

## **Historic, Archive Document**

Do not assume content reflects current scientific knowledge, policies, or practices.



62.41

# DASS PLANT GUIDE

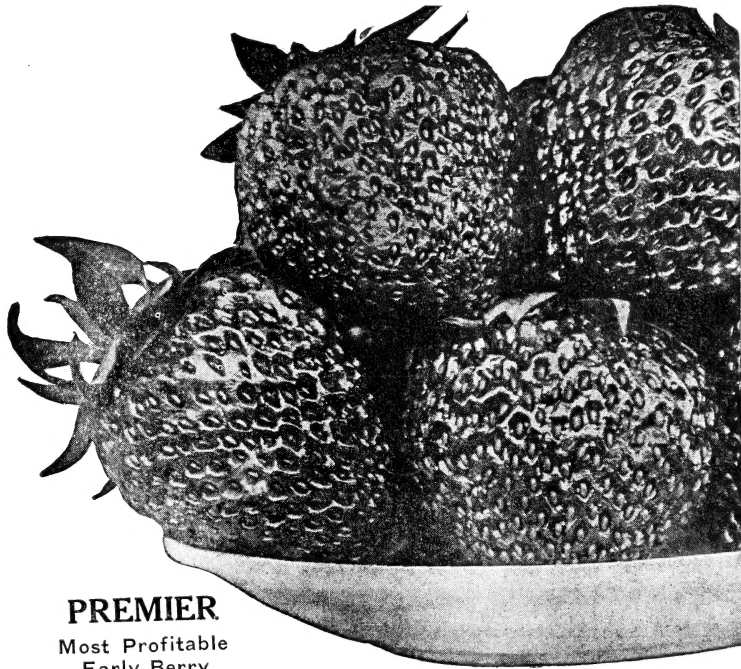
LIBRARY  
U. S. Department of Agriculture  
1943

FOR SEASON 1943

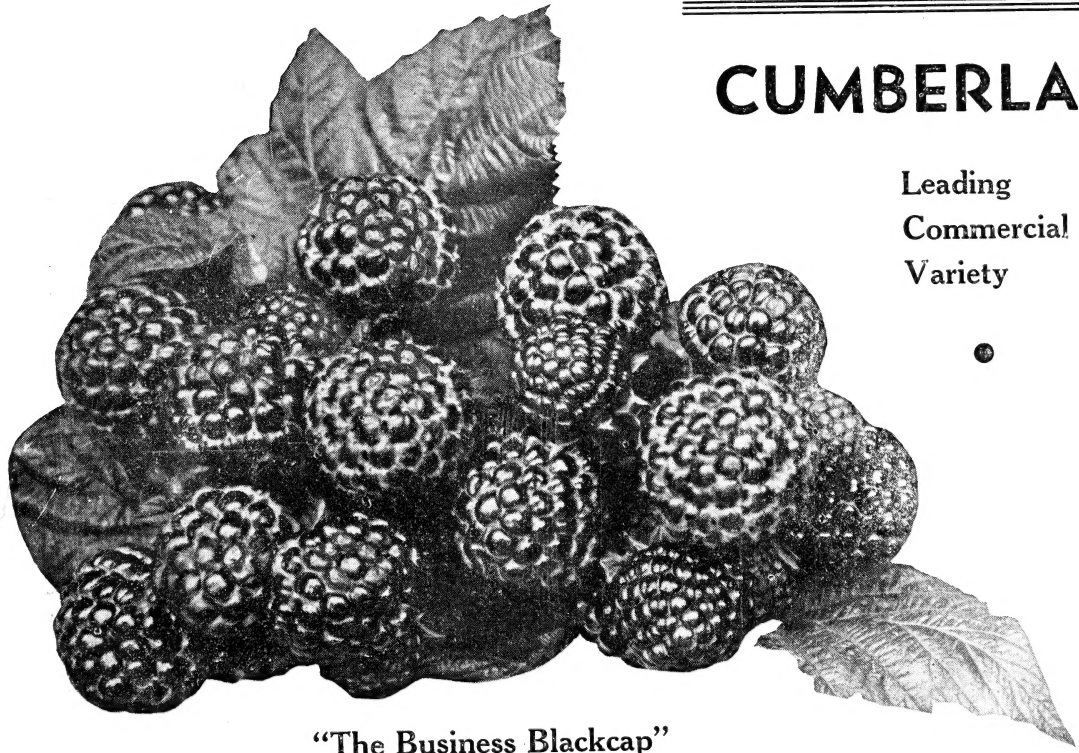
## YOUR STRAWBERRY GARDEN

- 50 Premier
- 50 Catskill
- 50 Dorsett
- 50 Mastodon
- Everbearing

**\$2.65**



**PREMIER**  
Most Profitable  
Early Berry



## CUMBERLAND

Leading  
Commercial  
Variety

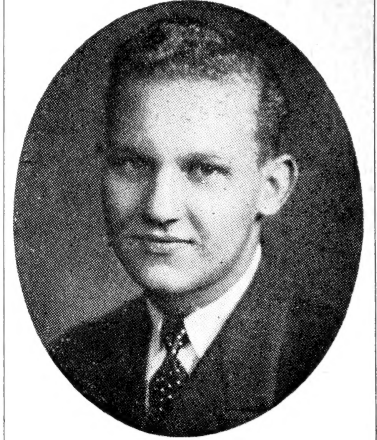
“The Business Blackcap”

## DASS' GUARANTEE



A. F. DASS, Sr.

We guarantee all stock which appears in this catalog to be just as represented, to be absolutely true-to-name, free from disease, and of high quality. Our nursery stock has been inspected twice by Michigan State Plant Inspectors, and each shipment bears a copy of Inspection Certificate showing our stock to be free from disease. We guarantee our plants to reach you alive and in perfect growing condition. All that we ask is that if for any reason you are not satisfied, that you report any error on our part immediately upon receipt of shipment. It is mutually agreed that in any event we are not liable for more than the purchase price of the stock.



A. F. DASS, Jr.

# DASS Offers You A Double Saving

Since we have been farmers ourselves for a great many years we understand the difficulties that beset the fruit grower, the Dass Nursery Company would be the last to recommend any stock but the best. In comparison with the other items which enter into the cost of a well-established fruit farm, the cost of plants is not great.

Times being what they are, however, any saving is worth making, so it is the policy of the Dass Nursery Company to offer its customers the best possible plants at the ABSOLUTE MINIMUM OF COST.

Help us to keep our costs down by ordering early. If full amount cannot be sent when ordering, you may send one-third with order and the balance any time before shipping date. Not only will we allow you liberal discounts for early orders, as described below, but you will be sure to have your plants reserved before the big rush starts during the shipping season.

**ALL STRAWBERRY ORDERS FOR 100 PLANTS OR LESS WILL BE PREPAID — A SAVING TO YOU OF FROM 12c TO 30c**

## BLAKEMORE

The Blakemore is a cross of Missionary and Premier, originated and developed by the U. S. Department of Agriculture. We have bought our foundation stock from that source.

Blakemore is a free plant maker and produces a heavy fruiting row on any kind of soil. The foliage is tall and heavy and protects the blooms from late spring freezes. The berries are beautiful, glossy, bright red to the core. It has a tough skin, firm flesh and a wonderful mild and juicy flavor. An excellent canner and one of the few varieties that keeps its color after preserving. Price same as Dunlap.

## CATSKILL

### Midseason Berry

This variety was introduced a few years ago by the New York Expt. Station. Catskill is a cross between Marshall and Premier and like Premier can be successfully grown in all sections of the country. Does well on any kind of soil—we have fruited Catskill and were pleasantly surprised by the size, beauty and quality of berries produced this extremely dry season.

## FAIRFAX

Fairfax is more vigorous than Premier and holds up better through the fruiting season. It is fully as healthy and free from disease. Considered just as productive as Premier under normal weather conditions, and more productive in dry seasons. The berries are larger and firmer and the quality much superior to Premier. Fairfax is a very attractive bright red. It is a moderate runner maker but better than Premier. Those who appreciate quality berries and want to get started with the best should plant Fairfax and Dorsett.

## DORSETT

Compared to Premier is just as free from disease, and is a better plantmaker. It is more vigorous than Premier and able to hold up the size of the fruit better through the season. It is a little heavier fruiter under normal conditions and bears considerably better than Premier under dry conditions. The berries are dark red, larger and firmer and more attractive than Premier and command 25c to 50c per case more than Premier on the market. One of the exceptional features of Dorsett as well as of Fairfax is the exceptional top price on the market.

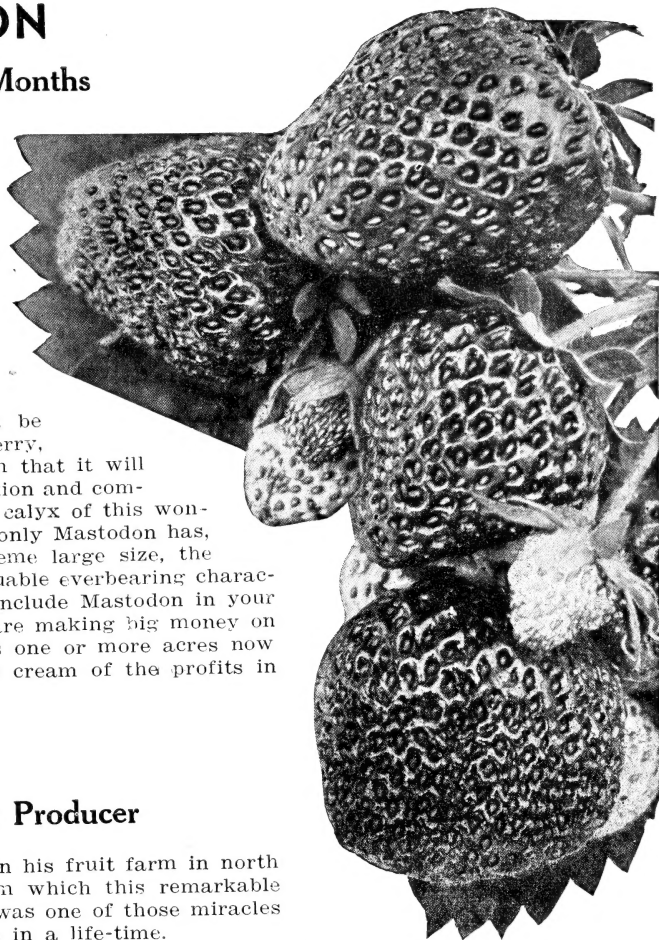
# EVERBEARING STRAWBERRIES

## MASTODON

3 Big Crops in 18 Months

PLANT MASTODON THIS YEAR. Why plant common sorts when with Mastodon you can get three crops in the same time you would get one with the June-bearing varieties? Our selected Mastodon bear a heavy crop the same summer planted, a crop the following spring that equals or surpasses any of the June Bearers that we grow and a heavy crop that following fall. Why wait a full year before getting returns?

A variety such as Mastodon cannot be adequately described in words. This berry, as a common or June-bearer, is so firm that it will carry hundreds of miles in perfect condition and command the highest prices. The big green calyx of this wonder variety gives it an appearance that only Mastodon has, and these facts, coupled with the extreme large size, the tremendous bearing capacity and its valuable everbearing characteristics, readily show why you should include Mastodon in your order this year. Others of our growers are making big money on this variety, and the farmer who plants one or more acres now for a June-bearing crop should get the cream of the profits in the future.



## GEM

Fine Quality—Heavy Producer

Discovered by Frank J. Keplinger on his fruit farm in north central Michigan, the parent plant from which this remarkable strain has been propagated apparently was one of those miracles that happen in the berry industry once in a life-time.

In an old patch of Everbearers there was a great, thrifty, husky plant with luxuriant dark green foliage, sparkling with vitality—loaded with beautiful bright red berries and growing lustily in the poorest soil in the whole field. The original Gem plants and 12 runner plants produced 25 quarts of berries and over 200 new plants the first season in new raw muck where other Strawberry plants were unable even to survive.

GEM

---

## SENATOR DUNLAP

Old Reliable Money-Maker

If you love shortcake, you will appreciate one made with Dunlap, and a can of them during the winter months is a treat. Both the canning factories and housewife demand this variety on account of its splendid flavor and dark rich, beautiful color. During the past two decades Dunlap has made more money for Strawberry growers than any other variety. The plants are medium in size, hardy long rooted, very prolific and will more than hold their own under any rough-and-tumble method of cultivation. In fact the Dunlap is the best berry for the beginner, as it is the easiest Strawberry to grow. Bears early, and is very productive.

## GRAND CHAMPION

Remarkably Long Fruiting

Greatest money-making Strawberry ever introduced; no crop failure on account of frosts. Has produced over 5000 quarts on one-half acre, in spite of heavy spring freezes. ALL SEASON BEARER. Commences to ripen with the Premier, the earliest berry, and produces fancy berries with the Aroma, which is a late berry. Plants are large, extra heavy, healthy foliage; berries are bright red, very large in size and have a fancy appearance. By all means try a few in your locality. Supply is very limited. Order early to avoid disappointment.

# PREMIER

## First on the Market

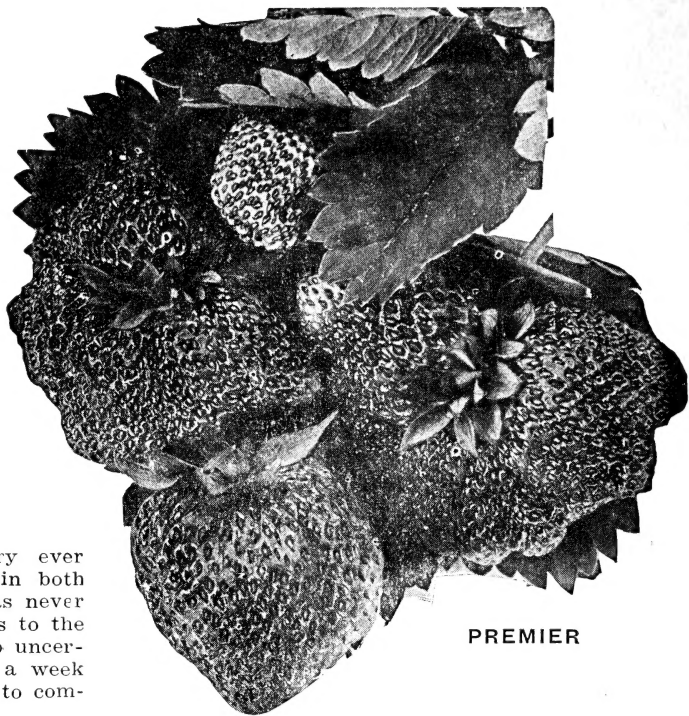
Premier is everything that the word indicates. It comes on the market at a time when there are practically no other strawberries. It SHIPS WELL, as it IS FIRM. The fruit is pointed, bright showy red, and has a nice calyx, large size. Is very early, in fact is the first berry to ripen.

We not only sell Premier by the thousands, but by the millions. This popularity is only due to the great results that DASS' PREMIER has produced for our customers. If you want big crops of large fine fruit—Plant Premier. Can quote special prices on large lots—write us.

## Frost-Proof

While it is the earliest Strawberry ever grown, Premier is so frost-resistant in both bud and blossom that its fruit crop has never been destroyed. Think what that means to the market grower. Premier eliminates crop uncertainties, and by ripening five days to a week ahead of any other kind, it never fails to command the highest price.

As a long distance shipper, Premier is unsurpassed. The berries are firm and will arrive at the market in fine condition. A berry that will stand up and keep its fresh, firm appearance for days will sell itself in any market. We recommend the Premier and Mastodon as being the biggest money-making Strawberries on the globe, and after you try them you will agree with us.



PREMIER

For a Strawberry Garden at Minimum Cost

## DASS CUT-PRICE PLANTS

It has always been our custom to thoroughly clean out our packing house every day during the shipping season, and as it is impossible to dig the exact number of plants required to fill the orders, we frequently find that we have a surplus of some varieties. If you are not particular about varieties, just want good Strawberry plants, this will enable you to plant a patch at a big saving. When Ordering Use Term: CUT PRICE PLANTS

Some of Our Best Varieties of Strawberry Plants

**\$4.00**

Per 1000

## COOPER

Beyond question this variety yields the biggest Strawberries ever produced. Its large, bushy plants are full of vigor and vitality that enable it to be grown successfully in all soils and climates. The flavor of its fruit is delicious, often being compared with that of the wild Straw-

berry. Cooper produces its crop early in the season, and is especially adapted to fancy local market trade, where its large size and attractive appearance result in quick sales at big profits. Is a splendid berry for table use, its wonderfully sweet flavor making it one of the best for sauce, shortcake, etc. Include some in your order.

## 2 COMPLETE HOME GARDENS of . . . STRAWBERRIES —

- 25 GEM
- 25 PREMIER
- 25 DUNLAP

All 75 plants **\$1.20**  
Prepaid for ..

- 25 MASTODON
- 25 DORSETT
- 25 BLAKEMORE

All 75 plants **\$1.40**  
Prepaid for ...

## BOYSENBERRIES

A crop of the blackberry, raspberry and loganberry. It is far more vigorous than any of its parents. Huge, plump, juicy, delicious berries, 1½ to 2 inches long, are borne in profusion. If you could taste them you would agree that in flavor they stand supreme. Whether eaten fresh or with cream, or canned for sauce, jam or preserves, or in pies, it is superior in every way to any other berry grown. Color dark wine-red, Boysenberry is almost seedless, is firm and therefore a good shipping berry. Produces in large clusters on long stems that stand away from the canes.

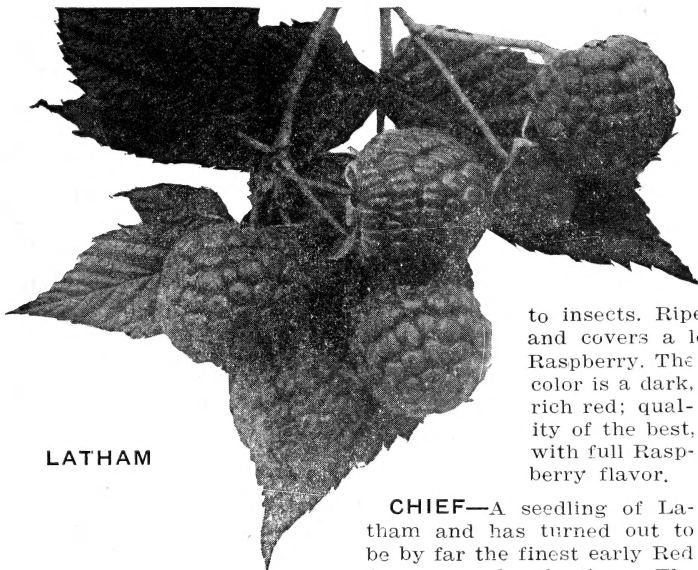
PRICES: 1-yr. No. 1, 25 for \$1.75; 50 for \$2.50; 75 for \$3.50; 100 for \$4.50; 200 for \$7.75; 300 for \$10.25; 400 for \$13.25; 500 for \$15.00; 1000 for \$29.00.

2-yr., No. 1 Transplants, Bearing Age, each 65c; 6 for \$3.00; 12 for \$5.50.

# Superior RASPBERRY PLANTS

**RED RASPBERRIES**—will do equally well on light or heavy soil; however it should be well drained. For field culture, Red Raspberries should be planted about 3 feet apart in the row, with the rows 7 feet apart, requiring about 2000 plants per acre. In the spring, all canes should be cut back to about 3 feet and branches trimmed to about 6 inches. Six or seven good strong canes are sufficient to a bush, and the berries will be higher in quality.

**LATHAM**—Although a comparatively new variety, it is entirely past the experimental stage, and we unhesitatingly recommend it as one of the best Raspberries ever grown. It was originated in Minnesota. This hardy berry has never been known to winter-kill even though exposed to 45 degrees below zero. The sensational yields of this variety have attracted the attention of growers everywhere, and everyone who has given it a trial is praising the many unusual features found in Latham. It is a tall, vigorous grower; the canes are extra heavy, well able to support the tremendous load of fruit. The foliage is a healthy, dark green, tough and leathery, highly resistant



LATHAM

to insects. Ripens about the same time as Cuthbert and covers a longer fruiting season than any other Raspberry. The color is a dark, rich red; quality of the best, with full Raspberry flavor.

**CHIEF**—A seedling of Latham and has turned out to be by far the finest early Red for general planting. The fruit is not quite as large as

Latham but is brighter red, very firm and a tremendously heavy yielder, producing 20 per cent more than Latham in the Minnesota test plots. The Chief is practically immune from mosaic and mildew and is even hardier and of better flavor than Latham. Raspberry growers have long looked for a good early Red Raspberry. They have tried King, Miller, Early June, etc., and although fairly good in many respects they have not been very profitable. It now looks as though the new Chief is going to meet most of the requirements and become the greatest money-maker of them all—ripening 10 days before Latham, firmer, same good color, fine flavor and a heavy yielder.

## "ALL-FRUIT" COLLECTION for the Home Garden

- 25 LATHAM, 1-yr.  
Red Raspberries
- 25 CUMBERLAND, 1-yr.  
Black Raspberries
- 25 ELDORADO, 1-yr.  
Blackberries

All 75 plants **\$2.50**  
Prepaid for .....

- 2-yr. Transplants
- 25 LATHAM
- 25 CUMBERLAND
- 25 ELDORADO

All 75 plants **\$4.50**  
Prepaid for .....

## BLACK RASPBERRIES

Black Raspberries should be planted on a rather high soil for best results. Gravelly and loamy soils are best. They are planted about 3 feet in the row, rows being from 6 to 7 feet apart. The young shoots each year are tipped or cut off when about 24 inches high, and the laterals are trimmed to about 6 or 8 inches in length the following spring. Leave about five good, strong shoots per bush.

**CUMBERLAND**—Without question the most profitable and popular Black Raspberry grown; the one safe and reliable commercial variety, because you can depend on a big paying crop regularly. We call it the "**Business Blackcap**" because it succeeds everywhere—light or heavy soils—East, West, North or South—wherever you find Raspberries grown, this is the leading black variety, and it never fails to produce its customary big crop every year. It is perfectly hardy, tremendously productive, the bushes are vigorous, upright, strong and healthy. Berries extra large, glossy black, not equalled by any other variety in quality, flavor and appearance. It's good to eat and good to sell.

**PLUM FARMER**—Is very popular with many growers on account of its earliness, and ability to mature its customary big yield in a very short time, usually from 12 to 16 days. The plants are healthy, canes strong growers. Produces plenty of bearing wood which insures a heavy crop of fruit. The berries, which are produced in clusters, are large, well colored and of first quality. Plum Farmer will give satisfaction everywhere. Ripens nearly a week earlier than Cumberland and can be worked in nicely with that variety.

**THE NEW LOGAN**—The most dependable early black Raspberry. Ripens one week earlier than Cumberland. Berries are extremely large, delicious, and the pickings from first to last are of uniformly high quality. New Logan holds up well through drought, and is highly disease-resistant. Free from seediness and a tendency to crumble.

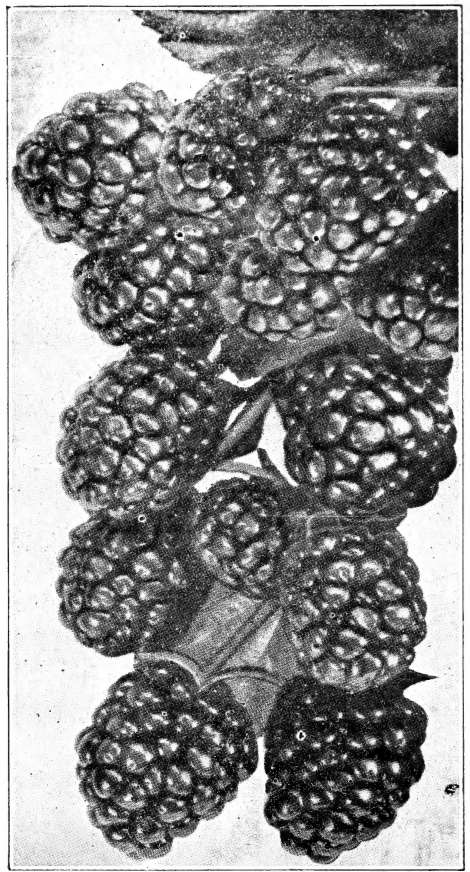
# BLACKBERRIES

## *Always Dependable*

Blackberries thrive equally well on any light or heavy soil and as they are practically immune from all disease and insects, one planting will provide a big income for a number of years. For field culture, Blackberries are usually planted 4 feet apart in the row, with the rows 7 feet apart, requiring about 1600 plants per acre. For best results they should be confined to hills, allowing only five or six strong shoots per hill. The new growth each summer should be trimmed down to about 24 inches and allowed to branch—this gives a stronger, sturdier bush.

**ALFRED**—This Blackberry has become a favorite for home use and market. The fruit is of the finest quality for table use, as it is nearly seedless and coreless. The flavor is sweet and enticing. Berries grow to immense size. Ripens early, perfectly hardy, a vigorous grower.

**ELDORADO**—Never winter-kills and always produces a full crop of jet black berries of enormous size. The hardiest and prettiest of all Blackberries, with that delicious aroma and flavor which can only be found in a wild Blackberry. It is valuable for all purposes, both home and commercial, being so very firm that it will remain in good condition for three and four days, and can be sent to distant markets where it always commands the highest prices.



ALFRED

# DEWBERRIES

## *To Increase Your Profits*

These are a sort of Blackberry, but the vines are not self-supporting, as are the Blackberries. The usual method of propagation is as follows: They are set 3 feet in the row, rows 6 feet apart. Short posts are set about every fifth vine and a wire stretched about three feet from the ground. Each spring all strong vines are tied to the wire, and the ends that are too long are cut off about ten inches above wire.

**LUCRETIA**—This is the best variety of Dewberry that we have fruited and is one that gives universal satisfaction. Berries are very large, in fact, being larger than any Blackberry grown. They are jet black, coreless, sweet and juicy. Dewberries are free from rust and all other fungous diseases. Plant at least a few for home use.

Ripens a week to ten days before the earliest ordinary blackberry. This, and the fact that they are unquestionably one of the finest looking berries of their kind and of such big, uniform size makes them topnotchers on price in any market. Dewberries are especially productive in light soils. Plant Lucretia and such land will make you a profit.

# BLUEBERRIES

Deliciously Sweet, Giant Size Berries

Who doesn't like Blueberry pie—delicious, juicy, and rich? Here's an unusual opportunity to obtain some prized Blueberry plants for your own garden. They do well on any fairly rich well-drained soil, preferring some acid and plenty of nitrogen.

Bushes are loaded with fine fruit the second year after planting, and bear indefinitely, year in, year out.

**RANCOCAS.** Midseason. Hardy, vigorous, productive; very large, firm berries of excellent sweet flavor.

**RUBEL.** Late. Hardy, vigorous and very productive, upright grower; large, extra firm berries of good quality.

**HARDING.** Late. Sweetest of all. Hardy, very productive; spreading growth.

## PRICES OF BLUEBERRY PLANTS

1-yr., Sure to Grow; 2 for 90c; 4 for \$1.80; 6 for \$2.45; 12 for \$2.85; 25 for \$5.50.

2-yr., No. 1, Start to Bear Second Season; 2 for \$1.10; 4 for \$2.00; 6 for \$2.50; 12 for \$5.00; 25 for \$10.00.



# GRAPES

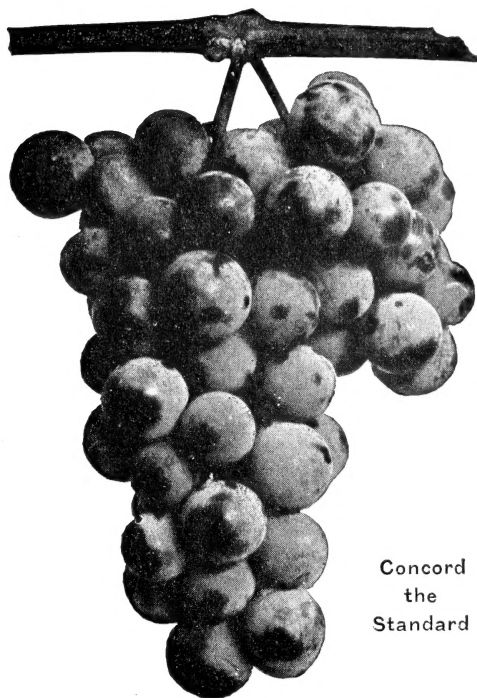
*Are Easy to Grow—Good for a Lifetime—Very Productive*

The Grape is perfectly hardy and can be grown almost anywhere. It must have well drained soil but it is not particular as to the kind of soil. They grow equally well in heavy clay, light sand or loam. Should be planted 8 to 10 feet, requiring 485 plants per acre. Should receive regular trimming, cutting off all the new growth but 4 laterals, two each side of the main stalk, and these trellised on the wire so they nearly meet the laterals reaching from the next vine, making it one continuous line, one on each wire; no side shoots of any kind.

**CONCORD**—This is the standard of quality and comparison on all markets. It is perfectly hardy, very productive and will succeed anywhere. The branches are large and compact; berries large, bluish black color. Foliage healthy and tough, and hangs on very late. The one all-purpose Grape; we heartily recommend it for both home and market use.

**NIAGARA**—This is the late leading white Grape throughout the country. Berries large, yellowish green when ripe. The bunch is large and compact. Is vigorous and hardy, and fully as productive as Concord. Fine flavored.

**PORTLAND**—A new white grape developed in Fredonia, N. Y. Ripens earlier than any other known grape, which permits its being planted over a wide range of territory. Berries large, and have that beautiful yellowish color. Quality excellent, equal to the Niagara and other later Grapes. It contains much sugar and can be eaten before it is fully ripe. Vine hardy and pro-



Concord  
the  
Standard

ductive. You will be pleased with this new Grape. Makes a beautiful showing with Fredonia.

**DELAWARE**—Beautiful light red to amber colored berries, small in size and sweeter than any other Grape. Bunches small and compact, sometimes shouldered. Flesh is juicy and spicy and of finest quality for table use, jellies, etc.

**FREDONIA**—Black. Large bunches and berries. Fine flavor. Ripens fully ten days earlier than Moore's Early. Excellent shipper, does not crack. A swell new variety.

**MOORE'S EARLY**—Ripens about ten days earlier than Concord. A fine table Grape, as the fruit is sweet and delicious. Berries and bunch extra large and firm; quality excellent. A fine Grape for home use and market. Black with light blue bloom.

## GOOSEBERRIES

**Unequaled for Pies and Preserves**

Very profitable, for they are strictly for the North and require a cold climate; easy to plant and care for, and bring good returns. They require feeding, and when given a good mulch of stable manure in the late fall, will repay you well.

**HOUGHTON**—Small dull reddish brown fruit, tender, juicy, sweet and pleasant, ripening soon after midsummer. Profuse bearer.

**DOWNING**—Medium to large, pale green. Quality good. Upright, productive bush. Midseason. The most widely grown variety.

PRICE: Each 20c; 10 for \$1.75; 100 for \$15.00

## CURRANTS

**Easy to Grow—Fine for Jelly**

The Currant is one of the most valued of small fruits. Being hardy, they do not winter-kill, are easy of cultivation, requiring little care.

**PERFECTION**—Cross of Fay's Prolific with white Grape and combines the best qualities of both parents. In color it is beautiful bright red and of a size larger than the Fay; the clusters average longer and the size of the berries is maintained to the end of the bunch. It is one of the most productive Currants we have ever known.

**LONDON MARKET**—A fine red Currant. Quality excellent with mild flavor. Bush healthy and vigorous.

PRICE: Each 20c; 10 for \$1.75; 100 for \$15.00

We cannot ship Gooseberries and Currants after April 10th, as the law requires that they must be shipped when dormant. The State Inspectors make a spring inspection of Gooseberry and Currant plants, consequently orders should be in by April 10th, to guarantee shipment

# PEARS . . . of Proven Varieties

The Pear tree will grow on almost any good soil, but thrives in a rather heavy clay or loam. Soil should be well drained and kept under cultivation for best results. Standard varieties are planted about 18 to 20 feet apart for permanent orchards and the dwarfs about 10 feet. Dwarfs must be planted deep enough to cover the junction of Pear and Quince about two or three inches.

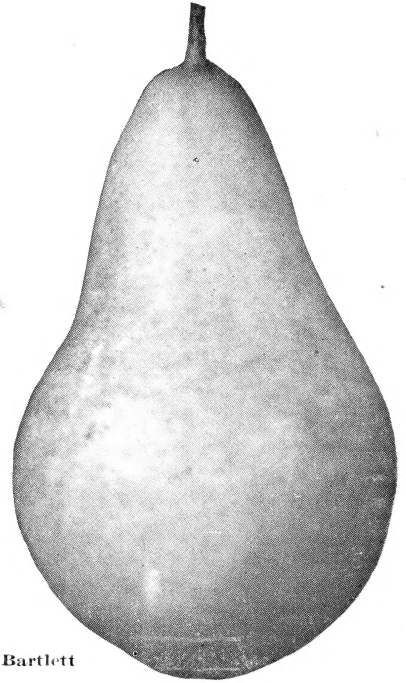
**PRICES: 5 to 6 ft. trees, 55c each; \$5.25 per 10; \$42.50 per 100.**

**BARTLETT**—This is the most popular Pear, both for home use and market, that the world has ever known. It is buttery and rich with high flavor. The tree is strong and vigorous in growth. Bears young and abundantly. It is a leader among canning Pears, and when well grown is the universal favorite and commands top prices.

**CLAPP'S FAVORITE**—A superb, large, long, yellow Pear, highly flavored and richly flushed with russett-red next to the sun. The flesh is fine grained, juicy, melting and buttery. A fine grower and enormously productive. Comes about two weeks earlier than Bartlett.

**SECKEL**—Often called the Sugar Pear. Is small in size, one of the richest and highest flavored Pears grown, always in demand for desserts and luncheons. Tree makes a somewhat slow, but stout and erect growth.

**DUCHESS DWARF**—This is the king among the dwarf Pears, and the one that gives the most satisfaction to growers everywhere. Does not require much space for planting and bears enormous loads of high quality fruit. When fully ripe is a golden yellow, with a dull blush on the sunny side. When properly trimmed it does not grow over five or six feet high, which feature makes it valuable for back-yard gardens and city lots.



Bartlett

**SHELDON**—One of the most highly prized late Pears; comes on some time after Bartlett. Roundish shaped and greenish russet with richly shaded cheek. Flesh a little coarse, melting, juicy with a very brisk vinous, highly perfumed flavor. A vigorous grower and a good bearer, even while quite young.

**KIEFFER** — Sometimes known as Winter Bartlett. Is a sure cropper, heavy yielder and has exceptional shipping qualities. While not of the best quality for out-of-hand eating, it is a favorite for canning and preserving. The early bearing, heavy cropping trees make it desirable for quantity.

## NEW DOUGLAS PEAR

Bears in Two Years

This valuable new early-bearing pear is cold resistant and considered to be blight proof. Bears early, oftentimes same season planted and produces heavy crops. Fruit is large, smooth, yellow blushed. Flavor delicious, very sweet, melting and juicy. A regular cropper in all soils and localities. Something new and better!

**PRICE: 2-yr., 4-6 ft. trees, each 60c; 3 for \$1.55; 10 for \$5.25.**



New Douglas Pear

# . . . Plant PEACHES for Quick Returns

This fruit brings returns sooner than any other tree that can be planted. It is very desirable also for use as a filler in Apple, Plum or Cherry orchards, because it comes into bearing so soon and makes the orchard show a profit before the slower growing trees reach their bearing age. They are usually planted from 15 to 20 feet apart in permanent orchards, and do best on light, well drained soil. Trees should be severely pruned when planted, allowing them to make new branches in the planted trunk.

Extra fine, 5 to 6 ft. trees, the best size to plant: 40c each; \$3.50 per 10; \$25.00 per 100.

## J. H. HALE

Fruit averages one-third to one-half larger than the Elberta; ripens about five days earlier and is much superior in flavor. Color a beautiful golden yellow with carmine blush. Is only partially self pollenizing, so should be planted with some other variety such as Elberta. Freestone.

## HALE-HAVEN

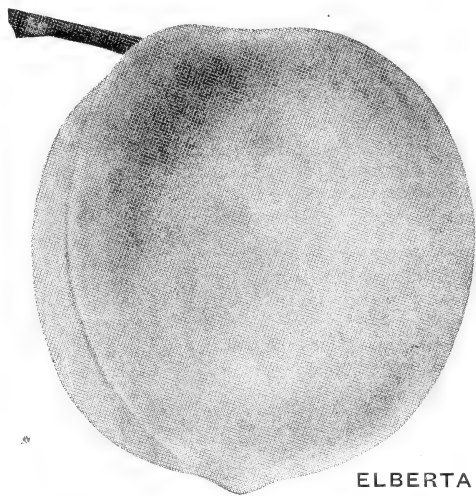
This new peach is a cross between South Haven and J. H. Hale, two of the greatest Peaches. It is an exceptionally early, heavy yielding frost-resistant variety. Two weeks earlier than Elberta. The flesh of Hale-Haven is thick, wholesome and delicious. Freestone. A real dependable money-maker.

## ROCHESTER

This wonderful new Peach originated near Rochester, New York, and is of the Crawford type. However, it precedes the Early Crawford by a week, is more prolific, hardier, larger, prettier and fully its equal in quality. Its skin is thick and tough which makes it a good shipper. Light yellow to orange, blushed with dark red. Well adapted for both home use and market. Freestone.

## ELBERTA

The standard market Peach of the whole country. Perfectly hardy and a strong growing disease-resistant variety. Color yellow with red cheek, flesh yellow and highly flavored; freestone; skin exceedingly tough and will stand long shipments better than any other Peach. There are more acres of Elberta now bearing than all other varieties combined in the great middle-west Peach belt, and we feel certain that it will hold this place for many years.



ELBERTA

## RED KING

A New Profit Maker

Red King is the same size as regular Elberta, but has a rich, delicious flavor all its own. Free from bitterness. It makes a cherished canning peach. Flesh is firm and fine. An ideal dessert variety but ranks with the best for shipping.

A week to ten days before Elbertas are ready you can be picking the gorgeous Red Kings. Follows Hale-Haven on the market and brings higher prices than other early varieties. Give Red King an important place in your orchard and you'll find it profitable and dependable.

Red King is perfectly freestone and self-pollenizing. It produces an enormous crop of full-size fruit every year. Bears young. The firm skin and flesh give it an "A" rating for quality.

## QUINCE

**ORANGE**—We list only this one Quince, as we consider it the best by far. The trees commence to bear very young and produce big crops. Fruit is excellently flavored, orange shape and of large size. Tree a dwarf grower, planted about 12 feet apart in orchards.

PRICES: 4 to 5 ft. trees, 60c each; \$5.75 per 10; \$50.00 per 100.

## APRICOT

**MOORPARK**—Very large, orange-yellow fruit with red cheek; flesh yellow, sweet, juicy and delicious; freestone; very productive; extra good for either market or dessert. Will thrive and produce an abundance of fruit anywhere that a peach or plum will thrive.

PRICES: 4 to 5 ft. trees, 60c each; \$5.75 per 10; \$55.00 per 100.

# *... Everyone Should Plant An Orchard*

Every land owner should plant at least a small orchard. The blossoms alone would more than repay for the trouble, even the shade it might afford. The landscape effect it gives to the homestead is invaluable as no real homestead could be complete in appointment without its orchard; it's the one dear spot in the memory of everyone reared on the farm that has its orchards. Still some people neglect such an important feature in laying out their home grounds, and with all these benefits you may have fruit fresh from the tree at your pleasure with a flavor that cannot be had in ones from a distant market. Could there be greater inducements for planting an orchard?

## **DASS' TIME-TRIED APPLES**

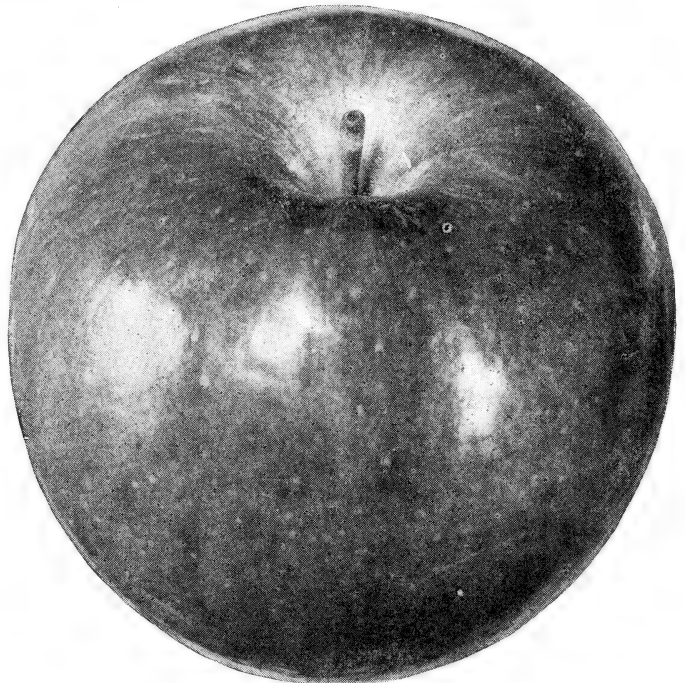
In late years the cost of bringing an orchard of Apples into bearing has been materially reduced by using peach and other fillers in the orchard. The Apples are planted from 33 to 40 feet apart and the fillers between. These fillers to be removed in from 10 to 15 years. Any land that is well drained and not too dry will raise Apples, and the varieties we list are time-tried and proven.

**Prices of 5 to 6 ft. trees, all varieties: 50c each; 10 for \$4.50; 100 for \$35.00**

### **Summer Apples**

#### **Yellow TRANSPARENT**

This is the best of all early summer Apples; excellent for both cooking and eating. Fruit large, crisp, tender, juicy, mildly sub-acid. Skin yellowish white when ripe. Tree medium sized, vigorous, hardy and quick growing. It is excessively productive and bears at an early age. Brings top prices on all markets, and is excellent for home use.



McIntosh

## **AUTUMN APPLES**

### **McINTOSH RED**

A medium sized, deep crimson Apple that is very beautiful. The tree is very hardy, vigorous, and quick growing. Will do well in all sections of the country. Flesh is pure white, tender, juicy and has a splendid flavor. In fact, we know of no fall Apple that is its equal. It originated in Canada and is therefore, very hardy. Plant at least a few trees and have good Apples while winter Apples are ripening. These will keep in storage for several months.

### **WEALTHY**

Large in size when full grown, and a good cropper. Fruit is red with light streaks. Quality good, juicy, an excellent cooker and canner. Is a hardy tree, and a good, quick grower. Bears young.

### **HYSLOP CRAB**

A good all-purpose Crab Apple. Large fruit. All over red, Ripens in August.

# WINTER APPLES

## GRIMES GOLDEN

The nearest to perfection of any yellow winter variety now in general cultivation. Is a large sized, golden yellow Apple, with extra fine flavor, and good keeping qualities. Tree a quick grower, and bears young. Don't fail to include some in your orchard.

## STAYMAN'S WINESAP

This Apple is now attracting attention everywhere as a profitable market variety. It has large size, dull red color, great productiveness and best quality. The tree is a vigorous grower and is irregular and drooping in habit, and adapts itself readily to different soils and climates.

## BALDWIN

The great commercial late winter Apple. Tree a large, vigorous, open grower, upright in tendency and very productive. Fruit large, rounded, deep red. Flesh juicy, crisp and rich.

## DELICIOUS

No new variety has ever gained popularity in so many different Apple sections as the Delicious. Fruit extra large. A brilliant bright red; flesh fine grained, crisp and juicy with a delightful aroma. Is of the highest quality. Tree one of the hardiest and quick grower and bears young.

## R. I. GREENING

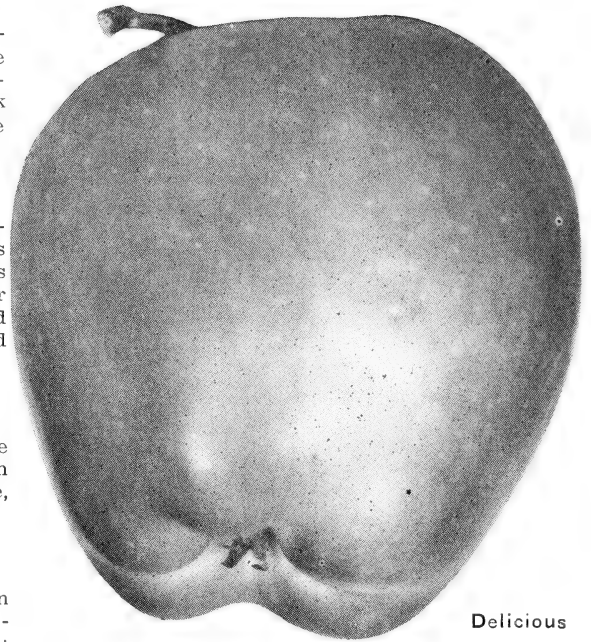
This is the old-fashioned Greening that sells rapidly at good prices on all markets. The best Apple for cooking purposes that there is grown, and also excellent for dessert use. Large in size; flesh firm, fine grained and crisp. Tree grows large and spreading; does well in any soil and climate.

## JONATHAN

A beautiful all-red Apple, medium in size, highly flavored, and of excellent quality, being tender, spicy and rich. A splendid market and family sort. Tree long lived, productive and an early bearer. Will keep well without special care, and will stand much handling.

## NORTHERN SPY

This is a fine Apple for culinary use and its exceptionally fine flavor makes it invaluable as a dessert Apple. Fruit extra large, firm, tender,



Delicious

crisp and juicy; mild sub-acid flavor. Skin pale yellow with bright pinkish red, and mottled with carmine. Tree large and vigorous.

## NEW CORTLAND

The young bearing habit of this fine new fall Apple has astonished growers everywhere. It has proven to be one of the greatest eating, shipping, and market Apples ever introduced. The trees are large, healthy, and immensely productive. Fruit large and handsome. Flesh fine grained, crisp, and juicy.

## DOUBLE RED DELICIOUS

This variety is like Delicious in every respect excepting that it has added color. As the name implies this is a solid red, highly colored Delicious. It is recommended especially for locations where Delicious does not have sufficient color. The tree is hardy, healthy, vigorous and bears regular annual crops. Flesh is fine grained, crisp, melting and juicy. Quality is very good and the season is November to March. Delicious is a wonderful eating Apple.

### Reserve Your DASS PLANTS Early and Make an Extra Saving

When we receive orders well ahead of our shipping season, we can handle our office work, digging and packing much more efficiently. We have figured what this saving is and we are anxious to have your orders early so that we may pass this saving on to you. Just another indication that DASS wants to give you the BEST PLANTS AT LOWEST COST.

**10%**

DISCOUNT on all orders mailed before March 1.

**5%**

DISCOUNT on all orders mailed before March 15.

# ..... Here Are Those MONEY-SAVING DASS PRICES

*Write for Special Quotations on Large Amounts*

NOTICE: Should any new taxes be levied which are unknown to us at this time, such taxes will be added to the prices quoted in this catalog.

## Strawberry Prices

	25	50	75	100	200	300	400	500	1000
Cut Price .....	\$ .40	\$.65	\$.85	\$1.00	\$1.25	\$1.60	\$2.10	\$2.35	\$4.00
Dunlap .....	.35	.55	.70	.80	1.50	2.25	2.95	3.25	5.20
Premier .....	.40	.65	.95	1.10	1.75	3.00	3.65	4.00	7.50
Dorsett .....	.40	.65	.95	1.10	1.75	3.00	3.65	4.00	7.50
Fairfax .....	.40	.65	.95	1.10	1.75	3.00	3.65	4.00	7.50
Catskill .....	.40	.65	.95	1.10	1.75	3.00	3.65	4.00	7.50
Grand Champion .....	.40	.65	.95	1.10	1.75	3.00	3.65	4.00	7.50
Cooper .....	.40	.65	.95	1.10	1.75	3.00	3.95	4.00	7.50
Blakemore .....	.35	.55	.70	.80	1.50	2.25	2.95	3.25	5.20
Gem .....	.55	.95	1.50	1.75	3.25	4.50	5.00	5.85	10.50
Mastodon .....	.75	1.25	1.75	2.00	3.75	5.00	7.35	8.25	14.85

## Red Raspberry Prices

	25	50	75	100	200	300	400	500	1000
Latham, 1-yr., No. 1 .....	\$.95	\$1.75	\$2.35	\$2.95	\$5.75	\$7.10	\$9.15	\$11.25	\$20.00
Latham, 1-yr., No. 2 .....	.80	1.10	1.55	1.90	2.85	3.90	5.00	6.50	12.00
Latham, 2-yr., Transplants .....	1.90	3.00	4.05	5.10	8.90	9.85	13.35	18.75	35.00
Chief, 1-yr., No. 1 .....	.95	1.75	2.35	2.95	5.75	7.10	9.15	11.25	20.00
Chief, 1-yr. No. 2 .....	.80	1.10	1.55	1.90	2.85	3.90	5.00	6.50	12.00

## Black Raspberry, Blackberry and Dewberry Prices

	25	50	75	100	200	300	400	500	1000
Cumberland .....	\$.95	\$1.75	\$2.75	\$2.85	\$5.75	\$7.50	\$9.50	\$11.00	\$20.00
Cumberland Transplants .....	2.25	3.85	5.25	6.85	12.75	17.65	23.25	31.00	58.00
Plumb Farmer .....	.95	1.75	2.75	2.85	5.75	7.50	9.50	11.00	20.00
New Logan .....	.95	1.75	2.75	2.85	5.75	7.50	9.50	11.00	20.00
New Logan Transplants .....	2.25	3.85	5.25	6.35	12.75	17.65	23.25	31.00	58.00
Alfred Root Cuttings .....	1.10	1.75	2.75	3.25	6.00	8.00	10.27	12.55	20.00
Eldorado Root Cuttings .....	1.10	1.75	2.75	3.25	6.00	8.00	10.27	12.55	20.00
Eldorado Transplants .....	1.40	2.25	3.30	4.15	7.85	11.10	13.85	18.00	32.00
Lucretia .....	.85	1.40	2.10	2.55	4.85	6.25	7.45	9.50	17.00

## Grape Prices

	Each	25	50	75	100	200	300	400	500	1000
Concord, 1-yr. ....	\$.10	\$1.25	\$1.90	\$3.00	\$3.25	\$6.00	\$8.50	\$10.25	\$11.75	\$25.00
Concord, 2-yr. ....	.10	1.85	3.50	4.90	5.85	10.85	15.75	19.50	23.00	46.00
Niagara, 1-yr. ....	.10	1.75	3.00	4.50	4.90	9.50	13.75	18.00	22.00	43.00
Niagara, 2 yr. ....	.10	2.25	4.25	6.25	6.85	13.25	20.00	27.00	34.00	63.00
Moore's Early, 1-yr. ....	.10	2.25	4.25	6.25	6.85	13.25	20.00	27.00	34.00	63.00
Delaware .....	.15	2.50	4.50	6.25	8.00					
Portland .....	.15	2.50	4.50	6.25	8.00					
Fredonia .....	.15	1.00	1.50	3.00	8.00					

## Asparagus Prices

	25	50	75	100	200	300	400	500	1000
Martha Washington, 1-yr. No. 1 .....	\$.45	\$.75	\$.85	\$1.00	\$1.60	\$2.20	\$3.00	\$3.65	\$7.00
Martha Washington, 2-yr., No. 2 .....	.65	1.00	1.40	1.75	2.70	3.75	4.80	5.75	11.00



# CHERRIES

Cherries succeed best in sandy or gravelly soil, but it must be well drained. The Sweet varieties grow more rapidly, and make more pyramidal trees. Sour varieties are more dwarf and can be planted about 18 feet apart in permanent orchards. Sweet Cherries should be planted about 24 feet apart. The roots and tops of Cherry trees should be severely pruned when planted, to secure best results.

## CHERRY PRICES

Sweet, 5-6 ft. trees, 70c each; \$6.50 per 10; \$55.00 per 100.

Sour, 55c each; \$5.00 per 10; \$42.50 per 100.

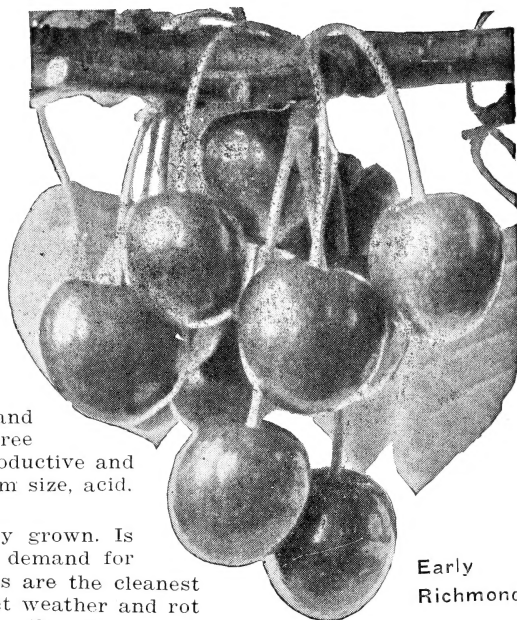
**EARLY RICHMOND**—(Sour.) This is the earliest and best sour variety, and a well known standard sort. Tree is hardy, vigorous and an upright grower. Is very productive and regular in bearing. Fruit a clear bright red, of medium size, acid, rich, and one of the best for canning and pies.

**MONTMORENCY**—(Sour.) The finest sour Cherry grown. Is large, juicy, very bright red, acid. There is greater demand for this Cherry on the market than any other. The trees are the cleanest and best growers and are less subject to disease, wet weather and rot than any other sour variety. Ripens about a week later than Richmond.

**BING**—(Sweet.) Trees hardy and a strong grower, especially adapted to the East, although it came from Oregon. Fruit extra large, black, very fine and excellent for commercial purposes.

**BLACK TARTARIAN**—(Sweet.) Tree vigorous, upright grower and immense bearer. Fruit very large, purplish black, heart-shaped; flesh mild and sweet, and quality considered of the best for market and dessert.

**NAPOLEON**—(Royal Ann.) (Sweet.) Of fine appearance and very largest size. Color yellow and amber, with bright red blush; fresh firm, juicy and delicious. Profitable for market, find-



Early Richmond

ing a ready sale for canning and dessert. Bears enormous crops.

**SCHMIDT'S BIGARREAU**—(Sweet.) New remarkably hardy and productive. Fruit of largest size, a deep mahogany color; flesh dark tender, juicy, very rich, excellent flavor. Stone small and separates easily from flesh.

**WINDSOR**—(Sweet.) New seedling originated at Windsor, Canada. Fruit large, liver colored, quite distinct; flesh remarkably firm and of fine quality. Tree hardy and very prolific. Most valuable late variety for market or family use.

# PLUMS

In general, Plum trees thrive best in a sandy or clayey soil, that is well drained. They are usually planted about 18 feet apart in permanent orchards or where a wagon sprayer is used about 20 feet. Many varieties of plums produce so abundantly that the best results are obtainable only by careful thinning. If allowed to grow naturally the trees will be weakened and the fruit will be smaller.

**PLUM PRICES**—5-6 ft. trees 55c each; \$5.00 per 10; \$40 per 100

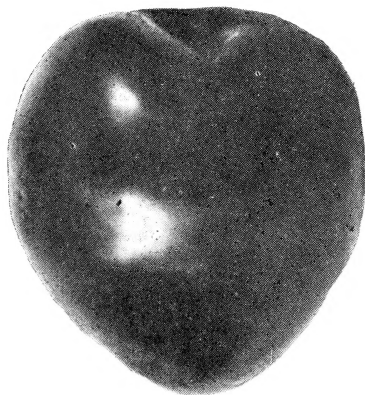
**ABUNDANCE**—Fruit large, showy, beautiful amber turning to a rich, bright cherry-red color, with a decidedly white bloom, and highly perfumed. Flesh light yellow, exceedingly juicy and tender, of a sweetness impossible to describe. Stone small and parts readily from flesh. For canning it is of greatest excellence. Its season is very early, ripening in advance of other Plums, thus adding to its value.

**BRADSHAW**—A very large and fine early Plum, dark violet, red, juicy and good. Trees erect and vigorous; very productive; valuable for market. The quality is excellent, and it is one of the most popular Plums for canning, while its attractive color, good quality and shipping properties make it sought for as a market variety.

**YELLOW EGG**—Golden yellow in color with thick bloom. Flesh golden yellow, rather juicy and very highly flavored. Tree large, productive.

## ITALIAN PRUNE—A European Variety

Giant purple, oblong plum which ripens in September. Beautiful and very delicious. Regular cropper. Fine for drying, canning, storage.



**GREEN GAGE**—Medium sized, round skin green, becoming yellowish green usually with reddish brown dots and network at base. Flesh pale green, melting, juicy, sweet and rich, and unqualified in flavor.

**LOMBARD**—Tree a medium sized, vigorous grower. Fruit medium to large, roundish oval, dark red; flesh yellow, juicy and pleasantly flavored. Is hardy and a valuable commercial sort.

**MONARCH**—Large, vigorous tree, begins fruiting young. Fruit very large, brilliant, bluish purple. Flesh is pale golden green and juicy. About two weeks later in season than Lombard.



# The Stately SHADE TREES

**WEeping WILLOW**—Grows 30 to 40 feet tall. Makes a quick growth. The branches are olive-green, slender, graceful, drooping nearly to the ground. Leaves long, smooth, silky green. It is fine as a specimen tree on the lawn alone. Its best situation is on the edge of streams or pools, natural or artificial, its branches near or drooping over the water.

**PRICE:** \$1.00 each.

**ALTHEA (Rose of Sharon)**—We offer the tree form which is most desirable. Perfectly hardy and adapted to all soils; grows to a height of from 6 to 8 feet, the large, bell-shaped flowers are of many colors as to variety; blooms August and September when few other shrubs are flowering.

**PRICE:** 2-yr. trees, 50c each; 3 for \$1.35.

**CUT-LEAF WEeping BIRCH**—One of the most beautiful and useful ornamentals. Shiny white bark, graceful drooping branches, finely cut dark green foliage; a striking tree even in winter with its snowy white bark.

**EACH,** \$2.50; 2 for \$4.50.

**CHINESE ELM**—A new variety quite similar to the American Elm in appearance but much more rapid in growth, probably growing faster than any other tree. It attains great height and possesses a marvelous adaptability to soils and conditions which would be fatal to other varieties. Well suited to arid sections and extreme temperatures.

**PRICE:** 8 to 10 ft., \$1.00.

**LOMBARDY POPLAR**—A tall, narrow tapering tree of obelisk form, growing rapidly to a height of sixty feet or more at maturity. Always makes a striking feature in any landscape. Fine for planting in groups, along driveways, or to make boundary lines. Sometimes used for tall screen hedges.

**PRICE:** \$1.00 each.

**SILVER MAPLE**—The beautiful silvery foliage and rapid growth of this variety make it an ideal tree for the lawn or streetside planting.

**PRICE:** 75c each; 2 for \$1.25.

---

## Ready to Bloom Field Grown SHRUBS

### SPIREA VAN HOUTTEI

Commonly called Bridal Wreath. This is the most popular of all shrubs. During May and June the branches are covered with a mass of flowers, and the dark green foliage gives a beautiful effect until winter. Thrives equally well in shade or sun. Plants attain a height of about five feet, and when in bloom are a mass of white, and never fail to attract attention.

**PRICE**—3-yr. plants 3 to 4 ft., 30c each; 10 for \$2.50.

### RED LEAF BARBERRY

The new shoots of the plants that are planted in the sun are red, but the older leaves are what we would call a deep maroon-purple. It is beautiful and we do not think the coloring is equalled by any other shrub. The habit of growth and general characteristics are the same as the regular Japanese Barberry. Should be planted in the sun and not too close together.

**PRICE**—2-yr. plants, 30c each; 4 for \$1.00.

### AMOR PRIVET

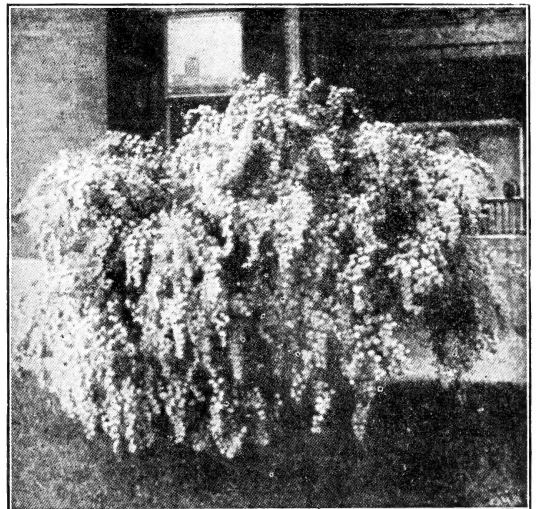
One of the best hedge plants in all America. Can be grown anywhere. Grows quickly and can be trimmed to any desired height. Leaves are shiny dark green color making it an attractive bushy hedge.

**PRICE**—20c each; 10 for \$1.85; 20 for \$3.00; 100 for \$10.50.

### SNOWBALL

A magnificent tall growing shrub, reaches a height of about 8 to 10 feet and about 8 feet in diameter. This is the old-fashioned Snowball with round clusters of pure white sterile flowers. Blooms latter part of May. Very hardy in sun or shade.

**PRICE**—2-yr. plants, 35c each; 4 for \$1.25.



Spirea Van Houttei

### RED LEAF MAPLE

This hardy dwarf tree averages about 10 feet. In spring leaves are blood-red turning to purple-red or bronze-green in the fall. This popular tree makes a fine ideal shade and ornamental addition.

**PRICE**—\$1.25 each.

### FLOWERING QUINCE

Bright scarlet flowers in May. Medium large bush. Fine for specimens, shrub masses or may be pruned for hedging purposes.

**PRICE**—2-yr. heavy bushes, 25c each; 3 for 65c; 10 for \$1.95.

# ... Selection of Ever-Popular ROSES

## GRACEFUL CLIMBING ROSES

### CRIMSON RAMBLER

Will attain a height of 10 to 20 feet in a season; produces a marvelous profusion of rich and glowing crimson clusters during June and July. The flowers are grown in pyramidal panicles, each carrying 30 to 100 blooms.

### PAUL'S SCARLET

A wonderful rose for trellis or pergola. Winner of Gold Medal as best new climbing Rose. Flowers are scarlet, shaded crimson. Blooms very long, holding its flowers after many June bloomers have dropped their petals.

### AMERICAN BEAUTY

The famous American Beauty Rose in climbing form. Has all of the characteristics of its relative, including form and color, a bright rich red. Healthy foliage and has strong climbing habit of growth.

### PINK RADIANCE

One of the outstanding American Roses. Color a light silvery pink, deepening to salmon; very large, borne in great abundance on long, strong stems. Continuous bloomer. Beautiful and dependable.

### GARDENIA

Yellow climber. A most beautiful Rambler, being different from the Dorothy Perkins in color only. Flowers borne in large clusters of small, double blooms, and are very sweet scented.

### K. A. VICTORIA

Pointed buds, large flowers. Pure white. Exquisite scent.

**PRICE of Heavy, Well Rooted  
2-yr. Climbers: 50c each; 4 for \$1.80**

## BUSH ROSES

### AMERICAN BEAUTY

(Hybrid Perpetual)

The best known and most highly prized of all American Roses. Bright, rich red in color, of exquisite form and fragrance, and very large size.

### RADIANCE

Extra hardy, vigorous and prolific; one of the best all-round garden Roses. Its color is a beautiful blending of carmine-rose with shades of opal and copper.

### LOS ANGELES

(Hybrid Tea)

Beautifully shaped, fragrant flowers of pale salmon-pink, richly shaded with deep rose and gold.

### TALISMAN

Most astounding Rose novelty produced in many years. Its brilliant orange-red buds open to large, fragrant, high-pointed bloom of glowing golden yellow stained with copper-red and orange-rose on inside of petals. As the petals unfold, they become apricot-gold, deep rose-pink or old rose, and unlike most roses, the color becomes brighter as the flowers develop. Plants are vigorous, healthy and hardy growers.

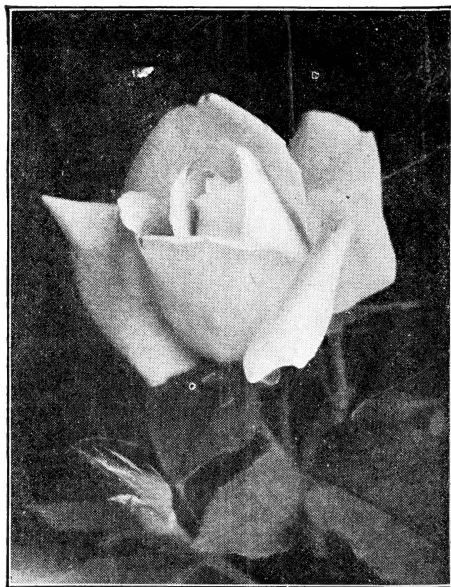
### SUNKIST

For cut-garden display, this Rose has no superior, as it blooms so freely. The lovely shaped flowers are yellow tinged orange, perfectly shaped and come singly on long stems.

### FRAU KARL DRUSCHKI

(Hybrid Perpetual)

The finest white Rose yet introduced. Sometimes called Snow Queen. Loved by all on account of the extra large, perfectly formed white flowers.



American Beauty

### KAISERIN AUGUSTA VICTORIA

(Hybrid Tea)

Most popular white rose. Large double, very fragrant flowers borne on long, stiff stems.

### MRS. E. P. THOM

Best yellow Rose. Fine long buds open into perfectly shaped, open flowers of rich lemon-yellow which do not fade; sweetly scented. Very vigorous grower and continuously in bloom.

**PRICES of Heavy, Well Rooted  
2-yr., Bush Roses: 50c each; 4, \$1.80**