

Historic, Archive Document

Do not assume content reflects current scientific knowledge, policies, or practices.

6-173
Fairview

Evergreen

Nursery

LIBRARY
RECEIVED

★ JAN 19 1943 ★

U. S. Department of Agriculture

IT'S NOT A HOME UNTIL IT'S PLANTED

1942

Spring 1943

F. C. HETZ & SONS

Fairview, Erie Co., Pa.

INTRODUCTION

To our friends, old and new:

We are in the nursery business alone—no outside interests or control. We operate 400 acres of which 300 are planted to nursery stock.

Terms:—Cash, unless satisfactory arrangement is made prior to shipment.

Packing charges:—Add 10% to the listed price for boxing or baling on orders of less than \$10.00. Orders \$10.00 and over are packed free. We can pack large orders cheaper.

Discounts:—5 or more of one variety and size—15% from single rates. No discount allowed from 10, 100 or 1000 rates.

Guarantee:—Stock is guaranteed to be true to name. While we exercise the greatest care to have stock true to name, we will in no case be liable for any sum greater than the purchase price.

Growth of stock:—We give no guarantee as to growth of stock, however, we send stock out in A1 condition only. Your care will determine your success in growing any plant or tree.

Specially Selected Stock:—Specially selected stock marked by customer at nursery will be charged for according to its value. These prices will not govern such transactions.

Grade:—All spreading trees will be measured by spread, not height.

Pennsylvania certificate of inspection with every order.

NOTICE:—Prices subject to change without notice.

5 or more at 10 rates. 25 at 100 rates. 200 at 1000 rates. Evergreen seedlings and transplants sold only in lots of 25 or more of 1 size and variety at list prices. 50% advance if less are ordered.



GENERAL PLANTING INSTRUCTIONS

Ornamental, Shade Trees and Deciduous Shrubs

PLANTING SEASON: OCT. 15 TO MAY 1. MUST BE DORMANT

Upon arrival open bundles and remove packing materials. If impossible to plant immediately, bury the roots in a shady place, packing well with soil so air cannot possibly reach them. But, if possible, plant immediately in soil well worked and loosened. Dig a hole large enough to admit the roots in their natural position. If roots are crowded you will be sure to lose the plant. After placing the plant in the hole, fill the hole about half full with soil and tramp it solid. Then, if the soil is dry fill the hole with water and let it settle. Finally, pack dirt in the remainder of the hole.

Evergreens

PLANTING SEASON: AUG. 15 TO JUNE 1

Dig a hole a little larger than the ball of earth around the tree. Leave burlap on the ball and place same in the hole, filling in the remaining space with well packed soil. **DO NOT REMOVE THE BURLAP** for it holds the ball of earth in place around the roots. Water thoroughly when hole is about $\frac{2}{3}$ filled with soil.

Keep the top soil around your plants loosened to the depth of about an inch to prevent the ground from baking and to conserve moisture.

Do not use manure or fertilizer for evergreen.

Do not allow dogs to get to evergreens. Place a wire screen or Barberry around them for protection.

Evergreens need a bath frequently. Turn the hose on them full force and keep them clean. Never do this in full sun for this burns the foliage.

Water evergreens about once each week in extremely dry weather, not oftener but thoroughly.

EVERGREENS

Evergreens add a wealth of charm and beauty to every landscape. They give color and contrast in summer. All winter long they show life and give promise of Spring.

All our Evergreens are sold B & B. By B & B we mean dug in the ground they stand in and burlapped so the dirt will not loosen.

All evergreens listed herein are specimen trees having been transplanted and sheared. We do not send out inferior stock.

Evergreen seedlings and transplants sold only in lots of 25 or more of one size and variety at listed prices. 50% advance if less are ordered. 200 or more at 1000 rate where listed. T indicates once transplanted; TT, twice transplanted; sldgs. seedlings. Lining out stock shipped naked roots packed in moss.



American Arbor Vitae

ARBOR VITAE (*Thuja*)

Arbor Vitae American—A tall pyramidal tree of compact growth. Stands trimming well and for this reason is the most widely used of all evergreens for large trimmed globes, hedges, etc. Foliage bright green. 2 yr. sldgs. 2-4'' \$3.00 per 100; \$25.00 per 1000; 3 yr. sldgs. 4-8'' \$4.00 per 100; \$32.50 per 1000; 8-12'' trsp. \$15.00 per 100; \$125.00 per 1000. TT 15-24'' \$32.50 per 100; 18-24'' \$1.25; 2-3' \$1.60.

Arbor Vitae Compacta—The compacta Arbor Vitae closely resembles the Globe, differing as it is slightly more upright in habit and faster in growth. Fine winter color. T 6-10'' \$20.00 per 100; \$175.00 per 1000; 10-12'' \$1.00; 12-15'' \$1.35; 15-18'' \$1.75.

Arbor Vitae Conica Densa—Dark green cone-shaped globe. Recommend for formal entrances, etc. T 6-12'' \$20.00 per 100; 15-18'' \$1.50; 18-24'' \$2.00; 2-2½' \$2.50.

Arbor Vitae Douglas Golden—A valuable golden form. Growth broad, bushy and upright. A fine tree for contrast. Its color makes the whole planting more noticeable. 18-24'' \$1.50; 2-2½' \$1.75; 2½-3' \$2.25.

Arbor Vitae Douglas Pyramidal—A compact form of fine pyramidal habit. The crowded tufted branches are sometimes cockscomb like. Foliage is dark green with lighter tips. One of the most valuable of the Arbor Vitae. 2-3' \$2.25.

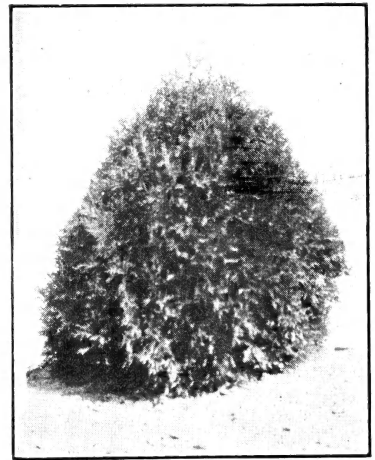
Arbor Vitae Ellegentissima (Goldentipped)—A rich lustrous green variety with rugged bronze tipped branches. Grows into a solid wide pyramid. T 9-12'' \$20.00 per 100; 18-24'' \$1.60; 2-3' \$2.00; 3-4' \$3.00.

Arbor Vitae Ellwangeriana (Tom Thumb)—A compact dwarf globe showing two types of deep green foliage. T 6-9'' \$16.00 per 100; 12-15'' \$1.00; 15-18'' \$1.25; 18-24'' \$1.75.

Arbor Vitae Hetz's Junior—This is an Ellwangeriana type with all fine needles and more compact growth. T 6-9'' \$17.50 per 100; 12-15'' \$1.10; 15-18'' \$1.35.

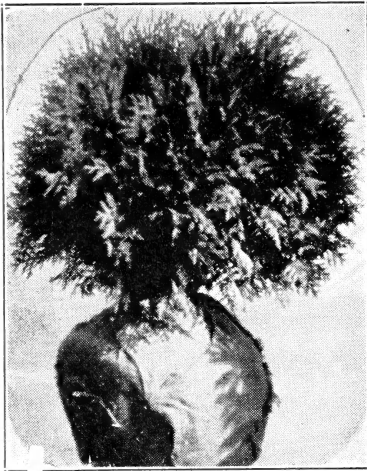
Arbor Vitae Hovey's Globe—A bright green oval globe. Holds a fine winter color. Sometimes called Hovey's Golden although its color is not golden, but a bright pea green. T 6-10'' \$20.00 per 100; 12-15'' \$1.15; 15-18'' \$1.50.

Arbor Vitae Monumentalis—Large broad pyramid with graceful recurring branches. Foliage light green in color and distinctly different from most Arbor Vitae. 4-5' \$3.00; 5-6' \$4.00.



Arbor Vitae Ellwangeriana

Prices: F. O. B. Fairview on orders amounting to \$10.00 or more. On orders under \$10.00 add 10% for packing charges. Discounts: 5 or more of one variety and size—15% from single rates. No discount allowed from 10, 100 or 1000 rates.



Arbor Vitae Woodward's

Arbor Vitae Pyramidal—A very popular tree. Narrow and compact in habit, retaining its deep green color throughout the winter. Beyond doubt the finest sentinel tree ever produced. T 12-18" \$35.00 per 100; 2-2½' \$2.00; 2½-3' \$2.75; 3-4' \$3.50.

Arbor Vitae Recurva Nana—An excellent dwarf species with drooping threadlike branchlets. Foliage is glossy green. As small tree it is a good globe which eventually grows into a fine broad pyramid. A Rock Garden novelty. T 5-8" \$17.50 per 100; 15-18" \$1.75; 18-24" \$2.25.

Arbor Vitae Rheingold—This is a new introduction and a gem for the rock garden. Very dwarf with bright golden juvenile foliage. Makes a dense little mound. T 4-6" \$20.00 per 100; 6-9" \$.85; 9-12" \$1.10; 12-15" \$1.50; 15-18" \$2.00.

Arbor Vitae Rosenthal—A slow growing broad pyramid with deep green tufted foliage. T 6-9" \$25.00 per 100; 18-24" \$2.00; 2-2½' \$2.50; 2½-3' \$3.00.

Arbor Vitae Siberian—Of slow growth forming a broad dense cone. Foliage rugged black green. Very hardy. T 6-10" \$20.00 per 100; 18-24" \$2.00; 2-2½' \$2.75; 2½-3' \$3.25.

Arbor Vitae Siberian Golden—Very light yellow variety of the preceding. 18-24" \$1.50; 2-2½' \$2.00; 2½-3' \$2.50; 3-4' \$3.00.

Arbor Vitae Umbraculifera (*Umbrella Arbor Vitae*)—A dwarf, recurving, heavy, deep green foliated variety making a low interesting rock garden specimen. 10-12" \$1.15; 12-15" \$1.50.

Arbor Vitae Vervaene—This variety grows identical in type to the parent American Arbor Vitae, differing in that the foliage is somewhat finer and bears a yellowish green cast. 18-24" \$1.50; 2-2½' \$2.00.

Arbor Vitae Woodward's Globe—One of the best forms of Globe Arbor Vitae. Makes a solid deep green ball which is slow in growth. T 6-10" \$20.00 per 100; 10-12" \$1.00; 12-15" \$1.35; 15-18" \$1.75.

ARBOR VITAE (*Biota*)

Arbor Vitae Oriental—The Oriental Vitae are more upright and the foliage is finer and more glossy than the American Arbor Vitae and its varieties. This is the fastest growing, and is upright in type. Foliage light green. Fine for city planting. 3-6" Slgd. \$3.00 per 100; T 6-12" \$6.00 per 100; 18-24" \$1.25.

Arbor Vitae Oriental Berckman's Golden—This is a wonderful bright yellow dwarf globe, never exceeds three feet in height. TT \$32.50 per 100; 12-15" \$2.00; 15-18" \$2.50.

Arbor Vitae Oriental Compacta—A remarkable tree. A broad pyramid, symmetrical in form. Foliage fine and soft light green. Excellent for formal planting. Growth slow. T 6-10" \$10.00 per 100; 15-18" \$2.00.

Arbor Vitae Oriental Conspicua—Fine narrow pyramid. Very pleasing golden color. 2-2½' \$2.50; 2½-3' \$3.00.

CHAMAECYPARIS

Chamaecyparis Lawsoniana (*Lawson's Cypress*)—A beautiful pyramid with pendulous tips. Soft graceful, glaucous foliage which retains its color throughout the winter. Should be planted in sheltered position. 18-24" \$1.50; 2-3' \$2.00; 3-4' \$2.75.

Chamaecyparis Thyoides (*White Cedar*)—This is the White Cedar native of the Eastern States. It is a graceful, loose growing pyramid with dull green foliage. Grows quite rapidly and makes an interesting specimen. Will thrive on ordinary soil, but is recommended for swampy, boggy soil where other evergreens will not grow. This tree is naturally adapted to swamps. Do not confuse with Arbor Vitae family. 18-24" \$1.00; 2-3' \$1.25; 3-4' \$1.75; 4-5' \$2.50; 5-6' \$3.50; 6-8' \$5.00.

CRYPTOMERIA

Cryptomeria Japonica Lobbi—An improvement of the parent type growing more narrow and pyramidal, also heavier foliage. 3-4' \$3.00; 4-5' \$4.00; 5-6' \$5.00; 6-7' \$6.50.



FIR (*Abies*)

The Fir Family is made up of interesting members gathered from all over the Northern Hemisphere. They grow into specimen trees and should be used as lawn and border specimens.



Fir Balsam

Alpine Fir (*Lasiocarpa*)—A very slow growing tree, native of the western Rockies. Its foliage is a pleasing soft blue. Belongs to the smaller garden where it will make an interesting long lived specimen. T 5-8" \$12.50 per 100; T 8-12" \$18.00 per 100; 18-24" \$2.75.

Fir Balsam—This is a fine tree for shady places. Quite a rapid grower with black green needles, noted for its fragrance. Growth similar to the spruces. T 5-8" \$9.00 per 100; T 8-12" \$12.50 per 100; \$110.00 per 1000; 18-24" \$1.35; 2-3' \$2.00; 3-4' \$2.50.

Fir Double[†] Balsam (*Frazer's*)—Similar to the Balsam Fir in color and growth differing as this variety has about twice as many needles. This has the effect of thickening up the foliage and making the specimen more dense. 18-24" \$1.50; 2-3' \$2.00; 3-4' \$2.50.

Fir Cork (*Arizona*)—A very slow growing specimen. Densely covered with deep blue foliage. 15-18" \$2.75; 18-24" \$3.25; 2-2½' \$4.00.

Fir Blue Cork (*Arizona Argentea*)—Intense blue grafted variety of above. 2-3' \$6.00; 3-4' \$7.50.

Fir Concolor—The famous Silver or White Fir. Growth rapid and conical. Foliage gray green or silver color. Fine for specimen planting. Sldgs. 4-8" \$6.00 per 100; 18-24" \$2.00; 2-3' \$2.75; 3-4' \$3.25; 4-5' \$5.00; 5-6' \$7.00; 6-7' \$9.50.

Fir Douglas—This is a very desirable evergreen, doing well in almost every situation, retaining the branches to the ground. The growth is naturally pyramidal. It is well adapted to trimming. Foliage grayish green, soft and feathery. We highly recommend this tree. 2 yr. sldgs. 3-6" \$4.00 per 100; \$30.00 per 1000; T 8-12" \$12.00 per 100; 18-24" \$1.50; 2-3' \$2.00; 3-4' \$2.75; 4-5' \$3.50; 5-6' \$5.00.

Fir European Silver (*Pectinata*)—This is the common Fir of Europe. The underside of the needles is marked by two heavy white bands giving to the upward glance at a large tree a very glaucous or silver effect. The upperside of the needle is a flat green, so one does not notice the silver underside of a small tree. Growth is rapid. Here is an opportunity to plant a specimen tree that everyone does not have. 18-24" \$2.00; 2-3' \$2.75; 3-4' \$4.00.

Fir Needle (*Holophyllus*)—New. Native of Manchuria. Promises to prove a handsome and distinct tree with glossy bright green foliage. 18-24" \$1.75; 2-2½' \$2.00; 2½-3' \$2.50.



Fir Concolor

Fir Nikko (*Homoleptis*)—A fast growing specimen, native to the forests of Japan. It closely resembles the European Silver Fir in coloring and habit, with sharp lance-like needles. 2-3' \$2.00; 3-4' \$2.75; 4-5' \$3.50.

Fir Nordmann (*Nordmanniana*)—A handsome and desirable species forming a narrow pyramidal densely branched tree with heavy dark green foliage. 12-15" \$1.75; 15-18" \$2.50.

Fir Veitchi—One of the best fir; particularly handsome when young. A medium grower, densely covered with heavy glossy, deep green needles which are heavily banded with silver on the underside, giving a marked contrast of color to the foliage. Native of central Japan. 2 yr. sldgs. 2-4' 100 for \$4.50; 5 yr. transplants 6-9' 100 for \$15.00; 18-24' \$2.00; 2-2½' \$2.75; 2½-3' \$3.50; 5-6' \$7.00.

HEATHER (*Calluna*)

Calluna Vulgaris—(*Common Heather*)—Low evergreen shrub not exceeding 12 inches in height, cultivated chiefly for its rosy-pink flowers which are borne in great profusion in late summer. The closely set branches are densely covered with miniature needles. Fine for a sunny slope or at the base of a sunny rock garden. Best planted in groups. 8-12' \$.70; 12-15' \$1.00.

Calluna Vulgaris Alporti—Strong grower. Bright green foliage, reddish purple flowers. 6-10' \$.70.

HEMLOCK (*Tsuga*)

Hemlock Canadian—Our native tree. A splendid evergreen of many uses, lending itself admirably to any location. Beautiful in group work. It stands shearing well, making a good compact tree or hedge. Highly recommended for that shady corner. Thousands are being used. T 8-12' \$22.50 per 100; T 12-15' \$30.00 per 100; 18-24' \$2.00; 2-2½' \$2.50; 2½-3' \$3.00; 3-4' \$3.75; 4-5' \$5.00; 5-6' \$7.00; 6-7' \$9.50; 7-8' \$12.50.

Hemlock Canadian Sargent's Weeping—Dwarf, flat, weeping form with spreading habit. 18-24' \$4.00; 2-2½' \$4.75; 2½-3' \$5.50.

Hemlock Carolina (*Carolinianum*)—Quite distinct in habit from the Canadian Hemlock, being more dwarf with darker green foliage and more compact habit of growth. 4-5' \$5.00.

Hemlock Japonica (*Diversifolia*)—Slow growing with short dark green needles. Growth broadly pyramidal. A rare novelty as it can be secured from but few nurseries. T 5-10' \$25.00 per 100.

Hemlock Seibold's (*Seiboldiana*)—A faster growing larger variety of the preceding. 18-24' \$2.25; 2-2½' \$2.75; 2½-3' \$3.25.

JUNIPER (*Juniperus*)

The Juniper family offers a wide variation of leaf or needle texture and more variation in type of growth and color than any other class of evergreens. As a group they are beautiful and informal, blending well with other evergreens.

Juniper Chinese—This is the parent plant of many useful types. It is variable in form but in general is a fine compact column, silvery or blue green in color. Very hardy. S 4-8' \$7.50 per 100; T 6-9' \$16.00 per 100; 2-3' \$2.25; 3-4' \$3.00.

Juniper Chinese Column (*Columnaris*)—This is a tall close growing type with needle foliage. 3-4' \$4.25; 4-5' \$5.00.

Juniper Chinese Govt. Sdlg. 18755—A very fine type Juniper unnamed from the test fields of the U. S. Government. Gray-green, close growing, all needle type foliage. 3-4' \$4.25; 4-5' \$5.00.

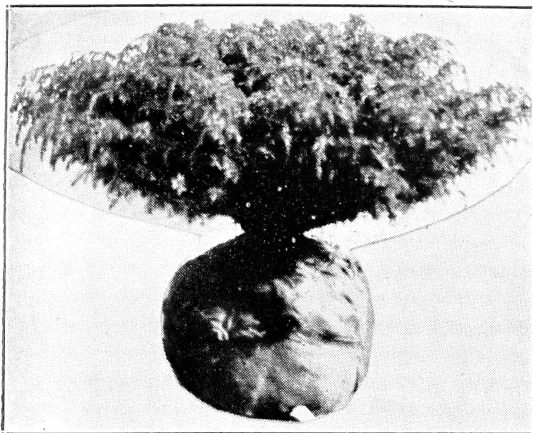
Juniper Chinese Green—This is a light pea-green variety making a fine broad pyramidal specimen. Foliage is both needle and scalelike. 2-3' \$3.25; 3-4' \$4.25.

Juniper Chinese Sargents (*Sargenti*)—Prostrate habit, slow growing ground cover. Ideal for Rock Garden or Bank Cover. 12-15' \$2.00; 15-18' \$2.50.

Juniper Chinese Veroides—Broad pyramid of rapid growth with green needle foliage. 3-4' \$4.25; 4-5' \$5.00.

Juniper Communis Cracovica (*Polish*)—Upright growing compact, narrow column. Fine for sentinel use. T 9-12' \$22.50 per 100; 15-18' \$1.50; 18-24' \$1.75.

Prices: F. O. B. Fairview on orders amounting to \$10.00 or more. On orders under \$10.00 add 10% for packing charges. Discounts: 5 or more of one variety and size—15% from single rates. No discount allowed from 10, 100 or 1000 rates.



Juniperus Communis Depressa

100; 15-18" \$1.65; 18-24" \$2.00; 2-2½' \$2.50; 2½-3' \$3.00.

Juniper Communis Depressa Vase Shaped—A uniform vase shaped strain of the parent. 15-18" \$1.75; 18-24" \$2.25.

Juniper Dwarf Swedish—This is a beautiful formal tree, being upright and very nearly the same width from top to bottom. Matures at about 6 feet. Silvery green. It closely resembles the Irish Juniper (see cut). Differing as it is slower in growth, somewhat broader, more of a grass green color, and much more permanent in a planting. T 9-12" \$22.50 per 100; 15-18" \$1.50; 18-24" \$2; 2-2½' \$2.50; 2½-3' \$3.

Juniper Swedish—A faster growing type of the above identical in habit and color, maturing at about 20 ft. T 12-15" \$22.50 per 100; 15-18" \$1.40; 18-24" \$1.75; 2-3' \$2.50.

Juniper Irish

(*Juniperus Hibernica*)—An extra fine formal tree. Growth upright and narrow, having no main leader. Foliage grayish green. Used extensively in pairs where sentinel effects are desired. T 12-18" \$20.00 per 100; 18-24" \$1.50; 2-2½' \$1.85; 2½-3' \$2.25.



Juniper Horizontalis Glauca

Juniper Irish Narrow (Fastiagata)—Extremely narrow type of above. Same grades and prices as Irish Juniper.

Juniper Glauca Hetzi—A very hardy fast growing spreading type Juniper with blue foliage and with somewhat more tendency to lift its foliage making it easier to grow this spreader with some height. Of the millions of trees produced by us this is the first sport we offer under our family name. We feel it will be generally accepted as one of the better evergreens. 1 yr. transplants from rooted cuttings 6-9" \$.50; \$35.00 per 100; 2 yr. TT 12-15" \$.75; \$50.00 per 100; (For Fall 1942 only—B & B 15-18" \$2.50).

Juniper Horizontalis Douglassi (Blue) (Waukegan)—Beautiful bluish green creeper turning to an attractive purplish bronze in winter. T 10-15" \$20.00 per 100; 15-18" \$1.50; 18-24" \$1.75.

Juniper Horizontalis Glauca—This is the true blue dwarf type of creeping Juniper. A very good low growing bright colored carpet. T 8-12" \$25.00 per 100; 15-18" \$2.00; 18-24" \$2.50; 2-2½' \$3.00.

Juniper Japonica—A slow growing vase shaped evergreen. Foliage scale type, good bright green. T 6-10" \$35.00 per 100; 15-18" \$2.00; 18-24" \$2.50.



Juniper Japonica Aurea—Extremely dwarf tree, outstandingly golden scalelike foliage, fountain type of growth. 12-15" \$2.50.

Juniper Meyer's (*Juniper Squamata Meyeri*)—Its color is an outstanding bright blue which is changeable when viewed from different angles. The needles are short, plump and thickly set. It grows in an irregular upright form resembling a fountain. Ideal for the rock garden, or for foreground work. A slow growing dwarf and perfectly hardy. Always attracts attention. At its best in a partially shaded position. T 5-8" \$40.00 per 100; 15-18" \$2.25; 18-24" \$2.75; 2-2½' \$3.50; 2½-3' \$4.00.

Juniper Pfitzer's—One of the leading evergreen ornamentals. Noted for its hardiness, doing well in almost any situation. Low, broad and irregular in form. Foliage gray or bluish green. T 6-10" \$22.50 per 100; 15-18" \$2.25; 18-24" \$3.00; 2-2½' \$3.50; 2½-3' \$4.50.

Juniper Pfitzer's Compacta—A slow growing compact and smaller variety. We highly recommend its use where space is limited. T 5-7" \$22.50 per 100; 15-18" \$2.50; 18-24" \$3.50.

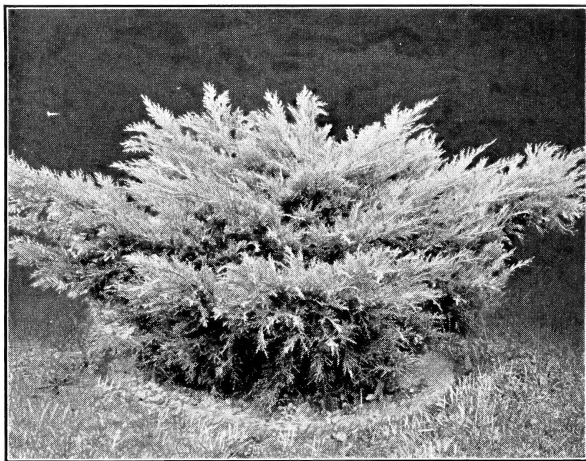
Juniper Pfitzer's Golden—A golden variety. 15-18" \$2.25; 18-24" \$3.00.

Juniper Savin (*Juniper Sabina*)—A low, much branched, vase shaped, half upright evergreen having no main leader. Densely furnished with short tufted branchlets, which are thickly covered with deep green needles. T 9-12" \$25.00 per 100; 12-15" \$1.35; 15-18" \$1.75; 18-24" \$2.25; 2-2½' \$2.75.

Juniper Sabina Fastigiata—A very good upright Juniper with soft, deep green, scale type foliage. 2-3' \$3.00; 3-4' \$4.00.

Juniper Silver (*Juniperus Scopolorum*)—A tall, narrow and compact column. Native of Colorado, differing from our Eastern Red Cedar as it is more compact and silvery blue in color. A neat tree. Sldg. 3-6" \$5.00 per 100; T 8-12" \$17.50 per 100; 2-3' \$2.25; 3-4' \$3.00.

Juniper Scopolorum Cupressifolia Glauca—A grafted variety of Silver Juniper with heavy somewhat pendulous growth. Very blue. This is an outstanding new addition to this popular family. 2-2½' \$2.75; 2½-3' \$3.50; 3-4' \$4.25.



Pfitzer's Juniper

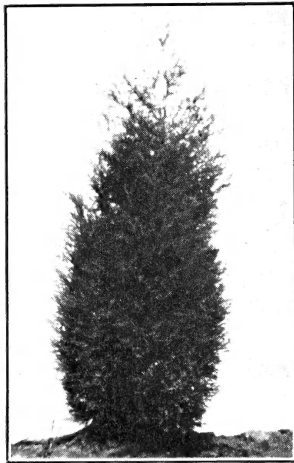
Juniper Spiny Greek (*Juniperus Excelsa Stricta*)—A slow growing dwarf cone, tapering from the ground to a sharp point. It is very formal and compact. Closely set with sharp glaucous needles. 12-15" \$1.50; 15-18" \$2.00; 18-24" \$2.50; 2-2½' \$3.00.

Juniper Tamarix (*Juniperus Sabina Tamariscifolia*)—A beautiful slow growing and compact spreading type juniper. Does not exceed 6 inches in height and makes an ideal carpet evergreen. Steel blue in color throughout the year. T 5-10" \$25.00 per 100; 15-18" \$2.00; 18-24" \$2.75.

Juniper Virginiana (*Red Cedar*)—Native of North America. Used extensively. Pyramidal in habit with dark green to steel blue foliage. The parent of a good many of the grafted Junipers. T 8-12" \$12.00 per 100; 2-3' \$1.75; 3-4' \$2.25.

Juniper Virginiana Burki—A new blue variety with finer foliage and less pendulous growth than Glauca. 2-3' \$2.75; 3-4' \$4.00.

Juniper Virginiana Cannarti—A compact pyramidal form with dark green foliage and bluish berries. Branches somewhat pendulous and needles scalelike. 2-3' \$2.75; 3-4' \$4.00.



Red Cedar

Prices: F. O. B. Fairview on orders amounting to \$10.00 or more. On orders under \$10.00 add 10% for packing charges. Discounts: 5 or more of one variety and size—15% from single rates. No discount allowed from 10, 100 or 1000 rates.



Juniper Virginiana Elegantissima (*Goldtip Red Cedar*)—Slow growing and irregular, but eventually making a broad pyramid. The tips of the foliage are bright cream color which gradually change to bronze as the foliage hardens up. It holds a place along with other choice evergreens for use in the best landscape plantings. 18-24" \$2.50; 2-2½' \$3.00.

Juniper Virginiana Glauca (*Blue Cedar*)—This is a beautiful grafted form of the Red Cedar. Foliage bright blue and slightly pendulous. 2-2½' \$2.50; 2½-3' \$3.00; 3-4' \$4.00; 4-5' \$5.00.

Juniper Virginiana Keteleri—A rapid growing, dark green variety with ascending branches and scale-like foliage. Bears an abundance of large blue berries. 3-4' \$4.00; 4-5' \$5.00.

Juniper Virginiana Pyramidalis (*Pyramidal Juniper*)—Narrow pyramid with green foliage. 2-3' \$2.75; 3-4' \$4.00.

Juniper Virginiana Schotti—A comparatively small columnar tree with bright green scale-like foliage. Branchlets somewhat pendulous. 2½-3' \$3.00; 3-4' \$4.00; 4-5' \$5.00.

Juniper Virginiana Tripartita (*Fountain Juniper*)—A sturdy heavy stemmed tree with very irregular branches. Grows somewhat wider than tall and gives one the impression of a fountain. Foliage is a good deep green. 18-24" \$2.25; 2-3' \$3.00; 3-4' \$4.00.

PINE (*Pinus*)

The pine family as a rule is a healthy disease free group. They are all mainly long needed and their deep colors are unchanging throughout the year. They make but one fast growth each year and are hardened and ready to move by the first of August. We suggest the use of pine wherever practical, as they give very satisfactory results.

Austrian Pine—A sturdy upright tree with compact, symmetrical growth. Being smoke resisting, it does well in cities. We advise the use of this tree for specimen planting. Seedlings 3-6" \$5.00 per 100; T 6-12" \$15.00 per 100; 2-3' \$2.50; 3-4' \$3.25; 4-5' \$4.00; 5-6' \$5.50 6-7' \$8.00.

Dwarf Stone Pine—A dwarf spreading variety of Swiss Stone Pine. Main branches usually horizontal on the ground. These are very fine heavy specimens giving effect of age. 4-5' \$4.00; 5-6' \$6.00; 6-8' \$8.00.

Jack Pine (*Pinus Banksiana*)—The fastest growing evergreen available, which matures rapidly into a ragged heavy specimen with rough shaggy bark. Very well suited for spotting on hillsides on large estates where age and cover are desired. 3-4' \$2.50; 4-5' \$3.00.

Japanese White Pine (*Pinus Parviflora*)—Native of Japan. The slender horizontal branches are clothed with short tufted dark green foliage and make a dense pyramidal tree. 2-3' \$2.25; 3-4' \$2.75; 4-5' \$3.50.

Japanese Red Pine—A rapid growing quickly developed Pine. Bears cones at an early age. Responds very well to shearing and can be made into a dense compact specimen. Sldgs. 3-5" \$3.50 per 100; Sldgs. 6-12" \$5.00 per 100; 18-24" \$1.00; 2-3' \$1.50.

Korean Pine—A handsome tree of pyramidal habit and rather slow growth. Belongs to the same family as White Pine and originated from Korea. Recommended for the smaller garden. 2-3' \$2.25; 3-4' \$3.00.

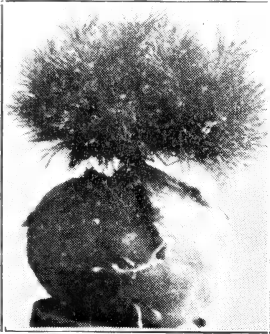
Limber Pine (*Pinus Flexilis*)—This Pine forms a beautiful outline, having pendulous and horizontal branches. A slow growing species of the White Pine with short rigid needles and a darker green color. Sldg. 3-5" \$6.00 per 100; 2-3' \$2.25; 3-4' \$3.00.



Pine Austrian



Macedonian Pine (*Pinus Peuce*)—A slow growing compact upright tree. Gray green foliage. A desirable pine for smaller gardens. This in our opinion is one of the best Pine in the nursery. It very much resembles the very desirable Swiss Stone Pine. This variety grows faster. Ten year old trees average 2' in height. 18-24" \$2.25; 2-2½' \$2.75; 2½-3' \$3.25.



Mugho Pine

Mugho Pine—One of the best dwarf globes. A compact, many stemmed tree with branches that trail along the ground. Foliage is a deep green, remaining the same throughout the winter. Coming from the Alps, it is perfectly hardy. It is also resistant to all insects and smoke. Valuable as a foreground plant in any planting. Also used in bed and mound work. **All Mughos measured by spread.** T 4-6" \$20.00 per 100; 12-15" \$1.85; 15-18" \$2.25; 18-24" \$2.75; 5-6' \$12.50; 6-7' \$18.00; 7-8' \$22.50.

Norway Red Pine (*Pinus Resinosa*)—One of the most satisfactory pines, being apparently without enemies. It is very hardy and adapts itself to many situations and soils. Its luxuriant dark green foliage and uniform growth add to the landscape. Used extensively for windbreaks, screens and reforestation. Sldg. 3-5" \$3.00 per 100; S. 6-12" \$4.00 per 100; T 10-15" \$8.50 per 100; 18-24" \$1.25; 2-3' \$1.75; 3-4' \$2.50; 4-5' \$3.25.

Ponderosa or Bull Pine—Called Bull Pine because of its heavy massive needles. Growth is quite rapid, making from one to two feet a year. A deep rooted drought resistant tree. Makes a fine specimen where it has room to develop. 18-24" \$1.50; 2-3' \$2.00; 3-4' \$2.75; 4-5' \$3.50.

Scotch Pine—A splendid upright grower that does well in almost any situation. Foliage is gray green and stands trimming well. Makes well formed, ornamental specimens. Also used for wind breaks, heavy screens and reforestation. Sldgs. 4-7" \$4.50 per 100; T 5-10" \$10.00 per 100; 2-3' \$2.00; 3-4' \$2.75.

Single Stem Mountain Pine (*Pinus Montana Uncinata*)—An upright strain of the noted Mugho Pine taken from trees produced in lower altitude, making it possible for us to offer the close growing habit and pleasing color of the Mugho Pine in an upright tree. Sldg. 3-5" \$5.00 per 100; T 6-12" \$15.00 per 100; 4-5' \$5.50; 5-6' \$7.00.

Swiss Mountain Pine—This Pine is closely related to the desirable Mugho Pine, differing only as this is of a faster growing and more upright strain. Sldg. 3-5" \$5.00 per 100.



White Pine

Swiss Stone Pine (*Pinus Cembra*)—A very slow growing five needle pine which matures into fine lawn specimens. Short gray green needles are produced on short stalky branches, making a dense broad pyramid. Our 12-18" trees are ten years old. However, growth becomes more rapid as the trees get older. 15-18" \$2.25; 18-24" \$2.75; 2-2½' \$3.50.

White Pine—Our Native Pine. An excellent symmetrical tree, conical in form. Foliage silvery green having a soft feathery appearance. Prefers partial shade. Will do well in any soil. It grows rapidly, sending out a new whorl of branches each year. Sldgs. 2-4" \$3.00 per 100; S 4-8" \$4.00 per 100; T 6-12" \$7.50 per 100; 18-24" \$1.40; 2-3' \$1.85; 3-4' \$2.25.

RETINOSPORA (*Japanese Cypress*)

The Retinospora family of evergreens as a whole are a very beautiful and interesting lot, being of slow growing compact habit and very readily shaped by pruning. Their foliage varies in color from deep green and blue to bright yellow and sulphur, in texture from minute needles to threadlike branchlets. Plant them in the sun.

Prices: F. O. B. Fairview on orders amounting to \$10.00 or more. On orders under \$10.00 add 10% for packing charges. Discounts: 5 or more of one variety and size—15% from single rates. No discount allowed from 10, 100 or 1000 rates.

Retinospora Decussata—This variety makes a slow growing broad bluish cone, densely covered with juvenile needles. Also known as Dwarf Plume Cypress. T 6-10" \$20.00 per 100; 15-18" \$1.35; 18-24" \$1.75; 2-2½' \$2.00.

Retinospora Filifera—Sometimes called Thread Cypress. A broad globe which in time makes a broad pyramid. The threadlike, pendulous foliage is dark green in color. T 5-8" \$17.50 per 100; 15-18" \$1.50; 18-24" \$2.00.

Retinospora Filifera Aurea—A bright yellow type of the former, slower in growth. Very desirable for color contrast. T 5-7" \$17.50 per 100.

Retinospora Obtusa—A strong grower of bushy or compact form. Foliage scalelike, clear green, drooping and graceful. Will do well in partial shade. Prefers well watered, light sandy soil. We recommend this evergreen for group work. T 8-12" \$15.00 per 100; 18-24" \$1.25; 2-3' \$1.65; 3-4' \$2.50.

Retinospora Obtusa Crippsi—A strikingly handsome dwarf with drooping branches, growing into a broad graceful cone. This is the brightest golden evergreen in cultivation and truly a gem for contrast in group planting. T 6-12" \$30.00 per 100; 15-18" \$1.75; 18-24" \$2.25; 2-2½' \$ 3.00; 2½-3' \$3.50.

Retinospora Obtusa Gracilis Compacta (Football Cypress)—Of dwarf and dense broadly conical habit. Deep green glossy foliage in much crowded branchlets on short branches. T 6-12" \$35.00 per 100; 2-3' \$3.25; 3-4' \$4.50; 4-5' \$6.00.

Retinospora Obtusa Gracilis Nana—A very dwarf compact globe with deep green foliage. Makes a permanent specimen in foreground plantings. 15-18" \$2.50; 18-24" \$3.00.



Retinospora Decussata

Retinospora Pisifera (Sawara Cypress)—A dense light green cone. Foliage silvery beneath. An excellent shrub for group plantings. Also fine for formal work. T 5-10" \$10.00 per 100; 18-24" \$1.25; 2-3' \$1.75; 3-4' \$2.50.

Retinospora Pisifera Aurea—A golden form of the Pisifera. This is one of the finest informal Retinosporas. T 6-10" \$15.00 per 100; 2-3' \$1.75; 3-4' \$2.50.

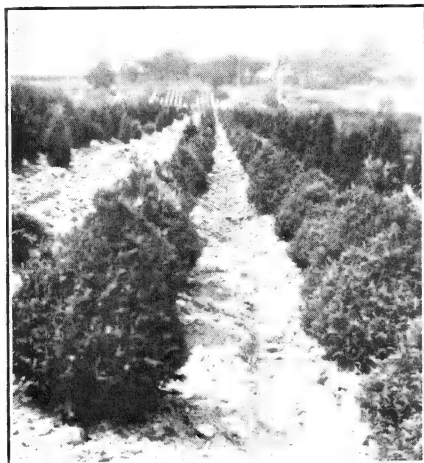
Retinospora Plumosa (Plume Cypress)—A compact, acorn-shaped evergreen of medium tall growth. Light green, feathery, plume-like foliage. An exceedingly handsome tree. T 6-12" \$22.50 per 100; 18-24" \$1.75.

Retinospora Plumosa Aurea (Golden Plume Cypress)—Like the preceding, but of a golden yellow color. Slower in growth, making ideal specimens for foundation plantings. T 6-10" \$22.50 per 100; 15-18" \$1.25; 18-24" \$1.50; 2-2½' \$2.25.



Retinospora Pisifera

Retinospora Plumosa Flavescens—A fine dwarf cone. Its foliage is very fine and of a bright sulphur color. Evergreens like these are invaluable for foreground plantings to liven up the color and set off the others. T 5-7" \$20.00 per 100; 15-18" \$1.75; 18-24" \$2.00; 2-2½' \$2.50.



Retinospora Plumosa Aurea

The backyard should be a place of beauty. Screen out that objectional view.



Retinospora Plumosa Lutescens—A dwarf minute flat globe. More dwarf even than the preceding, which it resembles closely. Sometimes called Gold Coin. Sulphur color foliage. T 4-6" \$16.50 per 100; 12-15" \$1.50; 15-18" \$2.00.

Retinospora Squarrosa Veitchi—Known as Moss Cypress. Soft dense juvenile foliage of silvery bluish color. A flat globe which eventually forms a broad pyramid. T 4-6" \$15.00 per 100; 15-18" \$1.35; 18-24" \$1.75; 2-3' \$2.00.

Retinospora Squarrosa Sulphurea—Sulphur color variety of preceding. 2-3' \$2.00.

SCIADOPITYS VERTICILLATA (*Umbrella Pine*)—Distinctive and different. Dark green needles in clusters like little umbrellas. Growth very slow, maturing into a broad heavy pyramid. Plant in sheltered position. 12-15" \$2.25; 15-18" \$2.75.

SPRUCE (*Picea*)

Black Spruce (*Picea Mariana*)—Native of New England. Light branched and matures in a small open growing specimen. Belongs in the novelty class. 2-3' \$1.75; 3-4' \$2.50; 4-5' \$3.25.



Black Hill Spruce

Black Hill Spruce—A native of the Black Hill mountains and justly thought to be one of the best of the evergreens. Growth upright and conical, retaining its branches well to the ground. The foliage is gray bluish green. A compact, slow growing tree of long life. 2 yr. Sldgs. 1-3" \$3.50 per 100; 1000 for \$25.

Colorado Blue Spruce (*Another of our specialties*)—The most beautiful of all evergreens for specimen planting. Growth upright and conical, rigidly stern and unyielding. Foliage deep glaucous blue. Grows well in any situation. The following are selected, every tree a shiner, selected for its blue color, not to be compared with the quality of Colorado Blue Spruce in catalogues where no Colorado Green is offered.

Seedlings and transplants are offered nursery run. 2 yr. Sldgs. 2-4" \$4.00 per 100; 3 yr. S. 4-7" \$5.00 per 100; T 5-8" \$12.00 per 100; T 8-12" \$15.00 per 100; 18-24" \$2.75; 2-2½' \$3.50; 2½-3' \$4.00; 3-4' \$5.00; 6-7' \$11.00; 7-8' \$14.00; 8-9' \$20.00; 9-10' \$25.00; 10-12' \$35.00; 12-14' \$50.00.

Colorado Green Spruce—Green variety of Colorado Blue Spruce. Also a truly beautiful evergreen. 18-24" \$1.50; 2-3' \$2.00; 3-4' \$3.00; 4-5' \$3.75.



Colorado Blue Spruce

Prices: F. O. B. Fairview on orders amounting to \$10.00 or more. On orders under \$10.00 add 10% for packing charges. Discounts: 5 or more of one variety and size—15% from single rates. No discount allowed from 10, 100 or 1000 rates.

Dwarf Alberta Spruce (*Picea Conica Glauca*)—Very dwarf tight growing cone. A rock garden specimen. 10-12" \$1.35; 12-15" \$1.65; 15-18" \$2.25.

Engleman Spruce—Native of Colorado with distinct blue foliage. Slow compact grower with medium length needles. Sldgs. 2-4" \$3.50 per 100; T 6-10" \$15.00 per 100; 18-24" \$2.25; 2-3' \$5.00; 3-4' \$4.00.

Hondo Spruce (*Picea Hondoensis*)—Native of Central Japan. A handsome ornamental tree of broad pyramidal habit. Bright dense green foliage. T 6-8" \$7.50 per 100; T 8-12" \$11.00 per 100; T 12-15" \$15.00 per 100.

Koster's Blue Spruce—This is a grafted tree taken from specially selected strain of the best color possible to obtain in a Blue Spruce. By grafting, a uniform color is obtained in a whole block of trees. 2 yr. grafts 6-10" \$1.25; 18-24" \$3.50; 2-2½' \$4.50; 2½-3' \$5.50; 3-4' \$7.50; 4-5' \$9.00; 5-6' \$12.50; 6-7' \$15.00; 7-8' \$18.00.

Moorheim's Blue Spruce—Another grafted form of Blue Spruce. Supposedly longer needled and better color than Koster's. We think them equally fine. T T 8-12" each \$2.00; 18-24" \$4.00; 2-2½' \$5.00; 2½-3' \$6.00; 3-4' \$8.00.

Koyami Spruce—Another interesting Japanese novelty. Slow growing narrow pyramidal tree with compact growth and green short thickly set needles. Sldg. 3-5" \$3.50 per 100; 18-24" \$1.35; 2-3' \$1.75; 3-4' \$2.50; 4-5' \$3.25.

Oriental Spruce (*Picea Orientalis*)—A very graceful spruce with dark glossy foliage of slow growth and therefore valuable in smaller gardens. Sldgs. 4-8" \$7.50 per 100; 15-18" \$1.50; 18-24" \$2.00; 2-2½' \$2.50.

Serbian Spruce (*Picea Omorika*)—This species has recently been offered to the American trade. It is destined to become popular. Pyramidal type of Spruce with underside of foliage very decidedly blue, giving the tree a two-toned color effect. 18-24" \$1.75; 2-3' \$2.50; 3-4' \$3.50; 4-5' \$4.50.

Sitka Spruce (*Picea Sitchensis*)—Native of the Western Coast of North America. A very ornamental tree with slender horizontal branches. Needles green above, underlaid with silver, giving the tree a striking color effect. T 10-15" \$15.00 per 100.



Norway Spruce

Norway Spruce—The Christmas tree. A strong upright grower that soon develops into a large tree. Used for hedges, windbreaks, etc., also for tubs and formal plantings when small, for it is a very shapely tree, 2 yr. S 4-7" \$3.00 per 100, 1000 for \$20.00; 5M for \$75.00; T 6-12" \$8.00 per 100; 1M for \$65.00; 5M for \$300.00; T 12-15" \$11.50 per 100; 1M for \$90; 5M for \$415.00; 18-24" \$1.25; 2-3' \$1.50; 3-4' \$2.25.

White Spruce (*Picea Canadensis*)—Somewhat more open grower than Black Hill Spruce. Makes a good Christmas tree. Sldgs. 2-5" \$3.50 per 100; 1000 for \$25.00; T 8-12" \$11.00 per 100; 2-3' \$1.75; 3-4' \$2.25; 4-5' \$2.75.

Red Spruce—The native spruce of New England and Canada. Not cultivated much in the nurseries, but makes an interesting specimen and should be included wherever specimen display is desired. Sldgs. 6-12" \$4.00 per 100.



YEW (*Taxus*)

The Yew or (*Taxus*) are beyond question among the very best in evergreens. They are disease free and hardy and will stand as much abuse as any evergreen. They are also indispensable for shady plantings. The foliage is heavy, waxy and rugged. All Yews bear scarlet berries in the summer.



Taxus Cuspidata Spreading

AMERICAN YEW (*Taxus Canadensis*)—A native of Canada, hardy anywhere. A dwarf spreading shrub with dark green, glossy needles. We recommend this evergreen for spots too shady for grass and other shrubbery. Habit identical to the spreading Japanese Yew (See cut). Needles and branches, however, are lighter and winter color not as good as Japanese Yew. 15-18" \$2.00; 18-24" \$2.50.

JAPANESE YEW (*Taxus Cuspidata*)—Half upright and irregular in habit, clothed with waxy black green needles. The Japanese Yew is one of the most useful evergreens for any planting. We recommend this very highly for shady locations where other trees will not grow. It also does equally as well in sun. **We have both spreaders and upright trees in this variety. Please specify.**

TAXUS CUSPIDATA—Spreading—T 8-12" \$25.00 per 100; TT 12-15" \$37.50 per 100; 15-18" \$2.75; 18-24" \$3.25; 2-2½' \$4.00; 2½-3' \$6.00.

Upright—T 5-8" \$17.50 per 100; T 8-12" \$32.50 per 100; 15-18" \$2.00; 18-24" \$3.00; 2-2½' \$3.75; 2½-3' \$4.50; 3-3½' \$5.50; 3½-4' \$7; 4-4½' \$8.50; 4½-5' \$10.

Taxus Cuspidata Brevifolia (*Dwarf Japanese Yew*)—Shrubby form with spreading branches densely clothed with short branchlets, slow growing and compact. A fine plant to use where one desires something which will remain small for years. 12-15" \$2.50; 15-18" \$3.00; 18-24" \$4.00; 2-2½' \$4.50.

Taxus Cuspidata Vermueleni—A slow growing upright Yew of the Brevifolia type. 15-18" \$2.75; 18-24" \$3.25.

ENGLISH YEW (*Taxus Baccata*)—The English Yew are not as extremely hardy as the Japanese Yew and for this reason should be planted in sheltered positions. They are a very interesting group and add much attraction to any garden.

Taxus Baccata Elegentissima (*Variegated English Yew*)—This variety is of a compact, dense habit. Young needles are striped pale yellow. Older ones with whitish margin. 12-15" \$2.00; 15-18" \$2.50; 18-24" \$3.00.



Taxus Cuspidata Upright
A Specialty at Fairview

Prices: F. O. B. Fairview on orders amounting to \$10.00 or more. On orders under \$10.00 add 10% for packing charges. Discounts: 5 or more of one variety and size—15% from single rates. No discount allowed from 10, 100 or 1000 rates.

Taxus Baccata Erecta (*Broom Yew*)—Narrow and upright type with slender branches and smaller needles than the other English Yew. 15-18" \$2.00; 18-24" \$2.50.

Taxus Baccata Repandens (*Spreading English Yew*)—A compact spreading type with dark glossy green foliage. Valuable for low planting. T 4-6" \$25.00 per 100; 12-15" \$1.75; 15-18" \$2.50.

Taxus Baccata Washingtoni (*Washington English Yew*)—A very hardy wide spreading form with needles light golden yellow, particularly on the under side. 15-18" \$2.25; 18-24" \$2.75; 2-2½' \$3.50.

TAXUS MEDIA—The Media taxus represents a new and ever growing family. Produced by crossing the variable strains of English Yew with the extremely hardy Japanese Yew. The results are an amazing number of delightful, hardy, and useful additions to this already popular family.

Taxus Media Andersoni—Closely resembles Japanese spreading but is a more vigorous grower and has a little more height. A coming favorite. T 6-10" \$25.00 per 100; 15-18" \$2.75; 18-24" \$3.25.

Taxus Media Browni—A compact growing spreading type inclined to have more height and be more or less globe shaped. Foliage is light green. T 5-8" \$25.00 per 100; 12-15" \$2.00; 15-18" \$2.75; 18-24" \$3.25.

Taxus Media Extra Fine Foliage—A dwarf spreading Brevifolia type with extra heavy needles, 15-18" \$3.25; 18-24" \$4.00; 2-2½' \$5.00.

Taxus Media Hatfieldi—A broad upright column, dark green and of slow growth. T 6-10" \$25.00 per 100; 15-18" \$2.75; 18-24" \$3.50.

Taxus Media Hicksi—Distinctly columnar habit, close growing and compact. Dark glossy green needles stand out rigidly from the branches. T 6-10" \$22.50 per 100; 15-18" \$2.50; 18-24" \$3.00.

Taxus Media Hunnewelliana—A vigorous grower with upright vase shaped form. Very hardy. Has excellent summer color and turns very bronzed in winter. T 6-9" \$27.50; 12-15" \$2.00; 15-18" \$2.75.

Taxus Media Negro—A slow growing very dark green foliaged Yew, which develops into a flat topped globe. T 4-8" \$22.50 per 100; 15-18" \$2.25; 18-24" \$3.00.

Taxus Media Pyramidalis—A heavily needled upright Taxus. Habit of growth very similar to the well known Irish Juniper. T 4-8" \$22.50 per 100; 15-18" \$3.00; 18-24" \$3.75.

BROAD LEAVED EVERGREENS



Yucca

ADAM'S NEEDLE (*Yucca*)

Filamentosa—Tall, graceful spikes, four to six feet high, with creamy white blossoms, like giant lilies of the valley rising from luxuriant evergreen foliage, make *Yucca* one of the most brilliantly effective plants for showy display. So hardy and easy to grow that it will transform the most barren places into year round beauty. 3 year No. 1 plants, \$.35.

Hacker's Variegated—Like the preceding in bloom. The center of the leaves of this variety are deep green while the edges are margined creamy-yellow. 3-year clumps \$.50; divisions \$.25.

ARCTOSTYPHYLLOS URVA URSI (*Bearberry*)—A low dense, viny mat excellent for Rock Garden or sandy slopes. Prefers poor sandy soil. Red berries. 12-24" \$.75.

BERBERIS (*Evergreen Barberry*)—The new evergreen barberries are valuable additions to the

Broad Leaved Evergreens. The dark green, glossy hollylike leaves are shown and flowers are very attractive.

Juliana—Evergreen to 5 feet. Fine winter coloring. Hardy. 12-15" \$1.00; 15-18" \$1.35.

Mentoriensis—(*U.S. Plant Patent No. 99*)—New. Semi-evergreen barberry. Holds its leaves until about March 1st. Has pleasing upright habit and is very hardy. We recommend this as an exceptionally fine hedge plant.

12-15"	3 for \$1.40	12 for \$4.00	100 for \$20.00
15-18"	3 for 1.50	12 for 4.50	100 for 30.00
18-24"	3 for 2.00	12 for 6.00	100 for 40.00
24-30"	3 for 2.60	12 for 7.25	100 for 50.00

BOXWOOD TREE (*Buxus Sempervirens*)—A dwarf, slow growing shrub with tiny dark leaves. Used for tubs and borders. A Boxwood hedge is a mark of quality in any planting T 6-8" \$12.00 per 100; 10-12" B&B \$1.00; 12-15" \$1.25; 15-18" \$1.60; 18-24" \$2.00.

Our stock will please you! Plant as an investment.



COTONEASTER ADDRESSA (*Creeping Cotoneaster*)—A very good creeping variety with larger berries and smaller grower than *Horizontalis*. 8-12" B&B \$1.00.

Horizontalis (*Rock Cotoneaster*)—A small horizontal shrub covered with waxy, mouse ear leaves. Minute pink flowers, followed by red berries. Useful for rockeries. 9-12" \$1.00; 12-18" \$1.35.

DAPHNE CNEORUM (*Garland Flower*)

A gem for the garden or rockery, producing delicate, rose pink clusters of flowers in early spring completely covering the plant and sparsely at intervals all summer until freezing weather compels the plant to stop blooming. Flowers rival the carnation for fragrance. Growth not exceeding 10" in height eventually spreading to 2 feet or more. We produce thousands. Dug B & B. 6-9" \$.75; 9-12" \$1.00; 12-15" \$1.25; 15-18" \$1.50.

Evergreen Thorn (*Crataegus Pyracantha Lelandi*)—A dense evergreen thorn, which can be trimmed to solid clumps. Foliage of very pleasing deep green with orange colored berries which persist well into the winter. B & B. 12-18" \$1.25; 18-24" \$2.00; 2-2½' \$2.75.

HOLLY (Ilex)

Crenata Bullata (*Japanese Boxleaf Holly*)—This is a hardy type of Japanese Holly with small boxwood-like leaves which are very glossy. This is a very valuable addition to the Broad Leaved Evergreens for the North. Makes a neat and attractive shrub and does well in shady situations. T 4-8" \$17.50 per 100; 12-15" \$1.75; 15-18" \$2.25.

Crenata Rotundifolia (*Japanese Boxleaf Holly*)—A variety with larger, rounder leaves and stronger, more upright growth. Very hardy; and we shall grow it by the thousands as we believe its use will become popular, and that it will take the place of Boxwood. T 4-8" \$17.50 per 100; 12-15" \$1.75; 15-18" \$2.25; 18-24" \$2.75.

Glabra (*Inkberry*)—Slow growing dense evergreen shrub with small glossy leaves. Will grow in heavy shade and stands shearing well. Black berries produced in fall and persist into winter. 15-18" \$2.25; 18-24" \$3.00.

Opaca (*American Holly*)—This is the holly used for Christmas decoration. It develops into a beautiful bush-like specimen. Prefers moist, well drained soil and a partially shaded location. 18-24" \$1.75; 2-3' \$2.75.



Mahonia Aquifolia

LEUCOTHOE CATESBAEI—A low growing evergreen shrub, which produces tresses of lily-like flowers. The foliage is rich green in summer, turning into a bronze in winter. Does well in shade. 15-18" \$1.65; 18-24" \$2.00; 2-2½' \$2.25; 2½-3' \$2.75.

MAHONIA AQUIFOLIA (*Holly Leaved Ashberry*)—A beautiful evergreen shrub, with smooth shiny holly leaves, bright yellow flower cluster in May, followed by blue grape-like berries. The leaf color varies throughout the summer, assuming all shades of green with flecks of red and bronze. T 6-9" \$10.00 per 100; 12-15" \$1.00; 15-18" \$1.25; 18-24" \$1.50.

MOUNTAIN LAUREL (*Kalmia Latifolia*)—**The Pennsylvania State Flower.** The mountain Laurel is very popular, being planted in group form with Rhododendrons or in individual masses. Light pink flowers are borne in clusters in May or June. Mountain Laurel and Rhododendrons demand acid soil and shade. Directions for making the soil acid will be sent upon request when plants are ordered. It is very easily and inexpensively done. Our nursery-grown clumps are excellent material. 15-18" \$2.00; 18-24" \$2.50; 2-2½' \$3.00; 2½-3' \$3.75.

PACHYSTIMA CANBYI—A remarkable dainty low evergreen shrub forming a dense evergreen carpet. 8-12" \$.90; 12-15" \$1.25.

PIERIS (Andromeda)

Floribunda—A native of the Blue Ridge Mountains of distinct characteristics. Its rich evergreen foliage and abundance of lily-of-the-valley-like flowers make it very effective. Being smaller than Rhododendron, it makes a very effective foreground plant for them. 15-18" \$2.50.

RHODODENDRON

Its dark green, leathery foliage forms a wonderful background for other shrubbery, and in winter it is a constant reminder of the Spring to come. Used largely in group plantings, although single specimens are not amiss. Indispensable for shady places and is one of the few plants growing well in such locations. Our stock is all "Nursery-grown" and we are offering an established, superior quality not to be compared to the ordinary collected wild stock. Having a natural good soil for growing Rhododendron, Mountain Laurel and other Ericaceae plant material, and realizing the need for good stock, also in an attempt to meet the overtaxed demand, we have made special effort and investment to grow these splendid evergreens.

Prices: F. O. B. Fairview on orders amounting to \$10.00 or more. On orders under \$10.00 add 10% for packing charges. Discounts: 5 or more of one variety and size—15% from single rates. No discount allowed from 10, 100 or 1000 rates.



Rhododendron Planting

Catawbiense—Massive lavender or reddish-purple flowers in abundance in May or June. Dependable for Decoration Day bloom. Will stand full sun. 15-18'' \$2.25; 18-24'' \$3.00; 2-2½' \$4.00; 2½-3' \$5.00.

Catawbiense (Cut Back Clumps)—These have been grown in full sun from clumps cut back and regrown from the ground up. They have at least 6 canes at the ground and are extra heavy foliaged. 12-15'' \$2.25; 15-18'' \$3.00; 18-24'' \$4.00.

Catawbiense Compacta—A dwarf slow growing variety of Catawbiense. Makes a compact deep green clump. 12-15'' \$2.50; 15-18'' \$3.25.

Carolinianum—Small leaved, rugged and dwarf. Pinkish white flowers in May. A good Rhododendron. 12-15'' \$2.00; 15-18'' \$2.50; 18-24'' \$3.00; 2-2½' \$3.75; 2½-3' \$4.00.

Hybrid Seedlings—These are produced from seed collected from Hybrid plants. These are superior in quality of leaf and flowers to the native varieties. Colors are mixed. 15-18'' \$3.25; 18-24'' \$3.50; 2-2½' \$4.50.

Maximum—Heavy, extra large leaves. Flowers white to pink in June or July. We recommend this variety for heavy shade and more for foliage effect than for bloom. 18-24'' \$2.00; 2-3' \$2.50; Heavy clumps—15-18'' \$2.00; 18-24'' \$2.50; 2-2½' \$3.00; 2½-3' \$3.50.

RHODODENDRON HYBRIDS

Hybrids are selected for exceptional fine color and foliage. Propagation is by grafting and is very difficult. 15-18'' \$4.00; 18-24'' \$5.00.

America—Red. Medium Bushy.

Caractacus—Old fashion crimson.

Chas. Dickens—Red. Tall grower.

Dr. Dresselheys—Red. Tall variety. Best seller.

Ignatius Sargent—Red. Medium tall grower.

Kettledrum—Red. Medium grower.

Mrs. C. S. Sargent—Light red. Bushy.

Mrs. P. den Ouden—Red. Medium tall habit.

Parsons Grandiflorum—Pink. Medium tall.

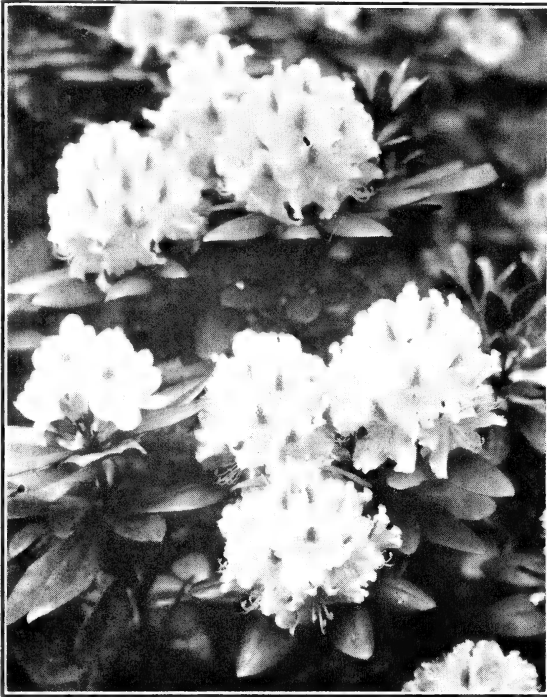
Purpleans Elegens—Purple. Medium habit.

Roseum Elegens—Orchid pink. Compact medium habit.

Every day you are judged by the appearance of your home grounds.



SPURGE JAPANESE (*Pachysandra Terminalis*)—A splendid evergreen ground cover, with thick, glossy green foliage. Makes a dense mat or low growing cover plant. Excellent for edgings. Will grow in dense shade where grass will not. 2 yr. 10 for \$1.50; 100 for \$10.00; 1000 for \$80.00.



Rhododendron Hybrid

Blue (*Quadrangulata*)—Native of Tennessee. Fast growing. Flowers before leaves appear. Bark inclined to be winged on young trees and very rough on older trees. Useful as lawn specimen or avenue tree. 8-10' \$2.50; 1½-2" Cal. \$3.00; 2-2½" \$4.00.

Green (*Lanceolata*)—Native of Eastern United States. Tree to 60 feet. 6-8' \$1.25; 8-10' \$1.75; 1½-2" Cal. \$2.50.

Mandshurian (*Mandshurica*)—Native of the Orient. Tree to 100 feet. 5-6' \$1.25; 6-8' \$1.50.

BEECH (*Fagus*)

European—Slow growing tree but develops into handsome heavy specimen with dark green glossy leaves. Retains leaves all winter. Useful for hedge purposes. B & B. 3-4' \$2.50; 4-5' \$3.00; 5-6' \$4.00; 6-8' \$6.00.

European Weeping—A very twisted and weeping grafted form. B & B. 6-8' \$12.00; 8-10' \$15.00.

ORNAMENTAL and SHADE TREES

ALDER (*Alnus*)

European (*Glutinosa*)—A vigorous growing tree with dark dull green foliage. Valuable for planting in damp situations. 4-6' \$1.50.

ARALIA (*Acanthopanax*)

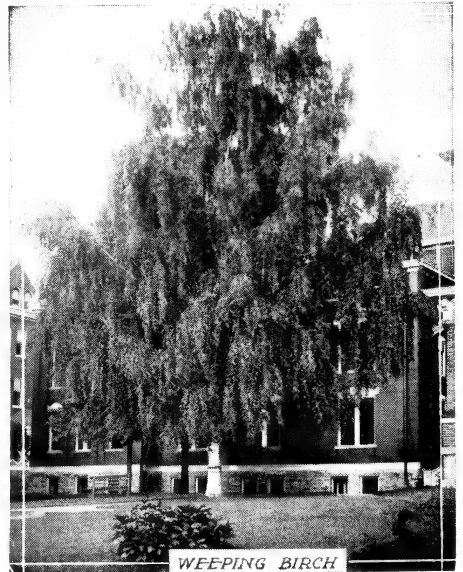
Ricinifolia (*Castor Aralia*)—This has a large single leaf similar to the Castor Oil Bean Plant. Single stalk heavily spined. A very desirable novelty. 2-3' \$.75; 3-4' \$1.00; 4-5' \$1.25.

Spinosa (*Hercules Club*)—Native.—Identical with Japonica except smaller in every respect. 3-4' \$.75; 4-5' \$1.00; 5-6' \$1.25.

ASH (*Fraxinus*)

American White—Tall, rapid grower with smooth gray bark and glossy fern-like leaves. Fine for grouping or street planting. 6-8' \$1.00; 8-10' \$1.50.

Black—Native tree to 80 feet. 4-6' \$1.25.



Birch, Cut Leaf Weeping

Prices: F. O. B. Fairview on orders amounting to \$10.00 or more. On orders under \$10.00 add 10% for packing charges. Discounts: 5 or more of one variety and size—15% from single rates. No discount allowed from 10, 100 or 1000 rates.

BEECH

River's Purple—One of the most beautiful and outstanding trees with colored foliage. Slow growing but eventually makes a large handsome tree. Dug B & B. 4-5' \$7.00; 5-6' \$9.00; 6-8' \$12.00; 8-10' \$15.00.

BIRCH (*Betulus*)

Canoe or Paper Bark—Makes a graceful tree with shiny leaves. Picturesque paper bark, very white when older. 6-8' \$2.00; 8-10' \$2.50.

Cut Leaf Weeping—Graceful tree for lawn planting. Bark white, leaves cut and branchlets drooping. These Birch are grown from Oregon transplanted whips and have a super root system. 5-6' \$2.00; 6-8' \$2.75; 8-10' \$3.25; 10-12' \$3.75; 12-14' \$4.00.

Nigra (*Red or River*)—A moisture loving graceful tree with slender very numerous branches and remarkable for its torn and rugged bark. 4-6' \$1.25; 6-8' \$2.00.

BUCKEYE (*Aesculus*)

Ohio (*Glabra*)—Makes a small tree of handsome appearance with yellow flowers in May. 8-10' 2-2½" Cal. \$4.00.

Red (*Pavia*)—Shrub or small tree variable 4 to 20 feet. Purplish to dark red flowers at a very early age. 12-18" \$.75; 18-24" \$1.00; 2-2½' \$1.50.

*Catalpa Bungei*

BUTTERNUT (*Juglans Cinerea*)—4-6' \$1.00.

CATALPA BUNGEI (*Umbrella Tree*)—Grafted on stems four to six feet high and makes umbrella shaped tree without trimming. Flourishes well in all soils. Usually set in pairs. 1 year heads, 5-6' stems \$2.00; 2 yr. heads \$2.50.

CHESTNUT, CHINESE HAIRY—A blight resistant Chestnut. Makes a slow growing bushy tree. Produces very fine quality nuts of the same size as American Chestnut at a very early age. This tree has great orchard possibilities. Write us about it or come and see our bearing stock. 1 yr. sdgls. 6-12" each \$.25; \$12.00 per 100; S 12-18" \$30.00; \$16.00 per 100; 2 yr. transplants 12-18" \$.35; \$20.00 per 100. T 18-24" @ 45¢

*Flowering Crab*

CRAB, FLOWERING—The Flowering Crabs form small compact trees. Used in lawn groups and high borders. Highly colored flowers followed by ornamental fruit.

Angustifolia (*Southern Crab*)—Tree to 20 feet. Fruit yellow-green and fragrant. 3-4' \$1.00.

Arnoldiana (*Arnold Crab*)—Large soft pink. Red fruit. 3-4' \$.85.

Atrosanguinea (*Carmine Crab*)—Deep rose; small red fruit. 3-4' \$.85.

Coronaria Charlotte Fl. Pl.—A double form somewhat lighter than the well known Betchels. 3-4' \$.90; 4-5' \$1.25; 5-6' \$1.50.



CRAB, FLOWERING

Do'ga (*Hanson's Red Crab*)—White flowering. Edible brilliant red fruit in abundance. 3-4' \$.75; 4-6' \$1.25; 6-8' \$1.75.

Eleyi—Single red flowering variety. Red fruit; purplish foliage. 4-6' \$1.00.

Floribunda (*Japanese Flowering Crab*)—Red flower buds turning to white bloom. Prolific small red fruit. 4-6' \$1.25.

Floribunda Peachblow—Single pink flowers; small yellow fruit. 4-5' \$1.00; 5-7' \$1.50.

Floribunda Purpurea—Large red flowers and fruit; very showy purplish green foliage. 3-4' \$.90.

Ioensis Betcheli (*Betchel Crab*)—Double pink rose-like flower. Dwarf compact grower. 2-3' \$.90; 3-4' \$1.25; 4-5' \$1.50.

Hopa (*Red Flowering Crab*)—Red flowers; medium grower. 4-6' \$1.25.

Neidwetzkyana (*Red Vein Crab*)—Leaves tinged red; flowers pink. 4-5' \$1.25; 5-7' \$1.75

Prunifolia Rinki (*Chinese Apple*)—Tree to 20 feet. Large flowers of soft pink; large red fruit. 5-7' \$1.50.

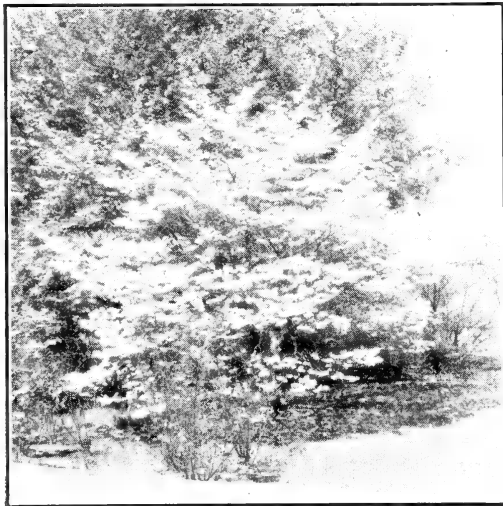
Purpurea Aldenhamensis—Medium grower. Semi-double purplish pink flowers. Fruit dark purplish red. 4-6' \$1.25; 6-7' \$1.50.

Sargenti (*Sargent Crab*)—Dwarf single pink flowers. Showy red fruit. 2-3' \$.85.

Spectabilis (*Chinese Flowering Crab*)—Tree to 25 feet. Fragrant semi-double pink; small yellow fruit. 3-4' \$.85; 4-5' \$1.25; 5-6' \$1.50.

Spectabilis Riversi—Double flowering pink bloom. 3-4' \$.75; 4-6' \$1.25; 6-7' \$1.50.

Zumi Callicarpa—Large white bloom. Prolific. Brilliant scarlet fruit. 3-4' \$.85; 4-5' \$1.25.



Flowering Dogwood

DOGWOOD FLOWERING

(*Cornus*)

DOGWOOD (*Cornus Florida*)—Flowers 3 to 3½ inches in diameter, produced in Spring before the leaves appear. Spreading and irregular. Makes a beautiful lawn specimen or background tree.

White—Bare Root 2-3' \$.75; 3-4' \$1.25; 4-5' \$1.50; B & B. 5-6' \$3.00; 6-7' \$4.00; 7-8' \$5.00.

Red—B & B. 2-3' \$2.25; 3-4' \$2.75; 4-5' \$3.75; 5-6' \$4.50; 6-7' \$6.00.

DOGWOOD KOUSA (*Cornus Kousa*)—Native of Japan and China. Makes a dense small tree growing to 20 feet, with glossy green leaves followed by creamy white flowers in June, and these in turn by cherry-like scarlet fruits, which are attractive to the birds. 2-3' \$1.00; 3-4' \$1.50; 4-5' \$2.00.

DOGWOOD PAGODA (*Cornus Alternifolia*)—A very picturesque small tree. Branches spread horizontally and are borne in whorls. Flat cymes of white flowers in June, followed by an abundance of blue-black berries. Attains a height of 15 to 20 feet. 2-3' \$.65; 3-4' \$1.00.

Prices: F. O. B. Fairview on orders amounting to \$10.00 or more. On orders under \$10.00 add 10% for packing charges. Discounts: 5 or more of one variety and size—15% from single rates. No discount allowed from 10, 100 or 1000 rates.

ELMS (*Ulmus*)

American—Most beautiful of all shade trees. Fast in growth with a rounded drooping graceful top. Indispensable as a shade tree, because of its great spread of branches. 8-10' \$1.50; 10-12' \$1.75; 1½-2" Cal. \$2.75; 2-2½" \$3.25; 2½-3" \$5.00; 3-4" \$9.00; 4-5" \$12.50; 5-6" \$18.00.

Moline—A remarkable new variety of extremely strong growth and large handsome deep grained foliage. 8-10' \$1.75; 1¼-1½" Cal. \$2.25.

Vase-shaped—Budded from the typical spreading elm which has been selected for its splendid characteristics. Large deep grained foliage, clean stem and vigorous growth. 8-10' \$1.75; 1¼-1½" Cal. \$2.25

Chinese (*Ulmus Pumila*)—It is heavily foliated with small leaves and makes a graceful full head. This tree does not grow as rapidly in this climate as in the West, however, it is perfectly hardy and worthy of planting either as a street tree or as a lawn specimen. 6-8' \$1.25; 1¼-1½" Cal. \$2.00; 5-6" \$15.00; 1½-2" \$2.75; 2-2½" \$3.25; 2½-3" \$4.50; 3-4" \$7.50; 4-5" \$10.00; 5-6" \$15.00.

EUPTELEA POLYANDRA—Graceful, bushy small tree. The bright green leaves are slender stalked and the tree is conspicuous in early spring from the bright red anther of its flower. 3-4' \$1.00; 4-5' \$1.25.

GOLDENRAIN TREE (*Koelreuteria*)—Medium sized, sparingly branched, round headed tree with light green compound leaves. Small yellow flowers followed by conspicuous pods. T 8-15" \$16.00 per 100; 4-5' \$1.75; 5-6' \$2.25.

HACKBERRY AMERICAN—Valuable as shade tree or single lawn specimen of medium size. Wide spreading head, light green foliage. Thrives in any soil. 2-3' \$.75; 3-4' \$1.00.

HORNBEAM (*Carpinus*)—Slow growing trees usually with dense round heads. Bright green leaves change to bright fall colors.

American (*Carpinus Caroliniana*)—Blue Beech. Native bushy tree with dense but slender and often pendulous branches. Smooth blue bark. 3-4' \$1.75; 4-5' \$2.25; 5-6' \$2.75; 6-8' \$3.00.

Chinese (*Carpinus Cordata*)—A very handsome species with deeply veined leaves. 3-4' \$2.00; 4-6' \$3.00.

European (*Carpinus Betulus*)—Used for heavy screens or large hedges also for specimen trees. Slow growing desirable tree. 3-4' \$2.25; 4-6' \$3.00.

HORSECHESTNUT (*Aesculus*)

Common (*Hippocastanum*)—Common to many yards. 4-5' \$1.25; 5-6' \$1.75; 6-8' \$2.50; 2-2½" Cal. \$3.50; 2½-3" Cal. \$5.00.

Red (*Carnea*)—Flowers flesh color to scarlet. More dwarf than common Horsechestnut. 4-5' \$3.00; 5-6' \$4.00.

KATSURA TREE (*Cercidiphyllum Japonicum*)—A bushy symmetrical upright tree, usually with several trunks maturing at 20 to 30 feet. Slender branches covered with handsome foliage, beautiful Spring and Autumn colors. One of the best introductions from Japan. 2-3' \$.75; 3-4' \$1.

KENTUCKY COFFEE TREE (*Gymnocladus Dioica*)—A slow growing native tree with smooth gray bark and alternate blue-green leaves which are twice compounded, 1½-3' long. Large panicles of greenish white flowers are followed by pods which persist throughout the winter. Seed were used for coffee west of the Alleghenies before and during the Revolutionary War. Picturesque outline. 2-3' \$.75; 3-4' \$1.15; 4-5' \$1.50.

LARCH (*Larix*)—Fast growing deciduous conifers with all the beauty of an evergreen in summer. Foliage bright green turning to a distinct rich yellow in Autumn. Makes a fine lawn or border tree. Very attractive and popular wherever it is used. Fall or very early Spring planting advised. (Continued next page.)

*American Elm*



LARCH

European (*Europa*)—Tree to 60 feet. Sldg. 12-24" \$5.00 per 100; 5-6' \$1.50; 8-10' \$2.50. Balling extra.

Japanese (*Leptoleptis*)—Faster growing, darker green than European. 6-8' \$1.75; 8-10' \$2.50. Balling extra.

LINDEN (*Tilia*)

European (*Vulgaris*)—A fine ornamental tree with handsome heart-shaped foliage and fragrant flowers. Growth is comparatively rapid with a regular pyramidal habit when young. Used for either shade or avenue trees. 6-8' 1¼-1½" \$2.25; 8-10' 1½-1¾" \$2.75; 1¾-2" \$3.50.

Big Leaf European (*Platyphyllos*)—A variety with large leaves. 6-8' \$1.50; 1¼-1½" \$2.25; 8-10' 1½-1¾" \$2.75; 1¾-2" \$3.50.

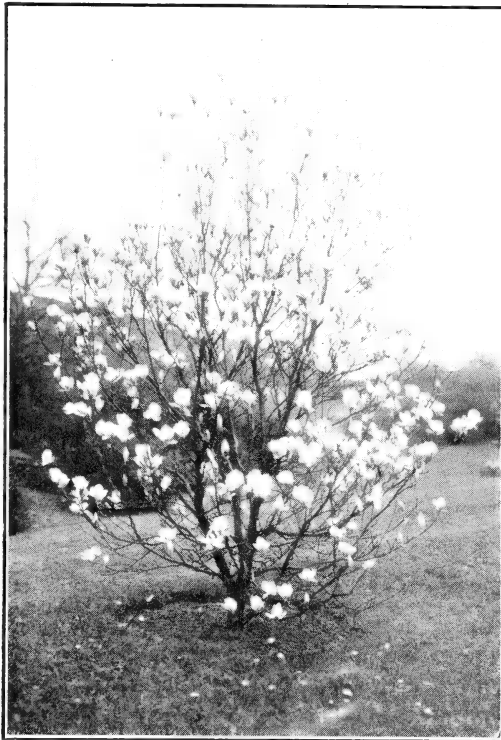
Little Leaf European (*Cordata*)—A variety with small leaves. 6-8' \$2.00.

Silver (*Tomentosum*)—Handsome tree with dense habit and upright growth. Under side of leaves white. 6-8' 1¼-1½" Cal. \$2.25.

LOCUST (*Yellow, Black or Common*)—For reforestation or holding steep banks. 6-12" 100 for \$1.00; 1-2' 100 for \$1.25; 2-3' 100 for \$2.00; 3-4' 100 for \$3.00. 250 or more at 20% discount.



European Larch



Magnolia Solangeana

MAGNOLIAS

Acuminata (*Cucumber Tree*)—A beautiful pyramidal tree, attaining a great height with spreading branches. Large dark bluish green leaves are 6 to 9 inches long. 3-4' \$1.00; 4-5' \$1.50.

Glauca (*Sweet Bay*)—In a moist situation this tree grows to a height of 30 feet, but much smaller in dry ground. Its thick waxy leaves are nearly evergreen. Delightfully fragrant, creamy flowers in June. B & B. T 12-24" \$20.00 per 100; 18-24" \$1.50; 4-5' \$3.50; 5-6' \$4.50.

Hypoleuca (*Silver Magnolia*)—A large growing tree type maturing with broad pyramidal head. One of the most beautiful of the species with 10 to 14 inch leaves silvery white beneath. White fragrant cup shaped flowers 6-7" across. Dug B & B. 2-3' \$1.75; 3-4' \$2.25; 6-7' \$4.00; 7-8' \$5.00; 8-10' \$7.50.

Lennei (*Lenne Magnolia*)—A slow grower with compact habit. Broad leaf. Flowers rosy purple outside. B & B. 2-3' \$4.00; 3-4' \$5.00.

Solangeana (*Saucer Magnolia*)—One of the finest of the flowering trees, growing to 20 feet. Flowers even when small with cup-shaped blossoms 3 to 5 inches across. Blooms purplish-pink and white appear before its massive, glossy leaves. Dug B & B. 18-24" \$2.50; 2-3' \$3.25; 3-4' \$4.50; 4-5' \$6.00; 5-6' \$8.50; 6-7' \$15.00.

Solangeana Nigra—Very dark red variety. Dug B & B. 18-24" \$2.50; 2-3' \$3.50; 3-4' \$4.50.
Stellata (*Star Magnolia*)—Matures at 8 feet. Fragrant white flowers. B & B. 18-24" \$3.50.

MAIDEN HAIR TREE (*Ginkgo*)—A strikingly handsome street or lawn tree, defying smoke, dust and insects. Erect, pyramidal form with small heart-shaped leaves. 2-3' \$5.50; 3-4' \$7.75; 6-8' 1-1/4" Cal. \$2.75; 1 1/4-1 1/2" \$3.25; 1 1/2-1 3/4" \$4.00; 1 3/4-2" \$4.50.

MAPLES (*Acer*)

Amur (*Ginnala*)—Graceful and valuable for bright red autumn coloring; twiggy habit of growth. Attains a height of 10 to 12 feet and makes a fine border specimen. 2-3' \$7.70; 3-4' \$8.85.

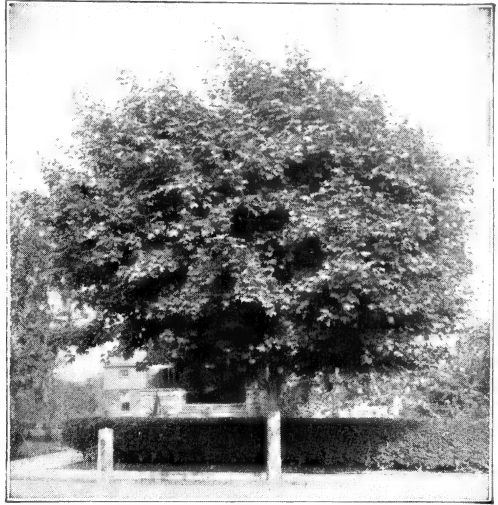
Japanese Blood Leaf (*Ochi Beni*)—A grafted variety with blood red leaves. Very showy. Shrub like in habit. B & B. 18-24" \$3.00.

Japanese Moonleaf—Very slow growing dwarf tree or shrub with round golden leaves. B & B. 18-24" \$3.50; 2-3' \$4.00; 3-4' \$5.00.

Japanese Shredded Leaf—A very dwarf type with finely shredded or fernlike leaves. Makes a wide mound solid from the ground. B & B 18-24" spread \$2.50; 2-3' \$3.50.

Japanese Shredded Blood Leaf—A red leaved variety of the former. B & B. Measured spread. 18-24" \$3.00; 2-2 1/2" \$3.75; 2 1/2-3' \$4.50; 3-4' \$6.00.

Norway—One of the hardiest shade trees and one of the most ornamental. It has broad, showy leaves and furnishes a dense shade throughout the Summer. Neat compact habit with a rounded head. 8-10' 1 1/4-1 1/2" Cal. \$3.00; 10-12' 1 1/2-1 3/4" \$3.50; 1 3/4-2" \$4.00; 2-2 1/2" \$5.00; 2 1/2-3" \$6.50; 3-4" \$8.00; 4-5" \$12.50; 5-6" \$17.50.



Maple Norway

Red Swamp or Scarlet—A very valuable tree for street or park planting. Attractive at every season for its excellent habit. Bright red flowers in early Spring. It possesses beautiful foliage which turns a bright orange in Autumn. 8-10' 1 1/4-1 1/2" Cal. \$2.75; 1 1/2-1 3/4" \$3.50; 1 3/4-2" \$4.25; 2-2 1/2" \$5.00.

Schwedler's—This is a purple leaved Norway Maple, having all the ornamental beauty of the Norway with the added attraction of pleasing reddish leaves in Spring changing to purplish in summer. 8-10' 1 1/2-1 1/2" Cal. \$4.00; 1 1/2-1 3/4" \$4.75; 1 3/4-2" \$5.50.

Silver—A hardy, rapid growing maple. Valuable for quick shade. Leaves silvery gray and deeply serrated. 6-8' \$1.00; 1 1/4-1 1/2" Cal. \$1.55; 1 1/2-2" \$2.50; 2-2 1/2" \$3.00.

Striped Maple (*Moosewood*)—Handsome, medium sized tree of upright, dense habit, with bright green large foliage, turning clear yellow in autumn, and attractive even in winter with its smooth greenish bark striped with white. Prefers a moist situation and is very useful as a background specimen in shrubbery and landscaping of banks or borders. 18-24" \$5.50; 2-3' \$7.75; 3-4' \$11.00.

Sugar or Hard—Our native tree and grandest of all shade trees. Somewhat slow in growth when small, but quite rapid as the tree becomes established. It makes a straight, spreading and symmetrical tree of grand proportions and lives as a landmark for ages to come. We have some exceptionally fine stock. 1 1/4-1 1/2" Cal. \$2.50; 1 1/2-1 3/4" \$3.00; 1 3/4-2" \$4.00; 2-2 1/2" \$4.50; 2 1/2-3" \$7.50.

MULBERRY TEA'S WEEPING—Long slender branches curve gracefully to the ground, forming an umbrella-shaped head. 2-year heads on 4 to 5 foot stems \$2.50.

MOUNTAIN ASH (*Sorbus*)

American—Native. Somewhat stronger grower than European Mountain Ash. Berries orange color and very large. 6-8' \$1.00; 8-10' \$1.50.

European—A graceful tree with gray green fern-like foliage. Bears large panicles of bright scarlet berries which hang on well into the Winter. 6-8' \$1.25; 8-10' \$1.75; 1 1/2-2" \$2.50.

Oak Leaf—A hybrid form similar to type in general character. Leaves however are distinctly different resembling that of the Oak. Fruit large and glossy. 4-5' \$7.75; 5-6' \$11.50; 6-8' \$22.00.

Turkeystan (*Tianschanica*)—A shrub or very small tree with brilliant red berries when very small. A border novelty and a Fairview specialty. 18-24" \$1.00; 2-3' \$1.25; 3-4' \$1.50.



OAK (*Quercus*)

Black (*Velutina*)—Native. Heavy dark leaves. Slender branches. Develops a narrow open head. Brilliant fall coloring. 6-8' \$2.00; 1¼-1½" \$3.00; 1½-2" \$4.75; 2-2½" \$6.00.

Chestnut Oak (*Prinus*)—Leaves like Chestnut. Beautiful tree with handsome foliage, glossy above, white beneath. 6-8' \$3.00; 1¼-1½" \$3.75.

English (*Robur*)—A very stately well shaped tree with interesting, small leaves which stay green and hold into early winter. 1½-2" \$4.50; 2-2½" \$6.00; 2½-3" \$8.00.

European Turkey (*Cerris*)—A slow growing tree with small persistent leaves. 5-6' \$1.75; 6-8' \$3.00; 1½-1¾" \$4.00.

Mossycup (*Macrocarpa*)—Of vigorous growth becoming a stately tree of picturesque appearance in winter with its corky branches. 5-6' \$1.35; 1¼-1½" Cal. \$3.00; 1½-2" \$4.50.

Pin (*Palustris*)—Almost pyramidal in habit. Grows rapidly and develops the family characteristics sooner than most oak. When older it is half weeping as the lower branches touch the ground. 6-8' \$1.75; 1¼-1½" Cal. \$3.00; 1½-1¾" \$3.50; 1¾-2" \$4.50; 2-2½" \$5.50; 2½-3" \$8.50.

Red (*Rubra*)—A tall growing tree unusually large in leaf and quick in growth. Foliage purplish crimson in Fall. Matures into a beautiful lawn specimen. 1½-2" Cal. \$5.00; 2-2½" \$6.00; 2½-3" \$8.50; 3-4" \$12.00.

Scarlet (*Coccinea*)—Leaves slightly more cut than Red Oak. Intense fall coloring. 6-8' \$2.75; 1¼-1½" \$4.00; 1½-2" \$5.00; 2-2½" \$7.00.

Swamp White (*Bicolor*)—A fast growing, large leaf tree with straight bole and open round topped head. 6-8' \$2.50; 1½-1¾" \$3.00.

White (*Alba*)—Native. Matures at 75 ft. with open spreading character. 6-7' \$2.25.



Red Oak

POPLARS (*Populus*)

Bolleana—A most attractive tree with dark green glossy leaves which are silvery-white underneath, give an added charm when the wind blows as they show up prominently. Similar columnar habit to Lombardy Poplar. 6-8' \$1.25; 8-10' \$1.65; 10-12' \$2.00.

Lombardy—Tall spire-like character valued for landscape works and screens. If interested in large quantities, write for prices. 5-6' \$0.60; 6-8' \$0.85; 8-10' \$1.00; 10-12' \$1.50; 12-15' \$2.00.

Simon's—Matures into a medium sized bushy tree. Growth, however, is very rapid. Leaves are glossy green, bluntly oval, tapering to the stem. Small branchlets carry a reddish cast in contrast to the light green of the heavy wood. 6-8' \$0.90; 8-10' \$1.25; 10-12' \$1.75.

PRUNUS (*Plum*)

Besseyi (*Bessey Cherry*)—The "Sand Cherry" of the western plains. A large bush type shrub to 10 feet. Ornamental, edible fruit, 2-3' \$0.45; 3-4' \$0.60.

Bleriana (*Red Leaved Plum*)—Abundant pink bloom. 4-6' \$1.25.

Hansen's Bush Cherry—Selected strain of Bessy Cherry. 18-24" \$0.40; 2-3' \$0.50.

Lannesiana Sirotoe (*Mt. Fuji Flowering Cherry*)—Spreading tree to 30'. Double white fragrant flowers. 4-6' \$2.00.

Newport (*Purple Leaved Plum*)—Makes a small tree with purple leaves. Excellent for background in the shrubby border for contrast. 4-6' \$1.15.

Sekijama (*Kwanzan Cherry*)—The best of all Japanese Flowering Cherries. Large double rich rose colored flowers. 5-7' \$2.50.

Subhirtella Autumnalis (*Autumn Flowering Higan Cherry*)—An abnormal form of the beautiful Japanese Cherry blooming in April and again in October. Bush like shrub or small forked tree. 3-4' \$2.00; 4-5' \$2.50.



Triloba (*Double Flowering Plum*)—This is really just a large growing shrub attaining 6 to 7 feet at maturity, decked with double pink flowers very early in the spring before the leaves appear. 2-3' \$.75; 3-4' \$1.00.

RUSSIAN OLIVE (*Eleagnus Augustifolia*)—A small tree growing to 20 or 30 feet with dark green bark and small silvery leaves. In habit of growth it closely resembles the Willow. Deep golden blooms followed by ornamental olive fruit. 3-4' \$.60; 4-6' \$.75; 6-8' \$1.25.

SERVICEBERRY (*Amelanchier Laevis*)—Graceful species, handsome in bloom. Grows to 40 feet. Dark purple fruit in June. 2-3' \$.70; 3-4' \$.85; 4-5' \$1.00.

SHADBLOW (*Amelanchier Canadensis*)—Also called Juneberry. A bushy tree growing 20 to 30 feet. White flowers in the spring before the leaves appear; followed by berries which are attractive to the birds. 2-3' \$.60; 3-4' \$.75; 4-5' \$1.00; 5-6' \$1.50.

SOPHORA JAPONICA (*Chinese Scholar-tree*)—Handsome small tree with spreading branches and glossy compound leaves. Very slow grower. 2-3' \$1.25; 3-4' \$1.75; 4-5' \$2.25.

SYCAMORE AMERICAN—Native, moisture loving, mottled bark tree. 1½-2" Cal. \$3.25; 2-2½" Cal. \$4.00.

SYCAMORE EUROPEAN—A rapid growing, wide spreading tree, with deep lobed palmate leaves. Valuable for its handsome foliage, hardiness and free growth. Bark grayish green in summer, mottled creamy white in winter. 6-8' \$1.25; 1¼-1½" Cal. \$2.50; 1½-2" \$3.50; 2-2½" \$4.00; 2½-3" \$6.

SWEET GUM (*Liquidambar Styraciflua*)—A beautiful pyramidal tree of very symmetrical habit with maple-like lustrous leaves which assume a deep crimson in Autumn. In Winter this tree is conspicuous for its unusual corky branches and deeply furrowed bark. 4-6' \$1.25; 2-2½' \$5.00.

THORNS (*Crataegus*)

Coccinioides—Handsome small tree maturing at 20 feet. Stout spreading branches with heavy spines. Dark crimson shining fruit. 3-4' \$1.50; 4-5' \$2.00.

Cordata (*Washington Thorn*)—Slow growing bushy tree with small brilliant red berries, which persist nearly all winter. Has a brilliant Autumn effect. 3-4' \$1.25; 4-5' \$1.75; 5-6' \$2.50.

Grass Galli (*Cockspur Thorn*)—The deep green shiny leaves make this Hawthorn distinctive. The white flowers are also conspicuous. 3-4' \$1.65; 4-5' \$2.25; 5-6' \$3.00; 5-7' \$2.50.

Oxyantha (*English Hawthorn*)—White flowers. Small red fruit in abundance. 5-7' \$2.50.

Oxyantha, Double Pink—A double pink strain of the following. 5-6' \$2.75.

Oxyantha Pauli (*Paul's Scarlet Thorn*)—Flowers are very double, deep crimson with scarlet shade. 4-5' \$2.00; 5-6' \$2.75; 6-8' 1-1¼" Cal. \$3.50.

Mollis (*Downy Hawthorn*)—A very decorative species, showy fruit and flowers. 3-4' \$1.25; 4-5' \$1.50.

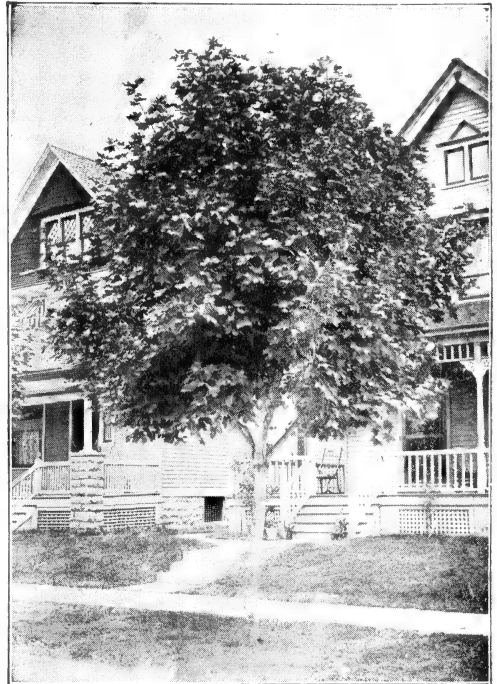
TULIP TREE (*White Wood*)—A fast growing tree which develops into a fine symmetrical and pyramidal shade tree. Has handsome waxy, light green leaves, which are square and pointed. Allied to the Magnolia. It derives its name from the large tulip-like flowers which are conspicuous. 5-6' \$1.00; 6-8' \$1.50; 8-10' \$2.00.

TUPELO, or BLACK GUM (*Nyssa Sylvatica*)—A slow growing medium sized tree with flat topped head. Gorgeous red fall foliage. Will do well in low moist ground. 3-4' \$1.00; 4-5' \$1.50; 5-6' \$2.00; 6-8' \$2.50.

WALNUT BLACK (*Juglans Nigra*)—4-6' \$1.25.

WILLOWS (*Salix*)

Golden (*Vetillina*)—A large growing willow with very golden bark. 8-10' 2-2½" Cal. \$2.50.



European Sycamore



WILLOW

Salamon's Weeping—We consider this variety the best of the weeping willows. It is of rapid growth and makes height quickly. 6-8' \$1.00; 8-10' \$1.50; 1½-2'' \$2.00; 2-2½'' \$2.50.

YELLOW WOOD (*Cladrastis Lutea*)—A broad medium sized tree with short trunk. Long drooping panicles of showy fragrant white flowers in June. Makes a fine lawn specimen. 4-5' \$2.00; 5-6' \$2.50; 6-8' \$3.00.

DECIDUOUS SHRUBS

Our shrubs are all heavy, well developed stock, planted with ample spacing and carefully cultivated to assure the best of quality. Along with our evergreens we have built up a variety which enables us to meet completely the needs of exacting landscape plans.

AMELANCHIER ALNIFOLIA (*Saskatoon*)—Spreading shrub with glossy foliage growing to 6 feet and producing edible persistent blue black fruit. 18-24'' \$.60; 2-3' \$.75.

AMELANCHIER BOTRYAPIUM—This is a dwarf variety of shadblow. It grows slowly, maturing into a large bush. Edible showy dark purple berries are borne in profusion in late June 18-24'' \$.60; 2-3' \$.75.

AMELANCHIER STOLONIFERA (*Running Shadblow*)—Upright stoloniferous shrub forming patches from 2 to 4 feet. Ornamental and edible fruit, black, juicy, and sweet. 2-3' \$.75.

ABELIA GRANDIFLORA—Half evergreen shrub. White flowers flushed with pink over a long season. Lustrous foliage. Must be planted in a protected spot. 18-24'' \$.60.

ALMONDS, FLOWERING—Early Spring flowering shrubs, with beautiful small, double pink flowers snuggling close to the twigs. 18-24'' \$.50; 2-3' \$.65.

ALTHEA (*Rose of Sharon*)—Blooms late in August or September with a profusion of large and brightly colored flowers. Grows upright to 12 or 15 feet. Colors Double Red, Pink, White, or Purple. 2-3' \$.55; 3-4' \$.75. Single Blue \$.75.

AMORPHA

Canescens (*Leadplant*)—A choice dwarf plant growing 2 to 3 feet high with long spikes of delicate blue flowers in July. 12-15'' \$.40; 15-18'' \$.50.

Fruiticosa (*Indigo Bush*)—Growing 6 to 10 feet tall, it makes an interesting ornamental shrub of spreading habit. Fine, feathery foliage. Remarkable for the unusual color of its dark violet purplish flowers. 2-3' \$.40; 3-4' \$.50; 4-6' \$.60.

ARALIA

Pentaphylla—A graceful shrub with arching branches and bright green, shining foliage. Excellent on rocky banks and slopes. Resists smoke. Makes a small tree in time. Greenish white flowers in long umbels. 18-24'' \$.50; 2-3' \$.65; 3-4' \$.75.

ARONIA (Chokeberry)

Attractive upright shrub growing to 8 feet with pale green leaves which are vividly red in Fall. Delicate white flowers in May are followed by attractive glossy berries which persist well along into the winter.

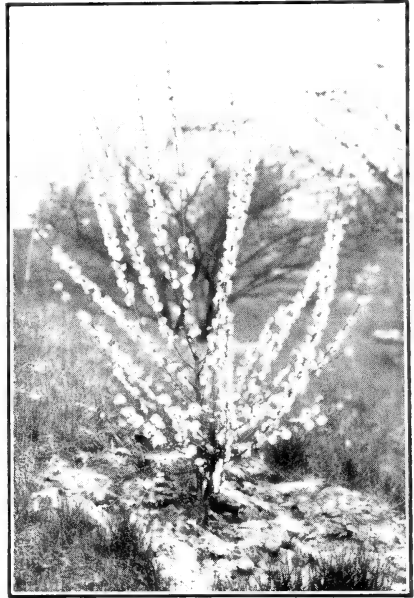
Arbutifolia (*Red Chokeberry*)—18-24'' \$.45; 2-3' \$.55.

Arbutifolia Brilliantissima (*Brilliant Chokeberry*)—Taller, brilliant pink. 2-3' \$.50; 3-4' \$.60.

Melanocarpa (*Black Chokeberry*)—18-24'' \$.40; 2-3' \$.55.

AZALEA—Azaleas are among the most beautiful of flowering shrubs bearing an abundance of brilliant flowers in the latter part of May and June. They are the deciduous branch of the Rhododendron family and require an acid soil condition and in direct contrast to the shade loving Rhododendrons, they need a sunny location to bring forth the most bloom. In planting Azaleas use some peat moss mixed half and half with the soil. A well drained spot, watered thoroughly about once each week, makes an ideal condition. We are specializing in the growing of this wonderful plant family.

Calendulacea (*Flame Azalea*)—Another native variety whose home is in the Carolina Mountains. Blooms the first of June while the new foliage is appearing. Very showy orange to canary yellow bloom. Maximum height of plant 5 feet, growth slow. 15-18'' \$1.65; 18-24'' \$2.00; 2-2½' \$2.50; 2½-3' \$3.00.



Flowering Almond

**AZALEA**

Kaempferi (*Torch Azalea*)—Bright orange to pink flowers 1½-to 2 inches across. Very handsome. Native of Japan. Matures at 5 to 6'. 12-15'' \$1.50; 15-18'' \$2.25.

Lutea (*Pontica Azalea*)—Makes a full well rounded shrub with pleasing heavy foliage. Yellow to orange yellow flowers with the first leaves. 18-24'' \$2.25; 2-2½' \$3.00; 2½-3' \$3.50.

Mollis (*Chinese Azalea*)—A super-excellent Chinese variety with extra large deep pink, salmon or bright yellow flowers which are dependable for Decoration Day bloom. Large hairy leaves thickly cover the plant after bloom disappears. We are propagating many thousand of these showy specimens. Growth slow to 4 feet. Heavily budded specimens.

Mixed colors: 12-15'' \$1.50; 15-18'' \$1.75; 18-14'' \$2.50; **Yellow** 18-24'' \$2.75.

Mucronulatum (*Korean Azalea*)—A new variety which has met with popular approval. This is a fast growing upright type which attains a height of 7 feet. Blooms very early in April and May before the other varieties. Pale rosy-purple flowers are borne solitarily and scattered throughout the entire plant. Semi-evergreen. 15-18'' \$1.50; 18-24'' \$2.00; 2-2½' \$2.25; 2½-3' \$2.75; 3-4' \$3.25.

Nudiflora (*Pinxterbloom*)—This is the Azalea native to the mountains of Pennsylvania. Slow growth to 4 feet. Fragrant pink flowers in early June. 15-18'' \$1.75.

Poukhanense—Single purplish flowers early in May. Growth slow, eventually making a heavy round bush 3-4' high. Hardy and of exceptional merit. 12-15'' \$1.75; 15-18'' \$2.00; 18-24'' \$2.25.

Schlippenbachi (*Royal Azalea*)—Another native of the Orient. This azalea has only recently been offered to the American Public. It is a slow growing, heavily branched shrub attaining after many years a height of approximately 4 feet. The 3 to 5 inch leaves, which are bluntly rounded on the outer end, are much larger than those of the other azaleas. Bright rose-pink flowers spotted with brown 2 to 3 inches across are borne with the leaves. 12-15'' \$1.25; 15-18'' \$1.65; 18-24'' \$2.00; 2-2½' \$2.50.

Yodogawa—A hybrid of the Poukhanense with double purplish-pink flowers. 15-18'' \$2.00.

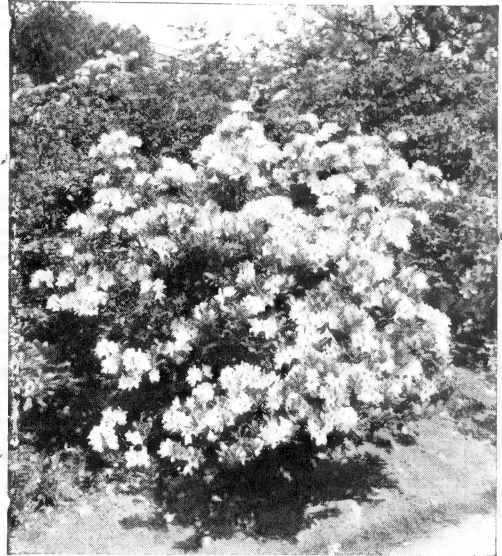
BARBERRY (Berberis)

Japanese—Small dense foliage, bright green in color, turning to orange and red in Autumn. Valuable for hedges. May be pruned to any form or height. Grows 3 to 4 feet high. Does not carry wheat rust. Bright red berries hang on all Winter. 6-9'' sdlg. 100 for \$1.25; 9-12'' 100 for \$2.25. 2 year transplants 12-15'' \$5.00 per 100. Heavy field row plants:

15-18''	.25	10 for \$1.75	100 for 12.50
18-24''	.30	10 for 2.25	100 for 15.00
2-2½'	.35	10 for 2.60	100 for 20.00
2½-3'	.40	10 for 3.20	100 for 25.00

Japanese Box—A very desirable dwarf Barberry with such compact even growth that it can be trimmed to shape like Boxwood. Makes a very desirable hedge around the formal garden or wherever a neat compact hedge is desired. We recommend this as the proper plant to use in front of evergreens where protection is desired.

9-12'' \$.30	10 for \$2.50	100 for \$18.00
12-15''	.35	10 for 3.00	100 for 22.50
15-18''	.40	10 for 3.50	100 for 26.00
18-24''	.45	10 for 4.00	100 for 30.00

*Azalea Mollis*



BARBERRY

Japanese Red Leaved—Leaves blood red throughout the growing season and with intensified fall coloring. Should be planted in sun for best color. 1 yr. sdgls. 6-9" 100 for \$3.00; 12-15" T \$2.00 100 for \$12.50; 15-18" \$3.30; 100 for \$22.50; 18-24" \$3.35; 100 for \$25.00; 2-2½' \$3.40; 100 for \$27.50; 2½-3' \$3.45; 100 for \$30.00.

Japanese Upright—An upright strain grown from seed. Better foliage color and habit than common Japanese Barberry. Sldg. 6-10" 100 for \$2.50; 15-18" \$3.30; 10 for \$2.50; 100 for \$18.00; 18-24" \$3.35, 10 for \$2.80; 100 for \$22.00.

Korean (*Koreana*)—A handsome species of Barberry with broad leaves which are mottled with red veins or splotches; coloring intensely brilliant in Autumn. Clusters of bright red fruit persist all winter. Matures at 6 feet and makes a very interesting specimen plant or desirable hedge 4 to 6 ft. high. 18-24" \$3.45; 2-2½' \$3.50; 2½-3' \$3.55; 3-4' \$3.65.



Truehedge Columberry

Mentoriensis—U. S. Plant Patent No. 99. See Broad Leaved Evergreens.

Truehedge Columberry (*Plant Patent No. 110*)—An upright strain of Japanese Barberry with richer foliage. Prolific fruiting. Requires very little trimming and makes up rapidly into a very desirable hedge. Prices net.

	Each	Per 5	Per 25	Per 100
18-24"	\$3.40	\$1.60	\$6.75	\$24.00
2-2½'	.50	1.90	7.25	30.00
2½-3'	.65	2.50	11.50	42.00

BUCKTHORN (*Rhamnus*)—Use for high dense hedges and screen plants.

Chadwicki—A new improved wide growing variety, with large glossy leaves. 3-4' \$.70, 100 for \$45.00. 4-5' \$.80, 100 for \$55.00.

Frangula (*Glossy*)—Valuable as a background shrub or a sturdy hedge. Grows to 8 feet. Glossy dark green leaves are set off in early Fall with persistent red berries which later turn black. 3-4' \$.40, 100 for \$30.00; 4-5' \$.50, 100 for \$37.50; 5-6' \$.60, 100 for \$45.00.



Buddleia or Butterfly Bush

BUDDLEIA (Butterfly Bush)

Alternifolia—Hardest member of the family. Does not freeze back. Extra long tresses of lilac purple flowers. 2-3' \$.50.

Charming—1938 introduction. Lavender pink. Very popular cutting variety. 2 yr. No. 1 \$.50.

Dubonnet—Nearest red introduction to date. 2 yr. No. 1 \$.50.

Ile de France—Dark purple. Dwarf. 2 yr. No. 1 \$.50.

Japonica—Heavily foliaged. Lilac flowers in dense panicles which are slightly pubescent. A novelty. 2-3' \$.50.

CALLICARPA

Japonica—Stronger and more upright grower than *Purpurea*. 2-3' \$.50; 3-4' \$.60.

Prices: F. O. B. Fairview on orders amounting to \$10.00 or more. On orders under \$10.00 add 10% for packing charges. Discounts: 5 or more of one variety and size—15% from single rates. No discount allowed from 10, 100 or 1000 rates.

**CALLICARPA**

Purpurea (*Chinese Beauty Berry*)—A pretty shrub with graceful habit growing to 3 to 4 feet high. Especially attractive in September with its lavender or orchid colored berries. 18-24" \$.40; 2-3' \$.45; 3-4' \$.50.

*Calycanthus Floridus*

foliated and larger flowering than the above. Must be planted in a protected situation. 2-3' \$.85; 3-4' \$1.25.

COMMON PERSIMMON—Woody plants to 15 feet, grown for handsome foliage and variable edible fruit. 4-5' \$1.25; 5-6' \$1.65.

COMPTONIA ASPLENIFOLIA (*Sweet Fern*)—A small native shrub growing 3 to 5 feet. Useful for covering banks and to grow on sterile sandy and stony soil. It is an attractive undershrub with fern-like, scented foliage and brownish head of imperfect flowers. 15-18" \$.50.

CORNELIAN CHERRY (*Cornus Mas*)—Handsome shrub or small tree of dense growth. Very attractive in early Spring with its yellow flowers and again in the Fall with its shining scarlet fruit. 3-4' \$1.25; 4-5' \$1.65; 5-6' \$2.25.

COTONEASTER—The Cotoneaster family is very interesting. An assorted group of them makes a valuable addition to the garden. Their leaves are small, round and glossy. Minute flowers are followed by glossy berries. Habit in general is semi spreading.

Acutifolia (*Peking Cotoneaster*)—Small pink flowers. Black fruit. 18-24" \$.60; 2-3' \$.70.

Bullata—Quite upright with larger crinkly leaves. Black fruit. 2-3' \$.65; 3-4' \$.75.

Dielsiana (*Diels Cotoneaster*)—Red fruit in abundance. Matures at 6 to 8 feet. 2-3' \$.75; 3-4' \$1.00.

Divaricata (*Spreading Cotoneaster*)—A handsome shrub growing to 6 feet with oval glossy green leaves. Persistent red fruit. 18-24" \$.60; 2-3' \$.75; 3-4' \$.90.

Hupehensis—Red fruited. A handsome species growing to 5'. 3-4' \$1.00.

Lucida—Dense upright shrub to 8 feet. Dark green foliage. Black fruit. 18-24" \$.60; 2-3' \$.75; 3-4' \$.90.

Moup'nensis (*Mupin Cotoneaster*)—Spreading shrub to 10 feet. Pinkish flowers in clusters followed by black fruit. Large heavy veined leaves glossy above, gray green below. 2-3' \$.70; 3-4' \$.90; 4-5' \$1.25.

Perpusilla—A variety of Horizontalis. Low, slow growing Rock Garden subject. Red fruited. 12-15" \$.75.

Simonsi (*Simon's*)—Semi-evergreen shrub to 4 feet with loose spreading habit. Shining red fruit in abundance. 2-3' \$.75; 3-4' \$.90.

Wilsoni—Grows to 5 feet. Fruit red. 18-24" \$.60; 2-3' \$.75; 3-4' \$1.00.

CORYLUS AMERICANA (*American Hazelnut*)—One of our native nut bearing shrubs that makes an attractive addition to natural planting. 2-3' \$.60; 3-4' \$.75; 4-5' \$.90.

Corylus Avellana Atropurpurea (*Purple Filbert*)—This is a grafted variety of European Filbert which makes a specimen shrub about 15 feet high. Leaves dark purple or brownish red. 6-8' B & B. \$10.00.

CALYCANTHUS FLORIDUS (*Sweet Scented Shrub*)—Upright to 6 feet, clothing its straight reddish shoots with large glossy leaves. Flowers double, chocolate red. 18-24" \$.40; 2-3' \$.50; 3-4' \$.60.

CARAGANA ARBORESCENS (*Siberian Pea Tree*)—Large growing shrub to twelve feet. Yellow pea-shaped flowers in May. 18-24" \$.40; 2-3' \$.50.

CEANOTHUS AMERICANA (*Jersey Tea*)—Low erect shrub to 3 feet. Has a profusion of white bloom in large panicles. 12-18" \$.45.

CEPHALANTHUS OCCIDENTALIS (*Button Bush*)—Round heads creamy white flowers July to September. Glossy foliage. Likes moist soil. 2-3' \$.45; 3-4' \$.55.

CLETHRA ALNIFOLIA (*Sweet Pepper Bush*)—A beautiful little shrub covered in August and September with small white spikes which are delightfully fragrant. Grows 3 to 5 feet and makes a fine sub-shrub. 18-24" \$.55; 2-3' \$.75.

CLETHRA BARBINERVIS—Larger growing heavier



CYDONIA JAPONICA (*Japanese Quince*)—A very showy bushy shrub of medium size with protective thorns. Blooms very early with orange scarlet flowers. 18-24" \$.40; 2-3' \$.50; Red 18-24" \$.50; 2-3' \$.65.

Pygmea (*Dwarf Japanese Quince*)—Dwarf spreading shrub to 3 feet. Flowers more salmon in color than Japonica. Excellent for heavy hedges. 12-18" \$.45; 18-24" \$.55.

CYTISUS (*Broom*)—Woody subjects chiefly grown for their profusely produced yellow bloom and for their slender twiggèd branches with bright green bark. Adapted for borders or shrubbery.

Nigricans (*Spike Broom*)—Grows to 4 feet with erect habit. 18-24" \$.50.

DOGWOOD (*Cornus*)—Mainly valuable for use as filler plants. Leaves bright and variegated on some varieties. White flowers borne in flat cymes are followed by decorative berries which attract the birds. The bright and glossy bark is brilliant and many colored for which reason they are fine in group plantings for winter effects.

Gold Bark (*Cornus Lutea*)—Attains a height of about 5 feet. In winter the bright yellow bark livens up the landscape. This variety and the red barked varieties work well together for contrast. 18-24" \$.45; 2-3' \$.55; 3-4' \$.65.

Gray Bark (*Cornus Paniculata*)—A well rounded compact bush growing to 6 feet, bearing small white flowers in May followed by white fruit or berries on noticeable red stems. 18-24" \$.40; 2-3' \$.50; 3-4' \$.60.

Red Bark (*Cornus Siberica*)—In winter the bright red bark of this shrub offers deep contrast to the more sombre colors of other wood. Grows 5 to 6 feet high. 2-3' \$.35; 3-4' \$.45; 4-5' \$.60.

Red Osier (*Cornus Stolonifera*)—Medium sized shrub, dark red bark and white flowers followed by white berries. 2-3' \$.35; 3-4' \$.45.

Silky Dogwood (*Cornus Amonum*)—Medium grower with purplish branches. Fruit blue or sometimes partially white. 3-4' \$.45.

Silver Blotch (*Cornus Siberica Elegentissima*)—Furnishes all the beauty of the Red Barked Dogwood in Winter with the added attraction of beautiful variegated leaves in summer. Very showy and one of the best shrubs. Can be kept compact by pruning. 2-3' \$.70; 3-4' \$.80.

DESMODIUM PENDULIFOLIUM (**Bush Clover**)—Showy purple flowers in late summer. Grows 3 to 5 feet high and winter kills back to the ground only to come up the next year thicker and heavier than the previous year. Makes an attractive shrub as it blooms when other flowering shrubs are mostly out of flower. 2-3' \$.45; 3-4' \$.60.

DAPHNE MEZEREUM (*February Daphne*)—A slow growing erect deciduous shrub growing to 4 feet. Cone shaped racemes of very fragrant deep red flowers in March before the leaves appear. Scarlet fruit. B & B. 15-18" \$1.25; 18-24" \$1.50; 2-2½' \$1.75; 2½-3' \$2.25.

DEUTZIA—Tall upright plants which bloom in June. Flowers dainty bell or tassel shaped, borne thickly in clusters along its branches.

Crenata Fl. Pl.—Double white, striped pink.] Grows to 8 feet. 3-4' \$.50.

Gracilis—A dwarf growing variety, not exceeding 3 feet at maturity. A mass of pure white flowers in May. Excellent for foreground for larger shrubbery. 12-15" \$.40; 15-18" \$.50.

Gracilis Rosea—A variety of above with pink flowers. 18-24' \$.50.

Lemoine—Medium grower of upright habit; long spikes of white flowers. Matures 4 to 5 feet. This is the intermediate grower between the taller and dwarf varieties. 18-24" \$.50.

ELEAGNUS ARGENTEA (*Silverberry*)—A fine large upright shrub excellent for high border. Leaves silvery on both sides, fragrant yellow flowers followed by an abundance of red fruit. 18-24" \$.40; 2-3' \$.50; 3-4' \$.65; 4-5' \$.80.

ELSHOLTZIA STAUNTONI—A very attractive late summer flowering shrub growing 3 to 4 feet with very showy lilac purple flowers. 18-24" \$.60.

ENKIANTHUS CAMPANULATUS (*Redvein Enkianthus*)—Handsome erect shrub to 15 feet. Should be associated with Ericaceous plant material. Yellowish pale orange flowers. Brilliant Autumn coloring. B & B. 12-18" \$1.00.



Deutzia

**EVONYMUS**

Americana (*Strawberry Shrub*)—Upright shrub to 8 feet. The tips of the branches are pendulous and covered with pleasing glossy foliage. Yellowish or reddish green flowers in June followed by showy pink fruit in September and October. Makes a very pleasing effect when planted with shrubbery or grouped alone. 18-24" \$.45.

Alatus (*Winged Burning Bush*)—Spreading shrub to 8 feet with corky winged branches. A fine shrub for solitary planting as well as for massing. The rich red and crimson of its leaves are very showy in Autumn. 18-24" \$.75; 2-3' \$1.00; 3-4' \$1.25; 4-5' \$1.65.

Alatus Compacta (*Dwarf Winged Burning Bush*)—Dwarf compact form of the type growing to five feet. 15-18" \$.75; 18-24" \$1.00; 2-2½" \$1.25.

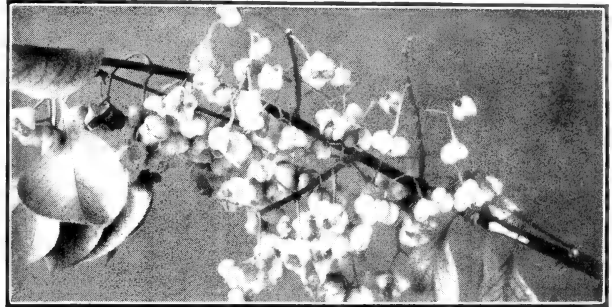
Atropurpureans (*Wahoo*)—A large shrub or small tree with interesting shiny leaves which turn to beautiful reddish shades in the Fall. Has an abundance of showy red fruit in September very similar to *Evonymus Americana*. 2-3' \$.60; 3-4' \$.75.

Europeans—Similar to above, somewhat smaller. 2-3' \$.60; 3-4' \$.75; 4-5' \$1.00; 5-6' \$1.25.

Oxyphyllus (*Japanese*)—Similar to two preceding. Larger leaves. Somewhat more heavily branched. 4-5' \$1.00.

Yedoensis (*Yeddo Evonymus*)—Grows up to 8 feet. Very attractive fruit. Fine fall coloring. 18-24" \$.50; 2-3' \$.75.

EXOCHORDA GRANDIFLORA (*Pearl Bush*)—One of the showiest flowering shrubs.

*Evonymus Europeans*

Grows to a height of 6 to 8 ft. The early buds look like pearls, opening into long gleaming sprays of pure white. 2-3' \$.50; 3-4' \$.60; 4-5' \$.75.

Fontanesia Fortunei (*Fortune Fontanesia*)—Shrub to 15 feet with handsome foliage. Slender branched, with narrow leaves, and small whitish flowers. 4-6' \$.85; 6-8' \$1.00.

FORSYTHIA (Golden Bell)

Splendid shrubs growing quite tall, brightening the garden in early spring, before the leaves appear, with masses of yellow flowers. Prices except as noted. 2-3' \$.45; 3-4' \$.55; 4-5' \$.65.

Fortunei—This variety has arching branches and is a vigorous grower.

Intermedia—The earliest blooming type. Growth upright.

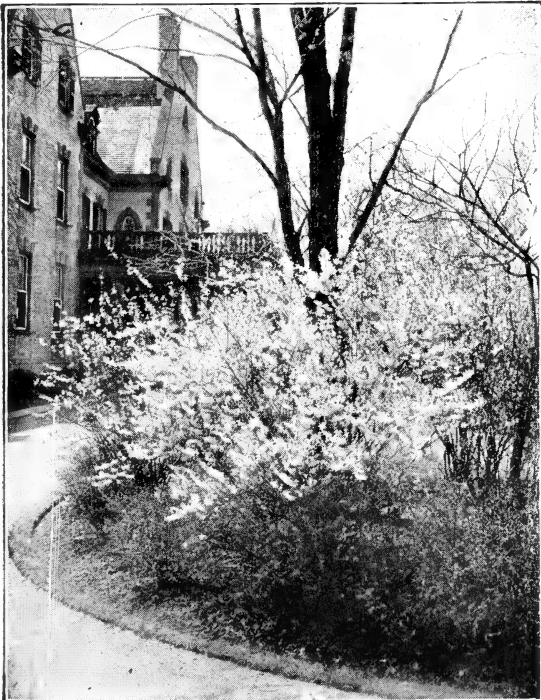
Intermedia Nana—New. Dwarf and compact. 12-15" \$.50.

Ovata—Hardest. Light lemon.

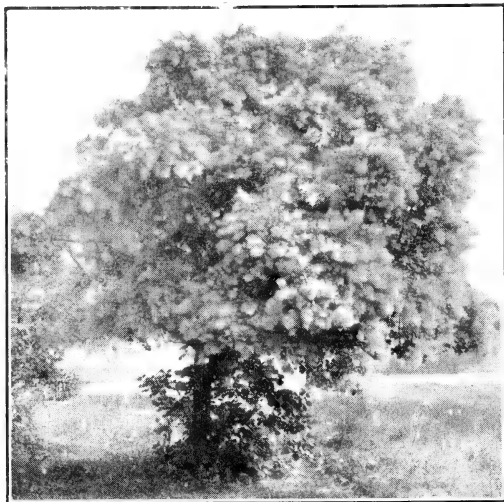
Spectabilis—Most profuse of all, with with large rich golden flowers.

Suspensa—Used to cover arches, stone fences, etc. Also one of the best shrubs obtainable for holding steep banks. 2-3' \$30.00 per 100.

Viridissima—The most upright, having very brilliant green foliage, which sets off the plant during the Summer.

*Forsythia*

Plan before you plant. Our shrubbery is thrifty and well developed.



Smoke Tree

FRINGE PURPLE (Rhus Cotinus)
SMOKE TREE—A spreading shrub or small tree. In mid-summer it is overhung with persistent mist-like flowers which are light lavender and give impression of smoke when seen from a distance. The color of the flowers change throughout each day. 18-24'' \$.50; 2-3' \$.85; 3-4' \$1.10.

FRINGE WHITE (Chionanthus Virginnica)—A very showy shrub with large leathery leaves and lace-like white flowers which persist over a long season are borne in graceful drooping panicles. Grows to small tree-like proportions retaining the branches well to the ground. 18-24'' \$.60.

GREAT SILVERBELL (Halesia Tetraptera)—A large handsome shrub with spreading branches. Large pinkish white bell shaped flowers in early spring. 3-4' \$.85; 4-5' \$1.00; 5-6' \$1.25.

HONEYSUCKLE BUSH (Lonicera)—The Honeysuckles have early, white to pinkish red blossoms which are followed by an abundance of orange to red colored berries. They are among the first of the shrubs to break forth in Spring and their bright green foliage is indeed welcome in contrast to their yet sleeping neighbors. Will do well in partial shade and makes an excellent high hedge or background shrub.

Amur (Maackii)—Vigorous grower 12 to 15 feet. White flowers followed by red fruit.

Bella Albida—Grows vigorously attaining 8-10 feet. Flowers white, fruit red.

Bella Rosea—Attains 8 feet; flowers pink.

Fragrantissima—A favorite drooping type distinguished by its dark leathery leaves which are practically evergreen if in a sheltered position. It derives its name from the intense fragrance of its tiny pinkish white flowers. Blossoms very early in small clusters.

Manchurian Ruprechtiana—Strong grower to 12 feet. Flowers white. Fruits red or sometimes yellow.

Morrowi Red Fruited—This is a spreading type growing to 6 feet. Early creamy white flowers followed by blood-red berries which are very attractive.

Morrowi Yellow Fruited—Like preceding with exception that the berries are yellow.

Tartarica—An upright tall growing shrub 8 to 10 feet. Small pinkish white blossoms followed by shiny red berries which hang on all Summer and Fall. Used extensively for high hedges.

Tartarica Rosea—Light pink variety of above.

Tartarica Rubra—Deep pink. Somewhat slower grower than Tartarica.

Wheeleri—Light red. Medium grower.

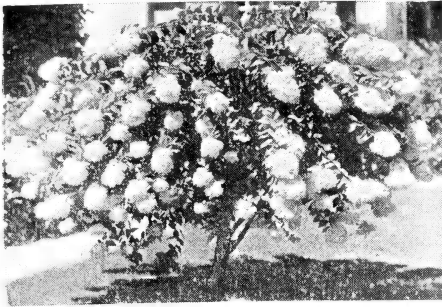
Price on all above Honeysuckles—2-3' \$.35; 3-4' \$.50; 4-5' \$.65.

If interested in quantity for hedge write for special quotations.

Korolkowi Floribunda (Broad Blueleaf Honeysuckle)—Wide spreading shrub with broad blue leaves, growing to 10 feet. Rose flowers, bright red fruit. 18-24'' \$.60.

Syringantha (Lilac Honeysuckle)—A very graceful shrub growing to 4 feet. Fragrant pale rosy lilac bloom in abundance. Fruit red. 18-24'' \$.50; 2-3' \$.60.

Prices: F. O. B. Fairview on orders amounting to \$10.00 or more. On orders under \$10.00 add 10% for packing charges. Discounts: 5 or more of one variety and size—15% from single rates. No discount allowed from 10, 100 or 1000 rates.



Hydrangea Paniculata

French (*Blue Hydrangea*)—This is the much desired Blue Hydrangea. Large waxy leaves. Pink flowers on 1 year wood, blue flowers on 2 year wood. Will stand heavy shade. Needs winter protection or else the buds may freeze in severe winters. 8-12" \$.80.

Oak Leaf (*Quercifolia*)—A very desirable shrub growing into compact round specimens 3 to 4 feet high with very large crinkled and rough leaves shaped like an oak leaf. Beautiful Autumn coloring and will succeed well in the shade. 18-24" \$.70.

HYPERICUM AUREA (**Golden St. Johnswort**)—Forms a dense shrub 2 to 3 feet with shiny blue-green foliage. Bright yellow flowers about two inches in diameter are borne persistently and abundantly in August and September. Does well in partial shade. 12-18" \$.45; 18-24" \$.60.

ILEX (**Holly**)

Sieboldi (*Fine Toothed Holly*)—This is a deciduous Holly from Japan, resembling the following described native Ilex except that it is smaller in every respect. Bright red berries about $\frac{1}{2}$ inch across are abundantly borne in fall. 18-24" \$.50; 2-3' \$.65; 3-4' \$.80.

Verticillata (*Black Alder, Winterberry*)—Our native, winterberry cut extensively for Christmas decorations. One of the best ornamental shrubs with bright red berries which persist nearly all winter and are rarely eaten by the birds. Mature at 4 to 6 feet. 18-24" \$.50; 2-3' \$.65.

KERRIA

Japonica (*Single Kerria*)—A dwarf shrub with a multitude of numerous graceful green branches and brilliant serrated leaves. Single golden flowers from June to September. The bright green wood is very noticeable throughout the whole year. 18-24" \$.55; 2-3' \$.75.

Japonica Fl. Pl. (*Double Kerria*)—Somewhat stronger in growth than the former. Double golden flowers. Prolific bloomer. This variety is not quite as hardy as the single Kerria sometimes winter killing back to the ground. It comes back however in one season to full proportion and bloom. 18-24" \$.60; 2-3' \$.85.

KOLKWITZIA AMABILIS (**Beauty Bush**)—A beautiful new shrub from China, growing to 6 feet with graceful arching habit. In June the deep pink buds open into beautifully marked pale flowers which are bell shaped and borne in clusters. 2-3' \$.75; 3-4' \$1.00.

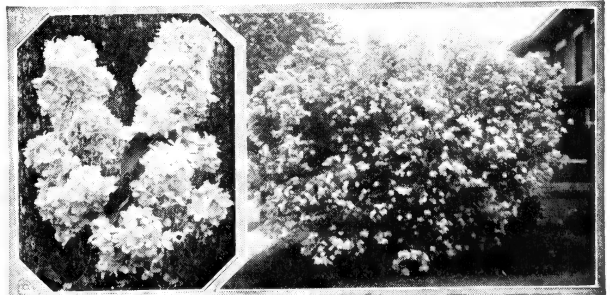
LABURNUM VULGARE (**Golden Chain**)—The Golden Chain are handsome small trees with dark green trifoliolate leaves falling late in Autumn without change in color. It has drooping (12-18") racemes of bright yellow flowers in late Spring, followed by long, narrow pods remaining on the tree a long time. Disease free. 2-3' \$.75; 3-4' \$1.00; 4-5' \$1.25; 5-6' \$1.75.

LILAC (*Syringa*)

Common—Although an old shrub, still it is one of the most admired. Every yard should have at least one lilac. We offer them in wide variations. 2-3' \$.40; 3-4' \$.50; 4-5' \$.65.

Emodi (*Himalayan Lilac*)—Grows to 10 feet with upright habit. Large leaves, flowers lilac or whitish in dense terminal panicles to 8 inches long. 2-3' \$.60; 3-4' \$.75.

Hybrid Seedling—Grown from the seed from French Hybrids. Run of the lot is much better than common Lilac. Colors mixed. 2-3' \$.60.



Lilacs

Use Honeysuckle for hedges and backgrounds



LILAC

Japonica (*Japanese Tree Lilac*)—Loose bunches of creamy white flowers, June-July. Handsome foliage; grows into well-shaped specimen. 3-4' \$1.00.

Josikea (*Hungarian Lilac*)—Shiny dark green foliage with violet flowers in June. 2-3' \$.55; 3-4' \$.75; 4-5' \$.90.

Late (*Villosa*)—Blossoms about one month later than other lilacs, purplish lilac color. Bushy compact habit growing to 8 feet. 2-3' \$.55; 3-4' \$.75; 4-5' \$.90.

Persian Purple—Dwarf growing with slender branches and narrow leaves. The minute single flowers in loose panicles make it very odd and attractive. 18-24'' \$.45; 2-3' \$.55; 3-4' \$.75.

Persian White—White variety of above. 2-3' \$.60; 3-4' \$.75.

Rothomagensis (*Chinese Lilac*)—A strong growing variety of Persian Lilac. 2-3' \$.50; 3-4' \$.65.

FRENCH HYBRID—These have been developed by careful selection from the common lilac. Prices on Hybrid Lilacs—2-3' \$.75; 3-4' \$1.00.

Chas. Joly—Double violet or wine purple.

Chas. X—Reddish purple, single.

Doyan Keteleer—Lilac blue. Double.

Ludwig Spaeth—Reddish purple. Single.

Mme. Cassimier Perrier—White. Large double clusters.

Michael Buchner—Pale lilac. Double flowers and double clusters. Medium to dwarf habit of growth.

President Grevy—Double blue.

MYRICA CAROLINIENSIS (*Bayberry*)—A handsome shrub semi-evergreen growing 2 to 5 feet high. Makes a very attractive border shrub. Leaves gray beneath, glaucous above. Grayish white fruit in winter. 12-15'' \$.50; 15-18'' \$.65.

PHILADELPHUS (Mock Orange)

The Philadelphus are among the best of shrubs for background and screen purposes. Their fragrant orange-blossom flowers and unusual good foliage make them desirable.

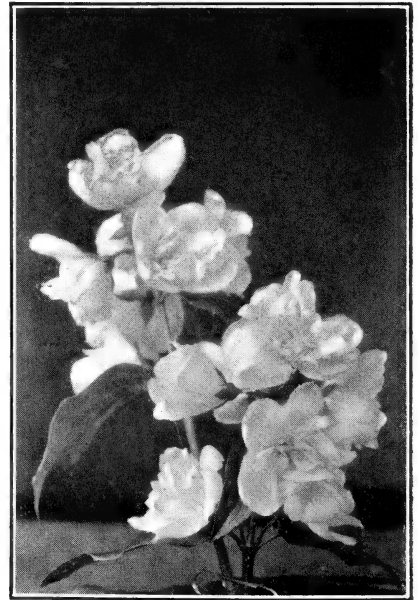
Aurea (*Golden Mock Orange*)—A compact slow growing shrub which attains a height of 4 feet. The best golden leaved shrub. Valuable for contrast. 12-18'' \$.50; 18-24'' \$.60.

Coronarius (*Sweet Mock Orange*)—White fragrant flowers profusely borne in May and June. 2-3' \$.40; 3-4' \$.50; 4-5' \$.65.

Grandiflora—A popular shrub. Flowers very large and white with golden stamens. Blossoms in June. Eight to ten feet tall. 3-4' \$.45; 4-5' \$.60.

Lemoine—Foliage fine. Erect shrub to six feet which flowers in June. 2-3' \$.45; 3-4' \$.60; 4-5' \$.75.

Virginalis—The most showy variety with double white flowers which are sweetly fragrant and have a long blooming season. Good foliage and compact upright growth. 2-3' \$.55; 3-4' \$.70.



Philadelphia Virginalis

Prices: F. O. B. Fairview on orders amounting to \$10.00 or more. On orders under \$10.00 add 10% for packing charges. Discounts: 5 or more of one variety and size—15% from single rates. No discount allowed from 10, 100 or 1000 rates.

PHOTINA

Villosa (*Redberried Photinia*)—A strong growing shrub or small tree sometimes to 15 feet. White flowers in June followed in Fall by rich scarlet berries in profusion. Pleasing foliage for color and texture. 18-24" \$.40; 2-3' \$.50; 3-4' \$.60; 4-5' \$.75.

POTENTILLA FRUITICOSA (*Shrubby Quincefoil*)—A handsome and distinctive low shrub 3 to 4 feet. Prefers moist soil. Many bright yellow showy flowers throughout the Summer. 15-18" \$.35; 18-24" \$.45.



A Privet Hedge

PRIVET (Ligistrum)—For hedges and screens. 25 at 100 rates. 200 or more at 10% discount.

Amor North River—A very hardy northern type. Grows vigorous and upright. Makes a strong bold hedge with quite conspicuous white bloom. This variety is being used more each year where a good hedge is desired and temperature will not permit the use of California privet. 18-24" 10 for \$1.25; 100 for \$8.50; 2-3' 10 for \$1.50; 100 for \$10.00.

California—The popular hedge. 18-24" 10 for \$1.25; 100 for \$7.50; 2-3' 10 for \$1.50; 100 for \$9.50.

European (*Vulgare*)—Hardy, upright, used for specimens and hedge. 2-3' \$.25; 3-4' \$.35.

Ibodium (*Hardy California*)—New. This privet is identical with California except that it will absolutely stand severe winter, and is somewhat a stronger grower. 18-24" 10 for \$1.50; 100 for \$8.50; 2-3' 10 for \$1.50; 100 for \$10.00.

Ibota—A strong growing spreading shrub. Small white flowers in June followed by a heavy crop of black berries which persist into the winter. Used for wide hedges and group plantings. This variety is rapidly gaining popularity. 18-24" \$.25; 100 for \$12.50; 2-3' \$.30; 100 for \$17.50; 3-4' \$.50.

Lodense—A slow growing dwarf privet which closely resembles Boxwood. Cannot be excelled where a low compact hedge is desired. This privet was recently introduced to the trade and is rapidly finding favor. 9-12" 10 for \$2.50; 100 for \$15.00; 12-15" \$.30, 100 for \$18.00; 15-18" \$.35; 100 for \$22.50.

Regal's (*Regalium*)—A strong very hardy type with numerous horizontally spreading, stiff twiggy branches. Has a slight drooping tendency which makes a fine wide hedge. White bloom in Spring and clusters of black berries throughout the Winter. 12-18" \$.30, 100 for \$20.00; 18-24" \$.35; 100 for \$25.00; 2-2½' \$.45, 100 for \$35.00; 2½-3' \$.50, 100 for \$40.00.

RED BUD (Cercis Canadensis) (Judas Tree)—A large growing shrub or small tree attaining a height of 12 to 15 feet. Irregular in form with heart shaped leaves. Covered with rosy-pink flowers early in Spring and is largely used to give color at this time in group plantings. 2-3' \$.50; 3-4' \$.70; 4-5' \$1.00; 5-6' \$1.25.

Chinensis (*Chinese Red Bud*)—Flowers larger and darker than American, growth slower and more compact. 18-24" \$.75; 2-3' \$1.00.

RHODOTYPOS KERRIODES (*White Kerria*)—Grows 4 to 5 feet with fresh green foliage. Pure white flowers followed by shiny bead-like berries which hang on all Winter. This shrub will endure partial shade. 18-24" \$.45; 2-3' \$.55; 3-4' \$.65.

ROSES

We are pleased to offer a strong grade of 2 year No. 1 roses. Kindly do not confuse with No. 1½ and 2 roses as offered by Department Stores. Our list is made up of the better new varieties and a few of the old standbys.

MONTHLY OR EVERBLOOMING

Price—2 yr. No. 1 \$.65 each; 6 or more at \$.55 each; 2 yr. No. 1½ \$.40 each; 6 or more at \$.35.

Why not have an "Outdoor Living Room"?



- Ami Quinard**—Very deep velvety red.
Caledonia—White. Large double flowers with high center.
Edith Nellie Perkins—Pink blended with salmon and orange.
Etoile de Holland—A fine dark red. Vigorous grower.
Elderado—A strong grower. True yellow until the bloom drops.
Frau Karl Druscki—Standard of White roses.
Golden Dawn—Cream yellow.
Joanna Hill—Very double yellow.
Joyous Cavalier—Brilliant scarlet, large double blooms.
K. A. Viktoria—Pure white, double.
Lady Ashtown—Deep pink.
McGredy's Scarlet—Large double flowers. Scarlet, tips of petals crimson, base orange yellow.
Mme. A. Dreux—Like a tangerine orange peel with a mixture of a wonderful rose color.
Mme. Jules Bouche—White slightly tinted pink in center.
Mevrouw G. A. Van Rossem—Pinkish yellow, strongly shaded with copper-pink.
Mrs. Chas. Bell—Silvery pink. Radiance type.
Mrs. E. P. Thom—Rich lemon yellow.
Mrs. Sam McGredy—Large orange salmon.
President Hoover—Blooms of maroon, orange and gold in contrasting fashion.



Rose (Radiance)

- President Plumecocq**—Soft coppery yellow and salmon.
Radiance—Pink. A popular rose. Prolific and hardy.
Red Radiance—Red. Ditto above.
Syracuse—Bright crimson. Large flowers.
Rev. F. Page Roberts—Indian yellow, reverse of petals carmine rose.
Talisman—A combination of yellow, copper and pink.
BABY RAMBLERS (Polyantha Roses)—\$.65 each, 6 or more assorted at \$.55.
Ellen Paulsen—Dark pink.
Gloria Mundi—Brilliant orange scarlet in large clusters.
Ideal—Finest dark red.
Mrs. R. M. Finch—Large, double, rosy-pink flowers.
CLIMBING ROSES—\$.60 each, 6 or more assorted at \$.50 each.
Dorothy Perkins—Clear pink, large clusters, medium to small bloom.
Dr. Van Fleet—Silvery-pink. Large flowers.
Jacotte—Brilliant apricot orange.
Mary Wallace—Large, pink.
Paul's Scarlet—Large scarlet blooms.
Primrose—Large double yellow. Hardy.

MISCELLANEOUS AND NATIVE ROSES—Mainly single flowering with large bright berries which persist into the winter. Largely used for planting among shrubbery and to cover waste places, banks, etc.

Blanda (Meadow Rose)—Bright rose. Slender purplish branches almost thornless. Abundance of brilliant fruit. Matures at 3 feet. 3 yr. 18-24" \$.40, 100 for \$30.00.

Hugonis (Golden Rose of China)—A very desirable border rose with attractive yellow flowers. Matures at 5 feet. 18-24" \$.50; 2-3' \$.65.

Lucida (Virginia Rose)—A slow growing upright shrub with bright pink flower. Ornamental in winter with red fruit and reddish brown stems. 18-24" \$.40.

Multiflora (Japanese Rose)—Small fragrant double white flowers in June. Vigorous grower, free bloomer. Use to cover banks, etc. Grows to 4 feet, with arching branches. 2 yr. 18-24" \$.40; 25 or more at \$.30.

Prices: F. O. B. Fairview on orders amounting to \$10.00 or more. On orders under \$10.00 add 10% for packing charges. Discounts: 5 or more of one variety and size—15% from single rates. No discount allowed from 10, 100 or 1000 rates.



Nitida (*Bristly Rose*)—Low upright shrub maturing at 2 feet. Deep pink flowers. 12-18" \$.40; 18-24" \$.45.

Palustris (*Swamp Rose*)—Bright rose pink flowers sparingly produced over a period of several months. Growth to 8 feet. 2 yr. 18-24" \$.40; 3 yr. 2-3' \$.50.

Rubiginosa (*Sweetbrier Rose*)—Shrub type of rose with fragrant foliage. Grows to 4 feet. Single bright pink flowers in June. 18-24" \$.35; 2-3' \$.45.

Rubrifolia (*Redleaf Rose*)—An attractive shrubby bush type with purplish red leaves and bark. Small single rose pink flowers. Makes a very attractive winter subject. 2-3' \$.40; 3-4' \$.50.

Rugosa—Single red or white flowers followed by showy apple-like fruit. Flowers and fruit persist all summer and fall. Excellent for grouping or individual beds, also makes very attractive mounds. 2 yr. 12-18" \$.40; 3 yr. 18-24" \$.50; 2-3' \$.65.

Rugosa F. J. Grootendorst—Rugosa hybrid with double bright crimson flowers borne in large clusters from May until November. 2 yr. No. 1 \$.60.

Setigera (*Prairie Rose*)—Large single flowers of rose pink. Useful for massing, covering fences or trellises. Makes a fine border for wildwood drive. 18-24" \$.40; 2-3' \$.50; 3-4' \$.65.

Spinosissima Altaica (*Altai Rose*)—Dwarf spreading to 4 feet with small leaves. Showy white to pinkish flowers followed by large dark red fruit. Branches densely spiny. 3 yr. 15-18" \$.40; 18-24" \$.50; 2-3' \$.60.

Wichuriana (*Memorial Rose*)—The ground cover rose used extensively for covering hillsides, steep terraces, etc. Also makes a good climber. Pure single white flowers in July. 2 yr. \$.35, 100 for \$25.00.

ROSE ACACIA (*Rhobinia Hispida*)—An elegant shrub growing 5 to 6 feet and soon developing into a rounded mass. Long graceful clusters of pea-shaped rosy pink flowers bloom in June and often throughout the summer. Excellent bank retainer. 2-3' \$.40, 100 for \$25.00.

SAMBUSCUS (Elder)

Acutilobia (*Culleaf*)—Deeply cut fern-like foliage gives excellent effect in shrubby border. 4-5' \$.65.

Aurea (*Golden Elder*)—Variegated leaves of bright yellow color. Flowers white, followed by red berries. Excellent for contrast in group planting. 2-3' \$.45; 3-4' \$.60; 4-5' \$.70.

SORBARIA SORBIFOLIA (*Ural False Spirea*)—A medium sized quick growing shrub with fluffy tassel-like heads of white flowers in mid-summer. 18-24" \$.50.

SOURWOOD (*Sorrell Tree*) (*Oxydendron Arborea*)—Very slow growing shrub or small tree. Leaves Pink or Red in early fall. Terminal flowers resemble Lily of the Valley. Very desirable. 18-24" \$.65; 2-3' \$.90.

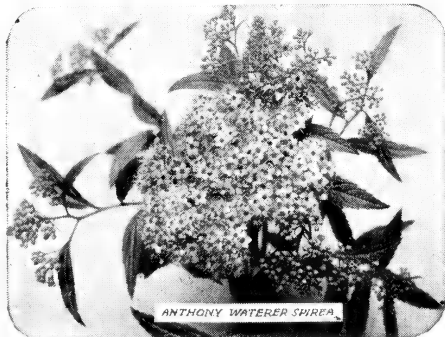
SPIREA—The Spirea all bloom with riot of profusion. Style, color and characteristics vary so widely that a variety of them will assure bloom the entire season and still evade repetition.

Anthony Waterer—Dwarf bushy shrub growing to three feet, with flowers on flat racemes from June to Fall. Flower rosy crimson. 12-15" \$.35; 15-18" \$.40; 18-24" \$.50; 2-3' \$.60.

Billardi Pink—Grows 5 to 6 feet. It is crowned with fluffy pink tassel-like flowers from July to October. Scarcely twigged and branches upright. Blooms consistently and is very showy in group or naturalistic plantings. 2-3' \$.30; 3-4' \$.40; 4-5' \$.50.

Callosa Alba—White, otherwise similar to Anthony Waterer. 12-18" \$.50.

Frobeli—A fast growing Anthony Waterer type in both color and characteristics. Attains a height of 4 feet. 12-18" \$.40; 18-24" \$.50; 2-3' \$.60.



Spirea Anthony Waterer



PIREA

Opulifolia (*Ninebark*)—Growth upright attaining 8 to 10 feet. White flower heads in June. Fine for screening. 2-3' \$.40; 3-4' \$.50; 4-5' \$.60.

Opulifolia Aurea (*Golden Spirea*)—Similar habit to above. Foliage golden turns to bronze. White flowers in June. 2-3' \$.40; 3-4' \$.50; 4-5' \$.60.

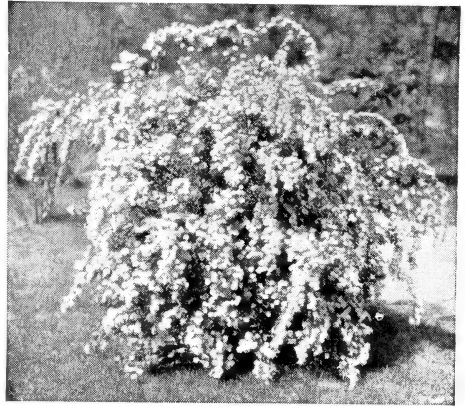
Opulifolia Nana (*Dwarf Ninebark*)—Dwarf compact form growing to 5 feet. Green foliage. 18-24'' \$.50; 2-3' \$.60.

Prunifolia Fl. Pl. (*Bridal Wreath*)—This is the true Bridal Wreath. Very double white rose-like flowers very early in clusters. Medium growth and compactly upright. Foliage plum leaved, turning in Autumn to brilliant red. 2-3' \$.60; 3-4' \$.75.

Thunbergi—Dwarf growing shrub to 4 feet. Foliage feathery of pleasing yellowish green which changes to red and orange in Autumn. White flowers very early. 18-24'' \$.45; 2-3' \$.55.

Trichocarpa (*Korean Spirea*)—A new introduction very similar to Van Houtti. Blossoms two weeks later, thus prolonging the showiness of this type. 2-3' \$.40; 3-4' \$.50; 4-5' \$.60.

Van Houtti—Grandest of all Spireas, one of the best shrubs. Complete fountain of pure white bloom in May and June. Foliage ornamental the year around. Commonly called Bridal Wreath, but erroneously so. 18-24'' \$.30; 2-3' \$.35; 3-4' \$.40; 4-5' \$.50.



Spirea Van Houtti

STEPHANANDRA FLEXUOSA (*Cutleaf Stephanandra*)—An attractive border shrub growing to 3 feet. Handsome deep lobed foliage which colors to purplish-red on angular or zigzagged branches. White cymes of flowers in June. 18-24'' \$.55.

STEWARTIA PENTAGYNA (*Mountain Stewartia*)—Very desirable ornamental with handsome bright green foliage. Large cup shaped white flowers. 2-3' B&B \$2.00.

SUMAC (*Rhus*)

Aromatic (*Fragrant Sumac*)—Grows to 5 feet with aromatic foliage. Clusters of small yellow flowers in May. Very attractive in June when covered with coral red fruit. 2-3' \$.40; 3-4' \$.50.

Copallina (*Shining Sumac*)—Shrub or small tree with shining deep green foliage. Does well in poor soil. 2-3' \$.40; 3-4' \$.50.

Typhina (*Staghorn Sumac*)—Common native sumac. 3-4' \$.40; 4-6' \$.50.

SYMPHORICARPOS

Alba (*Snowberry White*)—An excellent shrub for shady places or on a hillside, bearing clusters of large showy white berries which remain late in fall and winter. 18-24'' \$.35; 2-3' \$.45.

Chenaulti—A new improved variety of Coralberry. Berries larger and growth somewhat more upright. 18-24'' \$.35, 100 for \$17.00; 2-3' \$.40, 100 for \$22.00; 3-4' \$.50.

Vulgaris (*Coralberry or Indian Currant*)—Clusters of showy red berries hang in ropes on the weighted down branches. Ideal for holding steep hillsides. 25 or more at 100 rate. 18-24'' \$.25, 100 for \$12.00; 2-3' \$.30, 100 for \$15.00; 3-4' \$.40, 100 for \$20.00.

Prices: F. O. B. Fairview on orders amounting to \$10.00 or more. On orders under \$10.00 add 10% for packing charges. Discounts: 5 or more of one variety and size—15% from single rates. No discount allowed from 10, 100 or 1000 rates.

TAMARIX

Africana (*African Tamarix*)—Strong growing upright shrub to 12 feet with drooping slender branchlets. Grass green foliage. Pink flowers in May. 18-24" \$.40; 2-3' \$.50.

Odessana (*Caspian Tamarix*)—Shrub to 5 feet. Drooping feathery foliage silvery green, with large loose panicles of minute lavender pink flowers at intervals all summer long. Very attractive and should be included in every planting. 18-24" \$.40; 2-3' \$.55.

VACCINIUM PENNSYLVANICUM (Dry Land Blueberry)—Growing in clumps 2 to 3 feet high, it makes an attractive shrub specially suited for the larger rock garden. Edible blue berries are the main attraction. Bright red foliage in Fall. B&B. 15-18" \$1.00; 18-24" \$1.50; 2-3' \$2.00.

VACCINIUM (Blueberry)—Named varieties (*Cabot*) (*Concord*) (*Jersey*) (*Pioneer*)—Blueberries are at present very popular and give promise of extensive commercial use. Mature at about 4 feet and produce an abundance of large fruit. 12-15" \$1.00.

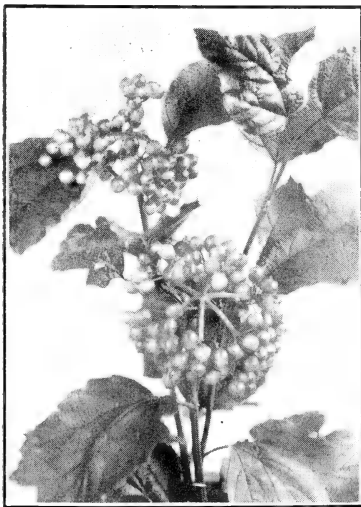
VIBURNUM—An interesting and showy group diversified greatly in character and common names, ranging in size from 2 to 12 feet and blooming profusely in the spring. In the summer their leaves are rich and heavy and aided by bright fruits vividly brighten up the autumn with vivid splashes of color.

Acerifolium (*Maple Leaf Viburnum*)—Grows to 5 feet with maple leaf foliage. Fruit red then black. Will stand dry partially shady position. 18-24" \$.50; 2-3' \$.65.

Americana (*American Cranberry*)—Similar to *Opulus* but more open growth. Berries brighter and more persistent. 2-3' \$.55; 3-4' \$.70.

Carlesi (*Fragrant Viburnum*)—One of the most desirable semi-dwarf flowering shrubs. Growing to four feet with clusters of wonderfully fragrant flowers white shaded to pink. The bush is rounded with broadly oval leaves glaucous beneath, dull green above and hairy on both sides. B&B. 15-18" \$1.50; 18-24" \$2.00.

Cassinoides (*Withe Rod*)—A splendid waxy leaved shrub. Foliage almost evergreen. White flowers in June and July followed by pink berries which change to dark blue. Rich Autumn coloring. Splendid for massing near water. 18-24" \$.60; 2-3' \$.75.



Viburnum Opulus



Tamarix

Dentatum (*Arrow Wood*)—Grows 8 to 10 feet tall. Bright green, heart shaped leaves turn to purple and red. Flowers in white cymes in May and June followed in October by bluish-black berries. 2-3' \$.50; 3-4' \$.60.

Dilatatum (*Linden Viburnum*)—One of our specialties. An upright bushy shrub attaining 10 feet. Hardy and free flowering, especially decorative with its numerous scarlet fruits which remain a long time on the branches. Exceptional fine Fall coloring. 18-24" \$.50; 2-3' \$.60; 3-4' \$.85.

Lantana (*Wayfaring Tree*)—15 to 18 feet. Beautiful wrinkled leaves; white flower in May and June followed by unequally colored crimson to black fruits which hang on all summer and cause a delightful color combination. 2-3' \$.50; 3-4' \$.65.

Lentago (*Sheepberry*)—Grows to be a small tree about 25 or 30 feet tall. Glossy dark leaves green and white cymes of flowers in June followed by large blue-black fruit. 3-4' \$.60; 4-5' \$.85; 5-6' \$1.00.

Opulus (*High Bush Cranberry*)—Dense green foliage, studded with large bunches of crimson berries which last well into the Winter. Matures at 8 to 10 feet into a compact rounded mass. 2-3' \$.50; 3-4' \$.60; 4-5' \$.75.

Opulus Nana (*Dwarf Cranberry Bush*)—A dwarf compact shrub not exceeding 2' with glossy dark green leaves. Equal the broad leaved evergreen for richness in appearance. This shrub is without flowers or fruit. An ideal formal border shrub also will stand lots of abuse and can be used where planting conditions are not always the best. 10-12" \$.50; 12-15" \$.60.

Spireas offer a wide range of character. They bloom freely.



Common Snowball

VIBURNUM

Opulus Sterilis (*Common Snowball*)—Medium sized shrub. Blooms in June with mass of pure white flowers which resemble snowballs. 2-3' \$.55.

Trained to single stem with head. 4-5' \$1.50.

Plicatum (*Japanese Snowball*)—An upright compact bush with crinkly bronze leaves. Mass of pure white in May. Matures at 6 to 8 feet. 18-24" \$.60.

Prunifolium (*Blackhaw*)—A handsome sturdy shrub with pure white flowers in May and June followed by glaucous black berries. 18-24" \$.40.

Sargentii (*Sargents Cranberry*)—Similar to Americana. Native of Japan. Pink fruit turning blue black. 2-3' \$.50; 3-4' \$.65.

Tomentosum (*Doublefile Viburnum*)—Foliage and growth identical with Plicatum. Flowers flat cymes followed by red to black berries. 2-3' \$.60; 3-4' \$.75.

VITEX (Chaste Tree)

Agnus Castus—A dainty shrub with lilac flowers in August and September; sun loving, foliage gray green and star shaped.

Thought should be taken in planting groups of flowering shrubs to include some which bloom at various times throughout the season. 2-3' \$.40; 3-4' \$.50.

Macrophylla—A variety of above with deep blue flowers. 18-24" \$.40; 2-3' \$.55.

Incisa (*Cutleaf Chaste Tree*)—Smaller growing than the preceding, smaller more delicate deep blue flowers and fern like foliage. 2-3' \$.50; 3-4' \$.60.

WEIGELIA (Diervilla)

Abel Carrieri—Rose carmine flowers very rich and showy. May and June and sparsely in the Fall. 2-3' \$.50; 3-4' \$.60.

Candida (*Snow Weigelia*)—Pure white flowers. 2-3' \$.50; 3-4' \$.60.

Eva Rathke—A very showy medium sized shrub with deep carmine red flowers, which are borne in great profusion in June and scarcely at intervals throughout the Summer. 18-24" \$.50; 2-3' \$.60.

Floribunda—Upright grower with deep crimson flowers. 2-3' \$.50; 3-4' \$.60.

Hendersonii—Strong grower, deep pink blooms. 2-3' \$.45; 3-4' \$.60; 5-6' \$.75.

Lutea (*Yellow Weigelia*)—2-3' \$.40.

Rosea—Early flowering. Rose colored. 2-3' \$.40; 3-4' \$.50.

Rosea Veriagata—Dwarf growing. Leaves margined and streaked creamy white. A fine shrub for contrast or foreground planting. A profusion of light pink flowers in June. 18-24" \$.45; 2-3' \$.60.

WITCH HAZEL (*Hamamelis Virginica*)—Ornamental woody plant growing slowly to 15 feet. Attractive yellow flowers appear late in Fall or Winter. Does well in moist half shady places. 18-24" \$.40; 2-3' \$.50; 3-4' \$.60; 4-5' \$.75.

Hamamelis Japonica—Shrub or small tree of slow growth and maturing at 20 feet. Yellow flowers 3 to 4 inches long in late fall or early winter. 18-24" \$.55; 2-3' \$.75; 3-4' \$.90.



Weigelia

ZANTHORHIZA APPIFOLIA (Yellowroot)—Shrubby plants growing 2 to 3 feet with handsome foliage which turns a beautiful golden color in Autumn. Small purplish flowers in June and July. Makes an excellent ground cover and will succeed on dry sandy soil, etc. 9-12" clumps \$.30, 100 for \$20.00.

VINES

AKEBIA QUINATA (Five Leaved Akebia)—A dainty beautiful vine with purple flowers in May. Deep green foliage holds well into Winter. 3 yr. \$.45.

AMPELOPSIS (Ivy)

Veitchi (Boston Ivy)—One of the best climbers for wall, etc., clinging well to the smoothest surfaces. Glossy green in summer with the brightest of fall coloring. 2 yr. No. 1 \$.40, 100 for \$25.00.

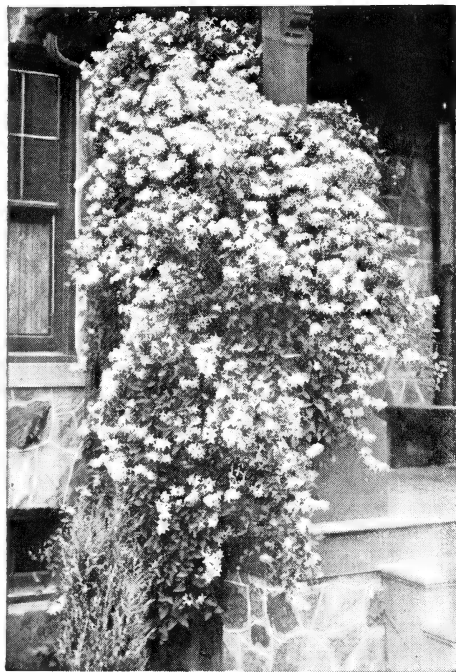
Quinquefolia (Virginia Creeper)—A fast growing vine, deeply cut leaves with rich fiery Autumn coloring. Used to cover trees, rocky slopes, fences, etc. 2 yr. \$.30, 100 for \$18.00.

Quinquefolia Englemanni (Engleman Ivy)—A variety of the former with closer set and more deeply cut foliage. 2 yr. \$.30, 100 for \$20.00.

CELASTRUS (Bittersweet)

Orbiculatus (Oriental Bittersweet)—A high climbing shrubby vine with glossy leaves and conspicuous orange yellow fruit which are retained all winter. Used extensively as a cut winter house decoration. Stronger grower than Scandens. 2 yr. 2-3' \$.35, 100 for \$20.00; 3 yr. 3-4' \$.50.

Scandens (American Bittersweet) Orange and red berries. Vines more slender than the above. Foliage lighter green. Both varieties make ideal bank retainers and we can supply in large quantities. 2 yr. 18-24" \$.30, 100 for \$15.00; 2-3' \$.40, 100 for \$20.00; 3-4' \$.50.



Clematis Paniculata

CLEMATIS

Jackmanni—Flowers three to four inches across—Deep purple. 2 yr. \$.75.

Paniculata (Sweet Scented Clematis)—Grand for screens, pillars and trellises. Flowers of medium size, fragrant, pure white, borne in immense sheets in September. 2 yr. \$.30.

ENGLISH IVY (Hedera Helix)—Useful climbing vine, also ground cover for shady places. Evergreen. 2 year plants \$.35, 100 for \$25.00; 3 yr. plants \$.45, 100 for \$35.00.

EVONYMUS—These are the best of evergreen vines with dark green glossy foliage. They vary somewhat in size of leaves and type of growth, making ideal material for low walls and underplanting among evergreens, also for holding banks, hillsides, etc. Will endure partial shade.

Japonica Medio Pictus—Slow growing with thick shiny leaves which have a yellow blotch in the center. 8-12" \$.40.

Patens (Sieboldiana)—Grows vigorously into a broad rather loose shrub. Ornamental fruit in Fall and Winter. 12-15" \$.40; 15-18" \$.55.

Radicans (Wintercreeper)—Evergreen. Self clinging vine. Fine for covering low walls also for underplanting among evergreens. 9-12" \$.40, 12-18" \$.50; 15-18" \$.65.

Radicans Argentea Marginata—A variety with leaves bordered white. 8-12" \$.45.

Radicans Carrieri—A fine evergreen shrub with glossy deep green leaves. 12-15" \$.50; 15-18" \$.70.

Radicans Colorata—Evergreen. A new introduction. Long narrow leaves purple underneath and tinged purple above. Assuming a very effective purple color in winter. Growth rapid and close to the ground. Excellent bankcover. Summer color deep green. 1 yr. 8-12" \$.25, 100 for \$16.00; 2 yr. 12-18" \$.35, 100 for \$20.00; 3 yr. 18-24" \$.40, 100 for \$25.00.

Nearly every variety of tree and shrub can be planted to best advantage during the fall.



EVONYMUS

Radicans Kewensis (*Baby Wintercreeper*)—A very small slow growing creeper with minute leaves. 8-12" \$.45.

Radicans Vegetus (*Big Leaf Winter creeper*)—Evergreen. Bushy with round dull green leaves, producing bright scarlet fruit freely. 12-15" \$.50; 15-18" \$.65; 18-24" \$.80.

DUTCHMAN'S PIPE (*Aristolochia Siphon*)—A vigorous grower with large dark green heart shaped leaves. 18-24" \$.65; 2-3' \$.85.

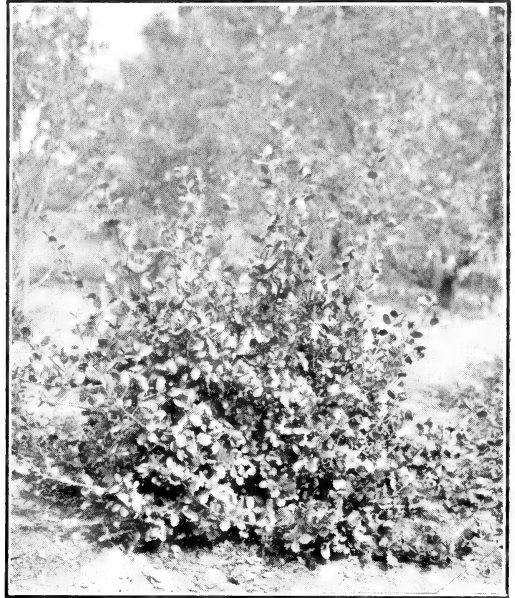
LONICERA (Honeysuckle)

Gold Flame—A vigorous grower which can be trimmed into bush form. Large yellow, pink tinged flowers. 3 yr. \$.60.

Halleana (*Hall's Honeysuckle*)—Almost evergreen. Color, an intermingling of white and yellow flowers extremely fragrant and most satisfactory. Does fairly well in partial shade. Used as a ground cover. 2 yr. No. 1 \$.30, 100 for \$15.00; 3 yr. \$.35, 100 for \$20.00.

Sempervirens—Thrifty high climbing vine. Shiny foliage. Flowers scarlet or orange red. Fragrant. 3 yr. \$.40.

MATRIMONY VINE (*Lycium Chinensis*)—A flourishing hardy climbing vine that will overcome any obstacle. Small blue flowers are followed by very ornamental red fruits. Makes a fine trellis vine where a dense shade is desired. 2-3' \$.40; 3-4' \$.50.



Evonymous Radicans Vegetus

POLYGONIUM AUBERTI (*Silver Lace Vine*)—A very rapid growing vine averaging 25 feet in a season. Producing an abundance of large silvery white sprays from late summer into fall. Foliage small bright green. 2 year \$.60.

ROSA WICHURIANA (*Memorial Rose*)—See Miscellaneous Roses Page 35.

TRUMPET CREEPER—A strong climbing vine with bright scarlet, trumpet shaped flowers in July and August. Used to cover rock walls, telephone poles, etc. 3 yr. \$.40, 100 for \$25.00.

VINCA MINOR (*Hardy Myrtle*)—Evergreen ground cover for carpeting where it is too shady for grass. Single lilac blue flowers in early Summer. 2 yr. \$.25, 100 for \$10.00, 1000 for \$80.00.

VINCA MINOR RUBRA—A variety with reddish blue hose in hose type bloom. 2 yr. \$.35.

WISTERIA SINENSIS (*Purple*)—An excellent vine for trellises, bearing pea-shaped flowers which hang in grape-like clusters about 12 inches long. Grafted from blooming plants. 2 year graft \$.60; White 2 yr. graft \$.60.

PERENNIALS

All perennials except where noted \$.30; 5 or more of 1 variety deduct 5c from each rate.

ACONITUM Fisheri—30" Blue flowers. Sept. and October. Grow in shade.

AESCLEPIAS Tuberosa—2½ feet. Orange. Nice for cutting. July and August.

AJUGA Reptans Rubra—Fine for rockery and shady ground cover. Purple. \$.25 each; 100 for \$15.00.

ALYSSUM Argentum—Fine rock plant.

ALYSSUM Saxatile Compacta (*Basket of Gold*)—Popular. Early Spring.

ANCHUSA Myosotidiflora (*Russian Forget-me-not*)—May.

ANEMONE JAPONICA (*Wind Flower*)—Valuable class of hardy perennials. August 'till November.

Queen Charlotte—Semi-double. Pleasing pink shade. \$.30 each.

ANEMONE PULSATILLA—For the rockery. Violet flowers. April and May. \$.40 each.

Prices: F. O. B. Fairview on orders amounting to \$10.00 or more. On orders under \$10.00 add 10% for packing charges. Discounts: 5 or more of one variety and size—15% from single rates. No discount allowed from 10, 100 or 1000 rates.

- AQUILEGIA** (*Columbine*)—Dobbies Improved Hybrids—Large flowered strain.
Crimson Star—New. Very popular. Crimson sepals, white petals.
ARABIS Alpina—1 foot. Pure white flowers. For border or rocky.
ARMERIA Common Thrift—Globular flowers on 18" stems.
ARTEMESIA Silver King—Silvery foliage fine for floral combinations and Winter bouquets

ASTER

- Mrs. Raynor**—Large blooms of deep red.
St. Egwin—2½ feet. Beautiful light pink, compact grower.
ASTILBE Gloria (*Spirea*)—Interesting plumes of feathery pink flowers. June and July.
CAMPANULA Persicifolia—3 feet. (Blue or white, state which) June and July.
Rotundifolia (*Blue Bells of Scotland*) 1 foot. June to August.
CENTUREA Dealbata—Pink. Fine border perennial.
CARNATION Grenadin—Mixed. Mostly red shades. Keep cutting for best results.
Dealbata—Pink. Fine border perennial. 2'.
CERASTIUM Tomentosum—(*Snow in Summer*) Silvery foliage. White flowers in May.
CHRYSANTHEMUMS (*Garden Varieties*)—Produce a lavish profusion of blooms giving color, life and beauty to the garden when other flowers have been destroyed by frost.

- Adironda**—White.
Argentuillas—Early reddish bronze.
Bronze Button—Popular button type.
Early Bronze—August. 18".
Excelsior—Clear yellow.
Eva—Dwarf pink.
Fred Peele—Yellow button, petals, tipped maroon.
Gold Coin—Large golden. 18".
Gypsie Queen—Yellow over deep bronze.
Jean Treadway—Large bronze, profuse bloomer.
Lillian Doty—Good pink.
Model of Perfection—White button.
Mrs. Birchard—Good early pink.
Province—Early, large, flesh pink.
Ruth Hatton—Creamy white, very good.
Tasiva—Early white, aster type.
Azalea-Mums—Very popular.
Bronze Cushion, Pink Cushion, White Cushion, and Yellow Cushion.

Korean Hybrids—

- Astrid**—Large single shell-pink. Beautiful.
Cerese—Soft yellow bronze.
Mars—Deep amaranth red.
CHRYSANTHEMUM MAXIMUM—Shasta Daisy (*King Edward*)—Large white flowers in May and June.
White Swan—Small double flowers.
COREOPSIS Double Sunburst—Truly double blooms.

DELPHINIUM

- Belladonna** (*Cliveden Beauty*)—Continuous bloomer. Sky blue.
Blackmore & Langdons (*Prize Strain*)—Excellent.
Lamartine—Dark velvety blue.
Liondel Hybrids—Largest bloom of all \$.50 each.
Pacific Hybrids—New. Most beautiful yet produced. Each \$.35.
DIANTHUS Barbatus (*Sweet William*)—Auricula Mixed.
Allwoodi—Stocky plants, mixed colors.
Deltoides (*Maiden Pinks*)—Creeping rock plant. Red flowers.

*Argentuillas*



Bleeding Heart (Dicentra Spectabilis)

DICTAMNUS FRAXINELLA ROSEA (*Gas Plant*)—A valuable border plant.

DIGITALIS (*Foxglove*)—Handsome tall spired, heavy foliaged plants. Valuable for background in the border.

Giant Shirley—Mixed. 4-5 feet. Various shades.

Perennial (Ambigua)—Yellow.

DORONICUM Platanoides—Large daisy-like flowers in early Spring. Yellow.

EULALIA GRACILLIMA UNIVITTATA (*Japanese Rush*) Ornamental grass. Divisions.

EUPHORBIA Polychroma—1 foot. Yellow. May and June.

FESTUCA GLAUCA (*Blue Grass*)—12 inches. Fine for rockery.

FUNKIA (*Plantain Lily*)—**Sieboldiana**—Large green leaves. Dark purple flowers.

Variegata—Green and yellow leaves. Purple flowers in July.

Variegata Richi—New darker flowering.

GAILLARDIA Goblin—New. Dwarf. Flowers completely cover the plant.

Grandiflora—2 feet. Maroon, orange and yellow. June to November. \$.20 each.

Geum—Prince of Orange. True orange.

GYPSOPHYLLA (**Baby's Breath**)—**Bristol Fairy**—New. Continuous bloomer. Large double white. \$.40 each.

Double Snow White.

Repens Rosea—Trailing rock plant. Pale pink flowers.

HELENIUM Autumnali Rubrum (*Sneeze-wort*)—5-6'. Showy heads of gold and bronze.

HELIOPSIS Zinnaeflora (*Orange Sunflower*)—Double and semi-double chrome yellow.

HELLEBORUS Niger (*Christmas Rose*)—Waxy white bloom in Dec., Jan. and Feb. \$.50 each.

HEMEROCALLIS (**Day Lily**) **Dwarf Orange.**

Her Majesty—Very nice.

Dumortieri—Orange. June. 2'.

Flava—2½ feet. Sweet scented, clear yellow.

Fulva—Bronze.

Kwanso Fl. Pl.—Double reddish orange.

HEUCHERA Rosamundi—The best coral pink variety.

Sanguinea-Plena—Bright Vermillion.

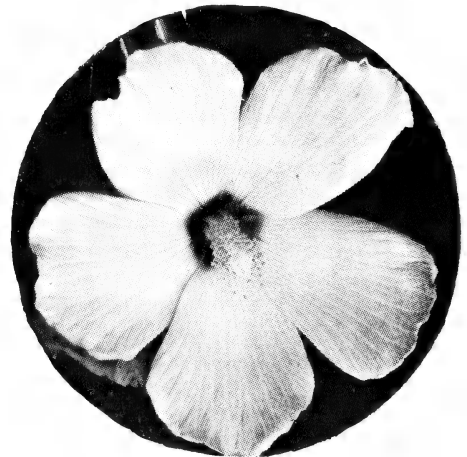
DICENTRA (**Bleeding Heart**)

Eximia—18 inches. Dwarf pink everblooming bleeding heart. For border or for the rockery.

Spectabilis—2 feet. An old fashioned favorite. Heart-shaped pink flowers in May and June. Each \$.40.



Digitalis (Foxglove)



Mallow Marvel (Hibiscus)

Prices: F. O. B. Fairview on orders amounting to \$10.00 or more. On orders under \$10.00 add 10% for packing charges. Discounts: 5 or more of one variety and size—15% from single rates. No discount allowed from 10, 100 or 1000 rates.

All perennials except where noted \$.30—5 or more of one variety deduct 5c from each rate.

HIBISCUS (*Mallow Marvel*)—4 to 6 feet. A Hollyhock hybrid. Enormous red, white or pink flowers. July, August and September. Mixed.

HOLLYHOCK Allegheny—Fringed. Mixed colors.

HYPERICUM Reptans—Soft yellow blooms in July and August.

IBERIS (*Hardy Candytuft*)—Fine for margins or rockery. White.

Inula Hirta (*Fleabane*)—Interesting rock plant, yellow.

IRIS Germanica (*Flag*) \$.20 each.

Alcazar—Lilac blue, bronze throat.

Celeste—Lavender. Profuse grower.

Gold Coin—18". Golden yellow.

Lieut. A. Williamson—Tall violet purple.

Seminole—The best red Iris.

Souv. Mme. A. de Gaudichon—Rich velvety purple. Most remarkable. \$.25 each on this variety.

IRIS Kaempferi (*Japanese Iris*)—

Mahogany—Large double mahogany red. Latest to bloom.

Pink Queen—Good pink variety.

Rene de Bulgaris—Deep blue shading to light blue, white veins.

Zama-no-mori—Large white with azure blue zone.

IRIS Pumila (*Miniature Flag*) \$.20 each.

Aurea—Yellow.

Cyanea—Early blue.

Purple—Later than Cyanea.

The Bride—White vigorous grower.

LAVENDULA Vera (*Sweet Lavender*)—18" Blue, July and August.

LIATRIS Pycnostachya (*Kansas Gay Feather*)—4-5' Spikes of rosy purple, July and August.

Scariosa—3-4'. Deeper color and smaller than above.

September Glory—Fine, late blooming.

LILIUM Auratum (*Gold Banded Lily*)—Very choice. White, gold stripe, chocolate red spots.

Candidum (*Madonna Lily*)—3 feet. Popular white lily. Late June, early July.

Elegens (*Russian Lily*)—Orange red.

Henryi—8 feet. Recurving petals. Orange yellow. Splendid. \$.35 each.

Philippinese Formosum—2-3 feet. Fragrant white blooms all summer.

Speciosa Rubrum—White background, red markings. \$.35 each.

Superbum—10 feet. Pale yellow to deep crimson. August and September.

Regale (*The Regal Lily*)—4-5 feet. Very popular. White suffused with pink, yellow throat. July.

Tenufolium—18 inches. Drooping scarlet flowers, recurved petals. Early June. \$.25 each.

Tigrinum—Salmon-orange spotted with gloss black.

Umbellatum—2 feet. Large upright orange-red blossoms.

LILY-OF-THE-VALLEY—Fine for shade and the rock garden. Divisions or Pips. 10 for \$.50; 100 for \$4.00.

LINUM Perenne (*Flax*)—Foliage and blue bloom very attractive.

LUPINE—New Regal Hybrids—Beautiful spikes of pea shaped flowers. Blue, white, red.

LYCHNIS Viscara Splendens—18 inches. Pink. Flowering profusely in June and July.

Viscara Splendens Fl. Pl.—Deep red, very double. \$.35 each.

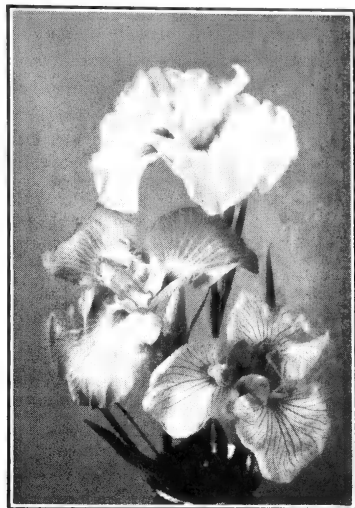
MAZUS Retans—For ground cover or the rockery.

MERTENSIA Virginica (*Blue Bells*)—A native plant. May and June.

NEPITA MUSSINI (*Caucasian Catnip*)—1-1½ feet. Popular Rock or Border plant.

OENETHERA Missouriensis—1 foot. Solitary yellow flowers often 4" across. June and Aug.

Youngi—2 feet. Yellow. Shiny foliage. June and July.



Japanese Iris



PACHYSANDRA TERMINALIS (*Japanese Spurge*)—Evergreen ground cover. Thrives in shade. 2 yr. 10 for \$1.50, 100 for \$10.00; 1000 for \$80.00.

PAPAVER Orientalis (*Oriental Poppy*)—Bright orange scarlet.

PARDANTHUS Chinensis (*Blackberry Lily*)—An interesting Day Lily. Orange.

PENSTEMON Hybrida Praecox—Pink shades. 3 feet. For Rockery or border.

PEONIES

We have the following popular varieties.

Avalanche—Late. Pure white.

Duchess de Orleans—Crown type. Pink and red.

Felix Crouse—Late. Deep rose. Large.

Price on above **\$.40 each.**

Karl Rosenfield—Best dark red. \$.50 each.

Marie Crousse—Salmon, pink. \$.50 each.

Mons. Martin Cahuzac—Late. Dark purple garnet. Darkest peony known. \$.75 each.

Officinalis Rubra—Popular early crimson. \$.75 each.

Therese—Midseason. Shell pink. One of the three highest rated peonies. Fragrant. \$.75 each.

PEONY MOUNTAIN (*Japanese Tree Peony*)—A very desirable novelty. Attains an ultimate height of 3 to 4 feet. Mixed colors. 12-18" \$2.00 4 yr. transplants \$1.00.



Peonies



Phlox Von Lassburg

PHLOX DECUSSATA (Hardy Phlox)

Africa—Carmine, red eye.

B. Compte—Blood red.

Break O' Morn—Soft pink, red eye.

Commander—Crimson.

Daily Sketch—New. Clear salmon-pink with crimson eye.

E. I. Farrington — Bright salmon-pink. Vigorous growth.

Ethel Pritchard—Near blue, fine.

Geo. Stipp—New Glowing salmon.

Isabey—Tall salmon pink. Very popular.

Leo Schlaegeter—Brilliant orange-crimson.

Lillian—New. Exceptionally fine light salmon-pink. Continuous bloomer if flowers are cut. \$.35 each.

Milly von Hoboken—Choice shell pink. Silvered reflex, red eye.

Miss Lingard—White—Everblooming. June to October.

Morganrood—A soft red banded with carmine, dark eye.

Mrs. Jenkins—Pure white. Good grower.

Painted Lady—Tall pink-red eye.

Rheinlander—Mottled salmon. Popular.

Rynstrom—Very good pink.

Saladin—A most brilliant scarlet red. Blood red eye.

Thor—Large florets. Rudy salmon pink. Very good.

PHLOX MACULATA—18 inches. Pink. Fine for rockery. June and July.

PHLOX SUBLATA (*Carpet Phlox*)

Alba—Pure white. April and May.



All perennials except where noted \$.30—5 or more of 1 variety deduct 5c from each rate.

PHLOX SUBLATA

Amoena—Bright pink. May. 6 inches.

Apple Blossom—New, pink.

Atropurpureans—The darkest carpet phlox.

Blue Hills—A true dark blue.

Lilacinea—Light lilac.

Rosea—Rose-pink. April and May.

Vivid—Soft pink-red eye.

PHYSOTEGIA Virginica—3 feet. Conspicuous pink spikes.

Virginica Vivid—20 inches. An improved new dwarf variety. Deeper pink.

PLATYCODEN Grandiflora—(*Balloon Flower*)—Tall, Blue.

Mariesi—12 inches Dwarf. July to October.

PLUMBAGO Larpentae—Desirable border or rock plant, blue.

POLYANTHUS (*Bunch Primrose*)—Mixed. Fine rock plant.

PULMONORIA (*Lungwort*)—12 inches. Interesting two shaded flowers, silvery spotted.

PYRETHRUM (*Painted Daisy*)—Kelway's Hybrids. May and June.

RUDBECKIA Purpurea—Splendid border plant. 2 to 3 feet.

SALVIA Azurea Grandiflora Meadow Sage—4 feet. Sky blue blooms August and September.

SANTOLINA Chamaecyparis—1 foot. Silvery foliage. Fine for edging.

SAXIFRAGA Cordifolia—1 foot. Rosy purple blooms in April and May. Large cabbage-like leaves.

SCABIOSA Caucasica (*Blue Bonnet*)—Soft lavender. June and September.

SEDUM (*Stone Crop*)—Popular rock garden plants. Most varieties moss-like and spreading.

Acre (*Golden Moss*)—2 inches. Thrives in poor soil. Yellow. June and July. \$.20 each.

Album—3 inches. Round fleshy foliage. White flowers in July. \$.20 each.

Arborea—New. Heavy silvery foliage. 10 inches. White.

Kamchaticum—6". Light green foliage turning golden in Fall. Orange-yellow.

Maximowiczii—1". Yellow blooms July-August. \$.20 each.

Obtusatum—6". Foliage emerald green shaded bronze. Yellow, July-August. \$.20 each.

Rupestre—6". Dense heads of yellow bloom. July. \$.20 each.

Sarmentosum—3". A rapid grower. Fine for filling seams in rock work. Yellow. July. \$.20 each.

Siboldi—1 foot. Leaves thick rubbery blue green. An excellent variety. Pink. July-August.

Spectabilis Brilliant—15". Very popular. Fine for borders. Crimson. September.

Spurium Coccineum—6". One of the best. Crimson. July-August. \$.20 each.

SEMPERVIVUM (*Hens and Chickens*)—Interesting evergreen rosette-like plants for the Rockery

Arachnoideum—2" rosettes cobwebbed. Flowers pale purple.

Arenarium—1" small green rosettes. Spreads rapidly.

Commoli—3". Glaucous green leaves, reddish tips. Red flowers.

Sobolifolium—Charming little rosettes with incurving petals. Turns red in Fall.

Tectorum (*House Leek*)—Flowers pale red on 1 foot stems.

SENICEO CLIVOREM—Rare. 4" yellow blossoms. 30". \$.50 each.

SHASTA DAISY—See *Chrysanthemum Maximum*.

SILENE Schafta—A charming rock plant. Masses of deep red bloom July to October

STACHYS LANTANA (*Lamb's Ear*)—8". Silvery-white woolly foliage. Purple. July.

STATICE Latifolia (*Sea Lavender*)—Blue mist-like flowers from August until Winter.

STOKESIA Cyanea (*Stokes Aster*)—18 inches. Light blue. July and August.

TEUCRIUM Chamaedrys—8". Becoming popular as an imitation Boxwood. Rose. August.

THALICTRUM Aquilegifolium (*Meadow-Rue*)—3 feet. Graceful foliage. Purple flowers. June and July.



All perennials except where noted \$.30—5 or more of one variety deduct 5c from each rate.

THYMUS SERPHYLLUM Album (*White Mountain Thyme*)—Clouds of tiny white flowers in June.

Citriodorus (*Lemon Thyme*)—Yellow flowers. 12".

Coccineum (*Scarlet Thyme*)—Moss-like foliage with scarlet bloom. June.

Languinosus—Soft grey foliage with rosy purple bloom in July and August.

TRITOMIA (*Red Hot Poker*)—A magnificent cut flower. Rush-like foliage.

TROLLIUS (*Globe Flower or Buttercup*)—Grow best on damp cool soil.

Ledibouri—Prolongs blooming season. Orange-yellow. \$.30 each.

VERONICA Incana—1'. White wooly plant. Blue flowers July-August.

Longifolia Subsessilis—2'. Thick spikes deep indigo blue. July-September. Popular. For cut flowers.

Spicata—2'. Long spikes of violet blue flowers all Summer.

Spicata Pink—Dwarf, showy pink spikes.

Teucrium—12". Dwarf clumpy growth. Blooms in May and June.

VIOLA Black Prince—Small blue-black flowers. \$.25 each.

Cornuta (*Tufted Pansy*)—6", blooms from early Spring until winter. Mixed colors. \$.25 each.

Oderata—Single sweet scented. \$.25 each.

Oderata Double Russian—True double sweet scented flowers. \$.35 each.

VINCA MINOR—(*Crepe-Myrtle*)—See Page 40.

VINCA MINOR Rubra—See Page 40.

YUCCA Filamentosa (*Adam's Needle*)—See page 13.

Variegata—See page 13.



Tritomia

FRUIT

We handle the following dependable line of fruit.

APPLES—Baldwin, Cortland, Delicious, Early Harvest, Famuse, McIntosh, N. W. Greening, Northern Spy, Red Astrakhan, Red Duchess, Red Spy and Wealthy. $\frac{3}{16}$ " 4-5' each \$.75.

CHERRIES—**Sour**—Montmorency, $\frac{3}{16}$ " 4-5' each \$.75.

Sweet—Black Tartarian, Napoleon, Schmidt's Bigareau, Windsor. $\frac{3}{16}$ " 4-6' \$.90 each.

PEACHES—Champion, Elberta, Golden Jubilee, Hale-Haven, J. H. Hale, Rochester. $\frac{3}{16}$ " 3-4' \$.45 each.

PEARS—Bartlett, Duchess, Flemish Beauty and Seckel. $\frac{3}{16}$ " 4-5' \$.75 each.

PLUM—N. Y. State Prune. $\frac{3}{16}$ " 4-5' \$.90 each.

MATERIALS FOR SHADY PLANTING

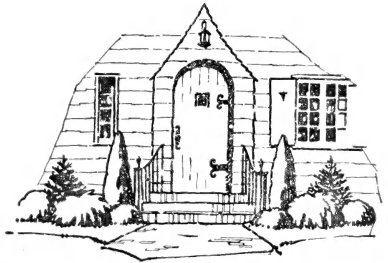
Extreme caution must be used in selecting suitable material for dense shady plantings. Plantings receive sun for more than half the day are easily planned for most any material can be used.

Suggestions for Shady Plantings

Evergreens —	Hemlock	Pachysandra	Rhododendron
Fir Balsam	Ilex Rotundifolia	Magnolia Glauca	Leucothoe
Fir Douglas	Juniperus Communis	Mahonia	Taxus
Boxwood	Juniperus Pfitzeri	Mountain Laurel	
Shrubs —Aronia	Fringe White	Menziesia	Spirea Opulifolia
Aralia	Hydrangea A. G.	Philadelphus	Snowberries, White
Calycanthus	Hydrangea Quercifolia	Potentilla	or Red
Cercis Canadensis	Honeysuckle Bush	Rhodotypos Kerrioides	Viburnum Opulus
			Viburnum Lentago
Vines —Evonymus	Hall's Honeysuckle	English Ivy	Vinca Minor
		Five Leaf Ivy	

Prices: F. O. B. Fairview on orders amounting to \$10.00 or more. On orders under \$10.00 add 10% for packing charges. Discounts: 5 or more of one variety and size—15% from single rates. No discount allowed from 10, 100 or 1000 rates.

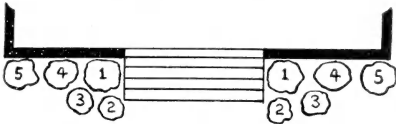
Suggestions for Your Entrance



A few beautiful evergreens at the entrance to your house will not only beautify but add much to the value of your home.

Beautiful surroundings make life more beautiful.

Let these three plans help you.



PLAN No. 1

Key No.

1	2 Pyramidal Arbor Vitae.....	3-4'
2	2 Mugho Pine.....	15-18''
3	2 Pfitzer's Juniper.....	18-24''
4	2 Retinospora Plumosa Aurea.....	2-2½'
5	2 Compacta Arbor Vitae.....	15-18''
	10 Evergreens—Total Cost.....	\$25.50

PLAN No. 2—Using Deciduous Shrubs

Key No.

1	2 Symphoricarpus Chenaulti.....	2-3'
2	2 Jap. Red Barberry.....	18-24''
3	2 Spirea Anthony Waterer.....	15-18''
4	2 Spirea Thunbergi.....	2-3'
5	2 Azalea Mollis.....	18-24''
	10 Plants—Total Cost.....	\$8.40

PLAN No. 3—Use this planting if your entrance is Shaded

Key No.

1	2 Taxus Cuspidata (Jap. Yew.) Upright.....	2-2½'
2	2 Boxwood sempervirens.....	12-15''
3	2 Ilex Crenata Rotundifolia.....	15-18''
4	2 Mountain Laurel.....	2-2½'
5	2 Leucothoe Cataesbaei.....	18-24''
	10 Evergreens—Total Cost.....	\$24.50

Beautiful Surroundings—Cheerful People.

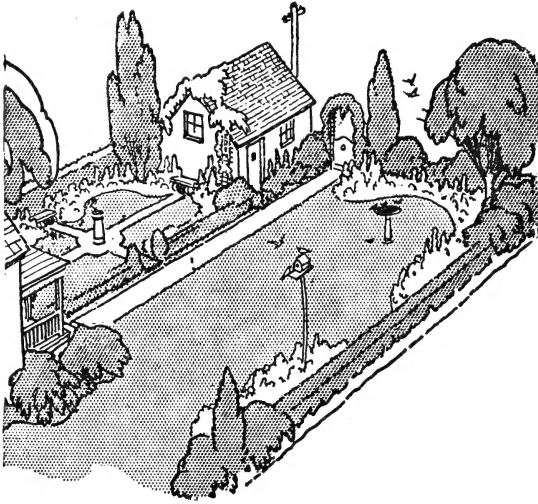
Your inspection invited. Visitors welcome.

INDEX

	Page
Abelia	24
Abies	3-4
Adams Needle	13
Akebia	39
Almond Flowering	24
Althea	24
Amelanchier	23, 24
Amorpha	24
Ampelopsis	39
Andromeda	14
Apples	46
Aralia	16, 24
Arbor Vitae	1-2
Arctostaphylos	13
Aristolochia	40
Aronia	24
Ash	16
Azalea	24, 25
Barberry	13, 26
Basswood	20
Bayberry	32
Beautyberry	26, 27
Beautybush	31
Beech	16, 17
Biota	2
Birch	17
Bittersweet	39
Black Gum	23
Boxwood	13
Broadleaf Evergreens	13-16
Broom	28
Buckeye	17
Buckthorn	26
Buddleia	26
Burning Bush	29
Bush Clover	28
Butterfly Bush	29
Butternut	17
Button Bush	27
Callicarpa	26, 27
Calluna	4
Calycanthus	27
Caragana	27
Catalpa	17
Ceanothus	27
Cedar	4-7
Celastrus	39
Cephalanthus	27
Cercidiphyllum	19
Chamaecyparis	2
Cherries	46
Chestnut	17
Chokeberry	24
Chrysanthemums	41
Clematis	39
Clethra	27
Colutea	27
Common Persimmon	27
Comptonia	27
Cornelian Cherry	27
Cornus	18, 28
Corylus	27
Cotoneaster	14, 27
Crataegus	14, 23
Cryptomeria	2
Cydonia	28
Cypress	2, 9, 10
Cytisus	28
Daphne	14, 28
Deciduous Shrubs	24-39
Delphinium	41
Desmodium	28
Deutzia	28
Dogwood	18, 28
Dutchman's Pipe	40
Elder	35
Eleagnus	23, 28
Elm	19
Elsholtzia	28
Enkianthus	28
Euptelea Polyandra	19
Evonymus	29, 39, 40
Evergreens	1-13
Evergreen Barberry	13
Evergreen Thorn	14
Exochorda	29

	Page
Fir	3, 4
Flowering Almond	24
Flowering Cherry	22
Flowering Crab	17, 18
Flowering Thorns	23
Flowering Dogwood	18
Fontanesia	29
Forsythia	29
Fraxinus	16
Fringe, Purple and White	30
Fruit	46
Ginkgo	21
Golden Bell	29
Goldenrain Tree	19
Great Silverbell	30
Gymnocladus Dioica	19
Hackberry	19
Halesia	30
Hamamelis	38
Hawthorn	23
Hazlenut	27
Heather	4
Hemlock	4
Hens and Chickens	45
High Bush Cranberry	37
Holly	14, 31
Honeysuckle Bush	30
Honeysuckle Vine	40
Hornbeam	19
Horse Chestnut	19
Hydrangea	31
Hypericum	31
Ilex	14, 31
Ivy	39
Japanese Cypress	9
Japanese Quince	28
Jersey Tea	27
Judas Tree	33
Juniper	4-7
Kalmia	14
Katsura Tree	19
Kentucky Coffee Tree	19
Kerria	31
Koelreuteria	19
Kolkwitzia	31
Laburnum	31
Larch	19, 20
Leucothoe	14
Ligustrum	33
Lilacs	31, 32
Lilies	43
Linden	20
Locust	20
Lonicera (Bush)	30
Lonicera (Vine)	40
Lycium	40
Magnolia	20
Maiden Hair Tree	21
Mahonia	14
Maples	21
Matrimony Vine	40
Mock Orange	32
Mountain Ash	21
Mountain Laurel	14
Mulberries	21
Myrica	32
Myrtle	40
Oak	22
Ornamental Trees	16-24
Oxydendron	35
Pachysandra	16
Pachstima	14
Peaches	46
Pears	46
Peonies	44

	Page
PERENNIALS 40-46	
Philadelphus	32
Phlox	44
Photinia	32
Picea	10, 11
Pieris	14
Pine	7, 8
Plan Suggestions	47
Plums	46
Polygonium	40
Poplars	22
Potentilla	32
Privet	33
Prunus	22
Pussy Willow	23
Quercus	22
Red Bud	33
Retinosporas	9, 10
Rhododendron	15
Rhodotypos	33
Rhus	30
Rose Acacia	35
Rose of Sharon	24
Roses	33, 34
Roses, Miscellaneous	34
Russian Olive	23
Sambucus	35
Sciadopitys	10
Service Berry	23
Shadblow	23
Shrubs	24-39
Silverberry	28
Silver Lace Vine	40
Smoke Tree	30
Snowberry	36
Sophora	23
Sorbaria	35
Sourwood	35
Spirea	35, 36
Spruce	10, 11
Spurge	16
Staphlea	36
Stephanandra	36
Stewartia	36
Sumac	36
Sweetfern	27
Sweet Gum	23
Sweet Pepper Bush	27
Sycamore	23
Symphoricarpos	36
Syringa	31, 32
Tamarix	37
Taxus	12, 13
Thorns	23
Thuya	1, 2
Trees	16-24
Trumpet Creeper	40
Tsuga	4
Tulip Tree	23
Tupelo Tree	23
Umbrella Pine	10
Umbrella Tree	17
Vaccinium	37
Viburnum	16, 37, 38
Vinca	40
Vines	39, 40
Vitex	38
Walnut	23
Weigelia	38
Witch Hazel	38
Whitewood	23
Willows	23, 24
Wisteria	40
Yellowroot	39
Yellow Wood	24
Yew	12, 13
Yucca	13
Zanthorhiza	39



Which Would You Choose?

