

## **Historic, Archive Document**

Do not assume content reflects current scientific knowledge, policies, or practices.



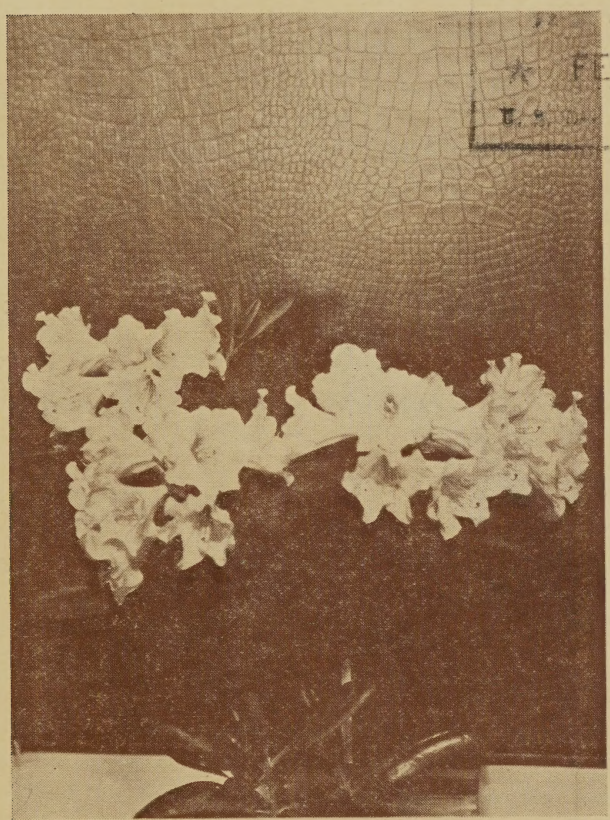
62.73



# RHODODENDRONS AND AZALEAS

SPRING 1943

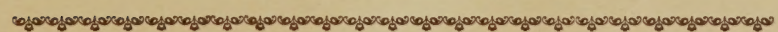
LIBRARY  
★ FEB 25 1943 ★  
U. S. DEPARTMENT OF AGRICULTURE



## DECATROS

**T**HIS original hybrid flowered here at a very early age and seems to be satisfactorily hardy. The huge flowers resemble *R. decorum* in size and form, but though they retain little of the fragrance of that species they are much hardier. The colors vary from white to light rose with yellow shadings and sometimes a deep crimson spotting in the throat.

**JOSEPH B. GABLE**  
STEWARTSTOWN, PA.



- ARBORESCENS—One of the finest native azaleas with very fragrant white flowers in June. 6-12 in., \$1.00
- ATLANTICUM—This low growing, spreading native azalea was probably first offered by us. It is a stoloniferous species spreading into clumps or patches several yards in diameter. Produces its white to pure rose pink flowers very profusely when grown in the open where it seldom attains a height of more than eighteen inches—more often less than a foot—but in the shade it grows much taller and flowers less. Our stock has been propagated from the northernmost station known and is fully hardy north. 6 in. pots, \$1.00
- BOULE DE NEIGE X FORTUNEI—The growth habit of these hybrids is very well filled and rounded—almost the ideal. Flowers light in color. 2-3 ft., \$4.00; 3-4 ft., \$5.00
- BRACHYCARPUM—This fine species from Japan is all too little known and grown in the Eastern U. S. where it is quite hardy, forming well shaped plants with beautiful dark green foliage and rather late creamy white flowers flushed and striped with pink. 1-1½ ft., \$2.00; 1½-2 ft. \$3.00; 2-3 ft., \$5.00
- BRACHYCARPUM X DISCOLOR—Second generation seedlings from a plant with lovely large pink flowers spotted with carmine. 3 in. pots, 50c; 6-12 in., \$1.00
- CALENDULACEUM—The Flame azalea with orange to scarlet flowers. 2 to 3 ft., \$2.50
- CAMPYLOCARPUM X DISCOLOR—A fine English hybrid and possibly hardy. 12-18 in., \$1.00
- CAROLINIANUM—Grows 3 to 4 feet and hardy. Early pink flowers. 2 to 3 ft., \$3.00; 1½ to 2 ft., \$2.00; 1 to 1½ ft., \$1.00
- CAROLINIANUM ALBUM—As above with white flowers. 1 to 1½ ft., \$1.00; 2 to 3 ft., \$2.00
- CATAWBIENSE—Our very hardy native with rose purple flowers. 2 to 3 ft., \$4.00; 1½ to 2 ft., \$3.00
- CATAWBIENSE X DISCOLOR—A new hybrid that has yet to flower here, but should resemble the following except much later. 8-12 in., \$1.00
- CATAWBIENSE X FORTUNEI—A very strong growing plant with fine large leaves and flowers which are light to deeper rose in color. Where large plants are wanted for background these are fine with much better flowers than Rhod. maximum. Quite hardy. 8-12 in., \$1.00; 3-4 ft., \$5.00
- CATAWBIENSE RED—These are seedlings of a plant of Catawbiense that has flowers of a good red color. 8-12 in., \$1.00
- CATAWBIENSE COMPACTUM—Seedlings of this dwarf form of our well known species. 6-12 in., 50c

- CAUCASICUM—Reputedly a hardy species—and we have no doubt as to its hardiness to winter cold—yet this dwarf shrub with white flowers tinted rose is a difficult subject here. Very slow growing.  
3 in. pots, \$1.00
- CHRYSANTHUM—Dwarf to 1 foot with pale yellow flowers. Hardy.  
4-6 in., \$1.00; 6-12 in., \$1.50
- CONEMAUGH—A hybrid of *R. racemosum* and *R. mucronulatum* that produces its rose colored flowers abundantly very early in spring. Upright in growth. Rooted cuttings.  
6-12 in., \$1.00
- CONESTOGA—The outstanding characteristic of this attractive hybrid of *carolinianum* and *racemosum* is its profuse flowering habit. A rather dwarf plant with rose pink blooms. Seedlings 6-12 in., \$1.00
- CONEWAGO—We have had more praise for this hybrid from our friends and customers than from any other original hybrid produced here. It has many good points including hardiness and profuseness of flowering but perhaps the most noteworthy is that it blooms very early just following *R. mucronulatum* when it has a season all to itself. Seedlings  
6-12 in., \$1.00
- DECATROS = DECORUM X ATROSANGUINEUM—See description and illustration on front cover.  
3 in. pots, 50c; 2-3 ft., \$3.00
- DECORUM—Grows from 12 to 20 feet with white sweet scented flowers. Flower buds rather tender.  
1-2 ft., \$3.00; 2-3 ft., \$5.00
- DECORUM X LODERI—Has never bloomed here.  
6-12 in., \$1.00
- DISCOLOR—This is one of the very finest exotic species that can be grown in our climate. It hails from west central China and has been described as "E. H. (Chinese) Wilsons' second best discovery." What interests us is that it is hardy in our part of the world in partially shaded woodland sites where it opens its great white or pale blush blossoms in late June. Our stock of large plants is quite exhausted and we can only offer 6-8 in. plants at  
\$1.00
- DISCOLOR HYBRIDS—Various light shades. Large late flowers and good foliage.  
8-12 in., \$1.00
- FARGESII—A handsome shrub with pink flowers in abundance.  
6-12 in., \$2.00
- FORTUNEI—Blush pink fragrant flowers and dependably hardy. This species becomes a tree of 15 to 20 feet. The corolla is seven lobed instead of the usual five and we strongly recommend this species. Requires some shade.  
8-12 in., \$1.00; 1-2 ft., \$3.00; 2-3 ft., \$4.00; 3-5 ft., \$6.00
- HORMOPHORUM—A shrub to 3 feet with rose colored flowers. We do not highly recommend this but it is the most growable of the Yunnanense type of rhododendron that we have found and may therefore be of interest.  
8-12 in., \$1.50

- HOULSTONII—This sort coming from approximately the same regions of China as *R. discolor* gives promise of becoming another hardy species to add to our list. It is close to *R. Fortunei* but smaller in all its parts. 6-12 in., \$1.50
- JAPONICUM—Deciduous species of the azalea series with yellow to orange flowers. Hardy. 8-12 in., \$1.00
- KAEMPFERI—Another Japanese azalea of pink salmon and orange shades. Evergreen in mild climates but hardy in New England where its leaves mostly fall. 18-24 in., \$2.50
- KEISKEI—So far the most satisfactory yellow species tried here. Azalea like lemon yellow flowers, fragrant, sometimes flushed with pale pink along the margins and medial lines. 2-3 ft. \$2.50
- LITIENSE—A yellow flowered species. Small plants. 4 in. pots, \$2.00
- LODERI—Seedlings of this "ne plus ultra" of English hybrids which seems rather tender here. 8-12 in., \$1.00
- LUTEUM—This old world azalea better known as "pontica" has fragrant yellow flowers. 6-12 in., 75c; 18-24 in., \$2.00
- MACROSEPALUM—Flowers Rose Lavender. 12-18 in., \$2.00
- MAXIMUM—Light pink or white flowers in July. Very hardy. Grown from seed we consider these superior to collected plants.  
1 to 2 ft., \$1.00; 2 to 3 ft., \$2.00; 3-5 ft., \$3.00
- MAXIMUM X DISCOLOR—Late with fine large pale to deeper pink flowers. 1 ft., \$1.00; 2-3 ft., \$4.00; 3-5 ft., \$6.00
- MAXIMUM X FORTUNEI. 1 ft., \$1.00
- MICRANTHUM—Hardy. Small white flowers in June in great profusion. 3-4 ft., \$4.00
- MINUS—A hardy but little known American rhododendron resembling *R. carolinianum* but flowering in June. 2 to 3 ft., \$2.00
- MINUS X CAROLINIANUM—A hybrid which is intermediate in characters between its parents and also in time of flowering.  
1 ft., \$1.00
- MOLLIS—A popular azalea of yellow and orange shades. 10-12 in., \$1.00
- MUCRONULATUM—Very early rose purple flowers with Forsythia Hardy. 18-24 in., \$2.00; 2-3 ft., \$3.00
- NUDIFLORUM—The native azalea commonly but erroneously called the "bush honeysuckle." 12-18 in., \$1.00; 18-24 in., \$1.50; 2 ft., \$2.00
- NUDIFLORUM X JAPONICUM—A very hardy hybrid with pink or rose flowers flushed with yellow and orange shades. 2-3 ft. \$2.50
- PENNSYLVANICUM—A natural hybrid of *R. atlanticum* and *R. nudiflorum*. Early fragrant white flowers. 2-3 ft., \$4.00

- POUKHANENSE—A hardy low growing Japanese azalea with fragrant lilac tinted flowers. 1½-2ft., \$2.50
- POUKHANENSE X LEDIFOLIA ALBA—Large flowers of pale bluish lavender heavily spotted carmine. Very hardy and good plant habit. 10-12 in., \$1.00; 1-2 feet, \$2.00
- RACEMOSUM 59717 ROCK—We recommend this as a very hardy form of this delightful rock garden subject. Clear pink flowers in late April or early May. 6-12 in., \$1.00; 10 to 18 in., \$3.00
- RACEMOSUM 19404 FORREST—Considered the best form in England where it grows but a few inches high with bright pink flowers. Fine for rock garden. 6-12 in., \$2.00
- RACEMOSUM X KEISKEI—A dwarf with pink flowers flushed with yellow. 1-2 ft., \$1.00
- RETICULATUM—Better known as azalea Rhombica or dilatata. Bright purple flowers. 1½-2 ft., \$2.00
- SCHLIPPENBACHII—The largest leaves and flowers of any hardy azalea species and by many considered the loveliest when covered with its great pink flowers.  
12-18 in., \$1.00; 18-24 in., \$2.00; 2-3 ft., \$4.00  
We have a large stock of this and will be pleased to quote in quantity.
- SMIRNOWII—Very hardy and slow growing with rose pink flowers of good size, this species is immune from the lace wing fly. 12-18 in., \$2.00; 2-3 ft., \$4.00
- SMIRNOWII HYBRIDS—These seedlings will have good size flowers of pink and rose shades. 8-12 in., \$1.00; 12-18 in., \$1.50
- VASEYI—Its very early pink flowers make it one of the loveliest azaleas. 1-1½ ft., \$1.00; 2-3 ft., \$2.00

#### RARE HOLLIES

- ILEX PERNYI—A Chinese species with small dark green leaves. Grown from cuttings. 10-12 in. plants, \$1.00
- ILEX AQUIFOLIUM VAR. PYRAMIDALIS—A compact growing variety of the English holly with fine red berries and quite hardy here. 12-18 in. plants, \$1.00

We also grow a number of rare hollies, yews, firs, magnolias, spruces, pines, etc. If interested write stating species or variety wanted and we will immediately quote prices if in stock.

Packing extra at cost on small orders. Orders of \$10.00 and more packed free. Terms cash with order from parties unknown to us.

No shipments to points outside the Jap beetle area.

## GABLE'S NEW HARDY AZALEAS



### AZALEA HYBRID -- LOUISE GABLE

Two year cutting

One of our best new hardy varieties.

BIG JOE (42G) Large orchid flowers. Very hardy plant. 8-12 in.

CAROLINE GABLE (96G) Hose-in-hose pink. 1-1½ ft.

CHEROKEE (30G) Intense scarlet. Medium grower. 3 in. pots, 8-12 in.

CHINOOK (11G) Hose-in-hose bright salmon. Upright habit. 3 in. pots,  
8-12 in., 1-1½ ft.



ELIZABETH GABLE (21G) Truly evergreen. Rose pink late flowers.  
3 in. pot, 8-12 in.

GLOW OF DAWN (115G) Lovely clear rose. 1-1½ ft.

HERBERT (47G) Magenta red. Low compact grower. 1-1½ ft.

LA LUMIERE (100G) Bright red with good plant habit. 3 in. pots, 8-12 in.

LA PREMIERE (1G) Double pink flowers rather late. 8-12 in.

LOUISE GABLE (13G) Double salmon pink. Most dependable. 3 in. pots, 8-12 in.

MARY DALTON (111G) Hose-in-hose salmon red with very pointed petals arranged in perfect symmetry. 3 in. pots, 1-1½ ft.

MILDRED MAE (69G) Very shapely plant with dense evergreen foliage and beautiful large flowers spotted bright red in the throat. 3 in. pots, 1-1½ ft.

MIRIAM (A10G) Deep crimson pink. Early. 3 in. pots, 1-1½ ft.

OLD FAITHFUL (136G) Large growing with early deep orchid flowers. 1-1½ ft.

POLARIS (118G) Hose-in-hose white of fine plant habit but rather tender in exposed situations. 8-12 in.

SPRINGTIME (A11G) A beautiful clear pink. Earliest of this group. 1-1½ ft.

VIOLA (52G) Large wide spreading plant with bluish lavender flowers spotted red. 1-1½ ft.

127-G. Not named. Carmine pink. A good one. 1-1½ ft.

176-G. Magenta red. Hardy. 1-1½ ft.

A110-G. Large hose-in-hose flowers, the color of the well known Hinodegiri but much larger flowers and about as hardy as that variety. 3 in. pots, 1-1½ ft.

Prices—1 year from 3 inch pots.

2 year, 8-12 inch xx B&B

3 year, 1-1½ ft. xx B&B

75c each, 8 for \$5.00

\$1.00 each, 6 for \$5.00

\$1.50 each

