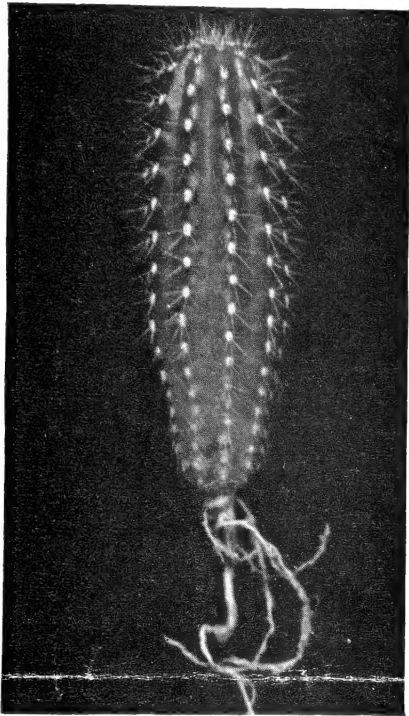


Historic, Archive Document

Do not assume content reflects current scientific knowledge, policies, or practices.

62.09

New Year Price List 1943



Trichocereus spachianus

GATES FAMOUS CACTUS GARDENS

FEB 2 1943

CORONA, CALIFORNIA
(Formerly of Anaheim, California)
WHOLESALE ONLY

U. S. Department of Agriculture

Member California Cactus Growers Association

California's Largest Cactus and Succulent Nursery

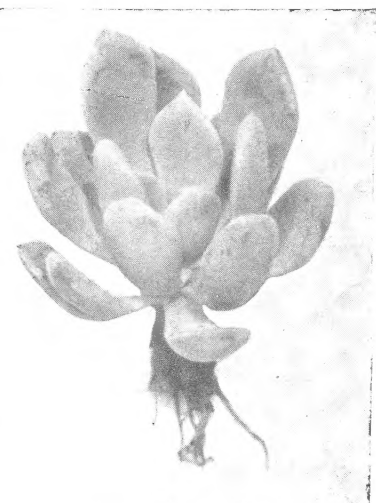
Midway Between the Desert
and the Sea



Echeveria Elegans



Dyckia Sulphurea



Echeveria Nobilis

Happy New Year!

We are glad to say that we are arriving at the goals of quantity production and uniform quality that we set for ourselves when we moved to this location three years ago.

Visitors are usually amazed at our systems of quantity production and propagation. Our broad fields are filled with hundreds of thousands of mother plants. This fall has been rainless and with the exception of a few frosty mornings, good weather has kept up to mid-winter. This permitted our crew to propagate steadily and we have the largest stock of plants in our thirteen years of cactus growing.

Our improved methods have permitted us to steadily lower prices until this list is the lowest priced we have ever issued. We expect prices have reached bottom until the upward swing of labor and other costs is checked. When looking over this list you will note that we give the proper name and approximate size of all plants offered.

TERMS

Cash or Railway Express C.O.D. only, F.O.B. Corona.
Minimum: Ten plants of a kind, one hundred plants to a shipment.

DISCOUNTS

25 or more plants take the 100 rate. Full count must be ordered to receive the 500 and 1000 rates. Orders made up of items at the 10 or 100 rates take the following discounts: orders totaling 500 plants or more, 25c per 100; totaling 1000 or more, 50c per 100.

ABBREVIATIONS

RC — rooted cutting, S — seedling, P — plant

LABELING

We label free with printed labels when requested, BUT ONLY WHEN REQUESTED.

PACKING

We pack free by a light and secure system which we believe is the best in use. Plants are packed bare root. We do not ship planted pots or dishes.

SUBSTITUTIONS

Unless instructed, we use our judgment in the case of short items.
WE ARE WHOLESALE ONLY
and believe we are the only California shippers who absolutely refuse retail business.

OUR GUARANTEE

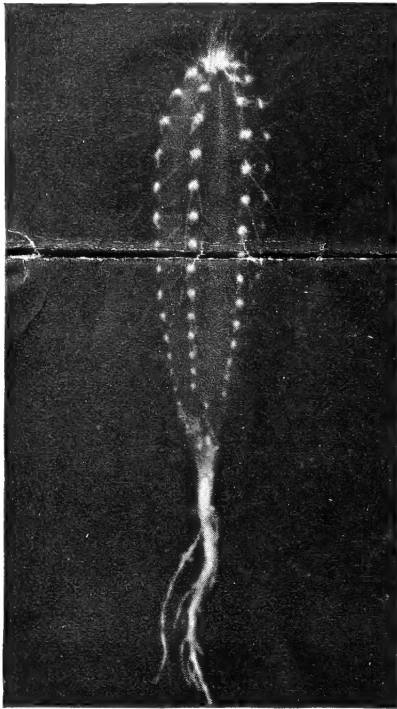
We guarantee safe arrival by Railway Express only. Parcel post and freight shipments travel at purchaser's risk for loss or damage en route. If plants should arrive in bad order, secure inspection report from delivering agency and send it to us. Claims for loss in transit cannot be considered without it. If upon opening shipment, any customer believes we have not shipped fair value and good quality, the entire shipment or portion should be returned to us at once by express collect.

We will refund any money paid out for such stock and transportation.

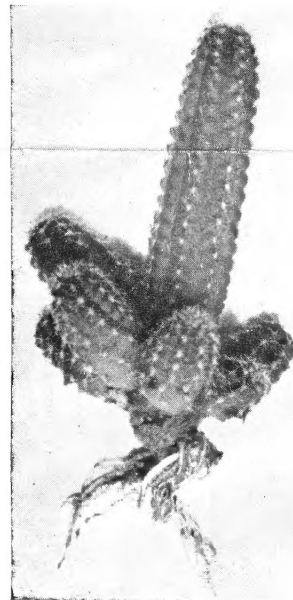
"CACTUS"

Priced per 10 100 500 1000

Astrophytum myriostigma. Bishop's Hood. Spineless, white-dotted body	1" S	.90	\$ 8.00
Astrophytum ornatum. Golden Spined Bishop's Hood. Deeply angled, white-dotted body with very attractive yellow spines	1" S	.90	8.00
Cephalocereus senilis. Mexican Old Man. Columnar, covered with white hair	1" S	.90	7.50 36.25 70.00
Cereus peruvianus. Peruvian Apple Cactus. Tall, columnar seedlings. Very popular. We have magnificent stock in good supply	1½-2" S	.35	2.50 11.25 20.00
Cereus peruvianus	2-3" S	.40	3.00 13.75 25.00
Cereus peruvianus	3-5"	.60	5.00 23.75 45.00
Cereus peruvianus	5-8"	.90	7.50 36.25 70.00
Chamaecereus sylvestrii. Peanut Cactus. Freely clustering, cylindrical branches, harmless spines. Probably the most widely used of all cactus	2-3" RC	.40	3.00 13.75 25.00



Cereus Peruvianus

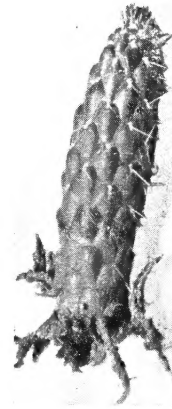


Chamaecereus Sylvestrii

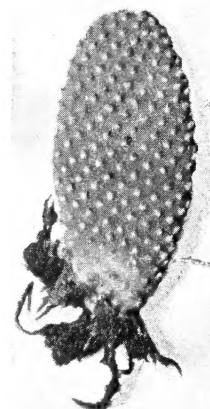
Chamaecereus sylvestrii. Single stem, excellent for animal tails	1½-3" RC	.35	2.50 11.25 20.00
Echinocereus pentalophus. Lady Fingers. From nursery grown plants	2-3"	.45	3.50 16.25 30.00
Echinopsis calochlora. Shining Ball. New, globular, shining body, yellow spines, does not elongate	1-1½" RC	.60	5.00 23.75 45.00
Echinopsis hybrids. Easter Lily Cactus. Globular, short-spined plants with very large pink or white lily-like flowers. Very useful	1½" P	.40	3.00 13.75 25.00
Echinopsis hybrids. Larger	2" P	.60	5.00 23.75 45.00
Harrisia (Eriocereus). A tall, slender, slightly curved group are very useful for animal tails.			
Harrisia martinii. White spined			
Dog Tail	2-3" S	.40	3.00 13.75 25.00
Harrisia tortuosa. Red Tipped Dog Tail. Dark-spined with red tip spines	2-3" S	.40	3.00 13.75 25.00
Lemaireocereus weberi. (Cereus Candelabrum). Beacon Tower. Columnar, dark, fluted	2" S	.40	3.00 13.75 25.00
Mammillarias assorted. Ruby Dumpling, globular and tall types, labeled	1½" S	.90	7.50 36.25 70.00
Mammillaria comptotricha. Bird's Nest. Long nipples bearing twisted yellow spines	1-1½" S	.60	5.00 23.75 45.00
Mammillaria elongata. Golden Stars. Erect, slender columns with yellow spines in star-shaped clusters	1-1½" P	.60	5.00 23.75 45.00
Mammillaria gracilis (fragilis). Miniature, globular, white-spined, clustering	1" RC	.40	3.00 13.75 25.00
Mammillaria gracilis	2" RC	.60	5.00 23.75 45.00
Mammillaria prolifera. Cuban Baby Cactus. Clustering, globular, covered with soft, creamy-white spines	1-1¼" S	.40	3.00 13.75 25.00
Notocactus mammulosus. Globular, dark spined, large flowers, blooming size	1-1½" P	1.20	10.00 48.75
Nyctocereus serpentinus. Snake Cactus. Tall, columnar, fluted, short spined	3-5" RC	.60	5.00 23.75 45.00

The Opuntia family is a very large group of useful cactus. They give better size value than any other cactus group. The dry climate of our new location is just what this group prefers. The cylindrical types are shipped as columnar rooted cuts. The flat padded, either as single or branched plants. The little tree types are freely branched.

Opuntia Baja California No. 1. Devil's Tower. A new species of our own discovery and introduction. Heavy, columnar, with colorful, short spines	3-5" RC	.60	5.00 23.75 45.00
Opuntia basilaris. Beaver Tail. Blue to purple spineless pads	2-3" RC	.35	2.50 11.25 20.00
Opuntia Boxing Glove. (Opuntia mammillata) shapely, short spined, columnar, immature fasciations. One of the most popular kinds. Our quality is superb	2-3" RC	.40	3.00 13.75 25.00
Opuntia Boxing Glove	3-5" RC	.60	5.00 23.75 45.00
Opuntia Boxing Glove	5-8" RC	.90	7.50 36.75 70.00
Opuntia Boxing Glove Crests. Remarkable, twisted and contorted fan-shaped freaks	RC	1.20	10.00
Opuntia Boxing Glove Crests	RC	1.75	15.00
Opuntia cylindrica. Emerald Idol. Heavy, short-spined, green columns	2-3" RC	.40	3.00 13.75 25.00
Opuntia cylindrica	3-5" RC	.60	5.00 23.75 45.00
Opuntia hamiltoniae. Hattie Hamilton's Cactus. Ribbed, columnar, sparsely spined, attractive type. Our discovery in Baja California, Mexico	2-3"	.45	3.50 16.25 30.00
Opuntia microdasys. Bunny Ears. One of the most popular cactus. Flat pads bearing clusters of short yellow spicules spaced in a beautiful pattern. Our new location produces the finest on the market. Single pads	2-3" RC	.35	2.50 11.25 20.00
Opuntia microdasys. Larger single pads	3-5" RC	.45	3.50 16.25 30.00
Opuntia microdasys. Small pads with ears	2-3" RC	.45	3.50 16.25 30.00
Opuntia microdasys. Larger pads with ears	3-5" RC	.60	5.00 23.75 45.00
Opuntia microdasys miniature. Baby Bunny Ears. Eared tiny pads produced by special cultural methods for use in 1 to 2-inch pots and small dishes	1½-2½" RC	.35	2.50 11.25 20.00
Opuntia microdasys miniature	2-4" RC	.40	3.00 13.75 25.00



O. Cylindrica



O. Microdasys



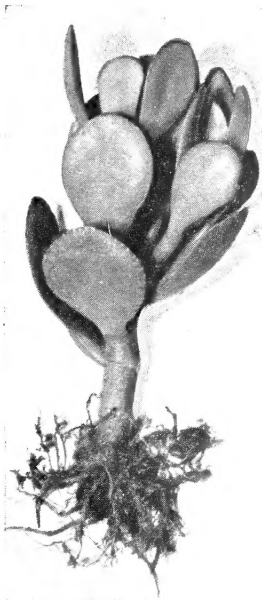
O. Boxing Glove

Opuntia microdasys buds. Indian Bonnet. Fruits with ears	2-3" RC	.40	3.00 13.75 25.00
Opuntia monacantha. Irish Mittens. Smooth, glossy-green pads, usually spineless	2-3" RC	.35	2.50 11.25 20.00
Opuntia monacantha. Larger plants	3-5" RC	.55	4.50 21.25 40.00
Opuntia monacantha buds. Indian Bonnet. Fruits with ears	2-3" RC	.40	3.00 13.75 25.00
Opuntia monacantha variegata. Joseph's Coat. White, green and red	3-5" RC	.60	5.00 23.75 45.00
Opuntia ramosissima. California Little Tree Cactus. Blue-green, sparsely spined, grotesque branches. Very desirable	Light RC	.90	7.50 36.25
Opuntia ramosissima. Larger and more branched	Heavy RC	1.20	10.00 48.75 95.00
Opuntia rufida. Red Bunny Ears. Rounded pads with reddish spicules	2-3" RC	.40	3.00 13.75 25.00
Opuntia rufida. Larger	3-5" RC	.60	5.00 23.75 45.00
Opuntia schickendantzii. Mule Ears. Pointed pads, stubby brown spines	2-3" RC	.40	3.00 13.75 25.00
Opuntia schickendantzii	3-5" RC	.55	4.50 21.25 40.00
Opuntia schickendantzii buds. Indian Bonnet. Fruits with ears	2-3" RC	.40	3.00 13.75 25.00
Opuntia species No. 2. Small ovate, gray green pads with few spines. Very useful	2-3" RC	.40	3.00 13.75 25.00
Opuntia species No. 3. Lead Pencil Opuntia. Round slender stems branching in whorls	2-3" RC	.40	3.00 13.75 25.00
Opuntia vilis. Dwarf Tree Cactus. Bushy, branched little trees that fit in anywhere. They are attractive singly or in combinations	2-3" RC	.40	3.00 13.75 25.00
Opuntia vilis, medium, well branched	3-5" RC	.60	5.00 23.75 45.00
Pachycereus pecten-aboriginum. Sonoran Giant. Fluted, heavy columnar	2-3" S	.40	3.00 13.75 25.00
Trichocereus spachianus. Tower of the Sun. Fluted, columnar; short, golden-brown spines	2-3" S	.40	3.00 13.75 25.00
Trichocereus spachianus. Larger	3-5" S	.60	5.00 23.75 45.00

"SUCCULENTS"

		Priced per 10	100	500	1000
Acrodon bellidiflorus. Clusters of elongated, notched leaves, pink flower	3" RC	.40	3.00	13.75	25.00
Aichryson (Aeonium) domesticum. Brass Buttons. Freely branching with yellow-green leaves	2-3" RC	.35	2.50	11.25	20.00
Aeonium haworthii. Pin Wheel. Gray rosettes edged with red	1 1/2-2 1/2" RC	.35	2.50	11.25	20.00
Aloe africana. Cape Aloe. Colorful, red-toothed Aloe. Excellent	2-3" S	.40	3.00	13.75	25.00
Aloe ferox. Striking colorful plant with teeth on all sides.	2-3" S	.40	3.00	13.75	25.00
Aloe humilis brevifolia. Pearl Aloe. Pearly, gray-green, toothed leaves	1 1/2-2 1/2" RC	.40	3.00	13.75	25.00
Aloe humilis brevifolia. Larger, in rosettes	2 1/2-3 1/2" RC	.60	5.00	23.75	45.00
Aloe humilis globosa. (Incurva). Crocodile Aloe. The smallest Aloe. Gray-green, incurved, toothed leaves	1 1/2-2" RC	.40	3.00	13.75	25.00
Aloe humilis globosa	2-3" P	.60	5.00	23.75	45.00
Aloe nobilis. Gold Toothed Aloe. Stiff, dark-green leaves. Yellow teeth	1 1/2-2 1/2" RC	.40	3.00	13.75	25.00
Aloe nobilis	2 1/2-4" RC	.60	5.00	23.75	45.00
Aloe seedlings. Several interesting types assorted of these useful plants	2-3" S	.40	3.00	13.75	25.00
Aloe spinosissima. Spider Aloe. Long, slender, toothed leaves	3-4" RC	.40	3.00	13.75	25.00
Aloe striata. Coral Aloe. Broad, striped, toothless leaves, red margins	2-3" S	.40	3.00	13.75	25.00
Aloe variegata. Partridge Breast, Rattlesnake Cactus, Tiger Aloe. The demand is usually greater than the supply	1 1/2-2" S	.90	7.50	36.25	70.00
Bryophyllum. See Kalanchoe also.					
Caralluma nebrowii. Marvelous clustering plant of the Stapelia group. Toothed, heavy, blue branches, purple markings. New	3-4" RC	.60	5.00	Limit 100.	

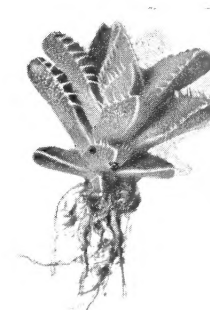
paint to form miniature Christmas Trees	2-4" RC	.35	2.50	11.25	20.00
Crassula tetragona	4-6" P	.40	3.00	13.75	25.00
Dyckia sulphurea. Pineapple Plant. Rosettes of re-curved, stiff, glossy, toothed leaves	2-3" S	.60	5.00	23.75	45.00
Echeveria amoena. Colorful, miniature rosettes	1 1/2-2 1/2" RC	.35	2.50	11.25	20.00
Echeveria derenbergii. Beautiful, waxy rosettes. One of the choicest kinds	2-2 1/2" RC	.60	5.00	23.75	45.00
Echeveria elegans. White Gem. Rosettes of powdered, pearly-white leaves	1 1/2-2 1/2" RC	.40	3.00	13.75	25.00
Echeveria expatriata. Green Gem. Shapely, small leaves in rosette, sometimes shaded with brown	1 1/2-2 1/2" RC	.40	3.00	13.75	25.00
Echeveria gilva (simulans). Wax rosettes. Yellow green, tinted with brown	1 1/2-2 1/2" RC	.40	3.00	13.75	25.00
Echeveria glauca. Blue Hen and Chickens. Colorful. Freely clustering	2-3" RC	.35	2.50	11.25	20.00
Echeveria microcalyx. Ruby Tipped Gem. Small-leaved rosette colored tips	1 1/2-2 1/2" RC	.40	3.00	13.75	25.00
Echeveria multicaulis. Copper Rose. Tall branching with broad, richly colored leaves in rosettes on the branch tips	1 1/2-2 1/2" RC	.60	5.00	23.75	45.00
Echeveria nobilis. (Pachyveria clevelandii). Opal Rose. Tall, broad, thick, very colorful, opalescent leaves in rosettes	2-3" RC	.40	3.00	13.75	25.00
Echeveria pulvinata. Plush Plant. Broad velvet rosettes, tinged with red and covered with short hairs	2-3" RC	.90	7.50	36.25	70.00
Echeveria (Graptopetalum or Brynesia weinbergii.) The Ghost Plant. Rosettes that appear to be carved from white marble	1 1/2-2 1/2" RC	.40	3.00	13.75	25.00
Euphorbia caput-medusa major. Giant's Chrb. Columnar, knobby gray-green	2-3" RC	.40	3.00	13.75	25.00
Euphorbia mammillaris. Fat Corn Cob. Stout with many ribs	2-3" RC	.40	3.00	13.75	25.00
Euphorbia submammillaris. Corn Cob. Stout, knobby, green columns	1 1/2-2" RC	.40	3.00	13.75	25.00
Euphorbia submammillaris. Larger	3-5" RC	.60	5.00	23.75	45.00



C. Argentea



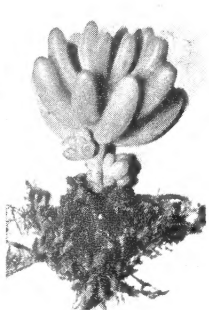
Crassula Imperialis



F. tigrina



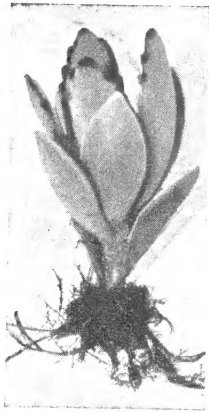
Aloe Variegata



S. Pachyphyllum

Crassula argentea. Crassula arborescens or Jade Plant to the nursery trade. Well colored, bronzed leaves with red edge. Branched	3-4" RC	.40	3.00	13.75	25.00
Crassula cultrata. Trout Spinner. Compact, branched plants. Small, bronzed leaves	2-4" RC	.40	3.00	13.75	25.00
Crassula hybrid No. 1. Fawn Ears. Branched with small, thick, reddish leaves	2-4" RC	.35	2.50	11.25	20.00
Crassula hybrid No. 2 Teaspoon Crassula. Medium sized, thin, curved, reddish leaves. A favorite	2-4 RC	.35	2.50	11.25	20.00
Crassula imperialis. Fox Tail. The very popular new heavy Lycopodioides type Crassula. Freely branching with vivid dark green leaflets	2-4" RC	.35	2.50	11.25	20.00
Crassula lycopodioides. Toy Cypress. Branching, with moss-like leaflets	2-4" RC	.35	2.50	11.25	20.00
Crassula lycopodioides, pseudolycopodioides, imperialis and Sedums moranese and sexangulare form a group of fillers that are to dish garden what "Gyp" is to floral arrangements. They may be broken up or used en masse for ground covers or to lighten the more massive plants.					
Crassula perforata. (perforata). Necklace Plant or String o' Buttons	2-3" RC	.40	3.00	13.75	25.00
Crassula pseudolycopodioides. Skinny Fingers. Branching with moss-like dark green leaflets. Holds up well in poor light	2-4" RC	.35	2.50	11.25	20.00
Crassula rupestris (monticola). Rosary Plant. A companion to Perforata	2-3" RC	.40	3.00	13.75	25.00
Crassula tetragona. Japanese Pine. Small trees with tiny leaves arranged in four rows. May be sprayed with white or colored					

Faucaria bosscheana. Baby Tiger Jaw. Small, tight-toothed rosettes	1 1/2-2 1/2" RC	.60	5.00	23.75	45.00
Faucaria tigrina. The most popular Tiger Jaw. Rosettes of queerly-toothed leaves. Yellow flowers	1 1/2-2" S.	.40	3.00	13.75	25.00
Faucaria tigrina	2-3" P	.60	5.00	23.75	45.00
Gasteria hybrids. Ox Tongue. Bow Tie or Duck Wings. Opposing thick, white-dotted leaves. Salmon flower	1 1/2-2" S	.40	3.00	13.75	25.00
Gasteria hybrids, larger	2-4" P	.60	5.00	23.75	45.00
Gastroaloe Spotted Beauty. A brand new novelty. Rosettes of broad, tapering, dark green leaves bearing raised pearl-like dots. A wonderful Haworthia-like plant that does well in poorly lighted places	2-2 1/2" P	.60	5.00	23.75	45.00
Gastroaloe Spotted Beauty	2 1/2-4" P	.85	7.50	36.25	70.00
Haworthia cymbiformis. Sculptured Jade. Thick-leaved plants with translucent windows that admit light to the center of the leaves	1 1/2-2" RC	.60	5.00	23.75	45.00
Haworthia cymbiformis	2-3" RC	.90	7.50	36.25	70.00
Haworthia margaritifera. Wart Plant, Hart's Tongue or Crown of Pearls. Rosettes of long tapering leaves, dotted with white granules	1 1/2-2" RC	.60	5.00	23.75	45.00
Haworthia margaritifera	2-3" RC	.90	7.50	36.25	70.00
Haworthia margaritifera	3-5" RC	1.20	10.00	48.75	95.00
Haworthia subfasciata. With dots in transverse rows.	1 1/2-2" RC	.60	5.00	23.75	45.00
Kalanchoe. See Bryophyllum also.					
Kalanchoe marmorata. Pen Wiper Plant. Large blue leaves with irregular brown and purple spots	2-3" RC	.40	3.00	13.75	25.00
Kalanchoe somaliensis. Jack Frost's Paint Brush. Broad, blue leaves tinted and shaded with orange and rose	2 1/2-4" RC	.45	3.50	16.25	30.00



K. tomentosa

Kalanchoe tomentosa. Pussy Ears or Panda Plant. Blue leaves covered with white velvet, scalloped edges bearing brown spots	2-3" RC	.60	5.00	23.75	45.00
Kleinia repens. Blue Chalk Sticks. Pickle-shaped, blue leaves around a central stem. Unusual and very colorful	2-3" RC	.40	3.00	13.75	25.00
Portulacaca afra. Elephant Bush. Dwarf tree, red stems, green leaves	2-3" RC	.35	2.50	11.25	20.00
Portulacaca afra. Larger	3-5" P	.45	3.50	16.25	30.00
Schoenlandia algoensis. Bird's Beak. Small, hard leaves in pairs on stem	2-3" RC	.40	3.00	13.75	25.00
Sedum adolphii. Golden Sedum. Tall with plump, yellow leaves	2-3" RC	.40	3.00	13.75	25.00
Sedum guatemalense. Christmas Cheer. Glossy red-tinted jelly bean leaves	2-3" RC	.35	2.50	11.25	20.00
Sedum multiceps. Baby Joshua Tree. Grottesquely branching plant with terminal tufts of moss-like green leaves.	1½-2" RC	.40	3.00	13.75	25.00
Sedum pachyphyllum. Jelly Beans. Fat blue-green leaves with red tips	2-3" RC	.35	2.50	11.25	20.00
Sedum praealtum crests. Colorful Coronet. Fan-shaped with bronzed leaves	2-3" RC	.40	3.00	13.75	25.00
Sedum praealtum crests. Larger	3-5" RC	.60	5.00	23.75	45.00
Sedum sexangulare. Lilliputian Grapes. Well branching plants with tiny green leaves in clusters. Good filler and ground cover	2-3" RC	.35	2.50	11.25	20.00
Sedum treleaseii. Silver Sedum. Erect stems bearing plump, mealy-white leaves. One of the most attractive Sedums	2-3" RC	.40	3.00	13.75	25.00
Sempervivum calcareum. Silver gray rosettes with rich brown tips.	1-1½" P	.40	3.00	13.75	25.00
Sempervivum fimbriatum. Tufties. Small, compact, green rosettes with a tuft on the tip of each leaf	1-1½" RC	.35	2.50	11.25	20.00
Sempervivum tectorum. House Leek. Clustering green rosettes, brown tipped	1½-2" RC	.35	2.50	11.25	20.00
Stapelia giant hybrids. Star Fish Flower. Attractive cactoid, columnar plants, branching from base. Hairy 3-6" flowers in fall and winter	3-5" RC	.40	3.00	13.75	25.00
Stapelia variegata. Toad Plant. Unusual cactoid plant. Freely branched	2-3" RC	.40	3.00	13.75	25.00
Umbilicus chrysanthus. Belly Button. Clustering, yellow-green, tight rosettes	1-2" RC	.35	2.50	11.25	20.00
Yucca whipplei. Candle of the Lord. Rosettes of narrow gray-green leaves	3-5" S	.40	3.00	13.75	25.00



Cephalocereus senilis



C. Hybrid #1



C. Tetragona



Echinopsis seedling

California Grown Dish Garden Assortments

The assortments we ship are well-rooted, clean and healthy plants grown especially for the small pot plant and dish garden trade. We ship them bare root, properly and lightly packed, so that you may expect a hundred salable plants out of every hundred purchased. Good plants are worth good packing.

Our assortments are not "loaded" with junk. They are carefully selected kinds, in well-balanced assortments. We ship equal numbers of each kind that we include, in all assortments, except Dog Tail assortments. Those who buy in small lots and who are not thoroughly familiar with cactus and succulents, will find our assortments more useful than their own selections. We label free with printed labels upon request, but only when labeling is requested.

CACTUS ASSORTMENT

Order by Number—	Per 100	500	1,000
1. Miniature cactus in all types for 1-1½" pots	\$3.00	\$13.75	\$25.00
2. Cactus in all types from 1 in. globular to 3 in. tall kinds, for 1½ to 3" pots	3.00	13.75	30.00
3. Same as No. 2, but without flat padded Opuntias, suitable for 1½ to 2½" pots	3.00	13.75	25.00
4. Cactus in all types, but in larger sizes than in No. 2 for 2½ to 3½" pots	5.00	23.75	45.00
5. Same as No. 4, but without flat padded Opuntias, suitable for 2 to 3" pots	5.00	23.75	45.00
6. Dog tail types especially grown and suitable for tails in pottery, 2-3" tall	2.50	11.25	20.00
8. Tall columnar cactus in at least eight varieties 2-3" tall	3.00	13.75	25.00
9. Larger columnar types in at least five varieties 3-5" tall	5.00	23.75	45.00
11. Flat, jointed Opuntias in many varieties 2-3" tall	2.50	11.25	20.00
12. Flat padded Opuntias in larger sizes, mostly with ears, 3-6" tall	5.00	23.75	45.00
13. Extra-choice slow growing cactus, assorted, for 1½-2½" pots	7.50	36.25	70.00

SUCCULENT ASSORTMENTS

24. Choice slow-growing MINIATURE SUCCULENTS in all types for 1-1½" pots	3.00	13.75	25.00
25. Colorful quick-growing succulents, as Sedums, Crassulas, in variety for 1½-3" pots	3.00	13.75	25.00
27. Colorful succulents, Kalanchoes, Sedums, Crassulas, etc., in larger sizes for 2½-4" pots	5.00	23.75	45.00
28. Choicer succulents, as Gasterias, Aloes, Stapelias, Echeverias, for 1½-3" pots	3.00	13.75	25.00
29. Hard succulents as Aloes, Gasterias, Haworthias, Faucaria, Euphorbias, 1½-3" pots	5.00	23.75	45.00
30. General assortment of all types of succulents for use in 1½-3" pots	3.00	13.75	25.00
31. General assortment of all types of succulents in larger sizes for 2½-4" pots	5.00	23.00	45.00
32. Deluxe succulent assortment of choice kinds for 1½-3" pots	7.50	36.25	70.00

GATES SAMPLERS

Owing to the great number of kinds we offer, we do not send out free samples. In order to show what the different kinds, sizes and prices are, we make up GATES SAMPLER ASSORTMENTS of all kinds and sizes in stock, ranging in price to 15c each, labeled with printed labels and priced per 100, packed F.O.B. Corona as follows: Cactus only \$3.00, Succulents only \$3.00, Cactus and Succulents combined \$5.50. NOTE:—No specified number of plants is promised, but Gates Samplers always give good value and on account of the cost of individual labeling a second Gates Sampler will not be shipped to a customer within ninety days from the previous shipment. The COMBINED GATES SAMPLER contains over a hundred plants.