

Historic, Archive Document

Do not assume content reflects current scientific knowledge, policies, or practices.

62,09

FALL 1943 Bulbs

SUNSET LILY (*Pardalimum Giganteum*)

This spectacular lily is brilliant orange-red with yellow tint at the base, and the petals beautifully marked with amber brown dots. Depending on the fertility of the soil they grow to a height of 5 to 6 feet, bearing large clusters of lovely flowers in mid-summer.

Easy to grow and thrives under varied soil and climatic conditions. Plant 8 inches deep.

Large bulbs, 50c each; \$4.00 per 12.
Medium size bulbs, 35c each; \$3.00 per 12.



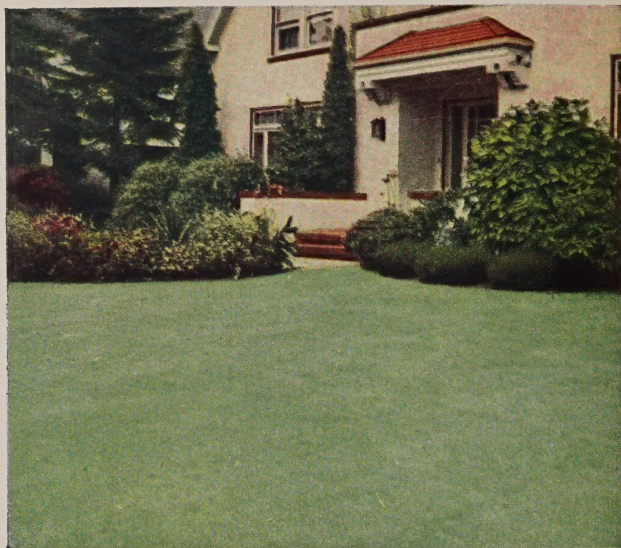
LIBRARY
OCT 5 1943
U. S. Department of Agriculture

HALLAWELL SEED CO.

SAN FRANCISCO, CALIFORNIA

HALLAWELL'S LAWN GRASSES

Your lawn will be only as good as the seed you sow, and the seed bed you prepare. The seed you sow is the least expensive item used in a lawn. Give your lawn a good start with HALLAWELL'S carefully selected high quality lawn seeds.



HALLAWELL'S EVERGREEN LAWN MIXTURE

HALLAWELL'S EVERGREEN LAWN MIXTURE

Here is a lawn mixture that will please you in every way. There are thousands of lawns of Evergreen in Northern California. It remains green throughout the year and thrives in climates from cool San Francisco to the warmer interior valleys.

EVERGREEN LAWN MIXTURE contains several of the most desirable small bladed grasses. Mowed at regular intervals it is a velvety dark green color and soon forms a thick

cushion turf. It makes an enduring lawn, one that will stand reasonable trampling without injury and after the turf is well established, it is resistant to many of the usual lawn ailments.

A good seed bed will encourage deep rooting and it is well to mix peat, leaf mold, or other similar weed-free organic materials into the soil before sowing the seed.

(Lb. 90c) (5 lbs. \$4.25)

HALLAWELL'S LAWN CARPET MIXTURE. This is predominantly a mixture of bent grasses, for those desiring a carpet-like lawn of fine texture and rich color. The best varieties of bent grass have been combined with other fine leaved varieties, in the proper proportion to give maximum serviceability and uniform attractiveness through the year. Sow one pound to 250 sq. ft. (Lb. \$1.25) (5 lbs. \$6.00)

HALLAWELL'S PARK LAWN MIXTURE. A formula mixture of hardy, fine bladed grasses. It provides an excellent turf which will withstand hard usage. Sow one pound to 100 square feet. (Lb. 70c) (5 lbs. \$3.25)

HALLAWELL'S SHADY NOOK MIXTURE. Genuine fine-bladed shade grasses in a blend suitable for growing in shaded corners and under trees. A Hallawell-formula-mixture. Sow 1 pound to 150 square feet. (Lb. \$1.50) (5 lbs. \$7.00)

ASTORIA BENT. Spreads from underground rootstalks, and produces a splendid rich green turf of upright growth and fine texture. Sow one pound to 500 square feet. Certified seed. (Lb. \$1.50) (5 lbs. \$7.00)

HIGHLAND BENT. A hardy, fine-leaved bent with upright habit of growth. It creeps by strong and underground rootstocks, succeeds in moist to medium dry acid soils, and when established, produces a fine turf

of beautiful light green color. Reports from interior valley sections indicate that it withstands the dry summer heat, and produces a good serviceable lawn. Sow one pound of seed to 500 square feet. (Lb. \$2.00) (5 lbs. 9.50)

SEASIDE BENT (Coos County Bent). A true creeping bent which roots at each joint where it contacts the soil, producing a thick, smooth, and enduring turf. Once established, the growth is upright, of fine texture, and a beautiful rich green. Seaside Bent succeeds for golf course and lawn under varied soil and climatic conditions. Sow one pound to 500 square feet. Certified seed. (Lb. \$1.50) (5 lbs. \$7.00)

CHEWING'S FESCUE. Produces a dense, lasting turf, succeeding even under adverse conditions. Hallawell's thoroughly re-cleaned seed. (Lb. \$1.50)

KENTUCKY BLUE GRASS, Hallawell's Select Grade. (Lb. 75c) (5 lbs. \$3.50) (10 lbs. \$6.50)

RED TOP GRASS. Gives a quick effect and succeeds on all soils, though doing best on moist soils. Should be in all lawn mixtures. (Lb. 50c) (5 lbs. \$2.25)

WHITE CLOVER. Highest quality re-cleaned seed. Sow one pound to 300 square feet. (Lb. \$1.75)

TULIPS

Best planting time for Tulips is October, November. Plant 5 or 6 inches apart. Prepare the soil to a depth of 12 or 15 inches and set the bulbs 7 to 10 inches beneath the surface. Deep planting retards top growth and gives ample time for a good root system to develop. The longer it takes for tulip tops to show through the surface, the better the flowers will be. To conserve space, grow vegetables on top of the tulip bed.

May we substitute? If so, will you please mention a few second choice?

AFTERGLOW (Darwin). Deep rosy-orange with salmon edges; inside is glossy orange with yellow base. (\$1.50 per 12) (\$10.00 per 100)

ALABASTER (Mayflowering). Pure white with small yellow center and ivory stamens. (\$2.00 per 12) (\$14.00 per 100)

ARGO (Mayflowering). Yellow, edged and stippled coppery brown, turning to golden yellow with orange markings. (\$1.50 per 12) (\$10.00 per 100)

AVIATEUR (Triumph). Shining carmine red, bordered white. (\$2.00 per 12) (\$14.00 per 100)

BARBARA PRATT (Mayflowering). Light cochineal carmine, edged lilac rose, yellow base. (\$1.50 per 12) (\$11.00 per 100)

BARON DE LA TONNAYE (Darwin). Bright rose margined blush. (\$1.50 per 12) (\$10.00 per 100)

BEVERLY (Cottage). Tall flame orange. (\$1.50 per 12) (\$11.00 per 100)

BLUE EAGLE (Darwin). Large shining blue-purple flowers. (\$1.50 per 12)

BLUE FLAG (Double Mayflowering). Huge double flower, softly tinted violet blue. (\$2.50 per 12)

BRONZE QUEEN (Breeder). Soft buff shaded bronze; inside tinged golden bronze. (\$1.50 per 12) (\$11.00 per 100)

CARRARA (Mayflowering). Large, round pure white flowers. (\$2.00 per 12) (\$14.00 per 100)

CITY OF HAARLEM (Darwin). Bright vermilion scarlet with blue-black base. (\$1.75 per 12) (\$12.00 per 100)

CLARA BUTT (Darwin). Lovely salmon rose of large size on good stems. (\$1.25 per 12) (\$9.00 per 100)



Dillenburg



City of Haarlem

COXA (Double Mayflowering). Large full double flowers scarlet tipped white. (\$2.50 per 12)

DIDO (Mayflowering). Deep pink with salmon suffusion and slightly edged orange. (\$1.75 per 12) (\$12.00 per 100)

DILLEBURG (Breeder). Lovely orange-red with bronze yellow edge. Inside glistening orange. (\$1.75 per 12) (\$12.00 per 100)

FARNCOMBE SANDERS (Darwin). Scarlet with rosy sheen and clear white base. (\$1.50 per 12) (\$11.00 per 100)

FEU BRILLIANT (Darwin). Glowing scarlet with white margined deep blue base. (\$1.50 per 12) (\$11.00 per 100)

GIANT LILAC (Darwin). Large dark lilac, one of the most striking colors in our Nursery Garden Trials. (\$1.50 per 12) (\$11.00 per 100)

GOLDEN HARVEST (Mayflowering). Lovely soft yellow with ivory stamen. (\$2.50 per 12)

INGLESCOMBE YELLOW (Mayflowering). Rich and glossy canary-yellow. (\$1.25 per 12) (\$9.00 per 100)

KING HAROLD (Darwin). Deep mahogany-red with purple black base. Rich. (\$1.50 per 12) (\$11.00 per 100)

LA TULIP NOIRE (Darwin). Very deep maroon with velvety sheen. The darkest tulip. (\$1.50 per 12) (\$11.00 per 100)

MRS. KRELAGE (Darwin). Rose pink, tinted lilac, very large. (\$1.50 per 12) (\$10.00 per 100)

MRS. MOON (Mayflowering). Popular dark yellow with reflexed pointed petals; ivory stamen. (\$1.75 per 12) (\$12.00 per 100)

PRINCESS ELIZABETH (Darwin). Lilac-rose edged rose with contrasting white base. Very beautiful. (\$1.50 per 12) (\$10.00 per 100)

REVEREND EWBANK (Darwin). Soft heliotrope-lilac. Splendid for bedding with yellow tulips. (\$1.50 per 12) (\$10.00 per 100)

YELLOW GIANT (Darwin). Large, tall, bright yellow with blackish base and dark anthers. Striking. (\$1.50 per 12) (\$11.00 per 100)

ZWANENBURG (Darwin). Pure white, black stamen. Still one of the best whites. (\$2.00 per 12) (\$14.00 per 100)

HALLAWELL'S EXTRA FINE MIXED—(\$1.25 per 12) (\$9.00 per 100)

GROW DAFFODILS and NARCISSUS in YOUR VICTORY GARDEN

Here is how you may have lovely daffodils in your Victory Garden. Prepare the soil 12 to 15 inches deep, plant the bulbs 8 to 10 inches deep and 5 to 6 inches apart. Plant fibrous or short rooted vegetable crops on top, lettuce, endive, radishes, spinach and early beets.

EASTERN ORDERS—Please see page 11 for Mail Order information.

LARGE TRUMPET DAFFODILS

The figure following the name indicates relative flowering time.

AEROLITE (2). Large golden trumpet with primrose perianth. Unusual for the great width of the flat opening outer petals and splendid lasting qualities of the flower. Extra size bulbs.

(\$2.00 per 12) (\$14.00 per 100)

EMPEROR (4). Pure yellow trumpet of good size and rich primrose perianth with wide overlapping petals.

Large: (\$1.00 per 12) (\$7.50 per 100)

Extra: (\$1.50 per 12) (\$10.00 per 100)

HECTOR TREUB (1). Uniform golden yellow of beautiful proportions; overlapping petals; early forcer. Described as an improvement over King Alfred.

(\$1.50 per 12) (\$11.00 per 100)

KING ALFRED (1). Golden yellow; the trumpet is of beautiful form with deeply frilled mouth; extremely large, bold flower and strong grower.

Large round bulbs: (\$1.50 per 12) (\$10.00 per 100)

Extra size, should produce 2 to 4 flowers per bulb: (\$2.00 per 12) (\$14.00 per 100)

Jumbo bulbs, 3 to 5 flowers per bulb: (\$3.00 per 12) (\$21.00 per 100)

MRS. E. H. KRELAGE (4). A charming variety with pure white perianth and a creamy white trumpet of perfect form which fades to a pure white as the flower matures. Extra size bulbs.

(\$3.00 per 12) (\$21.00 per 100)

LOVENEST (1). One of the very few members of the "pink daffodil" class; among the daintiest of all the "Trumpets." Trumpet saffron-yellow turning to apricot-pink. A charming daffodil.

(\$3.00 per 12) (\$20.00 per 100)

OLYMPIA (4). Giant flower similar to "Emperor" with yellow trumpet and lighter perianth. A magnificent variety of strong growth. Extra size bulbs.

(\$1.50 per 12) (\$11.00 per 100)

SPRING GLORY. Pure yellow trumpet, white perianth, excellent stem. A favorite garden variety.

(\$1.50 per 12) (\$10.00 per 100)

TRESSERVE (3). Rich yellow trumpet with canary-yellow perianth; an extremely large flower of beautiful form. Extra size bulbs.

(\$1.50 per 12) (\$11.00 per 100)

TRUMPET MIXTURE. A splendid mixture of long Trumpet types. (\$1.00 per 12) (\$7.50 per 100)

DOUBLE DAFFODILS

THE PEARL (2). Dainty, creamy white interspersed with sulphur yellow at center. Moderately double.

(\$1.25 per 12) (\$8.00 per 100)

TWINK (3). A fine, nearly full double flower, with alternating soft primrose and clear orange petals. A charming variety.

(\$3.00 per 12) (\$20.00 per 100)

VON SION (1). The largest double yellow trumpet variety; free flowering and very popular.

(\$1.50 per 12) (\$10.00 per 100)

SWEET SCENTED JONQUILS

CAMPANELLE RUGULOSUS SINGLE. Rich yellow fragrant flowers, two to four on a stem.

(\$1.00 per 12) (\$7.00 per 100)

SIMPLEX (SINGLE SWEET SCENTED). The very small blossoms are a rich yellow and most fragrant; very free flowering. Excellent for the rockery.

(\$1.50 per 12) (\$10.00 per 100)



Lovenest

MINIATURE DAFFODILS

(For the Rock Garden or Pots)

BULBODIUM CONSPICUOUS (Hoop Petticoat) (2). This variety grows only 6 inches tall with fine rush-like foliage. The flowers are bright golden yellow of hoop petticoat form. Prefers a dampish, sandy peat soil. Plant 2 to 2½ inches deep.

(75c per 12) (\$5.50 per 100)

MOONSHINE. A beautiful Triandrus hybrid, star shaped creamy white flower, often three to a stem, drooping gracefully, very beautiful and a great favorite especially for the rock garden or for naturalizing in the shade.

(\$1.25 per 12) (\$9.00 per 100)

SILVER CHIMES. One of the most desirable of the small-cupped Triandrus hybrids; frequently producing heads of six or more flowers with pure white perianth and delicate pale primrose cup. Ideal for pots in a cool greenhouse. (\$1.00 each)

POLYANTHUS NARCISSUS

PAPER WHITE GRANDIFLORA (1). Pure white star-shaped blossoms in clusters; very early free flowering and fragrant. Extra large size.

(\$1.00 per 12) (\$7.50 per 100)

GRAND SOLEIL D'OR (3). A rich, clear yellow with orange cup; very fragrant and handsome. Large bulbs.

(\$1.00 per 12) (\$7.50 per 100)

CHINESE SACRED LILY (2). Fragrant white star-shaped blossoms with yellow cups; flowers very early and freely. Large bulbs.

(\$1.50 per 12) (\$11.00 per 100)

CROWN DAFFODILS

The figure following the name indicates relative flowering time.

ALCIDA (Barrii) 4. Giant star-shaped flowers; wide pure white petals, and broad yellow cup frilled orange-red.
(\$1.25 per 12) (\$9.00 per 100)

ANNA CROFT (Barrii) 2. A variety of distinction; light primrose perianth and crinkled trumpet of deep yellow shading to orange.
(\$1.25 per 12) (\$9.00 per 100)

BATH'S FLAME (Barrii) 1. Yellow perianth, deep yellow cup, with broad edge of orange-scarlet. Petals very long, giving the flower a distinct and outstanding character. Long stems.
(\$1.20 per 12) (\$8.00 per 100)

CROESUS (Incomp.) 3. Wide, overlapping outer petals; creamy yellow in color. The broad fluted crown is a rich orange. A lovely, free flowering variety.
(\$1.25 per 12) (\$9.00 per 100)

DIANA KASNER (Barrii) 3. Large fluted, rich yellow cup with scarlet edge, encircled in artistic contrast with a snow white perianth.
(\$1.20 per 12) (\$8.00 per 100)

HERA (Leedsii) 3. The perianth is broad petaled and creamy white, while the deeply frilled cup is of the same shade, with a dainty edging of light primrose.
(\$1.00 per 12) (\$7.00 per 100)

JOHN EVELYN (Incomp.) 3. A striking new variety with a pure white perianth 4 to 5 inches across. The flat lemon-yellow cup, 2 inches in diameter, is densely frilled and deeply fluted.
(\$3.00 per 12) (\$20.00 per 100)

LORD KITCHENER (Leedsii) 2. Broad, flat pure white perianth, pale primrose crown. A splendid flower.
(\$1.25 per 12) (\$9.00 per 100)

MRS. NETTIE O'MELVENY. A delightful flower with pure white perianth and cup of clear lemon-yellow, with orange picottee.
(\$1.20 per 12) (\$8.00 per 100)

QUEEN OF THE NORTH. Broad glistening white perianth surrounding a soft primrose yellow cup with a finely crinkled, sulphur-yellow rim.
(\$1.20 per 12) (\$8.00 per 100)



Cheerfulness

RED BEACON (Barrii) 3. A most striking and attractive variety, with the contrast of its fluted cup of fiery orange-red, against an ivory-white perianth.
(\$1.25 per 12) (\$9.00 per 100)

SHORT CUP MIXTURE. A well balanced assortment of Leedsii or short-cupped varieties.
(\$1.00 per 12) (\$7.00 per 100)

POET'S NARCISSUS

CHEERFULNESS. A double Poetaz bearing three or four double white flowers on long graceful stems. Splendid for cutting and makes a fine showing in the garden.
(\$1.00 per 12) (\$7.00 per 100)

FRANS HALS (Poetaz) 2. The finest of the Poetaz group; creamy white perianth and sparkling yellow cup.
(90c per 12) (\$6.00 per 100)

HOMER (Poeticus) 3. Snowy white petals with dark red rimmed eye; a fine variety.
(75c per 12) (\$5.50 per 100)

KLONDYKE. Rich yellow perianth, darker cup, one of the finest yellows.
(\$1.00 per 12) (\$7.00 per 100)

ORNATUS MAXIMUS (Poeticus) 2. Pure white flowers with orange cup, edged with crimson; fine for cutting.
(75c per 12) (\$5.50 per 100)

BULB BED COVERING

For a delightful spring display, sow these seeds on top of the bulb beds after the bulbs are planted. One-half ounce of seed covers about 100 square feet.

ALYSSUM, CARPET OF SNOW. Pkt. 15c; ¼ oz. 40c; oz. 85c.

LINARIA (Fairly Bouquet). Pkt. 15c; ¼ oz. 45c.

NEMOPHILA INSIGNIS (Baby Blue Eyes). Pkt. 10c; oz. 40c; ¼ lb. \$1.25.

NEMOPHILA MIXED. Pkt. 10c; ½ oz. 25c; 1 oz. 40c; ¼ lb. \$1.25.

VIRGINIAN STOCK MIXED. Pkt. 10c; large pkt. 35c; oz. 75c.



John Evelyn



Caladium, Fancy Leaved

AMARYLLIS

VITTATA HYBRIDS (*Hippeastrum*). This is pre-eminently a window garden variety producing under simplest conditions, one or two spikes which are crowned with from three to six gigantic blooms, ranging in color from pure white grounds with various markings of rose or red to self colors as crimson, scarlet, cerise, etc. Large strong bulbs.

Assorted Shades: (70c each) (\$7.00 per 12)

Red Shades: (85c each) (\$8.50 per 12)

ANEMONES

Set the tops of the bulbs 1 inch below the surface and 6 inches apart. Avoid over-watering before growth starts. They succeed best in a rich and rather heavy soil.

BLUE POPPY. Deep violet-blue; single.

HIS EXCELLENCY. Dazzling scarlet.

THE BRIDE. Pure white, yellow stamens.

ST. BRIGID. A distinct strain producing large flowers, mostly semi-double, with finely divided petals in a large variety of colors. Large bulbs.

Each of above:

(80c per 12) (\$6.00 per 100)

DE CAEN or Giant Single Mixed. Large size bulbs.

(75c per 12) (\$5.00 per 100)

CALLA—ZANTEDESCHIA

PINK CALLA (*Rehmannii*). Medium sized flowers of rose pink, shading to cerise when fully open. An unusual Calla. Height 10 inches.

(65c each) (\$6.50 per 12)

YELLOW CALLA (*Elliottiana*). The true yellow-flowering Calla. The flowers are bright yellow and the foliage dark green, spotted white. Plant bulbs 1 inch deep in well drained soil after cold weather is over.

Medium bulbs: (25c each) (\$2.50 per 12)

Large bulbs: (40c each) (\$4.00 per 12)

WHITE CALLA (*Aethiopica*). Strong bulbs.

(20c each) (\$1.75 per 12)

CALADIUM

FANCY LEAVED VARIETIES

Suitable for pot culture for living room, sun porch, or conservatory decoration. They may also be used in window boxes where the situation is protected from wind and strong sunlight.

Start in sand during the early spring months, and plant into pots before the leaves unfold. Place your order early for January-February delivery.

Each of the following:

(35c each) (\$3.50 per 12)

CANDIDUM. Snow white leaf with green veins.

DR. E. O. GROVER. Bright rose-red center with red ribs.

DR. T. L. MEAD. Very deep red with brown to black shadings.

J. D. EISELE. Center of leaf is scarlet with green blotches and green border.

JOHN HACHMEISTER. Lovely deep rose leaves.

CALOCHORTUS

MARIPOSA TULIPS. The three-petaled flowers are cup-shaped and wonderfully marked with eyes, dots, and pencilings in rich colors. Plant 2 inches deep in well-drained soil in a sunny position.

(65c per 12) (\$4.50 per 100)

DIELYTRA—BLEEDING HEART

(December delivery)

SPECTABILIS. An old-fashioned favorite. Its long racemes of graceful, heart-shaped pink flowers are very attractive. Does well in any part of the hardy borders, and especially valuable for shady places.

Large clumps: (75c each) (\$7.50 per 12)

ERYTHRONIUM

(Dog's-tooth Violet, Trout Lily, Fawn Lily)

Charming woodland plants with richly-mottled leaves, bearing small lily-like flowers from February into April. The colors range from white, through shades of pink, to lavender and yellow.

Plant upright 2 or more inches apart, covering the tip with 2 or 3 inches of soil. Do not permit the bulbs to become dry out of the ground.

Mixture of colors: (65c per 12) (\$4.50 per 100)



Anemone, St. Brigid

TUBEROUS BEGONIAS

Usually ready for shipment about December. Place orders now.

HALLAWELL'S TUBEROUS BEGONIAS are the finest strain it is possible to buy. Outstanding seed plants in each type are selected each year during the blooming season, then the seedlings are rogued for type, color, and quality, to insure the very best results for our customers. We have only one quality—THE BEST, and that quality goes to all purchasers of our tubers.

Prices, all types, extra large tubers: (40c each) (\$4.00 per 12) (\$27.50 per 100) postpaid. On orders under \$2.00 send 25c for handling charge.

DOUBLE CAMELLIA FLOWERED TYPE. Colors: Apricot, Orange, Pink, Red, Rose, Salmon, White, Yellow.

CRISPA or FRILLED TYPE. Orange, Red, Rose, Salmon, White, Yellow.

DOUBLE FRILLED or CARNATION FLOWERED TYPE. A popular type in an assortment of lovely colors.

SINGLE CRESTED TYPE (Cristata). This is a very beautiful type of begonia. Mixed colors.

GIANT SINGLE TYPE. Individual flowers of this popular type grow to a very large size. Mixed colors.

DOUBLE HANGING TYPE. Colors: Apricot, Orange, Rose, Scarlet, White, Yellow.

(40c each) (\$4.00 per 12) (\$27.50 per 100)

MULTIFLORA MIXED. Dwarf, bushy plants bearing masses of double flowers about 1½ to 3 inches in diameter. Suitable for outdoor bedding.

(40c each) (\$4.00 per 12) (\$27.50 per 100)

For a real gardening thrill visit our
BLUE GLASS NURSERY GARDENS

16th AVENUE AT SLOAT BOULEVARD

You will find a large variety of interesting plants.



Single Crested Type

TUBEROUS BEGONIA

Upper, Double Camellia Flowered Type

Lower, Crispa or Frilled Type



Freesia, Hallawell's New Giant Colored

FREESIAS

Freesias are prized for their delightful fragrance. If the bulbs are left in the ground they multiply rapidly and early fragrant flowers for cutting. Plant 3 inches deep and 3 inches apart.

HALLAWELL'S NEW GIANT WHITE. In addition to its fragrance this charming white freesia is the largest flowered variety we have ever offered. It has good stems, too, and is one of the finest early cut flowers.

Medium sized bulbs: (40c per 12) (\$3.00 per 100)

Large sized bulbs: (65c per 12) (\$4.50 per 100)

HALLAWELL'S NEW GIANT COLORED FREESIAS. These are the best of the large flowered improved sorts.

Light Yellow, Pink, Bright Red, Blue.

Above: (65c per 12) (\$4.50 per 100)

Colored Mixture (includes no white):

(60c per 12) (\$4.00 per 100)

GLOXINIA

Planting time, January to March.

These exquisite semi-tropical plants require a warm, moist temperature, such as may be provided in the greenhouse or sun room. The magnificent flowers are of velvety texture and grow 4 to 6 inches in diameter.

BLACK PRINCE. Giant deep blue.

BRILLIANT. Giant blood red.

BRUNHILDE. Pure white.

MONTEREY ROSE. Soft rose.

RED ADMIRAL. Crimson.

SKY BLUE. Giant light blue.

Any of the above: (\$3.50 per 12) (\$25.00 per 100)

IXIAS

They are much admired for their brilliant colors and graceful flower stalks, which resemble a miniature *Gladolius*. They come in several shades and are fine for cutting, lasting several days in water. The bulbs should be planted 1 inch deep and 3 inches apart, and for best effect should be in beds or groups of 25 to 100 or more bulbs.

SPLENDID MIXTURE. Containing many colors.

(75c per 12) (\$5.00 per 100)

LEUCOCORYNE

GLORY OF THE SUN (*L. ixioides odorata*). The sweet-scented flowers are ethereal blue with yellow in the center, and last well after cutting. Planted 2 inches deep in a sunny, well-drained position, they bloom the first year under favorable conditions. Top size bulbs.

(\$1.25 per 12) (\$9.00 per 100)

LEUCOJUM—SNOWFLAKES

These are similar to Snowdrops but of stronger growth. The flowers are white, tipped with green, and are borne on stems 1 to 2 feet high.

(75c per 12) (\$5.50 per 100)

LILY OF THE VALLEY

(December delivery)

For outdoor culture they require a loose, rich soil and a moist, shady position. Set so that the tips are slightly above ground and at a distance of 3 or more inches apart.

Clumps for outdoor growing: (75c each) (\$8.25 per 12)

IXIOLIRION

PALLASII (Siberian Bluebells). A new hardy bulbous plant for the garden. The delicate blue, hyacinth-like flowers are produced in umbels on stems 12 to 18 inches long. They flower about the same time as bulbous iris, keep well, and are excellent for cutting.

(\$1.25 per 12) (\$9.00 per 100)



Ixiolirion

HALLAWELL'S GLADIOLUS

SELECTION OF THE FINEST VARIETIES

Six of a kind at the dozen rate; 50 at the hundred rate.

ALADDIN. A very large ruffled flower; deep salmon color.
(75c per 12) (\$5.00 per 100)

AVE MARIA. Perfectly formed, exquisite light blue flowers.
(75c per 12) (\$5.00 per 100)

BAGDAD. A charming Gladiolus of smoky old-rose. The throat is lighter and color deepens toward the edge of petals.
(75c per 12) (\$5.00 per 100)

BEACON. Bright salmon-red with cream throat. Grows very tall bearing huge spikes. Be sure to stake.
(75c per 12) (\$5.00 per 100)

BETTY NUTHALL. Glowing orange-pink with light yellow throat. Strong grower, good spike and perfect placement.
(60c per 12) (\$4.00 per 100)

COMMANDER KOEHL. Rich, deep scarlet-red with no markings or blotches. Wide open flowers on tall spikes.
(75c per 12) (\$5.00 per 100)

GATE OF HEAVEN. A new ruffled variety with large, bold flowers of a rich yellow shade.
(75c per 12) (\$5.00 per 100)

J. S. BACH. Salmon red shading lighter in the throat. Many florets open at one time, finely arranged on the spike.
(75c per 12) (\$5.00 per 100)

KING ARTHUR. Large ruffled florets of bright rosy lavender.
(75c per 12) (\$5.00 per 100)

MAID OF ORLEANS. Large pure white.
(60c per 12) (\$4.00 per 100)

MARGARET BEATON. An exquisite pure white, with small scarlet blotch.
(85c per 12) (\$6.00 per 100)

MINUET. Fine clear lavender. Splendid cut flower variety.
(65c per 12) (\$4.50 per 100)

MOORISH KING. The finest and largest flowered of the deep mahogany-red Gladiolus.
(85c per 12) (\$6.00 per 100)

MOTHER MACHREE. Lavender-gray with edges of petals overlaid salmon pink. An interesting color combination.
(75c per 12) (\$5.00 per 100)

NEW ERA. A lovely ruffled pink.
(75c per 12) (\$5.50 per 100)

PELEGRINA. Dark violet-blue, blotched slightly darker on two lower petals. One of the finest dark-blue shades.
(75c per 12) (\$5.00 per 100)

PICARDY. Glowing, shrimp or flesh-pink, without any markings. A very beautiful Gladiolus.
(60c per 12) (\$4.00 per 100)

ROYAL GOLD. We think this is the finest clear yellow.
(85c per 12) (\$6.00 per 100)

STAR OF BETHLEHEM. Exhibition white.
(75c per 12) (\$5.00 per 100)

TROUBADOR. An outstanding purple Gladiolus.
(75c per 12) (\$5.00 per 100)

VAGABOND PRINCE. An unusual bronze red with orange blotch.
(75c per 12) (\$5.00 per 100)

HALLAWELL'S SELECT MIXTURE. A mixture of the best named sorts in a great variety of colors.
(75c per 12) (\$5.00 per 100)

RAINBOW MIXTURE. A fine mixture of large flowering Gladiolus in a good variety of colors.
(50c per 12) (\$3.50 per 100)



GLADIOLUS—EARLY FLOWERING

(Baby Gladiolus)

This type of Gladiolus blooms in May or earlier. The flowers are borne on good stems; excellent for cutting. Plant 2 to 3 inches deep and 4 inches apart.

THE BRIDE. Pure white, daintily flecked with carmine in the throat.

PEACH BLOSSOM. Beautiful rosy blush, blotched with rose and cream.

SPIRITFIRE. Excellent red. Flowers slightly larger than other varieties.

LAVENDER QUEEN.

Each of above: (75c per 12) (\$5.50 per 100)

MIXTURE. All colors. (75c per 12) (\$5.50 per 100)

Complete Gladiolus Collection

TWO BULBS EACH of the 21 named Gladiolus listed at left, each variety labeled separately.

Total of 42 bulbs for.....\$3.00

2 Collections for.....\$5.70

HALLAWELL'S VEGETABLE SEEDS

For Fall and Winter Planting

The same dependable high quality, year after year. Hallawell's are proud to make their contribution to the war effort in the food production campaign. Under the strain of war conditions there has been no relaxation in our production department and you are assured of the usual dependable high quality seeds, plants and bulbs.

Prices of Vegetable Seeds are postpaid anywhere in U. S. A.

Market Gardeners ask for quantity prices.

TABLE BEETS

Prices, all varieties; (Pkt. 10c) (oz. 35c)

CROSBY'S EGYPTIAN. A good home garden variety.
DETROIT DARK RED. Large globe shaped.
EARLY WONDER. Medium early variety.
IMPROVED BLOOD TURNIP. Very early.

STOCK AND SUGAR BEETS

MAMMOTH LONG RED. Largest of the mangels; skin red, flesh white and red zoned.
(Pkt. 10c) (oz. 35c)
SUGAR BEET. May be used for sugar or for stock feed.
(Pkt. 10c) (oz. 35c)

BRUSSELS SPROUTS

Sow and cultivate same as cabbage.
(Pkt. 15c) (¼ oz. 60c)

BROCCOLI

ITALIAN GREEN SPROUTING. Rich in vitamins A, C.
(Pkt. 15c) (½ oz. 50c)

CABBAGE

Prices, all varieties: (½ oz. 60c) (oz. \$1.00)

ALL SEASONS. Large round heads.
COPENHAGEN MARKET. Early; round heads.
DRUMHEAD SAVOY. Round heads, crumpled leaves.
EARLY JERSEY WAKEFIELD. Small pointed heads.
EARLY DWARF FLAT DUTCH. Round flat heads.
GLORY OF ENKHUIZEN. Large round heads.
GOLDEN ACRE. Small round heads, grows quickly.
LARGE LATE FLAT DUTCH. Very large flat heads.
MAMMOTH RED ROCK. Round deep red heads.
MARION MARKET. Round heads about 4½ pounds.
CHINESE CABBAGE. Crisp and tender leaves.

CARROTS

Prices, all varieties: (Pkt. 10c) (½ oz. 30c) (oz. 50c)

CHANTENAY (Red Cored). Grows about 5 to 6 inches long.
DANVERS HALF LONG. About 6 to 7 inches long.
EARLY SCARLET HORN. Medium size, grows quickly.
OXHEART. For heavy soil, about 4 to 5 inches long.
FRENCH FORCING. Small round, crisp and early.
IMPROVED LONG ORANGE. Grows 10 to 12 inches long; tapering.

CAULIFLOWER

EARLY SNOWBALL. Medium size.
(Pkt. 25c) (¼ oz. \$1.75)

CHIVES

For flavoring soups and salads. (Pkt. 15c) (¼ oz. 75c)

COLLARDS

GEORGIA. A non-heading form of the cabbage family.
(Pkt. 10c) (oz. 20c)

ENDIVE

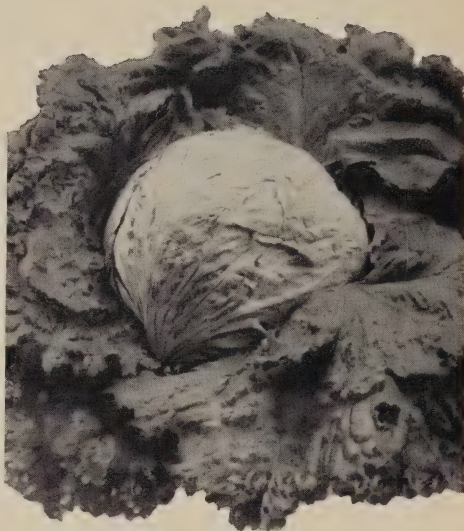
GREEN CURLED. Fine tender green, rich in vitamin A.
(Pkt. 10c) (½ oz. 25c) (oz. 40c)

BROAD-LEAVED BATAVIAN (Escarolle). Leaves are broad and thick.

(Pkt. 10c) (½ oz. 25c) (oz. 40c)

KALE

JERSEY. Tall growing for green chicken feed.
(Pkt. 10c) (oz. 50c)



Lettuce, Hallawell's No. 847

LETTUCE

Lettuce is a cool weather crop. Will stand some frost but not a hard freeze.

HALLAWELL'S NO. 847. The best heading lettuce. Plants should be 8 to 10 inches apart.

(Pkt. 10c) (½ oz. 35c) (oz. 60c)

HALLAWELL'S LOOSE LEAF. Leaves are brownish red. Plant thick in the row.

(Pkt. 10c) (½ oz. 35c) (oz. 60c)

EARLY CURLED SIMPSON. Large curled leaves.

(Pkt. 10c) (½ oz. 35c) (oz. 60c)

MIGNONETTE. Small compact heads.

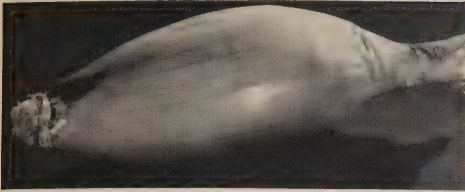
(Pkt. 10c) (½ oz. 35c)

CHICKEN LETTUCE. Green food for poultry.

(Pkt. 10c) (½ oz. 35c) (oz. 60c) (¼ lb. \$1.80)

LEEK

LARGE AMERICAN FLAG. For soup and salad flavoring.
(Pkt. 15c) (¼ oz. 50c)



Onion, Torpedo

ONION

In mild climates, sow onion seeds November to February for large onions to mature in mid-summer. Sow in beds and transplant while young, or they may be sown where they are to remain. Onions grown from seeds will seldom grow the objectionable seed stalk.

- TORPEDO. Sweet, mild, long oval-shaped red. (Pkt. 15c) (½ oz. 60c) (oz. \$1.00)
- AUSTRALIAN BROWN. Good keeper in hot climates. (Pkt. 10c) (½ oz. 60c) (oz. \$1.00)
- SWEET SPANISH (Riverside Strain). Very large, sweet and mild. (Pkt. 10c) (½ oz. 60c) (oz. \$1.00)
- EARLY SWEET SPANISH. For short season climates. (Pkt. 10c) (½ oz. 60c) (oz. \$1.00)
- RED WETHERSFIELD. Large size, pungent, purplish red. (Pkt. 10c) (½ oz. 60c) (oz. \$1.00)
- BUNCHING ONION (White). For small green onions. Any other variety may be used for bunching onion while they are small. (Pkt. 10c) (½ oz. 60c) (oz. \$1.00)
- YELLOW GLOBE DANVERS. Medium sized globe shape. (Pkt. 10c) (½ oz. 60c) (oz. \$1.00)

PARSLEY

- Prices, all varieties: (Pkt. 10c) (½ oz. 25c) (oz. 40c)
- DOUBLE CURLED.
- TRIPLE CURLED.
- EVERGREEN. Dark green foliage.

PEAS

Peas are a good cool weather crop. They will stand some frost but not a hard freeze. They may be grown during the winter months in San Francisco.

- Prices, all varieties: (Pkt. 10c) (½ lb. 30c) (lb. 50c)
- ALASKA. Quick maturing.
- AMERICAN WONDER. Quick maturing.
- LAXTON'S PROGRESS. Very large pods.
- THOMAS LAXTON. Large pods.
- DWARF TELEPHONE. 18 inches.
- MELTING SUGAR or EDIBLE POD.
- TELEPHONE or ALDERMAN. Tall, must be staked.

PARSNIPS

HOLLOW CROWN. Prepare the soil deep, they grow 10 to 12 inches down. (Pkt. 10c) (oz. 35c)

POTATOES

Potatoes must ripen 2 or 3 months after digging before they are ready to plant. Our high grade seed potatoes will be ready about December.

RADISH

- Prices, all varieties: (Pkt. 10c) (oz. 25c) (¼ lb. 75c)
- CRIMSON GIANT. Large round.
- EARLY SCARLET TURNIP. Small round.
- EARLY SCARLET GLOBE. Medium round.
- SPARKLER. Round white tip.
- FRENCH BREAKFAST. Half long.
- ICICLE. Long white.
- CALIFORNIA MAMMOTH WHITE. Winter.
- ROUND BLACK SPANISH. Winter.

SPINACH

Sow at regular intervals in mild winter climates. ½ oz. to 50 feet.

- Prices, all varieties: (Pkt. 10c) (oz. 20c) (¼ lb. 50c)
- HOLLANDIA. Thick green leaves.
- IMPROVED VIROFLAY. Long pointed leaves.
- PRICKLY SEEDED. Very hardy.

TURNIPS

- Prices, all varieties: (Pkt. 10c) (oz. 25c) (¼ lb. 75c)
- GOLDEN BALL. Good yellow variety.
- PURPLE TOP WHITE GLOBE.
- WHITE EGG. Pure white.



Radish, Scarlet Turnip



Radish, Sparkler

MAIL ORDER INFORMATION

Seeds Postpaid—All seeds listed in this catalog are sent postpaid.

Bulbs West of Rocky Mountains
All bulb orders west of the Rocky Mountains are sent postpaid.

Bulbs East of Rocky Mountains
All bulb orders east of the Rocky Mountains are sent postpaid, except Daffodils and others where noted. Due to the large size of our bulbs, 50c per dozen or \$2.50 per 100 should be added to apply on packing and postage.

Orders Under \$2.00
Send 25c for packing and postage on orders for less than \$2.00.

Sales Tax—California customers include 2¼% sales tax. There is no tax on vegetable seeds.

Prices—6 bulbs at the dozen rate, 50 bulbs at the 100 rate. Prices in this catalog are subject to change without notice and subject to stock being on hand when order is received. All prices conform to OPA price ceiling regulations where such regulations apply.

Non-Warranty—Most of the failures with seeds and bulbs are due to causes entirely beyond our control, such as unfavorable weather, too deep or too shallow planting, etc.; therefore, Hallawell Seed Co. gives no warranty, express or implied, as to description, purity, productiveness, or any other matter of any seeds, bulbs, etc., they send out, and will be in no way responsible for the crop.

HALLAWELL SEED COMPANY

Address all correspondence to 256 Market St., San Francisco

DOWNTOWN STORE AND OFFICES, 256 Market St. Telephone SU. 6593
BLUE GLASS NURSERY GARDENS, 19th Ave. at Sloat Blvd. . . Telephone MO. 2741

HARDY IRIS OR FLAGS

This type has beautiful orchid-like flowers and broad evergreen foliage. Suitable for planting in borders in light shade or sun. Hardy Iris require little care and thrive in almost any kind of soil that is well drained. In heavy soil we suggest adding a small amount of lime or wood ashes. Plant 2 inches deep and 15 inches apart.

Transplant about every third year to prevent overcrowding.

GOLDEN BEAUTY. One of the finest golden yellow varieties. This is the first time it has been offered.
(Each \$1.50)

BRONZINO. Standards golden bronze, falls rich coppery bronze.
(75c each) (3 for \$2.00)

CASTALIA. The "bluest" of blues; large; fragrant.
(35c each) (3 for 90c)

DREAM. 3 ft. Soft clear pink, tall and graceful.
(25c each) (3 for 60c)

EL CAPITAN. 38 in. Magnificent, light violet-blue. One of the largest grown.
(25c each) (3 for 65c)

FRIEDA MOHR. 45 in. Brilliant lavender or orchid-pink. Very stately and beautiful.
(25c each) (3 for 60c)

HAPPY DAYS. 40 in. One of the most popular of the yellow iris. Very large, well branched and a good grower.
(35c each) (3 for 90c)

JOYCETTE. 37 in. Red-violet. The colors are clear and rich.
(25c each) (3 for 60c)

KING MIDAS. 24 in. Standards golden-buff, falls garnet with orange beard.
(25c each) (3 for 60c)

LYCAENA. 27 in. White standards with rich purple falls.
(35c each) (3 for 90c)

MOONBEAM. 16 in. A low growing variety blooming clear light yellow. Free blooming and fine for parkings or borders.
(25c each) (3 for 60c)

NARADA. 40 in. An extraordinary, clear light blue. Large flower.
(\$1.00 each) (3 for \$2.50)

NARANJA. 36 in. Orange buds, opening to rich deep yellow with an orange cast. Late.
(35c each) (3 for 90c)

PURISSIMA. Pure white of fine form and heavy substance; of vigorous growth with tall branched stems.
(35c each) (3 for 90c)

DUTCH IRIS

An early, improved type of Spanish Iris producing extra large flowers on strong stems. Plant the bulbs 6 to 8 inches apart and set the tops 2 to 3 inches below the surface.

The figure following the name denotes relative flowering time.

GERRIT VAN HEES. Purplish blue standards, very large royal blue falls, pale yellow stripe.
(75c per 12) (\$5.00 per 100)

IMPERATOR. 7. Brilliant blue with orange-yellow blotch on lip.
(60c per 12) (\$4.00 per 100)

JAN VICTORS. 1½. Standards and falls soft violet-blue; good forcer. (75c per 12) (\$5.00 per 100)

S. DE VLEIGER (Blue Horizon). 6. Light violet-blue standards; falls softer blue with narrow orange stripe. Large flowers and vigorous.
(60c per 12) (\$4.00 per 100)

WEDGEWOOD (Tingitana Hybrid). 1. A large flower with blue standards, and lighter blue falls. An excellent early forcer, or will bloom with late daffodils.
(75c per 12) (\$5.00 per 100)

WHITE EXCELSIOR. 3. Fine pure white with narrow feather of golden orange on lip.
(75c per 12) (\$5.00 per 100)

YELLOW QUEEN. 3. Pure golden yellow. Excellent for forcing or outside growing.
(75c per 12) (\$5.00 per 100)

MIXTURE of named varieties.
(65c per 12) (\$4.50 per 100)

IRIS KAEMPFERI

This variety of Iris produces the largest and finest flowers in a great variety of colors. They are hardy, and do best in sunny situations which receive plenty of moisture during the growing season. They bloom for six weeks during June and July. The flowers measure 6 to 8 inches in diameter and are borne on long stems.

CATHERINE PERRY. Double blue, overlaid rich purple.

FASCINATION. Beautiful mauve-pink, veined white; double.

GOLD BOUND. Creamy white with gold bands; double.

KOKO-NO-IRO. Six petals, royal purple, yellow center.

MAHOGANY. Large double, purple-mahogany-red; late.

TEMPLETON. Reddish violet mottled and marbled with white; double.

Each of the above varieties: (50c each) (\$5.00 per 12)

LILIUM—LILY

Place lily orders early and bulbs will be sent as soon as ready. Plant them as soon as you receive them and do not remove or break the roots. Bulbs are ready for delivery about November.

AURATUM. One of the grandest hardy lilies. The large flowers are ivory white with chocolate crimson spots and a bright gold band through the center of each petal. Plant 9 inches deep.
(\$1.00 each) (\$10.00 per 12)

CANDIDUM (St. Joseph or Madonna Lily). A very hardy early flowering lily; the pure white flowers are fragrant and are borne on long stems. The best white lily to plant out of doors. Succeeds best when fully exposed to the sun. Plant not over 1 to 2 inches deep. (Order in October, as bulbs must be planted early.) Mammoth size.
(50c each) (\$5.50 per 12) (\$40.00 per 100)

FORMOSANUM. Tall, pure white, trumpet lily of the Easter-lily type.
(\$3.50 per 12) (\$25.00 per 100)

PARDALINUM GIGANTEUM (Sunset Lily). Robust hardy variety growing 5 to 7 feet tall. Deep red with deep purple spots and golden yellow center.
Large bulbs: (50c each) (\$4.00 per 12)
Medium size bulbs: (35c each) (\$3.00 per 12)

REGALE. A magnificent hardy lily from China; vigorous; 3 to 5 feet high, bearing one to several handsome white fragrant flowers; slightly shaded pink outside and the lower inner surface primrose-yellow. It seems to thrive in any good, well-drained soil and prefers full sun. Plant 9 inches deep. Northern domestic-grown bulbs.
Medium size bulbs: (\$2.00 per 12) (\$14.00 per 100)
Large size bulbs: (\$2.50 per 12) (\$18.00 per 100)

TENUIFOLIUM (Siberian Coral Lily). A charming little lily with strongly recurved petals of waxy texture; dazzling coral-red. Excellent for a partially shaded rock garden or border; 1 to 2 feet tall, blossoms profusely in May and June. Plant 6 inches deep.
(\$1.50 per 12) (\$11.00 per 100)

PREPARED BULB FIBRE

This is a very good material in which to grow bulbs, and it is especially adapted for use in the home, being clean and odorless.

It contains all the necessary plant food for almost all kinds of plants.

Before using it should be thoroughly moistened, and the bulbs planted in the same way as if soil were used. A special feature of this material is that bulbs can be grown in jardinières, fern dishes and other receptacles which have no drainage. After watering, the jardinière or dishes should be turned on side to drain off surplus water.

The treatment after planting in this material is the same as when planted in soil.

(2 lbs. 35c) (10 lbs. \$1.45) If wanted by mail, add postage.

Hallawell's RANUNCULUS



THE FINEST
STRAIN IN
CULTIVATION

RANUNCULUS

Hallawell's Hybrid Mixture

Clean, Healthy Bulbs to Produce the Finest Flowers

RANUNCULUS CULTURE

Attractive spring flowering bulbs producing flowers on stems 12 to 15 inches high. Very showy in beds or borders. Plant 2 inches deep with the claw-like projections downward, in a well-drained soil which has been previously watered and allowed to mellow. Little if any additional moisture should be required until the plants appear. October to December are the best planting months.

Irrigate as often as necessary to keep the soil moist to a good depth. Deep irrigation is better than a light sprinkle.

PRICES

SEPARATE SHADES: Orange, Pink, Red, Yellow, or White. (75c per 12) (\$5.50 per 100)

HYBRID MIXTURE. Large size bulbs. (75c per 12) (\$5.50 per 100)

HYBRID MIXTURE. Medium size bulbs. (50c per 12) (\$3.50 per 100)



Muscari, Grape Hyacinth

MUSCARI—GRAPE HYACINTH

These are dainty little flower spikes bearing curious ball-shaped bells in white and blue. Thriving either in partially shaded or sunny locations.

HEAVENLY BLUE. Flowers clear deep blue, changing to lighter blue; very strong grower, producing much larger spikes than the ordinary sort.

(50c per 12) (\$3.50 per 100)

ORNITHOGALUM

ARABICUM (Star of Bethlehem). Beautiful variety, throwing up a tall spike bearing numerous large milk-white star-shaped flowers, with a black center, and having a distinct aromatic perfume. They are of the easiest culture.

(75c per 12) (\$5.50 per 100)

HARDY PHLOX

Ready in December. Prices are postpaid.

Hardy Phlox thrive in soil which has been deeply enriched. They require plenty of water during the summer months, and in hot climates should have light shade.

CAROLINE VANDENBURG. Clear lavender blue with no magenta. Large individual flowers in attractive compact heads.

COUNT ZEPPELIN. Pure white with vermilion-red eye. A very popular variety.

DAILY SKETCH. Salmon-pink with vivid crimson eye. The flower trusses and individual flowers are very large.

FIRETAIL. Dazzling carmine red with blood-red eye. Very free flowering and a good grower.

GEORGE STIPP. Deep, glowing salmon with a lighter shade eye.

JULES SANDEAU. Large trusses of brilliant pink flowers. A very long blooming season.

LEO SCHLAGETIER. Glowing fiery red. An outstanding phlox.

MARY LOUISE. Pure white heads of unusually large size. Considered the best white to date.

WIDAR. Violet with white eye. A striking color combination.

Prices, any of the above:

(40c each) (3 for \$1.10) (\$4.00 for 12)

TIGRIDIA—TIGER FLOWER

(Spring delivery)

You should have these in your garden. Place orders now for spring delivery. Plant 4 to 6 inches deep in warm soil. Water plentifully after sprouts appear above surface and during growing season.

Large bulbs, separate colors:

(25c each) (\$2.00 per 12) (\$15.00 per 100)

BUCCANEER. Scarlet petals, orange cup, maroon spots.

CANARY QUEEN. Yellow petals, white cup, faint spots.

GYPSY MAID. Chrome yellow petals, maroon spotted cup.

ROSE KING. Rose petals, white cup, wine red spots.

SUNSET GLOW. Orange, streaked scarlet, deep red spots.

VAGABOND PRINCE. Pure white, large cup with maroon spots.

MIXED COLORS: (20c each) (\$1.75 per 12) (\$12.00 per 100*)

TRITONIA CROCATA

HYBRIDS MIXED. Attractive flowers about 2 inches across with a transparent blotch at the base of each petal. One foot tall; bloom in May. Plant bulbs 2 inches deep and 3 inches apart.

(65c per 12) (\$4.50 per 100)

TUBEROSE

DOUBLE PEARL. The old-fashioned double variety, highly prized for its fragrance.

Large bulbs: (\$1.50 per 12) (\$10.00 per 100)

HERBACEOUS PEONIES

Plant them in deep rich soil, setting the roots so that the crowns are covered with 2 inches of earth. If planted too deeply they are not likely to bloom freely. (November delivery.)

EDULIS SUPERBA. Deep rose pink, shading lighter.

FELIX CROUSSE. Rich, brilliant ruby red.

FESTIVA MAXIMA. Pure white.

GIGANTEA. Bright pink or lilac-rose, tipped silvery white; spicy fragrance.

MME. CALOT. Hydrangea pink with darker shadings. Very fragrant and free blooming.

MONS. JULES ELIE. Beautiful pure pink. The broad outer petals reflex, while the center quilled petals rise to a pyramid.

Strong clumps: (50c each) (\$5.50 per 12)

SCILLA—WOOD HYACINTH

Charming bell-shaped flowers that do well under trees or in other shady locations. Blooms very early. Plant 3 inches deep and 4 to 6 inches apart.

SEPARATE COLORS: White, Blue, Rose.

(75c per 12) (\$5.00 per 100)

MIXTURE. (50c per 12) (\$5.00 per 100)

SPARAXIS

The showy flowers are borne on stiff, wiry stems about 9 inches high. The colors are of the most pleasing combinations with throat markings of an entirely different color from the balance of the flower. Plant bulbs 2 inches deep and 3 or more inches apart.

MIXTURE. (50c per 12) (\$3.50 per 100)

WATSONIA

Watsonias are similar to Gladiolus, and bloom during June and July. The spikes grow 3 to 4 feet tall and bear a dozen or more flowers. They bloom freely and thrive best in a sunny situation. Set the bulbs 3 inches deep and 8 inches apart.

HYBRID MIXTURE. The bulbs vary in size according to variety, some of the best sorts having quite small bulbs.

(75c per 12) (\$5.50 per 100)

HALLAWELL'S FINEST QUALITY CALIFORNIA FLOWER SEEDS

Varieties listed in this catalog are for Fall and Winter planting.



Snapdragon, Hallawell's Super Majestic

ANTIRRHINUM (Snapdragon)

HALLAWELL'S STRAIN, SUPER MAJESTIC

Height, 20 to 30 inches.

AUTUMN GLOW SHADES. Old rose, yellow lip.

DAINTY. Lovely soft pink, as its name implies.

HARMONY SHADES. Terra cotta and yellow.

ORANGE SHADES. Deep and light shades.

RED ROCKET. Fiery red.

ROSE SENSATION. Finest rose pink.

SHASTA. Pure white.

SILVER PINK. Lovely clear pink.

YELLOW JACKET. Deep yellow.

Above separate colors: (Pkt. 25c) (1/16 oz. 60c)

HALLAWELL'S SUPER MAJESTIC MIXTURE — (Pkt. 25c) (1/16 oz. 60c)

INTERMEDIATE TYPE

Height, 18 to 24 inches.

HALLAWELL'S INTERMEDIATE MIXTURE—(Pkt. 15c) (1/16 oz. 40c)

MAXIMUM TYPE

Height, 3 to 4 feet.

ALASKA. Pure white.

CAMPFIRE. Luminous scarlet, yellow lip.

CANARY BIRD. Canary yellow.

COPPER KING. New. Bright bronzy copper.

CRIMSON MONARCH. Rich crimson.

LOVELINESS. Soft rose pink.

PINK SENSATION. Pure pink.

ROSALIE. Deep rose with undertone of topaz-amber.

SALMON ROSE SHADES. Bright yellow lip.

YELLOW GIANT. Deep yellow.

Above separate colors: (Pkt. 15c) (1/16 oz. 50c)

HALLAWELL'S SELECT MIXTURE. A selected strain containing many new shades. (Pkt. 15c) (1/16 oz. 65c)

CENTAUREA (Bachelor Button)

JUBILEE GEM. Double blue. (Pkt. 15c) (1/8 oz. 45c)

DOUBLE MIXED. (Pkt. 10c) (1/4 oz. 35c)

CHRYSANTHEMUM (Painted Daisy)

SINGLE MIXED. (Pkt. 10c) (1/4 oz. 35c)

SINGLE AND DOUBLE MIXED. (Pkt. 10c) (1/4 oz. 35c)

CINERARIA

For pots or beds in partial shade.

CALIFORNIA SUPER GIANTS MIXED. Huge trusses of flowers, 5 to 6 inches across. (Pkt. 50c)

MULTIFLORA NANA MIXED. Plants 10 inches high, small flowers, large heads. (Pkt. 50c)

BEDDING MIXTURE. Semi-dwarf, large flowered. (Pkt. 35c)

ALYSSUM

MARITIMUM (Sweet Alyssum). Height 10 inches. Very fragrant. (Pkt. 10c) (1/2 oz. 25c)

CARPET OF SNOW. Flat ground cover. (Pkt. 15c) (1/4 oz. 40c)

HALLAWELL'S VIOLET QUEEN. Bright violet; dwarf. (Pkt. 25c) (1/8 oz. 40c)

SAXATILE COMPACTUM. Perennial; bright yellow. (Pkt. 15c)

BARTONIA (Blazing Star)

Annual California Wildflower. Golden yellow. (Pkt. 10c) (1/4 oz. 45c)

Sow in open ground for winter bloom.

CALENDULA

ORANGE SUNSHINE. Fine double orange, long stems. (Pkt. 15c) (1/2 oz. 35c) (oz. 60c)

CAMPFIRE. Large, double, brilliant orange. (Pkt. 15c) (1/4 oz. 35c) (1/2 oz. 60c)

SUNSHINE. Double buttercup yellow, long stems. (Pkt. 15c) (1/2 oz. 45c)

ORANGE KING. Large deep orange red with dark center. (Pkt. 15c) (1/2 oz. 45c)

HALLAWELL'S SPECIAL MIXTURE. A fine assortment of varieties. (Pkt. 15c) (oz. 60c)



Calendula, Campfire



Alyssum, Violet Queen



Delphinium, Hallawell's Pacific Giants

CANDYTUFT

Seeds sown in autumn produce flowers in early spring.

TALL ANNUAL VARIETIES—Height 1 foot.

Planting time, year round.

- ALBIDA. Creamy white. (Pkt. 10c) (½ oz. 30c)
 CRIMSON or PURPLE. (Pkt. 10c) (½ oz. 30c)
 LAVENDER. Delicate shade of lilac. (Pkt. 10c) (½ oz. 30c)
 ROSE CARDINAL. Deep rosy cardinal. (Pkt. 10c) (½ oz. 40c)
 SPLENDID MIXED. (Pkt. 10c) (½ oz. 30c) (oz. 50c)
 GIANT HYACINTH FLOWERED. Very large heads and long spikes of white flowers. Best sort for cut flowers. 1½ feet. Extra select strain. (Pkt. 10c) (½ oz. 45c)

CARNATION

Sow seeds from August to March. They bloom within a few months.

- CHABAUD'S EVERBLOOMING. In separate colors of pink, white, crimson, rose, red, salmon and yellow. (Pkt. 20c)
 MIXTURE. (Pkt. 20c) (1/16 oz. 85c)
 ENFANT DE NICE. Our special strain of large full double carnations. Separate colors of pink, red, rose, salmon, white and striped. (Pkt. 25c)
 ENFANT DE NICE MIXTURE. (Pkt. 25c)

CLARKIA ELEGANS

When seed is sown thick in the row it grows tall and is fine for cutting.

HALLAWELL'S DOUBLE FLOWERING

- BRILLIANT. Very bright carmine-rose.
 PURPLE QUEEN. Rich purple.
 SALMON QUEEN. Salmon-pink flowers.
 SCARLET BEAUTY. Brilliant scarlet.
 WHITE. Pure white.

Each of above: (Pkt. 15c) (½ oz. 40c)

COLLINSIA

- BICOLOR. 1 to 2 ft. Violet and white. Prefers shade. Sow in open ground. (Pkt. 10c) (½ oz. 50c)

DELPHINIUM

HALLAWELL'S PACIFIC GIANT STRAIN

This is the finest strain in cultivation. Flowers are large, double and in charming color combinations.

SPECIAL MIXTURE. (Pkt. 50c) (3 pkts. \$1.35)

ESCHSCHOLTZIA (California Poppy)

AURANTIACA ORANGE. True California Poppy.

(Pkt. 10c) (oz. 35c) (¼ lb. \$1.00) (lb. \$3.25)

BRILLIANT MIXED. (Pkt. 10c) (oz. 40c) (¼ lb. \$1.25) (lb. \$3.75)

NEW HYBRIDS MIXED. Many new colors. (Pkt. 15c) (¾ oz. 50c) (oz. \$1.50)

GILIA

Hardy annual California wildflower. Sow seed in fall or winter.

CAPITATA. 1½ to 2 ft. high, eight blue flowers.

TRICOLOR. Height 1 ft., pale lilac to yellow.

Each of above: (Pkt. 10c) (½ oz. 25c) (oz. 40c)

GODETIA

Sow thick in the row. Crowded plants grow tall and produce fine cut flowers.

DUKE OF YORK. Satiny crimson carmine. (Pkt. 15c)

(¾ oz. 60c)

KELVEDON GLORY. Glowing salmon, orange. (Pkt. 15c)

(¾ oz. 50c)

PURITY. Glistening satiny white. (Pkt. 15c) (¾ oz. 50c)

SYBIL SHERWOOD. Salmon-pink, edged white. (Pkt. 15c)

(¾ oz. 40c)

SEMI-DWARF MIXED. Splendid assortment. (Pkt. 10c)

(¾ oz. 55c)

AMOENA. California wildflower. (Pkt. 10c) (¾ oz. 60c)

HEUCHERA (Coral Bells)

SANGUINEA SPLENDENS. (Pkt. 25c)

HOLLYHOCK

Sow in early fall for next year's bloom.

DOUBLE VARIETIES. Bright Red, Canary Yellow, Pink,

Salmon, Rose, White.

Any of above: (Pkt. 15c) (½ oz. 60c)

Double Mixed: (Pkt. 10c) (½ oz. 50c)

MIGNONETTE

Fragrant annual. Sow seed in open ground.

GOLIATH. Very large red spikes. (Pkt. 10c) (¼ oz. 45c)

SWEET SCENTED. (Pkt. 10c) (oz. 30c)

MIMULUS

QUEEN'S PRIZE. Large spotted flowers. (Pkt. 25c) (1/16 oz. \$1.00)

MYOSOTIS (Forget-me-not)

Hardy perennial for cool, moist situation.

ALPESTRIS BLUE. (Pkt. 15c) (¼ oz. 65c)

ROYAL BLUE. Rich dark blue. (Pkt. 10c) (½ oz. 45c)

BLUE PERFECTION. Dwarf indigo blue. (Pkt. 15c)

(¼ oz. 85c)

BLUE BIRD. Deep blue; winter blooming; 1 ft. (Pkt. 20c)

(1/16 oz. 60c)

NEMESIA

Annual, 12 inches, for garden or window boxes. Requires three weeks to sprout.

STRUMOSA GRANDIFLORA MIXED. Many beautiful

colors. 10 to 12 inches tall. (Pkt. 20c) (3 pkts. for 50c)

(½ oz. \$1.00)

TRUMP MIXED. Hallawell's Special. Compact form,

6 to 8 in. tall. (Pkt. 20c) (3 pkts. for 50c) (½ oz. \$1.00)

BLUE GEM. Dwarf blue for edging. (Pkt. 20c)

(3 pkts. for 50c) (¼ oz. \$1.15)

STRUMOSA GRANDIFLORA. Height 1 ft. In separate

colors of Blue, Orange, Rose Pink, Scarlet. Each of the

above: (Pkt. 25c) (3 pkts. 65c) (¾ oz. \$1.25)

COREOPSIS

HALLAWELL'S DOUBLE SUNBURST. Large semi-double, yellow. (Pkt. 15c) (¾ oz. 40c)

MAYFIELD GIANT. Single yellow, large. (Pkt. 15c)

(¾ oz. 35c)

CYNOGLOSSUM

(Chinese Forget-me-not)

AMABILE BLUE. Intense deep blue. (Pkt. 10c) (¾ oz. 30c)

FIRMAMENT. Bright blue on bushy plants. (Pkt. 15c)

(¾ oz. 45c)

LARKSPUR

Best results are obtained from sowing seeds in the open ground where plants are to remain, October to February.

HALLAWELL'S BASE BRANCHING LARKSPURS

- BLUE BELL. Clear light blue or silvery lavender.
- BLUE SPIRE. Intense deep blue, very beautiful in a bouquet with contrasting colors.
- CARMINE KING. Lovely deep carmine rose.
- DAINTINESS. Dainty clear lavender; a favorite among florists.
- EXQUISITE PINK IMPROVED. Pink, shaded salmon.
- EXQUISITE ROSE. Beautiful shade of rose.
- LOS ANGELES. Deep rose.
- LILAC SPIRE. An attractive lilac blue.
- MISS CALIFORNIA. Deep pink shaded salmon.
- PINK KING. Long graceful branches of soft salmon rose.
- WHITE KING. Pure glistening white.
- WHITE SPIRE. Pure white.

- Above separate colors: (Pkt. 15c) (¼ oz. 65c)
- SUPERB MIXTURE. (Pkt. 15c) (¼ oz. 50c)
- DOUBLE STOCK FLOWERED MIXTURE. (Pkt. 10c) (¼ oz. 35c)

LINARIA

Twelve to 15 inches; fine for sowing on top of bulb beds. A large planting of this at our Nursery Gardens attracted much attention.

- MIXTURE. (Pkt. 15c) (¼ oz. 35c)

LINUM (Scarlet Flax)

- RUBRUM. 1½ ft. Beautiful in mass plantings. Sow in open ground. (Pkt. 10c) (½ oz. 35c)
- FLAVUM NANUM COMPACTUM. Perennial, golden-yellow. (Pkt. 25c)
- PERENE. 18 inches, bright blue. (Pkt. 10c) (¼ oz. 35c)

LUPIN

- ANNUAL SORTS MIXED. (Pkt. 10c) (½ oz. 35c) (oz. 60c)
- HALLAWELL'S GIANT MIXTURE. 3 to 4 feet. (Pkt. 25c)
- NANUS. California wild flower, 10 to 15 inches high. (Pkt. 10c) (oz. 45c) (¼ lb. \$1.25) (lb. \$3.75)
- YELLOW QUEEN. Fragrant, clear yellow. 2 ft. high. (Pkt. 25c)



Pansy, Hallawell's American Giants

PANSIES

We are not given to boasting but we have had so many letters from gardeners praising our pansies, that we feel justified in claiming these the finest pansies in cultivation.

- HALLAWELL'S AMERICAN GIANTS. For color, size and texture these pansies are unsurpassed. Offered for the first time this year. (Pkt. \$1.00)
- HALLAWELL'S JUMBO. A superb strain of extra size. (Pkt. 50c) (3 pkts. \$1.25) (1/16 oz. \$2.00) (¼ oz. \$6.00)
- GENEVA GIANTS. The well-known popular Swiss strain. (Pkt. 50c) (3 pkts. \$1.25) (1/16 oz. \$2.25) (¼ oz. \$7.50)
- SUPER SWISS GIANTS MIXED. (Pkt. 25c) (1/16 oz. \$1.25) (½ oz. \$2.00)
- TRICOLOR. Johnny Jump-up, miniature; upper petals purple, lower white shading to yellow in center. (Pkt. 50c) (3 pkts. \$1.25)

PHACELIA (California Blue Bell)

- CAMPANULARIA. A hardy California wildflower. Nine inches high, clear deep blue.
- WHITLAVIA (Wild Canterbury Bell).
- Each of above: (Pkt. 10c) (oz. 75c)

ICELAND POPPY

- EMPEROR. Deep orange. (Pkt. 20c) (1/16 oz. 60c)
- EMPRESS. Salmon shades. (Pkt. 20c) (1/16 oz. 60c)
- YELLOW WONDER. (Pkt. 20c) (1/16 oz. 60c)
- SANFORD'S GIANT STRAIN. Large flowers, excellent color range. (Pkt. 25c) (¼ oz. \$1.00)
- SUNBEAM MIXTURE. (Pkt. 15c) (¼ oz. 50c)

ANNUAL POPPIES

- Sow seeds in open ground during fall and winter.
- AMERICAN LEGION. Orange-scarlet. (Pkt. 10c) (oz. 75c)
- SHIRLEY MIXED. (Pkt. 10c) (oz. 60c)
- SHIRLEY DOUBLE MIXED. (Pkt. 10c) (½ oz. 40c) (oz. 65c)

NEMOPHILA

A hardy annual California wild flower, growing about 6 inches high. Has small cup-shaped blossoms in shades of blue and white. Sow in the open ground in the fall or spring. Fine ground cover for bulb beds.

INSIGNIS (Baby Blue Eyes). Sky blue with white eyes. (Pkt. 10c) (oz. 40c) (¼ lb. \$1.25) (lb. \$3.75)
MIXED. (Pkt. 10c) (oz. 40c) (¼ lb. \$1.25)

PRIMULA

SINENSIS GIANT SINGLE FRINGED. (Pkt. 50c)
BULLEYANA. Height 2 feet, apricot to orange. (Pkt. 50c)
PULVERULENTA BARTLEY STRAIN. For shaded and damp places; numerous tiers of flowers in shades of pink. (Pkt. 50c)
AURICULA. The "Primrose of the Alps". (Pkt. 50c)
OBCONICA GIANT MIXED. (Pkt. 50c)

MALACOIDES PRIMULA

LILAC. Small lilac flowers. (Pkt. 20c) (1/32 oz. \$1.50)
SALMON QUEEN. (Pkt. 35c)
TWINKLES. Double flesh pink. (Pkt. 50c)
SNOWFLAKE. Glistening white. (Pkt. 35c)

HARDY PRIMROSES

POLYANTHUS GIANT SUPERB MIXED. (Pkt. 35c)
POLYANTHUS YELLOW. (Pkt. 50c)

SCHIZANTHUS

HALLAWELL'S SUPER GIANT MIXTURE. (Pkt. 35c) (1/16 oz. \$1.00)
HALLAWELL'S SELECT MIXTURE. (Pkt. 25c) (1/16 oz. 75c)
HALLAWELL'S DWARF. 10 to 15 inches high. (Pkt. 25c)
PANSY FLOWERED MIXTURE. (Pkt. 35c)
MIXED. For mass bedding. (Pkt. 15c) (½ oz. 35c)

VIOLA

(Tufted Pansies)

Planting time, July to March.

Very free-blooming hardy perennial plants. Flowers are not so large as in other varieties of pansies, but are produced in much greater numbers and also bloom for a longer season. Valuable for edging beds and borders. Keep the seed bed cool and moist. Our seed is always 100 per cent current crop.

ARKWRIGHT RUBY. Dark crimson-scarlet with central markings. (Pkt. 35c) (1/16 oz. \$1.35)
BLUE PERFECTION. Deep purplish blue. (Pkt. 20c) (½ oz. \$1.00)
CHANTREYLAND. Pure apricot; Free flowering. (Pkt. 25c) (1/16 oz. \$1.00)
LUTEA GRANDIFLORA. Fine yellow. (Pkt. 15c) (½ oz. \$1.00)
PAPILLO. Lavender with white eye. (Pkt. 15c) (½ oz. \$1.00)
WHITE PERFECTION. (Pkt. 15c) (½ oz. \$1.00)
VIOLA MIXTURE. Hallawell's mixture of bright gay colors. (Pkt. 15c) (½ oz. \$1.00)

VIRGINIAN STOCK

Ground cover about 6 inches high.

MIXED COLORS. (Pkt. 10c) (large pkt. 35c) (oz. 75c)



Stocks, Hallawell's Giant Perfection

STOCKS

Plantings for fall and winter should be in well drained soil. Stocks do not like wet feet.

HALLAWELL'S GIANT PERFECTION

AMERICAN BEAUTY. Very deep rose.
CRIMSON. A brilliant color.
FLESH (Beauty of Nice). Delicate shell-pink.
HEATHAM BEAUTY. Rose, shaded terra cotta.
LAVENDER. Fine color; lighter than variety Pale Blue.
OLD ROSE (Belle of Naples). Rich terra cotta rose.
PINK. Light rose-pink, fine in flower arrangements.
PURPLE (Summer Night). Purple or dark blue.
WHITE (Snowdrift). Pure white.
YELLOW (Monte Carlo). Creamy yellow.

Each of above separate colors: (Pkt. 15c) (½ oz. 85c)

Collection of 6 pkts. of any of the above varieties, 75c.

GIANT PERFECTION MIXED. (Pkt. 15c) (½ oz. 75c)

HALLAWELL'S CALIFORNIA WILD FLOWERS

On the Pacific Coast, sow successively from fall to early summer; in the East and Middle States, from March to May.

Successive sowings of Wild Flower seed will provide bloom almost the year around in California, especially in the cooler regions and if the plants can be watered. Although they respond best to careful soil preparation, scatter plantings are successful if the seed is sown at seasons when the plants will have benefit of rainfall. In areas where wild shrubs abound, it is better to concentrate your efforts on the clear spaces, and assure success by scarifying the soil with a mattock or heavy rake to make it easier for the seeds to root.

One ounce of seed will sow 150 to 200 square feet in a home garden planting, while one pound to 5,000 square feet is recommended for a city lot broadcast planting. For hillside or field planting, 5 to 8 pounds per acre are required, depending upon the existing growth of wild shrubs. Mix an equal quantity of sand with the seed as an aid to distribution.

CLARKIA
BARTONIA
COLLINSIA

ESCHSCHOLTZIA
GILIA CAPITATA
GODETIA AMOENA

LEPTOSYNE
LUPIN NANUS
NEMOPHILA

PHACELIA CAMPANULARIA
PHACELIA WHITTLAVIA
SALVIA CARDUACEA

Each of above: (Pkt. 10c) (bulk prices under listings in text).

COLLECTION of one packet each of the above 12 for \$1.00.

CALIFORNIA WILD FLOWER MIXTURE. (Pkt. 10c) (oz. 60c) (¼ lb. \$1.75) (lb. \$6.00)

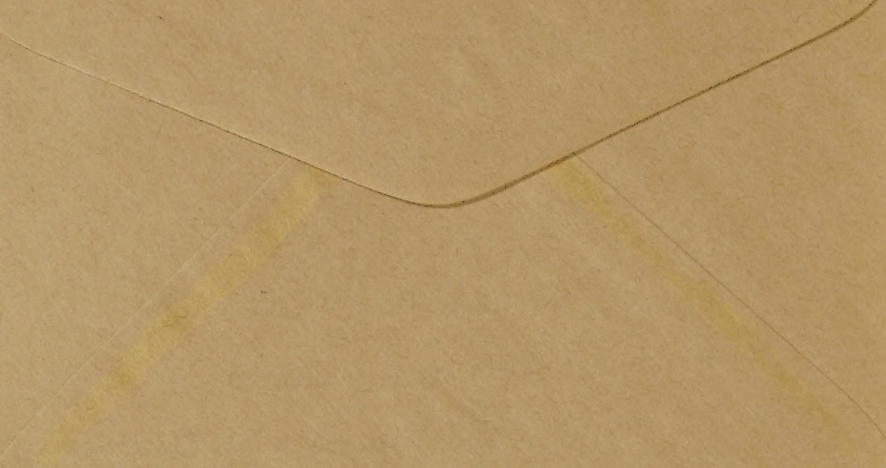
WILD AND HARDY CULTIVATED VARIETIES MIXED. (Pkt. 10c) (oz. 35c) (¼ lb. \$1.00) (½ lb. \$1.65) (lb. \$3.00).

FROM

HALLAWELL SEED CO.

256 MARKET STREET

SAN FRANCISCO 11, CALIFORNIA



SWEET PEAS

Hallawell's Giant Waved and Ruffled — For Spring and Summer Bloom

PLANT SWEET PEAS FROM OCTOBER TO FEBRUARY FOR SPRING AND SUMMER BLOOM

Price of each: (Pkt. 10c) (oz. 40c)

- CAPRI.** Beautiful light blue; long stems; strong grower.
FLAGSHIP. Deep navy blue flowers, very large and on long strong stems. This is a Silver Medal winner.
FLORA. An outstanding clear deep lavender.
HIGHLANDER. Lavender, many flowers on long strong stems.
KING LAVENDER. Light lavender, very robust grower.
HALLAWELL'S RUFFLED BLUE. Ruffled and duplexed dark blue flowers which are well placed on long vigorous stems.

ORANGE AND CERISE SHADES

- CRINKLES.** Large ruffled flowers of cerise-pink suffused coral.
GOLDEN DRAGON. Large duplexed orange. Standard is a vivid orange while the wings are shaded orange rose.
MAYTIME. Rich golden cerise, many flowers on a stem.

PINK AND ROSE SHADES

- CHLOE.** Deep shell pink on cream ground.
FLUFFY RUFFLES. Dainty cream pink, large ruffled flowers.
LADY RUFFLES. Exquisite pink on white ground. Large ruffled flowers.
PINKIE. Clear rose pink. Strong grower, large flowers.
ROSIE. Deep rose-pink; slightly waved and ruffled.
HALLAWELL'S RUFFLED ROSE. Soft rich rose, large and ruffled.
SWEET AFTON. Deep silvery pink, large flowered; fine stems.

PURPLE AND MAROON

- LEVIATHAN.** Rich maroon.
HALLAWELL'S RUFFLED PURPLE. Large ruffled flowers on good stems. Very beautiful in flower arrangements.

RED SHADES

- HOLLYBERRY.**—Rich scarlet with a flush of orange.
RED SUPREME.—A charming deep crimson. Large flowers, long stems.
HALLAWELL'S RUFFLED CRIMSON. Rich satiny crimson, ruffled and waved. Long stems.
WELCOME. Dazzling scarlet vermilion.

SALMON PINK SHADES

- EXQUISITE RUFFLED.** Sparkling salmon-cerise; large ruffled.
GLOAMING. Light salmon-pink on cream ground; an extra petal in many of these flowers and many of four to a stem.
PINK PRILLS. Salmon-cream pink seems to describe this very distinctive color.
SALMON GIGANTIC. Large flowered salmon-pink.

WHITE AND CREAM

- GIGANTIC.** Giant white.
MASTER CREAM. Deep cream.
SEXTET QUEEN. Giant white.
SNOW WHITE. Pure white.



Sweet Peas, Hallawell's Ruffled Spencer Mixed

FORMULA MIXTURES

HALLAWELL'S RUFFLED SPENCER MIXED. This extraordinary mixture contains all of the named ruffled varieties and many trial grounds ruffled which are not yet ready to be named separately. These ruffled sweet peas are distinguished by their waved and ruffled flowers which give the appearance of being double. The flowers are very large, the stems long and there are an unusual number of flowers on a stem. (Pkt. 15c) (oz. 50c)

HALLAWELL'S GIANT SPENCER MIXTURE. A mixture of the choicest Giant Spencer Sweet Peas. Includes many colors, each in proper proportion to produce a colorful display. (Pkt. 10c) (oz. 30c)

CUPID SPENCER SWEET PEAS. Dwarf, Large Flowered —Dwarf and bushy, growing about 1 foot high, spreading about 2 feet. They are excellent for low edgings or long strips of ground cover. Mixed. (Pkt. 15c) (oz. 60c)

Special Collection

6 Pkts. SPENCER SWEET PEAS, 50c

1 pkt. each of:

CAPRI, GLOAMING, GIGANTIC, HIGHLANDER, HOLLYBERRY, PINKIE.

Superb Collection

12 Pkts. SPENCER SWEET PEAS, \$1.00

1 pkt. each of:

CAPRI, GIGANTIC, GLOAMING, GOLDEN DRAGON, HIGHLANDER, HOLLYBERRY, MASTER CREAM, MAYTIME, PINKIE, RUFFLED BLUE, RUFFLED CRIMSON, SALMON GIGANTIC.

King Alfred Daffodils

—◆—

Exhibition Flowers from Hallawell's Jumbo Bulbs

More Flowers per Bulb, Too

King Alfred is one of the grandest daffodils and Hallawell's King Alfred bulbs are the finest quality it is possible to grow. As many as 5 or 6 large exhibition flowers may be grown from one bulb and all on long sturdy stems. Rich, lustrous golden-yellow flowers with the perianth often 4 inches across and the trumpet fully 2 inches long. It is extremely vigorous in habit of growth and is one of the finest garden varieties.

This year plant Hallawell's King Alfreds and see for yourself what fine quality flowers they will produce.

JUMBO BULBS \$3.00 per 12;
\$21.00 per 100.

LARGE BULBS \$2.00 per 12;
\$14.00 per 100.

ROUND BULBS \$1.50 per 12;
\$10.00 per 100.

Postpaid west of the Rocky
Mountains.

East of Rocky Mountains—
Please add 50c per dozen
or \$2.50 per 100 to help pay
postage.

KING ALFRED

**HALLAWELL
SEED COMPANY**
SAN FRANCISCO
CALIFORNIA

