

Historic, Archive Document

Do not assume content reflects current scientific knowledge, policies, or practices.

HORSFORD'S

Hardy Plants and Bulbs

6287

RECEIVED

★ MAR 11 1943 ★

U. S. Department of Agriculture

*A selection of the best
truly hardy varieties*

PERENNIALS

HARDY LILIES

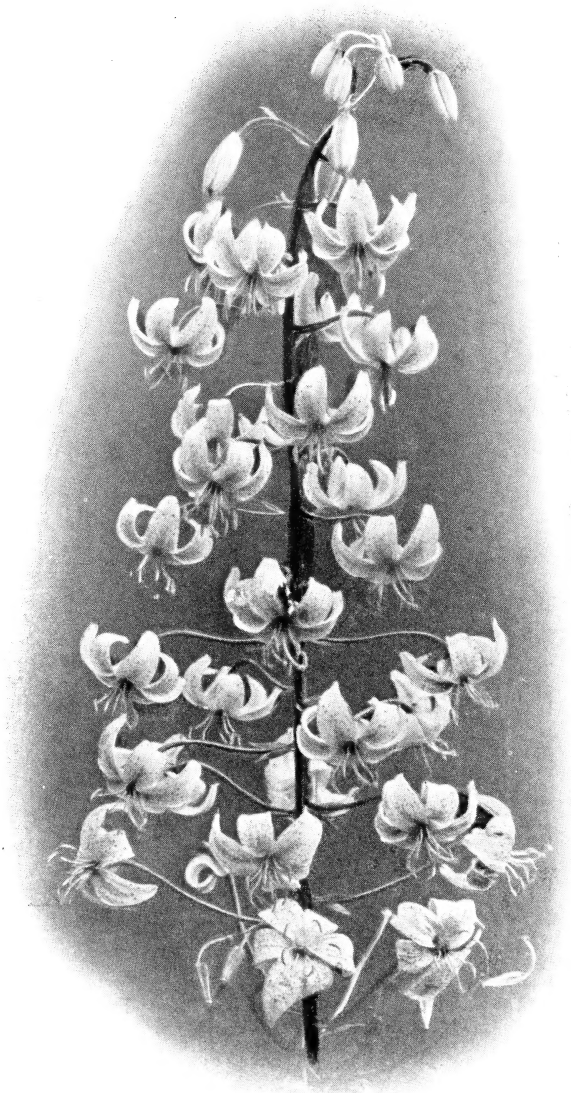
Own Root Lilacs - Evergreens

Shrubs - Woodland Ferns

FIFTY YEARS --- 1893 - 1943

F . H . H O R S F O R D

CHARLOTTE - - - VERMONT



This Catalog

marks the fiftieth anniversary of the establishment of the Horsford Nurseries. It might also be called a "Victory List" as it represents our attempt to give you a complete list with descriptions of our offering of Lilies, Perennials, Vines, Shrubs, Trees etc. in the briefest, most concise and economical way possible, in keeping with the times and conditions. We must win the war, yet we should not give up our flowers and gardens for they have been the mark of civilization since the beginning of history.

PRICES

Quality considered, we do not believe the values we offer can be equalled anywhere in the North. We've had to price a few varieties above the average for their type because of the difficulty of growing plants that measure up to our standards, but in general all perennials, all rock-garden plants, etc., each carry a standard price.

SPECIALTIES

In pursuance of our aim to handle only the best in the hardy plant line we are offering this year only those Hardy Lilies that we can certify as free of the insidious mosaic disease. This step precludes our offering some varieties we formerly carried and postpones delivery of others until autumn. See page 11 of this Catalog for further information.

Our list of Hardy Chrysanthemums includes the latest introductions in the varieties that are truly hardy and that will flower early enough to escape damage from frost.

In the Hybrid Lilacs, often called "French Lilacs" we are handling only plants grown on their own roots. This ensures our customers the best and most satisfactory stock obtainable. While our list is somewhat limited at present, we have a number of varieties in stock not offered in this Catalog and invite your writing us for any desired sort not listed on page 24.

NOTICE: Regarding small lots of assorted plants or shrubs.

One to four plants of one identical kind or color will be priced at the each rate, except in the case of perennials where the rate for three of the same kind is 60 cents.

This is necessary as each different kind or color has to be wrapped and labeled separately and considerable time is required to assemble an order made up of small lots of kinds that are widely separated over the nursery.

**SEE ORDER BLANK FOR COMPLETE INFORMATION
ABOUT TERMS, PAYMENT, AND SHIPPING**

NEW PERENNIALS AND OTHERS OF ESPECIAL INTEREST

DWARF HYBRID ASTERS. Here is a wonderful new class of Dwarf Hardy Asters for beds, borders, and the rock garden growing from 9 to 15 inches high. They make striking mounds of color in September when few other low flowering plants are to be seen.

Daphne. Attractive soft pink flowers. 12-15 in.

Diana. Delicate and appealing blush pink. 15 in.

Hebe. Clear lavender-blue flowers with showy effect. 15 in.

Lavanda. Light blue flowers of a vivid and pure color. 15 in.

Lilac Time. Mounds of deep violet-blue of startling effect. 15 in.

Marjorie. Beautiful bright rose-pink blooms. 12 in.

Nancy. Masses of pale flesh-pink flowers that almost hide all foliage. 12 in.

Niobe. White flowers in compact mass with yellow centers. 12 in.

Ronald. Has rose-pink buds opening to bright lilac-pink. Showy. 12 in.

Victor. Clear lavender-blue flowers. Dwarfest of all. Barely 9 in.

OTHER NEW HARDY ASTERS

Beechwood Challenger. The best of the red asters. Upright yet bushy growth and clean, healthy foliage. 4 ft.

35 cts. each, three for 90 cts.

Frikarti (Wonder of Staefa). Large flowers of violet-blue with large yellow center. Blossoms from late July to frost. 2 to 2½ ft.

50 cts. each, three for \$1.25.

Harrington's Pink. A truly pink hardy aster. Large flowers completely covering the plant. September. 4 ft.

50 cts. each, three for \$1.25.

Mount Everest. The finest and best white. September to frost. 3 to 4 ft.

Skylands Queen. A splendid pale blue, large flowered, new introduction. September. 3 to 4 ft.

35 cts. each, three for 90c, \$3 per doz.

Violette. The finest dark blue aster. 4 ft. September.

50 cts. each, three for \$1.25.

HARDY CHRYSANTHEMUMS

Clara Curtis. Single fragrant pink flowers of large size when well established. September. 1-1½ ft.

35 cts. each, \$3.50 per doz.

Dean Ladd. Large, double, reddish-bronze flowers appearing in July and continuing until frost. 18-24 in.

35 cts. each, \$3.50 per doz.

My Lady. Fully double, very large, beautiful orange-yellow flowers from July to frost. 18-24 in.

35 cts. each, \$3.50 per doz.

September Bronze. Best bronze pompon yet. September.

September Cloud. White pompon with primrose shading in center. September.

September Gold. Flowers trim and neat making well-rounded plants. September. 1½ ft.

Silver Moon. Single white flowers with yellow center. Has mild, sweet fragrance. 2½ ft. September.



Hardy Chrysanthemum

All plants on this page 25 cents each, three of one kind for 60 cents, \$2 per dozen, except as otherwise noted.

NEW GIANT HEMEROCALLIS

Bagdad. Rich brown red tones. June-July. 4 ft. \$1.00 each.

Cinnabar. Light bronzy red suffused with gold. June. 2½ ft. 50 cts. each.

Dauntless. Pale cadmium yellow, greenish throat, fulvus touch on each petal. July. 2½ ft. \$1.00 each.

Hyperion. Immense pale yellow flowers. July-August. 3½ ft. 75 cts. each.

Imperator. Rich orange, lined buff and copper. July-August.

35 cts. each, three for 90 cts.

Margaret Perry. Brilliant orange red lined soft yellow. July-August.

Mikado. Large, rich orange flowers marked with purple-red. June-July. 2½ ft. 35 cts. each.

Rajah. Delicate orange, eye zone of garnet brown. June-July. \$1.50 each.

See page 6 for complete list of Hemerocallis Hybrids.

OTHER NEW WORTHWHILE PERENNIALS

ANTHEMIS MOONLIGHT. Large, pale yellow daisy-like flowers. 2½ inches in diameter. Profuse bloomer. June-July. 50 cts. each, three for \$1.25.

DORONICUM clusi. Grows about 12-15 inches tall with large yellow daisy-like flowers. Might be called a dwarf plantagineum.

GAILLARDIA MR. SHERBROOKE. Flowers of a rich golden yellow. Strong stems.

35 cts. each, three for 90c, \$3 per doz.

IRIS Leut. de Chavagnac. A violet dwarf iris that is among the most reliable of the fall blooming sorts.

1. **siberica Peggy Perry.** Ruffled rich violet blue flowers with a white center. Early blooming.

LIATRIS scariosa alba. Imposing spikes more than half covered with clean, buttonlike blossoms. August-September. 3 ft. 50 cts. each, three for \$1.25.

RUSSELL LUPINES. This strain of Hybrid Lupines has been highly recommended and widely advertised. Has wide range of bright colors.

35 cts. each, \$3.50 per doz.

NEPETA Souvenir Andre Chaudron.

Silvery grey foliage and blue flowers. A fine blue effect during June, July and August in the hottest and driest weather. 12-15 in.

PAPAVER orientale Sass Pink. A beautiful large pale pink, with grey-mauve pollen and a maroon blotch at base of the petals.

P. Salmon Glow (Double). A fine double salmon-orange not to be confused with Olympia. The flowers are exceptionally large, fully 8 inches across. It is a Dutch origination and selected for the Wisley trials. It received a first class certificate in Holland and is spoken of as a beautiful double salmon-orange. Strong upright growing Poppy. It was much admired in our nursery.

75 cts. each, three for \$2.00.

PHLOX AUGUSTA. U. S. Plant Patent No. 252. Called "the finest American-Beauty-red Phlox ever introduced." Grows 2 to 2½ ft. and holds its color well in the sun.

Three for \$1.50, \$5.00 per doz.

P. Columbia. U. S. Plant Patent No. 118. Rich cameo pink blooms with faint blue eye. Has a long blooming season. 40 cts. each, \$1.10 per three, \$3.30 doz.

P. Daily Sketch. An outstanding novelty with large trusses composed of enormous individual flowers of light salmon pink with faint carmine eye.

See page 9 for other new varieties of Phlox and complete list.

PYRETHRUM James Kelway. Vivid scarlet flowers, very large and free.

STOKESIA BLUE MOON. Has immense light blue, disc-like flowers, 5 inches in diameter, on stiff stems. 12-18 inches in length. July-September.

50 cts. each, three for \$1.25.

TROLLIUS fortunei. Brilliant orange flowers of large size. Everblooming.

T. ledebouri Golden Queen. Rich golden flowers often three inches across with orange stamens. Blooms in June and July with three foot stems.

VERONICA Blue Ridge. Here is a dark blue *V. longifolia*, taller than *V. subsessilis*. 50 cts. each, \$5 per doz.

All plants on this page 25 cents each, three of one kind for 60 cents, \$2 per dozen, except as otherwise noted.

GENERAL LIST OF HARDY PERENNIALS

25 cts. ea. \$2.00 per doz.

Variety	Common Name	Color	Ht. feet	Flowering Season
ACHILLEA (<i>Yarrow</i>)	millefolium roseum.....	Bright red-pink	2	July, Aug.
	Parmica, Perry's White	Pure white	2	June-Sept.
ACONITUM (<i>Monkshood</i>)	autumnale	Dark navy-blue	3	Sept., Oct.
	fischeri	Bright glossy-blue	2-3	Sept., Oct.
	*fischeri wilsoni	Deep violet-blue	5-6	Sept., Oct.
	*napellus	Rich dark blue	3-4	July, Aug.
	*Spark's Variety	Dark blue	5-6	July-Aug.
ACTÆA (<i>Baneberry</i>)	alba	White	2	May-Sept
	rubra	White. Red berries	2	May-Sept.
ANCHUSA (<i>Bugloss</i>)	barrelieri	Dark blue	2-3	May
	myosotidiflora	Blue	1½	May
ANEMONE (<i>Windflower</i>)	canadensis.....	White	1	June
	japonica alba	White	2-3	Sept., Oct.
	japonica, Geante Blanche	Double; white	2-3	Sept., Oct.
	japonica, Queen Charlotte	Double; pink	2-3	Sept., Oct.
	japonica rosea superba	Pink	2-3	Sept., Oct.
	japonica rubra	Red	2-3	Sept., Oct.
	japonica, September Charm	Silvery pink	2-3	Sept., Oct.
	nemorosa	White	½	May
	pulsatilla, Pasque Flower	Violet-purple	1½	April
	hupehensis	Rose-pink	1½-2	Sept., Oct.
ANTHEMIS (<i>Camomile</i>)	tinctoria, Perry's			
	Variety	Bright golden yellow	1½-2	June, July
AQUILEGIA (<i>Columbine</i>)	alpina	Blue	1	May
	cærulea	Blue and white	2	May, June
	chrysantha	Yellow	3-2½	June
	Long-spurred Hybrids	Mixed colors	2-2½	June
ARISÆMA	triphylum. Jack-in-the-Pulpit	White	3	May
ARTEMISIA (<i>Mugwort</i>)	vulgaris lactiflora.....	Creamy white	3-4	Aug., Sept.
	Silver King	Silver-gray foliage	2-3	June-Sept.
ARUNCUS	sylvester. Goat's-Beard	White	4-5	July, Aug.
ASCLEPIAS	tuberosa. Butterfly-Weed	Orange-yellow	1½	Aug.
ASTER alpinus		Blue	½-1	June
	Barr's Pink	Pink	3-4	Sept.
	novæ-angliæ. New England Aster	Violet-purple	4-5	Sept., Oct.
	novæ-angliæ roesus	Rosy pink	4-5	Sept., Oct.
	Queen Mary	Blue	2-3	Aug., Sept.
ASTILBE, <i>Spiræa</i> .	Amethyst	Deep violet-purple	2-3	July
	Avalanche	Pure snow-white	2	July
	Gladstone	White	1½-2	July
	Granat	Crimson	2	July
	Gruno	Salmon-pink	3-4	July
	Marguerite van Rechteren	Vivid lilac-red	4-5	July
	Rhineland	Reddish salmon	2-3	July
	Salmon Queen	Salmon and White	3-4	July
AUBRIETIA deltoidea		Purple	½	May, June
BAPTISIA australis. Blue Wild Indigo.....		Blue	3-4	June
BOCCONIA cordata. Plume Poppy.....		Buff	5-6	Aug.
BOLTONIA asteroides		White	5-6	Sept.
	latisquama	Lavender-pink	5-6	Sept.

* These varieties 35 cts. each, 3 for 90 cts., \$3 per doz.

Variety	Common Name	Color	Ht. feet	Flowering Season
CALTHA palustris.	<i>Cowslip</i>	Yellow	1	May
CAMPANULA.	<i>Bellflower</i>			
carpatica		Blue	1/2	June-Aug.
carpatica alba		White	1/2	June-Aug.
persicifolia		Blue	2	June
persicifolia alba		White	2	June
persicifolia, Telham Beauty		Soft lavender-blue	2	June
rhomboidalis		Blue	1/2-1	June
rotundifolia, Olympica		Deep lavender	1/2-1	June
CASSIA marylandica.	<i>American Senna</i>	Yellow	3-5	Aug.
CATANANCHE cærulea.	<i>Blue Cupid's Dart</i>	Pale violet	2	July
CENTAUREA dealbata		Reddish pink	1-1 1/2	July
montana		Blue	1-1 1/2	July
CHELONE lyoni.	<i>Pink Turtlehead</i>	Purple red	3-4	Aug., Sept.
CHRYSANTHEMUM arcticum		White	1	Sept., Oct.
maximum, Shasta Daisy		White	2-3	July, Aug.
CHRYSANTHEMUMS, HARDY.				
Algonquin		Double yellow	1 1/2	Sept.
Alice Howel		Orange-yellow	2-3	Oct.
Astrid		Single salmon-rose	1 1/2	Oct.
Barbara Cumming		Yellow-bronze	2	Sept.
Early Bronze		Bronze-yellow	2 1/2	Sept.
Harvest Moon		Golden yellow	1 1/2	Oct.
Lillian Doty		Shell-pink	2	Oct.
Normandie		Light pink	1 1/2-2	Sept.
Pygmy Gold		Double golden-yellow	1 1/2	Sept.
Ruth Cumming		Reddish bronze	2	Oct.
White Lillian Doty		White	2	Oct.
Yellow Normandie		Yellow	1 1/2-2	Sept.
Yellow Cushion		Yellow mounds	1 1/2	Sept.
Pink Cushion		Pink	1 1/2	Sept.
King Cushion		Reddish-bronze	1 1/2	Sept.
Queen Cushion		White to lavender	1 1/2	Sept.
CIMICIFUGA racemosa.	<i>Bugbane</i>	White	5-6	July, Aug.
CONVALLARIA majalis.	<i>Lily-of-the-Valley</i>	White	1-1 1/2	May, June
COREOPSIS lanceolata		Yellow	2	June-Sept.
DELPHINIUM belladonna		Turquoise-blue	5-6	June
bellamosum		Deep blue	5-6	June
grandiflorum chinense		Dark blue	1 1/2	June
grandiflorum chinense album		White	1 1/2	June
grandiflorum chinense, Azure Fairy		Cambridge-blue	1 1/2	June
Pacific Hybrids		Mixed colors	5-6	June
Summer Cloud		White	5-6	June
DIANTHUS deltoides		Rose-pink	1/2	June
plumarius, Pheasant's Eye Pink		Pink and red	1	June
Furst Bismarck		Deep pink	1/2	June-Aug.
DICENTRA canadensis.	<i>Squirrel-corn</i>	Light pink	1/2	May
cucullaria, Dutchman's Breeches		White	1/2	May
eximia, Fringed Bleeding-Heart		Reddish purple	1	May-Aug.
*spectabilis, Bleeding-Heart		Crimson	2	May, June
DICTAMNUS albus rubra.	<i>Gas Plant</i>	Reddish purple	2	June
DIGITALIS. ambigua.	<i>Yellow Foxglove</i>	Yellow	2-3	June

* These varieties 35 cts. each, 3 for 90 cts., \$3 per doz.

Variety	Common Name	Color	Ht. feet	Flowering Season
DODECATHEON	<i>meadia. Shooting-Star</i>	Light pink	2	June
DORNICUM	<i>plantagineum (excelsum)</i>			
	<i>Leopard's-Bane</i>	Yellow	2	May
ECHINACEA	<i>purpurea. Purple Coneflower</i>	Purple	4	July, Aug.
ECHINOPS	<i>ritro. Globe-Thistle</i>	Blue	4-6	Aug., Sept.
ERYNGIUM	<i>amethystinum. Sea-Holly</i>	Blue	3-4	July, Aug.
EULALIA	<i>sinensis variegatus. Striped Eulalia</i>	Yellowish white	4-6	June-Aug.
EUPATORIUM	<i>urticæfolium. White Snakeroot</i>	White	3-4	Aug.
EUPHORBIA	<i>corollata. Flowering Spurge</i>	White	1½-2	July, Aug.
	<i>polychroma. Cushion Spurge</i>	Yellow	½	May
FUNKIA	<i>lanceifolia. Plantain Lily</i>	Pale lilac	1	Aug.
	<i>lanceifolia variegata. Lanceleaf Plantain Lily</i>	Purple lilac	1	Aug.
	<i>*subcordata. White Plantain Lily</i>	White	1½	Sept.
GAILLARDIA	<i>grandiflora maxima</i>	Yellow and red	3	July-Sept.
GENTIANA	<i>andrewsi. Closed Gentian</i>	Purplish blue	1	Aug., Sept.
GEUM, Lady	Stratheden	Yellow	2	June, July
PRINCE OF ORANGE		Orange	1½	June, July
GYPSOPHILA	<i>paniculata. Baby's-Breath</i>	White	2	July
	<i>*Bristol Fairy</i>	White	2	July, Aug.
	<i>repens</i>	White	½	June
HELENIUM	<i>autumnale. Sneezeweed</i>	Yellow	4-5	Sept.
	<i>Riverton Beauty</i>	Yellow, dark cone	4	Aug., Sept.
	<i>Riverton Gem</i>	Yellow and red	5	Aug., Sept.
HELIANTHUS	<i>lætiflorus. Showy Sunflower</i>	Bright yellow	3-4	Aug.
	<i>orgyalis. Graceful Sunflower</i>	Yellow	5-6	Oct.
HEMEROCALLIS	<i>flava. Lemon Day Lily</i>	Pale yellow	2	June
	<i>Apricot</i>	Apricot-orange	2	May-June
	<i>Citrina Hybrids</i>	Lemon-yellow	4-5	Aug., Sept.
	<i>fulva Kwanso. Double Orange Day Lily</i>	Orange	3	July, Aug.
	<i>thumbergi</i>	Lemon-yellow	2	July, Aug.
	<i>New Betscher Hybrids.</i>			
	<i>Anna Betscher</i>	Golden-yellow	2½	July-Aug.
	<i>Bay State</i>	Deep-yellow	2-3	July-Aug.
	<i>Dawn</i>	Pale rose	3	July
	<i>D. D. Wyman</i>	Golden-yellow	3	July-Aug.
	<i>J. A. Crawford</i>	Apricot-yellow	4	June, July
	<i>Latest</i>	Clear yellow	3	Aug.
	<i>Lemona</i>	Lemon-yellow	4-5	June
	<i>Goldeni</i>	Deep golden orange	3	July
HEPATICA	<i>acutiloba. Liverleaf</i>	Light pink	½	April
	<i>triloba</i>	Light-pink	½	April
HEUCHERA	<i>sanguinea. Coral Bells</i>	Coral-red	1½	June-Aug.
	<i>sanguinea alba</i>	White	1½	June-Aug.
	<i>sanguinea rosea gigantea</i>	Pink	1½-2	June-Sept.
	<i>sanguinea splendens</i>	Scarlet	1½	June-Sept.
HIBISCUS	<i>moscheutos. Rose-Mallow</i>	Pink	4-5	Aug., Sept.
IBERIS	<i>sempervirens. Candytuft</i>	White	½	June
INCARVILLEA	<i>delavayi. Hardy Gloxinia</i>	Rose-pink	1½	June, July

* These varieties 35 cts. each, 3 for 90 cts., \$3 per doz.

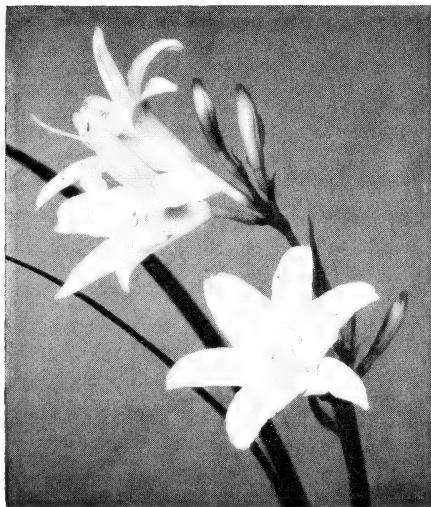


Lilies and Delphiniums

Variety	Common Name	Color	Ht. feet	Flowering Season
IRIS sibirica.	<i>Siberian Iris</i>	Blue	2-3	June
sibirica, Emperor		Deep violet	3-4	June
sibirica, Perry's Blue		Clear blue	3-4	June
sibirica, Perry's Pygmy		Dark violet	1-1½	June
sibirica, Snow Queen		White	3-4	June
sibirica, Thelma Perry		Light blue	3-4	June
pseudacorus.	<i>Yellowflag</i>	Yellow	3	June
versicolor.	<i>Common Blue Flag</i>	Blue	3-4	June
kaempferi.	<i>Japanese Iris</i>	Mixed	2-3	July
*kaempferi, Gold Bond		Double; white	2-3	July
*kaempferi, Iphigenie		Deep lilac	2-3	July
*kaempferi, Norma		Double; pink	2-3	July
*kaempferi, Pyramid		Violet-blue	2-3	July
*kaempferi, Uchiu		Blue and gold	2-3	July
LAVANDULA vera,	<i>Munstead</i>	Blue	½-1	July
LEONTOPODIUM alpinum.	<i>Edelweiss</i>	White	½	July, Aug.
LIATRIS pycnostachya.	<i>Gayfeather</i>	Rose-purple	4-5	Aug.
scariosa		Rose-purple	3-4	Sept.
spicata		Purple	1-1½	Aug.
LINUM flavum.	<i>Golden Flax</i>	Yellow	1	June, July
LOBELIA cardinalis.	<i>Cardinal Flower</i>	Deep scarlet	3-4	Aug.
LUPINUS polyphyllus.	<i>Lupine</i>	Blue	2-3	June
polyphyllus albus		White	2-3	June
polyphyllus roseus		Pink	2-3	June
Regal Lupines		Mixed	2-3	June
LYCHNIS chalcidonica.	<i>Maltese Cross</i>	Scarlet	3	June
LYTHRUM salicaria roseum.	<i>Rosy Loose-</i>			
stria		Rose-purple	3-4	July
MALVA moschata.	<i>Musk Mallow</i>	Pink	2	July, Aug.
moschata alba.	<i>White Musk Mallow</i>	White	2	July, Aug.
MERTENSIA virginica.	<i>Virginia Bluebells</i>	Blue	1-2	May
MONARDA didyma.	<i>Oswego Bee Balm</i>	Cardinal-red	3	July
Cerise Queen		Cerise-pink	3	July
Lavender		Lavender	3	July
Salmon-Pink		Salmon-pink	3	July
OENOTHERA fraseri.	<i>Evening Primrose</i>	Deep golden yellow	1-1½	July, Aug.
missouriensis.	<i>Ozark Sundrops</i>	Yellow	½-1	July, Aug.
PACHYSANDRA terminalis.	<i>Japanese</i>			
Spurge		White	½	May, June
PAPAVER nudicaule.	<i>Iceland Poppy</i>	White, yellow, orange	1-1½	May-Oct.
orientale.	<i>Oriental Poppy</i>	Orange-scarlet	2	May, June
orientale, Gerald Perry		Apricot-pink	2	May, June
orientale, Henry Cayeux.	50 cts. each	Old rose	2	May, June
orientale, Jean Mawson.	50 cts. each	Geranium-pink	2	May, June
orientale, Joyce		Cerise	2	May, June
orientale, Mahony.	50 cts. each	Carmine-purple	2	May, June
orientale, Orange Beauty		Orange	2	May, June
orientale, Perry's White.	50 cts. each	White	2	May, June
orientale pygmæa		Orange	1-1½	May, June
PENTSTEMON barbatus,	<i>Coral Gem</i>	Coral-red	2-2½	July
barbatus, Shell-Pink		Clear pink	2-2½	July
barbatus Torreyi		Scarlet	2-2½	July

* These varieties 35 cts. each, 3 for 90 cts., \$3 per doz.

Variety	Common Name	Color	Ht. feet	Flowering Season
PHLOX paniculata. <i>Hybrid Phloxes.</i>				
Albert Leo Schlageter		Bright red	2-2½	Aug.
Annie Cook		Flesh pink	2½	Aug.
Annie Laurie		Deep, rich salmon	2½	Aug.
B. Comte		French purple	2-3	Aug., Sept.
Betty Lou		Orange-scarlet	2-3	Aug.
Count Zeppelin		White, crimson eye	2½	Aug.
E. I. Farrington		Soft salmon	2-3	Aug.
Enchantress		Bright salmon-pink	1½-2	Aug.
Europa		White, red band	2-2½	Aug.
Firebrand		Bright red	2-2½	Aug.
Frau Anton Buchner		Pure white	2-3	Aug.
George Stipp		Deep salmon	2½-3	Aug.
Hans Volmuller		Soft lavender	2-2½	Aug.
Jules Sandeau		Pure pink	1-1½	July, Aug.
Mary Louise		Pure white	2-2½	Aug.
Mia Ruys		Pure white	1½-2	Aug.
Paul Hoffman		Carmine	2½	Aug.
Peach Blow		Apple-blossom-pink	1½	Aug.
Prof. Virchow		Orange and carmine	2-2½	Aug.
Rheinlander		Salmon pink	2-2½	Aug.
Rokoko		Soft pink	2½	Aug.
Salmon Glow		Deep salmon	2½	Aug.
Sir Edwin Landseer		Bright crimson	2-2½	Aug.
Von Hochburg		Brilliant red	2½	Aug.
suffruticosa, Miss Lingard		White	2-3	July



Hemerocallis

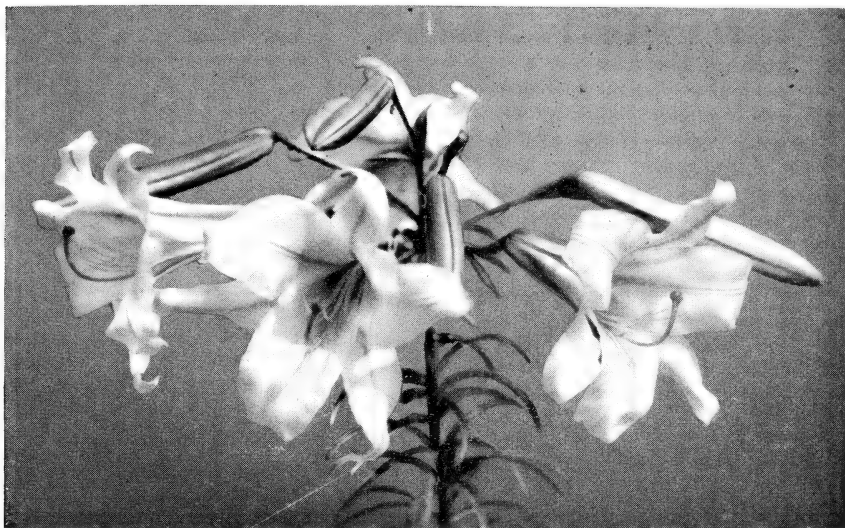


Hardy Phlox

* These varieties 35 cts. each, 3 for 90 cts., \$3 per doz.

Variety	Common Name	Color	Ht. feet	Flowering Season
PHYSOSTEGIA (False Dragonhead) <i>virginiana grandiflora</i> , Vivid		Bright-mauve-pink	1½-2	Sept., Oct.
PLATYCODON grandiflorum . Balloon Flower		Blue	1½-2	Aug., Sept.
POLEMONIUM reptans . Greek Valerian		White	1½-2	Aug., Sept.
POLYGONATUM biflorum . Small Solomon's Seal		Blue Greenish	½ 1-3	May
PRIMULA				
<i>cortusoides</i> . Bigleaf Primrose		Rosy pink	½	May
<i>elatior</i> . Ox-lip Primrose		Light yellow	½	May
<i>japonica</i> . Japanese Primrose		White, pink, red	1	May
<i>veris</i> . Common Primrose		Yellow	½	May
PYRETHRUM hybridum . Painted Daisy		Red, white, pink	2	June
SALVIA azurea grandiflora . Great Azure Sage		Azure-blue	2-3	Aug.
SANGUINARIA canadensis . Bloodroot		White	1	April
SAPONARIA ocymoides		Rosy pink	½	May-July
SCABIOSA caucasica . Caucasian Scabiosa		Blue	1½	June-Aug.
<i>caucasica alba</i> . White Caucasian Scabiosa		White	1½	June-Aug.
SILENE schafta . Autumn Catchfly		Rose-pink	½	June-Oct.
STATICE latifolia . Sea Lavender		Light blue	2	Aug., Sept.
STOKESIA cyanea . Stokes Aster		Azure-blue	1-1½	Aug.
THALICTRUM adiantifolium . Maidenhair				
<i>Meadow-Rue</i>		White	2	June
<i>dioicum</i> . Early Meadow-Rue		Purple	1-2	April, May
<i>polygonum</i> . Tall Meadow-Rue		White	3-4	Aug.
THERMOPSIS caroliniana		Bright yellow	3-4	July
TRADESCANTIA virginiana . Virginia Spiderwort		Light blue	1-1½	June
TRILLIUM erectum . Purple Trillium		Purple	1	May
<i>grandiflorum</i> . Wake-Robin. 10 cts. each;				
\$1 per doz.		White	1	May
<i>undulatum</i> . Painted Trillium		Pink	1	May
TROLLIUS europæus . Globe Flower		Pale yellow	1-1½	May-Aug.
* <i>Iedebouri</i>		Bright yellow	2-3	June
Orange Prince. 50 cts. each		Orange-yellow	1-1½	May-Aug.
ULMARIA filipendula . Meadow Sweet		White	2-3	June, July
<i>filipendula fl-pl.</i>		White	1½-2	June, July
UVULARIA grandiflora . Merrybells		Pale yellow	1-1½	May
VALERIANA officinalis . Hardy Heliotrope		White	3-4	June
VERONICA amethystina . Bastard Speedwell		Blue	1	June
<i>longifolia</i> . Beach Speedwell		Lilac-blue	2	July
<i>longifolia subsessilis</i> . Clump Speedwell		Deep blue	1½-2	Aug.
<i>spicata</i> . Spike Speedwell		Bright blue	1½	July
VIOLA canadensis . Canadian Violet		White	1	June
<i>cornuta</i> , Jersey Gem		Violet-blue	½	May-Oct.
* <i>odorata</i> , Double Russian		Deep purple	½	June
<i>palmata cucullata</i> . Hooded Violet		Blue	½	June
<i>pubescens</i> . Downy Yellow Violet		Yellow	½	June

* These varieties 35 cts. each, 3 for 90 cts., \$3 per doz.



Creelman Seedlings

MOSAIC-FREE LILIES FOR SPRING PLANTING

Plant clean, healthy stock free of the insidious mosaic which has accounted for most of your past failures with lilies.

Horsford's bulbs will guarantee your success. Recent discoveries by scientists show mosaic as the greatest contributor to all losses in Hardy Lilies.

We can offer the following varieties in clean stock and we give complete cultural directions with every order.

Amabile. A rare Korean of interesting shape. Grenadine-red, freely spotted black. July. 3 to 4 ft. 40c each, \$4.00 per doz.

Callosum. Flowers unspotted orange red and Turkscap-shaped. Height, 2 to 3 ft. August-September. 30c each, \$3.00 per doz.

Canadense. We're sorry we can't guarantee the color of this wild Lily, but everything else about it is all right. May be a brick-red, or a clear golden yellow. June, July. 2 to 5 ft. 15c each, \$1.50 per doz.

Centifolium. This variety is called a giant among lilies, with long, trumpet-shaped

white flowers, streaked outside with brown and flushed inside with yellow at the base of the trumpet. July. 4 to 5 ft. 60c each, \$6.00 per doz.

Creelman Seedlings. Beautiful trumpet lilies grown from the seed of the famous George C. Creelman Hybrid. Vigorous stems with many gorgeous white blooms. July. 4 to 5 ft. 60c each, \$6.00 per doz.

Crow's Hybrids. Outstanding creamy tones of coloring, some with greenish yellow throats and others clear yellow. Anthers vary from yellow to orange and dark brown. July-August. 4 to 5 ft. 60c each, \$6.00 per doz.

LILIES FOR SPRING PLANTING (*Continued*)

Davidii. A very vigorous and dependable Lily of Turk's Cap type. Numerous red flowers. July-August. 4 to 6 ft. 60c each, \$6.00 per doz.

Hansonii. Its nodding flowers, with their thick waxen petals, will bring you their delicate fragrance; the earliest of all lilies. Six to ten reddish orange blooms in a cluster. June. 3 to 4 ft. 50c each, \$5.00 per doz.

Henryi. Given heights will vary with soil and growing conditions, but we've honestly seen this Lily 9 feet high. Very easy to grow, too. Graceful sprays of brilliant apricot-yellow. August, September. 50c each, \$5.00 per doz.

Henryi. Improved variety. Similar to *L. henryi* except that the stems are stiff and erect in habit. This characteristic add greatly to its value in the garden. 75c each, \$7.50 per doz.

Horsfordi. This splendid creation arrived through the crossing of the vigorous and tall growing *L. maximowiczii* and the lovely *L. batemanni*. Color is a mild apricot with black spots. 3 ft. July. Price, 60c each, \$6.00 per doz.

Maxwill. A new hybrid between *L. willmottiae* and *L. maximowiczii*. In color it resembles the former but has the stiff stem of the latter which marks it a greatly improved variety. Orange. July. 5 to 6 ft. 75c each, \$7.50 per doz.

Philippinense formosanum. A variety of refined and graceful appearance, with long, grassy foliage. It reaches four feet with long trumpet flowers, pure white inside, slightly tinted reddish-brown outside. August-September. 25c each, \$2.50 per doz.

Pride of Charlotte. This stately offspring of *L. sargentiae* is more rugged than its parent. Long, white funnel-shaped flowers with yellow throat and sometimes marked externally a deep reddish-brown. 3 to 4 ft. July. 60c each, \$6.00 per doz. Large bulbs \$1.00 each.

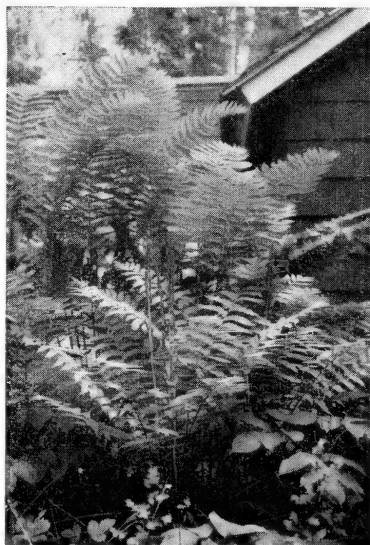
Regale. A truly Regal beauty, and the best behaved queen of the lot. Parade her before a royal curtain of Delphinium to

show her off to best advantage. White, slightly suffused with pink, shading to beautiful shade of canary-yellow at the throat. July. 3 to 5 ft. 60c each, \$6.00 per doz.

Superbum. America's handsomest native Lily, in our opinion, with its immense, pyramidal cluster of blooms right up high where you can admire them. Brilliant orange-red shading to yellow and spotted with brown. July. 4 to 6 ft. 25c each, \$2.50 per doz.

Tenuifolium. A small slender growing lily, not more than eighteen inches high, with bright scarlet flowers and recurved petals. One of the prettiest little lilies in cultivation. Early June. 12 to 18 in. 15c each, \$1.50 per doz.

Tenuifolium. Var. *Golden Gleam.* A fine type of *L. tenuifolium* with flowers of a beautiful apricot shade. A free and vigorous grower. 20c each, \$2.00 per doz.



Osmunda cinnamomea

HARDY FERNS

Perhaps, some time, some great scholar or chemist will devise a universal color language that can really picture color so one can see it. We wish we had it now, to tell you what we see in our Ferns, with their seemingly limitless variations of green and their intricate varied shapes and forms.

Individual families do not describe easily, for the variations of each are too great. The best we can do is to point out that there is some variety of Fern that can be grown in almost any conceivable location, be it a rocky hillside or a dank swamp, and that all of the plants in our list are absolutely hardy. And, of course, no other family, as a whole, does so well in shade. Our list supplies all the information you may need as to where to use each variety.

Variety	Common Name	Ht. feet	Use	Situation
ADIANTUM	pedatum. Maidenhair Fern	1-1½	S	M
ASPIDIUM	clintonianum	3-4	S	M
	cristatum	1	PS	M
	filix-mas. Male Fern	1½-2	S	R
	goldieanum	3-4	PS	M
	marginale. Evergreen Wood Fern	1½-2	S	D
	novboracense. New York Shield Fern	1	S	M
	spinulosum. Spinulose Wood Fern	1½-2	PS	D
	spinulosum dilatatum	2½	PS	M
ASPLENIUM	acrostichoides. Silver Spleenwort	3	PS	M
	augustifolium. Spleenwort	2-3	S	M
	felix-foemina. Lady Fern	1-3	O-S	M
	platyneuron. Ebony Spleenwort	1	PS	R
	trichomanes. Maidenhair Spleenwort	¼- ½	PS	R
CAMPTOSORUS	rhizophyllus. Walking-Leaf	½	S	R
CYSTOPTERIS	bulbifera. Bladder Fern	1½-2	PS	M
DICKSONIA	punctilobula. Hay-scented Fern	1-2	O	R
ONOCLEA	struthiopteris. Ostrich Fern	3-4	O-S	M
	sensibilis. Sensitive Fern	1	O	W
OSMUNDA	cinnamomea. Cinnamon Fern	3-4	O-S	W
	claytoniana. Clayton's Flowering Fern	2-3	O-S	D
	regalis. Royal Fern	2-3	O-S	W
PHEGOPTERIS	dryopteris. Beech Fern	1	S	M
	hexagonoptera. Hexagon Beech Fern	1	S	M
	polypodioides	¾	PS	M
POLYPODIUM	vulgare. Polypody	½	PS	D
POLYSTICHUM	braunii. Shield Fern. 50 cts.	1	PS	M
	acrostichoides. Christmas Fern	1	PS	D
WOODSIA	ilvenis. Rusty Woodsia	½	O	D
	obtusata. Obtuse-leaved Woodsia	½-1	S	D

KEY: Use—S, shade; PS, partial shade; O, open ground; O-S sun or shade.
 Situation—M, moist; D, dry; W, wet or boggy; R, rockwork.

Hardy Ferns \$0.20 each, \$1.50 per dozen.

EASY-TO-GROW FERNS

For Shady or Difficult Locations

FOR THE OPEN BORDER

Mostly tall Ferns with bold, broad foliage, and imposing appearance. They are adapted to sunshine but need the shelter of adjacent plants about the base of the fronds. Plant them in mixed groups among low shrubs.

- 6 *Osmunda claytoniana*. 2-3 ft.
 - 6 *Onclea struthiopteris*. 3-4 ft.
 - 18 *Dicksonia punctilobula*. 1-2 ft.
 - 6 *Asplenium felix-fœmina*. 1-3 ft.
- 36 Ferns for \$4.00

FOR WET, OPEN GROUND

No trouble at all to find ordinary plants for wet, open ground but not many Ferns are adapted to the sunshine. Use rushes or flowering plants freely in such situations.

- 12 *Onclea sensibilis*. 1 ft.
 - 12 *Osmunda regalis*. 2-3 ft.
- 24 Ferns for \$2.50



Asplenium felix-fœmina

FOR DRY, ROCKY LEDGE

Some of the choicest little Ferns are found in such places in nature. Mostly they are dwarf—frequently half evergreen—but always charming in outline, texture and aspect.

- 12 *Asplenium trichomanes*. 3-6 in.
 - 12 *Woodsia obtusa*. 6-12 in.
 - 12 *Polypodium vulgare*. 6 in.
 - 12 *Woodsia ilvensis*. 6 in.
- 48 Ferns for \$4.50

FOR MOIST, SHADY PLACES

The wealth of plants which will flourish in moist, shady places is embarrassing. Ferns are no exception. Choose those of relatively low stature, among which to mingle blooming plants such as bog orchids.

- 6 *Adiantum pedatum*. 1-1½ ft.
 - 6 *Aspidium cristatum*. 1 ft.
 - 6 *Polystichum acrostichoides*. 1 ft.
 - 6 *Aspidium spinulosum*. 1½-2 ft.
 - 6 *Aspidium marginale*. 1½-2 ft.
 - 6 *Asplenium acrostichoides*. 3 ft.
 - 6 *Asplenium felix-fœmina*. 1-3 ft.
 - 6 *Phegopteris hexagonoptera*. 1 ft.
 - 6 *Asplenium angustifolium*. 2-3 ft.
- 54 Ferns for \$5.00

FOR DRY, SHADY PLACES

Under trees, in the shade of buildings where the soil is too dry for blooming plants, these Ferns may adapt themselves or if not all, some may. Dry shade is one of the gardener's hardest problems.

- 9 *Aspidium marginale*. 1½-2 ft.
 - 9 *Dicksonia punctilobula*. 1-2 ft.
 - 9 *Osmunda claytonia*. 2-3 ft.
 - 9 *Polystichum acrostichoides*. 1 ft.
- 36 Ferns for \$4.50

Any of the above Ferns 20c each, 6 for 75c, \$1.50 per doz.

HARDY ORCHIDS

Variety	Common Name	Color	Season	Price	
				Each	Doz.
CALOPOGON pulchellus		Magenta	July	\$0.25	\$2.00
CYPRIPEDIUM acaule.	<i>Common</i>				
	<i>Lady's-Slipper</i>	Rose-pink	June (per bud)	20	1.50
	<i>hirsutum (spectabile). Showy Lady's-Slipper</i>	Rose-purple	June (per bud)	20	1.50
	<i>pubescens. Large Yellow Lady's-Slipper</i>	Yellow	June (per bud)	20	1.50
EPIPACTIS pubescens.	<i>Rattlesnake</i>				
	<i>Plantain</i>	White	June	20	1.50
HABENARIA blephariglottis.	<i>White</i>				
	<i>Fringed Orchid</i>	White	July	25	2.50
	<i>psycodes</i>	Purple	July	35	3.50
ORCHIS spectabilis.	<i>Showy Orchid</i>	Purplish pink	May	20	1.50
POGONIA ophioglossoides		Pale pink	July	20	1.50
SPIRANTHES cernua.	<i>Ladies' Tresses</i>	White	Aug.	20	1.50

SELECTED ROSES WITH "NORTH COUNTRY"
HARDINESS

Our Rose-list may seem peculiar to you, particularly if you go hunting for Columbia or Killarney or some of the good honest Hybrid Tea Roses that are usually found in catalogs. But you see, we just can't "make a go of them" up here in the North Country. Perhaps they'll be all right for a year or two, and then we'll have a winter like 1933 and there won't be much left.

So, instead, we stick to the Species, Hardy Climbers, Shrub Roses and the Hybrid Perpetuals. They are as hardy as other Regal Plants, and have just as interesting form and flowers. There are good whites, reds, pinks, yellows, singles and doubles, in every type of form and shape. Most of them require much less care than the so-called "ever-blooming" Roses. It's just that there aren't so many to choose from, though you can depend on the choice you make.

HYBRID PERPETUAL ROSES

We offer the following at 60 cts. each, \$6 per doz.

- Frau Karl Druschki.** This charming Rose is among the best of the double whites. If it has any fault yet seen, it is that it is too free with its splendidly formed blooms.
- General Jacqueminot.** An old favorite that should be in every Rose-garden, with its fragrant, large, very showy flowers of bright, velvety crimson.
- George Arends.** One of the finest pink Roses, with flowers like Frau Karl Druschki.
- Harrison's Yellow.** This is not a Hybrid Perpetual, but a big, bushy Briar Rose, common in old-time gardens, where it blooms in great billows of bright yellow very early in the season.
- Magna Charta.** Hardy. Handsome pink flowers in June, on long stems. Exceedingly fragrant.
- Mrs. John Laing.** Soft pink blooms of good form; fragrant. Free flowering. One of the finest June Roses.
- Paul Neyron.** The largest Rose in cultivation. Flowers clear deep rose, extremely double, intensely fragrant, and borne on long stems.
- Persian Yellow.** Deep golden yellow, full and fragrant. Hardy everywhere. Strong grower.
- Prince Camille de Rohan.** Deep velvety crimson-maroon, shaded scarlet. A magnificent dark Rose.

HYBRID PERPETUAL ROSES
(Continued)

Ulrich Brunner. Bright cherry-red blooms on long, light green, almost smooth stems. Free flowering.

SPECIES

ROSA rugosa. *Russian Rose.* A very desirable and hardy species with large, solitary, red, or sometimes white, flowers, coming in long succession.

50 cts. each, \$5 per doz.

rugosa, Dr. Eckener. A new rugosa hybrid of recent introduction. Flowers of salmon pink with gold base.

60 cts. each, \$6 per doz.

rugosa, Hansa. Very hardy variety with dark purple-red flowers. It is especially satisfactory in our severe climate.

50 cts. each, \$5 per doz.

wichuriana. *Cemetery or Memorial Rose.* A splendid Rose for growing where it will receive no care. Gives a great profusion of single white flowers.

50 cts. each, \$5 per doz.

HARDY CLIMBING ROSES

American Pillar. Very lusty Climber with bold, waxy foliage, bearing tremendous clusters of large, sparkling pink, single flowers with a round white eye and bright golden stamens. 50 cts. each, \$5 per doz.

Dorothy Perkins. The Rose of our New England countryside, where its mass of pink bloom makes colorful hedges, frames doorways, or decorates garden trellises each June. 50 cts. each.

Dr. W. Van Fleet. The first and, many people think, still the best of the Hardy Climbers with Hybrid-Tea-Type blooms. Long, clear pink buds opening to 4-inch bluish-pink flowers. 60 cts. each.

Excelsa. Flowers brilliant scarlet-crimson, produced in immense clusters on plants of great vigor and beauty. Altogether the best of its type. 60 cts. each.

New Dawn. Plant Patent No. 1. Many of those who argue with the Van Fleet enthusiasts present this Climber as superior because of its equal hardiness and similar bloom. \$1.50 each.

Paul's Scarlet Climber. Clear, vivid, shining, large, semi-double flowers which remain unusually long and in good condition on the plants, and never turn blue. 60 cts. each.

Primrose. New hardy yellow Climber with large, double, canary-yellow flowers in great profusion. 50 cts. each.

White Dorothy Perkins. A counterpart of Dorothy Perkins, except in color, showing a faint trace of pink in bud and opening to a pure white flower. 50 cts. each.

OTHER CHOICE GARDEN and SHRUB ROSES

Baby Rambler (Dwarf Crimson Rambler). Constantly in flower from early spring until frost, with good-sized trusses of crimson flowers much like Crimson Rambler.

50 cts. each, \$5 per doz.

F. J. Grootendorst. This variety has been aptly described as "a Rugosa Rose with the flowers of a red carnation." No other Rose in any other class excels it in continuous bloom. The habit is bushy and vigorous, and it is adaptable for single specimens or hedges.

50 cts. each, \$5 per doz.

Pink Grootendorst. A charming, bright shell-pink variation of the scarlet F. J. Grootendorst, like it in all other respects and equally valuable. Perhaps because the color is so soft and appealing in the mass, we find that many gardeners prefer it greatly to the hard brilliance of the red variety. 50 cts. each, \$5 per doz.

Hugonis. Fully as vigorous as *Spiraea Vanboutei*, this "Golden Rose of China" makes the same sort of outflowing, graceful, drooping plant. Its early, honestly yellow flowers make a desirable feature for the shrubby border, the driveway, the garden background, the corner, or a stunning hedge. 60 cts. each, \$6 per doz.

Roses like a good, deep, rich loam.

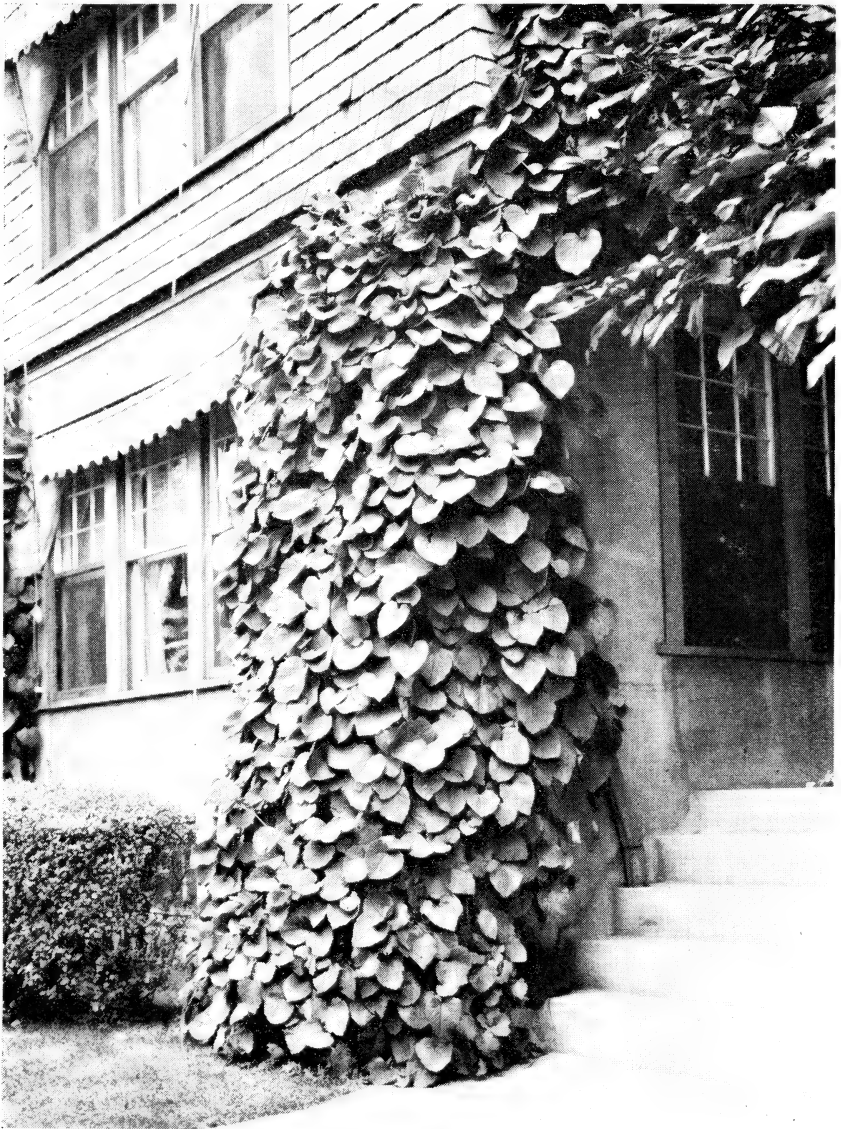
There is little danger of getting the soil too rich. Shallow, sandy or gravelly soils are not suited to them. When necessary to plant in such soils as these, artificial compost should be made by taking out a foot and a half of this natural soil, and filling in with rich heavy loam.



EVERGREENS

Evergreens are especially useful for foundation plantings, wind-breaks and screen plantings. Be sure and allow plenty of space for your Spruces and Hemlocks to develop.

Variety	Common Name	Shape	Size	Each
<i>Juniperus chinensis</i>				
Pfitzeriana	Pfitzer's Juniper	Spreading	1½-2	\$2.00
communis suecica	Swedish Juniper	A graceful column	2-3	2.00
sabina	Savin Juniper	Spreading	1½	1.50
<i>Picea excelsa (Abies excelsa)</i>	Norway Spruce	Tall, conical	1½-2	.50
pungens	Colorado Spruce	Symmetrical	2-3	1.00
pungens glauca	Colorado Blue Spruce	Symmetrical	3-4	1.50
pungens glauca	Colorado Blue Spruce	Symmetrical	2	3.50
pungens glauca	Colorado Blue Spruce	Symmetrical	2-3	5.00
<i>Pinus montana mughus</i>	Mugho Pine	Globular	1-1½	2.00
			1½-2	2.50
<i>Retinospora pisifera</i>				
filifera	Thread Retinospora		1½-2	1.50
plumosa	Plume Retinospora	Feathery	2-3	1.50
plumosa aurea	Golden plume Retinospora	Feathery	2-3	2.00
<i>Taxus canadensis</i>	Canadian Yew	Compact	1-1½	1.00
cuspidata	Japanese Yew	Spreading	1½-2	2.00
cuspidata capitata	Upright Japanese Yew		1-1½	2.00
cuspidata capitata	Upright Japanese Yew		1½-2	2.50
<i>Taxus cuspidata nana</i>	Dwarf Japanese Yew	Compact	1-1¼	2.00
			1¼-1½	3.00
<i>Thuja occidentalis</i>	American Arborvitæ	Conical	2-3	1.00
occidentalis globosa	Globe Arborvitæ	Globular	3-4	1.50
occidentalis globosa	Globe Arborvitæ	Globular	1-1½	.75
occidentalis pyramidalis	Pyramidal Arborvitæ	Narrow, pyramidal	1½-2	1.50
occidentalis pyramidalis	Pyramidal Arborvitæ	Narrow, pyramidal	2-3	2.50
occidentalis pyramidalis	Pyramidal Arborvitæ	Narrow, pyramidal	3-4	3.50
occidentalis, Tom Thumb	Tom Thumb Arborvitæ	Small, feathery	1½-2	1.00
occidentalis wareana	Wareana Arborvitæ	Pyramidal	1-1½	1.00
occidentalis wareana	Wareana Arborvitæ	Pyramidal	1½-2	1.50
<i>Tsuga canadensis</i>	Common Hemlock	Graceful, conical	1½-2	1.00
			2-3	1.50
			3-4	2.50



Aristolochia Macrophylla (Dutchman's Pipe)

VINES, TRAILERS AND CLIMBERS

Most of these are old stand-bys, varieties that have been growing and blooming in New England gardens for a century or more in many cases. We are certain of the hardiness of every one of them, and of that extra vigor and life that seems to come from our Vermont country.

ARISTOLOCHIA macrophylla. *Dutchman's Pipe.* Fine climber; large, dark green leaves; small, quaint flowers, shaped like a pipe, purple and green. 75 cts. each.

CELASTRUS orbiculatus. *Japan Bittersweet.* A vigorous grower, bearing a profusion of orange-yellow fruit with crimson seeds. 40 cts. each.

scandens. *Bittersweet.* Handsome twining shrub with dark green foliage and attractive orange-colored fruit. Fine for covering old walls or stone-heaps. 30 cts. each, \$3 per doz.

CLEMATIS Jackmani. Very beautiful, large, dark purple flowers. The showiest and handsomest of all the Clematis. 2-yr. plants, 75 cts. each.

Mme Edouard Andre. Crimson. 2-yr. plants, 75 cts. each.

paniculata. One of the handsomest Clematis in cultivation. Strong climbing vine, often 12 feet high, covered with fragrant white flowers, as if by a mantle. 40 cts. each, \$4 per doz.

EUONYMUS radicans. A splendid evergreen creeping plant with pretty, deep green, small foliage. Useful for covering low stone walls or stumps. As an edging plant it can be kept closely clipped. 50 cts. each, \$5 per doz.

E. radicans vegeta. *Evergreen Bittersweet.* True. This very handsome variety has broad, shining leaves and handsome scarlet fruits. The most desirable sort for covering walls and rocky places, and fine for the rock-garden. 60 cts. each, \$6 per doz.

LONICERA periclymenum belgica. *Scarlet Honeysuckle.* A very fine, red-flowered form, almost shrubby. It is also quite hardy. 40 cts. each, \$4 per doz.

LYCHNUM chinense. *Matrimony Vine.* Hardy climber, covered with scarlet fruit in autumn. 35 cts. each, \$3.50 per doz.

POLYGONUM auberti. *Chinese Fleecy vine.* A tall-growing, hardy vine with bronzy young leaves which turn green and an abundance of white flowers in feathery sprays.

2-yr. plants, 75 cts. each.

PSEDERA (Ampelopsis) quinquefolia. *Virginia Creeper; American Woodbine.* Its beautiful dark green foliage covers trellises or stone walls and turns to a charming dark red in autumn.

25 cts. each, \$2.50 per doz.

quinquefolia engelmanni. A form which clings to rocks and may be used where the Boston Ivy would not be hardy.

35 cts. each, \$3.50 per doz.

tricuspidata (A. veitchii). *Boston Ivy.* Clings closely to wood or stonework and colors beautifully in autumn.

50 cts. each, \$5 per doz.

TECOMA (Bignonia) radicans. *Trumpet Creeper.* Orange-scarlet, trumpet-shaped, showy flowers. A tall climber. 35 cts. each, \$3.50 per doz.

VINCA minor cærulea. *Myrtle.* For shady places. Fine clumps. 20 cts. each, \$1.50 per doz., \$12 per 100.

V. minor alba. *White Periwinkle.* The white-flowering form of preceding, which has not been plentiful in recent years.

25 cts. each, \$2 per doz., \$15 per 100.

V. minor, Bowles' Variety. An excellent variety of recent introductions with broad, somewhat crinkly, glossy green leaves. Flowers large, of a deep, rich blue color, unsurpassed ground cover.

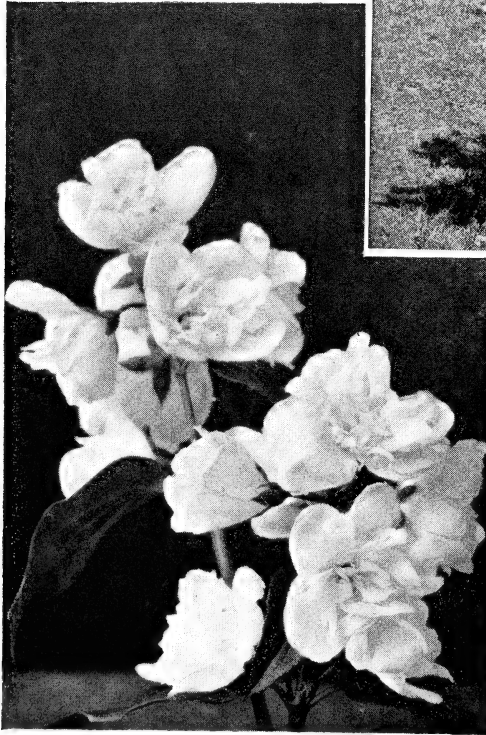
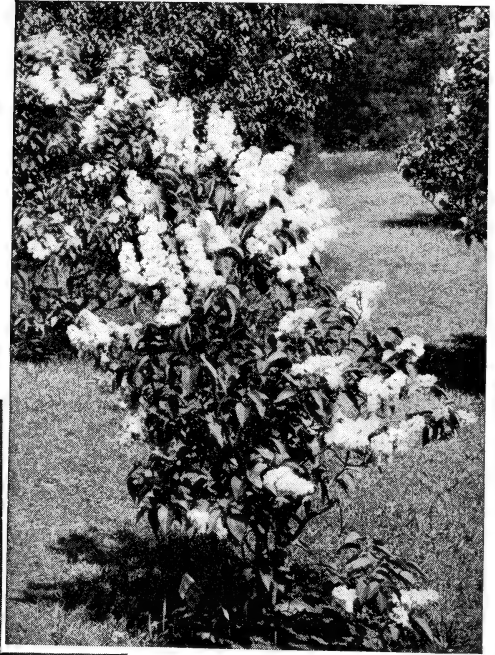
35 cts. each, \$3 per doz., \$20 per 100.

WISTERIA. Forms thick, woody stems and climbs high. Their spring bloom is produced in rich cascades and they flower at intervals all summer.

chinensis. Large, purple flowers, produced in great profusion on established plants. Native of China.

18 to 24 in., 75 cts. each.

Hybrid Lilac



Philadelphus Virginal

SHRUBS AND TREES

Variety	Common Name	Color	Grows to in feet	Size in feet	Price Each Doz.	
<i>Acer dasycarpum</i>	White or Silver Maple	Light green	80	8-10	\$1.25	\$12.50
<i>ginnala</i>		Scarlet foliage in autumn	16	5-6 6-8	.60 .75	6.00 7.50
<i>platanoides</i>	Norway Maple	Dark rich green	50	6-8 8-10	1.50 2.00	
<i>platanoides schwedleri</i>		Purplish foliage	50	6-8	2.50	
<i>Acanthopanax pentaphyllum</i>	Aralia	Shining foliage	10	2-3	.50	5.00
<i>Amygdalus</i>	Flowering Almond	Double rose	8	2-3	.60	
<i>Berberis thunbergi</i>		Scarlet foliage. Red berries	4	1½ 2	.20 .25	2.00 2.50
<i>Thunbergi atropurea</i>	Red-leaf Japanese Barberry	Bright reddish purple foliage	4	2	.50	5.00
<i>Betula alba</i>	European White Birch	Dark green foliage	40	6-8	1.50	
<i>pendula laciniata</i>	Cut-leaved Weeping Birch	Dark green	40	8-10	2.50	
<i>papyrifera</i>	Canoe or Paper Birch	Silvery white bark	30	5-6	1.00	10.00
<i>Clethra alnifolia</i>	Sweet Pepper Bush; Summer Sweet	Abundance of fragrant flowers	6	2	.50	5.00
<i>Cornus alba sibirica</i>		Coral-red branches. Fruit bluish white	10	2-3	.50	5.00
<i>paniculata</i>	Dogwood	Gray branches and white flowers	10	2-3	.35	3.50
<i>Cydonia japonica</i>	Japanese Quince	Orange-scarlet flowers	6	2	.45	4.50
<i>Daphne cneorum</i>	Garland Flower	Resy lilac flowers	1½	½-1	.60 1.00	6.00
<i>mezereum</i>	Spurge; Flax	Pink flowers	3	14 in. 15-18 in. 2	.40 .60 .75	4.00 6.00 7.50
<i>Deutzia gracilis</i>		Pure white flowers	3	1-½	.45	4.50
<i>lemoinei</i>		White flowers	4	1½-2	.50	5.00

Variety	Common Name	Color	Grows to in feet	Size in feet	Price	
					Each	Doz.
<i>Diervilla florida</i> . (<i>Weigela rosea</i>)		Pink and white flowers	6	3-4	.45	4.50
Eva Rathke		Crimson	6	2-3	.50	5.00
<i>Euonymus europæus</i>	Burning Bush	Crimson fruit	12	3-4	.60	6.00
<i>Forsythia intermedia spectabilis</i>	Showy Border Forsythia	Deep yellow	8	2-3	.50	5.00
<i>suspensa</i>	Golden Bell	Golden yellow	8	3-4	.60	6.00
<i>Hydrangea arborescens sterilis</i>	Hills-of-Snow	Cream-white	5	2	.50	5.00
<i>paniculata grandiflora</i>	Peegee Hydrangea	White-to-pink	8	2-3	.45	4.50
<i>Ilex verticillata</i>	Winterberry; Black Alder	Bright red fruit	5	2-3	.50	5.00
<i>Kalmia latifolia</i>	Mountain Laurel	Deep rose or nearly white	8	1½-2	1.50	
<i>Kolkwitzia amabilis</i>	Beauty Bush	Delicate pink flowers	8	2-3	.60	6.00
<i>Ligustrum amurense</i>	Amur River Privet	White flowers. Dark green foliage	12	2	.15	1.50
<i>Lonicera morrowi</i>		Pure white flowers. Bright red fruit		2-3	.50	5.00
<i>tatarica alba</i>	Tartarian Honcysuckle	Dark green foliage. White flowers	10	3-4	.60	6.00
<i>tatarica rubra</i>		Rose flowers	10	2-3	.50	5.00
<i>Malus ioensis bechteli</i>	Bechtel's Double flowering Crab	Bluish-pink	15	2-3 3-4	.50 .75	
<i>Philadelphus aureus</i>	Golden Syringa	Bright yellow foliage	6	2	.50	
<i>coronarius</i>	Mock Orange; Syringa	White flowers	10	2-3	.50	5.00
<i>lemoinei</i>		White flowers	8	2-3	.50	5.00
<i>pubescens (P. grandiflorus)</i>		Large white flowers	10	4-5	.60	6.00
<i>virginal</i>		Snow-white double flowers	8	2-3	.50	5.00
<i>Physocarpus opulifolius</i>	Ninebark	White flowers	8	3-4	.50	5.00
<i>Populus nigra italica</i>	Lombardy Poplar		60	8-10	1.25	12.50

Variety	Common Name	Color	Grows to in feet	Size in feet	Price	
					Each	Doz.
<i>Pyrus aucuparia</i>	European Mountain-Ash	Berries scarlet	15	6-8 8-10	1.50 2.00	
<i>Rhamnus cathartica</i>	Common Buckthorn	Dark green foliage. White flowers	5	3-4	.60	6.00
<i>Rhododendron maximum</i>	Rose Bay; Great Laurel	Pale rose or white flowers	6	3-4	2.75	
<i>Rhodotypos kerrioides</i>	Jetbead	Snowy white flowers. Black berries	5	2-3	.50	5.00
<i>Rhus typhina</i>	Staghorn Sumac	Showy in autumn	12		.15	1.50
<i>Rubus odoratus</i>	Flowering Raspberry	Large, showy flowers	5	2	.15	1.50
<i>Salix pentandra</i>	Laurel-leaf Willow	Dark green	18	4-5 5-6	.60 .75	6.00 7.50
<i>Sambucus canadensis</i>	Common Elder	Flowers creamy white			.15	1.50
<i>racemosa</i>	Red-berried Elder	Dark red fruit			.35	3.50
<i>Sorbaria sorbifolia</i> (<i>Spiraea sorbifolia</i>)	Siberian Spiraea	Flowers white	5	2-3	.40	4.00
<i>Spiraea billiardi</i>		Flowers bright pink	4	3-4	.40	4.00
<i>bumalda, Anthony Waterer</i>		Flowers bright crimson	3		.50	5.00
<i>opulifolia</i>	Ninebark	White flowers	5	3-4	.50	5.00
<i>prunifolia fl.-pl.</i>		Button-shaped white flowers	5	3-4	.60	6.00
<i>thunbergi</i>		Delicate white flowers	6	2-3	.50	5.00
<i>vanhouttei</i>	Bridal Wreath	White flowers	8	2-3 3-4	.30 .50	3.00 5.00
<i>Symphoricarpos racemosus</i>	Snowberry	Rose flowers		2-3	.35	3.50
<i>vulgaris</i>	Indian Currant	Coral berry. Rose-tinged flowers	6	2-3	.25	2.50
<i>Syringa japonica</i>	Japan Tree Lilac	Creamy white flowers	30	5-6 6-7	.75 1.00	
<i>josikæa</i>		Flowers bluish purple	10	3-4	.75	7.50
<i>vulgaris</i>	Common Purple Lilac	Purple	12	2-3 3-4	.40 .60	4.00 6.00
<i>vulgaris alba</i>	Common White Lilac	White	12	2-3 3-4	.50 .75	5.00

Variety	Common Name	Color	Grows to in feet	Size in feet	Price Each	Price Doz.
Hybrid Lilaes. "Own Root" Stock.						
Belle de Nancy		Double; pink	6	1½-2 2-3	.60	1.00
Bleuatre		Vinaceous-lilac	6	1½-2 2-3	.60	1.00
Charles Joly		Deep purple red	6	1½-2 2-3	.60	1.00
Charles X.		Single reddish purple flowers	6	1½-2 2-3	.60	1.00
Emile Lemoine		Pinkish-violet	6	1½-2 2-3	.60	1.00
Georges Bellaire		Dark wine red	6	1½-2 2-3	.60	1.00
Ludwig Spaeth		Rich red-purple	6	1½-2 2-3	.60	1.00
Mme Casimir Perier		Double, pearly white flowers	6	1½-2 2-3	.60	1.00
Pascal		Single; mauve	6	1½-2 2-3	.60	1.00
President Grevy		Double; blue	6	1½-2 2-3	.60	1.00
President Poincare ..		Double; deep pink	6	1½-2 2-3	.60	1.00
Ulmus americana	American Elm		120	8-10	1.50	
Viburnum ameri-						
canum	American Cranberry	White	4	3-4	.60	6.00
cassinoides	Withe-Rod	Creamy white flowers. Red berries	12	4-5	.75	7.50
dentatum	Arrow Wood	Flowers large, white dark purple fruit	12	3-4	.60	6.00
lantana	Wayfaring Tree	White flowers. Red berries	18	2-3	.50	5.00
lentago	Sheepberry; Nanny-Berry	White flowers. Bluish black fruit	20	3-4	.50	5.00
opulus	Cranberry Bush; High-bush Cranberry	Red fruit. White flowers	10	3-4	.60	6.00
opulus sterile	Common Snowball		8	2-3	.50	5.00
Weigela. See Diervilla.						

INSURANCE AGAINST LOSS IS BEST OBTAINED BY STAKING OF TREES AND TALL SHRUBS.

PLACE
3c
STAMP
HERE

F. H. HORSFORD

CHARLOTTE

VERMONT

FOLD ON THIS LINE

NOTICE

Regarding small lots of assorted plants or shrubs

One to four plants of one identical kind or color will be priced at the each rate, except in the case of Perennials and Rock Garden Plants where the rate for three of the same kind is 60 cents.

This is necessary as each different kind or color has to be wrapped and labeled separately and considerable time is required to assemble an order made up of small lots of kinds that are widely separated over the nursery.

I believe my friends listed below would like your catalog.

NAME.....

ADDRESS.....

NAME.....

ADDRESS.....

NAME.....

ADDRESS.....

NAME.....

ADDRESS.....

NAME.....

ADDRESS.....

We like to pick a choice lily bulb or two, or some plants you haven't ordered and might like to have, as a gift, when you send friends' names on the above form. It is our way of saying "thank you" for a helpful courtesy that we appreciate very much.



Russell Lupines



Perennial Border

Horsford's Hardy Perennials

F. H. HORSFORD

ESTABLISHED 1893

CHARLOTTE VERMONT