

Historic, Archive Document

Do not assume content reflects current scientific knowledge, policies, or practices.

62,61

LIBRARY RECEIVED

MAR 30 1943
U. S. Department of Agriculture

WHOLESALE PRICE LIST

OF

PAGE'S STANDARD *QUALITY SEEDS*

IN BULK

Season of
1 9 4 3

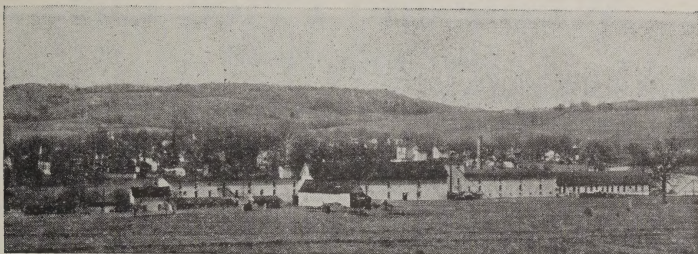


"At Your Service Since 1896"

THE PAGE SEED COMPANY
GREENE - - - NEW YORK

PLANTING GUIDE

| | Number of Sowings | Days Between Sowings | Average Packet Will Sow | Other Quantities Will Sow | Dates for Planting Outdoors | Distance Between Rows | Distance Between Plants | Days to Maturity |
|-----------------|-------------------|----------------------|-------------------------|----------------------------|-----------------------------|-----------------------|-------------------------|------------------|
| Beans—Bush Pole | 3 | 14 | 25 ft. 36 poles | 1b.—150 ft. 1b.—100 ft. | May—Aug. May | 2½ ft. 3½ ft. | 3 in. 42 in. | 48-54 65-70 |
| Beet | 1 | 30 | 15 ft. | oz.—100 ft. | Apr.—July | 1½ ft. | 3 in. | 55-80 |
| Broccoli | 4 | 40 | 150 plants | oz.—1500 plants | Apr.—June | 2½ ft. | 18 in. | 70 |
| Cabbage | 2 | | 180 plants | oz.—2000 plants | Apr.—July | 2½ ft. | 24 in. | 65-110 |
| Carrot | 1 | 30 | 25 ft. | oz.—200 ft. | Apr.—July | 1 ft. | 2 in. | 65-77 |
| Cauliflower | 4 | | 75 plants | oz.—1500 plants | Apr.—July | 3 ft. | 24 in. | 85-120 |
| Celery | 1 | | 100 plants | oz.—1000 plants | July | 3 | 6 in. | 115-140 |
| Cucumber | 1 | | 20 ft. | oz.—100 ft. | May—July | 3½ ft. | 12 in. | 55-75 |
| Egg Plant | 1 | | 50 ft. | oz.—1000 plants | June | 2½ ft. | 30 in. | 70-80 |
| Endive | 1 | 70 | 50 ft. | oz.—400 ft. | Apr.—June | 1 ft. | 12 in. | 88-90 |
| Kale | 2 | | 300 plants | oz.—1500 plants | Apr.—July | 1½ ft. | 18 in. | 55-85 |
| Kohl Rabi | 1 | 60 | 20 ft. | oz.—150 ft. | Apr.—July | 1½ ft. | 4 in. | 55-60 |
| Lettuce | 2 | 14 | 50 ft. | oz.—500 ft. | Mar.—July | 1½ ft. | 12 in. | 42-84 |
| Musk Melon | 4 | | 10 hills | oz.—50 hills | May | 3½ ft. | 18 in. | 85-95 |
| Okra | 1 | | 15 ft. | oz.—180 ft. | May | 2½ ft. | 15 in. | 50-62 |
| Onion | 1 | 40 | 30 ft. | oz.—200 ft. | Apr.—May | 1 ft. | 2 in. | 95-120 |
| Parsley | 2 | | 40 ft. | oz.—300 ft. | Apr.—Aug. | 1 ft. | 3 in. | 70-75 |
| Parship | 1 | | 20 ft. | oz.—150 ft. | Apr.—May | 2 ft. | 4 in. | 110-130 |
| Peas | 1 | 90 | 20 ft. | lb.—120 ft. | Mar.—July | 3 | 1½ in. | 54-75 |
| Pepper | 2 | | 100 plants | oz.—1000 plants | May | 2½ ft. | 20 in. | 68-80 |
| Pumpkin | 1 | | 6 hills | oz.—25 hills | May—June | 8 ft. | 60 in. | 100-120 |
| Radish | 1 | 14 | 50 ft. | oz.—200 ft. | Mar.—Aug. | 1 ft. | 3 in. | 25-29 |
| Rutabaga | 4 | | 150 ft. | oz.—600 ft. | July | 2½ ft. | 3 in. | 95-100 |
| Salsify | 1 | | 20 ft. | oz.—100 ft. | Apr.—May | 2 ft. | 3 in. | 120 |
| Spinach | 1 | 14 | 25 ft. | oz.—100 ft. | Mar.—Aug. | 1 ft. | 3 in. | 35-50 |
| Squash—Summer | 4 | | 6 hills | oz.—25 hills | May | 3½ ft. | 48 in. | 54-62 |
| Winter | 1 | | 6 hills | oz.—25 ft. | May | 5 | 100-110 | 80-90 |
| Sweet Corn | 3 | 25 | 40 ft. | lb.—250 ft. | May—June | 4 | 15 in. | 80-90 |
| Tomatoes | 1 | | 200 ft. | oz.—2500 plants | May—June | 3 ft. | 36 in. | 64-90 |
| Turnip | 2 | 120 | 150 ft. | oz.—600 ft. | Mar.—July | 1½ ft. | 3 in. | 40-60 |
| Watermelon | 1 | | 8 hills | oz.—30 hills | May | 6 | 3 in. | 35-95 |
| Soy Beans | 1 | | 20 ft. | lb.—150 ft. | May | 2 | 4 in. | 80-90 |



Greene, N. Y., March, 1943

To our Customers and Friends:—

Again we send you our annual Price List. This is the 1943 edition and contains the prices for Dealers who resell to the retail trade. Previous quotations are cancelled, and these prices are given with the distinct understanding that they are subject to change or revision without notice.

There is a great demand for seeds this spring due to the fact that rationing is going into effect and more people will plant crops that they will be able to store and can. Also, because of the drive to have Victory Gardens, you should be able to sell all the seed you have in stock.

Crops on many items were short and we are not able to offer a complete list. Our stocks are not great and we expect that we will have to advise customers that we cannot supply all of their requirements because of previous sales. Therefore, it is suggested that you do not delay sending your order for such items as you have not already stocked or ordered. Where possible give second and third choices should we happen to be out of the variety you desire.

On account of war conditions and the labor situation, we cannot promise to be as prompt in shipping your order as in former years, but we certainly will do our best.

Terms on Sales are:—Vegetable Seeds, 1½% 10 days, 60 days Net to firms of approved credit rating or for Cash with order, F. O. B. Greene, New York. Onion Sets, Lawn Mixtures, Grasses, Clover, etc. are Net Cash, F. O. B. Greene, New York.

All orders for seeds shipped out by us are sent with the understanding and agreement that "The Page Seed Company gives no warranty, express or implied, as to the productiveness of any seeds or bulbs it sells and will not be in any way responsible for the crop. Our liability, in all instances, is limited to the purchase price of the seed."

THE PAGE SEED COMPANY

Wholesale Price List

BEANS

Bush varieties of Beans are one of our leading specialties. We devote considerable acreage to them each year in New York State. By roguing we are able to keep our seed stock to a high degree of purity, and thus our seeds are satisfactory to critical dealers and planters. **120 pounds to the bag.**

| | 1-29 lbs. Per lb. | Bag Per lb. |
|--|----------------------|----------------|
| Burpee's New Kidney Wax | \$.22 | \$.19½ |
| Pods broad, golden yellow, about 6 inches long. A profitable variety for gardener and shipper. | | |
| Davis White Wax | | Short Crop |
| An early and attractive variety. Good as a snap bean while young and a shell bean when overgrown. | | |
| Golden Eye Wax | | Failure |
| Almost rust-proof, also very hardy. Pods are long, straight and flat. Some string. | | |
| Hodson Wax | .18 | .15½ |
| Pods are yellowish-green, large in size, rather late but rust and blight resistant. | | |
| Improved Golden Wax | .18 | .15½ |
| The most popular early wax bean for the home garden. Very early, and quite productive. Pods are straight and light yellow. | | |
| Pencil Pod Black Wax | .20 | .17½ |
| Productive, long pods, round, slightly curved and golden yellow. Very fleshy, brittle and stringless. | | |
| Refugee Wax | .18 | .15½ |
| Round, curled pods, brittle, stringless, desirable for home and market garden use. | | |
| Round Pod Kidney Wax (Brittle Wax) ... | | Short Crop |
| Round pods, 5½ to 6 inches long, light yellow, stringless. Very desirable for the home garden. | | |
| Sure Crop Black Wax (Golden Bountiful) . | .18 | .15½ |
| Thick, flat pods, about 6 inches long, and yellow. Hardy, rust resistant, stringless, bright yellow. | | |
| Top Notch Golden Wax | .18 | .15½ |
| Medium small, compact plant. Creamy-yellow pods, straight, flat-oval, stringless. | | |
| Unrivalled Wax | .18 | .15½ |
| Dwarf, moderately productive, flat pods, brittle, stringless. | | |
| Wardwell's Kidney Wax | .20 | .17½ |
| Popular among market gardeners. Broad pods, flat, about 5½ inches long. | | |
| Webber Wax | .18 | .15½ |
| Of high quality, fleshy, stringless and brittle. Hardy and productive. Known also as Crackerjack Wax. | | |



Beans—Continued

| | 1-29 lbs. Per lb. | Bag Per lb. |
|---|----------------------|----------------|
| GREEN-PODDED BUSH BEANS | | |
| Black Valentine | \$.18 | \$.15½ |
| Very productive, hardy and blight resistant. Largely used for market. Stringless, 50 days. | | |
| Bountiful (Six Weeks) | .18 | .15½ |
| One of the best flat podded types. Pods 7 inches long, absolutely stringless. Early, vigorous and productive. | | |
| Burpee's Stringless | .20 | .17½ |
| A desirable variety for either home or market. Is tender brittle and stringless. | | |
| Dwarf Horticultural or Cranberry | .18 | .15½ |
| One of the best for green shell beans. Good as snap bean while young. Almost stringless. | | |
| Early Broad Windsor (Fava) | .23 | .20½ |
| Has a long pod, and a large bean. | | |
| French's Horticultural | .19 | .16½ |
| Later than Dwarf Horticultural. Pods larger and more highly colored. | | |
| Full Measure | .20 | .17½ |
| Slender, round pods, tender and stringless. | | |
| Giant Stringless | .20 | .17½ |
| A productive variety bearing large, nearly round pods, brittle until quite old. | | |
| Improved Goddard | .18 | .15½ |
| One of the best green shell beans, large and a good show variety. Pods very stringy. | | |
| Landreth Stringless | .20 | .17½ |
| A selection of Burpee's Stringless. Pods 6 to 8 inches long, slightly curved. Vine 17 to 18 inches long. Resistant to blight. Ready for use in about 54 days. | | |
| Low's Champion | .19 | .16½ |
| An old variety, stringless and tender. Of fine quality. Used as a canning variety. | | |
| Plentiful | .20 | .17½ |
| A black seeded Bountiful. Flat pods, light green, stringless. | | |
| Refugee Stringless | .20 | .17½ |
| Pods are stringless, round, medium green. Excellent for canning or late gardens. | | |
| Round Pod Red Valentine | .18 | .15½ |
| A very sure cropping variety. Pods round, about 6½ inches long. Stringless while young. | | |
| Tendergreen | .20 | .17½ |
| Resembles Full Measure. Desirable for home and market gardens. Round pods, dark green, stringless, 54 days to picking stage. | | |
| Tenderhull | .17 | .14½ |
| A new sort of Bean. Pod very tender in all stages. White seed. | | |
| Tennessee Green Pod | .18 | .15½ |
| A second early, flat podded snap bean of excellent quality and flavor. Extra long pods of bright green color. | | |
| Vermont Cranberry | .20 | .17½ |
| An improved type of Dwarf Cranberry. | | |

BEANS—Continued

POLE BEANS

| | 1-29 lbs. Per lb. | Bag Per lb. |
|---|----------------------|----------------|
| Corn Hill or Cut Short | \$.19 | |
| Hardy, late, and productive. Stringy and of fair quality. | | |
| Golden Cluster Wax | .20 | |
| An excellent yellow podded variety. Pods long, broad, fleshy and stringless. Very popular. | | |
| Horticultural Pole (London Horticultural) . | .19 | |
| Very hardy, doing well in sections of short season. Productive, stringless and of good quality. | | |
| Kentucky Wonder Green Pod | | |
| (Old Homestead) | .19 | .18½ |
| The most popular of the green podded pole beans. Bears early and continuously. Stringless when young. | | |
| Kentucky Wonder Wax | .20 | |
| Very fleshy, brittle, with yellow pods. | | |
| Lazy Wife | .19 | |
| Medium green pods, borne in clusters, entirely stringless. Fine for dry beans. | | |
| Mammoth Horticultural | | |
| (Worcester Mammoth) | .21 | .18½ |
| Pods very showy, long flat, stringless and late. | | |
| McCaslan Pole | .18 | .15½ |
| Excellent for dry shell beans as well as snap. A good climber. Green pods. | | |
| Missouri Wonder (Noxall) | .18 | |
| Large plant, good climber, 66 days to picking stage. Particularly suited for green shell beans. | | |
| Scarlet Runner | .21 | |
| Used as a shell bean or for ornamental purposes. | | |
| Striped Creaseback (Scotia) | .17 | |
| Very early, medium length pods, used as snaps. Of fine quality. | | |
| Tennessee Wonder | | Short Crop |
| Of good climbing habit, light green, straight pods, nearly stringless. | | |
| White Creaseback | .17 | |
| Early and vigorous. Round pods, green, stringless, tender. | | |
| White Dutch Case Knife | .19 | |
| Largely used as a shell bean. | | |
| White Runner | .21 | |
| Good as a shell bean or for ornamental purposes. | | |
| White Kentucky Wonder | .19 | |
| Good climber. Round pods, green, tender, stringless. | | |

Beans—Continued

FIELD BEANS

| | 1-29 lbs. Per lb. | Bag Per lb. |
|--|----------------------|----------------|
| Boston Pea or Navy | \$.15 | \$.12½ |
| Large spreading plant with many runners. | | |
| Large White Kidney | .17 | .14½ |
| Excellent for dry shell use. | | |
| Large White Marrow | .17 | .14½ |
| Fine for baking. | | |
| Red Kidney | .16 | .13½ |
| Very good for dry bean use. | | |
| Yellow Eye | .15 | .12½ |
| Hardy, very productive, good for baking. | | |
| Red Kidney (Calaproved!) | .18 | .15½ |



LIMA BEANS

| | 1-29 lbs. Per lb. | Bag Per lb. |
|---|----------------------|----------------|
| Baby Potato | \$.20 | \$.17½ |
| Earlier than Burpee Bush. Adapted for canning and freezing. | | |
| Burpee's Bush | .20½ | .18 |
| A popular standard sort and widely planted. | | |
| Burpee's Improved Bush | .21½ | .19 |
| Large and productive. Pods borne in clusters. | | |
| Early Jersey Pole | .19½ | .17 |
| Prolific, tender, of fine quality. | | |
| Early Leviathan | .19½ | |
| Early, heavy cropper, good climber. | | |
| Fordhook Bush | .22 | .19½ |
| The popular market garden variety. | | |
| Giant Podded Pole | .19½ | |
| Large pods, vigorous, large beans, medium early. | | |
| Henderson Bush | .17½ | .15 |
| The small seeded variety. Largely used by canners. | | |
| King of the Garden Pole | .19½ | .17 |
| A popular, large podded sort. Excellent quality. | | |
| Siebert's Early Pole | .19½ | |
| Early and very productive. | | |
| Sieva or Carolina | .18 | |
| Grows 10 to 12 feet. Bears over long season. | | |

EDIBLE SOY BEANS

| | |
|----------------|-----|
| Bansei | .19 |
| Hokkaido | .19 |

GARDEN PEAS

Our strains of Peas are as uniformly true to type as soil and climatic conditions, plus human efforts can make them. All are grown under ideal conditions in sections best adapted to the variety. We do not believe that better seed can be supplied from any source.

| EXTRA EARLY SMOOTH SEEDED | 1-29 lbs. Per lb. | Bag Per lb. |
|---|----------------------|-------------------|
| Alaska (Wilt Resistant) | \$.16 $\frac{1}{2}$ | \$.14 |
| Largely used by canners and market gardeners. | | |
| First and Best | .17 | .14 $\frac{1}{2}$ |
| Ready for use in about 50 days. | | |
| Laxton's Superb (Early Bird) | .17 $\frac{1}{2}$ | .15 |
| Hardy and productive. Semi-wrinkled pea. | | |

EDIBLE PODDED SORTS

112 lbs. to the bag

| | 1-27 lbs. Per lb. | Bag Per lb. |
|--|----------------------|----------------------|
| Dwarf Gray Seeded Sugar | \$.18 | \$.15 $\frac{1}{2}$ |
| An old edible pod variety. Broad pods, flat and crooked. | | |
| Dwarf White Sugar | .18 | |
| Quite early, vine about 2 feet high. | | |
| Mammoth Luscious Sugar | .18 $\frac{1}{2}$ | .16 |
| Light green vines, large pods. | | |
| Mammoth Melting Sugar | .18 $\frac{1}{2}$ | .16 |
| Very tender and brittle. 3 $\frac{1}{2}$ foot vines, very popular. | | |

EARLY WRINKLED

| | | |
|--|-----|-------------------|
| American Wonder | .18 | .15 $\frac{1}{2}$ |
| 10 to 12 inches high, peas produced in about 60 days. | | |
| Blue Bantam | .20 | .17 $\frac{1}{2}$ |
| Large podded, height about 15 inches. | | |
| Gradus (Prosperity) | .19 | .16 $\frac{1}{2}$ |
| Standard early large pea. 30 inch vine. Bulk of peas borne in 70 days. | | |
| Hundredfold | .20 | .17 $\frac{1}{2}$ |
| Similar to Pioneer, later and more productive. | | |
| Laxtonian | .20 | .17 $\frac{1}{2}$ |
| The largest podded sort of the dwarf varieties. The earliness together with the size of pod, and the quality of the pea makes it a leader for market purposes. | | |
| Laxton's Progress | .20 | .17 $\frac{1}{2}$ |
| Semi-dwarf, a heavy yielder, large podded. | | |
| Little Gem | .17 | .14 $\frac{1}{2}$ |
| Produces 50 per cent of its crop in 80 days from date of planting. Very productive. Grows about 18 inches high. | | |
| Little Marvel | .18 | .15 $\frac{1}{2}$ |
| Grows 16 inches tall, pods 3 inches long, has 7 or more peas of fine quality. An ideal home variety. | | |
| Nott's Excelsior | .18 | .15 $\frac{1}{2}$ |
| Often called the best early dwarf wrinkled pea. Vines average 16 inches and are fairly loaded with pods. | | |

PEAS—Continued

| | 1-27 lbs. Per lb. | Bag Per lb. |
|---|----------------------|----------------|
| Premium Gem | \$.17 | \$.14½ |
| An improved type of Little Gem. | | |
| Sutton's Excelsior | .18 | .15½ |
| As early as Little Marvel and more productive than American Wonder or Nott's Excelsior. | | |
| Thomas Laxton | .18 | .15½ |
| Very popular and one of the best for home gardens. | | |
| World's Record | .19 | .16½ |
| An improved type of Gradus. Very productive. | | |

SECOND EARLY AND MAIN CROP

| | | |
|--|-----|------------|
| Alderman | | Short Crop |
| About 5 foot vines. Pods borne in clusters. Fine quality. | | |
| Bliss Everbearing | .17 | .14½ |
| Productive and fine quality, long in bearing. | | |
| Champion of England | .17 | .14½ |
| The best of the late varieties. Grows about 4 feet high. A well known favorite. | | |
| Dark Podded Telephone | .18 | .15½ |
| Vines 4 to 5 feet. Pods large and well filled. Very desirable for market gardens. | | |
| Dwarf Champion | | Short Crop |
| A desirable home or market variety. Height about 3 feet. Pods are well filled. | | |
| Dwarf Telephone | .18 | .15½ |
| Highly recommended for the home garden. Vine about 30 inches. | | |
| Giant Stride | .18 | .15½ |
| Wilt resistant. 75 days. Dark green. Fine for shipping. | | |
| Improved Stratagem | .19 | |
| A standard second early sort. Height 4 to 5 feet. Large pods. | | |
| McLean's Advancer | .17 | .14½ |
| A heavy yielder, and one of the canner's favorites. | | |
| Potlatch (Dwarf Defiance) | .19 | |
| A splendid variety for home or market. Very productive. Grows about 2 feet high. | | |
| Wyoming Wonder | .18 | .15½ |
| Resistant to wilt. Pods 5 to 6½ inches long, dark green. 24 to 28 inch vine. Ready in about 75 days. | | |

This Price List can only give brief or short descriptions of some of the more important seeds sold. Our Garden Guide, or Descriptive List gives better and more complete descriptions. Copies are available for distribution to your trade. Write us if you can use them.

We also have a Seed Corn Manual for those interested in Corn descriptions. These too, are available for distribution.

SWEET CORN

Sweet Corn weighs on the average 50 pounds to the measured bushel. Our corn is put up 100 pounds to the bag. The seed is produced in those sections best suited for the growing of corn. We believe our seed is equal to the best and better than some.

(100 pounds to the bag.)

WHITE VARIETIES

| | 1-24 lbs. Per lb. | Bag Per lb. |
|--|----------------------|----------------|
| Black Mexican | \$.15 | \$.12½ |
| One of the sweetest. White kernels when ready for use. | | |
| Country Gentleman | .19 | .16½ |
| Sweet, very fine quality, has uneven ears. | | |
| Early Evergreen | .19 | .16½ |
| Very productive, earlier than Stowell's. | | |
| Early Minnesota | .14 | .11½ |
| A popular old standby in many sections. | | |
| Early White Market | .14 | .11½ |
| Dwarf, large ears, very early. | | |
| Howling Mob | .14 | .11½ |
| One of the second-early sorts. | | |
| Kendel's Early Giant | .15 | |
| Juicy, sweet and palatable until quite old. | | |
| Long Island Beauty (Late Mammoth) ... | .15 | .12½ |
| Very sweet and sugary, large ears, rather late. | | |
| Mammoth White Cory | .14 | .11½ |
| Early, fine quality, large kernels. | | |
| Stowell's Evergreen | .19 | .16½ |
| The standard late variety. One of the best known. | | |
| Trucker's Favorite | .09½ | .07 |
| Used for roasting, 12-14 rows, white kernels. | | |
| Whipple's Early White | .14 | .11½ |
| Large ears, of excellent quality. | | |

YELLOW VARIETIES

| | | |
|---|-----|------|
| Golden Bantam | .15 | .12½ |
| Very early, sweet and tender. Fine flavor. Popular. | | |
| Golden Colonel | | |
| (Golden Country Gentleman) | .15 | .12½ |
| Kernels set in uneven rows like Country Gentleman. | | |
| Golden or Bantam Evergreen | .15 | .12½ |
| A popular mid-season sort. One of the evergreen type. | | |
| Golden Early Market | .15 | .12½ |
| Very prolific, 8 to 12 rows. | | |

SWEET CORN—Continued

| | 1-24 lbs. Per lb. | Bag Per lb. |
|---|----------------------|-------------------|
| Golden Gem | | Short Crop |
| Eight rows, early with short stalks. | | |
| Golden Giant | \$.16 | \$.13½ |
| The largest of the yellow sorts. Mid-season. | | |
| Golden Hummer | .15 | .12½ |
| Golden yellow, 8-12 rows, about 70 days. | | |
| Golden Sunshine | | |
| Excellent early variety with large ears. | | |
| Improved Golden Bantam | .15 | |
| A select strain, 12 rows, grown for particular people. | | |
| Spanish Gold | .15 | .12½ |
| Extra early, for first markets. | | |
| Whipple's Early Yellow | .14 | .11½ |
| Large ears, 12 to 14 rows, mid-season sort. | | |
| Wonder Bantam | .16 | .13½ |
| Slightly taller than regular Golden Bantam. Second early. | | |

**Protect Your Corn Plantings
with
STANLEY'S CROW REPELLENT**

We carry a line of supplies to aid you in your sale of seeds. These are listed on page 36. Note also the useful tables of information. These will aid you in answering questions of customers.

HYBRIDS

| | 1-24 lbs. Per lb. | Bag Per lb. |
|--|----------------------|-------------------|
| Bancross (Top Cross Bantam) | | Short Crop |
| 6 ft. stalk, 7 inch ear, 86 days to eating stage, 10 to 14 rows. | | |
| Golden Cross Bantam | | Short Crop |
| 6 ft. stalk, 7 to 8 inch ear, 88 days to eating stage, 10 to 14 rows. | | |
| Ioanna | .28 | |
| 12 to 14 rows, bright yellow. 80 days. | | |
| Marcross 13x6 | .26 | .23½ |
| 70 days to eating stage, short stalks, long ears, 10-14 rows of light cream kernels. | | |
| Spancross 13x4 | .26 | .23½ |
| 6 ft. stalk, 6 to 7 inch ear, 10 to 14 rows, 72 days to eating stage. | | |
| Top Cross Golden Evergreen | .25 | |
| 8 ft. stalk, 8 inch ear, 14 to 16 rows, 89 days to eating stage. | | |
| Top Cross Golden Sunshine or Tendergold | .26 | .23½ |
| 5 to 6 ft. stalk, 7 inch ear, 12 to 16 rows, 80 days to eating. | | |
| Top Cross Whipple's or Whipcross | .26 | |
| 7 ft. stalk, 7 inch ear, 12 to 14 rows, 84 days to eating stage. | | |

| POP CORN | | 1-24 lbs. Per lb. | Bag Per lb. |
|--|--------|----------------------|-------------------|
| Black Beauty | | | Short Crop |
| Early, purplish black kernels. | | | |
| Golden Baby Rice | \$.14 | | \$.11½ |
| Golden yellow kernels similar to White Rice. | | | |
| Golden Queen | .12 | | .09½ |
| The standard yellow variety. | | | |
| Improved Baby Rice | .13 | | .10½ |
| Very dwarf, kernels pearl white. | | | |
| South American | .12½ | | .10 |
| (T. N. T.) | | | |
| Pops out very large. | | | |
| White Rice | .12 | | .09½ |
| Early, translucent pearl white kernels. | | | |

ARTICHOKE

| | |
|--|---------|
| Green Globe | Per lb. |
| Perennial, 3 to 5 feet tall, large round deep green heads. | |

ASPARAGUS

| | |
|----------------------------------|--------|
| Mary Washington | \$.58 |
| Rust resistant, very tight tips. | |

ASPARAGUS ROOTS

| | | |
|---------------------------------------|-------------------|--------------------|
| Washington | Per 100 \$1.50 | Per 1000 \$9.00 |
| (Shipped direct from growing station) | | |

TABLE BEETS

| | 1-4 lbs. Per lb. | In 25 lb. lots Per lb. |
|---|---------------------|------------------------------|
| Crimson Globe | \$1.20 | \$1.12 |
| Main crop variety, large roots. | | |
| Crosby's Egyptian | 1.20 | 1.12 |
| Dark red, flattened globe shape, early. | | |
| Detroit Dark Red | 1.60 | 1.52 |
| Small tops, globular, deep blood red. | | |
| Dewing's Early Blood | 1.20 | 1.12 |
| An improved type of Early Blood. | | |
| Early Eclipse | 1.15 | 1.07 |
| Early, small tops, medium size, bright red. | | |
| Early Wonder | 1.20 | 1.12 |
| Globe shape, small tap root, a first early. | | |
| Edmund's Early Blood | 1.20 | 1.12 |
| Globe shape, dark red skin, short top. | | |
| Egyptian Blood Turnip | 1.30 | 1.22 |
| Dark red, one of the earliest, flattened. | | |
| Good for All | 1.50 | |
| Fine for canning, globular, deep crimson. | | |
| Half Long Blood | 1.15 | |
| Good for fall and winter use. Deep red. | | |
| Perfected Detroit | | Short Crop |
| Tall tops, globular roots, dark red flesh with lighter zones. | | |

SWISS CHARD

| | 1-4 lbs. Per lb. | In 25 lb. lots Per lb. |
|---|---------------------|------------------------------|
| Fordhook Giant | \$.96 | \$.88 |
| Tall, sturdy, broad leaves, heavily crumpled, dark green. Broad, thick, white stems. | | |
| Lucullus | | Short Crop |
| Upstanding, yellowish green, heavy crumpled leaf. Light green, thick stems. | | |
| White Silver (Large White Rib) | .95 | .87 |
| Medium height, smooth, yellowish green leaves. Stem broad, white with greenish tinge. | | |

MANGEL WURZEL and SUGAR BEETS

| | 1-4 lbs. Per lb. | In 25 lb. lots Per lb. |
|---|---------------------|------------------------------|
| French White Sugar | \$.95 | \$.87 |
| Long, smooth, and of rich quality. | | |
| Giant Half Sugar (Rose) | 1.00 | .92 |
| Valuable for feeding, oval shape, grayish white skin. | | |
| Giant Sludstrup | .95 | |
| Long, reddish yellow skin. Excels others in weight. | | |
| Golden Tankard | 1.00 | .92 |
| Very sweet, cylindrical in shape, orange yellow skin. | | |
| Ideal (Yellow Eckendorf) | .95 | .87 |
| Light yellow, cylindrical in shape. | | |
| Mammoth Long Red | 1.00 | .92 |
| The standard red, nearly cylindrical, large. | | |

Our seeds are gathered from sections where in our experience and that of growers, the conditions of soil and climate produce the best seed of its kind. Seeds cannot be judged, as are most goods, by inspection. Little can be told about the leaf, fruit, root, or flower they will develop, except by the test of growing. We must provide them from growers we know to be experienced and reliable; and you in turn must depend upon our ability, experience and integrity. We check and test the seeds, notes are taken, and comparisons made. We endeavor to offer the best, and to send out seed that will measure up to Page's Standard Quality.

BROCCOLI

| | | |
|--|---------|--------|
| Italian Sprouting or Calabrese | Per lb. | \$2.35 |
| Quick growing, tall branching head. | | |
| deRappa or Italian Turnip | | 1.00 |
| Plant 18 to 22 inches tall, one of the first early greens. | | |

BRUSSELS SPROUTS

| | | |
|--------------------------------|--|------------|
| Dwarf Paris | | Short Crop |
| Half dwarf, very widely grown. | | |

CABBAGE

| | 1-4 lbs. Per lb. | In 25 lb. lots Per lb. |
|--|---------------------|------------------------------|
| All Head Early | \$2.20 | |
| One of the earliest of the round head sorts. Very uniform. | | |
| All Seasons | 2.20 | |
| Adapted for late summer use. Stands dry, hot weather. | | |
| Charleston Wakefield | 2.10 | |
| Early, pointed head, very solid, medium size. | | |
| Copenhagen Market | 2.95 | 2.80 |
| Large, round heads, matures in about 100 days. | | |
| Danish Ball Head | | Short Crop |
| Standard winter sort. Round head, short stem, solid head. | | |
| Drumhead Savoy | 2.90 | 2.75 |
| Very distinct on account of its crumpled leaves. | | |
| Early Flat Dutch | | Short Crop |
| Thick heads, and flattened, solid and firm. | | |
| Early Jersey Wakefield | 2.40 | 2.25 |
| One of the earliest and surest heading varieties. | | |
| Early Winnigstadt | | Short Crop |
| Medium early, cone shaped, very productive. | | |
| Glory of Enkhuizen | 2.55 | |
| Very sure heading, excellent quality, very hard and solid. | | |
| Golden Acre | 3.55 | |
| An early strain of Copenhagen Market, round and compact. | | |
| Mammoth Red Rock | 3.00 | 2.85 |
| Large head, red leaves, medium late. | | |

CABBAGE—Continued

| | 1-4 lbs. Per lb. | In 25 lb. lots Per lb. |
|--|---------------------|------------------------------|
| Penn State Ball Head | \$4.05 | |
| Late, short stem, flattened globe heads. Store well. | | |
| Premium Late Flat Dutch | 2.20 | 2.05 |
| A well known late variety, large flattened heads. | | |
| Succession | 2.40 | |
| Flat heads, short stems. | | |
| Surehead | 2.40 | |
| Large round head, long stem. | | |

YELLOW RESISTANT VARIETIES

| | Per lb. | |
|---|---------------|--|
| Improved Globe | \$3.05 | |
| Strain of Glory of Enkhuizen, resistant to Yellows. | | |
| Jersey Queen | 2.45 | |
| Small, compact heads. | | |
| Marion Market | 3.25 | |
| Development from Copenhagen Market. | | |
| Wisconsin All Seasons | 3.00 | |
| Slightly coarser than the standard All Seasons. | | |
| Wisconsin Hollander | 3.00 | |
| Resistant strain of Danish Ball Head. | | |

CHINESE CABBAGE

| | 1-4 lbs. Per lb. | In 25 lb. lots Per lb. |
|--|---------------------|------------------------------|
| Chihli (Improved Pekin) | \$1.30 | \$1.15 |
| Early, thick tapering head. | | |
| Pe Tsai (Choknaei) (Celery) | Short Crop | |
| Cylindrical tapering head, very compact. | | |
| Wong Bok (Paoting) | 1.30 | 1.15 |
| Heavy and very solid. | | |

CARROT

| | | |
|---|------|------|
| Chantenay | 3.00 | 2.90 |
| Medium early, stump rooted, deep orange. | | |
| Coreless (Nantes) | 3.50 | 3.40 |
| Early, deep orange, free from woody center. | | |
| Danver Half Long | 3.00 | 2.90 |
| The popular main crop sort, deep orange. | | |
| Early Scarlet Horn | 3.10 | |
| Short, blunt, thick roots, early, orange-red. | | |
| Hutchinson | 3.00 | |
| Cylindrical, deep orange, long. | | |

CARROT—Continued

| | 1-4 lbs. Per lb. | In 25 lb. lots Per lb. |
|---|---------------------|------------------------------|
| Imperator | \$3.00 | \$2.90 |
| Deep rich orange, fine grained, tender, sweet, 8 inches long. | | |
| Improved Chantenay | 3.00 | 2.90 |
| Red Cored, practically coreless, deep orange. | | |
| Large White Belgian | 1.15 | |
| Grown for stock feeding, thick, white roots. | | |
| Large Yellow Belgian | 1.15 | |
| Similar to White Belgian. | | |
| Long Orange | | Short Crop |
| Long, late, deep orange. | | |
| Oxheart | | Short Crop |
| Short, blunt rooted, bright orange. | | |

CAULIFLOWER

| | Per oz. |
|-----------------------------|---------|
| Early Snowball | \$2.80 |
| Popular early, medium size. | |
| Super Snowball | 3.00 |
| Medium early, very white. | |
| Perfected Snowball | 2.90 |
| Solid, very white. | |

CELERY

| | Per oz. | Per lb. |
|---|---------|---------|
| Fordhook or Emperor | \$.38 | \$3.75 |
| Dwarf and stocky, has a nutty flavor. | | |
| Giant Pascal | .38 | 3.75 |
| A standard fall and winter sort. | | |
| Golden Self Blanching | .42 | 4.20 |
| Compact, stocky, early, solid stalks. | | |
| White Plume | .38 | 3.80 |
| Early, home garden favorite, easily blanched. | | |
| Wonderful or Golden Plume | .52 | 5.20 |
| Disease resistant, very crisp. | | |

CELERIAC

| | |
|---------------------------|------------|
| Giant Prague | Short Crop |
| Used in soups and salads. | |

COLLARDS

| | |
|--|-----|
| Georgia | .30 |
| Leaves used for making excellent greens. | |

CORN SALAD

| | |
|-----------------------------------|------------|
| Large Leaved | Short Crop |
| Used as a substitute for Lettuce. | |

CRESS

| | | |
|-----------------------------------|---------|--------|
| Green Curled or Peppergrass | Per lb. | \$1.30 |
| Early, deep green foliage. | | |

CUCUMBER

| | 1-4 lbs. Per lb. | In 25 lb. lots Per lb. |
|--|---------------------|------------------------------|
| A & C | \$1.75 | |
| Nearly cylindrical, 8 inches long, dark green. | | |
| Arlington White Spine | 1.40 | |
| A good yielder, a fine slicer, deep green color. | | |
| Black Diamond (Stays Green) | 1.50 | |
| Dark green, early, productive, fine shipper. | | |
| Boston Pickling (Green Prolific) | 1.55 | 1.45 |
| Bright green, medium size, good pickler, productive. | | |
| Clark's Special (Imperator) | 1.60 | |
| Outstanding for shipping, very dark green, few seeds. | | |
| Climbing | 1.40 | |
| Used for covering fences and trellises. Long fruit. | | |
| Davis Perfect | 1.55 | 1.45 |
| Very symmetrical, deep green, good shipper. | | |
| Early Cluster | 1.55 | 1.45 |
| Short green, borne in clusters, early. | | |
| Early Fortune | 1.60 | 1.50 |
| Desirable for shipping. Flesh firm and crisp. | | |
| Early Russian | | Short Crop |
| Early, hardy, productive, small fruited. | | |
| Early Short Green or Early Frame | 1.50 | |
| Vigorous, productive, medium early, crisp and tender. | | |
| Early White Spine (Improved) | 1.55 | 1.45 |
| One of the best for the table, mid-season, dark green. | | |
| Everbearing | 1.50 | |
| Small, very early, bears over long season. | | |
| Fordhook Pickling | 1.50 | |
| Is prolific, has thin tender skin. | | |
| Klondike | 1.40 | |
| Medium early, dark green, of good size. | | |
| Longfellow (Windemoor Wonder) | 1.85 | |
| Excellent for shipping, or forcing. Dark green. | | |
| Long Green | | Short Crop |
| Late standard sort, slender, fine for slicing and pickles. | | |

CUCUMBER—Continued

| | 1-4 lbs. Per lb. | In 25 lb. lots Per lb. |
|--|---------------------|------------------------------|
| National Pickling | \$1.55 | |
| Best all-around sort for pickling, dark green. | | |
| Perfection Pickling (Snow's) | 1.55 | |
| Early, prolific, widely used. | | |
| Straight Eight | 1.65 | 1.55 |
| 8 to 10 inches long, medium green. | | |
| White Wonder | Short | Crop |
| A novelty. White at all stages. | | |
| Woodruff's Hybrid | 1.40 | 1.30 |
| A main crop sort, fine shipper. | | |

DANDELION

| | | |
|--|---------|--------|
| Arlington Thick Leaf | Per lb. | \$4.75 |
| Blanches readily, has upright growth. | | |
| Radichetta (Arcoria di Catalogna) | | 3.00 |
| Called the Italian Dandelion account of its dandelion looking foliage. | | |

EGG PLANT

| | | |
|---------------------------------------|--------|------|
| Black Beauty | \$3.25 | |
| Early, of good size. | | |
| Long Purple (Italian Egg Plant) | Short | Crop |
| Dark purple, 7 to 8 inches long. | | |
| New York Improved | 3.25 | |

ENDIVE

| | | |
|--|------|--|
| Batavian Fullhearted (Escarole) | .95 | |
| Bright green, thick broad leaves, one of the best. | | |
| Green Curled Ruffec | .95 | |
| Hardy, deep green, finely cut and curled. | | |
| Moss Curled | .95 | |
| Compact, deeply curled and cut, medium green. | | |
| White Curled | 1.00 | |
| Leaves light yellowish green, blanches nearly white. | | |

HERBS, etc.

| | Per oz. | Per lb. |
|--------------------------------------|---------|---------|
| Anise (Pimpinella Anisum) | \$.30 | |
| Used for flavoring and medicine. | | |
| Caraway (Carum Carvi) | .30 | |
| Used for flavoring breads and soup. | | |
| Chervil | Short | Crop |
| Used for flavoring soups and salads. | | |

HERBS, etc.—Continued

| | Per oz: | Per lb. |
|--|---------|------------|
| Chicory (Witloof) | \$.28 | \$2.75 |
| Served as a salad. | | |
| Chives | | Short Crop |
| Perennial of the onion family, used in salads. | | |
| Dill (<i>Anethum Graveolens</i>) | | 1.25 |
| Used in flavoring pickles. | | |
| Fennel-Florence (<i>Foeniculum Dulce</i>) | | 1.75 |
| Leaf stalks are boiled for table use. | | |
| Fennel-Sweet (<i>Foeniculum Vulgare</i>) | | 2.00 |
| Used in salads and soups. | | |
| Lavender (<i>Lavandula Vera</i>) | | Short Crop |
| Leaves are very fragrant. Used to perfume linen. | | |
| Sage (<i>Salvia Officinalis</i>) | | Short Crop |
| Used for flavoring. | | |
| Sorrel | .40 | |
| Used as a salad. | | |
| Summer Savory (<i>Satureia Hortensis</i>) | .45 | |
| Used for flavoring soups. | | |
| Sweet Basil (<i>Ocimum Taseolicum</i>) | .30 | |
| Used for flavoring soups and sauces. | | |
| Sweet Marjoram (<i>Oreganum Majorana</i>) | | Short Crop |
| Used for seasoning broths and dressings. | | |
| Thyme (<i>Thymus Vulgaris</i>) | | Short Crop |
| Used for seasoning. | | |

KALE

| | | Per lb. |
|---|------------|---------|
| Blue Scotch | Short Crop | |
| Blue green plumed leaves. | | |
| Dwarf Curled Scotch | Short Crop | |
| Fine cut leaves, dwarf spreading growth. | | |
| Dwarf Siberian (Sprouts) | | 1.00 |
| Large bluish green spreading leaves. | | |
| Tall Curled Scotch | Short Crop | |
| Hardy, fine curled leaves, about 2 feet high. | | |

KOHLRABI

| | |
|---|------|
| Early Purple Vienna | 3.75 |
| Small tops, purple skin, medium size. | |
| Early White Vienna | 3.75 |
| Medium size, whitish green skin, small. | |

LEEK

| | |
|---|------------|
| American Flag | Short Crop |
| Strong growing, broad leaf, productive. | |

LETTUCE

LOOSE-LEAVED VARIETIES

| | 1-4 lbs. Per lb. | In 25 lb. lots Per lb. |
|---|---------------------|------------------------------|
| Black Seeded Simpson | \$1.15 | \$1.00 |
| Very popular, large leaf, light green. | | |
| Chicken | 1.00 | |
| For feeding poultry and rabbits. | | |
| Early Curled Simpson (Silesia) | 1.10 | .95 |
| Light green, crumpled leaves; ready in about 60 days. | | |
| Early Prizehead | 1.25 | 1.10 |
| Handsome dark green plants, with brownish hues. | | |
| Grand Rapids | 1.05 | .90 |
| Standard loose leaf sort, light green. | | |

HEADING OR CABBAGE VARIETIES

| | | |
|---|------|------------|
| Big Boston | 1.15 | |
| One of the most popular heading varieties. Yellowish green leaves with brownish red edges. | | |
| California Cream Butter | 1.20 | |
| Distinct summer sort. Heat resistant. Dark green tinged with brown. Large compact head. | | |
| Crisp as Ice | | Short Crop |
| Compact heads, variegated dark brown and green leaves. | | |
| Iceberg | 1.60 | 1.45 |
| Yellowish green leaves. Heat resistant, late, and crisp. | | |
| Imperial No. 44 | 1.70 | |
| Hard, well formed heads, does well in warm weather. | | |
| Imperial No. 847 | 1.70 | |
| Medium large, resists tip burn. | | |
| Improved Hanson | 1.15 | 1.00 |
| Ready in about 80 days. Light green, flat heads. | | |
| May King | 1.35 | |
| Ready in about 70 days, small, compact heading; light yellowish green tinged reddish brown. | | |
| Mignonette | 1.75 | |
| Small headed, early, crisp, dark green with brownish tinge. | | |
| New York No. 12 | 1.80 | |
| Early, large leaves, stands heat well. | | |
| New York No. 515 | 1.80 | |
| Adapted to summer and fall production. Resistant to tip burn, medium large and compact. | | |
| Wayahead | 1.30 | |
| Early, surebearing, light green. | | |
| White Boston or Unrivalled | 1.10 | |
| Lighter green than Big Boston, stands hot weather. | | |

LETTUCE—Continued

Cos or Romaine

| | 1-4 lbs. Per lb. | In 25 lb. lots Per lb. |
|---|---------------------|------------------------------|
| Dark Green | Short | Crop |
| Forms an upright solid head. Dark green. | | |
| Trianon or Paris White | \$1.05 | |
| Large white midrib, self-closing, medium green. | | |

**MUSK MELON and CANTALOUPE
GREEN FLESHED VARIETIES**

| | | |
|--|--------|--------|
| Early Hackensack | \$1.00 | \$.90 |
| For home garden, ribbed and netted, 88 days. | | |
| Honey Dew (Winter) | 1.00 | |
| Good shipper, large, thick flesh, 112 days. | | |
| Rocky Ford or Netted Gem | Short | Crop |
| Small, heavily netted, 92 days. | | |

SALMON FLESHED VARIETIES

| | | |
|--|-------|------|
| Banana | 1.00 | |
| Long, lemon colored skin, hardy, 100 days. | | |
| Bender's Surprise | 1.30 | 1.20 |
| Very hard rind, makes good shipper, 95 days. | | |
| Delicious | 1.20 | |
| An early Bender, quite large, deep orange flesh, sweet. | | |
| Emerald Gem | 1.15 | |
| Slightly netted, deeply ribbed, 85 days. | | |
| Fordhook | 1.05 | |
| Medium size, ribbed and netted, 88 days. | | |
| Hale's Best | 1.00 | |
| Early shipping sort, heavy netting, 85 days. | | |
| Hearts of Gold (Hoodoo) | Short | Crop |
| Splendid for shipping, small seed cavity, 94 days. | | |
| Honey Rock (Sugar Rock) | Short | Crop |
| Nearly round, grey green skin, 94 days. | | |
| Lake Champlain (Golden Champlain) | Short | Crop |
| Medium size, early, ribbed, 87 days. | | |
| Miller's Cream (Osage) | 1.10 | 1.00 |
| Late, large, small seed cavity, 95 days. | | |
| Pride of Wisconsin | 1.25 | |
| Oval shape, pearly grey rind, orange flesh, small seed cavity. | | |
| Schoon's Hard Shell | 1.30 | |
| Fine for marketing, red salmon flesh, 88 days. | | |
| Tip Top | 1.00 | |
| Nearly round, large, very juicy, 90 days. | | |

WATER MELON

| | 1-4 lbs. Per lb. | In 25 lb. lots Per lb. |
|--|---------------------|------------------------------|
| Cole's Early | \$.55 | |
| Nearly round, deep pink flesh. | | |
| Florida Favorite | .55 | |
| Oblong, excellent quality, deep red flesh. | | |
| Georgia Rattlesnake | .54 | |
| Pink flesh, light green skin with dark stripes. | | |
| Halbert Honey | .55 | |
| Oblong, medium early, sweet, crimson flesh. | | |
| Harris Earliest | .55 | |
| Oval, very early, deep pink flesh. | | |
| Hungarian Honey | .64 | |
| Globe shape, early, brilliant red flesh. | | |
| Irish Gray | .54 | |
| Large and long, good shipper, bright red flesh. | | |
| Kleckley's Sweet (Monte Cristo) | .58 | .49 |
| Delicious flavor, medium size, deep red flesh. | | |
| Kolb's Gem | .54. | .45 |
| A good shipper, nearly round, bright red flesh. | | |
| Long Light Icing (Gray Monarch) | .54 | |
| Very crisp and tender, deep red flesh. | | |
| Peerless (Ice Cream) | .55 | |
| Early, sweet, bright red flesh. | | |
| Phinney's Early | .54 | |
| Oblong, early, good quality. | | |
| Round Light Icing | .54 | |
| Medium early, light green skin, 90 days. | | |
| Stone Mountain | .56 | |
| Shipping sort, very large, rich scarlet flesh. | | |
| Sweetheart | | Short Crop |
| Crisp and solid, medium early, bright red flesh. | | |
| Tom Watson | .55 | |
| Large, fine for shipping, rich red flesh. | | |
| Winter Queen | .60 | .51 |
| Early, prolific, remains edible for several months if properly stored. | | |
| Wonder Melon | .58 | |
| Improved Kleckley's Sweet. Tender rind, about 90 days. | | |
| Citron (Red Seeded) | .55 | .46 |
| The old, well known, red seeded preserving melon. | | |

MUSTARD

| | Per lb. |
|--|---------|
| Southern Curled, Used for greens | \$.80 |
| Spinach (Tendergreen) Quick growing | .75 |
| White London, Used for ground Mustard | .70 |

OKRA

| | | |
|-----------------------|---------|--------|
| Perkins Mammoth | Per lb. | \$.29 |
| White Velvet | | .29 |

ONION SETS

| | | | |
|------------------|---|---|---|
| Bottle | W | | |
| Brown | R | P | |
| Ebenezer | I | F | R |
| Red | T | O | I |
| White | E | R | C |
| Yellow | | | E |
| Multiplier | | | S |

NOTE—Unless directed otherwise, we ship sets by Express or Parcel Post when the danger of frost is past. As soon as the sets are received, they should be spread in a dry place. Onion Sets are NET CASH.

ONION

| | | |
|---|------------|--------|
| Ebenezer | Per lb. | \$4.25 |
| Good keeper, mild, flattened, yellowish brown skin. | | |
| Early Yellow Globe | | 4.25 |
| Medium size, fairly good keeper. | | |
| Golden Marvel or Bottle | Short Crop | |
| Oblong bulbs, excellent keeper, rich golden yellow. | | |
| Large Red Wethersfield | | 4.25 |
| Standard red sort, flat, purplish red skin. | | |
| Ohio or Michigan Yellow Globe | | 4.25 |
| Flattened globe, dark yellow skin. | | |
| Prizetaker | Short Crop | |
| Globe shape, light straw colored skin, tinged with brown. | | |
| Silverskin (White Portugal) | | 6.00 |
| Crisp, mild, large, flat, white skin. | | |
| Southport Red Globe | Short Crop | |
| Large, late, excellent keeper, deep red skin. | | |
| Southport White Globe | Short Crop | |
| Early, mild, silvery white skin. | | |
| Southport Yellow Globe (Standard Strain) | | 4.20 |
| Standard winter sort, golden yellow skin. | | |
| Southport Yellow Globe (Brigham Strain) | | 4.25 |
| Excellent keeper, resistant to aphids. | | |
| Sweet Spanish (Riverside) | | 7.00 |
| Globular, golden yellow skin, mild. | | |
| Yellow Globe Danver | | 4.50 |
| One of the best for general use, coppery yellow skin. | | |
| White Sweet Spanish | | 6.75 |
| Pure white, firm, mild, large. | | |

PARSLEY

| | 1-4 lbs. Per lb. | In 25 lb. lots Per lb. |
|--|---------------------|------------------------------|
| Champion Moss Curled | \$.65 | \$.58 |
| Popular and a great favorite. | | |
| Double Curled | .65 | |
| Dwarf, fine curled. | | |
| Hamburg Rooted | .65 | .58 |
| Roots used like Parsnips. | | |
| Plain | .65 | .58 |
| Flat leaves, deeply cut, but not curled. | | |

PARSNIP

| | | |
|---|-----|-----|
| Hollow Crown | .85 | .77 |
| Standard sort, long uniform roots, creamy white skin. | | |
| Short Thick | .85 | |
| Early, medium top, 6 to 8 inch root. | | |

PEPPER

| | Per oz. | Per lb. |
|--|---------|----------|
| California Wonder | \$.28 | \$2.80 |
| Medium late, chunky, green changing to crimson, thick flesh, mild. | | |
| Chinese Giant | .33 | 3.30 |
| Very large, deep crimson, mild. | | |
| Harris' Early Giant | .25 | 2.45 |
| Large, mild, good quality. | | |
| Hot Bell or Bull Nose | | Sold Out |
| Large, thick flesh, used for stuffed peppers. | | |
| Long Red Cayenne | .25 | 2.45 |
| Medium early, slender, bright red, hot. | | |
| Long Red Finger (Italian) | .27 | 2.70 |
| Hot, rich red. | | |
| Neapolitan | .26 | 2.60 |
| Early, yellow green becoming bright red, mild. | | |
| Oshkosh | .28 | 2.75 |
| Medium early, glossy yellow turning to canary yellow. | | |
| Pimento | .20 | 2.00 |
| Mild, heart shaped, crimson. | | |
| Red Cherry | .29 | 2.85 |
| Second early, bears profusion of bright red fruit. | | |
| Ruby King | .23 | 2.30 |
| Sweet Bell or Bull Nose | .25 | 2.50 |
| Large, mild, bright crimson. | | |
| Sweet Mountain | | Sold Out |
| Bright red, mild and sweet, large. | | |

PEPPER—Continued

| | Per oz. | Per lb. |
|--|---------|---------|
| World Beater | \$.23 | \$2.30 |
| Large, thick flesh, mild, good shipper. | | |
| Yellow Hungarian Wax (Banana) | .35 | 3.50 |
| Early, waxy yellow turning to bright crimson, hot. | | |

PUMPKIN

| | 1-4 lbs. Per lb. | In 25 lb. lots Per lb. |
|--|---------------------|------------------------------|
| Connecticut Field (Big Tom) | \$.54 | \$.47 |
| Deep rich yellow, fine grain, highly flavored. | | |
| Golden Cushaw | .60 | |
| Golden yellow, thick dry flesh, 112 days. | | |
| Kentucky Field (Sweet Cheese) | .56 | |
| Large, creamy buff skin, yellow flesh. | | |
| King of the Mammoths | .80 | |
| Grows very large, bright yellow. | | |
| Long White Cushaw | .60 | |
| Crooknecked like a Squash, hardy creamy white shell. | | |
| Oriental Pie | .80 | |
| Shaped like a Cushaw, skin deep green, flesh deep yellow. | | |
| Striped Cushaw (Green) | .60 | |
| Grown for stock feeding, thick yellow skin. | | |
| Sweet or Sugar (New England Pie) | .57 | .50 |
| Small, round deep orange color skin, rich yellow flesh, fine grained and sweet. Very popular. | | |
| Tennessee Sweet Potato | .80 | |
| Early pear shaped, cream colored flesh. | | |
| Winter Luxury or Queen | .65 | |
| Medium early, little larger than Sweet or Sugar, flattened at ends, orange colored skin, covered with netting. | | |

RADISH

| | | |
|---|-----|-----|
| California Mammoth White | .64 | |
| Good for fall or winter, 8 inches long, crisp. | | |
| Chartier | .60 | |
| 7-8 inches long, rose color. 35 days. | | |
| Cincinnati Market | .60 | .51 |
| Small top, 7 inches long, scarlet. | | |
| Crimson Giant | .64 | .55 |
| Very large, used for forcing. | | |
| Early Scarlet Globe | .60 | .51 |
| Olive shape, bright scarlet, white flesh, tender. | | |
| Early Scarlet Turnip | .60 | .51 |
| Bright scarlet, crisp and tender. | | |
| Early White Turnip | .62 | |
| Small, quick growing, waxy white, small top. | | |

RADISH—Continued

| | 1-4 lbs. Per lb. | In 25 lb. lots Per lb. |
|---|---------------------|------------------------------|
| French Breakfast | \$.60 | \$.51 |
| Olive shape, carmine with white root. | | |
| Giant Stuttgart | .64 | |
| Late summer and fall variety, white. | | |
| Icicle (White) | .57 | .48 |
| Average 5 inches long, brittle, mild and crisp. | | |
| Long Black Spanish | .80 | .71 |
| Late, very hardy, white flesh, black skin. | | |
| Long Scarlet Short Top | .60 | |
| Smooth, tender, 6 inches long, carmine red. | | |
| Long Scarlet White Tip | .60 | |
| About 4½ inches long, crisp, tender, 26 days to marketable roots. | | |
| Non Plus Ultra (Scarlet Button) | .60 | |
| Round, medium size, bright scarlet, early. | | |
| Round Black Spanish | .65 | |
| Globe shape, late, well flavored, keeps well. | | |
| Saxa | .60 | |
| Early, round, bright scarlet, one of the best for forcing. | | |
| Scarlet China (China Rose) | .64 | .55 |
| A fall type, deep rose, blunt tip. | | |
| Scarlet Turnip White Tip | .59 | .50 |
| Base and root are white, widely used. | | |
| Sparkler | .59 | .50 |
| Fairly early, turnip shape, red with white base and root. | | |
| White Chinese or Celestial | .64 | |
| Large roots, 8 inches long, white, 60 days. | | |
| White Strasburg | | Short Crop |
| Large, white, late, summer or fall sort. | | |
| White Vienna (Lady's Finger) | .60 | |
| Slim, 6 inches long, good keeper. | | |

SALSIFY

| | | |
|---|------|------|
| Mammoth Sandwich Island (Vegetable Oyster) .. | 1.60 | 1.45 |
| Long roots, smooth, creamy white skin. | | |

SPINACH

| | 1-4 lbs. Per lb. | In 25 lb. lots Per lb. |
|--|---------------------|------------------------------|
| Bloomsdale Savoy | \$.55 | \$.50 |
| Early, hardy, deep glossy green leaves. | | |
| Bloomsdale Long Standing | .60 | .55 |
| Slow to bolt to seed, medium dark green leaves. | | |
| Giant Nobel | .58 | .53 |
| Valuable for market gardens and canning. | | |
| King of Denmark (Antvorskov) | .95 | .90 |
| Large, rounded, deep green leaves. | | |
| New Zealand (Everlasting) | 2.00 | 1.95 |
| Spreading habit, thrives during hot weather. | | |
| Princess Julianna | .75 | |
| Thick crumpled leaves, keeps its crispness well. | | |
| Victoria | .50 | |
| Large thick leaves, dark green, slow to shoot to seed. | | |
| Virginia Blight Resistant | .50 | .45 |
| Savoyed leaves, vigorous, used mainly for fall sowing. | | |
| Viroflay | .50 | |
| A fine selection, excellent for summer. | | |

SQUASH

SUMMER VARIETIES

| | | |
|---|-----|-----|
| Early Summer Crookneck | .70 | .62 |
| Very prolific, bears early, bright yellow. | | |
| Early White Bush (Patty Pan or Scallop) | .65 | .57 |
| Round, 6 inches across, creamy white. | | |
| Early Yellow Bush (Yellow Scallop) | .65 | |
| Round, 5 to 6 inches across, deep yellow color. | | |
| Giant Straightneck | .67 | .59 |
| Warty, dark yellow, neck nearly straight. | | |
| Giant Summer Crookneck | .67 | |
| Similar to, but larger than Early Summer Crookneck. | | |
| Vegetable Marrow (Bush Cocozelle) | .75 | .67 |
| Cylindrical, dark green skin, bush type of vine. | | |
| Vegetable Spaghetti | .70 | |
| 60 days, good keeper. | | |
| Zucchini (Italian) | .70 | .62 |
| Cylindrical, dark green black. | | |

SQUASH—Continued

FALL AND WINTER SORTS

| | 1-4 lbs. Per lb. | In 25 lb. lots Per lb. |
|---|---------------------|------------------------------|
| Acorn or Table Queen | \$.80 | \$.72 |
| Acorn shaped fruits, thin shell, dark green skin. | | |
| Banana | | Short Crop |
| Late, cylindrical, slate green skin, thick yellow flesh. | | |
| Blue Hubbard | | Short Crop |
| Large, blue gray skin, very hard shell, keeps long time. | | |
| Boston Marrow | .60 | .52 |
| Of good size, bright orange yellow, used for canning. | | |
| Buttercup | | Short Crop |
| Dry, thick flesh, excellent keeper. | | |
| Delicious | | Short Crop |
| Medium size, dark green skin, top shape, good keeper. | | |
| Golden Hubbard | | Short Crop |
| Fair size, medium early, deep orange red, slightly warty. | | |
| Golden Table Queen | .75 | |
| Acorn shape, golden yellow skin, 60 days. | | |
| Improved Hubbard | | Short Crop |
| Dark green, very warty, a winter sort. | | |
| Mammoth Chili | | Short Crop |
| Grown for stock feeding and exhibition. | | |
| Warted or Chicago Hubbard | | Short Crop |
| Dark green, good size, keeps well, very warty. | | |

TOMATO

| | Per lb. |
|--|---------|
| Beauty | \$2.55 |
| Smooth, pink, excellent quality, for main crop. | |
| Beefsteak | 3.05 |
| Bright red, high yielder. | |
| Bonny Best | 2.25 |
| Mid-season, solid, medium size, scarlet. | |
| Break o' Day | 2.55 |
| Resistant to wilt and rust, early, prolific, orange red. | |
| Chalk's Early Jewel | 2.25 |
| Heavy yielding, scarlet, a canning sort. | |
| Crimson Cushion | 3.05 |
| Large, mid-season, scarlet. | |
| Dwarf Champion | 3.00 |
| Early, flattened globe, solid, pink. | |

TOMATO—Continued

| | Per lb. |
|--|------------|
| Dwarf Stone | \$3.00 |
| Large, smooth, very solid, scarlet. | |
| Earliana | 3.30 |
| The market gardener's favorite, scarlet. | |
| Golden Dawn | 3.00 |
| 80 days, golden yellow, medium large. | |
| Golden Queen | 3.00 |
| Very mild, sweet, yellow, of good size. | |
| Greater Baltimore | 2.00 |
| Main cropper, medium size, scarlet. | |
| John Baer | 2.30 |
| Medium size, nearly round, scarlet. | |
| J. T. D. | 2.30 |
| Second early, slightly flattened globe, produces heavy crop. | |
| June Pink | 2.65 |
| Extra early, purplish pink, good size. | |
| Marglobe | 2.00 |
| Second early, disease resistant, scarlet. | |
| Matchless | 2.25 |
| Dependable second early sort, scarlet. | |
| Oxheart | Short Crop |
| Purple scarlet, very solid. | |
| Ponderosa | 3.50 |
| Late, large, pink, very solid and meaty. | |
| Pritchard | 2.10 |
| Early, brilliant scarlet, disease resistant. | |
| Rutgers | 2.15 |
| Medium to large, second early, bright red. | |
| Scarlet Dawn | 3.00 |
| Thick walls, bright scarlet, 70 days. | |
| Stone | 1.75 |
| Old standby, scarlet, uniform shape. | |
| White Beauty | 3.20 |
| A novelty, nearly white skin. | |
| Yellow Ponderosa | 3.15 |
| Large, mild, deep yellow. | |

TURNIP

| | 1-4 lbs. Per lb. | In 25 lb. lots Per lb. |
|--|---------------------|------------------------------|
| Amber Globe or Stone | \$.37 | \$.32 |
| Large, globular, yellow flesh. | | |
| Early Snowball | .40 | |
| Small tops, medium roots, round and white. | | |

TURNIP—Continued

| | 1-4 lbs. Per lb. | In 25 lb. lots Per lb. |
|--|---------------------|------------------------------|
| Golden Ball | \$.40 | .35 |
| Medium size, round, smooth, quick-growing, yellow. | | |
| Long White Cow Horn | .35 | |
| Roots about 12 inches long, nearly clear white. | | |
| Pomeranian White Globe | .34 | |
| Large tops, globe shape root, heavy cropper. | | |
| Purple Top Milan | Sold Out | |
| Early, fine sweet grain, white. | | |
| Purple Top Strap Leaf | .30. | .25 |
| Flattened, medium size, tender, white. | | |
| Purple Top White Globe | .35 | .30 |
| Large, globular, fine grain, white. | | |
| Seven Top | .31 | |
| Hardy, used for greens, also as a green fodder. | | |
| Shogoin | .95 | |
| Fast growing, makes excellent greens. | | |
| Southern Prize | .35 | |
| Roots for stock feed, tops for greens. | | |
| White Egg | .35 | .30 |
| Medium size, oval shape, sweet, white. | | |
| White Flat Dutch | .40 | |
| Early, medium size, fine quality, white. | | |
| Yellow Stone or Globe | .37 | .32 |
| Medium size, round, good keeper, yellow. | | |

RUTABAGA

| | | |
|---|----------|------|
| American Purple Top | 1.25 | 1.20 |
| Hardy, large, globular, bright yellow, sweet. | | |
| Macomber | 1.00 | .95 |
| White, green crown, large globe. | | |
| White Rutabaga or German | Sold Out | |
| Good size, white with green top. | | |
| White Swede | 1.00 | |
| Firm white flesh, large globe shape. | | |
| Yellow Rutabaga | 1.25 | |
| Large, hardy, sweet, yellow flesh. | | |

Page's Standard Quality Flower Seeds

NASTURTIUM

| | Per lb. |
|---|------------|
| Dwarf Choice Mixed—Fine for Bedding purposes | \$.75 |
| Tall Choice Mixed—For trellis, or banks | Short Crop |
| Golden Gleam Hybrid—Double, sweet scented | Short Crop |
| Scarlet Gleam Hybrid—Semi-double, scarlet | Short Crop |
| Gleam Hybrid Mixed—Semi-double, free blooming | Short Crop |

SWEET PEAS

| | |
|--|------|
| Ambition—Deep Lavender | .90 |
| Constance Hinton—White | .90 |
| Master Cream—Cream or light yellow | .90 |
| Pinkie—Rich rose pink | .90 |
| Welcome—Scarlet | .90 |
| Spencer Supreme Mixed—The finest of all mixtures | .70 |
| Spencer Choice Mixed—A standard mixture | .60 |
| Eckford Choice Mixed—Grandiflora types mixed | .55 |
| Perennial (<i>Lathyrus Latifolius</i>) Mixed | 4.00 |

OTHER ANNUALS and PERENNIALS

| | Per oz. | Per lb. |
|--|----------|----------|
| Ageratum—Swanley blue | Sold Out | Sold Out |
| Alyssum—White sweet | Sold Out | Sold Out |
| Yellow (Saxatile) | Sold Out | Sold Out |
| Aster—Crimson Comet | Sold Out | Sold Out |
| Rose Comet | \$.60 | \$6.00 |
| White Comet | Sold Out | Sold Out |
| Mixed Comet | .50 | 5.50 |
| All Sorts Mixed | Sold Out | Sold Out |
| Bachelor Button—Double Mixed | Sold Out | Sold Out |
| Balsam—Single Mixed | .30 | 3.00 |
| Blue Lace Flower (<i>Didiscus</i>) | Sold Out | Sold Out |
| Calendula—Orange King | .13 | 1.30 |
| Double Mixed | .11 | 1.10 |
| Calliopsis—Tall single mixed | .15 | 1.40 |
| Candytuft <i>Umbellata</i> —Mixed | .15 | 1.50 |
| Canterbury Bell—Cup and Saucer Mixed | .80 | 8.00 |

ANNUALS and PERENNIALS—Continued

| | Per oz. | Per lb. |
|--|---------|----------|
| Carnation—Chabaud Mixed | \$1.20 | |
| Chrysanthemum—Double Annual Mixed | | Sold Out |
| Clarkia—Elegans Mixed | | Sold Out |
| Cockscomb—Plumed Mixed | .32 | 3.20 |
| Crested Mixed | 1.20 | |
| Coreopsis Lanceolata | | Sold Out |
| Cosmos—Double Crested Mixed | .95 | 9.50 |
| Mammoth Single Mixed | .15 | 1.50 |
| Orange Flare | | Sold Out |
| Delphinium Hybrids—Mixed | | Sold Out |
| English Daisy—Double Mixed | 3.20 | |
| For-get-me-not (Myosotis) blue | 2.00 | |
| Four o' Clock (Marvel or Peru) Mixed | | Sold Out |
| Foxglove (Digitalis) Mixed | | Sold Out |
| Gaillardia—Single Mixed | .34 | 3.40 |
| Godetia—Tall double mixed | .34 | 3.40 |
| Gourds—All sorts mixed | .15 | 1.20 |
| Gypsophila (Baby's Breath) | | Sold Out |
| Hollyhock—Double Mixed | | Sold Out |
| Kochia—Childsii | .10 | .60 |
| Larkspur—Annual Mixed | .30 | 3.00 |
| Lobelia—Crystal Palace | 1.30 | |
| Love-in-a-Mist (Nigella) Mixed | .56 | 5.60 |
| Lupine—Perennial Mixed | .20 | 2.00 |
| Marigold—African tall mixed | .25 | 2.50 |
| French Dwarf mixed | .23 | 2.30 |
| Guinea Gold | .30 | 3.00 |
| Harmony double mixed | .25 | 2.50 |
| Sunset Giants | .50 | 5.00 |
| Mignonette | | Sold Out |
| Moonflower | .24 | 2.40 |
| Morning Glory—Tall Mixed | .15 | .80 |
| Heavenly Blue | | Sold Out |
| Scarlet O'Hara | | Sold Out |
| Nicotiana—Mixed | | Sold Out |
| Pansy—Trimardeau Mixed | 4.00 | |

ANNUALS and PERENNIALS—Continued

| | Per oz. | Per lb. |
|--|-----------------|-------------|
| Petunia—Balcony Blue | \$2.00 | |
| Rosy Morn | 1.00 | |
| Blue Bee | .90 | |
| Choice Mixed | 1.00 | |
| Phlox—Annual Mixed | Sold Out | |
| Pinks (Dianthus) Double Mixed | .50 | 5.00 |
| Single Mixed | .40 | 4.00 |
| Poppy—California (Eschscholtzia) Mixed | .15 | 1.50 |
| Iceland (Nudicaule) Mixed | .80 | |
| Shirley—Single Mixed | Sold Out | |
| Portulaca—Single Mixed | Sold Out | |
| Double Mixed | 3.00 | |
| Pyrethrum—Single Mixed | Sold Out | |
| Ricinus (Castor Oil Bean) Mixed | .12 | .80 |
| Salpiglossis—Mixed | Sold Out | |
| Salvia Splendens | Sold Out | |
| Scabiosa—Tall double mixed | .15 | 1.80 |
| Shasta Daisy | .50 | 5.00 |
| Snapdragon (Antirrhium) Mixed | 1.00 | |
| Snow-on-the-Mountain (Euphorbia) | .20 | 2.00 |
| Stock—Dwarf 10 Weeks Mixed | .50 | 5.00 |
| Evening Scented | .12 | 1.20 |
| Strawflower (Helichrysum) Mixed | Sold Out | |
| Sunflower (Helianthus) Dwarf Double | .15 | 1.50 |
| Sweet Sultan—Mixed | .35 | 3.50 |
| Sweet William—Mixed | Sold Out | |
| Verbena—Mixed | .55 | 5.50 |
| Wallflower—Perennial Mixed | 1.60 | |
| Zinnia—California Giant Brightness (Pink) | .35 | 3.50 |
| Daffodil (Yellow) | .35 | 3.50 |
| Orange King (Orange) | .35 | 3.50 |
| Scarlet Queen (Red) | .35 | 3.50 |
| Mixed | .30 | 3.00 |
| Fantasy Mixed | .35 | 3.50 |
| Lilliput Mixed | .25 | 2.50 |
| Mexican Mixed | .60 | 6.00 |

LAWN GRASS MIXTURES

When planting a lawn, we believe that the best is none too good, for there is no sense in planting weeds or inert matter. Weeds will appear even under the best conditions and in spite of all care taken. Inert matter may provide some plant food, but the commercial fertilizers are much better. Every house-owner wants seed that will produce fine lawns. We aim to put out mixtures as pure from weed seed and inert matter as we possibly can. Buy for quality, not for price, and the results will be all that anyone can desire.

Prices in quantities less than 25 lbs. slightly higher.

TERMS—Net Cash.

| | 25-99 lbs. Per lb. | 100 lbs. |
|--|-----------------------|----------|
| Greene Park Mixture | \$.28 | \$26.00 |
| A permanent, thick and velvety turf is produced. Contains the best grasses for the best results. | | |
| Page's Marvelawn | .26 | 24.00 |
| A mixture that is in great demand wherever Page's Seeds are sold. A blended combination of fine bladed, compact growing grasses. | | |
| Page's Fine Mixed | .22 | 20.00 |
| For ordinary use, and quick results. Does not produce permanent lawns. | | |
| Page's Shady Park Mixture | .32 | 30.00 |
| The sort used in shady places and where other grasses do not do well. Will produce a fine sward. | | |
| Page's Emerald Green | .21 | 19.00 |
| A good quality mixture for places that do not require permanency, and where price is an object. | | |
| Chenango Mixture | .31 | 29.00 |
| A special blending of certain grasses that has a big demand with certain of our customers. | | |
| Page's Marvelawn Packed in 16 oz. cartons per doz. | \$3.80 | |
| Packed in 8 oz. cartons | per doz. 2.00 | |
| Packed in 2 or 5 lb. bags in 50 lb. lots . | per lb. .29 | |
| Packed in 2 or 5 lb. bags in 100 lb. lots per lb. | .26½ | |

GRASSES

| | Per lb. | Per 100 lbs. |
|----------------------------------|---------|--------------|
| Creeping Bent | | |
| Cornell Hay Mixture | | |
| Cornell Pasture Mixture | | |
| Common Ryegrass | | |
| Kentucky Bluegrass | | |
| Meadow Fescue | | |
| New Zealand Chewing Fescue | | |
| Perennial Ryegrass | | |
| Redtop | | |
| Orchard Grass | | |
| Timothy | | |
| Timothy and Alsike Mixed | | |

**WRITE
FOR
PRICES**

CLOVER

| | Per lb. | Per 100 lbs. |
|----------------------------------|---------|---------------|
| Alsike | | |
| Ladino | | |
| Mammoth Red | | WRITE |
| Medium Red (Domestic) | | FOR |
| Sweet Clover White Blossom | | PRICES |
| Yellow Blossom | | |
| White Dutch Clover | | |
| Yellow Trefoil | | |

FORAGE and FIELD SEEDS

| | Per lb. | Per bu. | Per 100 lbs. |
|----------------------------------|------------|----------------|-----------------|
| Alfalfa—Grimm | | \$29.00 | |
| Common | | 28.00 | |
| Barley—Two Row Alpha | | 1.70 | |
| Six Row (Wisconsin No. 38) | | 1.75 | |
| Buckwheat—Silverhull | | 2.00 | |
| Millet—Golden | | | 4.50 |
| Hungarian | | | 5.00 |
| Japanese | | | 3.75 |
| Oats—Page's Marvel Brand | | 1.10 | |
| Peas—Canada Field | | | 7.00 |
| Rape—Dwarf Essex | .15 | | |
| Rye—Spring | | 2.10 | |
| Winter | | 1.50 | |
| Soy Beans—Black Wilson | | 2.50 | |
| Cayuga | | 2.75 | |
| Manchu | | 2.60 | |
| Seneca | | 3.00 | |
| Speltz | | 1.60 | |
| Sudan Grass | | | 5.50 |
| Sunflower—Mammoth Russian | | | 10.00 |
| Vetch—Spring | | | 8.50 |
| Winter | | | 14.00 |
| Wheat—Spring | | 2.55 | |

All Subject to Market Changes.

TERMS: Net Cash.

PAGE'S HIGH-BRED SEED CORN

(PA-SE-CO BRAND)

Most seed dealers in the East know that any variety of Seed Corn possessing merit can be best obtained from The Page Seed Company at Greene, New York. We have every reason to believe all Paseco Brand of varieties will stand up to the Page High Standard and our experience of over thirty years has given us a knowledge of the varieties best adapted to our Northern climate and soils.

Our Seed Corn is put up mainly in bags containing 2 bushels or 112 pounds net, 56 pounds to the bushel. Bags are free. All shipments of two bags and over are Freight Paid to your station. Sight Draft with Bill of Lading, payable upon arrival of shipment.

For description of varieties, write for our Corn Manual.

PAGE'S DENT VARIETIES

| | |
|---------------------------|---------------------------|
| Bloody Butcher | Golden Marvel |
| Blue Mountain | Golden Sweepstakes |
| Blue Ridge Ensilage | Lancaster Sure Crop |
| Cornell No. 11 | Leaming Improved |
| Early August | Leaming Ensilage |
| Early Bristol | Luce's Favorite |
| Early Eureka | Minnesota No. 13 |
| Early Marvel | Old Virginia |
| Early Mastodon | PaSeCo Ensilage |
| Early Triumph | Pride of North |
| Early Leaming | Pride of York |
| Full Silo | Red Cob Ensilage |
| Gold Dollar | Smoky Dent |
| Gold Mine | Thepage Early Dent |
| Golden Beauty | True Eureka |
| Golden Marvel | West Branch |
| Golden Glow | West Branch Sweepstakes |
| | White Cap Yellow Dent |

Write for Quotations

SEED CORN—Continued

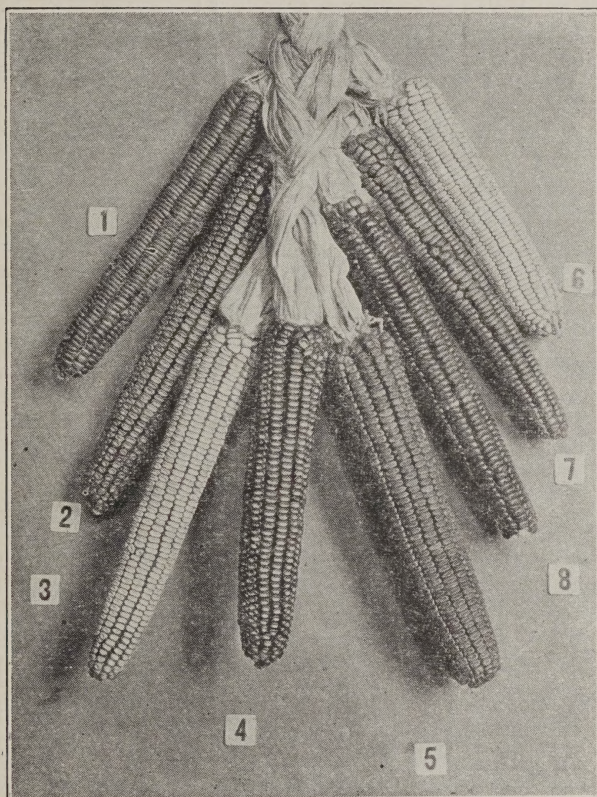
PAGE'S FLINT VARIETIES

Early Canada
 Golden Nugget
 King Philip
 Longfellow

Mammoth Yellow
 N. Y. State 8 Row Yellow
 Sanford White
 Smut Nose

HYBRIDS

Cornell 29-3
 Cornell 34-53



- | | |
|--------------------------------|---------------------------|
| 1. Page's Mammoth Yellow Flint | 5. Page's West Branch |
| 2. Page's Lancaster Sure Crop | 6. Thepage Early Dent |
| 3. Page's Pride of York | 7. Page's Golden Nugget |
| 4. Page's Early Bristol | 8. Page's Luce's Favorite |

SUPPLIES

STIM U PLANT
ORIGINAL PLANT FOOD TABLET

NOW CONTAINS VITAMIN B-1

| <i>Fast-Seller</i> | Size | Dealer | Retail |
|--------------------|------------|--------|--------|
| Clean | ● 10 tabs. | \$.06 | \$.10 |
| Odorless | ● 30 tabs. | .15 | .25 |
| Reliable | 100 tabs. | .45 | .75 |
| | 1000 tabs. | 2.10 | 3.50 |

● Packed 10 Units to Display Carton

STIM U PLANT

STIMUPLANT

10 tablet packets, per carton of 10 \$.50
30 tablet cartons, per carton of 10 1.35

INOCULATE ALL LEGUME SEEDS WITH

NITRAGIN

1898—FORTY-FIVE YEARS OF SERVICE—1943

When ordering, Always state name of seed.

| | | | |
|---|---------------|-----------------------------|---------------|
| ALFALFA | | BEANS | |
| Swt., Bur, Hubam Clovers | | String, Wax, Kidney | |
| Size | Dealer Retail | Size | Dealer Retail |
| 1/2 bu. ea. | \$.19 \$.30 | 1/2 bu. ea. | \$.16 \$.25 |
| 1 bu. ea. | .32 .50 | 1 bu. ea. | .23 .35 |
| 2 1/2 bu. ea. | .65 1.00 | 1 1/2 bu. ea. | .32 .50 |
| CLOVERS | | LESPEDEZA | |
| Medium and Mammoth | | Small (Inoculates up to | |
| Red, Alsike, Crimson and | | 120 lbs. seed) \$.23 \$.35 | |
| White Clovers | | Large (Inoculates up to | |
| 1/2 bu. ea. | \$.19 \$.30 | 100 lbs. seed) .32 .50 | |
| 1 bu. ea. | .32 .50 | SOYBEANS, LIMA | |
| 2 1/2 bu. ea. | .65 1.00 | BEANS, COW PEAS, | |
| PEAS (All Varieties) | | PEANUTS | |
| VETCHES (All Varieties) | | Small (Inoculates up to | |
| 1/2 bu. ea. | \$.16 \$.25 | 30 bu. seed) \$.20 \$.30 | |
| 1 bu. ea. | .23 .35 | 5 bu. ea. .37 .55 | |
| 1 1/2 bu. ea. | .32 .50 | 25 bu. ea. 1.67 2.50 | |
| 1 3/4 bu. ea. | 2.35 3.50 | (One can) | |
| GARDEN SIZE — Garden Peas and Beans | | 30 bu. 2.17 3.25 | |
| Sweet Peas and Lupines | | (6-5 bu. cans) | |
| Dir 80c ctn—Rtl 10c ea.—Packed 12 to Disp. Ctn. | | | |
| 1/2, 1, 1 1/2 bu. and small sizes packed 12 to carton | | | |
| 2 1/2 bu. to 25 bu. sizes packed 6 to carton | | | |

Manila Envelopes

1 oz. size (not printed)
per 1000 \$2.00
2 oz. size (not printed)
per 1000 \$2.20

Manila Bags

Half pint (not printed)
per 1000 \$4.50
Pint (not printed)
per 1000 \$5.00
Quart (not printed)
per 1000 \$5.75
3 Pint (not printed)
per 1000 \$6.25
Printing will be done
at cost, if copy
is submitted

Glass Display Jars

With plain screw tops
per doz. \$1.80
With pouring spout
tops, per doz. \$2.00
Screw Tops
With pouring spouts
per doz. 60c

Beta Scale and Chart
each 60c

Stanley Crow Repellent

Quart Cans
per doz. \$13.65
Pint Cans
per doz. \$7.80
Half Pint Cans
per doz. \$4.68

Pulverized Sheep
Manure
per 100 lbs. \$2.25

Vita Flor
(Vitamin B1)
per carton of
12 bottles \$4.00

SEEDS IN PACKETS

●

Many dealers prefer to sell seed in packets and cartons rather than having seed in bulk. This is a saving in time as customers can make their own selection and you do not have to stop to weigh out the seed.

We have Vegetable Seeds in 5 and 10 cent size packets, also Beans, Peas, Corn, Turnip and Rutabaga in 20 cent cartons and Flowers in 10 cent packets. These packets and cartons are supplied to Dealers on a Contract of Sale and Return. A discount is allowed when the unsold packets are returned, based upon the gross sale. The unsold packets are returnable for credit.

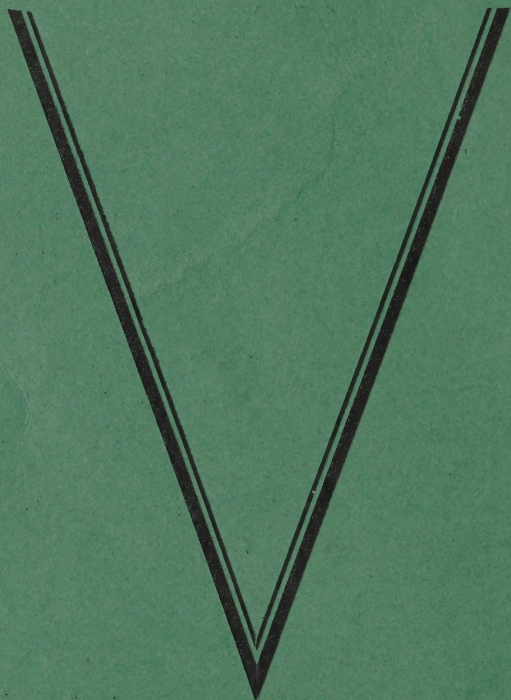
Page's Seeds are sold only by Dealers. They are not sold by school children.

There is sure to be a good demand for seeds in packets in 1943. Thus, if you do not have a case and have room to display one, write promptly stating the combination you can use.

PLANT A GARDEN

FOOD

FOR



VICTORY

BUY WAR BONDS