

Historic, Archive Document

Do not assume content reflects current scientific knowledge, policies, or practices.

62.61

LIBRARY
RECEIVED

★ MAR 30 1943 ★
U. S. Department of Agriculture

WHOLESALE PRICE LIST

OF

PAGE'S STANDARD
QUALITY **SEEDS**

IN BULK

Season of
1 9 4 3

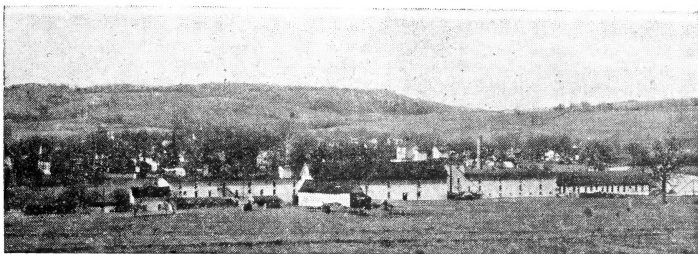


"At Your Service Since 1896"

THE PAGE SEED COMPANY
GREENE - - - NEW YORK

PLANTING GUIDE

	Number of Sowings	Days Between Sowings	Average Packet Will Sow	Other Quantities Will Sow	Dates for Planting Outdoors	Distance Between Rows	Distance Between Plants	Days to Maturity
Beans—Bush Pole	3	14	25 ft.	1b.—150 ft.	May—Aug.	2½ ft.	3 in.	48-54
Beet	1		36 poles	1b.—100 ft.	May—July	3½ ft.	42 in.	65-70
Broccoli	4	30	15 ft.	oz.—100 ft.	Apr.—July	1½ ft.	3 in.	55-80
Cabbage	2	40	150 plants	oz.—1500 plants	Apr.—June	2½ ft.	18 in.	70
Carrot	1		180 plants	oz.—2000 plants	Apr.—July	2½ ft.	24 in.	65-110
Cauliflower	4	30	25 ft.	oz.—200 ft.	Apr.—July	1 ft.	2 in.	85-120
Celery	1		75 plants	oz.—1500 plants	Apr.—July	3 ft.	6 in.	115-140
Cucumber	1		100 plants	oz.—1000 plants	May—July	3 ½ ft.	12 in.	55-75
Egg Plant	1		20 ft.	oz.—100 ft.	June	2½ ft.	30 in.	70-80
Endive	1		50 ft.	oz.—400 ft.	Apr.—June	1 ft.	12 in.	88-90
Kale	2	70	50 ft.	oz.—500 ft.	Apr.—July	1 ½ ft.	18 in.	55-85
Kohl Rabi	1		300 plants	oz.—1500 plants	Apr.—July	1 ½ ft.	4 in.	55-60
Lettuce	2	60	20 ft.	oz.—500 ft.	Apr.—July	1 ½ ft.	12 in.	42-84
Musk Melon	4	14	50 ft.	oz.—500 ft.	Mar.—July	3 ½ ft.	18 in.	85-95
Okra	1		10 hills	oz.—50 hills	May	2½ ft.	15 in.	50-62
Onion	1		15 ft.	oz.—180 ft.	May	2 ½ ft.	2 in.	95-120
Parsley	2	40	30 ft.	oz.—200 ft.	Apr.—May	1 ft.	3 in.	70-75
Parship	1		40 ft.	oz.—300 ft.	Apr.—Aug.	1 ft.	3 in.	110-130
Peas	4	90	20 ft.	oz.—150 ft.	Apr.—May	2 ft.	4 in.	54-75
Pepper	1		20 ft.	lb.—120 ft.	Mar.—July	3 ft.	1½ in.	68-80
Pumpkin	2		100 plants	lb.—1000 plants	May	2½ ft.	20 in.	100-120
Radish	1		6 hills	oz.—25 hills	May—June	8 ft.	60 in.	
Rutabaga	1	14	50 ft.	oz.—200 ft.	Mar.—Aug.	1 ft.	3 in.	25-29
Salsify	1		150 ft.	oz.—600 ft.	Apr.—May	2½ ft.	3 in.	95-100
Spinach	1		20 ft.	oz.—100 ft.	July	1 ft.	3 in.	120
Squash—Summer	4	14	25 ft.	oz.—100 ft.	Mar.—Aug.	1 ½ ft.	3 in.	35-50
Winter	1		6 hills	oz.—25 hills	May	3 ½ ft.	48 in.	54-62
Sweet Corn	1	25	40 ft.	oz.—250 ft.	May	4 ft.	15 in.	100-110
Tomatoes	3		200 ft.	lb.—250 ft.	May—June	4 ft.	72 in.	80-90
Turnip	1		150 ft.	oz.—2500 plants	May—June	3 ft.	15 in.	64-90
Watermelon	2	120	8 hills	oz.—600 ft.	Mar.—July	1 ½ ft.	36 in.	40-60
Soy Beans	1		20 ft.	oz.—30 hills	May	6 ft.	3 in.	35-95
	1		1b.—150 ft.	lb.—150 ft.	May	2 ft.	60 in.	80-90



Greene, N. Y., March, 1943

To our Customers and Friends:—

Again we send you our annual Price List. This is the 1943 edition and contains the prices for Dealers who resell to the retail trade. Previous quotations are cancelled, and these prices are given with the distinct understanding that they are subject to change or revision without notice.

There is a great demand for seeds this spring due to the fact that rationing is going into effect and more people will plant crops that they will be able to store and can. Also, because of the drive to have Victory Gardens, you should be able to sell all the seed you have in stock.

Crops on many items were short and we are not able to offer a complete list. Our stocks are not great and we expect that we will have to advise customers that we cannot supply all of their requirements because of previous sales. Therefore, it is suggested that you do not delay sending your order for such items as you have not already stocked or ordered. Where possible give second and third choices should we happen to be out of the variety you desire.

On account of war conditions and the labor situation, we cannot promise to be as prompt in shipping your order as in former years, but we certainly will do our best.

Terms on Sales are:—Vegetable Seeds, 1½% 10 days, 60 days Net to firms of approved credit rating or for Cash with order, F. O. B. Greene, New York. Onion Sets, Lawn Mixtures, Grasses, Clover, etc. are Net Cash, F. O. B. Greene, New York.

All orders for seeds shipped out by us are sent with the understanding and agreement that "The Page Seed Company gives no warranty, express or implied, as to the productiveness of any seeds or bulbs it sells and will not be in any way responsible for the crop. Our liability, in all instances, is limited to the purchase price of the seed."

THE PAGE SEED COMPANY

Wholesale Price List

BEANS

Bush varieties of Beans are one of our leading specialties. We devote considerable acreage to them each year in New York State. By roguing we are able to keep our seed stock to a high degree of purity, and thus our seeds are satisfactory to critical dealers and planters. **120 pounds to the bag.**

	1-29 lbs. Per lb.	Bag Per lb.
WAX-PODDED BUSH BEANS		
Burpee's New Kidney Wax	\$.22	\$.19½
Pods broad, golden yellow, about 6 inches long. A profitable variety for gardener and shipper.		
Davis White Wax		Short Crop
An early and attractive variety. Good as a snap bean while young and a shell bean when overgrown.		
Golden Eye Wax		Failure
Almost rust-proof, also very hardy. Pods are long, straight and flat. Some string.		
Hodson Wax18	.15½
Pods are yellowish-green, large in size, rather late but rust and blight resistant.		
Improved Golden Wax18	.15½
The most popular early wax bean for the home garden. Very early, and quite productive. Pods are straight and light yellow.		
Pencil Pod Black Wax20	.17½
Productive, long pods, round, slightly curved and golden yellow. Very fleshy, brittle and stringless.		
Refugee Wax18	.15½
Round, curled pods, brittle, stringless, desirable for home and market garden use.		
Round Pod Kidney Wax (Brittle Wax) ...		Short Crop
Round pods, 5½ to 6 inches long, light yellow, stringless. Very desirable for the home garden.		
Sure Crop Black Wax (Golden Bountiful) .	.18	.15½
Thick, flat pods, about 6 inches long, and yellow. Hardy, rust resistant, stringless, bright yellow.		
Top Notch Golden Wax18	.15½
Medium small, compact plant. Creamy-yellow pods, straight, flat-oval, stringless.		
Unrivalled Wax18	.15½
Dwarf, moderately productive, flat pods, brittle, stringless.		
Wardwell's Kidney Wax20	.17½
Popular among market gardeners. Broad pods, flat, about 5½ inches long.		
Webber Wax18	.15½
Of high quality, fleshy, stringless and brittle. Hardy and productive. Known also as Crackerjack Wax.		



Beans—Continued

	1-29 lbs. Per lb.	Bag Per lb.
GREEN-PODDED BUSH BEANS		
Black Valentine	\$.18	\$.15½
Very productive, hardy and blight resistant. Largely used for market. Stringless, 50 days.		
Bountiful (Six Weeks)18	.15½
One of the best flat podded types. Pods 7 inches long, absolutely stringless. Early, vigorous and productive.		
Burpee's Stringless20	.17½
A desirable variety for either home or market. Is tender brittle and stringless.		
Dwarf Horticultural or Cranberry18	.15½
One of the best for green shell beans. Good as snap bean while young. Almost stringless.		
Early Broad Windsor (Fava)23	.20½
Has a long pod, and a large bean.		
French's Horticultural19	.16½
Later than Dwarf Horticultural. Pods larger and more highly colored.		
Full Measure20	.17½
Slender, round pods, tender and stringless.		
Giant Stringless20	.17½
A productive variety bearing large, nearly round pods, brittle until quite old.		
Improved Goddard18	.15½
One of the best green shell beans, large and a good show variety. Pods very stringy.		
Landreth Stringless20	.17½
A selection of Burpee's Stringless. Pods 6 to 8 inches long, slightly curved. Vine 17 to 18 inches long. Resistant to blight. Ready for use in about 54 days.		
Low's Champion19	.16½
An old variety, stringless and tender. Of fine quality. Used as a canning variety.		
Plentiful20	.17½
A black seeded Bountiful. Flat pods, light green, stringless.		
Refugee Stringless20	.17½
Pods are stringless, round, medium green. Excellent for canning or late gardens.		
Round Pod Red Valentine18	.15½
A very sure cropping variety. Pods round, about 6½ inches long. Stringless while young.		
Tendergreen20	.17½
Resembles Full Measure. Desirable for home and market gardens. Round pods, dark green, stringless, 54 days to picking stage.		
Tenderhull17	.14½
A new sort of Bean. Pod very tender in all stages. White seed.		
Tennessee Green Pod18	.15½
A second early, flat podded snap bean of excellent quality and flavor. Extra long pods of bright green color.		
Vermont Cranberry20	.17½
An improved type of Dwarf Cranberry.		

BEANS—Continued

POLE BEANS

	1-29 lbs. Per lb.	Bag Per lb.
Corn Hill or Cut Short	\$.19	
Hardy, late, and productive. Stringy and of fair quality.		
Golden Cluster Wax20	
An excellent yellow podded variety. Pods long, broad, fleshy and stringless. Very popular.		
Horticultural Pole (London Horticultural) ..	.19	
Very hardy, doing well in sections of short season. Productive, stringless and of good quality.		
Kentucky Wonder Green Pod		
(Old Homestead)19	.18½
The most popular of the green podded pole beans. Bears early and continuously. Stringless when young.		
Kentucky Wonder Wax20	
Very fleshy, brittle, with yellow pods.		
Lazy Wife19	
Medium green pods, borne in clusters, entirely stringless. Fine for dry beans.		
Mammoth Horticultural		
(Worcester Mammoth)21	.18½
Pods very showy, long flat, stringless and late.		
McCaslan Pole18	.15½
Excellent for dry shell beans as well as snap. A good climber. Green pods.		
Missouri Wonder (Noxall)18	
Large plant, good climber, 66 days to picking stage. Particularly suited for green shell beans.		
Scarlet Runner21	
Used as a shell bean or for ornamental purposes.		
Striped Creaseback (Scotia)17	
Very early, medium length pods, used as snaps. Of fine quality.		
Tennessee Wonder		Short Crop
Of good climbing habit, light green, straight pods, nearly stringless.		
White Creaseback17	
Early and vigorous. Round pods, green, stringless, tender.		
White Dutch Case Knife19	
Largely used as a shell bean.		
White Runner21	
Good as a shell bean or for ornamental purposes.		
White Kentucky Wonder19	
Good climber. Round pods, green, tender, stringless.		

Beans—Continued

FIELD BEANS

	1-29 lbs. Per lb.	Bag Per lb.
Boston Pea or Navy	\$.15	\$.12½
Large spreading plant with many runners.		
Large White Kidney17	.14½
Excellent for dry shell use.		
Large White Marrow17	.14½
Fine for baking.		
Red Kidney16	.13½
Very good for dry bean use.		
Yellow Eye15	.12½
Hardy, very productive, good for baking.		
Red Kidney (Calapovedl)18	.15½



LIMA BEANS

	1-29 lbs. Per lb.	Bag Per lb.
Baby Potato	\$.20	\$.17½
Earlier than Burpee Bush. Adapted for canning and freezing.		
Burpee's Bush20½	.18
A popular standard sort and widely planted.		
Burpee's Improved Bush21½	.19
Large and productive. Pods borne in clusters.		
Early Jersey Pole19½	.17
Prolific, tender, of fine quality.		
Early Leviathan19½	
Early, heavy cropper, good climber.		
Fordhook Bush22	.19½
The popular market garden variety.		
Giant Podded Pole19½	
Large pods, vigorous, large beans, medium early.		
Henderson Bush17½	.15
The small seeded variety. Largely used by canners.		
King of the Garden Pole19½	.17
A popular, large podded sort. Excellent quality.		
Siebert's Early Pole19½	
Early and very productive.		
Sieva or Carolina18	
Grows 10 to 12 feet. Bears over long season.		

EDIBLE SOY BEANS

Bansei19
Hokkaido19

GARDEN PEAS

Our strains of Peas are as uniformly true to type as soil and climatic conditions, plus human efforts can make them. All are grown under ideal conditions in sections best adapted to the variety. We do not believe that better seed can be supplied from any source.

EXTRA EARLY SMOOTH SEEDED	1-29 lbs. Per lb.	Bag Per lb.
Alaska (Wilt Resistant)	\$.16 $\frac{1}{2}$	\$.14
Largely used by canners and market gardeners.		
First and Best17	.14 $\frac{1}{2}$
Ready for use in about 50 days.		
Laxton's Superb (Early Bird)17 $\frac{1}{2}$.15
Hardy and productive. Semi-wrinkled pea.		

EDIBLE PODDED SORTS

112 lbs. to the bag

	1-27 lbs. Per lb.	Bag Per lb.
Dwarf Gray Seeded Sugar	\$.18	\$.15 $\frac{1}{2}$
An old edible pod variety. Broad pods, flat and crooked.		
Dwarf White Sugar18	
Quite early, vine about 2 feet high.		
Mammoth Luscious Sugar18 $\frac{1}{2}$.16
Light green vines, large pods.		
Mammoth Melting Sugar18 $\frac{1}{2}$.16
Very tender and brittle. 3 $\frac{1}{2}$ foot vines, very popular.		

EARLY WRINKLED

American Wonder18	.15 $\frac{1}{2}$
10 to 12 inches high, peas produced in about 60 days.		
Blue Bantam20	.17 $\frac{1}{2}$
Large podded, height about 15 inches.		
Gradus (Prosperity)19	.16 $\frac{1}{2}$
Standard early large pea. 30 inch vine. Bulk of peas borne in 70 days.		
Hundredfold20	.17 $\frac{1}{2}$
Similar to Pioneer, later and more productive.		
Laxtonian20	.17 $\frac{1}{2}$
The largest podded sort of the dwarf varieties. The earliness together with the size of pod, and the quality of the pea makes it a leader for market purposes.		
Laxton's Progress20	.17 $\frac{1}{2}$
Semi-dwarf, a heavy yielder, large podded.		
Little Gem17	.14 $\frac{1}{2}$
Produces 50 per cent of its crop in 80 days from date of planting. Very productive. Grows about 18 inches high.		
Little Marvel18	.15 $\frac{1}{2}$
Grows 16 inches tall, pods 3 inches long, has 7 or more peas of fine quality. An ideal home variety.		
Nott's Excelsior18	.15 $\frac{1}{2}$
Often called the best early dwarf wrinkled pea. Vines average 16 inches and are fairly loaded with pods.		

PEAS—Continued

	1-27 lbs. Per lb.	Bag Per lb.
Premium Gem	\$.17	\$.14½
An improved type of Little Gem.		
Sutton's Excelsior18	.15½
As early as Little Marvel and more productive than American Wonder or Nott's Excelsior.		
Thomas Laxton18	.15½
Very popular and one of the best for home gardens.		
World's Record19	.16½
An improved type of Gradus. Very productive.		

SECOND EARLY AND MAIN CROP

Alderman		Short Crop
About 5 foot vines. Pods borne in clusters. Fine quality.		
Bliss Everbearing17	.14½
Productive and fine quality, long in bearing.		
Champion of England17	.14½
The best of the late varieties. Grows about 4 feet high. A well known favorite.		
Dark Podded Telephone18	.15½
Vines 4 to 5 feet. Pods large and well filled. Very desirable for market gardens.		
Dwarf Champion		Short Crop
A desirable home or market variety. Height about 3 feet. Pods are well filled.		
Dwarf Telephone18	.15½
Highly recommended for the home garden. Vine about 30 inches.		
Giant Stride18	.15½
Wilt resistant. 75 days. Dark green. Fine for shipping.		
Improved Stratagem19	
A standard second early sort. Height 4 to 5 feet. Large pods.		
McLean's Advancer17	.14½
A heavy yielder, and one of the canner's favorites.		
Potlatch (Dwarf Defiance)19	
A splendid variety for home or market. Very productive. Grows about 2 feet high.		
Wyoming Wonder18	.15½
Resistant to wilt. Pods 5 to 6½ inches long, dark green. 24 to 28 inch vine. Ready in about 75 days.		

This Price List can only give brief or short descriptions of some of the more important seeds sold. Our Garden Guide, or Descriptive List gives better and more complete descriptions. Copies are available for distribution to your trade. Write us if you can use them.

We also have a Seed Corn Manual for those interested in Corn descriptions. These too, are available for distribution.

SWEET CORN

Sweet Corn weighs on the average 50 pounds to the measured bushel. Our corn is put up 100 pounds to the bag. The seed is produced in those sections best suited for the growing of corn. We believe our seed is equal to the best and better than some.

(100 pounds to the bag.)

WHITE VARIETIES

	1-24 lbs. Per lb.	Bag Per lb.
Black Mexican	\$.15	\$.12½
One of the sweetest. White kernels when ready for use.		
Country Gentleman19	.16½
Sweet, very fine quality, has uneven ears.		
Early Evergreen19	.16½
Very productive, earlier than Stowell's.		
Early Minnesota14	.11½
A popular old standby in many sections.		
Early White Market14	.11½
Dwarf, large ears, very early.		
Howling Mob14	.11½
One of the second-early sorts.		
Kendel's Early Giant15	
Juicy, sweet and palatable until quite old.		
Long Island Beauty (Late Mammoth)15	.12½
Very sweet and sugary, large ears, rather late.		
Mammoth White Cory14	.11½
Early, fine quality, large kernels.		
Stowell's Evergreen19	.16½
The standard late variety. One of the best known.		
Trucker's Favorite09½	.07
Used for roasting, 12-14 rows, white kernels.		
Whipple's Early White14	.11½
Large ears, of excellent quality.		

YELLOW VARIETIES

Golden Bantam15	.12½
Very early, sweet and tender. Fine flavor. Popular.		
Golden Colonel		
(Golden Country Gentleman)15	.12½
Kernels set in uneven rows like Country Gentleman.		
Golden or Bantam Evergreen15	.12½
A popular mid-season sort. One of the evergreen type.		
Golden Early Market	.15	.12½
Very prolific, 8 to 12 rows.		

SWEET CORN—Continued

	1-24 lbs. Per lb.	Bag Per lb.
Golden Gem		Short Crop
Eight rows, early with short stalks.		
Golden Giant	\$.16	\$.13½
The largest of the yellow sorts. Mid-season.		
Golden Hummer15	.12½
Golden yellow, 8-12 rows, about 70 days.		
Golden Sunshine		
Excellent early variety with large ears.		
Improved Golden Bantam15	
A select strain, 12 rows, grown for particular people.		
Spanish Gold15	.12½
Extra early, for first markets.		
Whipple's Early Yellow14	.11½
Large ears, 12 to 14 rows, mid-season sort.		
Wonder Bantam16	.13½
Slightly taller than regular Golden Bantam. Second early.		

**Protect Your Corn Plantings
with
STANLEY'S CROW REPELLENT**

We carry a line of supplies to aid you in your sale of seeds. These are listed on page 36. Note also the useful tables of information. These will aid you in answering questions of customers.

HYBRIDS

	1-24 lbs. Per lb.	Bag Per lb.
Bancross (Top Cross Bantam)		Short Crop
6 ft. stalk, 7 inch ear, 86 days to eating stage, 10 to 14 rows.		
Golden Cross Bantam		Short Crop
6 ft. stalk, 7 to 8 inch ear, 88 days to eating stage, 10 to 14 rows.		
Ioanna28	
12 to 14 rows, bright yellow. 80 days.		
Marcross 13x626	.23½
70 days to eating stage, short stalks, long ears, 10-14 rows of light cream kernels.		
Spancross 13x426	.23½
6 ft. stalk, 6 to 7 inch ear, 10 to 14 rows, 72 days to eating stage.		
Top Cross Golden Evergreen25	
8 ft. stalk, 8 inch ear, 14 to 16 rows, 89 days to eating stage.		
Top Cross Golden Sunshine or Tendergold26	.23½
5 to 6 ft. stalk, 7 inch ear, 12 to 16 rows, 80 days to eating.		
Top Cross Whipple's or Whipcross26	
7 ft. stalk, 7 inch ear, 12 to 14 rows, 84 days to eating stage.		

POP CORN		1-24 lbs. Per lb.	Bag Per lb.
Black Beauty	Early, purplish black kernels.		Short Crop
Golden Baby Rice	Golden yellow kernels similar to White Rice.	\$.14	\$.11½
Golden Queen	The standard yellow variety.	.12	.09½
Improved Baby Rice	Very dwarf, kernels pearl white.	.13	.10½
South American	(T. N. T.)	.12½	.10
White Rice	Early, translucent pearl white kernels.	.12	.09½

ARTICHOKE

Green Globe	Per lb.
Perennial, 3 to 5 feet tall, large round deep green heads.	

ASPARAGUS

Mary Washington	\$.58
Rust resistant, very tight tips.	

ASPARAGUS ROOTS

Washington	Per 100	Per 1000
	\$1.50	\$9.00
(Shipped direct from growing station)		

TABLE BEETS

	1-4 lbs. Per lb.	In 25 lb. lots Per lb.
Crimson Globe	\$1.20	\$1.12
Main crop variety, large roots.		
Crosby's Egyptian	1.20	1.12
Dark red, flattened globe shape, early.		
Detroit Dark Red	1.60	1.52
Small tops, globular, deep blood red.		
Dewing's Early Blood	1.20	1.12
An improved type of Early Blood.		
Early Eclipse	1.15	1.07
Early, small tops, medium size, bright red.		
Early Wonder	1.20	1.12
Globe shape, small tap root, a first early.		
Edmund's Early Blood	1.20	1.12
Globe shape, dark red skin, short top.		
Egyptian Blood Turnip	1.30	1.22
Dark red, one of the earliest, flattened.		
Good for All	1.50	
Fine for canning, globular, deep crimson.		
Half Long Blood	1.15	
Good for fall and winter use. Deep red.		
Perfected Detroit		Short Crop
Tall tops, globular roots, dark red flesh with lighter zones.		

SWISS CHARD

	1-4 lbs. Per lb.	In 25 lb. lots Per lb.
Fordhook Giant	\$.96	\$.88
Tall, sturdy, broad leaves, heavily crumpled, dark green. Broad, thick, white stems.		
Lucullus		Short Crop
Upstanding, yellowish green, heavy crumpled leaf. Light green, thick stems.		
White Silver (Large White Rib)95	.87
Medium height, smooth, yellowish green leaves. Stem broad, white with greenish tinge.		

MANGEL WURZEL and SUGAR BEETS

	1-4 lbs. Per lb.	In 25 lb. lots Per lb.
French White Sugar	\$.95	\$.87
Long, smooth, and of rich quality.		
Giant Half Sugar (Rose)	1.00	.92
Valuable for feeding, oval shape, grayish white skin.		
Giant Sludstrup95	
Long, reddish yellow skin. Excels others in weight.		
Golden Tankard	1.00	.92
Very sweet, cylindrical in shape, orange yellow skin.		
Ideal (Yellow Eckendorf)95	.87
Light yellow, cylindrical in shape.		
Mammoth Long Red	1.00	.92
The standard red, nearly cylindrical, large.		

Our seeds are gathered from sections where in our experience and that of growers, the conditions of soil and climate produce the best seed of its kind. Seeds cannot be judged, as are most goods, by inspection. Little can be told about the leaf, fruit, root, or flower they will develop, except by the test of growing. We must provide them from growers we know to be experienced and reliable; and you in turn must depend upon our ability, experience and integrity. We check and test the seeds, notes are taken, and comparisons made. We endeavor to offer the best, and to send out seed that will measure up to Page's Standard Quality.

BROCCOLI

Italian Sprouting or Calabrese	Per lb. \$2.35
Quick growing, tall branching head.	
deRappa or Italian Turnip	1.00
Plant 18 to 22 inches tall, one of the first early greens.	

BRUSSELS SPROUTS

Dwarf Paris	Short Crop
Half dwarf, very widely grown.	

CABBAGE

	1-4 lbs. Per lb.	In 25 lb. lots Per lb.
All Head Early	\$2.20	
One of the earliest of the round head sorts. Very uniform.		
All Seasons	2.20	
Adapted for late summer use. Stands dry, hot weather.		
Charleston Wakefield	2.10	
Early, pointed head, very solid, medium size.		
Copenhagen Market	2.95	2.80
Large, round heads, matures in about 100 days.		
Danish Ball Head		Short Crop
Standard winter sort. Round head, short stem, solid head.		
Drumhead Savoy	2.90	2.75
Very distinct on account of its crumpled leaves.		
Early Flat Dutch		Short Crop
Thick heads, and flattened, solid and firm.		
Early Jersey Wakefield	2.40	2.25
One of the earliest and surest heading varieties.		
Early Winnigstadt		Short Crop
Medium early, cone shaped, very productive.		
Glory of Enkhuizen	2.55	
Very sure heading, excellent quality, very hard and solid.		
Golden Acre	3.55	
An early strain of Copenhagen Market, round and compact.		
Mammoth Red Rock	3.00	2.85
Large head, red leaves, medium late.		

CABBAGE—Continued

	1-4 lbs. Per lb.	In 25 lb. lots Per lb.
Penn State Ball Head	\$4.05	
Late, short stem, flattened globe heads. Store well.		
Premium Late Flat Dutch	2.20	2.05
A well known late variety, large flattened heads.		
Succession	2.40	
Flat heads, short stems.		
Surehead	2.40	
Large round head, long stem.		

YELLOW RESISTANT VARIETIES

	Per lb.	
Improved Globe	\$3.05	
Strain of Glory of Enkhuizen, resistant to Yellows.		
Jersey Queen	2.45	
Small, compact heads.		
Marion Market	3.25	
Development from Copenhagen Market.		
Wisconsin All Seasons	3.00	
Slightly coarser than the standard All Seasons.		
Wisconsin Hollander	3.00	
Resistant strain of Danish Ball Head.		

CHINESE CABBAGE

	1-4 lbs. Per lb.	In 25 lb. lots Per lb.
Chihli (Improved Pekin)	\$1.30	\$1.15
Early, thick tapering head.		
Pe Tsai (Choknaei) (Celery)	Short Crop	
Cylindrical tapering head, very compact.		
Wong Bok (Paoting)	1.30	1.15
Heavy and very solid.		

CARROT

Chantenay	3.00	2.90
Medium early, stump rooted, deep orange.		
Coreless (Nantes)	3.50	3.40
Early, deep orange, free from woody center.		
Danver Half Long	3.00	2.90
The popular main crop sort, deep orange.		
Early Scarlet Horn	3.10	
Short, blunt, thick roots, early, orange-red.		
Hutchinson	3.00	
Cylindrical, deep orange, long.		

CARROT—Continued

	1-4 lbs. Per lb.	In 25 lb. lots Per lb.
Imperator	\$3.00	\$2.90
Deep rich orange, fine grained, tender, sweet, 8 inches long.		
Improved Chantenay	3.00	2.90
Red Cored, practically coreless, deep orange.		
Large White Belgian	1.15	
Grown for stock feeding, thick, white roots.		
Large Yellow Belgian	1.15	
Similar to White Belgian.		
Long Orange		Short Crop
Long, late, deep orange.		
Oxheart		Short Crop
Short, blunt rooted, bright orange.		

CAULIFLOWER

	Per oz.
Early Snowball	\$2.80
Popular early, medium size.	
Super Snowball	3.00
Medium early, very white.	
Perfected Snowball	2.90
Solid, very white.	

CELERY

	Per oz.	Per lb.
Fordhook or Emperor	\$.38	\$3.75
Dwarf and stocky, has a nutty flavor.		
Giant Pascal38	3.75
A standard fall and winter sort.		
Golden Self Blanching42	4.20
Compact, stocky, early, solid stalks.		
White Plume38	3.80
Early, home garden favorite, easily blanched.		
Wonderful or Golden Plume52	5.20
Disease resistant, very crisp.		

CELERIAC

Giant Prague	Short Crop
Used in soups and salads.	

COLLARDS

Georgia30
Leaves used for making excellent greens.	

CORN SALAD

Large Leaved	Short Crop
Used as a substitute for Lettuce.	

CRESS

Green Curled or Peppergrass	Per lb.	\$1.30
Early, deep green foliage.		

CUCUMBER

	1-4 lbs. Per lb.	In 25 lb. lots Per lb.
A & C	\$1.75	
Nearly cylindrical, 8 inches long, dark green.		
Arlington White Spine	1.40	
A good yielder, a fine slicer, deep green color.		
Black Diamond (Stays Green)	1.50	
Dark green, early, productive, fine shipper.		
Boston Pickling (Green Prolific)	1.55	1.45
Bright green, medium size, good pickler, productive.		
Clark's Special (Imperator)	1.60	
Outstanding for shipping, very dark green, few seeds.		
Climbing	1.40	
Used for covering fences and trellises. Long fruit.		
Davis Perfect	1.55	1.45
Very symmetrical, deep green, good shipper.		
Early Cluster	1.55	1.45
Short green, borne in clusters, early.		
Early Fortune	1.60	1.50
Desirable for shipping. Flesh firm and crisp.		
Early Russian	Short	Crop
Early, hardy, productive, small fruited.		
Early Short Green or Early Frame	1.50	
Vigorous, productive, medium early, crisp and tender.		
Early White Spine (Improved)	1.55	1.45
One of the best for the table, mid-season, dark green.		
Everbearing	1.50	
Small, very early, bears over long season.		
Fordhook Pickling	1.50	
Is prolific, has thin tender skin.		
Klondike	1.40	
Medium early, dark green, of good size.		
Longfellow (Windemoor Wonder)	1.85	
Excellent for shipping, or forcing. Dark green.		
Long Green	Short	Crop
Late standard sort, slender, fine for slicing and pickles.		

CUCUMBER—Continued

	1-4 lbs. Per lb.	In 25 lb. lots Per lb.
National Pickling	\$1.55	
Best all-around sort for pickling, dark green.		
Perfection Pickling (Snow's)	1.55	
Early, prolific, widely used.		
Straight Eight	1.65	1.55
8 to 10 inches long, medium green.		
White Wonder	Short	Crop
A novelty. White at all stages.		
Woodruff's Hybrid	1.40	1.30
A main crop sort, fine shipper.		

DANDELION

	Per lb.
Arlington Thick Leaf	\$4.75
Blanches readily, has upright growth.	
Radichetta (Arcoria di Catalogna)	3.00
Called the Italian Dandelion account of its dandelion looking foliage.	

EGG PLANT

Black Beauty	\$3.25	
Early, of good size.		
Long Purple (Italian Egg Plant)	Short	Crop
Dark purple, 7 to 8 inches long.		
New York Improved	3.25	

ENDIVE

Batavian Fullhearted (Escarole)95
Bright green, thick broad leaves, one of the best.	
Green Curled Ruffec95
Hardy, deep green, finely cut and curled.	
Moss Curled95
Compact, deeply curled and cut, medium green.	
White Curled	1.00
Leaves light yellowish green, blanches nearly white.	

HERBS, etc.

	Per oz.	Per lb.
Anise (Pimpinella Anisum)	\$.30	
Used for flavoring and medicine.		
Caraway (Carum Carvi)30	
Used for flavoring breads and soup.		
Chervil	Short	Crop
Used for flavoring soups and salads.		

HERBS, etc.—Continued

	Per oz:	Per lb.
Chicory (Witloof)	\$.28	\$2.75
Served as a salad.		
Chives	Short	Crop
Perennial of the onion family, used in salads.		
Dill (<i>Anethum Graveolens</i>)		1.25
Used in flavoring pickles.		
Fennel-Florence (<i>Foeniculum Dulce</i>)		1.75
Leaf stalks are boiled for table use.		
Fennel-Sweet (<i>Foeniculum Vulgare</i>)		2.00
Used in salads and soups.		
Lavender (<i>Lavandula Vera</i>)	Short	Crop
Leaves are very fragrant. Used to perfume linen.		
Sage (<i>Salvia Officinalis</i>)	Short	Crop
Used for flavoring.		
Sorrel40	
Used as a salad.		
Summer Savory (<i>Satureia Hortensis</i>)45	
Used for flavoring soups.		
Sweet Basil (<i>Ocimum Taselicum</i>)30	
Used for flavoring soups and sauces.		
Sweet Marjoram (<i>Oreganum Majorana</i>)	Short	Crop
Used for seasoning broths and dressings.		
Thyme (<i>Thymus Vulgaris</i>)	Short	Crop
Used for seasoning.		

KALE

		Per lb.
Blue Scotch	Short	Crop
Blue green plumed leaves.		
Dwarf Curled Scotch	Short	Crop
Fine cut leaves, dwarf spreading growth.		
Dwarf Siberian (Sprouts)		1.00
Large bluish green spreading leaves.		
Tall Curled Scotch	Short	Crop
Hardy, fine curled leaves, about 2 feet high.		

KOHLRABI

Early Purple Vienna	3.75
Small tops, purple skin, medium size.	
Early White Vienna	3.75
Medium size, whitish green skin, small.	

LEEK

American Flag	Short	Crop
Strong growing, broad leaf, productive.		

LETTUCE

LOOSE-LEAVED VARIETIES

	1-4 lbs. Per lb.	In 25 lb. lots Per lb.
Black Seeded Simpson	\$1.15	\$1.00
Very popular, large leaf, light green.		
Chicken	1.00	
For feeding poultry and rabbits.		
Early Curled Simpson (Silesia)	1.10	.95
Light green, crumpled leaves; ready in about 60 days.		
Early Prizehead	1.25	1.10
Handsome dark green plants, with brownish hues.		
Grand Rapids	1.05	.90
Standard loose leaf sort, light green.		

HEADING OR CABBAGE VARIETIES

Big Boston	1.15	
One of the most popular heading varieties. Yellowish green leaves with brownish red edges.		
California Cream Butter	1.20	
Distinct summer sort. Heat resistant. Dark green tinged with brown. Large compact head.		
Crisp as Ice		Short Crop
Compact heads, variegated dark brown and green leaves.		
Iceberg	1.60	1.45
Yellowish green leaves. Heat resistant, late, and crisp.		
Imperial No. 44	1.70	
Hard, well formed heads, does well in warm weather.		
Imperial No. 847	1.70	
Medium large, resists tip burn.		
Improved Hanson	1.15	1.00
Ready in about 80 days. Light green, flat heads.		
May King	1.35	
Ready in about 70 days, small, compact heading; light yellowish green tinged reddish brown.		
Mignonette	1.75	
Small headed, early, crisp, dark green with brownish tinge.		
New York No. 12	1.80	
Early, large leaves, stands heat well.		
New York No. 515	1.80	
Adapted to summer and fall production. Resistant to tip burn, medium large and compact.		
Wayahead	1.30	
Early, surebearing, light green.		
White Boston or Unrivalled	1.10	
Lighter green than Big Boston, stands hot weather.		

LETTUCE—Continued

Cos or Romaine

	1-4 lbs. Per lb.	In 25 lb. lots Per lb.
Dark Green	Short	Crop
Forms an upright solid head. Dark green.		
Trianon or Paris White	\$1.05	
Large white midrib, self-closing, medium green.		

MUSK MELON and CANTALOUPE

GREEN FLESHED VARIETIES

Early Hackensack	\$1.00	\$.90
For home garden, ribbed and netted, 88 days.		
Honey Dew (Winter)	1.00	
Good shipper, large, thick flesh, 112 days.		
Rocky Ford or Netted Gem	Short	Crop
Small, heavily netted, 92 days.		

SALMON FLESHED VARIETIES

Banana	1.00	
Long, lemon colored skin, hardy, 100 days.		
Bender's Surprise	1.30	1.20
Very hard rind, makes good shipper, 95 days.		
Delicious	1.20	
An early Bender, quite large, deep orange flesh, sweet.		
Emerald Gem	1.15	
Slightly netted, deeply ribbed, 85 days.		
Fordhook	1.05	
Medium size, ribbed and netted, 88 days.		
Hale's Best	1.00	
Early shipping sort, heavy netting, 85 days.		
Hearts of Gold (Hoodoo)	Short	Crop
Splendid for shipping, small seed cavity, 94 days.		
Honey Rock (Sugar Rock)	Short	Crop
Nearly round, grey green skin, 94 days.		
Lake Champlain (Golden Champlain)	Short	Crop
Medium size, early, ribbed, 87 days.		
Miller's Cream (Osage)	1.10	1.00
Late, large, small seed cavity, 95 days.		
Pride of Wisconsin	1.25	
Oval shape, pearly grey rind, orange flesh, small seed cavity.		
Schoon's Hard Shell	1.30	
Fine for marketing, red salmon flesh, 88 days.		
Tip Top	1.00	
Nearly round, large, very juicy, 90 days.		

WATER MELON

	1-4 lbs. Per lb.	In 25 lb. lots Per lb.
Cole's Early	\$.55	
Nearly round, deep pink flesh.		
Florida Favorite55	
Oblong, excellent quality, deep red flesh.		
Georgia Rattlesnake54	
Pink flesh, light green skin with dark stripes.		
Halbert Honey55	
Oblong, medium early, sweet, crimson flesh.		
Harris Earliest55	
Oval, very early, deep pink flesh.		
Hungarian Honey64	
Globe shape, early, brilliant red flesh.		
Irish Gray54	
Large and long, good shipper, bright red flesh.		
Kleckley's Sweet (Monte Cristo)58	.49
Delicious flavor, medium size, deep red flesh.		
Kolb's Gem54.	.45
A good shipper, nearly round, bright red flesh.		
Long Light Icing (Gray Monarch)54	
Very crisp and tender, deep red flesh.		
Peerless (Ice Cream)55	
Early, sweet, bright red flesh.		
Phinney's Early54	
Oblong, early, good quality.		
Round Light Icing54	
Medium early, light green skin, 90 days.		
Stone Mountain56	
Shipping sort, very large, rich scarlet flesh.		
Sweetheart		Short Crop
Crisp and solid, medium early, bright red flesh.		
Tom Watson55	
Large, fine for shipping, rich red flesh.		
Winter Queen60	.51
Early, prolific, remains edible for several months if properly stored.		
Wonder Melon58	
Improved Kleckley's Sweet. Tender rind, about 90 days.		
Citron (Red Seeded)55	.46
The old, well known, red seeded preserving melon.		

MUSTARD

	Per lb.
Southern Curled, Used for greens	\$.80
Spinach (Tendergreen) Quick growing75
White London, Used for ground Mustard70

OKRA

Perkins Mammoth	Per lb.	\$.29
White Velvet29

ONION SETS

Bottle	W	
Brown	R	P
Ebenezer	I	F R
Red	T	O I
White	E	R C
Yellow		E
Multiplier		S

NOTE—Unless directed otherwise, we ship sets by Express or Parcel Post when the danger of frost is past. As soon as the sets are received, they should be spread in a dry place. Onion Sets are NET CASH.

ONION

Ebenezer	Per lb.	\$4.25
Good keeper, mild, flattened, yellowish brown skin.		
Early Yellow Globe		4.25
Medium size, fairly good keeper.		
Golden Marvel or Bottle	Short Crop	
Oblong bulbs, excellent keeper, rich golden yellow.		
Large Red Wethersfield		4.25
Standard red sort, flat, purplish red skin.		
Ohio or Michigan Yellow Globe		4.25
Flattened globe, dark yellow skin.		
Prizetaker	Short Crop	
Globe shape, light straw colored skin, tinged with brown.		
Silverskin (White Portugal)		6.00
Crisp, mild, large, flat, white skin.		
Southport Red Globe	Short Crop	
Large, late, excellent keeper, deep red skin.		
Southport White Globe	Short Crop	
Early, mild, silvery white skin.		
Southport Yellow Globe (Standard Strain)		4.20
Standard winter sort, golden yellow skin.		
Southport Yellow Globe (Brigham Strain)		4.25
Excellent keeper, resistant to aphids.		
Sweet Spanish (Riverside)		7.00
Globular, golden yellow skin, mild.		
Yellow Globe Danver		4.50
One of the best for general use, coppery yellow skin.		
White Sweet Spanish		6.75
Pure white, firm, mild, large.		

PARSLEY

	1-4 lbs. Per lb.	In 25 lb. lots Per lb.
Champion Moss Curled	\$.65	\$.58
Popular and a great favorite.		
Double Curled65	
Dwarf, fine curled.		
Hamburg Rooted65	.58
Roots used like Parsnips.		
Plain65	.58
Flat leaves, deeply cut, but not curled.		

PARSNIP

Hollow Crown85	.77
Standard sort, long uniform roots, creamy white skin.		
Short Thick85	
Early, medium top, 6 to 8 inch root.		

PEPPER

	Per oz.	Per lb.
California Wonder	\$.28	\$2.80
Medium late, chunky, green changing to crimson, thick flesh, mild.		
Chinese Giant33	3.30
Very large, deep crimson, mild.		
Harris' Early Giant25	2.45
Large, mild, good quality.		
Hot Bell or Bull Nose		Sold Out
Large, thick flesh, used for stuffed peppers.		
Long Red Cayenne25	2.45
Medium early, slender, bright red, hot.		
Long Red Finger (Italian)27	2.70
Hot, rich red.		
Neapolitan26	2.60
Early, yellow green becoming bright red, mild.		
Oshkosh28	2.75
Medium early, glossy yellow turning to canary yellow.		
Pimento20	2.00
Mild, heart shaped, crimson.		
Red Cherry29	2.85
Second early, bears profusion of bright red fruit.		
Ruby King23	2.30
Sweet Bell or Bull Nose25	2.50
Large, mild, bright crimson.		
Sweet Mountain		Sold Out
Bright red, mild and sweet, large.		

PEPPER—Continued

	Per oz.	Per lb.
World Beater	\$.23	\$2.30
Large, thick flesh, mild, good shipper.		
Yellow Hungarian Wax (Banana)35	3.50
Early, waxy yellow turning to bright crimson, hot.		

PUMPKIN

	1-4 lbs. Per lb.	In 25 lb. lots Per lb.
Connecticut Field (Big Tom)	\$.54	\$.47
Deep rich yellow, fine grain, highly flavored.		
Golden Cushaw60	
Golden yellow, thick dry flesh, 112 days.		
Kentucky Field (Sweet Cheese)56	
Large, creamy buff skin, yellow flesh.		
King of the Mammoths80	
Grows very large, bright yellow.		
Long White Cushaw60	
Crooknecked like a Squash, hardy creamy white shell.		
Oriental Pie80	
Shaped like a Cushaw, skin deep green, flesh deep yellow.		
Striped Cushaw (Green)60	
Grown for stock feeding, thick yellow skin.		
Sweet or Sugar (New England Pie)57	.50
Small, round deep orange color skin, rich yellow flesh, fine grained and sweet. Very popular.		
Tennessee Sweet Potato80	
Early pear shaped, cream colored flesh.		
Winter Luxury or Queen65	
Medium early, little larger than Sweet or Sugar, flattened at ends, orange colored skin, covered with netting.		

RADISH

California Mammoth White64	
Good for fall or winter, 8 inches long, crisp.		
Chartier60	
7-8 inches long, rose color, 35 days.		
Cincinnati Market60	.51
Small top, 7 inches long, scarlet.		
Crimson Giant64	.55
Very large, used for forcing.		
Early Scarlet Globe60	.51
Olive shape, bright scarlet, white flesh, tender.		
Early Scarlet Turnip60	.51
Bright scarlet, crisp and tender.		
Early White Turnip62	
Small, quick growing, waxy white, small top.		

RADISH—Continued

	1-4 lbs. Per lb.	In 25 lb. lots Per lb.
French Breakfast	\$.60	\$.51
Olive shape, carmine with white root.		
Giant Stuttgart64	
Late summer and fall variety, white.		
Icicle (White)57	.48
Average 5 inches long, brittle, mild and crisp.		
Long Black Spanish80	.71
Late, very hardy, white flesh, black skin.		
Long Scarlet Short Top60	
Smooth, tender, 6 inches long, carmine red.		
Long Scarlet White Tip60	
About 4½ inches long, crisp, tender, 26 days to marketable roots.		
Non Plus Ultra (Scarlet Button)60	
Round, medium size, bright scarlet, early.		
Round Black Spanish65	
Globe shape, late, well flavored, keeps well.		
Saxa60	
Early, round, bright scarlet, one of the best for forcing.		
Scarlet China (China Rose)64	.55
A fall type, deep rose, blunt tip.		
Scarlet Turnip White Tip59	.50
Base and root are white, widely used.		
Sparkler59	.50
Fairly early, turnip shape, red with white base and root.		
White Chinese or Celestial64	
Large roots, 8 inches long, white, 60 days.		
White Strasburg		Short Crop
Large, white, late, summer or fall sort.		
White Vienna (Lady's Finger)60	
Slim, 6 inches long, good keeper.		

SALSIFY

Mammoth Sandwich Island (Vegetable Oyster).	1.60	1.45
Long roots, smooth, creamy white skin.		

SPINACH

	1-4 lbs. Per lb.	In 25 lb. lots Per lb.
Bloomsdale Savoy	\$.55	\$.50
Early, hardy, deep glossy green leaves.		
Bloomsdale Long Standing60	.55
Slow to bolt to seed, medium dark green leaves.		
Giant Nobel58	.53
Valuable for market gardens and canning.		
King of Denmark (Antvorskov)95	.90
Large, rounded, deep green leaves.		
New Zealand (Everlasting)	2.00	1.95
Spreading habit, thrives during hot weather.		
Princess Julianna75	
Thick crumpled leaves, keeps its crispness well.		
Victoria50	
Large thick leaves, dark green, slow to shoot to seed.		
Virginia Blight Resistant50	.45
Savoyed leaves, vigorous, used mainly for fall sowing.		
Viroflay50	
A fine selection, excellent for summer.		

SQUASH

SUMMER VARIETIES

Early Summer Crookneck70	.62
Very prolific, bears early, bright yellow.		
Early White Bush (Patty Pan or Scallop)65	.57
Round, 6 inches across, creamy white.		
Early Yellow Bush (Yellow Scallop)65	
Round, 5 to 6 inches across, deep yellow color.		
Giant Straightneck67	.59
Warty, dark yellow, neck nearly straight.		
Giant Summer Crookneck67	
Similar to, but larger than Early Summer Crookneck.		
Vegetable Marrow (Bush Cocozelle)75	.67
Cylindrical, dark green skin, bush type of vine.		
Vegetable Spaghetti70	
60 days, good keeper.		
Zucchini (Italian)70	.62
Cylindrical, dark green black.		

SQUASH—Continued

FALL AND WINTER SORTS

	1-4 lbs. Per lb.	In 25 lb. lots Per lb.
Acorn or Table Queen	\$.80	\$.72
Acorn shaped fruits, thin shell, dark green skin.		
Banana		Short Crop
Late, cylindrical, slate green skin, thick yellow flesh.		
Blue Hubbard		Short Crop
Large, blue gray skin, very hard shell, keeps long time.		
Boston Marrow60	.52
Of good size, bright orange yellow, used for canning.		
Buttercup		Short Crop
Dry, thick flesh, excellent keeper.		
Delicious		Short Crop
Medium size, dark green skin, top shape, good keeper.		
Golden Hubbard		Short Crop
Fair size, medium early, deep orange red, slightly warty.		
Golden Table Queen75	
Acorn shape, golden yellow skin, 60 days.		
Improved Hubbard		Short Crop
Dark green, very warty, a winter sort.		
Mammoth Chili		Short Crop
Grown for stock feeding and exhibition.		
Warted or Chicago Hubbard		Short Crop
Dark green, good size, keeps well, very warty.		

TOMATO

	Per lb.
Beauty	\$2.55
Smooth, pink, excellent quality, for main crop.	
Beefsteak	3.05
Bright red, high yielder.	
Bonny Best	2.25
Mid-season, solid, medium size, scarlet.	
Break o' Day	2.55
Resistant to wilt and rust, early, prolific, orange red.	
Chalk's Early Jewel	2.25
Heavy yielding, scarlet, a canning sort.	
Crimson Cushion	3.05
Large, mid-season, scarlet.	
Dwarf Champion	3.00
Early, flattened globe, solid, pink.	

TOMATO—Continued

	Per lb.
Dwarf Stone	\$3.00
Large, smooth, very solid, scarlet.	
Earliana	3.30
The market gardener's favorite, scarlet.	
Golden Dawn	3.00
80 days, golden yellow, medium large.	
Golden Queen	3.00
Very mild, sweet, yellow, of good size.	
Greater Baltimore	2.00
Main cropper, medium size, scarlet.	
John Baer	2.30
Medium size, nearly round, scarlet.	
J. T. D.	2.30
Second early, slightly flattened globe, produces heavy crop.	
June Pink	2.65
Extra early, purplish pink, good size.	
Marglobe	2.00
Second early, disease resistant, scarlet.	
Matchless	2.25
Dependable second early sort, scarlet.	
Oxheart	Short Crop
Purple scarlet, very solid.	
Ponderosa	3.50
Late, large, pink, very solid and meaty.	
Pritchard	2.10
Early, brilliant scarlet, disease resistant.	
Rutgers	2.15
Medium to large, second early, bright red.	
Scarlet Dawn	3.00
Thick walls, bright scarlet, 70 days.	
Stone	1.75
Old standby, scarlet, uniform shape.	
White Beauty	3.20
A novelty, nearly white skin.	
Yellow Ponderosa	3.15
Large, mild, deep yellow.	

TURNIP

	1-4 lbs. Per lb.	In 25 lb. lots Per lb.
Amber Globe or Stone	\$.37	\$.32
Large, globular, yellow flesh.		
Early Snowball40	
Small tops, medium roots, round and white.		

TURNIP—Continued

	1-4 lbs. Per lb.	In 25 lb. lots Per lb.
Golden Ball	\$.40	.35
Medium size, round, smooth, quick-growing, yellow.		
Long White Cow Horn35	
Roots about 12 inches long, nearly clear white.		
Pomeranian White Globe34	
Large tops, globe shape root, heavy cropper.		
Purple Top Milan	Sold Out	
Early, fine sweet grain, white.		
Purple Top Strap Leaf30.	.25
Flattened, medium size, tender, white.		
Purple Top White Globe35	.30
Large, globular, fine grain, white.		
Seven Top31	
Hardy, used for greens, also as a green fodder.		
Shogoin95	
Fast growing, makes excellent greens.		
Southern Prize35	
Roots for stock feed, tops for greens.		
White Egg35	.30
Medium size, oval shape, sweet, white.		
White Flat Dutch40	
Early, medium size, fine quality, white.		
Yellow Stone or Globe37	.32
Medium size, round, good keeper, yellow.		

RUTABAGA

American Purple Top	1.25	1.20
Hardy, large, globular, bright yellow, sweet.		
Macomber	1.00	.95
White, green crown, large globe.		
White Rutabaga or German	Sold Out	
Good size, white with green top.		
White Swede	1.00	
Firm white flesh, large globe shape.		
Yellow Rutabaga	1.25	
Large, hardy, sweet, yellow flesh.		

Page's Standard Quality Flower Seeds

NASTURTIUM

	Per lb.
Dwarf Choice Mixed —Fine for Bedding purposes	\$.75
Tall Choice Mixed —For trellis, or banks	Short Crop
Golden Gleam Hybrid —Double, sweet scented	Short Crop
Scarlet Gleam Hybrid —Semi-double, scarlet	Short Crop
Gleam Hybrid Mixed —Semi-double, free blooming	Short Crop

SWEET PEAS

Ambition —Deep Lavender90
Constance Hinton —White90
Master Cream —Cream or light yellow90
Pinkie —Rich rose pink90
Welcome —Scarlet90
Spencer Supreme Mixed —The finest of all mixtures70
Spencer Choice Mixed —A standard mixture60
Eckford Choice Mixed —Grandiflora types mixed55
Perennial (Lathyrus Latifolius) Mixed	4.00

OTHER ANNUALS and PERENNIALS

	Per oz.	Per lb.
Ageratum —Swanley blue	Sold Out	
Alyssum —White sweet	Sold Out	
Yellow (Saxatile)	Sold Out	
Aster —Crimson Comet	Sold Out	
Rose Comet	\$.60	\$6.00
White Comet	Sold Out	
Mixed Comet50	5.50
All Sorts Mixed	Sold Out	
Bachelor Button —Double Mixed	Sold Out	
Balsam —Single Mixed30	3.00
Blue Lace Flower (Didiscus)	Sold Out	
Calendula —Orange King13	1.30
Double Mixed11	1.10
Calliopsis —Tall single mixed15	1.40
Candytuft Umbellata —Mixed15	1.50
Canterbury Bell —Cup and Saucer Mixed80	8.00

ANNUALS and PERENNIALS—Continued

	Per oz.	Per lb.
Carnation—Chabaud Mixed	\$1.20	
Chrysanthemum—Double Annual Mixed		Sold Out
Clarkia—Elegans Mixed		Sold Out
Cockscomb—Plumed Mixed32	3.20
Crested Mixed	1.20	
Coreopsis Lanceolata		Sold Out
Cosmos—Double Crested Mixed95	9.50
Mammoth Single Mixed15	1.50
Orange Flare		Sold Out
Delphinium Hybrids—Mixed		Sold Out
English Daisy—Double Mixed	3.20	
For-get-me-not (Myosotis) blue	2.00	
Four o' Clock (Marvel or Peru) Mixed		Sold Out
Foxglove (Digitalis) Mixed		Sold Out
Gaillardia—Single Mixed34	3.40
Godetia—Tall double mixed34	3.40
Gourds—All sorts mixed15	1.20
Gypsophila (Baby's Breath)		Sold Out
Hollyhock—Double Mixed		Sold Out
Kochia—Childsii10	.60
Larkspur—Annual Mixed30	3.00
Lobelia—Crystal Palace	1.30	
Love-in-a-Mist (Nigella) Mixed56	5.60
Lupine—Perennial Mixed20	2.00
Marigold—African tall mixed25	2.50
French Dwarf mixed23	2.30
Guinea Gold30	3.00
Harmony double mixed25	2.50
Sunset Giants50	5.00
Mignonette		Sold Out
Moonflower24	2.40
Morning Glory—Tall Mixed15	.80
Heavenly Blue		Sold Out
Scarlet O'Hara		Sold Out
Nicotiana—Mixed		Sold Out
Pansy—Trimardeau Mixed	4.00	

ANNUALS and PERENNIALS—Continued

	Per oz.	Per lb.
Petunia—Balcony Blue	\$2.00	
Rosy Morn	1.00	
Blue Bee90	
Choice Mixed	1.00	
Phlox—Annual Mixed	Sold Out	
Pinks (Dianthus) Double Mixed50	5.00
Single Mixed40	4.00
Poppy—California (Eschscholtzia) Mixed15	1.50
Iceland (Nudicaule) Mixed80	
Shirley—Single Mixed	Sold Out	
Portulaca—Single Mixed	Sold Out	
Double Mixed	3.00	
Pyrethrum—Single Mixed	Sold Out	
Ricinus (Castor Oil Bean) Mixed12	.80
Salpiglossis—Mixed	Sold Out	
Salvia Splendens	Sold Out	
Scabiosa—Tall double mixed15	1.80
Shasta Daisy50	5.00
Snapdragon (Antirrhium) Mixed	1.00	
Snow-on-the-Mountain (Euphorbia)20	2.00
Stock—Dwarf 10 Weeks Mixed50	5.00
Evening Scented12	1.20
Strawflower (Helichrysum) Mixed	Sold Out	
Sunflower (Helianthus) Dwarf Double15	1.50
Sweet Sultan—Mixed35	3.50
Sweet William—Mixed	Sold Out	
Verbena—Mixed55	5.50
Wallflower—Perennial Mixed	1.60	
Zinnia—California Giant Brightness (Pink)35	3.50
Daffodil (Yellow)35	3.50
Orange King (Orange)35	3.50
Scarlet Queen (Red)35	3.50
Mixed30	3.00
Fantasy Mixed35	3.50
Lilliput Mixed25	2.50
Mexican Mixed60	6.00

LAWN GRASS MIXTURES

When planting a lawn, we believe that the best is none too good, for there is no sense in planting weeds or inert matter. Weeds will appear even under the best conditions and in spite of all care taken. Inert matter may provide some plant food, but the commercial fertilizers are much better. Every house-owner wants seed that will produce fine lawns. We aim to put out mixtures as pure from weed seed and inert matter as we possibly can. Buy for quality, not for price, and the results will be all that anyone can desire.

Prices in quantities less than 25 lbs. slightly higher.

TERMS—Net Cash.

	25-99 lbs. Per lb.	100 lbs.
Greene Park Mixture	\$.28	\$26.00
A permanent, thick and velvety turf is produced. Contains the best grasses for the best results.		
Page's Marvelawn26	24.00
A mixture that is in great demand wherever Page's Seeds are sold. A blended combination of fine bladed, compact growing grasses.		
Page's Fine Mixed22	20.00
For ordinary use, and quick results. Does not produce permanent lawns.		
Page's Shady Park Mixture32	30.00
The sort used in shady places and where other grasses do not do well. Will produce a fine sward.		
Page's Emerald Green21	19.00
A good quality mixture for places that do not require permanency, and where price is an object.		
Chenango Mixture31	29.00
A special blending of certain grasses that has a big demand with certain of our customers.		
Page's Marvelawn Packed in 16 oz. cartons per doz.		\$3.80
Packed in 8 oz. cartons		per doz. 2.00
Packed in 2 or 5 lb. bags in 50 lb. lots .		per lb. .29
Packed in 2 or 5 lb. bags in 100 lb. lots per lb.		.26½

GRASSES

	Per lb.	Per 100 lbs.
Creeping Bent		
Cornell Hay Mixture		
Cornell Pasture Mixture		
Common Ryegrass		
Kentucky Bluegrass		
Meadow Fescue		
New Zealand Chewing Fescue		
Perennial Ryegrass		
Redtop		
Orchard Grass		
Timothy		
Timothy and Alsike Mixed		

**WRITE
FOR
PRICES**

CLOVER

	Per lb.	Per 100 lbs.
Alsike		
Ladino		
Mammoth Red		WRITE
Medium Red (Domestic)		FOR
Sweet Clover White Blossom		PRICES
Yellow Blossom		
White Dutch Clover		
Yellow Trefoil		

FORAGE and FIELD SEEDS

	Per lb.	Per bu.	Per 100 lbs.
Alfalfa—Grimm		\$29.00	
Common		28.00	
Barley—Two Row Alpha		1.70	
Six Row (Wisconsin No. 38)		1.75	
Buckwheat—Silverhull		2.00	
Millet—Golden			4.50
Hungarian			5.00
Japanese			3.75
Oats—Page's Marvel Brand		1.10	
Peas—Canada Field			7.00
Rape—Dwarf Essex15		
Rye—Spring		2.10	
Winter		1.50	
Soy Beans—Black Wilson		2.50	
Cayuga		2.75	
Manchu		2.60	
Seneca		3.00	
Speltz		1.60	
Sudan Grass			5.50
Sunflower—Mammoth Russian			10.00
Vetch—Spring			8.50
Winter			14.00
Wheat—Spring		2.55	

All Subject to Market Changes.

TERMS: Net Cash.

PAGE'S HIGH-BRED SEED CORN

(PA-SE-CO BRAND)

Most seed dealers in the East know that any variety of Seed Corn possessing merit can be best obtained from The Page Seed Company at Greene, New York. We have every reason to believe all Paseco Brand of varieties will stand up to the Page High Standard and our experience of over thirty years has given us a knowledge of the varieties best adapted to our Northern climate and soils.

Our Seed Corn is put up mainly in bags containing 2 bushels or 112 pounds net, 56 pounds to the bushel. Bags are free. All shipments of two bags and over are Freight Paid to your station. Sight Draft with Bill of Lading, payable upon arrival of shipment.

For description of varieties, write for our Corn Manual.

PAGE'S DENT VARIETIES

Bloody Butcher	Golden Marvel
Blue Mountain	Golden Sweepstakes
Blue Ridge Ensilage	Lancaster Sure Crop
Cornell No. 11	Leaming Improved
Early August	Leaming Ensilage
Early Bristol	Luce's Favorite
Early Eureka	Minnesota No. 13
Early Marvel	Old Virginia
Early Mastodon	PaSeCo Ensilage
Early Triumph	Pride of North
Early Leaming	Pride of York
Full Silo	Red Cob Ensilage
Gold Dollar	Smoky Dent
Gold Mine	Thepage Early Dent
Golden Beauty	True Eureka
Golden Marvel	West Branch
Golden Glow	West Branch Sweepstakes
	White Cap Yellow Dent

Write for Quotations

SEED CORN—Continued

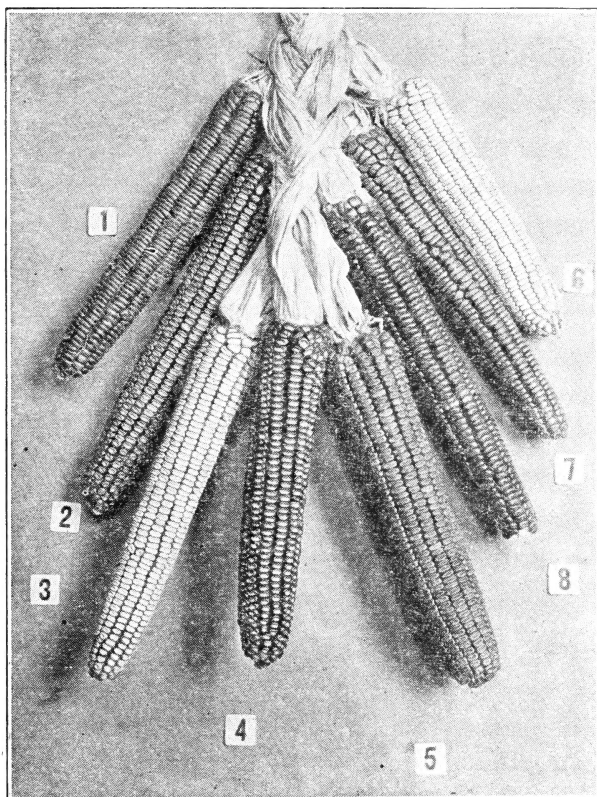
PAGE'S FLINT VARIETIES

Early Canada
 Golden Nugget
 King Philip
 Longfellow

Mammoth Yellow
 N. Y. State 8 Row Yellow
 Sanford White
 Smut Nose

HYBRIDS

Cornell 29-3
 Cornell 34-53



- | | |
|--------------------------------|---------------------------|
| 1. Page's Mammoth Yellow Flint | 5. Page's West Branch |
| 2. Page's Lancaster Sure Crop | 6. Thepage Early Dent |
| 3. Page's Pride of York | 7. Page's Golden Nugget |
| 4. Page's Early Bristol | 8. Page's Luce's Favorite |

SUPPLIES

STIM U PLANT
ORIGINAL PLANT FOOD TABLET

NOW CONTAINS VITAMIN B-1

Fast-Seller	Size	Dealer	Retail
Clean	● 10 tabs.	\$.06	\$.10
Odorless	● 30 tabs.	.15	.25
Reliable	100 tabs.	.45	.75
	1000 tabs.	2.10	3.50

● Packed 10 Units to Display Carton

STIM U PLANT

STIMUPLANT

10 tablet packets, per carton of 10 \$.50
30 tablet cartons, per carton of 10 1.35

INOCULATE ALL LEGUME SEEDS WITH

NITRAGIN

1898—FORTY-FIVE YEARS OF SERVICE—1943

When ordering, Always state name of seed.

ALFALFA Swt., Bur, Hubam Clovers	BEANS String, Wax, Kidney
Size Dealer Retail	Size Dealer Retail
½ bu. ea. \$.19 \$.30	½ bu. ea. \$.16 \$.25
1 bu. ea. .32 .50	1 bu. ea. .23 .35
2½ bu. ea. .65 1.00	1½ bu. ea. .32 .50
CLOVERS Medium and Mammoth Red, Alsike, Crimson and White Clovers	LESPEDEZA Small (Inoculates up to 50 lbs. seed) \$.23 \$.35 Large (Inoculates up to 100 lbs. seed) .32 .50
½ bu. ea. \$.19 \$.30	SOYBEANS, LIMA BEANS, COW PEAS, PEANUTS
1 bu. ea. .32 .50	Small (Inoculates up to 120 lbs. seed) \$.20 \$.30
2½ bu. ea. .65 1.00	5 bu. ea. .37 .55
PEAS (All Varieties)	25 bu. ea. 1.67 2.50 (One can)
VETCHES (All Varieties)	30 bu. 2.17 3.25 (6-5 bu. cans)
½ bu. ea. \$.16 \$.25	
1 bu. ea. .23 .35	
1½ bu. ea. .32 .50	
12½ bu. ea. 2.35 3.50	
GARDEN SIZE — Garden Peas and Beans Sweet Peas and Lupines	
Dir 80c ctn—Rtl 10c ea.—Packed 12 to Disp. Ctn.	
½, 1, 1½ bu. and small sizes packed 12 to carton	
2½ bu. to 25 bu. sizes packed 6 to carton	

Manila Envelopes

1 oz. size (not printed)
per 1000 \$2.00
2 oz. size (not printed)
per 1000 \$2.20

Manila Bags

Half pint (not printed)
per 1000 \$4.50
Pint (not printed)
per 1000 \$5.00
Quart (not printed)
per 1000 \$5.75
3 Pint (not printed)
per 1000 \$6.25
Printing will be done
at cost, if copy
is submitted

Glass Display Jars

With plain screw tops
per doz. \$1.80
With pouring spout
tops, per doz. \$2.00
Screw Tops
With pouring spouts
per doz. 60c

Beta Scale and Chart
each 60c

Stanley Crow Repellent

Quart Cans
per doz. \$13.65
Pint Cans
per doz. \$7.80
Half Pint Cans
per doz. \$4.68

**Pulverized Sheep
Manure**
per 100 lbs. \$2.25

Vita Flor
(Vitamin B1)
per carton of
12 bottles \$4.00

SEEDS IN PACKETS

●

Many dealers prefer to sell seed in packets and cartons rather than having seed in bulk. This is a saving in time as customers can make their own selection and you do not have to stop to weigh out the seed.

We have Vegetable Seeds in 5 and 10 cent size packets, also Beans, Peas, Corn, Turnip and Rutabaga in 20 cent cartons and Flowers in 10 cent packets. These packets and cartons are supplied to Dealers on a Contract of Sale and Return. A discount is allowed when the unsold packets are returned, based upon the gross sale. The unsold packets are returnable for credit.

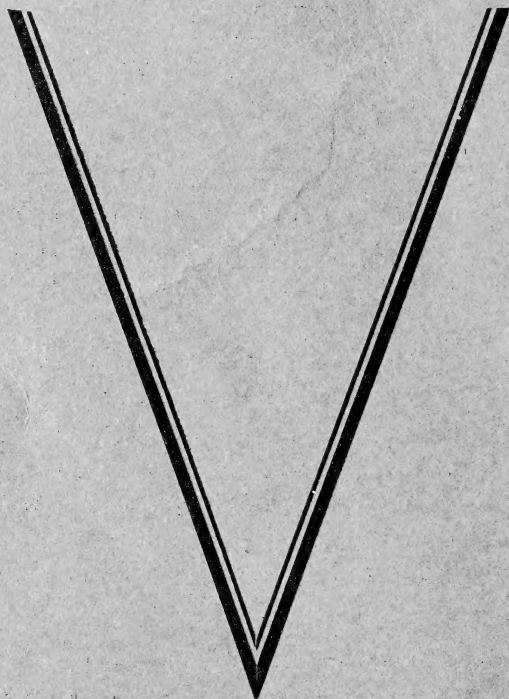
Page's Seeds are sold only by Dealers. They are not sold by school children.

There is sure to be a good demand for seeds in packets in 1943. Thus, if you do not have a case and have room to display one, write promptly stating the combination you can use.

PLANT A GARDEN

FOOD

FOR



VICTORY

BUY WAR BONDS