

Historic, Archive Document

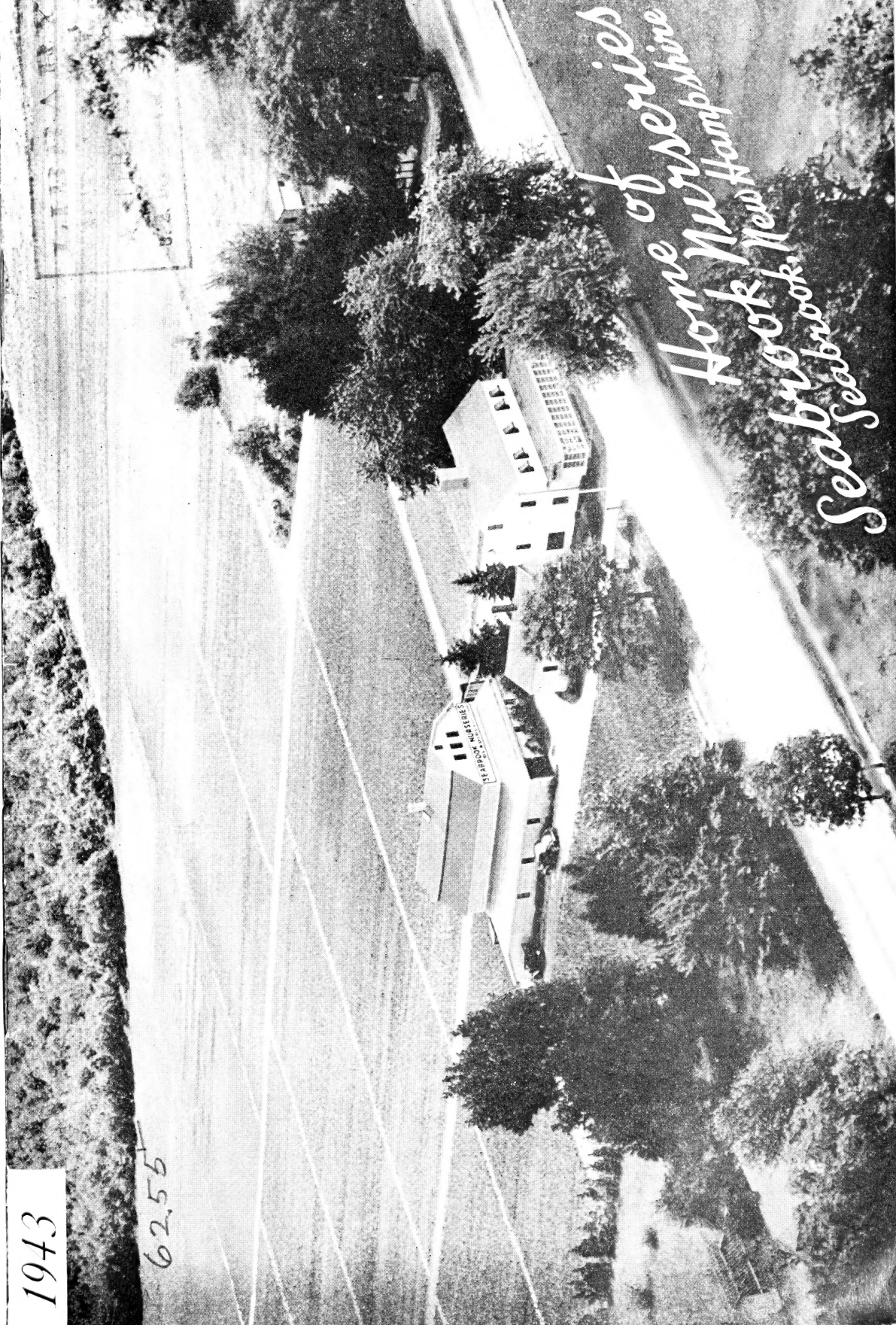
Do not assume content reflects current scientific knowledge, policies, or practices.

1943

62,55

SEABROOK CLASSICS
SEABROOK, N.H.

Home of series
Home New Hampshire
Seabrook, New Hampshire
Seabrook, New Hampshire



PLEASE READ CAREFULLY BEFORE ORDERING

GUARANTEE

We exercise the greatest care to have first-class bulbs true to name and will replace free any stock proving otherwise. Please notify us at once if shipment should not arrive in a satisfactory condition.

ORDER EARLY

Many varieties are sold out early. Order promptly to avoid disappointments. But late orders will receive careful attention. Open all packages upon arrival. Keep in a cool, dry place.

TERMS

Our terms are Net Cash before shipment unless arranged otherwise. 25% will hold winter orders until March first. Orders not fully paid for will be sent C. O. D. for the balance at time of shipment to you.

GRATIS

All orders are filled with a liberal overcount. Gratis of varieties other than ordered are included in each customer's package. We strive to keep our prices as low as other reliable growers, and will gladly include overcount to cover any reasonable reduction after list is issued.

POSTAGE

All orders amounting to \$1.00 or over will be sent prepaid to any point in United States, if taken from our **Prepaid List**. On orders of less than \$1 add 15 cents postage.

PRICES

Prices listed herein cancel all previous quotations. All stock offered and orders accepted subject to prior sale. We will gladly meet any other grower's prices where possible.

WHOLESALE PER THOUSAND

If you will send us your list of wanted varieties, stating quantity and size of each, we will be very glad to quote you **SPECIAL REDUCED PRICES** on gladiolus bulbs **PER THOUSAND**, either Prepaid or f. o. b. Seabrook, N. H., as you prefer.

PLEASE MAKE MONEY ORDERS PAYABLE AT THE EXETER,
NEW HAMPSHIRE, POST OFFICE

Please Select Second Choice, if Possible

SEABROOK NURSERIES

MABEL M. ROWE, Prop.

New England's Popular Gladiolus Farm

SEABROOK

NEW HAMPSHIRE

A Message of Thanks

WE'RE NEVER TOO BUSY TO SAY "THANK YOU" to our patrons nor are we ever too busy to give complete and careful attention to everyone who comes to our gardens or orders by mail. But at the year-end the members of SEABROOK NURSERIES feel urged to express a very special "THANK YOU" to cover the whole year and to go to all the friends whose patronage and good will have meant so much to our success.

The picture on this catalogue cover will give all our many friends and patrons both far and near a glimpse of our large gladiolus field, and store house. It is the best advertisement we know of.

There probably won't be much pleasure driving or vacations this year, but please do call and see the field in bloom when this way.

Remember a VICTORY garden will help out a lot this year, so plan to have a good one. A border of "GLADS" around it will give you a great deal of pleasure.

So we are sending you this sincere message of appreciation to let you know what is in our hearts. We invite you to visit our 20 acres of gladiolus, in bloom from July 15th until frost, located on U. S. Route 1, main highway to Portsmouth, N. H., six miles from Newburyport, Mass.

Yours for Victory,

SEABROOK NURSERIES,

Seabrook, N. H.

Mabel M. Rowe, Prop.

GLAD-I-O'-LUS:-

Please pronounce this wonderful flower right. The accent on the O'.

GLAD-I-O'-LUS and use the same form for both singular and plural. It hurts to hear one say GLADIOLA or GLADIOLIS!

DO GLADS CHANGE COLOR?

GLADIOLUS do NOT Change Color.

We have been asked this question hundreds of times. So many varieties divide or split. Suppose you plant twelve mixed bulbs, when you dig them you find you have about thirty bulbs. That is the reason you have more of one color than others. Many varieties do not divide, so you dig only one new bulb on the one you planted. And some not quite so strong just die out in the ground.

Of course glads grow older each year, you dig a new bulb but not a young one. So it is best to keep adding more bulbs to your collection each year.

PLANTING TIME

Our planting time here is around APRIL to JUNE, so when ordering your bulbs to be sent to you at planting time, please state when planting time is in your locality. It will help us a lot.

WHEN YOU CHANGE YOUR ADDRESS

Please notify us so we can change our files. Also please give your old address at the same time. This will save us many catalogues and you will receive yours. THANK YOU.

CARE AND CULTURE OF GLADIOLUS

Select a sunny location away from the roots of trees and shrubs. Plant about six inches deep, having bulbs five inches apart.

Place bulbs in a well worked trench in staggered or zigzag row— and cover at first with about two inches of loam; when shoots begin to appear, work balance of loam into the trench. At all times keep the soil loose. As an aid to producing larger blooms work in fertilizer around the plants when about a foot or more in height. At the time flower spikes appear, abundant watering is very beneficial.

Bulbs should be dug before leaves turn brown. Cut stock close to the bulb, spread them out to dry for two or three days in a sunny location and then place in an open shed or room for two weeks or more before storing them away in a cool dry place. Keep them spread out and not over three inches deep, give bulbs an occasional airing during the winter.

When cutting flowers, leave at least four leaves remaining on the plant. Positive injury to the blooming qualities of the bulbs for the following year will occur if this precaution is not heeded.

For cut flowers, cut the spike when first bud fully opens. The remaining buds will open nicely and give a longer period of bloom and greater enjoyment.

Remove wilted blossoms, change water and cut off small portion of the stems each day.

CONTROL OF THRIP

This insect can be carried on clothing, from one field to another by birds, high winds or in bouquets. Many bulbs are perfectly clean when planted, yet contract Thrip before season is over.

Thrip are black and cream, 1-16 inch long and live in the folding gladiolus leaves. Sometimes they can be detected by the silvery sheen on leaves although many times discovery is too late and the buds do not open as the insect has extracted all juice from them previously.

When plants are about three inches tall and thrip is found, it is best to use a solution of the following as a **weekly spray**.

Use 1 pound Tartar Emetic, 4 pounds brown sugar to 25 gallons water for weekly spray. Tartar Emetic is a deadly poison to human beings. Tartar Emetic spray will not burn the foliage. Or use 3 gallons water, tbsp. of Tartar Emetic and 1-3 cup sugar for smaller amounts.

If discovery is made too late, it is best to cut tops off, about six inches from ground and burn them, allow bulbs to stay in ground until digging time. The above spray can be used on remaining stalk to kill anything which might be left.

Dig, clean and dry bulbs in usual manner. Place thoroughly dry bulbs in boxes. Sprinkle Napthalene Flakes over bulbs at the rate of 1 pound to 2000 bulbs or 1 ounce to 100 corms. Immediately cover receptacles with paper to confine fumes. Keep bulbs at temperature of about 60 degrees for three weeks. Store in dry place, uncovered, at 40-50 degrees for winter.

Warning—Treat stock in Fall, before roots swell or form at base. Napthalene adhering to bulbs may burn rootlets where they appear. Bulbs must be thoroughly dry before treating with Napthalene.

Bichloride of Mercury can be used to disinfect in proportion of 1 ounce to 8 gallons of water, or 10-15 grain tablets to gallon water, or if only a small amount of bulbs use 1-5 grain tablet to 1 pint water, soaking bulbs in solution for 3 hours. If many varieties to soak at the same time, place them in sugar, salt or net bags, labelling each variety, using little wood labels. A waterproof pencil can be used on the labels for marking. Do not use metal containers.

NAPHTHALENE FLAKES, 2 POUND PACKAGE, 50c WITH BULB ORDERS

LYSOL DISINFECTANT.—As a dip for gladiolus bulbs, it has proven very satisfactory, 4 teaspoonfuls of Lysol mixed in 1 gallon of water, soaking the bulbs for 6 hours eliminates thrip and stimulates root growth.

Although this method has not been tried by us, we have known of others who have had success with Lysol. It may prove more satisfactory than the Mercury method.

SEABROOK NURSERIES GLADIOLUS

GIFT COLLECTIONS

Plan on presenting Gladiolus bulbs on Special Occasions, Birthday, Valentine, Easter, Mother's Day, Father's Day, or just any day before planting time so your relatives or friends may enjoy these lovely blooms this Summer, in their gardens.

These Selections are made up of large sized bulbs correctly labeled. Total value of any single collection is over \$2.00.

ANY ONE COLLECTION FOR \$2.00—ANY THREE FOR \$5.75

A—7 Each	B—7 Each	C—7 Each	D—7 Each
Alayne	Albatros	Bob White	Bella Donna
Beacon	Flaming Meteor	Com. Koehl	E. I. Farrington
Golden Cup	Blue Admiral	Duna	Lotus
Maid of Orleans	Gold Dust	Golden Chimes	Mrs. Ray Chase
Miss New Zealand	Halloween	J. S. Bach	Picardy
Rose M. Pfitzer	Paradise	King Arthur	Sonatine
Symphony	Miss New Zealand	Peggy Lou	Token
Marocco	Reverie	Pelegrina	Vagabond Prince

E—6 Each	F—6 Each	G—6 Each
Black Opal	Cadillac	Bit O'Heaven
Blue Beauty	Leona	Blue Danube
Early Rose	Mr. L. G. Rowe	Dr. Dentz
Golden Cup	Shirley Temple	Mr. L. G. Rowe
Heritage	Vagabond Prince	King Arthur
Kassel	Wurtembergia	Polar Ice
Amrita	Camellia	Wasaga

If you do not wish to send Collections, order bulbs of your own choice from the Prepaid Listings, and Page 9.

Open all Packages upon arrival and keep in a cool dry place, about 40 degrees is best.

ROCKWELL'S BOOK ON GLADIOLUS

Gladiolus, by F. F. Rockwell. Recommended as "the best brief guide on gladiolus growing." It tells how to plant, fertilize, and cultivate; how to grow from seed or bulblets; how to harvest and cure; how to handle for cut flowers and every other detail needed for success with this popular flower, 45 illustrations, 78 pages. Prepaid \$1.35.

SIZE IN BULBS

In Retail list, the large bulbs that we offer are 1¼ inches and over in diameter; medium size are ¾ inch up, and small bulbs ¾ inch up. For Wholesale sizes see list.

Beside the originator's name we have listed the approximate flowering season of each variety as follows:

E—Early, under 70 days from planting.
 EM—Early Midseason, 70-80 days from planting.
 M—Midseason, from 80-90 days from planting.
 LM—Late Midseason, over 90 days from planting.
 L—Large M—Medium S—Small Blts. Bulblets.

For large quantities see Wholesale List.

3-4 or 6 may be purchased at the 12 rate.
 No single item accepted for less than 10 cents.

TRY OUR VICTORY SPECIAL. See Page 21

SEABROOK NURSERIES GLADIOLUS

AFLAME (EM) Hornberger

Outstanding red Prim Grand. Per dz. L 50c M 30c S 20c 100 Blts. 15c.

AIDA (EM) Pfitzer

Dark blue, small reddish throat blotches. Very early. 6 open. Per dz. L 50c M 30c S 20c 100 Blts. 15c.

ALADDIN (M) Palmer

Huge, ruffled, bright salmon, cream blotch. L 8c ea. 75c dz. M 5c ea. 50c dz. S 35c dz. 100 Blts 20c.

ALAYNE (M) Kinyon

Clear light rose. Ruffled. Per doz. L 50c M 30c S 20c 100 Blts. 15c.

ALBATROS (M) Pfitzer

Tall, large, pure white. Per dz. L 50c M 30c S 20c 100 Blts. 15c.

ALGONQUIN (E) Palmer

Brilliant red, large wide open blooms. Tall. L 10c ea. \$1.00 dz. M 8c ea. 75c dz. S 35c dz. 100 Blts 35c.

ALLEGRO (E) Pfitzer

Light blue, two dark blue blotches. L 8c ea. 75c dz. M 50c dz. S 35c dz.

ALSACE (M) Benedict

Beautiful buff apricot. Heavy textured petals, fluted. Large decorative. Per ea. L 35c M 25c S 15c Blts. 12 for 35c.

AMERICAN COMMANDER (M)

New

Tall, clear red. Vigorous grower. L 30c ea. M 15c ea. S 10c ea.

AMRITA (M) Palmer

Ruffled, light buff, rich yellow throat. Large blooms well placed. L 8c ea. 75c dz. M 50c dz. S 35c dz. 100 Blts. 25c.

AVE MARIA (EM) Pfitzer

Light blue, small purple blotches. 7-8 florets open. Per dz. L 50c M 30c S 20c 100 Blts. 15c.

BABY BETTY (EM) Kinyon

Small decorative, cream blending to light pink at petal tips. Graceful. Per dz. L 60c M 30c S 20c 100 Blts. 10c.

BAGDAD (LM) Palmer

Large, smoky old rose, 5-6 open. Tall. Per dz. L 50c M 30c S 20c 100 Blts. 10c.

BANCROFT WINSOR (M) Winsor-Moseley

Lovely, large, slightly ruffled, light orange florets, perfectly placed. Spectrum red throat. Per ea. L \$1.00 M 60c Blts. 5-25c.

BARCAROLE (M) Palmer

Deep ruffled orange. Heavy substance. L 10c ea. \$1.00 dz. M 5c ea. 50c dz. 100 Blts. 25c.

BEACON (LM) Palmer

Clear red salmon, cream blotch. Tall. L 8c ea. 75c dz. M 40c dz. S 20c dz. 100 Blts. 20c.

BEAUTIFUL OHIO (M) Hull

Tall lavender rose. 5-6 large florets open. L 8c ea. 75c dz. M 5c ea. 50c dz. S 40c dz. 100 Blts. 25c.

BELLA DONNA (E) Pfitzer

Early large light blue, darker blotch. Per dz. L 60c M 30c S 20c 100 Blts. 10c.

BERTY SNOW (EM) Mair

Large, lavender florets. Per dz. L 50c M 30c S 20c 100 Blts. 10c.

BETTY BROWN EYES (M) Briggs

Orange prim, maroon blotches on two lower petals. Per dz. L 60c M 35c S 20c 100 Blts. 20c.

BETTY CO-ED (M) Briggs

Soft, creamy pink, prim. Very pretty. Per dz. L 50c M 30c S 20c 100 Blts. 10c.

SEND A VALENTINE GIFT OF GLADIOLUS BULBS.

SEABROOK NURSERIES GLADIOLUS

BETTY NUTHALL (M) Salbach

Salmon-pink, yellow throat markings. Per dz. L 50c M 30c S 20c 100 Blts. 10c.

BILL SOWDEN (M) Fallu

Deep scarlet with immense florets. Many open. Per dz. L 60c M 30c S 20c 100 Blts. 25c.

BIT OF HEAVEN (M) Crow

A tall, medium decorative of rich orange. Per dz. L 50c M 30c S 20c 100 Blts. 20c.

BLACK OPAL (M) Errey

Rich, very dark red. Outstanding exhibition. L 10c ea. \$1.00 dz. M 8c ea. 75c dz. S 50c dz. 100 Blts. 75c.

BLEEDING HEART (M) Brown

Light pink, red blotch. Per dz. L 50c M 30c S 20c 100 Blts. 10c.

BLUE ADMIRAL (M) Christ

Tall, deep clear violet-blue. Large florets. Per dz. L 60c M 40c S 20c 100 Blts. 15c.

BLUE BEAUTY (EM) Pfitzer

Light blue, petals edged violet-blue. Wide open florets. L 8c ea. 75c dz. M 50c dz. S 30c dz. 100 Blts. 50c.

BLUE DANUBE (M) Pfitzer

Amethyst blue, darker blotch. Tall spike, well placed florets. Per dz. L 60c M 30c S 20c 100 Blts. 20c.

BOB WHITE (E) Zimmer

Large white with rose penciling. Per dz. L 50c M 30c S 20c 100 Blts. 10c.

BOLERO (M) Lef

Smoky orange with velvety red blotch. 7-8 large blooms open. L 75c ea. M 50c ea.

BRIGHTSIDE (E) Prestgard

Canary yellow, flushed apricot in throat, orange tipped. Small, decorative. Tall, straight spike. Per dz. L 50c M 30c S 20c 100 Blts. 10c.

BUFFETTE (M) Winsor

Large, strong growing buff. Florets slightly ruffled of needle point type. Good commercial. L 8c ea. 85c dz. M 5c ea. 50c dz. 30 Blts. 15c.

CADILLAC (M) Vaughan

Tall, golden apricot, shading to apricot rose toward edge of petals. Per dz. L 50c M 30c S 20c 100 Blts. 15c.

CALIFORNIA (Sal.)

Hugh geranium pink. 6 to 8 large blooms open. A patented Glad so no increase can be sold. L 25c ea. M 20c ea.

CAMELLIA (M) Palmer

Large blush white with light orange blotch. L 8c ea. 75c dz. M 40c dz. S 25c dz. 100 Blts. 20c.

CAPEHEART (EM) Winsor

Light salmon rose, edges of petals deeper, with a slight rose feather in throat. Large florets on tall spike. Per ea. L 10c M 8c S 15c 12 Blts. 15c.

CHAS. DICKENS (EM) Pfitzer

Strong growing bright, radiant purple. Many open. Per dz. L 50c M 30c S 20c 100 Blts. 10c.

CHRISTABEL (M) Mitsch

Shrimp pink with cream throat. Tall. L 8c ea. 75c dz. M 40c dz. S 20c dz. 100 Blts. 20c.

CLINGENDAAL (E) Holland

Early, large orange red. L 15c ea. \$1.50 dz. M 10c ea. \$1.00 dz. S 8c ea. 75c dz.

COLONIAL MAID (M) Y

Tall light lavender, good propagator. L 8c ea. 80c dz. M 50c dz.

COLOSSUS (M) Mitsch

A large rich pink of good size and quality. L 8c ea. 75c dz. M 40c dz. S 30c dz. 100 Blts. 30c.

MOTHER'S DAY—REMEMBER MOTHER WITH GLADIOLUS BULBS.

SEABROOK NURSERIES GLADIOLUS

COMMANDER KOEHL (LM) Pfitzer

Large, clear dark scarlet. L 6c ea. 60c dz. M 30c dz. S 20c dz. 100 Blts. 15c.

CORONATION (M) Palmer

Light salmon, shading to cream. Exhibition type. Per dz. L 50c M 30c S 20c 100 Blts. 10c.

CORYPHEE (LM) Pfitzer

Pink florets, creamy white blotch. Many open. Sometimes crooked. Per dz. L 60c M 30c S 20c 100 Blts. 15c.

DAINTY QUEEN (EM) McKibbin

Shell pink prim, lacinated. Per dz. L 60c M 30c S 20c 100 Blts. 10c.

DAMASCUS (M) Stevens

Deep rose-purple, overcast blue, red blotch. Per dz. L 50c M 30c S 20c 100 Blts. 10c.

DEBONAIR (M) Palmer

LaFrance pink. Throat shrimp pink and cream. Per dz. L 50c M 30c S 20c 100 Blts. 10c.

DEE (EM) Rowe

Clear deep apricot prim. Many florets open. Tall. Per dz. L 50c M 30c S 20c 100 Blts. 10c.

DR. DENTZ (EM) Holland

Beautiful rose-pink. Large florets. L 8c ea. 75c dz. M 5c ea. 50c dz. S 40c dz.

DR. F. E. BENNETT (M) Diener

Large fiery red. Many open. Per dz. L 50c M 30c S 20c 100 Blts. 10c.

DREAM O' BEAUTY (M) Zimmer

American Beauty rose-red, strong grower. Popular. Per dz. L 50c M 30c 100 Blts. 10c.

DUNA (M) Palmer

Clear pink-buff. Large blooms well arranged. Per dz. L 50c M 30c S 20c 100 Blts. 15c.

EARLY ROSE (E) Jack

Early dark rose, decorative, good keeper. Per dz. L 60c M 40c 100 Blts. 25c.

EDITH GRACE (M) Harder

Tall exhibition white with wine red blotch. Per ea. L 25c M 15c S 10c 10 Blts. 15c.

E. I. FARRINGTON (M) Rowe

Popular, rich, soft self-yellow. Perfectly placed florets. True commercial. Per dz. L 50c M 30c S 20c 100 Blts. 10c.

ELIZABETH THE QUEEN (M) White

New lavender of merit. Tall and large. Per ea. L \$1.25 M 75c S 50c 2 Blts. 25c. 10 Blts. \$1.00.

ELLEN MARIE (E) Pruitt

Large ruffled salmon apricot, lighter throat blotch. Per dz. L 60c M 30c S 20c 100 Blts. 25c.

FLAMING METEOR (M) Mitsch

Tall light red. Large blooms. Per dz. L 50c M 30c S 20c 100 Blts. 25c.

FLORA FARMER (M) Quack

Deep radiant pink, creamy white throat. Slightly ruffled. Vigorous. L 15c ea. \$1.50 dz. M 10c ea. \$1.00 dz. 10 Blts. 15c.

GARDEN OF THE NATIONS (M) Winsor-Moseley

Clear cerise rose, edged silver. Good placement and size. Per ea. L 35c M 25c S 15c Blts. 6-25c.

GATE OF HEAVEN (M) Pfitzer

Rich, deep yellow. Large, ruffled florets, well placed. Per dz. L 50c M 30c S 20c 100 Blts. 10c.

GIANT NYMPH (LM) Coleman

Light rose pink, cream yellow throat. Per dz. L 50c M 30c S 20c 100 Blts. 10c.

WOULDN'T DAD ENJOY GLAD BULBS FOR FATHER'S DAY!

SEABROOK NURSERIES GLADIOLUS

GLORIANA (LM) Betscher

Large salmon, yellow throat. Per dz. L 50c M 30c S 20c 100 Blts. 10c.

GOLD DUST (M) Pfitzer

Fine, clear, deep yellow. L 8c ea. 75c dz. M 40c dz. S 20c dz. 100 Blts. 20c.

GOLDEN CHIMES (M) Ellis

Fine soft yellow. Good spikes of ruffled florets. Per dz. L 60c M 40c S 20c 100 Blts. 30c.

GOLDEN CUP (LM) Palmer

Larger and deeper than Golden Dream. Clear. Per dz. L 50c M 35c S 20c 100 Blts. 10c.

GOLDEN DREAM (M) Graff

Tall, clear, deep yellow florets, quite recurved. Per dz. L 50c M 30c S 20c 100 Blts. 10c.

GOLDEN GODDESS (M) Sal

Tall strong grower. Patented, so increase cannot be sold. Med. size clear yellow. L 8c ea.

GOLDEN POPPY (M) Prestgard

Rich, deep yellow, round florets. Tall, wiry stems. Per dz. L 60c M 35c S 20c 100 Blts. 20c.

GRAF ZEPPELIN (E) Pfitzer

Clear brilliant red. Per dz. L 50c M 30c S 20c 100 Blts. 20c.

GRAND OPERA (M) Salbach

Huge beautiful pink. 5 to 7 blooms open. Very strong grower. Patented. L 40c ea.

GRETA GARBO (M) Pfitzer

Very large, brilliant blush white. Long flowerhead. Outstanding. Per ea. L 25c M 15c S 10c. 12 Blts. 20c.

HALLOWE'EN (M) Gibbs

Tall, well placed spike, orange bronze florets. Small decorative. Per dz. L 60c M 40c S 20c. 100 Blts. 10c.

HELEN OF TROY (M) Sal

Large, light buff with soft blotch, Patented, no increase can be sold. Each L 25c M 20c.

HERITAGE (M) Ristow

Pure pink, snow white throat and midribs. Per dz. L 60c M 40c S 25c 100 Blts. 20c.

HONOR (M) Kinyon

Clear lavender, lower petal self color on white. Per dz. L 60c M 30c S 20c 100 Blts. 15c.

INTERMEZZO (M) Quackenbush

A new cream, informal in type, which opens 5 to 8 well placed florets. Each L 60c M 40c S 20c 7 Blts. 25c.

ISOLA BELLA (M) Pfitzer

Light pink lavender. Wide open florets. Per dz. L 60c M 50c S 30c.

JASMINE (M) Palmer

Clear pale lemon-yellow without marking. Slightly ruffled. L 10c ea. \$1.00 dz. M 6c ea. 55c dz.

JOAN PETY (M) Kinyon

Pure pink, violet markings on cream. Florets frilled. Per dz. L 60c M 35c S 20c. 100 Blts. 25c.

JONQUIL (M) Palmer

Clear deep yellow. Medium sized florets. Per dz. L 60c M 35c S 20c 100 Blts. 15c.

JOSEPH HAYDEN (M) Pfitzer

Exhibition heliotrope violet, darker blotches on lower petals. Sometimes crooked. L 8c ea. 75c dz.

J. S. BACH (E) Pfitzer

Fine orange salmon, lighter in throat, white midribs. Per dz. L 60c M 40c S 25c 100 Blts. 20c.

KASSEL (M) Pfitzer

Large scarlet. Good cut flower. Per dz. L 60c M 40c S 20c 100 Blts. 15c.

ADD MORE COLOR TO SISTER'S GARDEN WITH A GIFT OF BULBS.

SEABROOK NURSERIES GLADIOLUS

KING ARTHUR (M) Arenius

Large ruffled lavender. Per dz.
L 60c M 50c S 20c 100 Blts. 15c.

KING OF HEARTS (M) Salbach

Light coral red, large. Patented,
vigorous and tall, sometimes 8'' blooms
well placed. L 25c ea. M 20c ea.

KING WILLIAM (M) Munson

A soft salmon and apricot, cream
throat. Tall, vigorous grower. Good
exhibition and commercial. L 25c ea.
M 15c ea. S 8c ea. 12 Blts. 35c.

LA FIESTA (M) Salbach

Shades of orange and yellow. Very
showy. Per doz. L 50c M 40c S 25c
100 Blts. 20c.

LA PALOMA (E) Dusin

Tall, rich orange. Large florets.
Heavy texture. Per dz. L 50c M 30c
S 20c 100 Blts. 10c.

LEONA (LM) Pruitt

Tall, deep rose red, well spaced
and faced. Per dz. L 75c M 50c S 35c
100 Blts. 40c.

LIBELLE (M) Pfitzer

Near blue, heliotrope shade. Per
dz. L 60c M 30c S 20c 100 Blts. 15c.

LOTUS (EM) Prestgard

Large slightly ruffled cream pink.
Per dz. L 50c M 30c S 20c 100 Blts.
15c.

LUCIFER (M) Errey

Bright scarlet, purplish red blotch.
Large florets. Per dz. L 50c M 30c
S 20c 100 Blts. 15c.

LUSTRE (M) Winsor-Moseley

Lovely light rosy pink, lighter in
throat, slight feathering. Slightly
ruffled. Decorative. Per ea. L 50c
M 30c S 20c Blts. 12-25c.

MAID OF ORLEANS (M) Pfitzer

Beautiful milky white with light
cream throat. Tall spike, perfect
placement. Per dz. L 50c M 30c S 20c
100 Blts. 10c.

MAMMOTH WHITE (M) Pfitzer

Large white florets. 5-6 open. Per
dz. L 50c M 30c S 20c 100 Blts. 10c.

MARGARET BEATON (M) Twomey

New immense white with orange
scarlet blotch. L 10c ea. \$1.00 dz.
M 8c ea. 75c dz. S 5c ea. 50c dz. 100
Blts. 50c.

MARGARET FULTON (E) Ograd

Clear coral pink, lighter throat.
Tall, heavy stalk. Per dz. L 50c M 30c
S 20c 100 Blts. 10c.

MARION PEARL (M) Benedict

1943 introduction. Beautiful clear
salmon 6'' florets open. N. E. G. S.
Prize winner. Large only \$1.00 each.

MARMORA (M) Errey

Many large, well placed florets on
tall, strong stalk. Lavender gray,
petunia colored blotch. Per dz. L 50c
M 30c S 20c 100 Blts. 10c.

MAROCCO (EM) Pfitzer

A very deep black red. Per dz.
L 60c M 30c S 20c 100 Blts. 10c.

MARSEILLAISE (M) Scheer

Rich velvety red, one of the best,
M 75c ea. S 50c ea. Blts. 10c ea. 10
75c.

MARY DAMARIS (M) Clark

Clear soft medium yellow of good
size. L 10c ea. \$1.00 dz. M 8c ea. 75c
dz. S 50c dz. 100 Blts. 60c.

MARY SHARY (M) Vaughan

Clear soft primrose yellow, deeper
yellow throat. Per dz. L 60c M 30c
S 20c 100 Blts. 10c.

MASTER MYRON (M) Krueger

Immense rich medium red. Very
tall. Florets of heavy texture. Per
ea. L 25c M 15c S 10c Blts. 10 25c.

MILFORD (EM) Rides

Clear light blue, large florets of
good placement. Per dz. L 60c M 35c
S 20c 100 Blts. 15c.

BROTHER LIKES GLADS TOO! SEND GLADS TO HIM.

UNLABELED COLLECTIONS AT PREPAID PRICES

We have long been noted for the excellence of our mixtures, stating with reasonable assurance, that there are but few growers able to offer as varied and choice assortments such as we assemble. The bulbs are all 1 $\frac{1}{4}$ inches and over, and not the medium bulbs 1 inch or smaller, such as many offer at even greater prices. If you want medium bulbs, pay only what you should.

GARDEN MIXTURE

Composing many fine varieties, all colors. Splendid for a gorgeous garden display or flowers for cutting. \$2.00 per hundred, fifty for \$1.00 or 25c a dozen. Medium bulbs \$1.25 per hundred, fifty for 75c.

PRIMULINUS MIXTURE

For daintiness and quality, there is nothing that can equal our Primulinus Hybrids. For table or interior decorating, they are unsurpassed. \$3.00 per hundred, fifty for \$1.50 or 50c doz. Medium bulbs \$1.50 per hundred, 50 for 75c.

SEABROOK MIXTURE

Exhibition Types

Made up of a large number of very choice varieties of superior merit. If bought under name the bulbs would cost many times the price asked. \$4.00 per hundred, \$2.00 for fifty, 60c doz. Medium bulbs \$2.50 per hundred, \$1.25 for 50.

DELUXE COLLECTION

To satisfy the demand for a mixture containing the choicest varieties that it would be possible to buy for a reasonable price, we offer this collection with the assurance given that you will be agreeably surprised at the wonderful value. Every bulb that is put into this collection is from a variety of the finest exhibition type and collection well balanced as to colors. \$6.00 per hundred, \$3.00 for fifty, \$1.50 for twenty-five. Medium bulbs, \$4.00 per hundred. \$2.00 for 50.

COLOR COLLECTION

Ten large bulbs, each COLOR labeled, 100 bulbs in all, Yellow, Red, Pink, Cream, Salmon, Lavender, White, Purple, Orange and Old Rose. These are put up in three grades, \$2.00, \$4.00, and \$6.00. We can assemble these also in packages of 5 each at half price.

IRIS

We have numerous varieties not labeled that can only be sold in mixtures. All good sorts in varied collection, \$1.00 dozen. Also lots of single Colors for \$1. dozen. Buy a Yellow, White, Orchid or Mahogany collection.

PREPAID WHOLESALE LIST - SEAB

PRICE PER 100 - 25 AT 100 RATE

VARIETY	No. 1	No. 2	No. 3	No. 4	BULBLETS	
	1½ up	1¼ to 1½	1 to 1¼	¾ to 1	1000.	Qt.
Aflame, Geranium pink yellow blotch...	3.20	2.40	1.60	1.00	.60
Aida, Dark violet blue, red throat blotch..	3.80	3.00	2.00	1.60	1.00
Alayne, Clear light rose, ruffled	4.00	2.80	2.20	1.40	1.00
Albatros, Large pure white	3.80	3.00	2.00	1.60	.60	1.60
Amrita, Ruffl. light buff, rich mell. thrt.	7.00	6.00	5.00
Apricot Glow, Early apricot prim	2.80	2.00	1.40	1.00	.50
Ave Maria, Light blue, purple blotches ..	3.60	2.40	1.80	1.20	.60	1.50
Baby Betty, Cream blending to lt. pink ..	4.00	3.00	2.00	1.40	.80
Bagdad, Tall smoky old rose	3.60	2.40	1.80	1.20	.60	1.50
Beacon, Red salmon, cream blotches	4.80	3.60	2.40	1.80	2.00
Bella Donna, Early light blue, dk. blotch	4.00	3.20	2.60	1.80	1.50
Berty Snow, Large lavender	3.00	2.40	1.80	1.00	.50
Betty Co Ed, Soft creamy pink prim	3.60	2.40	1.60	1.20	.50	1.50
Betty Nuthall, Salmon, yellow throat	2.80	2.00	1.40	1.00	.50	1.00
Bill Sowden, Large deep scarlet	3.50	2.80	1.80	1.20	2.00
Bit O' Heaven, Fine clear orange	4.00	3.00	2.00	1.20	.60
Bleeding Heart, White, red blotch	3.60	2.80	2.00	1.20	.60
Blue Admiral, Tall, deep blue	4.00	3.00	2.00	1.60	1.00
Blue Danube, Amethyst blue, darker thrt.	4.00	3.20	2.80	2.00	.80
Blue Beauty, Lt. blue edged violet blue ..	6.00	5.00	4.00
Bob White, Lg. white, rose pencilling ..	3.60	3.00	2.00	1.60
Brightside, Rich ruffled orange	3.80	3.00	2.20	1.80	.80	1.50
Cadillac, Golden apricot, rose tipd. petals	4.00	3.20	2.60	2.00	.50
Chas. Dickens, Radiant purple	3.80	3.00	2.00	1.40	.80	1.50
Christabel, Shrimp pink, cream throat ..	5.00	4.00	3.00	2.20	1.00
Com. Koehl, Large dark scarlet	3.80	3.00	1.80	1.20	.80
Coronation, Light salmon shading cream	3.40	2.40	1.60	1.20	.80	2.40
Coryphee, Soft pink, white throat	3.60	2.80	2.00	1.40	.80
Damascus, Rose purple, red blotch	3.60	2.40	1.60	1.00	.60	2.00
Debonair, LaFrance pink, cream throat ..	3.60	2.40	1.60	1.00	.60	2.00
Dee, Clear deep apricot	3.20	2.40	1.80	1.00	.50	1.50
Dr. F. E. Bennett, Bright red	3.00	2.20	1.80	1.20	.50	1.50
Dream O' Beauty, Large rose-red	4.00	3.20	2.60	2.00	1.00
Duna, Soft pink buff	3.60	2.40	1.60	1.20	.60	1.00
E. I. Farrington, Clear light yellow	3.40	2.80	2.00	1.20	.50	1.50
Early Rose, Early deep rose	4.00	3.20	2.80	2.00	1.00
Flaming Meteor, Tall light red	3.80	3.00	2.40	1.80	1.00
Gate of Heaven, Rich deep yellow	4.00	3.00	2.00	1.40	1.00	2.00
Giant Nymph, Lt. pink, crm. yellow throat	3.00	2.40	1.40	1.00	.50	1.50
Gloriana, Rich salmon, yellow throat	3.00	2.40	1.40	1.00	.50	1.50
Gold Dust, Clear deep yellow	6.00	5.00	4.00	3.00	1.50
Golden Chimes, Fine soft yellow	4.00	3.00	2.00	1.50
Golden Cup, Clear deep yellow	3.60	2.40	2.00	1.00	.60	2.00
Golden Dream, Tall deep yellow	3.00	2.00	1.40	1.00	.50	1.50
Golden Poppy, Rich deep toned yellow ..	4.00	3.00	2.20	1.60	.80
Graf Zeppelin, Clear brilliant red	4.00	3.00	2.00	1.40	1.00
Hallowe'en, Fine orange bronze	3.80	3.00	2.00	1.40	1.00
Heritage, Pink, lighter throat	4.40	3.60	2.80	1.80	.80
Honor, Clear lavender	3.80	2.80	2.00	1.00	1.00
Isola Bella, Giant pink, lilac hue	6.00	5.00	4.00	3.00
J. S. Bach, Large salmon orange	5.00	4.00	3.00	2.00	1.00
Jonquil, Clear, deep yellow	4.00	3.00	2.00	1.60	.80
Kassel, Large scarlet	4.20	3.60	2.80	2.00	1.00
King Arthur, Fine rose-lavender	4.00	3.00	2.00	1.40	1.00
La Paloma, Vivid orange	3.00	2.00	1.60	1.00	.50	1.50
Libelle, Heliotrope blue	3.60	2.40	1.80	1.20	.60	1.60
Lotus, Cream and pink shades	3.00	2.00	1.40
Lucifer, Orange red, purple blotch	4.00	3.00	2.40	1.80	.80

DO NOT MIX F. O. B. PRICES WITH PREPAID PRICES. If this is done
PLEASE SELECT SECOND CHOICE

SEABROOK NURSERIES - SEABROOK, N. H.

PRICE PER 100 - 25 AT 100 RATE

VARIETY	No. 1	No. 2	No. 3	No. 4	BULBLETS	
	½ up	¼ to ½	1 to ¼	¾ to 1	1000	Ot.
Maid of Orleans, Milky white, cream thrt.	3.60	2.40	1.60	1.20	.80	1.50
Mammoth White, Immense pure white ..	4.00	3.00	2.00	1.60	1.00
Margaret Fulton, Clear rose salmon	3.40	2.40	1.40	1.00	.60	1.50
Marmora, Lavender grey, petunia blotch	3.60	2.80	2.00	1.40	.80
Marocco, Very deep red	4.00	3.00	2.00	1.60	.60	2.00
Milford, Clear azure blue	4.00	3.00	2.00	1.60	1.50
Minuet, Show lavender	3.60	2.40	1.60	1.00	1.00	3.00
Miss Bloomington, Early light yellow	3.00	2.40	1.60	1.00	.50	1.50
Miss New Zealand, Salmon, rose blotch .	5.00	4.00	3.00	2.00	1.00
Mother Machree, Smoky lavender	4.00	3.00	2.00	1.00	1.00
Mr. L. G. Rowe, Cream with pink	14.00	12.00	10.00	8.00	2.00
Mrs. P. W. Sisson, Fine light pink	2.60	2.00	1.40	1.00	.50	1.50
Mrs. Ray Chase, Large creamy white ..	3.60	3.00	2.40	2.00	.80	1.50
Ninth Symphony, Large salmon red	6.00	4.00	3.20	2.60	1.50
Orange Butterfly, Dainty orange prim ..	5.00	4.00	3.00	2.00	1.00	2.50
Orange Princess, Salmon orange	4.80	3.80	2.80	1.80	.80
Orange Queen, Apricot orange, red pencil	3.00	2.40	1.60	1.00	.60	1.50
Osalin, Clear coral pink	3.00	2.00	1.40	1.00	.80	1.50
Our Selection, Salmon red, flkd. deeper .	3.20	2.80	2.00	1.20	.80
Paradise, Large ruffled apricot	3.60	3.00	2.40	1.60	.80	1.50
Paul Pfitzer, Deep reddish purple	3.20	2.80	2.00	1.60	.80
Peggy Lou, Deep shrimp pink	6.00	5.00	4.00	3.00
Pelegrina, Deep near-blue	3.60	2.40	1.60	.80	.80	1.50
Phyllis McQuiston, Large pure pink	3.60	3.00	2.40	1.40	.60	2.00
Picardy, Soft shrimp pink	3.00	2.00	1.20	.80	.50	1.50
Polar Ice, Early pure white	4.00	3.00	2.60	2.00	.80
Pride of Wanakah, Rose pink, blotched .	4.00	3.20	2.80	2.00	.80
Queen Bremen, Deep rose-pink	3.20	2.60	2.00	1.40	.80	2.00
Red Lory, Carmine rose, purple blotches	4.00	3.20	2.60	2.00	.80
Red Phipps, Light red	3.60	3.00	2.40	1.80	.80
Reverie, Light pink and cream	4.00	3.20	2.40	1.80	.80	1.50
Rideau, Smoky salmon	3.00	2.50	2.00
Rosa Van Lima, Pure pink, white rib ..	6.00	4.00	3.60	2.80
Rose M. Pfitzer, Peaches and cream	4.00	3.20	2.80	1.80	1.00
Rose Mist, Old rose, edged gray	3.60	3.00	2.40	2.00	.80	1.50
Seabrook Beauty, Buff, shading pink	30.00	26.00	22.00	20.00	4.00
Shirley Temple, Ruffled cream, yel. thrt.	4.00	3.00	2.40	1.80	1.00
Smiling Maestro, Dp. slm. rose, flkd. brw.	4.00	3.20	2.20	1.80	1.00
Sonatine, Light pink, small red blotches .	3.60	2.40	1.80	1.00	.80	1.50
Southern Cross, Rich medium red	3.60	2.40	1.80	1.00	.80
Spirit St. Louis, Bronzy orange	3.00	2.20	1.40	1.00	.80	1.50
Star of Bethlehem, Immense white	4.80	3.80	3.00	2.40	1.00
Sunshine Girl, Clear pink, yellow throat .	3.00	2.40	1.80	1.00	.60
Sweetheart, Dainty white, pink edges ..	3.20	2.40	1.60	1.00	.80	1.50
Symphony, Light pink	3.60	2.80	2.00	1.60	.80	1.50
Talisman, Orange, yellow throat	3.20	2.60	2.00	1.60	.80	1.50
The Orchid, Orchid prim	6.00	5.00	4.40	3.60	1.00
Tobersun, Yellow-self	3.00	2.60	1.80	1.20	.80	2.00
Token, Flaming salmon, golden yel. thrt.	4.00	3.00	2.00	1.40	.80	2.00
Veigabond Prince, Hmgy. brown, fm. blth.	4.00	3.00	2.40	1.80	1.00
Veilchenblau, Violet blue	3.60	3.00	2.40	1.60	.80
Wasaga, Clear buff	3.60	2.40	1.60	1.00	.80	1.50
White Butterfly, Fine white prim	3.60	3.00	2.20	1.40	.80	2.50
Wurtembergia, Large red, cream throat .	4.00	3.00	2.40	1.40	.80	2.00
Zuni, Smoky, silver rose	6.00	5.00	4.00	3.00

It will be necessary for us to ship your order f. o. b. Seabrook, N. H.

PLEASE SELECT SECOND CHOICE

1943 WHOLESALE LIST NOT PREPAID 1943

DISCOUNTS DO NOT APPLY TO THIS WHOLESALE LIST — NOT PREPAID

PRICED PER 100 - - 25 AT 100 RATE

Affame	2.40	1.60	1.00	.70
Aida	2.80	1.80	1.40	1.00
Alayne	3.60	2.40	1.80	1.00
Amrita	6.00	5.00	4.00	
Apricot Glow	2.00	1.40	1.00	.60
Ave Maria	2.40	1.60	1.00	.80
Baby Betty	3.20	2.40	1.40	.80
Bagdad	2.40	1.40	1.00	.80
Beacon	3.50	3.00	2.00	1.40
Bella Donna	3.00	2.40	1.60	1.00
Berty Snow	2.40	1.60	1.00	.60
Betty Co Ed	2.50	1.50	1.00	.80
Betty Nuthall	2.20	1.40	1.00	.60
Bill Sowden	2.40	1.60	1.20	
Bleeding Heart	2.40	2.00	1.60	1.00
Blue Admiral	3.00	2.40	2.00	1.00
Blue Danube	3.00	2.00	1.40	1.00
Brightside	3.00	2.40	1.80	1.00
Cadillac	3.00	2.60	2.00	1.40
Chas. Dickens	2.60	1.60	1.00	.70
Christabel	3.00	2.00	1.40	1.00
Com. Koehl	2.60	1.80	1.40	1.00
Coronation	2.60	2.00	1.20	.80
Coryphee	3.00	2.00	1.20	.80
Damascus	3.40	2.80	2.00	1.40
Debonair	2.40	1.50	1.00	.80
Dee	2.40	1.80	1.00	.80
Dr. F. E. Bennett	2.40	1.80	1.20	1.00
Dream O'Beauty	3.00	2.60	1.80	1.00
Duna	2.20	1.60	1.00	.80
E. I. Farrington	2.40	1.60	1.20	1.00
Early Rose	3.00	2.40	2.00	1.00
Flaming Meteor	3.40	2.40	2.00	1.20
Gate of Heaven	2.40	1.80	1.20	1.00
Giant Nymph	2.20	1.40	1.00	.80
Glorianna	2.20	1.40	1.00	.80
Golden Chimes	2.80	2.00	1.40	1.00
Golden Cup	2.40	1.60	1.20	.80
Golden Dream	2.40	1.60	1.20	.80
Golden Poppy	3.60	2.60	1.80	1.00
Graf Zeppelin	3.00	2.00	1.40	1.00
Hallowe'en	3.00	2.60	1.20	1.00
Heritage	3.60	3.00	2.00	1.40
Honor	3.00	2.20	1.60	.80
Jonquill	3.00	2.40	1.60	1.00
Kassel	3.80	3.00	2.20	1.60
King Arthur	3.00	2.40	1.80	1.00
La Paloma	2.50	1.40	1.00	.80
Libelle	2.60	1.80	1.20	1.00

Lotus	2.40	2.00	1.00	
Lucifer	3.00	2.40	2.00	1.40
Maid of Orleans	2.40	1.60	1.20	.80
Mammoth White	2.80	2.00	1.20	.80
Margaret Fulton	2.40	1.60	1.00	.80
Marmora		2.20	1.80	1.00
Marocco	3.00	2.40	1.60	1.00
Milford	2.80	2.40	1.80	1.40
Minuet	2.60	1.60	1.00	.80
Miss Bloomington	2.40	1.60	1.00	.80
Miss New Zealand	4.00	3.00	2.40	2.00
Mother Machree	2.80	2.00	1.20	.80
M. L. G. Rowe	12.00	10.00	8.00	6.00
Mrs. P. W. Sisson	2.40	1.80	1.20	.80
Mrs. Ray Chase	3.00	2.20	1.50	1.00
Ninth Symphony	4.60	3.40	2.80	1.60
Orange Butterfly	3.00	2.40	1.80	1.20
Orange Princess	4.00	3.00	2.40	1.20
Orange Queen	2.40	1.80	1.20	.80
Osalin	2.40	1.80	1.20	.80
Our Selection	2.80	2.00	1.40	.80
Paradise	2.40	1.80	1.40	1.00
Paul Pfitzer	2.80	2.20	1.40	1.00
Peggy Lou	4.40	3.40	3.00	2.40
Pelegrina	2.40	1.60	1.00	.80
Phyllis McQuiston	3.00	2.40	1.80	1.00
Picardy	2.00	1.40	1.00	.60
Polar Ice	3.00	2.00	1.40	1.00
Queen Bremen	2.80	2.00	1.40	1.00
Red Lory	3.20	2.80	2.40	1.00
Reverie	3.00	2.00	1.40	1.00
Rideau	2.80	2.00	1.40	1.00
Rose M. Pfitzer	3.60	2.80	2.20	1.20
Rose Mist	3.00	2.40	2.00	1.40
Shirley Temple	3.00	2.40	1.80	1.20
Smiling Maestro	3.00	2.50	2.00	
Sonatine	2.40	1.80	1.20	1.00
Southern Cross	2.80	1.80	1.20	1.00
Spirit of St. Louis	2.60	1.80	1.00	.80
Star of Bethlehem	3.80	2.80	2.20	1.80
Sunshine Girl	2.60	1.80	1.20	.80
Sweetheart	2.40	2.00	1.60	.80
Symphony	2.40	1.60	1.20	.80
Talisman	2.60	1.80	1.50	1.00
Tobersun	2.60	1.60	1.20	.80
Token	2.50	2.00	1.40	1.00
Vagabond Prince	3.00	2.40	2.00	1.40
Veilchenblau	3.00	2.20	1.40	1.00
Wasaga	2.40	1.60	1.00	.80
White Butterfly	3.00	2.00	1.60	1.00
Wurtembergia	3.00	2.00	1.60	1.00
Zuni	5.00	4.00	3.20	2.60

WRITE FOR PRICES ON NO. 5 AND NO. 6 SIZE BULBS

DO NOT MIX ORDERS AT PREPAID PRICES with the F. O. B. LIST.
If this is done, it will be necessary for us to ship your order f. o. b. Seabrook, N. H.

Do not send extra money to cover pre-payment of an f. o. b. order, as it will have to be shipped f. o. b. Seabrook, N. H.

PLEASE MAKE MONEY ORDERS PAYABLE AT EXETER, N. H., POST OFFICE.

SEABROOK NURSERIES GLADIOLUS

MINUET (M) Coleman

Clear lavender, large flower of heavy substance. Per dz. L 60c M 30c S 20c 100 Blts. 15c.

MISS ALAMEDA (M) Salbach

Large deep salmon pink, carmine blotch. Tall. Per dz. L 50c M 30c S 20c 100 Blts. 10c.

MISS BLOOMINGTON (E) Kunderd

Very early tall light yellow. Per dz. L 50c M 30c S 20c 100 Blts. 10c.

MISS NEW ZEALAND (M) N Z

Salmon apricot, suffused rose with ripe peach blotch. Per dz. L 60c M 40c S 25c. 100 Blts. 25c.

MOHAWK (M) Stevens

Dark velvety red, no markings. World's best in its class so far. Per ea. L 50c M 30c S 15c.

MOTHER KADEL (EM) Moses

Clear medium yellow, no markings, 5-7 well placed blooms 4½ inches across. Good commercial. L 30c ea. \$3.00 dz. M 20c ea. \$2.00 dz. S 10c ea. \$1.00 dz. 100 Blts. \$1.00.

MOTHER MACHREE (M) Stevens

Smoky lavender, tinted salmon pink, flaked orange-red. Per dz. L 50c M 40c S 20c 100 Blts. 10c.

MR. LOUIS G. ROWE (LM) S N

White, flushed faintly with pale pink. Lower petals suffused with pale green-yellow. Seven 4 inch florets open on 15 bud 18 inch flower head. L 10c ea. \$1.00 dz. M 5c ea. 75c dz. S 50c dz. 100 Blts. 25c.

MRS. P. W. SISSON (LM) Coleman

Cameo pink. Several open. Good exhibition. Per dz. L 50c M 30c S 20c 100 Blts. 10c.

MRS. RAY CHASE (M) Miller

Large creamy white sometimes tinted pink. Per dz. L 50c M 30c S 20c 100 Blts. 10c.

MYRNA (M) Pruitt

Tall heavily ruffled creamy white. Outstanding. L 15c ea. \$1.50 dz. M 10c ea. \$1.00 dz. S 8c ea. 75c dz. 100 Blts. 75c.

NANCY ANN (M) Kinyon

Pale lavender pink. Good size and substance. Per dz. L 50c M 30c S 20c 100 Blts. 40c.

NEW ERA (M) Ellis-Majeski

Pretty self color pink. Intensely ruffled. Heavy textured. L 10c ea. \$1.00 dz. M 60c dz. S 30c dz. 100 Blts. 40c.

NINTH SYMPHONY (M) Pfitzer

Vivid salmon red with silky sheen, large wide open florets. L 8c ea. 85c dz. M 50c dz. S 30c dz.

ORANGE BUTTERFLY (LM) Sal.

Dainty orange, yellow throat blotches. Lovely prim. Per dz. L 50c M 30c S 20c 100 Blts. 15c.

ORANGE PRINCESS (M) DeGroot

Beautiful salmon orange with small crimson feather. Somewhat ruffled. Per dz. L 50c M 25c S 20c 100 Blts. 10c.

ORANGE QUEEN (EM) Pfitzer

A prim grand, copper-orange, self color. Per dz. L 50c M 30c S 20c 100 Blts. 10c.

OREGON STATE (M) Bones

A Picardy Seedling. Soft peach cream throat. L 10c ea. \$1.00 dz. M 8c ea. 75c dz. S 5c ea. 50c dz.

OSALIN (LM) Salbach

Clear coral-pink, soft orange markings. Per dz. L 50c M 30c S 20c 100 Blts. 10c.

OUR SELECTION (M) Ball

Salmon red, exhibition. Blotched cerise and cream. Per dz. L 50c M 30c S 20c 100 Blts. 10c.

HAVE YOU CHECKED OUR COLLECTIONS Page 3

SEABROOK NURSERIES GLADIOLUS

PARADISE (E) Pruitt

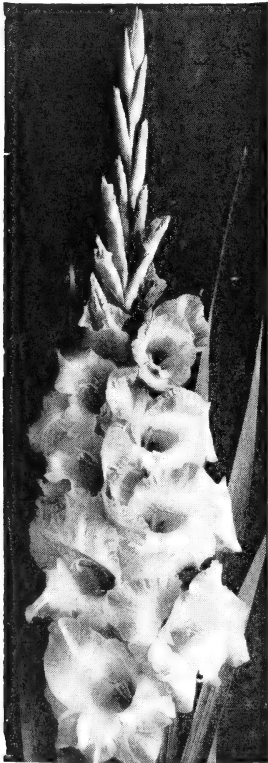
Clear apricot. Decorative, perfect placement. Per dz. L 60c M 30c S 20c 100 Blts. 15c.

PAUL PFITZER (LM) Pfitzer

Brilliant velvety reddish purple. Good grower. Per dz. L 50c M 30c S 20c 100 Blts. 10c.

PEGGY LOU (LM) Wilson-Evans

Deep shrimp pink exhibition. L 8c ea. 75c dz. M 5c ea. 60c dz. S 30c dz. 100 Blts. 15c.



FLORA FARMER

See Page 6 for Description

PELEGRINA (M) Pfitzer

Rich dark blue, darker blotch. Good propagator. Per dz. L 60c M 30c S 20c 100 Blts. 15c.

PHE德拉 (M) Benedict

Pure pink or light rose with white throat; 56 inch spike; 18 to 20 buds; 6 open; 5½ inch floret. 95 days to bloom. Does not streak or fleck; color very pure. L \$1.00 ea.

PHYLLIS McQUISTON (M) Stewart

Pure pink, five or more open. Per dz. L 50c M 30c S 20c 100 Blts. 10c.

PICARDY (LM) Palmer

Soft shrimp pink, outstanding. Per dz. L 50c M 30c S 20c 100 Blts. 10c.

PINK RADIANCE (M) Quack

Pure light pink, carmine in throat. Good Com'l. L 30c ea. \$3.00 dz. M 20c ea. \$2.00 dz. S 10c ea. \$1.00 dz. 12 Blts. 35c.

POLAR ICE (E) Pfitzer

Early good sized pure white. Commercial. Per dz. L 50c M 30c S 20c 100 Blts. 15c.

PRIDE OF WANAKAH (EM) Cris

Large deep lavender rose. Per dz. L 50c M 35c S 20c 100 Blts. 15c.

PURPLE BEAUTY (M) Roozen

Rich red purple. Clear good substance. Best purple. L 10c ea. \$1.00 dz. M 8c ea. 75c dz. S 60c dz. 100 Blts. 50c.

QUEEN OF BREMEN (E) Zimmer

Lavender pink prim flecked deeper. Per dz. L 50c M 30c S 20c 100 Blts. 15c.

QUEEN MARILYNN (M) Pruitt

Lovely shell pink with cream throat. L 8c ea. 75c dz. M 5c ea. 50c dz. 100 Blts. 25c.

Your Friends may be GLAD Enthusiasts—Suggestion—A BULB GIFT.

SEABROOK NURSERIES GLADIOLUS

RED LORY (LM) Errey

Carmine rose, purple blotches. Large florets. Per dz. L 50c M 30c S 20c 100 Blts. 10c.

RED PHIPPS (M) Briggs

Glowing red, good placement. Per dz. L 50c M 30c S 20c 100 Blts. 10c.

REVERIE (EM) Palmer

Light pink, cream throat. Beautiful. Per dz. L 60c M 40c S 20c 100 Blts. 15c.

REWI FALLU (E) Fallu

Deep blood red, massive blooms. Per dz. L 60c M 35c S 20c 100 Blts. 20c.

RIDEAU (LM) Palmer

Smoky salmon, medium spike. Per dz. L 50c M 30c S 20c 100 Blts. 15c.

ROSA VAN LIMA (M) Pfitzer

Pure, clear pink, slight lavender throat markings. Outstanding. L 8c ea. 75c dz. M 50c S 30c dz. 100 Blts. 20c.

ROSE MARIE PFITZER (LM) Pfitz.

Large peach and cream, pink edging. Per dz. L 60c M 40c S 20c 100 Blts. 15c.

ROSE MIST (M) Fischer

Old rose edged with pale gray, prim. Per dz. L 50c M 30c S 20c 100 Blts. 10c.

SANDRA (LM) Palmer

Large shrimp pink, amber blotch. Most attractive. L 6c ea. 60c dz. M 40c dz. S 20c dz. 100 Blts. 20c.

SEABROOK BEAUTY (LM) S N

Light buff shading to pink, rose blotch. Commercial. L 35c ea. \$3.50 dz. M 25c ea. \$2.50 dz. S 15c ea. \$1.50 dz. 100 Blts. \$1.50.

SEAFOAM (EM) Vaughan

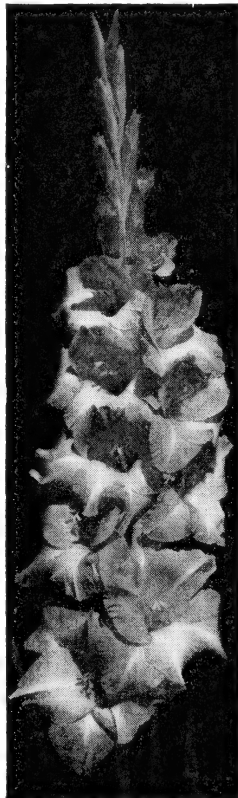
Pure white prim, several open. Per dz. L 50c M 30c S 20c 100 Blts. 15c.

SIR GALAHAD (M) Sal

Creamy yellow with crimson blotch, large and outstanding. Patented. L 25c ea. M 20c ca.

SHIRLEY TEMPLE (LM) Pruitt

Large ruffled cream with cream yellow throat. Popular. Per dz. L 50c M 30c S 20c 100 Blts. 15c.



MARION PEARL

See Page 8 for Description

SURFSIDE (M) Winsor

Very tall white. Good. L 8c ea. 85c dz. M 6c ea. 60c dz. S 5c ea. 50c dz. 25 Blts. 10c.

COLLECTIONS OR MIXTURES WILL INCREASE COLOR IN YOUR GARDEN.

SEABROOK NURSERIES GLADIOLUS

SMILING MAESTRO (LM) Christ

Large rich orange salmon. Per dz. L 60c M 35c S 20c 100 Blts. 20c.

SNOW PRINCESS (M) Pfitzer

Large white, cream throat, good substance. L 10c ea. \$1.00 dz. M 60c dz. S 40c dz. 100 Blts. 50c.

SO BIG (M) Kinyon

Deep rose-pink with violet feathering. Immense. Per dz. L 60c M 35c S 25c 100 Blts. 15c.

SONATINE (M) Pfitzer

Atlas rose with small cherry blotches. Per dz. L 60c M 30c S 20c 100 Blts. 15c.

SOUTHERN CROSS (M) Whitely

Large deep rich red. Per dz. L 60c M 30c S 20c 100 Blts. 15c.

SPIRIT ST. LOUIS (EM) Diener

Deep bronzy orange prim. Per dz. L 50c M 30c S 20c 100 Blts. 10c.

STAR OF BETHLEHEM (LM) Pfitz.

Immense pure white. Fine variety. Per dz. L 60c M 35c S 20c 100 Blts. 15c.

SWEETHEART (EM) Prestgard

Dainty white, pink edged prim. Fine cut flower. Per dz. L 50c M 30c S 20c 100 Blts. 10c.

SYMPHONY (M) Palmer

Tall, delicate pink. Large type. Many open. Good keeper. Per dz. L 50c M 30c S 20c 100 Blts. 10c.

TAKINA (M) Burns

Rosaline purple, flaked darker. Giant growth. Per dz. L 60c M 40c S 30c 100 Blts. 15c.

TALISMAN (E) Gruellmans

Canary yellow, flushed apricot. Greener than Brightside. Per dz. L 50c M 30c S 20c 100 Blts. 10c.

THE ORCHID (EM) Sprague

Lacinated lavender, resembling an orchid. Per dz. L 80c M 60c S 40c 100 Blts. 20c.

THISTLE DEW (EM) Winsor

Light pink, cream throat. Large wide open florets. Per ea. L 15c M 8c S 5c. 12 Blts. 15c.

TOKEN (E) Crow-Pappas

Tall, flame salmon, yellow throat. Ruffled florets. Per dz. L 60c M 30c S 20c 100 Blts. 15c.

VAGABOND PRINCE (M) Palmer

Mahogany brown smoky. 18 buds, 10 open. Per dz. L 50c M 35c S 25c 100 Blts. 10c.

VALERIA Pruitt

Excellent early scarlet. Much like Red Phipps in color. A very promising commercial.

VEILCHENBLAU (EM) Pfitzer

Violet blue florets. Large, good form and color. Per dz. L 50c M 30c S 20c 100 Blts. 10c.

VREDENBURGH (M) Pfitzer

Very large pure white, good substance. L 8c ea. 75c dz. M 50c dz. S 30c dz. 100 Blts. 40c.

WASAGA (L) Palmer

Clear buff, no markings. Per dz. L 50c M 30c S 20c 100 Blts. 10c.

GLADIOLUS MAKE AN APPROPRIATE GIFT FOR ALL.

SEABROOK NURSERIES GLADIOLUS

WENONAH (M) Kinyon

Exhibition salmon pink, wide open well placed florets. L 25c ea. M 5c ea. Blts. 10-25c.

WHITE BUTTERFLY (EM) Kunderd

Fair sized white florets, butterfly form. Excellent small decorative. Per dz. L 50c M 30c S 20c 100 Blts. 15c.

WHITE GOLD (E) Scheer

Mammoth cream blended to gold in throat. 7 inch florets, heavy substance, ruffled, well placed on tall spike. Per ea. \$1.00 M 75c S 60c Blt. 15c ea.

WINSTON

Most beautiful ruffled, cream. L 60c ea. M 30c ea.

WURTEMBERGIA (M) Pfitzer

Very large red with white throat. Strong grower. Per dz. L 60c M 35c S 25c 100 Blts. 15c.

ZAUBERFLOTE (LM) Pfitzer

Large peach-rose, red blotch. Very striking. L 8c ea. 75c dz. M 50c dz. S 40c dz. 100 Blts. 20c.

ZUNI (LM) Mitsch

Large silvery rose in smoky tones. L 8c ea. 85c dz. M 60c dz. S 40c dz. 100 Blts. 35c.

1943

New England Gladiolus Society Application

1943

SUPPLEMENT MEMBERSHIP\$2.00

Entitles you to a copy of **The Gladiolus Year Book**, issued in January, also April, July and October; Supplements, containing articles on planting, fertilizing hybridizing, growing, harvesting, curing, storing and news from affiliated Gladiolus Societies.

REGULAR MEMBERSHIP

(Book Only\$1.00)

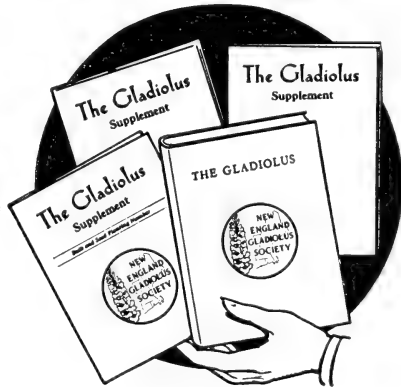
Regular cloth-bound copy of **The Gladiolus**, 1943, and membership privileges of the society.

Name

Address

Post Office

State



Send Money and Application to New England Gladiolus Society, Inc., Norwood, Mass. — Credit to **Seabrook Nurseries**.

SEABROOK NURSERIES GLADIOLUS

SPECIAL 50 CENT OFFERS

Any five items for \$2.00. Any twelve items for \$4.00 Any seventeen items for \$6.00. All prices NET PREPAID. With every \$6.00 order we will include 1 large bulb of SEABROOK BEAUTY.

Aida	6L	8M	6S	Leona	6L	6M	4S
Albatros	6L	8M	6S	Libelle	6L	8M	6S
Allegro	3L	3M	3S	Lucifer	6L	8M	6S
Aladdin	6L	8M	6S	Maid Orleans	6L	8M	6S
Ave Maria	6L	8M	6S	Marmora	6L	8M	6S
Baby Betty	6L	8M	6S	Marocco	6L	8M	6S
Bagdad	6L	8M	6S	Margaret Beaton	2L	3M	4S
Barcarole	2L	2M	3S	Mary Shary	6L	8M	6S
Beacon	4L	6M	6S	Milford	6L	8M	6S
Beautiful Ohio	3L	3M	3S	Miss New Zealand	6L	6M	4S
Bella Donna	6L	8M	6S	Mother Machree	6L	8M	6S
Betty Co Ed	6L	8M	6S	Mrs. P. W. Sisson	6L	8M	6S
Black Opal	2L	3M	3S	Orange Butterfly	6L	8M	6S
Blue Admiral	6L	6M	3S	Orange Princess	6L	8M	6S
Blue Danube	6L	8M	6S	Our Selection	6L	8M	6S
Brightside	6L	8M	6S	Paradise	6L	8M	6S
Cadillac	6L	8M	6S	Paul Pfitzer	6L	8M	6S
Chas. Dickens	6L	8M	6S	Peggy Lou	3L	6M	4S
Coronation	6L	8M	6S	Pelegrina	6L	8M	6S
Coryphee	6L	8M	6S	Picardy	6L	8M	6S
Dr. Dentz	2L	6M	6S	Polar Ice	6L	8M	6S
Damascus	6L	8M	6S	Red Lory	6L	8M	6S
Debonair	6L	8M	6S	Red Phipps	6L	8M	6S
Dream O' Beauty	6L	6M	3S	Reverie	6L	8M	6S
Duna	6L	8M	6S	Rosa Van Lima	3L	3M	4S
Early Rose	6L	6M	6S	R. M. Pfitzer	6L	8M	6S
E. I. Farrington	6L	8M	6S	Shirley Temple	4L	6M	4S
Ellen Marie	6L	8M	6S	Sonatine	6L	8M	6S
Flaming Meteor	6L	8M	6S	Southern Cross	6L	8M	6S
Gate of Heaven	6L	8M	6S	Symphony	6L	8M	6S
Gold Dust	6L	6M	6S	Talisman	6L	8M	6S
Golden Poppy	6L	8M	6S	Takina	6L	6M	6S
Graf Zeppelin	6L	8M	6S	Token	6L	8M	6S
Hallowe'en	6L	6M	3S	Vagabond Prince	6L	6M	3S
Heritage	6L	6M	3S	Veilchenblau	6L	8M	6S
Isola Bella	4L	6M	4S	Wasaga	6L	8M	6S
J. S. Bach	6L	6M	3S	Wurtembergia	6L	8M	6S
Kassel	6L	6M	3S				

VICTORY SPECIAL

15 Red, 15 White, 15 Blue—45 Lg. Bulbs \$1.25.
Colors Kept Separate or Mixed as You Prefer.

ORDER BLANK

SEABROOK NURSERIES

WHOLESALE

RETAIL

GLADIOLUS SPECIALISTS

SEABROOK - NEW HAMPSHIRE

Name { Mr. Amount Enclosed
Mrs.
Miss
Please write or print plainly \$.....

Street
Date

P. O. Box R. D. No. Box
Postoffice19.....
State Express Office
When Wanted

If necessary shall we substitute?

Quantity	Size	NAME OF VARIETY	Amount	

(Continue order on other side)

COLOR COLLECTIONS

Any one Collection of large sized bulbs carefully labeled for \$3. Prepaid.
 Any three of these \$3.00 Collections for \$8.50. In Medium sized bulbs, any one
 Collection for \$1.65 Prepaid. Any three \$1.65 Collections for \$4.50.

RED 4 Each

Aflame
 Algonquin
 Black Opal
 Bill Sowden
 Clingendaal
 Com. Koehl
 Dr. Bennett
 Flaming Meteor
 Graf Zeppelin
 Kassel
 Lucifer
 Marocco
 Rewie Fallu
 Red Phipps
 Southern Cross
 Wurtembergia

WHITE 5 Each

Albatros
 Helen Wills
 Maid Orleans
 Mammoth White
 Mrs. Ray Chase
 Myrna
 Polar Ice
 Seafoam
 Snow Princess
 Star Bethlehem
 White Butterfly

SALMON 5 Each

Aladdin
 Beacon
 Betty Nuthall
 Coronation
 Early Peach
 Gloriana
 J. S. Bach
 Margaret Fulton
 Miss New Zealand
 Osalin
 Rapture
 Smiling Maestro
 Token

BUFF and ORANGE 4 Each

Amrita
 Betty B. Eyes
 Bit O' Heaven
 Brightside
 Cadillac
 Dee
 Duna
 Ellen Marie
 Grand Slam
 Hallowe'en
 La Fiesta
 Orange Butterfly
 Orange Princess
 Orange Queen
 Paradise
 R. M. Pitzer
 Spirit St. Louis
 Talisman
 Wasaga

LAVENDER 6 Each

Alayne
 Bertie Snow
 Grafyn L. Chotek
 Honor
 Isola Bella
 King Arthur
 Minuet
 Queen Bremen
 So Big
 Joan Pety

BLUE and PURPLE 5 Each

Aida
 Ave Maria
 Bella Donna
 Blue Admiral
 Blue Beauty
 Blue Danube
 Chas. Dickens
 Leona
 Libelle
 Milford
 Paul Pitzer
 Pelegrina
 Purple Beauty
 Takina
 Veilchenblau

PINK 4 Each

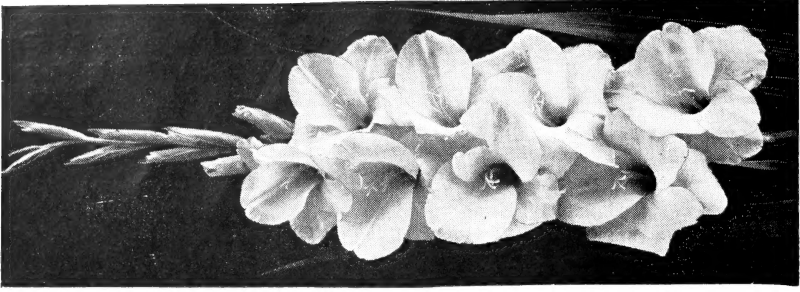
Betty Co-Ed
 Christabel
 Coryphee
 Debonair
 Dr. Dentz
 Early Rose
 Heritage
 Margaret Fulton
 Mrs. P. W. Sisson
 Peggy Lou
 Phyllis McQuiston
 Picardy
 Reverie
 Rosa Van Lima
 Rose Mist
 Sonatine
 Symphony

YELLOW 6 Each

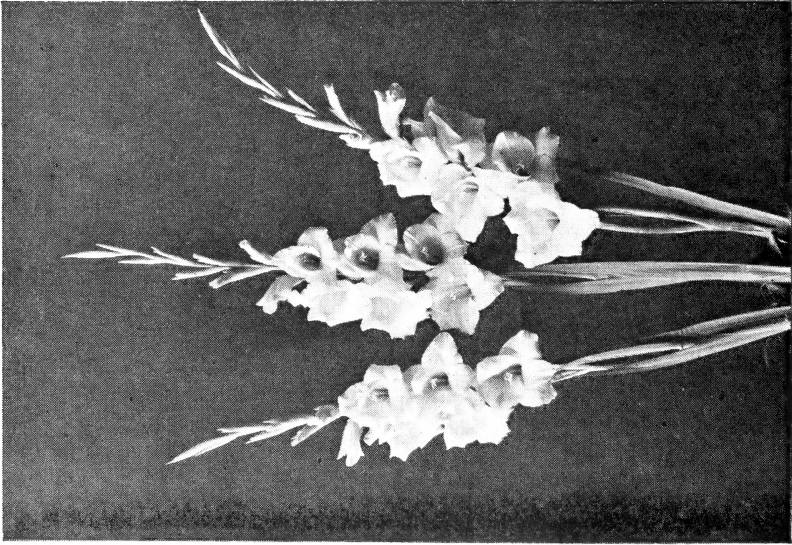
E. I. Farrington
 Gate of Heaven
 Gold Dust
 Golden Chimes
 Golden Cup
 Golden Dream
 Golden Goddess
 Golden Poppy
 Jonquil
 Mary Shary
 Miss Bloomington
 Tobersun

SMOKY and NOVELTY 5 Each

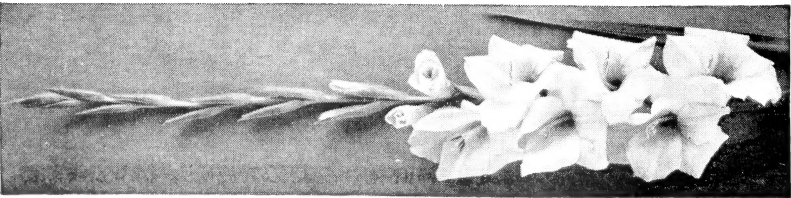
Bagdad
 Bleeding Heart
 Bob White
 Chief Multnomah
 Damascus
 Dream O' Beauty
 Marmora
 Mother Machree
 Our Selection
 Pride of Wanakah
 Red Lory
 Rideau
 Sweetheart
 Vagabond Prince
 Zuni



PINK RADIANCE



MOTHER KADEL



INTERMEZZO