

Historic, Archive Document

Do not assume content reflects current scientific knowledge, policies, or practices.

62.23

1943

New and rare Flowers

3 New Garden Beauties.

China Gold-Potentilla fruticosa purdmii. A charming little plant, almost shrublike growing a little taller than a foot. Producing a succession of golden yellow flowers throughout the summer. Add to it the fact that it thrives in either dry or moist soil and you will realize that you must have this gem for your garden.

Mordens Pink-Lythrums. This most beautiful flower was developed in Mordens nursery in Canada. So it must be hardy. It grows about 15 inches high and blooms continuously from June until heavy frosts set in. Flowers are of a rich deep pink. Be sure to add this charming plant to your garden.

Blue Spirea.-Caryopteris incanata. A rare dwarf plant of unusual beauty. A real acquisition to you garden. It blooms from late August until winter. Fine for cutting. Flowers are of a powdery blue and practically cover the whole plant. Why not add this gem to your garden.

Each: 35¢ -- 3 for only \$ 1.00



3 New Cushion Chrysanthemums.

This is a group of low growing Chrysanthemums forming little mounds covered with a multitude of blooms, reminding one of the old fashioned Azaleas. They grow about 12-15 inches high. Flowering starts beginning in September, lasting usually up to heavy frosts. It is best to give a little straw protection in winter, than the plants are quite hardy.

We offer here some of the newest of these Mums.

Santa Claus. A striking new introduction with big bushy growth covered by brilliant red flowers from September on. Santa Claus is of medium height and blooms are about 2 inches in diameter. A real novelty.

Golden Cushion. A new golden yellow form of the Cushion type. Foliage, flowers, form of growth and hardiness are of the true Azalea type. One of the finest additions to the Cushion Mum family.

King Cushion. Very dwarf and compact. Forms large mounds covered with many medium sized flowers of light bronze color. A real gem for the garden.

These 3 New Chrysanthemums will be shipped from 2 1/2 inch pots. They will be ready to bloom this Fall.

Each: 25¢ --- 5 for only \$ 1.00 Postpaid.

3 New Gems For The Garden.



Dianthus-Rose Unique. A new Everblooming Carnation. Perfectly formed double flowers of pleasing fragrance and delightful old rose color. The flowers blend superbly with attractive blue foliage.

Delphinium-Blue Grotto. One of the newer Delphiniums. Color is deep indigo blue, enriched with a royal purple blue with a creamy white center.

Phlox Subulata Camla. A new creeping Phlox which will be the delight of every gardener. It blooms in Spring and again in fall. Color is of a pleasing salmon-pink. More graceful than any other creeping Phlox.

Each: 35¢ -- 3 for only \$ 1.00 Postpaid.



Old Fashioned Bleeding Heart. Dicentra spectabilis. This is the old-fashioned type of Bleeding Heart. Its long racemes of graceful heart shaped pink flowers are always attractive in late May or June. Perfectly at home in any borders, especially valuable in the shade. Height 1-2 ft. Perfectly hardy.

Each: 40¢ --- 3 for only \$ 1.00

Dwarf Bleeding Heart. Dicentra exima. Also called Plume Bleeding Heart. It is a dwarf growing sort with beautiful finely cut foliage. Showy pink flowers appear continuously throughout the season. Height about 12 inches. Perfectly hardy. This is the real dwarf kind. Your flower garden is not complete without this gem.

Each: 40¢ --- 3 for only \$ 1.00.

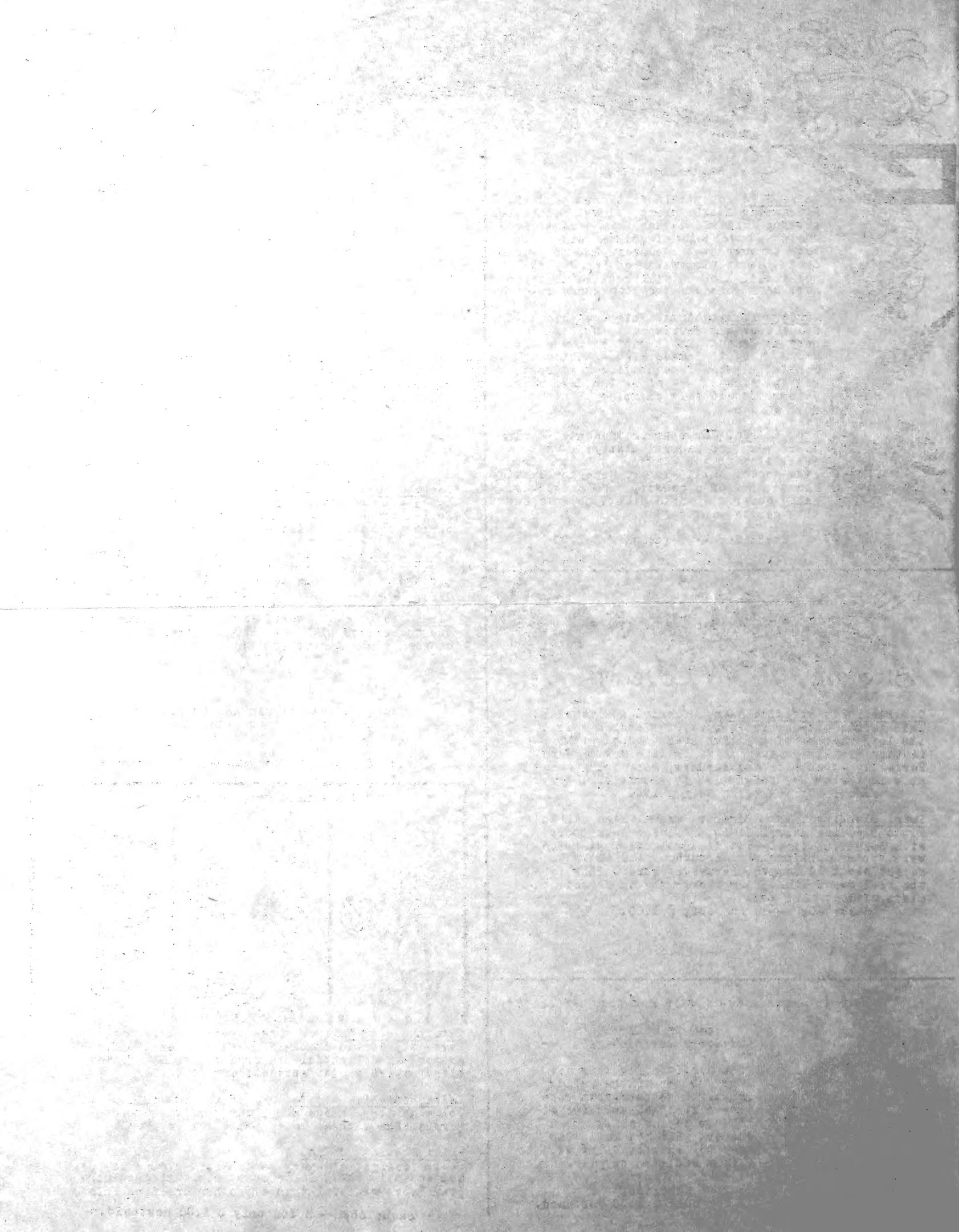
*** Here is another New Flower For Your Garden.***

Cashmir Mallow. (Lavatera Casimiriana).

From Persia comes this new dwarf member of the Mallow group. It seldom grows more than 2 ft high. Beautiful pink mallows appear all through the summer. This new Mallow is easy to transplant. It will be a fine addition to your garden.

Each: 35¢
3 for only \$ 1.00 Postpaid.







The Villa Park Evergreen Company

520 South Princeton Avenue Villa Park, Illinois

A Page of Special Bargains.

Seedlings ? No. But transplants at the price of seedlings.

Every year we receive many requests for seedlings. We have never met the demand, because we know that seedlings are a proposition only for the nurseryman. Just compare the seedling at the left side with the transplant at the right side and you will see for yourself which one is easier to handle. However to meet the demand for smaller evergreens we offer below a fine selection of strong once transplanted, 5 year old stock at prices practically the same as seedlings.



Seedling



Transplant



Blackhill Spruce



Col. Blue Spruce

Name of varieties.	Size	per 25	50	100
White Fir	6-8"	\$2.75	\$5.50	\$9.00
Coloroda Blue Spruce	8-16"	3.00	5.75	10.00
Black Hill Spruce	8-15"	2.85	5.25	9.50
Norway Spruce	12-16"	2.50	4.75	9.00
White Pine	12-24"	2.85	4.75	8.75
Red Pine	10-14"	2.25	4.00	7.00
Mugho Pine	6-8"	4.00	7.00	12.50
Upright Yew (Wisconsin raised.)	8-10"	5.00	9.00	16.50



Norway Spruce



Red Pine

" He who sees things grow from the beginning will have the best view of them ". -Aristotle.



White Fir



Mugho Pine



Upright Yew



White Pine



The Gardeners Delight



Yews



This page of bargains should be indeed the delight of every gardener. We offer here a collection of Yews seldom found in nursery catalogs. And we have kept the prices low so that every home owner can afford to plant at least a few of these trees. We cannot urge you strongly enough to take advantage of this offer.

The Yew is one of the patriarchs of trees and, in point of longevity holds its own with the giant Sequoia of California. Often referred to by the ancient Latin name of "Taxus", this ornamental tree is grown for its dark green foliage and scarlet berry like fruits. These characteristics are found in all the varieties which are listed here.

Although the Yew thrives in both full sun or dense shade, it prefers a shady position. Diseases and insects very seldom attack this tree.

Only recently have the fine qualities of the Yews been appreciated. It is now becoming one of the most popular evergreens in the country.

The different Yews we offer here have all proven hardy, are all two times transplanted and between 4 and 5 years old. They have had the best care in the nursery, have an especially strong root system, in fact they are ready to grow fast from now on.

Hicks Yew. This is one of the newer Yews and considered a cross between the Japanese and the English Yew. Very hardy.

Upright Yew. A upright growing tree possessing all the fine characteristics of the Yew. It will add dignity to any planting.

Hatfield Yew. One of the most compact Yews. Growing somewhat like the Hicks Yew, but a little more open on the top.

Vermeulen Yew. Very compact and dense upright growing Yew. Broad base and narrow top. Heavily interspersed with red berries.

Intermedia Yew. This is a rather fast growing Yew but very hardy. Can best be described as a fast growing dwarf Yew.

Brown's Yew. A new hybrid Yew of dense habit and conical in outline. Very dark green foliage. A very good grower.

Dwarf Yew. This is the hardiest of all the Yews. Slow growing, but compact and of dark green color. The tree for a small space.

Spreading Yew. Grows in form somewhat like the Pfitzer Juniper and can be used for the same purposes. Very hardy.

Kelsey Berry Yew. This new low growing Yew is the heaviest berry bearing Yew. Color is dark rich green, almost black. Very hardy.

The landscape uses of these different Yews are of course many. The foundation planting, entrance planting, borders, edges, rock garden, hedges, the shady northside, small spaces where plants have to be kept in bound, in all these places no better plants can be found than the Yew in all its varieties.

PRICE:

Each one of these fine Yews \$65

Two of these fine Yews \$1⁰⁰

POST PAID



Hicks Yew
12-15 inches high



Upright Yew
12-15 inches high



Hatfield Yew
8-12 inches high



Vermeulen Yew
2 x transplanted. 12 inches high



Intermedia Yew
10-12 inches high



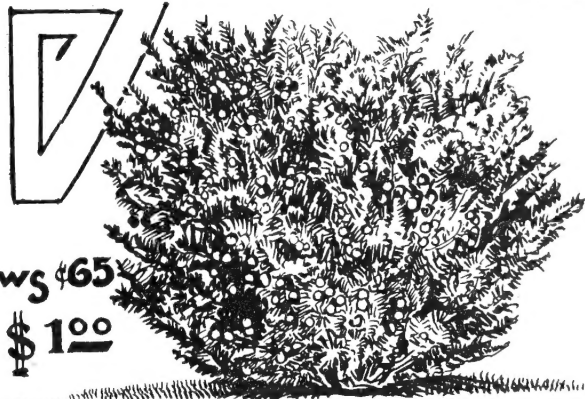
Brown's Yew
8-10 inches high



Dwarf Yew
8-10 inches high



Spreading Yew
12-15 inches spread



Kelsey Berry Yew
2 x transplanted. 12 inches high

