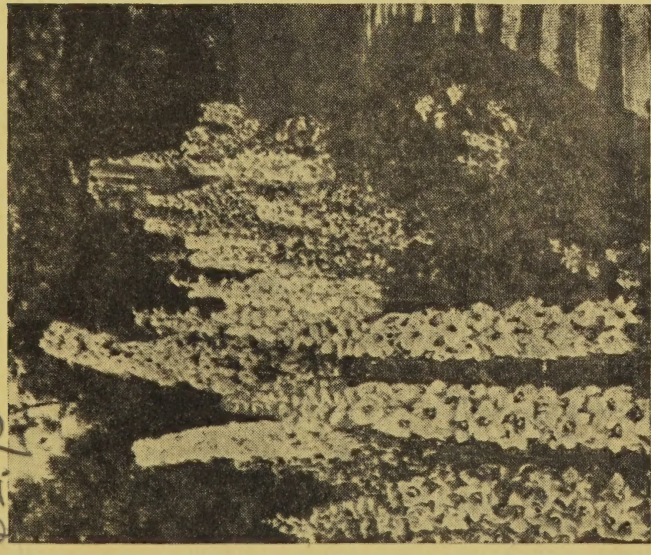


## **Historic, Archive Document**

Do not assume content reflects current scientific knowledge, policies, or practices.

LIBRARY

62.73



DELPHINIUM B & L HYBRIDS

LIBRARY  
 RECEIVED  
 ★ MAR 11 1943 ★  
 U. S. Department of Agriculture

BRISTOL PA. MAR 5 12:09 PM 1943

RETURN POSTAGE

U. S. DEPARTMENT OF AGRICULTURE,  
 WASHINGTON, D. C.

BUREAU OF PLANT INDUSTRY  
 Fruit and Vegetable Crops and Diseases  
 ••• 8-3501

1943 - SPRING AND FALL TRADE LIST - 1943

# WM. P. YEAGLE

SEEDLINGS, ROOTED CUTTINGS AND TRANSPLANTED PLANTS  
 FINE QUALITY PANSIES A SPECIALTY

"Plants That Please"

Established 1921  
 Phone Bristol 2118

BRISTOL, PA.





## SPRING PRICE LIST

All plants marked with an asterisk will be later due to inability to procure seed earlier. Regret the delay.

**PETUNIA**—All double, dwarf giant fringed; mixed colors. Strong well rooted seedlings \$1.65 per 100, \$15.00 per 1000. Strong transplanted plants \$2.50 per 100; \$23.50 per 1000.

**PETUNIA**—All Double Dwf. Giant Fringed; Pure white, World beauty and Blue. Strong transplanted plants \$3.00 per 100; \$27.50 per 1000.

**PETUNIA**—Ruffled Dwf. Grandiflora Nana Compacta Mxd. (new) Blooms are extra large, well ruffled with good open throats, about 4 inches in diameter, a remarkable blend of striking colors and gay color combinations. Fine for pot culture. Strong seedlings \$1.35 per 100, \$12.00 per 1000; strong transplanted plants \$2.00 per 100, \$18.50 per 1000.

**PETUNIA**—Super Fluffy Ruffles (new) A strain of Petunias so ruffled and frilled that the flowers have the appearance of being double. Far superior to the ordinary strain, blooms average 3½ to 4 inches in diameter. Strong seedlings \$1.35 per 100, \$11.00 per 1000. Transplanted plants \$1.85 per 100, \$16.50 per 1000.

**PETUNIA\***—Dwarf Cal. Giants (Bright colored strain) dwarf Giant Ruffled Monsters, dwarf Elks Pride and Velvet Ball. Strong seedlings \$1.25 per 100; \$10.00 per 1000. Strong transplanted plants \$1.85 per 100; \$16.00 per 1000.

**PETUNIA**—White Queen. Flowers are pure white and the uniformity of the dwarf compact growth is marvelous. One of the best large flowered single white. Strong seedlings, \$1.25 per 100; \$10.00 per 1000. Strong trans. \$1.75 per 100; \$16.00 per 1000.

**PETUNIA**—Glow (new) Silver Medal Winner a dwarf compact ball shaped variety, bright rose, red with lighter throat, free flowering all season, fine for pot plants or bedding. Strong seedlings \$1.25 per 100; \$10.00 per 1000. Strong transplanted plants \$1.75 per 100; \$16.50 per 1000.

**PETUNIA**—Colorado Sunset; dwarf fringed rose pink. Fine pot plant. Strong seedlings \$1.25 per 100; \$11.00 per 1000. Strong transplanted plants \$1.75 per 100; \$16.50 per 1000.

**PETUNIA**—Setting Sun. Compact Bushes, brilliant rose pink fringed 3 inch flowers the very best of its color. Strong seedlings \$1.25 per 100; \$10.00 per 1000. Strong trans. \$1.75 per 100; \$16.00 per 1000.

**PETUNIA**—Sunrise (new) fine for pot plants, the 2" flowers have slightly fringed edges and are a brilliant rose with a flush of scarlet and yellow throat, very compact. Seedlings \$1.00 per 100; \$9.00 per 1000. Strong transplanted plants \$1.50 per 100; \$13.50 per 1000.

## SPRING PRICE LIST

**PETUNIA\***—Cream Star flowers 2¼" across and are shaped like 5 pointed stars; soft creamy white deepening toward the throat to a bright golden yellow. Plants when properly grown are neatly rounded and completely covered with flowers over the side and top. Strong seedlings \$1.00 per 100; \$9.00 per 1000. Strong transplanted \$1.50 per 100; \$13.50 per 1000.

**PETUNIA**—Martha Washington; Giant flowering single frilled; dwarf compact type resembles a Pelargonium. Miniature Rose Gem; very compact and wonderful bloomer. Seedlings \$1.00 per 100; \$8.50 per 1000. Strong transplanted plants \$1.50 per 100; \$13.50 per 1000.

**PETUNIA**—Hybrida Topaz Queen all American selection 1938, a fiery velvety Rose of a brilliancy seldom seen, slightly suffused with gold. Seedlings 85c per 100; \$7.50 per 1000. Strong transplanted plants \$1.50 per 100; \$13.50 per 1000.

**PETUNIA**—Celestial Rose, Bluebird, Blue Gem, Balcony Blue, Snowball, General Dodds, and Dwarf Rose of Heaven. Strong seedlings 75c per 100; \$6.00 per 1000. Strong transplanted plants \$1.25 per 100; \$11.00 per 1000.

**PETUNIA**—Rosy Morn, and \*DeLuxe Mxd. Seedlings 65c per 100; \$5.50 per 1000. Strong transplanted plants \$1.25 per 100; \$11.00 per 1000.

Seedlings per 100    Per 1000

**AGERATUM**—Dwarf Blue Cap ..... .65      \$5.00

**AGERATUM**—Midget Blue (new), 1938  
Silver Award ..... 1.00      8.50  
Transplanted ..... 1.50      13.50

**ALYSSUM**—Dwarf bouquet ..... .40      3.50

**ALYSSUM**—Violet Queen (new). Compact form violet blue flowers ..... .75      6.50  
Transplanted ..... 1.50      13.50

**ASPARAGUS PLUMOSA**  
Strong transplanted ready for 3" 2.00

**ASTER**—Queen of the Market, Royal and Semples late Branching wilt resistant seed Pink, White and Lavender ..... .65      5.00

**CALENDULA**—Balls Long Orange ..... .65      5.00

**CALENDULA**—Transplanted ..... 1.50      13.50

**CAMPANULA-CAPATICA**—Blue ..... .85      6.50

**CANDY TUFT**—Giant White ..... .50      4.50

**CARNATIONS**—Chabauds mixed, large double blooms all summer ..... .65      5.00

**CARNATIONS**—(new). J. M. Bridgford. (Malmaison) a truly giant type of a Margaret class flowers 3" to 4" across, born on stiff stems and of all tints known to date, yellow being prominent. Strong transplant. .... 2.75      25.00



## SPRING PRICE LIST

	Seedlings per 100	Per 1000
DRACENA INDIVISI — Ready about April 15 .....	.75	6.00
DRACENA INDIVISI — Transplants ready June 1st .....	1.75	15.00
DELPHINIUM—Belladonna and Bella- mosum, Clivenden Beauty and Chinese Cambridge Blue and White, strong field grown plants ready for field about June 15th ..	1.25	9.00
DELPHINIUM—B & L Hybrids and Gold Medal Hybrids; about June 15th .....	1.50	13.50
DELPHINIUM—Pacific Hybrids mixed 65% mildew resistant. Huge flowers 2" to 2½". Strong field grown plants by June 15th .....	3.50	
DELPHINIUM—Lamartine, deeper in color than Belladonna, suitable for indoor forcing or field, mil- dew resistant. Strong field grown plants about June 15th ....	1.65	15.00
DELPHINIUM—WREXHAM and Blue Grotto ready June 15th .....	1.50	13.50
DIDISCUS—Blue Lace flowers .....	.60	5.00
DUSTY MILLER—Gymnocarpo .....	.60	5.00
FEVERFEW — Balls Double White, long stemmed flowers if planted early, blooms July and August. Trans., about May 10 .....	1.25	11.00
GEUM—Bradshaw (Red); Strathedon (yellow) .....	1.00	9.00
GEUM—Transplanted April 15th .....	2.00	17.50
IVY—English, rooted cuttings .....	1.50	13.50
IVY—Hahns, self branching rooted cuttings .....	2.00	
IVY—Merion Beauty, rooted cuttings ...	2.00	
2¼" Beetle zone only .....	6.00	
LARKSPUR—Double pink, blue and white .....	.75	6.00
LOBELIA—Dwarf blue stone .....	.65	5.00
LUPINE—Russels mixed hybrids, new miracle rainbow strain. Strong well rooted seedlings .....	4.50	40.00
Transplanted .....	9.00	
3" Pots beetle zone only 10 for \$2.00 .....	17.50	
MARIGOLD — Harmony dwf. New double yellow maroon border ....	.65	5.00
MARIGOLD—Crown of Gold—odorless Transplanted .....	.65 1.50	6.00
MARIGOLD* — Sunkist (new) very dwarf .....	.75	6.00

## SPRING PRICE LIST

Seedlings per 100    Per 1000

<b>MARIGOLD</b> — Scarlet glow (new) dwarf double 1941 all American selection, a distinct bronzy red color flowers 2" compact bushy growth free bloomer. Strong transplants .....	1.75	15.00
<b>NIEREMBERGIA*</b> —Purple Robe. Blue cup shaped flowers yellow eye, fine for edging, dwarf and com- pact 6" ready about March 1st ....	1.50	14.00
Transplanted about April 15th ..	2.50	23.50
<b>PANSIES</b> —Giant flowering Mixed .....	.65	4.00
<b>PANSIES</b> —Super Maple Leaf mxd. ....	1.00	7.50
<b>PANSIES</b> —Separate colors—white, red	.80	6.00
<b>PHLOX</b> —Drummondii dwf. mixed .....	.75	6.00
Transplanted .....	1.35	12.50
<b>SALVIA</b> —Zurich .....	.75	6.00
Transplanted .....	1.50	12.50
<b>SALVIA</b> —New seed, half ounce \$2.00, one ounce \$3.50		
<b>SALPIGLOSSIS</b> — Emperor — Cut Flower .....	.60	5.00
* <b>SHASTA DAISY</b> —Alaska .....	.85	6.50
<b>SCABIOSA</b> —Mixed giant hybrids .....	.75	6.00
* <b>SHASTA DAISY</b> —Diener's Dbl. White	1.50	
<b>SNAPDRAGONS</b> — Maximum rust proof, pink, yellow, bronze and scarlet and mixed .....	.75	6.50
<b>SNAPDRAGONS</b> — Supreme, Lucky Strike, Yellow, and Afterglow ..	.75	6.50
<b>SNAPDRAGONS</b> —Dandy (new) semi- dwarf rust proof, fine for pot plants, beautiful glowing orange and white tube, Seedlings .....	1.25	10.00
Transplanted .....	1.75	15.00
<b>VERBENA</b> —Mammoth mixed .....	.75	6.50
Transplanted .....	1.50	12.50
* <b>VERBENA</b> —Beauty of Oxford, Laven- der Glory .....	1.00	8.50
Transplanted .....	1.50	13.50
* <b>VERBENA</b> —Dwarf Danbrog, red with white eye .....	1.00	8.50
Transplanted .....	1.50	13.50
<b>VINCA VARIEGATED</b> — Rooted cut- tings .....	1.75	15.00
<b>VIOLAS</b> —Yellow gem. Ready March 10th .....	1.00	7.50
<b>ZINNIAS</b> — Giant dahlia flowered, mixed .....	.65	5.00
Transplanted plants of the above except where noted .....	1.25	11.00



# SPRING PRICE LIST

Seedlings per 100    Per 1000

## VEGETABLE SEEDLINGS

PEPPERS—Cal. Wonder (April 15) ....	.45	4.00
Transplanted .....	1.00	8.00
TOMATOES—Marglobe .....	.35	2.50
Transplanted .....	1.00	7.50
EGGPLANT—New York purple .....	.60	4.50
Transplanted .....	1.00	8.00

## PERENNIAL PLANTS

Strong one year old seedlings

Columbine, Elliot Hybrids (mixed), and Dwarf Blue. Hollyhocks dbl. pink. Gaillardia Bergundy. Sweet William (mixed) and dwarf Al- pine .....	1.50	12.50
--	------	-------

## CUSHION CHRYSANTHEMUM

Seedlings per 100

Yellow cushion rooted cuttings .....	6.00
Bronze cushion rooted cuttings .....	6.00
White cushion rooted cuttings .....	4.00
Pink cushion rooted cuttings .....	4.00

## ONE AND TWO YEAR OLD PERENNIAL PLANTS

(ready March 15th to December 1st

Plants per 10    Per 100

ARMERIA—Lauchena, Rose .....	1.50	11.00
AQUILEGIA — Scott Elliott hybrids mixed .....	1.50	10.00
DELPHINIUM—Belladonna improved and Bellamosum .....	1.50	10.00
DELPHINIUM—Lamartine .....	1.50	12.50
GAILLARDIA—Burgundy .....	1.25	8.00
PYRETHRUM—Roseum .....	1.50	10.00
PHLOX—Decussata Capt. Koehl blood red .....	1.20	9.00
PHLOX—B. Compte—Amaranthe .....	1.20	9.00
PHLOX—Mrs. Jenkins pure white .....	1.20	9.00
PHLOX—Thor. Salmon .....	1.25	9.00



## FALL PRICE LIST

All plants ready about Sept. 1st to Dec. 1st  
unless otherwise noted

### PANSY PLANTS

**YEAGLE'S SPECIAL MIXTURE**—Improved mixture of the finest strain obtainable. Flowers enormous size and wonderful color combinations are their distinctive features. 85c per 100; \$5.00 per 1000; 3000 for \$13.50.

**YEAGLE'S GIANT FLOWERING MIXTURE** — A strain unsurpassed for beautiful colors, equal to any available at the price 65c per 100; \$4.00 per 1000; 3000 for \$11.50 and 5000 for \$17.50. Large size plants for Winter flowering \$1.00 per 100; \$7.50 per 1000; ready about Oct. 15th. Write for special prices on large quantities. All field grown plants well rooted and stocky.

**DONS WINTER FLOWERING PANSIES MIXED**—Adapted for growing under Glass. Grows up to 3' tall, and must be staked. Heavy stems up to a foot tall support large blooms, in a range of colors. \$2.50 per 100; \$20.00 per 1000.

### PANSIES IN SEPARATE COLORS

**Alpenglow:** Cardinal shades, dark blotches, Beaconfield, deep purple, upper petals white. Bronze peculiar shades in bronze; Giant white, pure white flowers. Lake of Thun: Ultramarine blue, excellent combination when used with yellow master; Yellow Master, pure golden yellow.

Large size plant \$1.00 per 100; \$8.00 per 1000.  
Regular size plants 80c per 100; \$6.00 per 1000.

**Super Maple Leaf Giants;** exceptionally fine strain, with flowers of unbelievable size and texture, as some will measure 4" across. Plants of compact growth and rich dark green foliage. Regular size plants \$1.00 per 100; \$7.50 per 1000. Large size plants \$1.50 per 100 and \$10.00 per 1000.

### VIOLAS (tufted Pansies)

**Arkwright Ruby**—Large flowering type, bright rosy crimson with terra-cotta shadings; Chantryland, better in every way than Apricot Queen, Yellow Gem, large flowered, deep pure yellow, very free flowering \$1.00 per 100; \$8.50 per 1000. Mixed varieties, large variety of colors 65c per 100; \$4.50 per 1000.

**BELLIS DAISIES**—Monstrosa, pink, white and red 75c per 100; \$6.00 per 1000.

**MYOSOTUS**—Almestris Victoria, Azure blue flowers, 75c per 100; \$6.00 per 1000.

**VINCA VARIEGATED**—Field grown clumps ready about October 15th, \$8.00 per 100.

# FALL PRICE LIST

## PERENNIAL SEEDLINGS

Strong field grown plants ready for field.

Columbine, Elliot Hybrids and Alpine dwarf blue, Gaillardia Bergundy, Pyrethrum Roseum; Hardy Pinks, Carnations Grenadine red and pink, Sweet William, Newport Pink and mixed, Digitalis mixed, purple, rose and yellow, Hollyhock, double Newport pink, \$1.00 per 100; \$8.50 per 1000.

## SEEDLINGS AND TRANSPLANTS

Seedlings per 100 Per 1000

SNAPDRAGONS—(See Trade Papers)

CINERARIA—Cremers prize mixture ..	1.50	12.50
Transplanted .....	3.00	27.00
CINERARIA—Berlin Market .....	1.25	10.00
Transplanted .....	2.50	22.50
ROCKS—Bismarck, pink, white and lavender .....	.65	5.00

At all times we strive to justify the confidence of our customers, by strict adherence to these policies: "Plants that please, Service and all-around fair treatment."

## CONDITIONS OF SALE

Cash with order or C. O. D. shipments; on C. O. D. shipments 25% must accompany the order to guarantee acceptance. We reserve the right to decline C. O. D. orders. We do not deliver stock listed free of charge, but send by Express charges collect. No charge made for packing. All plants 250 at 1000 rate except Vegetable Plants. The prices are net and subject to no discounts. Proper packing and safe arrival guaranteed. Upon arrival unpack at once. Claims for shortage, etc., must be made within 5 days after receipt of plants. If arrival in Bristol by Bus or train, a 'phone call will bring immediate transportation to and from our nursery.

Prices subject to change without notice. A trial order solicited.

WILLIAM P. YEAGLE, BRISTOL, PENNA.

# ORDER EARLY