

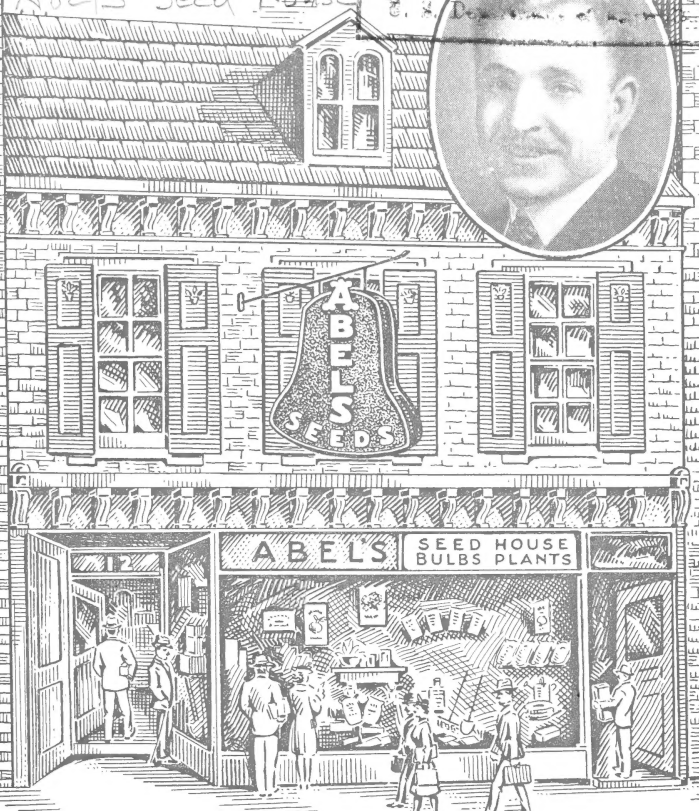
Historic, Archive Document

Do not assume content reflects current scientific knowledge, policies, or practices.

62.73

Abel's Seed House

FEB 19 1944



V

**ALL OUT
VICTORY
FOOD
PRODUCTION
IN
'44**

★

ABEL'S SEEDS

Bulbs
Fertilizers
Insecticides
Farm Supplies

Bee Supplies
Implements
and Repairs

12 North 9th.

READING, PA.

Vegetables for Vitality *. . . for Victory*

There are those who fight in many lands, and those who remain at home making the things needed by the fighting men. Chief requirement for those abroad and at home is FOOD.

You have been urged by your Government to cut down on your requirements of meat and use more VEGETABLES. It is a fact that we can all do a better job if we are well fed, therefore, the cultivation of food is extremely important, and VEGETABLES move into the front ranks.

V for VEGETABLES for VICTORY is our slogan this year. The farmer knows the important part he is called upon to play—to raise more and better crops—but he is somewhat handicapped by the shortage of help. Therefore, it is up to individuals living in cities, suburban and rural districts to transform any unused plots of ground into vegetable gardens. So let's roll up our sleeves and start digging.

To make a garden, there are several important procedures:

- 1—Select your soil for a garden plot with natural fertilizer and improve same with commercial fertilizer and add organic matter.
- 2—Plow or spade deeply so fertilizer is worked well into soil.
- 3—Pulverize the soil ready for planting with cultivator, rake or harrow.
- 4—Purchase and plant seeds. You get only tested and certified seeds at ABEL'S SEED HOUSE, and free information on garden problems.
- 5—Cultivate to keep soil in condition for air and moisture and free from weeds.
- 6—Use the correct Insecticide to protect plants and vegetables from being destroyed by insects.

THEN . . . HARVEST THE CROP

Every farmer knows "IT IS THE CROP THAT COUNTS" and ABEL'S SEEDS, with the proper cooperation, will produce a "bumper" crop. Consult us regarding your planting problems.

Let's all get out and dig in the soil this spring for recreation and profit, if not in your own back yard, then help your neighbor or a farmer, for Food will help to Win the War and your contribution in this way will make the **V** more vital in VEGETABLES and VICTORY.



CONSERVING FOR VICTORY

We Have Eliminated Our Usual Complete Listing
of
FLOWERS

We Have a Complete Stock at Our Store—Come In and
Make Your Selections.

The House of Abel

AND ITS MESSAGE TO YOU

Time marches on. For sixteen years we have been issuing this catalog for your help and guidance in selecting your spring and fall plantings. Each year we not only endeavor to list the new offerings in the seed world, but to include information which will be of assistance to the planter.

As a part of our service, we extend to each and every customer the privilege of calling upon us with their planting problems. We endeavor to solve all the problems presented, regardless of how difficult they may be. Should we be unable to supply the information immediately, it is ever our pleasure to do some research work for the benefit of our customers. All of which is offered FREE.

Our aim has always been, and always will be, to serve well all those who help to contribute to our success—our customers. All orders and all requests, large or small, receive our very best attention.

In SEEDS, BULBS, and SUPPLIES, we offer you only the highest quality obtainable, because we only deal with reputable growers and manufacturers, so that their guarantee augments our own.

Thanks to all our customers for their liberal support and patronage, for they have made possible this fifteenth catalog. If you have been well served by the HOUSE OF ABEL, your neighbors and friends will welcome a word from you not only about ABEL'S QUALITY SEEDS but also about ABEL'S SERVICE. These two, quality and service, we have united for better business through you. Accept, please, our grateful appreciation.



ORDER EARLY

We will appreciate it if our customers will send us their orders for seeds plants, bulbs, etc., during January and February. Your order can be filled at once and held for shipment when you wish same. No charge is made for boxes or packing, except for two bushel bags which are charged at cost and may be returned to us for credit.

SHIPPING INSTRUCTIONS

Always state by what method you wish goods forwarded, otherwise we will ship according to our best judgment.

HOW TO SEND CASH

We prefer that you send either Post Office Money Order, check or Express Money Order for amounts above 50c and stamps, Money Order or check for less.

NON-WARRANTY

Wilbert N. Abel of Abel's Seed House gives no warranty, express or implied, as to description, quality, productiveness, or any other matter of any seeds, bulbs or plants they sell and will not be responsible for the crop. If the customer does not accept the goods on these terms they are at once to be returned and the amount paid for them will be refunded.

The war has created a severe shortage of many varieties of seeds. Some seed replacements will be impossible to obtain, while others will be at much higher prices. Therefore, we suggest you order your seeds early. Due to conditions existing beyond our control, prices are subject to change without notice.

ASPARAGUS

MARTHA WASHINGTON RUST-RESISTANT ASPARAGUS—A variety bred up by the U. S. Department of Agriculture, at Washington, D. C., from a careful selection of plants of the Washington variety, and now more popular and more widely grown than any other. It produces large, beautiful, straight, dark green tender shoots of the most delicious flavor.

Large Two-Year-Old Roots of Genuine Martha Washington—Doz., \$1.00; 25, \$1.90; 50, \$2.60; 100, \$4.00; 250, \$7.75; 500, \$12.50; 1,000, \$22.00.

Martha Washington Seed—Can have a light cutting in 3 years. Pkt., 10c; oz., 20c; ¼ lb., 50c; ½ lb., 90c; lb., \$1.75.

DWARF OR BUSH GREEN POD BEANS

1 qt. weighs approx. 2 lbs.

½ pt., 30c; pt., 50c; qt., 90c.

ABEL'S TENDERGREEN—Pods are 6" long, round, medium dark, slightly curved, stringless. 56 days.

ABEL'S PLENTIFUL—Similar to Bountiful, except that they are slightly thicker, 7½" long, and a little darker green. Stringless. 50 days.

BURPEE'S GREEN STRINGLESS—Plants bushy and productive. Pods round, slightly curved, 5" long, stringless. 54 days.

GIANT STRINGLESS—Excellent variety for market gardening and shipping. Plant large, sturdy, and prolific. Pods round, 6½" long, fairly straight, light green, stringless. 56 days.

BOUNTIFUL—Plant medium large. Pods flat, 7" long, light green, stringless, and of good quality. 51 days.

LANDRETH'S STRINGLESS GREEN POD—Pods fairly straight 6½" long, round and of dark green color. An excellent canning variety. Stringless. 54 days.

WAX OR YELLOW-PODDED

½ pt., 30c; pt., 50c; qt., 90c.

ABEL'S BRITTLE WAX—One of the earliest of all wax beans. Vines about 15 inches in height. Pods round, slightly curved, 5½" long, deep yellow in color. Stringless. 62 days.

ROUND-POD KIDNEY WAX—Similar to Brittle Wax. Plants large, erect, medium green in color. Pods medium yellow, 5½" long, round, slightly curved, brittle, fleshy. 62 days.

GERMAN BLACK WAX—(Pencil Pod)—A leading variety for home and market gardening. Plant large, stocky, vigorous. Pods round, 6" long, slightly curved, fleshy, golden yellow, stringless. 55 days.

ABEL'S BOUNTIFUL WAX—An extremely early variety with 6½" long, flat, handsome pods. A good yielder. Stringless. 48 days.

SHELL

½ pt., 30c; pt., 50c; qt., 90c.

RED KIDNEY—Pods broad, flat and stringy. 5" long. A dwarf grower and very hardy. 62 days.

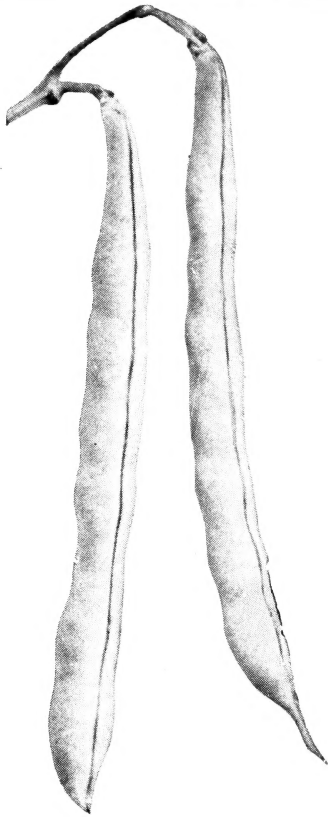
WHITE KIDNEY—Same as above, only white seeded. 62 days.

WHITE MARROWFAT SOUP—Extra fine shell beans, 5¼" long. Pods large, flat, and straight with 5 to 7 pure white seeds in each pod. 100 days.

DWARF HORTICULTURAL—(Bird Egg)—Used both as snap and shell beans. Pods 5" long, thick, flat and stringless. Very good yielder. 58 days.

ROBUST PEA—(Navy Beans)—Small, white baking beans of extra-fine quality, pods 4" long. 90 days.

Pencil Pod
or
German
Black Wax
Beans



POLE BEANS GREEN PODDED

$\frac{1}{2}$ pt., 25c; pt., 45c; qt., 80c.

KENTUCKY WONDER—(Old Homestead)—Vine five foot. Vigorous, large, crumpled medium green leaves. Pods round, curved, silver-green, brittle, almost stringless, $8\frac{1}{2}$ " long. 65 days.

LAZY WIFE—A late variety excellent for snap-shorts or shelled. Vine four foot. Pods 6" long, thick, meaty, stringless, with fine flavor. 73 days.

SCARLET RUNNER—Mostly used as an ornamental climber but edible and may be cooked in same manner as other Snap Beans. Vine twelve foot. Pods flat, oval, straight, coarse surface, 8" long. 90 days.

ABEL'S MAMMOTH HORTICULTURAL—(Wooster Pole)—We have an exceptionally fine, choice, large-seeded, large-podded, high-colored stock of these beans. They are the true old-fashioned type, hard to be found. Pods flat, 7" long, blade-like, green splashed with red. 85 days.

TENNESSEE WONDER—(Egg Harbor Pole)—Vine, climber. Green foliage, purple stems, bluish pink flower. Pods straight, $6\frac{1}{4}$ " long, gray-green crease back, double barreled, somewhat stringy. 71 days.

WAX PODDED

$\frac{1}{2}$ pt., 25c; pt., 45c; qt., 80c.

GOLDEN CLUSTER—Vine $4\frac{1}{2}$ '. Yellowish-green leaf. Pods waxy, 7" long, yellow, fleshy, stringless, flat, curved. 70 days.

KENTUCKY WONDER WAX—Very good climber. Dull green foliage. Pods flat, 8" long, fleshy, curved, glossy yellow. 70 days.

LIMA BEANS (BUSH)

1/2 pt., 25c; pt., 45c; qt., 80c.

ABEL'S NU-GREEN LIMA—Strong, stocky bush with big root-system. Small pod like a Baby Lima but Bean large, thick, potato type. Unusually sweet flavor. Pods curved, thick, round, oval, gray-green. 3 to 5 beans to a 3 1/4" pod. 75 days.

FORDHOOK BUSH—Average bush height 19". Gray-green foliage. Pods straight to recurved, thick, plump. Three to five beans to a 5" pod. Seed potato type, dimpled, greenish-white. 75 days.

BURPEE'S IMPROVED BUSH—Bush about 20" high. Compact, runnerless, erect, dark green, pods curved. Flat with 3 to 5 large beans to 5 1/2" pod. 75 days.

HENDERSON'S BUSH—Bush height 16", erect, runnerless, dark, glossy green. Pods curved, flat, 3 1/2" long, dark green with 3 to 4 beans to a pod. 65 days.

DREER'S BUSH—Potato, lima type. Plant large, spreading, with numerous semi-runners, vigorous. 3 1/4" pods contain 2 to 4 seeds. 80 days.

ITALIAN FAVA—A Bean similar to the English Broad Bean. They are very late and produce a crop of dark green pods. They are hardier than other beans and should be planted early in the spring. Average 4 to 6 beans to a 3 1/2" pod. 75 days.

LIMA BEANS (POLE)

1/2 pt., 25c; pt., 45c; qt., 80c.

DREER'S POLE—A potato lima similar in pod and seed as fordhook only smaller. Pods 4" long, straight, smooth, flattish oval white with greenish tint. 92 days.

KING OF THE GARDEN—The most widely used pole lima. Plant tall, good-climber, hardy, and vigorous. Very productive. Pods 7", flat, smooth with 4 to 5 large oval greenish white bean. 88 days.

BURPEE'S GIANT-PODDED—One of the largest podded Pole Limas. 7 1/2". Beans extra large, of superb flavor. Vine grows 10 to 12' high. 88 days.

BROCCOLI

GREEN TALIAN SPROUTING CALABRESE—Forms a large cluster of bluish green flower heads. When the central head is removed numerous lateral sprouts develop each heading. Stems and head are both cooked like cauliflower. 60 days. Pkt., 15c; 1/2 oz., 35c; 1 oz., 65c; 1/4 lb., \$2.00.

BRUSSELS SPROUTS

LONG ISLAND IMPROVED—Best strain, Sprouts compact, grayish, green, hardy, early. Height, 18", 1 1/2" diameter, 75 days. Pk., 10c; 1/2 oz., 30c.

BEETS

ABEL'S EARLY WONDER—Roots nearly globe-shaped of uniform size with little foliage. Skin deep red; flesh dark red with little zoning. 58 days.

Pkt., 10c; oz., 25c; 1/4 lb., 85c; 1 lb., \$2.50.

BERK'S FAVORITE BEET—A pedigree stock unsurpassed in earliest, uniformity and in depth of interior color. Tops medium erect, uniform in size and color. Roots semi-globular. Deep red, smooth with small neck and tap root. Excellent quality. 57 days.

Pkt., 10c; Oz., 30c; 1/4 lb., 95c; 1 lb., \$2.80.

DETROIT DARK RED—Skin dark blood-red; flesh bright red, very tender and sweet. Fine round shape. Excellent for main crop. 68 days.

Pkt., 10c; oz., 30c; 1/4 lb., 95c; 1 lb., \$2.80.



Detroit
Dark Red
Beet

BURPEE'S RED BALL—Remarkable for its uniform shape, deep colored bluish, and fine sweet flavor. The roots are globe-shaped, and having a smooth deep red skin. The flesh is dark red, free from woody fiber, and very tasty. Finest quality. Desirable for home or market. 57 days.

Pkt., 10c; oz., 25c; $\frac{1}{4}$ lb., 80c; 1 lb., \$2.40.

FAMOUS BLACK KNIGHT BEET—Deepest dark red all the way through. It is of very superior quality, richly flavored, and is very smooth, clean, and of a very uniform shape and size, bunching up attractively. 60 days.

Pkt., 10c; oz., 30c; $\frac{1}{4}$ lb., 95c; 1 lb., \$2.80.

HARRISBURG MARKET—Extra-early beet. Dark red color all the way through; tender, highly flavored flesh; smooth clean skin; shape extremely uniform. This is the very best first-early beet. It has become the leading early beet in many city markets. 58 days.

Pkt., 10c; oz., 30c; $\frac{1}{4}$ lb., 95c; 1 lb., \$2.80.

CROSBY'S EGYPTIAN—An improved strain of Egyptian Beet. Rich dark red flesh, crisp and tender. An excellent early sort. 54 days.

Pkt., 10c; oz., 20c; $\frac{1}{4}$ lb., 70c; 1 lb., \$2.30.

ABEL'S NEW HALF-LONG—One of the finest half-long beets on the market. Flesh deep maroon-red, approaching black, free from toning. 78 days.

Pkt., 10c; oz., 30c; $\frac{1}{4}$ lb., 95c; 1 lb., \$2.80.

ABEL'S NEW CENTURY BEET—The root is turnip or top shaped, tends to show considerable sideroot. Interior is blood-red in color, cooks a very deep, dark red. The tops or leaves are a conspicuously green top without a trace of any red coloring either in the leaves or stems, showing considerable foliage and standing somewhat taller than most varieties of garden beets. 75 days.

Pkt., 10c; oz., 30c; $\frac{1}{4}$ lb., 90c.

MANGEL-WURZEL AND SUGAR BEETS

MAMMOTH LONG RED—Enormous roots, averaging 30 to 50 tons per acre. 90 days.

Pkt., 10c; oz., 20c; ¼ lb., 60c; 1 lb., \$1.80.

GOLDEN TANKARD—Bright yellow; large. Tends to give color to milk. 90 days.

Pkt., 10c; oz., 20c; ¼ lb., 60c; 1 lb., \$1.80.

CABBAGE

EARLY JERSEY WAKEFIELD—Extra early. Plants compact, hardy. Withstand cold weather. Heads cone shaped, solid. Ave. diam., 5", weight, 2¼ lbs., 64 days.

Pkt., 10c; ½ oz., 20c; 1 oz., 30c; ¼ lb., \$1.10; 1 lb., \$4.05.

EARLY WINNIGSTADT—Short stemmed, vigorous, and a dependable header, for market gardens and shipping. Heads very solid, fine grained, 7"—8" long. The leaves have a distinct twist at point of head; a good cropper of excellent quality. Ave. diam. 6", weight 3½ lbs., 83 days.

Pkt., 10c; ½ oz., 20c; 1 oz., 30c; ¼ lb., \$1.10; 1 lb., \$4.05.

ABEL'S GOLDEN ACRE—Selected from Copenhagen Market. Very early, and slightly smaller than Copenhagen. Solid, fine grained, well flavored. Ave. diam 6", weight 3 lbs., 65 days.

Pkt., 10c; ½ oz., 30c; 1 oz., 55c; ¼ lb., \$1.90; 1 lb., \$6.00.

COPENHAGEN MARKET—Heads average four pounds, solid, hard, small core. Compact growth allows thick planting. Short stem. Excellent quality. Ave. diam. 6½", weight 4 lbs., 65 days.

Pkt., 10c; ½ oz., 30c; 1 oz., 50c; ¼ lb., \$1.75; 1 lb., \$5.50.

DANISH BALLHEAD TALL STEM OR HOLLANDER—Late cabbage, good for storage and shipping. Plant large, sturdy, short stem. Head deep, round, hard, compact. Flavor good. Ave. diam 7½", weight 6½ lbs., 110 days.

Pkt., 10c; ½ oz., 30c; 1 oz., 50c; ¼ lb., \$1.75; 1 lb., \$5.50.

LARGE LATE FLAT DUTCH—Wide adaptation. Good for storage. Heads solid, flat, resists bursting. Ave. diam 12", weight 12 lbs., 102 days.

Pkt., 10c; ½ oz., 30c; oz., 50c; ¼ lb., \$1.75; 1 lb., \$5.50.

LATE AMERICAN DRUMHEAD—Quite similar to Late Flat Dutch but shorter in stem; large, spreading, dark green leaves. Heads very large, flat, solid. For home and market gardens, also for shipping. A good keeper. Ave. diam. 12", weight 11 lbs., 110 days.

Pkt., 10c; ½ oz., 25c; 1 oz., 40c; ¼ lb., \$1.50; 1 lb., \$5.25.

SUREHEAD—Of the Late Flat Dutch type; medium long stem; a dependable header. Outer leaves not numerous but of upright growth. Heads large, round, somewhat flattened. Ave. diam. 10", weight 9 lbs., 77 days.

Pkt., 10c; ½ oz., 30c; 1 oz., 55c; ¼ lb., \$1.90; 1 lb., \$6.00.

MAMMOTH RED ROCK—A large strain of the standard red cabbage. Heads round, very hard; color purplish red; an excellent keeper. Ave. diam. 7", weight 7 lbs., 100 days.

Pkt., 10c; ½ oz., 30c; 1 oz., 55c; ¼ lb., \$1.90.

HOLMES HOUSER CABBAGE—A main crop or winter storage cabbage, developed in Pennsylvania. It has a head varying from round to bluntly pointed, with a distinct type of foliage and a very small core; it is extremely hardy, doing well under difficult conditions; it develops a medium sized head with splendid keeping qualities. Ave. diam. 8", weight 5 lbs., 77 days.

Pkt., 10c; ½ oz., 30c; 1 oz., 55c; ¼ lb., \$1.90.

PENN STATE BALLHEAD—Late, Prolific, uniform. Heads flattened globe, hard, heavy. Ave. diam. 7", weight 5½ lbs., 110 days.

Pkt., 10c; ½ oz., 30c; 1 oz., 55c; ¼ lb., \$1.90.

YELLOWS RESISTANT CABBAGE

EARLY JERSEY WAKEFIELD—An improved strain especially selected for "yellows-resistance." The heads are of conical form, with a broad base and pointed top. Compact plants and very productive. About the first of this group to mature. Ave. diam. 5", weight 2½ lbs., 63 days.

Pkt., 10c; ½ oz., 30c; 1 oz., 55c; ¼ lb., \$1.90.

GLORY OF ENKHUIZEN—Used largely for kraut, also by truckers and shippers. Heads large, round, solid, with few outer gray-green leaves; of excellent quality. Ave. diam. 8", weight 5 lbs., 77 days.

Pkt., 10c; ½ oz., 30c; 1 oz., 55c; ¼ lb., \$1.90.

GOLDEN ACRE—New "yellow-resistant" Golden Acre. Medium size, solid, round heads about 6" across; two weeks earlier than Marion Market. Plants are short-stemmed, of erect uniform growth, and have grayish green leaves. Ave. diam. 6", weight 3 lbs., 65 days.

Pkt., 10c; ½ oz., 30c; 1 oz., 55c; ¼ lb., \$1.90.

WISCONSIN ALL SEASONS—Bred from all Seasons and has inherited all the good qualities of that excellent cabbage. It is said to be the hardiest of all flat-head varieties and is much in demand for making kraut. Stands hot weather well. Ave. diam. 10", weight 9 lbs., 95 days.

Pkt., 10c; ½ oz., 30c; 1 oz., 55c; ¼ lb., \$1.90.

WISCONSIN HOLLANDER—Developed from the famous Danish Ballhead but required about 10 days longer to come to maturity. Heads are large, round, flattened on top but quite deep. Ave. diam. 7½", weight 8 lbs., 105 days.

Pkt., 10c; ½ oz., 30c; 1 oz., 55c; ¼ lb., \$1.90.

CHINESE OR CELERY CABBAGE

PE-TSAI—Early and sure heading. Outer dark green leaves enclose cylindrical, tapering head; very compact, white tinted with green; crisp and sweet. Ave. diam. 15", 75 days.

Pkt., 10c; ½ oz., 25c; 1 oz., 40c; ¼ lb., \$1.25.

WONG BOK—A short stout oval variety; compact, tender, and well blanched. Grown in the South. Ave. diam. 9", 85 days.

Pkt., 10c; ½ oz., 25c; 1 oz., 40c; ¼ lb., \$1.25.

CHIHLI—Early and dependable in heading. Head thick, tapered at top, solid, blanched well, sweet and tender. A superior variety. Ave. diam., 18", 75 days.

Pkt., 10c; ½ oz., 25c; 1 oz., 40c; ¼ lb., \$1.25.

CARROTS

ABEL'S GOLDEN ROD OR TENDERSWEET—(IMPERATOR)—Tops medium but suitable for bunching. Roots smooth, deep orange, semi-blunt. Flesh fine grained, tender, indistinct cord. Length of root, 8"; diam. at shoulders, 1½"; 77 days.

Pkt., 10c; ½ oz., 20c; 1 oz., 35c; ¼ lb., \$1.25; 1 lb., \$3.80.

ABEL'S RED-CORED CHANTENAY—Like Chantenay except orange-red color extends clear to center. Outstanding favorite. Length of root, 5"; diam. at shoulders, 2"; 72 days.

Pkt., 10c; ½ oz., 20c; 1 oz., 35c; ¼ lb., \$1.25; 1 lb., \$3.80.

TOUCHON—Similar to Nantes but a little longer. Tops small. Roots deep orange, cylindrical, stump-rooted. Flesh bright orange, tender, sweet, of fine flavor; core small and inconspicuous. Length of root, 6½"; diam. at shoulders, 1½"; 70 days.

Pkt., 10c; ½ oz., 20c; 1 oz., 35c; ¼ lb., \$1.25; 1 lb., \$3.80.

VEGETABLES FOR VITALITY FOR VICTORY

EARLY GOLDEN BALL—Also called French Forcing. An excellent quick-growing variety with small round roots about 1½ inches in diameter. The beautiful orange flesh is tender, fine grained, and of rich flavor. Length of root, 2"; diam. at shoulders, 1½"; 65 days.

Pkt., 10c; ½ oz., 20c; 1 oz., 35c; ¼ lb., \$1.25; 1 lb., \$3.80.

ABEL'S NANTES—Tops medium; roots cylindrical, smooth, bright orange becoming yellow in center, but no distinct core. Length of root, 6"; diam. at shoulders, 1¼"; 70 days.

Pkt., 10c; ½ oz., 20c; 1 oz., 35c; ¼ lb., \$1.25; 1 lb., \$3.80.

DANVERS HALF-LONG—Heavy yield on all soil types. Tops medium size, coarse. Roots smooth, orange, tapering to blunt point. Flesh sweet, crisp, tender. Length of root, 7"; diam. at shoulders, 2"; 75 days.

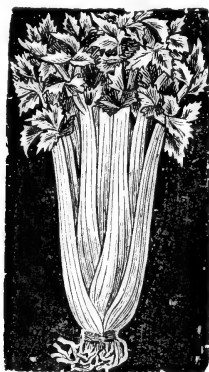
Pkt., 10c; ½ oz., 20c; 1 oz., 35c; ¼ lb., \$1.25; 1 lb., \$3.80.

LONG ORANGE—Heavy yield, used for stock feeding as well as gardening. Color, red-orange; long, tapered to a point; lighter colored core. Length of root, 11"; diam. at shoulders, 2¼"; 88 days.

Pkt., 10c; ½ oz., 20c; 1 oz., 35c; ¼ lb., \$1.25; 1 lb., \$3.80.

PRIDE OF DENMARK—A cross between the two well known varieties Nantes and Chantenay, this novelty unites the good qualities of both. Our Pride of Denmark will stand storing and shipping at the same time retaining flavor and crispness of Nantes. The long obtuse cylindrical roots are when grown in the proper soil, absolutely smooth, of a beautiful scarlet color, and practically coreless. Length of root, 7"; diam. at shoulders, 2"; 88 days.

Pkt., 10c; ½ oz., 20c; 1 oz., 35c; ¼ lb., \$1.25; 1 lb., \$3.80.



Fordhook
Emperor
Celery

CELERY

EMPEROR—(FORDHOOK)—Outer leaves dark green, fading to a yellowish green inside. Stalk large, thick, heavy, tender, crisp, very little fiber; blanches to pale gold heart. Height, 18"; 125 days.

Pkt., 10c; ½ oz., 50c; 1 oz., 90c; ¼ lb., \$2.75.

ABEL'S GOLDEN PLUME—Well suited to market garden planting and to shipping. Plant of medium height with compact, full heart; blanches readily to golden yellow; of excellent quality. Height, 20"; 115 days.

Pkt., 10c; ½ oz., 50c; 1 oz., 90c; ¼ lb., \$2.75.

ABEL'S HOUSER—Absolutely the best green celery without excepting any. When blanched it becomes a beautiful creamy white, full of hearts, and every stem of it to the outside is delicious. It is not surpassed as a good keeper, and is the leading green celery in every market. Height, 18"; 125 days.

Pkt., 10c; ½ oz., 50c; 1 oz., 90c; ¼ lb., \$2.75.

ABEL'S WONDERFUL—An unusually thick-set compact celery which attains exceptional weight. Has no soft stalks, is free from strings, and is a perfect shipper. Height, 20"; 115 days.

Pkt., 10c; 1/2 oz., 50c; 1 oz., 90c; 1/4 lb., \$2.75.

SALT LAKE—(UTAH)—A very desirable green type. Plant stocky, full hearted and compact; blanches readily. Stems thick, solid, medium broad and full rounded; of nutty flavor and fine quality. Height, 18"; 122 days.

Pkt., 10c; 1/2 oz., 50c; 1 oz., 90c; 1/4 lb., \$2.75.

EASY BLANCHING—An excellent second early green variety for home gardens and truckers. Vigorous and compact in habit of growth, it blanches readily to attractive white, and is a good keeper. Stalks are thick, solid and of good flavor. Height, 20"; 122 days.

Pkt., 10c; 1/2 oz., 45c; 1 oz., 80c; 1/4 lb., \$2.50.

GIANT PASCAL—Green leaves. Keeps well. Blanches to yellowish-white. Solid, crisp, fine flavor. Height, 24"; 135 days.

Pkt., 10c; 1/2 oz., 40c; 1 oz., 70c; 1/4 lb., \$2.00.

GOLDEN SELF-BLANCHING—Earlier than the original strain, with taller, less sturdy stalks. Particularly desirable for truckers, but not as suited to shipping; blanches readily; of excellent quality. Height, 18"; 120 days.

Pkt., 10c; 1/2 oz., 50c; 1 oz., 90c; 1/4 lb., \$2.75.

WHITE PLUME—Leaves bright green, tinged with white; stalks medium, easily blanched to pure white; solid, crisp and of good quality. Height, 18"; 110 days.

Pkt., 10c; 1/2 oz., 40c; 1 oz., 75c; 1/4 lb., \$2.25.

WINTER QUEEN—(SCHUMACHER)—A medium dwarf, winter variety, earlier than Giant Pascal. Stalks light green, broad, solid and crisp; blanches well to creamy white. Height, 18"; 130 days.

Pkt., 10c; 1/2 oz., 40c; 1 oz., 75c; 1/4 lb., \$2.25.

CELTUCE

BURPEE'S CELTUCE grows easily and quickly, forming a rosette of light green leaves which may be used, when young, as "greens." In less than 90 days after seed is sown, the central stem or stalk of the plant is usable and will be found most tender at this age. Celtuce stalks are solid throughout, the skin greenish white and tough but the inside is very succulent, most delicate pale green, crisp and brittle. Young Celtuce leaves have 4 times the Vitamin C content of head-lettuce leaves.

Pkt., 15c; 1/4 oz., 35c; 1/2 oz., 65c; oz., \$1.25.

CELERIAC (TURNIP-ROOTED CELERY)

GIANT PRAGUE—Roots of good size, round, smooth, with small tops.

Pkt., 10c; 1/2 oz., 45c; 1 oz., 80c; 1/4 lb., \$2.40.

CHICORY

WITLOOF—(FRENCH ENDIVE)—Used extensively for salads. The parsnip-shaped roots are reset for forcing in cold frames or greenhouse, and the new leaf growth forms an attractive, compact blanched head, with broad, crisp leaves, having a pleasantly sharp flavor.

Pkt., 10c; 1/2 oz., 35c; 1 oz., 60c; 1/4 lb., \$1.80.

SWEET CORN

HYBRIDS

GOLDEN CROSS BANTAM—Bright yellow kernels. Two or three times as productive as Golden Bantam, and equal in quality. Resistant to wilt. Stalk sturdy and upright. No. of rows, 12; height of stalk, 6'; length of ear, 8"; 85 days.

1/2 lb., 35c; 1 lb., 60c; 2 lbs., \$1.10; 5 lbs., \$2.25; 10 lbs., \$4.00.

ABEL'S TOP FLIGHT BANTAM—Yellow. Kernels extremely tender, flavorful, productive. High yield and excellent quality. No. of rows, 16-18; height of stalk, 7'; length of ear, 10"; 83 days.

1/2 lb., 35c; 1 lb., 60c; 2 lbs., \$1.10; 5 lbs., \$2.25; 10 lbs., \$4.00.

ABEL'S VICTORY CORN (HYBRID)—For the first sweet corn of the season plant Abel's Victory Hybrid corn and invite your friends in for a treat. The rapid growth of this first early yellow hybrid will surprise you, and it is safe to plant it even a week earlier than ordinary sweet corn. Although designed to be the first on the market, the yield is good with 8 to 10 rowed ears, 7 to 8 inches long. The tips are well filled, and uniformly excellent. Unlike many extra early types which are susceptible to smut, Abel's Victory Hybrid sweet corn shows good resistance and makes clean, fine quality crops. Maturity 59 days.

1/2 lb., 40c; 1 lb., 65c; 2 lb., \$1.25; 5 lb., \$2.75.

MARCCROSS C-13x6 (HYBRID)—71 days. Ears 6 to 7 inches, with 12 to 14 rows of fairly large yellow kernels. Fairly good quality. Stalk, 4 1/2 to 5 feet. Garden and market, quite well known in the East.

1/2 lb., 35c; 1 lb., 60c; 2 lb., \$1.10; 5 lb., \$2.25.

IOANA (HYBRID)—90 days. 9 inches, with 12 to 14 rows of medium width, deep yellow kernels, of excellent quality. Uniform. Stalk—6 to 6 1/2 feet. A new high yielding hybrid destined to be popular.

1/2 lb., 35c; 1 lb., 60c; 2 lb., \$1.10; 5 lb., \$2.25.

CARMELCROSS—75 days. A new development by the Connecticut Agricultural Experiment Station, and recommended for the northeastern states. Ears average 12 rows. Resembles Marccross but is later in maturing. Excellent quality.

1/2 lb., 35c; 1 lb., 60c; 2 lb., \$1.10; 5 lb., \$2.25.

SPANCROSS (HYBRID)—73 days. Excellent for early market. Ears well filled on good sturdy stalks. Golden yellow, sweet and tender. 1/2 lb., 35c; 1 lb., 60c; 2 lb., \$1.10; 5 lb., \$2.25.

ABEL'S TENDERGOLD—Stalks sturdy with good foliage. Ears nearly cylindrical, kernels medium in width and depth, golden yellow, tender and of good quality. No. of rows, 12; height of stalk, 7 1/2'; length of ear, 8"; 75 days.

1/2 lb., 35c; 1 lb., 60c; 2 lbs., \$1.10; 5 lbs., \$2.25; 10 lbs., \$4.00.

SILVER CROSS HYBRID BANTAM—A very white sweet corn, very high in sugar content. Kernels extremely tender. No. of rows, 12-14; height of stalk, 7'—8'; length of ear, 8 1/2"; 82 days.

1/2 lb., 35c; 1 lb., 60c; 2 lbs., \$1.10; 5 lbs., \$2.25; 10 lbs., \$4.00.

STOWELL'S EVERGREEN HYBRID—Highly valuable to market gardeners and canners. Stalk sturdy with close growing upright ears; foliage medium green. Ears very slightly tapered, uniform. Kernels white, medium-wide, deep, medium cob. No. of rows, 16-18; height of stalk, 8'; length of ear, 8"; 93 days.

1/2 lb., 35c; 1 lb., 60c; 2 lbs., \$1.10; 5 lbs., \$2.25; 10 lbs., \$4.00.

OPEN POLLINATED VARIETIES

GOLDEN BANTAM—The most popular and finest flavored open pollinated yellow sweet corn. Kernels broad, sweet, flavorful, tender. Has a rich sweet and buttery flavor. No. of rows, 8; height of stalk, 4½'; length of ear, 6½"; 78 days. ½ pt., 20c; pt., 30c; qt., 55c; pk., \$4.00.

GOLDEN SUNSHINE—An early variety of the Golden Bantam Type. Kernels large, broad, golden yellow, and of good flavor. No. of rows, 10-12; height of stalk, 5'; length of ear, 7"; 70 days.

½ pt., 20c; pt., 30c; qt., 55c; pk., \$4.00.

GILL'S EARLY GOLDEN MARKET—A popular and prolific variety for home and market garden. Kernels golden yellow, medium, tender, sweet, and of good flavor. No. of rows, 8-12; height of stalk, 4½'; length of ear, 6½"; 72 days.

½ pt., 20c; pt., 30c; qt., 55c; pk., \$4.00.

AUNT MARY'S CORN—Stalk with fairly heavy, very strong, even, broad leaf growth; ears very slender with a very small cob, pure white kernels, very sweet and tender. Has a very heavy, long, close husk, and will hold for weeks after becoming fit to eat. No. of rows, 8; height of stalk, 8½"; 95 days.

½ lb., 35c; 1 lb., 60c; 2 lbs., \$1.10; 5 lbs., \$2.25; 10 lbs., \$4.00.

GOLDEN COUNTRY GENTLEMAN—(SHOE PEG)—A prolific variety of excellent quality. Stalk 7' tall, often with two ears. Kernels very deep, slender, sweet, with tender hull, and set irregularly without row formation, 7" ear, 95 days.

½ pt., 20c; pt., 30c; qt., 55c; pk., \$4.00.

GOLDEN EVERGREEN—Best and sweetest of sweet corns. Cross of Golden Bantam and Stowell's Evergreen. No. of rows, 12-14; height of stalks, 6½'-7'; length of ear, 7½"; 86 days.

½ pt., 20c; pt., 30c; qt., 55c; pk., \$4.00.

WHIPPLES' EARLY YELLOW—Popular for home and market gardens. Stalk sturdy and erect; strong husks, well filled at tips. Kernels golden yellow, fairly deep, sweet, and of good flavor. No. of rows, 12-14; height of stalks, 7'; length of ear, 7"; 82 days.

½ pt., 20c; pt., 30c; qt., 55c; pk., \$4.00.

GOLDEN GIANT—For home and market gardens. Ears rather thick at the butt. Kernels golden yellow; of fair quality. No. of rows, 12-16; height of stalk, 7'; length of ear, 7½"; 87 days.

½ pt., 20c; pt., 30c; qt., 55c; pk., \$4.00.

DWARF EXTRA-EARLY ADAMS—This is not a Sweet or Sugar Corn, and the distinction should be kept carefully in mind. However, it is of good flavor, quite sweet and tender when young. No. of rows, 12; height of stalk, 5½'; length of ear, 6"; 66 days.

½ pt., 15c; 1 pt., 25c; 1 qt., 40c; 1 pk., \$2.75.

EARLY SURPRISE—Notable for ear size combined with extreme earliness. Very desirable for the earliest markets. Kernels tender and of good quality. No. of rows, 8-12; height of stalk, 5'; length of ear, 7"; 72 days.

½ pt., 20c; pt., 30c; qt., 55c; pk., \$4.00.

WHIPPLES' EARLY WHITE SWEET CORN—Ears well filled at tips. Kernels deep, medium-narrow, sweet and tender. No. of rows, 14-18; height of stalk, 6½"; 85 days.

½ pt., 20c; pt., 30c; qt., 55c; pk., \$4.00.

EARLY EVERGREEN—Earlier than Stowell's Evergreen, and is equal in all respects. An old market gardener's favorite. No. of rows, 14-18; height of stalk, 8'; length of ear, 8"; 83 days.

½ pt., 20c; pt., 30c; qt., 55c; pk., \$4.00.

VEGETABLES FOR VITALITY FOR VICTORY

WHITE EVERGREEN—The ears are large, closely set with pearly white grains of rich and luscious flavor. Heavy yielder. No. of rows, 14; height of stalk, 7'; length of ear, 7-8"; 88 days.

1/2 pt., 20c; pt., 30c; qt., 55c; pk., \$4.00.

STOWELL'S EVERGREEN—Grains long and white in color. Standard main crop variety. Has been popular for years for late white sweet corn. No. of rows, 14-18; height of stalk, 7 1/2'; length of ear, 8"; 94 days.

1/2 pt., 20c; pt., 30c; qt., 55c; pk., \$4.00.

KENDEL'S EARLY GIANT—Ears slightly tapered and attractive. No. of rows, 12-14; height of stalk, 6 1/2'; length of ear, 7"; 85 days.

1/2 pt., 20c; pt., 30c; qt., 55c; pk., \$4.00.

HOWLING MOB—A prolific variety for home and market gardens. Thick butts, strong husks with green streamers. Kernels clear white, plump and of fair quality. No. of rows, 12-16; height of stalk, 7'; length of ear, 7 1/2"; 83 days.

1/2 pt., 20c; pt., 30c; qt., 55c; pk., \$4.00.

BLACK MEXICAN—A very old variety. Kernels tender, exceptionally sweet; white at eating stage, changing to blue-black at maturity. No. of rows, 8; height of stalk, 6'; length of ear, 7 1/2"; 88 days.

1/2 pt., 20c; pt., 30c; qt., 55c; pk., \$4.00.

POP CORN

MONARCH WHITE RICE—An old standard early variety. Kernels pointed, of translucent appearance; white when popped. Height of stalk, 6 1/2'; length of ear, 6"; 90 days.

1/2 lb., 15c; 1 lb., 28c; 5 lb., 26c; 10 lb., 24c.

QUEEN'S GOLDEN—Tall, vigorous plant with long, slim ears. Smooth, yellow pearl-type kernel. Height of stalk, 7'; length of ear, 7"; 90 days.

1/2 lb., 15c; 1 lb., 27c; 5 lb., 25c; 10 lb., 23c.

CAULIFLOWER

EXTRA-EARLY SNOWBALL—Plants dwarf with short, pale leaves. Heads medium size, firm, compact, pure white. Fine quality and dependability. Diameter, 6 1/2"; 55 days.

Pkt., 15c; 1/4 oz., \$1.00; 1/2 oz., \$1.85; 1 oz., \$3.50.

DRY-WEATHER—Larger and later than Early Snowball. Pure white heads. Wide adaptation, particularly drouth resistant. Diameter, 7 1/2"; 66 days.

Pkt., 15c; 1/4 oz., \$1.00; 1/2 oz., \$1.85; 1 oz., \$3.50.

CUCUMBERS

A. B. C. CUCUMBER—Uniform, nearly cylindrical, very dark green, well rounded at ends. Good market gardener's variety. Thickness, 2 1/4"; length, 8 1/2"; 68 days.

Pkt., 10c; oz., 35c; 1/4 lb., \$1.25; 1 lb., \$3.50.

ABEL'S STAYS GREEN or BLACK DIAMOND—Fruits symmetrical, nearly square ended. Very dark green, holds color and firmness well when shipped long distances. Thickness, 2 3/8"; length, 7"; 60 days.

Pkt., 10c; oz., 25c; 1/4 lb., 80c; 1 lb., \$2.75

ABEL'S EARLY FORTUNE—Fruit long and tapering. Flesh thick, white, firm, and unusually crisp. Very few seeds. Rich dark green color which does not fade when shipped. Thickness, 2 1/2"; length, 9"; 63 days.

Pkt., 10c; oz., 25c; 1/4 lb., 80c; 1 lb., \$2.75

STRAIGHT "8"—Fruit symmetrical, cylindrical, well rounded at ends. Color dark green quite free from light stripes. Ideal for shipping and home use. Thickness, 1 1/2"; length, 8"; 66 days.

Pkt., 10c; oz., 35c; 1/4 lb., \$1.25; 1 lb., \$3.50.

ARLINGTON WHITE SPINE—Fruit long, slim and attractive, semi-blunt ended, medium green. Thickness, $2\frac{1}{2}$ " ; length, $7\frac{1}{2}$ " ; 62 days.

Pkt., 10c; oz., 25c; $\frac{1}{4}$ lb., 80c; 1 lb., \$2.75

EARLY JERSEY—Fruits medium green, tapered at both ends; uniform and slender. Thickness, $2\frac{1}{2}$ " ; length, $5\frac{1}{2}$ " ; 63 days.

Pkt., 10c; oz., 35c; $\frac{1}{4}$ lb., \$1.25; 1 lb., \$3.50.

LONDON LONG GREEN—Excellent for slicing; hardy and prolific. Fruits deep green, straight, slightly tapered; heavily warted; flesh very white and crisp. Thickness, $2\frac{1}{2}$ " ; length, 11" ; 67 days.

Pkt., 10c; oz., 35c; $\frac{1}{4}$ lb., \$1.25; 1 lb., \$3.50.

DAVIS PERFECT—Fruit long and large, tapered at both ends, smooth and uniform. Firm flesh with small seed cavity. Dark green. Holds color and shape well in shipping. Thickness, $2\frac{1}{4}$ " ; length, $9\frac{1}{2}$ " ; 65 days.

Pkt., 10c; oz., 25c; $\frac{1}{4}$ lb., 80c; 1 lb., \$2.75

EVERBEARING—Fruits chunky. By keeping the fruits picked, it will continue to bear throughout the growing season. Thickness, 2" ; length, $4\frac{1}{2}$ " ; 55 days.

Pkt., 10c; oz., 35c; $\frac{1}{4}$ lb., \$1.25; 1 lb., \$3.50.

EARLY GREEN CLUSTER—Small fruits borne in clusters. Chunky, uniform, medium green; used for pickles. Thickness, $2\frac{1}{2}$ " ; length, $5\frac{1}{2}$ " ; 55 days.

Pkt., 10c; oz., 25c; $\frac{1}{4}$ lb., 80c; 1 lb., \$2.75.

EXTRA-EARLY GREEN PROLIFIC—(BOSTON PICKLING)—Vine heavy, short. Fruit short, thick, very slightly tapered, blunt ends, uniform. Good pickler. Thickness, $2\frac{1}{2}$ " ; length, 6" ; 58 days.

Pkt., 10c; oz., 25c; $\frac{1}{4}$ lb., 80c; 1 lb., \$2.75

WEST INDIA GHERKIN—Used for very small pickles. Fruits pale green, covered with prickly spines; oval and uniform. Thickness, 1" ; length, $2\frac{1}{2}$ " ; 60 days.

Pkt., 10c; oz., 30c; $\frac{1}{4}$ lb., 90c; 1 lb., \$3.25.

WHITE WONDER—Heavy, long runners. Fruit straight, blunt. Color creamy white. Useful as a novelty for slicing and for salads. Flavor fairly good. Thickness, 3" ; length, 7" ; 62 days.

Pkt., 10c; oz., 35c; $\frac{1}{4}$ lb., \$1.25; 1 lb., \$3.50.

COLLARDS

GEORGIA—Plant upstanding, and vigorous, with large, undulated leaves; withstands heat and adverse soil conditions. Of fine quality when cooked. Length of stem, 2 to 3" ; 80 days.

Pkt., 5c; oz., 15c; $\frac{1}{4}$ lb., 45c.

CORN SALAD

LARGE SEEDED, LARGE LEAVED—A strong growing, large sort, with rounded leaves of gray-green color. 60 days.

Pkt., 15c.

DANDELION

IMPROVED BROAD LEAVED—Plant rather upright. Leaves are thick and easily blanched. 60 days.

Pkt., 10c; $\frac{1}{2}$ oz., 40c; 1 oz., 75c; $\frac{1}{4}$ lb., \$1.95.

ENDIVE

BATAVIA FULL HEART BROAD LEAVED—**ESCAROLE**—Foliage broad and flat, deep green leaves with thick midrib. Leaves are exceedingly palatable when well bleached. Stands dry weather better than any other sorts. Diameter, 16" ; 90 days.

Pkt., 10c; 1 oz., 25c; $\frac{1}{4}$ lb., 60c; 1 lb., \$1.85.

GREEN CURLED—Tufty and full in center; midrib white, thick, tender, and fleshy; blanches readily. Good fall variety. Diameter, 16" to 18" ; 95 days.

Pkt., 10c; 1 oz., 25c; $\frac{1}{4}$ lb., 60c; 1 lb., \$1.85.

EGGPLANT

BLACK BEAUTY—Rich, dark purple fruit. Large, symmetrical. Slightly earlier than New York, but not quite so large. Holds color well. Height, 27"; 90 days.

Pkt., 10c; 1/2 oz., 40c; oz., 75c; 1/4 lb., \$2.25.

FLORIDA HIGH BUSH—Plant upstanding, holding fruits off the ground. Fruits elongated, tapering towards stem; dark purple. A hardy variety, resistant to drought and disease. Height, 32"; 80 days.

Pkt., 10c; 1/2 oz., 35c; oz., 65c; 1/4 lb., \$1.90.

EXTRA EARLY LONG PURPLE—Dark purple, smooth and attractive; oblong-oval in shape. Height, 26"; 78 days.

Pkt., 10c; 1/2 oz., 40c; oz., 75c; 1/4 lb., \$2.25.

IMPROVED NEW YORK SPINELESS—Heavy producer. Fruit oval, purple, tapered towards top. Good color although not as dark as Black Beauty. Height, 28"; 93 days.

Pkt., 10c; 1/2 oz., 45c; oz., 80c; 1/4 lb., \$2.50.

HERBS

DILL—The dry branches and seed are used extensively for flavoring cucumber pickles; the young stems for flavoring soups and sauces. It's an annual.

Pkt., 10c; 1/2 oz., 15c; 1 oz., 25c.

CHIVES—Dark green, onion-flavored tops used in soups, salads, and stews. Perennial.

Pkt., 15c; 1/2 oz., 60c.

ANISE—(A)

Pkt., 20c; 1/2 oz., 45c; 1 oz., 85c.

CARAWAY—(P)

Pkt., 15c.

CATNIP—(P)

Pkt., 25c.

CORIANDER—(A)

Pkt., 10c; 1 oz., 30c; 1/4 lb., 50c.

HOREHOUND—(P)

Pkt., 10c; 1 oz., 30c; 1/4 lb., 50c.

LAVENDER—(P)

Pkt., 25c.

SAGE—(P)

Pkt., 20c.

SUMMER SAVORY—(A)

Pkt., 15c; 1 oz., 50c.

SWEET BASIL—(A)

SWEET FENNEL—(P)

Pkt., 15c; 1 oz., 45c.

SWEET MARJORAM—(A)

Pkt., 15c; 1 oz., 35c; 1/4 lb., 60c.

FINOCCHIO—Also called Florence Fennel. (60 days). Produces a large bulb at the surface of the ground which, if covered with soil, will bleach to a fine creamy white. Can be eaten raw or served boiled with a cream dressing; an excellent vegetable with a pleasing anise flavor.

Pkt., 15c; 1 oz., 35c; 1/4 lb., 60c.

KALE or BORECOLE

DWARF CURLED SCOTCH KALE—Plant low and compact, with large, bright green leaves—curled, cut, and crimped until the whole plant resembles a bunch of moss. Used as greens, and when properly handled make an excellent dish. Height, 14"; 55 days.

Pkt., 10c; 1/2 oz., 15c; oz., 25c; 1/4 lb., 80c.

KOHL-RABI

EARLY WHITE VIENNA—An extra early variety. Has very few short leaves. Bulbs are sweet and tender. Width, 2"; length, 2½"; 60 days.

Pkt., 10c; ½ oz., 40c; oz., 75c; ¼ lb., \$2.25.

EARLY PURPLE VIENNA—Bluish purple, similar to White Vienna except in color. Width, 2"; length, 2½"; 60 days.

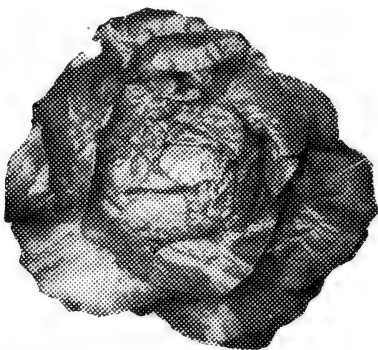
Pkt., 10c; ½ oz., 40c; oz., 75c; ¼ lb., \$2.25.

LEEK

LARGE AMERICAN FLAG—Makes large, green leaves and medium large bulbs on a pure white stem. Very hardy and productive. Width, 2"; length, 7"; 90 days.

Pkt., 10c; ½ oz., 50c; oz., 90c.

LETTUCE



**Iceberg
Lettuce**

IMPERIAL 44—Heads medium dark green, very large, solid and firm, slightly flattened and of good market type and quality. 82 days.

Pkt., 10c; oz., 35c; ¼ lb., \$1.10; lb., \$3.50.

IMPERIAL 847—Heads are medium large, hard, fine and well covered by the inner leaves. Stands up well in summer weather, resisting tip burn. 84 days.

Pkt., 10c; oz., 35c; ¼ lb., \$1.10; lb., \$3.50.

NEW YORK 515—An early variety well adapted to summer and early fall production; resistant to tip burn; prominent ribs and heavy core. Heads medium large, compact, attractive. 75 days.

Pkt., 10c; oz., 30c; ¼ lb., \$1.00; lb., \$3.00.

BLACK-SEEDED SIMPSON—Forms large, loose yellowish-green leaves, crumpled and frilled, exceedingly tender and crisp. Very popular home garden variety as it is very early. 46 days.

Pkt., 10c; oz., 20c; ¼ lb., 65c; lb., \$1.75; 5 lb., \$1.70; 10 lb., \$1.65.

EARLIEST WAYAHEAD—A first early, excellent variety for home gardens, as it heads well under varying conditions. Head small, medium green, with few outer leaves, solid and attractive, interior golden yellow and of good flavor. Outer leaves crumpled and blistered. 63 days.

Pkt., 10c; oz., 25c; ¼ lb., 80c; lb., \$2.50.

ICEBERG—Large curly leaves of bright, light green with a very slight reddish tinge at the edges. The unusual solidity of the heads is insured by the large, white main ribs of the leaves, each of which curves strongly to the center, making it impossible for the leaves to open outward and expose the center which is constantly and thoroughly blanched. 80 days.

Pkt., 10c; oz., 30c; ¼ lb., 90c; lb., \$2.75.

VEGETABLES FOR VITALITY FOR VICTORY

IMPROVED HANSON—Plant very large with thick yellowish-green leaves; heads large, firm and cabbage-like with sweet, tender heart. Good for midsummer planting and popular with home gardeners. 78 days.

Pkt., 10c; oz., 25c; $\frac{1}{4}$ lb., 75c; lb., \$2.25.

GRAND RAPIDS—An excellent forcing variety as well as one of the best for outdoor planting. Plant erect; leaves medium light green, very curled and fringed. Stands heat and dry weather well. 43 days.

Pkt., 10c; oz., 20c; $\frac{1}{4}$ lb., 70c; lb., \$2.00; 5 lb., \$1.85; 10 lb., \$1.75.

WHITE BIG BOSTON—Similar to white seeded Big Boston, but with leaves slightly lighter green and free from a brown tint; heart buttery, yellow; of excellent quality. Highly desirable for nearby markets. 76 days.

Pkt., 10c; oz., 25c; $\frac{1}{4}$ lb., 75c; lb., \$2.25.

NEW YORK OR WONDERFUL—One of the very best of the curled or crisp heading varieties. The head, at first pointed or conical, becomes globular at maturity and is of medium large size, dark green in color and slightly curled on edges. Heads are very hard and well blanched. Quality is excellent, being sweet, yet never buttery in flavor. 78 days.

Pkt., 10c; oz., 30c; $\frac{1}{4}$ lb., \$1.25; lb., \$2.85.

NEW YORK 12—A widely used strain of New York, which stands heat well. Plant and head lighter green than New York, with fewer outer leaves; large, compact, uniform and attractive. 77 days.

Pkt., 10c; oz., 30c; $\frac{1}{4}$ lb., \$1.00; lb., \$3.00.

EARLY PRIZE HEAD—A non-heading variety. Very early, quick growing, making a lot of good eating leaves of excellent flavor. Leaves are light green with very ragged brown edges. A most popular variety with home gardeners. 47 days.

Pkt., 10c; oz., 35c; $\frac{1}{4}$ lb., \$1.10; lb., \$3.50.

MAY KING—An extremely early heading sort, for earliest heading sort, for earliest outside planting, and for greenhouse forcing. Leaves yellowish green, tinged with brown at edges. Heads small, compact with golden yellow interior and buttery flavor of fine quality. Days from sowing to marketable stage, 63.

Pkt., 10c; oz., 20c; $\frac{1}{4}$ lb., 70c; 1 lb., \$2.00.

ROMAINE or COS—It is medium large, medium green, and forms a good, well folded head of fine quality, which blanches readily. 77 days.

Pkt., 10c; oz., 25c; $\frac{1}{4}$ lb., 80c; lb., \$2.50.

BLACK SEEDED TENNISBALL or SALAMANDER—An especially fine Lettuce forming solid heads of superb quality, large size, and nearly round form, with a golden yellow heart protected by broad, crumpled outer leaves of medium green color.

Pkt., 10c; oz., 20c; $\frac{1}{4}$ lb., 65c; lb., \$1.90.

EARLY CURLED SILESIA—A favorite curled or loose-leaved sort for the home garden.

Pkt., 10c; oz., 20c; $\frac{1}{4}$ lb., 65c; 1 lb., \$1.90.

BIG BOSTON—Fine for foldframes or outdoors. Heads large and solid.

Pkt., 10c; oz., 25c; $\frac{1}{4}$ lb., 75c; lb., \$2.25.

ABEL'S ALL THE YEAR ROUND—A variety for sowing in the fall for wintering over to have early head lettuce the first thing in the spring. Finest quality, solid heads with creamy yellow center. Sow the seed about August 15 to September 10. About the end of October set the plants to remain permanently in as warm and favorable situation as possible. Protect with straw during frosty weather. Heads begin to form in April. See description.

Pkt., 10c; oz., 35c; $\frac{1}{4}$ lb., \$1.10; lb., \$3.50.

MUSKMELON

ABEL'S PERFECTION—A large, main-crop variety, varying in shape from round to slightly netted; flesh deep salmon, sweet and spicy.

Pkt., 10c; oz., 20c; 1/4 lb., 55c; 1 lb., \$1.80.

BANANA—Resembles a huge banan in shape. Fruits smooth and slender, lemon colored; tapering at ends; flesh pronounced salmon, of somewhat banana-like flavor. Width, 4"; depth, 18"; 98 days.

Pkt., 10c; oz., 25c; 1/4 lb., 70c; 1 lb., \$2.00.

BENDER'S SURPRISE—Largest of the oval pink fleshed melons, early for its size. High quality. Coarse netting, distinct ribs hard rind. Good shipper. Width, 8"; depth, 7 1/2"; 94 days.

Pkt., 10c; oz., 20c; 1/4 lb., 55c; 1 lb., \$1.80.

EMERALD GEM—For home gardens, does not keep. Outer color emerald green yellowing at maturity; distinctly ribbed, with slight netting; flesh very thick, deep rich salmon color, sweet and of spicy flavor. Width, 5 1/2" depth, 4 1/2"; 85 days.

Pkt., 10c; oz., 30c; 1/4 lb., 90c; 1 lb., \$2.50.

EXTRA EARLY HACKENSACK—Nearly round. Deeply ribbed, with very coarse netting. Skin green tinged with yellow at maturity. Flesh green, somewhat coarse, but juicy and sweet. Width, 6"; depth, 5"; 82 days.

Pkt., 10c; oz., 25c; 1/4 lb., 70c; 1 lb., \$2.00.

FLAT JENNY LIND—Heavily netted fruits, with crisp, light green flesh of rich flavor. Width, 3-4".

Pkt., 10c; oz., 20c; 1/4 lb., 55c; 1 lb., \$1.80.

PRIDE OF WISCONSIN—(Orange Flesh). A melon which in a few years has become a premium priced variety in large Eastern markets. Pride of Wisconsin deserves a premium price. It has unsurpassed quality, large size, firm, thick orange flesh, strong rind, and heavy netting. Vines are vigorous and very productive considering the size of the melons. Fruits are nearly round, 6 1/2 x 7" and weight 4 to 5 lbs. The rind is blue-gray, turning golden when ripe, with sparse but prominent and clear-cut netting. Ribs are faint and entirely lacking. Flesh is of excellent flavor and edible to the rind. The triangular seed cavity is quite compact. Round, 6 1/2 x 7"; 92 days.

Pkt., 10c; oz., 35c; 1/4 lb., \$1.00; 1 lb., \$3.90.

IMPERIAL No. 45—Disease resistant. (Orange Flesh). An outstanding melon in which disease resistance and high quality have been successfully combined. The most popular of all commercial varieties because of its excellent shipping qualities and resistance to powdery mildew. Fruits are oval, 6 in. long, with thick, sweet orange flesh. Good producer. Oval, 6"; 92 days.

Pkt., 10c; oz., 25c; 1/4 lb., 80c; 1 lb., \$2.25.

FORDHOOK—A medium melon for home and gardens and nearby markets. Outer color of mottled green; flesh medium orange-yellow, juicy, sweet and spicy. Width, 5"; depth, 4"; 88 days.

Pkt., 10c; oz., 25c; 1/4 lb., 70c; 1 lb., \$2.00.

HALE'S BEST—Fruits oval; inconspicuous ribbing with heavy netting. Flesh extremely thick, salmon-orange, sweet and of very fine quality. Width, 5"; depth, 6"; 82 days.

Pkt., 10c; oz., 25c; 1/4 lb., 80c; 1 lb., \$2.25.

HEARTS OF GOLD—Nearly round, slightly ribbed, finely netted, light green to light yellow upon ripening. Flesh very thick, firm, and delicious. Small cavity with a tight web. Color yellow shading to pink. Good shipper. Width, 5"; depth, 5 1/2"; 90 days.

Pkt., 10c; oz., 25c; 1/4 lb., 80c; 1 lb., \$2.25.

VEGETABLES FOR VITALITY FOR VICTORY

HONEY DEW—Fruits round and slightly oval. Skin smooth and creamy yellow at maturity. Flesh emerald green, fine grained, very sweet. Rind thin but firm. Ships well. Width, 7"; depth, 7½"; 113 days.

Pkt., 10c; oz., 25c; ¼ lb., 70c; 1 lb., \$2.00.

ROCKY FORD—Fruits are small with rather large seed cavity, nearly round, with very faint ribs, and heavily covered with hard gray netting; flesh thick, green in color, with gold tinge at the center; juicy, spicy, and of good flavor. Width, 5"; depth, 5½"; 92 days.

Pkt., 10c; oz., 25c; ¼ lb., 70c; 1 lb., \$2.00.

SPICY—Quite uniform fruits; flesh deep rich salmon and tender. Width, 6 to 7"; depth, 8 to 10"; 90 days.

Pkt., 10c; oz., 25c; ¼ lb., 80c; 1 lb., \$2.25.

OSAGE or MILLER'S CREAM—Oval, dark green, somewhat netted and ribbed. Flesh extremely thick, firm, rich salmon color, highly flavored and delicious to the rind. Cavity small, keeps and ships well. Width, 6½"; depth, 7"; 94 days.

Pkt., 10c; oz., 25c; ¼ lb., 80c; 1 lb., \$2.25.

MUSTARD

FORDHOOK FANCY—A handsome, upright growing, mild variety, slow to bolt seed stalks; leaves bright green, plume-like, and deeply fringed on the edges; excellent for salads; seed reddish brown. 40 days.

Pkt., 10c; ½ oz., 15c; oz., 20c; ¼ lb., 50c; 1 lb., \$1.55.

OKRA or GUMBO

CLEMSON SPINELESS—Developed by the South Carolina Experiment Station. All-America Silver Medal for 1939. A very uniform spineless strain of the Perkins long-podded type. Plant has less foliage than Perkins; pods rich green, straight, ridged. A valuable introduction for commercial or garden crops. Height, 4½'; 55 days.

Pkt., 10c; oz., 15c; ¼ lb., 30c.

KLECKLEY'S FAVORITE—Plants close-jointed, with ample foliage, and bear smooth white pods of the very finest quality at each leaf-joint.

Pkt., 10c; oz., 15c; ¼ lb., 30c.

ONIONS

WETHERSFIELD LARGE RED—The standard red market variety. Large, round, somewhat flattened; flesh purplish white; skin deep purplish red. Very productive. The best keeper and one of the most popular for general cultivation. Diam., 3"; 110 days.

Pkt., 10c; ½ oz., 35c; oz., 60c; ¼ lb., \$1.95; lb., \$6.50.

YELLOW GLOBE DANVERS—Hard and a good cropper; used largely for storage. Bulbs medium large, round, yellow, firm, solid with small neck. Flesh white, with slight yellow tone. Diam., 2¾"; 110 days.

Pkt., 10c; ½ oz., 35c; oz., 65c; ¼ lb., \$1.95; lb., \$6.75.

MAMMOTH PRIZETAKER—Bulbs large, globe shape; skin thin and glossy, of straw color; flesh coarse but mild. Diam., 3½"; 105 days.

Pkt., 10c; ½ oz., 35c; oz., 65c; ¼ lb., \$1.95; lb., \$6.75.

MAMMOTH SILVER KING—Enormous silvery white onions of mild flavor. Quickly grows to maturity on rich soil and often attains a weight of 2 to 3 pounds. Diam., 3½"; 100 days.

Pkt., 10c; ½ oz., 35c; oz., 65c; ¼ lb., \$1.95; lb., \$6.75.

SOUTHPORT YELLOW GLOBE—Large, perfectly shaped globe. Keeps exceptionally well through the winter. Very productive, dark yellow, handsome appearance. Diam., 3"; 116 days.

Pkt., 10c; 1/2 oz., 35c; oz., 65c; 1/4 lb., \$1.80; lb., \$6.00.

SOUTHPORT WHITE GLOBE—Bulbs round and of good size. Solid, pure white, skin thin and brittle. Good for winter storage. Also used for early bunching. Diam., 3"; 112 days.

Pkt., 10c; 1/2 oz., 40c; oz., 70c; 1/4 lb., \$2.00; lb., \$7.50.

EBENEZER OR JAPANESE ONION—Used mostly for growing sets. Keeps extremely well; does not run to seed readily. Bulbs flat, deep yellow, firm, thick skinned. Diam., 2" to 3"; 110 days.

Pkt., 10c; 1/2 oz., 30c; oz., 55c; 1/4 lb., \$1.70; lb., \$5.50.

SOUTHPORT RED GLOBE—Perfect globe shape. Deep red skin, with red flesh, tinted white. Skin tough, thin, close fitting. Flesh strongly flavored. Good keeper. Diam., 3"; 115 days.

Pkt., 10c; 1/2 oz., 35c; oz., 65c; 1/4 lb., \$1.95; lb., \$6.50.

WHITE PORTUGAL—SILVERSKIN—Medium thick, flat shape when mature. White skin and flesh, sometimes green tinted, mild flavor; skin tight and tough. Used mainly for onion sets and small pickling onion. Diam., 3"; 100 days.

Pkt., 10c; 1/2 oz., 40c; oz., 70c; 1/4 lb., \$2.00; lb., \$7.00.

EXTRA-EARLY BARLETTA—An exceptionally early sort, used for pickling and for green bunching. Bulbs small, flat, pure white, of mild, sweet flavor. 90 days. Cannot supply.

SWEET SPANISH — (RIVERSIDE STRAIN) — Large, well shaped, weighs from one to three pounds. Unusually mild. Keeps well. To grow large bulbs thin plants to 6 or 8-inch spacing. Diam., 4"; 105 days.

Pkt., 10c; 1/2 oz., 50c; oz., 90c; 1/4 lb., \$2.75; lb., \$8.50.

PARSNIP

LONG SMOOTH—(HOLLOW CROWN)—Roots white, smooth, tender, sugary and of excellent flavor. Very hardy and will keep through winter without protection. Length of root, 12"-16"; 98 days.

Pkt., 10c; 1/2 oz., 15c; oz., 25c; 1/4 lb., 70c.

PARSLEY

PLAIN—(SINGLE)—Used largely for flavoring. Leaves bright green, deeply cut, flat, not curled; stem small, solid, without purple coloration, edible. 72 days.

Pkt., 10c; oz., 20c; 1/4 lb., 45c; lb., \$1.25

DARK MOSS-CURLED—A compact plant with dark bright green leaves, exceedingly finely cut and curled, giving the appearance of a dense piece of moss. Very desirable for garnishing, and for decorative purposes. 70 days.

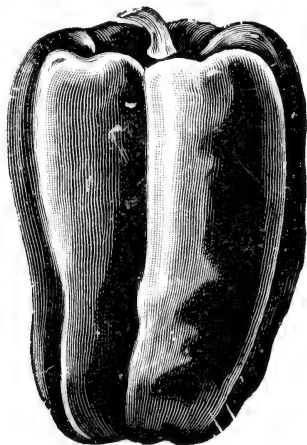
Pkt., 10c; oz., 20c; 1/4 lb., 50c; lb., \$1.40.

PARAMOUNT—A recent introduction of triple curled type. Plant slow growing, very dark green, tall and with stout stems for bunching. 85 days.

Pkt., 10c; oz., 20c; 1/4 lb., 50c; lb., \$1.40.

TURNIP-ROOTED—(HAMBURG)—Grown mostly for the thick fleshy roots. Roots nearly white, thick at neck and tapering to the base. Flesh is white and somewhat dry. Used for flavoring soups. 6" roots; 90 days.

Pkt., 10c; oz., 15c; 1/4 lb., 45c; lb., \$1.30.



California
Wonder
Pepper

PEPPERS

CALIFORNIA WONDER—Plant strong, upright. Fruits large, squared, four lobed, very thick walled, sweet, and mild. From a deep green to a bright red in color. Excellent stuffing type. Length, 5"; width, 4"; 76 days.

Pkt., 10c; 1/2 oz., 40c; oz., 70c; 1/4 lb., \$2.00; 1/2 lb., \$3.10.

HARRIS' EARLY GIANT—An excellent early sweet variety for home and market garden use. Plant dwarf, upright, very productive. Fruits pendent, gently tapered, 3-lobed, of mild flavor; deep green changing to bright red. Resembles a large Bull Nose in shape. Length, 4 1/4"; width, 3 1/2"; 63 days.

Pkt., 10c; 1/2 oz., 35c; oz., 65c; 1/4 lb., \$1.90; 1/2 lb., \$2.85.

SWEET-MEAT GLORY—A superior strain of the pimiento pepper with beautiful large heart shaped fruits of a bright crimson-scarlet color. Peppers are sweet, mild and very tasty. Length, 3 1/2"; width, 2 1/2"; 82 days.

Pkt., 10c; 1/2 oz., 35c; oz., 65c; 1/4 lb., \$1.90; 1/2 lb., \$2.85.

RUBY KING—Plants vigorous, compact, productive. Fruits long and of deep green color when young, bright red when ripe. Flesh thick and mild. Good variety for mangoes or stuffed peppers. Length, 4 1/2"; width, 3 1/2"; 70 days.

Pkt., 10c; 1/2 oz., 40c; oz., 70c; 1/4 lb., \$2.00; 1/2 lb., \$3.10.

RUBY GIANT—For home and market gardens. Plant vigorous, erect, very productive. Fruits slightly tapered, 4-lobed, deep green changing to bright red; flesh thick, sweet and mild. Length, 5"; width, 3 1/2"; 75 days.

Pkt., 10c; 1/2 oz., 40c; oz., 70c; 1/4 lb., \$2.00; 1/2 lb., \$3.10.

NEAPOLITAN—A very early, medium large, prolific variety. Fruits upright in growth, 3-lobed; yellowish green, becoming bright red; flesh extremely mild and sweet. Length, 4"; width, 2"; 60 days.

Pkt., 10c; 1/2 oz., 40c; oz., 70c; 1/4 lb., \$2.00; 1/2 lb., \$3.10.

GOLDEN QUEEN—A large yellow variety, of sweet and mild flavor, resembling Ruby King in shape and size. Fruits 3-lobed, pendent, tapered, deep green, becoming attractive yellow. Length, 4"; width, 3 1/2"; 78 days.

Pkt., 10c; 1/2 oz., 40c; oz., 70c; 1/4 lb., \$2.00; 1/2 lb., \$3.10.

CHINESE GIANT—Plant strong, bushy growth. Fruit large, squared, four lobed, deep green to a bright red color. Productive, good side wall thickness. Sweet and mild. Length, 5"; width, 4"; 80 days.

Pkt., 10c; 1/2 oz., 40c; oz., 70c; 1/4 lb., \$2.00; 1/2 lb., \$3.10.

LARGE BELL—BULLNOSE—A popular early, prolific sort, with small, erect plant. Fruits pendent, blunt, largely 4-lobed, deep green changing to scarlet red at maturity; ribs pungent, flesh quite mild. Length, 3"; width, 2 3/4"; 64 days.

Pkt., 10c; 1/2 oz., 40c; oz., 70c; 1/4 lb., \$2.00; 1/2 lb., \$3.10.

OSHKOSH—A medium early productive sort, deep glossy green in color turning to canary yellow at maturity. Fruits mild, fairly smooth, broad at base tapering to blunt point. Length, 4½"; width, 3½"; 70 days.

½ oz., 40c; oz., 70c; ¼ lb., \$2.00; ½ lb., \$3.10.

BURPEE'S SUNNYBROOK—The sweetest and most prolific of all. The green skin turns to deep red; smooth and glossy. The extremely thick flesh is mild, juicy, sweet and appetizing. Length, 2½"; width, 2¾"; 110 days.

Pkt., 10c; ½ oz., 35c; oz., 60c; ¼ lb., \$1.75.

HOT PEPPERS

LONG RED CAYENNE—72 days. 5 in. long and about ½ in. thick; often curled and twisted. Easily dried for winter use. Pkt., 10c; ½ oz., 35c; oz., 60c.

LARGE RED CHERRY—69 days. Flattened globe fruits, 1½ in. across; deep green turning to cherry-red at maturity. Pkt., 10c; ½ oz., 35c; oz., 60c.

RED CHILI—82 days. Small, very hot, cone-shaped fruits, 2 in. long and ¼ in. across. Both skin and flesh are red.

Pkt., 10c; ½ oz., 35c; oz., 60c.

SMALL RED CHERRY—Popular for use in pickles. Plants vigorous, upright, prolific. Fruits round, smooth, solid, very pungent; color deep green changing to deep scarlet. Length, 1"; width, 1"; 82 days. Pkt., 10c; ½ oz., 35c; oz., 60c.

TABASCO—92 days. Extremely hot, small, upright fruits, 1½ in. long, ⅜ in. thick; pale yellow turning orange-scarlet. very sturdy dwarf vine. 18" high, 4 pod, 60 days.

red skin; flesh pure white, crisp. 1¼", 20 to 25 days.

well before going pithy, 1¼", 23 days.

Pkt., 10c; ½ oz., 40c; oz., 70c.

PUMPKINS

JAPANESE—Skin dark green, with lighter green stripes. Flesh deep yellow, and of good quality. Seeds have markings resembling Japanese characters. Valuable for canning and stock feed. Length, 12"; diam., 8"; 110 days.

Pkt., 10c; oz., 20c; ¼ lb., 50c; lb., \$1.40.

WHITE CUSHAW—(JONATHAN)—Small, and with shorter, straighter neck than other Cushaw types. Exterior color nearly white. Length, 18"; diam., 7"; 110 days.

Pkt., 10c; oz., 20c; ¼ lb., 50c; lb., \$1.40.

YELLOW CUSHAW—Fruits crooknecked, medium large. Skin golden yellow, smooth, hard; flesh thick, yellow, dry and sweet. Length, 20"; diam., 9"; 112 days.

Pkt., 10c; oz., 20c; ¼ lb., 50c; lb., \$1.40.

STRIPED CUSHAW—Fruits crooknecked; skin hard, thin, smooth, dull white with irregular green stripes; flesh thick, yellow, medium coarse. Length, 18"; diam., 10"; 112 days.

Pkt., 10c; oz., 20c; ¼ lb., 50c; lb., \$1.40.

GENUINE MAMMOTH JUMBO—(KING OF THE MAMMOTHS)—Salmon-orange skin; very thick, bright yellow flesh, which is fine grained, tender, and of excellent quality for pies. Length, 22"; diam., 18"; 120 days.

Pkt., 10c; oz., 20c; ¼ lb., 60c; lb., \$1.80.

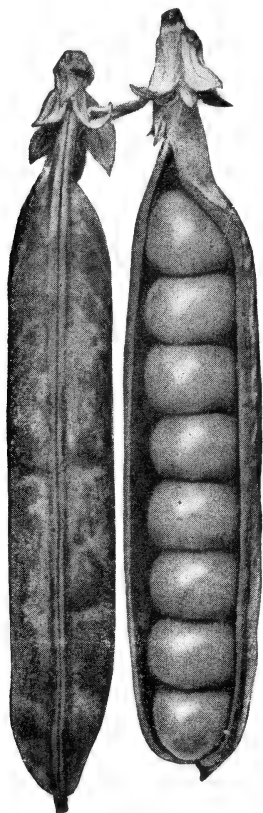
SMALL SUGAR—Small but handsome. Round, deep orange, fine grained, sweet. Superior for pies. Length, 8"; diam., 10"; 115 days. Pkt., 10c; oz., 15c; ¼ lb., 45c; lb., \$1.40.

BIG TOM—(IMPROVED LARGE FIELD)—Fruits round or slightly oval in form; reddish orange skin, slightly ribbed; rich orange-yellow flesh. Width, 15"—20"; 118 days.

Pkt., 10c; oz., 15c; ¼ lb., 35c; lb., \$1.05.

LARGE CHEESE—Fruits very flat, slightly ribbed, cream colored; flesh very thick, orange-yellow and of fine quality. Length, 6"; width, 12"; 108 days.

Pkt., 10c; oz., 20c; ¼ lb., 50c; lb., \$1.40.



Extra Early
Blue
Bantam

PEAS

ABEL'S GIANT PODDED HAMPER—Dark green foliage and pods, a vine heavy and dark in color. Seed large, wrinkled. Length of plant, 22"; length of pod, 4½"—5"; 65 days.
½ pt., 20c; pt., 35c; qt., 65c; pk. (14 lb.), \$4.80.

ABEL'S SUPREME—WILT RESISTANT—A medium late sort desirable for the trucker. Vine dark green in color. Length of plant, 24"; length of pod, 4½"—5"; 74 days.
½ pt., 20c; pt., 35c; qt., 65c; pk. (14 lb.), \$4.80.

ABEL'S WONDER WILT RESISTANT—(GILBO)—A very good general-purpose variety. Plant heavy, dark green. Pods round, dark green, pointed. Seed green, large. Length of plant, 25"; length of pod, 4¾"; 72 days.
½ pt., 20c; pt., 35c; qt., 65c; pk. (14 lb.), \$4.80.

ABEL'S EARLY BIRD—It is a semi-round seeded pea with a very large dark green pod of wonderful appearance and a very sturdy dwarf vine. 58 days.
½ pt., 20c; pt., 35c; qt., 65c; pk. (14 lb.), \$4.80.

LARGE PODDED ALASKA—(AMEER)—Pods well filled with medium size dark green peas of excellent flavor. Length of plant, 28"; length of pod, 2½"; 58 to 60 days.
½ pt., 15c; pt., 25c; qt., 45c; pk. (15 lb.) \$3.20.

BUIST'S EXTRA-EARLY MORNING STAR—Much hardier, more productive, and withstand greater changes of weather than any other variety. The largest-podded extra early, and entirely free from runners. Length of plant, 24"; length of pod, 3"; 58 days.
½ pt., 15c; pt., 25c; qt., 45c; pk. (15 lb.) \$3.20.

AMERICAN WONDER—Vigorous vines with luxuriant foliage. Good for private garden use on account of its dwarf habit. Pods light colored, straight, round, and blunt. Seed medium sized and square at the ends. Length of plant, 12"; length of pod, 2 $\frac{1}{2}$ "; 60 days.

$\frac{1}{2}$ pt., 20c; pt., 35c; qt., 65c; pk. (14 lb.), \$4.80.

NOTT'S EXCELSIOR—Plant dark green, slender. Pods single, blunt, round, plump, light green; well filled with medium sized, tender peas. Seed square, light green. Length of plant, 16"; length of pod, 2 $\frac{3}{4}$ "; 62 days.

$\frac{1}{2}$ pt., 20c; pt., 35c; qt., 65c; pk. (14 lb.), \$4.80.

GRADUS—(**PROSPERITY**)—Early, large podded variety, popular with market gardeners. Vine and foliage moderately heavy and medium green. Pods medium green, semi-round, straight and pointed. Very sweet, medium green peas. Productive, high quality. Length of plant, 24"; length of pod, 4"; 62 days.

$\frac{1}{2}$ pt., 20c; pt., 35c; qt., 65c; pk. (14 lb.), \$4.80.

EXTRA EARLY BLUE BANTAM—Vines carry enormous crops of large, deep bluish green pods. Pointed pods. Length of plant, 18"; length of pod, 4"; 65 days.

$\frac{1}{2}$ pt., 20c; pt., 35c; qt., 65c; pk. (14 lb.), \$4.80.

LITTLE MARVEL—Extra fine dwarf sweet pea. Pods larger than Nott's Excelsior. Good variety for either private or market garden. Foliage and pods very dark green. Pods nearly round, square ended, very dark green peas. Productive, and high quality. Length of plant, 18"; length of pod, 3"; 60 days.

$\frac{1}{2}$ pt., 20c; pt., 35c; qt., 65c; pk. (14 lb.), \$4.80.

TELEPHONE—Medium-late, wrinkled, productive variety with long slightly curved pods. Peas of large size and best quality. Length of plant, 40"; length of pod, 4 $\frac{1}{2}$ "; 72 days.

$\frac{1}{2}$ pt., 20c; pt., 35c; qt., 65c; pk. (14 lb.), \$4.80.

ALDERMAN—Large podded pea. Vine vigorous, foliage medium green. Pods broad, pointed, dark green. Seed large, green. Length of plant, 40"; length of pod, 4 $\frac{1}{2}$ "; 72 days.

$\frac{1}{2}$ pt., 20c; pt., 35c; qt., 65c; pk. (14 lb.), \$4.80.

DWARF TELEPHONE—(**CARTER'S DAISY**)—Vines medium green with coarse foliage. Pods broad, straight, pale green. Peas fill the pods well, and are of excellent flavor. Length of plant, 22"; length of pod, 4"; 70 days.

$\frac{1}{2}$ pt., 20c; pt., 35c; qt., 65c; pk. (14 lb.), \$4.80.

LAXTONIAN—Vine vigorous and productive, foliage dark green. Pods dark green, straight, and pointed. Seed light green, large, wrinkled, flattened and irregular in shape. Length of plant, 18"; length of pod, 4"; 65 days.

$\frac{1}{2}$ pt., 20c; pt., 35c; qt., 65c; pk. (14 lb.), \$4.80.

THOMAS LAXTON—Very popular variety. Vine and foliage moderately stout, medium green. Pods medium green, straight, nearly round, square ended. Superior quality. Length of plant, 30"; length of pod, 3 $\frac{1}{2}$ "; 60 days.

$\frac{1}{2}$ pt., 20c; pt., 35c; qt., 65c; pk. (14 lb.), \$4.80.

EDIBLE POD VARIETIES

MAMMOTH MELTING SUGAR PEAS — Plant light green, coarse. Pods single, very broad, indented, light, blunt; brittle, fleshy, stringless, free from fiber, of good quality; contain about 7 peas. Seed large, round, creamy white. Length of plant, 54"; length of pod, 5"; 84 days.

$\frac{1}{2}$ pt., 20c; pt., 35c; qt., 65c; pk. (14 lb.), \$4.80.

MAMMOTH LUSCIOUS SUGAR PEAS—(PURPLE BLOSSOM)

—Plant light green, coarse. Pods single, light green, blunt, straight, indented; contain about 8 peas. Seed round, gray. Length of plant, 54"; length of pod, 4½"; 80 days.

½ pt., 20c; pt., 35c; qt., 65c; pk. (14 lb.), \$4.80.

DWARF GRAY SUGAR PEAS—(PURPLE BLOSSOM)

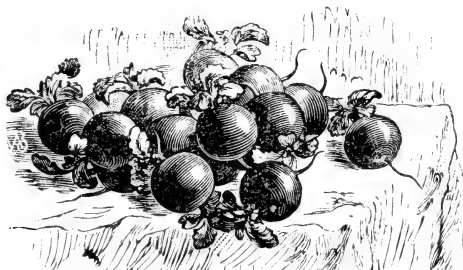
—Plant slender and wiry with purple blossoms. Pods double, light green, heavily curved, semi-pointed, strongly indented between the peas. Seed small, mottled, gray, round. Length of plant, 28"; length of pod, 3"; 65 days.

½ pt., 20c; pt., 35c; qt., 65c; pk. (14 lb.), \$4.80.

DWARF WHITE BLOSSOM

—Plant slender, medium green, with white blossoms. Pods single and double, much constricted, mostly straight, semi-pointed, light green. Seed small, round, smooth, creamy white. Length of plant, 26"; length of pod, 2¾"; 65 days.

½ pt., 20c; pt., 35c; qt., 65c; pk. (14 lb.), \$4.80.



**Abel's
Rapid
Red**

RADISH

ABEL'S SPARKLER—Popular with market gardeners. Roots round, smooth, dull scarlet-red, one-third white at bottom; flesh white, crisp and tender. Diam., 1¼"; length, 1¼"; 26 days.

Pkt., 10c; oz., 20c; ¼ lb., 50c; lb., \$1.25; 5 lb. lots, \$1.20.

ABEL'S RAPID RED—Small, perfectly round, with thin, bright red skin; flesh pure white, crisp. 20 to 25 days.

Pkt., 10c; oz., 15c; ¼ lb., 40c; lb., \$1.00; 5 lb. lots, 95c.

CAVALIER—Roots uniform, olive-shaped, deep scarlet. Holds well before going pithy. 23 days.

Pkt., 10c; oz., 20c; ¼ lb., 50c; lb., \$1.25; 5 lb. lots, \$1.20.

CRIMSON GIANT GLOBE—Largest round red. Tops small, upright. Roots go up to 1½" without pith. Globe shape, deep red, thick skin. Flesh white, tender, crisp. Diam., 1½"; length, 1½"; 30 days.

Pkt., 10c; oz., 15c; ¼ lb., 45c; lb., \$1.15; 5 lb. lots, \$1.10.

OLIVE SHAPED EARLY SCARLET—(SHORT TOP)—Tops small but strong enough to bunch well. Roots olive-shaped, with small tap root; bright scarlet. Flesh white, crisp, tender. 23 days.

Pkt., 10c; oz., 15c; ¼ lb., 45c; lb., \$1.15; 5 lb. lots, \$1.10.

WHITE PEARL or PEARL FORCING—A beautiful pearly white, half stump-rooted radish that is very firm and solid and remains in good condition for two weeks before becoming woody or showing any signs of going to seed. Diam., ¾"; length, 6"; 27 days.

Pkt., 10c; oz., 20c; ¼ lb., 50c; lb., \$1.25; 5 lb. lots, \$1.20.

WHITE ICICLE—Finest early white variety. Popular with home gardeners. Tops medium, roots long, tapering, pure white, very crisp and mild. Diam., ¾"; length, 6"; 27 days.

Pkt., 10c; oz., 15c; ¼ lb., 35c; lb., 95c; 5 lb. lots, 90c.

ABEL'S NEW PEARL ROUND—The Radishes are perfectly round, large, snow-white, with very thin tap-root. The tops are medium to short, making them very suitable for outside, under sash, or in greenhouse. Bunched and washed they make a most attractive show. I urge you to grow a good quantity of them.

Pkt., 10c; oz., 20c; 1/4 lb., 50c; lb., \$1.25; 5 lb. lots, \$1.20.

LONG WHITE VIENNA—(LADY FINGER)—Similar to White Icicle, but more slender and several days later. Roots sleek, tapering; skin white, with tinge of green on the sloping shoulder; flesh white and crisp. Diam., 1/2"; length, 5 1/2"—6 1/2"; 29 days.

Pkt., 10c; oz., 20c; 1/4 lb., 50c; lb., \$1.25; 5 lb. lots, \$1.20.

WHITE STRASBURG—Large, showy, thick at shoulder, tapering to a point. Flesh white, firm, mildly pungent. Diam., 1 1/2"; length, 6"; 39 days.

Pkt., 10c; oz., 20c; 1/4 lb., 50c; lb., \$1.25; 5 lb. lots, \$1.20.

CHARTIERS—(SHEPERD)—A very attractive sort; bright rose color on the upper part, shading to white at the tip; flesh white and crisp. Diam., 1"; length, 7"—8"; 35 days.

Pkt., 10c; oz., 20c; 1/4 lb., 50c; lb., \$1.25; 5 lb. lots, \$1.20.

FRENCH BREAKFAST—Old favorite. Tops medium small. Roots thicker towards bottom, scarlet with white tip. Flesh white, crisp, excellent quality. Diam., 3/4"; length, 1 1/2"; 25 days.

Pkt., 10c; oz., 15c; 1/4 lb., 40c; lb., \$1.00; 5 lb. lots, 95c.

CINCINNATI MARKET—Small, short top for home gardens and truckers. Roots cylindrical, with tapering end, deep red; flesh very white, crisp, mild and tender. Length, 6"—7"; 28 days.

Pkt., 10c; oz., 20c; 1/4 lb., 50c; lb., \$1.25; 5 lb. lots, \$1.20.

CALIFORNIA MAMMOTH WHITE RADISH—An excellent fall variety. Roots cylindrical, and thickest at lower end; leaves large, light green, flesh white, crisp and not pungent. Diam., 2"; length, 7"—8"; 60 days.

Pkt., 10c; oz., 20c; 1/4 lb., 50c; lb., \$1.25; 5 lb. lots, \$1.20.

WINTER RADISHES

CHINESE ROSE—(SCARLET CHINA)—Roots cylindrical, or larger at bottom, tapering abruptly to a small tip. Skin very smooth and bright rose. Flesh firm, crisp, tender pungent. Diam. 1 3/4"; length, 8"; 53 days.

Pkt., 10c; oz., 20c; 1/4 lb., 50c; lb., \$1.25; 5 lb. lots, \$1.20.

LONG BLACK SPANISH—Tops large and heavy. Roots large and tapering. Skin black, flesh white. Very firm and pungent. Diam., 2"; length, 8"; 62 days.

Pkt., 10c; oz., 20c; 1/4 lb., 50c; lb., \$1.25; 5 lb. lots, \$1.20.

ROUND BLACK SPANISH—Roots round or top shaped. Skin black, flesh white, firm crisp, and highly flavored. Good keeper. Diam., 4"; length, 4"; 60 days.

Pkt., 10c; oz., 20c; 1/4 lb., 50c; lb., \$1.25; 5 lb. lots, \$1.20.

WHITE CHINESE—(CELESTIAL)—Roots cylindrical, with heavy shoulder; flesh white, crisp, rather mild in flavor. Diam., 2 1/2"—3"; length, 8"; 60 days.

Pkt., 10c; oz., 20c; 1/4 lb., 50c; lb., \$1.25; 5 lb. lots, \$1.20.

RHUBARB

VICTORIA—A main crop sort, vigorous in growth, with up-standing, thick red stalks of excellent quality.

Pkt., 10c; oz., 20c; 1/4 lb., 50c.

RUTABAGA

IMPROVED PURPLE-TOP—Roots large, globular, inclined toward top shape with relatively small neck; yellow with purple top; flesh light yellow, firm, of good texture and quality. Diam., 5"; 90 days.

Pkt., 10c; oz., 20c; ¼ lb., 50c; lb., \$1.50.

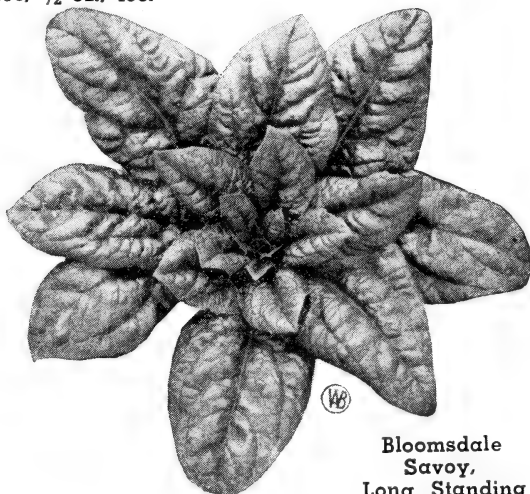
EARLY NECKLESS RUTABAGA—Medium top and very small neck. Roots flattened globe in shape, yellow with purple top; flesh yellow, firm and of excellent quality. Diam., 4½"; 85 days.

Pkt., 10c; oz., 20c; ¼ lb., 60c; lb., \$1.85.

SALSIFY (VEGETABLE OYSTER)

MAMMOTH SANDWICH ISLAND—The most usually cultivated variety; hardy, slow growing, requires all season and is better if frosted. Tapering, smooth, dull white. Length, 8"—9"; width, 1½"—2".

Pkt., 10c; ½ oz., 45c.



Bloomsdale
Savoy,
Long Standing

SPINACH

BLOOMSDALE SAVOY, RESELECTED, s. s.—A first early, vigorous variety. Plant fast growing, uniform, hardy and attractive. Leaves large, oval-shaped, curved, heavily savoyed, dark glossy green. Bolts rather quickly. 39 days.

Pkt., 10c; oz., 15c; ¼ lb., 25c; lb., 70c; 5 lb., 67c;
10 lb. and up, 65c.

BLOOMSDALE SAVOY, LONG STANDING, s. s.—Only a few days later than other Bloomsdales, it holds 12-14 days longer before throwing seed stalks. Plant large, very uniform, erect and sturdy, with very attractive, highly crumpled and blistered dark green leaves. Exceptionally valuable for home and market gardens, and for shipping from the South. 42 days.

Pkt., 10c; oz., 15c; ¼ lb., 25c; lb., 65c; 5 lb., 62c;
10 lb. and up, 60c.

VICTORIA, s. s.—Distinguished by its flat rosette of large, crumpled, thick, blunt, very dark green, glazed leaves. Its slowness in bolting seed stalks makes it a desirable variety for mid-summer use. 48 days.

Pkt., 10c; oz., 15c; ¼ lb., 25c; lb., 70c; 5 lb., 67c;
10 lb. and up, 65c.

NEW ZEALAND, p. s. *Tetragonia expansa*—Not a true spinach, though similar when cooked. Native of New Zealand, quite distinct in habit of growth; thrives in hot, dry weather. The large, spreading plants have small, thick, pointed, deep green leaves, which can be picked repeatedly throughout the season. Seeds are large and hard-horned; should be steeped, and planted only in warm soil. 70 days.

Pkt., 10c; oz., 20c; 1/4 lb., 45c; lb., \$1.30.

KING OF DENMARK, s.s.—An exceptionally long-standing sort, highly desirable for canning, and for market gardens. The large, spreading plants carry broad, rounded, very dark green leaves, which are somewhat crumpled. Excellent for spring planting as seed stalks are slow in forming. 46 days.

Pkt., 10c; oz., 15c; 1/4 lb., 25c; lb., 70c; 5 lb., 67c; 10 lb. and up, 65c.

ARISTOCRAT—Only a few days later than other Bloomsdales, it holds 12-14 day longer before throwing seed stalks. Plant large, very uniform, erect and sturdy, with very attractive, highly crumpled and blistered dark green leaves. Exceptionally valuable for home and market gardens, and for shipping from the South. 42 days.

Pkt., 10c; oz., 15c; 1/4 lb., 25c; lb., 70c; 5 lb., 67c; 10 lb. and up, 65c.

VIRGINIA SAVOY (BLIGHT RESISTANT), s.s.—Bred at the Virginia Experiment Station for mosaic resistance. Upstanding, vigorous plants; seeding rather early; highly desirable for planting in infested soil. Leaves somewhat smoother than other strains of Savoy. 39 days.

Pkt., 10c; oz., 15c; 1/4 lb., 25c; lb., 70c; 5 lb., 67c; 10 lb. and up, 65c.

SQUASH

EARLY YELLOW SUMMER CROOKNECK—An extensively used summer sort. Plants very prolific. Fruits curved at neck, light yellow at early eating stage, and covered with warts. Length, 10"; diam., 4"; 52 days.

Pkt., 10c; oz., 20c; 1/4 lb., 55c; lb., \$1.65.

STRAIGHTNECK SUMMER—58 days. The same squash as the Golden Crookneck, but with a straight neck. Golden orange, warted fruits, 18 in. long. Finest quality salmon-yellow flesh. Popular with housewives as it can be prepared for the table with little loss.

Pkt., 10c; oz., 20c; 1/4 lb., 55c; lb., \$1.65.

WHITE BUSH SCALLOP (PATTY PAN)—An old favorite for home and market gardens. Fruits pale green when very young, becoming white as they grow, to 2 1/2 lb.; shaped somewhat like a round pie or patty with scalloped edges. Length, 3"; diam., 7 1/2"; 52 days.

Pkt., 10c; oz., 20c; 1/4 lb., 55c; lb., \$1.65.

GOLDEN HUBBARD—Similar to Green Hubbard, but earlier, smaller, and more prolific. Popular with home and market gardeners and canners. Fruits somewhat pointed at each end, 8-10 lbs., moderately warted, orange-red, with faint cream colored stripes toward blossom end; flesh deep orange, dry, and of fine quality; keeps well. Length, 11"; diam., 8"; 100 days.

Pkt., 10c; oz., 20c; 1/4 lb., 60c; lb., \$1.80.

GREEN HUBBARD, IMPROVED—Standard winter sort for home and market gardeners, and for shipping. Fruits, 10-12 lb. pointed at both ends, slightly warted, dark bronze-green in color; rind hard and tough; flesh very thick, orange-yellow, dry and sweet. Length, 12"; diam., 9"; 105 days.

Pkt., 10c; oz., 20c; 1/4 lb., 60c; lb., \$1.80.

VEGETABLES FOR VITALITY FOR VICTORY

FORDHOOK pepo-Fruits tapered toward stem, somewhat ridged, smooth, cream colored; 1½-2 lb.; flesh extremely thick; straw colored, dry and sweet. Length, 8"; diam., 3"; 62 days.

A bush strain of this variety is also available.

Pkt., 10c; oz., 25c; ¼ lb., 75c; lb., \$2.00.

COCOZELLE, LONG—Of Italian marrow type, increasingly popular with market gardeners and shippers. Fruits, 4 lb.; cylindrical, straight, smooth, dark green with lighter green stripes which change to deep yellow at maturity; flesh very firm, greenish white; a very early, prolific variety. Length, 20"; diam., 4½"; 65 days.

Pkt., 10c; oz., 20c; ¼ lb., 55c; lb., \$1.55.

SWISS CHARD OR SPINACH BEET

BURPEE'S RHUBARD CHARD—A new Swiss Chard that looks like Rhubarb. The leaf-stalks, considered by many as the most delicious part of the Chard plant, are bright but delicate, translucent crimson; the rich color extends out through the veins into the dark green, heavily crumpled leaves. Easily grown, thrives everywhere. You will enjoy the different, tasty, delicious flavor of Burpee's Rhubarb Chard. Whether you cook the leaf-stalks alone, use only the leaves, or cook both together, you will find a sweetness you never knew existed in a leafy vegetable. 60 days.

Pkt., 10c; ½ oz., 30c; oz., 55c.

LUCULLUS—Popular for home and market gardens. Upright in habit of growth; leaves crumpled, bright yellowish green; stems thick, broad, and white. 50 days.

Pkt., 10c; oz., 20c; ¼ lb., 75c.

TOMATOES

ABEL'S MARKET CHAMPION—This magnificent new main crop tomato possesses all the good qualities to make it the ideal tomato for market and the home garden. The vines are large, hardy and productive. The fruits are bright scarlet, oval and deep, exceptionally smooth, ripening evenly to the stem without cracking. This new introduction of ours is the best of all tomatoes for canning and is unsurpassed as a money-maker for the market gardener. 80 days.

Pkt., 10c; ½ oz., 30c; oz., 50c; ¼ lb., \$1.40; ½ lb., \$2.15.

OXHEART, p.—Plant is open, spreading, only moderately productive. Fruits large, heart-shaped, somewhat rough, pink; very solid, meaty, and of mild flavor. 90 days.

Pkt., 10c; ½ oz., 45c; oz., 80c; ¼ lb., \$2.35; ½ lb., \$3.50.

BEEFSTEAK (Crimson Cushion: Red Ponderosa), r.—A wilt resistant, large variety, for home and market garden use. Plant open in habit of growth, heavy, rather light green, vigorous. Fruits large, flat, scarlet, rather smooth. 90 days.

Pkt., 10c; ½ oz., 40c; oz., 75c; ¼ lb., \$2.15; ½ lb., \$3.25.

BONNY BEST, r.—Standard second early variety for market gardeners, shippers and canners. Plant medium, not very hardy. Fruits slightly flattened globe shape, of medium size; smooth, solid, bright scarlet in color, of excellent quality. 73 days.

Pkt., 10c; ½ oz., 35c; oz., 65c; ¼ lb., \$1.90; ½ lb., \$2.80.

EARLIANA, r.—A standard first-early variety, widely adapted and valuable in areas of shorter season. Plant open, spreading, medium small, with finely cut foliage. Fruits flattened, medium sized, bright red, quite smooth. The Asgrow strain has been bred for thicker, smoother fruits. 66 days.

Pkt., 10c; ½ oz., 35c; oz., 65c; ¼ lb., \$1.90; ½ lb., \$2.80.

MARGLOBE r.—Introduced by the U. S. Dept. of Agriculture in 1925, this main crop variety has come into wide use by truckers and shippers, and in some sections by canners. Plant vigorous, with heavy foliage, resistant to Fusarium wilt and nail-head rust; moderately productive. Fruits medium large, nearly globular, deep red, smooth, solid, with thick walls and cross-sections; of fine quality. 77 days.

Pkt., 10c; 1/2 oz., 35c; oz., 65c; 1/4 lb., \$1.90; 1/2 lb., \$2.80.

MATCHLESS, r.—A reliable mid-season sort, well adapted to canning. Plant heavy in growth, erect, strongly productive. Fruits large, thick-flat, quite smooth, bright cardinal-red. 83 days.

Pkt., 10c; 1/2 oz., 35c; oz., 65c; 1/4 lb., \$1.90; 1/2 lb., \$2.80.

RUTGERS, r.—A recent introduction by the New Jersey Experiment Station which has deservedly achieved general popularity. Primarily intended for canning, has also proven a good green-wrap shipper and all-purpose variety of wide adaptation. Bred from Marglobe and J.T.D., it combines the best qualities of both, including Marglobe's resistance to disease and J.T.D.'s habit of ripening from the interior outwards. Plant large with thick stems and vigorous foliage. Fruits globular; bright red, smooth with thick walls and small seed cells. 86 days.

Pkt., 10c; 1/2 oz., 35c; oz., 65c; 1/4 lb., \$1.90; 1/2 lb., \$2.80.

PRITCHARD (Scarlet Topper), r.—Introduced by the U. S. Dept. of Agriculture. All-America Gold Medal 1934. Plant self-topping, resistant to Fusarium wilt and nail-head rust. Fruits globular with thick walls; color light scarlet, not as intense as could be desired. For market gardens, shipping and canning. 76 days.

Pkt., 10c; 1/2 oz., 30c; oz., 55c; 1/4 lb., \$1.60; 1/2 lb., \$2.50.

BURPEE'S DWARF GIANT (Tree Type)—Plants are of the dwarf or tree type; fruits are flattened, with rich purple-crimson skin. The meat is fine-grained, juicy, and solid enough to stand shipping well. Desirable home garden variety for those who want to grow large sized tomatoes in a small space. 80 days.

Pkt., 10c; 1/2 oz., 40c; oz., 75c; 1/4 lb., \$2.15; 1/2 lb., \$3.25.

STONE, IMPROVED, r.—Plant large, dense, very productive. Fruits large, flattened by deep, smooth, attractive scarlet-red of fine flavor. The Asgrow strain ripens evenly and is uniform. 86 days.

Pkt., 10c; 1/2 oz., 30c; oz., 50c; 1/4 lb., \$1.40; 1/2 lb., \$2.25.

DWARF STONE, r.—Most widely used of the dwarf varieties. Plant short, compact, with dark foliage. Fruits large, flattened globe, exceptionally attractive bright red in color, and quite solid. 92 days.

Pkt., 10c; 1/2 oz., 30c; oz., 50c; 1/4 lb., \$1.40; 1/2 lb., \$2.25.

PONDEROSA, p.—One of the largest varieties in general use for home garden planting. Plant large and spreading, with medium green leaves. Fruits very large, flat, purplish pink, somewhat rough, with tendency to crack, solid, with small seed cells; of inviting flavor. 88 days.

Pkt., 10c; 1/2 oz., 40c; oz., 75c; 1/4 lb., \$2.15; 1/2 lb., \$3.25.

GOLDEN QUEEN, y.—The leading large yellow variety. Good for home gardens and for commercial juice. Plant of medium size. Fruits medium large, deep golden yellow; smooth, rather solid, of mild flavor. 84 days.

Pkt., 10c; 1/2 oz., 35c; oz., 60c; 1/4 lb., \$1.75; 1/2 lb., \$2.75.

TRUCKER'S FAVORITE—Fruit of regular size and form, meaty, very evenly colored deep rich purplish red from stem to blossom end. Matures between the midseason and main-crop varieties. 80 days.

Pkt., 10c; 1/2 oz., 40c; oz., 75c; 1/4 lb., \$2.15; 1/2 lb., \$3.25.

VEGETABLES FOR VITALITY FOR VICTORY

CHALK'S EARLY JEWEL, r.—A second early sort for home gardeners and truckers, also good for canning in the North. Plant medium, with open growth; prolific. Fruits medium large, smooth, scarlet, flattened globe-shaped. Very similar to Bonny Best. 74 days.

Pkt., 10c; 1/2 oz., 35c; oz., 65c; 1/4 lb., \$1.90; 1/2 lb., \$2.80.

ABEL'S GREATER BALTIMORE, r.—Mainly a canning variety. Plant large, vigorous, somewhat open. Fruits flat, medium large, deep scarlet, fairly solid and firm. 82 days.

Pkt., 10c; 1/2 oz., 30c; oz., 50c; 1/4 lb., \$1.50; 1/2 lb., \$2.25.

JOHN BAER, r.—An early sort maturing between Earliana and Bonny Best. Excellent for gardeners serving local markets and for canning. Plant of medium height and open growth. Fruits medium size, smooth, semi-globular, attractive deep scarlet, with medium walls and small core. The Asgrow strain is exceptionally early. 70 days.

Pkt., 10c; 1/2 oz., 30c; oz., 50c; 1/4 lb., \$1.50; 1/2 lb., \$2.25.

PENN STATE (NEW)—Developed by Dr. Myers of Penn State College. The plants are of the self-topping type, with short, thick vines, which allow them to be set close together. The medium sized, scarlet-red fruits are born in clusters of 4 to 6 to a plant, and are smooth, slightly flattened, solid, and of superb quality. 80 days.

Pkt., 10c; 1/2 oz., 45c; oz., 80c; 1/4 lb., \$2.35; 1/2 lb., \$3.50.

PRESERVING TOMATOES

RED PEAR, s. f.—Very similar to Red Cherry, except that fruits are pear-shaped. 73 days.

Pkt., 10c; 1/2 oz., 45c; oz., 80c.

YELLOW PEAR, s. f.—Very similar to Red Pear, except for color. 73 days.

Pkt., 10c; 1/2 oz., 45c; oz., 80c.

YELLOW PLUM, s. f.—A yellow fruited sort, with oval plum-shaped fruit. For preserves. 73 days.

Pkt., 10c; 1/2 oz., 45c; oz., 80c.

YELLOW CHERRY, s. f.—Fruits are small, round, yellow, with shape and size of a cherry. Grown for preserving and as a novelty. 73 days.

Pkt., 10c; 1/2 oz., 45c; oz., 80c.

RED CHERRY, s. f.—Valuable for preserving, and as a novelty. Plant rank in growth. Fruits small, rich scarlet-red, cherry-like; borne in heavy clusters. 73 days.

Pkt., 10c; 1/2 oz., 45c; oz., 80c.

RED CURRANT, s. f.—Red small stems of currant like fruit. 73 days.

Pkt., 10c; 1/2 oz., 45c; oz., 80c.

RED PEACH, s. f.—About 1 1/4" through; round, fuzz like peach. 73 days.

Pkt., 10c; 1/2 oz., 45c; oz., 80c.

GROUND CHERRY (HUSK OR STRAWBERRY), s. f.—73 days.

Pkt., 10c; 1/2 oz., 45c; oz., 80c.

TURNIPS

PURPLE TOP WHITE GLOBE—The most popular variety for home and market gardens, and for shipping. Tops dark green, large, erect, cut leaved. Roots large, globe-shaped, very smooth, upper part purple-red, white below; flesh white, sweet, crisp and tender. The Asgrow strain is very uniform and attractive. Diam., 4"; 57 days.

Pkt., 10c; oz., 20c; 1/4 lb., 50c; lb., \$1.25; 5 lb., \$1.10; 10 lb., \$1.00.

COW HORN (LONG WHITE)—Tops large, upstanding, with deeply cut leaves. Roots white with light green shoulder, one-third out of ground, 9"-10" long, tapering, often crooked. A sweet, tender variety for table use and a heavy yielder for stock at full maturity. Diam., 2 $\frac{1}{8}$ "; 70 days.

Pkt., 10c; oz., 20c; $\frac{1}{4}$ lb., 50c; lb., \$1.40; 5 lb., \$1.35.

GOLDEN BALL—An attractive sort for the home garden and for truckers. Tops small, erect, cut leaved. Roots medium sized, round, smooth, yellow; flesh deep yellow, of fine texture and better flavor than others in this group. Diam., 3 $\frac{1}{2}$ "; 65 days.

Pkt., 10c; oz., 20c; $\frac{1}{4}$ lb., 50c; lb., \$1.40.

SEVEN TOP—A very hardly sort, grown principally for greens, also for forage. Popular throughout the South. The young shoots are very tender; roots tough and unsuitable for food.

Pkt., 10c; oz., 15c; $\frac{1}{4}$ lb., 35c; lb., \$1.05.

PURPLE TOP STRAP LEAVED—A medium early, very productive variety, used extensively in home and market gardens. Tops medium small, upright and compact. Roots flat, purple-red at the top, white below; flesh white, fine grained and tender. Diam., 4"; 46 days.

Pkt., 10c; oz., 15c; $\frac{1}{4}$ lb., 40c; lb., \$1.20.

WHITE EGG—For home gardens and local markets. Tops medium sized, upright, cut leaved. Roots white, egg-shaped, 3"—3 $\frac{1}{2}$ " long, white throughout; smooth, fine grained, and of fine quality. Diam., 2 $\frac{1}{8}$ "; 60 days.

Pkt., 10c; oz., 15c; $\frac{1}{4}$ lb., 40c; lb., \$1.20.

AMBER GLOBE—Principally a stock feed variety; also used for table when young. Tops large, cut leaved. Roots round, large, smooth, globe-shaped, light yellow with green top; flesh yellowish white, of good quality. Diam., 6"; 76 days.

Pkt., 10c; oz., 15c; $\frac{1}{4}$ lb., 40c; lb., \$1.20.

WATERMELON

CUT-RED WATSON—Markets calling for really good, large melons of the Tom Watson type will be pleased with this. A fine grained, deep red fleshed, entirely stringless and very sweet melon. There was not a white heart or an off-melon in our fields. Rind is very tough and darker green than the older strains of Watson. Under proper growing conditions will often average, 25 lbs.; 95 days.

Pkt., 10c; oz., 15c; $\frac{1}{4}$ lb., 45c; lb., \$1.25; 5 lb., \$1.23; 10 lb., \$1.20.

STONE MOUNTAIN, IMPROVED—Introduced by H. G. Hastings Co. A high quality shipping variety, also for garden planting. Fruits very large, oval-round with blunt ends; medium green with indistinct veining, rind is but fairly tough. Flesh rich scarlet, fine grained and very sweet; seed white with black edge. 35 lbs.; 90 days.

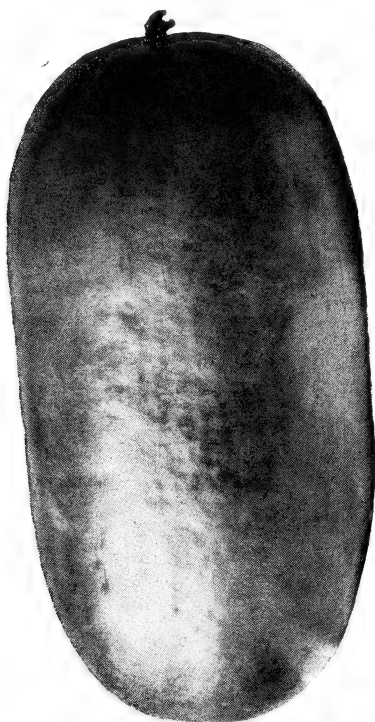
Pkt., 10c; oz., 15c; $\frac{1}{4}$ lb., 45c; lb., \$1.25; 5 lb., \$1.23; 10 lb., \$1.20.

GEORGIA RATTLESNAKE (AUGUSTA RATTLESNAKE) — Fruits large, elongated, gray-green, with irregular very dark green stripes; rind very tough. Flesh bright pink, seed dull white with black tip. 28 lbs., 90 days.

Pkt., 10c; oz., 15c; $\frac{1}{4}$ lb., 45c; lb., \$1.25; 5 lb., \$1.23; 10 lb., \$1.20.

KLECKLEY'S SWEET (Monte Cristo)—Similar to Wondermelon. An excellent variety for home gardens and local markets. It will not stand shipping long distances. Fruits large, cylindrical, dark bluish green, with thin, tender rind. Flesh bright red, tender and extremely sweet; seed creamy white with traces of brown. 30 lbs.; 85 days.

Pkt., 10c; oz., 15c; $\frac{1}{4}$ lb., 45c; lb., \$1.30; 5 lb., \$1.28; 10 lb., \$1.25.



Abel's
Sugar
Stick

ABEL'S SUGAR STICK—Vines strong, vigorous, setting many melons measuring from 20 to 24 inches in length. Rind thin and tough; skin light grayish green with narrow darker green lines, giving a mottled effect of small half-inch squares; flesh deep, rich red, with broad, solid heart, crisp and sugary. 30 lbs.; 90 days.

Pkt., 10c; oz., 15c; $\frac{1}{4}$ lb., 45c; lb., \$1.30; 5 lb., \$1.28; 10 lb., \$1.25.

SWEET HEART—Fruits large, nearly round, gray with fine veining of light green; rind tough and elastic. Flesh pink; seed black. 22 lbs.; 85 days.

Pkt., 10c; oz., 15c; $\frac{1}{4}$ lb., 45c; lb., \$1.30; 5 lb., \$1.28; 10 lb., \$1.25.

HALBERT'S HONEY—Similar to Kleckley's Sweet, but somewhat larger; desirable for home and market gardens, but not for shipping. Fruits long, cylindrical, with blunt ends, slightly ridged, dark green, lightly veined; rind very tender. Flesh bright red, and exceptionally sweet; seed white with blackish tip. 35 lbs.; 82 days.

Pkt., 10c; oz., 15c; $\frac{1}{4}$ lb., 45c; lb., \$1.30; 5 lb., \$1.28; 10 lb., \$1.25.

DIXIE—Fruits medium, oblong to long, light green with dark stripes; rind thin but strong. Flesh bright red, seed black. Keep well. Weight, 25 lbs.; 85 days.

Pkt., 10c; oz., 15c; $\frac{1}{4}$ lb., 45c; lb., \$1.30; 5 lb., \$1.28; 10 lb., \$1.25.

DIXIE QUEEN—A very prolific, shipping type of excellent quality. Fruits oval-round, light green with dark green stripes; weight 30 lbs.; rind thin but tough. Flesh bright red, crisp and quite free from fibre; seed small, white and few. Sometimes incorrectly described as white-seeded Cuban Queen. Weight, 30 lbs.; 85 days.

Pkt., 10c; oz., 20c; $\frac{1}{4}$ lb., 55c; lb., \$1.55; 5 lb., \$1.53; 10 lb., \$1.50.

ABEL'S INSECTICIDES AND FUNGICIDES

ANTROL is easy to use, economical, and safe around children and pets. Can be used inside or outside the house. Consists of small glass containers from which the worker ants carry special Antrol Syrup to their nests for food. The whole ant family is quickly killed at the source—the only way to get permanent freedom from these pests. Antrol containers are practically unbreakable glass, with rust-proof, water-proof aluminum lids. Control both sweet and grease-eating ants. Prices—Antrol Ready-filled set, containing 4 filled feeders, **40c**; Antrol Regular Set, 4 containers and 4-oz. bottle syrup—enough for two fillings, **60c**; Antrol Syrup for refilling, 4-oz. bottle, **20c**; pint bottle, **90c**.

ARSENATE OF LEAD (Dry)—Will destroy leaf-eating insects. Mix 2 pounds to 50 gallons water. Lb., **30c**; 4 lbs., **80c**. Case, 48 lbs. at **15c** per lb.

BORDEAUX MIXTURE (Dry)—For all fungoid diseases, mildew, and various rots of grape, etc. 1 lb., **35c**; 4 lbs., **85c**.

CALCIUM ARSENATE—For spraying to kill potato beetles and cabbage worms, and for use on plants having hardy foliage, use 1½ to 2 pounds to 50 gallons water or 2 tablespoons to 1 gallon water. For dusting, dilute with an equal amount of hydrated lime and apply with duster. 1-lb. pack, **25c**; 4-lb. pack, **70c**.

AVENARIUS CARBOLINEUM. Kills mites or ticks in hen houses. Applied once a year. Guaranteed to do the work. It will not only kill mites and fowl ticks by direct contact, but if sprayed or brushed, it will penetrate all cracks and crevices and effectually stop their propagation and keep away these pests. **PRESERVES WOOD EVERYWHERE** against rot and decay, adding at least 100 per cent to the life of fence posts, poles, sills, floors, bridge timbers, porches and to wood imbedded in concrete. It enables the use of any kind of wood grown on your own wood lot for fence posts, making such species as willow and cottonwood posts a durable and lasting as the long life and expensive species. **\$2.00** per gallon in single gallons. Write for prices on larger quantity.

C. P. O. (Insecticidal Soap Spreader). Odorless, nonpoisonous, liquid form. Dilute 1 to 80 to make nicotine, pyrethrum and other insecticidal poisons more effective. Can also be used without insecticidal poisons for control of **JUNIPER SCALE**, many forms of aphids and certain other insects infesting evergreens, flowering shrubs, fruits and vegetables. 3 ozs., **20c**; pt., **60c**; qt., **\$1.00**; 1 gal., **\$2.25**; 5 gals., **\$8.50**; 10 gals., **\$14.50**; 30 gals., **\$32.00**.

COPPER SOLUTION—The original ammoniated copper so highly recommended by Department of Agriculture as the most effective preventive for mildew, black spot, rust, etc., on roses, and other plants. Highly concentrated—stands dilution 80 to 1. Invisible on foliage or blooms. ½ pt., **50c**; pt., **85c**; qt., **\$1.50**.

CORNFUME—For the control of the Corn Ear Worm. Based on a formula successfully used in tests made by leading Agricultural Specialists. Economical. Easy to apply. The Cornfume pump delivers just the right dose in one application. Cornfume is applied just before the corn tassels. One application is sufficient for effective control. Tasteless and odorless, Cornfume does not impart any foreign odor to the corn. Harmless and non-poisonous when used in Corn Ear Worm control. Half pints at **60c**; Half Pint size with Cornfume Pump, **\$1.50**.

VEGETABLES FOR VITALITY FOR VICTORY

FISH-OIL SOAP—Liquid—Commonly known as "Whale-Oil Soap." Makes an excellent wash for trees and plants. Lb., **38c**; 5 lbs., **\$1.50**.

FLOWERS OF SULPHUR—A staple preventive for mildew on grapes, roses, etc. Lb., **15c**; 5 lbs., **50c**; 10 lbs., **75c**; 50 lbs., **\$3.43**; 100 lbs., **\$6.00**.

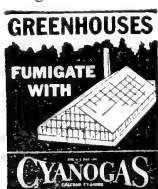
SULPHUR, WETTABLE (Dritomic)—A new and greatly improved summer fungicide containing 95 per cent Sulphur of 325-mesh fineness. It wets immediately upon being placed in water and will stay in suspension indefinitely. Ideal for wet spraying of fruit and ornamental trees to control scabrot, leaf-spot, mildew, rust, etc. 2 lbs., **25c**; 5 lbs., **50c**; 10 lbs., **90c**; 25 lbs., **\$2.25**; 50 lbs., **\$4.00**; 100 lbs., **\$7.00**.

FUNGTROGEN—The spray for controlling mildew and black spot. It is well to spray regularly about every five days with this preparation in order to prevent mildew and black spot from getting control of your roses. Use two ounces to the gallon of water. It is necessary to control mildew and black spot, as they will eventually destroy the plants, and when Fungtrogen is used, not only does it act as a preventive and remedy, but each time you spray with this material the plants are stimulated in better growth and foliage and consequently unusually fine blooms. 1/2 pt., **75c**; pt., **\$1.25**; qt., **\$2**; 1/2 gal., **\$3.50**; gal., **\$6**.

FRUITONE—The hormone spray. Stops pre-harvest drop of apples and fruits. Contains the same chemicals found by the United States Department of Agriculture to be most effective. Holds apples on the tree to maturity of size and color. Also can be used to reduce gardenia bud drop. 2-oz. can, **\$1.00** (makes 25 gallons spray). 12-oz. can, **\$5** (makes 150 gallons spray.)

GRAPE DUST—To kill mildew of grapevines; also on other plants or trees affected with mold, mildew, and rust-mites. 1 lb., **40c**; 5 lbs., **\$1.50**.

CYANOGAS A-DUST—For killing the following pests: Rats (in burrows); along ditch banks; in city dumps; under pavements and tight floors; in lumber piles; on poultry farms; in grain elevators and stockyards). Mice (field mice and pine mice.) Moles, Woodchucks (Groundhogs). Diseased bees, Wasps, Yellow Jackets and Hornets. Soil insects in lawns and golf greens. 1/2 lb., **45c**; 1 lb., **75c**; 5 lbs., **\$3.00**.



CYANOGAS G-FUMIGANT—The positive fumigant for greenhouse fumigation, mushroom house fumigation, warehouse and flour mill fumigation, grain fumigation, seed fumigation, fumigation of growing and dormant nursery stock, soil sterilization (wireworms, millipedes, grubs, and other soil insects). Fumigating bulbs in storage (gladioli, Narcissi, Iris, etc.) Fumigating tourists' camps, summer camps, bunk houses (for bedbugs, cockroaches, etc.). 5 lbs., **\$3**.

CYANOGAS ANT KILLER—Is not a bait! It is different. A small amount injected into the ant nest destroys the entire colony immediately. Spectacularly effective. This 4-oz. tin contains enough Cyanogas to kill a million ants. 4-oz. tin Cyanogas Ant Killer, **30c** each.

YELLOW CUPROCIDE is practically all fungicide, being 93 per cent cuprous oxide, an "insoluble" copper. When you spray Yellow Cuprocide, you do not load your plants with inactive material that keeps out the light and interferes with growth. Every pound you put in your tank is there to fight the blight. Better than Bordeaux. A state experiment station scientist, on a fellowship supported by Rohm & Hass Company, has thoroughly demonstrated that Yellow Cuprocide is superior to Bordeaux in continued fungicidal activity. Even on crops which can stand Bordeaux, you will be ahead with Yellow Cuprocide. On Bordeaux-sensitive crops, such as tomatoes and cucurbits, Yellow Cuprocide's value to you is doubled, since you avoid Bordeaux injury. 3 lbs., **\$2.00.**

DOG SKAT—Keeps dogs, cats and other animals away from trees, evergreens, roses, shrubbery, etc. Tube releases vapor offensive to animals, but not noticeable to humans. One large tube lasts a year. Small tube, **15c**; large tube, **30c.**

JAPANESE BEETLE CONTROL—JAPTOX—Kills and repels Jap beetles. It is a fine powder containing arsenate which, when sprayed on foliage, establishes a very pronounced silvery coating which sticks longer than any other spray material known. Very easy to apply—no inconvenient paste to work with. Not recommended for peach trees. 1-lb. canisters, **45c**; 100 lb. drums, **\$22.00.**

NAPHTHALENE—Useful in controlling Gladiolus thrips. Cyclamen thrips together with certain soil insects. Lb., **20c.**

LIME-SULPHUR SOLUTION—A concentrated liquid form of this widely used insecticide and fungicide for spraying fruit trees. It is usually combined with other materials to control several types of insects and diseases with the same spray. Dilution: 1 to 20 for dormant pruning; 1 to 40 for later applications. Qt., **40c**; gal., **\$1.00.**

IMPROVED CERESAN for seed treatment of small grains. Ceresan has proved effective in controlling such seed-borne diseases as bunt or stinking smut of wheat, stripe disease of barley, loose and covered smuts of barley and oats, and covered kernel smut of sorghum. It is the only dust treatment which has successfully controlled these destructive grain diseases. Ceresan does not injure the seed nor the grain-drill. Only 2 ounces of Ceresan required per bushel of wheat, rye or sorghum and 3 ounces for barley and oats. Easy to apply, economical to use. Prices: 4 oz., **30c**; 1 lb., **80c**; 5 lbs., **\$3.40**; 25 lbs., **\$15.00.**

SULFOCID—A powerful fungicide for fruits, vegetables and flowers. Especially effective for mildew, rust, anthracnose, brown rot and other fungus diseases, non-poisonous. Qt., **\$1.00**; gallon, **\$2.50.**

LIME-SULPHUR (Dry)—Widely recommended and known as one of the best preparations for San Jose scale, oyster-shell scale, etc. 1-lb. can, **35c**; 5 lbs., **\$1.45**; 12½ lb. bag, **\$2.25**; 25 lbs., **\$4.00**; 100 lbs., **\$12.50.**

NICO-FUME LIQUID—A highly refined solution of free nicotine guaranteed to contain fully 40 per cent nicotine. Used for destroying aphids, thrips, etc. Lb., **\$2.40**; 8 lbs., **\$11.10.**

NICO-FUME POWDER—For fumigating in greenhouses to destroy aphids, thrips, etc. 1-lb. can, **75c**; 5 lbs., **\$3.60**; 10 lbs., **\$6.20.**

NICO-FUME PRESSURE FUMIGATOR—Nico-Fume Pressure Fumigator is safe for the plants and is the most commonly used fumigant. Insects on crops grown in greenhouses may be controlled by fumigation in many instances. This is advantageous to greenhouse owners because fumigation reaches every leaf and bud, and requires less time and labor than does spraying. ½ lb. size, **45c** each; case lots of 1 doz., **\$4.35**; 1-lb. size, **75c** each; case lots of 1 doz., **\$7.35.**

VEGETABLES FOR VITALITY FOR VICTORY

INSECTROGEN is intended for leaf-eating insects of all kinds, including caterpillars, beetles, worms, etc. Use two ounces to one gallon of water. Insectrogen stays on the foliage a long time and is not washed off after rains, placing a protective film on the foliage. Insectrogen is not only a destroyer at the leaf-eating type of insects, but is also a repellent. 4 ozs., 50c; ½ pt., \$1; pt., \$1.75; qt., \$2.75; ½ gal., \$4.50; gal., \$8.00.

BLACK LEAF 40—50-lb drum, \$46.80; 10 lbs., \$11.65; 5 lbs., \$6.70 each; 2 lbs., \$3.57 each; 1 lb., \$2.42 each; 5 oz., \$1.05 each; 1 oz., 36c each.

LUCKY STRIKE kills all plant insects on your flowers and vegetables. **Lucky Strike** is the revolutionary spray that has created a tremendous sensation among entomologists, florists, gardeners. In the opinion of many, it represents the greatest advance that has been made in an insecticide.



Lucky Strike is the kind of spray you have long wanted. It contains a substance more deadly to insects than anything else ever discovered . . . yet it does not harm children, animals, or the plants and the delicate flowers on which it is sprayed. 1 oz., 35c; makes 4-8 gals.; ¼ pt., \$1.00, makes 15-30 gals.; ½ pt., \$1.60, makes 35-70 gals.; 1 pt., \$2.50, makes 70-140 gals.; 1 qt., \$4.50, makes 140-280 gals.; 1 gal., \$14.00, makes 500-1,000 gals. 5 lbs., \$1.50.

CROW-FEZ—Crow repellent. Birds and animals will not bother seed corn or other grained treated with Fez-Crow. Protects corn and seeds from rot. Does not hinder germination. Not poisonous. One-half pint treats 1 bushel, pint treats 2 bushels, quart treats 4 bushels. ½ Pt., 35c; pt., 50c; qt., 75c.

PARIS GREEN—Superior quality, ¼ lb., 20c; lb., 68c.

PARA-DICHLOROBENZINE (P. T. B.) For peach-tree borers. Lb., 35c; 5 lbs., \$1.50; 10 lbs., \$2.50; 25 lbs., \$5.25.

SCALECID—The quality miscible oil. Oldest and best known dormant or delayed spray for fruit trees and ornamentals. Easy and pleasant to use. Use 1 to 15 for all deciduous trees, 1 to 20 for evergreens. Kills scale, aphid, red mite and other insects wintering on the trees. It is a complete dormant spray. Invigorates and kills insects. Fall spraying controls scale, peach leaf curl, pear psylla, bud moth, case bearer, etc. Spring spraying controls scale, red mite, aphid, red bug, tent caterpillar, leaf miner, case bearer, etc. Qt., 75c; gal., \$1.75; 5 gal., \$6.35; 15 gal., \$12.95, \$2.00 drum deposit; 30 gal., \$21.25, \$2.50 drum deposit; 50 gal., \$29.90, \$3.00 drum deposit; 55 gal., \$32.89, \$3.00 drum deposit.

ROOTONE, the plant hormone powder. For better rooting of cuttings, seeds and bulbs. Just dip cuttings into the powder before planting. To treat seeds and bulbs, just dust with Rootone before planting. ¼ oz. package, 25c; 2 oz. jar, \$1.00.



RED ARROW INSECT SPRAY (Pyrethrum Soap). A non-poisonous, efficient insecticide for use against sucking and chewing insects, such as Mexican bean beetles, rosechafers, aphid (plant lice), leaf-hoppers, etc. Oz., **35c**; 4 oz., **\$1.00**; pt., **\$2.85**; qt., **\$5.00**; gal., **\$16.00**.

ROTENONE DUST— $\frac{3}{4}\%$ Rotenone and other Derris Resins. Thiocyanate Compound. 15% Microscopic Sulphur. Carrier—with high Electrostatic Charge. Made from high Rotenone content Derris Root. This product contains oil of the Rotenone and other active Derris Resins contained in the Derris Root from which it is made. Insecticide and Fungicide. For general garden dry dusting or wet spraying. Defends crops. Ready to use. This Product does not contain Arsenic of Lead. 1 lb., **35c**; 2 lbs., **65c**; 4 lbs., **\$1.20**; 35 lbs., **\$9.00**.

TREAT BEFORE PLANTING WITH
SEMESAN
 FOR DISEASE PROTECTION

VEGETABLES, FLOWERS—More vegetables and better flowers through controlling diseases with SEMESAN. $\frac{1}{3}$ oz., **10c**; 2 ozs., **40c**; lb., **\$2.50**; 5 lbs., **\$11.40**. Free pamphlet.

CORN—Increase your corn yield 3 bushels an acre with SEMESAN JR. $\frac{1}{2}$ oz., **15c**; 12 ozs., **56c**; lb., **75c**; 5 lbs., **\$3.00**. Free pamphlet.

POTATOES—2c a bushel now pays for easy Dip Treatment of Seed Potatoes with New Improved SEMESAN BEL. 2 ozs., **30c**; lb., **\$1.65**; 5 lbs., **\$7.15**. Free pamphlet.

SLUG SHOT DUST—The safe, nonpoisonous, dusting insecticide. Kills chewing insects and controls fungus. Harmless to humans, plants and vegetables. Kills Mexican bean beetle, cabbage worms, beetles, potato bugs, green flies, slugs, etc. 1 lb., **30c**; 5 lbs., **\$1.30**.

SNAROL is a ready-prepared meal that you simply broadcast on the ground vegetation. Kills cutworms, sowbugs, grasshoppers, slugs, snails, earwigs, etc. It will not deteriorate from rain or sprinkling. Thus it lasts longer and is more economical. It is non-injurious to vegetation. Lb., **25c**; $2\frac{1}{2}$ lbs., **50c**; 6 lbs., **\$1.00**; 10 lbs., **\$1.50**; 50 lbs., **\$5.50**.

SUNOCO SPRAY OIL—For the control of scale insects, red spider, aphid, thrip, etc Cheap, effective, and pleasant to handle. Gal., **\$1.30**; 5 gals., **\$5.25**.

TOBACCO DUST—If dusted on while the foliage is moist, it destroys rose-lice, cabbage and turnip fleas, etc. Also used as a fertilizer. Lb., **10c**; 5 lbs., **30c**; 10 lbs., **55c**; 25 lbs., **\$1.25**; 100 lbs., **\$4.00**.

ABEL'S SPECIAL CANADIAN PEAT MOSS—Granulated Peat Moss should be used liberally about the garden or greenhouses, for pot-plants, window boxes, growing bulbs, etc. It is also useful for mulching perennial beds, lawns, roses, etc., and mixing with sandy or clayey soils. Large bale, (13 cu. ft.) covers 240 sq. ft., 1 inch deep. $\frac{1}{2}$ Bale, **\$2.75**; bale, **\$5.00**.

VEGETABLES FOR VITALITY FOR VICTORY

TRANSPLANTONE—The vitamin-hormone stimulant. Vitamin B1 in the most effective form. Use on backward house plants or in the garden on seedlings (flowers or vegetables), shrubs or trees. Speeds up root growth and makes stronger plants. 1 ounce makes 1,000 gallons of solution. 1 oz. can, **50c**; 3-oz. can, **\$1.00**.

MICHIGAN PEAT MOSS—America's finest—All American peat. Thousands of years ago there was a lake where now stretches a huge peat bog at Capac, Michigan. For centuries the moss grew in the still waters until finally the lake disappeared, leaving in its place the finest peat deposits on the American continent. From this peat bog, Michigan Peat—Soil Sponge is scientifically produced, dried in the sun and stored in brick buildings to insure the maintenance of uniform quality. This scientifically processed peat costs no more than inferior substitutes, so when you buy insist on Genuine Michigan Peat—soil sponge from Capac. **\$2.75** per bag.

TRI-OGEN—The all-purpose spray. A positive plant protection. This complete rose garden spray treatment—Tri-ogen—offers the first definite mildew and black spot control combined with an insecticide. It kills all insects, including the sucking and leaf-eating types. It remains on foliage, repelling subsequent attacks. Tri-ogen also stimulates plant growth, resulting in fine foliage and luxuriant blooms. In four sizes: A. Small Kit (makes 16 quarts), **\$1.50**; B. Medium Kit (makes 64 quarts), **\$4.00**; C. Large Kit (makes 32 gallons), **\$6.00**; D. Estate Kit (makes 128 gallons), **\$20.00**.

TREE TANGLEFOOT—The best remedy against caterpillars and all tree-crawling insects. 6 ozs., **50c**; lb., **80c**; 5 lbs., **\$3.75**.

VOLCK—A powerful spray, effective on all ornamental and flowering plants for control of red spider, aphids, scale, etc. 1/2 pt., **35c**; qt., **75c**; gal., **\$2.25**; 5 gals., **\$6.50**.

WILSON'S O. K. PLANT SPRAY—For inside and outside spraying. For aphids, thrips, mealy bug, scale, rose-bugs, and many other insects. The only insecticide recommended by the officers of the Garden Club of America. Qt., **\$1**; gal., **\$3**; 5 gals., **\$12**.

WEED KILLER—Used only on paths, drives, gutters, and places where no growth is wanted. Dilute 1 gallon with 40 gallons of water. Qt., **65c**; gal., **\$1.55**.

ADCO—A bacterial food for making artificial manure, by mixing it with leaves, grass cuttings, green weeds or, in fact all the many wastes that accumulate during the garden year and applying water; the product is a clean manure. 1 box Adco, makes about 300 lbs., **\$1.00**; 25 lb. bag sufficient to make one-half ton of manure, **\$2.00**; 150 lb. bag sufficient to make 3 tons of manure, **\$10.50**; 600 lbs., **\$42.00**; 2100 lbs., **\$145.00**.

ASHES, HARD WOOD—Apply 1000 lbs. per acre. Indispensable for all crops requiring potash; excellent for mixing with potting soil. For top dressing lawns and grass fields it is applied to best advantage either in very early spring or late fall. 5 lbs., **25c**; 10 lbs., **45c**; 25 lbs., **85c**; 50 lbs., **\$1.50**; 100 lbs., **\$2.50**; 200 lbs., **\$4.00**; 1000 lbs., **\$18.00**; per ton, **\$35.00**.

BLOOD (DRIED)—For indoor culture of flowering plants, like roses, carnations, etc., its chief element being nitrogen. One of the quickest acting fertilizers. 5 lbs., **60c**; 10 lbs., **\$1.00**; 25 lbs., **\$2.00**; 50 lbs., **\$3.75**; 100 lbs., **\$7.00**.

COTTONSEED MEAL—Apply 800 pounds per acre. Exceedingly rich in potash and ammonia, making it excellent for use as a grass and grain fertilizer; for putting greens it is invaluable. Write for prices.

BOVUNG—A rich manure from cows—the ideal fertilizer for New Lawns and for restoring the worn-out grass plot to its original vigor. Through a special process practically all moisture is removed from Bovung soon after it has been taken from the barns. Bovung is absolutely free of all live weed seeds, it can not bring plant diseases to your garden, and while a little goes far, no harm will occur through fertilizing your lawn or garden freely. Bovung broadcasts as readily as grass seed and we suggest three applications upon your lawn throughout the year, in the early spring, again in midsummer, and finally early in the autumn. Bovung, too, is an excellent fertilizer for the flower and vegetable garden, being of an organic nature it brings to the soil just those materials in which the average garden soil is lacking. 5 lbs., **35c**; 10 lbs., **60c**; 25 lbs., **\$1.15**; 50 lbs., **\$1.85**; 100 lbs., **\$3.50**; 500 lbs., **\$16.00**; ½ ton, **\$28.00**; 1 ton, **\$55.00**.

BONE MEAL—RAW—Unusually rich in nitrogen and phosphoric acid, the two principal plant foods. We recommend this especially for lawns, gardens and greenhouses, or any purpose where a high class fertilizer counts. Apply 800 to 1000 lbs. per acre. 5 lbs., **35c**; 10 lbs., **60c**; 25 lbs., **\$1.15**; 50 lbs., **\$2.00**; 100 lbs., **\$3.75**.

DUTCH MAID (PULVERIZED FORM)—For lawns, flowers, shrubs and vegetables. The use of DUTCH MAID will make lawns richer, give earlier flowers, make thrifty shrubs and larger yields of vegetables. DUTCH MAID is a specially prepared plant food that contains the essential ingredients—nitrogen, phosphoric acid and potash in the form that will give rapid growth and full development of the above plant life. Guaranteed analysis. Nitrogen 4 per cent, Avai. Phos. Acid 6 per cent, Potash 6 per cent. 5 lbs., **50c**; 10 lbs., **85c**; 25 lbs., **\$1.50**; 50 lbs., **\$2.50**; 100 lbs., **\$4.00**; 500 lbs., **\$17.50**; 1000 lbs., **\$32.50**; ton, **\$60.00**.

HORN SHAVINGS—Used principally for mixing in potted soil; rich in ammonia, especially valuable in chrysanthemum growing. 5 lbs., **70c**; 10 lbs., **\$1.25**; 25 lbs., **\$2.00**; 50 lbs., **\$3.75**; 100 lbs., **\$7.00**.

HYPER-HUMUS—An excellent article to incorporate with poor soil in the garden, green house or in potting plants. When used in garden work, the ground should be covered with one-half to two inches of Humus and spaded in. 5 lbs., **25c**; 10 lbs., **45c**; 25 lbs., **85c**; 50 lbs., **\$1.25**; 100 lbs., **\$2.00**; 500 lbs., **\$9.50**; 1000 lbs., **\$15.00**; 2000 lbs., **\$25.00**.

IMP FERTILIZER is of the same analysis, approximately of the same composition and texture, and is used in the same way as the imported product most widely used in this country. Provides that all important impetus or vital force necessary to the healthy development of flowers and plants. Is the improved domestic fertilizer that rivals if not excels the imported article. IMP and the leading imported fertilizer have been fully analyzed by one of the leading analytical chemists of the country. Their findings will be sent for your perusal on request. Only asks a fair and unprejudiced trial, knowing full well that it must stand on its own solid worth to merit success. Boldly challenges all fair comparison. Be your own judge as to whether its claims are substantiated. 28 lbs., **\$3.50**; 56 lbs., **\$5.50**; 112 lbs., **\$10.00**.

LIME (HYDRATED OR POWDERED)—This is a very fine article for distributing on grass. Promotes growth, gives the grass a rich color and has a tendency to prevent the growth of weeds. Apply one ton per acre. 5 lbs., **15c**; 10 lbs., **25c**; 50 lbs., **60c**; 500 lbs., **\$4.50**; 1000 lbs., **\$8.00**.

PHOSPHATE, SUPER-ACID (16 Per Cent)—Apply 1,000 lbs. per acre. Used for mixing with other fertilizers to increase the phosphoric acid analysis. 5 lbs., **35c**; 10 lbs., **60c**; 25 lbs., **\$1.00**; 50 lbs., **\$1.50**; 100 lbs., **\$2.75**.

VEGETABLES FOR VITALITY FOR VICTORY

MURIATE OF POTASH—Apply 100 to 150 lbs. per acre, usually with other fertilizers. Excellent for potatoes, corn and other grains. Analysis, equal to 50 per cent actual potash. 5 lbs., **35c**; 10 lbs., **60c**; 25 lbs., **\$1.25**; 50 lbs., **\$2.00**; 100 lbs., **\$3.75**; ton, **\$44.20**.

THOMPSON'S VITAMIN B-1 PURE CRYSTALLINE POWDER PRODUCES AMAZING REINVIGORATED ROOT GROWTH!
Cattleya blooms twice normal size . . . 5-inch tea rose buds . . . Cottage tulips with 30-inch stems. Hyacinths with flower heads over 12 inches long . . . Snapdragons, 6½ feet tall . . . Birds of Paradise with 16 huge flowers . . . Daffodils bigger than a salad plate on a 42-inch stalk thicker than man's thumb . . . Roses transplanted while flowering . . . Annuals, perennials and shrubs transplanted without soil on roots . . . Root-rot stopped in valuable trees. 100 mgm (1/10 gram) **\$1.00**. Makes 2,000 gallons of solution; enough for a season in the average garden.

NITRATE OF SODA—Apply 100 to 150 lbs. per acre, mixing with land plaster or other fertilizers to render application more easy. Use only after plants are above ground. If used in liquid form dilute 2 ozs. to 1 gal. of water and do not apply oftener than twice a week. 5 lbs., **35c**; 10 lbs., **60c**; 25 lbs., **\$1.40**; 50 lbs., **\$2.50**; 100 lbs., **\$4.50**.

SHEEP MANURE—Apply 1000 lbs. per acre. One of the most extensively used of animal manures. The analysis shows it to be a perfectly balanced plant food. For garden, lawn or greenhouse use, nothing surpasses sheep manure; it is clean and easily handled, besides giving immediate results. Moisture maximum 6 per cent; nitrogen minimum 1.75 per cent; T.P.A. 1 per cent; potash, 3.25 per cent. 5 lbs., **\$1.85**; 100 lbs., **\$3.50**.

SOOT (SCOTCH IMPORTED)—This is used principally for bringing a good healthy color into foliage of chrysanthemum and other greenhouse plants. Also destroys insects and grubs that work on top of and underneath the surface. 5 lbs., **75c**; 10 lbs., **\$1.40**; 25 lbs., **\$2.25**; 100 lbs., **\$7.00**.

SULPHATE OF ALUMINUM—Especially adapted for fertilizing Rhododendrons, and other plants requiring an acid soil. 5 lbs., **40c**; 10 lbs., **70c**; 25 lbs., **\$1.25**; 100 lbs., **\$4.50**.

SULPHATE OF AMMONIA—Apply 70 to 100 lbs. per acre only with other fertilizers deficient in nitrogen. A valuable fertilizer for all plants in which a large leaf development or rapid growth is desired; will stimulate growth almost immediately. Analysis equal to 25% of ammonia. 3 lbs., **25c**; 5 lbs., **35c**; 10 lbs., **60c**; 25 lbs., **\$1.25**; 50 lbs., **\$2.00**; 100 lbs., **\$4.00**.

TANKAGE—This is usually applied to plants such as roses, etc., under glass. It is similar to dried blood. 5 lbs., **40c**; **70c** per 10 lbs.; 25 lbs., **\$1.25**; **\$2.00** per 50 lbs.; 100 lbs., **\$3.50**.

TEROGEN—A spring and summer ground dressing; reinforces any manure fertilizers you may use. Lb., **75c**; 2 lbs., **\$1.25**; 5 lbs., **\$2.75**; 10 lbs., **\$4.75**.

TOBACCO STEMS—For fumigating, mulching and fertilizing, these are invaluable. The chief fertilizing element in them is the potash. 5 lbs., **25c**; 10 lbs., **50c**; 50 lbs., **\$1.75**; 100 lbs., **\$3.00**.

VIGORO—A specially prepared plant food for lawns, vegetable and flower gardens, shrubbery, trees, etc. 5 lbs., **50c**; 10 lbs., **80c**; 25 lbs., **\$1.45**; 50 lbs., **\$2.35**; 100 lbs., **\$3.70**.

OUR ADVICE—Order Earlier Than You Have Ever
Ordered Before

Dear Friends and Gardeners:

There probably is not one phase of business which has not by this time been affected by the war, and farming in particular has had enormous strains put upon it. With many farmers, food-producers either in the armed forces or in defense factories. This means that all planters must be surer than ever that every seed they plant will be cleaned and tested and suited to soil and climate conditions. Such as **ABEL'S SEEDS**. Tried out on our trial grounds at **ABEL'S ACRES**, Stonersville, Pa. Cooperate by ordering early.

Wilber M. Abel,

ONION SETS

We have been promised by our grower several hundred bushel of $\frac{7}{8}$ " screen extra fine sets of Ebenezers.

35c per lb., \$8.50 per bus. (32 lb.) (O.P.A.)
Price regulation No. 371 (Revised) effective December 30, 1943.

SEED POTATOES

Maine grown. Selection and stock good.

PLOW SHARES

GOOD ASSORTMENT

ABEL'S QUALITY LAWN SEEDS

ABEL'S EVERGREEN LAWN GRASS SEED IS BEING USED
ON THE FINEST LAWNS IN BERKS COUNTY

ABEL'S EVERGREEN LAWN GRASS—This formula, after years of experimenting, has been blended carefully of grasses adapted to producing very thick growth and velvety appearance. Our grass seed is tested for purity and germination and each variety of grass in its composition is here for a special purpose—some for making fibrous roots which hold upon the soil and keep the turf in place; some of a sure creeping nature, filling up any bare spots; others for their color value; also for withstanding beating down by excessive rains. One pound will usually seed a place of 10 by 10 feet; 1 peck a space of 1,000 square feet; 1 bushel a space of 4,000 square feet, or, say 40 by 100 feet. For a thicker, more permanent effect, more seed is better. **Lb., 55c; 5 lbs., \$2.50; bu. (20 lbs.), \$9.50; 100 lbs., \$45.00.**

ABEL'S SPECIAL LAWN SEED INCLUDING BENT GRASSES—A perfect blend combination of the purest high test grass seed INCLUDING BENT GRASSES most suitable for the establishment of a luxuriant lawn. This mixture combines the qualities of quick growth, compactness and permanence, and is recommended to those who seek a beautiful lawn. **Lb., 65c; 5 lbs., \$3.00; 20 lbs. and up, 55c per lb.**

PENN'S COMMON OR CITY PARK LAWN GRASS—Contains only grasses suitable for the purpose of making a beautiful lawn. It germinates quickly and roots deeply, enabling it to withstand the intense heat of summer. This special mixture can be recommended very highly. However, the formula and purity test does not equal that of our Evergreen Lawn Grass. **Lb., 45c; 5 lbs., \$2.00; bu. (20 lbs.), \$7.50; 100 lbs., \$35.00.**

ABEL'S PARKWAY LAWN GRASS—A mixture meeting the requirements of those desiring a moderately priced grass seed. A quick growing mixture producing a permanent sod. **Lb., 35c; 5 lbs., \$1.60; bu. (20 lbs.), \$6.00; 100 lbs., \$28.00.**

ABEL'S SHADY PLACE LAWN GRASS—Usually it is quite difficult to obtain a satisfactory growth of grass under trees and in shady places, and for sowing in such places we recommend the use of our special mixture. It will quickly produce an abundant and even growth of beautiful green grass. The grasses used in making this special mixture are those adapted for growing in shade. It has been successfully used on some large operations where greensward was desired on land partially shaded by old trees. **Lb., 60c; 5 lb., \$2.75; bu. (20 lb.), \$10.00; 100 lbs., \$48.00.**

ABEL'S TERRACE MIXTURE LAWN GRASS—A special mixture of grasses for sowing on terraces and side hills—grasses that produce strong, spreading roots, thus preventing heavy rains from washing them out, that will withstand drought and exposure, thrive on shallow soils, and produce a rich, green turf throughout the season. **Lb., 60c; 5 lbs., \$2.75; bu. (20 lbs.), \$10.00.**

FANCY RED-TOP GRASS—One of the Bent grasses. Used on golf courses and in all good lawn mixtures. Does well in wet places and under unfavorable conditions. Is drought-resistant. **1 lb., 40c; 5 lbs., \$1.75; bu. (14 lbs.), \$4.20.**

KENTUCKY BLUE GRASS—Forms a close, thick dark green turf and is very hardy. Heavy, fine, clean seed. **Lb., 45c; 5 lbs., \$2.00; bu. (14 lbs.), \$5.25.**

ABEL'S WHITE DUTCH CLOVER—Re-cleaned for sowing on lawns, pastures, etc. **Oz., 15c; 1/4 lbs., 35c; 1/2 lb., 60c; lb., \$1; 2 lbs., \$1.95; 5 lbs., \$4.50; 10 lbs., \$8.50; 25 lbs., \$20.00.**