

Historic, Archive Document

Do not assume content reflects current scientific knowledge, policies, or practices.

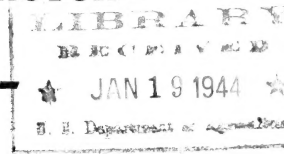
52091

BUCKLEY NURSERY CO.

Home of Pacific Gold Peach

BUCKLEY, WASHINGTON

-1944-



FLOWERING CHERRY



BECHTEL'S DOUBLE FLOWERING CRAB



FLOWERING PEACH

Roses

Ornamental Shrubs

Fruit, Nut, Shade Trees - Berries

PLANT DEPENDABLE NURSERY STOCK!

In times like these, it is more than ever vital that you should plant only **DEPENDABLE** stock, bought from a **DEPENDABLE** nursery. For twenty-two years Mr. W. M. Schwab, manager of the **BUCKLEY NURSERY CO.**, has been furnishing **QUALITY** trees to the Pacific Northwest. No planter should overlook the matter of Personal Service which a reliable nursery is glad to furnish to its customers. A thorough knowledge of soil and growing conditions, types and varieties best suited to each locality—a knowledge gained from first-hand experience—makes it possible to give you many worthwhile suggestions.

We take pride in our type of nursery service, and believe our customers appreciate our high standard of business. We give you the **MOST** in **QUALITY** for your money.

PLEASE OBSERVE WHEN ORDERING

Trees or shrubs of unknown or questionable value, purchased from an unknown source a thousand miles or more away, **CANNOT** be expected to give good results or be as adaptable to local conditions as are our trees which are thoroughly **ACCLIMATED TO WESTERN WASHINGTON CONDITIONS**.

All price lists issued prior to this catalog are hereby cancelled. All prices quoted in this catalog are subject to change without notice. All orders are accepted subject to stock being available at time of delivery.

PLANTING SEASON—Nursery stock does not ripen up thoroughly until about the middle of November. We dig and ship immediately that which is ripe, but **WE DO NOT** dig before mature simply to make early shipments. All items listed herein can be planted from middle of November until late February or March, depending upon earliness of spring.

TRANSPORTATION—We pay the mailing or express charges on items listed herein to all points in Western Washington, provided the amount of order is \$1.00 or over. Where order is less than this amount add 15c to help pay transportation.

TERMS—Cash. Send postoffice or express money order, bank draft or check. No order will be sent C. O. D. unless accompanied by 25% deposit. (Minimum deposit 50c.) If not paid for in full before shipping date we add 15c to C. O. D. to pay for the C. O. D. costs. Pay in full before shipment and save this charge. For orders less than \$1.00 send cash in full with order.

SALES TAX—All purchasers whose orders are being shipped to Washington points will please add to their remittance the Washington Sales Tax of 3%.

PACKING—No charge is made for packing on retail orders of dormant nursery stock to any point in the United States. Packing on evergreens at cost.

GUARANTEE—We guarantee all the stock we sell to be true-to-name, nevertheless, it is understood and agreed that should any stock prove untrue to name the nursery shall not at any time be liable for any sum greater than the amount received.

We guarantee all of our nursery stock to grow and will replace free of charge within one year of date of order when stock is picked up at the nursery. A 25-cent charge will be made to cover packing and shipping charges of each tree replaced and 10 cents for each vine or plant replaced when shipment is made to the customer. In all instances, extent of liability shall be determined by the nursery.

NOTICE—If there is any **spraying, planting, cultivating, or pruning problem** with which you are confronted, on which you would like help, a letter to us will receive our prompt and careful attention. All fruit trees are completely pruned and ready for planting when they leave our nursery, and no further pruning need be done the first year.



Well-planted landscaping adds beauty to your home

Write for information on our landscaping service. We have a complete stock of Evergreens and Flowering Shrubs to . . .

BEAUTIFY YOUR HOME.

PLANTING CHART

This convenient planting chart gives the appropriate planting distances at which various fruit trees and vines should be set. It also shows the number of trees at various distances that can be planted per acre.

Number of Trees per Acre			Suitable Distance for Planting	
No. Feet Apart	Square Method	Triangle Method		No. Feet Each Way
12 x 12	302	349	Apples	25 to 35
13 x 13	257	295	Pears	18 to 25
14 x 14	222	255	Sweet Cherries	25 to 35
15 x 15	193	222	Sour Cherries	20 to 25
16 x 16	170	190	Plums	18 to 25
17 x 17	150	172	Prunes	18 to 25
18 x 18	134	158	Peaches	18 to 25
19 x 19	120	138	Almonds	18 to 28
20 x 20	108	125	Quince	12 to 18
22 x 22	90	104	Nectarines	16 to 20
24 x 24	76	88	English Walnuts	40 to 60
25 x 25	69	80	Filberts	20 to 25
27 x 27	60	69		
30 x 30	43	55		
33 x 33	40	46		
35 x 35	35	40		
36 x 36	33	38		
40 x 40	27	31		

These distances will vary according to the type of soil and locality. For garden or home orchard, trees can be a little closer than for commercial orchards where cultivating is essential.

Kind of Vine or Plant	Proper Spacing	No. per Acre	Kind of Vine or Plant	Proper Spacing	No. per Acre
Grape Vines	8 x 8 ft.	680	Evergreen Blackberries	16 x 8 ft.	390
Currants	4 x 5 ft.	2178	Himalaya Blackberries	16 x 8 ft.	390
Boysenberry, Youngberry	8 x 8 ft.	680	Dewberries	6 x 6 ft.	1210
Olympic Berries	8 x 8 ft.	680	Loganberries	10 x 8 ft.	544
Gooseberries	5 x 5 ft.	1742	Asparagus	1½ x 4½ ft.	6000
Raspberries	2½ x 7 ft.	2500	Strawberries	1½ x 3 ft.	9658
Cumberland Blackcaps	2½ x 7 ft.	2500			

FLOWERING SHRUBS

ALTHEA (*Hibiscus Syriacus*)—The Althea is one of the more attractive shrubs blooming in July, August and September. The flowers are large, many colored, and very attractive. Red, Pink or Lavender, 2-3 ft., \$1.00 each; 3-4 ft., \$1.25.

AZALEA HINODEGIRI — Dwarf azalea, flame color, brilliant blossoms completely hide the shrub. 6-8 in., \$1.00.

AZALEA MOLLIS—A shrub attaining the height of 3 to 4 ft. Large clusters of yellow, salmon or flame colored flowers that bloom before the leaves appear in the spring. One of the finest and choicest of shrubs; very hardy. 9-12 inches, \$1.00.

CAMELLIA — Broad-leaved evergreen, handsome glossy green leaves, very showy blossoms in white, rose or red. 8-12 inches, \$1.50; 15-18 inches, \$3.00.

DEUTZIA—One of the most satisfactory shrubs to plant for late spring blooming either singly or in masses. Bears a profusion of flowers.

Lemoine—Pure white. 18-24 inches, \$1.00; 2-3 ft., \$1.25.

Scabra Plena — Double rose. 18-24 inches, \$1.00; 2-3 ft., \$1.25.

Gracilis—Slender, dwarf, pure white. 12-18 in., \$1.00; 18-24 in., \$1.25.

EXOCHORDA (*Pearl Bush*)—Attractive snowy white blossoms. Dainty foliage. Very showy. 2-3 ft., \$1.25; 3-4 ft., \$1.50.

BEAUTY BUSH (*Kolkwitzia*)—A graceful shrub attractive at all times. Masses of delicate pink flowers in spring. 2-3 ft., \$1.50; 3-4 ft., \$1.75.

MAGNOLIA (*Soulangeana*) — Handsome upright shrub with large showy sweet scented blossoms, creamy white tinted with purple, appearing before the leaves. 18-24 inches, \$4.00.

MAGNOLIA (*Purpurea*)—Similar to *Soulangeana*, except blossoms have a more pronounced edging of purple with a creamy white throat. 18-24 in., \$4.00 ea.

MAGNOLIA (*Stellata*)—The Starry Magnolia. Bushy and slow growing, very showy with narrow petaled, fragrant flowers, blossoming with the early daffodils. 18-24 inches, \$4.00.

FORSYTHIA (*Golden Bell*)—A beautiful shrub of medium size; flowers are of a bright yellow and appear before the leaves, very early in the spring; foliage dark green. The best of early flowering shrubs. 2-3 ft., \$1.00; 3-4 ft., \$1.25.

SPIREA

THUNBERG (*Spirea Thunbergi*)—A very graceful early flowering shrub, the slender branches clothed with feathery bright green foliage. Flowers pure white in early spring. 2-3 ft., 85c.

VAN HOUTTE (*Spirea Van Houttei*) (**Bridal Wreath**)—This is the most popular of all the spireas and is more largely planted than any other one shrub. Its gracefully arching branches heaped as they are with the white blossoms in spring, and its thriftiness under the most trying of conditions are the reasons for its popularity. 2-3 ft., 85c; 3-4 ft., \$1.25.

SPIREA ANTHONY WATERER—Deep rose flowers blooming all summer. Colorful foliage. 15-18 inches, 85c; 24-30 inches, \$1.25.

VIBURNUM CARLESI (**Fragrant Snowball**)—Pure white, delightfully sweet scented, flowers faintly tinted rose when opening. Very free bloomer. 15-18 inches, \$2.25.

VIBURNUM PLICATUM (**Snowball**) — Ivory white flowers, appearing in June with attractive green foliage. 2-3 ft., \$1.50; 3-4 ft., \$1.75.

VIBURNUM OPULUS (**Common Snowball**)—The favorite for all old-fashioned gardens. 2-3 ft., \$1.00; 3-4 ft., \$1.50.

WEIGELIA ROSEA (**Pink**) — Large light pink blossoms, often blooming for ten weeks with a few blossoms in the fall. 3-4 ft., \$1.00.

WEIGELIA EVA RATHKE—A new free-flowering variety with carmine red flowers. 2-3 ft., \$1.00. Extra heavy 3-yr., \$1.25.

CLIMBING VINES

CLEMATIS (**JACKMANI**)—This is the beautiful large flowered purple Clematis that grows so beautifully throughout Western Washington. 2 yr. No. 1. \$1.50.

CLEMATIS MME. EDWARD ANDRE—Bright red. 2 yr. No. 1, \$1.50.

CLEMATIS HENRYI—Similar to *Jackmanii*, but with white blossoms. 2 yr. No. 1, \$1.50.

IVY (**Boston**)—Bright green leaves, color deep red in fall, clings to stone or wood. \$1.00 each.

WISTERIA (**Purple, White, Pink or Violet**)—We handle only the finest grafted plants, which are sure to bloom. 3 yr., \$1.75 each.

FLOWERING SHRUBS

HYDRANGEA

ARBORESCENS GRANDIFLORA (Hills of Snow)—The blooms are large, snow white and foliage finely finished. Hardy. Each \$1.00.

PEEGEE (H. Paniculata Grandiflora)—A beautiful tall shrub with leaves of bright shiny green; flowers borne in huge panicles from 8 to 12 inches long, white, changing to light pink later in the fall; blooms in August and September; can be grown in tree form successfully and makes a very desirable lawn ornament. 2-3 ft., \$1.00; 3-4 ft., \$1.50.

TAMARIX—Slender drooping shoots with delicate feathery foliage; great billowy masses of pink flowers in early spring, nearly covering branches. 2-3 ft., \$1.00; 3-4 ft., \$1.25.

COTONEASTER (Horizontalis)—Very attractive, lies flat to ground or can be trained against a lattice. Produces mass of bright vermilion berries in winter with colorful leaves. 12-15 ins., \$1.00; 18-24 ins., \$1.50.

FLOWERING QUINCE—Low growing, bushy with brilliant showy blossoms in early spring, followed by shiny attractive foliage. 2-3 ft., \$1.25; 3-4 ft., \$1.75.

LILAC

COMMON PURPLE (Syringa Vulgaris)—The well known purple variety long a standard sort, a beautiful shrub, indispensable in every collection. 2-3 ft., \$1.00; 3-4 ft., \$1.25.

COMMON WHITE—Too well known to need description; flowers white and fragrant. 2-3 ft., \$1.00; 3-4 ft., \$1.25.

GRAFTED LILACS

2-3 ft., \$1.50 4-5 ft., \$2.50

Persian—Deep purple with slender branches.

Adelaide Dunbar—Double; Dark Red.

Belle De Nancy—Double; Pinkish Lavender.

Charles Joly—Double; Dark Reddish Purple.

Edith Cavell—Double; Milk White.

Ludwig Spaeth—Single; Dark Reddish Purple.

Villa de Troyas—Single; Dark Wine Red.

SHADE and ORNAMENTAL TREES

FLOWERING CRAB

One of the showiest ornamental flowering trees. Trees are graceful and attractive.

FLORIBUNDA—Flowering Crab—Deep pink blossoms; blooms very profusely with clusters of small yellow apples following blossoms. 3-4 ft., \$1.25; 5-6 ft., 2 yr., \$1.75.

PARKMAN—A newer variety, one of the very best. Bright rose-red, double flowers hang on long, slender stems. 2-3 ft., \$1.25; 3-4 ft., \$1.50.

SCHEIDECKERI—Another choice flowering crab. Small growing tree, grows upright and vase-like, or pyramidal, with small pink flowers in great profusion. 3-4 ft., \$1.25; 5-6 ft., 2 yr., \$1.75.

NEIDZWETSKYANA—An excellent flowering crab. Brilliant red blossom. Bright red fruit. Very ornamental and showy. 3-4 ft., \$1.25; 5-6 ft., 2 yr., \$1.75.

FLOWERING CRAB (Bechtel's)—One of the finest double, bright pink fragrant flowers. Slow growing. 2-3 ft., \$1.25; 3-4 ft., \$1.50.

ELM (American)—A majestic native tree of great size and wide spread; fairly fast growing. Makes a beautiful lawn or street tree. 5-6 ft., \$1.25; 6-8 ft., \$1.50.

SILK TREE (Albizzia Julibrissin)—Hardy native of Persia and China. Fern-like foliage, and above it clusters of small silken tassels, yellow at base and covered with silky pink hairs. From a distance the entire tree is covered with a silken mantle of very fragrant flowers. 3-4 ft., \$1.50 each.

PRUNUS BLERIANA—Small tree with purple tinted foliage, double pink flowers. The first in blossom every spring. Blossoms appear before foliage. Very showy. Semi-dwarf. 3-4 ft., \$1.25; 5-6 ft., 2 yr. branched, \$1.75.

ALMOND (Pink Flowering)—A vigorous, beautiful tree covered in May with rose-colored blossoms. Hardy. 2-3 ft., \$1.00; 3-4 ft., \$1.25.

PRUNUS PISSARDI—Purple leaf plum. Much used for its flowers, foliage and fruit. 4-6 ft., \$1.00; 6-8 ft., branched, \$1.75.

PRUNUS TRILOBA—Early, before the leaves appear, the slender branches of this little tree are solid festoons of glorious double pink rose-like flowers. Triloba is a sensation every spring. 4-5 ft., \$1.50.

PRUNUS VESUVIUS—Deep blood red foliage with purple branches. Retains deep rich color all summer. Attractive white blossoms in early spring, followed by tasty purple fruit. 1 year, 4-5 ft., \$1.25; 2 yr. 5-6 ft., branched, \$1.75.

DOGWOOD—Pink Flowering, very dwarf tree; large clusters of pink blossoms, very showy. 24-30 in., \$2.75 each; 30-36 in., \$3.50.

DOGWOOD (White Flowering)—An attractive small shade tree; very hardy; branches are a profusion of creamy white flowers every spring. 3-4 ft., \$1.50.

GOLDENCHAIN (Laburnum Vulgare)—Beautiful small tree with clover-shaped leaves; flowers are fragrant long chains of golden yellow. 4-5 ft., \$1.50.

PRUNUS CAMELIFLORA (Double Flowering Peach)—Bright pink, one of the most brilliant early blooming trees. 5-6 ft., \$2.00 each.

SHADE and ORNAMENTAL TREES

AILANTHUS (Tree of Heaven)—A very rapid grower. Tropical in appearance, hardy and thrives in adverse conditions. 5-6 ft., \$1.50; 6-8 ft., \$2.00.

BIRCH (European White Birch)—Attractive white bark, good foliage and shape make it a very desirable tree for street, lawn and landscape effect. 5-6 ft., \$1.25; 6-8 ft., \$1.50.

CATALPA SPECIOSA (Western Catalpa)—Large leaves and large clusters of white attractive flowers. 5-6 ft., \$1.75; 6-8 ft., \$2.50.

CATALPA BUNGEI (Umbrella Catalpa)—Dense round headed tree, fine for formal plantings. 6 ft. head, \$4.00.

SYCAMORE (American Plane Tree)—A fine specimen or street tree, quickly grows to a lofty wide spreading tree; dense foliage, bright green leaves; seed balls are interesting in winter. 5-6 ft., \$1.75; 6-8 ft., branched, \$2.50.

MAIDENHAIR TREE (Ginkgo Biloba)—Very striking, unusual tree growing slowly 30 to 35 feet, slender while young, spreading with age. Foliage shaped like Maidenhair fern, but 2 or 3 inches across, unusual green color, very bright yellow in autumn. Hardy and very desirable. 4-5 ft., \$2.50.

LINDEN, EUROPEAN—Small leaf, symmetrical and compact. Fragrant yellow bloom, 5-6 ft., \$1.75.

AMERICAN LINDEN—Strong growing tree with drooping branches. Large attractive leaves. A very desirable shade tree. 5-6 ft., \$1.25; 6-8 ft., \$1.75.

ACER NEGUNDO (Variegated Boxelder)—Makes an excellent shade tree for lawn, or parking strip. Slow-growing. 3-4 ft., \$1.75; 6-8 ft., \$3.00.

LOCUST, GLOBE—Has beautiful, round, globe-shaped top, budded on straight six-foot standard. Top can be sheared each year, making this a very attractive, formal tree that can be kept small where space is limited. Globe Locusts are planted about the Capitol Grounds at Olympia and have attracted widespread interest of tree lovers. 6 ft. stems, \$3.00.

PINK FLOWERING LOCUST—Attractive pink fragrant blossoms. Tree similar in habit to Black Locust, but thornless. Grafted heads, 5-6 ft., \$3.00.

BLACK LOCUST—A rapid growing tree; will thrive in any soil; flowers in long pendulous racemes, white and fragrant. 4-6 ft., \$1.00; 6-8 ft., \$1.25; 3 yr., heavy, well branched, \$2.00 each.

HONEY LOCUST—Vigorous growing tree with attractive feathery-fern like foliage. Long thorns. 5-6 ft., \$1.75; 6-8 ft., \$2.50.

NORWAY MAPLE—Large growing shade tree of rounded form. Fast growing for a hardwood tree. 4-6 ft., \$1.00; 6-8 ft. branched, \$1.75; 10-12 ft., \$2.50.

SUGAR MAPLE—Make Your OWN Maple Syrup! Tree is well shaped with colorful foliage in fall. 5-6 ft., \$1.50; 6-8 ft., \$2.00.

OAK—Attractive shade tree; graceful pyramidal. Foliage very showy in autumn. Slow growing. 5-6 ft., \$1.50; 6-8 ft., \$2.50.

RED BUD—Attractive shade tree with purplish rose flowers in spring. Very graceful little tree. 4-5 ft., \$1.75.

HAWTHORNE, PAUL'S SCARLET—This is a beautiful, deep scarlet Hawthorne that grows to perfection in Western Washington. 4-5 ft., \$1.25; 5-6 ft. whips, \$1.50; 2 yr. select, well branched, \$2.25.

TULIP TREE (Liriodendron)—Handsome pyramidal tree, interesting foliage; a good shade tree with light yellow flowers in shape and size like tulips. A novel hardy tree. 4-5 ft., \$1.50; 6-8 ft., \$2.25.

MOUNTAIN ASH—Well shaped tree, very symmetrical with large clusters of showy red berries. 5-6 ft., \$1.50; 6-8 ft., well branched, \$2.00.

RUSSIAN MULBERRY—Fast growing; light green foliage; fruit edible. Often planted near cherry trees to attract birds and save cherries. 5-6 ft., \$1.50; 6-8 ft., \$2.00; 2 yr., well branched, heavy, \$2.50.

HORSE CHESTNUT, European or White Flowering—A beautiful well known tree, forming a round dance of showy flowers in spring. 4-5 ft., \$1.50; 3-4 ft., \$1.00.

HORSE CHESTNUT, Red Flowering (Rubicunda)—A splendid tree producing showy red flowers a little later in the season than the white. 3-4 ft., \$4.00.

WEeping TREES

BIRCH, CUTLEAF—Tall slender, yet vigorous in growth; graceful drooping branchlets, with delicately cut foliage. The white bark of trunk and limbs make it a tree of rare beauty summer and winter. Very popular for single specimens or groups. 5-6 ft., \$1.75; 8-10 ft., \$3.00.

MULBERRY—Forms a perfect umbrella-shaped head with long slender branches drooping to the ground. Grafted, 5-6 ft. head, \$4.50.

WEeping FLOWERING PEACH—One of the most brilliant flowering trees; single coral pink. Grafted, 5-6 ft. head, \$3.00.

WILLOW NIOBE—Golden twigs; showy tree in winter and early spring. 3-4 ft., \$1.00; 5-6 ft., \$1.50; 6-8 ft., \$2.00. Larger sizes on request.

WILLOW WISCONSIN—A large tree with long, drooping branches; very fast growing. 5-6 ft., \$1.25; 6-8 ft., \$2.00.

WEeping CHERRY—Deep pink, double or single flowers beautifully displayed on the graceful arching and drooping branches. Grafted, 6 ft. head, \$2.75.

EVERGREENS

CYPRESS—Alumi (Blue Cypress)—Pyramidal.

—**Erecta Verdis**—Pyramidal—bright green.

—**Lawson**—Pyramidal—Variable in height.

18-24 inches, \$1.50; 3-4 ft., \$3.00; 4-5 ft., \$4.00; 5-6 ft., \$5.00.

CYPRESS SILVER QUEEN—Slow growing, silvery green foliage. 18-24 inches, \$2.00; 3-4 ft., \$4.00.

CYPRESS — Stewardi (Golden Lawson) — Erect habit, good winter color. Same price as Silver Queen.

JUNIPER — Irish — Narrow, columnar, silvery green. 18-24 inches, \$1.50; 3-4 ft., \$3.00.

JUNIPER — Excelsa Stricta — Pyramidal, blue green; very symmetrical. 15-18 in., \$2.00; 3-4 feet, \$4.00.

JUNIPER SABINA TAMARISCIFOLIA—One of the finest creeping varieties, forming a dense, compact carpet of blue-green foliage which never changes color. Hardy. 15-18 in., \$2.75; 18-24 in., \$3.50.

JUNIPER SABINA—Beautiful deep green foliage, bushy low grower forming an irregular vase-shaped bush. Well adapted to planting under windows. 12-18 inches, \$2.00; 18-24 inches, \$3.50.

ARBORVITAE—Thuya Pyramidalis—One of the best, columnar. 18-24 inches, \$1.50; 3-4 ft., \$3.50.

ARBORVITAE—Thuya Orientalis Beverleyensis (Golden Pyramidal) — Slow-growing, symmetrical. 18-24 inches, \$2.50; 2-3 ft., \$3.50.

ARBORVITAE — Golden (Berckmani) — Dwarf, globular, very slow growing; unexcelled for foundation planting. 8-10 inches, \$1.25; 12-15 inches, \$2.50; 15-18 inches, \$3.00.

CEDRUS DEODARA—The most graceful of the Cedrus, and often considered the finest individual evergreen tree. Silvery blue, feathery foliage borne on long drooping branches. 18-24 inches, \$2.50; 30-36 inches, \$3.50; 4-5 ft., \$5.00.

MUGHO PINE—(Dwarf)—Attractive green foliage, rather short needles, forms a low round topped plant, useful any place where a low compact plant is desired. 10-12 inches, \$1.50; 18-24 inches, \$3.00.

RETINOSPORA PLUMOSA — (Golden) — Soft golden foliage, branches are slender and pliable, giving a plume like appearance. Very adaptable. Can be sheared to any desired shape or height. 12-15 inches, \$1.25; 24-30 inches, \$2.25.

COTONEASTER—Franchetti — Graceful, pendulous branches, good foliage, with large clusters of showy, orange berries. Evergreen. 2-3 ft., \$1.50; 3-4 ft., \$1.75.

ENGLISH LAUREL — An evergreen especially adapted for conditions on the Pacific Coast, with large glossy green leaves. Very useful in hedge plantings, for screening and as individual specimens.

Respond to trimming very well and can be sheared to any shape. 18-24 inches, \$1.25; 24-30 inches, \$1.75; 12-15 inches for hedging, \$45.00 per 100.

BOXWOOD—Truedwarf—For edging base plantings or along sidewalks. 4-5 inches, 40c; \$4.00 per doz.

PRIVET—(English) — One of the most popular hedge plants. Can be used for background or evergreen screen. 18-24 inches, \$12.50 per 100; 30-36 ins., \$17.50 per 100.

MEXICAN ORANGE—(Choisya ternata)—Waxy, fragrant light green foliage. Sweet scented pure white clusters of flowers blooming from February to June. 12-15 inches, \$1.25; 18-24 inches, \$2.00.

DAPHNE (Odora)—Early blooming. Waxy bright green foliage with most fragrant deep pink flowers. 6-8 inches, \$1.00; 10-12 inches, \$1.50; 18-24 ins., \$3.50.

RETINOSPORA SQUAROSA NANA (Dwarf) — Very dense form of retinospora forming a low globe shaped plant. 10-12 inches, \$1.25; 15-18 inches, \$1.75.

SPRUCE—Colorado — Blue — Slow growing; an excellent specimen type, luxuriant foliage, very hardy. 12-15 inches, \$2.75; 3-4 ft., \$8.50.

SPRUCE—Norway—Green foliage; very hardy. 2-3 ft., \$2.50; 4-5 ft., \$5.00.

LAURESTINUS—A handsome leaved evergreen. Attractive white, tinted pink, blossoms all winter. 15-18 inches, \$1.75; 24-30 inches, \$2.75.

RHODODENDRONS—Our state flower. One of the handsomest of all broad leaved evergreens. Has beautiful blossoms in spring of white, pink, lavender, red, or purple.

Hybrid seedlings (not tagged as to color) 12-15 inches, \$2.75; 18-24 inches, \$4.00; 24-30 inches, \$5.00.

Special Named Varieties—From grafts or cuttings. (tagged as to color), 12-15 inches, \$4.00; 15-18 inches, \$5.00; 18-24 inches, \$6.00.

Larger specimens available in hybrids and named sorts. Prices on request.

HOLLY—English—Perfectly hardy on Pacific Coast. Berried specimens, 24-30 in., \$3.50; 3-4 ft., \$6.

HEATHER—Mediterranean Hybrid — Blossoms all winter. Lavender pink blossoms. 8-10 inches, \$1.00 each.

HEATHER—Erica Carnea—Deep pink flowers—January to April. More dwarf than Mediterranean. 8-10 inches, \$1.00 each.

NOTE—This is only a partial list of our large stock of evergreens. Write for prices on other varieties or larger specimens.

**PRICES ON EVERGREENS F. O. B. BUCKLEY
SHIPPING AT COST**

The PACIFIC GOLD Peach

Your land can produce **PACIFIC GOLD!** A peach that can be grown and marketed on the Coast ahead of Eastern crops. A firm, sweet, colorful peach ready for market at a time when prices are good. It's gold in your pocket when you have Pacific Golds on your land. Proven best in every respect.

PACIFIC GOLD PEACHES

are in bearing now in practically all parts of Western Washington. At least one of your neighbors or acquaintances will enjoy this fine fruit from his own tree this year. Place your order NOW and add your name to our large list of satisfied customers.



PACIFIC GOLD—one of the finest peaches on the market—has been developed especially to suit the needs and growing conditions in Western Washington.

PACIFIC GOLD was developed in our orchards at Buckley, Washington, where we have approximately 300 trees of this remarkable variety in profitable commercial production.

They are very hardy and regularly bear big crops of fruit. Two-year-old trees are often loaded, and in our orchard three and four-year trees have produced three to five boxes of fine peaches.

The **PACIFIC GOLD** peach is a rich golden color with a beautiful red cheek. The flesh is rich yellow and the flavor delicious. Having no acidity, it requires less sugar when eaten fresh or as a preserved fruit. It entirely lacks coloration about the pit and bitterness characteristic to other peaches.

The flesh is firm and solid and a very good canner. It is a good tree-ripened shipping peach with a small free-stone.

For years there has been a real need for a good peach for the Coast. Fruit from distant orchards is often harvested in a semi-green state to reach market in solid condition. Consumers in the city seldom taste

“tree-ripened” peaches that have been allowed to stay on the trees until the fruit has acquired its natural sugar and sweetness that comes only from normal, proper ripening.

Growers of **PACIFIC GOLD** can place a fine, tree-ripened peach on the market—full of real flavor—within only an hour or two from the time the peaches are picked. Pacific Gold is the one peach tried and proven that produces heavy profitable crops of quality fruit under Western Washington conditions.

PACIFIC GOLD matures its fruit one week to ten days ahead of Eastern Washington crop, which is a great advantage in marketing.

Prices

Well rooted, thrifty Pacific Gold trees sell at the following prices:

	Each	10-25	25-50	50-100
No. 1 Yearling, light, 3-4'	\$1.00	\$.95	\$.90	\$.85
1st Grade No. 1 Yearling, 4-6 ft.	1.25	1.20	1.15	1.10
Extra Heavy One Year, 5-7 ft.	1.50	1.40	1.35	1.25

Special prices on larger quantities.

No. 246 NOW! ENTIRELY NEW!

A new entirely different peach! Ripens before all other commercial varieties! Hardy! Heavy bearing! Golden flesh! Fine textured! Highly colored, firm, good shipper and canner. Freestone. Good sized!

This peach is so new we have not even named it! Supply is quite limited, all orders will receive preference according to date received. Order by nursery classification number—(No. 246).

Peach No. 246

Each \$2.00 12 for \$20.00

(Trees are all one-year heavy, well branched.)

PEACHES

Tree Ripened Peaches Taste Best!

You can never really know how good peaches taste until you pick them fully ripened from your own trees. Fresh ripe, home-grown peaches are delicious fruit that may be grown at little expense. They are easy to grow, quick to come into bearing and very productive.

Cultural directions for peaches are enclosed with each peach tree order.

CRAWFORD'S EARLY—Freestone. A large, magnificent yellow peach of good quality. One of the most popular varieties. August.

EARLY ELBERTA—Freestone. Large yellow with red cheek, flesh firm, yellow, juicy; of fine quality. Early September.

HALE'S EARLY—Freestone. Medium, flesh white, fine quality, very rich flavor. Late August.

ROCHESTER—Small to medium, orange yellow with deep red blush. Very juicy, highly flavored. Productive, semi-freestone. Middle of August.

PACIFIC GOLD—The peach we especially recommend. Especially adapted to climatic conditions of western Washington. See previous page for prices.

VETERAN—A new development well adapted to Western Washington. Freestone. Flesh a deep golden with fine veins of red next to pit. Sweet, good flavored. An excellent peach for planting with the Pacific Gold. Ripens two weeks after the Pacific Gold.

STRAWBERRY PEACH—A favorite for eating or pickling. White meat. Medium to large, exceptionally fine flavor; ripens mid-August.

J. H. HALE—Ripens early September. Large size, freestone, good canning. Yellow flesh.

GOLDEN JUBILEE—Famous new variety, originated by the New Jersey Experimental Station. Free stone. Large size, sweet. Good canning or fresh.

PEACHES—Continued

IMPROVED CRAWFORD—Ripens before regular Crawford. Good flavor; freestone. Yellow flesh. Medium to large.

VEDETTE—One of the earliest yellow-meated peaches. A delicious peach for eating fresh.

PRICES ON PEACHES

PRICES (Except Pacific Gold, No. 246 and Red Haven)	
Yearling 3-4 ft., light.....	\$.85
Yearling 4-6 ft., heavy.....	1.00
Yearling 5-7 ft., extra heavy.....	1.25
Two-year, select.....	1.50

RED HAVEN—New. Highly colored, red skin. Flesh yellow. Freestone. Ripens month ahead of Elberta. Limited quantity at \$1.50 each.

APRICOTS

A beautiful and delicious fruit, a close relative of the plum and peach, combining the qualities of both. The fruit ripens after the early cherries, and just before the plums and peaches.

TILTON—Medium to large, firm flesh, sweet and juicy, tree hardy and thrifty grower. We consider this one of the best varieties for Western Washington.

WENATCHEE MOORPARK—One of the largest; orange-yellow with numerous specks and dots; flesh yellow and sweet, juicy and rich. Ripens first to middle of August.

Prices

Yearling 4-6 foot, heavy.....	\$1.00
Yearling 5-7 foot, extra heavy.....	1.25
Two-year select.....	1.50

PERFECTION APRICOT—The newest and best apricot for general commercial or home orchard planting. Very hardy, heavy bearing. The largest apricot of all. Excellent flavor.

Each \$1.25



APRICOT

APPLES—Grow 'Em on Your Own Trees

Properly cared for apple orchards of the right varieties have been consistent money makers. Some are excellent for eating purposes, some excellent for cooking, others only of fair quality for either purpose. Apples do not all mature at the same time. Good, fresh apples for both eating and cooking can now be had twelve months in the year by selecting proper varieties according to their seasons and adaptability to different uses. And—any apple tastes better from your own tree than from a paper bag purchased at a fruit stand.

SUMMER APPLES

RED ASTRACHAN—A fine home apple for cooking and eating. Good quality. Yellow covered with red, striped appearance.

YELLOW TRANSPARENT—An excellent apple for eating or cooking. No apple in its season approaches it. A clear yellow color. Ripens through a period of from three to four weeks. The apple that made green apple pie famous.

FALL APPLES

DUCHESS—Large, juicy and sweet, one of the finest of cooking apples.

GRAVENSTEIN—Large, fine quality, one of the best, an old favorite. Ripens in August.

RED GRAVENSTEIN—Large, bright red, excellent quality. One of the best raw or cooked. Particularly well adapted to Western Washington. Has a rich, spicy flavor. Ripens shortly after plain Gravenstein.

WEALTHY—Large, bright red, tart, very good.

WAGNER—Medium size, deep red, juicy, excellent flavor.

SNOW (Fameuse)—Medium size, deep red striped. Excellent eating and cooking. Flesh exceptionally fine textured, crisp.

KING—Largest size, oblate, yellowish grounded, striped and covered with bright red. Fragrant spicy smelling. Flesh very crisp, tender, rich, fine flavor. A superb apple.

WINTER APPLES

ENGLISH RUSSETT — Medium to large apple, fine grained, excellent eating apple, and exceptionally fine keeper. An old favorite regaining popularity.

WINTER BANANA — Large, clear waxy yellow with blush, fine tart flavor, good cooking and eating, crisp.

YELLOW BELLFLOWER — Very large, yellow with blush, tart and juicy. Exceptionally fine cooking apple, good keeper.

GRIMES GOLDEN—Medium to large, rich golden yellow, crisp, fine flavor. A universal favorite, good keeper.

McINTOSH RED — Large, bright red, striped white, fine-grained texture, very aromatic, good cooking and eating, strong growing.

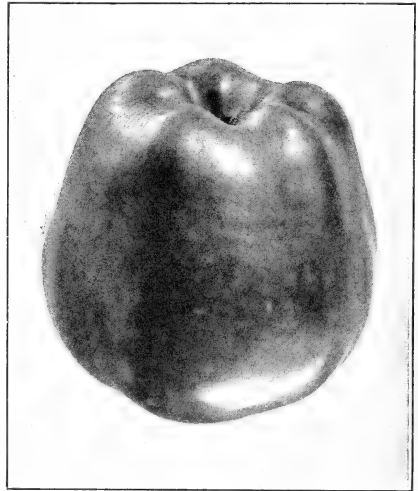
RHODE ISLAND GREENING—Large round, skin greenish-yellow, flesh yellow and juicy, an old-time favorite for cooking. Keeps until April.

TOLMAN (Sweet) — Medium size, yellow apple. Sweet, without tartness, yellow and red, rich flavored.

ROME BEAUTY—Large, yellow and bright red. Fresh yellowish, tender, juicy, sub-acid. Good bearer, excellent cooking apple. Keeps until March.

NORTHERN SPY—A fine, large striped red, tender, mild, juicy apple, excellent eating or cooking. Keeps well up to June. Strong growing trees.

STAYMAN WINESAP—Improved Winesap, larger and more prolific. Large, yellow splashed with red, tart, excellent quality, a fine eating apple. Bears quite young.



RED DELICIOUS—A new strain, double-red improved Delicious. Retains its firm texture, juice and flavor much longer than ordinary Delicious. An excellent variety for Western Washington.

JONATHAN—Red and yellow, juicy, rich flavor, tender flesh. Very productive. Good commercial apple. Fine eating.

BALDWIN—Large, deep red, tart, juicy, excellent cider apple, fine eating. Very good keeper.

SPITZENBERG—Medium to large, deep red, spicy crisp flavor, an old favorite, good cooking and eating. Fine keeper.

WHITE WINTER PEARMAIN—Large, pale yellow, fine flavor, good eating and cooking.

YELLOW NEWTON PIPPIN—Medium to large, light yellow, excellent for both eating and cooking. One of the finest keeping apples. Keeps until April.

RAINIER—Sweet, non-acid apple, good cooked or raw, an excellent keeper.

YELLOW DELICIOUS—A large apple of excellent quality. Bears young, very prolific. Crisp, white, rich flavored flesh, good eating and cooking.

Please Note, Other Varieties

This Nursery list is our condensed list for Fall and Spring delivery. Should there be any other items or varieties in which you are interested, which we do not include in the list, be sure to write us. We can supply all your wants in the nursery line.

Our stock includes the best of the proven old favorites as well as the dependable newer varieties, covering a range of seasons and uses to meet all tastes and requirements.

COMBINATION APPLE TREES

We have a limited number of apple trees with from three to five different varieties budded or grafted on as many different branches. These ripen from summer to late fall—all dependable, high grade varieties.

Home owners and tree lovers will find these "Combination" trees, containing several varieties on one single tree, a never-ending source of interest. For the home owner with limited space, one of these trees puts in a whole "home orchard" on the ground occupied by a single tree. Imagine, beautiful red, yellow and other brilliant colored apples all on one tree!

These combination trees are especially desirable for the city dweller who has but a small amount of yard space.

- 3 Way—Yellow Transparent, Red Gravenstein,
1 Winter Apple. Each \$3.00
- 4 Way—Yellow Transparent, Red Gravenstein,
2 Winter Apples. Each 3.50
- 5 Way—Yellow Transparent, Red Gravenstein,
King, 2 Winter Apples. Each 4.00

These trees are grafted to the most popular varieties for Western Washington. Varieties of winter apples will vary considerably; however, care will be taken to select special kinds ordered wherever possible. (Note—If you would like to have special varieties on a combination tree, we will graft it to order for you. Special varieties must be ordered a year ahead.)



CRABAPPLES

Crabapples are of value both for the beauty of the tree and the quality of fruit. Delicious for cooking, preserving and making jellies.

HYSLOP—Medium size, yellow with shadings of crimson maroon, flesh fine, firm, yellow, astringent. One of the most desirable sorts for culinary purposes.

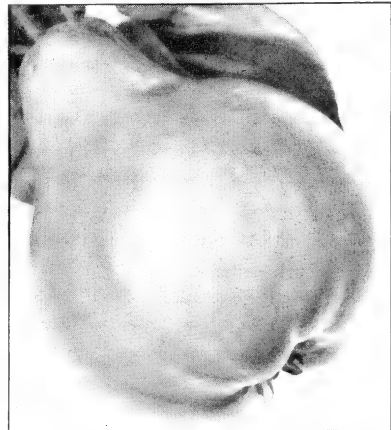
RED SIBERIAN—Small fruit, averaging an inch in diameter, clusters, bears young and abundantly. Excellent for pickling.

TRANSCENDENT—Medium to large, brownish yellow with blush of bright red. Flesh firm and crisp, fine grained, very juicy.

WHITNEY—Fruit large, yellow striped with red and covered with red on sunny side. Flesh yellow, very juicy and fine grained. Flavor rich and almost sweet.

Prices on All Apple Trees

	Each	12 to 50
Yearling, 4-6 foot.....	\$1.00	\$.90
Two-year, Select, branched.....	1.25	1.10
Two-year Specimen	1.50	1.25



QUINCES

The Quince is attracting a good deal of attention as a market fruit. The tree is hardy and compact in growth and requires little space; is productive, bears regular crops and comes into bearing early. The fruit is much sought for canning, jellies and preserves. Imparts a delicious flavor to other fruits when canned in proportion of one quart of quinces to about four quarts of other fruits.

The tree is dwarf and slow growing, makes an excellent lawn tree.

CHAMPION — Very large and handsome, flesh cooks up very tender. Bears abundantly. Greenish-yellow color.

ORANGE—Large, roundish, somewhat irregular with a small and short neck at base; fine golden-yellow flesh of excellent flavor.

PINEAPPLE—One of the best for home use. Fruit large, highly flavored. Greenish-yellow to deep yellow in color. We especially recommend this as being the best variety for Western Washington.

Prices

1 year 2-3 ft.....	\$1.00
1 year 3-4 ft.....	1.25
2 year	1.50

PEARS

The pear thrives over a wide range of soils and climatic conditions. The pear roots also withstand heavy wet soils much better than most fruits. The popular Bartlett rules supreme as a summer pear, but some of our fall and winter varieties are even finer in quality and flavor, and all lovers of fine pears should include some of these in their home garden. Unlike most other fruits, the pear develops much better quality when ripened off the tree and the fruit should be picked before it begins to soften. Pears are planted from 20 to 25 feet apart.

SUMMER PEARS

BARTLETT—Large size, golden yellow when ripe. With a beautiful blush on the sunny side. Buttery, very juicy and highly flavored. Tree a strong grower, bears early and abundantly Very popular. Ripens in late August, first of September.

CLAPP'S FAVORITE—A large fine pear, resembling the Bartlett, but without its musky flavor; fine in texture, without graininess, pale lemon-yellow with delicate flavor, slight blush on sunny side. Tree is hardy and productive. Ripens with Bartlett.

FLEMISH BEAUTY — Large, rather round in shape, one of the hardiest, produces good crops and is a regular sure bearer. Fruit firm, with sweet, aromatic flavor.

AUTUMN PEARS

ANJOU (Buerre d'Anjou)—A large fine pear, buttery and melting with sprightly flavor. Tree a fine grower and very productive. October to January.

COMICE—A splendid commercial variety, of fine size, good appearance, with faint reddish blush on sunny side, very juicy, sweet and aromatic. Excellent quality.

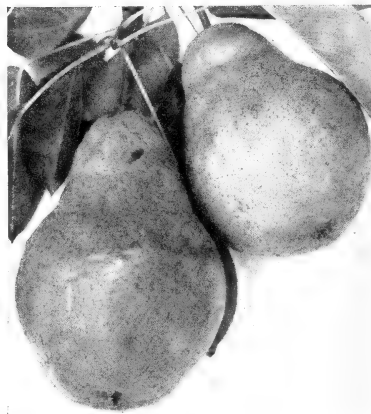


SECKEL — Small, rich, yellowish-brown; one of the best flavored pears known, fine for pickling or preserves. Ripens late September, early October.

GORHAM—Large size, golden yellow when ripe, resembles Bartlett, ripens about two weeks later; finer flavored, and firmer texture than Bartlett.

WINTER VARIETIES

WINTER NELIS—Medium to large, skin yellowish green, dotted with gray russet; flesh yellowish white, fine grained, of a rich saccharine, aromatic flavor. December.



WINTER BARTLETT—This fine pear originated in Eugene, Oregon. Fruit large, closely resembling the famous Bartlett in shape and appearance but ripening considerably later. Flavor almost identical with the Bartlett. Is undoubtedly one of the few pears of recent introduction of real merit.

BOSC—One of the best early winter pears. A splendid shipping and commercial pear. Moderately long shaped. Solid russet color, flesh fine grained and highly flavored. Good keeper.

Pear Prices		Each	12 to 50
Yearling 4-6 foot.....		\$1.00	\$.90
Two-year Select		1.25	1.10
Two-year Specimen		1.50	1.25

NECTARINES

The Nectarine is really a smooth-skinned peach. The prevailing opinion among many people has been that the Nectarine is a hybrid resulting from the crossing of the peach with some other fruit, which is not the case. They are a luscious fruit with a rich, sweet aromatic flavor, excellent for eating fresh or for canning.

BOSTON RED — Large size, deep yellow with bright blush, very sweet.

NEW WHITE—Large white with blush, fine quality.

Yearling 4-6 feet.....	\$1.00
Heavy 5-7 foot Specimen.....	1.25
Two year select.....	1.50

PLUMS

Plums Are Easy to Grow and Early to Bear

DUARTE—Ripens August to September. Fruit heart-shaped, deep red all the way through. Very small pit. Delightful flavor.

BLUE DAMSON—Ripens September. Enormously productive, a regular bearer. Fruit ripens over a long season. Delicious eaten fresh. Incomparable for preserves and marmalades. Brings a good price on the market, is often used by commercial canneries.

BURBANK—The fruit is large, clear cherry red with a thin lilac bloom; flesh a deep yellow, very sweet, with a very agreeable flavor, begins to bear second year after transplanting. August.

BRADSHAW—Ripens August or mid-season. Very large, dark violet red, yellowish green flesh of pleasing flavor. Semi-freestone. Good quality. Flavor, rich and sweet. Tree a good grower and very productive. Blooms late, thus more likely to escape late frost. Good market variety. Desirable plum for the home orchard.

CLIMAX—Ripens early, about middle of July to August. One of Luther Burbank's finest introductions. Growing in popularity both for home use and as a commercial shipper. Fruit is large, pear-shaped, commercial shipper. Fruit is large, pear-shaped, superbly rich in flavor and quality.

COLUMBIA—Ripens late August. Large, dark purple, almost round, flesh yellow, juicy and sweet. A very desirable plum for the home orchard.

PEACH—Ripens usually July and August. The Peach plum is justly esteemed because of its earliness, large size, and handsome appearance. Fruit is very large, rather round, peach color, flesh golden yellow. Juicy, pleasant sprightly flavor.

SATSUMA—A fine large plum. The flesh is solid, purplish crimson color from pit to skin, juicy, very fine quality. Pit very small, little larger than a cherry stone. September.

WICKSON—The tree grows in vase form, sturdy and upright. The stone is small and the flesh is of fine texture, firm, sugary and delicious. September 1.

YELLOW EGG—Ripens end of August. A large, handsome yellow plum. Good for home use or market. Golden yellow covered with thick bloom. Flesh firm, sweet and juicy.

REINE CLAUDE—Large, nearly round; pale yellow, marked with red; juicy, melting and excellent; good bearer. Not liable to rot. First of September.

JEFFERSON—Finest of all yellow canning plums. Mid-season. Used by commercial canners. Flesh is firm, sweet and juicy.

SANTA ROSA—Large, purplish crimson, flesh yellow, mottled crimson, very good quality. Excellent for eating or canning, very delicious flavor. Mid-July.

APEX—Early July, shipping and market. One of earliest plums. Medium size, light crimson, good flavor.

BEAUTY—Early July, shipping and home orchard. The earliest red plum, important commercial variety. Fruit medium size to large, heart-shaped and crimson. Very delicious flavor. Trees very productive, self-pollinating.



SHIRO—Very early, large, golden yellow. A Burbank introduction.

ACE—September. Very sweet, freestone. Flesh and skin bright red.

PRUNES

COATES 1418, DATE PRUNE, IMPROVED FRENCH PRUNE—Sweeter, larger than French prune, fine for drying. Reddish purple, juicy. A favorite for canning and eating.

HUNGARIAN—Largest size, beautiful bright red, one of the best for marketing; fine for eating or canning. September.

ITALIAN—Medium to large size. Oval, dark purple, flesh juicy, sweet and delicious. A standard drying and shipping variety. Tree a strong grower and heavy bearer.

SILVER PRUNE—Large size and sweet. Ripens very late. October.

FRENCH (Petite d'Agen)—Small to medium in size, very fine texture, reddish purple, sweet and juicy. Very good eating and canning.

DOUBLE X FRENCH—A fine, large, improved type of French prune, very sweet and of excellent quality. Good for drying or canning.

IMPERIAL EPINEUSE—August-September. Good commercially and for home use. One of the largest prunes. Fruit of excellent quality, fine flavor. Very good for canning.

STANDARD—August. Drying and canning. Fruit large, dark purple; flesh amber, fine grained, juicy and sweet. Requires cross pollination.

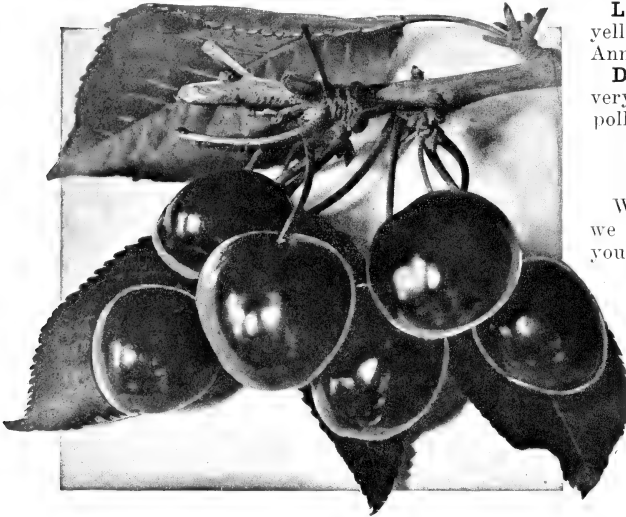
SUGAR—Early August. Drying and fresh shipping. The earliest prune. Fruit medium to large, oval, dark purple. Flesh sweet, and of good quality. An excellent pollinizer.

	Prices	Each	12 to 50
Yearling 4-6 foot.....		\$1.00	\$.90
Two-year Select		1.25	1.10
Two-year Specimen		1.50	1.25

CHERRIES

Cherry trees are a real asset to any home! Big sweet, luscious cherries—fresh from the tree—will be appreciated by the whole family. Makes an excellent shade tree or lawn tree.

No fruit surpasses the cherry for flavor and popularity and few approach it. Cherries are a luxury within the reach of everyone owning a city lot, or small acreage. They are easily grown, stand shipment well, are practically free from disease and there is a growing demand for them at good prices.



SWEET CHERRIES

BING—One of the best and most delicious cherries. The color is deep dark red, nearly black; meat firm, sweet and exceedingly well flavored. Almost unequalled in size, attractiveness and quality. Fruit hangs on the trees well and ripens uniformly so that the crop can be taken at one picking. Bing is one of the best market and shipping varieties and without superior for eating or canning.

BLACK REPUBLICAN—An excellent pollenizing variety. Rich in flavor, with fine quality, firm flesh, good canner, excellent eating.

BLACK TARTARIAN — A very good pollenizer. Medium to large, bright purplish black, tender, juicy, very rich excellent flavor. Productive. Ripens first to middle of July.

ROYAL ANN—Large, light yellow with red cheek. Ranks among the best sweet cherries because of its large size, handsome appearance and high quality. Excellent for dessert and the leading sweet canning cherry. A very desirable cherry for home or commercial use.

GOV. WOOD—One of the best cherries, light yellow marbled with red, juicy, rich and delicious. Tree strong grower, and a good bearer. Ripens 1st of July. Good pollenizer for Royal Ann.

LAMBERT — A very large, heart-shaped cherry with firm flesh and rich sweet flavor. An excellent shipper, takes first rank for commercial production. One of the finest sweet cherries for home or commercial use. Is less subject to frost injury at blossom time than many of the other sweet varieties.

CENTENNIAL — Large, yellow, good pollenizer. Firm flesh, rich flavor. Good for canning and eating.

LONG STEM WATERHOUSE—Medium to large, yellow with red cheek, greatly resembling Royal Ann. Good pollenizer.

DEACON—Large black cherry, with firm flesh, very rich in flavor, fine for eating or canning, good pollenizer

COMBINATION CHERRY TREES

(Sweet)

Where space is limited, or for ordinary family use, we recommend these combination trees. They give you a variety of cherries without a wasteful surplus.

If you have no other cherry trees, select one of these with a pollenizer on the same tree.

Tartarian, Bing, Royal Ann, Lambert	\$4.00
Tartarian, Bing, Lambert	3.50
Royal Ann, Lambert, Black Republican	3.50
Tartarian, Bing	3.00
Lambert, Bing	3.00
Royal Ann, Bing	3.00

SOUR CHERRIES

EARLY RICHMOND — Medium size, dark red, melting, juicy, sprightly acid flavor. This is unsurpassed for cooking purposes and is exceedingly productive. Ripens in June.

ENGLISH MORELLO—Medium to large, blackish red, rich acid, juicy and good, very productive, excellent canner. Ripens last of July to middle August.

LATE DUKE—Large, dark red, juicy and rich. An old, excellent variety, very productive. Middle of July.

MAY DUKE—Similar to Late Duke, but earlier, ripens middle of June.

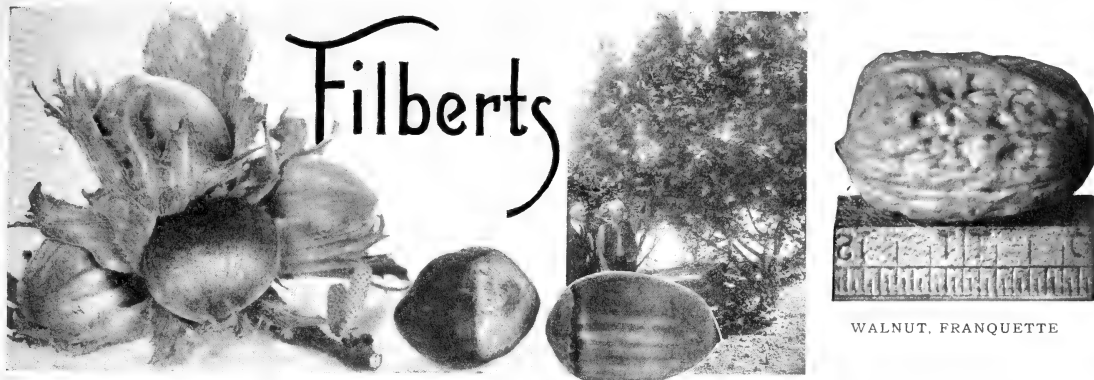
MONTMORENCY — Ripens mid-season about 10 days ahead of English Morello. The most widely and most numerous planted cherry. Very productive, and a regular bearer. Colors early before ripe, a distinct advantage for shipping. Fruit is roundish, plump and beautiful glowing red color. Hangs in clusters, making picking easy. One of the best sour cherries for canning or pies.

Prices on Both Sweet and Sour Cherries

	Each	12 to 50
Yearling 2-3 foot	\$1.00	\$.90
Yearling 3-4 foot	1.25	1.10
Yearling 4-6 foot	1.50	1.25
Two-year select	1.75	1.50
Two-year specimen	2.00	1.75

Please Note, Other Varieties

This Nursery list is our condensed list for Fall and Spring delivery. Should there be any other items or varieties in which you are interested, which we do not include in the list, be sure to write us. We can supply all your wants in the nursery line.



WALNUT, FRANQUETTE

The Filbert is less particular to the location and soil than many other nut and fruit trees. It does well on any soil that is fertile, well drained, retentive of moisture during summer, and which has sufficient depth. Filberts are generally planted 25 feet apart, each way. This requires 70 trees to the acre.

The harvesting and care of the filbert nut is a simple matter. The nuts ripen in September and October and fall from the tree. The nuts are then gathered and spread out to dry and season in a warm room, which enhances the flavor. The nut is rich in food value, exceptionally healthful and delicious to the taste. No harmful effects result from eating as plentifully as one desires.

There is little danger of an over-supply of filberts. The United States imports yearly over 25 million pounds of nuts. They are inferior in every respect to our home production as one can easily ascertain by eating and comparing the two—the home-grown and the imported.

The territory in which the filbert can be grown is limited to this Northwest country.

Varieties

BARCELONA—A large round nut that drops freely from its husk. The self-husking feature is a valuable one. Makes a large tree and bears early. Proper pollination is essential. DuChilly, Daviana and White Aveline are all good pollenizers for Barcelona.

DUCHILLY—A leading commercial variety, very popular in Western Washington. Very large, long nut of superior quality. In some markets command premium price over Barcelona. Trees not so large as Barcelona but a good bearer.

DAVIANA—This is a handsome nut of the DuChilly type or long nut. The trees are large, handsome and of upright growth. Excellent pollenizer for DuChilly and Barcelona.

WHITE AVELINE—Mostly planted as a pollenizer for Barcelona, and for home use. Barcelona also pollinizes White Aveline, so they are to be recommended for inter-plantings.

Note—In filbert plantings, each tree should contact a pollenizer, hence in commercial plantings, pollenizers are planted every third tree in every third row. We will, without charge, make planting charts, showing locations of pollenizers, for any of our customers who wish to plant filbert acreages.

Prices	Each	Per 12
1 year 2-3 ft.....	\$.85	\$ 75
1 year 3-4 ft.....	1.00	.90
2 year 4-5 ft.....	1.25	1.10
2 year Specimen.....	1.50	1.25
*3 year Specimen.....	2.00	...
*4 year Specimen.....	2.50	...

* These are necessarily limited.

WALNUTS

***ENGLISH WALNUTS**—These are prolific bearers on the Coast. Having a deep tap root, they should be planted on deep soil. Each—4-6 ft. \$2.00; 6-8 ft. \$2.50.

***FRANQUETTE** — Grafted on California Black root. Quite large elongated oval, and very attractive. An improved strain of English walnut, large nuts, big meats, splendid quality. We especially recommend this variety for Western Washington climatic conditions. Reliable bearer. Each—3 to 4 ft., \$2.00; 4 to 6 ft., \$2.50; 8-10 ft., 2 yr. br., \$4.00.

***CALIFORNIA BLACK**—A rapid grower and a very desirable tree, nut medium size with hard smooth shell. Adapts itself easily to different climates. 4-6 ft., \$1.50; 6-8 ft., \$2.00; 8-10 ft. Specimens 3 yrs., \$3.00.

BUTTERNUTS

BUTTERNUT—A beautifully formed tree bearing a rough coated nut of most attractive flavor, well known to the Middle West. Succeeds fairly well in the Pacific states. A very attractive shade tree. 3-4 ft., \$1.50 each; 4-6 ft., \$2.50 each.

CHESTNUTS

AMERICAN SWEET—Makes a handsome shade tree, full medium size, very sweet and well flavored.

SPANISH—A valuable species, both for ornamental use and fruit. Makes a handsome lawn tree and produces much larger fruit than the American variety.

ITALIAN — Makes a handsome lawn tree, nuts medium size, sweet, well flavored. 3-4 ft., \$1.50; 4-6 ft., \$2.00; 6-8 ft., \$2.50 each.

SPECIAL NOTICE

In addition to trees listed in our catalog, we have a limited number of larger older specimen trees available in some varieties of fruit, nut and shade trees. Write for particulars stating variety you wish to obtain.

ALMONDS

Almond trees are very early bloomers. The best locations are on higher lands free of frost and with good air-drainage. Low, wet, cold situations should be avoided. Almonds grow best in a porous, well drained, sandy loam soil. Two or more varieties of almonds should be planted together to provide proper pollination. The best pollinating variety is Drake's Seedling which can be planted with I.X.L. or Nonpareil.

- 1 year, 4-6 ft. \$1.25
- 1 year, 5-7 ft., heavy 1.50
- 2 year select 1.75

DRAKE'S SEEDLING—A well known variety prized for its regular and heavy producing qualities. Pollenizer. Nut medium size, roundish, shell medium soft, with good size kernel.

I.X.L.—One of the standard commercial varieties. Hulls easily. Nuts are large and symmetrical. Shell soft, smooth, kernel large and well filled, tree a strong grower.

NONPAREIL—Most popular thin shell variety. Kernel long and narrow and of excellent quality. Tree is a vigorous grower, producing heavy crops of large, well-filled nuts.

TEXAS PROLIFIC—An excellent type, good producer, pollenizer, nuts medium to large. Good flavor.

FIGS

Do you like Figs? No?

Then you have never really tried to eat fresh, ripe ones. No other fruit has the universal appeal to the palate of man as the fig.

Varieties of Figs

BROWN TURKEY (Brown) — Large size, very good flavored, bears young, and bears heavily. Makes a good tree shape.

LATTARULA (White)—The Asiatic Honey Fig. It ripens two crops a season. First crop July 15th to August 15th, and the second crop, September 10th to October 30th. Used for eating fresh or preserves, marmalade and candy.

GRANATA (Black)—The Persian Fig. Grown in Persia and Syria. This is one of the largest figs grown, it being not uncommon to see figs measuring 7 inches in circumference. Bears two crops a season after it gets in the fourth year's growth and can be used for any purpose the Lattarula is used. Not as hardy as white.

- 1 year light \$1.50
- 1 year heavy 2.00
- 2 year select 3.00

ASPARAGUS

RUSTPROOF WASHINGTON ASPARAGUS — Just the thing to round out a well-planned home garden. Well rooted 2-year, 50c per dozen; \$3.00 per 100.



RHUBARB

Not a luxury, but a necessity for all well balanced gardens . . . Fine for sauce, or pies. **Mammoth Victoria**, or **Strawberry**. 20c each; \$2.00 per dozen.

LOGANBERRY

Fruit of the same size and general shape as a large blackberry, in large clusters; dark red in color; mild pleasant vinous flavor, excellent for table use or for canning. Each, 25c; dozen, \$2.50.

BLUEBERRIES

A comparatively new introduction of genuine merit. Will do well in majority of home gardens and thrive in boggy, or sub-irrigated plots.

EARLY VARIETIES

CABOT—Berries large, good flavor.

PIONEER—Berries large, fine flavor; makes excellent pies, jams and jellies.

MID-SEASON

RANCOCAS—Large berries, strong grower, good commercial berry.

KATHERINE—Large berries, good home berry, but poor shipper.

CONCORD—Large berries, good flavor.

HARDING—Medium size berries, very sweet.

LATE VARIETIES

RUBEL—Medium size, good flavor, heavy bearer.

GROVER—Attractive bush, berries large and delicious.

JERSEY—Very late, large, good flavor.

SEEDLINGS

We also have a number of seedling berries from large berried parent bushes. Excellent for home use.

PRICES

Named Varieties:	Each	10 to 50
1 year	\$1.00	\$.90
2 year	1.25	1.20
3 year	1.75	1.50
Seedlings:		
1 year75	.60
2 year	1.00	.90

SMALL FRUITS

OLYMPIC BERRY

A marvelous new berry of the highest quality with an exquisite flavor. Should be planted in every home garden. This berry originated on Vashon Island and has proven both hardy and productive. The best and newest in cane berries. Dewberry type fruit. Must be trellised like Loganberry. **Each, 50c; doz. \$5.00; per 50, 30c each; 100 to 500, 25c each.**

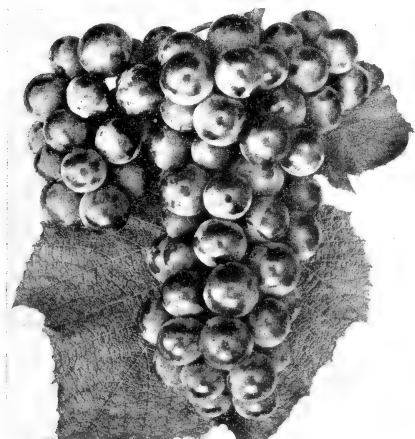
YOUNGBERRY

Recent introduction. Fine, cross between Loganberry and Dewberry. **Each, 30c; dozen, \$3.00.**

BOYSENBERRY

The gigantic new blackberry with a real wild blackberry flavor. The largest and finest blackberry on the market for home or commercial use. Originated in California by crossing Blackberries, Raspberries and Loganberries. The Boysenberry is a pleasing blend of all varieties. The vines are exceptionally hardy, drought resistant, and make a strong vigorous growth.

	Each	12	100
One year	\$.20	\$2.00	\$12.50
Two year30	3.00	20.00



GOLDEN MUSCAT GRAPE

One of the really good European type grapes which will mature well under Western Washington conditions. Hardy, heavy bearing, is an excellent wine or table grape.

	Each	Dozen
2 yr. No. 1	\$.75	\$7.50



GRAPES

Well rooted 2-year No. 1 plants, **50c each; \$5.00 doz.**

RED

AGAWAM—Large bunch, red berries, tender and juicy; ripens early. Good bearer. A very fine table grape.

BRIGHTON—Flesh rich, sweet and of the best quality; ripens early. Very productive and vigorous in growth.

DELAWARE—Bunch small and compact; berries small, light red, sugary and vinous.

CACO—New, and of exceptional merit. Wine-red berries, compact bunch—good size fruit. Hardy and a thrifty grower. Ripens late August to September.

BLACK

CAMPBELL'S EARLY—Handsome black berries with purple bloom; rich, keeps very well.

CONCORD—Fine black variety; juicy and sweet, splendid flavor; reliable and productive. One of the most popular and adaptable varieties. The standard grape in many sections.

WORDEN—Seedling of the Concord, which it greatly resembles in appearance and flavor, but the berries are larger. The fruit is better flavored and ripens earlier than the Concord.

ISLAND BELLE—Its keeping and shipping qualities are unequalled. Ripens middle of August to September. Keeps sound and perfect both on and off the vine for weeks, after other grapes are gone. Both clusters and berries are large, glossy black with attractive blue bloom; sweet and juicy. Stands at the head of early black grapes for quality.

WHITE

NIAGARA—Berries are medium to large and good in quality. Bunches are large and fairly compact. Skin thin, but tough. Niagara holds the same position among white grapes as Concord among black varieties. Ripens before Concord. Good for arbors.



RASPBERRIES

CUTHBERT—Very hardy, medium to large, firm and of excellent flavor, good shipper, at present the leading main crop raspberry. Doz. \$1.00; 100, \$5.75; 1000, \$25.00.

CHIEF—A new red raspberry; excellent appearance and flavor. Dozen, \$1.00; 50 for \$3.25; 100 for \$5.75.

TAHOMA—Large dark red berries. Excellent for dessert or canning berry. Dozen, \$1.00; 50 for \$3.25; 100 for \$5.75.

NEW WASHINGTON—A cross between St. Regis and Cuthbert, developed at Western Washington Experimental Station. Plants more resistant to winter freezing and mosaic. Berries large, red, good flavor. 12 for \$1.00; 50 for \$3.25; 100 for \$5.75.

CUMBERLAND (Blackcap)—Berries large, firm and of excellent flavor; flavor similar in some respects to wild blackberry. Each, 20c; doz. \$2.00; 100, \$15.00.

GOOSEBERRIES

OREGON CHAMPION—Berries medium, round, smooth, greenish-white with thin transparent skin; good quality; ripens early. Bush vigorous and very free from mildew.

1 year, 30c each, \$3.00 doz.

2 year, 40c each, \$4.00 doz.



ROCKHILL EVERBEARING

A new runnerless strawberry of exceptionally fine flavor, heavy bearing, very good quality. 12 for \$1.00; \$7.00 per 100.



CURRENTS

FAY'S PROLIFIC—Bright red, medium size currant, ripening in long bunches; heavy bearer.

WHITE GRAPE—An old favorite returning to popularity, unsurpassed for making jellies and jams.

PERFECTION—Bright red, and of a size larger than the Fay. Very productive. Rich mild sub-acid flavor.

CHERRY—The largest of all red currants, sometimes more than half inch in diameter. Plant very vigorous.

1 year, 30c each; \$3.00 per dozen.

2 year, 40c each; \$4.00 per dozen.

STRAWBERRIES

MARSHALL—Large, fine flavor, good canner, excellent eating.

IMPROVED MARSHALL—A standard proven variety, large berries, fine quality. A good canner and shipper.

DORSETT—A new and proven berry, one of the finest for home or commercial use, rich in color and flavor, one of the sweetest of strawberries. Every home garden should include some of these.

NEW OREGON—A new berry of fine quality and flavor, very large, heavy bearing, vine makes vigorous growth, a good shipper and canner.

Doz. 50c; 100, \$2.00; 500, \$9.00; 1000, \$15.00.

EVERBEARING

PROGRESSIVE—Smaller than Mastodon, but of better quality and finer flavor.

MASTODON—Largest of the Everbearing strawberries, good color and flavor.

Prices: 25, \$1.00; 100, \$3.00; 1000, \$25.00.

PLEASE USE THIS ORDER BLANK

BUCKLEY NURSERY CO. . . . Buckley, Washington

Order Number	Date..... 194	Loaded by.....
Amount Enclosed:	SOLD TO..... (Please Print Name)	Filled.....
When to be Shipped:	P. O. ADDRESS.....	Chkd.....
Nearest Express Office	CITY..... STATE.....	Pkd.....
	SHIP TO.....	Bales.....
	STREET (or Box No.).....	Boxes.....
	CITY.....	Crates.....
	COUNTY..... STATE.....	Pkgs.....
If any item is out of stock, may we substitute? Write Yes or No.....		Shpd.....

Clerk Chk.	Quantity	ARTICLE WANTED	Size	Price Each	TOTAL	
					Dollars	Cents
		Do you want the stock pruned? Write Yes or No..... (Unless ordered otherwise all nursery stock is pruned prior to delivery)				

WASHINGTON RESIDENTS, WHOSE ORDERS BEING SHIPPED TO WASHINGTON POINTS, PLEASE ADD WASH. SALES TAX OF 3%
 THE BUCKLEY NURSERY CO. will exercise care to have all stock true to name, nevertheless it is understood and agreed that should any stock prove untrue to name, the Buckley Nursery Co. shall be liable only for the sum paid for the stock which may prove untrue, and shall not be liable for any greater amount. The Buckley Nursery Co. books all orders with the understanding that same shall be void should injury befall the stock from flood, drought, frost or other causes beyond their control.

Amount Carried Forward

ESPALIER FRUIT TREES

The Espalier is an exceptionally attractive type of tree which has been trained to grow where space is limited and to assume any shape preferred. Usual preference is to "T" shaped trees which grow flat against a home or building wall, however, variety of designs is unlimited. They serve a dual purpose, both as aids in beautifying the home and garden, and in producing large quantities of choice fruit. Every home lover should include at least one of these novel and practical trees in his selection. The fruit is similar in all respects to the fruit grown on a standard sized orchard tree. Trees are exceptionally heavy producers in proportion to size of trunk and limbs.

APPLES

(For descriptive matter as to variety of apples see page 12.)

Varieties available:

Yellow Transparent	Red Delicious
Gravenstein	Yellow Delicious
King	

PEARS

PASTOREN—A late pear with excellent fruit. Large lemon yellow with soft blush. An excellent keeper, fine grained and juicy.

TONGERN—Large golden brown, dotted with soft red of extraordinary beauty. Fruit ripens in early fall and is juicy and highly flavored.

GELLERT BUTTER PEAR—An early fall pear, large lemon-yellow overspread with cinnamon russett. Very juicy and sweet.

WILLIAM'S BUTTER PEAR—Similar to the Bartlett. Large fine fruit. Rich yellow with faint blush on exposed cheek. Delicious flavor. Early fall.

CHERRIES

OSTHEIMER WEICHSEL—A hardy cherry. Fruit large; skin deep red, turning to dark red at maturity. Classed as a sour cherry, it is much sweeter and juicier than the ordinary pie cherry. Will not split in rainy weather. July.

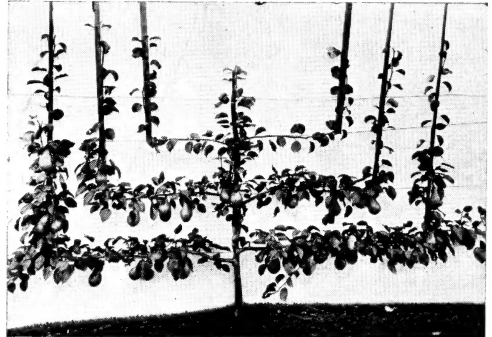
BULGARIAN—Fruit large, dark red color. Rich flavor. Sweet. Late.

LAMBERT—Very large fruit, dark red, same as standard variety.

PLUMS

YELLOW EGG CLIMAX ITALIAN PRUNE

(For descriptions see page 15.)



ESPALIER PEAR TREE

APRICOTS

BLLENHEIM—Large, oval, yellow, rich and juicy, regular prolific bearer.

PERFECTION—New. Extra large fruit, flesh firm with rich flavor.

PRICES:

Two-year old with one series of branches. Spread 5-6 feet; height, 2 to 2½ ft.

Apples, Pears, Prunes, Plums,
Cherries and Apricots. \$4.00 each

Three-year old, with two series of branches. Bottom series spread 6 to 8 ft; second series 3 to 4 ft.; height, 3 to 4 ft.

Apples, Pears, Prunes, Plums,
Cherries and Apricots. \$6.00 each

Four-year old; three series of branches. Bottom series, 7 to 9 ft.; second series, approximately 5 ft.; third series, approximately 3 ft.; height, 4 to 5 ft.

Apples, Pears, Plums, Cherries
and Apricots \$7.25 each

(All prices quoted are prepaid in Western Washington.)

TWO-YEAR No. 1 BUSH ROSES

75c EACH; \$7.50 PER DOZEN

AUTUMN—Medium sized buds, color burnt orange streaked with red; strong grower, healthy foliage, blooms freely.

CHARLES K. DOUGLAS—Scarlet-erimson, free bloomer. Strong and bushy.

CALEDONIA—One of the better white roses. Long, large buds, double.

DAME EDITH HELEN—Very fragrant, double pink. Perfectly formed.

DOROTHY PAGE ROBERTS—Coppery-pink, free bloomer.

DUCHESS OF ATHOL—Long, pointed orange bud. Opens to rose and gold double blooms.

EDITH NELLIE PERKINS—Long, pointed buds opening to large full flowers, two-toned, orange-buff inside and salmon and copper-pink outside the petals.

E. G. HILL—Great, massive blooms of deep velvety maroon.

ETOILE DE HOLLANDE—The finest dark red rose for general purposes.

FEU JOSEPH LOOYMANS—Long pointed buds of glowing apricot and old gold.

GOLDEN EMBLEM—Beautiful, large double blooms of rich yellow, sometimes stained with red on outer petals.

HADLEY—Large, well formed flowers of rich crimson. Fully double.

HINRICH GAEDE—Long, nasturtium-red buds, opening to very double bright vermilion blooms with gold shadings.

HOOSIER BEAUTY—A very double, distinctive zinnia-shaped, bright carmine. Crimson inner petals have very dark shadings.

INDEPENDENCE DAY—Fine, double blooms of a delicate orange-pink shade.

JOANNA HILL—Very double bloom with Indian Yellow center surrounded by gold-buff outer petals.

KAISERIN AUGUSTA VIKTORIA—The best double, pure white bedding rose. Full blossoms, shapely buds.

JOHN RUSSELL—Large fragrant blooms of deep crimson with black sheen.

K. OF K.—Bright scarlet, semi-double blossoms. Very showy, free bloomer.

LADY HILLINGDON—Long, slender stems bear pointed dark-yellow buds, opening to large golden double blooms.

LOS ANGELES—Double flowers are rich flame pink, shading to apricot and yellow.

LULU—Long, dainty buds of coral-apricot. Semi-single.

MABEL MORSE—Vivid, golden-yellow double blooms. Fragrant, free-bloomer.

MARGARET MCGREDDY—Brilliant red petals in hinges of deep gold. Very showy.

MCGREDDY'S SCARLET—Large flowers of brilliant scarlet with orange base. Upper portions of petals lightly-washed crimson.

MCGREDDY'S IVORY—Long bud with greenish markings, opening to ivory-white, perfectly shaped, double, fragrant blooms.

MME. CAROLINE TESTOUT—Well-shaped buds, fully double satiny-pink flowers. An old favorite.

MME. EDOUARD HERRIOT—The original bright orange-pink rose. Excellent for bedding or cutting.

MRS. CHARLES BELL—Light pink edged petals, blending into rich salmon-pink center.

MRS. E. P. THOM—Fine long buds which open into perfectly shaped flowers of rich lemon-yellow.

MRS. HENRY MORSE—The flowers are bright pink, with a silvery sheen.

MRS. PIERRE S. DUPONT—Reddish-gold buds open into beautiful, double yellow flowers.

MRS. SAM MCGREDDY—Large, fairly double blooms of orange-salmon, with a suffusion of gold. Vigorous, healthy.

PADRE—A strong upright grower, with beautifully shaped buds and blooms of rich copper-scarlet.

PRESIDENT HERBERT HOOVER—Maroon, orange and gold. Beautifully pointed buds, large, fragrant flowers.

QUEEN ALEXANDRA—Vivid, rich, vermilion shading into orange at base of petals.

REV. F. PAGE ROBERTS—A true, rich yellow. Outer petals touched with copper and red tracings.

SENSATION—All the name implies. Truly a sensation of riotous color, vivid scarlet.

SHOT SILK—Cherry-cerise, shot with yellow. Very fragrant. Profuse bloomer.

SUNBURST—Golden apricot, velvety-soft petals. Lasting color.

TALISMAN—Fragrant bloom of glowing golden yellow, stained with copper-red and orange-rose inside petals. Free bloomer.

FOLLOWING VARIETY OF ROSES

75c per bush — No. 1, 2 year

CATALONIA—One of the most brilliantly colored new varieties. Full double blooms of orange-vermilion, gold reverse.

CONDESA DE SASTAGO—This Spanish novelty is the first double rose to have the vivid colors of the brilliant specie rose Austrian Copper. The bud is like molten gold, striped with flame.

CHRISTOPHER STONE—A really sensational red rose. Perfect form, scarlet, and very fragrant. Dark green, disease resistant foliage.

GEN. McARTHUR—Bright scarlet-red, large and full. Perfect buds on strong stems. Fragrant, vigorous grower and free bloomer.

HAWLMARK CRIMSON—Large, fragrant blooms of deep velvety crimson. Perfect form. Free bloomer.

LADY MARGARET STEWART—Copper orange buds, opening to bright golden yellow flowers. A favorite cut rose.

OLYMPIAD—A flashing, vivid scarlet. Base of petals tipped yellow. Excellent bloomer—perfect shape.

SISTER THERESE—Perfectly formed golden yellow buds, opening to full, fragrant flowers. Sensational.

PATENTED ROSES

We have available a complete stock of all varieties of Patent Roses; both the newer and older types. Write for list and prices on these.

CLIMBING ROSES

2 year No. 1 — \$1.00 each

HOOSIER BEAUTY—Fragrant, glowing crimson with darker shadings.

MME. CECILE BRUNNER—One of the strongest growing baby roses. Bright pink.

PAUL'S SCARLET—Flowers large, well-shaped, vivid scarlet. Blooms all summer.

PRES. HOOVER—The same as the bush rose in blooming qualities. A thrifty grower.

DR. W. VAN FLEET—Masses of pale-pink blooms from early summer till late fall.

GEN. McARTHUR—Fine, fragrant red. Free bloomer; vigorous grower.

MME. EDOUARD HERRIOT—Coral-red, shading to orange. Hardy; free-blooming.

MRS. E. P. THOM—A good yellow rose in a climbing variety. Flowers retain all the beauty of the bush type.



TREE ROSES

These are the same fine roses we offer in bush varieties, but are grafted on Briar Stock, 36 to 42 inches high, where they show off to better advantage. Truly a beautiful ornamental addition to any yard.

Two year old—No. 1—\$3.00 each.

AUTUMN—Burnt orange suffused with russet brown and bronze-red, all overlaid on a background of rich yellow.

CONDESA DE SASTAGO—Golden yellow, striped with red. Fully open, it is a fiery copper and gold.

DAME EDITH HELEN—A smooth, even shade of light satiny pink.

E. G. HILL—Immense, double flowers of dazzling scarlet shading to deeper red as they develop.

HADLEY—Rich crimson with velvety texture. Very sweet scented.

IMPERIAL POTENTATE—A clear, rich rose pink veined with red.

JOANNA HILL—Orange-yellow. Dainty and lovely.

LOS ANGELES—Large, full, flame-pink buds and flowers.

McGREDY'S IVORY—Creamy ivory-white. Buds are long and pointed.

McGREDY'S YELLOW—Bright, buttercup yellow. Every bloom is perfect.

MME. EDOUARD HERRIOT—Coral-red, shaded to yellow at base. Long, pointed buds.

MRS. E. P. THOM—Clear, canary yellow. A free bloomer.

MRS. P. S. DuPONT—The ace of the golden yellow ever-blooming roses.

PRES. HOOVER—A wonderful multi-colored rose, combining shades of cerise-pink, scarlet and yellow.

GENERAL McARTHUR—A truly gorgeous scarlet-red rose. Large, fragrant, free-bloomer. Hardy.

TALISMAN—A glorious riot of red, burnt orange and gold.

DWARF TREES



Dwarf Pear Tree 14 Years Old

Dwarf trees are grown from the same stock as the Espalier trees and have most of their advantages. They require very little space—only one-fourth as much as an ordinary tree—yet they yield an abundance of delicious fruit.

When fully grown, the maximum height of dwarf trees is not over 10 feet, and by proper pruning they can be kept down to six feet. This makes it easy to prune and spray them and the fruit is within reach for easy picking. Varieties are very similar to standard type trees.

Every garden, large or small, has space for one or more of these heavy producing dwarf trees, a practical novelty, both ornamental and productive.

Varieties:

APPLES

Yellow Transparent
Yellow Delicious
Red Delicious

APRICOTS

Blenheim
Moorpark
Perfection

PLUMS

Yellow Egg
Italian Prune

PEARS

Bartlett Pear
Clapp's Darling
Flemish Beauty
Gellert Butter Pear
Tongern Pear
Pastoren Pear
Williams Butter Pear

CHERRIES

Bohemian
Lambert
Royal Anne

PRICES: 2 yr. \$3.00; 3 yr. \$4.00; 4 yr. \$5.00.

BUCKLEY NURSERY CO.
BUCKLEY, WASHINGTON