

Historic, Archive Document

Do not assume content reflects current scientific knowledge, policies, or practices.

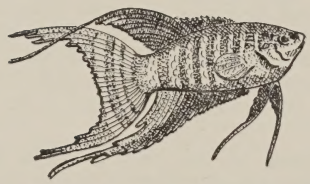
62,67

c1944

PRICE LIST

LIBRARY
 RECEIVED
 ★ JAN 13 1944 ★
 U. S. Department of Agriculture

BUSKIRK'S AQUARIUM



INDEPENDENCE
 O H I O

INSTRUCTIONS CONCERNING YOUR ORDERS:

All prices are F. O. B., Independence, Ohio and are shipped via EXPRESS.

EXAMINE your shipment on arrival. We replace fish and also plants ~~only~~ when your claim is accompanied by a BAD ORDER SLIP received from the Railway Express by you and sent to us with your claim. 100

All orders for fish must be accompanied by ~~50c~~ to cover the cost of special cans and packing charges.

No C. O. D. orders are accepted.

It will be to your advantage to PRINT your name and your COMPLETE address on your order. It insures delivery and avoids many costly mistakes.

CARE OF YOUR ORDER UPON ARRIVAL:

If fish, it is well to have one or more aquariums ready for the new fish. These should be partly filled with seasoned water (aged water). Taking the fish from the shipping can they should be FLOATED, in jars containing the same water in which they were shipped, in the prepared aquarium. The remaining water in the can should be strained and dumped into the aquarium. When the temperature is the same in both the aquarium and floating jars, the fish may be released into the aquarium. They should be kept in this aquarium several days, away from your other fishes.

A teaspoon of sea salt to each 5 gallons of water makes an effective tonic for the fish if they appear sluggish.

A WORD OF ADVICE:

We are always ready and willing to draw upon our store of experience, gained through a quarter of a century of serving the aquatic public, to answer your problems. Feel free to call on us at any time and we shall do all in our power to make our advice aid you.

LIVEBEARERS

	Per Pair
RED PLATYI—The favorite moon. Fine red stock	\$.75
BLACK PLATYI—Of the finest strain, an old favorite50
BLUE PLATYI—A blue-green variety. Very pleasing50
GOLD PLATYI—A delicate and pleasing hue of sungold50
SALT & PEPPER PLATYI—A real old timer in a newer, finer strain, that's the best.....	.75
PLATYI VARIATUS—Red tailed full colored fancier's fish of highest color and breeding	1.00
GOLD HELMET PLATYI—The most striking of all Moons with a perfect helmet of gold50
GREEN SWORDTAIL—Coming back into favor again, stronger than ever. Good tails	1.00
ORANGE SWORD—Nice sized stock, very pretty75
SWORDTAIL—Green and orange, med. pair50
RED SWORD WITH BLACK DORSAL—One of the newer types that is fast gaining in favor. Very pretty	1.00
BLOOD RED SWORD—The highest development in Swordtail species. Unlike the old red, the BLOOD RED appears to be almost a living flame. SPECIAL PRICE	1.00
SWORDTAILS—Blood red and red with black dorsal, med.75
BLACK SWORDTAIL—Another very fine development that has a place in every tank. A REAL black Swordtail	1.00
FULL GROWN PAIR OF THE ABOVE	1.50
LEBISTES RETICULATUS—Often referred to as the "Common" Guppyi. Care and selection however gives you the "Cream of the crop"40
GOLDEN GUPPYI—Rare beauty and a golden tint gives you one of the finest Guppyi	.50
LACE TAIL GUPPYI—The body colors, of outstanding quality and the tail of a delicate lace pattern. Beautiful50

	Per Pair
BLOND LYRE TAIL GUPPYI — A newer development with a dominate color of golden cream. Exceedingly pretty50
BLACK TAILED GUPPYI—When courting the female, the large full tail of the male becomes suffused with black50
SWORDTAIL GUPPYI—Male with a beautiful long swordtail50
SHOW SPEC. OF ABOVE	1.00
PARAGON GUPPYI—A perfect lacetail ...	1.00
RAINBOW GUPPYI20
Small, 6 for50
MOLLIENISIA SPHENOPS—Black spotted, very nice50
SHOW PAIR OF ABOVE	1.00
LIBERTY MOLLY—One of the most colorful Mollies with the dorsal carrying the patriotic colors50
SHOW SPEC. OF ABOVE	1.00
BLACK SAILFIN MOLLIES—Large sailfin dorsal setting off a beautiful black body....	1.00
SHOW SPEC. OF ABOVE	1.50
MIDNIGHT MOLLIES — Born black and stays black, developed to the highest degree	1.00
SHOW SPEC. OF ABOVE	1.50
H. FORMOSA—“The Mosquito Fish” and actually the smallest living live-bearer known to aquarists50
BABY FISH—Assorted varieties, our selection, doz.	1.00

LABYRINTH

	Per Pair
BLUE GOURAMI—An old favorite among the Labyrinths	\$.50
LARGE SPEC. OF ABOVE	1.00
DWARF GOURAMI—Very pretty.....	1.00
LEERI — “The Pearl.” Its Mosaic pattern makes it the most beautiful Gourami of all Large Breeders	2.00
PINK KISSING GOURAMI	1.50
PARADISE—Still a fish of rare beauty and interest50
SHOW SPEC. OF ABOVE	1.00

	Per Pair
WHITE PARADISE—A striking development in the Paradise family, often rare.....	1.00
LARGE BREEDERS	1.50
BETTAS — The Siamese Fighting Fish of both red and blue strains. One of the finest strains developed in the U. S. The color and quality of the fish is the finest obtainable. FEMALES50
MALES	1.00
SHOW SPEC. MALES.....	1.50 to 3.00
SMALL, 3 for.....	1.00
 EGG-LAYERS	
AUSTRALIAN RAINBOW	\$1.00
ACARA PORTALEGRENSIS — One of the better known Chosen Cichlids that is much more peaceful than most50
LARGE BREEDERS	2.00
HEMICHROMIS BIMACULATUS — It is commonly called the jewel and at breeding time, its appearance is just that.....	2.00
MEDIUM	1.00
CICHLASOM CONGO—Another very beautiful Cichlid	2.00
MEDIUM	1.00
CICHLASOMA MEEKI—Fire mouth Cichlid	2.00
SCALARE—The Angel Fish, the most popular of all egg layers. Truly one of the most beautiful	1.00
MEDIUM SIZE	2.00
LARGE SIZE	3.50
ROSY BARB — A delightful fish for any aquarium, medium 50c, large.....	1.00
BARBUS SUMATRANUS — A rarer and more colorful Barb that is indeed a beauty	1.00
STRIPED BARB—(Semifasc.) An excellent community fish50
BARBUS OLIGOLEPIS—The checker-board Barb and a real beauty.....	1.00
BARBUS TITEYA—The “Cherry” Barb, an old favorite	1.00
BLACK RUBY BARB — (Nigro.) A real show fish with a wealth of beautiful colors. Med. \$1.00, large.....	2.00
ZEBRA DANIO—The life of any aquarium. Appear best in schools of four or more50
Medium25

	Pair
PEARL DANIO—Med. 25c pr., large _____	.50
GOLDEN DONIO—Med. 25c pr., large _____	.50
TETRA VON RIO—One of the prettiest of the smaller Tetras.....	50c and 1.00
TETRA BUENOS AIRES—A larger Tetra, colorful and flashy _____	.50
SILVER TETRA—A metallic silver covers the entire sides of this active fish.....	.50
BLACK TETRA—With a black and silver marked body and fins and a practically invisible tail, this fish has taken the Hobby. Med. 75c; large _____	1.00
NEON TETRA—Easily the most colorful fish on the face of the earth. It actually glitters like a neon tube.....	
ROSEACUS — Known as the Black Flag Tetra, this outstanding fish is one of the best _____	
BLOODFINS—Med. \$1.00 pr., large.....	1.50
HEAD & TAILLIGHT—An outstanding marking identifies this community tank fish _____	1.00
PRISTELLA RIDDLEI — One of the few aquarium fish marked in WHITE. Med. 50c pr., large.....	1.00
WHITE CLOUD MOUNTAIN FISH—one of the newer importations from far off China. A rival of the Neon. Med. \$1.00 pr., large	1.50

SCAVENGERS

One of the most important factors in successful aquarium keeping is having scavengers of the right type and of the right quantity. Too often this fact is neglected and more and more fish are added to an aquarium with no thought given to the extra requirements in keeping the aquarium balanced.

The types of scavengers listed below are the finest obtainable and all are good healthy stock.

When you order fish, give thought also to the house cleaning needs of your aquariums.

	Per Pair
CORYDORAS—A small armoured Catfish which is a perfect scavenger and will not bother the tiniest fish or rile the aquarium water (EACH) _____	\$
C. LEOPARDUS—Of the same Catfish family but very prettily marked with leopard spots (EACH) _____	
BLACK RAMSHORN SNAILS _____	.05
6 for _____	.25
	Each
RED RAMSHORN SNAILS _____	.10
4 for _____	.25

	Each
TRUMPET SNAILS10
4 for25
JAPANESE SNAILS10
3 for25
NURSEMAID SNAILS20
RED TRUMPET SNAILS10
3 for25
FRESH WATER CLAMS.....	.15
2 for25
TADPOLES05
6 for25
AMERICAN NEWTS15
TURTLES15

AQUARIUMS

10 gal. 10 x 10 x 24 inches	4.00
35 gal. plate glass, stainless steel	30.00
Stand	6.00

ACCESSORIES

Heater, not submergible.....	1.50
HEATER, submergible, 25 to 100 watts.....	
THERMOSTAT	
THERMOSTAT & HEATER.....	8.00
THERMOMETER—Floating, tested35
THERMOMETER—Not tested	
AIR PUMP—Jenson	
AIR PUMP TUBING, per foot.....	.10
NET—3 inches15
NET—4 inches25
DIP TUBE—12 inches.....	.40
DIP TUBE—16 inches.....	.60
WORM FEEDERS—With cork15
FEEDING RINGS—Small 15c, large.....	.25
AQUARIUM CEMENT25
AQUARIUM SAND—(White) 10 lb.25
(Brown) 10 lb.50
FUNGUS CURE35
WATER NEUTRALIZER10
RELEASE STONES35

PLANTS

Aquatic plants form one of the important stages of the complete cycle of a balanced aquarium. They are needed to help supply oxygen to the fish and take up some of the waste matter that is given off by the fishes. Buskirk's aquatic plants are all carefully propagated by skilled aquarists and give you the highest in quality, growth and satisfaction.

	Per Bunch
CABOMBA	\$.15
ANACHARIS15
LUDWIGIA15
LYSIMACHIA10
PARROTS FEATHER15
ELODEA (Floating) Portion50
DWARF SAGITTARIA—Per Doz.50
SINENSIS SAGITTARIA—Each10
NATANS SAGITTARIA—Per Doz.....	.50
VALLISNERIA—Per Doz.25
CORKSCREW VALLISNERIA—Per Doz.35

FOOD

A quarter of a century of research and study by our firm with dozens of different kinds of foods and tonics has led to the development of a BALANCED food, containing all the necessary elements necessary for the health and growth of your fish. Cereals, salts and meats, blended together in just the right quantities to assure you the finest for your fish. Prepared and shipped in clean glass bottles in two sizes.

REGULAR SIZE	\$.25
“SAVINGS” SIZE50
SALMON EGGS FOR BABY FISH.....	.50
TURTLE FOOD15
GOLD FISH FOOD, quart35

FOR BEAUTY, COLOR, QUALITY and
SIZE

BUSKIRK'S

WATERLILIES, GOLDFISH and PLANTS

GIVE YOU EVERYTHING

FOR THE OUTDOOR POOL

SEND FOR OUR PAMPHLET