

Historic, Archive Document

Do not assume content reflects current scientific knowledge, policies, or practices.

62.37



YOUR 1944 GUIDE
 TO BETTER PERENNIALS—
 ROSES—HERBS—AND
 OTHER ORNAMENTALS



Carroll Gardens

WESTMINSTER • MARYLAND

Telephone: Westminister 534

To Our Customers and Friends

These days gardening takes on a new significance for many of us. With the whole world at war we find ourselves often confused, troubled, or perhaps disheartened by sad news. Thus for all of us, gardening can be a source of solace and relaxation and a renewal of courage. We are all familiar with that sentiment that "man is closer to God in the garden than anywhere else on earth," and now more than ever do we realize its truth.

In presenting our 1944 catalogue we are offering the best in new and popular perennials for your garden, together with a selected list of roses, flowering shrubs, and evergreens. In previous catalogue issues, we have suggested the planting of perennials in

You Are Welcome

To be sure, travel has been greatly checked by gas rationing but whenever possible, we shall be delighted to have you visit our display grounds and nursery which are located on U. S. Route 140, at "Fairground Hill," on the southern edge of Westminster. We are only 28 miles from the city of Baltimore and 22 miles from historic Gettysburg, Pa.

Guarantee. We guarantee any plant we sell to be true to name and to reach you in fresh, healthy condition. On items that prove not to be as represented, we will replace or refund the purchase price.

Terms. Cash or satisfactory reference must accompany all orders from parties unknown to us. ORDER EARLY AND SAVE. Special 5 percent cash discount on all orders received before March 10. To new customers who receive this catalogue after that date, we will grant the discount for two weeks after they obtain their copy. Complaints, if any, must be made in writing to us within five days after receipt of goods.

groups of three or more of one kind. This year for your benefit as well as ours, MAY WE STRONGLY URGE THAT YOUR ORDERS BE PLACED FOR THREE, SIX, OR TWELVE OF A VARIETY. First of all, you will have a more effective garden display; and secondly, the savings in labor, packing, and shipping materials can be passed on to you.

Everyone realizes that due to present-day conditions operating costs have advanced. In order that we may maintain our usual standards of quality and prompt service, you will note from the Price Table on page 3 that it has been necessary to increase our prices slightly.

Your Garden Problem

We are sure that the two new booklets offered free to our customers on the order sheet will be of great help to you. However, you may wish advice in selecting varieties for particular places in your garden. We shall give your correspondence our careful attention. Let us call your attention to the fact that we often have many plants which are not listed in this catalogue.

Please Note —

Transportation. We prepay transportation charges on orders amounting to \$3.00 or more, east of the Mississippi on practically all plants listed; west of Mississippi please add 10 per cent to the amount of the order. Some special orders calling for large shrubs, evergreens, trees, potted roses, etc., will be shipped either Parcel Post or Express Collect. Orders less than \$3.00, add 35 cts. for postage and packing.

Time of Shipment. Regardless of when your order is received, plants will be shipped at the proper planting-time for your locality. Some varieties are best transplanted at a certain time of the year, and we reserve the right to hold shipment of that part of your order till the proper planting season for such varieties included in your order.

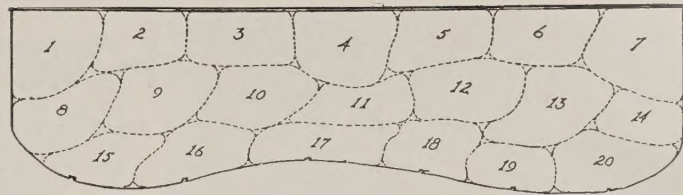
SPECIAL NOTICE TO OUR LOCAL CUSTOMERS

A complete selection of annual flower plants for bedding and window-boxes will be available at our nursery during the planting season. Also, as a special feature this spring we'll have a fine selection of vegetable plants for your Victory Garden. If you can't call at our place as you did in the past, due to gasoline shortage, order by mail and we'll see that your order reaches you in good condition.

INDEX

BLUEBERRIES 22	Carnation 5,6	Inula 11	Saponaria 14	Franklinia 17
EVERGREENS, Coniferous	Catananche 6	Iris 20	Satureia 30	Fuchsia 23
Arborvitae 22	Chives 30	Lavandula 30	Scabiosa 32	Genista 23
Juniper 22	Chrysanthemums 26-30	Liatris 9,11	Sedum 14	Hydrangea 17
Retinospora 22	Chrysanthemum maximum 19	Lilies 21	Sempervivum 14	Hypericum 23
Spruce 22	Cimicifuga 6	Linum 9,11	Shasta Daisy 19	Lespedeza 23
Yews 22	Clematis 6	Liriope 11	Silene 14	Lonicera 23
HERBS 30,31	Convulvulus 9	Lobelia 11	Statice 14	Magnolia 25
PERENNIAL BORDER, How to Make a 3	Coreopsis 6	Lupinus 11	Stokesia 12	Potentilla 23
PERENNIALS and ROCK-PLANTS	Coronilla 6	Lychnis 8,11	Tarragon 31	Salix 23
Achillea 3	Corypedium 7	Lythrum 11	Teucrium 30	Syringa 23
Aconitum 3	Dahlia 9	Matricaria 11	Thalictrum 15	Viburnum 17
Actinea 3	Daphne 8	Mertensia 11	Thermopsis 14	Vitex 23
Aethionema 3,5	Delphinium 5,7	Myosotis 11	Thymus 30	SHRUBS, Evergreen
Agastache 3	Dianthus 7	Nepeta 11	Tradescantia 15	Abelia 22
Ajuga 3	Dicentra 7	Nierembergia 9	Trillium 15	Azalea 7
Allium 3	Dictamnus 7	Oenothera 11	Tritoma 12,15	Berberis 22
Alyssum 6	Digitalis 7	Pachysandra 11	Trollius 24	Buxus 22
Anchusa 24	Doronicum 7	Papaver 11	Tunica 15	Cotoneaster 22
Androsace 6	Epimedium 7	Pardanthus 11	Valeriana 15	Daphne 22
Anemone 5,6,24	Funkia 7	Pentstemon 11	Verbascum 12,15	Erica 22
Anthemis 6	Gaillardia 7	Peonies 11	Verbena 15	Holly 17
Aquilegia 6	Gentiana 7	Peonies, Tree 11	Verbena, Lemon 31	Ilex 22
Arabis 6	Geranium 7,31	Perovskia 14	Veronica 12,15	Mahonia 22
Armeria 5,6	Gerbera 7	Phlox, Hardy 14	Vinca 15	Pachistima 22
Artemisia 30	Geum 8	Phlox 12,13	Viola 15	Pyracantha 17
Asclepias 6	Gypsophila 7,8	Physostegia 14	Violet 24	Rhododendron 22
Asperula 30	Helianthemum 7	Platycodon 8,14	Yucca 15	VINES
Asters 4	Helianthus 8,10	Plumbago 14	ROSES 16,18	Ampelopsis 23
Astilbe 24	Heliopsis 9,10	Polemonium 14	SHRUBS, Deciduous Flowering	Clematis 23
Aubrieta 6	Helleborus 7	Poppy, Oriental 11	Buddleia 23,25	Honeysuckle 23
Callirhoe 6	Hemerocallis 10	Primroses 9,14	Caryopteris 23	Hydrangea 23
Campanula 6	Heuchera 10	Pulmonaria 14	Cydonia 23	Ivies, Evergreen 23
	Hibiscus 10	Pyrethrum 19	Elsholtzia 23	Silver Lace Vine 23
	Hollyhock 10	Rosemary 30		Wisteria 23
	Iberis 10	Rudbeckia 14,32		
	Incarvillea 10	Sage 5		
		Salvia 14,30		
		Santolina 30		

Here's How— to Make a Perennial Border



Plan for a Border 5 feet wide and 20 feet long

FOR an abundance of color through the summer months, perennials are an indispensable part of the home garden, as well as a convenient source of cut flowers for indoor decoration. By planning your border in advance you can arrange perennials to make a pleasing picture. (The sketch above is a suggestion for grouping plants in irregular masses and may well serve as a guide for planning a border of any size.)

The plants we have selected in the three groups listed below were chosen for their free-flowering habit, their hardiness and their vigor. Although the sketch above provides for a border 5 ft. wide and 20 ft. long, it can easily be adapted to accommodate whatever space is available in your garden.

SEVENTY-FIVE BORDER PERENNIALS

Any One of the Three Groups (75 Plants) for \$18.50 Postpaid

Group A—75 Plants

Key	For Sunny Locations	No. of Plants
1	Chrysanthemum, Mrs. P. S. du Pont III	3
2	Phlox, Leo Schlageter	3
3	Verbascum, Pink Domino	5
4	Aster, Harrington's Pink	3
5	Chrysanthemum, Yellow Spoon	3
6	Delphinium, Belladonna	5
7	Chrysanthemum, Burgundy	3
8	Shasta Daisy, Ophelia	3
9	Pyrethrum, Single and Double, Mixed	7
10	Phlox, E. I. Farrington	3
11	Aquilegia, Mrs. Scott Elliott's Strain	3
12	Phlox, Miss Lingard	3
13	Anthemis, Perry's Variety	3
14	Phlox, Border Queen	3
15	Coreopsis, Golden Shower	5
16	Veronica, Blue Spire	3
17	Iberis sempervirens	5
18	Stokesia, Blue Moon	3
19	Dianthus, Bobby	6
20	Gypsophila repens Bodgeri	3

Group B—75 Plants

Key	For Partly Shaded Locations	No. of Plants
1	Chrysanthemum, Sigurd	3
2	Hemerocallis, J. A. Crawford	3
3	Lythrum virgatum	3
4	Aster, Harrington's Pink	3
5	Anemone, Marie Manchar	6
6	Delphinium, Belladonna	6
7	Chrysanthemum, Salmon Gold	3
8	Shasta Daisy, Ophelia	3
9	Pyrethrum, Single and Double, Mixed	6
10	Phlox, E. I. Farrington	3
11	Aquilegia, Mrs. Scott Elliott's Strain	3
12	Phlox, Miss Lingard	6
13	Coreopsis, Golden Shower	3
14	Phlox, Border Queen	3
15	Chrysanthemum, September Gold	3
16	Catananche coerulea major	3
17	Iris sibirica, Snow Queen	3
18	Stokesia, Blue Moon	3
19	Aster Alpellus, Triumph	3
20	Polemonium, Blue Pearl	6

Group C—75 Plants

Key	For Shaded Locations	No. of Plants
1	Iris sibirica, Perry's Blue	3
2	Monarda, Salmon Queen	3
3	Astilbe, Deutschland, White	3
4	Hemerocallis, Mikado	3
5	Anemone, Marie Manchar	6
6	Iris sibirica, Caesar's Brother	3
7	Cimicifuga dahurica	3
8	Anemone hupehensis	6
9	Astilbe, America (Lavender-pink)	3
10	Hemerocallis, Goldeni	3
11	Tradescantia, Purple Dome	3
12	Funkia subcordata alba	3
13	Trollius, Golden Queen	3
14	Lobelia cardinalis	3
15	Epimedium, Mixed Varieties	6
16	Anchusa myosotidiflora	3
17	Iris sibirica, Snow Queen	3
18	Iris pumila, Prairie Gem	3
19	Phlox divaricata	9
20	Hemerocallis minor	3

PERENNIALS AND ROCK-PLANTS

Unless otherwise noted, all plants are 85 cts. for 3 of one kind; \$1.50 for 6 of one kind; \$3 per doz. of one kind. Single plants, 40 cts. each.

* Indicates alpiners or rock-plants; with few exceptions these plants are also ideal for broad masses in the foreground of your perennial border or for edging. † Indicates varieties which are useful for cutting.

The following quantity prices apply to all perennials and rock-plants when 3 or more of one kind are ordered. Refer to it to determine the each, six and dozen price of all plants for which only the price for 3 is given in the catalogue.

Each	3 plants of any one kind	6 plants of any one kind	12 plants of any one kind
\$0 40	\$0 85	\$1 50	\$3 00
45	1 00	1 75	3 50
50	1 20	2 20	4 40
55	1 35	2 50	5 00

ACHILLEA (Yarrow)

- †**Filipendulina, Parker's Variety.** 3 ft. The large heads of bright yellow bloom are borne on sturdy stems. June, July.
- †**Ptarmica, Perry's White.** 18 in. Clusters of double pure white flowers. A favorite for cutting all summer long, and a good filler plant. June, August.
- ***Tomentosa sulphurea.** 8 in. A new form of light yellow coloring.

ACONITUM (Monkshood)

Picturesque plants for shady gardens, preferring rich, moist soil.

- †**Fischeri.** 2 to 3 ft. Loose heads of dark blue flowers. September.
- †**Napellus, Spark's Variety.** 4 ft. Violet-blue. July, August.
- †**Wilsoni.** 4 to 5 ft. Attractive foliage with rich deep blue flowers. October.

ACTINEA (Lakeside Daisy)

***Herbacea.** 8 in. A choice rock-plant with large yellow daisy-like bloom in early spring.

AETHIONEMA. See page 5.

AJUGA (Bugle)

- ***Genevensis rosea.** 6 in. This new pink-flowering form is useful in the rock-garden or as a ground-cover. The well-formed spires of bloom add a touch of height when combined with tiny alpines.
- ***Reptans.** 6 in. Familiar kind with blue flowers. Sun or shade. May.
- ***Tottenhami.** 6 in. Bronze-red foliage characterizes this blue flower. May, June.

AGASTACHE (Giant Hyssop)

In sunny summer borders these fragrant-leaved perennials with loose heads of pinkish purple bloom are colorful and pleasant to the nose.

- †**Cana.** 2 to 3 ft. Purple-crimson flowers rise well above the foliage and appear from midsummer to frost.
- †**Rupestris.** 2 ft. Compact in growth; the grayish foliage is most effective with the coral-red flowers, which appear continuously from late July on.

†**Verticillata.** 18 to 24 in. The earliest to bloom. The purplish rose coloring of the flowers and the gray-green foliage with mint-like fragrance are a pleasing combination.

Single plants, 45 cts. each; \$1 for 3 of one kind; \$3.50 per doz. of one kind.

ALLIUM

- ***Tibeticum.** 1 ft. The globular lilac flowers bring a welcome spot of color to the rock-garden in summer. July, August.



FRIKARTI

HARDY ASTERS

Alpellus, Triumph. Attractive little mounds only about 8 inches high, covered with sparkling blue daisies during June and July. 3 for \$1.35; \$5 per doz.

‡**Frikarti, Wonder of Staefa.** Branching plant 2 to 2½ feet high and as much through. Blooms early June until frost. Flowers are lavender-blue; 2 inches in diameter. 3 for \$1; \$3.50 per doz.

‡**Hybridus luteus.** Bushy plants 2 feet tall covered with clusters of tiny bright yellow flowers on 1 to 1½-foot stems through July and into August. A splendid cut-flower.

Tall Fall Asters (Michaelmas Daisies) September Blooming

New York Aster (Nova-belgi Type)

‡**Beechwood Challenger.** 3 ft. A new Aster with sturdy plants bearing masses of glowing crimson flowers. We consider this to be the finest red Aster.

‡**Blue Plume.** 2 ft. A choice and showy Aster with almost double flowers of deep blue. Bloom is carried in stately spikes.

Lavender Giant. A new introduction of our own. Large lavender-blue flowers completely cover the 3-foot plants in graceful sprays, making this variety ideal for cut-flower use. Early September to late October. 55 cts. each; 3 for \$1.35; \$5 per doz.

‡**Mount Everest.** 4 ft. Pyramidal plants of snowy white flowers with yellow eyes. Beautiful in the garden or when cut.

‡**Violetta.** 4 ft. *New.* The darkest Aster. Lovely flowers of deep violet-purple. Sturdy plants. 55 cts. each; 3 for \$1.35; \$5 per doz.

New England Aster (Novae-angliae Variety)

‡**Harrington's Pink.** 4 ft. Flowers are perfectly flat, 1½ inches or more across, and of clear soft pink, with not a hint of the usual magenta found in most pink Asters. 3 for \$1.20; \$4.40 per doz.

Survivor. 4 ft. Bright rose-pink, with a longer blooming season than the familiar Harrington's Pink. A top-notch late perennial. 3 for \$1.35.

PRICES: Unless otherwise priced, all Asters are sold at 85 cts. for 3 of one kind; \$1.50 for 6 of one kind; \$3 per doz. of one kind.



BLUE PLUME



HYBRIDUS LUTEUS



HARRINGTON'S PINK



MOUNT EVEREST



BEECHWOOD CHALLENGER

MASTER ASTER COLLECTION

Frikarti **Lavender Giant**
Hybridus luteus **Blue Plume**
Harrington's Pink **Beechwood Challenger**
Mt. Everest

21 plants (3 each of above varieties) for only \$5.50

(Value \$6.25)

Ask for Offer No. 1



LAVENDER GIANT



SAGE

See Herb List on page 31.

CARNATION, Crimson King. Dazzling double crimson flowers from late spring until fall. 18 in. 3 for \$1; \$3.50 per doz.

Lucia. Deep rose-pink with salmon shadings. Excellent for cutting as well as garden use. 3 for \$1.20; \$4.40 per doz.

Two Outstanding Hardy Carnations

LUCIA. Pink. **CRIMSON KING.** Red.
6 plants (3 each of above varieties), for only \$2
(Value \$2.20)

Ask for Offer No. 2



FALL ANEMONE, 5 distinct varieties

SEPT. QUEEN MARIE MANCHARD
ALBA SEPT. CHARM
 MARGARETE

Special Offer: 10 plants (2 each of above 5) for \$3
Ask for Offer No. 2A

ÆTHIONEMA, Warley

Rose. Loveliest of Persian Candytufts, producing neat compact plants about 8 in. tall. The little flowers are rose-pink with light veinings, and are in 3/4-in. globular heads. 3 for \$1; \$3.50 per doz.

ANEMONES, Fall-flowering. 3 for 85 cts.; 6 for \$1.50; \$3 per doz. See page 6 for variety list.

ARMERIA, Bees' Ruby. Large heads of ruby-red flowers produced on stiff, wiry stems. Bloom-heads stand about 18 in. high. A solid bed or large border group in bloom in June is a spectacle. 3 for \$1; \$3.50 per doz.

DELPHINIUMS, New Giant Pacific Hybrids will provide the exhibitor with prize-winning spikes of beautiful flowers. 3 for \$1.35; \$5 per doz. See page 7 for variety list.

SAGE. Used for flavoring. 3 for 85 cts.; \$3 per doz. See complete Herb List, pages 30 and 31.



ARMERIA, Bees' Ruby



CARNATIONS: Crimson King and Lucia



ÆTHIONEMA, Warley Rose



NEW GIANT PACIFIC HYBRID DELPHINIUMS

ALYSSUM (Madwort)

- ***Saxatile citrinum.** Golden-tuft. 1 ft. Lemon-yellow coloring of this old-time favorite is an addition to any garden.
- ***Saxatile compactum.** 1 ft. Every gardener is enthusiastic about "Basket of Gold," which combines well with many plants in the rock- or wall-garden or in your perennial border.
- ***Saxatile fl.-pl.** A double-flowering form of deeper coloring. 3 for \$1.20.

ANCHUSA myosotidiflora. See color illustration, page 24.

ANEMONE (Windflower)

Spring-Flowering Kinds

- ***Pulsatilla.** Pasqueflower. 10 to 12 in. The violet-blue flowers are followed by silky seed-pods. A picturesque and curious plant.
- ***Pulsatilla alba.** A dainty white-flowering form.
- ***Pulsatilla rubra.** Purple-blue coloring.
- ***Sylvestris.** 18 in. Large white flowers on slender stems. The plant grows best in a moist shady location. May, June.

Fall-Flowering Kinds

See color illustration on page 5

- Alba.** Large, single flowers of purest white on splendid 4-foot plants.
- Margarete.** The double dark pink flowers are borne in profusion on 3-foot stems.
- Marie Manchart.** Three-foot plants bearing semi-double blooms of clean white.
- September Charm.** A recent hybrid, from 2 to 2½ feet tall. It has lovely single silvery rose flowers.
- September Queen.** The rosy red flowers are semi-double and are freely produced. 2 ft.
- ***September Sprite.** 12 in. A charming pink variety of diminutive form.

ANDROSACE (Rock-Jasmine)

- ***Lanuginosa.** 4 in. The clusters of silvery foliage and the terminal heads of lilac-pink flowers are borne on thread-like trailing stems. June, September.
- ***Sarmentosa Chumbyi.** 4 in. The rosy lilac flowers, verbena-like in form, rise above rosettes of luminous foliage. May.

Choose a well-drained location in the rock-garden for both above varieties.

ANTHEMIS (Golden Marguerite)

These rampant-growing perennials produce an abundance of cut-flowers. They require little care and make a brilliant showing. Ideal in the foreground of shrub plantings.

- †**Moonlight.** 18 to 24 in. *New.* Light yellow.
- †**Perry's Variety.** 2 ft. A favorite kind. Bright yellow. June to August.
- †**Roger Perry.** 18 in. Deep gold-yellow bloom. June, July. 3 for \$1; \$3.50 per doz.

ARABIS (Rock-Cress)

- ***Alpina fl.-pl.** 1 ft. Desirable double white form. April, May.
- Ferdinand Coburg.** 4 in. White flowers borne above distinct dark green foliage; compact grower.
- Spring Charm.** 8 in. *New.* Compact plants produce pink flowers freely in early spring. 55 cts. each; 3 for \$1.35; \$5 per doz.

ARMERIA (Thrift)

- ***Bees' Ruby.** See color illustration on page 5.
- ***Caespitosa Hybrids.** Large flower-heads in a pleasing variety of pink shades.
- ***Cephalotes rubra.** 1 ft. Deep pink; very showy. June.

ARTEMISIA. See page 31.

AQUILEGIA (Columbine)

Columbines are "must" plants for every garden, however small. They adapt themselves easily and often self-sow, to the delight of most gardeners. Few plants are more graceful in form and the blooms are delightful for cutting.

- †**Caerulea.** 2 ft. The famous Rocky Mountain blue Columbine.
- ***Canadensis.** 18 in. A native kind with reddish orange flowers. May, June.
- †**Chrysantha.** 2½ ft. Choice long-spurred yellow flowers.
- †**Chrysantha, Silver Queen.** A top-notch pure white variety.
- †**Clematiflora.** 2 ft. Spurless blossoms resembling the Clematis in form; colors on the pastel side.
- †**Crimson Star.** Large flowers with crimson sepals and spurs accentuated with white petals.
- ***Flabellata nana alba.** 15 in. A dwarf species with ivory-white flowers. May, June.
- †**Longissima.** 18 in. A native kind. Pale yellow coloring with amazingly long spurs.
- †**Mrs. Scott Elliott's Strain.** Outstanding for its wide range of color. We offer these long-spurred Columbines with justifiable pride.
- †**Rose Queen.** Long-spurred pink flowers.

ASCLEPIAS (Butterfly-Weed)

- †**Tuberosa.** 2 ft. Brilliant orange flowers; a favorite for wild gardens as well as perennial borders. June, July.

ASPERULA. See page 31.

ASTERS, Hardy. See page 4.

ASTILBE, Fanal. See page 24.

AUBRIETIA (Purple Rock-Cress)

- New Large-flowering Hybrids.** 4 in. A wide range of colors.

CALLIRHOE (Poppy-Mallow)

- ***Involucrata.** 8 in. This delightful trailing plant belongs in every large rock-garden. The rich crimson poppy-like flowers appear freely all summer.

CARNATION, Hardy

(See also **Dianthus**)

- †**Crimson King.** See color illustration, page 5.
- †**Hardy Border, Mixed.** Delightful collection in a wide variety of colors, both single and double.

NEW ENGLISH COTTAGE CARNATIONS

These amazing new hybrids are important for their compact growth, their vigorous flowering habit and fragrance.

- †**Cynthia.** Pure shrimp-pink waxy petals and delightful spicy fragrance.
- †**Lorna.** Single salmon-tinted blooms in clusters.
- †**Lucia.** See color illustration, page 5.
- †**Scarlet Glow.** 15 to 18 in. Large double blooms of deep orange-scarlet, a striking color. June and occasionally through the summer and fall.
- †**Sylvia.** The petals are pale rose-pink edged with silvery white, gradually deepening to rich salmon.

The above five varieties, \$1.20 for 3 of one kind; \$4.40 per doz. of one kind

CATANANCHE (Cupid's-Dart)

- †**Caerulea major.** 15 in. Delightful bright blue flowers appear freely from June to late August. 3 for \$1; \$3.50 per doz.

CAMPANULA (Bellflower)

In your rock-garden or your perennial planting, or in the foreground of your shrub border, Campanulas can be used to good advantage. They provide bright spots of color, and the hardy plants can be depended upon to increase in size each year.

- ***Carpatica, Blue Carpet.** 6 in. Unusually compact and free-flowering. 3 for \$1; \$3.50 per doz.
- ***Garganica.** 6 to 8 in. Light blue starry flowers are produced in great abundance. Particularly effective in a wall-garden. May, June.
- †**Glomerata.** 18 in. Heads of striking blue flowers. Very hardy.
- †**Medium.** 2 ft. Canterbury Bells. Mixed or separate colors—white, pink, and blue.
- †**Medium calycanthema.** Cup-and-Saucer Canterbury Bells. Mixed, or white, pink, and blue.
- ***Muralis.** 4 in. Ideal for partial shade, the purple-blue flowers are particularly enjoyable in June and July.
- †**Persicifolia.** 2½ ft. The delightful flowers are borne on spire-like stems. June, July.
- †**Persicifolia alba.** The desirable white form.
- †**Persicifolia, Blue Spire.** 2 to 3 ft. Attractive double blooms on sturdy stems. 3 for \$1; \$3.50 per doz.
- †**Persicifolia, Misty Morn.** 3 ft. An outstanding double blue form. 3 for \$1.35; \$5 per doz.
- Persicifolia, White Pearl.** 2½ ft. The loveliest of the double white Persicifolias. 3 for \$1.35; \$5 per doz.
- ***Poscharskyana.** Easier to grow than Garganica, the starry blue flowers appear freely through the summer months.
- ***Pseudo-Raineri.** 4 to 6 in. From compact foliage the large blue flowers rise in symmetrical fashion. A good source of color for the summer rock-garden.
- ***Rotundifolia, Purple Gem.** 12 in. Rich blue-purple blooms. Exceptionally free flowering.

CHIVES. See page 30.

CHRYSANTHEMUM. See pages 26, 27, 28, 29, 30.

CIMICIFUGA (Bugbane)

These varieties will help to solve many a problem in the shady garden. Plant in large groups, and enjoy a delightful display of white spire-like flowers for several months.

- †**Racemosa.** 4 to 6 ft. July, August.
- †**Simplex dahurica.** 4 ft. July, August. 3 for \$1.35; \$5 per doz.

CLEMATIS

- ***Integrifolia caerulea.** 1 ft. The curious tubular blooms of porcelain-blue appear in June.

CONVOLVULUS mauritanicus. See page 9.

COREOPSIS (Tickseed)

- ***Auriculata nana.** 15 in. A dainty species with clusters of golden yellow flowers. May to September.
- †**Golden Shower.** 18 to 24 in. A new introduction chosen for its freedom of bloom throughout the summer. Delicate star-like brilliant yellow blossoms. Graceful foliage. 3 for \$1; \$3.50 per doz.
- †**Perry's Double.** A double-flowering hybrid of unusually large size. Very free-flowering habit.

CORONILLA

- ***Cappadocica.** The glaucous foliage makes a compact mat; brilliant golden yellow flowers show in great abundance. May to July.

CYPRIPEDIUM (Lady's Slipper)

These natives can be made a part of a woodland garden or some shady corner of your garden where the soil is moist.

- Acaule.** Pink.
- Pubescens.** Yellow.
- Spectabile.** Charming pink species.

DAHLIA, Dwarf Summer. See page 9.

DELPHINIUM

For the background of your perennial border or in a shrub planting, stately spikes of this top-notch perennial make a great show. Delphiniums are a garden "must."

- ‡**Belladonna.** 3 to 4 ft. Light blue.
- ‡**Blackmore & Langdon Hybrids.** 4 to 5 ft. Semi-double and double blooms in shades of blue, lavender, and purple.
- ‡**Chinensis, Tom Thumb.** 15 in. Dwarf in habit, it produces several crops of exquisite blue flowers.
- ‡**Lamartine.** 3 to 4 ft. Brilliant marine-blue.
- ‡**New Giant Pacific Hybrids, Mixed Shades.** See color illustration on page 5. 3 for \$1.35.
- ‡**New Giant Pacific Hybrids, Named Series.**
 - Black Knight.** Dark velvety purple.
 - Blue Bird.** Medium blue, white bee.
 - Blue Jay.** Dark blue.
 - Cameliard.** Pure lavender, white bee.
 - Galahad.** Clear white.
 - Guinevere.** Pink-lavender, white bee.
 - King Arthur.** Royal purple, white bee.
 - Round Table.** Mixed color combinations.
 - Summer Skies.** Clear light blue, white bee.

NOTE: Above named series are grown from seed and cannot be guaranteed to be absolutely true to color.

3 plants of any one Named Series variety for \$1.50; \$6 per doz.

SPECIAL OFFER

3 plants each of any four of the above varieties (12 plants total), your selection, for only \$5.

DIANTHUS (Fragrant Pinks)

Reminiscent of other days when fragrant flowers were in vogue, the great number of Dianthus available today are still a source of color and delicious fragrance.

- ***Bobby.** 8 in. One of our favorite plants, this compact-growing gem with glaucous foliage produces large flowers of deep pink with crimson centers.
- *‡**Bristol Purity.** 1 ft. Double white flowers.
- *‡**Little Joe.** 6 in. Large crimson blooms; delightful companion for Bobby.
- ‡**Meg Gardner.** 15 in. A new introduction bearing large white flowers with distinct red centers. June, July.
- *‡**Old Spice.** Plant Patent No. 499. 1 ft. A new and choice introduction. Carnation-like salmon-pink flowers; clove-scented. Blooms freely in June and through the summer months. 3 for \$1.35; \$5 per doz.
- ***Roy's Hybrids.** Pink and red tones. May, June.
- ***Tiny Rubies.** The miniature plants produce carnation-like flowers on stems 4 to 5 inches high. In full sun the color is pink; with partial shade it approaches rose. It is a "must" for your rock-garden.
- White Reserve.** 16 in. Another top-notch white carnation. June, July.

DIANTHUS BARBATUS (Sweet William)

- ‡**Newport Pink.** Lovely salmon-pink.
- ‡**Scarlet Beauty.** A beautiful shade of scarlet.
- ‡**White.**
- ‡**Mixed Hybrids.** Many shades.

Unless otherwise noted, all plants 40 cts. each; 3 for 85 cts.; \$3 per doz.; six plants at the dozen rate

* Indicates alpine or rock-plants; with few exceptions these plants are also ideal for broad masses in the foreground of your perennial border or for edging. † Indicates varieties which are useful for cutting.

DICENTRA (Bleeding-Heart)

- ‡**Eximia.** Finely cut foliage and the showy pink flowers on long stems are a delightful combination.
- ‡**Spectabilis.** The old-fashioned Bleeding-heart once established will remain in the garden for years. 3 for \$1.35; \$5 per doz.

DICTAMNUS (Gas Plant)

- Albus.** A hardy plant that will grow and remain in the garden for many years; best left undisturbed as it improves with age. June, July. 3 for \$1.
- Ruber.** A red-flowering form of the above. 3 for \$1.

DIGITALIS (Foxglove)

- ‡**Ambigua.** 2½ ft. A true perennial Foxglove with pleasing yellow flowers. June, July.
- ‡**Giant Shirley, Mixed.** Fine selection of mixed colors.

DORONICUM (Leopards-Bane)

These gleaming yellow daisy-like flowers are a top-notch source of color in the spring border and rock-garden. For best results, grow them in partial shade.

- ‡**Excelsum.** 2 ft. The large yellow daisies are particularly effective in broad masses. April, May.
- ‡**Mme. Mason.** Compact in habit; noted for its large bloom. April, May.

EPIMEDIUM (Barrenwort)

For the rock-garden in sun or shade, for the perennial border, or as a ground-cover the Epimediums have few equals.

- ***Niveum.** 10 in. Pure white blooms resembling a bishop's hat. 3 for \$1; \$3.50 per doz.
- ***Mixed Varieties.** 10 in. White, red, or yellow. The leathery bronze-green foliage is attractive throughout the year. Mixed only, 3 for \$1; \$3.50 per doz.

GENTIANA (Gentian)

- ***Acaulis Clusi.** 2 to 3 in. Just the thing for a moist shady corner in your rock-garden. This choice plant with its dazzling blue trumpet-shaped flowers is well worth having. April, May. 50 cts. each; 3 for \$1.20.

FUNKIA (Hosta)

Indispensable plants for gardens, the Funkias grow well in sun or shade. Their blooms are attractive and their foliage has a rich and enduring quality which is especially decorative for ground-cover use.

- Cœrulea lanceolata.** One of those plants that require a minimum of care. The plants with their lush foliage are always nice, and the flowers are lovely during summer.
- Glauca.** The large leaves have a pleasing blue-gray cast; spikes of blue flowers. July, August. 3 for \$1.35; \$5 per doz.
- Lancifolia.** 24 in. Glossy narrow foliage; lilac-blue flowers. August.
- Subcordata grandiflora.** The old-fashioned August Lily; one of the most permanent of perennials. Makes a delightful shady border. 3 for \$1.20; \$4.40 per doz.
- Thomas Hogg.** 2 ft. Each large dull green leaf has a narrow silver edging; lavender flowers. August, September. 3 for \$1.35; \$5 per doz.
- Undulata variegata.** 2 ft. A form with variegated foliage; blue flowers in July.

GAILLARDIA (Blanket-Flower)

- Mr. Sherbrook.** Clear yellow flowers produced in great abundance through the summer and early fall. Keep the dead flower-heads picked off.
- New Giant Monarch Strain.** Unusually large bloom in a variety of color.
- Ruby.** A worthy red-flowering companion.
- The Imp.** 10 in. Unique in this family for its dwarf habit and bronzy crimson blooms.

GERANIUM (Cranesbill)

- ‡**Grandiflorum.** 2 ft. Large lilac-blue flowers with pleasing foliage. June, July.
- ***Lancastriense.** New. 6 in. Light salmon-pink blooms borne frequently on 4 to 6-inch stems. Unusually hardy; a choice rock-garden plant.

GERBERA

- ‡**Jamesoni Hybrids.** Transvaal Daisy. This tender plant can be set out early in the spring to produce its large single brilliant daisy-like flowers in summer. It is not winter-hardy throughout most of the East. 3 for \$1; \$3.50 per doz.

GEUM (Avens). See page 8.

GYPSOPHILA (Babys-Breath)

- ‡**Bristol Fairy.** This indispensable cut-flower in its white form belongs in every garden. See color illustration on page 8. 3 for \$1.20; \$4.40 per doz.
- ***Fratensis.** 8 in. Glaucous foliage and light pink flowers. May to July.
- ‡**Oldhamiana.** 3 ft. A pale pink, this hybrid extends the season considerably. July to late September.
- ‡**Repens Bodgeri.** 18 in. Earlier than Bristol Fairy, the white flowers are tinted pink. Compact in habit.
- *‡**Repens Bodgeri, Rosy Veil.** A dwarf pink form treasured for the rock-garden or the foreground of the perennial border.

Choice Double Babys-Breath (Gypsophila) Collection

- Bristol Fairy.** Tall; double; white.
 - Bodgeri.** Dwarf; white tinted pink.
 - Rosy Veil.** Dwarf; best pink.
- 9 plants (3 each of above varieties) for only \$2.65. (Value \$2.90).
Ask for Offer No. 3

HELIANTHEMUM (Sun-Rose)

These delightful low-spreading, shrubby plants are indispensable in the rock-garden and foreground of the hardy border.

- ***Ben Ledi.** A new hybrid with crimson-lake flowers.
- ***Buttercup.** Single; golden yellow.
- ***Double Yellow.** Double blooms of citron-yellow.
- ***Fireball.** Double; bright scarlet.
- ***Rhodanthum carneum.** Pale pink flowers on silvery foliage are a pleasing combination.

HELLEBORUS (Christmas Rose)

They grow best in rich soil and a shady location; unexcelled for the beauty of their flowers, their evergreen foliage, and their attractive appearance the year round.

- *‡**Niger.** 1 ft. Single white blooms flushed with pink, on sturdy stems. December to March. 85 cts. each; \$8.50 per doz.
- *‡**Orientalis Hybrids.** 1 ft. The Lenten Rose. The flowers, greenish white, pink, and purple, appear in February and March. Mixed shades only, 75 cts. each; 3 for \$2.



HELIANTHUS, Coronation

HELIANTHUS, Corona-tion. Golden yellow flowers 4 inches across, with crested centers, on 4-5 ft. plants. Blooms profusely in late summer and fall. 3 for \$1; \$3.50 per doz.

DAPHNE Cneorum. 10 in. Fragrant pink flowers in clusters on a spreading evergreen shrub. Plant it in light soil in a sunny spot. 1-yr. plants, 3 for \$1; \$3.50 per doz.



GYPSOPHILA, Bristol Fairy
(combined with Gaillardia)



DAPHNE Cneorum



PLATYCODON grandiflorum caeruleum

GYPSOPHILA, Bristol Fairy, is an indispensable cut-flower to combine with other perennials. 3 for \$1.20; \$4.40 per doz.

SPECIAL OFFER

3 Gypsophila, Bristol Fairy
3 Gaillardia

6 plants for \$1.90

ASK FOR OFFER No. 5



GEUMS, Princess Juliana, Fire Opal and Wilton Ruby

PLATYCODON grandiflorum caeruleum. 3 ft. The blooms resemble a balloon and the flower a shallow cup; pleasing lavender-blue coloring. 3 for 85 cts.; \$3 per doz.

GEUMS, Princess Juliana, Fire Opal and Wilton Ruby are 1½ to 2-foot plants providing gay color from May to July. They are hardy and long-lived. 3 for \$1.20; \$4.40 per doz.

Hardy Geum Collection

Princess Juliana. Orange-yellow.

Fire Opal. Fiery orange-scarlet.

Wilton Ruby. Scarlet-red.

9 plants (3 each of above varieties) for only \$3 (value \$3.60)

ASK FOR OFFER No. 4

LYCHNIS Viscaria splendens flore-pleno. 12 to 18 in. Double rose-pink flowers; excellent plant for rock-garden or border. 3 for 85 cts.; \$3 per doz.



LYCHNIS Viscaria splendens flore-pleno



LIATRIS, September Glory

Whether seen in the garden or in a tall vase with other autumn flowers this showy spire-like perennial is always admired for its distinctive form and color. 3 for \$1; \$3.50 per doz.



HELIOPSIS, Summer Gold. Semi-double golden flowers on a 3-foot plant. Withstands heat and drought and blooms freely all summer. 3 for \$1.20; \$4.40 per doz.



LINUM alpinum. 15 in. Dwarf; brilliant sky-blue flowers in summer. 3 for 85 cts.; \$3 per doz.



New Giant-Flowering PRIMROSES (Cowslip)

Many brilliant colors. Ideal spring-blooming plants for shady, moist places. 3 for 85 cts.; \$3 per doz.



DAHLIA, Unwin's Strain

TWO CHOICE TENDER PERENNIALS

In the North both should be treated as annuals.

CONVOLVULUS mauritanicus. A miniature Morning-Glory for the rock-garden and borders. Attractive blue flowers from June to frost. Trailing habit, only 6 inches high. 3 for 75 cts.; \$2.50 per doz.

NIEREMBERGIA hippomanica. Our own strain, propagated from cuttings and much superior to seedlings. Compact plant about 6 inches high. Cup-shaped blue flowers all summer and early fall. 3 for 50 cts.; \$1.85 per doz.; \$12 per 100.

DWARF SUMMER DAHLIAS

Unwin's Strain, Mixed Colors. Graceful, semi-double flowers in a wide range of colors, starting to bloom in early summer and continuing until frost. Strong plants, 3 for 85 cts.; 6 for \$1.50; 12 for \$2.75; 25 for \$5.



NIEREMBERGIA HIPPOMANICA

HEMEROCALLIS (Daylily)

The hybridizers have wrought wonders with the old-fashioned Daylily. The improvements include a wider color range, an extended period of bloom, larger flowers, and sturdier plants. What is more, Hemerocallis are amazing in their adaptability; they are extremely hardy and will thrive under the most ordinary conditions, blooming in full sun or partial shade. Their vigor is especially evident in dry seasons and insect pests have little effect on them.

- ‡**Dr. Regel.** Rich orange-yellow. May.
- ‡**Flava.** Sweet-scented; clear yellow. June.
- ‡**Florham.** Golden yellow.
- ‡**Kwanzo.** A distinct double-flowering form of rich golden bronze. July, August.
- *‡**Minor.** 18 in. A miniature form with pale yellow flowers. May, June. 45 cts. each; 3 for \$1.
- ‡**Thunbergi.** Buttercup-yellow. July, August.

New Giant-Flowering Hybrids

- ‡**Apricot.** 2 ft. Apricot-yellow. May, June. 45 cts. each; 3 for \$1.
- ‡**August Pioneer.** 2½ ft. Chrome-orange blooms of medium size. Especially valuable for its late period of bloom—early August through September. \$1.25 each; 3 for \$3.50.
- ‡**Bagdad.** 5 ft. Large flowers borne on plants of considerable height; coppery red petals with orange throat. July. \$1.50 each.
- ‡**Boutonniere.** 2½ ft. Flourishing clusters of small flowers. The throat of each is orange-yellow with darker petals. August, September. 75 cts. each; 3 for \$2.
- ‡**Cinnabar.** 2 to 3 ft. Orange base, sprinkled cinnamon; recurving sepals and petals. Very free blooming. July. 75 cts. each; 3 for \$2.
- ‡**Curly Pate.** 4½ ft. Medium-sized yellow, cup-shaped flowers with petals curled at the ends. 40 cts. each; 3 for \$1.
- ‡**Dauntless.** Large blooms of pale yellowish orange with a pastel blending. \$1 each; 3 for \$2.75.
- ‡**Dazzler.** 3 ft. Fair-sized deep yellow blooms. Late May, June. 50 cts. each; 3 for \$1.25.
- ‡**D. D. Wyman.** 3 ft. Golden yellow with tawny splashes. Late June, July. 50 cts. each; 3 for \$1.25.
- ‡**Dover.** 4 ft. Large; clear orange. June, July. 40 cts. each; 3 for \$1.
- ‡**Enchantress.** 4 ft. Large flowers of pleasing soft yellow, deepening to copper-gold, with slight pink flush. July, August. \$1.25 each; 3 for \$3.50.
- ‡**Flavina.** 2½ ft. Lemon-yellow flowers of medium size. Late June. 75 cts. each; 3 for \$2.
- ‡**Fulva maculata.** 4 ft. Unusually large blossoms of coppery orange, shaded crimson. July, August. 75 cts. each; 3 for \$2.
- ‡**Fulva rosea.** 3 ft. Fulvous rose with a red zone and yellow shading at the base. A choice variety of subtle color. July, August. \$2.50 each.
- ‡**George Yeld.** 4 ft. Distinctly large; the outer petals are rich orange-yellow and the inner flushed with rose. July, August. 75 cts. each; 3 for \$2.
- ‡**Gloriana.** 3 ft. Large; clear orange. June. 75 cts. each; 3 for \$2.
- ‡**Golden Dream.** 3 ft. Large, deep golden yellow flowers. July, August. \$1 each; 3 for \$2.50.
- ‡**Goldeni.** 2 ft. Deep golden orange; attractive in form; very free-flowering. Late June to August. 45 cts. each; 3 for \$1.

- ‡**Gypsy.** 3 ft. Striking deep orange coloring; greatly admired in our garden. July, August. 50 cts. each; 3 for \$1.25.
- ‡**Hyperion.** 3½ ft. One of the most popular varieties—pale canary-yellow. July. 75 cts. each; 3 for \$2.
- ‡**Imperator.** 4 ft. A distinct variety with rich orange-red coloring. July, August. 60 cts. each; 3 for \$1.50.
- ‡**J. A. Crawford.** Clear gold. 60 cts. each; 3 for \$1.50.
- ‡**J. R. Mann.** 2½ ft. Golden yellow. July, August. 50 cts. each; 3 for \$1.25.
- ‡**Lemona.** 4 ft. Medium-sized blooms of lemon-yellow. July, August. 50 cts. each; 3 for \$1.25.
- ‡**Linda.** 3½ ft. The crinkled petals are golden yellow with cinnamon markings. July, August. \$1.50 each; 3 for \$4.
- ‡**Mandarin.** 5 ft. Unusually tall and especially lovely in the evenings is this lemon-yellow variety for late summer. August. 50 cts. each; 3 for \$1.25.
- ‡**Mikado.** 3 ft. A glamorous combination—orange with a mahogany-red spot on each petal. Occasionally blooms in the fall. June, July. 75 cts. each; 3 for \$2.
- ‡**Modesty.** 4 ft. Palest yellow; amazing in size. June. 50 cts. each; 3 for \$1.25.
- ‡**Mrs. A. H. Austin.** 2½ ft. The cup-shaped deep orange-yellow blooms are of medium size; most attractive. August. \$1 each; 3 for \$2.50.
- ‡**Mrs. W. H. Wyman.** 3½ ft. Best described as pale glistening yellow. August. 50 cts. each; 3 for \$1.25.
- ‡**Multiflora Summer Hybrids.** 2½ ft. Great clusters of small orange-yellow bloom are borne over a long period. Early July to late August. 75 cts. each; 3 for \$2.
- ‡**Ochroleuca.** 3½ ft. A delightful companion for the Multiflora hybrids, the small, pale yellow flowers are particularly effective in the evening. July, August. 45 cts. each; 3 for \$1.
- ‡**Ophir.** 4 ft. Its rich golden yellow coloring has made this a favorite variety. July. 75 cts. each; 3 for \$2.
- ‡**Pale Moon.** 4 ft. Soft yellow; a favorite of ours. \$1 each; 3 for \$2.50.
- ‡**Patricia.** 3½ ft. Glistening yellow with a greenish throat. Truly an achievement in Daylily hybrids. \$1.50 each; 3 for \$4.
- ‡**Rajah.** 3½ ft. Orange-red blooms with garnet-brown eye markings and pale orange throat. July, August. \$1.50 each; 3 for \$4.
- ‡**Serenade.** 4 to 5 ft. A subtle pastel combination of yellow and pink with petals that are twisted and crinkled. June, July. \$1.50 each; 3 for \$4.
- ‡**The Gem.** 3 ft. An unusually popular yellow variety; large size. July, August. 45 cts. each; 3 for \$1.
- ‡**Wau-bun.** 2½ ft. The large, light yellow flowers are sprinkled with traces of red, and the petals of this unusual hybrid are slightly twisted. June, July. \$1.50 each; 3 for \$4.

CHOICE DAYLILY COLLECTION

- | | |
|------------------|-------------------------|
| Dover | Mikado |
| Goldeni | Mrs. W. H. Wyman |
| Imperator | Ophir |
- 6 plants (1 each of above varieties) for only \$3. (Value \$3.40)
Ask for Offer No. 6
- 12 plants (2 each of above varieties) for only \$5.50.
Ask for Offer No. 6A
- 18 plants (3 each of above varieties) for only \$7.
Ask for Offer No. 6B

HELIANTHUS (Perennial Sunflower)

- ‡**Coronation.** See color illustration on page 8.
- ‡**Loddon Gold.** 4 to 5 ft. Large, rich yellow blooms from August to October.

HELIOPSIS (Orange Sunflower)

- ‡**Scabra excelsa.** 3 ft. Single and semi-double flowers; deep yellow. June to September.

New Varieties

The Heliopsis hybrids are free blooming, long lasting as cut-flowers, easy to grow, and endure hot dry conditions admirably. Few plants are more desirable for color in the summer garden.

- ‡**Formosa.** Semi-double; bright yellow.
 - ‡**Immens.** Double; chrome-yellow.
 - ‡**Summer Gold.** See color illustration on page 9.
- New Varieties, \$1.20 for 3 of one kind; \$4.40 per doz. of one kind.

HEUCHERA (Coral-Bells)

Light soil and full sun suit them best, but they will make an admirable show in partial shade.

- ‡**Brizoides.** 18 to 24 in. Vigorous grower; light pink flowers. May to August.
- *‡**Garnet.** This distinct new, easily grown variety is one of the loveliest of all the Coral Bells. Garnet-shaded edges enhance the clear deep pink flowers that are borne freely 15 to 18 inches above the healthy foliage. 50 cts. each; 3 for \$1.20; \$4.40 per doz.
- *‡**Perry's White.** 15 in. Compact grower; large, pure white bells. May to July.
- *‡**Queen of Hearts.** 18 in. Large bells of intense coral-scarlet. June to August. 3 for \$1.35; \$5 per doz.
- *‡**Rosamundi.** 18 in. Coral-pink. May to July.
- *‡**Snowflake.** 18 in. Shimmering white. June to August. 3 for \$1.35; \$5 per doz.

HIBISCUS (Rose-Mallow)

The 5-foot, shrub-like plants are particularly spectacular, with an abundance of large single hollyhock-shaped flowers, measuring 4 to 6 inches across in late summer.

New Giant-flowering, Mixed. We can also furnish separate colors—pink, red, and white.

HOLLYHOCK {*Althaea rosea*}

Double Pink, White, Red, Yellow, and Mixed.

HOSTA. See Funkia.

INCARVILLEA (Hardy Gloxinia)

- *‡**Delavayi.** 18 in. Rich rose trumpet-shaped blooms in clusters. Does best in part shade. June. 3 for \$1.35; \$5 per doz.

IBERIS (Candytuft)

- *‡**Little Cushion.** 4 in. A new hybrid of our own introduction that is truly a gem. Plants make a compact cushion-like form completely covered with white flowers in early spring. Distinctive evergreen foliage.
- *‡**Little Gem.** A dwarf compact form favored for borders.
- *‡**Sempervirens.** The Hardy Candytuft has many uses in the garden.
- *‡**Snowflake.** Large, pure white flowers on dwarf plants.

Unless otherwise noted, all plants 40 cts. each; 3 for 85 cts.; \$3 per doz.; six plants at the dozen rate

* Indicates alpiners or rock-plants; with few exceptions these plants are also ideal for broad masses in the foreground of your perennial border or for edging. ‡ Indicates varieties which are useful for cutting.

PERENNIALS AND ROCK-PLANTS, continued

INULA (Fleabane)

- ***Ensifolia.** 6 in. Golden yellow daisy-like flowers. June, August.
- IRIS** (Flag). See page 20.
- LAVANDULA.** See page 30.

LIATRIS (Gayfeather)

- ‡**Pycnostachya.** 4 ft. The tall spikes of rich purple are outstanding in the summer garden. July, August.
- ‡**Scariosa, September Glory.** See color illustration on page 9.
- ‡**Scariosa, White Spire.** 3 ft. Choice white form. 3 for \$1.20; \$4.40 per doz.
- Spicata.** 3 ft. Similar to *L. pycnostachya* but earlier to bloom.

LINUM (Perennial Flax)

- ***Alpinum.** See color illustration, page 9.
- ***Flavum.** 12 in. A golden yellow flower. May to July.

LIRIOPE (Snakebeard)

- ***Graminifolia.** 10 in. The grass-like foliage makes a pleasing setting for the spikes of purple bloom which appear in late summer. Ideal in shady places and especially useful for ground-covers, or where grass will not grow.

LOBELIA

- ‡**Cardinalis.** 2½ ft. An indispensable native especially for the wild garden or along a stream. July, August.

LUPINUS (Lupine)

- ‡**Polyphyllus.** Blue, pink, white, or mixed.
- ‡**Russell Hybrids.** An extraordinary new strain noted for its pastel colors. 3 for \$1; \$3.50 per doz.

LYCHNIS (Campion)

- ‡**Chalcedonica.** 2 ft. Brilliant scarlet blooms. June.
- *‡**Viscaria splendens flore-pleno.** 15 in. This old-fashioned plant with showy heads of crimson-purple has long been a favorite. May, June. See color illustration, page 8.

LYTHRUM

- ‡**Morden's Pink.** 2 to 2½ ft. Masses of rose-pink flowers on narrow spikes. Profuse and continuous bloomer June to September. Excellent for cutting. A hardy variety growing in full sun or partial shade. 65 cts. each; 3 for \$1.75.
- ‡**The Beacon.** 3 ft. A welcome addition to the early summer garden with showy spikes of carmine-red flowers of lacy texture. June, July.
- ‡**Virgatum, Rosalie.** 2½ ft. Slender spikes of rosy purple flowers known for their compact, free-branching growth; sun or partial shade. June, September.

MATRICARIA (Feverfew)

- *‡**Golden Ball.** The yellow button-like flowers are produced in great abundance.
- *‡**Little Gem.** 12 in. A compact form producing white flowers from June on.

MERTENSIA

- ***Virginica.** Virginia Bluebells. 15 in. The loveliest of all blue spring-flowering plants. Plant them in broad masses with daffodils.

MYOSOTIS (Forget-Me-Not)

- ***Palustris semperflorens.** 8 in. Ideal for moist shady places, for your rock-garden or border. Blooms all summer.

NEPETA (Catmint)

- ***Mussini.** 12 in. The deep blue flowers and grayish foliage make a pleasing combination.
- *‡**Mussini, Six Hills Giant.** 18 in. Improved form; fine for an informal border or edging.

NIEREMBERGIA hippomanica. See page 9.

OENOTHERA

Illumination. Lovely Evening Primrose with great masses of deep golden yellow blooms from early June right through to August. Neat, compact plants 12 inches high. Just the plant for a hot dry spot. The attractive leathery foliage retains its freshness and vigor all summer.

PACHYSANDRA (Japanese Spurge)

Terminalis. 10 in. The ideal evergreen ground-cover for shady places. \$1.75 per doz.; \$14 per 100.

PAPAVER (Oriental Poppies)

We feel that the Oriental Poppies are an important part of every well-planned garden and we have endeavored to assemble the finest of new varieties.

All Oriental Poppies, \$1 for 3 of one kind; \$3.50 per doz. of one kind, unless otherwise noted.

Beauty of Livermere. Crimson with black blotches.

Cavalier. Crinkly flowers of deep scarlet-red.

Fairy. Pale pink.

Gold of Ophir. Golden orange approaching true gold.

Henri Cayeux. The so-called purple Poppy—usually described as old-rose.

Jeannie Mawson. Sparkling geranium-pink.

Joyce. Deep rose-pink.

Lachs Konigen. Peach-red with a pinkish cast.

May Sadler. The fringed petals of the salmon-pink flowers have black markings.

Mrs. Perry. Orange-apricot.

Nancy. Deep crimson with glossy black blotches at the base of each petal.

Orange Perfection. Orange-tinted blooms.

Perry's White. One of the few good white Poppies. This variety has a maroon splash at the base of each petal.

Proserpine. Scarlet-red flowers are supported by heavy stems.

Purity. Softest pink without any other markings.

Wunderkind. Truly a connoisseur's variety is this cerise-colored Poppy. 75 cts. each; 3 for \$2.

Wurtembergia. Rose-red, large and very striking.

Two Unusual New Poppies

Salmon Glow. Plants of vigorous habit with large double salmon-orange flowers. Well worth trying. 3 for \$1.35; \$5 per doz.

Snowflake. Plant Patent No. 365. A curious bicolor combination—the lower half of the flower is pure white and the upper half a flame-orange. Something new and different. 65 cts. each; 3 for \$1.75.

PARDANTHUS (Blackberry-Lily)

‡**Chinensis.** 2 ft. Large clusters of orange blooms spotted black, followed by clusters of blackberry-like fruits.

Be sure to include in your order
Lythrum, Morden's Pink

PENTSTEMON (Beard-Tongue)

- ‡**Barbatus, Pink Beauty.** 3 ft. Glowing pink flowers.
- ‡**Firebird** (Cherry Glow). 2 ft. An outstanding new introduction to add color to summer gardens. The individual ruby-crimson blooms are unusually large and the long spikes of bloom are especially attractive in bouquets. 3 for \$1.20; \$4.40 per doz.
- ‡**Garnet.** 18 in. The graceful stems hold loosely arranged garnet blooms. June, September. 3 for \$1; \$3.50 per doz.
- ‡**Utahensis.** 18 in. A very hardy new variety with light lavender-blue flowers in early summer. Very free bloomer. 3 for \$1; \$3.50 per doz.

PEONIES

All Double Peonies (named varieties), except where noted, 75 cts. each; \$2 for 3 of one kind; \$7.50 per doz. of one kind. Varieties listed at \$1 each are \$2.75 for 3 of one kind; \$10 per doz. of one kind.

‡**Avalanche.** Splendid late white variety.

‡**Baroness Schroeder.** White; fragrant.

‡**Cherry Hill.** Soft, velvety garnet-red. \$1 each.

‡**Felix Crouse.** Ruby-red; midseason.

‡**Festiva Maxima.** Immense white blooms with crimson specks; early.

‡**Georgiana Shaylor.** Rose-pink; mid-season.

‡**Karl Rosenfield.** The finest deep red Peony.

‡**La Lorraine.** Large; double; creamy white. Finest white Peony for cut flowers. \$1 each.

‡**Marie Crouse.** Light salmon-pink.

‡**Mons. Jules Elie.** The favorite early pink.

‡**Nanette.** Golden stamens. \$1 each.

‡**Officialis rubra fl.-pl.** The familiar old-fashioned red Peony.

‡**Primevere.** Nearest to yellow. \$1 each.

‡**Richard Carvel.** Uniform bright crimson. \$1 each.

‡**Sarah Bernhardt.** Deep appleblossom-rose-pink.

‡**Tenuifolium flore-pleno.** An interesting double form of the old-time fern-leaf Peony. \$1.50 each; 3 for \$4.

‡**Therese.** A lovely soft pink. \$1 each.

‡**Walter Faxon.** Coral-pink. \$1 each.

SPECIAL DOUBLE PEONY COLLECTIONS

6 Plants (1 each of six Named Varieties, Our Selection) for only \$4.

Ask for Offer No. 7

12 Plants (2 each of six Named Varieties, Our Selection) for only \$7.

Ask for Offer No. 7A

Single Peonies

All Single Peonies, 75 cts. each; any 3 for \$2; \$7 per doz., unless otherwise priced.

‡**Fuyajo.** Mahogany, tipped light bronze. \$1 each.

‡**L'Etincelante.** Carmine with a silvery margin.

‡**Lord Kitchener.** Rich crimson.

‡**Mikado.** Brilliant cerise-crimson.

‡**Rosy Dawn.** The most beautiful single white; extra-large flowers.

‡**Surugu.** Deep red; fine for cutting.

‡**Tenuifolium.** A very quaint old-fashioned single red. One of the first Peonies to bloom. The fern-like foliage is interesting throughout the season.

SPECIAL SINGLE PEONY COLLECTIONS

L'Etincelante. Pink.

Mikado. Red.

Rosy Dawn. White.

3 plants (1 each of above varieties) for only \$2.

Ask for Offer No. 7B

6 plants (2 each of above varieties) for only \$3.50.

Ask for Offer No. 7C

TREE PEONIES. Send for list.



PHLOX subulata

PHLOX subulata. For masses of color in your rock-garden or wall-garden, few plants are more adaptable than *Pblox subulata*. See list on page 14.

VERBASCUM, Pink Domino. Fine spikes of rose-pink flowers on strong, healthy plants. A fine addition to this family. 3 for \$1.20; \$4.40 per doz.

VERONICA, Blue Spire. A recent introduction known for its vigor, and its long spikes of blue. July-August. 3 for \$1; \$3.50 per doz.

TRITOMA, Springtime. Pat. No. 318. A new variety of contrasting coral-red and cream, blooming in late June and July. 65 cts. each; 3 for \$1.75.

STOKESIA, Blue Moon. A new and striking giant-flowering form of lavender-blue. 3 for \$1; \$3.50 per doz.

Brilliant Tritoma Collection

**Galpini
Gold Mine
Pfitzeri**

**Primrose Beauty
Springtime
White Fairy**

6 plants (1 each of above varieties) for only \$2.75. (Value \$3.15)

Ask for Offer No. 10

12 plants (2 each of above varieties) for only \$5.

Ask for Offer No. 10A

18 plants (3 each of above varieties) for only \$6.75.

Ask for Offer No. 10B

**Spring-flowering
Phlox Collection**

- Atropurpurea.** Red.
- Blue Eyes.** Best blue.
- Camla.** Pink.
- Camla alba.** White.
- Sampson.** Deep rose.

15 plants (3 each of above varieties) for only \$3.75. (Value \$4.25)

Ask for Offer No. 8



**VERBASCUM
Pink Domino**

**VERONICA
Blue Spire**



**New
Verbascum
Collection**

- Cotswold Queen**
- Cotswold Gem**
- Pink Domino**

9 plants (3 each of above varieties) for only \$2.50. (Value \$3)

Ask for Offer No. 9



TRITOMA, Springtime Pat. No. 318.



STOKESIA, Blue Moon

HARDY SUMMER PHLOX

Phlox is the backbone of the summer garden and it can be depended upon to produce a great abundance of bloom over a long period. For a colorful display select early, midseason, and

late kinds. Plant broad masses of white with the more brilliant colors. Three plants of an individual variety grouped together will make a brilliant showing.

- Appleblossom.** 2½ to 3 ft. Soft pink. Midseason. 3 for \$1; \$3.50 per doz.
- Atlanta.** Pat. 329. 2 to 2½ ft. White shading pale blue; deeper blue eye. Midseason. 3 for \$1.50; \$5.50 per doz.
- Augusta.** Pat. 252. 2½ ft. American-Beauty red. 3 for \$1.50; \$5.50 per doz.
- Border Queen.** 1½ ft. Large florets of deep watermelon-pink. Early.
- Caroline Vandenburg.** 2 ft. Lavender-blue hybrid. Midseason.
- Charles H. Curtis.** 2½ ft. Sunset-red. 3 for \$1.35; \$5 per doz.
- Chieftain.** 2 ft. Fiery red. Midseason.
- Count Zeppelin.** 2½ ft. Each white floret has a red center.
- Daily Sketch.** 2½ to 3 ft. Salmon-pink florets marked with crimson. Midseason.
- Dr. Klemm.** 1½ to 2 ft. Lavender-blue with rich purple centers. Midseason. 3 for \$1; \$3.50 per doz.
- E. I. Farrington.** 3 ft. Salmon-pink. Midseason.
- Ethel Pritchard.** 2 ft. French mauve. Midseason.
- Fairy King.** 2 ft. Large rounded heads of soft lavender. Resistant to the usual Phlox diseases. 65 cts. each; 3 for \$1.65.
- Flash.** 2 ft. Carmine-crimson with an orange center. 3 for \$1; \$3.50 per doz.
- Leo Schlageter.** 2½ ft. Scarlet-red with an orange cast. Midseason.
- Lilian.** 2 to 2½ ft. Cameo-pink; each floret has a blue eye. Early.

- Mary Louise.** 2½ ft. Best white for modern gardens. Vigorous growth, clean foliage, and medium height recommend it. Late. 3 for \$1; \$3.50 per doz.
- Mia Ruys.** 1½ ft. Dwarf; pure white. Midseason.
- Miss Lingard.** 2½ to 3 ft. White flowers delightful for cutting. Very early.
- Mrs. Edward Harding.** 2½ ft. Salmon-rose. Midseason.
- Mrs. Jenkins.** 2½ ft. An old white stand-by of medium height. Midseason.
- Mrs. Scholten.** 2 ft. Salmon-scarlet. Midseason.
- Painted Lady.** 2½ to 3 ft. Delightful combination of silver-pink with salmon shading and cherry-red centers. Early.
- Progress.** 2½ ft. Light blue, with deeper purple-blue eye. 3 for \$1.35; \$5 per doz.
- R. P. Struthers Improved.** 3 ft. Bright rosy carmine blooms. Midseason.
- Rosalinda.** A pink form of Miss Lingard.
- Ruby Lee.** 2 ft. Extra large plum-red flowers. Healthy vigorous growth; medium height. 3 for \$1; \$3.50 per doz.
- Salmon Beauty** (Eve Forster). 2 ft. Salmon-pink, accentuated with white eyes. Midseason. 3 for \$1; \$3.50 per doz.
- Silverton.** 2 ft. Clear lavender. Early. 3 for \$1; \$3.50 per doz.
- Snowcap.** 2 ft. A good white variety for the middle ground of your border. Early.
- Starlight.** 2 to 2½ ft. Violet-red florets shading lilac; white center. Midseason.

- Stephanie.** 1½ ft. Mauve-pink flowers. Early. 3 for \$1; \$3.50 per doz.
- Thor.** 2 ft. The florets are a combination of salmon-pink with a scarlet glow, and a red eye. Midseason.
- Tigress.** 2 ft. Salmon-scarlet. Midseason.

"Top-Notch" Phlox Collection

- | | |
|--------------------------|------------------------|
| Appleblossom | Flash |
| Atlanta | Lilian |
| Augusta | Mary Louise |
| Border Queen | Mrs. Ed Harding |
| Charles H. Curtis | Ruby Lee |
| Dr. Klemm | Salmon Beauty |

12 plants (1 each of above varieties) for \$4
Ask for Offer No. 11

24 plants (2 each of above varieties) for \$7
Ask for Offer No. 11A

36 plants (3 each of above varieties) for \$9
Ask for Offer No. 11B

Any six of the above varieties, your selection, for only \$2.25.

"Popular" Phlox Collection

12 plants (3 each of four distinct varieties, our selection) for only \$3
Ask for Offer No. 11C

NOTE: Unless otherwise noted, all Phlox are 85 cts. for 3 of one kind; \$1.50 for 6 of one kind; \$3 per doz. of one kind.



A Hardy Border, showing the effective use of Hardy Summer Phlox.

**PEROVSKIA (Silver Sage;
Russian Sage)**

‡**Atriplicifolia.** 4 ft. The felty gray foliage and the lavender-tipped blooms provide a pleasing tall accent of gray for summer borders. August to October. 3 for \$1.35; \$5 per doz.

PHYSOSTEGIA (False Dragonhead)

‡**Rosy Spire.** 3½ ft. Showy spikes of deep rosy crimson bloom. September.
‡**Summer Glow.** 4 ft. The striking spikes are often 18 inches long; top-notch cut-flowers. Late August, September.
‡**Summer Snow.** 3 ft. A new white variety; we need more spire-like flowers in summer gardens. July, August.
‡**Vivid.** 18 in. Ideal dwarf kind with deep pink bloom. September.

PLUMBAGO (Leadwort)

***Larpetae.** 12 in. Rich foliage and deep blue flowers in late summer; useful for sunny or shady ground-covers or for the rock-garden. July to September.

HARDY PHLOX

**Spring-Flowering Kinds
Phlox subulata**

Few of our hardy perennials are more widely adapted for use in the rock-garden or wall-garden or on steep slopes for ground-cover use. The plants make a brilliant splash of color in the spring and display attractive foliage throughout the season. They grow best in well-drained soil and in full sun.

See color illustration, page 12.

- ***Alice Wilson.** *New.* Bright lavender-blue. Blooms again in full.
- ***Atropurpurea.** Very showy brilliant red.
- ***Blue Eyes.** An outstanding lavender-blue variety. 3 for \$1; \$3.50 per doz.
- ***Brightness.** *New.* Attractive bright pink.
- ***Camla.** An English novelty. The large flowers are glistening pink. Blooms again in the fall. 3 for \$1; \$3.50 per doz.
- ***Camla alba.** A lovely new white form that blooms very freely again during fall months. 3 for \$1; \$3.50 per doz.
- ***Dixie Brilliant.** Truly an exciting new hybrid with unusually large crimson blooms which appear after most kinds have finished flowering. 3 for \$1; \$3.50 per doz.
- ***Pink Cushion.** *New.* Compact, bushy growth. Color similar to Rosea.
- ***Rosea Improved.** An improved form of Rosea.
- ***Sampson.** *New.* Deep rose with crimson center. Distinct, and lovely. This is the same as the variety offered as Sensation.
- ***Vivid.** A compact and showy grower with fiery rose flowers.

Other Phlox Species

- ***Divaricata.** Our beautiful blue native Phlox. Does well in shade.
- ***Ovata (Carolina).** Bright rosy red flowers on 12 to 15-inch stems come profusely in May and June.
- ***Ovata pulchra.** 12 in. A very rare and beautiful pink form of the well-known *P. ovata*. It blooms freely in May and June. 3 for \$1.35.

HARDY SUMMER PHLOX. See page 13

PLATYCODON (Balloon-Flower)

- Grandiflorum caeruleum.** See color illustration, page 8.
- ***Grandiflorum Mariesi.** 18 in. A useful dwarf kind for the foreground of the border.
- ***Grandiflorum Mariesi album.** A white-flowering perennial that is hard to beat.



Physostegia

POLEMONIUM

***Blue Pearl.** Jacobs-Ladder. 12 in. A new dwarf Polemonium with great clusters of light blue flowers. The plants grow well in partial shade or full sun. May.

PRIMULA (Primrose)

Perhaps the showiest of spring-flowering perennials are the lovely Primroses. They have a wide color range covering the entire spectrum. Most kinds do best in rich moist soil and in partial shade, but the Veris and the Juliae can be grown in full sun if watered frequently during the summer months.

- ***Auricula, Giant Hybrids.** These distinctive Primulas have curious contrasting eyes and large blooms on 6 to 8-inch stems.
- ***Cashmiriana.** An unusual species with large round heads of lavender bloom.
- ***Juliae, Wanda.** Deep blue-purple, almost violet; very free-flowering.
- ***Veris, Munstead Giants Strain.** Separate colors including yellow, red, cream, and mixed.
- ***Zambalensis, Primrose Lodge.** Large, deep crimson blooms borne on 6-inch stems. Free-flowering.

PULMONARIA (Lungwort)

In moist shady soil they are especially happy but they can be depended upon for almost any part of the garden that is not too dry. The plant is a source of perpetual interest. In the spring there are the Mertensia-like blooms and throughout the growing season the silver-spotted foliage is attractive.

- ***Angustifolia azurea.** Bears racemes of sky-blue flowers that are very attractive. Since the plant grows less than a foot high, it makes a good ground-cover, especially in damp, shady places. April, May.
- ***Saccharata, Mrs. Moon.** The dark green foliage has silver spots and the flowers are a pleasing combination of salmon-pink and blue. April, May. 55 cts. each; 3 for \$1.35.

PYRETHRUM (Painted Daisy). See list on page 19.

RUDBECKIA (Coneflower)

‡**Maxima.** 5 ft. A distinctive and little-known species with glaucous foliage sparsely arranged on long sturdy stems which are topped with large yellow blooms, measuring 3 to 4 inches across and further accentuated with a 2-inch dark cone. June, July.

‡**Purpurea, The King.** See back cover.
‡**White Lustre.** See back cover.

ROSEMARY. See page 31.

SALVIA (Sage)

‡**Azurea.** 4 ft. The stems of each clump are terminated with loose panicles of sky-blue flowers. August, September.
Officialis. See page 31.
‡**Pitcheri.** 4 ft. In autumn the branching stems are covered with deep blue flowers of gentian-like loveliness.

SAPONARIA (Soapwort)

***Ocymoides alba.** Although sprawly in its habit of growth, it is particularly attractive.
***Ocymoides splendens.** The dense masses of pink flowers which appear in late spring add color to the rock-garden.

SCABIOSA (Scabious). See back cover.

SEDUM (Stonecrop)

***Sieboldi.** In late fall when rock-gardens are dull, this unusual plant, curious in form, foliage, and flower, puts on a show.
***Spectabile, Brilliant.** 18 in. A common but worthwhile perennial with large flat heads of brilliant red flowers.
***Spurium, Dragon's Blood.** Bright carmine-red flowers appear above bronzy red foliage from July to September, creating charming contrasts. An excellent plant for the wall or rock-garden.

SEMPERVIVUM (Houseleek)

We have more than 25 varieties. Won't you tell us your special interest?

SHASTA DAISY

See Chrysanthemum maximum, page 19.

SILENE (Catchfly)

***Alpestris flore-pleno.** A choice double-flowering form of pure white. 3 for \$1; \$3.50 per doz.
***Wherryi.** 6 in. A rock-plant that deserves to be better known. Large showy single pink flowers. May, June.

STATICE (Sea-Lavender)

‡**Latifolia.** The large loose heads of purplish bloom are soft and pleasing in color. July, August.
‡**STOKESIA, Blue Moon.** See color illustration on page 12.

TARRAGON. See page 31.

THERMOPSIS (Carolina Yellow Lupine)

‡**Caroliniana.** 3 ft. A good yellow accent plant with spikes of pea-like flowers. June, July.

THYMUS. See page 31.

Unless otherwise noted, all plants 40 cts. each; 3 for 85 cts.; \$3 per doz.; six plants at the dozen rate

* Indicates alpines or rock-plants; with few exceptions these plants are also ideal for broad masses in the foreground of your perennial border or for edging. ‡ Indicates varieties which are useful for cutting.

THALICTRUM (Meadow-Rue)

‡**Lavender Mist** (*Rochebrunianum*). 4 ft. Garden makers, especially those who enjoy perennials, will be fascinated with this new Meadow-Rue. The foliage is like that of a maidenhair fern, delicate and beautiful. The large loose flower panicles of lavender-purple will lend an unusual note in sun or partial shade. 60 cts. each; 3 for \$1.60; \$6 per doz.

TRILLIUM (Wood-Lily)

***Grandiflorum**. The welcome white blooms of this early spring native plant are indispensable for color in the shady garden.

TROLLIUS. See page 24.

TUNICA (Tunic-Flower)

***Saxifraga alba flore-pleno**. A rare new double white form of the following. Just as free a bloomer.

***Saxifraga rosea flore-pleno**. Lovely double, rose-pink flowers from June to November.

TRADESCANTIA (Spiderwort)

The common old-fashioned forms were known to our grandmothers, who had many names for them. The hybridizers have been at work improving them not only in color and size of bloom, but they have considerably lengthened the period of bloom.

***Brevicaule**. A dwarf species with rose-pink flowers. May to July.

New Tradescantias

Ideal Plants for Shady Locations

Sent to us by the U. S. Department of Agriculture

The descriptions are those of the Department. Height 15 to 20 inches.

Any of these 8 varieties, 3 for \$1; 12 for \$3.50.

Blue Stone. Low-growing. Large, rich blue flowers.

Iris Pritchard. White flowers, heavily stained with azure-blue; blue center. Late bloomer.

James Crawford Weguelin. 18 in. Large flowers of a uniform light azure-blue. Very pleasing.

James Stratton. A variety with large flowers, 2½ inches from tip to tip; color deep delphinium-mauve, slightly shaded with rose.

Leonora. The very fine flowers are a deep rich glowing violet.

Lilac Time. Distinct light lilac color.

Pauline. Flowers are rosy mauve. A vigorous variety.

Purple Dome. A vigorous plant with large clusters of rich purple flowers.

TRADESCANTIA COLLECTION

For Your Shady Garden

- Blue Stone**
- Iris Pritchard**
- Pauline**
- Purple Dome**

12 plants (3 each of above varieties) for only \$3.50. (Value \$4)

Ask for Offer No. 12

VALERIANA

‡**Coccinea** (*Centranthus ruber*). 18 to 24 in. A grand border plant. Showy rose-colored flowers produced freely in May and June, with few flowers appearing all through the summer.

‡**Coccinea alba**. A lovely white-flowering form.

‡**Officialis**. 4 ft. Fragrant hardy garden Heliotrope.



Veronica longifolia subsessilis

TRITOMA (Red-Hot-Poker)

These striking spire-like blooms make effective accents in the perennial border and are equally as charming in flower arrangements.

*‡**Galpini**. 18 to 24 in. Graceful dwarf species with grass-like foliage. Delicate orange-saffron-yellow flowers; July to September. 3 for \$1.35; \$5 per doz.

‡**Gold Mine**. 2½ ft. Coppery gold spikes, making an outstanding effect in the garden. Blooms all summer. 3 for \$1.

‡**Golden Scepter**. 3 ft. Hardy, vigorous variety with saffron-yellow spikes during late June and early July. Beautiful planted with light blue delphiniums. 65 cts. each; 3 for \$1.75; \$6 per doz.

‡**New Hybrids**. Flowers of various shades of cream, yellow, orange, and scarlet, on 2 to 3-foot spikes, in June and July.

‡**Pfitzeri**. 3 ft. Orange-scarlet spikes abundantly produced. August to October. 3 for \$1.

‡**Primrose Beauty**. Beautifully formed spikes of clean primrose-yellow stand over 3 feet tall. Blooms in late summer and has been surprisingly hardy. 65 cts. each; 3 for \$1.75.

‡**Springtime**. See color illustration on page 12.

‡**White Fairy**. 2 ft. An unusually good hybrid. The pure white bloom spikes are open and graceful. June, July. 60 cts. each; 3 for \$1.50; \$5.50 per doz.

VERBASCUM (Mullein)

For many years first in English gardens, these spire-like perennials are a welcome addition to American gardens, producing an abundant display of color in the summer. 3 feet tall.

‡**Cotswold Gem**. Tall, slender, branching spikes of soft amber-yellow flowers with purple centers.

‡**Cotswold Queen**. A lovely Mullein with tall spikes of old-rose and buff-pink flowers. A fine background and border plant.

‡**Pink Domino**. See color illustration on page 12.

All Verbascons, 3 for \$1.20; \$4.40 per doz.

VINCA (Periwinkle)

Minor, Bowles Variety. Glossy green foliage. Large deep blue flowers.

VERBENA, Hardy

***Canadensis**. A choice, creeping, hardy Verbena. Violet-purple flowers from May to fall.

***Canadensis, Attraction**. A sparkling color that has been admired by all visitors who have seen it in bloom in our display garden—fiery deep rose, with deeper crimson-scarlet center. The plants are covered with blooms from June to frost. Plant it in full sun, but it will also do well in part shade.

***Canadensis, Pink**. Lavender-pink. All summer.

***Chamaedryfolia, Brilliant** (God of Fire). *New*. Fiery scarlet flowers all summer. Plant in a dry, sunny place. A striking color that appeals to all. Not hardy in winter.

HARDY VERBENA COLLECTION

- 3 Attraction**
- 1 Canadensis Pink**
- 1 Canadensis**
- 1 Brilliant**

6 plants (Value \$2.05) for \$1.75
Ask for Offer No. 13

VERONICA (Speedwell)

‡**Blue Peter**. This novelty has greatly impressed us because of its compact growth; the spikes of deep blue flowers are borne on stiff stems 18 inches long. 60 cts. each; 3 for \$1.50; \$5.50 per doz.

‡**Blue Spire**. See color illustration on page 12.

***Incana**. 12 in. Silver-gray foliage. Deep blue flowers in June.

***Incana rosea**. *New*. Same as above variety, with lovely pink flowers. 3 for \$1; \$3.50 per doz.

‡**Longifolia subsessilis**. Charming summer-blooming hardy plant that deserves a place in every garden, large or small. Beautiful blue flowers in 18 to 24-inch spikes. July to September.

***Rupestris**. Creeping habit. Deep blue flowers in late May and June.

***Rupestris flexuosa**. A lovely pale blue form. Very compact growing. April and May flowering.

‡**Spicata alba**. 18 in. White. June, July.

***Spicata nana**. 6 in. An attractive dwarf form blooming freely during June.

***True Blue**. 12 in. A lovely deep blue variety. Very attractive. May and June.

VIOLA ODORATA (Sweet Violet)

***Double Russian**. Very sweet-scented double flowers. Best planted in shade. 3 for \$1.20; \$4.40 per doz.

***Double White**. *New*, white. 3 for \$1.35; \$5 per doz.

***Rosina**. The new pink fragrant Violet. Lovely pink and rose shades. Blooms freely in the spring and again in the fall.

***Royal Robe**. See color illustration on page 24.

***Semperflorens**. This perpetual-flowering variety blooms in spring, summer, and autumn, giving quantities of fragrant flowers. The plants are hardy and grow well, but seem to thrive best in partial shade. 3 for \$1.20; \$4.40 per doz.

HARDY VIOLET COLLECTION

- Royal Robe**
- Rosina**
- Double White**
- Semperflorens**

12 plants (3 each of above varieties) for only \$3.50. (Value \$3.85)

Ask for Offer No. 14

YUCCA (Adams-Needle)

Variegata. The foliage is golden variegated, resembling the greenhouse Pandanus. Handsome as a specimen plant or for grouping effects. White flowers. 3 for \$1.35; \$5 per doz.



PLANT ROSES *for Beauty in Your War-time Garden!*

POPULAR ROSE COLLECTION

- Christopher Stone.** Scarlet-crimson.
- Condesa de Sastago.** Yellow and copper.
- Editor McFarland.** Deep pink.
- Etoile de Hollande.** Brilliant red.
- K. A. Viktoria.** Creamy white.
- Luna.** Moonlight-yellow.
- Mrs. E. P. Thom.** Clear yellow.
- Mrs. Sam McGredy.** Blend of scarlet and orange.
- Radiance, Pink.**
- Radiance, Red.**
- Rouge Mallerin.** Brilliant deep red.
- Sister Therese.** Golden yellow.

12 plants (1 each of above varieties) for \$8.50
ASK FOR OFFER No. 15

NOVELTY ROSE COLLECTION

- Angels Mateu.** Pat. 174. Orange-rose.
- Bright Wings.** Prop. rights reserved. Coral-pink.
- California.** Pat. 449. Bronzy apricot.
- Charlotte Armstrong.** Pat. 455. Cerise to spectrum-red.
- Crimson Glory.** Pat. 105. Deep velvety crimson.
- Eclipse.** Pat. 172. Rich gold.
- Fantastique.** Pat. 574. Creamy yellow, edge of petal vivid carmine.
- Good News.** Pat. 426. Peach-pink.
- Grande Duchesse Charlotte.** Prop. rights reserved. Burnt-carmine changing to begonia-rose.
- Lowell Thomas.** Pat. 595. Deep golden yellow.
- Mary Margaret McBride.** Pat. 537. Rose-pink.
- Rex Anderson.** Pat. 335. Pure white.

12 plants (1 each of above varieties) for \$14
ASK FOR OFFER No. 16

FOR COMPLETE LIST OF ROSES SEE PAGE 18

*Distinctive
Selections of*
**EVERGREEN
AND
DECIDUOUS
SHRUBS**



AMERICAN HOLLY, Croonenberg variety. Strong plants, 3-in. pots, 6 to 12 in. high, \$1.50 each. See page 22.



FRANKLINIA alatamaha. 15 ft. Short-stemmed, very fragrant, white flowers produced on this small tree. Foliage glossy green, turning scarlet in the fall. Blooms in mid-August, continuing until frost. 12 to 18-in. plants, \$1.50 each; 2 for \$2.75.



HYDRANGEA, Bluebird. For early summer color this showy shrub is well worth having. Potted plants, 50 cts. each; 3 for \$1.25.



AZALEA Kaempferi Hybrids

POPULAR AZALEAS

Hinodegiri. 3 ft. Brilliant scarlet blooms completely cover the plant. Foliage rounded, deep green. Probably the most popular Azalea.

Ledifolia alba. 4 ft. Very large white flowers. Good grower and bloomer.

Sweet Brier. *New.* One of the hardiest Kurumes. Attractive rose-pink flowers.

AZALEA Kaempferi Hybrids. *New varieties.* Height 3 to 5 ft.

Atlanta. Immense purple flowers.

Betty. Brilliant rosy pink, tinted orange.

Carmen. Large, rose-colored blooms.

Cleopatra. Early; light pink.

Fedora. Large salmon flowers.

Othello. Brick-red to orange.

Any of the above 2-yr. plants, 65 cts. each; \$6 per doz.



PYRACANTHA coccinea Lalandi. 8 ft. Beautiful evergreen shrub covered with a profusion of white flowers in early spring, followed by bright orange berries which hang on nearly all winter. Potted plants, 12 to 15 in., 50 cts. each; 3 for \$1.25.



VIBURNUM Burkwoodi. Perhaps the outstanding new shrub in recent years. Flower-heads unusually large and deliciously fragrant. Makes a fine specimen plant. 8 to 12-in. plants, \$1 each; 3 for \$2.50.

HYBRID TEA OR MONTHLY ROSES

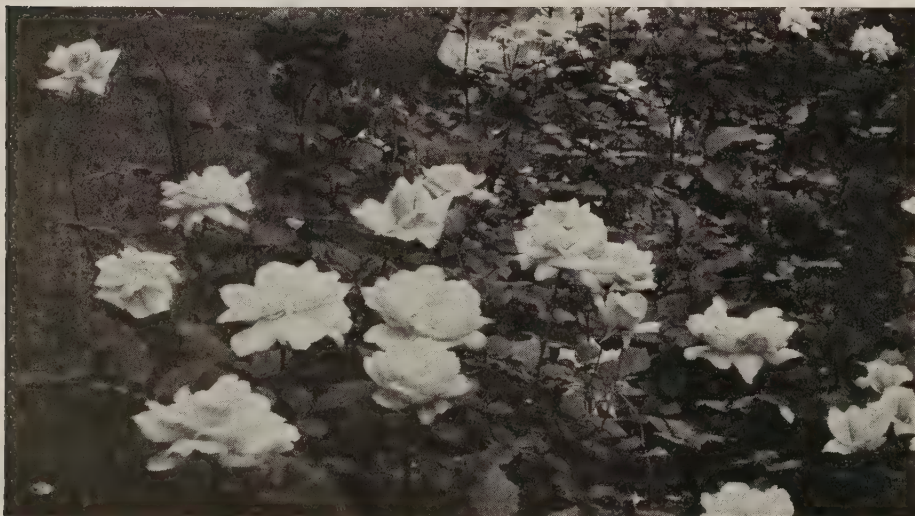
New Hybrid Tea or Monthly Roses

Patented Varieties

- Angels Mateu.** Pat. 174. Orange-rose. Fragrant.
- California.** Pat. 449. Bronzy apricot; reverse of petals coppery pink. Small foliage. \$1.50 each; 3 for \$3.75.
- Charlotte Armstrong.** Pat. 455. Cerise to spectrum-red. Slender buds open into large blooms. \$1.50 each; 3 for \$3.75.
- Countess Vandal.** Pat. 38. Coppery bronze with gold.
- Crimson Glory.** Pat. 105. Deep velvety crimson.
- Dr. Kirk.** Copper flushed orange. \$1.25 each; 3 for \$3.15.
- Eclipse.** Pat. 172. Rich gold; lovely long buds. \$1.25 each; 3 for \$3.15.
- Gloaming.** Pat. 137. Pink overlaid with salmon. \$1.25 each; 3 for \$3.15.
- Good News.** Pat. 426. Peach-pink. Extra-good plant. \$1.50 each; 3 for \$3.75.
- McGredy's Sunset.** Pat. 317. Yellow and orange, flushed scarlet. \$1.25 each; 3 for \$3.15.
- Mme. Cochet-Cochet.** Pat. 129. Coppery pink.
- Rex Anderson.** Pat. 335. A beautiful white Rose. \$1.50 each; 3 for \$3.75.
- R. M. S. Queen Mary.** Pat. 249. Salmon. \$1.25 each; 3 for \$3.15.
- Rome Glory.** Pat. 304. Beautiful cerise-red. \$1.25 each; 3 for \$3.15.
- Santa Anita.** Pat. 539. Deep pink.
- Sierra Glow.** Pat. 521. Pink over orange. \$1.50 each; 3 for \$3.75.
- Signora.** Pat. 201. Burnt sienna.
- Texas Centennial.** Pat. 162. Vermilion-red. 75 cts. each; 3 for \$1.85.
- The Chief.** Pat. 456. Deep rose-pink.
- Warrawee.** Pat. 140. Fine shell-pink.

Outstanding Floribunda Roses

- Betty Prior.** Pat. 340. Carmine outside, pink inside. 85 cts. each; 3 for \$2.15.
- Donald Prior.** Pat. 377. Scarlet flushed crimson. 85 cts. each; 3 for \$2.15.
- Permanent Wave.** Pat. 107. Deep rosy pink. Wavy petals. 85 cts. each; 3 for \$2.15.
- Poulsen's Copper.** Pat. 446. Coppery pink. \$1 each; 3 for \$2.50.
- Poulsen's Yellow.** True yellow. \$1 each; 3 for \$2.50.
- World's Fair.** Pat. 362. Large velvety scarlet flowers; very hardy. \$1 each; 3 for \$2.50.



Plant Roses for color and fragrance in your garden

New and Better Roses

Strictly the finest quality stock, guaranteed to be strong, two-year, No. 1 field-grown plants and true to name. Give us a trial and see the difference. After May 1, we supply potted Roses.

This is a selected list of a few of the finest new and better varieties that we have thoroughly tested in our own garden and know to be hardy, free-blooming, and disease-resistant. You can order them with confidence and be assured that you are getting the best varieties.

Should you be interested in other varieties that we do not list, let us know. We may have them or may be able to get them for you at standard prices.

All Patented Roses are sold at \$1 each; 3 for \$2.50, unless otherwise priced.

1 each of any 12 Roses priced at \$1 each, offered for \$10.

1 each of any 12 Roses priced at \$1.25 each, offered for \$12.50.

Roses priced at \$1.50 each are offered at \$15 per doz.

New Buttercup-Flowered Rose

Margo Koster. The buttercup-shaped flowers are salmon, with rich shading of orange and pink. 85 cts. each; 3 for \$2.35; \$8.50 per doz.

Four Outstanding Newer Climbing Roses

- Blaze.** Pat. 10. Brilliant scarlet. \$1 each; 3 for \$2.50.
- Doubloons.** Pat. 152. Large; saffron-yellow. \$1 each; 3 for \$2.50.
- Dr. J. H. Nicolas.** Pat. 457. Large double flowers of rose-pink. Everblooming. \$1.50 each; 3 for \$3.75.
- New Dawn.** Pat. 1. Light pink. \$1.50 each; 3 for \$3.75.

Three Popular Climbing Roses

Any of the three, 85 cts. each; any 3 for \$2.35; \$8.50 per doz.

- Paul's Scarlet Climber.** Very showy scarlet.
- Silver Moon.** Large; creamy white.
- Spanish Beauty.** Large; deep pink.

Standard Kinds

Prices on all standard varieties, 85 cts. each; 3 of any one variety for \$2.35; assorted varieties, \$8.50 per doz.

- Ami Quinard.** Blackish maroon to velvety red.
- Autumn.** Red, orange, yellow, and pink.
- Betty Uprichard.** Salmon and carmine.
- Caledonia.** Very good white.
- Christine Kordes.** Carmine-scarlet.
- Christopher Stone.** Scarlet-crimson.
- Condesa de Sastago.** Yellow and copper.
- Dainty Bess.** Single; delicate rose-pink.
- Editor McFarland.** Deep pink.
- Etoile de Hollande.** Brilliant red.
- Faience.** Peach and yellow.
- Federico Casas.** Two-toned copper and orange.
- Golden Dawn.** Light golden yellow.
- Heinrich Wendland.** Nasturtium-red, orange reverse.
- Joanna Hill.** Creamy yellow.
- Kaiserin Auguste Viktoria.** Creamy white.
- Lady Ashtown.** Clear warm rose-pink.
- Luna.** Beautiful moonlight-yellow.
- Margaret McGredy.** Orange-scarlet.
- McGredy's Yellow.** Pure yellow.
- Mme. Joseph Perraud.** Nasturtium-buff.
- Mme. Jules Bouche.** A favorite white.
- Mrs. Charles Bell.** The salmon sport of Radiance.
- Mrs. E. P. Thom.** Clear yellow.
- Mrs. P. S. du Pont.** Deep golden yellow.
- Mrs. Sam McGredy.** Blend of scarlet and orange.
- President Herbert Hoover.** Yellow, orange, and scarlet.
- President Macia.** Long-pointed buds; rich carmine-pink outside, flesh inside.
- Radiance.** Pink.
- Red Radiance.** Red.
- Rouge Mallerin.** Brilliant deep red.
- Sister Therese.** Golden yellow.
- Snowbird.** Pure white.
- Talisman.** Scarlet, rose, and yellow.

Miniature or Alpine Roses

Dainty little plants for rock-gardens, miniature Rose-gardens, and for choice places where tiny Rose bushes are desired. They bloom all summer and are as easy to grow as monthly Roses. The following varieties are all desirable and each one distinct from the others. Height 6 to 12 inches.

Any of the following varieties, 3-inch pots, 3 for \$1.35; \$5 per doz., except where noted.

- Oakington Ruby.** Brilliant red.
- Rouletti.** Pink.
- Sweet Vivid.** Large; vivid pink. 12 inches high. \$1 each; 3 for \$2.50.

Four Popular Polyantha Roses

Any of the four, 85 cts. each; 3 of any one kind for \$2.35; \$8.50 per doz.

- Cecile Brunner** (Sweetheart Rose). Pink.
- Gloria Mundi.** Orange-scarlet.
- Mrs. R. M. Finch.** Delicate rose-pink.
- Pink Gruss an Aachen.** Large; pink.

With every order, we will be glad to send you a copy of a 16-page booklet entitled "Roses for Your Garden." It contains helpful suggestions about the planting, use and care of Roses.



Shasta Daisy, Majestic

SHASTA DAISIES

CHRYSANTHEMUM MAXIMUM

The Shasta Daisies are among the most desirable of all cut-flower material, and are easily grown. The long-stemmed flowers are long lasting when cut. They are all nice clean whites that are unusually useful to work in with other flowers in bouquets and decorations.

Admiral Byrd. Splendid, large, pure white flowers with two or three rows of deeply notched petals and a rich golden yellow center. The beautiful frilly blooms last an unusually long time when cut. 2½ to 3 ft. Summer and fall.

Beaute Nivelloise. A fine new Shasta Daisy with large flowers, having two rows of lacinated petals and a clear yellow center. 18 to 24 in. All summer.

Chiffon. A double row of narrow frilled petals and a clear yellow center. 18 in. All summer. 3 for \$1.20; \$4.40 per doz.

Double White Swan. Masses of double white flowers over a long season. 18 to 24 in. Late spring and early summer. 3 for 85 cts.; \$3 per doz.

Esther Reed. Fully double white flowers of good lasting quality. The blooms are 3 to 4 inches in diameter and come rather freely on the sturdy plants. 1½ to 2 ft. Summer and fall. 3 for \$1.35; \$5 per doz.

Favorite. This popular florist's variety is an excellent outdoor daisy bearing masses of large, semi-double, pure white flowers. 2 ft. July, August.

Majestic. Large white flowers, 5 to 6 inches across, with a small yellow center, are produced intermittently throughout the summer. Petals are straight, overlapping, and do not droop; stems are stiff and stand up well. Easily grown, it withstands adverse conditions. By far the finest single Shasta Daisy. 18 to 24 in. \$1 each; 3 for \$2.75; \$10 per doz.

Marconi. A novelty with extra-large, double flowers about 5 inches across. We have the true stock propagated from divisions and feel sure you will be pleased with it. 2 to 3 ft. All summer. 65 cts. each; 3 for \$1.65; \$6 per doz.

Ophelia. A splendid new Shasta with masses of large single daisies. 18 to 24 in. All summer.

Snowball. Large double pure white flowers resembling the annual asters in form. 18 to 24 in. Blooms freely in early summer months. 65 cts. each; 3 for \$1.65; \$6 per doz.

Supreme. Extra-large, single white flowers. 2 ft. June, July. 3 for 85 cts.; \$3 per doz.

Unless otherwise noted, all above newer Daisies are \$1 for 3 of one kind; \$3.50 per doz. of one kind.

PYRETHRUM

(Painted Daisy)

Pyrethrums are special favorites with us because of their simple beauty of form, their wide use as cut-flowers, and their attractive appearance in the garden.

All Pyrethrums are 55 cts. each; 3 of one kind for \$1.35; \$5 per doz., unless otherwise noted.

‡**Brilliant.** Red; almost double blooms.

‡**Eileen May Robinson.** Perhaps the finest single Painted Daisy ever introduced to American gardens. The lustrous bright pink flowers are often 4 inches across, on 30-inch stems.

‡**Florence Shadley.** Double; lovely pink.

‡**Huntington's Scarlet.** The large, pure scarlet blooms are accentuated with golden yellow centers.

‡**Pink Bouquet.** A delightful pink variety with a crested center.

‡**Rosary.** *New.* Double bright pink; known for its sturdy growth.

‡**Silver Tips** (Barbara Shum). *New.* The double red blossoms have tiny white markings at the tips of the petals.

‡**Finest Double, Mixed.** Many delicate and subtle shades. 3 for \$1; \$3.50 per doz.

‡**Single, Mixed.** A delightful strain for broad masses. 3 for 85 cts.; \$3 per doz.

‡**Single and Double, Mixed.** Grown from our own selected seed. 3 for 85 cts.; \$3 per doz.



Pyrethrums, Single and Double

Herbs to flavor soups, salads, omelets and many other dishes are easy to grow. Plan to include some in your 1944 garden. Most kinds are equally delicious when used fresh or dried. See complete list on pages 30, 31.

IRIS

Spring to Autumn

CRESTED IRIS

***Arenaria.** 4 in. The lovely Sand Iris. Fairly large yellow flowers in May.

***Cristata.** 6 in. Pale blue flowers in May.

***Cristata alba.** White.

Dichotoma (Vesper Iris). 2 ft. Lovely lilac-colored flowers from July to September.

***Gracilipes.** A little gem with dainty blue flowers, veined lilac and crested with orange. Plant in light, rich soil in shade.

***Tectorum** (Roof Iris). Attractive blue.

***Tectorum album.** White.



BEARDED IRIS



SIBERIAN IRIS

BEARDED IRIS

Alta California. Yellow; tall.
Anne Marie Cayeux. Pinkish lilac, flushed gray.

Black Wings. Dark purplish blue, almost black.

Blue Velvet. Purplish blue.

Clara Noyes. Rich blend of Talisman rose.

Dauntless. Pure red tone.

Frieda Mohr. Deep pink.

Gudrun. White dusted gold.

Jean Cayeux. A blend of browns.

King Juba. Old-gold, edged carmine.

Laddie Boy. Deep blue.

Mary Geddes. Pink, overlaid Pompeian red.

Pink Satin. True pink.

Pluie d'Or. Deep yellow.

Princess Beatrice (Pallida Dalmatica). Light blue.

Red Dominion. Purplish red.

San Francisco. White, edged blue.

Snow White. Pure white.

Sunlight. Soft yellow.

Talisman. Red, yellow, pink, and chamois.

William Mohr. Soft violet veined bright gray.

6 choice Bearded Iris, our selection of varieties, for \$1.

NOVELTY BEARDED IRIS

Our complete collection includes over 100 varieties, which we plan to feature in a Special Summer Listing. **Watch For It!**



ORIENTAL IRIS (*Iris Kaempferi*)

AUTUMN-FLOWERING BEARDED IRIS

Autumn Haze. Lavender-violet.

Autumn King. Blue-purple.

Black Magic. Intense deep blue-violet with a rich velvety black luster and sheen.

Eleanor Roosevelt. Deep violet.

Six Fall-blooming Iris: One each of 6 varieties, our selection, \$1.25

Golden Harvest. Deep yellow. 35 cts. each.

***Jean Siret.** Yellow. Dwarf.

***Lieut. de Chavagnac.** Brilliant violet. Dwarf.

Autumn Queen. New. White.

SIBERIAN IRIS

Caesar's Brother. New. Beautiful. Different. Rich black pansy-purple. A delight to lovers of dark Iris. 3 for \$1; \$3.50 per doz.

Perry's Blue. Clear blue. **Snow Queen.** Pure white; dwarf.

Unless otherwise noted, all plants 3 for 85 cts.; \$3 per doz.; six plants at the dozen rate

MINIATURE BEARDED IRIS

Give display of bloom in April and early May. Plants grow 6 to 10 in. high.

***Fairy.** Pale blue.

***La Fiancee.** White.

***Prairie Gem.** Yellow blooms in spring and fall.

***Pumila, Mixed.** 6 for \$1.

***Sambo.** Deep blue.

***Stewart Hybrid.** Yellow.

ORIENTAL IRIS

The most beautiful of the Iris, making a splendid display in the garden during late June and early July. Height about 2 to 3 feet.

All varieties, unless otherwise noted, \$1.20 for 3 of one kind; \$4.40 per doz. of one kind; 50 cts. each

Azure. Double; immense mauve-blue flowers.

Betty F. Holmes. Double; large, white blooms with yellow midrib.

Blue Bird. Single; rich blue.

Catherine Parry. Double; blue, overlaid rich purple.

Columbia. Double; blue with white veins, yellow center.

Doris Childs. Double; pearl-white, veined purple.

Fascination. Double; mauve-pink, lightly veined white.

Gold Bound. Double; white, gold-banded center. 3 for 85 cts.; \$3 per doz.

La Favorite. Double; white veined blue, purple center.

La Tosca. Double; immense white flowers.

Lavender Giant. Single; lavender-blue.

Mahogany. Double; a lovely mahogany-red.

Purple and Gold. Double; rich violet-purple, with golden throat. 3 for 85 cts.; \$3 per doz.

Queen of the Blues. Pale blue, veined white.

Red Riding Hood. Single; a fine red variety.

Rose Anna. Double; light mauve, heavily veined with purple.

Shadow. Single; reddish purple.

T. S. Ware. Double; reddish violet flowers with white centers.

Victor. Double; light blue, veined blue.

White Swan. Single; pure white.

ORIENTAL IRIS COLLECTION

12 plants (2 each of six named varieties, our selection) \$4
Ask for Offer No. 17

24 plants (2 each of twelve named varieties, our selection) \$7
Ask for Offer No. 17A

12 plants in mixed colors (our selection, not named) \$3
Ask for Offer No. 17B



GIANT ORIENTAL POPPY COLLECTION

3 PINK 3 DEEP RED 2 WHITE

8 plants (Value \$3.50) for only \$3 Ask for Offer No. 18

See page 11 for complete listing of Poppies



AMABILE



PHILIPPINENSE FORMOSANUM



TENUIFOLIUM



ELEGANS



HENRYI



REGALE

"EASY-TO-GROW" LILIES for Your Perennial Border

AMABILE. Drooping, turks-cap-shaped flowers of deep reddish orange spotted maroon.

ELEGANS. Erect flowers in shades of orange-red, lightly spotted with blackish purple.

HENRYI. The flowers are soft golden yellow tinged green and marked with brown raised dots and lines. 3 for \$1.35; \$5 per doz.

PHILIPPINENSE FORMOSANUM. The trumpet-shaped blooms are white outside with brownish purple ribs and the face pure white with a greenish white throat.

REGALE. The bloom is a well-shaped trumpet, the outside tinted pinkish, the face white and the throat golden.

TENUIFOLIUM. Excellent for rock-gardens. The recurved petals have a waxy texture and are deep scarlet in color.

HARDY AMARYLLIS, Magic Lily

This plant, known also as *Lycoris squamigera*, produces green foliage in the spring which disappears in midsummer. About a month later, as if by magic, the flower-stalk appears, bearing a cluster of seven to twelve lily-shaped, lilac-pink flowers, lightly shaded blue. Perfectly hardy. \$1 each; 3 for \$2.75.

PRICES: Unless otherwise noted, all above Lilies are \$1 for 3 of one kind; \$3.50 per doz. of one kind

EVERGREEN SHRUBS

ABELIA (Bush Arbutus)

Grandiflora. 4 ft. Useful in foundation plantings and mixed with other shrubs and evergreens. Flowers are white, flushed pink. Glossy evergreen foliage. Blooms from June to November.

Edward Goucher. 18 to 24 in. A new variety with much larger flowers, of a lovely shade of lavender-pink. Just as easy to grow and blooms as continuously as the above variety.

Either of the above, 50 cts. each;
3 for \$1.25; \$5 per doz.

AZALEA. See color illustration and list on page 17.

BERBERIS (Evergreen Barberry)

Juliana. Wintergreen Barberry. 5 ft. A valuable evergreen shrub with narrow-toothed spiny leaves that on the new shoots are several shades of green.

Tricanthophora. Three-spine Barberry. 3 ft. In our opinion this is the finest of the evergreen Barberries.

Verruculosa. Warty Barberry. 3 ft. A semi-dwarf, slow-growing kind with dark glossy green leaves, whitish underneath. Flowers primrose-yellow.

Any of the above choice Evergreen Barberries, strong 3-in. pot-plants, 40 cts. each; 3 of any one kind for \$1; 12 assorted plants for \$4.

BUXUS (Boxwood)

Suffruticosa (nana). True dwarf hedging Boxwood. 4 to 6 in., \$2 per doz.; \$15 per 100.

COTONEASTER

(Rock Spray; Quinceberry)

Selected evergreen and deciduous varieties.

Adpressa. Creeping Cotoneaster. 6 in. A fine variety for ground-cover. Shiny dark green leaves.

Apiculata. Cranberry Cotoneaster. One of the finest. Extra-large red berries.

Dammeri (humifusa). 8 in. A creeping shrub for the rockery. A perfect prostrate species with bright evergreen foliage and coral-red berries.

Salicifolia. Willow-leaf Cotoneaster. 5 ft. Semi-evergreen. Graceful, drooping branches. White flowers in May and June; red fruit. Very handsome.

Any of the above Cotoneasters, strong 3-in. pot-plants, 50 cts. each; 3 of any one kind for \$1.25; 12 assorted plants for \$5.

DAPHNE (Garland-Flower)

Cneorum. 10 in. Fragrant pink flowers in clusters on a spreading evergreen shrub. Plant it in light soil in a sunny spot. 1-yr. plants, 40 cts. each; 3 for \$1; \$3.50 per doz.

ERICA (Heath)

***Carnea rosea.** These miniature shrubs, seldom more than 8 inches high, are covered with rosy pink flowers in March and April. Hardy, free blooming, and excellent in the rock-garden.

***Carnea, Ruby Glow.** New. Lovely bright red.

***Carnea, Springwood.** A white form.

Any of the above, 1 and 2-yr. young plants, 40 cts. each; 3 for \$1; \$4 per doz.

MAHONIA (Holly Grape)

Aquifolium. 4 ft. Large, shining leaves turning bronzy red in autumn. Clusters of yellow flowers in early spring, followed by blue berries in summer. 75 cts. each; 3 for \$2.

RHODODENDRON HYBRIDS

Bushy plants, 18 in. high, \$2.75 each. Different colors available.

ILEX (Holly)

Cornuta femina. Chinese Holly. 10 ft. One of the showiest of the Hollies. Leaves dark glossy green, oblong, with three strong spikes at the dilated apex, and one or two on each side. Scarlet berries.

Crenata. Japanese Holly. 5 ft. Slow-growing shrub with dark glossy green foliage and small black berries. A special strain.

Opaca. American Holly. 25 ft. There is nothing prettier than our native American Holly when it is full of bright red berries, although its bright glossy foliage is beautiful all the year round.

Opaca, Male. Should be planted with Female varieties to pollinize them.

Opaca, Croonenburg. A fine new American Holly. Large dark green foliage and large red berries. \$1.50 each; 3 for \$4.

Opaca xanthocarpa. A yellow-berried variety. \$1 each; 3 for \$2.75.

Pernyi. 10 ft. An interesting and unusual shrub of bushy growth with handsome, shiny and spiny evergreen leaves.

All Hollies, in strong 3-in. pots, 6 to 12 in. high, 65 cts. each; 3 of any one kind for \$1.65; 12 assorted kinds for \$6, unless otherwise noted.

PACHISTIMA

***Canbyi.** A choice little evergreen shrub of very low growth (seldom over 8 inches high). Fine for planting in front of tall shrubs or evergreens, also good for the rock-garden and makes an excellent ground-cover. Does well in sun or part shade, in well-drained soil. Young plants, \$2.50 per doz.; \$15 per 100.

PYRACANTHA coccinea Lalandi. See color illustration, page 17.

CHOICE AND RARE CONIFEROUS EVERGREENS

We offer young potted plants of the following varieties. The size following the name indicates the approximate height at maturity.

ARBORVITAE (Thuja)

***Occidentalis, Little Gem.** 2 ft. A dwarf variety excellent for the rock-garden. 3 for 75 cts.; 6 for \$1.25.

Occidentalis, Woodwardi. Globe Arborvitae. 3 ft. The best globe-shaped Arborvitae. 3 for 60 cts.; 6 for \$1.

JUNIPER (Juniperus)

Prostrata venusta. Blue Creeping Juniper. An ideal little creeping evergreen. Splendid in the rock-garden. Glauous blue foliage. 40 cts. each; 3 for \$1; 6 for \$1.75.

RETINOSPORA (Chamaecyparis)

Obtusa nana. Dwarf Hinoki Cypress. 3 ft. A little gem with graceful dark green foliage. Dense, bushy growth. 50 cts. each; 3 for \$1.25.

Pisifera squarrosa pygmaea. "Little Silver Ball." 18 in. An unusual little evergreen. Thick, bushy growth, forming small globe-shaped plants. Foliage silvery green. Fine for rock-gardens. 50 cts. each; 3 for \$1.25.

SPRUCE (Picea)

Abies conica glauca. Dwarf Alberta Spruce. 8 ft. Splendid, upright, cone-shaped form. Tidy dense growth. Fine for rockery and formal effects.

Abies excelsa nidiformis. Birdnest Spruce. 3 ft. Very compact, bushy grower. Dark green foliage.

Abies Maxwelli. Maxwell Spruce. 2½ ft. Low, round, dense bush. Attractive bright green foliage.

Small sturdy plants, 75 cts. each
1 each of the 3 for \$2

DELICIOUS NEW BLUEBERRIES

Imagine the old-fashioned Blueberry or "Huckleberry" grown to three-quarters of an inch in diameter. That's what these new varieties will do, and the amount of fruit has also been increased.

Blueberries require an acid soil containing an abundance of peat or other partially rotted vegetable matter. They need a moderate supply of soil-moisture, and good drainage so that the roots can get air during the growing season. Space the plants about 3 feet apart if planted in a row. Setting the plants in beds 3 feet apart one way and 4 to 5 feet the other way has also been found satisfactory.

Blueberries make attractive hedges or they can be grown as specimens or used in foundation plantings. In addition to their delicious fruits, the plants contribute greatly to the color pageant in autumn when their foliage takes on hues of yellow, orange and red.

Strong plants, 12 to 15 inches high
3 for \$3; \$11 per doz.

Cabot. The earliest variety to fruit. Plants seldom exceed 3 feet in height, making a broad, low bush. Berries have a delicious subacid flavor.

Concord. Bush of upright habit and at maturity exceeds 6 feet in height. The berries are large, frequently reaching ¾ inch in diameter.

Jersey. Vigorous in habit, grows very large. The berries are very large, light blue in color.

Rancocas. Slender, vigorous, upright habit rarely surpassing 5 feet in height. The berries are earlier and larger than Rubel.

Rubel. Well-developed bushes stand 6 feet or more high. The large berries are of fine blue color; can be depended on for a good crop every year. Ripens about two weeks later than Cabot.

YEWS (Taxus)

The Yews are by far the finest evergreens, thriving in shade or sun and in almost any soil. They are seldom bothered with insects or diseases. The dark green foliage remains attractive the year round.

Baccata fastigiata. Irish Yew. 25 ft. Symmetrical, upright growth. Not very hardy in the North.

Baccata repandens. Spreading English Yew. 3 ft. A good dwarf variety for the rock-garden.

Canadensis stricta. 18 in. Suitable for edging and other places where low plants are needed.

Cuspidata. Spreading Yew. 5 ft. One of the most commonly used evergreens for foundation and group plantings.

Cuspidata capitata. Upright Yew. 25 ft. Although this beautiful evergreen grows to 25 feet in height, it will stand much pruning, and can therefore be kept to any height or shape desired.

Cuspidata nana. Dwarf Yew. 3 ft. A popular dwarf variety for rock-gardens and in front of taller evergreens.

Media. 4 ft. One of the finest of the spreading Yews. Bushy.

Media Hatfieldi. Hatfield Yew. 10 ft. Compact bush of broad, upright growth; very good.

Media Hicksi. Hicks Yew. 15 ft. Of narrow, upright growth. This new variety will replace the old Irish Juniper where narrow, upright trees are needed.

All the above Yews, young potted plants, 4 to 10 in. high, depending upon the habit of growth of the various kinds, 4 of any one kind for \$1; 12 assorted kinds for \$2.50; 100 for \$20.

DECORATIVE AND USEFUL VINES

Vines help to soften walls and the harsh lines of buildings. Often they can be used on fences and walls to good advantage.

AMPELOPSIS (Boston Ivy)

Veitchi. The most satisfactory vine for use on brick walls, for it clings to the smoothest surface. Glossy green leaves turn scarlet and crimson in the fall. 50 cts. each; 3 for \$1.25.

LARGE-FLOWERING CLEMATIS

A sunny spot in fertile, well-drained soil produces the best results with these popular climbers.

Duchess of Edinburgh. Large, double, white flowers. Profuse bloomer.

Henryi. Large, creamy white blooms.

Jackmani. Rich purple. A long-time favorite.

Mme. Baron Veillard. Large lavender flowers.

Mme. Edouard Andre. Bright rosy carmine. Most attractive.

Montana Rubens. Warm reddish mauve.

Ramona. Lavender-blue.

Any of the above Clematis, 75 cts. each; any 3 for \$2; any 12 for \$7.50

SWEET AUTUMN CLEMATIS

Paniculata. Pure white, fragrant bloom mantles the plant in August and September. A vigorous climber producing a most graceful, showy effect. 50 cts. each; 3 for \$1.35.

HYDRANGEA (Climbing Hydrangea)

Petiolaris. A climber reaching 50 feet if given support; otherwise a somewhat straggling bush. Round, flat clusters of bloom. 3-in. pot-plants, 85 cts. each.

NEW HONEYSUCKLE (Lonicera)

Goldflame. Bright flame-pink, trumpet-shaped flowers with creamy golden yellow color inside. Grows as a vine or bush and has a very long blooming season. 50 cts. each; 3 for \$1.25.

EVERGREEN IVIES (Hedera)

There are many varieties available, which you will find listed in our previous catalogues. Or if you will write for our list, we shall be glad to send you the names of varieties now on hand, with their prices.

SILVER LACE VINE (Polygonum)

Auberti. Foamy white sprays of flowers completely cover the plant in late summer and early fall. The vigorous, hardy vines reach 25 feet in height. Easily grown; does well in sun or shade. 2-yr. plants, 65 cts. each; 3 for \$1.65.

WISTERIA

Long-clustered Wisteria (*Wisteria multi-juga*). These varieties are most spectacular, for they produce clusters of bloom 18 to 24 inches long. Our grafted plants are sure to bloom.

Multijuga rosea. Pink.

Multijuga purpurea. Purple.

Multijuga alba. White.

Multijuga violacea-plena. Violet-blue; double.

Any of the above four Wisterias, \$1 each; any 3 for \$2.75

Sinensis Issai. Blue Chinese Wisteria. Does not grow very large, and is therefore good for limited space. Blooms periodically all summer. Grafted plants, \$1.25 each.

DECIDUOUS FLOWERING SHRUBS

We cordially invite correspondence regarding any plants in which you may be interested, but which you do not find listed in this catalogue.

Due to lack of space in this catalogue, and transportation costs on the larger-sized shrubs, evergreens, and flowering trees, we are listing only a few of the newer kinds, in small sizes suitable for mail orders. However, larger sizes than those listed, as well as many more varieties, are available, particularly to our local customers who can call at the nursery and to those living within the area reached by our trucks.

The size following the variety name indicates approximate height at maturity.

BUDDLEIA (Butterfly Bush)

A shrub that needs little care if planted in a sunny location in well-drained soil. Panicles of flowers are produced profusely.

Charming. 5 ft. Long sprays of lavender-pink blooms in late summer. A hardy plant that can endure cold weather. 50 cts. each; 3 for \$1.25.

Fascination. See color illustration on page 25.

Ile de France. 4 ft. Bright rosy purple, suffused violet. Blooms freely. 3 for \$1; \$3.50 per doz.

Orchid Beauty. See color illustration on page 25.

Royal Red. See color illustration on page 25.

White Bouquet. See color illustration on page 25.

CARYOPTERIS (Blue Spirea)

Incana. Blue flowers cover the compact bushes in late summer. Reaches 3 feet or more in height. 50 cts. each; 3 for \$1.20.

CYDONIA, New Flowering Quinces

Five selected varieties. Any variety, 10 to 12-in., 2-yr. field-grown plants, 75 cts. each; 3 of any one kind, \$2; 1 each of the 5 varieties, \$3.50.

Columbia. Flowers bright red, and fruit greenish yellow, fragrant. Late.

Grandiflora rosea. Flowers lemon-colored, tinted pink, turning deep rose with age. Very large fruit; foliage bronze-tipped.

Grandiflora rubra. An early bloomer, and a favorite. Large, deep red flowers.

Moerloosi. Pink and white. Blooms late. Low, spreading growth.

Nivalis. Blooms large, snowy white.

ELSHOLTZIA (Mintshrub)

Farquhari. 2 ft. Dense spikes of bright pink flowers in late summer. Aromatic foliage and flowers. Blooms best if planted in a sunny location. Potted plants, 40 cts. each; 3 for \$1; \$3.50 per doz.

FRANKLINIA (Gordonia) alatamaha. See color illustration, page 17.

FUCHSIA (Hardy Fuchsia)

Magellanica. 2 ft. Showy hanging blooms with ruby-red centers and blue petals. Easily grown in part shade. 40 cts. each; 3 for \$1.

Scarlet Beauty. Pat. 440. Bright ruby-red center, with deep purple petals. Upright habit; blooms freely in summer in part shade, but needs winter protection. 50 cts. each; 3 for \$1.25.

GENISTA (Broom)

Andreana. 4 ft. Graceful bright green stems covered with scarlet and yellow flowers in summer. Grows well in a sunny location, in soil that is not too rich. Selected hardy strain. Young pot-plants, 40 cts. each; 3 for \$1.

Prostrata. 8 in. Yellow blooms are produced in June and July on a prostrate plant. Excellent for rockeries. 40 cts. each; 3 for \$1; \$3.50 per doz.

HYDRANGEA, Bluebird. See color illustration, page 17.

HYPERICUM (St. Johns-Wort)

Moserianum. Large, golden yellow flowers all summer. A hardy shrub, easily grown. 40 cts. each; 3 for \$1; \$3.50 per doz.

LESPEDEZA (Bush Clover)

Formosa. Purple Bush Clover. 5 ft. Graceful arching branches bearing rosy purple flowers in late summer. The tops die down to the ground in winter and should be cut to the ground in spring. 50 cts. each.

LONICERA (Honeysuckle)

Tatarica rubra. 8 ft. A new variety with bright red flowers and blue-green foliage. Grows well in any good garden soil. 50 cts. each.

POTENTILLA

Fruticosa Purdomi. Lemon Drops. A small shrub 2 feet high, blooming continuously from May to September. Excellent for the rock-garden or in front of taller-growing shrubbery. Bright sulphur-yellow blooms. 75 cts. each; 3 for \$2; \$7.50 per doz.; \$50 per 100.

SALIX (Dwarf Willow)

Purpurea nana. A low-growing plant doing well in any soil. Grows 3 to 5 feet high, but can be kept lower. Foliage is blue-gray-green. Excellent for hedges. 3 for \$1; \$3 per doz.; \$20 per 100.

SYRINGA (Lilac)

1-yr. plants, 8 to 12 in. high. Several varieties are available, at 50 cts. each; 1 each of 5 different kinds for \$2.25; 12 assorted kinds, \$5.

VIBURNUM Burkwoodi. See color illustration, page 17.

VITEX (Chaste Tree)

Macrophylla. 5 ft. Beautiful dark, fern-like foliage. Lavender-blue flowers in dense spikes are produced from June to September. Any good soil suits it. Young pot-plants, 50 cts. each; 3 for \$1.35.

5 HARDY PERENNIALS FOR YOUR SHADY GARDEN

These lovely perennials will thrive beautifully in shaded as well as in sunny locations, provided the soil does not become too dry during the summer months.

TROLLIUS Ledebouri, Golden Queen. 3 ft. A handsome variety with large open flowers of beautiful golden yellow. Blooms late May to July. 3 for \$1; \$3.50 per doz.



TROLLIUS
Golden Queen

ANEMONE hupehensis. 18 in. Warm rose-colored flowers appear earlier than most kinds. This compact variety is ideal for the foreground of your perennial border. August, September. 3 for 85 cts.; \$3 per doz.

SHADY GARDEN COLLECTION

3 plants each of the five varieties here illustrated.

(15 plants, value \$7.50), for only

\$5.00

ASK FOR OFFER No. 19

NOTE: If you wish to add white to this Shady group, we suggest the lovely spring-blooming **Anemone sylvestris.** 3 for 85 cts.; \$3 per doz.



ANEMONE hupehensis



ASTILBE, Fanal

ASTILBE, Fanal. "Lighthouse" is the meaning of the word Fanal. A group of three or six of these lovely plants will surely be the "shining light" in the foreground of your border during May and June. Spire-shaped sprays—the most fiery crimson you can imagine—tower 15 inches above the abundant dark bronzy green foliage, which remains attractive throughout the season. Plant in rich, moisture-retaining soil in semi-shade or full sun. 75 cts. each; 3 for \$2; \$7 per doz.



ANCHUSA myosotidiflora

***ANCHUSA myosotidiflora.** The loose heads of brilliant blue flowers combine effectively with narcissus and other spring-flowering plants, and the heart-shaped leaves make an attractive shady ground-cover throughout the season. 3 for 85 cts.; \$3 per doz.

VIOLET, Royal Robe. A distinct addition to the Violet family that deserves a place in your shady rock-garden, or as a ground-cover. 3 for \$1.20; \$4.40 per doz.



VIOLET, Royal Robe

Five Outstanding BUDDLEIAS

Buddleia, Empire Blue. Pat. 557. A distinct new variety of deep blue with a delicate lilac tone. One of the best we have ever seen. 75 cts. each; 3 for \$2.

Buddleia, Fascination. Another hybrid of dainty coloring. It belongs in the pink tones. 75 cts. each; 3 for \$2.

Buddleia, Orchid Beauty. Unusually well-formed spikes of bloom; delicate fragrance. 60 cts. each; 3 for \$1.50.

Buddleia, Royal Red. Pat. 556. The closest approach to red yet achieved in Buddleias. 75 cts. each; 3 for \$2.

Buddleia, White Bouquet. Pat. 536. A welcome addition to this great shrub family. 75 cts. each; 3 for \$2.

Newest Butterfly Bushes

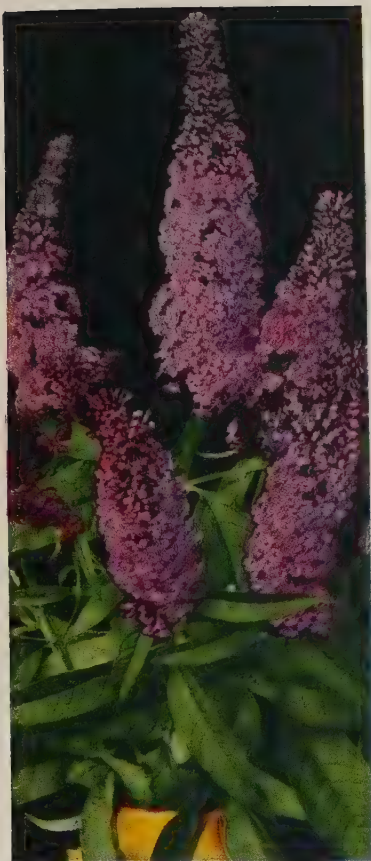
Empire Blue
Fascination

Orchid Beauty
Royal Red

White Bouquet

5 plants (1 each of above varieties) for only \$3
(Value \$3.60)

Ask for Offer No. 20



BUDDLEIA, Orchid Beauty



BUDDLEIA
Royal Red

Pat. 556

One each of the four Buddleias illustrated on this page for \$2.50 (value \$2.85). Or you may select any 3 for \$2



BUDDLEIA, Fascination



© **BUDDLEIA, White Bouquet**
Pat. 536



MAGNOLIA stellata, Waterlily

MAGNOLIA stellata, Waterlily.

Something new and decidedly different in Magnolias is the lovely hybrid Waterlily. The similarity to a waterlily is easily seen in the delightful pink and white color combination and the pleasing form.

Strong potted plants,
\$1.50 each; 3 for \$4

Chrysanthemums

Hardy Chrysanthemums are among the most dependable flowers in the autumn garden, providing glorious color and spicy fragrance from early September (August with some varieties) until heavy frosts spoil the display.

There are Chrysanthemums of many types, from the Cushion mums for low mounds of color in borders and

rock-gardens to the long-stemmed kinds for cutting.

We feel that we have one of America's finest and most up-to-date Chrysanthemum collections. Our list includes selected varieties from the University of Minnesota, University of Chicago, and Bristol collections, and from several other sources in different parts of the country, including some of our own introductions.

Large Double-Flowered Varieties (Decorative)

Autumn tide. The early blooms of this outstanding double Chrysanthemum vary from rich burnt-orange to a pleasing shade of vermilion, and as the season advances gradually change to apricot blended with coral, with a golden undertone. Blooms from mid-September throughout the season. 60 cts. each; 3 for \$1.60; \$6 per doz.

Avalanche. Large, well-formed, double white flowers in great quantities. A beautiful white Chrysanthemum. 2½ to 3 ft. Late September. 45 cts. each; 3 for \$1; \$3.50 per doz.

Betty. See color illustration, page 28.

Calendula. Beautiful deep chrome-yellow with metallic sheen, 3 inches in diameter. Deep green foliage. 1½ to 2 ft. Mid-September to November. 75 cts. each; 3 for \$2; \$7.50 per doz.

Chippewa. Semi-double to double, aster-like flowers, 3 inches across, of aster-purple. Plant bushy, with many stems. Very showy and good for cutting. 2 ft. September on. 60 cts. each; 3 for \$1.60; \$6 per doz.

Egg-Shell. A distinct egg-shell shade, slightly deeper at the center. Decorative flowers measuring 3½ inches across; excellent for cutting, as it has long-lasting qualities. Strong wiry stems about 3 feet tall. Blooms in late September and early October. 60 cts. each; 3 for \$1.60; \$6 per doz.

Eugene A. Wander. See color illustration, page 29.

Gold Treasure. This deep golden yellow mum is a natural for cut-flowers. Its blooms are large and bright, full double, 2½ inches across, on tall, long-stemmed plants 2 feet high. Early October. 55 cts. each; 3 for \$1.35; \$5 per doz.

Goldilocks. One of the most beautiful yellow Chrysanthemums we have seen. The ball-shaped, well-formed flowers are 2½ inches or more in diameter, brilliant canary-yellow. Good habit of growth with long stems, which makes it ideal as a cut-flower. Healthy, clean foliage. 1½ to 2 ft. Early September on. Be sure to include it in your order. 75 cts. each; 3 for \$2; \$7.50 per doz.

Granny Scovill. See color illustration, page 29.

Harbinger. See color illustration, page 28.

King Midas. Large double blooms 4 inches across, of a charming shade of soft yellow, occasionally touched with bronze. Strong free-blooming plants. 2 and 3 ft. Late September.

Lavender Lady. See color illustration on page 29.

Lola. Large double flowers of glittering gold. Very attractive. 55 cts. each; 3 for \$1.35; \$5 per doz.

M. J. Costello. Nearly fully double, 2 inches across; golden yellow at margins, reddish gold at center. Stiff, upright stems. 2 ft. Early September to late November. 60 cts. each; 3 for \$1.60; \$6 per doz.

Mme. Chiang Kai-shek. See color illustration, page 28.

Mrs. Pierre S. du Pont III. See color illustration, page 29.

Mrs. Sam P. Rotan. Large, double, brilliant golden yellow shaded orange. Flowers resist light frost. 3 ft. Early October.

My Lady. Large, double flowers of an unusual shade of orange-yellow. 2 to 3 ft. Mid-September. 50 cts. each; 3 for \$1.20.

Pale Moon. Fluffy sulphur-yellow blooms cover the plant. An exquisite loosely double variety. 2 ft. Late September.

Polar Ice. Clear, glistening blue-white, without a trace of cream color; flowers 2½ to 3 inches in diameter. Thick, heavy, upright stems, much branched at top. Very free flowering. The most beautiful white we have seen so far. 1½ to 2 ft. September 1 to end of October. 75 cts. each; 3 for \$2; \$7.50 per doz.

Quaker Maid. Extra-large attractive crimson flowers, with some touches of gold. 2½ ft. 55 cts. each; 3 for \$1.35; \$5 per doz.

Rapture. Shapely, double flowers which are a lovely blend of orange-bronze and carmine. Strong, bushy plants. 3 ft. Early October. 45 cts. each; 3 for \$1; \$3.50 per doz.

Red Velvet. See color illustration, page 29.

September Dawn. The first really good double pink. Flowers are about 3 inches across. Hardy, vigorous grower, and free-flowering. 2 ft. Early September.

Sun God. Showy late variety; large, ball-shaped, bronzy gold flowers. 3 ft. Late Oct.

Symphony. Three-inch double blooms of mauve-rose overcast with soft coppery rose. 3 to 4 ft. Early October.

Theresa. Double, 3-inch blooms, coppery orange with deep yellow center.

Tiffany Rose. A Carroll Gardens introduction for 1944. Double, deep rose flowers with faint cream undertones remind one of the iridescence of Tiffany glass. The blending of these colors at the base of the petals forms a golden halo, adding much to the unusual effect of the 3-inch flowers. These lovely blooms are produced freely, on 18 to 24-inch, uniform, bushy plants from late September or early October. An excellent cut-flower variety. 75 cts. each; 3 for \$2; \$7.50 per doz.

White Knight. See color illustration, page 29.

William Longland. Nearly fully double, bright clear bronze, changing to soft clear primrose-yellow, 2½-inch flowers. 3 ft. Mid-September to November. 50 cts. each; 3 for \$1.35; \$5 per doz.

Supreme Decorative Chrysanthemum Collection

10 New Masterpieces from the foremost Hybridizers in America.

Betty	Goldilocks
Calendula	Mme. Chiang Kai-shek
Chippewa	Polar Ice
Egg-shell	Tiffany Rose
Gold Treasure	
Red Velvet	

1 each of the 10 varieties (value \$6.90), for only \$5.85.

Ask for Offer No. 21

3 each of the 10 varieties (30 plants in all), for only \$14.50.

Ask for Offer No. 21A

Medium-Sized Double Varieties

Algonquin. Showy, double, clear yellow flowers, 2½ inches across. Spreading growth. 2 ft. Early September.

Bonfire. Medium blooms of red and bronze. One of the hardiest varieties we know of; ideal for cutting.

Boreas. Early, double white, 2-inch flowers. The plant is rather low but stems long. Good cut-flower.

Burgundy. Double blooms of glowing wine-red in generous clusters on strong stems. Sturdy plants with healthy foliage. 2½ ft. Early October. 45 cts. each; 3 for \$1; \$3.50 per doz.

Carolina Lee. Full double flowers 2 inches across, of deep bright crimson fading to a lighter shade. Early October.

Goblin. Two-inch blooms of a warm bronze shading to sparkling gold when open. Uniquely distinct. 2 ft. Mid-October.

Golden Charm. A free-flowering variety with splendid double golden yellow blooms. 2 ft. Early October.

Goldridge. Nearly fully double, 3 inches in diameter, with flat broad overlapping petals. Glistening coppery gold, with small yellow center when old. 1½ to 2 ft. Mid-September to November.

Milky Way. Glorious semi-double, milky white, informal flowers with broad overlapping petals. 2 ft. Late September.

Mrs. C. R. Hastings. Unusual soft rose-red. Plants are of a very bushy habit, loaded with 2-inch, semi-double flowers. Free flowering and striking. 1½ ft. October 1.

Purple Jewel. See color illustration, page 28.

Purple Star. Flowers semi-double, 2 inches across; color bright dahlia-purple. 1½ ft. September to October.

Red Gold. One of the most attractive Chrysanthemums from the University of Minnesota group. Very striking scarlet to Brazil-red flowers. 1½ to 2 ft. Early September on. 75 cts. each; 3 for \$2; \$7.50 per doz.

Robert Brydon. Double, dark garnet-red, 2½ to 3-inch flowers. Dense, bushy, spreading habit. Very free flowering. 18 to 20 in. September to November.

Rose Glow. Exquisite old-rose blooms on excellent cutting stems, freely produced. 2½ ft. Late September.

Special in This Group

**Bonfire
Burgundy
Goblin**

**Golden Charm
Purple Jewel
Red Gold**

1 each of:

6 Very Choice Varieties (value \$2.80), for only \$2. Ask for Offer No. 21B.

3 each of the 6 varieties (18 plants in all), for only \$5. Ask for Offer No. 21C.

ALL CHRYSANTHEMUMS

unless otherwise noted

85 cts. for 3 of one kind.

\$1.50 for 6 of one kind.

\$3 per doz. of one kind.

Single plants, 40 cts. each.

CHRYSANTHEMUMS, continued

Single and Semi-Double Varieties, Korean Hybrids, Etc.

Autocrat. Beautiful bright orange-scarlet single flowers, each with a golden yellow halo. 2½ ft. October 10.

Autumn Lights. Masses of lovely, semi-double flowers of coppery bronze with a gleaming orange tone. 2 ft. Late September.

California Red. Bright scarlet-red, single flowers with double row of petals. 2½ to 3 ft. Late blooming.

California Yellow. Deep canary-yellow.

Carroll Pink. Another of our introductions. The semi-double, 3 to 3½-inch blooms are of the clearest pink shade we have yet seen in Chrysanthemums. The plants grow 18 to 24 inches high, and are very free blooming, starting in late September or early October. 75 cts. each; 3 for \$2; \$7.50 per doz.

Debutante. Large semi-double bloom. A gorgeous blending of light rose, soft peach and lemon-yellow. 2½ ft. Late September. 45 cts. each; 3 for \$1; \$3.50 per doz.

Early Joan Helen. Distinctly new and different is this brilliant large, semi-double mum. Blossoms are produced in such profusion that the plant becomes an 18-inch mound of sparkling beauty. Flowers are a rich velvety garnet-lake color, shading to rhododendron-purple with a bright yellow center. Blooms in late September and early October. 60 cts. each; 3 for \$1.60; \$6 per doz.

Eureka Giant. Semi-double, 2½-inch blooms of very brilliant golden orange. Healthy green foliage; very strong habit of growth. Bush is compact, with upright stems, making a spread of 18 to 24 inches. Be sure to include it in your collection. 60 cts. each; 3 for \$1.60; \$6 per doz.

Evening Sun. Large single flowers carried erect on shapely, well-rounded plants 2 feet high. Carnelian-red shading to burnt orange, made more intense by the golden center and lemon-yellow halo in contrast with the large dark green leaves. In full bloom in early October. 60 cts. each; 3 for \$1.60; \$6 per doz.

Hebe. Luminous pink, single flowers which change to soft lavender-pink as they mature. 2 ft. Late September.

Honey Girl. Large (3½-inch), semi-double flowers of a showy honey-amber color, produced in clusters on long upright stems. Excellent for cutting; very beautiful. Late September. 75 cts. each; 3 for \$2; \$7.50 per doz.

Louise Schling. Large, semi-double flowers of glowing salmon-red changing to soft bronze-salmon. 2½ ft. Late September.

Manantico. Semi-double; unusual bright red. 18 in. Early September.

Peachblow. Single; glorious blend of salmon, pink, fawn, and bronze. 2½ ft. Late September.

Primula. Lovely, single, lemon-yellow flowers, 2 inches in diameter, in a long, much-branched cluster. Extremely free flowering; excellent green foliage. 2½ ft. Late September to November. 55 cts. each; 3 for \$1.35; \$5 per doz.

Red Bank. Nearly single, 2 to 2½ inches across; clear bright red with conspicuous yellow center. The mass effect is very brilliant, whether against green lawns, shrubbery, or autumn foliage. 18 to 20 in. Mid-September to late October. 75 cts. each; 3 for \$2; \$7.50 per doz.

Red Hussar. Semi-double flowers of bright scarlet-crimson. Plants bushy and compact. 18 in. Mid-October.

Sappho. Splendid single daisies of pure yellow are produced in profusion. 2 ft. Mid-September.

Silver Moon. Large, single flowers like Shasta Daisies, with a double row of gleaming silvery white petals. 2½ ft. Late September.

The Chief. Large, semi-double flowers of bright scarlet and gold. Distinct. 3 ft. Mid-October. 45 cts. each; 3 for \$1; \$3.50 per doz.

Valhalla. Large, single, bright maroon-crimson flowers, 3 to 4 inches across. 2 to 2½ ft. Mid-October. 45 cts. each; 3 for \$1; \$3.50 per doz.

Vesta. Golden orange. Mid-September.

Welcome. Semi-double, bright mellow-purple flowers on long stems. Rather low, irregular, and bushy. 1½ ft.

Tussore. Single, uniform clear shell-pink, 2 to 2½-inch flowers. Upright plant, profusely branched above, and extremely free flowering. 18 to 20 in. Late September to end of October. 55 cts. each; 3 for \$1.35; \$5 per doz.

Six Very Fine Varieties in This Group

1 each of

**Carroll Pink
Debutante
Honey Girl**

**Early Joan Helen
Primula
The Chief**

6 plants in all (value \$2.75) for only \$2.25.
3 of each (18 plants) for \$5.50.

Button-Flowered Varieties

Irene. Dainty little pure white buttons. Without a doubt the finest white button. 2 ft. Early October.

Jewel. Clusters of soft pink pompons, excellent for cutting. 2½ ft. Early October.

Judith Anderson. Well-rounded, 1½-inch blooms of clear buttercup-yellow. A grand little show plant as well as a fine garden variety. 2 ft. Early October.

Ouray. Masses of rich bronze flowers with a coppery glow. A reliable hardy variety. 2½ ft. Early October.

Yellow Irene. Same as White Irene but the color is a lovely pale yellow which you will like.

Yellow Jewel. Ball-shaped, 1¼-inch flowers of a pleasing shade of yellow with an attractive undertone of bronze. 3 for \$1.35; \$5 per doz.; 55 cts. each.

Special: 5 Button Chrysanthemums

**Irene
Jewel
Yellow Jewel**

**Yellow Irene
Ouray**

1 each of the 5 varieties (value \$2.15),
for only \$1.65. Ask for Offer No. 22.

3 each of the 5 varieties (15 plants in all),
for only \$3.75. Ask for Offer No. 22A.



Button-flowered Chrysanthemums

Astrid Group, Northland Daisies

Super Hardy Daisy (Mums)

Astrid. The original Northland Daisy with large single flowers of shell-pink warmed with old-rose tints, and a bright yellow center. 18 in. Early October.

Good Morning. Large, single, pure yellow flowers. A fine free-blooming variety. 18 in. Mid-October.

Igloo. Large; pure white. One of the finest of the single white Chrysanthemums. 18 in. Early October.

Loki. Single; crimson-purple. Dwarf, compact habit. Mid-October.

Nancy. Large single flowers of bright crimson at first opening, changing to an attractive deep pink. 18 in. Early October.

Salmon Gold. Lovely semi-double flowers, to 2½ inches across, are a blend of salmon and gold. 18 in. Early October.

Siegfried. Delightful blooms of rich yellow. A splendid Northland Daisy. 2½ ft. Mid-October.

Viking. Beautiful single flowers of burnt orange, or it might be called reddish bronze. 18 to 24 in. Early October.

Four Very Choice Northland Daisies

**Igloo
Nancy**

**Loki
Siegfried**

1 each of the 4 varieties (value \$1.60),
for only \$1.25. Ask for Offer No. 23.

3 each of the 4 varieties (12 plants in all),
for only \$3. Ask for Offer No. 23A.

September Jewel Group

Gudrun. Single golden copper blooms shaded pink. 2 to 2½ inches across. 12 to 15 in. Late September.

Sigurd. A lovely little gem. A single type with a double row of light coral-red petals around a yellow center. 2 ft. Mid-September.

Spoon Chrysanthemums

An interesting new type with dainty single and semi-double flowers. The petals are tubular, flattening out near the tip so that each petal resembles a miniature spoon. 2 to 3 ft. All come into bloom in early October. See color illustration, page 28.

Bronze Spoon. Bronze.

Jasper Spoon. Yellow tubes with red spoons.

Orchid Spoon. Light pinkish lilac.

Pink Spoon. Improved semi-double pink.

Rose Spoon. Luminous old-rose.

Silver Spoon. Silvery white.

White Spoon. Double white with creamy center.

Yellow Spoon. Double; brilliant yellow.

Five Choice Spoon Chrysanthemums

**Bronze
Jasper
Orchid**

**White
Yellow**

1 each of the 5 varieties (value \$2), for
only \$1.65.

3 each of the 5 varieties (15 plants in all),
for only \$3.75.

All Chrysanthemums UNLESS OTHERWISE NOTED

85 cts. for 3 of one kind.

\$1.50 for 6 of one kind.

\$3 per doz. of one kind.

Single plants, 40 cts. each

NEW HARDY CHRYSANTHEMUMS

MME. CHIANG KAI-SHEK. Patent pending. Beautifully formed, old-gold flowers composed of stiff petals that withstand any and all bad weather. We consider it one of the finest Chrysanthemums in our collection. A magnificent plant in full flower in September, but often showing blooms in late August. \$1 each; 3 for \$2.75; \$8.50 per doz.

Special Offer No. 24

Mme. Chiang Kai-shek.
Purple Jewel
Harbinger
Betty
Eureka Giant

1 of each for **\$2.50**
(Value \$3.20).

PURPLE JEWEL. A tall, stately variety with great sprays of lovely amaranth-purple flowers, much larger than Jewel. One of our most popular varieties. 60 cts. each; 3 for \$1.60; \$6 per doz.



PURPLE JEWEL



MME. CHIANG KAI-SHEK
Pat. Pending

HARBINGER. Nearly fully double, incurved flowers, 2½ inches in diameter, in clusters of five or six, bronze-yellow. Branches freely from the ground. Excellent for bedding and lasts well when cut. 2 ft. Early September to November. 50 cts. each; 3 for \$1.35; \$5 per doz.



HARBINGER

BETTY. Double, 2½-inch blooms of lovely appleblossom-pink with deep rose center. Healthy upright growth with long stems, excellent for cut-flowers. 2½ ft. Early October. 50 cts. each; 3 for \$1.35; \$5 per doz.



BETTY

EUREKA GIANT. Very brilliant golden orange, semi-double, 2½-in. blooms. Healthy green foliage; very strong habit of growth. Bush is compact with upright stems, making a spread of 18 to 24 in. Be sure to include this variety in your collection. 60 cts. each; 3 for \$1.60; \$6 per doz.



EUREKA GIANT



Pink, White, Yellow Spoon Chrysanthemums
1 each of above 3 for \$1

SPoon CHRYSANTHEMUMS

The petals are tubular, flattening out near the tip so that each petal resembles a miniature spoon. 2 to 3 ft. All come into bloom in early October. 40 cts. each; 3 for any one color for 85 cts.; \$3 per doz.

SIX BIG BEAUTIES



LAVENDER LADY

LAVENDER LADY. Double flowers of true lavender, in graceful sprays—one of the most beautiful Chrysanthemums ever produced. Splendid branching plants. 3 ft. Early October. 45 cts. each; 3 for \$1; \$3.50 per doz.



EUGENE A. WANDER

EUGENE A. WANDER. Extra-large double blooms of glistening yellow. A beautiful yellow variety. 1½ ft. Late August. 45 cts. each; 3 for \$1; \$3.50 per doz.

RED VELVET. Shapely double flowers of medium size are borne in generous clusters on long stems. The opening color is velvety crimson, then becomes darker instead of fading. The rich butternut fragrance adds to the cut-flower value. Splendid plants. Blooms in early October. 60 cts. each; 3 for \$1.60; \$6 per doz.

WHITE KNIGHT. One that fills a long-felt need for a large double white. The loose upright bush produces a nice crop of double, 3-inch blooms of pure white, with just a slight tinge of cream at the center. Late September. 60 cts. each; 3 for \$1.60; \$6 per doz.



WHITE KNIGHT

MRS. PIERRE S. DU PONT III. A beautiful blend of peach-pink, rosy salmon, and fawn. Makes an unforgettable cut-flower. Rich butternut fragrance and strong, healthy growth. 45 cts. each; 3 for \$1; \$3.50 per doz.

GRANNY SCOVILL. One of the finest large-flowered varieties, fully 4½ inches across. Warm coral-bronze—a glorious flower. 2 ft. October 1. 45 cts. each; 3 for \$1; \$3.50 per doz.



Special Offer

- 1 each of the 6 varieties on this page for \$2.50
- 2 of each for \$4.50
- 3 of each for \$6
- 6 of each for \$10

See complete list of Chrysanthemums on pages 26, 27, 30



MRS. PIERRE S. DU PONT III



GRANNY SCOVILL

FLASH!

1944 Chrysanthemum Introductions

(Received too late to be included in regular list)

BURMA. Large double. Glistening bronze with soft orange tints and coppery overtones. Late Sept. on. 3 for \$2.50; \$10 per doz.; \$1 each.

MANDALAY. Pompon. Brilliant orange-bronze blooms; ideal for cutting. October 1. 3 for \$2; \$7.50 per doz.; 75 cts. each.

HARBOR LIGHTS. Pompon. Soft yellow and creamy white tints mingle to create a luminous, sparkling effect. September 20. 3 for \$2; \$7.50 per doz.; 75 cts. each.

NORTH STAR. Single pure white blossoms; early and extremely hardy. Mid-Sept. 3 for \$2; \$7.50 per doz.; 75 cts. each.

Azalea or Cushion Mums

Mound-like plants 1½ to 2 feet tall which are covered with semi-double flowers from early August until frost. Spreading out over 2 or 3 feet in diameter, they make colorful bedding or border plants or rocky specimens.

Bronze Cushion. Light bronze.

Bronze Gold. A distinct Cushion variety growing 2 feet in height and 2 feet or more across; in bloom the plant is a gorgeous fluffy mass of gold tinted with bronze. Late September until frost. 60 cts. each; 3 for \$1.60; \$6 per doz.

Champion Cushion. A richer-colored variety of reddish bronze.

Dahlia-Flowered Cushion. An odd-shaped flower somewhat resembling a dahlia in form. Purplish wine in color. Beautiful and very distinct new variety. 45 cts. each; 3 for \$1; \$3.50 per doz.

Harmony. As its name indicates, it carries several tones of color. During the early season it is yellow, but later becomes strawberry-pink, and as the cool weather comes, deep Brazil-red. At times all these three colors will be present at once. The plant is covered with a mass of 2¼-inch blooms for several weeks. September on. 55 cts. each; 3 for \$1.35; \$5 per doz.

Little Bob. A lovely, very double flower of mahogany-bronze. A splendid bloomer.

Little Jim. A lovely new form of Little Bob with violet-rose flowers. 55 cts. each; 3 for \$1.35; \$5 per doz.

Marjorie Mills. Opening deep crimson, burnished with chestnut, later becoming suffused with rose and bronze tints. Plants are 18-inch mounds covered with bloom from late September on. 60 cts. each; 3 for \$1.60; \$6 per doz.

Moonglow. A very low bushy type, with dark green glossy leaves; very early bloom. Double, deep lemon-chrome, 1¾-inch flowers which cover the plant for several weeks; very attractive. 60 cts. each; 3 for \$1.60; \$6 per doz.

Pink Cushion. Light pink.

Pygmy Gold. Golden yellow blooms slightly over 1 inch across. A distinct Korean variety.

Santa Claus Red Cushion. A lovely shade of Chrysanthemum crimson.

White Cushion. White flowers in profusion.

Yellow Cushion. Somewhat larger bloom than the others. A clear yellow.

Five Distinct New Cushion Mums

Dahlia-flowered Harmony	Little Jim Moonglow
Marjorie Mills	

1 each of the 5 varieties (value \$2.75), for only \$2. Ask for Offer No. 25.

3 each of the 5 varieties (15 plants in all), for only \$5. Ask for Offer No. 25A.

CHRYSANTHEMUMS, continued

Pompons

Ball-shaped flowers averaging 1½ to 2 inches across.

Early Bronze. This grand Chrysanthemum often blooms in August, and the perfectly formed pompons entirely cover the plant. 18 to 24 in. Early September.

Early Wonder. Masses of ball-shaped blooms about 2 inches across, in a lovely shade of pale pink which ages almost white. 2½ ft. Late September.

Little Eskimo. A low, spreading variety growing 15 inches high. Pure white, ball-shaped flowers 1½ inches in diameter that do not fade to pink. Produced abundantly, beginning in early September. 55 cts. each; 3 for \$1.35; \$5 per doz.

Rembrandt. A new color combination in pompons—rosy mauve tinted copper and suffused ripe strawberry, an art blend you will like. Pyrethrum crossed with Chrysanthemum has produced this lovely novelty. Do try it. 1½ to 2 ft. October 1. 75 cts. each; 3 for \$2; \$7.50 per doz.

Ruby Pompon. Splendid pompons of ruby-crimson in large sprays on upright plants. A wonderful bloomer. 2½ ft. Early October. 60 cts. each; 3 for \$1.60; \$6 per doz.

White Doty. A standard variety with perfectly formed white pompons on long stems. 3½ ft. Mid-October.

Yellow Gull. Ball-shaped, showy yellow blooms 2 inches across, on 3-foot stems. A good cut-flower.

Don't Miss These Two

Rembrandt and Ruby Pompon

SPECIAL:

2 Rembrandt, 3 Ruby Pompon

5 plants in all (value \$3.10), for only \$2.65.

Ask for Offer No. 26.

HERBS, for Cooking and Sweet Fragrance

Prices on Herbs

unless otherwise noted are:

3 of any one kind for 85 cts.; \$3 per doz.; 40 cts. each. 6 plants of a kind at the dozen rate.

Fashions change, and so do gardening trends. Again we find the old-time herbs of our grandmothers' gardens in favor. American homemakers are rediscovering the practical value of herbs in cooking, and realizing that beauty and fragrance may be added to their flower borders by the planting of unusual, decorative, and fragrant herbs.

Most herbs have simple requirements. Average, well-drained soil in full sun will suit most varieties listed, unless otherwise noted. May we suggest that the culinary herbs especially be planted where you will have easy and frequent access to them. Then, as the occasion arises, you may easily secure a few fresh leaves for your cooking needs, and many a delightful, appetizing dish will grace your table.

PERENNIAL HERBS

BALM, Lemon (*Melissa officinalis*). 2 ft. Dark green leaves, deliciously scented like Lemon Verbena. Used for tea, or as a garnish for cool summer beverages. Rich moist soil, sun or part shade.

BERGAMOT or BEEBALM (*Monarda didyma*). 3 ft.

Salmon Queen. The old-fashioned favorite, Oswego Tea. Salmon-pink flowers; delightfully fragrant foliage.

Cambridge Scarlet. Brilliant crimson-scarlet flowers.

White. A white-flowered variety.

BURNET (*Sanguisorba*). 18 in.

S. canadensis. Dainty picot-edged leaves, cucumber-scented, add a delicious touch to summer salads. Good soil, sun or part shade.

S. minor. Similar to above, but foliage is somewhat smaller and more tender.

CATNIP (*Nepeta Cataria*). 2 ft. Grayish green foliage and faint purple flower spikes. The aromatic scent has an especial attraction for cats. Full sun; any soil.

Five New Cushion Pompons

Dwarf Jewel. At last a Jewel type of flower on a compact, cushion-shaped plant. The flowers are as perfectly formed as those of the Jewel but are larger and produced in such quantities that the foliage of the plant is obscured. Color is a soft lavender that is very pleasing. Height about 14 inches and width 20 inches. Blooms in late September. It has been very popular at our gardens. 60 cts. each; 3 for \$1.60; \$6 per doz.

Lavender Lassie. A replica of the large-flowered Lavender Lady but in a smaller pompon form, and a cushion-like plant. The 2-inch lavender flowers cover the plant mounds, which are about 2 feet tall and more across. Blooms late September. 60 cts. each; 3 for \$1.60; \$6 per doz.

September Bronze. Shapely little pompons of golden bronze shading to a warmer bronze, completely covering the plant. 18 in. Mid-September.

September Cloud. Beautifully rounded white blossoms, with primrose shading in center. A wonderful bloomer. 18 in. Mid-September.

September Gold. Huge sprays of brilliant golden yellow cover the well-rounded plants. 18 in. Mid-September.

Any of the above 3 varieties, 45 cts. each; 3 for \$1; \$3.50 per doz.

Five Gorgeous Cushion Pompons

Lavender Lassie	September Bronze
Dwarf Jewel	September Cloud
September Gold	

1 each of the 5 varieties (value \$2.55), for only \$2. Ask for Offer No. 27.

3 each of the 5 varieties (15 plants in all), for only \$5. Ask for Offer No. 27A.

CHAMOMILE (*Anthem. nobilis*). 8 in. Produces soft mats of finely cut foliage, with single daisy-like white flowers. Dried flower heads used for tea.

CHIVES (*Allium Schoenoprasum*). 12 in. The smallest variety of the Onion family. Try adding the finely chopped leaves to your omelets and salads. Grow in rich soil.

COSTMARY (*Chrysanthemum Balsamita*). 3 ft. Also known as Sweet Mary, All Spice, Bible Leaf. Long, narrow, pale green leaves; yellow flowers. Reputed to repel moths. Full sun.

GERMANDER (*Teucrium chamaedrys*). 12 in. An excellent edging for your herb garden. Can be clipped like boxwood. Dark, glossy, closely set leaves; rose flowers.

HELiotROPE, HARDY (*Valeriana officinalis*). 4 ft. Showy heads of rose-tinted flowers are produced during June and July, with a delightful heliotrope fragrance.

HOREHOUND (*Marrubium vulgare*). 3 ft. Wrinkled, woolly aromatic leaves. Familiar to almost everyone through its use in candy and cough syrup. Light loamy soil; sun.

HYSSOP (*Hyssopus officinalis*). 2 ft. A showy herb forming low compact bushes, with spikes of deep blue flowers. This herb, steeped in tradition, has little practical use in modern times.

LAVENDER (*Lavandula*). 12 to 18 in.

L. vera. An herb garden is not complete without one of the forms of Lavender. This one has intensely fragrant foliage and flower spikes. When the center buds start to open, the flower spikes are gathered and then dried. When fully dry, sachets can be made and placed with linens, to which the Lavender imparts a clean, fresh scent.

L. vera rosea. New. Similar to above, but the blooms are a delicate silvery pink. 3 for \$1.35; \$5 per doz.; 55 cts. each.

L. vera, Twinkle Purple. A definitely improved form of *L. vera*. Compact, well-formed plants with purple flowers. 3 for \$1.20; \$4.40 per doz.; 50 cts. each.

HERBS, continued

LAVENDER-COTTON (*Santolina*). To 18 in.

S. incana. The silver-gray foliage is attractive the entire year; button-like, yellow flowers. Full sun.

S. viridis. A rare form of the above with lustrous green foliage.

LOVAGE (*Levisticum officinale*). Yellow umbels of flowers are produced above the much-divided, yellow-green leafage. The leaves have a celery flavor.

MARJORAM (*Origanum*). 18 in.

Pot Marjoram (*O. Onites*). Reddish branching plant with small clusters of pinkish flowers. Leaves are used for flavoring meat dishes and starchy foods.

Sweet Marjoram (*O. Majorana*). 12 in. Treated as an annual. One of the choicest of herbs, with pleasing, unforgettable scent and flavor. Fresh or dried leaves add zest to sauces, soups, or stuffing. Often cooked with spinach. In sheltered location it will live over the winter.

Wild Marjoram (*O. vulgare*). Similar to Pot Marjoram, but somewhat hardier in extreme northern gardens. White flowers.

MINT (*Mentha*). Mints thrive best in moist soil and part shade. The leaves are generally useful in teas, and should be brewed, not boiled. A Mint-bed is sure to prove delightful and useful.

Apple Mint (*M. rotundifolia*). Round woolly leaves; showy lavender flowers.

Apple Mint, Variegated (*M. rotundifolia variegata*). A beautiful variegated form of the preceding. Decidedly decorative in the herb garden or hardy border.

Curly Mint (*M. crispa*). Leaves are curiously curled and twisted. An interesting variety.

Orange Mint (*M. piperita citrata*). A minty, citrus flavor is imparted to cool summer beverages by adding the crushed leaves.

Pennyroyal (*M. Pulegium*). Aromatic pennyroyal scent. A low, spreading variety.

Peppermint (*M. piperita*). 2 ft. The true old-fashioned peppermint-flavored variety that is used for making tea, flavoring candy, and garnishing summer drinks.

Spearmint (*M. spicata*). A few of the uses for this fine Mint are flavoring drinks and confections, and above all, making the well-known Mint jelly to serve with lamb.

Spearmint, Variegated Lemon-scented. Lovely variegated-foliage form of the above.

Spearmint, Anise-flavored. Small narrow leaves; anise flavored and scented.

ROSEMARY (*Rosmarinus officinalis*). Tender perennial, except in the far south, but can be wintered indoors in the window garden. This indispensable herb has narrow, dark green leaves, gray beneath, of a sweet spicy fragrance. The leaves are delicious added to sandwich fillings and soups.

RUE (*Ruta graveolens*). 2½ ft. A decorative garden plant with finely cut, blue-green foliage and yellow flowers.

SAGE (*Salvia officinalis*), **Holt's Mammoth**. 2½ ft. This improved variety is always attractive and interesting in the herb patch or garden. Gray, pebbly foliage; purple-blue flower spikes. Leaves are used for flavoring meats.

SAVORY (*Satureia montana*), **Winter**. 12 in. This fine herb, of neat habit, is valuable for edging purposes or in the wall or rock-garden. Used for seasoning meat dishes and soups.

SORREL (*Rumex scutatus*). The large leaves are used in omelets and salads.

SWEET FLAG (*Acorus Calamus*). Leaves are used to flavor desserts. 3 for \$1.35; \$5 per doz.; 55 cts. each.

TARRAGON (*Artemisia Dracunculus*). 2 ft.

Narrow dark green, glossy leaves, very aromatic. This is one of the most useful of the culinary herbs, used to flavor vinegar, fish dishes, soups, and salads. 3 for \$1.35; \$5 per doz.; 55 cts. each.

THYME (*Thymus*). Thyme, in its many forms, is one of those universally loved, fragrant plants. Some varieties are shrubby, woody types, while others are low growing and creeping. All are interesting for various garden uses, as noted. All varieties do best in well-drained, sandy soil in full sun.

Caraway-scented (*T. Herba-barona*). 4 in. Trailing type, useful for flavoring beef dishes.

Common (*T. vulgaris*). 12 in. Upright, somewhat spreading habit of growth; narrow leaves and purplish flowers. The most widely used Thyme for flavoring poultry dressing. We offer two types—**Dark Green Leaved, Greyish Green Leaved**. (Please state which you prefer.)

Crimson (*T. Serpyllum coccineus*). 4 in. Prostrate, creeping habit of growth; crimson flowers. Used in wall plantings, rock-gardens, and in the crevices of stone walks. Dark green foliage.

Lemon (*T. citriodorus*). 6 in. Blue-green leaves, with a distinct lemon fragrance and flavor.

Lemon, Golden-edged Variegated (*T. citriodorus aureus variegatus*). The dark green leaves are edged with gold. Thick bushy plants.

Lemon, Silver-edged Variegated (*T. citriodorus argenteus variegatus*). Similar to *T. citriodorus*, but the slightly smaller leaves are margined with silver.

Pink (*T. Serpyllum carneus*). Creeping type with flesh-pink flowers.

White (*T. Serpyllum albus*). Thick close mats of bright green foliage are covered in early summer with tiny pure white flowers. Best of the creeping types for winter effect.

Woolly (*T. lanuginosus*). Gray, woolly foliage; especially good for very dry places.

WOODRUFF (*Asperula cynanchica*). Trailing or creeping branchlets bear tiny pink flowers throughout the summer. Sandy soil and partial shade.

WOODRUFF, SWEET (*A. odorata*). 4 in. An unusual ground-cover for shady places. Leaves are scented like new-mown hay, and are used in flavoring wine.

WORMWOODS (*Artemisia*). The Wormwoods are mainly ornamental foliage plants, always decorative. Many pleasing effects and contrasts will result by planting them among your other perennials.

Beach (*A. stelleriana*). 18 in. Commonly known as "Old Woman" or "Dusty Miller." It makes a lovely silver-leaved edging plant.

Fringed (*A. frigida*). 12 in. The daintiest of the Wormwoods, with lovely soft silvery foliage. Be sure to try it!

Mugwort (*A. lactiflora*). 4 ft. A stately plant for the background of the border, producing pyramidal heads of fragrant, creamy white flowers during August and September.

Roman (*A. pontica*). 2 ft. Lacy gray-green foliage, finely cut. An effective plant.

Southernwood (*A. abrotanum*). Commonly known as "Old Man." A shrubby green-foliaged plant with leaves divided into thread-like segments. Lovely planted with the Beach Wormwood.

Silver King (*A. albula*). 3 ft. Graceful silvery white plant, also known as "Ghost Plant." The dried foliage is attractive for winter bouquets.

Culinary or Kitchen Herb Garden Collection

Ask for Offer No. 28

CHIVES **SAGE**, Holt's Mammoth
PEPPERMINT **moth**
POT MARJORAM **SAVORY**, Winter
ROSEMARY **TARRAGON**, True
THYME, Common **French**

3 each of the 8 varieties (24 plants in all, value \$7.30), for only \$6.25.

Fragrant and Decorative Herb Collection

Ask for Offer No. 29

LEMON BALM
BERGAMOT, SALMON QUEEN
LAVENDER, TWICKLE PURPLE
APPLE MINT, VARIEGATED
LEMON THYME, SILVER-EDGED
ARTEMISIA, SILVER KING
WILD MARJORAM
RUE

3 each of the 8 varieties (24 plants in all, value \$6.80), for only \$5.90.

Collection of Herbs for Carpeting or Stepping-Stone Walks

This group of low-growing herbs is useful for growing strong resistant mats or carpets between flagstones and naturalistic stone steps. Planted in these spots they will not protest on being trampled upon, but will reward you delightfully with their aromatic, spicy fragrance instead.

CARAWAY-SCENTED THYME
CRIMSON THYME
LEMON THYME
PENNYROYAL MINT
WHITE THYME

OFFER NO. 30

3 each of the 5 varieties, 15 plants for only \$4.

OFFER NO. 30A

6 each of the 5 varieties, 30 plants for only \$7.50.

OFFER NO. 30B

10 each of the 5 varieties, 50 plants for only \$11.50.

ANNUAL HERBS

Seed of the following herbs can usually be obtained from your local seedsman, but we also have a limited number of plants available.

Anise **Coriander**
Basil, Sweet **Dill, Mammoth**
Borage **Fennel, Florence**
Caraway **Savory, Summer**
Parsley, Extra Curled Dwarf (Emerald)
Parsley, Plain-leaf or Single

Any of the above Annual Herbs, 3 of any one kind for 65 cts.; any six for \$1.25; any 12 for \$2.

SWEET-SCENTED GERANIUMS

GERANIUM, SWEET-SCENTED (*Pelargonium*).

Lemon, True, Finger Bowl (Prince Rupert). (*Crispum*). 12 to 18 in. One of the choicest, lemon-scented. Curious leaves with crisped edges. Pink flowers.

Nutmeg (*fragrans*). 12 in. Another old favorite, with pungent nutmeg scent. Light green leaves; tiny white flowers.

Rose (*graveolens*). 2½ ft. Large, much-divided leaves; rose flowers. Grandmother frequently placed a leaf in the bottom of her glasses of apple jelly, thus imparting an additional flavor.

Any above Sweet-scented Geraniums, 3 of any one kind for \$1; \$3.50 per doz.; 45 cts. each.

LEMON VERBENA (*Lippia citriodora*). A tender herb, with most refreshing lemon-scented leaves. Dried leaves are excellent for teas, pot pourri, and old-fashioned sweet bags. 3 for \$1.20; \$4 per doz.; 50 cts. each.

Prices on Herbs, unless otherwise noted, are 3 of any one kind for 85 cts.; \$3 per doz.; 40 cts. each; six plants of a kind at the dozen rate.

Carroll Gardens

WESTMINSTER • MARYLAND

Telephone: Westminster 534



RUDBECKIA *purpurea*, The King

Large star-like crimson-red flowers borne on stiff stems. Insect free, not bothered by weather, easily grown. Can be combined effectively with White Lustre.

3 for \$1.20; \$4.40 per doz.



SCABIOSA *caucasica*, Giant Hybrids

2 ft. Lavender-blue flowers add class to a mixed bouquet or used alone make stunning arrangements.

Caucasica alba. A fine white form.

Either, 3 for \$1; \$3.50 per doz.

COLLECTION: 5 plants for \$1.50

Tri-Color COLLECTION

9 plants

3 of each variety
(Value \$4.20)

FOR ONLY \$3.50



RUDBECKIA, White Lustre

White blooms borne freely on sturdy stems from late June to September. When the blooms first open, the petals grow upward; as the flowers approach maturity, the petals flatten in true daisy-like fashion, and the developing cone grows larger, causing the petals to turn downward. A very fine new perennial. 75 cts. each; 3 for \$2; \$7.50 per doz.