

Historic, Archive Document

Do not assume content reflects current scientific knowledge, policies, or practices.

62.09

LIBRARY
RECEIVED
★ SEP 14 1944 ★
U. S. Department of Agriculture

FALL
1944

Bulbs



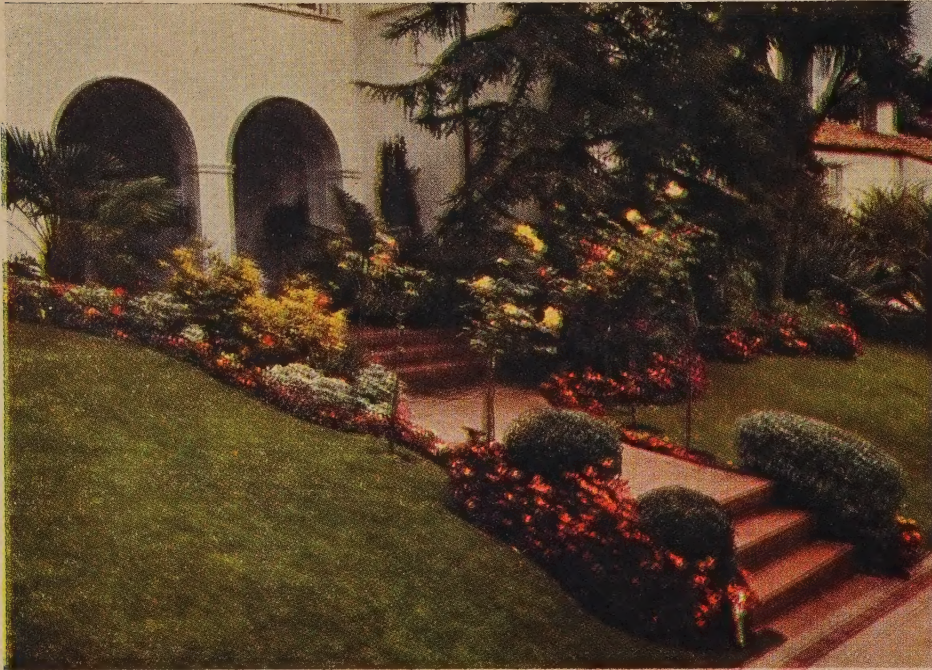
DUTCH IRIS

Turn to page 3 for complete list of varieties

hallawell seed co.

256 MARKET STREET SAN FRANCISCO, CALIFORNIA

Hallawell's **LAWN GRASSES**



HALLAWELL'S PARK LAWN. Intended for sowing where the lawn will get the hardest usage. After it is established, it will withstand the usual wear and tear of the backyard where the youngsters play. **PARK LAWN** thrives in the sun; and will grow in light or heavy soils. It will withstand the cold Winter and hot Summers yet it is one of our best wear resistant grasses in the cool climate of San Francisco. Sow 1 pound to 10 x 10 or 100 square feet.

1 lb. bag.....\$.70	3 lb. bag.....\$ 2.00
5 lb. bag..... 3.25	10 lb. bag..... 6.25
25 lb. bag..... 15.00	50 lb. bag..... 27.50

POSTPAID

HALLAWELL'S EVERGREEN MIXTURE. The well styled lawn for your garden living room. Makes a luxuriant velvety green turf of fine-bladed grasses. When mowed at regular intervals and fertilized occasionally, it is a velvety dark green color, and soon forms a thick cushion turf. It makes an enduring lawn; one that will withstand a reasonable amount of hard usage. In a good deep seed bed to encourage deep rooting, **EVERGREEN** will last for years and with reasonable care, will improve with age. Suitable for any climate except the most severe extremes of heat and cold. Sow 1 lb. to 10 x 10 or 100 square feet.

1 lb. bag.....\$ 1.00	3 lb. bag.....\$ 2.65
5 lb. bag..... 4.35	10 lb. bag..... 8.50
25 lb. bag..... 20.00	50 lb. bag..... 37.50

POSTPAID

HALLAWELL'S LAWN CARPET. This is predominantly a mixture of the most desirable bent grasses to produce a carpet-like lawn of fine texture and rich color. Other fine-leaved grasses are combined with the bents in the proper proportion to give maximum serviceability and uniform attractiveness throughout the year. **Lawn Carpet** and other bent grasses are recommended for those who are willing to study carefully their management and give them proper care. It grows a very beautiful lawn and is usually considered sufficient reward for the extra care and attention required. Sow 1 pound to 15 x 20 or 300 square feet.

1 lb. bag.....\$ 1.50	3 lb. bag.....\$ 4.00
5 lb. bag..... 5.75	10 lb. bag..... 11.00
25 lb. bag..... 23.75	POSTPAID

HALLAWELL'S SHADY NOOK MIXTURE. A Hallawell formula mixture of genuine fine bladed grasses suitable for growing in total shade. It will not grow a turf in dense dark shade (for example, under trees where limbs hang almost to the ground) but it will produce a good lawn in bright day-light situations that get little or no sun. Sow 1 pound to 10 x 10 or 100 square feet.

1 lb. bag.....\$ 1.75	3 lb. bag.....\$ 5.00
5 lb. bag..... 8.00	10 lb. bag..... 15.00

POSTPAID

LAWN RENEWAL MIXTURE. To make an old lawn look like new, reseed it with Hallawell's Lawn Renewal Grass Seed Mixture. Rake the lawn both ways, mow it close to the ground and remove the clippings. Sow the seed 1 pound to 10 x 20 or 200 square feet and keep it thoroughly moist until the lawn is established. Hallawell's Lawn Renewal is composed of fine leaved grasses that will thrive in any climate except the most severe extremes of heat or cold.

1 lb. bag.....\$ 1.00	3 lb. bag.....\$ 2.85
5 lb. bag..... 4.50	10 lb. bag..... 8.75
25 lb. bag..... 21.50	50 lb. bag..... 42.00

POSTPAID

Roughly there are more than 3,000 species of grasses, comprising some 200 families. No other plant is more widely distributed and none more tolerant of varied soil and climatic conditions.

Wherever you live you may have a lawn if you can provide a reasonably suitable soil and a supply of water for irrigation.

In the following listings of Hallawell's Lawn Grasses are mixtures to suit all but the most extreme situations, and you should have no difficulty choosing the one most desirable for your lawn.

Just drop your order in the mail and we will make prompt shipment. We pay the postage anywhere within the U. S.

Complete planting directions in every package.

HOW MUCH SEED?

The size of the seeds determine the quantity of seed to sow in 100 square feet. There are more small seeds and fewer large ones in a pound. Bent grass seeds, for example, are exceedingly small and 1 pound will sow a space 20 x 25 or 500 square feet.

Other grass seeds used in our special mixtures are larger seeds, consequently fewer seeds per pound.

If the lawn is given careful attention and never allowed to suffer a lack of food or moisture, you may sow at the rate of 1 pound to 10 x 15, or 150 square feet.

For a thick stand of grass that will grow a good turf quickly, plant the mixtures at the rate of 1 pound to 10 x 10, or 100 square feet.

BENT GRASSES

For lawn purpose the bents might well be considered the "aristocrats" of the grasses. When grown properly and well cared for they make very beautiful lawns and produce a fine thick turf.

Bent grasses are in use for lawns and golf courses, from coast to coast and under varied climatic conditions, but since they are susceptible to injury from fungus diseases they are recommended for those who have the time and the will to study carefully their management.

HALLAWELL'S ASTORIA BENT. For lawn or putting-green; grows a luxuriant dark green velvety turf and creeps mostly by underground root-stalks. Sow 1 pound to 20 x 15 or 300 square feet.

1 lb. bag.....\$ 1.75	3 lb. bag.....\$ 5.00
5 lb. bag..... 8.00	10 lb. bag..... 15.00
25 lb. bag..... 33.75	POSTPAID

HALLAWELL'S HIGHLAND BENT. A very hardy bent which is considered less susceptible to the fungus diseases and is recommended for sowing on putting greens or lawns that get considerable wear. It is fine leaved, upright growth, moderately light green color and spreads by strong underground root stalks. Sow 1 pound to 15 x 20 or 300 square feet.

1 lb. bag.....\$ 2.00	3 lb. bag.....\$ 5.85
5 lb. bag..... 9.50	10 lb. bag..... 18.00
25 lb. bag..... 42.50	POSTPAID

HALLAWELL'S SEASIDE BENT. A true creeping bent, producing surface runners which root at each joint when they come in contact with the soil. Once established, the growth is upright of fine texture and a beautiful rich green with a thick, smooth and enduring turf. Sow 1 pound to 20 x 15 or 300 square feet.

1 lb. bag.....\$ 1.60	3 lb. bag.....\$ 4.50
5 lb. bag..... 7.00	10 lb. bag..... 12.75
25 lb. bag..... 31.00	POSTPAID

CHEWING'S PESCUE. Fine, wiry leaved grass, upright growth, dark green color. Usually sown with other grasses.

1 lb. bag.....\$ 1.75	3 lb. bag.....\$ 5.00
5 lb. bag..... 8.00	10 lb. bag..... 15.00
25 lb. bag..... 30.00	POSTPAID

KENTUCKY BLUE GRASS. Hallawell's select re-cleaned grade.

1 lb. bag.....\$.75	3 lb. bag.....\$ 2.00
5 lb. bag..... 3.25	10 lb. bag..... 6.00

POSTPAID

Please ask for prices on larger quantities.

RED TOP. For use as a nursecrop in mixtures.

1 lb. bag.....\$.60	3 lb. bag.....\$ 1.65
5 lb. bag..... 2.60	10 lb. bag..... 5.00

POSTPAID

WHITE DUTCH CLOVER. Highest quality re-cleaned seed. Sow 1 pound to 300 square feet.

1 lb. bag.....\$ 1.75	3 lb. bag.....\$ 5.00
5 lb. bag..... 8.00	POSTPAID

Please ask for prices on larger quantities.

WE PAY POSTAGE ANYWHERE WITHIN U. S. ON GRASS SEEDS, PRICED AT 50c per pound or more.

Top Size TULIPS

(Prices Are Postpaid)

Best planting time for Tulips is October, November. Plant 5 to 6 inches apart. Prepare the soil to a depth of 12 or 15 inches and set the bulbs 7 to 10 inches beneath the surface. Deep planting retards top growth and gives ample time for a good root system to develop. The longer it takes for tulip tops to show through the surface, the better the flowers will be.

The figure following the name indicates the relative time of flowering.

(PRICES—All Varieties \$1.75 per 12, \$12.50 per 100, postpaid.)

ADELGAR (3). This lovely tulip received an award of merit in Holland in 1935 and was considered one of the outstanding varieties. It is Cottage type, light lemon yellow and under favorable conditions grows 25 to 28" high.

BARBARA PRATT (3). This is a very beautiful tulip with slightly reflexed petals of light cochineal-carmine edged with lilac-rose. The base is yellow with a narrow green edge. A fine exhibition bloom. Height 27 inches.

BLUE PERFECTION (3). Large, well formed flowers of violet-blue with each petal edged heliotrope. Very effective when grouped among yellow tulips. Height 22 inches.

CLARA BUTT (4). This pure pink tulip is one of the most popular of the Darwin types. It is striking when massed against others of darker color. Height 22 inches.

FANTASY. A magnificent pink Parrot tulip. The flowers are strangely beautiful in form, the large petals being curiously fantastic in their growth. The main color outside is pink, while the inner color is deep velvety rose. It has large stiff stems.

INGLESCOMBE YELLOW (4). Glossy canary-yellow, large globular flowers, perfectly formed and beautiful; strong stems about 20 inches long. Sow the seeds of *Nemophila Insignis* (Baby Blue Eyes) on top the bed for a striking color combination. Height 20 inches.

LE NOTRE (1). A charming rose-pink tulip with beautifully formed cup-shaped blooms. Has a good stem and grows to a height of about 25 inches under favorable conditions.

PRIDE OF HAARLEM (1). Vivid Cherry-red brightened with scarlet. A brilliant color for borders and for massing among shrubs. The blooms are very large, on strong stems and fragrant.

WILLIAM COPELAND (1). A very beautiful tone of soft lavender, has good substance, and medium-strong stem. Height 22 inches.

HALLAWELL'S EXTRA FINE MIXED. Comprised of many new and outstanding varieties from our tulip trial gardens, which we conducted to test the new sorts which were introduced from Holland. (\$1.50 per 12) (\$10.00 per 100)

DUTCH IRIS

(Excellent Cut Flowers)

These irises are the same varieties displayed in florists shops during the Spring and Summer months. They are not only an excellent cut flower but they make a fine showing in the garden and remain in good condition an unusually long time. They are very easily grown, and will produce fine quality flowers with a minimum of care. Plant the bulbs 6 to 8 inches apart and about 4 inches deep, in good garden soil. (The figure following the name indicates the relative flowering time.)

BLUE HORIZON (5). Light violet-blue standards; falls softer blue with narrow orange stripe. Large flowers and vigorous.

(75c per 12) (\$5.00 per 100)

DAVID HARING (4). Standards are greyish-white, falls pure white. A very large flower.

(85c per 12) (\$6.50 per 100)

GERRIT VAN HEES (5). Purplish blue standards, very large royal blue falls, pale yellow stripe.

(75c per 12) (\$5.00 per 100)

GOLDEN LION (8). A beautiful iris with lemon-yellow standards and deeper golden-yellow falls.

(\$1.00 per 12) (\$7.00 per 100)

IMPERATOR (6). Brilliant blue with orange-yellow blotch on lip.

(75c per 12) (\$5.00 per 100)

JAN VICTORS (1½). Standards and falls soft violet-blue; good forcer.

(75c per 12) (\$5.00 per 100)

MORNING MIST. Lovely light blue.

(85c per 12) (\$6.50 per 100)

WEDGEWOOD (Tingitana Hybrid) (1). A large flower with blue standards, and lighter blue falls. An excellent early forcer, or will bloom with late daffodils.

(85c per 12) (\$6.50 per 100)

WHITE EXCELSIOR (2). Fine pure white with narrow feather of golden orange on lip.

(85c per 12) (\$6.50 per 100)

YELLOW QUEEN (2). Pure golden yellow. Excellent for forcing or outside growing.

(85c per 12) (\$6.50 per 100)

MIXTURE of named varieties.

(75c per 12) (\$5.00 per 100)



TULIPS

DUTCH IRIS, YELLOW QUEEN



HALLAWELL'S EXTRA

More Blooms Per Bulb



DIOTIMA

Large Trumpet Daffodils

Figure following the name indicates relative time of flowering. Number 1 indicates the first to bloom, etc.



KRELAGE

AEROLITE (2). Visitors to our Nursery Garden trials seem to have a preference for this bi-color trumpet and we find the demand increasing each year. The trumpet is golden yellow, the perianth primrose. It is a flower of unusual quality. Extra size bulbs.
(\$2.00 per 12) (\$14.00 per 100)



AEROLITE

DIOTIMA. Finest exhibition daffodil; unrivalled in size and beauty; a prize-winner wherever it is shown. This mammoth flower is beautifully proportioned and is carried gracefully on its 24-inch stems. The broad overlapping petals form a star-shaped perianth of medium deep primrose while the trumpet is slightly deeper colored.
(75c each) (\$7.50 per 12) (\$50.00 per 100)

EMPEROR (4). Rich yellow trumpet and primrose perianth. Flowers are large with wide overlapping petals and good stem. This is the best of the medium priced daffodils. Large: (\$1.50 per 12) (\$10.00 per 100); Extra Size: (\$1.75 per 12) (\$12.00 per 100).

HECTOR TREUB (1). A splendid golden yellow, held erect on long, strong, stems. The petals are well overlapped and the trumpets frilled. In trials at our Nursery Gardens these flowers last longer than any other trumpet variety.
(\$2.00 per 12) (\$15.00 per 100)

KING ALFRED (1). Large, golden-yellow flower on long, strong stem. One of the best known daffodils. More flowers per bulb from Hallawell's King Alfreds.

Large round bulbs: (\$1.75 per 12) (\$12.50 per 100)

Extra size: Should produce 2 to 4 flowers per bulb. (\$2.50 per 12) (\$17.50 per 100)

Jumbo bulbs, 3 to 5 flowers per bulb. (\$3.00 per 12) - (\$21.00 per 100)

LOVENEST (1). A pink daffodil is most unusual; this is one of the very few pink class. It is dainty and charming. Perianth is white, the trumpet, saffron-yellow turning to apricot-pink. Order early on this one.
(\$3.50 per 12) (\$25.00 per 100)

MRS. E. H. KRELAGE (4). A charming daffodil with pure white perianth and a creamy white trumpet which changes to white as the flower matures. Lovely in bouquets with contrasting colors. Extra size bulbs.
(\$3.50 per 12) (\$25.00 per 100)

OLYMPIA (4). Bold, large yellow trumpet; pale yellow perianth. A very large flower and a splendid daffodil for cutting. Extra size bulbs.
(\$2.00 per 12) (\$15.00 per 100)

SPRING GLORY. Long chrome-yellow trumpet with reflexed brim; clear white perianth. It is a large flower and beautiful form; an excellent garden daffodil.
(\$2.00 per 12) (\$15.00 per 100)

TRESSERVE (3). Beautiful light yellow trumpet daffodil and destined to become a leader among the new giant trumpets. It is a splendid exhibition variety. Extra size bulbs.
(\$2.00 per 12) (\$15.00 per 100)

LONG TRUMPET MIXTURE. If you have a place under trees or among shrubs where you can establish a permanent bed, plant these deep and leave them in the ground. To assure a wide assortment, we pack them 50 in a bag.
(\$1.25 per 12) (\$4.50 per 50) (\$9.00 per 100)

SIZE BULBS

Finest Exhibition Quality



HELIOS

ALCIDA (Barri) (4). The relative flowering time of this variety is 4 and it is the last one in this class to bloom. The large flower has a pure white perianth, opening star-shaped with broad individual petals. The cup is citron yellow with a blood-orange frill.

(\$1.75 per 12) (\$12.00 per 100)

ANNA CROFT (Barri) (2). A variety of distinction and always a favorite in the flower show. It has a light primrose perianth. A charming crinkled trumpet of deep yellow, shading to orange at the edge. Long stemmed.

(\$1.75 per 12) (\$12.00 per 100)

BATH'S FLAME (Barri) (1). A popular flower with yellow perianth and a deeper yellow cup which is neatly edged with a broad fringe of orange-scarlet. The petals are long and the stems are strong.

(\$1.50 per 12) (\$11.00 per 100)

EASTERN ORDERS

Due to the extra large size of our daffodil bulbs we cannot prepay them fully to points east of the Rocky Mountains. Eastern customers will therefore please include 50c per dozen, \$2.50 per 100 to apply on packing and postage. (Established customers tell us our bulbs are worth the extra cost.)



LOVENEST

CROWN DAFFODILS

In these charming daffodils the cup or crown in the center of the flower is about 1/3 the length of the perianth segments. While the perianths are white, the cups are of bright contrasting colors, sometimes frilled and often edged in yet another color. They are dainty and beautiful.

The figure following the name indicates the relative flowering time. Number 1 indicates the first to bloom; 2, the second to bloom; 3, the third, and so on.

CROESUS (Incomp.) (3). Wide, overlapping outer petals; creamy yellow in color. The broad fluted crown is a rich orange. A lovely, free flowering variety.

(\$1.75 per 12) (\$12.00 per 100)

DIANA KASNER. Pure white perianth with broad overlapping petals. The cup is deep yellow at the base and has a broad frilled edge of deep red. An outstanding variety.

(\$1.75 per 12) (\$12.00 per 100)

FIRETAIL. A favorite in any garden and one of the most popular show varieties. Perianth is broad petaled, creamy-white, the cup is orange with a bright scarlet orange frill.

(\$3.00 per 12) (\$21.00 per 100)

BULB BED COVERING

For a delightful spring display, sow these seeds on top of the bulb beds after the bulbs are planted. One-half ounce of seed covers about 100 square feet.

ALYSSUM, CARPET OF SNOW. Pkt. 15c; ¼ oz. 45c.

LINARIA (Fairy Bouquet). Pkt. 15c; ¼ oz. 45c.

NEMOPHILA INSIGNIS (Baby Blue Eyes). Pkt. 10c; oz. 60c; ¼ lb. \$1.75.

NEMOPHILA MIXED. Pkt. 10c; 1 oz. 60c; ¼ lb. \$1.75.

VIRGINIA STOCK MIXED. Pkt. 15c; large pkt. 35c; oz. \$1.00.



SILVER STAR



DIANA KASNER



CROESUS (INCOMPARABILIS)

HELIOS. Deep golden-yellow perianth with petals overlapping at the base. The cup is quite large and opens slightly darker than the petals. Helios is a very popular variety.

(\$2.00 per 12) (\$14.00 per 100)

HERA (Leedsii) (3). One of the daintiest and loveliest flowers. The broad overlapping petals of the perianth are cream-white; the cup is deeply fringed with a dainty edging of light primrose.

(\$1.75 per 12) (\$12.50 per 100)

JOHN EVELYN (Incomp.) (3). In writing catalog descriptions during blooming season, it is difficult to avoid using superlatives. Each flower appears to be the most beautiful one. They are all beautiful, but John Evelyn is strikingly so. The perianth is 4 to 5 inches across, pure white; with a large fluted cup, lemon yellow and densely fringed. Illustrated on back cover.

(\$3.50 per 12) (\$25.00 per 100)

MRS. NETTIE O'MELVENY (Leedsii). New to most gardeners because it has not been generally listed in catalogs. It is a charming flower with pure white perianth and a cup of clear lemon-yellow, picoteed orange.

(\$1.50 per 12) (\$11.00 per 100)

QUEEN OF THE NORTH. Broad glistening white perianth surrounding a soft primrose yellow cup with a finely crinkled, sulphur-yellow rim.

(\$1.75 per 12) (\$12.00 per 100)

SILVER STAR (Leedsii). Perfect broad-petalled star-shaped perianth of cream white and a broad trumpet of primrose changing to cream-white. It has a good stem and is an excellent cutting or exhibition variety.

(\$2.50 per 12) (\$17.50 per 100)

WALTER HAMPDEN (3). Bright primrose perianth with a broad flaring yellow trumpet, tinted orange in the frills. This is an outstanding variety.

(\$3.00 per 12) (\$21.00 per 100)

SHORT CUP MIXTURE. To get you acquainted with the Short Cup group of Narcissus, we offer this inexpensive mixture of many fine varieties.

(\$1.25 per 12) (\$9.00 per 100)

DOUBLE NARCISSUS

Double daffodils are particularly desirable for cutting. A very few of them will make an excellent showing as cut flowers. The bulbs multiply and from a dozen or more it is possible to increase them to many more in a few years.

THE PEARL (2). Light primrose interspersed with sulphur yellow at the center. Double form. Very attractive.

(\$1.75 per 12) (\$12.00 per 100)

TWINK (3). A nearly full double flower of soft primrose with short orange colored petals interspersed in the center. A charming flower and especially good for cutting.

(\$3.00 per 12) (\$21.00 per 100)

VON SION (1). Large double golden yellow. Usually the first to bloom and thus prolongs the season when planted with other varieties.

(\$1.75 per 12) (\$12.50 per 100)



CHEERFULNESS

BOUQUET NARCISSUS

POET'S

CHEERFULNESS. A charming Hybrid Polyanthus bearing clusters of three or four double white flowers with a shading of cream at the base of the petals. They are graceful and excellent for bowl or vase arrangements.

(\$1.75 per 12) (\$12.50 per 100)

KLONDYKE. A handsome free flowering Polyanthus of rich golden-yellow, with a deeper yellow cup. Flowers are in clusters of three or more on good stems.

(\$1.50 per 12) (\$11.00 per 100)

LAURENS KOSTER. An old favorite bearing large clusters of white flowers with a deep yellow cup. The bulbs multiply rapidly and produce many flowers.

(\$1.50 per 12) (\$11.00 per 100)

ORNATUS MAXIMUS. Pure white perianth; broad cup margined scarlet; one of the first to bloom. Splendid for mass planting in any little used portion of the garden.

(\$1.00 per 12) (\$7.50 per 100)

SNOW KING. This is one of the finest Poeticus Narcissus. The perianth is glistening white; the cup rather flat with broad red edge. It grows tall, with good stem and the flowers held upright.

(\$1.50 per 12) (\$11.00 per 100)



IXIOLIRION

TUBEROUS BEGONIAS

PALCE ORDER NOW FOR SHIPMENT WHEN READY

Hallawell's Tuberous Begonias are the finest quality. They are produced each year from outstanding parent plants and grown to give the best results. Start the tubers in moist leafmold or Humulch; set the tubers hollow side up, the round side down.

When the sprouts are about 2 inches long transplant them to pots in a lath house. Planting time is January to June. Orders should be placed early for delivery of tubers at the proper planting time.

Prices, all types, extra large tubers: (45c each) (\$4.50 per 12) (\$30.00 per 100) postpaid. On orders under \$2.00 send 25c for handling charge.

DOUBLE CAMELLIA FLOWERED TYPE. Colors: Apricot, Orange, Pink, Red, Rose, Salmon, White, Yellow.

CRISPA or FRILLED TYPE. Orange, Red, Rose, Salmon, White, Yellow.

DOUBLE FRILLED or CARNATION FLOWERED TYPE. White, Yellow.

SINGLE CRESTED TYPE (Cristata). This is a very beautiful type of begonia. Mixed colors.

GIANT SINGLE TYPE. Individual flowers of this popular type grow to a very large size. Mixed colors.

DOUBLE HANGING BASKET TYPE. Plant two or three tubers in a hanging clay pot 10 to 12 inches in diameter. A good soil mixture consists of one-third rotted manure, one-third coarse leaf mold and one-third sand. If not more than two shoots show, pinch out the tips to induce branching.

MIXED COLORS, large tubers. (45c each) (\$4.50 per dozen)

MULTIFLORA MIXED. Dwarf, bushy plants bearing masses of double flowers about 1½ to 3 inches in diameter. Suitable for outdoor bedding. (45c each) (\$4.50 per 12) (\$30.00 per 100)

POLYANTHUS NARCISSUS

HOW TO GROW IN PEBBLES. Use a bowl 5 to 6 inches deep; fill it to within an inch of the top with large pebbles. Set the bulb in the pebbles about one inch, just so the base of the bulb touches the water. Fill the bowl with water and keep it outdoors until the first flowers are ready to open, then take it into the house and place near a window. They will bloom beautifully. This culture is intended for reasonably mild winter climates.

PAPER WHITE GRANDIFLORA (1). Pure white star-shaped blossoms in clusters; very early free flowering and fragrant. Extra large size. (\$1.75 per 12) (\$12.50 per 100)

GRAND SOLEIL D'OR (3). A rich, clear yellow with orange cup; very fragrant and handsome. Large bulbs. (\$1.50 per 12) (\$11.00 per 100)

MINIATURE DAFFODILS

(FOR THE ROCK GARDEN OR POTS)

BULBOCODIUM CONSPICUUS (Hoop Petticoat) (2). This variety grows only 6 inches tall with fine rush-like foliage. The flowers are bright yellow of hoop petticoat form. Prefers a dampish, sandy peat soil. Plant 2 to 2½ inches deep. (\$1.00 per 12) (\$7.50 per 100)

MOONSHINE. A beautiful Triandrus hybrid, star-shaped creamy white flower, often three to a stem, drooping gracefully, very beautiful and a great favorite especially for the rock garden or for naturalizing in the shade. (\$2.00 per 12) (\$15.00 per 100)

TRIANDRUS ALBUS (Angel's Tears). These tiny daffodils make beautiful pot plants and are lovely in a rock garden. They prefer shade, a gritty soil and good drainage. (No manure should be given.) (\$3.00 per 12) (\$20.00 per 100)

FRAGRANT JONQUILS

Jonquils are sometimes called Miniature Daffodils. The flowers are in clusters of 2 to 4 and they are very showy when grown in groups at the base of a tree or among shrubs. Delightfully fragrant, and good for cutting.

SIMPLEX (SINGLE SWEET SCENTED). The very small blossoms are a rich yellow and most fragrant; very free flowering. Plant them in clusters. (\$1.50 per 12) (\$11.00 per 100)

CAMPERNELLE. These are fragrant, rich yellow flowers borne in clusters of 3 to 6 and on stems 12 to 15 inches tall. They are graceful and charming in the garden and are very desirable for cutting. (1.50 for 12) (\$11.00 per 100)



(Upper) CAMELIA FLOWERED (Lower) CRISPA

CALADIUM (ELEPHANT'S EAR)
(See Page 9 for Description and Prices)



MISCELLANEOUS BULBS



LEUCOCORYNE



AMARYLLIS

YELLOW CALLA (*Elliottiana*)



AMARYLLIS

In climates where the winters are cold the Amaryllis is used as a window garden pot plant. Put them in 5 or 6-inch pot, one bulb to a pot, with the neck and upper surface of the bulb exposed. They grow tall stems with three to six gorgeous blooms which last a long time in good condition.

In mild winter climates plant them in the garden, in a protected situation. Order early and plant as soon as you receive them.

ASSORTED SHADES. (85c each) (\$9.00 per 100)

SCARLET SHADES. (\$1.00 each) (\$10.00 per 100)

CRIMSON SHADES. (\$1.00 each) (\$10.00 per 100)

ANEMONES

Set the tops of the bulbs 1 inch below the surface and 6 inches apart. Avoid over-watering before growth starts. They succeed best in a rich and rather heavy soil.

BLUE POPPY. Deep violet-blue; single.

HIS EXCELLENCY. Dazzling scarlet.

THE BRIDE. Pure white, yellow stamens.

ST. BRIGID. A distinct strain producing large flowers, mostly semi-double, with finely divided petals in a large variety of colors. Large bulbs.

Each of above:

(\$1.00 per 12) (\$7.00 per 100)

DE CAEN or Giant Single Mixed. Large size bulbs.

(80c per 12) (\$6.00 per 100)

CALLA—ZANTEDESCHIA

PINK CALLA (*Rehmannii Superba*). Medium sized flowers of rose-pink, shading to cerise when fully open. An unusual Calla. Height about 10 inches.

(75c each) (\$7.50 per 12)

YELLOW CALLA (*Elliottiana*). The true yellow flowering calla. The flowers are bright yellow and the foliage dark green, spotted white. A splendid pot plant for fall planting, or it may be planted outdoors in a moist protected situation after cold weather.

Medium size bulbs. (30c each) (\$3.00 per 12)

Large bulbs. (50c each) (\$5.00 per 12)

WHITE CALLA (*Aethiopica*). Strong bulbs.

(35c each) (\$3.50 per 12)

CALADIUM

FANCY LEAVED VARIETIES

Suitable for pot culture for living room, sun porch, or conservatory decoration. They may also be used in window boxes where the situation is protected from wind and strong sunlight.

Start in sand during the early spring months, and plant into pots before the leaves unfold. Place your order early for January-February delivery.

Each of the following:

(50c each) (\$5.00 per 12)

CANDIDUM. Snow white leaf with green veins.

ITACAPUS. Dark red with bright red dots.

MACAHYDA. Bronze leaf with pink and white splashes.

MRS. W. B. HALDEMAN. Red center, narrow green border.

SOROCABA. Silvery-white, green ribs and veins.

TRIUMPHE. Red center, scarlet ribs, green background.

CALOCHORTUS

MARIPOSA TULIPS. The three-petaled flowers are cup-shaped and wonderfully marked with eyes, dots, and pencilings in rich colors. Plant 2 inches deep in well-drained soil in a sunny position.

(75c each) (\$5.00 per 100)

ERYTHRONIUM

(Dog's-tooth Violet, Trout Lily, Fawn Lily)

Charming woodland plants with richly-mottled leaves, bearing small lily-like flowers from February into April. The colors range from white, through shades of pink, to lavender and yellow.

Plant upright 2 or more inches apart, covering the tip with 2 or 3 inches of soil. Do not permit the bulbs to become dry out of the ground.

Mixture of colors:

(75c per 12) (\$5.00 per 100)

DIELYTRA—BLEEDING HEART

(DECEMBER DELIVERY)

SPECTABILIS. An old-fashioned favorite. Its long racemes of graceful, heart-shaped pink flowers are very attractive. Does well in any part of the hardy borders, and especially valuable for shady places.

Large clumps: (75c each) (\$7.50 per 12)

FREESIAS

Freesias are prized for their delightful fragrance. If the bulbs are left in the ground they multiply rapidly and produce early fragrant flowers for cutting. Plant 3 inches deep and 3 inches apart.

HALLAWELL'S NEW GIANT WHITE. In addition to its fragrance this charming white freesia is the largest flowered variety we have ever offered. It has good stems, too, and is one of the finest cut flowers.

Medium sized bulbs: (50c per 12) (\$3.50 per 100)

Large sized bulbs: (80c per 12) (\$6.50 per 100)

HALLAWELL'S NEW GIANT COLORED

FREESIAS. These are the best of the large

flowered improved sorts. Light Yellow,

Pink, Bright Red, Blue.

Above: (75c per 12) (\$5.00 per 100)

Colored Mixture (includes no white):

(75c per 12) (\$5.00 per 100)



ERYTHRONIUMS

ANEMONES, ST. BRIGID'S



GLOXINIA

PLANTING TIME . . . JANUARY TO MARCH

These exquisite semi-tropical plants require a warm, moist temperature, such as may be provided in the greenhouse or sun room. The magnificent flowers are of velvety texture and grow 4 to 6 inches in diameter.

BLACK PRINCE. Giant deep blue.

BRILLIANT. Giant blood red.

BRUNHILDE. Pure white.

RED ADMIRAL. Crimson.

SKY BLUE. Giant light blue.

Any of the above: (50c each) (\$5.50 per 12)

IXIAS

They are much admired for their brilliant colors and graceful flower stalks, which resemble a miniature *Gladiolus*. They come in several shades and are fine for cutting, lasting several days in water. The bulbs should be planted 1 inch deep and 3 inches apart, and for best effect should be in beds or groups of 25 to 100 or more bulbs.

SPLENDID MIXTURE. Containing many colors.

(75c per 12) (\$5.50 per 100)

IXIOLIRION

PALLASII (Siberian Bluebells). A new hardy bulbous plant for the garden. The delicate blue, hyacinth-like flowers are produced in umbels on stems 12 to 18 inches long. They flower about the same time as bulbous iris, keep well, and are excellent for cutting. Illustrated on page 6.

(\$1.50 per 12) (\$11.00 per 100)

LEUCOCORYNE

GLORY OF THE SUN. This lovely flower came to America from Chili 15 or 20 years ago. It was very exciting when it was introduced for only a few growers had seen the flowers and descriptions were glowing. Bulbs sold at very high prices and growers were eager to buy even as few as one or two bulbs. Now they are more plentiful and many more gardeners can enjoy them. They are spring flowering, bearing heads of fragrant, light blue flowers with yellow stamens; stems are 12 to 15 inches and the flowers keep well when cut. Plant 3 or 4 inches deep. Illustrated on page 8.

Large bulbs: (25c each) (\$2.00 per 12) (\$14.00 per 100)

LEUCOJUM—SNOWFLAKES

These are similar to Snowdrops but of stronger growth. The flowers are white, tipped with green, and are borne on stems 1 to 2 feet high.

(\$1.00 per 12) (\$7.50 per 100)

LILY OF THE VALLEY (DECEMBER DELIVERY)

For outdoor culture they require a loose, rich soil and a moist, shady position. Set so that the tips are slightly above the ground and at a distance of 3 or more inches apart.

Clumps for outdoor growing: (\$1.00 each) (\$10.00 per 12)

MUSCARI—GRAPE HYACINTH

These are dainty little flower spikes bearing curious ball-shaped bells in white and blue. Thriving either in partially shaded or sunny locations.

HEAVENLY BLUE. Flowers clear deep blue, changing to lighter blue; very strong grower, producing much larger spikes than the ordinary sort. Illustrated on page 13.

(75c per 12) (\$5.00 per 100)

ORNITHOGALUM—STAR OF BETHLEHEM

ARABICUM. Waxy, white star-shaped flowers with a glistening jet-black pistil and yellow stamens. They are in large clusters at the top of stems 15 to 18 inches long and are very desirable for display in large vases. They are easily grown and will thrive in any reasonably good garden soil where they get sunlight at least one-half time. Large bulbs to flower next Spring. Illustrated on page 13.

(\$1.00 per 12) (\$7.50 per 100)

HARDY PHLOX

READY IN DECEMBER. PRICES ARE POSTPAID

Hardy Phlox thrive in soil which has been deeply enriched. They require plenty of water during the summer months, and in hot climates should have light shade.

AUGUSTA. Brilliant cherry-red.

ATLANTA. White, shaded pale-blue with darker eye.

CHARLES CURTIS. Brilliant sunset-red.

CAROLINE VANDENBURG. Clear lavender blue with no magenta. Large individual flowers in attractive compact heads.

COUNT ZEPPELIN. Pure white with vermilion-red eye. A very popular variety.

DAILY SKETCH. Salmon-pink with vivid crimson eye. The flower trusses and individual flowers are very large.

GEORGE STRIPP. Deep, glowing salmon with a lighter shade eye.

JULES SANDEAU. Large trusses of brilliant pink flowers. Has a very long blooming season.

LEO SCHLAGETER. Glowing fiery red. An outstanding phlox.

MARY LOUISE. Pure white heads of unusually large size. Considered the best white to date.

WIDAR. Violet with white eye. A striking color combination.

Prices, any of the above:

(50c each) (\$5.00 for 12)

SCILLA—WOOD HYACINTH

Charming bell-shaped flowers that do well under trees or in other shady locations. Blooms very early. Plant 3 inches deep and 4 to 6 inches apart.

SEPARATE COLORS: White, Blue, Pink.

(95c per 12) (\$6.50 per 100)

MIXTURE: (95c per 12) (\$6.50 per 100)

SCILLA PERUVIANA. An unusual bulbous plant bearing large heads of deep blue flowers at the top of tall stout stems. The foliage is similar to that of *amaryllis*. A good garden subject as well as for flower vase arrangement.

(50c each) (\$4.50 per 12)

SPARAXIS

Brightly colored flowers of pleasing color combinations and throat markings of contrasting colors. They grow about 9 inches high, keep well when cut and are exquisite in bowl arrangements. Plant the bulbs about 2 inches deep and 3 or 4 inches apart. They may also be grown in pots, about six bulbs for a six-inch pot. Illustrated on page 13.

(75c per 12) (\$5.50 per 100)

SPREKELIA—AZTEC LILY

Bright red orchid-shaped flowers on long sturdy stems, standing well above the *amaryllis*-like foliage. They grow equally well in pots or in the garden and last well when cut. Plant 6 to 8 inches apart and cover about 1 inch.

(50c each) (\$5.00 for 12)

TIGRIDIA—SHELL FLOWER

PLACE ORDERS NOW FOR SPRING DELIVERY

The following list of our improved, large-flowering *tigridias*, represents the varieties we have in sufficient production to offer this year. They are all very beautiful and the demand for them is increasing so much that we are sometimes short on a few varieties for filling orders. Often we can send another, but do not like to do so without permission, so if you will please state "substitute" it may enable us to fill your order complete.

PRICES. The following in separate colors, each variety labeled:

(30c each) (\$3.00 per dozen)

(25c each) (\$2.50 per dozen)

AZTEC CHIEF. Brilliant scarlet, deep red spots in cup.

BUCCANEER. Scarlet petals, orange cup, maroon spots.

CANARY QUEEN. Yellow petals, white cup, faint spots.

GYPSY MAID. Chrome yellow petals, maroon spotted cup.

ROSE KING. Rose petals, white cup, wine red spots.

SCARLET GIANT. Scarlet petals, orange cup.

SUNSET GLOW. Orange, streaked scarlet, deep red spots.

VAGABOND PRINCE. Pure white, large cup with maroon spots.

TRITONIA CROCATA

ORANGE PRINCE. Attractive flowers about 2 inches across with a transparent blotch at the base of each petal. One foot tall; bloom in May. Plant bulbs 2 inches deep and 3 inches apart.

(75c per 12) (\$5.00 per 100)

TUBEROSE

DOUBLE PEARL. The old-fashioned double variety, highly prized for its fragrance.

Large bulbs: (\$2.00 per 12) (\$14.00 per 100)

TRITELIA

UNIFLORA. Fragrant little star-shaped flowers of light blue with white centers. May be used as a pot plant or for edging in the garden. They are low growing and will spread rapidly under trees or high shrubs.

(95c per 12) (\$6.50 per 100)

WATSONIA

Watsonias are similar to *Gladiolus*, and bloom during June and July. The spikes grow 3 to 4 feet tall and bear a dozen or more flowers. They bloom freely and thrive best in a sunny situation. Set the bulbs 3 inches deep and 8 inches apart.

HYBRID MIXTURE. The bulbs vary in size according to variety, some of the best sorts having quite small bulbs.

(\$1.25 per 12) (\$9.00 per 100)

Grow Narcissus in Pots

HALLAWELL'S PREPARED BULB FIBRE

You may grow pots of lovely daffodils or crown narcissi. Plant 4 or 5 bulbs in a 6 or 7 inch flower pot. Moisten the bulb fibre thoroughly and let it stand over night. Cover the bulbs about 1 inch in the pot, water well and keep out doors until ready to bloom.

Hallawell's prepared bulb fibre contains all the necessary plant food. Just plant the bulbs and keep them watered.

Bulb fibre may also be used for planting in bowls without drainage. Before using the fibre, moisten thoroughly, plant the bulbs, then after each watering turn the bowl on the side to drain off the surplus water. After the plants begin to grow draining will not be necessary.

1½ pounds of Prepared Bulb Fibre will fill a 7-inch pot. It may be used many times.

1½ lb. package.....	\$.60	} Postpaid
3 lb. package.....	1.10	
5 lb. package.....	1.75	

Hallawell's Vegetable Seeds

FOR FALL AND WINTER PLANTING

The same dependable high quality, year after year. Hallawell's are proud to make their contribution to the war effort in the food production campaign. Under the strain of war conditions there has been no relaxation in our production and you are assured of the usual dependable high quality seeds, plants and bulbs.

PRICES OF VEGETABLE SEEDS ARE POSTPAID ANYWHERE IN U. S. A.

MARKET GARDENERS ASK FOR QUANTITY PRICES.



PEAS

TABLE BEETS

(Pkt. 10c) (oz. 35c) (¼ lb. \$1.00) (lb. \$3.25)

CROSBY'S EGYPTIAN. A good home garden variety.

DETROIT DARK RED. Large globe shaped.

EARLY WONDER. Medium early variety.

IMPROVED BLOOD TURNIP. Very early.

STOCK AND SUGAR BEETS

MAMMOTH LONG RED. Largest of the mangels; skin red, flesh white and red zoned. (Pkt. 10c) (oz. 30c) (¼ lb. 90c) (lb. \$2.20)

SUGAR BEET. May be used for sugar or for stock feed.

(Pkt. 10c) (oz. 35c) (¼ lb. \$1.00) (lb. \$3.25)

BRUSSEL SPROUTS

Sow and cultivate same as cabbage.

(Pkt. 15c) (¼ oz. 60c) (oz. \$2.00)

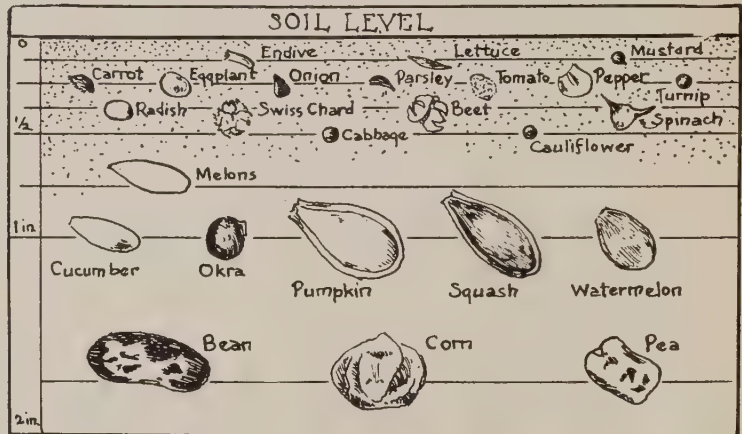
BROCCOLI

ITALIAN GREEN SPROUTING. Rich in vitamins A, C.

(Pkt. 15c) (½ oz. 50c)



BEETS, DETROIT, DARK RED



CABBAGE

(Pkt. 19c) (¼ oz. 30c) (oz. 75c) (¼ lb. \$2.25)

ALL SEASONS. Large round heads.

COPENHAGEN MARKET. Early; round heads.

DRUMHEAD SAVOY. Round heads, crumpled leaves.

EARLY JERSEY WAKEFIELD. Small pointed heads.

EARLY DWARF FLAT DUTCH. Round flat heads.

GLORY OF ENKHUIZEN. Large round heads.

GOLDEN ACRE. Small round heads, grows quickly.

LARGE LATE FLAT DUTCH. Very large flat heads.

MAMMOTH RED ROCK. Round deep red heads.

MARION MARKET. Round heads about 4½ pounds.

CHINESE CABBAGE. Crisp and tender leaves.



TURNIP, PURPLE TOP WHITE GLOBE

CARROTS

(Pkt. 10c) (½ oz. 30c) (oz. 50c) (¼ lb. \$1.50) (lb. \$4.50)

CHANTENAY (Red Cored). Grows about 5 to 6 inches long.

DANVERS HALF LONG. About 6 to 7 inches long.

EARLY SCARLET HORN. Medium size, grows quickly.

OXHEART. For heavy soil, about 4 to 5 inches long.

FRENCH FORCING. Small round, crisp and early.

IMPROVED LONG ORANGE. Grows 10 to 12 inches long; tapering.

NANTES HALF LONG CORELESS. Reddish orange.

CAULIFLOWER

EARLY SNOWBALL. Medium size.

(Pkt. 25c) (¼ oz. \$1.75) (oz. \$5.00)

HALLAWELL'S LATE. (Pkt. 15c) (¼ oz. \$1.00) (1 oz. \$3.00)

CELERY

UTAH. (Pkt. 10c) (¼ oz. 35c) (oz. \$1.00)

GOLDEN SELF BLANCHING. (Pkt. 10c) (¼ oz. 35c) (oz. \$1.00)



CARROT, NANTES

Flower and vegetable seeds are sent post paid anywhere within the U. S. A. except where otherwise noted in this Catalog.

NON WARRANTY — While we exercise the greatest care to have all our seeds, bulbs and plants of good quality and true to name, there are many contingencies encountered in growing plants, and success is dependent upon other factors besides seeds, bulbs or plants. Therefore, we operate under the usual Seedsmen's Non Warranty:

HALLAWELL SEED COMPANY gives no warranty, express or implied, as to the productiveness of any seeds, bulbs, or plants it sells, and will not be in any way responsible for the crop. Liability in all instances is limited to the purchase price.

FOLD ON THIS LINE FIRST

USE
LETTER
POSTAGE
HERE

HALLAWELL SEED CO.

256 MARKET ST.

SAN FRANCISCO 11,

CALIFORNIA

Mail Order
R U S H

FOLD ON THIS LINE LAST

Hallawell's For Your Garden
San Francisco Seedsmen and Nurserymen

FROM _____
STREET _____
TOWN _____
STATE _____

FOLD ON THIS LINE SECOND

CALIFORNIA WILD FLOWERS

Broadcast California Wild Flowers or the Colorful California Poppy on the vacant lots in your neighborhood or on the hillslides in your vicinity. Include the seeds in this order now.

ENV.-O-BLANK
TRADE MARK REG. IN U. S. PAT. OFFICE
STANLEY WESSEL & COMPANY
CHICAGO, ILLINOIS

Flower and vegetable seeds are sent post paid anywhere within the U. S. A. except where otherwise noted in this Catalog.

NON WARRANTY — While we exercise the greatest care to have all our seeds, bulbs and plants of good quality and true to name, there are many contingencies encountered in growing plants, and success is dependent upon other factors besides seeds, bulbs or plants. Therefore, we operate under the usual Seedsmen's Non Warranty:

HALLAWELL SEED COMPANY gives no warranty, express or implied, as to the productiveness of any seeds, bulbs, or plants it sells, and will not be in any way responsible for the crop. Liability in all instances is limited to the purchase price.

FOLD ON THIS LINE FIRST

USE
LETTER
POSTAGE
HERE

HALLAWELL SEED CO.

256 MARKET ST.

SAN FRANCISCO 11,

CALIFORNIA

Mail Order
RUSH

FOLD ON THIS LINE LAST

Hallawell's For Your Garden
San Francisco Seedsmen and Nurserymen

FOLD ON THIS LINE SECOND

CALIFORNIA WILD FLOWERS

Broadcast California Wild Flowers or the Colorful California Poppy on the vacant lots in your neighborhood or on the hillslides in your vicinity. Include the seeds in this order now.

FROM _____
STREET _____
TOWN _____
STATE _____

ENV.-O-BLANK
TRADE MARK REG. IN U. S. PAT. OFFICE
STANLEY WESSEL & COMPANY
CHICAGO, ILLINOIS

HALLAWELL'S VEGETABLE SEEDS

CHICORY

LARGE ROOTED. (Pkt. 15c) (oz. 75c)
 ASPARAGUS or RADICHELLI. (Pkt. 15c) (oz. \$1.00)
 WHITLOOF (French Endive). (Pkt. 25c) (oz. \$3.50)

LETTUCE

Lettuce is a cool weather crop. Will stand some frost but not a hard freeze.

BIBB. Small crisp heads.
 (Pkt. 15c) (oz. 40c) (¼ lb. \$1.00)
 HALLAWELL'S NO. 847. The best heading lettuce. Plants should be 8 to 10 inches apart.
 (Pkt. 10c) (½ oz. 35c) (oz. 60c)
 HALLAWELL'S LOOSE LEAF. Leaves are brownish red. Plant thick in the row.
 (Pkt. 10c) (½ oz. 35c) (oz. 60c)
 EARLY CURLED SIMPSON. Large curled leaves.
 (Pkt. 10c) (½ oz. 35c) (oz. 60c)
 MIGNONETTE. Small compact heads.
 (Pkt. 10c) (½ oz. 35c)
 PARIS COS or ROMAINE. Upright loose folding heads.
 (Pkt. 10c) (oz. 35c) (¼ lb. \$1.00)
 CHICKEN LETTUCE. Green food for poultry.
 Pkt. 10c) (½ oz. 35c) (oz. 60c) (¼ lb. \$1.80)

LEEK

LARGE AMERICAN FLAG. For soup and salad flavoring.
 (Pkt. 15c) (¼ oz. 50c)

MUSTARD

SOUTHERN GIANT CURLED. (Pkt. 10) (oz. 25c) (¼ lb. 75c)



CARROTS, RED CORED CHANTENAY

CHIVES

For flavoring soups and salads.
 (Pkt. 25c) (¼ oz. 75c)

COLLARDS

GEORGIA. A non-heading form of the cabbage family.
 (Pkt. 10c) (oz. 20c) (¼ lb. 50c) (lb. \$1.50)

ENDIVES

GREEN CURLED. Fine tender green, rich in vitamin A.
 (Pkt. 10c) (½ oz. 25c) (oz. 40c)
 BROAD-LEAVED BATAVIAN (Escarolle). Leaves are broad and thick.
 (Pkt. 10c) (½ oz. 25c) (oz. 40c)

KALE

JERSEY. Tall growing for green chicken feed.
 (Pkt. 10c) (oz. 50c)

KOHL RABI

EARLY WHITE VIENNA. (Pkt. 10c) (½ oz. 60c) (oz. \$1.00)
 EARLY PURPLE VIENNA. (Pkt. 10c) (½ oz. 60c) (oz. \$1.00)

ONION

In mild climates, sow onion seeds November to February for large onions to mature in mid-summer. Sow in beds and transplant while young, or they may be sown where they are to remain. Onions grown from seeds will seldom grow the objectionable seed stalk.

All varieties: (Pkt. 15c) (¼ oz. 35c) (oz. \$1.00)
 TORPEDO. Sweet, mild, long oval-shaped red.
 AUSTRALIAN BROWN. Good keeper in hot climates.
 SWEET SPANISH (Riverside Strain). Very large, sweet and mild.
 EARLY SWEET SPANISH. For short season climates.
 RED WETHERSFIELD. Large size, pungent, purplish red.
 BUNCHING ONION (White). For small green onions. Any other variety may be used for bunching onion while they are small.
 YELLOW GLOBE DANVERS. Medium sized globe shaped.
 WHITE SWEET SPANISH. Large, sweet and mild.
 SOUTHPORT WHITE GLOBE. Mild flavor and good keeper.

PARSLEY

(Pkt. 10c) (½ oz. 25c) (oz. 40c)

DOUBLE CURLED.
 TRIPLE CURLED.
 EVERGREEN. Dark green foliage.

PARSNIPS

HOLLOW CROWN. Prepare the soil deep, they grow 10 to 12 inches down.
 (Pkt. 10c) (oz. 35c)

PEAS

Peas are a good cool weather crop. They will stand some frost but not a hard freeze. They may be grown during the winter months in San Francisco.

Prices, all varieties:

(Pkt. 10c) (½ lb. 30c) (lb. 50c)

ALASKA. Quick maturing, winter variety.
 AMERICAN WONDER. Quick maturing, 15 inches.
 LAXTON'S PROGRESS. Very large pods, 24 inches.
 THOMAS LAXTON. Large pods, 3 feet.
 DWARF TELEPHONE. 18 inches.
 MELTING SUGAR or EDIBLE POD. 4 feet.
 TELEPHONE or ALDERMAN. Tall, must be staked.



ONION, UTAH, SWEET SPANISH



LETTUCE, HALLAWELL'S No. 847

POTATOES

Potatoes must ripen 2 to 3 months after digging before they are ready to plant. Our high grade seed potatoes will be ready about December.

RADISH

Prices, all varieties:
 (Pkt. 10c) (oz. 25c) (¼ lb. 75c) (lb. \$1.75)
 CRIMSON GIANT. Large round.
 EARLY SCARLET TURNIP. Small round.
 EARLY SCARLET GLOBE. Medium round.
 SPARKLER. Round white tip.
 FRENCH BREAKFAST. Half long.
 ICICLE. Long white.
 CALIFORNIA MAMMOTH WHITE. Winter.
 ROUND BLACK SPANISH. Winter.

SALSIFY

MAMMOTH SANDWICH ISLAND.
 (Pkt. 10c) (oz. 25c) (¼ lb. 75)

SPINACH

Sow at regular intervals in mild winter climates. ½ oz. to 50 feet.

(Pkt. 10c) (oz. 20c) (¼ lb. 50c)

HOLLANDIA. Thick green leaves.
 IMPROVED VIROFLAY. Long pointed leaves.
 PRICKLY SEEDED. Very hardy.

SWISS CHARD

IMPROVED SILVER. (Pkt. 10c) (oz. 25c) (¼ lb. 80c)
 LUCULLUS. (Pkt. 10c) (oz. 25c) (¼ lb. 80c)
 RHUBARD CHARD. Ornamental. (Pkt. 25c)

TURNIPS

Prices, all varieties:
 (Pkt. 10c) (oz. 25c) (¼ lb. 75c) (lb. \$1.50)
 GOLDEN BALL. Good yellow variety.
 PURPLE TOP WHITE GLOBE.
 WHITE EGG. Pure white.



BRUSSELS SPROUTS

Hardy California *Iris*

Stately and imposing, the Irises are well deserving of great popularity. They are easy to grow and adaptable to various locations, have a long blooming season and are excellent for cutting purposes.

There are hundreds of varieties, and of course, too many to list, so at blooming time we go into the test garden and select 20 of the very best in the full color range.

If you planted these 20 Irises in your garden, you would have the cream of the 1944 crop. Here they are.

COLLECTION — 1 EACH — \$17.50 . . . POSTPAID

(A \$20.00 VALUE)

SNOW FLURRY. A stunning white iris, the finest we have ever seen. It is a blue white which is probably the whitest white. The blooms are very large and are beautifully ruffled; both standards and falls are white and the falls are broad. The flower stalks are tall, carrying as many as 17 buds and flowers at one time. In addition to all of these fine qualities, it is fragrant. Early. 50". (\$4.50 each)

BRONZINO. Tall, rich in color, ideal in form and habit of growth. Standards frosty golden-bronze, falls rich coppery bronze. Large blooms on well branched stems. Mid-season. 40". (75c each) (3 for \$2.00)

DEEP VELVET. Very large, rich deep red-violet. Standards and falls about the same shade but upper part is rich dark purple shading to claret brown. Branching stems, free bloomer. Mid-season. 38". (\$3.00 each)

E. B. WILLIAMSON. Large rosy copper blend that is very distinct and beautiful. The blooms are of good form and fragrant. (Each 75c) (3 for \$2.00)

EL CAPITAN. A very large and stately soft lavender blue. While it was introduced several years ago it is still one of the choice varieties. It is tall, and well branched. Early. 33". (60c each) (3 for \$1.50)

ELEANOR BLUE. Lovely clear, soft blue with delicate brown marking at the haft and prominent yellow beard. Blooms are large and on good stems. An iris you will always like. Mid-season. 32". (Each 50c) (3 for \$1.25)

GOLDEN BEAUTY. Standards are lustrous golden-yellow; falls striped brown at beard and converging into all gold shading in lower portion. Stem is medium and graceful with well placed blooms. (Each \$1.50)

HAPPY DAYS. Exquisite soft yellow; one of the most popular varieties. The blooms are very large and well placed on well branched stalks. Every one likes Happy Days. Mid-season. 40". Large rhizomes. (Each 50c) (3 for \$1.25)

LIGHTHOUSE. Standards are old rose, falls a shade of coppery red—a bright and attractive combination of colors. Lighthouse is well named, for it is an easily outstanding iris in the garden. Late. 36". (Each 50c) (3 for \$1.25)

MIDWEST GEM. Large luminous apricot yellow, slightly flushed pink. Both standards and falls are delicately crinkled at the edges. Mid-season. 36". (Each 75c) (3 for \$2.00)

MOKI. Giant brownish bronze blooms, gracefully placed on strong branching stems. This iris is outstanding. Has every quality. (Each 75c) (3 for \$2.00)

NARANJA. A clear, rich deep yellow, with a definite cast of orange on the falls. The buds are pure orange just before opening. Excellent blooms of good form; well branched stems. Late. (50c each) (3 for \$1.25)

NATIVIDAD. Splendid medium sized, cream which is particularly desirable for cutting. It has good form and good growing habit. (50c each) (3 for \$1.25)

PERSIA. Large blooms with falls a charming blend of bluish lavender and standards bright iridescent steel blue. The haft is brown with yellow beard. Good stems; hardy. Mid-season. 36". (50c each) (3 for \$1.25)

PURISSIMA. A perfect, clear white with large blooms beautifully poised on tall graceful stems. An ideal iris for mild climate but a little tender for extreme cold, unless protected. Early. 50". (50c each) (3 for \$1.25)

SIERRA BLUE. A tall, deep-blue self, winner of Dykes Medal and popular wherever it is grown. It is one of the tallest of the Irises, and produces an abundance of fine blooms. Early. 50". (50c each) (3 for \$1.25)

SIR MICHAEL. Standards clear light blue, falls a bright shade of violet blue. Large well formed blooms are gracefully spaced on 40-inch stems. A grand iris. Mid-season. (50c each) (3 for \$1.25)

SUTTERS GOLD. One of the very few good two-tone yellows. Large well formed blooms of fine texture. Standards clear apricot yellow, falls deeper yellow with a brown overlay. Stems are perfect, carrying 7 to 8 blooms on each stalk. A fine cut flower. Mid-season. 38". (Each \$1.00) (3 for \$2.50)

TIGER-TIGER. One of the finest in its color class. Standards are bronze with brownish red falls, producing a color combination that is rich and beautiful. Good size and well branched. Late. 24". (Each 50c) (3 for \$1.25)

WILLIAM A. SETCHELL. We do not usually recommend the very largest flowered iris but here is one that well deserves special notice. Blooms are 6 to 7 inches tall, with large falls 3½ inches wide and 3½ to 4 inches long. Standards are steel blue, falls deep violet blue. Mid-season. 42". (\$1.50 each)



SNOW FLURRY

IRIS KAEMPFERI

This variety of Iris produces the largest and finest flowers in a great variety of colors. They are hardy, and do best in sunny situations which receive plenty of moisture during the growing season. They bloom for six weeks during June and July. The flowers measure 6 to 8 inches in diameter and are borne on long stems.

CATHERINE PERRY. Double blue, overlaid rich purple.

FASCINATION. Beautiful mauve - pink, veined white; double.

GOLD BOUND. Creamy white with gold bands; double.

KOKO-NO-IRO. Six petals, royal purple, yellow center.

MAHOGANY. Large double, purple-mahogany; late.

TEMPLETON. Reddish violet mottled and marbled with white; double.

TORO-ODORI (Dancing Tiger). Double. Purple, speckled and splashed grey. Unique and beautiful.

Each of the above varieties:
(50c each) \$5.00 per 12)

MAIL ORDER INFORMATION

MAIL ORDERS—All bulbs, except daffodils, are sent postpaid anywhere within the U.S.A. Due to the large size of our daffodil bulbs, please include 50c per dozen, \$2.50 per 100 on orders for shipment east of the Rocky Mountains. This will apply on packing and postage.

ORDERS UNDER \$2.00—Send 25c for packing and postage on orders for less than \$2.00.

SALES TAX—California customers please include 2½% Sales Tax.

PRICES—6 bulbs at the dozen rate, 50 at the 100 rate. We reserve the right to refund all or part of any money sent for stock we are unable to supply at time order is received.

ADDRESS ALL CORRESPONDENCE TO
HALLAWELL SEED COMPANY
256 MARKET STREET
SAN FRANCISCO 11, CALIFORNIA

NON WARRANTY—While we exercise the greatest care to have all our seeds, bulbs and plants of good quality and true to name, there are many contingencies encountered in growing plants, and success is dependent on other factors besides seeds, bulbs or plants. Therefore, we operate under the usual Seedmen's Non Warranty:

HALLAWELL SEED COMPANY gives no warranty, express or implied, as to the productiveness of any seeds, bulbs, or plants it sells, and will not be in any way responsible for the crop. Liability in all instances is limited to the purchase price.



SPARAXIS



IRIS, SIERRA BLUE



ORNITHOGALUM ARABICUM

LILY, PARDALINUM GIGANTEUM
(Sunset Lily)

MUSCARI

FREESIAS



LILIUM--LILY

Place lily orders early and bulbs will be sent at the proper planting time. Do not remove or break the roots and plant the bulbs as soon as you receive them.

AURATUM (Gold Band Lily). One of the grandest of the hardy lilies. The plants are enormous and in large clusters at the top of strong leafy stems. They are ivory-white with chocolate crimson spots and a bright gold band through the center of each petal. Fragrant. Bulbs should be divided after the fourth year. Plant 7 to 9 inches deep. Large bulbs: (\$1.00 each) (\$10.00 per 12) (\$60.00 per 100)

CENTIFOLIUM. A giant among lilies and a hardy garden variety. The plants are quite tall, the flowers long, tubular and white with yellow at the base of the trumpet. This is the first time we have had sufficient stock to offer this magnificent lily. Plant 8 inches deep.

(Each 75c) (\$7.50 per 12)

HENRYI. A very beautiful Chinese lily with bright golden-yellow reflexed flowers, spotted brown. A well grown plant should stand 5 to 8 feet high and have as many as 20 open flowers at one time. Plant 8 to 10 inches deep in partial shade and provide plenty of moisture during the growing season.

(Each 60c) (\$6.00 per 12)

PARADALINUM GIGANTEUM (Sunset Lily). Robust hardy variety growing 5 to 7 feet tall. Deep red with deep purple spots and golden yellow center. Illustrated on page 13.

(35c each) (\$3.00 per 12)

REGALE. A magnificent hardy lily from China; vigorous; 3 to 5 feet high, bearing one to several handsome white fragrant flowers; slightly shaded pink outside and the lower inner surface primrose-yellow. It seems to thrive in any good, well-drained soil and prefers full sun. Plant 9 inches deep. Northern domestic-grown bulbs.

Medium size bulbs: (\$2.50 per 12) (\$17.50 per 100)

Large size bulbs: (\$3.00 per 12) (\$21.00 per 100)

SHUKSAN. This magnificent lily is one of the most easily grown of the newer garden varieties. It grows tall and blooms profusely, bearing bright orange flowers with darker spots. Under favorable conditions the bulbs multiply rapidly.

(Each 75c) (\$7.50 per 12)

TENUIFOLIUM (Siberian Coral Lily). A charming little lily with strongly recurved petals of waxy texture; dazzling coral-red. Excellent for a partially shaded rock garden or border; 1 to 2 feet tall, blossoms profusely in May and June. Plant 6 inches deep.

(\$2.50 per 12) (\$17.50 per 100)



RANUNCULUS

Hallawell's RANUNCULUS

Clean, Healthy Bulbs to Produce the Finest Flowers

RANUNCULLUS CULTURE

Attractive spring flowering bulbs producing flowers on stems 12 to 15 inches high. Very showy in beds or borders. Plant 2 inches deep with the claw-like projections downward, in a well-drained soil which has been previously watered and allowed to mellow. Little if any additional moisture should be required until the plants appear. October to December are the best planting months.

Irrigate as often as necessary to keep the soil moist to a good depth. They prefer full sun.

PRICES

HYBRID MIXTURE. Large size bulbs.
(\$1.00 per 12) (\$7.50 per 100)

HYBRID MIXTURE. Medium size bulbs.
(60c per 12) (\$4.00 per 100)

HERBACEOUS PEONIES

Plant them in deep rich soil, setting the roots so that the crowns are covered with 2 inches of soil. (November delivery.)

FELIX CROUSSE. Rich, brilliant ruby red.

FESTIVA MAXIMA. Pure white.

GIGANTEA. Bright pink or lilac-rose, tipped silvery white; spicy fragrance.

L'ECLANTANTE. Deep velvety crimson.

MME. CALOT. Hydrangea pink with darker shadings. Very fragrant and free blooming.

MONS. JULES ELIE. Beautiful pure pink. The broad outer petals reflex, while the center petals rise to a pyramid.

STRONG CLUMPS: (60c each) (\$6.00 per 12)



L. SHUKSAN

HALLAWELL'S GLADIOLUS

SELECTION OF THE FINEST VARIETIES

Six of a kind at the dozen rate; 50 at the hundred rate.

Prices: (\$1.25 per 12) (\$9.00 per 100) (Except where priced otherwise)

ALADDIN. A very large ruffled flower; deep salmon color.

BAGDAD. A charming Gladiolus of smoky old-rose. The throat is lighter and color deeper toward the edge of petals.

BARCAROLLE. An outstanding salmon-orange. Flowers are good size and ruffled.

BEACON. Bright salmon-red with cream throat. Grows very tall bearing huge spikes. Be sure to stake.

BETTY NUTHALL. Glowing orange-pink with light yellow throat. Strong grower, good spike and perfect placement.

CHARLES DICKENS. Glowing red-purple, with deeper velvety blotch on lower petals.

COMMANDER KOEHL. Rich, deep scarlet-red with no markings or blotches. Wide open flowers on tall spikes.

GATE OF HEAVEN. A new ruffled variety with large, bold flowers of a rich yellow shade.

GRETA GARBO. Has a very delicate rose coloring with creamy lower petals. Well expanded, perfectly formed flowers.
(\$2.00 per 12) (\$15.00 per 100)

J. S. BACH. Salmon red shading lighter in the throat. Many florets open at one time, good placement on the spike.

KING LEAR. Probably the finest purple gladiolus. Flowers are large and many open at once.

MAID OF ORLEANS. Large pure white.

MARGARET BEATON. An exquisite pure white, with small scarlet blotch.

MINUET. Fine clear lavender. Splendid cut flower variety.

MOORISH KING. The finest and largest flowered of the deep mahogany-red Gladiolus.

NEW ERA. A lovely ruffled pink.

PELEGRINA. Dark violet - blue, blotched slightly darker on two lower petals. One of the finest dark-blue shades.

PICARDY. Glowing, shrimp or flesh-pink, without any markings. A very beautiful Gladiolus.

ROSA VAN LIMA. Bright pink, an excellent cut flower variety.

ROYAL GOLD. We think this is the finest clear yellow.

TROUBADOR. An outstanding purple Gladiolus.

VAGABOND PRINCE. An unusual bronze red with orange blotch.

HALLAWELL'S SELECT MIXTURE. A mixture of the best named sorts in a great variety of colors.

(\$1.25 per 12) (\$9.00 per 100)

RAINBOW MIXTURE. A fine mixture of large flowering Gladiolus in a good variety of colors.

(\$1.00 per 12) (\$7.00 per 100)

Complete Gladiolus Collection

TWO BULBS EACH OF 20 LISTED VARIETIES—OUR SELECTION—EACH VARIETY LABELED SEPARATELY.

Total of 40 bulbs \$4.00
2 collections for \$7.50

NEW PATENTED GLADIOLUS

CALIFORNIA (patented). A very large wide-open flower of geranium-pink with a deeper pink blotch in the throat. The plants are tall with long straight flower spikes and well placed florets. Won first prize in East Bay Show for largest floret—7¼ inches.
(30c each) (\$2.50 per 12) (\$17.50 per 100)

HELEN OF TROY (patented). A charming flower of apricot-pink with blotch of orange tint on the lower petals. It is tall with long straight flower spikes, opening six to eight wide open flowers at one time. A fine exhibition variety and a prize winner on many occasions.
(30c each) (\$2.50 per 12) (\$17.50 per 100)

KING OF HEARTS (patented). Perhaps the largest of all gladiolus yet not the least bit coarse. Individual florets measure 8 inches across, with flower stalks tall and graceful. The color is a light coral-red, shading to pink; flowers are placed perfectly and the spike is excellent.
(30c each) (\$2.50 per 12) (\$17.50 per 100)

SIR GALAHAD (patented). Soft creamy-yellow with diamond-shaped blotch of rich crimson in the deep and wide open, long flower spike with 6 to 8 flowers open at once. They are perfectly placed on straight stems and are strikingly beautiful.
(30c each) (\$2.50 per 12) (\$17.50 per 100)

GLADIOLUS — EARLY FLOWERING (BABY GLADIOLUS)

(\$1.00 per 12) (\$7.00 per 100)

This type of Gladiolus blooms in May or earlier. The flowers are borne on good stems; excellent for cutting. Plant 2 to 3 inches deep and 4 inches apart.

FLORENCE. Bright rose-pink.

SPITFIRE. Excellent red. Flowers slightly larger than other varieties.



HELEN OF TROY

HALLAWELL'S CALIFORNIA WILD FLOWERS

On the Pacific Coast, sow successively from fall to early summer; in the East and Middle States, from March to May.

Successive sowings of Wild Flower seed will provide bloom almost the year around in California, especially in the cooler regions and if the plants can be watered. Although they respond best to careful soil preparation, scatter plantings are successful if the seed is sown at seasons when the plants will have benefit of rainfall. In areas where wild shrubs abound, it is better to concentrate your efforts on the clear spaces, and assure success by scarifying the soil with a mattock or heavy rake to make it easier for the seeds to root.

One ounce of seed will sow 150 to 200 square feet in a home garden planting, while one pound to 5,000 square feet is recommended for a city lot broadcast planting. For hillside or field planting, 5 to 8 pounds per acre are required, depending upon the existing growth of wild shrubs. Mix an equal quantity of sand with the seed as an aid to distribution.

CLARKIA
BARTONIA
COLLINSIA

ESCHSCHOLTZIA
GILIA CAPITATA
GODETIA AMONEA

LEPTOSYNE
LUPIN NANUS
NEMOPHILA

PHACELIA CAMPANULARIA
PHACELIA WHITLAVIA
SALVIA CARDUACEA

EACH OF ABOVE: (Pkt. 10c)

California Wild Flower Mixture

(Pkt. 10) (oz. 75c)
(¼ lb. \$1.75) (lb. \$7.50)

WILD AND HARDY CULTIVATED VARIETIES MIXED

(Pkt. 10c) (oz. 50c)
(¼ lb. \$1.50)
(½ lb. \$2.75)

HALLAWELL'S FINEST QUALITY

VARIETIES LISTED IN THIS CATALOG ARE FOR FALL AND WINTER PLANTING . . . PRICES ARE POSTPAID

ALYSSUM

MARITIMUM (Sweet Alyssum). Height 10 inches. Very fragrant. (Pkt. 10c) (½ oz. 35c)
 CARPET OF SNOW. Flat ground cover. (Pkt. 15c) (¼ oz. 40c)
 HALLAWELL'S VIOLET QUEEN. Bright violet; dwarf. (Pkt. 25c) (½ oz. 40c)
 SAXATILE COMPACTUM. Perennial; bright yellow. (Pkt. 25c)

ANTIRRHINUM (Snapdragon)

<p>HALLAWELL'S STRAIN, SUPER MAJESTIC Height, 20 to 30 inches AUTUMN GLOW SHADES. Old rose, yellow lip. DAINTY. Lovely soft pink, as its name implies. HARMONY SHADES. Terra cotta and yellow. ORANGE SHADES. Deep and light shades. RED ROCKET. Feiry red. ROSE SENSATION. Finest rose pink. SHASTA. Pure white. SILVER PINK. Lovely clear pink. YELLOW JACKET. Deep yellow. Above separate colors: (Pkt. 25c) (1/16 oz. 75c) HALLAWELL'S SUPER MAJESTIC MIXTURE; (Pkt. 25c) (1/16 oz. 60c)</p>	<p>MAXIMUM TYPE Height, 3 to 4 feet. ALASKA. Pure White. CAMPFIRE. Luminous scarlet, yellow lip. CANARY BIRD. Canary yellow. COPPER KING. New. Bright bronzy copper. CRIMSON MONARCH. Rich crimson. LOVELINESS. Soft rose pink. PINK SENSATION. Pure pink. ROSALIE. Deep rose with undertone of topaz-amber. SALMON ROSE SHADES. Bright yellow lip. YELLOW GIANT. Deep yellow. Above separate colors: (Pkt. 20c) (1/16 oz. 75c) HALLAWELL'S SELECT MIXTURE. A selected strain containing many new shades. (Pkt. 15c) (½ oz. 75c)</p>
--	---

BARTONIA (Blazing Star)

Annual California Wildflower. Golden yellow. (Pkt. 10c) (¼ oz. 45c)
 Sow in open ground for winter bloom.

CALENDULA

LEMON QUEEN. Fine double orange, long stems. (Pkt. 15c) (½ oz. 35c) (oz. 60c)
 CAMPFIRE (Improved). Large, double, brilliant orange. (Pkt. 15c) (¼ oz. 45c)
 SUNSHINE. Double buttercup yellow, long stems. (Pkt. 15c) (½ oz. 45c)
 ORANGE KING. Large deep orange red with dark center. (Pkt. 15c) (½ oz. 45c)
 HALLAWELL'S SPECIAL MIXTURE. A fine assortment of varieties. (Pkt. 15c) (oz. 60c)

CENTAUREA (Bachelor Button)

JUBILEE GEM. Double blue. (Pkt. 15c) (¼ oz. 45c)
 DOUBLE MIXED. (Pkt. 10c) (¼ oz. 35c)
 BLUE BOY. Double blue. (Pkt. 15c) (½ oz. 40c)

CHRYSANTHEMUM (Painted Daisy)

SINGLE MIXED. (Pkt. 10c) (¼ oz. 35c)

CINERARIA

For pots or beds in partial shade.
 CALIFORNIA SUPER GIANTS MIXED. Huge trusses of flowers, 5 to 6 inches across. (Pkt. 50c)
 MULTIFLORA NANA MIXED. Plants to 10 inches high, small flowers, large heads. (Pkt. 50c)
 BEDDING MIXTURE. Semi-dwarf, large flowered. (Pkt. 35)

CANDYTUFT

Seeds sown in autumn produce flowers in early spring.
TALL ANNUAL VARIETIES—Height 1 foot. Planting time, year round.
 ALBIDA. Creamy white. (Pkt. 10c) (½ oz. 30c)
 CRIMSON or PURPLE. (Pkt. 10c) (½ oz. 30c)
 LAVENDER. Delicate shade of lilac. (Pkt. 10c) (½ oz. 30c)
 ROSE CARDINAL. Deep rosy cardinal. (Pkt. 10c) (½ oz. 40c).
 SPLENDID MIXED. (Pkt. 10c) (½ oz. 30c) (oz. 50c)
 GIANT HYACINTH FLOWERED. Very large heads and long spikes of white flowers. Best sort for cut flowers. 1½ feet. Extra select strain. (Pkt. 15c) (¼ oz. 50c)

COLLINSIA

BICOLOR. 1 to 2 ft. Violet and white. Prefers shade. Sow in open ground. (Pkt. 10c) (¼ oz. 75c)



SNAPDRAGONS

(Varieties listed in this catalog are for Fall and Winter Planting)



CARNATIONS



HEUCHERA (Coral Bells)

CALIFORNIA FLOWER SEEDS

VARIETIES LISTED IN THIS CATALOG ARE FOR FALL AND WINTER PLANTING . . . PRICES ARE POSTPAID

CARNATION

Sow seeds from August to March. They bloom within a few months.

CHABAUD'S EVERBLOOMING MIXTURE. (Pkt. 20c) (1/16 oz. 95c)

ENFANT DE NICE. Our special strain of large full double carnations. Separate colors of pink, red, rose, salmon, white and striped. (Pkt. 35c)
ENFANT DE NICE MIXTURE. (Pkt. 35c)

CLARKIA ELEGANS

When seed is sown thick in the row it grows tall and is fine for cutting.

HALLAWELL'S DOUBLE FLOWERING

BRILLIANT. Very bright carmine-rose.

SALMON QUEEN. Salmon-pink flowers.
SCARLET BEAUTY. Brilliant scarlet.
WHITE. Pure white.
Each of above: (Pkt. 15c) (1/8 oz. 40c)
DOUBLE MIXED. (Pkt. 15c) (1/4 oz. 75c)

COREOPSIS

HALLAWELL'S DOUBLE SUNBURST. Large semi-double yellow. (Pkt. 15c) (1/8 oz. 50c)

MAYFIELD GIANT. Single yellow, large. (Pkt. 15c) (1/8 oz. 35c)

CYNOGLOSSUM

(CHINESE FORGET-ME-NOT)
AMABILE BLUE. Intense deep blue. (Pkt. 10c) (1/4 oz. 30c)

FIRMAMENT. Bright blue on bushy plants. (Pkt. 15c) (1/4 oz. 45c)

DELPHINIUM

HALLAWELL'S PACIFIC GIANT STRAIN

This is the finest strain in cultivation. Flowers are large, double and in charming color combinations.

SPECIAL MIXTURE: (Pkt. 50c) (3 pkts. \$1.35)

ESCHSCHOLTZIA (California Poppy)

AURANTIACA ORANGE. True California Poppy. (Pkt. 10c) (oz. 40c) (1/4 lb. \$1.25) (1 lb. \$3.75)

NEW HYBRIDS MIXED. Many new color. (Pkt. 15c) (1/4 oz. 75c) (oz. \$2.00)

BRILLIANT MIXED. (Pkt. 10c) (oz. 60c) (1/4 lb. \$1.75) (lb. \$5.00)

GILIA

Hardy annual California wildflower. Sow seed in fall or winter.

CAPITATA. 1 1/2 to 2 ft. high, eight blue flowers.
TRICOLOR. Height 1 ft., pale lilac to yellow.
Each of above: (Pkt. 10c) (1/2 oz. 45c) (oz. 75c)

GODETIA

Sow thick in the row. Crowded plants grow tall and produce fine cut flowers.

DUKE OF YORK. Satiny crimson carmine. (Pkt. 15c) (1/8 oz. 50c)
KELVEDON GLORY. Glowing salmon, orange. (Pkt. 15c) (1/8 oz. 50c)
PURITY. Glistening satiny white. (Pkt. 15c) (1/8 oz. 50c)
SYBIL SHERWOOD. Salmon-pink, edged white. (Pkt. 15c) (1/8 oz. 50c)
SEMI-DWARF MIXED. Splendid assortment. (Pkt. 15c) (1/4 oz. 75c)
AMOENA. California wildflower. (Pkt. 10c) (1/8 oz. 60c)

HEUCHERA (Coral Bells)

SANGUINEA SPLENDENS. (Pkt. 35c)

HOLLYHOCK

Sow in early fall for next year's bloom.

DOUBLE VARIETIES.
Double Mixed: (Pkt. 15c) (1/4 oz. 60c)

LARKSPUR

Best results are obtained from sowing seeds in the open ground where plants are to remain. October to February.

HALLAWELL'S BASE BRANCHING LARKSPURS

BLUE BELL. Clear light blue or silvery lavender.
BLUE SPIRE. Intense deep blue, very beautiful in a bouquet with contrasting colors.
CARMINE KING. Lovely deep carmine rose.
EXQUISITE PINK IMPROVED. Pink, shaded salmon.
EXQUISITE ROSE. Beautiful shade of rose.
LOS ANGELES. Deep rose.
LILAC KING. An attractive lilac blue.
MISS CALIFORNIA. Deep pink shaded salmon.
PINK KING. Long graceful branches of soft salmon rose.
WHITE KING. Pure glistening white.
Above separate colors: (Pkt. 15c) (1/4 oz. 65c)
SUPERB MIXTURE: (Pkt. 15c) (1/4 oz. 65c)

LINARIA

Twelve to 15 inches; fine for sowing on top of bulb beds. A large planting of this at our Nursery Gardens attracted much attention.

EXCELSIOR MIXED. (Pkt. 15c) (1/4 oz. 45c)
FAIRY BOUQUET. (Pkt. 15c) (1/8 oz. 45c)



DELPHINIUM. HALLAWELL'S PACIFIC GIANTS

LINUM (Scarlet Flax)

RUBRUM. 1 1/2 ft. Beautiful in mass plantings. Sow in open ground. (Pkt. 10c) (1/4 oz. 30c)
FLAVUM NANUM COMPACTUM. Perennial, golden-yellow. (Pkt. 25c)
PERENE. 18 inches, bright blue. (Pkt. 15c) (1/4 oz. 35c)

LUPIN

HALLAWELL'S GIANT MIXTURE. 3 to 4 ft. (Pkt. 25c)
NANUS. California wild flower, 10 to 15 inches high. (Pkt. 10c) (oz. 75c) (1/4 lb. \$2.00) (1 lb. \$5.00)

MIGNONETTE

Fragrant annual. Sow seed in open ground.
GOLIATH. Very large red spikes. (Pkt. 15c) (1/4 oz. 50c)
SWEET SCENTED. (Pkt. 10c) (1/4 oz. 35c)
GIANT MACHET. (Pkt. 15c) (1/4 oz. 30c)

MIMULUS

QUEEN'S PRIZE. Large spotted flowers. (Pkt. 25c) (1/16 oz. \$1.50)

MYOSOTIS (Forget-me-not)

Hardy perennial for cool, moist situation.
ALPESTRIS BLUE. (Pkt. 15c) (1/8 oz. 50c)
BLUE PERFECTION. Dwarf indigo blue. (Pkt. 25c) (1/8 oz. 85c)
BLUE BIRD. Deep blue; winter blooming; 1 foot. (Pkt. 20c) (1/16 oz. 60c)



CALENDULA, CAMPFIRE



SWEET SULTANS



ICELAND POPPY



POLYANTHUS PRIMROSES

NEMESIA

Annual, 12 inches, for garden or window boxes. Requires three weeks to sprout.

STRUMOSA GRANDIFLORA MIXED. Many beautiful colors, 10 to 12 inches tall. (Pkt. 25c) (3 pkts. for 65c) (1/8 oz. \$1.25)

TRIUMPH MIXED. Hallawell's Special. Compact form, 6 to 8 inches tall. (Pkt. 25c) (3 pkts. for 65c) (1/8 oz. \$1.25)

MEMOPHILA

A hardy annual California wild flower, growing about 6 inches high. Has small cup-shaped blossoms in shades of blue and white. Sow in the open ground in the fall or spring. Fine ground cover for bulb beds.

INSIGNIS (Baby Blue Eyes). Sky blue with white eyes. (Pkt. 10c) (oz. 75c) (1/4 lb. \$2.00) (lb. \$5.50)

MIXED. (Pkt. 10c) (oz. 75c) (1/4 lb. \$2.00) (lb. \$5.50)

PANSIES

We are not given to boasting but we have had had so many letters from gardeners praising our pansies, that we feel justified in claiming these the finest pansies in cultivation.

HALLAWELL'S AMERICAN GIANTS. For color, size and texture these pansies are unsurpassed. Offered for the first time this year. (Pkt. \$1.00)

HALLAWELL'S JUMBO. A superb strain of extra size. (Pkt. 50c) (3 pkts. \$1.25) (1/16 oz. \$2.00) (1/4 oz. \$6.00)

GENEVA GIANTS. The well-known popular Swiss strain. (Pkt. 50c) (3 pkts. \$1.25) (1/16 oz. \$2.25) (1/4 oz. \$7.50)

SUPER SWISS GIANTS MIXED. (Pkt. 25c) (1/16 oz. \$1.25) (1/8 oz. \$2.00)

TRICOLOR. Johnny Jump-up, miniature; upper petals purple, lower white shading to yellow in center. (Pkt. 50c) (3 pkts. \$1.25)

PHACELIA (California Blue Bell)

CAMPANULARIA. A hardy California wildflower. Nine inches high, clear deep blue.

WHITLAVIA (Wild Canterbury Bell).

Each of above: (Pkt. 15c) (oz. \$1.25)

ICELAND POPPY

EMPEROR. Deep orange. (Pkt. 25c) (1/16 oz. 75c)

EMPRESS. Salmon shades. (Pkt. 25c) (1/16 oz. 75c)

YELLOW WONDER. (Pkt. 25c) (1/16 oz. 75c)

SANFORD'S GIANT STRAIN. Large flowers, excellent color range. (Pkt. 25) (1/8 oz. \$1.00)

SUNBEAM MIXTURE. (Pkt. 15c) (1/8 oz. 75c)

HALLAWELL'S PASTEL TINTS. (Pkt. 25c) (1/16 oz. \$1.00)

ANNUAL POPPIES

Sow seeds in open ground during fall and winter.

AMERICAN LEGION. Orange-scarlet. (Pkt. 10c) (oz. 75c)

SHIRLEY MIXED. (Pkt. 10c) (oz. 75c)

SHIRLEY DOUBLE MIXED. (Pkt. 10c) (1/4 oz. 35c) (oz. \$1.00)

PRIMULA

BULLEYANA. Height 2 feet, apricot to orange. (Pkt. 50c)

PULVERULENTA BARTLEY STRAIN. For shaded and damp places; numerous tiers of flowers in shades of pink. (Pkt. 50c)

AURICULA. The "Primrose of the Alps". (Pkt. 50c)

OBCONICA GIANT MIXED. (Pkt. 50c)

MALACOIDES PRIMULA

LILAC. Small lilac flowers. (Pkt. 25c) (1/32 oz. \$1.50)

SWEETHEART. Salmon-pink, edged white. (Pkt. 50c)

FAIRY JEWELS. Rich rose-pink. (Pkt. 50c)

TWINKLES. Double flesh pink. (Pkt. 50c)

SNOWFLAKE. Glistening white. (Pkt. 50c)

HARDY PRIMROSES

POLYANTHUS GIANT SUPERB MIXED. (Pkt. 50c)

POLYANTHUS YELLOW. (Pkt. 50c)

SCHIZANTHUS

HALLAWELL'S SUPER GIANT MIXTURE. (Pkt. 35c) (1/16 oz. \$1.00)

HALLAWELL'S SELECT MIXTURE. (Pkt. 25c) (1/16 oz. 75c)

HALLAWELL'S DWARF. 10 to 15 inches high. (Pkt. 25c)

PANSY FLOWERED MIXTURE. (Pkt. 35c)

STOCKS

Plantings for fall and winter should be in well drained soil. Stocks do not like wet feet.

HALLAWELL'S GIANT PERFECTION

AMERICAN BEAUTY. Very deep rose.

CRIMSON. A brilliant color.

FLESH (Beauty of Nice). Delicate shell-pink.

HEATHAM BEAUTY. Rose, shaded terra cotta.

LAVENDER. Fine color; lighter than variety Pale Blue.

OLD ROSE (Belle of Naples). Rich terra cotta rose.

PINK. Light rose-pink, fine in flower arrangements.

PURPLE (Summer Night). Purple or dark blue.

WHITE (Snowdrift). Pure white.

YELLOW (Monte Carlo). Creamy yellow.

Each of above separate colors: (Pkt. 15) (1/8 oz. 85c)

GIANT PERFECTION MIXED. (Pkt. 15c) (1/8 oz. 75c)

VIOLA

(TUFTED PANSIES)

Planting time, July to March

Very free-blooming hardy perennial plants. Flowers are not so large as in other varieties of pansies, but are produced in much greater numbers and also bloom for a longer season. Valuable for edging beds and borders. Keep the seed bed cool and moist. Our seed is always 100 per cent current crop.

ARKWRIGHT RUBY. Dark crimson-scarlet with central markings. (Pkt. 35c) (1/16 oz. \$1.50)

BLUE PERFECTION. Deep purplish blue. (Pkt. 25c) (1/16 oz. 75c)

CHANTREYLAND. Pure apricot; free flowering. (Pkt. 25c) (1/16 oz. \$1.25)

LUTEA GRANDIFLORA. Fine yellow. (Pkt. 25c) (1/16 oz. 75c)

PAPILIO. Lavender with white eye. (Pkt. 25c) (1/16 oz. 75c)

WHITE PERFECTION. (Pkt. 25c) (1/16 oz. 75c)

VIOLA MIXTURE. Hallawell's mixture of bright gay colors. (Pkt 25c) (1/16 oz. 75c.)

VIRGINIAN STOCKS

Ground cover about 6 inches high.

MIXED COLORS. (Pkt. 15c) (large pkt. 35c) (oz. \$1.00)



PANSY

GIANT SWEET PEAS

LONG STEMS AND LARGE WAVY FLOWERS

Hallowell's sweet peas are grown and selected to produce the largest flowers and longest stems in exhibition varieties.

Price of each: (Pkt. 15c) (oz. 50c)

CAPRI. Light blue; long stems.
 CARDINAL. Poppy scarlet.
 CAVALCADE. Carmine-rose, shaded gold.
 CHINESE BLUE. Rich deep blue.
 CREAM GIGANTIC. Largest cream.
 ECSTASY. Delicate bluish pink.
 GIGANTIC WHITE. Very large white.
 HEBE. Bright pink, wavy.
 HIGHLANDER. Lavender, many flowers.
 MISS CALIFORNIA. Salmon, cream-pink.
 OLYMPIA. Large rich purple.
 PINKIE. Rose-pink, very large.
 PIRATE GOLD. Golden Orange.
 POWERSCOURT. Lavender, long stem.
 RED SUPREME. Deep crimson.
 REFLECTION. Clear blue.
 RUBICUND. Crimson-scarlet.
 SALMON GIGANTIC. Giant salmon-pink.
 SERENADE. Clear medium salmon.
 SEXTET QUEEN. Large white.
 SMILES. Shrimp pink.
 SULTAN. Black velvety maroon.
 THRILLER. Orange scarlet.
 WELCOME. Dazzling scarlet.

HALLAWELL'S GIANT MIXED

A fine mixture of large flowered, long-stemmed varieties. Includes many colors, each in proper proportion to produce a colorful display in your garden. (Pkt. 15c) (oz. 50c)

DWARF SWEET PEAS

CUPID SPENCER. Dwarf, large-flowered, growing about one foot high and spread about 2 feet. They are excellent for low edgings or long strips of ground cover. (Pkt. 15c) (oz. 60c)

SPECIAL COLLECTION . . . 60c

Consists of 1 packet each—our selection—of five colors of giant, long-stemmed sweet peas for spring blooming.

SUPERB COLLECTION . . . \$1.25

Hallowell's Giant Sweet Peas. One packet each—our selection—of 10 varieties, all different; sufficient to plant 50 feet of row. \$1.25.

NEW AND IMPROVED SWEET PEAS

All very large flowers and long stems.
 DAINTY. Florist's shade of rose-pink. (Pkt. 25c)
 DAZZLER. Large flowered, bright red. (Pkt. 25c)
 MERIT. Lovely carmine shaded tinge of gold. (Pkt. 25c)
 WHITE WINGS. Large wavy pure white. (Pkt. 25c)
 VICTOR. Lovely shade of lavender. Waved. (Pkt. 25c)

Prize Collection

NEW AND IMPROVED SWEET PEAS

Postpaid, \$1.00

Five packets, 1 packet each of five varieties; sufficient to plant 30 feet of row and produce 200 or more bouquets of fine, long stemmed, wavy flowers.

In San Francisco plant October to May.

HALLAWELL'S EARLY SPENCER SWEET PEAS

Hallowell's Early Spencer Sweet Peas flower 3 to 4 weeks earlier than any other varieties. They are especially desirable for greenhouse plantings and for growing in frost-free sections for Winter blooming. We particularly recommend them for the Hawaiian Islands. They have all the fine qualities of our Giant Spencers, produce giant flowers and very long sturdy stems. Where the Winter climate is mild, plant the seeds in August and September for Winter bloom. Under favorable conditions they will flower by Christmas. Shade the planting to keep the soil cool until the seeds sprout.

Price of each: (Pkt. 20c) (3 for 50c)

AMETHYST. Royal-purple, large.
 APOLLO. Long stemmed, salmon-cerise.
 BALL ROSE. Rose-pink; florist favorite.
 BLUE BONNET. Clear, deep blue.
 BRIDESMAID. Dainty silver-pink.
 CREAM. Light primrose.
 DAPHNE. Soft salmon-pink.
 HARMONY. Excellent lavender.
 HOPE. Very fine white.
 MARS. Deep velvety crimson.
 MEMORY. Light lavender.
 MRS. H. S. REDDICK. Fine salmon-pink.
 OTHELLO. Deep maroon.
 SEQUOIA. Golden Cerise.
 SHIRLEY TEMPLE. Soft rose-pink.
 TREASURE ISLAND. Bright golden-orange.
 VULCAN. Christmas red.
 WHITE CHAMPION. Pure White.



SWEET PEAS

HALLAWELL'S EARLY SPENCER MIXTURE

A well balanced color mixture of the choicest early Spencer varieties. These are the largest flowered, long stemmed sweet peas for Winter bloom. Under favorable growing conditions, stems 8 to 10 inches long may be expected from the first flowers, and four giant flowers on a stem. Some of the flowers are waved and a few may be duplexed.

Be sure to shade the bed if planted in hot weather and when they begin to bloom do not overwater. One good deep irrigation each week will be plenty in medium heavy soil. If they are watered too much, the buds will drop from the stems.

(Pkt. 20c) (3 for 50c) (oz. \$1.00)

EARLY SPENCER COLLECTION . . . \$1.00

Consists of one packet each, our selection, six colors of Early Spencer varieties for Winter blooming in mild Winter Climates.





TWINK (See Page 6 for Description)



THE PEARL (See Page 6 for Description)



JOHN EVELYN (See Page 6 for Description)

NARCISSI

TWINK . . .
\$3.00 per 12; \$21.00 per 100

THE PEARL . . .
\$1.75 per 12; \$12.00 per 100

JOHN EVELYN . . .
\$3.50 per 12; \$25.00 per 100

HERA . . .
\$1.75 per 12; \$12.50 per 100

ALCIDA . . .
\$1.75 per 12; \$12.00 per 100

KLONDYKE . . .
\$1.50 per 12; \$11.00 per 100

HALLAWELL SEED COMPANY

256 MARKET STREET
SAN FRANCISCO 11, CALIFORNIA



HERA (See Page 6 for Description)

ALCIDA (See Page 5 for Description)

KLONDYKE (See Page 6 for Description)

