

Historic, Archive Document

Do not assume content reflects current scientific knowledge, policies, or practices.

62,35

LIBRARY

RECEIVED

FEB 19 1944



Spring 1944



THE CHAS. C. HART SEED CO.
WETHERSFIELD 9, CONN. ••• NEWPORT • MAINE

Dear Friends:

We are pleased to present our 1944 Seed Catalogue, which we trust you may find not only interesting but of value in assisting you to prepare for your 1944 Victory Garden.

In our presentation we have endeavored to be concise and brief, and all varieties of seed which we offer are in our opinion, varieties which will be well adapted for your garden.

There will be a still greater demand for seed this year, as our country needs our help in connection with our food supply. It is our desire to cooperate with our customers, and in order to insure prompt shipment we ask that you kindly mail your order to us as promptly as may be convenient for you.

Each year we receive many friendly letters from our customers, some advising us of the success which they have enjoyed with our seed, some requesting advice as to their garden problems, and many of a personal nature regarding the members of our organization. These letters please us, as we desire to be friendly, and realize the satisfaction of living during this period with a friendly thought for our neighbors.

We wish for you all that is well. May your garden be bountiful, and may we all put forward every effort to win this war as soon as possible and to win the peace to follow.

THE CHAS. C. HART SEED COMPANY,

Wethersfield 9, Connecticut

Newport, Maine

Growers and Dealers in Garden, Field and Flower Seeds. Members: American, Western, Southern, New England and Connecticut Seed Trade Associations.



FRANK S. HART
President

Quality Since
1892



WILLIAM G. HART
Vice-Pres. and Ass't Treasurer



EVERETT H. HART
Treasurer



FREDERICK C. HART
Secretary

On a six months leave of absence. Now in Washington with the Food Price Division of the O.P.A. In connection with formulation and regulation of prices on Vegetable and Field Seeds.

← GORDON S. HART

Gordon S. Hart, second son of William, enlisted in the Army on June 12th, 1942, immediately after his graduation from the University of Connecticut. He attended the Meteorological School in connection with the Air Service at Chanute Field, Illinois, from which he was graduated in October of that year. Gordon paid the supreme sacrifice as a result of enemy action in the North Atlantic area February 3, 1943, and was posthumously awarded the Purple Heart Decoration by the War Department. Having worked with us since he was a boy, Gordon grew up in our business, and at college passed with honors those subjects required to be of help in connection with his entrance to our firm.

WESLEY T. HART →

Wesley is the son of William and is manager of our Newport, Maine, Growing branch, where we operate four farms with nearly 600 acres of seed crops, and where we contract with farmers for approximately 2,000 acres of seed Beans.



Seeds Have Gone to War . . .

For a great many years seeds have been greatly overproduced. With highly competitive price market costs have been slashed and in many instances quality has been sacrificed to insure a growing profit. This has been a short-sighted philosophy which many American Seedsmen have found out too late.

Today the tables are turned. The vital necessity of producing enough seeds to supply all of the countries of the world with the exception of those directly controlled by the Axis Powers demands all the ingenuity and productive ability of American Seed Growers. In addition, a stock pile must be built to supply all the occupied countries with these most vital of foodstuffs when they are released from Axis control.

We are proud of the part we have played in this enormously increased production. Proud, also, that we have been able to continue our function of supplying over 6000 New England and the North Eastern dealers with high quality seeds. It is our intention to continue to grow all we possibly can so that both vital and important goals can be met.

To enumerate the short items on this year's seed list would necessitate altogether too much space. Practically everything among the more important items is short. We cannot too strongly urge conservative buying. Do not order more than you actually need. This will help your neighbor to secure the seeds he must and should have. With Cannery and Dehydrators above normal times, with Lend-Lease requirements nearly as great as our own normal domestic needs and with every Army and Marine Task Force that leaves our shores carrying its own seeds to take care of its needs, it is not surprising that seeds will be short.

We approach another year of production with a certain feeling of dread; for in seed production nothing can wait. When harvests are ready, they must be gathered and supplies of labor for harvesting are uncertain. Many of our crops this year were lost through inability to secure sufficient labor at the proper time. Next fall we anticipate that conditions will be worse and labor supplies more difficult to obtain. It will take courage to face an increased production but it *takes* courage to fight a total war. We will increase our production by every possible available acre and will bend every effort to secure the highest return nature will allow us.



Directions for Ordering

Please use order sheet in the back of the catalog. It will be of great help to us in filling your order quickly and correctly. Be sure to fill in your full name and address. If your order is to come by freight or express please write in your freight or express station if different from your Post Office.

Please keep a copy of your order—Many customers complain they have received goods they have not ordered at all. At any rate, it is always wise to check over your order. If we have made a mistake (we sometimes do) we want to rectify it immediately.

How to send money—Remittances may safely be made by Post Office or Express Order, Bank Draft, Check or Registered Letter. We will accept stamps for sums less than one dollar. If bills are sent, always register the letter.

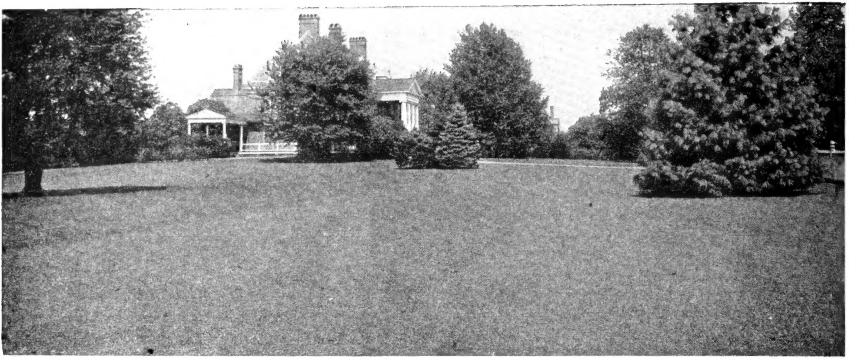
We guarantee the safe arrival of all orders—There is no need to send insurance money. We will take care of that.

24 Hour Service—All orders are filled the same day as received, except in the case of seasonal goods which will be sent when the weather permits.

Our Guarantee—We guarantee to the full amount of the purchase price, the purity and quality of all seeds you buy from this catalog. Should failure result from any fault of the seed, you can have your money back. However, this is the limit of our liability. Seeds are subject to so many climatic and soil conditions over which we have no control, that we give no warranty, express or implied as to quality, description, productiveness or any other matter of any seed we sell and will be in no way responsible for the crop. Our liability in all instances is limited to the purchase price of the seed.

Seeds by Parcel Post—Packages weighing 70 lbs. can be sent into the first three zones and 50 lbs. may be sent anywhere in the country.

WE PREPAY ALL TRANSPORTATION CHARGES



A Beautiful Lawn is an Asset to Any Property

LAWN SEED is the greatest mystery in the world to most home owners who cannot make head or tail out of the complex formulas printed on Lawn Seed labels. They are not meant to be confusing but most people do not know which grasses are desirable or undesirable in a lawn. One pound of Lawn Seed is required for 150 square feet but heavier seeding is desirable.

In general, the finest grasses for permanent, velvety lawns are Kentucky Blue Grass, Chewings Fescue or any of the Bent family. **WHITE CLOVER** may be added if desired but the most attractive lawns are made without it. The higher the percentage of these grasses the better your lawn will be.

However, these are slow to establish themselves and other quick-growing grasses must be added to act as nurse grasses. These grow rapidly and furnish shade and cover until the more permanent seeds have established themselves. The two best are **RED TOP** and **RYE GRASS** but the finest lawns are made with mixtures containing not more than 30% of these.

For special purposes Poa Trivalis and Chewings Fescue are essential for shady locations or for poor and sandy soils while Canada Blue Grass is useful for terraces and steep banks.

After you have made certain that the desirable seeds are in your mixture check the percentage of inert matter. This is dead seed or seed hulls or chaff and it is material you pay for but do not use. It is completely waste and the smaller the percentage of waste the better your mixture. The weed content should be small, of course, but more weed seeds are present in your soil per square foot than are ever found in fifty pounds of decent Lawn Seed.

The State of Connecticut has set up standards for Lawn Seed and when these blends are used a fine lawn is assured. We are licensed to offer these blends which are: Gold Seal, certified to be of the highest quality; Blue Seal of high quality; and Red Seal, of good quality. We also offer a **GOLD SEAL ALL-BENT FORMULA** for putting or bowling greens, **SHADY PLACE** for deeply shaded areas, **TERRACE SOD** for steep embankments and a special formula for Poor or Sandy Soils.

We also present two blends where price is a larger consideration; **ELM TREE** and **EVER-GREEN**. These are both excellent blends for competitive purposes and will prove satisfactory for the average lawn. They simply do not contain as large a percentage of the finer bladed, more desirable grasses nor is their purity quite as high as in the State Seal mixtures. We also list a complete variety of all separate turf grasses should you desire to grow these alone. We invite your questions and problems.

We solicit inquiries from builders and contractors who require special blends for unusual conditions or whose problem is the necessity for a quick green cover on rather poor soil. If you are building a new home, ask your contractor to specify **HART'S SEEDS** for your lawn—because a fine lawn always adds to the value of your property.

Lawn Seed Blends

	1-5 lbs.	6-20 Per lb.	21-100 Per lb.
Greendale (Gold Seal).....	\$0.55	\$0.47	\$0.42
Standish Park (Gold Seal).....	.55	.47	.42
Splendor (Gold Seal).....	.60	.55	.52
Special Bent (Gold Seal).....	.80	.75	.72
Blue Seal.....	.50	.45	.42
Red Seal.....	.45	.40	.37
Elm Tree.....	.40	.35	.32
Evergreen.....	.35	.30	.27
Deep Shade (Gold Seal).....	.80	.75	.72
Shady Place.....	.60	.55	.52
Terrace Sod.....	.60	.55	.52
Poor or Sandy Soils.....	.50	.45	.42

Special Purpose and Separate Grasses

	1-10 lbs.	11-100 Per lb.
Kentucky Blue Grass 99%.....	\$0.36	\$0.35
Canada Blue Grass.....	.40	.39
Colonial Bent.....	1.15	1.10
Astoria Bent.....	1.10	1.00
Seaside Bent.....	1.35	1.25
Chewings Fescue.....	.70	.68
Domestic Rye Grass.....	.18	.15
White Dutch Clover.....	.95	.90
Fancy Red Top 98%.....	.25	.24



Asparagus, Mary Washington

ASPARAGUS SEED

1 oz. of seed will sow 75 feet of row and produce about 250 plants

Culture—Asparagus seed should be sown as early as possible in the spring. When roots are one year old they should be transplanted into permanent beds in rows about 4 feet apart with root crown $1\frac{1}{2}$ feet apart in trenches 10 inches in depth.

Mary Washington. The best variety. Rust resistant. The most widely used for home and market. Large thick stalks, attractive green in color with purple tops. Tender and delicious.
Pkt. 10c., oz. 15c., $\frac{1}{2}$ lb. 35c., lb. \$1.25.

ASPARAGUS ROOTS

Mary Washington (1 year old). To produce Asparagus from roots follow directions as outlined above when roots are raised from seed. Doz. 40c., 50 roots \$1.00, 100 roots, \$1.75, 500 roots \$7.50, 1000 roots \$14.00.

BEANS. Green Pod

We prepay all transportation charges

One pound of Beans will plant 150 feet, 90 lbs. per acre

Culture—Plant in rows $2\frac{1}{2}$ feet apart, dropping seed 2 inches apart. Plant when ground is warm and make small plantings every two weeks and have fresh Beans right up until frost.

Bountiful. The largest and heaviest yielding flat green Bean. Without question the finest stock of this favorite green podded variety. There is no other strain which will produce a higher yield of these handsome, large flat, light green pods. Our many market gardeners will bear witness to the high quality of our type. Pkt. 15c., $\frac{1}{2}$ lb. 30c., lb. 50c., 2 lbs. 90c., 3 to 10 lbs. 30c. per lb., 11 to 25 lbs. 29c. per lb., over 25 lbs. 27c. per lb.

Black Valentine Stringless. An extremely prolific and early round Bean entirely stringless. Pkt. 15c., $\frac{1}{2}$ lb. 30c., lb. 50c., 2 lbs. 90c., 3 to 10 lbs. 29c. per lb., 11 to 25 lbs. 28c. per lb., over 25 lbs. 26c. per lb.

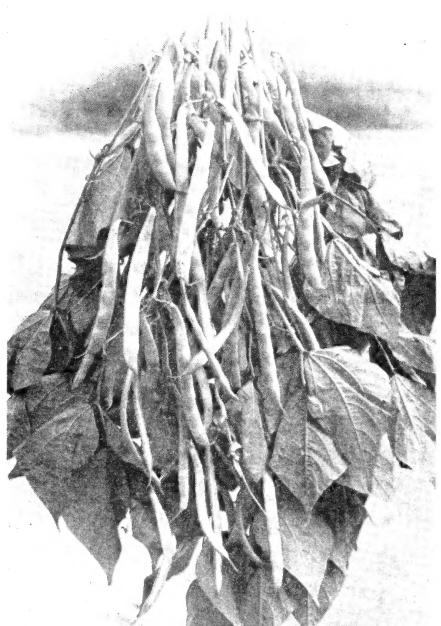
Full Measure. One of the best flavored varieties. Round and luscious. A dependable canning sort. Pkt. 15c., $\frac{1}{2}$ lb. 30c., lb. 50c., 2 lbs. 90c., 3 to 10 lbs. 34c. per lb., 11 to 25 lbs. 33c. per lb., over 25 lbs. 31c. per lb.

Landreth's Stringless. A splendid improvement on the old type Burpee's Stringless, growing 2 in. longer than that type. A round Bean of really superior quality and flavor. Pkt. 15c., $\frac{1}{2}$ lb. 30c., lb. 50c., 2 lbs. 90c., 3 to 10 lbs. 32c. per lb., 11 to 25 lbs. 31c. per lb., over 25 lbs. 29c. per lb.

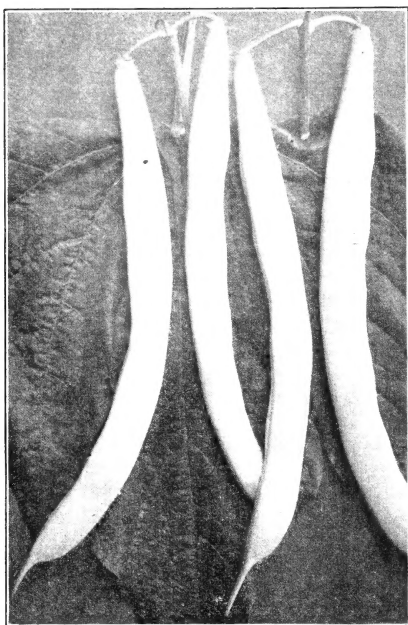
Plentiful. Another new flat pod of extremely high quality. Similar to Bountiful with a pod $\frac{1}{2}$ to 1 inch longer and a trifle later in maturity. A black seeded variety. Pkt. 15c., $\frac{1}{2}$ lb. 30c., lb. 50c., 2 lbs. 90c., 3 to 10 lbs. 32c. per lb., 11 to 25 lbs. 31c. per lb., over 25 lbs. 29c. per lb.

Streamliner. A splendid new flat podded Bean of very superior quality. The pods are slightly larger than Bountiful and are a handsome bluish green in color. Very fleshy and attractive. The seed is white. Pkt. 15c., $\frac{1}{2}$ lb. 30c., lb. 50c., 2 lbs. 90c., 3 to 10 lbs. 34c. per lb., 11 to 25 lbs. 33c. per lb., over 25 lbs. 31c. per lb.

Tendergreen. The finest of the round podded green Beans. Although still comparatively new, this handsome and early Bean has become one of the most popular on our list. The high yield and superior quality of its straight, round green pods will commend this Bean to the most critical gardener. Pkt. 15c., $\frac{1}{2}$ lb. 30c., lb. 50c., 2 lbs. 90c., 3 to 10 lbs. 34c. per lb., 11 to 25 lbs. 33c. per lb., over 25 lbs. 31c. per lb.



Beans, Bountiful



Beans, Sure Crop Wax

Wax or Yellow Podded Beans

Pencil Pod Black Wax. The finest round podded Bean for home and market. Frequent roguing and particular attention to stock seed keeps our strain of this favorite Bean at the peak of perfection. Its long, round, waxy pods are never marred by the "shorts" and "greens" so common to inferior strains. Pkt. 15c., $\frac{1}{2}$ lb. 30c., lb. 50c., 2 lbs. 90c., 3 to 10 lbs. 34c. per lb., 11 to 25 lbs. 33c. per lb., over 25 lbs. 31c. per lb.

Round Pod Kidney Wax. Long, round, clear yellow pods of exceptional flavor. Pkt. 15c., $\frac{1}{2}$ lb. 30c., lb. 50c., 2 lbs. 90c., 3 to 10 lbs. 37c., 11 to 25 lbs. 36c. per lb., over 25 lbs. 34c. per lb.

Sure Crop Wax. Justly the most popular flat Wax Bean. Also known as Bountiful Wax, this superior yielding Bean occupies the same position among Wax Beans that the Bountiful does in the green pods. Its enormous yields of long, straight, flat bright yellow pods spell extra profits. Pkt. 15c., $\frac{1}{2}$ lb. 30c., lb. 50c., 2 lbs. 90c., 3 to 10 lbs. 32c. per lb., 11 to 25 lbs. 31c. per lb., over 25 lbs. 29c. per lb.

Davis Stringless White Wax. An excellent wax variety. May be used as baking bean when cured. Seed is pure white. Pkt. 15c., $\frac{1}{2}$ lb. 30c., lb. 50c., 2 lbs. 90c., 3 to 10 lbs. 34c. per lb., 11 to 25 lbs. 33c. per lb., over 25 lbs. 31c. per lb.

Top Notch Golden Wax. An unexcelled new strain of this popular tasty flat Bean. Pkt. 15c., $\frac{1}{2}$ lb. 30c., lb. 50c., 2 lbs. 90c., 3 to 10 lbs. 31c. per lb., 11 to 25 lbs. 30c. per lb., over 25 lbs. 28c. per lb.

Unrivaled Wax. Truly "unrivaled" for early and heavy yields. An exceptionally early Bean, with long narrow, flat pods which yields tremendously on very dwarf plants. Your pickers will turn in 50% more baskets in the same time on fields of Unrivaled. Pkt. 15c., $\frac{1}{2}$ lb. 30c., lb. 50c., 2 lbs. 90c., 3 to 10 lbs. 34c. per lb., 11 to 25 lbs. 33c. per lb., over 25 lbs. 31c. per lb.

Field or Baking Beans

White Marrow	Soldier (richest and meatiest)
White Navy	Light Red Kidney
White Kidney	Yellow Eye

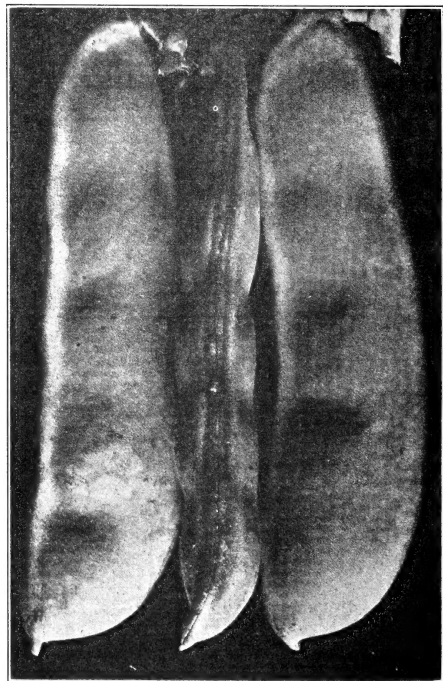
All varieties. $\frac{1}{2}$ lb. 20c., lb. 30c., 2 lbs. 55c., over 2 lbs. 20c. per lb.

LIMA BEANS. Bush

Burpee's Improved Bush. Larger pods and beans. One more bean per pod than in the old variety. A trifle deeper green in color. Pkt. 15c., $\frac{1}{2}$ lb. 30c., lb. 50c., 2 lbs. 90c., 3 to 10 lbs. 32c. per lb., 11 to 25 lbs. 31c. per lb., over 25 lbs. 29c. per lb.

Fordhook Bush. Our strain is justly the most popular on the large Long Island and South Jersey markets because of its high vitality and freedom from splitting. Fordhooks are one of our biggest specialties. Pkt. 15c., $\frac{1}{2}$ lb. 30c., lb. 50c., 2 lbs. 90c., 3 to 10 lbs. 34c. per lb., 11 to 25 lbs. 32c. per lb., over 25 lbs. 30c. per lb.

Henderson Bush or Baby Lima. Extremely early and prolific; delightful quality, dependable bearer. A Bean sure to ripen. Pkt. 15c., $\frac{1}{2}$ lb. 30c., lb. 50c., 2 lbs. 90c., 3 to 10 lbs. 30c. per lb., 11 to 25 lbs. 29c. per lb., over 25 lbs. 28c. per lb.



Lima Beans, Fordhook Bush

LIMA BEANS. Pole

1 lb. of seed will plant about 100 hills

Culture—Support vines with poles at least 7 feet in length and sink approximately 2 feet in ground and space 3 to 4 feet apart each way. Plant 6 seeds around each pole and later thin to the 3 strongest plants.

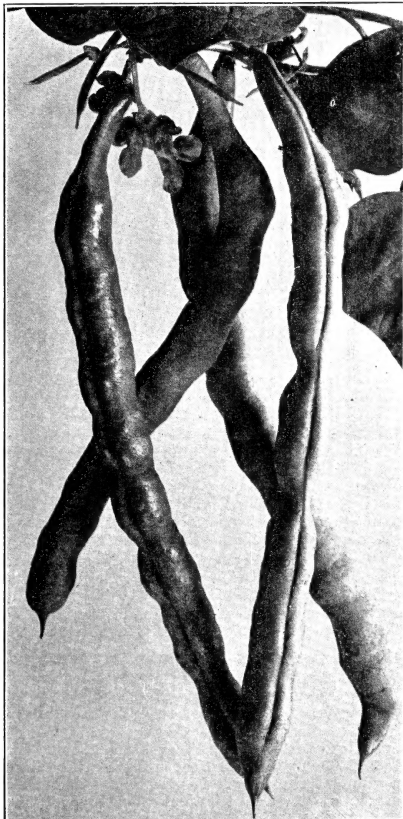
King of the Garden. Early and productive. A favorite in home and market garden. Pkt. 15c., $\frac{1}{2}$ lb. 30c., lb. 50c., 2 lbs. 90c., 3 to 10 lbs. 32c. per lb., 11 to 25 lbs. 31c. per lb., over 25 lbs. 29c. per lb.

Mammoth Podded. The largest of all pole limas having a 7 inch pod with 6 large Beans of finest quality. Pkt. 15c., $\frac{1}{2}$ lb. 30c., lb. 50c., 2 lbs. 90c., 3 to 10 lbs. 33c. per lb., 11 to 25 lbs. 32c. per lb., over 25 lbs. 30c. per lb.

SHELL BEANS. Bush

1 lb. will sow 150 feet of row

French Horticultural. Our superior strain of this splendid Bean is still "tops," with its handsome seven inch pods liberally splashed with carmine. This Bean originated in New England. We secured our strain from the originator and continued to grow it in New England under our constant supervision. No wonder it brings better prices on the market. Pkt. 15c., $\frac{1}{2}$ lb. 30c., lb. 50c., 2 lbs. 90c., 3 to 10 lbs. 31c. per lb., 11 to 25 lbs. 30c. per lb., over 25 lbs. 28c. per lb.



Shell Beans, Kentucky Wonder, or Old Homestead

Broad Windsor or Long Podded Fava. Grown extensively by Italians as a green shell Bean; very hardy and should be planted as soon as ground can be worked. Pods 7 to 8 inches long with 4 to 6 large beans each. To be eaten as Lima Beans. Pkt. 15c., $\frac{1}{2}$ lb. 20c., lb. 35c., 2 lbs. 65c., 3 to 10 lbs. 30c. per lb.

Low's Champion or Red Cranberry. Useful also as green "snap" Bean and very superior as a shell variety. Resistant to blight. Pkt. 15c., $\frac{1}{2}$ lb. 30c., lb. 50c., 2 lbs. 90c., 3 to 10 lbs. 31c. per lb., 11 to 25 lbs. 30c. per lb., over 25 lbs. 28c. per lb.

Ruby Dwarf Horticultural or Roman. The old "favorite" Cranberry Bean so desirable for Succotash; also used as "snap" and shell Beans. Pkt. 15c., $\frac{1}{2}$ lb. 30c., lb. 50c., 2 lbs. 90c., 3 to 10 lbs. 29c. per lb., 11 to 25 lbs. 28c. per lb., over 25 lbs. 26c. per lb.

Vermont or Old Fashioned. A favorite shell Bean in Northern New England which should be used elsewhere. The Beans and pods are the largest in any of the dwarf types. Pkt. 15c., $\frac{1}{2}$ lb. 30c., lb. 50c., 2 lbs. 90c., 3 to 10 lbs. 30c. per lb., 11 to 25 lbs. 29c. per lb., over 25 lbs. 27c. per lb.

SHELL BEANS. Pole

1 lb. will plant 100 hills

Culture—Support vines with poles as with Pole Limas.

King Horticulture. A revelation if you have never tried it. Our strain of this remarkable but little known Bean produces immense pods 8 to 9 inches long, beautifully splashed and colored with rich yellow and carmine and very similar in appearance to French Horticulturals. The handsome pods bring a premium on every market and even a few poles will more than repay the extra effort. Pkt. 15c., $\frac{1}{2}$ lb. 30c., lb. 50c., 2 lbs. 90c., 3 to 10 lbs. 33c. per lb., 11 to 25 lbs. 32c. per lb., over 25 lbs. 30c. per lb.

Kentucky Wonder or Old Homestead. Enormously productive about 10 days earlier than any other green pod sort. Pods very long light green, stringless. Will hang in clusters and all in all a splendid "snap" bean. Pkt. 15c., $\frac{1}{2}$ lb. 30c., lb. 50c., 2 lbs. 90c., 3 to 10 lbs. 29c. per lb., 11 to 25 lbs. 28c. per lb., over 25 lbs. 26c. per lb.

Kentucky Wonder Wax. Long, flat yellow pods of fine quality similar to green Kentucky Wonder excepting in color. Pkt. 15c., $\frac{1}{2}$ lb. 30c., lb. 50c., 2 lbs. 90c., 3 to 10 lbs. 32c. per lb., 11 to 25 lbs. 31c. per lb., over 25 lbs. 29c. per lb.

Scarlet Runners. Prized for the beauty of its scarlet flowers and for its choice, edible flavor. Pkt. 15c., $\frac{1}{2}$ lb. 30c., lb. 50c., 2 lbs. 90c., 3 to 10 lbs. 31c. per lb., 11 to 15 lbs. 30c. per lb., over 25 lbs. 28c. per lb.

New Italian Pole Bean. An outstanding early green "snap" Bean, stringless and of excellent quality; pods 5 inches in length, broad and flat. Also may be used as a shell Bean. Pkt. 15c., $\frac{1}{2}$ lb. 30c., lb. 50c., 2 lbs. 80c.

Edible Soy Beans

1 lb. will sow about 150 feet of row

Culture—Edible Soy Beans are now very popular because of their high vitamin content and are high in protein and fat. East-bean grown and may be eaten in its green state or dried. Can be roasted in much the same manner as nuts. Sow in rows 3 feet apart, dropping seed 2 inches apart.

Bansei. The best variety for our Northern section. Plants will grow about 2 feet high. Pkt. 15c., $\frac{1}{2}$ lb. 30c., lb. 50c., 2 lbs. 90c., 3 to 10 lbs. 30c. per lb., 11 to 25 lbs. 29c. per lb., over 25 lbs. 28c. per lb.

Kanro. Also very popular in the Northern climate. Excellent in flavor. Pkt. 15c., $\frac{1}{2}$ lb. 30c., lb. 50c., 2 lbs. 90c., 3 to 10 lbs. 30c. per lb., 11 to 25 lbs. 29c. per lb., over 25 lbs. 28c. per lb.

BEETS

1 oz. of seed will sow 50 feet of drill—10 lbs. per acre in rows 14 inches apart. A few rows in the garden will supply fresh beets throughout the season.

Culture—Sow early in the Spring and later for a succession. Sow in July for use in the Fall. Sow in rows 14 to 18 inches apart; cover $\frac{1}{2}$ to 1 inch deep (the latter if ground is dry). Thin to 3 inches apart when plants are small. Thinnings may be used for Beet Greens.

Crosby's Egyptian (Special Strain). Deep crimson color, small tops and slender tap roots. Very early. Pkt. 10c., oz. 30c., $\frac{1}{4}$ lb. 90c., lb. \$2.90.

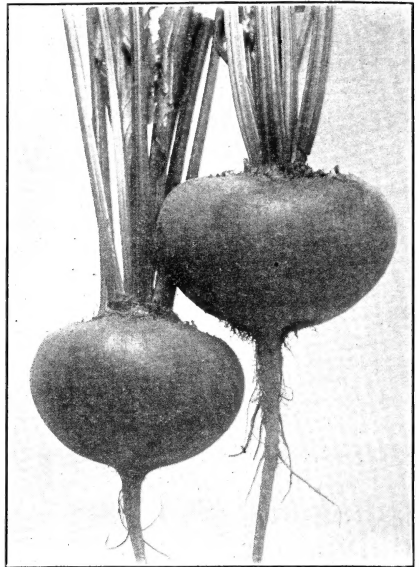
Detroit Dark Red. Very deep red in color, adaptable for both market and home garden use. Desirable for bunching and canning. Beets are smooth and uniform. Pkt. 10c., oz. 35c., $\frac{1}{4}$ lb. 95c., lb. \$3.25.

Early Blood Turnip. An early large variety of good quality. Tops are large and adaptable for tender beet greens. Pkt. 10c., oz. 30c., $\frac{1}{4}$ lb. 90c., lb. \$2.90.

Extra Early Flat Egyptian. One of the earliest varieties grown. A flat beet of excellent flavor. Pkt. 10c., oz. 30c., $\frac{1}{4}$ lb. 90c., lb. \$2.90.

Hart's Early Wonder. The finest available early bunching Beet. Our splendid selection of this desirable early variety is unsurpassed and we confidently feel that no other strain offered can approach it for uniformity of size, shape and deep bright red color. Pkt. 10c., oz. 30c., $\frac{1}{4}$ lb. 90c., lb. \$2.90.

Perfected Detroit. A perfect globe shaped strain of the old type Detroit, growing slightly smaller but earlier with small tops and fine tap roots. The skin is deep red and the flesh is solid red without zoning or light colored rings, a truly remarkable selection. Pkt. 10c., oz. 35c., $\frac{1}{4}$ lb. \$1.00, lb. \$3.35.



Beet, Hart's Early Wonder

Mangel Beet. For Stock Feeding

Plant 6 to 8 lbs. per acre. Sow seed in rows 2 $\frac{1}{2}$ feet apart.

Golden Tankard. Large oval yellow roots. Pkt. 10c., oz. 20c., $\frac{1}{4}$ lb. 70c., lb. \$2.20, 10 lb. \$2.00 per lb.

Improved White Sugar. Handsome white flesh, high in sugar content. Pkt. 10c., oz. 20c., $\frac{1}{4}$ lb. 70c., lb. \$2.20, 10 lbs. \$2.00 per lb.

Mammoth Long Red. The most popular and one of the heaviest yielders. Pkt. 10c., oz. 20c., $\frac{1}{4}$ lb. 70c., lb. \$2.20, 10 lbs. \$2.00 per lb.

BROCCOLI

1 oz. will produce about 2000 plants

Culture—Broccoli requires no special care. For early use sow indoors or in hot-beds and set plants at least 2 feet apart. Later sowings may be made out-doors.

Di Rapa. Known also as Caledonia Turnip or Senaps, this variety is relished for its turnip-like leaves and small flower heads which are eaten as greens. Pkt. 10c., oz. 30c., $\frac{1}{4}$ lb. 60c., lb. \$1.90.

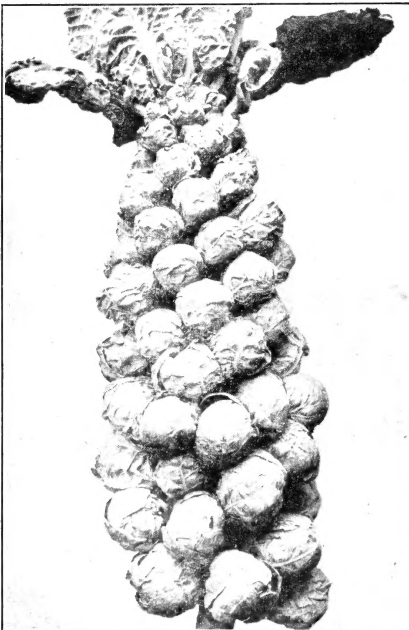
Early Green Calabrese or Italian Sprouting. Our surpassingly fine strain of this wonderful vegetable produces the desirable large closely packed central heads and solid side shoots so highly prized. Pkt. 10c., $\frac{1}{2}$ oz. 30c., oz. 50c., $\frac{1}{4}$ lb. \$1.75, lb. \$6.00.

BRUSSELS SPROUTS

1 oz. will produce 2500 plants. Set out like cabbage

Culture—Transplant in rows about 3 feet apart. Rows 18 inches apart.

Long Island Improved. Our special Long Island strain. Grown for us in the heart of the "Sprout" section on Long Island, this wonderful selection out-distances all others in its high percentage of "hard" sprouts. Pkt. 10c., $\frac{1}{4}$ oz. 30c., $\frac{1}{2}$ oz. 55c., oz. \$1.00, $\frac{1}{4}$ lb. \$3.75.



Brussels Sprouts, Long Island Improved

CABBAGE

1 oz. will produce from 1500 to 2000 plants, $\frac{1}{4}$ to $\frac{1}{2}$ lb. per acre

Culture—For early plants sow seed in hot-bed in February and March, or about six weeks before the ground is warm enough to plant. For medium early crops sow seed in open ground as soon as ground is in condition to work. For late crops plant around June 1st.

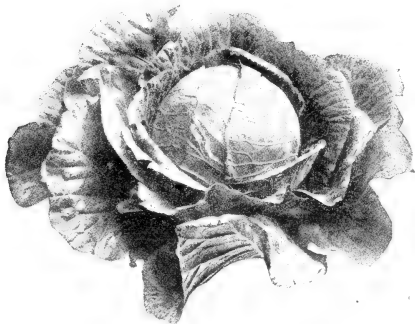
Early Summer Varieties

Copenhagen Market. A fine round headed variety to follow Golden Acre and 3 to 4 pounds heavier than that sort. Our selection is very sure heading. Pkt. 10c., oz. 55c., $\frac{1}{4}$ lb. \$2.00, lb. \$6.95.

Early Jersey Wakefield. An extra early heavy yielding pointed Cabbage of superlative quality. We offer an exceptionally fine strain. Pkt. 10c., oz. 40c., $\frac{1}{4}$ lb. \$1.50, lb. \$5.45.

Erkhuizen Glory. Fine for home garden, market or kraut; early and productive. Pkt. 10c., oz. 55c., $\frac{1}{4}$ lb. \$2.00, lb. \$6.95.

Golden Acre (Original Strain). Universally considered the finest early Cabbage. Golden Acre reaches new heights in our splendid strain. Uniform in maturity, size and shape, it leaves little to be desired. We are proud of its universal acceptance. Pkt. 10c., oz. 65c., $\frac{1}{4}$ lb. \$2.15, lb. \$7.60.



Cabbage, Copenhagen Market

Fall and Winter Varieties

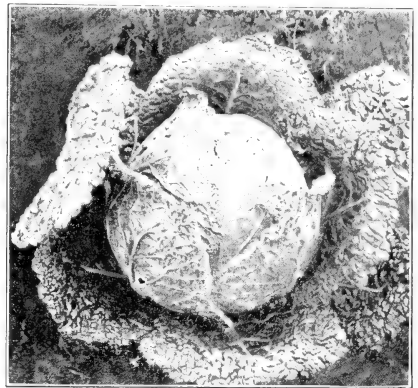
Danish Ball Head (Short Stem). We offer an excellent strain of this favorite main crop variety. Pkt. 10c., oz. 55c., $\frac{1}{4}$ lb. \$2.00, lb. \$7.10.

Penn State Ball Head. Our strain of this tremendous yielder is unexcelled. The round solid, heavy heads will produce practically 100% and outyield any other variety of Cabbage in total tonnage to the acre. Pkt. 10c., oz. 55c., $\frac{1}{4}$ lb. \$2.00, lb. \$7.10.

Perfection Drumhead Savoy. Our strain has a dark green color with a fine curly appearance and is very compact and uniform. Pkt. 10c., oz. 55c., $\frac{1}{4}$ lb. \$2.00, lb. \$6.95.

Premium Late Flat Dutch. Large, flat, deep heads. Much relished for kraut. Pkt. 10c., oz. 40c., $\frac{1}{4}$ lb. \$1.50, lb. \$5.45.

Mammoth Red Rock. The largest and best Fall or early Winter shipping and storing variety. Pkt. 10c., oz. 165c., $\frac{1}{4}$ lb. \$2.15, lb. \$7.60.



Cabbage, Perfection Drumhead Savoy

Chinese Cabbage

1 oz. will sow 300 feet of drill

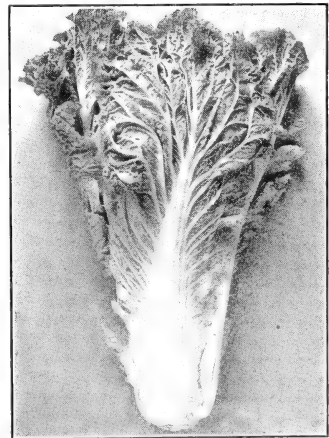
Culture—Sow middle of July in rows 2 $\frac{1}{2}$ feet apart and thin to 18 inches in row.

Chihili. Very popular, being the earliest and surest heading. Produces long solid white heads of the best quality. Pkt. 10c., oz. 40c., $\frac{1}{4}$ lb. \$1.25, lb. \$4.00.

Wong Bok. Its broad heads are rather short; tightly folded and well blanched. Pkt. 10c., oz. 40c., $\frac{1}{4}$ lb. \$1.25, lb. \$4.00.

CARDOON

Long Smooth Solid. Grown like celery and served like Asparagus. Pkt. 10c., oz. 40c., $\frac{1}{4}$ lb. \$1.50.



Chinese Cabbage, Wong Bok

CARROT

1 oz. of seed will sow 150 feet of drill, 3 to 4 lbs. per acre

Culture—Sow seeds in drills 12 to 15 inches apart and thin from 3 to 4 inches. For early crop, sow as soon as ground can be worked; June and July for later crops; early August for Fall crops.

Chantenay. (Special Strain). Very popular, roots grow 6 to 7 inches in length, tapering slightly with stump root of deep rich orange. Pkt. 10c., oz. 45c., $\frac{1}{4}$ lb. \$1.65, lb. \$4.65.

Chantenay Red Cored. The coreless carrot which has displaced the old type Chantenay; being smoother, more uniform and more attractive. Pkt. 10c., oz. 45c., $\frac{1}{4}$ lb. \$1.65, lb. \$4.65.

Danvers Half Long. The old dependable main crop Carrot with roots 7 to 8 inches long tapering to bottom. Pkt. 10c., oz. 45c., $\frac{1}{4}$ lb. \$1.65, lb. \$4.65.

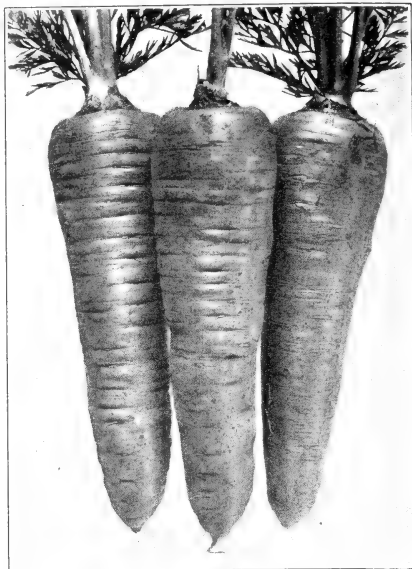
Greater Chantenay. Desirable for early bunching. Seven inch roots tapering slightly with blunt ends and maturing fully as early as Chantenay. Highly desirable for those who want a somewhat longer Carrot than Chantenay without sacrificing earliness. Pkt. 10c., oz. 45c., $\frac{1}{4}$ lb. \$1.65, lb. \$4.65.

Hutchinson. Our strain of this popular New England variety needs no introduction. The long cylindrical roots will grow 12 to 15 inches long and are a beautiful deep orange in color, shading to a light green on the shoulders. No carrot known produces a greater yield than Hutchinson. Our super strain costs more and is worth it. Pkt. 10c., oz. 50c., $\frac{1}{4}$ lb. \$1.75, lb. \$4.75.

Imperator. The finest for bunching. Also known as the "California". This quality Carrot is very popular with the high-class trade. The long smooth tapering roots are a deep orange in color with a minimum of core, and cooks up tender and sweet. Pkt. 10c., oz. 50c., $\frac{1}{4}$ lb. \$1.75, lb. \$4.75.

Improved Long Orange. Fine stock Carrot as well as table; will mature roots a foot in length. Pkt. 10c., oz. 45c., $\frac{1}{4}$ lb. \$1.65, lb. \$4.65.

Scarlet Nantes (Coreless). Beautiful cylindrical carrot with blunt ends and entirely coreless. Housewives prefer it for slicing and dicing and its attractive appearance sells it readily. Pkt. 10c., oz. 50c., $\frac{1}{4}$ lb. \$1.85, lb. \$4.85.



Carrot, Danvers Half Long

CAULIFLOWER

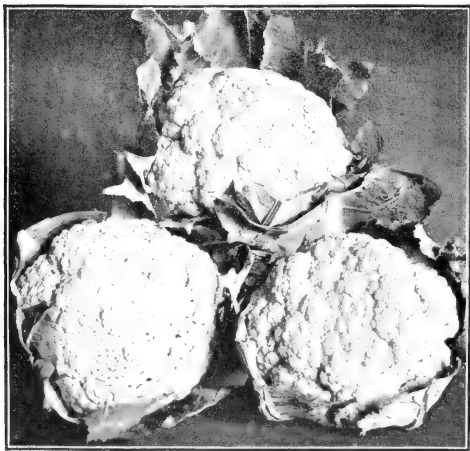
1 oz. will produce 1500 to 2000 plants

Culture—For early heads start indoors in February while the main or Fall crops may be sown in June and transplanted in July. Allow ample room for development and fertilize heavily.

Early Snowball (Perfected). Still the best main crop variety with large attractive heads of uniform size. This is the same strain we have offered so successfully for many years. Pkt. 20c., $\frac{1}{4}$ oz. 90c., $\frac{1}{2}$ oz. \$1.50, oz. \$2.80, $\frac{1}{4}$ lb. \$10.00.

Super-Snowball. Pedigreed stock of this extremely early variety grown from a European gardener's strain. It has a deeper curd of better weight than any other strain we have seen, and the entire crop heads evenly and uniformly. Why take chances with inferior strains when your total cost per acre is so little more with this Superstrain. Pkt. 20c., $\frac{1}{4}$ oz. \$1.00, $\frac{1}{2}$ oz. \$1.60, oz. \$2.90, $\frac{1}{4}$ lb. \$10.35.

Snowdrift. Very early, large white heads with tight curd. In season with Early Snowball. Pkt. 20c., $\frac{1}{4}$ oz. 90c., $\frac{1}{2}$ oz. \$1.50, oz. \$2.80, $\frac{1}{4}$ lb. \$10.00.



Cauliflower, Early Snowball



Carrot, Chantenay Red Cored

CELERY

1 oz. of seed will produce 5000 plants

Culture—Celery for early use should be sown indoors during February or March, and for Fall use sow seeds outdoors as early as the ground can be worked so that plants may be set in July. It requires rich, well-manured soil and plenty of moisture. Soil boards or celery paper may be used to blanch the stalks.

Celeriac or Knob Celery. Large bulbous edible roots of high quality. Pkt. 10c., $\frac{1}{2}$ oz. 30c., oz. 50c., $\frac{1}{4}$ lb. \$1.75.

Easy Blanching (Newark Market). Leaves green and stalks pure white when blanched and of excellent quality. Pkt. 10c., $\frac{1}{2}$ oz. 30c., oz. 50c., $\frac{1}{4}$ lb. \$1.75.

Giant Pascal. Large, solid green stalks which quickly blanch to a pure white. Our type is unusually free from "softs" and "strings." Pkt. 10c., $\frac{1}{2}$ oz. 35c., oz. 60c., $\frac{1}{4}$ lb. \$2.00.

Golden Self Blanching (Old type). Popular for late crops with large heavy hearts. Pkt. 10c., $\frac{1}{2}$ oz. 35c., oz. 65c., $\frac{1}{4}$ lb. \$2.25.

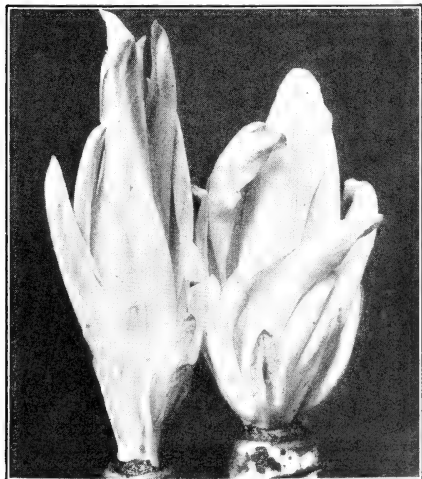
Utah or Salt Lake. Best of the green types. Extremely crisp, thick stalks of high quality which blanch very quickly with a smaller number of "softs" than in any other green celery. Pkt. 10c., $\frac{1}{2}$ oz. 40c., oz. 75c., $\frac{1}{4}$ lb. \$2.50.

White Plume. Beautiful white celery of luscious flavor. Pkt. 10c., $\frac{1}{2}$ oz. 40c., oz. 75c., $\frac{1}{4}$ lb. \$2.50.

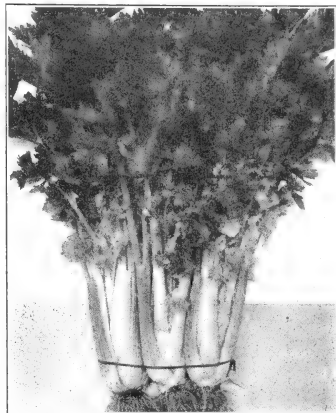
Wonderful or Golden Plume. Still the finest yellow Celery. Our proven stock produces very large stalks with thick heavy hearts and an absolute minimum of "softs" and "greens." The germination is strong and vigorous and no matter what you pay for Celery you can not secure a larger number of stalks than from this tried and tested seed. Pkt. 10c., $\frac{1}{2}$ oz. 35c., oz. 65c., $\frac{1}{4}$ lb. \$2.25.

COLLARDS

Collards are raised like Cabbage and are used for greens. They are non-heading cabbage-like plants. Pkt. 10c., oz. 20c., $\frac{1}{4}$ lb. 60c.



Chicory, French Endive



Celery, Wonderful or Golden Plume

CHICORY

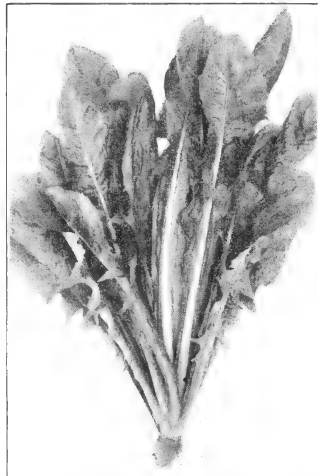
Catalogna (Italian Dandelion). Used for early greens, as the leaves are very tender. Pkt. 10c., $\frac{1}{2}$ oz. 35c., oz. 60c., $\frac{1}{4}$ lb. \$2.00.

French Endive (Witloof Chicory). Popular Fall and Winter salad plant. May be transplanted in dark cellar for Winter use. Pkt. 10c., oz. 50c., $\frac{1}{4}$ lb. \$1.75, lb. \$6.00.

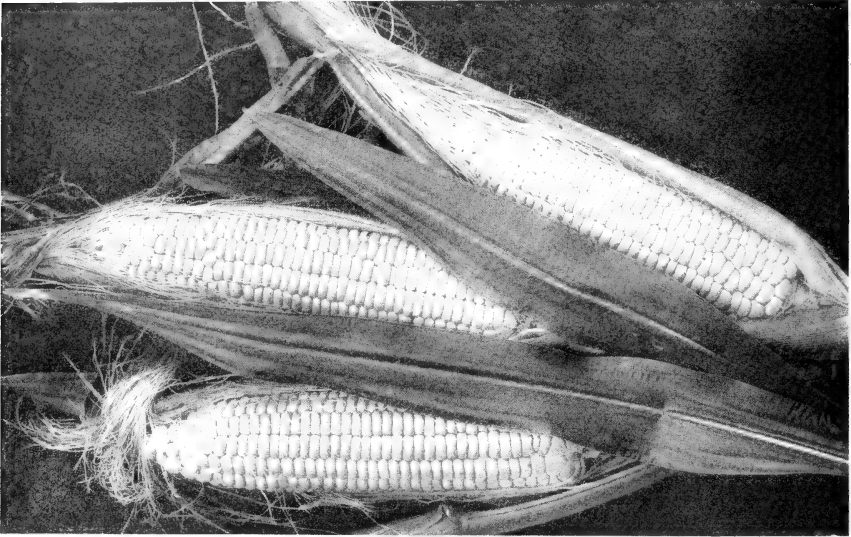
CRESS

True Water. Excellent for growing in frames and greenhouses or plant early in the Spring near the edge of a pond or stream. Pkt. 25c., oz. \$2.00.

Upland (Curled). Sow thickly in drills about 1 foot apart early in the Spring. May be planted at intervals of 2 weeks up to the 1st of August. Pkt. 10c., oz. 50c., $\frac{1}{4}$ lb. \$1.50, lb. \$5.00.



Chicory, Catalogna



Corn, Hart's Golden Bantam

CORN. Yellow Varieties

We prepay all transportation charges

1 lb. will plant about 250 hills; 12½ lbs. per acre if sown by hand; 15 lbs. per acre by machine

Culture—Plant about May 15th and in succession every two weeks until the middle of July; thus having a continuous crop all season. Plant DWARF varieties 3 feet apart each way, a few inches farther for TALLER varieties. Seed 5 to 6 kernels per hill, thin to 4 plants for best results.

Barden's Wonder Bantam. An extremely large kernel. Excellent for roasting, a trifle larger than Golden Bantam. Pkt. 15c., ½ lb. 25c., lb. 45c., 2 lbs. 75c., 3 to 10 lbs. 29c. per lb., 11 to 25 lbs. 28c. per lb., over 25 lbs. 26c. per lb.

Golden or Bantam Evergreen. The old favorite Evergreen type in a rich golden yellow. The standard for late Corn. Pkt. 15c., ½ lb. 25c., lb. 45c., 2 lbs. 75c., 3 to 10 lbs. 28c. per lb., 11 to 25 lbs. 27c. per lb., over 25 lbs. 25c. per lb.

Golden Colonel. For quality and sweetness. Irregular kernels like Country Gentleman but a pleasing creamy yellow in color. Pkt. 15c., ½ lb. 25c., lb. 45c., 2 lbs. 75c., 3 to 10 lbs. 28c. per lb., 11 to 25 lbs. 27c. per lb., over 25 lbs. 25c. per lb.

Golden Early Market or Extra Early Golden. There are many inferior strains of this most valuable of early varieties. Our stock has been grown under our own supervision since we secured our original strain, and we believe we have today as pure an early, large-eared strain as there is available. The 7 to 8 inch ears of broad, yellow kernels sell readily and are available when other gardeners are bringing in small undersized ears. Pkt. 15c., ½ lb. 25c., lb. 45c., 2 lbs. 75c., 3 to 10 lbs. 29c. per lb., 11 to 25 lbs. 28c. per lb., over 25 lbs. 26c. per lb.

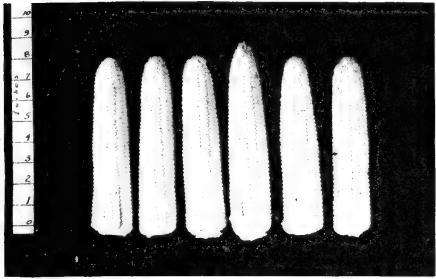
Golden Sunshine. Good for market as well as the home garden. For several years we have selected Golden Sunshine for earliness and size and can offer today a Corn nearly as early as Golden Market, a trifle longer but slimmer, possessing the delicious flavor of Golden Bantam. Pkt. 15c., ½ lb. 25c., lb. 45c., 2 lbs. 75c., 3 to 10 lbs. 29c. per lb., 11 to 25 lbs. 28c. per lb., over 25 lbs. 26c. per lb.

Hart's Golden Bantam. Extra early, extra heavy yielding and extra sweet. Eight rows of large, plump golden yellow kernels, bursting with sweetness. The very appearance of our Golden Bantam is irresistible. There is no heavier yielding, earlier or more attractive Bantam than this—the yardstick of quality. Pkt. 15c., ½ lb. 25c., lb. 45c., 2 lbs. 75c., 3 to 10 lbs. 29c. per lb., 11 to 25 lbs. 28c. per lb., over 25 lbs. 26c. per lb.

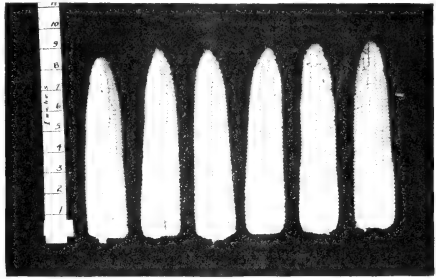
Twelve-Rowed Bantam. Highly prized for canning due to its heavy yield and delicious flavor. Pkt. 15c., ½ lb. 25c., lb. 45c., 2 lbs. 75c., 3 to 10 lbs. 28c. per lb., 11 to 25 lbs. 27c. per lb., over 25 lbs. 25c. per lb.

Whipple's Early Yellow. The largest, heaviest main crop variety. Pkt. 15c., ½ lb. 25c., lb. 45c., 2 lbs. 75c., 3 to 10 lbs. 28c. per lb., 11 to 25 lbs. 27c. per lb., over 25 lbs. 25c. per lb.

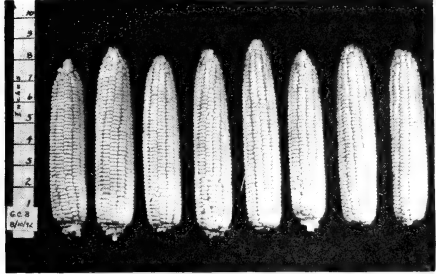
VARIOUS HYBRID CORNS. See page 12



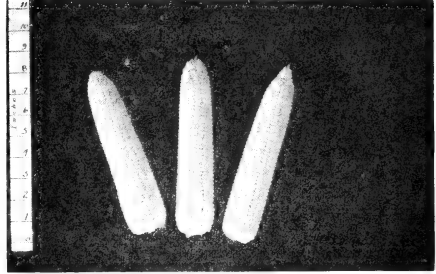
MARCROSS



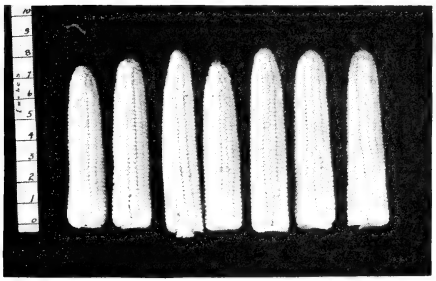
CARMELCROSS



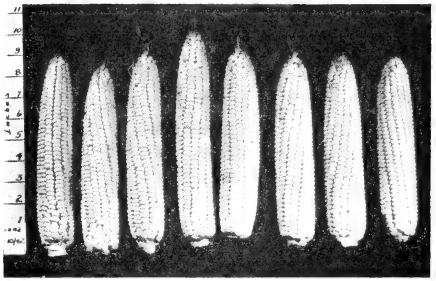
GOLDEN CROSS BANTAM



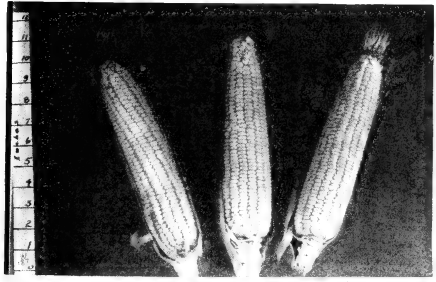
LINCOLN



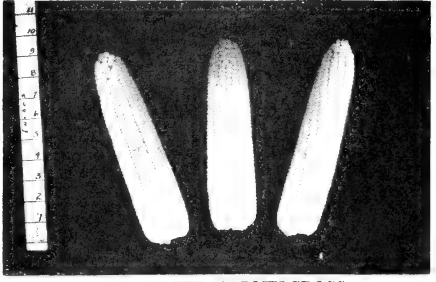
LEXINGTON



IOANA



WILSON



IMPROVED CARMELCROSS

These Corn photographs are furnished through the courtesy of the Connecticut Agriculture Experiment Station



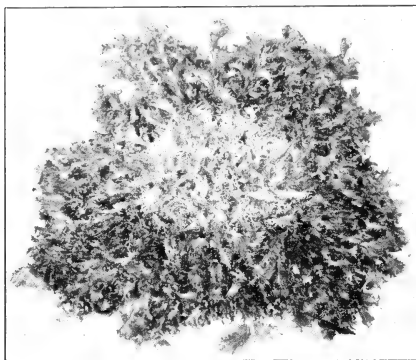
Cucumber, A & C

CUCUMBER

1 oz. will plant 60 hills. 2 lbs. of seed per acre

Culture—Cucumbers may be planted in hills 4 to 5 feet apart as soon as the ground is thoroughly warm and may be sown as late as July. Fertile, light, well-drained soil is best, and well rotted manure in the hills and a side dressing of commercial fertilizer is very beneficial.

- A & C.** Long and attractive. Probably the handsomest Cucumber grown with 11 inch fruits, very deep dark green in color, uniform and cylindrical throughout their length, terminating in blunt, well rounded ends. Handsome and desirable both for shipping and for market gardens. Our strain is topnotch. Pkt. 10c., oz. 25c., $\frac{1}{4}$ lb. 85c., lb. \$3.20.
- Black Diamond.** Early and prolific. Much prized for its ability to hold its color and firmness for a long period of time. Pkt. 10c., oz. 20c., $\frac{1}{4}$ lb. 65c., lb. \$2.45.
- Boston Pickling.** The standard for commercial pickling use. Blunt ended fruit, 6 inches long. Pkt. 10c., oz. 25c., $\frac{1}{4}$ lb. 80c., lb. \$2.70.
- China Long.** An edible novelty 15 to 20 inches long. Pkt. 10c., oz. 25c., $\frac{1}{4}$ lb. 90c., lb. \$3.45.
- Davis Perfect.** Very long, straight fruit tapering at the ends with a rich deep green color. Pkt. 10c., oz. 20c., $\frac{1}{4}$ lb. 65c., lb. \$2.45.
- Early Fortune.** A splendid white spine type. Very early and productive. Color light green with a trace of white on the stem. Pkt. 10c., oz. 20c., $\frac{1}{4}$ lb. 65c., lb. \$2.45.
- Hybrid White Spine.** For heaviest yields. Although a mid-season variety the extra yields per acre of this long, handsome Cucumber makes it one of the most valuable for a gardener to grow. It holds its rich green color a long time and stands up extremely well. Our strain is as fine as it is possible to secure. Pkt. 10c., oz. 20c., $\frac{1}{4}$ lb. 65c., lb. \$2.45.
- Improved Long Green.** Fruit long, straight and dark green, used for slicing, pickling or market. Pkt. 10c., oz. 25c., $\frac{1}{4}$ lb. 85c., lb. \$3.20.
- Improved White Spine.** Early and productive. Pkt. 10c., oz. 20c., $\frac{1}{4}$ lb. 65c., lb. \$2.45.
- Longfellow.** Longest Cucumber grown. Fruits 12 to 15 inches long, dark green, uniform and attractive. This is the *premium* Cucumber and we consider it the highest quality Cuke of all. Naturally we have devoted considerable time to the perfection of this splendid type. Pkt. 10c., oz. 25c., $\frac{1}{4}$ lb. 85c., lb. \$3.20.
- National Pickling.** An excellent pickling variety. Blunt ending, making a stocky pickle. Pkt. 10c., oz. 25c., $\frac{1}{4}$ lb. 85c., lb. \$3.20.
- Perfected Pickling.** Prolific and early. Our selection of an ideal pickling variety. Early, highly productive, uniformly shaped and colored, it leaves little to be desired. When mature, the fruits are 5 to 6 inches long, straight, blunt ended and a medium deep green. Pkt. 10c., oz. 20c., $\frac{1}{4}$ lb. 80c., lb. \$2.70.
- Straight Eight.** Handsome and prolific. Every fruit uniformly 8 inches long—as though poured from a die—straight and smooth and a pleasing dark green in color. This uniformity in size and color coupled with its extremely high yield deserve for it a place on every trucker's list. Our strain is from the originator's stock. Pkt. 10c., oz. 25c., $\frac{1}{4}$ lb. 80c., lb. \$2.95.



Endive, Green Curled

DILL

1 oz. will sow 50 feet of row

A valuable herb used largely in Dill Pickles.

Long Island Mammoth. Very large and prolific. Pkt. 10c., oz. 20c., $\frac{1}{4}$ lb. 60c., lb. \$1.75.

EGG PLANT

1 oz. will produce about 2000 plants

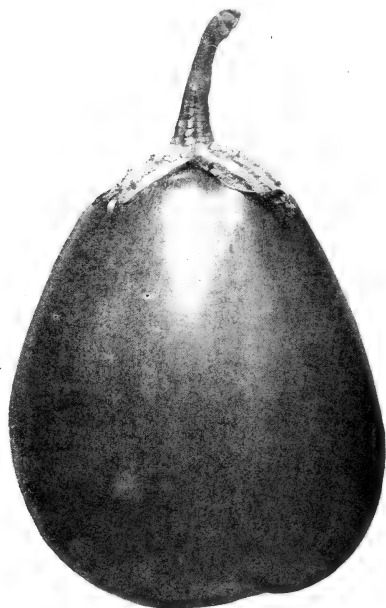
Culture—Egg Plant requires rich, sandy, warm soil and must be started indoors in February. Its culture is the same as for peppers.

Black Beauty. Strong, sturdy plants with a heavy yield of beautiful dark purple fruit. We have an excellent strain. Pkt. 10c., $\frac{1}{2}$ oz. 30c., oz. 50c., $\frac{1}{4}$ lb. \$1.60, lb. \$6.25.

New Hampshire Hybrid. A new smaller headed type which bears heavily and produces fruit earlier than other strains. Pkt. 10c., $\frac{1}{2}$ oz. 30c., oz. 50c., $\frac{1}{4}$ lb. \$1.60, lb. \$6.25.

New York Improved. Later and larger than Black Beauty. Pkt. 10c., $\frac{1}{2}$ oz. 30c., oz. 50c., $\frac{1}{4}$ lb. \$1.60, lb. \$6.25.

Long purple Italian. Early, small and club-shaped. Pkt. 10c., $\frac{1}{2}$ oz. 30c., oz. 50c., $\frac{1}{4}$ lb. \$1.60, lb. \$6.25.



Egg Plant, New York Improved

ENDIVE

1 oz. will sow 150 feet of drill

Culture—Endive is sown in the open ground as early as it can be worked and at frequent intervals until July. Sow in drills and thin to about 6 inches. Blanch by tying the outer leaves together over the center.

Full Hearted Escarolle or Broad Leaf Batavian. Our selection produces tightly packed heads with broad deep leaves, blanching easily. Pkt. 10c., oz. 20c., $\frac{1}{4}$ lb. 50c., lb. \$1.90.

Green Curled. Very fine cut and curled leaves making immense heads. Pkt. 10c., oz. 20c., $\frac{1}{4}$ lb. 50c., lb. \$1.90.

FENNEL

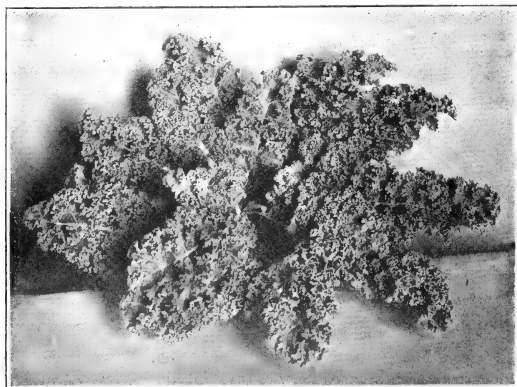
Sweet Florence. The true Italian strain with large, bulbous roots. Edible as Celery with anise flavor. Pkt. 10c., oz. 50c., $\frac{1}{4}$ lb. \$1.50, lb. \$5.00.

KALE

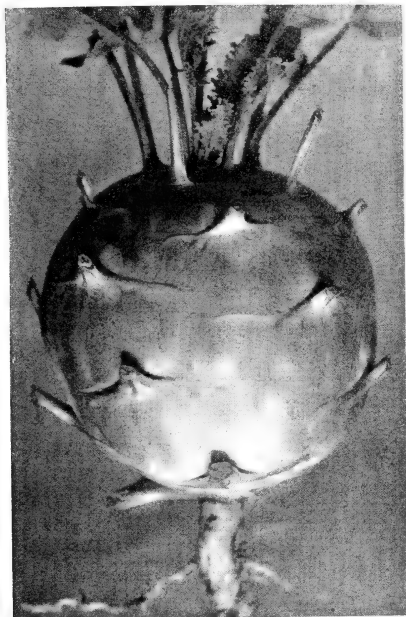
Culture—May be sown from early Spring until late August, but is at its best after frost. Plant in rows 18 inches to 2 feet apart and thin to 12-15 inches in the row.

Dwarf Green Curled. Dwarf and spreading. Very curly and a deep blue-green in color. Pkt. 10c., oz. 45c., $\frac{1}{4}$ lb. \$1.50, lb. \$5.00.

Dwarf Siberian. Broad, light green leaves curled on the edges. Pkt. 10c., oz. 30c., $\frac{1}{4}$ lb. 90c., lb. \$4.00.



Kale, Dwarf Green Curled



Kohlrabi, White Vienna



Leek, Large American Flag

KOHLRABI

Culture—Sow in rows 12-18 inches apart and thin to about 6 inches in the row.

White Vienna. Early white round snowy-white bulbs, sweet and delicious with a mild turnip flavor. Pkt. 10c., oz. 55c., $\frac{1}{4}$ lb. \$1.75, lb. \$6.85.

LEEK

Sow in rows 12 inches apart and thin to about 4 to 6 inches. Hill up earth about the roots to blanch well before using

Large American Flag. Large, thick, sturdy stalks with smooth clear pearly white bottoms blanching far up. The finest market strain. Pkt. 10c., oz. \$1.00, $\frac{1}{4}$ lb. \$3.50.

LETTUCE

A packet will sow about 30 ft. of row; an ounce 250 feet.

Culture—Lettuce grows quickly in cool seasons of the year and produces best in a rich, moist, cool soil. Make successive sowings until June and again in August and September. Head Lettuce should be thinned or transplanted a distance of about 1 foot apart. The loose leaf varieties may be thinned to 4 inches when they come up and then every other one taken out and used as they get larger. Iceberg varieties are very popular for their crispness.

Iceberg Types

Iceberg. Large solid heads with curled, blistered leaves; a pleasing light green. Pkt. 10c., oz. 30c., $\frac{1}{4}$ lb. 85c., lb. \$2.85.

Imperial No. 44. The most dependable of the Iceberg types; will form crisp, medium sized heads under almost any condition. Pkt. 10c., oz. 30c., $\frac{1}{4}$ lb. 85c., lb. \$3.10.

Imperial No. 847. Large solid oval heads which stand hot weather better than most types and are resistant to Brown Blight. Pkt. 10c., oz. 30c., $\frac{1}{4}$ lb. 85c., lb. \$3.10.

New York Head No. 12 or California Iceberg. Our improved early strain of this unsurpassed lettuce is practically 100% sure heading and is especially valuable for early Spring sowing. Pkt. 10c., oz. 30c., $\frac{1}{4}$ lb. 95c., lb. \$3.40.

New York No. 515. A "Hot Weather" Lettuce. A wonderful strain of New York head which is earlier and withstands hot, dry weather much better. The type and appearance is very similar to No. 12 with few outside leaves and large, solid heads, and is an attractive bright green in color. Try this by all means. Our strain is very dependable. Pkt. 10c., oz. 30c., $\frac{1}{4}$ lb. 95c., lb. \$3.40.

Butter Head Varieties

Big Boston Head. Our strain heads uniformly and stands a long time before bolting to seed. Pkt. 10c., oz. 25c., $\frac{1}{4}$ lb. 70c., lb. \$2.35.

Hartford Bronze Head (Crisp as Ice). Early, tight, compact heads tinged with bronze. Very crisp and of high quality. Pkt. 10c., oz. 20c., $\frac{1}{4}$ lb. 65c., lb. \$2.10.

Tennisball Black Seed. Solid heads, crisp, heat resistant tender leaves. Excellent for Summer planting. Pkt. 10c., oz. 35c., $\frac{1}{4}$ lb. \$1.00.

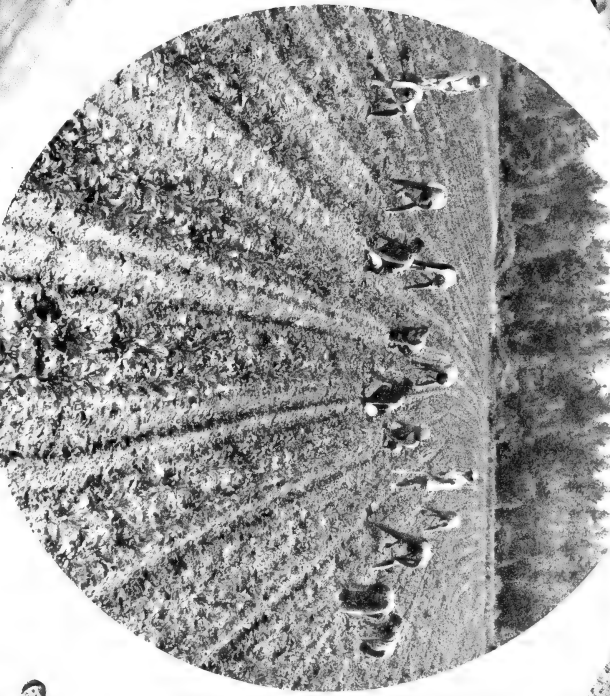
White Boston. Uniform and sure heading. Our strain shows a remarkably high resistance to "Tip-burn." Pkt. 10c., oz. 20c., $\frac{1}{4}$ lb. 65c., lb. \$2.10.

FIELD OF BEATED HUBBARD SQUASH ON OUR CORNIN, MAINE FARM



We present herewith a few pictures of our farms in Maine. We operate four farms with nearly six hundred acres of seed crops, and contract with farmers for approximately two thousand acres of seed Beans.

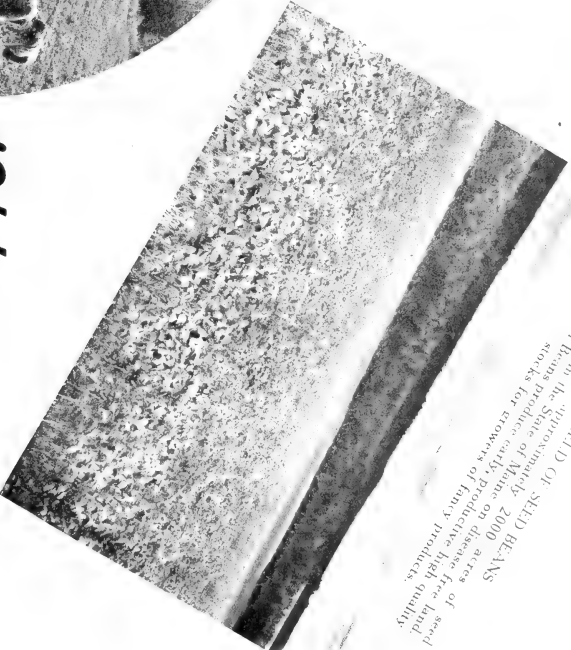
1892



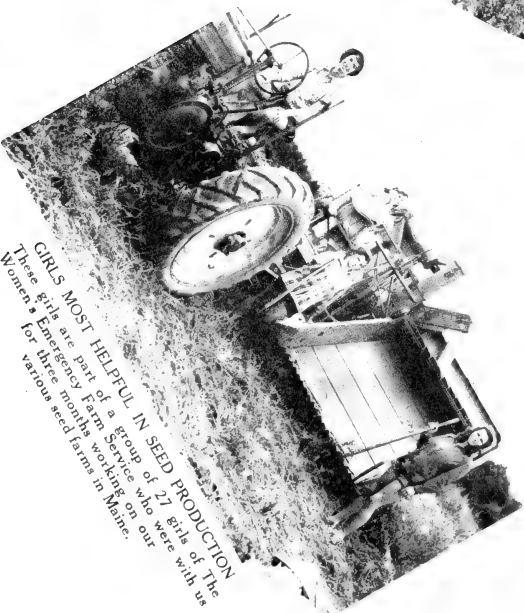
BEETS GROWN FOR INCREASE A field of our Beets which are to be placed in storage for the production of seed in 1944.

We are prepared to take care of your orders promptly and wish for you bountiful crops.

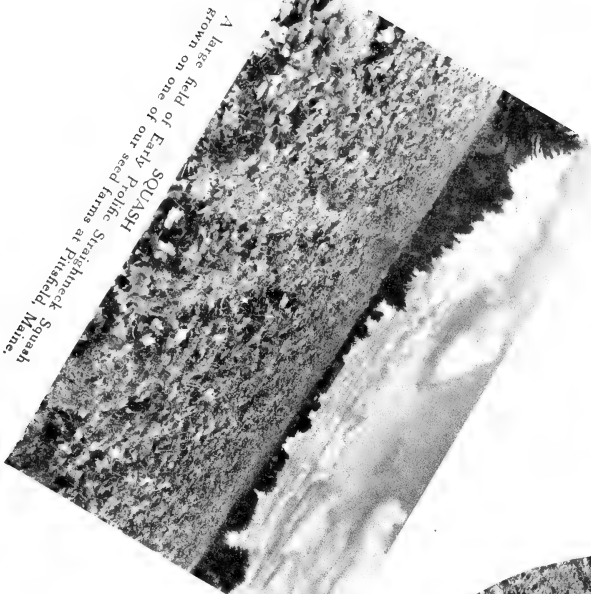
1944



A FIELD OF SEED BEANS We grow approximately 2000 acres of seed Beans in the State of Maine. Our Beans produce early, productive high quality crops for growers of family products.



GIRLS MOST HELPFUL IN SEED PRODUCTION These girls are part of a group of 27 girls of the Women's Emergency Farm Service who were with us for three months working on our various seed farms in Maine.



A large field of Early Profic Squash grown on one of our seed farms at Pittsfield, Maine.

LETTUCE—Continued

Cos or Romaine

White Paris Cos or Romaine. Self folding. Long large heads of the highest quality. Of upright growth a foot high, blanches white inside. Flavor sweet and desirable for lettuce salad. Pkt. 10c., oz. 20c., $\frac{1}{4}$ lb. 65c., lb. \$2.10.

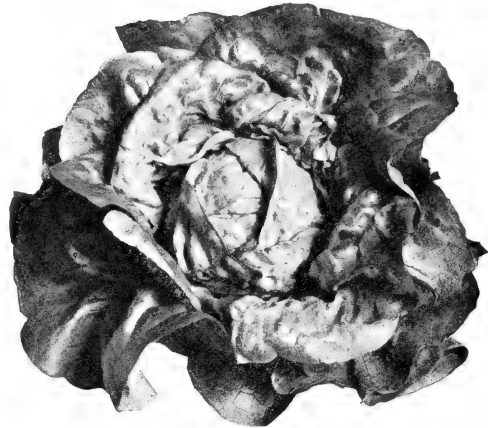
Loose Leaf Varieties

Early Prize Head. Crisp loose heads deeply curled and tinged with reddish brown. Pkt. 10c., oz. 20c., $\frac{1}{4}$ lb. 65c., lb. \$2.10.

Grand Rapids Special. Large, robust well curled heads in a delightful light green. Our strain is superlative. Pkt. 10c., oz. 20c., $\frac{1}{4}$ lb. 65c., lb. \$2.10.

Simpsons Early Curled. A fast growing leaf lettuce for home gardeners. Pkt. 10c., oz. 20c., $\frac{1}{4}$ lb. 65c., lb. \$2.10.

Wonder of 4 Seasons. A delightful new lettuce. Bronze leaf and tender, delicious, a lettuce to be desired in every garden. Pkt. 10c., oz. 25c., $\frac{1}{4}$ lb. 85c., lb. \$3.10.



Lettuce, Big Boston Head (See page 15)

MUSKMELON

A packet of seed will plant about 20 hills. An ounce, 100 hills; 2 to 3 lbs. per acre

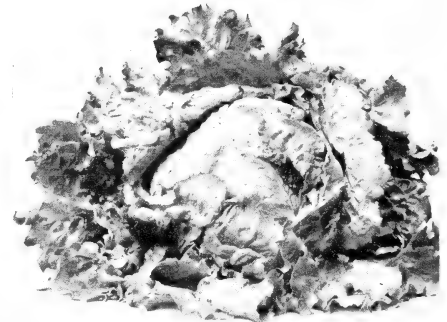
Culture—Muskmelons thrive on rich warm sandy loam and should be sown in raised hills spaced about 4 feet apart after all danger of frost is passed. Thin to about 3 plants in a hill.

Benders Surprise. Northern grown and carefully selected. Attractive appearance, fine flavor, large size and long keeping qualities, make this wonderful variety the most desirable on the whole melon list. Our strain is one of the finest on the market. Pkt. 10c., oz. 30c., $\frac{1}{4}$ lb. 90c., lb. \$3.40.

Delicious. The earliest large melon grown. This popular improvement on the Bender's ripens 1 week to 10 days earlier and grows nearly as large. It is really delicious and sells readily on the roadside stand. Our strain is from hand cut melons, and is the equal of any on the market. Pkt. 10c., oz. 30c., $\frac{1}{4}$ lb. 90c., lb. \$3.40.

Emerald Gem. Small, round, green melons with yellow flesh. Early, sweet and productive. Pkt. 10c., oz. 30c., $\frac{1}{4}$ lb. 90c., lb. \$3.40.

Golden Charnplain. The earliest melon grown. Oval shaped and of good quality. Best for localities with short growing season. Pkt. 10c., oz. 30c., $\frac{1}{4}$ lb. 90c., lb. \$3.40.



Lettuce, New York Head No. 12, or California Iceberg (See page 15)

Hearts of Gold. Medium, round and netted, orange-yellow flesh of high flavor and quality. An excellent shipper. Pkt. 10c., oz. 30c., $\frac{1}{4}$ lb. 90c., lb. \$3.40.

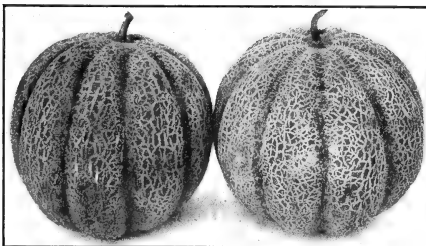
Honey Rock. Sweet and delicious. These round melons with their light grey net-work are packed with deep-orange delicious flesh and are hard as a rock even when fully ripened. This melon is one of the most attractive grown. Pkt. 10c., oz. 30c., $\frac{1}{4}$ lb. 90c., lb. \$3.40.

Osage (Miller's Cream). Oval shaped, dark green and netted with yellow flesh. Pkt. 10c., oz. 30c., $\frac{1}{4}$ lb. 90c., lb. \$3.40.

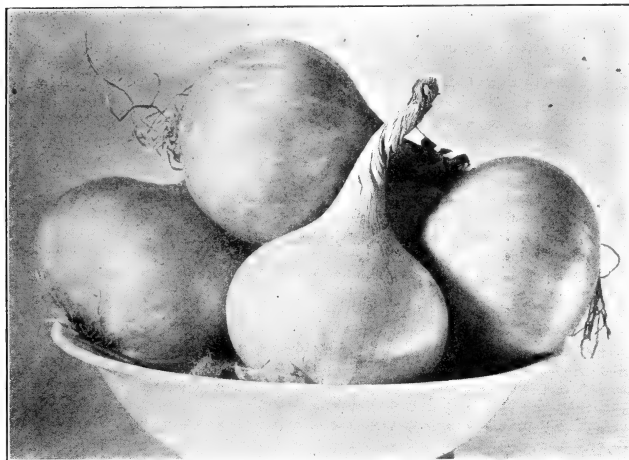
Pride of Wisconsin. Nearly round fruits, 6 x 5 $\frac{1}{2}$ inches with a hard, grayish, green rind, coarsely netted. The flesh is thick, juicy and very sweet flavored and is a deep salmon in color. Pkt. 10c., oz. 30c., $\frac{1}{4}$ lb. 90c., lb. \$3.40.

Rocky Ford. A small, high flavored, light green fleshed melon. Pkt. 10c., oz. 30c., $\frac{1}{4}$ lb. 90c., lb. \$3.40.

Honey Dew. A green melon, late in maturing, round, thick meated, luscious in flavor. Pkt. 10c., oz. 30c., $\frac{1}{4}$ lb. 90c., lb. \$3.40.



Muskmelon, Benders Surprise



Onion, Southport Yellow Globe

WATERMELON

1 oz. will plant about 30 hills; 4 lbs. per acre

Culture—They do best in rich, sandy soils but well drained loam is also suitable. Do not plant until the ground is very warm and space in hills 6 to 8 feet each way thinning to 4 plants to each hill.

Coles Early. Round, deep red and sweet. Pkt. 10c., oz. 15c., $\frac{1}{4}$ lb. 40c., lb. \$1.25.

Citron. Red seeded for preserves. Pkt. 10c., oz. 20c., $\frac{1}{4}$ lb. 35c., lb. \$1.15.

Early Canada. An extremely early, small, round headed melon for Northern latitudes. Pkt. 10c., oz. 15c., $\frac{1}{4}$ lb. 50c., lb. \$1.50.

Ice Cream. Oblong, very sweet, bright scarlet flesh. Pkt. 10c., oz. 15c., $\frac{1}{4}$ lb. 40c., lb. \$1.25.

Kleckley's Sweet. An early melon, popular with every grower. Pkt. 10c., oz. 15c., $\frac{1}{4}$ lb. 40c., lb. \$1.50.

Stone Mountain. Best for market. A large, round, blocky melon. Very sweet scarlet flesh with few seeds. Pkt. 10c., oz. 15c., $\frac{1}{4}$ lb. 40c., lb. \$1.25.

Wondermelon. Heaviest bearer. Long, thick melons with glossy green skin and deep scarlet flesh, very sweet and juicy. One of the most prolific of all melons. Pkt. 10c., oz. 15c., $\frac{1}{4}$ lb. 40c., lb. \$1.25.

MUSTARD

1 pkt. of seed will sow 18 feet of row, 1 oz. 300 ft.

Culture—Mustard may be used for salads or cooked for greens, grows rapidly and should be sown in rows 12 inches apart.

Fordhook Famous. Large, deep green leaves, very pungent. Pkt. 10c., oz. 20c., $\frac{1}{4}$ lb. 55c., lb. \$1.65.

Southern Giant Curled. Large green crumpled leaves of fine flavor. Pkt. 10c., oz. 20c., $\frac{1}{4}$ lb. 55c., lb. \$1.65.

OKRA

A pkt. of seed will be sow 15 ft. of row; an oz. 50 feet.

Culture—Sown in rows and thinned from 6 to 8 inches. Okra is used as a vegetable or in soups. Pods should be picked when small and tender.

Perkins Mammoth. Large green pods. Pkt. 10c., oz. 20c., $\frac{1}{4}$ lb. 30c., lb. 80c.

White Velvet. Round light green pods. Pkt. 10c., oz. 20c., $\frac{1}{4}$ lb. 30c., lb. 80c.

ONIONS

1 pkt. of seed will sow about 25 feet of row; 1 oz. 200 feet; 4 to 5 lbs. per acre

Culture—Onions must be sown very early on fertile, well drained soil in rows 1 to 1½ feet apart. Cover seed lightly and thin to about 2 inches. Onion Sets may be planted in similar rows as early as the ground can be worked.

Early Yellow Globe. The finest extra early yellow. Truly enormous crops of fine globe shaped, bright, straw-colored bulbs make this Onion the most popular variety introduced in recent years. Their thick skin does not shuck off in handling and keeps very well in storage. We handle only the originator's stock. Pkt. 10c., $\frac{1}{2}$ oz. 40c., oz. 70c., $\frac{1}{4}$ lb. \$2.30, lb. \$7.60.

Ebenezer. A fine mild, light yellow Onion with unexcelled keeping qualities. Very desirable for "set" Onions. Pkt. 10c., $\frac{1}{2}$ oz. 40c., oz. 70c., $\frac{1}{4}$ lb. \$2.30, lb. \$7.60.

Prizetaker. A very large, handsome globe shape of mild flavor. Pkt. 10c., $\frac{1}{2}$ oz. 45c., oz. 85c., $\frac{1}{4}$ lb. \$2.65, lb. \$9.50.

Riverside Sweet Spanish. These large, handsome, yellow Onions are not at all difficult to grow provided they are started early and will repay the extra time required. The bulbs often weigh a pound or more and have excellent storage qualities and are always very sweet and mild. Every Onion grower should devote a portion of his acreage to this profitable variety. Pkt. 10c., $\frac{1}{2}$ oz. 45c., oz. 85c., $\frac{1}{4}$ lb. \$2.65, lb. \$9.50.

Southport Red Globe. A perfect globe shaped red and a splendid keeper. Pkt. 10c., $\frac{1}{2}$ oz. 40c., oz. 85c., $\frac{1}{4}$ lb. \$2.30, lb. \$7.60.

Southport White Globe. A large and very handsome globe which always commands high prices. Pkt. 15c., $\frac{1}{2}$ oz. 45c., oz. 85c., $\frac{1}{4}$ lb. \$2.65, lb. \$9.50.

Southport Yellow Globe. Somewhat later than globe Danvers but of a more attractive globe shape and appearance. Pkt. 10c., $\frac{1}{2}$ oz. 40c., oz. 85c., $\frac{1}{4}$ lb. \$2.30, lb. \$7.60.

Wethersfield Large Red. The popular variety. A very large, flat deep red. Pkt. 10c., $\frac{1}{2}$ oz. 40c., oz. 70c., $\frac{1}{4}$ lb. \$2.30, lb. \$7.60.

White Portugal. Flat white bulbs of mild flavor, excellent for pickles and early "greens." Pkt. 10c., $\frac{1}{2}$ oz. 45c., oz. 85c., $\frac{1}{4}$ lb. \$2.65, lb. \$9.50.

White Sweet Spanish. The largest of the white onions, globular, mild flavor and firm. Pkt. 15c., $\frac{1}{2}$ oz. 45c., oz. 85c., $\frac{1}{4}$ lb. \$2.65.

Yellow Globe Danvers. The onions are of globe shape with small necks and deep orange-yellow skin. The flesh is creamy white and of mild flavor. The onions are firm, keep well, are of good size and medium early. Pkt. 10c., $\frac{1}{2}$ oz. 40c., oz. 70c., $\frac{1}{4}$ lb. \$2.30, lb. \$7.60.

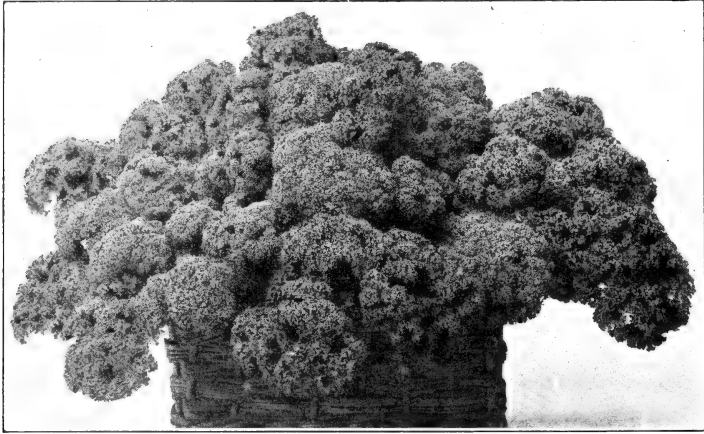
Onion Sets

We prepay all transportation charges

1 lb. will set 74 to 100 feet of row, depending upon size of sets

Culture—Onion Sets may be planted just as early as the ground can be worked. Sets should be planted about 2 inches apart and covered about 2 inches deep.

Ebenezer Yellow **Red** **White**
Lb. (qt.) 50c., 8 lbs. (pk.) \$3.00



Parsley, Triple Curled

PARSLEY

1 pkt. will sow 50 feet of row; 1 oz. 200 feet

Culture—Used for garnishing and flavoring; Parsley needs but a small space in the garden. Sown in Spring or Summer plants may be left until the following Spring.

Hamburg or Turnip Rooted. The roots are boiled and served like Parsnips. A delightful flavor. Also used in flavoring soups and stews. May be stored in sand and used all Winter. Pkt. 10c., oz. 20c., $\frac{1}{4}$ lb. 40c., lb. \$1.45.

Triple Curled. An extremely handsome new strain with very densely curled rich dark green leaves on long stems. Pkt. 10c., oz. 20c., $\frac{1}{4}$ lb. 45c., lb. \$1.45.

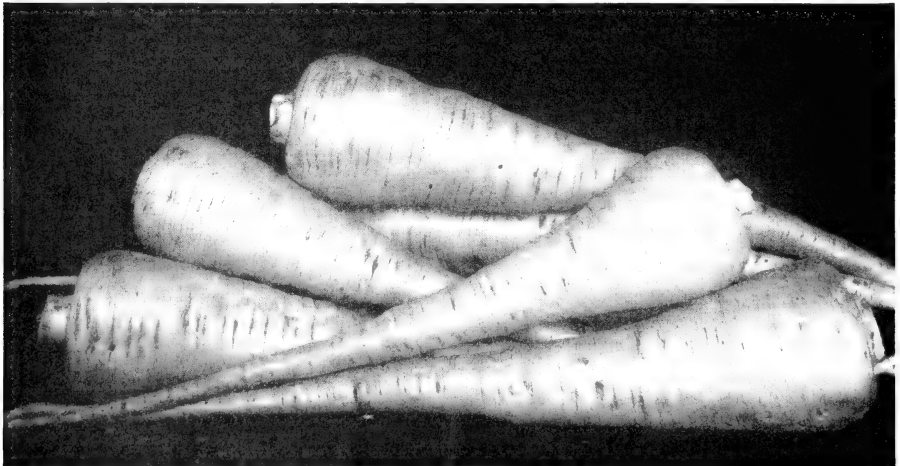
Plain Leaved. Uncurled. Used for flavoring and drying. Pkt. 10c., oz. 20c., $\frac{1}{4}$ lb. 45c., lb. \$1.50.

PARSNIPS

1 pkt. of seed will sow 25 feet of row; 1 oz. 150 feet

Culture—Sow seed in May in rows 2 feet apart. Mellow soil for best development is advised; thin to about 2 or 3 inches. Leave roots until frost for a more subtle flavor, or Winter over in a pit until the following Spring.

Ideal Hollow Crown. A beautiful snowy white. Handsome, large roots, long and tapering but smooth and fine with no side roots or "fingers" Pkt. 10c., oz. 20c., $\frac{1}{4}$ lb. 50c., lb. \$1.65.



Parsnip, Ideal Hollow Crown

PEAS

We prepay all transportation charges

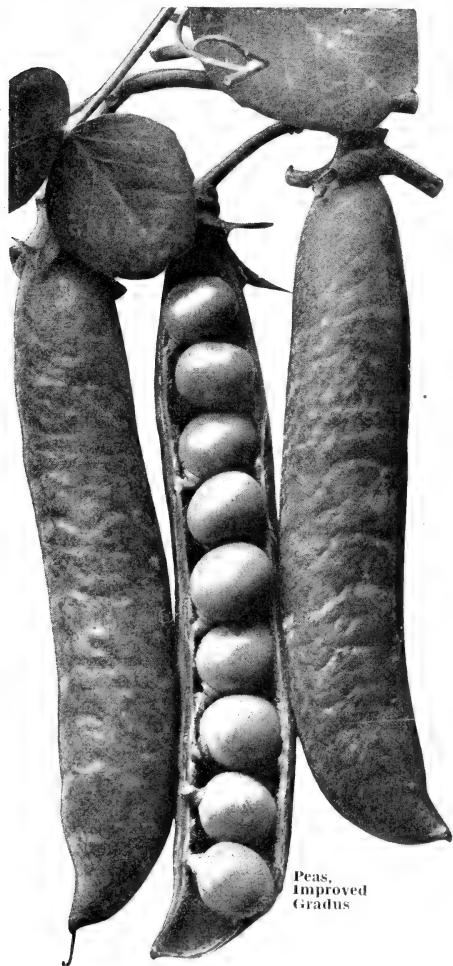
1 lb. of seed will sow 100 feet; 90 lbs. per acre

Culture—Plant peas as early as ground can be worked. Sow in rows 2 feet or more apart about 2 inches deep. Follow with subsequent plantings to insure a continuous supply all season. It is well to inoculate Peas.

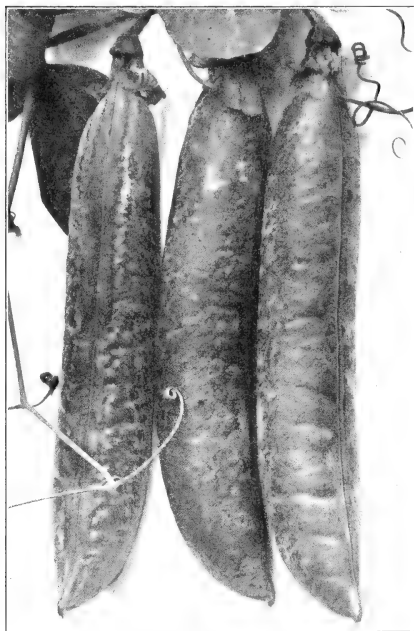
Early Varieties

Alaska. A smooth seeded variety, earliest of all. A short pod, hardy and productive. Pkt. 15c., $\frac{1}{2}$ lb. 25c., lb. 45c., 2 lbs. 70c., 3 to 10 lbs. 29c. per lb., 11 to 25 lbs. 28c. per lb., over 25 lbs. 26c. per lb.

Hundredfold (Improved Blue Bantam and Laxtonian). The best Pea in the so-called Laxtonian or early dwarf type. The 4 inch pods are a deep blue-green in color and are borne on vines about 18 inches high. This Pea is an extremely heavy yielder and produces a large quantity of very uniform pods. Pkts. 15c., $\frac{1}{2}$ lb. 30c., lb. 50c., 2 lbs. 80c., 3 to 10 lbs. 31c. per lb., 11 to 25 lbs. 30c. per lb., over 25 lbs. 28c. per lb.



Peas,
Improved
Gradus



Peas, Improved Dark Podded Telephone
(Alderman type) (See page 22)

Improved Gradus. Early large podded Pea of high quality. Vines $2\frac{1}{2}$ feet high. Pkt. 15c., $\frac{1}{2}$ lb. 30c., lb. 50c., 2 lbs. 80c., 3 to 10 lbs. 29c. per lb., 11 to 25 lbs. 28c. per lb., over 25 lbs. 26c. per lb.

Laxton's Progress. Large, handsome, well filled pods borne on vines 15 to 18 inches high, this Pea is most profitable to follow the extra early taller sorts. Our strain has been very carefully rogued. Pkt. 15c., $\frac{1}{2}$ lb. 30c., lb. 50c., 2 lbs. 80c., 3 to 10 lbs. 31c. per lb., 11 to 15 lbs. 30c. per lb., over 25 lbs. 28c. per lb.

Little Marvel. A very prolific Pea of extremely high table quality. The Peas and pods are somewhat small but a tremendous amount of pods may be harvested from only a short row. The pods are borne in pairs. Pkt. 15c., $\frac{1}{2}$ lb. 30c., lb. 50c., 2 lbs. 80c., 3 to 10 lbs. 29c. per lb., 11 to 25 lbs. 28c. per lb., over 25 lbs. 26c. per lb.

Nott's Excelsior (Premier). One of the finest early dwarf varieties. A heavy yielder of very high quality. Pkt. 15c., $\frac{1}{2}$ lb. 30c., lb. 50c., 2 lbs. 80c., 3 to 10 lbs. 29c. per lb., 11 to 25 lbs. 28c. per lb., over 25 lbs. 26c. per lb.

Sutton's Excelsior. Larger Peas and pods than in the Nott's type. Pkt. 15c., $\frac{1}{2}$ lb. 30c., lb. 50c., 2 lbs. 80c., 3 to 10 lbs. 30c. per lb., 11 to 25 lbs. 29c. per lb., over 25 lbs. 27c. per lb.

Thomas Laxton. Very early with medium sized pods of the highest quality. Pkt. 15c., $\frac{1}{2}$ lb. 30c., lb. 50c., 2 lbs. 80c., 3 to 10 lbs. 29c. per lb., 11 to 25 lbs. 28c. per lb., over 25 lbs. 26c. per lb.

World's Record. Probably the earliest large podded Pea under cultivation. World's Record is the best money maker for the gardener and is a prolific and heavy bearing strain; one of the finest on the market. You will make no mistake in planting World's Record. Pkt. 15c., $\frac{1}{2}$ lb. 30c., lb. 50c., 2 lbs. 80c., 3 to 10 lbs. 29c. per lb., 11 to 25 lbs. 28c. per lb., over 25 lbs. 26c. per lb.

PEAS—Continued

Main Crop Dwarf Varieties

Dwarf Alderman. One of the finest large podded dwarf varieties, the pods being borne in great profusion on strong and sturdy vines about 2 feet high. A very attractive variety which commands good prices on the midseason market. Pkt. 15c., $\frac{1}{2}$ lb. 30c., lb. 50c., 2 lbs. 80c., 3 to 10 lbs. 29c. per lb., 11 to 25 lbs. 28c. per lb., over 25 lbs. 26c. per lb.

Giant Hamper. The earliest, largest podded and most productive Pea in existence. About 2 days later than Progress, but with larger and longer pods. Pkt. 15c., $\frac{1}{2}$ lb. 30c., lb. 50c., 2 lbs. 80c., 3 to 10 lbs. 31c. per lb., 11 to 25 lbs. 30c. per lb., over 25 lbs. 28c. per lb.

Hart's Icer No. 95 (Our popular midseason variety). Its large deep green pods are borne on rich green dwarf vines and mature just after the very early varieties. Thus it catches the market at a time when prices are generally high. Its ability to stand hot, dry weather makes it perfect for late plantings. Do not however, make plantings until the weather is fully settled. Pkt. 15c., $\frac{1}{2}$ lb. 30c., lb. 50c., 2 lbs. 80c., 3 to 10 lbs. 31c. per lb., 11 to 25 lbs. 30c. per lb., over 25 lbs. 28c. per lb.

Roger's Gilbo. A wonderful new mammoth podded main crop. A midseason pea producing immense pods on very dwarf vines. The yield is extremely heavy and the handsome dark green pointed pods are in our opinion an excellent Pea for the market. A trifle earlier and harder than other dwarf varieties. Pkt. 15c., $\frac{1}{2}$ lb. 30c., lb. 50c., 2 lbs. 80c., 3 to 10 lbs. 29c. per lb., 11 to 25 lbs. 28c. per lb., over 25 lbs. 26c. per lb.

Tall Variety

Improved Dark Podded Telephone (Alderman type). Tremendous pods, growing nearly 6 inches long on tall vines. This is the finest of all tall Peas and out-yields all others. The vines must be supported for best results. Pkt. 15c., $\frac{1}{2}$ lb. 30c., lb. 50c., 2 lbs. 80c., 3 to 10 lbs. 29c. per lb., 11 to 25 lbs. 28c. per lb., over 25 lbs. 26c. per lb.

PEPPER

An ounce will produce about 1000 plants

Culture—Peppers must be started indoors or under glass very early. They prefer light well fertilized soil and should be set in rows 2 to 3 feet apart and about 18 inches in the row.

California Wonder. Largest of all. Mammoth fruits sometimes weighing a pound with very thick meaty walls. Unusually solid and heavy, regular in shape, uniform in size and very high yielding. Our strain is very refined. Pkt. 10c., $\frac{1}{2}$ oz. 35c., oz. 60c., $\frac{1}{4}$ lb. \$2.25, lb. \$7.95.

Harris Early Giant. Heavy bearing, early, square and blocky. Very desirable. Our stock is the finest available. Pkt. 10c., $\frac{1}{2}$ oz. 30c., oz. 45c., $\frac{1}{4}$ lb. \$1.30, lb. \$4.80.

Hot Squash. We offer a warranted strain of true hot Pepper. Pkt. 10c., $\frac{1}{2}$ oz. 25c., oz. 40c., $\frac{1}{4}$ lb. \$1.25, lb. \$4.50.

Hot Bull Nose. The largest fruited hot Pepper known. Our strain will run over 90% hot. Pkt. 10c., $\frac{1}{2}$ oz. 25c., oz. 40c., $\frac{1}{4}$ lb. \$1.25, lb. \$4.90.

Hungarian Wax. A long yellow variety mild and sweet. Pkt. 10c., $\frac{1}{2}$ oz. 30c., oz. 50c., $\frac{1}{4}$ lb. \$1.75, lb. \$6.10.



Pepper, California Wonder

King of the North. Yields a greater number of large peppers than any other variety. The flesh is thick, mild and sweet and the fruits are square and blocky. Pkt. 10c., $\frac{1}{2}$ oz. 30c., oz. 45c., $\frac{1}{4}$ lb. \$1.50, lb. \$5.10.

Large Ruby King Selected. Plants early, hardy and productive with thick tapering bright ruby-red fruits. This old favorite is still one of the most profitable varieties. Our strain is very carefully selected. Pkt. 10c., $\frac{1}{2}$ oz. 30c., oz. 55c., $\frac{1}{4}$ lb. \$2.00, lb. \$7.00.

Large Red Cherry. We offer a special large strain of this desirable hot pungent variety. Pkt. 10c., $\frac{1}{2}$ oz. 30c., oz. 45c., $\frac{1}{4}$ lb. \$1.35, lb. \$5.05.

Long Thick Red Cayenne. A giant type of this favorite hot pepper. Pkt. 10c., $\frac{1}{2}$ oz. 30c., oz. 50c., $\frac{1}{4}$ lb. \$1.75, lb. \$6.10.

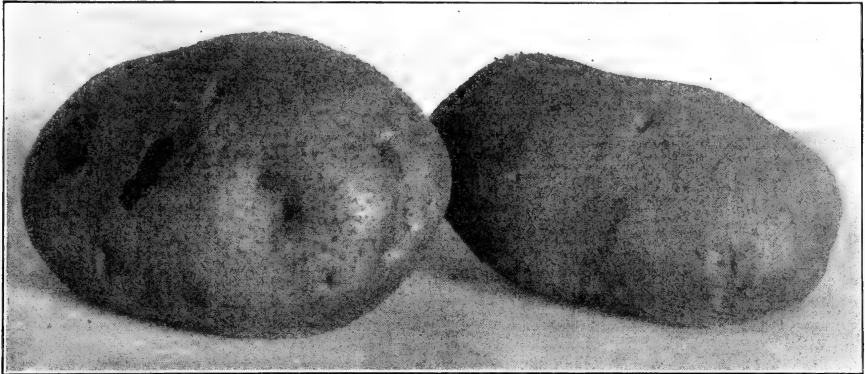
Neapolitan. Early and productive sweet and mild. Pkt. 10c., $\frac{1}{2}$ oz. 25c., oz. 40c., $\frac{1}{4}$ lb. \$2.00, lb. \$7.00.

Sweet Bull Nose. A standard early pickling variety. Pkt. 10c., $\frac{1}{2}$ oz. 25c., oz. 40c., $\frac{1}{4}$ lb. \$1.35, lb. \$5.05.

Sweet Squash (Cheese or Tomato, Sunnybrook). Very thick flesh, mild and sweet. Pkt. 10c., $\frac{1}{2}$ oz. 25c., oz. 40c., $\frac{1}{4}$ lb. \$1.25, lb. \$4.50.

Windsor A. A new Pepper of unusual merit. This pepper was developed by Dr. Curtis of the Connecticut Experimental Station with the shape and size of Ruby King, plus the thick walls of the California Wonder and a lighter and more attractive green in color. The yield is truly enormous, although not the earliest Pepper grown, it will over a short period out-yield any other variety. Our seed is grown only from the Station Stock. Pkt. 10c., $\frac{1}{2}$ oz. 30c., oz. 45c., $\frac{1}{4}$ lb. \$2.00, lb. \$7.00.

Worldbeater. A large, thick fleshed pepper which is enormously productive. Midseason in maturity. Pkt. 10c., $\frac{1}{2}$ oz. 35c., oz. 40c., $\frac{1}{4}$ lb. \$2.25, lb. \$7.95.



Potato, Green Mountain

POTATOES

HART'S CERTIFIED SEED POTATOES

We offer Maine Certified U. S. No. 1 Potatoes free from serious diseases and varietal mixture. Diseases such as mosaic, leaf roll, wilt, etc., may not be very apparent, but they reduce the yield to a marked degree. It pays to plant the best grade.

Culture—12 to 15 bushels will plant one acre and yield about 250 to 300 bushels; 1½ to 3 bushels to ¼ acre yielding 33 to 37 bushels. 3 pecks to 1 bushel to a small plot 50 feet by 60 feet will yield 15 to 10 bushels.

Potatoes Sold at Ceiling Prices

Irish Cobbler. The most popular early Potato; round, white, having rather deep eyes. Heavy yielder of fine quality.

Chippewa. This newer Potato, a few days later than Cobbler is becoming very popular because of the high yield. The tubers are attractive, white, slightly flattened and with shallow eyes. This later Potato is good for Winter storage.

Katahdin. A new later Potato, slightly oval, very smooth, with shallow eyes. The type is very uniform and in cooking and eating qualities it is excellent. Good for Winter storage.

Green Mountain. A mealy white, round, slightly flattened Potato having few shallow eyes, not susceptible to disease, this Potato is still an old favorite.

MARCH SHIPMENT

10 sacks or more \$4.74 per 100 lbs.
 1 to 10 sacks \$5.25 per 100 lbs.
 Less than 1 sack \$6.25 per 100 lbs.

APRIL SHIPMENT
 10c. per 100 lbs. advance

MAY SHIPMENT
 20c. per 100 lbs. advance

PUMPKIN

1 oz. will plant about 20 hills

Culture—Pumpkins are planted in hills 3 to 4 feet apart and thinned to about 4 plants. If larger fruits are desired, remove all but 2 or 3 plants.

Connecticut Field or Big Tom. Large, golden yellow of fine quality. Pkt. 10c., oz. 20c., ¼ lb. 30c., lb. \$1.10.

King of the Mammoth. Largest of all, sometimes weighing 100 lbs. or more. The fruit are salmon pink and nearly round. The flesh is yellow and thick. Pkt. 10c., oz. 20c., ¼ lb. 55c., lb. \$1.90.

Large Cheese or Kentucky Field. Fine grained and sweet, large fruit mottled light green and yellow. May also be used for stock feeding. Pkt. 10c., oz. 20c., ¼ lb. 40c., lb. \$1.35.

Small Sugar or Pie. Small, round, very prolific and excellent for pies. Pkt. 10c., oz. 20c., ¼ lb. 40c., lb. \$1.35.



Pumpkin, Small Sugar or Pie

RADISH

1 pkt. will sow 15 to 20 feet; 1 oz. about 75 feet; 10 lbs. per acre

Culture—Radishes grow rapidly and require only a moderately light soil. Sow very thinly in drills 12 inches apart and make frequent sowings to insure a succession of roots.

Cavalier. The best short-topped deep scarlet Radish grown. They are the true olive shape, very uniform, crisp and mild. Pkt. 10c., oz. 20c., $\frac{1}{4}$ lb. 40c., lb. \$1.15, 2 lbs. or over, \$1.05 per lb.

Crimson Giant. Large, globe Radishes, scarlet, solid white flesh. Larger than Scarlet Globe. Pkt. 10c., oz. 15c., $\frac{1}{4}$ lb. 35c., lb. \$1.10, 2 lbs. or over, \$1.00 per lb.

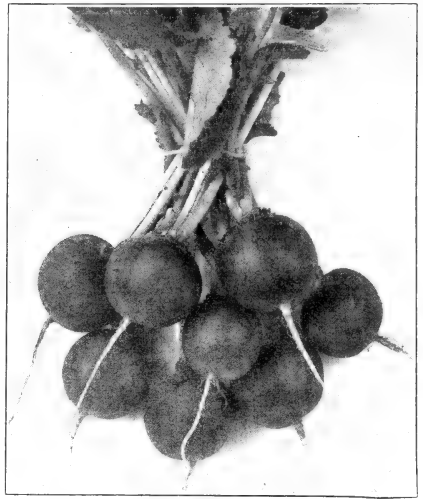
Early Scarlet Globe. Special selection. Our strain of this superfine variety is from transplanted roots only and is a true olive-shape with a beautiful bright scarlet color, small-topped, early and uniform. Our seed is strong and rapid growing, maturing under favorable conditions in 20 days from sowing. Pkt. 10c., oz. 20c., $\frac{1}{4}$ lb. 40c., lb. \$1.30, 2 lbs. or over, \$1.20 per lb.

French Breakfast. Half long scarlet, white tipped. Pkt. 10c., oz. 20c., $\frac{1}{4}$ lb. 40c., lb. \$1.30, 2 lbs. or over, \$1.20 per lb.

White Tipped Scarlet or Sparkler. Round scarlet with a white tip which grows rapidly and is very crisp and mild. Pkt. 10c., oz. 20c., $\frac{1}{4}$ lb. 40c., lb. \$1.30, 2 lbs. or over, \$1.20 per lb.

White Icicle. Short tops, smooth clear white, mild-flavored, long roots. Pkt. 10c., oz. 20c., $\frac{1}{4}$ lb. 40c., lb. \$1.30, 2 lbs. or over, \$1.20 per lb.

Round Black Spanish. Round, deep black skin, white flesh, Turnip-shaped roots and may be kept all Winter if stored in moist sand. Pkt. 10c., oz. 20c., $\frac{1}{4}$ lb. 40c., lb. \$1.50, 2 lbs. or over, \$1.40 per lb.



Radishes, Early Scarlet Globe

SALSIFY or OYSTER PLANT

1 pkt. will sow 15 feet of row; 1 oz. 50 feet

Culture—Sow in rows 2 feet apart. Thin to 3 inches. If planted in Fall may remain in ground all Winter for Spring use.

Pkt. 10c., oz. 60c., $\frac{1}{4}$ lb. \$1.55, lb. \$5.25

RHUBARB

Culture—Roots can be raised from seed sown in the Spring. Transplant to permanent bed the following Spring.

Myatt's Victoria. Early, large ruby red stalks. Pkt. 10c., oz. 25c.

SORREL

Broad-leaved. The standard variety. May be used as greens or for soup flavoring. Thin to 4 in. Pkt. 10c., oz. 50c., $\frac{1}{4}$ lb. \$1.55, lb. \$5.25.



Spinach, Long Standing Savoy (See page 25)

SPINACH

1 oz. will sow 50 feet of drill; 15 to 20 lbs. per acre

Culture—Spinach may be sown very early in the Spring as it is not injured by Spring freezes. Sow thinly in rows 18 inches apart and thin to 3 inches. Make successive sowings until Summer and plant again in the Fall. September sowings survive the Winter and may be cut very early in the Spring.

Blight Resistant Savoy. True strain. We offer a blight-resistant strain which is fully as curled and crumpled as Reselected Savoy and will stand as well as Old Dominion. Hitherto, most strains have contained a high percentage of "smooth" leaves. Ours is practically 100 per cent Savoy. Pkt. 10c., oz. 15c., $\frac{1}{4}$ lb. 25c., lb. 70c., over 2 lbs. 65c. per lb.

Early Reselected Savoy. Very early and of fine color. Our strain is extremely well bred with a high percentage of female plants. Pkt. 10c., oz. 20c., $\frac{1}{4}$ lb. 30c., lb. 90c., over 2 lbs. 85c. per lb.

King of Denmark. Large, round, somewhat blistered leaves which remain in good condition a week after any other variety. Pkt. 10c., oz. 20c., $\frac{1}{4}$ lb. 35c., lb. \$1.25, over 2 lbs. \$1.20 per lb.

Long Standing Savoy. Best for Spring sowing. A trifle later than Reselected, but with higher non-bolting qualities. We have a very high class strain. Pkt. 10c., oz. 20c., $\frac{1}{4}$ lb. 30c., lb. 95c., over 2 lbs. 90c. per lb.

New Zealand. Not a true Spinach, for the leaves may be picked from a bush-like plant which will grow out again. Pkt. 10c., oz. 25c., $\frac{1}{4}$ lb. 90c., lb. \$3.00.

Nobel Giant Leaved. An improved, thick-leaved type, smooth, large, medium green in color and long standing. Pkt. 10c., oz. 20c., $\frac{1}{4}$ lb. 35c., lb. 95c., over 2 lbs. 90c. per lb.

Old Dominion. Most highly resistant. Thick, bluish-green leaves which stand for an extremely long time before seeding. Excellent for Fall sowing. Pkt. 10c., oz. 20c., $\frac{1}{4}$ lb. 30c., lb. 90c., over 2 lbs. 85c. per lb.

SQUASH. Summer

1 pkt. will sow 3 or 4 hills; 1 oz. 15 hills; about 4 lbs. per acre

Culture—Squash needs a fertile deep soil. The bush varieties should be spaced 4 feet apart and the running sorts 8 feet and thinned to about 4 plants in each hill.

Connecticut Straightneck. A superlative strain. Over 95 per cent true Straightnecks, very thick and free from tapering. The color is a light, creamy lemon-yellow and is entirely free from warts and disfigurements. This fine strain is very early and has been selected to meet every requirement of the most exacting gardener. A true money-maker. Pkt. 10c., oz. 20c., $\frac{1}{4}$ lb. 50c., lb. \$1.50.



Spinach, New Zealand

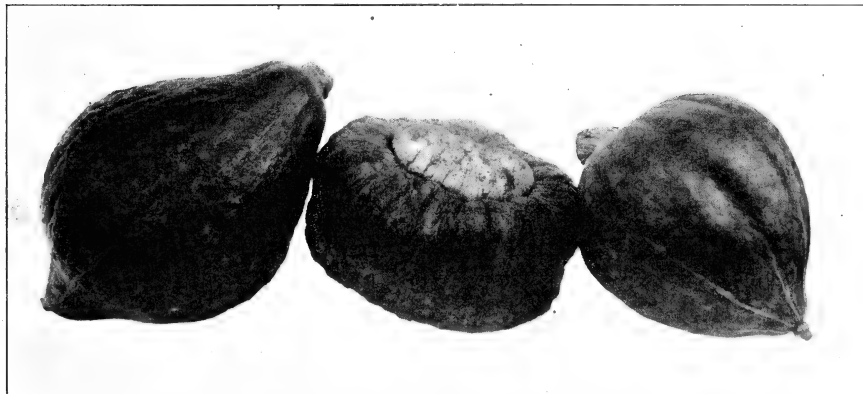
Early Prolific Straightneck. The fruits are borne in great profusion on dwarf vines and are somewhat smaller than other types of Straightneck. They are remarkably uniform in shape and size and have a very smooth skin and clear bright golden yellow color with no trace of green. Pkt. 10c., oz. 20c., $\frac{1}{4}$ lb. 50c., lb. \$1.60.

Giant Summer Crookneck. The popular old-time favorite with curved necks and somewhat warty, deep golden yellow in color. Pkt. 10c., oz. 20c., $\frac{1}{4}$ lb. 50c., lb. \$1.50.

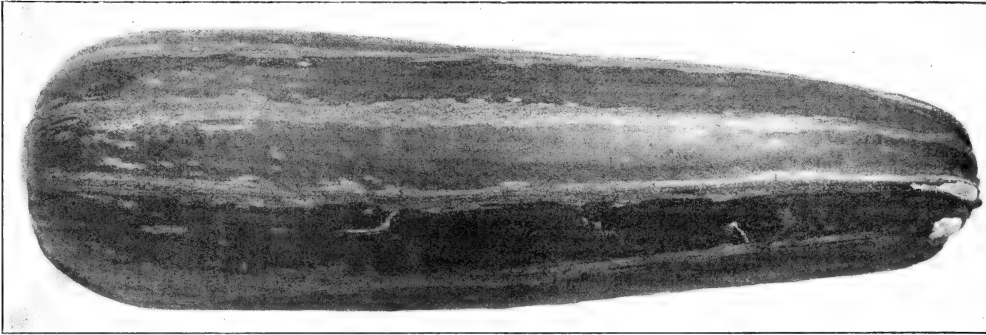
Italian Vegetable Marrow (Cocozelle). Long, mottled dark green fruits of surpassing flavor. We have an excellent strain of this popular variety. Pkt. 10c., oz. 20c., $\frac{1}{4}$ lb. 60c., lb. \$1.75.

White Bush Scallop. Flattened and scalloped fruits. Delicious if picked when young and tender. Pkt. 10c., oz. 20c., $\frac{1}{4}$ lb. 45c., lb. \$1.40.

Yankee Hybrid. A straightneck without equal for the production of early fruit. The fruits are wonderfully attractive with a waxy yellow color with no trace of green. These straightnecked, slightly roughened skinned Squash always average twice as many marketable fruit and the total yield is much heavier. Pkt. 10c., oz. 50c., $\frac{1}{4}$ lb. \$1.75, lb. \$6.20.



Squash, True Hubbard, Warren's Turban (Essex Hybrid) and Green Delicious



Squash, Italian Vegetable Marrow (Cocozelle) (See page 25)

SQUASH. Winter

Culture—Winter varieties should be planted later than the Summer types but both are very tender and may not be planted until all danger of frost is over.

Blue Hubbard. Favorite New England strain. Our Blue Hubbard is the desirable slate-gray so highly prized in Massachusetts. The hard shell makes it the finest Winter keeper of all Winter Squashes. Our seed is grown in New England and is as pure a type as we have ever seen. Pkt. 10c., oz. 25c., $\frac{1}{4}$ lb. 65c., lb. \$2.25.

Golden Hubbard. Sometimes known as red; similar in shape to Hubbard, except that the fruit is a deep orange-red, warted and uniform in size. Pkt. 10c., oz. 25c., $\frac{1}{4}$ lb. 55c., lb. \$1.90.

Green Delicious. A Squash of delightful flavor, earlier than the Hubbard types and smaller. Pkt. 10c., oz. 25c., $\frac{1}{4}$ lb. 55c., lb. \$1.65.

Improved Warted Hubbard. Larger than true Hubbard with a very knotted warty skin. Pkt. 10c., oz. 25c., $\frac{1}{4}$ lb. 55c., lb. \$1.90.

Table Queen (Des Moines or Acorn). This attractive little Squash is most popular for individual baking with fruit a dark green, 4 to 5 in. long and 4 in. diameter, deeply ribbed, with a smooth hard shell. Pkt. 10c., oz. 25c., $\frac{1}{4}$ lb. 55c., lb. \$1.65.

True Hubbard. Deep green, smooth skin of high quality. The old-fashioned Winter Squash of fairly large size. Is still a favorite Winter variety. Pkt. 10c., oz. 25c., $\frac{1}{4}$ lb. 55c., lb. \$1.90.

Warren's Turban (Essex Hybrid). Another New England strain of superlative quality. Very early, warted fruits with rich orange flesh of highest quality. Will keep well all Winter. Pkt. 10c., oz. 25c., $\frac{1}{4}$ lb. 60c., lb. \$2.00.



Squash, Giant Summer Crookneck (See page 25)

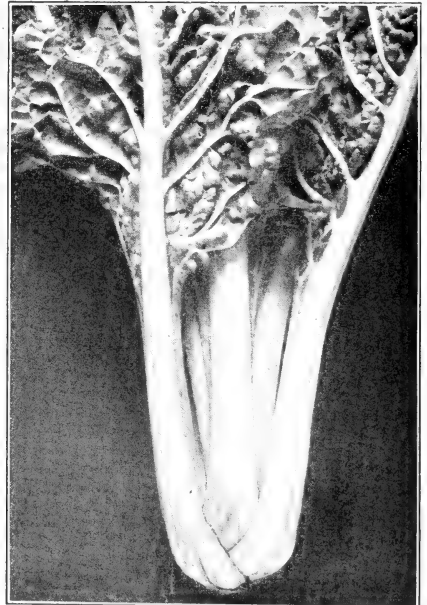
SWISS CHARD or SPINACH BEET

1 oz. will sow about 50 feet of row

Culture—Swiss Chard is really a beet grown for greens. The leaves and mid-rib may be cooked separately or together. Both delicious. When cut it will grow again and produce continued crops. With a little protection in Winter Swiss Chard will be available the next Spring.

Large White Ribbed. Dark green, well blistered leaves with broad, white midribs. Pkt. 10c., oz. 20c., $\frac{1}{4}$ lb. 70c., lb. \$2.55.

Lucullus. Large midribs and light yellowish green leaves. Pkt. 10c., oz. 20c., $\frac{1}{4}$ lb. 70c., lb. \$2.40.



Swiss Chard, Lucullus

TOMATO

1 pkt. will produce about 150 plants, 1 oz. 2000 plants

Culture—Tomato plants are easily grown in a shallow box in the house allowing 6 weeks for plants large enough to set out. When plants are about 2 inches tall transplant and space about 4 inches apart. When all danger of frost is over, set out in garden spacing about 3 feet.

Dwarf Champion. An early, pink-fruited variety on dwarf vines. Pkt. 10c., ½ oz. 25c., oz. 40c., ¼ lb. \$1.25, lb. \$1.50.

Dwarf Stone. Plants grow very dwarf and stocky and can be set close together. Fruit is of flattened globe shape like the Stone but ripens a little later than Stone. Pkt. 10c., ½ oz. 30c., oz. 50c., ¼ lb. \$1.75, lb. \$6.25.

Earliana. Our strain produces large, solid, bright scarlet fruits with a thick skin and a pronounced freedom from cracking. Pkt. 10c., ½ oz. 30c., oz. 50c., ¼ lb. \$1.75, lb. \$6.45.

Extra Marglobe. This superior strain produces enormous yields of perfect shaped, large, fancy fruits, earlier than any other strain of ordinary Marglobe. Pkt. 10c., ½ oz. 35c., oz. 55c., ¼ lb. \$1.65, lb. \$6.00.

Golden Queen. Large, smooth, non-acid, yellow fruit. Pkt. 10c., ½ oz. 30c., oz. 50c., ¼ lb. \$1.75, lb. \$6.00.

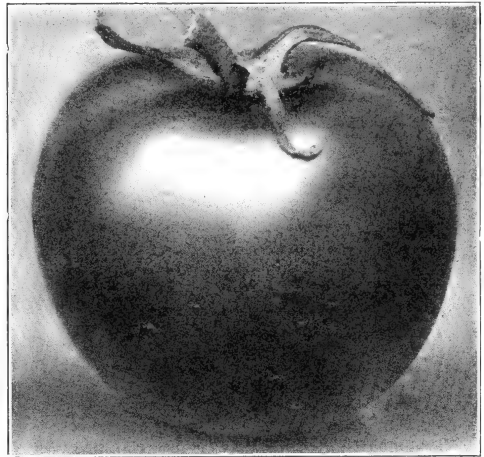
Hart's Improved Stone. Smooth, solid, firm fruit and an enormous yielder. Our strain is firm and solid, with thick, meaty flesh. Pkt. 10c., ½ oz. 25c., oz. 40c., ¼ lb. \$1.40, lb. \$5.25.

Oxheart. The largest Tomato. The shape is like an "oxheart" and the flesh is heavy and solid with extremely small seed cavities. Pkt. 10c., ½ oz. 45c., oz. 80c., ¼ lb. \$3.00, lb. \$11.55.

Ponderosa. Immense, heavy fruit, often weighin. 2 lbs. or more, with a beautiful light pink skin. Pkt. 10c., ½ oz. 35c., oz. 60c., ¼ lb. \$2.00, lb. \$7.65

Pritchard or Scarlet Topper. The deep globe shape and early ripening period of this fine variety coupled with its freedom from cracking, solid structure and brilliant red color make it one of the most desirable ever introduced. Pkt. 10c., ½ oz. 30c., oz. 50c., ¼ lb. \$1.75, lb. \$6.00.

Rutgers. Unusually large and solid. An exceptional variety developed by the New Jersey Experiment Station, being notable for its large size and solid structure, perfect globe shape, splendid flavor and deep color throughout. It ripens about the same time as Marglobe and produces a tremendous amount of fruit. The vine is heavy with large leaves which protect it from sun and scald. Pkt. 10c., ½ oz. 30c., oz. 50c., ¼ lb. \$1.75, lb. \$6.00.



Tomato, Extra Marglobe

Special Bonny Best. For those who demand a superior strain of this popular early variety we offer this strain of seed from crown set fruit only. Seed is saved only from the plants which show the greatest vigor and earliness. This means seed of pure parentage, high germination and vigorous growth. Pkt. 10c., ½ oz. 30c., oz. 50c., ¼ lb. \$1.75, lb. \$6.00.

Stokesdale Certified. A medium size deep globe, very solid, of fine quality. Ripens about the same time as Bonny Best but outyields it. Pkt. 10c., ½ oz. 30c., oz. 50c., ¼ lb. \$1.75, lb. \$6.00.

Victor. A vigorous early variety, medium large, smooth ripens to an even red. Pkt. 10c., ½ oz. 35c., oz. 60c., ¼ lb. \$2.00, lb. \$7.00.

Tomato, Small Fruited

Red Plum	Yellow Plum	Red Pear
Yellow Pear	Strawberry	Red Currant
All pkts. 10c., ½ oz. 40c., oz. 65c., ¼ lb. \$2.25, lb. \$7.40.		



Tomato, Rutgers

TURNIP

1 pkt. of seed will sow 50 feet of row, an ounce 300 feet. 1½ lb. of seed per acre in drills, 2¼ lb. broadcast

Culture—Turnips develop best during cool weather and an early crop may be harvested from seed sown early in the Spring. Best results are from seed sown from the middle of July to the middle of August. Drill out in rows 18 inches apart or sow broadcast.

Early Snowball. A pure white early round Turnip of high quality. Pkt. 10c., oz. 25c., ¼ lb. 45c., lb. \$1.50.

Early White Milan. Same as purple Top Milan but all white. Pkt. 10c., oz. 25c., ¼ lb. 45c., lb. \$1.50.

Long White or Cowhorn. White variety both edible and for stock. Pkt. 10c., oz. 25c., ¼ lb. 45c., lb. \$1.50.

Purple Top Milan. An extremely highclass extra early purple top flat Turnip. Pkt. 10c., oz. 25c., ¼ lb. 45c., lb. \$1.50.

Purple Top Strap Leaf. A large, flat, white with a purple top. Quick growing. Pkt. 10c., oz. 25c., ¼ lb. 45c., lb. \$1.50.

Red Top Globe (Reselected). Our special stock of this favorite turnip continues in popularity due to its uniform, smooth, handsome roots with their bright purplish tops extending well down on the roots. Naturally they sell more readily on the market and always command better prices than ordinary Turnips. Pkt. 10c., oz. 25c., ¼ lb. 45c., lb. \$1.50.

White Egg. A pure white globe shape, early and fine grained. Pkt. 10c., oz. 20c., ¼ lb. 45c., lb. \$1.40.

Yellow Globe. Round, smooth, yellow fine grained Turnip. Pkt. 10c., oz. 20c., ¼ lb. 45c., lb. \$1.40.

RUTA BAGA

Ruta Bagas have firmer flesh and will keep longer but require more time to develop and should be sown earlier.

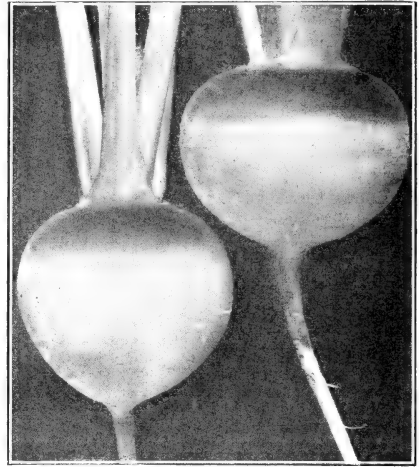
Long Island Improved Neckless (Improved Purple Top Yellow). The large handsome roots are entirely free from neck and have a fine round shape with a rich yellow color and a sweet mild flavor. Pkt. 10c., oz. 20c., ¼ lb. 50c., lb. \$1.60.

Macomber. White flesh and sweetest of all. Pkt. 10c., oz. 20c., ¼ lb. 50c., lb. \$1.60.

Victory or Laurentian (Neckless). A new and exceptionally fine all yellow Ruta Baga without the pronounced neck of the old type. It is a splendid Winter keeper and has firm solid flesh of fine flavor. Decidedly the best of the "Canadian" types. Pkt. 10c., oz. 25c., ¼ lb. 50c., lb. \$1.60



Turnip, Purple Top Strap Leaf



Turnips, Yellow Globe

HERBS

Every garden should have a few Herbs, which are used for flavoring and sauces, medicinal purposes or for their scent. Sow early in Spring in carefully prepared soil.

Anise	Pkt. \$0.20	Fennel (Sweet Florence).....	Pkt. \$0.10
Balm30	Lavender.....	.25
Basil.....	.10	Marjoram, Sweet.....	.25
Borage.....	.20	Rosemary.....	.25
Caraway.....	.20	Sage.....	.25
Chives.....	.30	Summer Savory.....	.25
Coriander.....	.20	Thyme.....	.30
		Wormwood.....	.30

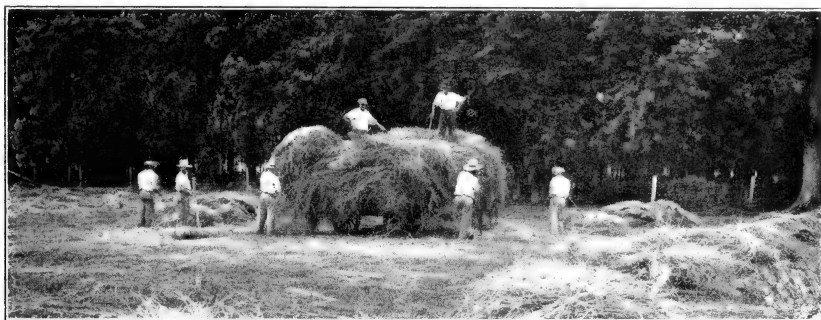
Miscellaneous Garden Requirements

We are pleased to offer the following Insecticides, Fertilizers, Inoculations and Miscellaneous Garden Requirements.

Prices will be at market values and ceiling prices.

We will be pleased to quote on request.

Lime, Hydrated	Red Arrow
Arsenic of Lead	Rat Poison
Black Leaf 40	Semesan
Bordeaux Mixture	Semesan Bel. For Potatoes
Co-Po-Tex	Semesan Jr. For Corn
Crow Repellent	Sheep Manure
Nitragin	Bonemeal
Nodogen. For Peas, Beans and Corn, also Legumes	Commercial Fertilizer



Field and Farm Seeds and Grasses

In buying grass seeds from us you may be sure that you will receive seeds of the highest possible analysis. Owing to the variation in market values on grass seeds, we are not always able, at the time this catalog is printed to make fixed prices, but we will guarantee that our prices will at all times be as low as the market permits. We will be glad, however, to quote prices at any time on any quantity and invite your correspondence.

FORAGE CROPS

Variety	Rate per acre	Weight per bu.	Per lb.	Bu. Per lb.	10 bu. Per lb.
Golden Millet	1 bu.	50 lbs.	\$0.09½	\$0.09	\$0.08
Hungarian Millet	1 bu.	48 lbs.	.10	.09½	.08½
Barnyard Millet	1 bu.	32 lbs.	.08½	.08	.07
Rape, Dwarf Essex	10 lbs.18	100 lbs. 17c.	17c. per lb.
Sudan Grass	25 lbs.12	100 lbs. 11c.	11c. per lb.
Sunflower	Price on Application	

GRAIN SEEDS

			Per bu.	Bag 2½ bu.	10 bu.
Barley Oderbrucker	2 bu.	48 lbs.	\$3.00	\$2.85	\$2.75
Buckwheat, Japanese	1 bu.	48 lbs.	3.25	3.15	3.00
Rye, Winter or Rosen	1½-2 bu.	56 lbs.	Open
Spring Rye	1½-2 bu.	56 lbs.	3.25	3.00	2.85
Spring Wheat, Marquis	2 bu.	60 lbs.	4.00	3.75	3.50

SEED OATS

(Standard weight, 32 lbs. per bushel)

Swedish Type	1½ bu.	46 lbs.	Price on Application		
Victory	1½ bu.	42 lbs.	" " "		

HAY and PASTURE GRASSES

			1 lb.	Bu.	100 lbs.
Kentucky Blue Grass	40 lbs.	21 lbs.	\$0.36	\$7.40	\$0.35
Orchard Grass	20-25 lbs.	14 lbs.	.42	5.50	.40
Red Top	20 lbs.	35 lbs.	.25	5.75	.24
Timothy	25 lbs.	45 lbs.	.14	6.00	.13

CLOVERS

Alsike	20 lbs.	60 lbs.	\$0.42½	\$0.40½
Crimson	10 lbs.	60 lbs.	.2120
Ladino (Scarified)	5 lbs.	60 lbs.	Price Open		
Medium Red (Domestic)	20 lbs.	60 lbs.	.45½43½
White Dutch	25 lbs.	60 lbs.	.9590
White Sweet Blossom	30 lbs.	60 lbs.	.2019

ALFALFA

Certified Grimm (Blue Tag)	25 lbs.	60 lbs.	Open
Affidavit Grimm (Idaho)	\$0.53¾	\$31.00	\$0.49¾

Hart's Flower Seeds.

We regret very much that it is not possible for us to offer our usual variety of choice flower seeds. Our Government has requested flower seed growers to reduce their acreage in order that land may be utilized in the production of vegetable seed. The list which we offer, however, comprises the standard varieties which are to be desired in every flower garden.

Annuals

AGERATUM

Heads of feathery blue flowers, excellent for edging and for cutting.

- Balls' Blue.** 6 in. Pkt. 10c., $\frac{1}{4}$ oz. 25c., oz. 85c.
Imp. Dwarf Blue. 8 in. Pkt. 10c., $\frac{1}{4}$ oz. 20c., oz. 65c.
Semi-Dwarf Blue. 18 in. Pkt. 10c., $\frac{1}{4}$ oz. 20c., oz. 65c.

ALYSSUM

Dense growing plants completely covered with tiny white flowers.

- Little Gem.** 8 in. Pkt. 10c., $\frac{1}{4}$ oz. 20c., oz. 65c.
Procumbens. 5 in. Pkt. 10c., $\frac{1}{4}$ oz. 20c., oz. 65c.

ANTIRRHINUM, or SNAPDRAGON

Long, gorgeous spikes of color.

- Giant Flowered, Mixed.** Pkt. 10c., $\frac{1}{4}$ oz. 30c.
***New Giant Rustproof (AAS).** Pkt. 25c., $\frac{1}{4}$ oz. 60c., oz. \$2.00.

ASTERS

American Branching. Huge blossoms of solid, Peony-like flowers.

- | | | |
|--------------|---------------|--------|
| Azure | Light Rose | Purple |
| Shell Pink | Peerless Pink | Red |
| Coppery Rose | White | |
- Pkt. 10c., $\frac{1}{4}$ oz. 40c., oz. \$1.15

California Giants. Colossal flowers with long, twisted petals.

- | | | |
|-------------|---------------|-------|
| Light Blue | Apple Blossom | White |
| Dark Purple | Peach Blossom | Mixed |
| Deep Rose | | |
- Pkt. 10c., $\frac{1}{4}$ oz. \$1.00, oz. \$3.45

Early Beauty. Huge blossoms of curved and twisted petals.

- | | | |
|-----------|------------|-------|
| Azure | Purple | White |
| Crimson | Shell Pink | Mixed |
| Deep Rose | | |
- Pkt. 10c., $\frac{1}{4}$ oz. 45c., oz. \$1.60

Extra Early Express. Wilt resistant. Earliest Aster grown. Pkt. 15c., $\frac{1}{4}$ oz. 95c., oz. \$3.15.

Improved Giant Crego. Large, double flowers with long, ribbon-like petals, gracefully curled and crested.

- | | | |
|-----------|------------|---------------|
| White | Lavender | Peach Blossom |
| Crimson | Deep Rose | Mixed |
| Dark Blue | Shell Pink | |
- Pkt. 10c., $\frac{1}{4}$ oz. 60c., oz. \$1.90

BALSAM (Lady Slipper)

Brilliant double flowers on stout stems.
 Pkt. $\frac{1}{4}$ oz. Oz.

Bush-flowered. An entirely new race of dwarf, free flowering, used for bedding and borders. \$0.10 \$0.85 \$3.00

Camellia-flowered. .10 .20 .60

Torch. A brilliant vermilion red, very dwarf. .10 .85 3.00

Finest Mixed. All attractive shades. .10 .75 2.75

CALENDULA

Long flowering, bright and cheery.

- | | Pkt. | $\frac{1}{4}$ oz. | Oz. |
|---|--------|-------------------|--------|
| Ball's Orange. | \$0.10 | \$0.25 | \$0.75 |
| Campfire. Crimson sheen. | .10 | .25 | .75 |
| *Chrysantha (AAS) (Sunshine) | .10 | .20 | .60 |
| Florist Colors. A very brilliant mixture. | .10 | .20 | .50 |
| Orange King. | .10 | .20 | .60 |
| *Orange Shaggy (AAS). A delightful new type. | .10 | .20 | .60 |
| Pastel Shades. Light delicate tones | .10 | .20 | .50 |
| Radio. Quilled petals. | .10 | .20 | .60 |

CANDYTUFT

Clusters of tiny bright flowers.

- | | Pkt. | $\frac{1}{4}$ oz. | Oz. |
|--|--------|-------------------|--------|
| Giant Hyacinth-flowered. White. | \$0.10 | \$0.20 | \$0.65 |
| Hybrids Mixed | .10 | .25 | .75 |

CARNATION

- | | Pkt. | $\frac{1}{4}$ oz. | Oz. |
|------------------------|--------|-------------------|--------|
| Chabaud's Giant | \$0.10 | \$0.75 | \$2.85 |

CELOSIA Cristata (Crested Cockscomb)

- | | Pkt. | $\frac{1}{4}$ oz. | Oz. |
|---|--------|-------------------|--------|
| Dwarf Mixed | \$0.10 | \$0.50 | \$1.75 |
| Tall Mixed | .10 | .45 | 1.50 |
| Glasgow Prize. Large dark crimson combs. | .15 | .75 | 2.50 |

CELOSIA Childsii (Chinese Woolflower)

- | | Pkt. | $\frac{1}{4}$ oz. | Oz. |
|--|--------|-------------------|--------|
| Mixed. Huge balls of brilliant wool-like substance. | \$0.10 | \$0.40 | \$1.25 |

CENTAUREA (Bachelor's Button)

- | | Pkt. | $\frac{1}{4}$ oz. | Oz. |
|--|--------|-------------------|--------|
| Double. Blue, White, Pink, Red. | \$0.10 | \$0.25 | \$0.75 |
| Imperialis (Sweet Sultan). Quilled, thistle-like flowers. | .10 | .25 | .75 |
| Mixed. | .10 | .25 | .75 |
| *Jubilee Gem (AAS). Immense, bright blue flowers. | .20 | .75 | 2.50 |

CORN, ORNAMENTAL

- | | Pkt. | $\frac{1}{4}$ oz. | Oz. |
|---|------|-------------------|--------|
| Squaw, or Indian. Vari-colored ears valuable for Winter decorations. | | | \$0.15 |
| Rainbow. Many colored leaves for garden decoration. | | | .15 |

*(AAS) All America Selection

COSMOS

Pkt. ¼ oz. Oz.

Double Crested. A crown or Anemone-like crest with large outer petals.	\$0.10	\$1.00	\$3.45
Early Flowering. Dwarf plants with a myriad of blossom.	.10	.20	.50
Extra Early Express. An early, free-flowering streamline type, growing only 2½ ft. high and flowering in 45 days from seed.	.10	.25	.90
*Klondyke Orange Flare (AAS). A vivid orange with deep green foliage flowering until frost.	.10	.60	1.90
The Queen. Gigantic blossoms freely borne, of superior size and color intensity.	.10	.25	.90
*Sensation (AAS). Tremendous flowers, 4 to 5 in. across and early flowering.	.15	.95	3.15

DIANTHUS (Pinks)

Chinese Double. Largest of annual Pinks.	\$0.10	\$0.25	\$0.75
Diadem (Hartwegi, Single). Immense florets.	.10	.25	.75
Royal (Hartwegi, Double). Wide variety of colors and markings.	.10	.25	.75

ESCHSCHOLTZIA (California Poppy)

Brilliant Mixed. Crimson, Pink, and Orange.	\$0.10	\$0.20	\$0.65
--	--------	--------	--------

EUPHORBIA (Snow-on-the-Mountains)

Heterophylla.	\$0.10	\$0.35	\$1.15
Variegata. Striped green and white leaves.	.10	.20	.60

GAILLARDIA (Blanket Flower)

Lorenziana, Double.	\$0.10	\$0.20	\$0.60
Picta, Single.	.10	.20	.60

GYPSOPHILA (Baby's Breath)

Alba (Covent Garden Strain).	\$0.10	\$0.20	\$0.60
-------------------------------------	--------	--------	--------

KOCHIA (Mexican Fire Bush)

Tricophylla. Pyramidal, evergreen-like plants turning to a fiery red in the Autumn.	\$0.10	\$0.20	\$0.60
--	--------	--------	--------

MARIGOLD

The unrivaled garden flower.

African Types

Tall Orange, or Lemon.	\$0.10	\$0.25	\$0.75
Mixed Dwarf Orange.	.10	.20	.65
Dwarf Orange, or Lemon.	.10	.25	.75
Mixed.	.10	.20	.60

French Types, Double

*French Dwarf (AAS). Monarch Strain. Medium sized blossoms blotched with bright and vivid colors.	\$0.10	\$0.25	\$0.75
French Tall. Large, curiously marked flowers.	.10	.25	.75
Royal Scot. A charming combination of mahogany and gold in the tall type.	.10	.25	.75

MARIGOLD—Continued

French Types, Single

Pkt. ¼ oz. Oz.

French Dwarf. Lovely little variegated blossoms.	\$0.10	\$0.25	\$0.75
---	--------	--------	--------

Various New Types

*Mammoth Mum (AAS). All America Winner for 1944. Great, fluffy, light sulphur yellow blooms 4 in. across, 2 in. deep, flowering in 2½ months from seed, enabling gardeners to have Mums for garden and cut flowers weeks earlier than usual. If you want something new and outstanding, try this new variety.	\$0.25	\$1.75
American Beauty. Large orange and yellow incurved Chrysanthemum-flowered type.	.20	.95	\$3.45
California Sunshine Mixture. Mixture of lovely shapes and shades.	.25	.65	2.20
Crown of Gold. Odorless foliage, orange flowers with crested centers and broad petals.	.20	.45	1.60
Early Sunrise. Large, ball-shaped flowers of dozens of tiny, fine-petaled florets, flowers about Aug. 15th	.25	1.60	5.65
*Guinea Gold (AAS). Semi-double, fluffy flowers of brilliant orange, suffused with gold.	.15	.35	1.15
Harmony. Dwarf golden yellow flowers bordered maroon red.	.15	.35	1.15
Miniature. Compact little plants, completely covered with tiny bright flowers. Fine for edging.	.15	.40	1.25

MIGNONETTE

Macbet (New York Market).	\$0.15	\$0.20	\$0.60
----------------------------------	--------	--------	--------

NASTURTIUMS

Dwarf Mixed.	\$0.10	\$0.15	\$0.20
Glorious Glean Mixture.	.10	.20	.50
Golden Glean.	.10	.20	.50
Tall Mixed.	.10	.15	.20

PETUNIA

*Cheerful (AAS). All America Winner for 1944. Entirely new color and growing habit. Crisp satiny sheen on salmon-pink petals, deeper rose veining toward throat; flowers 2½ in. and more across. Plants first grow low, spreading close to ground, later forming a mound 10 to 12 in. high with spread of 2 ft.	\$0.25	\$5.00
Balcony. Trailing type for window boxes. Red, Rose and Blue.	.20	1.15	\$2.00
Mixed.	.10	1.00	1.75

PETUNIA HYBRIDA

Best for beds and massing.

Elk's Pride. Large-flowered, dark velvety purple.	\$0.25	\$4.40	\$7.50
Howard Star. Maroon with a five-pointed white star.	.10	.75	1.25
Rosy Morn. Clear pink with a broad white throat.	.10	2.20	3.75

*(AAS)—All America Selection.

PHLOX

	Pkt.	¼ oz.	Oz.
Drummondii. Dwarf.....	\$0.10	\$0.25	\$0.90

POPPY

	Pkt.	¼ oz.
Shirley, Single.....	\$0.10	\$0.20

PORTULACA

	Pkt.	⅛ oz.
Single Mixed.....	\$0.10	\$0.25
Double Mixed. Resembles small bright roses.....	.10	.65

RICINUS (Castor Oil Bean)

Tree-like plants with ornamental foliage.

	Pkt.	Oz.
Gibsoni. Dark red leaves.....	\$0.10	\$0.20
Red Spire. Bronze green foliage, rose crimson spires.....	.10	.20
Zanzibariensis. Tropical green leaves of huge size.....	.10	.20

SALVIA (Scarlet Sage)

	Pkt.	⅛ oz.
Splendens, Bonfire. Large spikes, very free blooming.....	\$0.10	\$0.45
America. Extremely uniform in growth and bloom.....	.20	.65

SCABIOSA (Pin Cushion Flower)

*New Giant Hybrids (AAS). Large, massive blooms in new and old shades.....	\$0.10	\$0.25
--	--------	--------

STOCKS (Gilliflower)

	Pkt.	¼ oz.	Oz.
Dwarf Ten Weeks. Fine central spikes with many side shoots.....	\$0.10	\$0.25	\$0.90
Improved Bismarck. The aristocrat of Stocks. Extremely high percentage of doubles.....	.20	.75	2.50
Beauty of Nice. Very early and long flowering.....	.20	.75	2.50

SUNFLOWER

	Pkt.
Mammoth Russian. Gigantic heads on long spikes.....	\$0.10

SWEET PEAS

	Pkt.	½ oz.	Oz.	¼ lb.	Lb.
1 oz. to 25 feet of row.....					
Mixed. All colors.....	\$0.10	\$0.20	\$0.25	\$0.75	\$2.50
Ruffled Mixed. Edges daintly waved and fringed.....	.10	.25	.35	1.00	3.15

VERBENA

	Pkt.	¼ oz.	Oz.
Hybrida. Immense trusses, florets over 1 in. in diameter.....	\$0.10	\$0.35	\$1.15

WALLFLOWER

Mixed. Spikes thickly set with flowers in rich reds and yellows.....	\$0.10	\$0.25	\$0.90
--	--------	--------	--------

CUT FLOWER MIXTURE

Choice Annuals with long stems and an easy habit of growth.....	\$0.10	\$0.20	\$0.50
---	--------	--------	--------

*(AAS) All America Selection

WILD FLOWER MIXTURE

Wild Flower Garden. This mixture is calculated to furnish a multitude of bloom including not only the common and well known sorts but also many rare and unfamiliar varieties.....	Pkt.	¼ oz.	Oz.
	\$0.10	\$0.25	\$0.95

ZINNIA

California Mammoth. Monstrous flat-typed flowers often growing 8 in. across. Mixed.....	\$0.10	\$0.40
Lilliput. Small, compact, symmetrical flowers on dwarf plants. Mixed.....	.10	.40
Fantasy. Shaggy petaled, medium-sized flowers. Excellent for cutting. Mixed.....	.10	.50
Dahlia Flowered. Most graceful, large Zinnia, conical petals give the appearance of depth. Mixed.....	.10	.35	\$1.25

EVERLASTING

Acroclinium. Daisy-like flowers. Bright rose with yellow centers.....	\$0.10	\$0.20	\$0.65
Gomphrena (Globe Amaranth). Clover-like heads. White.....	.10	.20	.65
Helichrysum. Best of Everlastings. Bright and brilliant colors.....	.10	.25	.75
Chinese Lantern (Physalis). Bright red balloon-like husks.....	.10	.60	2.00
Everlasting Mixture. All of the above and many others carefully blended.....	.10	.20	.60

CLIMBING VINES

Cardinal Climbers. Heavy foliage with bright scarlet flowers.....	\$0.10	\$0.25	\$0.90
Cobaea scandens (Cathedral Bells). Huge, bell-shaped flowers in blue and white.....	.10	.25	.90
Gourds, Mixed.....	.10	.20	.40
Large Decorative. Useful for dippers, bowls and bird houses, etc.....	.10	.20	.40
Kudzu Vine. Dense shade and very rapid growing.....	.10	.25	.90

MORNING-GLORY

Cornell. Intense red with a striking border of pure glistening white. The colors of Cornell University.....	\$0.10	\$0.65	\$2.20
Heavenly Blue. Loveliest of all Climbers, Blossoms 3 to 4 in. across. A rich, deep glowing blue in color.....	.10	.35	1.15
Imperial Mixed. Gigantic flowers with exquisite markings and shadings.....	.10	.15	.40
Pearly Gates. Large, pure white blossom.....	.15	.60	2.00
Scarlett O'Hara. Its large, dark, wine-red is a remarkable companion piece for the well liked heavenly blue and Pearly Gates (white), and a trellis or fence covered with these strikingly beautiful 4 in. flowers is a vivid sight and displays our patriotic colors (red, white, and blue). The covering of Morning-Glory seed is so hard it is advised to soak seed in water for a few hours for quicker germination.....	.15	.60	2.00

PERENNIALS

ALYSSUM (Basket of Gold)

Saxatile. Masses of bright golden yellow flowers. Pkt. ¼ oz. Oz.
\$0.10 \$0.25 \$0.90

ANCHUSA

Italica (Forget-Me-Not). Panicles of gentian blue. Pkt. ¼ oz. Oz.
\$0.10 \$0.20 \$0.65

AQUILEGIA (Columbine)

Scott Elliott Hybrids. Tremendous long-spurred flowers in bright, vivid colors. Pkt. ¼ oz. Oz.
\$0.25 \$0.95 \$3.15

BELLIS Perennis (English Daisy Double)

Double, Daisy-like flowers—Pink, Red and White. Treated like Pansies. Pkt. ¼ oz. Oz.
\$0.10 \$0.40 \$1.25

CAMPANULA (Canterbury Bell)

Single. Bell-shaped. Pkt. ¼ oz. Oz. \$0.10 \$0.20 \$0.65
Double. Densely double. .10 .35 1.15
Calycanthemum (Cup-and-Saucer). .10 .40 1.25

CHRYSANTHEMUM (Shasta Daisy)

Leucanthemum. Huge, white flowers with yellow centers. Pkt. ¼ oz. Oz.
\$0.10 \$0.60 \$1.90

DIANTHUS (Clove Pinks)

Plumarius. Old-fashioned hardy garden flower. Pkt. ¼ oz. Oz.
\$0.10 \$0.25 \$0.90

DIGITALIS (Foxglove)

Giant Shirley. Long spires with gay mottled and spotted bells. Pkt. ¼ oz. Oz.
\$0.10 \$0.25 \$0.90

DELPHINIUM (Hardy Larkspur)

Tall spikes with double flowers in shades and tones of blue. Pkt. ¼ oz. Oz.
\$0.25 \$1.15 \$3.75

Hollyhock Strain. Large, double-flowered in various blue shades. Pkt. ¼ oz. Oz.
\$0.25 \$1.15 \$3.75

De Luxe Hybrids. Extra large, double flowers in blue and pastel shades. Pkt. ¼ oz. Oz.
.20 1.00 3.45

GAILLARDIA (Blanket Flower)

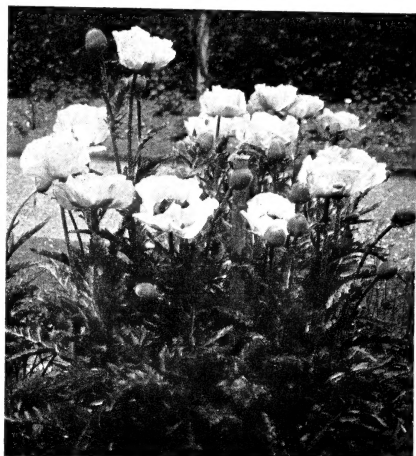
Grandiflora. Shades of brilliant red and yellow. Pkt. ¼ oz. Oz.
\$0.10 \$0.35 \$1.15

GYPSOPHILA (Baby's Breath)

Paniculata. Miniature balls of white petals. Pkt. ¼ oz. Oz.
\$0.10 \$0.20 \$0.65

HIBISCUS (Mallow)

Gigantic, Hollyhock-like flowers in Pink, Rose, White and Crimson. Pkt. ¼ oz. Oz.
\$0.10 \$0.25 \$0.90



Oriental Poppy

HOLLYHOCK

Pkt. ¼ oz. Oz.
Single. Wide color range. Pkt. ¼ oz. Oz. \$0.10 \$0.25 \$0.90
Double. Deeply curled. .10 .45 1.60

Triumph. Gigantic crested blooms, 4 to 5 in. across. Pkt. ¼ oz. Oz.
.20 .90 3.15

LATHYRUS (Perennial Pea)

Latifolius. Decorative climber with Pea-shaped blossom. Pkt. ¼ oz. Oz.
\$0.10 \$0.25 \$1.15

LUPINE

Stately spikes of close packed blossoms.
Polyphyllus. Showy mixture. Pkt. ¼ oz. Oz.
\$0.10 \$0.20 \$0.65

MYOSOTIS (Forget-Me-Not)

Sprays of small, delicate bright blue flowers.
Palustris. True swamp type. Pkt. ¼ oz. Oz.
\$0.10 \$0.45 \$1.40

POPPY

Oriental. Large, showy orange-scarlet blossoms. Pkt. ¼ oz. Oz.
\$0.10 \$0.50 \$1.90

Iceland. Medium sized; brightly colored flowers. Pkt. ¼ oz. Oz.
.20 .65 2.20

PYRETHRUM (Painted Daisy)

Single. Bright Daisy-like flowers. Pkt. ¼ oz. Oz.
\$0.10 \$0.35 \$1.15

SWEET WILLIAM

Single. Pkt. ¼ oz. Oz. \$0.10 \$0.20 \$0.65
Double. .10 .25 .90



HART'S
DAHLIA FLOWERED
ZINNIA

Pkt. 10c., 1/4 oz. 35c.,
1 lb. \$1.45

THE CHAS. C. HART SEED CO.
WETHERSFIELD 9, CONN. ••• NEWPORT • MAINE