

Historic, Archive Document

Do not assume content reflects current scientific knowledge, policies, or practices.

62.73

Paramount *Roses*

LIBRARY
RECEIVED
★ SEP 14 1944 ★
U. S. Department of Agriculture

for
FALL 1944



MIRANDY

Pat. No. 632

\$2.50 each



*Highest Award
for the Year
All-America
Rose Selections*

PARAMOUNT NURSERIES

A. & A. D. VANDERKRAATS, Props.

WEST GROVE • PENNSYLVANIA



Paramount ROSES • • •

REGULAR and thorough spraying is an important factor in growing good Paramount Roses. The above sprayer has a tank capacity of 300 gallons, pumps to 500 pounds pressure and carries 32 nozzles, spraying eight rows each trip, with four nozzles to each row. The variety being sprayed above is Mrs. P. S. du Pont.

We use Bordeaux Mixture for control of black-spot and mildew, adding arsenate of lead for the Japanese beetles, and Black-Leaf 40 for aphids, etc. Home gardeners much prefer Tri-Ogen, which gives full protection against all insect pests and fungous diseases, and does not discolor the foliage like Bordeaux Mixture.

Roses are scarce all over the United States this year. Due to the shortage of labor and the very unfavorable weather last spring, all commercial Rose-growers were forced to reduce their plantings considerably. In fact, barely 40 per cent of normal harvest is expected this fall.

As a consequence of our reduced plantings, we were forced to eliminate many varieties previously grown. However, our list still gives a wide selection in both color and popularity, as we retained only the best and most satisfactory kinds.

We urge you to place your orders early, wherever you choose to purchase. Preferably plant this autumn and avoid the disappointment that is bound to befall latecomers next spring.

WHEN TO PLANT ROSES

Proper planting-time in the fall is from November 1 until freezing weather; in the spring, from early March, when the ground opens up, until April 30. Order early to insure your desired selection, and plant early each season for real Rose success.

PARAMOUNT NURSERIES

A. & A. D. VANDERKRAATS, Props.

WEST GROVE · PENNA.

Near Jennersville in Chester County, Penna.

Phone: West Grove 2711

Our Cover Collection

3 ROSES, one each of the following **\$4.60**

Delivery Free

All Three Are All-America Rose Selections

Mirandy

This is the first-place winner of the All-America Rose Selections for this year. A gorgeous, fragrant red Rose. See front cover for color and page 7 for description. *Pat. No. 632*

\$2.50 each

Grande Duchesse Charlotte

Named for the reigning sovereign of the Duchy of Luxembourg, who is still a refugee from her native country. See it in color on back cover page and description on page 6. *Pat. pending.*

\$1.50 each

Mary Margaret McBride

Named for the noted author and radio personality. Illustrated in color on back cover page, with description on page 7. *Pat. No. 537.*

\$1.50 each

The picture below was taken about a year ago. These steers have long since been converted into meat, which has now been consumed. The Roses in the background were harvested last fall, sold then or this past spring, and are still going strong in gardens all over the country.

The manure produced by these animals went to the benefit of the Roses that we are harvesting this fall, which only proves the truth of the old saying, "The good one does lives after him!"



PARAMOUNT ROSES ARE GUARANTEED TO GROW AND BE TRUE TO NAME

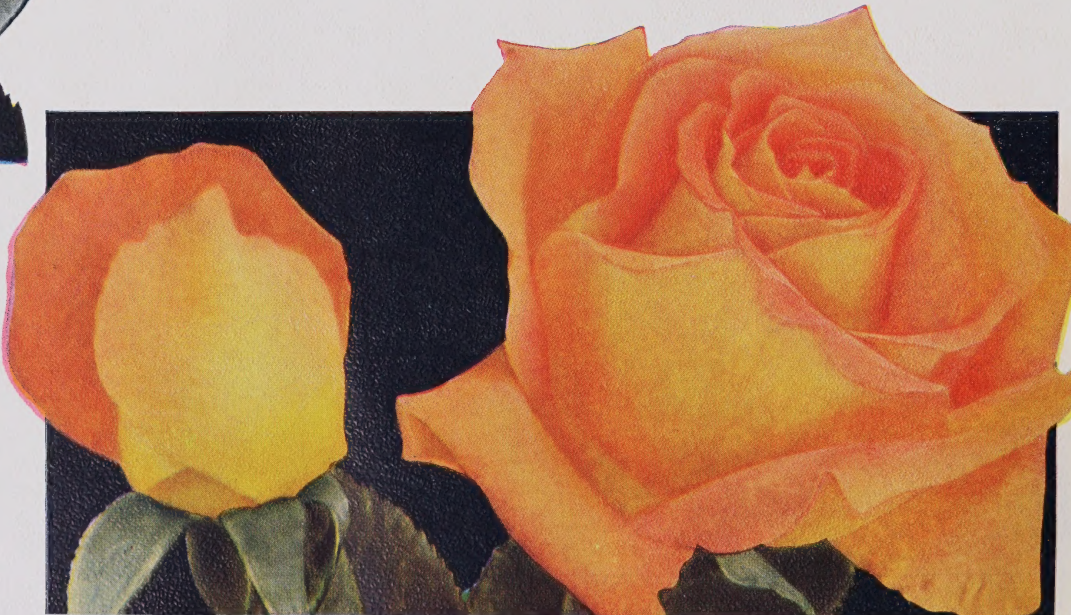


**CHARLOTTE
ARMSTRONG**
Pat. No. 455
\$1.50 each



NARZISSE. *Pat. pending.* \$1.50 each

ALL MAGNIFICENT



© **McGREY'S SUNSET.** *Pat. No. 317.* \$1.25 each



© **DICKSONS RED.** *Pat. No. 376.* \$1.25 each

THESE 6 ROSES

for **\$6.90** DELIVERY FREE



NOVELTIES •



GOOD NEWS. *Pat. No. 426.* \$1.50 each



© **PEDRALBES.** \$1.25 each

HYBRID TEA ROSES

The Newer Varieties

Novelty Roses are priced individually, but substantial reductions may be had, **IF ORDERED IN GROUPS OF THREE OF ANY ONE KIND.**

\$1.00 kinds are 3 for \$2.50
\$1.25 kinds are 3 for \$3.15

\$1.50 kinds are 3 for \$3.75
\$2.50 kinds are 3 for \$6.25

ANGELS MATEU. *Orange-rose.* Large, full-petaled flowers of splendid form. Foliage dark green and leathery. Erect grower. Fragrance of ripe blackberries. A great favorite among connoisseurs, because of its lovely shade. Flowers of high quality even in hot weather. In color on page 9. *Pat. No. 174.* \$1 each

BETTER TIMES. *Cerise-red;* double and very fragrant. Upright grower, none too vigorous but fairly hardy. Very active bloomer with superb flowers for cutting, especially in the fall. Rated the best greenhouse variety ever introduced; splendid outside too, if nursed along a little. *Pat. No. 23.* \$1.25 each

CALIFORNIA. Glorious shade of *ruddy orange* toned with saffron-yellow, outside of petals overlaid with Saturn rose. Long-pointed buds open to flowers of enormous size, 5 to 6 inches across. Exceptionally vigorous, with healthy, glossy green foliage. One of the finest recent introductions. *Pat. No. 449.* See color illustration on page 9. \$1.50 each

CHARLOTTE ARMSTRONG. Rich *carmine* to spectrum-red buds open to blooms of deep cerise. Long, slender buds on long stems. Vigorous, free-branching grower with handsome foliage. Blooms in great quantities, usually one flower to each stem. Received the highest All-America Rose Selections award for 1941. The American Rose Society puts it in the "must" class. In color on page 4. *Pat. No. 455.* \$1.50 each

COUNTESS VANDAL. Long-pointed buds open to full, perfect, fragrant blooms, richly adorned in *copper and salmon*, suffused with soft yellow. Vigorous, upright grower that blooms unceasingly. The best of the "salmon" group. *Pat. No. 38.* \$1.25 each

CRIMSON GLORY. Deep, velvety *crimson.* Rich in color, perfect in form, and delightfully fragrant. Thrifty grower of spreading habit and a free bloomer. Rated the best red and the most popular Rose of any color. Shown in color on page 8. *Pat. No. 105.* \$1.25 each

DICKSONS RED. Glowing *scarlet-red.* Large, beautifully formed, high-centered flower on long stems, with rich fragrance. Unfading color, best in the fall. A very fine Rose and a grand exhibition type. *Pat. No. 376.* Shown in color on page 5. \$1.25 each

ECLIPSE. Long, stream-lined bud of rich *golden yellow.* Vigorous, upright grower producing mildly fragrant flowers on long stems. Unusual, handsome and distinctive. The leader of all yellows. A most prolific bloomer and our favorite Rose. Illustrated in color on page 9. *Pat. No. 172.* \$1.25 each

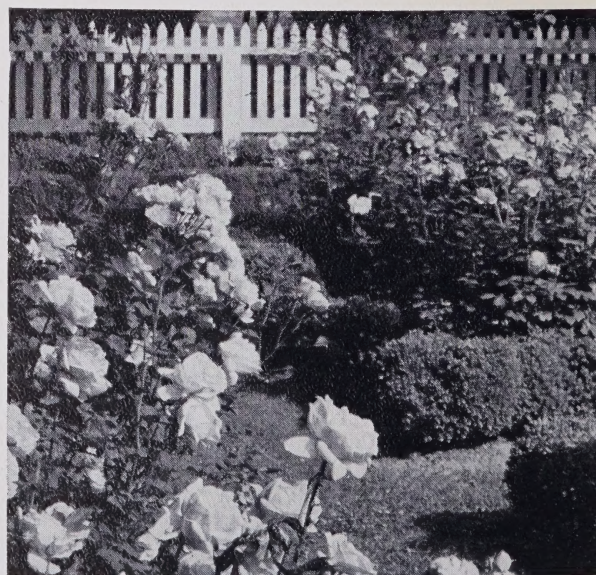
FLAMBEAU. Vivid, vibrant glowing *scarlet.* Large, double flowers on strong stems. Vigorous, tall grower and continuous bloomer. Delightfully fragrant. *Pat. No. 374.* \$1.25 each

GOOD NEWS. *Peach-pink,* changing to silvery pink in the open bloom. Full, perfectly formed, tea-scented flowers. Vigorous, bushy and altogether an excellent grower and constant bloomer. A truly door-yard Rose. In color on page 5. *Pat. No. 426.* \$1.50 each

GRANDE DUCHESSE CHARLOTTE. A grand new shade of *red.* Chestnut color in bud-form, opening to firm-petaled blooms of begonia-rose. Some call it tomato-red. Buds are long-pointed, on long stems. Flower is large, double, long-lasting, and unfading. Foliage is large, glossy, dark green. The bush is very vigorous, upright and bushy. Carnation fragrance. Shown in color on back cover page. *Pat. pending.* \$1.50 each

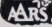
HECTOR DEANE. *Strawberry-pink* from crimson buds, diffused with orange. Tall, vigorous grower and very floriferous. Intense old-rose perfume. *Pat. No. 361.* \$1.25 each

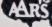
McGREDY'S SUNSET. *Saffron-yellow* blushed with delicate orange. Beautiful buds, full shapely flowers, sweetly fragrant. Most vigorous plant and prolific bloomer. Color illustration on page 4. *Pat. No. 317.* \$1.25 each



PARAMOUNT ROSES ARE GUARANTEED TO GROW AND BE TRUE TO NAME

HYBRID TEA ROSES, *The Newer Varieties*

MARY MARGARET McBRIDE. Gorgeous  deep coral-pink, suffused with gold at base. Long-pointed buds open to large, exquisite, high-centered blooms, on long stems. Vigorous, hardy grower and generous bloomer. Luxuriant, smooth, leathery, deep green foliage. Alluring fragrance. Quite similar in color and habit to Pink Dawn, itself a very good Rose, but this has character and "class." Appears in color on back cover page. *Pat. No. 537.* \$1.50 each

MIRANDY. *Gorgeous chrysanthemum-red.* A  glorious new Rose from California, that was given the highest award in the tests for this year in the All-America Rose Selections. Big, ovoid buds, often long-pointed, are deep, rich, dark red with black shadings. Full flowers of beautiful form are long-lasting and have a wonderful fragrance. Plant is strong, free-branching with heavy stems and is a free producer. Good also in hot weather. Shown in color on front cover. *Pat. No. 632.* \$2.50 each

MME. CHARLES MALLERIN. *Orange-flame,* a vivid and unusual color. Large, full flowers on strong stems, richly fragrant. Sturdy; an early and free bloomer. *Pat. No. 409.* \$1.50 each

MME. COCHET-COCHET. *Coppery pink.* Beautiful form, exquisite coloring and sweetly fragrant. Splendid grower, free-flowering, and one of the best of all Roses. It is illustrated in color on page 13. *Pat. No. 129.* \$1.25 each

MME. HENRI GUILLOT. *Deep watermelon-pink,* heavily veiled with reddish orange, all artistically blended into a vivid picture. Long, tapering buds open to large camellia-shaped flowers with rich fragrance. A really excellent Rose with magnificent blooms. *Pat. No. 337.* \$1.25 each

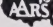
NARZISSE. *Maize-yellow.* Lovely buds and fine full flowers of great size, slightly scented. Vigorous and erect grower with leathery foliage. An exhibition type with its handsome buds on long stems. Outstanding variety in Pennsylvania State College tests. Shown in color on page 4. *Pat. pending.* \$1.50 each

PEDRALBES. Rich yellow buds open to creamy white blooms of large size, with yellow center. Profuse and constant bloomer. Spreading type of growth. Flowers come in clusters on long, graceful stems, with slight fragrance. Shown in color on page 5. \$1.25 each

SIGNORA. Long, brownish orange bud that opens to *mandarin-orange* and salmon. Bloom is double and very fragrant. *Pat. No. 201.* \$1.25 each

STERLING. Beautiful *pink.* The big, long-pointed bud of brilliant deep pink, with yellow at base, opens into a large bloom, lasting when cut; fragrant. Near the top of the pinks. In color on page 9. *Pat. No. 21.* \$1.25 each

TEXAS CENTENNIAL. Bright *vermilion-red.* Long-pointed buds of perfect form that open into large, richly fragrant blooms on long stems, ideal for cutting. Color and substance are marvelous in the fall. Unusually vigorous, with an abundance of healthy foliage. It appears in color on page 12. *Pat. No. 162.* \$1 each

THE CHIEF. *Flame color,* ranging from coral  to orange. Large, pointed bud. Very large, full flower on long stem. Dark green foliage. Vigorous grower of branching habit and free bloomer. Rich, fruity fragrance. See page 8 for color. *Pat. No. 456.* \$1.25 each

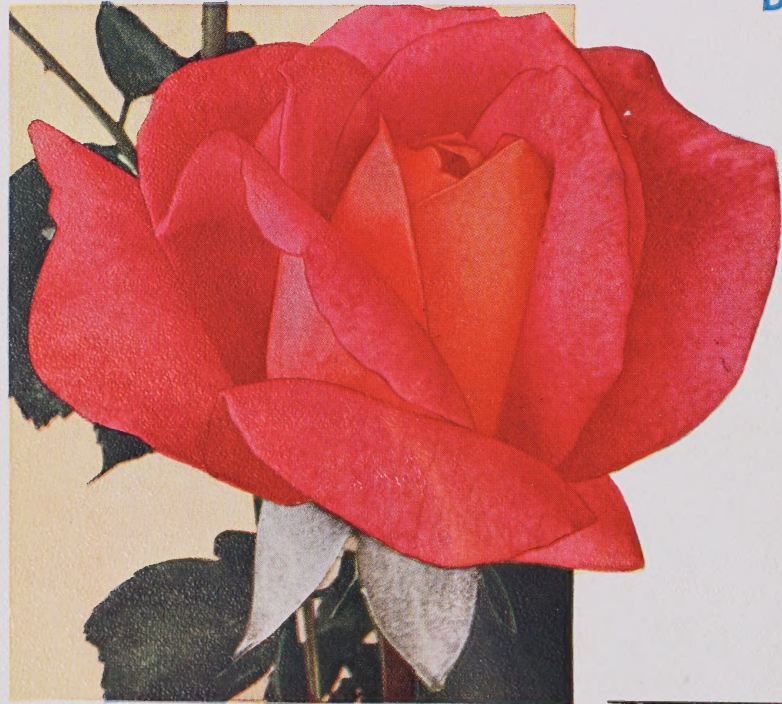
WHITE BRIARCLIFF. *Pure white.* Fine form, ideal for cutting; deliciously fragrant. Vigorous and bushy plant. An early and prolific producer. *Pat. No. 108.* \$1.25 each



PARAMOUNT ROSES ARE GUARANTEED TO GROW AND BE TRUE TO NAME



CRIMSON GLORY. Pat. No. 105
\$1.25 each



THE CHIEF. Pat. No. 456. \$1.25 each

◆ *Paramount*
SPECIAL

6
ROSES

Shown here
in color
for only

\$6.25

DELIVERY FREE



PARAMOUNT ROSES ARE GUARANTEED

Amount COLOR SET

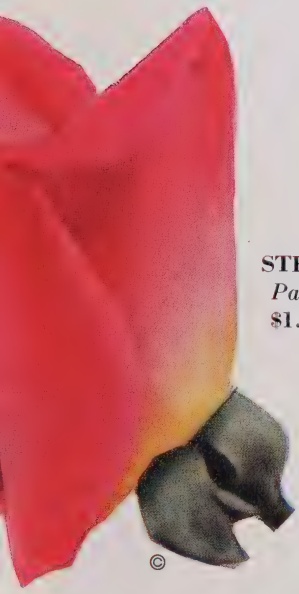
We recommend membership in the American Rose Society to all Rose lovers. Write the Secretary, Box 687, Harrisburg, Pa., for details.



CALIFORNIA. *Pat. No. 449*
\$1.50 each



© **ECLIPSE.** *Pat. No. 172.* \$1.25 each



STERLING
Pat. No. 21
\$1.25 each



ANGELS MATEU. *Pat. No. 174.* \$1 each

TO GROW AND BE TRUE TO NAME

HYBRID TEA ROSES

Standard Kinds

Prices of all Standard Kinds 95 cts. each; \$9.50 per doz.

In any combination desired • Delivery Free

Ami Quinard. *Blackish maroon*, opening into semi-double flowers of rich velvety red, with blackish luster—brilliant and unfading; has old-time fragrance. Strong, upright grower and fine producer.

Autumn. Radiant *burnt-orange*. Exquisitely formed buds, richly colored, open to moderately fragrant flowers that are a rainbow of colors—red, orange, yellow and pink. Upright grower, very vigorous, with large, leathery foliage. Active bloomer.

Betty Uprichard. Two-tone—*salmon and carmine*. A very free and steady bloomer and unusually vigorous grower. Buds are long-pointed, on a good, heavy stem. Sweetly fragrant. Flowers unfurl with one petal tucked back like a cocked hat.

Christopher Stone. *Scarlet-crimson*—a brilliant, clear color superb in the fall. Long-pointed bud opens into large flower of truly sparkling color, with Damask fragrance. A most active and flashy performer, highly rated and much beloved. Illustrated in color on page 13.

Condesa de Sagago. Rich *yellow* buds unfold into copper-color blooms, with yellow on the reverse; fully double with alluring raspberry fragrance. Exceptionally vigorous and supremely bushy in growth. A foolproof Rose if there ever was one.

Duquesa de Penaranda. *Copper-apricol*. Very vigorous, erect and continuous worker. Has long-pointed buds which open into fine flowers, sweetly fragrant and of flaming color. Striking foliage.

Edith Nellie Perkins. Two-tone—*salmon and carmine*. Has an ideal bud that opens into perfect bloom with mild fragrance. Similar in color and form of flower to Countess Vandal, but a more bushy grower. Blooms freely.

Editor McFarland. *Deep pink* that does not fade. Large flowers of excellent form on long stems; long lasting when cut and slightly fragrant. Plant is unusually vigorous and always active.

Etoile de Hollande. Brilliant *dark red*. Perfect buds; large, double flowers on long stems, and truly fragrant. Plant is vigorous, always growing and continuously in bloom. Stems almost thornless and foliage healthy.

Frau Karl Druschki. The White American Beauty. *Snow-white* blooms of immense size, fully double and of perfect form. Extremely hardy and vigorous. Good for exhibitions.

Girona. Multicolored—*Turkey-red and golden yellow*. Full, double flowers of beautiful form; rich attar-of-rose fragrance. Free bloomer on tall, sturdy plant. Illustrated in color on page 12.

Golden Dawn. *Sunflower-yellow* with bud tinged carmine; deliciously fragrant. Robust grower with superabundance of foliage; a prolific bloomer. Bush and habit perfect.

Golden Sagago. *Buttercup-yellow*. Exceptionally strong grower and very free bloomer. Very full flower, richly fragrant. Bushy and heavily foliaged. Illustrated in color on page 13.

Joanna Hill. *Creamy yellow*. A typical florists' Rose that does well outside. Long buds open to full, long-stemmed, perfect blooms with moderate fragrance. Upright grower that provides many fine flowers for cutting.

Kaiserin Auguste Viktoria. *Cream-white*, with greenish tint in the center. Large and perfectly formed blooms, fully double, on long stems, and richly fragrant. Truly majestic and the best white of all. Constant bloomer and healthy grower.

Killarney, Double White. *Pure white*. Long-pointed buds and large flowers with haunting perfume. Good grower, fine bedder, and graceful habit.

Lady Ashtown. Clear, warm unfading *rose-pink*, with yellow glow at base of petals. Long-pointed buds and brilliant flowers, slightly scented. Very vigorous and unusually active, bushy in habit. One of the finest and most reliable pinks.

Margaret McGredy. *Orange-scarlet*. Very large, long-pointed buds and beautiful double flowers, slightly scented. Extremely vigorous grower with healthy, glossy foliage. A tireless worker and wonderful bedding type. Truly Floribunda.

McGredy's Scarlet. Velvety brilliant *scarlet*. A stout grower, bearing large flowers of excellent form on long stems. Liberal producer with tough constitution. A very satisfactory Rose.



PARAMOUNT ROSES ARE GUARANTEED TO GROW AND BE TRUE TO NAME



A glimpse of our Rose-fields in full bloom

HYBRID TEA ROSES, *Standard Kinds*

McGredy's Yellow. *Canary-yellow* of elegant form, still beautiful in open flower. Vigorous in growth, free blooming, with healthy, glossy foliage. A fine Rose that does not fade. Illustrated in color on page 12.

Mme. Jules Bouche. *White.* A well-known and popular Rose. Bushy, vigorous grower producing many long-pointed, mildly fragrant flowers on long stems. Has perfect growing habit. The most continuous-blooming white Rose and generally satisfactory in all respects.

Mrs. E. P. Thom. *Clear yellow* of uniform color. Vigorous, upright in growth with abundance of foliage and splendid plant habit. Full, double flower, sweetly scented, produced on long stems, ideal for cutting.

Mrs. P. S. du Pont. *Golden yellow*—a rich, deep color that does not fade. Long-pointed buds and flowers of medium size that come in great profusion; spicy fragrance. Plant is a low grower but stoutly built, with abundance of foliage and is a prolific bloomer. The best all-round yellow garden Rose. Actually Floribunda.

Pink Dawn. Deep *pink* with orange at the base. Blooms of good form; sweetly fragrant. A vigorous grower, upright in habit. Long-lasting cut-flowers.

Pink Pearl. Light, clear *pink*, with the fragrance and form of the old Columbia. Very double flowers, in the old-time style, freely produced. Strong, vigorous plant.

Poinsettia. *Rich scarlet*, color even and distinct. Beautifully shaped buds and large, brilliant blooms, slightly fragrant. Tall, healthy grower, profuse bloomer. A very fine Rose. See color illustration on page 13.

President Herbert Hoover. *Yellow, orange and scarlet* in a luscious blend of color. Large, glorious blooms come on long, strong stems that make each flower a real bouquet; richly fragrant. Exceptionally vigorous bush that breaks freely and is a very free bloomer. Fine in the fall.

President Macia. Long-pointed buds of rich *carmine-pink*, inside of petals flesh-pink. Strong grower with abundance of leathery foliage. The flowers are large, quite fragrant, on long stems fine for cutting. Shown in color on page 12.

Radiance. The most dependable Rose in America—the standard for all others. Brilliant *carmine-salmon* with reverse rose-color. Its thrifty habit of growth and rugged character reach perfection. The most popular and most successfully grown variety in the country.

Red Radiance. Clear, *genuine red*. The counterpart of Radiance and its inseparable companion in the garden. Has all the dependable and admirable qualities of Pink Radiance, but has a richer color.

Roslyn. *Golden yellow* with reverse orange. A cut-flower type that does exceedingly well outside. Bud of excellent form; large bloom of unfading color, slightly fragrant. An active bloomer with a compact, vigorous bush.

Sister Therese. "The Little Flower." *Golden yellow*; bud touched with orange-carmine. Exquisite, long-pointed bud, making a fine, fragrant cut-flower. Vigorous, active grower of spreading habit, and a very free bloomer.

Snowbird. *Pure white.* An ideal bedding Rose. Blooms of perfect form, full-petaled, very large and deliciously fragrant. Healthy foliage. The handiwork of the late Secretary of the American Rose Society, R. Marion Hatton, and a splendid memorial to him.

Souv. de Claudius Pernet. *Pure yellow*—sunflower-yellow. Large, full flowers of rich, unfading color; very mild scent. A florist's Rose that is still very popular in the garden. Plant upright, vigorous and very free flowering.

Talisman. Beautiful mixture of *golden yellow, orange and scarlet*, varied in every bloom. Richly colored buds on long stems, fine for cutting, especially in the fall; very fragrant. Upright, vigorous grower and constant bloomer. Most widely known Rose.

PARAMOUNT ROSES ARE GUARANTEED TO GROW AND BE TRUE TO NAME

TEXAS
CENTENNIAL
Pat. No. 162
\$1 each

Paramount


12 ROSES

(EIGHT SHOWN HERE IN COLOR)

for \$9.00

DELIVERY FREE

Christopher Stone. Scarlet-crimson.
Condesa de Sastago. Copper color and yellow.
Girona. Turkey-red and yellow.
Golden Sastago. Buttercup-yellow.
Kaiserin Auguste Viktoria. Cream-white.
McGredy's Scarlet. Brilliant scarlet.
McGredy's Yellow. Canary-yellow.
Mme. Cochet-Cochet. Coppery pink.
Mrs. P. S. du Pont. Golden yellow.
Poinsettia. Rich scarlet.
President Macia. Carmine-pink.
Texas Centennial. Vermilion-red.



McGREDY'S
YELLOW
95 cts.
each



PRESIDENT MACIA. 95 cts. each



GIRONA. 95 cts. each

FAVORITE DOZEN



POINSETTIA. 95 cts. each

*Paramount Roses
Are Guaranteed to Grow
and Be True to Name*



MME. COCHET-COCHET. Pat. No. 129
\$1.25 each



GOLDEN SASTAGO. 95 cts. each



CHRISTOPHER STONE. 95 cts. each



Showing the bushy growth and plentiful bloom of a Floribunda Rose

FLORIBUNDAS

Large-Flowering Bedding Roses



Gruss an Aachen. *Yellow, pink and rose.* Ideal bedding Rose. Low, heavily foliated bush, a constant mass of blooms. Flowers are large, full, double and good for cutting.

95 cts. each; 3 for \$2.40

Permanent Wave. A strong-growing *cochineal-red* bedding Rose. Petals are peculiarly waved, which gives an unusually novel appearance to the clusters of large flowers, hence its name. A perfect hedge-plant. *Pat. No. 107.* \$1 each; 3 for \$2.50

Pink Gruss an Aachen. Similar in habit to Gruss an Aachen but it has a rich *salmon-pink* color, which gives it more life and makes it more attractive.

95 cts. each; 3 for \$2.40

A. Grille. *Lively scarlet-crimson.* Large-flowered, semi-double blooms come in clusters all summer. Bushy, vigorous grower with dark green foliage. *Pat. No. 475.* \$1 each; 3 for \$2.50

Betty Prior. *Bright red* buds open to single flowers of shell-pink, giving glorious two-tone effect, resembling pink dogwood. Prolific bloomer. Outstanding. *Pat. No. 340.* \$1 each; 3 for \$2.50

Donald Prior. *Brilliant scarlet.* Large, semi-double flowers borne in great profusion. Very spectacular. Sturdy and vigorous. Makes beautiful combination with Betty Prior. *Pat. No. 377.* \$1 each; 3 for \$2.50

Summer Snow. *Pure white,* very double blooms; sweetly fragrant. Profuse bloomer. *Pat. No. 416.* \$1 each; 3 for \$2.50

World's Fair. *Velvety crimson-scarlet.* Large clusters of rich red cover the bush continuously. Big double flowers. Healthy, vigorous and prolific. Makes a spectacular show. *Pat. No. 362.* \$1 each; 3 for \$2.50



You have a standing invitation to come to see the splendid condition of the plants in our fields, when traveling conditions permit. Seeing our Roses in bloom will help you to choose the varieties you want.

PARAMOUNT ROSES ARE GUARANTEED TO GROW AND BE TRUE TO NAME

From _____

PLACE
STAMP
HERE

PARAMOUNT NURSERIES

A. & A. D. VANDERKRAATS, *Props.*

WEST GROVE, PENNA.

ORDER SHEET

PARAMOUNT NURSERIES

A. & A. D. VANDERKRAATS, *Props.*

WEST GROVE, PENNA.

Date _____ Amount Enclosed \$ _____

Name _____

Street _____

Post Office _____ State _____

Express Office (if different) _____

Quantity	ITEMS	Amount
	3 New Roses "Cover Collection" @ \$4.60	
	6 Novelty Roses. Pages 4 and 5 @ \$6.90	
	Special Color Set of 6 Roses. Pages 8 and 9 @ \$6.00	
	Our Favorite Dozen—12 Roses. Page 13 @ \$9.00	
	TOTAL	

Hardy Climbing ROSES

The spectacular show produced by even one Climbing Rose makes this class especially desirable for every home. If you have only a few feet of ground space you can have a Climber by supplying support for it to grow upon. Climbers can be trained on fences, pillars, or against the side of a house or garage. We offer here the hardiest kinds, which will grow with little protection. By all means have a Climbing Rose in your garden; and if you have one we guarantee you will want more.

Blaze. The everblooming Paul's Scarlet. Bright scarlet color that holds well. Blooms in masses. *Pat. No. 10.* \$1.25 each; 3 for \$3.15

Climbing American Beauty. *Crimson.* Large, fragrant flowers of fine form, borne in clusters. Blooms early in the season. 95 cts. each; 3 for \$2.40

Climbing Summer Snow. Clear, sparkling *white.* Large, generous clusters of double, good-sized flowers. Blooms during the summer, too. Medium grower, making a fine pillar Rose. A bushy grower and abundant producer. *Pat. No. 400.* \$1.50 each; 3 for \$3.75

Doublons. A radiant *yellow* Climber with large, compact, double blooms coming in clusters; spicy fragrance. Vigorous grower with long, heavy canes. Noted for hardiness. Beautiful foliage of dark, velvety green. Blooms in midseason and tends to rebloom later. *Pat. No. 152.* \$1.50 each; 3 for \$3.75

Paul's Scarlet Climber. *Brilliant scarlet.* The flowers are large and beautifully formed, coming in clusters, making a vivid splash of color that holds clear and true. The blooms come on long stems, making good cut-flowers. Medium grower, ideal for pillars. Blooms in midseason. 95 cts. each; 3 for \$2.40



HOW TO PLANT ROSES

Rose-beds should be prepared well in advance of the arrival of the plants.

Roses require sun, at least half of the day. Protection from strong winds is also desirable. The beds should be placed where the soil is naturally well drained, or drainage should be provided. The soil should be good garden loam. If it is poor, remove the top 8 to 10 inches, spade up the bottom, mixing in some good manure, and replace the top portion with good top-soil, letting it settle well before planting.

The Roses should be planted about 12 to 15 inches apart each way, varying the distance somewhat, depending on the vigor and spread of the varieties selected.

All Roses should be planted as soon as received. But the bundles can usually be kept intact for a week, if kept in a cool, dark place. If delayed in planting for more than one week, remove the plants from the bundles, and hill them in carefully in a shady and moist place, until wanted.

When planting in the fall, no pruning is necessary, but cutting back to 6 to 8 inches can do no harm. Immediately after planting, hill the soil around each plant for at least 6 inches.

In planting in the spring, trim the branches back to 4 to 5 inches. If planting late in the spring, when it is warm, and it often is after the middle of April, hill the soil up slightly and keep the plants shaded from the sun for several weeks, and water well each day.

Full planting directions are sent with each shipment, and one should read them carefully before proceeding with the job.

The best spray for Roses is TRI-OGEN, a complete insect spray and fungicide. It stimulates plant-growth and is harmless to foliage or blooms. It is convenient, easy and pleasant to use and is triple acting. It can be purchased at most seed stores or in any garden department of general stores. If you cannot secure it locally, please write to us and we will secure it for you.

PARAMOUNT ROSES ARE GUARANTEED TO GROW AND BE TRUE TO NAME

**GRANDE
DUCHESS
CHARLOTTE**

Pat. pending

\$1.50 each



**COVER
COLLECTION**

3 ROSES \$4.60

Value \$5.50. Delivery Free

MIRANDY (Front Cover)

GRANDE DUCHESS CHARLOTTE

MARY MARGARET McBRIDE

**PARAMOUNT
NURSERIES**

A. & A. D. VANDERKRAATS, Props.

WEST GROVE, PENNA.



© MARY MARGARET McBRIDE. *Pat. No. 537*
\$1.50 each