

Historic, Archive Document

Do not assume content reflects current scientific knowledge, policies, or practices.

LIBRARY
RECEIVED
★ JAN 22 1944 ★
U. S. Department of Agriculture

Garden Success

George
Stromer
PROPRIETOR



SPRING
and FALL

1944



South Michigan Nursery
New Buffalo, Michigan.

New Everbearer



SOUTH MICHIGAN NURSERY

Minnesota 1166

At Last! An Everbearing Strawberry That Has Everything Starts Bearing 60 Days After Set and Continues Bearing Till Heavy Frosts. 3 CROPS IN 18 MONTHS!

Minnesota 1166 is a large, long-pointed berry, produced on long-branched fruit stems, well hidden under the leaves for good protection. The color of the fruit is on the dark red order, and a solid red clear through the berry, even when the berry is still not quite ripe. The flavor is even better than the Wayzata everbearing, which up to now has always been the best flavored berry.

Minnesota 1166 is just as productive as any everbearing strawberry we have grown, and makes a good quantity of plants. For best results in fruit production, we recommend that the runners be pinched off as fast as they appear in the summer. It's a strong grower, resembling the Missionary variety. The fruit is attached to a fine green hull that will not pull out even when the berries are dead ripe. This, with the small amount of

juice that this variety contains, will make it the very best jam berry ever introduced. This variety has been known to keep five days without refrigeration, and never mold or spoil in the hottest weather. It will dry up like a raisin before it will spoil. This will make it the coming commercial variety, as most other everbearing varieties will not keep long after picking.

Minnesota 1166 berries shipped to the South Water Street market in Chicago this summer sold for \$7.50 per 24-pint crate. Once you have tasted Minnesota 1166 berries you will eat no other kind. We know, for we grow all the varieties and at our table we choose the Minnesota 1166 every time. We have 150,000 of them to offer and we are sure this will not go half way around, so send in your order early, and take advantage of the discount we offer for early orders.

Prices:	6 for\$1.00	50 for\$ 3.25	300 for\$16.50
	12 for 1.35	100 for 6.00	500 for 26.00
	25 for 2.00	250 for 14.25	1000 for 50.00

Less Discounts

**Bears in 60 to 80 days
3 Crops in 18 months!**



Wayzata Everbearer

- The Honey-Sweet Berry
- Red to the Heart
- Small Hulls
- No Green Tips

WAYZATA challenges the world in flavor, size and productiveness. Now matched only by Minnesota 1166. Newly set plants start to bear in 60 days, and continue for nearly six months without any let-up, if they are cultivated once a week, and all weeds kept out. Adapts itself to most any type of soil. Plants are hardy and tough. Their dark green, leathery-like leaves are rarely attacked by common strawberry plant diseases.

Wayzata plants set in the spring of 1944 will start to bear within 60 to 90 days, and bear all summer up to severe killing frosts. They will again bear a full crop in June, 1945, and another in the fall of 1945. Three nice big crops in 18 months. It is not an unusual thing to have fresh strawberry shortcake for Thanksgiving days—both of them. 100 plants will be sufficient for an average family.

6 for\$1.50
12 for 2.00

PRICES
25 for\$ 3.25
50 for 5.50
NO DISCOUNTS ALLOWED

75 for\$ 8.00
100 for 10.00

[3]

New Buffalo . . . Michigan

ROBINSON (New)

Latest Thing in Spring-Bearing Strawberries

Crossed Between Premier and Washington Varieties

This variety was found here in Berrien County, Michigan, several years ago and has been thoroughly tested and by this time known as the best late strawberry to grow. Greatest shipping berry known.

MARVELOUS QUALITY

These big round blunt-pointed berries are of top quality. They are borne on large thick fruit stems, that are well protected with a heavy foliage that makes up a wide fruiting and picking row. The tangy rich sweet flavor is found in no other strawberry. Just imagine yourself ready to start working on the dish full of the berries below. Solid red all the way through and full of rich red juice.

LONG FRUITING SEASON

Robinson starts to ripen soon after Premier and continues right through the late strawberry season. No let-up at all. Every berry a large one right up to the last picking. Bring a much higher price on the market, so it's the greatest money maker of all strawberries. Sold for 50c a crate more than Premier.

HEALTHY FOLIAGE

The plants make a fine wide picking row, and foliage of the healthiest. Will grow on most any type of soil, just so that it is well drained. This is the first year we are offering it to you, and naturally our stock is somewhat

limited. Not a diseased plant in the whole lot was found by the State Inspectors. Our prices are reasonable, and would advise you to plant all you can afford to buy to get a start of this wonderful berry.



Robinson

PRICES

25 for	\$ 1.25
50 for	1.75
100 for	2.95
200 for	5.25
250 for	6.00
500 for	9.00
1000 for	17.00

Less Discounts

- 20% Discount until February 5th
- 10% Discount until March 5th
- 5% Discount until April 5th

Balance of Season, Net Prices

COLLECTION No. 1

All NEW Varieties

- 100 Robinson
- 25 Minnesota 1166
- 6 Streamliner

For Only \$4.45
NO DISCOUNT

COLLECTION No. 2

- 250 Robinson
- 100 Minnesota 1166

For Only \$8.40
NO DISCOUNT

Giant Mastodon Everbearer

3 Full Crops in 18 Months 3 Big Profits

Mastodon has been with us for about 20 years, and in all these 20 years we have never known them to fail on a full crop 5 to 6 months long the same year they are set out. The size of the berry is like Wayzata—very large. It is of very good quality, red all the way through, and fine flavor. Bears as heavy as Wayzata, and makes many new runner plants. These new runner plants will also bear towards fall, and then you have a real picking row. This wide row will make fine picking the next June as a spring berry. Mastodon does not require any special soil, care or petting. They grow most anywhere, or on any soil that will grow garden or potatoes. They sell like "hot cakes" on roadside stands, or on any market. It will take a hard freeze to stop the Mastodon from bearing. White frosts will never hurt them at all. A field of Mastodon in full bearing in late November is a sight never to be forgotten. Even after a light snow one can go out and find ripe berries unharmed.

Mastodon Prices

25 for	\$ 1.25
50 for	2.00
100 for	3.50
200 for	5.80
300 for	8.10
400 for	10.40
500 for	12.50
1000 for	24.00

Less Discounts

20% DISCOUNT
Until Feb. 5

10% DISCOUNT
Until Mar. 5

5% DISCOUNT
Until Apr. 5

Balance of Season
Net Prices

GEM GIANT EVERBEARER

Bears 60 Days After Planting

Gem differs a little from Wayzata and Mastodon in this way: Gem prefers a clay or a heavy sandy loam soil, where Wayzata and Mastodon do well on most any kind of soil. Gem also does best when grown in the hill system, so for best results keep all runners nipped off. The berries are large and smooth, and of a light red color, that ripen up even all around. Bears equally as heavy as Mastodon, and the berries get larger towards fall. Runner plants will bear as well as the mother plant. Gem is a good plant maker. Makes a good June-bearing variety. Bears 3 crops in 18 months. Gem makes a beautiful quart of berries. Berries like these sell for 50c a quart around Thanksgiving and bring good prices all summer long.

Gem Prices

25 for	\$1.25	300 for	\$ 8.10
50 for	2.00	400 for	10.40
100 for	3.50	500 for	12.50
200 for	5.80	1000 for	24.00

Less Discounts

Collection No. 3

25 Minn. 1166 For Only
25 Mastodon
25 Gem **\$3.20**

NO DISCOUNT

Collection No. 4

100 Mastodon For Only
100 Gem
100 Minn. 1166 **\$9.00**

NO DISCOUNT

Collection No. 5

25 Mastodon Everbearing
25 Gem Everbearing
6 Minn. 1166 Everbearing
For Only **\$2.25**
NO DISCOUNT

SOUTH MICHIGAN NURSERY New Buffalo, Michigan



Stromer's

PREMIER

The Most Popular Berry Ever Introduced

If you plant STROMER'S PREMIER you will get the first berries on the market. They will be bearing heavily before other varieties begin. Your biggest picking will be when berries are in good demand and are bringing top prices. Premier will grow anywhere. The plants are sturdy and long rooted, a good drought-resister. The berries are very large, and hold their size to the last picking. The flavor cannot be beaten.

In Premier we offer you the greatest early Strawberry of all time. However, the early ripening of this variety is only one of its many good features. It is immensely productive and, unlike other early ripening Strawberries, the fruit produced by Premier is of the very finest quality, color, texture and flavor; and last but not least, every berry is large in size and uniform in shape. For every purpose that a Strawberry is wanted, Premier is supreme—eating, canning, preserving, distant and local market—no other variety can give you any more pleasure, satisfaction or profit. Premier succeeds everywhere and never fails to give a big crop of the very finest berries. The foliage is tough and healthy and grows tall and rank, covering the blossoms and berries, and protecting them from frost and scalding sun.

PREMIER PRICES

25 for	\$1.00	100 for	\$2.00	300 for	\$ 5.40	500 for	\$ 8.00
50 for	1.25	200 for	3.60	400 for	6.80	1000 for	15.00

LESS DISCOUNTS

FAIRFAX

Fine for Shipping. This is one of the finest spring-bearing strawberries grown. It is an extra good home use berry, and especially for canning and jam making, because it is nearly black. It is the darkest red strawberry we know of. It is so firm that one has to cut or slice them to get them to make juice.

FAIRFAX PRICES

25 for	\$1.00	100 for	\$2.00	300 for	\$ 5.40	500 for	\$ 8.00
50 for	1.25	200 for	3.60	400 for	6.80	1000 for	15.00

LESS DISCOUNTS

SENATOR DUNLAP

Senator Dunlap is an old well known variety that has made more dollars for berry growers than any other variety. It grows most anywhere, and is the toughest, healthiest and fastest grower of them all. Berries dark red, not so large as others, but the quality is fine. Wonderful for canning, as well as fresh. Sometimes listed as Dr. Burrill.

DUNLAP PRICES

25 for	\$0.75	100 for	\$1.60	300 for	\$ 3.90	500 for	\$ 5.50
50 for90	200 for	2.80	400 for	4.40	1000 for	10.00

LESS DISCOUNTS



BRUNE'S MARVEL EVERBEARING STRAWBERRY

This is another new variety of everbearing strawberry that differs from all others in this way: For you folks who cannot eat other varieties of strawberries, can eat this one. No acid, and about all sugar. This variety will not cause a rash like others do on some folks. It's really so sweet that no sugar is needed. Mild and smooth. Seeds are so small that they are hardly noticed. Berries large, bright red, and bears 60 days after set, and is still at it when it commences to snow. Bears the very best in September and October. Have very few plants to offer this year. If you want to try this one order early.

PRICE

6 for	\$0.85	25 for	\$2.00	100 for	\$ 5.50
12 for	1.25	50 for	3.00	200 for	10.00

LIMIT—NO DISCOUNT

Collection No. 6

25 Brunas Marvel ONLY
25 Minnesota 1166 \$2.80
NO DISCOUNT



RED LAKE Currant

This new, better and extra hardy large red Currant comes from Minnesota. This Red Lake is the last word in Currants and you will really want a few plants of them even if you think you have plenty of Currants already. Produce long, large, red clusters that make up into excellent jelly. Ships well, and is the best commercial variety to grow.

Red Lake Prices: 2-yr., No. 1, 35c each; 3 for \$1.00; 6 for \$1.75; 10 for \$2.75. NO DISCOUNT.

WHITE GRAPE Currant

Same as Red Lake except fruit is white. Same price as Red Lake. No discount.

WHITE BLACKBERRY

Strange as it may seem, this is a real creamy white Blackberry. Mixed with the jet black ones for dessert, it makes a most wonderful dish. The fruit is about the size of Alfred, with few seeds and quite sweet when fully ripe. The bushes are good, strong growers and very productive. This is not a worthless novelty, but a fruit of real value, and should be in every garden.

1-yr. No. 1 plants: 20c each; 6 for 90c; 12 for \$1.50. 2-year-old bearing-age transplants: 35c each; 3 for \$1.00; 6 for \$1.85; 12 for \$3.00. No discount.

Stramer's Raspberries

MORRISON Blackcap Raspberry

LARGEST BLACKCAP RASPBERRY GROWN—Berries as Large as a Quarter

Would you believe that there could be a Black Raspberry that would grow larger than the Cumberland? Well, there is one now called the Morrison Blackcap. This new variety was found growing wild in Girard, Penna., by County Agent Paul Crossman of Erie County. Mr. Crossman was attracted by its unusually large size, and its shiny jet black color. The berry is much larger than the Cumberland, many of them nearly an inch in diameter. Mr. Crossman says that the plants are very free from disease, and are vigorous growers. We have been fortunate in obtaining a limited amount of these plants for our own propagation purposes, but we are going to let a few of them go to our customers for 1944. Don't wait too long, as when our stock is sold, we will have to refund the money, and you will have to wait to get your start. MORRISON excels as a berry for both home and commercial planting. The large attractive berries meet all culinary requirements. They are high in quality, firm texture, juicy, not so seedy as other blackcaps. MORRISON berries hold up longer in grocery and market displays. They will outyield other black raspberry varieties.

"Not just another blackcap."

"Largest black raspberry I have ever seen."

"No diseased Morrisons have been found to this date."

"The most promising late black raspberry growing at the New York Station."—Geo. L. Slate.

Our Cumberland Blackcap listed on page 9 is reliable and good. Has been the outstanding commercial variety for many years. Now, however, Morrison comes along, and is just so much better in every way, that we are sure in a few years, everyone will be growing Morrison. It bears twice as many berries, because the plants grow twice as large, and the berries are a third larger too. It is possible to pick 8 pints of berries from a single well cared for plant, the second year after set, so you see you do not need to buy many for home use. At 30 cents per pint you can see it will pay you to buy a few plants and raise your own, and save your ration points for other things. We have less plants to offer this year than last on account of labor shortage. We were unable to fill one third of the orders last Spring, so you know what to do. Don't overlook the 20% discounts for early orders.



Collection No. 8
 100 Alfred, 1-yr.
 100 Morrison, 1-yr.
 For Only **\$10.50**
 No Discount

Collection No. 7
 25 Morrison, 1-yr.
 25 Alfred, 1-yr.
 Only **\$3.50**
 No Discount


1-Year-Old No. 1 Plants

Each \$0.35	25 for \$3.95	300 for . . \$23.95
3 for 1.00	50 for 6.25	500 for . . 39.00
6 for 1.60	100 for 9.95	1000 for . . 75.00
12 for 2.95	200 for 17.00	LESS DISCOUNT

2-Year-Old Bearing-Age Plants

Each \$1.25	6 for \$4.50	LESS DISCOUNT
3 for 3.00	12 for 7.50	12 limit to a customer



New!

SUNRISE

Red Raspberries are so scarce that we wish you would give us second choice in ordering.

The **OUTSTANDING NEW RED RASPBERRY** originated by the U. S. Department of Agriculture has now been christened **SUNRISE**. It comes to fruit growers with many advantages over older sorts.

DR. DARROW and **PROFESSOR CLARK** describe the new berry in the U. S. Department Circular 397. It originated as a cross between Latham and Ranere. Among other things they say:

"Of most importance about **SUNRISE** from the standpoint of the practical grower perhaps, are:

1. "**HARDINESS** and **RESISTANCE** to disease."
2. "**EARLINESS** and **LARGER SIZE** of the berry as compared with Ranere."
3. "**BETTER TEXTURE** and **QUALITY** of the fruit compared with Latham."

"In New Jersey where **SUNRISE** had been grown commercially for a period of six years, it has been outstanding."

MR. BLACK, a prominent New Jersey fruit grower, writes June 12, 1942:

"Have picked **SUNRISE** twice from plants planted in the spring of 1941 and had fair picking from this one-year-old field. They brought 25c a pint. We do not think Latham will be ripe for 2 weeks as they are just shedding their petals. Have a good prospect for a heavy crop."

These comments from competent and practical men are evidence that this **NEW SUNRISE** will find an important place in raspberry growing. It combines the most necessary characteristics of a successful berry—**HARDINESS—RESISTANCE to DISEASE—EARLINESS and HIGH QUALITY of FRUIT.**

SUNRISE has been under test and observation by the U. S. Department of Agriculture since 1923. We offer it to the general public at prices that are reasonable. The supply is limited. Place your order early.

PRICES: SUNRISE, LATHAM and INDIAN SUMMER			
1-Year, No. 1, First Class — 500 at 1000 rate.			
Each	\$0.30	12 for	\$2.50
6 for	1.50	25 for	4.50
		50 for	\$ 8.00
		100 for	14.95
2-Year-Old Bearing-Age Plants			
Each	\$0.50	6 for	\$2.00
3 for	1.25	12 for	3.75
		25 for	\$ 5.95
		100 for	18.95

All Red Raspberry prices are alike above, and **LESS DISCOUNT**. In ordering please give second choice, as plants are very scarce. Order early.

LATHAM Red Raspberry

Commercial Growers' First Choice

This is beyond a single doubt the very best of all the red raspberries so far. Latham is large, some measuring an inch in diameter, firm, sweet, few seeds, and perfectly hardy. Stands 45 degrees below zero. Grows tall heavy canes that can carry the heavy load. Finest variety for commercial growers and home use. Prices above.

INDIAN SUMMER Everbearing

This new two-crop or everbearing red raspberry was introduced by the New York Experiment Station. It bears in July like any other red raspberry, and also in the fall, beginning in September on the new growth, and continues till frost. The berries are large, conical shape, and of extra fine quality. This variety is by far the best of all the everbearing varieties so far. We have discarded St. Regis for this new variety. Prices above.

NOTICE

Never before have we seen the time when plants of all kinds were so scarce, and this is especially true when it comes to raspberry plants of all kinds. This is all due to the labor shortage, and a little to the wet weather we had in this section last Spring. We have a fair supply of Morrison and Cumberland, but not a third enough of any of the red varieties. We have about equal amounts of each variety, so have priced them all alike. Do not order more than you need. We suggest that 25 plants will supply an average family of five. Set the plants 6 ft. apart each way if you have room enough, and take extra good care of them. It will pay you well. Never put any manure or fertilizer in the hole with the plants. Rather put it around the plants (on top) after you have them set. After you have the 1-yr. plants set, cut them back so that only one bud is above the ground. Of course on the 2-yr. bearing-age plants, set them as you receive them, as they are to bear this year. Never set any raspberry plants more than 2 inches below the top of the roots. Spread roots out well, and tramp solidly with your feet. Water after set if the ground is dry, or late in the season. Cultivate every week, and keep all weeds and grass out. No spraying will be necessary.

Cumberland

THE BUSINESS BLACKCAP

This is without question one of the most profitable and popular Black Raspberries ever grown. It is the one safe and reliable commercial variety because you can depend on a big crop regularly. We call it the "business Blackcap" because it succeeds on all soils and produces its big crop year after year.

We have never known Cumberland to fail, and the best proof that it is a profitable variety is the fact that the demand for plants is greater every year and more Cumberlands are planted than all other varieties combined.

Cumberland is perfectly hardy and tremendously productive. The berries are extra large, glossy black, and not equaled by any other variety in quality, flavor or appearance, except Morrison. Whether wanted for market or home use, we can recommend Cumberland to our most exacting customers. Disease free. Twice state inspected plants.



CUMBERLAND PRICES:

1-Year, No. 1 Plants					
12 for	\$1.10	100 for	\$4.95	400 for	\$14.80
25 for	1.80	200 for	8.00	500 for	18.00
50 for	3.20	250 for	9.60	1000 for	35.00
75 for	4.20	300 for	12.40	LESS DISCOUNTS	
2-Year, Bearing-Age Plants					
Each	\$0.75	6 for	\$3.75	12 is the limit to a customer.	
3 for	2.00	12 for	5.75	LESS DISCOUNTS	



GLENDALE *Hardy* Heavy Bearing Gooseberry

Very large berries of delicious flavor. Greenish yellow in color turning to pink when fully ripe. Plants are perfectly hardy, and vigorous growers. Bears young, and annually on sturdy bushes. It's a money maker as well as a good pie variety. Three plants usually plenty for home use. Plants will last many years, with very little care. Just keep the weeds and grass from them. **Price: 50c each; 3 for \$1.35.**



GOLDEN QUEEN

A beautiful large golden yellow Raspberry. Many prefer this variety to any of the reds or blacks, owing to its sugary sweetness, and unsurpassed flavor. Should be in every garden, its beauty and high quality placing it at the head for table use. The canes are hardy, vigorous growers, and heavy croppers.

PRICES—1-Yr. No. 1

1 for	\$0.20
3 for50
6 for90
12 for	1.50

2-Yr. Bearing-Age Plants

1 for	\$0.35
3 for	1.00
6 for	1.85

Mary Washington ASPARAGUS

There is no variety of Asparagus as good as Mary Washington, and whether for home use only or for market, you cannot afford to grow any other. This wonderful new Asparagus was developed and introduced by the U. S. Department of Agriculture, and through a recent introduction, it has become famous the country over.

Growers everywhere are discarding all other varieties in favor of Mary Washington, because it is earliest, the stalks are larger, more tender, more productive than any other variety.

ASPARAGUS PRICES:

1-Year No. 1		2-Year, No. 1	
Roots		Roots	
25 for	\$1.10	6 for	\$0.75
50 for	2.00	12 for	1.10
75 for	2.50	25 for	1.75
100 for	3.00	50 for	2.50
250 for	6.00	100 for	4.50
NO DISCOUNT			





Thornless Boysenberry

Thornless Boysenberry

**All of the Good
Qualities of the Regular
Boysenberry BUT NO THORNS**

This is the early ripening strain of Thornless Boysenberry with canes as smooth as a grape vine. RIPENS 10 DAYS TO TWO WEEKS EARLIER THAN BOYSENBERRY. The introducer claims even heavier yields from this Thornless Boysenberry than the common Boysenberry. This new strain Thornless Boysenberry is identical to the Boysenberry except that there are no thorns and it ripens earlier. This is a very good feature as the early berries bring more money. The Thornless is just as hardy, rugged and heavy bearing as its parent the Boysenberry. Vines grow 25 feet long, and this pretty apple-green vine loaded with giant purple beauties is a sight you will never forget, and after you taste a handful of them, other berries will go begging for a while. Delicious with cream and sugar, and when made into jam, it's the last word. Supply of plants still limited, so hurry.

THORNLESS BOYSENBERRY PRICES:

1-Yr., No. 1 Plants		2-Yr., Bearing-Age
Each	\$0.35	Each \$1.25
3 for90	2 for 2.20
6 for	1.50	5 for 5.00
10 for	2.00	10 for 7.50
25 for	4.50	
	LESS DISCOUNTS	LESS DISCOUNTS

THORNLESS DEWBERRY

This is a new Dewberry of the Lucretia type, and is absolutely thornless. This new variety grows like any dewberry, and is very productive, and hardy. This is just as big an improvement as the thornless Boysenberry over the old thorny one, that we do not list any more. Why put up with thorns, and scratched up hands and arms when you can grow our thornless Dewberries? We have just a limited amount of them to offer this year, but get a few of them this year, to get started early. Dewberries are always in good demand, and there is nothing nicer than a dish full of them with sugar and cream.

THORNLESS DEWBERRY PRICES:

1-Year, No. 1 Plants	
Each	\$0.25
25 for	\$3.00
6 for	1.00
50 for	4.50
12 for	1.75
100 for	8.95
	NO DISCOUNT

COLLECTION No. 9
10 Thornless Boysenberry, 1-yr.
and 6 Thornless Dewberry, 1-yr
For **\$2.40** NO DISCOUNT
Only



Thornless Dewberry

The ALFRED BLACKBERRY

Our 2-year bearing-age plants bear a year sooner—berries first year. STANDS 30 DEGREES BELOW ZERO, GEO. STROMER, ORIGINATOR

Year after year, with diligent care, I have propagated these plants to such an extent that the fruit is now being supplied to the local markets at a fancy price, and is always in good demand. Last year I measured a good many berries that were over one and one-half inches long, and three inches around. Buy from the originator and get GENUINE ALFRED.

IMMENSE SIZE. The berries are twice as large as ordinary Blackberries, many of them 1½ inches long, and the finest flavored of all Blackberries. It is practically coreless, sweet and delicious. Very small seed.

EXTREMELY HARDY. ALFRED can be grown anywhere without winter protection, having withstood 30 degrees below zero, and not a single tip of a branch injured, while our other varieties were frozen to the ground.

EARLY SEASON. It ripens a week to ten days earlier than Eldorado and in productiveness it is in a class by itself. We have seen them bear a second crop. We picked many crates this year in September.

ALFRED BLACKBERRY PRICES:

1-Yr., No. 1 Plants	2-Yr., Bearing-Age Plants
6 for	Each \$0.25
12 for	3 for60
25 for	6 for90
50 for	12 for 1.65
100 for	25 for 2.25
200 for	50 for 3.50
300 for	100 for 6.50
500 for	
1000 for	LESS DISCOUNTS
	LESS DISCOUNTS



Alfred

Giant Cultivated

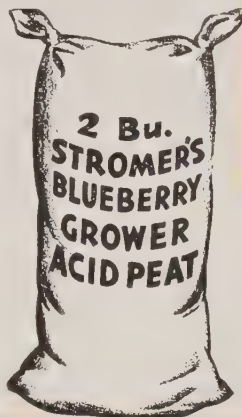
2 Plants
for only **\$2.50**
LESS DISCOUNT

BLUEBERRIES

JUMBO SIZE

**DELICIOUS—PROFITABLE
VERY ORNAMENTAL**

During the summer the foliage is deep satiny green, and against this background hang clusters of berries royal in their magnificence. During autumn the leaves turn bronze, and during the winter months the twigs are red. Buds are pink and open to white, bell-shaped flowers. **Two plants** should be set out to insure cross pollination, so we would not advise to set just one plant. We are offering 3-year plants that will bear the second year. Blueberries like these sell for 55c and 70c per quart on retail markets.



Blueberry Prices:
3-Year-Old Plants
2 for\$2.50
4 for 4.40
6 for 6.00
10 for 9.50
NO DISCOUNT

Collection 10
5 Blueberry Plants,
3-yr. and
1 Bushel Blueberry
Grower.
For **\$5.00**
NO DISCOUNT



STROMER'S BLUEBERRY GROWER will hold 15 to 20 times its own weight in water, and contains much fertilizer value that blueberry plants need. Also fine for evergreens. We ship in bags containing about 2 bus. Weight around 100 lbs. Price \$1.00 per bag. Mention how we should ship—express or freight.

REQUIRE LITTLE CARE

Blueberries prefer an acid soil containing an abundance of peat or other partially rotted vegetable matter. They also need a moderate supply of moisture, but good drainage. In other words, water must not stand where they are planted. If your soil is not already acid, this condition can be created by mixing in the soil, old sawdust, pine needles, or soil from the bottom of old woodpiles. But the very best thing to use is our Blueberry Grower. This is a sour fertilizer you should use for Blueberries, Evergreens, Azaleas, Rhododendrons or any shrub that requires acid soil.



THE NEW EVERBEARING

Streamliner

Enormous Size --- But Never Hollow

We have never seen a more beautiful strawberry. Almost round, bright scarlet in color, and the very largest berry of all everbearing strawberries. Outyields both Mastodon and Gem. Sweet as honey, with very little acid. Ripens red all over at the same time, even late in the Fall. Bears 60 days after set, and will bear the second year as well as the first. From late June to late in November it will be loaded with ripe berries, green ones, and blossoms all at the same time.

At first we were not going to offer them in 1944, but since we have 10,000 more plants than we will need for propagating purposes, we are going to let our good friends and customers in on it a year earlier.

This is going to be a real running mate for the famous Minnesota 1166 which we offer in the front of this book. Try them all and compare them. See which one does the best for you in your locality. This variety, like all the everbearers that we offer, will bear alone—perfect flowering. Our price, while they last, is as follows:

STREAMLINER PRICES:
Each\$0.30 12 for\$2.75
3 for75 25 for 4.00
6 for 1.40 100 for 15.00
NO DISCOUNT. (100 LIMIT.)



Caco

Collection No. 11
 3-Yr., No. 1 Plants
 1 Caco 1 Concord
 1 Fredonia 1 Niagara
 All For Only
NO DISCOUNT \$1.40

CACO

This is the new quick growing, young bearing, delicious, sweet, big red grape that is so popular. It has no equal as a home use table grape. It has a peculiar characteristic found in no other grape, in that it is rich in flavor. Its deep wine-red color is so pleasing to the eye. A vine full of these rich red beauties is a sight. They are so easy to grow that everyone should have a few vines in the back yard. Ripening in September like they do, the crop will be harvested long before killing frosts. Always in demand at fancy prices, and roadside stand owners make big money with Caco. Bunches are large, well formed, and make a fancy package. Hardy.

CONCORD

Concord is beyond a doubt the most popular blue grape. More Concord are planted than all other varieties. It is the commercial table and wine variety. Concord is perfectly hardy, having stood 30 degrees below zero without injury. Does well on any soil, but makes the sweetest fruit on light sand that has been well fertilized. Bunches are large, compact and well shaped. Sweet and juicy. Vines grow fast, and bear second year.

SEEDLESS CONCORD

After years of experimentation and cross-breeding, a perfectly hardy seedless Grape has been developed. The first of a new race of Grapes that should eventually replace the



BLACK WALNUT
 NATIVE BLACK WALNUT. A tree of large size and majestic form. The most valuable of all trees for its timber, bringing the very highest price in market. A good shade tree, and the large, oily nuts are of fine flavor and marketable at a fair price. 3-4 ft. trees, each 30c; 4 for \$1.00; 10 for \$2.00. NO DISCOUNT.



HARDY FILBERT
 Can be grown anywhere. Perfectly hardy. Large well-filled nut. Bears young. 18-24 in., each 75c; 3 for \$2.00; 10 for \$5.95. 4-5 ft., each \$1.90; 3 for \$5.25. NO DISCOUNT.

GRAPES

Collection No. 12
 3 Caco, 2-yr., No. 1
 3 Fredonia, 2-yr., No. 1
 6 Concord, 2-yr., No. 1
 For Only
NO DISCOUNT \$2.50

FREDONIA

This new early black grape was originated at the New York Experiment Station. No other grape contains quite so much sugar as Fredonia. Bunches are large and compact. Very hardy, vigorous grower. Bears second year. Ripens 15 days ahead of Concord, and tops the market on account of its high quality. A few cents spent now for some Fredonia plants will be a lifetime investment, for which you will never be sorry.

NIAGARA

This is the great white grape that succeeds most everywhere, even as far South as Florida. Bunches are nice, large, well shaped. Of a greenish white, turning to a light yellow when dead ripe. When fully ripe they are as sweet as honey. Vines are hardy, and bear young.

GRAPE PRICES:	1	6	12	25	100
Caco, 2-yr., No. 1	\$.35	\$1.50	\$2.80	\$4.50	\$12.00
Caco, 2-yr., No. 1, bearing age	.50	2.50	4.00		
Concord, 2-yr., No. 1	.35	1.50	2.80	4.50	12.00
Concord, 3-yr., No. 1	.50	2.50	4.00		
Fredonia, 2-yr., No. 1	.35	1.50	2.80	4.50	12.00
Fredonia, 3-yr., bearing age	.50	2.50	4.00		
Niagara, 2-yr., No. 1	.35	1.50	2.80	4.50	12.00

LESS DISCOUNTS

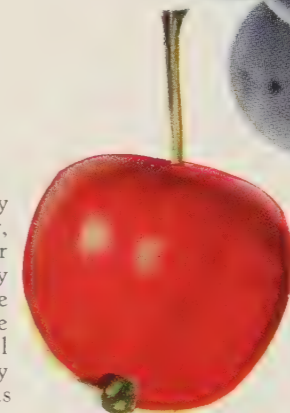


Fredonia

DOLGO CRAB APPLE

The perfect Crab. Hardy everywhere. Heavy bearer, usually beginning the year after setting. Jells perfectly even when dead ripe. A fine ornamental tree for the lawn as well as a wonderful commercial sort. Rapidly displacing such varieties as Transcendent and Hyslop. Bears young.

Prices: 2-year, 9/16 inch trees, each \$1.00; 3 for \$2.70. NO DISCOUNT.



GOLDEN MUSCAT

This new hardy California yellow grape can now be grown anywhere, because it's hardy enough. The berries are large, and form a big compact bunch that is very attractive. Quality is of the best, fruit being meaty with the Muscat aroma. Be sure to have at least one plant of this new variety in your garden or back yard, and be convinced.

2-yr.-old plants, each \$1.50. LIMIT. NO DISCOUNT.



Niagara

Hansen Bush Cherry

The New Quick-Bearing Cherry
EASY TO GROW—SURE TO PRODUCE
 Highly Productive—Good Flavor—
 Hardy Everywhere

Though the fruit of this new Cherry much resembles a Plum in size and shape, it comes massed in clusters and at times almost completely covers the limbs. The tree grows in a dwarf bushlike shape, rarely getting over 4 or 5 feet tall. Also of striking ornamental value.

Plant Hansen Bush Cherries Because:

- 1—They are so easy to grow and are perfectly hardy everywhere.
- 2—Are good to eat fresh, and make delicious preserves.
- 3—Bear from the ground up, early, heavily, and annually.
- 4—Are dwarf growing, bushy, and take up little room.
- 5—Excellent for hedges, ornamental shrubs and erosion control.

Fruits in one year. Large three-year-old Bush Cherries, ready to bear this year.

Prices: Each 50c; 3 for \$1.00; 10 for \$2.50; 25 for \$5.00; 100 for \$15.00. Extra large, 3-yr. giant plants, 75c each; 3 for \$2.00.

Seedless Pear

Brand new variety. Practically seedless. Solid all the way through. Ideal for canning. No waste. It is of the Bartlett type, pure white flesh with yellow blushed skin. Ripens 10 days later than Bartlett, and trees bear when 3 years old. A 5-year tree known to bear 3 bushels of fruit. Price, two-year-old, 9/16 inch trees, each \$1.75. Stock limited. NO DISCOUNT.

HOME GRAPE Collection

6 Concord, 3-yr., No. 1.
 6 Fredonia, 3-yr., No. 1.
 3 Caco, 3-yr., No. 1.

All For Only
\$4.00
 NO DISCOUNT





PLUMS

NEW WEATHER- SPOON PLUM

This is a new plum, similar to Stanley prune, except that it is larger, and a more blue color, with heavy bloom. Bears young, and very hardy. Fruits a beautiful blue, with yellow flesh. Sweet, freestone, and juicy. Excellent to eat fresh, or canned. Requires little sugar.

Price: 2-year-old, 9/16 inch, each \$1.25; 3 for \$3.00. **SUPER SIZE** trees, each \$2.00. **LESS DISCOUNTS.**

STANLEY PRUNE

This new purple (Prune) plum is superior to all plums or prunes. It often comes into bearing the third year, and ripens 10 days earlier than the German Prune. Very hardy, and very thrifty grower. Fruits are large, bluish purple, sweet, rich and fine. Freestone. Excellent to eat fresh and best of all for canning. It's also a money-maker on the market. Get started now.



Price: 2-yr., 9/16 inch, each \$1.25; 3 for \$3.00. **SUPER SIZE**, each \$2.00. **Less Discounts.**

UNDERWOOD

This is the earliest of the large new Plums. Ripens from about August 1st to 15th, and attains a size of 1 3/4 inches. The tree is one of the strongest growers of all these new Plums and gets to be very large, furnishing a large bearing surface to produce wonderful crops of beautiful fruit. Fruit is very attractive; red, firm, juicy flesh, very small pit, freestone. Splendid quality.

Price: 2-yr., 9/16 inch, each \$1.50; 3 for \$4.00.

SUPER SIZE, each \$2.50.



PEARS

BARTLETT

The most popular home use and commercial variety. Large yellow with red cheek. Flesh tender and juicy. Bears every year. Best for canning.

Price: 2-year-old, 9/16 inch, each \$1.00; 3 for \$2.75. **SUPER SIZE** trees, each \$1.50. **LESS DISCOUNTS.**

SEEDLESS PEAR

Brand new variety. Practically seedless. Solid all the way through. Ideal for canning. No waste. It is of the Bartlett type, pure white flesh with yellow blushed skin. Ripens 10 days later than Bartlett, and trees bear when 3 years old. A 5-year tree known to bear 3 bushels of fruit.

Price: 2-year-old, 9/16 inch, each \$1.75. **NO DISCOUNT.**



Orange Quince

We list only this one Quince as we consider it by far the best. The trees commence to bear very young and produce big crops. Fruit is excellently flavored and of large size.

Price: 2-year-old trees, each \$1.50.

Rhubarb

Our giant red stalked Rhubarb is the best that can be grown. It is early, tender, with a mild acid flavor. Delicious for sauce, pies, or jam. We are offering large 2-year roots with plenty of branch roots. Can be cut same year set. Six plants will supply a family. Prices: 15c each; 6 for 50c; 12 for 90c; 25 for \$1.50; for 90c; 25 for \$1.50.



EXTRA HEAVY 3-Yr. Clumps

Each \$0.25
6 for 1.00

Will give you plenty of Rhubarb within 30 days.

CHERRIES

YELLOW GLASS

Sweet Cherry

Fruit very large and heart-shaped. Color is a pale yellow with a light red cheek when exposed on the sunny side. Flesh is firm, rather brittle and of fine flavor. Pit small. Ripens in July. Trees vigorous and hardy. The best yellow.

20% DISCOUNT
Until Feb. 5

10% DISCOUNT
Until Mar. 5

5% DISCOUNT
Until Apr. 5

Balance of season
NET



Montmorency

LAMBERT

This is that extra large blackish red sweet cherry that you see in the fancy fruit stores, that sells anywhere from 35c to 60c per pound. Brittle and sweet. Small pit. Dark wine-red all the way through the meat. Remarkable keeping qualities, and a wonderful producer. Ripens about the time most of the smaller varieties are off the market. Brings the highest price on any market on account of its size and attractive appearance. Sells like hot cakes at all roadside stands. Trees are vigorous, and will grow anywhere on any kind of soil as long as it's well drained. Do not plant them where it is a little wet. Unless you already have a cherry tree growing, we would advise you to plant at least two trees. These need not be of the same variety. Trees are hardy anywhere the temperature stays above 40 below zero.

Collection No. 14

- 1 Hardy Apricot. 2-year-old, 9/16 in.
- 2 New Weatherspoon Plum. 2-year-old, 9/16 in.
- 2 Lambert Sweet Cherry. 2-year-old, 9/16 in.

For Only **\$4.75** NO DISCOUNT

MONTMORENCY

This is the largest of all pie cherries. Fruit is large, bright red, and juicy. Ripens about 10 days after Early Richmond. This is the variety that is most widely planted in all cherry-growing sections. Bears second or third year. Very hardy.

WINDSOR

Large, liver colored sweet cherry. Next largest to Lambert. Sweet, juicy and brittle. Ripens a little ahead of Lambert. Very hardy and productive.

BLACK TARTARIAN

Here is a good, hardy, productive cherry that is widely grown. The fruit is not quite as large as Windsor, and is a week earlier. Rich, juicy and fine. A good pollenizer for other varieties.

CHERRY PRICES

2-yr., 9/16 inch, each \$1.50; 3 for \$4.00. **SUPER SIZE**, each \$2.50.
LESS DISCOUNTS

Lambert

SURE CROP NECTARINE

Fruit as large as peaches, but entirely fuzzless. Golden orange with blazing red blushes. Strikingly beautiful, and richly flavored. Combine peach and apricot flavor. Trees hardy as peaches, easy to grow.

Price: **SUPER SIZE** only. Each \$2.00. **NO DISCOUNT.**





APPLES

DOUBLE RED DELICIOUS

This variety is far superior to the common red Delicious as it is highly colored all around, with no green sides. Double Red Delicious is America's number one apple. It tops the market every time, and seems to bear in a wide range of soils and climates. The fruits are very large, solid red, with the five points, and rather long in shape. Truly a most beautiful apple, and the best eating apple of them all. Flesh slightly yellow, with semi-sweet flavor. 2- and 3-year-old sizes available.

JONATHAN

Everyone knows that Jonathan is second best seller on any market, Red Delicious being No. 1. Jonathan is a first class eating apple. Not such a good cooker. Fruit dark red, flesh white, and a good keeper. Trees bear young, and yearly. There are more Jonathan and Red Delicious set than all the rest of the varieties combined. 2- and 3-year-old sizes available.

YELLOW TRANSPARENT

The finest extra early yellow apple. It ripens in July and the season continues to September. The fruit is of medium size, and can be used for pies and sauce before it is entirely ripe. The flesh is white, mild, juicy, and sweet. Trees grow upright, and can be planted at much less distance than most other varieties. Bears young and regularly. 2- and 3-year sizes available.

YELLOW DELICIOUS

Winter. Tree comes into bearing early, producing heavy crops. Very thrifty, hardy, and a vigorous grower. A golden apple which has won its fame as an outstanding commercial variety.

NORTHERN SPY

This fine well-known winter variety is juicy, of excellent flavor, fine for cooking and baking, as well as about the best eating apple of them all.

APPLE TREE PRICES:

(Except Dolgo Crab, Old Time and Vest Pocket)
2-Year-Old Trees, 4 to 6 ft.

Each	\$0.75	10 for	\$ 6.00
3 for	2.10	25 for	14.75
5 for	3.15	100 for	55.00

SUPER SIZE TREES

Each	\$1.25	5 for	\$4.75
3 for	3.00	10 for	9.00

LESS DISCOUNTS

Old-Time Apples

We list here a few of the old-time varieties, seldom found listed any more. The supply is limited, and here are the varieties:

Golden Russet	Tolman Sweet
Maiden Blush	R. I. Greening
Red Astrachan	Snow
Sweet Bough	Early Harvest

2-year-old trees

Price: Each \$1.00—NO DISCOUNT



VEST POCKET APPLE TREES 6 Varieties All on One Tree!

This is not just a novelty but a wonderful idea where folks have just a limited space to plant trees. This **Vest Pocket** apple tree will give you six varieties all on one tree. From early to late winter apples. This combination is Double Red Delicious, Yellow Delicious, Dark Red Jonathan, Wealthy and Crimson Winesap, all budded on Yellow Transparent stock. This will give you 6 varieties. Prices: Nice, well-shaped, 3-year trees, each \$3.00. NO DISCOUNT.

GIANT 5-YEAR FRUITING SIZE.
Each \$7.50. LESS DISCOUNTS.

Hardy Apricot

Produces good size fruit of an orange-yellow color with a little darker red cheek. Very delicious flavor, with small freestone pit. They are very productive and bear young. As hardy as a peach, and as easy to grow. Ripens in August.

2-yr., 9/16 in., each \$1.25; 3 for \$3.00. SUPER SIZE trees, each \$1.75; 2 for \$3.00. LESS DISCOUNTS.



PEACHES

NEW REDHAVEN PEACH

Long before other early Peaches are coloring, **Redhaven** is flaunting its bright red-all-over dress! It colors beautifully, long before ripe, and can be picked and marketed at a high price, while still firm enough to ship well.

Redhaven ranks with the best Peaches in richness of flavor, fineness and firmness of flesh, quality, yield, hardiness, and dependability. It bears a full crop after cold winters when other varieties fail.

It's a **freestone, self-pollinating, extra early** Peach that will get the first high Peach prices, and bring extra profit for you.

VANGUARD OF PEACHES

Right at the beginning of the Peach season, when other early Peaches are still green, **Redhaven** Peaches are beaming from the tree like so many scarlet beacons! You can see them a great way off, and want to eat them even before they are soft! They get those first, eager, **big Peach dollars**, for they set their own price.

FAMOUS "HAVEN" FLAVOR

If you have grown and eaten South Haven and Hale-Haven, you have another treat in store when you taste **Redhaven**. It was originated by Stanley Johnston of South Haven Experiment Station, who also originated the other "Havens." But this one tops them all, because it is so extra early, yet such a hardy variety, big bearer, and dependable cropper. A real, all-around Peach.

REDHAVEN PRICES

2 yr., 9-16 in. trees.

Each \$1.25
3 for 3.00
5 for 4.50
10 for 8.50

Super Size Trees.

Each \$1.50.
NO DISCOUNT

BRIGHTEST RED DRESS

Redhaven has the brightest coloring of any Peach. Looks like it's ripe 10 days or more before it's ready to pick.

PEACH GROWER'S DREAM

Peach growers have always dreamed of having a Peach that really had color, flavor, quality, quantity, and would ripen early enough to avoid price competition. **Redhaven** more than answers that dream. It is destined to stand with all the big-profit Peaches. A freestone, perfectly self-pollinating variety. Get started with **Redhaven** this spring!



Redhaven

HALE-HAVEN

Introduced by the Michigan Experiment Station. It is a cross between the J. H. Hale and the South Haven. Freestone. Yellow flesh. Firm. Excellent quality. Ripens last week in August. This is what we consider the very best peach of them all. Trees are strong growers, and hardy. This variety will make you big money and should be planted extensively. No better variety ever introduced for canning and eating fresh.

2-year-old trees: Each \$1.00; 3 for \$2.50. Super Size trees: Each \$1.25; 3 for \$3.00. LESS DISCOUNTS.

ELBERTA

This is the standard market Peach wherever you go. Fruit very large, oblong shape. Yellow, freestone, and tender flesh with a firm skin, which makes it the best shipping peach. Ripens first week in September. Flesh turns to deep red near the pit. Good canning variety.

2-year-old trees: Each \$1.00; 3 for \$2.50. Super Size trees: Each \$1.25; 3 for \$3.00. LESS DISCOUNTS

INDIAN BLOOD PEACH (Cling)

(Late.) An old-fashioned favorite of fine flavor. Flesh is blood-red color.

2-year-old trees: Each \$1.00; 3 for \$2.50. Super Size trees: Each \$1.25; 3 for \$3.00. LESS DISCOUNTS.

POLLY White Peach

This is the hardiest of all white peaches. Originated at the Iowa Experiment Station, withstands 20 degrees below zero. You folks who live out of the peach country should plant Polly. This is a home use variety, as it's too soft to ship far. The fruit is large, white and freestone. Ripens a few days ahead of Elberta. Polly has an outstanding delicious flavor that you will never forget. 2-year-old trees: Each \$1.00; 3 for \$2.50. Super Size trees: Each \$1.25; 3 for \$3.00. LESS DISCOUNTS.



ANOKA

The Old Folks' Apple

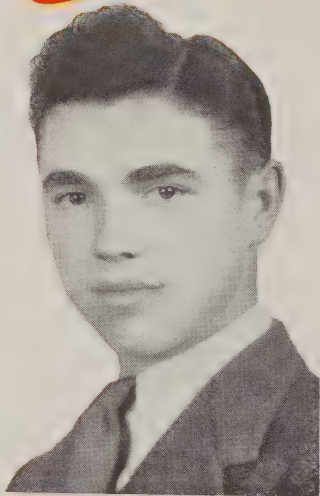
This wonderful early apple should be planted by both young and old. Especially should old folks plant a tree or two of them, as they will bear the same year you set them. Many have produced apples in our nursery row. No waiting for fruit if you plant **Anoka**. Hardy in all climates. The best early summer apple of red color. Wonderful cooking apple, as well as a tasty eating apple. Mellow and juicy. Not tart. The trees of the **Anoka** variety are not exactly what one would call a DWARF, but they are somewhat dwarfed on account of their early bearing qualities, so this is the nearest thing that we have to offer in a DWARF apple tree. We offer you some strong, healthy trees in both 2-year-old and in the SUPER size. Order yours early, as each year we sell out of **ANOKA** long before the season is over.

Price: 2-year-old trees, each \$1.25; 3 for \$3.00
SUPER SIZE TREES (bearing age), each \$2.00
LESS DISCOUNTS

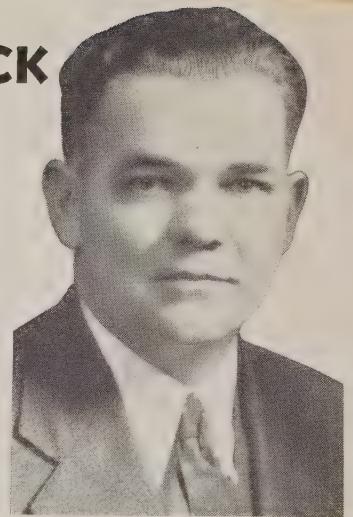


Save Money

ON FINEST HARDIEST STOCK Fruit Trees, Plants and Evergreens



JOHN STROMER
Now Pvt. John Stromer
U. S. Army
Somewhere in Sicily



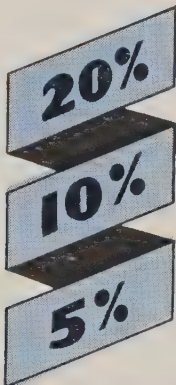
GEORGE STROMER

As proprietor of the South Michigan Nursery, Mr. Stromer closely supervises the filling and shipping of each and every order. His vast experience in nursery work is your assurance of quality and healthy, vigorous stock.

You can always count on the South Michigan Nursery for Quality and Saving. This is headquarters for the best in strawberries, boysenberries, raspberries, blackberries, and finest varieties of apples, peaches, cherries, pears, blueberries, grapes, lovely flowers and beautifying ornamentals. Our low prices save you real money . . . and our good, healthy nursery stock and plants will prove a source of abundant pleasure and profit for you. All the stock we ship is State Inspected. Your order, whether small or large, will be appreciated and will be shipped with utmost care, exactly in accordance with your instructions. Be sure to order early and take advantage of our liberal discounts.

GEORGE STROMER.

LIBERAL DISCOUNTS for Early Orders



DISCOUNT
Until Feb. 5th

DISCOUNT
Until Mar. 5th

DISCOUNT
Until Apr. 5th

**Balance of
Season
Net Prices**

It Pays to Mail Your Order Now

20% discount will again be allowed for all 1944 fall orders. If this catalog reaches you after January, 1944, we will allow you 10 days' time to take advantage of the 20% discount. This is done to be fair to folks who ask for the catalog and receive it after discount dates.

Your order will not be shipped until you are ready for it in the spring.

GUARANTEE We guarantee all of our nursery stock to be just as represented in our catalog; fully up to grade, of good quality, free from disease, and absolutely true to name; also to reach the customer alive, and in perfect growing condition. Furthermore, we will, at our option, either replace free of charge, or refund purchase price on any stock that arrives in bad condition; providing claim is made within five days from arrival of shipment, accompanied by a signed statement from the Express Agent or Postmaster at destination, showing extent of loss or damage. If any stock proves untrue to name it will, at our option, either be replaced free of charge, or purchase price will be refunded; but in no case will we be responsible for a sum greater than the original purchase price paid. Beyond this our liability ceases. It is understood and agreed between the customer and ourselves that the purchaser's order, and our acknowledgment of its receipt, shall constitute a mutual acceptance of the above terms and conditions.

REMITTANCE

Remit by draft, post office money order, express money order, registered letter or your personal check. Stamps may be sent for small orders. For the very best service, send money orders.

REFERENCES

Citizens Bank, Michigan City, Ind., American Railway Express Agent, Postmaster or Dun & Bradstreet.

HARDY PHLOX

FIREBRAND

Bright vermilion-scarlet with deeper center; large trusses. Strong grower.

LILLIAN

Lillian is an outstanding salmon-pink Phlox. Florets are rich salmon-pink. Very robust grower with plenty of vitality. Massive display. Grows 2 to 3 feet high. Very hardy. Fine for cutting.

ROYAL PURPLE

Purple, deep at edges, shading to violet in center of petals.

SALMON BEAUTY

Rich salmon-pink with white eye. There are many Phlox of this general color, but when all is said and done, we believe Salmon Beauty is one of the first on the list in this shade.

HAUPTMAN KOEHL

Dark blood-red. Large clusters on strong, tall stems. Florets large.

PHLOX PRICES—5 TOP-NOTCH VARIETIES:

No. 1, field-grown plants, each 25c; 5 for \$1.00. **NO DISCOUNT.**
Will sell you 1 of each for only \$1.00. **NO DISCOUNT.**



Hardy Phlox



MIXED GLADIOLUS

This wonderful mixture is made up of ten of the best and most popular varieties. All strong growers of every color. All giant flowers and many ruffled ones. Every bulb will bloom this year.
25 for 65c; 75 for \$1.25; 100 for \$1.60. **NO DISCOUNT.**

AMOUR RIVER PRIVET HEDGE

100 feet of Hardy Hedge for \$7.50. 12 to 18 inches tall.

This is the hardiest of all hedges, and one of the most beautiful. Foliage dark glossy green. Leaves stay on long into the winter. Fine white flowers with berries later on. Set 1 foot apart.
12-18 inch plants, 10 for \$1.25; 100 for \$7.50. Husky, 18-24 inch, 4 canes, 10 for \$2.50; 100 for \$18.00. **NO DISCOUNT.**

SHRUBS

RED FLOWERING DOGWOOD

Beautiful red flowers in April and May before leaves appear. Ultimate height 20 feet. Plant 10 to 12 feet apart. Like shade. Hardy.

Prices: 18-24 in., not balled, \$1.50 each; 2 for \$2.75; 4 for \$5.25. 3-4 ft., balled in moss, \$3.25 each.

WHITE FLOWERING DOGWOOD

(*Cornus Florida*.) 18 feet. Flowers white, 3 to 3½ inches in diameter, produced in spring before leaves appear; foliage grayish green, glossy and handsome; in the autumn turning to deep red, presenting a gorgeous spectacle.

2-3 ft., 80c each; 3 for \$2.25. 3-4 ft., \$1.75 each.

FORSYTHIA (Golden Bell)

Earliest of all shrubs to bloom. Blooms before the leaves start real early in the spring to brighten things up. Often before the last snow is gone.

Price: 18-24 inch, 35c each; 3 for \$1.00.



Red Dogwood

ALTHEA (Rose of Sharon)

Strong erect growing shrublike trees. Large showy flowers in late summer and fall. We offer Red, Pink, Purple, and White with Pink Eye.

2-3 ft. strong plants at 40c each; 3 for \$1.00.

RED LEAF BARBERRY

Foliage is brilliant blood-red in spring. Color holds all summer if grown in the full sunlight. Red berries that will remain all winter.

12-15 in., sturdy plants, 25c each; 5 for \$1.00; 10 for \$1.75. NO DISCOUNT.

PINK FLOWERING ALMOND

Small double pink flowers real early in the spring about the time that the Forsythia blooms.

2-3 ft., husky plants, 75c each; 3 for \$2.00.

BLEEDING HEART

(Picture on Back Cover)

Makes a plant 18 to 24 inches tall and 18 inches across. Dozens of tall stems loaded with big rose-and-cream hearts. Thrives everywhere.

PERFECTLY HARDY PERENNIAL!

Blooming size divisions, each 65c; 2 for \$1.25.



PRUNUS NEWPORT

This ornamental flowering Plum is one of the finest. Upright spreading bush form. Dark red foliage all summer. In spring it will be covered with dainty white flowers. No fruit. A few of these in your yard will really add a splash of color to your landscape planting.

2-3 ft. trees, each 65c; 2 for \$1.10.

RUSSIAN MULBERRY

If you plant cherry trees this year or now have cherry trees growing, plant a Russian Mulberry for the birds. They will leave your cherries alone, and eat the Mulberries. One tree is enough.

Price: 75c each. Large, 3-4 ft. tree.

MAY DAY TREE

The bouquet tree of loveliness. The first tree to show green in the spring and be in full leaf when others start. Bloom very early in the season, usually April or May. The flowers are large, pure white and fragrant. The fruit is small and although edible and makes good jelly, it is better for the birds. Birds eat these berries and leave your cherries for you. May be left to grow in a bush form or trimmed to make a tree. You should have one of these new trees this year.

2-3 ft. trees, 85c each; 2 for \$1.50.

BUDDLEIA, ROYAL RED Plant Patent Applied For

In presenting Buddleia Royal Red we believe we are introducing a new hardy plant that will be the sensation of the plant world for years to come. Royal Red represents 8 years of intensive breeding work, culminating in the first truly red Butterfly Bush. As a hardy summer cut flower plant and as an ornamental lawn shrub, Royal Red is unsurpassed in beauty and usefulness. From July until frost the plant produces an abundance of rich dazzling red panicles that attract instant attention. For garden planting, Royal Red is one of the most beautiful hardy plants that has ever been produced. The plant is hardy, grows 4 to 6 feet high and the foliage is deep leathery green. The sturdy plants we offer will flower abundantly the first year.

Husky, field-grown plants, ready to bloom, 85c each; 2 for \$1.50. NO DISCOUNT.



Althea ←



SHRUBS

HYDRANGEA P. G.

Flowers are extra large, white at first turning to a pretty pinkish purple, and later on in the fall to a perfect bronze. Fine winter bouquet. Blooms July to October.

18-24 inch plants, 40c each; 3 for \$1.00; 2-3 ft. size, 75c each.

HYDRANGEA A. G. (Hills of Snow)

This is the snowball type Hydrangea. Large blooms in June and lasts all summer. Will grow in the shade as well as sunlight.

18-24 inch plants, 40c each; 3 for \$1.00. 2-3 ft., 65c each.

BITTERSWEET TREE

A splendid small tree with deep green foliage, with bright autumn color. Loaded with bittersweet berries in early fall. Attract birds. 4-5 ft. trees, \$1.25 each.

PERSIAN LILAC, Purple

A decided improvement over the common Lilac. A shrub with slender, arching branches, attaining a height of 5 to 10 feet. The foliage is small, the flowers bright purple. Blooms in May and June. A much more profuse bloomer than the common, and does not sprout so from the roots. We consider the Persian much preferable. 2-3 ft., 50c each; 4-5 ft., \$1.00 each.

SPIREA, ANTHONY WATERER

The bright pink flowers are borne in full, flat clusters on erect stems in June and July.

12-15 inch, each 30c; 3 for 80c; 10 for \$2.25.

TREE HYDRANGEA

Same as Hydrangea P. G., except these are in tree form. 2-3 ft., \$1.00 each; 3-4 ft., \$1.50 each. NO DISCOUNT.

BUDDLEIA, CHARMING

Rosy pink. Never has a name so appropriately been applied to a flower. This exotic Buddleia is indeed a Pink Charming. Extra long flower panicles, many measure 15 to 18 inches long, full and tapering perfectly toward the tip. Plant is hardy and foliage of clear green, blends with any background. Like all the Buddleias, new shoots come up from the ground each spring. The old wood dies back during the winter and should be pruned out as soon as new growth starts.

Price: 2-year-old, field-grown plants, 60c each.

GIANT-FLOWERED MARSHMALLOWS

The mammoth, holly-shaped flowers come in white, pink, and crimson. The natural size of the flowers is 8 to 10 inches in diameter. All the roots offered will produce blooming plants next summer. Although they may be planted in the fall, provided a 6-inch covering of leaves is given, we prefer to plant them in spring, after which they should be thoroughly watered.

Price: Large plants, 35c each.



Mallow

One of each color Mallow for \$1.00.

BECHTEL'S DOUBLE FLOWERING CRAB

15 feet. A fine, small flowering tree which, when in bloom, presents the appearance of being covered with delicate pink Roses, scenting the atmosphere for a long distance with a perfume surpassing the fragrance of the Tea Roses. The cut blossoms have often been taken for Roses. The ideal lawn tree for the small yard.

2-3 ft., each 75c; 3 for \$2.00.



Bechtel's Flowering Crab

COMMON SNOWBALL

A well known favorite shrub tree. White globular flowers for Decoration Day. Does well anywhere, and will stand partial shade.

2-3 ft. plants, 65c each.

EARLIEST BLOOMING PEONY, OFFICINALIS RUBRA

Bright red in color, large, and the earliest of all. Blooms long and plants last a lifetime. Nice 3 to 5-eye divisions, each 80c.



SPIREA VAN HOUTTEI

One of the most common but still one of the most beautiful of all shrubs. So easy to grow. The branches covered with small white blooms will droop gracefully to the ground, and it is sometimes called Bridal Wreath. Blooms early spring.

Prices: 12-18 inch, well-branched plants, each 25c; 5 for \$1.00; 10 for \$1.75. 18-24 in., husky, each 35c; 3 for \$1.00.

NIOBE WEeping WILLOW

This is the yellow bark weeping willow, with the long, drooping branches, that dress up a yard so beautifully. Also fine for rock gardens, along the bank of a stream or lake. Very hardy. Will grow on high ground or in water.

We offer 5-6 ft. trees, each \$1.00. NO DISCOUNT.



Euonymus (Alatus)

EUONYMUS (Alatus)

4 feet. A choice, rare, compact shrub noted for its unbelievable brilliance of foliage, fruit in the autumn, and unique cork-winged bark. Does well in partial shade or sun. 15 to 18 inches.

18-24 in., each 95c; 2-3 ft., each \$1.25.

SPIREA BILLIARDI

Long spikes of deep rose flowers from June to September. Grows 4 to 5 feet tall.

Price: 2-3 ft. plants, each 45c.

MOCK ORANGE Bouquet Blanc

Everblooming. Grows 8 to 10 feet high and produces clusters of fragrant double flowers in June and later. Also intermittently until fall. Plant 5 feet apart; ordinary soil; ordinary moisture; sun or partial shade.

2-3 ft. plants, each 85c.



Mock Orange

FRENCH LILAC, Leon Gambetta

Buds and reverse of petals very pink, which gives the flower a general pink effect. Deep pink buds open into very double little roseline florets of the daintiest pink and lavender. We still say it is the finest of all Lilacs and we want to emphasize this. There are many fine Lilacs, but we believe this is the most beautiful of all.

Price: 3-4 ft. plants, TREE FORM, each \$1.50.

FRENCH LILAC, Chas. X., Red

Immense, single, wine-red. A splendid growing variety that produces immense blooms in the greatest profusion. The blooms, when they first open and for several days are sensational because of their great size and rich color. Then the color changes to a dull purple. When visitors are in our fields and this variety is at its best, it goes into almost every order. When in its prime, this is the greatest red.

Price: 2-ft. plants, each 70c; 3 for \$2.00.

HIGHBUSH CRANBERRY

An upright, handsome shrub. Clusters of white flowers in April and May, followed by bright red berries that hang on all winter.

2-3 ft. plants, each 35c; 3 for \$1.00.

MOCK ORANGE, Virginal

This is the new double white Mock Orange that is so fragrant that it will spray a room with perfume when used as a cut flower. No better shrubs to dress up the yard. Hardy.

18-24 in., 45c; 3 for \$1.25; 2-3 ft. size, each 60c; 3 for \$1.50.



Lilac, Chas. X

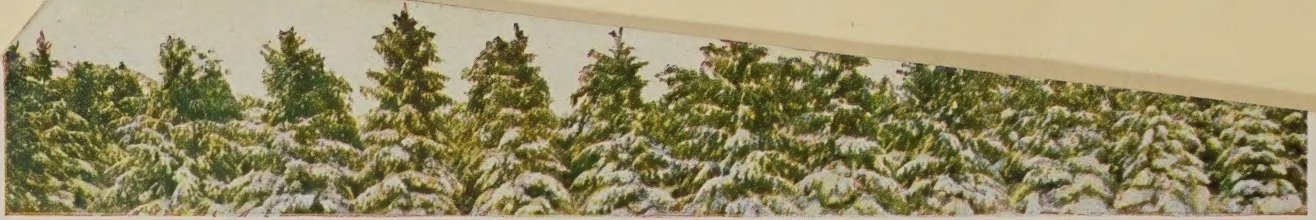
Blue HYDRANGEA

A rare plant of exquisite beauty, which will produce a fine crop of glorious blue flowers measuring 6 to 10 inches across. A few old rusty nails placed in the hole as you plant will assure them to bloom blue and stay blue. Or a teaspoonful of aluminum sulphate will do the trick also.

Nice Large, 2-Year-Old Plants
\$1.25 Each; 2 for \$2.00

No discount.





A VALUABLE WINDBREAK OF NORWAY SPRUCE
 We Offer Below Trees at Prices That Are Very Reasonable So You Can Afford to Plant This Year

Norway Spruce



Norway Spruce

Norway Prices

**2-3 ft. Specimens.
7-Year-Old.**
 Each\$2.00
 2 for 3.75
 5 for 7.50
 10 for12.00

**3-4 ft. Specimens.
10-Year-Old.**
 Each\$5.00
 2 for 9.00
 5 for19.00

This is one of the easiest and fastest growing of all the evergreens, and also one of the most beautiful ones. The foliage is dark green throughout the whole season. It is so hardy and thrifty that it will grow anywhere. On high dry yellow sand, or on low ground where water will stand part of the year. For windbreaks that are the best, also for Christmas trees, as well as ornamentals. Makes a beautiful driveway when planted on both sides. Will stand trimming, and if the head is cut out, can be formed into a round ball.

We are offering several sizes at prices that you will not want to pass up. We intend to sell our entire stock this spring, so that no doubt this offer at these prices will not appear again in another year.

**10-12 in., 4-Yr.-Old,
Twice Transplanted,
Bushy**
 Each\$0.60
 3 for 1.50
 5 for 2.00
 10 for 3.50

**12-18 in., 4-Yr.-Old,
Bushy, Twice Trans-
planted**
 Each\$0.75
 3 for 2.00
 5 for 2.50
 10 for 4.00
 25 for 8.75

**18-24 in., 4-Yr.-Old,
Bushy, Twice Trans-
planted (Beauties)**
 Each\$ 1.00
 3 for 2.65
 5 for 4.00
 10 for 7.50
 25 for 12.50

SPINY GREEK JUNIPER

(*Juniperus excelsa stricta*)

Narrow, columnar, having many erect branches and branchlets. Foliage spiny, with sharp points, glaucous blue. Of extremely dense growth and develops a formal shape, valuable in landscape. Grows slowly, eventually reach a height of 5 feet, with a spread of 2½ to 3 feet. Can be kept smaller by trimming. Plant in a dry, sunny location.

18-24 inch specimens, each \$3.00; 2 for \$5.50.

DWARF ENGLISH BOXWOOD

A widely known dwarf Boxwood. Small, dark green leaves stay bright throughout winter months. Fine for specimens or low hedge. Easy to grow. Any type soil, and once established needs little attention. Lives many years. Often called Century Plant.

10-12 inch plants, 7-year-old, each \$1.00; 2 for \$1.85. NO DISCOUNT.

SPREADING YEW

Beautiful Yew of moderate bushy growth, usually grows wider than tall. Branches from the bottom, developing into a bush form. Spreading branches densely clothed with short, dull green leaves. The most attractive spreading evergreen. Will grow in semi-shade.

18-24 inch specimens, each \$3.75; 2 for \$7.00.



Mugho Pine

MUGHO PINE

Our Dwarf Mugho Pine are the dwarf, pincushion type. Compact and hardy. We offer plants six inches tall and a 6-inch diameter top, 5 years old. These dwarf plants are slow growing but so far superior to the Montana Mugho.

Price: Each, 6x6 in., 75c; 10x10 in., \$1.00; 16x16 in., \$2.75; 20x20 in., \$3.25; 24x24 in., \$4.00.



Spiny Greek Juniper



Dwarf English Boxwood



VIRGINIANA JUNIPER

30 feet. Erect, broadly pyramidal habit; flat, beautifully carved, bright green foliage, dense from ground up; grows rapidly and soon forms a beautiful tree. Usually seen as a tree 5 to 10 feet high and half as wide, but grows to be a large tree. Used extensively as single specimens, for foundation planting, screens and windbreaks, and heads the list for evergreen hedge planting.
 12-18 inch, each 50c; 2 for 90c. 4-5 ft., each \$3.50.



PYRAMIDAL ARBOR-VITAE

Dark green foliage. Hardy, pyramidal shape. Grows anywhere. Plant one on each side of your garden gate or the entrance to your home.
 8-12 inch, each 50c; 2 for 90c. 18-24 in. trees, each \$1.00; 2 for \$1.90. 24-36 in. trees, each \$1.75; 2 for \$3.25. 3-4 ft. trees, each \$3.00.

GLOBE ARBOR-VITAE

A dwarf evergreen with compact globe shape. Dark green.
 10-12 in. dwarf, each 75c; 2 for \$1.40. 12x12 in., each \$1.00; 2 for \$1.90.



Globe Arbor-Vitae

Pyramidal Arbor-Vitae

IRISH JUNIPER

Of decided columnar form and immediately attracts attention. For formal work, especially in contrast with other plants, it has decided advantage over anything you can use for such work. Slender in habit; needs no shearing.
 15-20 inch, each 75c; 2 for \$1.40. 18-24 inch, each \$1.00; 2 for \$1.75. 2-3 ft., each \$1.75; 2 for \$3.00. 3-4 ft., each \$3.50; 2 for \$6.00.



Savin Juniper



COLORADO BLUE SPRUCE

A very hardy evergreen. One of the most beautiful for landscape work. Foliage is greenish blue to silvery blue. Should be set in open sunlight, not too near other trees and buildings for best color. 4-6 in. transplants, each 25c; 5 for \$1.00. 12-15 in. transplants, each 45c; 5 for \$2.00.

COLLECTION No. 15
 10 Col. Blue Spruce, 12-15"
 10 Col. Blue Spruce, 4-6"
 For only \$3.95
 NO DISCOUNT

SAVIN JUNIPER

The favorite trailer—beautiful, dependable, and hardy everywhere. Dark green, tufted foliage covers dense, spreading branches, producing an ideal plant for the foreground, and giving the finest sort of finish to foundation groups, park or formal beds. It endures smoky conditions of the city, and is at home everywhere. You will be well pleased with our fine specimens. Seldom over 3 feet high at maturity. 10-12 inch, each 35c; 3 for \$1.00. 18-24 inch, each \$1.25.



PFITZER'S JUNIPER

This is one of the most popular Junipers. Spreading type, very hardy. Grows anywhere, even in shade. Wet or dry. Silvery green foliage.
 12-15 inch plants, each 75c; 2 for \$1.40. 2-3 ft., each \$2.50.

DISCOUNT

20%

to Feb. 5.

10%

to Mar. 5.

5%

to April 5.

See page 18.



STROMER'S EVERBLOOMING ROSES

Start Blooming 60 Days After Set and Continue Until Stopped by Killing Frost

PINK DAWN. An abundance of perfectly formed, full double flowers of deep rose opening lovely pink tinted with orange at the base of the petals. Very fragrant. A sturdy variety of upright habit as fine for garden display as for cutting.

RED TALISMAN. A beautiful deep pure red rose, producing large, upright blooms that are ideal for cutting. Buds are long and pointed. Fragrant and long lasting. Plants are hardy and vigorous. One of the finest red roses ever introduced. More blooms per plant than any other red rose.

CONDESA DE SASTAGO. A splendid double Rose with the vivid colors of the sparkling species Austrian Copper. The buds are golden yellow, beautifully striped with brilliant capucine red. The open, spicy scented blooms are of similar color. Strong grower and a perfect beauty.

McGREDY'S IVORY. Lovely large flowers of beautiful double form and moderately fragrant. The color is soft delicate creamy white merging into a yellow at the base. Abundant bloomer and vigorous grower. No better white rose.

McGREDY'S YELLOW. Yellow Roses have been getting better and better year by year, and now they reach their supreme beauty in McGredy's Yellow. Soft pure, adorable. You'll love McGredy's Yellow Rose. Very artistic and gracefully shaped, strong grower, abundant bloomer.

All Hardy Northern Grown Plants—Price, Each 75c

1 Each of Above 5 Roses, Only \$3.00—No Discount

CLIMBING ROSES

PAUL'S SCARLET CLIMBER. The "Reddest Rose That Grows" and the most popular of all climbers. Large, semi-double blooms in bold clusters hold their vivid scarlet color until the petals fall. Very fine for trellises and arches, or can be kept nipped back to bush form.

MARY WALLACE. Long-pointed buds and very large cupped, semi-double flowers, clear rose-pink in color. A strong grower and very free flowering. Often repeats in autumn.

PRIMROSE. Charming little double yellow flowers in large clusters, all through June. A rapid climber, with good foliage. Hardy.

SILVER MOON. White. Handsome foliage, and big, saucer-shaped, moon-white flowers with brilliant yellow centers.

2-year-old, No. 1 plants, each 35c; 3 for \$1.00; 10 for \$3.00. NO DISCOUNT.

BLAZE. Held by many to be the finest climber of all time. All the hardiness, strong growing habit and quality of its parent, Paul's Scarlet, plus the trait of being an ever-bloomer. We heartily recommend this fine climber to anyone who is seeking the most in satisfaction from climbing roses. 2-yr., No. 1, each \$1.50.

BLEEDING HEART

Beloved by all. One of the most delightful of the spring-flowering plants. Bears numerous rosy red, heart-shaped flowers pendent on long arching stems. Grows to a height of 2 feet. It was a favorite in Grand mother's Day and is still good. Don't fail to get it at this price.

Each 65c; 2 for \$1.25.

BITTERSWEET

Yellow flowers in June, followed by bright orange-yellow and crimson fruit in autumn. Extra strong, field-grown plant. 2-year-old plants, each 25c; 5 for \$1.00.

BOSTON IVY

Clings to any surface. Its large leaves completely cover any surface desired. Plant 8 to 10 feet apart in ordinary soil; ordinary moisture; shade or sun. Strong, 2-year plants, each 50c.



SOUTH MICHIGAN NURSERY New Buffalo, Michigan