

## **Historic, Archive Document**

Do not assume content reflects current scientific knowledge, policies, or practices.



62.53

1944

Waukegan Nurseries

APR 11 1944  
U. S. DEPARTMENT OF AGRICULTURE



*Your Garden*

## *Renaissance*

ONCE again Spring slips silently in from nowhere — despite global war and death and destruction. Once again you are aware of an intangible ecstasy that comes of knowing the earth is stirring with new life and beauty that is timeless and unquenchable.

A wealth of gardening pleasure lies ahead of you, emanating from a knowledge that your efforts will be well repaid with colorful, beautiful trees and plants blossoming and ripening for your pleasure.

This year, with precious gardening hours at a premium and countless duties intervening, we again stress the simple, the easy-to-maintain garden. Evergreens, handsome pioneers of the garden, form an opulent background and lend charm and grace in an unchanging loveliness. For decorative as well as practical purposes, fruit trees command particular prominence.

While our boys fight to uphold all that is priceless to them and us, despite the chaos and confusion of their present existence, their thoughts must surely revert back to home and the things to which they want to return on a brighter day. Perhaps it's a young lad's remembrance of a house on Elm Street . . . the fragrance of white lilacs washed with rain . . . the thick carpet of grass on which so many play-filled hours were spent . . . a maple tree that grew up with the children who sought shady refuge beneath it.

Let us at home keep alive and vivid these remembrances—for them—when they return home to Elm Street or Maple Street . . . it could be almost any little street . . .

1 9 4 4

---

## WAUKEGAN NURSERIES

(Incorporated)

GREEN BAY ROAD

WAUKEGAN, ILL.

Phone Majestic 30



## Evergreens

frosted with snow  
 mellowed by night  
 serene and untroubled  
 stately your height  
 wind sifting through  
 thick emerald lace  
 a thing of rare beauty  
 regal your grace

k. k.

### WHITE FIR (*Abies concolor*)

A tall, worthwhile evergreen with graceful branches. Demands a well-drained location and moisture.

3/4 ft. high .....	each \$4.00	7/8 ft. high .....	each 12.50
4/5 ft. high .....	each 6.00	8/9 ft. high .....	each 15.00
5/6 ft. high .....	each 7.50	9/10 ft high ea	20.00 to 25.00
6/7 ft. high .....	each 9.50	10/12 ft high ea	25.00 to 30.00

### DOUGLAS FIR (*Pseudotsuga douglasi*)

A handsome and hardy conical-shaped evergreen effective either as a specimen or in groups. Needles bluish-green. Reaches a height of two hundred feet in its native state. Tolerates considerable shade. Illustrated on the following page.

2/3 ft. high.....each	\$2.50	7/8 ft. high.....each	10.00
3/4 ft. high.....each	3.00	8/9 ft. high.....each	12.50
4/5 ft. high.....each	4.00	9/10 ft. high.....each	15.00
5/6 ft. high.....each	6.00	10/12 ft high ea	17.50 to 20.00
6/7 ft. high.....each	8.00	12/15 ft high ea	20.00 to 30.00



**Taxus Cuspidata Nana**

**Taxus cuspidata nana (Dwarf yew)**

A truly distinguished little evergreen and the finest dwarf it is possible to obtain for your garden. Lower in growth and with less of a spread than any of the prostrate yews the irregular little branches are thickly covered with short black-green needles. Indispensable for foundation planting it can also be used with superb effects in the perennial borders.

10/12 in. wide.....each	2.50	15/18 in. wide.....each	4.00
12/15 in. wide.....each	3.00	18/24 in. wide.....each	5.00
24/30 in. wide .....		..... each	7.50

**Taxus media hicksi (Hick's yew)**

Of real value for formal effects, for narrow hedges, or in the rear of foundation planting Hick's yew is columnar in form, slender and sturdy. The red fruits are particularly conspicuous on this variety.

15/18 in. high.....each	3.00	2 1/2/3 ft. high.....each	6.00
18/24 in. high.....each	4.00	3 3/4 ft. high.....each	7.50
2 2/2 ft. high.....each	5.00	3 1/2/4 ft. high.....each	9.00

**Taxus cuspidata intermedia**

A handsome dwarf evergreen of lower and less spreading growth than the regular Japanese yew.

18/24 in. wide.....each	5.00	30/36 in. wide.....each	8.50
24/30 in. wide.....each	6.50	36/42 in. wide.....each	12.50
42/48 in. wide .....		..... each	15.00



### Upright Yew

#### Taxus capitata (Upright Yew)

Eventually becomes a spire-like sentinel forty feet high. This is the yew for formal or informal accents, for narrow hedges of medium height, or (left unshaped) for towering screens.

18/24 in. high .....	each	3.00
24/30 in. high .....	each	4.00
2½/3 ft. high .....	each	5.50
3/3½ ft. high .....	each	7.00
3½/4 ft. high		
each 8.50		
4/4½ ft. high		
each 10.00		
4½/5 ft. high		
each 11.00 to 13.00		
5/5½ ft. high		
each 14.00 to 16.00		

#### Taxus Cuspidata

#### Taxus cuspidata (Spreading yew)

A spreading variety that in time forms an evergreen mass twelve feet across and usually under seven feet high. It can, however, be kept to any desired shape by shearing and for this reason is superb in a hedge. Carries brilliant red berries in the fall like other Japanese yews.

15/18 in. wide.....	each	3.00
18/24 in. wide.....	each	4.00
24/30 in. wide.....	each	6.00
2½/3 ft. wide.....	each	8.00
3/3½ ft. wide.....	each	10.00
3½/4 ft. wide.....	each	12.50
4/4½ ft. wide.....	each	15.00
4½/5 ft. wide.....	each	18.00
5/5½ ft. wide.....	each	20.00
5½/6 ft. wide.....	each	25.00



### **Pinus mugho (Swiss mountain pine)**

Of round shape with irregular branches this is a low-growing evergreen of exceptional character. Unusually hardy.

15/15 in. wide.....each	2.00	24/24 in. wide.....each	3.00
18/18 in. wide.....each	2.50	30/30 in. wide.....each	4.00
36/36 in. wide.....each			5.00

### **Pinus nigra (Austrian pine)**

Long, stiff, dark green needles and wide-spreading branches. Three-inch cones. Decorative. Withstands smoke.

### **Pinus resinosa (Red Pine)**

The longest leaf of any hardy pine; very dark. Indeed makes a beautiful plant when properly taken care of.

### **Pinus ponderosa (Bull Pine)**

A fine ornamental tree and valuable for windbreak or timber. Needles very long and somewhat lighter in color than the Austrian or Red Pine.

Prices for Austrian, Ponderosa and Red Pine as follows:

3/4 ft. high.....each	\$3.00	6/7 ft. high.....each	\$ 8.00
4/5 ft. high.....each	4.00	7/8 ft. high.....each	10.00
5/6 ft. high.....each	6.00	8/9 ft. high.....each	13.50

### **Pinus strobus (White pine)**

Long considered king of American conifers. Develops into a venerable specimen. Dignity combined with regal assurance.

3/4 ft. high.....each	\$3.00	6/7 ft. high.....each	\$ 8.00
4/5 ft. high.....each	4.00	7/8 ft. high.....each	10.00
5/6 ft. high.....each	6.00	8/9 ft. high.....each	13.50
9/10 ft. high.....each			\$15.00 to \$18.00

### **Pinus sylvestris (Scotch pine)**

Fast-growing for a pine. Good in a windbreak.

3/4 ft. high.....each	\$2.50	7/8 ft. high.....each	9.00
4/5 ft. high.....each	3.00	8/9 ft. high.....each	11.00
5/6 ft. high.....each	4.50	9/10 ft. high.....each	12.50
6/7 ft. high.....each	7.00	10/12 ft. high.....each	15.00

●  
**Our Nursery** is located approximately 3 miles west of the city of Waukegan on Green Bay Road and is very easy to reach by auto. However, should you travel by train and will advise us one day in advance of your anticipated arrival, or phone us when you do arrive, we will arrange to meet you at depot.



## SPRUCE (*Picea*)

Majestic evergreens with short, flat needles. Good as specimens and highly desirable for inter-planting with firs which they somewhat resemble, or for combining with pines.

### *Picea pungens glauca* (Colorado blue spruce)

Famous for its steel-blue needles, the Colorado blue spruce is desirable as a specimen where sharp color contrast is wanted.

2/3	ft. high	.....each	\$4.50
3/4	ft. high	.....each	5.50
4/5	ft. high	.....each	7.50
5/6	ft. high	.....each	9.00
6/7	ft. high	.....each	12.00
7/8	ft. high	.....each	15.00
8/9	ft. high	.....each	17.50
9/10	ft. high	.....each	20.00
10/12	ft. high	.....each	25.00
12/15	ft. high	.....	35.00 to 50.00

### *Picea pungens kosteriana* (Koster's blue spruce)

The handsomest and bluest of the spruces, this is one of the world's most renowned evergreens. The growth is symmetrical and the needles a uniform silvery-blue. Discovered in the Rockies, the Koster blue spruce came to American gardens by way of Switzerland and Holland where it was first propagated.

2/3	ft. high.....each	\$ 6.00	8/9	ft. high.....	35.00 to 40.00
3/4	ft. high.....each	8.00	9/10	ft. high.....	40.00 to 45.00
4/5	ft. high.....each	10.00	10/11	ft. high.....	45.00 to 50.00
5/6	ft. high.....each	15.00	11/12	ft. high.....	50.00 to 75.00

### *Picea pungens* (Colorado green spruce)

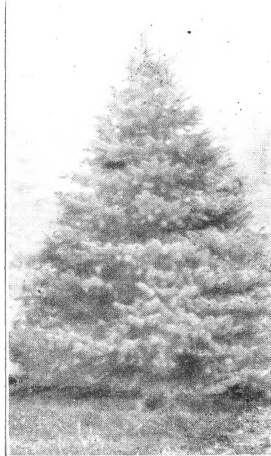
A fine variety with bluish-green needles. Branches in tiers.

2/3	ft. high.....each	\$2.50	7/8	ft. high.....each	9.50
3/4	ft. high.....each	3.00	8/9	ft. high.....each	12.50
4/5	ft. high.....each	4.50	9/10	ft. high.....each	15.00
5/6	ft. high.....each	6.00	10/12	ft. high ea.	17.50 to 20.00
6/7	ft. high.....each	7.50	12/15	ft. high ea.	20.00 to 30.00

### *Picea abies* (Norway spruce)

Perhaps the most widely planted of the tall-growing evergreens. Pyramidal in shape. Dark green needles. Excellent for mass planting.

3/4	ft. high.....each	\$2.00
4/5	ft. high.....each	2.50



### Juniperus sabina von ehron (Von Ehron juniper)

Dark green needles on upright, wide-spreading branches. Rarely over five feet high, the Von Ehron juniper is a handsome, picturesque dwarf.

15/18 in. spread .....	each	\$2.00
18/24 in. spread .....	each	2.50
2/2½ ft. spread .....	each	3.00
2½/3 ft. spread .....	each	3.50
3/3½ ft. spread .....	each	4.50
3½/4 ft. spread .....	each	5.50

### Juniperus scopulorum (Colorado red cedar)

A pyramid up to forty feet high with silvery-green needles.

1½/2 ft. high.....each	\$1.50	2½/3 ft. high.....each	2.50
2/2½ ft. high.....each	2.00	3/3½ ft. high.....each	3.50

### Juniperus squamata meyeri (Meyer juniper)

A beautiful deep blue evergreen. Dwarf and irregular in habit of growth. Excellent in a hedge.

12/15 in.....each	\$2.00	18/24 in.....each	2.75
15/18 in.....each	2.25	2/2½ ft.....each	3.50
2½/3 ft. ....		.....each	4.00

### Juniperus virginiana (Red cedar)

The popular red cedar is compact in growth, pyramidal in shape, bright green in summer, and bronzy-green in winter. Can be sheared and makes a good hedge plant. In groups, cedars form an effective background for tall-growing perennials or flowering plums.

5/6 ft. high.....ea.	\$5.00	6/7 ft. high.....ea.	6.50
7/8 ft. high.....ea.	8.50	8/9 ft. high.....ea.	10.00
9/10 ft. high.....each	12.00		

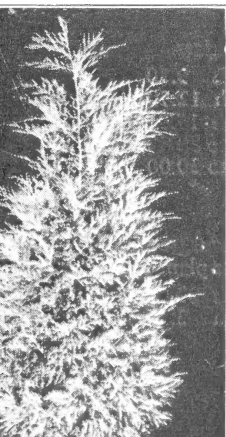
### Juniperus virginiana cannarti (Cannart red cedar)

A compact form of the red cedar. Dark green needles.

¾ ft. high.....ea.	\$4.00	5/6 ft. high.....ea.	6.50
4/5 ft. high.....ea.	5.00	6/7 ft. high.....ea.	8.50

### Juniperus virgiana glauca (Silver red cedar)

Habit of growth is similar to cannart cedar and is similarly priced.



## JUNIPER (*Juniperus*)

The junipers comprise a large and important group of evergreens. They vary in size and form, from the columnar to the prostrate.

### *Juniperus chinensis pfitzeriana* (Pfitzer juniper)

An unusually hardy and reliable type with spreading, horizontal branches. Forms a low pyramid. Withstands smoke conditions. Useful in foundation or group planting.

15/18 in. spread.....each	2.00	2 1/2/3 ft. spread.....each	3.50
18/24 in. spread.....each	2.50	3/3 1/2 ft. spread.....each	4.50
2/2 1/2 ft. spread.....each	3.00	3 1/2/4 ft. spread.....each	5.50

#### Upright form of above

3 1/2—4 ft. high .....	each	7.50
------------------------	------	------

### *Juniperus chinensis sargentii* (Sargent juniper)

Original plant was introduced into this country from seed collected in Japan in 1892 by Prof. Sargent. A desirable ground cover rich in color.

15/18" spread .....	each	\$2.00
18/24" spread .....	each	2.50

### *Juniperus communis depressa plumosa* (Andorra juniper)

A wide-spreading variety of low growth that turns a purplish-bronze in winter.

15 to 18 in. spread .....	each	\$1.50
18 to 24 in. spread .....	each	2.00
24 to 30 in. spread .....	each	2.50

### *Juniperus sabinia horizontalis* (Bar Harbor juniper)

A prostrate variety found on the coast of Maine. Hardy.

15/18 in spread .....	each	\$1.50
18/24 in. spread .....	each	2.00
2/2 1/2 ft. spread .....	each	3.00

Pfitzer Juniper



**Thuja occidentalis douglasi (Douglas pyramidal arborvitae)**

This is one of the finest of this species of evergreen and can only be appreciated when seeing the fine texture of foliage.

4/5 ft. high.....each	\$4.00	5/6 ft. high.....each	6.00
6/7 ft. high.....each			8.00

**Thuja occidentalis douglasi aurea (Douglas golden arborvitae)**

A vigorous broad pyramidal growing evergreen introduced by this nursery.

5/6 ft. high.....each	\$6.00	6/7 ft. high.....each	8.00
-----------------------	--------	-----------------------	------

**Thuja occidentalis globosa (Globe arborvitae)**

Forms a compact ball of green, useful in low plantings.

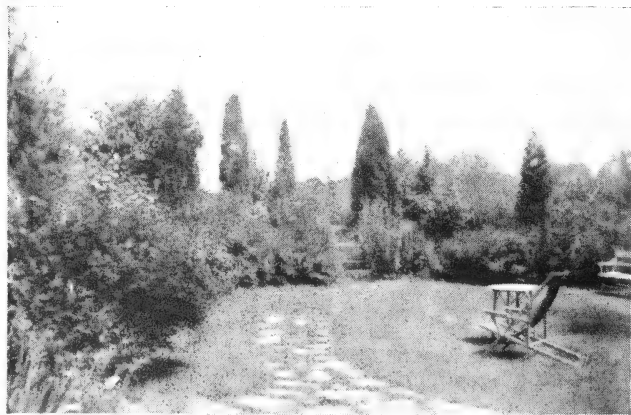
2½/3 ft. wide .....	each	\$2.50
3/4 ft. wide .....	each	4.00

**Thuja occidentalis pyramidalis (Pyramidal arborvitae)**

The pyramidal form of the hardy American type that holds its color well in winter. A fine accent plant. Fifteen feet.

2/3 ft. high .....	each	\$2.00	5/6 ft. high .....	each	4.00
3/4 ft. high .....	each	2.50	6/7 ft. high .....	each	6.00
4/5 ft. high .....	each	3.00	7/8 ft. high .....	each	7.00

Evergreens, Shade and Fruit Trees and Shrubs personally selected will be tagged and priced at time selection is made.



Evergreens in a Planting of Mixed Shrubs

## ARBORVITAE (Thuja)

An extremely valuable group of evergreens with dense foliage arranged in overlapping, fan-like sprays. Arborvitae are at their best when grown in moist, well-drained soil. Avoid planting against a wall.

### Thuja occidentalis (American arborvitae)

Develops into a handsome, spire-like specimen forty feet high. A good evergreen for hedges.

2/3 ft. ....	each	2.00
3/4 ft. ....	each	2.50
4/5 ft. ....	each	3.00
7/8 ft. very heavy .....	each	7.50
8/9 ft. very heavy .....	each	9.00
9/10 ft. very heavy .....	each	12.00
10/12 ft. very heavy .....	each	15.00 to 17.50

### Thuja occidentalis wareana (Siberian Arbor Vitae)

A highly commendable plant that is hardy, rugged and full of character.

2/3 ft. high .....	each	\$2.50
3/4 ft. high .....	each	3.50
4/5 ft. high .....	each	5.00
5/6 ft. high .....	each	6.00

## RETINOSPORA (Chamaecyparis)

Ornamental evergreens similar in character to the Arborvitae and yet in many respects quite superior. Given the right location—a sheltered position in moist, well-mulched soil—few evergreens are more effective. For the most satisfactory results the Retinospora or cypress as it is commonly called, should receive an annual shearing.

All Retinosporas are priced as follows:

5/6 ft. high.....	each	\$4.50	6/7 ft. high.....	each	6.00
7/8 ft. high.....	each			each	7.50

## THE NECESSITIES OF WAR

We as nurserymen, like everyone else, are affected by the war. We are limited as to the amount of gasoline we can get for our trucks. This in turn limits our deliveries. We are affected by the manpower shortage. This limits our ability to dig plant material and to make deliveries as promptly as in other years. Due to circumstances beyond our control we now add a small delivery charge to the price listed in this catalog.

We are making every effort to maintain service and to uphold a ninety-five year reputation. We ask your indulgence and cooperation.

## DECORATIVE AND FLOWERING TREES

Whether your garden be large or small there is always a place for flowering trees. They can be grown with equal satisfaction either as individual specimens on the lawn or grouped among the shrubs.

### **Betula pendula (European white birch)**

A tree of medium growth, white bark and pendulous branches.

8/10 ft. high.....ea. \$2.00	1½/2 in. stem.....ea. 3.50
1/1½ in. stem.....ea. 2.50	2/2½ in. stem.....ea. 4.00

### **Betula pendula gracilis (Cutleaf weeping birch)**

White bark, finely cut foliage and drooping branches make this unsurpassed as a lawn specimen.

8/10 ft. high.....ea. \$2.50	1½/2 in. stem.....ea. 5.00
1/1½ in. stem.....ea. 3.50	2/2½ in. stem.....ea. 6.50
2½/3 in. stem.....ea. 8.50	

### **Celtis occidentalis (Hackberry)**

Similar in foliage and habit as Elm but of slower growth.

1/1½ in. stem.....each 2.50	
1½/2 in. stem.....each 3.00	
2/2½ in. stem.....each 4.50	

### **Crataegus oxyacantha splendens (Paul's Scarlet thorn)**

A variety of English hawthorn. One of the most brilliant when in bloom.

5/6 ft. high B/B....ea. \$4.00	6/7 ft. high B/B....ea. \$7.50
--------------------------------	--------------------------------

### **Crataegus cordata (Washington thorn)**

Native to the east. Round-headed. Reaches a height of twenty-five feet. Fruits red.

5/6 ft. each B/B.....\$4.00	
-----------------------------	--

### **REDBUD (Cercis canadensis)**

A small and graceful native tree. Crimson-pink blossoms cling to the stems before the heart-shaped leaves appear. Give it a moist, well-drained location and the companionship of ferns and hepaticas.

5/6 ft. high.....each \$1.00	6/7 ft. high.....each \$1.50
------------------------------	------------------------------

### **Sorbus aucuparia (European mountain-ash)**

The rowan tree of druidic legend. Taller growing than the American variety. Blood-red berries.

1/1½ inch stem .....	each 2.00
1½/2 inch stem .....	each 2.50
2/2½ inch stem .....	each 3.00

## MAPLE (Acer)

Maples rank among our best known and most desirable shade trees. In fall their foliage adds brilliant reds and yellows to garden.

### Acer platanoides (Norway maple)

A valuable lawn or shade tree attaining a height of ninety feet and more.

1/1½ in. stem.....ea.	\$2.00	2½/3 in. stem.....ea.	5.00
1½/2 in. stem.....ea.	2.50	3/3½ in. stem.....ea.	6.00
2/2½ in. stem.....ea.	3.50	3½/4 in. stem.....ea.	8.00
4/4½ in. stem.....each	10.00		
Pyramidal form—			
5/6 ft. high .....	each \$1.50		

### Acer platanoides schwedleri (Schwedler's maple)

Leaves in spring present a medley of glorious purples, scarlets and reds turning during the summer to a deep green. A vigorous grower and a worthwhile tree.

1/1½ in. stem.....each	\$3.00	2½/3 in. stem.....each	7.00
1½/2 in. stem.....each	4.00	3/3½ in. stem.....each	8.50
2/2½ in. stem.....each	5.50	3½/4 in. stem.....each	11.00

### Acer dasycarpum (Silver Maple)

Leaves deeply cut, a cheerful green on top and silvery beneath, changing in autumn to a sunny yellow. A rapid grower reaching over eighty feet.

1/1½ in. stem.....each	\$1.00	2/3 in. stem.....each	\$2.50
1½/2 in. stem.....each	1.50	3/3½ in. stem.....each	4.00

We also grow the cut leaf Maple and offer at same comparative low prices.

### Acer ginnala (Amur maple)

Large shrub form bush with yellowish flowers, pretty fall colored foliage.

¾ ft. tall.....each	\$ .75	4/5 ft. tall.....each	\$1.00
---------------------	--------	-----------------------	--------

### Acer platanoides globosa (Globe Norway maple)

This is a budded tree grown to form a globe-shaped head on 6-7 foot standards; needs no pruning.

5 yr. head .....	each \$6.00		
6 yr. head .....	each 8.00		

### AMERICAN WHITE 'ASH (Fraxinus americana)

A giant that towers to a hundred feet. Leaves turn to gold in early autumn.

1½/2" stem.....ea.	\$1.50	2½/3" stem.....ea.	\$2.50
2/2½" stem.....ea.	2.00	3/3½" stem.....ea.	3.00

### **Ulmus americana (American elm)**

Because of its tall, shapely growth and its magnificent vase-shaped head, there really is no tree to take the place of the American elm.

### **Ulmus americana molini (Moline elm)**

### **Ulmus americana (Lake City elm)**

All of the above elms are priced as follows:

1 1/2 in. stem.....ea.	\$2.50	3/3 1/2 in. stem.....ea.	5.00
2/2 1/2 in. stem.....ea.	3.00	3 1/2/4 in. stem.....ea.	6.50
2 1/2/3 in. stem.....ea.	4.00	4/4 1/2 in. stem.....ea.	8.50
4 1/2/5 in. stem .....		.....each	10.00

Larger sizes priced at nursery.

### **Salix babylonica (Weeping willow)**

Long, drooping branches. Thirty feet high.

### **Salix niobe (Golden weeping willow)**

A suitable tree for many forms of planting.

4/6' high .....	ea. \$ .75	8/10' high .....	ea. \$1.50
6/8' high .....	ea. 1.00	1/1 1/2" stem .....	ea. 2.00

### **Salix pentandra (Laurel willow)**

A desirable type with bright catkins and glossy green leaves.

4/6' high .....	each \$ .50	6/8' high .....	each 1.00
8/10' high .....		.....each	1.50

### **Populus alba pyramidalis (Bolleana poplar)**

Of narrow, columnar growth and a good accent plant.

8/10' high .....	each \$ 1.25	1 1/2/2" stem .....	each 1.75
2/2 1/2" stem .....		.....each	2.50

### **Populus nigra italica (Lombardy poplar)**

Fast growing but short-lived. Splendid for quick windbreaks and screens.

6/8 ft. high.....	each \$ .50		
8/10 ft. high.....	each	.75	
10/12 ft. high.....	each	1.00	

### **Prunus cerasifera Newport (Purple-leaved plum)**

Twenty-five feet high. Pink flowers, purple leaves and wine-red fruits. Try with scillas or grape hyacinths.

5/6 ft. high.....	each \$2.00	5/6 ft. high B/B.....	ea. 4.50
6/7 ft. high B/B.....		.....each	6.00

### **Prunus americana (Wild plum)**

A thicket tree adapted to group planting. Approximately twenty feet high. Flowers white.

5/6 ft. high .....	each \$1.25		
6/7 ft. high .....	each	1.50	
7/8 ft. high .....	each	2.00	





Ginkgo Biloba

### Ulmus pumila (Chinese elm)

Small leaved and fast growing.

1½/2" stem	.....ea.	2.50
2½/2" stem	.....ea.	3.00
2½/3" stem	.....ea.	4.00
3½/2" stem	.....ea.	5.00

Larger sizes priced at nursery.

### GINKGO BILOBA

Probably the oldest tree in cultivation. Specimens found near Chinese temples furnished the parent stock for all trees grown today. Develops into a handsome, round-headed tree over a hundred feet tall. Bears small, fan-shaped leaves. Disease-free and smoke-resistant.

Trees average 8 to 10 ft. in height

1¼/1½ in. stem	.....ea.	\$3.50
1½/2 in. stem	ea.	5.00 B/B 7.00
2/2½ in. stem	ea.	7.00 B/B 9.50
2½/3 in. stem	ea.	9.00 B/B 12.00

### HORSE-CHESTNUT (Aesculus hippocastanum)

The storied tree of Paris streets. Introduced into Europe from the Near East in the sixteenth century by the same man who brought the lilac, mock-orange and tulip. Casts dense shade.

6/7 ft. high	.....each	\$4.00	7/8 ft. high	.....each	\$5.00
--------------	-----------	--------	--------------	-----------	--------

### LINDEN (Tilia glabra)

Native to the middle west, the American linden is of fairly rapid growth and develops into a tall, handsome shade tree. Covered with fragrant flowers in June.

2½/3 in. caliper	.....ea.	\$4.00	3½/4 in. caliper	.....ea.	7.00
3/3½ in. caliper	.....ea.	5.00	4/4½ in. caliper	.....ea.	9.00
4½/5 in. caliper	.....	.....	.....	each	12.00
Pyramidal form—					
5/6 ft. high	.....	.....	.....	each	\$1.75

### SYCAMORE (Platanus occidentalis)

A very desirable tree, quite picturesque; sheds bark similar to white birch.

6/8 ft. high 1 inch stem	.....each	\$2.50
8/10 ft. high 1½ inch stem	.....each	3.50

### Flowering Crabapple (*Malus*)

For the middle west there is no finer, hardier flowering tree than the crabapple. Many varieties exist, each varying somewhat in shade of bloom and habit of growth. Try pink-flowered types with pale lilac tulips and white arabis.

#### **Malus Arnoldiana** (Arnold's crabapples)

A hybrid from the Arnold Arboretum, pink flowers, yellow fruit.

#### **Malus atrosanguinea** (Carmine crabapple)

Carmine blossoms; red fruit.

#### **Malus baccata** (Siberian crab)

Fragrant white bloom; red and yellow fruit.

#### **Malus coronaria** (Wild sweet crab)

Fragrant rose blooms, fading white.

#### **Malus floribunda** (Showy crab)

Pink buds opening white; fruit yellow or red.

#### **Malus Hopa** (Hopa crab)

A fine upright tree, rose-red flowers and red-fleshed edible fruit.

#### **Malus niedwetzkyana** (red-veined crab)

Reddish purple flowers, leaves, fruit and bark.

#### **Malus purpurea aldenhensis**

Double wine-red flowers and fruit.

#### **Malus purpurea eleyi** (Eley's crab)

Wine-red flowers and fruit.

#### **Malus Red Silver** (Red Silver Crab)

Foliage red and silver with dark pink flowers and red fruit.

#### **Malus scheideckeri** (Scheidecker crab)

Semi-double pink flowers; very decorative.

#### **Malus theifera** (Tea crab)

Soft pink cluster flowers, fruit greenish yellow marked with red.

All above varieties priced as follows:

1/1 1/2 in. stem.....	each	2.50	B/B	5.00
1 1/2/2 in. stem.....	each	3.00	B/B	5.50
2/2 1/2 in. stem.....	each	3.50	B/B	6.50

Larger sized specimens for immediate effect are priced at nursery.

#### **Malus ioensis plena** (Bechtel's crabapple)

Flowers soft pink; look like roses and smell like violets. Fruits greenish and waxy. Branches horizontal. Height twenty-five feet or more. Double-flowered form of the Prairie crabapple.

4/5 ft. high.....	each	\$2.00
5/6 ft. high.....	each	2.50



Bechtel's Crab

## SHRUBS

Shrubs form the background for your garden. They give it an air of quiet seclusion and turn it into an intimate outdoor living room carpeted with grass and furnished with bloom.

In addition to the varieties most commonly grown there are many others less well known but no more expensive and equally as desirable. Included among these are native types such as the witch-hazels, dogwoods, shadblooms and winterberries—shrubs of consistent merit throughout the year.



Beauty Bush

### ACANTHOPANAX PENTAPHYLLUM

Five leaf aralia; excellent for screen planting, dark green leaves which remain on stem late in fall.

Desirable for city planting.

3/4 ft. high .....each \$ .50

4/5 ft. high .....each \$ .60

### SHADBLOW (*Anemolanchier canadensis*)

A tall-growing native shrub covered with white blooms in April and May. Makes a handsome specimen.

1/1 1/2 ft. high.....each \$ .40

2/3 ft high .....each .60

### CHOKEBERRY (*Aronia*)

Native shrubs of unusual merit that are particularly effective when combined with hawthorns or evergreens.

#### *Aronia arbutifolia* (Red Chokeberry)

Red leaved and red berried in the fall. Under eight feet high. Prefers a moist location.

2/3 ft. high well branched bushes .....each \$ .60

3/4 ft. high well branched bushes .....each .75

#### *Aronia melanocarpa* (Black chokeberry)

Lower growing. Bears black fruit. (Illustrated at the beginning of this section).

2/3 ft. high .....each \$ .60

3/4 ft. high .....each .75

### **Berberis thunbergi (Japanese barberry)**

Needs no introduction. Appreciated for its red berries and colorful foliage in the fall.

12/18 in. high .....	each	\$ .25	.....per doz.....	\$2.50
18/24 in. high .....	each	.35	.....per doz.....	3.50
24/30 in. high .....	each	.40	.....per doz.....	4.00

### **Berberis thunbergi atropurpurea (Red leaved barberry)**

A popular variety with bright red leaves.

12/18 in. high very full branched.....	each	\$ .40
18/24 in. high very full branched.....	each	.50
24/30 in. high very full branched.....	each	.60

### **Berberis Mentorensis (Plant Patent No. 99)**

A superb hedge plant, Does not rust or discolor in hot dry weather.

18/24 in. high bushy .....	per 3	\$2.00	per 10	\$5.00
----------------------------	-------	--------	--------	--------

### **BEAUTY BUSH (Kolkwitzia amabilis)**

Arching branches covered with pink, bell-shaped flowers in June. Six feet high.

4/5 ft. specimen plants .....	each	.75
5/6 ft. specimen plants .....	each	1.00

### **BUCKTHORN (Rhamnus)**

Hardy, decorative shrubs valued for their handsome foliage.

#### **Rhamnus cathartica (Common buckthorn)**

Grows to eighteen feet. Adapted to hedges or informal plantings. White flowers in June.

3/4 ft. high .....	each	\$.35
4/5 ft. high .....	each	.40
5/6 ft. high .....	each	.50

#### **Rhamnus frangula (Glossy buckthorn)**

Lustrous green leaves that turn a bright yellow make this the best of the buckthorns. Valuable either in the shrub border or as a specimen.

3/4 ft. high .....	each	\$.35
4/5 ft. high .....	each	.40
5/6 ft. high .....	each	.50

### Caragana (Siberian Pea-tree)

Very hardy shrub of yellow flowers.

3/4 ft. high.....each \$ .50

### Cephalantus (Buttonbush)

Round heads of creamy white flowers, good foliage; likes moisture

2/3 ft. high.....each \$ .45

### CINQUEFOIL (*Potentilla fruticosa*)

The shrubby cinquefoil varies from one to four feet in height and produces an abundance of bright yellow flowers throughout the summer.

12/18 inches high ..... each \$ .30

18/24 inches high ..... each .40

### *Cornus paniculata* (Gray dogwood)

Gray branches, red stems and white fruits. Sometimes eight feet high but more frequently under six. Unexcelled for naturalistic plantings.

### *Cornus alba siberica* (Coral dogwood)

A bushy shrub up to ten feet high with coral-red bark and light blue berries.

All shrub dogwoods are priced as follows:

3/4 ft. high ..... each \$ .40

4/5 ft. high ..... each .45

### COTONEASTER ACUTIFOLIA (Pekin cotoneaster)

An upright shrub with arching branches and small, pointed leaves. Grows to eight feet and makes a good hedge plant.

18/24 in. high.....each \$.35

2/2 1/2 ft. high.....each .40

2 1/2/3 ft. high.....each .45

3/4 ft. high.....each .55

4/5 ft. high.....each .75

### Cotoneaster Hedge



### Deutzia (Pride of Rochester)

Strong grower, free bloomer, double white flowers.

4/5 ft. high heavy bushes.....each \$ .75

### American Elder

Hardy native shrub with white fragrant flowers followed by black berries.

4/5 ft. high bushy.....each \$ .50

### Euonymus alatus (Winged spindle tree)

Curious cork-like bark and irregular branches give the winged spindle tree a decorative value in the winter landscape especially when silhouetted against the snow. Leaves turn crimson in autumn. Good in groups, alone or in a hedge. Trimming almost unnecessary.

3/4 ft. high heavy.....each \$2.25

4/5 ft. high heavy.....each 3.50

5/6 ft. high heavy B B.....each 5.00

6/7 ft. high heavy B B.....each 6.50

### Euonymus alatus compacta (Dwarf winged spindle tree)

A lower and more compact form and, like its taller relative, carries yellow flowers and scarlet berries.

3 to 3 1/2 ft. high.....each \$2.50

3 1/2 to 4 ft. high.....each 3.00

4 to 4 1/2 ft. high.....each 4.00

4 1/2 to 5 ft high.....each 5.00

### Euonymus americanus (Burning bush)

Greenish-white flowers in June. In September the crimson seed capsules burst and reveal orange-scarlet fruits. Up to eight feet high. Prospers best in a moist location.

4/5 ft. high .....each \$ .75      5/6 ft. high.....each \$1.00

6/7 ft. high.....each 1.50      7/8 ft. high.....each 2.00

### Euonymus europaeus (European burning bush)

Much taller than the American variety. Leaves turn a brilliant red in the fall.

4/5 ft. high .....each \$ .50      6/7 ft. high .....each \$ .90

5/6 ft. high .....each \$ .65      7/8 ft. high .....each 1.25

### Forsythia suspensa fortunei (Fortune's forsythia)

An upright form. Bright yellow flowers.

Both varieties are priced as follows:

3/4 ft. high ..... each \$3.35

4/5 ft. high ..... each .45

**Hydrangea arborescens grandiflora (Hills of snow)**

A low-growing bush, three to five feet high, with large clusters of white flowers.

**Hydrangea paniculata grandiflora (Peegee hydrangea)**

Taller growing. Flowers open white and, later, range through pink to purple.

Hydrangeas are priced as follows:

18/24 in. high .....	each	\$ .40
2/3 ft. high .....	each	.50
3/4 ft. high .....	each	.60

**Hypericum (St. John's Wort)**

A beautiful low-growing shrub producing an abundance of yellow flowers and fine foliage.

12/18 inches.....each	\$ .30	18/24 inches.....each	\$ .35
-----------------------	--------	-----------------------	--------

**JAPANESE QUINCE (Cydonia japonica)**

Brick-red flowers in early spring. Irregular and picturesque branches. Makes a good low hedge or an interesting specimen.

2/3 ft. high each.....	.60	3/4 ft. high each.....	.75 to 1.50
------------------------	-----	------------------------	-------------

**JETBEAD (Rhodotyus kerriodes)**

A small shrub only five feet high, but handsome. White flowers, four-petaled, and two inches across in May.

1½/2 ft. high .....	each	\$ .25	2½/3 ft. high .....	each	\$ .35
2/2½ ft. high .....	each	.30	3/4 ft. high .....	each	.40

**KERRIA JAPONICA**

The old-fashioned kerria, sometimes simply called japonica. Yellow blossoms on slender, yellow-green stems during April and May. Seldom over four feet high.

2/2½' high .....	ea.	.40	2½/3' high .....	ea.	\$.50
------------------	-----	-----	------------------	-----	-------

**Ligustrum amurense (Amur privet)**

An erect-branched, half evergreen shrub up to fifteen feet high. The best of the privets for hedges in the Chicago area.

1½/2 ft. high .....	each	\$ .15	doz. ....	\$1.50
2/3 ft. high .....	each	.20	doz. ....	2.00
3/4 ft. high .....	each	.25	doz. ....	2.50

**Ligustrum obtusifolium regelianum (Regel's privet)**

Lower growing than the ibota privet, this variety is effective when massed with evergreens. Spreading, horizontal branches.

18/24 in. high.....each	\$ .30	24/30 in. high.....each	.35
-------------------------	--------	-------------------------	-----

### Honeysuckle Zabeli

Probably the best of the upright growing honeysuckles. Attractive foliage and real deep pink (red) flowers on every cane followed by an abundance of brilliant red berries.

3/4 ft. high.....	each \$ .45
4/5 ft. high—specimen .....	.75
5/6 ft. high—specimen .....	1.00

### Lonicera tartarica (Tartarian honeysuckle)

Delicate foliage, pink flowers and scarlet fruits. Ten feet high.

3/4 ft. high .....	each \$ .35
4/5 ft. high .....	each .50
5/6 ft. high specimen .....	each .75
6/7 ft. high specimen .....	each 1.00

### Mahonia Aquifolium

This bush has shiny holly-like leaves which turn bronze in fall. One of the most attractive broad-leaved evergreen plants. Does well in full sun or in light shade.

12/18 inch plants B/B.....	each \$1.75
----------------------------	-------------

### Philadelphus virginalis

Semi-double flowers in clusters. One of the best of the mock-oranges.

3/4 ft. high .....	each \$ .45
4/5 ft. high .....	each .60
5/6 ft. high .....	each .90

### Philadelphus coronarius (Common mock-orange)

In the gardens of colonial America this was known as the "white pipe-tree," and widely planted, the common mock-orange reaches a height of ten feet or more. Makes a splendid screen.

3/4 ft. high .....	each .35	4/5 ft. high .....	each .50
5/6 ft. high .....	each .75	6/7 ft. high .....	each 1.00

### Philadelphus lemoinei (Lemoine's mock-orange)

A low mock-orange not over six feet high and upright in growth. Exceptionally fragrant blossoms in clusters.

2/3 ft. high.....	each \$ .35	3/4 ft. high.....	each \$ .40
4/5 ft. high.....	each \$ .50		

The prices published in this list cancel those in all previous lists and is subject to change without notice.





**Philadelphus Virginal**

## A WORD ABOUT OUR PLANTS

All plants are grown with the utmost diligence and care. This assures you of finer material for size than is ordinarily offered and we are confident you will be more than pleased with our stock.

Repeat orders from our many friends is our greatest pleasure.

### **Physocarpus opulifolius (Common ninebark)**

A taller shrub excellent for screen planting.

3/4 ft. high .....	each \$ .35
4/5 ft. high .....	each .40

### **Physocarpus monogynus (Dwarf ninebark)**

Native to the middle west. Low growing and adapted to border planting.

18/24" .....	each \$ .35
2/3' .....	each .40
3/4' .....	each .45

### **Prunus cistena (Dwarf purple-leaf plum)**

Valuable to any landscape planting; desirable well-branched plant; fine for foliage color contrast.

2/3 ft. high.....each .60	3/4 ft. high.....each .75
4/5 ft. high.....each 1.00	5/6 ft. high.....each 1.50

### **Prunus glandulosa sinensis (Double flowering almond)**

Long a popular shrub. Branches covered with double pink blossoms before the leaves appear. Grows to five feet. Try with mertensias.

2/3 ft. high.....each \$ .60	3/4 ft. high.....each \$ .75
------------------------------	------------------------------

### **Prunus triloba flore-plena (Double flowering plum)**

Double pink flowers crowd the stems before the leaf buds unfold. A gem for planting against a background of arborvitae and above a colony of grape hyacinths.

2/3 ft. high.....each \$ .60	3/4 ft. high.....each \$ .75
------------------------------	------------------------------

There are other varieties of trees, shrubs, and vines not listed in this catalog. However, **IF IT IS HARDY**, we grow it.

**Prunus tomentosa (Nanking cherry)**

A full, rounded shrub not over eight feet high, the Nanking cherry is covered with a mass of small white blossoms in the spring. Fruits showy. Highly desirable in groups or as a specimen.

3/4 feet high .....	each \$ .75
4/5 feet high .....	each .90

**Hansen Bush Cherry (Prunus Besseyi)**

Hardy dwarf shrub. Silvery green foliage and quick bearing fruit.

18/24 inch high.....	each \$ .40
3/4 ft. high—heavy bush.....	each .75

**Ribes Aureum**

Slender golden currant.

A very suitable shrub for naturalistic planting.

3/4 ft. high.....	each \$ .35
4/5 ft. high.....	each .50

**MOUNTAIN CURRANT (Ribes alpina)**

Flowers greenish-yellow and fruits scarlet. A shrub of neat habits six feet high. Tolerates shade and can be sheared.

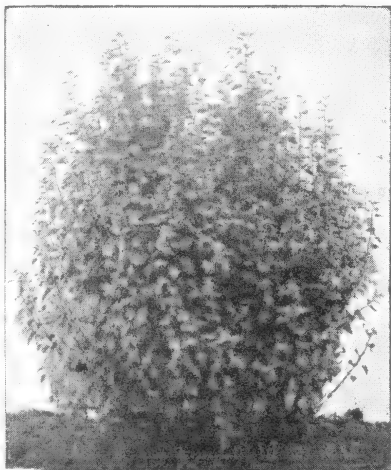
12/18 in. high..each	\$ .40
18/24 in. high..each	.45
24/30 in. high..each	.50
30/36 in. high..each	.75

**ROSE OF SHARON**

(*Hibiscus syriacus*)

Valuable for late summer blooms when few other shrubs are in flower. Varieties include white, pink, red, purple, or blue-flowered forms.

3/4 ft. high.....	each \$ .60
-------------------	-------------



Mountain Currant

**Rhus canadensis (Fragrant sumac)**

A low, rambling shrub. Leaves aromatic. Orange and scarlet in the fall.

18/24" high .....	each \$ .35
24/30" high .....	each .50

**Rhus typhina (Staghorn sumac)**

Sometimes a small tree but more frequently a tall shrub. Forked, velvety branches. Showy, maroon-red fruit.

4/6 ft. high .....	each \$ .50
--------------------	-------------

**RUSSIAN OLIVE (Elaeagnus angustifolia)**

A tall-growing shrub with silvery-gray leaves and branches. Orange berries. Good for massing.

4/5 ft. high.....each \$ .50	5/6 ft. high.....each .75
6/7 ft. high .....	each 1.50

**Elaeagnus argentea (Silverberry)**

This shrub does not grow as tall as the Russian olive but is very attractive in foliage and berry.

2/3 ft. high.....each \$ .50	3/4 ft. high.....each \$ .75
------------------------------	------------------------------

**Spiraea arguta (Garland spirea)**

A vigorous grower, small light green leaves, free flowering, fragrant.

18/24" high .....	each \$ .35
2/3 ft. high .....	each .45
3/4 ft. high .....	each .55

**Spiraea bumalda Anthony Waterer (Waterer's spirea)**

A dwarf shrub popularly used as an edging or in the front of shrub borders. Bright crimson flowers in late June or July.

15/18 inches high .....	each .30
18/24 inches high .....	each .40
24/36 inches high .....	each .50

**Spiraea bumalda froebeli**

Taller growing than Anthony Waterer. Pink flowers.

2/2½ ft. high .....	each \$ .35
2½/3 ft. high .....	each .45
3/3½ ft. high .....	each .50

**Spiraea vanhouttei (Bridal wreath)**

Early June flowering and in time for late tulips. Arching branches covered with snowy white blossoms. Good in an informal hedge of medium height or in foundation planting.

3/4 ft. high .....	each \$ .35
4/5 ft. high .....	each .50
5/6 ft. high .....	each .75

**Symphoricarpos chenaulti**

Fine light green leaves and pink fruits. The best of the group and a shrub to be widely planted.

2/3 ft. high .....	each \$ .35	doz. ....	\$3.50
3/4 ft. high .....	each .45	doz. ....	4.50

**Symphoricarpos racemosus (Common snowberry)**

Waxy white berries that remain through the winter.

**Symphoricarpos vulgaris (Indian currant)**

Dull, coral-red fruit.

2/3 ft. high .....	each \$ .25	doz. ....	\$2.50
3/3½ ft. high .....	each .30	doz. ....	3.00

**Syringa vulgaris (Common lilac)**

A sturdy shrub and an old favorite. In two varieties:— one with purple and the other with white blossoms.

2/3 ft. high .....	each \$ .35
3/4 ft. high .....	each .50
4/5 ft. high heavy clumps .....	each 1.00
5/6 ft. high heavy clumps .....	each 2.00

**Syringa persica (Persian lilac)**

Clusters of fragrant, pale lilac flowers on slender, arching stems.

3/4' high .....	each .40
4/5' high .....	each .50
5/6 ft. high .....	each .75

**FRENCH HYBRID LILACS**

These are the finest of the modern lilacs and worthy of a place in your garden. Offered in white, pink, purple, red, lavender and blue.

2/3 ft. high .....	each \$ .75
3/4 ft. high .....	each 1.00
4/5 ft. high .....	each 1.50

**Syringa Villosa (Late Lilac)**

A very pretty lavender-pink bloom in late June. Bright green heavy foliage, very attractive.

2/3 ft. high.....	each \$ .40
3/4 ft. high.....	each .50

### **Viburnum americanum (American cranberry bush)**

The common name for this shrub is a complete misnomer since it bears no cranberries. A tall, handsome bush. Scarlet fruits in large clusters form in July and persist through most of the winter.

### **Viburnum carlesi (Fragrant viburnum)**

A low-growing shrub for an intimate spot in your garden. Pinkish, clove-scented blooms in late April and May. Conceded to be an aristocrat.

Dug with ball of earth.

15/18 inches high B/B.....	each \$2.00
18/24 inches high B/B.....	each 2.50

### **Viburnum dentatum (Arrow-wood)**

Conspicuous white flowers in May and June. Fruits blue-black. Autumn coloring purple and red. Tall and tolerates shade. A good shrub for an informal hedge.

### **Viburnum lantana (Wayfaring tree)**

Tall and tree-like. Wide clusters of white flowers in late June and July. Fruits red, changing to black.

### **Viburnum molle (Kentucky viburnum)**

A mid-western native and exceptionally hardy. Medium height. Clusters of white flowers in May and June. Blue-black fruits.

### **Viburnum opulus sterile (Snowball)**

The common and widely planted snowball develops into a ten-foot shrub. Large round clusters of white flowers in May and June. Give it a sunny location.

Except as noted, all Viburnums are priced as follows:

3/4 ft. high .....	each \$ .60
4/5 ft. high specimens .....	each .75
5/6 ft. high specimens .....	each 1.00

### **Viburnum lentago (Nannyberry)**

White flowers in May and June. Fruits blue-black. The tallest of the viburnums reaching a height of twenty-five feet.

3/4 ft. high.....	each \$ .75	4/5 ft. high.....	each \$1.00
-------------------	-------------	-------------------	-------------

### **Viburnum opulus nanum (Dwarf cranberrybush)**

Very desirable for edging or facing shrubs. Grows very compact and not over 2 ft. Comparatively new in our locality.

12/15" .....	each .85
15/18" .....	each 1.00
18/24" .....	each 1.25

## WEIGELIA FLORIDA ROSEA

Profuse bloomer. Rose-colored flowers in June. An attractive eight foot shrub for the border.

3/4 ft. high.....each \$ .50

## WINTERBERRY (*Ilex verticillata*)

One of our native hollies, the winterberry prefers a moist, well-drained location. Magnificent combined with cedars or hemlocks. Produces the bright red-berried stems sold at Christmas time.

2/3 ft. high.....each \$ .75      3/4 ft. high.....each \$1.00

## WITCH-HAZEL (*Hamamelis virginiana*)

The common witch-hazel reaches a height of fifteen feet or more. Small yellow flowers and dry, luminous leaves in early winter. Splendid as a background shrub or for use in naturalistic plantings.

3/4 ft. high bushy.....each \$1.00

### Plants Whose Berries Attract Birds

Barberry (all)  
Golden twig Dogwood  
Gray Dogwood  
Hawthorn (all)  
Honeysuckle Bush (all)  
Mountain Ash (all)  
Prairie Rose

Red Cedar  
Shadblow  
Snowberry (all)  
Staghorn Sumac  
Viburnum (all)  
Virginia Creeper  
Winterberry

If you do not contemplate any planting now perhaps a friend or neighbor is looking for this booklet. Will you please pass it on.

—Thank you

## HYBRID TEA ROSES

**Ami Quinard**—Dark red, vigorous grower.

**Red Radiance and Pink Radiance**—Both wonderful growers and very hardy.

**E. G. Hill**—Dazzling scarlet shading free flowering.

**Roslyn**—A very fine golden yellow flower.

**Etoile de Hollande**—Brilliant red fragrant and free blooming.

**Talisman**—Brilliant red and golden buds. One of the best bloomers.

**Editor McFarland**—Clear pink bloom, strong stems and long lasting when cut.

**Betty Uprichard**—Delicate salmon-pink and fine fragrance.

**Caledonia**—A desirable white continuous bloomer and fragrant.

2 yr. plants.....each \$ .60      Potted Roses.....each \$ .85

### Rosa Setigera (The Prairie Rose)

Native to the middle west. Single pink blossom blooms in mid-summer; striking in the fall when its arching canes are loaded with crimson fruit. Develops into spreading mass 6 to 8 ft. high.

4 yr. plants.....each \$.75      5 yr. plants.....each 1.00

### FATHER HUGO'S ROSE (*Rosa hugonis*)

Early and profuse bloomer. Single yellow flowers. Six to eight feet tall. 5 yr. old plants.....each \$.75

### HARRISON'S YELLOW ROSE (*Rosa foetida harrisoni*)

Derived from the Austrian brier rose, Harrison's yellow has been in cultivation for over a century. A good hedge rose. Semi-double yellow flowers. Over six ft. high. 5 yr. old plants.....each \$.75

## CLIMBING ROSE

Invaluable in your garden, climbing roses can be used to cover an arbor, trail over a wall, frame a doorway. The following varieties have long been favorites.

**American Beauty**—Crimson.

**Dr. Van Fleet**—Flesh pink. Large Flowers.

**Dorothy Perkins**—Large pink blooms in clusters.

**Paul's Scarlet**—Bright scarlet.

**Silver Moon**—White blooms four inches across. Fragrant.

2 yr. plants.....each \$ .60

3 yr. plants.....each .75

4 yr. plants.....each 1.00

## GROUND COVERS and VINES

Ground covers add the finishing touches to your garden. They can be used under trees where the shade is too deep for grass, between shrubs and lawn, in front of low evergreens. There are many types—some usually considered as vines are even more effective when grown in low, billowy masses. Vines, as such, take but a little space and contribute a wealth of charm.

### **Celastrus scandens (American bittersweet)**

Better adapted as a ground cover than a climbing plant. Effective tumbling over a retaining wall. Prefers poor, somewhat sandy soil. Fruit yellow and crimson.

2 yr. plants.....each \$ .40

### **BOSTON IVY (Ampelopsis tricuspidata veitchi)**

Small-leaved type. A vigorous grower and rapid climber. Fine fall coloring.

3 yr. plants .....each \$ .50

### **CLEMATIS**

Included under clematis are flowering vines of great beauty and wide popularity.

#### **Clematis jackmani**

Large-flowered with showy purple blooms four inches across. July to October flowering.

**Clematis henryi** Large-flowered, white blooms.

**Clematis ramona (popular)** Large-flowered, blue blooms.

Grown in 4" pots .....each .75

#### **Clematis paniculata**

Fragrant white flowers in September and October. Long a favorite and one of the best vines for a doorway or for use as a spreading ground cover.

3 yr. plants .....each .40

### **EUONYMUS radicans vegetus (Evergreen Bittersweet)**

A very desirable plant to use on walls and spread along embankments; also ideal for foundation planting.

4 yr. plants.....each \$ .85      5 yr. plants.....each \$1.00



**ENGELMANN CREEPER**  
(*Ampelopsis quinquefolia engelmanni*)

A small leaved creeper. Hardy and clinging.

5 yr. plants.....each \$ .50

**GRAPE (*Vitis*)**

No vine quite equals the grape for arbor or trellis. But it is only reasonable to combine the practical with the ornamental and plant vines that bear edible fruits. See Fruits.

All the honeysuckle vines are adapted for climbing, or for trailing as ground covers.

***Lonicera japonica halliana* (Hall's japanese honeysuckle)**

The widely planted half-evergreen honeysuckle. White, fragrant blooms.

3 yr. plants.....each \$ .40

***Lonicera sempervirens* (Trumpet honeysuckle)**

Evergreen during a good part of the year. Flowers in clusters. Red or orange outside, yellow inside.

3 yr. plants.....each \$ .45

**MATRIMONY VINE (*Lycium chinense*)**

A summer blooming climber with purple flowers. Does best in the shade.

3 yr. plants.....each \$ .35

**MYRTLE (*Vinca minor*)**

Creeping evergreen plants with light blue flowers. One of our best ground covers for either sun or shade.

per doz. clumps ..... 1.00 per 100 ..... 7.50

**PORCELAIN IVY (*Ampelopsis heterophylla*)**

Dense and quick-growing: Distinguished for its light blue berries carried during the late summer and fall.

3 yr. plants .....each .50

**SILVER-LACE VINE (*Polygonum auberti*)**

Grows to twenty-five feet. Profuse bloomer with fragrant white flowers in August.

3 yr. plants .....each .50



**HONEYSUCKLE (*Lonicera*)**

## FRUITS and BERRIES

In wartime the desirability of the small home orchard and of bush fruits become apparent. Transportation difficulties and rationing fade from the picture when it is possible to pick ripe apples, pears, grapes and blackberries from trees and vines growing in the backyard.

- ✓ **APPLE**—Ten varieties all hardy and adapted to the Chicago area.
- ✓ **CRABAPPLE**—Dolgo, Whitney.
- ✓ **PEAR**—Bartlett and Flemish beauty, Kiefer.
- ✓ **PLUM**—Abundance, Lombard, Stanley Prune.
- ✓ **CHERRY**—Montmorency, English Morello.

All FRUIT TREES priced as follows:

7/8-1	inch stem 5-6 ft. high.....	each	\$2.00
1 1/4-1 1/2	inch stem 5-6 ft. high.....	each	2.50
1 1/2-2	inch stem 6-7 ft. high.....	each	3.50
2-2 1/2	inch stem 7-9 ft. high.....	each	4.50
2 1/2-2	inch stem 7-9 ft. high.....	each	5.50

- ✓ **Dwarf Pear Trees**—Bartlett, Flemish Beauty.
 

3 yr. old	4-6 ft. high.....	each	\$4.00
6 yr. old	5-8 ft. high.....	each	6.00

- ✓ **Espalier Pear and Apple Trees**—2 tier horizontal cordons.
 

4 yr. old.....		each	\$6.00
Single cordons	4-6 yr. old.....	each	5.00

	Each	per 10
✓ <b>BLACKBERRY</b> —Eldorado 2 yr. plants.....	\$ .15	\$1.25
✓ <b>CURRANTS</b> —Cherry 2 yr. plants.....	.25	2.25
✓ <b>GOOSEBERRY</b> —Downing 2 yr. plants.....	.30	2.50
✓ <b>RASPBERRIES</b> —transplants		
Latham (red) .....	.15	1.25
Indian Summer (red) .....	.20	1.75
Morrison (black) 1 yr.....	.25	2.25
✓ <b>BOYSENBERRY</b> (Thornless) transplants.....	.50	4.50
✓ <b>GRAPES</b> —Concord, Niagara 3 yr. plants.....	.20	1.75
✓ <b>STRAWBERRIES</b>	per 25	per 100
Mastodon everbearing .....	\$1.00	\$3.50
Wayzata .....	1.75	6.00
✓ <b>ASPARAGUS</b> —Martha Washington 2 yr.....	1.00	3.50

## GARDEN SUPPLIES

### LAWN SEED — DOUGLAS BRAND

A lawn seed mixture of our own blending. Contains choice Kentucky blue, red top and other fine grass seeds. Produces a deep, healthy turf.

Per lb. \$ .50    3 lbs. \$1.40    5 lbs. \$2.25    10 lbs. \$4.25

### WAUKEGAN BRAND

A companion mixture for shady areas.

Per lb. \$ .60    3 lbs. \$1.75    5 lbs. \$2.80    10 lbs. \$5.50

### COW MANURE

From our own barns. Provides the organic matter which many garden soils require.

Per bag of approx. 2 bushels .....\$ .60

### PEAT MOSS

Moisture-retaining humus. Improves heavy or sandy soils. A splendid mulch for shrubs and trees both in summer and winter.

per bag....\$1.00    per 1/2 bale....\$2.50    per bale....\$4.50

### DRICONURE IMPROVED

A combination of Peat Moss and specially prepared manure serving a twofold purpose most beneficial to your garden.

50 lb. bag ..... \$2.00

### SHEEP MANURE

Dehydrated. Weedless. A concentrated organic fertilizer.

Per 50 lb. bag ..... \$1.50

Muriate of Potash should be used extensively for all root crops.

10 lbs.....\$ .75    25 lbs.....\$1.25    50 lbs.....\$2.25

### AGRICULTURAL HYDRATED LIME

A neutralizer for soil

10 lb. bag .... .35    25 lb. bag .... .75    50 lb. bag .... 1.25

### BONEMEAL

An old standby. Slow acting but effective.

25 lb. bag .... 1.25    50 lb. bag .... 2.25    100 lb. bag .... 4.00

### Wilson Special LAWN & GARDEN Fertilizer

100 lb. bag .....each 3.50

50 lb. bag .....each 2.25

25 lb. bag .....each 1.25

HARDWOOD ASHES Contains all fertilizer elements except nitrogen, is rich in potash, very good for lawns.

10 lb. bag .... .50    25 lb. bag .... 1.00    50 lb. bag .... 1.75

**BLACK LEAF 40** A Nicotine Sulphate solution recommended for use in spraying as per directions for soft bodied insects.

1 oz. bottle.....\$ .35                      5 oz. bottle.....\$1.25

**TREE TANGLEFOOT** A perfect safeguard for trees. Prevents insects from crawling along trunk to damage foliage.

6 oz. can.....\$ .45                      1 lb. can.....\$ .80

### ARSENATE OF LEAD

In dry form for either dusting or spraying. Provides economical, effective control for chewing insects.

1 lb. carton.....\$ .35                      4 lb. carton.....\$ .90  
3 lb. carton......75                      6 lb. carton..... 1.15

### Calcium Arsenate (Dry)

1 lb.....\$ .35                      4 lbs.....\$ .85

**SULFORON** A micro-fine wettable sulfur. Has many advantages over ordinary sulfur. Can be used as a dust or spray with good results.

6 lb. bag ..... \$ .55                      50 lb. bag ..... 4.00

**BORDEAUX MIXTURE** effective in the control of black spot, mildew, leaf spot etc.

1 lb. carton ..... \$ .35                      4 lb. carton ..... .90

### ROSE FOOD

A special fertilizer prepared for rose growers to assure excellent foliage and bloom.

5 lb. package ..... .75  
10 lb. package ..... 1.30  
25 lb. package ..... 2.75

### PRUNING SHEARS

No. 124 Seymour Smith Pruning Shear. A very fine and efficient high quality hand shear for all pruning needs. Each...\$3.50

---

## WAUKEGAN NURSERIES

(Incorporated)

GREEN BAY ROAD

WAUKEGAN, ILL.

Phone Majestic 30

**Marvel Dust** Shake Marvel Dust on ground at base of trees, shrubs, evergreens, flower beds to keep dogs and cats away. A harmless powder ready for use. Package.....\$ .15  
 6 oz. carton.....\$ .25      16 oz. carton..... .50

**ANTI DOG SPRAY**

Safe harmless plant spray that will keep dogs away from evergreens and other plants.

1/2 pint bottle.....each \$ .40      1 pint bottle.....\$ .65

**PLANT SPRAY**

Phenolated Liquid Pyrethrum excellent control method in spraying flowers, shrubs and vegetables.

1/2 pint bottle.....each \$ .40

**CRABGRASS ERADICATOR**

A non-inflammable, non-poisonous chemical for practical control of weeds in your lawn.

5 lb. package.....\$ .70

10 lb. package..... 1.15

25 lb. package..... 2.50

**SA-VA-TREE**

An elastic compound for the protection of tree wounds caused by pruning. It will not crack, peel or flake; guards against weather, insects and fungi. 1 pint.....each \$ .40

1 quart can at.....\$ .60      1 gal. can at..... 1.75

**C. C. C. SPRAY PUMP**

Compact. Modern. Convenient. Stored in a space less than two inches wide. For insecticides, white wash or disinfectants.

Complete (without pail).....\$7.50

**KRAFT CRINKLED DUPLEX WRAPPING PAPER**

Prevents sun scald and excessive transpiration after transplanting. Comes in rolls 4 inches wide of approximately 40 ft.

per roll .....15c      2 rolls .....25c



*Remember*

VIGORO is available for  
Lawn and General Orna-  
mental Feeding.

VIGORO Victory Garden Fertilizer is clean, odorless, economical and easy to use. It is a "SQUARE MEAL" for Vegetables.

100 lb. bag.....	each	\$3.70
50 lb. bag.....	each	2.35
25 lb. bag.....	each	1.45
10 lb. carton.....	each	.80
5 lb. carton.....	each	.50

Be sure your outdoor living room affords a velvety turf and colorful, fragrant flower! FEED THEM WITH VIGORO. Again available for lawn, flowers, shrubs and tree feeding.

100 lb. bag.....	each	\$4.00
50 lb. bag.....	each	2.50
25 lb. bag.....	each	1.50

### Dendrol Oil Spray

For the most effective dormant spray use this high quality preparation which will do the job at the lowest cost to you. Always ready for use. (Do not neglect spraying.)

per qt. ....	\$ .35
per 1/2 gal. ....	.65
per gal. ....	1.25

### VERDOL Oil Spray

The regular summer oil spray is indeed very good also.

per pt. ....	\$ .35
per qt. ....	.45
per gal. ....	1.50

### C. P. O. INSECTICIDE SOAP SPREADER

Non-poisonous—odorless:

An inexpensive satisfactory spray for use in all weather to rid your bushes, trees and evergreens of pests and insects.

Formula in using C.P.O.: 1 pt. to approx. 10 gal. of water with Black leaf 40 or Pyrote as directed.

per gal. ....	\$2.25	per qt. ....	.65c	per pint ....	.40c
---------------	--------	--------------	------	---------------	------