

Historic, Archive Document

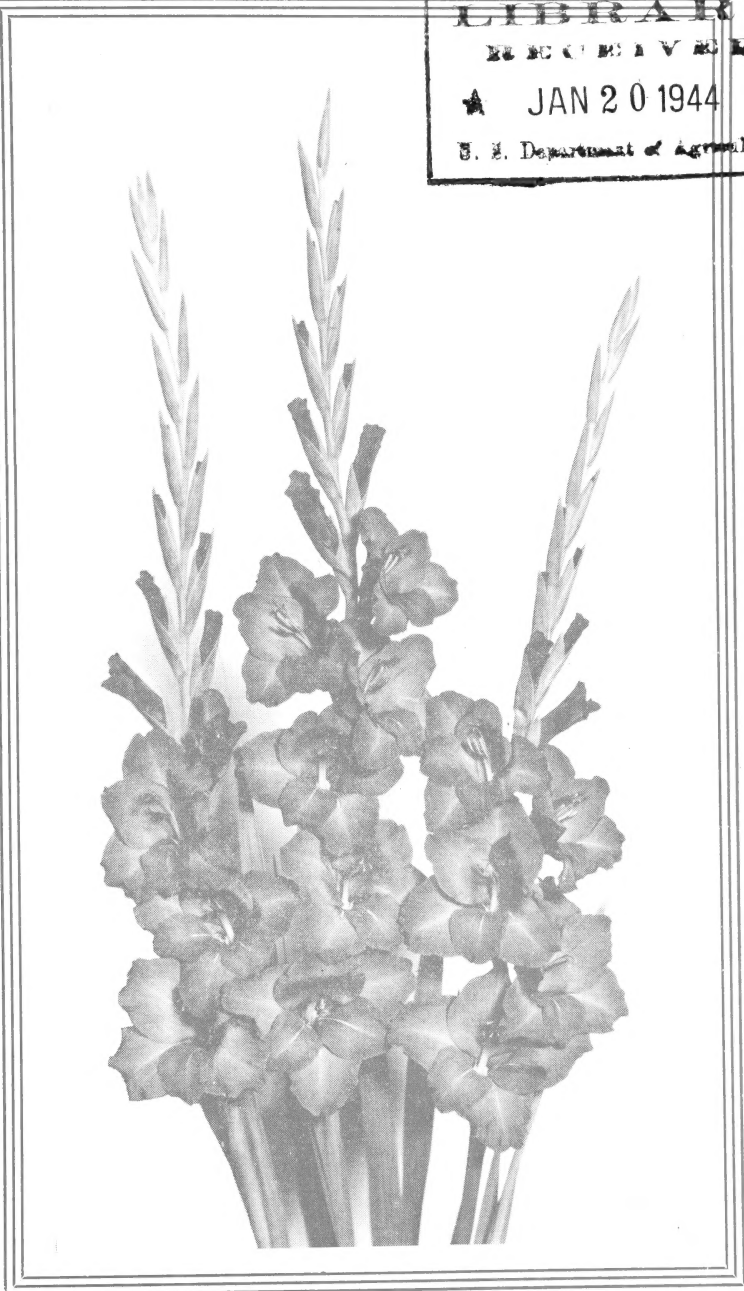
Do not assume content reflects current scientific knowledge, policies, or practices.

Flying Cloud Farms INC.

62,39

**G
L
A
D
I
O
L
U
S**

LIBRARY
RECEIVED
★ JAN 20 1944 ★
U. S. Department of Agriculture



1944

MRS. BANCROFT WINSOR
ACUSHNET STATION

MRS. SYLVIA W. MOSELEY
NEW BEDFORD, MASS., U.S.A.



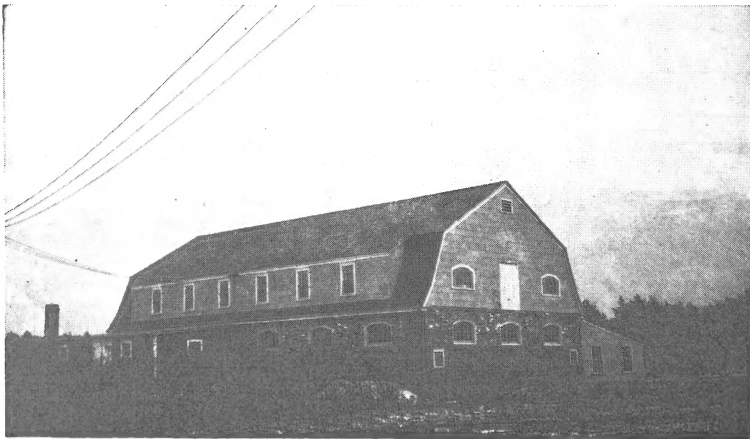
Thank You!

Before telling you about the many new and interesting varieties we wish to express our appreciation to all our customers and friends for your confidence in us and your loyal support.

If, in the following pages, you do not find the information you are seeking, write to us and we will do our best to help.

Don't forget, you and your friends are always most welcome at Flying Cloud Farms.

Mrs. Winsor and Sylvia.



BULB STORAGE

Around The Garden

Another summer spent almost entirely in our own gardens has really given us an opportunity to become better acquainted with many of the newer varieties.

Early in the season **AURORA** attracted our attention! A bright salmon rose, towering above its neighbors with mammoth ruffled blossoms—truly spectacular! **TARA** and **MARGUERITE** were very fine too.

Not far away was **MADONNA**, such a refined pure white; perhaps more stately than **SURFSIDE** but Surfside is increasingly popular with all who see it and grow it. More on the creamy side, and of massive growth, is **WHITE GOLD**, particularly popular with the exhibitionists.

The vivid reds such as: **ERREY'S SCARLET**, **MASTER MYRON**, and **SOUTHERN DRAMA**, are outstanding in any garden. **JULES AMOTT** is a nice shade of red, very lovely, while **MRS. MARK'S MEMORY** is a bit more on the rose red shade. Turning to the darker reds we admire **MOHAWK** greatly and darker still is **BLACK MAGIC**—really dark and rich.

Growing near some of these darker reds we note **EVENING LIGHT**, a lovely flesh, brightened by a rosy blotch in the throat; and **BUNGANA**, a rich textured flesh too.

Royal in their coloring are: **IMPERIAL PURPLE**, **NAROOMA**, and **ELANORA**. Then we acclaim **VULCAN**, **BURMA**, and **CONVOY**,—hard to really discriminate between these beauties. **PARNASSUS** is quite an addition to this color group.

Scattered about the field are the pinks, in all shades from the delicate light pink of **HOPEDALE** and the apricot pink of **SUSQUEHANNA**, strengthening in tone with **PINK JEWEL**, **PHEDRA**, **MARION PEARL** and **PINK RADIANCE**; then to the rosier pinks—**ROSEA**, **ROSY MORN**, and **GENGHIS KHAN**. There are so many striking and beautiful pinks it is hardly fair to differentiate. Our tastes vary, fortunately, and it would be difficult to choose for anyone else. **CAPEHEART** is popular with us naturally and our **PRESTIGE**, more of a light salmon, makes a fine showing. **PINK LASS** and **LIPSTICK** with their attractive throat markings, are very worthwhile.

Familiar to many of you are **HARVEST MOON** and **MARY DAMARIS**,—both fine yellows. **MOTHER KADEL** was very outstanding this summer and we liked the tall spikes of **FRANK WARNER**.

The rich orange of **BANCROFT WINSOR** is noticeable in everyone's garden and seems more popular with visitors each year. **SUNBURST** was outstanding too with its warm orange shades. Both these varieties have a blending but noticeable blotch in the throat.

No garden is complete without its blues and, while there are not as many new ones in this group, there are a few. **AZURINE**, for instance, is a fine tall blue, a bit on the light shade, with large florets and very nice. **CABARITA** and **TUNIA'S BLUE** are well worth growing and **WINTERMOON** is especially nice—more of a solid blue. Shading towards the darker ones we like **INDIGO** and **LEONARDO DA VINCI**—very deep and rich in tone.

ELIZABETH THE QUEEN makes more of an impression on us each year and **MAUVETTE**, of Burns', holds our attention. There still is—and I hope always will be—**MINUET**, a grand tribute to Joe Coleman.

Perhaps you are not all as fond of smokies but they must not be forgotten and there are many lovely ones. **MIDNIGHT SUN** and **NORWOTTUCK** are most unusual and **BRONZE-WING** and **GLENORA**, of Errey's, are really lovely. **RECADO** and **MARIA STUART** are somewhat different in shading but just as fine.

It is difficult to limit oneself so do not think these few varieties are the only fine ones. There are so many and we have tried to interest you in some of the newer glads that you have not all seen. We really like them all but, like human nature, some are closer than others.

Successful Gladiolus Culture

The present day varieties of gladiolus can be very EASILY GROWN to perfection in every section of United States or Canada as well as in most all the foreign countries. We hope these notes may be of help to our customers in having their gardens filled with better glads this year.

OPEN YOUR PACKAGE of bulbs as soon as received and allow the air to get at them. If there are only a few in each bag, open the top and stand the bag up in a box. If there are many bulbs in a bag it is advisable to pour them out, each variety in a separate shallow box. Now they can be stored in a cool dry cellar, preferably where the temperature is about 40° fahrenheit and it is well to let some fresh air in occasionally.

You can make YOUR FIRST PLANTING about the time farmers put in their first potatoes and this will vary according to location. Your last planting should be at least 120 days before your usual first frost but that is hardly long enough if you expect to dig good mature bulbs of the midseason varieties. In our locality it would seem best to make about three plantings, three or four weeks apart, to insure a long season of bloom; we suggest in southeastern New England—April 10-15, May 10 or thereabouts, and June 1-10.

Glads love the sun so SELECT A SUNNY LOCATION away from trees or shrubs where roots might take up the food and moisture you intend the glads to get and also away from the sides of houses, walls or fences that might shade them even if only for a part of each day.

The soil will have considerable bearing on your culture. If a heavy clay soil, you will not need to plant more than two thirds as deep as in a light sandy soil. Plant large bulbs about six inches deep in light sandy soil; medium bulbs four inches and small bulbs three inches. If you are mainly interested in bulblet increase, plant as close to the surface as possible, if blooming size bulbs you will probably have to stake them. Light soils will usually give more bulblets than heavy soils.

Either spade or plough (depending on the size of the garden) the soil deeply, preferably in the fall, leaving it rough during the winter. If stable manure is available put it on before spading and it will be well rotted by spring.

If the glads are grown for landscape effect they should be in beds about six to ten inches apart depending upon the variety. If grown for the blooms, as more often is the case, they should be in rows and the bulbs can be placed either in single or double rows. We prefer double rows in the trench as then they tend to hold each other up on windy days. The rows should be from eighteen inches apart to thirty-six inches depending on whether you intend to cultivate by hand or machine. The wider rows are much easier to handle if cultivating machinery is used. Allow about five inches between large bulbs and less as the size of the bulbs planted decreases.

FERTILIZER: This item plays a very important part in successful growing, yet the cost in relation to the whole is not a large factor. Therefore it pays to use a plant food that supplies not only the so-called major elements, but the just-as-important minor elements as well. Research has shown that deficiencies in minor elements will cause a very definite retardation if not a complete failure of a crop.



Garden of the Nations

Here at Flying Cloud, we have found that Vigoro supplies the needed elements and has given us excellent satisfaction. A check on bulb growth has revealed superior development to former years, and color has been outstanding.

General recommendations for the use of Vigoro are as follows: After the soil is put in good tillable condition, the planting rows should be made an inch or so deeper than you want to plant. Vigoro should then be put in the bottom of the row at the rate of about four pounds per 100 feet of row. Cover the plant food with one-and-one-half inches of soil, and then plant the corms. Or, if preferred, Vigoro may be worked thoroughly into the soil in the bottom of the row instead of just being covered with soil. Wait one or two days before planting. After the glads are eight to ten inches high, a surface feeding should be made at the rate of four pounds to 100 feet of row. The Vigoro should be spread on both sides of the row and worked lightly into the soil. Another similar feeding should be made just as the buds appear. Now, be sure the soil is well loosened and the fertilizer is well mixed in the bottom of the trench before setting the bulbs. After the bulbs are set, cover in the trench and hill it up a bit. When the first weeds appear, rake it down level again and that first crop of weeds is easily killed. Many years ago, a very successful farmer said, "Remember, a crop well planted, is a crop half grown," and we believe he was 100 percent right.

Watering will depend entirely upon the rainfall, heat, and type of soil you are using but when you do water, use enough to do a good job. Three quarters of an inch of water at least for big bulbs (just set a low straight sided tin can among them before you start watering and then you can tell how much you are getting on). Three quarters of an inch you will find is a lot but it pays, especially from the time the spikes come out of sheath until they bloom.

Stirring of the soil is a great factor. Hoeing, scratching, cultivating, brooming, or whatever you want to call it, should be done often. We use lawn brooms in the planted rows on our light soil and cultivators in the rows. We plan to get over the piece every fourth or fifth day but if it has been dry, once a week is enough. If it rains, or we irrigate, we try to cultivate the following day as soon as it dries out.

We believe if you treat all your bulbs before planting, by soaking eight to twelve hours in a solution of Bichloride of Mercury (Corrosive Sublimate) one ounce to seven gallons of warm water (preferable to keep the solution in a fairly warm place early in the season) any thrip trouble you may be threatened with is on the way out, (this recommendation is for bulbs with their husks on; six to eight hours is sufficient for the bulbs which have been peeled). Use only wooden, glass or crockery containers as the chemical action, weakening the solution, will take place in a metal vessel. We do it to any bulbs we plant no matter where they come from or whether they have been treated with naphthalene flakes, gas, or low temperatures,—all of which kill all thrips. The soaking is too cheap a form of insurance to run the risk. You can do no harm to the bulbs with this treatment except to delay blooming about ten days. If you are in a climate where the winter temperatures go low enough for the ground to stay frozen a few days, we are convinced that when this soaking procedure is followed, your only chance of infestation is from some other planting that has not been properly treated and the thrips may come a half mile or more with a strong prevailing wind in a short time. It would seem a wise move to play safe and spray them when about six inches high even if one does not see any signs of thrips for they are hard to see at this stage. Just a few present at this time will make enough later on to do serious damage. The old formula still seems to be popular; it is **two tablespoons of Arsenate of Lead, two pounds sugar** (the cheapest kind you can buy) and **three gallons of water**. In the sections where the weather is often hot and the humidity high during the growing season, growers have had some trouble with burning of the foliage with this arsenate of lead spray although it does not burn nearly as easily as Paris Green. A comparatively new **Tartar Emetic** spray has been used very successfully and we suggest it be used in place of the arsenate spray. The formula is: **Tartar Emetic—**

four pounds; brown sugar—16 pounds; to 100 gallons of water. **For home gardens** use: 3 gallons of water, $4\frac{1}{2}$ teaspoonsful of Tartar Emetic, and $1\frac{2}{3}$ cups of brown sugar. Tartar Emetic is a standard drug also known as Antimony and Potassium Tartrate U. S. P. Brown sugar is usually cheaper but any sugar is equally effective or you can use corn syrup and molasses (three and three-quarters pints per 100 gallons. If Tartar Emetic is not obtainable, a suggested substitute is Salp (sodium antimony lacto phenolate) used in combination with the corn syrup or molasses solution at the rate of six pints per 100 gallons of spray. We think if one keeps all open spikes cut close there will be little damage. The thrips go to blooming spikes so if these are cut and removed from the field, any thrips present on the spikes where most of them will be, would go out on these spikes. Any tops broken off or worthless spikes, should also be kept cleaned up and removed from the field and destroyed as you then remove any thrips that may be present on these spikes.

When they start to bloom, it is wise to cut them as soon as a bloom or two open and put them in water inside where they will continue to open better and safer than in the field. If desired for showing, and the show is nearby, cut the spikes as above and hold in as cool a place as available until the day of the show. If you must ship or carry the blooms some distance, we suggest you pack them flat in boxes.

Now the fun is over and the work of digging, curing and cleaning is at hand. Dig the bulbs about four to six weeks after blooming or as soon as they show signs of turning brown. Cut the tops off close to the bulb and spread out in low boxes to dry; preferably where the air can move around them. It will depend on the size of the bulbs and the drying conditions on how soon they will be ready to clean; the old bulb should come off easily and be sure to destroy all the old bottoms, etc. Now store in a cool dry place. If you use naphthalene flakes, we suggest that you put in half a handful on pieces of paper, or small pie plates, in the boxes; cover the boxes with paper, or, if you can put them in one big pile, cover it all with a tight cover of some kind such as canvas or several thicknesses of newspaper and leave for a couple of weeks. Uncover, take out the naphthalene flakes, and store for the winter. Putting the naphthalene on paper will save taking all the bulbs out to get the naphthalene flakes away from the bulbs for we do not like to leave them among the bulbs all winter. Now the bulbs should be in good shape until planting time.

Graded Lots

Discounts do not apply to these Graded Lots

The graded lots have been very popular and we will make them up from any variety in the catalogue. We will put up 50c lots of any variety that does not list for over 25c for a single large bulb, and \$1.00 lots of any variety that does not list for over 50c for a single large bulb. We realize that there may be some cases where the stocks will be so reduced that we cannot supply all varieties in graded lots throughout the season and we do hope you will be good enough to send a few second choices in case any you select are not available. We plan, where these graded lots are ordered, to put any extras, we may be giving, into additional bulbs of the ordered lots rather than add bulbs of other varieties, so that is where you will find your extras unless specially requested to otherwise. Of course if the order is not all graded lots, the usual extras will be included. The customers that have had these lots know the value they received. To others, we will just say that they will be much in excess of the catalogue prices and contain a good assortment of sizes. If you wish part in bulblets please mention it as otherwise they will be made up entirely of bulbs. On the 50c lots you can order: five for \$2.25, ten for \$4.00, or fifteen for \$5.75. On the \$1.00 lots you can order: five for \$4.60, ten for \$8.50, or fifteen for \$12.00.

Shipment

Orders can usually be shipped all winter except to the most northern states. We like to ship as soon after the order is received as weather permits. This season, with the shortage of labor, it may be two weeks after we receive your order before we can fill and ship it. There will be no "immediate" or "at once" shipments of orders this season. However, we will gladly store and ship when you wish. We ship by either parcel post or express, whichever we think best and cheapest or safest at the time shipment is desired, so if your express office is different from your mail address be sure to state it on the order. Fairly heavy orders are usually cheaper by express. We guarantee safe delivery of every shipment. Any orders over \$10.00 we will be glad to ship by express at any time the customer desires although we prefer to hold them a day or two if extremely low temperatures are forecast. Please state on the order the approximate date you prefer to receive the shipment.

Bulblets

While we guarantee to satisfy our customers if it is possible, it must be understood that WE DO NOT GUARANTEE BULBLETS TO GROW. The bulblets of some varieties are hard to germinate and they need good care to get the best results. Bulblets are cheaper than bulbs because they are not so sure to grow. It is a cheap way to get a start, especially in the new introductions, but we want our customers to be sure they understand clearly that they must not expect us to replace them if they do not germinate. Of course a big per cent usually will grow anyway but if they are valuable ones, and are cracked before planting, and then kept well watered, the per cent that grow will be much increased. We will always select the largest bulblets available of the ordered variety.

Terms

Customers often lose cash sent in the mails unregistered so be sure to register any orders containing cash. Anyone sending cash, not registered, does so at their own risk of loss. The day an order is received we mail you a card or letter of acknowledgement. If this does not arrive promptly please let us know. We may be able to trace it then but if we do not know about it for a couple of months it is hopeless.

It is our custom to add extras to each order; the amount and varieties vary with the size of the order. As some customers already have a wide selection of varieties, they prefer the extras in overcount of the ordered varieties, or have some varieties in mind that they might like to try and, while, of course, we can not always send all the varieties that are mentioned, it will help us to have a list to select from so we may send something you really want. Just put on the order what you would prefer to have us do—increase the count, take them from your list, or select them ourselves.

If one is willing to pay the transportation charges on an order, we will see that there are bulbs of a value much larger than the shipping cost added to the order to offset these charges. Here again, just give us an idea of what you would like and we will do our best.

No order accepted for less than \$1.00 which must be accompanied by cash in full, and no single item for less than ten cents. On orders of \$5.00 and up, we will accept 25% with the order, balance before shipment. We will prepay all orders to any point in the United States or Canada, except orders from the wholesale list, and guarantee safe delivery on all shipments. Orders from foreign customers, except Canada and Mexico, must be accompanied by money order or draft and shipping charges.

CASH DISCOUNTS for full payment of orders before January 15, 1944:

Net Orders For \$ 3.00 to \$ 5.00 take 10% off
Net Orders For 5.00 to 25.00 take 15% off
Net Orders For 25.00 or over take 20% off

BULB DISCOUNTS for orders paid for after January 15, 1944:

Orders for \$ 3.00 to \$ 5.00 select 10% additional stock
Orders for 5.00 to 25.00 select 15% additional stock
Orders for 25.00 or over select 20% additional stock

These discounts do not apply to our new introductions, the graded lots, wholesale orders, or collections. These extras to be selected from the retail list. **Where bulbs, not bulblets, are priced each, ten bulbs of a variety will be sold at eight times the single price; five bulbs or more at the ten rate.** Large bulbs will be 1 ¼" up, medium will be ¾" up, and small will be ⅝" up. As long as available, the larger bulbs of each grade will be used.

We shall personally see that full value is given to every customer. If you are not pleased with the stock when received, or if, after you have grown it, you are not satisfied with the results, please let us know and we will make every effort possible to please you. All stock is guaranteed true to name and free from disease.

Substitution

In no case will any other variety be substituted for the variety ordered except with your permission on orders received prior to May 15. However, if you order later than this please give us some varieties for second choice or, if we are out of some varieties, permit us to send more of those available to make up the value. All orders are put up and put aside when received regardless of the shipping date.

Flying Cloud Farms' Introductions

- A. L. STEPHEN (Winsor-Moseley 1942)**—An outstanding large decorative which received its Award of Merit from the New England Gladiolus Society. The parents of this variety are Alpheus (Errey) and Picardy, and it shows its parentage in the color combination and the pleasing slightly ruffled shape of the florets. The ground color is rose doree with an attractive spectrum red spot in the throat. Tall, straight spikes of well placed blooms and five or six florets open at once are characteristic of this variety. **L \$1.25, M 75c, S 50c, Blts. 10c each.**
- BANCROFT WINSOR (Winsor-Moseley 1941)**—A handsome flower which has won much acclaim in the past several years and a variety we deem worthy of this name. Tall stately spikes of perfectly placed light orange florets which do not burn or fade in the sun. The lovely large slightly ruffled florets have a deeper and more reddish plume in the throat. Ridgway color is grenadine pink with a spectrum red throat. **L 75c, M 50c, Blts. 3-25c.**
- BUFLETTE (Winsor 1937)**—This buff variety is an extremely strong tall grower with wide dark green foliage. It is a very fast propagator, giving large quantities of bulblets that germinate easily. It gives good commercial spikes from even the smallest bulbs and blooms consistently from bulblets in regular field culture. 10-12 perfectly placed florets open at once. It is a fine commercial and being extra early adds to its value for this purpose. **L 2-15c, M 5-15c, S 5-10c, Blts. 30-10c.**
- CAPE COD (Winsor-Moseley 1942)**—An exhibition variety with perfectly placed blooms of glistening lilac pink and a creamy throat overlaid with a slight feather of deeper self. Received its Award of Merit from the N. E. G. S. and a Vote of Commendation from the Maryland Trial Gardens. **L \$1.50, M \$1.00, S 60c, Blts. 3-50c.**
- CAPEHEART (Winsor 1938)**—Light salmon rose, deeper at the edges of the petals, with a slight rose feather in the throat. The blooms are over six inches with eight open on an eighteen bud spike. Although not a seedling of Picardy, it is similar to it in propagation, type of growth, and spike formation; in fact, before it was named, field visitors spoke of it as "that pink Picardy seedling." It blooms about twenty days ahead of Picardy and especially for this reason it makes it a valuable commercial as well as an exhibitor's variety. **L 2-15c, M 4-15c, S 4-10c, Blts. 30-15c.**
- EVENING LIGHT (Winsor-Moseley 1943)**—A fine commercial and show bench variety which has won much acclaim in the last few years. The large, wide open, plain petaled florets of peach pink with a cream and rose throat are well placed on tall straight spikes. The lovely clear peach color with the rosy pink throat is a most striking combination and one which has proven most popular. **L \$1.50, M \$1.00, S 75c, Blts. 25c each.**
- GARDEN OF THE NATIONS (Winsor-Moseley 1939)**—The color is a clear cerise rose with each petal edged silver; this combination of color makes a decided impression when one sees it for the first time. The spikes are strong and straight, the placement and spacing of the buds is right; five or six open blooms on a sixteen to eighteen bud spike is average for this variety. The individual florets are of good size and it would be classed as a decorative. Garden of the Nations is a seedling of Sir Hubert Wilkins and Red Lory. **L 25c, M 15c, S 10c, Blts. 10-15c.**
- HONEYMOON (Winsor 1938)**—Peach pink, suffused deeper at the edges of the petals, going to a lighter shade in the throat where there is a creamy blotch with a slight garnet feather. The ruffled florets are of great substance with about eight large blooms open on a tall twenty bud exhibition spike. **L 20c, M 15c, S 2-15c, Blts. 10-15c.**

- HOPEDALE (Winsor-Moseley 1940)**—A delicate flesh pink with slightly lighter throat. The florets are large and well placed on tall straight spikes such as are true of its seed parent. Its fine texture shows good resistance to heat and does not show water spotting. Hopedale makes a fine cut flower and has been most popular with our trade. **L 35c, M 25c, S 15c, Blts. 12-25c.**
- LUSTRE (Winsor-Moseley 1940)**—A lovely light rosy pink that gets much lighter in the throat where it is overlaid by a most attractive lustrous cyclamen feather. The ruffled edges of the petals are a bit darker than the pink ground color of the individual florets. A fine decorative glad. **L 35c, M 25c, S 15c, Blts. 12-25c.**
- ODELLIA (Winsor-Moseley 1942)**—Showy red-orange prim with a large yellow blotch in the throat. The willowy spikes, characteristic of a small decorative, with five or six florets open, are nice in a bouquet by themselves or when mixed with other flowers. We offered this variety to meet the demand for a few small flowered glads which some of our customers requested. **L 3-25c, M 3-15c, S 3-10c, Blts. 25-10c.**
- ORCHID BEAUTY (Winsor-Moseley 1943)**—Light rose lavender ground with striking deeper self lines, becoming magenta farther in the throat—one of the tallest growing glads in our field. An orchid novelty which has aroused much interest in our garden and is most popular with the florists as well as hobbyists. **L \$1.50, M \$1.00, S 75c.**
- PRESTIGE (Winsor-Moseley 1939)**—The color is a soft pink, slightly on the salmon tone, shading to cream as it goes into the throat. The florets are Picardy size but more ruffled. Eight open blooms are well placed on long flower heads that average several more buds than does its parent Picardy. The slight ruffling and the delicate coloring have made it very popular for a cut flower. **L 25c, M 15c, S 10c, Blts. 10-15c.**
- RED BANK (Winsor-Moseley 1939)**—The spikes average eight open and carry eighteen buds. The florets are slightly larger than those of its parent Commander Koehl and set tightly against the spikes. The color is almost identical to Dr. Bennett with a small dark feather edged white in the throat. It is a much desired color, an extra good propagator, makes nice bulbs, and is a 100% cutter. **L 25c, M 15c, S 10c, Blts. 10-15c.**
- ROBERT SHIPPEE (Winsor-Moseley 1940)**—Despite the beauty of many of the new glads, this variety still is one of the most beautiful we have seen. The china white florets are ruffled and enhanced by a dainty spot of rose color in the throat. The heavy texture of the florets makes it a fine cut flower for which the florists always ask. **L 2-25c, M 2-15c, S 2-10c, Blts. 15-15c.**
- SURFSIDE (Winsor 1937)**—Surfside has the vigorous growth of Picardy and the spikes are very tall. Field grown spikes from large bulbs average eighteen to twenty buds with seven or more 5½" blooms open. The beautifully ruffled blooms have a slight pencil line in the throat and are of great substance. Bulblets are plentiful and germinate easily and it blooms readily in the field from bulblets. Midseason variety blooming here in about eighty days when planted after May 10. A great variety for the exhibitor as well as the commercial grower. **L 2-15c, M 4-15c, S 4-10c, Blts. 30-15c.**
- SYLVIA TWING (Winsor-Moseley 1942)**—A lovely platinum pink flower, a bit more creamy in the throat where there are pencillings of a deeper self color. A typical large decorative variety which has been most popular as a cut flower. **L 35c, M 25c, S 15c, Blts. 12-25c.**
- THISTLE DEW (Winsor 1938)**—A dandy light pink with a peachy cream throat slightly peppered pink. The large florets are a bit ruffled and lay flat against the stem on the long graceful spikes with as many as seven or eight open at once. In past seasons it has won many awards and much acclaim. **L 3-25c, M 3-15c, S 3-10c, Blts. 25-10c.**

WAMPUM (Winsor 1938)—Large, round, flat, slightly ruffled florets of a dark smoky rose with an attractive white feather dusted a bit at the edges. The long heavy spikes are ideal for exhibition with about eight open out of eighteen or more buds. This variety has won a Commendation from the N. E. G. S. and has won at several shows as well as receiving much other favorable comment. **L 15c, M 10c.**

Special Collection Offer—Save One-Half

One large bulb, labeled, each of: A. L. STEPHEN, CAPE COD, EVENING LIGHT, GARDEN OF THE NATIONS, HONEYMOON, HOPEDALE, LUSTRE, PRESTIGE, RED BANK, and ROBERT SHIPPEE—**for \$3.00**—a six dollar value. Or **one medium bulb, labeled, of each—for \$2.00.**

A customer in Oklahoma writes:—"I think your Surfside is one of the most beautiful whites I have seen so I am sending for more."

"Surfside is truly a wonderful white and everyone that sees it raves about it and, to me, it is the best white glad to date!"—K. J. T., Wisconsin.

"Your bulbs are wonderful and I sell a great many blooms every summer from them."—Mrs. F. M., New Hampshire.

"Received bulbs and extras and am overjoyed with them; they are so clean and were wrapped to perfection."—J. K., Union, New Jersey.

"I do want to tell you how lovely Bancroft Winsor was last year. It was the loveliest of all the varieties I grow and its keeping qualities will make it a great commercial."—W. L., New Jersey.

"Received your shipment of bulbs and can say we are more than pleased with their quality. Also appreciate the fine extras and must say you certainly do give good measure both in size and count. We especially like Surfside,—it's so beautiful and dependable—everybody likes it who sees it and it would help any firm to expand. Bancroft Winsor is lovely. It does as well as any orange we grow but is much more beautiful and doesn't fade like many others."—C. B., Plymouth, Indiana.

"Bulbs received in perfect condition and thank you for your generosity. I am especially happy to receive those extra bulbs, the blooming of which will be eagerly awaited."—E. J. G., Indianapolis, Indiana.

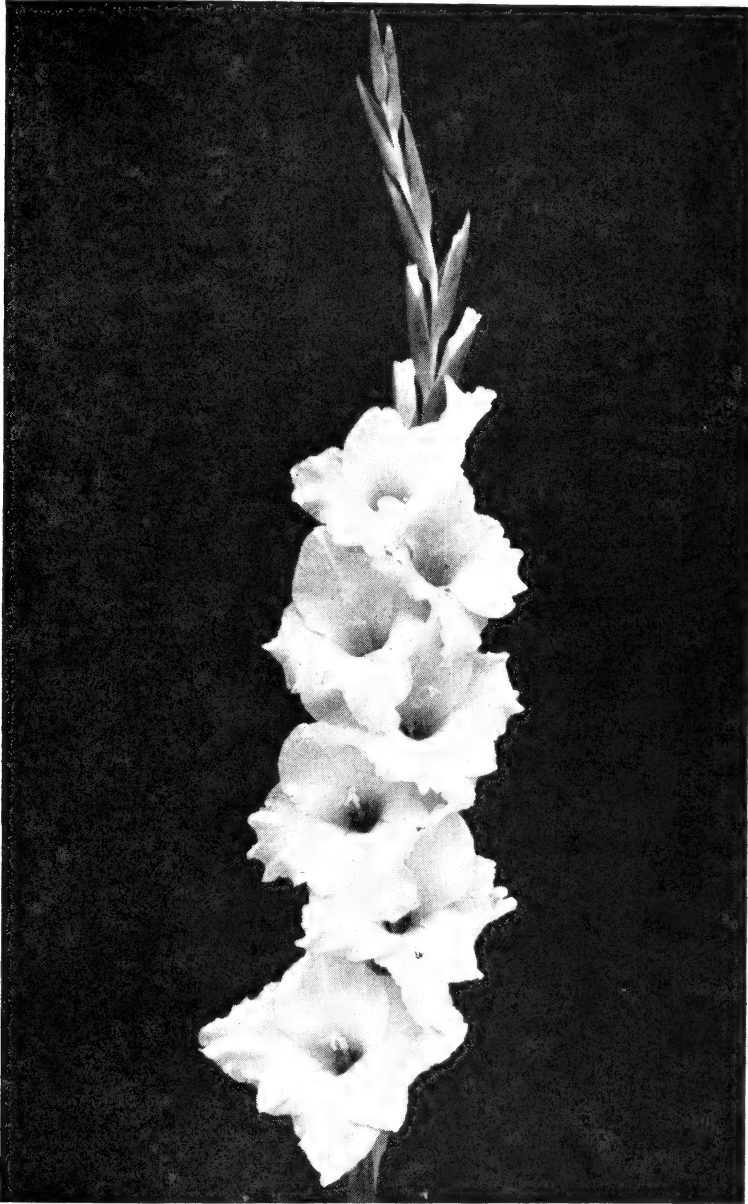
"Received bulbs in first class shape. Never saw a cleaner line of stock. Am sure surprised at overcount and extra premium bulbs of choice varieties."—C. J. F., Detroit, Michigan.

"Received the bulbs and, for the fourth straight year, want to say I'm more than pleased with the quality of bulbs, overcount, oversize, and extras. Always a pleasure to order and receive glad bulbs from you."—R. S., Hagerstown, Maryland.

"I received an order of bulbs from you this year for the first time and I must say that I am greatly satisfied. The promptness with which you filled my order was gratifying but the number of extras was almost unbelievable."—W. W., West Chester, Penna.

"I was very much pleased with the glad bulbs and thank you for your generosity in sending the extras. It is really a pleasure to do business with you."—C. C. R., Attleboro, Mass.

"Bancroft Winsor and Surfside were very good this past year. You should be proud of them!"—J. A. M., Connecticut.



Surfside

"We have grown your Surfside for three years and we like it better each year."—A. H. D., Ferndale, Michigan.

A Massachusetts customer writes:—"Surfside is unquestionably the best white commercial today; stronger and more beautiful than Maid of Orleans."

"Surfside continues to top my all-round whites and I think of it as one of my ten best of any color. Healthy, prolific, uniform, and beautiful,—and what more can one ask!"—L. C. S., Milton, Wisconsin.

Descriptive Price List 1944

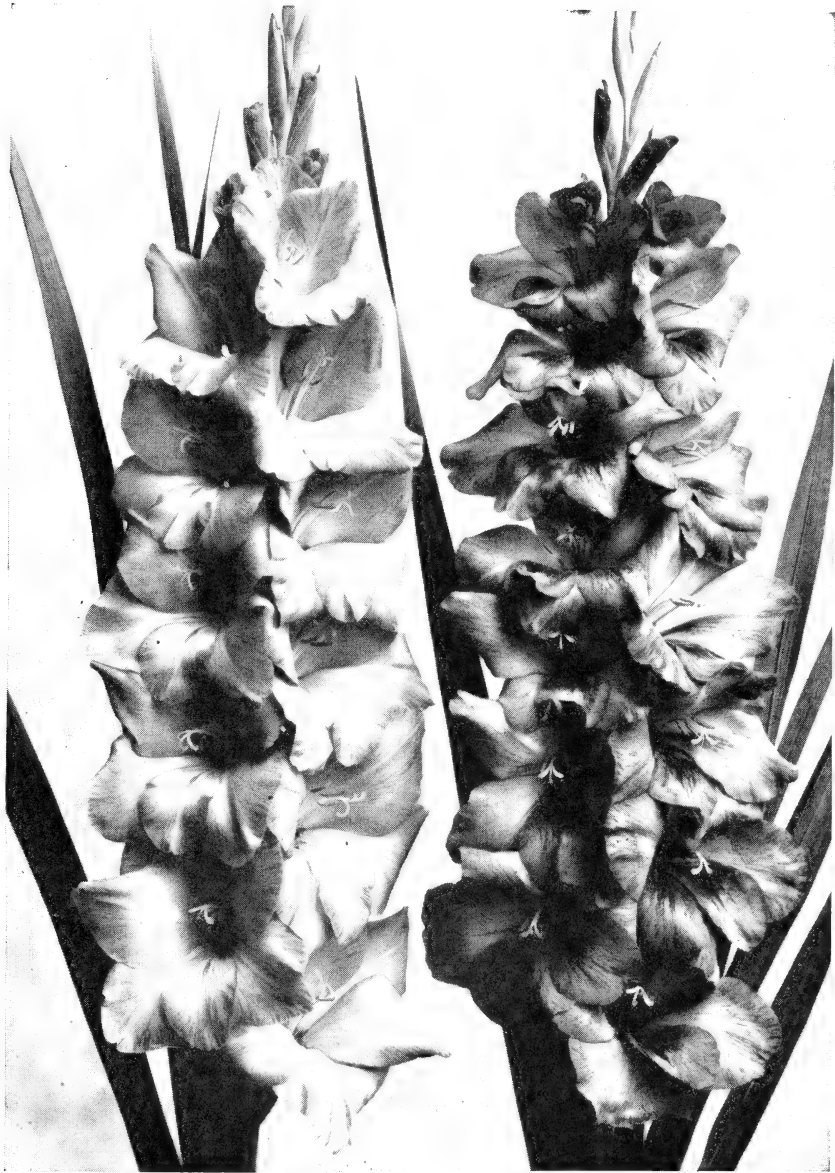
- AJAX (Errey)**—Tall massive white with contrasting petunia throat. The florets are large, ruffled, and heavy textured. **L \$1.00, M 60c.**
- ALADDIN (Palmer)**—Bright reddish salmon with large cream blotch. The beautifully ruffled blooms open 8 to 10 on long flower heads. A fine variety and a winner at many shows. **L 2-15c, M 3-15c, S 6-15c, Blts. 30-15c.**
- ALGONQUIN (Palmer)**—Brilliant scarlet. 8 to 10 florets open wide on tall straight spikes. A fine exhibition variety. **L 3-25c, M 3-15c, S 3-10c, Blts. 25-10c.**
- ALLEGRO (Pfitzer)**—Light lavender blue with two dark blue blotches in throat tipped white. The color is clear and makes a fine cut flower as well as an exhibition glad. **L 3-25c, M 3-15c, S 3-10c, Blts. 25-10c.**
- ALSACE (Benedict)**—Beautiful buff apricot. Florets are large, ruffled, needlepoint type and of heavy texture. A very tall strong grower with 8 or so open on 20 bud spikes. **L 30c, M 20c, S 10c, Blts. 10-30c.**
- A. L. STEPHEN (Winsor-Moseley)**—See Flying Cloud Farms' Introductions.
- ALTA (E. H. Young)**—Light rose salmon with plum markings. Tall and nice. First prize winner at Wisconsin and Maryland shows. **L 25c, M 15c, S 2-15c, Blts. 15-15c.**
- ANNAMAE (Pommert)**—Pure snow white with tiny wine-red spot at base of petals. A seedling of Maid of Orleans but without the creaminess of that variety; not quite as tall but blooms ten days earlier. A fine early pure white. **L 2-25c, M 2-15c, S 2-10c, Blts. 15-15c.**
- ARETHUSA (Fischer)**—Heavily ruffled apricot-tan with cream throat. A fine glad. **L 3-25c, M 3-15c, S 3-10c, Blts. 25-10c.**
- ARUNDEL (Downs)**—Bright crimson with deeper self blotch on lower petal and faint white midrib. Slightly ruffled florets of good texture on tall spikes. **L 50c, M 30c, S 20c, Blts. 10-25c.**
- ATLAS (Pfitzer)**—Dark blue, somewhat lighter in throat, with two tiny black reddish purple blotches on the lower petals. **L \$1.00, M 60c, S 30c, Blts. 10c each.**
- AURORA (Fanning)**—Bright salmon rose, lighter in throat with self veining. Florets are large, ruffled, and of heavy texture. Tall, strong, straight spikes and a fine glad! **L 60c, M 40c, S 20c, Blts. 3-15c.**
- AZALEA (Pfitzer)**—Large rosy red with bluish feather in throat tipped yellow. Florets are large and well placed on strong spikes. **L 2-15c, M 2-10c, S 4-10c, Blts. 30-15c.**
- AZURINE (Buchanan)**—Light violet blue; 42" tall; 22" head, with 15 buds. Grand champion at World's Fair in 1940. **S 25c, Blts. 2-15c.**
- BANCROFT WINSOR (Winsor-Moseley)**—See Flying Cloud Farms' Introductions.
- BARCAROLE (Palmer)**—Large, clear, grenadine orange self. The heavily ruffled florets are of good substance and open 6-7 at a time. **L 3-25c, M 3-15c, S 3-10c, Blts. 25-10c.**
- BEACON (Palmer)**—Bright rose scarlet with a very large clear cream blotch—a striking color scheme! **L 2-15c, M 3-15c, S 6-15c, Blts. 30-15c.**
- BINGO (Canine)**—Large flesh colored florets, flecked deep pink, with a rose and cream throat. Attracts much attention in our field. **L 10c, M 2-15c S 2-10c, Blts. 25-15c.**
- BLACK MAGIC (Errey)**—A tall, strong, black red, opening up to eight very large flowers in excellent formation. A splendid addition to this color class. **L \$1.00, M 60c.**

- BLACK OPAL (Errey)**—An exceptional rich dark red self. You will find the faults of dark reds overcome in this glad with its long flower head of ten well placed florets. A fine glad. **L 2-15c, M 2-10c, S 4-10c, Blts. 30-15c.**
- BLUE BEAUTY (Pfitzer)**—This glad is well named for it surely is a blue beauty. It is probably the best blue on the market. The strong blue shade becomes a bit lighter at the edges of the petals. It is a tall, strong grower and produces long spikes that will open eight florets at once. **L 2-15c, M 2-10c, S 4-10c, Blts. 30-15c.**
- BLUE WONDER (Both)**—A medium light blue which is made attractive by lines of deeper self at edges of petals and in the throat. Tall spikes with large five inch flowers perfectly placed. **L 10c, M 2-15c, S 2-10c, Blts 25-15c.**
- BLUTENTRAUM (Barth)**—A very early glad of a soft shade of pink with a lighter throat and carmine pencillings. About six blooms open at once and stands up well in all weather. **L 25c, M 15c, S 2-15c, Blts. 10-15c.**
- BRONZEWING (Errey)**—This is the brightest and most attractive of all autumn tints, being a brilliant mixture of orange, salmon and slate, with a powdered crimson and yellow throat. Opens up to ten on a strong stem and is suitable for both exhibition and decorative purposes. **L 50c, M 30c, S 20c, Blts. 10-25c.**
- BRUNETTE (Errey)**—Gorgeous glowing dark red with three faint white darts on lower petals. The slightly ruffled florets are perfectly placed on good stems and is valuable for decorative purposes. **M 2-15c, S 2-10c, Blts. 25-15c.**
- BRUNO (Errey)**—Peach brown with narrow smoky edge to petals. Throat is brown with two or three garnet lines. 8-10 florets open on tall spikes. Florets glisten in sun and make a most attractive new novelty. **L 25c, M 15c, S 2-15c, Blts. 10-15c.**
- BUFFETTE (Winsor)**—See Flying Cloud Farms' Introductions.
- BUNGANA (Errey)**—Large ruffled white florets faintly overlaid with a touch of pink and the cream throat is lightly shaded and powdered magenta. Up to ten flowers open at a time in perfect formation on tall spikes and a most attractive glad. **L 75c, M 50c, S 25c, Blts. 2-15c.**
- BURMA (Palmer)**—Deep rose, lighter in throat. Heavily ruffled, well placed florets on tall spikes; fine for exhibition. **L \$2.50, M \$1.50, S \$1.00, Blts. 20c each.**
- CABARITA (Errey)**—Nice medium blue going to a very dark purple throat which is based garnet and tipped with cream darts. **L \$1.00, M 60c, S 30c, Blts. 3-25c.**
- CALOOLA (Errey)**—Rose salmon, overlaid and flecked slate. The center of the flower is carmine, powdered cream. The florets are large, slightly ruffled, and well placed. A fine glad. **L \$2.00, M \$1.50, S \$1.00, Blts. 20c each.**
- CAMELLIA (Palmer)**—Bluish white, tinted pink, with small scarlet marking in throat. Tall and husky. **L 3-25c, M 3-15c, S 3-10c, Blts. 25-10c.**
- CANDY HEART (Salbach)**—Nicely ruffled florets of soft flesh pink. Throat is more creamy and overlaid with two light carmine plumes. **L 2-15c, M 2-10, S 4-10c, Blts. 30-15c.**
- CAPE COD (Winsor-Moseley)**—See Flying Cloud Farms' Introductions.
- CAPEHEART (Winsor)**—See Flying Cloud Farms' Introductions.
- CAROLINE (Mair)**—Salmon rose ground shading to almost white in throat where there are several dark rose lines. **L 4-25c, M 4-15c, S 4-10c, Blts. 30-15c.**

Minneapolis, Minnesota—"I want you to know how pleased we were with the shipment of glad bulbs received early this month. I never saw bulbs in finer condition and it is a pleasure to plant them."

- CATTLEYA**—Light lavender fading to almost white at the throat with a reddish lavender feather. The blooms are slightly ruffled and it is a very popular color. **L 10c, M 2-15c, S 2-10c, Blts. 25-15c.**
- CENTENNIAL (Ball)**—A lovely deep pink, tinted gray at the edges, with a raspberry plume in the throat. The color is very striking and lends accent to the flowers in the garden. **L 15c, M 10c, S 2-10c, Blts. 25-10c.**
- CENTURY LAVENDER (Burns)**—Large round wide open lavender florets, deeper in throat, with cream dart. Blooms are well arranged on tall spikes. **L 15c, M 10c, S 2-10c, Blts. 25-10c.**
- COLONEL TYNG (Woodward)**—Clear, sparkling, rich coral pink with snow white throat and midrib. Tall and straight as a gun barrel with 5" wide open florets perfectly placed on 18-22 bud spikes; 6-8 open at once with many buds showing color. **L \$1.00, M 75c, S 50c, Blts. 10-\$1.50.**
- COLONIAL MAID (C. G. Young)**—Lavender (a bit lighter than Minuet) with deeper flecks and lines in throat. A nice lavender. **L 3-25c, M 3-15c, S 3-10c, Blts. 25-10c.**
- CONVOY (Palmer)**—Clear rose purple, slightly deeper in throat. Florets are large, of good texture, and well placed on tall spikes. A fine addition to this color class. **L 60c, M 40c, S 25c, Blts. 6-25c.**
- COONEY LASS (Kreuger)**—Slightly ruffled, salmon pink. Tall and nice. **L 15c, M 10c, S 2-10c, Blts. 10-10c.**
- CORAL GLOW (Ellis)**—Lovely bright coral with cream midrib. Blooms are large, of heavy substance, and well placed **L 2-20c, M 2-15c, S 4-15c, Blts. 30-15c.**
- CORONA (Palmer)**—Creamy white ground to cream throat with rosy lavender edge around petals. Florets are of the round type and very pretty. **L 25c, M 15c, S 2-20c, Blts. 10-20c.**
- DAUNTLESS (Errey)**—Attractive pale pink shading to petunia in the throat. 6 large blooms open in field with 9 of the 20-22 buds showing color. A most pleasing new one from Errey. **L \$2.00, M \$1.50, S \$1.00, Blts. 20c each.**
- DIANE (Kreuger)**—Fine orange salmon blooms on tall straight spikes. **L 15c, M 10c, S 2-10c, Blts. 10-10c.**
- DR. DENTZ (Heemskerck)**—Shrimp pink ground color with darker flecks. Dusty specks of deeper self in throat add to its attractiveness. **L 3-15c, M 6-15c, S 10-15c, Blts. 50-15c.**
- DR. VERHAGE (Buggenum)**—Scarlet with red velvet spot offset cream in the throat. The ruffled blooms are large and of good texture. **L 15c, M 10c, S 2-10c, Blts. 25-10c.**
- EARLY ROSE (Jack)**—Attractive bright rose florets that are slightly darker in the throat. A dandy early cut flower. **L 2-15c, M 3-15c, S 6-15c, Blts. 30-15c.**
- ECLANTINE (Scheer)**—Clear, sparkling medium pink with exceptionally heavy substance. 6-7" heavily ruffled florets are perfectly placed on typical exhibition spikes. **L \$15.00, M \$12.00, S \$10.00, Blts. \$1.50 each or 4-\$5.00. No Discount.**

"Received the glad bulbs and they were fine, living up to the Flying Cloud Farms' reputation. Thanks for the liberal count and extras. I have a good collection of your glads and when it comes to texture, length of flower spike and number of blooms open at one time; there is not a poor one among them. And when those people who see them ask me where I get such flowers, I am only too glad to recommend Flying Cloud Farms."—Pennsylvania.



Killara

Elanora

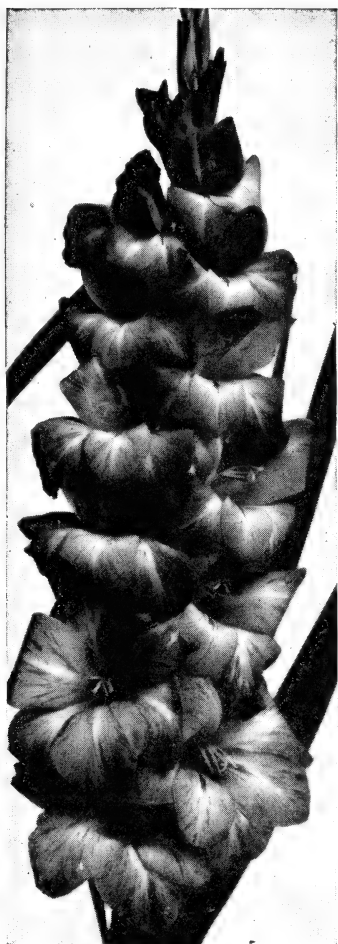
ELANORA (Errey)—Rich rose-red-violet self, with all the buds showing color. Florets are large and perfectly placed on typical Errey exhibition spikes. A fine glad! L 50c, M 30c, S 20c, Blts. 10-25c.

- ELIZABETH THE QUEEN (D. W. White)**—An exhibition and commercial lavender—really a clean mauve—a bit darker than Minuet, with a reddish stippled feather in the throat and some flecking of the same. Nicely ruffled petals (a bit needlepoint) with many large blooms open on long flower heads. **L 60c, M 40c, S 30c, Blts. 10-50c.**
- ERREY'S SCARLET (Errey)**—Truly a magnificent clear scarlet with two deeper self darts on lower petals. 14 well opened ruffled florets of fine substance on tall spikes. A dandy scarlet! **L 75c, M 50c, S 25c, Blts. 2-15c.**
- ETHEL CAVE-COLE (Cave)**—Large, flat, wide open florets of light pink with slightly deeper and more rosy self throat, the same color of which there are occasional fleckings at the edges of the petals. Tall grower. **L 15c, M 2-15c, S 4-15c, Blts. 20-15c.**
- EVENING LIGHT (Winsor-Moseley)**—See Flying Cloud Farms' Introductions.
- FLAGSHIP (Butt)**—Medium shade of light red with an attractive white throat pencilled blue. The florets are large and round and perfectly placed on tall straight spikes. A fine exhibition glad. **L 25c, M 15c, S 2-15c, Blts. 15-15c.**
- FLORA FARMER (Quackenbush)**—Pure pink, shading to darker self at edges of petals, and creamy white throat. The florets are large and ruffled; five or six open with several more showing color on a long spike of 18-20 buds. A popular variety that attracts much attention in our field. **L 10c, M 2-15c, S 2-10c, Blts. 25-15c.**
- FRANK WARNER (Buchanan)**—Medium yellow with a warm red spot in the throat. Tall and early. **L 75c, M 50c, S 25c, Blts. 2-15c.**
- FRANZ LITZ (Barth)**—A dazzling scarlet with darker throat and cream dart. Makes nice tall spikes with well placed blooms. **L 15c, M 10c, S 2-10c, Blts. 25-10c.**
- FRASCATI (Pfitzer)**—Ground color is a fine rose-red shading to lighter rose with carmine feathers on the lower petals. Midseason. **L 15c, M 10c, S 2-10c, Blts. 25-10c.**
- GABRIEL (Errey)**—The outer portion of the flower is an unusual mixture of gray and salmon and the crimson center is powdered with yellow. Florets are large and ruffled and it is hard to beat in the smoky division. **L 2-15c, M 2-10c, S 4-10c, Blts. 30-15c.**
- GARDEN OF THE NATIONS (Winsor)**—See Flying Cloud Farms' Introductions.
- GENGHIS KHAN (Scheer)**—Huge salmon pink blending to soft cream throat. Large florets are of very heavy substance with petals fluted and ruffled and slightly lacinated. Placement, facing, and spacing faultless. Six open with five in color on straight spikes—18-19 buds. Early midseason. **L \$5.00, M \$3.50, S \$2.00, Blts. 50c each. No Discount.**
- GERTRUDE SWENSON (Swenson)**—Beautiful shade of mauve with a white blotch on the lower petals and a light mauve feather. The spike is the ideal of the exhibitor; placement perfect, with medium sized florets holding their size very evenly up the spike. Opens many at a time and has won many championships in Australia. **L 3-15c, M 6-15c, S 10-15c, Blts. 50-15c.**
- GINGER ROGERS (Davis)**—A most attractive and bright light orange with reddish lines in throat. Tall, strong, and nice. **L 15c, M 10c, S 2-10c, Blts. 25-10c.**
- GLENBURN (Errey)**—Apricot with a brilliant orange and crimson blotch on the lower petals. A bright and attractive glad with many open on tall spikes. **L \$1.50, M. \$1.00, S 60c, Blts. 15c each.**
- GLENORA (Errey)**—Dark smoky old rose with garnet velvet lower petals that are bordered with a powdering of gold. A very striking novelty. **L 75c, M 50c, S 25c, Blts. 2-15c.**

- GLOAMING (Zimmer)**—Slightly ruffled bright purple with attractive white throat. The spikes are tall, graceful, and is especially pretty in mixed bouquets. A medium decorative that is very popular. **L 3-15c, M 6-15c, S 10-15c, Blts. 50-15c.**
- GOLD DUST (Pfitzer)**—Deep rich yellow self. A fine commercial as it is very early. **L 3-15c, M 6-15c, S 10-15c, Blts. 50-15c.**
- GOLDEN LANCER (Heberling)**—Rich deep yellow with a reddish brown feather in the throat. The ruffled florets are of good substance and well placed on tall spikes. **L 3-15c, M 6-15c, S 10-15c, Blts. 50-15c.**
- GREEN LIGHT (Pfitzer)**—A light cream with a green gloss from which the name is derived. The large florets are slightly ruffled and of fine substance. This is an exhibition glad of high quality. **L 4-25c, M 4-15, S 4-10c, Blts. 35-10c.**
- GRETA GARBO (Pfitzer)**—This variety has lovely soft colored rose florets with a cream lower lip. The large, well placed blooms open quite flat on the fine spikes where six or seven open at one time. A fine exhibition glad. **L 15c, M 10c, S 2-10c, Blts. 25-10c.**
- GUERDON (Balentine)**—American Beauty color—a shade deeper than the popular Dream O'Beauty, and with a silky sheen. The slightly ruffled florets are well placed on tall straight spikes and it is a vigorous grower. **L 2-25c, M 2-15c, S 2-10c, Blts. 15-15c.**
- GUNPOWDER (Sewell)**—A color sport of Picardy; identical to its parent variety in all respects except color which is a clear buff with slight throat markings. A winner at many shows. **L 60c, M 40c, S 20c, Blts. 3-15c.**
- HAROLD LOGAN (Rides)**—Nice light blue with feather of self on white throat with line of darker blue through feather. **L 3-25c, M 3-15c, S 4-10c, Blts. 25-10c.**
- HARVEST MOON (Jack)**—A nice clear yellow self. Many open on tall spikes. **L 2-15c, M 2-10c, S 4-10c, Blts. 30-15c.**
- HIGHLAND CHIEF (Mair)**—Rosy lilac with deeper markings in throat. Tall spikes and large flowers. **L 15c, M 10c.**
- HONEYMOON (Winsor)**—See Flying Cloud Farms' Introductions.
- HOPEDALE (Winsor-Moseley)**—See Flying Cloud Farms' Introductions.
- HURRICANE (Evans)**—Bright salmon-toned orange with a cream throat. Many open on tall straight spikes. **L 50c, M 30c, S 20c, Blts. 5-15c.**
- IMPERIAL PURPLE (Arenius)**—Late midseason purple; slightly deeper and more reddish in throat. Large blooms are well placed on tall straight spikes. **L 75c, M 50c, S 25c, Blts. 2-15c.**
- INDIGO (Errey)**—Rich royal purple with faint garnet feather. Velvety texture and a most attractive glad. **L 75c, M 50c, S 35c, Blts. 2-15c.**
- INTERMEZZO (Quackenbush)**—Clear cream self except for a faint dusting of violet rose deep in throat. 5-8 open on tall straight spikes of 18-20 buds. Texture and placement good and a winner at many shows. **L 30c, M 20c, S 10c, Blts. 10-25c.**
- ISOLA BELLA (Pfitzer)**—Light lavender. The petals are slightly ruffled and even in the bud stage show the beautiful color. A most attractive midseason variety. **L 2-15c, M 2-10c, S 4-10c, Blts. 30-15c.**
- IVORY KEYS (Ellis)**—Large white with light yellow lining to throat. Seven open in field on tall straight spikes. **L 10c, M 2-15c, S 2-10c, Blts. 25-15c.**
- JASMINE (Palmer)**—Large, slightly ruffled, florets of clear pale lemon yellow without markings. Early and seems to stand the heat well. **L 10c, M 2-15c, S 2-10c, Blts. 25-15c.**

- JOSEPH HAYDN (Pfitzer)**—This novelty has reason to be popular for it is a pleasing and unusual color. The light blue flower has a very heavy deep blue blotch that almost covers the lower petals. **L 2-15c, M 2-10c, S 4-10c Blts. 30-15c.**
- KARINGAL (Errey)**—Lovely soft shade of pure pink with a cream center that is faintly powdered and lined garnet. The florets are very large and perfectly formed. A fine glad. **Large only—\$2.00.**
- KILLARA (Errey)**—Deep salmon pink, more creamy in throat, with deeper self pencillings. **L 30c, M 20c, S 10c, Blts. 10-30c.**
- KING LEAR (Palmer)**—Clear deep reddish purple with silver line at edges of petals. The blooms are very large and heavily ruffled on tall spikes. Early. **L 2-15c, M 3-15c, S 6-15c, Blts. 30-15c.**
- KING WILLIAM (Schenetsky)**—A soft salmon and apricot blending beautifully into a clear unmarked cream throat. A tall, healthy, vigorous grower and a great commercial as well as a super exhibition variety. **L 15c, M 10c, S 2-10c, Blts. 25-10c.**
- KOALA (Errey)**—Creamy pink florets that seem to glisten in the sunlight. The throat is still more creamy with reddish pepperings—most attractive. Fine for both decorative and exhibition purposes. **L 35c, M 25c, S 15c, Blts. 10-25c.**
- LADDIE (H. E. Wilson)**—Very large light salmon pink with faint rose blotch in the throat. Fine tall grower. **L 2-15c, M 3-15c, S 6-15c, Blts. 30-15c.**
- LAUSANNE (Van Duersen)**—Large florets of medium yellow shading to darker self in throat. Tall graceful spikes with seven to eight opening at once. **L 2-15c, M 2-10c, S 4-10c, Blts. 30-15c.**
- LAVENDER QUEEN (Arenius)**—Deep violet lavender. Spikes are tall and straight with 6-8 open. Florets are large and perfectly placed. Midseason. Fine propagator. **L 2-15c, M 2-10c, S 4-10c, Blts. 30-15c.**
- LEGEND (C. Fischer)**—Pure light pink blending to a creamy white throat. Large florets of good texture on tall straight spikes. **L 25c, M 15c, S 2-20c, Blts. 15-15c.**
- LEONARDO DA VINCI (Pfitzer)**—Dark royal purple self. Florets are slightly ruffled and have a silky sheen. A fine new addition to this color class. **L \$2.00 M \$1.50, S \$1.00, Blts. 20c each.**
- LIPSTICK (Ballentine)**—Nicely ruffled pure shell pink with bright rose plumes in throat. Florets are large and of very good texture; well placed on tall spikes. **L 30c, M 20c, S 10c, Blts. 10-20c.**
- LUSTRE (Winsor-Moseley)**—See Flying Cloud Farms' Introductions.
- MADONNA (Bork)**—A very large snowy white. Opens 6-7 huge wide open waxy florets in perfect alignment on tall, well tapered, spikes of 18-20 buds. The blooms are usually 6" in size but 7" florets are not unusual for this fine exhibition variety. Fine grower and propagator. A definite improvement in the whites. **L 75c, M 60c.**
- MAID OF ORLEANS (Pfitzer)**—Heavy textured white with cream throat. A popular commercial. **L 3-15c, M 6-15c, S 10-15c, Blts. 50-15c.**
- MARGARET BEATON (Twomey)**—Nice large florets of a good clear white with an orange red blotch in the throat. A nice strong grower. **L 10c, M 2-15c, S 2-10c, Blts. 25-15c.**
- MARGARET JOAN (Errey)**—Beautiful shade of deep shell pink deepening to a more orange pink in the throat. The florets are large and well formed on tall straight spikes with 10-12 open at a time. **L 50c, M 30c, S 20c, Blts. 10-25c.**

Yorkshire, England—"The gladiolus corms arrived in perfect condition. I just wish to thank you most sincerely for the fine way in which you have treated me for I certainly have a treat in store, for the clean, healthy, young stock, your most generous overcount, for the excellent varieties of extras, the splendid method of packing and your most prompt delivery."

**Bronzewing****Alsace****Margaret Joan**

"Received bulbs and appreciate discount, extras, and overcount. Would also like to tell you that I have never seen a cleaner and better looking lot of bulbs in my ten years of growing them."—C. R. B., Bradford, Mass.

"My order of bulbs was received from you in excellent condition. I was much pleased with your generous overcount on the entire order and delighted with the extras. If other customers are as fortunate as I have been I can see why they like to do business with you."—J. A. B., Milton, Mass.

"It certainly was a pleasure to receive such a nice clean lot of bulbs. Was greatly pleased with your generous overcount and fully appreciate your courteous treatment in filling such a variegated order. I most surely can recommend your organization to any and all prospective gladiolus patrons."—G. H. L., Woburn, Maine.

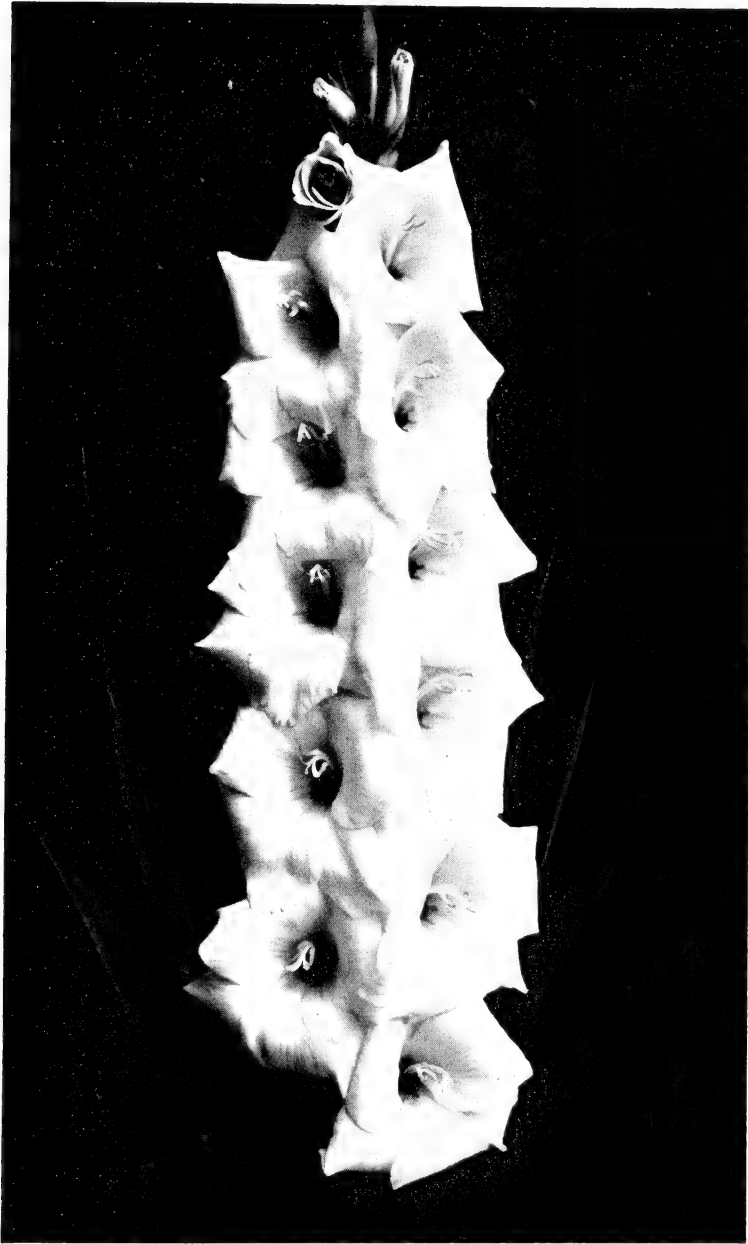
- MARGUERITE (Pommert)**—Bright salmon with broad yellow throat on which there is a dusty feather of lighter self. Large, wide open, blooms lay flat against the strong spikes. One of the the best and strongest glads in our field. **L 20c, M 15c, S 2-15c, Blts. 20-25c.**
- MARIA STUART (Pfitzer)**—Rose brown, which glistens in sun, becoming more slatey at edges and more pink at base of petals with a few garnet lines that accent the throat. A very pretty novelty. **L 50c, M 30c, S 20c, Blts. 10-25c.**
- MARION PEARL (Benedict)**—Salmon with clear lighter self throat and no markings. 6-9 of the 6" florets open on 18-21 bud spikes that are tall and straight. Received its Award of Merit from the N. E. G. S. and is a fine glad. **Large or Medium \$1.00 each. No Discount.**
- MARSEILLAISE (Scheer)**—Rich glowing velvety scarlet with narrow cream lines on lower petals. Florets up to 6¾", plain petalled, 6-7 open on tall straight spikes. **L 75c, M 50c, S 35c, Blts. 2-15c. No Discount.**
- MARY DAMARIS (Clark)**—Clear soft yellow—an addition to a weak color class. Florets are nicely placed on good strong spikes. **L 2-15c, M 2-10c, S 4-10c, Blts. 30-15c.**
- MASKERADE (Pfitzer)**—Amber-yellow with distinct scarlet-carmine blotch. The medium sized flowers are of a fine roundish form. A nice bright novelty. **L \$1.50, M \$1.00, S 60c, Blts. 15c each.**
- MASTER MYRON (Krueger)**—Enormous rich red self. The florets are of good substance and well placed on tall straight spikes. It stands up exceptionally well in the heat and attracts much attention in our field. **L 20c, M 15c, S 2-15c, Blts. 20-25c.**
- MATTERHORN (Pfitzer)**—A pure white except for a slight cream throat. The large, heavy textured florets are well placed on a 22-bud spike with 8-10 open at a time. A fine exhibition white. **L 3-25c, M 3-15c, S 3-10c, Blts. 25-10c.**
- MAUVETTE (Burns)**—Attractive mauve lavender with two velvety rose-purple lines in the throat. A good addition to this popular color class. **L 75c, M 50c, S 25c, Blts. 2-15c.**
- MEDALIST (Mair)**—Bright salmon rose with a definitely darker, more chocolate, edge and a large stunning white throat which makes a most striking and pleasing color combination. The florets are large, ruffled, and of good texture. **L 2-15c, M 2-10c, S 4-10c, Blts. 30-15c.**
- MERRIMACK (Woodward)**—Rich rose salmon with white throat and midrib through center of each petal. Tall exhibition spikes of twenty-four buds with 8 open. This variety did very well with us this summer. **L 50c, M 35c, S 25c, Blts. 25-\$1.00.**
- MERRIWA**—Light rose pink with deeper self flecks and throat. **L 25c, M 15c, S 2-15c, Blts. 10-15c.**
- MIDNIGHT SUN (Moore)**—Pale peach with a smoky overcast—a beautiful combination—with brighter throat of salmon and cream. Produces fine exhibition spikes and is a dandy novelty. **L 50c, M 30c, S 20c, Blts. 10-25c.**
- MIKADO (Errey)**—A lovely pink with attractive rosy slate fleckings and red and cream peppered plumes in the throat. Tall spikes with ten or more open at once. A truly exhibition glad. **Large only—25c each.**
- MILLIE PARKS (Burns)**—Light salmon to flesh pink, heavily pencilled rose, with a yellow throat. Florets are of good size and well placed. **L 25c, M 15c, S 2-15c, Blts. 10-15c.**
- MINUET (Coleman)**—Old but still the measuring stick for all lavenders. **L 2-15c, M 3-15c.**
- MISS HARRIET (Carpenter)**—One of our earliest blooming varieties. It is a bright chrome orange with a yellow throat. A fine commercial as it is early flowering. **L 6-25c, M 6-15c, S 6-10c, Blts. 50-10c.**



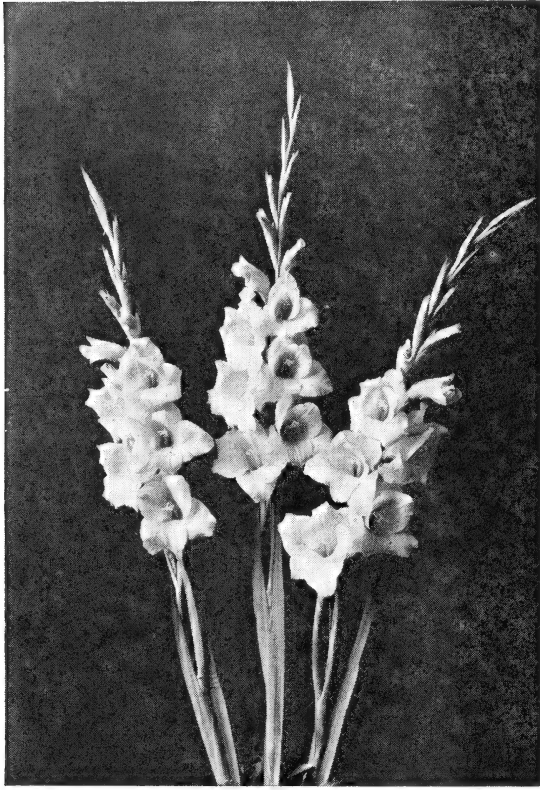
Marion Pearl

- MISS LOMBARD (C. A. Brown)**—Miss Lombard is distinctly a novelty. Cream with somewhat tulip shaped petals of needlepoint type, the point being edged and dotted with rose. An early midseason medium decorative. **L 2-15c, M 2-10c, S 4-10c, Blts. 30-15c.**
- MISS NEW ZEALAND (Julyan)**—The shrimp pink ground color fades to begonia rose in the throat where there is a most attractive tyrian rose blotch. The tall spikes produce florets that are full 7½" across and there are nine or ten open at once. Everyone should be growing this giant glad. **Large only—10c each.**
- MOHAWK (Stevens)**—A deep maroon opening up to ten 5" well placed blooms on tall straight spikes. A fine addition to this color class. Midseason. **L 40c, M 20c, S 2-20c, Blts. 10-20c.**
- MOTHER KADEL (Kadel)**—A clear medium yellow, slightly deeper in the throat. It has won many awards and is a great addition to the decorative class. **L 25c, M 15c, S 2-15c, Blts. 10-15c.**
- MRS. E. J. TOON (Toon)**—A tall clear white. The large florets are perfectly placed with 8 or more open at a time. A fine exhibition white. **L 2-15c, M 2-10c, S 4-10c, Blts. 30-15c.**
- MRS. G. G. ERREY (Errey)**—The creamy white ground color of the large, heavy textured florets, becomes darker in the throat, making a really beautiful flower. The long Errey spike of perfect formation opens ten or more flowers to make a "show" for itself. **L 25c, M 15c, S 2-15c, Blts. 10-15c.**
- MRS. LULU HUNT**—Very early light salmon with light lipstick throat. Fine tall spikes and very popular with our florists. **L 2-25c, M 2-15c, S 2-10c, Blts. 25-15c.**
- MRS. MARK'S MEMORY (Pfitzer)**—Enormous florets of reddish violet with a small dark carmine blotch on the lower petal which adds to its beauty. A fine exhibition variety and one of Pfitzer's best introductions. **L \$1.00, M 60c, S 30c, Blts. 3-25c.**
- MRS. RAY MATTINGLY**—Violet rose, or light rosy lilac, with a yellowish throat. Pretty novelty. **L 3-25c, M 3-15c, S 3-10c, Blts. 25-10c.**
- MRS. ROBERT NASH (Moir)**—The pink ground color becomes more of a strawberry pink at the edges and blends to a creamy yellow in the throat where we find a few red pencillings. An attractive and popular glad. **L 15c, M 10c, S 2-10c, Blts. 25-10c.**
- MURALLA (Errey)**—Silvery pink, going brighter at the edges of the petals, and shading lighter toward the throat where there is a heavy garnet blotch tipped with a slight speck of yellow. Exhibition spikes; striking and nice. **L 50c, M 30c, S 20c, Blts. 10-25c.**
- MYRNA (Pruitt)**—A fine creamy white deepening to a darker cream in the throat. The blooms are of nice texture, heavily ruffled, and constitute a spike more refined and more pleasing than Shirley Temple we think. **L 15c, M 10c, S 2-10c, Blts. 25-10c.**
- NANA (Pfitzer)**—A very fine pure white. The texture is excellent, the blooms are large and placed perfectly on tall straight spikes. **L 50c, M 30c, S 20c, Blts. 10-25c.**
- NARCOMA (Errey)**—Attractive bright magenta purple self. 9 well placed florets open on a 21 bud spike. A fine midseason exhibition variety. **L 50c, M 30c, S 20c, Blts. 10-25c.**
- NORWOTTUCK (LaSalle)**—A beautiful smoky lavender with a more salmon throat. Produces fine tall heavy spikes of true exhibition caliber. One of the prettiest and most popular smokies in our field. **L 25c, M 15c, S 2-15c, Blts. 10-15c.**
- ODELLIA (Winsor-Moseley)**—See Flying Cloud Farms' Introductions.
- OKARINA (Pfitzer)**—This one has been very fine with us. It has a smoky overcast but the lavender ground color is more attractive than that commonly found in smokies. It makes fine big spikes with many open. **L 10c, M 2-15c, S 2-10c, Blts. 25-15c.**
- OLD GOLD (Both)**—Rich buff orange. Florets are bright and attractive on tall well formed spikes. A nice glad. **L 2-25c, M 2-15c, S 2-10c, Blts. 15-15c.**

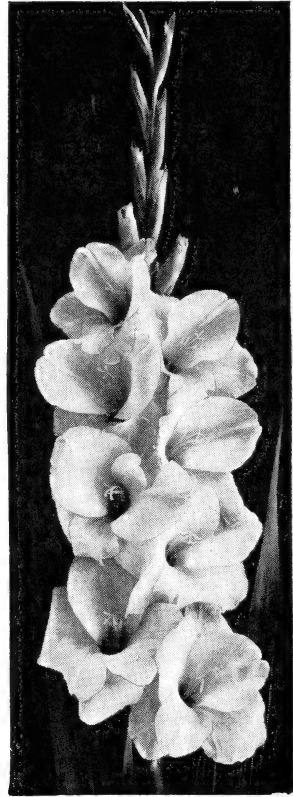
"The package of bulbs came to us in fine shape. Thank you for the extras,—you were most generous for so small an order."—C. A. J., Wisconsin.



Mrs. G. G. Errey



Mother Kadel



Pink Radiance

ORANA (Errey)—Light pink with two dusty rose red feathers offset yellow. Pretty. L \$1.50, M \$1.00, S 75c, Blts. 15c each.

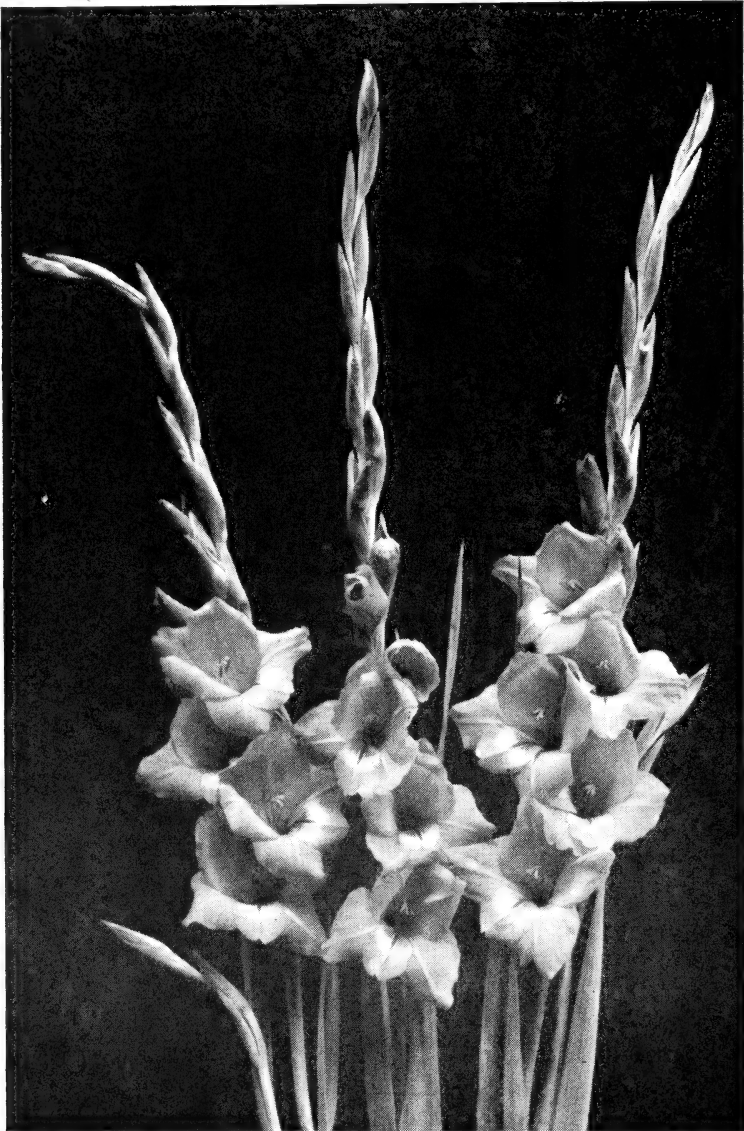
ORANGE DREAM (Roosen)—Enormous round florets of brilliant orange with velvety red feather in throat and lighter midribs. A very pretty glad! L 3-15c, M 6-15c, S 10-15c, Blts. 50-15c.

ORCHID BEAUTY (Winsor-Moseley)—See Flying Cloud Farms' Introductions.

ORNAT—Rich rose red with darker self lip and shading lighter at back of throat. Pretty and a tall strong grower. L 2-25c, M 2-15c S 2-10c, Blts. 15-15c.

PAUL GRAMPEL (Pfitzer)—Fine large bright red self; seems to stand up well in the heat. Blooms early and looks to have a good commercial future. L 2-15c, M 2-10c, S 4-10c, Blts. 30-15c.

- PEGGY LOU (Wilson)**—Although this variety is said to have the same parentage as Picardy, we have found that the lovely soft blue-toned pink florets have a more leathery substance than Picardy. This is a glad that every glad fancier should have in his collection. **L 2-15c, M 2-10c, S 4-10c, Blts. 30-15c.**
- PERSIAN ORANGE (Stewart)**—Bright scarlet orange with heavy white lines on lower petals and white pepperings offset by red feather in throat. Texture, placement, and height are good. **L 3-25c, M 3-15c, S 3-10c, Blts. 25-10c.**
- PHEDRA (Benedict)**—Ruffled, light rose pink with white throat. 18-20 buds, 6 open, 56 inch spike, 5½" florets. Color clear and pure, does not streak or fleck. Award of Merit Mass. Hort. Soc. and N. E. G. S. **Large only—50c each. No Discount.**
- PHOEBE (Scheer)**—A tall medium pink—very attractive. Florets are large, round, and well placed with 10-12 open and 6-7 showing color on a 21-23 bud spike. **L \$2.00, M \$1.50, S \$1.00, Blts. 20c each. No Discount.**
- PICARDY (Palmer)**—Large florets of a pleasing apricot color on tall strong spikes but too well known to need further description. **L 3-15c, M 6-15c, S 10-15c, Blts. 20-25c.**
- PINK JEWEL (Errey)**—A beautiful shade of soft shell pink. The large florets are of good texture and well formed on tall strong spikes. A fine addition to the decorative class. **L \$1.50, M \$1.00, S 75c, Blts. 15c each.**
- PINK LASS (Jackson)**—Clear light pure pink with carmine midrib and lines on lower petals—a lovely color combination. Large decorative type with 20 buds, 6 florets open, and 5 showing color. The 5" florets are plain petaled, triangular shape, and wide open. Blooms early and is a good increaser. **Large or Medium \$1.00 each, S 50c. No Discount.**
- PINK RADIANCE (Quackenbush)**—Light silvery pure pink of exhibition type. Fine tall spikes with 6-8 large florets open at once. A fine cut flower as well as an exhibition variety. **L 25c, M 15c, S 2-15c, Blts. 10-15c.**
- PINK SELECTION (Both)**—A delicate light pink, darker at edges, with a cream throat overlaid red. Fine for exhibition. **L 15c, M 10c, S 2-10c, Blts. 25-10c.**
- POLAR ICE (Pfitzer)**—This pure, dead white, grows very straight and the flowers are of good shape and size. A better variety than Albatross. Used very extensively in Europe and the United States for forcing under glass and considered the best white for this purpose. A fine early commercial white. **L 6-25c, M 6-15c, S 6-10c, Blts. 50-10c.**
- PRESTIGE (Winsor)**—See Flying Cloud Farms' Introductions.
- PREUSSEN'S GLORIA (Pfitzer)**—Very rich velvety dark black red with a fine white line running down the middle of the lower petals. Heavy textured, well-formed florets on long straight spikes. **L \$2.50, M \$2.00, S \$1.50, Blts. 25c each.**
- PURPLE BEAUTY (Roosen)**—An addition to the purple class. The flowers are a rich dark red violet of good substance with 6-8 open on 19 bud spikes. Tall and very nice. **L 10c, M 2-15c, S 2-10c, Blts. 25-15c.**
- RECADO (Palmer)**—Rosy ash with rose salmon veinings and darker blotch in throat. A pleasing smoky novelty. **L 2-15c, M 2-10c, S 4-10c, Blts. 30-15c.**
- RECORDER (Whiteley)**—This variety is of the usual Miss Whiteley type. The color is purplish violet, brighter than Gertrude Swenson, with a deeper throat. **L 3-25c, M 3-15c, S 3-10c, Blts. 25-10c.**



Red Bank

RED BANK (Winsor)—See Flying Cloud Farms' Introductions.

RED BEAUTY (Aikemade)—A scarlet red self. Flowers are of medium size, blooms very early, and makes a good commercial. **L 6-25c, M 6-15c, S 6-10c, Blts. 50-10c.**

RED ENSIGN (Errey)—Bright scarlet with conspicuous white throat edged scarlet. Florets are well formed and spaced on tall spikes. **M 15c, S 2-15c, Blts. 10-15c.**

- RED GIANT (Phillips)**—Bright cerise, rather than red, deepening in the throat with a white line through center of lower petals. Many visitors to our field remark that it is the color of an American Beauty rose. 8 perfectly placed blooms open at once on very tall strong spikes. We like it better than any of the other so-called giants. **L 2-15c, M 2-10c, S 4-10c, Blts. 30-15c.**
- RED LIGHTNING (Pruitt)**—Bright pleasing red with cream blotch in the throat. **L 15c, M 10c, S 2-10c, Blts. 25-10c.**
- RICHARD WAGNER (Barth)**—Glistening clear orange with dusty red orange feather on cream throat. Nice spikes and a showy glad. **Large only—2-15c.**
- ROBERT SHIPPEE (Winsor-Moseley)**—See Flying Cloud Farms' Introductions.
- ROSA VAN LIMA**—A lovely pure pink with a white midrib and throat and just a touch of a dusty lavender feather deep in throat. It easily opens eight fine blooms on a perfectly formed spike. It is early and everyone should grow some of this variety. **L 2-15c, M 2-10c, S 4-10c, Blts. 50-10c.**
- ROSEA (Errey)**—Clear light rose pink with deeper self lines in throat. Florets are very large, of good texture, with 8 open at once. A fine new one from this originator. **L \$1.50, M \$1.00, S 60c, Blts. 15c each.**
- ROSE DAWN (Errey)**—A glowing old rose set off by a deeper rose shade in the throat; along the color lines of St. Albans. Tall strong grower. **L 10c, M 2-15c, S 2-10c, Blts. 25-15c.**
- ROSY MORN (Riley)**—A lovely rosy pink with rich white throat. Tall spikes and large blooms. **L 15c, M 10c, S 2-15c.**
- ROYAL**—Light reddish purple darkening toward the throat which is lightened by a white dart. Rich color. Med. Dec. **L 10c, M 2-15c, S 2-10c, Blts. 25-15c.**
- ROYAL DUTCH (Duijn)**—Broad, well rounded, flowers of rosy pink with a blood red blotch. A very pretty and attractive variety that is most conspicuous as a cut flower. Along the color lines of Bleeding Heart but of a more graceful formation. **L 2-15c, M 2-10c, S 4-10c, Blts. 30-15c.**
- ROYAL GOLD (Pfitzer)**—Another early yellow with round florets of heavy substance. The clear yellow ground color is deeper in the throat to give a rich golden bloom. Opening eight florets, it makes a fine exhibition as well as decorative variety. **L 2-15c, M 2-10c, S 4-10c, Blts. 30-15c.**
- ROYAL PINK (Ellis)**—Bright rose salmon pink with lipstick tongue and white midribs. Blooms are very large and well placed on tall spikes. **L 2-15c, M 2-10c, S 4-10c, Blts. 30-15c.**
- RUDESHEIM (Barth)**—This nice pure lilac has a darker edge and, being a good propagator and early, should be in demand. Six open flowers, that stand weather well, are nicely placed on the spikes. **L 2-15c, M 2-10c, S 4-10c, Blts. 30-15c.**
- RUFFLED BEAUTY (Prestgard)**—A very nice, heavily ruffled, light yellow. A large decorative and very pretty. **L 2-15c, M 4-15c, S 4-10c, Blts. 30-15c.**
- SALADIN (Mair)**—A very unusual color—slatey purple—but it makes a fine spike of true Mair fashion. A most interesting novelty. **L 10c, M 2-15c, S 2-10c, Blts. 25-15c.**
- SARASATE (Pfitzer)**—Large attractive slatey rose with more brownish feathers in throat. Florets are of good substance on strong spikes. Early mid-season. **L 2-25c, M 2-15c, S 2-10c, Blts. 15-15c.**
- SENSATION (Marshall)**—Beautiful medium bright rose. Large, heavily ruffled blooms open on tall strong spikes. Good texture and fine for exhibition as well as commercial purposes. **L 15c, M 2-20c, S 2-15c, Blts. 25-10c.**

- SNOW PRINCESS (Pfizer)**—This white may well be called an improved Maid of Orleans. Snow Princess is a little more pure in color and grows fully as well as Maid of Orleans. A fine glad. **L 2-15c, M 2-10c, S 4-10c, Blts. 30-15c.**
- SPITFIRE (Evans)**—Slightly ruffled florets of clear rosy salmon with white throat on which there are a few cherry lines. Ten $5\frac{1}{2}$ - $6\frac{3}{4}$ " blooms open on tall strong spikes. **L \$1.00, M 75c, S 50c, Blts. 10c.**
- STORM TRIUMPHANT (Swenson)**—Rich reddish mahogany with a bright line in each petal and a crimson blotch in throat. Good sized blooms, 8 open, and a fine novelty. **L 4-25c, M 4-15c, S 4-10c, Blts. 30-15c.**
- SUNBURST (Errey)**—Beautiful clear orange apricot with deep orange blotch, edged lighter self, in throat and self colored dart through center of blotch. Very pretty. **L \$2.00, M \$1.50, S \$1.00, Blts. 20c each.**
- SUNGLO (Errey)**—Light orange florets that glisten in the sunlight with slightly lighter throat and deeper self pencillings. Bright and attractive. **L \$2.00, M \$1.50, S \$1.00, Blts. 20c each.**
- SURFSIDE (Winsor)**—See Flying Cloud Farms' Introductions.
- SUSQUEHANNA (Herridge)**—Lovely apricot pink flesh with more creamy throat. Large florets on long straight spikes. Very nice. **L 60c, M 40c, S 25c, Blts. 7-25c.**
- SYLVIA TWING (Winsor-Moseley)**—See Flying Cloud Farms' Introductions.
- SYLVIA WINSOR (Symons)**—Delicate clear light cream, becoming darker in the throat, with a few magenta markings. The large, well formed, florets are nicely placed on typical exhibition spikes. **L 2-25c, M 2-15c, S 2-10c, Blts. 15-15c.**
- TAGORE (Pfizer)**—Rich cerise magenta with darker feather in throat. Makes nice spikes and is a popular color. **L 15c, M 10c, S 2-10c, Blts. 25-10c.**
- TAKINA (Burns)**—This variety has the largest florets of any variety we have seen. It will open about seven florets up to 8" in size. The color, a bit hard to describe, is Ridgway's "rosaline purple" (Almost a pure violet red.) Placement is good, it is a strong grower, and propagates easily. **L 2-15c, M 2-10c, S 4-10c, Blts. 30-15c.**
- TARA (Hogan)**—Large flowered deep salmon with very attractive light yellow throat. Tall, straight, 16 bud spikes with excellent placement. Good propagator and bulblets germinate easily. No Discount. **L 50c, M 30c, S 20c.**
- THISTLE DEW (Winsor)**—See Flying Cloud Farms' Introductions.
- TONGOLA (Errey)**—A fine exhibition cream becoming more creamy in the throat with a few dusty carmine lines. This variety will open eight or more perfectly placed blooms on long typical Errey spikes. **L 3-25c, M 3-15c, S 3-10c, Blts. 25-10c.**
- TOTEM (Stewart)**—Brilliant salmon scarlet with deeper throat. Florets are large, round, and well placed on tall spikes. **L 3-15c, M 6-15c, S 10-15c, Blts. 50-15c.**
- TRAUERMANTEL (Pfizer)**—A popular variety that is two shades of violet, the lower petals being of a darker velvety purple. A nice novelty and there are no others that we know of with this color combination. Early midseason. **L 20c, M 15c, S 2-15c, Blts. 20-25c.**
- TUNIA'S BLUE (Both)**—Very large individual blooms of a medium dark blue, darker at edges, and then darker again in the throat. A nice glad. **L 10c, M 2-15c, S 2-10c, Blts. 25-15c.**



Gladiolus Arrangement

- TUNIA'S TRIUMPH (Both)**—This one has been called a "Triumph" for exhibition and commercial purposes. The enormous, slightly ruffled, glistening red florets are well formed on massive spikes. **L 2-15c, M 2-10c, S 4-10c, Blts. 30-15c.**
- VALERIA (Pruitt)**—Clear red with a silky sheen. It shades a bit darker towards the center and has a faint white line in the lower petals. A lovely color. **L 3-15c, M 6-15c, S 10-15c, Blts. 50-15c.**
- VATER RHEIM (Barth)**—Bright carmine red spotted darker. Very large flowers well arranged on the spike. **L 2-15c, M 2-10c, S 4-10c, Blts. 30-15c.**
- VICTORY (Heemskerck)**—Rosy orange with a white throat on which there are slight garnet lines. The blooms are large and nicely placed on fine spikes. **L 2-15c, M 2-10c, S 4-10c, Blts. 30-15c.**
- VREDENBURG (Pfitzer)**—We feel that this variety may replace the popular Polar Ice. The large florets open flatter than those of Polar Ice and have the texture of Maid of Orleans. **L 2-15c, M 2-10c, S 4-10c, Blts. 30-15c.**
- VULCAN (Stevens)**—A giant purple on the red-violet shade. Grows five feet tall with well placed 6" blooms which make a great show of color. A fine addition to this increasingly popular color class. **L 60c, M 40c, S 25c, Blts. 12-25c.**
- WAIANAWA**—Lovely lavender blue, darker at edges, going to white at the throat where there are a few violet lines. Tall grower and a nice addition to the blue class. **L 2-25c, M 2-15c, S 2-10c, Blts. 15-15c.**

WAMPUM (Winsor)—See Flying Cloud Farms' Introductions.

WHITE FANTASY (LaSalle)—An early white with a more creamy throat. Well placed florets on graceful spikes make it a nice decorative and it is becoming a most popular cut flower. **L 10c, M 2-15c, S 2-10c, Blts. 25-15c.**

WHITE GOLD (Scheer)—Large cream florets blending to gold in the throat. Blooms are slightly ruffled, heavy textured and well placed on tall spikes. **L 60c, M 40c, S 20c, Blts. 2-15c. No Discount.**

WINALL (Both)—Light smoky blue with ruby tongue on lower petal. Many florets, of good texture, will open at once on tall straight spikes. **L 10c, M 2-15c, S 2-10c, Blts. 25-15c.**

WINTERMOON (Buchanan)—Medium blue with white blotched throat and midrib. 6 open on 17 bud spikes. Nice. **L 75c, M 50c, S 25c, Blts. 2-15c.**

YELLOW PERIL (Ellis)—A very deep yellow shading even darker in the throat. Texture and placement good. **L 25c, M 15c, S 2-15c, Blts. 10-15c.**



Unlabeled Collections

THE BIGGEST BARGAIN IN THE CATALOG

If you do not care to know the name of each variety as it blooms, these collections are the value supreme. In each collection there will be at least forty varieties and special care will be used to see that all colors, from white to the dark reds and purples, are included. There will be no difference in the three collections, as regards to the range of color and number of varieties. The cost of the bulbs in these collections if purchased separately, and each variety named, would be at least three times the prices of these unlabeled collections. All prices are prepaid.

No. 2—Unlabeled Collection. This collection will contain varieties that are the very best of the medium priced class. This is the collection we recommend to those who want modern gladiolus varieties for cutting. **100 assorted large (1" up) bulbs for \$3.00; 50 for \$1.75.** With each 100 bulbs of this collection we will add—free—3 large bulbs (labeled) of Hopedale and 3 large bulbs of Lustre—value \$2.00.

No. 2A—Same Collection but of Medium Size Bulbs. 100 for \$2.00; 50 for \$1.25. With each 100 bulbs of this collection we will add—free—3 medium bulbs (labeled) of Hopedale and 3 medium bulbs of Lustre—value \$1.50.

No. 3—Unlabeled Collection. This collection will contain many newer and higher priced varieties and here you will find in abundance the ones you read about as show winners. **100 large bulbs (1" up)**, but of more recent introduction and therefore higher in price, **\$5.00; 25 or more at the same rate.** With each 100 bulbs of this collection we will add—free—1 large bulb (labeled) of Evening Light and 1 large bulb of Cape Cod,—value \$3.00.

No. 3A—Same Collection but of Medium Size Bulbs. 100 for \$3.50; 50 for \$2.00. With each 100 bulbs of this collection we will add—free—1 medium bulb (labeled) of Evening Light and 1 medium bulb of Cape Cod,—value \$2.00.

No. 4—Unlabeled Collection. This de luxe collection will be made up from the most recent introductions—American and foreign—and will include many of the very finest high priced prize winners of today, as well as some that have not yet been shown in this country. Certainly here is a collection of Flying Cloud Farms' Aristocrats which, if purchased from our retail list, labeled, would cost at least \$30.00, and we will add—free—to each order for 100 bulbs; 2 large (labeled) bulbs each of: Evening Light and A. L. Stephen—value \$5.00. **100 large bulbs for \$10.00; 25 or more at the same rate.**

No. 4A—Same Collection but of Medium Size Bulbs. 100 for \$7.00; 25 or more at the same rate. With each 100 bulbs of this collection we will add—free—2 medium (labeled) bulbs each of: Evening Light and A. L. Stephen—value \$3.50.

"Every one of the twenty varieties I purchased from you lived up to or surpassed the description in your catalog. In my opinion Hopedale is by far the most beautiful glad I believe I ever saw—a darling pastel. Evening Light too is very lovely but in a different way. The huge, clean, unflecked florets, enhanced by the rose color in the throat, should make this one of the finest florist varieties. Surfside, a real honey, just enough color in throat to set it apart from other whites; plenty open, good size, good substance and has about everything it takes to make a truly fine glad. Sylvia Twing and Cape Cod are just about the same color and both are very lovely. Bancroft Winsor gives wonderful spikes, good size, and plenty open. Capeheart was the first of all your varieties to bloom, therefore, it is a "must have" if you like 'em big and early and what commercial grower doesn't? And finally there was Red Bank,—the florets are medium size but it does make a fine long fiery ribbon of color."—Indiana.

Wholesale Prices—F. O. B. New Bedford, Mass.

Discounts Do Not Apply To This Wholesale List

25 or more at the 100 rate; 250 or more at the 1000 rate. If you desire thousand lots of any of the varieties in this wholesale list, the price will be eight times the price per hundred.

If out of size ordered, we will send the next smaller size and add enough extra to offset the difference in price unless otherwise requested.

All Stock Subject to Prior Sale. Obvious Errors in Prices are Cancelled.

	Per 100	No. 1	No. 2	No. 3	No. 4	No. 5	No. 6	Bulblets	
		1 ½" up	1 ¼ - 1 ½"	1 - 1 ¼"	¾ - 1"	½ - ¾"	⅜ - ½"	½ Pt.	Quart
Alsace	100	20.00	18.00	15.00	12.00	8.00	6.00	8.00
Alta	100	18.00	16.00	12.00	10.00	7.00	4.00	4.00	15.00
Blue Beauty	100	6.00	5.00	4.00	3.00	2.50	2.00	3.00
Buffette	100	4.00	3.20	2.50	1.75	1.40	1.25	1.75
Capeheart	100	6.00	5.00	4.00	3.00	2.50	2.00	3.00
Flora Farmer	100	7.00	6.00	5.00	4.00	3.00	2.50	4.00	15.00
Gold Dust	100	3.50	2.50	2.00	1.50	1.25	1.00	1.50	4.00
Hopedale	100	20.00	18.00	15.00	12.00	15.00
King William	100	8.00	6.50	5.00
Lavender Queen	100	4.00	3.20	2.60	1.75	1.40	1.25	1.75
Maid of Orleans	100	2.20	1.80	1.40	1.10	.80	.65	.60	1.50
Miss Harriet	100	2.30
Mother Kadel	100	15.00	13.00	11.00	9.00	7.00	4.00	7.00	25.00
Mohawk	100	25.00	20.00	16.00	12.00	8.00	6.00	9.00	25.00
Pink Radiance	100	15.00	13.00	11.00	9.00	7.00	4.00	8.00	30.00
Prestige	100	15.00	13.00	11.00	9.00	8.00
Red Bank	100	15.00	13.00	11.00	9.00	8.00
Red Beauty	100	2.50	2.00	1.60	1.30	.80	.60	.80	2.00
Robert Shippee	100	7.00	6.00
Rosa Van Lima	100	5.00	4.00	3.00	2.50	1.50
Rosy Morn	100	10.00	8.00	6.00	5.00	4.00	3.00	2.50	10.00
Snow Princess	100	3.20	2.60	2.00	1.50	1.25	1.00	1.50
Surfside	100	5.00	4.00	3.00	3.00
Sylvia Twing	100	20.00	18.00	15.00	12.00	15.00
Takina	100	3.50	2.50	2.00	1.50
Thistle Dew	100	6.00	5.00	4.00	3.00	2.50	2.00	3.00

"Received shipment of bulbs in good shape. Please accept my thanks and appreciation for the extras and overcount on all varieties ordered, even on your new introductions. I figure I received bulbs to a value of almost double the amount sent."—E. G., Indianapolis, Indiana.

"Thank you for the more than generous way in which you filled my order for glad bulbs. The bulbs reached me in fine shape and were so healthy looking. Even the bulbs I ordered small of were good size."—H. B., Holdrege, Nebraska.

"The shipment of bulbs arrived safely and it was indeed a thrill to unpack them; they are so clean and were so neatly wrapped. The extras were more than I expected. Thank you for your generosity."—B. E. B., Rochester, N. Y.

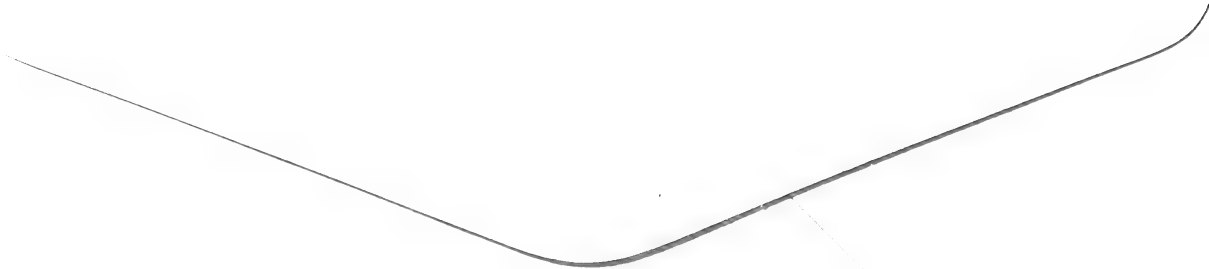
"Thank you for the extras you sent in my order, especially the Bancroft Winsor which has bloomed and sure was a masterpiece. Surfside and Robert Shippee were pleasing and in great demand for my trade."—C. J. F., Detroit, Michigan.

From _____

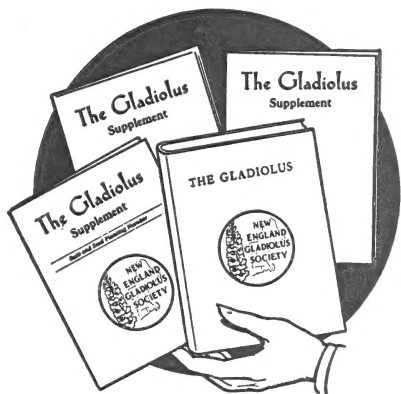
FLYING CLOUD FARMS, Inc.

MRS. BANCROFT WINSOR,

**Acushnet Station,
New Bedford, Mass., U. S. A.**



Gladiolus Societies



Anyone interested in growing gladiolus should join some society and receive the information they are constantly sending out. The New England Gladiolus Society is probably the largest in the world and their year book is full of valuable information and worth much more than the dues. This year they are going to publish the quarterly bulletins which will keep one posted throughout the year. All you need to do to join is fill out the coupon and send it to the secretary. There are also many fine state societies that issue bulletins, some each month and others less often. It will be well worth the cost for you to join the organization in your own state.

Application Blank for New Member

THE NEW ENGLAND GLADIOLUS SOCIETY, INC.

Date.....

To ALBIN K. PARKER, Secretary, Norwood, Mass., U. S. A.

Supplement Membership

\$2.00

Entitles you to a deluxe, flexible, imitation leather-bound copy of *The Gladiolus* issued in January. - You will receive also April, July and October Supplements (about 36 pages each) containing current information and seasonal articles on planting, fertilizing, hybridizing, growing for and shipping to shows; the listing of over forty show dates on this continent; harvesting, curing, storing; reporting of over twenty-five shows; also news from the nineteen affiliated Gladiolus societies and from foreign sources.

Regular Membership (Book Only)

\$1.00

Regular cloth-bound copy of *The Gladiolus*, 1944, and membership privileges of the society. (Usually costs us more than your dues—but offset by value to N. E. G. S. of possibly volunteered participation and possible market for our advertisers.)

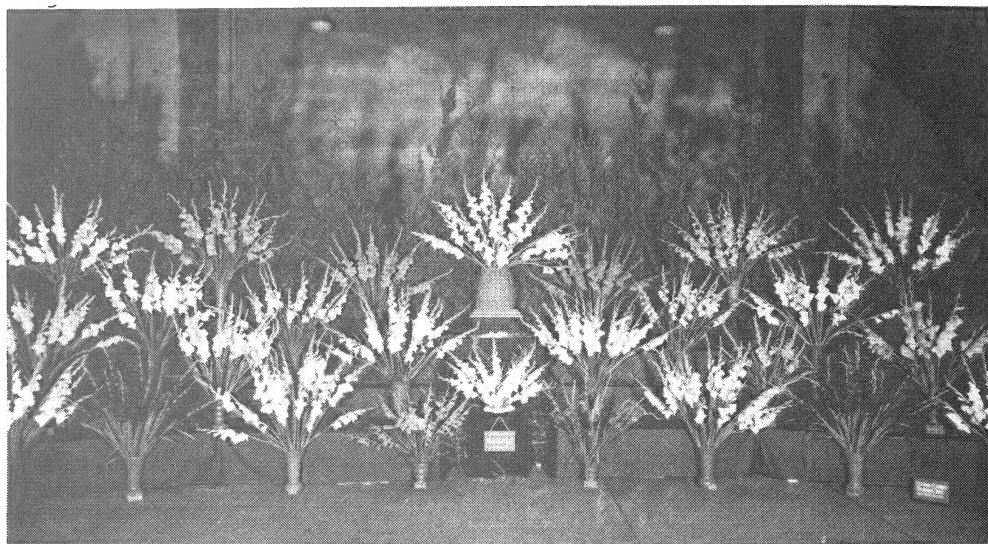
NAME

(Please Print)

ADDRESS..... STREET..... POST OFFICE.....

Please credit To: FLYING CLOUD FARMS, Acushnet Station, New Bedford, Mass.

Remit to New England Gladiolus Society, Inc., by Check, Money Order or Cash; make U. S. or International money orders payable in Norwood, Mass., U. S. A.



OUR MEDAL-WINNING EXHIBIT AT THE 1943 NEW ENGLAND
GLADIOLUS SOCIETY SHOW

