

Historic, Archive Document

Do not assume content reflects current scientific knowledge, policies, or practices.

68 103 217+22
**SELECT THE
COTTONSEED**

FOR

Your **LAND**

**A Bagley
Pedigreed
Seed**



*For Every
Type of Soil
and Climate*

W. W. BAGLEY & SONS

**State Registered
Cotton Breeders**

MARTINDALE, TEXAS

THREE GREAT S

**BAGLEY PEDIGREED
SEED Approved by
State Plant Board**

No greater proof or indorsement of the quality of Bagley Pedigreed Seed can be offered. Our plant breeding work is fully indorsed by the Texas Seed and Plant Board. We have complied with all requirements necessary to produce the highest quality of Pedigreed seed. Correct breeding and careful handling of Bagley Pedigreed Seed adds profits by producing greater yields per acre, better staple and higher lint per cent.

The purity of Bagley Pedigreed Seed is protected by our exclusive gin plants. After ginning, the seed go to our *Big Seed Houses* to be properly cured and then our *Modern Cleaning Machinery* is used to improve mechanical condition of the seed.

PERSONAL ATTENTION

We do not entrust the breeding of our Newest Improved Bagley Pedigreed Cottonseed to others. We attend to every single phase of the work ourselves. The members of our firm devote their entire time and thought to the continued improvement of *Bagley Cottons*. Shipping you quality seed means something to us. We are in the business to stay, and satisfied customers are our best advertisement. We offer you better seed backed by 29 years of good sound breeding. When you invest in *Bagley Pedigreed Seed* you can be sure of getting seed that have been properly bred, grown, ginned and handled. Come by and see us.

ORDER YOUR SEED

SEE INSIDE

W. W. BAGLEY &

TRAINS of MONEY-MAKING COTTON



W. W. BAGLEY, Founder, Breeder and Grower,
As He Appears Today

Plant the Bagley Strain SUITED TO YOUR SOIL

3 DISTINCT VARIETIES NOW
READY TO MEET YOUR EVERY NEED

For greater production and better quality cotton you should plant a cottonseed that is best suited to your soil and climate.

After years of breeding, testing, experimenting, and acclimating you can now select a Bagley Pedigreed Seed adapted to your particular type of land. With three distinct varieties of Bagley Pedigreed Seed developed and grown in Texas to produce a more profitable cotton on the different types of land, you will select a Bagley strain that will make you more cotton dollars from every acre you plant. You may have some bottom land or upland or other land. One of the three strains of Bagley Cotton is what you are looking for. If one strain does not suit your land, then another will. You will not make a mistake if you select either of our three strains of Bagley Cotton for your farm. However, one strain may be better suited to your land and climate.

Select your cotton planting seed from our three strains of Bagley Pedigreed Seed which have been developed to give you greater production and better quality cotton on your land. See inside of this folder for more information on our three strains listed below.

BAGLEY 793 MASTER STRAIN

BAGLEY STONEVILLE 2-B

BAGLEY B-17 ROYAL ROWDEN

EARLY — OUR SUPPLY IS VERY LIMITED

PAGES, THIS FOLDER, FOR COMPLETE DESCRIPTION OF EACH STRAIN

SONS STATE REGISTERED COTTON BREEDERS MARTINDALE, TEXAS

THERE IS A PRECISION BRED, CHOICE QUALITY

Bagley Pedigreed Cottonseed

ESPECIALLY ADAPTED TO YOUR SOIL AND CLIMATE

Select One or More of Our 3 Strains Listed Below For Greater Production and Better Quality Cotton on Your Land

FOR UPLAND LEVEL AND ROLLING BLACKLAND

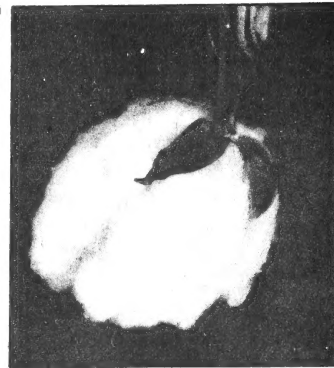
Plant

BAGLEY 793 MASTER STRAIN

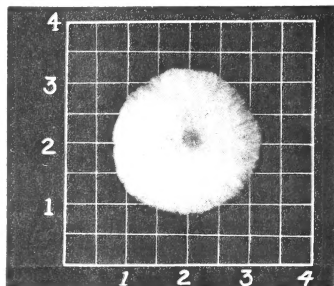
NEWEST REGULAR BAGLEY TYPE

Developed from our old reliable strain of Bagley Pedigreed Cotton which we have bred for over a quarter of a century, our 793 Master Strain is showing an outstanding performance in the field, at the gin and on the market. It possesses all of the inherent, well-balanced features of our regular Bagley Cotton and, in addition, shows to be a more productive strain, earlier, has a more uniform type boll and a truly exceptional plant structure. Because of its strong drought-resisting features this strain is particularly adapted to Uplands, Level and Rolling Blacklands. Further description follows:

- PLANT TYPE**—Upright, sturdy stalk, with well-developed, long, short-jointed fruiting branches and a minimum of vegetative limbs.
- YIELD**—Very productive, fast fruiting and often makes from 10% to 25% more than ordinary cotton.
- LINT TURN-OUT**—40% to 42% dependent on soil and season.
- STAPLE**—Strong, hard, uniform 1" to 1-1/16" staple according to land and season.
- BOLLS**—Majority big, round, five-lock bolls with slight point. Well-shaped bur makes it easy to pick. 50 to 60 bolls make pound seed cotton.
- EARLINESS**—Fast early growth, fruits excessively and matures early.
- FOLIAGE**—Light to medium—adequate for proper boll protection during ordinary dry, hot summers.
- ROOTS**—Deep, penetrating tap roots and fine lateral rooting system often insures a crop in dry seasons when ordinary cottons fail.
- SEED**—Medium size, Uniform, High-Quality seed that give good germination.
- STORM PROOF**—DROUGHT RESISTANT—HIGH VARIETAL PURITY



One of Bagley's Large, Drooping Five-Lock Bolls



Long, Hard, Uniform Strong Staple

FOR VALLEY LAND BOTTOM OR RICH FLAT LEVEL LAND

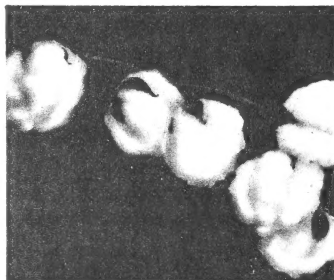
Plant

BAGLEY STONEVILLE 2-B

HIGHEST YIELDING STONEVILLE TYPE

Our newest addition to the Strains we have to offer, is our money-making Stoneville 2-B Cotton. This strain is particularly suited and gives best results on Valley Land, Bottom or Rich Flat Level Land. Also it produces well on any type of cotton-growing soil. Our tests and experiments with this cotton on our Breeding Farms here have been very pleasing. Bagley Stoneville 2-B grows off fast, fruits heavily and its light foliage makes it more insect-resistant. It has medium to large bolls with a large percentage five-lock and produces a good quality staple of long length. The exceptional prolificness of this cotton stamps it as a real money-maker and it'll win your admiration after you have grown it one season. More fully described as follows:

- PLANT TYPE**—Sturdy, upright stalk, vigorous, spreading, long, short-jointed fruiting branches.
- PRODUCTION**—Exceptionally high-yielding. Under favorable conditions increased production of 10% to 25% is often obtained.
- LINT TURN-OUT**—Average 35% to 38%, depends on land and season.
- STAPLE**—Good character, Uniform 1" to 1-1/8" strong staple according to soil and season.
- BOLLS**—Medium to large, fluffy bolls that open well and pick easy. 60 to 70 per pound of seed cotton.
- EARLINESS**—Extra fast in growing off, sets fruit quickly, matures and opens early.
- FOLIAGE**—Medium light. Small leaves make it more insect resistant and crop matures quicker.
- ROOTS**—Fine rooting system that helps account for the extra high yields.
- SEED**—Medium size with well-filled, easy-to-germinate kernels.
- STORM PROOFNESS**—Excellent for this type cotton.



Long Fruiting Branches Increase Production

FOR UPLAND SANDY, MIXED RICH BOTTOM BLACK OR OTHER LAND

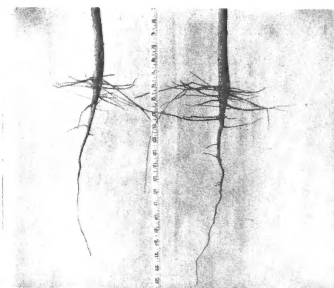
Plant

BAGLEY B-17 ROYAL ROWDEN

NEWEST AND BEST YIELDING ROWDEN TYPE

Our B-17 Royal Rowden is a cotton that is absolutely new and different. It is getting a wonderful reception wherever planted. This strain has been developed from a most outstanding Arkansas Rowden type cotton. Its heavy yields of big, fluffy bolls, light foliage, drought-resisting characteristics and general structure of this plant make it adaptable to most all soils and climates suited to cotton growing. We recommend it to give you good results on upland, sandy, mixed, rich bottom, black or other land. You will be well pleased with the beautiful sample this cotton makes. Don't fail to plant some of it the coming season. More complete description follows:

- PLANT TYPE**—Upright, pyramidal stalk with well-spaced, short-jointed fruiting branches.
- PRODUCTION**—Very prolific and fast fruiting. Makes ordinarily 15% to 25% more per acre.
- LINT TURN-OUT**—37% to 40%, dependent on land and season.
- STAPLE**—Hard, Strong, Uniform 31/32" to 1-1/16" staple according to soil and season.
- BOLLS**—Big bolls that open nicely and are easily picked. 50 to 60 per pound of seed cotton.
- EARLINESS**—Grows off extra fast, fruits very rapidly and opens early.
- FOLIAGE**—Reduced to minimum—Less harborage for insects—allows crop to mature quicker.
- ROOTS**—Good tap and lateral rooting system. Increases yield ability.
- SEED**—Uniform, medium to large size seed with well-filled, healthy kernels that give good germination.
- DROUGHT RESISTANT**—STORM RESISTANT—WILT RESISTANT



Deep, Penetrating Tap Roots Insure Good Yields per Acre

Below Are Shown the Offices and Main Warehouses Where Bagley Pedigreed Seed Are Tested, Cured and Stored



W. W. BAGLEY & SONS COTTON BREEDERS MARTINDALE, TEXAS

EARLY BUYERS ARE WISE

The demand is always much greater than the supply for Newest Improved BAGLEY PEDIGREED COTTON SEED. We recommend that our grower friends order early and get early shipment. During years past we have sent back thousands upon thousands of orders, checks and money orders to those who waited too late to send in their order.

Again this year we know that "the early buyer will be the wise buyer." He will get his supply of planting seed and he will get them at the early order price. Be an early buyer. We will be glad to serve you. See our nearest Bagley representative or use the convenient Order Blank below.

**MAKE SURE
OF A SUPPLY**

**USE THIS
ORDER FORM NOW**



W. W. BAGLEY & SONS
COTTON BREEDERS
Martindale, Texas

_____, 194_____.

Please enter my order for the following Newest Improved Bagley Pedigreed Cotton Seed, freight prepaid, in accordance with your standard terms and conditions.

____ Bu. Bagley's 793 Master Strain
____ Bu. Bagley's B-17 Royal Rowden
____ Bu. Bagley's Stoneville 2-B

} at \$_____ per bu.

Ship on or about _____ Order No. _____

Name _____

P. O. Address _____

R. F. D. _____ Box No. _____

Railway Station _____

Check or Money Order Inclosed, \$ _____

Draw through _____ Bank

Location of Bank (town) _____

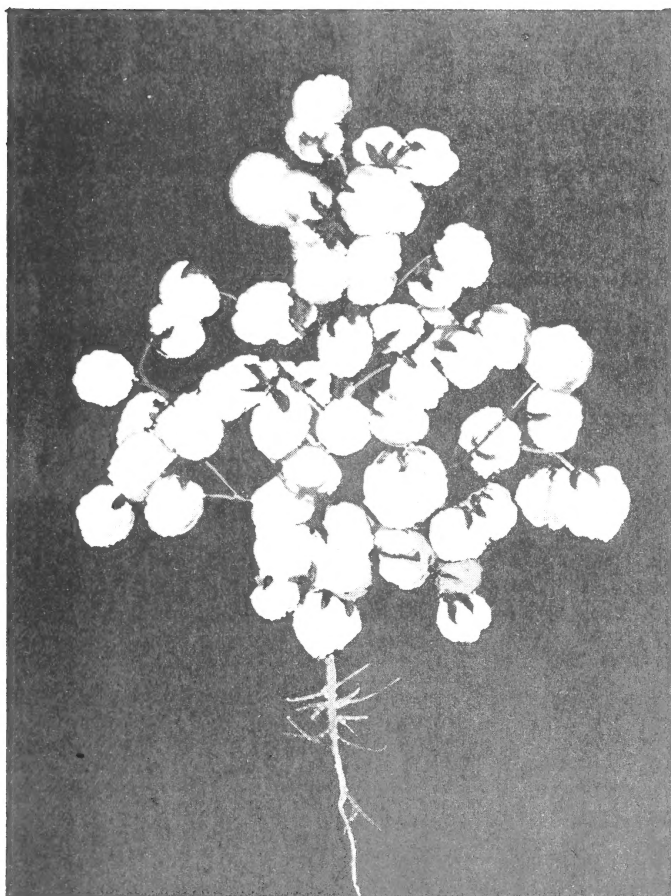
Terms: Cash payable on shipping date.

Purchaser _____

OUR GUARANTEE

If seed that you purchase from us on this order do not give you the results you have a right to expect, we will make it right with you.

W. W. BAGLEY & SONS,
Cotton Breeders.



TYPICAL PYRAMIDAL STALK OF BAGLEY COTTON. PLANTS LIKE THIS WILL MAKE MORE DOLLARS FOR YOU ON YOUR OWN FARM

There's
**BUSHELS
OF
QUALITY**
in
*Every
Sackful*



