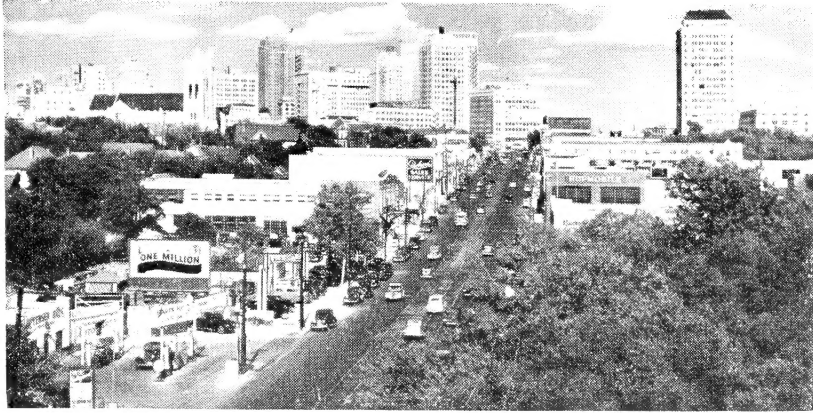


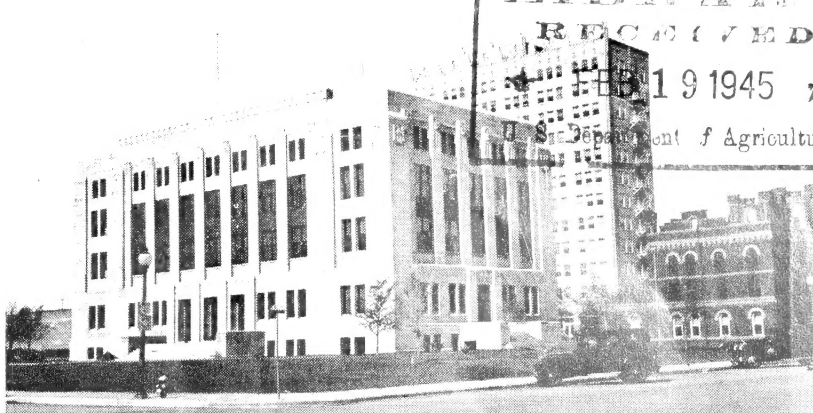
Historic, Archive Document

Do not assume content reflects current scientific knowledge, policies, or practices.



FORT WORTH, TEXAS

Center for many of the oil, livestock, railroad, aviation, and manufacturing interests of the Southwest. Outstanding park, educational, and recreational facilities.

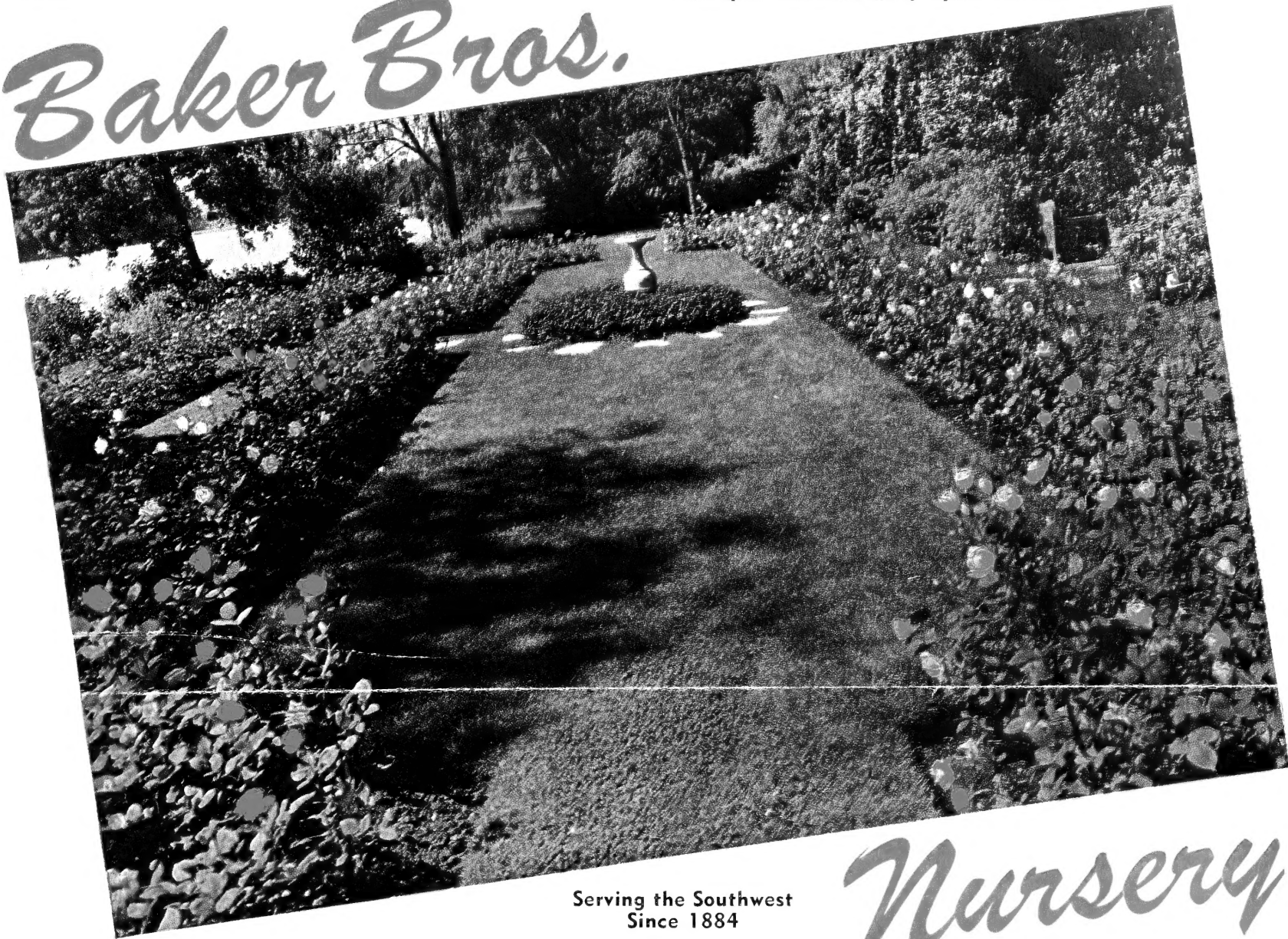


MIDLAND, TEXAS

Established in 1884. Livestock, oil, and agricultural center. Home of Midland Army Air Base. Photo shows Court House completed but before grounds were landscaped. Petroleum building beyond Court House.

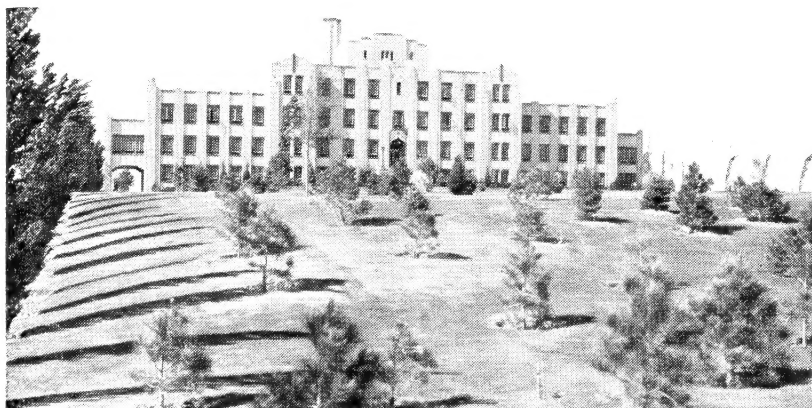
LIBRARY
RECEIVED
MAY 19 1945
U.S. Department of Agriculture

Baker Bros.



Serving the Southwest
Since 1884

Nursery



ALBUQUERQUE, NEW MEXICO

Largest city in New Mexico. Serves as distribution center for entire state. Located in fertile irrigated valley of Rio Grande River. Served by Santa Fe Railroad, T.W.A., and Continental Airlines, and on famous Highway "66." Pictured is the U. S. Government Indian Hospital.



LUBBOCK, TEXAS

"Queen City of the South Plains." Home of Texas Technological College; rail and distribution center for richest agricultural section of West Texas. Pictured is entrance to Mackenzie State Park, 547 acres, adjoining city north and east.

Baker Bros. Nursery

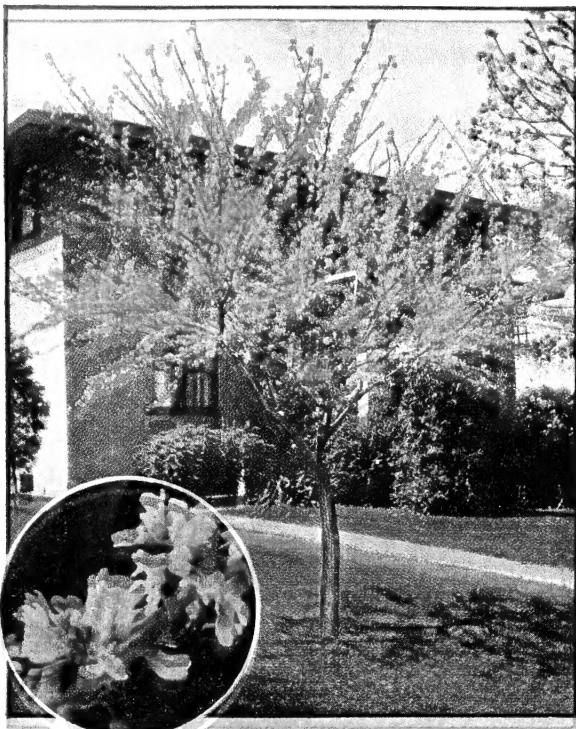
has been growing and selling hardy, dependable nursery stock for the **SOUTHWEST** since 1884. Our four well stocked nurseries located in Lubbock, Midland and Fort Worth, Texas, and Albuquerque, New Mexico, have a wide assortment of home grown plants and experienced, well trained personnel to serve you.

TERMS

Terms are cash with order, or if shipped C.O.D., one-fourth of the amount of the order must be sent with the order.

BARE-ROOTED PLANTS SENT PREPAID TO YOU. ALL BALLED AND BURLAPPED PLANTS SENT FREIGHT OR EXPRESS COLLECT.

ORDERS WITH ASSORTMENTS OF BARE-ROOTED AND BALLED AND BURLAPPED PLANTS WILL BE SENT IN TWO SHIPMENTS.



Redbud

Large shrub or small tree, whose branches are completely covered with rosy purple flowers in March before the leaves appear. A satisfactory flowering tree because it is so hardy, has no diseases, and has handsome, heart-shaped leaves.

Why not start a "Redbud Trail" in your community?

	Each	3		Each	3
2-3 feet	\$0.75	\$2.00	4-5 feet
3-4 feet	1.00	2.50	5-6 feet
				2.00	5.00

OUR GUARANTEE

We guarantee to send out healthy trees, true to name and free from disease, and if we fail in this we stand ready, upon proper proof, to replace such stock, or refund the purchase price, but we do not hold ourselves liable for an amount greater than the original price. We are unwilling to be responsible for improper planting, handling and cultivation.

We will replace all stock planted by us that does not live at one-half of its purchase price up to June 1st of the planting season.



Tree Wistaria

Tree form of Chinese Purple Wistaria. Formal small tree with free blooming, large clusters of lilac-purple flowers. All plants grafted from blooming wood. Will produce blooms first year.

	Each
4-foot standard
5-foot standard
	\$5.00 7.50

Red-Leaf Plum

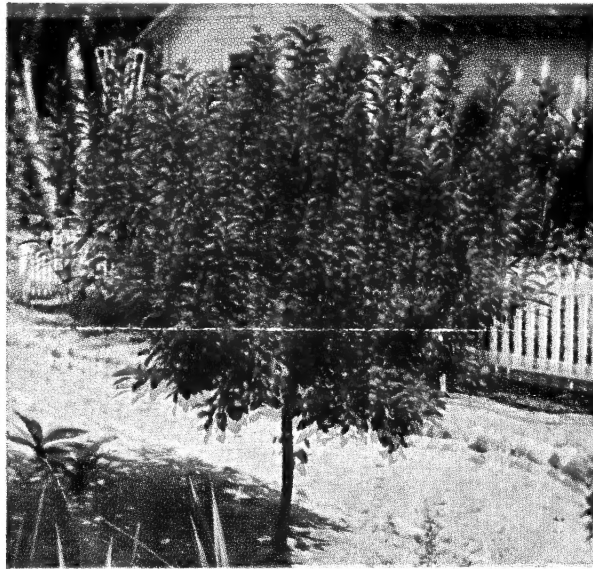
A handsome small tree covered with pale pink plumlike blossoms in early spring. The foliage is purplish red and does not turn green in summer.

	Each	3
3-4 feet	\$1.00 \$2.50
4-5 feet	1.50 4.00
5-6 feet	2.00 5.00

Bungei Catalpa (Umbrella Catalpa)

Broad-leaved, formal tree, good for formal gardens and outdoor living rooms.

	Each	3
5-6 feet	\$5.00 \$14.00



Double Flowering Peach

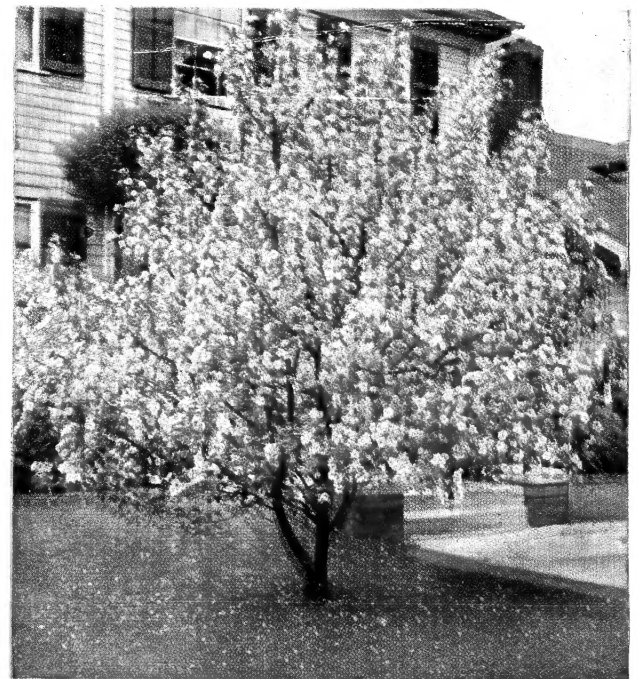
One of the most beautiful ornamental trees. In early spring it is completely covered with carnation-like blossoms, followed by green, glossy foliage. A fast grower and sure to be the talk of your neighborhood. These trees will bloom this spring and develop into a mass of beauty in another year.

	Each	3
3-4 feet	\$1.00 \$2.50
4-5 feet	1.50 4.00
5-6 feet	2.00 5.00

Mimosa

Small, informal shaped, low-branching tree with lacy foliage, covered with a profusion of pink mossy-like blossoms.

	Each	3
4-5 feet	\$1.50
5-6 feet	2.00
6-8 feet, slender	3.50



Bechtel's Double Flowering Crab

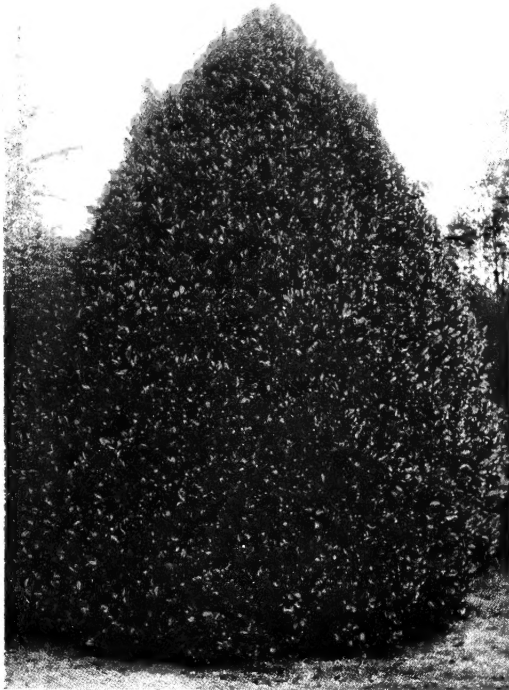
A small, upright tree with erect growing branches. In late spring the limbs are literally covered with delicate pink flowers an inch or more across which resemble small Roses.

	Each	3
18-24 inches	\$1.00 \$2.50
2-3 feet	1.50 4.00
3-4 feet	2.00 5.00

Broadleaf EVERGREENS . . .

The varieties we offer are "BEST FOR THE SOUTHWEST." Plant for year-round beauty of foliage, blooms and berries. Good for foundation planting, screen or specimen plants.

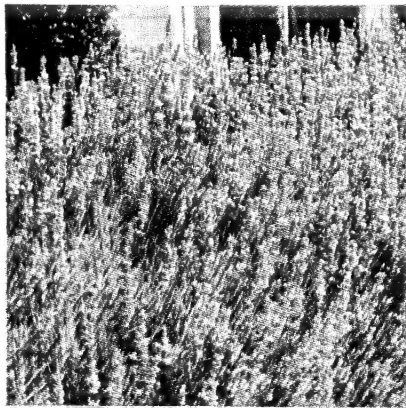
All Broadleaf Evergreens are priced F.O.B. OUR NURSERY. Shipped to you FREIGHT OR EXPRESS COLLECT.



Cherry Laurel

This fine plant makes a very large, handsome specimen, especially when sheared. Given room it will spread out in a broad, bushy tree. Splendid for tall hedges or windbreaks, and screens.

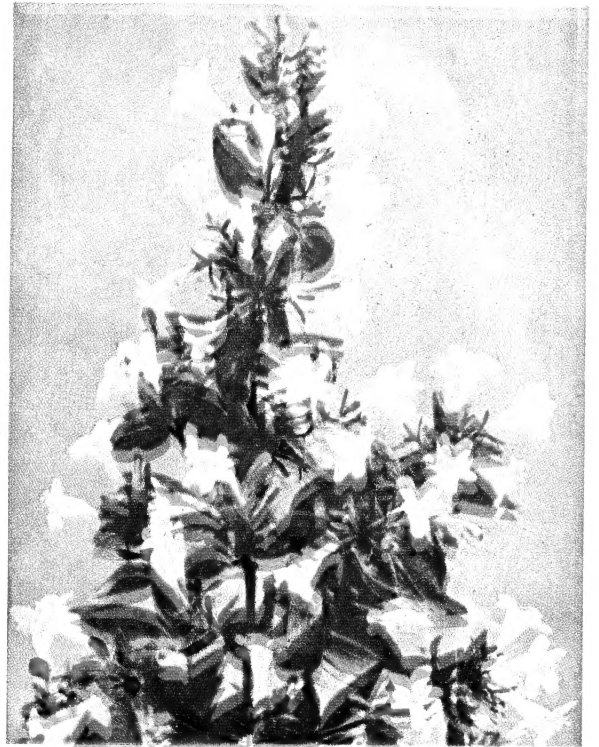
	Each
3-4 feet	\$3.00
4-5 feet	4.50
5-6 feet	7.50



English Lavender

A low, bushy, round plant, whose distinctive gray color makes a pleasing accent in front of taller plants, and at porch steps. Withstands drought well. Spikes of lavender colored flowers with an aromatic foliage in spring.

	Each
12-18 inches, Balled and Burlapped, 25 lbs.	\$1.50
18-24 inches, Balled and Burlapped, 30 lbs.	2.50



Abelia

Small, bell-shaped, white flowers, borne in clusters, against a background of bronze-like foliage, making this broadleaf evergreen one of our most popular plants. Can be used in mass plantings, hedges or as sheared, formal specimens. Height about 4 feet. Hardy, and can be planted in open sun or partial shade.

	Each
18-24 inches	\$2.00
2-3 feet	3.00
3-4 feet	4.00

Baker Bros. Compact Leucophyllum — Also Known as Seniza

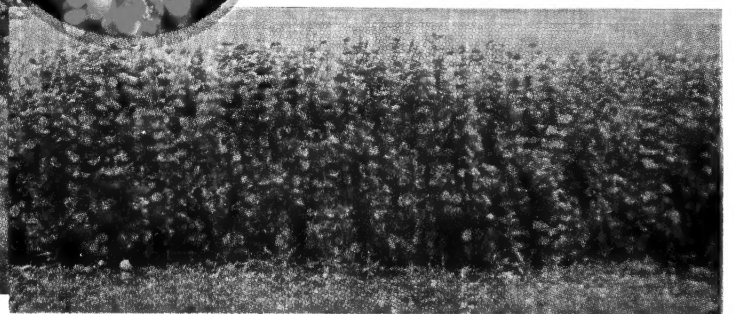
Compact native evergreen with soft gray foliage, growing about three feet high, producing delightful orchid colored blossoms in late summer. Its refreshing blossoms make a pleasing contrast among green-leaved plants and conifers. Will bloom several times during the season from May to October. **Gallon cans, each \$2.00.**

Euonymus

The heavy, dark green leaves, and ability to adapt itself to various forms, whether used as a hedge, individual shrub, or even as a semi-vine effect when trained against a wall or building, make this popular broadleaved evergreen one of the most versatile plants we grow. It will grow 6 or 8 feet high or can be kept to 2 or 3 feet by trimming.

18-24 inches,
\$1.50 each.

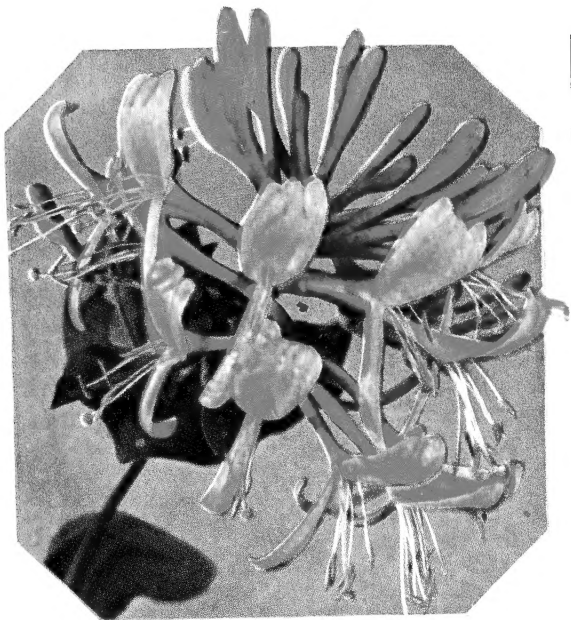
2-3 feet,
\$2.50 each.



Euonymus

Broadleaf

All Broadleaf Evergreens are shipped F. O. B. OUR NURSERY. Shipped to you Freight or Express Collect.



Goldflame Honeysuckle (Name Trade-Marked)

A superlative variety; beautiful, hardy and versatile. The large flame-coral trumpets lined with gold, fragrant after nightfall, appear in immense, showy clusters the same year the plant is set out. Reaching its full glory of bloom in early summer, it nevertheless flowers abundantly from May until frost. Dark blue-green foliage, disease and pest free, is attractive in itself and makes a perfect background for the brilliance of the flowers.

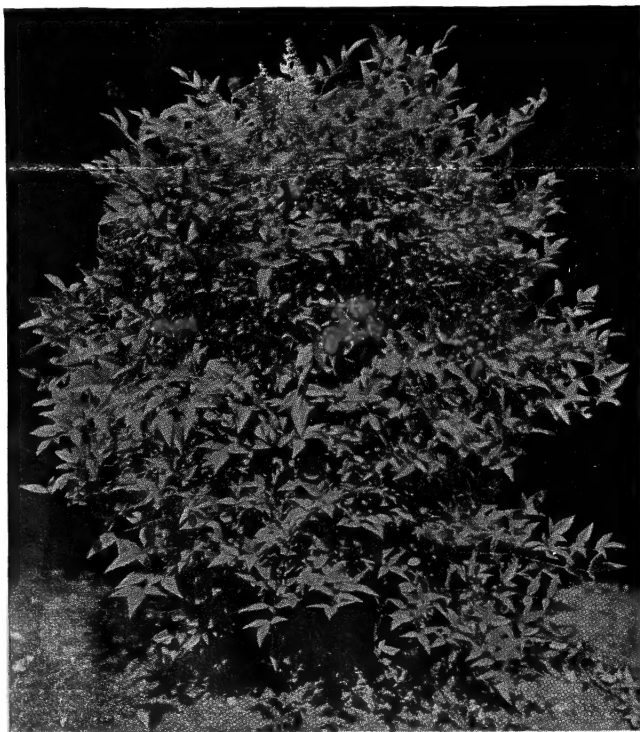
Allowed to grow naturally, Goldflame will climb a trellis or spread as a ground cover; pruned, it becomes a striking specimen shrub; while if planted in a row and sheared, it gives a smashing effect as an everblooming hedge.

	Each
18-24 inches, Bare-Rooted	\$1.00
24-30 inches, Balled and Burlapped	2.00
30-36 inches, Balled and Burlapped	3.00

Boxwood

The English Boxwood grows well in the Southwest. They seem to stand the sunshine better than the other varieties, but do better if planted in partial shade. Good for formal hedges or individual sheared specimens. Fine for formal gardens.

	Each
18-24 inches	\$2.50
24-30 inches	4.00



Nandina - Heavenly Bamboo

One of the most interesting plants that we grow and is extremely decorative the entire year. In the spring and autumn the large compound leaves are tinged with red; in early summer panicles of white flowers are produced; and in the winter, the crowning glory, terminal spikes of large bright red berries are retained until the following spring. Hardy over the entire SOUTHWEST.

	Each
18-24 inches, single cane	\$1.00
24-30 inches	2.50
30-36 inches	3.00



Mahonia - Orange Holly

A beautiful low-growing evergreen with striking holly-like leaves that vary in hue from dark greens to shadings of reds and bronzes. Perfectly hardy, but is best in partially shaded spots. Has yellow flowers at the ends of the stems in spring, followed by blue berries. Excellent as a contrasting plant.

	Each
18-24 inches	\$2.50
24-30 inches	3.50

Elaeagnus

A beautiful evergreen of fairly rapid growth and of rather spreading habit, with silvery gray foliage and yellowish, fragrant flowers in autumn. Branches are a frosty green color with brownish mottling. 8 feet, or can be kept sheared.

	Each
Gallon Cans	\$1.50
2-3 feet	2.50
3-4 feet	4.00

Photinia Serrulata

A large, handsome shrub with slightly curled, indented leaves. The new foliage in spring is a bright red. Best used around large buildings or for heavy landscape plantings. Not particular about soil or situation.

	Each
2-3 feet	\$2.50
3-4 feet	3.50

Pineapple Guava - Feijoa

An attractively gray-foliaged, broadleaved evergreen. Height about 4 feet in our locality. Attractive blossoms in spring. Fruits in South Texas.

	Each
2-3 feet	\$2.50
3-4 feet	3.50

Cotoneaster (Francheti)

Graceful plant whose dainty leaves turn a bronze-red in winter. Its bright red berries at that time make it most desirable among heavier types of evergreens. 6 feet.

	Each
30-36 inches	\$3.00

Magnolia Grandiflora (Southern Magnolia)

Most majestic and stately of all our broadleaved evergreen trees. Ultimate height of 50 feet. The leaves are a glossy, bright green, and the large, fragrant, white flowers scattered from April through June make this tree most conspicuous. To reach its full dignity, should be planted in rich soil with ample room.

	Each
3-4 feet	\$5.00
4-5 feet	7.50

Florida Jasmine (Sometimes called Jasmine Humile)

Bright green foliage, masses of yellow flowers. Blooms from May to November. Can be trimmed to give an informal, flowing effect, and is ideal for foundation or border plantings. Usually grows about 3 feet high with the same spread.

	Each
2-3 feet	\$2.50
3-4 feet	3.50



Florida Jasmine

EVERGREENS

All Broadleaf Evergreens are priced F.O.B. OUR NURSERY. Shipped to your FREIGHT OR EXPRESS COLLECT.



Everblooming Gardenia

Much prized because of its large white, very fragrant flowers, and bright glossy green leaves. A glorious crop produced in May with a scattering of flowers through the summer. Best planted in a protected spot, in well drained soil.

	Each
24-30 inches	\$2.00
30-36 inches	3.00

Evergreen Hedge Plants

Be a good neighbor and plant a friendly fence. Nothing like Privet for lasting beauty and added value to your property.

One hundred plants will grow 100 feet of hedge.

CALIFORNIA PRIVET. Glossy green foliage. Grows rapidly and will withstand droughts. One of the best for beautiful hedges.

AMUR RIVER PRIVET (SOUTH). The best hedge plant for the South and Southwest. Its rapid and graceful growth, with its small, bright green foliage and its ability to stand constant pruning make it one of the most desirable plants for hedges.

	10	100
12-18 inches	\$1.20	\$10.00
18-24 inches	1.60	15.00
2-3 feet	2.50	20.00

Worthiana Italian Cypress

Very superior strain of symmetrical, upright growth, and much hardier than other Cypresses. The parent tree on our grounds is twenty years old and has never been injured by cold when all other specimens were either killed outright or severely damaged by the severe cold spells we have had every four or five years. Young plants propagated from this stock were uninjured in the field while other stock was killed. Every tree is handsome and uniform in its growth. Maximum height 20 feet.

	Each
3-4 feet	\$4.00
4-5 feet	6.00
5-6 feet	7.50

Spanish Broom

Large yellow, pea-shaped blossoms, produced in April and May, make this plant one of the most attractive plants in the garden. Your spring season is not complete without a Spanish Broom to brighten your landscape.

	Each
Gallon Cans	\$2.00

Texas Holly - Yaupon

Native Holly of Texas. Bears red berries; foliage dark green; leaves small. Compact growth makes an ideal plant for formal plantings, specimens or hedges. Height 15 ft.

	Each
2-3 feet	\$2.50
3-4 feet	3.50

Wax-Leaf Ligustrum

Produces large, thick, dark shiny green leaves, large clusters of white flowers in the spring with purple berries in the fall. An ideal plant for foundation plantings. Hardy as far north as Lubbock. We consider this one of our best all around varieties.

	Each	3
18-24 inches	\$2.50	\$ 6.50
2-3 feet	3.50	9.00
3-4 feet	5.00	13.50



Wax Leaf Ligustrum

Baker Bros.

Landscape Department

We maintain one of the largest departments in the Southwest. Let our experienced landscape architects help you with your landscape problems.

We have an ample supply of large specimen shade trees, evergreens, and shrubs to give an immediate effect to your planting.



Firethorn - Pyracantha

There are several varieties of these plants. We are listing the two most popular ones.

PYRACANTHA LALANDI. Fast becoming one of the most popular of the larger growing evergreens, because of its handsome, upright branches and glowing clusters of orange berries all winter. Most attractive in spring when fairly loaded with masses of tiny white flowers. Makes a fine hedge plant when pruned or can be trained over arbors. You have probably noticed thousands of these plants on the highways of Texas.

PYRACANTHA YUNNANENSIS. Similar to Lalandi, except lower growing and produces red berries. Ideal for Christmas decorations.

	Each
Gallon Cans	\$1.50
2-3 feet	2.50
3-4 feet	4.00



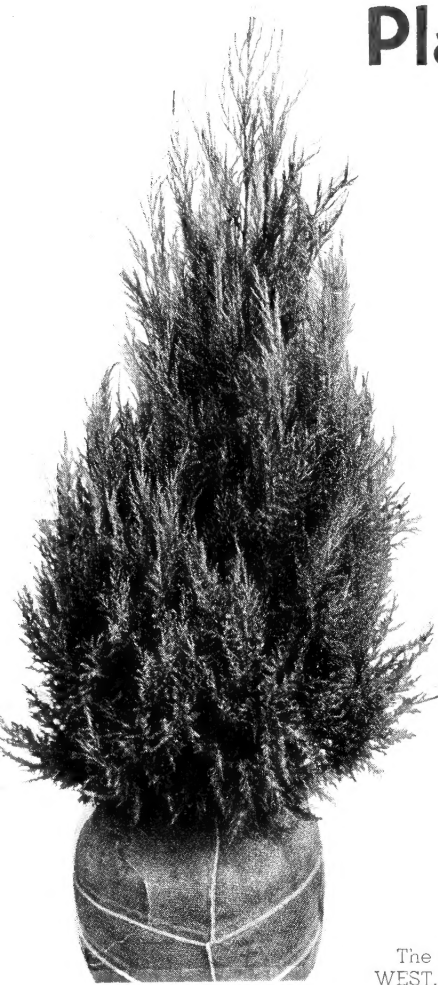
Upright Ligustrum

A large, upright growing shrub with broad, dark green foliage much like that of a lilac, bearing white flowers in loose sprays in spring, and black berries in winter. An excellent evergreen for large screens or against large buildings.

	Each	3
3-4 feet	\$2.50	\$ 6.50
4-5 feet	3.50	9.00
5-6 feet	5.00	13.50

Plant Baker Bros.

Evergreens for Enjoyment



EXCELSA ARBOR-VITAE

A fast, compact grower, darker in color than the Baker, and a little wider at the bottom. As pretty as any of the Chinese types and hardier. It is growing successfully in the northern states where others are sometimes damaged by cold. In New Mexico it has withstood a cold of 30 degrees below zero.

	Each
30-36 inches	\$3.00
3-4 feet	4.00
4-5 feet	5.00

RAMSEY'S HYBRID ARBOR-VITAE

Is of an improved strain. This improved old variety is sturdy, with a heavy, more compact, dark green, feathery textured foliage. One of the hardy columnar varieties.

	Each
3-4 feet	\$3.00
4-5 feet	4.00
5-6 feet	5.00

ARIZONA CYPRESS

One of the fastest growing, drought-resistant varieties that we have. Extremely blue in color, fine textured foliage. This plant attains a growth of about 18 feet and about 10 feet in width. Should be used as specimen plants and not planted too close to buildings.

	Each
Gallon Cans	\$2.00

CEDRUS DEODARA

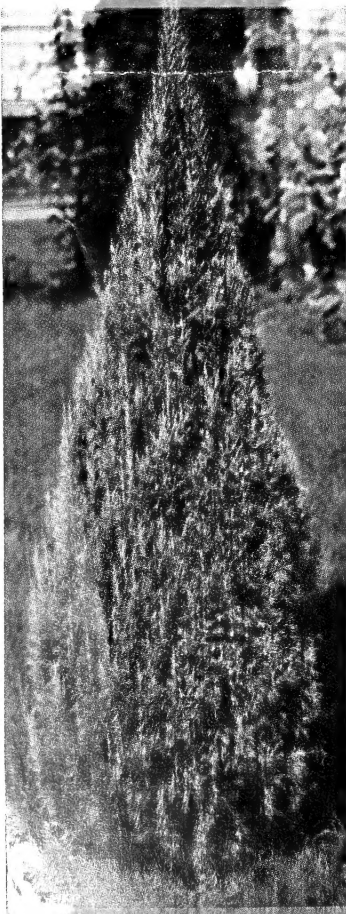
The stateliest of all evergreen lawn specimens for the SOUTH-WEST. Blue-green in color, with long, drooping limbs, this fine evergreen has rightfully earned the title of "the Living Christmas Tree." Perfectly hardy, except in the northern parts of New Mexico, Texas, and in Oklahoma.

	Each		Each
4-5 feet	\$5.00	5-6 feet	\$7.50

SCOPULORUM JUNIPERS

There are several types of Scopulorum Juniper which are native in the Rocky Mountains. The best types are grown from grafts and we have listed below three of these types:

HILL'S SILVER JUNIPER. The growth is compact and symmetrical and of a bright, light bluish color. One of the leading ornamental trees throughout the Southwest.



Dundee Juniper

MOONLIGHT JUNIPER. This tree has none of the typical needle-like foliage of Juniperus Scopulorum, but runs to the whipcord foliage. This, combined with its extremely light, frosty blue color, gives it peculiar and distinct characteristics.

CHANDLER'S SILVER JUNIPER. The Chandler's Silver Juniper is one of the popular varieties of Scopulorum which has gained wide acceptance throughout the trade, particularly in the western and southwestern territory. It is a compact, upright grower with attractive, light blue foliage.

	Each
3-4 feet	\$5.00
4-5 feet	7.50

DUNDEE JUNIPER

One of the nicest types of Juniper that we grow. Grows to a height of from 12 to 15 feet in the Southwest. The summer color is grayish green, the winter color is a purplish plum which develops after the frost in the fall. It thrives in all sections of the country and is rapidly becoming a great favorite with planters everywhere. It can be trimmed and maintained in a small size, but under normal conditions it grows in a fairly broad and compact pyramidal shape.

	Each
3-4 feet	\$5.00
4-5 feet	7.50

PFITZER'S JUNIPER

The handsomest of the Chinese Juniper varieties, the Pfitzer, which grows in the form of a low, broad pyramid, is the most satisfactory of all Junipers in this climate. Can be used in shade or in open plantings; in fact, will grow under almost any conditions under which any other evergreens will grow.

	Each
18-24 inches	\$2.50
24-30 inches	3.50
30-36 inches	5.00

BONITA ARBOR-VITAE

Each plant a field-grown specimen; not to be compared with cheap bed-grown plants.

Bonita being the Spanish name for "pretty," this little plant is indeed well named. Low, round growing, dark green, it is ideal for small formal plantings, window boxes, urns, etc.

	Each
18-24 inches	\$2.50
24-30 inches	3.00
30-36 inches	4.00

BAKER'S ARBOR-VITAE

We are proud of this dark green pyramidal Arbor-Vitae which bears our name, and which we developed and introduced over 20 years ago. It is by far the best known and most widely used of any evergreen in plantings. Ultimate height about 12 feet.

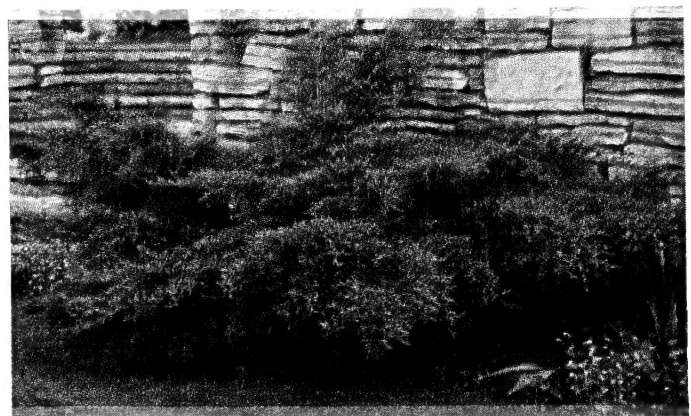
	Each
2-3 feet	\$2.00
3-4 feet	4.00
4-5 feet	5.00



PONDEROSA PINE

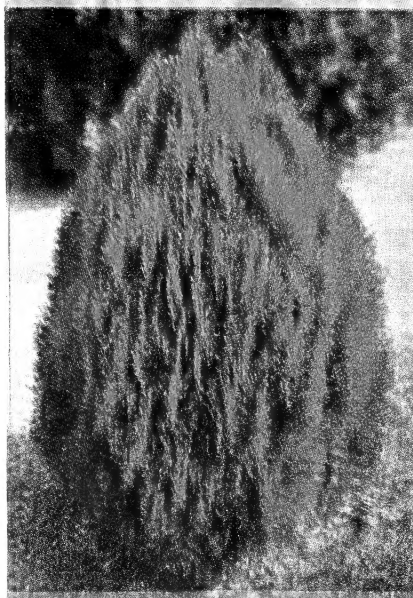
The best tall growing Pine for the Southwest. Grows to a height of about 30 feet in Texas. Fairly slow growth until about 6 feet in height and then it grows faster. Easy to transplant. In all, one of our most satisfactory specimen plants.

	Each
3-4 feet	\$5.00
4-5 feet	7.50
5-6 feet	10.00
Specimens up to	15.00



Pfitzer's Juniper

and Beauty Throughout the Year



COLUMNAR JUNIPER

Slender, pyramidal; grows symmetrical and narrow, with blue-gray, prickly foliage. Ultimate height about 18 feet. **Each**
 3-4 feet \$5.00
 4-5 feet 7.50

KETELEER'S JUNIPER

This dark green, compact, narrow-growing Juniper has proven itself to be one of the best pyramidal varieties for the SOUTHWEST. Where the Italian Cypress is not hardy this plant can be trimmed to a narrow, pyramidal shape and used in its place. **Each**
 3-4 feet \$4.00
 4-5 feet 5.00
 5-6 feet 7.50

SPINY GREEK JUNIPER

This little tree has been a great favorite for many years. It has been more extensively used in the eastern and southern states, but it is now becoming popular in the Middle West. Its growth is rather broad, tapering to a pointed terminal top. In this locality trees seldom reach more than four or five feet high with a spread of 2½ to 3 feet. It grows slowly and is, therefore, of great value in foundation plantings and rock gardens. **Each**
 12-18 inches \$2.00
 18-24 inches 2.50
 24-30 inches 3.50



RED CEDAR

One of the best known American evergreens. Ideal for planting in almost any growing condition. Light green in the summer, turning to purplish red in the fall and winter. Can be sheared into a formal specimen, grown loose for mass effect, or trimmed to a standard formal tree effect. **Each**
 3-4 feet \$5.00
 4-5 feet 7.50

BERCKMANN'S GOLDEN ARBOR-VITAE

One of the nicest of the lower growing compact evergreens. The golden yellow of the foliage makes a most pleasing contrast to the deep green of other evergreens. Because of its extreme hardiness (having stood 15 degrees below zero without damage) it may be used in almost any location. The dwarf, compact habit of growth makes it ideal for small gardens, for cemetery plantings, for window boxes and for vases.

Each
 18-24 inches \$2.50
 24-30 inches 3.00
 30-36 inches 4.00



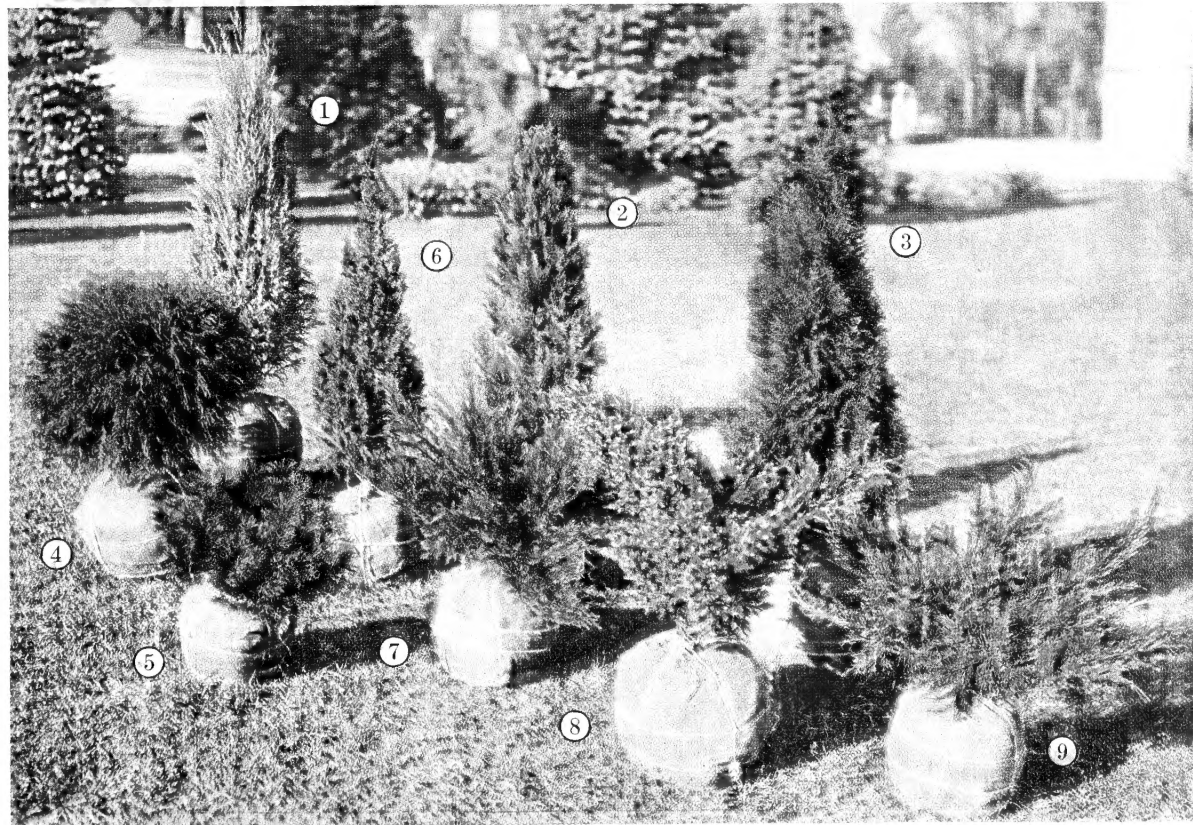
TAMARISCIFOLIA JUNIPER

A small, compact growing, refined, spreading Juniper, with blue-gray foliage. Ideal for formal or mass bed plantings where a low-growing effect is needed. **Each**
 12-18 inches \$2.50
 18-24 inches 3.50

CANNARTI RED CEDAR

This horticultural variety of the Red Cedar has long been one of the leading favorites. It has deep, rich green color and runs largely to the whipcord foliage rather than the needle formation. If left untrimmed, the growth is rather open and graceful, but by shearing specimens may be produced to suit the needs of the planter. The ultimate growth is up to 20 feet, but by trimming may be kept smaller. In diameter trees may be two to four feet at the base. It has unusually bluish and powdery berries which occur in some trees in large clusters and are most attractive. **Each**
 3-4 feet \$5.00
 4-5 feet 7.50

All Coniferous Evergreens are priced F.O.B. OUR NURSERY. Shipped to you FREIGHT or EXPRESS COLLECT.



Notice the large, firm balls of growing soil dug with each plant. This method of handling assures the evergreen a good chance to live when transplanted.

- ① Scopulorum Juniper
- ② Hill's Dundee Juniper
- ③ Pyramidal Arbor-Vitae
- ④ Bonita Arbor-Vitae
- ⑤ Globe Arbor-Vitae
- ⑥ Columnaris Juniper
- ⑦ Savin Juniper
- ⑧ Meyer Juniper
- ⑨ Pfitzer Juniper

Baker Bros. Everblooms

Ragged Robin Root Stock

Newer, Deep-Growing, Drought-Resistant
2-yr., heavy grade \$1.25 each; \$14.00 per doz.

We are Offering You the
Best for the



Mrs. E. P. Thom

Caledonia

Grenoble

White

CALEDONIA. Pure white, pointed buds, open into a large, double, fragrant flower. A really fine variety.

KAISERIN A. VICTORIA. This old favorite is still just about the best white Rose grown. The creamy white buds are long, very double, pointed, and borne on a good stem.

Red

AMI QUINARD. This vigorous growing, fragrant blooming, red Rose is a worthy addition to any garden. The large velvety flowers are a dark maroon color.

CHRISTOPHER STONE. Created a sensation when introduced in 1935. The color is scarlet-crimson, without a trace of bluing. Intensely fragrant. Has received a Gold Medal, a First Class Certificate, and an Award of Merit, as well as the Clay Cup.

ETOILE DE HOLLANDE. Brilliant red, double large flowers, borne on a vigorous growing bush, make this red Rose one of our favorites.

FRANCIS SCOTT KEY. Very large, double, light crimson buds. A free bloomer and good grower.

GRENOBLE. Extra large scarlet bloom of fine form on a huge healthy bush. One of the finest red Roses.

HADLEY. Extra fine, large, high-centered flower with recurving petals of rich, velvety crimson; long, strong stems. Tall grower.

RED RADIANCE. This familiar, heavy blooming, vigorous red Rose is by far the best known of all red Roses. If you want to be assured of plenty of blooms for cut flowers, you can't make a better selection.

ROUGE MALLERIN. Brilliant red buds opening to glowing scarlet. Blooms unusually well, extra strong grower.

Pink

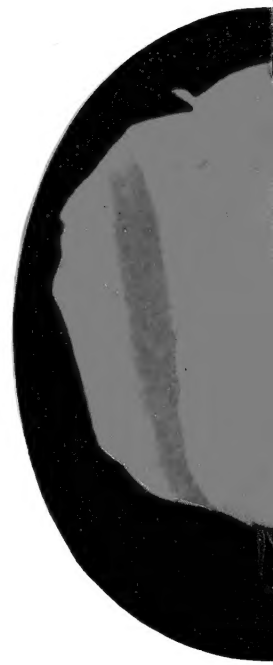
DAME EDITH HELEN. Still one of the more popular pink Roses. Big double flowers of glowing clear rose-pink, produced on a tall, upright bush. Lovely clear color and delightful fragrance combined with its unusual lasting qualities when cut make it an ideal all around Rose.

BRIARCLIFF. Rose-pink at center passing to a lighter shade at the outer petals. Very large flowers. Blooms singly on long stems. Improvement over old Columbia. Wonderful as a cut flower.

EDITOR McFARLAND. Superb deep pink Rose—possibly the finest deep pink bloom in existence. The flowers are fragrant and retain their form for several days after cutting. Awarded a Gold Medal at Lyons, 1932, in the contest for the most beautiful Rose of France.

MRS. CHARLES BELL. One of the Radiance family, with shell-pink buds and soft salmon tinted open flowers that are sweetly scented. An exceptionally good variety for general garden use.

PINK RADIANCE. This well known Rose is truly a favorite. Large, free blooming, deep rose-pink with lighter tint on reverse side. The blooms are fragrant; grows very upright and strong.



Talisman

oming ROSES *No Finer Flowers in all the Garden*

Multiflora Root Stock

Standard Proven Understock

2-yr., heavy grade, \$1.00 each; \$10.00 doz.

Proven Varieties That are Southwest

Yellow

LADY HILLINGDON. An old favorite, but still good. Slender, pointed buds of deep saffron-yellow.

LUXEMBOURG. This old variety is still one of the best of the deep yellow Roses. It produces some of the most beautiful blooms of any and stands our Southwestern climate as well as the rest.

MRS. ERSKINE PEMBROKE THOM. Long, canary-yellow, pointed buds, borne on a long stem, opening into a large flower that keeps fine when cut, make this good variety one of the best yellows.

MRS. PIERRE S. DU PONT. Fine glossy foliage. Free blooming, golden yellow, medium blooms. Looks fine in the garden or when cut, as it has good heavy stems.

ROSLYN. Large, semi-double, fragrant; bloom clear golden yellow. The long, pointed bud and lasting quality of the flower make Roslyn a good cut Rose.

SOEUR THERESE. A favorite yellow Rose. Large plants with quantities of shapely golden yellow blooms; fragrant and lasting.

YELLOW TALISMAN. A yellow sport of the popular Talisman Rose. A dependable yellow Rose with a pleasing fragrance; suitable for cutting.

Multi-Color

BETTY UPRICHARD. Unusually fragrant, beautiful buds of copper-red opening to semi-double flowers of medium size, extremely fragrant. Beautiful light green, glossy foliage; grows into large plants; long, strong stems.

DUQUESA DE PENARANDA. Large, double flowers of brownish apricot with rich fruit fragrance are borne all season on upright plants with heavy, attractive foliage.

HINRICH GAEDE. A spectacular flower of luminous vermilion shaded to golden yellow; rich fragrance; sturdy plants.

PRES. HERBERT HOOVER. Large, semi-double blooms of cerise, pink, flame, scarlet and yellow. No Rose planting would be complete without this particular variety. Very beautiful buds, makes a large, strong bush with unusually long stems.

TALISMAN. Perfectly formed buds of brilliant red, gold, yellow and copper, double lasting flowers, extremely fragrant, and carried on long stem. Strong and free blooming. This Rose is one of the most popular ever grown.

All Roses shipped prepaid. Roses on multiflora root stock ready for shipment December 1st. Those on ragged robin root stock not available until February 15, 1945.



Editor
McFarland



Soeur
Therese



Rouge
Mallerin

Leading Shrubs for the



ALTHEA

We are offering four named varieties that are "Best for the Southwest."

Altheas bloom from May to September, producing masses of flowers throughout the summer months. Height about 10 feet.

ANEMONAEFLORUS. Semi-double, bright rose.

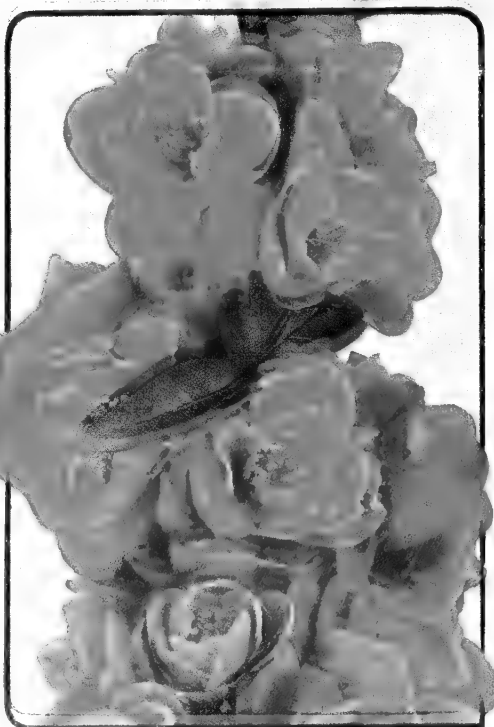
AMPLISSIMA. Red, very double, flowers resemble Carnations.

LADY STANLEY. Semi-double, light pink.

VIOLET-CLAIRE: Large, clear purple, semi-double.

(We offer only budded varieties, not to be confused with seedling-grown plants.)

	Each	3	
18-24 inches	\$0.75	\$2.00	
2-3 feet	1.00	2.60	



FLOWERING QUINCE

Masses of bright scarlet flowers in early spring. Our plants are budded plants grown from flowering wood. One of the first plants to bloom in the spring.

	Each	3	
18-24 inches	\$0.75	\$2.00	
2-3 feet	1.00	2.60	

BUSH CLOVER

(Purple Desmodium)

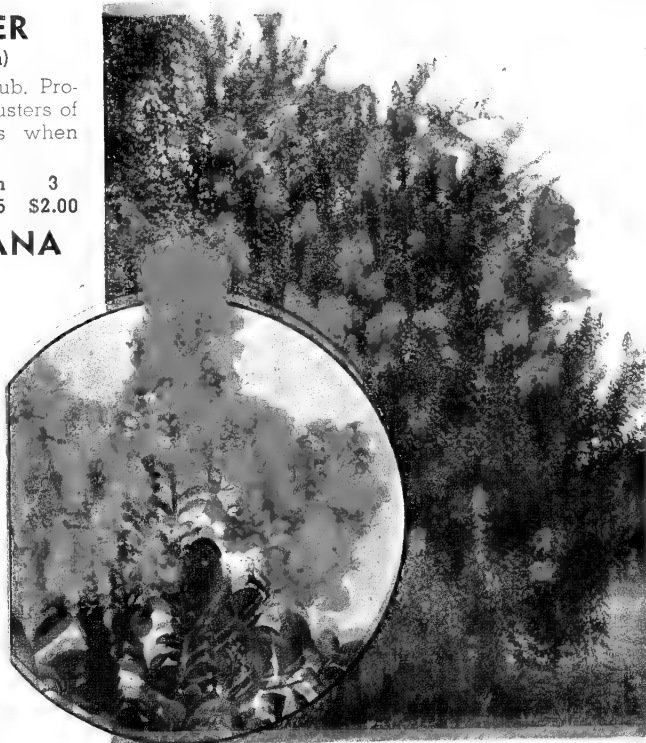
Ideal fall blooming shrub. Produces large, pendulous clusters of purple blossoms. Blooms when other flowers are scarce.

	Each	3	
Heavy Clumps	\$0.75	\$2.00	

HARDY LANTANA

A rapid, low growing perennial-like shrub, producing small heads of orange and yellow flowers the entire season. Very desirable for giving color in front of tall shrubs. Thrives in any soil. Orchid and yellow variety equally as continuous a bloomer. Flowers are a combination of orchid and yellow colors. Foliage is prickly and aromatic.

Heavy Clumps,	75c each;	3 for \$2.00.
---------------	-----------	---------------



HARDY SALVIA or SCARLET SAGE

A dwarf native of Texas and Mexico. Almost evergreen. Should be pruned almost to ground each spring to keep compact. Bears rose colored flowers, like small trumpets all up the stems from early spring until late frost. Should be in every planting because it is so hardy, does not require much care, and the dark green foliage with its odor of garden Sage is so attractive.

	Each	3	
Heavy Clumps	\$0.75	\$2.00	

RED WING

From Far Off South America Comes This Exotic Little Plant

From South America, the land of color, comes one of the most colorful shrubs of recent years. Yellow blossoms in sprays with red seed pods that cling to the stem give a profusion of color the entire summer, regardless of the heat and dry weather. Ideal for use in landscape work where a small flowering shrub is required. Can be trimmed often without affecting its beauty. Fine for cut flowers, keeping several days after cut. Not hardy north of Lubbock.

	Each	3	
18-24 inches	\$0.75	\$2.00	
2-3 feet	1.00	2.60	

DEUTZIA

A fine, upright growing plant, bearing lovely double white flowers along the stems in spring, coming into flower after the Spireas are through blooming.

	Each	3	
18-24 inches	\$0.75	\$2.00	
2-3 feet	1.00	2.60	

WEIGELA ROSEA

Medium growing, upright shrub bearing great profusion of trumpet-shaped flowers in late spring. A very showy plant. Flowers variegated from coral to delicate flesh-pink. Height about 5 feet.

	Each	3	
18-24 inches	\$0.75	\$2.00	
2-3 feet	1.00	2.60	

CRAPE MYRTLE

By far the best known, most popular and finest flowering shrub in the Southwest. Blooms freely from June to October. The soft, fluffy flowers of crinkled crepe are borne in dense heads. Watermelon-red is the most popular color.

Don't worry if they are slow to start growing after planting. They are sometimes slow starters.

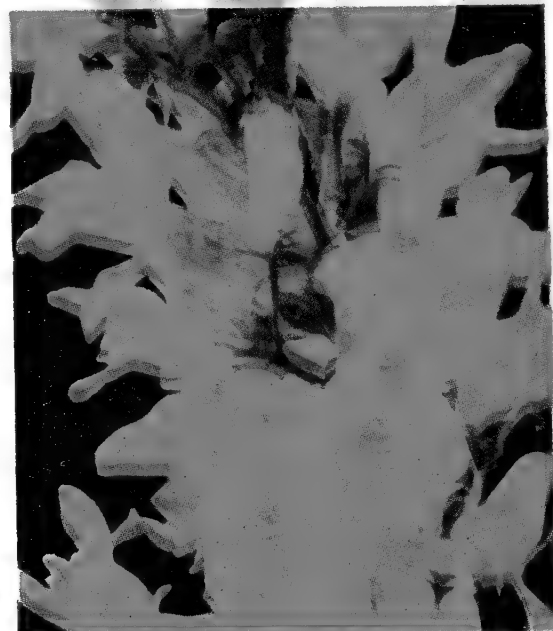
	Each	3	
18-24 inches	\$0.50	\$1.25	
2-3 feet75	2.00	

BUSH HONEYSUCKLE

WHITE. One of our earliest blooming plants, blooming in February and March.

PINK. Flowers borne in clusters in March and April.

	Each	3	
18-24 inches	\$0.50	\$1.25	
2-3 feet75	2.00	



GOLDEN BELL - Forsythia

Produces a mass of bell-like, yellow blossoms in the early spring; fine for border plantings. We have listed the best variety that we know.

	Each	3	
18-24 inches	\$0.50	\$1.25	
2-3 feet75	2.00	

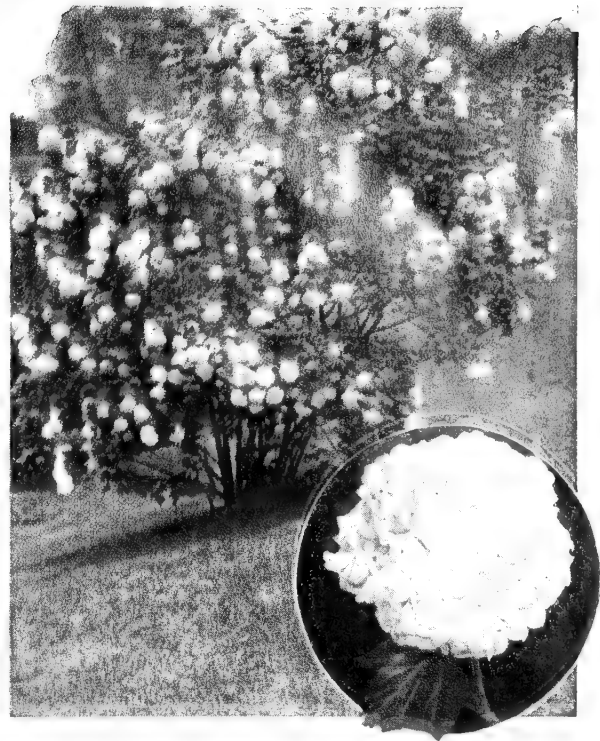
Gardens of the Southwest



BUTTERFLY BUSH

(*Buddleia, Ile de France*)
 A new, improved form of the old favorite. Long, graceful spikes of dark violet-purple give color from May until frost. It is very fine as a cut flower. It is well named as it attracts butterflies and humming birds throughout the blooming season.

18-24 in., 50c
 ea.; 3, \$1.25.
 2-3 feet, 75c
 ea.; 3, \$2.00.



SNOWBALL

An old favorite. Tall growing; large coarse textured foliage; showy white flowers in large heads, making a complete "snowball."

Each
 18-24 inches \$1.00
 2-3 feet 1.50

PERSIAN LILAC

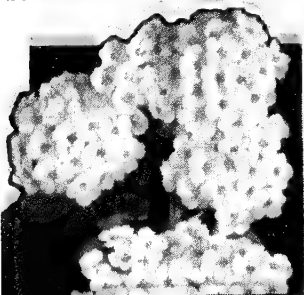
Now here is a Lilac that will bloom every year and sometimes twice a year, in the spring and again in the fall. Large panicles of purple blossoms make a striking effect when in bloom. Very fragrant, and make good cut flowers for spring bouquets.

Each 3
 18-24 inches \$0.50 \$1.25
 2-3 feet75 2.00

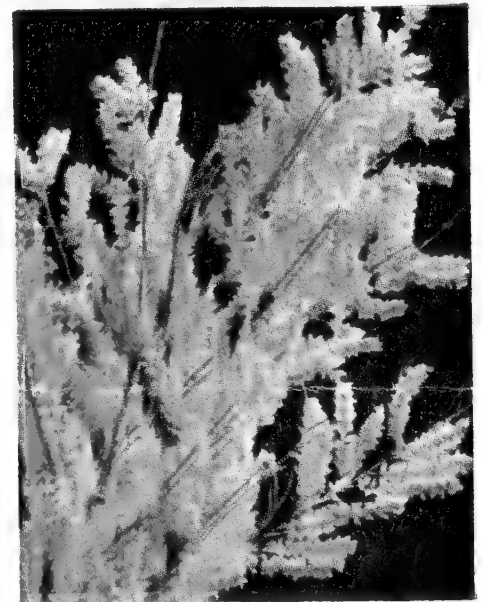
FLOWERING POMEGRANATE

Produces large, double, orange-red flowers in spring. This is a fine shrub because of its glossy green foliage, and because it is so drought resistant. Sometimes bears large, red fruits. Height 8 feet. Very disease resistant. Should be cut back if planted north of Lubbock, Texas.

Each 3
 18-24 inches \$0.50 \$1.25
 2-3 feet75 2.00



Spirea Van Houttei



SALT CEDAR - Tamarix

A very rapid growing shrub or small tree, which is excellent for heavy plantings or hiding unsightly structures. Grows well on any type of soil. Bears numerous spikes of lavender colored flowers at the ends of the branches over a long season. Has Sage-like aroma.

There are several good varieties, but we think "Tamarix Hispidula Aestivalis" is the best for all around purposes.

Each 3
 18-24 inches \$0.50 \$1.25
 2-3 feet75 2.00

SPIREA

There are several varieties of Spiraea. We think the best are:

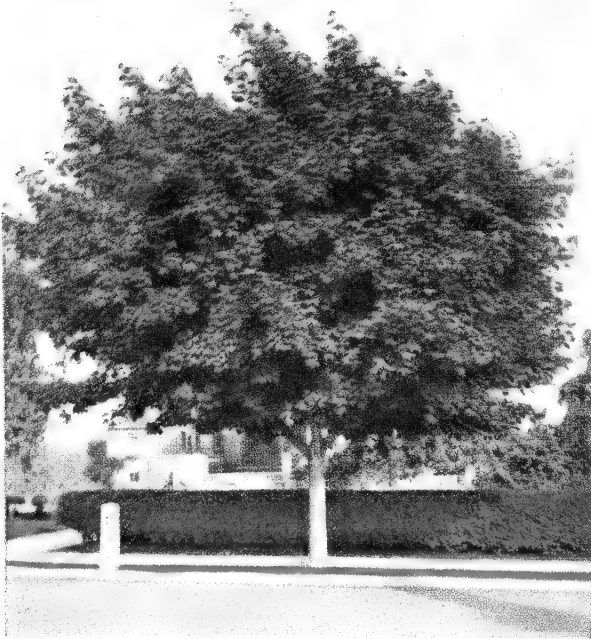
PRUNIFOLIA. Small white, double blossoms. Shiny foliage. One of the best Spiraea for cut flowers. Make a fine bouquet mixed with Flowering Quince, Golden Bell, and other spring flowers.

REEVESIANA. Double blooming; upright growing; white.

VAN HOUTTEL. Known as Bridal Wreath. Low growing, pendulous branches, effective when covered with single white blossoms in the early spring.

Each 3
 18-24 inches \$0.50 \$1.25
 2-3 feet75 2.00

Shade Trees



WESTERN GREEN ASH

A rapid growing tree desirable for planting in the arid section of the Southwest, though it will also thrive on the Coast and in other sections. Will flourish in alkaline soils and withstands drought well.

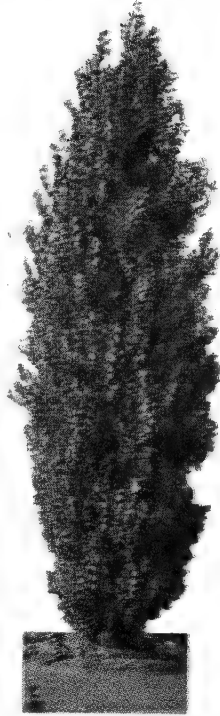
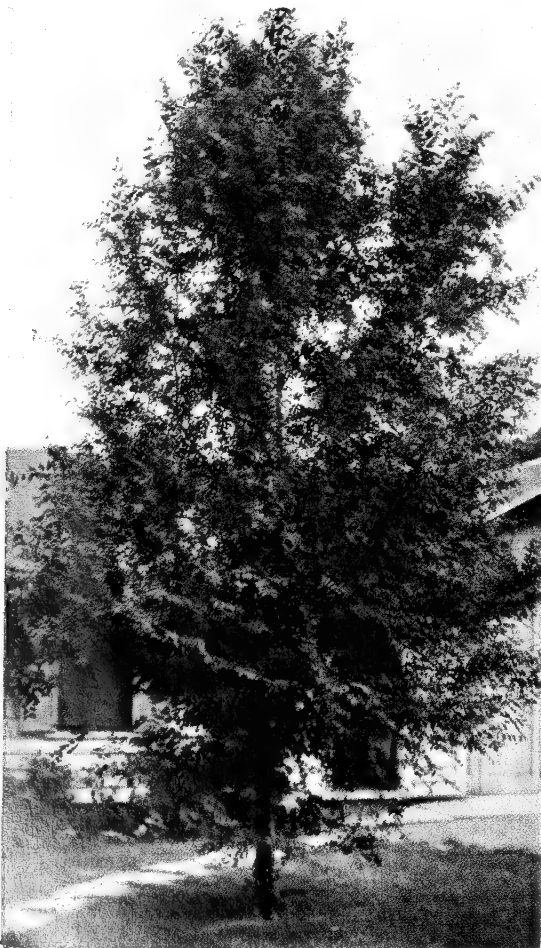
	Each
6- 8 feet	\$1.50
8-10 feet	2.50
10-12 feet	3.50

CHINESE ELM

(*Ulmus Pumila*)

A remarkable tree because of its great rapidity in growth, bright fresh looking foliage and compact shape. Stands drought or cold, and retains its foliage until quite late in autumn.

	Each
5- 6 feet	\$1.00
6- 8 feet	1.50
8-10 feet	2.00
1½-2 inch caliper	2.50
2-2½ inch caliper	3.00



(Above)

LOMBARDY POPLAR

(*Populus Nigra Italica*)

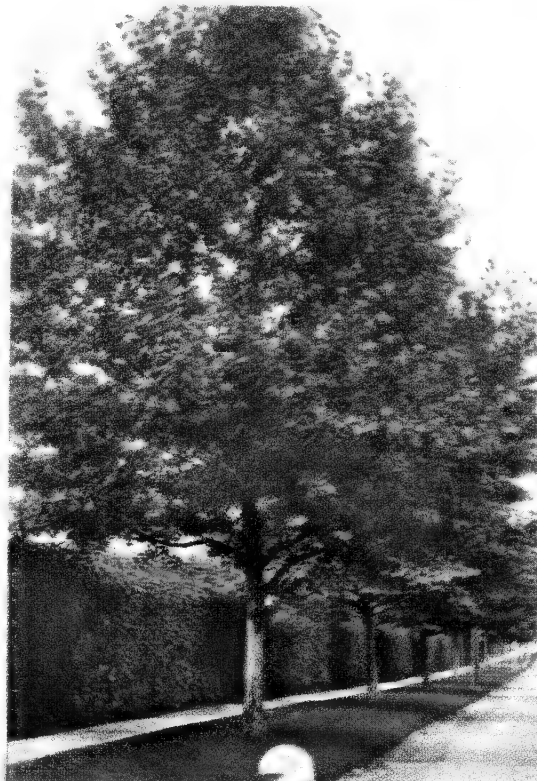
Tall, column-shaped tree, which is very effective used as a background or accent.

	Each
5- 6 feet	\$1.00
6- 8 feet	1.50
8-10 feet	2.00
1½-2 inch caliper	2.50
2-2½ inch caliper	3.00

WEeping WILLOW

A most graceful tree with long, drooping branches and narrow, willow-like, light green leaves. Most effective when used near water or put on the lawn.

	Each
5- 6 feet	\$1.50
6- 8 feet	2.00
8-10 feet	3.00



SOFT MAPLE

Beautiful foliage, deeply indented, which turns beautiful shades of reds in autumn. Tree fast growing and makes a fine head.

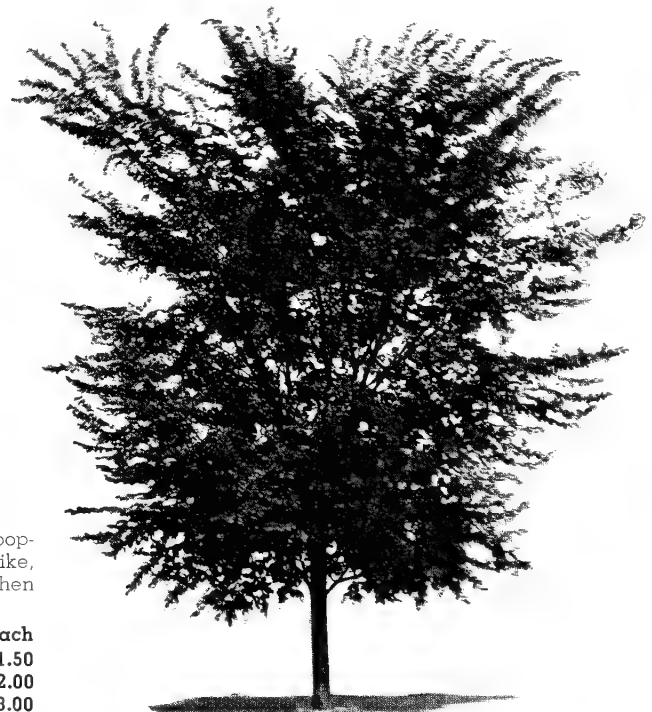
	Each
6- 8 feet	\$1.50
8-10 feet	2.50
10-12 feet	3.50

THORNLESS HONEY LOCUST

Symmetrical growing, medium sized shade tree with bright green, compound leaves. Ideal for street planting. Grows well in semi-arid climate. Used by highway department for roadside development.

	Each
6- 8 feet	\$1.50
8-10 feet	2.50
10-12 feet	3.50

All Items on This Page, Except Live Oak, Are Sent to You Prepaid



AMERICAN ELM

(*Ulmus Americana*)

An excellent native tree, with a broad, spreading head which makes a splendid shade tree. It is long lived and hardy.

	Each
6- 8 feet	\$1.50
8-10 feet	2.50
10-12 feet	3.50

LIVE OAK

A fine evergreen shade tree, well adapted for most of the Southwest. There are some fine trees growing in Lubbock, Midland and Albuquerque, N. M., and they are native around Fort Worth and south.

We have a good supply of trees in our nursery in Fort Worth. They should be transplanted from February 1 to April 1.

Specimen trees \$5.00 to \$50.00 each

SYCAMORE

(*Platanus Occidentalis*)

Very easily grown, giving quick shade and making a handsome tree, with well formed head, and interesting white bark.

	Each
6- 8 feet	\$1.50
8-10 feet	2.50
10-12 feet	3.50

BAKER BROS. *Small Fruit*

GRAPES

2-year vines, 50c each; \$5.00 per doz.

BIG EXTRA. Extra large bunch; berries black, of fine quality. A Post-Oak hybrid variety. Hardy and good bearer. June.

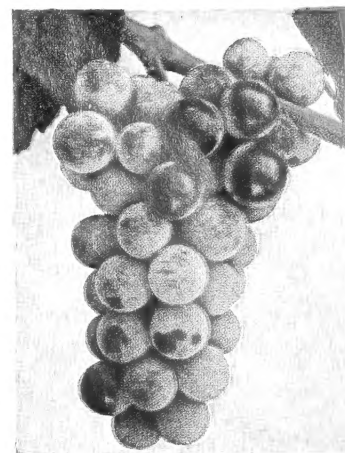
CARMEN. One of the best varieties for the South. Dark red and of fine quality. Ripens in July.

CONCORD. The most widely known and the most popular Grape. Large, compact clusters of large black fruit. Delicious, sweet and very tender. Begins to ripen about July 20th and continues for about three weeks.

DELAWARE. Small, compact clusters of bright red berries. Fruit is juicy and very sweet.

MOORE'S EARLY. Very large, early black of fine texture and quality, fine for market or home use. Hardy and prolific. Ripens in June.

NIAGARA. Most popular of the white Grapes because the large fruit has such a delightful flavor. Heavy bearer and excellent for arbors.



Concord Grapes

BOYSENBERRY

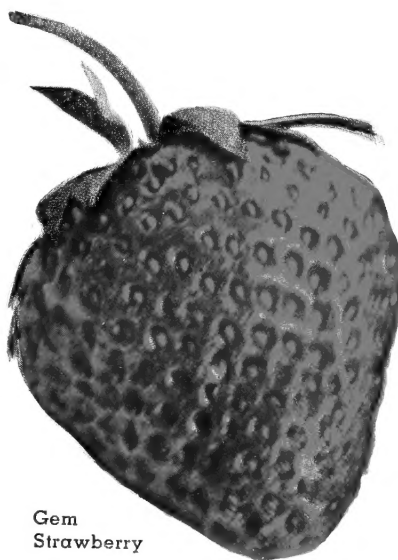
The Boysenberry is a cross of the Blackberry, Raspberry and Loganberry, and is far more vigorous than any of its parents. It is immense in size and when you taste it, you will agree that in flavor it stands supreme. It is impossible to describe its delicious flavor. It is almost seedless, firm, and is produced in large clusters on long stems that stand away from the canes. Delicious when eaten fresh or with cream, and is ideal for canned sauce, jam, jelly or preserves, in pies, tarts and shortcakes. Its natural tendency is to trail on the ground, but can be trained on fence or wires.

\$2.00 per doz.; \$15.00 per 100.

STRAWBERRY

GEM EVERBEARING. The best everbearing variety for the "Southwest." Prolific bearer, long berries, ripen light red all way through.

\$2.25 per 25; \$4.25 per 50; \$8.00 per 100.



Gem Strawberry

YOUNGBERRY

Everyone should have a few plants of this new berry plant. It is gaining popularity as a commercial fruit as it handles well and fits into every home use. The large, dark wine colored berries have a minimum of seed and are highly flavored. It is a cross between the Loganberry and Texas Dewberry, and is the world's choicest bush berry.

\$1.50 per doz.; \$10.00 per 100

AUSTIN DEWBERRY

The berries are much larger than those of any other Dewberry or Blackberry. It requires no trellis or stakes. The fruit is extra black and is superior in flavor and quality to any other Dewberry.

\$1.00 per doz.; \$8.00 per 100.

MCDONALD BLACKBERRY

Has the largest yield of any Blackberry. Ripens two weeks earlier than any other variety. Delicious when eaten with cream. Very good for canning purposes. Should be planted with other varieties for pollenization.

\$1.00 per doz.; \$8.00 per 100.



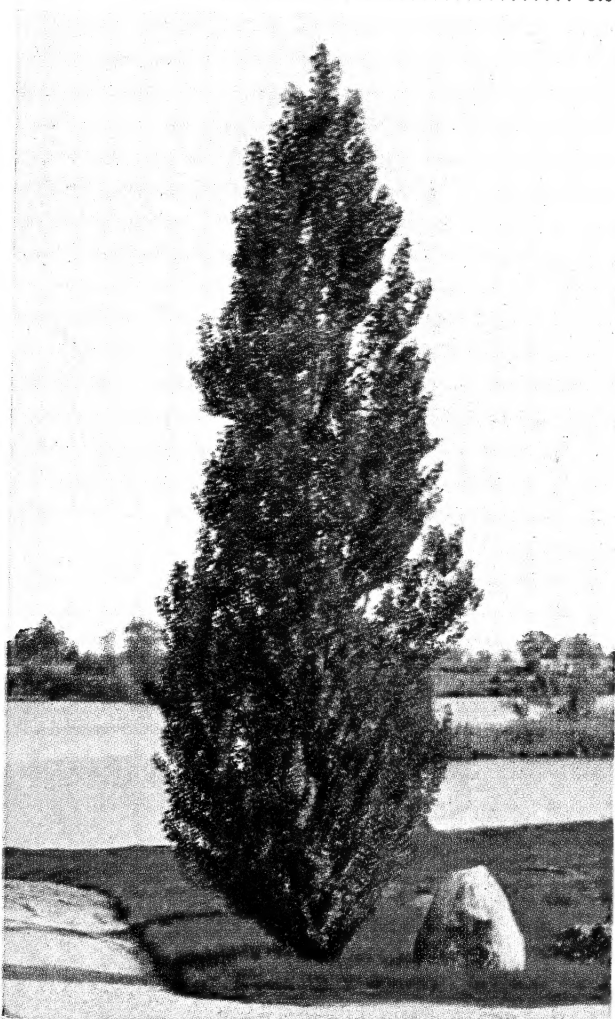
Austin Dewberry



PIN OAK

Tall growing, stately, almost evergreen in the Southwest. Used extensively in South and East Texas, but thrives over the entire Southwest. Bright scarlet foliage in fall.

	Each
6-8 feet	\$2.00
8-10 feet	3.00



BOLLEANA POPLAR (Populus Bolleana)

Tall, column-like shape, and silvery gray foliage. A fine tree for accent purposes.

	Each
6-8 feet	\$1.50
8-10 feet	2.50
10-12 feet	3.50

ALL ITEMS ON THIS PAGE SENT TO YOU
PREPAID

Tree Fruits for the Southwestern

SUMMER APPLES

ANOKA. A wonderful new early Apple which generally begins to bear the first year after planting. Fruit is large, yellow streaked red, good flavor. Ripens in August but can be used a month earlier for pies and sauce. Grows exceptionally well in any part of the country.

EARLY HARVEST. A healthy tree, vigorous and a good bearer. Fruit medium in size, clear, waxy yellow; flesh tender, juicy, acid flavor. Ripens in July.

RED JUNE. The old-fashioned favorite. Medium sized, red; flesh white, tender. Abundant bearer. Ripens last of June.

WINTER APPLES

CRIMSON WINESAP. One of the best of the old Winesap varieties. Bears well and will keep throughout the fall and winter. Fruit is medium in size, medium red, juicy and of fine flavor.

DOUBLE RED DELICIOUS. Considered as one of the finest Apples on the market today. It bears young, keeps longer and the fruit colors up several weeks earlier than the common Red Delicious. The fruit is large, solid red and has a delicious flavor that is unexcelled by any other Apple. Fine for home or commercial use.

DOUBLE RED JONATHAN. Everyone knows and like this fine red Apple. Fruit is a dark red, crisp and tender. Fine for cooking or the market.

GRIMES GOLDEN. Medium to large, bright yellow, with pink cheeks; flesh fine grained, juicy, with a very pleasing spicy flavor. For pies, sauce and dumplings, is excellent. One of the best quality eating Apples. Keeps in storage until January.

ROME BEAUTY. Fall bearing. Keep well.

STAYMAN WINESAP. Medium size, dark red, juicy, mild. A favorite late winter Apple and a leading commercial variety on all markets, as well as a very popular home Apple in the West.

YELLOW DELICIOUS. Bears young and heavily; large, golden in color and a very delicious flavor. Ripens in October and will keep until spring.

APPLE PRICES

	Each	Doz.
2-3 feet	\$1.00	\$10.00
3-4 feet	1.25	12.50
4-6 feet	1.60	18.00

Heavy Specimen trees, 3/4 inch diameter, \$2.00 ea.

APRICOTS

CLUSTER. A very productive variety. Fruit medium in size, firm and very delicious. Bears early.

MOORPARK. Large, freestone, productive. Bears in July. Yellow and brown with dark specks. Good for canning or drying.

	Each
18-24 inches	\$1.00
2-3 feet	1.25
3-4 feet	1.75
4-5 feet	2.25

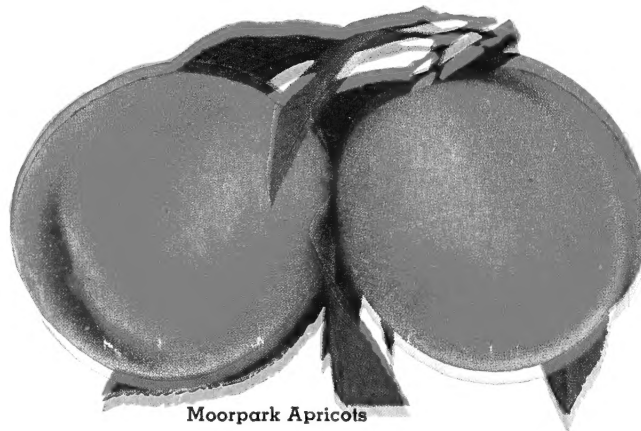


Double Red Delicious

All
Fruit Trees
and
Fruit Plants
are sent
POSTPAID



Sapa Plum



Moorpark Apricots

PLUMS

ABUNDANCE. June. Large size, cherry-red, firm and sweet: one of the most dependable of Japanese Plums. Regular bearer.

AMERICA. June. Medium size; beautiful golden yellow with lots of red; bear heavy crop at an early age. Good commercially or for home orchards.

BRUCE. June. A hybrid variety; large, red and productive. Especially good in West Texas. Unusually resistant to worms.

BURBANK. July. Japanese Plum. Large, richly colored, red mottled with yellow; excellent Plum for eating; delicious flavor; good bearer.

GOLD. July. Hybrid variety. Fruit almost transparent, golden yellow, desirable as market sort.

SIX WEEKS. May. Earliest; large, brilliant red; flesh pink, stone small. Tree vigorous; upright, grows well in all locations.

WICKSON. July. Large, heart-shaped, bright red with heavy bloom; flesh yellow.

	Each	Doz.
2-3 feet	\$1.00	\$10.00
3-4 feet	1.50	16.00
4-6 feet	2.00	22.00

COMPASS CHERRY PLUM. Cross between Plum and Cherry. Produces fruit when young—sometimes first year after planting. Hardy and vigorous grower. Bears dark red small fruit in clusters. Ripens in July. Makes fine jelly.

WANETA. Bears very young. Red colored, delicious fruit. Ripens in July. Prolific.

OPATA. June. Medium. Purple-red splashed with green. Clingstone. Gorgeous in bloom—bears first year after planting. Sweet and juicy.

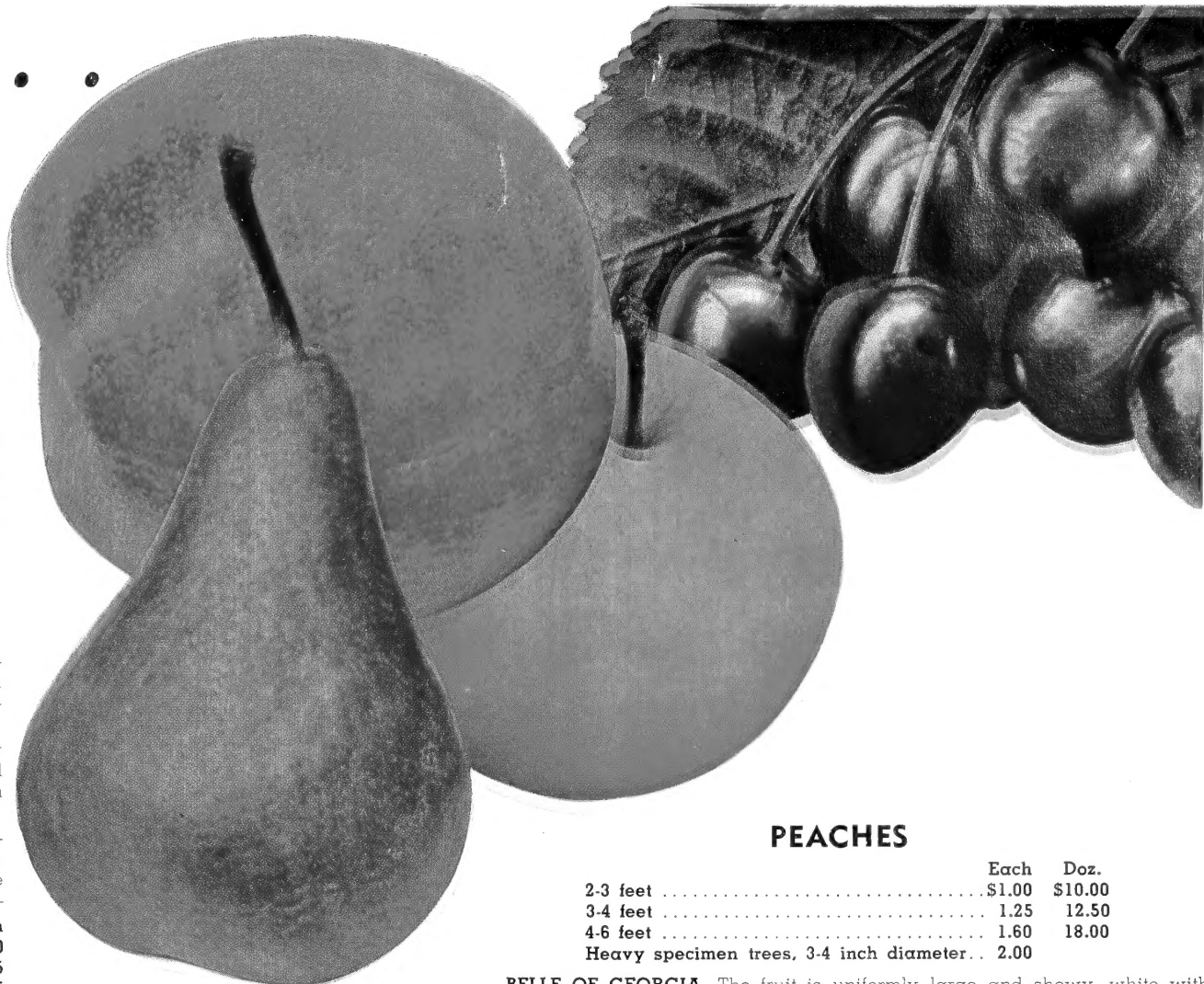
SAPA. July. Somewhat dwarfish, thrifty. Fruit large, dark purple with greenish splotches; flesh rich, dark purple-red, of rich flavor, small pit.

	Each
18-24 inches	\$1.00
2-3 feet	1.25
3-4 feet	1.75
4-6 feet	2.25



Planter . . .

HIGH QUALITY fruit trees are scarce this year! Don't be disappointed! Place your order early! Plant a "Permanent Victory Garden" with Fruit Trees, Pecans, Grapes, Berries, Persimmons and Figs. Fruit trees that grow and produce! The best cost no more! Our years of planting experience have enabled us to recommend only the varieties that are "BEST for our SOUTHWEST."



PEARS

DOUGLAS. Bears in October. Produces young. Medium sized, golden color; firm, mellow fruit. Blight resistant.

GARBER. Large, yellow with red blush on cheek. Good keeper and shipper. Bears in August.

KIEFFER. Large, golden yellow, often blushed in the sun; juicy and melting. One of the best for canning and preserving.

	Each
18-24 inches	\$1.00
2-3 feet	1.25
3-4 feet	1.75
4-6 feet	2.25

CHERRIES

EARLY RICHMOND. The first Cherry to get ripe, ripening soon after school is out. They taste so good and are ideal for making fresh Cherry pies. The large, bright red fruit is juicy and delicious. Bears heavily and starts bearing very young.

MONTMORENCY. The most widely planted Cherry because it does well everywhere. A sure bearer, ripening about 10 days later than the Early Richmond. Best of all for canning.

	Each
18-24 inches	\$1.00
2-3 feet	1.25
3-4 feet	1.75
4-6 feet	2.25

PECANS

Plant Pecans for shade as well as for nuts. We are listing the three varieties that in our opinion are "Best for the Southwest."

	Each	3	8
3-4 feet	\$3.00	\$ 8.70	\$22.40
4-5 feet	4.00	11.00	
5-6 feet	5.00	13.50	

BURKETT. The Burkett Nut is large, almost perfectly round, thin, soft shell, plump kernel and excellent flavor. Kernels release easily, coming out in whole halves. Early and regular bearer. Healthy and vigorous and one of the finer varieties for East and West Texas.

SUCCESS. A fine variety. Large, oblong, thin shell. Has good cracking qualities as the partitions are thin and the full, plump, yellow kernels are of a good flavor and very delicious. Immune to disease to which most varieties are susceptible.

WESTERN SCHLEY. The standard of excellence among Pecans. Very high quality flavor; long, slender, thin shell. Ripens early.

FIGS

BROWN TURKEY. A very large, bluish purple fruit. Bears prolifically from July through September.

MAGNOLIA. Large, pale green or white; shape varies from ordinary Fig in that it is short and flat. Always bears first year, and, if frozen, will bear on the young wood of the first year. Commonly known as "Neverfail."

	Each	3	8
12-18 inches	\$0.60	\$1.65	\$4.10
18-24 inches	.75	2.10	5.30
2-3 feet	1.00	2.85	7.20

PEACHES

	Each	Doz.
2-3 feet	\$1.00	\$10.00
3-4 feet	1.25	12.50
4-6 feet	1.60	18.00
Heavy specimen trees, 3-4 inch diameter.	2.00	

BELLE OF GEORGIA. The fruit is uniformly large and showy, white with red cheeks; flesh white, firm and very delicious. Produces heavily in mid-July.

EARLY WHEELER. High quality early Peach, ripen about May 30th. Does best in North and West Texas and New Mexico.

ELBERTA. Everyone knows this universal variety. This large, yellow, delicious Peach fills millions of fruit jars every year. Early July.

FRANK. A very fine, large yellow, delicious clingstone Peach. One of the best varieties for home and commercial growing. Mid-July.

HALE-HAVEN. Ripens early July, just before Elberta. Yellow freestone, firm flesh, consistent bearer.

INDIAN CLING. The old-fashioned Indian Peach. Medium in size and extra delicious; flesh red and one of the best clingstone varieties.

J. H. HALE. One of the oldest and best Peaches on the market today. The very large, golden yellow fruit begins to blush with a faint touch of red as it begins to ripen, and with its fuzzless skin, it is one of the most desirable for eating purposes and is one of the most widely used varieties for canning. The flesh is yellow, solid, tender and delicious. Ripens in mid-July and in time to get the best market prices. Be sure to plant several of these at these attractive prices.

LEONA. One of the best Peaches for Central and North Texas. Large, yellow with red cheek, similar to the Elberta but much better for Texas climate. Produces heavily and fruit is of a very high quality. Early July.

MAMIE ROSS. A very large oval Peach, white and with a red cheek; its firmness and tough skin make it one of the best early Peaches for the market. The flavor is rich and extra delicious. Late June.

MAYFLOWER. One of the first to ripen. Medium in size, practically red all over; flesh firm and of good flavor. Bears early when fruit is welcome in any home. Early June.

SLAPPEY. A large, yellow, fine flavored type. Good for home or commercial use. Late June.

IMPROVED GRAFTED PERSIMMONS

	Each
2-3 feet	\$1.50
3-4 feet	2.00
4-5 feet	2.50

This item should be planted at every home. It is very ornamental and the large, unusual fruit will make it something of interest in your neighborhood. Ripens from August to October.

EUREKA. A popular variety. Large, round. Orange-red skin; sweet, brown flesh.

TANE NASHI. One of the largest Persimmons. Orange-red skin; yellow flesh. Almost seedless. Useful as an ornamental besides having delicious edible fruit.

Climbing Roses

Most of the Roses in this class are climbing forms of the familiar bush Roses of the same name and classified as Teas and Hybrid Teas. These Roses bloom at intervals during the whole season, which is a distinct advantage. For the Southwest and sections where the winters are reasonably mild, they are highly recommended. After they are established they give satisfactory results. The flowers come from spurs on old wood, therefore they should not be pruned.

DAINTY BESS. A book could be written on this beautiful single Rose which is a very vigorous climber, excellent blooms of rose-pink under petals of a lighter shade of pink. Very showy. A continuous bloomer, healthy and very popular.

PAUL'S SCARLET. Semi-double flowers in large clusters, flaming scarlet with a crimson shade. None better. This is an excellent Pillar Rose.

CLIMBING TALISMAN. Climbing sport of the familiar Talisman. An excellent bloomer. No other multi-colored Rose is as popular as Talisman.

CLIMBING RED RADIANCE. Sport of Red Radiance with the flower like the parent; excellent climber. One of the most popular and a good bloomer.

CLIMBING LUXEMBOURG. A good yellow climber, disease resistant, large, long, full buds that open in double flowers that are lasting when cut.

CLIMBING PRESIDENT HOOVER. A sport of the bush President Hoover, identical with it in flower. A good one. Vigorous and healthy.

CLIMBING COLUMBIA. Sport of bush Columbia. Peach-blow pink flowers like its parent. Nearly thornless. One of the best varieties.

CLIMBING ETOILE DE HOLLANDE. Climbing sport of the popular bush variety; dark velvety red, vigorous, nice stems, excellent to cut as they are very lasting and hold the color well.

POSTPAID PRICES ON CLIMBING ROSES:

	Each	Doz.
Heavy field-grown	\$1.00	\$10.00
Medium80	8.00

Everblooming Baby Roses

(Polyanthas)

A class of Roses (Polyantha) called "Baby Roses" because of their small, dainty blooms. Most varieties bloom continuously and profusely; it is not uncommon for the plants to be completely covered with color, resembling a living bouquet. They bloom almost continuously from early spring to late fall. Plant them for massing in beds, for edging or for low hedges.

CECIL BRUNNER. Sweetheart Rose. Small, exquisitely formed buds. Flowers of light pink with yellow base; healthy and prolific.

ELSE POULSEN. Lovely pink; one of the best and most popular Polyanthas. Disease resistant.

LAFAYETTE. An excellent Polyantha with large, bright cherry-carmine flowers. Popular and a good one.

GOLDEN SALMON. Bright orange-salmon flowers in huge clusters. Blooms all through the season. A novel Rose and very popular.

CHATILLON. One of the very best dwarf pink Roses. Large heads of flowers all season. An outstanding Rose for any garden.

IDEAL. Velvety crimson clusters of fragrant flowers; most popular red; strong grower. Lasts well when cut. Beautiful dark green glossy foliage. Blooms first and last in season.

POSTPAID PRICES ON BABY ROSES:

	Each	Doz.
Heavy field-grown	\$1.00	\$10.00
Medium80	8.00



A COMPLETE LISTING OF HYBRID TEA ROSES WILL BE FOUND ON PAGES 8 AND 9.

BAKER BROS. NURSERY

Serving the Southwest Since 1884

Fort Worth, Texas Midland, Texas
Lubbock, Texas Albuquerque, N.M.