

Historic, Archive Document

Do not assume content reflects current scientific knowledge, policies, or practices.

62.61

LIBRARY
RECEIVED
★ MAR 23 1945 ★
U. S. Department of Agriculture

EBERLE'S SEEDS

1945

116 MAIN STREET
HEMPSTEAD, N. Y.

FREDERICK W. EBERLE
ALBANY, NEW YORK 2



Choice Seeds, Bulbs, Plants and Horticultural Requisites

1945

IN PRESENTING our Annual Catalog to an ever-increasing number of customers, we desire to thank them for past favors and solicit a continuance of their patronage. We shall also greet with pleasure any new patrons that may come to us, and assure them our seeds have long been known for their high standard of quality; our increased sales indicate that their reputation is well merited.

FREDERICK W. EBERLE

How to Order by Mail

NAME AND ADDRESS SHOULD ALWAYS BE GIVEN. Frequently, orders are received when the sender has failed to give his name, or the Post-Office address has been omitted; hence, for this reason, the order cannot be filled. Please use the order sheet and envelope enclosed with this Catalog, giving your name, full Post-Office address, and how you wish the order sent: by Parcel Post, Express, or Freight. Be sure to give your nearest Express Office or Railroad Station, where it is different from your Post-Office address. Duplicate order sheets and envelopes will be sent on request.

HOW TO SEND MONEY. Remittances may be made by **Money Order, Draft, or Check.** If cash or stamps are sent, be sure to register the letter.

PRICES SUBJECT TO CHANGE. All prices in this Catalog are subject to change without notice.

FORWARDING. We deliver, postage paid, to any Post-Office in the United States, Vegetable or Flower Seeds in Packets, Ounces, and Quarter Pounds, ordered at prices quoted in this Catalog, except where otherwise noted.

NON-WARRANTY. Complaints made that seeds are not good should quite as often be attributed to other causes than to the quality of the seeds. There are hundreds of contingencies continually arising to prevent the best seeds always giving satisfaction, such as sowing too deep, too shallow, in too wet or too dry soil; insects of all descriptions destroying the plants as soon as or before they appear; wet weather, cold weather, frosts, chemical changes in the seeds induced by temperature, etc. For the above reasons it is impracticable to guarantee seeds under all circumstances, therefore FREDERICK W. EBERLE gives no warranty, express or implied, as to description, quality, productiveness, or any other matter of any seeds, bulbs, or plants sent out, and will not be in any way responsible for the crop. If the purchaser does not accept the goods on these terms, they are at once to be returned. When mentioned, purity and germination tests are for information only and are without guarantee.

Improved American Savoy Cabbage

This is one of the best varieties of Savoy Cabbage grown. The heads are large and compact, and the leaves dark green and very crumpled. Well adapted to early or late planting. Our stock has been carefully selected and is superior to most strains offered under this name.

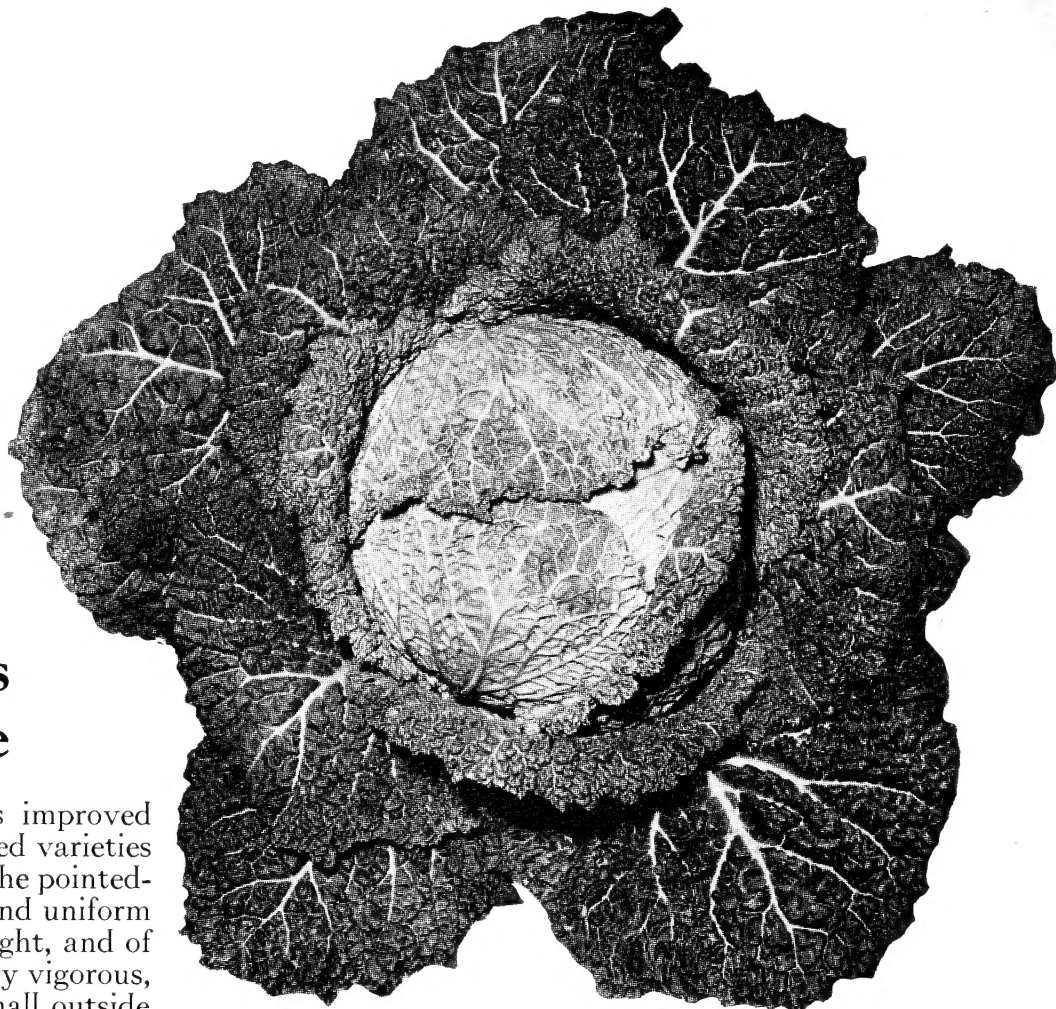
Pkt. 20 cts., 1/2oz. 44 cts., oz. 87 cts.

Eberle's Peerless Special Cabbage

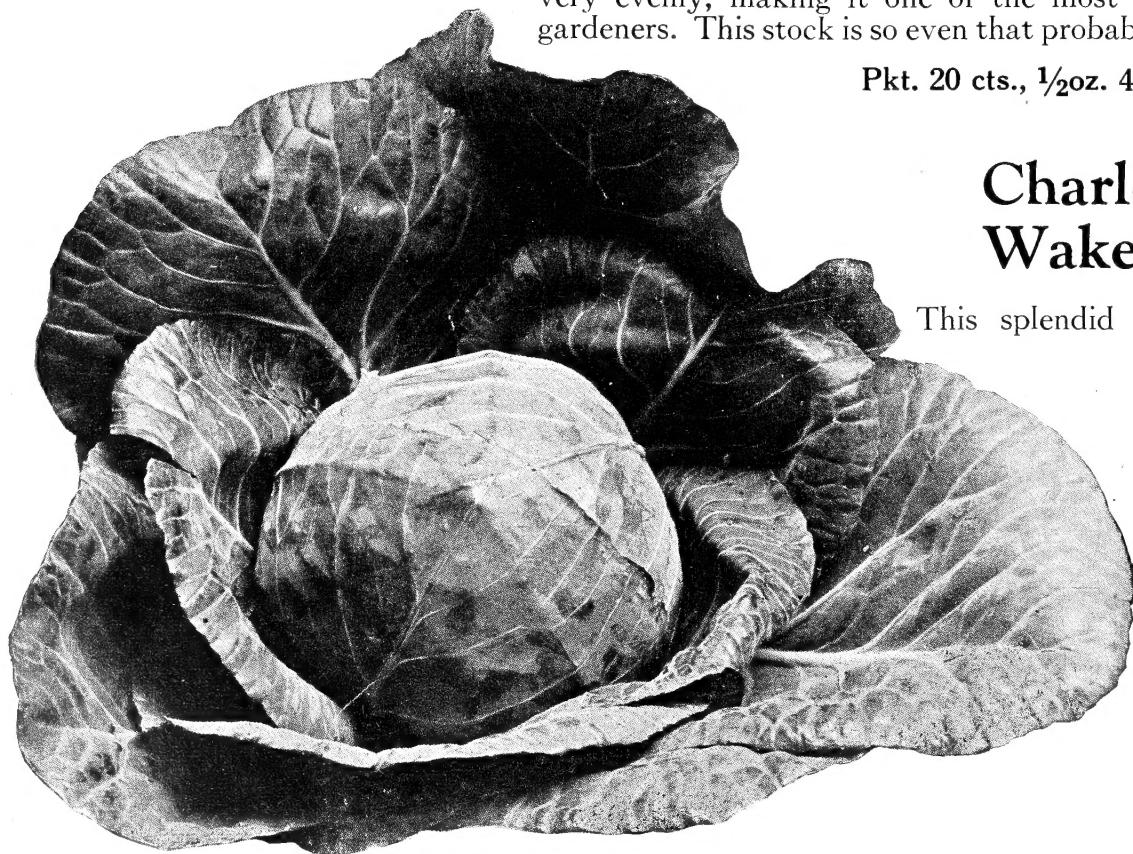
The best extra-early variety. This improved strain is the earliest of the round-headed varieties and matures several days earlier than the pointed-head sorts. The heads are very solid and uniform in size, averaging 6 to 8 pounds in weight, and of remarkably fine quality. Plants are very vigorous, short-stemmed, very compact, with small outside leaves which permit close planting, and mature

very evenly, making it one of the most profitable varieties for market gardeners. This stock is so even that probably every plant will make a head.

Pkt. 20 cts., 1/2oz. 49 cts., oz. 97 cts.



Improved American Savoy Cabbage



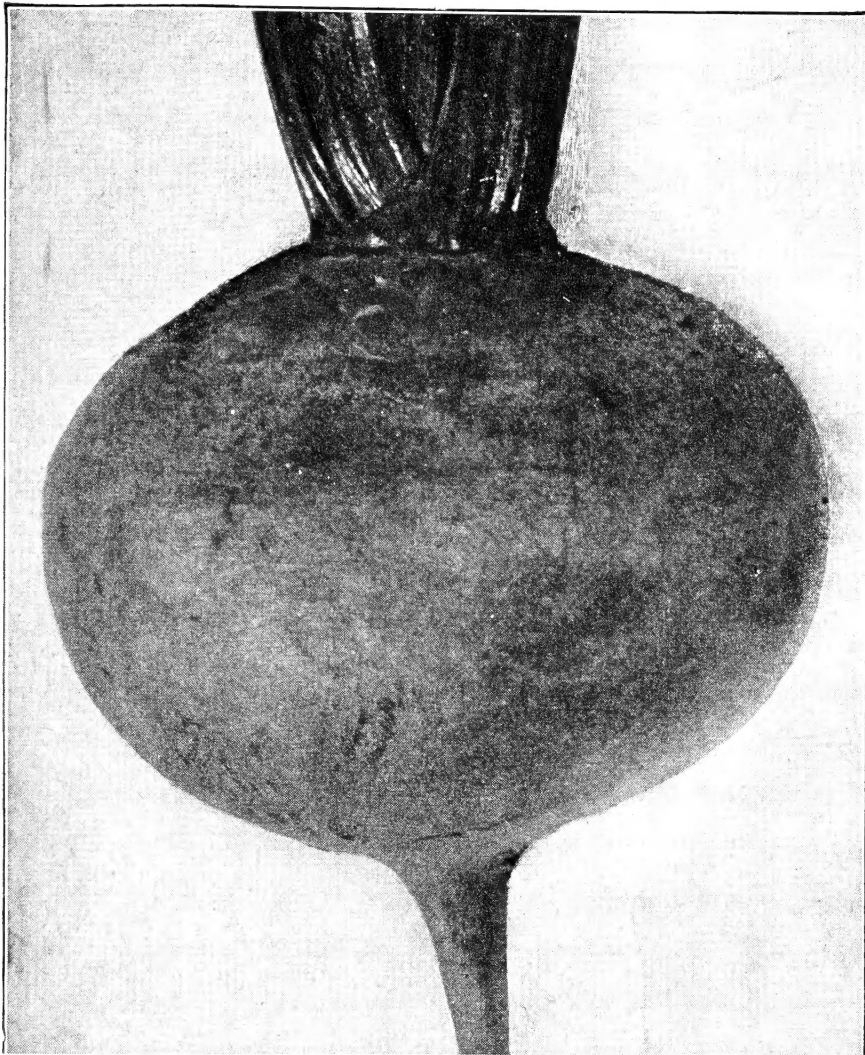
Eberle's Peerless Special Cabbage

Charleston or Large Wakefield Cabbage

This splendid variety matures a few days later than Extra-Early Wakefield, but is much larger and not so pointed. The plants are medium, very vigorous, and exceedingly hardy. Heads very uniform in size and shape and mature very evenly, making it one of the best varieties for early planting for both truckers and shippers.

The stock we offer has been grown from carefully selected plants and is sure to please the most critical grower.

Pkt. 10 cts., 1/2oz. 26 cts., oz. 52 cts.



Detroit Dark Red Special Beet

Detroit Dark Red Beet

Special

This well-known variety is one of the best general crop Beets and is very popular among market gardeners. The roots are very dark, uniform in shape, and of excellent quality; the tops are medium in size and of very vigorous growth. It is well adapted for bunching and marketing in baskets, and one of the best for storing for winter use. The stock we offer has been very carefully selected for trueness to type and color and is sure to please the most critical grower.

Pkt. 15 cts., oz. 20 cts., 1/4lb. 80 cts.,
lb. \$3

Crosby's Egyptian Beet

Special

A very early sort, well suited for first outdoor sowing. The tops are of medium size and vigorous growth. Roots medium size with a small tap-root, very uniform in shape and color, and grow so evenly that they can all be pulled and bunched at one time. It has a very smooth skin and is very attractive. Extensively used by market gardeners.

Pkt. 15 cts., oz. 20 cts., 1/4lb. 80 cts.,
lb. \$3

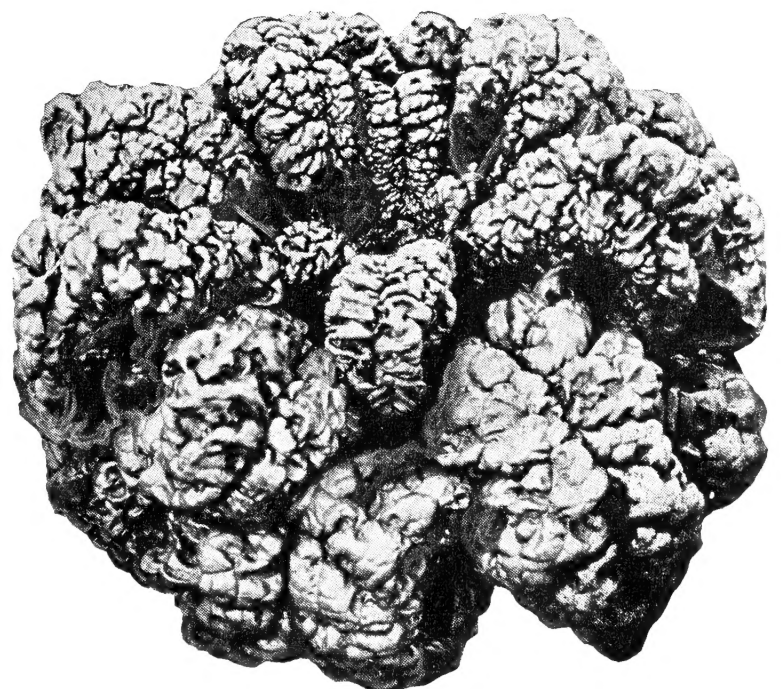
Savoy Special Spinach

Extensive trials prove this variety to be far superior in every way to the old type Bloomsdale. It is just as early and robust as the ordinary strain, but will stand in marketable condition ten to fourteen days longer before bolting to seed. Being of uniform habit, the plants make a fine appearance. The leaves are large, intensely crumpled, and of an attractive deep, glossy green color. We strongly recommend this strain for early or summer use. Pkt. 10 cts., oz. 20 cts., 1/4lb. 50 cts., lb. \$1.50

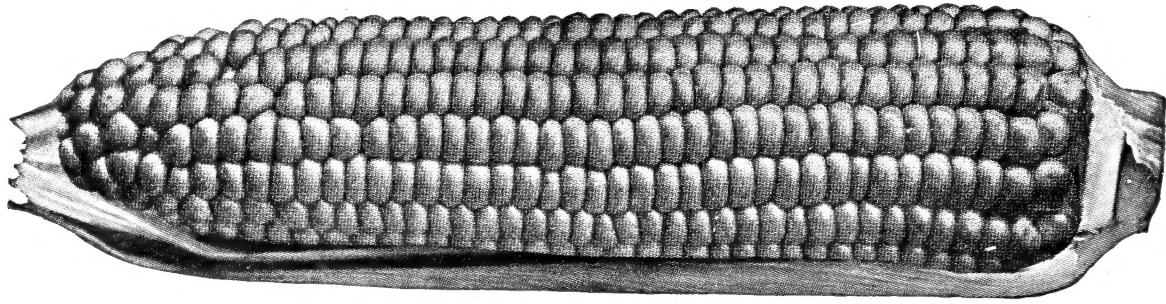
Savoy (Blight-Resistant) Spinach

This robust variety is especially valuable for its blight-resisting quality. The large, dark green leaves of good substance are savoyed and crumpled. It is best suited for late crop and the seed should not be sown before the latter part of August, as the plants have a tendency to bolt to seed if sown earlier.

Pkt. 10 cts., oz. 20 cts., 1/4lb. 50 cts., lb. \$1.50



Savoy Special Spinach



Golden Cross Bantam

SWEET CORN

Golden Cross Bantam

One of the best of the crosses for midseason. The stalks are of medium height, producing well-filled ears about 8 inches long and 10- to 14-rowed. The kernels are deep, narrow, thin-skinned, and have a very fine flavor, making it an ideal sort for home and market use.

Pkt. 20 cts., 1/2lb. 35 cts., lb. 65 cts., 2 lbs. \$1.20

Marcross 39

An early yellow topcross Corn. The stalks are about 6 feet high and very prolific, producing large 12- to 14-rowed ears which are well filled with kernels of delicious flavor. An excellent variety for market gardeners.

Pkt. 20 cts., 1/2lb. 35 cts., lb. 65 cts., 2 lbs. \$1.20

Whipcross

A second-early hybrid yellow Corn. Stalks about 7 feet tall and more productive than Whipple's Early Yellow. The ears are about 9 inches long, 12- to 16-rowed, well filled to the very tip and of exceptionally fine quality. A most desirable variety for the market garden.

Pkt. 20 cts., 1/2lb. 35 cts., lb. 65 cts., 2 lbs. \$1.20

Marcross 6-13

One of the earliest hybrid Sweet Corns. Ears golden yellow, 6 to 8 inches long, 10- to 14-rowed, very uniform, and of excellent quality. Stalks medium tall and very productive.

Pkt. 20 cts., 1/2lb. 35 cts., lb. 65 cts., 2 lbs. \$1.20

Golden Early Market

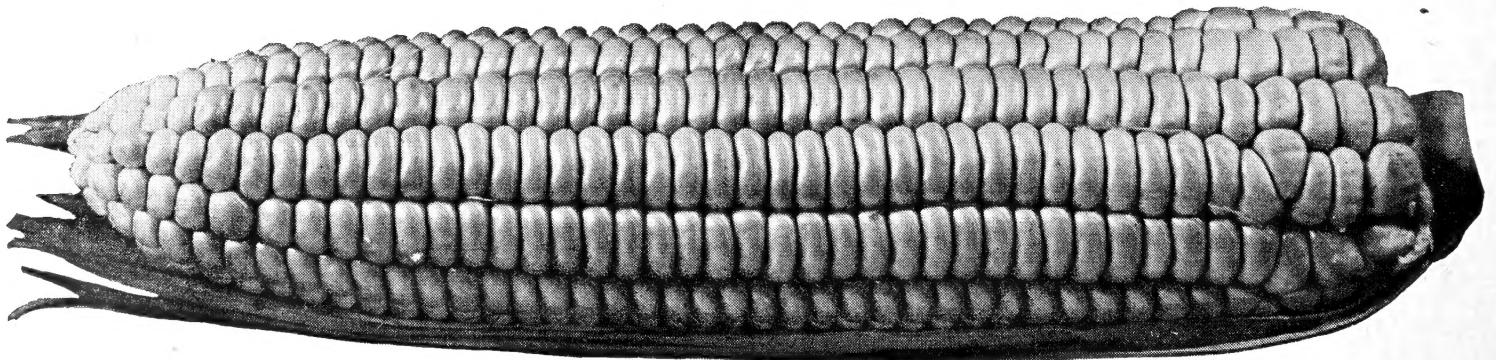
A very early yellow variety which matures 8 to 10 days earlier than Golden Bantam. Ears 12- and 14-rowed, 8 inches long, of a rich golden yellow color and good quality. Plants grow 4 feet high and produce two ears to each stalk, close to the ground.

Pkt. 15 cts., 1/2lb. 23 cts., lb. 45 cts.,
2 lbs. 80 cts.

Golden Bantam

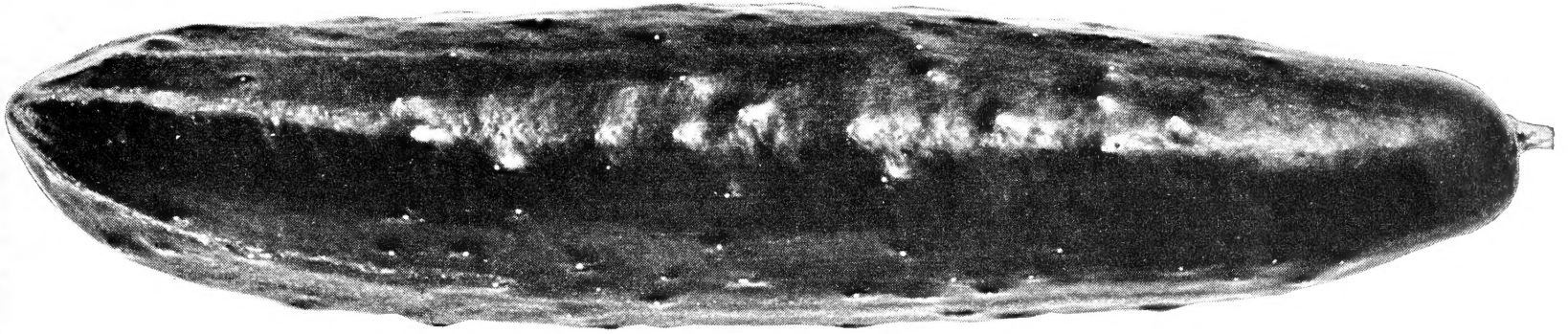
Still one of the sweetest yellow Corns. Medium early. Stalks about 5 feet tall. Very prolific, bearing 2 or more 8-rowed ears. Kernels deep, very sweet and tender.

Pkt. 15 cts., 1/2lb. 23 cts., lb. 45 cts.,
2 lbs. 80 cts.



Whipcross

If Corn is ordered by mail or express prepaid, add 8 cents per pound and 2 cents for each additional pound for transportation and packing



Longfellow Cucumber

CUCUMBERS

Early Fortune

An exceedingly prolific and attractive dark green, white-spined variety. The fruits are cylindrical or slightly tapered at the ends, and average 9 inches in length with a $2\frac{1}{2}$ -inch diameter. They retain their dark green color for a long time after picking and do not fade when shipped a long distance. The seed cavity is small and the white flesh is firm and crisp, with very few seeds, making it an excellent sort for slicing. It is the finest type of the early-maturing sorts and has become a general favorite with many growers. The vines are hardy and vigorous.

Pkt. 10 cts., oz. 15 cts., $\frac{1}{4}$ lb. 60 cts.

Davis' Perfect

This long, smooth, handsome, white-spine Cucumber is more extensively used than any other sort. The vines are very productive and the fruits are deep green, averaging 10 inches in length. They are medium early in maturing, and suitable for forcing or outdoor culture.

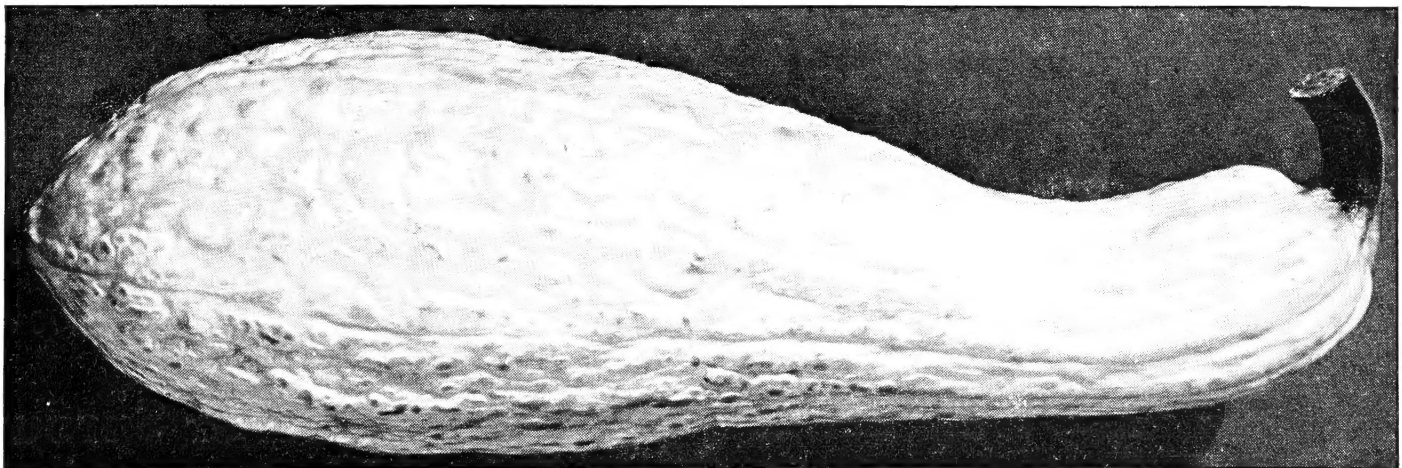
The deep green fruits are very attractive and the clear white, crisp flesh is tender and of excellent flavor. It is less affected by the hot sun than most sorts, and also remains in marketable condition for a longer period.

Pkt. 10 cts., oz. 15 cts., $\frac{1}{4}$ lb. 60 cts.

Longfellow

A beautiful, intense dark green sort, well adapted to greenhouse forcing, frame, or outdoor culture. It is a large-fruited, main-crop Cucumber of perfect shape and exceptional attractiveness. The long, slender, straight, smooth fruits always command top price in the market. They measure 12 to 14 inches long, pack right, and remain in prime condition for a longer period than any other variety. The delicate-flavored, white flesh is very crisp and almost seedless. Healthy and vigorous vines, producing a heavy yield of fruits which, when grown outdoors and fully developed, are equal to greenhouse-grown varieties. We recommend it as an ideal type for both home and market garden.

Pkt. 10 cts., oz. 18 cts., $\frac{1}{4}$ lb. 70 cts.



Squash, Giant Summer Straightneck

An improved strain which possesses all the good qualities of the Giant Summer Crookneck but is vastly superior to that variety on account of its fine, symmetrical form and thick, meaty neck. The straight fruits, measuring 18 to 20 inches long, are intensely warted and of a pale lemon-yellow color when ready for marketing. A valuable sort for shipping because of its form, as it packs right, thus eliminating loss from breakage experienced with the Crookneck variety.

Pkt. 10 cts., oz. 30 cts., $\frac{1}{4}$ lb. 80 cts.

ENDIVE

Full Heart (Escarolle)

A popular and hardy growing sort, producing rosette-type heads which often measure 16 inches in diameter. Large, broad leaves, slightly twisted and waved, and of a bright deep green color. The small inner leaves form a tender, crisp, fine, creamy white, full heart. When blanched, it makes an excellent salad. The thick leaves, with white midribs, are cooked like spinach or used for flavoring soups, etc.

Pkt. 10 cts., oz. 35 cts., 1/4lb. \$1.00

Large Green Curled Special

A selected strain of this strong-growing variety, which is of easy culture and valuable for late crop. The leaves are very finely curled, of a bright green color, and form so dense a center that it readily blanches of itself to a rich creamy white. The plant has a very attractive appearance and a stimulating pungent flavor.

Pkt. 10 cts., oz. 35 cts., 1/4lb. \$1.00



Full Heart (Escarolle) Endive

KALE

Dwarf Green Curled Special

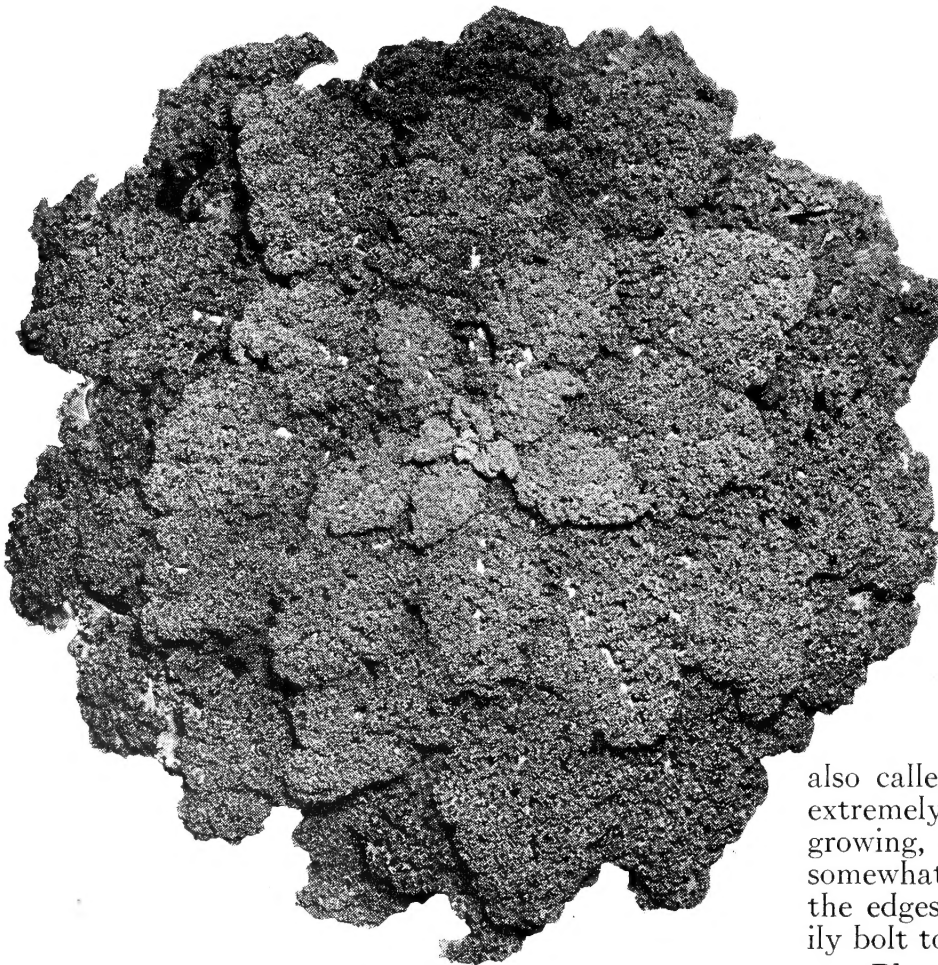
This strain is extremely hardy and vastly superior to the ordinary Dwarf Green Curled in every way. It is of a more uniform, low-growing, and compact habit, with large, finely curled, fringed leaves of an intense dark green color. The delicate-flavored leaves retain their dark green color for a longer time than any other variety. Valuable for "greens" during the winter and the quality is improved when the plants have been touched by frost.

Pkt. 20 cts., 1/2oz. 40 cts., oz. 70 cts., 1/4lb. \$2.00

Siberian or Sprouts

One of the best-known varieties of Kale; also called "Sprouts" or "German Greens." It is an extremely hardy, bluish green-leaved sort of low-growing, spreading habit. The leaves are large and somewhat plain in the center, but cut and frilled at the edges. Makes a rapid growth and does not readily bolt to seed in the spring.

Pkt. 10 cts., 1/2oz. 25 cts., oz. 40 cts., 1/4lb. \$1.10



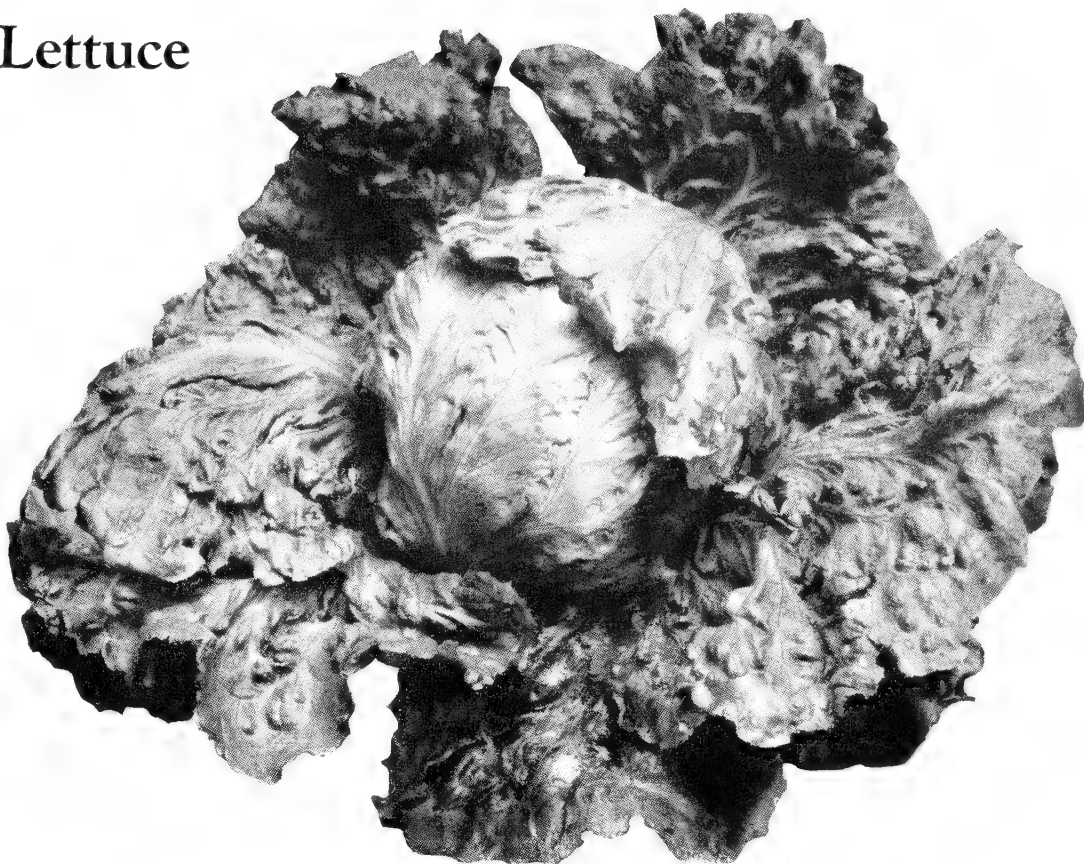
Dwarf Green Curled Special Kale

New York Special Lettuce

A choice, early strain of the curled or crisp heading New York or Wonderful. Possessing all the good qualities of the parent variety and being of earlier maturity, makes it better adapted and more valuable for the early market. The rich dark green outer leaves are slightly curled on the edges and the immense heads of exceptional firmness blanch to an enticing creamy white.

Unsurpassed for crispness, tenderness, and freedom from bitterness; also for its good keeping and shipping qualities. We have made extensive trials of this variety and find it to be of special merit.

Pkt. 20 cts., oz. 38 cts., 1/4lb. \$1.13



New York Special Lettuce

Eberle's Perfection Lettuce

An excellent sort for spring or fall planting. The plants are large, of vigorous growth, very hardy, withstanding considerable wet or cold weather, and succeed best in heavy soil. Outer leaves are broad, smooth, with wavy edges of a light green color, slightly tinged with reddish brown, while the inner leaves blanch to a greenish yellow. Heads very large, compact, crisp and tender, and are well suited to long-distance shipping.

Pkt. 20 cts., oz. 36 cts., 1/4lb. \$1.14



White Boston Lettuce

White Boston Lettuce

This splendid heading variety is somewhat similar to the well-known Big Boston but matures earlier and is of a lighter green color, with no tint of brown on the margin of the leaves. The plants are large and vigorous, producing compact heads of fine butterhead quality, blanched to a creamy yellow. Very uniform in heading and the broad, smooth leaves, with wavy edges, are tender, crisp, and juicy. It is remarkably free from tip-burn and withstands the hot weather better than most sorts before bolting to seed. Extensively grown for early and late crop and well adapted to muck culture. Highly recommended for its attractiveness and exceptionally fine qualities.

Pkt. 20 cts., oz. 36 cts., 1/4lb. \$1.09

PEAS

Eberle's Defiance

A variety of recent introduction which has become very popular with those who appreciate appearance and fine quality. The vines are vigorous and produce an abundance of large pods filled with immense Peas of excellent quality. This variety ripens immediately after the extra-early sorts and is a splendid Pea for the home or market garden. Height 1½ ft.

Pkt. 20 cts., ½lb. 25 cts., lb. 40 cts., 2 lbs. 70 cts.

Laxton's Progress

This is undoubtedly the finest large-podded early dwarf Pea. The dark green, robust vines grow about 18 inches high and produce a great abundance of dark green pods which are very attractive and contain 8 to 10 large Peas of excellent quality. It is similar to Pioneer and Hundredfold in many respects, but will mature about three days earlier.

Pkt. 20 cts., ½lb. 25 cts., lb. 40 cts., 2 lbs. 70 cts.

World's Record

Splendid, heavy-cropping, large-podded variety of the Gradus type, but superior to it in many respects. It is earlier, does not grow quite so tall, and the pods are larger and more uniform in size. They are a handsome deep green color, measure 3½ to 4 inches in length, and are well filled with deep green Peas of exceptional quality. The vines grow about 3 feet high and are very productive. Highly recommended.

Pkt. 20 cts., ½lb. 25 cts., lb. 40 cts., 2 lbs. 70 cts.

Prince Edward

This splendid, large-podded variety is of recent introduction and has become very popular with market gardeners. The vines are vigorous and strong, producing very large pods which often measure 5 inches in length; they are borne in great profusion and are of excellent quality; color deep green. Height, 4 ft.

Pkt. 20 cts., ½lb. 25 cts., lb. 40 cts., 2 lbs. 70 cts.

Hundredfold

For the home garden this variety is unequalled. The dark green vines, growing 15 to 18 inches high, are extremely robust and prolific. Its rich, dark green, fairly broad and pointed pods, measuring 4 inches long, are well filled with 7 or 8 deep green Peas of the most delicious flavor. They mature a few days later than the extra-early round-seeded sorts, but are larger, more attractive, and of a superior quality. May be grown in succession throughout the entire season.

Pkt. 20 cts., ½lb. 25 cts., lb. 40 cts., 2 lbs. 70 cts.

If Peas are ordered by mail or express prepaid, add 8 cts. per pound and 2 cts. for each additional pound for transportation and packing



World's Record Peas

PEPPERS

Surprise

A new Pepper of outstanding merit, somewhat similar to California Wonder. The plants are dwarf, vigorous, and produce an abundance of large, thick-fleshed, pendent fruits, which are sweet and mild, medium early, and very uniform. The color is a deep green changing to a bright scarlet when ripe. In our trials this Pepper has proved to be the most prolific of the large-type varieties. We do not hesitate to recommend this to the most critical grower.

Pkt. 20 cts., 1/2oz. 65 cts., oz. \$1.20

California Wonder

An outstanding and distinct variety which surpasses all others for thickness of flesh and handsome appearance. The immense, square fruits are smooth, of a glossy, dark green color which turns to crimson when the Peppers are ripe, exceptionally sweet and crisp, thick-walled, making them ideal for stuffing and salads. Plants are of erect growth, vigorous and productive. A splendid sort for shipping.

Pkt. 20 cts., 1/2oz. 55 cts., oz. \$1.00



Surprise Pepper

World-Beater

The earliest of the extremely large, sweet Peppers. The plants are vigorous and very productive. The fruits are large and very attractive, flesh thick and of very mild flavor, color deep green when young, deep crimson when matured. An excellent variety for shipping and market garden.

Pkt. 20 cts., 1/2oz. 65 cts., oz. \$1.20

Neapolitan

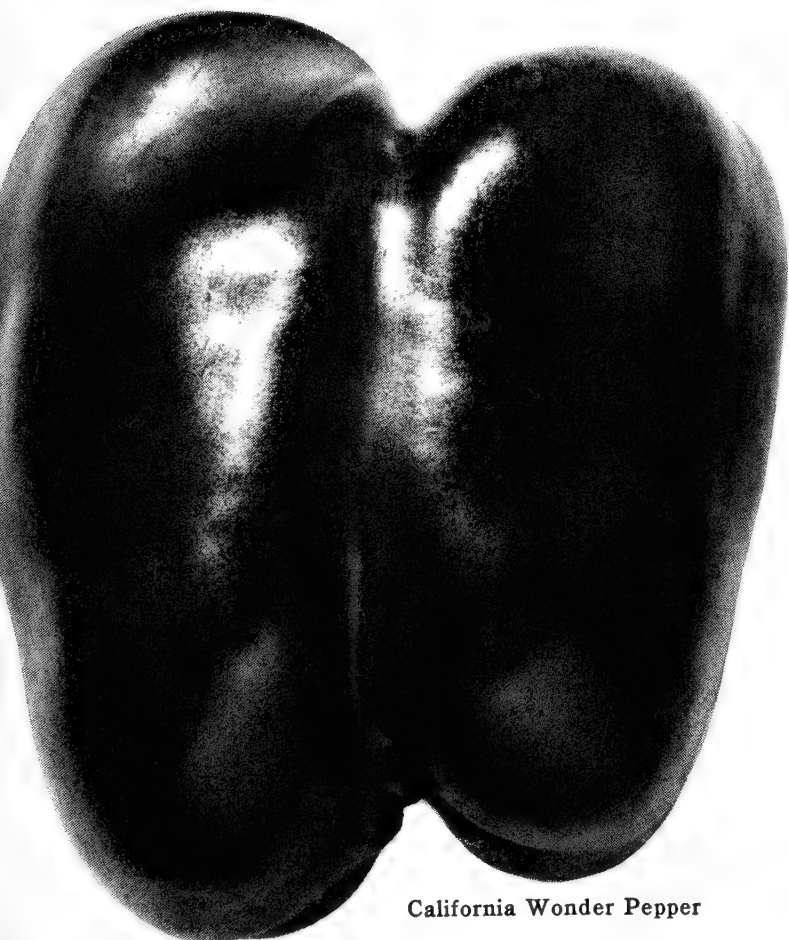
One of the earliest varieties. The elongated fruits are of upright growth and measure 4 inches long; a pale green when young turning to a brilliant red when ripe. Very mild and sweet.

Pkt. 20 cts., 1/2oz. 50 cts., oz. 90 cts.

Ruby King (Special)

The large, pendent fruits are early, very attractive and average 5 to 6 inches in length, with a 4-inch diameter at stem end. The flesh is thick and of a mild and pleasant flavor. Plants grow stocky and are very productive, yielding large fruits which are uniformly regular in size and shape, well suited for stuffing.

Pkt. 20 cts., 1/2oz. 50 cts., oz. 90 cts.



California Wonder Pepper

RADISHES

Early Scarlet Globe Forcing

A select strain, especially adapted for forcing under glass. It is the earliest globe-shaped variety, with fair-sized roots and short tops, just right for bunching. The Radishes are very uniform in shape, with slender tap-root, bright scarlet skin, and fine, mild-flavored, white flesh, exceptionally crisp and tender. Unsurpassed for attractiveness and also well suited for growing outdoors.

Pkt. 10 cts., oz. 20 cts., 1/4lb. 60 cts., lb. \$1.80

Icicle

This is the earliest and most handsome, long, pure white Radish in cultivation. The roots grow about 6 inches long, broad at top, tapering to a point, and are nearly transparent. They retain their excellent flavor and tender, brittle quality for a long time. Superb summer variety, maturing in 21 days; also adapted for forcing.

Pkt. 10 cts., oz. 20 cts., 1/4lb. 60 cts., lb. \$1.80



Early
Scarlet
Globe
Forcing
Radishes

Sparkler

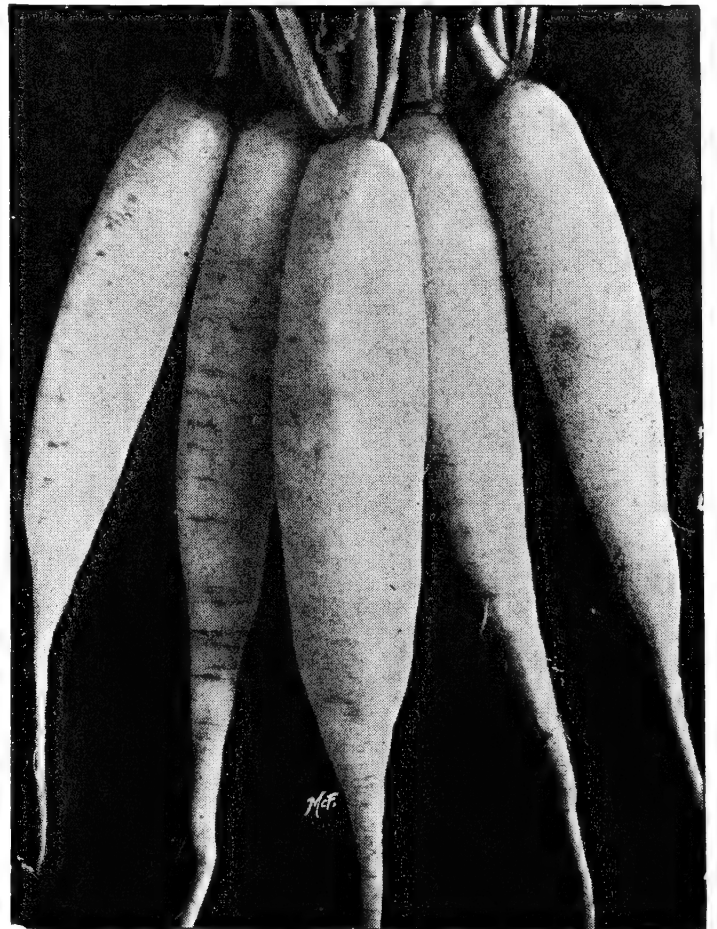
A choice strain of Early Scarlet Turnip White-tipped Radish. The color is a beautiful scarlet with large white tip and is very attractive. Flesh crisp and sweet.

Pkt. 10 cts., oz. 20 cts., 1/4lb. 60 cts., lb. \$1.80

White Strasburg

A desirable large white variety for late summer and autumn use. The roots are thick at the shoulder, somewhat tapering, and measure 5 to 6 inches long when fully matured. They are fit for use in six weeks from time of sowing and will continue to increase in size for four weeks longer without becoming pithy. Fine quality, pure white flesh, rather tender and not too pungent.

Pkt. 10 cts., oz. 20 cts., 1/4lb. 60 cts., lb. \$1.80



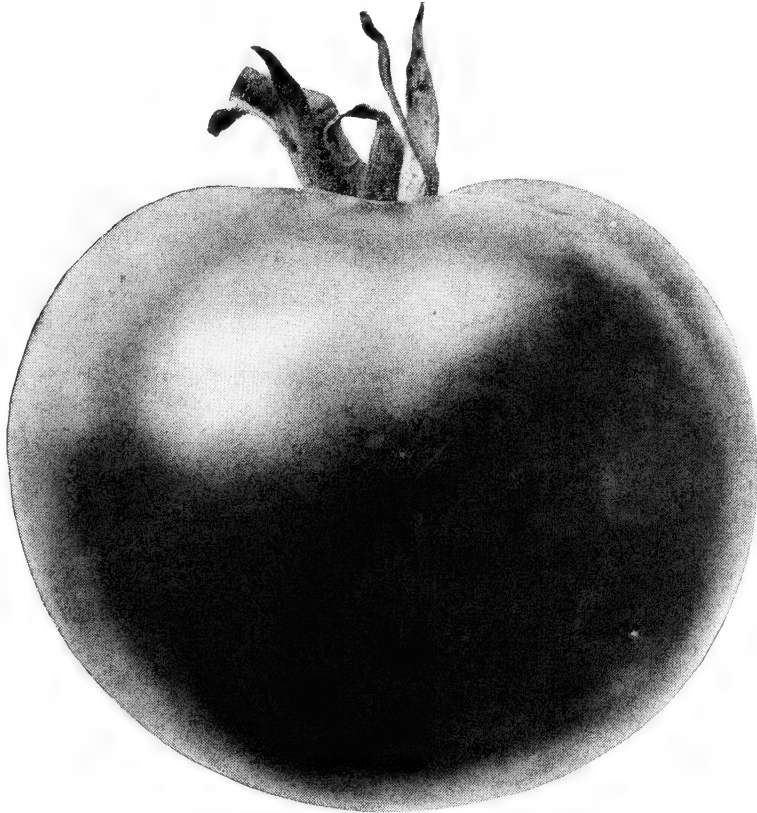
Icicle Radishes

TOMATOES

Early Prolific Tomato

An exceedingly early variety. The perfect, round fruits, of a rich red color, are medium-sized, very smooth, and free from blemishes; flesh solid and firm, with few seeds. They ripen early and uniformly right up to the stem. Vines vigorous and productive. We can thoroughly recommend this as a first-class early and all-round market variety of excellent flavor; also good shipper.

Pkt. 20 cts., 1/2oz. 75 cts., oz. \$1.40



Early Prolific Tomato

Globe Tomato

SPECIAL STRAIN

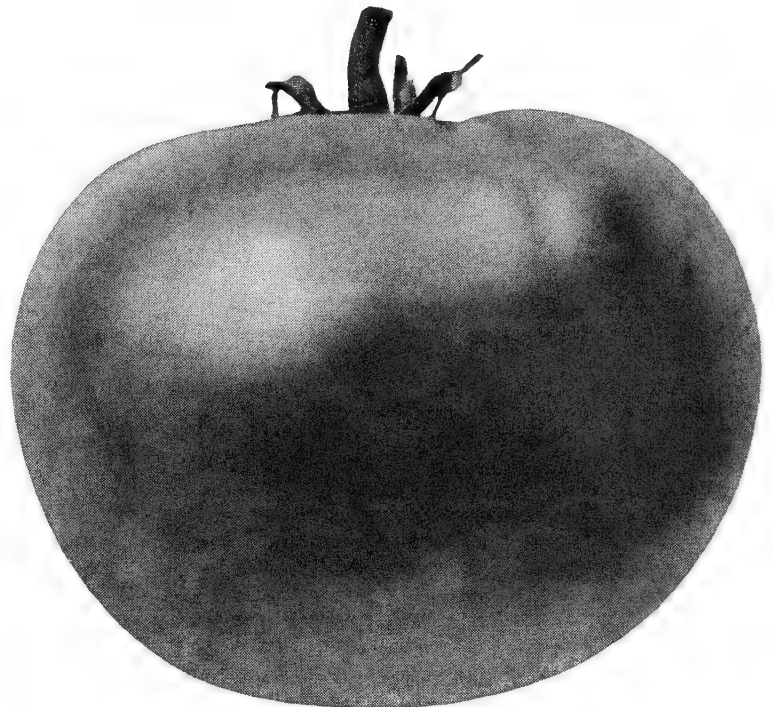
A superb, medium-early variety, with attractive, globe-shaped, purplish pink fruits. It is very productive and the large fruits, borne in clusters, have a fine, smooth skin and solid flesh with few seeds. Highly recommended for its excellent shipping qualities.

Pkt. 20 cts., 1/2oz. 75 cts., oz. \$1.40

Pritchard Scarlet Topper Tomato

A very productive early sort. The splendid, globe-shaped, smooth fruits grow to a good size and attain an attractive bright red color. Flesh firm, mild-flavored, free from acidity, with no core and small seed-cavity. Plants grow compact and robust and produce a heavy crop when planted in good rich soil.

Pkt. 20 cts., 1/2oz. 75 cts., oz. \$1.40

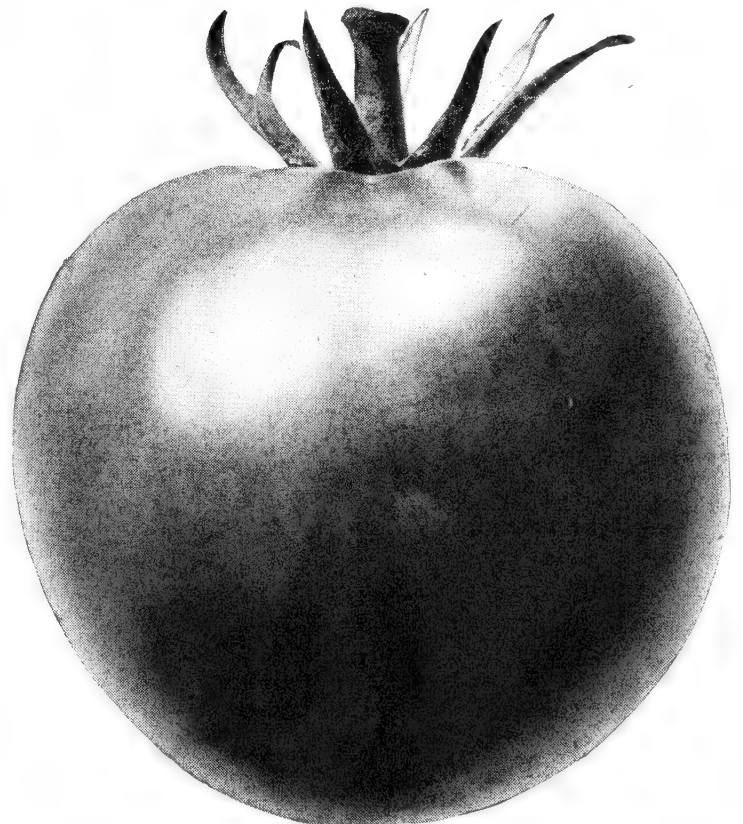


Eberle's Excelsior Tomato

Eberle's Excelsior Tomato

A most excellent, large, purplish pink Tomato. The smooth, firm fruits, produced in clusters, are almost globe-shaped, free from cracks, and mature early. They grow very uniform in size and have solid flesh of delicious flavor. The vines make a strong, healthy growth, do not blight easily, and are very productive. A valuable variety for shipping to distant markets.

Pkt. 20 cts., 1/2oz. 75 cts., oz. \$1.40



Pritchard Scarlet Topper Tomato

Eberle's Vegetable Seeds

ARTICHOKE *1 ounce will produce 300 plants*

LARGE GREEN GLOBE. The flower-heads or buds are thick and fleshy, very tender and delicious . . .

Pkt.	Oz.	¼lb.
\$0 10	\$0 70	\$2 00

ASPARAGUS *1 ounce will sow 50 feet of drill*

WASHINGTON. Very productive and of exceptional quality. The shoots are large, thick, and blight-resistant . . .

10	25	70
----	----	----

ASPARAGUS ROOTS

WASHINGTON. Strong, two-year-old roots. \$2.50 per 100, \$15 per 1,000.

BEANS, Dwarf Green-Podded *1 pound will plant 100 feet of drill*

	Pkt.	½lb.	1 lb.	2 lbs.	5 lbs.
BLACK VALENTINE. Very early, hardy, and productive. Pods dark green	\$0 15	\$0 25	\$0 50	\$0 90	\$2 00
BLACK VALENTINE STRINGLESS. Plants are very vigorous and very productive. Pods are round, green and nearly straight, free from strings	15	25	50	90	2 00
BOUNTIFUL. An excellent early variety. The vines are strong, very productive. Pods light green, long and very uniform in size and shape, free from strings	15	25	50	90	2 00
FULL MEASURE. Suitable for spring or fall crops. Medium green, round, stringless pods	15	25	50	90	2 00
PLENTIFUL. An improved type of Bountiful. Pods deep green, stringless	15	25	50	90	2 00
TENDERGREEN. An improvement in round-podded green Beans. Pods straight, dark green, stringless, of fine quality	15	25	50	90	2 00
WINDSOR LONG-POD (Fava Beans). Superior to others of the Windsor type	15	25	50	90	2 00

BEANS, DWARF WAX-PODDED

DAVIS STRINGLESS KIDNEY WAX. A white-seeded variety producing attractive light yellow pods	15	25	50	90	2 00
IMPROVED CURRIE'S RUSTPROOF WAX. Pods long, semi-round, stringless and of fine quality. Vines very prolific	15	25	50	90	2 00
PENCIL-POD BLACK WAX. Round, slightly curved pods, stringless, highest quality	15	25	50	90	2 00
SURE-CROP WAX. An excellent early variety. Vines vigorous. Pods long, golden yellow and stringless	15	25	50	90	2 00
WEBBER WAX or CRACKERJACK. A valuable flat-podded variety, for early planting. Pods medium broad, bright yellow.	15	25	50	90	2 00

BEANS, BUSH LIMA

FORDHOOK. One of the best Bush Lima Beans. Pods 4½ to 5 inches, containing 3 or 4 large Beans of finest quality

15	25	50	90	2 00
----	----	----	----	------

BEANS, POLE *1 pound will plant 50 hills*

EBERLE'S GIANT (Lima). One of the best of the pole varieties . . .	15	25	50	90	2 00
KENTUCKY WONDER GREEN POD. One of the best green-podded Pole Beans. Very productive and of excellent flavor	15	25	50	90	2 00
SCARLET RUNNER. An ornamental climber with attractive scarlet flower. May be used as Snap or Shell Bean	15	25	50	90	2 00

BEETS *1 ounce will sow 50 feet of drill*

	Pkt.	Oz.	¼lb.	1 lb.
CROSBY'S EGYPTIAN. (Special.) A very early sort for first outdoor sowing. Tops medium. Roots dark red, smooth, and very uniform	\$0 15	\$0 25	\$0 80	\$3 00
DETROIT DARK RED. (Special.) A standard main-crop variety. Color dark red. Tops medium. Roots globe-shaped, very smooth, and grow so uniform that the crop can all be harvested at the same time	15	25	80	3 00
DETROIT DARK RED. (Selected.) A good main-crop variety well suited for all purposes. Tops medium. Large roots, dark red, globe-shaped, and very uniform. Well adapted for bunching	15	25	80	3 00
EARLY WONDER. (Selected.) A valuable variety for early market. Tops are medium. Roots uniform, round, smooth, and of an attractive deep red color	15	25	80	3 00
LONG SMOOTH BLOOD. Roots 8 to 10 inches long. Skin dark purple with extra-dark flesh, very sweet and tender	15	25	80	3 00
GREEN TOP. Medium tops with grayish green foliage. Roots round and blood-red	15	25	80	3 00

SUGAR BEET

VILMORIN'S IMPROVED. Standard variety for poultry and stock-feeding	15	25	80	3 00
--	----	----	----	------

MANGEL WURZEL

GOLDEN TANKARD. Large, oval-shaped roots. Flesh yellow, zoned white when thoroughly matured	15	25	75	2 20
NORBITON GIANT LONG RED. One of the most productive sorts	15	25	75	2 20

BORAGE

Largely used as pot herb	15	30	1 00	
------------------------------------	----	----	------	--

BROCCOLI *1 ounce will produce 3000 plants*

	Pkt.	½oz.	Oz.
BRONZINO. A very hardy variety producing large, firm heads, some of which are purple while others are dark yellow. Very fine flavor	\$0 20	\$0 75	\$1 25
BRONZINO PURPLE. Heads purple, very large and compact, of fine quality	20	75	1 25
CALABRESE (Italian Sprouting). Adapted for either early or late planting			Sold Out
EARLY GREEN SUMMER. Matures earlier than Calabrese	20	75	1 25
DI RAPA. Early. For spring sowing, should be cut before yellow blossoms appear	10	30	50
DI RAPA. Late. For fall sowing to winter over	10	30	50

BRUSSELS SPROUTS *1 ounce will sow 200 feet of drill*

HALF-DWARF SPECIAL. An extra-selected stock. Recommended to growers looking for fancy stock			Sold Out
L. I. HALF-DWARF. Sprouts solid and of excellent flavor	15	45	80

CABBAGE *1 ounce will produce 5000 plants*

ALL-HEAD EARLY. Good second-early sort. Deep, flat heads of solid, uniform shape	15	26	52
ALL SEASONS. Suitable for midseason and early fall crop	15	26	52
AMERICAN SAVOY IMPROVED. Especially fine strain. Large heads, of dark green color, compact, and finely curled. This strain has proved very popular with our market gardener customers	20	44	87
BUGNER. (Yellows-resistant.) Heads flattish round, solid. Good keeper	20	44	87
CHARLESTON WAKEFIELD. The heads are uniform in size and shape and mature evenly	15	26	52

CABBAGE, continued

	Pkt.	½oz.	Oz.
COPENHAGEN MARKET. A desirable early, round-headed variety. Compact, short-stemmed plants maturing about 10 days later than Eberle's Peerless Special	\$0 20	\$0 44	\$0 87
DANISH BALLHEAD. Short-stemmed strain. Deep, round solid heads. Most popular for storage purposes	20	29	57
EBERLE'S PEERLESS SPECIAL. Our leading extra-early Cabbage. This improved strain is the earliest of round-headed varieties. The heads are very solid and uniform in size, averaging 6 to 8 pounds in weight, and of remarkably fine quality. The compact, short-stemmed plants permit close planting. This is a favorite with critical market gardeners	20	49	97
GLOBE YELLOWS-RESISTANT. A strain similar in type to Glory of Enkhuizen Cabbage, but resistant to yellows disease	20	44	87
GLORY OF ENKHUIZEN. This is a popular round-headed main-crop variety. The heads are solid, averaging from 6 to 8 pounds	20	26	52
GOLDEN ACRE. Especially valuable for early planting. Round heads uniform in shape and size	20	49	97
HACO RED. Superior, early, short-stemmed, deep red, solid heads. Weigh 3 to 4 pounds			Sold Out
MAMMOTH ROCK RED. Large, deep, solid, flat heads. The best of the large-type red Cabbages	20	44	87
MARION MARKET. A yellows-resistant strain developed from Copenhagen Market	20	44	87
PEERLESS. This strain matures a few days earlier than Copenhagen Market	20	49	97
PEERLESS YELLOWS-RESISTANT. This is a similar Cabbage to Peerless but resistant to yellows disease	20	49	97
PENN STATE BALLHEAD. One of the heaviest of the Danish Ballhead type. Retains green color longer than most late Cabbages	20	44	87
SUCCESSION. A standard variety for midseason and early fall crop	20	26	52
TRUCKERS' FAVORITE. A distinct variety resembling Danish Ballhead, but larger and heavier. Recommended for shipping and storing over winter	20	27	54
WISCONSIN NO. 8. (Yellows-resistant.) Recommended for late crop. Good keeping quality. Large, firm, globular heads. Average weight 7 to 9 pounds	20	44	87

CHINESE CABBAGE

CHIH LI. Long, cylindrical, compact heads, very solid and excellent quality. Most popular market sort.	10	19	37
PE-TSAI. Resembles Cos Lettuce in form. Not so compact as Chihli. Has stronger Cabbage flavor	10	19	37
WONG BOK. Grows a dwarf, broad, firm head. Later in maturing than Pe-Tsai or Chihli	10	19	37

CARDOON

LARGE SMOOTH			Sold out
-------------------------------	--	--	----------

CARROT *1 ounce will sow 100 feet of drill*

	Pkt.	Oz.	¼lb.
CHANTENAY, LONG TYPE. Since being introduced, has taken first place among early bunching Carrots. Slimmer at shoulder than regular Chantenay; almost coreless; 6½ inches long. Good deep-colored skin and the fine-grained tender flesh, with delicate flavor, makes it very popular in markets. Does well either on muck or upland soils.	\$0 10	\$0 35	\$1 16
CHANTENAY, RED-CORED. Shape and length are similar to Chantenay. When cut the small core is deeper colored. Roots are smooth and stump-rooted	10	35	1 16
CORELESS LONG RED. Does well on muck soil. Smooth, deep orange-colored roots	10	35	1 16
DANVERS HALF-LONG. This might be called a standard variety. Popular with market gardeners in many states. Has good bunching top. Roots grow about 7 inches long, tapering uniformly to the blunt end	10	35	1 16
EBERLE'S NO. 308. On deep, light soils this strain excels. Roots are cylindrical, stump-rooted, grow longer than Coreless. Both outside and inside color is deep orange			Sold out
HUTCHINSON. A long deep orange-colored variety with strong top. Excellent for bunching	10	35	1 16
IMPERATOR. Extensively grown in California. A long slender Carrot well adapted to bunching. The roots are about 8½ inches long, tapering to a semi-blunt end. Color deep orange	10	35	1 16

CARROT, continued

	Pkt.	Oz.	¼lb.
INTERMEDIATE. An excellent main-crop variety with smooth orange roots measuring 10 to 11 inches. Uniform in shape, about 2½ inches diameter at shoulder, tapering to a point	\$0 10	\$0 35	\$1 16
MORSE'S BUNCHING. The roots are almost cylindrical with rounded shoulders. Recommended where a longer bunching Carrot is required			Sold Out
NANTES HALF-LONG STUMP-ROOTED. This variety is largely used on muck soils. Tops medium. Roots deep reddish orange, about 7 inches long, cylindrical, stump-rooted, and coreless	10	35	1 25
PERFECTION. A most desirable Carrot for bunching. Roots about 8 inches long, cylindrical, very smooth and almost coreless. Color deep orange	10	35	1 16
TENDERSWEET. A long slender Carrot, excellent for bunching. Color deep orange; very sweet and tender	10	35	1 16
RELIANCE. We consider this one of the best strains of bunching Carrots. Skin bright color; flesh rich orange; shape very attractive, about 7 inches long, and shows up well when packed for market. Does equally well on muck or upland soils	10	35	1 16

CAULIFLOWER *1 ounce will produce 3000 plants*

	Pkt.	¼oz.	Oz.
DWARF ERFURT. A desirable strain for late crop. It is of a dwarf, compact habit, with erect, dark green, pointed leaves growing closely about the flower. The snow-white heads of even surface are large, heavy, close-grained, and of an attractive appearance when prepared for market	\$0 50	\$1 13	\$4 50
PREMIER. An excellent new variety well suited for fall planting. Matures about one week earlier than Snowball. The heads are large, deep, and compact, and are well protected by ample foliage	50	1 13	4 50
SELECTED SNOWBALL. This variety is more extensively grown than any other sort. Well adapted for late summer and fall-crop planting. Has ample leaves to protect the heads from sun and frost. The heads are solid, compact, round, very white, and curdlike. They measure 9 to 10 inches across and have a depth in proportion. The strain we offer is one of the finest of the Snowball type	50	1 13	4 50
EBERLE'S SPECIAL No. 100. An early variety of Snowball suitable for early and late culture, maturing about 10 days earlier than Erfurt. The heads are large, deep, solid and compact	50	1 13	4 50
WHITE MOUNTAIN. A Snowball type that is very hardy. The heads are white, very solid and compact, while the plant is very robust, with ample foliage to protect the heads from the sun. It matures slightly earlier than Snowball and is a desirable sort for late planting	50	1 13	4 50
DANISH GIANT or DRY WEATHER. A large, late variety, well adapted to withstand long dry seasons. The plants being of a robust habit give greater protection to the heads which are very solid, pure white	50	1 13	4 50

CELERY *1 ounce will produce 4000 plants*

	Pkt.	½oz.	Oz.
EASY-BLANCHING. This is a pale green, early Celery. The plants are of medium height, vigorous, and not so susceptible to blight, while the stalks are broad, crisp, and tender. It has a very full heart which bleaches readily to a golden yellow color. Suitable for both muck and upland culture	\$0 35	\$1 50	\$2 50
EBERLE'S WONDERFUL. A distinct and valuable early variety. The plants are semi-dwarf, very vigorous, and are not so susceptible to blight and other Celery diseases. It has a very full heart which bleaches quickly to a beautiful golden yellow color. In quality it is surpassed by none, and its handsome appearance commands a ready sale in any market. It is all the name implies—Wonderful	35	1 50	2 50
CORNELL No. 19. An early yellow variety of fine quality	35	1 50	2 50
GOLDEN SELF-BLANCHING. (Tall.) This new strain is in every way similar to the well-known Golden Self-blanching, but is a more vigorous grower, earlier, taller and not so susceptible to blight.	25	80	1 50
PARAGON CELERY. A very desirable green Celery for late planting. It is a robust grower, semi-dwarf, is quite free from blight, and has a full heart which bleaches easily to a creamy yellow. The stalks are broad, solid, crisp, free from stringiness and of a fine nutty flavor. An excellent sort for storing for winter use	35	1 50	2 50

CELERY, continued

	Pkt.	½oz.	Oz.
SUMMER PASCAL. A green variety of excellent quality. Plants are compact and grow about 16 inches tall. Stalks round, smooth, and have a glossy sheen.	\$0 35	\$1 50	\$2 50
TRIUMPH. A Celery of exceptional merit. The plant is dwarf, vigorous, quite hardy, and has a very full heart. Stalks pale green, broad, quite thick, very solid, crisp and tender, bleaching readily to a golden yellow color. Highly recommended for an early or late crop	35	1 50	2 50
WONDERFUL SPECIAL. This strain is taller and longer jointed than Wonderful Celery; we recommend it for early transplanting. The very full heart bleaches quickly to a lovely golden yellow color	35	1 50	2 50
SOUP. The tops are cut and used for flavoring soups	10	15	25
UTAH PASCAL. A green sort with thick round stems of fine quality	25	80	1 50

CELERICAC

LARGE SMOOTH PRAGUE. Turnip-rooted Celery	25	1 25	2 00
--	----	------	------

CHICORY *1 ounce will sow 100 feet of drill*

	Pkt.	Oz.	¼lb.
CATALOGNA. Dark green, narrow serrated leaves mostly used as greens	\$0 10	\$0 50	\$1 50
NEAPOLITAN. A hardy variety with serrated leaves, used as greens		Sold out	
SAINT PASQUALE. Used as greens.		Sold out	
WITLOOF or LARGE-ROOTED. Smooth roots 8 to 10 inches long. In fall roots are transplanted and forced for French Endive; also used as greens	10	50	1 50

COLLARD

GEORGIA. Somewhat similar to Cabbage but does not form a head	10	25	75
CABBAGE or HEADING. Produces loose folding leaves which are inclined to form heads	10	25	75

CORN SALAD *1 ounce will sow 150 feet of drill*

A substitute for lettuce		Sold out	
------------------------------------	--	----------	--

CORN (Sweet) *1 pound will plant 100 hills*

	Pkt.	1 lb.	2 lbs.	5 lbs.
GOLDEN BANTAM. One of the sweetest of the yellow Corns. 80 days	\$0 20	\$0 45	\$0 80	\$1 75
GOLDEN CROSS BANTAM HYBRID. The best of the Hybrid Corns replacing many main-crop varieties. Ears 10 to 14-rowed. Excellent quality. 88 days	25	65	1 20	2 75
GOLDEN EARLY MARKET. One of the best of the extra-early sorts producing large well-filled ears which are 10 or 12-rowed. Stalks about 4½ feet. 70 days	20	45	80	1 75
GOLDEN EVERGREEN. Produces large-sized 12 and 14-rowed ears with deep grains of a most delicious flavor. Stalks about 7 feet. 90 days	20	45	80	1 75
GOLDEN SUNSHINE. About 10 days earlier than Golden Bantam. Ears 10 or 12-rowed. Stalks average about 4 feet. 70 days	20	45	80	1 75
IOANA. A large main-crop variety. 90 days	25	65	1 20	2 75
LATE MAMMOTH. The largest late variety grown producing immense 14 and 16-rowed ears which are well filled with large white, tender grains of a decided sugary flavor. Stalks about 9 feet. 100 days	20	45	80	1 75
LINCOLN. A medium-early variety. Ears 12 or 14-rowed about 8 inches long. 84 days	25	65	1 20	2 75
LONG ISLAND BEAUTY. A large late white variety. The ears often measure 12 inches long, with 16 rows of sweet sugary grain. Stalks about 8 feet. 100 days	20	45	80	1 75
MARCROSS 39 HYBRID. An early yellow-top cross variety. Stalks about 6 feet producing 12 or 14-rowed ears of delicious flavor. Suitable for market gardeners. 77 days	25	65	1 20	2 75
MARCROSS 6-13. This new variety has large uniform ears which mature about two days later than Golden Early Market. Stalks 4 to 5 feet and very productive. 72 days	25	65	1 20	2 75

CORN (Sweet), continued

STOWELL'S EVERGREEN. A late white-grained variety producing large ears having 14 or 16 rows of very deep sweet grain. Stalks about 7 feet. 100 days	Pkt.	1 lb.	2 lbs.	5 lbs.
	\$0 20	\$0 45	\$0 80	\$1 75
WHIPCROSS P39 HYBRID. A large-eared yellow Corn. Ears 12 or 14-rowed, of good flavor. Stalks 7 feet. 84 days	25	65	1 20	2 75
WHIPPLE'S EARLY YELLOW. A second-early variety producing large well-filled ears which are 12 or 14-rowed. Stalks about 6 feet. 80 days	20	45	80	1 75

CRESS

Curled. Leaves pungent. Used as salad	Pkt.	Oz.	¼lb.	Upland. Used as salad	Sold out
	\$0 10	\$0 35	\$1 00	Water. Used as salad	Sold out

CUCUMBER *1 ounce will plant 50 hills*

DAVIS' PERFECT. This long smooth handsome white-spined Cucumber is extensively used. The vines are very productive, fruits very uniform and of deep green color. Suitable for forcing and outdoor culture	Pkt.	Oz.	¼lb.
	\$0 10	\$0 20	\$0 60
EARLY FORTUNE. An exceedingly early, prolific and attractive dark green white-spined variety	10	20	60
EARLY GREEN PROLIFIC. A very productive pickling sort	10	20	60
EXTRA-EARLY DARK GREEN WHITE SPINE. An extremely early variety. The vines are vigorous, very healthy, and produce a large crop of uniform and symmetrical-shaped fruits of an attractive dark green color	10	20	60
HYBRID. A very productive dark green Cucumber. An excellent sort for shipping	10	20	60
LONGFELLOW. An attractive intense dark green sort, well adapted to greenhouse forcing, frame or outdoor culture. The long, slender, straight, smooth fruits always command top price in the market, measuring about 12 to 14 inches long, and remain in prime condition for a longer period than any other variety. Resistant to cucumber and other diseases	10	20	70
LONG GREEN IMPROVED. Standard late sort, largely used for dill pickles	10	20	60
NATIONAL PICKLING. The best pickling variety, producing fruits more uniform in shape and size than any other sort. The fruits are dark green, cylindrical in shape and blunt at both ends	10	20	60
No. 500. A most desirable sort. The vines are vigorous and very prolific. Fruits very dark green and unusually uniform, measuring about 12 inches	10	25	90
SNOW'S PICKLING. One of the best varieties for pickling. The early-maturing, uniform-sized fruits are short, square-ended and of a rich deep green color. Very prolific	10	20	60

DANDELION *1 ounce will sow 100 feet of drill*

THICK-LEAVED IMPROVED. A very early, large, thick-leaved variety, superior to the common sorts	Pkt.	½oz.	Oz.
	\$0 25	\$0 60	\$1 00

DILL *1 ounce will sow 100 feet of drill*

MAMMOTH. An improved strain, taller and more productive than the common sort	10	15	25
---	----	----	----

EGGPLANT *1 ounce will produce 1000 plants*

BLACK BEAUTY. A very desirable variety. The fruits are large, entirely spineless, and have an attractive dark purple skin. Very prolific	Pkt.	½oz.	Oz.
	\$0 20	\$0 70	\$1 20
NEW YORK SPINELESS. Large, dark purple fruits of fine quality	20	70	1 20
EARLY LONG PURPLE. This is an early variety, very productive. The fruits are club-shaped and of a rich purple color	20	70	1 20
BLACK BEAUTY SPECIAL. An improved strain of Black Beauty. The fruits are smooth, black-purple, and large. Plants are robust and very productive	20	70	1 20
FLORIDA HIGH BUSH. Plants vigorous and strong. Fruit more slender than Black Beauty, not quite so dark	20	70	1 20

ENDIVE *1 ounce will sow 200 feet of drill*

BATAVIAN FULL HEART (Escarolle). One of the best sorts for general use. The large heads are deep rosettes, and often measure 16 inches in diameter. The inner leaves bleach readily to a crisp creamy yellow color	Pkt.	Oz.	¼lb.
	\$0 10	\$0 35	\$1 00
LARGE CURLED SPECIAL. A large-framed vigorous variety. The bright green outer leaves are finely curled; the inner leaves form a compact center that bleaches creamy yellow	10	35	1 00

FENNEL *1 ounce will sow 75 feet of drill*

FLORENCE. One of the best sorts. Has large, bulb-like, oval base	15	45	1 25
MESSINA. Not so tall as Florence. May be sown earlier. The base is more round but not so large	15	45	1 25
NEAPOLITAN. A standard large variety	15	45	1 25

HERBS, Sweet, Pot, and Medicinal

Basil, Sweet. Used for flavoring	Pkt.	Oz.	¼lb.	Lavender. A perennial with penetrating fragrance	Pkt.	Oz.	¼lb.
	\$0 10	\$0 50	\$1 50			\$0 10	\$0 45
Borage	Sold out			Sage.	70	4 00	
Dill, Mammoth	10	25	75		Savory, Summer. Used for flavoring	10	1 40
Fennel, Florence	10	45	1 25				

KALE *1 ounce will produce 3000 plants*

DWARF GREEN CURLED. Dwarf, spreading habit with densely curled leaves				Pkt.	½oz.	Oz.
						Sold out
DWARF GREEN CURLED SPECIAL. This strain is superior to most Kales. The leaves are finer curled and darker; plants grow more uniform and compact; does not turn yellow so readily when cold weather sets in	\$0 20	\$0 40	\$0 70			
TALL GREEN SCOTCH. Very hardy. Plants grow 2½ feet high, with large, light green, curled leaves						Sold out
SIBERIAN (SPROUTS). Very hardy and stand the winter well. The leaves are numerous, thick, coarse, and plume-like	15	25	40			

KOHLRABI *1 ounce will sow 250 feet of drill*

EARLY WHITE VIENNA. An early, small-leaved variety well suited for forcing and early outdoor planting	15	45	85
LARGE WHITE VIENNA. A large, late sort. The bulbs are larger and tops longer than Early White Vienna, more suitable for main outdoor crop			Sold Out

LEEK *1 ounce will sow 100 feet of drill*

AMERICAN FLAG. Very desirable for early use	15	60	1 10
GIANT ITALIAN. A large, hardy variety with thick stem and dark green, broad leaves	15	60	1 10
MUSSELBURGH. Large, thick variety with long white stems which have an attractive appearance	15	60	1 10
WINTER. A hardy, long-keeping sort with deep grayish green leaves, thick stems, and mild flavor	15	60	1 10

LETTUCE *1 ounce will sow 150 feet of drill*

BIG BOSTON. (Special Stock.) Large, compact heads of light green color, slightly tinged with brown	Pkt.	Oz.	¼lb.
	\$0 15	\$0 21	\$0 54
BLACK-SEEDED BIG BOSTON. A little earlier and larger than Big Boston. Heads solid and excellent quality	20	36	1 14
BLACK-SEEDED SIMPSON. Attractive, loose-leaved variety. Early. Large, compact plants. Light greenish yellow leaves. Fine quality	15	21	64
EBERLE'S PERFECTION. A large butterhead type with dense creamy yellow hearts, suitable for spring or fall planting. Grows well on heavy soil	20	36	1 14

LETTUCE, continued

	Pkt.	Oz.	¼lb.
GRAND RAPIDS. Excellent for greenhouse culture and outdoor planting. Light green, curled leaves	\$0 15	\$0 26	\$0 53
GREAT LAKES. One of the best heat-resistant varieties	50	1 00	3 00
IMPERIAL F. A very desirable variety. Heads are large and compact and are not so susceptible to unfavorable weather conditions	20	38	1 13
IMPERIAL 847. A black-seeded variety. The heads are large and solid and resist heat more than most sorts. Well suited for late planting	20	38	1 13
IMPERIAL NO. 152. Heads medium large and compact. Resistant to tip-burn. Well adapted to varying conditions	20	38	1 13
IMPERIAL NO. 44. Similar to No. 152. The heads are medium large, very firm and resistant to tip-burn	20	38	1 13
IMPERIAL NO. 456. A new heat-resistant sort	20	38	1 13
MAY KING. An extremely early variety. The heads are small, compact and very solid, slightly tinged with brown. Well adapted to greenhouse forcing and early outside culture	15	26	79
NEW YORK NO. 55. A very early small hard-heading variety	20	38	1 13
SALAMANDER. One of the best varieties for withstanding heat. The heads are large and very attractive in appearance	15	21	64
TENNIS BALL. (Black-seeded.) A very compact head variety of fine quality	15	21	64
WHITE BOSTON. A fancy stock of this variety. The heads are large, very solid, light green, and of fine quality. Well suited to spring or fall planting	20	36	1 09
DARK GREEN COS. A medium-large dark green variety	15	26	83
PARIS WHITE COS. Heads are large, medium green color, and self-blanching	15	26	83

MELON (Musk) *1 ounce will plants 50 hills*

BENDER'S SURPRISE. An excellent main-crop variety. Fruits large, nearly round; fairly well-netted light greenish yellow skin; deep salmon flesh; small seed-cavity. Excellent quality	10	35	1 00
GOLDEN DELICIOUS. Oval fruits, with coarse netting, bright salmon flesh. Very fine quality	10	35	1 00
HALE'S BEST. Oval shape with heavy netting. Flesh salmon-orange color, exquisite flavor	10	35	1 00
HEARTS OF GOLD. Vigorous and prolific vines. Fruits nearly round, finely netted, and uniform in size. Thick deep orange flesh of delicious flavor	10	35	1 00
HONEY ROCK. Medium-sized fruits with grayish green skin, coarsely and heavily netted; deep, fine-grained salmon flesh of extremely rich flavor	10	35	1 00
MILWAUKEE MARKET. Medium large, round fruits, well netted. Flesh bright salmon and very sweet.	10	35	1 00
PRIDE OF WISCONSIN. Medium size, well-netted. Flesh deep orange color and of excellent flavor	10	35	1 00
TIP-TOP. A large variety of excellent quality. Distinctly ribbed and slightly netted; flesh bright salmon color	10	35	1 00

MELON (Water) *1 ounce will plant 30 hills*

COLE'S EARLY. The best early variety for the eastern states. Medium-sized fruits with dark and light green stripes; flesh scarlet, of fine quality	10	35	1 00
FLORIDA FAVORITE. Dark green rind striped with light green; crimson flesh of delicious flavor	10	35	1 00
KLECKLEY SWEETS. Oblong, dark green fruits; excellent bright red flesh	10	35	1 00
STONE MOUNTAIN. An early sort suitable for eastern states. Fruits are round, with dark green rind, slightly ribbed; deep crimson flesh of superb flavor	10	35	1 00
TOM WATSON. A large, long, dark green melon. Flesh deep red and very sweet. A good shipper	10	35	1 00
WINTER QUEEN. Medium-sized round melon with white skin; deep red flesh of fine quality	10	35	1 00
CITRON. (Green-seeded.) Smooth, round variety used for preserves. Striped and marbled green rind with solid white flesh	10	35	1 00

MUSTARD *1 ounce will sow 100 feet of drill*

FORDHOOK FANCY. Intensely curled, bright green leaves, with fringed edges. Excellent for garnish- ing and salads	Pkt.	Oz.	¼lb.
	\$0 10	\$0 25	\$0 75
GIANT SOUTHERN CURLED. Vigorous-growing plants with large light green leaves, having crumpled edges	10	25	75

OKRA or GUMBO *1 ounce will sow 75 feet of drill*

DWARF GREEN LONG-POD. One of the best	10	20	60
--	----	----	----

ONION *1 ounce will sow 100 feet of drill*

EARLY YELLOW GLOBE. A very early variety. Medium size; good shape; attractive color; and very productive	Pkt.	½oz.	Oz.	¼lb.
	\$0 20	\$0 45	\$0 80	\$2 40
EBENEZER (Japanese). One of the most hardy and best-keeping Onions grown. Largely used for sets	20	35	70	2 10
EVERGREEN WHITE BUNCHING. A hardy winter variety well suited for sowing in the fall to winter over; can also be sown in the summer. Does not make bulbs	20	45	80	2 40
EXTRA-EARLY WHITE. A small white Onion with dark green tops. Useful for bunching . .				Sold Out
MICHIGAN YELLOW GLOBE. Large; symmetrical; small neck; deep rich color	20	45	80	2 40
PRIZETAKER. Extra-large, early, globe-shaped Onion of mild flavor. Size and shape very uniform	20	45	85	2 60
PROSPERITY. A hardy perennial extensively used for bunching	20	45	80	2 40
QUEEN. Very early, flat, white Onion of mild flavor. Mainly used for pickling or bunching .				Sold Out
SOUTHPORT LARGE RED GLOBE. A large handsome variety of medium size with small neck and very deep rich red color. Of superior quality				Sold Out
SOUTHPORT LARGE WHITE GLOBE. Well suited to produce crop of dried bulbs for winter storage. Also used for bunching	20	50	95	2 90
SOUTHPORT LARGE YELLOW GLOBE. A standard variety. Bulbs are large and uniform, with small neck and rich orange color. A splendid keeper	20	45	80	2 40
SWEET SPANISH. A handsome globe-shaped Onion. The bulbs are very large, with a yellow- ish brown color; flesh is firm, pure white, and of fine flavor	20	45	85	2 60
WHITE BUNCH. The best white bunching sort, with heavy, dark green tops. Very mild . .				Sold Out
WHITE PORTUGAL or SILVERSKIN. A large, white, flat Onion extensively used for bunch- ing, pickling, or to grow sets	20	50	90	2 70
BRIGHAM YELLOW GLOBE. Bulbs globular, solid. Good keeper	20	45	80	2 40

ONION SETS *3 pounds will plant 100 yards of row*

WHITE and YELLOW. *Price subject to change with the market; write for quotations.*

PARSLEY *1 ounce will sow 75 feet of drill*

CHAMPION MOSS CURLED. Compact, dark green leaves, densely curled	Pkt.	Oz.	¼lb.
	\$0 15	\$0 20	\$0 70
EXTRA-DOUBLE CURLED SPECIAL. Our best strain of Curled Parsley. Not so liable to tip- burn. Color very dark. Exquisitely curled	15	20	70
HAMBURG or ROOTED. The roots are parsnip-shaped, of medium length. Very fine stock .	15	20	70
PARAMOUNT. Compact, 12 inches tall, densely curled, rich dark green color	15	20	70
PLAIN or ITALIAN. Very dark green serrated leaves	15	20	70

PARSNIP *1 ounce will sow 200 feet of drill*

GUERNSEY. Desirable hollow-crown variety. Roots are smooth and uniform	15	25	80
HOLLOW CROWN. An early variety. Roots uniform in shape, 12 to 14 inches long, 2½ to 3 inches thick at shoulder, tapering to a point	15	25	80

PEAS *2 pounds will plant 100 feet of drill*

	Pkt.	½lb.	1 lb.	2 lbs.	5 lbs.
ALASKA. An extremely early variety of good quality. Height, 2½ feet	\$0 20	\$0 25	\$0 40	\$0 70	\$1 50
EBERLE'S DEFIANCE. A second-early variety. The vines are vigorous and produce an abundance of large pods, filled with immense Peas of excellent quality. This variety ripens immediately after the extra-early sorts. Height, 1½ feet	20	25	40	70	1 50
GRADUS or PROSPERITY. Early wrinkled Peas of fine quality. Height, 2½ feet	20	25	40	70	1 50
HUNDREDFOLD. An early, dwarf, large-podded variety. Height, about 2 feet	20	25	40	70	1 50
LAXTONIAN. One of the earliest of the large-podded dwarf Peas. Height, 2 feet	20	25	40	70	1 50
LAXTON'S PROGRESS. An early, large-podded dwarf variety. The vines are robust, producing an abundance of dark green pods which are very attractive and contain 8 to 10 large Peas of excellent quality. Height, 1½ feet	20	25	40	70	1 50
LITTLE MARVEL. An extra-early dwarf sort. Pods blunt, dark green, well filled with Peas of fine quality. Height, 1½ feet	20	25	40	70	1 50
PRINCE EDWARD. A late main-crop variety. The vines are very productive; pods are large and well filled with delicious Peas. Height, about 4 feet	20	25	40	70	1 50
TELEPHONE. A well-known main-crop Pea. Height, about 4 feet	20	25	40	70	1 50
THOMAS LAXTON. This superb early sort is noted for its exquisite flavor. The large dark green pods with blunt ends are well filled with 7 or 8 large Peas of unsurpassed quality. Vines dark green, robust and very productive. Height, 3 feet	20	25	40	70	1 50
WORLD'S RECORD. An excellent sort for early planting. The vines are vigorous and produce an immense crop of well-filled dark green pods usually containing 10 Peas of exceptional quality. Height, 2½ feet	20	25	40	70	1 50

PEPPER *1 ounce will produce 1500 plants*

	Pkt.	½oz.	Oz.
CALIFORNIA WONDER. A large, heavy, smooth Pepper of dark green color. Surpasses all others for thickness of flesh and handsome appearance	\$0 20	\$0 55	\$1 00
CALWONDER. Similar to California Wonder but earlier and more prolific	20	55	1 00
CAYENNE—LONG THICK. This strain is a great improvement on the ordinary variety, being longer and much thicker in the flesh and type of pod. Pungent	20	50	90
CAYENNE—LONG THIN. A long slender variety bright red in color when ripe. Very pungent	20	50	90
EARLY GIANT. Recommended for early crop. Large and sweet	20	50	90
HUNGARIAN—LONG YELLOW. An improved strain, producing bright yellow fruits 6 to 7 inches long; when ripe they turn deep crimson. Very prolific. Pungent	20	65	1 25
LARGE CHERRY RED. Cherry-shaped fruits considerably larger than the common Red Cherry. Extremely pungent and of a bright red color when ripe	20	50	90
NEAPOLITAN. Elongated fruits of upright growth, about 4 inches long, very early, mild, and sweet flavored	20	50	90
RUBY KING SPECIAL. One of the best main-crop varieties. The pendent fruits are very attractive and average 5 to 6 inches in length, with 4-inch diameter at stem end. The flesh is thick and of mild and pleasant flavor. Plants are very productive, yielding large fruits which are uniformly regular in size and shape. Well suited for stuffed Peppers	20	50	90
SQUASH or CHEESE. Flat tomato shape, slightly corrugated	20	55	1 00
SUNNYBROOK. Fruits are tomato shape, borne upright. Color deep green, turning red when ripe; flesh thick and mild	20	55	1 00

PEPPER, continued

SURPRISE. A new Pepper of outstanding merit, somewhat similar to California Wonder. The plants are dwarf, vigorous, and produce an abundance of large, thick-fleshed, pendent fruits, which are sweet and mild, medium early, and very uniform. The color is a deep green changing to a bright scarlet when ripe. In our trials this Pepper has proved to be the most prolific of the large-type varieties.

We do not hesitate to recommend this to the most critical grower	Pkt. \$0 20	½oz. \$0 65	Oz. \$1 20
WORLDBEATER. Main-crop variety. Fruits large; flesh thick and of mild flavor	20	65	1 20

PUMPKIN *1 ounce will plant 25 hills*

CONNECTICUT FIELD. Largely cultivated for stock-feeding and canning	Pkt. \$0 15	Oz. \$0 25	¼lb. \$0 70
LARGE CHEESE SPECIAL. Large flat, creamy buff fruits of good quality	15	35	1 00
SMALL SUGAR. A small round variety of excellent quality. The flesh is rich yellow, and of a most delicious, sweet flavor	15	30	90

RADISH *1 ounce will sow 100 feet of drill*

CINCINNATI MARKET. An improved strain of Long Scarlet Short-Top	Pkt. \$0 10	Oz. \$0 20	¼lb. \$0 60	Lb. \$1 80
EARLY SCARLET GLOBE FORCING. Especially adapted for forcing. The earliest globe-shaped variety. Bright scarlet, uniform in size, with short tops just right for bunching	10	20	60	1 80
EARLY SCARLET GLOBE SPECIAL. Selected strain of this well-known sort. Of uniform shape and bright scarlet color	10	20	60	1 80
EARLY WHITE TURNIP. Quick-growing, waxy white, round Radish; very solid, crisp, and of good flavor				Sold out
GIANT WHITE STUTTGART. Large, top-shaped roots measuring 3 inches in diameter and 4 inches long. Suitable for late summer planting				Sold out
ICICLE. A handsome white Radish, about 5 inches long, crisp, and mild flavored	10	20	60	1 80
ICICLE FORCING. A short-top strain recommended for culture under glass	10	20	60	1 80
SCARLET TURNIP, WHITE-TIPPED. Very early. The roots are almost round, bright scarlet with well-marked white tip	10	20	60	1 80
SPARKLER. Resembles Scarlet Turnip, White-tipped, but the white base is more prominent	10	20	60	1 80
WHITE STRASBURG. A long, clear white Radish suitable for early or late planting	10	20	60	1 80
CHINA ROSE. Attractive bright rose-colored winter variety. Cylindrical, blunt roots about 6 inches long	10	20	60	1 80
ROUND BLACK SPANISH. Round black roots, 3 to 4 inches in diameter; flesh white, firm, and pungent. Good keeper	10	20	60	1 80
WHITE CHINESE or CELESTIAL. Cylindrical, about 8 inches long; flesh white, of mild flavor	10	20	60	1 80

RAPE *5 pounds per acre*

DWARF ESSEX. This quick-growing forage plant is sometimes used as "greens" and cooked like cabbage	½lb. \$0 40	Lb. \$0 75
---	-------------	------------

RHUBARB

EARLY RASPBERRY. Early. Medium size	Pkt. \$0 20	Oz. \$0 85	¼lb. \$2 50
LARGE VICTORIA. Large late variety	10	45	1 25

SALSIFY or OYSTER PLANT *1 ounce will sow 50 feet of drill*

MAMMOTH SANDWICH ISLAND. Produces long, tapering, creamy white roots	Pkt. \$0 10	½oz. \$0 20	Oz. \$0 35
---	-------------	-------------	------------

SAVORY

SUMMER. Leaves and flowers used for flavoring Pkt. \$0 20 ½oz. \$0 80 Oz. \$1 40

SORREL *1 ounce will sow 150 feet of drill*

NARROW-LEAVED SPECIAL. Slow in going to seed. Long, narrow, bright green leaves 10 30 50

SPINACH *1 ounce will sow 100 feet of drill*

	Pkt.	Oz.	¼lb.	Lb.
BLIGHT-RESISTANT SAVOY. Best suited for fall cutting; in eastern states should be sown not much earlier than August 20. The large green leaves are heavily crumpled	\$0 10	\$0 15	\$0 45	\$1 30
BLOOMSDALE SAVOY. A quick-growing strain with dark green, heavy, crumpled leaves	10	15	45	1 30
KING OF DENMARK. A dark green variety with slightly crumpled leaves. Will withstand hot weather better than any other sort	10	15	45	1 30
LONG SEASON. The leaves are thick, dark green, and crumpled. Short-stemmed, compact plants. Good for summer crop	10	15	45	1 30
LONG-STANDING BLOOMSDALE. A dark green, crumpled-leaved variety. Stands heat longer than regular Bloomsdale Savoy	10	15	45	1 30
NEW ZEALAND. A distinct type varying in form from other Spinach. Thrives during hot weather and can be cut throughout the summer	20	30	80	3 00
NOBEL GIANT THICK-LEAF. The best strain of round-leaved type. Suitable for spring or fall planting. Plants are large. Dark leaves and quite thick	10	15	45	1 30
OLD DOMINION. A blight-resistant strain. In eastern states may be sown about 10 days earlier than Blight-resistant Savoy without danger of bolting to seed. Suitable to carry over winter. Dark green, curled leaves	10	15	45	1 30
PRINCESS JULIANA. Heavy, compact plants with very dark leaves, thick and crumpled. Good summer variety	10	15	45	1 30
SAVOY LONG-STANDING NO. 818. A reselected strain of Long-standing Savoy, withstanding summer heat longer than other Savoy strains. The leaves are intensely crumpled and an attractive dark green color	10	15	45	1 30
SAVOY SPECIAL. Superior in every way to the older type Bloomsdale, being equally early, with heavier plants that remain longer before shooting to seed	10	15	45	1 30

SQUASH *1 ounce will sow 25 hills*

	Pkt.	Oz.	¼lb.
BLUE HUBBARD. Similar to Hubbard but has a hard blue-gray shell	\$0 10	\$0 35	\$0 95
COCOZELLE DARK GREEN. Handsome, dark green, solid-color fruits	10	30	80
COCOZELLE DI PERGOLA. Long, pale grayish green fruits	10	40	1 20
COCOZELLE STRIPED. Dark green with light green stripes	10	30	80
DELICIOUS. Good-keeping winter sort. Medium size	10	35	95
EARLY PROLIFIC. Similar to Giant Summer Straightneck but somewhat earlier	10	35	95
GIANT SUMMER STRAIGHTNECK. Improvement over Crookneck Squash, the fruits being nearly straight, 18 to 20 inches long, and of a lemon-yellow color	10	30	80
GOLDEN HUBBARD. Deep orange; excellent quality. Good keeper	10	30	80
IMPROVED HUBBARD. A selected strain of this well-known variety. Dark green, hard shell; heavy fruits of fine quality	10	30	80
LONG ISLAND WHITE BUSH. Similar to Mammoth White Bush Scalloped except scallops are not so pronounced, but has deeper flesh	10	30	80
MAMMOTH WHITE BUSH SCALLOPED. Early summer Squash. Fruits round, flattened, with scalloped edges	10	30	80
TABLE QUEEN or DES MOINES. Dark green, acorn-shaped fruits. Very delicious	10	30	80
WARTED HUBBARD. A very dark green, heavily warted sort. Good keeper	10	35	95

SWISS CHARD *1 ounce will sow 75 feet of drill*

	Pkt.	Oz.	¼lb.
DARK GREEN WHITE-RIBBED. Thick dark green leaves with broad ribs	\$0 15	\$0 40	\$0 75
FORDHOOK GIANT. Well curled, broad, dark green leaves with wide stems	15	40	75
LUCULLUS. Light yellowish green curled leaves	15	40	75

TOMATO *1 ounce will produce 2000 plants*

	Pkt.	½oz.	Oz.
BEAUTY. An early, smooth, purplish pink variety	\$0 20	\$0 50	\$0 90
BREAK O'DAY. Resistant to wilt and nail-head rust. Early and very prolific	20	55	1 00
BONNY BEST. A second-early, bright scarlet variety of medium size, smooth and firm	20	55	1 00
DWARF CHAMPION. Dwarf, upright-growing Tomato. Fruit crimson, tinged with purple	20	65	1 20
DWARF STONE. Stocky plants of dwarf tree type. Bright scarlet fruits	20	65	1 20
EARLIANA. Improved extra-early variety, with smooth, firm bright red fruits of uniform size and color	20	55	1 00
EARLY DETROIT. Large, smooth, purplish pink variety	20	65	1 20
EARLY JEWEL. A handsome bright scarlet Tomato. Very productive	20	55	1 00
EARLY PROLIFIC. Exceedingly early, maturing about same time as Earliana. Medium-sized, very smooth, rich red fruits remarkably uniform, perfect shape, with solid, firm flesh of excellent flavor	20	75	1 40
EBERLE'S EARLY EXCELSIOR. Vigorous and productive vines, suitable for trellis culture. The fruits are purplish pink in color, very firm, and uniform in size	20	75	1 40
GLOBE. (Special Strain.) Large, deep globe-shaped, dark pink variety	20	75	1 40
GREATER BALTIMORE. A very productive main-crop sort. Fruits deep scarlet and medium large	20	55	1 00
JOHN BAER. An excellent early variety. Smooth, firm, scarlet fruits of good quality	20	55	1 00
MARGLOBE SPECIAL. An exceptionally fine strain of this disease-resistant variety. Fruit smooth and very solid. Largely used as a main-crop sort	20	65	1 20
MATCHLESS. A main-crop sort. Fruit deep red	20	55	1 00
NEW STONE. One of the most reliable main-crop varieties. Fruits large, smooth, solid, and an attractive scarlet color	20	65	1 20
PONDEROSA. Very large fruit of flattish shape and purplish pink color	20	65	1 20
SCARLET TOPPER (PRITCHARD). A splendid second-early variety. The fruits are globe-shaped, smooth, and of bright red color. Plants are self-topping and resistant to disease. Heavy cropper in good rich soil	20	75	1 40
RED PLUM (Large Italian). Fruits about 3 inches long and 1½ inches in diameter. Tremendous cropper. For canning or making Tomato preserve the quality is unsurpassed	20	55	1 00
RUTGERS. Of Marglobe type. Plants large and very vigorous. Fruit medium large	20	80	1 50
VALIANT. An early variety. Fruit large and solid		Sold Out	
YELLOW PLUM. Oval, smooth, deep yellow fruits	20	65	1 20

TURNIP *1 ounce will sow 200 feet of drill*

	Pkt.	Oz.	¼lb.
EXTRA-EARLY PURPLE-TOP MILAN. Very early. Medium-sized flat roots with distinct purple top	\$0 10	\$0 15	\$0 50
EXTRA-EARLY WHITE MILAN. Similar to Purple-Top Milan except that the roots are entirely white.	10	15	50
GOLDEN BALL. The best and sweetest of the yellow-fleshed Turnips. Medium size, round, and has a smooth yellow skin	10	15	50
GREEN-TOP AMBER GLOBE. Large, smooth, globe-shaped roots; light yellow base with light green top	10	15	50
PURPLE-TOP WHITE GLOBE. The roots are smooth, globe-shaped, with distinct purple top	10	15	50
PURPLE-TOP WHITE GLOBE SPECIAL. A reselected strain producing even-shaped roots. Specially recommended	10	15	50
SEVEN TOP. Very hardy. Vigorous tops. In some sections the roots are left in the ground over winter, producing early spring "greens."	10	15	50
WHITE EGG. An oval or egg-shaped clear white Turnip	10	15	50

RUTABAGA, RUSSIAN or SWEDISH TURNIPS *1 ounce will sow 150 feet of drill*

AMERICAN PURPLE-TOP SPECIAL. A selected strain producing large, smooth, globe-shaped roots, with small neck. Firm, sweet, yellow flesh	10	15	53
LARGE WHITE FRENCH. A hardy white variety with large, globular roots and short neck		Sold Out	

MARIGOLD

Yellow Supreme, Carnation-Flowered

Gold Medal, 1935 All-America Seed Selections. The enormous, fluffy flowers are rich, dazzling yellow and many measure 3 inches across. Instead of the objectionable Marigold odor the flowers have a mild, honey-like fragrance and the foliage is practically odorless. Blooms early and continues until October or later. Lasts long in water; useful cut-flower.

Pkt. 10 cts., $\frac{1}{4}$ oz. 35 cts.



SALPIGLOSSIS

One of the most beautiful free-flowering annuals, worthy of more extensive culture and popularity. The attractive, funnel-shaped flowers, vividly veined in crimson, scarlet, yellow, violet, and purple shades, are carried on long, slender, branching stems. Bloom profusely from July until fall. Excellent for cut-flowers. Height, 2 feet.

Grandiflora, Emperor, Finest Mixed. A large-flowered strain.

Pkt. 15 cts. $\frac{1}{8}$ oz. 35 cts.



SALPIGLOSSIS

ZINNIA

Double Dahlia-Flowered

(Gold Medal Strain.) This strain, without exception, is the best for large size, fullness of petals, range of color, and splendid keeping quality of the flowers. A choice variety for the flower-garden and a money-maker for florists. Height, $2\frac{1}{2}$ to 3 feet.

Pkt. 15 cts., $\frac{1}{4}$ oz. 45 cts., $\frac{1}{2}$ oz. 80 cts.





VERBENA



STOCKS

VERBENA

hybrida grandiflora
(*gigantea*)

A giant-flowered strain of robust habit, unsurpassed for size, brilliancy, attractiveness, and profusion of bloom. White, Pink, Scarlet, Blue, and Mixed.

Each, pkt. 20 cts., $\frac{1}{4}$ oz. \$1.10, $\frac{1}{2}$ oz. \$2

STOCKS

Mammoth Nice

A popular variety of branching habit, with long spikes of large, double flowers. Excellent for cutting purposes and suitable for summer bedding.

Pkt. 15 cts., $\frac{1}{4}$ oz. \$1.10,
 $\frac{1}{2}$ oz. \$2



PETUNIA

Single Giants
of California

A special strain, unsurpassed for beauty and variation of splendid colors and markings. The flowers measure 4 to 5 inches across, beautifully ruffled and often frilled on the edge. A distinguishing feature is the wide, flaring throat netted and veined with black, red, or yellow, which increases their beauty.

Pkt. 25 cts.,
1,000 seeds \$1,
 $\frac{1}{2}$ oz. \$12



ASTER
Giant Crego (Wilt-Resistant)

Tall-branching, strong-growing half-hardy annual, much superior to the old Comet Aster. The immense flowers resemble the Japanese chrysanthemum, making it very desirable for either garden or house decoration. Height, 2 feet.

Pkt. 15 cts., 1/4oz. 55 cts., 1/2oz. 90 cts., oz. \$1.70



PINKS, DOUBLE

Beautiful, half-hardy biennial plants of the carnation family, fine for borders. Flowers vary from pure white to the richest crimson, while many are beautifully laced or striped. They are easily grown and thrive in almost any kind of soil. Seed sown outdoors in May will produce flowers in July. Height, 1 foot.

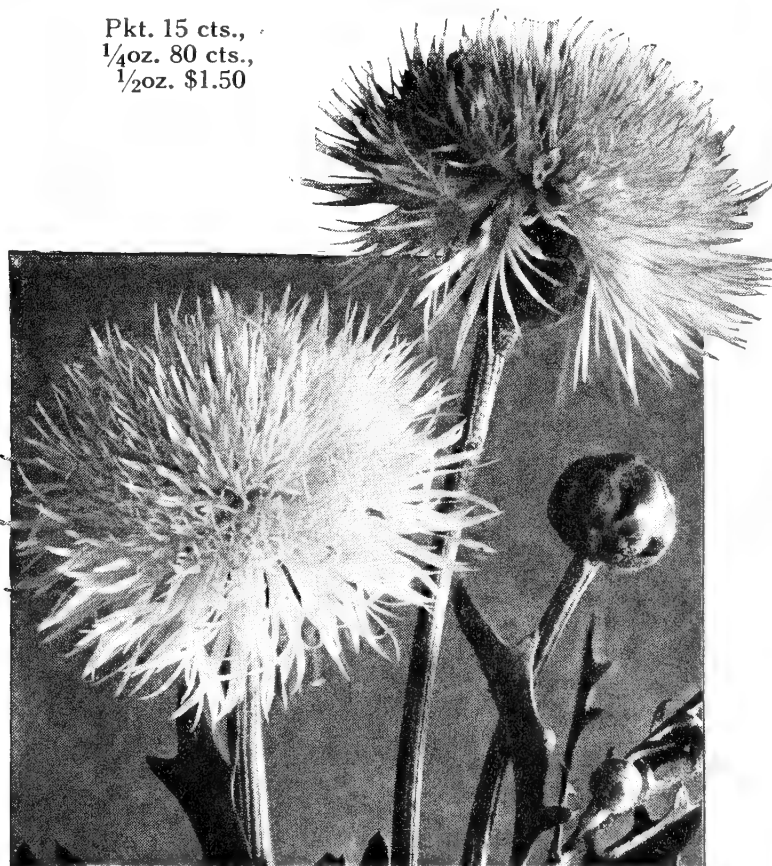
Finest Mixed, pkt. 10 cts., 1/4oz. 30 cts., 1/2oz. 55 cts.



ICELAND POPPY

The graceful flowers in a variety of colors are among the most showy and popular garden perennials. They are of easy culture, and their exceptional brilliancy makes an attractive display in beds and borders; valuable cut-flowers. Height, 1 foot. Mixed.

Pkt. 15 cts.,
 1/4oz. 80 cts.,
 1/2oz. \$1.50



CENTAUREA · Giant Imperialis
 Imperial Sweet Sultan

An improved strain. Very showy in beds or borders. The large flowers, borne on long stems, are fragrant, and if cut when the buds first open, will keep for almost two weeks in water. Height, 2 1/2 feet.

Finest Mixed, pkt. 10 cts., 1/4oz. 25 cts., 1/2oz. 40 cts.



MARIGOLD, Dwarf Double French

MARIGOLD

Dwarf Double French

These are suitable for borders or pots, as they do not grow very tall. Their vivid blotched and shaded flowers prove very attractive. Easily grown from seed. If sown outdoors in May, will produce flowers throughout the summer. Height, 1 foot.

Finest Mixed, pkt. 10 cts.,
1/4oz. 30 cts., 1/2oz. 55 cts.

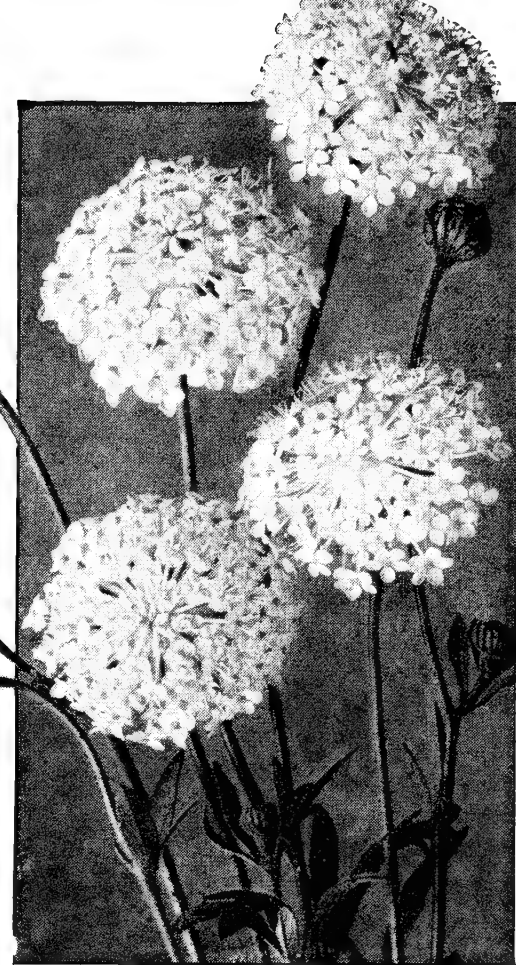
DIDISCUS

Caeruleus

Blue Lace Flower

Attractive, free-flowering hardy annual of easy culture. The large umbel-shaped clusters of lace-like lavender flowers, borne on long stems, are excellent for bouquets. Height, 2 feet.

Pkt. 10 cts., 1/4oz. 40 cts., 1/2oz. 75 cts.



DIDISCUS, Blue Lace Flower



LARKSPUR · *Tall-Branching*

The gorgeous appearance of the flower-spikes produced by this class is remarkable. They are much in demand on account of their easy cultivation and variety of colors. Valuable for cut-flowers. Height, 2 to 3 feet.

Finest Mixed, pkt. 10 cts., 1/4oz. 25 cts., 1/2oz. 40 cts.



PHLOX · *Drummondii Grandiflora*

This easily grown annual, with its dazzling display of color, is probably the most desirable of all hardy garden flowers. Sow in a sunny location when danger of frost is past, and you will have a remarkable display of bloom in a very short time. May also be started under glass and transplanted when weather is suitable to get an extra-early display in beds or borders. Height, 1 foot. Finest Mixed.

Pkt. 15 cts., 1/4oz. \$1.10, 1/2oz. \$2.00

Selected Flower Seeds

Special care has been taken in selecting only the finest and most reliable strains
 Varieties marked A are Annual; P, Perennial; B, Biennial

Ageratum (A)

Blue Perfection. Semi-dwarf. Medium blue	Pkt. \$0 10	½oz. \$0 80	Oz. \$1 50
Imperial Dwarf White	10	80	1 50
Blue Ball. Dwarf. Deep blue	20	1 10	2 00

Alyssum

Compactum, Little Gem. (A). Dwarf, compact	10	50	90
Procumbens, Carpet of Snow. Dwarf, spreading. (A).	10	70	1 25
Saxatile compactum. (P). Golden yellow	20	80	1 50

Anchusa (P)

Italica, Dropmore. Gentian-blue	Pkt. \$0 10	½oz. \$0 50
--	-------------	-------------

Antirrhinum . Snapdragon

(P) Treated as annual. 3 feet.

MAXIMUM (Rust-Resistant)	Pkt.	½ oz.
Alaska. White	\$0 20	\$2 00
Apple Blossom. Rosy pink, white tube	20	2 00
Campfire. Scarlet	20	2 00
Canary Bird. Canary-yellow	20	2 00
Copper Queen. Bronzy copper	20	2 00
Crimson	20	2 00
Indian Summer. Coppery orange-scarlet	20	2 00
Loveliness. Rose-pink	20	2 00
Pink Sensation. Soft pink	20	2 00
Finest Mixed	20	2 00

Aquilegia (P)

Long-spurred Hybrids. Mixed colors	25	3 00
---	----	------

Arctotis (A)

Grandis. African Lilac Daisy	10	50
---	----	----

Asters (A)

QUEEN OF THE MARKET (Wilt-Resistant). An early-flowering variety, much grown by florists for their first crop. Plants are of branching habit. Height, 18 inches.

Finest Mixed.	Pkt. \$0 20	½oz. \$1 10	Oz. \$2 00
--------------------------------	-------------	-------------	------------

GIANT CREGO (Wilt-Resistant). The flowers are of immense size, wavy, reflexed, very much resembling the Japanese chrysanthemum.

Azure-Blue	Pkt. \$0 15	½oz. \$0 95	Oz. \$1 80
Crimson	15	95	1 80
Rose-Pink	15	95	1 80
Shell-Pink	15	95	1 80
Violet, Dark	15	95	1 80
White	15	95	1 80
Finest Mixed.	15	95	1 80

ASTERS, continued

LATE BRANCHING (Wilt-Resistant). The best variety for florists' use. Produces large quantities of flowers borne on long stems. Height, 2½ feet.

	Pkt.	½oz.	Oz.
Crimson	\$0 15	\$0 95	\$1 80
Dark Blue	15	95	1 80
Light Blue	15	95	1 80
Pure White	15	95	1 80
Rose-Pink	15	95	1 80
Scarlet	15	95	1 80
Shell-Pink	15	95	1 80
Finest Mixed.	15	95	1 80

HEART OF FRANCE (Wilt-Resistant)

Rich dark red	25	2 25	4 00
-------------------------	----	------	------

SINGLE GIANTS of CALIFORNIA

(Wilt-Resistant). Finest Mixed.	15	90	1 75
---	----	----	------

Baby's Breath. See Gypsophila.

Balsam (A)

	Pkt.	½oz.
Double Rose-flowered, Finest Mixed.	\$0 10	\$0 25
Double Camellia-flowered, Mixed.	15	40

Bellis Perennis (P) . Double English Daisy

Longfellow. Dark rose-color	}	Sold out
Snowball. Pure white		
Monstrosa, Red		
Monstrosa, White		
Monstrosa, Rose. White tipped with rose		
Monstrosa tubulosa, Etna. Dark red		

Calendula (A) . Pot Marigold

	Pkt.	½oz.	Oz.
Campfire. Orange with red sheen	\$0 10	\$0 40	\$0 75
Chrysantha. Yellow; long, wide drooping petals	10	35	60
Lemon Queen. Light sulphur-yellow	10	40	75
Orange King. (Florists' Strain.)	10	40	75
Ball's Orange. (Florists' Strain.)	10	50	90
Masterpiece. Deep orange, dark center	10	50	90
Mixed.	10	35	60

Calliopsis (A)

Tall, Double, Mixed.	10	30	50
---------------------------------------	----	----	----

Canary-Bird Vine (A)

Canary-Yellow	10	35	60
--------------------------------	----	----	----

Candytuft (A)

Giant White Hyacinth-flowered. (Im- proved Strain.)	Pkt. \$0 10	½oz. \$0 60	Oz. \$1 00
Finest Mixed. All colors	10	25	40

Candytuft (Iberis) (P)

For Borders and Rock-Gardens

Sempervirens. White	Pkt. \$0 15	½oz. \$1 50
Gibraltarica. White shading to lilac	10	70

Canterbury Bells (Campanula) (B)

Height, 2 feet

Blue Shades	10	60
Rose Shades	10	60
White	10	60
Finest Mixed	10	60
ANNUAL MIXED. Height, 2½ feet	10	70

CALYCANTHEMA (Cup-and-Saucer). (B)

Blue Shades	15	1 50
Rose Shades	15	1 50
White	15	1 50
Finest Mixed	15	1 50

Carnation

CHABAUD'S GIANT DOUBLE. (B)

Strong, upright plants. Height, 18 inches.

Crimson	20	3 00
Deep Rose	20	3 00
Flesh-Pink	20	3 00
Scarlet	20	3 00
Yellow	20	3 00
White	20	3 00
Finest Mixed	20	3 00

ENFANT DE NICE, Finest Mixed. (B)

Flowers 2½ to 3 inches across; sweet-scented. Height, 15 inches 25 4 00

HARDY GARDEN, Dwarf Scarlet. (P) For market. Height, 18 inches.

Sold out

Finest Mixed. Free flowering. Double, scented flowers. Height, 18 inches

Sold out

Early Vienna, Dwarf Mixed. Large, double flowers. Height, 12 inches

25 2 50

Celosia (A)

Cristata, Tom Thumb, Mixed. Cockscomb	15	1 00
Plumosa Thompsoni magnifica, Finest Mixed. Feathered Cockscomb	10	50
Childsii. Chinese Woolflower	10	50

Centaurea (A) • Cornflower

Cyanus, Double, Blue Boy. <i>New.</i> Large-flowered	10	35
Cyanus, Double, Finest Mixed	10	30
Imperialis, Mixed. Sweet Sultan	10	40
Candidissima. Dusty Miller. Silvery gray foliage	15	1 50
Suaveolens. Sweet Sultan. Canary-yellow	10	40

Chrysanthemum

Double, Finest Mixed. (A)	Pkt. \$0 10	½oz. \$0 30
Single, Mixed. (A)	10	30
Shasta Daisy, Alaska. (P) Large, pure white flowers with yellow centers	10	70

Clarkia (A)

Double, Mixed Colors	10	45
--------------------------------	----	----

Coreopsis (P)

Grandiflora, Mayfield Giant. Deep golden yellow	10	50
Double Yellow.	15	1 00

Coleus

Grand Exhibition Mixture. Highly recommended	Sold out
--	----------

Cosmos (A)

Early Double Crested, Pink	15	1 75
White	15	1 75
Crimson	15	1 75
Mixed	15	1 75
Early Summer-flowering, Pink	10	30
White	10	30
Crimson	10	30
Mixed	10	30
Sensation, Mixed. <i>New.</i> Large flowers 4 inches in diameter. Height, 4 feet	10	50
Orange Flare. Deep orange	10	50

Delphinium (P) • Hardy Larkspur

Belladonna, Improved Cliveden Beauty. Turquoise-blue	25	2 75
Bellamosum Improved. Deep blue	25	2 75
Double Hybrids, Mixed. Handsome blue shades	Sold out	
Hollyhock Strain. Very large spikes	25	5 00
Pacific Giants	1 00	10 00

Dianthus (B) • Pinks

Height, 1 ft.

Chinensis, Double, Finest Mixed	10	40
Diadematus, Double, Finest Mixed	10	50
Heddewigi, Double, Finest Mixed	10	35
Heddewigi, Royal Pink, Mixed	10	40
Single Japanese Pink, Finest Mixed	10	30

Didiscus (A)

Cæruleus. Blue Lace Flower	10	75
--------------------------------------	----	----

Digitalis (B) • Foxglove

Purpurea monstrosa, Finest Mixed	10	75
The Shirley, Finest Mixed	10	1 00

Dimorphotheca (A) • African Daisy

Finest Mixed.	10	75
-----------------------	----	----

Dracaena			
Indivisa. Ornamental foliage plant	Pkt. \$0 10	½oz. \$0 40	
Eschscholtzia (A) • California Poppy			
Brilliant Mixed.	10	35	
Euphorbia (A)			
Variegata. Snow-on-the-Mountain	10	35	
Gaillardia			
Lorenziana, Double Mixed. (A)	10	45	
Grandiflora hybrida, Mixed. (P)	10	50	
The Dazzler. (P) Rich red with golden yellow margin	15	90	
Burgundy. Coppery scarlet	20	2 00	
Goblin. Dwarf, compact	20	3 00	
Geum (P)			
Mrs. Bradshaw. Glowing red	15	1 50	
Lady Stratheden. Golden yellow	15	2 00	
Globe Amaranth (A)			
Finest Mixed.	10	35	
Godetia (A)			
Dwarf, Double, Mixed.	15	1 00	
Gourds, Annual Climbers			
Ornamental Small Varieties, Mixed.	Pkt. \$0 10	½oz. \$0 25	Oz. \$0 45
Gypsophila • Baby's Breath			
Elegans grandiflora alba, Covent Garden Strain. (A)	10	20	35
Paniculata, Single. (P)	10	45	80
Paniculata, Double. (P)	25	4 00	
Helichrysum (A) • Strawflower			
Monstrosum, Mixed.	10	65	1 25
Heliotrope (P)			
Mixed. Lilac and dark blue shades	Sold out		
Hollyhock (B)			
Choice Double Strain, Finest Mixed.	15	1 20	2 30
Hunnemannia (A)			
Fumariæfolia. Yellow Tulip-Poppy	10	50	90
Ipomoea (A) See Morning-Glory			
Kochia (A) • Mexican Fire Bush			
Childsi.	10	25	40
Lobelia (A)			
Compacta, Crystal Palace. Blue	Pkt. \$0 15	½oz. \$1 75	
Pendula, Sapphire.	20	3 00	
Lupinus			
Hartwegi, Mixed. (A)	10	20	
Polyphyllus, Rose Shades. (P)	10	30	
Blue Shades. (P)	10	20	
White. (P)	10	20	
Mixed	10	20	

Larkspur (A)			
Height, 3 feet			
GIANT IMPERIAL.			
Blue Bell. Light blue	Pkt. \$0 15	½oz. \$0 80	Oz. \$1 50
Blue Spire. Dark blue	15	80	1 50
Daintiness. Lavender	15	80	1 50
Dazzler. Scarlet	15	80	1 50
Exquisite. Rose	15	80	1 50
Los Angeles Improved. Pink.	15	80	1 50
White Spire	15	80	1 50
Finest Mixed.	15	80	1 50
Tall Branching or Stock-Flowered, Mixed.	10	40	75
Lychnis (P)			
Chalcedonica. Scarlet	Pkt. \$0 15	Oz. \$1 00	
Marigold (A)			
GIGANTEA, Double Mixed. 4 to 5-in. flowers in pleasing shades of orange or yellow on tall, stocky plants	Pkt. \$0 15	½oz. \$1 60	Oz. \$3 00
GIGANTEA, DWARF			
Dwarf, compact plants, 1 foot high. Large flowers 4 inches in diameter			
Pot O'Gold. Golden orange	50	5 50	10 00
Gypsy Jewels. Orange and yellow shades	50	5 50	10 00
TALL AFRICAN			
All-Double Orange	15	1 20	2 25
All-Double Lemon	15	1 20	2 25
All-Double, Mixed	15	60	1 00
CARNATION-FLOWERED			
Guinea Gold, Reselected. Orange ruffled flowers	10	55	1 00
Yellow Supreme. Lemon; carnation-flowered	10	55	1 00
TALL FRENCH. Double, Finest Mixed			
DWARF FRENCH	10	50	90
Double Harmony. Deep orange center petals, with maroon-brown guard petals			
Double, Mixed, Monarch Strain. Large, double flowers	10	55	1 00
Single, Legion of Honor. Yellow, blotched brown	10	30	50
MINIATURE			
Tagetes signata pumila, Little Giant.	15	1 20	2 25
Marvel of Peru (A) • Four o'Clock			
Mixed.	20	35	
Matricaria (A)			
Capensis. Feverfew. Tall; double; white	Pkt. \$0 10	½oz. \$0 75	
Eximia, Snowball. Dwarf; double; white	15	1 50	
Eximia, Golden Ball. Dwarf; double; yellow	15	1 50	
Mignonette (A)			
Large-flowering Sweet-scented.	Pkt. \$0 10	½oz. \$0 20	Oz. \$0 30
Red Goliath. Suitable for pot-culture	15	1 50	
Moonflower • Ipomoea			
Grandiflora alba. Annual climber	Pkt. \$0 10	½oz. \$0 30	
Morning-Glory (A)			
Giant Japanese. Climber	Pkt. \$0 10	½oz. \$0 25	Oz. \$0 40
Heavenly Blue, Early Strain. Climber	10	70	

Myosotis (P) • Forget-me-not

Height, 8 inches

Alpestris, Victoria, Blue. Dwarf	}	Sold out
Alpestris, Victoria, Indigo-Blue		
Alpestris, Rose-Pink		
Alpestris, Finest Mixed		

Nasturtium (A)

	Pkt.	Oz.	¼lb.
Dwarf Golden Gleam. Double; sweet-scented	\$0 10	\$0 40	\$1 25
Dwarf Scarlet Gleam. Sweet-scented	10	40	1 25
Dwarf Gleam Hybrids. Brilliant mixture	10	40	1 25
Dwarf, Finest Mixed	10	40	1 25
Giant Climbing, Finest Mixed	10	40	1 25

Nemesia (A)

	Pkt.	½oz.
Compacta, Triumph, Mixed.	\$0 20	\$2 00

Nicotiana (A)

Affinis. White	10	45
Sanderæ Hybrids.	10	45

Pansy (P)

	Pkt.	½oz.	¾oz.
Dwarf Swiss Giants	\$0 15	\$2 00	\$6 00
Eberle's Gilt-Edge Mixture	10	1 60	5 00
Engelmann's Giant	20	3 00	9 00
Mastodon	15	2 00	6 00
Super Maple Leaf Giants	15	2 00	6 00
Swiss Giants, Mixed	15	2 00	6 00
Trimardeau, Finest Mixed	Sold out		

The above are carefully selected strains

Petunia (A)

HYBRIDA TYPE

Howard's Star Improved. Height, 1½ feet	10	50	1 50
Single, Mixed. Height, 1½ feet	10	50	1 50

BALCONY TYPE. Trailing habit.

Good for baskets and window-boxes.			
Balcony, Blue	10	1 00	3 00
Balcony, Rose	10	1 00	3 00
Balcony, White	10	1 00	3 00
Balcony, Finest Mixed	10	80	2 50

DWARF BEDDING TYPE

Blue Bird. Deep velvety purple	10	80	2 50
Celestial Rose. Deep rose. Compact plants	10	80	2 50
Cockatoo	15	1 00	3 00
Glow. Glowing rose-red	25	3 50	10 00
Heavenly Blue. Light silvery blue	15	1 25	3 75
Inimitable Dwarf. Striped and blotched	10	60	1 80
Rose of Heaven, Extra Select. Rose-pink	10	60	1 80
Rosy Morn, Extra Select. Rose with white throat	10	90	2 70
Silvery Blue	15	1 25	3 75
Snow White. Large-flowering compact plants	10	60	1 80

PETUNIA, continued

LARGE-FLOWERING TYPE

	Pkt.	⅙oz.	⅓oz.
Dwarf Elk's Pride. Largest. Velvety purple	\$0 25	\$5 00	\$9 00
Giants of California. Large flowers	25	6 50	12 00
Dwarf Giants of California. Suitable for pots	25	6 50	12 00
Ruffled Monsters. Large ruffled	25	5 00	9 00

DOUBLE

	Pkt.	1/128oz.
All-double Dwarf Giant Fringed, Mixed	\$1 00	\$8 00

Phlox

DRUMMONDI GRANDIFLORA. (A) Height, 1 foot.

	Pkt.	½oz.
Finest Mixed	\$0 15	\$2 00

Physalis (P) • Chinese Lantern Plant

Francheti	10	75
---------------------	----	----

Poppy

Iceland, Giant Hybrids, Finest Mixed. (P)	15	2 00
Oriental, Hybrids. Finest Mixed (P)	15	1 50
Giant Shirley, Double, Finest Mixed. (A)	10	50
Giant Shirley, Single, Finest Mixed. (A)	10	50

Portulaca (A)

Single, Mixed.	10	90
Double, Mixed.	15	2 50

Pyrethrum (P)

Roseum hybridum grandiflorum, Single, Mixed.

Painted Daisy. Height, 2½ feet	Sold out
--	----------

Ricinus (A) • Castor-Oil Plant

	Pkt.	Oz.
Mixed.	\$0 10	\$0 30

Salpiglossis (A) • Velvet Flower

	Pkt.	½oz.
Grandiflora, Emperor, Finest Mixed.	\$0 15	\$0 75

Salvia

	Pkt.	½oz.	Oz.
Splendens (A) America. Height, 1½ feet	\$0 50	\$6 50	\$12 00
Splendens (A) Bonfire. Height, 2½ feet	50	4 50	8 00
Splendens (A) grandiflora. Height, 3 feet	25	3 50	6 00
Farinacea (P) Blue Bedder. Deep blue	50	4 00	

Schizanthus (A)

	Pkt.	½oz.
Wisetonensis, Excelsior, Mixed.	\$0 20	\$3 00

Shasta Daisy (P)

Alaska. Large pure white flowers with yellow centers	10	75
--	----	----

Scabiosa · Mourning Bride

	Pkt.	½oz.
Azure Fairy. Light lilac	\$0 15	\$0 60
Black Prince. Purple	15	60
Cherry	15	60
Fiery Scarlet. Rich red	15	60
Flesh Color. Soft pink	15	60
Pure White (Snowball)	15	60
Rose. Deep pink	15	60
Yellow	15	60
Finest Mixed	15	60

Solanum

Capsicastrum. Jerusalem Cherry	20	1 50
--	----	------

Statice

Dumosa. (P) Dense silvery gray flowers . . .	15	2 00
Kampf's Tall Improved. (A) Everlasting. Deep blue	10	40

Stocks (A)

Eberle's Florists' Favorite, Finest Mixed. Height, 2 feet	15	2 00
Large-flowering Ten-Weeks, Finest Mixed. Height, 1 foot	15	2 00
"Cut-and-Come Again," Mixed. Height, 1½ ft.	15	2 00
Mammoth Early Branching Nice. Height, 1½ feet.		
Pure White	15	2 00
Dark Blood-Red	15	2 00
Flesh Color	15	2 00
Rose-Pink	15	2 00
Purple-Violet	15	2 00
Finest Mixed	15	2 00

Sunflower (A)

	Pkt.
Double Chrysanthemum-flowered	\$0 10
Miniature, Single	10
Dwarf Red	10
Sun Gold. Golden yellow, perfectly double flowers ideal for cutting	15

Sweet Peas (A)

	Pkt.	Oz.	¼lb.
Early-flowering Superb Mixed.	\$0 10	\$0 65	\$2 00
Eberle's Mixture, Summer-flowering Spencers.	10	35	1 00

Sweet William (B)

	Pkt.	½oz.
Single Auricula-eyed	\$0 15	\$1 00
Dark Crimson	15	1 00
Pink Beauty	15	1 00
Scarlet Beauty	15	1 00
Finest Mixed	15	1 00
Double Crimson	15	1 00
Finest Mixed	15	1 00
Eberle's Dwarf, Finest Mixed. Compact and very free blooming	15	1 25

Tagetes (A)

	Pkt.	½oz.	Oz.
Signata pumila, Little Giant.	\$0 15	\$1 10	\$2 00

Wallflower (P)

Siberian (<i>Cheirantbus Allioni</i>).	10	30
--	----	----

Verbena (A)

	Pkt.	½oz.	Oz.
MAMMOTH. Height, 1½ feet.	\$0 15	\$1 30	\$2 50
Blue Shades	15	1 30	2 50
Pink Shades	15	1 30	2 50
Purple	15	1 30	2 50
Scarlet	15	1 30	2 50
White	15	1 30	2 50
Finest Mixed	15	1 30	2 50
GRANDIFLORA (GIGANTEA)			
Beauty of Oxford Hybrids. Rosy pink to rose-red	20	2 00	
Blue, White Eye	20	2 00	
Crimson Glow. Fiery crimson	20	2 00	
Lucifer. Scarlet	20	2 00	
Salmon-Pink	20	2 00	
White	20	2 00	
Finest Mixed	20	2 00	

Vinca Rosea (P) · Periwinkle

Rose	10	80
White	10	80
White with eye	10	80
Mixed	10	80

Zinnia (A)

CALIFORNIA GIANTS, Finest Mixed	15	80	1 50
DAHLIA-FLOWERED (Gold Medal Strain)			
Canary Bird. Yellow shade	10	65	1 25
Crimson Monarch. Dark crimson	10	65	1 25
Dream. Rosy lavender	10	65	1 25
Eldorado. Salmon-rose	10	65	1 25
Exquisite. Light rose	10	65	1 25
Golden Dawn. Golden yellow	10	65	1 25
Golden State. Orange-yellow	10	65	1 25
Illumination. Deep rose	10	65	1 25
Oriole. Orange and gold bicolor	10	65	1 25
Polar Bear. Pure white	10	65	1 25
Purple Prince. Deep purple	10	65	1 25
Scarlet Flame	10	65	1 25
Special Gold Medal Mixture	15	80	1 50

GIANT DOUBLE

Finest Mixed. All colors	15	80	1 50
------------------------------------	----	----	------

HAAGEANA, DOUBLE, Mexican Hybrids.

Delightful, double and semi-double 1½-inch flowers in a wide range of colors, from cream to orange, garnet to brown on a compact plant about 18 inches high.

Finest Mixed.	15	1 10	2 00
-----------------------	----	------	------

DOUBLE LILLIPUT or POMPON

Burnt-Orange	10	65	1 25
Canary-Yellow	10	65	1 25
Crimson Gem	10	65	1 25
Lilac Gem	10	65	1 25
Purple	10	65	1 25
Rosebud. Pink	10	65	1 25
Salmon-Rose	10	65	1 25
Scarlet Gem	10	65	1 25
White Gem	10	65	1 25
Finest Mixed	10	65	1 25

FANTASY

Finest Mixed. Shaggy petals.	10	65	1 25
--------------------------------------	----	----	------

SUPER CROWN O'GOLD.

Large, graceful flowers in beautiful pastel shades, each petal overlaid with golden yellow.

Pastel Mixture	15	1 10	2 00
--------------------------	----	------	------



Eberle's Lawn Grass Seed

What is more charming than a beautiful lawn! It can be had at a small cost by using **Eberle's Special Lawn Grass Seed**. Sodding is unsatisfactory, in most respects, hence the sowing of seed. Careful experiments have enabled us to offer an unrivaled series of mixtures for the purposes named below, consisting of such varieties as will flourish under varied conditions, making a rich, deep green, soft velvety sward.

Our Lawn Grass Seed Mixtures are composed of the highest grade of fine-leaved perennial grasses which will produce luxuriant and durable lawns.

HOW TO MAKE A LAWN. The soil should be rich, well-drained, and carefully prepared, making it as fine and smooth and mellow as possible. Great care should be taken to use only the very best quality of suitable seed, sowing at such a time as to give the young plants a chance to become well rooted before being subjected to very cold or hot, dry weather. All lawns are improved in vigor and texture by frequent mowing and rolling. The seed may be planted early in the spring or fall and should be sown at the rate of 150 lbs. to the acre. If sown in the spring, sow as early as possible, making the surface very fine and smooth, then raking it over and sowing the seed, covering it by rolling with a light roller. It may also be sown in the fall, provided it is done early enough to secure a good growth before winter sets in, when a light dressing of manure should be given to protect the roots from severe frosts.

EBERLE'S SPECIAL LAWN GRASS

This special mixture contains species of grasses, carefully blended, which will produce a turf in six weeks that will retain its rich green color and velvety appearance throughout the entire summer. Highly recommended for making new lawns or renovating old ones.

Lb. 65 cts., 5 lbs. \$3.00, 10 lbs. \$5.50, 20 lbs. \$10

EBERLE'S SHADY LAWN GRASS

A mixture of grasses suitable for under trees or all locations that are in partial shade. This mixture is a combination of dwarf-growing, fine-leaved, hardy grasses which will thrive without much sun and make a rich green sward where ordinary mixtures would fail to do so. Extra fertilizing is usually required for the shady lawn as the spreading roots of trees and large shrubs use up the available nitrogen in the soil.

Lb. 75 cts., 5 lbs. \$3.50, 10 lbs. \$6.50, 20 lbs. \$12



Grass Seed Mixtures for Special Purposes

Eberle's Bent Grass Lawn Seed

Used extensively, and very successfully, for putting-greens and unsurpassed for making lawns of smooth, fine grass. Our mixture contains a large percentage of mixed Bent Grass suitable for the average soil and more practical than the pure Bent mixture.

Lb. \$1, 5 lbs. \$4.50, 20 lbs. \$16

Lawn Tennis Mixture

A very carefully prepared mixture composed of hardy, re-cleaned, high-quality grass and clover seed combined and contains no timothy. Produces a thick, velvety growth especially good for the back lawn and play-yard, and is especially suitable for grounds of this character.

Lb. 70 cts., 5 lbs. \$3.25, 20 lbs. \$11

Terrace Mixture

This mixture of grasses is especially suitable for terraces, side-hills, and embankments, producing strong, spreading roots which prevent heavy rains from washing them out. Resistant to drought, thrives on shallow soils, and will give a fine thick growth of dark green texture.

Lb. 70 cts., 5 lbs. \$3.25, 20 lbs. \$11

To Grass a Terrace

For each square rod take a pound of Lawn Grass Seed and mix it with about 6 cubic feet of good dry garden loam. Place it in a tub and add liquid manure, diluted with about two-thirds water until the mixture has the consistency of mortar. Make the slope perfectly even and smooth, water it well, then apply the paste in a thin, even coat.

One pound will sow 15 by 20 feet, or 300 square feet

Golf Links Mixture

A selection of fine grasses chosen with great care and properly blended to make a dense turf of dwarf, spreading growth that will stand rough usage and be useful wherever hard wear necessitates grass of this character.

Lb. 40 cts., 5 lbs. \$1.75, 20 lbs. \$6

Treat Dahlias well and have flowers which make the neighbors jealous

SUMMER-FLOWERING BULBS AND ROOTS FOR SPRING PLANTING

All bulbs and roots inspected and found to be sound and free from disease when shipped

DAHLIAS

The Dahlia has always been a favorite flower, therefore needs no introduction. It is easy to grow and responds readily to care and attention. Many new kinds have been introduced in recent years, and the following varieties listed have been selected for their hardiness, size of flower, and beautiful colorings. We furnish all field-grown roots.

Cactus and Semi-Cactus Dahlias

The flowers of this type are large and handsome, similar to the chrysanthemum in shape, having long, narrow, pointed petals, variously rolled or twisted. Will keep in good condition long after cutting.

	Each
Cigarette. SC. Creamy white, heavily edged white.	\$0 35
Edna Ferber. SC. Glistening coral, shading to old-gold. . .	40
Elsie Daniels. Lavender-pink shading white at center. . . .	35
F. W. Fellowes. Coral-red with deeper suffusion at center.	70
Mariposa. SC. Pink shade, faint violet suffusion.	35
Mrs. Edna Spencer. Lavender-pink with white suffusion. . .	30
Mercedes. SC. Creamy yellow with sunset pink.	40
Papillon. Blending of old-rose with golden lights.	75
Wizard of Oz. Giant. Amber-pink with soft salmon shading. .	50

Formal and Informal Decorative Dahlias

This well-known type produces large, double flowers, regular in form and borne on long, stout stems. The plants are of a robust growth and do well under varied conditions.

	Each
Amun-Ra (Sun God). Mammoth flowers of copper and orange, shading to gold and amber.	\$0 45
Elite Glory. Massive, rich red exhibition variety.	50
Fort Washington. Dark mahogany-red. The best and largest of its color.	60
Jane Cowl. Giant blooms of bronzy buff and old-gold. . . .	50
Jersey's Beauty. Beautiful shade of rose-pink.	35
Marmion. Pure golden yellow with bronze suffusion on reverse of petals.	50
Margaret Woodrow Wilson. Opalescent pink, face of petals creamy white; very large.	50
Snowdrift. Immense blooms with waxy white petals.	50
U. S. A. Distinct, sparkling, pure deep orange.	90



Decorative Dahlia

Double Pompon Dahlias

These bloom most profusely from early in the season until frost, furnishing at all times an abundance of perfect flowers on good stems suitable for cutting, and admirable for table decoration.

- Daisy. A favorite because it blooms early and profusely. Salmon-rose flowers.
- Ideal. Splendid, small, pure yellow blooms borne very profusely on wiry stems.
- Joe Fete. Beautiful pure white blooms.
- Nerissa. A lovely and perfect blend of mauve and soft pink.
- Sunbeam. Crimson-scarlet.
- Tom Thumb. A pretty variety with very small blooms of a rich garnet color.
- Yellow Gem. The finest of the yellow Pompon Dahlias.

Any of the above Pompon Dahlias, 35 cts. each, \$3.50 per doz.

CANNA

For a brilliant show all summer there is no plant that excels the Canna, the tall varieties for center of beds and the dwarf sorts for borders. They do best in rich soil and bloom from July until frost.

	Each	Doz.
Tall, Mixed. Large-flowering sorts. Height, 5 to 6 feet	\$0 15	\$1 50
Dwarf, Mixed. Large-flowering sorts. Height, 3½ to 4 feet.	15	1 50

CALADIUM ESCULENTUM (Elephant's Ear)

One of the finest foliage plants, with immense, tropical leaves that will add greatly to the attractiveness of the garden.

	Each	Doz.
Extra Size. 12 in. and over in circum.	\$0 35	\$3 50
First Size. 9 in. and over in circum.	25	2 50

MADEIRA VINE

A favorite, tuberous-rooted climber with glossy green leaves and delightfully fragrant, white blossoms. It is of very rapid growth and will thrive anywhere but does best in a warm, sheltered, sunny location. 15 cts. each, \$1.50 per doz.

TUBEROSES

Beautiful, pure white, wax-like, very sweet-scented, double flowers, growing on tall stems, each stem bearing a dozen or more blooms.
Dwarf Double Pearl. Extra large. 10 cts. each, \$1 per doz., \$6 per 100.



Pompon Dahlias

GLADIOLUS

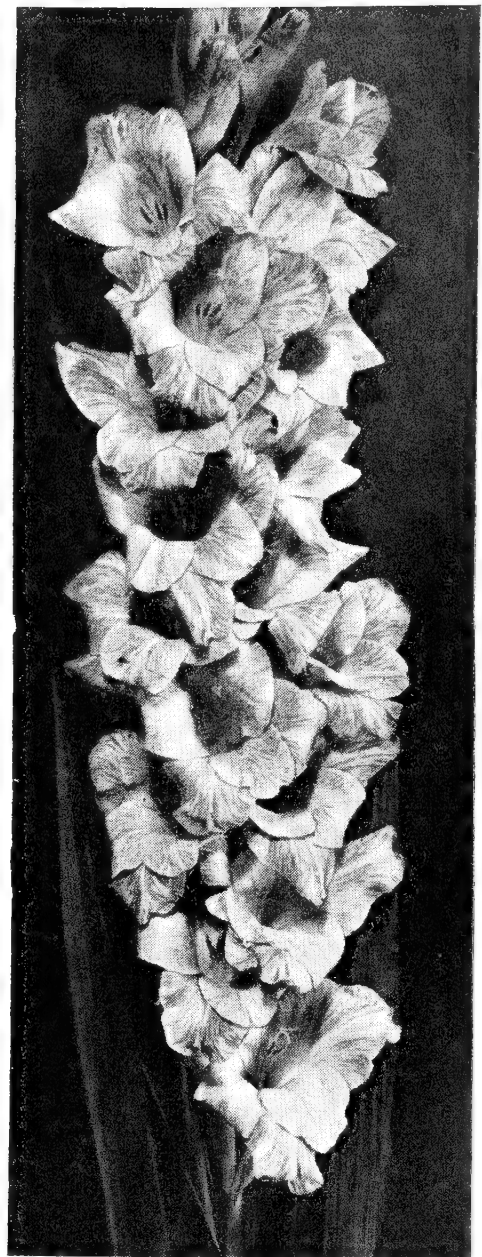
The Gladiolus is known and highly esteemed by all lovers of flowers. The handsome flower-spikes, of great substance, are very attractive in beds or borders and as cut-flowers. Their good keeping quality as a cut-flower will be greater if spikes are cut whenever the two lower flowers have opened. Of easy culture and thrive well in any good garden soil. Bulbs planted during April will begin flowering in July, and if planted every two weeks thereafter until the latter part of June will produce continuous succession of bloom until frost. Our bulbs are grown by specialists.

	Doz.	100
Alice Tiplady. Splendid bright orange-saffron; good large flowers.	\$0 80	\$6 00
Carmen Sylva. A fine, large, sturdy, pure white. One of the best for cutting.	90	7 00
Crimson Glow. Warm, glowing crimson-scarlet. An early and vigorous grower.	80	6 00
Dr. F. E. Bennett. Vivid brilliant scarlet. Splendid spike of large blooms.	90	7 00
E. J. Shaylor. A superb, beautifully ruffled variety of deep rose-pink color.	80	6 00
Golden Measure. Giant pure yellow, slightly ruffled. One of the best.	1 00	8 00
Halley. Salmon-pink, with cream and carmine throat. Large, early flower	80	6 00
Mrs. F. C. Peters. Beautiful, giant, rosy lavender blooms with patch of glossy crimson on lower petals.	90	7 00
Mrs. H. E. Bothin. Heavily ruffled flowers of shell-pink, tinted salmon, with flaming scarlet blotch.	90	7 00
Mrs. Leon Douglas. Possibly the largest of the Gladiolus. Begonia-rose with flame striping; lemon markings and sprinkled with ruby on lower petals.	90	7 00
Nancy Hanks. Large flowers of richest apricot.	90	7 00
Orange Queen. Striking orange-yellow, tinted apricot.	80	6 00
Purple Glory. Rich velvety maroon with black blotches, beautifully ruffled.	1 00	8 00
Schwaben. Fine, large sulphur-yellow flowers.	80	6 00
W. H. Phipps. Salmon-pink, overlaid with rose; large flowers.	1 00	8 00
Special Mixture. Large-flowering varieties; attractive colors.	65	5 00

HARDY GARDEN LILIES

The most attractive of all hardy plants. These stately Lilies, with their beautiful flowers, constitute the chief attraction in the hardy border. Plant as early as possible in the spring in a well-drained soil. Once established they will bloom for years. A heavy mulching of leaves or manure in the fall is all that is required for best results.

Auratum (The Golden-banded Lily of Japan). Enormous white flowers, spotted crimson, with golden band through center of each petal.	Each \$0 35	Doz. \$3 50
Regale (Regal Lily). Fragrant white blooms with outside of petals tinted pink; shaded sulphur inside.	35	3 50
Speciosum rubrum. Beautiful white blooms, shaded rose, with crimson spots.	45	4 50
Tigrinum splendens (Tiger Lily). Spotted red-orange flowers. Blooms in August and September. Excellent for perennial border and rock-garden. Height, 2 to 4 feet.	25	2 50



Gladiolus, W. H. Phipps



Lilium regale



Madeira Vine. See page 36

CLOVER SEEDS

Alfalfa or Lucerne (*Medicago sativa*). A clover-like, leguminous plant of great importance as a hay and forage crop; also as a soil-enricher. Sow on rich, moist loam or sandy soil, having a deep, porous subsoil. Once established, it will produce three or four heavy crops in a season, making from three to six tons of hay per acre. Sow in spring or fall at the rate of 30 pounds per acre. Lb. 45 cts., 100 lbs. \$40.

Alsike or Hybrid (*Trifolium hybridum*). The most hardy of all Clovers. On rich, moist soil it yields an enormous quantity of hay or pasture, but its greatest value is for sowing with other Clovers and grasses, as it forms a thick bottom and greatly increases the yield of the crop. Cattle prefer it to any other forage. Sow in spring or fall, at the rate of 8 pounds per acre. Lb. 40 cts., 100 lbs. \$35.

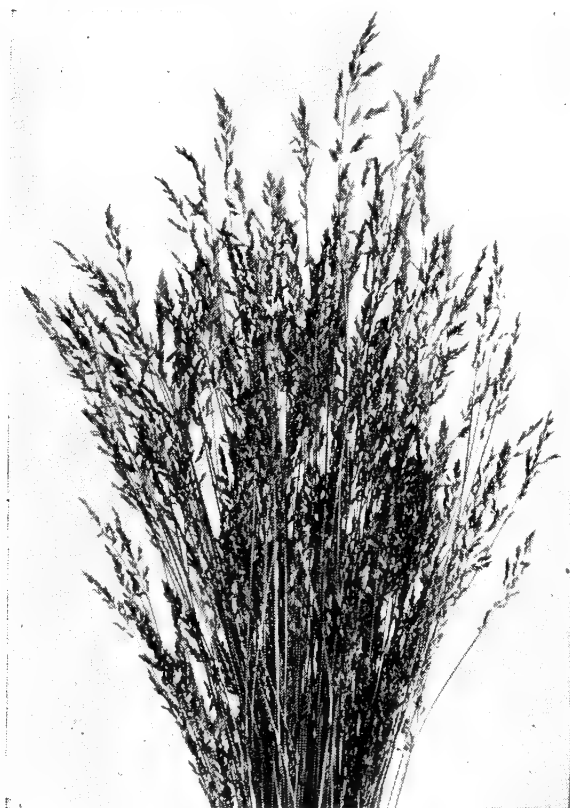
Mammoth Red (*Trifolium pratense perenne*). Also called "Cow Grass" or "Pea Vine Clover." Grows quite distinct from the Common Red Clover, often making a stand when other Clovers fail. Valuable for reclaiming exhausted land when plowed under as a green manure. Sow about 12 pounds per acre. Lb. 43 cts., 100 lbs. \$38.

Crimson or Scarlet (*Trifolium incarnatum*). The importance of this annual Clover is realized more and more every year, not only as a pasture green, forage and hay crop, but as a cover crop and soil-renovator. The yield in fodder is immense, and after being cut it commences growing again, continuing until severe freezing weather. Should not be planted until spring. Sow 10 to 15 pounds per acre. Lb. 25 cts., 100 lbs. \$20.

White (*Trifolium repens*). A small, low-growing, perennial variety, with round, white, fragrant heads. The plants are perfectly hardy, stand close cutting, and produce an abundance of leaves and blossoms. Very desirable for beautifying the lawn, also for pasturage when sown with other grasses. It is adapted to all soils but thrives best in moist ground. Sow in spring at the rate of 8 pounds per acre. Lb. \$1.25.



Alfalfa or Lucerne Clover



Red-Top Grass

GRASS SEEDS

Bent, Astoria (*Agrostis capillaris*). One of the best of the Bent varieties. Makes a fine compact, durable turf of deep green color. Lb. \$1.25, 100 lbs. \$110.

Bent, Colonial (*Agrostis tenuis*). A narrow-leaved variety forming a strong, durable turf of a rich green color. Lb. \$1.25, 100 lbs. \$110.

Bent, Seaside (*Agrostis maritima*). A hardy creeping grass well adapted to putting-greens and lawns. Lb. \$1.25, 100 lbs. \$110.

Blue Grass, Kentucky. Perennial. Time of flowering, June; height, 10 to 15 inches. This is one of the best grasses for lawns and most nutritious pasturage for all stock. When once established, it will improve each year and endure for a long period. Its spreading habit, smooth, even growth, and deep green color make it indispensable for lawns or meadows. Lb. 60 cts., 100 lbs. \$55.

Fescue, Chewing's (*Festuca rubra commutata*). Well adapted to shady places. Makes a fine dark green, dense turf. Lb. \$1.20, 100 lbs. \$110.

Fescue, Red (*Festuca rubra*). Perennial. Time of flowering, June and July; height, 2 to 2½ feet. Valuable for pasture, tennis-courts, and lawns. Lb. \$1, 100 lbs. \$90.

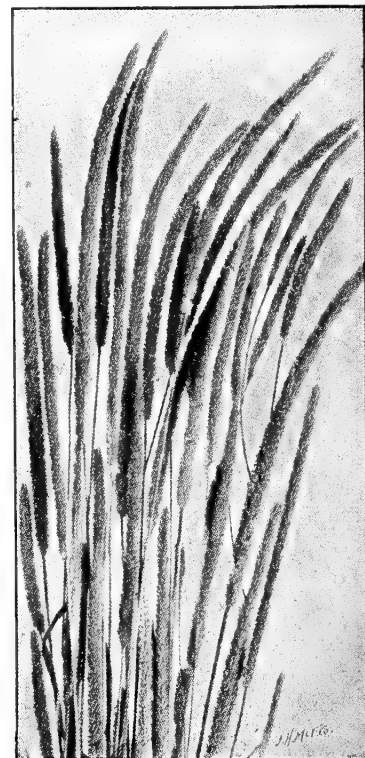
Red-Top, Fancy Recleaned (*Agrostis vulgaris*). Perennial. Time of flowering, July; height, 1 to 2 feet. Extensively used in pastures and lawns. Best results are produced on rich, well-drained soil. Lb. 45 cts., 100 lbs. \$40.

Meadow Grass, Wood (*Poa nemoralis*). Perennial. Time of flowering, June; height, 1½ to 2 feet. An excellent variety for shaded places and under trees. Of early growth, with exceptionally fine foliage of a deep green color. Well suited for lawns and pastures. Sold out.

Rye Grass, Domestic. A mixture of English and Italian Rye Grass. A quick-growing grass. Lb. 25 cts., 100 lbs. \$20.

Rye Grass, English (*Lolium perenne*). Perennial. Time of flowering, June; height, 15 to 24 inches. A valuable grass for permanent pasture. The plants make a quick growth and produce an abundance of foliage which retains its bright green color during the season. Withstands frequent close cropping and succeeds best in well-drained locations. Lb. 40 cts., 100 lbs. \$35.

Timothy (*Phleum pratense*). Perennial. Time of flowering, June and July; height, 2 to 3 feet. A very hardy rapid-growing grass which will produce a heavy yield the year after sowing. The seed we offer is the finest recleaned, and will be found more profitable than other samples offered at cheaper prices. Lb. 17 cts., 100 lbs. \$13.



Timothy Grass

INSECTICIDES

ANT GAS. Is effective against most types of ants, kills immediately, will eliminate entire ant colony without delay. Easy to apply. Also effective against ground moles. $\frac{1}{2}$ -pt. cans 55 cts.

ARSENATE OF LEAD. (Powdered.) Superior to paste arsenate; mixes with water almost instantly; stands suspension longer, and has double the covering capacity. Lb. 40 cts., 4 lbs. \$1.30, 25 lbs. \$5.50.

BORDEAUX MIXTURE. For all fungoid diseases. Ready for use by adding water. Lb. box (makes 5 gallons of spray) 40 cts., 4 lbs. 95 cts., 25 lbs. \$4.60.

BLACK-LEAF "40." Highly recommended as a spray for all sucking insects. One ounce makes 6 gallons. Oz. 40 cts., 5 ozs. \$1.30, 2 lbs. \$3.50.

CALOMEL. For control of root maggots on cabbage and cauliflower in hotbeds. Very effective and does not injure the tenderest foliage; also effective against flea beetles. Use at the rate of 2 to 4 ounces to 10 gallons water.

For dusting when transplanting in field, use at the rate of 1 pound to 5 pounds ground limestone, using powder duster and dusting at base of each plant.

If used for treating the seed against maggots before sowing, use $1\frac{1}{2}$ pounds to 1 pound seed.

Also used for the control of onion maggot by treating seed before sowing. 1-lb. bottle \$4.50.

COPPER SOLUTION. For mildew, pear and apple scab, rust on carnations and violets. $\frac{1}{2}$ pt. 50 cts., pt. 85 cts.

CURE DAMP (Copper Oxide, Red). For the control of damping off of spinach, tomatoes, beets, peppers, eggplants, cucumbers, and melons. 1-lb. can \$1, 5 lbs. \$4.

DANDELION KILLER. A drop from spouted can kills most weeds in lawn. $\frac{1}{2}$ pt. 40 cts., qt. 85 cts.

DOG SCAT. (Liquid.) Sprayed on evergreens, trees or shrubs, keeps dogs away. 3-oz. bottle 40 cts.

GRAFTING WAX. For grafting cuts and bruises on trees and shrubs. $\frac{1}{4}$ lb. 20 cts., $\frac{1}{2}$ lb. 30 cts., lb. 55 cts.

FISH-OIL SOAP. An excellent wash for trees and plants; kills insects and their eggs. Lb. 35 cts., 5 lbs. \$1.50.

LIME-SULPHUR. (Powdered.) For dormant spraying of fruit and shade trees and bushes against San Jose and oyster-shell scales; also for peach-leaf curl and brown rot of peaches. Lb. (makes $3\frac{1}{2}$ to 5 gallons) 50 cts., 5 lbs. \$2.

PARA-DICHLORO-BENZINE. The best remedy for peach tree borers. 1-lb. tin 70 cts., 5 lbs. \$3.25.

PARIS GREEN. For all insects that eat foliage. Lb. 60 cts.

ROTENONE DUST NO. 75. Highly recommended non-poisonous dust, used effectively on all vegetables. Lb. 40 cts., 5 lbs. \$1.25.

SEMESAN. The well-known plant disinfectant for rots, damping off, etc. 2 ozs. 55 cts., lb. \$2.75.

SLUG-SHOT. Very effective in destroying potato bugs, beetles, green and black flies, slugs, worms, and caterpillars. Non-poisonous; easily applied, requires no mixing and will not injure the plants in any way. Lb. 35 cts., 5 lbs. \$1.25.

SLUG-SHOT. (Liquid.) Kills all chewing and sucking insects. Non-poisonous, contains 1% rotenone, 1% pyrethrum. Oz. 40 cts., 4 ozs. \$1, pt. \$2.75, qt. \$4.75.

SULPHUR (SUPERFINE POWDER). For checking mildew. Lb. 20 cts., 5 lbs. 60 cts., 10 lbs. \$1, 25 lbs. \$2.

TOBACCO DUST. A remedy for green flies, beetles, etc. Lb. 20 cts., 5 lbs. 60 cts., 10 lbs. \$1, 25 lbs. \$2.

TREE TANGLEFOOT. No crawling insect can pass a band of Tree Tanglefoot. One pound for a 6-foot band 4 inches wide and $\frac{1}{8}$ inch thick. $\frac{1}{2}$ lb. 35 cts., lb. 65 cts.

TREE WOUND PAINT. Excellent for pruned or damaged trees. Prevents infection. $\frac{1}{2}$ pt. 60 cts., pt. \$1.

WEED-KILLER. A liquid preparation for the killing of every kind of weeds on roadways, paths, gutters, tennis courts. One gallon makes 40 gallons liquid. 1-qt. can 65 cts., gal. \$1.75.

FERTILIZERS FOR LAWN, GARDEN, AND GREENHOUSE

ADCO. A powder which, when mixed with almost any non-woody vegetable waste and kept moist, gradually converts the mass into real manure fully equal to the farmyard product in fertilizing power, but free from foul odor, flies, weed-seeds, etc. 25 lbs. \$2.25.

AGRICO. The nation's leading fertilizer.

For Garden: 10 lbs. 80 cts., 25 lbs. \$1.40, 50 lbs. \$2.20, 100 lbs. \$3.50.

For Lawn: 10 lbs. 80 cts., 25 lbs. \$1.50, 50 lbs. \$2.50, 100 lbs. \$4.

ALUMINUM SULPHATE. Especially adapted for rhododendrons and other plants requiring an acid soil. 100 lbs. \$4.50.

BONE-MEAL. Made from the best quality of bone and finely pulverized. Valuable for top-dressing lawns, roses, flowers, and vegetables. Apply about 1,000 lbs. per acre or 5 lbs. to 100 square feet. **Sold out.**

BOVUNG. A natural cow-manure containing not less than 75 per cent organic matter, thoroughly dehydrated and well pulverized. Ideal for use on the lawn and also excellent for flowering plants. 50 lbs. \$2.

CANADIAN PEAT MOSS. Granulated Peat Moss should be used liberally about the garden or greenhouse, for pot-plants, window-boxes, and growing bulbs, etc., for mulching perennial beds, lawns, roses, etc., and mixing with sandy or clayey soils. Bus. 65 cts., $1\frac{3}{4}$ bus. \$1, $\frac{1}{2}$ bale \$3, bale \$5.

COW MANURE. Especially suited for soil-mixing, mulching and liquid manuring. 5 lbs. 40 cts., 10 lbs. 60 cts., 25 lbs. \$1.20, 50 lbs. \$2, 100 lbs. \$3.50.

HUMUS. Nature's product for enriching lawns and gardens. It is odorless and beneficial to all plant-life. 5 lbs. 25 cts., 25 lbs. 80 cts., 50 lbs. \$1.20, 100 lbs. \$2.20.

LIME. (Hydrated.) Extensively used in the garden or on the farm to correct acid conditions in the soil. Also to make clay soils more friable and sandy soils more compact. 5 lbs. 20 cts., 10 lbs. 35 cts., 25 lbs. 50 cts., 50 lbs. 75 cts.

MURIATE OF POTASH. Usually used with other fertilizers deficient in potash. Excellent for potatoes, corn and other grains. 100 lbs. \$4.

NITRATE OF SODA. Valuable for the nitrogen it contains in forcing backward plant-life to strong growth. Quick in action and should be applied sparingly. 5 lbs. 65 cts., 10 lbs. \$1.10, 25 lbs. \$2.20, 100 lbs. \$5.50.

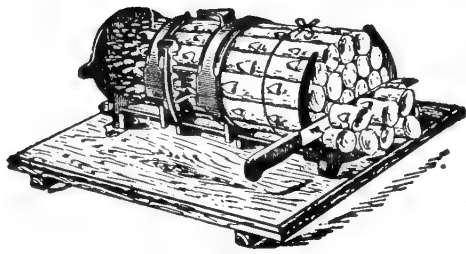
ROSE FOOD. A perfectly balanced plant-food especially prepared for roses. 5 lbs. 50 cts., 10 lbs. 85 cts.

SHEEP MANURE, PULVERIZED. A rich, pure, and natural manure. Excellent as a top-dressing for lawns. 5 lbs. 40 cts., 10 lbs. 60 cts., 25 lbs. \$1.20, 50 lbs. \$2, 100 lbs. \$3.50

SULPHATE OF AMMONIA. For lawns, home-gardens, and fruits. This brand is especially prepared for top-dressing, is soluble and quickly available. It feeds the grass and starves the weeds. 5 lbs. 65 cts., 10 lbs. \$1.10.

SUPERPHOSPHATE (16%). Used for mixing with other fertilizers to increase the phosphoric acid analysis. 5 lbs. 3 cts., 10 lbs. 50 cts., 25 lbs. \$1, 100 lbs. \$2.25.

Garden Tools and Sundries



Asparagus Buncher

No. 1. Makes bunch 3 to 3½ inches diameter. \$5.50 each.
No. 2. Makes bunch 4 to 4½ inches diameter. \$5.50 each.
Length adjustable, 7 to 9 inches.

Asparagus Knife

American V-shape—
50 cts. each.

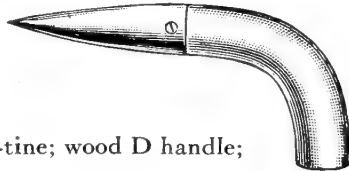


Corn Knife

Little Giant. Designed to meet the call for a corn hook on the lines of the Little Giant Grass Hook but with longer reach and adapted to heavier work. 65 cts. each.

Dibbles

For transplanting; wood handle.
95 cts. each.



Forks

Digging or Spading. Best quality; 4-tine; wood D handle; strap ferrule. \$3 each.
Manure. Best quality; oval tines; iron D handle; strap ferrule. 4-tine, \$2.20 each; 5-tine, \$2.50; 6-tine, \$2.75.
Potato-digging. Best quality; 6 heavy, round tines. \$2.50 each.
Hay. Best quality; 3 oval tines; strap ferrule. \$1.75 each.

Fruit Picker

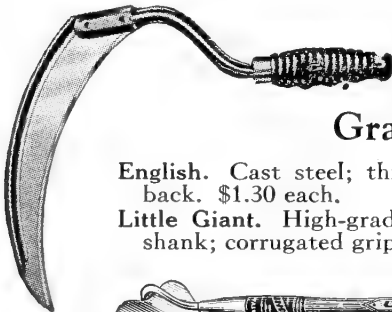
Galvanized steel wire; attaches to pole. Price, without pole, 65 cts. each.

Glazing Points

Peerless No. 2. For medium, double thickness glass. 80 cts. per 1,000; postpaid, 95 cts.

Grafting Wax

¼lb. 20 cts., ½lb. 30 cts., 1lb. 50 cts.



Grass Hooks

English. Cast steel; thin cutting blade; strong, riveted back. \$1.30 each.
Little Giant. High-grade sheet steel blade; drop forged shank; corrugated grip handle. 65 cts. each.



Hoes

Field Hoe Field. Best-quality shank, with 4-foot handles, 6 to 8 in., \$1.50 each.

Warren. Heart-shaped, for making drills, covering, and weeding. \$1.50 each.

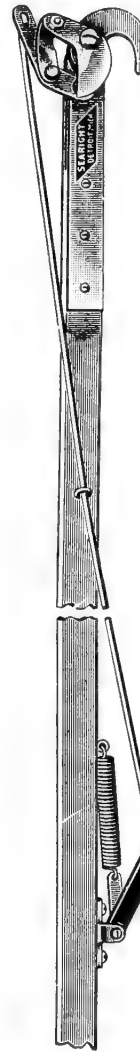


Cultivator. Ideal for hoeing or weeding and can be used in wide or narrow row. Three-prong, \$1.10 each; 5-prong adjustable, \$1.65.

English Scuffle or Push. Best-quality forged steel. 6-in., \$1.20; 8-in., \$1.35. Handles, 35 cts. extra.



English Scuffle Hoe



Picks and Mattocks

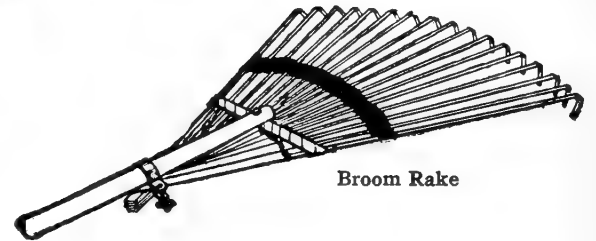
Pick. Handled. \$1.65 each.
Pick Mattock. Handled. \$1.90 each.
Axe Mattock. Handled. \$1.90 each.

Pruners

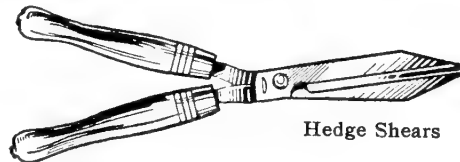
Tree. For strength, durability, and easy cutting quality, this Trimmer is unequalled. It is constructed for heavy work and will cut a limb up to 1¼ inches in diameter. 8-ft., \$6; 10-ft., \$7.

Rakes

Lawn Broom. For removing leaves from lawns. Reaches all cracks and crevices without pulling up the tender grass roots. Can be used to rake among the flowers without injuring them. 90c. each.
Steel Garden. Best quality, strong and durable, not welded but cut from one piece of steel. 12-tooth, \$1.30 each; 14-tooth, \$1.40; 16-tooth, \$1.50.
Wooden Hay. Best. 12-tooth, \$1 each.
Wooden Lawn. Best. 24-tooth, \$1.50 each.
Wire Lawn. Reversible. 24-tooth, \$1.10 each.



Broom Rake

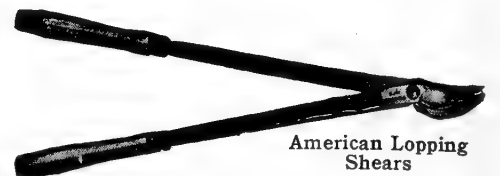


Hedge Shears

Shears

Hedge. Notched blade of high-grade, forged steel, full ground and polished. 8-in., \$2.75; 9-in., \$3.

American Lopping. Easy cutting; good for heavy work. High-grade, forged blade and ferrule. 26-in. handles, \$4 ea.; 30-in., \$5; 36-in., \$5.50.



American Lopping Shears



Progress Grass Shears

Grass, Progress Improved. Hardened and tempered blades, semi-finished; green handles and shanks. \$1.10 each.
Sheep or Grass. Best quality. 50 cts. to \$1.65 each.

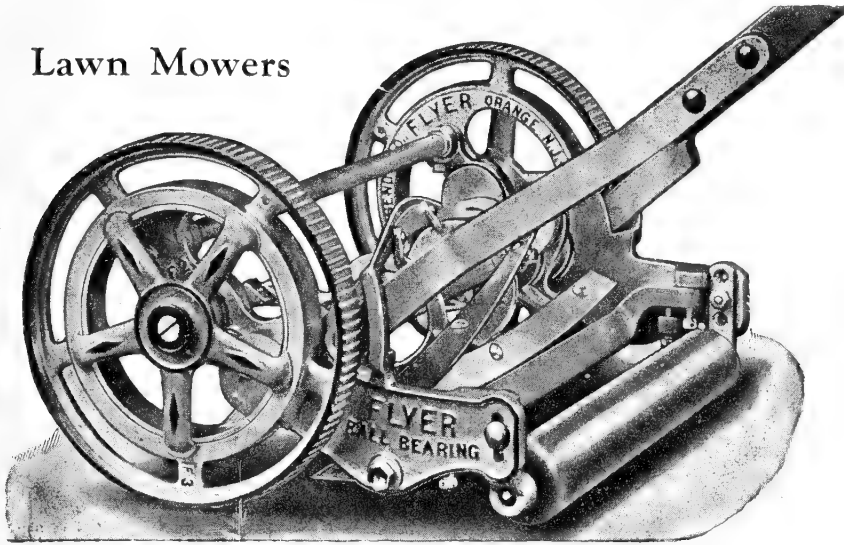
Pruning. High-grade forged steel. 9-in., \$1.65 each; solid steel, \$1.10.



Pruning Shears

GARDEN TOOLS AND SUNDRIES, continued

Lawn Mowers



Flyer (Ball-bearing)

This gem of Lawn-Mower construction was built to supply a first-class Mower at a low price. It is the strongest, lightest running, most beautifully designed and finished Mower of its class. Equipped with two-gear internal driver and pinion type, 9-inch driving wheels, 5½-inch reel, with four cutting blades made from the highest grade crucible steel, oil-tempered, also lower self-sharpening blade made from same material. A Mower of perfect adjustments and exquisite workmanship. Price, 14-in. cut, \$13; 16-in., \$13.50; 18-in., \$15.75.

Saws

Pruning. Double-edge; best quality. \$1.50 each.
Crosscut. Made of the best steel properly hardened and tempered to hold edge and set. 5-ft., \$4 each; 5½-ft., \$4; 6-ft., \$4.50.
One-Man Crosscut. With supplementary handle. 4-ft., \$3.80 each; 4½-ft., \$4.20; 5-ft., \$4.40.
Buck. With common frames. \$1.65 each.
Buck. With patent frames. \$1.85 each.

Scythes

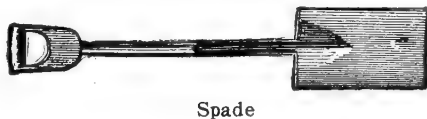
English. Best quality; thin cutting blade and strong riveted back. 30-in., \$3 each; 32-in., \$3.25; 34-in., \$3.50.
Little Giant. Best crucible steel. The all-day edge kind, 30-in., 32-in., and 34-in., \$2 each.
Little Giant Bush. Best steel; strong short blade. \$2 each.
Scythe Snath. Regular bend with patent swing socket loop. \$2.
Scythe Stone, Llectro. 20 cts. each; **Farmers Choice.** 10 cts. each.

Shovels

Square or Round-Point. Solid steel; hollow back; best quality. No. 2, with D handle. \$2 each.
Scoop. Solid steel; hollow back; D handles. No. 3, \$2.40 each; No. 4, \$2.50; No. 5, \$2.60.

Spades

Solid steel, polished; plain back; short or long handle; best quality. \$2 each.



Spade

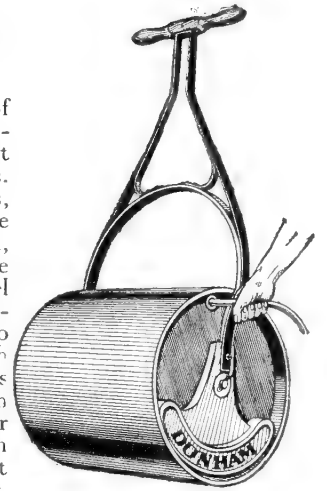
Trowels



Garden, Solid Steel. Made from heavy sheet steel, shank and blade being one piece. 6-in., 55 cts. each.
Garden, Forged Steel. The blade and shank are made of one piece of steel; extra-strong. 6-in., 90 cts. each.
Garden. Blade made from cold rolled steel, malleable iron shank, firmly riveted. 5-in., 25 cts. each; 6-in., 30 cts.
Ladies' Flower. 6-in. blade, 20 cts. each.

Water-Weight Lawn Rollers

This Water-Weight Roller of superior quality and strong construction plays an important part in maintaining handsome lawns. It is equipped with roller-bearings, making it easy to operate, and the rolling surface is perfectly smooth, to prevent injury to the lawn. The water-drum is of heavy sheet-steel construction, with all seams electric welded, and can be made to vary in weight by filling with water or sand. When ground is soft, it may be used empty; when hard, filled to desired weight for effective work. When filled with sand, the roller weighs 60 per cent more than when filled with water.



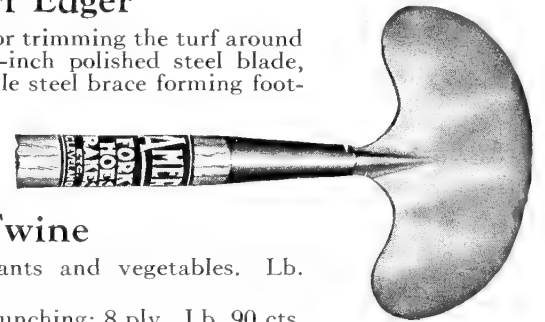
No.	Drum	Weight, empty	Filled with water	Price
5	18 x 24 in.	80 lbs.	310 lbs.	\$22 00
7	24 x 24 in.	115 lbs.	500 lbs.	30 00

Planet Jr. Lawn Edger No. 2

A handy Edger for the lawn. The cutting blade is made of good-quality steel and well sharpened. Has a strong wood handle. \$1.65 each.

Turf Edger

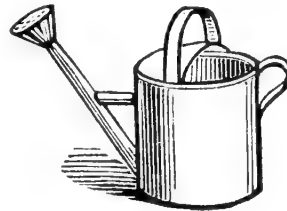
An excellent tool for trimming the turf around borders, etc. Has 9-inch polished steel blade, reinforced with double steel brace forming foot-rest. \$1.65 each.



Twine

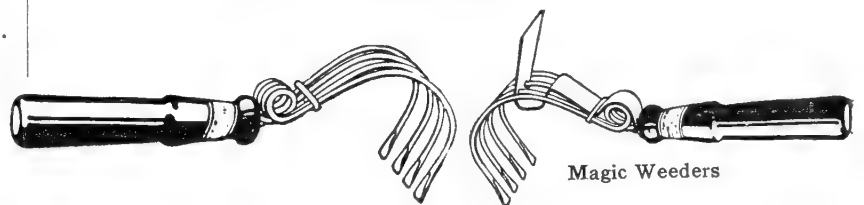
Jute. For tying plants and vegetables. Lb. 40 cts.
Cotton. White; for bunching; 8 ply. Lb. 90 cts.
Binder. Best quality, in 5-lb. balls. \$1.20 each.

Watering Pots



Galvanized. Regular pattern; heavy, galvanized iron with one rose. 8-qt., \$1.30 each; 10-qt., \$1.50; 12-qt., \$1.75; 16-qt., \$1.95.

Weeders



Magic Weeders

Magic. The curved spring tines, made from the best galvanized steel, enter the soil easily and do not clog. No. 1, 40 cts. each; No. 2, 55 cts.

Excelsior. Useful for using in small flower-beds and window-boxes. 25 cts. each.



Hazeltine Weeder



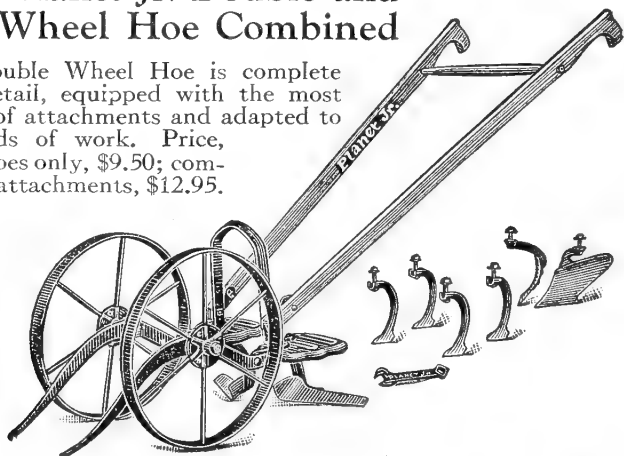
Excelsior Weeder

Hazeltine. Popular for weeding between all small plants. 40 cts. each.

GARDEN AND FARM IMPLEMENTS

No. 12 Planet Jr. Double and Single Wheel Hoe Combined

This Double Wheel Hoe is complete in each detail, equipped with the most useful set of attachments and adapted to many kinds of work. Price, with side hoes only, \$9.50; complete with attachments, \$12.95.



No. 13 Planet Jr. Double and Single Wheel Hoe Combined



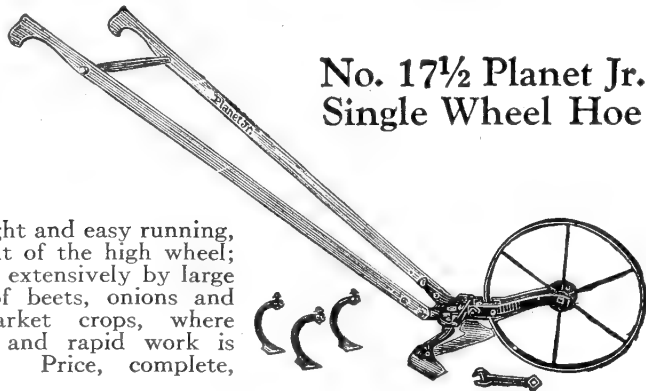
Just the tool for a small gardener. Very light and easy running, on account of the high wheels. The great advantage of this Double Wheel Hoe is that it can be made into a practical

Single Wheel Hoe. An attachment for sowing seed in drills, which fits on this tool, can also be had. Price, \$9.95.



No. 17 Planet Jr. Single Wheel Hoe

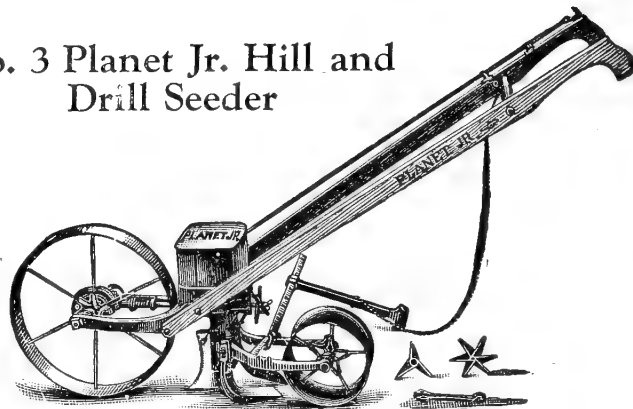
A first-rate Single Wheel Hoe, sufficient for most garden work; you can do more and better work with it in one day than you can do in several days with a hand hoe. Price, complete, \$8.95



No. 17 1/2 Planet Jr. Single Wheel Hoe

Very light and easy running, on account of the high wheel; used very extensively by large growers of beets, onions and other market crops, where thorough and rapid work is essential. Price, complete, \$7.95.

No. 3 Planet Jr. Hill and Drill Seeder



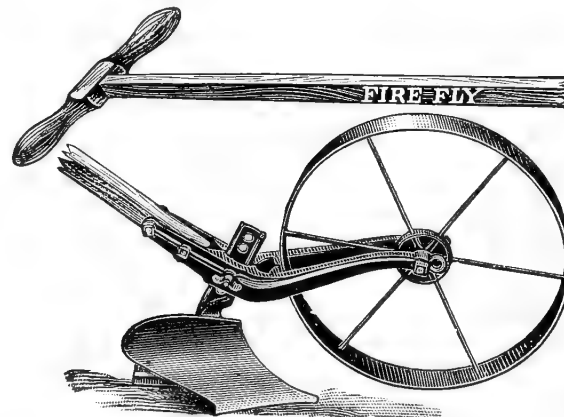
The No. 3 Planet Jr. Seeder only is a popular size at a moderate price. We recommend customers to buy separate seed drills and wheel hoes where they have enough work to warrant it. The steel driving wheel is of proper height, with broad face, making the tool light and easy running. The special force feed is admirable, working equally well whether sowing with an ounce or a full hopper. The hill dropping is simple and reliable, spacing hills either 4, 6, 8, 12 or 24 inches apart. From hill to drill—this change is made or reversed almost instantly. Price, \$19.75.

No. 300 Planet Jr. Seeder



This Seeder is accurate, simple, durable, reliable and easy running, doing first-class work in every particular. Price, \$22.75.

Fire Fly Garden Plow



This tool is exceedingly useful to owners of small gardens. It will throw a furrow 4 to 6 inches wide and 1 to 3 inches deep, and deeper by going a second time in each furrow. It opens furrows for manure or seeds and covers them, and opens up rows for all kinds of plant-setting. In cultivating, plow away lightly. Price, \$4.95.

Here are good tools which insure good work

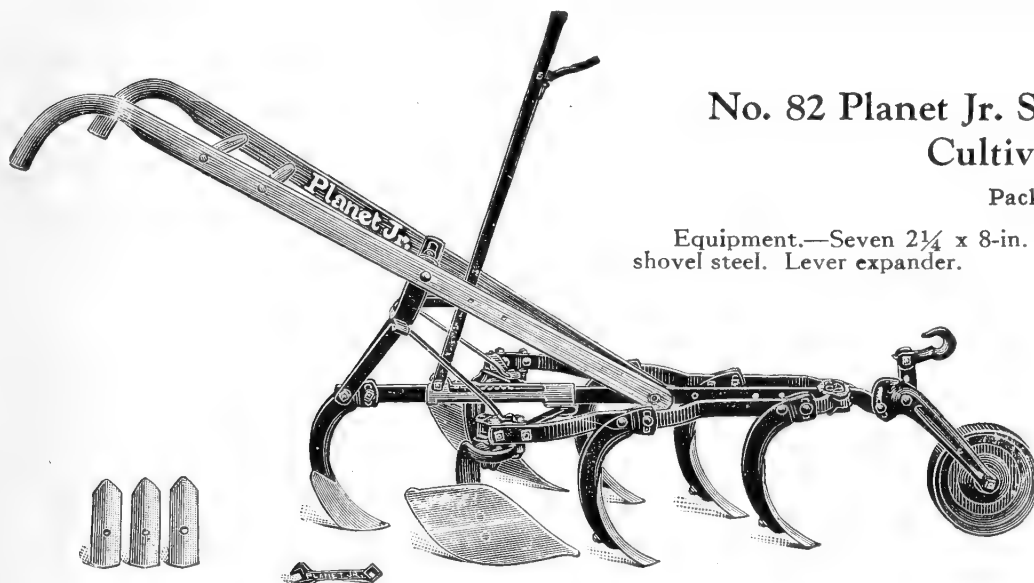
GARDEN AND FARM IMPLEMENTS, continued

No. 82 Planet Jr. Seven-Tooth Horse Hoe and Cultivator Combined

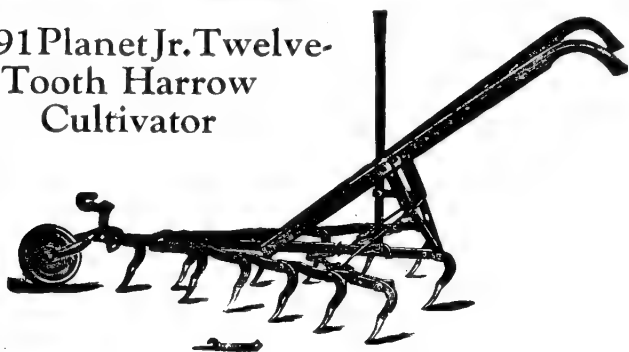
Packed weight, 76 lbs.

Equipment.—Seven $2\frac{1}{4}$ x 8-in. cult. steels. One pair 6-in. side steels. One 7-in. shovel steel. Lever expander.

This is a new machine which is bound to be popular. It has all the advantages of our No. 9 Horse Hoe with its reversible side standards which can be turned any angle desired. The seven teeth insure fine and thorough cultivation. The machine will take all the extra attachments which fit our Nos. 7, 8 and 9 Horse Hoes, and the whole combination is one which is invaluable for hoeing, hilling or cultivating. Price, \$17.25.

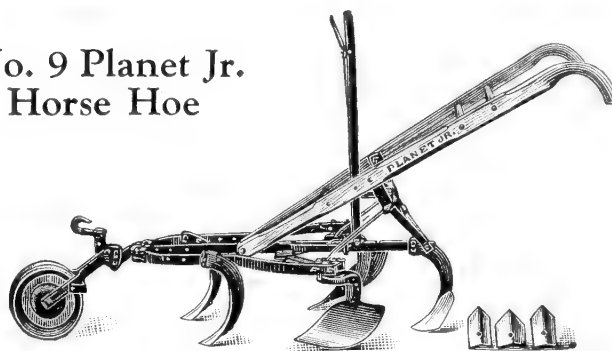


No. 91 Planet Jr. Twelve-Tooth Harrow Cultivator



This tool has rapidly grown in favor with truckers and farmers. This is because the soil can frequently be cultivated without hilling, leaving the ground in the finest condition. For ground which is full of stones or gravel this tool is very useful, doing the work very competently and rapidly. It can be expanded to 32 inches and contracts to 12 inches. Price, \$13.95.

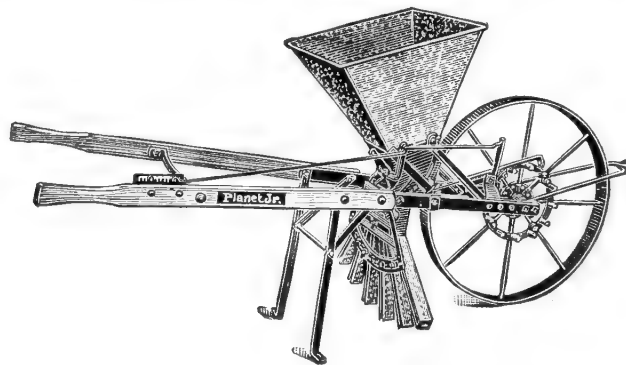
No. 9 Planet Jr. Horse Hoe



This tool has rapidly grown in favor with market gardeners and farmers. It is strong and light, has patent handle braces which are rigid, yet do not interfere with opening and closing, nor with the side adjustment of the handles. The patent handle adjustment is very complete; up or down for height, and a very important side adjustment. It holds the handles either central or to one side, as desired. Thus, in covering, the operator need not walk on the finished work; and in vineyards and among blackberries, raspberries, etc., he may work close without scratching his hands or having the handles break down the crop. Price, \$15.50.

No. 220 Planet Jr. Fertilizer Distributor

The simplicity, efficiency, and long-wearing qualities of this Fertilizer Distributor will appeal to everyone. It will distribute fertilizer on the ground to any desired width from 4 to 30 inches, or in the middle of three rows 12 to 14 inches apart and can also be used in 42- to 48-inch rows by closing off the flow in three spouts and distributing through the others, either on the right or left-hand side. The hopper capacity is one bushel and the weight of the load is placed over the wheel, making it easy to push. Quantity per acre is regulated by a notched index on the right-hand handle and the shut-off rod is operated from the same point. Price, \$31.50.

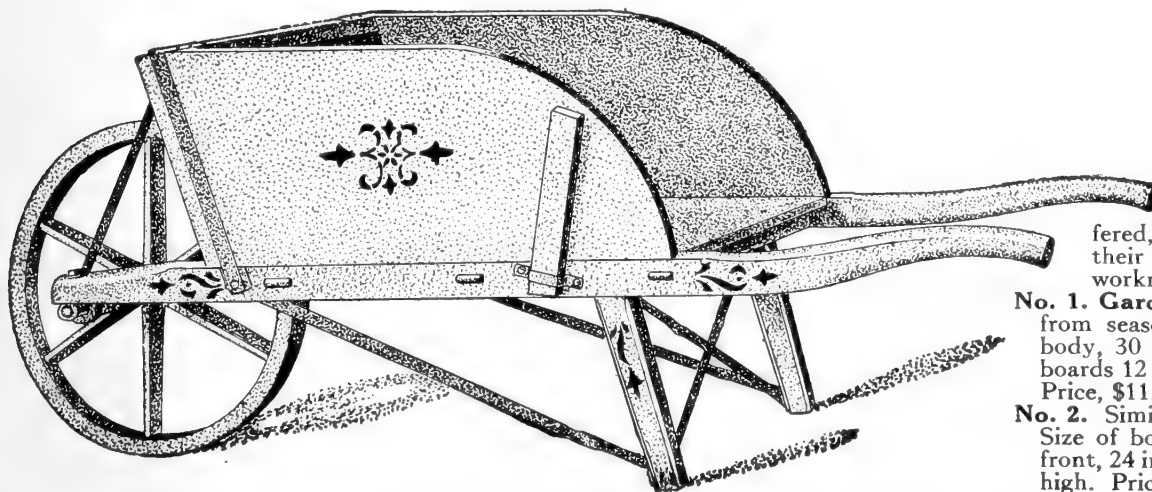


Garden Barrows

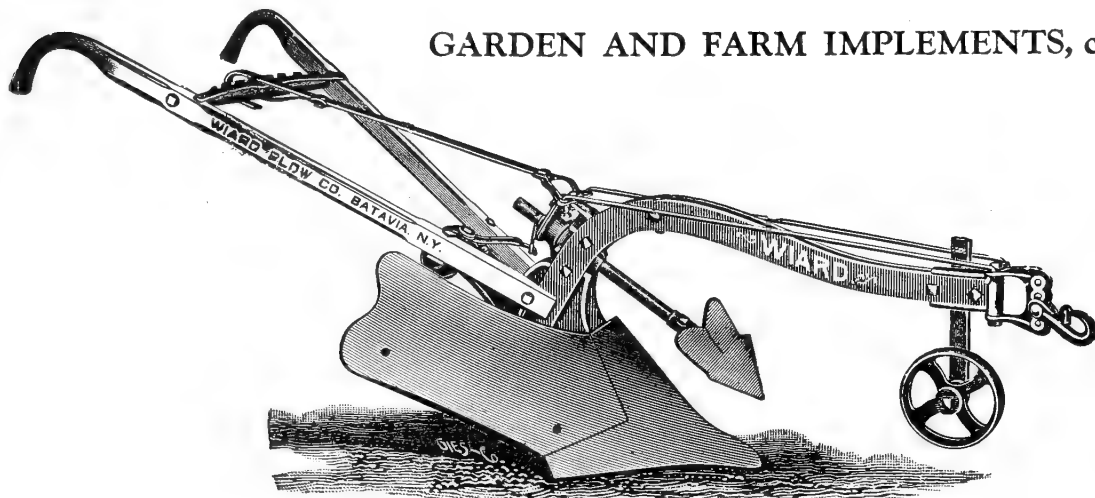
A neat, well-made, and durable class of Wheelbarrows. They are superior to the type generally offered, as none but the best material is used in their construction by experienced and skilled workmen.

No. 1. Garden and Farm Wheelbarrow. Made from seasoned hardwood, painted red. Size of body, 30 inches long, 24 inches wide, and sideboards 12 inches high. Strong, neat, and durable. Price, \$11.50.

No. 2. Similar in style to the above, only smaller. Size of body, 28 inches long, 20 inches wide in front, 24 inches wide at back, sideboards 12 inches high. Price, \$9.



GARDEN AND FARM IMPLEMENTS, continued



Wiard Steel Swivel Plow

This is one of the finest Swivel Plows ever produced. The beam is of the highest grade forged steel and stronger than any other beam made. It is adjusted so that the Plow works perfectly; will reverse either way, and can be used for side hill or level land, without leaving dead furrows and ridges.

No. 120. Light two-horse. All steel, \$38.00.

No. 115X. Light two-horse. Chilled, \$32.00.

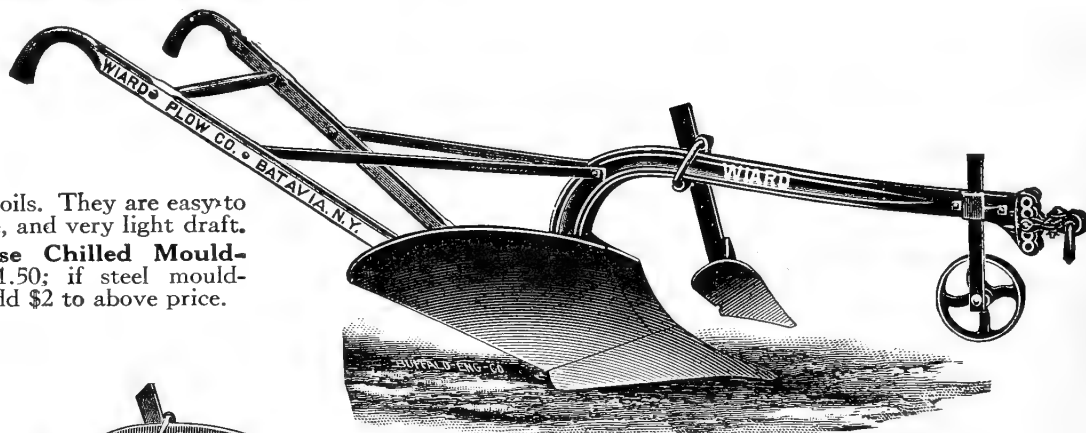
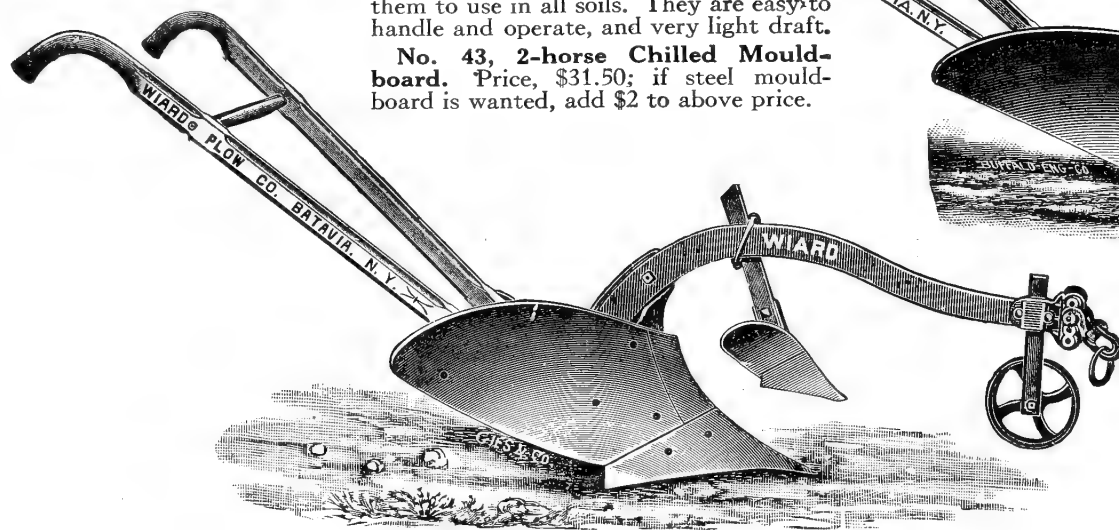
The No. 115X is an all-chilled Plow and is made to meet the demand where a lower-priced Plow is wanted.

Wiard Steel Beam Plow

This series of Plows is the acme of perfection in Plow construction. They are made from the best material obtainable and the shape of the mouldboards is such as to adapt

them to use in all soils. They are easy to handle and operate, and very light draft.

No. 43, 2-horse Chilled Mouldboard. Price, \$31.50; if steel mouldboard is wanted, add \$2 to above price.

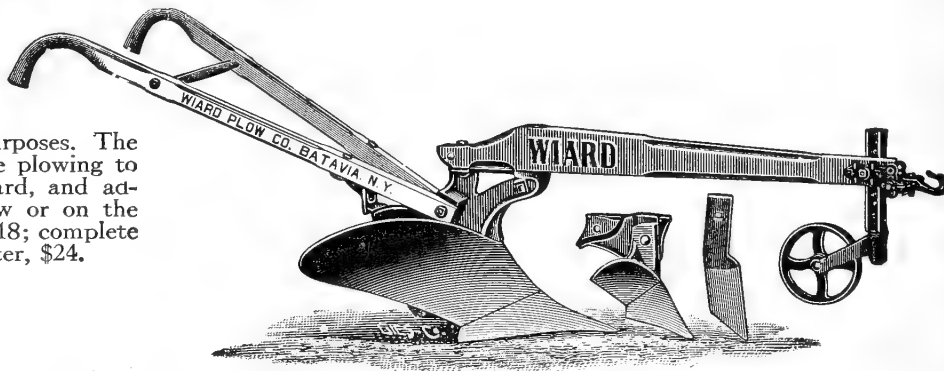
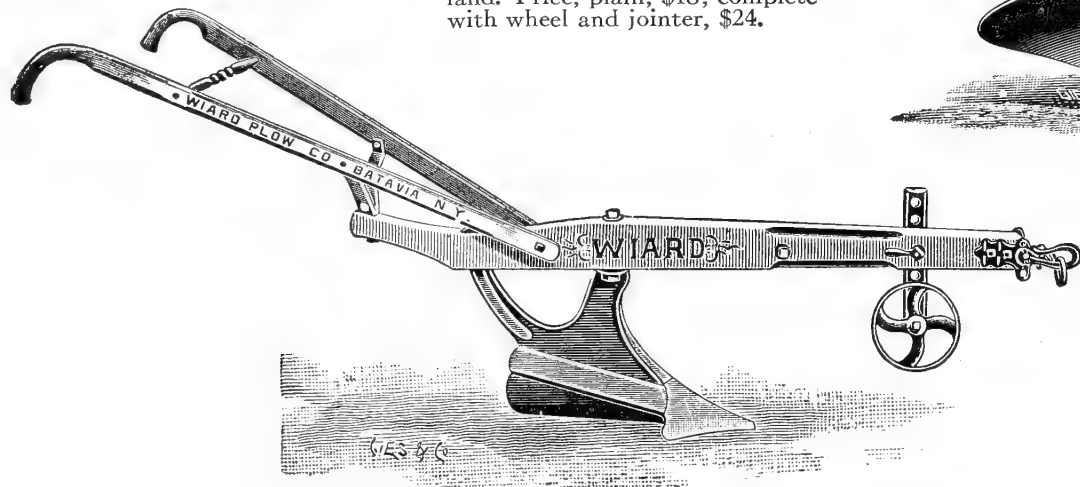


Wiard Steel Beam Plow

No. 72. A light, two-horse Plow which has proved popular and is a model of its kind. It is light in draft and so balanced that it can be easily handled. The mouldboard has superior turning qualities and is adapted to all conditions of soil. Price, \$31.50; if steel mouldboard is wanted, add \$2 to above price.

No. 10 One-Horse Plow

This Plow is designed for general garden and vineyard purposes. The handles can be shifted from left to right, permitting close plowing to trees and under grape-trellis wire. Has chilled mouldboard, and adjustable beam so that the horse can walk in the furrow or on the land. Price, plain, \$18; complete with wheel and jointer, \$24.



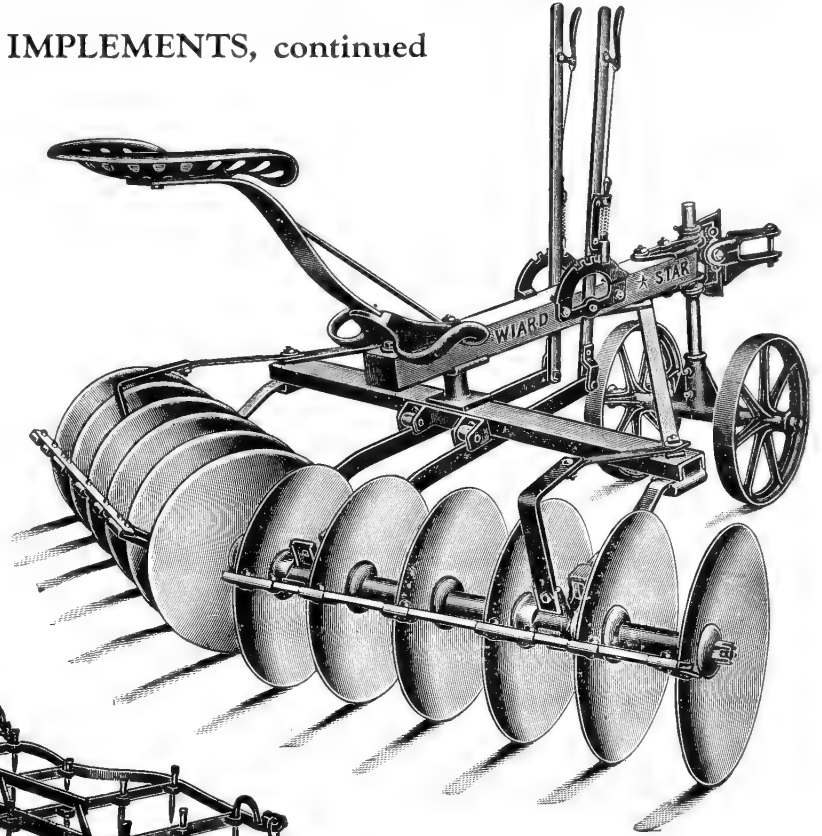
Wiard Subsoil or Ditching Plow

A strong and serviceable right-hand, subsoil Plow, intended to follow in the furrow of the turning Plow and to loosen the soil in the bottom of the furrow from 3 to 6 inches deep. This Plow is furnished with plain point only. It is being used by some of our best practical farmers, and is especially adapted for use in the culture of crops, where deep cultivation gives the best results. For ditching purposes it has no equal. Price, \$28.50.

GARDEN AND FARM IMPLEMENTS, continued

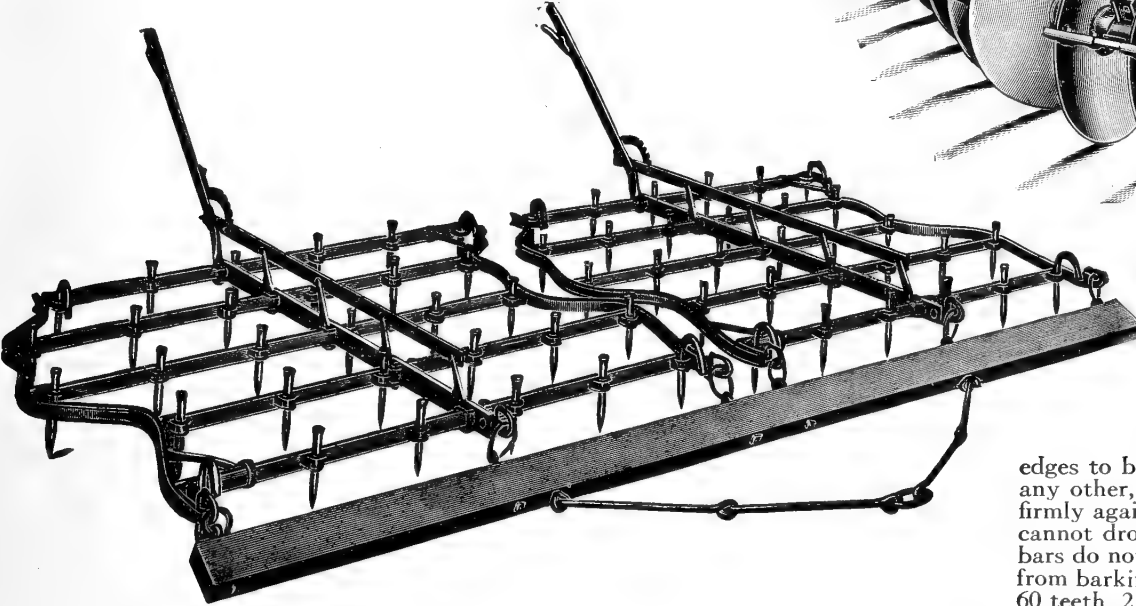
Disc Harrow with Fore Truck

This Harrow contains all features of any importance in a Disc Harrow, and includes many advantages and conveniences for the cheap and successful use of such an implement. The gauge can be placed at any angle, and it has adjustable cleaners, which can be removed if desired. The Fore Truck has a universal attachment, and can be fitted to and used on other makes of Harrows that have a short wood pole. The whiffletrees are attached to the clevis on the Fore Truck, avoiding the possibility of any weight or bearing down on the horses' necks. The Truck can be raised or lowered and works on a swivel so that short turns can be made. It is strongly constructed with most durable bearings and easily operated. Price, with 18-in. disc, and Fore Truck, \$86.75; with 18-in. disc, and Long Pole, \$78.



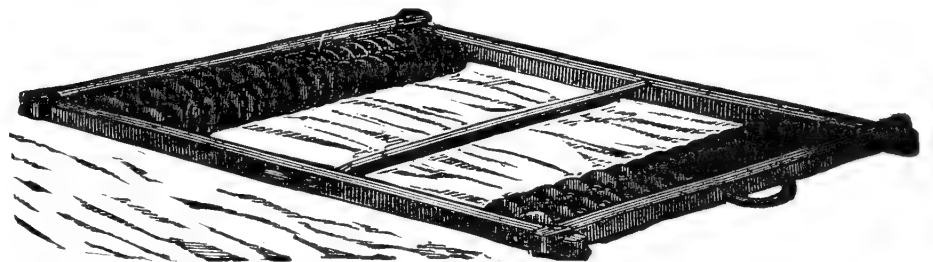
Spike Tooth Lever Harrow

This Harrow is one of the best on the market. The frame is made of I and U bar steel, which makes it very strong. The triangular tooth has three sharp edges to be used in succession. It stirs more soil than any other, and having a broad, flat face, is held more firmly against the tooth bar. The teeth are headed and cannot drop out should they become loose. The tooth bars do not project beyond the frame, which prevents it from barking your trees. Price, 30 teeth, 1 section, \$15; 60 teeth, 2 sections, \$26.



The Meeker Smoothing Harrow

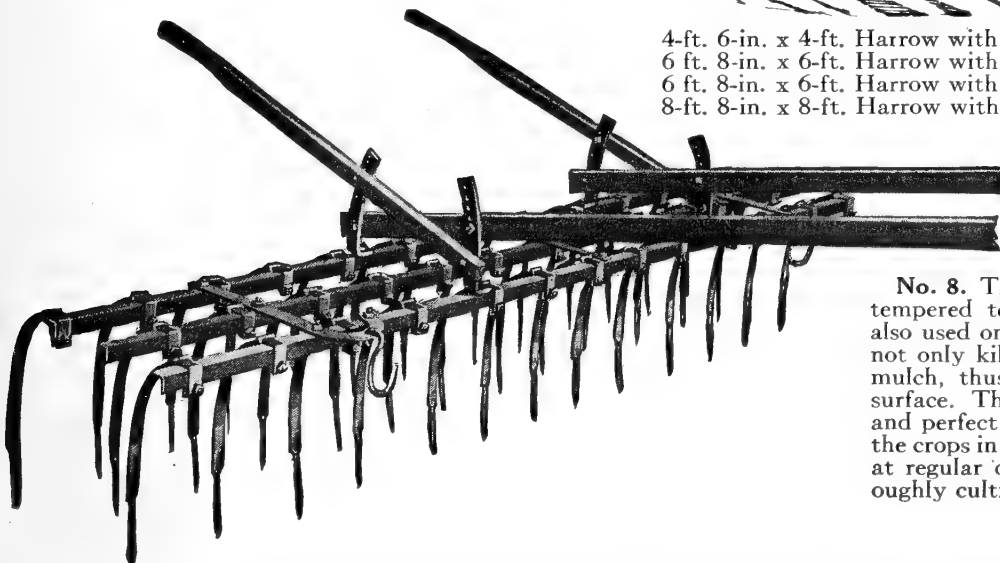
A splendid Harrow to prepare the soil for sowing small seeds. It has four sets of rollers containing 46, 58 and 82 discs, depending upon the size, the discs being set so as to overlay or meet. The use of a Meeker Harrow saves the work of raking, and does the work of a dozen men. The board in the center, set at an angle, can be adjusted up and down and serves as a leveler.



4-ft. 6-in. x 4-ft. Harrow with 8-in. discs	\$40 00
6 ft. 8-in. x 6-ft. Harrow with 8-in. discs	47 00
6 ft. 8-in. x 6-ft. Harrow with 10-in. discs	50 00
8-ft. 8-in. x 8-ft. Harrow with 10-in. discs	70 00

Walking Weeder

No. 8. This one-horse Weeder is 7½ feet wide, with 38 oil-tempered teeth, and is especially serviceable for spring crops; also used on grain-field when hard or dry. Using a Weeder early not only kills the weeds, but also scarifies the surface, leaving a mulch, thus preventing formation of a crust or baking of the surface. The teeth may be respaced, not removed, and thorough and perfect work can be done by using all the teeth to cultivate the crops in rows until plants are quite tall. When teeth are spaced at regular distances, no open spaces are left and ground is thoroughly cultivated. Price, \$18.

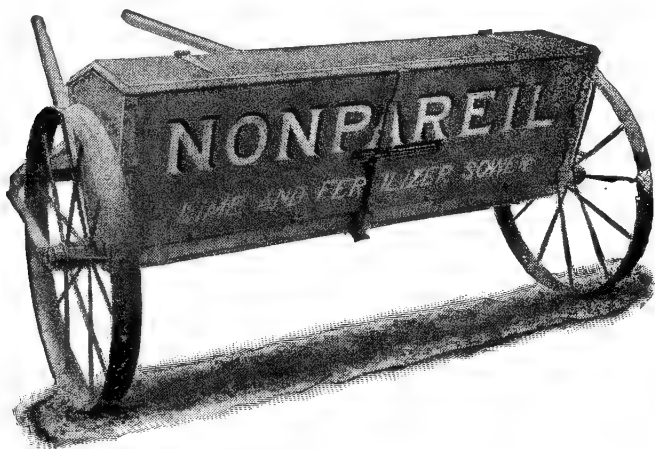


GARDEN AND FARM IMPLEMENTS, continued

Cyclone Seeder

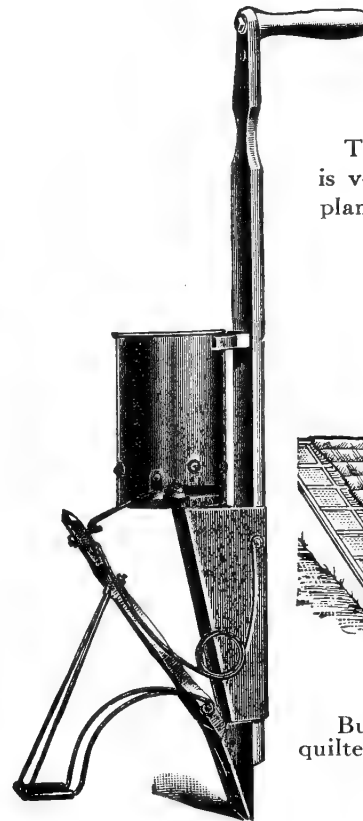
We highly recommend this to anyone desiring a convenient machine; practical and an all-round first-class grain and grass Seeder.

It is easily operated and will distribute any desired quantity of seed per acre. The slope-feed board gives the seed a gravity flow and keeps the hopper outlet properly filled without tilting the machine. An automatic feed adjustment furnishes a positive force feed and is quickly adjusted for sowing the different varieties of seed. Price, \$3.



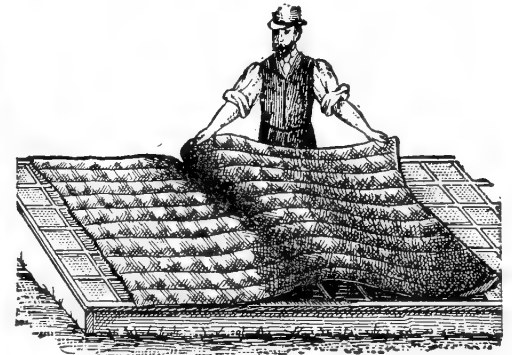
Broadcast Fertilizer Sower

This Fertilizer Sower combines simplicity, strength and durability and has no superior for sowing all kinds of commercial fertilizers broadcast or in rows. It has a reel which runs the full length of the hopper and keeps the fertilizer in motion so that it is forced through the openings in the bottom plates. This kind of opening, it has been found, is the only pattern that will sow successfully all kinds of commercial fertilizers in large or small quantities. Price, \$60.



Hand Corn Planter

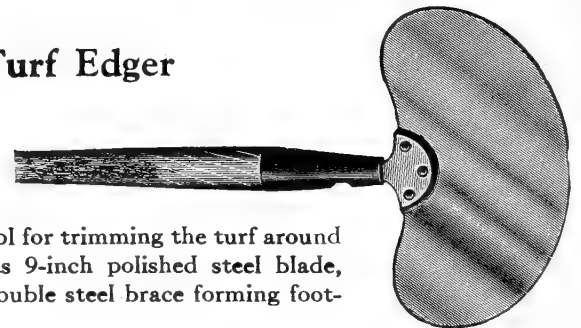
This Planter works automatically and is very accurate. It can be adjusted to plant the required depth. Price, \$4.



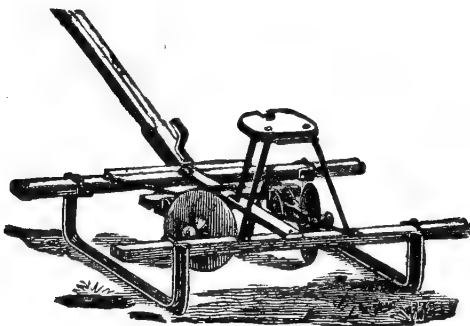
Hotbed Mats

Burlap-lined; waste wool and cotton quilted; frost-proof. Size 76 x 84 in.

Turf Edger



An excellent tool for trimming the turf around borders, etc. Has 9-inch polished steel blade, reinforced with double steel brace forming foot-rest. Price, \$2.

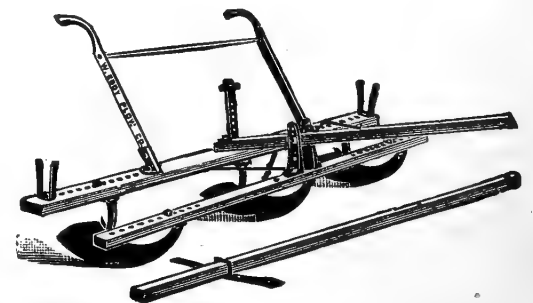


Darnell's Marker and Coverer

This tool can be used for marking out furrowing, covering or ridging all kinds of row crops. It can be adjusted to open two furrows at once or it will make one double furrow or ridge up both sides of a row at one operation. The runners are constructed to make a perfect seed-bed and prevent sliding on side-hills. The revolving discs cut their way straight through without hindrance or clogging. Unequaled as a time-saver and does the finest kind of work. Price, \$30.

Garden and Farm Three-Row Marker

A valuable tool where an even and uniform mark is required. It is of light draft and can be adjusted to width and depth as desired. The runners are sufficiently long to insure even running and, consequently, straight rows. Best-quality steel wings, shaped to open a large furrow and at the same time pulverize the soil for seed-bed. The wings are bolted on to the runners and may easily be replaced when worn. Price, \$22.



EBERLE'S SEEDS

1945

**FREDERICK W. EBERLE
ALBANY, NEW YORK 2**