

Historic, Archive Document

Do not assume content reflects current scientific knowledge, policies, or practices.

62.09

1945 Fall Bulb Catalog



DAFFODILS

- Lower Left, Scheherazade
- Center Left, Mrs. John C. Bodger
- Top, Pygmalion
- Center Right, Golden Perfection
- Lower Right, Texas

hallawell seed co.

256 MARKET STREET • SAN FRANCISCO 11, CALIFORNIA



DIOTIMA



MRS. E. H. KRELAGE

The Daffodils on Our Cover

HERE ARE FIVE STARS OF THE DAFFODIL WORLD—new creations for the garden fancier or the collector of the rare and unusual. Here are fascinating new color combinations developed by renowned horticulturists. Flowers which have distinction and grace, and all those qualities possessed only by prize exhibition blooms. Get your start of these now and enjoy the finest daffodils you ever grew. The bulbs multiply at the normal rate for daffodils and a very good increase may be expected.

***PYGMALION**—Of the new orange-cupped hybrids, Pygmalion has been selected as one of the finest. The enormous flat perianth is of a soft pale yellow color; the large deep crown is orange-yellow, shading to blood-orange at the nicely frilled edge. The stem is tall and the flower looks up—an all too rare quality in daffodils. Pygmalion represents the new hybrid daffodil at its best.

Each \$1.50; 12 for \$15.00; 50 for \$55.00

***MRS. JOHN C. BODGER**—Considered by experts one of the most exquisite of the white daffodils. The perianth is star-shaped, the trumpet narrow and fluted. The entire flower is ivory-white, both perianth and trumpet, and is in stunning contrast to the blue-green foliage. We think it one of the most decorative and unusual daffodils we have ever offered—unexcelled for garden and border, as well as one of the very best varieties for pot growing.

Each \$1.50; 12 for \$15.00; 50 for \$55.00

***SCHEHERAZADE**—Tall and queenly, one of the finest of the new daffodils. Large topaz-yellow perianth of overlapping petals, perfectly formed. The broad heavily frilled cup is pure chrome-yellow, without the slightest trace of orange. At blooming time in our Nursery Gardens Scheherazade has been one of our most popular daffodils and is sure to be in great demand when better known.

Each \$1.50; 12 for \$15.00; 50 for \$55.00

***GOLDEN PERFECTION**—A jonquil hybrid that has won awards at every show in Holland and Great Britain. The flowers are long lasting with a perfectly rounded perianth with wide overlapping segments, deep citron-yellow with mica-sheen, and cup of purest gold, finely proportioned for good balance; calyx grey-green flecked with gold. Excellent for cutting and flower arrangements.

Each \$1.50; 12 for \$15.00; 50 for \$55.00

***TEXAS**—Queen of the double daffodils. A splendidly proportioned plant bearing very large blooms which are held in good position on long stout stems. The broad primrose petals shading to cream down the center are gracefully interspersed with shorter petals of brilliant orange color producing a magnificent double flower. Texas has had many Awards of Merit.

Each \$1.50; 12 for \$15.00; 50 for \$55.00

New Daffodil Collection

5 bulbs each of the above 5 varieties illustrated on cover. 25 bulbs in all.

Prepaid for \$27.50.

Large Trumpet Daffodils

ALL EXTRA SIZE BULBS

Figure following the name indicates relative time of flowering.
Number 1 indicates the first to bloom, etc.

AEROLITE (2)—Visitors to our Nursery Garden trials seem to have a preference for this bi-color trumpet and we find the demand increasing each year. The trumpet is golden yellow, the perianth primrose. It is a flower of unusual quality.

12 for \$3.00; 100 for \$20.00

DIOTIMA—Finest exhibition daffodil; unrivalled in size and beauty; a prize-winner wherever it is shown. This mammoth flower is beautifully proportioned and is carried gracefully on its 24-inch stems. The broad overlapping petals form a star-shaped perianth of medium deep primrose while the trumpet is slightly deeper colored.

Each 50c; 12 for \$5.50; 100 for \$40.00

EMPEROR (4)—Rich yellow trumpet and primrose perianth. Flowers are large with wide overlapping petals and good stem. This is the best of the medium priced daffodils.

Large: 12 for \$1.75; 100 for \$12.50

Extra size: 12 for \$2.00; 100 for \$15.00

JEFTA—A grand new seedling. The delicate colored perianth is cream, the trumpet pale lemon, slightly recurved at the mouth. It blooms early and provides bi-color blooms of good size and exquisite form. This is the first time we have had a sufficient number to offer to our trade. Get your start of Jefta this year.

75c each; 12 for \$7.50; 100 for \$50.00

KING ALFRED (1)—Large, golden-yellow flower on long, strong stem. One of the best known daffodils. More flowers per bulb from Hallawell's King Alfreds.

Large round bulbs: 12 for \$1.75; 100 for \$12.50

Extra size: Should produce 2 to 4 flowers per bulb:

12 for \$2.50; 100 for \$17.50

Jumbo bulbs, 3 to 5 flowers per bulb:

12 for \$3.00; 100 for \$21.00

LOVENEST (1)—A pink daffodil is most unusual; this is one of the very few pink class. It is dainty and charming. Perianth is white, the trumpet, saffron-yellow turning to apricot-pink. Order early on this one.

50c each; 12 for \$5.00; 100 for \$37.50

MRS. E. H. KRELAGE (4)—An exhibition daffodil with pure white perianth and a creamy white trumpet which changes to white as the flower matures. Lovely in bouquets with contrasting colors.

50c each; 12 for \$5.50; 100 for \$40.00



STATENDAM

SPRING GLORY (1)—Long chrome-yellow trumpet with reflexed brim; clear white perianth. It is a large flower and beautiful form; an excellent garden daffodil.

35c each; 12 for \$3.50; 100 for \$25.00

STATENDAM—In our trial gardens we have excellent opportunity to make comparisons of habit of growth, keeping qualities, etc. For some years now Statendam has been superior in many respects, especially in its size and vigorous growth habit. It is an extremely large, deep, golden-yellow trumpet variety; a worthy one that will increase rapidly and produce fine exhibition blooms year after year.

50 each; 12 for \$5.50; 100 for \$40.00

WINTER GOLD—This charming daffodil has many outstanding qualities to recommend it for garden planting. It is very early to bloom, has elegant form, and its long straight trumpet is beautifully frilled. The perianth is bright yellow, the trumpet deep golden-yellow. For several years we have planned to offer Winter Gold in our catalog, but this is the first year we have had sufficient stock.

50 each; 12 for \$4.75; 100 for \$37.00

LONG TRUMPET MIXTURE—If you have a place under trees or among shrubs where you can establish a permanent bed, plant these deep and leave them in the ground. To assure a wide assortment, we pack them 50 in a bag.

12 for \$1.75; 100 for \$12.50

BULB BED COVERING

Sow the seeds of Baby Blue Eyes on top of your bulb beds. The myriads of baby blue flowers will further enhance the beauty of your garden. Try it.



LOVENEST



KING ALFRED



TUNIS



RED CROSS (GIANT INCOMPARABILIS)

CROWN DAFFODILS

ALL EXTRA SIZE BULBS

In these charming daffodils the cup or crown in the center of the flower is about 1/3 the length of the perianth segments. While the perianths are white, the cups are of bright contrasting colors, sometimes frilled and often edged in yet another color. They are dainty and beautiful.

The figure following the name indicates the relative flowering time. Number 1 indicates the first to bloom; 2, the second to bloom; 3, the third, and so on.

Bulb orders for \$2.50 or more are postpaid, orders for less than \$2.50, add 35c for packing and postage.

ANNA CROFT (Barri) (2)—A variety of distinction and always a favorite in the flower show. It has a light primrose perianth. A charming crinkled trumpet of deep yellow, shading to orange at the edge. Long stemmed.

12 for \$3.00; 100 for \$20.00

BATH'S FLAME (Barri) (1)—A popular flower with yellow perianth and a deeper yellow cup which is neatly edged with a broad fringe of orange-scarlet. The petals are long and the stems are strong.

12 for \$1.75; 100 for \$12.50

CROESUS (Incomp.) (3)—Wide, overlapping outer petals; creamy yellow in color. The broad fluted crown is a rich orange. A lovely, free flowering variety.

12 for \$2.00; 100 for \$15.00

DIANA KASNER (3)—Pure white perianth with broad overlapping petals. The cup is deep yellow at the base and has a broad frilled edge of deep red. An outstanding variety.

12 for \$1.75; 100 for \$12.50

FIRETAIL (3)—A favorite in any garden and one of the most popular show varieties. Perianth is broad petaled, creamy-white, the cup is orange with a bright scarlet orange frill.

12 for \$3.50; 100 for \$25.00

HERA (Leedsii) (3)—One of the daintiest and loveliest flowers. The broad overlapping petals of the perianth are cream-white; the cup is deeply frilled with a dainty edging of light primrose.

12 for \$1.75; 100 for \$12.50

BULB FIBRE FOR POTS AND BOWLS

Contains all necessary plant food. Moisten thoroughly; then water as necessary to keep moist. Drainage in pot or bowl not necessary. 1½ pounds of fibre will fill a 7-inch pot.

1½-lb. pkg., 60c; 3 lbs., \$1.10; 5 lbs., \$1.75. Postpaid.

JOHN EVELYN—John Evelyn has an exquisite loveliness all its own. The pure white perianth is four to five inches across, framing the glistening lemon-yellow crown which is beautifully frilled and shirred. It is also a very excellent pot variety and may be grown in our special bulb fibre. Large bulbs.

\$3.50 for 12; \$25.00 for 100

MAYFLOWER (Barrii)—A new and most striking short cup variety and only now available in sufficient number to offer to our trade. The broad over-lapping petals of the perianth are pure glistening white, with a dainty yellow eye picoteed bright red. Mayflower grows tall and is a lovely cut flower. Relative blooming time is with the larger flowered trumpets.

Each 85c; 12 for \$9.00; 100 for \$65.00

MRS. NETTIE O'MELVENY (Leedsii) (2)—New to most gardeners because it has not been generally listed in catalogs. It is a charming flower with pure white perianth and a cup of clear lemon-yellow, picoteed orange.

12 for \$1.75; 100 for \$12.50

QUEEN OF THE NORTH (3)—Broad glistening white perianth surrounding a soft primrose yellow cup with a finely crinkled, sulphur-yellow rim.

12 for \$1.75; 100 for \$12.50

RED CROSS—A crown daffodil famous throughout the daffodil world. It is extra large with primrose yellow perianth and a deep, densely frilled cup of vivid orange-red. It is a substantial flower, with excellent keeping qualities and a fine exhibition or garden variety. This year we have a limited supply of large blooming-size bulbs.

12 for \$3.50; 100 for \$25.00

TUNIS (Leedsii)—A magnificent daffodil; very tall, with strong foliage and stem and lovely flowers develop to great size and are of stoutest substance. Its broad waved perianth is pure glistening white and the bold ivory crown which is beautifully flanged and serrated at the edge, has a flush of pale coppery-gold. A winner at all shows. Tunis is also an ideal pot variety and will grow beautifully in our bulb fibre.

Each \$1.50; 12 for \$15.00; 50 for \$55.00

WALTER HAMPDEN (3)—Bright primrose perianth with a broad flaring yellow trumpet, tinted orange in the frills. This is an outstanding variety.

12 for \$3.00; 100 for \$21.00

SHORT CUP MIXTURE—To get you acquainted with the Short Cup group of Narcissus, we offer this inexpensive mixture of many fine varieties.

12 for \$1.75; 100 for \$12.50



GROW DAFFODILS IN POTS

You may grow lovely crown daffodils in pots by planting them in Hallawell's Bulb Fibre. The pot illustrated above was grown at our Nursery Gardens. In San Francisco and similar climates set the pot in a cool place in the garden and keep the bulb fibre moist. When the buds are ready to open, the pot may be taken into the house.

In addition to the Crown daffodils illustrated above many others are equally satisfactory for pot culture. We suggest you try a selection from the following:

EMPEROR	WINTERGOLD
STATENDAM	BULBOCODIUM
MRS. E. H. KRELAGE	conspicuus
SILVER CHIMES	TRIANDRUS albus
MRS. JOHN BODGER	MOONSHINE

BOUQUET NARCISSUS

POET'S

ACTAEA—This is the largest Poeticus and one of the most beautiful exhibition flowers. The broad snow-white perianth is centered with a large eye broadly margined dark-red. The flower has good form and excellent keeping qualities. The bulbs multiply at the normal rate.

12 for \$2.00; 100 for \$15.00

CHEERFULNESS (4)—A charming Hybrid Polyanthus bearing clusters of three or four double white flowers with a shading of cream at the base of the petals. They are graceful and excellent for bowl or vase arrangements.

12 for \$2.00; 100 for \$15.00

KLONDYKE (3)—A handsome free flowering Polyanthus of rich golden-yellow, with a deeper yellow cup. Flowers are in clusters of three or more on good stems.

12 for \$1.75; 100 for \$12.50

LAURENS KOSTER (2)—An old favorite bearing large clusters of white flowers with a deep yellow cup. The bulbs multiply rapidly and produce many flowers.

12 for \$1.75; 100 for \$12.50

SNOW KING (4)—This is one of the finest Poeticus Narcissus. The perianth is glistening white; the cup rather flat with broad red edge. It grows tall, with good stem and the flowers held upright.

12 for \$1.75; 100 for \$12.50



TWINK

DOUBLE NARCISSUS

Double daffodils are particularly desirable for cutting. A very few of them will make an excellent showing as cut flowers. The bulbs multiply and from a dozen or more it is possible to increase them to many more in a few years.

THE PEARL (2)—Light primrose interspersed with sulphur yellow at the center. Double form. Very attractive.

12 for \$1.75; 100 for \$12.00

TWINK (3)—A nearly full double flower of soft primrose with short orange colored petals interspersed in the center. A charming flower and especially good for cutting.

12 for \$3.50; 100 for \$25.00

VON SION (1)—Large double golden yellow. Usually the first to bloom and thus prolongs the season when planted with other varieties.

12 for \$1.75; 100 for \$12.50



CHEERFULNESS



SILVER CHIMES

POLYANTHUS NARCISSUS

How to Grow in Bulb Fibre—Plant 4 to 6 bulbs in a 6- or 7-inch pot or bowl. If in a bowl, it should be at least 4 inches deep. Keep them in a cool place, preferably out of doors until the buds are ready to open. They may then be taken into the house to bloom.

PAPER WHITE GRANDIFLORA (1)—Pure white star-shaped blossoms in clusters; very early free flowering and fragrant. Extra large size.

12 for \$1.75; 100 for \$12.00

GRAND SOLEIL D'OR (3)—A rich, clear yellow with orange cup; very fragrant and handsome. Large bulbs.

12 for \$1.75; 100 for \$12.00

CHINESE SACRED LILY—Fragrant white star-shaped flowers with yellow cups. They grow well in bowls of bulb fibre if kept cool until they make roots. In San Francisco or similar climates keep them outdoor until ready to bloom.

Large bulbs: 12 for \$2.00; 100 for \$15.00



MOONSHINE

Sow Low Annuals to Cover Bulbs

For a delightful spring display, sow these seeds on top of the bulb beds after the bulbs are planted. One-half ounce of seed covers about 100 square feet.

ALYSSUM, CARPET OF SNOW—Pkt. 15c; $\frac{1}{4}$ oz. 40c.

LINARIA (Fairy Bouquet)—Pkt. 20c; $\frac{1}{8}$ oz. 60c.

NEMOPHILA INSIGNIS (Baby Blue Eyes)—Pkt. 15c; oz. 75c; $\frac{1}{4}$ lb. \$2.00; lb. \$6.00.

VIRGINIAN STOCKS MIXED—Pkt. 15c; large pkt. 35c; oz. \$1.00.

MINIATURE DAFFODILS

For the Rock Garden or Pots

BULBOCODIUM CONSPICUUS (Hoop Petticoat) (2)—This variety grows only 6 inches tall with fine rush-like foliage. The flowers are bright yellow of hoop petticoat form. Prefers a dampish, sandy peat soil. Plant 2 to 2 $\frac{1}{2}$ inches deep.

12 for \$1.00, 100 for \$7.50

MOONSHINE—A beautiful Triandrus hybrid, star-shaped creamy white flower, often three to a stem, drooping gracefully, very beautiful and a great favorite especially for the rock garden or for naturalizing in the shade.

12 for \$2.50; 100 for \$17.50

SILVER CHIMES—One of the loveliest of the small cupped cluster flowered daffodils. Stems 12-16 inches high produce 6 or more flowers each. Pure white with delicate primrose cups. We find this to be one of the best for pot culture, setting several to each pot and leave outdoors until ready to bloom.

Each \$1.50; 12 for \$15.00; 50 for \$55.00

TRIANDRUS ALBUS (Angel's Tears)—These tiny daffodils make beautiful pot plants and are lovely in a rock garden. They prefer shade, a gritty soil and good drainage. (No manure should be given.)

12 for \$3.00; 100 for \$20.00

FRAGRANT JONQUILS

Jonquils are sometimes called Miniature Daffodils. The flowers are in clusters of 2 to 4 and they are very showy when grown in groups at the base of a tree or among shrubs. Delightfully fragrant, and good for cutting.

SIMPLEX (SINGLE SWEET SCENTED)—The very small blossoms are a rich yellow and most fragrant; very free flowering. Plant them in clusters.

12 for \$1.50; 100 for \$11.00

CAMPERNELLE—These are fragrant, rich yellow flowers borne in clusters of 3 to 6 and on stems 12 to 15 inches tall. They are graceful and charming in the garden and are very desirable for cutting.

12 for \$1.75; 100 for \$12.00



SOLEIL D'OR
Grow in Bowls of Bulb Fibre
for Indoor Flowering

TRIANDRUS ALBUS (left)
A Delightful Miniature for
Rock Gardens or Pots

DUTCH IRIS

(Excellent Cut Flowers)

Bulb Orders for \$2.50 or More are Postpaid

Orders for Less Than \$2.50 Send 35c for Packing and Postage

These irises are the same varieties displayed in florists shops during the Spring and Summer months. They are not only an excellent cut flower but they make a fine showing in the garden and remain in good condition an unusually long time. They are very easily grown, and will produce fine quality flowers with a minimum of care. Plant the bulbs 6 to 8 inches apart and about 4 inches deep, in good garden soil. (The figure following the name indicates the relative flowering time.)

BLUE HORIZON (5)—Broad light violet, blue standards, soft sky-blue falls, narrow orange stripes.

IMPERATOR (6)—Large dark blue, free flowering and unusually fine for cutting.

JACOB DE WITT (3)—Standards are very dark blue—the falls slightly lighter.

WEDGEWOOD (1)—Large flower with blue standards, and lighter blue falls. One of the first to bloom.

WHITE EXCELSIOR—Pure white with narrow feather of golden orange.

YELLOW QUEEN—Pure golden yellow.

Each of above: 12 for \$1.00; 100 for \$7.50

Mixed Dutch Iris: 12 for \$1.00; 100 for \$7.50

PEONIES

Not all peonies will thrive in the Pacific Coast climate. The following varieties are western grown and are therefore proven. Cover the crowns about 2 inches when planting.

Prices of the following: Each 75c; 12 for \$8.00.

BARONESS SCHROEDER—Large double flesh white.

DUCHESS DE NEMOURS—Cream yellow center; white guards.

FELIX CROUSE—Dazzling ruby-red.

MME. DE VERNEVILLE—Large blush white.

OFFICINALIS RUBRA—Brilliant Red.

REINE HORTENSE—Light pink.



RANUNCULUS



DUTCH IRIS

Hallawell's RANUNCULUS

Clean, Healthy Bulbs to Produce the Finest Flowers

RANUNCULUS CULTURE

Attractive spring flowering bulbs producing flowers on stems 12 to 15 inches high. Very showy in beds or borders. Plant 2 inches deep with the claw-like projections downward, in a well-drained soil which has been previously watered and allowed to mellow. Little if any additional moisture should be required until the plants appear.

Irrigate as often as necessary to keep the soil moist to a good depth. They prefer full sun.

PRICES

HYBRID MIXTURE—Large size bulbs.

12 for \$1.25; 100 for \$9.00

HYBRID MIXTURE—Small size bulbs.

12 for 60c; 100 for \$4.00

RANUNCULUS

SEPARATE COLORS—Gold, Orange, Red, Pink, White.

12 for \$1.00; 100 for \$7.50

Hallawell's GLADIOLUS

For Exhibition Spikes of Prize Winning Varieties

PRICES 12 for \$1.25; 100 for \$9.00 (Except those priced otherwise)
6 at the dozen rate; 50 at the 100 rate

- BAGDAD**—A charming gladiolus of smoky old-rose. The throat is lighter and color deeper toward the edge of petals.
- BARCAROLLE**—An outstanding salmon-orange. Flowers are good size and ruffled.
- BEACON**—Bright salmon-red with cream throat. Grows very tall bearing huge spikes Be sure to stake.
- BLACK OPAL**—Deep blackish red; fine exhibition spikes.
- CHARLES DICKENS**—Glowing red-purple, with deeper velvety blotch on lower petals.
- COMMANDER KOEHL**—Rich, deep scarlet-red with no markings or blotches. Wide open flowers on tall spikes.
- DREAM OF BEAUTY**—A lovely rose-red. Excellent for cutting.
- GATE OF HEAVEN**—A new ruffled variety with large, bold flowers of a rich yellow shade.
- GOLDEN CHIMES**—An exquisite ruffled yellow.
- GRETA GARBO**—Has a very delicate rose coloring with creamy lower petals. Well expanded, perfectly formed flowers.
- J. S. BACH**—Salmon red shading lighter in the throat. Many florets open at one time, good placement on the spike.
- KING LEAR**—Probably the finest purple gladiolus. Flowers are large and many open at once.
- LADDIE**—Light pink; very large flowers and well placed.
- MAID OF ORLEANS**—Large pure white.
- MARGARET BEATON**—An exquisite pure white, with small scarlet blotch.
- MASTER MYRON**—Bright red; large exhibition spikes.
- MINUET**—Fine clear lavender. Splendid cut flower variety.
- MOTHER MACHREE**—Lavender-gray with edges of petals overlaid salmon-pink. Unusually lovely.
- PELEGRINA**—Dark violet-blue, blotched slightly darker on two lower petals. One of the finest dark-blue shades.
- PICARDY**—Glowing, shrimp or flesh-pink. without any markings. A very beautiful gladiolus.
- ROSA VAN LIMA**—Bright pink, an excellent cut flower variety.
- ROYAL GOLD**—We think this is the finest clear yellow.
- VAGABOND PRINCE**—An unusual bronze red with orange blotch.
- VREDEBURG**—Large pure white; good substance.
- HALLAWELL'S SELECT MIXTURE**—A mixture of the best named sorts in a great variety of colors.
12 for \$1.25; 100 for \$9.00
- RAINBOW MIXTURE**—A fine mixture of large flowering gladiolus in a good variety of colors. 12 for \$1.00; 100 for \$7.00



PICARDY

COMPLETE Gladiolus Collection

2 bulbs each of 22 listed varieties — our selection, each variety labeled separately.

Total 44 bulbs \$5.00
2 Collections for 9.50

Show Collection For Garden or Exhibition Purposes

5 bulbs each of 22 listed varieties, our selection, each variety labeled separately.

Total 110 bulbs \$11.25
2 Show Collections for 22.00

UNUSUAL GLADS

Here are a few outstanding varieties of gladiolus of which we have bulbs in sufficient number to offer this year. They were popular in our Nursery Gardens last year and many advance orders were placed. We think they will please you, too:

- CORONA**—A very beautiful gladiolus; cream white in the center shading lighter toward the edge, each petal edged rose-pink.
12 for \$1.75; 100 for \$12.00
- ELIZABETH THE QUEEN**—Large beautifully ruffled flowers of deep lavender.
12 for \$5.00; 100 for \$35.00
- GLAMIS**—Deep rose-pink; considered one of the finest of this color.
12 for \$3.00; 100 for \$22.50
- MOORISH KING**—The finest and largest of deep mahogany-red. Scarce.
12 for \$1.75; 100 for \$12.00
- WHITE GOLD**—White, shading to cream toward the center and with golden yellow throat. 12 for \$3.50; 100 for \$25.00

Flower and vegetable seeds are sent post paid anywhere within the U. S. A. except where otherwise noted in this Catalog.

NON WARRANTY — While we exercise the greatest care to have all our seeds, bulbs and plants of good quality and true to name, there are many contingencies encountered in growing plants, and success is dependent upon other factors besides seeds, bulbs or plants. Therefore, we operate under the usual Seedsmen's Non Warranty:

HALLAWELL SEED COMPANY gives no warranty, express or implied, as to the productiveness of any seeds, bulbs, or plants it sells, and will not be in any way responsible for the crop. Liability in all instances is limited to the purchase price.

FOLD ON THIS LINE FIRST

USE
LETTER
POSTAGE
HERE

HALLAWELL SEED CO.

256 MARKET ST.

SAN FRANCISCO 11,

CALIFORNIA

Mail Order
RUSH

FOLD ON THIS LINE LAST

San Francisco Seedsmen and Nurserymen

Hallawell's For Your Garden

FROM _____
STREET _____
TOWN _____
STATE _____

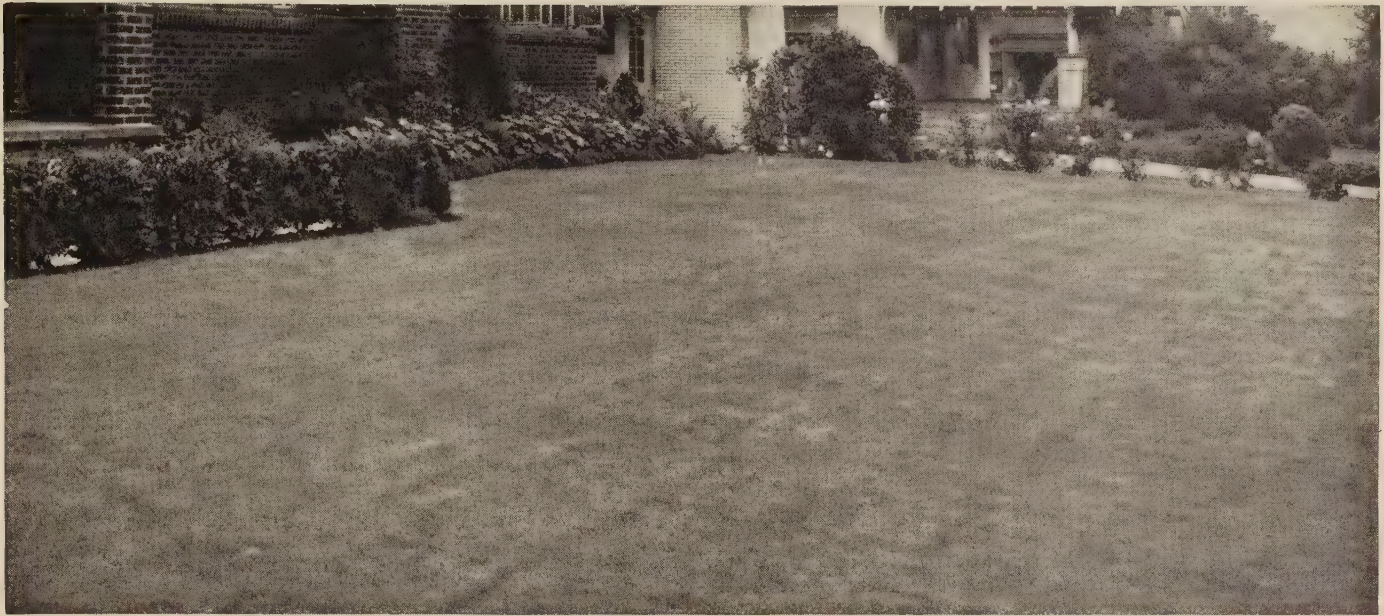
FOLD ON THIS LINE SECOND

CALIFORNIA WILD FLOWERS

Broadcast California Wild Flowers or the Colorful California Poppy on the vacant lots in your neighborhood or on the hillsides in your vicinity. Include the seeds in this order now.

ENV.-O-BLANK
TRADE MARK REG. IN U. S. PAT. OFFICE
STANLEY WESSEL & COMPANY
CHICAGO, ILLINOIS

Hallawell's **LAWN GRASSES**



HALLAWELL'S PARK LAWN—Intended for sowing where the lawn will get the hardest usage. After it is established, it will withstand the usual wear and tear of the backyard where the youngsters play. Heavy soils. Sow 1 pound to 10 x 10 or 100 square feet.

1 lb. bag.....\$.70	3 lb. bag.....\$ 2.00
5 lb. bag..... 3.25	10 lb. bag..... 6.25
25 lb. bag..... 15.00	50 lb. bag..... 27.50

HALLAWELL'S EVERGREEN MIXTURE—The well styled lawn for your garden living room. Makes a luxuriant velvety green turf of fine-bladed grasses. When mowed at regular intervals and fertilized occasionally, it is a velvety dark green color, and soon forms a thick cushion turf. It makes an enduring lawn; one that will withstand a reasonable amount of hard usage. Sow 1 pound to 10 x 10 or 100 square feet.

1 lb. bag.....\$ 1.00	3 lb. bag.....\$ 2.80
5 lb. bag..... 4.60	10 lb. bag..... 9.00
25 lb. bag..... 22.00	50 lb. bag..... 42.50

HALLAWELL'S LAWN CARPET—This is predominantly a mixture of the most desirable bent grasses to produce a carpet-like lawn of fine texture and rich color. Other fine-leaved grasses are combined with the bents in the proper proportion to give maximum serviceability and uniform attractiveness throughout the year. Sow 1 pound to 15 x 20 or 300 square feet.

1 lb. bag.....\$ 1.50	3 lb. bag.....\$ 4.35
5 lb. bag..... 7.00	10 lb. bag..... 13.00
25 lb. bag..... 28.75	

HALLAWELL'S SHADY NOOK MIXTURE—A Hallawell formula mixture of genuine fine bladed grasses suitable for growing in total shade. Sow 1 pound to 10 x 10 or 100 square feet.

1 lb. bag.....\$ 1.75	3 lb. bag.....\$ 5.00
5 lb. bag..... 8.00	10 lb. bag..... 15.00

LAWN RENEWAL MIXTURE—To make an old lawn look like new, reseed it with Hallawell's Lawn Renewal Grass Seed Mixture. Rake the lawn both ways, mow it close to the ground and remove the clippings. Sow the seed 1 pound to 10 x 20 or 200 square feet and keep it thoroughly moist until the lawn is established. Hallawell's Lawn Renewal is composed of fine leaved grasses that will thrive in any climate except the most extremes of heat and cold.

1 lb. bag.....\$ 1.00	3 lb. bag.....\$ 2.85
5 lb. bag..... 4.75	10 lb. bag..... 9.25
25 lb. bag..... 22.50	50 lb. bag..... 43.50

BENT GRASSES

For lawn purposes the bents might well be considered the "aristocrats" of the grasses. When grown properly and well cared for they make very beautiful lawns and produce a fine thick turf. All of our bent grasses are best grade certified seed.

HALLAWELL'S ASTORIA BENT—For lawn or putting-green; grows a luxuriant dark green velvety turf and creeps mostly by underground root-stalks. Sow 1 pound to 20 x 15 or 300 square feet.

1 lb. bag.....\$ 2.00	25 lb. bag..... 42.50
5 lb. bag..... 9.50	3 lb. bag.....\$ 5.85
10 lb. bag..... 18.00	

HALLAWELL'S HIGHLAND BENT—A very hardy bent which is considered less susceptible to the fungus diseases and is recommended for sowing on putting greens or lawns that get considerable wear. It is fine leaved, upright growth, moderately light green color and spreads by strong underground root stalks. Sow 1 pound to 15 x 30 or 300 square feet.

1 lb. bag.....\$ 2.00	25 lb. bag..... 42.50
5 lb. bag..... 9.50	3 lb. bag.....\$ 5.85
10 lb. bag..... 18.00	

HALLAWELL'S SEASIDE BENT—A true creeping bent, producing surface runners which root at each joint when they come in contact with the soil. Once established, the growth is upright of fine texture and a beautiful rich green with a thick, smooth and enduring turf. Sow 1 pound to 20 x 15 or 300 square feet.

1 lb. bag.....\$ 2.00	25 lb. bag..... 42.50
5 lb. bag..... 9.50	3 lb. bag.....\$ 5.85
10 lb. bag..... 18.00	

KENTUCKY BLUE GRASS—Hallawell's select re-cleaned grade.

1 lb. bag.....\$1.00	3 lb. bag.....\$2.90
5 lb. bag..... 4.75	10 lb. bag..... 9.00

Please ask for prices on larger quantities.

WHITE DUTCH CLOVER—Highest quality re-cleaned seed. Sow 1 pound to 300 square feet.

1 lb. bag.....\$1.75	5 lb. bag.....\$8.00
3 lb. bag.....\$5.00	

Please ask for prices on larger quantities.

WE PAY POSTAGE ANYWHERE WITHIN U. S. ON GRASS SEED

Hallawell's VEGETABLES

The same dependable high quality, year after year. Even under the strain of war conditions, there has been no relaxation in our production and you are assured of the usual dependable high quality seed.

PRICES OF VEGETABLE SEEDS ARE POSTPAID ANYWHERE IN U. S. A. MARKET GARDENERS ASK FOR QUANTITY PRICES.

CABBAGE

In the San Francisco Bay Area sow the seeds during June, July and August. Transplant when plants are 2 to 3 inches high.

ALL SEASONS—Round heads about 10 inches in diameter.

AMERICAN DRUMHEAD SAVOY—A fine crumpled leaf cabbage; round heads, tender.

COPENHAGEN MARKET—Heads weigh 10 to 12 pounds each and are of excellent quality.

DANISH BALLHEAD—Ready to cut in about 100 days. Large round heads.

EARLY DWARF FLAT DUTCH—A very good home garden variety.

EARLY JERSEY WAKEFIELD—Solid pointed heads of very good quality.

GLORY OF ENKHUIZEN—Heads round, 8 to 9 inches in diameter, weighing 6 to 8 pounds.

GOLDEN ACRE—Earliest round headed cabbage. Small heads, 3 to 5 pounds.

LARGE FLAT DUTCH—Enormous round, flat heads. Set plants at least 2 feet apart.

MAMMOTH RED ROCK—Best red cabbage. Large globular heads, beautiful deep red.

MARION MARKET—Resistant to cabbage diseases and insect pests.

MIDSEASON MARKET—Large globe shaped heads with short stems.

Each of above: Pkt. 10c; ¼ oz. 30c; oz. 75c; ¼ lb. \$2.25; lb. \$6.75

CARROTS

Sow the seed ½ inch deep and keep thoroughly moist for 10 days or 2 weeks. One ounce sows more than 100 feet of row.

CHANTENAY (Red Cored)—Grows about 5 to 6 inches long.

DANVERS HALF LONG—About 6 to 7 inches long.

EARLY SCARLET HORN—Medium size, grows quickly.

FRENCH FORCING—Small round, crisp and early.

IMPROVED LONG ORANGE—Grows 10 to 12 inches long; tapering.

IMPERATOR—Deep, rich orange flesh, fine grained and well flavored.

NANTES HALF LONG CORELESS—Reddish orange.

OXHEART—For heavy soil, about 4 to 5 inches long.

Each of the above: Pkt. 10c; oz. 50c; ¼ lb. \$1.50; lb. \$4.00

CELERY

For best results it should be grown quickly. Plant in rich loam and fertilize to promote rapid growth.

UTAH—Pkt. 15c; ¼ oz. 35c; oz. \$1.00.

GOLDEN SELF BLANCHING—Pkt. 15c; ¼ oz. 35c; oz. \$1.00.

CHICORY

LARGE ROOTED—Pkt. 15c; oz. 75c.

ASPARAGUS or RADICHETTI—Pkt. 15c; oz. \$1.00.

WHITLOOF (French Endive)—

Pkt. 25c; oz. \$3.50

CHIVES

For flavoring soups and salads.

Pkt. 25c; ¼ oz. 75c

COLLARDS

GEORGIA—A non-heading form of the cabbage family.

Pkt. 10c; oz. 20c; ¼ lb. 50c; lb. \$1.50

ENDIVE

GREEN CURLED—Fine tender green, rich in Vitamin A.

Pkt. 10c; ½ oz. 25c; oz. 40c

BROAD LEAVED BATAVIAN (Escarolle)—Leaves are broad and thick.

Pkt. 10c; ½ oz. 25c; oz. 40c

KALE

JERSEY—Tall growing for green chicken feed. Pkt. 10c; oz. 50c.

DWARF CURLED SCOTCH—For greens. Pkt. 10c; oz. 50c

KOHL RABI

EARLY WHITE VIENNA—

Pkt. 10c; ½ oz. 60c; oz. \$1.00

EARLY PURPLE VIENNA—

Pkt. 10c; ½ oz. 60c; oz. \$1.00



BEETS, DETROIT DARK RED

BEETS

Sow one ounce to 50 feet of row and thin by pulling the small beets when the tops are large enough for greens.

CROSBY'S EGYPTIAN—Flat, globe shaped, purplish red.

EARLY WONDER—Semi-globular, grows very quickly.

DETROIT DARK RED—Large globe shaped.

Each of above: Pkt. 10c; oz. 35c; ¼ lb. \$1.00; lb. \$3.00

STOCK AND SUGAR BEETS

MAMMOTH LONG RED—Largest of the mangles, skin red, flesh white. Pkt. 10c; oz. 30c; ¼ lb. 90c; lb. \$2.20

SUGAR BEET—For sugar or for stock feed.

Pkt. 10c; oz. 35c; ¼ lb. \$1.00, lb. \$3.00

BROCCOLI

ITALIAN GREEN SPROUTING—Easy to grow and a very satisfactory vegetable.

Pkt. 15c; ½ oz. 50c; oz. 90c; ¼ lb. \$2.00

CAULIFLOWER

This is a fine winter crop in the Bay Area. Culture same as for cabbage.

EARLY SNOWBALL—Pkt. 25c; ¼ oz. \$1.75.



CELERY, UTAH



CARROTS, RED CORED CHANTENAY

for FALL-WINTER Planting

LETTUCE

Lettuce is a cool weather crop. It will stand some frost, but not a hard freeze. The heading varieties or the loose leaf may be grown the year round in San Francisco or similar climates.

BIBB—Small emerald-green heads of crisp tender leaves.

Pkt. 25c; oz. 75c

CHICKEN LETTUCE—Grows a stout stalk 3 to 4 feet high with many leaves; for poultry and rabbit feed.

Pkt. 10c; oz. 35c

COSBERG—Small, compact heads with crumpled outer leaves.

Pkt. 10c; oz. 35c

EARLY CURLED SIMPSON—Large curled and crinkled leaves.

Pkt. 10c; oz. 25c

HALLAWELL'S NO. 847—The best heading lettuce. Plants should be 8 to 10 inches apart.

Pkt. 15c; ½ oz. 35c; oz. 60c

HALLAWELL'S LOOSE LEAF—Leaves are brownish red. Plant thick in the row.

Pkt. 10c; ½ oz. 35c; oz. 60c

MIGNONETTE—Small compact heads (recommended for Hawaiian Islands).

Pkt. 15c; ½ oz. 35c

PARIS COS or ROMAINE—Upright loose folding heads.

Pkt. 10c; oz. 35c; ¼ lb. \$1.00

LEEK

LARGE AMERICAN FLAG—For soup and salad flavoring.

Pkt. 15c; ¼ oz. 50c

MUSTARD

SOUTHERN GIANT CURLED—Pkt. 10c; oz. 25c; ¼ lb. 75c.

ONION

In mild climates, sow onion seeds November to February for large onions to mature in mid-summer. Sow in beds and transplant while young, or they may be sown where they are to remain. Onions grown from seeds will seldom grow the objectionable seed stalk.

TORPEDO—Sweet and mild, long oval-shaped red. Good to eat and very decorative.

AUSTRALIAN BROWN—Good keeper in hot climates.

SWEET SPANISH (Riverside strain)—Very large, sweet and mild.

EARLY SWEET SPANISH—For short season climates.

RED WETHERSFIELD—Large size, pungent, purplish red.

BUNCHING ONION (white)—For small green onions. Any other variety may be used for bunching onion while they are small.

YELLOW GLOBE DANVERS—Medium sized globe-shaped.

WHITE SWEET SPANISH—Large, sweet and mild.

SOUTHPORT WHITE GLOBE—Mild flavor and a good keeper.

Any of the above: Pkt. 15c; ¼ oz. 35c; oz. \$1.00

PARSLEY

Parsley is slow to germinate. Give it plenty of time and keep the seed bed moist.

DOUBLE CURLED—

TRIPLE CURLED—

EVERGREEN—Dark green foliage.

Any of the above: Pkt. 10c; ½ oz. 25c; oz. 40c

PARSNIPS

HOLLOW CROWN—Prepare the soil deep. They grow 10 to 12 inches down. Pkt. 10c; oz. 35c.

PEAS

Peas are a good cool weather crop. They will stand some frost but not a hard freeze. They may be grown during the winter months in San Francisco or similar climates.

ALASKA—Quick maturing, winter variety.

AMERICAN WONDER—Quick maturing, 15 inches.

LAXTON'S PROGRESS—Very large pods, 24 inches.

THOMAS LAXTON—Large pods, 3 feet.

DWARF TELEPHONE—18 inches.

MELTING SUGAR OR EDIBLE POD—4 feet.

TELEPHONE OR ALDERMAN—Tall, must be staked.

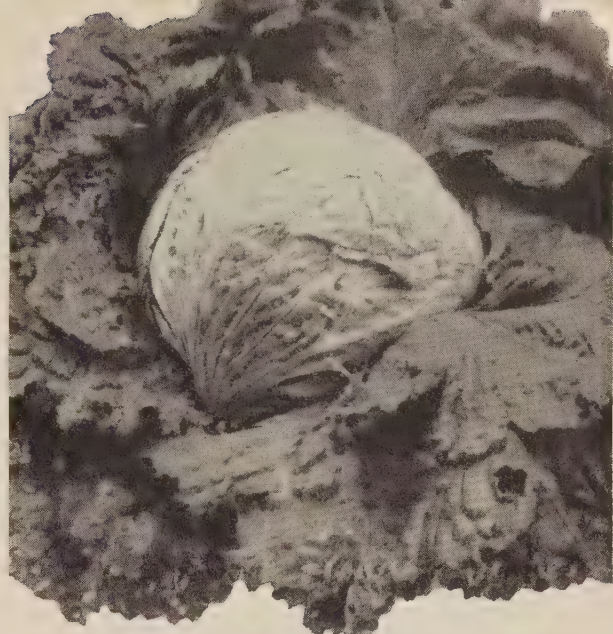
Any of the above: Pkt. 10c; ½ lb. 30c; lb. 50c

POTATOES

Potatoes must ripen 2 to 3 months after digging before they are ready to plant. Our high grade certified seed potatoes will be ready about December.

SALSIFY

MAMMOTH SANDWICH ISLAND—Pkt. 10c; oz. 25c; ¼ lb. 75c.



LETTUCE, HALLAWELL'S NO. 847

RADISH

CRIMSON GIANT—Large round.

EARLY SCARLET TURNIP—Small round.

EARLY SCARLET GLOBE—Medium round.

SPARKLER—Round white tip.

FRENCH BREAKFAST—Half long.

ICICLE—Long white.

CALIFORNIA MAMMOTH WHITE—Winter.

ROUND BLACK SPANISH—Winter

Any of the above: Pkt. 10c; oz. 25c; ¼ lb. 75c; lb. \$1.75

SPINACH

Sow at regular intervals in mild winter climates. ½ oz. to 50 feet.

HOLLANDIA—Thick green leaves.

IMPROVED VIROFLAY—Long pointed leaves.

PRICKLY SEEDED—Very hardy.

Any of the above: Pkt. 10c; oz. 20c; ¼ lb. 50c

SWISS CHARD

IMPROVED SILVER—Pkt. 10c; oz. 25c; ¼ lb. 80c.

LUCULLUS—Pkt. 10c; oz. 25c; ¼ lb. 80c.

RHUBARB CHARD—Ornamental. Pkt. 25c.

TURNIP

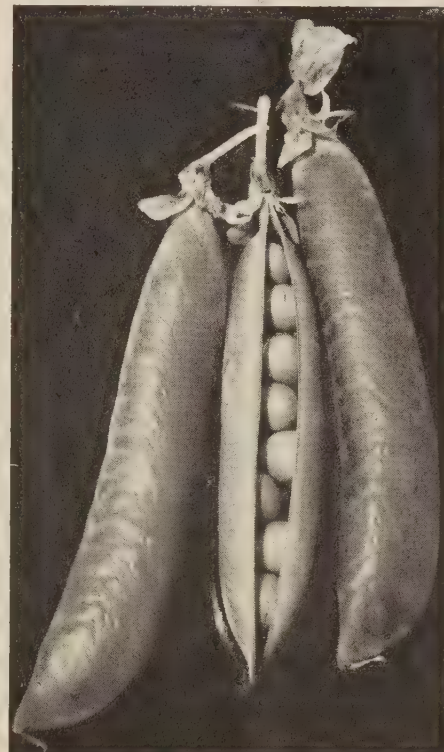
GOLDEN BALL—Good yellow variety. **PURPLE TOP WHITE**

GLOBE. WHITE EGG—Pure White. Any: Pkt. 10c; oz. 25c;

¼ lb. 80c.

We offer a
Complete assortment
of
garden seeds.

Customers in the
Bay Area
will find all
kinds of
sprays,
fertilizers
and sundries
for
home vegetable
gardening.



PEAS

Hallawell's CALIFORNIA FLOWER

PRICES ARE POSTPAID



SUPER MAJESTIC SNAPDRAGONS



COREOPSIS DOUBLE SUNBURST



PETUNIA, RUFFELD GIANTS OF CALIFORNIA

ABRONIA grandiflora (Sand Verbena). Hardy per. with numerous clusters of sweet scented rosy-lilac flowers. Thrives in dry situations and rockeries. Sow seed in fall or early spring. Pkt. 15c.

ALYSSUM

MARITIMUM (Sweet Alyssum). Hgt. 10 in. Very fragrant. Pkt. 10c; ½ oz. 35c.
CARPET OF SNOW. Flat ground cover. Pkt. 15c; ¼ oz. 40c.
HALLAWELL'S VIOLET QUEEN. Bright violet; dwarf. Pkt. 25c; ½ oz. 40c.
SAXATILE COMPACTUM. Per. Bright yellow. Pkt. 25c.
SAXATILE SILVER QUEEN. Pale yellow; compact habit; good for edging and rockeries. Hardy per. Pkt. 25c.

ANTIRRHINUM (Snapdragon)

HALLAWELL'S STRAIN SUPER MAJESTIC

Height 20 to 30 inches

AUTUMN GLOW SHADES. Old rose, yellow lip.
DAINTY. Lovely soft pink, as its name implies.
HARMONY SHADES. Terra cotta and yellow.
RED ROCKET. Fiery red.
ROSE SENSATION. Finest rose pink.
SHASTA. Pure white.
SILVER PINK. Lovely clear pink.
YELLOW JACKET. Deep yellow.
 Above separate colors: Pkt. 25c; 1/16 oz. 75c.
HALLAWELL'S SUPER MAJESTIC MIXTURE: Pkt. 25c; 1/16 oz. 60c.

Intermediate Type

Height 18 to 24 inches

HALLAWELL'S INTERMEDIATE MIXTURE: Pkt. 15c; 1/16 oz. 40c.

Maximum Type

Height 3 to 4 feet

ALASKA. Pure white.
CAMPFIRE. Luminous scarlet, yellow lip.
CANARY BIRD. Canary yellow.
COPPER KING. Bright bronzy copper.
CRIMSON MONARCH. Rich crimson.
LOVELINESS. Soft rose pink.
PINK SENSATION. Pure pink.
ROSALIE. Deep rose with topaz-amber undertone.
SALMON ROSE SHADES. Bright yellow lip.
YELLOW GIANT. Deep yellow.
 Above separate colors: Pkt. 20c; 1/16 oz. 75c.
HALLAWELL'S SELECT MIXTURE. A selected strain containing many new shades. Pkt. 15c; ½ oz. 75c.

AQUILEGIA (Columbine). Hardy per. growing 2 to 3 feet high and producing many flowers. Require partial shade, growing best in soil containing leaf mold or other organic material.

LONGISSIMA. Yellow, extra long spurs. Pkt. 50c.

LONG SPURRED BLUE HYBRIDS. Blue shades. Pkt. 35c; 1/16 oz. \$1.00.

HALLAWELL'S SELECT HYBRIDS. Far surpasses any strain we have ever had in our nursery gardens. Pkt. 35c; 1/16 oz. \$1.00.
LONG SPURRED HYBRIDS MIXED. Great variety of colors. Pkt. 15c; 1/16 oz. 75c.

BARTONIA (Blazing Star). Annual California Wildflower. Sow in open ground for winter bloom. Golden yellow. Pkt. 10c; ¼ oz. 45c.

CALENDULA

LEMON QUEEN. Fine double orange. Long stems. Pkt. 15c; ½ oz. 35c; 1 oz. 60c.
CAMPFIRE IMPROVED. Large double brilliant orange. Pkt. 15c; ¼ oz. 45c.
SUNSHINE. Double buttercup yellow; long stems. Pkt. 15c; ½ oz. 45c.
ORANGE KING. Large deep orange-red with dark center. Pkt. 15c; ½ oz. 45c.
HALLAWELL'S SPECIAL MIXTURE. A fine assortment of varieties. Pkt. 15c; oz. 75c.

CANDYTUFT. Seeds sown in autumn produce flowers in early spring. Tall Annual Varieties. Height 1 foot. Planting time, year around.

ALBIDA. Creamy white. Pkt. 15c; ¼ oz. 25c.

CRIMSON or PURPLE. Pkt. 15c; ½ oz. 30c.

LAVENDER. Delicate shade of lilac. Pkt. 15c; ¼ oz. 25c.

ROSE CARDINAL. Deep rosy cardinal. Pkt. 15c; ¼ oz. 40c.

SPLENDID MIXED. Pkt. 15c; ½ oz. 35c.

GIANT HYACINTH FLOWERED. Very large heads and long spikes of white flowers. Best sort for cut flowers. 1½ feet. Extra select strain. Pkt. 15c; ¼ oz. 50c.

CARNATIONS. Sow seeds from August to March. They bloom within a few months.

CHABAUD'S EVERBLOOMING MIXTURE. Pkt. 25c; 1/16 oz. 95c.

ENFANT DE NICE. Our special strain of large full double carnations. Separate colors of pink, red, rose, salmon, white and striped. Pkt. 35c.

ENFANT DE NICE MIXTURE. Pkt. 35c; 1/16 oz. \$1.50

CENTAUREA (Bachelor Button).

JUBILEE GEM. Double blue. Pkt. 15c; ½ oz. 45c.

BLUE BOY. Double blue. Pkt. 15c; ½ oz. 45c.

DOUBLE MIXED. Pkt. 15c; ¼ oz. 35c.

CHRYSANTHEMUM (Painted Daisy). Single Mixed. Pkt. 10c; ½ oz. 35c.

CINERARIA. For pots or beds in partial shade.

CALIFORNIA SUPER GIANTS MIXED. Huge trusses of flowers. 5 to 6 inches across. Pkt. 50c.

MULTIFLORA NANA MIXED. To 10 inches high; small flowers in large heads. Pkt. 50c.

BEDDING MIXTURE. Semi-dwarf; large flowers. Pkt. 35c.

CLARKIA ELEGANS. When seed is sown thick in the row it grows tall and is fine for cutting.

HALLAWELL'S DOUBLE FLOWERING.

BRILLIANT. Very bright carmine rose.

SALMON QUEEN. Salmon pink flowers.

SCARLET BEAUTY. Brilliant scarlet. Each of above: Pkt. 15c; ½ oz. 50c.

DOUBLE MIXED. Pkt. 15c; ½ oz. 75c.

COLLINSIA, BICOLOR. 1 to 2 feet. Violet and white. Prefers shade. Sow in open ground. Pkt. 10c; ¼ oz. 75c.

COREOPSIS

HALLAWELL'S DOUBLE SUNBURST. Large semi-double yellow. Pkt. 15c; ½ oz. 50c.

MAYFIELD GIANT. Single yellow, large. Pkt. 15c; ½ oz. 35c.

CYNOGLOSSUM (Chinese Forget-me-not).

AMABILE BLUE. Intense deep blue. Pkt. 15c; ¼ oz. 30c.

FIRMAMENT. Bright blue. Bushy plants. Pkt. 15c; ¼ oz. 45c.

GILIA. Hardy ann. California Wildflower. Sow in fall or winter.

CAPITATA. 1½ to 2 feet. Eight blue flowers.

TRICOLOR. 1 foot. Pale lilac to yellow. Each of above: Pkt. 10c; ½ oz. 45c; oz. 75c.



CARNATIONS, EN

SEEDS for Fall and Winter Planting

DELPHINIUM

HALLAWELL'S PACIFIC GIANT STRAIN. This is the finest strain in cultivation. Flowers are large, double and in charming color combinations. Each, Pkt. 50c.

Dark Blue Shades Mixture
Light Blue Shades Mixture
Pastel Shades Mixture
Mammoth White
Hallawell's Special Mixture

DIANTHUS (Annual Pinks). Sow from Sept. to May in boxes to transplant. May be sown in open in Spring in rows where plants are to remain.

HEDDEWIGI. Mixture of large doubles; fine colors. Pkt. 10c; ¼ oz. 45c.

LACINIATUS MIXED. Finest single fringed variety in choice colors. Pkt. 15c; ¼ oz. 45c.

DIANTHUS (Perennial Pinks). Hardy, low growing. Sow in boxes in early Summer or Fall. Will bloom the following season.

RARE SPECIES MIXED. For rock gardens. Includes a large number of kinds, many rarely seen. Pkt. 25c; 1/16 oz. 75c.

LOVELINESS (Fragrant Pink). Delightfully fragrant. Flowers have lacerated petals; of an exquisite mauve tint.

Pkt. 25c; 1/16 oz. \$1.25

PLUMARIUS (Pheasant's Eye Pink). Single Clove Pink with fringed edged flowers in various colors. Fragrant. Pkt. 15c; ¼ oz. 45c.

DIGITALIS (Foxglove). Seed sown in boxes or in the open in a cool place any time in Summer to early Fall. Will bloom following season. Height 4 to 5 feet, mostly flower spike.

GLOXINAEFLORA MIXTURE.

Pkt. 10c; ½ oz. 45c.

GIANT SHIRLEY. Spikes 3 to 4 feet long. White to dark rose, handsomely blotched and spotted. Pkt. 15c; ½ oz. 45c.

LUTZII HYBRIDS. Long spikes. Charming pale apricot flowers. Perennial. Pkt. 25c.

ESCHSCHOLTZIA (California Poppy)

AURANTIACA ORANGE. California Poppy.

Pkt. 10c; oz. 50c; ¼ lb. \$1.50; lb. \$4.00.

BRILLIANT MIXED.

Pkt. 10c; oz. 60c; ¼ lb. \$1.75; lb. \$5.00.

NEW HYBRIDS MIXED. Many new colors.

Pkt. 15c; ¼ oz. 75c; oz. \$2.00.

GOETIA. Sow thick in the row, for tall stems and cut flowers.

DUKE OF YORK. Satiny crimson carmine.

Pkt. 15c; ½ oz. 50c.

KELVEDON GLORY. Glowing salmon, orange. Pkt. 15c; ½ oz. 50c.

PURITY. Glistening satiny white.

Pkt. 15c; ½ oz. 50c

SEMI-DWARF MIXED. Splendid assortment.

Pkt. 15c; ¼ oz. 75c.

AMOENA. California Wildflower.

Pkt. 10c; ¼ oz. 75c.

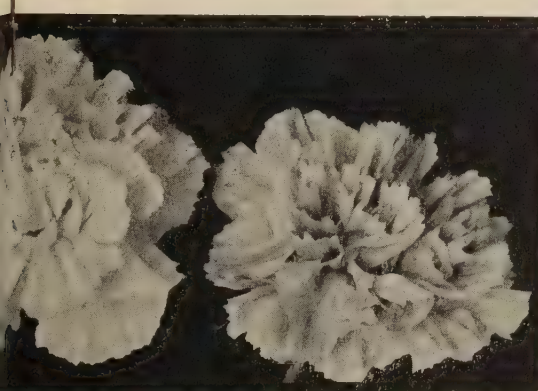
HEUCHERA (Coral Bells). SANGUINEA

SPLENDENS. Pkt. 35c.

HOLLYHOCK. Sow in early fall for next

year's bloom.

DOUBLE MIXED. Pkt. 15c; ½ oz. 70c.



ENFANT DE NICE

LARKSPUR

Best results are obtained from sowing in the open ground where plants are to remain. October to February.

Hallawell's Base Branching Larkspurs
BLUE BELL. Clear light blue or silvery lavender.

BLUE SPIRE. Intense deep blue. Fine cut flower.

CARMINE KING. Love'y deep carmine rose.

EXQUISITE PINK IMPROVED. Pink shaded salmon.

LOS ANGELES. Deep rose.

LILAC KING. Attractive lilac blue.

MISS CALIFORNIA. Deep pink shaded salmon.

PINK KING. Long branches. Soft salmon rose.

WHITE KING. Pure glistening white.

Above separate colors: Pkt. 15c; ¼ oz. 65c.

SUPERB MIXTURE. Pkt. 15c; ¼ oz. 65c.

LILUM (Lily). Sow in sterilized soil in flats

or prepared bed of cool frame or greenhouse.

Top growth will show in 3 to 8 weeks.

Transplant when several months old. Following are easy to grow.

DAURICUM. Upright flowers, orange spotted red. 1½ to 2 feet. Pkt. 50c.

PHILIPPINENSE FORMOSANUM (Late).

Up to 8 flowers on stem 4 to 6 feet tall.

Warm sunny place. Pkt. 50c.

HENRYI. Bright golden yellow, spotted brown. 5 to 8 ft. tall. Cut flower. Pkt. 50c.

REGALE. White trumpets suffused pink. Fragrant. Hardy lily. One of best. Pkt. 50c.

TENUIFOLIUM GOLDEN GLEAM. 18 inches.

Medium size golden yellow flowers. Light soil, sun. Pkt. 50c.

WILLMOTTIAE. 6 feet. Rich orange red, recurved petals. Hardy and dependable.

Pkt. 50c.

AURATUM. A grand lily 4 to 6 feet. Ivory white spotted crimson. Partial shade. Slow to germinate. Requires period of cold following a period of warmth before top growth appears. Pkt. 50c.

LINARIA. 12 to 15 inches. Fine to sow on top of bulb beds. Attracted much attention at our Gardens.

EXCELSIOR MIXED. Pkt. 15c; ¼ oz. 45c.

FAIRY BOUQUET. Pkt. 15c; ½ oz. 60c.

LINUM (Flax).

RUBRUM (Scarlet Flax). 1½ feet. For mass sowing. Plant in open ground.

Pkt. 10c; ¼ oz. 30c.

FLAVUM NANUM COMPACTUM. Per.

Golden yellow. Dwarf. Pkt. 25c.

PERENNE. 18 inches. Bright blue.

Pkt. 15c; ¼ oz. 35c.

LOBELIA. Half hardy ann. 4 to 6 in. high, of compact growth. Sow in boxes from Nov. to May and transplant when well started.

BLUE EMPEROR. Sky blue. Compact bright green foliage. Pkt. 15c; 1/16 oz. 75c.

CAMBRIDGE BLUE. Very free flowering. Light blue, 6 inches high.

Pkt. 25c; 1/16 oz. \$1.00.

CARDINALIS QUEEN VICTORIA. Per. 18 to 24 inches. Spikes of deep crimson flowers; dark red foliage. Pkt. 50c; 3 for \$1.25.

CRYSTAL PALACE COMPACTA. Most used for border edging. Deep blue; dark foliage. 6 in. Always in bloom. Pkt. 15c; 1/16 oz. 75c.

SAPPHIRE. Superb, pendulous habit. Large deep blue flowers with white eyes. For window boxes and hanging baskets.

Pkt. 15c; 1/16 oz. 75c.

LUPIN. HALLAWELL'S GIANT MIXTURE.

3 to 4 feet. Pkt. 25c; ¼ oz. 75c.

NANUS. California wildflower. 10 to 15 inches.

Pkt. 10c; oz. 65c; ¼ lb. \$2.00; lb. \$5.00.

MIGNONETTE. Fragrant ann. Sow in open ground.

GOLIATH. Red spikes. Pkt. 15c; ¼ oz. 50c.

SWEET SCENTED. Pkt. 10c; ¼ oz. 35c.

GIANT MACHET. Pkt. 15c; ¼ oz. 40c.

MIMULUS QUEEN'S PRIZE. Large spotted flowers. Pkt. 25c; 1/32 oz. \$1.00.



GIANT IMPERIAL LARKSPUR



DELPHINIUM, PACIFIC HYBRID



PANSY, AMERICAN GIANTS



GIANT IMPERIAL STOCK



VIOLAS, TUFTED PANSIES

MYOSOTIS (Forget-me-not). Hardy per. for cool, moist places.

BLUE BIRD. Deep blue; winter blooming 1 foot. Pkt. 20c; 1/16 oz. 60c.

NEMESIA. Ann. for garden and window boxes. Will germinate in 3 weeks.

STRUMOSA GRANDIFLORA MIXED. 10 to 12 inches. Many beautiful colors. Pkt. 25c; 1/8 oz. \$1.25.

TRIUMPH MIXED. Hallawell's Special. Compact, 6 to 8 in. tall. Pkt. 25c; 1/8 oz. \$1.00.

NEMOPHILA (Baby Blue Eyes). Hardy ann. California Wildflower. Sow in open ground fall or spring. A fine cover for bulb beds. 6 inches high.

INSIGNIS. Cup-shaped flowers, sky blue with white eye. Pkt. 15c; oz. 75c; 1/4 lb. \$2.00; lb. \$6.00.

CALIFORNIA PANSIES

HALLAWELL'S SELECT STRAINS

Sow in the fall for early spring bloom and early in the year until May for spring and summer bloom.

AMERICAN GIANT. An exceptional strain introduced by us in 1942. Flowers enormous, 3 inches or more across on long sturdy stems. Brilliant color combinations. Pkt. \$1.00; 1/16 oz. \$3.00.

FLORIST'S PRIDE. For large flowers on 6 to 8 inch stems under greenhouse culture. May be grown in the garden. Pkt. \$1.00; 3 for \$2.50.

GENEVA GIANT SPECIAL MIXTURE. Our own special strain, always in demand. Large flowers, good stems, bright colors. Pkt. 50c; 3 for \$1.25; 1/16 oz. \$2.25; 1/4 oz. \$7.50.

HALLAWELL'S JUMBO. Superb strain of extra size Pansies. Splendid form and striking colors. Pkt. 50c; 3 for \$1.25; 1/16 oz. \$2.50; 1/4 oz. \$7.50.

Giant Pansies

ALPENGLOW. Rich velvety red with three dark blotches. Pkt. 50c; 3 for \$1.25.

ALPINE SNOW. Pure white. Pkt. 50c; 3 for \$1.25.

BERNA. Velvety violet blue. Pkt. 50c; 3 for \$1.25.

CORONATION GOLD. Pure golden yellow. Very large. Pkt. 50c; 3 for \$1.25.

RHINEGOLD. Golden yellow with deeper brown blotches on lower petals. Pkt. 50c; 3 for \$1.25.

ULLSWATER. Ultramarine with dark blue blotches. Pkt. 50c; 3 for \$1.25.

SWISS GIANTS MIXED. Mammoth size. Good range of predominately dark colors. Pkt. 25c; 1/16 oz. \$1.50; 1/8 oz. \$2.50.

TRICOLOR (Johnny Jump-Up). Miniature. Upper petals purple, lower three white shading yellow in center. Pkt. 50c; 3 for \$1.25.

HALLAWELL'S CALIFORNIA PETUNIAS

Petunias are one of our specialties in California. Watch Hallawell listings for the best listings of new creations of this popular flower. See our Annual Spring Catalog for complete list.

GIANT RUFFLED PETUNIAS.

GIANT MIDGET. Huge ruffled flowers; dwarf plants suitable for pots, window boxes, edgings. Mixture. Pkt. 50c; 3 for \$1.25.

DWARF GIANTS OF CALIFORNIA. Large ruffled flowers, exquisite color combinations. Pkt. 50c; 3 for \$1.25.

RUFFLED GIANTS OF CALIFORNIA. Same as above but taller plants. Pkt. 50c; 3 for \$1.25.

COLLECTION. One each of the above outstanding Petunias. \$1.25.

PHACELIA (California Blue Bell). Hardy annual.

CAMPANULARIA. 9 inches. Clear deep blue. Native.

WHITLAVIA (Wild Canterbury Bell).

Each of above: Pkt. 15c; 1/2 oz. \$1.00.

PLATYSTEMON (Cream-Cups) CALIFORNICUS. Ann. 6 to 10 in. Very dainty and graceful. Cream colored flowers. Very charming. Pkt. 25c.

For space limitations, descriptive information is necessarily brief. For greater detail refer to our Spring Catalog. Varieties listed here are for fall planting. All prices postpaid.

ICELAND POPPIES

EMPEROR. Deep orange.

YELLOW WONDER.

COONARA PINKS. Lovely rose, pink and salmon.

Any of above: Pkt. 25c; 1/16 oz. 60c.

HALLAWELL'S PASTEL TINTS.

Pkt. 25c; 1/16 oz. \$1.00.

POPIES, ANNUAL. Sow in open ground during fall and winter.

AMERICAN LEGION. Orange-scarlet. Pkt. 10c; oz. 75c.

SHIRLEY MIXED. Pkt. 10c; oz. 60c.

SHIRLEY DOUBLE MIXED.

Pkt. 10c; 1/4 oz. 35c; oz. \$1.00.

PRIMROSES

AURICULA. Primrose of the Alps. Pkt. 50c.

OBCONICA MIXED. Giant flowered. Pkt. 50c.

PULVERULENTA Bartley Strain. Flowers, pink in tiers. Shaded damp places. Pkt. 50c.

MALACOIDES PRIMULA.

FAIRY JEWELS. Rich rose pink. Pkt. 50c.

SNOWFLAKE. Glistening white. Pkt. 50c.

SWEETHEART. Salmon-pink, edged white. Pkt. 50c.

TWINKLES. Double, flesh pink. Pkt. 50c.

HARDY PRIMROSES. Polyanthus.

BLUE. Pkt. 50c.

YELLOW. Pkt. 50c.

GIANT SUPERB MIXED. Pkt. 50c.

SCHIZANTHUS.

HALLAWELL'S DWARF. 10-15 inches. Pkt. 25c.

HALLAWELL'S SELECT MIXTURE.

Pkt. 25c; 1/16 oz. 75c.

PANSY FLOWERED MIXTURE. Pkt. 25c.

STOCKS

Plantings for fall and winter should be in well drained soil. Stocks do not like wet feet.

HALLAWELL'S GIANT PERFECTION

AMERICAN BEAUTY. Very deep rose.

CRIMSON. Brilliant color.

FLESH (Beauty of Nice). Delicate shell pink.

HEATHAM BEAUTY. Rose shaded terra cotta.

LAVENDER. Fine light lavender.

OLD ROSE (Belle of Naples). Rich terra cotta rose.

PINK. Light rose pink. Fine in arrangements.

PURPLE (Summer Night). Purple or dark blue.

WHITE (Snowdrift). Pure white.

YELLOW (Monte Carlo). Creamy yellow.

Above separate colors: Pkt. 15c; 1/8 oz. 85c.

GIANT PERFECTION MIXED.

Pkt. 15c; 1/8 oz. 75c.

HALLAWELL'S SUPER GIANT IMPERIAL STOCK

Base branching from close to the ground. Particularly good for cutting. Spikes may be removed from the plant and still leave a display in the garden.

AMETHYST. Lavender.

BONNY. Large dark blue florets.

FIREFLY. Bright fiery red. Very fine under electric lights.

PRIMROSE. Yellow.

ROSE IVORY. Lovely combination; ivory and rose.

SNOW. Pure white.

VENUS. Pink, light in color.

MIXTURE of above colors.

Above: Pkt. 35c; 3 for 90c; 1/16 oz. \$1.25.

VIOLA (Tufted Pansies). Sow July to March. Free blooming hardy per. Flowers smaller than pansies but in great profusion and over a longer season. Keep seed bed cool and moist.

ARKWRIGHT RUBY. Crimson scarlet with central markings. Pkt. 35c; 1/16 oz. \$1.25.

BLUE PERFECTION. Deep blue. Pkt. 25c; 1/16 oz. 75c.

CHANTREYLAND. Apricot. Pkt. 25c; 1/16 oz. \$1.25.

LUTEA GRANDIFLORA. Yellow. Pkt. 25c; 1/16 oz. 75c.

PAPILIO. Lavender, white eye. Pkt. 25c; 1/16 oz. 75c.

MIXTURE of bright gay colors. Pkt. 25c; 1/8 oz. \$1.25.

VIRGINIAN STOCKS. Ground cover about 6 inches high.

MIXED COLORS.

Pkt. 15c; large pkt. 35c; oz. \$1.00.

Hallawell's SWEET PEAS

LONG STEMS AND LARGE WAVY FLOWERS

Hallawell's sweet peas are grown and selected to produce the largest flowers and longest stems in exhibition varieties.

Price of each: Pkt. 15c; oz. 50c.

- | | |
|---------------------------------------|-------------------------------------|
| CAPRI. Light blue; long stems. | PINKIE. Rose-pink, very large. |
| CARDINAL. Poppy scarlet. | PIRATE GOLD. Golden orange. |
| CAVALCADE. Carmine-rose, shaded gold. | POWERSCOURT. Lavender, long stem. |
| CHINESE BLUE. Rich deep blue. | RED SUPREME. Deep crimson. |
| CREAM GIGANTIC. Largest cream. | REFLECTION. Clear blue. |
| ECSTASY. Delicate blush pink. | RUBICUND. Crimson-scarlet. |
| GIGANTIC WHITE. Very large white. | SALMON GIGANTIC. Giant salmon-pink. |
| HEBE. Bright pink, wavy. | SERENADE. Clear medium salmon. |
| HIGHLANDER. Lavender, many flowers. | SEXTET QUEEN. Large white. |
| MISS CALIFORNIA. Salmon, cream-pink. | SMILES. Shrimp pink. |
| OLYMPIA. Large rich purple. | SULTAN. Black velvety maroon. |
| | THRILLER. Orange scarlet. |
| | WELCOME. Dazzling scarlet. |

HALLAWELL'S GIANT MIXED

A fine mixture of large flowered, long-stemmed varieties. Includes many colors, each in proper proportion to produce a colorful display in your garden. Pkt. 15c; oz. 50c

SPECIAL COLLECTION . . . 60c

Consists of 1 packet each—our selection—of five colors of giant, long-stemmed sweet peas for spring blooming.

SUPERB COLLECTION . . . \$1.25

Hallawell's Giant Sweet Peas. One packet each—our selection—of 12 varieties, all different; sufficient to plant 50 feet of row. \$1.25.

NEW AND IMPROVED SWEET PEAS

All very large flowers and long stems.

- | | |
|---|--|
| DAINTY. Florists shade of rose-pink. Pkt. 25c. | WHITE WINGS. Large wavy pure white. Pkt. 25c. |
| DAZZLER. Large flowered, bright red. Pkt. 25c. | VICTOR. Lovely shade of lavender. Waved. Pkt. 25c. |
| MERIT. Lovely carmine shaded tinge of gold. Pkt. 25c. | |

Prize Collection—Postpaid, \$1.00

NEW AND IMPROVED SWEET PEAS

Five packets, 1 packet each of five varieties; sufficient to plant 30 feet of row and produce 200 or more bouquets of fine, long stemmed flowers. In San Francisco plant October to May.

RUFFLED SWEET PEAS

RUFFLED SPENCER MIXTURE—This extraordinary mixture contains all of the name ruffled varieties and many trial grounds ruffled which are not yet ready to be named separately.

These ruffled sweet peas are distinguished by their waved and ruffled flowers which give the appearance of being double. The flowers are very large, the stems long and there are an unusual number of flowers on a stem. One ounce will plant a 30-foot row. Pkt. 25c; oz. \$1.00.

HALLAWELL'S EARLY SPENCER MIXTURE

Be sure to shade the bed if planted in hot weather and when they begin to bloom do not overwater. One good deep irrigation each week will be plenty in medium heavy soil. If they are watered too much, the buds will drop from the stems.

Pkt. 20c; 3 for 50c; oz. \$1.00

EARLY SPENCER COLLECTION . . . \$1.00

Consists of one packet each, our selection, six colors of Early Spencer varieties for Winter blooming in mild Winter Climates.



HALLAWELL'S GIANT SWEET PEAS

HALLAWELL'S EARLY SPENCER SWEET PEAS

Hallawell's Early Spencer Sweet Peas flower 3 to 4 weeks earlier than any other varieties. They are especially desirable for greenhouse plantings and for growing in frost-free sections for Winter blooming. We particularly recommend them for the Hawaiian Islands. They have all the fine qualities of our Giant Spencers, produce giant flowers and very long sturdy stems. Where the Winter climate is mild, plant the seeds in August and September for Winter bloom. Under favorable conditions they will flower by Christmas. Shade the plantings to keep the soil cool until the seeds sprout.

Price of each: Pkt. 20c; 3 for 50c.

- | | |
|---|--|
| AMETHYST. Royal - purple, large. | HOPE. Very fine white. |
| APOLO. Long stemmed salmon-cerise. | MARS. Deep velvety crimson. |
| BALL ROSE. Rose-pink; florist favorite. | MEMORY. Light lavender. |
| BLUE BONNET. Clear, deep blue. | MRS. H. S. REDDICK. Fine salmon-pink. |
| BRIDESMAID. Dainty silver-pink. | OTHELLO. Deep maroon. |
| CREAM. Light primrose. | SEQUOIA. Golden cerise. |
| DAPHNE. Soft salmon-pink. | SHIRLEY TEMPLE. Soft rose-pink. |
| HARMONY. Excellent lavender. | TREASURE ISLAND. Bright golden-orange. |
| | VULCAN. Christmas red. |
| | WHITE CHAMPION. Pure white. |

DWARF SWEET PEAS

CUPID SPENCER. Dwarf, large-flowered, growing about one foot high and spread about 2 feet. They are excellent for low edgings or long strips of ground cover. Pkt. 15c; oz. 60c.

HALLAWELL'S CALIFORNIA WILD FLOWER SEEDS

A MIXTURE OF HARDY, EASILY GROWN VARIETIES

OTHER WILD FLOWERS—The following California native wild flowers may be found listed in alphabetical order in the flower seeds: Bartonis, Clarkia, Collinsia, Eschscholtzia, Gilia Capitata, Godetia, Amonea, Leptosyne, Lupin Nanus, Nemophila, Phacelia Campanularia, Platystemon Californicus, Salvia Carduacea.

Wild flowers are beautiful in all regions. In California they come in such great variety that visitors from other states always want to send some "to the folks back home".

Successive sowings of Wild Flower seed will provide bloom almost the year round in California, especially in the cooler regions and if the plants can be watered. Although they respond best to careful soil preparation, scatter-plantings are successful if the seed is sown at seasons when the plants will have benefit of rainfall. In areas where wild shrubs abound, it is better to concentrate your efforts on the clear places and assure success by scarifying the soil to make it easier for the seeds to take root.

One ounce of seed will sow 150 to 200 square feet in a home garden planting, while one pound to 5,000 square feet is recommended for a city lot—broadcast planting. For hillside or field planting, 5 to 8 pounds per acre, depending upon the existing growth of wild shrubs. Mix an equal quantity of sand or soil to aid the distribution.

CALIFORNIA WILD FLOWER MIXTURE.
Pkt. 15c; oz. 75c; ¼ lb. \$2.25; lb. \$7.50.

WILD AND HARDY CULTIVATED VARIETIES MIXED.
Pkt. 15c; oz. 60c; ¼ lb. \$2.00; ½ lb. \$3.00; lb. \$5.00.

Hardy California *Iris*

Bulb Orders for \$2.50 or More are Postpaid. Orders for Less Than \$2.50 Send 35c for Packing and Postage

Stately and imposing, the Irises are well deserving of great popularity. They are easy to grow and adaptable to various locations, have a long blooming season and are excellent for cutting purposes.

There are far too many varieties to list so this year at blooming time we went into the test garden and selected 14 of the best ones in a complete color range.

If you planted these 14 irises in your garden you would find them to be an excellent choice of varieties. Here they are.

Collection — One each of the 14 listed varieties including our new introduction, **\$19.50**
DESERT SKIES. A \$23.75 value. Postpaid.....

DESERT SKIES—Brand new, being offered for the first time! It is tall and gracefully branched; the large perfectly formed blooms are clear sparkling blue, with no hint of any other shade. An outstanding Iris. Each \$5.00

BRONZINO—Tall, rich in color, ideal in form and habit of growth. Standards frosty golden-bronze, falls rich coppery bronze. Large blooms on well branched stems. Mid-season. 40". Each 75c



SNOW FLURRY

SNOW FLURRY—A stunning white iris, the finest we have ever seen. It is a blue white, probably the whitest white. The blooms are very large and are beautifully ruffled; both standards and falls are white and the falls are broad. The flower stalks are tall, carrying as many as 17 buds and flowers at one time. In addition to all of these fine qualities, it is fragrant. Early. 50". Each \$4.50

CHINA MAID (Milliken)—One of the finest pinks, being soft lilac pink blended golden bronze. Large, and of good form and habit, and particularly outstanding because of its smooth, even texture. Mid-season. 48".

Each \$1.25

COPPER CASCADE—Pure copper with a glistening golden undertone. Both standards and falls are of the same general color tone but the beard is orange. The blooms are large and of good substance; mid-season. 50".

Each \$1.00

CREOLE BELLE—Deep violet blue with deep brown shadings on upper part of falls. A rich and unusual color combination. The blooms are large and stems are long. Mid-season. 36".

Each 50c

DEEP VELVET—Very large, rich deep red-violet. Standards and falls about the same shade but upper part is rich dark purple shading to claret brown. Branching stems, free bloomer. Mid-season. 38".

Each \$3.00

GOLDEN MAJESTY—Considered one of the best deep yellow varieties. It has everything, perfect form, good substance and graceful branching stems. A vigorous free bloomer and does not fade easily. Mid-season. 42".

Each \$1.50

JUNALUSKA—A very striking iris with yellow standards suffused bronze and with deep velvety maroon falls, highlighted by golden-orange beard. Mid-season. 38".

Each 75c.

NARADA—Very large flowers of clear light blue, the standards a shade lighter than the broad flaring falls. It blooms freely and is one of the finest in the blue class.

Each \$1.00

ORMOHR—A very pleasing shade of manganese violet, heavily veined cream and dotted deep violet. The standards are large and domed, the falls broad and round. A lovely iris. Mid-season. 40".

Each \$2.00

PERSIA—Large blooms of bright steel blue; standards and broad rounded falls of blended bluish lavender, highlighted with bright yellow beard. Good form and good stem. Mid-season. 36".

Each 75c

SAN GABRIEL—A very large pinkish-lavender of excellent form and graceful stem. It blooms early and is well branched. 60".

Each 50c

WILLIAM A. SETCHELL—We do not usually recommend the very largest flowered iris but here is one that well deserves special notice. Blooms are 6 to 7 inches tall, with large falls 3½ inches wide and 3½ to 4 inches long. Standards are steel blue; falls deep violet blue. Mid-season. 42".

Each \$1.25



Iris Kaempferi

ORIENTAL IRIS

Beautiful broad petaled flowers in many charming color combinations most of which include a sparkling yellow band at the base of each petal in the open center of the flower.

Plant them in a sunny situation and water plentifully. They bloom in mid-summer.

Prices: 75c each; 12 for \$7.50

FASCINATION—Mauve-pink, lightly veined white. Double.

GOLD BOUND—Glistening white with a cream glow at the gold-banded center. Double.

MOUNT HOOD—Light-blue shaded darker, bright orange center. Double.

PURPLE and GOLD—Rich violet-purple with white petaloids tipped violet. Double.

ROSANA—Light mauve deeply and heavily veined purple; brilliant yellow center. Double.

TEMPLETON—Reddish violet mottled and marbled with white. Double.

T.S.WARE—Large reddish-violet, contrasting white center. Double.

IRIS COLLECTION—8 Iris Kaempferi, our selection, \$5.00—postpaid.

Flower and vegetable seeds are sent post paid anywhere within the U. S. A. except where otherwise noted in this Catalog.

NON WARRANTY — While we exercise the greatest care to have all our seeds, bulbs and plants of good quality and true to name, there are many contingencies encountered in growing plants, and success is dependent upon other factors besides seeds, bulbs or plants. Therefore, we operate under the usual Seedsmen's Non Warranty:

HALLAWELL SEED COMPANY gives no warranty, express or implied, as to the productiveness of any seeds, bulbs, or plants it sells, and will not be in any way responsible for the crop. Liability in all instances is limited to the purchase price.

FOLD ON THIS LINE FIRST

USE
LETTER
POSTAGE
HERE

HALLAWELL SEED CO.

256 MARKET ST.

SAN FRANCISCO 11,

CALIFORNIA

Mail Order
RUSH

FOLD ON THIS LINE LAST

San Francisco Seedsmen and Nurserymen

Hallawell's For Your Garden

FROM _____
STREET _____
TOWN _____
STATE _____

FOLD ON THIS LINE SECOND

CALIFORNIA WILD FLOWERS

Broadcast California Wild Flowers or the Colorful California Poppy on the vacant lots in your neighborhood or on the hillside in your vicinity. Include the seeds in this order now.

ENV.-O-BLANK
TRADE MARK REG. IN U. S. PAT. OFFICE
STANLEY WESSEL & COMPANY
CHICAGO, ILLINOIS



CARNATION-FLOWERED BEGONIA



CAMELLIA-FLOWERED BEGONIA

HALLAWELL'S

Tuberous Begonias

PLACE ORDERS EARLY FOR SHIPMENT
WHEN READY

Great care is exercised in the production of Hallawell's California grown Tuberous begonias. Carefully selected parent plants of the most desirable types in each class are chosen and propagated under the most favorable California climatic conditions. Results from these tubers will be found very satisfactory. When ordering please ask for cultural directions which will be sent free.

PRICES—Prices are the same for all types.

Extra large tubers: 50c each; 12 for \$5.00;
100 for \$35.00—ALL POSTPAID

Orders less than \$2.00 — Send 25c handling charge.

DOUBLE BEGONIA

DOUBLE CAMELLIA FLOWERED—Large full-double flowers of exquisite form. In separate colors of apricot, orange, pink, red, rose, salmon, white, yellow and mixed. Two or more of one color will be labeled.

SINGLE FRILLED BEGONIA

CRISPA or SINGLE FRILLED—Large single flowers with the petals profusely ruffled and frilled. A very beautiful form. In separate colors of orange, red, rose, salmon, white, yellow. One of a color will be sent as Mixed. Two or more of one color will be labeled.

DOUBLE FRINGED BEGONIA

DOUBLE FRINGED or CARNATION—Full double to the center with each petal fringed at the edge. Mixed colors only.

CRESTED BEGONIA

SINGLE CRESTED or CRISTATA—Varied single forms with ruffled and frilled petals embellished by tiny tufts, producing a charming flower. Mixed colors only.

SINGLE BEGONIAS

GIANT SINGLE—A favorite form which adds to the interest of any collection. Mixed colors only.

MULTIFLORA BEGONIA

MULTIFLORA MIXED—Dwarf bushy plants bearing masses of double flowers about 1½ to 3 inches in diameter. Suitable for pots or bedding.

HANGING BASKET BEGONIAS

DOUBLE BASKET TYPE—Plant several tubers in an 8- or 10-inch hanging pot. A good soil mixture consists of 1/3 each of well rotted manure, leaf mold and sandy loam. Mixed colors only.



TUBEROUS ROOTED BEGONIA, HANGING BASKET TYPE



LILIUM PARDALINUM GIGANTEUM



LILIUM X CENTIFOLIUM

LILIUM—LILY

Place lily orders early and bulbs will be sent at the proper planting time. Do not remove or break the roots and plant the bulbs as soon as you receive them.

AURATUM (Gold Band Lily)—One of the grandest of the hardy lilies. The flowers are enormous and in large clusters at the top of strong leafy stems. They are ivory-white with chocolate crimson spots and a bright gold band through the center of each petal. Fragrant. Bulbs should be divided after the fourth year. Plant 7 to 9 inches deep. Large bulbs.

Each \$1.50; 12 for \$15.00

CENTIFOLIUM—A magnificent lily bearing great clusters of large white trumpet blooms on plants 6 to 8 feet high. It has abundant foliage and is very ornamental. Plant the bulbs 8 to 10 inches deep in light shade and in a well drained situation.

Each 75c; 12 for \$7.00; 100 for \$45.00

FORMOSANUM—This is one of the highly desirable trumpet lilies. The plants are uniformly tall, the flowers pure white with emerald-green throat and shaded violet outside. It blooms late, usually September or October. Plant 5 or 6 inches deep in soil containing plenty of leaf mold and in a warm sunny situation.

Each 35c; 12 for \$3.50; 100 for \$25.00

HENRYI—A very beautiful Chinese lily with bright golden-yellow reflexed flowers, spotted brown. A well grown plant should stand 5 to 8 feet high and have as many as 20 open flowers at one time. Plant 8 to 10 inches deep in partial shade and provide plenty of moisture during the growing season.

Each 50c; 12 for \$5.00; 100 for \$35.00

PARADALINUM GIGANTEUM (Sunset Lily)—Robust hardy variety growing 5 to 7 feet tall. Deep red with deep purple spots and golden yellow center.

Each 45c; 12 for \$4.50; 100 for \$30.00

SHUKSAN—This lovely lily is one of the most easily grown of the newer garden varieties. It grows tall and blooms profusely, bearing bright orange flowers with darker spots. Under favorable conditions the bulbs multiply rapidly.

Each 75c; 12 for \$7.50



LILIUM FORMOSANUM

REGALE—A hardy lily from China; vigorous; 3 to 5 feet high, bearing one to several handsome white fragrant flowers; slightly shaded pink outside and the lower inner surface primrose-yellow. It seems to thrive in any good, well-drained soil and prefers full sun. Plant 9 inches deep. Northern domestic-grown bulbs.

Medium size bulbs:

12 for \$3.00; 100 for \$21.00

Large size bulbs:

12 for \$5.00; 100 for \$35.00

TENUIFOLIUM (Siberian Coral Lily)—A charming little lily with strongly recurved petals of waxy texture; dazzling coral-red. Excellent for a partially shaded rock garden or border; 1 to 2 feet tall, blossoms profusely in May and June. Plant 6 inches deep.

Each 35c; 12 for \$3.00



LILIUM HENRYI

MISCELLANEOUS BULBS

BULB ORDERS FOR \$2.50 OR MORE ARE POSTPAID
ORDERS FOR LESS THAN \$2.50, ADD 35c FOR PACKING
AND POSTAGE

AMARYLLIS

In climates where the winters are cold the Amaryllis is used as a window garden pot plant. Put them in 5 or 6-inch pot, one bulb to a pot, with the neck and upper surface of the bulb exposed. They grow tall stems with three to six gorgeous blooms which last a long time in good condition.

In mild winter climates plant them in the garden, in a protected situation. Order early and plant as soon as you receive them.

ASSORTED SHADES—Each 85c; 12 for \$9.00.

SCARLET SHADES—\$1.00 each; 12 for \$10.00.

CRIMSON SHADES—\$1.00 each; 12 for \$10.00.

ANEMONES

Set the tops of the bulbs 1 inch below the surface and 6 inches apart. Avoid over-watering before growth starts. They succeed best in a rich and rather heavy soil.

BLUE POPPY—Deep violet-blue; single.

HIS EXCELLENCY—Dazzling scarlet.

THE BRIDE—Pure white, yellow stamens.

ST. BRIGID—A distinct strain producing large flowers, mostly semi-double, with finely divided petals in a large variety of colors. Large bulbs.

Each of above: 12 for \$1.00; 100 for \$7.50

DE CAEN or GIANT SINGLE MIXED—Large size bulbs.

12 for \$1.00; 100 for \$7.50

BRODIAEA

Brodiaeas grow from small bulbs producing heads of waxy flowers atop long stiff stems. They are very pretty in the garden or when cut and are particularly desirable for their long keeping qualities. They are very hardy; are easy to grow and may be easily naturalized in almost any soil. Plant 2 inches deep and 4 or 5 inches apart.

CAPITATA—Known as California Hyacinth; has slender stems 6 to 12 inches high, capped with a cluster of violet-blue flowers.
12 for 85c; 100 for \$6.00

COCCINEA—Floral Firecracker. Clusters of brilliant scarlet tubular flowers tipped with green and on stiff slender stems one to two feet high. They thrive in shady, well-drained locations and prefer gritty soil. Very effective when intermingled with ferns, etc.
12 for \$1.25; 100 for \$9.00

LAXA—Large loose umbels of fine blue flowers on stems 1 to 2 feet high. They require full sun and well drained soil; are hardy and should grow well in Eastern climates.
12 for 85c; 100 for \$6.00



ANEMONE
MONARCH
DE CAEN

CALLA—ZANTEDESCHIA

PINK CALLA (Rehmannii Superba)—Medium sized flowers of rose-pink, shading to cerise when fully open. An unusual Calla. Height about 10 inches.

Each 75c; 12 for \$7.50

YELLOW CALLA (Elliottiana)—The true yellow flowering calla. The flowers are bright yellow and the foliage dark green, spotted white. A splendid pot plant for fall planting, or it may be planted outdoors in a moist protected situation after cold weather.

Medium size bulbs: Each 35c; 12 for \$3.50; 100 for \$25.00

Large bulbs: Each 50c; 12 for \$5.00; 100 for \$35.00

WHITE CALLA (Aethiopica)—Strong bulbs.

Each 50c; 12 for \$5.00

CYCLAMEN

NEAPOLITANUM—A rare rock garden plant, which may also be grown in pots. The ivy-shaped leaves are marbled with white, the flowers are in shades of pink and they appear simultaneously with the leaves. A very interesting little plant.

Each 75c; 12 for \$7.50

DIELYTRA—BLEEDING HEART

(DECEMBER DELIVERY)

SPECTABILIS—An old-fashioned favorite. Its long racemes of graceful, heart-shaped pink flowers are very attractive. Does well in any part of the hardy borders, and especially valuable for shady places.

Large clumps: Each \$1.00; 12 for \$10.00



YELLOW CALLA



FRAGRANT FREESIAS

**CALADIUM
FANCY LEAVED VARIETIES**

Suitable for pot culture for living room, sun porch, or conservatory decoration. They may also be used in window boxes where the situation is protected from wind and strong sunlight.

Start in sand during the early spring months, and plant into pots before the leaves unfold. Place your order early for January-February delivery.

Each of the following: Each 50c; 12 for \$5.00

- CANDIDUM—Snow white leaf with green veins.
- ITACAPUS—Dark red with bright red dots.
- MACAHYDA—Bronze leaf with pink and white splashes.
- MRS. W. B. HALDEMAN—Red center, narrow green border.
- SOROCABO—Silver-white, green ribs and veins.
- TRIUMPHE—Red center, scarlet ribs, green background.



LEUCOCORYNE



IXIAS

CALOCHORTUS

MARIPOSA TULIPS—The three-petaled flowers are cup-shaped and wonderfully marked with eyes, dots, and pencilings in rich colors. Plant 2 inches deep in well-drained soil in a sunny position.

12 for 85c; 100 for \$6.00

Hardy Orchids

CYPRIDEDIUMS

Terrestrial Orchids or Lady Slippers

Thrive in woodland soil that is fairly well drained, preferably sandy or gritty but may also be of clay texture if it has a liberal mixture of leaf mold. The location must be shady and moist.

CALIFORNICUM—Clusters of lovely small white orchids with bright yellow sepals on sturdy plants growing 18 to 24 inches high. In dry regions, plant them in a shaded situation where they will have constant moisture. Mix plenty of leaf mold, pine or redwood shavings into the soil, and apply acid plant food.

75c each; 12 for \$7.50

MONTANUM—A very lovely orchid which grows in the forest of a northern California region. The flowers are quite large, have sepals and petals of brown with a white lip veined purple. Very fragrant.

75c each; 12 for \$7.50

CALYPSO BOREALIS—An exquisite pink orchid which thrives in mold and moss on rotted logs or in a similar soil on the ground in the shaded woods. It does not root in the ground. The root is a little white bulb.

75c each; 12 for \$7.50

LEUCOCORYNE

GLORY OF THE SUN—This lovely flower came to America from Chili 15 or 20 years ago. It was very exciting when it was introduced for only a few growers had seen the flowers and descriptions were glowing. Bulbs sold at very high prices and growers were eager to buy even as few as one or two bulbs. Now they are more plentiful and many more gardeners can enjoy them. They are spring flowering, bearing heads of fragrant, light blue flowers with yellow stamens; stems are 12 to 15 inches and the flowers keep well when cut. Plant 3 or 4 inches deep.

25c each; 12 for \$1.50; 100 for \$10.00



CALOCHORTUS



ERYTHRONIUMS

GLOXINIAS

Hallawell's California Grown Tubers for Growing in Pots

Gloxinias are popular semi-tropical plants. They require a warm moist temperature such as in a greenhouse or sun room. They need shade and plenty of moisture during the growing and blooming season. When they have finished blooming, dry them off gradually, then store the tubers in slightly moist peat. They are usually good for two or three plantings. Sometimes we run short of tubers in some of the colors listed and we can generally substitute other interesting color variations. When ordering, please state if we may substitute. We offer the following colors: Blue and White, Crimson, Purple, Scarlet, Sky Blue, White.

Tubers: 60c each; 12 for \$6.00

LEUCOJUM—SNOWFLAKES

These are similar to Snowdrops but of stronger growth. The flowers are white, tipped with green, and are borne on stems 1 to 2 feet high.

12 for \$1.00; 100 for \$7.50

**LILY OF THE VALLEY
(December Delivery)**

For outdoor culture they require a loose, rich soil and a moist, shady position. Set so that the tips are slightly above the ground and at a distance of 3 or more inches apart.

Clumps for outdoor growing:
\$1.00 each; 12 for \$10.00

BABY GLADS

12 for \$1.00; 100 for \$7.50

These bloom in early Spring and are very desirable for cutting. Plant them 2 to 3 inches deep and 4 to 5 inches apart.

FLORENCE — Bright rose pink.

PEACH BLOSSOM—Blush, blotched rose and cream.

SPITFIRE—Bright red.



BABY GLADIOLUS



HALLAWELL'S GLOXINIA

FRAGRANT FREESIAS

WHITE FREESIAS

HALLAWELL'S NEW GIANT WHITE—Prized not only for the size of flower and long stem, but for its delightful fragrance. Plant 3 inches deep and 3 inches apart each way. The bulbs multiply rapidly.

Large bulbs: 12 for \$1.00; 100 for \$7.50

Medium size bulbs: 12 for 60c; 100 for \$4.00

COLORED FREESIAS

HALLAWELL'S GIANT COLORED FREESIAS—May be grown in pots or in the garden. We can supply them in separate colors in lots of one dozen or more. Shades of blue, bright red, pink, yellow or mixed.

12 for 75c; 100 for \$5.50

HYACINTH

WHITE DUTCH—This is the first year since the invasion of Holland that we have had any hyacinths in sufficient number to list in our catalog. This year, only the white one.

50c each; 12 for \$5.00; 100 for \$37.50

IXIAS

They are much admired for their brilliant colors and graceful flower stalks, which resemble a miniature Gladiolus. They come in several shades and are fine for cutting, lasting several days in water. The bulbs should be planted 1 inch deep and 3 inches apart, and for best effect should be in beds or groups of 25 to 100 or more bulbs.

SPLENDID MIXTURE—Containing many colors.

12 for \$1.00; 100 for \$7.50

ERYTHRONIUM

(Dog's-tooth Violet, Trout Lily, Fawn Lily)

Charming woodland plants with richly-mottled leaves, bearing small lily-like flowers from February into April. The colors range from white, through shades of pink, to lavender and yellow.

Plant upright 2 or more inches apart, covering the tip with 2 or 3 inches of soil. Do not permit the bulbs to become dry out of the ground.

Mixture of colors: 12 for 85c; 100 for \$6.00



ORNITHOGALUM, Star of Bethlehem

ORNITHOGALUM

STAR OF BETHLEHEM

ARABICUM—Waxy, white star-shaped flowers with a glistening jet-black pistil and yellow stamens. They are in large clusters at the top of stems 15 to 18 inches long and are very desirable for display in large vases. They are easily grown and will thrive in any reasonably good garden soil where they get sunlight at least one-half time. Large bulbs to flower next Spring. 12 for \$1.00; 100 for \$7.50

MUSCARI—GRAPE HYACINTH

These are dainty little flower spikes bearing curious ball-shaped bells in white and blue. Thriving either in partially shaded or sunny locations.

HEAVENLY BLUE—Flowers clear deep blue, changing to lighter blue; very strong grower, producing much larger spikes than the ordinary sort. 12 for 75c; 100 for \$5.50



MUSCARI, Grape Hyacinth



EFFECTIVE PLANTING OF MUSCARI

OXALIS

For indoor winter flowering in pots, or hanging baskets. Plant about 8 bulbs in a 6-inch container and keep close to a window to encourage bushy growth.

- Buttercup Yellow
- Grand Duchess Lavender
- Bowei Deep Rose

Any of the above: 12 for 75c; 100 for \$5.50

HARDY PHLOX

Clumps of three or more hardy phlox make an attractive group in a border and in masses they produce brilliant summer color. The varieties listed here will withstand freezing winter weather. In the warmer sections of California, best results will be obtained by surface mulching to keep the soil cool and moist.

Prices: 50c each; 12 for \$5.00

AUGUSTA—Large heads of brilliant cherry-red florets on vigorous plants about 2½ feet high.

B. COMPTE—Rich satiny amaranth flowers, very brilliant; tall growing.

CAROLINE VANDENBURG—A true lavender-blue; very large individual florets.

CHARLES CURTIS—Glowing sunset coloring; strong grower 2½ to 3 feet tall. Brilliant and beautiful.

CHEERFULNESS—Salmon-orange flowers which hold their color well even in the hot sun. Height 3 feet, late blooming.

COUNT ZEPPELIN—Pure white with vermilion-red eye. Free flowering and beautiful.

DAILY SKETCH—Large individual florets of light, salmon-pink with vermilion-red eye.

GEORGE STIPP—Deep glowing salmon with shaded lighter eye. Does not fade.

JULES SANDEAU—Very large heads of brilliant rose pink flowers. Rather dwarf but free flowering.

LEO SCHLAGETER—Brilliant scarlet flowers with a slight orange shading; three feet.

MRS. JENKINS—A very free flowering pure white; robust habit of growth and a very desirable phlox.

WIDAR—The violet florets have a clear white eye, an unusual color combination.

SCILLA—WOOD HYACINTH

Charming bell-shaped flowers that do well under trees or in other shady locations. Blooms very early. Plant 3 inches deep and 4 to 6 inches apart.

SEPARATE COLORS—White, Blue Pink and Mixed.

12 for \$1.00; 100 for \$7.50

FOR HYBRIDISTS

AMARYLLIS SEED—Hand-pollinated finest strain. Pkt. \$1.00.

AURATUM LILY—With directions for sowing. Pkt. 50c.



OXALIS



WATSONIAS

SPARAXIS

Brightly colored flowers of pleasing color combinations and throat markings of contrasting colors. They grow about 9 inches high, keep well when cut and are exquisite in bowl arrangements. plant the bulbs about 2 inches deep and 3 or 4 inches apart. They may also be grown in pots, about six bulbs for a six-inch pot.

12 for 75c; 100 for \$5.50

SPREKELIA—AZTEC LILY

Bright red orchid-shaped flowers on long sturdy stems, standing well above the amaryllis-like foliage. They grow equally well in pots or in the garden and last well when cut. Plant 6 to 8 inches apart and cover about 1 inch.

50c each; 12 for \$5.00



TIGRIDIAS

TIGRIDIA—SHELL FLOWER

A new and interesting flower to greet you every morning; tigridias last only one day, but each morning there are fresh new flowers to succeed those of the day before. Day after day for weeks, they pop out of the long bud sheath, like rockets, and in most fascinating color combinations. They thrive in soil containing considerable humus such as peat moss, leaf mold or well rotted manure. In San Francisco give them full sun; in warm climates, partial shade. Plant the bulbs 6 inches apart and cover 4 to 6 inches deep.

- ANGELITA—Silky white blades; white cup spotted purple.
- BOLIVAR—Rose-red blades; yellow cup spotted carmine.
- FRANCISCO—Lilac-blades; white cup spotted purple.
- MEXICO—Brilliant red blades; harmonizing spotless cup.
- MONTEZUMA—Wine-red blades; yellow cup spotted carmine.
- ORO—Entire flower is golden yellow.
- PAN AMERICA—Golden yellow blades; yellow cup spotted carmine.
- TERESA—Rose-pink blades harmonizing spotless cup.

NOTE: Three or more of one variety will be labeled. Less than 3 of a kind will be sent mixed.

PRICES—Any of above: 12 for \$1.50; 100 for \$10.00

MIXED—A splendid assortment of many interesting color combinations. 12 for \$1.50; 100 for \$10.00

TRITONIA CROCATA

ORANGE PRINCE—Attractive flowers about 2 inches across with a transparent blotch at the base of each petal. One foot tall; bloom in May. Plant bulbs 2 inches deep and 3 inches apart.

12 for 75c; 100 for \$5.00

ZEPHYRANTHES

A grass-like plant growing 7 to 10 inches high and bearing small crocus-like flowers in great profusion. It blooms constantly from early Spring 'til frost, is excellent for edgings and will grow in almost any climate including the hot interior valleys.

- CANDIDA—White. 12 for 75c; 100 for \$5.50
- ROSEA—Rose-pink. 12 for \$1.25; 100 for \$9.00

WATSONIA

Watsonias are similar to Gladiolus, and bloom during June and July. The spikes grow 3 to 4 feet tall and bear a dozen or more flowers. They bloom freely and thrive best in a sunny situation. Set the bulbs 3 inches deep and 8 inches apart.

HYBRID MIXTURE—The bulbs vary in size according to variety, some of the best sorts having quite small bulbs. 12 for \$1.25; 100 for \$9.00

MAIL ORDER INFORMATION

CATALOGS—We publish two catalogs a year. Our Annual Spring Catalog, ready January 1st; our Fall Bulb Catalog, ready August 1st. A postcard request will put you on our mailing list.

MAIL ORDERS—All bulb orders for \$2.50 or more are prepaid within continental U. S. A.

ORDERS FOR LESS—If bulb order is for less than \$2.50, please send 35c for packing and postage.

PRICES—Six bulbs are at the dozen rate; 50 at the 100 rate.

Prices in this catalog cancel all previous quotations.

REFUNDS—We reserve the right to refund all, or part of money sent for merchandise which we cannot supply at time the order is received.

Address All Correspondence to

HALLAWELL SEED COMPANY
256 Market Street

SAN FRANCISCO 11, CALIFORNIA

NON WARRANTY—While we exercise the greatest care to have all our seeds, bulbs and plants of good quality and true to name, there are many contingencies encountered in growing plants, and success is dependent on other factors besides seeds, bulbs or plants. Therefore, HALLAWELL SEED COMPANY gives no warranty, express or implied, as to the productiveness of any seeds, bulbs, or plants it sells, and will not be in any way responsible for the crop. Liability in all instances is limited to the purchase price.

Top Size TULIPS

ADELGAR (3)—This lovely tulip received an award of merit in Holland in 1935 and was considered one of the outstanding varieties. It is Cottage type, light lemon yellow and under favorable conditions grows 25 to 28" high.

BARBARA PRATT—This is a very beautiful tulip with slightly reflexed petals of light cochineal-carmine edged with lilac-rose. The base is yellow with a narrow green edge. A fine exhibition bloom.

BLUE PERFECTION—Large, well formed flowers of violet-blue with each petal edged heliotrope. Very effective when grouped among yellow tulips.

CLARA BUTT—This pure pink tulip is one of the most popular of the Darwin types. It is striking when massed against others of darker color.

DIDO—Outer petals—orange red with a shading of carmine; the edges of petals are shaded orange. Inner petals bright salmon-orange with yellow at base.

FANTASY—A magnificent pink Parrot tulip. The flowers are strangely beautiful in form, the large petals being curiously fantastic in their growth. The main color outside is pink, while the inner color is deep velvety rose. It has large stiff stems.

INGLESCOMBE PINK—Soft rosy-pink with salmon flush.

INGLESCOMBE YELLOW—Glossy canary-yellow, large globular flowers, perfectly formed and beautiful; strong stems about 20 inches long. Sow the seeds of *Nemophila Insignis* (Baby Blue Eyes) on top the bed for a striking color combination.

LE NOIRE—A charming rose-pink tulip with beautifully formed cup-shaped blooms. Has a good stem and grows to a height of about 25 inches under favorable conditions.

MOZART—A single early tulip blooming about ten days earlier than Darwins and recommended for cold winter climates. Color is deep rose with rosy white base.

PRIDE OF HAARLEM—Vivid cherry-red brightened with scarlet. A brilliant color for borders and for massing among shrubs. The blooms are very large, on strong stems and fragrant.

SPRINGFIELD—A large round Darwin flower, white with just a faint tint of cream and with contrasting dark pollen.

WILLIAM COPELAND—A very beautiful tone of soft lavender, has good substance, and medium-strong stem.

YELLOW GIANT—A very large bright yellow flower with dark, almost black coloring at the base and with dark colored pollen. Under favorable growing conditions it grows tall and is excellent for cutting.

PRICES—All top size bulbs: 12 for \$2.00; 100 for \$15.00
Bulb orders for \$2.50 and over sent Postpaid.

HALLAWELL'S EXTRA FINE MIXTURE

Includes many new and outstanding varieties from our tulip trial gardens. Bulbs offered will give satisfaction in colorful blooms suitable for cutting or garden display.

12 for \$1.75; 100 for \$12.50



PLANTING HINTS

Best planting time for Tulips is October, November. Plant 5 to 6 inches apart. Prepare the soil to a depth of 12 or 15 inches and set the bulbs 7 to 10 inches beneath the surface. Deep planting retards top growth and gives ample time for a good root system to develop. The longer it takes for tulip tops to show through the surface, the better the flowers will be.

hallawell seed co.

256 MARKET STREET SAN FRANCISCO 11, CALIFORNIA