

## **Historic, Archive Document**

Do not assume content reflects current scientific knowledge, policies, or practices.

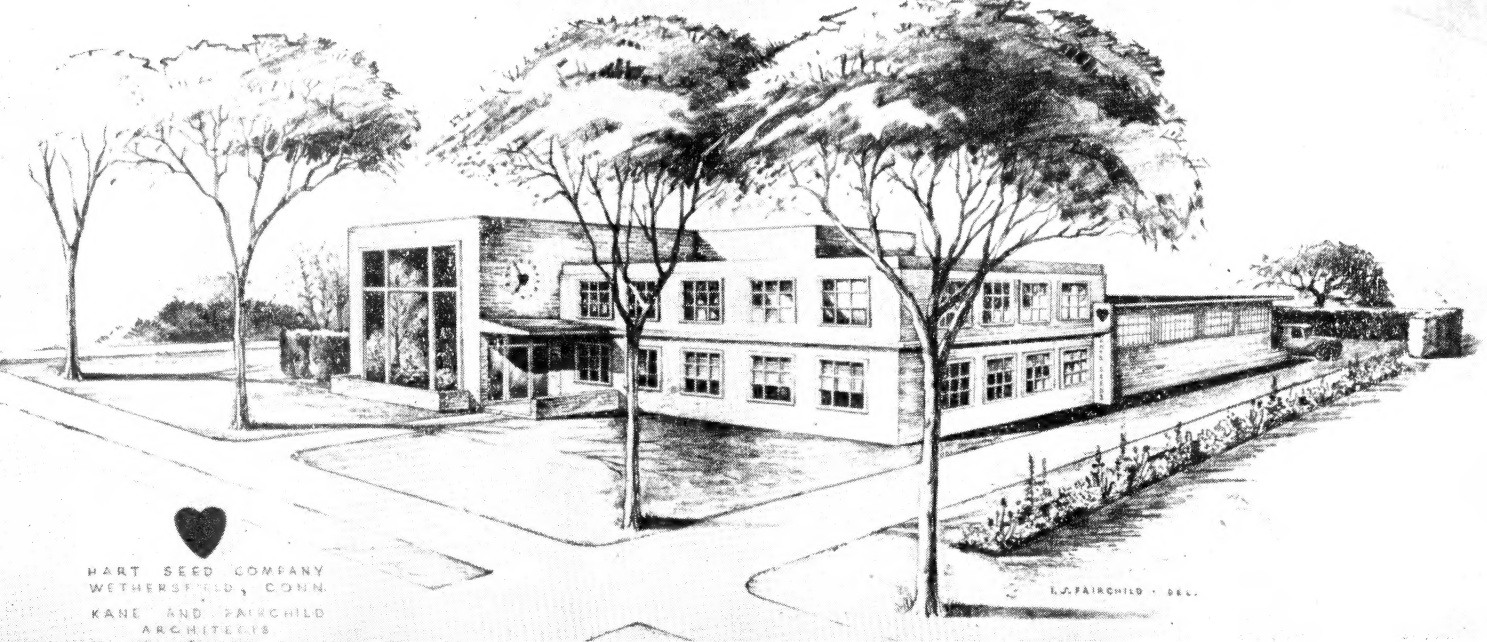




SPRING-1945

*The Chas. C. Hart Seed Co.*

WETHERSFIELD 9, CONN. • NEWPORT, MAINE



## Dear Friends:

On Saturday, December 11, 1943, our main warehouse and office building at Wethersfield was completely demolished by fire. We were able to save only our office equipment and records. The balance of our machinery and stock was a total loss. On Monday morning our office staff went to work in the first floor living room of our Mother's house—across the street from our building. Three weeks later we were ready to do business again in temporary buildings, erected as an emergency measure. By December 11, 1944 we expect to move into our new warehouse, an architect's drawing of which is shown above.

Fortunately, much of our seed stock was either located at our Maine warehouse or was in transit to us from our western growing points and what seed we did lose was replaceable. Not one of our thousands of general store customers failed to receive his order from us and we were able to fill all retail orders in full with the exception of the certain flower seeds and herbs which were unobtainable. No one was disappointed.

Our loss was completely covered by insurance and we are ready to start the season of 1945 with the largest and widest stock of seed we have ever offered—in a thoroughly modern building efficiently planned and arranged and furnished with the most modern machinery and equipment. Your order will be promptly and carefully filled with high germinating new seeds of the highest quality.

With every best wish

**THE CHAS. C. HART SEED COMPANY,**  
Wethersfield 9, Connecticut Newport, Maine



## The Advantage of Buying from a Grower

The fact that we ourselves grow a very large proportion of the seeds we sell is a distinct advantage to you—our customers. As producers we know what we are selling because we have seen it growing. We know what our customers want and need because we have talked with them and have gone into the markets where their produce is sold and have seen what their buyers require. Our breeding and selection work has been directed toward growing vegetables which will produce seed which in turn produces second generation crops exactly like its parents. This emphasis on proven quality means better types, bigger yields and earlier returns.

## The Continued Importance of Food

American agriculture has done a remarkable job. Our food production has been stupendous. We have been the best fed nation in the world and our armed forces have been the best-fed fighting men in the world. We have fed our Allies and we have fed the Liberated areas. *But the job is not done.* There must not be a letdown in our productive efforts. Replacement of point rationing means that food will continue to be a vital factor in the ultimate outcome of the war. Your contribution to your own home needs releases so much more for our armed forces and our allies. The food needs of Liberated Europe will be great, even greater than we can now comprehend. Weather conditions in 1945 can change the picture considerably. Let us not relax at a time when victory is in sight. We are winning the war by having enough of everything and it would be a fatal error to fail at this crucial time.

### Plant a Victory Garden in 1945



## Directions for Ordering

**Please use order sheet** in the back of the catalog. It will be of great help to us in filling your order quickly and correctly. Be sure to fill in your full name and address. If your order is to come by freight or express please write in your freight or express station if different from your Post Office.

**Please keep a copy of your order**—Many customers complain they have received goods they have not ordered at all. At any rate, it is always wise to check over your order. If we have made a mistake (we sometimes do) we want to rectify it immediately.

**How to send money**—Remittances may safely be made by Post Office or Express Order, Bank Draft, Check or Registered Letter. We will accept stamps for sums less than one dollar. If bills are sent, always register the letter.

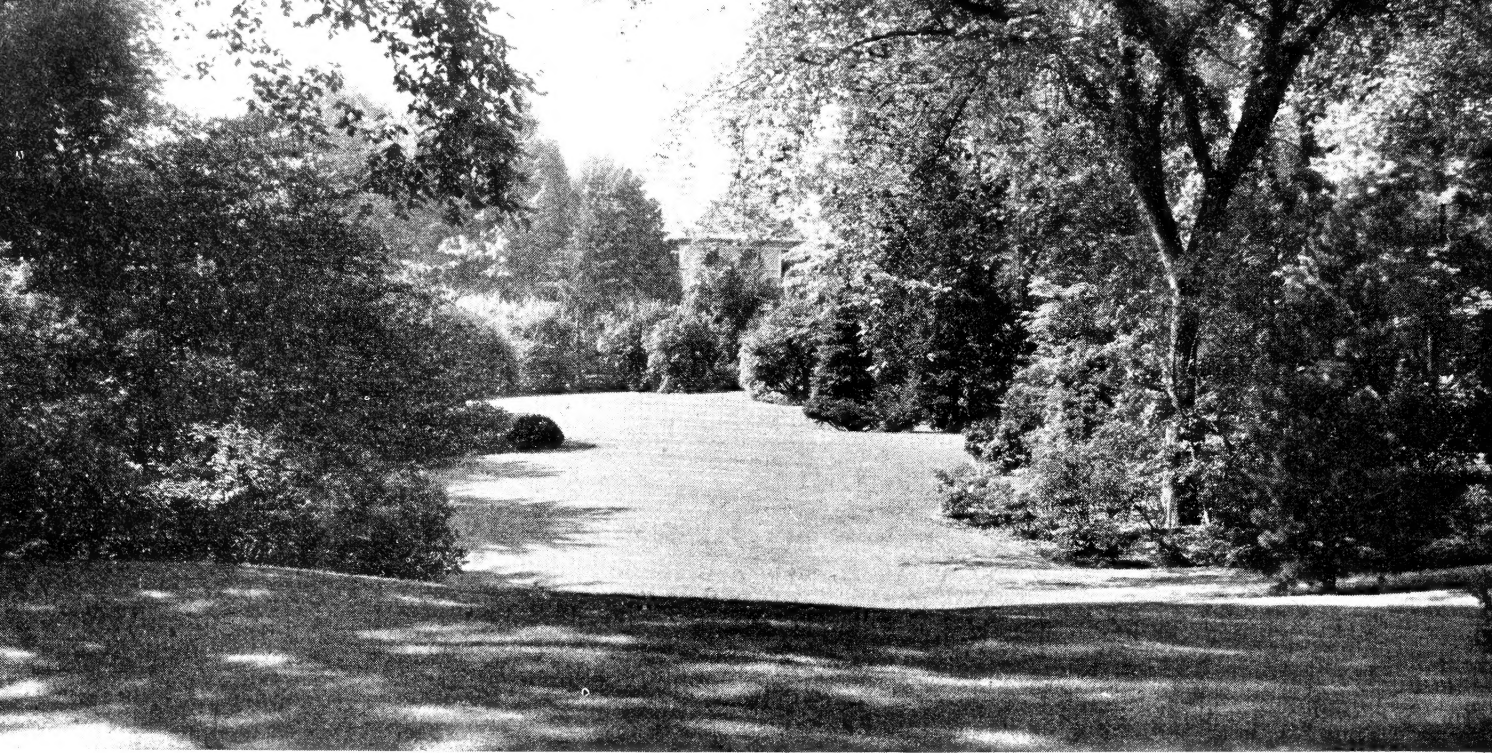
**We guarantee the safe arrival of all orders**—There is no need to send insurance money. We will take care of that.

**24 Hour Service**—All orders are filled the same day as received, except in the case of seasonal goods which will be sent when the weather permits.

**Our Guarantee**—We guarantee to the full amount of the purchase price, the purity and quality of all seeds you buy from this catalog. Should failure result from any fault of the seed, you can have your money back. However, this is the limit of our liability. Seeds are subject to so many climatic and soil conditions over which we have no control, that we give no warranty, express or implied as to quality, description, productiveness or any other matter of any seed we sell and will be in no way responsible for the crop. Our liability in all instances is limited to the purchase price of the seed.

**Seeds by Parcel Post**—Packages weighing 70 lbs. can be sent into the first three zones and 50 lbs. may be sent anywhere in the country.

**WE PREPAY ALL TRANSPORTATION CHARGES**



## A Beautiful Lawn is an Asset to Any Property

LAWN SEED is the greatest mystery in the world to most home owners who cannot make head or tail out of the complex formulas printed on Lawn Seed labels. They are not meant to be confusing but most people do not know which grasses are desirable or undesirable in a lawn. One pound of Lawn Seed is required for 150 square feet but heavier seeding is desirable.

In general, the finest grasses for permanent, velvety lawns are Kentucky Blue Grass, Chewings Fescue or any of the Bent family. WHITE CLOVER may be added if desired but the most attractive lawns are made without it. The higher the percentage of these grasses the better your lawn will be.

However, these are slow to establish themselves and other quick-growing grasses must be added to act as nurse grasses. These grow rapidly and furnish shade and cover until the more permanent seeds have established themselves. The two best are RED TOP and RYE GRASS but the finest lawns are made with mixtures containing not more than 30% of these.

For special purposes Poa Trivalis and Chewings Fescue are essential for shady locations or for poor and sandy soils while Canada Blue Grass is useful for terraces and steep banks.

After you have made certain that the desirable seeds are in your mixture check the percentage of inert matter. This is dead seed or seed hulls or chaff and it is material you pay for but do not use. It is completely waste and the smaller the percentage of waste the better your mixture. The weed content should be small, of course, but more weed seeds are present in your per soil square foot than are ever found in fifty pounds of decent Lawn Seed.

The State of Connecticut has set up standards for Lawn Seed and when these blends are used a fine lawn is assured. We are licensed to offer these blends which are: Gold Seal, certified to be of the highest quality; Blue Seal of high quality; and Red Seal, of good quality. We also offer a GOLD SEAL ALL-BENT FORMULA for putting or bowling greens, SHADY PLACE for deeply shaded areas, TERRACE SOD for steep embankments and a special formula for Poor or Sandy Soils.

We also present two blends where price is a larger consideration; ELM TREE and EVERGREEN. These are both excellent blends for competitive purposes and will prove satisfactory for the average lawn. They simply do not contain as large a percentage of the finer bladed, more desirable grasses nor is their purity quite as high as in the State Seal mixtures. We also list a complete variety of all separate turf grasses should you desire to grow these alone. We invite your questions and problems.

We solicit inquiries from builders and contractors who require special blends for unusual conditions or whose problem is the necessity for a quick green cover on rather poor soil. If you are building a new home, ask your contractor to specify HART'S SEEDS for your lawn—because a fine lawn always adds to the value of your property.

### Lawn Seed Blends

	1-5 lbs. Per lb.	6-20 lbs. Per lb.	21-100 lbs. Per lb.
Greendale (Gold Seal).....	\$0.70	\$0.65	\$0.60
Standish Park (Gold Seal).....	.75	.70	.65
Splendor (Gold Seal).....	.85	.80	.75
Special Bent (Gold Seal).....	.90	.85	.80
Blue Seal.....	.60	.55	.50
Red Seal.....	.55	.50	.45
Elm Tree.....	.45	.40	.35
Evergreen.....	.40	.35	.30
Deep Shade (Gold Seal).....	.90	.85	.80
Shady Place.....	.65	.60	.55
Terrace Sod.....	.60	.55	.50
Poor or Sandy Soils.....	.60	.55	.50

### Special Purpose and Separate Grasses

	1-10 lbs. Per lb.	11-100 lbs. Per lb.
Kentucky Blue Grass, 98%.....	\$0.48	\$0.46
Kentucky Blue Grass, 94%.....	.45	.43
Kentucky Blue Grass, 90%.....	.43	.41
Kentucky Blue Grass, 85%.....	.40½	.38½
Canada Blue Grass.....	.39	.37
Colonial Bent.....	1.00	.95
Astoria Bent.....	.95	.90
Seaside Bent.....	1.10	1.05
Chewings Fescue.....	.88	.85
Domestic Rye Grass.....	.17	.15
Fancy Red Top, 98%.....	.28	.26
Fancy Red Top, 94%.....	.30	.28
Fancy Red Top, 92%.....	.28	.26
White Dutch Clover.....	1.15	1.10

## ASPARAGUS SEED

1 oz. of seed will sow 75 feet of row and produce about 250 plants

**Culture**—Asparagus seed should be sown as early as possible in the spring. When roots are one year old they should be transplanted into permanent beds in rows about 4 feet apart with root crown 1½ feet apart in trenches 10 inches in depth.

**Mary Washington.** The best variety. Rust resistant. The most widely used for home and market. Large thick stalks, attractive green in color with purple tops. Tender and delicious. Oz. 20c., ¼ lb. 60c., lb. \$2.00.

## ASPARAGUS ROOTS

**Mary Washington** (1 year old). To produce Asparagus from roots follow directions as outlined above when roots are raised from seed. 50 roots \$1.00, 100 roots, \$2.00, 500 roots \$9.50, 1000 roots \$18.00.

## BEANS. Green Pod

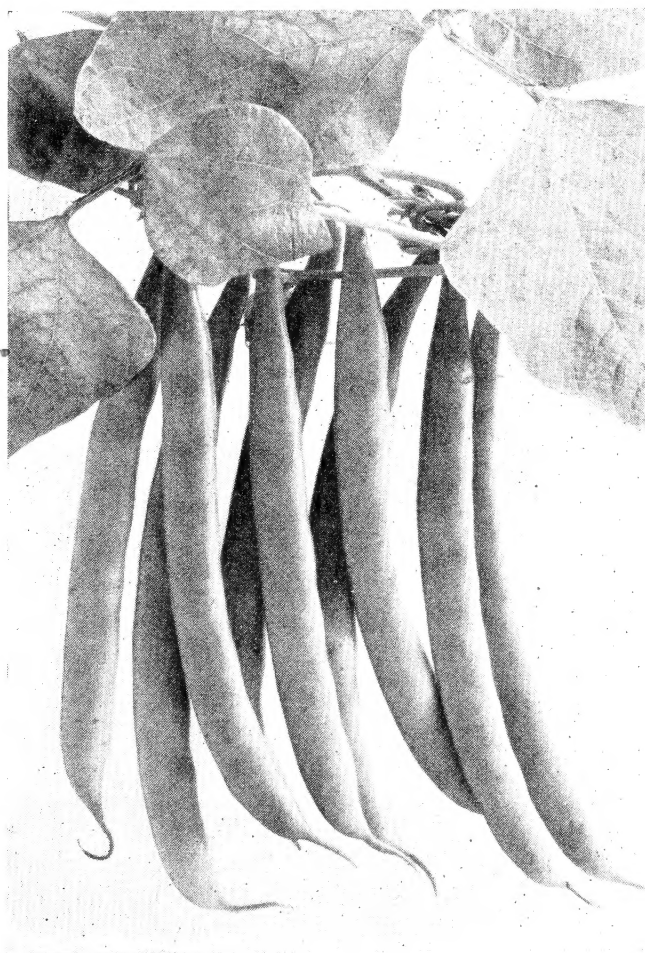
We prepay all transportation charges

One pound of Beans will plant 150 feet, 90 lbs. per acre

**Culture**—Plant in rows 2½ feet apart, dropping seed 2 inches apart. Plant when ground is warm and make small plantings every two weeks and have fresh Beans right up until frost.

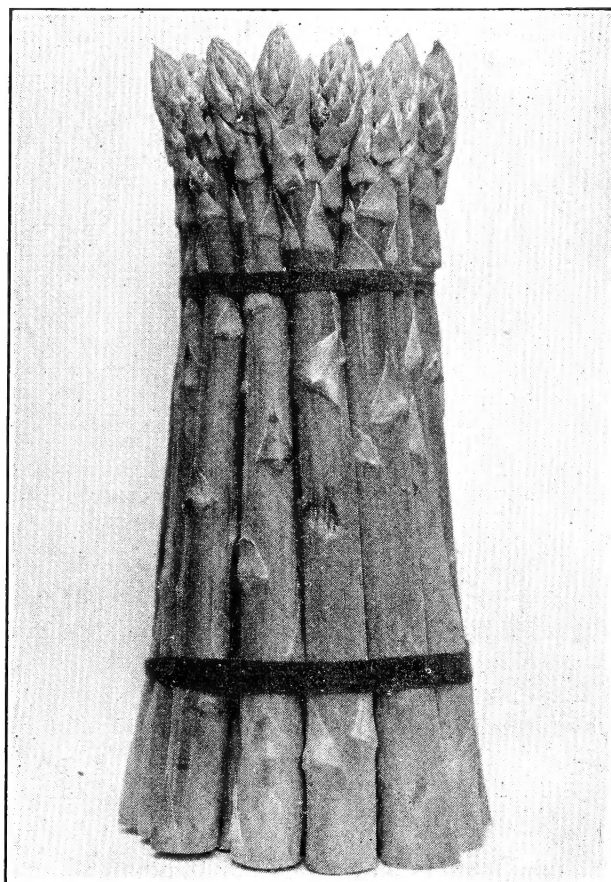
All Beans are 15c. per packet, 30c. for ½ lb., 50c. for 1 lb. and 90c. for 2 lbs., unless otherwise indicated

**Bountiful.** The largest and heaviest yielding flat green Bean. Without question the finest stock of this favorite green podded variety. There is no other strain which will produce a higher yield of these handsome, large flat, light green pods. Our many market gardeners will bear witness to the high quality of our type. 3 to 10 lbs. 30c. per lb., 11 to 25 lbs. 29c. per lb., over 25 lbs. 27c. per lb.



Beans, Bountiful

Packets (sufficient for the needs of the average small family) of all vegetable seeds listed in this catalog, are 10c., unless otherwise indicated.



Asparagus, Mary Washington

**Black Valentine Stringless.** An extremely prolific and early round Bean entirely stringless. 3 to 10 lbs. 29c. per lb., 11 to 25 lbs. 28c. per lb., over 25 lbs. 26c. per lb.

**Landreth's Stringless.** A splendid improvement on the old type Burpee's Stringless, growing 2 in. longer than that type. A round Bean of really superior quality and flavor. 3 to 10 lbs. 30c. per lb., 11 to 25 lbs. 28c. per lb., over 25 lbs. 26c. per lb.

**Plentiful.** Another new flat pod of extremely high quality. Similar to Bountiful with a pod ½ to 1 inch longer and a trifle later in maturity. A black seeded variety. 3 to 10 lbs. 30c. per lb., 11 to 25 lbs. 28c. per lb., over 25 lbs. 26c. per lb.

**Streamliner.** A splendid new flat podded Bean of very superior quality. The pods are slightly larger than Bountiful and are a handsome bluish green in color. Very fleshy and attractive. The seed is white. 3 to 10 lbs. 33c. per lb., 11 to 25 lbs. 31c. per lb., over 25 lbs. 29c. per lb.

**Tendergreen.** The finest of the round podded green Beans. Although still comparatively new, this handsome and early Bean has become one of the most popular on our list. The high yield and superior quality of its straight, round green pods will commend this Bean to the most critical gardener. 3 to 10 lbs. 32c. per lb., 11 to 25 lbs. 30c. per lb., over 25 lbs. 28c. per lb.

## Wax or Yellow Podded Beans

**Pencil Pod Black Wax.** The finest round podded Bean for home and market. Frequent roguing and particular attention to stock seed keeps our strain of this favorite Bean at the peak of perfection. Its long, round, waxy pods are never marred by the "shorts" and "greens" so common to inferior strains. 3 to 10 lbs. 36c. per lb., 11 to 25 lbs. 34c. per lb., over 25 lbs. 32c. per lb.

**Round Pod Kidney Wax.** Long, round, clear yellow pods of exceptional flavor. 3 to 10 lbs. 37c., 11 to 25 lbs. 36c. per lb., over 25 lbs. 34c. per lb.

**Sure Crop Wax.** Justly the most popular flat Wax Bean. Also known as Bountiful Wax, this superior yielding Bean occupies the same position among Wax Beans that the Bountiful does in the green pods. Its enormous yields of long, straight, flat bright yellow pods spell extra profits. 3 to 10 lbs. 31c. per lb., 11 to 25 lbs. 30c. per lb., over 25 lbs. 28c. per lb.

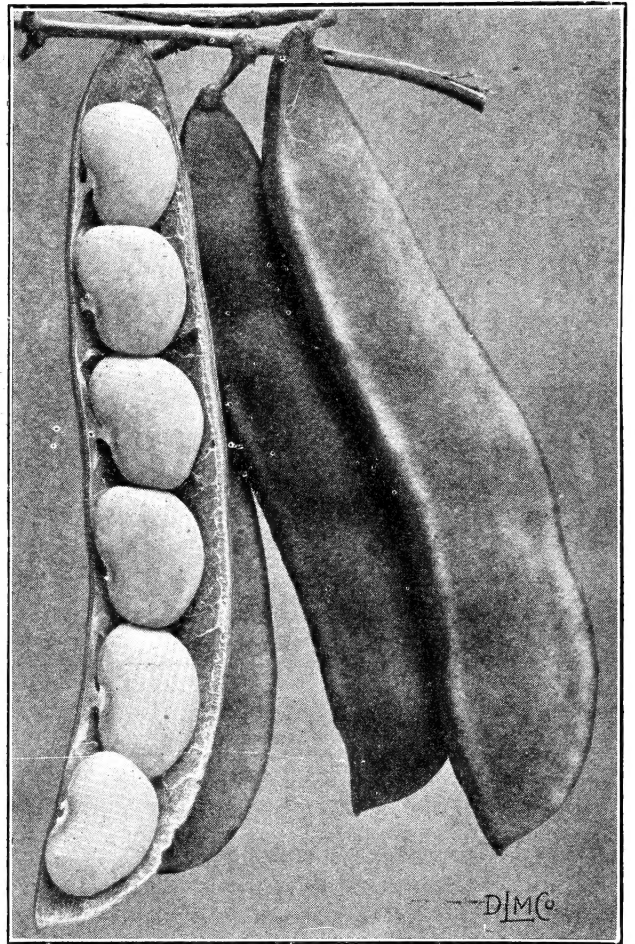
**Top Notch Golden Wax.** An unexcelled new strain of this popular tasty flat Bean. 3 to 10 lbs. 33c. per lb., 11 to 25 lbs. 31c. per lb., over 25 lbs. 29c. per lb.

**Unrivaled Wax.** Truly "unrivaled" for early and heavy yields. An exceptionally early Bean, with long narrow, flat pods which yields tremendously on very dwarf plants. Your pickers will turn in 50% more baskets in the same time on fields of Unrivaled. 3 to 10 lbs. 32c. per lb., 11 to 25 lbs. 30c. per lb., over 25 lbs. 28c. per lb.

## Field or Baking Beans

<b>White Marrow</b>	<b>Soldier</b> (richest and meatiest)
<b>White Navy</b>	<b>Light Red Kidney</b>
<b>White Kidney</b>	<b>Yellow Eye</b>

All varieties, ½ lb. 20c., lb. 30c., 2 lbs. 55c., over 2 lbs. 20c. per lb.



Lima Bean, Fordhook Bush

## LIMA BEANS. Bush

**Burpee's Improved Bush.** Larger pods and beans. One more bean per pod than in the old variety. A trifle deeper green in color. 3 to 10 lbs. 31c. per lb., 11 to 25 lbs. 29c. per lb., over 25 lbs. 27c. per lb.

**Fordhook Bush.** Our strain is justly the most popular on the large Long Island and South Jersey markets because of its high vitality and freedom from splitting. Fordhooks are one of our biggest specialties. 3 to 10 lbs. 32c. per lb., 11 to 25 lbs. 30c. per lb., over 25 lbs., 28c. per lb.

**Henderson Bush or Baby Lima.** Extremely early and prolific; delightful quality, dependable bearer. A Bean sure to ripen. 3 to 10 lbs. 32c. per lb., 11 to 25 lbs. 28c. per lb., over 25 lbs. 26c. per lb.

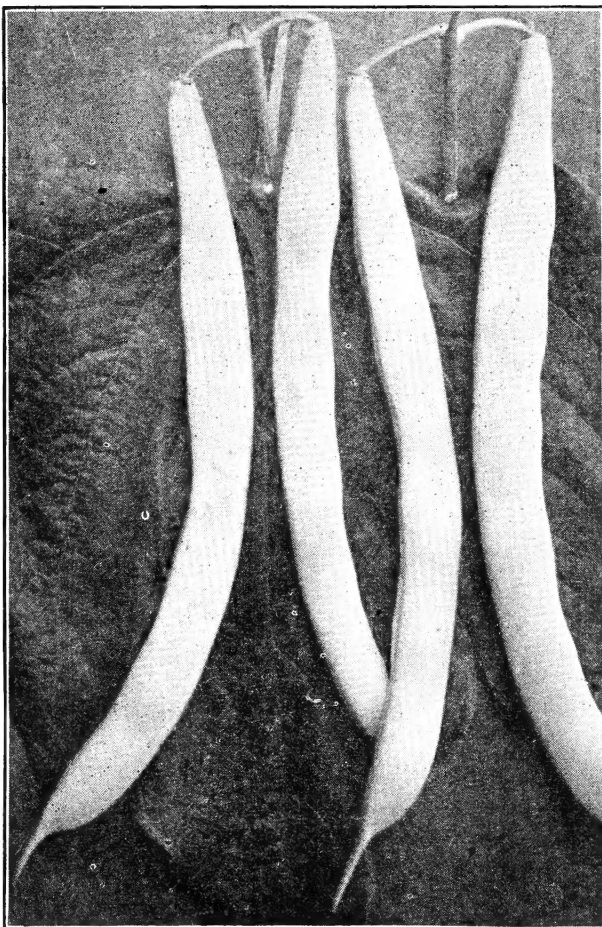
## LIMA BEANS. Pole

*1 lb. of seed will plant about 100 hills*

**Culture**—Support vines with poles at least 7 feet in length and sink approximately 2 feet in ground and space 3 to 4 feet apart each way. Plant 6 seeds around each pole and later thin to the 3 strongest plants.

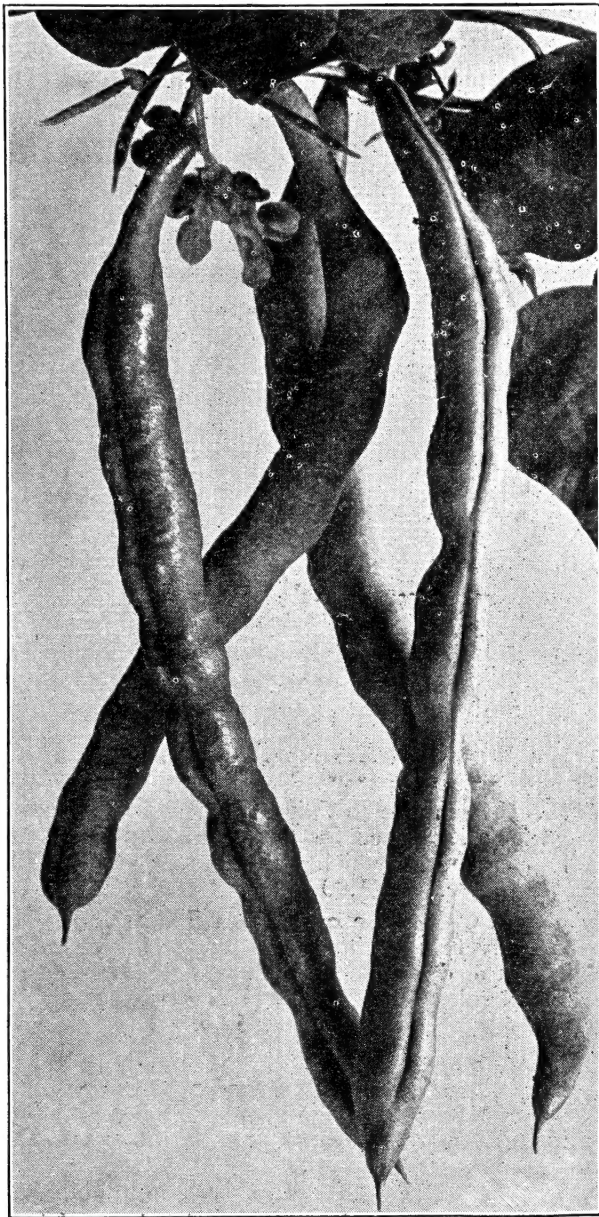
**King of the Garden.** Early and productive. A favorite in home and market garden. 3 to 10 lbs. 32c. per lb., 11 to 25 lbs. 31c. per lb., over 25 lbs. 29c. per lb.

**Mammoth Podded.** The largest of all pole limas having a 7 inch pod with 6 large Beans of finest quality. 3 to 10 lbs. 33c. per lb., 11 to 25 lbs. 32c. per lb., over 25 lbs. 30c. per lb.



Beans, Sure Crop Wax





Shell Beans, Kentucky Wonder, or Old Homestead

## SHELL BEANS. Bush

*1 lb. will sow 150 feet of row*

**French Horticultural.** Our superior strain of this splendid Bean is still "tops," with its handsome seven inch pods liberally splashed with carmine. This Bean originated in New England. We secured our strain from the originator and continued to grow it in New England under our constant supervision. No wonder it brings better prices on the market. 3 to 10 lbs. 34c. per lb., 11 to 25 lbs. 32c. per lb., over 25 lbs. 30c. per lb.

**Broad Windsor or Long Podded Fava.** Grown extensively by Italians as a green shell Bean; very hardy and should be planted as soon as ground can be worked. Pods 7 to 8 inches long with 4 to 6 large beans each. To be eaten as Lima Beans. 3 to 10 lbs. 27c. per lb.

**Low's Champion or Red Cranberry.** Useful also as green "snap" Bean and very superior as a shell variety. Resistant to blight. 3 to 10 lbs. 34c. per lb., 11 to 25 lbs. 32c. per lb., over 25 lbs. 30c. per lb.

**Ruby Dwarf Horticultural or Roman.** The old "favorite" Cranberry Bean so desirable for Succotash; also used as "snap" and shell Beans. 3 to 10 lbs. 29c. per lb., 11 to 25 lbs. 28c. per lb., over 25 lbs. 26c. per lb.

**Vermont or Old Fashioned.** A favorite shell Bean in Northern New England which should be used elsewhere. The Beans and pods are the largest in any of the dwarf types. 3 to 10 lbs. 32c. per lb., 11 to 25 lbs. 30c. per lb., over 25 lbs. 28c. per lb.

## SHELL BEANS. Pole

*1 lb. will plant 100 hills*

**Culture**—Support vines with poles as with Pole Limas.

**King Horticultural.** A revelation if you have never tried it. Our strain of this remarkable but little known Bean produces immense pods 8 to 9 inches long, beautifully splashed and colored with rich yellow and carmine and very similar in appearance to French Horticulturals. The handsome pods bring a premium on every market and even a few poles will more than repay the extra effort. 3 to 10 lbs. 32c. per lb., 11 to 25 lbs. 30c. per lb., over 25 lbs. 28c. per lb.

**Kentucky Wonder or Old Homestead.** Enormously productive about 10 days earlier than any other green pod sort. Pods very long light green, stringless. Will hang in clusters and all in all a splendid "snap" bean. 3 to 10 lbs. 29c. per lb., 11 to 25 lbs. 28c. per lb., over 25 lbs. 26c. per lb.

**Kentucky Wonder Wax.** Long, flat yellow pods of fine quality similar to green Kentucky Wonder excepting in color. 3 to 10 lbs. 32c. per lb., 11 to 25 lbs. 31c. per lb., over 25 lbs. 29c. per lb.

**Scarlet Runners.** Prized for the beauty of its scarlet flowers and for its choice, edible flavor. 3 to 10 lbs. 31c. per lb., 11 to 15 lbs. 30c. per lb., over 25 lbs. 28c. per lb.

**New Italian Pole Bean.** An outstanding early green "snap" Bean, stringless and of excellent quality; pods 5 inches in length, broad and flat. Also may be used as a shell Bean. (Only 2 lbs. to a customer.)

**Yard Long.** An edible novelty producing pods sometimes 36 inches long. Pkt. 20c.

## Edible Soy Beans

*1 lb. will sow about 150 feet of row*

**Culture**—Edible Soy Beans are now very popular because of their high vitamin content and are high in protein and fat. Easiest bean grown and may be eaten in its green state or dried. Can be roasted in much the same manner as nuts. Sow in rows 3 feet apart, dropping seed 2 inches apart.

**Bansei.** The best variety for our Northern section. Plants will grow about 2 feet high. 3 to 10 lbs. 29c. per lb., 11 to 25 lbs. 27c. per lb., over 25 lbs. 25c. per lb.

**Kanro.** Also very popular in the Northern climate. Excellent in flavor. 2 lbs. 90c., 3 to 10 lbs. 31c. per lb., 11 to 25 lbs. 29c. per lb., over 25 lbs. 27c. per lb.

The best insurance is to have enough canned goods on your shelves to go through the Winter. When you pack them yourself you'll have better foods at lower prices.

## BEETS

*1 oz. of seed will sow 50 feet of drill—10 lbs. per acre in rows 14 inches apart. A few rows in the garden will supply fresh beets throughout the season.*

**Culture**—Sow early in the Spring and later for a succession. Sow in July for use in the Fall. Sow in rows 14 to 18 inches apart; cover  $\frac{1}{2}$  to 1 inch deep (the latter if ground is dry). Thin to 3 inches apart when plants are small. Thinnings may be used for Beet Greens.

*All Beets 10c. per packet, 20c. per ounce*

**Crosby's Egyptian** (Special Strain). Deep crimson color, small tops and slender tap roots. Very early.  $\frac{1}{4}$  lb. 65c., lb. \$2.25.

**Detroit Dark Red.** Very deep red in color, adaptable for both market and home garden use. Desirable for bunching and canning. Beets are smooth and uniform.  $\frac{1}{4}$  lb. 65c., lb. \$2.25.

**Early Blood Turnip.** An early large variety of good quality. Tops are large and adaptable for tender beet greens.  $\frac{1}{4}$  lb. 65c., lb. \$2.25.

**Hart's Early Wonder.** The finest available early bunching Beet. Our splendid selection of this desirable early variety is unsurpassed and we confidently feel that no other strain offered can approach it for uniformity of size, shape and deep bright red color.  $\frac{1}{4}$  lb. 65c., lb. \$2.25.

**Perfected Detroit.** A perfect globe shaped strain of the old type Detroit, growing slightly smaller but earlier with small tops and fine tap roots. The skin is deep red and the flesh is solid red without zoning or light colored rings, a truly remarkable selection.  $\frac{1}{4}$  lb. 70c., lb. \$2.50.

## Mangel Beet. For Stock Feeding

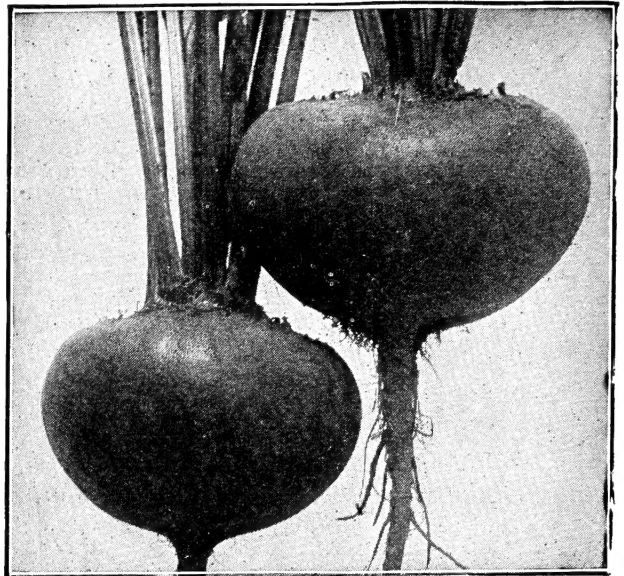
*Plant 6 to 8 lbs. per acre. Sow seed in rows 2 $\frac{1}{2}$  feet apart.*

*All Mangels: Pkt. 10c., oz. 20c.,  $\frac{1}{4}$  lb. 60c., 1 lb. \$1.85, 10 lbs. \$1.75 per lb.*

**Golden Tankard.** Large oval yellow roots.

**Improved White Sugar.** Handsome white flesh, high in sugar content.

**Mammoth Long Red.** The most popular and one of the heaviest yielders.



Beet, Hart's Early Wonder

## BROCCOLI

*1 oz. will produce about 2000 plants*

**Culture**—Broccoli requires no special care. For early use sow indoors or in hot-beds and set plants at least 2 feet apart. Later sowings may be made out-doors.

**Di Rapa.** Known also as Caledonia Turnip or Senaps, this variety is relished for its turnip-like leaves and small flower heads which are eaten as greens. Oz. 30c.,  $\frac{1}{4}$  lb. 60c., lb. \$1.90

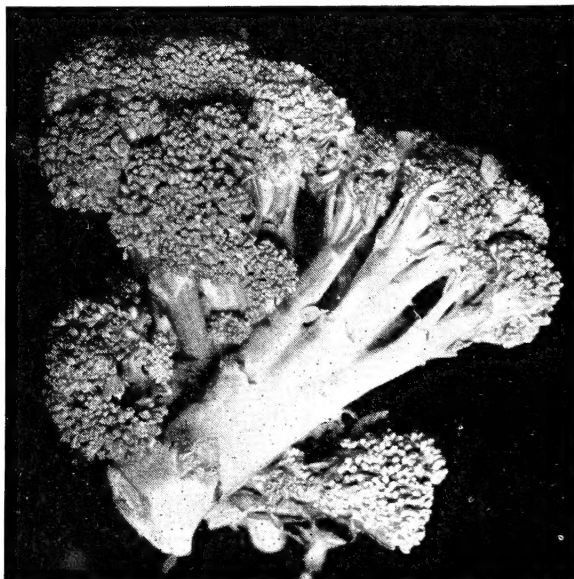
**Early Green Calabrese or Italian Sprouting.** Our surpassingly fine strain of this wonderful vegetable produces the desirable large closely packed central heads and solid side shoots so highly prized.  $\frac{1}{2}$  oz. 30c., oz. 50c.,  $\frac{1}{4}$  lb. \$1.50, lb. \$5.00.

## BRUSSELS SPROUTS

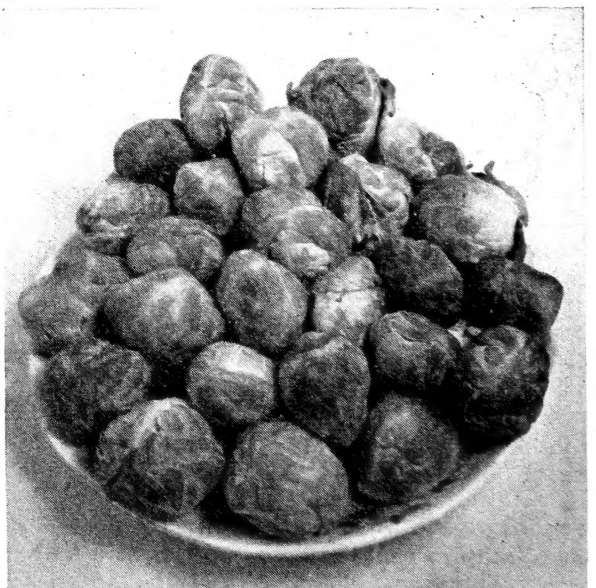
*1 oz. will produce 2500 plants. Set out like cabbage*

**Culture**—Transplant in rows about 3 feet apart. Rows 18 inches apart.

**Long Island Improved.** Our special Long Island strain. Grown for us in the heart of the "Sprout" section on Long Island, this wonderful selection out-distances all others in its high percentage of "hard" sprouts.  $\frac{1}{4}$  oz. 30c.,  $\frac{1}{2}$  oz. 55c., oz. \$1.00,  $\frac{1}{4}$  lb. \$3.75.



Broccoli, Early Green Calabrese, or Italian Sprouting



Brussels Sprouts, Long Island Improved

## CABBAGE

1 oz. will produce from 1500 to 2000 plants,  $\frac{1}{4}$  to  $\frac{1}{2}$  lb. per acre

**Culture**—For early plants sow seed in hot-bed in February and March, or about six weeks before the ground is warm enough to plant. For medium early crops sow seed in open ground as soon as ground is in condition to work. For late crops plant around June 1st.

### Early Summer Varieties

**Copenhagen Market.** A fine round headed variety to follow Golden Acre and 3 to 4 pounds heavier than that sort. Our selection is very sure heading. Oz. 50c.,  $\frac{1}{4}$  lb. \$1.75, lb. \$6.00.

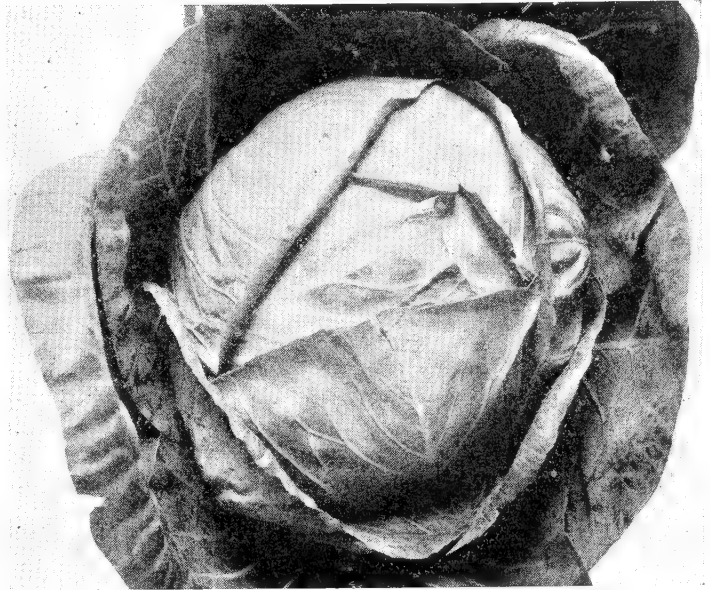
**Early Jersey Wakefield.** An extra early heavy yielding pointed Cabbage of superlative quality. We offer an exceptionally fine strain. Oz. 40c.,  $\frac{1}{4}$  lb. \$1.50, lb. \$5.50.

**Enkhuizen Glory.** Fine for home garden, market or kraut; early and productive. Oz. 50c.,  $\frac{1}{4}$  lb. \$1.50, lb. \$5.50.

**Golden Acre (Original Strain).** Universally considered the finest early Cabbage. Golden Acre reaches new heights in our splendid strain. Uniform in maturity, size and shape, it leaves little to be desired. We are proud of its universal acceptance. Oz. 60c.,  $\frac{1}{4}$  lb. \$1.75, lb. \$6.00.

**Green Acre.** Similar in size, shape and maturity to Golden Acre but holds it's green color much longer; hence of greater value to market gardeners. Oz. 60c.,  $\frac{1}{4}$  lb. \$2.00, lb. \$7.50.

**Savoy Chieftain.** An extremely early, fine flavored Savoy type, smaller than our Perfection Drumhead. Oz. 60c.,  $\frac{1}{4}$  lb. \$2.00, lb. \$7.00.



Cabbage, Copenhagen Market

### Fall and Winter Varieties

**Danish Ball Head (Short Stem).** We offer an excellent strain of this favorite main crop variety. Oz. 55c.,  $\frac{1}{4}$  lb. \$2.00, lb. \$6.50.

**Penn State Ball Head.** Our strain of this tremendous yielder is unexcelled. The round solid, heavy heads will produce practically 100% and outyield any other variety of Cabbage in total tonnage to the acre. Oz. 55c.,  $\frac{1}{4}$  lb. \$2.00, lb. \$6.50.

**Perfection Drumhead Savoy.** Our strain has a dark green color with a fine curly appearance and is very compact and uniform. Oz. 60c.,  $\frac{1}{4}$  lb. \$1.75, lb. \$6.00.

**Premium Late Flat Dutch.** Large, flat, deep heads. Much relished for kraut. Oz. 40c.,  $\frac{1}{4}$  lb. \$1.50, lb. \$5.50.

**Mammoth Red Rock.** The largest and best Fall or early Winter shipping and storing variety. Oz. 60c.,  $\frac{1}{4}$  lb. \$2.00, lb. \$7.00.

### Chinese Cabbage

1 oz. will sow 300 feet of drill

**Culture**—Sow middle of July in rows  $2\frac{1}{2}$  feet apart and thin to 18 inches in row.

**Chihili.** Very popular, being the earliest and surest heading. Produces long, solid white heads of the best quality. Oz. 25c.,  $\frac{1}{4}$  lb. 75c., lb. \$2.50.

**Wong Bok.** Its broad heads are rather short; tightly folded and well blanched. Oz. 25c.,  $\frac{1}{4}$  lb. 75c., lb. \$2.50.

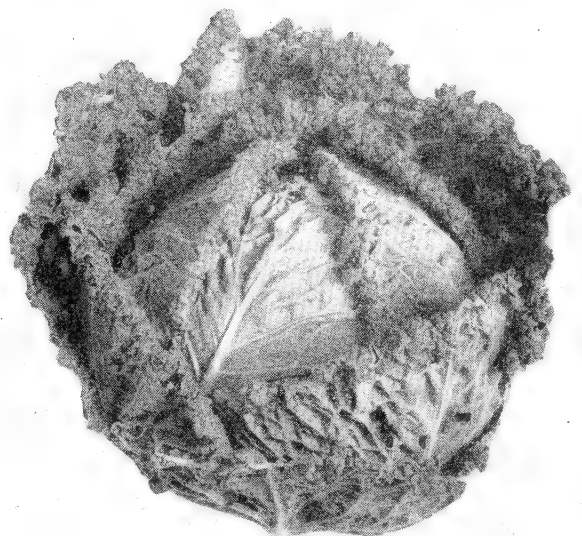
### CARDOON

**Long Smooth Solid.** Grown like Celery and served like Asparagus. Oz. 40c.,  $\frac{1}{4}$  lb. \$1.50.

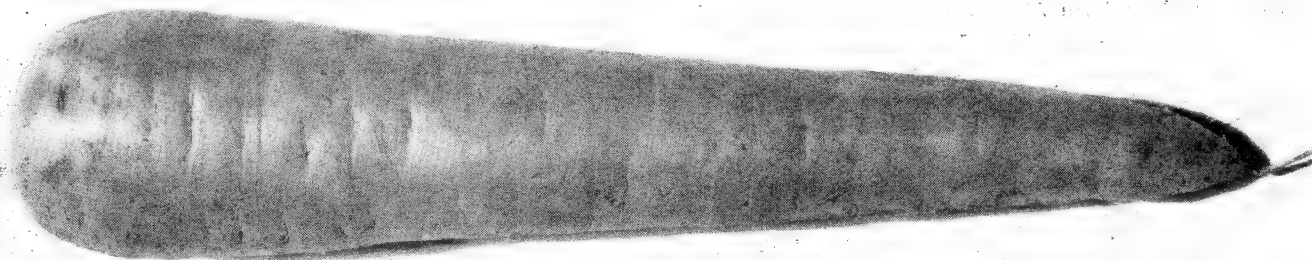


Chinese Cabbage, Chihili

Try a few new and unusual vegetables this year. You'll be surprised how good some of them are.



Cabbage, Danish Ball Head



Carrot, Imperator

## CARROT

*1 oz. of seed will sow 150 feet of drill, 3 to 4 lbs. per acre*

**Culture**—Sow seeds in drills 12 to 15 inches apart and thin from 3 to 4 inches. For early crop, sow as soon as ground can be worked; June and July for later crops; early August for Fall crops.

**Chantenay Red Cored.** The coreless carrot which has displaced the old type Chantenay; being smoother, more uniform and more attractive. Oz. 25c.,  $\frac{1}{4}$  lb. 75c., lb. \$2.75.

**Danvers Half Long.** The old dependable main crop Carrot with roots 7 to 8 inches long tapering to a blunt end. Oz. 25c.,  $\frac{1}{4}$  lb. 75c., lb. \$2.75.

**Greater Chantenay.** Desirable for early bunching. Seven inch roots tapering slightly with blunt ends and maturing fully as early as Chantenay. Highly desirable for those who want a somewhat longer Carrot than Chantenay without sacrificing earliness. Oz. 25c.,  $\frac{1}{4}$  lb. 80c., lb. \$2.85.

**Hutchinson.** Our strain of this popular New England variety needs no introduction. The long cylindrical roots will grow 12 to 15 inches long and are a beautiful deep orange in color, shading to a light green on the shoulders. No carrot known produces a greater yield than Hutchinson. Our super strain costs more and is worth it. Oz. 30c.,  $\frac{1}{4}$  lb. \$1.00, lb. \$3.25.

**Imperator.** The finest for bunching. Also known as the "California". This quality Carrot is very popular with the high-class trade. The long smooth tapering roots are a deep orange in color with a minimum of core, and cooks up tender and sweet. Oz. 30c.,  $\frac{1}{4}$  lb. 90c., lb. \$3.00.

**Improved Long Orange.** Fine stock Carrot as well as table; will mature roots a foot in length. Oz. 25c.,  $\frac{1}{4}$  lb. 75c., lb. \$2.50.

**Scarlet Nantes (Coreless).** Beautiful cylindrical carrot with blunt ends and entirely coreless. Housewives prefer it for slicing and dicing and its attractive appearance sells it readily. Oz. 30c.,  $\frac{1}{4}$  lb. \$1.00, lb. \$3.25.

## CAULIFLOWER

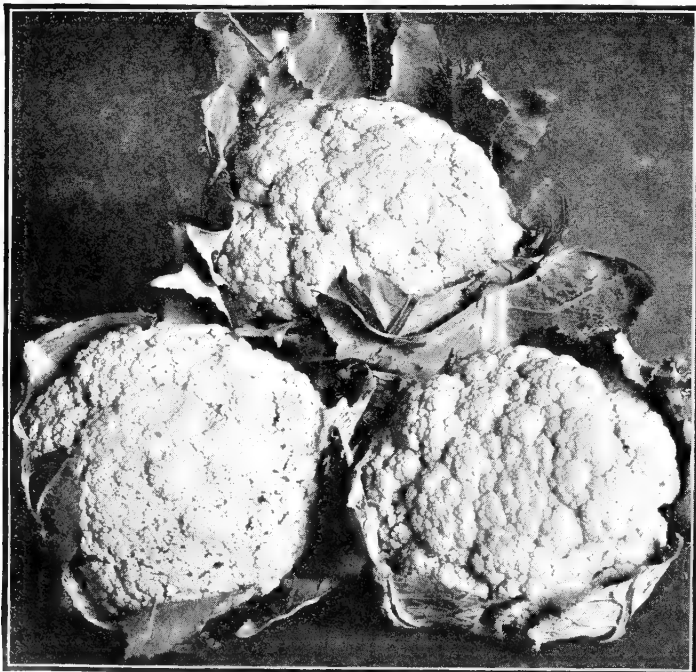
*1 oz. will produce 1500 to 2000 plants*

**Culture**—For early heads start indoors in February while the main or Fall crops may be sown in June and transplanted in July. Allow ample room for development and fertilize heavily.

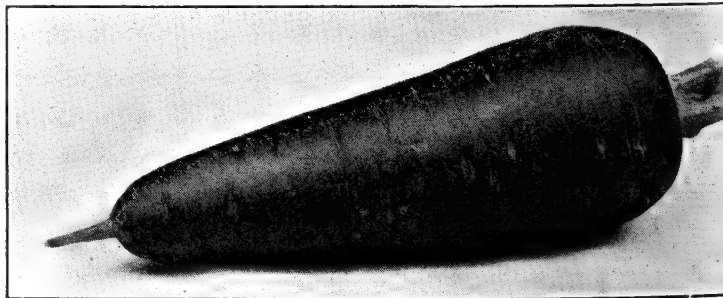
**Early Snowball (Perfected).** Still the best main crop variety with large attractive heads of uniform size. This is the same strain we have offered so successfully for many years. Pkt. 20c.,  $\frac{1}{4}$  oz. 80c.,  $\frac{1}{2}$  oz. \$1.40, oz. \$2.50,  $\frac{1}{4}$  lb. \$8.00.

**Super-Snowball.** Pedigreed stock of this extremely early variety grown from a European gardener's strain. It has a deeper curd of better weight than any other strain we have seen, and the entire crop heads evenly and uniformly. Why take chances with inferior strains when your total cost per acre is so little more with this Superstrain. Pkt. 20c.,  $\frac{1}{4}$  oz. 85c.,  $\frac{1}{2}$  oz. \$1.50, oz. \$2.75,  $\frac{1}{4}$  lb. \$9.00.

**Snowdrift.** Very early, large white heads with tight curd. In season with Early Snowball. Pkt. 20c.,  $\frac{1}{4}$  oz. 85c.,  $\frac{1}{2}$  oz. \$1.50, oz. \$2.75,  $\frac{1}{4}$  lb. \$9.00.



Cauliflower, Early Snowball



Carrot, Chantenay Red Cored

## CELERY

*1 oz. of seed will produce 5000 plants*

**Culture**—Celery for early use should be sown indoors during February or March, and for Fall use sow seeds outdoors as early as the ground can be worked so that plants may be set in July. It requires rich, well-manured soil and plenty of moisture. Soil boards or celery paper may be used to blanch the stalks.

**Celeriac or Knob Celery.** Large bulbous edible roots of high quality.  $\frac{1}{2}$  oz. 50c., oz. 90c.,  $\frac{1}{4}$  lb. \$3.00.

**Easy Blanching** (Newark Market). Leaves green and stalks pure white when blanched and of excellent quality.  $\frac{1}{2}$  oz. 60c., oz. \$1.00,  $\frac{1}{4}$  lb. \$3.75.

**Giant Pascal.** Large, solid green stalks which quickly blanch to a pure white. Our type is unusually free from "softs" and "strings".  $\frac{1}{2}$  oz. 50c., oz. 90c.,  $\frac{1}{4}$  lb. \$3.00.

**Golden Self Blanching** (Old type). Popular for late crops with large heavy hearts.  $\frac{1}{2}$  oz. 60c., oz. \$1.00,  $\frac{1}{4}$  lb. \$3.75.

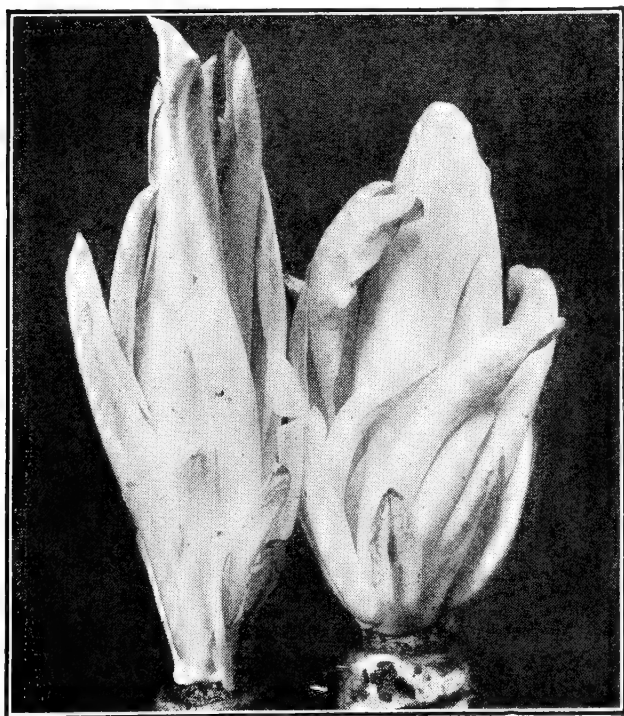
**Utah or Salt Lake.** Best of the green types. Extremely crisp, thick stalks of high quality which blanch very quickly with a smaller number of "softs" than in any other green celery.  $\frac{1}{2}$  oz. 60c., oz. \$1.00,  $\frac{1}{4}$  lb. \$3.00.

**White Plume.** Beautiful white celery of luscious flavor.  $\frac{1}{2}$  oz. 60c., oz. \$1.00,  $\frac{1}{4}$  lb. \$3.25.

**Wonderful or Golden Plume.** Still the finest yellow Celery. Our proven stock produces very large stalks with thick heavy hearts and an absolute minimum of "softs" and "greens." The germination is strong and vigorous and no matter what you pay for Celery you can not secure a larger number of stalks than from this tried and tested seed.  $\frac{1}{2}$  oz. 75c., oz. \$1.25,  $\frac{1}{4}$  lb. \$3.75.

## CELTUCE

Resembling both Celery and Lettuce, the rather thick stalks may be peeled and eaten raw or boiled and the leaves may be used as salad greens. Oz. 50c.,  $\frac{1}{4}$  lb. \$1.75.



Chicory, French Endive



Celery, Golden Plume

## COLLARDS

Collards are raised like Cabbage and are used for greens. They are non-heading cabbage-like plants. Oz. 20c.,  $\frac{1}{4}$  lb. 60c.

## CHICORY

**Catalogna** (Italian Dandelion). Used for early greens, as the leaves are very tender.  $\frac{1}{2}$  oz. 35c., oz. 50c.,  $\frac{1}{4}$  lb. \$1.50.

**French Endive** (Witloof Chicory). Popular Fall and Winter salad plant. May be transplanted in dark cellar for Winter use. Oz. 40c.,  $\frac{1}{4}$  lb. \$1.25, lb. \$4.50.

## CRESS

**Upland** (Curled). Sow thickly in drills about 1 foot apart early in the Spring. May be planted at intervals of 2 weeks up to the 1st of August. Oz. 30c.,  $\frac{1}{4}$  lb. 90c., lb. \$3.00.



Corn, Hart's Golden Bantam

## CORN. Yellow Varieties

We prepay all transportation charges

*1 lb. will plant about 250 hills; 12½ lbs. per acre if sown by hand; 15 lbs. per acre by machine*

**Culture**—Plant about May 15th and in succession every two weeks until the middle of July; thus having a continuous crop all season. Plant DWARF varieties 3 feet apart each way, a few inches farther for TALLER varieties. Seed 5 to 6 kernels per hill, thin to 4 plants for best results.

*All open-pollinated Corn is 15c. per packet, 25c. per ½ lb., 45c. per lb., 80c. for 2 lbs., unless otherwise indicated.*

**Golden or Bantam Evergreen.** The old favorite Evergreen type in a rich golden yellow. The standard for late Corn. 3 to 10 lbs. 26c. per lb., 11 to 25 lbs. 24c. per lb., over 25 lbs. 22c. per lb.

**Golden Colonel.** For quality and sweetness. Irregular kernels like Country Gentleman but a pleasing creamy yellow in color. 3 to 10 lbs. 32c. per lb., 11 to 25 lbs. 30c. per lb., over 25 lbs. 28c. per lb.

**Golden Early Market or Extra Early Golden.** There are many inferior strains of this most valuable of early varieties. Our stock has been grown under our own supervision since we secured our original strain, and we believe we have today as pure an early, large-eared strain as there is available. The 7 to 8 inch ears of broad, yellow kernels sell readily and are available when other gardeners are bringing in small undersized ears. 3 to 10 lbs. 32c. per lb., 11 to 25 lbs. 30c. per lb., over 25 lbs. 28c. per lb.

**Golden Sunshine.** Good for market as well as the home garden. For several years we have selected Golden Sunshine for earliness and size and can offer today a Corn nearly as early as Golden Market, a trifle longer but slimmer, possessing the delicious flavor of Golden Bantam. 3 to 10 lbs. 32c. per lb., 11 to 25 lbs. 30c. per lb., over 25 lbs. 28c. per lb.

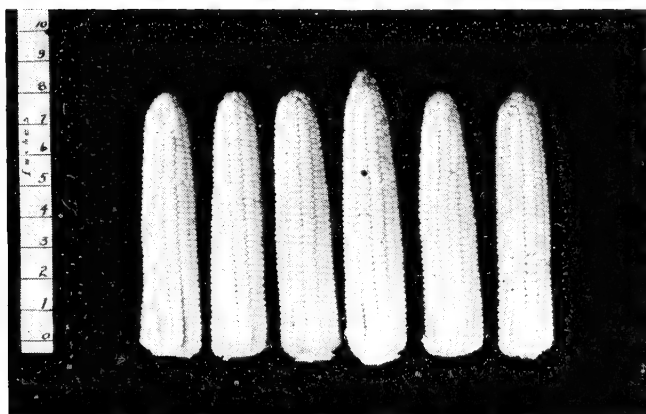
**Hart's Golden Bantam.** Extra early, extra heavy yielding and extra sweet. Eight rows of large, plump golden yellow kernels, bursting with sweetness. The very appearance of our Golden Bantam is irresistible. There is no heavier yielding, earlier or more attractive Bantam than this—the yardstick of quality. 3 to 10 lbs. 28c. per lb., 11 to 25 lbs. 26c. per lb., over 25 lbs. 24c. per lb.

**Twelve-Rowed Bantam.** Highly prized for canning due to its heavy yield and delicious flavor. 3 to 10 lbs. 27c. per lb., 11 to 25 lbs. 25c. per lb., over 25 lbs. 23c. per lb.

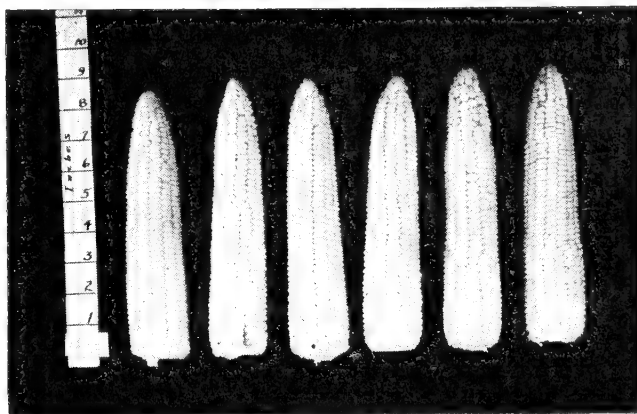
**Whipple's Early Yellow.** The largest, heaviest main crop variety. 3 to 10 lbs. 28c. per lb., 11 to 25 lbs. 27c. per lb., over 25 lbs. 25c. per lb.

(Corn continued on page 12)

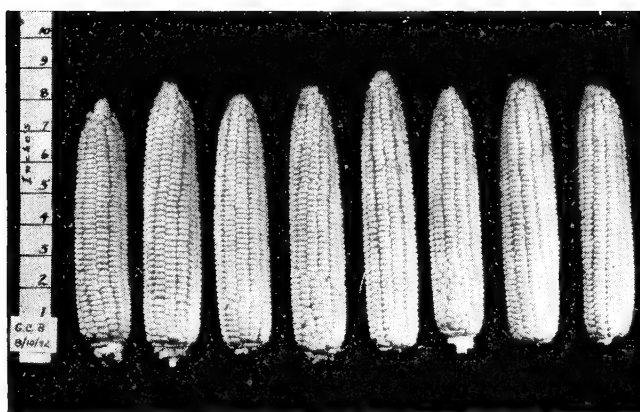
VARIOUS HYBRID CORNS. See page 12



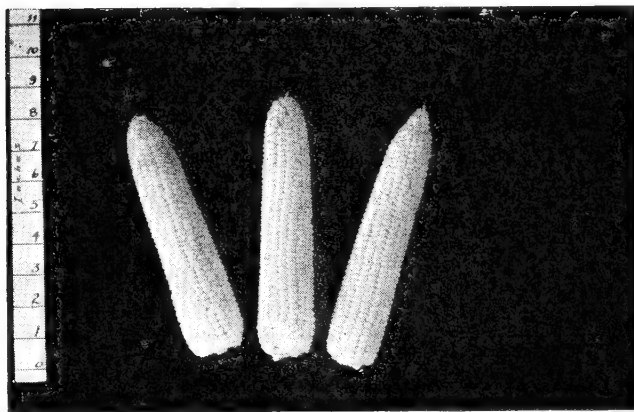
MARCROSS



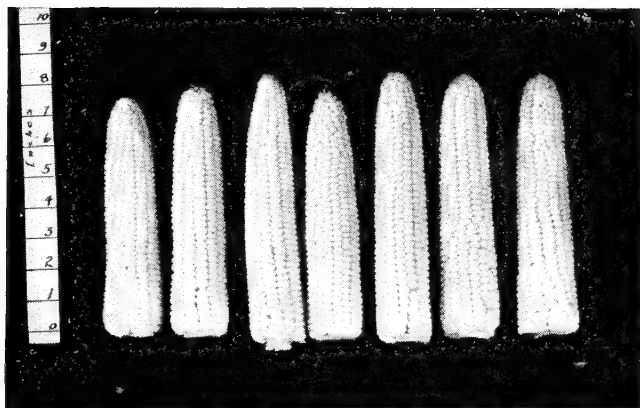
CARMELCROSS



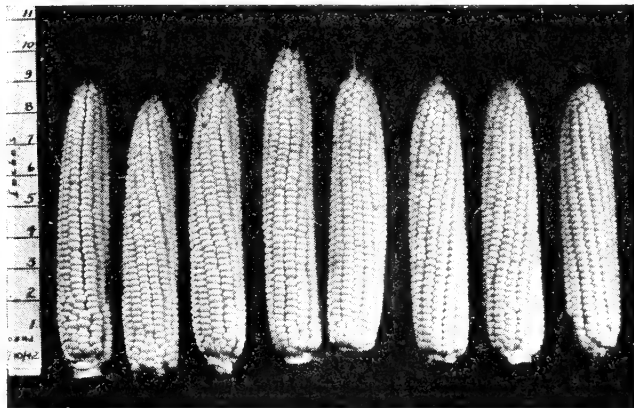
GOLDEN CROSS BANTAM



LINCOLN



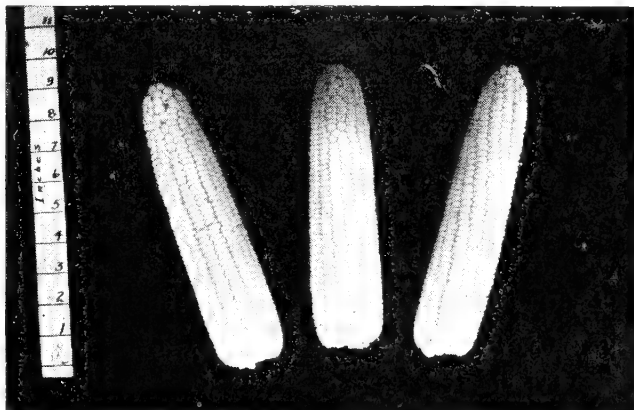
LEXINGTON



IOANA



HYBRID STOWELLS



TENDERGOLD

These Corn photographs are furnished through the courtesy of the Connecticut Agriculture Experiment Station

## CORN. White Varieties

**Black Mexican.** Many people prefer the blackish-blue kernels. 3 to 10 lbs. 28c. per lb., 11 to 25 lbs. 26c. per lb., over 25 lbs. 24c. per lb.

**Columbia.** The earliest large-eared Corn grown. Sweet and tasty and of high quality. 3 to 10 lbs. 29c. per lb., 11 to 25 lbs. 27c. per lb., over 25 lbs. 25c. per lb.

**Country Gentleman.** High quality, late Corn with irregular row formation. Often called Shoe-Peg. 3 to 10 lbs. 31c. per lb., 11 to 25 lbs. 30c. per lb., over 25 lbs. 28c. per lb.

**Early Pearl.** The sweetest Corn in the world.

This really remarkable Corn grows about 5 inches long, just the right size for the high class hotel and restaurant trade, and is 12 rowed with long deep snowy-white kernels. The tender thin pericarp breaks readily to release the delicious tenderness. We have had so many glowing reports and so many letters of praise from our customers, that we want others to try Early Pearl; we know you will be delighted. If you have only a small space for a garden nothing will repay you more than a few hills of Early Pearl—that is if you appreciate fine things—and who doesn't like fine things to eat. Pkt. 15c., ½ lb. 30c., lb. 50c., 2 lbs. 90c., over 2 lbs. 40c. per lb.

**Howling Mob.** An excellent medium early large white Corn, highly prized for both home garden and market. 2 lbs. 75c., 3 to 10 lbs. 28c. per lb., 11 to 25 lbs. 26c. per lb., over 25 lbs. 24c. per lb.

**Long Island Beauty.** Immense ears nearly 12 inches long. 2 lbs. 75c., 3 to 10 lbs. 30c. per lb., 11 to 25 lbs. 29c. per lb., over 25 lbs. 28c. per lb.

**Stowell's Evergreen (Selected).** An old favorite and still one of the sweetest. 2 lbs. 75c., 3 to 10 lbs. 32c. per lb., 11 to 25 lbs. 30c. per lb., over 25 lbs. 28c. per lb.

## HYBRID CROSSED CORN

For Eastern markets it is definitely established that crosses from Connecticut Experimental Station Inbreds are outstanding in their maturity classes. We offer the following for delivery from 1944 crop.

**All Hybrid Crossed Corn, 20c. per packet, 35c. per ½ lb., 65c. for 1 lb., \$1.20 for 2 lbs.**

**Carmelcross (P39 x C13).** Matures 8 to 10 days after Marcross or about 4 days earlier than Whipple Yellow. Its quality is much higher than Whipple's and it will do well in all sections where Golden Cross is adaptable. Ear length 7½ inch, 12 to 14 rows, very heavy. 3 to 10 lbs. 49c. per lb., 11 to 25 lbs. 47c. per lb., over 25 lbs. 45c. per lb.

**Golden Cross.** First and still most popular of Hybrid Corns, although late in maturity its long slender ears of surpassing flavor and its extreme uniformity and high yields make it the standard of Hybrids. 3 to 10 lbs. 49c. per lb., 11 to 25 lbs. 47c. per lb., over 25 lbs. 45c. per lb.

**Stowells Evergreen Hybrid.** Sturdy stalks with close growing upright ears. Very uniform, slightly tapered ears with 16-18 rows of glistening white kernels. Enormously productive. 3 to 10 lbs. 55c. per lb.; 11 to 25 lbs. 53c. per lb.; over 25 lbs. 51c. per lb.

**Ioana.** One of the best mid-season varieties. Matures approximately in 86 days; following Golden Cross. Ears 8 inches long with 12 to 14 rows. Wilt resistant. 3 to 10 lbs. 49c. per lb., 11 to 25 lbs. 47c. per lb., over 25 lbs. 45c. per lb.

**Lexington (13x15).** Slightly later than Marcross but with longer, plumper and heavier ears. 2 lbs. \$1.25, 3 to 10 lbs. 49c. per lb., 11 to 25 lbs. 47c. per lb., over 25 lbs. 45c. per lb.

**Lincoln (23x39).** Fills the maturity gap between Marcross and Carmelcross. Long, thick, heavy ears of very superior table quality. A big producer and a highly desirable market Corn. This fine Corn won the 1941 All America award. 3 to 10 lbs. 49c. per lb., 11 to 25 lbs. 47c. per lb., over 25 lbs. 45c. per lb.

**Marcross (13x6 or 6x13).** Matures 3 to 4 days later than Spancross, is about 1 inch longer, heavier and larger, 12 to 14 rows. It is also cold and wilt resistant and very uniform in all plant and ear characteristics. It has been thoroughly tested in all Northeastern States and is well adapted as far South as New Jersey and in certain parts of the Corn Belt. 3 to 10 lbs. 49c. per lb., 11 to 25 lbs. 47c. per lb., over 25 lbs. 45c. per lb.

**Pearlcross.** A cross on our early Pearl (the sweetest Corn in the world) which doubles the size and doubles the yield without sacrificing the deliciously sweet and delightfully tender flavor of that surpassing variety; 7 inch ears with long pearly white kernels in 10 to 12 rows, bearing over 16,000 ears per acre. The greatest advertisement for quality a roadstand or market gardener can offer to his customers. They all come back for more. 2 lbs. \$1.25, 3 to 10 lbs. 55c. per lb., 11 to 25 lbs. 53c. per lb., over 25 lbs. 51c. per lb.

**Spancross (C4x13).** An extra early Hybrid, with a medium sized ear of good quality. It is highly resistant to bacterial wilt and is somewhat cold resistant. The plant is short and stocky and with ears set low and is remarkably uniform in time of maturity, producing most of its crop before Golden Early Market makes its first ears. Ears about 6½ inches long, 10 to 12 rowed, slightly slimmer and longer than Golden Market. 3 to 10 lbs. 52c. per lb., 11 to 25 lbs. 50c. per lb., over 25 lbs. 48c. per lb.

**Tendergold.** Maturing slightly ahead of Golden Cross this variety has been popular for many years. Its nearly cylindrical ears are golden-yellow, tender and of good quality. 3 to 10 lbs. 52c. per lb.; 11 to 25 lbs. 50c. per lb., over 25 lbs. 48c. per lb.

## Pop Corn

**Black Beauty**

**Hulless**

**Queen's Golden or T.N.T.**

**White Rice**

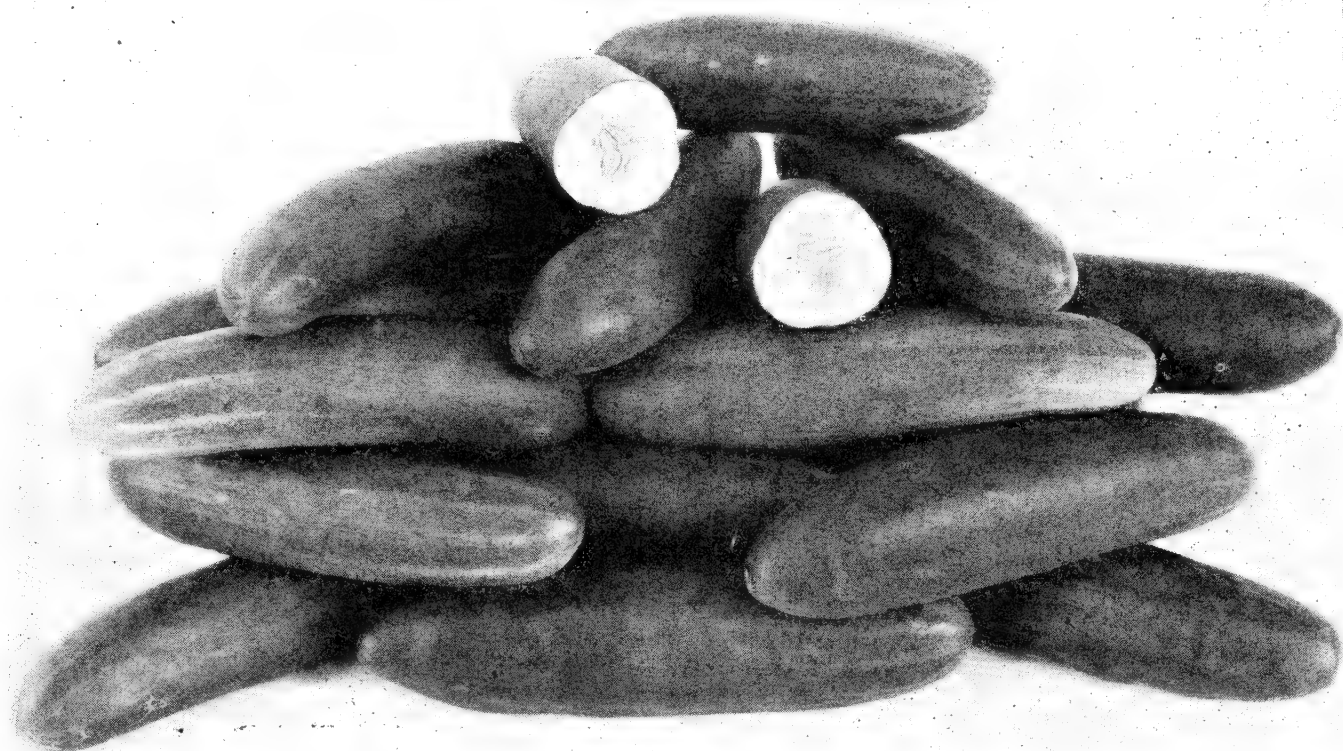
½ lb. 20c., lb. 30c., 2 lbs. 50c., 3 to 10 lbs. 23c. per lb., over 10 lbs. 22c. per lb.

## DANDELION

*1 oz. will sow 100 feet of drill*

**Arlington Thick Leaf.** The finest market gardeners strain with stocky, very broad leaved plants with heavy white ribs. We offer only fresh seed of strong germination. Sow seeds in Spring or Summer which will Winter over ready to eat the following Spring. Oz. 75c., ¼ lb. \$2.25, lb. \$8.50.





Cucumber, A. &amp; C.

## CUCUMBER

*1 oz. will plant 60 hills. 2 lbs. of seed per acre*

**Culture**—Cucumbers may be planted in hills 4 to 5 feet apart as soon as the ground is thoroughly warm and may be sown as late as July. Fertile, light, well-drained soil is best, and well rotted manure in the hills and a side dressing of commercial fertilizer is very beneficial.

**A & C.** Long and attractive. Probably the handsomest Cucumber grown with 11 inch fruits, very deep dark green in color, uniform and cylindrical throughout their length, terminating in blunt, well rounded ends. Handsome and desirable both for shipping and for market gardens. Our strain is topnotch. Oz. 25c.,  $\frac{1}{4}$  lb. 80c., lb. \$2.85.

**Black Diamond.** Early and prolific. Much prized for its ability to hold its color and firmness for a long period of time. Oz. 20c.,  $\frac{1}{4}$  lb. 70c., lb. \$2.25.

**Boston Pickling.** The standard for commercial pickling use. Blunt ended fruit, 6 inches long. Oz. 20c.,  $\frac{1}{4}$  lb. 70c., lb. \$2.25.

**China Long.** An edible novelty 15 to 20 inches long. Oz. 30c.,  $\frac{1}{4}$  lb. \$1.00, lb. \$3.25.

**Davis Perfect.** Very long, straight fruit tapering at the ends with a rich deep green color. Oz. 20c.,  $\frac{1}{4}$  lb. 70c., lb. \$2.25.

**Early Fortune.** A splendid white spine type. Very early and productive. Color light green with a trace of white on the stem. Oz. 20c.,  $\frac{1}{4}$  lb. 70c., lb. \$2.25.

**Hybrid White Spine.** For heaviest yields. Although a mid-season variety the extra yields per acre of this long, handsome Cucumber makes it one of the most

valuable for a gardener to grow. It holds its rich green color a long time and stands up extremely well. Our strain is as fine as it is possible to secure. Oz. 20c.,  $\frac{1}{4}$  lb. 70c., lb. \$2.25.

**Improved Long Green.** Fruit long, straight and dark green, used for slicing, pickling or market. Oz. 25c.,  $\frac{1}{4}$  lb. 80c., lb. \$2.75.

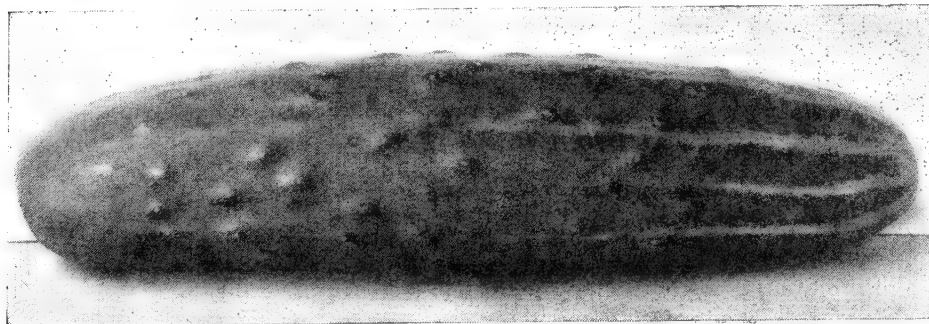
**Improved White Spine.** Early and productive. Oz. 20c.,  $\frac{1}{4}$  lb. 70c., lb. \$2.25.

**Longfellow.** Longest Cucumber grown. Fruits 12 to 15 inches long, dark green, uniform and attractive. This is the *premium* Cucumber and we consider it the highest quality Cuke of all. Naturally we have devoted considerable time to the perfection of this splendid type. Oz. 30c.,  $\frac{1}{4}$  lb. 90c., lb. \$3.00.

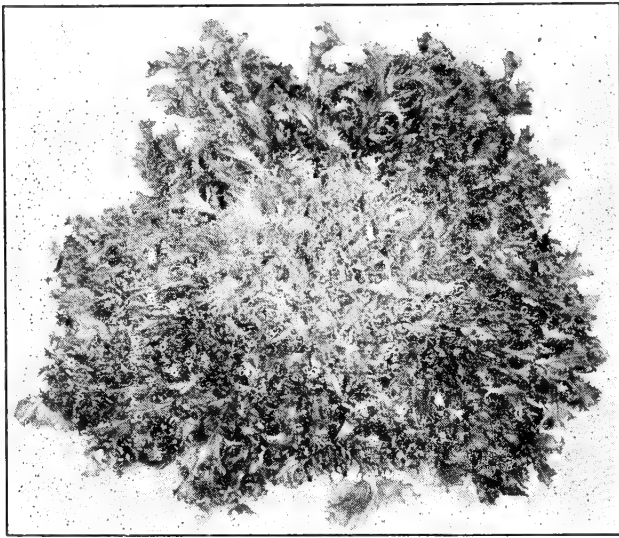
**National Pickling.** An excellent pickling variety. Blunt ending, making a stocky pickle. Oz. 20c.,  $\frac{1}{4}$  lb. 70c., lb. \$2.25.

**Perfected Pickling.** Prolific and early. Our selection of an ideal pickling variety. Early, highly productive, uniformly shaped and colored, it leaves little to be desired. When mature, the fruits are 5 to 6 inches long, straight, blunt ended and a medium deep green. Oz. 20c.,  $\frac{1}{4}$  lb. 70c., lb. \$2.25.

**Straight Eight.** Handsome and prolific. Every fruit uniformly 8 inches long—as though poured from a die—straight and smooth and a pleasing dark green in color. This uniformity in size and color coupled with its extremely high yield deserve for it a place on every trucker's list. Our strain is from the originator's stock. Oz. 25c.,  $\frac{1}{4}$  lb. 90c., lb. \$2.75.



Cucumber, Straight 8



Endive, Green Curled

## DILL

*1 oz. will sow 50 feet of row*

A valuable herb used largely in Dill Pickles.

**Long Island Mammoth.** Very large and prolific. Oz. 15c.,  $\frac{1}{4}$  lb. 45c., lb. \$1.40.

## EGG PLANT

*1 oz. will produce about 2000 plants*

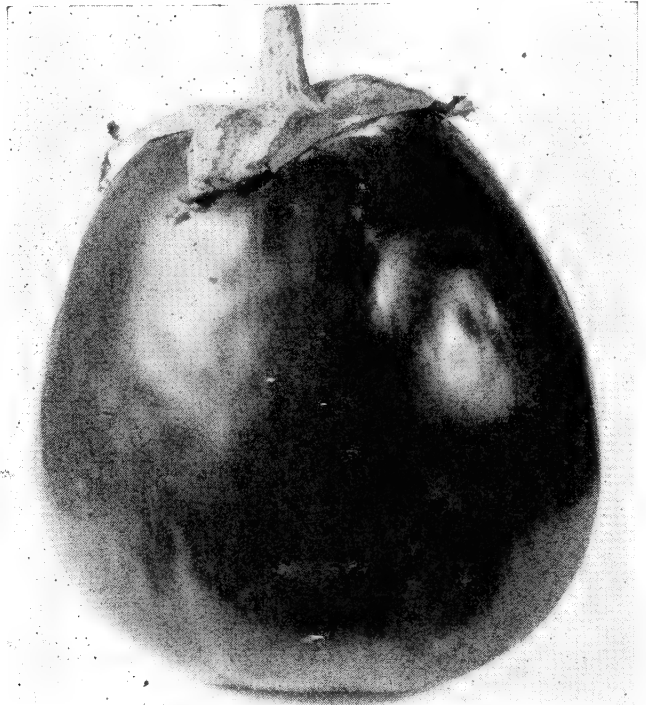
**Culture**—Egg Plant requires rich, sandy, warm soil and must be started indoors in February. Its culture is the same as for peppers.

**Black Beauty.** Strong, sturdy plants with a heavy yield of beautiful dark purple fruit. We have an excellent strain.  $\frac{1}{2}$  oz. 30c., oz. 50c.,  $\frac{1}{4}$  lb. \$1.60, lb. \$6.25.

**New Hampshire Hybrid.** A new smaller headed type which bears heavily and produces fruit earlier than other strains.  $\frac{1}{2}$  oz. 30c., oz. 50c.,  $\frac{1}{4}$  lb. \$1.60, lb. \$6.25.

**New York Improved.** Later and larger than Black Beauty.  $\frac{1}{2}$  oz. 30c., oz. 50c.,  $\frac{1}{4}$  lb. \$1.60, lb. \$6.25.

**Long Purple Italian.** Early, small and club-shaped.  $\frac{1}{2}$  oz. 30c., oz. 50c.,  $\frac{1}{4}$  lb. \$1.60, lb. \$6.25.



Egg Plant, Black Beauty

## ENDIVE

*1 oz. will sow 150 feet of drill*

**Culture**—Endive is sown in the open ground as early as it can be worked and at frequent intervals until July. Sow in drills and thin to about 6 inches. Blanch by tying the outer leaves together over the center.

**Full Hearted Escarolle or Broad Leaf Batavian.** Our selection produces tightly packed heads with broad deep leaves, blanching easily. Oz. 20c.,  $\frac{1}{4}$  lb. 50c., lb. \$1.90.

**Green Curled.** Very fine cut and curled leaves making immense heads. Oz. 20c.,  $\frac{1}{4}$  lb. 50c., lb. \$1.90.

## FENNEL

**Sweet Florence.** The true Italian strain with large, bulbous roots. Edible as Celery with anise flavor. Oz. 20c.,  $\frac{1}{4}$  lb. 75c., lb. \$2.25.

## KALE

**Culture**—May be sown from early Spring until late August, but is at its best after frost. Plant in rows 18 inches to 2 feet apart and thin to 12-15 inches in the row.

**Dwarf Blue Scotch.** Dwarf and spreading. Very curly and a deep blue-green in color. Oz. 25c.,  $\frac{1}{4}$  lb. 75c., lb. \$2.50.

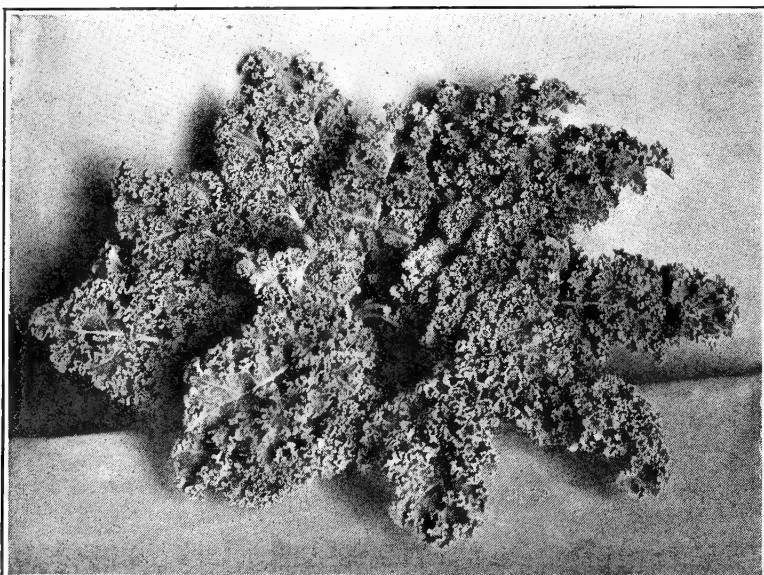
**Dwarf Siberian.** Broad, light green leaves curled on the edges. Oz. 20c.,  $\frac{1}{4}$  lb. 60c., lb. \$2.00.

## KOHLRABI

**Culture**—Sow in rows 12-18 inches apart and thin to about 6 inches in the row.

**Early Purple.** Dwarf plants with globular purple-skinned bulbs with white, tender flesh. Oz. 40c.,  $\frac{1}{4}$  lb. \$1.25, lb. \$4.50.

**White Vienna.** Early white, round, snowy-white bulbs, sweet and delicious with a mild turnip flavor. Oz. 40c.,  $\frac{1}{4}$  lb. \$1.25, lb. \$4.50.



Kale, Dwarf



Great Lakes

## LEEK

*Sow in rows 12 inches apart and thin to about 4 to 6 inches. Hill up earth about the roots to blanch well before using*

**Large American Flag.** Large, thick, sturdy stalks with smooth clear pearly white bottoms blanching far up. The finest market strain. Oz. 60c.,  $\frac{1}{4}$  lb. \$2.00.

## LETTUCE

*A packet will sow about 30 ft. of row; an ounce 250 feet.*

**Culture**—Lettuce grows quickly in cool seasons of the year and produces best in a rich, moist, cool soil. Make successive sowings until June and again in August and September. Head Lettuce should be thinned or transplanted a distance of about 1 foot apart. The loose leaf varieties may be thinned to 4 inches when they come up and then every other one taken out and used as they get larger. Iceberg varieties are very popular for their crispness.

### Imperial Types

**Great Lakes.** Large, well-folded leaves with heavy ribs. This outstanding new variety shows considerable resistance to tipburn and seems to have an ability to head surely and solidly under very adverse conditions. Oz. 60c.,  $\frac{1}{4}$  lb. \$1.85, lb. \$6.50.

**Iceberg.** Large solid heads with curled, blistered leaves; a pleasing light green. Oz. 30c.,  $\frac{1}{4}$  lb. 90c., lb. \$3.00.

**Imperial No. 44.** The most dependable of the Iceberg types; will form crisp, medium sized heads under almost any condition. Oz. 30c.,  $\frac{1}{4}$  lb. \$1.00, lb. \$3.40.

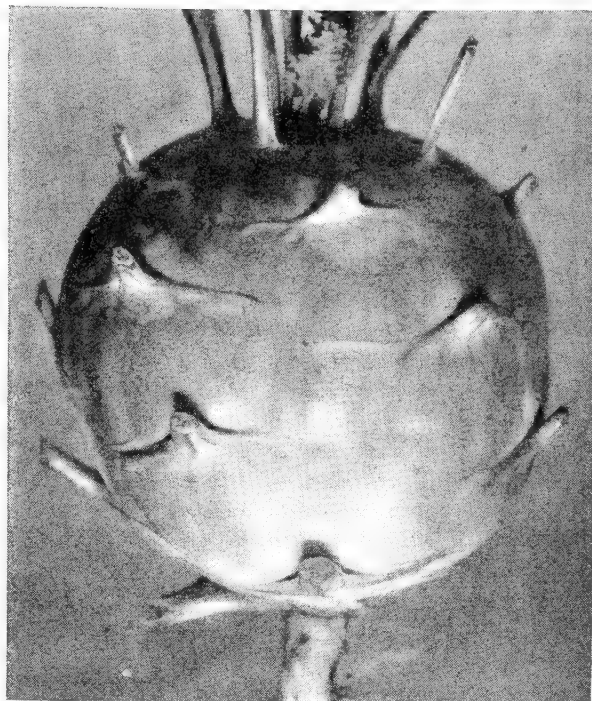
**Imperial No. 456 (Cornell No. 339).** Highly suitable for eastern use where heads are desired in July and August. It withstands extreme heat and tipburn better than any other sort yet introduced. Oz. 45c.,  $\frac{1}{4}$  lb. \$1.50.

**Imperial No. 847.** Large solid oval heads which stand hot weather better than most types and are resistant to Brown Blight. Oz. 30c.,  $\frac{1}{4}$  lb. \$1.00, lb. \$3.40.

**New York Head No. 12 or California Iceberg.** Our improved early strain of this unsurpassed lettuce is practically 100% sure heading and is especially valuable for early Spring sowing. Oz. 30c.,  $\frac{1}{4}$  lb. \$1.00, lb. \$3.40.

**New York No. 615.** A "Hot Weather" Lettuce. A wonderful strain of New York head which is earlier and withstands hot, dry weather much better. The type and appearance is very similar to No. 12 with few outside leaves and large, solid heads, and is an attractive bright green in color. Try this by all means. Our strain is very dependable. Oz. 30c.,  $\frac{1}{4}$  lb. \$1.00, lb. \$3.40.

(Lettuce continued on page 18)



Kohlrabi, White Vienna (See page 14)

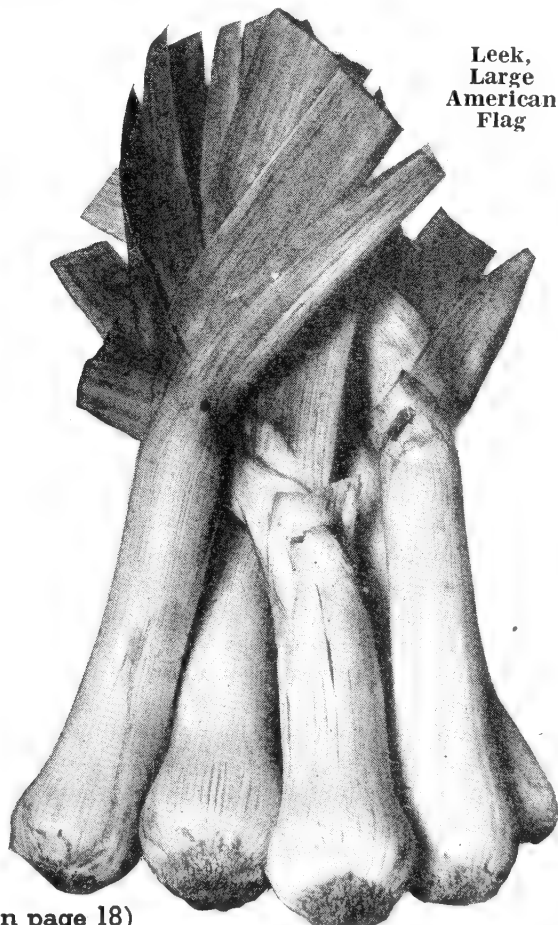
## Butter Head Varieties

**Big Boston Head.** Our strain heads uniformly and stands a long time before bolting to seed. Oz. 25c.,  $\frac{1}{4}$  lb. 70c., lb. \$2.35.

**Hartford Bronze Head (Crisp as Ice).** Early, tight, compact heads tinged with bronze. Very crisp and of high quality. Oz. 20c.,  $\frac{1}{4}$  lb. 65c., lb. \$2.10.

**Tennisball Black Seed.** Solid heads, crisp, heat resistant tender leaves. Excellent for Summer planting. Oz. 20c.,  $\frac{1}{4}$  lb. 65c., lb. \$2.10.

**White Boston.** Uniform and sure heading. Our strain shows a remarkably high resistance to tipburn. Oz. 20c.,  $\frac{1}{4}$  lb. 65c., lb. \$2.10.

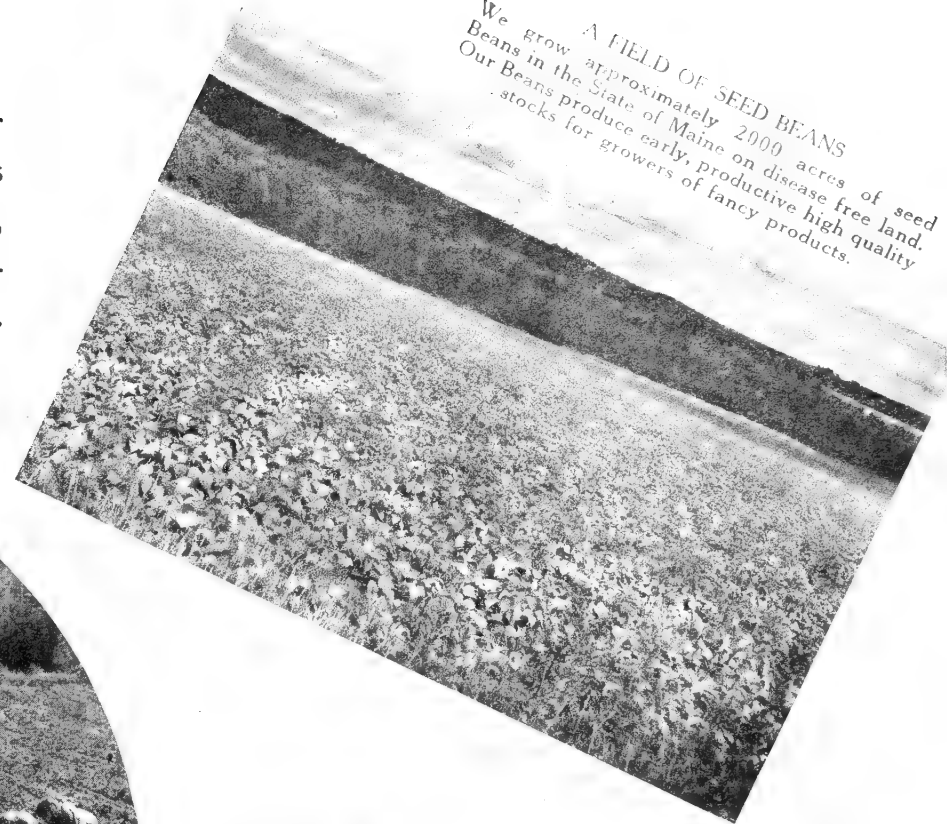
Leek,  
Large  
American  
Flag

FIELD OF WARTED HUBBARD SQUASH ON OUR CORINNA, MAINE FARM



We present herewith a few pictures of our farms in Maine. We operate four farms with nearly six hundred acres of seed crops, and contract with farmers for approximately two thousand acres of seed Beans.

A FIELD OF SEED BEANS  
We grow approximately 2000 acres of seed Beans in the State of Maine on disease free land. Our Beans produce early, productive high quality stocks for growers of fancy products.



1892



1945

BEETS GROWN FOR INCREASE

A field of our Beets which are to be placed in storage for the production of seed in 1945.

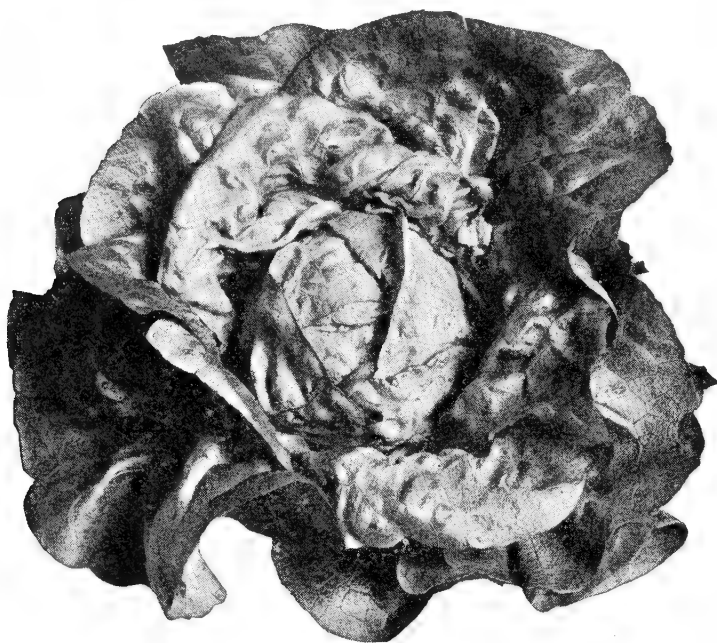
We are prepared to take care of your orders promptly and wish for you bountiful crops.

A large field of Early Prolific Straightneck Squash grown on one of our seed farms at Pittsfield, Maine.



GIRLS MOST HELPFUL IN SEED PRODUCTION  
These girls are part of a group of 27 girls of The Women's Emergency Farm Service who were with us for three months working on our various seed farms in Maine.





Lettuce, Big Boston Head (See page 15)

## LETTUCE—Continued

## Cos or Romaine

**White Paris Cos or Romaine.** Self folding. Long large heads of the highest quality. Of upright growth a foot high, blanches white inside. Flavor sweet and desirable for lettuce salad. Oz. 20c.,  $\frac{1}{4}$  lb. 65c., lb. \$2.10.

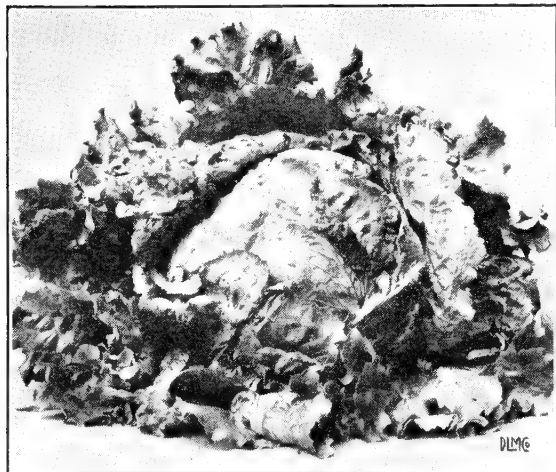
## Loose Leaf Varieties

**Early Prize Head.** Crisp loose heads deeply curled and tinged with reddish brown. Oz. 20c.,  $\frac{1}{4}$  lb. 65c., lb. \$2.10.

**Grand Rapids Special.** Large, robust well curled heads in a delightful light green. Our strain is superlative. Oz. 20c.,  $\frac{1}{4}$  lb. 65c., lb. \$2.10.

**Oak Leaf.** A distinct leaf or loose heading type whose crisp, delicious leaves are shaped like oak leaves. Most desirable for home gardens as it will stand all summer without bolting or becoming bitter. Oz. 35c.,  $\frac{1}{4}$  lb. \$1.25.

**Simpsons Early Curled.** A fast growing leaf lettuce for home gardeners. Oz. 20c.,  $\frac{1}{4}$  lb. 65c., lb. \$2.10.



Lettuce, New York Head No. 12, or California Iceberg (See page 15)

## MUSKMELON

A packet of seed will plant about 20 hills. An ounce, 100 hills; 2 to 3 lbs. per acre

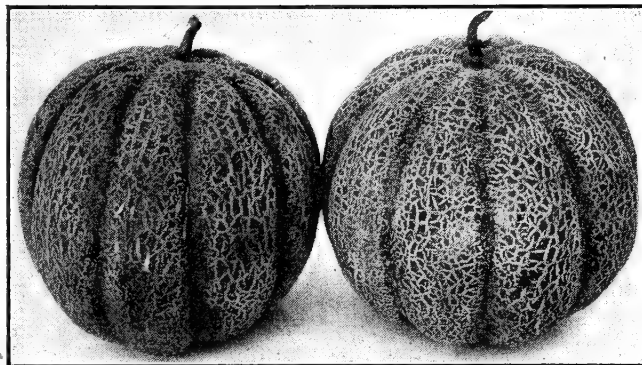
**Culture**—Muskmelons thrive on rich warm sandy loam and should be sown in raised hills spaced about 4 feet apart after all danger of frost is passed. Thin to about 3 plants in a hill.

**Benders Surprise.** Northern grown and carefully selected. Attractive appearance, fine flavor, large size and long keeping qualities, make this wonderful variety the most desirable on the whole melon list. Our strain is one of the finest on the market. Oz. 25c.,  $\frac{1}{4}$  lb. 80c., lb. \$2.75.

**Delicious.** The earliest large melon grown. This popular improvement on the Bender's ripens 1 week to 10 days earlier and grows nearly as large. It is really delicious and sells readily on the roadside stand. Our strain is from hand cut melons, and is the equal of any on the market. Oz. 25c.,  $\frac{1}{4}$  lb. 80c., lb. \$2.75.

**Emerald Gem.** Small, round, green melons with yellow flesh. Early, sweet and productive. Oz. 25c.,  $\frac{1}{4}$  lb. 80c., lb. \$2.75.

**Golden Champlain.** The earliest melon grown. Oval shaped and of good quality. Best for localities with short growing season. Oz. 25c.,  $\frac{1}{4}$  lb. 80c., lb. \$2.75.



Muskmelon, Benders Surprise

**Hearts of Gold.** Medium, round and netted, orange-yellow flesh of high flavor and quality. An excellent shipper. Oz. 25c.,  $\frac{1}{4}$  lb. 75c., lb. \$2.50.

**Honey Dew.** A green melon, late in maturing, round, thick meated, luscious in flavor. Oz. 25c.,  $\frac{1}{4}$  lb. 80c., lb. \$2.75.

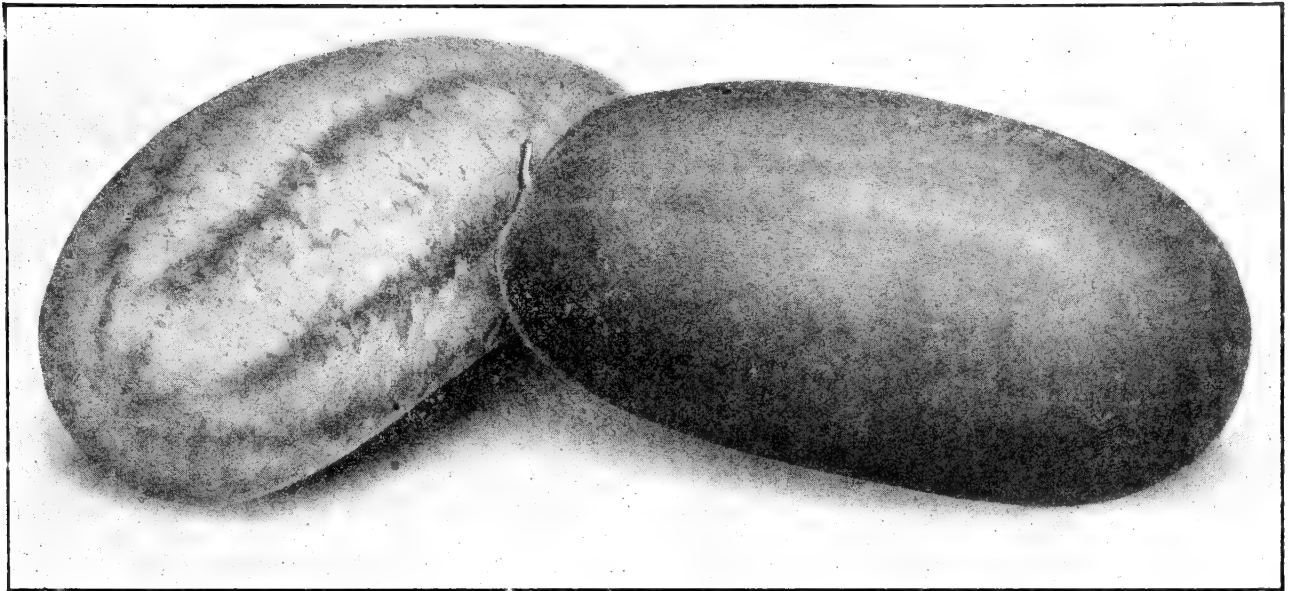
**Honey Rock.** Sweet and delicious. These round melons with their light grey net-work are packed with deep-orange delicious flesh and are hard as a rock even when fully ripened. This melon is one of the most attractive grown. Oz. 25c.,  $\frac{1}{4}$  lb. 80c., lb. \$2.75.

**Osage (Miller's Cream).** Oval shaped, dark green and netted with yellow flesh. Oz. 25c.,  $\frac{1}{4}$  lb. 75c., lb. \$2.50.

**Pride of Wisconsin.** Nearly round fruits, 6 x 5 $\frac{1}{2}$  inches with a hard, grayish, green rind, coarsely netted. The flesh is thick, juicy and very sweet flavored and is a deep salmon in color. Oz. 25c.,  $\frac{1}{4}$  lb. 80c., lb. \$2.75.

**Rocky Ford.** A small, high flavored, light green fleshed melon. Oz. 30c.,  $\frac{1}{4}$  lb. 90c., lb. \$2.50.

Make gardening a hobby. Healthful exercise that brings results in better health and saves you food points too.



Watermelon, Kleckley's Sweet and Wondermelon

## WATERMELON

*1 oz. will plant about 30 hills; 4 lbs. per acre*

**Culture**—They do best in rich, sandy soils but well drained loam is also suitable. Do not plant until the ground is very warm and space in hills 6 to 8 feet each way thinning to 4 plants to each hill.

**Coles Early.** Round, deep red and sweet. Oz. 15c.,  $\frac{1}{4}$  lb. 45c., lb. \$1.60.

**Citron.** Red seeded for preserves. Oz. 20c.,  $\frac{1}{4}$  lb. 50c., lb. \$1.75.

**Early Canada.** An extremely early, small, round headed melon for Northern latitudes. Oz. 15c.,  $\frac{1}{4}$  lb. 50c., lb. \$1.75.

**Ice Cream.** Oblong, very sweet, bright scarlet flesh. Oz. 15c.,  $\frac{1}{4}$  lb. 45c., lb. \$1.50.

**Kleckley's Sweet.** An early melon, popular with every grower. Oz. 15c.,  $\frac{1}{4}$  lb. 45c., lb. \$1.50.

**Stone Mountain.** Best for market. A large, round, blocky melon. Very sweet scarlet flesh with few seeds. Oz. 15c.,  $\frac{1}{4}$  lb. 45c., lb. \$1.50.

**Wondermelon.** Heaviest bearer. Long, thick melons with glossy green skin and deep scarlet flesh, very sweet and juicy. One of the most prolific of all melons. Oz. 15c.,  $\frac{1}{4}$  lb. 50c., lb. \$1.60.

## MUSTARD

*1 pkt. of seed will sow 18 feet of row, 1 oz. 300 ft.*

**Culture**—Mustard may be used for salads or cooked for greens, grows rapidly and should be sown in rows 12 inches apart.

**Fordhook Famous.** Large, deep green leaves, very pungent. Oz. 15c.,  $\frac{1}{4}$  lb. 30c., lb. 90c.

**Southern Giant Curled.** Large green, crumpled leaves of fine flavor. Oz. 15c.,  $\frac{1}{4}$  lb. 30c., lb. \$1.00.

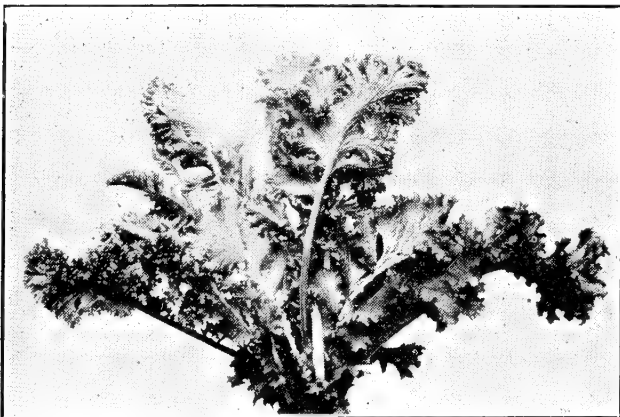
## OKRA

*A pkt. of seed will sow 15 ft. of row; 1 oz. 50 ft.*

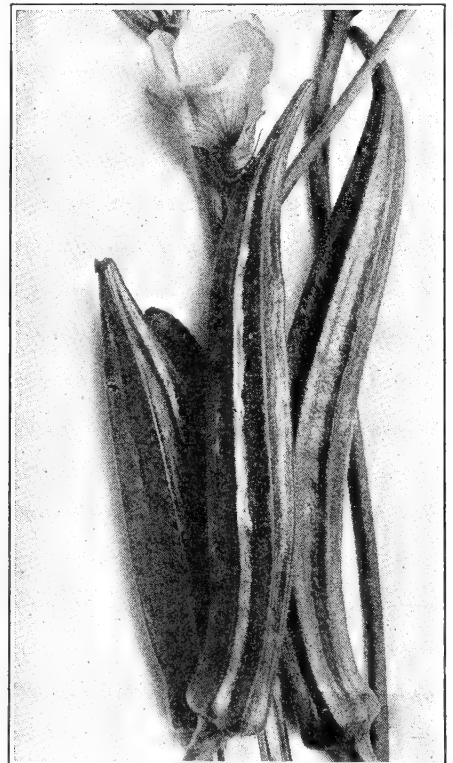
**Culture**—Sown in rows and thinned from 6 to 8 inches. Okra is used as a vegetable or in soups. Pods should be picked when small and tender.

**Perkins Mammoth.** Large green pods. Oz. 15c.,  $\frac{1}{4}$  lb. 30c., lb. \$1.00.

**White Velvet.** Round, light green pods. Oz. 15c.,  $\frac{1}{4}$  lb. 30c., lb. \$1.00.



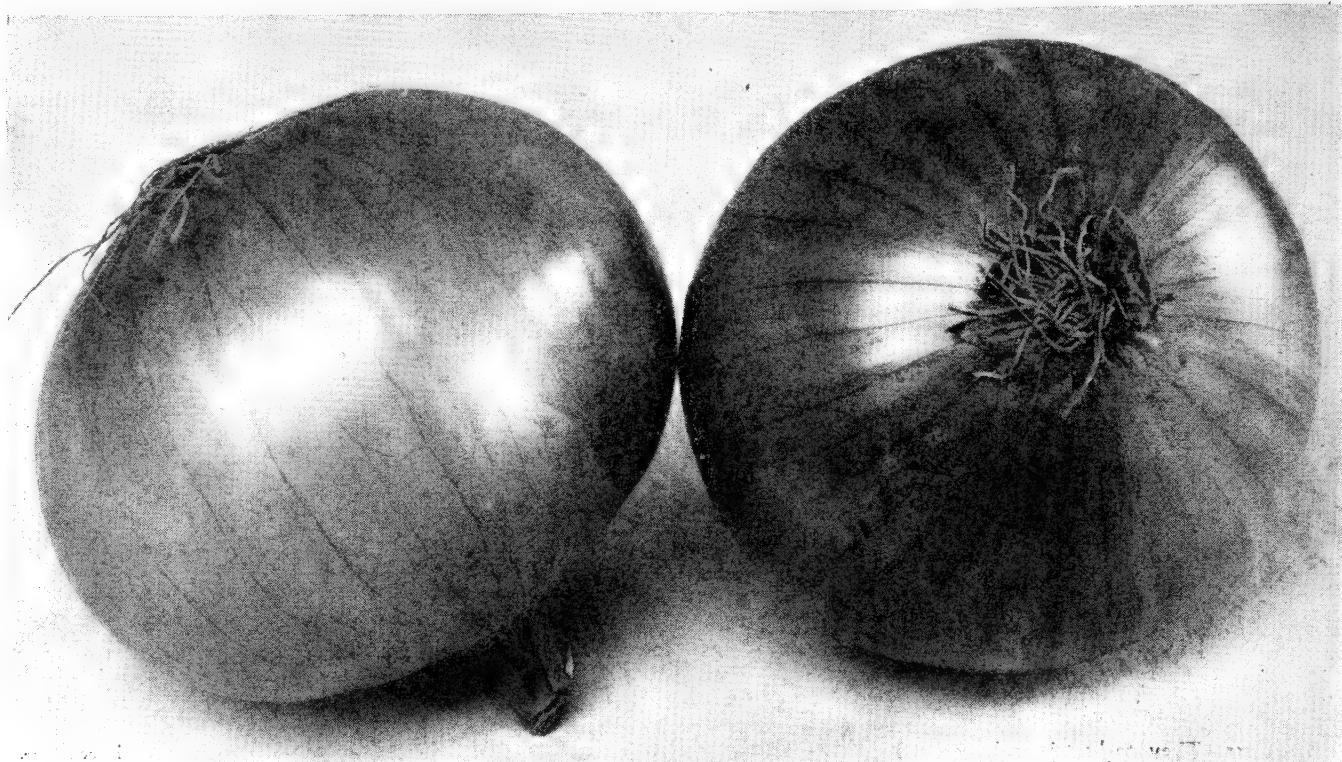
Mustard



Okra

### Please Note!

All Packets  
Are 10c.  
Unless  
Otherwise  
Indicated



Onion, Sweet Spanish

## ONIONS

1 pkt. of seed will sow about 25 feet of row; 1 oz. 200 feet;  
4 to 5 lbs. per acre

**Culture**—Onions must be sown very early on fertile, well drained soil in rows 1 to 1½ feet apart. Cover seed lightly and thin to about 2 inches. Onion Sets may be planted in similar rows as early as the ground can be worked.

**Early Yellow Globe.** The finest extra early yellow. Truly enormous crops of fine globe-shaped, bright, straw-colored bulbs make this Onion the most popular variety introduced in recent years. Their thick skin does not shuck off in handling and keeps very well in storage. We handle only the originator's stock. Oz. 50c., ¼ lb. \$1.75, lb. \$6.25.

**Ebenezer.** A fine mild, light yellow Onion with unexcelled keeping qualities. Very desirable for "set" Onions. Oz. 50c., ¼ lb. \$1.60, lb. \$5.75.

**Evergreen Bunching.** A bulbless, bunching variety grown for "rareripes." It is perennial and the stems may be pulled very early in the spring. Oz. 50c., ¼ lb. \$1.75, lb. \$6.50.

**Southport Red Globe.** A perfect globe shaped red and a splendid keeper. Oz. 65c., ¼ lb. \$2.00, lb. \$7.00.

**Southport White Globe.** A large and very handsome globe which always commands high prices. Oz. 60c., ¼ lb. \$2.00, lb. \$7.50.

**Southport Yellow Globe.** Somewhat later than Globe Danvers but of a more attractive globe shape and appearance. Oz. 55c., ¼ lb. \$1.75, lb. \$6.25.

**Utah Sweet Spanish.** These large, handsome, yellow Onions are not at all difficult to grow provided they are started early and will repay the extra time required. The bulbs often weigh a pound or more and have excellent storage qualities and are always very sweet and mild. Every Onion grower should devote a portion of his acreage to this profitable variety. Oz. 65c., ¼ lb. \$2.00, lb. \$7.50.

**Wethersfield Large Red.** The popular variety. A very large, flat deep red. ½ oz. 40c., oz. 50c., ¼ lb. \$1.75, lb. \$6.00.

**White Portugal.** Flat white bulbs of mild flavor, excellent for pickles and early "greens." Oz. 75c., ¼ lb. \$2.25, lb. \$7.25.

**White Sweet Spanish.** The largest of the white onions, globular, mild flavor and firm. Oz. 75c., ¼ lb. \$2.25, lb. \$7.50.

**Yellow Globe Danvers.** The onions are of globe shape with small necks and deep orange-yellow skin. The flesh is creamy white and of mild flavor. The onions are firm, keep well, are of good size and medium early. Oz. 60c., ¼ lb. \$1.75, lb. \$6.25.

## Onion Sets

**We prepay all transportation charges**

1 lb. will set 74 to 100 feet of row, depending upon size of sets

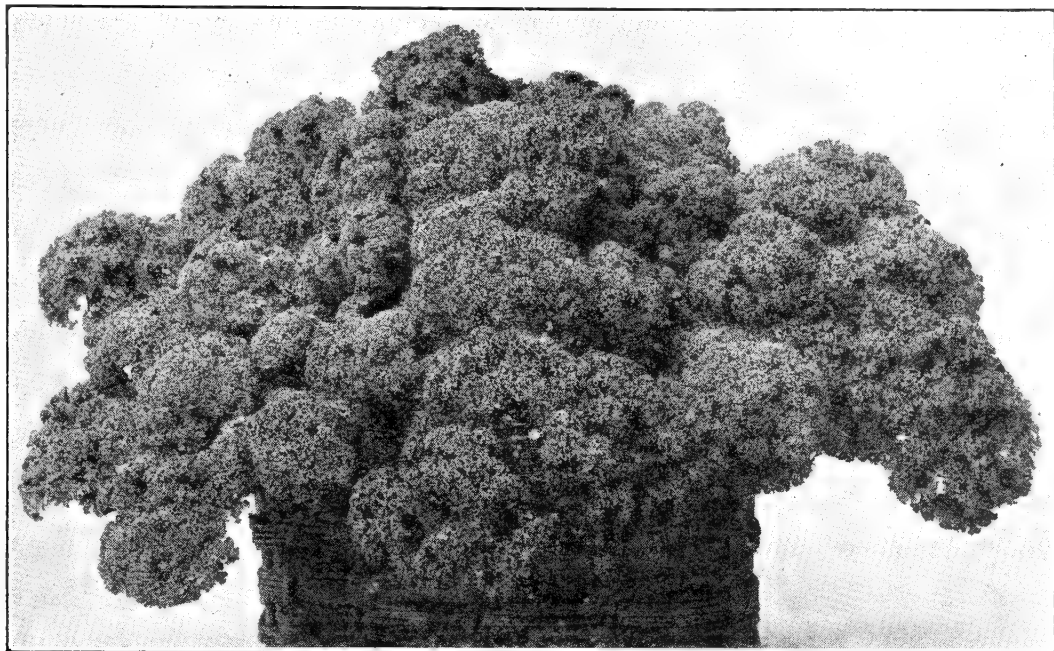
**Culture**—Onion Sets may be planted just as early as the ground can be worked. Sets should be planted about 2 inches apart and covered about 2 inches deep.

<b>Ebenezer Yellow</b>	<b>Red</b>	<b>White</b>
Lb. (qt.) 50c., 8 lbs. (pk.) \$3.00		



Onion, White Portugal





Parsley, Triple Curled

## PARSLEY

*1 pkt. will sow 50 feet of row; 1 oz. 200 feet*

**Culture**—Used for garnishing and flavoring; Parsley needs but a small space in the garden. Sown in Spring or Summer plants may be left until the following Spring.

**Hamburg or Turnip Rooted.** The roots are boiled and served like Parsnip. A delightful flavor. Also used in flavoring soups and stews. May be stored in sand and used all Winter. Oz. 20c.,  $\frac{1}{4}$  lb. 40c., lb. \$1.45.

**Plain Leaved.** Uncurled. Used for flavoring and drying. Oz. 20c.,  $\frac{1}{4}$  lb. 45c., lb. \$1.50.

**Triple Curled.** An extremely handsome new strain with very densely curled rich dark green leaves on long stems. Oz. 20c.  $\frac{1}{4}$  lb. 45c., lb. \$1.45.

## PARSNIP

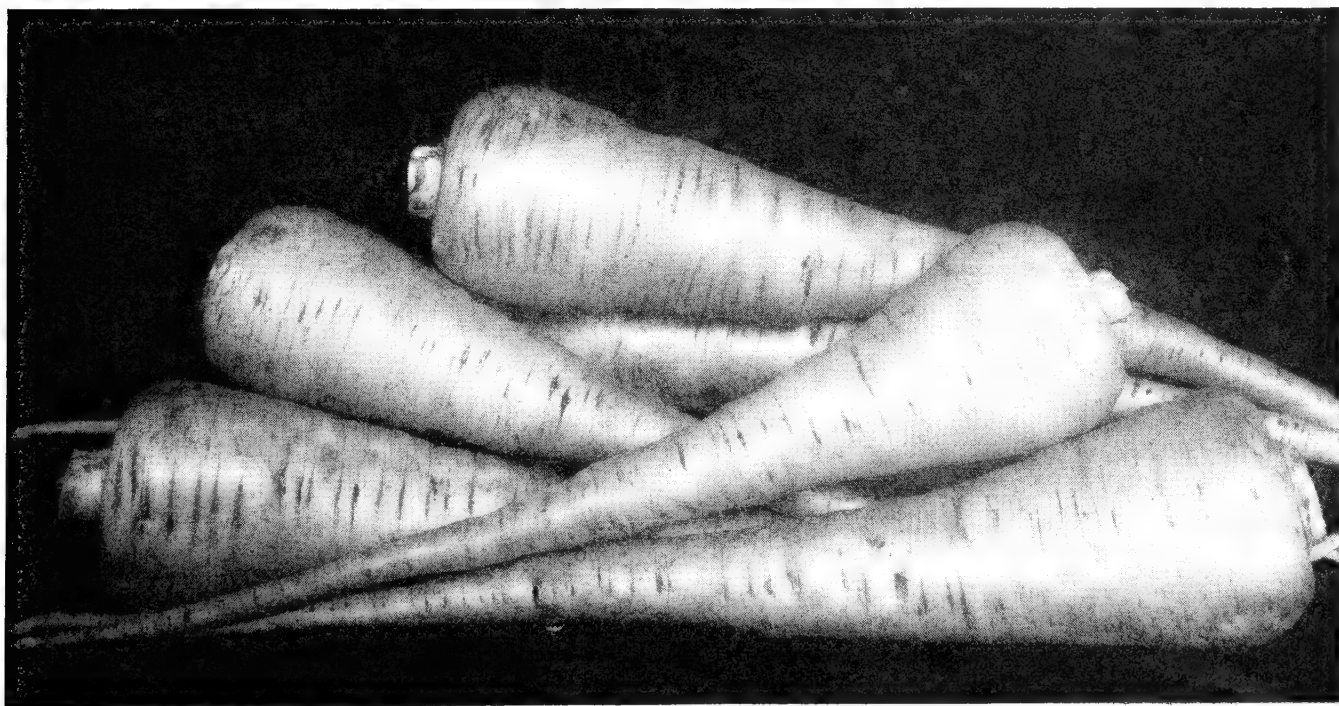
*1 pkt. of seed will sow 25 feet of row; 1 oz. 150 feet*

**Culture**—Sow seed in May in rows 2 feet apart. Mellow soil for best development is advised; thin to about 2 or 3 inches. Leave roots until frost for a more subtle flavor, or Winter over in a pit until the following Spring.

**Ideal Hollow Crown.** A beautiful snowy white. Handsome, large roots, long and tapering but smooth and fine with no side roots or "fingers." Oz. 15c.,  $\frac{1}{4}$  lb. 40c., lb. \$1.25.

---

There is no let down on the fighting fronts.  
There must be none at home.



Parsnip, Ideal Hollow Crown

# PEAS

We Prepay All Transportation Charges

1 lb. of seed will sow 100 feet; 90 lbs. per acre

**Culture**—Plant Peas as early as ground can be worked. Sow in rows 2 feet or more apart about 2 inches deep. Follow with subsequent plantings to insure a continuous supply all season. It is well to inoculate Peas.

## Early Varieties

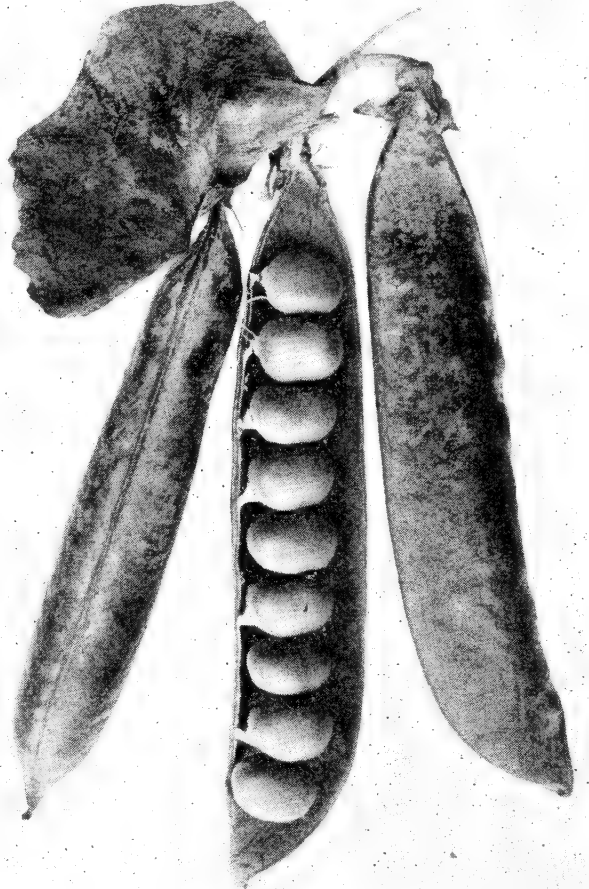
All Peas: Pkt. 15c., ½ lb. 25c., 1 lb. 45c.,  
2 lbs. 80c.

**Alaska.** A smooth seeded variety, earliest of all. A short pod, hardy and productive. 3 to 10 lbs. 24c. per lb., 11 to 25 lbs. 22c. per lb., over 25 lbs. 20c. per lb.

**Hundredfold** (Improved Blue Bantam and Laxtonian). The best Pea in the so-called Laxtonian or early dwarf type. The 4 inch pods are a deep blue-green in color and are borne on vines about 18 inches high. This Pea is an extremely heavy yielder and produces a large quantity of very uniform pods. 3 to 10 lbs. 27c. per lb., 11 to 25 lbs. 25c. per lb., over 25 lbs. 23c. per lb.

**Improved Gradus.** Early large podded Pea of high quality. Vines 2½ feet high. 3 to 10 lbs., 26c. per lb., 11 to 25 lbs. 24c. per lb., over 25 lbs. 22c. per lb.

**Laxton's Progress.** Large, handsome, well filled pods borne on vines 15 to 18 inches high, this Pea is most profitable to follow the extra early taller sorts. Our strain has been very carefully rogued. 3 to 10 lbs. 28c. per lb., 11 to 25 lbs. 26c. per lb., over 25 lbs. 24c. per lb.



Peas, Laxton's Progress

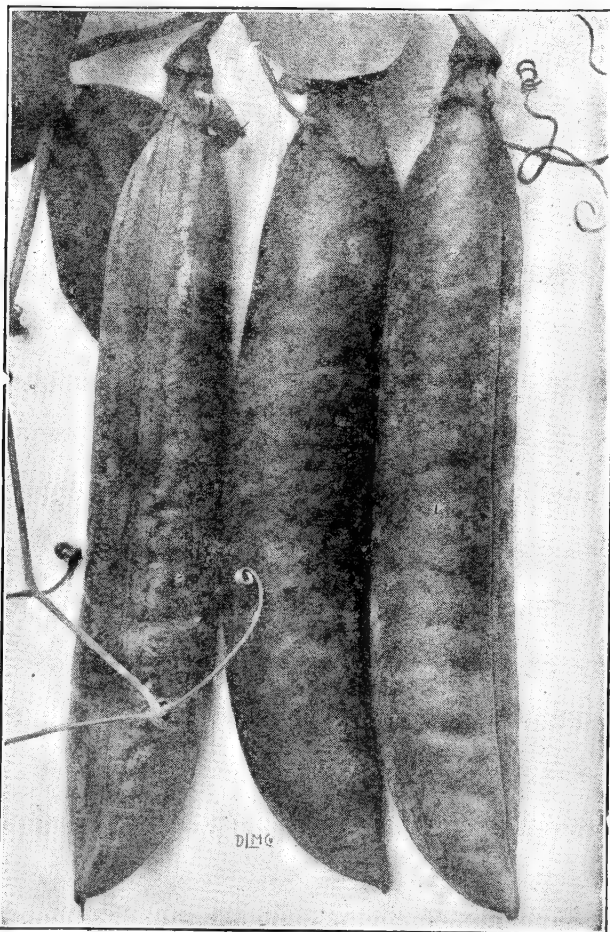
**Little Marvel.** A very prolific Pea of extremely high table quality. The Peas and pods are somewhat small but a tremendous amount of pods may be harvested from only a short row. The pods are borne in pairs. 3 to 10 lbs. 26c. per lb., 11 to 25 lbs. 24c. per lb., over 25 lbs. 22c. per lb.

**Nott's Excelsior** (Premier). One of the finest early dwarf varieties. A heavy yielder of very high quality. 3 to 10 lbs. 25c. per lb., 11 to 25 lbs. 23c. per lb., over 25 lbs. 21c. per lb.

**Sutton's Excelsior.** Larger Peas and pods than in the Nott's type. 3 to 10 lbs. 26c. per lb., 11 to 25 lbs. 24c. per lb., over 25 lbs. 22c. per lb.

**Thomas Laxton.** Very early with medium sized pods of the highest quality. 3 to 10 lbs. 26c. per lb., 11 to 25 lbs. 24c. per lb., over 25 lbs. 22c. per lb.

**World's Record.** Probably the earliest large podded Pea under cultivation. World's Record is the best money maker for the gardener and ours is a prolific and heavy bearing strain; one of the finest on the market. You will make no mistake in planting World's Record. 3 to 10 lbs. 27c. per lb., 11 to 25 lbs. 25c. per lb., over 25 lbs. 23c. per lb.



Peas, Improved Dark Podded Telephone  
(Alderman Type) (See page 23)

## PEAS—Continued

## Main Crop Dwarf Varieties

**Dwarf Alderman.** One of the finest large podded dwarf varieties, the pods being borne in great profusion on strong and sturdy vines about 2 feet high. A very attractive variety which commands good prices on the midseason market. 2 lbs. 80c., 3 to 10 lbs. 28c. per lb., 11 to 25 lbs. 26c. per lb., over 25 lbs. 24c. per lb.

**Giant Hamper.** The earliest, largest podded and most productive Pea in existence. About 2 days later than Progress, but with larger and longer pods. 2 lbs. 80c., 3 to 10 lbs. 28c. per lb., 11 to 25 lbs. 26c. per lb., over 25 lbs. 24c. per lb.

**Hart's Icer No. 95** (Our popular midseason variety). Its large deep green pods are borne on rich green dwarf vines and mature just after the very early varieties. Thus it catches the market at a time when prices are generally high. Its ability to stand hot, dry weather makes it perfect for late plantings. Do not however, make plantings until the weather is fully settled. 2 lbs. 80c., 3 to 10 lbs. 28c. per lb., 11 to 25 lbs. 26c. per lb., over 25 lbs. 24c. per lb.

**Roger's Gilbo.** A wonderful new mammoth podded main crop. A midseason Pea producing immense pods on very dwarf vines. The yield is extremely heavy and the handsome dark green pointed pods are in our opinion an excellent Pea for the market. A trifle earlier and harder than other dwarf varieties. 2 lbs. 80c., 3 to 10 lbs. 28c. per lb., 11 to 25 lbs. 26c. per lb., over 25 lbs. 24c. per lb.

## Tall Variety

**Improved Dark Podded Telephone** (Alderman type). Tremendous pods, growing nearly 6 inches long on tall vines. This is the finest of all tall Peas and out-yields all others. The vines must be supported for best results. 2 lbs. 80c., 3 to 10 lbs. 26c. per lb., 11 to 25 lbs. 24c. per lb., over 25 lbs. 22c. per lb.

## PEPPER

*An ounce will produce about 1000 plants*

**Culture**—Peppers must be started indoors or under glass very early. They prefer light well fertilized soil and should be set in rows 2 to 3 feet apart and about 18 inches in the row.

**California Wonder.** Largest of all. Mammoth fruits sometimes weighing a pound with very thick meaty walls. Unusually solid and heavy, regular in shape, uniform in size and very high yielding. Our strain is very refined. Oz. 50c.,  $\frac{1}{4}$  lb. \$1.75, lb. \$6.25.

**Harris Early Giant.** Heavy bearing, early, square and blocky. Very desirable. Our stock is the finest available. Oz. 50c.,  $\frac{1}{4}$  lb. \$1.75, lb. \$6.25.

**Hot Squash.** We offer a warranted strain of true hot Pepper. Oz. 50c.,  $\frac{1}{4}$  lb. \$1.75, lb. \$6.00.

**Hot Bull Nose.** The largest fruited hot Pepper known. Our strain will run over 90% hot. Oz. 50c.,  $\frac{1}{4}$  lb. \$1.75, lb. \$5.75.

**Hungarian Wax.** A long yellow variety, mild and sweet. Oz. 60c.,  $\frac{1}{4}$  lb. \$2.00, lb. \$6.75.

**King of the North.** Yields a greater number of large peppers than any other variety. The flesh is thick, mild and sweet and the fruits are square and blocky. Oz. 40c.,  $\frac{1}{4}$  lb. \$1.35, lb. \$4.75.

**Large Ruby King Selected.** Plants early, hardy and productive with thick tapering bright ruby-red fruits. This old favorite is still one of the most profitable varieties. Our strain is very carefully selected. Oz. 40c.,  $\frac{1}{4}$  lb. \$1.25, lb. \$4.50.



Pepper, California Wonder

**Large Red Cherry.** We offer a special large strain of this desirable hot pungent variety. Oz. 50c.,  $\frac{1}{4}$  lb. \$1.75, lb. \$6.00.

**Long Thick Red Cayenne.** A giant type of this favorite hot pepper. Oz. 40c.,  $\frac{1}{4}$  lb. \$1.35, lb. \$4.75.

**Neapolitan.** Early and productive, sweet and mild. Oz. 45c.,  $\frac{1}{4}$  lb. \$1.50, lb. \$5.00.

**Sweet Bull Nose.** A standard early pickling variety. Oz. 45c.,  $\frac{1}{4}$  lb. \$1.50, lb. \$5.00.

**Sweet Squash** (Cheese or Tomato, Sunnybrook). Very thick flesh, mild and sweet. Oz. 40c.,  $\frac{1}{4}$  lb. \$1.25, lb. \$4.50.

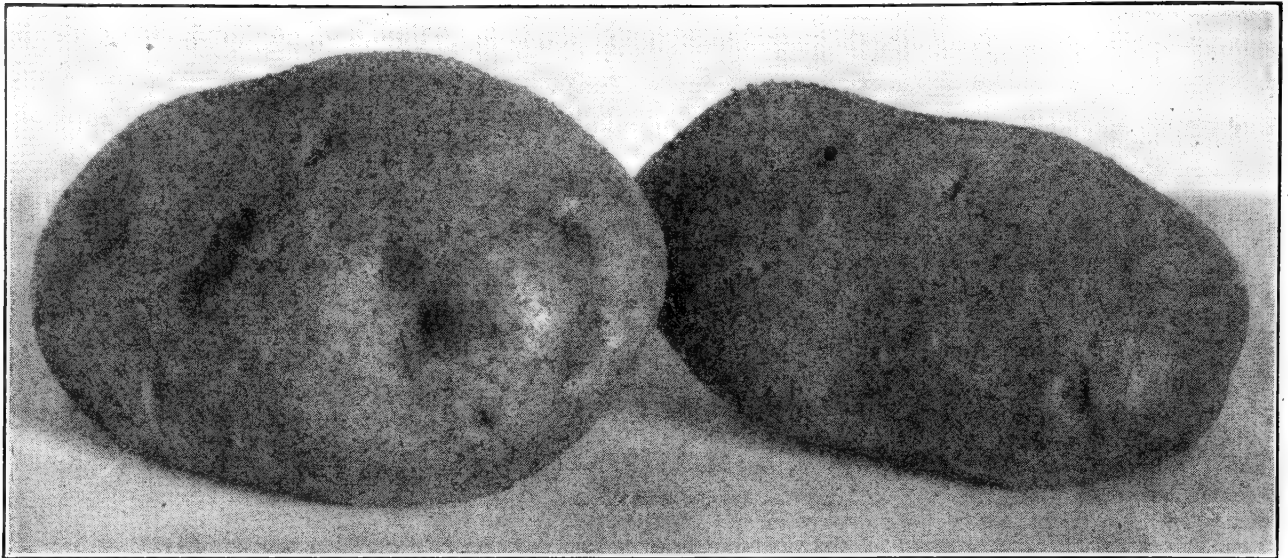
**Windsor A.** A new Pepper of unusual merit. This pepper was developed by Dr. Curtis of the Connecticut Experimental Station with the shape and size of Ruby King, plus the thick walls of the California Wonder and a lighter and more attractive green in color. The yield is truly enormous, although not the earliest Pepper grown, it will over a short period out-yield any other variety. Our seed is grown only from the Station Stock. Oz. 50c.,  $\frac{1}{4}$  lb. \$1.75, lb. \$6.50.

**Worldbeater.** A large, thick fleshed pepper which is enormously productive. Midseason in maturity. Oz. 40c.,  $\frac{1}{4}$  lb. \$1.25, lb. \$4.50.

## PLEASE NOTE

*All packets and half-pounds of Beans are 15c. and 30c. respectively, unless otherwise indicated. Corn is priced at 15c. per packet and 25c. per half pound, with the exception of Hybrid sorts which are 20c. per packet and 35c. per half pound. Peas are 15c. per packet and 25c. per half pound.*

*All fine seeds are 10c. per packet.*



Potato, Green Mountain

## POTATO

### HART'S CERTIFIED SEED POTATOES

We offer Maine Certified U. S. No. 1 Potatoes free from serious diseases and varietal mixture. Diseases such as mosaic, leaf roll, wilt, etc., may not be very apparent, but they reduce the yield to a marked degree. It pays to plant the best grade.

**Culture**—12 to 15 bushels will plant one acre and yield about 250 to 300 bushels; 1½ to 3 bushels to ¼ acre yielding 33 to 37 bushels. 3 pecks to 1 bushel to a small plot 50 feet by 60 feet will yield 10 to 15 bushels.

Write for Prices

## PUMPKIN

1 oz. will plant about 20 hills

**Culture**—Pumpkins are planted in hills 3 to 4 feet apart and thinned to about 4 plants. If larger fruits are desired, remove all but 2 or 3 plants.

**Connecticut Field or Big Tom.** Large, golden yellow of fine quality. Oz. 15c., ¼ lb. 35c., lb. \$1.25.

**King of the Mammoth.** Largest of all, sometimes weighing 100 lbs. or more. The fruit are salmon pink and nearly round. The flesh is yellow and thick. Oz. 20c., ¼ lb. 60c., lb. \$2.00.

**Large Cheese or Kentucky Field.** Fine grained and sweet, large fruit mottled light green and yellow. May also be used for stock feeding. Oz. 20c., ¼ lb. 40c., lb. \$1.35.

**Small Sugar or Pie.** Small, round, very prolific and excellent for pies. Oz. 20c., ¼ lb. 40c., lb. \$1.35.

## RADISH

1 pkt. will sow 15 to 20 feet; 1 oz. about 75 feet; 10 lbs per acre

**Culture**—Radishes grow rapidly and require only a moderately light soil. Sow very thinly in drills 12 inches apart and make frequent sowings to insure a succession of roots.

**Cavalier.** The best short-topped deep scarlet Radish grown. They are the true olive shape, very uniform, crisp and mild. Oz. 15c., ¼ lb. 35c., lb. \$1.15, 2 lbs. or over, \$1.10 per lb.

**Crimson Giant.** Large, globe Radishes, scarlet, solid white flesh. Larger than Scarlet Globe. Oz. 15c., ¼ lb. 35c., lb. \$1.10, 2 lbs. or over, \$1.05 per lb.

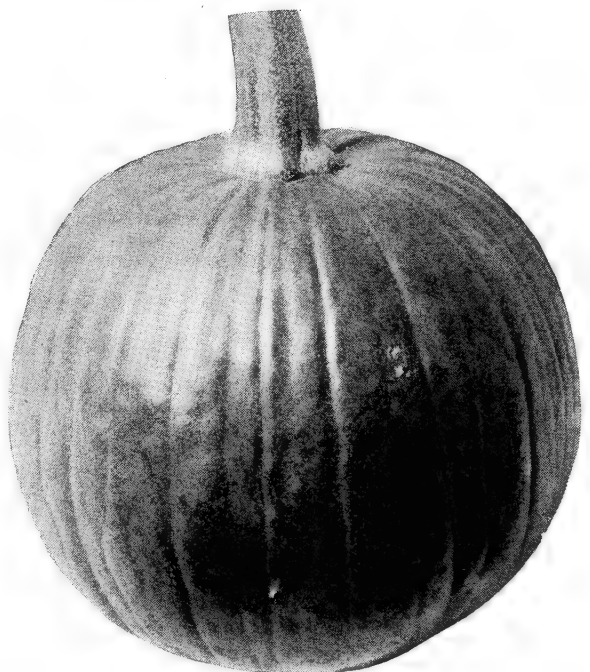
**Early Scarlet Globe.** Special selection. Our strain of this superfine variety is from transplanted roots only and is a true olive-shape with a beautiful bright scarlet color, small-topped, early and uniform. Our seed is strong and rapid growing, maturing under favorable conditions in 20 days from sowing. Oz. 15c., ¼ lb. 35c., lb. \$1.10, 2 lbs. or over, \$1.00 per lb.

**French Breakfast.** Half long scarlet, white tipped. Oz. 15c., ¼ lb. 35c., lb. \$1.10, 2 lbs. or over, \$1.00 per lb.

**Round Black Spanish.** Round, deep black skin, white flesh, Turnip-shaped roots and may be kept all Winter if stored in moist sand. Oz. 20c., ¼ lb. 40c., lb. \$1.40, 2 lbs. or over, \$1.35 per lb.

**White Tipped Scarlet or Sparkler.** Round scarlet with a white tip which grows rapidly and is very crisp and mild. Oz. 15c., ¼ lb. 35c., lb. \$1.10, 2 lbs. or over, \$1.00 per lb.

**White Icicle.** Short tops, smooth clear white, mild-flavored, long roots. Oz. 15c., ¼ lb. 35c., lb. \$1.10, 2 lbs. or over, \$1.00 per lb.



Pumpkin, Small Sugar or Pie



Spinach, Long Standing Savoy

## RHUBARB

**Culture**—Roots can be raised from seed sown in the Spring. Transplant to permanent bed the following Spring.

**Myatt's Victoria.** Early, large ruby red stalks. Oz. 25c.

## SALSIFY or OYSTER PLANT

*1 pkt. will sow 15 feet of row; 1 oz. 50 feet*

**Culture**—Sow in rows 2 feet apart. Thin to 3 inches. If planted in Fall may remain in ground all Winter for Spring use.

Oz. 60c.,  $\frac{1}{4}$  lb. \$1.55, lb. \$5.25

## SORREL

**Broad-leaved.** The standard variety. May be used as greens or for soup flavoring. Thin to 4 in. Oz. 50c.,  $\frac{1}{4}$  lb. \$1.55, lb. \$5.25.

## SPINACH

*1 oz. will sow 50 feet of drill; 15 to 20 lbs. per acre*

**Culture**—Spinach may be sown very early in the Spring as it is not injured by Spring freezes. Sow thinly in rows 18 inches apart and thin to 5 inches. Make successive sowings until Summer and plant again in the Fall. September sowings survive the Winter and may be cut very early in the Spring.

**All Spinach: Pkt. 10c., oz. 15c.,  $\frac{1}{4}$  lb. 35c., unless otherwise indicated**

**Blight Resistant Savoy.** True strain. We offer a blight-resistant strain which is fully as curled and crumpled as Reselected Savoy and will stand as well as Old Dominion. Hitherto, most strains have contained a high percentage of "Smooth" leaves. Ours is practically 100 per cent Savoy. Lb. 60c., over 2 lbs. 55c. per lb.

**Early Reselected Savoy.** Very early and of fine color. Our strain is extremely well bred with a high percentage of female plants. Lb. 55c., over 2 lbs. 50c. per lb.

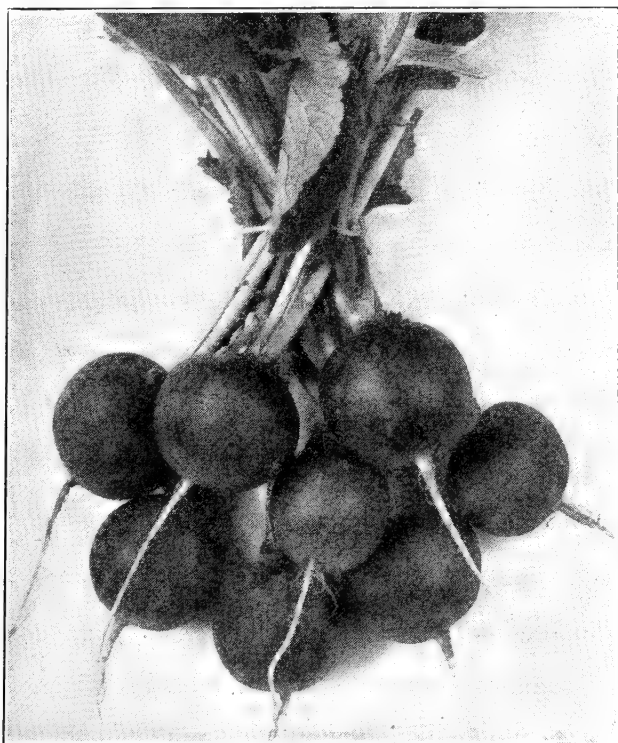
**King of Denmark.** Large, round, somewhat blistered leaves which remain in good condition a week after any other variety. Lb. 65c., over 2 lbs. 60c. per lb.

**Long Standing Savoy.** Best for Spring sowing. A trifle later than Reselected, but with higher non-bolting qualities. We have a very high class strain. Lb. 60c., over 2 lbs. 55c. per lb.

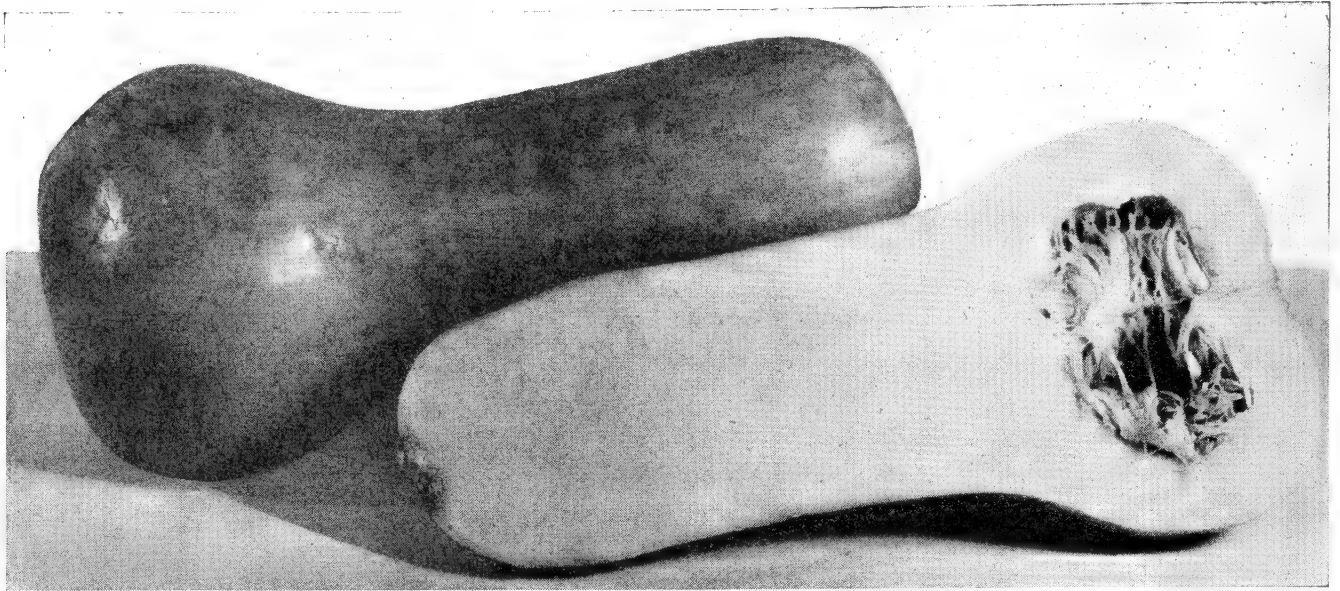
**New Zealand.** Not a true Spinach, for the leaves may be picked from a bush-like plant which will grow out again. Oz. 20c.,  $\frac{1}{4}$  lb. 60c., lb. \$2.00.

**Nobel Giant Leaved.** An improved, thick-leaved type, smooth, large, medium green in color and long standing. Lb. 65c., over 2 lbs. 60c. per lb.

**Old Dominion.** Most highly resistant. Thick, bluish-green leaves which stand for an extremely long time before seeding. Excellent for Fall sowing. Lb. 70c., over 2 lbs. 65c. per lb.



Radishes, Early Scarlet Globe (See page 24)



Squash, Butternut

## SQUASH. Summer

1 pkt. will sow 3 or 4 hills; 1 oz. 15 hills; about 4 lbs. per acre

**Culture**—Squash needs a fertile deep soil. The bush varieties should be spaced 4 feet apart and the running sorts 8 feet and thinned to about 4 plants in each hill.

**Connecticut Straightneck.** A superlative strain. Over 95 per cent true Straightnecks, very thick and free from tapering. The color is a light, creamy lemon-yellow and is entirely free from warts and disfigurements. This fine strain is very early and has been selected to meet every requirement of the most exacting gardener. A true money-maker. Oz. 15c.,  $\frac{1}{4}$  lb. 45c., lb. \$1.35.

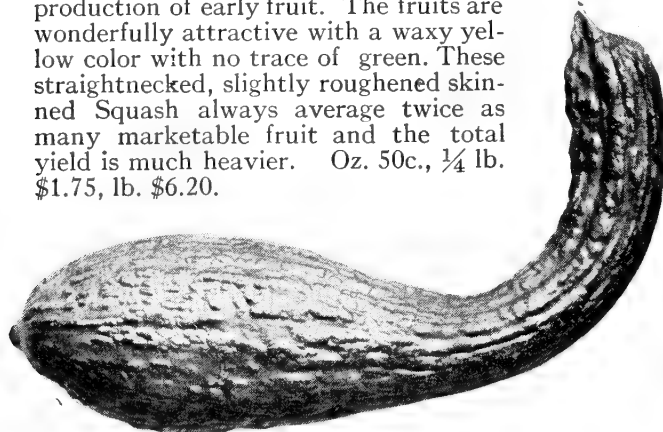
**Early Prolific Straightneck.** The fruits are borne in great profusion on dwarf vines and are somewhat smaller than other types of Straightneck. They are remarkably uniform in shape and size and have a very smooth skin and clear bright golden yellow color with no trace of green. Oz. 15c.,  $\frac{1}{4}$  lb. 45c., lb. \$1.35.

**Giant Summer Crookneck.** The popular old-time favorite with curved necks and somewhat warty, deep golden yellow in color. Oz. 15c.,  $\frac{1}{4}$  lb. 45c., lb. \$1.35.

**Italian Vegetable Marrow (Cocozelle).** Long, mottled dark green fruits of surpassing flavor. We have an excellent strain of this popular variety. Oz. 15c.,  $\frac{1}{4}$  lb. 45c., lb. \$1.35.

**White Bush Scallop.** Flattened and scalloped fruits. Delicious if picked when young and tender. Oz. 15c.,  $\frac{1}{4}$  lb. 45c., lb. \$1.35.

**Yankee Hybrid.** A straightneck without equal for the production of early fruit. The fruits are wonderfully attractive with a waxy yellow color with no trace of green. These straightnecked, slightly roughened skinned Squash always average twice as many marketable fruit and the total yield is much heavier. Oz. 50c.,  $\frac{1}{4}$  lb. \$1.75, lb. \$6.20.



Squash, Giant Summer Crookneck

## SQUASH. Winter

**Culture**—Winter varieties should be planted later than the Summer types but both are very tender and may not be planted until all danger of frost is over.

**Buttercup.** A small thick-fleshed squash, shaped somewhat like Turban. The thin, tough rind is dark green with gray striping and the orange flesh cooks sweet and dry. Oz. 25c.,  $\frac{1}{4}$  lb. 75c., lb. \$2.75.

**Butternut.** The utmost in table quality. This new type is shaped like a Straightneck summer squash with an enlarged knob on the end which holds the small seed cavity. The neck is all solid, rich, dry, golden-yellow flesh which resembles a sweet potato. Don't fail to include a packet of this superior squash. Oz. 75c.,  $\frac{1}{4}$  lb. \$2.50, lb. \$8.00.

**Blue Hubbard.** Favorite New England strain. Our Blue Hubbard is the desirable slate-gray so highly prized in Massachusetts. The hard shell makes it the finest Winter keeper of all Winter Squashes. Our seed is grown in New England and is as pure a type as we have ever seen. Oz. 20c.,  $\frac{1}{4}$  lb. 60c., lb. \$2.00.

**Golden Hubbard.** Sometimes known as red; similar in shape to Hubbard, except that the fruit is a deep orange-red, warted and uniform in size. Oz. 15c.,  $\frac{1}{4}$  lb. 50c., lb. \$1.50.

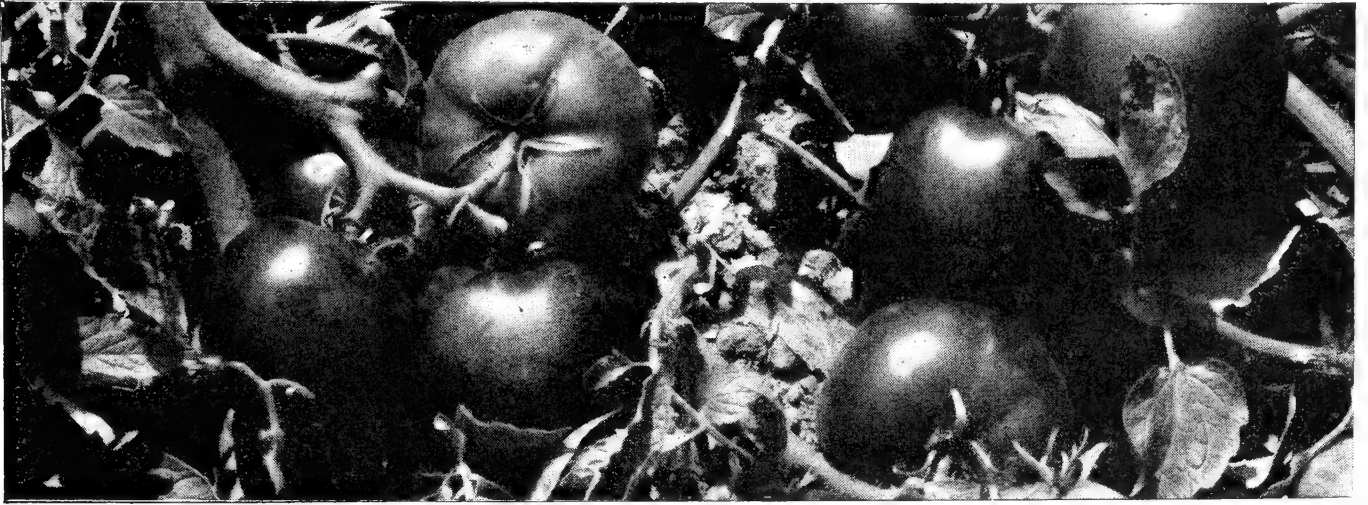
**Green Delicious.** A Squash of delightful flavor, earlier than the Hubbard types and smaller. Oz. 15c.,  $\frac{1}{4}$  lb. 50c., lb. \$1.65.

**Improved Warted Hubbard.** Larger than true Hubbard with a very knotted warty skin. Oz. 20c.,  $\frac{1}{4}$  lb. 55c., lb. \$1.80.

**Table Queen (Des Moines or Acorn).** This attractive little Squash is most popular for individual baking with fruit a dark green, 4 to 5 in. long and 4 in. diameter, deeply ribbed, with a smooth hard shell. Oz. 15c.,  $\frac{1}{4}$  lb. 50c., lb. \$1.50.

**True Hubbard.** Deep green, smooth skin of high quality. The old-fashioned Winter Squash of fairly large size. Is still a favorite Winter variety. Oz. 15c.,  $\frac{1}{4}$  lb. 55c., lb. \$1.80.

**Warren's Turban (Essex Hybrid).** Another New England strain of superlative quality. Very early, warted fruits with rich orange flesh of highest quality. Will keep well all Winter. Oz. 25c.,  $\frac{1}{4}$  lb. 60c., lb. \$1.75.



Tomato, Rutgers

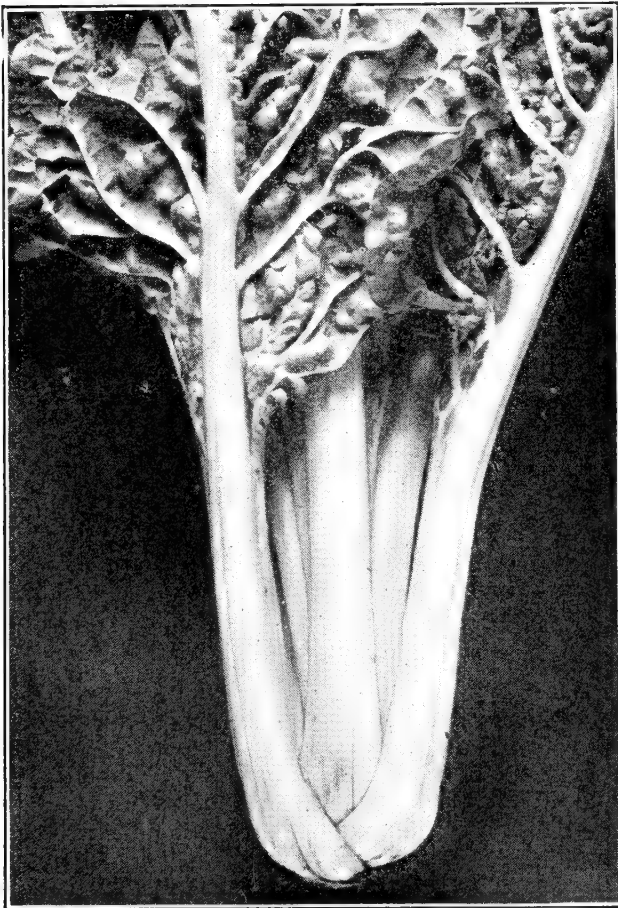
## SWISS CHARD or SPINACH BEET

*1 oz. will sow about 50 feet of row*

**Culture**—Swiss Chard is really a beet grown for greens. The leaves and midrib may be cooked separately or together. Both delicious. When cut it will grow again and produce continued crops. With a little protection in Winter Swiss Chard will be available the next Spring.

**Large White Ribbed.** Dark green, well blistered leaves with broad, white midribs. Oz. 20c.,  $\frac{1}{4}$  lb. 45c., lb. \$1.40.

**Lucullus.** Large midribs and light yellowish green leaves. Oz. 20c.,  $\frac{1}{4}$  lb. 45c., lb. \$1.40.



Swiss Chard, Lucullus

## TOMATO

*1 pkt. will produce about 150 plants, 1 oz. 2000 plants*

**Culture**—Tomato plants are easily grown in a shallow box in the house allowing 6 weeks for plants large enough to set out. When plants are about 2 inches tall transplant and space about 4 inches apart. When all danger of frost is over, set out in garden spacing about 3 feet.

**Dwarf Champion.** An early, pink-fruited variety on dwarf vines. Oz. 70c.,  $\frac{1}{4}$  lb. \$2.50, lb. \$9.00.

**Dwarf Stone.** Plants grow very dwarf and stocky and can be set close together. Fruit is of flattened globe shape like the Stone but ripens a little later than Stone. Oz. 70c.,  $\frac{1}{4}$  lb. \$2.50, lb. \$9.00.

**Earliana.** Our strain produces large, solid, bright scarlet fruits with a thick skin and a pronounced freedom from cracking. Oz. 65c.,  $\frac{1}{4}$  lb. \$2.25, lb. \$7.50.

**Extra Marglobe.** This superior strain produces enormous yields of perfect shaped, large, fancy fruits, earlier than any other strain of ordinary Marglobe. Oz. 45c.,  $\frac{1}{4}$  lb. \$1.50, lb. \$5.25.

**Golden Queen.** Large, smooth, non-acid, yellow fruit. Oz. 60c.,  $\frac{1}{4}$  lb. \$2.00, lb. \$7.25.

**Hart's Improved Stone.** Smooth, solid, firm fruit and an enormous yielder. Our strain is firm and solid, with thick, meaty flesh. Oz. 40c.,  $\frac{1}{4}$  lb. \$1.40, lb. \$5.00.

**Jubilee.** A large new orange-yellow flesh and skinned variety of excellent quality. The seed cavities are small and the flesh and fruits solid and heavy. Oz. \$1.75,  $\frac{1}{4}$  lb. \$6.50.

**Oxheart.** The largest Tomato. The shape is like an "oxheart" and the flesh is heavy and solid with extremely small seed cavities. Oz. \$1.75,  $\frac{1}{4}$  lb. \$6.00, lb. \$20.00.

**Ponderosa.** Immense, heavy fruit, often weighing 2 lbs. or more, with a beautiful light pink skin. Oz. \$1.00,  $\frac{1}{4}$  lb. \$3.75, lb. \$13.50.

**Pritchard or Scarlet Topper.** The deep globe shape and early ripening period of this fine variety coupled with its freedom from cracking, solid structure and brilliant red color make it one of the most desirable ever introduced. Oz. 50c.,  $\frac{1}{4}$  lb. \$1.75, lb. \$6.50.

**Rutgers.** Unusually large and solid. An exceptional variety developed by the New Jersey Experiment Station, being notable for its large size and solid structure, perfect globe shape, splendid flavor and deep color throughout. It ripens about the same time as Marglobe and produces a tremendous amount of fruit. The vine is heavy with large leaves which protect it from sun and scald. Oz. 50c.,  $\frac{1}{4}$  lb. \$1.50, lb. \$5.25.

(Tomato continued on page 28)

**TOMATO—Continued**

**Special Bonny Best.** For those who demand a super-strain of this popular early variety we offer this strain of seed from crown set fruit only. Seed is saved only from the plants which show the greatest vigor and earliness. This means seed of pure parentage, high germination and vigorous growth. Oz. 50c., ¼ lb. \$1.75, lb. \$6.00.

**Stokesdale Certified.** A medium size deep globe, very solid, of fine quality. Ripens about the same time as Bonny Best but outyields it. Oz. 50c., ¼ lb. \$1.50, lb. \$5.00.

**Valiant.** This splendid new variety is in many sections taking the place of Earliana. Although about two days later the fruits are so much better looking and the quality so much finer this is unimportant. The fruits are even, firm, and solid and the quality is excellent. Oz. 75c., ¼ lb. \$2.75.

**Victor.** A vigorous early variety, medium large, smooth ripening to an even red. Oz. 50c., ¼ lb. \$1.75, lb. \$6.50.

**Tomato, Small Fruited**

**Red Plum                  Yellow Plum                  Red Pear**  
**Yellow Pear              Strawberry                  Red Currant**  
 All pkts. 10c., oz. 75c., ¼ lb. \$2.50, lb. \$9.00.

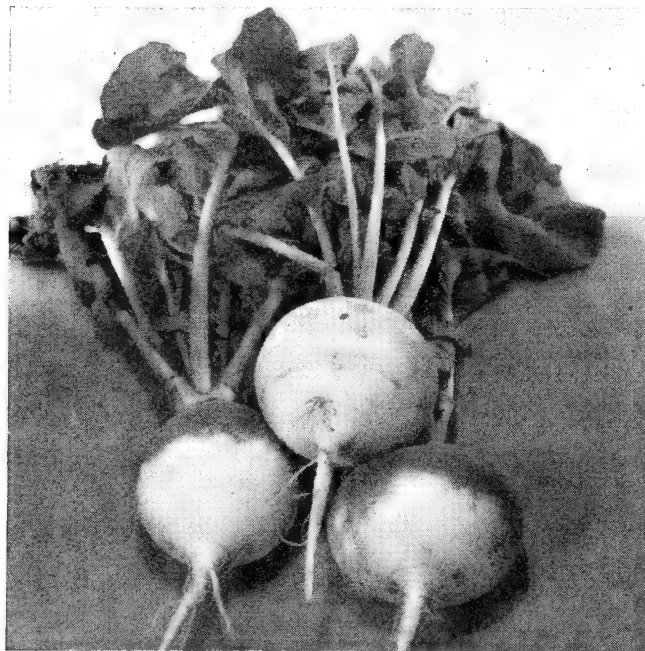
**RUTABAGA**

Rutabagas have firmer flesh and will keep longer but require more time to develop and should be sown earlier.

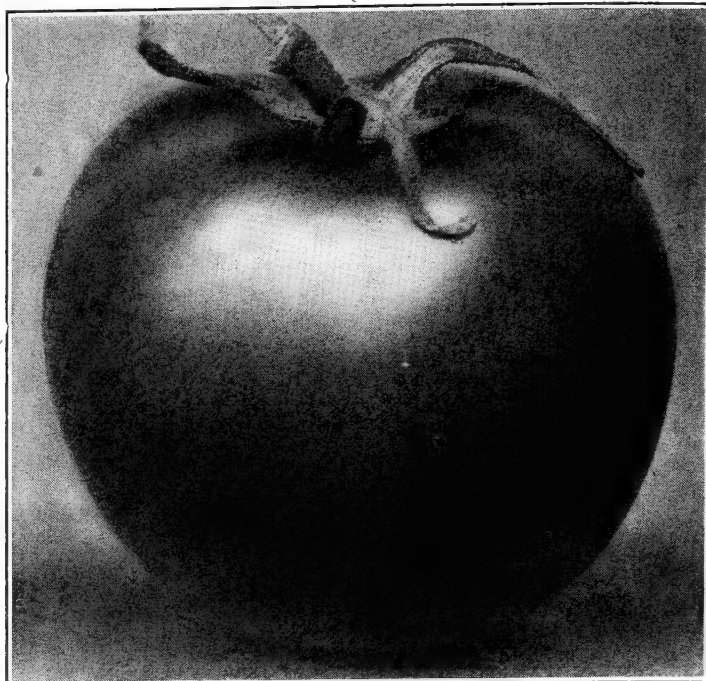
**Long Island Improved Neckless** (Improved Purple Top Yellow). The large handsome roots are entirely free from neck and have a fine round shape with a rich yellow color and a sweet mild flavor. Lb. 75c.

**Macomber.** White flesh and sweetest of all. Lb. 75c.

**Victory or Laurentian** (Neckless). A new and exceptionally fine all yellow Rutabaga without the pronounced neck of the old type. It is a splendid Winter keeper and has firm solid flesh of fine flavor. Decidedly the best of the "Canadian" types. Lb. \$1.00.



Turnip, Red Top Globe



Tomato, Extra Marglobe

**TURNIP**

*1 pkt. of seed will sow 50 feet of row, an ounce 300 feet. 1½ lb. of seed per acre in drills, 2½ lb. broadcast*

**Culture**—Turnips develop best during cool weather and an early crop may be harvested from seed sown early in the Spring. Best results are from seed sown from the middle of July to the middle of August. Drill out in rows 18 inches apart or sow broadcast.

*All Turnip: Pkt. 10c., oz. 15c., ¼ lb. 35c.*

**Early Snowball.** A pure white early round Turnip of high quality. Lb. 75c.

**Early White Milan.** Same as Purple Top Milan but all white. Lb. \$1.00.

**Long White or Cowhorn.** White variety both edible and for stock. Lb. 75c.

**Purple Top Milan.** An extremely highclass extra early purple top flat Turnip. Lb. 75c.

**Purple Top Strap Leaf.** A large, flat, white with a purple top. Quick growing. Lb. 75c.

**Red Top Globe** (Reselected). Our special stock of this favorite turnip continues in popularity due to its uniform, smooth, handsome roots with their bright purplish tops extending well down on the roots. Naturally they sell more readily on the market and always command better prices than ordinary Turnips. Lb. 85c.

**White Egg.** A pure white globe shape, early and fine grained. Lb. 75c.

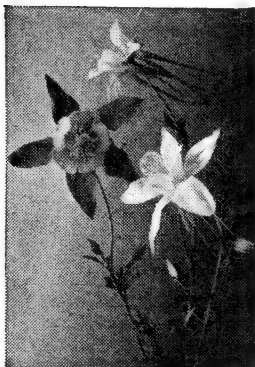
**Yellow Globe.** Round, smooth, yellow fine grained Turnip. Lb. 75c.

**HERBS**

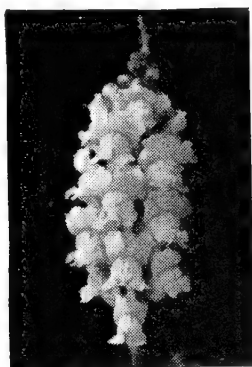
Every garden should have a few Herbs, which are used for flavoring and sauces, medicinal purposes or for their scent. Sow early in Spring in carefully prepared soil.

Anise.....	Pkt. \$0.10	Fennel (Sweet Florence).....	Pkt. \$0.10
Balm.....	.20	Lavender.....	.25
Basil.....	.10	Marjoram, Sweet.....	.25
Borage.....	.10	Rosemary.....	.25
Caraway.....	.10	Sage.....	.25
Catnip.....	.25	Summer Savory.....	.25
Chives.....	.20	Thyme.....	.30
Coriander.....	.10	Wormwood.....	.30

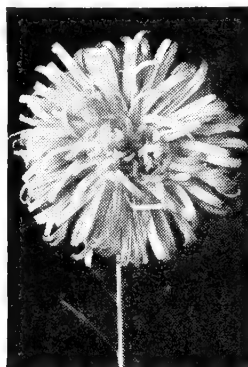




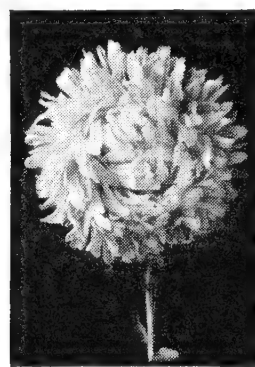
Aquilegia



Antirrhinum



Aster, Crego



Aster, El Monte

## Hart's Flower Seeds

Although flower seed production has been considerably curtailed at the request of the Government, we are able to offer, we believe, as select a list of the newer types as well as the old favorites, as it is possible to secure. Every shade and every variety we offer is pure-bred—the best in its' class—and is equally suitable for the select florist trade as it is for home gardens.

**PLEASE NOTE**— $\frac{1}{2}$  oz. is sold at twice the  $\frac{1}{4}$  oz. rate; 1 oz. at three times the  $\frac{1}{4}$  oz. rate. All packets are 10c., unless otherwise indicated. Each packet is beautifully lithographed and has full cultural directions.

### AGERATUM

Heads of feathery blue flowers for edging and cutting.

**Midget Blue.** 6 in. Compact plants, rich blue. (*All American Award, 1940*).  $\frac{1}{4}$  oz. \$1.75

**Blue Perfection.** 12 in. Large flowered, medium-light blue.  $\frac{1}{4}$  oz. 30c.

### ALYSSUM

Dwarf edging plants completely covered with tiny white flowers.

**Little Gem.** 6 in. Bush plants and good-sized flowers.  $\frac{1}{4}$  oz. 20c.

**Carpet of Snow.** 3 in. Spreading plants literally covering the ground with a blanket of white.  $\frac{1}{4}$  oz. 25c.

**Saxatile.** Perennial. 12 in. Rich, golden yellow flowers, flowering very early in the Spring. Ideal for rock gardens.  $\frac{1}{4}$  oz. 30c.

### ANCHUSA

**Blue Bird.** Perennial. 18 in. Rich indigo blue flowers like huge Forget-me-nots.  $\frac{1}{4}$  oz. 35c.

### AQUILEGIA (Columbine)

Perennial. 18 inches. Bright and delicate colors. Honeycomb-like flowers with long spurs.

**Dobbies Imperial.** Finest mixture.  $\frac{1}{4}$  oz. \$1.50

### ANTIRRHINUM (Snapdragon)

Long spikes closely packed with large blooms in rich and delicate shades. 12 inches.

**Tall Giants.**  $\frac{1}{4}$  oz. 75c.

### ASTER

Most of our strains are wilt-resistant. 12-24 inches.

**Giant Comet.** Double, well-formed, feathery flowers. Mixed.  $\frac{1}{4}$  oz. 45c.

**Super Giant, El Monte.** The largest and most fully double Aster known; the full petaled flowers are 6 to 8 in. across in a rich glowing, crimson color.  $\frac{1}{4}$  oz. \$1.25

**Giants of California.** Enormous blooms with broad, graceful petals; the best Aster for cutting.  $\frac{1}{4}$  oz. \$1.00

**Improved Crego.** Large, fully double, well formed flowers. One of the finest for all purposes.

<b>Crimson</b>	<b>Peach Blossom</b>	<b>Purple</b>
<b>Deep Rose</b>	<b>Pink</b>	<b>White</b>
<b>Light Blue</b>		

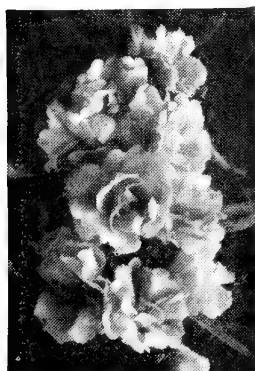
Separate colors,  $\frac{1}{4}$  oz. 60c. Mixed,  $\frac{1}{4}$  oz. 50c.

**Queen of the Market.** Very early, long-stemmed flowers with feathery petals. Very fine for cutting.  $\frac{1}{4}$  oz. 50c.

**American Branching.** Extremely large, well-formed flowers of the feathery-petaled type. A very selected stock.

<b>Azure Blue</b>	<b>Rose</b>	<b>Shell Pink</b>
<b>Purple</b>	<b>Crimson</b>	<b>White</b>

Separate colors,  $\frac{1}{4}$  oz. 60c. Mixed,  $\frac{1}{4}$  oz. 50c.



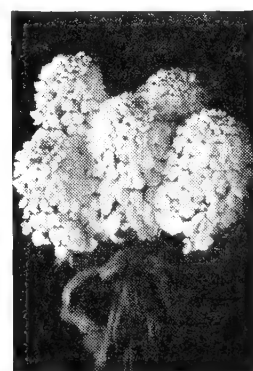
Balsam, camellia-flowered  
(See page 30)



Calliopsis  
(See page 30)



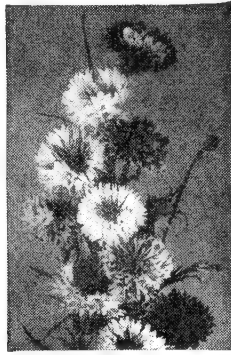
Calendula chrysantha  
(See page 30)



Candytuft  
(See page 30)



Carnation



Centaurea cyanus

## BALSAM

Double Camellia-like flowers on bushy plants. Bright, vivid colors. 12 inches.  $\frac{1}{4}$  oz. 30c.

## CALENDULA

Large, flat-petaled, free-flowering blooms in shades of orange and yellow. 10 inches.

**Orange King.** Bright deep orange.  $\frac{1}{4}$  oz. 20c.

**Campfire.** Brilliant reddish orange.  $\frac{1}{4}$  oz. 35c.

**Chrysantha.** Loosely arranged, golden-yellow petals.  $\frac{1}{4}$  oz. 30c.

**Lemon Queen.** Double lemon-yellow.  $\frac{1}{4}$  oz. 25c.

**Yellow Colossal.** Extra large, clear yellow.  $\frac{1}{4}$  oz. 35c.

**Florists Special Mixture.** All large flowered, long-stemmed varieties.  $\frac{1}{4}$  oz. 25c.

## CANDYTUFT

Umbels of tiny bright colored flowers; 8 in.  $\frac{1}{4}$  oz. 20c.

## CALLIOPSIS

Yellow and brownish red, curiously marked flowers for cutting 2 ft.

**Tall Single.**  $\frac{1}{4}$  oz. 20c.

## CARNATION

Fragrant, double blooms, like florists' Carnations, but smaller. 12 inches.

**Marguerite.**  $\frac{1}{4}$  oz. 90c.

## CELOSIA

2 feet.

**Plumosa.** Majestic plumes of vivid scarlet and yellow.  $\frac{1}{4}$  oz. 50c.

**Cristata (Cockscomb).** Large, showy heads of crimson and scarlet; like roosters' combs.  $\frac{1}{4}$  oz. \$1.50

## CENTAUREA (Bachelor Button)

These gay, double flowers blossom very profusely. 18 inches.

**Cyanus: Pink      Red      White      Blue**  
Separate colors,  $\frac{1}{4}$  oz. 25c.      Mixed,  $\frac{1}{4}$  oz. 20c.

**Imperialis (Sweet Sultan).** Delicately colored and exquisitely fringed flowers, resembling thistle blossoms.  $\frac{1}{4}$  oz. 35c.

## CHRYSANTHEMUM

18 inches.

**Annual Single.** Showy color combinations of yellow, mahogany, soft pinks and purple.  $\frac{1}{4}$  oz. 20c.

**Leucanthemum (Shasta Daisy).** Perennial. Immense, Daisy-like flowers with broad white petals and golden centers.  $\frac{1}{4}$  oz. 60c.

## COREOPSIS

Perennial. 2½ feet. Large, broad-petaled, free-flowering, golden yellow flowers.  $\frac{1}{4}$  oz. 20c.

## COSMOS

Feathery foliage and fine large, single petaled blooms for cutting or garden show. 2 to 3 feet.

**Sensation.** The largest flowered strain in existence.  $\frac{1}{4}$  oz. 25c.

**Double Crested.** Single flowers with a tufted or crested center.  $\frac{1}{4}$  oz. \$1.25

**Orange Flare.** A bright cheerful orange. Very showy.  $\frac{1}{4}$  oz. 30c.

**Early Flowering Single.** Rather dwarf plants with good sized flowers blooming very early.  $\frac{1}{4}$  oz. 15c.

## DAHLIA

2 feet.

**Unwins Dwarf Hybrids.** The semi-double flowers range from soft delicate shades to bright and vivid colors. Tubers of the colors you like most can be saved.  $\frac{1}{4}$  oz. \$1.25

## DELPHINIUM

Perennial. Gigantic spikes of rich color, shades of blue predominating.

**Wrexham Hollyhock Strain.** Mammoth double florets in every conceivable shade of blue.  $\frac{1}{4}$  oz. \$3.00

**Gold Medal Hybrids.** A large percentage of doubles; the single flowers often measuring nearly an inch across.  $\frac{1}{4}$  oz. \$1.25

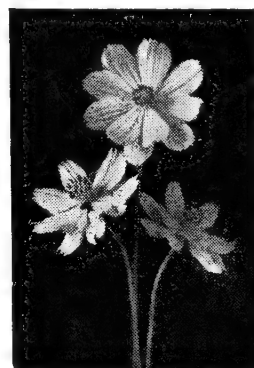
## DIANTHUS (Pinks)

**Single Mixed.** 12 in. A mixture of all shades and colors ranging from rich crimson to delicate pink.  $\frac{1}{4}$  oz. 20c.

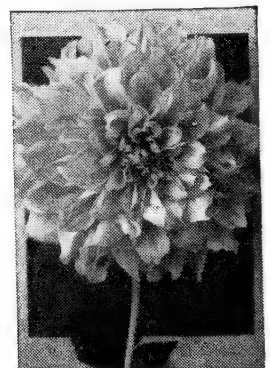
**Sweet Wivelsfield.** Resembles Sweet William but with individual florets nearly twice as large.  $\frac{1}{4}$  oz. 20c.

## DIGITALIS (Foxglove)

Perennial. 3 feet. Tall spikes completely covered with spotted and veined bell-like flowers.  $\frac{1}{4}$  oz. 35c.



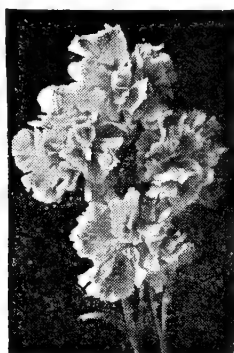
Cosmos, Orange Flare



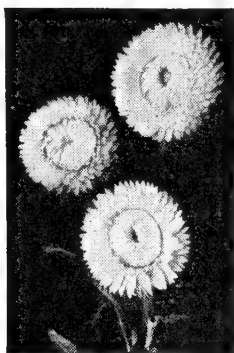
Dahlia



Gypsophila



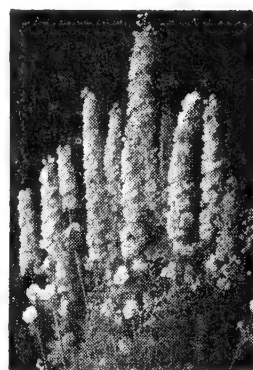
Godetia  
Dwarf Double



Helichrysum



Kochia



Larkspur

### ESCHSCHOLTZIA (California Poppy)

Bright and vivid, saucer-shaped flowers in lovely and bright colors. 6 in.  $\frac{1}{4}$  oz. 20c.

### EUPHORBIA (Snow-on-the-Mountain)

Decorative green leaves with broad white margins. 3 feet.  $\frac{1}{4}$  oz. 25c.

### GAILLARDIA (Blanket Flower)

Gay, brightly colored, broad-petaled flowers in vivid color combinations.

**Grandiflora.** Annual. 2 ft.  $\frac{1}{4}$  oz. 30c.

**Portola Hybrids.** Perennial. 3 ft. Large, brownish-red flowers with a center disc of contrasting colors.  $\frac{1}{4}$  oz. \$1.50

### GODETIA

Double red, purple and pale tones shading to white. 2-3 feet.  $\frac{1}{4}$  oz. 45c.

### GOURDS—Trailing

Every conceivable shape and color combination for Winter decorations.

**Small Fruited.**  $\frac{1}{4}$  oz. 15c.

**Large Fruited.**  $\frac{1}{4}$  oz. 15c.

### GYPSOPHILA (Babysbreath)

Dainty, ethereal little white flowers for combining in bouquets.  $1\frac{1}{2}$  feet.

**Dwarf London Market.** Annual.  $\frac{1}{4}$  oz. 15c.

**Paniculata.** Perennial.  $\frac{1}{4}$  oz. 20c.

### HELICHRYSUM (Everlasting)

Double, brightly colored Strawflowers which may be dried for Winter decoration. 3 ft.  $\frac{1}{4}$  oz. 50c.

### HELIANTHUS (Sunflower)

10 feet.

**Mammoth Russian.** Huge heads of yellow and black. Oz. 50c.

### HIBISCUS (Mallow)

Perennial. 3 feet. Immense, single blooms resembling Hollyhocks in reds, pinks and white.  $\frac{1}{4}$  oz. 45c.

### HOLLYHOCK

Perennial. 5 feet. Huge, colorful blooms borne in profusion on tall, erect spikes.

**Double Triumph.** Fringed and tufted flowers in delightful color combinations.  $\frac{1}{4}$  oz. 90c.

**Single.** Finest Mixed.  $\frac{1}{4}$  oz. 20c.

### KOCHIA (Mexican Fire Bush)

Symmetrical, evergreen-like bushes, brilliant green in the Summer which turn a fiery red in the Autumn. 3 feet.  $\frac{1}{4}$  oz. 15c.

### LARKSPUR

Gay and bright flower spikes resembling Delphinium. Reds, Blues, Pinks and White.  $1\frac{1}{2}$  ft.

**Tall Double Stock-flowered.**  $\frac{1}{4}$  oz. 25c.

### LOBELIA—Trailing

Pretty little dark blue flowers with dark foliage. Fine for edging or window boxes.

**Crystal Palace Compacta.**  $\frac{1}{4}$  oz. \$1.50

### LUPINE

Long spikes of white, blue and violet. 2 feet.

**Hartwegi.**  $\frac{1}{4}$  oz. 20c.

### MIGNONETTE

Delightfully, fragrant little flowers for combining with others in bouquets. 12 inches.

**Machet.**  $\frac{1}{4}$  oz. 15c.

### MORNING GLORY—Climbing

Huge, trumpet-like flowers for covering unsightly walls, fences, etc.

**Heavenly Blue.** A bright clear sky blue. Flowers often measure 4 in. across.  $\frac{1}{4}$  oz. 25c.

**Scarlett O'Hara.** Deep wine-red flowers. Wonderful in combination with Heavenly Blue.  $\frac{1}{4}$  oz. 40c.

**Pearly Gates.** A pure white, mammoth-flowering type.  $\frac{1}{4}$  oz. 50c.

**Giant Imperial.** All shades and colors mixed.  $\frac{1}{4}$  oz. 20c.

**MARIGOLD**

Various shades of orange, yellow, brown, red, etc. on finely cut foliage.

**Collarette, Crown of Gold.** 2 ft. Bright golden-orange flowers, with a crested center and broad guard petals.  $\frac{1}{4}$  oz. 30c.

**French Dwarf Harmony.** 8 in. Small blossoms with crested centers in all shades of brown, yellow and orange.  $\frac{1}{4}$  oz. 20c.

**Gigantea, Orange Sunset.** 2½ ft. Huge blossoms, 5 to 6 in. across in a fine deep orange.  $\frac{1}{4}$  oz. 75c.

**Gigantea, Sunset Giants.** All shades and colors in this supreme blend.  $\frac{1}{4}$  oz. 50c.

**Yellow Supreme.** 1½ ft. Huge, loose-petaled, fluffy flowers in bright yellow.  $\frac{1}{4}$  oz. 35c.

**Guinea Gold.** Like the above but a deep orange-yellow.  $\frac{1}{4}$  oz. 35c.

**Dixie Sunshine (Early Sunrise).** 2 ft. Quilled petals make this a curious and novel cut flower. Bright yellow.  $\frac{1}{4}$  oz. 35c.

**French Dwarf Single Brownie.** 1 ft. Gay mahogany and brown flowers striped with yellow.  $\frac{1}{4}$  oz. 35c.

**French Dwarf Double Royal Scot.** 1½ ft. Striped brown and gold flowers. Very striking and attractive.  $\frac{1}{4}$  oz. 45c.

**French Dwarf Double Scarlet Glow.** A bright orange scarlet with unusual shadings.  $\frac{1}{4}$  oz. 50c.

**African Tall Double Eldorado.** 3 ft. Huge balls of orange, gold and yellows.  $\frac{1}{4}$  oz. 45c.

**Extra Dwarf Double Spry.** 8 in. Cheerful yellow, bordered with mahogany.  $\frac{1}{4}$  oz. 45c.

**Dwarf Double Harmony Hybrids.** 12 in. Wide and varied range of color combinations.  $\frac{1}{4}$  oz. 30c.

**Tagetes Gnome.** 6 in. Dainty golden-yellow flowers on compact little plants. Wonderful for borders and edging.  $\frac{1}{4}$  oz. 75c.

**NASTURTIUM**

These bright flowers thrive on poor soil and like a sunny spot. 1 foot.

**Gleam Hybrids.** A large, semi-double form in all colors and shades.  $\frac{1}{4}$  oz. 15c.

**Golden Gleam.** Bright golden yellow.  $\frac{1}{4}$  oz. 15c.

**Scarlet Gleam.** Rich glowing scarlet.  $\frac{1}{4}$  oz. 15c.

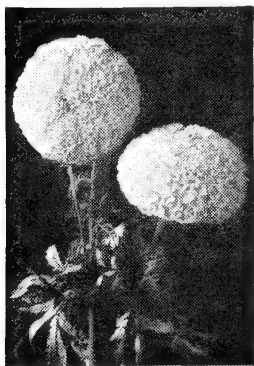
**Tall Mixed.** Trailing type.  $\frac{1}{4}$  oz. 15c.

**Dwarf Mixed.** Single flowers.  $\frac{1}{4}$  oz. 15c.

**NICOTIANA (Flowering Tobacco)**

Fragrant tubular flowers thriving in hot, dry weather. White, pink and deep red. 2 feet.

**Affinis Hybrids.**  $\frac{1}{4}$  oz. 25c.



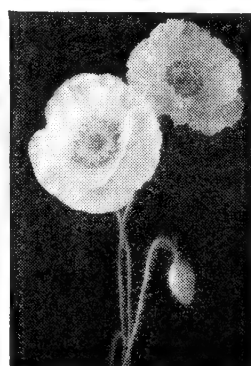
Marigold  
Tall African



Nasturtium  
Golden Gleam



Petunia, Fringed



Poppy, Single Shirley



Salpiglossis  
(See 3rd cover)

**PETUNIA**

**Martha Washington.** 8 in. Ruffled and fringed blush-pink, deepening to a dark violet throat. Pkt. 25c.

**Twinkles.** 8 in. Cheerful pink with an overlaid white star. Pkt. 25c.

**Hybrid Mixed.** 12 in. All shades and colors of single, long throated flowers.  $\frac{1}{4}$  oz. 50c.

**Balcony Blue.** A trailing type for window or plant boxes.  $\frac{1}{4}$  oz. 50c.

**Rosy Morn.** 15 in. Bright, lustrous pink with a white throat.  $\frac{1}{4}$  oz. 85c.

**LARGE FLOWERED FRINGED TYPES:**

**Setting Sun.** Very free flowering. A brilliant, deep rose with dark throats; very deeply fringed. Pkt. 25c.

**Dainty Lady.** Large, delicate yellow flowers on compact plants. Well fringed. Pkt. 25c.

**Miranda.** Huge rose carmine with dark throats. Pkt. 25c.

**Burgundy.** A rich wine red with a contrasting white throat. Pkt. 25c.

**Elk's Pride.** The largest and darkest deep velvety purple. Pkt. 25c.

**Flaming Velvet.** Luscious velvety blood red. Pkt. 25c.

**Pink Glory.** Large, deep rose, with a white throat. Pkt. 25c.

**Snow Queen.** Pure glistening white. Pkt. 25c.

**Fluffy Ruffles.** Delightful mixture of delicate light shades, finely fringed and heavily ruffled. Pkt. 25c.

**Giants of California.** Gigantic fringed and ruffled flowers with beautifully veined, attractive, deep throats. Pkt. 25c.

**POPPY**

Brightly colored, cup-shaped flowers in a wide variety of shades and tones. 2 feet.

**Single Shirley.**  $\frac{1}{4}$  oz. 20c.

**Double Shirley.** Exotic, Carnation-like flowers.  $\frac{1}{4}$  oz. 25c.

**PORTULACA**

Brilliant and colorful, little border or edging flowers, blooming only when the sun shines. 6-8 inches.

**Single.**  $\frac{1}{4}$  oz. 50c.

**Double.**  $\frac{1}{4}$  oz. \$1.25

**RICINUS (Castor Oil Bean)**

Gigantic, tree-like plant with colorful, tropical leaves. For lawn decoration. 6-12 feet.

**Zanzibariensis.** Oz. 10c.





FROM

.....  
.....  
.....

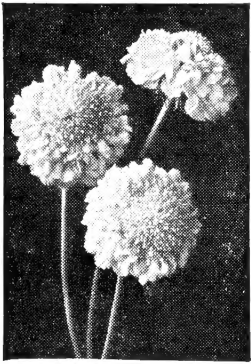
THE CHARLES C. HART SEED CO.

WETHERSFIELD 9,

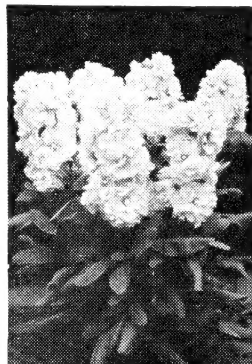
CONN.



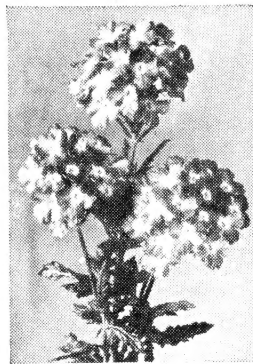




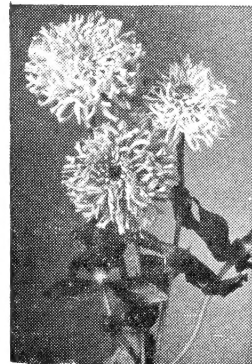
Scabiosa



Stocks, Ten Weeks



Verbena



Zinnia, Fantasy



Zinnia, Dahlia-flowered

## SALPIGLOSSIS (Painted Tongue)

Purple and yellow, trumpet-like flowers veined with gold. 2-3 feet.

**Empress.** ¼ oz. 45c.

## SCABIOSA (Mourning Bride)

Clusters or umbels of tiny flowers resembling a Pincushion. 1½ feet.

**Hybrids.** ¼ oz. 20c.

## SCHIZANTHUS (Butterfly Flower)

Pyramidal, bushy plants completely covered with colorful, butterfly-like flowers in a wide variety of pastel and bright colors. 1 foot.

**Grandiflora.** ¼ oz. \$1.25

## SNAPDRAGON—See Antirrhinum

## STOCKS

Spikes completely covered with large, double, sweet-scented flowers in all shades and tones. 1 foot.

**Giant Imperial.** Huge, double blossoms on immense spikes. A florist strain. ¼ oz. 90c.

**Dwarf Ten Weeks.** A good strain which contains a percentage of single flowers. ¼ oz. 30c.

## SWEET PEAS—Climbing

The secret of successful Sweet Peas is in early sowing. Our seed is highly superior in blossom, size, and stem length.

Rosy Lavender	Orange Tinted Salmon
Clear Pink	Rich Purple
Glistening White	Orange
Bright Pink on Cream	Dark Violet Blue
Deep Navy Blue	Dazzling Scarlet
Deep Rich Cream	

Separate colors, oz. 25c., ¼ lb. 75c.

**Unrivaled Mixture.** Contains the largest and most attractive named varieties as well as many of the newest experimental novelties. Oz. 20c., ¼ lb. 60c.

## SWEET WILLIAM

Perennial. 10 inches. Large clusters of good-sized flowers in bright and striking color combinations.

**Single.** ¼ oz. 65c.

**Double.** ¼ oz. 85c.

## VERBENA

Clusters or umbels of bright, vivid, four-petaled flowers. Fine for cutting. 1 foot.

**Gigantea Mixed.** ¼ oz. \$1.00

## ZINNIA

The most colorful and most popular garden flower. It ranges through every conceivable color and shade and its types resemble practically every other known garden flower. 1-3 feet.

**Giant Dahlia Flowered.** The petals of this superb strain are slightly incurved, giving the flower the appearance of depth. No other garden flower can surpass this in rich color and graceful form.

Rich Canary Yellow	Orange and Gold
Deep Crimson	Bicolor
Rosy Lavender	Large Creamy White
Light Rose Deep Center	Deep Purple
Deep Yellowish Orange	Bright Scarlet

Separate colors. ¼ oz. 45c.

**Gold Medal Mixture.** ¼ oz. 40c.

**California Giants.** Immense, flat flowers with flat petals, often measuring 6 in. across. The largest Zinnia grown.

Canary Yellow	Pure White
Soft Pink	Salmon Rose
Orange Scarlet	Glowing Scarlet

Deep Purple ¼ oz. 45c.

Separate colors.

**Finest Mixed.** ¼ oz. 40c.

**Lilliput.** Small, compact plants bearing an immense number of symmetrical, double flowers like buttons in every conceivable shade and tone.

Blackish Red	Golden Orange	Salmon Rose
Canary Yellow	Deep Pink	Scarlet
Bicolor Rose	Purple	White
	Rose Pink	

Separate colors. ¼ oz. 40c.

**Pastel Shades Mixed.** All light, delicate and dainty tones and shades. ¼ oz. 45c.

**All Colors Mixed.** ¼ oz. 35c.

**Fantasy.** Shaggy petaled, medium-sized double flowers presenting a very unusual and exotic appearance.

**Star Dust.** A beautiful and attractive golden yellow. ¼ oz. 45c.

**Finest Mixed.** A bright and colorful mixture. ¼ oz. 40c.

**Harmony.** Bears a large number of medium-sized flowers resembling the annual Scabiosa or Harmony Marigold with an outer fringe of petals and a central tuft of contrasting color.

**Mixed.** ¼ oz. 40c.

**Gaillardia-flowered or Navajo.** Resembles a double Gaillardia with its mellow tones and bicolors. Very striking and exotic. ¼ oz. 45c.



HART'S  
DAHLIA FLOWERED  
ZINNIA

Pkt. 10c., 1/4 oz. 35c.,  
Oz. \$1.45

**The Chas. C. Hart Seed Co.**

**WETHERSFIELD 9, CONN. :: NEWPORT, MAINE**