

Historic, Archive Document

Do not assume content reflects current scientific knowledge, policies, or practices.

62.47

Flower and Vegetable Seeds

Summer Flowering Bulbs and Supplies



See Page 8
for Prices

Aster
Giant Crego

1945 Catalog

A. H. Hummert Seed Co.

2746-48 Chouteau Ave. • Phone GRand 0646

Half Block from Wholesale Flower Market

St. Louis 3, Mo.

Vegetable - Flower Seeds, Bulbs, Insecticide Supplies

Catalog 1945

TERMS OF BUSINESS

Parcel Post. We will be pleased to send such items as can be mailed by parcel post; customers to remit for postage. We do not deliver any goods free at Wholesale Prices.

Routing. Please give explicit shipping directions with each order, giving name of freight, express and post office stations. If no directions are given, we will use our best judgment, but all goods travel at purchaser's risk.

Cash Discounts. Cash with order only. 5% on Flower Seeds, 2% on Vegetable Seeds, 2% on Bulbs. Otherwise, on bills for Flower and Vegetable Seeds, Bulbs, and Plants, a discount of 2% for payment 10 days from date of bill may be deducted. Exception to the above is taken when goods are supplied under special quotation, in which case particular terms will be noted.

Unknown correspondents desiring to open an account will please furnish three references to parties in the trade with whom they have had credit relations, and

sufficient time to investigate same; otherwise cash must accompany order.

All goods are offered subject to crop failures, shortages or other causes beyond our control and to being unsold on receipt of order, and we reserve the right to advance prices without notice.

We do not send goods C.O.D.

IMPOSSIBLE TO GUARANTEE CROPS

Warranty. Although we try our best to please we cannot warrant in any way, expressed or implied, the contents or description, purity, productiveness or any matter of any seeds, bulbs or plants and we will not in any way be responsible for the crop. If the purchaser does not accept these goods on the above terms no sale is made thereof and goods must be returned at once. Again we say for the business you have sent us we are grateful and trust we may continue to serve you carefully and promptly.

Prices in This Catalog Are Subject to Change Without Notice

LAWN GRASS SEED

The best time to start your lawn or to rebuild it, is during the cool weather early in spring or in fall. The weather at this time is favorable for the development of a good turf.

All our Lawn Grasses are re-cleaned and tested for highest quality, purity and germination.

One pound of Lawn Seed will sow 10x30 feet; 75 to 100 pounds to the acre.

BENT, COLONIAL or ASTORIA

A new, very fine-bladed grass producing a thick turf. 1/2 lb., 65c; 1 lb., \$1.25; 5 lbs., \$6.00.

BENT, SEASIDE

This is the variety which was first identified in Oregon. It is a hardy creeping variety forming close matlike sward. 1/2 lb., 65c; 1 lb., \$1.25; 5 lbs., \$6.00.

BERMUDA

It is of dwarf habit with long creeping stems, rooting at the joint and covering the ground with a matting of fine turf. 1 lb., \$1.25; 5 lbs., \$6.00.

BLUE GRASS, KENTUCKY (Poa pratensis)

Fancy extra re-cleaned. Kentucky Blue Grass is the most hardy and valuable of all grasses. 1 lb., 50c; 3 lbs., \$1.45; 5 lbs., \$2.40; 10 lbs., \$4.50; 25 lbs., \$9.75; 112-lb. bag, 34c per lb.

BLUE GRASS, CANADIAN (Poa compressa)

A very hardy perennial grass with creeping rootstocks. 1 lb., 55c; 3 lbs., \$1.55; 5 lbs., \$2.50; 25 lbs., \$11.25.

BLUE GRASS, KENTUCKY SUPREME BRAND

97 per cent pure. This seed is re-cleaned to the highest purity obtainable. 5 lbs., \$2.65; 10 lbs., \$5.25; 25 lbs., \$11.50; 112-lb. bag, 43c per lb.

VELVET LAWN SEED

The finest balanced mixture of the best Kentucky Blue Grass, Fancy Re-cleaned Red Top, small percentage of Rye Grass and White Clover. The best lawn mixture for this climate. 1 lb., 45c; 3 lbs., \$1.30; 5 lbs., \$2.15; 10 lbs., \$4.10; 25 lbs., \$8.75; 100 lbs., \$32.00.

RED TOP, FANCY

Red Top is a remarkable grass accommodating itself to a variety of soils and conditions. It is strongly drought-resistant. 1 lb., 35c; 3 lbs., \$1.00; 10 lbs., \$3.00; 100 lbs., \$22.00.

RYE GRASS

Succeeds well on almost any soil, but is particularly adapted to moderately moist lands. 1 lb., 25c; 3 lbs., 65c; 5 lbs., \$1.00; 10 lbs., \$2.00; 100 lbs., \$14.00.

RYE GRASS, PERENNIAL

A hardy grass of quick growth, suitable for lawns and meadows. 1 lb., 40c; 3 lbs., \$1.15; 5 lbs., \$1.75; 10 lbs., \$3.40; 100 lbs., \$22.00.

WHITE or DUTCH CLOVER FOR LAWNS

A low growing Clover. Very desirable for beautifying the lawn. 1 pound covers 600 square feet. 1/2 lb., 65c; 1 lb., \$1.15; 5 lbs., \$5.50.



FARM SEEDS

We carry in stock during the season a full line of farm seeds. Please write for price for any quantity you are in the market.

Alfalfa

Brome Grass

Lespedeza Clover

Sweet Clover

Hairy Vetch

Red Clover

HYBRID SEED CORN

Select large flat grain. Best for main crop. No. 13 per bu., \$7.00. For bottom ground, No. 8 per bu., \$7.50.

Red Top

Timothy

Millet

Soy Beans

Sudan Grass

Sunflower

VEGETABLE SEEDS

Prices f.o.b. St. Louis. Prices quoted are subject to change

One of the most profitable spring crops for the greenhouse or hotbed plant is seedling vegetable plants for home gardens. We are offering vegetable seeds only in the best standard varieties for market and home garden. Should you desire any variety not listed, please write.

ASPARAGUS

Mary Washington. $\frac{1}{4}$ lb., 35c; lb., \$1.25.

BUSH BEANS, GREEN POD

1 lb. will plant 100 ft. of row.

Bountiful Stringless. 48 days. This is the best flat-podded stringless variety. The light green pods are $6\frac{1}{2}$ to 7 inches long. Pkt., 10c; $\frac{1}{2}$ lb., 20c; 1 lb., 35c; 5 lbs., \$1.25; 10 lbs., \$2.25.

Stringless Green Pod. 52 days. A very desirable dwarf, round, green-podded snap bean, largely grown for the market. Pkt., 10c; $\frac{1}{2}$ lb., 20c; 1 lb., 35c; 5 lbs., \$1.25; 10 lbs., \$2.25.

Tendergreen Stringless. 56 days. A very high quality green-podded sort, of the finest quality. Pods are perfectly round. Pkt., 10c; $\frac{1}{2}$ lb., 20c; 1 lb., 35c; 5 lbs., \$1.35; 10 lbs., \$2.50.

Keystone New Stringless. 54 days. Pods are medium green, round, fleshy, fine grained and strictly stringless. Pkt., 10c; $\frac{1}{2}$ lb., 25c; 1 lb., 40c; 5 lbs., \$1.75.

WAX BEANS

Golden Wax. 48 days. A splendid home garden variety; also much used for canning.

Pencil Pod Wax. 52 days. The pods average 5 to 6 inches in length, a round-podded wax variety; they are very solid, meaty and tender.

Davis Stringless Wax. 48 days. Plant large and thrifty, heavily productive over long period. Pods handsome bright yellow, $5\frac{1}{2}$ to 6 inches long.

Above 3 Varieties:

Pkt., 10c; $\frac{1}{2}$ lb., 25c; 1 lb., 40c; 5 lbs., \$1.65.

BUSH LIMA BEANS

Burpee's Improved Bush Lima. 80 days. Grows 10 to 30 inches; handsome large pods.

Henderson's Bush Lima. 74 days. Produces enormous crops. Small seeded—sure to produce under any conditions.

Thorogreen. (Green Seeded.) 74 days. A baby bush lima with beans that retain their green color until they are fully matured. Pods are dark green, thick walled.

All Bush Lima Beans: Pkt., 10c; $\frac{1}{2}$ lb., 20c; 1 lb., 35c; 5 lbs., \$1.40; 10 lbs., \$2.50.

POLE BEANS

Kentucky Wonder, Old Homestead. 65 days. Unexcelled for home and market garden.

St. Louis Perfection. 70 days. An early maturing, green-podded, white-seeded pole sort, desirable for snaps and unsurpassed in its class as green shell beans. The pods are round.

King of the Garden. 84 days. One of the best pole limas, large leaved, good climber. Pods about $4\frac{1}{2}$ to $5\frac{1}{2}$ inches long.

All Pole Beans: Pkt., 10c; $\frac{1}{2}$ lb., 20c; 1 lb., 35c; 5 lbs., \$1.40; 10 lbs., \$2.50.

EDIBLE BEANS, DWARF

Edible Soy. Edible Soys, prepared just as lima beans, green or dry, are delicious. Soy beans are rich in Vitamins A, B and G. $\frac{1}{2}$ lb., 20c; 1 lb., 30c; 5 lbs., \$1.25.

White Navy. (Shell Bean.) The famous little white soup bean. $\frac{1}{2}$ lb., 15c; 1 lb., 25c; 5 lbs., \$1.00.

BROCCOLI

(Calabrese)

Early Green Sprouting. 70 days. Pkt., 10c; $\frac{1}{2}$ oz., 20c; oz., 35c; $\frac{1}{4}$ lb., \$1.00.



Bountiful Stringless



Detroit Dark Red



Tendergreen Stringless

BEETS

1 oz. to 60 ft. of row.

Early Wonder. 50 days. Earliest and best for forcing or home garden. Tops short, flesh dark red. Pkt., 10c; oz., 25c; $\frac{1}{4}$ lb., 60c; 1 lb., \$1.75.

Detroit Dark Red Selected. 55 days. Standard for home and market garden. Uniform globe-shaped. Pkt., 10c; oz., 25c; $\frac{1}{4}$ lb., 65c; 1 lb., \$1.85.

MANGEL BEET

Mammoth Long Red. Oz., 15c; $\frac{1}{4}$ lb., 40c; 1 lb., \$1.25.

BRUSSELS SPROUTS

Long Island Improved. 90 days. Pkt., 10c; $\frac{1}{2}$ oz., 35c; oz., 60c.



Golden Acre

CABBAGE

1 oz. will produce 2000 plants.

- All Seasons.** 80 days. Of the flat Dutch type and a first class main crop. The heads are very large and solid. $\frac{1}{2}$ oz., 20c; oz., 35c; $\frac{1}{4}$ lb., \$1.00; lb., \$3.50.
- Copenhagen Market.** 66 days. A very choice strain. Medium-sized heads; compact, good yielder. Pkt., 10c; $\frac{1}{2}$ oz., 25c; oz., 40c; $\frac{1}{4}$ lb., \$1.25; 1 lb., \$4.50.
- Charleston Wakefield.** 70 days. Large, heart-shaped, average weight 4 to 5 lbs. For home and market garden. Pkt., 10c; $\frac{1}{2}$ oz., 20c; oz., 35c; $\frac{1}{4}$ lb., \$1.00.
- Early Dwarf Flat Dutch.** 65 days. Heads nearly round, firm, fine flavor and high quality. Pkt., 10c; oz., 35c; $\frac{1}{4}$ lb., \$1.00; 1 lb., \$3.50.
- Early Jersey Wakefield.** Pointed heads. 62 days. Extremely early variety, very valuable for home and market garden. Pkt., 10c; $\frac{1}{2}$ oz., 20c; oz., 35c; $\frac{1}{4}$ lb., \$1.00.
- Golden Acre.** 64 days. Round head, short stem. Uniform, firm, especially valuable for early market and shipping. Pkt., 10c; $\frac{1}{2}$ oz., 25c; oz., 40c; $\frac{1}{4}$ lb., \$1.25; 1 lb., \$4.50.
- Premium Late Flat Dutch.** 90 days. Good keeper, firm heads of good quality. Dependable. Pkt., 10c; $\frac{1}{2}$ oz., 25c; oz., 40c; $\frac{1}{4}$ lb., \$1.25; 1 lb., \$4.50.

YELLOWS RESISTANT VARIETIES

- Jersey Queen.** 63 days. The resistant Jersey Wakefield. Heads are solid, conical. Pkt., 10c; $\frac{1}{2}$ oz., 25c; oz., 40c; $\frac{1}{4}$ lb., \$1.25.
- Marion Market.** (Yellows Resistant.) 85 days. This was originally bred up from Copenhagen Market. It takes about 20 days longer to mature. Pkt., 10c; $\frac{1}{2}$ oz., 25c; oz., 40c; $\frac{1}{4}$ lb., \$1.25; 1 lb., \$4.50.

SAVOY and RED CABBAGE

- Dwarf Um Savoy.** 85 days. Heads medium large; flat and firm. Crimped leaves. Pkt., 10c; $\frac{1}{2}$ oz., 25c; oz., 45c.
- Dark Red Erfurt.** 90 days. Best red variety. Good keeper, round hard head. Pkt., 10c; $\frac{1}{2}$ oz., 25c; oz., 45c.

CHINESE CABBAGE

Chinese or Celery Cabbage

- Chihili.** 75 days. This is a sure heading, vigorous growing lettuce variety with erect, cylindrical pointed head 18 to 20 inches long. Pkt., 10c; oz., 25c; $\frac{1}{4}$ lb., 75c.

CAULIFLOWER

- Super Snowball.** Finest quality. 65 days. Well adapted for use under a wide range of conditions. Heads large, firm and pure white, and well protected by inner leaves. Pkt., 25c; $\frac{1}{4}$ oz., \$1.00; $\frac{1}{2}$ oz., \$1.75; 1 oz., \$3.00.

CARROTS

1 oz. will sow 100 feet of row.

- Chantenay.** 70 days. Roots about 5 to 6 inches in length, 2 to $2\frac{1}{2}$ inches thick at the crown, smooth and tapering. Color deep orange-red. Pkt., 10c; oz., 25c; $\frac{1}{4}$ lb., 75c; 1 lb., \$2.15.
- Danvers Half Long.** 75 days. Bright orange, tapering. Very productive. Pkt., 10c; oz., 25c; $\frac{1}{4}$ lb., 75c; 1 lb., \$2.25.
- Touchon.** 75 days. An excellent variety. Attractive deep orange roots, 6 to 7 inches. Fine for canning. Pkt., 10c; oz., 20c; $\frac{1}{4}$ lb., 75c; 1 lb., \$2.25.

CELERY

- Giant Pascal.** 140 days. The standard late, green celery of excellent quality. Pkt., 10c; $\frac{1}{2}$ oz., 35c; oz., 65c; $\frac{1}{4}$ lb., \$2.25.
- Golden Self Blanching.** Select. 85 days. Early and very desirable for home and market garden. Pkt., 10c; $\frac{1}{2}$ oz., 35c; oz., 65c; $\frac{1}{4}$ lb., \$2.25.
- Celeriac.** Turnip rooted. 120 days. Pkt., 10c; $\frac{1}{2}$ oz., 30c; oz., 55c; $\frac{1}{4}$ lb., \$2.00.

SWISS CHARD

- Burpee's Rhubarb Chard.** Pkt., 15c; 1 oz., 35c.
- Lucullus.** 60 days. Large leaves are wrinkled, with thick midribs, tender and of good flavor. Oz., 20c; $\frac{1}{4}$ lb., 50c; 1 lb., \$1.40.

CHICORY

- Witloof or French Endive.** 150 days. Roots used for winter forcing. For blanching place the roots upright, about $1\frac{1}{2}$ inches apart. Pkt., 10c; oz., 25c.

COLLARDS

- Georgia or Southern.** A variety of cabbage that does not form a head, but produces a mass of leaves. Very hardy and continuous grower. Pkt., 10c; oz., 20c; $\frac{1}{4}$ lb., 60c.

CUCUMBERS

1 oz. will plant 50 hills; 2 lbs. will plant an acre.

- Black Diamond.** 64 days. Fruits rich dark green, retaining their color long after pickling. 7 to 8 inches long, $2\frac{3}{4}$ inches thick. Pkt., 10c; oz., 20c; $\frac{1}{4}$ lb., 60c; 1 lb., \$2.00.
- Davis Perfect.** 60 days. A very fine cucumber. Beautiful dark green color. Fruits 8 to 10 inches long, tapering at both ends, solid flesh, few seeds. Pkt., 10c; oz., 20c; $\frac{1}{4}$ lb., 60c; 1 lb., \$1.90.
- London Long Green.** 70 days. The fruits are very long, often 12 to 15 inches when mature, yellow when ripe. Pkt., 10c; oz., 20c; $\frac{1}{4}$ lb., 60c; 1 lb., \$2.25.
- Straight Eight.** 64 days. This White Spine variety typifies its name, running quite straight, regularly 8 inches long and 2 inches in diameter. Color dark green. Pkt., 10c; oz., 25c; $\frac{1}{4}$ lb., 75c; 1 lb., \$2.50.
- Snow's Perfection Pickling.** 60 days. Is grown almost exclusively for pickling and is ideal for that purpose. It produces fruits of pickling size in 47 to 50 days. Pkt., 10c; oz., 20c; $\frac{1}{4}$ lb., 60c; 1 lb., \$1.90.



Snow's Perfection Pickling

EGGPLANT

An ounce of seed is enough for 1000 plants.

- Black Beauty.** 80 days. It is oval in shape, uniformly the darkest in color. Perfectly spineless and smooth. Pkt., 10c; ½ oz., 30c; oz., 50c; ¼ lb., \$1.75.
- Improved New York Purple.** About 83 days. Early and almost continuous bearing; fruits are satiny smooth, rich purple color and large. Pkt., 10c; ½ oz., 30c; oz., 50c; ¼ lb., \$1.75.

KOHLRABI

1 oz. of seed will produce from 3000 plants.

- Earliest White Vienna.** 55 days. Greenish white outside, with clear white flesh within, fine quality. Pkt., 10c; ½ oz., 20c; oz., 35c; ¼ lb., \$1.25.
- Earliest Purple Vienna.** Same in every respect except in color. Pkt., 10c; ½ oz., 20c; oz., 35c; ¼ lb., \$1.25.

ENDIVE

1 oz. of seed for 50 ft. of row.

- Broad-Leaved White or Escarolle.** 92 days. A distinctly improved form of Broad-Leaved Endive. Plant medium large with deep, full, well-blanchd heart of infolded broad leaves. Pkt., 10c; oz., 20c; ¼ lb., 50c.
- Green Curled.** 95 days. The leaves of this variety are finely divided, giving a mossy appearance. Pkt., 10c; oz., 20c; ¼ lb., 50c.

LETTUCE

1 oz. will produce 3000 plants.

EARLY CURLD VARIETIES

- Early Curled Simpson.** 45 days. The standard loose-headed variety. Earlier than the heading sorts. Pkt., 10c; oz., 25c; ¼ lb., 60c; 1 lb., \$1.50.
- Black-Seeded Simpson.** 45 days. Easily grown, especially recommended for spring and early summer use. The leaves are large, yellowish green, fringed and crumpled. The inner leaves are almost white. Pkt., 10c; oz., 25c; ¼ lb., 60c; lb., \$1.50.
- Grand Rapids.** 45 days. Especially adapted for early family use. A loose-headed lettuce of pleasing appearance and remarkable table merit. Pkt., 10c; oz., 25c; ¼ lb., 65c; lb., \$1.75.
- Prize Head.** 40 days. Forms a very large loose head, slightly tinged with brown. Pkt., 10c; oz., 20c; ¼ lb., 60c.

HEADING VARIETIES

- Big Boston.** 70 days. Especially valuable for summer and fall use out-of-doors. It is a butter-head type with glossy leaves tinged brown. Pkt., 10c; oz., 25c; ¼ lb., 65c; lb., \$1.75.
- New York or Wonderful.** (No. 12.) This is a decidedly crisp, cabbage-heading variety. It is very large, rooting deeply, resisting hot, dry weather, slow to run to seed. Pkt., 10c; oz., 30c; ¼ lb., 90c; lb., \$3.25.

KALE

- Siberian.** 40 days. Very hardy and improved by moderate frost. Sow in May or June. Makes excellent greens, tender and fine flavor. Pkt., 10c; oz., 15c; ¼ lb., 50c; 1 lb., \$1.50.
- Dwarf Green Curled Scotch.** 55 days. Pkt., 10c; oz., 20c; ¼ lb., 65c; 1 lb., \$1.90.

LEEK

- Large London Flag.** ¼ oz., 25c; oz., 65c; ¼ lb., \$2.25.

MUSKMELON or CANTALOUPE

- Hale's Best.** 85 days. Exceptionally fine quality, originating in California's famous Imperial Valley. Salmon flesh, medium early. A splendid shipping melon. Pkt., 10c; oz., 20c; ¼ lb., 50c; lb., \$1.65.
- Pride of Wisconsin.** 90 days. Salmon flesh of unusual thickness. The melon grows to an average size of 8 inches. Pkt., 10c; oz., 20c; ¼ lb., 55c; lb., \$1.75.

WATERMELON

- Kleckley's Sweet.** 95 days. This is considered the sweetest of the large melons. Particularly adapted for home garden.
 - Stone Mountain (or Dixie Belle).** 110 days. Rich dark green in color with scarlet flesh that is exceptionally sweet.
 - Tom Watson.** 110 days. The rind is dark blue-green; the flesh is deep red and very sweet.
- All above: Pkt., 10c; oz., 20c; ¼ lb., 50c; 1 lb., \$1.25.

MUSTARD

1 oz. will sow 40 ft.

- Chinese Broad-Leaved.** The leaves are broad, smooth and often 12 inches long. Color deep green. Oz., 10c; ¼ lb., 35c; 1 lb., 90c.
- Southern Giant Curled (Long Standing).** 30 days. The leaves of this variety are closely curled and finely fringed. A little slower growing than the frilled varieties but longer standing. 1 oz., 10c; ¼ lb., 35c; 1 lb., 90c; 5 lbs., \$4.00.

OKRA or GUMBO

- Improved Dwarf Green.** 65 days. Low, stocky and productive, with long pods. Oz., 10c; ¼ lb., 35c; lb., 90c.

PARSLEY

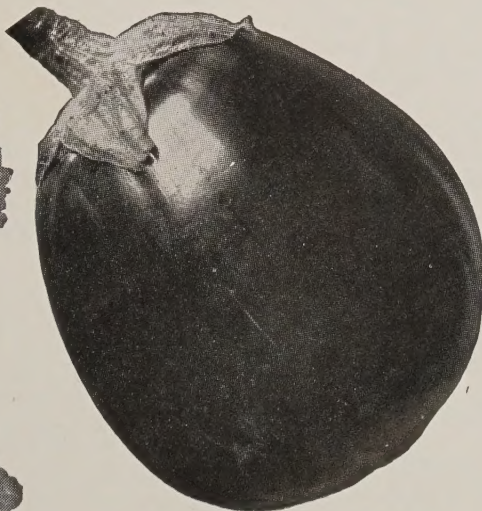
- Double Curled.** The best green curled. Pkt., 10c; oz., 20c; ¼ lb., 50c; 1 lb., \$1.40.
- Hamburg Rooted.** The root of this variety is edible. The roots may be stored in sand for winter use. Pkt., 10c; oz., 20c; ¼ lb., 50c; 1 lb., \$1.50.

PARSNIP

- Hollow Crown.** 95 days. This is the most popular and best variety in cultivation. The skin is smooth and the flesh tender. Pkt., 10c; oz., 20c; ¼ lb., 50c; 1 lb., \$1.50.



Grand Rapids



Improved New York Purple



Pride of Wisconsin

ONION

1 oz. will sow 100 ft. of row.

- Southport White Globe.** 110 days. This variety yields abundantly, producing medium to large, fine shaped clear white bulbs. Pkt., 15c; ½ oz., 30c; oz., 55c; ¼ lb., \$1.85; 1 lb., \$7.00.
- Southport Red Globe.** 110 days. Bulbs round, splendid keeper. Best of all red varieties. Pkt., 15c; ½ oz., 25c; oz., 50c; ¼ lb., \$1.75; lb., \$6.75.
- Sweet Spanish.** 100 days. Large, globular; yellow, good shipper and keeper. Pkt., 15c; ½ oz., 35c; oz., 60c; ¼ lb., \$2.00; 1 lb., \$7.50.
- White Lisbon Bunching.** The earliest and best onion for early bunching; small bulbs, skin pearly white, flesh of good quality and flavor. Pkt., 10c; ½ oz., 25c; oz., 45c; ¼ lb., \$1.60.
- Philadelphia Silverskin.** (For pickling.) This is a medium sized onion of mild flavor and with clear white skin. The variety is a favorite bunching onion, and for pickles. Pkt., 15c; ½ oz., 30c; oz., 60c; ¼ lb., \$1.85; 1 lb., \$7.00.

GARDEN PEAS

1 lb. is enough for 100 ft. of row.

- Alaska-Ameer Mammoth Pod.** The seed being smooth, it can be planted as early as any of the extra earlies. It is very prolific; pods of a rich dark green color. Vine about 30 inches high. Matures in about 56 days. Pkt., 10c; ½ lb., 20c; 1 lb., 30c; 5 lbs., \$1.15; 10 lbs., \$2.00.
- Laxton's Progress.** 62 days. The earliest of the large-podded dwarf peas. Pods 4½ inches long, containing 7 to 9 dark green peas. 18 inches tall. Pkt., 10c; ½ lb., 20c; 1 lb., 35c; 5 lbs., \$1.25; 10 lbs., \$2.25.
- Little Marvel.** 63 days. A leading variety of wrinkled-seeded. Grows 18 inches high. Pods average 3 inches, well filled with 7 or 8 large, deep green peas. Pkt., 10c; ½ lb., 20c; 1 lb., 35c; 5 lbs., \$1.25.
- Mammoth Pod Extra Early.** 65 days. Large pods, sweet rich quality, long lasting. Very popular for home garden and market. About 32 in. high. Pkt., 10c; ½ lb., 20c; 1 lb., 35c; 5 lbs., \$1.25; 10 lbs., \$2.25.

PEPPER

1 oz. will produce 2000 plants.

- Bell or Bull Nose.** 65 days. An early sweet pepper. Large, bright red, thick flesh. Pkt., 10c; ½ oz., 25c; 1 oz., 45c; ¼ lb., \$1.25.
- California Wonder Select.** (Sweet.) 72 days. Standard of excellence in sweet peppers. Heavy producer, fruit large, smooth. Pkt., 10c; ½ oz., 30c; 1 oz., 50c; ¼ lb., \$1.75.
- Chinese Giant.** (Sweet.) 80 days. The largest sweet pepper. Pkt., 10c; ½ oz., 30c; oz., 50c; ¼ lb., \$1.75.
- Hungarian Yellow Wax.** 70 days. This large fruited, early, hot pepper is highly esteemed for canning. The plants produce a fine crop of fruits 6 to 7 inches long and 2 inches in diameter. Pkt., 10c; ½ oz., 35c; oz., 60c; ¼ lb., \$2.25.
- Pimiento.** 73 days. The shape is distinctly conical, medium size. Color; when young, is a glossy green turning ruby-red when ripe. Pkt., 10c; ½ oz., 35c; 1 oz., 65c; ¼ lb., \$2.25.
- Ruby Giant.** 73 days. Standard for home or market. Very productive. Pkt., 10c; ½ oz., 25c; 1 oz., 45c; ¼ lb., \$1.40.

SMALL FRUITED VARIETIES

- Long Red Cayenne.** The fruit is 4 inches long and 1 inch thick, twisted and pointed. The flesh is strong and pungent. Recommended for drying. Pkt., 10c; ½ oz., 25c; oz., 50c; ¼ lb., \$1.50.
- Red Chili.** Bright red when ripe and are very hot or pungent. They are used for making pepper sauce. Pkt., 10c; ½ oz., 30c; 1 oz., 50c.

PUMPKINS

- Kentucky Field.** 100 days. Standard large pumpkin for canning and for stock feed. Oz., 10c; ¼ lb., 35c; 1 lb., 90c.

RHUBARB ROOTS

Strong roots, 2 years old, which, if planted in good soil early in the spring, will make a strong growth and yield stalks the following spring. 25c each; \$2.25 per doz.

RHUBARB

- Myatt's Victoria.** A splendid early sort. Stalks are large, very thick, of rich red color, and almost stringless. Oz., 25c; ¼ lb., 60c; 1 lb., \$2.00.

RADISHES

1 oz. will sow 100 ft. of row.

- Crimson Giant.** 30 days. Roots scarlet, spherical. Largest early radish which remains crisp the longest. Oz., 10c; ¼ lb., 35c; 1 lb., \$1.00.
- Scarlet Turnip White Tipped or Sparkler.** Something extra fine. 23 days. The lower half is white, the upper half bright scarlet, the contrast in color being very showy either on the table or market stand. Oz., 10c; ¼ lb., 35c; 1 lb., \$1.00; 5 lbs., \$4.50.
- Scarlet Globe.** (Selected Stock.) 23 days. The interior of the root is pure white, mild, crisp and fine grained. Recommended for market garden or forcing. Oz., 10c; ¼ lb., 35c; 1 lb., \$1.10; 5 lbs., \$4.75.
- Icicle.** 35 days. A magnificent white variety. Grows 3½ to 4 inches long. Oz., 10c; ¼ lb., 35c; 1 lb., \$1.10; 5 lbs., \$4.75.
- Long Scarlet Short Top.** 28 days. This is a well known sort with long, bright scarlet roots 6 or 7 inches long, with small top. Oz., 10c; ¼ lb., 35c; 1 lb., \$1.00.

WINTER RADISHES

- Rose-Colored China.** 40 days. Root long, of a fine scarlet color. Extremely solid and a most excellent keeping variety. Oz., 15c; ¼ lb., 40c; 1 lb., \$1.25.
- Round Black Spanish.** 40 days. Good specimens are almost round and measure 3 to 4 inches through. Skin black, flesh white. A fine keeper. Oz., 15c; ¼ lb., 40c; 1 lb., \$1.25.
- California White Mammoth.** Very solid and tender. The best white radish for late fall planting. Oz., 15c; ¼ lb., 40c; 1 lb., \$1.25.

RUTABAGAS

- American Purple Top.** A hardy productive variety; roots are large, globular in form, with a very small tap root; color, bright yellow with a purple top; flesh yellow. Oz., 10c; ¼ lb., 35c; 1 lb., \$1.00.

SALSIFY

(Oyster Plant)

- Mammoth Sandwich Island.** This variety is uniform in growth. The roots are of superior quality and most delicate flavor. Pkt., 10c; ½ oz., 30c; 1 oz., 50c; ¼ lb., \$1.50.

TAMPALA

Sow seed thinly after all danger of frost is past (about the time you plant corn, or any time after the soil becomes thoroughly warm); cover with ¼ in. of fine soil. For the most delicious "greens," raw or cooked, make several sowings 10 days or 2 weeks apart and use the entire plants when 5 or 6 inches high. Rows should be spaced 12 to 15 inches apart. Pkt., 15c.

SPINACH

1 oz. to 30 or 35 ft. of drill.

Bloomsdale Reselected. 40 days. The large leaves are very thick, dark green and curled. Oz., 10c; ¼ lb., 30c; lb., 75c; 10 lbs., \$5.50.

Zealand Spinach. 60 days. While this is not a member of the spinach family proper, it furnishes an abundance of delightful "greens" throughout the summer and right up to cold weather. Pkt., 10c; oz., 20c; ¼ lb., 60c; lb., \$1.75.

SQUASH

1 oz. will plant 20 hills; to 2 lbs. an acre.

Acorn. For baking. Matures in about 58 days. In size equals a coconut. The shell is usually thin and it does not require over 20 minutes for baking or boiling. The color is dark green. Pkt., 10c; oz., 20c; ¼ lb., 50c; lb., \$1.50.

Mammoth White Bush. 54 days. Creamy white and scalloped around the edges; flesh is milk-white and of delicious flavor. Widely used for stewing or boiling. Pkt., 10c; oz., 20c; ¼ lb., 50c; 1 lb., \$1.25.

Chicago Warty Hubbard. 110 days. Chicago Warty Hubbard Squash has been bred to the highest quality; fruits are large; skin rough, dark green; flesh bright orange, fine grained, rich and dry. Pkt., 10c; oz., 20c; ¼ lb., 60c; 1 lb., \$2.00.

Yellow Summer Crookneck. 55 days. Our strain produces fruit nearly double the size of the old "Crookneck." Pkt., 10c; oz., 20c; ¼ lb., 50c; lb., \$1.50.

Italian Marrow or Zucchini. 60 days. When matured it is 18 inches long, 5 to 7 inches in diameter and an excellent keeper, very dark green. A bush type and very productive. There is nothing better for slicing and frying when small. Pkt., 10c; oz., 20c; ¼ lb., 50c; lb., \$1.50.



Golden Cross Bantam Hybrid

SWEET CORN

1 pkt. plants 40 hills; 1 lb., 250 hills; 15 lbs. to acre.

Golden Cross Bantam Hybrid. 85 days. Bred for wilt resistance, high yield and superlative quality. Grows 7 to 8 ft. high. Fine ears with 10 to 14 rows of light golden kernels. Pkt., 10c; ½ lb., 30c; lb., 50c; 5 lbs., \$2.25.

Evergreen Hybrids. 90 days. You've tried yellow hybrids, now test the superiority of this corn of the Stowell's Evergreen type. Plants grow 8 to 10 ft. tall, ears measure 7½ to 8½ inches, with 14 to 18 rows of deep, narrow kernels. Pkt., 10c; ½ lb., 35c; lb., 60c; 5 lbs., \$2.50.

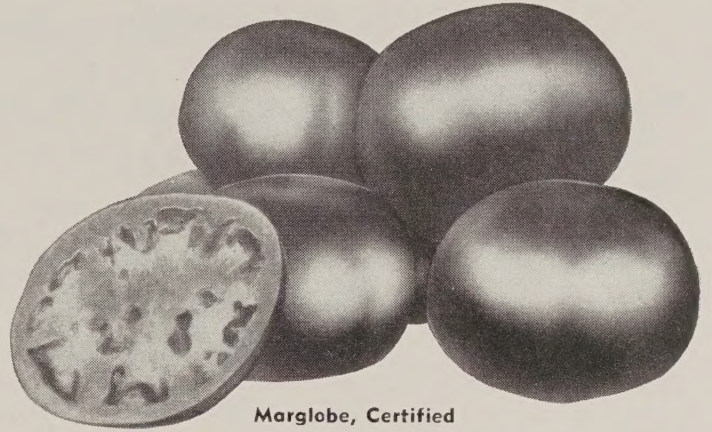
Country Gentleman. About 95 days. The grain is small and crowded together on the cob, instead of forming in defined rows. Deliciously tender and sweet. Pkt., 10c; ½ lb., 25c; lb., 40c; 5 lbs., \$1.75.

TURNIPS

1 oz. will sow 200 ft. of drill; 1 to 2 lbs. for an acre.

Purple Top White Globe. Roots globular, smooth; bright purplish red above, white below. Flesh white, firm, fine grained and tender. Oz., 10c; ¼ lb., 30c; 1 lb., 75c; 10 lbs., \$6.00.

Seven Top, for Turnip Greens. A foliage turnip for table and forage use. Crown sends up numerous leafy shoots which are excellent for greens. Oz., 10c; ¼ lb., 30c; 1 lb., 75c.



Marglobe, Certified

TOMATOES

1 oz. will produce about 1000 plants.

Bonny Best. 75 days. One of the most prolific of the early tomatoes. Medium size, solid, bright red. Pkt., 10c; ½ oz., 30c; oz., 50c; ¼ lb., \$1.65; 1 lb., \$6.00.

Break O' Day. Wilt resistant. 85 days. Vines vigorous and very productive. An early scarlet fruited variety. Medium to large size and globe-shaped. Pkt., 15c; ½ oz., 30c; oz., 55c; ¼ lb., \$1.85; 1 lb., \$7.00.

Crimson Cushion or Beefsteak. 98 days. Late, red, very large. Pkt., 10c; ½ oz., 30c; oz., 50c; ¼ lb., \$1.65; 1 lb., \$6.00.

Earliana. Very early—particularly valuable for home and early market garden. Medium size, deep scarlet. Pkt., 10c; ½ oz., 30c; oz., 50c; ¼ lb., \$1.65; lb., \$6.00.

Gulf State Market. 80 days. Very fine second early, crimson, medium size, very solid. Pkt., 10c; ½ oz., 30c; oz., 55c; ¼ lb., \$1.75.

Jubilee. New orange colored. Bronze medal in All-America 1943 trials. Non-acid, meaty, recommended. Pkt., 25c; ½ oz., 85c; oz., \$1.50.

Livingston Globe. 85 days. A large purplish pink, globe-shaped or very nearly round tomato of excellent quality. Pkt., 10c; ½ oz., 30c; oz., 55c; ¼ lb., \$1.85; 1 lb., \$7.00.

Marglobe, Certified. 85 days. Of fine appearance, and great productiveness. In color it is a most beautiful scarlet, ripening well up to the stem. The "Marglobe" has proven resistant to wilt. Pkt., 10c; ½ oz., 25c; oz., 45c; ¼ lb., \$1.50; 1 lb., \$5.50.

Michigan State Forcing. Developed at Michigan State College. Rich, deep scarlet fruits, average 5 to 6 ounces, globular, in large clusters. Highly self-pollinating but responds well to daily tapping of flowering clusters. Pkt., 25c; ¼ oz., 50c; 1 oz., \$1.75.

Oxheart. 90 days. Extra large, heart-shaped, few seeds, mild flavor. Pkt., 15c; ½ oz., 40c; oz., 75c; ¼ lb., \$2.50.

Ponderosa. 85 days. Extremely large; purplish pink, few seeds, mild flavor. Pkt., 15c; ½ oz., 35c; oz., 65c; ¼ lb., \$2.25.

Pritchard. (Scarlet Topper.) 90 days. Fine all-round variety, heavy yielder; second early; wilt-resistant; fruit solid. Pkt., 10c; ½ oz., 30c; oz., 50c; ¼ lb., \$1.75; lb., \$6.50.

Rutgers, Certified. 85 days. Desirable for market gardeners; bright red, smooth, thick walls—firm and mild. Does well even at a low fertility level. Favorite in sandy soil. Pkt., 10c; ½ oz., 25c; oz., 45c; ¼ lb., \$1.50; 1 lb., \$5.50.

Stone. 90 days. Valuable for market and canning; heavy producer; deep scarlet. Pkt., 10c; ½ oz., 25c; oz., 45c; ¼ lb., \$1.50; lb., \$5.50.

PICKLING or PRESERVING VARIETIES

Red Cherry. Used for preserving and pickling. Fruit small, round and deep red.

Yellow Plum. Fruits plum-shaped, clear yellow color. Either above: Pkt., 10c; ½ oz., 30c; 1 oz., 50c.

AGERATUM MEXICANUM

Dwarf, Compact

Tr. pkt. ¼ oz.

Midget Blue. Small, clear blue flowers, freely produced. One of the better strains	¼ oz., 90c..	\$0.35	\$1.75
Blue Ball Improved. 6 to 10 in. Large flowered strain	¼ oz., 60c..	.25	1.10
Blue Perfection. 10 to 15 in. Large flower heads20	.50

ALYSSUM

Tr. pkt. Oz.

Carpet of Snow. The best extra dwarf strain we know of	¼ oz., 25c..	\$0.15	\$0.90
Little Gem. 6 inches. White, good even stock	¼ oz., 25c..	.15	.90
Maritimum. Sweet, white. 10 inches15	.60
Snow Cloth. Excellent new selection, plants flat, compact mass pure white flowers	¼ oz., 25c..	.15	.90
Violet Queen. Bright violet, dwarf, compact, fine for bedding and borders ..	¼ oz., 35c..	.20	1.10

ALYSSUM

(Perennial)

Saxatile compactum (Basket of Gold). An indispensable plant for the rockery or border, growing 1 foot high and producing in May masses of broad, flat heads of bright yellow flowers	¼ oz., 30c..	.15	1.00
---	--------------	-----	------

AMARANTHUS

Tr. pkt. ¼ oz.

Tricolor (Joseph's Coat). Yellow, green, and red. 3 feet		\$0.20	\$0.45
---	--	--------	--------

ANTIRRHINUM - SnapdragonFor Outdoor Culture
Super Majestic

1½ feet.

The Majestic class are suited best for pot sale. An extra large flowered class of fairly compact growth. Fine for spring flowering if started early enough to draw up the stems.

Autumn Glow. Old rose suffused amber.**Dainty.** Soft pink.**Du Barry.** A flaming rose, with gold and amber shading.**Harmony.** Terra cotta and yellow.**Orange Shades.** Deep to light orange.**Red Rocket.** Bright red.**Rose Sensation.** Rose-pink.**Rosette** (MacDonald). Rich deep rose self.**Shasta.** Pure white.**Super Majestic Mixed.**

Prices on above Majestic varieties:

Each, tr. pkt., 25c; ¼ oz., 45c; ¼ oz., 85c.

Maximum or Super Giants

Rust-Resistant. 2¾ feet.

In habit these are taller than the Majus group, and the individual flowers are much larger. Fine for cutting

Apple Blossom. Rose-pink, white tubes.**Brilliant Rose.** A bright clear true rose-pink.**Campfire.** Luminous scarlet.**Canary Bird.** Giant yellow**Copper Queen.** Bronze-brown.**Crimson King.** Crimson.**Indian Summer.** Orange-scarlet.**Loveliness.** Soft rose-pink.**Red Cross.** Crimson, white tube.**Rosalie.** A rich deep rose, with an amber shading.**Snowflake.** Pure white.**Yellow Giant.** Deep yellow.**Maximum Mixed.** All varieties.

Prices on above Maximum Varieties:

Each, tr. pkt., 25c; ¼ oz., 45c; ¼ oz., 85c.



Ageratum, Midget Blue

ANCHUSA

(Annual)

Tr. pkt. Oz.

Blue Bird. Attractive deep Forget-Me-Not blue flowers. 18 to 24 in. ¼ oz., 30c..	\$0.15	\$0.90
Italica, Dropmore. Perennial. Grows 3 to 5 ft. high. Bears during May and June, in abundance, flowers of the richest gentian-blue	¼ oz., 25c..	.15 .85

ANTHEMIS - Marguerite

(Perennial)

Kelwayi. A most satisfactory hardy perennial bearing daisy-like, golden yellow blossoms; excellent for cutting	¼ oz., 35c..	.25
---	--------------	-----

ARMERIA - Sea Pink; Thrift

(Perennial)

Tr. pkt. ¼ oz.

Formosa hybrida. Heads of rosy pink flowers. Useful for edging or rockery..	\$0.25	\$0.70
--	--------	--------

ASPARAGUS

Carefully harvested, hand-picked, plump, well-matured seed.

Plumosus. The fine feathery variety.**Sprengeri.**

Prices on above: Each, 100 seeds, 30c; 250 seeds, 60c; 1000 seeds, \$1.90.



Antirrhinum

Forcing Snapdragons

SPECIAL OFFER—WHERE PRICE IS:

\$1.00 per pkt., we supply any 3 for \$2.50; any 5 for \$3.50.

\$1.50 per pkt., we supply any 3 for \$4.00; any 5 for \$6.50.

\$2.00 per pkt., we supply any 3 for \$5.00; any 5 for \$7.50.

1/2 Tr. pkts., all varieties listed at \$1.00, for 60c.

"SNAPS" for Greenhouse Forcing LEADING VARIETIES

	Tr. pkt.
* Better Times. Bright rose-pink, early bloomer	\$2.00
* Christmas Cheer. The best early pink. Easy to grow, sure to bloom, pleasing color, sow in June for Christmas crop	2.00
* Ethel. Is a large, bright yellow flower, winter bloomer, well formed head, good stems, shatterproof	1.50
* La France. Ruffled satiny pink, excellent spikes and stem, and a favorite with everyone	1.50
* Koester's White. A fine early new white	1.50
* Marie Louise. A beautiful shell-pink	2.00
* Mary Ellen (Yoder's). Early light rose-pink	2.00
Margaret (Yoder). Ivory-white	2.00
* Maryland Pink. Early, light pastel pink. Large flowers	3.00
* Peggy Schumann. A fine rose-pink, excellent spikes	2.00
* St. Louis Early Pink (Rowe). Beautiful shade of silvery pink ..	1.50
* Talisman. Improved strain, early, all double, all bronze, true to type and color	1.50
* White Prosperity. Clear white, extra fine	1.50
* White Wonder. Early snow-white	1.50
* Yellow Delight. Fine early yellow	1.50
* Yellow Wonder. Early clear deep yellow	1.50

STANDARD GREENHOUSE VARIETIES

Afterglow. Deep golden bronze, medium early	1.00
Bertha Baur. Lavender-orchid shade	1.00
* Ceylon Court Dark. Early yellow	1.00
* Cheviot Maid Supreme. Best early clear rose-pink	1.00
Coates' Yellow Perfection. A fine deep yellow, early	1.00
Daybreak. Strong, vigorous pink	1.00
Gilbert's Pink. Medium early	1.00
Glorious. Deep bronze, shaded scarlet	1.00
Hodaly's Ideal. A popular bronze and gold	1.50
Lucky Strike. Best white medium early	1.00
Roman Gold. Deep golden yellow	1.00
* Rose Queen. Fine deep rose, medium early	1.00
Schrock's Orchid. A fine orchid-lavender	1.00
* Schlegel's Early White. Is a clear white	1.00
* Schlegel's Early Yellow. Is a bright lively yellow	1.00
* Sun Tan. Rosy tan, yellow lip	1.00
Velvet Beauty. Rich American-Beauty-red in color	1.00
Greenhouse Varieties, Mixed. A good mixture75

In sowing Snapdragon Seed always bear in mind that failure in germination usually results either from covering the seeds too thickly with soil or allowing the flats to dry out while germination is under way, or not applying sufficient shade up to time the seedlings appear. For winter crop the seed should be sown in June and measures should be taken to prevent damping off.



Varieties preceded by * (*) are best for early winter flowering.

AQUILEGIA - Columbine (Perennial)

Long Spurred Columbines

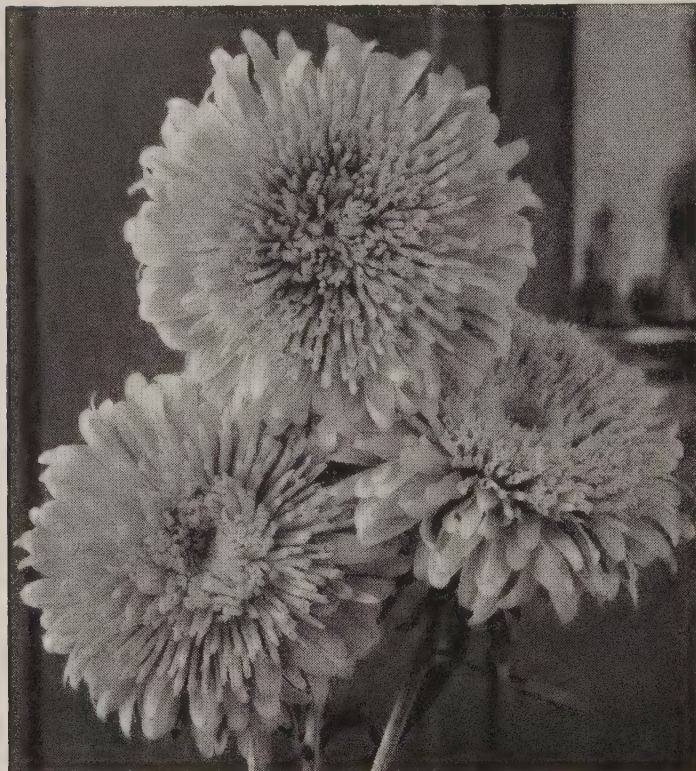
The plants are of strong, thrifty growth, with flowers of largest size, varying in color through tones of cream, pink, lavender, blue, white, red, etc.

Tr. pkt. 1/8 oz. 1/4 oz.

Mrs. Scott Elliott's Hybrids. An excellent and popular long-spurred mixture.	\$0.40	\$0.65	\$1.10
Blue Shades. An extremely fine strain of light and dark blue shades35	.60	1.00
Spurred Crimson Star. Out at present50		
Orange and Scarlet Shades. Contains fine shades of orange-scarlet35	.60	1.00
Rose Queen. Pink shades, long spurs. 2 1/2 ft.40	1.00	1.75
Snow Queen. 18 in. Finest pure white variety35	.60	1.00



Aquilegia, Long-Spurred Hybrid



Aster, Princess Bonnie

Queen of the Market

Wilt Resistant. 1½ feet

Medium sized flowers. Blooms in July. The earliest Aster of quality.

	Tr. pkt.	¼ oz.	Oz.
Azure Blue	\$0.30	\$0.50	\$1.75
Crimson	.30	.50	1.75
Dark Blue	.30	.50	1.75
Flesh Pink	.30	.50	1.75
Light Blue. Medium blue	.30	.50	1.75
Peach Blossom or Blush-Pink	.30	.50	1.75
Rose. Soft rose	.30	.50	1.75
White	.30	.50	1.75
Finest Mixed	.25	.40	1.60

Early Royal

Wilt Resistant, 2 feet

Blooms mid-July, directly following the Queen of the Markets.

	Tr. pkt.	¼ oz.	Oz.
Azure Blue or Dark Lavender	\$0.30	\$0.50	\$1.85
Deep Rose. Taller	.30	.50	1.85
Purple. Deep purple	.30	.50	1.85
Shell-Pink	.30	.50	1.85
Salmon-Rose. Lively color	.30	.50	1.85
White	.30	.50	1.85
Finest Mixed	.25	.45	1.75

Heart of France

Tr. pkt. ¼ oz. Oz.

Brilliant Red. Blooms about August 15th. Generally considered the best red Aster

	\$0.30	\$0.50	\$1.75
--	--------	--------	--------

Giant Crego Improved (Incurved)

Wilt Resistant. 2½ feet

Twisted and curled petals. Flowers of good size.

	Tr. pkt.	¼ oz.	Oz.
Azure Blue	\$0.30	\$0.50	\$1.75
Blue Flame. Bright navy blue	.30	.50	1.75
Crimson	.30	.50	1.75
Deep Rose. Bright rose	.30	.50	1.75
Light Blue	.30	.50	1.75
Peach Blossom. Opens white, flushes lavender-pink	.30	.50	1.75
Pink. Shell-pink	.30	.50	1.75
Purple or Dark Blue	.30	.50	1.75
White	.30	.50	1.75
Finest Mixed	.25	.40	1.60

ASTERS—WILT RESISTANT

Asters are now one of the most profitable cut flowers, whose culture has been greatly simplified by the introduction of Wilt-Resistant varieties.

Ball Wilt-Resistant

2½ feet

	Tr. pkt.	¼ oz.	Oz.
Ball White Late. Blooms early to mid-September	\$0.30	\$0.50	\$1.85
Ball White Early. Blooms late August to early September	.30	.50	1.85
Ball Phlox-Pink Early. Excellent commercial pink. Blooms about Sept. 5 to Sept. 10	.30	.50	1.85
Ball Deep Purple Early. Outstanding color. Blooms late August to early September	.30	.50	1.85
Ball Deep Rose Early. Attractive bright rose. Blooms about mid-August	.30	.50	1.85

Princess Bonnie

Tr. pkt. ¼ oz. Oz.

Princess Bonnie. A new type pink Aster; blooms have a full crested, powder-puff-like center; wilt resistant, a good shipper

	\$0.30	\$0.55	\$1.90
--	--------	--------	--------

American Beauty

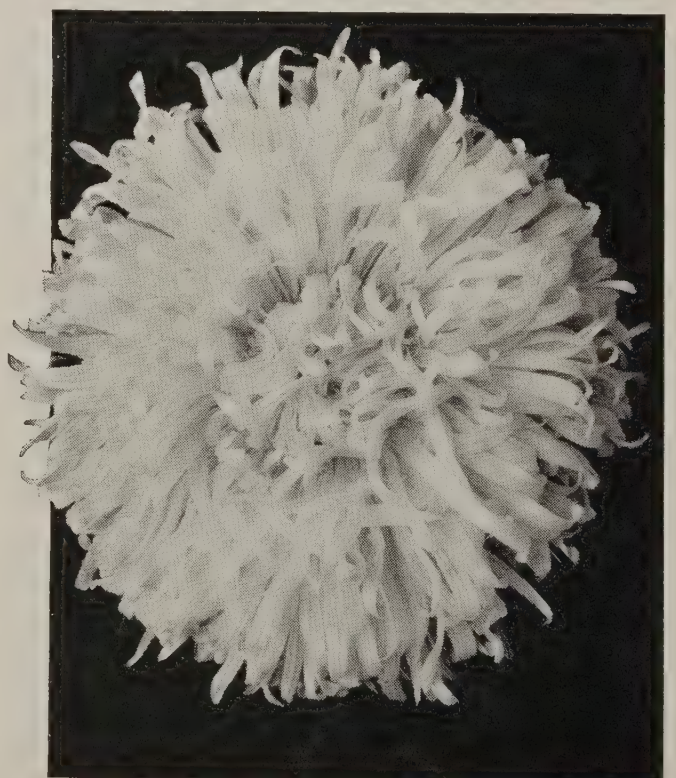
Wilt Resistant. 2½ to 3 feet

Blooms September 25th to October 1st.

	Tr. pkt.	¼ oz.	Oz.
Azure Fairy. Azure-blue or dark lavender	\$0.30	\$0.60	\$2.25
Crimson	.30	.60	2.25
Deep Rose	.30	.60	2.25
Purple	.30	.60	2.25
September Beauty. Delicate shell-pink	.30	.60	2.25
White	.30	.60	2.25
Mixed Colors	.30	.55	1.90

Single Chinensis

Single Varieties Mixed \$0.30 \$0.50



BALSAM

Tr. pkt. 1/4 oz.

- Double Bush Flowering. 15 in. Flowers are produced above the foliage \$0.25 \$0.60
- Double Camellia-Flowered Mixture. Attractive brightly colored mixture20 .40

BEGONIA

Among the best bedding plants for semi-shady positions and equally valuable for house culture and pots.

- Carmen. Bright rose flowers, bronze foliage Tr. pkt. \$1.50
- Christmas Cheer Red. A very large-flowered variety, color dark crimson-scarlet 1.00
- Christmas Pink. Identical to above variety, only the color is a delightful shade of warm rose-pink 1.50
- Luminosa Compacta. Extra dwarf, scarlet 1.50
- Indian Maid. 10-inch. Bright deep scarlet flowers with deep lustrous bronze foliage 1.50
- Masterpiece. One of the large flowered fibrous rooted Begonias, with clear rose-pink blossoms 1.00
- White Pearl. Pure white, green foliage 1.50

BROWALLIA

Tr. pkt.

- Speciosa Major. Large deep blue flowers. Fine for pots. 12 in. 1/32 oz., \$1.25.. \$0.50
- Viscosa Compacta, Sapphire. Dark blue, white eye, dwarf compact plant for pots and bedding. 1/32 oz., \$1.00.. .50

CALCEOLARIAS

This highly attractive pot plant calls for a cool house, must be sheltered from strong sun, and they are easily over-watered. Sow seed in July-August for nice plants for Mother's Day.

- Multiflora Nana Mixed. The average size of the blooms is only 1 1/2 inches, but the amount of flowers produced is unsurpassed. The color scheme is extraordinarily gay and full of contrast. Pinch out center to make a well-shaped bushy plant \$1.00

CAMPANULA MEDIUM - Canterbury Bells

- Cup and Saucer. 3 ft. Tr. pkt. 1/4 oz. Oz.
- Dark Blue \$0.20 \$0.45 \$1.50
- Light Blue20 .45 1.50
- Rose20 .45 1.50
- White20 .45 1.50
- Choice Mixed. Extra fine20 .35 1.35

CARNATION, GRENADIN

(Perennial)

- Cardinal Red Tr. pkt. 1/8 oz. 1/4 oz. \$0.50 \$0.85 \$1.50
- Snow White50 .85 1.50
- Triumph Deep Pink50 .85 1.50
- Grenadin Mixed50 .85 1.50

CARNATION, CHABAUD'S GIANT IMPROVED

- These carnations come into bloom five months from time seed is planted and continue to bloom throughout the summer.
- Mixed Tr. pkt. 1/8 oz. 1/4 oz. \$0.35 \$0.70 \$1.25

CALENDULA

Calendula are easily grown in a cool house with plenty of air. In fall, leave the ventilators wide open at all times if possible. A midwinter temperature of 45 degrees at night is best. If grown cool in a good soil you will get good hardy plants. The reason flowering plants sometimes come single is due to check in growth, such as poor soil, lack of water, or weakened through aphid. Sow seed first week in August for end of December or January crop. One ounce will produce about 2500 plants.

- Tr. pkt. 1/4 oz. Oz.
- Ball's Gold Improved. Deep golden yellow, extra long stemmed. \$0.25 \$0.50 \$1.50
- Ball's Lemon Queen. Clear yellow, dark center, medium long stem .25 .50 1.50
- Ball's Supreme. Light orange, dark center, medium long stem .25 .50 1.50
- Ball's Masterpiece. The finest long stemmed, dark center, orange.. .25 .50 1.50
- Ball's Improved Long Orange. Long-stemmed, light center, clear orange25 .50 1.50
- Sensation, Improved. Long stems: very double, brilliant orange.. .25 .50 1.50
- Price of the above: 2 ozs., \$2.50; 4 ozs., \$4.50.

- Tr. pkt. 1/2 oz.
- Chrysantha (Sunshine). Buttercup yellow \$0.20 \$0.50
- Orange King. Rich deep orange-red, dark center, medium; fine for pots and bedding20 .50

CARDINAL CLIMBER

- Tr. pkt. Oz.
- Cardinal Red. Rapid growing annual climber, producing a profusion of brilliant cardinal-red flowers. To hasten germination file or cut notch in seed.. \$0.20 \$0.75



Calendula, Sensation Improved

CANDYTUFT Tr. pkt. Oz.

Giant Hyacinth Flowered White, Extra Select. This is a very superior strain; it grows about 1½ feet high, with enormous trusses of blooms
 ½ oz., 45c; lb., \$8.00 . \$0.20 \$0.75

CANDYTUFT, PERENNIAL - Iberis

Tr. pkt. ¼ oz.
 Gibraltarica. Lilac, shading to white . . . \$0.25 \$0.50
 Queen of Italy. Rosy lilac25 .50
 Sempervirens. White, 1 ft.25 .50

CANDYTUFT, UMBELLATA

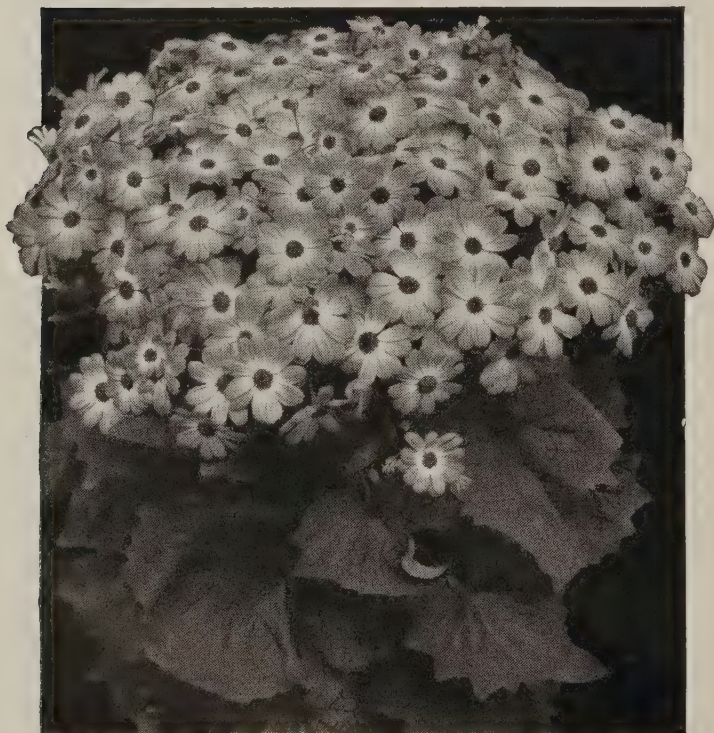
A popular spring cut flower. Sow in January, plant out 8x10 inches. Tr. pkt. Oz. ¼ lb.
 Carmine \$0.20 \$0.50 \$1.35
 Flesh-Pink20 .50 1.35
 Lavender20 .50 1.35
 Rose-Cardinal20 .50 1.35
 White20 .50 1.35
 Fine Mixed. All varieties20 .45 1.25

CELOSIA, DWARF

Feather varieties can be lifted to pots or transplanted from open ground when in full flower, much the same as hardy Mums. Fine for pot plants. Tr. pkt. ⅛ oz.
 Dwarf, Fire Feather \$0.35 \$0.75
 Dwarf, Golden Feather35 .75
 Flame of Fire. Excellent pot plant35 .75
 Dwarf Feather Mixture35 .70

CELOSIA, IMPROVED CRISTATA
 (Dwarf Cockscomb)

For beds, borders and pots. Tr. pkt. ⅛ oz.
 Amaranth. Brilliant red, green foliage . . \$0.25 \$0.50
 Empress. Dark foliage, dark red flowers. .25 .50
 Glasgow Prize. Green foliage25 .50
 Finest Mixed25 .50
 Tr. pkt.
 Maple Gold. Beautiful combs varying in color from light to dark pink, tipped with gold. Grows 2 to 3 ft. high and makes an excellent cut flower. Will keep 3 or 4 days out of water. \$0.35



Cineraria, Cremer's Prize Strain



Candytuft, Hyacinth Flowered

CELOSIA, TALL

The increasing popularity of this showy annual is explained by its ease of growth, making showy mass effects even in poor soil and hot climates.

Tr. pkt. ⅛ oz.
 Thompsoni magnifica. 4 ft. Well balanced mixture of all colors in this class. \$0.25 \$0.50

CENTAUREA CYANUS, DOUBLE
 (Cornflower or Bachelor's Button). 3 ft.

Seed of this valuable cut flower can be sown outdoors during September and usually lives outdoors during winter, same as annual Larkspur. Tr. pkt. Oz. Lb.
 Blue Boy. Finest blue \$0.15 \$0.45 \$5.00
 Pinkie. Fine deep pink15 .45 5.00
 Red Boy. Deep carmine rose15 .45 5.00
 Snow Man. White15 .45 5.00
 Double Finest Mixed15 .35 4.50

CENTAUREA, WHITE-LEAVED

(Dusty Miller. For borders, vases, baskets.) Tr. pkt. ¼ oz.
 Candidissima. 6-inch. Silver gray foliage. \$0.25 \$0.65
 Gymnocarpa. 24-in. Fine, silvery foliage. .15 .40

CERASTIUM Tr. pkt. ¼ oz.

Tomentosum (Snow-in-Summer). Silvery white foliage. White flowers. 16 inches. \$0.20 \$0.35

CHEIRANTHUS - Wallflower

Tr. pkt. ½ oz.
 Golden Bedder. Deep yellow
 ¼ oz., 25c. \$0.15 \$0.45
 Allioni (Siberian Wallflower). Brilliant orange15 .25

CHRYSANTHEMUM, DOUBLE

Tr. pkt. ¼ oz.
 Golden Crown. Bright butter-yellow flowers are quilled and come fully double. \$0.25 \$0.65

CHRYSANTHEMUM, SHASTA DAISY
 (Perennial) Tr. pkt. Oz.

Shasta Alaska. The most popular of all. Very large pure white flowers with small yellow centers. 2½ ft. ¼ oz., 45c. \$0.25 \$1.25
 Asterflorum. Giant double shaggy aster-like Daisy50
 Double Shasta Alaska. A fine double cut flower variety, about 70% double50

CINERARIA HYBRIDA

Tr. pkt.

- Cremer's Prize.** Improved. A very excellent market strain. Distinguished by small foliage, medium to small flowers produced very profusely in large heads and medium tall habit ..\$1.50
- Siter's Rainbow Strain.** An excellent market strain with immense heads of medium large, mostly white-eyed flowers and small foliage 2.00

CINERARIA MARITIMA

(Foliage Varieties) Tr. pkt. ¼ oz.

- Diamond.** White leaved\$0.20 \$0.60

CLARKIA ELEGANS DOUBLE

2 feet. Sow in January, grow on in a flat or shallow raised bed. Must be run dry and not fed during growing season.

- Brilliant.** Bright carmine. **May Blossom.** Rose-pink.
Enchantress. Salmon-pink. **Exquisite Mixed.**
Glorious. Brilliant scarlet.

Tr. pkt., 25c; ¼ oz., 50c.

COLEUS

Large Leaved Hybrids. Seed saved from newest and finest large leaved varieties of superbly variegated foliage. Tr. pkt., \$1.00.

CUPHEA

Tr. pkt.

Firefly. A very attractive spring pot plant that may be planted out for bedding and border work. Height 12 in. and covered with small bright scarlet flowers throughout the summer . \$0.50

COREOPSIS GRANDIFLORA (Perennial)

Very good cut flower. Tr. pkt. ¼ oz. 1 oz.

- Sunburst (New Gold).** A fine semi-double strain\$0.20 \$0.30 \$1.00
- Mayfield Giant.** Extra large deep golden yellow. Single\$0.15 \$0.25 \$0.75

COSMOS, SINGLE SENSATION

- Cardinal.** Crimson. **Purity.** Pure white.
Pinkie. Light pink. **Sensation Mixed.**

Tr. pkt., 20c; ¼ oz., 35c; oz., 90c.

COSMOS, LATE SINGLE

- | | Tr. pkt. | Oz. | ¼ lb. |
|--|----------|--------|--------|
| Lady Lenox. Pink | \$0.15 | \$0.35 | \$1.25 |
| Lady Lenox. White | .15 | .35 | 1.25 |
| Perfection. Crimson | .15 | .35 | 1.25 |
| Orange Flare. Fine orange | .15 | .40 | 1.50 |

CYNOGLOSSUM - Chinese Forget-Me-Not

Tr. pkt. ½ oz.

- Firmament.** A dwarf (15 inches) selection from the original blue strain; rich blue, even habit\$0.25 \$0.75

DAHLIA

Seedling Dahlia strains have increased in favor rapidly the past few seasons. Can be flowered the first season if sown early.

Tr. pkt. ¼ oz.

- Unwin's Dwarf Hybrids.** Double and semi-double types. Very even habit, 18 inches, with an attractive bright color range1 oz., \$2.75..\$0.35 \$0.75

DELPHINIUM (Perennial)

PACIFIC GIANTS
(Vetterle and Reinelt)

An early spring sowing of either the Giant Pacific Hybrids or the regular cut flower kinds such as Belladonna Improved will produce fine large clumps by next fall for greenhouse forcing or sale.

Black Knight Series. The darkest of them all. Individual flowers of beautiful round form, with heavy velvety texture.

Blue Bird. A clear medium blue with huge tall spikes. The most outstanding novelty.

Bluejay Series. Every Delphinium lover seeks the true blue color. The color is striking, clear medium to dark blue.

Cameliard Series. This is a pure lavender self, with white bee, the individual flowers are very round and flat. Beautifully balanced spikes combine with excellent growing habits.

Galahad Series. Finest white of enormous size, averaging three inches in diameter of individual flowers with very heavy glistening texture.

Guinevere. Light pink lavender self with white bee. Individual florets 2½ to 3 inches in diameter.

King Arthur. Brilliant royal velvet with large white bee. Individual florets 2½ inches in diameter, very thin woody stems with small foliage. Very long graceful spikes.

Lancelot Series. A new color in Delphinium of pure lilac self tone with white bee. Individual flowers 2 to 2½ inches in diameter.

Round Table Series. As the name implies, this represents all the newest color developments and possessing size that will make them invaluable for show purposes.

Summer Skies. Clearest light blue with white bee. Individual florets 2 to 2½ inches in diameter.

Prices of Above Varieties:

Tr. pkt., \$1.00; ⅛ oz., \$2.00; ¼ oz., \$3.50; oz., \$12.00.

Pacific Giants Mixed. Select mixed. Tr. pkt., 75c; ⅛ oz., \$1.75; ¼ oz., \$3.00; oz., \$10.00.

BELLADONNA TYPE

Tr. pkt. ¼ oz. 1 oz.

Belladonna Improved. Light blue, large flowered and a strong grower. The finest strain of Belladonna on the market ¼ lb., \$9.00..\$0.40 \$0.75 \$2.50

Bellamosum Improved. Extra select, dark blue, large flowers, deeper and more uniform color. ¼ lb., \$9.00.. .40 .75 2.50

Blackmore and Langdon Hybrids. Shades of blue with contrasting bees. A fine, free-flowering, hybrid strain50 .90 3.25



Delphinium, Pacific Giants

DIANTHUS - Pinks (Annual)

Dianthus Chinensis - China or India Pinks

	Tr. pkt.	1/4 oz.	Oz.
Chinensis, Double. Choice Mixed.	\$0.15	\$0.25	\$0.90
Chinensis, Single. Choice mixed.	.15	.25	.90

Dianthus Heddwigi

	Tr. pkt.	1/4 oz.	Oz.
Heddwigi, Double. Choice mixed	\$0.15	\$0.25	\$0.90
Heddwigi, Single. Choice mixed.	.15	.25	.90

Dianthus Plumarius - Grass or Clove Pinks
(Perennial)

	Tr. pkt.	1/4 oz.	Oz.
Cyclops, Single Perpetual. Various colors, red eye	\$0.20	\$0.30	\$1.10
Spring Beauty. Double giant-flowered Carnation-like in form and with a beautiful color	.25	.55	1.75
Plumarius Single (Single Pinks). Fine mixed	.25	.40	1.25

Dianthus - Pinks For Rock Garden

(Perennial) Tr. Pkt.

Allwoodi alpinus. Flowers first year from seed. 4 to 6 inches high; mixed colors. A gem for the rock garden; fragrant	1/8 oz., 90c.	\$0.35	
	Tr. pkt.	1/4 oz.	Oz.

Caesius (Cheddar Pink). A dwarf tufted variety. Rose-pink flowers	\$0.20	\$0.25	\$1.00
---	--------	--------	--------

Deltoides Rose (Maiden Pinks)	.20	.35	1.25
-------------------------------	-----	-----	------

Deltoides Mixed	.20	.35	1.25
-----------------	-----	-----	------

Rock Garden Rare Species Mixed.	.25	.75	
---------------------------------	-----	-----	--

Sweet Wivelsfield. The plants grow 12 inches high, with showy blooms in shades of pink and crimson	.20	.45	
--	-----	-----	--

Dianthus barbatus. See Sweet William.

DIDISCUS

Tr. pkt.

Coeruleus. Blue Lace Flower	\$0.25		
-----------------------------	--------	--	--

DIGITALIS - Foxglove

(Perennial) Tr. pkt. 1/4 oz.

Giant Shirley Mixed. A greatly improved strain of unusually strong, vigorous growth. Enormous spikes 3 to 5 feet in length set with very large flowers	\$0.20	\$0.60	
--	--------	--------	--

DRACAENA

Tr. pkt. 1/2 oz.

Indivisa. Narrow green leaves	\$0.25	\$0.60	
-------------------------------	--------	--------	--

ESCHSCHOLTZIA - California Poppy

Tr. pkt. Oz.

Hybrida Mixture.	\$0.15	\$0.75	
------------------	--------	--------	--

FEVERFEW - Matricaria

(Perennial) Fine for Cut Flowers

Tr. pkt. 1/4 oz. Oz.

Ball's Double White. Extra	\$0.40	\$0.90	\$3.50
----------------------------	--------	--------	--------

Dwarf Double Golden Ball	.25	.50	1.50
--------------------------	-----	-----	------

FOUR O'CLOCK

Oz. 1/4 lb.

Marvel of Peru, Mixed	\$0.20	\$0.50	
-----------------------	--------	--------	--

FORGET-ME-NOT - Myosotis

(Biennial) Tr. pkt. 1/8 oz.

Royal Blue. (Indigo blue.) 12 in. Deep rich blue	1/4 oz., \$1.35	\$0.40	\$0.75
--	-----------------	--------	--------

Oblongata, Blue Bird. Large deep blue flowers 3 to 4 months after sowing; height 1 ft.	\$0.35	\$0.85	
--	--------	--------	--

GEUM (Perennial)

Tr. pkt. 1/4 oz.

Mrs. Bradshaw. Large double, brilliant orange-scarlet; height, 1 1/2 ft.	\$0.25	\$0.50	
--	--------	--------	--

Prince of Orange. Large, showy, orange-red flowers	.25	.50	
--	-----	-----	--



Dianthus Plumarius

GAILLARDIA GRANDIFLORA

(Perennial)

One of the showiest and most effective hardy perennial plants. It should have a place in every hardy border, also splendid for cutting. 2 feet.

Tr. pkt. 1 oz.

Burgundy. Self-colored wine-red, 2 1/2 in. in diameter, on long stiff stems, from June until fall	1/4 oz., 50c.	\$0.30	\$1.75
---	---------------	--------	--------

Dazzler. Large flowers, bright golden yellow, with rich maroon-red center. 3 ft.	1/4 oz., 45c.	.25	1.50
--	---------------	-----	------

Goblin. Very compact globular plants, red and yellow bicolor	1/4 oz., 55c.	.35	1.90
--	---------------	-----	------

Portola Hybrids. The flowers are very large, of great substance. Color a brilliant scarlet with copper hue. Petals heavily tipped with golden yellow. 2 1/2 to 3 ft.	1/4 oz., 45c.	.25	1.50
--	---------------	-----	------

Grandiflora Superb Mixed. Splendid combinations of crimson and gold in great variety	1/4 oz., 35c.	.20	1.10
--	---------------	-----	------

GAILLARDIA PICTA

(Annual)

Tr. pkt. Oz.

Lorenziana Double Choice Mixed	1/4 oz., 40c.	\$0.25	\$1.25
--------------------------------	---------------	--------	--------



Gaillardia, Burgundy

GOURDS, ORNAMENTAL

Decorative Varieties, Mixed. ¼ oz., 15c; oz., 45c.

GREVILLEA

Robusta (Australian Silk Oak). Popular for specimen or combination work. Tr. pkt., 25c; ¼ oz., 50c.

GYSOPHILA ELEGANS

These are always in demand for mixing with other cut flowers. Several plantings can be made during the season in order to have a succession of bloom.

Covent Garden Market Reselected. 2 ft. An improved giant pure white. Tr. pkt., 15c; oz., 25c; ¼ lb., 75c; 1 lb., \$2.50.

Grandiflora Alba, London Market. The largest flowered pure white Gypsophila. Tr. pkt., 15c; oz., 25c; ¼ lb., 75c; 1 lb., \$2.50.

Elegans Carmine. Same habit as others, but with bright carmine-pink flowers. Rather small flowered. Tr. pkt., 20c; ¼ oz., 35c; 1 oz., \$1.00.

GYSOPHILA - Baby's Breath
(Perennial)

Pacifica. Pink variety of strong growth blooming later than *Paniculata*. 4 ft. Tr. pkt., 50c; ⅛ oz., 90c.

Paniculata. Small, white flowers about 50 per cent double. An excellent strain for drying. Tr. pkt., 50c; ⅛ oz., 75c.

Repens, White. Dwarf trailer with masses of small white flowers. 6 inches. Tr. pkt., 50c; ⅛ oz., 55c.

HELIANTHEMUM - Rock or Sun Rose
(Perennial)

Mutabile. Low-growing evergreen plants, mixed colors. Tr. pkt., 20c; ¼ oz., 50c.

HELICHRYSUM

The popular double Strawflower.

Choice Mixed. Tr. pkt., 20c; ¼ oz., 35c; 1 oz., \$1.00.

HEUCHERA - Coralbells
(Perennial)

Sanguinea (Coral Bells). 24 in. Crimson. An attractive garden plant with some value for cutting. Tr. pkt., 50c; 1/16 oz., \$1.00; ⅛ oz., \$1.75.

HOLLYHOCKS
(Perennial)

Imperator. Choice double fringed mixture. Tr. pkt., 25c; ¼ oz., 50c; 1 oz., \$1.65.

Triumph. Double mixed. Flowers waved and fringed. Tr. pkt., 25c; ¼ oz., 50c; 1 oz., \$1.65.

CHATER'S DOUBLE

Double Crimson	Double Newport Pink
Deep Rose	White
Maroon	Mixed
Yellow	

Each: Tr. pkt., 25c; ¼ oz., 45c; 1 oz., \$1.50.

HUNNEMANNIA

Sunlight. Semi-double. Tr. pkt., 25c; ¼ oz., 50c; 1 oz., \$1.75.

IMPATIENS

Provide splendid pot plants. Also useful for porch boxes. Will succeed in partial shade. **Cannot supply.**



ANNUAL LARKSPUR
TALL BRANCHING DOUBLE STOCK
FLOWERED, 4 Feet

The tall double stock-flowered are best suited for outdoor planting. Seed sown latter part of September usually winters over well in our latitude.

Dark Blue. Fine dark blue.	Los Angeles. Salmon-rose.
Empress Rose. Select rose.	Rosamond. Fine rose-pink.
La France. Salmon-pink.	White. Pure white.
Lilac Improved. Deep lilac.	Mixed. Best mixed.

Tr. pkt., 25c; oz., 75c; ¼ lb., \$2.50; lb., \$9.00.

IMPERIAL OR BASE BRANCHING

These Larkspurs are ideal for cut flowers as the flower stems, three to four feet long, branch from the base of the plant. Best for indoor forcing.

Blue Bell. Fairly deep blue; excellent.	Los Angeles Improved. Salmon-rose.
Blue Spire. Very deep violet-blue.	Lilac Queen. Rich lilac-lavender.
Carmine King. Carmine-rose.	Lilac Spire. A fine lilac.
Exquisite Rose. Soft rich pink.	White King. A fine early white.
Gloria Improved. Deep rose-pink.	Mixed. Best mixed.

Prices above varieties: Tr. pkt., 30c; oz., 80c; ¼ lb., \$2.75; lb., \$10.50.

LARKSPUR, COCKADE TYPE

An improved strain of the base branching Giant Imperial type—producing a more symmetrical plant with longer flowering spikes and closer spaced florets.

Blue Cockade. Rich lilac-blue.
Cinnabar Cockade. Brilliant rose.
Salmon-Pink Cockade. A fine color.
White Cockade. Pure white.
Cockade Exquisite Mixed, above varieties.

Prices of above: Tr. pkt., 30c; oz., 90c; ¼ lb., \$3.00.

LINARIA MAROCCANA

Fairy Bouquet (Miniature Snapdragon). 10 inches. Flowers very early and freely. Tr. pkt., 25c; ¼ oz., 65c.

LINUM - Flax
(Perennial)

Perenne (Blue Flax). Pale blue, round-shaped flowers on slender stems, height 18 inches. Tr. pkt., 15c; ¼ oz., 25c; 1 oz., 75c.

LOBELIA

	Tr. pkt.	1/4 oz.	
Blue Stone Reselected. Compact habit, large flowers, brilliant mid-blue	\$0.35	\$1.00	
Crystal Palace Compacta. 4 inches, ultra-marine-blue. The best for edging; dark foliage35	.80	
Florist Favorite. Dark blue, white eyes; 4 inches35	.85	
Mrs. Clibran. Deep blue, white eye, dark foliage35	.90	
Sapphire. For hanging baskets, large, deep navy-blue with white eye35	1.00	

LOBELIA, PERENNIAL

	Tr. pkt.	1/4 oz.
Cardinalis. Deep cardinal-red spike. August flowering	\$0.35	\$0.90

LUPINUS (Annual Lupines)

The annual varieties are popular cut flowers and excellent for forcing.

	Tr. pkt.	Oz.	1/4 lb.
Hartwegii Giant, King Blue	\$0.20	\$0.60	\$2.00
Hartwegii Giant, King White20	.60	2.00
Hartwegii Giant, Sky-Blue20	.60	2.00
Hartwegii, Annual. Mixed Colors. 2 feet	1/2 oz., 20c.	.35	1.25

LYCHNIS

(Perennial)

	Tr. pkt.	1/4 oz.
Chalcedonica. Fine scarlet flowers. 2 ft.	\$0.20	\$0.50
Salmon Queen. Salmon-pink25	.75

MARIGOLD - Tagetes

Tall African, Double Fistulosa 3 Feet

An especially fine tall branching strain, bearing enormous flowers of the quilled type; valuable for cutting.

Orange All-Double. A strain of African Marigold which has come about 95% double. A superior strain for cutting. Tr. pkt., 25c; 1/4 oz., 50c; 1 oz., \$1.50; 1/4 lb., \$5.00.

All-Double Lemon. Same trueness to double type as All-Double Orange. Tr. pkt., 25c; 1/4 oz., 50c; 1 oz., \$1.50; 1/4 lb., \$5.00.

Burpee Gold. An odorless Guinea Gold, same deep golden orange color but considerable earlier. Fine for a spring greenhouse crop or for outdoor cutting if not too hot. Tr. pkt., 25c; 1/4 oz., 50c; 1 oz., \$1.75.

Golden Emblem. Bright gold; midway between orange and lemon; fairly true. Tr. pkt., 25c; 1/4 oz., 40c; 1 oz., \$1.25.

Mission Giant Yellowstone. Clear golden yellow. A new personality in Marigolds of exceptional merit. The plants grow about 18 inches high. Tr. pkt., 25c; 1/4 oz., 50c; 1 oz., \$1.50.

All-Double Mixture. Mixture of above All-Double varieties. Tr. pkt., 25c; 1/4 oz., 40c; 1 oz., \$1.35.

African, Double Carnation-Flowered 2 1/2 Feet

This new type produces practically 100 per cent double plants. The loose, informal flowers are fluffy in appearance and very popular for cutting.

Golden Eagle. Midway between Guinea Gold and Yellow Supreme in color. Quite large and fairly true to type. Tr. pkt., 25c; 1/4 oz., 40c; 1 oz., \$1.25.

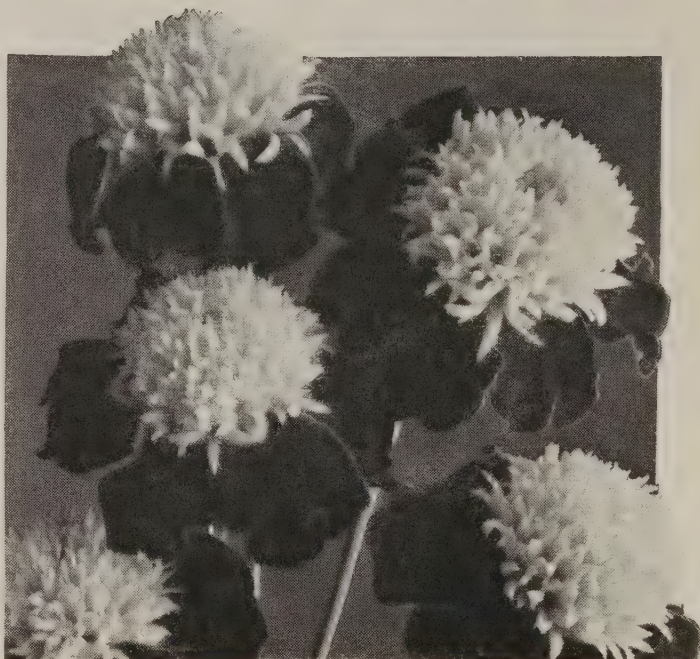
Guinea Gold. Attractive deep golden orange flowers, 2 to 3 in., and very freely produced; fine for cutting. Tr. pkt., 25c; 1/4 oz., 40c; 1 oz., \$1.25; 1/4 lb., \$3.50.

Yellow Supreme. Bright lemon-yellow, loose petaled flower. Not quite as long stemmed as Guinea Gold. Tr. pkt., 25c; 1/4 oz., 40c; 1 oz., \$1.25; 1/4 lb., \$4.00.

Sunset Giants. This is a mixture ranging from deep orange through golden orange. Tr. pkt., 25c; 1/4 oz., 50c; 1 oz., \$1.50.

Double Carnation-Flowered Mixed. Tr. pkt., 20c; 1/4 oz., 35c; oz., \$1.00.

Lieb's Winter Flowering. Mahogany-brown with golden yellow crested center. Tr. pkt., 20c; 1/4 oz., 35c.



Marigold

Dwarf French Double

	1 Foot	Tr. pkt.	1/4 oz.	Oz.
Butter Ball. Butter-yellow	\$0.20	\$0.35	\$1.25	
Golden Ball. Extra large flowers20	.35	1.25	
Harmony. Center deep orange, surrounded by maroon-brown20	.35	1.25	
Lemon Ball20	.35	1.00	
Pallida. Dwarf compact, pale sulphur-yellow20	.30	.90	
Robert Beist. Dark maroon20	.30	.90	
Sunkist. Golden orange20	.35	1.25	
Spry. Yellow crested center20	.35	1.25	
Striped. Extra select20	.30	.90	
Dwarf French Double Mixed20	.30	.90	
Yellow Pigmy. Lemon-yellow, 8 in.35	.50		

Dwarf French Single

	1 Foot	Tr. pkt.	1/4 oz.	Oz.
Flash. New early flowering. Orange, fine for cutting and garden bedding	\$0.50			
Legion of Honor (Little Brownie).15	.25	.75	
Tagetes signata pumila. Very dwarf orange20	.35	1.25	
Dwarf French Single Mixed15	.25	.75	

MIGNONETTE - Reseda Odorata

	Tr. pkt.	Oz.
Ball's Forcing Strain	\$0.35	\$1.50
New York Market25	1.00
Machet, Golden Goliath. True gold color25	1.00
Machet, Goliath Red. Large red spikes25	1.00
Special Mixture20	.90

MOONFLOWER

	Oz.	1/4 lb.
Noctiflora. Large white	\$0.30	\$0.90

MORNING GLORY

	Tr. pkt.	Oz.
Clarke's Early Heavenly Blue. A beautiful shade of belladonna-blue flowers	\$0.20	\$0.75
Scarlett O'Hara. Rich dark wine-red or deep crimson20	.75
Pearly Gates. Large flowered pure white.20	.85

NASTURTIUM, DOUBLE

Double Scarlet Gleam. Dazzling fiery orange-scarlet.	
Double Golden Gleam. Especially adapted for window box culture.	
Glorious Gleam Hybrids Finest Mixed.	
Each: 1/2 oz., 15c; 1 oz., 25c; 1/4 lb., 90c.	

NEMESIA NANA COMPACTA

	Tr. pkt.	¼ oz.
Blue Gem Improved. Bright blue\$0.25	\$0.75
Fire King. Scarlet75
White Queen. White, yellow eye75
Triumph Choice Mixed60

PENTSTEMON - Beard Tongue
(Perennial)

Large bell-shaped flowers; blooms June to August; fine for the flower border and for cutting; can be forced in a cool greenhouse. Tr. pkt.

Sensation. The most brilliant and varied colors; many of them are beautifully edged with a fine contrasting color. 2 ft.\$0.35

NIEREMBERGIA Tr. pkt.

Purple Robe. A fine dwarf deep violet-blue, blooms in 15 weeks from seed\$0.50

Hippomanica. An attractive lavender-blue, suitable for outdoor bedding. 6 to 8 in.50



GIANT PANSIES
STEELE'S GIANTS

Miracle Mixed. The flowers are of excellent substance, very attractive colors. Tr. pkt., 50c; ⅛ oz., \$1.25; ¼ oz., \$2.25; oz., \$7.50.

Super Swiss "400" Mixed. Grand in size, form, color and substance, in red, gold, rose, blue, violet, bordered, blotched and beautifully marked. Plants low and compact. Tr. pkt., 50c; ⅛ oz., \$1.25; ¼ oz., \$2.50; oz., \$9.00.

Jumbo Mixed. This superb strain of Pansies is of largest size, richest and most varied colors. Most desirable for cutting; ideal for selling in baskets. Tr. pkt., \$1.00; ⅛ oz., \$2.25; ¼ oz., \$4.00; ½ oz., \$7.50; 1 oz., \$14.00.

SEPARATE COLORS

Adonis. Light blue and lavender shades. Tr. pkt., 50c; ⅛ oz., \$1.25; ¼ oz., \$2.35.

Coronation Gold. Dwarf, large flowered golden yellow. Tr. pkt., 50c; ⅛ oz., \$1.25; ¼ oz., \$2.50.

Gorgeous, Swiss Type. Finest all red. Tr. pkt., 75c; ⅛ oz., \$1.75; ¼ oz., \$3.00.

Grand Duke Michel. Pure white. Tr. pkt., 50c; ⅛ oz., \$1.25; ¼ oz., \$2.35.

Madame Steele. Royal purple. Tr. pkt., 50c; ⅛ oz., \$1.25; ¼ oz., \$2.35.

Mlle. Irene. Copper-red. Tr. pkt., 50c; ⅛ oz., \$1.25; ¼ oz., \$2.50.

SELECTED PETUNIAS

Our Petunia seeds are of the finest quality, grown by the best growers in California, from selected plants, and are hand pollinized; no matter how careful the selection, you sometimes will find a few plants which revert to the old type; these usually bloom first. This is a natural habit of Petunias.

PETUNIA, ALL-DOUBLE

America Dwarf Rose-Pink. A strain of dwarf Petunias that gives practically 100 per cent double flowers from seed, something every florist has been looking for. Flowers are large ruffled and fringed rose-pink. 500 seeds, \$1.75; 1000 seeds, \$3.00.

Double Giants, Exquisite Mixed. An improved Shepherd Strain of Double Petunia. Immense blooms are typical of this improved double strain. Produces practically 100 per cent double flowers in a wonderful range of colors. 12 to 14 inches tall. Tr. pkt., 500 seeds, \$1.50; 1000 seeds, \$2.50.

SINGLE PETUNIAS

Dwarf Giants of California

Supreme Florist Strain

A dwarf sturdy growing type especially suited to pot culture. Flowers are beautifully ruffled and fringed with open well marked throats. This dwarf class makes particularly fine 3 and 4-inch pot plants for spring business. Seed for this purpose should be sown in January.

Dwarf Giants of California Select Mixed. This is the best strain of giant-flowered Petunias in existence for pot culture and bedding. The plants are bushy, grow about 12 inches high and produce their immense flowers freely and in a wonderful variety of colors. ½ tr. pkt., 60c; tr. pkt., \$1.00; 1/32 oz., \$3.50; ⅛ oz., \$12.50.

Dwarf Giants of California, Ramona Strain, Dark and Light Shades. A dwarf sturdy growing type especially suited to pot culture. Flowers are beautifully ruffled and fringed with open, well marked throats. ½ tr. pkt., 60c; tr. pkt., \$1.00; 1/32 oz., \$3.25.



Dwarf California Giants



Petunia, Dwarf Lace Veil Fringed

Large-Flowering Dwarf Fringed Dwarf Erfurts

SINGLE DWARF FRINGED - 10-inch

For neat compact growth and richly fringed flowers, this class is most valuable for use as pot plants. Also highly attractive for bedding. Tr. pkt. 1/64 oz.

- Elk's Pride Dwarf.** Extra dwarf with large single fringed flowers of velvety violet. \$0.50 \$1.50
- Gaiety.** Rose and white, daintily fringed, free flowering50 1.50
- Gottfried Michaelis.** Deep velvety magenta-crimson, dark throats, free flowering .. .50 1.40
- Lace Veil.** Pure white, large flowers, free flowering50 1.50
- Setting Sun.** Brilliant deep rose, dark throats, very free flowering50 1.50
- Dwarf Erfurt Fringed Mixed**50 1.25

Large-Flowering Ruffled Grandiflora

Generally more robust than the fringed and larger flowered—excellent for bedding. Flowers 3 to 4 inches in width. Height, 12 inches. Tr. pkt. 1/32 oz.

- Elk's Pride.** Largest and best velvety purple \$0.50 \$1.60
- Giant Steel Blue.** Light bluish white with dark veins50 1.50
- Purple Prince.** Extra large flowered purple with light or silver seam around edge of petals50 2.00
- Snow Storm.** Flowers are the purest white and the plants of uniform dwarf compact growth50 2.75
- White Cloud.** An effective all purpose dwarf white with nicely ruffled flowers. Particularly well liked for pot work .. .50 1.75
- White Queen.** A fine white, dwarf, compact excellent variety50 2.00
- Ruffled Grandiflora Fine Mixed**50 1.50

Petunia, Balcony Pendula

Highly suitable for window boxes. Tr. pkt. 1/8 oz.

- Cornflower Blue.** A violet-blue \$0.35 \$0.75
- Crimson.** Dark red35 .75
- Rose.** Fiery rose, select strain35 .75
- Star of California.** Violet, white star35 .75
- Violacea.** Fairly dwarf deep purple35 .75
- White.** Pure white35 .75
- Balcony Mixed**35 .60

Large Single Fringed

(Flowers 3 inches across)

While not quite so large as the Giants, these fringed Petunias have a charm of their own, due to their attractively fringed blooms.

Tr. pkt. 1/64 oz.

- Miranda.** Deep carmine-scarlet with darker veined throat. Dwarf habit \$0.50 \$1.45
- Pride of Portland.** A shade lighter than Pink Triumph, with a white throat and somewhat more dwarf50 1.50
- Romany Lass.** Deep crimson, deeper throat50 1.35
- Scarlet Beauty.** Scarlet-rose, dark throats. .50 1.35
- Theodosia.** Largest fringed rose, gold throat50 1.35
- Violacea Marine.** Deep velvety violet50 1.25
- White Beauty.** Finely fringed clear white. .50 1.25
- Fringed.** Choice mixed50 1.00

Petunia Hybrida, Bedding

This class is of vigorous growth and for this reason is suited to outdoor bedding where summers are most trying.

- Flaming Velvet.** Rich brilliant velvety blood-red or crimson flower. Tr. pkt., 35c; 1/8 oz., 50c; 1/4 oz., 90c; oz., \$3.50.
- General Dodd.** This is a velvety blood-red, but differs in the growth. In height this does not exceed 10 inches. Tr. pkt., 25c; 1/8 oz., 45c; 1/4 oz., 75c.
- Heavenly Blue.** Light or silvery blue. Extra select. Tr. pkt., 35c; 1/8 oz., 65c; 1/4 oz., \$1.10; oz., \$3.90.
- Inimitable.** Striped and blotched. Tr. pkt, 25c; 1/8 oz., 45c; 1/4 oz., 75c.
- Radiance.** A very brilliant and rich rose or cerise color, veined yellowish throat. Blooms very early and profusely, of uniform height and branching nicely. Tr. pkt., 40c; 1/8 oz., \$1.00; 1/4 oz., \$1.50.
- Violacea.** Rich violet, compact and dwarf. The finest dwarf violet. Tr. pkt., 35c; 1/8 oz., 75c; 1/4 oz., \$1.25.
- Choice Bedding Mixed.** A very choice mixture which contains a splendid blend of color. Tr. pkt., 25c; 1/4 oz., 75c; oz., \$2.75.



Petunia, Large Ruffled Grandiflora

PETUNIAS—Continued

SINGLE BEDDING PETUNIAS

Dwarf Bedding Varieties

This group is a dwarf, compact, floriferous and continuous bloomer, undoubtedly the most satisfactory bedding plant in cultivation.

Admiral. Most attractive dwarf blue bedding Petunia. Flowers are ruffled, adding greatly to their distinctiveness. Tr. pkt., 50c; 1/32 oz., \$1.50; 1/16 oz., \$2.75.

Betsy Ross. Ruffled blooms 2½ inches across, red and white with golden and dark red throat. Of uniform and compact habit, free flowering. Tr. pkt., 50c; 1/32 oz., \$1.25.

Blue Bird. Another good medium violet-blue for bedding. Tr. pkt., 30c; 1/8 oz., 70c; 1/4 oz., \$1.15; 1 oz., \$3.50.

Celestial Rose Re-selected. Definitely superior to the regular Celestial Rose, slightly dwarfer in habit and larger flowered. Unquestionably the best available strain of this fine pot plant item. Tr. pkt., 35c; 1/8 oz., \$1.00; 1/4 oz., \$1.90.

Cockatoo. Deep velvety violet-purple, with irregular-sized white spots and stars. Tr. pkt., 30c; 1/8 oz., 85c.

Cream Star. Flowers grow 2¼ in. across and are shaped like five-pointed stars; soft creamy white. Tr. pkt., 35c.

Dazzler. Bright rose, same shade as Dwarf Pink Glory. Tr. pkt., 35c; 1/8 oz., 75c; 1/4 oz., \$1.35.

Glow. Bright rose-red, with lighter throat. Dwarf, compact ball-shaped. Very free flowering and true to type. Tr. pkt., 35c; 1/16 oz., \$1.15; 1/8 oz., \$2.00; 1/4 oz., \$3.50.

Howard's Star Improved. Medium tall velvety purple with white star. Highly attractive and popular for bedding. Our stock of this will come quite true to this starred type. Tr. pkt., 30c; 1/8 oz., 60c; 1/4 oz., \$1.10.

King Henry. Large flowers of a rich velvety blood-red color. Very free flowering. Dwarf compact habit. Tr. pkt., 50c; 1/32 oz., \$1.25.

Martha Washington. Flowers frilled and ruffled, 3 inches in diameter. Blush-pink veined rich wine-red, deepening at throat, which is a dark violet. 9 in. Tr. pkt., 50c; 1/32 oz., \$1.10.

Rose of Heaven Improved. The best strain on the market for borders and bedding. Perfectly uniform, fine rose-pink color; dwarf habit. Tr. pkt., 30c; 1/4 oz., 90c; oz., \$3.40.

Rosy Morn Improved. Differs from the original in that the rose coloring is stronger and deeper and habit some stronger. Quite uniform and distinct in every way. Tr. pkt., 35c; 1/8 oz., 60c; 1/4 oz., \$1.10; oz., \$4.00.



Dwarf Bedding Petunia

Salmon Supreme. Dwarf light salmon-rose. An attractive and rather striking color. Tr. pkt., 40c; 1/16 oz., \$1.25.

Scarlet Flare. Scarlet-rose, overlaid deep velvety scarlet. Tr. pkt., 40c; 1/32 oz., \$1.00.

Silver Blue. An old favorite, and rightly so. Still the best silvery blue in this class. Resembles Celestial Rose in habit of growth. Tr. pkt., 35c; 1/8 oz., 85c; 1/4 oz., \$1.40; 1 oz., \$5.00.

Snow Queen. Our finest pure white bedding Petunia. Its strong spreading growth and free flowering habit have made it a favorite wherever grown. Tr. pkt., 25c; 1/8 oz., 45c; 1/4 lb., 75c; 1 oz., \$2.75.

Topaz Queen. A remarkable color combination of glowing carmine-rose with distinct orange-scarlet overtone. Medium large flowered and striking whether used for bedding or in pots. Tr. pkt., 35c; 1/8 oz., \$1.00; 1/4 oz., \$1.75.

Velvet Ball. Dwarf compact plants with velvety blood-red blooms. Tr. pkt., 40c; 1/32 oz., \$1.00.

Violet Blue. A rich violet with a bright blue cast. A new color in the nana compacta type. Tr. pkt., 35c; 1/8 oz., 90c; 1/4 oz., \$1.60.

Nana compacta Mixed. A well balanced mixture. Tr. pkt., 25c; 1/4 oz., 75c; oz., \$2.75.

PHLOX DRUMMONDI GIGANTEA ART SHADES

A strain of Phlox Drummondii with flowers an inch and a quarter to an inch and a half in diameter. It has a most wonderful range of color in soft Art Shades.

The soft colors blended together make a most beautiful mixture and a color combination never before seen in annual Phlox. Plants about 10 inches high.

Red Glory. A bright scarlet-red with large contrasting white eye.

Rosy Morn. A particularly bright, clear rose-pink with large white eye.

Art Shades Mixture. Large flowered mixture of pastel shades with white eyes.

Prices on the above 3 varieties:
Tr. pkt., 35c; 1/8 oz., 60c; 1/4 oz., \$1.00.

PHLOX

Drummondii Nana Compacta

Dwarf type for growing in pots or bedding.

	Tr. pkt.	1/4 oz.	Oz.
Dwarf Fine Mixed	\$0.40	\$1.25	
Cecily Mixed. Large flowering . .	.40	1.25	4.00
Star Finest Mixed40	1.25	4.00



Phlox Drummondii Gigantea Art Shades

PHYSOSTEGIA - False Dragonhead

(Perennial) Tr. pkt. 1/4 oz.

Virginia. One of the prettiest hardy perennials. It forms dense bushes, 3 to 4 feet high; spikes of delicate pink tubular flowers \$0.35 \$0.85

PLATYCODON

Grandiflorum. Large steel-blue flowers .. .20 .50

PORTULACA - Moss Rose

A very excellent plant for dwarf bedding or border work. Very easily grown. Tr. pkt. 1/4 oz.

Grandiflora Double Mixed. Extra select \$0.25 \$1.00
Grandiflora Single Mixed25 .90

POPPIES

Papaver Nudicaule - Iceland Poppy

Tr. pkt. 1/4 oz.

El Monte. Deep tangerine-orange. 2 ft. \$0.30 \$0.60
Gartford Giant Mixed. 2 1/2 to 3 ft.35 .75

Annual Poppies

Tr. pkt. Oz.

Shirley Finest Single Mixed \$0.15 \$0.50
American Legion. Single orange-scarlet.. .15 .50

PRIMULA

Giant Primula Obconica

These large-flowering brilliant colored primroses are one of the most popular pot plants for winter and spring sales. The small plants are very useful for combinations for Easter. January sown seed will produce large plants for Thanksgiving, Christmas, etc. Seed sown in March and April will make fine plants for spring and Easter.

(1000 Seeds) Tr. pkt.

Giant Crimson. Compact habit. Enormous sized truss \$1.00
Giant Scarlet. Oriental red, shading to scarlet. A gem 1.00
Primula Obconica. Mixed..... 1.00

Primula Malacoides "Erikssoni"

Tr. pkt.

Brilliant (Eriksson's Deep Red). The flower opens lavender but changes to a brilliant red in one or two days in a sunny greenhouse \$1.00
Pure White (Improved). A real improvement in a pure white malacoides. Flowers profusely on numerous stems 1.00
Glory of Riverside (Improved). True rose-pink, a strong grower and without a doubt the most valuable variety for all purposes 1.00
Lilac Beauty. Pure light blue, 100% even color when blooming and a delight to work in combinations. 500 seeds 1.00
Eriksson's Special Mixed 1.00

PYRETHRUM (Perennial)

One of the really good hardy perennials, valuable alike for cutting or planting in the hardy border.

Tr. pkt. 1/8 oz.

Hybridum, Single. Large flowering. Mixed 1/4 oz., \$1.25.. \$0.40 \$0.75
Robinson's Giant Hybrid Red. Fine for cutting50 .75
Semi-Double Mixture. An excellent strain. 1/4 oz., \$1.50.. .40 .85

RUDBECKIA

Tr. pkt. 1/4 oz. Oz.

Kelvedon Star. Brown discs ... \$0.25 \$0.45 \$1.50
My Joy. Orange-yellow25 .45 1.50

SALPIGLOSSIS

Some very attractive colors for summer cutting and spring flowering under glass. Tr. pkt. 1/4 oz.

Emperor. Extra choice large flowering mixture \$0.20 \$0.45
Light Blue and Gold Improved. A rich light blue with gold veinings20 .45
Scarlet and Gold. A fine color. Height, 20 in.20 .45



Salvia

SALVIA SPLENDENS

We fully realize the importance of Salvias to florists and are careful to arrange for our stock with an American specialist who supplies only fine plump seed.

Tr. pkt. 1/4 oz.

America (Globe of Fire). Plants grow about 18 inches high \$0.50 \$1.50
Bonfire (Clara Bedman). Erect habit—the old standby. 18 in.50 1.50
Harbinger (Firebrand). Of uniform type, about 15 inches (not available)
Farinacea (Blue Bedder). 36 in.40 1.25

SCABIOSA

Choice long-stemmed annuals for summer cutting.

Tr. pkt. 1/2 oz. Oz.

Blue Moon. Deep azure-blue ... \$0.25 \$0.95 \$1.75
Rose Cockade. Bright rosy lilac . .25 .75 1.25
Royal Cockade. Salvia-blue25 .75 1.25
White Cockade. Snow-white25 .75 1.25
Giant Hybrids Mixed25 .75 1.25

Scabiosa (Perennial)

Excellent perennial cut flower material. Larger flowered than the popular annual form, perfectly hardy, and early flowering. Seed germination sometimes slow and irregular. Tr. pkt. 1/4 oz.

Caucasica, House Hybrids. Shades of lavender and blue \$0.40 \$0.90
Columbaria, Lavender. Delicate color35 .85
Choice Mixed25 .75

SCHIZANTHUS - Butterfly Flower

Tr. pkt.

Giant Flowering Hybrids. An extra select large flowered hothouse strain \$0.35
Compactus, Mixed. The plants grow dwarf and compact, making them suitable for pot culture .35

SOLANUM - Jerusalem Cherry

Hlavacek's Masterpiece. A compact type, red	Tr. pkt.	1/4 oz.	
	\$0.20	\$0.50	
Bird's Eye Pepper. Florist strain, small bright red berries30	.75
Capsicastrum Nanum. Small red fruit...		.35	

STATICE, PERENNIAL

	Tr. pkt.	1/4 oz.	Oz.
Caspia. Perennial. Large lilac ..	\$0.25	\$0.70	\$2.25
Dumosa. Clear silvery white25	.70	2.25
Latifolia. Small purplish blue25	.60	2.00

STATICE SINUATA

The seed of annual Statice is of irregular germination.

	Tr. pkt.	Oz.
Kampf's Tall Improved. Deepest blue ..	\$0.15	\$0.35
Lavender Queen15	.35
Rosea Superba15	.35
Yellow (Bonduelli)15	.35
Choice Mixed15	.35
Suworowi, Russian or Rat Tail. Excellent for spring cutting or pot specimens25	.90

STOCKS

NON-BRANCHING COLUMN

Immensely fully double close-spaced flowers, one 2 to 2 1/2-ft. spike per plant. This strictly non-branching strain is in very great demand by florists.

American Beauty. Deep American-Beauty-rose.	Chamois Pink. Apricot or chamois-pink.
No. 16 Ball White Improved. Finest early pure white, with extra large florets, and well-formed, compact spikes.	Gardenia. Finest double white.
Ball Supreme. Extra long, stiff stems and fine heavy spikes of rich silvery rose have made this the outstanding variety in its color class.	Lilac Lavender. A very attractive, clear, bright lavender.
Ball's White. Sometimes tinged blush.	Malmaison Pink. Light Enchantress Carnation-pink.
Blue. Rather deep lilac. Fine color.	Rose Pink. This is the popular clear rose-pink.
	Ruby. Rich crimson-red.
	Yellow Wonder. New rich cream-yellow.
	Mixed Colors.

Any of the above: Tr. pkt., \$1.00; 1/4 oz., \$2.50; oz., \$9.00.

GIANTS OF CALIFORNIA

This is a comparatively new tall branching group of Stocks. Many growers transplant these Stocks about 4 inches apart in beds, and find that they grow to a height of 3 feet, having only a single central spike with a 15-inch stem of florets.

Golden Gate. Yellow.	Red Woods. Blood-red.	Sequoia. Rose-carmine.
Monterey. Pink.	Santa Barbara. Chamois.	Tahoe. Lavender.
Pacific. Blue.	Santa Maria. White.	Yosemite. Rose.

Any of the above: Tr. pkt., 35c; 1/4 oz., \$1.00; oz., \$3.50.

Mixed: Tr. pkt., 30c; 1/4 oz., 90c; oz., \$3.00.

IMPERIAL IMPROVED BISMARCKS

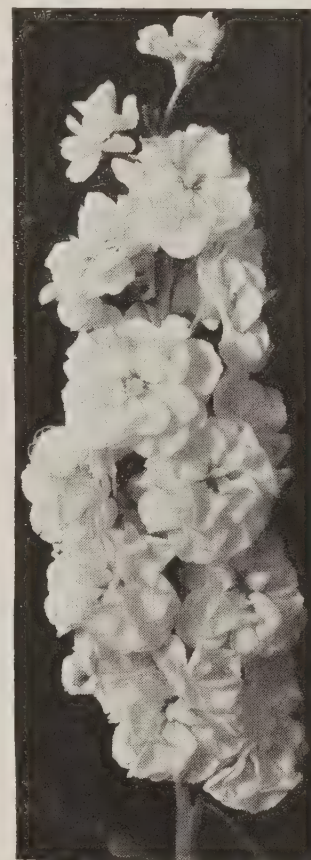
An especially meritorious class; of branching habit. Very early blooming and producing a high percentage of doubles. 2 1/2 ft. Suitable for greenhouse culture or growing out-of-doors.

Chamois. Ivory-tinted rose.	Lavender.
Elk's Pride. Rich purple.	Lilac. Lilac-lavender.
Flesh. Delicate pink.	Rose. Deep rose-pink.
Golden Rose.	Shasta. Glistening white.
Fiery Blood-Red.	

Any of the above varieties:
Tr. pkt., 35c; 1/4 oz., 90c; oz., \$3.00.



Dianthus Barbatius—Sweet William



Stocks, Double Giant Column, Gardenia

SWEET WILLIAM - Dianthus Barbatius (Perennial)

There is always a good demand for these beautiful free-flowering old-fashioned favorites.

	Tr. pkt.	1/4 oz.	Oz.
Single Dark Crimson	\$0.25	\$0.50	\$1.60
Single Holborn Glory25	.50	1.60
Single Newport Pink25	.50	1.60
Single Scarlet Beauty25	.50	1.60
Single White25	.50	1.60
Single Choice Mixed25	.50	1.50
Double Choice Mixed25	.50	1.50
Dwarf Compact Double Finest Mixed35	.75	

THUNBERGIA - Black-Eyed Susan

	Tr. pkt.	1/4 oz.	Oz.
Mixed. Trailer for window and porch boxes ... 1/4 lb., \$3.00..	\$0.20	\$0.40	\$0.90

TORENIA FOURNIERI Tr. pkt.

Flowers are sky-blue, blotched dark blue with yellow centers\$0.40

TRITOMA - Red Hot Poker

	3 Feet	Tr. pkt.	1/4 oz.
Hybrida Mirabilis. Blooms first year ...	\$0.25	\$0.50	

SWEET PEAS EARLY OR WINTER FLOWERING

All the newer varieties are very strong growers and will produce heavy stems with four and five flowers on each. Early Spencers are also adapted for winter flowering in the open, when planted in the milder latitudes.

- American Beauty.** A rich crimson-rose.
- Amethyst.** Royal purple.
- Apollo.** Soft salmon-cerise, long stemmed.
- Ball's Rose Improved.** Rich deep rose-pink.
- Ball Rose Queen.** The best rose-pink, long-stemmed.
- Ball Orange Improved.** Clear deep glowing orange.
- Burpee's White.** Giant white seeded.
- Blue Bird.** A magnificent violet-blue.
- Bridesmaid.** A charming deep silvery pink.
- Daphne.** Soft salmon-pink; a fine color with long stems.
- Eleanor Blue.** Long stem, sky-blue.
- Exposition Pink.** Gorgeous rich pink.
- Fiesta.** A new fine orange-cerise, on long stems.
- Fragrance.** Large frilled lavender flowers.
- Gardenia.** A dense paper-white, large duplexed flowers.
- Harmony.** Clear lavender.
- Heather Bell.** Mauve-lavender.
- Hope.** Pure black-seeded white.

- Hiawatha.** A clear deep rose on white ground; large.
- Josie.** Long-stemmed, rose-pink.
- Lavanda.** A pure clear lavender.
- Laddie Improved.** Rose.
- Majestic Rose.** Brilliant rose-pink, richer and deeper than Zvolanek's Rose.
- Mrs. Herbert Hoover.** Bright blue; extra long stems.
- Mrs. H. S. Reddick.** Salmon-pink.
- Pride.** Large flowered cerise.
- Princess Blue.** A belladonna-blue, both standards and wings holding to same rich light blue color.
- Red Bird.** Crimson-red.
- Sequoia.** Rich golden cerise with long, strong stems.
- Shirley Temple.** A new pink of great value.
- Treasure Island.** A sparkling shade of golden orange.
- Triumph.** The color is lovely soft, lilac-mauve.
- Twilight.** A medium clear lavender; an improvement over the popular Harmony.
- White Harmony.** Black-seeded white.

Price, all above: 1 oz., 40c; ¼ lb., \$1.45; 1 lb., \$5.00.
Early-Flowering Spencer, Special Mixture: ½ oz., 20c; 1 oz., 30c; ¼ lb., \$1.00; lb., \$3.40.

SPRING FLOWERING SPENCERS

Intermediate in season between Early and Standard Spencers, this new type of Sweet Pea, possessing the characteristic of heat resistance, maintains remarkable vigor, length of stems, size of flower and productivity throughout the growing season, both under glass and out-of-doors.

	Oz.	¼ lb.	1 lb.
Spring Flowering Blue. Long-stemmed, clear medium blue	\$0.45	\$1.50	\$5.00
Spring Flowering Lavender. Long-stemmed, rich clear lavender45	1.50	5.00
Spring Flowering Light Lavender. Light lavender; very large flowers45	1.50	5.00
Spring Flowering Rose-Pink. Long-stemmed, clear rose-pink45	1.50	5.00



Viola Cornuta, Arkwright Ruby



Vinca Rosea

VINCA ROSEA - Periwinkle

This seed should be sown early to secure salable plants for spring.

	Tr. pkt.	¼ oz.	Oz.
Rosea alba. White, rose center	\$0.25	\$0.55	\$1.75
Alba pura. Pure white25	.55	1.75
Rosea. Pink25	.55	1.75
Mixed25	.55	1.75

VIOLA - Tufted Pansy

8 inches

	Tr. pkt.	¼ oz.
Arkwright Ruby. Dark crimson-scarlet	\$0.35	\$1.00
Blue Perfection. Medium clear blue35	.90
Lutea splendens. Sulphur-yellow35	.90
Papilio, Deep Violet35	.90
Papilio, Light Blue. Blue and white35	.90
White Perfection. Pure white35	.90
Mixed30	.85



Verbena

VERBENA

Hybrida Grandiflora

A magnificent strain of robust, compact habit and free blooming.

- Beauty of Oxford Hybrid.** A beautiful rose-pink.
- Blue.** White eye.
- Brightness.** Bright rosy scarlet, white eye.
- Lucifer.** Flaming scarlet self.
- Luminosa.** Fiery pink shading of salmon.
- Pure White.** Fine.
- Spectrum Red.** Vivid crimson.
- Violacea Stellata.** Violet, white eye.
- Grandiflora Mixed.**
- Royal Bouquet Mixed.** This variety has an upright growth on straight stems.

Prices of above varieties: Tr. pkt., 35c; ¼ oz., 75c; 1 oz., \$2.75.

VERBENA - Venosa

	Tr. pkt.	¼ oz.	Oz.
Lilacina. Delicate lavender-blue	\$0.30	\$0.65	\$2.25
Erinoides (Moss Verbena). Purple30	.55	1.75

FLORISTS' ZINNIAS

Bodger's "Gold Medal" Zinnias for Cut Flowers and Garden

Few flowers have exhibited greater improvement at the hands of hybridizers than the Zinnias, and their improvement has been matched with a corresponding increase in public favor. For those getting started with Zinnias, it should be emphasized that the nature of the plants demands plenty of warmth. This is explained by the fact they are native of Mexico.

By sowing outdoors in May and as late as August 1st, in well enriched soil and protected with water, they can be had in fine shape right up to frost.

Bodger's Gold Medal Giant Double Dahlia-Flowered

The plants are of medium height, 2½ to 3 ft., very robust, bearing many strong stems of the fully double, huge flowers which resemble the show type of Dahlia.

- Canary Bird.** Rich canary-yellow.
- Crimson Monarch.** Deep crimson, flowers very large.
- Dream.** Deep rosy lavender.
- Eldorado.** Salmon-apricot.
- Exquisite.** Light rose, deep rose center.
- Golden Dawn.** Golden yellow.
- Illumination.** Deep rose self.
- Luminosa.** Bright deep pink.
- Oriole.** Orange and gold bicolor.
- Polar Bear.** Large creamy white.
- Scarlet Flame.** Bright scarlet.
- Will Rogers.** Loveliest, most brilliant scarlet-red.
- Gold Medal Finest Mixed.** Grown as separate colors.

Prices of Above Varieties:

Tr. pkt., 25c; ¼ oz., 40c; 1 oz., \$1.25; ¼ lb., \$4.00.

Double Lilliput

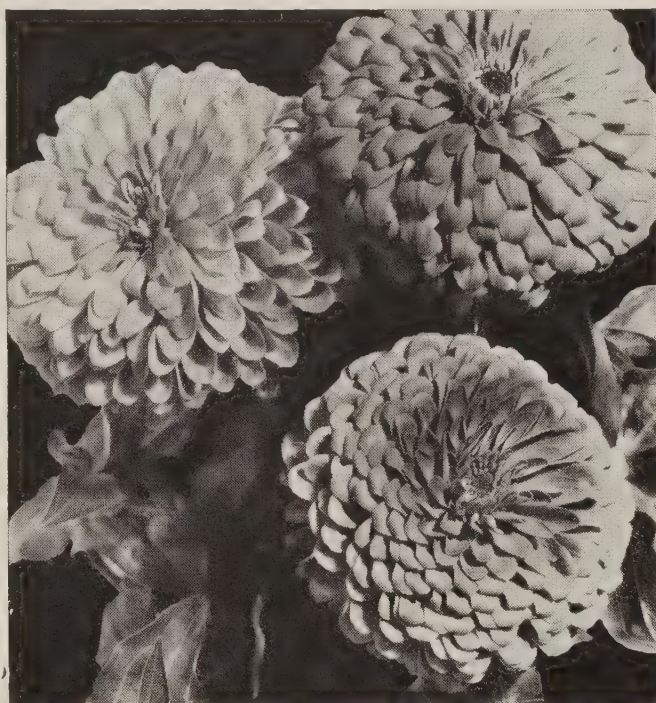
The Lilliputs are among the most popular Zinnias for cut flower use. The flowers are small, compact, and symmetrical, on strong stemmed, 1½ to 2 ft. plants.

- Canary Gem.** Canary-yellow.
- Crimson Gem.**
- Golden Gem.** Golden orange.
- Lilac Gem.**
- Rosebud.** Rose-pink.
- Salmon Gem.**
- Scarlet Gem.**
- White Gem.**

Pastel Mixture. Pastel shades.

Prices of Above Varieties:

Tr. pkt., 25c; ¼ oz., 35c; 1 oz., \$1.00; ¼ lb., \$3.50.



Zinnias

Fantasy

Most interesting of the newer Zinnia developments, the Fantasy type maintains its place as a reigning favorite among the florist trade.

	Tr. pkt.	¼ oz.	Oz.
Star Dust. Rich deep golden yellow			
low	\$0.25	\$0.60	\$1.75
Wildfire. Dazzling scarlet25	.60	1.75

Miscellaneous Types

Crown o' Gold (Desert Gold). Comprising the light and deeper shades of gold. Tr. pkt., 25c; ¼ oz., 40c; oz., \$1.25.

Crown of Gold Pastel Tints. Strictly a mixture of pastel tints and contains a wide color range, including soft yellow, old gold, light pink, apricot-pink. Tr. pkt., 25c; ¼ oz., 40c; oz., \$1.25.

Gracillima (Red Riding Hood). Miniature bright crimson flowers about the size of Lilliputs. 1 foot high, splendid for bedding. Tr. pkt., 25c; ¼ oz., 40c; oz., \$1.25.

Linearis. The plants grow about one foot high and about 18 inches in diameter. The foliage is a neat, narrow leaf. The flowers are a beautiful orange-yellow color. Tr. pkt., 25c; ¼ oz., 60c.

SUMMER FLOWERING BULBS

AMARYLLIS

(Large Flowering Hybrids)

These bulbs will make handsome pot plants for window display during the spring. Light and red shades, mixed.

	Doz.	100
Select Bulbs	\$3.60	\$25.00

GLADIOLUS

Prices on bulbs are subject to change without notice.

Fine, well cured and graded bulbs. Strictly up to size and true to name. Prices quoted are subject to change. We carry a large stock of No. 2 size. If in the market, please write for market price.

Varieties marked (*) recommended for forcing.

	First Size	1000
Albania. One of the finest of pure whites	\$4.50	\$40.00
Beacon. Red-salmon with cream throat. Very tall. Medium early	5.50	50.00
Betty Nuthall. Clear coral with deeper throat lines. Excellent cut flower	4.50	40.00
Charles Dickens. Purple-violet with deeper throat. Tall, strong growing ..	4.50	40.00
*Dr. F. E. Bennett. Peach-red, overlaid with scarlet	5.00	45.00
Elvira. A beautiful tall white	4.50	40.00
*Flaming Sword. Beautiful brick-red, tall	4.50	40.00
*Giant Nymph. Light pink with cream throat	4.50	40.00
Golden Dream. A very fine deep, pure yellow; by far the best	4.50	40.00
Helen Wills. White, cream throat	4.50	40.00
*Margaret Fulton. Coral-pink, to trifle lighter throat, tall spike. Early	4.50	40.00
*Maid of Orleans. Beautiful milky white with cream throat. Tall, sturdy grower with eight or more flowers open	5.00	45.00
*Minuet. Light lavender with ideal spike. One of the best	5.50	50.00
*Miss Bloomington. Six to eight large, perfectly placed, rich lemon-yellow blooms open at a time. Considered the best early yellow variety	4.50	42.00
Peggy Lou. Shrimp-pink with deeper tint of rose. Long flower head, very large florets	5.50	50.00
*Picardy. The most popular of all Gladioli. Color is a beautiful light salmon. Tall, strong grower with extra large florets	5.00	50.00
*Red Phipps. Tall, nice spike of soft red, eight or more open at one time..	5.50	45.00
Rosa Van Lima. Pure self-colored light pink. Many flowers open at one time. Strong grower	5.50	50.00
Snow Princess. (New.) A fine large pure white	5.25	45.00
*Token. An extra early flame-salmon, clear yellow throat	4.50	40.00
Florist's Superfine Mixed	4.50	40.00

CALADIUM - Fancy-Leaved

Ten Best Named Varieties Per 100 \$18.00

CALADIUM ESCULENTUM - Elephant's Ear

Much used for bordering Canna beds or sub-tropical plantings.

	Doz.	100
Selected Size Bulbs. 7 to 9 inches	\$1.10	\$ 9.00
Extra Large Bulbs. 9 to 11 inches	2.50	16.00
Mammoth Size. 11 to 12 inches	3.00	25.00

CANNAS - Large Flowering Dormant Roots

	100	1000
City of Portland. The best pink Canna. Very compact, almost dwarf, and of a very luxuriant growth. Leaves bluish green; never burns	\$6.00	\$55.00
King Humbert. This remarkable Canna has been the sensation of the past ten years. Scarlet flowers; bronze leaves. 4 ft.	5.50	52.00
The President. 4 ft. This immense flaming scarlet leads the red varieties in the quality and also the quantity of its bloom. The foliage is rich green and burn-proof in the hottest weather ...	5.50	52.00
Yellow King Humbert. 4 ft. An orchid-flowering, well-known King Humbert. Flower a deep rich yellow, softly spotted and blotched with bright red. Green foliage	5.50	52.00

THE REGALE LILY

The flowers are white, slightly suffused with pink.

	Per 100
6-7 inch Regales	\$15.00

TUBEROSES

	100	1000
Single Everblooming. Our bulbs are secured from dependable growers	\$4.25	\$38.00



Tuberose

FERTILIZERS FOR BETTER CROPS

The highest grade only. Guaranteed analysis. Prices net cash and subject to market changes. All F.O.B. St. Louis. Due to certain conditions we are unable to quote prices on some items at this time and when in the market please write us for price.

ADCO

Is a powder which, mixed with vegetable matter and kept moist, turns the latter into real manure, but without the odor, flies, etc. Directions enclosed in bags. Price: 7½-lb. pkg., \$1.00; 25-lb. bag, \$2.25; 100 lbs., \$8.60.

ALUMINUM SULPHATE

For making acid soil. Also used in benches that contain too much lime. 100 lbs., \$2.95.

ARMOUR'S SPECIAL GROWERS MIXTURE

All inorganic and quickly available—4 per cent nitrogen, 12 per cent available phosphoric acid, 8 per cent potash. Before planting apply 6 lbs. per 100 square feet and work thoroughly into soil. For soil piles, mix 4-inch potful with each wheelbarrow of soil. 100 lbs., \$2.50; ton, \$46.00.

ARMOUR'S BONE, BLOOD AND POTASH Fertilizer Mixture (Analysis 5-8-7)

For potting soil, use about 20 lbs. to a cubic yard of soil, and for the dressing scatter it about as thick as lawn grass seed is sown, after loosening the surface of the soil. It is excellent for carnations if applied by the end of October or in November. 100 lbs. Not available at this time.

BONE MEAL 2-24

Best grade of steamed bone for general use. 2 per cent nitrogen, 24 per cent phosphoric acid. Used under glass or outside for nearly all plants. 100-lb. bag, \$3.25; ton, \$58.00.

CATTLE MANURE (2% Nitrogen, 1% Total Phosphoric Acid, 1% Potash)

This is a very high grade material, heat dried, and free from straw, being all pure cattle manure. 100-lb. bag, \$1.95; ton, \$37.00.

COTTON SEED MEAL

An excellent organic fertilizer. For Laurels, Rhododendrons, Azaleas, etc. Also used for lawns. Not available at this time.

HARDWOOD CHARCOAL (Granulated Fine)

For mixing in soil in seed flats, cutting benches and pot plants. 50-lb. bag, \$1.90.

IRON SULPHATE

Effective against chickweed. Harmless to lawns. Use 1½ lbs. to 1 gal. water. One gallon treats 100 square feet of lawn. 10 lbs., 65c; 25 lbs., \$1.00; 100 lbs., \$3.00.

MURIATE OF POTASH

The chief use of muriate of potash is the stimulation of root growth. Not available at this time.

MICHIGAN PEAT

The ideal all-organic soil builder and plant food. Michigan Peat is the ideal organic soil builder and plant food for seed flats, and mixing for potting and greenhouse bench soil. A neutral peat containing 3 per cent nitrogen. For seed flats use one-half peat and one-half good loam; for potting use one-fourth peat and three-fourths soil. 100-lb. bag, \$2.90. Write for price on bulk car lots.

NITRATE OF SODA

The quickest acting and most effective source of nitrogen. It is available almost as soon as applied. 10 lbs. Nitrate of Soda, 75c; 25 lbs., \$1.20; 100 lbs., \$3.50.

SHEEP MANURE—Pulverized (2% Nitrogen, 1% Total Phosphoric Acid, 2% Potash)

This is a pure, natural manure. It is excellent for mixing with the soil for greenhouse plants—one part manure and six parts soil. 100-lb. bag, \$1.95; ton, \$37.00.

SUPER ACID PHOSPHATE (20% Phosphoric Acid)

Used for Carnation soil and other crops requiring phosphoric acid. 100-lb. bags. For Grain and Corn use 500 lbs. per acre. 80-lb. bag, \$1.80; ton, \$30.80.

SWIFT RED STEER 4-12-4

A well balanced plant food for commercial growers for feeding and making potting soil. Use 5-inch pot for wheelbarrow of earth. For Grain and Corn use 500 lbs. per acre. 100-lb. bag, \$2.25; ton, \$37.00.

SWIFT RED STEER 0-12-12

High in potash, best for root crops such as Potatoes, Beets, Carrots. Use 500 lbs. per acre. 100-lb. bag, \$2.15; ton, \$35.40.

**ALWAYS INOCULATE WITH
LEGUME-AID**

Replaces many pounds of expensive fertilizer.
Costs so little you cannot afford to seed without it.

Variety	Unit Size	Price
Combination Alfalfa and All Clovers	1-Bu. each	\$0.50
	2½-Bu. each	1.00
Vetch, Aust. Winter Peas, Field and Garden Peas	100-Lb. each	.50
Soybeans, Garden Peas	Up to 2-Bu. each	.30
	5-Bu. each	.55
	*50-Bu. each	5.00
*Contains 10 individual 5-Bu. unit sizes		
Lespedeza, Cowpeas, Lima Beans, Peanuts	100-Lb. each	.50
Garden Peas, Garden Beans	Combination For 1-Bu. each	.50
Garden Peas, Beans, Limas, Sweet Peas and Lupines	Garden Packet For 5-Lb. each	.10

GARDEN AND LAWN FERTILIZER

A Necessity to All Growing Plants

ARMOUR'S SPECIAL ORNAMENTAL 6-12-4

A concentrated fertilizer for lawns, trees, shrubs and ornamental plants. For garden or lawn use 100 lbs. for 50x100 ft. 100-lb. bag, \$3.75.

VIGORO

Is a specially prepared plant food. It contains all of the elements necessary to grow flowers, lawns, vegetables, shrubbery and trees. It is clean and odorless. Complete directions in every bag. 5 lbs., 45c; 10 lbs., 85c; 25 lbs., \$1.45; 75-lb. bag, \$3.00.

BONE MEAL 2-24

Best grade of steamed bone for general use. 2 per cent nitrogen, 24 per cent phosphoric acid. Used under glass or outside for nearly all plants. For garden or lawn use 100 lbs. for 30x100 ft. 100-lb. bag, \$3.25.

CATTLE MANURE (2% Nitrogen, 1% Total Phosphoric Acid, 1% Potash)

This is a very high grade material, heat dried, and free from straw, being all pure cattle manure. For lawn or gardens, 100 lbs. will cover 25x50 ft. 100-lb. bag, \$1.95.

HYDRATED LIME

Used to neutralize acid soil on lawns and gardens. Use 50 lbs. for 20x100 ft. 10-lb. bag, 20c; 50 lbs., 60c.

PEAT MOSS (Granulated)

A moisture retaining humus for mixing potting soil. Large standard bale, \$3.75.

MILORGANITE

A unique plant food, scientifically prepared, free from weed seed and all harmful organisms. Easy to apply without danger of burning. For lawn or garden use 100 lbs. for 50x100 ft. 25 lbs., \$1.00; 50 lbs., \$1.50; 100 lbs., \$2.75.

SHEEP MANURE—Pulverized (2% Nitrogen, 1% Total Phosphoric Acid, 2% Potash)

This is a pure, natural manure. It is excellent for mixing with the soil for greenhouse plants—one part manure and six parts soil. For lawns and garden, 100 lbs. will cover 25x50 ft. 50 lbs., \$1.10; 100 lbs., \$1.95.

SUPER ACID PHOSPHATE (20% Phosphoric Acid)

Used for crops requiring an excessive amount of phosphoric acid. 80 lbs. will cover 25x100 ft. Per 80-lb. bag, \$1.80.

SULPHATE OF AMMONIA

Highly concentrated, quick acting. Particularly desirable for lawns and gardens. 10 pounds covers 2,500 square feet or 50x50 feet. Not available at this time.

Prices in This Catalog Are Subject to Change Without Notice

INSECTICIDES AND FUNGICIDES

NOTE: All prices listed are subject to any and all governmental regulations issued for the purpose of governing the items herein shown. The right is reserved by this company to cancel any item offered, modify the price shown, or substitute similar products if the cause of the war so demands. To the best of our knowledge, prices on supply items in this catalog conform to existing price regulations established as of the date this catalog was issued.

ARSENATE OF LEAD

Dry Powdered, for dusting and spraying. 1 lb., 25c; 4 lbs., 75c; case of 12 4-lb. pkgs., **Market Price.**

BLACK ARROW 5000

A Pyrethrum Dust particularly effective against thrips, white flies, leaf rollers, midge, and will not burn or injure plants in any way. If available, at 2-lb. bag, 50c; 25-lb. bag, \$8.50.

BLACK LEAF 40

is a solution of Nicotine Sulphate. It is highly recommended by Experiment Stations throughout the United States as a spray for soft bodied sucking insects. For spraying only. Directions must be followed carefully. 1 lb., \$1.90; 2 lbs., \$2.85; 5 lbs., \$5.80; 10 lbs., \$10.60.

BLUE VITRIOL POWDER (Copper Sulphate)

10 lbs., \$1.50; 25 lbs., \$3.25; 100 lbs., \$11.00.

BORDEAUX MIXTURE (Dry)

The best fungicide for curing and preventing black rot, mildew, blight, leaf curl, scab, or other fungoid diseases on fruits and plants. 1 lb. will make 8 gallons liquid. Lb., 25c; 4 lbs., 75c.

CYANOGAS "A" GRADE

For moles, rats, gophers, and other ground rodents. (By express only). 1-lb. cans, 75c.

CYANOGAS ANT KILLER

4-oz. spouted cans, 30c.

CYANOGAS CALCIUM CYANIDE "G"

Greenhouse fumigant. Aphis, white fly, thrips, soft scale and mealy bug and control for crop-destroying rodents. (By express only.) 5 lbs., \$2.75; 25 lbs., \$9.50; 100 lbs., \$25.00. Write for leaflet.

DOWSPRAY 17

A new wet spray for control of red spider and thrip for those who prefer a spray over dusting with DN DUST No. 10 and Dust No. 12. Packed in three-quarter pound containers, the amount required for 100 gallons of water. 3/4 lb. pkg., \$2.50; case, 9 3/4-lb. pkgs., \$20.25.

DOW MIKE SULPHUR

More than 15 times finer than 325-mesh Sulphur. Wets instantly and is the preferred wettable Sulphur because of its fineness, high Sulphur content and improved adhesion. 1 lb., 30c; 4-lb. bag, 60c.

DOW MIKE SULPHUR SPECIAL FOR DUSTING

About half as finely divided as Mike Sulphur. Ideal for dusting. Goes farther and covers better than ordinary dusting Sulphurs due to its minute size. Particularly effective on Roses. 10-lb. bag, \$1.25.

DN SULPHUR DUST No. 10

Positively kills off red spider on Carnations. 10 lbs., \$3.00; 5 10-lb. bags, \$12.50; 100 lbs., \$25.00.

DN DUST No. 12

To control red spider mite and thrips on Roses, Snapdragons, Gardenias, Carnations. 10-lb. pkg., \$4.50; case five 10-lb. pkgs., \$20.00.

DRY LIME-SULPHUR

For dormant spray use 12 to 15 lbs. to each 50 gallons of water. Lb., 30c; 5 lbs., \$1.40; 25 lbs., \$3.25.

FISH OIL SOAP

For use as a spreader in using spray materials. Also as a wash on various plants for cleansing foliage. With nicotine sprays use 3 to 5 lbs. to 50 gallons. 25 lbs., \$4.00.

FLOWERS OF SULPHUR

A powder used to check mildew, dry rot and other fungous diseases. Price: 5 lbs., 45c; 10 lbs., 75c.

FLY AND MOSQUITO SPRAY

Stainless—pleasant to use. 1-qt. can, 50c; 1-gal. can, \$1.50.

GRAPE AND ROSE DUST (HAMMOND'S)

A dusting fungicide. Basically a micro-fine colloidal sulphur compound that is vastly superior to most fungicides in controlling blights, powdery mildew and black spot. Non-poisonous. Price: 1 lb., 35c; 5 lbs., \$1.25.

MOLOGEN

A safe powder to get rid of moles. Non-poisonous to birds and pets. 1/2-lb. pkg., 50c.



GRASELLI SPREADER-STICKER

For LORO and practically all sprays. Grasselli Spreader-Sticker is used with contact insecticides such as LORO and Nicotine Sulphate. Generally about eight ounces of Grasselli Spreader-Sticker can be used to advantage with 100 gallons of properly diluted Nicotine Sulphate, LORO and other contact sprays. Pt., 75c; gal. cans (8 lbs.), \$4.95; 5-gal. cans (40 lbs.), \$23.00.

HAMMOND'S COPPER SOLUTION

Ammoniated Copper Liquid-Fungicide for the control of fungous diseases. Gal. can., \$4.75.

KROP SAVER DUST No. 10

A Pyrethrum insecticide for control of insects on food crops. 4-lb. pkg., \$1.00; 50-lb. bag, \$11.00.

LORO

It is effective on aphids (plant lice, black and green fly), thrips, midge, red spider, mealy bug, lace fly and leaf hopper. Its use is suggested on other insects where a contact insecticide is needed. Against chrysanthemum midge, mealy bugs, red spider, mites and thrips. Pt., \$2.00; gal., \$10.50; 5 gals., \$9.00 per gal. If available.

MULTICIDE

For aphids, leaf rollers, leaf hoppers, midges, tarnished bugs, white flies. Not available at present.

NIKOTEEN

30% grade. For spraying and fumigating. 1/2 lb., \$1.00; 1 lb., \$1.80.

NIKOTEEN LIQUID

An effective spray when mixed with 500 parts of water. Death to aphids, green fly, spider, mealy bug, thrips and other forms of flower, fruit and vegetable lice. 40% strength—4 lbs., \$6.35; 8 lbs., \$10.75; 40 lbs., \$45.00.

NICO-FUME LIQUID

For fumigating or spraying; contains 40 per cent nicotine. 4 lbs., \$6.35; 8 lbs., \$10.75.

NICO-FUME PRESSURE FUMIGATOR

Put up in 1/2-lb. and 1-lb. cans. Powder is now burned under pressure, giving better control of insects. The cans have a sparkler for lighting the powder. 1/2-lb. cans, 45c; doz., \$4.45. 1-lb. cans, 65c; doz., \$7.40.

NNOR

Gives high kill when used as a general greenhouse spray for red spider (in young, adult and egg), green aphid, leaf tiers, leaf hopper, mealy bugs. Gal., \$10.00; 5 gals., \$45.00.

NO-PY-RO

A synthetic insecticide for control of red spider, thrip, mealy bug, aphids, and white fly. Gal., \$10.00.

PARA-SCALECIDE

For treating peach-borer. Dilute 1 gal. with 7 gals. water. Apply late fall or early spring. Qt., 85c; gal., \$2.20.

PARIS GREEN

A poisonous insecticide in powder form; for insects which chew. 1/4 lb., 20c; 1 lb., 50c; 5 lbs., \$2.25.

RED ARROW

A non-poisonous contact spray that will not stain or burn tenderest foliage. Effective against red spiders, mealy bug, aphid and other pests. One ounce will make 4 to 8 gallons spray. Price: 1 oz., 35c; 4 ozs., \$1.00; 1 pt., \$2.85; 1 qt., \$5.40; gal., \$11.00.

SCALECIDE

A dormant spray for scale. One part Scalecide is mixed with 15 parts of water. Price: Qt., 75c; gal., \$1.75; 5 gals., \$6.35.

SELOCIDE

Kills red spiders. Selocide kills from 90 to 100 per cent of red spiders (Tetranychus Telarius L.) in just one application. Selocide also kills the eggs and it does not harm tender plants when properly used. Gal., \$3.00; 5 gals., \$13.50.

SLUG SHOT (HAMMOND'S)

All purpose, safe, dusting insecticide. Fortified with Rotenone, Slug Shot is powerfully effective against leaf eating insects. Price: 1 lb., 30c; 5 lbs., \$1.00.

SNAROL

Snarol—an attractive bait meal—will quickly rid your garden of cutworms, snails, slugs, sowbugs, earwigs, and grasshoppers. Snarol is a ready-prepared meal that you simply broadcast about plants and shrubs after you sprinkle them in the evening. 1 lb., 25c; 10 lbs., \$1.50.

FROM

A. H. HUMMERT SEED CO.

2746-2748 CHOUTEAU AVENUE (3)

ST. LOUIS, MO.

FLOWER—GARDEN—LAWN SEED—BULBS



INSECTICIDES AND FUNGICIDES—Continued

TARTAR EMETIC

For Gladiolus thrips—absolute control if properly used. 4 lbs. Tartar Emetic, 16 lbs. Brown Sugar, 100 gallons of water. 5 lbs., \$4.00. Write for prices on larger quantities.

TOBACCO DUST

Fine powdered tobacco. Used principally as a ground covering in greenhouses to repel insects. Price: 100 lbs., \$3.25.

TOPTOX

For thrips, aphids, red spider, tarnished plant bug, mite and lacewing fly on different plants. Gal., \$9.75; 5 gals., \$42.50.

TERRO ANT KILLER

A syrup to be placed on chips of wood or cardboard. Ants will be quite active for some time eating the Terro and taking it back to the nest for the queen ant. The queen ant being destroyed ceases further propagation. Price: 25c and 50c per bottle.

TREE TANGLEFOOT (CATERPILLAR PASTE)

A sticky substance spread around the bark of trees to prevent creeping insects from climbing up the tree. Price: 6-oz. can, 35c; 1 lb., 80c; 5 lbs., \$3.75; 10 lbs., \$7.00; 25 lbs., \$15.00.



TRI-GEN

All-purpose spray that gives positive plant protection. Kills all insects (chewing and sucking), controls mildew and blackspot.

- E Kit (makes 10 qts.) \$ 0.90
- A Small Kit (makes 16 qts.) Protects 12 to 20
Roses for season 1.50
- B Medium Kit (makes 64 qts.) Protects 50 to
80 Roses for season 4.00
- C Large Kit (makes 32 gals.) Protects 100 to
160 Roses for season 6.00
- D Estate Kit (makes 128 gals.) Protects 400 to
600 Roses for season 20.00

VOLCK

The scientific insecticide for nursery, greenhouse and garden. Controls scale insects, mealy bug, white flies, red spiders, rust mites, aphid, thrips. Qt., 75c; gal., \$2.25; 5 gals., \$6.75.

WEED KILLER (Hammond's)

Weeds, poison ivy, and all vegetation are easily killed with this highly concentrated (stands dilution with 40 parts of water), easy to use material. Simply mix with water, apply with a sprinkling can and all vegetation withers and dies. Do not use on lawns as it kills ALL vegetation. Gal., \$1.50; 5 gals., \$7.25.

YAMTOX

For control of thrip, aphid, midge, red spider, white fly, larva. Mixed 1 to 400. Gal., \$12.00.

HORMODIN POWDER—ROOTONE—POT LABELS—SUPPLIES



ROOTONE—Hormone Powder for Cuttings

Treat your cuttings with Rootone. It is foolproof. No skill required. It effectively prevents damping off of seedlings.

- 2-oz. jar for 3,000 cuttings .. \$1.00
- 1-lb. jar for 30,000 cuttings .. 5.00

TRANSPLANTONE

For treatment of transplants of all kinds; it contains the root-forming hormones, vitamin B-1 and other members of the vitamin B complex, important in plant growth. 3 ozs., \$1.00; 1 lb., \$4.00.

HORMODIN No. 1 POWDER

Designed primarily for use on carnations, chrysanthemums, poinsettias. 1 3/4-oz. tin for 3,000 cuttings, 50c; 1-lb. tin for 30,000 cuttings, \$3.00.

DU-BAY SEMESAN

It destroys the destructive diseases on the seed and protects them from the rots in the soil. Sprinkling of the seedling beds with Semesan solution effectively prevents damping-off. Recommended especially for seeds, bulbs, and Gladiolus corms.

Semesan (for Vegetables and Flowers). Small pkt., 10c; 2 ozs., 40c; 1 lb., \$2.50; 5 lbs., \$11.40.

Semesan, Jr. (for Corn). 12 ozs., 55c; 1 lb., 75c; 5 lbs., \$3.00. 2 ounces treat 1 bushel of seed Corn, as a dust.

Semesan Bel (for Seed Potatoes, Bulbs, and Roots). 2 ozs., 30c; 1 lb., \$1.65; 5 lbs., \$7.15. 1 pound treats 60 to 80 bushels of seed Potatoes.

Ceresan (for Wheat, Oats, Barley, Rye, and Cotton). 1-lb. tin, 75c. 2 to 3 ounces treat a bushel of seed, as a dust.



FRUITONE—For Better Set of Fruit or Seed

BEANS—Lima, String or Soy—Spraying flowers with Fruitone gives a better set of pods, especially in bad weather. Increases in crop up to 30% have resulted in field tests.

PEARS and PLUMS—Spray as for apples two to three weeks before harvest. 2-oz. can, \$1.00; 12-oz. can, \$5.00.



VITAMIN B¹ is not a fertilizer and does not take the place of it.

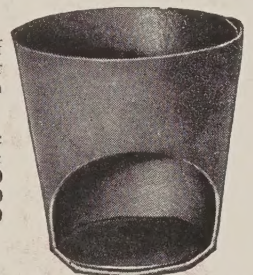
VITAMIN B¹ acts to release and magnify the plant food in soil.

PLANTABBS supply a complete, balanced plant food of the high analysis 11-15-20, therefore when COMBINED with VITAMIN B¹ produces startling results.

- Doz.
- 25c size \$2.00
- 50c size 4.00

NEPONSET RED FLOWER POTS

These Neponset Red Pots are made of specially treated paper intended for use in shipping plants which have been grown in clay pots.



- | | |
|------------------------|--------------------|
| Packed 1000 to case | Packed 500 to case |
| Per Case | Per Case |
| 2 1/4 inch..... \$3.75 | 4 inch..... \$4.00 |
| 2 1/2 inch..... 4.10 | 5 inch..... 5.40 |
| 3 inch..... 5.10 | 6 inch..... 7.00 |
| 3 1/2 inch..... 6.25 | |

POT LABELS

Packed in cartons	Plain	Painted
4 x 7/8 inch, 1000	\$2.10	\$2.30
5 x 7/8 inch, 1000	2.20	2.50
6 x 7/8 inch, 1000	2.40	2.90
8 x 7/8 inch, 500	3.60	4.40
10 x 7/8 inch, 500	4.30	5.25

LABELS—TREE—Copper Wired

	Per 1000
	Plain Painted
3 1/2 inches long, 3/8 inch wide	\$2.20 \$2.70

WEATHERPROOF PENCILS

For marking labels. Will not rub off or fade. Each, 15c; doz., \$1.75.

GARDEN STAKES

Packed in Cartons	Plain	Painted
8 x 7/8 inches—250	\$1.55	\$1.70
10 x 7/8 inches—250	1.95	2.20
12 x 1 1/8 inches—100	1.10	1.25

SAFETY GLAZING GUN

Best for liquid putty. Each \$5.25.



GLAZING PUTTY

This, the original glazing plastic, has been used for years by exacting greenhouse owners everywhere. It is easy to apply with either bulb or gun. Gal., \$2.00; 5 gals., \$9.75.



VITAPANE

The latest development in flexible glass substitutes. 50-ft. rolls, 36 inches wide, \$6.20; 50-yd. roll, \$18.50.

WOOD PLANT BANDS

Stapled, Ready to Use	Per
Size	Weight 1000
1000 2x2x3	28 lbs. \$3.70
1000 2 1/2x2 1/2x3	30 lbs. 4.20
1000 3x3x3	35 lbs. 4.40
1000 4x4x4	60 lbs. 5.30

NEW PLANT LIFE

A LIQUID PLANT FOOD
1/2 Teaspoon Makes 1 Quart of Complete Fertilizer.
3-oz. bottle, 25c; doz., \$2.00.

SPHAGNUM MOSS

Extensively used for filling fern and orchid baskets, mixing with potting soil, covering tops of pots to preserve moisture, etc. Bale, about 16 lbs., \$2.25.

Selected . . .

VEGETABLE SEEDS

Pages 1 to 5



Tomato, Rutgers Certified
See page 4

A. H. HUMMERT SEED CO.

2746-48 Chouteau Avenue

ST. LOUIS 3, MISSOURI