

## **Historic, Archive Document**

Do not assume content reflects current scientific knowledge, policies, or practices.



LIBRARY  
RECEIVED  
★ MAR 29 1945 ★  
U. S. Department of Agriculture

## THE INLAND SEED CO.

WISHES to take this opportunity to announce the association of Mr. Thomas P. Anderson as manager of the company. This association brings the third generation of Andersons into the firm.

The Inland Seed Co. was founded thirty-five years ago when Mr. H. S. Church and Mr. John Anderson merged their two respective seed stores at 915 W. First.

In 1913 Mr. Church was forced, because of ill health, to retire, and Mr. Anderson carried on the business.

In 1923 a need was felt for larger quarters so the company was moved to our present location at 120 S. Howard. It was in that year that Mr. H. C. Anderson joined his father as President of the firm.

In 1932 Mr. H. C. Anderson passed away and Mrs. H. C. Anderson took over the duties of her late husband.

October of 1943 saw ill health creep up on Mr. John Anderson and he was forced to retire in his 85th year. At the time of his retirement Mr. Anderson was considered the oldest merchant in point of continuous service in the city of Spokane.

At the present time Lt. Henry D. Anderson is serving overseas as a communications officer in the Army Air Corps, but he also expects to join the firm when he returns to civilian life.

Throughout Oregon, Idaho, Montana, and Washington we have our consignment boxes located in various Grocery, Drug, and Hardware stores for your convenience. The next time you are in one of these stores why not take a minute to look over the display. If he doesn't have just what you had in mind write to us and we will be more than happy to serve you. At the same time if you have any other question in mind about any items not listed in this catalog or if you have a problem you would like cleared up send them along at the same time. There have been many such occasions in the past years which have required no little research on our part before they could be answered. We have three employees that have a combined service record of over ninety years with us who have proven their worth many times over as they are able to answer questions that only men of experience can answer.

At the time Mr. Church and Mr. Anderson started the Inland Seed Co. one of their principles was the old maxim that "The Customer Is Always Right". Today, under the third generation management, that rule still goes. Another practice we will follow is the shipment of orders on the day that they are received by us. We ask you, however, to bear in mind the fact that inexperienced help may cause a short delay. In case your remittance is insufficient to cover the amount of your order we will fill the order to the amount received unless instructed to send C.O.D. for the balance due to the fact that **ALL OF OUR PRICES ARE SUBJECT TO CHANGE WITHOUT NOTICE.**



# VEGETABLE SEEDS

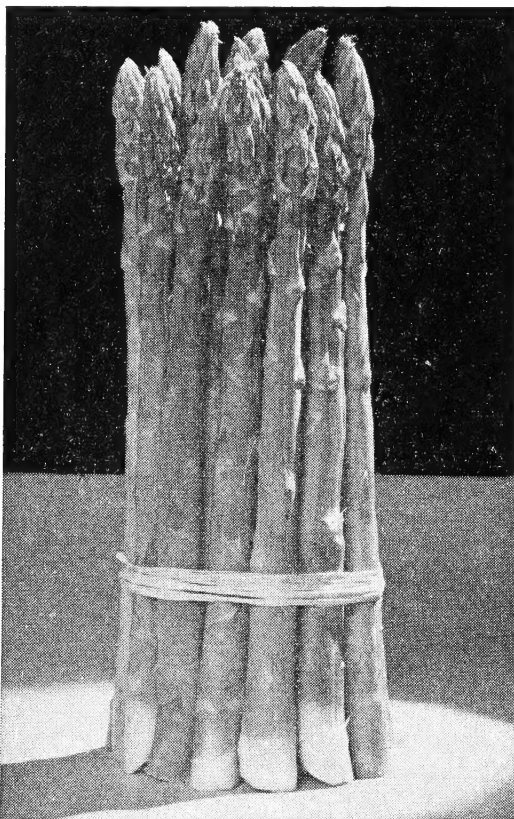
## ARTICHOKE TUBERS

These are planted and cultivated very much the same as potatoes. They are of especially great value for the feeding of stock. Write for prices.

## ASPARAGUS

Asparagus seed should be sown as early in the spring as the ground can be worked. When the roots are from 1 to 2 years old they should be moved to their permanent location, spacing them from 15 to 18 inches apart in rows 2 to 3 feet apart.

**Mary Washington.** The Mary Washington Asparagus is without a doubt the best green asparagus for home use, as the shoots are thick, heavy, long and straight with rich dark green lightly tinted purple tips, that are slow to branch. This variety is highly resistant to rust. Please write for prices.



ASPARAGUS

## BEANS

### BUSH, WAX PODDED

**Golden Wax Improved.** This is one of the best and earliest dwarf sorts. The plants are erect, compact, and very productive. The pods are of medium length, nearly straight, broad, flat and a golden yellow and from 4½ to 5 inches in length.

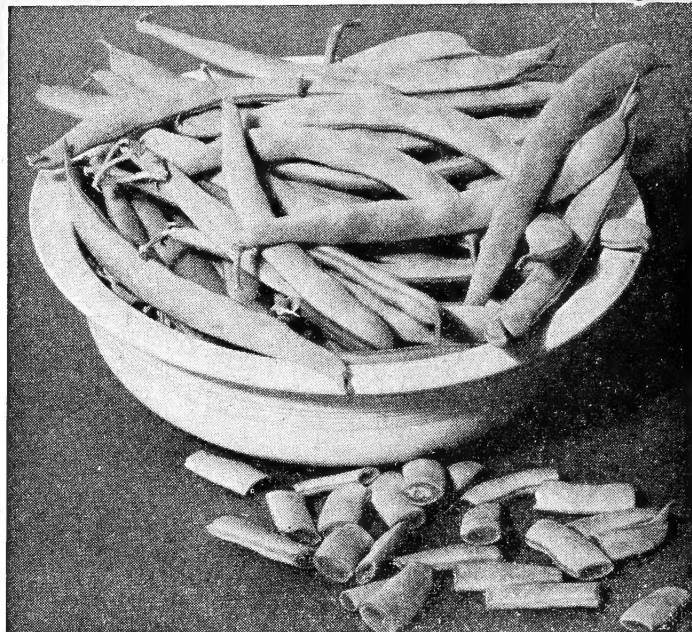
**Black Wax, Pencil Pod.** This bean is extremely productive, bearing magnificent straight, pencil shaped pods, five to seven inches in length, of a rich golden yellow color; beautifully rounded, meaty, fresh, brittle, solid, and entirely stringless.

### BUSH, GREEN PODDED

**Bountiful.** One of the best early varieties for home garden and shipping. Plant is vigorous grower and prolific bearer of pods 6 to 7 inches in length; straight, broad and thick; flat. Stringless, brittle tender and of fine quality.

**Refugee Improved Stringless.** This is a very desirable home garden bean with light green pods ranging from 6 to 7 inches in length.

**Stringless Green.** This is a very desirable dwarf green podded snap sort for the home garden and market. The plants are large, spreading and productive, the pods are medium green 6 inches in length, cylindrical, and remain crisp and tender throughout the growing season.



BOUNTIFUL GREEN PODDED BEANS

**Tender Green or New Stringless.** This is the leading all-purpose round pod stringless bean for market gardeners, shippers and canners. The vine is a steady, heavy producer with pods from 6 to 6½ inches long. Especially adapted to quick freezing preservation.

**Bush Bean prices:** Pkt. 10c; ½ lb. 20c; 1 lb. 35c; 5 lbs. \$1.50.

### POLE, GREEN PODDED

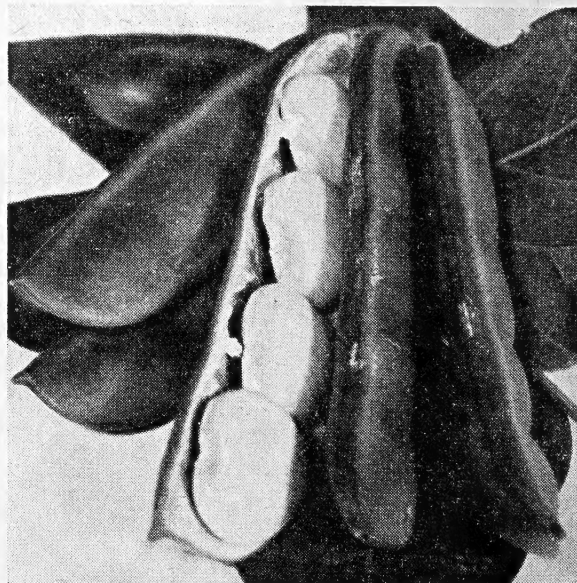
**Kentucky Wonder or Old Homestead.** The leading pole bean, the best known and most widely used. The vines grow from 5 to 6 feet in height with dark green foliage and pods, which have excellent flavor, and are from 7½ to 9 inches in length, and are very good for canning and quick freezing.

**Oregon Giant.** This variety was adapted for and extensively used in the Northwest. The vine grows to around 6 feet tall and has broad thick flat, very meaty pods growing from 8½ to 9 inches in length.

### YELLOW PODDED

**Kentucky Wonder Wax.** This is by far the best wax podded pole bean. The vine is a good climber and grows to about 5 feet, and is a very heavy producer of light golden yellow, thick flat almost stringless pods.

**Prices:** Pkt. 10c; ½ lb. 20c; 1 lb. 35c; 5 lbs. \$1.50.



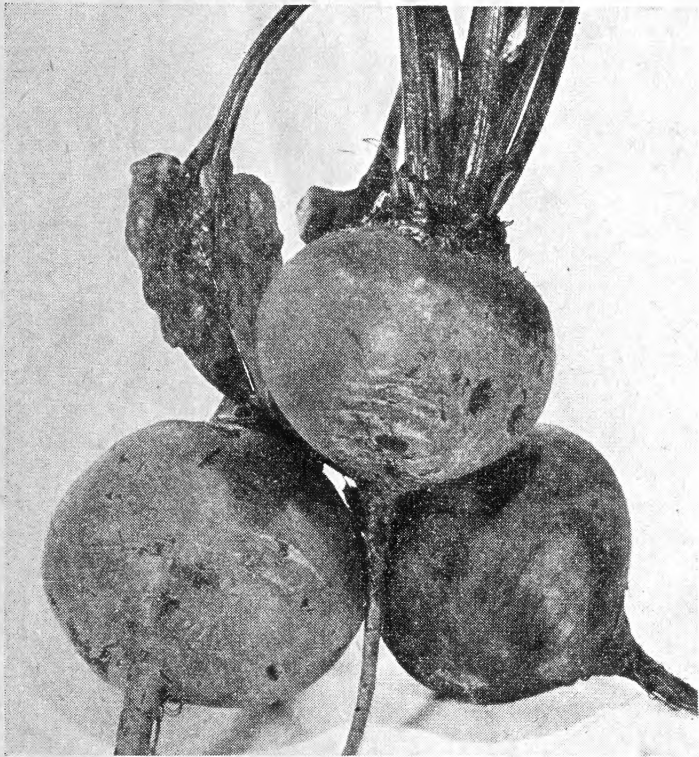
HENDERSON'S BUSH LIMA



**BUSH LIMAS**

**Henderson Bush Lima (Baby Lima).** This is the most widely used of the lima beans for home and market gardens, because of its productiveness, hardiness and resistance to disease. The pod is flat and slightly curved; dark green and especially good for freezing.

Prices: Pkt. 10c; ½ lb. 30c; 1 lb. 50c.



BEEET, DETROIT DARK RED

**BEETS**

**Blood Turnip, Edmands.** An extra selected stock of Blood Turnip. The roots are dark red and nearly round or slightly flattened. The flesh is deep red.

**Crosby's Egyptian.** An extra early variety; splendid for home gardens or market. Tops medium in size, roots flattened, globe shaped with small tap roots. The color is very dark red; flesh crisp and tender.

**Detroit Dark Red.** The standard of excellence in table beets for home and market gardens, for shipping and for canning. Tops are uniform, small, slender, erect. Roots globe shaped with small collar and small tap root. Very dark blood red.

**Early Wonder.** Very desirable for home and market garden. The tops are small and the roots a flattened globe shape with a small collar and top root. The flesh is a deep purplish red.

Prices on all varieties: Pkt. 10c; ¼ lb. \$1.00; 1 lb. \$3.00.

**SWISS CHARD**

**Lucullus.** This is the most commonly grown chard. It is not only a fine home garden variety but is most satisfactory for market use. The spines and midribs are light green in color, broad and thick. The leaves are light green, fleshy, crumpled, attractive and make very excellent table greens.

**MANGEL WURZELS**

**Danish Sludstrup.** Tests have shown this mangel to be of very high feeding value and one which should be used more extensively. The roots are long, pointed, oval with reddish yellow skin and flesh.

**Giant Half Sugar.** This is a long, oval variety with tapered roots. It is grayish white in color with a rose colored shoulder. Flesh is white and has a very high sugar content.

**Mammoth Long Red.** This is the largest and heaviest cropping Mangel. The roots grow in a truly enormous size, sometimes growing as much as 3 feet in length. The skin is red; flesh white veined pink.

Prices: 1 oz. 25c; ¼ lb. 75c; 1 lb. \$2.00.



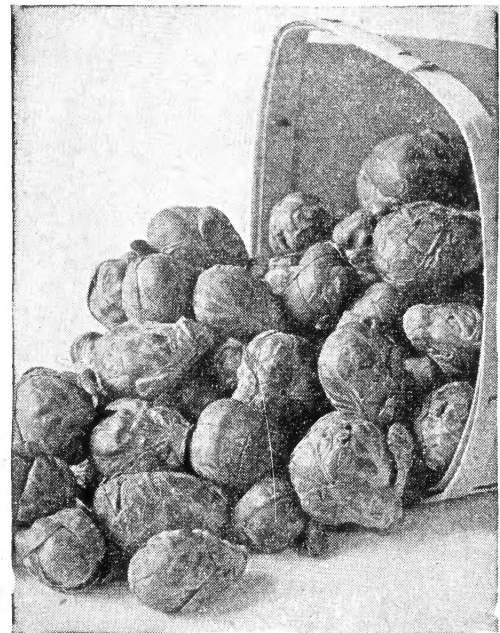
BROCCOLI

**BROCCOLI**

**Italian Green Sprouting** There is no Broccoli which is better for either home shippers, or market gardeners. The plant is tall, erect, with a central head and numerous side sprouts. After the central heads are cut the side sprouts grow out to form edible heads for the remainder of the season. Prices: Pkt. 10c; 1 oz. 50c.

**BRUSSELS SPROUTS**

**Long Island Improved.** This variety is most commonly grown as a fall, winter and early spring crop. The plants are small and compact, producing solid, round cabbage like balls 1½ inches in diameter. Prices: Pkt. 10c; 1 oz. 75c.



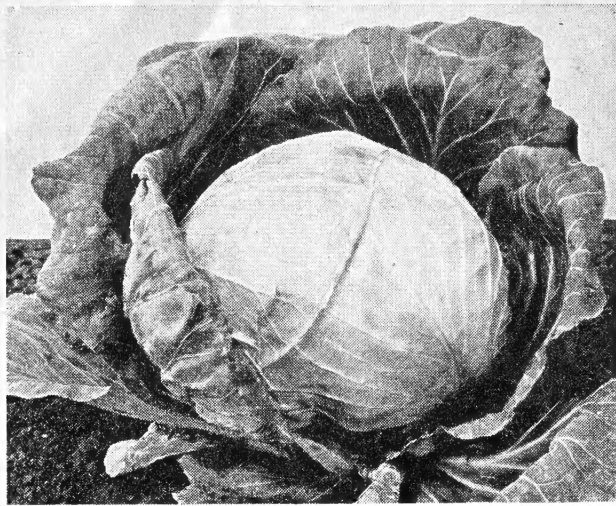
BRUSSELS SPROUTS

**CABBAGE****FIRST EARLY**

**Golden Acre.** This is a very uniform maturing and attractive variety of cabbage which makes an excellent home, market, or shipping variety. The plant is rather small with a short stem and short leaves. The head round and solid grows to about 6½ inches in diameter. Prices: Pkt. 10c; oz. 75c.

**Early Jersey Wakefield.** This variety is the earliest and surest heading cabbage as well as the most popular pointed cabbage. It is small, compact, with medium green foliage. Its firmly developed crisp, tender head is conical in shape and grows to about 7 inches in length and 5 inches at the base. Prices: Pkt. 10c; oz. 50c.





CABBAGE, LATE FLAT DUTCH

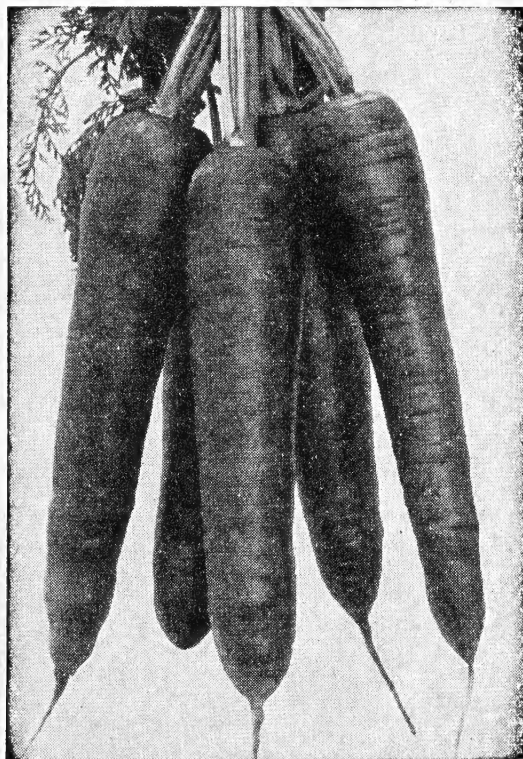
**Copenhagen Market.** This is a very dependable early and uniform variety used largely as an early shipper. The round, solid heads of a gray green color are very desirable for kraut. **Prices: Pkt. 10c; 1 oz. 75c.**

## LATE

**Danish Ball Head.** This is one of the hardiest cabbages in cultivation. It will endure both frost and drought. These hardy and compact plants have very thick, smooth leaves. The late maturing heads are round, solid and medium size. **Prices: Pkt. 10c; oz. 75c.**

**Drumhead Savoy.** This variety is very popular because of its tasty flavor which is sweeter and more delicate than other varieties of cabbage. The heavy round heads are somewhat flattened with deep green wrinkled outer leaves enclosing the tender light green heart. This is a late maturing variety but will keep all winter. **Prices: Pkt. 10c; 1 oz. 50c.**

**Late Flat Dutch.** This excellent cabbage for home and market gardens deserves its popularity because of its heavy yield of very large flat and solid heads. The leaves are a light gray green and from 6½ to 7 inches in depth. **Prices: Pkt. 10c; 1 oz. 50c.**



CARROTS, IMPERATOR

## CARROTS

## TABLE

**Chantenay.** Early, scarlet color; broad thick shoulders; stump root. Is desirable for the home and market garden. The flesh is red-orange and a fine quality. **Prices: Pkt. 10c; 1 oz. 45c; ¼ lb. \$1.35; 1 lb. \$4.00.**

**Danvers Half Long Improved.** First class quality for all soils. The root is of a rich dark orange color and grows very smooth and handsome. Very productive; produces as much tonnage to the acre as the longer field varieties. **Price: Pkt. 10c; oz. 45c; ¼ lb. \$1.35; 1 lb. \$4.00.**

**Early French Forcing.** This variety is used for early green and for hot house forcing. The tops are very small and root nearer round and red orange in color. Flesh is medium orange, crisp and of good flavor. **Prices: Pkt. 10c; 1 oz. 45c; ¼ lb. \$1.35; 1 lb. \$4.00.**

**Nantes or Coreless.** This variety is falsely called and sold as Coreless The Nantes is not entirely Coreless but much nearer to it than any other variety. The flesh is red and very sweet; stump root. **Prices: Pkt. 10c; 1 oz. 45c; ¼ lb. \$1.35; 1 lb. \$4.00.**

**Imperator.** This carrot grows to a length of 7 or 8 inches. It has a shoulder diameter of from 1 to 1½ inches; has a smooth crown with no undesirable side shoots. It is a deep orange color; fine texture and a sweet flavor. **Price: Pkt. 10c; 1 oz. 45c; ¼ lb. \$1.35; 1 lb. \$4.00.**

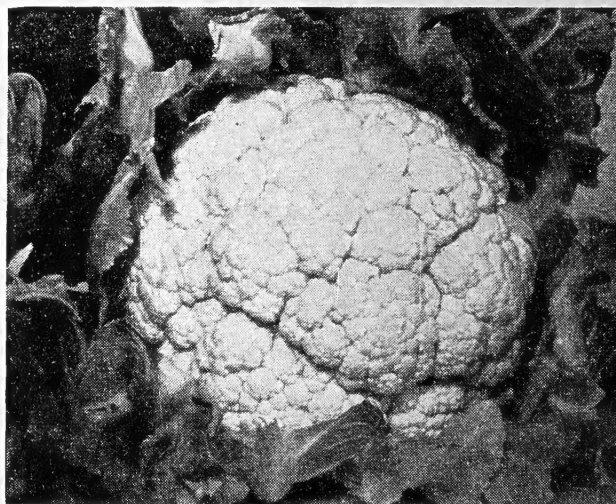
**Oxheart or Querande.** This is a thick quality 5 to 6 inches long; a very blunt root; the lower end grows more rapidly than other variety and the root attains a weight of more than a pound.

**Early Scarlet Horn.** This is used by gardeners for early market; tops are slender and short. The roots tapering and blunt like a small short Chantenay. The flesh is crisp and a red-orange color. **Price: Pkt. 10c; oz. 45c; ¼ lb. \$1.35; 1 lb. \$4.00.**

## CARROTS—STOCK

**White Belgian.** Grows one-third out of the ground. Root pure white, green above the ground. The flesh is of deep yellow.

**Yellow Belgian.** Large root; yellow flesh; good keeper. **Price: 1 oz. 30c; ¼ lb. 90c.**



SNOWBALL CAULIFLOWER

## CAULIFLOWER

Cauliflower will not head in hot dry weather. When heads begin to form draw the leaves in tight together to protect them from the sun.

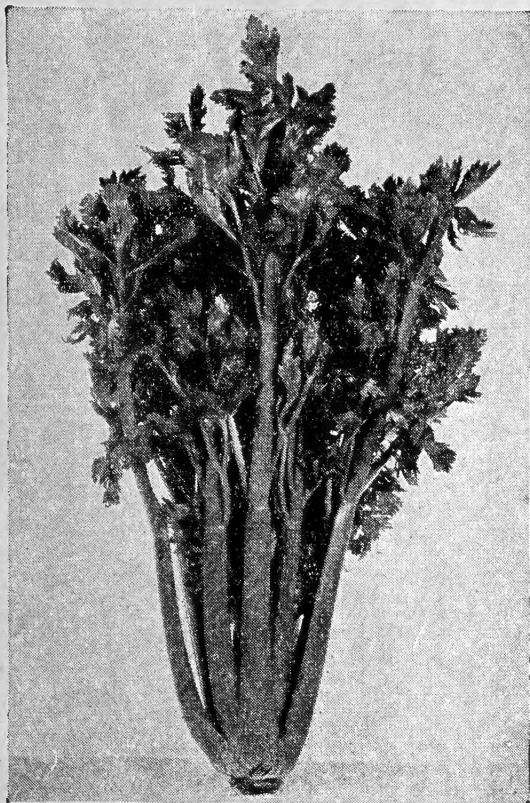
**Snow Ball.** This is the best and most widely used early variety. The plants are dwarf with short pale green leaves. The heads are medium, firm, compact, solid, pure white and of the finest quality. **Price: Pkt. 25c; ½ oz. \$2.00.**

## CELERY

**Golden Plume.** This variety is well suited for either the home or market garden. Plant is medium height with compact full heart. It blanches readily to a golden yellow. It is of excellent quality. **Price: Pkt. 10c.**

**Golden Crisp Utah.** This is a very desirable variety. The plant is stocky, full hearted, and compact. It has a rich flavor and very free from strings. It is green and bleaches to a pure white; as a shipper, it is limited due to its tenderness. **Price: Pkt. 10c.**





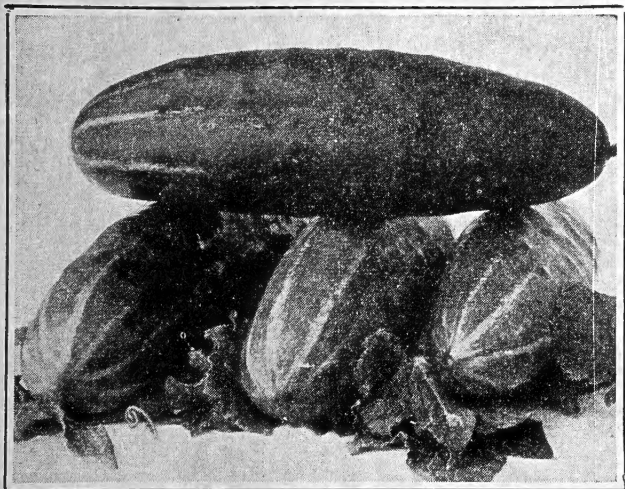
GOLDEN UTAH CELERY

## CUCUMBERS

**Chicago Pickling.** Most widely known of the pickling variety; is extremely early and develops nicely. It may be used for slicing. This very hardy prolific plant bears fruit 6½ inches long and 2½ inches in diameter. Black spined, uniform in size, and most attractive; medium green color. **Price: Pkt. 10c; 1 oz. 35c; ¼ lb. \$1.00; 1 lb. \$2.00.**

**Davis Perfect.** This Cucumber is very good in the home and market garden; it is highly productive and its eating qualities are unsurpassed. The fruit grows to 10 inches in length, has few seeds and a fine white flesh. **Price: Pkt. 10c; 1 oz. 35c; ¼ lb. \$1.00.**

**Gherkin.** This is not a true Cucumber; it is used for very small pickles; the uniform fruits are pale green and heavy with prickly spines. **Price: Pkt. 10c; 1 oz. 35c; ¼ lb. \$1.00.**



CUCUMBER

**Longfellow.** This variety produces extremely long, handsome fruits which have won the name of the finest of the large sorts. It may be used very successfully for either home gardens or green house growing. The fruits are 12 to 15 inches long; white spined, good quality and most attractive dark green color. **Price: Pkt. 10c; 1 oz. 35c; ¼ lb. \$1.00.**

**Straight Eight.** This is a variety of distinct characteristics with unusual uniformity. It is unsurpassed as a slicer for the home garden. The fruit is 8 inches in length, 2 inches in diameter, deep rich green, and cylindrical with blunt ends. **Price: Pkt. 10c; 1 oz. 35c; ¼ lb. \$1.00.**

**Klondike White Spined.** This variety is very valuable as a long distance shipper as it holds its color and firmness well. It is known for its ability to withstand adverse weather conditions. The fruit grows to 7½ inches in length with slightly tapering ends. It is smooth; uniformly developed and dark green in color. **Price: Pkt. 10c; 1 oz. 35c; ¼ lb. \$1.00.**

**Long Green Improved.** This is the standard light variety for the home and market garden. Excellent for slicing, the fruits are deep green, straight, slightly tapered. Flesh is very white and crisp. **Price: Pkt. 10c; 1 oz. 35c; ¼ lb. \$1.00.**

## CORN—SWEET

### FIRST EARLY

**Early Minnesota.** The ears are about eight inches long, eight rowed; kernels very broad, white, sweet and tender.

**Golden Bantam.** Grows from 3½ to 4 feet in height. Ears about six inches in length. Eight rows golden-yellow.

**Golden Market.** An early yellow variety. Ears running from 10 to 12 rows of medium length. Earlier than Golden Bantam.

**Golden Sunshine.** A very early yellow corn — about a week earlier than the Golden Bantam, retaining its flavor and tenderness, ears same size.

### MEDIUM EARLY

**Early Evergreen.** This fine variety yields large, handsome, ten and twelve rowed ears, averaging about nine inches in length. Very sweet, fine flavor and tender.

**Giant Golden Bantam.** By careful selection, and cross breeding, all the good traits of Golden Bantam have been retained, and in addition a larger ear has been produced, making it the most popular variety of yellow sweet corn. About a week later than the Golden Bantam.

**Lb. 35c; 5 lbs. \$1.50; 10 lbs. \$3. Add postage.**

### HYBRID SWEET CORN

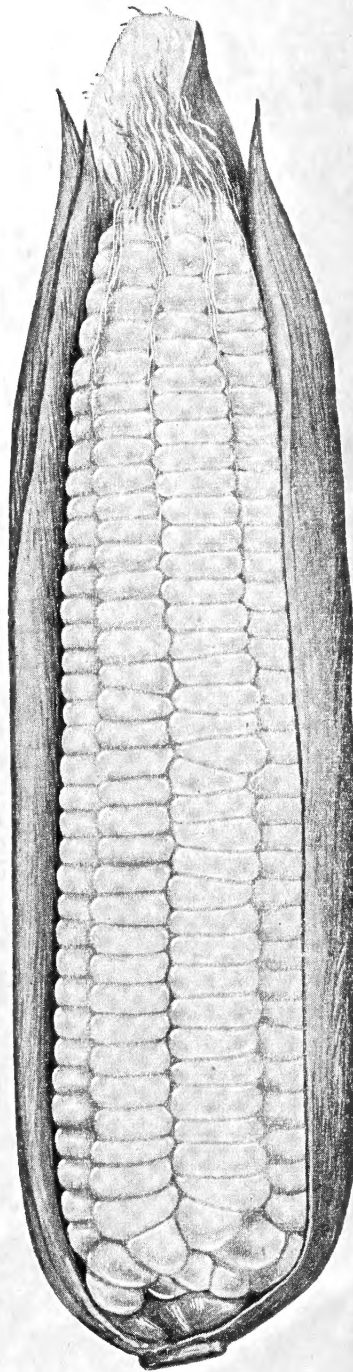
**GOLDEN CROSS BANTAM** is a cross between two inbreds. Ears usually run 12 rows and are about the same length as ears of Golden Bantam. About a week later than Golden Bantam. The chief points in its favor are the following: ITS PRODUCTIVITY; ITS RESISTANCE TO DISEASE; ITS EVEN RIPENING; ITS GOOD FLAVOR.

**Price—Golden Cross Bantam: Pkt. 10c; ½ lb. 20c; 1 lb. 50c.**

### CORN—LATE

**Stowell's Evergreen.** Hardy and productive, very tender. This variety of corn is distinguished by large ears, long, deep kernels, rich, sugary flavor. Ears are about seven to eight inches long, fourteen to twenty rowed.

**Price—Stowell's Evergreen: Pkt. 10c; ½ lb. 20c; 1 lb. 50c.**



GOLDEN BANTAM



## EGG PLANT

**Black Beauty.** This is a very prolific and early variety. The medium sized plants bearing 4 to 6 globe shaped dark purple fruits are of excellent quality. **Price: Pkt. 10c; 1 oz. 65c.**



EGGPLANT, BLACK BEAUTY

## ENDIVE

**Broad Leaved Batavian.** This is a fine type of endive which is readily used for home and market gardens or for shipping. Valuable variety to grow not only from the stand point of its fine quality but its adaptability to withstand adverse weather conditions. The deep green thick ribbed plant grows to 16 inches in diameter. The heart is made up of broad thick twisted and toothed leaves which form a hard like bunch which blanches easily.

**Price: Pkt. 10c; 1 oz. 25c.**

## KALE or BORECOLI

**Dwarf Green Curled Scotch.** This is a very hardy productive variety of excellent flavor. A low growing compact plant with finely curled deep dark green color. **Price: Pkt. 10c; 1 oz. 20c; ¼ lb. 60c.**

**Tall Green Scotch.** This hardy variety grows to a height of about 2 feet; there are an abundance of dark yellowish green leaves which are very curly and wrinkled. **Price: Pkt. 10c; 1 oz. 20c; ¼ lb. 60c.**

**Thousand Headed or Jersey Kale.** This is a very productive variety grown mostly for stock and chicken feed. Plants are extremely tall, sometimes attaining the height of 6 feet. The leaves are large, deep green, thick and smooth. **Price: Pkt. 10c; 1 oz. 20c; ¼ lb. 60c.**

## KHOL - RABI

Khol-Rabi is a vegetable intermediate between the turnip and cabbage and captures the flavor of each.

**Early White Vienna.** This is the most popular variety. It is excellent for forcing or the home and market garden. The plant is small and a rich green in color. The bulb is edible when about 2 inches in diameter. Globe shaped, light green color, flesh white, fine texture, and of excellent mild flavor. **Price: Pkt. 10c; 1 oz. 50c.**

## LEEK

**Large London or Scotch Flag or American Flag.** This is a quick, strong growing plant. Produces long stems of uniform shape and size; 2 inches through and 10 inches long. They blanch a beautiful white and are mild of flavor. The Leek is closely allied to the onion but milder in flavor. It is used mostly in flavoring soups. **Price: Pkt. 10c; 1 oz. \$1.00.**

## LETTUCE

### LOOSE HEAD or CUTTING

**Prize Head.** This is an old favorite that has held its place in the home garden for many years. Up to this time it is still considered by many to be the best non-heading variety. It is an early type that is too tender for shipping. The plant is medium in size, curly with frilled edges. Has a fine sweet flavor and the outside leaves are medium green crumpled and tinged with reddish brown. **Price: Pkt. 10c; 1 oz. 30c; ½ lb. 75c.**

**Early Curled Simpson.** This is probably the most widely used of all varieties for home gardens. It is early, hardy and dependable,

has loose leaves that are large, crumpled and frilled, firm, compact, central bunch. It is very tender and sweet. The color is a yellowish green. **Price: Pkt. 10c; 1 oz. 30c; ½ lb. 75c.**

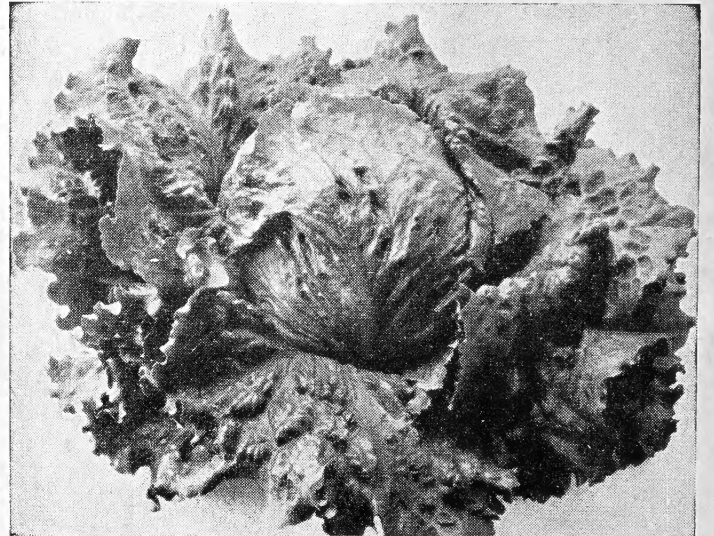
## FORCING

**Grand Rapids (Seed Black).** This is one of the most popular loose leaved varieties. It is excellent for early planting outside and for green house forcing. The plants are erect and compact, leaves light green, broad, wavy, curly and highly fringed. **Price: Pkt. 10c; 1 oz. 30c; ½ lb. 75c.**

**Hanson.** This is an old favorite for home and market gardens. Hardy and sure heading. The heads are large, globular, compact, tender and sweet. Leaves large, broad and curly, light yellowish green, excellent for mid-summer planting. **Price: Pkt. 10c; 1 oz. 30c; ½ lb. 75c.**

**Great Lakes.** This is a new hardy variety of the Imperial types. Developed by the U. S. Department of Agriculture and Michigan Experiment Station. The leaves are large and well folded: ribs heavy. It shows considerable resistance to tip burn. Heads in adverse weather conditions. **Price: Pkt. 25c.**

**New York or Wonderful.** This is the pioneer of long distance shipping varieties. A large curled head lettuce with dark green leaves which are slightly curled on the edges. Heads are well blanched, sweet, tender and of excellent quality. **Pkt. 10c; oz. 40c; ½ lb. \$1.20.**

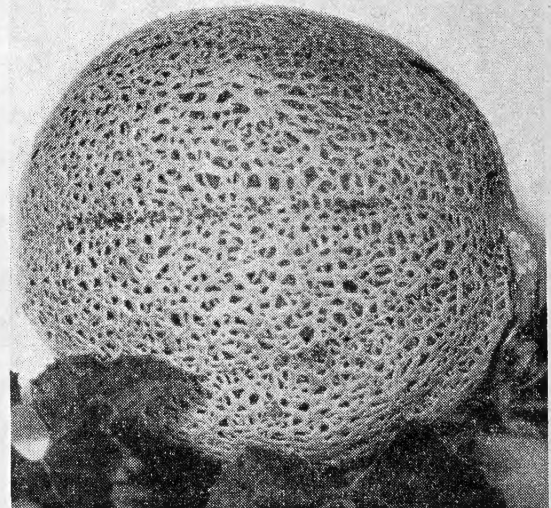


LETTUCE, NEW YORK TYPE

## MUSKMELON and CANTALOUPE

### SALMON FLESHED VARIETIES

**Hale's Best Improved.** This is the most popular and leading cantaloupe with large shippers and growers. It is a highly refined, extremely early and uniform melon that has become exceedingly popular with market gardeners and truckers. The fruits are slightly oval and remarkably uniform, entirely heavily netted. It has a small seed cavity and a deep salmon color. Flesh of excellent quality and sweet flavor. **Price: Pkt. 10c; 1 oz. 25c; ½ lb. 75c.**



MUSKMELON, HALE'S BEST IMPROVED

**Hearts of Gold or Hoodoo.** A mid-season Cantaloupe which is splendid as a crop to follow early varieties. It is popular among marketers and makes a fine shipper. The well netted fruits are almost round with a small seed cavity and a thick, firm, deep golden orange colored flesh. It has a distinct sweet spicy flavor. **Price: Pkt. 10c; 1 oz. 25c; ½ lb. 75c.**

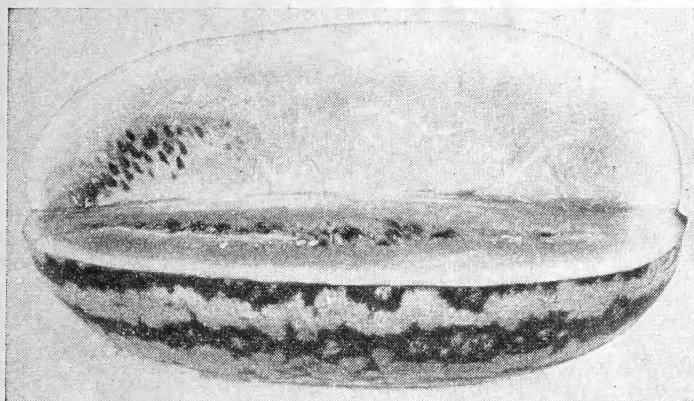
#### GREEN FLESHED VARIETIES

**Rockyford or Netted Rock.** This is a comparatively small green fleshed melon of the old type, slightly ribbed. Flesh is thick, with a golden tinge at the center. The outside is covered with a hard gray netting twisted around. Juicy and of excellent flavor. **Price: Pkt. 10c; 1 oz. 25c; ½ lb. 75c.**

**Pollock 10-25.** This is a Rockyford type, early, vigorous and of good quality. The fruits are broad and oval shaped. No ribbing, thickly covered with netting, flesh is golden at the center and shading to green at the rind. Bosolite variety. **Price: Pkt. 10c; 1 oz. 25c; ½ lb. 75c.**

**Honey Dew.** This variety requires a long growing season but once matured makes an excellent shipper and may be stored and kept in fine condition during most of the winter months. The fruit is large, globe shaped, smooth cream colored, hard rind upon ripening. The flesh is light green and exceptionally juicy with a sweetness entirely different from any other melon. **Price: Pkt. 10c; 1 oz. 25c; ½ lb. 75c.**

**Casabas, White Fleshed Golden Beauty.** This is a large round variety with fruits growing 6 to 8 inches in diameter. Has a tough wrinkled skin of a bright golden yellow. Flesh is white, thick and juicy with a distinct flavor. A good keeper. **Price: Pkt. 10c; 1 oz. 25c; ½ lb. 75c.**



WATERMELON, STRIPED KLONDIKE

#### MELONS—WATER

**Klondike (Black Seed).** This is a variety grown mostly in the west for markets shipping short distances. The fruits are oblong and sometimes obtain a weight of 25 pounds. The flesh is deep red and the rind dark green. The seeds are small and are mixed black and white. The flesh is very firm, melting and sweet. **Price: Pkt. 10c; 1 oz. 20c; ¼ lb. 60c.**

**Kleckley's Sweet or Monte Cristo.** This is one of the best flavored melons in cultivation. The shape and color being extremely desirable. The rind is a very dark green and very thin. The flesh is deep scarlet, fine and of delicious quality. **Price: Pkt. 10c; 1 oz. 20c; ¼ lb. 60c.**

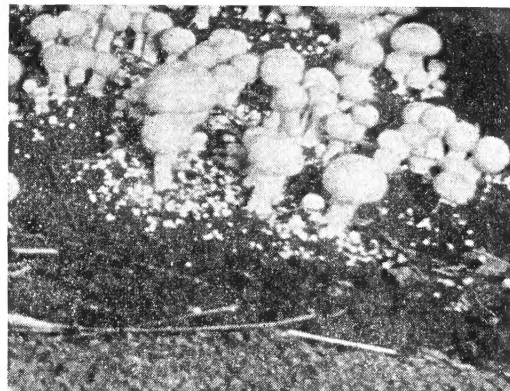
**Striped Klondike.** This is a selection from Klondike for fruits that are striped like the old Georgia rattle snake. The fruit is about the same size. The flesh color and quality is very similar to the Klondike. This variety is very popular in the West, and Northwestern States. **Price: Pkt. 10c; 1 oz. 30; ¼ lb. 90c.**

**Tom Watson.** This variety is considered by many to be the peer of shipping melons. Oblong in length, being 10 to 12 inches in diameter and weighing 35 to 40 pounds. The skin is deep green, flesh is red and the seeds brown. It is an excellent fruit for storing. **Price: Pkt. 10c; 1 oz. 20c; ¼ lb. 60c.**

**Ice Cream.** White seeds. Early variety, well adapted to home gardens. Rind is very thin and medium green in color. The flesh rich, scarlet, and sweet. This is the best for home and market gardeners. **Price: Pkt. 10c; 1 oz. 20c; ¼ lb. 60c.**

#### MELONS—CITRON

For preserving; grows uniformly round and smooth. Striped with marbled light green. Flesh white and solid. **Price: Pkt. 10c; 1 oz. 20c; ¼ lb. 60c.**



MUSHROOMS

#### MUSHROOM SPAWN

**Lambert's Pure Culture.** It comes in bricks, weighing about 20 ounces. These are broken up into pieces the size of a walnut and put into the bed one foot apart each way.

**Price: Brick 45c; 5 bricks \$2.00.**

Write for free booklet on Mushroom Culture.

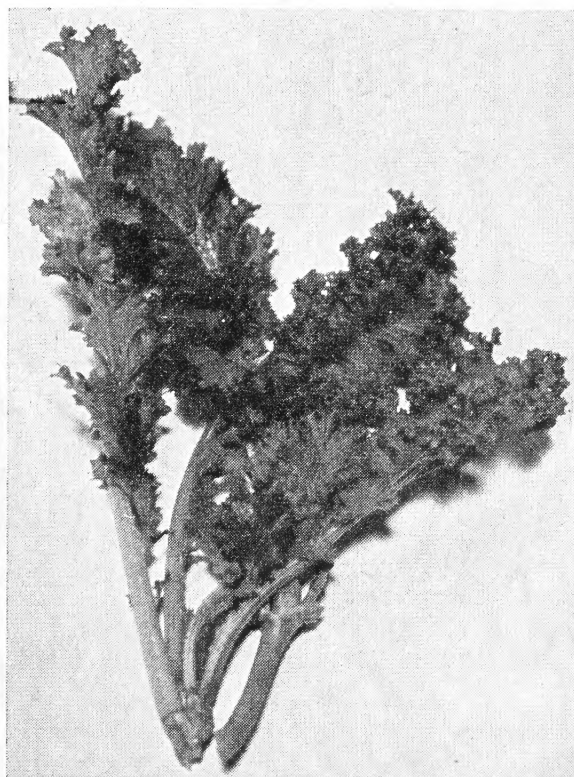
#### MUSTARD

**Southern Giant Curled.** The leaves are large and light green in color with a tinge of yellow. They are crimped and frilled at the edges. The plant is up-right or slightly spreading in growth. **Price: Pkt. 10c; 1 oz. 20c.**

#### OKRA or GUMBO

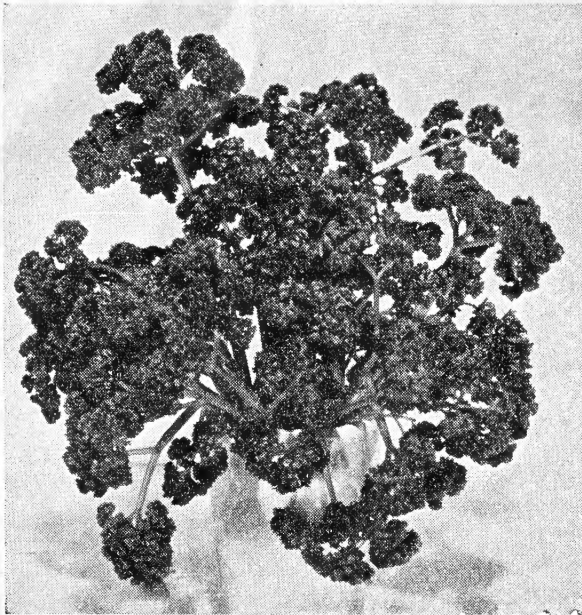
The long tender pods of Okra are very delicious when sliced and cooked in soups.

**Dwarf Green.** This plant grows about 2 feet in height with many branches. The large green tender pods are thickly set in the plant. The pods measure 5 to 7 inches in length.



MUSTARD, GIANT SOUTHERN CURLED





PARSLEY

**PARSLEY**

Very useful for flavoring soups, meats and for garnishments. Green leaves are used for flavoring.

**Extra Double Curled.** This is a vigorous growing compact, productive variety. The leaves are dark green in color and thickly curled. It is the most popular home and market garden variety. **Price:** Pkt. 10c; 1 oz. 20c.

**ONIONS**

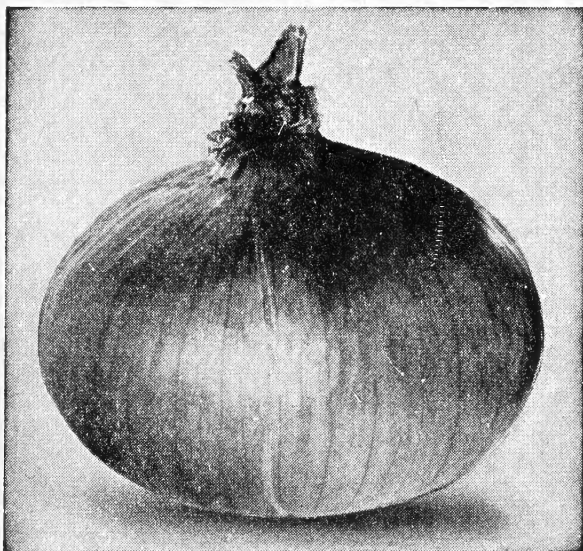
**RED**

**Southport Red Globe.** This most excellent variety produces bulbs of medium to large size, ideally globe shaped, with very smooth, glossy surface, very small neck.

**YELLOW**

**Danvers—Yellow Flat.** The leading large yellow variety, round, slightly flattened, flesh fine-grained, rather mild, very rich and sweet; one of the best keepers and shippers.

**Danvers—Yellow Globe.** The shape is almost globe form and the bulbs are quite large, with thin necks. The skin is a fine brown orange yellow.



YELLOW GLOBE DANVERS

**Sweet Spanish.** A very large globe-shaped light yellow onion with small top, and an exceptionally fine shipper. This onion combines flavor and mildness with good keeping qualities.

**WHITE**

**Clover Leaf Bunching.** Do not make the mistake of thinking that all varieties of onions are equally good for bunching. White varieties are always the best.

**Southport Globe.** Its mild, delicious flavor and exceptionally attractive appearance have won great prominence. It is a most beautiful onion. Flesh fine and very white.

**Sweet Spanish.** Similar in size and shape to the Riverside Sweet Spanish, but pure white. Very handsome and mild.

Postpaid.	Pkt.	1 oz.	1 lb.
Y. Danver .....	\$0.10	\$0.75	\$2.25
Y. G. Danver.....			
S. S. Yellow.....	\$0.10	\$0.75	\$2.25
S. S. White.....			
S. W. Globe.....			
S. R. Globe.....			
Bunching .....			

**ONION SETS**

**Yellow—Lb. 20c, postpaid; 10 lbs. \$1.50.** For large quantities, write for prices, stating quantity wanted.

**ONION PLANTS**

Matured onions can be secured from the plants much sooner than from seed. It is recommended to plant the rows 16 inches apart and the plants 3 to 4 inches apart in the rows. If planted in this manner it will take about 100,000 to the acre. Do not plant too deep. Plants are put up in bundles of about 100 and 60 bundles to a crate. Count not guaranteed.

Not less than two bundles sold.

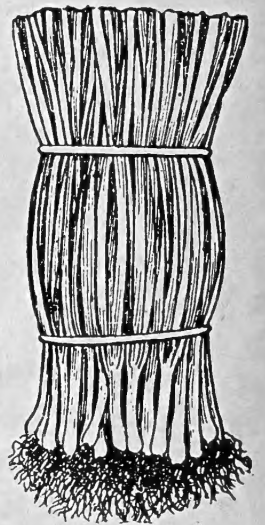
**Prepaid**

2 bundles .....	\$0.45
3 bundles .....	.60
6 bundles .....	1.00
10 bundles .....	1.50

**Not Prepaid**

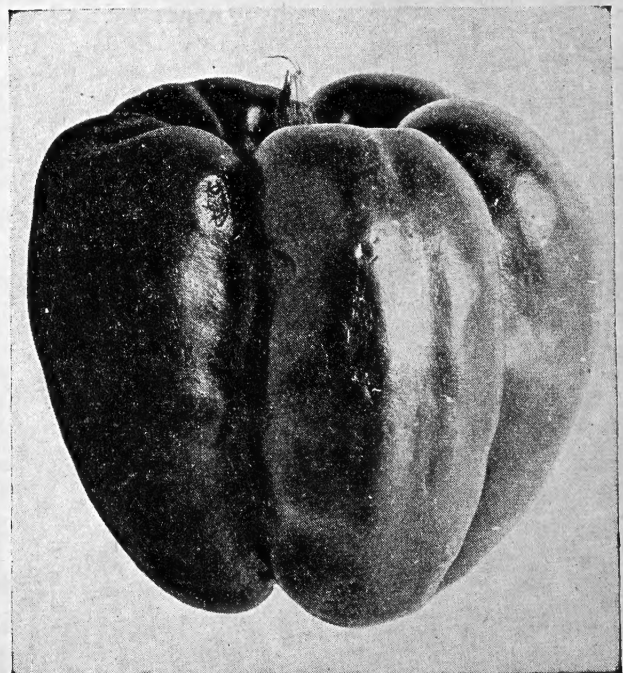
Crate of 60 bundles .....	5.50
---------------------------	------

Crate weighs about 30 lbs.  
Quotations not guaranteed.



**PEPPERS**

**California Wonder.** This is the most popular and widely used and the finest of the mild flavored large peppers. The four lobed fruits measure 4½ inches long and 4 inches in diameter. The thick walls are green when young shading to crimson when ripe. Is very excellent for shipping; good for home or market gardens. **Price:** Pkt. 10c; 1 oz. 75c; ¼ lb. \$2.25.



PEPPER



**Large Bell or Bull Nose.** Plants are very vigorous, growing to about 2 feet in height. Compact and very productive. The fruits are large growing from 3 to 4 inches in length. **Price: Pkt. 10c; 1 oz. 75c; ¼ lb. \$2.25.**

**Ruby King.** This is a large early pepper that is very popular with the home and market gardeners. The vigorous up-right plants often produce as many as 15 fruits. Fruits are deep green, becoming a glowing ruby red when ripe. Walls are thick and sturdy. **Price: Pkt. 10c; 1 oz. 75c; ¼ lb. \$2.25.**

**Long Red Cayenne.** This is the most popular "hot" pepper. Its conical shaped fruits are 4 to 5 inches in length and ½ inch in diameter. The color when young is deep green turning to a bright red when ripe. A popular variety for bunching with pot herbs or for winter use. **Price: Pkt. 10c; 1 oz. 75c; ¼ lb. \$2.25.**

## PARSNIPS

**Long Smooth or Hollow Crown.** This is the standard variety. The long roots are white, tender, sugary, tapered and smooth. **Prices: Pkt. 10c; 1 oz. 25c; ¼ lb. 60c.**



PARSNIPS

## PEAS—GARDEN

### EXTRA EARLY DWARF

**Alaska or Earliest of All.** A smooth pea which in evenness of growth of vine and early maturity of pods is unequalled by any other pea. Vines two or two and one-half feet.

**American Wonder Improved.** One of the best of the wrinkled sorts. Has stout, branching vines about 18 to 24 inches high, and covered with well-filled pods of delicious peas.

**Blue Bantam.** Vines average 24 inches in height, deep bluish-green pods, measuring four to four and one-half inches and contain eight to ten large bluish peas.

**Little Marvel.** Height 18 to 24 inches. The vines are sturdy, and heavily set with straight, deep green pods, square ended at the bottom and nearly three inches in length.

### SECOND EARLY DWARF

**Gradus or Prosperity.** The vine grows about 30 inches. The pods are of a light green color and measure 4 inches or more.

**Telephone.** Produces handsome long pods. Immensely productive, of the finest quality and excellent sugary flavor; vines very strong, growing from 18 to 24 inches high.

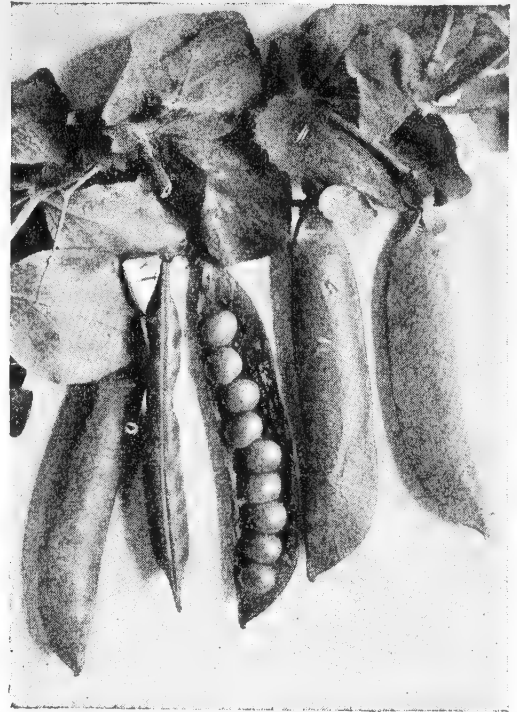
### LATE DWARF

**Stratagem Improved or Potlatch.** The pods are of immense size filled with large, dark green, wrinkled peas of the finest quality; vine of medium height.

### TALL

**Telephone.** The vines grow from 4 to 5 feet and are strong and vigorous, producing large pods of about 4 inches in length and well filled with large peas of most luscious flavor.

**Prices—All varieties: ½ lb. 20c; 1 lb. 35c; 2 lbs. 65c; 5 lbs. \$1.50.**



PEAS

## PUMPKIN

**Connecticut Field.** This is a large, rich, smooth orange yellow pumpkin. Used extensively for canning. Most popular for pies but very excellent for stock feed. Grown largely in corn fields. It is slightly oval in shape and can be grown anywhere. **Price: Pkt. 10c; 1 oz. 25c; ¼ lb. 75c.**

**Early Sugar.** This is a small early sort very popular for home gardens. It is thought by many to be the best pie pumpkin. The fruits are 8 to 10 inches in diameter flattened, with a smooth skin. The flesh is orange yellow with a hard rind. It can be grown with corn and is a very heavy producer. **Price: Pkt. 10c; 1 oz. 25c; ¼ lb. 75c.**

## PEANUTS

**Jumbo.** The peanut thrives and produces best in light sandy fertile soil with a good clay subsoil. It has a long tap root which extends deep into the earth. **Price: 50c per lb.**



PUMPKIN

## RADISHES

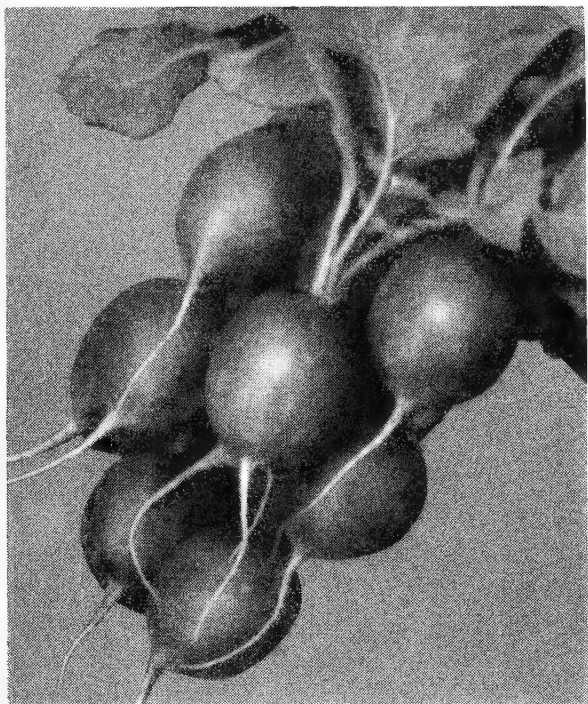
### EARLY TURNIP ROOTED

**Crimson Giant.** A very early radish, double the size of any of the other early turnip-shaped type. Does not get hollow and pithy. The flesh is a sparkling white, solid and crisp.

**Scarlet Globe.** Similar in form to the Scarlet Turnip-Rooted, but much darker in color; flesh white, very crisp and tender, top small, well adapted for growing in frames.

**Scarlet Turnip.** A small, round, red turnip-shaped radish, with small top, of quick growth; very early; crisp, tender.

**Scarlet, White Tipped.** The favorite variety for outdoor cultivation; medium size, uniform shape, bright scarlet with white tip, which makes it most attractive. Grows quickly; flesh white, crisp and of the best quality.



RADISH, EARLY SCARLET GLOBE

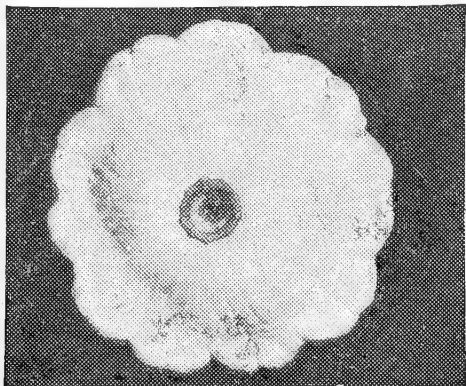
### MEDIUM EARLY, OLIVE SHAPED

**French Breakfast or Half-Long White Tipped.** Medium size, of quick growth, crisp and tender; terminates more abruptly than the Half-Long Scarlet, lower end of tap root white.

### WINTER

**Black Spanish, Long.** Very hardy and good for winter use. Will keep good all winter. Roots are large and firm.

**Late Long White.** The roots are 5 to 6 inches in length and 1 inch thick and pure white in color with small tops. This variety is equally suitable for outdoor planting or for forcing under glass. It is the most popular white home garden variety.



WHITE BUSH SCALLOP



SQUASH, DARK ZUCCHINI

## SQUASH

### SUMMER

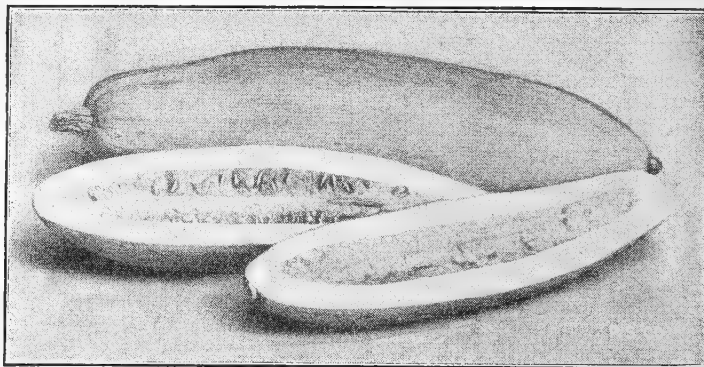
**Bush Scallop, White.** This is the well known, very early, somewhat flattened scalloped bush squash. Color creamy white.

**Cocozelle.** Also known as Italian Vegetable Marrow. The oblong fruits measure from 12 to 16 inches in length. Color dark green marbled with yellow and dark green stripes.

**Straightneck Giant Yellow.** This is bred from the yellow crook-neck and retains the warty, creamy, golden skin and fine quality of the parent stock.

**Golden Delicious.** The dry flesh of this variety makes it very desirable for canning and home gardens. The fruits are top shaped and weigh about 7 pounds. Flesh is thick, sweet, medium grained, and golden orange in color. The outside skin is a bright reddish orange with deep green tip at the blossom end.

**Zucchini.** The fruits of this variety are long, cylindrical and smooth. The color varies from gray green to dark green. The length is 13 to 15 inches and the diameter is 4½ to 5½ inches. The flesh is greenish white and of excellent flavor.



BANANA

### WINTER

**Banana.** Grows from 1 to 2 feet in length. Flesh firm and solid, of beautiful orange-yellow, and excellent quality. Rind or shell smooth and grayish-green color.

**Delicious.** The fruit is moderately hard, usually dark green, but sometimes lighter in color and mottled. The flesh is thick, very fine grained and bright yellow in color.

**Hubbard, Chicago Warty.** The fruit is large, heavy and warty, with a very hard shell. The skin is uniformly dark bronze green. The flesh is bright orange-yellow, fine grained, thick.

**Marblehead.** Light green in color. Rich yellow meat and good flavor. Large size. Good keeper, abundant yielder.

**Table Queen, or Kitchenette, or Acorn.** A small acorn-shaped, dark green, about 6 inches long and 4 inches in diameter.

Priceson all varieties: Pkt. 10c; oz. 25c; ¼ lb. 75c.



## TOMATOES

**Bonnie Best.** This is a splendid early general purpose variety valuable for forcing and for canning. The uniform fruits are flattened, globe shaped, smooth. The color is an intense scarlet. A vigorous grower and quite prolific.

**Break o' Day.** The fruits are scarlet, globe shaped and very solid. They are borne in clusters on rather open vines. It is a popular home variety as it is disease resistant and free from cracking.

**Chalk's Early Jewel.** This is a popular second early bright red, flattened variety. A very heavy producer, producing fruits of large size and sweet flavor. Fruits are larger than the Bonnie Best. The flesh is thick and solid with few seeds. It ripens right up to the stem without any cracks or green core.

**Earliana.** This is an excellent early bright scarlet tomato. The vines are open and the foliage small. The flat, smooth fruits are crowded in clusters of 6 to 10 over the entire plant. This is the most popular of the early red varieties.

**John Baer.** This variety is very similar to the Bonnie Best. The fruits are larger, nearly round, smooth and more attractive in color.

**Marglobe.** This is a most valuable all purpose variety that has won its way to a surprising number of gardeners, shippers, and canners. It is very resistant to wilt and rust. The vines are vigorous, medium green with heavy foliage that shades the fruit well. The fruits are a deep scarlet color fully colored around the stem. It is globe shaped, smooth, thick, and sweet.

### SMALL VARIETIES

**Husk Tomato or Ground Cherry.** This is not a true tomato. The fruits are small, round, yellow, borne singly and enclosed in a thin papery husk. It is very sweet and used most for pies and preserves. Sometimes called Strawberry tomato.

**Yellow Pear.** This variety has bright yellow fruits 2 inches long and pear shaped. Has a rich distinctive flavor.

**Prices on all varieties:** Pkt. 10c; oz. 40c; ¼ lb. 75c.



TOMATO

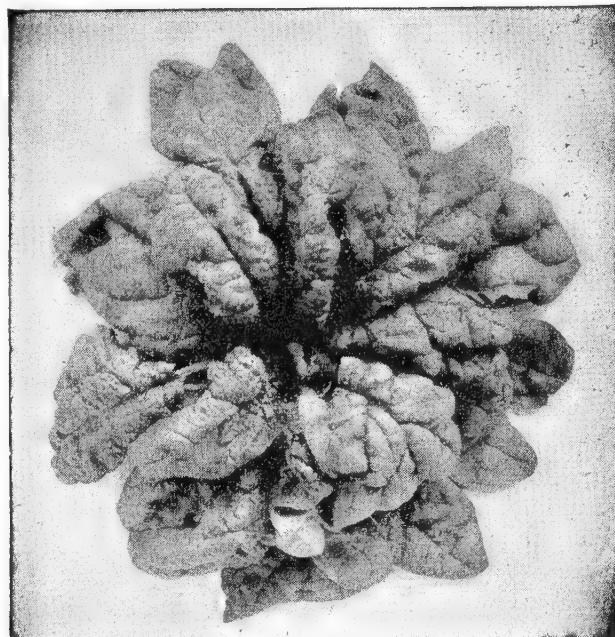
## SALSIFY or VEGETABLE OYSTER

**Mammoth Sandwich Island.** Is a very superior standard strong foliage, large, uniform, smooth white roots. Standard variety for market gardens and shipping. **Price:** Pkt. 10c; oz. 50c.

## SPINACH

**Giant Noble Thick Leaved Long Standing.** This variety has large, smooth, deep green leaves. Thick arrow shaped with round tips. It is very prolific and popular with canners as well as home gardeners. **Price:** Pkt. 10c; oz. 35c.

**Monstrous Viroflay.** This is a very suitable large type, medium early, smooth spinach for canner. This variety cannot be classed with the long standing sorts but holds up well for canning purposes. The leaves are very large, broad, rounded arrow shape, fairly smooth with slightly crumpled edges. Color is bright green. **Price:** Pkt. 10c; oz. 35c.



SPINACH

## TURNIPS

**Early Flat White Dutch Strapped Leaved.** This is a white fleshed turnip for home and market gardens. The roots are flat and about 1½ inches deep. Fine grained with a sweet flavor. The strapped leaved tops are small and erect. **Price:** Pkt. 10c; oz. 20c; ¼ lb. 60c.

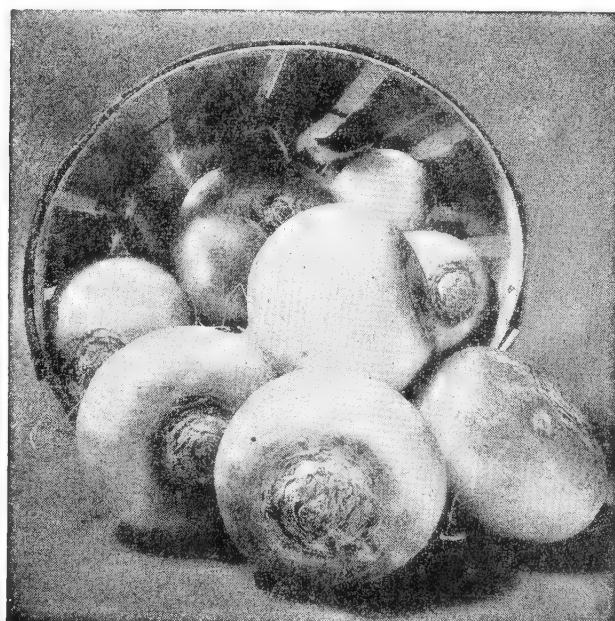
**Purple Top Strap Leaved.** This variety is one of the best and most widely used for home and market gardens for spring and fall planting. It is valuable for its earliness and fine edible quality. The tops are medium small, erect, compact, and slender strapped leaves. The root is 3 or more inches in diameter, uniform deep flat. Purplish red above ground and white below. The flesh is white, of fine texture, is tender and sweet flavored. **Price:** Pkt. 10c; oz. 20c; ¼ lb. 60c.

**Purple Top White Globe.** It serves for every use whether in the home and market gardens or for shipping and storing. The root is 4 to 5 inches in diameter, globe shaped with the upper portion a bright purple and pure white below. The flesh white, tender, fine textured with a delicate sweet flavor. **Price:** Pkt. 10c; oz. 20c; ¼ lb. 60c.

## RUTABAGAS or SWEDISH TURNIPS

**American Purple Top.** This is the standard variety grown for home, market and storage. The roots are large and globular, deep purplish above the ground and light yellow below. The flesh is a creamy yellow of the finest texture and flavor. This is a good yielder and keeper. **Price:** Pkt. 10c; oz. 20c; ¼ lb. 60c.

**Neckless.** This is a good producing variety of considerable merit. Tops are small with no neck. The roots medium size, globe shaped and the flesh a deep yellow and fine grained. This is an early and a thrifty variety. **Price:** Pkt. 10c; oz. 20c; ¼ lb. 60c.



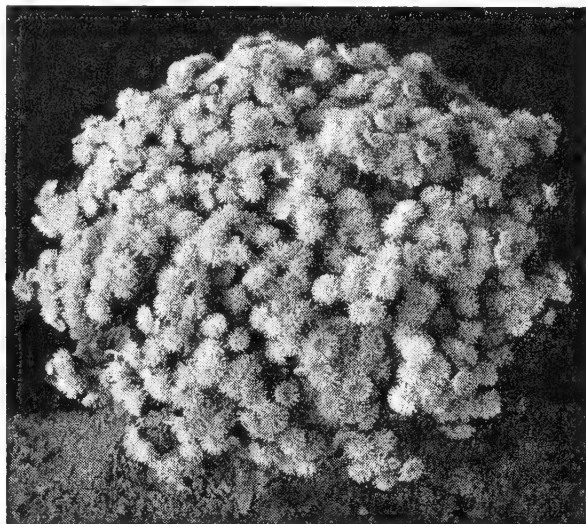
TURNIP



# FLOWER SEEDS

In describing our flower seeds the letter (A) Denotes annual variety; (B) biennial, and (P) perennial.

**AGERATUM** or **Floss Flower** (A). Little Dorrit. The attractive feathery flowers are borne in dense clusters; desirable for bedding and borders, being covered with bloom all summer. Azure. Pkt. 10c; ¼ oz. 45c; ½ oz. 75c.



AGERATUM

**SWEET ALYSSUM, Carpet of Snow** (A). Very dwarf and spreading; 3 to 4 inches high, and each plant covers a space 10 to 15 inches in diameter. Pkt. 10c; ¼ oz. 30c; ½ oz. 50c.

**Saxatile (Basket of Gold)** (P). A hardy variety bearing an abundance of yellow flowers in April and May about 9 inches high. Pkt. 10c; ¼ oz. 35c; ½ oz. 60c.

**AMARANTHUS** (A). Brilliant foliaged, growing from 3 to 5 feet high, bearing curious racemes of flowers. Useful for the center of large beds.

**Caudatus (Love Lies Bleeding)**. Blood red. Pkt. 5c; ¼ oz. 30c.

**ARABIS** or **ROCK CRESS** (P). The blooms are produced in great profusion that soon they appear like a mass of snow, excellent for rock gardens or border. Pkt. 10c; ¼ oz. 45c.

## ASTERS

**Improved Crego** (A). Plants robust; about 2 feet high. The large double flowers are well formed, making a very fine variety for all purposes. Azure blue, crimson pink. White and Mixed. Pkt. 10c; ¼ oz. 40c; ½ oz. 70c; oz. \$1.25.

**California Giants, Improved** (A). Large flowers, often measuring 5 to 6 inches in diameter, and they are characterized by the Crego type of flowers. Mixed: Pkt. 15c; ¼ oz. 60c.

**Early Beauty**. Plants grow from 2 to 3 feet high. Flowers measuring 4 to 5 inches; borne on long, stout stems from 18 to 24 inches. Mixed: Pkt. 10c; ¼ oz. 40c; ½ oz. 75c; oz. \$1.25.

**California Sunshine**. Flowers 3 inches across, with a single outer row of petals. Plants grow 1½ feet tall. Mixed: Pkt. 10c.

**Hardy Perennial Asters (Michaelmas Daisies)**. Single fall-flowering hardy herbaceous plants, thriving in any good garden soil. If sown early they will flower the first season; 3 feet. Mixed: Pkt. 10c.

**LOS ANGELES SUPER GIANT ASTERS**. The flowers are from 6 to 8 inches across with full petaled, graceful, interlacing petals. Plants are about 2½ feet tall, with 6 to 8 long, non-lateral stems per plant.

El Monte, Crimson. Los Angeles, Shell Pink. Pkt. each, 15c.

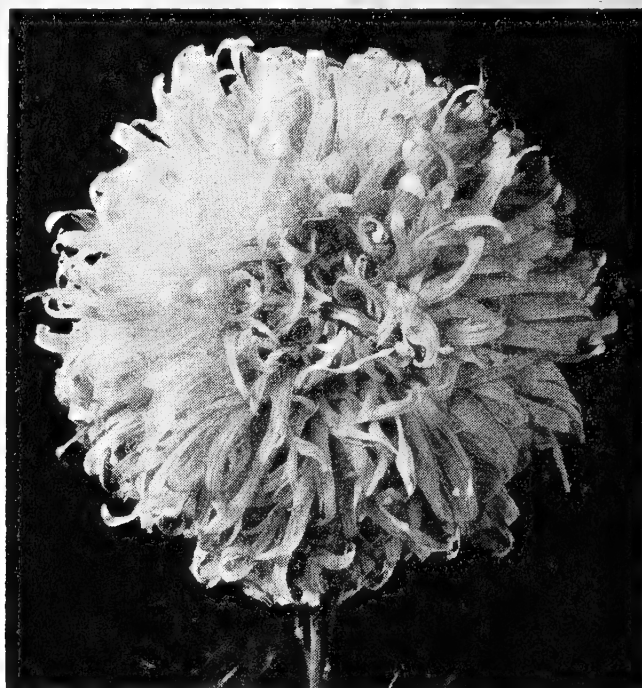
**BACHELOR'S BUTTON, or CENTAUREA CYANUS** (Also called **Corn Flower**) (A). A very hardy annual, producing handsome flowers. Double Blue: Pkt. 5c; ¼ oz. 30c; ½ oz. 50c; oz. 85c.

**BALSAM** or **LADY'S SLIPPER** (A). A favorite producing its gorgeous masses of beautiful brilliant-colored flowers in great profusion; 2 feet.

Double Camellia-Flowered, Mixed. Pkt. 10c; ¼ oz. 35c.

Single Camellia-Flowered, Mixed. Pkt. 10c; ¼ oz. 30c.

**BLUE LACE FLOWER (Didiscus Coerulus)** (A). Grows about 2 feet in height. Each branch ends in an umbel of light sky-blue flowers. Pkt. 10c; ¼ oz. 40c; ½ oz. 75c.



LOS ANGELES SUPER GIANT ASTERS

**CHILDSII, CHINESE WOOL FLOWER** (A). A distinct form of the plumed Celosia, with beautiful, ball-shaped flower-heads of a purplish crimson color. Flowers profusely during summer and fall. Two to 3 feet. Pkt. 10c.

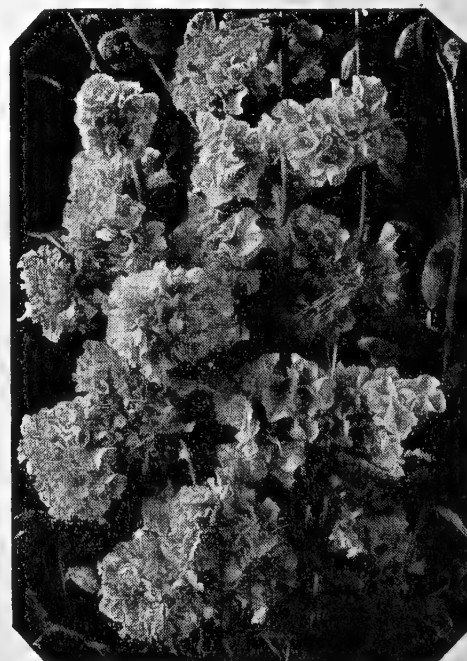
**CHINESE LANTERN (Physalis Franchetti)** (P). A hardy perennial grown for its showy scarlet-red seed-pods which are easily dried for winter bouquets. The flowers are white, followed by the showy lanterns. Pkt. 10c; ¼ oz. 50c; ½ oz. 90c.

**CHRYSANTHEMUMS (Painted Lady)** (A). These outdoor "summer Chrysanthemum" are showy and effective. Plants become more bushy and shapely if pinched back.

Double or Single Mixed: Pkt. 10c.

**CLARKIA** (A). Handsome, free flowering annuals of easy cultivation. Produce a fine effect massed in beds. Flowers are very bright and attractive.

Double Mixed: Pkt. 10c.



CLARKIA, DOUBLE



CALENDULA

**CALENDULA, Pot MARIGOLD (A).** Very hardy, 1 foot high, blooming freely practically the whole year round.

**Double Mixed: Pkt. 5c; ¼ oz. 25c; ½ oz. 40c; oz. 60c.**

**Orange Ball (A).** A very fine double calendula, growing to enormous size; of a rich orange-yellow color. **Pkt. 10c.**

**CALLIOPSIS (A).** The flowers are placed on graceful wavy stems and in color run through all the shades of red and yellow. Tall double mixed. Tall single. **Mixed: Pkt. 5c.**

**CANTERBURY BELLS (Campanula Calycanthemum) (Cup and Saucer) (B).** Produces beautiful single flowers 3 inches in length with saucers 3 to 4 inches in diameter. The plants form pyramids of bloom bearing from 100 to 200 of these exquisite blossoms. 2½ feet high. **Mixed: Pkt. 10c; ¼ oz. 35c.**

## Again You Can Have Rich, Pre-War Formula

We are now supplying Fulton's Plantabbs in the rich, white, completely dissolving TABLETS, the same formula as before they went to war. Plantabbs provide a high analysis of Nitrogen, Phosphoric Acid, and Potash PLUS all the Vitamin B1 needed by deficient plants, with many secondary ingredients thereby making a complete, balanced FOOD in quickly available form which improves every type of flower and vegetable fed upon it.

### GROW BEAUTIFUL PLANTS AND FLOWERS

**HOUSE PLANTS** flourish with strong, green, bushy foliage, the blooming kind covered with perfect blossoms. Ferns, Geraniums, Ivy, Cacti, African Violets, etc., thrive the year round.

**GARDEN FLOWERS** like Roses, Delphinium, Dahlias, Mums, etc., will make your garden a true joy.

**VEGETABLES.** Begin feeding when plants are well up out of the ground. Repeat regularly to maturity and raise a crop of tomatoes, beans, peas, etc., like you never dreamed of.

Push a tablet into the soil near the stem or, if liquid form is preferred, simply drop 4 tablets in a gallon of water. Quick, easy, economical and so safe will not burn tenderest plants.

For prize results, we recommend Fulton's Plantabbs in boxes of

10 Tablets..	\$ .10
30 Tablets..	.25
75 Tablets..	.50
200 Tablets..	1.00
1000 Tablets..	3.50



**CANDYTUFT (A).** Showy, branching plants bearing in profusion terminal clusters of beautiful single flowers.

**Empress (A). White, Giant. Pkt. 10c; ¼ oz. 25c; ½ oz. 40c.**

### CARNATION

The Carnation has always been one of the most esteemed of flowers, because of their fragrance, diversity of color and great beauty. For early blooming sow under glass.

**Marguerite Double Mixed (P).** The most magnificent of all the Pink family and a general favorite.

**Pkt. 10c; ¼ oz. 40c; ½ oz. 70c; oz. \$1.25.**

### CENTAUREAS

**Moschata Alba Royal Sweet Sultan (A).** This is undoubtedly the finest of all Sweet Sultans for cut flower purposes. The beautiful sweet-scented artistic-shaped flowers are borne on long, strong stems. **Mixed: Pkt. 10c; ¼ oz. 35c; ½ oz. 60c.**

### CELOSIA

**CELOSIA (Cockscomb) (A).** Free blooming annuals, growing best in light soil. They make splendid border plants.

**Mixed: Pkt. 10c; ¼ oz. 35c; ½ oz. 60c; oz. \$1.00.**

**CELOSIA (Plumosa or Plumed) (A).** They generally form pyramidal bushes and the numerous massive plumes wave graceful above the foliage. 2 to 3 feet.

**DELPHINIUM (Larkspur) (P).** Very few plants are as stately, decorative and showy as these. They have a dignity peculiarly their own, with tall graceful spikes covered with bloom.

**Mixed, Dark Blue, Light Blue. Pkt. 15c; ¼ oz. 60c; ½ oz. \$1.00.**

**COLUMBINE OR AQUILEGIA (P).** Grows about 2 feet high. Splendid for permanent beds and borders.

**Single or Double Mixed: Pkt. 10c.**

**COREOPSIS LANCEOLATA (P).** Blooms the first year; flower rich yellow, single; very fine for cutting. **Pkt. 10c.**

**COSMOS (A).** A hardy and rapid grower, forming bush-like plants with feathery green foliage, 4 feet high, covered with large flowers somewhat resembling the single dahlia.

**Single Mixed: Pkt. 10c.**

**Double Mixed: Pkt. 15c.**

**EARLY KLONDYKE ORANGE FLARE.** Bright vivid orange, borne on long stems. **Pkt. 10c; ¼ oz. 35c.**

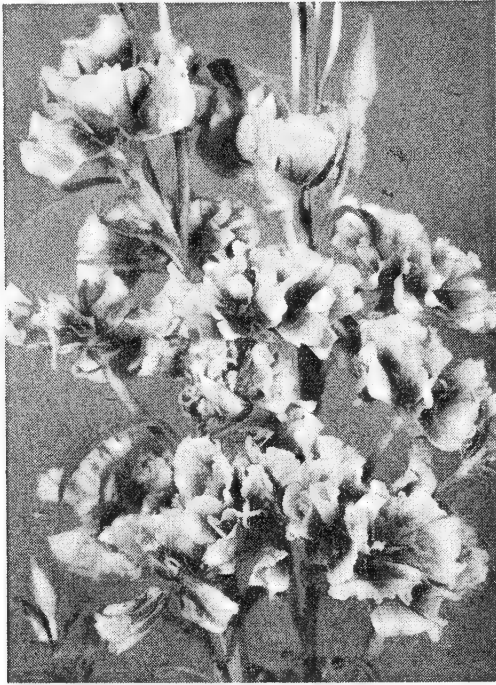
### DAISIES

**Shasta (P).** Flowers of the snowiest white, with yellow centers. Blooms the first season and should be sown in boxes early and transplanted. **Pkt. 10c; ¼ oz. 40c; ½ oz. 70c; oz. \$1.25.**

**African Daisy (Dimorphotheca Aurantiaca) (A).** Its blossoms are a unique glossy orange gold, which brilliant coloring is rendered more conspicuous by the dark disk surrounding the black zone. **Pkt. 10c; ¼ oz. 40c; ½ oz. 70c; oz. \$1.25.**



CARNATIONS



GODETIA

**EVERLASTING**

**HELICHRYSUM (A).** Sometimes called Straw Flower. Double daisy-like flowers. Desirable as dried specimens and for use in making winter bouquets. Hardy, 2 to 2½ feet high. Monstrosum, fl. pl., finest mixed. **Pkt. 10c.**

**Honesty (Lunaria Biennis) (B).** Known also as Moonwort, Money and Peters Pence. Bloom is transparent, silvery, loose sprays last all winter in dry bouquets. **Pkt. 10c.**

**FORGET-ME-NOTS (Myosotis) (P).** A modest little flower. A pretty trailer with blue flowers. **Pkt. 10c.**

**FOUR O'CLOCK (Mirabilis) (A).** Is also called Marvel of Peru. A handsome, free-flowering, sweet-scented plant. They open their blossoms about 4 o'clock in the afternoon. **Choice mixed, pkt. 10c.**

**FOXGLOVE (Digitalis) (P).** Handsome, ornamental, hardy. The spikes are often 3 to 5 feet long and thickly strung with thimble-shaped flowers. **Mixed, pkt. 10c.**

**GAILLARDIA (Blanket-Flower) (A).** Remarkable for the profusion, size and brilliancy of their flowers. Blooms all summer. Height 2½ feet. **Mixed Double (A). Pkt. 10c.**

**Perennial, single mixed, pkt. 10c.**

**GEUM, Mrs. Bradshaw (P).** Low growth sending up flower-stems 2 feet long. The flowers are double and measure 2 inches in diameter. Intense orange-scarlet. **Pkt. 15c.**

**GODETIA (A).** Attractive and hardy. The plants bloom profusely and bear showy flowers of rich and varied colors. **Tall double mixed, pkt. 10c.**

**GYPSOPHILA or BABY'S BREATH (A).** Grandiflora Covent Gardens. A greatly improved strain. Pure white flowers. **Pkt. 10c.**

**Perennial Paniculata. Pkt. 10c; ¼ oz. 30c; ½ oz. 40c; oz. 75c.**

**HOLLYHOCKS, Chater's Superb Double (P).** These fine old-fashioned perennials are most striking when planted in groups of long rows; their variety of color is wonderful. **Double mixed, pkt. 10c.**

**KOCHIA CHILDSII (Mexican Fire Bush, or Summer Cypress) (A).** Symmetrical and attractive. Early in the fall innumerable little flowers appear and the bush takes on a deep red tinge. **Pkt. 10c.**

**LARKSPUR (Delphinium) (A).** The Larkspur with its long clustered spikes of beautiful irregular flowers, is especially valuable for its shades of blue.

**Mixed Double: Pkt. 10c.**

**LINUM (Blue Flax) (A).** A very showy bedding plant, having fine foliage, with brilliant blue flowers. **Pkt. 10c.**

**LOBELIA**

**LOBELIA (A).** A very valuable and beautiful dwarf-growing plant, delicate drooping habit and profusion of charming little blue and white flowers. Highly desirable for borders.

**Trailing Blue. Pkt. 10c.**

**Crystal Palace Compacta (A).** Dwarf, rich, bright blue. **Pkt. 10c.**

**LUPINUS.** Free-flowering, easily grown with long graceful spikes of pea-shaped flowers; valuable for borders, beds.

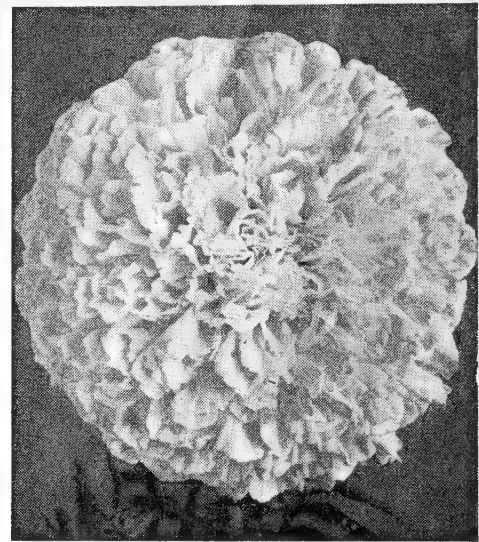
**Polyphyllus (P). Mixed, pkt. 10c.**

**TEXAS BLUEBONNET (A). Pkt. 10c.**

**RUSSELLS. Pkt. 15c.**

**MARIGOLD**

**Marigolds (A).** The African varieties grow 2 to 3 feet tall, bear large yellow or orange-colored flowers, and are adapted for large beds. Profuse bloomers until frost.



MARIGOLD

**AFRICAN**

**Lemon Ball.** Extra large, round, double flowers of a clear canary-yellow.

**Orange Ball.** Enormous flowers of intense rich orange.

**Dwarf Double.** About 1½ feet high; large flowers; desirable for shrubbery or mixed border. **Mixed.**

**Tall Double.** About 2 feet high with flowers 3 to 4 inches in diameter, in shades of yellow and orange. **Mixed.**

	Pkt.	¼ Oz.	½ Oz.	Oz.
Lemon Ball.....	} \$0.10	\$0.35	\$0.60	\$1.00
Orange Ball.....				
Dwarf Double Mixed.....				
Tall Double Mixed.....				

**Guinea Gold.** A graceful pyramidal plant, about 2½ feet high. Flowers, about 2½ inches across, are semi-double of a brilliant golden orange. **Pkt. 10c.**

**Crown of Gold.** A bright golden orange with a very delicate fragrance. 2 feet tall. Early continuous bloomer. **Pkt. 10c.**

**MIGNONETTE**

**Allan's Defiance (A).** Spikes grow to a remarkable size, of delicious fragrance. The individual florets are large and form a graceful spike. **Pkt. 10c.**

**Golden Machtet.** A compact growing variety with medium long thick spikes of yellow flowers, very fragrant. **Pkt. 10c.**

**NASTURTIUM**

For ease of culture, duration of bloom and brilliancy of color, nothing excels Nasturtiums.

**Golden Gleam (A).** Semi-tall. Two to 2½ feet high. Sweet scented flowers average 2½ to 3 inches across.

**Glorious Gleam Hybrids, Sweet Scented.** A hybrid mixture. Large flowers, well formed; double. Long stems.

**DWARF**

**Finest Mixed.** This mixture is selected from the very finest varieties and when planted in beds or masses will present a most brilliant and pleasing effect.

**TALL**

**Finest Mixed.** This is a very superior mixture and consists of a number of the best-known varieties and will, without doubt, prove highly satisfactory. Dwarf and tall mixed. **Pkt. 5c; oz. 15c.**

**NEMOPHILA, BABY EYES, LOVE-IN-THE-GROVE (A).** The pretty, bell-shaped flowers are freely produced all summer. Plants 8 inches high; of neat, bushy habit. **Mixed, pkt. 5c.**

**NICOTIANA, AFFINIS (Tuberous-Flowered Tobacco) (A).** Delightfully sweet-scented; blooming continually; annual; 2 to 3 feet high. **Mixed, pkt. 10c.**

**NIGELIA, LOVE-IN-A-MIST (A).** A compact, free-flowering plant with finely cut foliage, curious-looking flowers and seed pods. Height 1 foot. **Mixed, double pkt. 10c.**





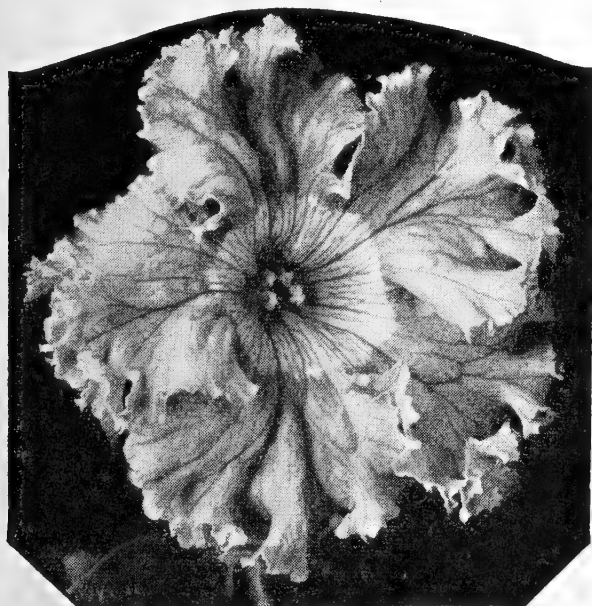
PANSY, SWISS GIANT

### PANSIES

**Fancy Mixed.** Flowers of richest and most varied shades. Plants hardy and vigorous. A very fine mixture. **Pkt. 10c.**

Pansy seeds are mostly imported, hence the shortage.

**Viola Cornuta (Tufted Pansies) (P).** Viola is often mistaken for a small pansy. It belongs to the same family and is one of the best for borders. Very attractive. **Mixed, pkt. 10c.**



PETUNIA

### PHLOX

**Phlox Drummondii (A).** Of all summer-flowering annuals, the varieties of Phlox Drummondii are unquestionably one of the most brilliant and satisfactory. Seed may be sown in the open.

**Grandiflora Mixed. Pkt. 10c.**

**Perennial Mixed. Pkt. 15c.**

**Star (A).** The petals of these flowers have fringed or toothed edges, darker centers, giving them the appearance of twinkling stars. **Pkt. 10c; ¼ oz. 60c; ½ oz. \$1.00; oz. \$1.75.**

### PINKS

**Dianthus.** Both the single and double Pinks are well adapted for bedding and borders. The brilliantly colored flowers contrast vividly with the bright, green leaves.

**Single Mixed (A). Pkt. 10c.**

**Plumarius (Grass Pink) (P).** A beautiful hardy pink. Fringed-edged flowers. Sweet scented. **Single mixed, pkt. 10c.**

### PETUNIA

**PETUNIA (A).** Of easy culture, early to bloom and continues throughout the summer until the first killing frost. No other flower produces a greater diversity of color.

**California Giants (A).** Flowers very large in great variety of colors and markings with yellow throats. Fringed. **Mixed, pkt. 25c.**

**Flaming Velvet.** Rich, blood-red flower, about 15 inches in height, flowers large and borne in great profusion. **Pkt. 15c.**

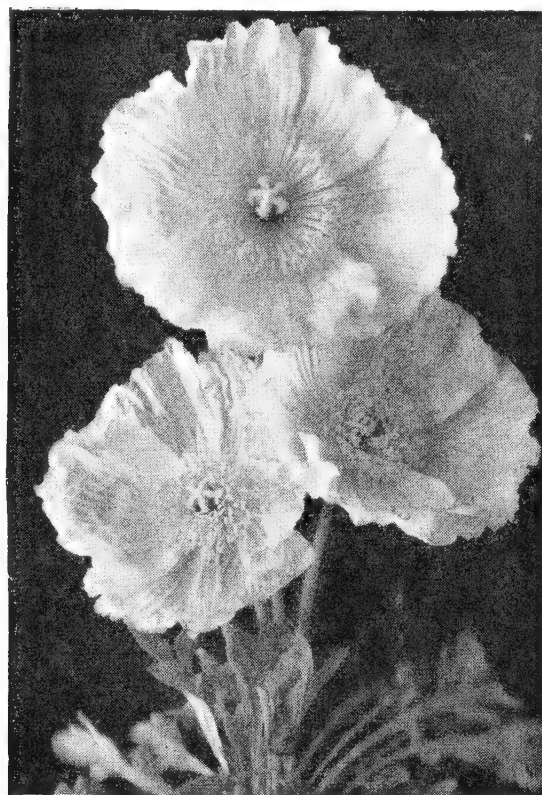
**Heavenly Blue.** A beautiful shade of light silvery blue. **Pkt. 15c.**

**Rosy Morn (A).** A bright rosy pink, with silvery white throat, very charming, compact, and free flowering. Makes a very dainty and effective border. **Pkt. 10c; ⅛ oz. 45c; ¼ oz. 75c.**

**Single Mixed. Pkt. 10c; oz. 40c; ½ oz. 75c; oz. \$125.**

### POPPIES

**Golden West (Eschscholtzia) (A).** Commonly known as California poppy. Color, rich, rare tints of yellow and orange; very beautiful. **Single. Pkt. 10c.**



ICELAND POPPY

**Mixed. (A).** This is a special mixture and embraces all colors and shades of the Eschscholtzia California type of poppies. **Pkt. 10c.**

**Iceland (P).** A graceful, delicate variety. The plant is low-growing, but the stems are long and slender. **Single, mixed, pkt. 10c.**

**Oriental (P).** Enormous flowers. The leaf is long and deeply cut and clothed with white, bristly hair. **Single, mixed, pkt. 10c; ¼ oz. 50c; ½ oz. 90c; oz. \$1.50.**

**Shirley Improved (A).** The most beautiful type of poppies, having soft, hairy foliage. Free blooming. **Single mixed, pkt. 10c.**

**PORTULACA or ROSE MOSS (A).** Brilliant, dwarf, 6 inches high, blooming profusely from early summer to autumn.

**Single Mixed. Pkt. 10c.**

**Double Mixed. Pkt. 10c.**

**Oenothera (Evening Primrose) (A).** A free bloomer producing bright colored single flowers which open on the approach of twilight. **Pkt. 10c.**

**PYRETHRUM (P).** Hardy. Blooms during May and June. Foliage and flowers both very ornamental. **Mixed. Pkt. 15c.**

**RICINUS, or CASTOR OIL BEAN (A).** Ornamental plants. Picturesque foliage; brilliant colored fruit, producing a sub-tropical effect; fine for lawns. **Finest mixed, pkt. 10c; oz. 30c.**

**SALPIGLOSSIS (A).** Quaint funnel-shaped flowers; beautiful range of colors; 2½ feet tall and a continuous bloomer. **Finest mixed, pkt. 10c.**

**SALVIA BONFIRE.** Brilliant scarlet flowers thrown well above the plant. **Pkt. 10c; ¼ oz. 60c; ½ oz. \$1.00; oz. \$1.75.**

**SCABIOSA or MOURNING BRIDE (A).** A free-flowering annual. Very effective for garden decoration. Double mixed. **Pkt. 10c.**



SNAPDRAGON

### SNAPDRAGONS

**SNAPDRAGON, or ANTIRRHINUM (P).** One of the most useful and showy plants. Of almost every shade and color. Half hardy. **Mixed, pkt. 10c.**

**University of California De Luxe Mixture, Rust Proof.** The grower makes the following statement: In our University of California De Luxe Mixture we are proud to offer the University of California Mixture supplemented by the addition of a wide range of colors not found in the original mixture. **Pkt. 10c.**

**SNOW ON THE MOUNTAIN (Euphorbia)** The crown of each plant produces small flowers with broad white bands on a rich green ground. Plants about 2 feet tall. **Pkt. 10c.**

**SUNFLOWER (Helianthus) Double Chrysanthemum Flowering (A).** Grows about 3 feet high, bright golden yellow flowers on stiff stems. **Pkt. 5c; ¼ oz. 30c; ½ oz. 50c; oz. 90c.**

**SWEET WILLIAM (P).** Hardy, producing a splendid effect in beds and borders with rich and varied flowers.

**Mixed Double. Pkt. 10c; ¼ oz. 35c; ½ oz. 60c; oz. \$1.00.**

**Mixed Single. Pkt. 5c; ¼ oz. 30c; ½ oz. 50c; oz. 90c.**

### STOCKS

**STOCKS.** Sometimes called Gilliflower. Considered almost indispensable where a fine display of flowers is wanted. They produce dense spikes of very fragrant flowers.

**Matthiola Bicornis (Evening Scented Stock) (A).** The pink and lilac blossoms, partly closed during the day, expand and impart their fragrance in the evening; 12 to 15 inches. **Pkt. 5c.**

**Mammoth Early Branching Nice (A).** For fragrance, brilliancy, diversity of color, profusion, they are unsurpassed. **Double mixed, pkt. 10c; ¼ oz. 60c; ½ oz. \$1.00; oz. \$1.75.**

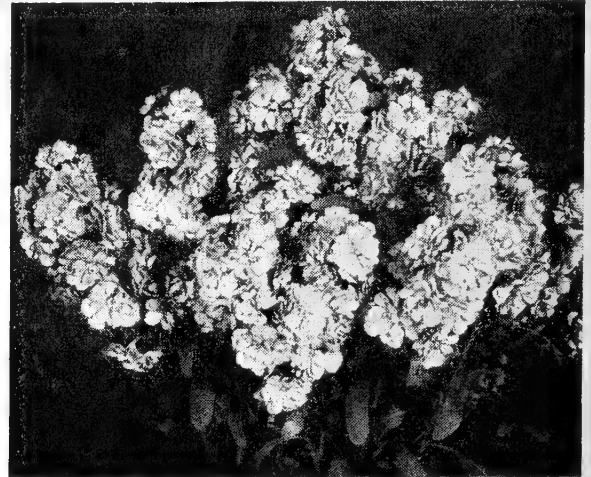
**VERBENA (A).** Start seed in the house or under glass early in the spring and transplant after 3 or 4 inches of growth. **Mammoth extra choice, mixed, pkt. 10c; ¼ oz. 40c; ½ oz. 75c; oz. \$1.25.**

**VIOLETS (P).** Violet Odorata is the well-known English violet, hardy perennial. Slow in germinating. Succeeds best in partially shaded moist places. Sweet scented. **Pkt. 10c.**

**GARDEN MIXTURE (A).** A garden is not complete without a bed of this mixture of flowering annuals. A package will sow a bed about 2 by 10 feet.

**Annuals. Pkt. 10c; oz. 30c; 2 oz. 50c; 4 oz. 90c.**

**Perennials. Pkt. 10c; oz. 35c; 2 oz. 60c; 4 oz. \$1.00.**



STOCKS

**WALL FLOWER (P).** Produces spikes of beautiful, exceedingly fragrant flowers. Half-hardy.

**Mixed Single. Large flowering. Pkt. 10c; ¼ oz. 30c; ½ oz. 50v.**

### ZINNIAS, DAHLIA FLOWERED

**ZINNIAS (A).** Are one of the most brilliant and showy annuals and have been very greatly improved. The outstanding type at the present time is what is known as Dahlia Flowered.

**Crimson Monarch.** The largest and best of the red shades.



ZINNIA

**Dream.** A distinct shade of deep lavender, shading to purple.

**Golden Dawn.** Rich golden yellow.

**Scarlet Flame.** An orange-scarlet. A dazzling color.

**Exquisite.** A striking self color of deep rose.

**Gold Medal Dahlia Flowered Mixture.** This special mixture of Dahlia Flowered Zinnias has been grown as separate colors in the field and then mixed in the proper proportions.

**California Giants.** Flowers of immense size; very showy. **Mixed.**

**Lilliput Pompon.** Dwarf. Double pompon flowers. **Mixed.**

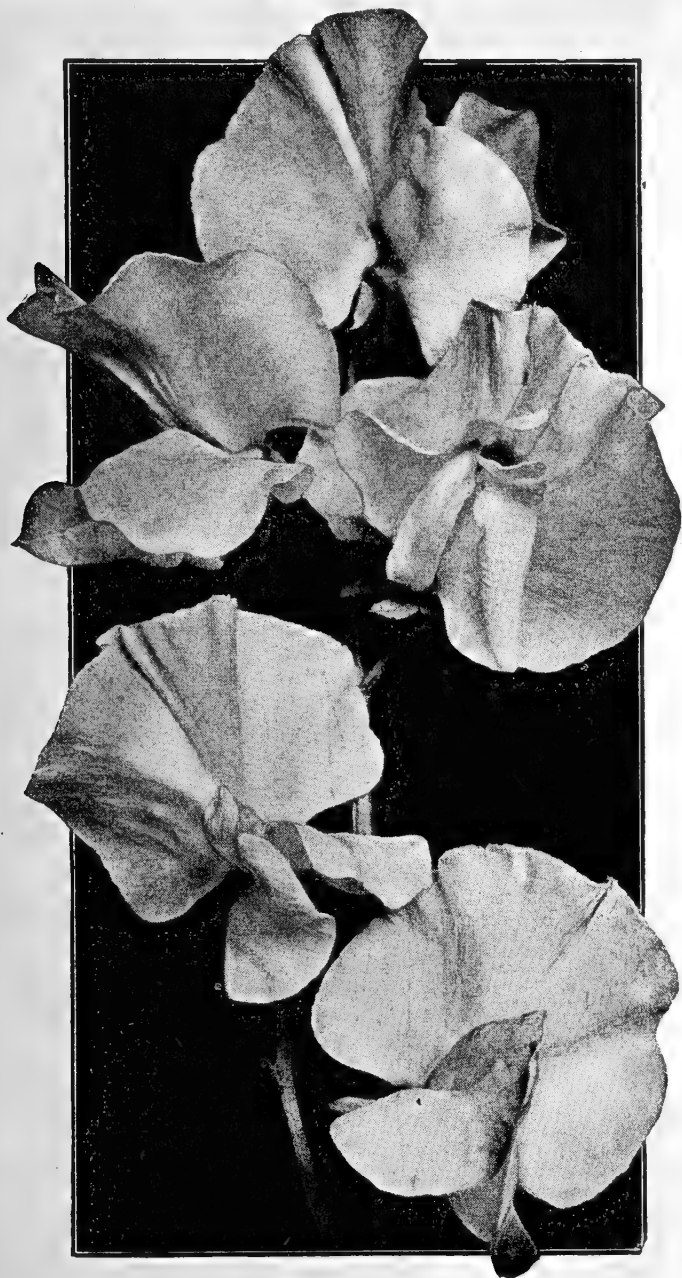
**All Zinnias: Pkt. 10c; ¼ oz. 40c; ½ oz. 60c; oz. \$1.00.**



## SWEET PEAS

### GIANT SPENCERS MIXED

**CLOVER LEAF MIXTURE** is highly dependable, and with proper care should give very satisfactory results. Pkt. 5c; large pkt. 10c; oz. 20c; 2 oz. 30c; ¼ lb. 50c; ½ lb. 75c; lb. \$1.25.



GIANT SPENCER SWEET PEAS

### STANDARD SPENCERS

All the following varieties of choice Spencer Sweet Peas: Pkt. 10c; oz. 25c; 2 oz. 40c; ¼ lb. 60c; ½ lb. \$1.10; 1 lb. \$2.00.

#### BLUE

**Reflection.** Clear mid blue.  
**Heavenly Blue** Light delphinium blue.

#### CREAM

**Dobbie's Cream.** A strong grower; profuse bloomer.  
**What Joy.** Deep rich cream.

#### CRIMSON

**Red Boy.** Rich deep crimson.

#### LAVENDER

**Ambition.** Rosy lavender.  
**Austin Frederich.** Large flowered, clear lavender.

#### MAROON

**Warrior.** A very dark beautiful maroon.

#### ORANGE

**Orange Flare.** Deepest of all oranges.  
**Tangerine Improved.** A very rich beautiful orange.

#### PINK

**Pink Frills.** Rich salmon pink.  
**Pinkie.** Rose-pink with large frilled flowers.

#### PURPLE

**Purple King.** The colors is a rich, royal purple.

#### SALMON

**Gold Crest.** Orange, tinted salmon.  
**Silver Jubilee.** Intense salmon; beautiful.

#### SCARLET

**Fiery Cross.** Scarlet orange.  
**Welcome.** A most brilliant dazzling scarlet.

#### WHITE

**King White.** Remarkable for its glistening whiteness.  
**Glistening.** Pure white.

### PERENNIAL SWEET PEAS

Hardy, with smaller flower and lacking the fragrance of Sweet Peas, but producing a succession of blossoms in clusters of eight to ten each. **Mixed, pkt. 10c; ½ oz. 40c; oz. 75c.**



IPOMOEA, SCARLET O'HARA (Morning Glory)

### MORNING GLORIES

**MORNING GLORY (A) (Convolvulus Major Ipomea Purpurea).** Tall, fine mixed, a great variety of colors of the popular old fashioned sorts. Pkt. 5c; ¼ oz. 25c; ½ oz. 40c; oz. 60c.

**GIANT JAPANESE FRINGED (Imperials) (A).** The flowers are often three inches or more across. The foliage in some plants comes plain green, in others it is mottled. Pkt. 10c; ¼ oz. 25c; ½ oz. 40c; oz. 75c.

**HEAVENLY BLUE IMPROVED.** Deep heavenly blue shading light towards center. Blooms very large and showy. Rapid grower. Pkt. 10c; ¼ oz. 40c; ½ oz. 75c.

**SCARLETT O'HARA.** Gold Medal, All-America Selections 1939. Rich dark wine red or deep rosy crimson. Flowers about 4 inches in diameter and are very showy. Pkt. 15c.

### VINES FROM SEEDS

**WILD CUCUMBER (A).** A quick growing vine. Thickly dotted over with pretty white fragrant flowers, which are followed by ornamental seed pods. Pkt. 10c; ½ oz. 20c; oz. 30c; 2 oz. 50c; ¼ lb. 75c; ½ lb. \$1.25; lb. \$2.25.

**BEANS, SCARLET RUNNER.** A great favorite as an ornamental climber for its bright scarlet sprays of pea-shaped blossoms. Oz. 10c; 2 oz. 15c; ¼ lb. 35c; ½ lb. 40c; 1 lb. 75c.

**COBEA SCANDENS (A).** It climbs 30 feet in a season. The flowers are bell-shaped. Very prolific and perfectly hardy. **Mixed, pkt. 10c; ¼ oz. 35c; ½ oz. 60c; oz. \$1.00.**

**Japanese Kudzu (P).** Foliage luxuriant. The vine is extremely rapid and dense in growth; perfectly hardy. Pkt. 10c; ¼ oz. 35c.

**Japanese Hop (Humulus) (A).** Attains a growth of 20 to 25 feet. The leaves (6 to 7 inches across) are beautifully marked and variegated. Pkt. 10c; ¼ oz. 35c; ½ oz. 60c; oz. \$1.00.

**Moon Flower or Ipomea, Mexican Grandiflora (A).** Rapid growing climber. The flowers are large, waxy white and very showy. Pkt. 10c; ¼ oz. 35c; ½ oz. 60c; oz. \$1.00.

**GOURD (Cucurbita) (A).** The vines make a rapid growth. The foliage is ornamental. Ten to 20 feet high. **Mixed, pkt. 10c; ½ oz. 30c; oz. 50c.**



## BULBS

### DAHLIAS

This type is particularly valued because of the fact that the flowers will keep in good condition longer after cutting than those of any other type.

### CACTUS

This type is particularly valued on account of the fact that the flowers will keep in good condition longer after cutting than those of any other type.

- Campfire Glow.** Bright crimson. **Each 35c.**
- Ambassador.** Soft bright yellow. **Each 40c.**
- Jean Trimbee.** Giant flowers, rich purple. **Each 50c.**
- Enchanting.** Giant flowers of rich rosy salmon. **Each 40c.**
- Romany.** Bright geranium scarlet. Long petals. **Each 40c.**
- Mary Muir.** Large ivory white blooms. **Each 35c.**
- Golden Standard.** Golden tan. **Each 50c.**



CACTUS DAHLIA

### SHOW DAHLIAS

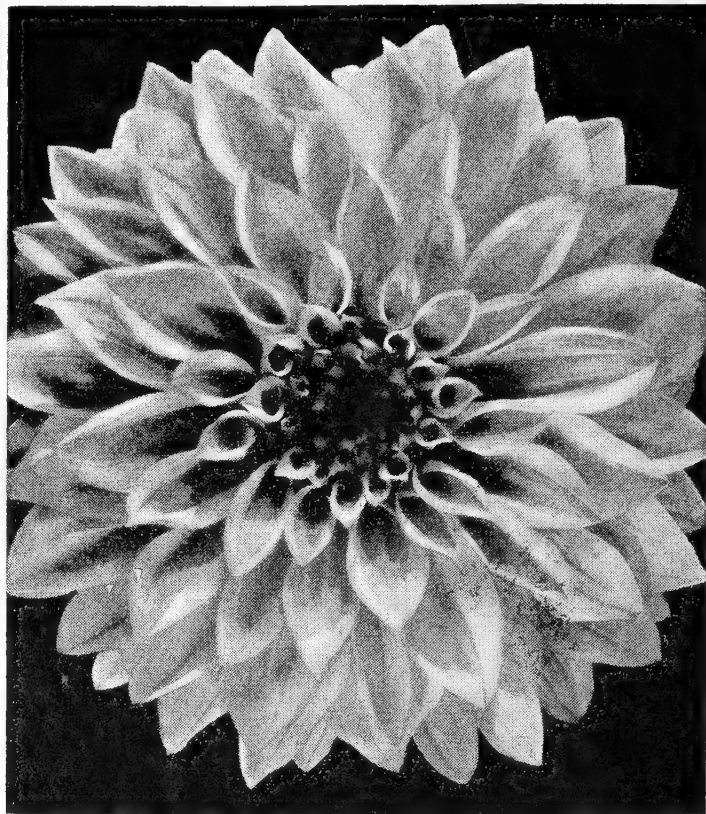
Show Dahlias are usually of solid color, but in certain varieties the tips of the petals may be of another. They are usually round, ball-shaped, and are always beautiful and compact.

- Bonnie Blue.** Dark lavender blue.
- American Beauty.** Large flowers; gorgeous wine crimson.
- A. D. Livoni.** Color, rich pink; fine stems.
- Anna Rehorst.** Deep purple or maroon shade; good stems.
- Big Ben.** Rich raspberry red.
- Gold Medal.** Brilliant orange scarlet
- White Livoni.** A pure white.
- Golden Opportunity.** Deep golden yellow.

Each of the above show dahlias, 35c.

### DECORATIVE

The Decorative Dahlias are an intermediate form between the Show and Cactus types. Many beautiful varieties have been introduced, some with flat petals, others reflexed, incurved or curiously twisted.



DECORATIVE DAHLIA

### DECORATIVE DAHLIAS

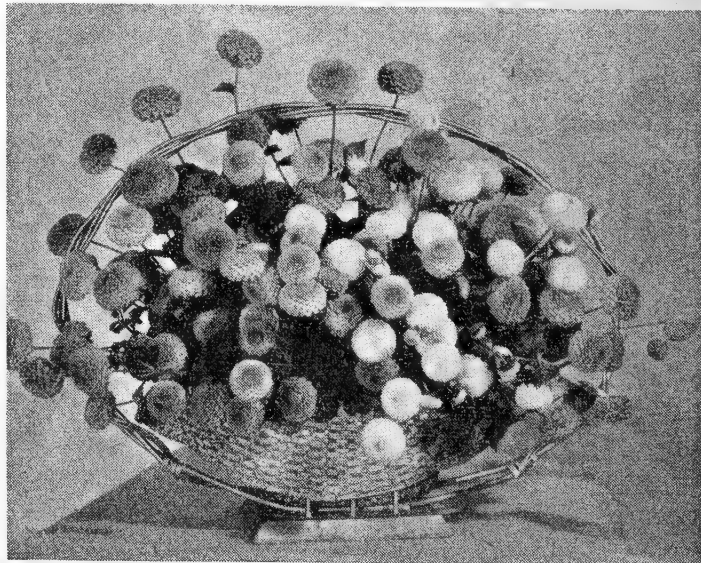
- Harriet Thompson.** Orange buff and bronze. **Each 35c.**
- Marshall's Pink.** A beautiful shrimp pink. **Each 40c.**
- Mr. Crowley.** An exquisite salmon pink. **Each 35c.**
- Dad.** Large, brilliant red flowers, with good stems. **Each 40c.**
- Maryland Jubilee.** Large deep American Beauty red. **Each 50c.**
- Redwing.** Bright scarlet red flowers. **Each 40c.**
- Mt. Hood.** Exceptional pure white blooms. **Each 40c.**
- Marmion.** Primrose yellow, bronze center. **Each 40c.**
- Oregon Sunshine.** A rich shade of golden yellow. **Each 40c.**

### POM PON DAHLIAS

The plants grow into neat little bushes which are covered with small, perfectly ball-shaped Dahlias measuring up to 2 inches in diameter. The flowers are always double to the very center and in many varieties the petals are curled.

- Dee Dee.** Small lilac lavender. Good stems.
- Rosa Wilmoth.** A fine rose pink on ideal stems; free flowering.
- Edith Mueller.** Beautiful rose red.
- Tip Top.** Rich crimson.
- Joe Fette.** Small, perfect white blooms on long, erect stems.
- Yellow Gem.** Extra fine clear yellow.

Above, 30c each.



POMPON DAHLIAS

**GLADIOLUS**

Gladiolus are the most popular of all garden bulbs. Grow and bloom readily in any soil or climate. Need little care and attention, and make a display which for brilliancy and beauty of coloring few bulbs can equal and none surpass.

**ALBATROS.** Large Pure White..

**BAGDAD.** Old Rose.

**DR. MOODY.** Large Lavender.

The foregoing, 1/2 dozen 30c; dozen 50c, postpaid.

**LOYALTY.** Grand Yellow.

**MAMMOTH WHITE.** Immense Size.

**PELEGRINA.** Violet Blue.

**PFITZER TRIUMPH.** Salmon Orange.

The foregoing, 1/2 dozen 35c; dozen 60c, postpaid.

**BLUE DANUBE.** Amethyst Blue.

**COMMANDER KOEHL.** Scarlet.

**GATE OF HEAVEN.** Yellow.

**SMILING MAESTRO.** Salmon.

The foregoing, 1/2 dozen 40c; dozen 70c, postpaid.

All 50c varieties.....25, \$1.00; 50, \$1.75; 100, \$3.00

All 60c varieties.....25, 1.10; 50, 2.00; 100, 3.50

All 70c varieties.....25, 1.25; 50, 2.50; 100, 4.50

**EXHIBITION MIXTURE**

1/2 dozen 15c; dozen 30c; 25, 60c; 50, \$1.10; 100, \$2.00, postpaid

**PEONIES**

The Peony with its immense flowers is one of the most desirable perennials. (E) denotes Early; (M) Midseason; (L) Late.



PEONY

**CRIMSON**

**Grover Cleveland.** Dark crimson. 55c.

**Longfellow.** Large bright double crimson peony. 65c.



GLADIOLUS

**PINK**

**Albert Crousse (L).** Large flowers. Light rose pink. 55c.

**Edulus Superba (E).** Lovely bright pink; fragrant. 45c.

**Etta.** Old rose pink, large flowers. 65c.

**President Taft.** Light hydrangea pink. 65c.

**RED**

**Cherry Hill.** Garnet red. 75c.

**Felix Crousse (M).** Brilliant rose red; beautiful. 55c.

**Karl Rosen Field (M).** One of the best dark reds. 55c.

**Lord Kitchener.** Cherry red. 55c.

**WHITE**

**Baroness Schroeder (E).** Pure clear white. Each 55c.

**James Kelway.** Blush white. 55c.

**Hotkaps Protect Your Plants**

Do as successful market growers do — Place patented Germaco HOTKAPS — strong little hothouses — over seeds (or over plants when transplanting). Completely protect from destructive frosts, storms, insects — maintain perfect mulch. Increase yield from 18% to 51%, ripen plants three weeks earlier.

Quick, easy to set, instructions on package. 25 Hotkaps, 50c. 250 for \$3.50. Setter free. Beat everyone with first vegetables, flowers. Buy Germaco HOTKAPS from us today. **MARKET GROWERS: GERMACO HOTKAPS** help you have sure crops, highest out-of-season prices, bigger profits. 1000 for \$11.00.

**Send for FREE FOLDER**

**HOTKAPS.** Protect plants from destructive frost, storms, insects. University Experiment Station tests prove HOTKAPS increase yield 18% to 51%, promote bigger fruits and vegetables, ripen plants three weeks earlier.

Lots of 1,000.....	\$11.00 per 1000
Less than 1,000.....	1.25 per 100
Less than 500.....	1.50 per 100
Less than 100.....	.25 per doz.

Thousand weigh 28 lbs. Add postage.

We also have Hotkaps in small packages as follows:

	Weight	Price
25 Package, contains 1 paper setter.....	2 lbs.	\$0.60
100 Package, contains metal garden setter and steel tamper .....	5 lbs.	2.25
250 Package complete, contains metal garden setter and steel tamper.....	10 lbs.	4.50
Garden Setter alone.....	1 lb.	.55
Steel tamper alone.....	1 lb.	.30
Steel Setter alone.....	4 lbs.	1.50

Add postage.





**ACME ROTENONE GARDEN GUARD** is an ideal insecticide for the home garden. Dust or spray. Non-injurious to human and warm blooded animals. Acts both as contact and stomach poison against a wide range of insects. 1 lb. sifter carton, 35c. 1 lb. pump gun, 59c.

**ACME ARSENATE OF LEAD**—Safe on tender foliage for the control of chewing insects on fruit trees, vegetables, tobacco, and many other plants. Controls grubs in lawns. 1 lb., 35c. 4 lb. bag, 35c.

**ACME RED RIVER POTATO MIX**—Dust or spray. Combining a patented copper fungicide with quick-killing arsenic. Kills potato bugs quicker—drives off flea beetles and leaf hopper—prevents blight—stimulates foliage. 1 lb., 35c. 4 lb. bag, 85c.



**ROTENONE GARDEN SPRAY (NNOR)** containing Rotenone kills most common garden bugs of both sucking and leaf eating types. You've got to wet them—to get them. NNOR penetrates the waxy or hairy covering, brings the tremendous power of Rotenone into action. 1 oz. ....35c 6 oz. ....\$1.00 16 oz. ....\$2.15 Gals....\$13.50



**ACME EMO-NIK** for the control of scale, red spider, mealy bug, white flies, rust mites, aphids, and many other common insects. A complete contact insect spray combining nicotine with a summer oil emulsion. Practically odorless when sprayed, 4½ oz., 35c. Pint, 65c. Quart, 95c.

**ACME LIME SULPHUR**—A standard 33° Baume lime and sulphur converted into a dry powder. For dormant spraying against scale, peach blight, leaf curl, and twig borer. For summer spraying against scab, soot, blotch, red spider, and mite. 1 lb., 35c. 5 lbs., \$1.47.

**ACME APHIS SPRAY** combines a soft spray soap with Black Leaf 40. Recommended for aphids (plant lice), thrip, leaf hopper, infesting rose bushes, flowers, shrubs, vines. 3 oz. collapsible tube, 35c; 12 oz., \$1.00.



**Acme Scientific Rose and Flower Spray**

A "system" of spray treatment for roses and flowers of all kinds. Eliminate guess work. Each set contains three separate items—A, B, and C—each scientifically made to combat one of the three major classifications of blight and insect pest. Mix all three together with water. Use regularly. Result: complete all-around protection. Surprisingly economical.

Sizes	Amount of Spray	No. of Roses Protected all season	Prices
No. 3.....	.12 qts.....	7 to 12 bushes.....	\$0.95
No. 6.....	.24 qts.....	15 to 25 bushes.....	1.50
No. 24.....	.96 qts.....	60 to 100 bushes.....	4.00
No. 48.....	.48 gals.....	120 to 200 bushes.....	6.00
No. 96.....	.96 gals.....	240 to 400 bushes.....	9.75



**ACME TOMATO DUST** is especially prepared to control blight and worms preying on tomatoes. While specifically designed for tomatoes, it also is equally effective in the control of leaf chewing insects and blight on many other vegetables such as potatoes, cucumbers, beans and cabbage, also many flowers as roses, azalea, evergreens, asters, and hollyhock. 1 lb. Sifter carton, 35c. 1 lb. pump gun, 55c. 4 lb. 80c. 50 lb. \$9.00.

**ACME KOPPER QUEEN (Mildew Spray)** is a stainless liquid copper spray for the control of mildew, leaf spot, and black spot on rose bushes, flowers, and many other kinds of foliage. Leaves no unsightly residue. A liquid spray replacing Bordeaux Mixture and Sulphur. ½ pt., 35c. Pint, 60c. Quart, 90c. Gallon \$2.25.

**ACME BORDEAUX MIXTURE** prevents large losses caused by blight, rot, mildew, scab, anthracnose, etc. Stimulates plant growth, increasing the harvest. Almost every kind of vegetable, fruit, and shrub can be improved by Bordeaux spraying. 1 lb., 35c. 4 lbs., 75c.

**ACME KOPPER KING** spray or dust for control of tomato blight. Recommended for use wherever Bordeaux Mixture is used. Kopper King is a tri-basic copper sulphate—a modern development. 1 lb., 40c 4 lbs., \$1.09.

**ACME WETTABLE DUSTING SULPHUR** is an improved dusting sulphur for home use which can also be used as a liquid spray. Controls red spiders on evergreen, mildew, leaf spot, black spot, and rust on rose bushes, chrysanthemums, snapdragons, carnations, and certain other foliage. 98% passes through a 325 mesh screen. An excellent chigger chaser. 2 lb. sifter carton, 30c.



**ACME ANT-KILL** is most effective for control of all honey-dew loving ants. Syrup is sold with safety cup. Junior Set, 35c. Cottage Set, 65c. 2 oz. Bottle, 15c. Extra Cups, 10c.

**ACME BAIT-M** with METALDEHYDE is an attractive insect bait for plant protection. Contains metaldehyde for control of snails. 1 lb., 25c. 2½ lbs., 50c, 10 lbs., \$1.75.

**ACME STOP**—A sticky tree banding compound for use on trees, to prevent insects from crawling up to destroy foliage. 6 oz., 35c. 1 lb., 65c. 7½ lbs., \$4.00.

**ACME KOPPER SHIELD**—A pruning and tree wound paint. An antiseptic treatment to prevent fungi from penetrating the wounds. ½ pt., 30c. Pint, 45c. Quart, 75c.

**ACME DAWG-GONE**—Protect that evergreen—keep dogs away. Remove cap and hang tube (opening down) in the lower branches of trees. Tubes, 15c each.

**ACME WEED KILLER** destroys weeds and all vegetation. The kind to use on driveways, clay courts, paths, etc. Also widely used in spotting lawn weeds. Pint, 35c. Quart, 55c. Gallon, \$1.60.

# NURSERY STOCK

We secure our nursery stock from a reliable Spokane nursery firm and orders are sent out as received.

Add postage at the rate of 5c for each small root. If six or more are ordered, add postage at the rate of 3c per root. Large roots forwarded by carrier at customer's expense. If postage is not forwarded, order will be held awaiting postage.

All Nursery stock prices subject to change without notice.

## HARDY ROSES, No. 1

Two Year Old. Each, 50c, except where quoted; add postage.

**American Beauty.** One of the largest, sweetest and best; rich rosy crimson, shaded and veined in a most charming manner.

**Betty Uprichard.** Two-toned salmon pink; very vigorous.

**Charles K. Douglas.** The flowers are large, semi-double, brilliant light crimson with a scarlet undertone.

**Frau Karl Druschky.** Best known white. Very popular.

**General Jacqueminot.** The blossoms are large, full, and globular, having a cup-shaped form. Brilliant scarlet-crimson.

**Gruss an Teplitz.** Color crimson-scarlet, but not vivid enough to throw other sorts into the background.

**Gorgeous.** Flowers are large and full. Deep orange yellow and heavily vined with reddish copper.

**Dame Edith Helen.** The flowers are perfectly shaped, bright pink. The most perfumed of all pink roses.

**E. G. Hill.** Beautiful long buds and high-centered dazzling scarlet blooms shading to deeper as they develop more fully.

**Etoile de Hollande.** The most popular red garden rose—a brilliant crimson-red. A strong, vigorous grower.

**Joanna Hill.** Beautifully slender buds. Flowers suffused with soft orange and creamy yellow.

**Kaiserin Augusta Victoria.** Pure white; splendid large buds and superb, full, double blooms.

**Hoosier Beauty.** A large, full flower with well shaped buds; color is an exceptionally attractive glowing, velvet crimson.

**Lord Charlemont.** Mass of livid crimson blooms; large and full.

**Los Angeles.** In color a luminous flame-pink; toned with coral and shaded with translucent gold at the base of the petals.

**Mme. Edouard Herriot.** Profuse bloomer; coral red.

**Mme. Caroline Testout.** A grand rose, with large full flowers and handsome buds; rich pink. The hardiest of the Teas.

**President Herbert Hoover.** Blend of flaming scarlet, pink, yellow and orange. Extremely tall, vigorous growth.

**Souvenir de Claudius Pernet.** Its color is sunflower-yellow, and it retains this color in bud and open bloom.

**Sunburst.** The flowers are large, full, and of fine elongated cupped form. The color is a superb cadmium-yellow.

**Talisman.** Its brilliant orange-red buds open to a large, fragrant, high-pointed bloom of glowing golden yellow.

**Ulrich Brunner.** Extra-large flowers of light red, bordering on scarlet or crimson—a shade of red distinctly its own.

All of these No. 1 two-year-old, extra large roots. 50c each; 10 for \$4.50. Add 5c postage for one root; 10 for 5 roots and 12c for 10 roots.

## ROSE SPECIAL

No. 2 two-year-old roses, same varieties as above, but roots not quite so large, 4 for \$1.00. Add postage. Supply of these roots is limited. Suggest you place order early.



JOANNA HILL

## HARDY CLIMBING ROSES

Each, 50c, except where otherwise quoted; add postage.

**Climbing American Beauty.** Heavy strong grower; hardy everywhere. Color rich red passing to crimson. Very popular.

**Climbing Gruss an Teplitz.** A perfect sheet of crimson when in bloom. It's the same as the Bush Teplitz.

**Dorothy Perkins.** Beautiful shell-pink color, which holds for a long time, fading finally to a lovely deep rose. Free of mildew.

**Dr. W. Van Fleet.** Large flowers of a dainty flesh pink with rosy center. Flowers of perfect form with reflex petals.

**Paul's Scarlet Climber.** Vivid scarlet, shaded crimson; makes a brilliant display for a long period of time.

**Talisman.** Exactly the same as bush rose of the same name.

Add 5c postage on all roses and other small roots for one, and 10c for 5 roots, 12c for 10 roots.

## PATENTED ROSES

**Crimson Glory.** Patent No. 105. Deep crimson with well formed buds and large flowers; vigorous. **Each \$1.00.**

**Rex Anderson.** Patent No. 335. Handsome buds and roses of great size. Color a cream turning pure white with age. **\$1.25.**

**Blaze.** Patent No. 10. Climber, hardy everbloomer. Bright scarlet. **Each \$1.00.**

**Countess Vandal.** Patent No. 38 Long buds, rich blend of pink, copper and gold. **Each \$1.00.**

**Will Rogers.** Patent No. 265. Dark velvety crimson maroon, free blooming. **Each \$1.00.**

**Mary Hart.** Patent No. 8. Red sport of Talisman. **Each 85c.**

**Texas Centennial.** Patent No. 162. Clear red sport of President Herbert Hoover. **Each 60c.**

Add 5c postage on all roses and other small roots for one root, 10c for 5 roots, 12 cents for 10 roots.



## VINES AND CLIMBERS

**Boston Ivy, Japanese Ivy.** Best known and most popular climber for chimney, brick and stonework. **Each, 50c, 75c.**

**Engelmanni.** Deeply cut leaves which turn to a beautiful crimson in fall. Clings to walls without aid of artificial support. Vigorous growth. **Each, 25c, 50c, 75c.**

**Virginia Creeper or American Ivy.** Fast growing, hardy creeper, massive foliage, deeply cut leaves which turn to a beautiful crimson in fall. **25c to 75c.**

## CLEMATIS

**Henryi.** Large single white flower, most popular of its color. **Each \$1.00.**

**Jackmani.** Large velvety dark purple flower, very showy. **50c to \$1.00.**

**Paniculata.** Late flowering variety with panicles of small white flowers borne in great profusion in early fall. **Each 50c, 75c.**

## HONEYSUCKLES

**Belgia or Everblooming.** Flowers yellow, blotched with red above; blooms all summer, fragrant. **Each 50c, 75c.**

**Halls' Japan.** Blooms continuously from June until frost; fragrant, white and yellow flowers, in great abundance. **Each 25c, 50c, 75c.**

**Scarlet Trumpet.** Trumpet shaped flowers of bright scarlet. **Each, 50c, 75c.**

## FLOWERING SHRUBS

**Almond.** In full bloom before leaves appear. Dwarf growth.

**Double white and double pink flowers.** 2 to 3 feet. **75c to \$1.00.** Add postage.

**Althea (Rose of Sharon).** Bloom late in August and September, with a profusion of large bright colored flowers. **Each, 50c.**

## BARBERRY, BERBERIS

**Common.** Sturdy, erect-growing shrub. Golden flowers in spring, followed by bright scarlet fruits in autumn. Two to 3 feet, **each, 50c**; 3 to 4 feet, **each, 75c.**

**Japan Red Leaf.** A brilliant bronzy red. The heat of summer intensifies this color. 18 to 24 inches. **Each, 50c.**

**Thunberg's Japanese.** Hardy, low-growing shrub, small, bright green leaves that turn to orange and yellow. **Each, 35c, 50c, 75c.**

**Purple.** A showy and effective shrub with purple leaves. Reddish purple berries in autumn. **Each, 50c to \$1.00.** Add postage.

## CRANBERRY, HIGH BUSH

Handsome, dense, brilliant green foliage, a rich setting for bunches of crimson berries. **Each, 50c to \$1.00.**

## DEUTZIAS

An ornamental shrub that is grown because of its profusion of snowy white flowers in spring or early summer.

**Lemoines.** Small, spreading shrub producing large white flowers. 12 to 18 inches, **each, 50c**; 18 to 24 inches, **each, 75c.**

**Pride of Rochester.** Blooms early. Double, white flowers, 2 to 3 feet, **each, 35c**; 3 to 4 feet, **each, 50c.** Add postage.

## DOGWOOD, CORNUS

**Dogwood (Cornus).** The shrubby dogwoods are mainly valuable for the brilliancy of their barks and berries.

**Sibirica.** Clusters of fine white flowers in summer, succeeded by ornamental berries in fall. **Each, 35c, 50c and 75c.**

**Lutea.** A strikingly yellow-branched form of *Stolonifera*. **Each, 75c.**

**Elegantissima.** Variegated, silver-leaved. **Each, 75c.**



FORSYTHIA

## FORSYTHIAS

One of the first plants to flower in early spring, blooming before the leaf buds burst on other plants in exquisite splendor.

**Fortunei.** Bark bright yellow. Dense masses of golden flowers. 2 to 3 feet, **35c to 50c**; 3 to 4 feet, **75c.**

**Morrowi, Morrow Honeysuckle.** Five to 6 feet. Pure white flowers and blood-red fruit. **35c to 75c.**

**Rosy Tartarian Honeysuckle.** Variety with rosy-pink flowers and red fruit. **35c to 75c.**

Add postage on all nursery stock.

## HYDRANGEA

**Hills of Snow or Snowball Hydrangeas.** A profusion of snow-white clusters of flowers decorating the plant most of the summer. **Each, 50c, 75c, \$1.00.**

**Paniculata Grandiflora, Large Flowered.** Flowers pure white, changing to pink, borne in clusters, July until October. 18-inch, **50c**; 24-inch, **75c**; 30-inch, **\$1.00**; add postage.

## LILAC

**Common (Purple or White).** Hardy and extra fragrant, flowering in May and June.

**Persian Lilac (Purple).** Blooms a good deal more than the Common, and has smaller leaves. Does not sprout as much from the roots.

**Lilac (French Grafted).** There is no comparison between our common Lilac to those of the French Hybrids in the texture, size, color tones, fragrance and luster of the blooms.

**Charles the Tenth.** Dark lilac-red, single.

**Ludwig Spaeth.** Large panicles of dark red flowers.

**Michel Buchner.** Pale lilac, large and very double.

**Mme. Lemoine.** Double with very large white flowers.

All Lilacs, **50c to \$1.50.**

## QUINCE, FLOWERING

**Quince, Japan or Flowering (Cydonia Japonica).** In early spring are hidden by a wealth of scarlet flowers. 12 to 18 inch, **50c**; 18 to 14 inch, **75c**; 2 to 3 feet, **\$1.00.**

## SNOWBALLS

**Common.** Large, globular clusters of white sterile flowers blooming in May. **50c, 75c, \$1.00.**

**Double Japanese (Plicatum).** Bears great wreaths and clusters of pure white globular masses of flowers. Grows 4 to 6 feet high. Two feet, **each, \$1.00.**

## SPIREAS

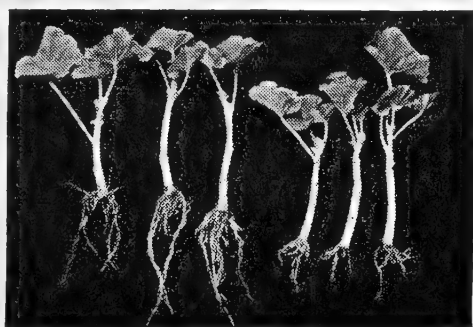
**Anthony Waterer.** Covered nearly the whole growing season with large umbels of deep crimson flowers. **35c, 50c, 75c and \$1.00.**

**Froebeliana.** Fine rosy colored flowers, produced last of June in large flat heads, the young foliage tinted red; also beautiful in early fall. **25c to 75c.**

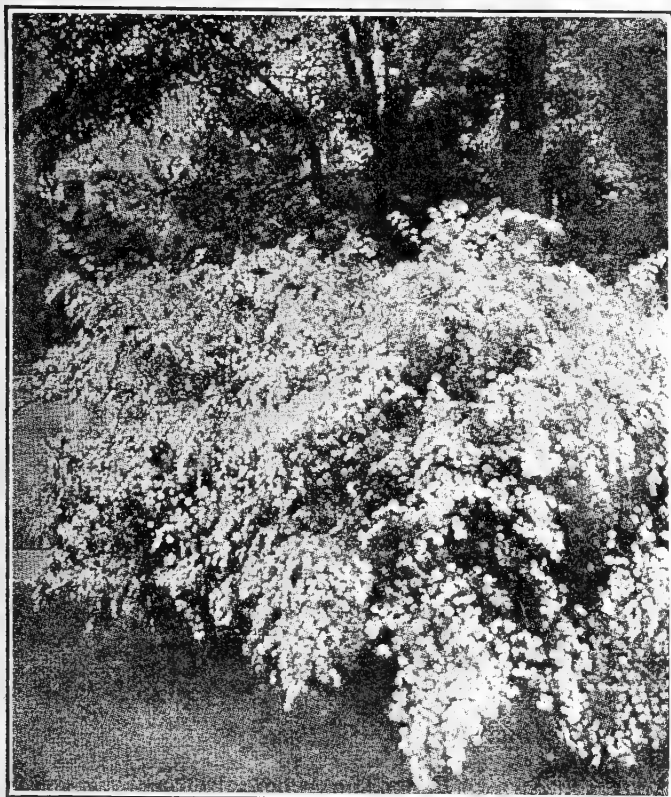
# ROOTONE

Reg. U. S. Pat. Off.

**ROOTONE, the plant hormone powder. Dip cuttings in Rootone before planting to give faster, better, more successful rooting. Mix flower, vegetable or grass seed with Rootone before planting to give faster growth and stronger roots. Easy to use. 1/4 oz. packet 25c. 2 oz. jar \$1.00. 1 lb. can \$5.00.**



Geranium Cuttings—Treated and Untreated



SPIREA VAN HOUTTEI

**Prunifolia (Bridal Wreath).** Slender erect-growing, having beautifully colored foliage, and bearing very early in the spring small double white flowers. Two feet, **60c**; 3 feet, **75c**.

**Thunbergi.** Low-growing of compact form, with delicate light green foliage which colors up beautifully in the fall. Small white flowers in great profusion, early in the spring. **50c, 75c**.

**Van Houttei.** A beautiful ornament for the lawn. When in flower it is a complete fountain of white bloom. Two feet, **each, 25c**; 3 to 4 feet, **each, 50c, \$1.00**. Add postage.

### SYRINGA or MOCK ORANGE

**Gordonianus.** Late large flowered, strong growing sort. Two to 3 feet, **50c**; 3 to 4 feet, **75c**; 4 to 5 feet, **\$1.00**.

**Virginialis.** The double, semi-double and single flowers are large, handsome and fragrant. Two to 3 feet, **75c**.

### WEIGELIAS

**Eva Rathke.** A free flowering bright red variety of rather dwarf habit. **50c and \$1.00**.

**Rosea.** The old standard, strong growing, pink flowered variety. **35c to 75c**.

**Rosea Variegata (Variegated).** Valuable for the clearly defined variegation in its leaves of green, yellow and pink. **Flowers light pink and blush. Each, 50c and 75c.** Add postage.

### HEDGE PLANTS

**English Privet.** Plant in double row 2 feet apart, 6 inches between plants. 15 to 18 in., **10 plants \$1.00; per 100, \$7.50**. 18 to 30 in., **10 plants \$1.25; per 100, \$10.00**.

**Golden Privet.** Beautiful variegated shrub used to plant in among evergreens. Gives wonderful effect. **\$1.00 each**.

Add postage as per instructions under nursery stock.

The following shrubs can be used for beautiful hedges and screens: Privet, Barberry, Forsythias, Honeysuckle, Hydrangeas, Lilacs, Spireas. Write for prices stating quantities.

## FRUIT

### BLACKBERRIES

#### BUSH

**Two year old: Each, 20c, 3 for 50c; doz., \$1.50; 50, \$5.50; 100, \$10.00; add postage.**

**Blower.** Fruit large, jet black, good shipper, hardy, productive.

**Early Harvest.** Its earliness, combined with good shipping qualities, make it very profitable. Compact dwarf grower.

#### VINING

**Price, two year old: Each, 20c, 3 for 50c; doz., \$1.50; 50, \$5.50; 100, \$10.00; add postage.**

**Himalaya Giant.** Hardy, and thrives even under severe conditions. Fruit large, handsome and fine quality.

**New Mammoth.** Strong grower of trailing habit, enormously productive; very early, fruit enormous, core soft and small.

### BOYSENBERRY

Jet black, sweet and firm, it has a raspberry-like flavor even when canned and makes excellent pies. **2 year old, 20c; 3 for 50c; doz., \$2.00.**

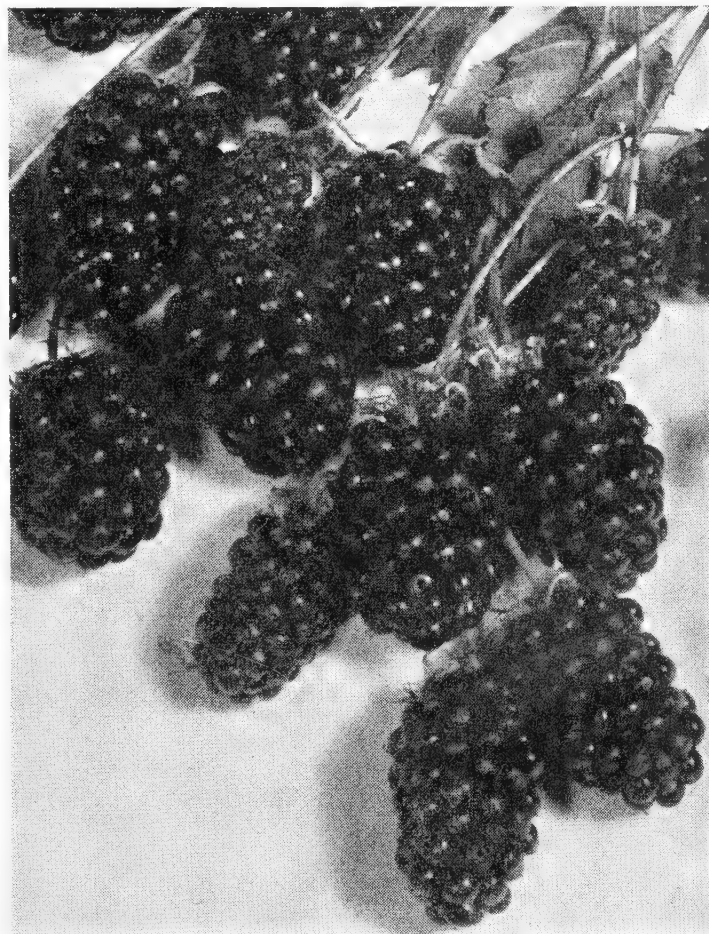
**New Thornless.** Equal in quality and productiveness in every respect to the old type and has the added advantage of being thornless. **35c; 4 for \$1.00.**

### YOUNGBERRIES

A cross between the Dewberry and Loganberry. Berries larger than loganberries, purplish black and similar to raspberries in flavor. Very vigorous grower, begins bearing at an early age.

**The above two berries, 20c each; 3 for 50c; 12 for \$2.00.**

**New Thornless. 35c; 4 for \$1.00.** See description of New Thornless Boysenberry.



OLYMPIC BERRY (Boysenberry)





CURRENTS

**CURRENTS**

**RED**

**Cherry.** Very large, deep red; fine for preserving; valuable market variety.

**Perfection.** Beautiful bright red, largest size, fine bunches on long stems, permitting easy picking, without crushing.

**WHITE**

**Grape.** Very large; yellowish white; very mild acid; excellent quality and valuable for the table.

**All Currants: One year old, each, 25c; doz., \$2.00. Two year old, each, 35c; doz., \$3.00.**

Owing to Federal quarantine, currants cannot be shipped after April 1 and before November 1.

**DEWBERRIES**

The most dependable of all dewberries. Fine flavor. **Price each, 15c; doz., \$1.50; 50, \$5.50; 100, \$10.00; add postage.**

**GOOSEBERRIES**

**Oregon Champion.** Berries very large, pale green; sweet, fine, bush strong, prolific bearer. This is the standard.

**Red Jacket (Josselyn).** Large, smooth, prolific and hardy.

**One year old, each, 25c; doz., \$2.00. Two year old, each, 35c; doz., \$3.00; add postage.**

Owing to Federal quarantine gooseberries cannot be shipped after April 1 and before November 1.

**RASPBERRIES**

**BLACK**

**Two year transplants. Each, 15c; doz., \$1.50; 50, \$5.50; 100, \$10.00; add postage.**

**Cumberland.** Fruit very large, firm, keeps and ships as well as any of the blacks. The most profitable market variety.

**Plum Farmer.** The berries are thick-meated and firm.

**Indian Summer.** Ever-bearing Raspberry. These are very popular for home use, as they fruit continuously throughout the year. **Each 15c; 10 for \$1.00; 100 for \$8.00.**

**RED**

**Each 15c, 12 for \$1.00, 100 for \$7.50.**

**The New Chief.** Chief is a big berry, of very fine quality, bright red, and a most heavy bearer.

**Latham.** Latham is the greatest red raspberry ever introduced.

**St. Regis.** Everbearing. Very popular for home use, as they fruit continuously. **Each 15c; 12 for \$1.25; 100 for \$8.00.**

**GRAPES**

**BLACK**

**Campbell's Early.** This variety is recommended very highly on account of its earliness and other good qualities.

**Concord.** Very extensively planted. Bunch and berries medium size; black; good keeper. Vine hardy and productive.

**Moore's Early.** Bunch large; fruit large; round, black, with heavy bloom. Best early variety, hardy and productive.

**GREEN**

**Moore's Diamond.** Bunches large; berry greenish white, flesh juicy; almost without pulp.

**Niagara.** Very hardy, strong grower; bunches large, compact. Berries large, round, light greenish white, semi-transparent.

**RED**

**Agawam.** Large berries, pulp soft and sweet, early.

**Delaware.** Bunches small, compact; berries rather small, round, thin skin, light red; flesh juicy, sweet, good.

**Large Varieties.** Tokay, Muscat and Malaga.

	Each	Doz.	25	50	100
Campbell's 2 years.....	\$0.30	\$3.00	\$5.00	\$8.00	\$15.00
Concord, 1 year.....	.15	1.50	2.50	4.25	7.50
Concord, 2 years.....	.20	2.00	3.50	5.50	10.00
All other varieties—					
1 Year .....	.20	2.00	3.50	5.50	10.00
2 Years .....	.30	3.00	5.00	8.00	15.00
3 years .....	.50				

Add postage.

**LOGANBERRIES**

The loganberry is larger than the blackberry. Color dark red and produced in immense clusters. Two year old, **each, 20c; 3 for 50c; add postage.**



GRAPES, CONCORD

**APPLES**

**SUMMER VARIETIES**

Two and 3 years old, each, \$1 to \$1.50. 1 year old, 5 feet, each, 75c. 1 year old, 4 feet, each, 65c. 1 year old, 3 feet, each, 50c. Write for price on 50 and 100 lots.

**Early Harvest.** Medium, pale yellow, tender, juicy.  
**Yellow Transparent.** Earliest and best; white, tender, juicy. Grows rapidly; bears young, makes a profitable "filler."  
**Red une.** A brilliant red variety. Its distinct flavor has made it popular.

**FALL VARIETIES**

**Duchess.** Rather large; light red streaks on yellow ground; tender and juicy; very hardy. Handsome appearance.  
**Snow (Fameuse).** Medium size; bright red deepening to almost purplish black in highly colored specimens; flesh white, juicy.

**WINTER VARIETIES**

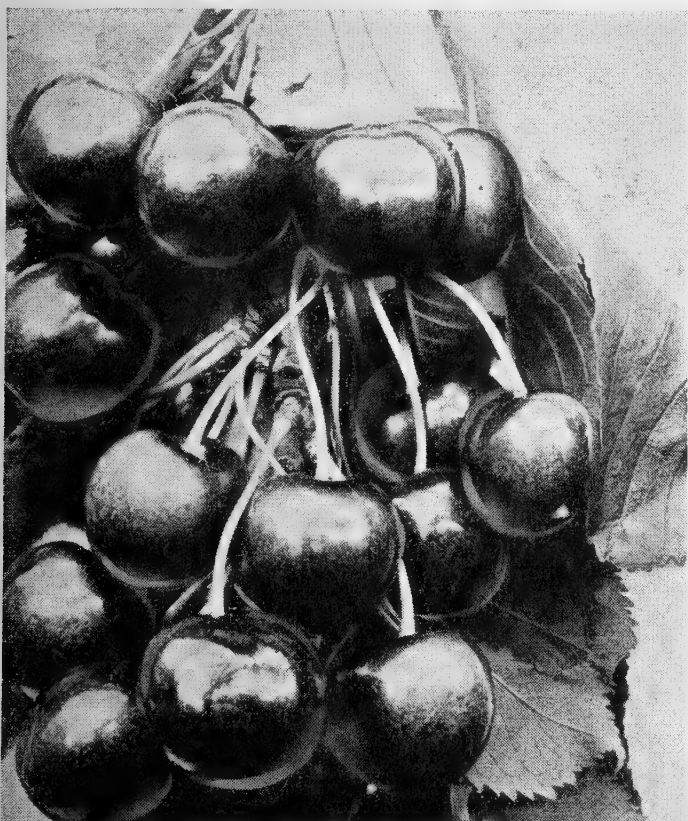
**Banana.** Large and showy; yellow, with pinkish red blush; flesh tender, heavy bearer.  
**Delicious.** Large; brilliant dark red; flesh fine grained, crisp, juicy with a delightful aroma; splendid keeper and shipper.  
**Delicious Red.** A solid red and retains all the good qualities of the original Delicious.  
**Jonathan.** Red and yellow, tender, juicy and rich. Very productive; one of the best for table and market.  
**Red McIntosh.** Large deep crimson, highest quality, juicy, subacid. Good for both culinary use and dessert.  
**Rome Beauty.** Dark red striped, large excellent quality; a market favorite, bringing good prices. Late bloomer.  
**Stayman Winesap.** Medium size; flesh fine, crisp, and high-flavored.  
**Wagener.** Medium to rather large; beautiful bright red.

**APPLES, CRAB**

**Transcendent.** Largest of the crabs; striped red, showy, excellent and very handsome. Hardy and strong grower.  
**Siberian, Red.** Small, bright red, covered with light bloom; fine flavor, excellent for preserving. Ripens September.  
**Siberian, Yellow.** Large, beautiful, golden yellow. September and October.  
 Same price as apples.

**APRICOTS**

One year, 3 to 4 feet, each, 65c. One year, 4 to 5 feet, each, 85c. Two and 3 years old, each, \$1.00 to \$1.50.  
**Moorpark.** Very large; orange with reddish cheek; flesh orange, sweet, juicy, with fine flavor; very valuable. Ripens early.  
**Royal.** Medium size, oval, sweet, yellow, tree productive; excellent drying and canning variety. Ripens in July.  
**Tilton.** Large, flesh firm, yellow, decidedly freestone. Tree vigorous, regular and heavy bearer.



**CHERRIES**

**CHERRIES**

**SOUR**

Two and 3 year old selected, each, \$1.00 to \$1.50. One year old, 4 feet, each, 85c. One year old, 3 feet, each, 60c.

**Early Richmond.** Medium, dark red, melting, juicy, sprightly, rich acid, best. June.  
**Late Duke.** Large, light, red, delicious fruits. Tree strong and upright, exceedingly productive. July.  
**May Duke.** Large, red, juicy, rich. June. Not so sour as some varieties, and very pleasant for sensitive teeth.  
**Montmorency.** Large red, acid, exceedingly productive. Late.

**SWEET**

Two and 3 year old selected, each, \$1.00 to \$2.00. One year old, 4 to 6 feet, each, 85c. One year old, 3 to 4 feet, each, 75c.

**Bing.** Very large; dark brown, almost black; flesh firm, rich and delicious. Immense size; good shipper.  
**Lambert.** Large size and fine quality; deep, rich red, almost black; flavor unsurpassed. Best shipping variety.  
**Royal Ann.** One of the best known cherries. Very large, firm, rich red and white; good for table or canning.

**PLUMS**

Two or 3 year old selected, each, \$1.00 to \$1.50. One year old, 4 to 6 feet, each, 75c. One year old, 3 to 4 feet, each, 65c.

**Bradshaw.** Very large, oval; dark violet red; juicy, sweet and good. A valuable market variety. August-September.  
**Damson.** Small, roundish oval; dark purple; favorite for preserves. September.  
**Peach.** Large, roundish; brownish red; coarse grained, but juicy. Ripens July. Ranks first in popularity.

**PRUNES**

Two and 3 year old, each, \$1.00 to \$1.50. One year old, 5 feet, each, 75c. One year old, 3 to 4 feet, each, 50c.

**Italian.** Good size purple, juicy, delicious, best for drying; separates freely from the stone.  
**French or Petite.** Medium to small, egg-shaped; violet purple; juicy, very sweet, rich and sugary. Prolific.  
**Sugar, New.** Fruit ripens early; flesh tender and rich; color dark purple. Early, August.

**PEACHES**

Two year old, each, \$1.00 to \$1.50. One year old, 4 to 5 feet, each, 75c. One year old, 3 to 4 feet, each, 50c.

**Alexander.** Medium, greenish white, nearly covered with rich red; melting, juicy, sweet. July.  
**Crawford's Early.** A large yellow peach of excellent quality. Its size and beauty make it one of the most popular varieties.  
**Elberta.** The great market peach. Large, handsome; orange-yellow, nearly overspread with red, much mottled.  
**J. H. Hale.** Large size, fine quality, red cheek, yellow meated freestone, ripening with Elberta.

**GRAFTING WAX**

¼ lb. 25c, postpaid, 30; ½ lb. 40c, postpaid, 50c; 1 lb. 75c, postpaid, 85c.

**DEADLINE INSECT BARRIER**

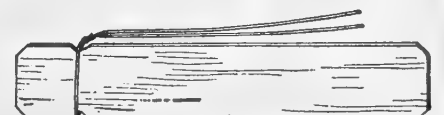
¼ lb. 25c, postpaid, 30c; ½ lb. 40c, postpaid, 50c; 1 lb. 75c, postpaid, 85c.

**LABELS**



		100	500	1000	Weight
Pot, painted	4x5/8	\$0.35	\$1.35	\$2.40	5 lbs.
Pot, painted	5x5/8	.35	1.50	2.65	6 lbs.
Pot, painted	6x5/8	.40	1.75	3.00	8 lbs.
Pot, painted	8x5/8	.50	2.25	4.00	10 lbs.
Pot, painted	10x5/8	.70	3.25	6.00	12 lbs.

Tree Labels, painted, copper wire. Size, 3½x5/8. 100, 35c; 500, \$1.50; 1000, \$2.75. Weight per 1000, 6 lbs.; add postage.





# PLANTS AND ROOTS

## STRAWBERRIES

### EVERBEARING

**Gem.** This is as its name implies, a bright red berry to the core, well flavored. Not as large as Mastodon. Better flavored and a much better shipper and a few days earlier.

**Mastodon** without doubt is the largest everbearing strawberry. It is a very mastodon in the size of its big, red, luscious berries. Their glossy red color gives them a beautiful appearance.

### ONE CROP VARIETIES

**Marshall.** Produces remarkably large, beautiful fruit.

**Premier.** Early. A good shipper. Ideal in color. Ripens evenly.

**Dorsett.** Color light red, heavy producer, exceptionally firm.

**Fairfax.** A very good berry, large, firm, splendid color.

	Prepaid			Not Prepaid				
	Doz.	25	50	100	200	500	1000	
Mastodon	}	\$0.50	\$0.85	\$1.25	\$2.00	\$3.25	\$6.50	\$12.00
Gem								
One crop varieties		.40	.50	.75	1.25	2.00	3.75	7.00

Quotations not guaranteed.

Good size strawberry plants weigh about 6 lbs. per 100.

### STRAWBERRY CRATES

No deck, 100, \$15.00. Less than 100, each, 16c.

Price not guaranteed.

### BERRY HALLOCK (PAPER)

Strawberry and Raspberry self-folding hallocks are put in packages of 500 pint size. Weight 26 lbs. per 500. **Price per M, \$7.00; 500, \$4.00; 100, \$1.00.** Add postage. Quotations not guaranteed. (No Plants or Roots Sent C. O. D.)

### PLANTS, FLOWERING

Alyssum, Asters, Carnations, Cosmos, Daisies, Dahlias, Lobelia, Marigold, Petunia, Salvia, Snapdragons, Stocks, Verbenas, Wall-flowers, Zinnias.

All above flower plants: Doz. 25c; 50 for 85c; 100 for \$1.50, postpaid. Pansy plants, doz. 60c to 85c, postpaid.

### PLANTS, VEGETABLE

Quotations on 500 and 1000 lots are on outdoor grown plants ready about May 15th. On 100 and less, transplanted plants.

Variety	Postpaid			Not Postpaid	
	Doz.	50	100	500	1000
Cabbage — Transplanted	.25	\$0.75	\$1.10	\$4.50	\$8.00
Cauliflower — Transplanted	.30	1.00	1.35	4.50	9.00
Celery — Transplanted	.25	.75	1.10	4.50	8.00
Egg Plant — Transplanted	.30	.75	1.25	4.50	8.00
Peppers — Transplanted	.30	.75	1.25	4.50	8.00
Tomatoes — Transplanted	.30	.75	1.25	4.50	8.50

### ROOTS

Asparagus, Mary Washington, 2 years old	.40	1.00	1.75	5.25	10.00
Hop	.75	2.75	5.00	7.25	15.00
Horseradish	.30	1.00	1.50	4.25	8.00

	Postpaid			Not Postpaid	
	Each	Doz.	50	100	500
Chives, small bunch	\$0.15	\$1.25	\$3.50	\$5.00	\$15.00
Rhubarb, 1 year old	.15	1.25	3.25	5.00	15.00
Rhubarb, 2 years old	.25	1.75	4.50	8.00	30.00

Prices not guaranteed, but are subject to change.

## FIELD SEEDS

We are unable to quote on field seeds as our catalog goes to the printer, but will be glad to quote upon request. Please state amount wanted.

### ALFALFA

**Alfalfa, Common Variety.** Most generally sown.

**Alfalfa, Grimm.** A hardier variety than the common.

**Alfalfa, Cossack.** Some say this strain is hardier than Grimm.

**Alfalfa, Ladak.** Extremely hardy, drought-resistant.

## CLOVERS

**Ladino White Clover.** Grows on thin soil, needs moisture.  
**Alsike.** Produces large crops of excellent hay.  
**Red, Medium.** Standard variety. Highly recommended.  
**Red, Mammoth.** Heavier yielder than the Medium.  
**Sweet, White Blossom.** Erect branching biennial.  
**Sweet, Yellow Blossom.** Same family as the White Blossom.  
**White Dutch.** Low growing. White blossoms.

## GRASSES

**Bent, Creeping.** Fine texture. Valuable for lawns.  
**Blue Grass, English.** Grows from 3 to 4 feet high.  
**Blue Grass, Kentucky.** Very sweet and nutritious.  
**Bromus Inermus.** Withstands drouth well.  
**Bromus Marginatus.** Stock relish both pasture and hay.  
**Canary Grass.** Known as water grass. 6 to 7 feet high.  
**Crested Wheatgrass.** A perennial grass related to Blue Joint.  
**Fescue, Chewing.** Small, hardy low growing.  
**Lespedeza Korean.** Abundant growth, deep roots.  
**Orchard Grass.** Stands the drouth. Grows well in the shade.  
**Red Top.** Valuable for moist rich soils; 1 to 2 feet high.  
**Rye, English.** Valuable for pasture.  
**Rye, Italian.** Annual, quick grower; 2½ to 4 feet.  
**Sudan Grass.** Annual, 7 to 9 feet. Wonderful stooler.  
**Timothy.** Best of all grasses; 2 to 3 feet.  
**Tall Meadow Oat Grass.** Deep rooted; withstands drouth.

## MILLETS

**Early Fortune.** A sure cropper and specially valuable for late planting, as it is one of the earliest varieties.  
**Golden.** Rank grower. Splendid variety for hay. Grows from 4 to 5 feet on rich soil. Cut when in bloom.  
**Siberian.** One of the very earliest. A very heavy cropper. Hay finer than Golden and grows taller. Rust-proof.

## PEAS

**Canadian.** A heavy cropper. Very tall vines.  
**Alaska.** Green smooth seed. The earliest, short straw.  
**Whipporwill.** Prolific yielder. Vigorous grower.

Ask for prices on all Field Seeds, stating amount wanted.

APPROX. 70,000,000 LBS. OF AIR-NITROGEN ABOVE EVERY ACRE. THIS IS AVAILABLE FREE FOR SOIL AND CROP IMPROVEMENT IF YOU

## CONVERT LEGUME SEEDS INTO FERTILIZER PLANTS

Inoculating by with

# NITRAGIN

SINCE 1898

ALFALFA
RED CLOVER
SWT. CLOVER
COWPEAS
PEAS
VETCH
A. W. PEAS
SOYBEANS
LESPEDEZA
PEANUTS
BEANS
ALL-LEGUMES

### 1945 NITRAGIN INOCULATION PRICES

When Ordering, ALWAYS State Name of Seed.

**ALFALFA**  
**Sweet, Bur, Hubam Clovers**  
 Size Retail  
 1 bu. ea. ....\$ .50  
 2½ bu. ea. .... 1.00

**CLOVERS**  
**Medium & Mammoth**  
**Red, Alsike, Crimson & White Clovers**  
 1 bu. ea. ....\$ .50  
 2½ bu. ea. .... 1.00

**PEAS (All Varieties)**  
**VETCHES (All Varieties)**  
 100 lb. size (Inoculates up to 100 lbs.) ea. ....\$ .50  
 1200 lb. size ea. .... 5.70 (12-100 lb. size cans)

**BEANS—Navy, Pinto, Wax, String, Kidney, Gr. Northern**  
 1 bu. ea. ....\$ .35

**LESPEDEZA Hulled or Unhulled**  
 100 lb. size (Inoculates up to 100 lbs. seed) ....\$ .50

**PEANUTS, LIMA BEANS, COW PEAS**  
 Size Retail  
 Small (Inoculates up to 120 lbs. seed) .....\$ .30  
 5 bu. ea. .... .55  
 25 bu. (one can) ea. 2.50  
 30 bu. (one ctn.) ea. 3.25 (Contains 6-5 bu. cans)

**SOYBEANS (All Varieties)**  
 Small (Inoculates up to 120 lbs. seed) .....\$ .30  
 5 bu. ea. .... .55  
 25 bu. (one can) ea. 2.50  
 30 bu. (one ctn.) ea. 3.25 (Contains 6-5 bu. cans)

**LUPINES (All Varieties)**  
 100 lb. size (Inoculates up to 100 lbs. seed) ea. \$ .50

**GARDEN SIZE**  
**Garden Peas and Beans**  
**Sweet Peas, Lupines and Edible Soybeans**  
 Enough for 8 lbs. seed  
 Retail Price 10c each.

**NITRAGIN — Oldest and Most Widely Used Inoculator in America**

## LAWN GRASS

Beautiful lawn will always add beauty to a beautiful house. When choosing seed for a lawn choose wisely and carefully, always buying the best grade of seed.

**Clover Leaf Mixture.** This is the best all purpose lawn mixture. Only the best grade grasses obtainable are put into this. Contents are Red Top, Blue Grass and Clover. The Red Top and Clover being annual grasses will die out after a few years, leaving an excellent stand of Blue Grass which can be obtained only by using a mixture of this type.

**Bent Mixture.** For those who like and want a Bent lawn this is the most superior mixture of this type. This will furnish you with the lawn which will be a joy and beauty for years.

**Shady Lawn Mixture.** This mixture is intended for and will thrive under conditions where there is partial or complete shade such as under trees or in shade of building.

## MISCELLANEOUS

**Buckwheat.** Heavy yielder. Very early. Stands up well. **2 lbs. 25c; 25 lbs. and over, 10c per lb.** Add postage.

**Flaxseed.** It has been customary to sow on virgin sod. **2 lbs. 25c.** Add postage.

**Kaffir Corn.** Attains a growth of from 4 to 5 feet. **15c per lb.; 25 lbs. and over, 12½c per lb.** Add postage.

**Kale, Thousand Headed.** See garden section.

**Lentils.** Succeed best in dry, sandy soil. Used largely for soup. **2 lbs. 25c; 25 lbs. and over, 10c lb.** Add postage.

**Rape, Dwarf Essex.** Used solely for securing green feed.

**Sugar Cane, Early Amber.** Earliest, best for northern latitudes. **2 lbs. 25c; 25 lbs. and over, 10c per lb.** Add postage.

**Sunflower.** A forage plant. **15c per lb.** Add postage.

**Vetches, Spring.** In the Inland Empire these will not withstand the winters.

**Vetches, Spring.** For Spring sowing only.

## GRAIN

### BARLEY

**Beardless.** A good yielder.

### CORN

The verdict of the farmers has been that No. 13 is far superior to any other variety for the Northwest.

**Postpaid, 1 lb. 20c; 2 lbs. 35c; 5 lbs. 75c; 10 lbs. \$1.25.**

**Not postpaid, 1 lb. 15c; 2 lbs. 25c; 5 lbs. 50c; 10 lbs. \$1.00; 25 lbs. \$2.00; 50 lbs. \$3.25; 100 lbs. \$5.50.** Prices not guaranteed.

**Hybrid No. 544.** This is about three days later than Minnesota No. 13 and has consistently out-yielded the ordinary Field Corn by 25% to 50%. Average 10 ft. tall and free from suckers. Ears are borne at a medium height and are 16 to 18 rows. Kernels deep, small eob. **1 lb. 25c; 10 lbs. \$2.00.** Add postage.

### POP

**White Pearl.** The best corn for popping and for the general market; early, white pointed kernels. **1 lb. 25c,** postage paid. At purchaser's expense, **10 lbs. \$1.00.**

**Corn Earworm Oil.** Controls earworm in corn. The U. S. Department of Agriculture and a number of the State Colleges have recommended a solution of pyrethrum in highly refined mineral oils of certain specifications. This Corn Earworm Oil is just such a material. **Gallons \$2.25. Weight 12 lbs.** Add postage.

### MARKTON OATS

The outstanding features of Markton oats are their immunity to smut and their superior yield.

### RYE

**Spring Rye.** Spring rye is an excellent catch crop where winter grain has been killed out.

**Winter Rye.** Rosen Rye is a stiff-strawed, large headed variety which ordinarily has four full rows of grain on over 99 per cent of its heads.

Write for prices on all field seeds, stating amount wanted, or we will fill all orders at prices prevailing on date of shipment.

### WHEAT

**WINTER—Jones Fife, Martin Amber, Gold Coin.**

**SPRING—Bluestem, Marquis, Early Bart, Federation.**

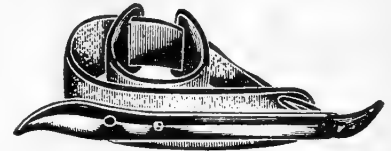
## CORN HUSKERS

**Model A, "Corn King".** Long leather strap laces four times across the back of the hand and around the thumb. Cinch lacing insures comfort to wearer. **Price 60c.** Weight, 2 lbs.; add postage.

**Model 2000B.** All steel pin made of the best grade of material obtainable for the purpose with all steel rear brace. **Price 30c.** Weight, 1 lb.; add postage.



A



2000B

## POTATOES

**Prices.** Owing to the great uncertainty regarding values we are unable to make definite prices at present. Write for prices, stating amount wanted.



### EARLY

**Bliss Triumph or Six Weeks.** This is very early and is also one of the best yielders of the early varieties. Skin pink.

**Ohio.** A leading early sort. Round, short, and thick tubers, smooth and solid; cooks dry and mealy and matures very early.

**Earliest of All or Early Eureka.** Is a white-skinned variety. The tubers are smoother than most other varieties.

### MEDIUM

**Irish Cobbler.** The tubers are round, somewhat flattened with rather deep eyes and are medium to large in size.

### LATE

**Netted Gem.** The hardiest, most vigorous in growth, most productive, and the best in table quality. Tubers medium long.

### CERTIFIED STOCK

We are usually able to supply blue tag quality in all the standard varieties.

Write for prices, stating amount wanted.

### KREME SKIN GLOVES

Made from soft and select hides. Semi-styled in design and used for both work and play—**Gardening, Household, Driving,** etc. Give full protection with utmost comfort and finger freedom. Ladies' sizes only (small, medium, large).

**Price \$1.00 a pair, \$1.10, postpaid.**



# FERTILIZERS

- BONE MEAL.** Steamed. Specially prepared as a fertilizer.  
**GYPSUM.** Recommended for clover fields.  
**NITRATE OF SODA.** 13% nitrate.  
**MURIATE OF POTASH.** 50% potash.  
**SULPHATE OF AMMONIA.** 20% nitrate.

## PEP

Your plants require different food elements from the soil. The safest and surest way to make certain that your plants will be properly fed is to feed them with Pep. Pep is a clean, sanitary, economical complete plant food. Analysis: Nitrate 6%; phosphoric acid 10%; potash 4%.

100 lbs.....	<b>\$3.70</b>	25 lbs.....	<b>\$1.45</b>
50 lbs.....	<b>2.35</b>	10 lbs.....	<b>.80</b>
5 lbs.....	<b>.50</b>		

An inexpensive fertilizer spreader, distributes evenly. Made of especially strong fiberboard paper.

**Price, \$1.25; postpaid, \$1.45.**



# SEEDERS

## GENUINE CAHOON

The Genuine Cahoon has malleable iron frame, double gate, speeded so that step of operator at an ordinary gait corresponds to one complete turn of the handle. Secure the genuine original Cahoon Seeder. **Price, \$11.50.** Weight 8 lbs., add postage.

## IMPROVED CYCLONE

The improved "Cyclone" is the only hand seed sower that is framed together with a slope feed board.

Automatic feed shut-off starts or stops flow of seed instantly. The improved "Cyclone" is guaranteed to sow perfectly all seed that can be sown broadcast, such as clover, timothy, millet, flax, wheat, oats, alfalfa, etc., etc. Weight 5 lbs.



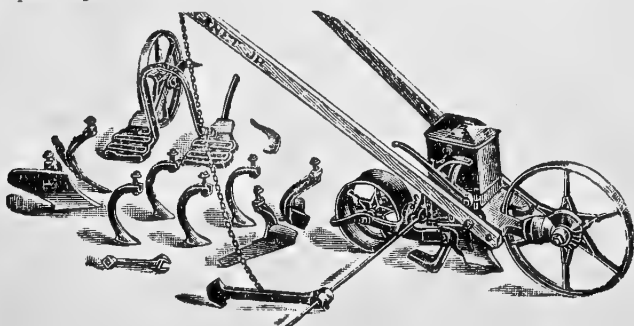
## PLANET, JR.

**No. 4.** Single wheel seeder hand cultivator. Seeder only.

**No. 25.** A combination tool. Hill and drill seeder. Double or single wheel hoe.

Hoes, 6 inch.....	<b>\$1.35</b>	3 lbs.
Hoes, 7½ inch.....	<b>1.55</b>	3 lbs.
Hoes, 9 inch.....	<b>1.75</b>	3 lbs.
Cultivator teeth, each.....	<b>.40</b>	1 lb.
Plows for double wheel hoes, each.....	<b>1.45</b>	3 lbs.
Plows for single wheel hoes, each.....	<b>1.20</b>	3 lbs.
Double mould board plow.....	<b>1.75</b>	
Handles, per pair.....	<b>1.30</b>	3 lbs.

Add postage.



# ADCO

Adco is a powder which when mixed with vegetable refuse, leaves, etc., are converted into manure. The refuse is arranged in layers, saturated with water and then sprinkled with Adco. Keep the heap moist and turn in the dry outside portion. **7½ lbs. \$1.25; 25-lb. bag, \$2.50.** Add postage.

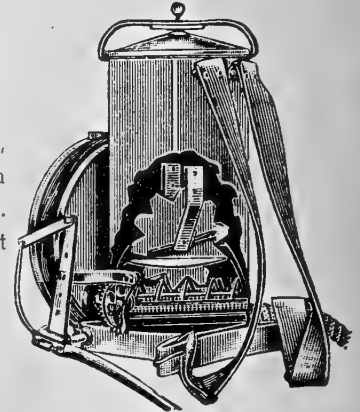
## DUSTERS

### AMERICAN BEAUTY

When dusting is to be done well, the supremacy of the American Beauty has never been questioned. Its high quality, stability and perfect performance make it ideal.

Weight, 18 pounds.

Add postage.



**The Duster Brown** measures 20 inches overall; one-half pint capacity. Dust receptacle is removable and equipped with screened discharge tube. **Each 60c.** Weight 1 lb. Add postage.

**22A**—Similar to the Duster Brown. 11 inches long and is equipped with a screen discharge tube.

40 inches in length; visible glass jar; angle nozzle. Discharge tube screened to hold back lumps. 1-quart capacity.

Mailing weight 3 lbs.; add postage.

**27A**—Similar in construction to the Crystal; 1½ pint capacity. Mailing weight 2 lbs.; add postage.

Write for prices on Dusters.

## ARNOLD SPRAYER CARTRIDGES

Arnold cartridges are made in the following solid soluble forms. Under normal conditions each Arnold cartridge makes the equivalent of five to six gallons of spray.

**ARSENATE OF LEAD SPRAY**—Controls codling moth.

**DORMO-O-SPRAY**—Contains miscible oil. For use in dormant spraying.

**FUNGUS SPRAY**—For controlling leaf spot, black spot, stem spots, and fruit rot.

**PLANT FOOD SPRAY**—A balanced fertilizer consisting of Nitrogen, Phosphoric Acid, and Potash.

**SULPH-O-SPRAY**—Will aid in the control of such fungus diseases as are controllable by weak sulphur spray.

**VITAMIN B-1**—For use in garden hose sprayers and subsurface feeders and irrigators.

**NIC-O-SPRAY**—Will aid in the control of certain soft-bodied sucking insects such as aphid.

**PYR-O-SPRAY**—Will aid in the control of certain soft-bodied sucking insects such as aphid.

**ROT-O-SPRAY**—Will aid in the control of such insects as cyclamen mite, Mexican bean beetle, striped cucumber beetle and red spider.

**All cartridges, 35c each, 12 for \$4.00.** Mailing weight of any 6 cartridges, 1 lb.; add postage.

**SPRAYERS—COMPRESSED AIR**

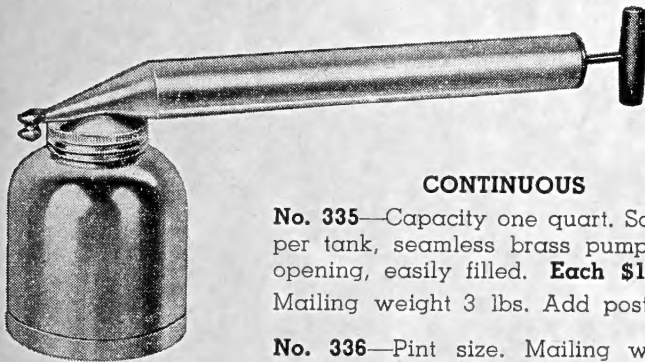


**250D.** Same style and make as 350D. Capacity 2½ gallons. Weight 9 lbs. Add postage.

**350D.** 3½-gallon funnel top, electro welded hot galvanized safety lock, seamless brass pump. Weight 9 lbs. Add postage.

**No. 3D**—3 gallon capacity.. Open head type. Heavy steel tank. 2 inch seamless brass pump. Brass valve. Mailing weight 11 lbs. Add postage.

**SPRAYERS—HAND**



**CONTINUOUS**

**No. 335**—Capacity one quart. Solid copper tank, seamless brass pump. Large opening, easily filled. **Each \$1.75.** Mailing weight 3 lbs. Add postage.

**No. 336**—Pint size. Mailing weight 2 lbs. Add postage.

**No. 315**—Quart sprayer. Tin. An all-purpose sprayer. Mailing weight 2 lbs. Add postage.

**Pint Size**—Mailing weight 1 lb. Add postage.

**SINGLE ACTING**

**No. 14**—Quart. Most excellent sprayer for use in home garden. Large opening. Easily filled.

Sprayer 315 quart and pint sizes and No. 14 quart and pint sizes are the same style and shape as No. 335.

**Twin Blast**—Quart size, glass jar, tin pump. Double spray jets. Mailing weight 3 lbs. Add postage.

We are not sure now how many Sprayers we will have, therefore we ask that you write for prices.

**NOZZLES**

**Bordeaux**—The handle is built close down to the body and is shaped so as to avoid catching in the branches. Easily adjustable for fine or coarse streams or fine spray. **Price, 60c; postpaid, 70c.**

**Adjustable Nozzle**—Can be adjusted to any angle. **Each, \$1.00; postpaid, \$1.05.**



With the patented feature the shut-off is always at discharge regardless of what length of pole is used. This eliminates use of stop-cock. Nozzle seats are brass, not rubber.

**No. 176 Nozzle.** ¼-in. pipe for ¾-in. hose. **\$1.50; postpaid, \$1.60.**

**No. 176 Nozzle.** ¼-in. pipe for ½-in. hose. **\$1.50; postpaid, \$1.60.**

**Angle Nozzle only, No. 168, 60c. Straight Nozzle only, No. 166, 60c; postpaid, 65c.**

**SPRAY MATERIALS**

**INSECTICIDES, FUNGICIDES**

Write for prices, stating size and quantity wanted, as it is impossible to quote prices on insecticides. At present, these quotations are not guaranteed.

**SAFE DELIVERY OR PRICES ON INSECTICIDES NOT GUARANTEED.**

**ALL ROUND SPRAY**

A triple service product. Nicotine Sulphate, to control sucking insects. Arsenate of Lead, to destroy the chewing insects. Bordeaux Mixture, to prevent blight and fungus diseases. **¼ lb. 25c;** add postage.

**ARSENATE OF LEAD**

**Dry Powder Arsenate of Lead.** Use 1 pound to 1½ pounds to 50 gallons of water when applied to control codling moth. For potato beetles that are hard to kill use 2 to 3 pounds to 50 gallons of water.



**1-oz. bottle, 35c; 5-oz. bottle, \$1.05; 1 lb., \$2.50; 2 lbs., \$3.70; 10 lbs., \$11.65.** Add postage.

**BLUESTONE**

Used largely for treatment of wheat to prevent smut. Use 1 pound to 5 gallons of water.

**BORDEAUX MIXTURE**

Widely used to control fungous diseases such as Peach Curly Leaf, Peach Blight, Pear Scab, Strawberry Rust, Potato Blight.



**BOTANO DUST**

A high strength Rotenone dust useful in controlling certain Aphis, Thrips, Worms, Beetles, Spittle Bugs.

**SNAROL**

**Metaldhyde-Arsenical Bait.** Attracts and kills snails and slugs. Snarol may also be used to control Sowbugs, Cutworms, Earwigs, etc. A ready-prepared bait meal that is non-injurious to vegetation when used as directed. **1½-lb. pkg. 25c; 2½-lb. pkg. 50c.** Add postage.



**BUG-GETA**

A prepared bait that has proved effective for destroying Snails, Slugs, Sowbugs, Pillbugs, Earwigs, Grasshoppers, Cutworms, Armyworms and Strawberry Root Weevils. **1-lb. carton, 25c; 2-½-lb. carton, 50c.** Add postage.



**OIL SPRAY, DORMANT**

**Directions.** For San Jose Scale, Oyster Shell Scale, Aphis, and to prevent hatching of Brown Mite and European Red Mite, one quart makes 6 gallons. Apply just before buds open.

**Gallons, \$1.25, weight 12 lbs.; 16 oz. 40c, weight 3 lbs.; add postage. 5-gallon can, \$4.95.**

**OIL SPRAY, SUMMER**

**Directions.** For Red Spider, Aphids, Scale Insects, etc., use 1 quart to 12 gallons water, or 5 tablespoonfuls to 1 gallon. For Mealy Bug use 1 quart to 8 gallons of water or 8 tablespoonfuls to 1 gallon.

**Gallons, \$1.75, weight 12 lbs.; quarts, 75c, 3 lbs.; pints, 50c, 2 lbs.; add postage. 5-gallon can, \$6.00.**

**TOBACCO DUST, BULK**

For green and black aphis, fleas, beetles. **1 lb. 15c; 2 lbs. 30c; 5 lbs. 75c; 10 lbs. \$1.40; 25 lbs. \$3.75; 50 lbs. \$6.00; 100 lbs. \$11.00.**

**VOLCK**



"Garden Volck" is used to control Aphis, Thrips, Scale, Mealy Bug, Red Spider, White Fly, Lace Wing Bug, Cyclamen Mite, Greenhouse Orthezia, Leaf Miner, Squash Bug, Leaf Hopper, Small Caterpillars, Leaf Spot, Mildew. **4 oz., 35c; pint, 85c; quart, \$1.25.** Add postage.

"Greenhouse Volck" is a special "Volck" for use on tender plants under lath or glass. It is exceptionally safe to tender foliage. Unusually effective against Mealy Bug. Also controls Scale, White Fly, Red Spider, etc. **Gallon, \$2.00; 5 gallons, \$5.00.**



"Nursery Volck" is the high quality Mineral Oil Spray for general nursery and garden use, and is recommended for the same pests as Garden Volck with the exception of Aphis, Thrips, Small Worms and Bugs. **Pint, 50c; quart, 75c.** Add postage.

**GARDEN GUARD**

To be used as a spray or dust. Non-injurious to humans, yet effective both by contact and as a stomach poison against an exceedingly wide range of insects. **1-lb. sifter carton, 35c; 4-lb. paper bag, 65c;** postage extra.

**QUOTATIONS ON SPRAYING MATERIAL NOT GUARANTEED.**

**CERESAN—NEW IMPROVED**

**Barley.** Stripe and covered smut are usually eliminated by the use of this simple dust treatment.

**Oats.** Excellent control of loose and covered smuts may be obtained with Ceresan.

**Wheat.** Ceresan is very effective in the control of bunt or stinking smut.

For wheat use 1/2 ounce per bushel of seed. For oats and barley 3 ounces per bushel of seed.

**4-oz. can, 30c; 1-lb. tin, 80c; 4-lb. tin, \$2.70; 25-lb. drum, \$15.00; 100-lb. drum, \$55.00.** Mailing wts., 2 lbs., 7 lbs. and 30 lbs., add postage.



**COPPER CARBONATE 54-55%**

**Copper Carbonate.** Two ounces per bushel is sufficient to insure full coverage. Avoid inhaling the Copper Carbonate dust. The treated grain should not be fed to chickens or livestock. **5-lb. pkg. \$1.60; 10-lb. pkg. \$3.15; case, 4 10-lb. pkgs. \$11.25.** Add postage.

**SEMESAN**

For most flower and vegetable seeds use 1 ounce of Semesan to each 15 pounds, but to dust field crops use 2 ounces per bushel for the large varieties of seeds or 3 ounces for the small kinds. **1/3 oz. envelope, 10c; 2-oz. tin, 40c; 1-lb. tin, \$2.50; 5-lb tin, \$11.40.** Mailing weights, 2 and 7 lbs. Add postage.

**IMPROVED SEMESAN BEL**

Dry seed potatoes may be most conveniently disinfected before cutting by gently rolling them and the Semesan dust together in a barrel or other cylindrical container for 3 to 5 minutes or until the tubers are thoroughly coated. **2-oz. envelope, 30c; 1-lb. tins, \$1.65; 5-lb. tins, \$7.15; 25-lb. pail, \$33.25.** Add postage.

**SEMESAN JR.** Is a dust disinfectant used for the ear, root and stalk rots of field and sweet corn. It is used at the rate of 3 ounces per bushel of seed. **1 1/2-oz. envelope, 15c; 1-lb., 75c; 5-lb. tins, \$3.00.** Add postage.

**RODENT DESTROYERS**

Prices not guaranteed on any rodent destroyer.

**CYANOGENS**

Kills by giving off gas on exposure to the moisture in the air.

**Cyanogas.** For controlling ants, rats, moles, fleas, gophers, sage rats, prairies dogs, ground squirrels, wire worms, snails, slugs.

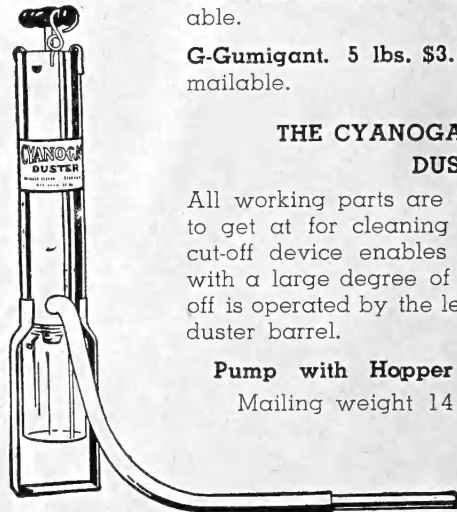
**Granular. 1 lb., 80c; 5 lbs., \$2.60; 25 lbs., \$6.40; 100 lbs., \$19.00.**



**A-Dust. 1/4 lb. 30c; 1/2 lb. 45c; 1 lb. 80c; 5 lbs. \$2.60; 25 lbs. \$6.40; 100 lbs. \$19.00.** Not mailable.

**G-Gumigant. 5 lbs. \$3.10; 100 lbs \$26.00.** Not mailable.

**THE CYANOGENS FOOT PUMP DUSTER**



All working parts are non-corrosive and easy to get at for cleaning or repairing. The dust cut-off device enables Cyanogas to be used with a large degree of economy. The dust cut-off is operated by the lever at the bottom of the duster barrel.

**Pump with Hopper Attachment, \$14.00**  
Mailing weight 14 lbs. Add postage.

**Mouse Seed** can be used without bait, without traps, without muss. Mouse Seed is real seed—that kills mice. It attracts them wherever it is left.

Pour a pile of seeds out of the package on a saucer. The mice, attracted by the flavor, will gnaw the kernels, leaving the husks.

**Oz. pkgs., 25c; postpaid, 30c.**

**Rat Nots.** This is a handy Red Squill poison that can be used even by a child. It is not harmful to pets or small children but is a sure death to rats. **Price, 25c.** Add postage.

**No. 18 FOLDING**

This is similar to the No. 13, except it is supplied with a folding handle. Blade 12 inches. **\$1.60; postpaid, \$1.70.**

**No. 13 CALIFORNIA PRUNER**

Curved blade makes cutting easy. Handle of applewood. Blade 14 inches. **Price, \$1.90; postpaid, \$2.00.**

**BROODER THERMOMETERS**

**No. 5794S**

**No. 5794S.** Ordinary grade, white lithographed scale, 4 1/2 inches long, black figures, 10 to 140°. **Price, 70c, postpaid, 80c.**

**WAFER THERMOSTATS**

Wafer Thermostats are made of two round concave discs. The cavity between them is filled with a volatile liquid. 3, 4 and 5-inch sizes with thread connections on lower side and beveled place in upper side.

**3-inch, 35, postpaid, 45c; 4-inch, 50c, postpaid, 60c; 5-inch, 60c, postpaid, 70c.**

**PETTY'S POULTRY PUNCH**

Latest, most convenient Poultry Punch; will not clog. Thoroughly practical.

**Postpaid, 25c.**



**MOUSE SEED**  
(HOUSEHOLD-ALL-USE POULTRY PUNCH)  
**Kills Mice!**

**CHICK FEEDERS**

At present we are unable to quote prices on feeders or fountains and cannot guarantee delivery.

The trough is stamped from one piece of galvanized iron.

- No. 71. 16 inches. Weight 1 lb.
- No. 72. 23 inches. Weight 1 1/2 lbs.

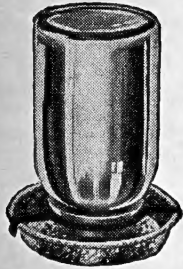
Add postage.

The following troughs have adjustable legs so the height can be raised or lowered.

- No. 40. 18 inches. Weight 1 1/2 lbs.
- No. 41. 24 inches. Weight 2 lbs.
- No. 42. 36 inches. Weight 3 lbs. Add postage.

Furnished with a four-blade metal revolving reel which prevents roosting.

- No. 410. 24 inches. Weight 3 lbs.
- No. 420. 36 inches. Weight 4 lbs. Add postage.



**FRUIT JAR FOUNTAINS**

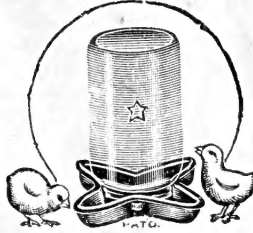
Used as fountains or feeders. Both styles.

Dozen weighs 4 lbs.

Add postage.

No 20

No. 32



**WORM KILLERS**

**"BLACK LEAF" WORM POWDER.** The dose is 1/4 pound mixed in a gallon of mash, for 100 birds, or 1 pound to 400 birds; fed the first thing in the morning. 4 oz. 65c; prepaid, 75c; 1 1/2 lbs. \$2.50; prepaid, \$2.60.

**CAPSULES.** An insoluble capsule carrying a combination worm medicine for tape, round and pin worms.

Prices:	Adult	Pullet	Chick
50-cap. Pkg. ....	\$ .75	\$ .50	\$ .40
100-cap. Pkg. ....	1.25	1.00	.75

**FLU-KOFF EMULSION** is a cough syrup. Give in wet mash or soaked oats. 4-oz. bottle, 50c; postpaid, 60c; 12-oz. bottle, \$1.00; postpaid, \$1.10; quart bottle, \$2.00; postpaid, \$2.15.

**VAPO-SPRAY** is a compound of healing oils. Spray it in the air of the poultry house at night. 32-oz. bottle, 75c; postpaid, 90c; 1/2-gal. bottle, \$1.25; postpaid, \$1.45.

Safe delivery of bottles not guaranteed.

**WALKO TABLETS**

Is highly recommended for colds, roup, etc. Dissolve in water and follow the directions on package. 100 to box. Price, 50c. Postpaid, 55c.

**LICE KILLERS AND DISINFECTANTS**

**LICE LIQUID**

—is for painting roosts, fittings, the inside of house, nest boxes and wherever mites congregate. Cans, qt. 60c; 2 qt. 90c; gal. \$1.50. Not available. Express or freight extra.



**TOBACCO DUST**

For use in dust baths or nests. A cheap and effective exterminator of lice. Lb. 20c; 2 lbs. 35c; 5 lbs. 75c; 10 lbs. \$1.30; 25 lbs. \$3.00; 50 lbs. \$5.50; 100 lbs. \$9.50. Add postage In sealed packages, 2 lbs. 45c; 10 lbs. \$1.50. Add postage.

**LICE POWDER** is for dusting hens, nests, growing chicks and wherever body lice exist. 1-lb. package, 25c; 2 1/2-lb. package, 50c. Mailing weight, 2 and 3 lbs.; add postage.

**ZENOLEUM**

One gallon of Zenoleum makes 100 gallons disinfectant. Kills vermin, cures skin trouble. Kills lice and cures mange. Pint, 50c; qt. 75c; 1/2 gal. \$1.25; gallon, \$2.00. Not available. Zenoleum is one of the very best dips for all kinds of livestock.

**"Black Leaf 40"** "painted" full strength (1 oz. to 12 or 15 feet of roost) on the top sides of the roosts before fowls perch for the night, kills body-lice. Fumes permeate the feathers.

1-oz. bottle, 35c; 5-oz. bottle, \$1.00; 1-lb. bottle, \$2.25; 2-lb. tin, \$3.25; 10-lb. tin, \$10.60. Add postage.

**CEL-O-GLASS**

Lets through the ultra-violet rays of the sun; is ideal for hotbed sash, coldframes, etc.; made in rolls 3 feet wide. Ask for prices.



**GERMOZONE** is especially valuable in preventing and controlling the diarrhoeas and digestive disorders of little chicks and grown fowls.

- 4 oz. 40c; postpaid, 45c.
- 12 oz. 75c; postpaid, 85c.
- 32 oz. \$1.50; postpaid \$1.65.
- 1/2 gal. \$2.50; 1 gal. \$4.50.

Half gallon and gallons put in glass jugs. Not mailable.

**NON-PIKK**

—will, if used in time, prevent toe-picking, rump-picking, feather-pulling. It is effective. Just treat the birds and return them to their pens—one taste and they never forget. At the first sign of toe-picking, etc., apply a small amount on the wings and tails of several birds in each pen. 1 oz., 30c; postpaid, 35c. 1/4 lb., 65c; postpaid, 70c; 1/2 lb., \$1.00; postpaid, \$1.10.



**COD LIVER OIL**

Recent studies show that certain vitamins are necessary for proper growth, body maintenance, and reproduction. Cod liver oil supplies these vitamins.

Gallon, \$1.25, if customer furnishes container, \$1.35 per gal. if Inland Seed Co. furnishes container. Not mailable.

**PEAT MOSS**

A very high quality peat moss. Tremendously absorbent and will hold over 15 times its own weight in water. Ideal dressing for lawns and flowers. It has no equal as a poultry litter or for brooding baby chicks. Over 20 cu. ft. of loose moss to the bale. \$3.25.

**BOTTLE CAPS**

**Bottle Caps.** Stock print same as shown in cut. No lift. Packed in tubes of 500. 40c. Thousand weigh 2 1/2 lbs.; add postage.

**CAPS WITH LIFT**

**Stock Print.** Milk, cream, whipping cream, buttermilk and plain. No printing on plain. Packed in tubes of 500. 40c. Weight per M. 3 lbs.; add postage.

Ask for price on 50M with your imprint.



**BOTTLES, MILK**

There are various grades of milk bottles on the market, and, unfortunately, there are still some people who consider a milk bottle a milk bottle. It is economy to use only the best.

- Half Pints, doz., 75c; 1/2 gross, \$3.25; gross, \$6.00.
- Pints, doz., 90c; 1/2 gross, \$4.00; gross, \$7.50.
- Quarts, doz., \$1.15; 1/2 gross, \$5.25; gross, \$10.00.

**DAIRY THERMOMETERS**

**Glass Floating**

**No. 5700. Churn Thermometer.** Glass cylinder; 10 in. long; mercury filled tube; weighted to float upright. Range 10° to 110° F. in 1° graduations. Price, \$2.00; postpaid, \$2.10.

**No. 5702. Churn Thermometer.** Glass cylinder; mercury filled tube; weighted to float upright. Range 10° to 110° F. in 1° graduations. Price, \$1.25; postpaid, \$1.35.

**No. 5715.** Length, 8 in. Mercury filled tube. Best imported. Price, 60c; postpaid, 70c.

**No. 5705.** Flanged metal scale Churn and Pasteurizing. Ten-inch; mercury filled tube, sliding guard; scale range, zero to 220° F.; 10 inches. Price, \$2.50; postpaid, \$2.60.

**COTTON DISCS**

**J. and J. Rapid Flo Filter Discs**

		Plain	Gauze
6 in. ....	100	\$0.60	\$0.80
6 1/2 in. ....	100	.65	.85



**EAR BUTTONS**

Are made of pure hardened aluminum, consisting of two parts or sleeves, thus giving an absolute seal that will not become loose. Name and number can be put on without additional cost.

25, \$1.75; 50, \$3.00; 100, \$5.00; 500, \$22.50.

Add 10c per 100 or less number for postage.

**WYANDOTTE STERILIZERS. 2 lbs.**

\$1.00; add postage.

**DIVERSOL STERILIZERS. 2 lbs.**

\$1.00; add postage.



**EAR BUTTON PUNCH**

This combined punch and pliers are especially made for adjusting the buttons. The cutter makes the necessary hole, and the nipples seal the button. **Each, \$1.90; postpaid, \$2.00.**

**EAR LABEL PUNCH**

Do not forget to order punch when you order ear labels, as punch is necessary to cut hole in ear and also to seal labels. **Price, \$1.90, postpaid, \$2.00.**

**K. O. FLY SPRAY**

Will not taint milk or discolor hair. Kills and repels flies. **Quarts, 55c; gallon can, \$1.25.**

**ZENOLEUM**

**Sheep Scab.** One part of Zenoleum to seventy parts of water heated to 100 to 110 degrees Fahrenheit. Hold the sheep in this bath for two minutes.

**Sheep Ticks.** To 12 gallons of water add one pint of Zenoleum. Dip the sheep soon after mixing, and keep them in the water a minute.

**Lice on Sheep.** Dip the sheep, making a solution of one part Zenoleum to 50 parts of water. Repeat in six to eight days.

**Fly and Maggots.** Use equal parts Zenoleum and water, and in extreme cases, full strength Zenoleum. **Pint, 50c; quart, 75c; 1/2 gal. lon. \$1.25; gallon, \$2.00.** Freight or express extra.

**BEE SUPPLIES**

**DOVETAILED HIVES**

Complete 1 1/2-story hive consists of 1 body, 1 super, 1 bottom board, 1 cover, 8 Hoffman brood frames, 2 wedges for super, 6 section holders, 6 slotted separators.

We have not been able to secure definite prices on bee supplies but prices will be considerably higher. All orders to be filled at prices prevailing when order is received.

**EIGHT-FRAME HIVE**

	Nailed	
1 Story .....		<b>\$1.85</b>
1 1/2 Story .....		<b>2.85</b>

**TEN-FRAME HIVE**

	Nailed	
1 Story .....		<b>\$2.25</b>
1 1/2 Story .....		<b>3.45</b>

Body, 65c; Bottom, 45c; Covers, 45c.

No division boards in hives. Add postage.

**SUPER-TEN FRAME HIVE**

	Nailed	
Super Comb Honey .....		<b>\$1.20</b>
Super Extracting .....		<b>1.20</b>

**SUPER-EIGHT FRAME HIVE**

	Nailed	
Super Comb Honey.....		<b>\$1.00</b>
Super Extracting .....		<b>1.00</b>

Wt.  
Nailed  
Lbs.

25  
31

Wt.  
Nailed  
Lbs.

32  
42

Wt.  
Nailed  
Lbs.

11  
11

Wt.  
Nailed  
Lbs.

9  
10

**BEE HIVE EXTRAS**

	Each	50
<b>Section Holders, slotted.....</b>	<b>8c</b>	<b>\$3.50</b>
Weight: 100, 35 lbs.; add postage.		
<b>Slotted Separators .....</b>	<b>5c</b>	<b>2.00</b>
Weight: 100, 8 lbs.; add postage.		
<b>Super Followers .....</b>	<b>10c</b>	<b>3.00</b>
<b>Spring Steel Hive Tool, each, 60c; postpaid, 70c.</b>		

**BEE ESCAPES**

**Porter.** No apiarist can afford to be without bee escapes.  
**Double, 35c; add 5c for postage.**

**BEESWAX**

**Small Cakes, 10c; 1 lb. size, 60c; add postage.**

**BROOD FRAMES**

Full size. **Price, each, 7c; 50, \$3.00; 100, \$5.50.** Weight per 100, 55 lbs.; add postage.

**Shallow Extracting Frames. Price, each, 7c; 50, \$3.00; 100, \$5.50.** Weight of 100, 28 lbs.; add postage.

**COMB FOUNDATION**

Medium Brood, **85c per 7.** Thin Super, **95c per 8.** Add postage.

**DRONE AND QUEEN TRAP**

Weight, 1 lb. **8 frame, 75c; 10 frame, 85c; add postage.**

**ENTRANCE GUARDS**

These are to admit workers, and exclude drones. For 8 and 10 frame hives. **35c; by mail, 40c.**

**FOUNDATION FASTENERS**

**The Parker. Price, 50c; postpaid, 60c.**

**GLOVES**

Canvas with sleeves, medium and large. **\$1.25; postpaid, \$1.35.**

**HONEY BOXES**

**Price, per 25, 60c; 50, \$1.00; 100, \$1.75; 500, \$8.50; 1000, \$16.00.** Weight: 100, 6 lbs.; add postage.

**HONEY KNIFE**

**Price, \$1.65; postpaid, \$1.75.**

**QUEEN EXCLUDING ZINCS**

For 8-frame hive, unbound, 13 3/4x19 3/4. **Price, 80c.**

For 10-frame hive, unbound, 16x19 3/4. **Price, 90c.**

8-frame, 7-wire-and-wood, 13 7/8x20. **Price, \$1.00.**

10-frame, 7-wire-and-wood, 16 1/4x20. **Price, \$1.10.**

Add 10c each for postage.

**ROOT BEE SMOKERS ALWAYS SMOKE**

The Root Smoker Bellows is bound by a projecting metal strip to give a hand-hold.

**Junior, \$1.25; postpaid, \$1.35.** A good smoker for a few colonies.

**Standard, \$1.50; postpaid, \$1.60.** Larger capacity than Junior.

**Jumbo, \$1.75; postpaid, \$1.85.** Double capacity of the Standard.

**INDESTRUCTIBLE BEE VEIL**

Snag proof, bee proof, long life, comfortable, unobstructed vision; fits any hat; best material; most popular of all veils. **Price, \$1.00; postpaid, \$1.10.**

**WAX TUBE FASTENER**

**Van Deusen.** For fastening the foundation sheets to thin top-bars. It is simply a brass tube half an inch in diameter, 6 inches long and tapering. This is filled with hot wax and the point is then slowly drawn along the edge of the foundation. **35c; by mail, 40c.**

**WIRE**

No. 28 Tinned Wire seems to be the most suitable of any for wiring frame. **1/4-lb. spool, 350 feet, 30c; 1/2-lb. spools, 700 feet, 50c; 1-lb. spools, 1400 feet, 85c.** Add postage.

**WIRE IMBEDDER**



The teeth are wide and grooved in the direction of the circumference midway across front of teeth, so that the wheel will easily follow the wire. **35c; by mail, 40c.**