

## **Historic, Archive Document**

Do not assume content reflects current scientific knowledge, policies, or practices.



62107  
ESTABLISHED 1898

FORTY-SEVENTH YEAR

LIBRARY RECEIVED  
U. S. Department of Agriculture

# LEE'S SEEDS

SPRING 1945

47 YEARS OF DEPENDABLE SEED SERVICE

ARTHUR G. LEE

SEEDSMAN AND FLORIST

Fort Smith, Arkansas

**1898**

# LEE'S SEEDS

**1945**

47 YEARS OF DEPENDABLE SEED SERVICE

January 1, 1945

How to Order. You will find a convenient order blank in the back of catalogue. Write your name and address plainly. Be sure to state how you wish your order shipped.

If you are a market gardener and use garden seeds in quantity lots write for our Market Gardener's price list.

## —LEE'S DOLLAR COLLECTION \$1.00 POSTPAID—

1 Pkt. Beans, Stringless Green Pod	\$ .10	1 Pkt. Okra, Long Green Pod	.05
1 Pkt. Beans, Kentucky Wonder	.10	1 Pkt. Radish, Scarlet Turnip White Tip	.10
1 Pkt. Sweet Corn, Golden Bantam	.10	1 Pkt. Radish, Long White Icicle	.10
1 Pkt. Peas, Alaska Extra Early	.10	1 Pkt. Tomato, Marglobe	.10
1 Pkt. Beets, Early Blood Turnip	.10	1 Pkt. Pepper, California Wonder	.10
1 Pkt. Onion, Red Wethersfield	.10	1 Pkt. Squash, White Bush Scallop	.05
1 Pkt. Cabbage, Early Jersey Wakefield	.05	1 Pkt. Carrots, Danvers Half Long	.05
1 Pkt. Collards, True Georgia	.05	1 Pkt. Watermelon, Kleckley's Sweet	.05
1 Pkt. Mustard, Giant Curled	.10	1 Pkt. Turnip, Purple Top Globe	.10
1 Pkt. Cucumber, Long Green	.05		
1 Pkt. Lettuce, Hanson (Head)	.05		<b>\$1.60</b>

For \$1.00 I will send you, postpaid, this collection, which contains 20 varieties of seeds. No change will be allowed in this collection. No others will be sold at this reduced price.

### SEED TESTING SERVICE

All seeds we sell are carefully tested in our seed laboratory and to all orders for field seeds is attached an analysis tag giving germination, purity, etc., which tests are verified from time to time by the State Seed Inspection Service. Thus you have full information as to quality of seeds you are buying.

### FREE DELIVERY BY MAIL

WE PAY POSTAGE TO ANY POSTOFFICE IN THE UNITED STATES ON ALL VEGETABLE AND FLOWER SEEDS, BULBS, ETC., PRICED IN THIS LIST, EXCEPTING WHERE OTHERWISE NOTED

**PRICES.** All prices in this catalogue subject to change without notice.

**NO C. O. D. SHIPMENTS.** Please send money with order sufficient to cover the whole bill. We advise against C.O.D. orders because of delays and high collection charges, which are unsatisfactory to the customer and expensive to us if uncalled for. Any over remittance will be promptly refunded.

**ARTHUR G. LEE** gives no warranty, express or implied, as to the description, purity, quality, productiveness, or any other matter, of any seeds, bulbs or plants he sends out, and will not be in any way responsible for the crop. If purchaser does not accept the goods on these terms they are at once to be returned.

# Lee's Evergreen Lawn Grass

**HOW TO MAKE A LAWN.** Spade or plow ground to a depth of eight inches. Afterwards harrow or rake carefully, pulverizing all lumps. If the soil is poor, fertilize freely, working into the soil, then rake level and roll the soil well to make a solid bottom. Scatter the seed evenly over the surface. Rake seed in and roll, water regularly and carefully. Should bare spots appear, rake the surface and sow more seed.

**BERMUDA GRASS (Hulled).** Its great drouth-resisting properties and ability to withstand our extreme summer heat makes this the most desirable of all grasses for use in lawns in the South.

The advantage in planting the hulled seed is the fact that it will germinate in seven or eight days, while the unhulled seed takes from four to six weeks. Sow for lawns 1 pound to 30x30 feet. When planted for pasture, sow 4 to 5 pounds per acre.

**KENTUCKY BLUE GRASS.** This is the basis of all lawns where tame grasses are preferred, and in combination with White Clover forms the finest and smoothest lawns. Especially adapted to shady situations. One pound will sow 10x10 feet.

For Prices Refer To Green List Enclosed.

**LEE'S EVERGREEN LAWN GRASS.** This is a mixture of tame grasses for use where Bermuda Grass is not desired, and in shady situations where Bermuda Grass will not grow. One lb. will sow a plot 10x10 feet.

**DOMESTIC RYE GRASS.** Extensively sown on Bermuda lawns in the fall, grows during the winter months, providing a velvety green lawn. Sow one pound to every 10x10 feet.

**RED TOP.** A very quick growing grass similar to Blue Grass but of finer texture. Especially adapted to low, wet situations. It should be included in all lawn grass mixtures. Sow one pound to every 10x20 feet.

**WHITE DUTCH CLOVER.** A low growing Clover. Very desirable for beautifying the lawn.

## Adco

**ADCO** - For making artificial manure. Turns garden rubbish such as leaves, weeds, etc., into rich fertilizer. Every pound of Adco makes forty pounds of clean manure. Write or ask for descriptive circular.

25-lb. bag, \$2.50, F. O. B. Ft. Smith.



## Vigoro

1 pkg. (24 Tablest)	\$ .10
1-lb. pkg. ....	\$ .10
5-lb. pkg. ....	.45
10-lb. pkg. ....	.85
25-lb. pkg. ....	1.50
50-lb. bag. ....	2.50
100-lb. bag. ....	4.00

Prices named are not prepaid.

**STEAMED BONE MEAL.** It carries ammonia and phosphoric acid recommended for shrubbery, trees, roses, etc. Apply early spring and late fall. 1 lb. 15c; 5 lb. 60c; 10 lb. \$1.00; 25 lb. \$1.75; 100 lb. \$6.00, not prepaid.

**HYDRATED LIME.** Used in sweetening acid soils in flower and vegetable gardens, lawns, etc. Can be applied anytime of the year. 10 lbs. sufficient for 1000 square feet. 10 lbs. 25c, 50 lbs. 90c, not prepaid.

**PEAT MOSS.** A moisture-retaining humus. Quickly decays so that it is available for plant food. Used extensively on lawns and for mulching roses, flower beds, evergreens, etc. It is especially adapted to loosen up tight clay soil, thereby, making the soil retain moisture. 1/2 bu. 75c; 1 bu. \$1.15; 1/2 bale \$3.50; full bale \$6.50. Not prepaid.

**NO C. O. D. SHIPMENTS.** Please send money with order sufficient to cover the whole bill. We advise against C.O.D. orders because of delays and high collection charges, which are unsatisfactory to the customer and expensive to us if uncalled for. Any over remittance will be promptly refunded.

**VIGORO IS IDEAL FOR LAWNS, FLOWERS, SHRUBS, TREES, VEGETABLES!**

## ASPARAGUS

Make trenches about 4 inches deep and 6 inches wide and place the roots crown up, about 2 feet apart. Leave the roots at least 4 feet apart.

**MARY WASHINGTON.** A strain selected from the Martha Washington, but earlier.

For Prices Refer to Green List Enclosed.

**MARY WASHINGTON** (2 year old roots). 12 for 60c; 25 for \$1.00; 60 for \$1.75; 100 for \$3.00. Postpaid.



Landreth's Stringless Green Pod

## BUSH BEANS, GREEN PODDED

One pound to 100 feet of drill; 40 to 60 pounds per acre.

**LANDRETH'S STRINGLESS** (54 days). A new round podded bean developed from the Burpee's Stringless Green Pod. The vine is more erect, with a darker foliage, a longer, slimmer pod, and the vines stay green longer than the old type. Pods 6 to 8 inches, do not turn yellow. Slightly curved, meaty, absolutely stringless and free from fibers. Probably the most disease-resistant and productive bean on the market.

**BURPEE'S STRINGLESS** (53 days). Pods 5½ in. long, almost ½ in. wide and equally thick. Fine grained and tender.

**GIANT STRINGLESS** (53 days). Pods 6 to 6½ in. long; round, very fleshy; desirable for canning and shipping.

**TENDERGREEN** (52 days). A main crop variety. Plants large, erect, productive. Pods round, fleshy, stringless and of fine quality. Much in demand as a shipping bean.

**STRINGLESS BLACK VALENTINE** (53 days). A recent improvement over the old Black Valentine. Very early, stringless—Pods round and green. Heavy yielder.

**TENNESSEE GREEN POD** (54 days). Pods 6 to 7 inches long; flat; slightly stringy. Habits similar to Kentucky Wonder, but dwarf. Fine flavor.

For Prices Refer To Green List Enclosed.

**FULL MEASURE** (52 days). A round-podded, stringless variety, with very fleshy straight pods. Popular in some sections with bean growers on account of its high yields and long picking season under favorable conditions.

## DWARF YELLOW POD

**GOLDEN WAX** (48 days). Pods 4½ to 5 in. long; oval, fleshy, brittle, stringless.

**PENCIL POD BLACK WAX** (52 days). Pods 5½ to 6 in. long; stringless, brittle.

## BUSH LIMA

One pound will plant 100 feet of drill.

**HENDERSON'S BUSH** (65 days). Seeds small and white. When picked at the proper stage, the beans retain an attractive greenish tint and have a most delicate flavor.

**JACKSON WONDER.** Seeds brown. Popular in the South.

**LARGE BUSH LIMA** (75 days). Beans white and large.

## POLE LIMA

**SMALL WHITE LIMA** (Carolina or Sieva) (78 days). Beans white, similar in size and quality to the Henderson's Bush Lima.

**FLORIDA POLE LIMA** (78 days). Popular in the South. Seed cream colored, speckled reddish brown.

**LARGE WHITE POLE LIMA**—(88 days). Beans greenish white, large size pods long and broad. A strong grower. One of the leading pole lima beans for home and market gardeners.

**LARGE SPECKLED POLE LIMA.** Pods large. Beans very tender and of excellent quality. Seed creamy white, mottled with purple.

## POLE GREEN PODDED

Sow 1 lb. to 100 feet drill; 30 lbs. per acre.

**KENTUCKY WONDER** (65 days). Pods 8 to 9 in. long, nearly round. Best known and most popular of all pole beans.

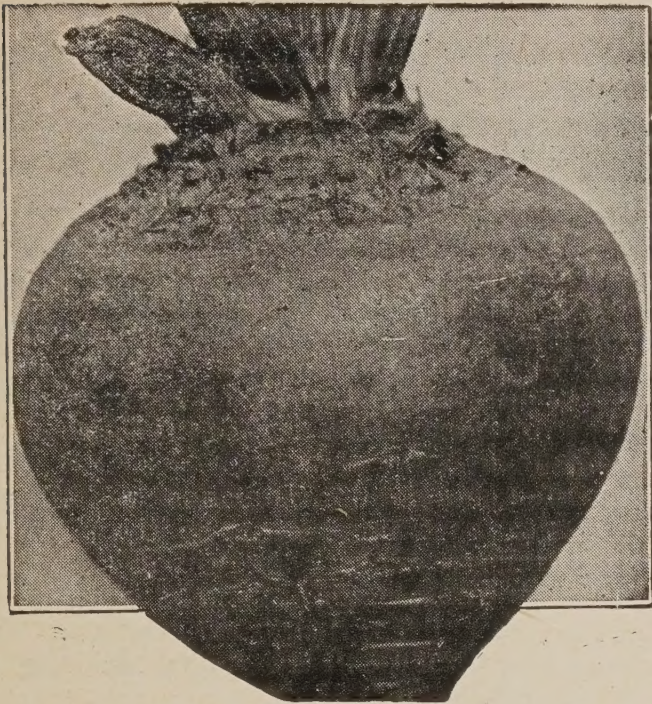
**McCASLIN POLE** (70 days). Pods 8 in., slightly flattened. Similar to Kentucky Wonder, but seeds are white. Excellent for snap and for dry shell use.

**KENTUCKY WONDER WAX** (67 days). Pods waxy, fleshy and tender. Has a distinct flavor of its own. Very popular.

**CUT SHORT or CORN HILL** (75 days). One of the most popular corn field beans.

**WHITE CREASEBACK** (63 days). A corn field bean for snaps. Seeds white.

**STRIPED CREASEBACK** (72 days). A corn field bean for snaps. Excellent quality.



Beet, Detroit Dark Red

## BEETS

Sow one ounce to 100 feet of drill;  
6 to 8 pounds per acre.

**CROSBY'S EGYPTIAN** (50 to 55 days). Roots flattened globe shape. Dark red; medium size. One of the best early varieties. Fine for bunching.

**DETROIT DARK RED** (52 to 55 days). The most popular and probably the best of the main crop beet. Form, oval. Flesh, dark blood red. Skin smooth, with small tap roots. Extensively used by canners because of its good red color. A favorite beet with market gardeners.

**EARLY WONDER** (45 to 50 days). A variety which has gained wide popularity among market gardeners. It is of the blood turnip type. Uniform in size, flat to globe shaped, bright red skin, vermilion red flesh with distinct zones of lighter red. A good shipper.

**EARLY BLOOD TURNIP** (60 days). Roots nearly round or slightly flattened.

**SWISS CHARD**. Stalks pure white and thick as rhubarb. Foliage yellowish green and crumpled like Bloomsdale Spinach or Savoy Cabbage. Very choice. The tops cook like spinach and the stems like Celery. Cultivation same as Beets.

## STOCK BEETS

**CULTURE:** Seed should be 1 inch apart in rows 2½ feet apart and covered to a depth of 1½ inches. Thin to 10 inches when about 3 inches high. It requires 8 lbs. of Mangel Beets to plant an acre. Stock Beets are a valuable food used in conjunction with other feeds for milk cows, hogs, poultry.

STOCK BEETS - Continued next column.

**GIANT HALF SUGAR ROSE.** A distinct type of Sugar Beet producing roots of giant size, long oval tapering smooth. Grows half out of the ground. Flesh is white with high sugar content, is high in food value.

**MAMMOTH LONG RED.** These Beets, on good soil, sometimes grow 18 inches long. Dark leaves; flesh white tinged with rose. An excellent keeper; nutritious and milk producing.

## BORECOLE or KALE

One-half ounce for 100 feet of row;  
4 pounds per acre.

**SIBERIAN—CURLLED.** A most vigorous and spreading variety. Leaves large and rather plain in the center, cut and frilled at edge. Color is bluish green.

## BROCCOLI

**ITALIAN GREEN SPROUTING.** Cultivated like cabbage, it bears a succession of sprouting heads.

## CAULIFLOWER

**EARLY SNOWBALL** (54 days). Heads very early compact and white.

## CELERY

**WHITE PLUME.** The earliest and most easily blanched celery known.

## CABBAGE

### CHINESE OR CELERY CABBAGE

Healthful and tasty either cooked or raw. Can be served like lettuce, or it makes a delicious cole slaw. Boiled more palatable than ordinary cabbage.

**WONG BOK.** Short, broad, tightly folded; well blanched: heads 8 to 10 inches high.

### Cabbage Yellows Resistant

Recommended where infested "Cabbage Yellows" soil had prevented non-resistant varieties from producing a crop.

**DETROIT (Golden Acre).** (55 days). The earliest of the round-headed yellows-resistant cabbages. Heads are medium sized, weigh 4 to 5 lbs. Plants are short stemmed, erect, with few outer leaves.

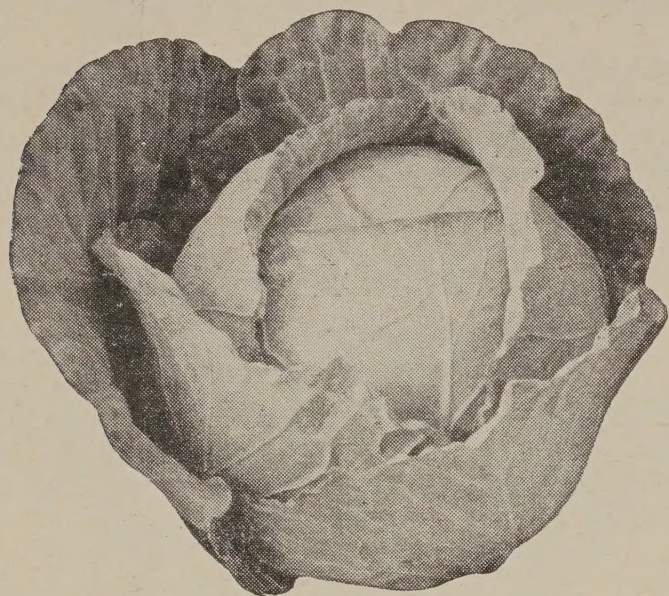
**RACINE MARKET** (60 days). (Early Copenhagen Market). Heads are early, solid, and uniform. An excellent short-stemmed variety for shipping.

**MARION MARKET (Copenhagen Market).** (70 days). Resembles Copenhagen Market but matures about 10 days later and makes a much larger plant. The heads are almost round and very solid, weighing 5 to 6 lbs.

(Cabbage continued on page 6)

## CABBAGE (Cont'd)

One ounce will produce about 3,000 plants; four ounces will transplant an acre.



Copenhagen Market

**CHARLESTON WAKEFIELD (75 days).** About one week later than Early Jersey Wakefield, but heads are half-round and larger and broader. This variety is extremely popular with market gardeners and growers owing to its earliness and its size.

**EARLY JERSEY WAKEFIELD (65 days).** Head cone shaped; very solid. Dwarf, compact, with a few outer leaves, which permits close planting; heads weigh 2 to 3 lbs. each.

**EARLY ROUND DUTCH (71 days).** Plant small, compact. Stem short. Head almost ball-shaped. Weigh 4½ to 5 lbs. Firm and of high quality.

**ALL HEAD EARLY (77 days).** A short-stemmed variety, with large, solid heads. An old variety of great merit, much in demand by Southern growers on account of its resistance to disease.

**COPENHAGEN MARKET (70 to 75 days).** An early, large, dependable, round-headed variety. Nearly as early as Charleston Wakefield and about a week later than Golden Acre. Tightly folded and short stemmed. One of the most desirable of the round-headed varieties.

**GOLDEN ACRE (65 days).** An extra early selection of the Copenhagen type. Heads of medium size, round, hard and solid. Has all the wonderful characteristics of the popular Copenhagen Market Cabbage, but the heads are smaller and mature 9 days earlier.

**ALL SEASONS (85 to 90 days).** Heads large, round. A favorite for making kraut.

## COLLARDS

One-fourth ounce to 100 feet of row.

**TRUE GEORGIA (80 days).** Grows 2 or 3 feet high. A standard sort.

## CUCUMBER

One ounce to 50 hills; 2 pounds per acre.

**EARLY FORTUNE (64 days).** Eight to 9 inches. Early, very productive, and disease-resistant. Flesh white; color rich, dark green. Recognized as being one of the best for shipping.

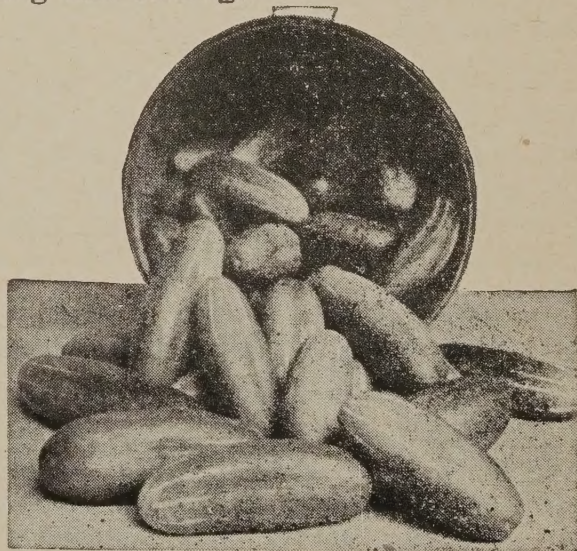
**LONG GREEN—IMPROVED (70 days.)—** Twelve to 14 inches. A standard late, well known table sort. Color dark green.

**A. AND C. (60 days).** A new introduction. Spines white; vines healthy, robust and resistant to disease, producing an abundance of uniform exceedingly dark green cucumbers about 10 inches long, not quite so large in diameter as Early Fortune. We recommend this new cucumber as one of great merit.

**THE COLORADO (60 days).** 12 inches, White spined. A beautiful long, slender, dark green cucumber. Popular because of its excellent shape and intense color which is maintained longer than most varieties. Very productive and resistant to disease. At present the most popular shipping Cucumber.

**EARLY GREEN CLUSTER (55 days).** Fruit short, chunky, and small and borne in clusters.

**SHORT GREEN (56 days).** Seven inches, medium in size and earliness. Good for pickling and slicing.

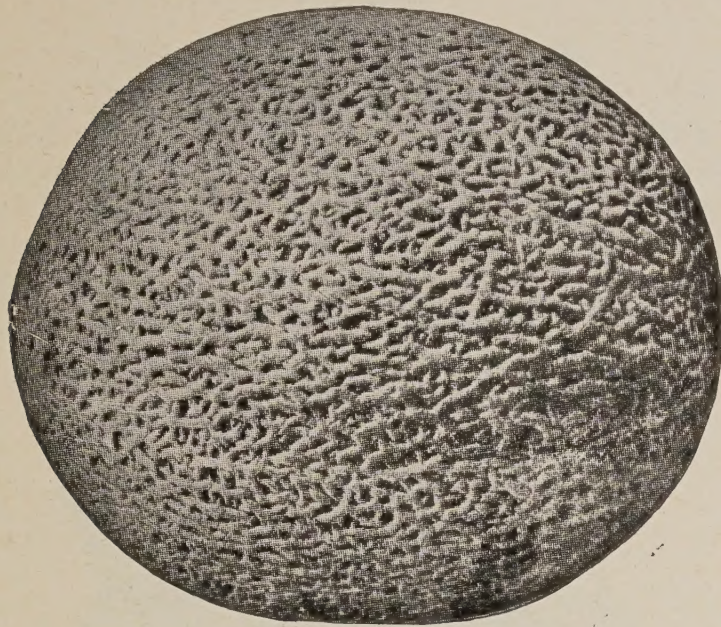


Colorado Cucumber

**NATIONAL PICKLE (55 days).** Black Spine, size 7x3 inches. Dark Green. A recent introduction of early pickling type developed for the National Pickle Packers Association. Early, productive and uniform strain. The small pickles are rather short and thick, while the larger sizes are smooth and cylindrical with well rounded ends.

For Prices Refer To Green List Enclosed.





Hale's Best Cantaloupe

## CANTALOUPES

One ounce to 100 hills; 2 pounds per acre.

**ROCKY FORD Green Fleshed (90 days).** A small green fleshed melon of the oval type weighing about 2 pounds. The most widely known and extensively grown in its class. Noted for its extraordinary flavor.

**POLLOCK 10-25. Salmon tint.** Similar to Rocky Ford other than color of the meat.

**HALE'S BEST NO. 36.** Salmon flesh. This is the smallest of the Hale's Best strains, absolutely uniform, solid net and with a remarkably thick flesh. They are earlier than any of the other Hale's Bests, more prolific, that is more melons produced per acre.

**HALE'S BEST NO. 936.** Salmon flesh. This is the next size larger Hale's Best than the No. 36. It runs just a bit irregular, shows a little ribbing, and is reasonably well netted. For production within trucking distance or moderate distance car-lot shipping it works out quite satisfactorily.

**HALE'S IMPERIAL No. 45 (86 days).** Flesh deep salmon. Mildew resistant. An early variety for shipping trade. A true Hale's Best. Seed cannot be jarred loose, remains edible and really is better 10 days after packing. Must be picked full slip or dead ripe. Being full ripe it has a delicious flavor and is the best long-distance shipper, holding up after reaching market much longer than other sorts.

**BANANA (94 days).** A long melon. Growing about 20 inches. Lemon colored skin when matured. Salmon colored flesh. Strictly a home melon.

**QUEEN OF COLORADO (90 days).** Bright salmon. Size 6x6½ inches. Rind very hard, pearly gray color. Heavily covered with distinctive netting. Ripens to a yellowish shade. Flesh thick and excellent flavor.

**LARGE HACKENSACK.** Green fleshed. Large, round, but flattened on the ends.

## SWEET CORN

¼ lb. to 100 feet, 15 lbs. per acre.

**STOWELL'S EVERGREEN (95 days).** A standard late variety, very valuable for canning and much grown for market. Kernels very deep; ears 8 inches long. White, sweet and tender.

**COUNTRY GENTLEMEN (Shoe Peg) (95 days).** Regarded by many as the sweetest of all sweet corn. Ears 7 to 8 inches long; cob small, covered with slender white grains without row formation.

**GOLDEN BANTAM (80 days).** Early golden in color, and of highest quality. Ears 6 to 7 inches long; 8 rowed. An ideal sort for the home garden.

**GOLDEN CROSS BANTAM HYBRID (88 days).** This hybrid is one of the best and most prolific of the yellow sweet corns, bred for wilt resistance, high yield and quality. Ears 8 to 10 inches long and yielding about 40 per cent more marketable ears than Golden Bantan.

**EARLIGOLD (Hybrid) (72 to 73 days).** The earliest yellow hybrid developed for market gardeners and shippers who have been looking for a hybrid both early and large eared. Ears average 6½ to 7 inches well filled with 12 to 16 rows of kernels.

**EVERGREEN HYBRID - a - (Hybrid Stowell's Evergreen).** White kernels (90 days). Ears 7½ to 8½ inches long, with 14 to 18 rows of deep narrow white kernels, which are of the very highest quality. Differs from open pollinated Stowell's Evergreen in having smaller ears. Popular with all growers and used extensively for canning.

**EARLY ADAMS (60 days).** Not a sugar corn, but grown extensively for table use. Can be planted earlier than sugar corn, which makes it a valuable first crop sort. Produces ears 7 to 8 inches long. Fairly sweet and tender.

**TRUCKER'S FAVORITE (65 to 70 days).** Although not a sugar corn it makes the finest roasting ears. No early garden corn is so extensively grown. Attractive ears 9 to 11 inches long, with tender, sweet grains. Ready for table or market in about 65 days.

For Prices Refer to Green List Enclosed.

## CARROTS

Plantings may be made in early spring or in July and August.

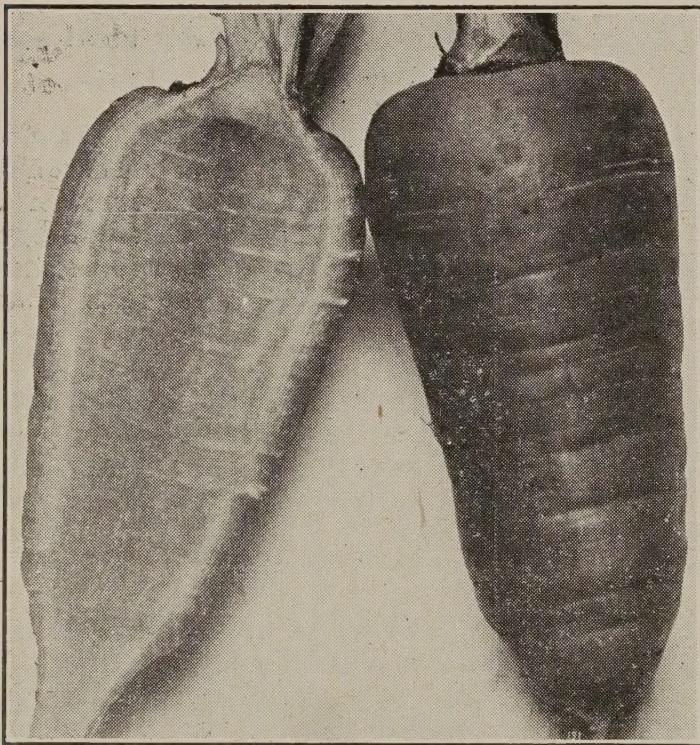
One ounce for 100 feet of row, or 3 to 5 pounds per acre.

**DANVER'S ½ LONG (75 days).** A favorite main crop variety of the half long type averaging 7 inches in length, broad shoulder, tapering to a blunt end. Flesh bright orange. Used extensively by market gardeners, shippers and home gardeners.

**IMPERATOR (70 days).** Roots smooth, taper slightly from a rounded shoulder down to a semi-blunt tip. Flesh rich orange, practically no core.

**CHANTENAY (70 days).** Half-long type averaging 5 to 6 inches long - stump rooted. Roots deep reddish, orange flesh, deep orange. Good home garden or shipping sort. Dependable heavy yielder.

**LONG ORANGE (85 days).** Roots 12 inches long, about 3 inches broad. Much grown for stock.



Danver's Half Long Carrot

## EGG PLANT

One ounce to 2,000 plants.

**NEW YORK IMPROVED (Spineless).** Firm, meaty and of excellent quality. Fruit dark purple.

## ENDIVE

One ounce to 100 feet of row.

**BROAD LEAVED BATAVIAN (Escarolle).** Crispness and tenderness make this Endive unexcelled for salads.

**EARLY GREEN CURLED.** The leaves finely divided, giving a mossy appearance.

For Prices Refer To Green List Enclosed.



Iceberg

## LETTUCE

One-half ounce for 100 feet of row.

**BLACK SEEDED SIMPSON (50 days).** The most popular of loose leaved varieties. Light green, inner leaves almost white.

**GRAND RAPIDS (45 days).** The favorite loose leaved forcing lettuce under glass.

**IMPROVED HANSON (70 days).** One of the most reliable sure heading sorts. Leaves large, broad and slightly crumpled.

**BIG BOSTON (70 days).** Heads large and compact; leaves broad, almost smooth, but wavy at the edge. Color light green.

**NEW YORK HEAD (80 days).** A large, late, crisp cabbage heading variety. Heads very firm, hard and well blanched.

**PRIZE HEAD (reddish leaves).** A crisp, tender, loose leaved, non-heading sort.

**ICEBERG (80 days).** A sure and hard-heading hot weather variety. Outer leaves light green, curly and finely fringed. Hearts are white, crisp and tender. One of the most desirable in its class.

## MUSTARD

One-half ounce for 100 feet of row;  
5 to 6 pounds per acre.

**SOUTHERN GIANT GURLED.** (Long Standing). The leaves are large, much crumpled and frilled at the edge. Valued on account of its hardiness and good quality.

**LARGE SMOOTH LEAVED.** Leaves thick round and smooth bright medium green. A little slower grower than the frilled varieties, but longer standing. Tender, Mild, much grown for canning.

**MUSTARD-SPINACH or Tendergreens.**

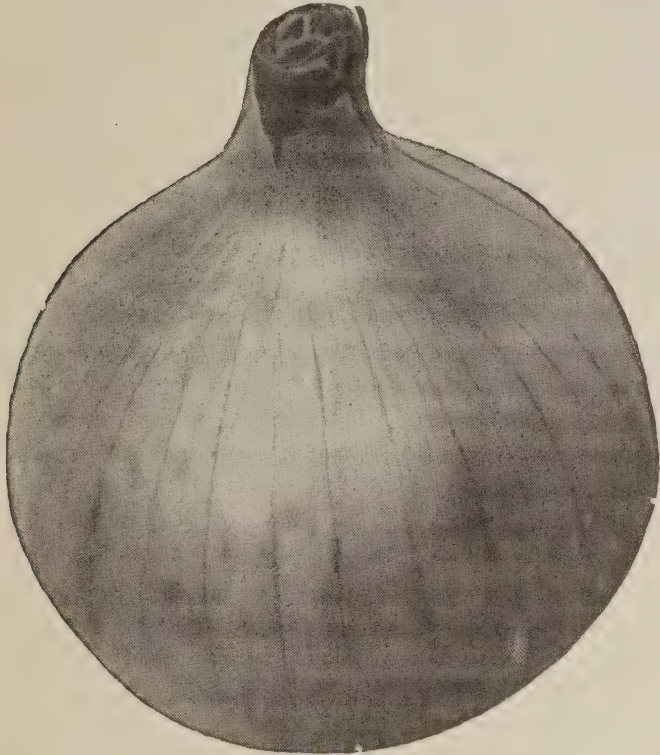
A new vegetable combining the delicious flavors and healthful qualities of spinach, mustard, and turnip greens. Flourishes in hot weather and is resistant to extreme cold.

## ONION

One ounce to 200 feet of row;  
5 pounds per acre.

**RED WETHERSFIELD (100 days).** The large, flat, deep mahogany red bulbs have pinkish white flesh. One of the best types.

**SOUTHPORT RED GLOBE (114 days).** The bulbs are globe shaped, with a small neck. Color deep purplish red. Fine grained.



Yellow Sweet Spanish

**YELLOW SWEET SPANISH (114 days).** Popular on account of its size and handsome appearance. Ripens evenly and ships as well as any of the better shipping sorts. The large bulbs with copper colored skins have mild white flesh of very delicate flavor.

**WHITE SWEET SPANISH (110 days).** Similar to Yellow Sweet Spanish but having clear white skin and smaller neck. Flesh clear white firm and mild. Largest of the white onions. The pure white skin improves its market appearance.

**PRIZETAKER (102 days).** One of the largest of the late main crop sorts. Globe shaped; yellowish brown skin; white, tender flesh. Noted for its mild flavor and keeping qualities. Regarded the best in its class.

**CRYSTAL WHITE WAX.** A half globe sort Waxy, pure white and of mild flavor. Earliest of the White Bermuda types. Extensively planted in the South.

**BERMUDA—YELLOW.** Similar to the White, with a straw colored skin and white flesh.

## PARSNIP

**HOLLOW CROWN.** The roots reach a length of 8 to 10 inches. Flesh white, tender and sweet.

## PEAS

One pound to 100 feet of row;  
40 to 60 pounds per acre.

**ALASKA (55 days).** Height 2½ feet; pods 2½ inches long. A very early, smooth, blue pea. Popular with canners and truckers.

**NOTT'S EXCELSIOR (59 days).** Vines 12 to 14 inches high. A standard extra early dwarf wrinkled pea, bearing over a long period. Noted for its fine quality.

**LITTLE MARVEL (62 days).** Vines 18 inches. The pods are somewhat larger than Nott's Excelsior. A fine variety for home garden and is much used for shipping.

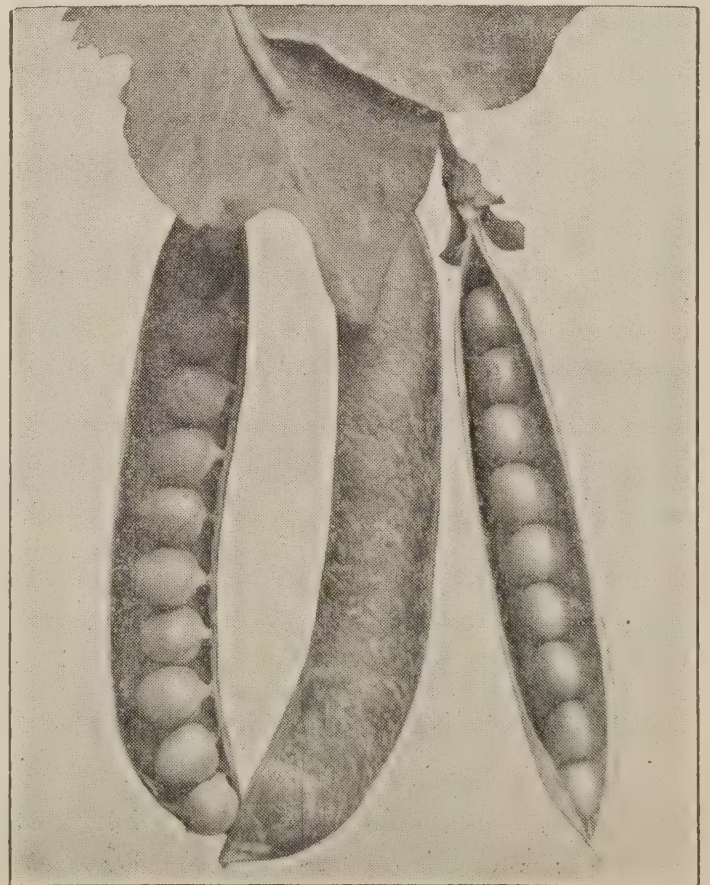
**LAXTON'S PROGRESS (62 days).** Vines 18 to 22 inches. Pods 4 to 4½ inches long, wide and plump. One of the largest of the dwarf vine peas and of exceptionally fine quality.

**DWARF TELEPHONE (70 days).** Vines 20 inches. A popular home and market garden variety.

**THOS. LAXTON (54 to 60 days).** Vines grow 3 feet tall. Pods 4 to 4½ inches long. Seeds large, wrinkled and of superior quality. Probably the most in demand for shipping than any other wrinkled pea. Very desirable for the home garden.

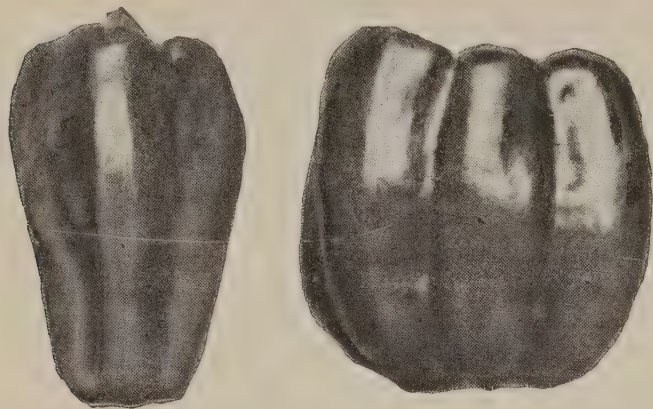
**TALL TELEPHONE (74 days).** Vines 4 to 4½ feet tall. This is a standard wrinkled pea. One of the best in its class.

**LARGE WHITE MARROWFAT (82 days).** Vines 5 feet. While productive the quality is not so good as the wrinkled variety.



Alaska Peas

For Prices Refer To Green List Enclosed.



## PEPPER

One ounce to 1,000 plants.

**CALIFORNIA WONDER (75 days).** A large, thick meated sweet pepper, 4½ inches long, 4 inches in diameter. Very mild and fine flavored. Considered by many the best of the sweet peppers.

**CHINESE GIANT (80 days).** One of the largest of the mild varieties. Fruits thick, blocky and square ended.

**RUBY KING (60 days).** While not so large as the California Wonder it is a very satisfactory sort for the home garden. Flesh sweet, thick and mild.

**LARGE BELL or BULL NOSE (60 days).** Fruits are 2 inches in diameter, 3 inches long. A standard early variety.

**PIMENTO.** A very thick fleshed, heart shaped, smooth pepper, much used for salads.

**LONG RED CAYENNE (70 days).** Has fruit which is long, slender and pungent.

**RED CHILI (70 days).** Fruit about 1½ inches long and cone shaped; very hot; used for pepper sauce.

## PARSLEY

**MOSS CURLED.** A plant used in flavoring soups and for garnishing.

## PUMPKIN

2 to 3 pounds per acre.

**LARGE CHEESE.** A large, round, flattened pumpkin. Skin cream color, flesh yellow, fine grained. Especially good for pies and canning; also excellent for feeding stock. Grows to a large size.

**SWEET or SUGAR.** Fruits small, round, flattened at the ends. Flesh and skin deep orange yellow. Fine for pies.

**GREEN STRIPED CUSHAW.** Crookneck type. Skin mottled green and white; flesh rich yellow, fine grained and fine flavor.

## RHUBARB

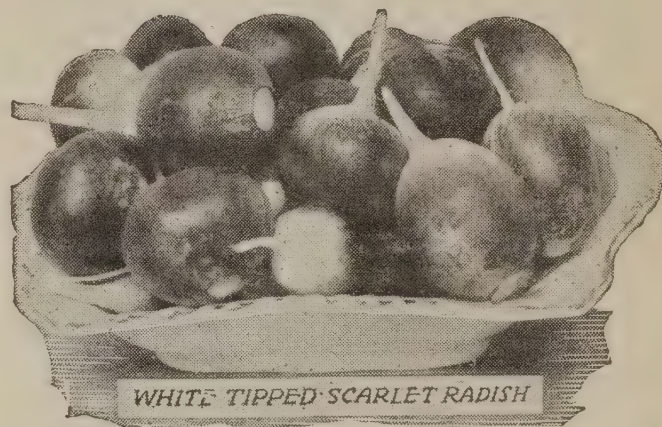
**VICTORIA.** An excellent and hardy sort for home garden.

## RADISH

One ounce to 100 feet of row;  
10 to 12 pounds to the acre.

**SCARLET GLOBE, SELECTED (24 days).** Noted for its earliness, brilliant scarlet color and quality. One of the best of the forcing varieties which does equally as well out of doors.

**SCARLET TURNIP WHITE TIPPED (26 days).** One of the most popular and early forcing varieties. Extensively grown for shipping.



WHITE TIPPED SCARLET RADISH

**FRENCH BREAKFAST (24 days).** Of oblong form, rose scarlet, small white tip.

**LONG WHITE ICICLE (30 days).** Pure white roots. The most popular long white.

**EARLY LONG SCARLET (30 days).** The standard long scarlet variety.

## WINTER VARIETIES

**CALIFORNIA MAMMOTH WHITE (55 days).** Roots 6 to 8 inches long. Flesh pure white. Solid, crisp, and may be used in all stages of growth.

**CHINA ROSE (52 days).** Roots 6 to 7 inches long. Skin deep rose; flesh pure white, crisp and pungent.

## SALSIFY

**SANDWICH ISLAND.** Vegetable Oyster. Strong growing, with long white roots.

## SQUASH

Plant 8 to 10 seeds in a hill, thinning to 3 of the strongest plants in each hill. One ounce to 25 hills; 3 to 4 pounds per acre.

**WHITE BUSH SCALLOP.** A very early summer variety. Fruit flattened and scalloped with smooth white skin.

**YELLOW STRAIGHTNECK.** The most used yellow summer squash.

**TABLE QUEEN - ACORN.** Acorn shape. Skin smooth, dark green, shell thin; flesh light yellow. Bakes dry and sweet.

**IMPROVED HUBBARD.** Green. The standard Hubbard winter squash. Flesh orange yellow, skin dark green.

For Prices Refer To Green List Enclosed.

## SPINACH

1 oz. to 100 feet of row: 8 to 10 lbs.  
broadcast per acre.



Bloomsdale Re-Selected Spinach

**BLOOMSDALE, SAVOY LEAVED, RE-SELECTED (40 days).** This is the best known and most widely used by shippers, market gardeners and for the home garden. Upright growth; thick, glossy, dark green leaves which are more or less crumpled. Edible in 40 to 55 days from planting. As an autumn sort it has no superior.

**BLOOMSDALE, LONG STANDING (45 days).** Remains 8 to 14 days longer in table condition than the main crop Bloomsdale, is larger and about 5 days later. Possesses all the good qualities of the Bloomsdale, from which it is a plant selection, but remains longer in shipping condition.

**GIANT NOBEL (50 days).** An erect, strong growing, long standing sort. Leaves large, usually broad, firm and thick. Light green to yellowish green in color. Smooth, and the largest of any Spinach. Desirable for those who do not favor a Savoy leaf.

**NEW ZEALAND (70 days).** Although not a true Spinach, the leaves look like spinach. Thrives during the hottest weather. The tender tips may be cut every few days from July until frost. Plant 4 seeds in hills 2 feet apart each way.

## TAMPALA

**TAMPALA.** A new delicious hot weather green vegetable. Resembles Spinach and can be cooked and served in the same manner. Plants when they become 5 or 6 inches high make the most tasty greens. Sow in drills  $\frac{1}{4}$  inch deep in rows 2 feet apart—thin to 2 feet apart in row.

## TURNIP

One ounce will sow about 100 feet of drill;  
1 to 2 lbs. per acre; for greens, 4 lbs.

**PURPLE TOP WHITE GLOBE.** The most popular white fleshed turnip. The upper part is purplish red, the lower part white, fine grained and sweet.

**PURPLE TOP STRAP LEAF.** An early variety. Roots flat, medium size.



Purple Top White Globe Turnip

**WHITE EGG.** Egg shaped. White skin and flesh. Grows half out of ground. Very sweet and tender.

**POMERANIAN WHITE GLOBE.** A large, round, white turnip. Roots often grow to 10 to 12 pounds.

**YELLOW GLOBE.** A round, smooth, light yellow variety of medium size.

**SEVEN TOP.** Grown exclusively for tops, which are used for greens. Tops are ready for use in 30 days.

**SOUTHERN PRIZE.** Splendid foliage turnip which produces an abundance of leaves for greens and forage as well as a large, fleshy, white root.

**SHOGOIN.** A foliage variety very popular in the South for turnip greens. Bright green leaves grow upright about 2 feet. Roots semiglobe, pure white, sweet and tender. Produces an enormous yield of foliage; grows upright and is free from insects.

**RUTABAGA. American Purple Top.** The standard variety for table and stock feeding. The culture is practically the same as for turnips, except the plant should be thinned to 8 to 10 inches apart in the rows.

For Prices Refer to Green List Enclosed.

## TOMATO

One ounce will produce 2500 plants.



Rutgers Tomato

### Scarlet Fruited Varieties

**RUTGERS (80 days).** Color scarlet. A new variety of great merit. Fruits are large, similar to Marglobe in shape, except somewhat flatter and equally wilt resistant. Produces a sturdy plant, with thick stem and an abundance of foliage. Ideal canning and juice tomato.

**MARGLOBE (80 days).** Color red. Fruits are large, smooth and globular. A very heavy yielder of fine large tomatoes which have a small seed cavity and thick, firm meat. One of the most popular of the wilt resistant varieties.

**BREAK O'DAY (60 days).** An early wilt-resistant variety with large, solid, globular scarlet fruit. About ten days earlier than Marglobe, which it resembles. Its main feature is earliness.

**BOUNTY (61 days).** A new introduction and one of the best of the very early scarlet fruited varieties. Average 5 oz. in weight and semi-globular. Plants are small, short and may be set as close as 2 ft. apart in row. They are not suited to pruning or staking.

**EARLIANA (60 days).** Color red. Noted for its extreme earliness. Fruits are grown in clusters.

**JOHN BAER (65 days).** Color red. Fruits are large, round and solid. Similar to Stone, but earlier. One of the very best varieties we list.

**NEW STONE (85 days).** Color red. An old standard variety and one of the best. Unsurpassed for canning and slicing.

**CHALK'S EARLY JEWEL (65 days).** The fruit is nearly round, deep scarlet, early. A good main crop sort.

**BEEFSTEAK (90 days).** Color red. The largest of the red tomatoes. Flesh very solid and meaty. One of the best table sorts.

### Pink Fruited Varieties

**GULF STATE MARKET (70 days).** Color purplish pink. Particularly valuable for shipping. Fruits large and uniform size, globe shaped, smooth and firm.

**JUNE PINK (60 days).** Color purplish pink. Very early. Fruits produced in clusters. A favorite with home gardeners.

**PONDEROSA (90 days).** Color purple. The largest of the purple fruited varieties. Fruits solid, with few seeds.

**OXHEART (90 days).** One of the largest of tomatoes. Purple fruit.

**DWARF CHAMPION (65 days).** Fruit smooth, solid and medium size; color pink.

### Yellow Fruited Variety

**YELLOW PEAR.** Clear yellow color. Esteemed for preserves.

**YELLOW PONDEROSA (90 days).** Largest of the yellow tomatoes.

**ROOTONE.** A root-forming stimulant when applied to cuttings, seeds, and bulbs. A powder and gets its root-forming activity from growth substances which it contains. Pkt. ( $\frac{1}{4}$  oz.), sufficient to treat more than 400 cuttings, 25c postpaid.

## TOBACCO

**SWEET ORONOCO.** The best for sun curing and makes a fine chewing tobacco. Wrappers and fillers.

**WHITE BURLEY.** Rich, bright leaf; large long and broad.

**HAVANA.** Used for cigar purposes. Has a fine quality leaf. Very early.

## OKRA

One ounce to 50 feet of row;  
5 to 8 pounds per acre.

**LONG GREEN POD (Clemson Spineless).** (55 days). A uniform, dark green spineless strain of Perkins type long pod Okra. Easily picked without discomfort.

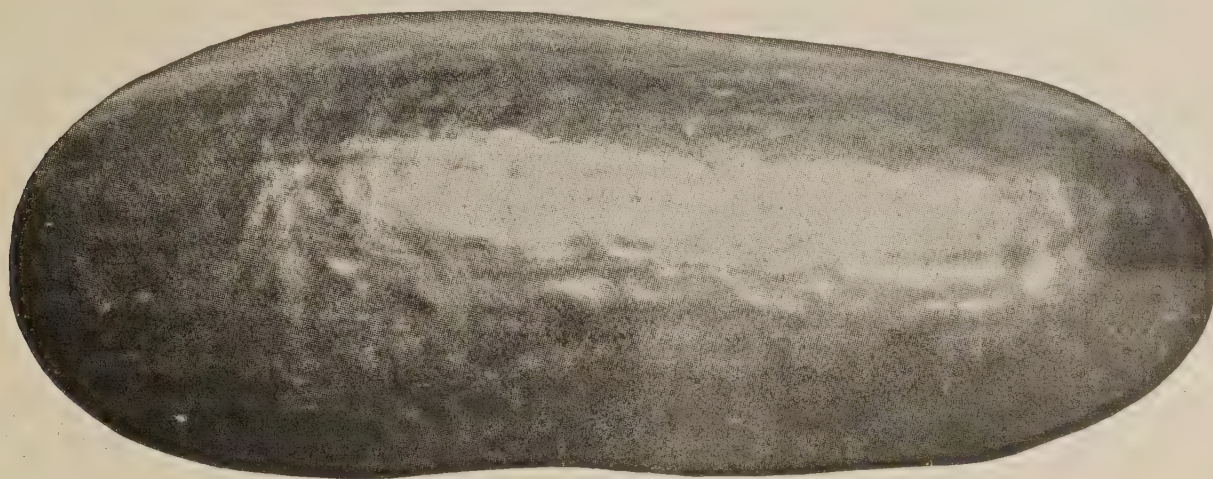
**GREEN VELVET (55 days).** A green spineless round podded velvet Okra which remains tender until quite long.

**WHITE VELVET.** Pods are round, smooth, free from ridges. Greenish white in color. Plants  $3\frac{1}{2}$  feet high, pods 6 to 7 inches.

**EARLY DWARF PROLIFIC.** One of the earliest. Pods short, rather blunt; 4 inches long; deep green. Very productive.

For Prices Refer to Green List Enclosed.

Our Watermelon Seed is especially selected to meet the requirements of the critical growers and is known as "Market Gardener Stock" and not stock termed "Commercial grade" usually sold for less money.



The Fine New Blacklee Watermelon

## WATERMELON

4 ounces to 100 hills; 2 lbs. per acre.

**BLACKLEE.** The ideal new watermelon. In shape is long, oval, very symmetrical and smooth. Color dark, rich green. Flesh brilliant red, seed black. Free from stringiness, of fine texture. Slightly crisp, very sweet, and has a delicate distinctive flavor. Rind hard and tough; a good shipper. Considered to be the best long melon yet developed.

**STONE MOUNTAIN (90 days).** A very large, nearly round melon of high quality. The sweet flesh of rich scarlet color with few seeds is covered by a tough, dark rind. Very prolific. It is one of the most popular shipping varieties.

**SCHOCHLER.** A very large, thick, long, dark green melon; with good culture will produce melons up to 85 pounds. Rind rather thick; flesh bright red, crisp and sweet. One of the best very large melons. A good shipper.

**TOM WATSON.** For years the outstanding shipping melon and equally popular for the home garden. The dark green melons are large and long, the flesh rich red, juicy and sweet.

**SMITH WATSON (Known as Spotted Watson and Cletex).** Extremely popular where grown. Flesh is blood red and very firm. Grows to 80 lbs. Rind is tough and thick, color dark green with irregular gray spots giving a marbled effect mixed with dark green color—a good shipper.

**DIXIE QUEEN.** A new introduction of great merit. A good shipper and a splendid home garden melon. Almost round, weighs

about 35 pounds, rind thin and tough, light green color with dark green stripes, flesh rich scarlet and very smooth, seed small and white colored.

**IMPROVED KLECKLEY'S SWEET (also called Wonder Melon) (90 days).** Medium to large size. Rind light pale green with light mottled tracings. Flesh brilliant crimson and of exceptional quality. A home garden melon long regarded as the sweetest of all melons.

**HALBERT'S HONEY (85 days).** Shape oblong, skin very dark green. Medium early and fairly large. Flesh crimson and very sweet. Somewhat similar to Kleckley's Sweet, but larger.

**HOOSIER MOUNTAIN (88 days).** A new melon of the Stone Mountain type, often growing to enormous size. Shape round. Flesh bright red and of superior quality. A good shipper.

**FLORIDA GIANT - Also called Black Diamond. (90 days).** Largest of the newly introduced varieties. The melons are oval shaped, with blunt ends, rind thin and tough, suitable for long distance shipping. Flesh blood-red, tender and very sweet.

**IRISH GRAY (90 days).** Weight 30 pounds. A long melon especially recommended for shipping. Rind is light green in color and very tough. Flesh dark pink.

**CHILIAN (85 days).** Black seeded, size 10 x 9½. Weight 18 pounds. Early, prolific, of superior quality. Color dark green, flesh bright red. Flesh edible to the thin rind.

**GOLDEN HONEY (90 days).** Best of the yellow fleshed melons. Oblong shape with dark green rind. Flesh sparkling golden color and deliciously sweet.

**LEE'S CHOICE FLOWER SEEDS**

All prices quoted on Flower Seeds include delivery by mail.

**AGERATUM.** Annual. Dwarf blue. Pkt., 10c;  $\frac{1}{8}$  oz., 40c;  $\frac{1}{4}$  oz., 70c.

**ALYSSUM, SWEET.** White. Grows 6 to 8 inches high. The small, white, fragrant flowers are used much in borders and rock gardens. An old favorite. Pkt. 10c.,  $\frac{1}{2}$  oz., 40c; oz., 75c.

**ASTERS.** Queen of the Market. Mixed. Pkt., 15c;  $\frac{1}{8}$  oz., 40c;  $\frac{1}{4}$  oz., 70c.

**BALSAM (Touch-Me-Not, or Lady Slipper).** Annual. Double Mixed. Pkt. 10c;  $\frac{1}{4}$  oz., 30c.

**BALSAM APPLE.** Quick growing vine with ornamental foliage. Pkt., 10c;  $\frac{1}{4}$  oz., 20c; 1 oz., 50c.

**CALIFORNIA POPPY (Eschscholtzia).** Double Orange. Annual. A long stemmed plant with many gorgeous flowers of rich orange color. Pkt., 10c;  $\frac{1}{4}$  oz., 50c.

**CANDYTUFT.** Annual. Mixed colors. Pkt., 10c;  $\frac{1}{4}$  oz., 25c;  $\frac{1}{2}$  oz., 40c.

**CARDINAL CLIMBER.** Resembles the Cypress Vine, but larger. Pkt., 10c.

**CELOSIA or COCKSCOMB.** Annual. *Celosia Cristata.* Compact heads of fiery red. Pkt., 10c;  $\frac{1}{4}$  oz., 25c;  $\frac{1}{2}$  oz., 40c.

**CENTAUREA (Bachelor's Button).** Called Cornflower, Blue Bottle and Ragged Robin. Double Blue. Pkt., 15c;  $\frac{1}{2}$  oz. 60c; Double Pink. Pkt., 15c;  $\frac{1}{2}$  oz., 60c.

**COLUMBINE (Aquilegia).** Old fashioned flower for borders. Perennial. Improved long spurred varieties mixed. Pkt., 20c.

**COSMOS.** A tall, graceful, showy annual. Double Crested Mixed. Pkt., 15c;  $\frac{1}{8}$  oz., 40c.  $\frac{1}{4}$  oz., 75c.

Dwarf Orange Flare. Pkt., 10c;  $\frac{1}{3}$  oz., 30c;  $\frac{1}{4}$  oz., 50c.

Early Mammoth Mixed. Pkt., 10c;  $\frac{1}{4}$  oz., 20c;  $\frac{1}{2}$  oz., 35c.

**CYPRESS VINE.** Annual. Grow about 15 feet. Scarlet and Mixed. Pkt. 10c.

**DAHLIA.** Blooms the first season from seed. Double Mixed. Pkt., 15c;  $\frac{1}{16}$  oz., 40c;  $\frac{1}{8}$  oz., 70c.

**HARDY DIANTHUS.** Annual. Lee's Choice Mixed. Pkt., 10c;  $\frac{1}{4}$  oz., 40c.

**DIGITALIS (Fox Glove).** Mixed. Pkt., 10c;  $\frac{1}{8}$  oz., 25c.

**FORGET-ME-NOT.** Annual Chinese Blue Mixed. Pkt., 15c.

**FOUR O'CLOCK (Marvel of Peru).** Annual. Pkt., 10c; oz., 35c.

**GAILLARDIA.** Hardy, Annual. *Picta.* Single flowers of the finest shade and colors. Pkt. 10c;  $\frac{1}{4}$  oz., 40c.

**GOURDS.** Annual. Attractive, curiously shaped, strangely colored fruits. The dense foliage of the gourd vine makes it useful for covering arbors, fences or unsightly places. Small and large fruited varieties mixed: Pkt., 10c;  $\frac{1}{2}$  oz., 20c; oz., 35c.

**GYPSOPHILA (Baby's Breath) (2 to 3 ft.)** Small single flowers on branched stems giving a white lace-like effect. Pkt., 10c;  $\frac{1}{2}$  oz., 20c; oz., 35c.

**HELICHRYSUM (Everlasting or Straw Flower.)** Pkt., 10c;  $\frac{1}{4}$  oz., 30c.

**HOLLYHOCKS.** Perennial. Double Crimson, Double Pink. Pkt., 10c;  $\frac{1}{8}$  oz., 35c;  $\frac{1}{4}$  oz., 60c;  $\frac{1}{2}$  oz., \$1.00. Double Mixed Pkt., 10c;  $\frac{1}{8}$  oz., 30c;  $\frac{1}{4}$  oz., 50c;  $\frac{1}{2}$  oz., 90c.

**JACK BEAN (Dolichos or Hyacinth Bean).** Annual. Pkt., 5c;  $\frac{1}{2}$  oz., 15c; oz., 25c.

**KUDZU VINE (Japanese "Jack and the Bean Stalk").** Pkt., 10c;  $\frac{1}{4}$  oz., 25c;  $\frac{1}{2}$  oz., 40c.

**LARKSPUR (Delphinium).** Annual. A well-known favorite, producing attractive flower spikes 3 to 4 ft. tall, which stand upright, close to the center stalk. Well formed, double flowers in a wonderful range of colors.

Giant Imperial Pink. Pkt., 10c;  $\frac{1}{8}$  oz., 30c;  $\frac{1}{4}$  oz., 50c;  $\frac{1}{2}$  oz., 90c.

Giant Imperial Red. Pkt., 10c;  $\frac{1}{8}$  oz., 30c;  $\frac{1}{4}$  oz., 50c;  $\frac{1}{2}$  oz., 90c.

Giant Imperial Blue. Pkt., 10c;  $\frac{1}{8}$  oz., 30c;  $\frac{1}{4}$  oz., 50c;  $\frac{1}{2}$  oz., 90c.

Giant Imperial Mixed. Pkt., 10c;  $\frac{1}{8}$  oz., 25c;  $\frac{1}{4}$  oz., 40c.

**MOURNING BRIDE (Scabiosa).** Annual. Mixed. Pkt., 10c;  $\frac{1}{4}$  oz., 25c;  $\frac{1}{2}$  oz., 40c; oz., 70c.

**MOURNING BRIDE (Scabiosa).** Imperial, Giant Blue Moon Double-hardy annual, 3 to 4 ft. tall. Cone-shaped flowers, richly colored. Blooms last about a week when cut. Pkt., 15c.

**VIGORO IS IDEAL FOR LAWNS, FLOWERS, SHRUBS, TREES, VEGETABLES!**



**MORNING GLORY.** Annual. One of the most popular climbers. White. Pkt., 15c.

**MORNING GLORY.** Japanese. Pkt., 10c; ½ oz., 25c; oz., 40c.

**MORNING GLORY.** Heavenly Blue. Pkt., 15c; ¼ oz., 35c; ½ oz., 60c.

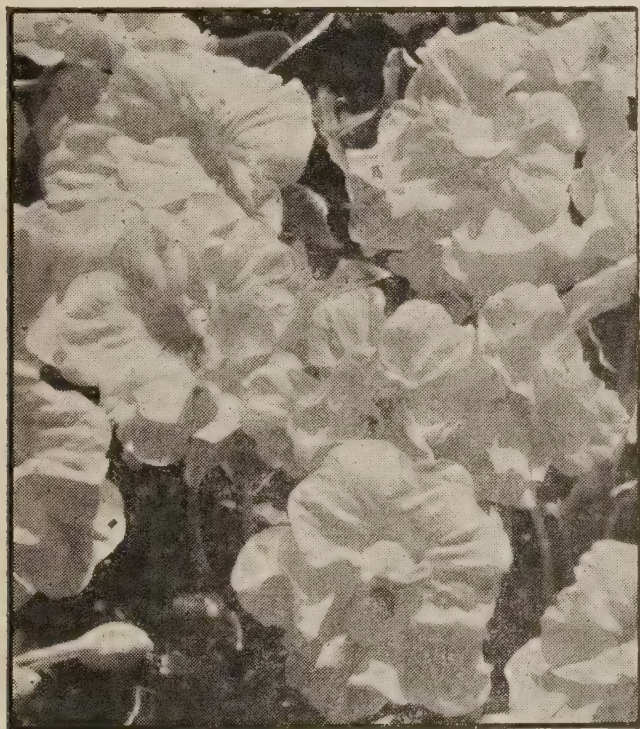
**MORNING GLORY.** Scarlet O'Hara. The blooms measure from three to four inches and are vivid velvety Scarlet. Pkt., 15c; ¼ oz., 35c.

**MARIGOLDS.** Annual. Tall Double African Mixed. About 2 feet tall. Pkt., 10c; ¼ oz., 25c; ½ oz., 40c; oz., 70c. Dwarf, Double French. About 1 foot. Pkt., 10c; ¼ oz., 25c; ½ oz., 40c; oz., 70c.

**MARIGOLD.** Guinea Gold. Carnation-like petals. A distinct type of Marigold of graceful pyramidal habits. The color is a brilliant orange flushed with gold—flowers semi-double. Grows 2 to 2½ feet high. Pkt., 10c; ¼ oz., 30c; ½ oz., 50c.

**MARIGOLD.** Sunset Giant. The largest of the Marigolds, producing flowers averaging 6 in, plants growing 3½ feet or more tall; color ranging from deep orange to deep golden yellow.

Pkt., 15c; ⅛ oz., 50c; ¼ oz., 85c.



Lee's Choice Nasturtium

## NASTURTIIUM (Annual)

**GOLDEN GLEAM.** A new, sweet-scented, double golden yellow Nasturtium. ½ oz., 15c; 1 oz., 25c; ¼ lb., 90c.

**GLEAM HYBRIDS MIXED.** A new double, sweet-scented Nasturtium, in gorgeously colored, large, well-formed flowers of dazzling beauty.

½ oz., 15c; 1 oz., 25c; ¼ lb., 90c.

**NASTURTIIUM.** One of the most popular and widely planted flowers.

Dwarf Mixed. ½ oz., 10c; 1 oz., 20c; 2 oz., 35c; ¼ lb., 65c.

Tall Mixed. ½ oz., 10c; 1 oz., 20c; 2 oz., 35c; ¼ lb., 65c.

**POPPIES.** Annual. Favorites that bring to the garden vivid and exquisite coloring.

**American Legion.** Single brilliant scarlet. Pkt., 10c; ¼ oz., 25c; ½ oz., 40c; 1 oz., 70c.

**Shirley, Single Mixed.** Pkt., 10c; ¼ oz., 20c; ½ oz., 30c; 1 oz., 50c.

**FLORALIFE** helps cut flowers to live 3 to five days longer. 1 pkg. sufficient for 2 quarts water 10c postpaid.

**PHLOX-DRUMMONDI.** One of the most brilliant and easily grown of all annuals. Large flowering. Thrives in a sunny position and in any kind of good soil. **Finest Mixed.** Pkt., 15c; ⅛ oz. 50c.

**PORTULACA (Sun Plant) (Moss Plant).** A garden gem thriving in sunny situations. **Single Mix - Pkt., 10c; ⅛ oz., 25c; ¼ oz., 40c** **Double Mix-Pkt., 15c; ⅛ oz., 50c; ¼ oz., 1.00.**

**PANSIES.** Lee's Giant Mixed. This mixture contains the best as to size and color. Pkt., 25c.

**RICINUS (Castor Bean).** Annual. Pkt., 5c; oz., 20c; ¼ lb., 60c.

**SALVIA (Splendens).** Annual. The large-flowering Scarlet Sage. Grows 3 to 4 feet high. Pkt., 15c; ⅛ oz., 60c; ¼ oz., \$1.00.

**SWEET WILLIAM.** Perennial. Double Mixed. Pkt., 10c; ⅛ oz., 25c; ¼ oz., 40c.

**SNAPDRAGON (Antirrhinum).** A most beautiful bedding plant. Fine for cutting. Seed sown the first week in April will bloom from July until frost. Can be planted either in fall or spring.

Tall Pink. Pkt., 15c; 1/16 oz., 30c; ⅛ oz., 60c.

Tall Yellow. Pkt., 15c; 1/16 oz., 30c; ⅛ oz., 60c.

Tall Scarlet. Pkt., 15c; 1/16 oz., 30c; ⅛ oz., 60c.

Finest Mixed. Pkt., 15c; ⅛ oz., 60c.

**ROOTONE.** A root-forming stimulant when applied to cuttings, seeds, or bulbs. Not a fertilizer. Price: ¼ oz. Packet, enough for 400 cuttings, 25c, postpaid.



Clean and odorless. For prices refer to page 3.

## Spencer Sweet Peas

A new type of Sweet Peas which have become very popular. The flowers are of extraordinary size, usually measuring two inches across, with wavy or frilled-edge petals which, with their rich coloring, have gained for them the name of Orchid-flowering Sweet Peas.

### EARLY-FLOWERING SPENCERS

These varieties of Spencer Sweet Peas bloom about a month earlier than the standard Spencer varieties.

**EARLY CASCADE.** One of the best early flowering white varieties.

**EARLY GIANT ROSE.** A magnificent variety with large rose-pink flowers.

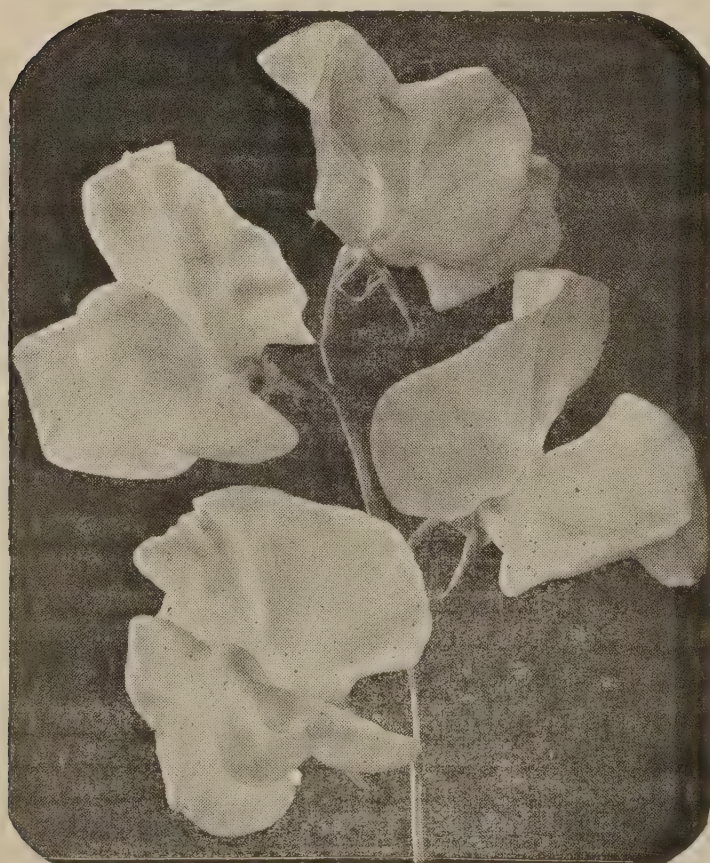
**EARLY HARMONY.** One of the best early, clear lavenders.

**EARLY APOLLO.** The best early-flowering Salmon Sweet Peas. Beautiful, large, well-waved blooms.

Any of the above named varieties:

½ oz., 20c; 1 oz., 40c; ¼ lb., \$1.40.

**LEE'S EARLY FLOWERING MIXED.** A fine mixture of early flowering varieties. ½ oz., 15c; 1 oz., 30c; ¼ lb., \$1.00.



**LEE'S FINEST MIXED SPENCER.** A mixture of the finest Spencer sorts. Selected from the best of the named sorts. We have endeavored to make a perfect blend. Pkt., 10c; 1 oz., 15c; ¼ lb., 50c; 1 lb., \$1.50.

**PETUNIAS.** One of the most important annual plants, because they bloom uninterruptedly from early summer until frost. Rich in color and easy to grow.

**Violacea, Purple.** Pkt., 15c; ⅛ oz., 65c.

**Rose of Heaven, Pure Rose.** Pkt., 15c; ⅛ oz., 40c; ¼ oz., 70c.

**General Dodd, Blood Red.** Pkt., 15c; ⅛ oz., 40c; ¼ oz., 70c.

**Finest Mixed.** Pkt., 15c; ⅛ oz., 35c; ¼ oz., 60c; 1 oz., \$2.25.



Lee's Choice Petunias

**FLORALIFE** helps cut flowers to live 3 to 5 days longer. 1 pkg. sufficient for 2 quarts water 10c postpaid.

**TITHONIA SPECIOSA (Mexican Sunflower).** (8 ft.) The dazzling orange-scarlet flowers borne on huge bushes with woody stems resembling a single Zinna. Pkt., 15c; ⅛ oz., 40c; ¼ oz., 70c.

**VERBENA.** This old-time flower is familiar to all. We offer a choice selection of the large flowering strains.

**Scarlet Defiance.** Pkt., 15c; ⅛ oz., 40c; ¼ oz., 70c.

**Mayflower, Pink.** Pkt., 15c; ⅛ oz., 40c; ¼ oz., 70c.

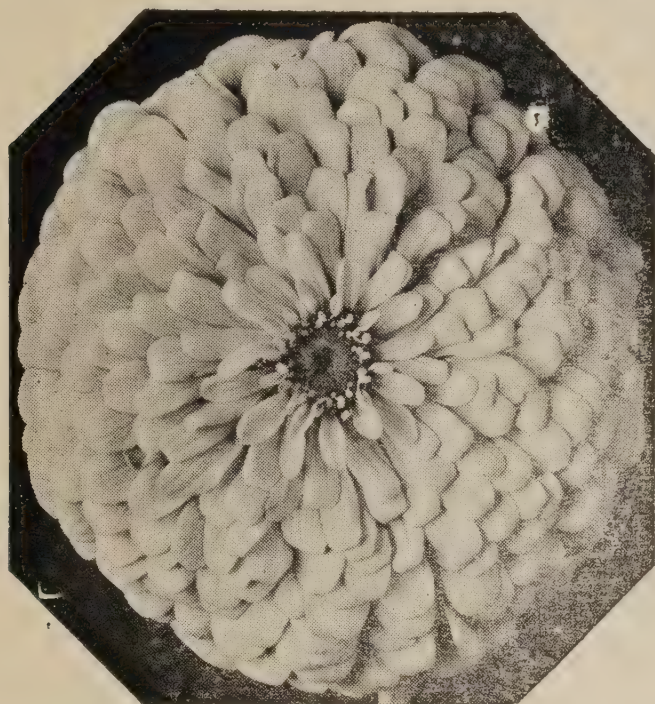
**Mammoth Mixed.** Pkt., 15c.

**VINCA (Periwinkle).** Annual. Finest Mixed. A free blooming plant with bright green shiny foliage. Valuable for pot culture or for borders. Grows 1 ft. Pkt., 10c;

### INOCULATE SWEET PEAS

If you want large blossoms and more of them, inoculate the seed before planting with NITRAGIN Inoculation. Directions with package. Price, postpaid, pkg., 10c. Enough for any amount of seed up to 6 pounds.

## Zinnias



Lee's Choice Zinnias

**ZINNIAS LILLIPUT.** This strain of Zinnias grows about one foot high and bears flowers about one inch in diameter. Very brilliant colors. Lilliput Yellow, Lilliput Rose, Lilliput Crimson. Pkt., 10c;  $\frac{1}{8}$  oz., 20c;  $\frac{1}{4}$  oz., 35c;  $\frac{1}{2}$  oz., 60c; oz., \$1.00. Lilliput Finest, Mixed. Pkt., 10c;  $\frac{1}{8}$  oz., 15c;  $\frac{1}{4}$  oz., 30c;  $\frac{1}{2}$  oz., 50c; oz., 85c.

**ZINNIAS.** Annual. The improved Zinnias make a most brilliant showing the entire season. If grown in a sunny spot in well fertilized soil and watered freely the flowers will be more completely double. We offer in separate colors—Giant Crimson, Giant Rose, Giant White, Giant Orange, Giant Yellow.

Pkt., 15c;  $\frac{1}{8}$  oz., 35c;  $\frac{1}{4}$  oz., 55c;  $\frac{1}{2}$  oz., \$1.00.

**ZINNIA.** California Mixed. Pkt., 10c;  $\frac{1}{8}$  oz., 20c;  $\frac{1}{4}$  oz., 30c;  $\frac{1}{2}$  oz., 50c; 1 oz., 90c.

**ZINNIA.** Fantasy. A new type of the Zinnia family. The rounded flowers are composed of a mass of shaggy ray-like petals which give a delicate and refined appearance to the medium sized double flowers. Mixed colors. Pkt., 10c;  $\frac{1}{4}$ oz., 30c;  $\frac{1}{2}$  oz., 50c.



Clean and Odorless. For prices refer to page 3.

**ALUMINUM SULPHATE.** For creating acid condition in the soil. A space 10x10 requires one pound. Price: 1 lb., 15c; 5 lbs., 60c; 10 lbs., \$1.00; not prepaid.

## Lee's Flower Shop

**FLOWERS** from Lee's have a distinctive quality and are noted for their freshness and beauty.

**DESIGNING.** This department is under the direction of skilled designers whose artistic arrangements will please the most exacting tastes.

**FUNERAL FLOWERS** in sprays and designs in prices ranging from \$3.00 up to any amount desired.

**HOSPITAL** and other bouquets artistically arranged to suit every occasion.

**POTTED PLANTS.** We can always supply, in season, beautiful plants for Easter, Mother's Day, Christmas, etc.

**WEDDING FLOWERS AND DECORATIONS** given special attention. Planning the arrangements is part of our service.

**ORDERS.** If you do not live in Fort Smith, your orders either by mail, phone, or wire will receive our careful attention and be dispatched promptly.

Members of the Florist Telegraph Delivery Service. Orders delivered quickly through telegraphic service to any part of the world.

## GLADIOLUS BULBS

Gladiolus are grown and admired wherever beautiful flowers are known.



All prices quoted on Bulbs include delivery by mail or express.

**GIANT NYMPH.** Very large, light pink with creamy throat. One of the finest early light pinks. 10c each; 3 for 25c; 12 for 85c; 100 for \$6.00.

**PICARDY.** A most sensational flower of delicate flesh pink. Large blooms and many open at once. 10c each; 3 for 25c; 12 for 85c; 100 for \$6.00.

**GOLD EAGLE.** Clear deep yellow. The finest of all yellow varieties, stems tall and straight. 10c each; 3 for 25c; 12 for 85c; 100 for \$6.00.

**MAID OF ORLEANS.** A beautiful pure snow white Gladiolus with large wide open flowers with beautiful round petals. Considered one of the best early white varieties. 10c each; 3 for 25c; 12 for 85c; 100 for \$6.00.

**RED PHIPPS.** Earliest of all the reds; tinted salmon. A new variety of brilliant red color; opens well and comes in flower very early. 10c each; 3 for 25c; 12 for 85c; 100 for \$6.00.

**DR. F. E. BENNETT**—Firey scarlet with ruby and white lines in the throat. Tall spike with many well placed blooms open at one time. 10c each; 3 for 25c; 12 for 85c; 100 for \$6.00.

**MINUET.** Large light pinkish lavender with ideal spike, one of the best in its color. 10c each; 3 for 25c; 12 for 85c; 100 for \$6.00.

## TUBEROSE

**MEXICAN EVERBLOOMING.** A new Tuberose that has become very popular. Large white, single flower thickly set on a stalk growing from two to three feet high. The flowers are very fragrant. 10c each; 3 for 25c; 12 for 85c; 100 - \$6.00.

## THREE POPULAR CANNAS

**THE PRESIDENT.** Four feet. A rich glowing scarlet, superior to any other red variety in quality of bloom. 2 roots, 25c; 6 for 60c; 12 for \$1.10.

**CITY OF PORTLAND.** Four feet. A beautiful bright pink Canna of the largest size. 2 roots, 25c; 6 for 60c; 12 for \$1.10.

**DOROTHY-S** - 4 ft green foliage, a beautiful salmon red. 2 roots, 25c; 6 for 60c; 12 for \$1.10.

## DAHLIA BULBS

The selection of named Dahlias we offer is very choice and regarded among the best in their class.

**JERSEY BEAUTY.** Decorative. The best true pink Dahlia. 35c each; 3 for 90c.

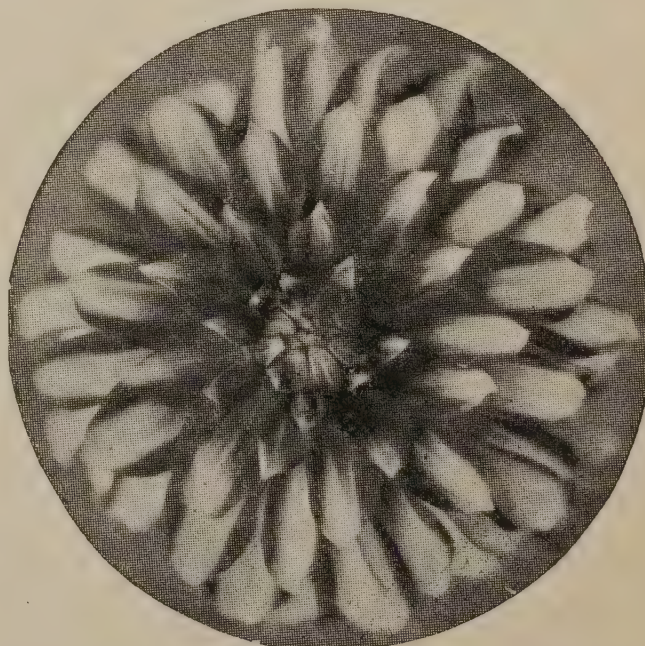
**JERSEY BEACON.** Decorative. A brilliant cardinal red. 35c each; 3 for 90c.

**BEAUTY SUPREME.** Decorative. A beautiful deep lavender pink usually referred to as orchid colored. 35c each; 3 for 90c.

**KENTUCKY.** Decorative. A beautiful salmon pink. 35c each; 3 for 90c.

**SAGAMORE.** Decorative. A beautiful bronze colored Dahlia of striking appearance. A Dahlia you should have. 35c each; 3 for 90c.

**WHITE KING.** Decorative. White. A very full, deep build flavor with waxy petals. 35c each; 3 for 90c.



**SPECIAL OFFER.** One bulb each of above 6 fine named varieties for \$1.60, postpaid.

# Lee's Dependable Grass-Clover Seeds

## CLOVERS

**ALFALFA.** The most valuable of all cultivated forage crops and soil builder. There is nothing that makes better hay than alfalfa, and stock are extremely fond of it. It develops a strong root system, which increases the humus content and opens up the soil, thus improving the soil by adding large quantities of nitrogen from the air. Alfalfa can be cut at any time from start of bloom stage to the time the plants are in full bloom. Sow broadcast at the rate of 20 to 25 pounds to the acre.

**RED CLOVER (Medium Red).** Adapted to limestone soils. Fine for pasturage in combination with other clovers and grasses. Sow at the rate of 8 to 12 pounds per acre.

**SWEET CLOVER (White Blossom).** A biennial variety of clover, while young resembles alfalfa, grows to a height of 4 to 6 feet. As a land builder it has few equals. Adds humus and nitrogen to the soil when plowed under. Valuable for pasture and forage. Sow in fall or spring at the rate of 12 to 15 pounds per acre.

**SWEET CLOVER (Yellow Blossom).** Similar in many respects to the White Blossom Sweet Clover listed above, but it is an annual. Will re-seed itself if cut when seeds start maturing. Grows 2 to 3 feet tall. Sow 12 to 15 pounds per acre.

**ALSIKE.** Adapted to damp, moist, loamy soils. In growth and habit resembles alfalfa. Valuable for either hay or pasture and equal to Red Clover in food value. Frequently sown with Red Top and Timothy, producing a very fine quality of hay. Sow at the rate of 5 to 6 pounds per acre.

**WHITE DUTCH CLOVER.** Creeping in habit, is largely used on lawns and in pasture mixture. Much relished by stock, and high in protein. Sow at the rate of 5 to 8 pounds per acre; 1 to 2 pounds in mixtures.

**HOP CLOVER (Yellow Blossom).** An annual. Grows about 6 to 8 inches high. Growing season from early spring to mid-summer. Especially valuable when sown very early with Japan Clover on Bermuda sod or with any grasses for pasture. Similar to Lespedeza, but more upright, and has a yellow blossom. Very early and fast-growing. Sow 5 to 7 lbs. alone or 2 lbs. in mixture.

**GIANT BUR CLOVER (In the Bur).** A new type that attains a height of 5 feet and is 3 weeks earlier than the common bur clover. Does best on sandy loam. Planted principally for soil building and grazing and works exceedingly well with Bermuda Grass pastures. Plant in fall at the rate of 20 to 30 lbs. per acre.

**LESPEDEZA, KOREAN.** Earliest of the annual Lespedezas; best adapted to rich woodlands or low rich lands that carry considerable moisture. It begins flowering in July and ripens in September. Sow 20 to 25 pounds per acre broadcast alone or on grain crops. It is not necessary to cover.

**LESPEDEZA, KOBE.** This is a deep-rooting, rather tall growing variety, having many leaves. On account of its root system and strong growth it withstands the drought better than the Korean. Especially adapted to uplands. Usually grows from 2 to 2½ feet tall. Sow 20 to 25 lbs. per acre broadcast alone, or on grain crops.

**LESPEDEZA, SERICEA. (Perennial).** A new type which comes back each spring from crowns, like alfalfa. Has enormous root system penetrating often four feet in the soil. In planting, the seed bed should be thoroughly prepared. It requires about 3 years before Sericea attains its normal stand. For hay sow 15 to 20 lbs. per acre.

**CRIMSON CLOVER.** An annual winter soil-building crop and a quick grazing crop. Makes excellent quality hay if cut before maturity. However, it is more often pastured in winter and plowed under as a green manure crop in the spring. This three-purpose clover—Hay, Pasture, and Manure crop—is very fast coming into popularity, and should be given a good trial. Sow 15 to 20 lbs. per acre, from August 15 to Nov. 1.

Inoculate all Legume Seeds with

## NITRAGIN

1898—Forty Seven Years of Service—1945.  
When ordering, Always state name of seed

<b>ALFALFA</b> Swt., Bur, Hubam Clovers Size Retail 1 bu. each...\$ .50 2½ bu. each... 1.00	<b>SOYBEANS</b> Size Retail Small, (Inoculates up to 120 lbs. seed) \$ .30 5 bu. each..... .55 25 bu. each..... 2.50 (One can) 30 bu. each..... 3.25 (6-5 bu. cans)
<b>CLOVERS</b> Medium & Mammoth Red, Alsike, Crimson & White Clovers 1 bu. each...\$ .50 2½ bu. each... 1.00	<b>BEANS—Navy, Pinto, Wax, String, Kidney and Great Northern</b> 1 bu. each.....\$ .35
<b>LESPEDEZA</b> 100 lb. size (Inoculates up to 100 lbs.) ..\$ .50	<b>PEANUTS, LIMA BEANS, COW PEAS</b> Small, (Inoculates up to 120 lbs. seed) \$ .30 5 bu. each..... .55 25 bu. each..... 2.50 (One can) 30 bu. each..... 3.25 (6-5 bu. cans)
<b>PEAS (All Varieties)</b> <b>VETCHES (All Varieties)</b> 100 lb. size (Inoculates up to 100 lbs.) ea.\$ .50 1200 lb. size ea... 5.70 (12-100 lb. cans)	<b>LUPINES (All Varieties)</b> 100 lb. Size (Inoculates up to 100 lbs. seed) ea. \$ .50
<b>GARDEN SIZE—Peas, Beans, Sweet Peas, Lupines, Lima Beans and Edible Soybeans</b> Enough for 8 lbs. seed — Retail Price 10c each	

## GRASS SEED

**BERMUDA GRASS (Hulled).** Its great drought-resisting properties and ability to withstand our extreme summer heat makes this the **most desirable of all grasses for the South.** Valued as a pasture grass and more extensively used than any other.

The advantage in planting the hulled seed is the fact that it will germinate in seven or eight days, while the unhulled seed takes from four to six weeks. Growers to whom we have sold the hulled seed the past season find the quick-growth has an advantage over the unhulled seed in obtaining a quick permanent stand. Sow for lawns 1 pound to 30x30 feet; 4 pounds per acre.

**RED TOP.** Especially adapted to our climate and the best of all grasses for low, wet, seepy lands. Makes a fine quality of hay and excellent pasturage. On good soil it grows about 2 feet high. Should be included in all permanent pasture mixtures. Sow about 10 pounds per acre. Extra fancy recleaned, solid seed.

**TIMOTHY.** A perennial lasting 3 to 5 years. One of the hardiest grasses grown, very productive and nutritious. Best adapted to limestone soils and in combination with Red Clover makes the finest of hay. Sow in spring or fall 15 pounds alone or 10 pounds Timothy, 4 lbs. Red Clover per acre.

**ORCHARD GRASS.** Perennial. The most valuable of all grasses for hay or pasture in sections where it is adapted. Best suited to land that will grow Red Clover or Timothy. Yields large crops of excellent and nutritious hay as well as having special value as a pasture grass. Sow in spring or fall in the South. Sow 28 lbs. per acre.

**KENTUCKY BLUE GRASS.** This is the basis of all lawns where tame grasses are preferred, and in combination with White Clover forms the finest and smoothest lawns. Especially adapted to shady situations. One lb. will sow 10x10 feet.

**LEE'S EVERGREEN LAWN GRASS.** This is a mixture of tame grasses, for use where Bermuda Grass is not desired, and in shady situations where Bermuda Grass will not grow. Produces a permanent, thick, velvety green lawn the year around when the season is not too hot. One lb. will sow 10x10 feet.

Price Change. Write for latest price list when ready to buy Field Seeds.

**CYCLONE SEED SOWERS.** Will sow many acres per hour, any amount per acre. Every planter should have one. Each, \$3.00 post-paid.

For Prices Refer To Green List Enclosed.

**DOMESTIC RYE GRASS.** Other than Bermuda Grass this is the most valuable grass we offer. Produces an abundance of foliage that remains bright and green throughout the winter months. Will bear frequent and close cropping. Is relished by all kinds of stock and is not easily injured by trampling. Can be sown on Bermuda meadows in fall producing green pasturage until late spring. If sown separately a permanent meadow of about eight (8) months duration may be obtained if stock is removed about June 1st, allowing it to reseed. Makes a better growth than most grasses on land of low fertility. Drainage is desirable but it has the reputation as a wet land grass. Sow on Bermuda meadows at the rate of 10 to 20 lbs. per acre. If sown alone 25 to 35 lbs. per acre.

**JOHNSON GRASS.** Recognized as one of the most valuable hay and forage plants where its growth can be controlled. Sow 25 pounds per acre.



For vegetable and flower seeds, bulbs, roots, corns, and tubers. Effective in controlling dampening-off of seedlings and cuttings.

Prices named are F.O.B. Fort Smith.

**SEMESAN.** For Flower and Vegetable Seeds. 1 oz. treats 15 pounds. 1/3 oz., 10c; 2 oz., 40c; 1 lb., \$2.50; 5 lbs., \$11.40.

**SEMESAN JR.** For Corn. Use 1 1/2 oz. per bushels. 1 1/2 oz. 15c; 12 oz. 56c; 6 1/4 lb. \$3.75; 25 lb. \$12.50.

**SEMESAN BEL.** Apply to whole or cut seed potatoes, either as a dry powder or as a liquid dip. One pound treats 60 to 80 bushels. 2 oz., 30c; 1 lb., \$1.65; 5 lb., \$7.15.

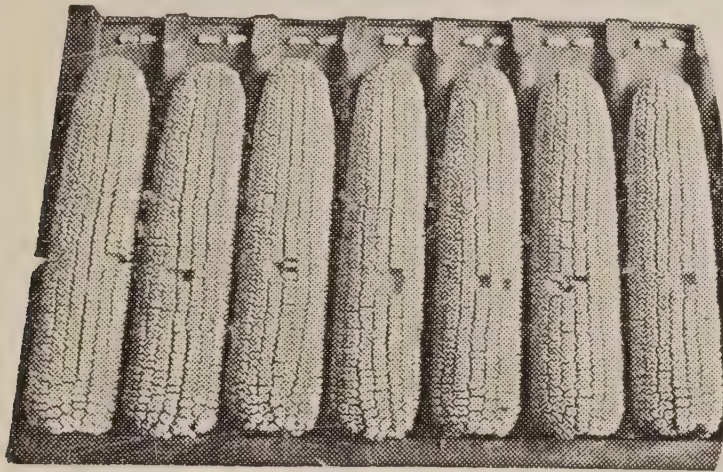
**2% CERESAN.** A dust disinfectant for cotton, millets, peas, sorghums. Three ounces treat 1 bushel of cotton seed. 1 lb., 75c; 4 3/4 lb., \$3.14; 25 lb., \$14.50.

**NEW IMPROVED CERESAN.** A dust disinfectant for wheat, oats, and barley. 1 pound treats 12 bushels. 4 oz., 30c; 1 lb. 80c; 4 lb., \$2.70; 25 lb., \$15.00.

**ARASAN -** For Peanuts and Certain Vegetables. 1 oz., 16c; 8 oz., 80c; 5 lb., \$6.45; 25 lb., \$30.00.

# Seed Corn

We do not offer what is usually termed Commercial Grade Seed Corn. All corn offered is carefully selected as to type, hand tipped and butted and tested for germination. While the hand-selected corn costs slightly more, it is well worth the difference.



## NATIVE GROWN CORN

Generally considered to be the best medium or late corn for this locality.

**LEE'S IMPROVED ST. CHARLES WHITE (110 days).** Known throughout the South as a standard red cob corn. Has a large deep white grain set on a large red cob. Ears remarkably large. Especially adapted to bottom lands.

**LEE'S BIG YELLOW DENT (110 days).** A standard late heavy-land corn. Cob is long, red and medium small. Kernel long, deep yellow, rather soft. A very heavy yielding variety.

**IOWA SILVER MINE (90 days).** We offer a limited quantity of this excellent native-grown corn. Does exceptionally well on medium or heavy soils.

**REID'S YELLOW DENT (90 days).** This fine Early Corn is adapted to both upland and bottom land. Grains are deep and closely packed. Our largest selling variety of corn and one of the best of the Yellow Dent varieties.

**PAYMASTER (110 days).** An extra large, long, deep grained white corn with red cob, especially adapted to bottom land.

**HICKORY KING (110 days).** Has the smallest cob of any corn grown producing a large flat white flinty grain. Makes the finest meal and hominy. Much used for roasting ears, having a pleasing flavor of its own. Very resistant to drought on account of its deep root system.

For Prices Refer To Green List Enclosed

**LEE'S DWARF WHITE JUNE.** A late planting variety. Noted for its drought resistant properties.

**TRUCKER'S FAVORITE (70 Day White).** The most valuable extra early corn we have ever offered. Produces an ear 9 to 11 inches long, usually two to three ears to the stalk. Not only will it produce a crop equal to most of the larger varieties, it rarely misses maturing a crop before the drought sets in. The corn we offer is Northern grown, which will mature earlier than our native-grown.

## HYBRID SEED CORN

Hybrids have a heavy root system to resist drought and offer greater resistance to insects. Have sturdy stalks that resist wind and storms and are resistant to cold wet weather and hot winds.

Hybrids are no longer in the experimental stage and each year more and more corn growers are planting a large portion of their acreage to one or more proved strains.

We offer Funk's Hybrid Corn grown in Missouri under their supervision. Also, 1001 Hybrid. This is a soft corn fully described in this column.

**FUNK'S HYBRID G-244.** An early maturing yellow, two-eared hybrid. Medium tall, excellent grain quality and resistant to drought and insects. An excellent hybrid for general use on both upland and bottom soils and adapted to early and late planting.

**FUNK'S HYBRID G-46.** Medium early maturing two-eared hybrid. Later than G-244 and recommended for bottom lands. Noted for large ears and yield.

**FUNK'S HYBRID G-702.** Medium, late maturing, large single ears. Adapted to medium and high fertility soils.

**1001 HYBRID CORN.** Developed by one of America's foremost corn breeders, is a main crop, late-maturing, yellow-grain, white cob variety, doing its finest in fertile soil under favorable conditions, or unfavorable when the going is tough. A large, tall, full-season corn, with high shelling percentage, not hard. Resistant to drought and chinch bugs, shucks easily. This is the variety of Hybrid Corn that we have been looking for since the Hybrid Corns have been introduced, suitable for feeding mules and preferable to any variety of Hybrid Corn we know of for this purpose.

Write for quantity prices on field seeds and I will quote you lowest prices and give you freight or express rates to your station.

## FORAGE CROPS

**SUDAN GRASS**—The Best Annual Hay Crop. Sudan Grass is a slender, fine stemmed, leafy plant similar to sorghum. It will grow anywhere that corn will. Of all the hay crops planted, it is the best and surest and the easiest to handle. It can be planted in the South any time after April first. If sown in drills it requires five pounds per acre; if sown broadcast, 20 to 25 pounds per acre.

**OATS (Ferguson 922)**. An improved strain of the rust-proof varieties, but more prolific, rust resistant. Withstands cold and sudden changes unusually well. Over a period of nine years, it tops the list in yield in the Rice Branch Experiment Station tests. The seed we offer is of the very highest quality and strictly seed stock, is double recleaned—of high germination and free from noxious seeds. Recommended for both fall and spring plantings.

### MILLET

**MILLET (Lee's Golden)**. This is the big-headed type, a variety we have specialized in for many years. Unlike the Western Millet, it grows much larger and produces a larger crop of nutritious hay. Should be cut when coming to flower. It makes a crop in about 60 days and can be sown as late as July. Sow broadcast at the rate of 25 to 50 lbs. per acre.

**DWARF ESSEX RAPE**. A cheaply grown pasturage for sheep, hogs, cattle and poultry. Plants resemble kale but grow much larger leaf. Like kale, it stands a great amount of cold weather. Will attain its growth in about six to eight weeks. Can be planted either in spring or fall at the rate of 6 to 8 pounds per acre, broadcast.

**BARLEY (Winter Beardless)**. A hardy variety of Barley developed in the South, adapted to fall planting for winter and spring grazing. As a winter pasture it has few equals. Has a very high nutritious feeding value, tender and much relished by all kinds of stock. As a milk producer it ranks high. The grain in feeding value is equal to corn. Sow 1½ to 2 bushels per acre.

**BUCKWHEAT**. Sown largely for bees. The blooms produce excellent honey. Sow 15 to 20 pounds per acre.

**RYE (Common)**. An old standard variety of rather slow growth and of creeping habit. Much in demand. Sow 1 bushel per acre.

**RYE (Balboa)**. Rapid, upright habit of growth. Similar to Abruzzi, but more winter-hardy and of much quicker growth. Sow one bushel per acre.

## CANE FOR FODDER

### SACCHARINE TYPES FOR FORAGE

**EARLY ORANGE CANE**. About ten days later than Early Amber but makes a taller, larger and more leafy growth. Preferred by many growers on account of containing more sweetness in the stalk than most varieties.

**HEGARI**. The popularity of this valuable grain as a grain and forage sorghum is fast taking the place of all other non-saccharine sorghums. It compares favorably with Red Top and Amber Cane. Its saccharine content is high, and it is very palatable to stock. The uniform and upright seed-heads of white grain do not shatter. It is drought resistant and in short seasons is a sure feed crop. Plant 6 to 8 pounds per acre.

**ATLAS SORGO**. A nutritious grain fodder crop. A cross between Atlas and Sweet Sorghum. Grown largely for silage, being an enormous producer, frequently making 15 to 20 tons per acre and growing 12 feet tall. Being a hybrid, requiring extra care in producing seed. We offer only state certified stock. Sow 8 to 10 lbs. per acre.

**GROHOMA**. A fine medium maturing grain sorghum crop that is drought resisting. Plant in rows and cultivate like corn or cotton. Five pounds plants an acre.

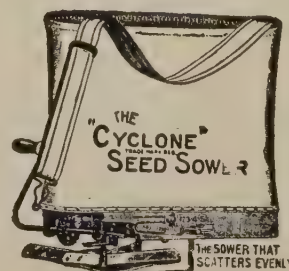
### NON-SACCHARINE TYPES FOR FORAGE

**FETERITA**. An excellent drought resistant forage crop. Similar to Kafir Corn but grows taller, producing larger heads.

**KAFIR CORN (white seeded)**. Valuable for dry-land farming, producing seed in great abundance and fattening as corn.

**MILO MAIZE (yellow)**. A specie of Kafir Corn, and planted, cultivated and harvested in the same manner.

Should you be in the market for Field Seeds in large quantities, please send us a list of your requirements for prices, advising the amount of each item wanted.



### Cyclone Seed Sower

Will sow many acres per hour, any amount per acre. Saves labor and seed. Every planter should have one. Each, \$3.00, postpaid.

For Prices Refer To Green List Enclosed.



## LEGUME CROPS



### SOY BEANS

**LARGE SEED VARIETIES.** Planted as a grain crop. Plant in rows 38 inches apart, three to four pecks per acre. Broadcast for hay, 1 to 1½ bushels per acre. In corn a bushel will plant 6 to 7 acres.

**SMALL SEED VARIETIES.** Plant broadcast 3 to 5 pecks per acre, depending upon the richness of the soil. For seed plant in rows about one bushel to 3 acres for Laredos.

**ROLSOY (135 days).** An exceptionally heavy yielder is this improved variety of the regular Arksoy. It is a consistent 35 to 40 bushel per acre yielder on good land and is even less liable to shatter than the original Arksoy. Erect growth and non-shattering characteristics make this an easy crop to harvest with a combine.

**SOY BEANS (Brown Biloxi). (150 to 165 days).** An upright variety, growing 4 to 5 feet high, covered with a dense mass of foliage which does not shed easily. A heavy yielder of beans. The oil and protein are high. May be harvested as late as February with very small loss from shattering.

**SOY BEANS (White or Yellow Biloxi). (150 to 160 days).** Has the good qualities of the chocolate Biloxi but heavier grain and hay yielder. The nearest non-shattering white bean. One of the best for crushing, being very high in protein and oil contents.

For Prices Refer To Green List Enclosed.

**SOY BEANS (Laredo). (120 to 130 days).** One of the best hay varieties, producing hay of fine quality—can be planted earlier than any other Soy Bean. Seeds small and black. When planting for seed one bushel of Laredos plant three acres in 38-inch rows. When planting for hay, three to five pecks per acre should be planted broadcast, depending on the richness of the soil.

**MUNG BEANS.** Grow on upright bushes from 2 to 4 feet high and mature in 70 to 90 days. The hay cures quickly and may be threshed in 2 to 4 days after cutting, and it retains all the leaves. Harvest when majority of pods turn black. Sow 5 lbs. per acre in drills.

**VETCH, HAIRY OR WINTER.** A Nitrogen gatherer and soil improver. One of our best winter legumes and green manure crops. So resistant to cold, adapted to a wide range of soils and can be made to reseed itself. For grazing or cover crops sow 10 to 20 pounds per acre with any of the fall grains. For soil improvement and when seeded alone sow 20 to 25 pounds per acre. For spring planting in combination with oats, sow 10 pounds per acre.

### SEED PEANUTS

**CULTURE.** Plant in May or early in June in rows 3½ feet apart, dropping two kernels to the hill, hills about one foot apart. Cover one to two inches deep. 25 to 30 lbs. of unhulled peanuts will plant an acre. Crack or break the hull before planting.

**SPANISH PEANUTS.** While not as large as other varieties they will produce more peanuts and hay than any other variety and are the most commonly grown.

**TENNESSEE RED PEANUTS.** The pods usually containing 3 nuts and sometimes four; a very productive variety.

### COW PEAS

**WHIPPOORWILL.** More largely grown than any other Cow Pea, probably because of its long vines, usually about six feet.

**LARGE BLACK EYE.** The Black Eye Stock Peas commonly grown in this vicinity are used mostly for cooking.

**TEXAS SUGAR CROWDER.** Peas are white, medium size, rich sugary flavor. Considered by many the best canning pea of the crowdiers.

**LADY PEAS** Peas are small, fine flavored. May be used either green or dry.

**BROWN SUGAR CROWDER.** An early maturing table pea of excellent flavor. Medium size brown pea with pronounced flattened end. Their rich sugar flavor makes them a great favorite.

**WHITE SUGAR CROWDER.** Similar to above excepting peas are white with a brown eye.

QUANTITY	ARTICLES WANTED	DOLLARS	CENTS
	Amount Brought Forward		

**NOTICE:** Please write below the names of any of your neighbors who would be interested in our catalog

NAMES	POST OFFICE	STATE



**PLEASE GIVE YOUR NAME AND ADDRESS IN FULL**





# SALCECIDE for PEACH BORERS

## THE PARA-SCALECIDE METHOD

**PARA-SCALECIDE** is a combination of paradichlorbenzene and Scalecide for the control of peach borers. The Para-Scalecide method is both safer and cheaper than the crystal method. **Directions:** Dilute each gallon in 7 gallons of water and spray or pour on the base of the trees 4 to 6 inches above the ground, allowing it to run down in the ground and promptly mound the earth about it to hold the fumes. No further attention to the mound is necessary, nor is it necessary to smooth the ground before application. Amount of dilute material generally applied per tree is:

½ pint on one to two year old trees. 1 pint on three to four year old trees. 1½ pints on older trees. 1 gallon is sufficient to treat 40 to 50 full-grown peach trees. Apply during the early Fall months as paradichlorbenzene is inactive at temperatures colder than 60°, or in the Spring after the soil has warmed to 60° or more. Prices quoted are F.O.B. Fort Smith:

1 Qt. can, 88c; 1 Gal. can, \$2.30; 5 Gal. can, \$7.48; 15 Gal. drum, \$18.21. Not prepaid. We will be pleased to give further information on request.

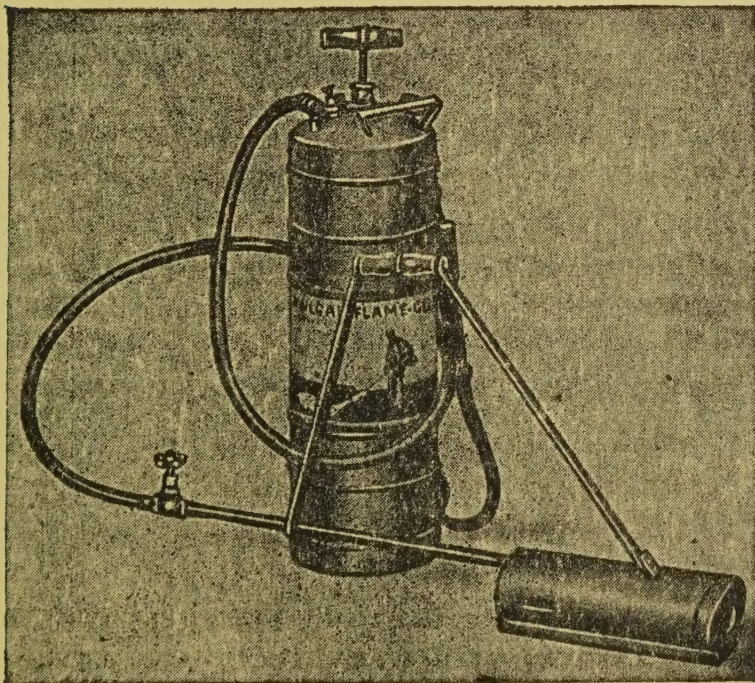
**SULFOCIDE.** As a summer spray Sulfocide is a highly concentrated sulfur fungicide, when sprayed on the fruit or foliage, precipitates an extremely fine colloidal sulfur, that has been used safely and effectively on fruits, vegetables, and flowers, against fungus diseases. Sulfocide is used on both peaches and apples at the same dilution. It is very effective against brown rot of peaches. Sulfocide will not burn foliage unless it comes in contact with Arsenate of Lead in the spray tank, or on the foliage. This is overcome by using a peacemaker, such as Spray Catalizer.

**LINSO INSECTICIDE SOAP**—A soap spreader in liquid form used with insecticides such as D-X, Sulfocide and Nicotine Sulphate. Soap spreaders are not used with Arsenate of Lead spray combination. ½ pint bottles 35c each, 1 quart cans 82c each, not prepaid.

**SPRAY CATALIZER**—Spreader and sticker. Controls Arsenate of Lead and Sulphur. Use at the rate of two pounds per 100 gallons of spray (a rounded teaspoon per gallon). 2 lb. bags 60c not prepaid.

## HAUCK FLAME GUNS

Quickly and easily destroys weeds, brush, grass, ivy, tree stumps. There are so many uses in which these flame Guns can be used, we cannot enumerate them in our limited space. Guns are powerful and wind-proof; burn kerosene, range oil, stove oil, or light furnace oil. Used to advantage on drainage ditches, fence rows, will do the work of 4 men. If interested we will be pleased to mail you complete information.



THE VULCAN. Price \$16.00

**THE VULCAN.** (4 Gallon capacity.) A low cost all-purpose unit. Flat flame spreads 6" wide by 26" long. Price \_\_\_\_\_ \$16.00

**THE LITTLE GIANT.** (1½ Gallon capacity). A compact heavy duty-general purpose unit. Flat flame spread 10 inches wide by 26 inches long. Price \_\_\_\_\_ \$24.00

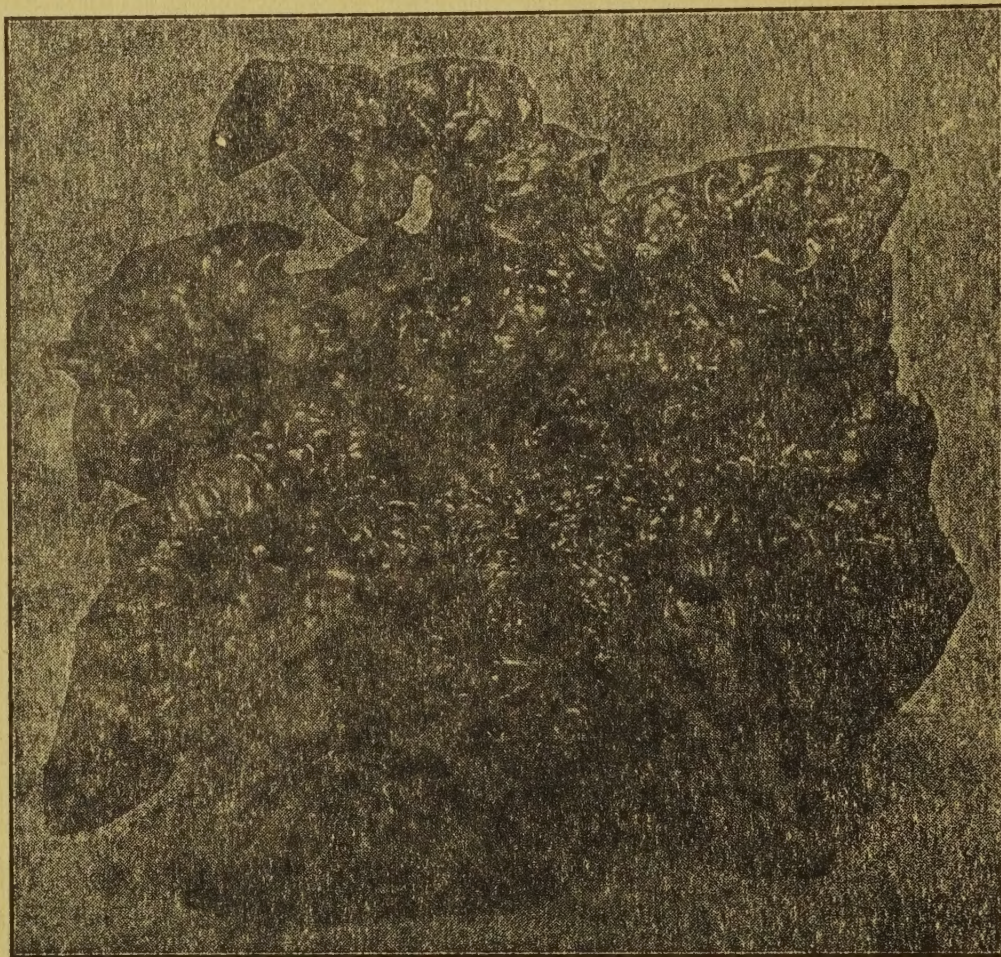
**THE VULCAN GLIDER.** (4 Gallon capacity. Same as above, but on runners. Price \_\_\_\_\_ \$17.00

**THE GIANT GLIDER.** (5 Gallon capacity.) A heavy duty general purpose burner. Flame spreads 10" wide by 26" long. Price \_\_\_\_\_ \$32.50

**There is a Flame-Gun to meet your exact needs. Saves time, money, and labor.**

— FORTY-SEVENTH YEAR —

Lee's Dependable Seed Service



**LEE'S RE-SELECTED BLOOMSDALE SPINACH**

Fort Smith is located in one of the largest spinach producing centers in the Middle West. Spinach produced in Arkansas and Oklahoma is noted for its unusual fine quality and commands the highest price in the markets. For many years we have been supplying large quantities of high quality spinach seed and there is an increasing demand for our re-selected high germinating seed.

**ARTHUR G. LEE**

**SEEDSMAN AND FLORIST**

**Fort Smith, Arkansas**