

Historic, Archive Document

Do not assume content reflects current scientific knowledge, policies, or practices.

62.47

1945 Edition

NEOSHO

NURSERIES COMPANY

NEOSHO, MISSOURI



SPECIAL

Home Fruit Offer No. 1

Please order by number.

ALL TREES select, 4-6 ft., 2-yr., heavy-rooted

PEACH—4-6 Ft.

- 1 Large Delicious Golden Freestone.
- 1 Sweet, Juicy, White Freestone.

APPLE—4-6 Ft.

- 1 Snappy, Crisp, Dark Red Jonathan.
- 1 Sweet-as-Honey Yellow Delicious

CHERRY—4-5 Ft.

- 1 Large Dark Red Montmorency

PLUM—4-6 Ft.

- 1 Sweet, Solid-Meated Red Plum

PEAR—4-6 Ft.

- 1 Fine-Grained Eating Pear

10 Luscious Boysenberry

25 Ruby-Red Strawberries

10 Large Hybrid Blackberries

10 Tender, Large-Stalk Asparagus

3 Grape Vines

65 TREES AND PLANTS

All For

only \$9.95

(Regular Value \$14.75)

Direct From Grower to You

It is possible for us to make this outstanding offer because we are one of the Nation's largest growers of fruit trees, vines and plants. This Collection comes direct from our own growing fields.

ORDER NOW!

Direct

FROM GROWER

TO YOU!



These Rows 1/4 Mile Long—100,000 Peach Trees in This Block

WE GROW OUR OWN STOCK

So in ordering from **Neosho Nurseries Company** you are getting your trees and plants direct from the grower. We own and cultivate 400 acres of Missouri's most fertile land especially suited for producing strong, vigorous, healthy root systems. The following figures will give you a better picture of our extensive operations.

100,000 Peach	10,000 Pear and Plum
20,000 Cherry	250,000 Berries
100,000 Grapes	100,000 Evergreens
250,000 Shrubs	10,000 Shade Trees
60,000 Apple	

The **Neosho Nurseries** are not only one of the largest growers of nursery stock in the United States, but we offer the widest assortment of **new** and **improved** varieties from which you may make your choice, with thousands of specimens of each item.

We maintain vitality and vigorous conditions by transporting all trees and plants from field to storage in enclosed, covered, air-tight trucks especially constructed for this purpose.

Our storage at Neosho is the largest nursery storage in this part of the country, and temperature is controlled with an air-conditioning system.

We maintain a trial grounds and test orchard for testing new varieties to find if they are suitable to soil and climatic conditions, to determine if they are hardy, productive and resistant to disease before offering them to our customers.

Our office and packing house at Neosho covers 37,000 sq. ft. At Newtonia, 11 miles east of Neosho, where most of our Hagerstown silt loam land is situated, we have many buildings, including a concrete storage house where the stock is graded and sorted without exposure to drying sun or wind.

25 YEARS OF SERVICE

Joe Williams—In charge budding and grafting.
Oren Williams—In charge propagating.
Floyd Kritz—In charge entire 400 acres growing operations.
Hurley Kritz—In charge storage and shipping.
Peachie Ransom—In charge stock records.
M. Vaughn Woodard—In charge landscape and sales department.
G. B. Williams, Sec'y-Treas.—In charge office management.
A. E. Weston, President and Gen. Mgr.

All of above have had more than 25 years service with the Company and experience in rendering "growing satisfaction."

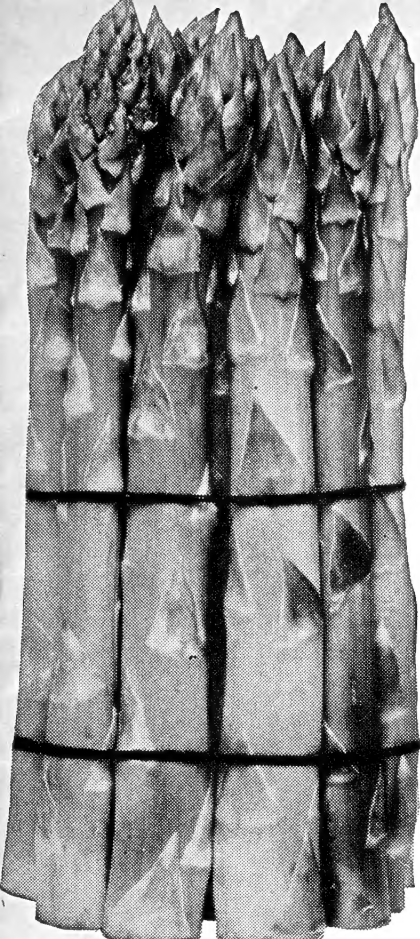


Neosho Nurseries Owned by Employees

The **Neosho Nurseries Company** is owned by the employees who operate it. Not only our President, A. E. Weston, but those in charge of every department are directly interested in your success and making future friends and customers for **Neosho Nurseries**.

Ordering From Neosho is Like Buying Direct From the Factory

We Own and Operate 400 Acres



Mary Washington Asparagus

Crisp—Snappy HORSERADISH

True Maliner Kren which has that crisp, snappy taste without bitterness. Will grow on most any soil.

	3	12
Cuttings	\$0.35	\$0.95
Crowns75	2.25

Old Fashioned SAGE

To flavor the Thanksgiving turkey. Heavy clumps, each 50c; 3 for \$1.35.

INDEX

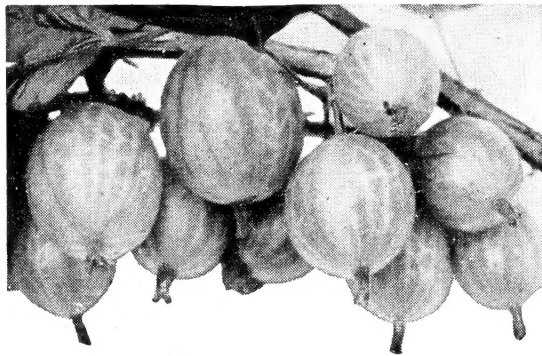
Apples	10, 11
Apricots	14
Asparagus	3
Blackberries	5
Boysenberries	5
Bulbs	30, 31
Cherries	12, 14
Currants	3, 36
Evergreens	28, 29
Gooseberries	3, 36
Grapes	9, 36
Hedges	17
Hormone	34
Horseradish	3
Iris	34
Nectarines	14
Nut Trees	35
Peaches	6, 7, 8
Pears	13
Peat Moss	34
Peonies	33
Perennials	32, 33
Persimmon	35
Plant Health	34
Plums	13, 14
Raspberries	4, 5
Rhubarb	4
Roses	18, 19, 20, 21
Seeds	34, 35
Shade Trees	22, 23
Shrubs	24, 25, 26, 27
Special Offers	
1, 9, 15, 18, 19, 20, 30, 33, 34, 36	
Strawberries	4, 5, 36
Vigoro	34
Vines	16, 17, 30

Healthy—Tender ASPARAGUS

Asparagus is among the most welcome of the early spring vegetables, and deserves a place in every garden. Plant Neosho roots, and be sure of the finest vegetables for your own table or for sale. Don't forget Neosho's direct-from-grower-to-you prices save you money. Order these early spring vegetables in plenty of time for planting!

MARY WASHINGTON. The best Asparagus whether for home use or market. This variety was developed by U. S. Department of Agriculture and is rust resistant. It is earlier, stalks are larger, more tender, more productive than any other variety.

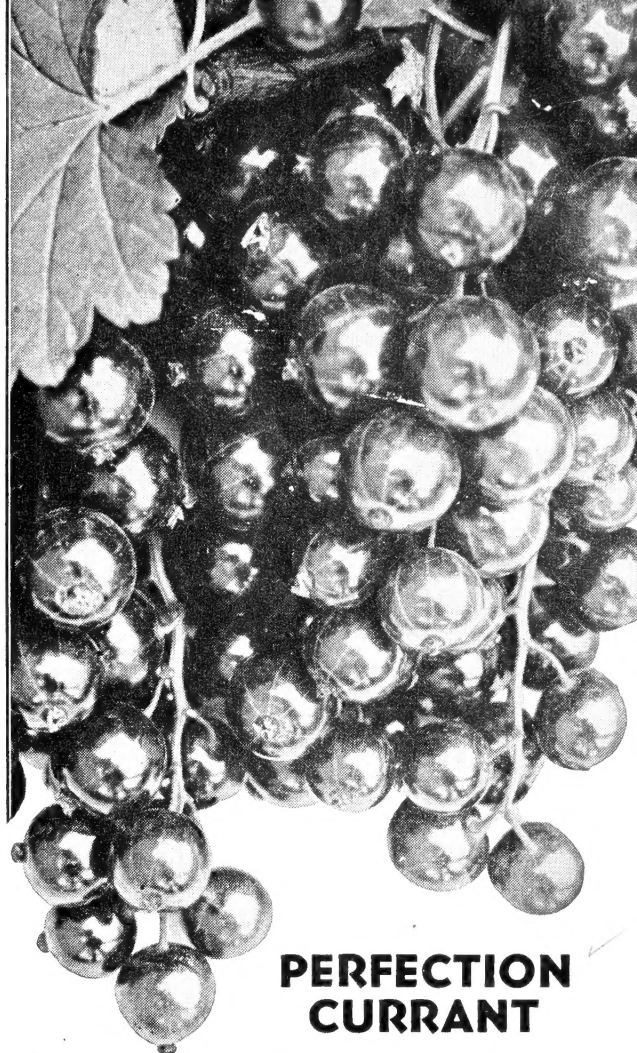
	12	25	50	100
Heavy	\$0.60	\$0.95	\$1.75	\$3.35
Jumbo85	1.45	2.75	4.75



Oregon Champion GOOSEBERRIES

The ranking Gooseberry in both size and quality. Extra large pale transparent berries of unexcelled quality. Brings highest prices. Wonderful for pies and preserves.

No. 1 Plants:
2 for \$1.19 5 for \$2.39 9 for \$4.19



PERFECTION CURRANT

The standard of quality in Currants. Extra large red berries. Fine for jelly and preserves.

2 for 98c 5 for \$2.25 9 for \$3.75

PREMIUMS for Ordering Early

Thousands were too late last year. Fruit Trees are even more scarce this year. Demand is greater than supply.

Even with our large acreage we had to disappoint many customers last spring who waited too late in ordering. We just couldn't supply the demand. Many varieties are still just as scarce; some are unobtainable. Orders will receive priority according to the succession in which they are received up to Feb. 15th. It is simply a question of first come, first served. Order early and your material will be tagged and reserved, ready for shipment at the proper time for planting. If you desire, you may specify on your order date you want shipment made. We will include a Free Premium with all orders received before Feb. 15th (except on Special Offers).

NEOSHO GUARANTEE

1. True to name stock is our unqualified guarantee. We will replace without charge, or refund purchase price if any proves otherwise.

2. "Yours for Growing Satisfaction" is our slogan. Hence we guarantee highest quality and arrival in good condition. Examine shipment carefully on arrival. Any complaints made within ten days will be cheerfully adjusted to your satisfaction. We will either refund purchase price or replace stock, as you prefer.

3rd. Despite every precaution in shipping, handling and planting, there are occasional losses, even with the best of stock, over which none of us have any control. Hence we offer to help you by sharing your loss. We will replace at one-half price any stock that fails to grow, if you will report by July 1st following planting.

CONVENIENT TERMS

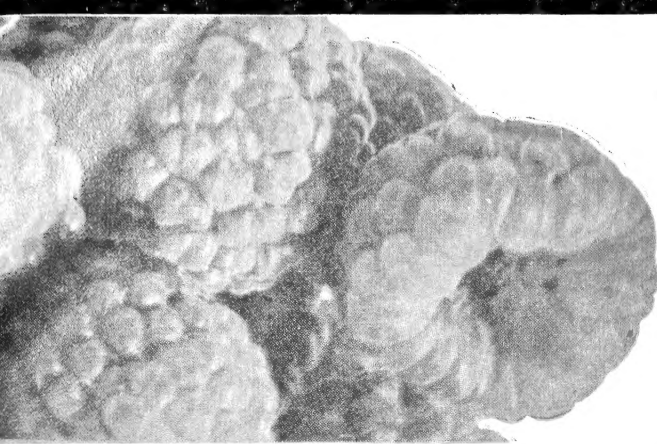
All orders, unless otherwise specified in catalog, are f. o. b. Neosho.

Terms: Payment in full should accompany all orders. Due to war conditions C. O. D.'s are out for the duration. Shortage of labor necessitates this, as C. O. D. shipments require triple the amount of time to handle. However, on orders of \$10.00 or more, customer may send 10% with order, balance before shipment, or C. O. D. if preferred. All orders 10 to 100 lbs. will be shipped by Express collect for transportation, unless you advise you are on Rural Route and prefer Parcel Post. In such case, we will pay postage and send you a postal advising amount of postage due, which you can forward.

SALES TAX

The Missouri law requires us to collect 2% Sales Tax from all Missouri customers. Please add this amount to your order, if you live in Missouri.

Shipping Season October 15th to May 15th



**Indian Summer
Everbearing**

INDIAN SUMMER Everbearing Red Raspberry

Introduced by New York Experiment Station, it is proving more satisfactory each year as it fruits over wider areas. Many are planting Indian Summer as a one-crop variety, because of its vigor, large size, fine flavored berries, ripening before Chief. Berries are much larger than other everbearing types and of excellent quality. The summer

crop ripens very early, the autumn crop from September until frost.

3 for 75c 6 for \$1.25 25 for \$3.95
For spring planting only.



RHUBARB

REGULAR RHUBARB. Our regular Rhubarb is whole root grown from Myatt's Linnaeus seed, which produces a large, tender variety.

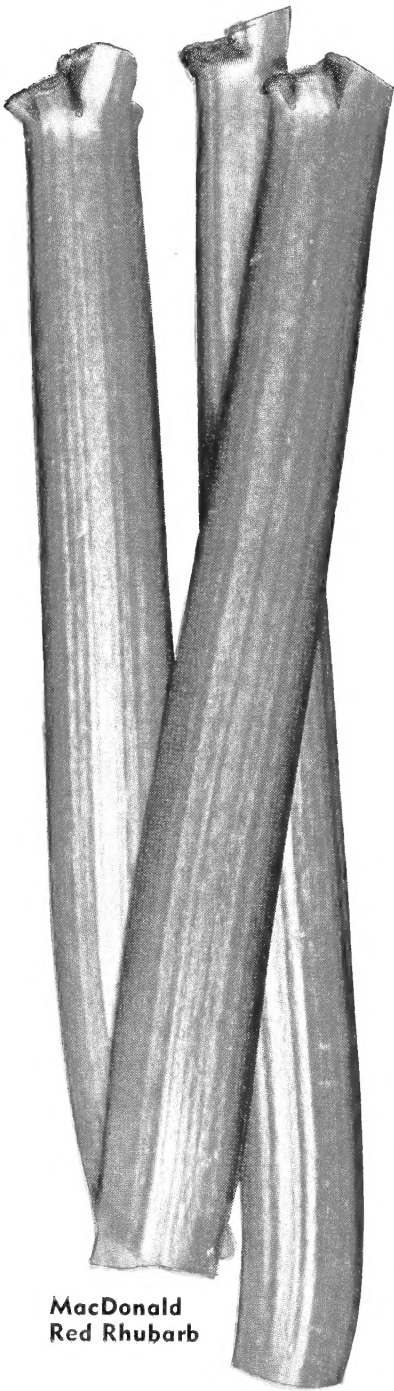
5/8 in. diameter, 3 for 50c; 6 for 90c;

12 for \$1.60.

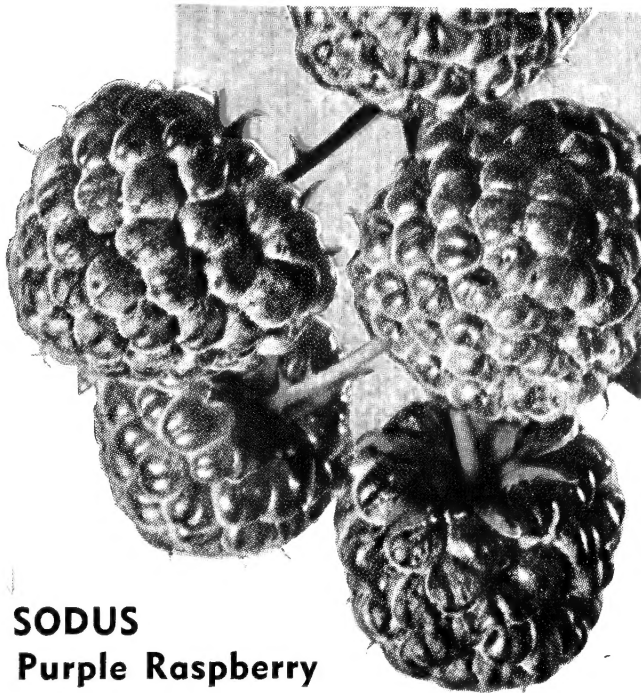
1 in. diameter, 3 for 75c; 6 for \$1.35;

12 for \$2.50.

RED RHUBARB, MacDONALD. The best large, red Rhubarb with stalks of giant size; tender and sweet, requiring less sugar. Stays tender far into the summer. Can be grown only from divisions, which makes it cost more, but you get the genuine red, giant size, heavy producing strain. **Large divisions, each 75c; 3 for \$1.95.**



**MacDonald
Red Rhubarb**



SODUS Purple Raspberry

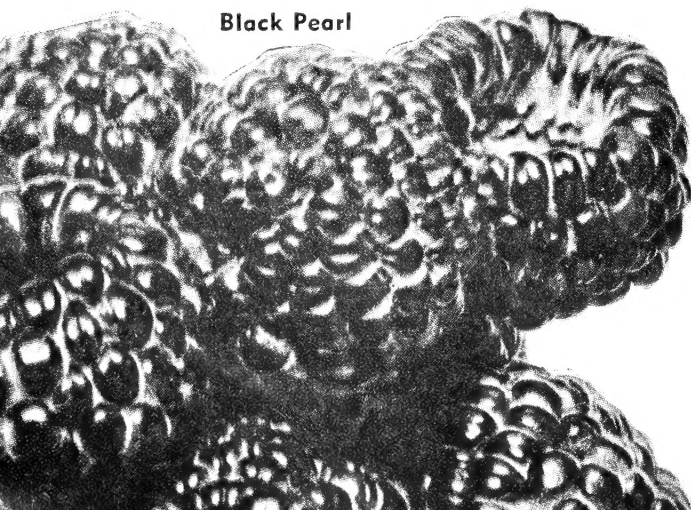
Produces fruit the first season. Wonderful new maroon-cardinal colored Raspberry. Extremely vigorous, hardy and productive beyond comparison with any other Raspberry. Originated by New York Experiment Station. Berries large, firm and excellent quality. Extremely hardy, drought resistant and not subject to winter injury; does not require winter protection even in Minnesota.

10 for \$1.65 25 for \$3.50 100 for \$11.95

**STRAWBERRIES and
RASPBERRIES
FOR SPRING SHIPMENT ONLY**

Old Fashioned SAGE

To flavor the Thanksgiving turkey. **Heavy clumps, 50c; 3 for \$1.35.**

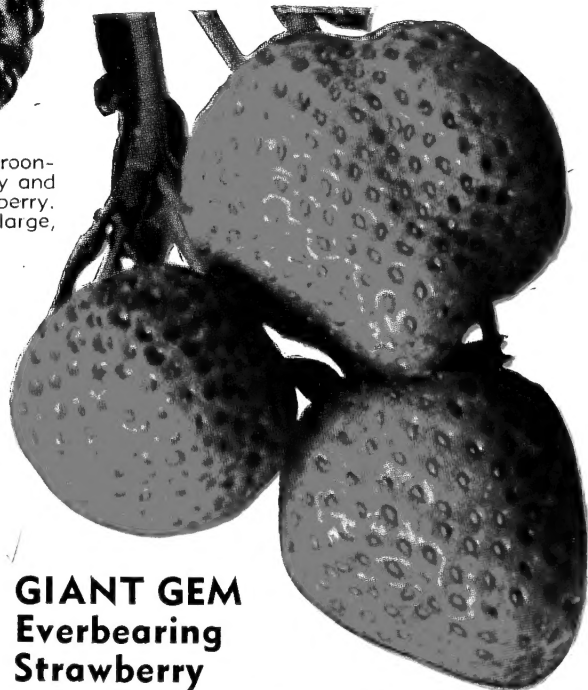


Black Pearl

BLACK PEARL Raspberry

The earliest, finest black Raspberry. Ripens ahead of hot and dry weather. Brought \$7.00 to \$10.00 per 24-pint crate this year, due to earliness of season, large size and fine quality.

6 for \$0.95
12 for 1.75
25 for 3.25
100 for 10.95



GIANT GEM Everbearing Strawberry

By its outstanding performance, Giant Gem is now the leading Everbearing Strawberry. Very productive. Bright red berries are large, good quality and ripen evenly. They will bear this summer, 90 days after planting. Next year, they will bear spring, summer and fall. **For spring shipment only.**

25 for \$1.50 50 for \$2.75
100 for 4.95 200 for 8.95

THORNLESS

Boysenberry

Immense, delicious berries with a tangy Raspberry-Dewberry flavor. It is easy to pick these big, juicy berries on these THORNLESS plants. Wonderful served fresh. Makes delicious pies, cobblers or preserves. Planted in the spring they will make six to eight feet of growth the first year and will produce a heavy crop the next year.

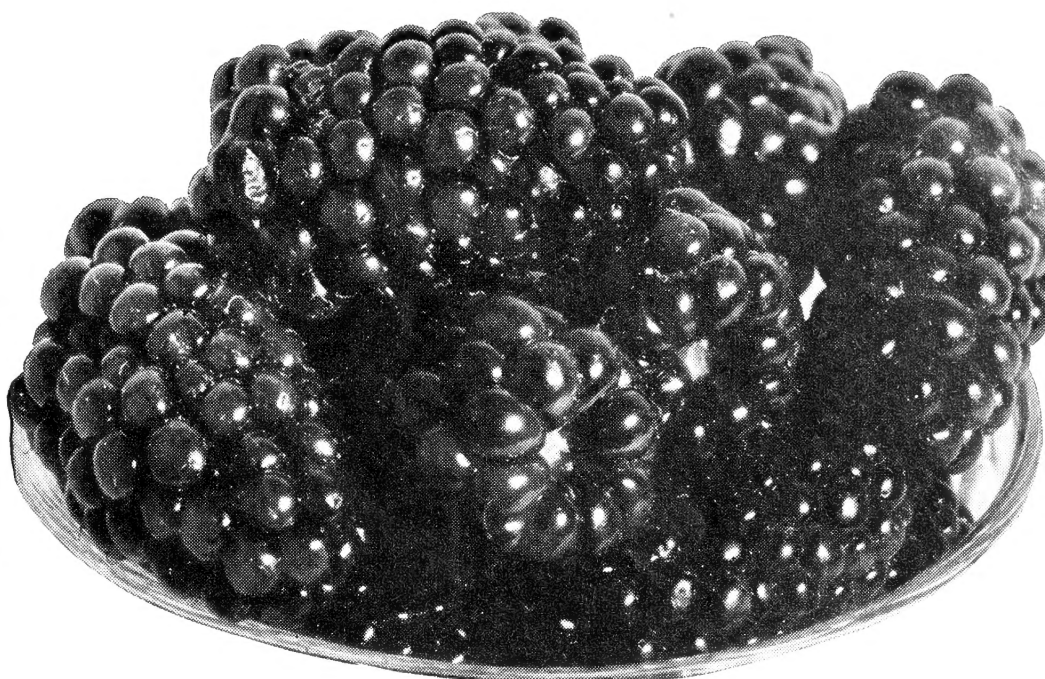
5 for \$1.19 100 for \$15.95
 25 for 4.95 200 for 29.75
 For spring shipment only.

ORIGINAL BOYSENBERRIES

Berries of the same immense size and delicious flavor as the Thornless type.

10 for \$1.49 25 for \$2.95
 50 for 5.50 100 for 9.95
 200 for \$18.75

For spring shipment only.



MacDonald Hybrid Blackberry

RASPBERRIES

For Spring Shipment Only.

CUMBERLAND (Black)

(Midseason.) The most widely planted black Raspberry because of its productiveness and quality. Berries are extra large, fine and sweet. 1-yr.

10 for \$1.45 25 for \$2.95
 50 for 5.50 100 for 9.90

SUNRISE (Red)

An outstanding new red Raspberry originated by the United States Department of Agriculture. Extremely hardy and resistant to disease. Early and large size berries of best texture and quality. Our supply is limited.

10 for \$1.65 25 for \$3.50
 50 for 6.50 100 for 11.95

BLACK PEARL (Black)

The earliest, finest black Raspberry. Ripens ahead of hot and dry weather. Brought \$7.00 to \$10.00 per 24-pint crate this year, due to earliness of season, large size and fine quality.

6 for \$0.95 12 for \$1.75
 25 for 3.25 100 for 10.95

STRAWBERRIES

Strawberries for Spring Shipment Only.

AROMA

(Midseason to Late.) The favored midseason shipping berry which has made the Ozarks famous as producers of the world's finest berries. Large, firm, delicious berries which stand shipping extra well.

BLAKEMORE

Extra early, bright red berry. Highly flavored and a tremendous yielder; self-pollenizing. A heavy plant maker. Easy to develop a full, wide row the first season. Fine for quick freezing storage.

PRICES OF AROMA AND BLAKEMORE

25 for \$0.85 50 for \$1.45
 100 for 2.50 200 for 4.25

SENATOR DUNLAP

A very popular berry noted for dependability and productiveness. A medium sized, deep glossy red berry of rich, sweet flavor and very good quality.

PRICES OF DUNLAP

Prices 25 Plants 50 Plants 100 Plants
\$0.85 \$1.45 \$2.75

BLACKBERRIES

McDONALD HYBRID BLACKBERRY

(Very Early.) A Blackberry-Dewberry Hybrid. It is large, oblong, very good quality; drought resistant, vigorous grower. Plant in rows 8 to 10 feet apart. The vine trails on the ground the first season like Dewberry, but grows upright the next year. We will include with each 25 McDonald plants 5 plants free of either Lucretia Dewberry or Early Harvest for cross pollination. Plant these every 4th or 5th plant in the row for heavy fruiting.

10 for \$1.25 25 for \$2.50 100 for \$8.95

EARLY HARVEST

(Early.) Glossy black, medium size, good quality. Heavy producer and ripens early.

10 for \$1.25 25 for \$2.50 100 for \$8.95

ELDORADO

(Late.) Thrives on poor soil better than other varieties. Extra firm, sweet, full-flavored berries of large size and most excellent quality.

10 for \$1.25 25 for \$2.50 100 for \$8.95



MASTODON

The largest of the everbearers, good quality, producing a heavy fall crop.

PROGRESSIVE, Everbearing

Small berry but the finest flavor of any berry grown; heavy reproducer, hence you have no difficulty in making a row. This variety fruits all summer. One of the best everbearers for home use.

PRICES OF MASTODON AND PROGRESSIVE

25 for \$1.50 50 for \$2.75 100 for \$4.95

NEOSHO

Improved Peaches

New and improved varieties of Peaches have been the biggest forward step in the nursery business. Improved quality and appearance means ready sale at higher prices. Improved hardiness means heavy crops year after year. Plant new and improved Neosho trees for greater profits. There is always a heavy demand for our improved varieties, so please send in your orders early. We do not like to disappoint any of our customers.



Golden Jubilee

NEOSHO EARLY ELBERTA

Our own special strain of Early Elberta that we have fruited for years. Ripens 5 days ahead of Elberta. A smooth-skinned Peach, yellow background with crimson blush. Much better flavor than regular Elberta and of good size. Brings top prices on every market.

GOLDEN JUBILEE

A beautiful yellow freestone Peach ripening 25 days ahead of Elberta. Good size and quality. Originated by New Jersey Experiment Station. **One of the best shippers** of the early Peaches. Tree vigorous, blooms later and is hardier than most other varieties. Why not try a few Golden Jubilee trees this year . . . raise these hardy, yellow freestone Peaches that ripen 25 days ahead of Elbertas.

HALE-HAVEN

A magnificent cross between the wonderful quality of J. H. Hale and the hardiness of South Haven. Originated at Michigan Experiment Station. A most **desirable commercial variety**, steadily gaining favor because of wonderful size, color and shipping qualities, hardiness of bud and vigor of tree. A profit-making variety you cannot afford to overlook.

BELLE OF GEORGIA

(White Freestone.) (Midseason.) An unusually handsome large Peach. Creamy white blushed with red; good quality. A favorite with commercial growers. Very hardy, vigorous and productive. Ripens August 1st.

NEOSHO HALE

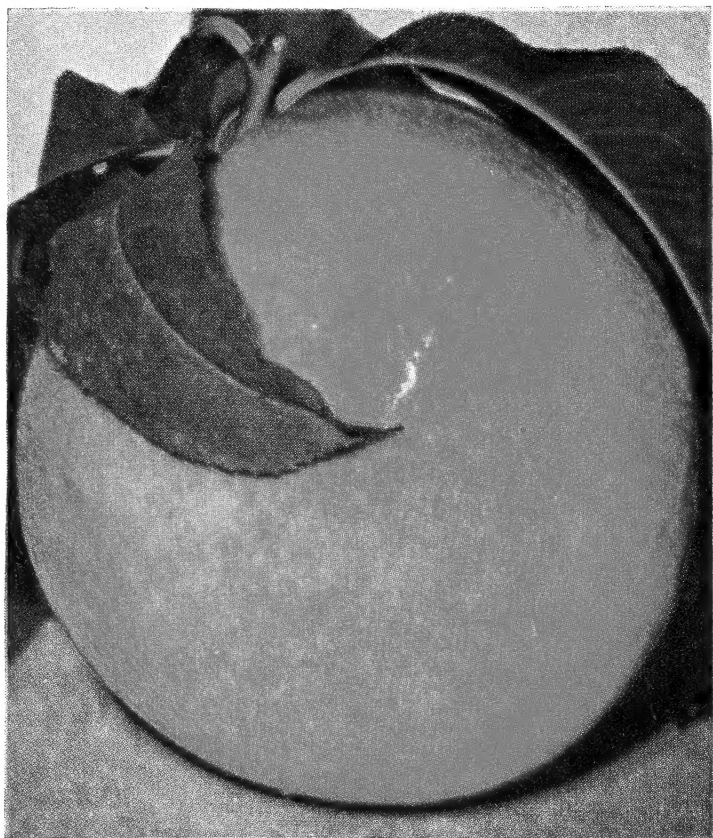
(Yellow Freestone.) (Midseason.) Very large in size; beautiful yellow overlaid with red, and has a firm, fine-grained, yellow flesh of good quality. It colors up a week before maturity. Ripens 3 to 7 days ahead of Elberta.

CHAMPION

(White Freestone.) (Midseason.) An exceptionally high quality, attractive, hardy white Peach. It has a peculiar honeyed sweetness; ideal for home use and local markets. Ripens August 1st.

NEOSHO ELBERTA

(Yellow Freestone.) (Midseason.) The most widely planted commercial Peach. Very large, golden yellow. Tree is very productive, yielding large quantities of uniform, highly colored fruit. Ripens August 10th.

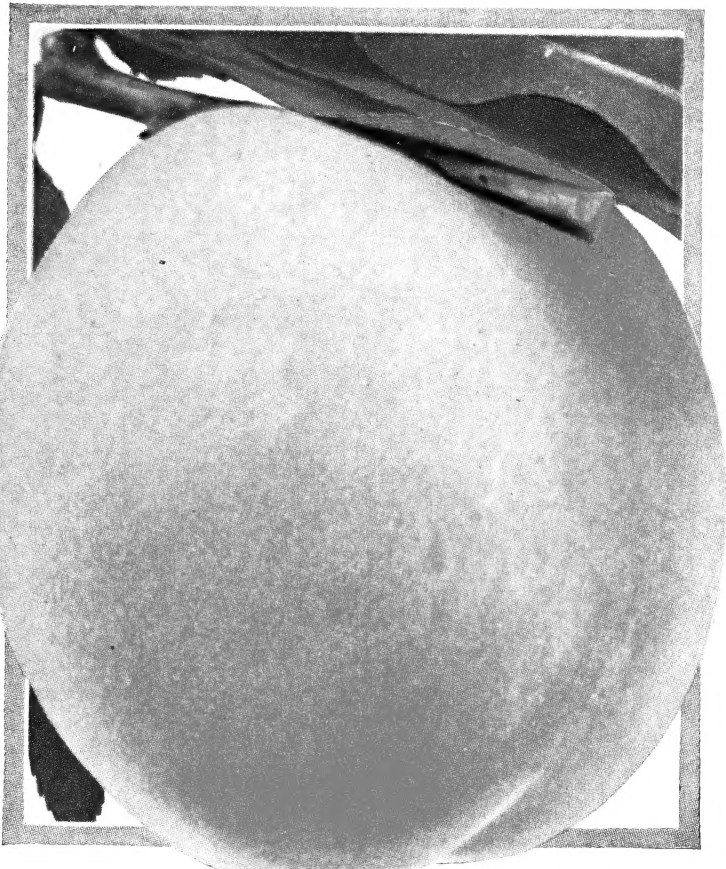


Hale-Haven

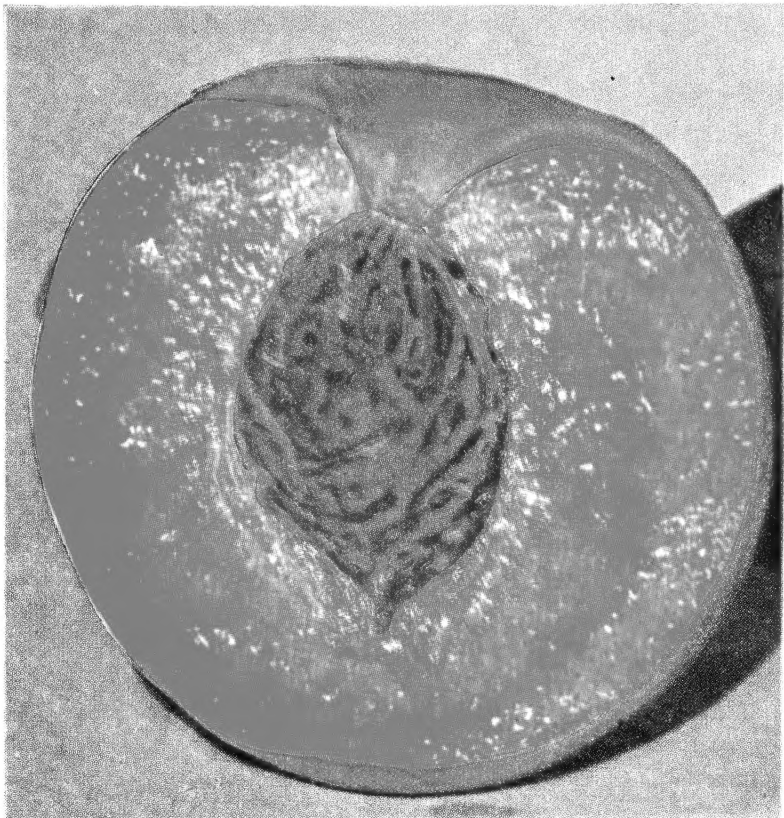
PRICES

	Each	5 Each	25 Each
2-3 ft.	\$0.55	\$0.50	\$0.45
3-4 ft.75	.70	.60
9/16 in., 4-6 ft.	1.00	.95	.85
Super X, 11/16 in.	1.25	1.20	1.10

for Bigger and Better Yields of Luscious Fruit



Belle of Georgia



Neosho Hale

Special Note

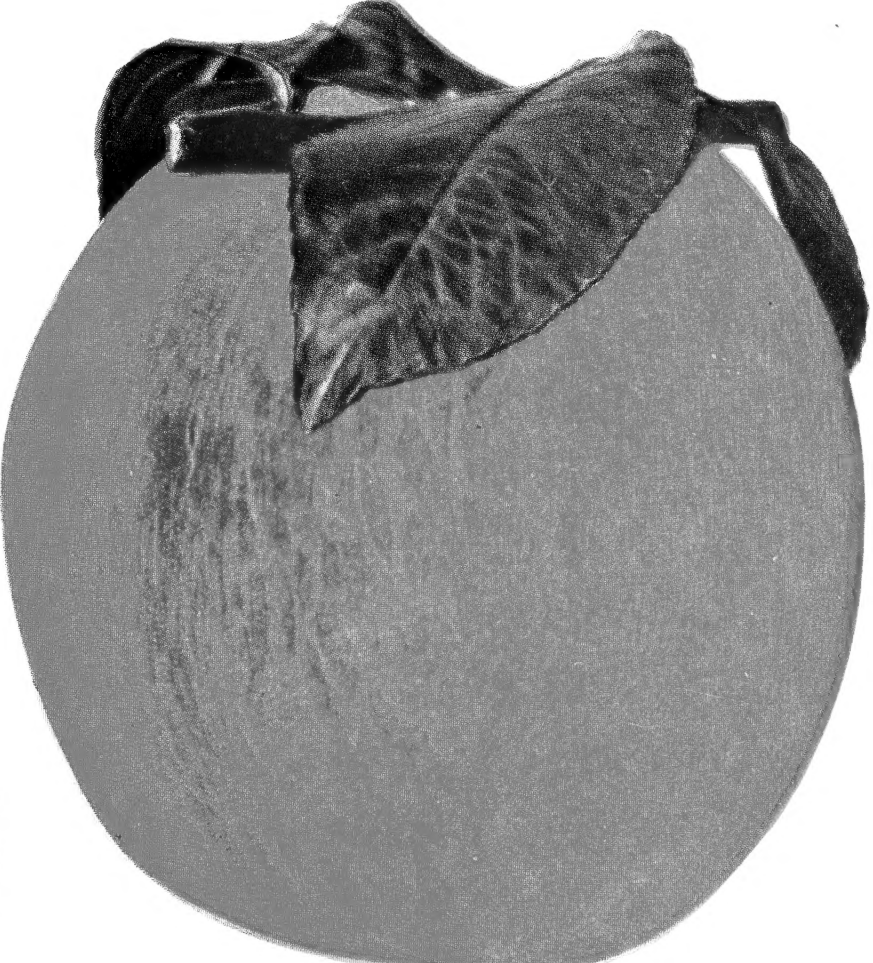
Our supply of the following varieties is quite limited, and unless orders are submitted early in the season it will be necessary to restrict the number allotted to each customer.

- ✓ **CARMAN.** Large, creamy white with deep blush; skin tough, making it a good market variety; flesh tender, juicy, fine flavor. Semi-cling.
- ✓ **CHINESE CLING.** Flavor delicious. Large size, white flesh with red blush; ripens after Elberta.
- ✓ **ELBERTA CLING.** The best yellow clingstone, especially fine for canning, preserving and pickling; large, yellow, round. Ripens August 15th.
- ✓ **FAIRS BEAUTY.** Hardiness, great beauty, high quality recommend this Peach for all sections. Unrivaled as an early canning variety. An early Peach following Golden Jubilee three to five days. Tree vigorous, spreading, very hardy in bud, often producing a crop when other varieties are winter-killed. Fruit is medium to large in size, skin a deep golden yellow blushed with bright red, flesh is firm, tender, melting and juicy. Freestone, clinging slightly when the Peach is hard ripe.
- ✓ **IMPROVED LATE CRAWFORD.** Ours is a special strain of the wonderful Crawford Peach; better in quality, hardier in tree and surer in bearing than regular Late Crawford. About 10 days after Elberta.
- ✓ **POLLY.** A variety which has produced with good results as far north as Minnesota and the Dakotas. A creamy white freestone with red blush. Early.
- ✓ **RED GAGE ELBERTA.** A wonderful improved bud sport of the Elberta Peach which we can recommend most highly. Ripens two to three days after Elberta. Is of wonderful size and improved color. Most outstanding feature of this Peach is its resistance to disease and hardiness in bud; crops every season.

JUNE BUDS
in following varieties:

Early Elberta ✓	Champion ✓	Elberta ✓	Golden Jubilee ✓
	Hale-Haven ✓	J. H. Hale ✓	
See following page.			25
18-24 in.			(each) 100
2-3 ft.			(each) \$0.35
			.50 .45

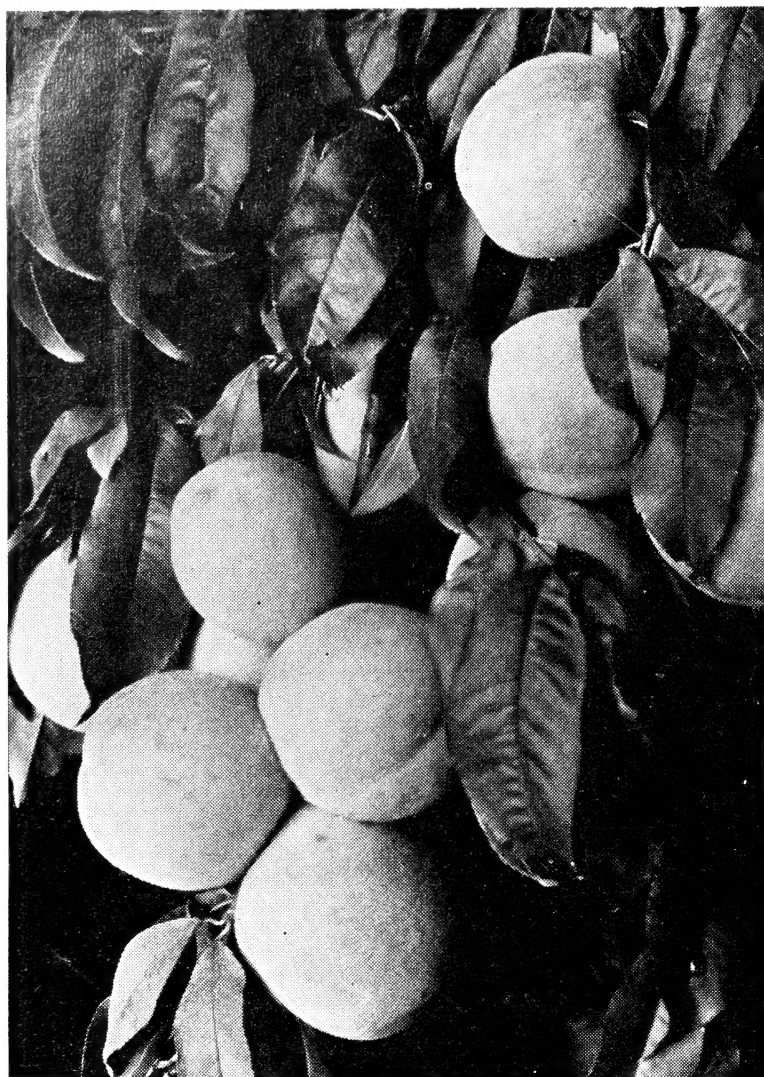
PEACH SEEDLINGS
For Fence Rows, Windbreaks and Home Gardens
Peach Tree Grown from Seed
Ten 18-24 in. for \$1.98; 50 for \$ 7.95
Ten 2-3 ft. for 2.50; 50 for 9.95
Ten 3-4 ft. for 3.50; 50 for 13.95



Neosho Early Elberta

PRICES	Each
2-3 ft.	\$0.55
3-4 ft.75
9/16-11/16 in. caliper, 4-6 ft.	1.00
Super X 11/16 in. caliper, 5-7 ft.	1.25

NEOSHO PEACH TREES



A 4-YR. CHAMPION HEAVY WITH FRUIT

Make Quick Growth, Bear Early,
Produce Heavy Crops

PEACH PRICES

	Each	5	25
2-3 ft.	\$0.55	\$0.50	\$0.45
3-4 ft.75	.70	.60
9/16 in., 4-6 ft.	1.00	.95	.85
Super X, 11/16 in.	1.25	1.20	1.10

ALTON

This Peach in our own orchard has proven one of the hardiest, most profitable of the Belle of Georgia type, ripening about half way between Red Bird and Elberta. It is a semi-cling, white Peach with beautiful red blush. **You'll have a crop of Altons whenever seedlings bear.** Ripens about July 15th. The tree is strong, stocky, good grower, well-branched, and it is an extremely good, regular bearer. All in all, the Alton is a money-maker for the farm or home.

FRANKS

This Peach highly recommended by Missouri Experiment Station, has proven hardiest and most profitable Peach on their grounds. Fine flavored, large yellow cling covered with red; ripening 5th of September. Clings always make good market Peaches. The fruit is beautifully blushed, firm, rich, most delicious in flavor. You will find the Franks a very superior Peach because of its great size, beautiful color, high quality, and high production.

HEATH CLING

(White Clingstone.) (Very late.) Best to preserve or pickle whole. Exceptionally good keeper. Ripens September 20th.

INDIAN BLOOD

(Clingstone.) (Late.) An old-fashioned favorite of fine flavor. Flesh is blood-red color.



Bundle of Well-Grown June Bud Peach

LATE CRAWFORD

(Yellow Freestone.) (Late.) High quality, scarcely equalled in richness of flavor. Adaptable to a wide range of soil and climate. Ripens August 18th.

LATE ELBERTA

(Yellow Freestone.) A large yellow Peach with red cheek, of Elberta type, ripening last of August, extending the Elberta season 20 days.

MIKADO

The earliest yellow Peach of real quality and flavor. Ripens July 1st. Extra large, shaped and colored like Elberta. Very hardy in bud and a heavy producer. Brings highest prices on the market. Cling.

RED BIRD

(Semi-Clingstone.) An unusually large, early, commercial variety. Very firm and ships well. Creamy white covered with bright red; a most handsome Peach. Ripens July 1st.

JUNE BUD PEACH TREES

Though our supply is quite limited, we offer at attractive prices the following June Bud Peach Trees to commercial growers. Get your order in early as our supply will not last throughout the season.

Early Elberta	Hale-Haven
Elberta	J. H. Hale
Champion	Golden Jubilee

PRICES

	25 Rate	100 Rate
18-24 in.	\$0.40	\$0.35
2-3 ft.50	.45



SUPERB NEOSHO HALE PEACHES at their best as grown by Geo. Edrington, Osceola, Arkansas. Many specimens measured nearly 4 inches in diameter. That's less than a dozen Peaches to the yard. Mr. Edrington has 500 trees, some of which produced 10 bushels to the tree this year (1943), and with Peaches selling from \$6.00 to \$8.00 per bushel, that makes a pretty fair income per acre.

NEOSHO GRAPES Bear

Every Year ^{HIGH} QUALITY

Neosho Super-X Two-Year Vines

Are Heavy, Well-Rooted Specimen Plants That Will Make Quick Growth and Come Into Early Bearing.

GRAPE VINE PRICES

	Each	4	12	25
1 yr. No. 1, thrifty, well-rooted, 1-yr. vines..	\$0.30	\$1.00	\$2.75	\$5.25
2 yr., Super X, No. 1, heavy	.40	1.45	3.60	6.95

AGAWAM (Red)

The most widely grown of the red Grapes. Large, rich, sweet and aromatic. Ripens after Concord.

CACO (Red)

We consider this Grape one of the best varieties. The fruit is very large, rich and sugary, with a delicious melting flavor. The hardy, vigorous vine that assures the grower extra profits. Vines bear young, heavily and regularly. Ripens in August.

CAMPBELL EARLY (Black)

Bunch and berry are large; high quality. Ripens about two weeks before Concord. Blooms midseason.

CONCORD (Black)

The most widely planted Grape. Superior in hardiness and productivity and regularity in bearing and in ability to withstand disease and insects. The leader for making Grape juice.

DELAWARE (Red)

The standard of quality; the best table Grape. Unusually hardy; usually bears abundantly. Blooms rather late.

DIAMOND (Green)

It is the hardiest, most productive and vigorous of the green Grapes. It reserves a high place among the best for commercial and home vineyards. Blooms midseason.

MOORE'S EARLY (Purplish Black)

The most widely planted early commercial Grape. Ripens 2 weeks earlier than Concord. Good quality. It is best described as an early Concord. Blooms midseason.

NIAGARA (Green)

The most widely planted green Grape. Larger bunches and berries than Concord, as good, or better quality. Productive, vigorous, adaptable. Ripens about with Concord. Blooms midseason.

PORTLAND (White)

Earliest of varieties to ripen. Produces a large, white fruit with spicy and luscious flavor. A very hardy, popular, money-making variety. Usually ripens a few days ahead of Fredonia. The amber-white color of the fruit makes it one of the most popular varieties. **Can supply Portland in 1-yr. vines only.**



FREDONIA (Purple)

A new Grape which experts and most growers say will soon become the leading black Grape in America. It ripens early, 10 days before Moore's Early. Berries are

large, very juicy, and have delicious flavor. This vigorous, productive variety is unusually hardy. Plant some Fredonia vines this year.

100 RATE ON

Special **Concord, Fredonia, Moore's Early**

1-Yr. No. 1	1-Yr. Commercial
\$20.00 per 100	\$16.95 per 100



SHERIDAN (Blue)

A new blue-black Grape that ripens a week after Concord. It has an even sweeter and richer flavor. Berries are very large, and the vine is an unusually heavy bearer. This is considered a choice Grape by experts and commercial growers. Can supply Sheridan in 1-yr. vines only.

1-Yr. Commercial Grade

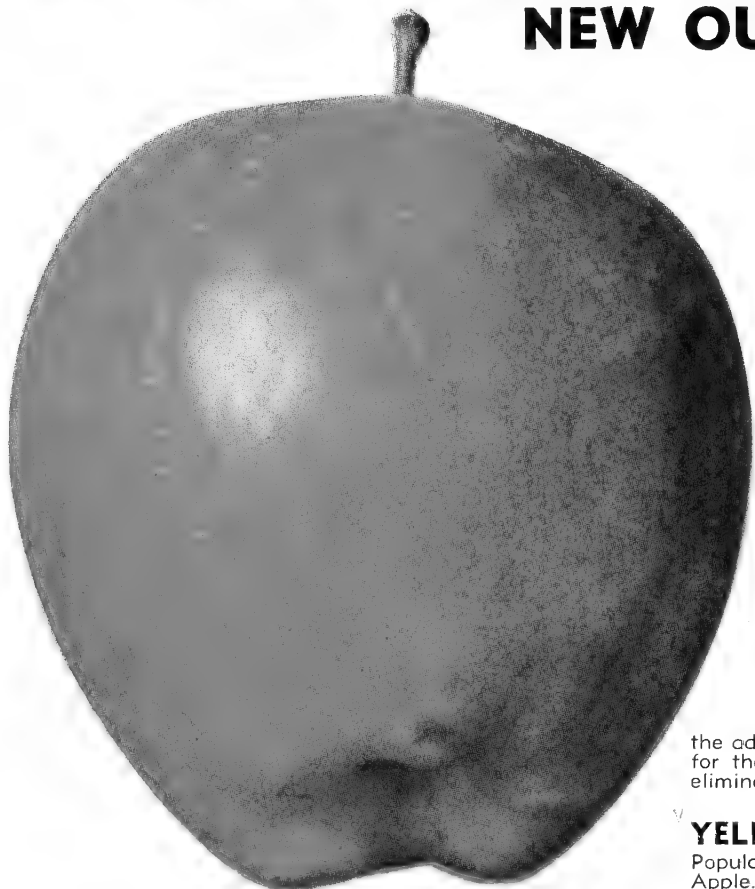
Fredonia, Moore's Early, Concord

1-yr. Commercial Grape, true-to-name, 1-yr. plants, suitable for commercial growers.

25 for \$4.95 100 for \$16.95

APPLES for Health and Profit

NEW OUTSTANDING VARIETIES



Blood Red Delicious

ANOKA— The Old Folks' Apple

The second year, big, full-sized crop; earliest and heaviest bearing Apple. Hardy in all climates; never winter-kills. Can be grown anywhere in the United States. Ripens in August but can be used a month earlier. Apples are good sized, well-formed, beautifully colored. Has proven to be one of the very best early summer Apples for all purposes.

GOLDEN LODI

New, Improved Transparent. Has been thoroughly tested and meets every requirement of an outstanding early apple for quality, productiveness and profit. A large waxy apple of clear Transparent color but they handle, keep and ship better because flesh is firm and skin thick. **Twice the size of Transparent** and the tree is a vigorous spreading grower. It ripens July 1st.

RED DUCHESS

This is a strain of the Duchess. The only difference is that it colors somewhat earlier, and better, which is a big advantage for the commercial Apple grower. **Profits are larger** because of the earlier marketing quality. Plant a few of these in your orchard this year.

TURLEY WINESAP

A truly fine quality Apple of a beautiful ruby-red color of the Stayman type. Absolutely does not crack. This is Indiana's greatest gift to the Apple industry and their most precious crop. You, too, will find it a profit maker.

WHETSTONE

The Missouri Fruit Experiment Station put in 40 years time and effort crossing Jonathan and Ben Davis to develop an apple with Jonathan quality and Ben Davis productiveness and keeping qualities. Out of 600 crosses **this apple is their first choice** from a profit standpoint. It fills up the barrel or basket with large, high-colored apples that will hang on the tree to Christmas, if necessary, and keep until spring.

Crab Apples

HYSLOP

Large, very brilliantly colored, dark red or purplish, overspread with thick blue bloom; good jelly and preserves.

VIRGINIA

One of the finest Crabs for home use, and being a heavy producer of large pink fruit of unusual hardiness makes it a profitable market Crab.

THESE varieties are considered the finest, heavy producing strains, and Neosho Nurseries have always been one of the leaders in the production of hardy, money-making Apple tree varieties. You buy with confidence when you buy Neosho Apple Improved Varieties. Plant these summer, fall and winter Apples. Then you can have Apples almost the year around.

- *Bear Young*
- *Giant Size*
- *Rich Color*

DARK RED JONATHAN

You increase your profits when you plant Dark Red Jonathan. This is an improved strain of Jonathan, **and the most profitable Apple obtainable.** The Dark Red Jonathan attains a brilliant red color 2 weeks before ripening, and this, in turn, gains

the advantage of higher market prices for the grower. Early marketing also eliminates windfalls.

YELLOW DELICIOUS

Popular, big, beautiful golden yellow Apple. Has a wonderful flavor, excellent quality, firm flesh, and fast ripening quality. Tree begins bearing at a very early age and is a vigorous grower so that a six-year-old tree can have 5 or 6 bushels of apples, and a 15-year-old tree 20 to 25 bushels. Brings highest prices and is in demand on every market.

BLOOD-RED DELICIOUS

Has all of the good qualities of the common Delicious, but colors out a deeper red, and 2 to 3 weeks before the common Delicious begins to take color. This means earlier profits and bigger profits for the grower because earlier picking, earlier marketing, and more **extra fancy grade**, with little or no windfalls, and color to get the best prices.

DOUBLE RED STAYMAN

Everyone is familiar with the wonderful, early coloring qualities of the Red Stayman. The Neosho Dark Red Stayman is a marvelous improvement over many Stayman Apples; has more color and keeping qualities. It is the solid dark red which makes it a universal favorite.

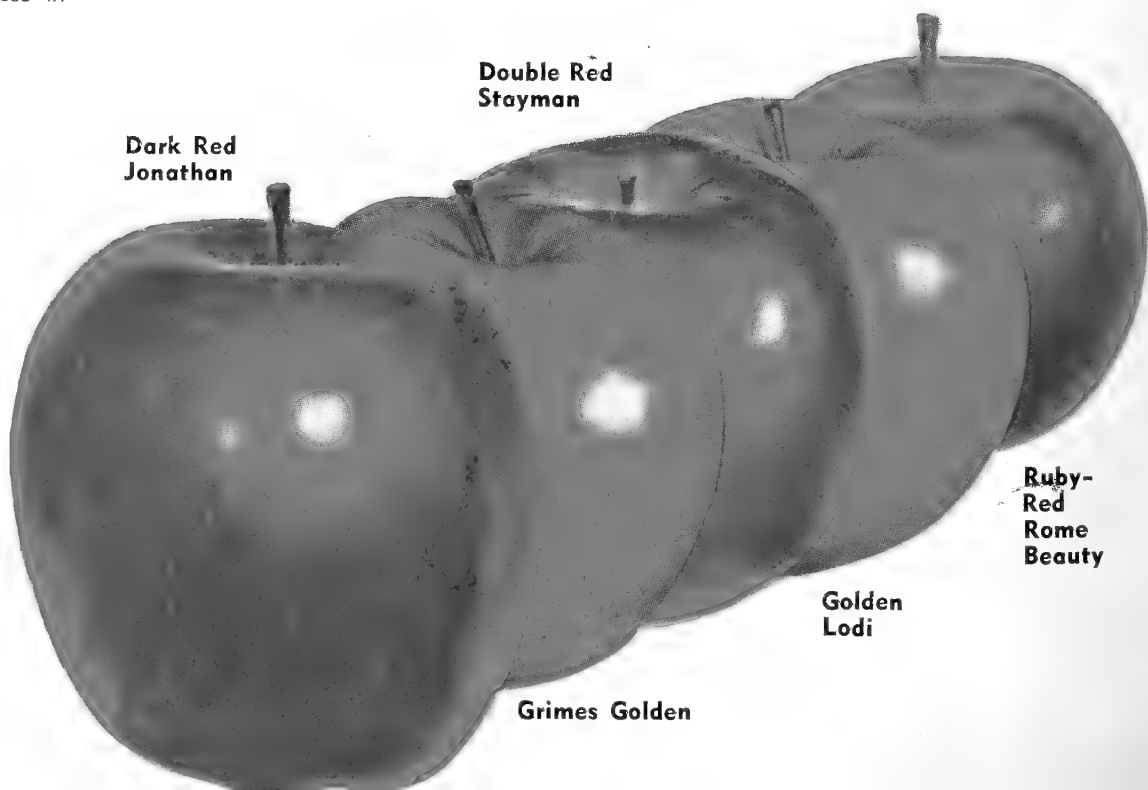
RUBY-RED ROME BEAUTY

Identical with the Rome Beauty except that it colors earlier and has more red color. Hence, it is a more profitable Apple for the grower. This is also a hardy, vigorous Apple tree, and is a popular favorite in almost every section of the Apple country.

PRICES ALL NEOSHO APPLE VARIETIES

	2-YEAR	Each	5	25
7/16 in., 3-5 ft.		\$0.75	\$0.70	\$0.60
9/16 in., 4-6 ft.		1.00	.95	.85
Super X, 11/16 in., 5-7 ft.		1.25	1.20	1.10
1-YEAR GRAFTS				
2-3 ft.45	.40	.35
3-4 ft.60	.55	.50
4-5 ft.75	.70	.60

Super X Trees bear early. Due to demand from our customers we are listing Super X or Super Size apple. Do you wish you had planted those trees 2 years ago? If so, plant Super X grade. These choice specimens make a rapid growth, will produce quick results, come into bearing early and make strong, vigorous, productive trees.



Dark Red Jonathan

Double Red Stayman

Grimes Golden

Golden Lodi

Ruby-Red Rome Beauty

BLACK BEN

(Winter.) The best of the Ben Davis family. It attains a much higher color than Ben Davis or Gano. The tree is hardier, more vigorous and more prolific than Ben Davis. Fruit is large, solid dark red.

DELICIOUS

(Winter.) Who is not familiar with this popular Apple? Who does not appreciate its unexcelled flavor, its beauty of form and color, its fragrant aroma? It finds a ready sale at high prices. Tree vigorous, hardy, is fruiting in nearly every state.

GRIMES GOLDEN

Is the best quality and most profitable yellow Apple; a rich golden color, fine flavor and aroma, an ideal dessert Apple and an equally fine cooker. You cannot go wrong on this beauty because it is a definitely profitable Apple, easy to grow, hardy and prolific bearer.

JONATHAN

(Fall.) A grand, good Apple; once tasted, always wanted. Bright solid red; aromatic flavor and juice full of snap and sparkle. Medium size; good to best quality. Bears young; good crops regularly. Fine for home and commercial planting.

KING DAVID

(Fall.) Bears heavy crops year after year. Medium size; very dark, rich garnet-red, showing almost a purplish black on the sunny side. Tree hardy, vigorous grower; bears young. Often used as a filler.

MAIDEN BLUSH

(Late Summer.) Waxed yellow with red blush; mild flavor, large size.

ROME BEAUTY

(Winter.) Large, roundish Apple, handsomely colored and striped with bright red; good quality. Splendid storage Apple; a splendid bearer; blooms late.

STAYMAN WINESAP

(Winter.) Largest of the Winesaps, striped and splashed bright crimson. Splendid quality. Reliable annual cropper.

WEALTHY

(Late Summer.) A most dependable and widely planted late summer Apple; bright red striped; medium to large size. Ripens over a long season. Very good quality. Tree upright grower; often used as a filler; very hardy; bears young.

WILSON JUNE

(Midsummer.) A deep, solid crimson like a Red June; large, good quality. Hardy, vigorous, very productive, bears young. Most beautiful of its season; good shipper.

WINESAP

(Winter.) One of the oldest and most popular Apples; a good shipper and an exceptionally good keeper in ordinary and cold storage. Splendid bright red, indistinctly striped with dark purplish red; good quality. Medium size. Hardy; a heavy, regular bearer.



Yellow Delicious—Bears Heavy Crops at an Early Age, Brings Top Prices

EARLY HARVEST

(Midsummer.) A yellow, medium sized Apple of very good quality for either dessert or cooking. Comes into bearing young.

WINTER BANANA

(Winter.) Very showy, bright yellow, with a pinkish red cheek noted for its brilliant, transparent, waxen appearance.

MAMMOTH BLACK TWIG

Or Arkansas. (Winter.) A large Apple of good quality; a dull green or deep yellow overspread with red; excellent keeper.

PARAGON WINESAP

(Winter.) Paragon has the large size and very good quality of the Stayman, combined with the dark red color of the old Winesap.



A Picture of 2-Yr. Necsho Trees Taken in June Will Make Fine Sturdy Trees by Fall

YELLOW TRANSPARENT

(Early Summer.) The best extra early Apple; medium size; a beautiful clear yellow; smooth, waxen, brilliant skin. Unexcelled for pies, tarts and apple sauce. Tree extremely hardy, upright, compact grower; often used as a filler; reliable cropper.

YORK IMPERIAL

(Winter.) Bright pin-striped with dark red; fair quality. Its oblique or lop-sided shape is a notable characteristic. A very heavy bearer. Easy to handle. Good keeper in dry storage.

COMMERCIAL ORCHARDISTS

A fine growing season enables us to offer this year splendid 1-yr. Apple grafts in all varieties of Apple offered on both pages 10 and 11.

1-YR. APPLE GRAFTS	Each	5 Rate	25 Rate
2-3 ft.	\$0.45	\$0.40	\$0.35
3-4 ft.60	.55	.50
4-5 ft.75	.70	.60

HARDY UNDERSTOCK for Top Working

The Iowa State Experiment Station at Ames, Iowa, have done wonders in improving the hardiness, productivity and early bearing of Apple by top working trees onto Virginia Crab understocks. Hence we offer Virginia Crab in both 1- and 2-yr. trees.

VIRGINIA CRAB TREES	25 Rate	100 Rate
1-yr., 2-3 ft.	\$0.35	\$0.30
1-yr., 3-4 ft.50	.40
1-yr., 4-5 ft.60	.50
2-yr., 3-4 ft.55	.50
2-yr., 4-6 ft.80	.75
2-yr., Super X	1.00	.90

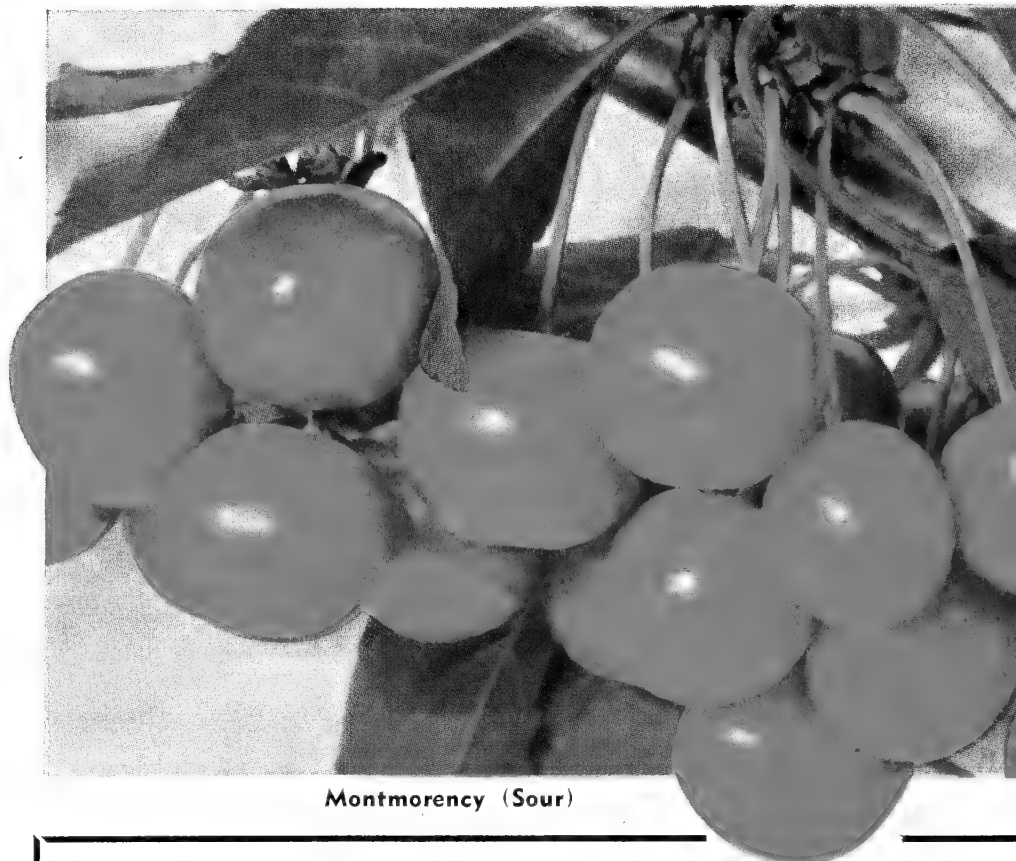
The following varieties are compatible with Virginia Crab understock:

- | | |
|---------------------|--------------------|
| Blood Red Delicious | Maiden Blush |
| Black Ben | Ruby Red Rome |
| Dark Red Delicious | Turley |
| Grimes Golden | Yellow Delicious |
| King David | Yellow Transparent |

FAMOUS NEOSHO CHERRIES!

EASY TO RAISE—GROW RAPIDLY

*The
World's
Finest
Cherries!*



Montmorency (Sour)

PRICES

Early Richmond, Montmorency

	Each	5 Rate	25 Rate
2-3 ft.	\$1.00	\$0.95	\$0.90
7/16 in., 3-3½ ft..	1.20	1.15	1.10
9/16 in., 3½-4 ft..	1.50	1.40	1.35
Super X, 11/16 in., 4-5 ft.	1.75	1.65	

EARLY RICHMOND (Sour)

The favorite early bright red May Sour Cherry. Fruit is medium size. A good canner. Tree is medium size. Ripens about a week earlier than Montmorency.

MONTMORENCY (Sour)

The most widely planted Cherry. Productive and a regular bearer. Colors early before ripe—a distinct advantage for shipping. The fruit is roundish, plump and a beautiful glowing red. It hangs in clusters, making picking easy. The fruit does not crack or rot, even in very hot weather. It hangs on without dropping after it is dead ripe. The flesh is rich, sprightly and pleasant. A good shipper and a good canner. Does not mash down in the box.

Black Tartarian (Sweet)



SWEET CHERRY PRICES

	Each	5 Rate
2-3 ft.	\$1.00	\$0.95
3-4 ft.	1.50	1.40
4-5 ft.	1.75	1.65
5-7 ft.	1.95	1.85

BLACK TARTARIAN

Most widely planted Sweet Cherry east of the Mississippi. Beautiful lustrous, purplish black when ripe. Medium size for Sweet Cherry, very good quality. The tree is a very large, vigorous, upright grower. Very productive and regular bearer. Early.

NEOSHO NAPOLEON

This is a select strain of yellow Sweet Cherry which has produced a crop 7 straight years here in Neosho. The best yellow Sweet Cherry. Mellow, sweet flavor. A fancy dessert variety, but is also a good keeper and bearer.

LATE DUKE

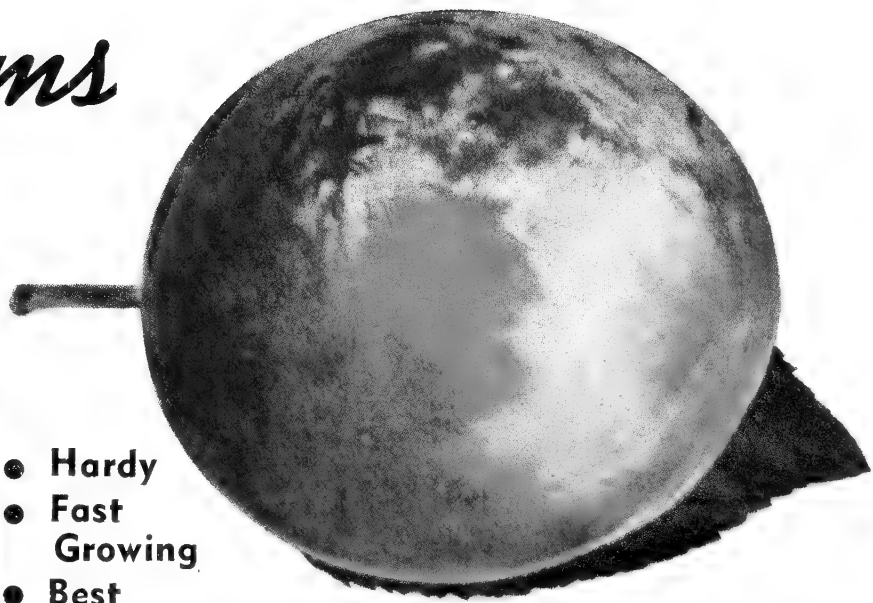
A large, heart-shaped, dark red, semi-sweet variety with hardy quality that succeeds well here in the Middle West.

SENECA

Resembles Black Tartarian, but ripens 2 weeks earlier; rich sweet flavor.

A Sweet Cherry planted alone is not likely to bear fruit, because it is self-sterile. Plant a Black Tartarian with any other Sweet Cherry.

JUMBO *Plums*



- Hardy
- Fast Growing
- Best Varieties

HANSEN HYBRIDS

Hansen Hybrid Plums are dwarf growing, extra hardy trees that come into bearing the first year after planting. Fruits in great profusion.

SAPA—BEARS FIRST YEAR. (Hansen Hybrid.) A large size purple Hansen Hybrid, with purple flesh full of rich juice of fine flavor. Bears heavy crops annually and begins fruiting the first year after planting. Succeeds everywhere, ripens middle of July. Fine for canning.

HANSKA — The Big Freestone. (Apricot Plum.) Big, reddish

purple Plum with sweet apricot perfumed yellow meat. Freestone. Bears right away after planting. Ripens in August.

OPATA. Bears often the year after planting. Reddish purple skin, yellow inside. Limbs are almost entirely hidden by clusters of fruit—so heavy you must watch you don't break the limbs. Grows on any soil. Ripens 10th of July.

AMERICA (Improved Gold)

The best of Burbank's American Hybrids; unusually attractive golden yellow with red cheek. Bears at an early age. Enormously productive of high quality, sweet, juicy, solid meated large Plums. Phenomenally free from rot; tree large, vigorous, extremely hardy. Ripens July 20th.

(Plum Varieties Continued on Page 14.)

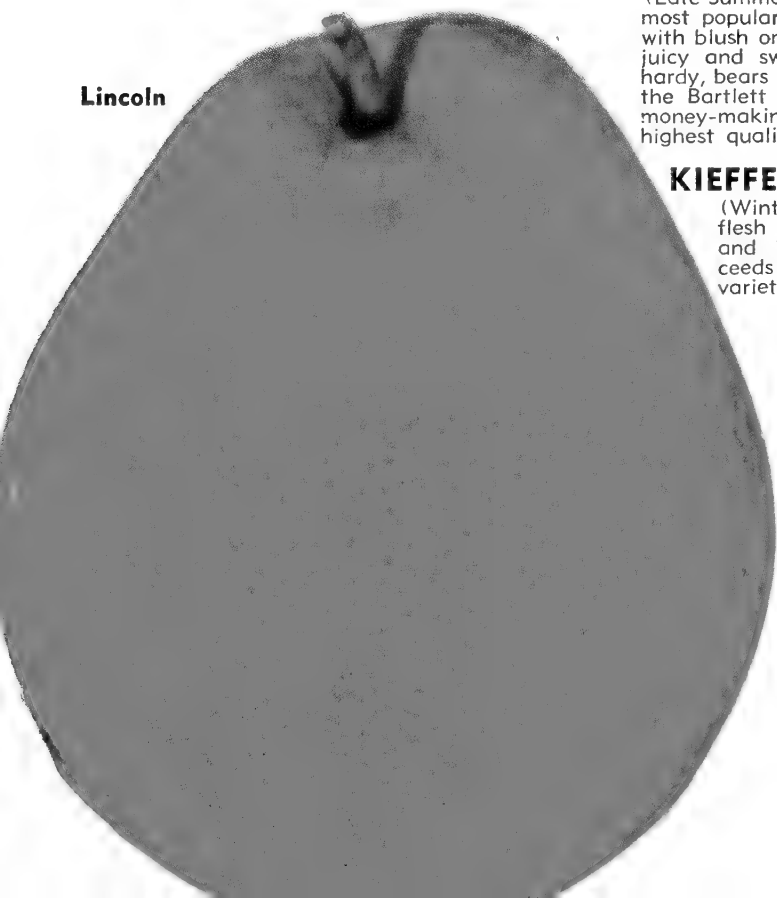
PLUM and PEAR PRICES			
	Each	5 Rate	25 Rate
2-3 ft.	\$1.00	\$0.95	\$0.90
3-4 ft.	1.20	1.15	1.10
9/16 in., 4-5 ft.	1.50	1.40	1.35
Super X, 11/16 in., 5-6 ft.	1.75	1.65	

NEOSHO *Famous Quality* PEARS

LINCOLN

(Summer.) Large, yellow; quality good to very good; similar to Bartlett but more resistant to blight. Succeeds farther south than Bartlett can be grown. It has stood the severest tests of intense, moist summer heat and low altitude of the climate of Lincoln, Illinois, where it was originated by W. E. Jones. Comes into early bearing and bears heavy crops annually; very hardy. Blooms midseason.

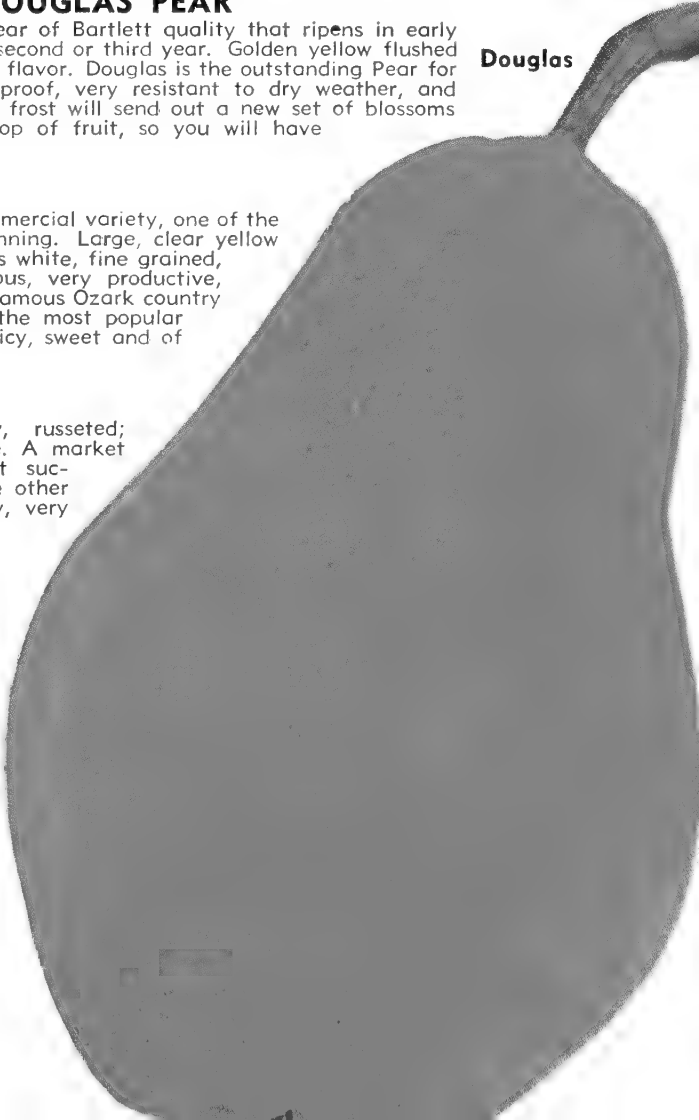
Lincoln



POPULAR, HARDY, DOUGLAS PEAR

Douglas is a large, handsome Pear of Bartlett quality that ripens in early fall and comes into bearing the second or third year. Golden yellow flushed with pink, tender, juicy, excellent flavor. Douglas is the outstanding Pear for the Central West. It is blight proof, very resistant to dry weather, and if your bloom is killed by spring frost will send out a new set of blossoms on the new wood and set a crop of fruit, so you will have Pears every year on Douglas.

Douglas



BARTLETT

(Late Summer.) The leading commercial variety, one of the most popular for dessert and canning. Large, clear yellow with blush on sunny side. Flesh is white, fine grained, juicy and sweet. Tree is vigorous, very productive, hardy, bears young. Here in the famous Ozark country the Bartlett has proved one of the most popular money-making varieties. Very juicy, sweet and of highest quality.

KIEFFER

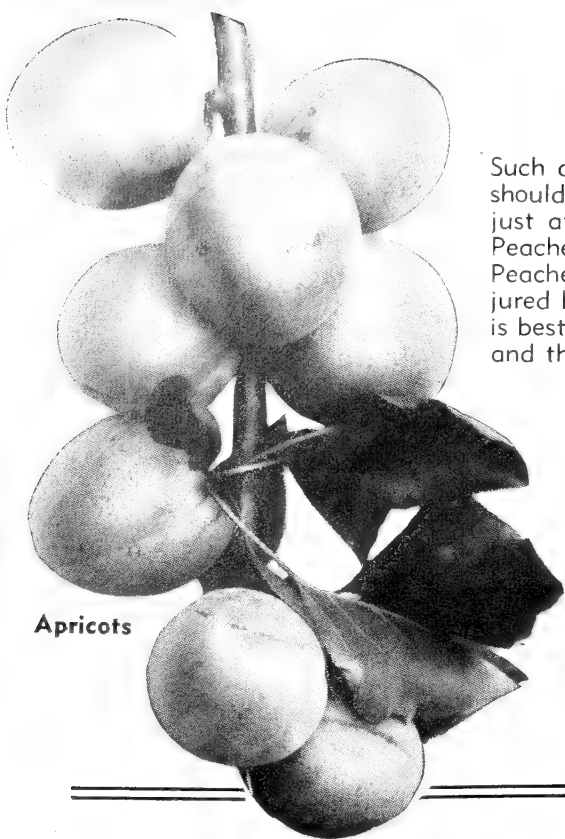
(Winter.) Large, yellow, russeted; flesh white, rather coarse. A market and kitchen variety that succeeds farther south where other varieties fail. Tree hardy, very vigorous, resistant to blight. Blooms early.

SECKEL

(Sugar Pear) As sweet a flavor as its name suggests. Good right off the tree to eat out of hand, or for dessert or canning. Russet coated. Ripens in August.

PEAR PRICES
same as Plum

See Schedule
above



Apricots

APRICOTS

Such delightful luscious fruit as the Apricot really should be planted more than it is, since it ripens just after the early Cherries, and before the best Peaches. Apricots will stand more winter cold than Peaches, although the bloom is more apt to be injured by spring frost. A northern or eastern slope is best so the opening of the buds will be retarded and the danger of frost damage lessened.



NECTARINES

A cross between Peach and Plum. Has smooth skin like a Plum and seed like a Peach. Flesh and flavor of both Plum and Peach. Quality unusually pleasing. Color beautiful bright red; size about same as medium size Peach. Freestone. Bears after second year.

Nectarine and Apricot Prices

	Each	5 Rate	25 Rate
2-3 ft.	\$1.00	\$0.95	
3-4 ft.	1.20	1.15	1.10
9/16 in., 4-5 ft.	1.50	1.40	1.35
Super X, 11/16 in., 5-6 ft.	1.75	1.65	

Plum Prices

	Each	5 Rate	25 Rate
2-3 ft.	\$1.00	\$0.95	\$0.90
3-4 ft.	1.20	1.15	1.10
9/16 in., 4-5 ft.	1.50	1.40	1.35
Super X, 11/16 in., 5-6 ft.	1.75	1.65	

Plum Varieties—Continued from page 13

ABUNDANCE. (Early.) A pinkish red Plum. Medium size. Flesh is yellow, sweet, aromatic. Tree is a vigorous grower.

BRUCE. One of the heaviest producers. Ripens July 1st. Large, red, sweet, tender. Perfectly hardy.

BURBANK. (Midseason.) A dark red roundish Plum, good quality and shipper. The flesh is a deep yellow, firm, very juicy, aromatic and sweet.

ITALIAN PRUNE. (Late.) The largest, best and most widely grown of the Prunes. Rich purplish blue. Large size; flesh yellow, aromatic, juicy and sweet.

MUNSON. A hybrid cross with America. Earliest, ripening last of June. Large, yellow, good quality, tender, juicy, sweet. Bears young, producing large crops.

PRESIDENT PLUM. The largest of all the Plums. A beautiful dark purplish black with a heavy bloom. Ripens late, 10th of September. A wonderful rich flavored freestone, solid flesh Plum. A fine, profitable market Plum, and splendid for home use as well.

WANETA. A Hansen Hybrid. Exceptionally hardy, withstanding extremely hot and dry weather. Often bears second year. Color purplish red, 2 inches in diameter.

PLUM JUNE BUDS

We have a limited supply of these small, thrifty, well-rooted June buds which we can furnish in the following varieties:

✓ Abundance	✓ Waneta
✓ America	✓ Italian Prune
✓ Sapa	✓ Nectarine

	5 Rate	25 Rate
18-24 in.	\$0.70	\$0.65
2- 3 ft.85	.80

The New KOREAN BUSH CHERRY

The new quick-bearing Cherry. Easy to grow; sure to produce; highly productive; good flavor. Hardy everywhere.

Perfectly hardy ornamental shrub with white blossoms followed by rich red fruit which is fine for making jam, jelly and pie. Plant two or more for pollination.

Heavy, well branched, 2 yr., 2 for \$1.98; select size, 2 for \$1.69.

Easy Payment Plan

There is NO RED TAPE to our Easy Time Payment Plan. Simply write for our Time Payment Blank which gives full details. Fill out blank and return to us with your order and deposit, you will receive shipment at the PROPER PLANTING TIME. You pay in TEN EQUAL MONTHLY PAYMENTS. Time Payment Plan limited to orders of \$25.00 or more. [14]



Peach Seedlings

For fence rows, windbreaks and home gardens.
Fast growing Peach trees grown from seed.

Ten 18-24 in. trees for \$1.98; 50 for \$ 7.95

Ten 2-3 ft. trees for \$2.50; 50 for \$ 9.95

Ten 3-4 ft. trees for \$3.50; 50 for \$13.95



Super X Trees—Fruit Early

ALL-SEASON PEACH SPECIAL No. 2

Fresh Peaches ripe from your own trees from July 1st to mid-August.

1 Golden Jubilee 1 Elberta 1 Red Bird
1 Champion 1 Hale-Haven

All five, 2-3 ft. trees, postpaid for \$2.29

Regular Value, \$3.25.

FREE — 1 Yellow Delicious Apple Tree — FREE



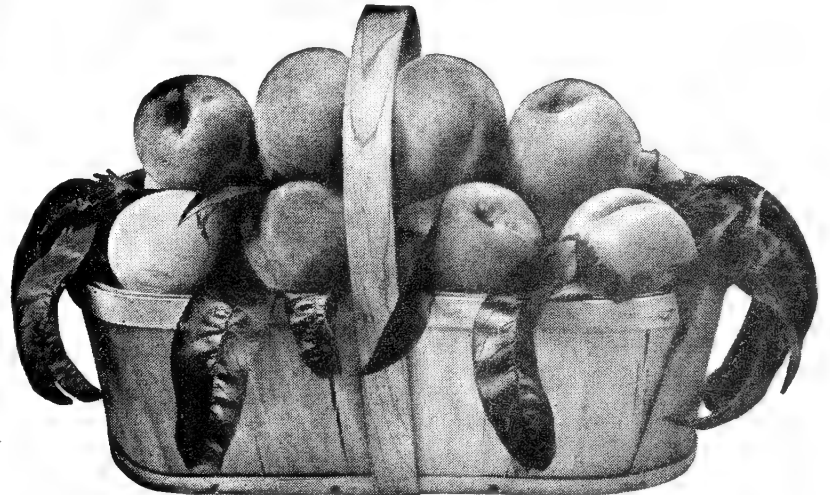
BERRY SPECIAL No. 12

3 Thornless Boysenberry
3 Black Pearl Raspberry
3 Eldorado Blackberry
3 Red Raspberry

All 12 plants postpaid for \$1.98

Regular Value, \$2.87

FREE with this offer: 1 Grape Vine, Delicious.
Large purple variety.



ALL-SEASON APPLE SPECIAL No. 5

Ripe fruit from June till October.

1 Yellow Transparent 1 Yellow Delicious
1 Dark Red Jonathan 1 Blood Red Delicious
1 Turley Winesap

Five 3-4 ft. trees for \$2.39

Regular Value, \$3.45.

FREE — 1 Early Richmond Cherry, 24 inch

ALL-SEASON STRAWBERRY SPECIAL No. 100

ORDER SPECIALS
BY NUMBER

Strawberries



25 Progressive
Everbearing

50 Blakemore

75 Plants

All Postpaid for

\$1.95

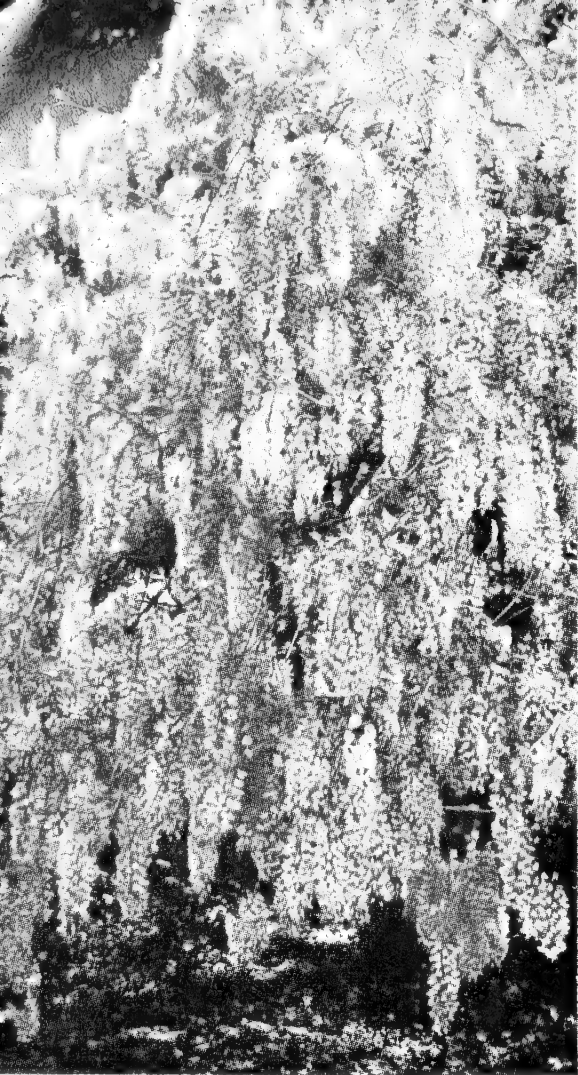
Reg. Value, \$2.95

2 Iris FREE with
this offer.

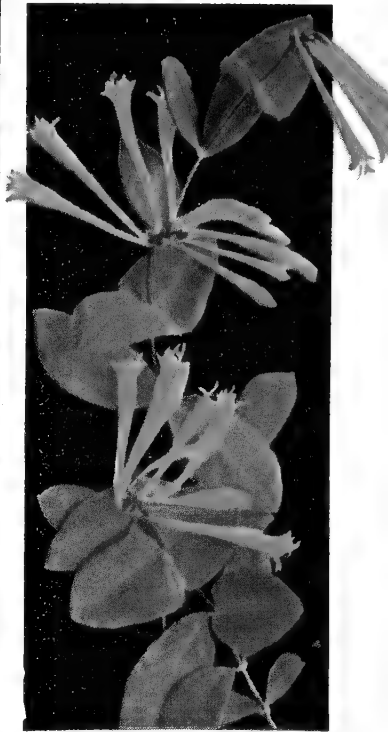
If weather conditions, or other factors over which we have no control, should cause the loss of a certain variety we have listed in one of the Special Offers, we reserve the privilege of substituting a variety of equal or better value. In such case, we ordinarily add something extra complimentary.



For Charm and Beauty



Silver Lace Vine
Each, \$1.00; 3 for \$2.75



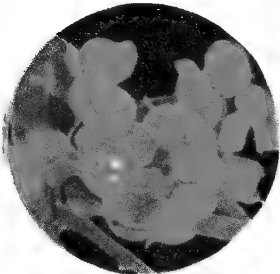
Scarlet Trumpet Honeysuckle
Each, 50c; 3 for \$1.35

TWO LOVELY WISTERIAS

PINK WISTERIA. This is the finest pink Wisteria we have ever seen. Clusters about 15-18 inches long. Slow to commence flowering but once started it blooms profusely. **Each, \$3.00.**

DOUBLE VIOLET WISTERIA. The only double Wisteria known in this country, and has the darkest colored flowers of all. They are exactly like dark-colored purple Violets borne in clusters about 15-18 inches long. Very free bloomer. Equally as desirable and beautiful as Pink Wisteria here illustrated. **Each, \$3.00.**

Pink Wisteria—Each \$3.00



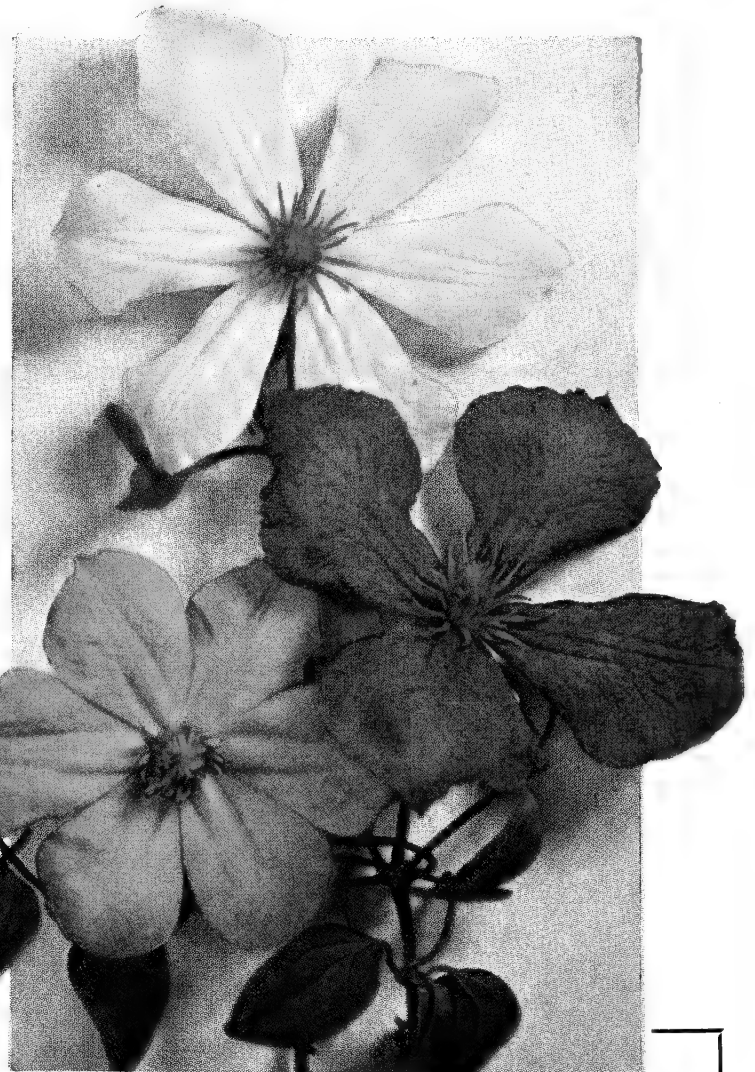
Bittersweet
Each 45c
3 for \$1.25



Evergreen Honeysuckle
Each 45c
3 for \$1.25



←
Boston Ivy
Each 75c
3 for \$1.95



Large Flowering

HYBRID

Clematis

Large Flowering Clematis

BARON VEILLARD. Lovely large flowering, free blooming pink.

JACKMANI. The popular purple variety with large purple-blue flowers.

MME. ANDRE. Large purplish crimson flowers.

RAMONA. Beautiful sky-blue flowers; one of the best. **\$1.25 each; 3 for \$3.50.**

NEOSHO VINES *are Leaders*

BITTERSWEET. Clusters of orange-scarlet berries; when dried make lovely winter bouquets. Plant two to pollenize.
Each 45c; 3 for \$1.25

CLEMATIS *Paniculata*. Fragrant white flowers in late summer and early fall.
Each 75c; 3 for \$1.95

EVERGREEN HONEYSUCKLE VINE. (Hall's.) Fragrant white and yellow flowers, and attractive blue-green foliage which remains most of the winter. Grows anywhere.
Each 45c; 3 for \$1.25

EVERBLOOMING HONEY-SUCKLE (Heckrotti). Can be grown as a shrub or vine. Bright rose-red flowers lined with gold. Large, blue-green foliage. Blooms all summer. Perfectly hardy.
Each 65c; 3 for \$1.75

IVY, American. A hardy rapid climber; colors bright crimson in fall.
Each 45c; 3 for \$1.25

Boston. The most popular plant for covering brick, stone or wood. Clings to smoothest surface. Colors beautifully in fall.
Each 75c; 3 for \$1.95

English. Semi-hardy evergreen vine; does best on north or east side.
Each 75c; 3 for \$1.95

SCARLET TRUMPET HONEY-SUCKLE. Same as above except it has orange-scarlet flowers.
Each 50c; 3 for \$1.35

SILVER LACE VINE. The Silver Lace Vine often grows 20 feet the first season. Thousands of fleecy white flowers in late summer. Hardy and easy to grow.
Each \$1.00; 3 for \$2.75

WISTARIA. Our plants are grafted and sure to bloom. Beautiful lilac-purple.
Each \$1.25; 3 for \$2.95

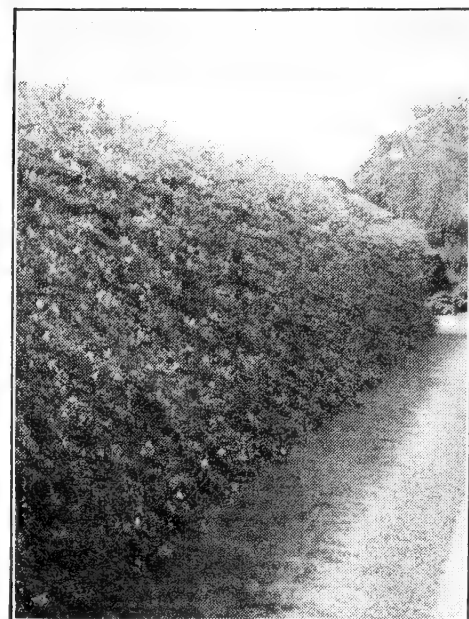


Red Leaf Barberry Hedge

For BOUNDARY, SCREEN or BARRIER

Hedges

That Beautify As They Serve



Tartarian Honeysuckle

Privet Hedges are formal type which you keep pruned to desired shape and height. To make a good compact hedge, they should be planted 8 to 9 inches apart and pruned back to within 2 inches of the ground when they are set. They should be sheared several times in the early part of the growing season to form a dense, compact hedge.

Why is the 2-3 ft. grade more desirable and of greater value than 12-18 inch, if you are going to cut them back when planting? Because the 12-18 inch grade will have 2 to 3 canes. The 2-3 ft. will have 5 to 9 canes and a much heavier root system, hence will make a compact hedge the first season.

The Shrubs we offer in Green and Red Barberry, Spirea Van Houttei, Spirea Thunbergi and Tartarian Honeysuckle are heavy, well-branched, field-grown plants which will give an immediate effect at planting time, and should not be confused with small, spindling 2-year seedlings from beds such as offered by most nurseries.

HARDY RUSSIAN PRIVET

(Amur River North). America's leading trimmed hedge plant; absolutely hardy. Can be trimmed to any desired height and always makes a dense, attractive hedge. Set plants 1 foot apart.

	Per 10	Per 25	Per 50	Per 100
12-18 in.	\$1.75	\$3.75	\$6.25	\$9.95
18-24 in.	2.45	4.75	7.25	11.95
2-3 ft.	2.95	5.25	8.95	15.95

CALIFORNIA PRIVET

Semi-evergreen, with thick shining foliage; a rapid grower. When planting cut most of the top to get a dense, bushy plant.

	Per 10	Per 25	Per 50	Per 100
12-18 in.	\$1.25	\$2.75	\$4.25	\$7.95
18-24 in.	1.75	3.75	6.25	9.95
2-3 ft.	2.45	4.45	7.95	11.95

IBOLIUM PRIVET

A cross between California and Ibotia Privet, with the dark, glossy foliage of the California and the hardiness of the Ibotia.

	Per 10	Per 25	Per 50	Per 100
12-18 in.	\$1.75	\$3.75	\$6.25	\$9.95
18-24 in.	2.45	4.75	7.25	11.95
2-3 ft.	2.95	5.25	8.95	15.95

THOMPSON'S PRIVET

A hardy variety noted for its dense, compact growth.

	Per 10	Per 25	Per 50	Per 100
12-18 in.	\$1.75	\$3.75	\$6.25	\$9.95
18-24 in.	2.45	4.75	7.25	11.95
2-3 ft.	2.95	5.25	8.95	15.95

BARBERRY, Red Leaf

The leaves are rich, lustrous, bronzy red. It naturally will make a dense, rounded hedge 3 feet tall, but can be trimmed to any desired height. Plant in full sunlight to develop its full color. Plant 1 foot apart.

	Per 25	Per 50	Per 100
12-15 in.	\$7.50	\$13.50	\$24.95
15-18 in.	9.95	18.75	34.95

BARBERRY, Green

A protective as well as ornamental hedge, as the small spines will keep out cats, dogs and chickens. Makes an attractive hedge either trimmed or untrimmed. Perfectly hardy. Red berries, and foliage colors beautifully in fall.

	Per 25	Per 50	Per 100
12-18 in.	\$5.45	\$ 8.95	\$15.95
18-24 in.	6.25	10.75	19.95
2-3 ft.	7.45	13.75	24.95

HONEYSUCKLE, Tartarian

One of the most satisfactory tall growing hedge plants. It is strong, vigorous and hardy and is one of the first shrubs to leaf out in the spring and retains its foliage well into the winter. The small, pink blossoms are followed by bright red fruits. Normally grows into a hedge 6 to 12 feet and will thrive in most any soil. Plant 3 feet apart.

	Per 10	Per 25
2-3 ft.	\$3.95	\$8.95
3-4 ft.	4.75	10.95

SPIREA THUNBERGI

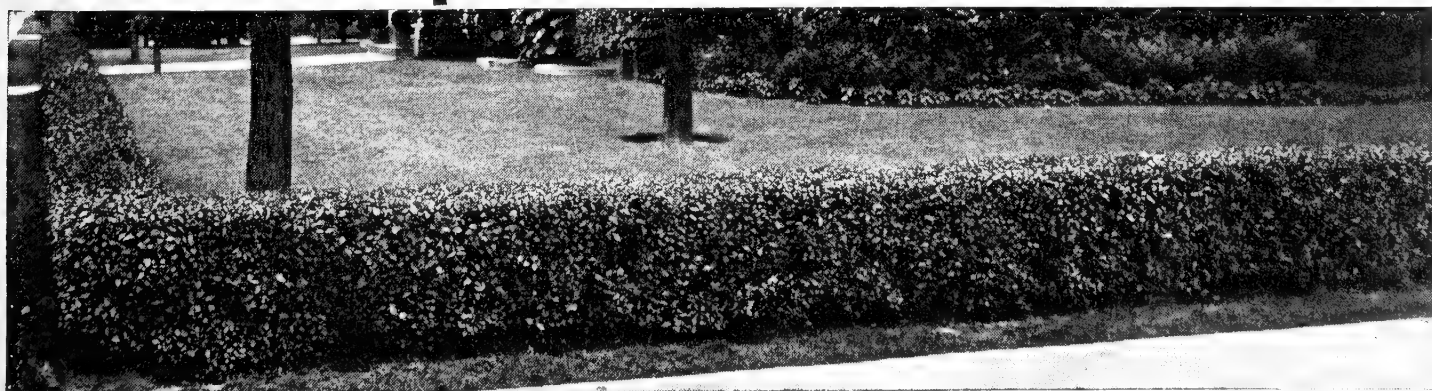
Makes an attractive hedge 4 to 6 feet tall. Its slender arching branches are completely covered with small white blossoms in early spring, and its narrow, light green foliage changes to shades of orange in the fall. Plant 2 feet apart.

	Per 10	Per 25
18-24 in.	\$3.25	\$7.45
2-3 ft.	4.75	10.95

SPIREA VAN HOUTTEI

(Bridal Wreath)
Makes a beautiful untrimmed hedge and is the most widely planted shrub in the United States.

	Per 25	Per 50	Per 100
12-18 in.	\$5.25	\$ 8.95	\$14.95
18-24 in.	5.95	10.75	17.95
2-3 ft.	7.45	12.95	22.95
3-4 ft.	10.95	17.95	33.95



Hardy
Russian
Amur
Privet



Neosha Everblooming ROSES

Super X Grade, Each \$1.00; 4 for \$3.75; 9 for \$7.95
 Select Grade, Each .85; 4 for 3.25; 9 for 6.75

We offer Roses in 2 sizes. All are strictly first class, hardy, field grown, budded plants that will bloom in the spring a few weeks after planting, and continue throughout the summer until frost. It is not unusual for one bush to have a dozen blooms on it at one time, and six to eight dozen blooms throughout the summer. With cut flowers selling from three to six dollars per dozen, think of the wonderful value you are getting in Neosha's husky, famous free-blooming Roses from \$1.00 to \$1.25 each. Roses are justly called "Queen of the Garden" as nothing else can surpass their fragrance, beauty, or produce more abundantly throughout the season. Plant in full sunlight 18 inches apart in rich, firm, well-drained soil. Plant early in spring, or in the late fall after the Roses have matured in good condition. If you plant in the fall, mound the earth up 6 or 8 inches above the crown of the bush for protection. This should be brought back level when Roses are ready to start growth in the spring.

We have a special group of customers who desire extra large, heavy plants and for these we make a special Super X Grade. These are as fine Roses as can be had from any source.

BRIARCLIFF. Large, pointed buds of brilliant rose-pink; fragrant and long lasting. Vigorous grower, fine long stems; a greatly improved Columbia.

BETTY UPRICHARD. Delicate salmon-pink with coppery carmine reverse; Verbena fragrance. A healthy, free-blooming type which makes it an outstanding showy garden Rose.

CONDESA DE SASTAGO. A beautiful two-toned coppery red inside, golden tint outside. Delicately perfumed, robust in growth. It glows with outstanding brilliance in any garden.

CHRISTOPHER STONE. Large semi-double vivid scarlet flowers overlaid with velvety crimson. Has delicious old rose scent. Vigorous upright habit, bright green foliage. Ranks as one of the very finest red Roses of recent introduction.

EDITH NELLIE PERKINS. Salmon-pink inside, rich copper-rose outside; large blooms. Early and continuous. Long pointed buds and long stems; fragrant.

EDITOR MCFARLAND. Clear, brilliant pink; perfectly formed, long lasting when cut, strong stems. One of the finest pink Roses ever introduced.

E. G. HILL. Massive blossoms of deep maroon; velvety on inside—very fragrant. Its brilliant color, extraordinary free bloom and lasting qualities make it a favorite everywhere.

ETOILE DE HOLLANDE. Bright red; large—very fragrant. Perfect buds opening into a glorious red flower of incomparable fragrance. Strong grower, free branching and healthy.

← Condesa de Sastago →

STAR Collection

8 Outstanding 8
ROSES
SUPER X GRADE
8 for \$6.95

ONE EACH
 Souer Therese
 Rouge Mallerin
 Pierre S. DuPont
 Etoile de Hollande
 Condesa
 Poinsettia
 K. A. Victoria

We Can Also Furnish This Collection
 in Select Grade
 8 for \$5.95

Etoile de Hollande

K. A. Victoria

Poinsettia

← Souer Therese →

**1000
BLOOM
Collection**

This collection has been especially selected for hardiness, drought resistance, easy to grow. Holds good foliage without spraying and produces a wealth of bloom the first year from June to frost.

2 Red Radiance 1 Two-Toned Pres. Hoover
 1 Pink Radiance 1 Shell-Pink, Mrs. Chas. Bell
 1 White K. A. Victoria

7 Super X Grade \$5.95
 Select Grade 4.95

→ Rouge Mallerin →



Climbing Dr. W. Van Fleet 95c each; 4 for \$3.25

HARDY CLIMBERS

of Unusual Beauty

SUPER X GRADE

Each 95c 4 for \$3.25

AMERICAN BEAUTY. A strong grower with large flowers of a very pleasing rose-pink color. Very good for cutting, and blooms are exquisitely colored and usually fragrant. One of the most popular Neosho Hardy Climbing Roses.

SILVER MOON. The creamy white buds are long and pointed and open into semi-double, white flowers with golden yellow stamens. An excellent regular monthly bloomer.

MARY WALLACE. The flowers are semi-double, a bright and clear rose-pink with salmon base. These are often 4 inches across, appearing intermittently throughout the season.

DR. W. VAN FLEET. Has long, pointed buds of rich flesh-pink. It is a hardy climber and a splendid variety for cutting. Blooms early and late, and thrives everywhere.

PAUL'S SCARLET. The most brilliant scarlet. Has semi-double flowers, freely produced. This variety is illustrated in natural color at right. Is a very hardy Rose and has strong climbing habit.

PLANT HEALTH

FOR HEALTHY ROSES

Kill Insects, Worms, Fungus NEOSHO All-Purpose Dust

Our own special formula. Kills eating insects, such as cutworms, bag worms and canker worms. Controls fungous diseases, such as mildew and black spot. Controls sucking insects, such as aphid and red spider.

Keeps your Shrubs, Roses, Evergreens and Perennials in healthy condition. Remember, an ounce of prevention is worth a pound of cure. Start your dusting when leaves appear and continue at regular intervals. Will adhere to foliage better if applied when foliage is damp. 1½ lbs., 75c; f. o. b. Neosho.

COMPLETE FOUNDATION PLANTING SPECIAL No. 16

Enough Shrubs to make a good Foundation Planting. These shrubs are chosen for continuation of bloom, color and proper heights.

LARGE GROWING—for Corners
2 Spirea Van Houttei 2 Persian Lilac

MEDIUM GROWING—for Space Between Windows, etc.
2 Beautyberry 2 Globe Flower
2 Lemoinei Mock Orange

LOW GROWERS
3 Crimson Spirea 3 Red Leaf Barberry

16 SHRUBS
LARGE SIZE \$7.45 MEDIUM SIZE \$6.45

All-Season Shrub Special No. 6

Flowering Shrubs which will give a continuation of bloom from spring until frost. One each of the following:

- 1 Forsythia or Golden Bell
- 1 Lemoinei Mock Orange
- 1 Honeysuckle, Tartarian
- 1 Crimson Spirea
- 1 Desmodium
- 1 Althea, or Rose of Sharon

Large Grade, 6 for \$2.45
Reg. value \$4.00.

Parcel Post Grade, 6 for \$1.75

[20]

SPECIAL

**50-Ft. Everblooming
Rose Hedge
\$11.95**

Either Red or Pink

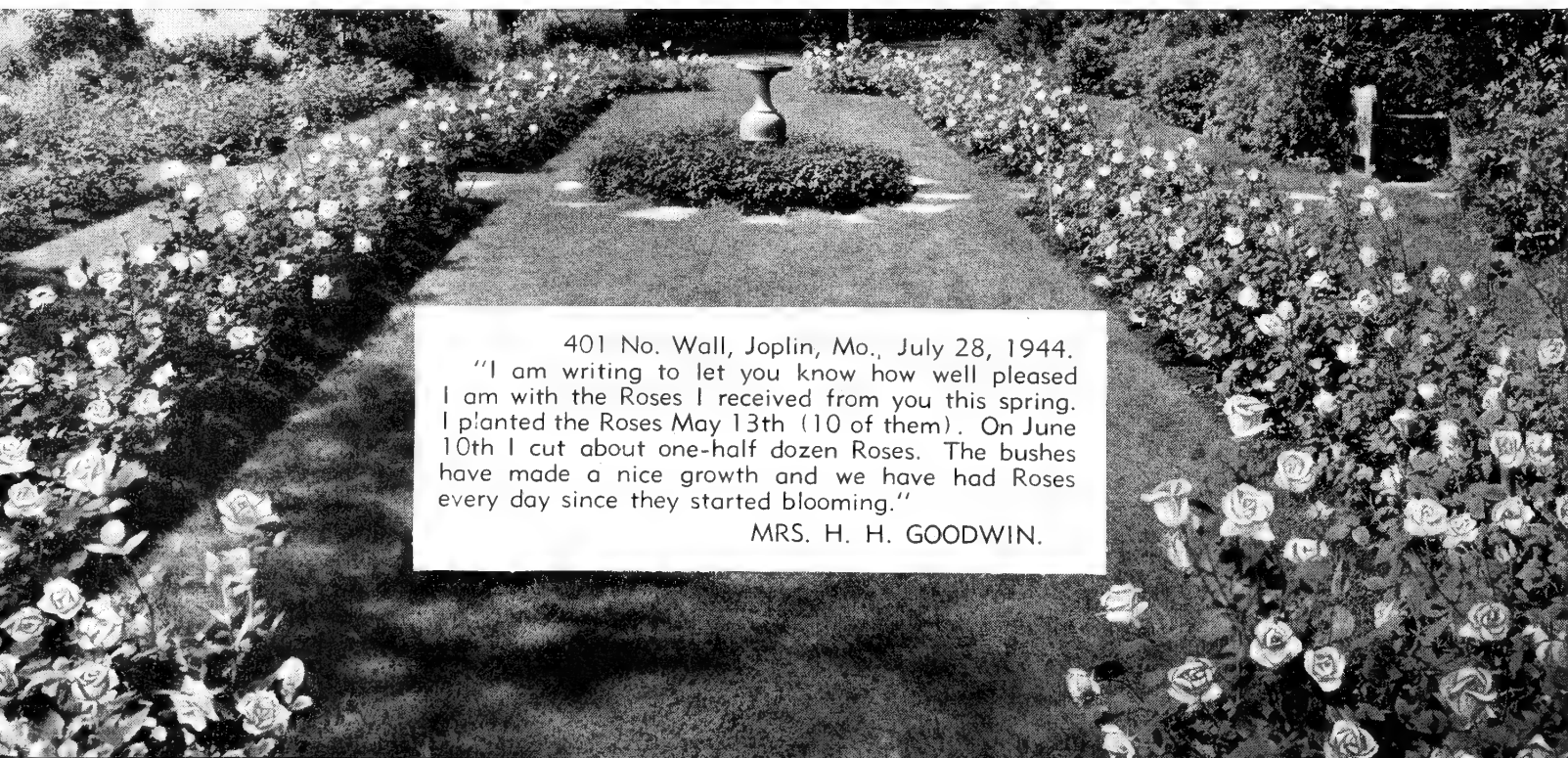
A beautiful everblooming hardy Rose hedge. Enough plants to plant 50 feet setting plants 30 inches apart. Deep green foliage and clusters of bright Roses from June until frost.

EVERBLOOMING SHRUB ROSE (Grootendorst)

Pink or Red

Hardy as an Oak; grows 4 to 6 feet tall, dark green foliage and clusters of either pink or bright red blossoms all summer. Can be used in shrub border, and also makes a beautiful flowering hedge.

No. 1 plants, each 75c



401 No. Wall, Joplin, Mo., July 28, 1944.
"I am writing to let you know how well pleased I am with the Roses I received from you this spring. I planted the Roses May 13th (10 of them). On June 10th I cut about one-half dozen Roses. The bushes have made a nice growth and we have had Roses every day since they started blooming."

MRS. H. H. GOODWIN.

Everblooming Climbers



Paul's Scarlet Climber—Each 95c; 4 for \$3.25

**SUPER X
GRADE**

Each . . \$1.00
4 for . . 3.75

CLIMBING PINK RADIANCE. A beautiful two-toned vivid pink; fragrant, monthly bloomer. Everblooming.

CLIMBING KAISERIN AUGUSTA VICTORIA. Soft pearly white, shading to light lemon in center. Everblooming.

CLIMBING RED RADIANCE. The same favorite in climbers

that it is in the bush Rose. Unusually thrifty grower of cerise-scarlet. Everblooming.

CLIMBING TALISMAN. Same as bush Rose, only in climbing form. Everblooming.

Polyantha Roses

SUPER X GRADE

Each \$0.95
4 for 3.25
9 for 6.75

THESE Neosho Monthly Bloomers are among the most popular large-flowering Polyantha Roses, all outstanding monthly bloomers and beautiful in color, with abundant fragrance that will fill the air in your garden and in your home.

Else Poulsen. Rose-pink.

Gloria Mundi. Orange-scarlet.

La Fayette. Light cherry.

Baby Ideal. Red.

Hardy as Spirea. Always in bloom. Require no spraying. All that they ask is a little cultivation. Plant these Roses by the dozens.



Monthly Blooming Climbing Red Radiance
\$1.00 each; 4 for \$3.75



Everblooming Shrub Rose, 75c each



Polyantha
Rose,
Baby Ideal
95c each;
4 for \$3.25



Polyantha Rose,
Else Poulsen
95c each;
4 for \$3.25

Flowering Trees and Shade Trees

ASH, Mountain. 20 feet. Orange-red berries and attractive fernlike foliage.

	Each		Each
4-5 ft.	\$1.75	6-8 ft.	\$3.00
5-6 ft.	2.50		

ASH, White. 60 feet. Bright green foliage and extremely hardy.

	Each		Each
5-6 ft.	\$1.25	8-10 ft.	\$2.25
6-8 ft.	1.75		

CRAB, Bechtel's Flowering. 10-15 feet. Double roselike pink blooms in spring.

	Each		Each
2-3 ft.	\$1.00	3-4 ft.	\$1.35

CRAB, Hopa Flowering. Rose-colored flowers followed by red fruits; attractive foliage.

	Each		Each
3-4 ft.	\$1.00	4-5 ft.	\$1.35

DOGWOOD, White Flowering. Large white blossoms in early spring. Foliage colors beautifully in fall.

	Each		Each
2-3 ft.	\$1.25	3-4 ft.	\$1.75

DOGWOOD, Red Flowering. Pink or red flowers form one of the most attractive flowering trees.

	Each
2-3 ft.	\$1.95
3-4 ft.	\$2.75

ELM, American. A vigorous native tree; tall and spreading grower.

	Each
4- 5 ft.	\$0.90
5- 6 ft.	1.25
6- 8 ft.	1.50
8-10 ft.	2.00

ELM, Chinese. The fastest growing shade tree, small leaves; hardy.

	Each	3 For
4- 5 ft.	\$0.50	\$1.35
5- 6 ft.75	1.95
6- 8 ft.	1.00	2.75
8-10 ft.	1.75	4.75
10-12 ft.	2.50	6.95



Neosho New Improved Budded Chinese Elm
6-8 ft., \$1.35

MAPLE, Norway. A large, handsome round-headed hard Maple with deep, rich green foliage turning yellow in fall.

	Each
5- 6 ft.	\$1.60
6- 8 ft.	2.25
8-10 ft.	3.25

MAPLE, Sugar. One of the best trees; although a slow grower its long life, compact shape and beautiful fall coloring of foliage makes it quite desirable.

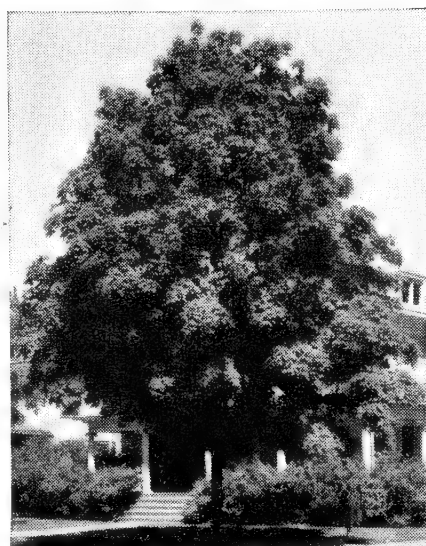
	Each
4-5 ft.	\$1.25
5-6 ft.	1.75
6-8 ft.	2.25

MIMOSA. (Silk Tree.) A rapid grower, spreading branches, low flat-topped head, feathery foliage, pink flowers in large heads for several weeks.

	Each
2-3 ft.	\$1.00
3-4 ft.	1.25
4-5 ft.	1.75

PLUM, Red Leaf. A handsome, upright small tree with small pale pink flowers and purple foliage.

	Each
2-3 ft.	\$0.95
3-4 ft.	1.25



Norway Maple
6-8 ft., \$2.25

NEOSHO ELM, Chinese. (Budded.) This is a select strain of Chinese Elm which we bud to get uniform habit of growth.

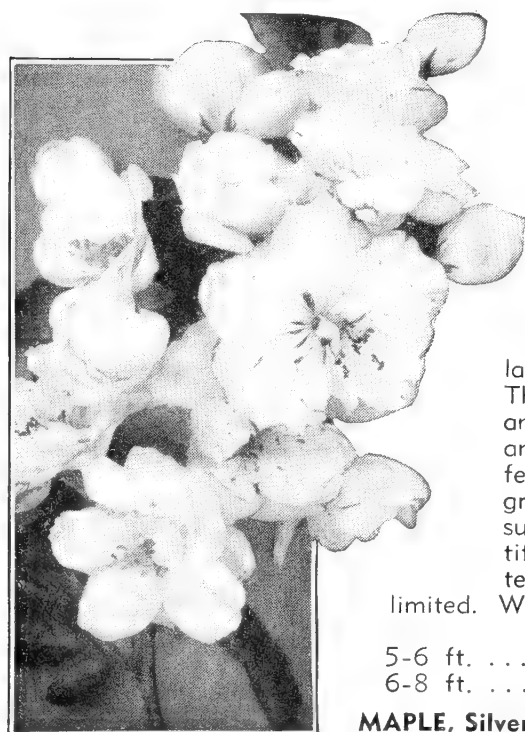
	Each
5- 6 ft.	\$1.00
6- 8 ft.	1.35
8-10 ft.	1.95
10-12 ft.	2.75

NEOSHO BROADLEAF CHINESE ELM. The fastest growing tree in America; hardy, drought resistant, beautiful. A sport of Chinese Elm discovered in our nursery row and from which we have propagated the last 8 years. Its leaves are large and dark green. The bark is smooth and branches are straight and strong. Will stand high wind, dry summers and cold winters, and still grow from 8 to 14 feet in 1 year. The demand for this tree is so great we have never been able to build up a surplus stock, so if you want some of the beautiful, permanent, quick growing trees, you'd better place your order at once as our supply is limited. We can offer them in the following sizes:

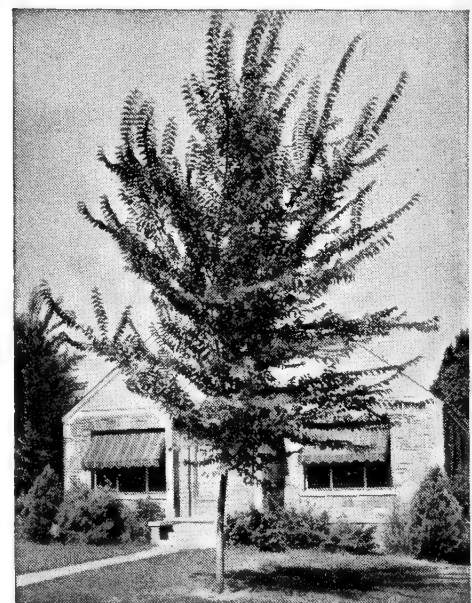
	Each		Each
5-6 ft.	\$1.25	8-10 ft.	\$2.25
6-8 ft.	1.75	10-12 ft.	2.95

MAPLE, Silver. A quick grower with light green leaves, silver on under side.

	Each		Each
5-6 ft.	\$1.00	8-10 ft.	\$1.95
6-8 ft.	1.49	10-12 ft.	2.50

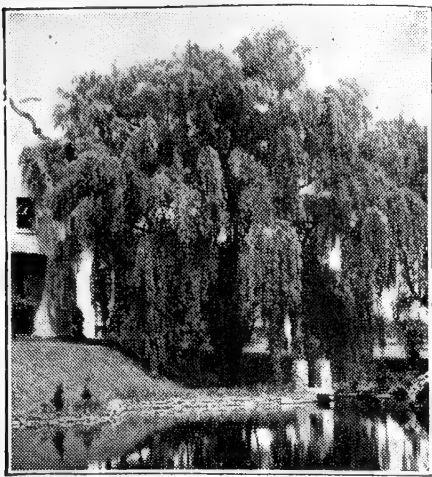


**Bechtel's
Flowering Crab**
3-4 ft., \$1.35



Broad-Leaf Chinese Elm
6-8 ft., \$1.75
Our Own Select Strain
Exclusive with Neosho

SHADE TREES—cont'd



Weeping Willow
6-8 ft., \$1.50

OAK, Pin. The fastest growing Oak. Glossy foliage and symmetrical habit of growth. Very desirable. Each

4-5 ft.	\$1.50
5-6 ft.	1.95
6-8 ft.	2.95

OAK, Red. The best all-around Oak. Grows to 80 feet and has handsome broad leaves, giving splendid shade, turning a rich purplish crimson in fall. A vigorous grower, quickly developing a broad, rounded head. Grows and thrives anywhere. Each

5-6 ft.	\$1.95
6-8 ft.	2.95

POPLAR, Lombardy. Tall, slender tree of rapid growth. Each 5 For

3- 4 ft.	\$0.35	\$1.49
4- 5 ft.45	1.98
5- 6 ft.60	2.49
6- 8 ft.75	3.19
8-10 ft.	1.00	4.49

POPLAR, Silver Leaf. A new type Popular much longer lived than ordinary Lombardy. Has delightful silver-grey bark with leaves which are green on top and silver beneath. Extremely hardy and fast growing. Our supply is limited.

	Each
3-4 ft.	\$0.75
4-5 ft.	1.00
5-6 ft.	1.50

REDBUD. One of the first trees to bloom in spring with reddish pink blossoms before leaves appear.

	Each
4-5 ft.	\$1.00
5-6 ft.	1.50
6-8 ft.	1.95



White Flowering Dogwood
3-4 ft., \$1.75

SYCAMORE. A rapid grower; picturesque in winter with its white bark. Each

6- 8 ft.	\$1.75
8-10 ft.	2.50
10-12 ft.	2.95

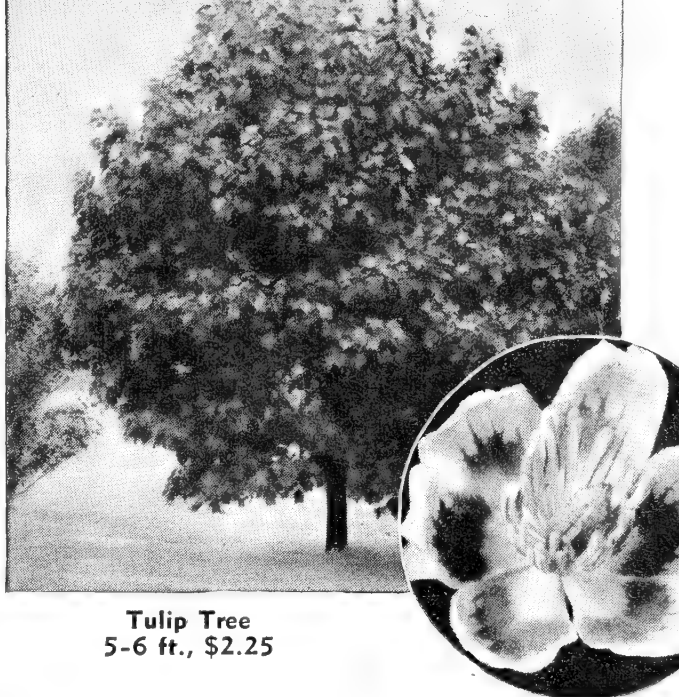
SWEET GUM. One of the most beautiful native trees which should be more widely planted. Shiny star-shaped Maple-like leaves that turn brilliant scarlet in the fall. It is exceedingly ornamental, useful and strikingly free from pests and diseases. Excellent for home and street planting. Each

5- 6 ft.	\$1.75
6- 8 ft.	2.25
8-10 ft.	3.25
10-12 ft.	5.00

Kansas City, Missouri
September 5, 1944

About ten years ago we planted one of the Neosho Nurseries Company Broadleaf Chinese Elm trees. It is now 15 inches in diameter and 10 feet higher than our 2½-story house. Nothing has ever affected it. No bugs, bag, web or worm. It has never been banded and yet the bugs stay away. It is really a beautiful tree.

H. A. ADAMS



Tulip Tree
5-6 ft., \$2.25

TULIP TREE. A large, rapid grower bearing Tulip-shaped yellowish blossoms. Large, dark green foliage. Each

4- 5 ft.	\$1.75
5- 6 ft.	2.25
6- 8 ft.	2.75
8-10 ft.	3.50

WILLOW, Permanent Wave. Something new. The tree with a "permanent wave"—branches and leaves are curled, waved and twisted. A startling novelty. It grows upright and weeps a little with the weight of the leaves, making a perfectly lovely, graceful tree. Each

4-5 ft.	\$1.00
5-6 ft.	1.50
6-8 ft.	2.00

UMBRELLA TREE SPECIAL

Grows naturally into a compact, round-headed tree, with large, dense leaves. Often planted in pairs on either side of walk or at each end of garden seat, etc. 2-3 yr. Each

Two 5-ft. trees for	\$2.75
---------------------------	--------

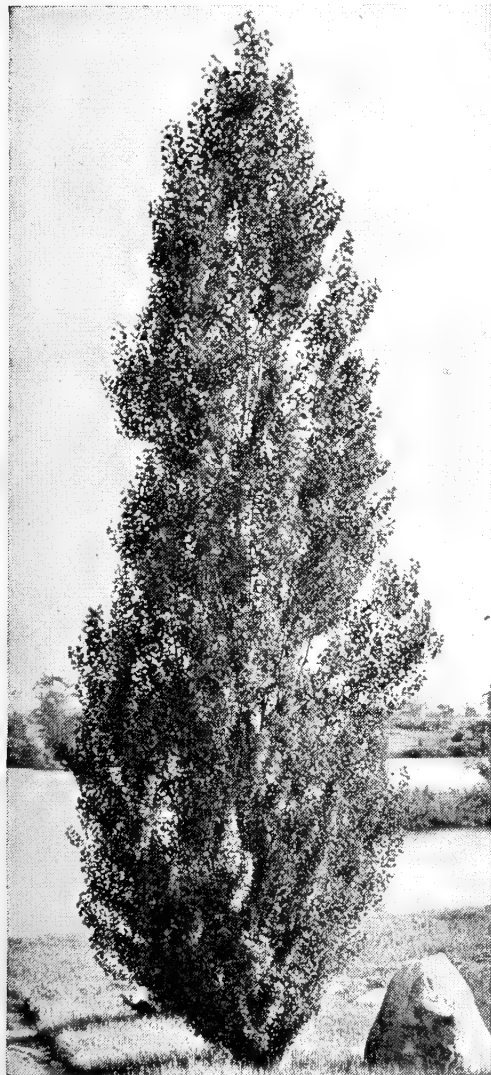
WILLOW, Weeping. Green bark. One of the most graceful of all trees. Each

5- 6 ft.	\$1.15
6- 8 ft.	1.50
8-10 ft.	2.25

WHITE FRINGE. A graceful small tree with drooping panicles of white fringy flowers; very fragrant. Each

2-3 ft.	\$1.00
--------------	--------

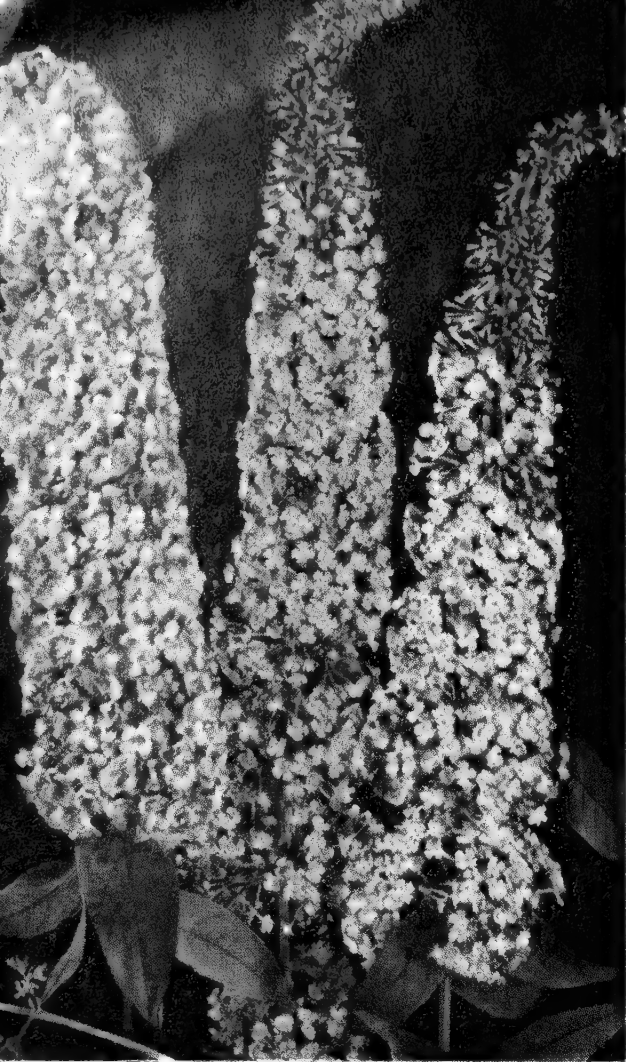
Sweet Gum—6-8 ft., \$2.25



Silver Leaf Poplar
4-5 ft., \$1.00



Outstanding and



Ile de France 75c **Flaming Violet** \$1.00 **Charming** 75c

BUTTERFLY BUSH

BUDDLEIA, Flaming Violet. The finest and most brilliant of all. Immense spikes of flaming violet intensely brilliant and sparkling with a fiery glow rarely seen in flowers. Flower trusses are 12 to 18 inches long and last a long time in bloom on the shrubs, as well as when cut and placed in water. Plant is vigorous, strong and upright. Flowers throughout the summer and autumn.

No. 1, each \$1.00

BUDDLEIA, Ile de France. While not as new as the above variety, it is still outstanding. Rich claret-purple spikes of bloom all summer. Fragrant.

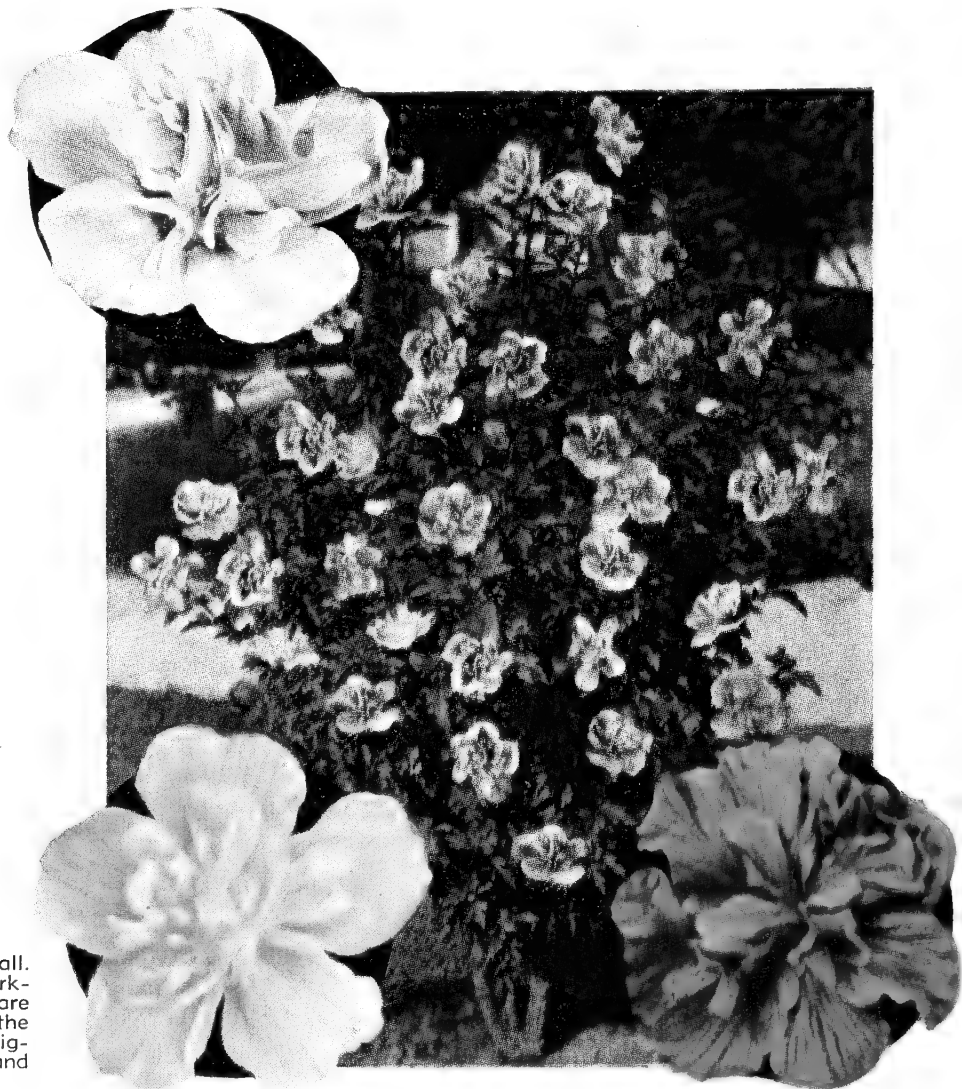
No. 1, each 75c

BUDDLEIA, Charming. Lovely long flower spikes of an exquisite shade of pink—a beauty in any location. Blooms all summer; fine for cutting.

No. 1, each 75c

BUDDLEIA Magnifica. Purple flower spikes all summer.

No. 1, each 65c



SHRUB ALTHEA - Rose of Sharon

An upright shrub of good, compact habit, particularly suited for screens or specimens in the shrub border. They bloom from July until frost and give color when most other shrubs have finished blooming. Be sure and include some of these to give you color in late summer and fall. We offer red, pink, lavender and white. All double flowers.

	Each
Parcel Post Size	\$0.45
Select Grade55
Super X Grade65

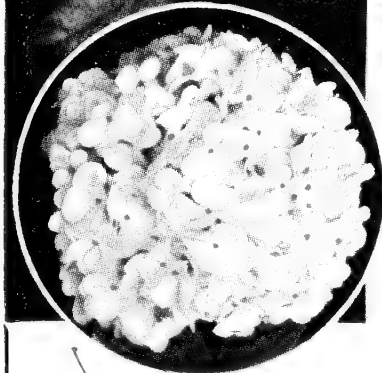
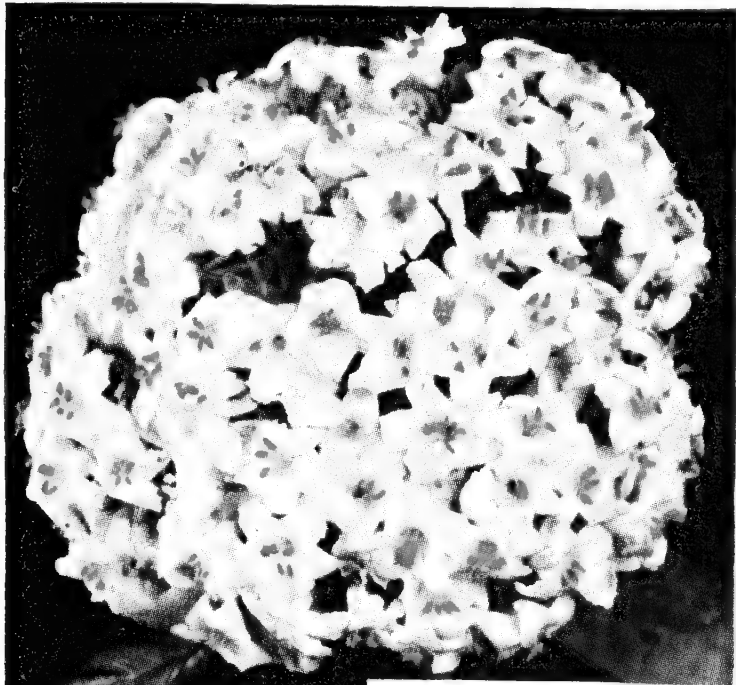


The Gorgeous Pink Hydrangea

HARDY PINK HYDRANGEA (Domotoi). This beautiful, hardy variety produces large globe-shaped clusters of flowers 12-15 in. in diameter, composed of immense semi-double flowers. Very frequently the main stem produces 3 or 4 additional smaller bloom clusters below the main flower head, creating a veritable bouquet. The flower is pure pink in alkaline soil but will change to a beautiful light blue in acid soil. Grows into a stout plant 2 or 3 feet in diameter and about the same height. No matter if all of last season's growth freezes back to the ground, the blooms are produced on new growth. One of the hardiest Hydrangeas which will grow in full sun or light shade.

Heavy No. 1 plants	\$2.50
HYDRANGEA, "Hills of Snow." Grows 4 to 6 feet. Stands shade; large heads of pure white flowers like snowballs in July-August.	
Parcel Post Size	\$0.60
Select Grade75
Super X Grade85
HYDRANGEA P. G. Immense cone-shaped white flower heads which change to pinkish bronze later.	
Parcel Post Size	\$0.60
Select Grade75
Super X Grade85

Different Shrubs



VIBURNUM "ENCHANTMENT"

(*Viburnum Dilatatum*)

This fine Viburnum grows to a height of 7 or 8 feet. The many valuable characteristics of this plant place it near the top. It is of neat, compact habit, bearing 5-inch clusters of white flowers in May followed later in summer or fall with clusters of rich scarlet berries. Does well in full sun or shade. Foliage colors bronze-red in fall. Puddled roots.

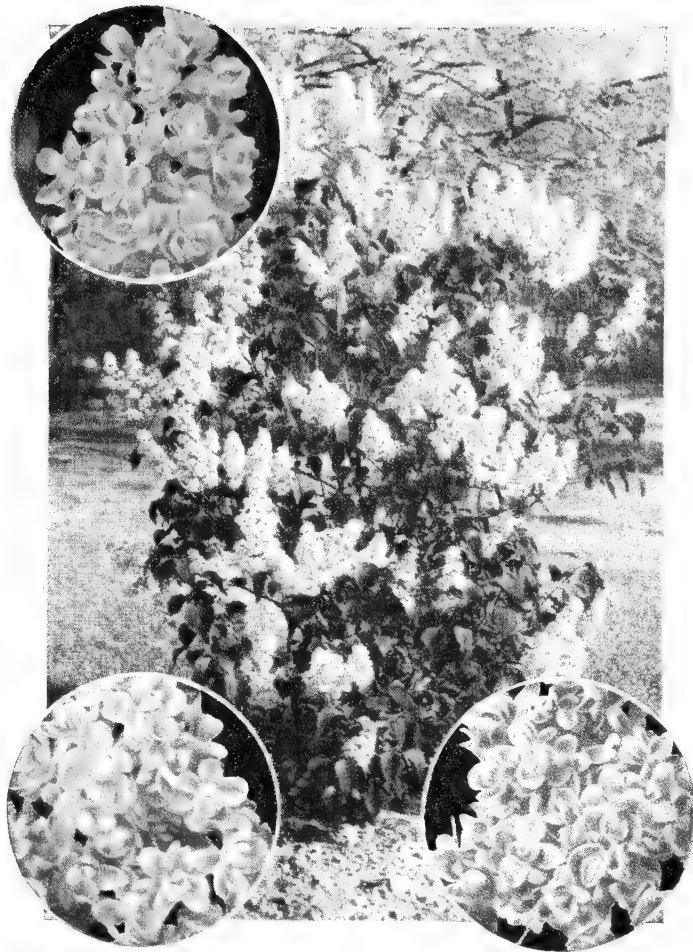
Select Grade\$1.95 Super X Extra Heavy Grade ..\$2.95

SNOWBALL. The old-fashioned favorite.

Parcel Post Size ..\$0.60 Select Grade ..\$0.75 Super X Grade ..\$0.85

CRANBERRY, High Bush. 8 to 10 feet. Large clusters of ornamental red berries in July which hang on into winter.

Parcel Post Size ..\$0.60 Select Grade ..\$0.75 Super X Grade ..\$0.85



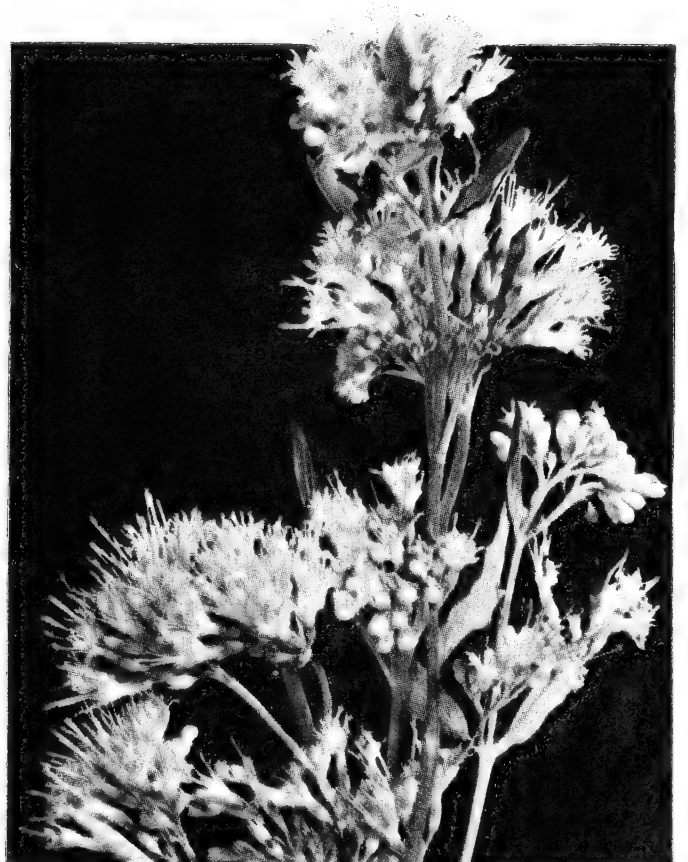
HYBRID BUDED LILACS

Immense trusses, exquisite colors and fragrance. Bloom second year. Perfectly hardy; do not sucker. We offer them in the following colors: White, Blue, Pink and Wine.

	Each
Parcel Post Size	\$0.95
Select Grade	1.35
Super X Grade	1.75

LILAC, Chinese Rothomogensis. A greatly improved Persian Lilac for foundation planting, of slender branches and attractive foliage which blooms in great profusion in the nursery row.

	Each
Parcel Post Size	\$0.60
Select Grade75
Super X Grade85



BLUE MIST (*Caryopteris*)

A charming low-growing, perfectly hardy shrub which blooms in profusion with clusters of powdery blue-fringed flowers from August 1st until frost. 2-yr., No. 1 plants, \$1.00.



DOGWOOD

RED FLOWERING. Pink or red flowers form one of the most attractive following trees. **Each**

2-3 ft.	\$1.95
3-4 ft.	2.75

WHITE FLOWERING. Large white blossoms in early spring. Foliage colors beautifully in fall. **Each**

2-3 ft.	\$1.25
3-4 ft.	1.75

*Beautify
Your Home
and
Increase
Its Value
with These
Outstanding
NEOSHO
SHRUBS*

Hardy FLOWERING SHRUBS

Bloom from spring until frost.

We offer shrubs in 3 sizes, all hardy, field-grown, first-class plants.

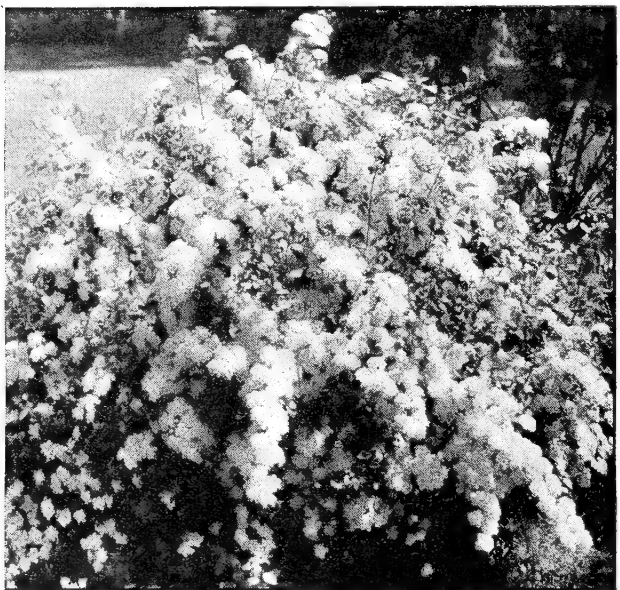
Parcel Post Grade: This grade is the size most Mail Order firms offer as 2-yr. field-grown at pre-paid parcel post prices.

Select Grade are heavier, select plants out of our 2- and 3-year-old blocks; well-rooted and heavier branched.

Super X Grade are for those who desire quick results and extra heavy plants. These are the largest, finest specimen plants obtainable.



Mock Orange, *Virginalis*—Super X, 75c



Spirea Van Houttei—Super X, 50c

The Spireas

CRIMSON (Anthony Waterer.) Dwarf shrub with bright red flowers a summer.

Parcel Post \$0.40 Select Grade \$0.55 Super X Grade \$0.65

KOREAN. Similar to Bridal Wreath, blooms 2 weeks later. Grows 6 to 8 feet.

Parcel Post \$0.40 Select Grade \$0.55 Super X Grade \$0.65

DWARF WHITE. Flat white blossoms all summer. Grows 2 to 3 feet.

Parcel Post \$0.40 Select Grade \$0.55 Super X Grade \$0.65

THUNBERGI. Graceful habit, white flowers in March-April. Grows 5 to 6 feet.

Parcel Post \$0.40 Select Grade \$0.55 Super X Grade \$0.65

FROEBELI. A low, compact shrub to 4 feet covered in May and June with clusters of bright pink flowers. Foliage maroon and green; perfectly hardy.

Parcel Post \$0.30 Select Grade \$0.40 Super X Grade \$0.50

SPIREA PRUNIFOLIA. 6 to 8 ft. Blossoms early with small double white blooms. Dark green foliage turning orange in fall.

Parcel Post \$0.40 Select Grade \$0.55 Super X Grade \$0.65

VAN HOUTTEI. This popular shrub needs no description. Most people know it as "Bridal Wreath."

Parcel Post \$0.30 Select Grade \$0.40 Super X Grade \$0.50

BARBERRY, Green. Grows in most any soil; sun or shade. Thorny branches; foliage red in fall, red berries. Good foundation shrub. Does not carry rust. Each \$0.30
Parcel Post Size\$0.30
Select Grade40
Super X Grade50

BARBERRY, Red Leaf. Brilliant red foliage all season. Each \$0.40
Parcel Post Size\$0.40
Select Grade55
Super X Grade65

BEAUTY BUSH. 6 to 8 ft. Graceful habit, lovely pink flowers in May. Each \$0.60
Parcel Post Size\$0.60
Select Grade75
Super X Grade85

BEAUTYBERRY. Small pink-tinted flowers followed by masses of violet-purple berries in late summer. An unusual shrub; perfectly hardy, grows to 6 feet. Each \$0.30
Parcel Post Size\$0.30
Select Grade40
Super X Grade50

BRILLIANT CHOKEBERRY. White flowers followed by shining red berries and fine fall color. Will endure shade. Grows 4 to 5 feet. Each \$0.30
Parcel Post Size\$0.30
Select Grade40
Super X Grade50

BUTTON BUSH. Good foliage; feathery, round white flowers June-Sept. Grows 6 to 8 feet. Each \$0.40
Parcel Post Size\$0.40
Select Grade55
Super X Grade85

CALYCANTHUS. Handsome maroon flowers, deliciously fragrant. Glossy foliage; stands shade. Each \$0.60
Parcel Post Size\$0.60
Select Grade75
Super X Grade85

CHENAULTI SNOWBERRY. A fine new shrub, graceful form, excellent foliage, attractive berries; perfectly hardy. Foliage is a rich green; berries red and white. Makes a dense bush 3 to 4 feet tall with a lacy fernlike appearance. Each \$0.30
Parcel Post Size\$0.30
Select Grade40
Super X Grade50

DESMODIUM. Purple flowers in late summer. Each \$0.40
Parcel Post Size\$0.40
Select Grade55
Super X Grade65

DEUTZIA, Pride of Rochester. Grows 10 to 12 feet, double white flowers tinged with pink. Each \$0.40
Parcel Post Size\$0.40
Select Grade55
Super X Grade65

GOLDEN ELDER. Grows 10 to 12 feet with attractive golden yellow foliage. Each \$0.40
Parcel Post Size\$0.40
Select Grade55
Super X Grade65

GLOBE FLOWER. A handsome shrub, 5 ft. or more tall, with shiny bright green leaves and early double orange-yellow flowers throughout the summer. Each \$0.60
Parcel Post Size\$0.60
Select Grade80

JETBEAD. A low, somewhat arching bush with pretty foliage and attractive white flowers in May followed by shiny black berries. Each \$0.40
Parcel Post Size\$0.40
Select Grade55
Super X Grade65

PEARL BUSH. Grows 8 to 10 feet. Glistening white flowers in April. Each \$0.60
Parcel Post Size\$0.60
Select Grade75
Super X Grade85

PRIVET, Fern Leaf (Regel's). Low growing, dense shrub with horizontal branches; one of the best for shade. Each \$0.40
Parcel Post Size\$0.40
Select Grade55
Super X Grade65

REDTWIG DOGWOOD. Creamy white flowers in spring followed by blue berries. Attractive red bark in winter. Each \$0.40
Parcel Post Size\$0.40
Select Grade55
Super X Grade65

SCARLET QUINCE. Bright scarlet blossoms in March-April. Each \$0.40
Parcel Post Size\$0.40
Select Grade55
Super X Grade65

TAMARISK, Africana. Fine, graceful foliage with showy pink trumpet-shaped flowers in May. Grows 10 to 12 feet. Each \$0.50
Parcel Post Size\$0.50
Select Grade65
Super X Grade75



Red Barberry—Super X, 65c

HONEYSUCKLE, Fragrant. Grows 6 to 8 feet. Fragrant white flowers in March; nearly evergreen. Each \$0.50
Parcel Post Size\$0.50
Select Grade65
Super X Grade75

HONEYSUCKLE, Tartarian. Grows 8 to 10 feet. Rosy pink flowers followed by red fruits. Grows 8-10 ft. Each \$0.30
Parcel Post Size\$0.30
Select Grade40
Super X Grade50

MOCK ORANGE, Double Virginal. Double Mock Orange and a gorgeous shrub. Erect branches with long, thick panicles of double white flowers, sweetly fragrant. Each \$0.50
Parcel Post Size\$0.50
Select Grade65
Super X Grade75

MOCK ORANGE, White Bouquet. Grows 6 to 8 feet. Completely covered with fragrant white blossoms in April. Each \$0.40
Parcel Post Size\$0.40
Select Grade55
Super X Grade65

MOCK ORANGE, Lemoini. Grows 5 to 6 feet. Dense racemes of fragrant white flowers. Each \$0.40
Parcel Post Size\$0.40
Select Grade55
Super X Grade65

MOCK ORANGE, Common. Fragrant white flowers in April; 8 to 10 feet. Each \$0.30
Parcel Post Size\$0.30
Select Grade40
Super X Grade50

PEARL BUSH. Grows 8 to 10 feet. Glistening white flowers in April. Each \$0.60
Parcel Post Size\$0.60
Select Grade75
Super X Grade85

PRIVET, Fern Leaf (Regel's). Low growing, dense shrub with horizontal branches; one of the best for shade. Each \$0.40
Parcel Post Size\$0.40
Select Grade55
Super X Grade65

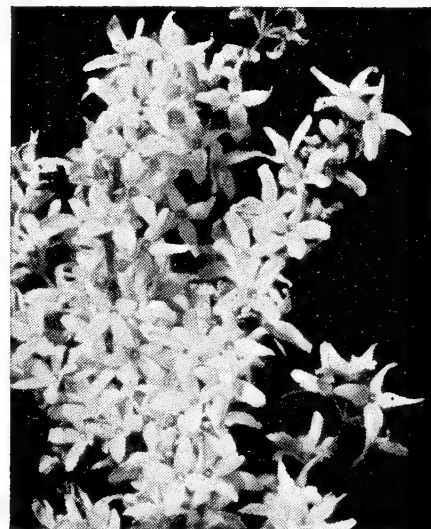
REDTWIG DOGWOOD. Creamy white flowers in spring followed by blue berries. Attractive red bark in winter. Each \$0.40
Parcel Post Size\$0.40
Select Grade55
Super X Grade65

SCARLET QUINCE. Bright scarlet blossoms in March-April. Each \$0.40
Parcel Post Size\$0.40
Select Grade55
Super X Grade65

TAMARISK, Africana. Fine, graceful foliage with showy pink trumpet-shaped flowers in May. Grows 10 to 12 feet. Each \$0.50
Parcel Post Size\$0.50
Select Grade65
Super X Grade75



Pearl Bush—Super X, 85c



Forsythia—Super X, 65c



RED ZABELLI HONEYSUCKLE

The new red Bush Honey-suckle. Bright red blossoms followed by red fruit. Grows 6 to 8 feet. Hardy, attractive foliage.

	Each
Parcel Post Size ..	\$0.50
Select Grade60
Super X Grade75



LACE FLOWER

(*Hydrangea Acuminata*)

A new outstanding low growing Hydrangea with beautiful lacy flat blooms, blue clusters in center surrounded by larger white shrub that will add charm to your garden. **Strong No. 1 plants, each \$2.50.**



WEIGELA, Bristol Ruby

Definitely superior to Eva Rathke in every respect. It makes a well-rounded specimen 6 to 7 feet tall with ruby and garnet-crimson flowers and attractive green foliage. Hardy and vigorous; the plant requires very little pruning because it flowers well from old wood; no die-back or uneven growth at any time.

	Each
2-3 ft.	\$1.50
3-4 ft.	2.35

WEIGELA, Abel Carriere. Grows 6 to 8 feet. Brilliant red trumpet-shaped blossoms in April.

	Each
Parcel Post Size	\$0.60
Select Grade75
Super X Grade85

WEIGELA, Eva Rathke. Grows 4 to 5 feet. Trumpet-shaped blossoms of rich ruby-red in April-May.

	Each
Parcel Post Size	\$0.50
Select Grade65
Super X Grade75

WEIGELA Rosea. Showy pink trumpet-shaped flowers in May.

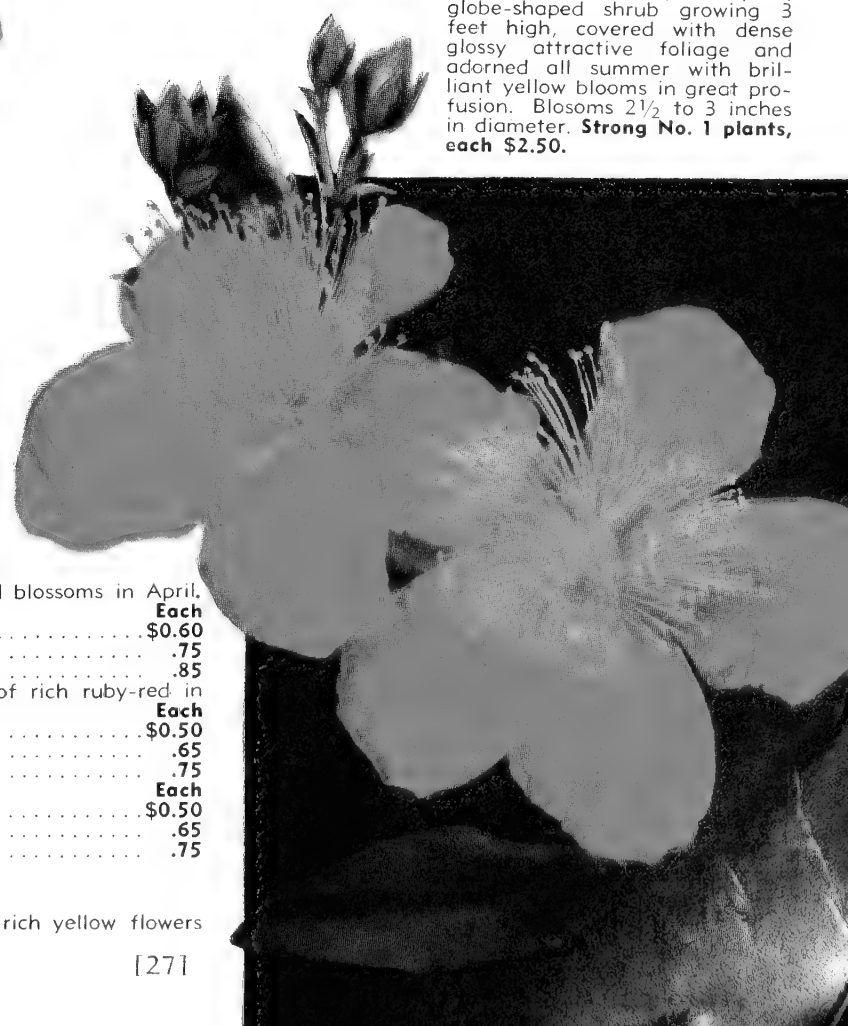
	Each
Parcel Post Size	\$0.50
Select Grade65
Super X Grade75

FORSYTHIA, Spectabilis

Hardest and most showy of all the Forsythias; very profuse bloomer; rich yellow flowers appearing before the foliage.

Sungold (Hypericum)

A hardy dwarf, compact, globe-shaped shrub growing 3 feet high, covered with dense glossy attractive foliage and adorned all summer with brilliant yellow blooms in great profusion. Blossoms 2 1/2 to 3 inches in diameter. **Strong No. 1 plants, each \$2.50.**

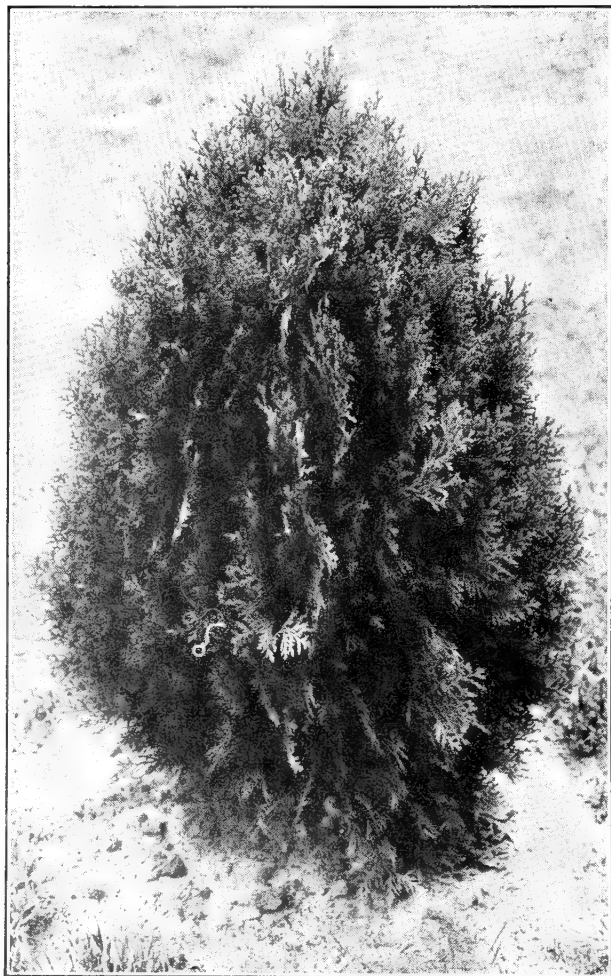
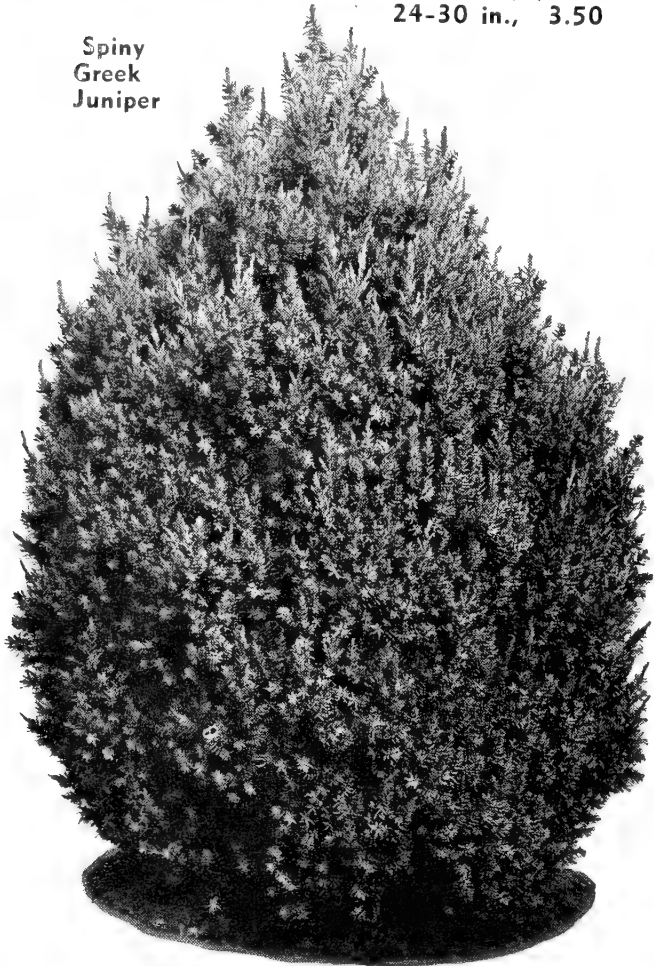


Neasha

EVERGREENS

Spiny
Greek
Juniper

Each
18-24 in., \$2.95
24-30 in., 3.50



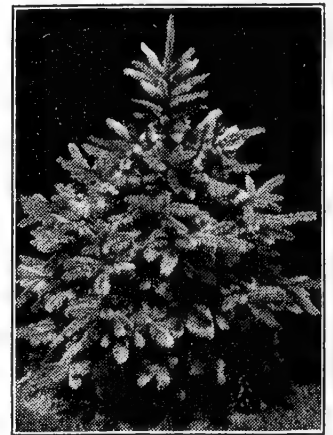
Berckmann's Golden Arbor-Vitae
15-18 in., \$2.50; 24-30 in., \$4.00
18-24 in., 3.25; 30-36 in., 5.00

ARBOR-VITAE

AMERICAN PYRAMIDAL	BERCKMANN'S GOLDEN.
Each	Each
2-3 ft. \$2.75	18-24 in. \$3.25
3-4 ft. 3.75	24-30 in. 4.00
4-5 ft. 4.75	30-36 in. 5.00
AMERICAN GLOBE.	BAKER'S PYRAMIDAL.
Each	(Improved.) Each
12-15 in. \$2.00	2-3 ft. \$3.25
15-18 in. 2.75	3-4 ft. 4.00
	4-5 ft. 5.00

JUNIPER

ANDORRA. Low, spreading, bluish green; winter color, purple.	Each	2-2½ ft. \$3.25
18-24 in. \$2.50	Each	
ASHFORDI. Slender pyramidal; bluish.	Each	
2-3 ft. \$2.35	3-4 ft. \$3.35	
CANNARTI. Pyramidal; rich deep green.	Each	
3-4 ft. \$4.50	5-6 ft. \$7.50	
4-5 ft. 5.50		
CHANDLER'S SCOPULORUM. Pyramidal silver.	Each	
3-4 ft. \$4.50	4-5 ft. \$5.50	
CHINESE. Pyramidal; retains its bright green color through entire winter.	Each	
3-4 ft. \$4.50	5-6 ft. \$7.50	
4-5 ft. 5.50		
DUNDEE. Slender pyramidal, deep green; winter color purple.	Each	
3-4 ft. \$4.50	4-5 ft. \$5.50	
ELEGANTISSIMA. Broad cone; green with yellow tips.	Each	
3-4 ft. \$4.00	5-6 ft. \$7.00	
4-5 ft. 5.00		
IRISH. Slender, pyramidal, bluish.	Each	
3-4 ft. \$3.75	4-5 ft. \$4.75	
KETELEERI.	Each	
3-4 ft. \$4.50	5-6 ft. \$7.50	
4-5 ft. 5.50		
MEYERI.	Each	
18-24 in. \$3.75	2-3 ft. \$5.00	
FAMOUS PFITZER. Spreading, bluish green.	Each	
15-18 in. \$1.75	2½-3 ft. \$3.25	
18-24 in. 2.25	3-3½ ft. 4.50	
2-2½ ft. 2.75	3½-4 ft. 5.50	
GOLD TIP PFITZER.	Each	
15-18 in. \$2.00	18-24 in. \$3.00	
SPINY GREEK. Cone, gray-blue; very compact.	Each	
18-24 in. \$2.95	2-2½ ft. \$3.50	
VIRGINIANA GLAUCA. Broad, pyramidal, silvery blue.	Each	
3-4 ft. \$4.50	4-5 ft. \$5.25	



Colorado Green Spruce
2-3 ft., \$3.50
3-4 ft., 4.95



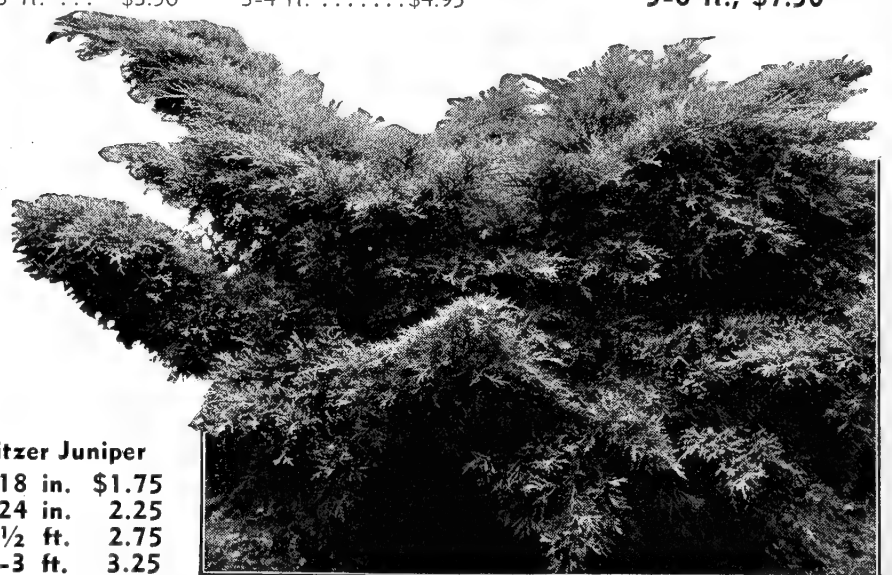
Chinese Pyramidal Juniper
3-4 ft., \$4.50; 4-5 ft., \$5.50
5-6 ft., \$7.50

NEOSHO PINES

AUSTRIAN. Long needles, dark green.	Each	Each
2-3 ft. \$2.95	4-5 ft. \$5.00	
3-4 ft. 4.00	5-6 ft. 7.00	
SCOTCH. Broad cone; green.	Each	Each
2-3 ft. \$2.95	4-5 ft. \$5.00	
3-4 ft. 4.00	5-6 ft. 7.00	
DWARF MUGHO.	Each	Each
12-15 in. \$2.25	15-18 in. \$3.00	

SPRUCE

COLORADO GREEN. Hardy, symmetrical, compact habit of growth.	Each	Each
2-3 ft. \$3.50	3-4 ft. \$4.95	

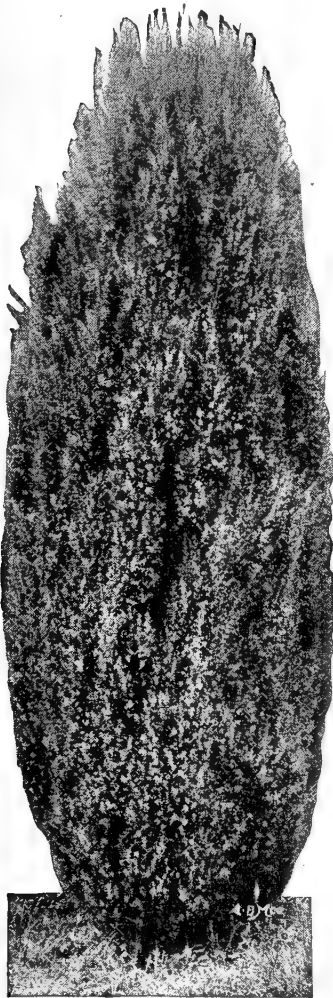


Pfitzer Juniper
15-18 in. \$1.75
18-24 in. 2.25
2-2½ ft. 2.75
2½-3 ft. 3.25

for Permanent Beauty

COLORADO BLUE SPRUCE

Each
2-3 ft. \$5.00
3-4 ft. 8.00



Irish Juniper
3-4 ft., \$3.75
4-5 ft., 4.75

Evergreens FOR MAIL ORDERS

To reduce express charges for Mail Order customers by eliminating weight of balled and burlapped specimens, which often carry 50 lbs. of dirt per plant, we offer specimen evergreen trees with roots puddled and individually wrapped in sphagnum moss. This is a most economical and successful method of speeding up delivery, and reducing transportation cost. Can be shipped by express at minimum cost. They transplant easily.

Have your ground ready for planting by the time trees arrive.

Plant as soon as possible after trees reach you. Do not expose roots to air. When you have everything ready to plant, unpack the shipment, putting roots of trees into a pail of water and soak thoroughly, then plant at once. Plant deeply and firmly, spreading the roots out in their natural position. Water well and keep ground cultivated about one inch deep around plant at all times.

We have the following varieties for Mail Orders:
PUDDLED ROOTS AND WRAPPED IN MOSS

Pfizer's—	Each	3 For
10-15 inch	\$0.85	\$2.35
15-18 inch	1.25	3.50
18-24 inch	1.65	4.50
Spiny Greek—		
8-12 inch85	2.35
12-15 inch	1.35	3.75
15-18 inch	1.75	4.95
Ashfordi Juniper—		
18-24 inch	1.00	2.75
2- 3 foot	1.50	4.15
3- 4 foot	2.25	5.95
American Pyramidal Arbor-Vitae—		
18-24 inch	1.25	3.50
2- 3 foot	1.95	5.50
Scotch Pine—		
2-3 foot	1.75	

BROAD-LEAF EVERGREENS

ABELIA GRANDIFLORA. Small white, trumpet-shaped blossoms all summer. Glossy foliage. Bareroot B&B

18-24 in. \$1.25 \$1.95

2- 3 ft. 1.75 2.50

EUONYMUS PATENS. Compact, with orange berries. Bareroot B&B

15-18 in. \$1.00 \$1.50

18-24 in. 1.35 1.85

2- 3 ft. 1.95 2.50

3- 4 ft. 2.35 3.00

NANDINA DOMESTICA. Foliage red in winter; clusters of red berries. Each

18-24 in. \$1.95

2-2½ ft. 2.50

2½-3 ft. 3.50

MAGNOLIA GLAUCA (Sweet Bay). Each

3-4 ft. \$5.00

4-5 ft. 6.50

5-6 ft. 8.50

MAGNOLIA SOULANGEANA NIGRA. Each

2-3 ft. \$4.75

SCARLET FIRETHORN (Pyracantha Coccinea.) A spiny, dense shrub rarely over 6 feet high; with small, glossy leaves and large clusters of scarlet fruits. Each

18-24 in. \$1.75

2- 3 ft. 2.50

COTONEASTER PRAECOX. Each

18-24 in. \$2.00

2- 3 ft. 2.75

KOREAN BOXWOOD. Each

12-15 in. \$2.00

15-18 in. 3.00

MAHONIA (Oregon Holly). A perfectly hardy, broadleaf evergreen with shiny Holly-like leaves that turn a maroon-red in fall and remains this attractive color all winter. Each

15-18 in. \$2.25

18-24 in. 3.00



American Pyramidal Arbor-Vitae
2-3 ft., \$2.75; 3-4 ft., \$3.75

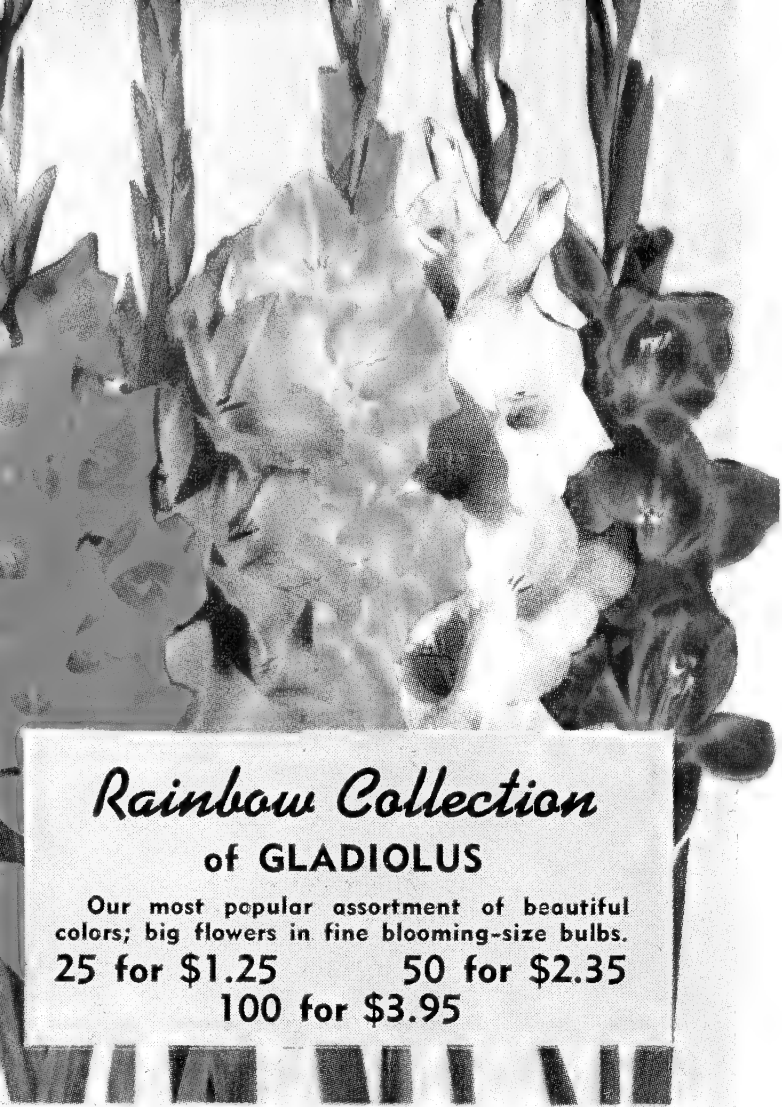
Mahonia (Oregon Holly)
15-18 in., B&B, \$2.25

Abelia Grandiflora

2-3 ft., B&B, \$2.50



Spring Bulbs



Rainbow Collection of GLADIOLUS

Our most popular assortment of beautiful colors; big flowers in fine blooming-size bulbs.
25 for \$1.25 50 for \$2.35
100 for \$3.95



DAHLIAS

GALLANT FOX. Vivid red with sturdy stems and excellent keeping qualities.

AYALON. Large flowers of clear yellow on long stems.

MRS. GEO. LE BOUTILLIER. A rich velvety carmine, giant in size and outstanding in all respects.

MARGARET WOODROW WILSON. Faces of petals creamy white with reverse pink.

MRS. IDA DE VER WARNER. Large flowers of deep mauve-pink; can be grown to a diameter of 11 inches.

JANE COWL. A large flower of warm buff and old gold blending to a bright salmon at center.

JERSEY'S BEAUTY. The most popular Dahlia; lavender-pink. Fine stem and foliage.

PRIDE OF STRATFORD. Bright orange shade with long, stout stems and good foliage.

Each 55c; 3 for \$1.45; 6 for \$2.45

DAHLIA COLLECTION

(Mixture of Decorative types.)

Here are 6 bulbs of assorted colors of decorative types most suitable for cut flower bouquets. Free bloomers and easy to grow.

6 for \$1.75

Lilies

May be planted fall or spring. Fall planting will bring earlier and better bloom the first season.

REGALE. America's most popular, hardy white Lily. Frequently will have 20 to 25 blooms in a cluster. Easy to grow.

Each 40c; 3 for \$1.00

EMERALD LILY. Large clusters of lovely white flowers with pale emerald-green throat from August until frost. Hardy and easy to grow.

Each 75c; 3 for \$1.95

FIRE or CORAL LILY. Small, brilliant scarlet flowers on stems 18 to 24 inches tall in June.

Each 35c; 3 for \$1.00



Regal Lily—Each 40c

CALADIUM

Decorative foliage plant.

Each 40c; 3 for \$1.00

SUMMER GLORY

Everblooming Honeysuckle (Heckrotti)

A profusion of fiery gold large trumpet-shaped blooms throughout the summer from June till frost. Handsome blue-green foliage. Extremely hardy. Can be grown as shrub or vine.

65c each
3 for \$1.75



CANNAS

Stately flowers of brilliant colors; easy to grow.

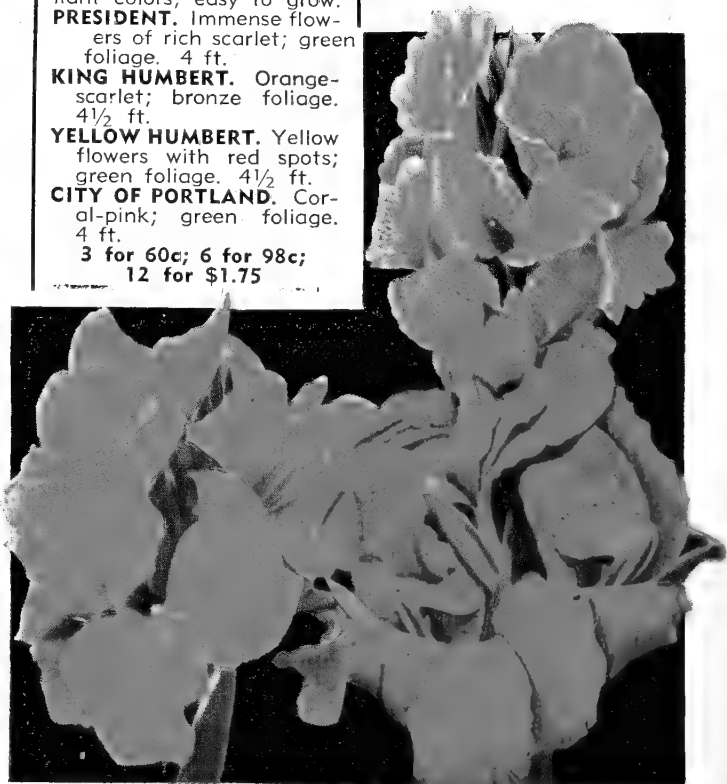
PRESIDENT. Immense flowers of rich scarlet; green foliage. 4 ft.

KING HUMBERT. Orange-scarlet; bronze foliage. 4½ ft.

YELLOW HUMBERT. Yellow flowers with red spots; green foliage. 4½ ft.

CITY OF PORTLAND. Coral-pink; green foliage. 4 ft.

3 for 60c; 6 for 98c; 12 for \$1.75



Cannas—3 for 60c

Plant This Fall



DUTCH IRIS

These lovely flowers are unsurpassed for cut flowers, lasting fully a week in water. Their hardiness and interesting color range have made them very popular for garden planting. Hardy, but in extreme climates should be given a mulch. Mixed colors.

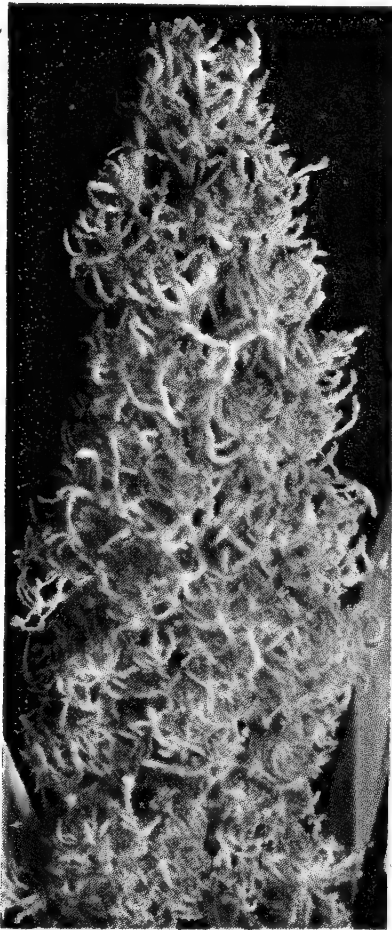
3 for	\$0.35
12 for	1.25
25 for	2.35

YELLOW TRUMPET

Narcissus or Daffodils

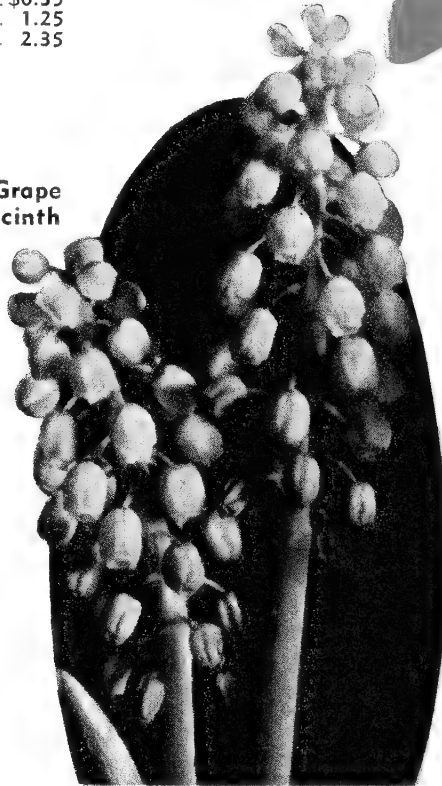
KING ALFRED. A king among the finer varieties. Rich lustrous golden yellow throughout. Extremely vigorous of habit.

3 for	\$0.50
6 for	.90
12 for	1.65
25 for	2.95



Plume Hyacinth

Grape Hyacinth



Peonies
and
Iris
on page
33

GRAPE HYACINTH

Or American Blue Bells

Charming little heavenly-blue flower spikes in early spring. Perfectly hardy.

12 for	\$0.95	25 for	\$1.85
--------------	--------	--------------	--------

PLUME HYACINTH

(Muscari Plumosum)

A very unusual and fascinating

flower, bearing feathery plumelike flowers of rosy violet in May. Fine for either rockery or border.

3 for	\$0.35	12 for	\$1.25	25 for	\$2.35
-------------	--------	--------------	--------	--------------	--------

TULIPS

Our featured Rainbow Collection of outstanding varieties. Wonderful assortment of colors. Beautiful, long stemmed, large flowering varieties.

Large 10-12 cm.

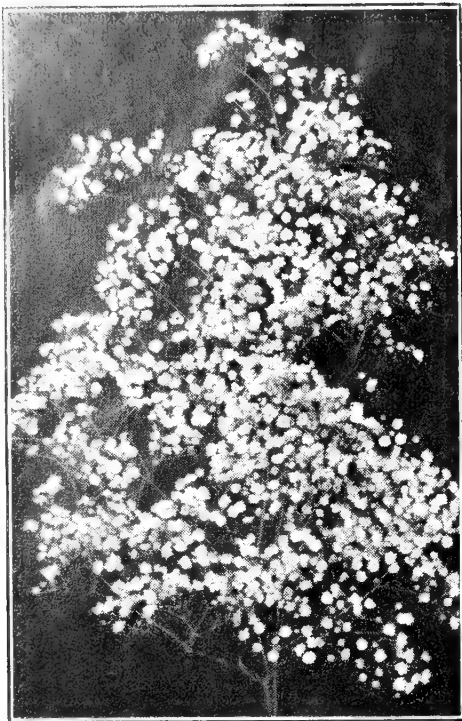
Grade

12 for	\$1.95
25 for	3.50
50 for	4.95
100 for	8.95

Blooming Size

12 for	\$1.25
25 for	2.25
50 for	3.95
100 for	6.95





Baby's Breath (Bristol Fairy)—75c



Saponaria—35c



Delphinium—35c

PERENNIALS

Each 35c; 3 for 90c; 12 for \$2.95, unless otherwise priced.

Anthemis tinctoria. Fernlike foliage, large golden yellow flowers all summer. Will grow anywhere.

Baby's Breath (Gypsophila), Bristol Fairy. As misty as an angel's breath. Double flowers are pure white, fully 3 times the size of ordinary varieties. Extremely vigorous growth, 3 feet high and 4 feet across. Blooms all summer. Each 75c.

Canterbury Bells. Tall flower spikes of shades of blue, white and pink.

Cerastium tomentosum (Snow-in-Summer). A low-growing plant with silvery white foliage and abundance of white flowers in April-May.

Columbine (Aquilegia, Hybrids). Lovely long-spurred blossoms in early spring in wide range of colors.

Digitalis (Foxglove). Long spikes of bell-shaped blossoms in colors from white to rose.

Coreopsis. Large, golden yellow flowers all summer; excellent for cutting.

Delphinium, La Martine. Rich indigo-blue flower spikes.

Delphinium Hybrids.

Forget-Me-Not. Large, rich blue flowers with yellow eye; a charming plant for damp places.

Gaillardia, Burgundy. Improved variety with deep burgundy-wine-colored petals; blooms all summer.

Gaillardia, Dazzler. Another improved variety.

Hollyhocks. Double, red, yellow, pink, and white.

Allwood Pinks. A riot of color and flowers in great abundance in June and July, are the result from just a few plants. Cut back all flower stems when through blooming.

Missouri Primrose. A low grower and profuse bloomer with solitary yellow flowers 4 inches across from June to August.

Phlox. (Mixed.) Large flower heads in a wide range of colors. Hardy and dependable; perennial. Pink, red, lavender, and white.

Physalis (Chinese Lantern Plant). Orange lanterns in fall. Used in winter bouquets.

Platycodon. Broad thick foliage and deep violet-blue flowers throughout the summer.

Pyrethrum Hybrids (Painted Daisy). Daisy-like flowers of different shades of pink, white and red.

Saponaria (Soapwort). Pretty prostrate border and rockery plant; flowers rosy pink, produced in great quantities just above the foliage in late May and early June.

Shasta Daisy, Alaska. Magnificent Daisy-like flowers nearly 5 inches across. Pure glistening white with yellow eye. Blooms all summer. 2 feet.

Stokesia (Cornflower Aster). China Aster-like flowers that appear late in the season on erect leafy stems 1 to 2 feet high. July through October.

Sweet Rocket. Fragrant purple flowers in showy spikes. 2 to 3 feet. May-July.

Sweet William, Mixed. A wide range of colors in this mixture of the hardy old-fashioned Sweet William.

Tunica. A pretty tufted plant with light pink flowers produced all summer; about 6 inches high.

Thymus coccineus serpyllum. A prostrate grower with bright scarlet flowers.



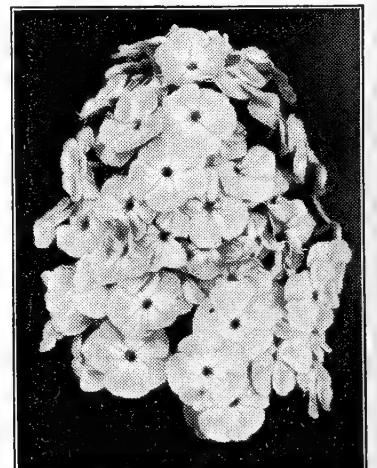
Columbine—35c



Platycodon—35c



Sweet William—35c



Phlox—35c

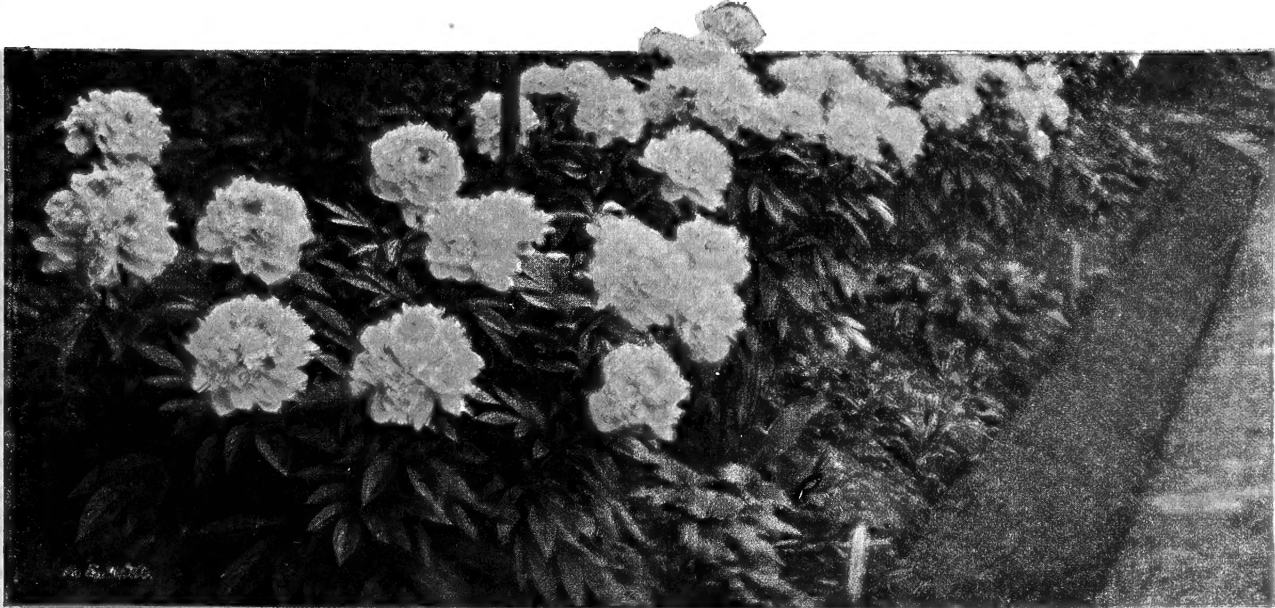
SPECIAL PEONY Collection

3 DIFFERENT COLORS

- 1 Pink
- 1 Red
- 1 White

All good strong roots. Our selection of varieties.

3 for \$1.00



PEONIES

DUCHESS D'ORLEANS. Midseason, pink, large, fragrant, compact, double. **Each 50c; 3 for \$1.40.**

EDULIS SUPERBA. America's most popular pink, called the "Memorial" pink because it blooms early. **Each 50c; 3 for \$1.40.**

FELIX CROUSSE. The most popular of all red Peonies. For freedom of bloom, beauty of flower and sureness of bloom, none other surpasses it. **Each 80c; 3 for \$2.25.**

FESTIVA MAXIMA. Nearly a hundred years old and still one of the best white Peonies. Immense flowers of purest white with some crimson splashes. **Each 60c; 3 for \$1.65.**

FONTENELLE. Rich crimson with large, perfect flowers. Early. **Each 60c; 3 for \$1.60.**

KARL ROSENFELD. Rich velvety crimson. Tall, compact grower. An A-1 bloomer. Large flowers of perfect form. **Each 95c; 3 for \$2.45.**

MME. BOULANGER. Glossy, tender, rose shading to heliotrope. Rose type. Very large bloom. Late midseason. **Each 60c; 3 for \$1.60.**

MME. FOREL. Glossy pink with silvery reflex and deeper rose center. Large, compact. Very fragrant. **Each 60c; 3 for \$1.60.**

RICHARD CARVEL. A very early, large crimson. Strong grower; long, heavy stems; very attractive. **Each \$1.25; 3 for \$3.00.**

THERESE. Satiny pink with lilac-white center. Enormous compact rose type. Erect, strong grower. **Each \$1.25; 3 for \$3.00.**

Outstanding Peony Special

1 each of Mme. Boulanger, Mme. Forel, Fontenelle, Karl Rosenfield, Therese, and Richard Carvel.

6 for \$3.95

BLEEDING HEART - Dicentra

OLD-FASHIONED. 2 feet. An old favorite that is becoming very popular again. Each year we sell out before the season is over. It thrives in partially shaded places. Graceful heart-shaped flowers in April-May. Extra heavy plants. **Each 75c; 3 for \$2.00.**

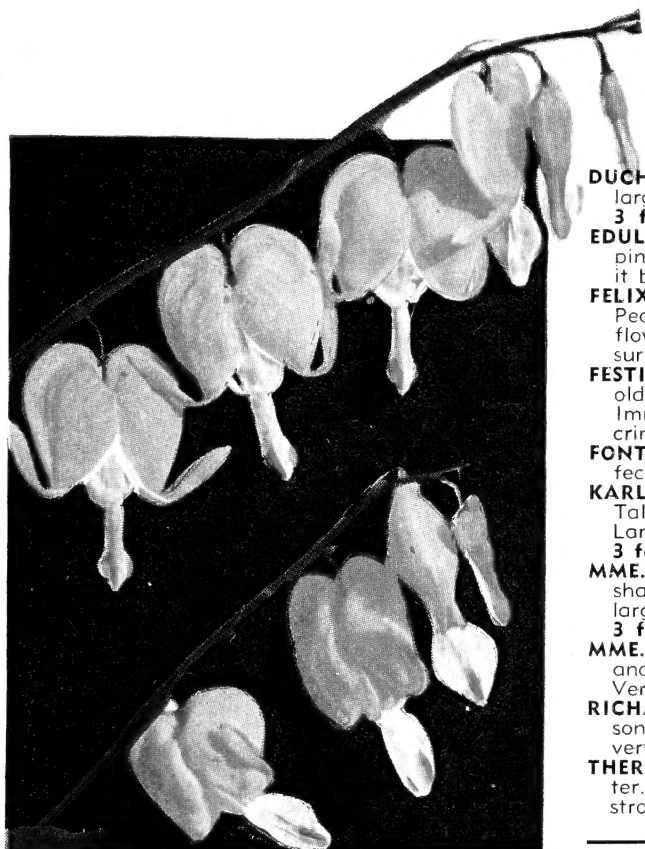
EXIMIA. Plumy Bleeding Heart; a dwarf growing new variety with finely cut foliage and pretty pink flowers throughout the season, over a much longer period than the old-fashioned Bleeding Heart, but not as showy. **Each 50c; 3 for \$1.25.**

← HARDY CARNATIONS

RED-PINK. Hardy with pink or red flowers on stiff stems; fine for cutting, all summer. **Each 35c; 3 for 90c.**

Cushion → Chrysanthemums

Dwarf, Pin-Cushion Type which bloom from August till frost. A bushel of bloom at a time, as many as a thousand flowers on a single plant. Very hardy, easy to grow. Blooms first year. Four different, striking, vivid colors—Yellow, Bronze, Pink, and Red. **Each 45c; 4 for \$1.50.**

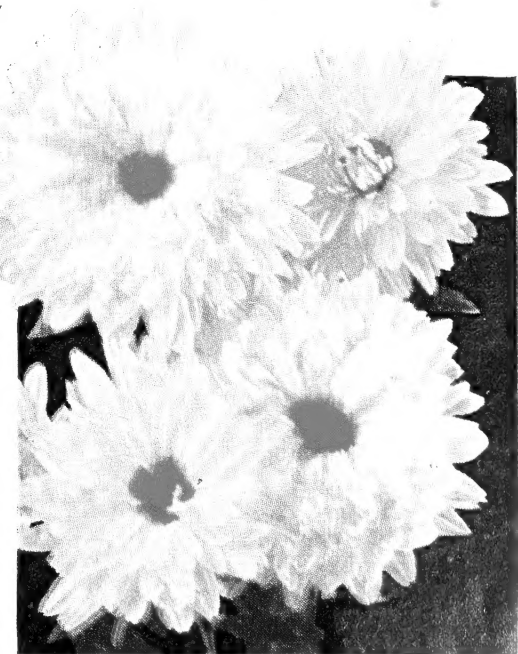


Bleeding Heart (Old-Fashioned)
75c each; 3 for \$2.00



Susan Bliss Iris
Each 30c
3 for 80c

Special Iris Offer and Other Varieties—
See Page 34



IRIS

3 for 50c; 12 for \$1.60.

- BLACK PRINCE.** Dark purple.
- CELESTE.** Azure-blue.
- LENT A. WILLIAMSON.** Violet, golden beard.
- MADAME CHOBAUT.** Orange and red.
- PERFECTION.** Purple and lavender.
- QUEEN CATERINA.** Pale violet.
- QUEEN OF MAY.** Rose and lilac.
- SANS SOUCI.** Yellow and brown.
- SHERWIN WRIGHT.** Golden yellow.
- SIBERIAN.** Blue, narrow leaves.
- AMBASSADEUR.** Velvety purple.
- FRIEDA MOHR.** Deep pink.
- MOTHER OF PEARL.** Pale lavender.
- OPERA.** Violet-red.

KOREAN IRIS

Special varieties: White, Royal Purple, Blue, and Mahogany. **Each 50c; 3 for \$1.35.**

DOUBLE DUTY IRIS

These NEOSHO varieties flower two or more times each year.

- AUTUMN KING.** 36 in. Flowers large, clear blue-purple.
- ELEANOR ROOSEVELT.** 26 in. A profuse bloomer; rich violet.
- AUTUMN QUEEN.** 18 in. A pure white.

Each 50c; 3 for \$1.35.

RED IRIS

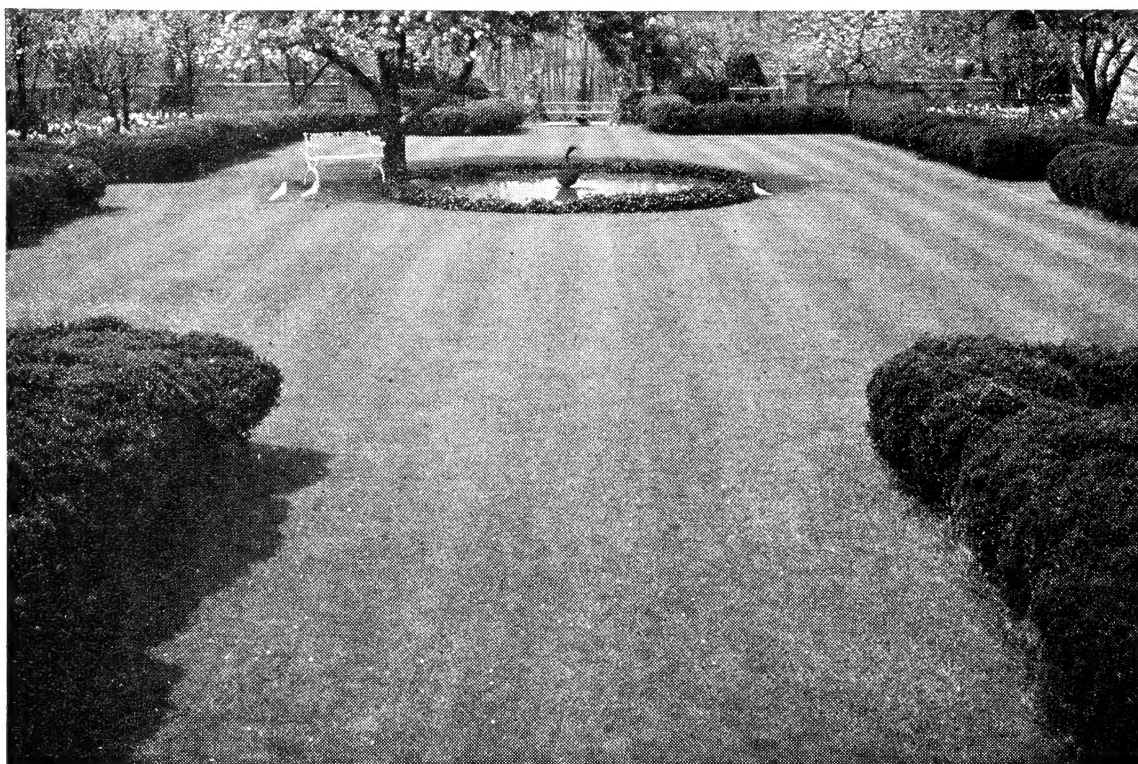
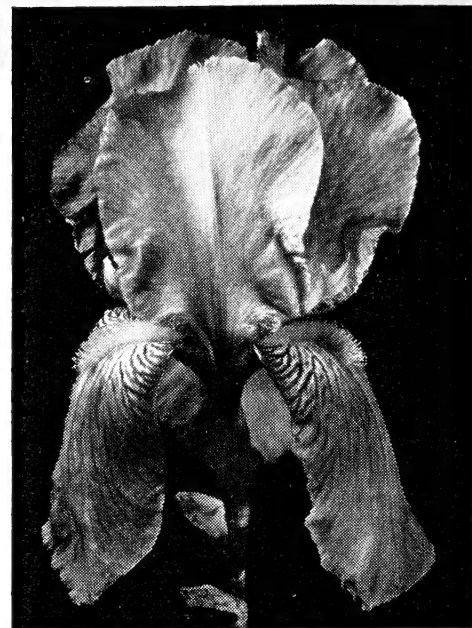
- SUSAN BLISS.** 40 in. A beautiful pink-toned variety. See natural color illustration, page 33.
- DAUNTLESS.** 40 in. One of the finest and purest red-toned Iris. A profuse bloomer. Single plants sold for \$35.00 a few years ago.

Each 30c; 3 for 80c.

BABY IRIS

- PURPLE AND YELLOW.** Very popular Iris. **3 for 40c; 6 for 75c.**

These are beautiful, colorful, hardy, fast-growing flowers, and make a splendid addition to every garden.



Neosha LAWN GRASS SEED

Have Beautiful Green Velvety Lawns by Using NEOSHO Superior Grass Seed

All our seed mixtures are treated with the new, sensational Hormone which gives better germination and better root system.

5 VARIETIES LISTED BELOW:

NEOSHO SUPERIOR MIXTURE

For a permanent lawn. This is composed of finest quality seeds mixed according to our own formula.

1 lb., 69c; 3 lbs., \$1.95; 5 lbs., \$2.95

NEOSHO DENSE SHADE MIXTURE

For lawns which are either partially or completely shaded.

1 lb., 79c; 3 lbs., \$2.19; 5 lbs., \$3.50

NEOSHO QUICK LAWN MIXTURE

For new lawns where quick germination and coverage is desired.

1 lb., 59c; 3 lbs., \$1.49; 5 lbs., \$2.25

KENTUCKY BLUE GRASS

This is finest quality, re-cleaned seed, weighing 24 lbs. to the bushel. Most ordinary Blue Grass only weighs 16 lbs. to bushel.

1 lb., 79c; 3 lbs., \$2.19; 5 lbs., \$3.50

DOMESTIC or WINTER RYE

An annual grass for quick coverage or to use on Bermuda lawns for winter effect.

1 lb., 35c; 3 lbs., 95c; 5 lbs., \$1.49

BERMUDA GRASS STOLONS

For spring shipment only.

Per bu., \$2.50

VIGORO

**Victory Garden Fertilizer
For Food Production Only.**

F. O. B. Neosho

100-lb. bag	\$3.50
50-lb. bag	2.25
25-lb. bag	1.40
10-lb. pkg.	.80
5-lb. pkg.	.50

NEOSHO PLANT FOOD

A well balanced fertilizer for all general uses.

80-lb. bag, \$2.95.

2 SUSAN BLISS
Shown in natural color.
FREE With Our
Easy-to-Grow
Last-a-Lifetime
Iris Special

We have selected this assortment for a wide variety of colors, as well as bloom over a long period. This assortment will give you a wealth of bloom for a 30-day period.

18 for \$1.75
WITH 2 SUSAN BLISS
EXTRA FREE

New Hormone

In dust form to aid transplanting and insure quick, strong growth.

Staley-mone

For use on all plants, seeds, trees and grass. The first such product at a reasonable price, and one we have tested on our own grounds with amazing results. Simple to use; directions with each package. Plants start quicker, grow faster, bear sooner.

1-lb. package\$1.00
5-lb. package 2.50

MULCH WITH PEAT MOSS

To conserve moisture, keep down weeds, winter protection.
60-lb. bag, \$1.95; 120-lb. bag, \$3.50.

PLANT HEALTH

Kill Insects, Worms, Fungus NEOSHO All-Purpose Dust

Our own special formula. Kills eating insects, such as cutworms, bag worms and canker worms. Controls fungous diseases, such as mildew and black spot. Controls sucking insects, such as aphids and red spider.

Keeps your Shrubs, Roses, Evergreens and Perennials in healthy condition. Remember, an ounce of prevention is worth a pound of cure. Start your dusting when leaves appear and continue at regular intervals. Will adhere to foliage better if applied when foliage is damp.

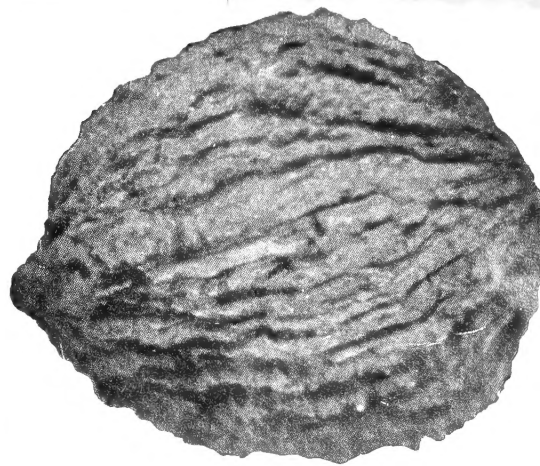
1 1/2 lbs., 75c; f. o. b. Neosho.

NUT TREES

Thomas Black Walnut

Now you can have an improved, grafted Black Walnut, which is giant size and kernels come out in halves. Thomas is the fastest growing and produces the largest nuts. It bears very young, generally next year after planting. A mature tree will produce 15 to 40 bushels of nuts which sell from \$4.00 to \$10.00 per bushel. The nuts are immense size and crack easily. A bushel of nuts crack out 10 to 12 pounds of meats. Meats are of delicious flavor. Will grow anywhere.

Each
3-4 ft. \$3.75

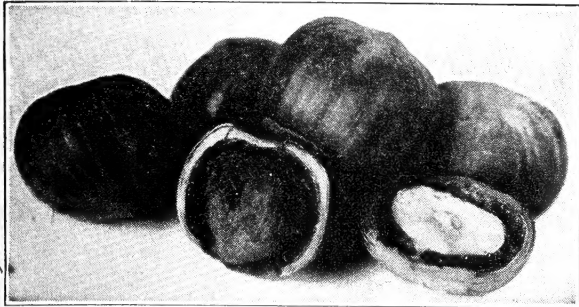


Thomas Black Walnut

Stuart Pecans

The hardest of the Paper-Shells—large, thin-shelled, delicious nuts. Ornamental as well as fruitful.

Each
2-3 ft. \$2.50
4-5 ft. 3.25



Hazelnut

Round, sweet kernels, easily removed and delicious for many uses. Plants grow more like a large shrub with decorative foliage. Bear young and are hardy. Plant a group of them in the corner of your yard.

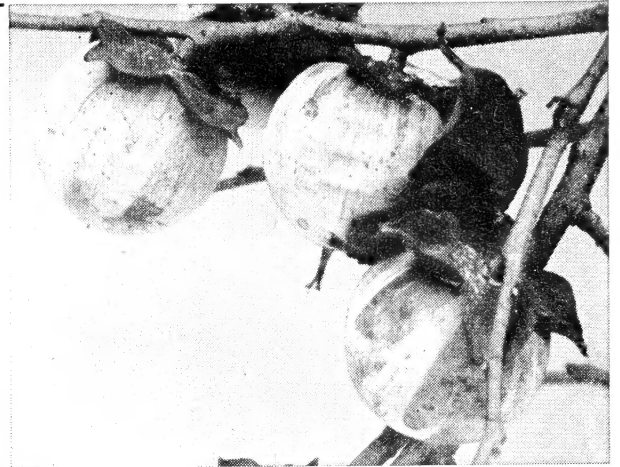
2-3 ft., each \$1.25;
4 for \$4.49.

Hardy Ozark Persimmon

Sweet as honey—absolutely hardy—ornamental. These are the sweet native Persimmons and are perfectly hardy anywhere that Peaches will grow. They make a compact ornamental tree and will bear practically every year.

4-5 ft. \$1.75
each

5-6 ft. \$2.25
each



SEEDS of Annual Flowers

See enclosed leaflet for Vegetable Seed.

NASTURTIUMS

DWARF MIXED. The most popular dwarf annual, easy to grow in poor soil and blooms for weeks; in rich colors, fine for beds and borders. Pkt., 10c; oz., 35c; 1/4 lb., \$1.25.

SWEET PEAS

SPENCER MIXED. The best strain of Sweet Peas, in a choice variety of colors. Pkt., 10c; oz., 35c; 1/4 lb., \$1.25.

ZINNIAS

FINEST MIXED GIANT DAHLIA-FLOW-ERED. Will grow anywhere; thrive in hot weather. Pkt., 10c.

PETUNIAS

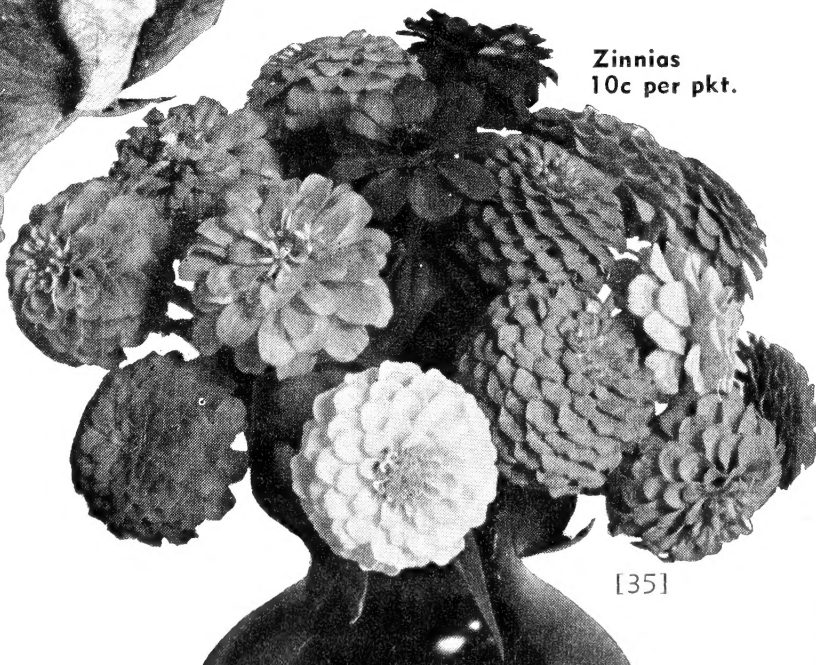
Easily grown, bloom all summer; improved mixed colors. Pkt., 10c; oz., \$1.00.



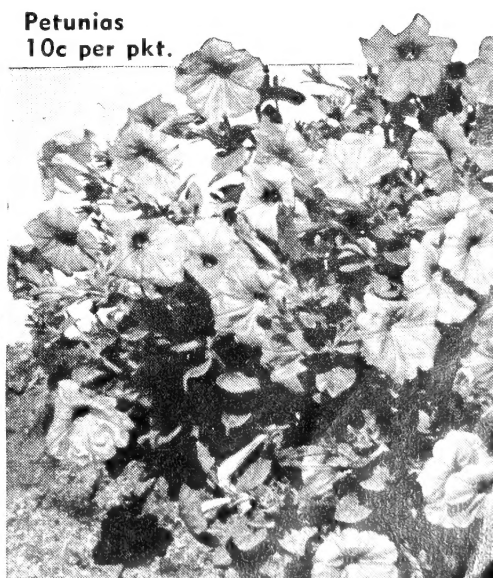
Nasturtium
10c per pkt.



Sweet Peas
10c per pkt.



Zinnias
10c per pkt.



Petunias
10c per pkt.



**NEOSHO BROAD-LEAF
Chinese Elm**

Our own special strain. The fastest growing tree in America.

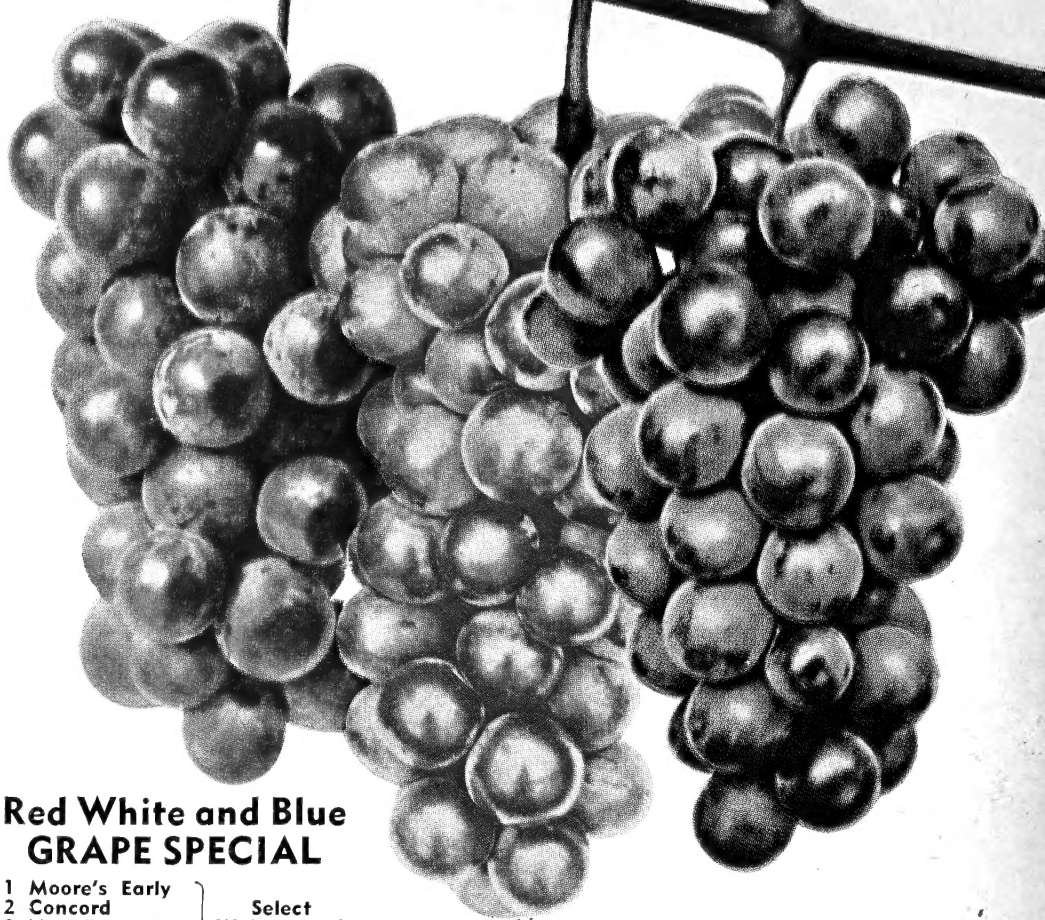
Hardy—Drought Resistant—Beautiful
Complete description on page 22.

5-6 ft., \$1.25 6-8 ft., \$1.75
8-10 ft., \$2.25

GOOSEBERRY

Oregon Champion. Large, pale green; excellent for home use or market. Vigorous and productive.

2 for \$1.19
5 for 2.39
9 for 4.19



**Red White and Blue
GRAPE SPECIAL**

- | | |
|----------------------------------|-----------------------------------|
| 1 Moore's Early | } Select
Well-Rooted
Plants |
| 2 Concord | |
| 2 New Fredonia | |
| 1 Delicious Red
1 Sweet White | |

7 Sturdy Vines \$1.49
(Reg. Value \$2.40)



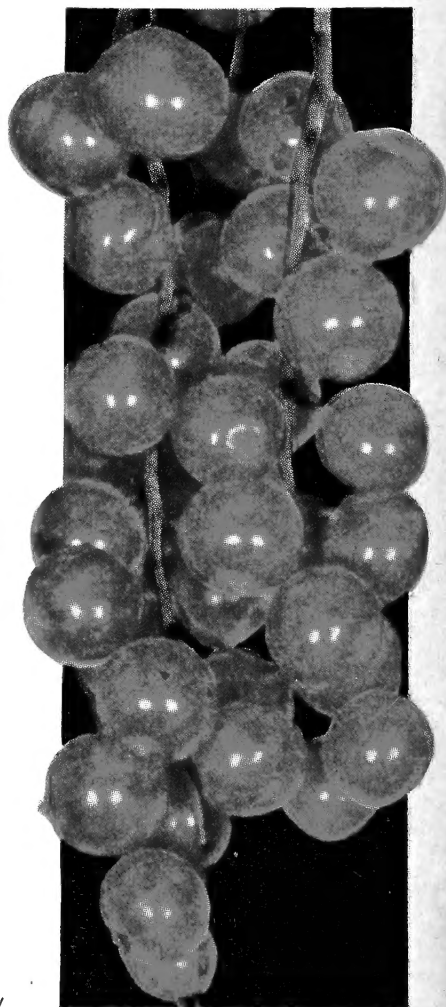
STRAWBERRY Special

75 Plants, Postpaid, \$1.95

2 Iris Free.

50 Blakemore. Extra early bright red berry. Highly flavored and a tremendous bearer. A heavy plant maker. Fine for quick freezing storage.

25 Progressive Everbearing. One of the sweetest flavored berries grown. Sparkling bright red berries. Healthy, strong, vigorous grower. Fruits all summer.



**RED LAKE
CURRANT**

Big, well-filled clusters of glossy red, pleasantly acid fruit. Fine for jelly and preserves. A vigorous grower and heavy producer.

2 for \$1.20
5 for 2.75
9 for 4.50

**NEOSHO NURSERIES CO.
NEOSHO, MISSOURI**