

Historic, Archive Document

Do not assume content reflects current scientific knowledge, policies, or practices.

62,51

LIBRARY
RECEIVED

★ FEB 20 1945 ★

U. S. Department of Agriculture

Plumfield Nurseries

L. A. MOFFET, Gen. Manager

G. A. GRITZMACHER, Asst. Manager

2105 North Nye Ave.
PHONE 102
FREMONT, NEBRASKA

Founded in
1890

Trees That Please
NEBRASKA GROWN

Incorporated
1914

On U. S. Highways 30 - 77 - 275

Spring 1945
WHOLESALE TRADE LIST



Growers of a Complete
Line of Nursery Stock for the
Wholesale Trade

Terms and Conditions of Sale

TERMS—1% Discount for cash if paid on or before 10th of month following date of invoice, and is due NET 30 days thereafter. Interest charged on past due accounts.

These terms are offered to those with established credit; otherwise cash, security, or satisfactory references. C. O. D. orders must be accompanied by one-fourth cash.

PRICES named in this list are based upon present market conditions and are subject to change without notice. These are Wholesale Prices and apply upon the following quantities:

30 of any variety and size at the hundred rate.

300 of any variety and size at the thousand rate.

Samples at list price.

Note:—Classifications as given above are understood to be as listed under general headings in price list. (Broken lots of less than quantity listed of any one variety and grade will be billed at 15% above rate.)

ALL PRICES ARE NET, BOXING AND BALING EXTRA.

SHIPPING—Please give shipping instructions whether by freight or express and route. If no instructions are given we will forward to the best of our judgment, without assuming responsibility. All goods travel at the purchasers risk and expense.

TRUCK SERVICE—We are able to offer truck service within a radius of 300 to 500 miles from Fremont. Charges average about the same as railroad rates with delivery at your door. If interested write for further information.

CAUTION—We accept all orders subject to crop conditions and on condition that same shall be void should injury befall our stock from hail, fire, frost, error in count or other causes beyond our control. All contracts are subject to war priorities on material, transportation and other causes arising that may limit, restrict or make impossible performance thereunder.

GUARANTEE OF GENUINENESS—If any nursery stock proves untrue to description or variety name under which it is sold, we hold ourselves in readiness, on proper proof, to replace such nursery stock that may prove untrue to description or name, or refund the original amount paid. We shall in no case be liable for any sum greater than the amount originally received for said nursery stock.

CLAIMS for any cause must be made promptly on receipt of stock. We will not entertain claims after goods have been once accepted, or when report is not made within Ten Days after arrival of stock. We express or imply no warranty as to productiveness or life of the nursery stock we sell and will not be in any way responsible for the results secured in transplanting.

SPECIAL NOTICE—Correspondents are requested to use their printed business letterheads. We do not quote wholesale prices to retail buyers. We use every effort to limit the distribution of trade prices to those whom we know to be entitled to receive them.

PLUMFIELD NURSERIES

L. A. MOFFET, Manager

G. A. GRITZMACHER, Assistant Mgr.
FREMONT, NEBRASKA

EVERGREENS



Prices are for Evergreens Securely Balled and Burlapped.

Can dig Evergreens, roots puddled at reduction in price.

Our Evergreens have all been three times x x x transplanted, having been grown with plenty of room for development. Have been properly sheared and pruned for producing compact, symmetrical specimens.

Evergreens selected and tagged by customers in the nursery field will be subject to a 10% additional charge to cover extra expense.

Height specified after variety indicates height tree should obtain at maturity.

We cannot assume responsibility for the successful transplanting of Evergreens, as weather conditions, method of handling and care govern results secured and are sold with the distinct understanding that if they arrive in good condition and are accepted, our responsibility ceases.

FIR, Abies

CONCOLOR, White Fir. 50-60 ft.

By far the most outstanding Fir, withstands severe winter and summer heat better than other Firs. The color runs from pale green to light blue. The leaves are long, soft, and pungent. It develops into a narrow pyramid shape, symmetrical form. When small, it has a tendency to grow rather irregularly, but assumes a symmetrical even growth as it grows older.

			Per 10	Per 100
22	2	to 2½ feet.....	20.00
20	3	to 3½ feet.....	30.00
38	3½	to 4 feet.....	35.00
44	4	to 4½ feet.....	40.00
13	4½	to 5 feet.....	45.00

PSEUDOTSUGA DOUGLASI, Douglas Fir. 70-80 ft.

The Douglas Firs are well known, however, the type listed here differs from the Western type as well as the Northern and Southern types. This one is native of Colorado, stands considerable drouth. Foliage is bluish-green, grows 1 to 2 ft. per year, is symmetrical and fairly compact. Makes a nice yard tree, also used extensively for windbreaks.

10	2	to 2½ feet.....	14.00
5	3	to 3½ feet.....	20.00
5	3½	to 4 feet.....	22.50
18	4	to 4½ feet.....	30.00
15	5	to 5½ feet.....	40.00
11	6	to 7 feet.....	60.00

ARBOR VITAE—See Thuya.**JUNIPER, Juniperus**

CHINENSIS, Chinese		Per 10	Per 100
15	18 to 24 inches.....	15.00
50	2 to 2½ feet.....	17.50

JUNIPER CHINENSIS KETELEERI

Good green color. Rapid grower. Very attractive berries. Stiff main stem insuring a straight upright tree. Free from cedar apple rust.

20	2 to 2½ feet.....	20.00
5	2½ to 3 feet.....	25.00
20	3 to 3½ feet.....	30.00
24	3½ to 4 feet.....	35.00
46	4 to 4½ feet.....	40.00

CHINENSIS PFITZERIANA, Pfitzer Juniper. 5-6 ft.

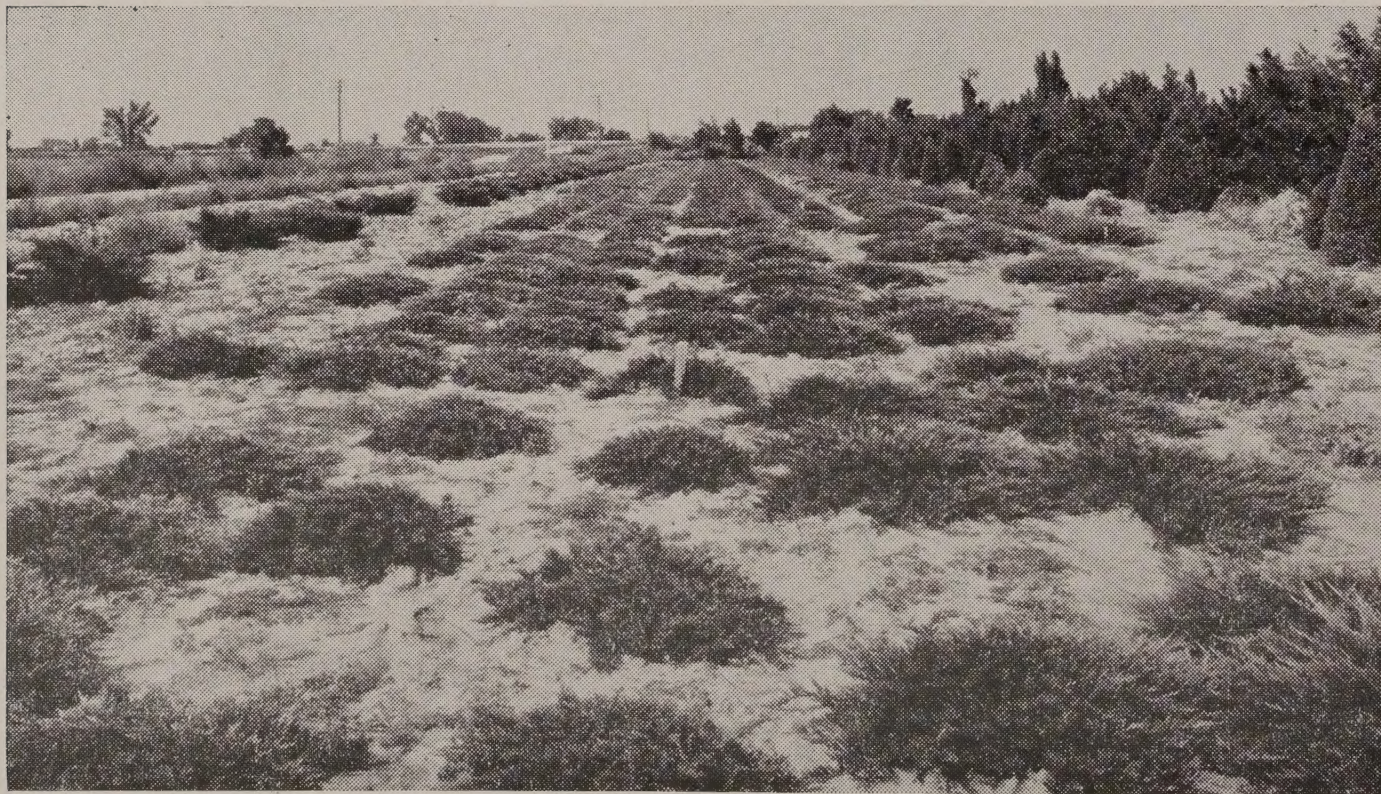
This tree is widely known among nurserymen. It originated in Germany many years ago. When grown without staking, it develops a low spreading habit. Handsome, feathery, gray-green foliage covers the arching, spreading branches as it develops its broad picturesque form.

200	15 to 18 inches.....	15.00	140.00
100	18 to 24 inches.....	17.50	160.00
100	2½ to 3 feet.....	27.50	250.00
160	3 to 3½ feet.....	32.50	300.00
340	3½ to 4 feet.....	37.50	350.00

COMMUNIS DEPRESSA PLUMOSA, Andorra.

A low growing spreading evergreen. Beautiful silvery green in Spring, turning to rich purple bronze in autumn. Seldom grows over 15 inches high, spreading over wide area.

25	12 to 15 inches.....	10.00
40	15 to 18 inches.....	12.50	115.00
90	18 to 24 inches.....	15.00	135.00
40	2 to 2½ feet.....	20.00	175.00

**NEW HORIZONTAL EVERGREENS**

The following junipers are natives of the Rocky Mountain region. These varieties were selected for their beauty, compactness and hardiness and have proven a great asset to us who find many needs for low growing ground covers.

EVERGREENS—Continued

JUNIPER ADMIRABILIS

Habit of growth is horizontal but it is so compact that it makes a solid mat of evergreen, covering the ground completely. Foliage bluish green. Grows 6 to 8 inches high. Spreads rapidly, yet retains its compactness. A very fine plant to use for covering graves, terraces or any place where a low beautiful covering is wanted.

Quantity		Per 10	Per 100
150	12 to 15 inches.....	10.00	90.00
80	15 to 18 inches.....	12.50	115.00
45	18 to 24 inches.....	15.00	135.00
18	2 to 2½ feet.....	20.00	175.00

JUNIPER ARGENTEUS

Smooth blue-silver foliage. Grows 6 to 8 inches high. Makes solid cover. Very attractive.

20	12 to 15 inches.....	10.00	90.00
7	15 to 18 inches.....	12.50	115.00

JUNIPER FILICINUS MINIMUS

This pretty little juniper is also a variety of the Rocky Mountains. It is one of the finest foliaged evergreens of the juniper family. Its short horizontal limbs covered with delicate small branchlets forming fern shaped branches makes it a gem for the rock garden or any other place that a slow growing prostrate evergreen is desired. Grows 4 to 6 inches high, spreads slowly and is very compact. Green foliage.

40	12 to 15 inches.....	10.00	90.00
24	15 to 18 inches.....	12.50	115.00
15	18 to 24 inches.....	15.00	135.00

LIVIDUS (Bluish)

Foliage silver-blue on slender branches, making a solid fast growing cover. Grows 4 to 6 inches high. One of our best ground covers.

130	12 to 15 inches.....	10.00	90.00
11	15 to 18 inches.....	12.50	115.00

PULCHELLUS, Pumilus (Beautiful Dwarf)

A beautiful dwarf plant. Foliage is a mixture of blue and green. The short, sharp leaves make up the little branchlets that develop into fern-shaped branches and very attractive. Grows not over 4 to 6 inches high. Spreads quite slowly and very dense.

20	12 to 15 inches.....	10.00	90.00
30	15 to 18 inches.....	12.50	115.00
30	18 to 24 inches.....	15.00	135.00
5	2 to 2½ feet.....	20.00	175.00

SABINA TAMARISCIFOLIA, Tamarix Savin Juniper, 3-4 ft.

A beautiful dwarf, handsome light green lacy foliage resembling the delicacy of the Tamarisk shrub, thickly fills the low, creeping plant, forming a dense mat of misty green. You will find it very charming as an edger or in the rock garden.

20	12 to 15 inches.....	12.50
50	15 to 18 inches.....	15.00
4	2 to 2½ feet.....	25.00

SABINA VON EHROH, Savin Von Ehron. 8-10 ft. spread

Belongs to the Savin family. An extremely rapid grower clothed with dark green foliage. Many nurserymen consider it better than Savin.

60	18 x 18 inches, Sheared Globe.....	17.50	150.00
25	24 x 24 inches, Sheared Globe.....	22.50	185.00

SABINA, Savin Juniper, 5-6 ft.

Spreading form with slender branches and dark green, short, tufted foliage. Excellent for foundation work and underplanting. Very hardy and planted over a wide area.

200	15 to 18 inches.....	15.00	140.00
500	18 to 24 inches.....	17.50	160.00
500	2 to 2½ feet.....	22.00	200.00
100	3 to 3½ feet.....	28.50	260.00
150	3½ to 4 feet.....	35.00	300.00

EVERGREENS—Continued



SAVIN JUNIPERS

JUNIPER VIRGINALIS (Bush Juniper)

Dark green healthy foliage. Grows bushy like savins but more upright and not quite so broad.

		Per 10	Per 100
75	15 to 18 inches.....	15.00	140.00
45	18 to 24 inches.....	17.50	160.00
20	2 to 2½ feet.....	22.50	200.00

JUNIPER SCOPULORUM (Western Silver Cedar)

Extends over a wide range from the Dakotas and Montana down through the Rocky Mts. into New Mexico. Color range from green to extremely silvery blue. Its habits range from low, horizontal types to narrow columnar types. Very hardy drouth resisting and adapts itself over a wide range of territory.

SCOPULORUM, Colorado Silver Juniper. 25-30 ft.

Silvery foliage and close symmetrical upright growth. Thrives in hot, dry weather, when the color is the brightest. Very hardy. Grown from seed.

200	2 to 2½ feet.....	17.50	160.00
200	2½ to 3 feet.....	21.00	190.00
200	3 to 3½ feet.....	25.00	225.00
125	3½ to 4 feet.....	28.50	260.00
100	4 to 4½ feet.....	32.50	300.00
50	4½ to 5 feet.....	40.00	375.00
10	5 to 5½ feet.....	45.00	425.00

SCOPULORUM, Natural Globe, Silver Foliage

45	18 inches x 18 inches.....	25.00
25	24 inches x 24 inches.....	30.00

SCOPULORUM MONTANA, 20-30 ft.

Flathead region type. Dull, pointed leaves, whipcord like foliage, silver blue to green. Grown from seed.

20	2 to 2½ feet.....	17.50	160.00
30	2½ to 3 feet.....	21.00	190.00
50	3 to 3½ feet.....	25.00	225.00
125	3½ to 4 feet.....	28.50	260.00
100	4 to 4½ feet.....	32.50	300.00
100	4½ to 5 feet.....	40.00	375.00
130	5 to 5½ feet.....	45.00	425.00
20	5½ to 6 feet.....	50.00	475.00
35	6 to 7 feet.....	57.50	550.00

EVERGREENS—Continued



BLOCK OF GRAFTED JUNIPER

In order to get uniform habit of growth and color of foliage, we have selected some outstanding types of various forms and have reproduced by grafting. See following varieties for further description.

SCOPULORUM DECUMBENS ARGENTATUS (Grafted) 20-30 ft.

The remarkable characteristics of this tree will not display their beauty until it has attained a growth of six feet or more, displaying more beauty each year. It has shining silver-green foliage. Each year the new branches, while soft, grow downward and as the season goes on the branches stiffen and turn directly upward. As the tree develops it becomes a mass of well clothed horizontal branches with their tips perpendicular with the leader.

Quantity		Per 10	Per 100
10	2½ to 3 feet.....	27.50
5	3 to 3½ feet.....	32.50	300.00
40	3½ to 4 feet.....	37.50	350.00
50	4 to 4½ feet.....	42.50	400.00
30	4½ to 5 feet.....	47.50	450.00
30	5 to 5½ feet.....	55.00	500.00
4	6 to 7 feet.....	65.00

SCOPULORUM FULGENS (Grafted) 20-30 ft.

This tree is a native of Colorado. Its habit is upright, pyramidal, full at base and grows compact. Bicolor foliage, glistening, bluish-green, becoming more silver at the tips. The branchlets grow more or less opposite forming flat, Arbor Vitae-like branches. Grows one foot per year.

25	2½ to 3 feet.....	27.50
100	3 to 3½ feet.....	32.50	300.00
16	3½ to 4 feet.....	37.50	350.00
14	4 to 4½ feet.....	42.50	400.00
25	4½ to 5 feet.....	47.50	450.00
5	5 to 5½ feet.....	55.00	500.00

SCOPULORUM FUNALIS (Grafted) 20-30 ft.

Bluish-green, whip-cord foliage, retaining nearly the same color thruout the year. Pyramidal habit of growth, extremely hardy. Slightly silver-tinged in

EVERGREENS—Continued

winter. Straight stem with branches growing nearly horizontal. Will attain more compactness if sheared. Grows one foot per year.

Quantity			Per 10	Per 100
65	3	to 3½ feet.....	32.50	300.00
28	3½	to 4 feet.....	37.50	350.00
15	4	to 4½ feet.....	42.50
8	6	to 7 feet.....	65.00
6	8	to 9 feet.....	90.00

SCOPULORUM MOFFETI (Grafted) 20-30 ft.

A very attractive tree. Has a mixed green and silver foliage, more silver on tips of branches. Pyramidal habit. Heavy base. Makes an ideal tree whether sheared or not.

25	2½	to 3 feet.....	27.50
30	3	to 3½ feet.....	32.50	300.00
30	3½	to 4 feet.....	37.50	350.00
35	4	to 4½ feet.....	42.50	400.00

SCOPULORUM PATHFINDER (Grafted) 20-30 ft.

This tree found favor almost instantly by reason of its outstanding silver foliage. It is upright in habit, full at base, limbs curved upward covered with shining silver-blue foliage making it an outstanding tree of the times. Will grow about one foot a year. Can be sheared, if necessary.

500	2½	to 3 feet.....	27.50
600	3	to 3½ feet.....	32.50	300.00
500	3½	to 4 feet.....	37.50	350.00
375	4	to 4½ feet.....	42.50	400.00
100	4½	to 5 feet.....	47.50	450.00

SCOPULORUM SILVER BEAUTY (Grafted) 20-30 ft.

A native of the San Isabel Forest region, and truly a beautiful tree. It is upright, full at base, branches have upward trend, foliage is greenish-silver, more silver on the exposed tips of branches. Grows about one foot a year.

35	3	to 3½ feet.....	32.50
80	3½	to 4 feet.....	37.50	350.00
110	4	to 4½ feet.....	42.50	400.00
25	4½	to 5 feet.....	47.50	450.00

SCOPULORUM SILVER CORD (Montana Type)

Silver-blue soft foliage. Stiff main stem. Upright grower. Broad at base.

70	2½	to 3 feet.....	27.50
55	3	to 3½ feet.....	32.50
50	3½	to 4 feet.....	37.50
14	4	to 4½ feet.....	42.50

SCOPULORUM SUTHERLAND

Cone shaped. Compact green foliage. Needs very little trimming. Not as rapid growing as most of the Scopulorum.

19	3	to 3½ feet.....	32.50
18	3½	to 4 feet.....	37.50
12	4	to 4½ feet.....	42.50

SCOPULORUM WEIRI (Grafted) 18-25 ft.

A true blue color foliage. This tree has sharp pointed leaves that are blue throughout. The tree grows upright, limbs semi-horizontal, short, and tufted at the tip. Makes a very dense growth, full at base, takes on shape when young and retains its pyramidal habit well throughout the years. Grows about 8 to 12 inches a year. Can be sheared, if necessary.

Quantity			Per 10	Per 100
20	3	to 3½ feet.....	32.50	300.00
20	3½	to 4 feet.....	37.50	350.00
10	4	to 4½ feet.....	42.50	400.00

EVERGREENS—Continued

SCOPULORUM WELCHI (Grafted) Welch's Pyramidal

The Welchi is the most satisfactory columnar type Scopulorum on the market today. Foliage is a light, evenly mixed greenish-silver. Leaves sharp but lay very close to the stem. Branches are very full and tufted at the base, tapering out to a prominent point, yet they are sharply curved upward forming a fine, outstanding columnar tree. Grows about one foot a year. Retains its shape without shearing.

Quantity		Per 10	Per 100
100	2½ to 3 feet.....	27.50
100	3 to 3½ feet.....	32.50	300.00
180	3½ to 4 feet.....	37.50	350.00
200	4 to 4½ feet.....	42.50	400.00
50	4½ to 5 feet.....	47.50	450.00
30	5 to 5½ feet.....	55.00	525.00

VIRGINIANA GLOBES—(Globosa)

15 x 15 inches.....	17.50
18 x 18 inches.....	22.50
24 x 24 inches.....	27.50

VIRGINIANA BLUE RAPIDS (Grafted) 30-40 ft.

Foliage bluish-green color. Leaves not so sharp, growing on stout, coarse, horizontal branches, which set close to each other on a straight, rugged, fast-growing stem. Hardy and one of the best grafted Juniper Virginiana varieties. Northern origin. Retains its color in winter.

25	2½ to 3 feet.....	20.00	185.00
55	3 to 3½ feet.....	27.50	250.00
75	3½ to 4 feet.....	35.00	300.00
80	4 to 4½ feet.....	40.00	375.00
20	4½ to 5 feet.....	45.00	400.00
40	5 to 5½ feet.....	50.00	475.00

VIRGINIANA CANNARTI, Cannart's Red Cedar, 20-30 ft.

Foliage deep, rich green. Main stem very straight. Branches almost horizontal. Requires shearing to attain compactness.

200	2 to 2½ feet.....	25.00	225.00
300	2½ to 3 feet.....	27.50	250.00
250	3 to 3½ feet.....	32.50	300.00

VIRGINIANA ELEGANTISSIMA LEE, Gold Tip Red Cedar

Dark green foliage. Golden tipped, more so in autumn. The natural tendency is to grow low and spreading. Very hardy; desirable, where color is required.

10	15 to 18 inches.....	13.50
10	18 to 24 inches.....	16.50	150.00
10	2 to 2½ feet.....	20.00	175.00
100	2½ to 3 feet.....	25.00	225.00
50	3 to 3½ feet.....	30.00	275.00
50	3½ to 4 feet.....	35.00	325.00
7	4 to 4½ feet.....	40.00	375.00

VIRGINIANA GLAUCA, Silver Red Cedar. 15-20 ft.

An old variety. Pyramidal tree of moderate size. Silver blue color. Brightest in spring, darkening as season progresses. Stands trimming well.

90	2 to 2½ feet.....	22.50	200.00
150	2½ to 3 feet.....	27.50	250.00
125	3 to 3½ feet.....	32.50	300.00
4	3½ to 4 feet.....	37.50	350.00

VIRGINIANA KOSTERI. 4-5 ft.

Low spreading variety with bluish-green leaves. Very hardy. Habit of growth very much like Pfitzer. Fast becoming very popular in this territory.

100	18 to 24 inches.....	17.50	160.00
40	2 to 2½ feet.....	22.00	200.00
95	2½ to 3 feet.....	27.50	250.00
180	3 to 3½ feet.....	32.50	300.00
240	3½ to 4 feet.....	37.50	350.00

EVERGREENS—Continued

VIRGINIANA PYRAMIDIFORMIS (Dundee Juniper)

Compact, symmetrical growth. Green foliage changing to purple in winter. A very desirable, pyramidal tree.

		Per 10	Per 100
50	2½ to 3 feet.....	25.00
50	3 to 3½ feet.....	30.00
4	3½ to 4 feet.....	35.00
11	5 to 5½ feet.....	50.00
2	5½ to 6 feet.....	55.00

VIRGINIANA PYRAMIDALIS (Pyramidal Cedar) 10-12 ft.

Intense green foliage, narrow columnar habit with branches ascending upward. One of the most interesting and attractive better evergreens.

6	2½ to 3 feet.....	27.50
32	3 to 3½ feet.....	32.50
6	3½ to 4 feet.....	37.50
40	4 to 4½ feet.....	42.50
30	4½ to 5 feet.....	47.50
33	5 to 5½ feet.....	50.00

SPRUCE, *Picea*

CANADENSIS ALBERTIANA, Black Hills Spruce. 40-50 ft.

Native of the Black Hills of South Dakota. Foliage varies from dark green to blue. One of the most hardy Spruce. Grows symmetrical, compact and very shapely from small trees in nursery to older established trees. Wide spread pyramidal form.

100	15 to 18 inches.....	10.00	85.00
50	2 to 2½ feet.....	16.00	140.00
45	4 to 4½ feet.....	40.00	375.00
18	4½ to 5 feet.....	45.00	425.00
64	5 to 5½ feet.....	50.00	475.00
40	6 to 8 feet.....	65.00

EXCELSA, Norway Spruce

Sharp, pointed needles, green in color. Used extensively for windbreaks and general planting. Rapid growth.

150	18 to 24 inches.....	11.00	100.00
200	2 to 2½ feet.....	15.00	135.00

PUNGENS GLAUCA (All Blue Medium Color) 60-80 ft.

This selection is of a medium blue color but not as light a blue as the "select."

16	3 to 3½ feet.....	35.00
15	3½ to 4 feet.....	42.50
35	4 to 4½ feet.....	47.50
20	4½ to 5 feet.....	52.50
26	5 to 5½ feet.....	60.00

PUNGENS GLAUCA GREEN (Mostly Green) 60-80 ft.

These have very little blue color.

30	3½ to 4 feet.....	35.00	325.00
35	4 to 4½ feet.....	40.00	375.00
18	4½ to 5 feet.....	45.00	425.00

PINE, *Pinus*

ARISTATA, Fox Tail Pine.

A dwarf, bushy Pine.

10	18 to 24 inches.....	20.00
14	2 to 2½ feet.....	25.00



MONTANA SCOPULORUM JUNIPER AND MUGHO PINE

MUGHUS, Mugho Pine. 3-4 ft.

Dwarf pine of many branches. Used in rockeries and in foundation planting. New growth, in spring, resembles candles.

Quantity		Per 10	Per 100
200	12 to 15 inches.....	14.00	125.00
550	15 to 18 inches.....	17.50	150.00
800	18 to 24 inches.....	20.00	175.00
550	2 to 2½ feet.....	22.50	200.00
200	2½ to 3 feet.....	25.00	225.00
90	3 to 3½ feet.....	27.50	250.00

NIGRA, Austrian Pine. 60-70 ft.

Deep rich green color. Growth close and compact. Coal gas and smoky atmosphere have very little effect on its growth. Valuable for windbreaks. Very hardy.

200	2 to 2½ feet.....	15.50	140.00
25	2½ to 3 feet.....	17.50	160.00
170	3 to 3½ feet.....	22.50	200.00
14	4 to 4½ feet.....	30.00

PONDEROSA, Western Yellow or Bull Pine. 50-100 ft.

A most valuable pine for ornamental, windbreak and timber planting. Very long needles and compact growth makes this tree very desirable.

60	2 to 2½ feet.....	15.50	140.00
90	3 to 3½ feet.....	22.50	200.00

STROBUS, White Pine

Grows very fast. Will grow well on most any kind of soil. Valuable for back-grounds or windbreaks.

180	3 to 3½ feet.....	22.50	200.00
75	3½ to 4 feet.....	27.50	250.00
65	4 to 5 feet.....	35.00
10	5 to 6 feet.....	40.00

SYLVESTRIS REGENSIS, Scotch Pine. 60-70 ft.

Regensis is the best known type of Scotch Pine grown. Is a valuable tree wherever Pine trees are desired.

10	3 to 3½ feet.....	17.50
30	3½ to 4 feet.....	20.00
40	4 to 4½ feet.....	22.50
32	5 to 6 feet.....	35.00

TAXUS, Yew**TAXUS CUSPIDATA**

Spreading Japanese Yew. This tree develops in a low bushy formation. Dark green needles. Valuable for foundation planting.

Quantity		Per 10	Per 100
50	12 to 15 inches.....	15.00
15	15 to 18 inches.....	20.00

TAXUS CUSPIDATA, Browni

Foliage darker green, habit more upright than Cuspidata.

30	12 to 15 inches.....	12.00
10	15 to 18 inches.....	15.00

TAXUS CUSPIDATA, Hicksi

A columnar form, dark green foliage.

30	12 to 15 inches.....	12.00
20	15 to 18 inches.....	15.00

TAXUS CUSPIDATA NANA (Dwarf Japanese Yew)

Extremely slow grower, forming a low irregular outline. Blackish green color. Formerly known under the name Brevifolia Nana.

25	12 to 15 inches.....	20.00
20	15 to 18 inches.....	25.00
18	18 to 24 inches.....	30.00

BREVIFOLIA, Upright.

Broad base, pyramidal tree. Waxy green foliage. A very good tree for planting on the north or shady places.

40	15 to 18 inches.....	16.00
15	18 to 24 inches.....	20.00

THUYA, American Arbor Vitae**THUYA OCCIDENTALIS, American Arbor Vitae Pyramidalis**

25	18 to 24 inches.....	11.00	100.00
100	2 to 2½ feet.....	14.00	125.00
100	2½ to 3 feet.....	16.50	150.00
15	3 to 3½ feet.....	18.00	175.00

THUYA OCCIDENTALIS, American Arbor Vitae Woodward's Globe

10	24 x 24 inches.....	15.00	135.00
----	---------------------	-------	--------

EVERGREENS FOR LINING OUT

The make up and handling of this line of stock means success or failure to the planter. Our stock is grown in rich, sandy loam, which builds a wonderful root system. With our experience in handling, the planter is assured of good results.

ORDER EARLY.

50 of any variety and size at the hundred rate.
250 of any variety and size at the thousand rate.
Samples at list price.

KEY—TTT—three times transplanted
TT—twice transplanted
T—once transplanted

RP—Root Pruned
S—Seedlings

Grade estimates were made in mid-summer and are subject to change.
Don't buy more than you need as the supply is short.

ABIES BALSAM FIR

Quantity		Per 25	Per 100	Per 1000
1,000	6 to 9 inches RP.....	2.00	7.00	60.00
1,000	4 to 6 inches RP.....	1.50	5.00	45.00

EVERGREENS—Continued

JUNIPER COMMUNIS DEPRESSA PLUMOSA (Andorra)

A low growing spreading evergreen. Beautiful silvery green in Spring, turning to rich purple bronze in autumn. Seldom grows over 15 inches high, spreading over wide area.

Quantity		Per 25	Per 100	Per 1000
240	9 to 12 inches TT.....	5.50	20.00	175.00
400	6 to 9 inches TT.....	4.50	16.00	140.00

JUNIPER ADMIRABILIS

Habit of growth is horizontal but it is so compact that it makes a solid mat of evergreen, covering the ground completely. Foliage bluish green. Grows 6 to 8 inches high. Spreads rapidly, yet retains its compactness. A very fine plant to use for covering graves, terraces or any place where a low beautiful covering is wanted.

60	12 to 18 inches TTT.....	6.75	25.00	225.00
700	9 to 12 inches TTT.....	6.25	22.50	200.00
600	9 to 12 inches TT.....	5.50	20.00	175.00
400	6 to 9 inches TT.....	4.50	16.00	140.00

JUNIPER ADPRESSUS

This juniper differs some from the others, although it is of the same species. Its foliage is more green with very prominent whitish-green pointed tips. Entire plant grows so tight to the ground that it resembles being pressed against the earth. Grows 4 to 6 inches high. Spreads rapidly making a fine covering.

130	9 to 12 inches TTT.....	6.25	22.50	200.00
200	9 to 12 inches TT.....	5.50	20.00	175.00

JUNIPER ARGENTEUS

Smooth blue-silver foliage. Grows 6 to 8 inches high. Makes solid cover. Very attractive.

50	9 to 12 inches TT.....	5.50	20.00	175.00
100	6 to 9 inches TT.....	4.50	16.00	140.00

JUNIPER CHINESE

A native Juniper of Asia where it covers large areas. The needles are sharp and prickly, light green with a slightly bluish cast. It averages 15-20 feet.

100	18 to 24 inches TTT.....	7.50	27.50	250.00
200	12 to 18 inches TT.....	5.00	17.50	150.00
1,200	9 to 12 inches TT.....	3.50	12.00	100.00
2,500	6 to 9 inches TT.....	2.50	8.50	75.00

JUNIPER EXIMIUS

Dwarf growing, foliage greenish silver. Very similar to the following. limbs covered with delicate small branchlets forming fern shaped branches.

30	9 to 12 inches TTT.....	6.75	25.00	225.00
250	6 to 9 inches TT.....	5.50	20.00	175.00

JUNIPER FILICINUS MINIMUS

This pretty little juniper is also a variety of the Rocky Mountains. It is one of the finest foliated evergreens of the juniper family. Grows 4 to 6 inches high.

50	9 to 12 inches TTT.....	6.75	25.00	225.00
150	6 to 9 inches TT.....	5.50	20.00	175.00

JUNIPER KOSTERI

Low spreading variety with bluish-green leaves. Very hardy. Habit of growth very much like Pfitzer. Fast becoming very popular in this territory.

300	15 to 18 inches TTT.....	12.50	45.00	400.00
400	12 to 15 inches TTT.....	10.50	37.00	325.00
500	9 to 12 inches TT.....	6.25	22.50	200.00
300	6 to 9 inches TT.....	5.00	17.50	150.00

EVERGREENS—Continued

JUNIPER LIVIDUS

Foliage silver-blue on slender branches, making a solid fast growing cover. Grows 4 to 6 inches high. One of our best ground covers.

Quantity		Per 25	Per 100	Per 1000
200	12 to 15 inches TTT.....	6.75	25.00	225.00
500	9 to 12 inches TTT.....	6.25	22.50	200.00
225	9 to 12 inches TT.....	5.50	20.00	175.00
300	6 to 9 inches TT.....	4.50	16.00	140.00

JUNIPER PETRAEUS

Foliage dull silvery-green. Grows fast and makes a very attractive plant. Grows 6 to 8 inches high.

125	12 to 18 inches TTT.....	6.75	25.00	225.00
200	9 to 12 inches TTT.....	6.25	22.50	200.00
250	9 to 12 inches TT.....	5.50	20.00	175.00
400	6 to 9 inches TT.....	4.50	16.00	140.00

JUNIPER PFITZER

This tree is widely known among nurserymen. It originated in Germany many years ago. When grown without staking, it develops a low spreading habit. Handsome, feathery, gray-green foliage covers the arching, spreading branches as it develops its broad picturesque form.

200	15 to 18 inches TTT.....	13.75	50.00	450.00
500	12 to 15 inches TTT.....	11.25	40.00	350.00
500	9 to 12 inches TTT.....	9.00	32.50	275.00
1,000	9 to 12 inches TT.....	6.75	25.00	225.00

JUNIPER PLANIFOLIUS

A rapid grower, with long, palmy, silver-blue branches. Grows 8 to 10 inches high. Solid cover. Should be used where quick cover is desired.

150	12 to 15 inches TTT.....	6.75	25.00	225.00
100	9 to 12 inches TTT.....	6.25	22.50	200.00
225	9 to 12 inches TT.....	5.50	20.00	175.00
400	6 to 9 inches TT.....	4.50	16.00	140.00

JUNIPER PULCHELLUS

A beautiful dwarf plant. Foliage is a mixture of blue and green. The short, sharp leaves make up the little branchlets that develop into fern-shaped branches and very attractive. Grows not over 4 to 6 inches high. Spreads quite slowly and very dense.

50	12 to 15 inches TTT.....	6.75	25.00	225.00
100	9 to 12 inches TTT.....	6.25	22.50	200.00
75	9 to 12 inches TT.....	5.50	20.00	175.00
300	6 to 9 inches TT.....	4.50	16.00	140.00

JUNIPER SAVINS

Spreading form with slender branches and dark green, short, tufted foliage. Excellent for foundation work and underplanting. Very hardy and planted over a wide area.

100	15 to 18 inches TTT.....	13.75	50.00	450.00
250	12 to 15 inches TTT.....	11.25	40.00	350.00
500	9 to 12 inches TTT.....	9.00	32.50	275.00
1,500	9 to 12 inches TT.....	6.75	25.00	225.00
1,500	6 to 9 inches TT.....	5.50	20.00	175.00

SABINA HORIZONTALIS (Creeping Savin's)

Originally from coast of Maine. Makes a strong, thrifty growth with long, graceful branchlets. Foliage bluish-green, not as dense as some of the Rocky Mt. varieties.

100	9 to 12 inches TT.....	5.50	20.00	175.00
175	6 to 9 inches TT.....	4.50	16.00	140.00

JUNIPER SUBGLAUOUS

Foliage a dull greenish silver. A fine ground cover, 6 to 8 inches high.

50	12 to 15 inches TTT.....	6.75	25.00	225.00
50	9 to 12 inches TTT.....	6.25	22.50	200.00
200	9 to 12 inches TT.....	5.50	20.00	175.00
100	6 to 9 inches TT.....	4.50	16.00	140.00

EVERGREENS—Continued

JUNIPER SCOPULORUM, MONTANA

Flathead region type. Dull, pointed leaves, whipcord like foliage, silver blue to green. Grown from seed.

Quantity		Per 25	Per 100	Per 1000
1,100	2 to 3 feet TTT.....	12.00	45.00	400.00
1,500	18 to 24 inches TTT.....	10.00	35.00	300.00

JUNIPER VIRGINIANA, Platte River Type.

1,500	2 to 3 feet TTT.....	9.00	32.50	275.00
700	2 to 3 feet T.....	5.00	18.00	160.00

JUNIPER WAUKEGAN

10	12 to 15 inches TTT.....	6.75	25.00	225.00
25	9 to 12 inches TTT.....	6.25	22.50	200.00
20	6 to 9 inches TT.....	4.50	16.00	140.00

PICEA ALBERTIANA CANADENSIS, BLK. H. SPRUCE

500	12 to 15 inches TTT.....	7.50	27.50	250.00
8,000	9 to 12 inches TTT.....	6.75	22.50	200.00
2,000	6 to 9 inches TTT.....	5.00	17.50	150.00

SPRUCE, COLO. BLUE PUNGENS, GLAUCA

200	9 to 12 inches TTT.....	7.50	27.50	250.00
1,000	9 to 12 inches T.....	5.00	18.00	160.00
2,000	6 to 9 inches T.....	4.00	14.00	120.00
5,000	4 to 6 inches T.....	2.75	10.00	90.00
3,000	6 to 9 inches RP.....	2.40	8.50	75.00
3,000	4 to 6 inches RP.....	2.00	7.00	60.00

SPRUCE, WHITE CANADENSIS ALBA

25	2 to 3 feet TTT.....	11.25	40.00	350.00
150	18 to 24 inches TTT.....	7.50	27.50	250.00
600	9 to 12 inches T.....	2.50	9.00	80.00
1,700	6 to 9 inches T.....	2.15	7.50	65.00
5,000	4 to 6 inches T.....	1.75	6.00	50.00
700	9 to 12 inches RP.....	2.25	8.00	70.00
1,000	6 to 9 inches RP.....	1.85	6.50	55.00

PINE, JACK (Banksiana)

2,000	18 to 24 inches RP.....	2.40	8.50	75.00
1,900	12 to 18 inches RP.....	2.15	7.50	65.00
3,500	9 to 12 inches RP.....	1.75	6.00	50.00
2,000	6 to 9 inches RP.....	1.40	4.50	35.00

PINE, DENSIFLORA RED PINE

2,000	18 to 24 inches RP.....	2.40	8.50	75.00
4,000	12 to 18 inches RP.....	2.15	7.50	65.00
5,000	9 to 12 inches RP.....	1.75	6.00	50.00
4,000	6 to 9 inches RP.....	1.40	4.50	35.00

PINE, EDULIS NUT PINE

200	18 to 24 inches RP.....	2.40	8.50	75.00
200	6 to 9 inches RP.....	1.75	6.00	50.00
500	4 to 6 inches RP.....	1.40	4.50	35.00

PINE, FLEXILIS LIMBER PINE

100	6 to 9 inches RP.....	1.75	6.00	50.00
600	4 to 6 inches RP.....	1.40	4.50	35.00

PINE, AUSTRIAN NIGRA

1,000	18 to 24 inches RP.....	3.50	12.00	100.00
7,000	12 to 18 inches RP.....	2.40	8.50	75.00
8,000	9 to 12 inches RP.....	2.00	7.00	60.00

PINE, PONDEROSA BULL

1,400	12 to 18 inches RP.....	2.40	8.50	75.00
10,000	9 to 12 inches RP.....	2.00	7.00	60.00
15,000	6 to 9 inches RP.....	1.75	6.00	50.00

PINE, RESINOSA RED PINE

Quantity		Per 25	Per 100	Per 1000
1,000	12 to 18 inches RP.....	2.40	8.50	75.00
1,000	9 to 12 inches RP.....	2.00	7.00	60.00

PINE, WHITE STROBUS

1,000	12 to 18 inches T.....	2.40	8.50	75.00
4,200	9 to 12 inches T.....	2.00	7.00	60.00
5,000	9 to 12 inches RP.....	1.75	6.00	50.00
6,000	6 to 9 inches RP.....	1.50	5.00	40.00

PINE, SCOTCH SYLVESTRIS

1,700	12 to 18 inches RP.....	2.15	7.50	65.00
3,700	9 to 12 inches RP.....	1.75	6.00	50.00

AMERICAN ARBOR VITAE THUYA

3,500	6 to 9 inches T.....	2.00	7.00	60.00
2,700	4 to 6 inches T.....	1.65	5.50	45.00
3,000	9 to 12 inches T.....	2.50	8.50	80.00

JUNIPER GRAFTS

Our field grown grafts are grown in such a manner as to give you a tree properly started. We space, stake, tie and prune them. The TTT and TTTT will not need to be transplanted anymore after you line them out into the field. The TT should be under cut after the second year out if you intend growing stock larger than 4-5 ft. **DON'T BUY MORE THAN YOU NEED AS SUPPLY IS SHORT.**

50 Grafts of not less than 10 of a kind or grade at 100 rate.

300 Grafts of not less than 50 of a kind or grade at 1000 rate.

JUNIPER BLUE RAPIDS

Foliage bluish-green color. Leaves not so sharp, growing on stout, coarse, horizontal branches, which set close to each other on a straight, rugged, fast-growing stem. Hardy and one of the best grafted Juniper Virginiana varieties, Northern origin. Retains its color in winter.

75	2 to 3 feet.....	11.00	100.00	900.00
70	18 to 24 inches.....	9.00	85.00	800.00

JUNIPER BURKI

Distinct blue, forming a dense column. Winter coloring metallic purple.

30	2 to 3 feet.....	11.00	100.00	900.00
----	------------------	-------	--------	--------

JUNIPER CANNARTI

Foliage deep, rich green. Main stem very straight. Branches almost horizontal. Requires shearing to attain compactness.

100	3 to 4 feet.....	12.50	115.00	1000.00
70	18 to 24 inches.....	9.00	85.00	800.00

CANNARTI PLUMOSA, a new Cannarti Juniper

It has many advantages over the Cannarti

It has the same green color thru out the year

Its main stem is straight

Its branches are closer together

It is much more compact

It is some slower in growth

Its juvenile foliage is more plume-like

It has never been offered before.

SOLD OUT

30 18 to 24 inches 1.50

JUNIPER VIRG. GLAUCA

An old variety. Pyramidal tree of moderate size. Silver blue color. Brightest in spring, darkening as season progresses. Stands trimming well.

Glauca (Virg.)

15	3 to 4 feet.....	12.50	115.00	1000.00
50	2 to 3 feet.....	11.00	100.00	900.00
30	18 to 24 inches.....	9.00	85.00	800.00

Globe (Virg.)

15	10 to 15 inches.....	6.50	60.00	550.00
----	----------------------	------	-------	--------

JUNIPER GRAFTS—Continued

JUNIPER LEE'S ELEGANTISSIMA

Dark green foliage. Golden tipped, more so in autumn. The natural tendency is to grow low and spreading. Very hardy; desirable, where color is required.

Lee's Golden (Virg.)		Per 10	Per 100	Per 1000
80	18 to 24 inches.....	9.00	85.00	800.00
40	15 to 18 inches.....	8.00	75.00	700.00

JUNIPER VON EHROH

Belongs to the Savin family. An extremely rapid grower clothed with dark green foliage. Many nurserymen consider it better than Savin.

100	9 to 12 inches.....	6.50	60.00	550.00
Blue Colo. Globe (Scop.)				
150	15 to 18 inches.....	8.00	75.00	700.00
25	10 to 15 inches.....	7.50	70.00	650.00

JUNIPER PFITZER TYPE SCOPULORUM

A natural bushy silver-blue colored scopulorum. Very hardy and attractive.

90	18 to 24 inches.....	11.00	100.00	900.00
15	10 to 15 inches.....	7.50	70.00	650.00

JUNIPER DECUMBENS SILVER BLUE

The remarkable characteristics of this tree will not display their beauty until it has attained a growth of six feet or more, displaying more beauty each year. It has shining silver-green foliage. Each year the new branches, while soft, grow downward and as the season goes on the branches stiffen and turn directly upward. As the tree develops it becomes a mass of well clothed horizontal branches with their tips perpendicular with the leader.

45	2 to 3 feet.....	11.00	100.00	900.00
----	------------------	-------	--------	--------

EMERALD GREEN (Scop.)

A new Scopulorum with sharp dense green foliage, Colo. type. None better.

Quantity		Per 10	Per 100	Per 1000
85	2 to 3 feet.....	12.00	110.00	1000.00
200	18 to 24 inches.....	11.00	100.00	900.00

JUNIPER FULGENS

This tree is a native of Colorado. Its habit is upright, pyramidal, full at base and grows compact. Bicolor foliage, glistening, bluish-green, becoming more silver at the tips. The branchlets grow more or less opposite forming flat, Arbor Vitae-like branches. Grows one foot per year.

140	2 to 3 feet.....	11.00	100.00	900.00
45	18 to 24 inches.....	9.00	85.00	800.00

JUNIPER FUNALIS

Bluish-green, whip-cord foliage, retaining nearly the same color thruout the year. Pyramidal habit of growth, extremely hardy. Slightly silver-tinged in winter. Straight stem with branches growing nearly horizontal. Will attain more compactness if sheared. Grows one foot per year.

95	2 to 3 feet.....	11.00	100.00	900.00
175	18 to 24 inches.....	9.00	85.00	800.00

JUNIPER GREEN SPREADER

Foliage light greenish silver, drooping branches. Very good for low planting.

45	15 to 18 inches.....	8.50	80.00	750.00
5	10 to 15 inches.....	7.50	70.00	650.00

HILBORN GLOBE (Scop.)

A natural globular bush, bluish-silver foliage, very dense, dwarf in habit.

Quantity		Per 10	Per 100	Per 1000
45	15 to 18 inches.....	9.50	90.00	850.00
125	10 to 15 inches.....	8.50	80.00	750.00
90	9 to 12 inches.....	7.50	70.00	650.00

JUNIPER GRAFTS—Continued

JUNIPER MOFFETI SCOPULORUM

A very attractive tree. Has a mixed green and silver foliage, more silver on tips of branches. Pyramidal habit. Heavy base. Makes an ideal tree whether sheared or not.

Quantity		Per 10	Per 100	Per 1000
25	2 to 3 feet.....	11.00	100.00	900.00
15	12 to 18 inches.....	6.50	60.00	550.00

JUNIPER PATHFINDER SCOPULORUM

This tree found favor almost instantly by reason of its outstanding silver foliage. It is upright in habit, full at base, limbs curved upward covered with shining silver-blue foliage making it an outstanding tree of the times. Will grow about one foot a year. Can be sheared, if necessary.

230	2 to 3 feet.....	11.00	100.00	900.00
275	18 to 24 inches.....	9.00	85.00	800.00
50	12 to 18 inches.....	6.50	60.00	550.00

JUNIPER SILVER BEAUTY SCOPULORUM

A native of the San Isabel Forest region, and truly a beautiful tree. It is upright, full at base, branches have upward trend, foliage is greenish-silver, more silver on the exposed tips of branches. Grows about one foot a year.

100	2 to 3 feet.....	11.00	100.00	900.00
190	18 to 24 inches.....	9.00	85.00	800.00

JUNIPER SILVER CORD SCOPULORUM

The straightest stemmed Juniper we grow. Foliage is very blue and attractive. Branches grow upward, needs very little shearing.

60	2 to 3 feet.....	11.00	100.00	900.00
----	------------------	-------	--------	--------

JUNIPER VIRGINALIS DARK GREEN

A bush Juniper, branches upright. Foliage dark green, slow grower. Very attractive.

25	15 to 18 inches.....	9.50	90.00	850.00
50	10 to 15 inches.....	7.00	65.00	600.00
200	9 to 12 inches.....	6.50	60.00	550.00

FRUIT TREES

Fruit Trees and Plants are very scarce. Please do not be disappointed if we are unable to book your full wants of Fruit Trees and Plants.

HEIGHT AND CALIPER—Height given of fruit trees is approximate and represents average height of most varieties. Some slow growing kinds may fall short of height specified as it is intended that **THE CALIPER SHALL GOVERN.**

All Fruit Trees are tied 11-16 and 9-16, 10; 7-16 and 5-16, 20 per bundle.

APPLES

Our Apple trees are excellent stock, have been well grown, are well graded and we are confident will please critical trade. Note the complete assortment we are offering with improved strains in many varieties.

	Per 10	Per 100	Per 1000
First Class, 11-16 to 1-inch, 4½ feet and up.....	\$ 6.00	\$55.00
" " 9-16 to 11-16, 4 feet and up.....	5.00	45.00
" " 7-16 to 9-16, 3 feet and up.....	4.00	35.00
" " 5-16 to 7-16, 2 feet and up.....	2.90	25.00

Anoka	Fameuse	Red Siberian Crab
Cortland	Grimes Golden	Sharon
Crimson Winesap	Haralson	Stayman Winesap
Delicious Red	Jonathan	Tolman Sweet
Delicious Yellow	Jonathan Dble Red	Wealthy
Dolga Crab	Missouri Pippin	Whitney Crab
Duchess Red	N. W. Greening	Winesap
Early Harvest	Prairie Spy	Yellow Transparent
Early McIntosh	Red June	

FRUIT TREES—Continued

CHERRIES—Sour—On Mahaleb

	Per 10	Per 100	Per 1000
One Year, 11-16 and up, 3½ feet and up.....	\$ 9.00	85.00
" " 9-16 to 11-16, 3 feet and up.....	8.00	75.00
" " 7-16 to 9-16, 2½ feet and up.....	7.00	65.00
" " 5-16 to 7-16, 2 feet and up.....	5.50	50.00

Early Richmond
Ostheim

English Morello

Montmorency Large

PRUNUS BESSEYI (Sand Cherry) Sometimes called Rocky Mountain Dwarf Cherry or Bush Cherry. Grows 3 to 4 ft. high. Makes a broad bush, fruit bluish black, flesh green. Bears fruit second year. Very prolific.

	Per 10	Per 100	Per 1000
3 to 4 feet, Transplants.....	\$2.90	\$25.00
2 to 3 feet ".....	2.50	22.00
18 to 24 inches ".....	2.10	18.00
12 to 18 inches ".....	1.70	14.00

PEAR—Standard

	Per 10	Per 100	Per 1000
One Year, 7-16 to 9-16, 3 feet and up.....	7.50	70.00

Bartlett
Douglas

Duchess

Flemish Beauty

PLUM

	Per 10	Per 100	Per 1000
11-16 and up, 4½ feet and up.....	\$8.50
9-16 to 11-16, 4 feet and up.....	7.50
7-16 to 9-16, 3½ feet and up.....	6.50

AMERICAN and HARDY HYBRIDS, on Native Roots

Compass
Golden Rod
Monitor

Opata
Sapa
Toka

Underwood
Waneta

***Ember**, (Minnesota No. 83) an attractive yellow Plum blushed with red, ripening September and early October. Tree is vigorous and productive.

APRICOTS—On Apricot Root

	Per 10	Per 100	Per 1000
One Year, 9-16 to 11-16, 3½ feet and up.....	SOLD \$6.50	OUT
" " 7-16 to 9-16, 3 feet and up.....	SOLD 5.50	OUT
" " 5-16 to 7-16, 2 feet and up.....	4.00	

Chinese

Thompson's Early

Moorpark

Superb

Hardy Manchurian Varieties

Hansen's new northwest, hardy varieties of Apricots, recently introduced by Prof. N. E. Hansen. They are drouth resistant and extremely hardy. The varieties offered are the best introductions to date.

	Per 10	Per 100	Per 1000
One Year, 9-16 to 11-16, 3½ feet and up.....	SOLD \$6.50	OUT
" " 7-16 to 9-16, 3 feet and up.....	SOLD 5.50	OUT
" " 5-16 to 7-16, 2 feet and up.....	4.00	

Mandarin

Ninguta

Sansin

PEACH

	Per 10	Per 100	Per 1000
One Year, 1 inch and up, 6 feet and up.....	\$7.50
" " 11-16 and up, 4 feet and up.....	SOLD 6.00	OUT
" " 9-16 to 11-16, 3½ feet and up.....	SOLD 5.00	OUT
" " 7-16 to 9-16, 3 feet and up.....	4.00	

Champion
Elberta

Golden Jubilee
Halehaven
Heath Cling

J. H. Hale
Polly

SMALL FRUITS

GRAPE VINES

	Tied, 2 year, 50; No. 2, 100 per bundle.	Per 100	Per 1000
Brighton, dark red, 2 years, No. 1.....		\$20.00
" " " 2 years, No. 2.....		15.00
Concord, black, 2 years, No. 1.....		16.00	140.00
" " 2 years, No. 2.....		11.00	90.00
Fredonia, new, early, black, valuable, 2 years, No. 1.....		20.00
" " " " " 2 years, No. 2.....		14.00
Moore's Early, black, 2 years, No. 1.....		20.00
" " " 2 years, No. 2.....		14.00
Worden, black, 2 years, No. 1.....		18.00
" " 2 years, No. 2.....		12.00

✓ **RASPBERRIES**

Tied 25 per bundle.

Cumberland, black, tips.....	\$ 6.00	\$ 50.00
Latham, red, suckers, No. 1.....	7.50	65.00

MISCELLANEOUS BERRIES

Boysenberry, tip plants, No. 1.....	\$ 7.50	\$ 65.00
-------------------------------------	---------	----------

MISCELLANEOUS

Horseradish, Crowns.....	\$ 8.50	\$ 75.00
Rhubarb, Victoria, whole roots, 1/2 to 5/8-inch.....	3.50	30.00
" " " " 5/8 to 1-inch.....	4.50	40.00
" " " " 1 to 1 1/2-inch.....	5.50	50.00
	Per 10	Per 100
Rhubarb, McDonald, grown from divisions.....	\$ 4.00	\$35.00

DECIDUOUS and ORNAMENTAL SEEDLINGS

Our seedlings are graded not only by height but particular attention is given to caliper, which insures a strong grade.

Tied 3-4 ft. and up, 25; 2-3 ft., 50; 18-24 and smaller, 100 per bundle.

ASH, GREEN, Fraxinus lanceolata	Per 100	Per 1000
6 to 12 inches.....	9.00	80.00
12 to 18 inches.....	1.40	12.00
18 to 24 inches.....	2.10	18.00
2 to 3 feet.....	2.90	25.00

CARAGANA, arborescens, Siberian Pea-tree	Per 100	Per 1000
6 to 12 inches.....	1.40	12.00
12 to 18 inches.....	2.10	18.00
18 to 24 inches.....	2.90	25.00
2 to 3 feet.....	3.70	32.00

ELM, AMERICAN WHITE, Ulmus americana	Per 100	Per 1000
6 to 12 inches.....	8.00	7.00
12 to 18 inches.....	1.20	10.00
18 to 24 inches.....	1.70	14.00
2 to 3 feet.....	2.40	20.00

ELM, CHINESE, Ulmus pumila	Per 100	Per 1000
We have a splendid lot of Chinese Elm seedlings in all grades, graded by height and caliper, making a strong grade.		
6 to 12 inches.....	.70	6.00
12 to 18 inches.....	1.00	9.00
18 to 24 inches.....	1.70	14.00
2 to 3 feet.....	2.40	20.00
3 to 4 feet.....	3.50	30.00
4 to 5 feet.....	5.60	50.00

DECIDUOUS and ORNAMENTAL SEEDLINGS—Continued

HACKBERRY, *Celtis occidentalis*

	Per 10	Per 100
12 to 18 inches.....	2.10	18.00
18 to 24 inches.....	2.90	25.00
2 to 3 feet.....	3.50	30.00

LOCUST, BLACK or YELLOW, *Robinia pseudoacacia*

12 to 18 inches (For Spring Only).....	1.80	15.00
18 to 24 inches " " ".....	2.40	20.00
2 to 3 feet " " ".....	3.20	28.00
3 to 4 feet " " ".....	3.50	32.00

LOCUST HONEY, *Gleditsia triacanthos*

6 to 12 inches.....	1.20	10.00
12 to 18 inches.....	1.80	15.00
18 to 24 inches.....	2.50	22.00
2 to 3 feet.....	3.20	28.00
Thornless, inermis, 6 to 12 inches.....	1.40	12.00
" " 12 to 18 inches.....	2.10	18.00
" " 18 to 24 inches.....	2.90	25.00
" " 2 to 3 feet.....	3.50	30.00

MULBERRY, RUSSIAN, *Morus tatarica*

12 to 18 inches.....	2.10	18.00
18 to 24 inches.....	2.40	20.00
2 to 3 feet.....	2.90	25.00

DECIDUOUS TREES

Our Shade and Ornamental Trees are first class, well shaped, young and vigorous nursery grown trees with good roots. They have been grown from seedlings transplanted in nursery row especially for this purpose.

All calipers taken 6 inches above the collar.

ASH, Green, *lanceolata*, 50-60 ft.

Thrives over a wide territory. Especially valuable for planting in high altitudes and dry cold climates. Succeeds everywhere. Valuable on the farm.

4 to 5 feet.....	2.50	22.00
5 to 6 feet.....	4.00	35.00
6 to 8 feet.....	5.50	50.00
8 to 10 feet.....	7.50	70.00
1¼ to 1½ in.....	9.00	80.00

BIRCH, Cutleaf Weeping, *Betula laciniata*, 30-40 ft.

A graceful, white barked tree with drooping limbs and cut-leaved foliage. Highly recommended for lawn and park planting. Balled in Moss.

5 to 6 feet.....	13.50	125.00
6 to 8 feet.....	17.50	165.00
8 to 10 feet.....	25.00
1¼ to 1½ in.....	30.00
1½ to 2 in.....	35.00
2 inch.....	45.00

BIRCH, European White (*alba*) 30-40 ft.

White barked, medium sized, graceful tree. Thrives well in even poor and dry soils.

8 to 10 feet.....	12.00	110.00
1¼ to 1½ in.....	14.00	130.00
1½ inch.....	16.50	150.00
2 inch.....	22.50	200.00

CHERRY, Wild Black (see *Prunus Serotina*)

DECIDUOUS and ORNAMENTAL SEEDLINGS—Continued

COFFEETREE, KENTUCKY, *Gymnocladus dioica*. 50-70 ft.

A rather slender tree, hardy, green leaflets on long stems, flowers greenish white in June. Leathery reddish-brown pods that hang on all winter.

	Per 10	Per 100
4 to 5 feet.....	7.00	65.00
5 to 6 feet.....	10.00	90.00
6 to 8 feet.....	15.00	135.00
8 to 10 feet.....	19.00	175.00

CRAB, Flowering**Bechtel, 12-15 ft.**

A beautiful, double pink, flowering crab with fragrant flowers. May-June. Does well where not affected with Cedar Fungus.

18 to 24 inches.....	4.00	35.00
2 to 3 feet.....	4.50	40.00

CRAB, Flowering Malus. 15-30 ft.

The following varieties of flowering crabs are valuable, producing attractive flowers and fruit. Where Cedar trees are plentiful we recommend planting these in preference to Bechtel's.

2 to 3 feet.....	4.50	40.00
3 to 4 feet.....	6.00	55.00
4 to 5 feet.....	7.50	70.00
5 to 6 feet.....	8.50	80.00

Hopa, Red Flowering Crab. 20-25 ft.

A beautiful, upright growing tree with attractive foliage. Entirely covered with rose colored flowers in April. Fruit red inside and out, hanging on until late autumn. Very hardy and free from disease. Planted extensively.

Red Silver. 18-20 ft.

Fruit rich maroon red, foliage somewhat cut-leaved with silver and red color. A remarkable combination.

ELM—American White, *Ulmus americana*. 60-100 ft.

The most popular American tree for street and general planting.

5 to 6 feet.....	4.00	35.00
6 to 8 feet.....	6.50	60.00
8 to 10 feet.....	8.50	80.00
1¼ to 1½ inches.....	11.00	100.00
1½ to 2 inches.....	15.00	135.00
2 to 2½ inches.....	25.00	225.00

Chinese. *pumila*. 40-50 ft. Transplanted in nursery rows.

A hardy, rapid grower. Slender branched, compact habit of growth with small attractive leaves. Highly recommended for dry climate.

Write for quantity prices.	Per 10	Per 100	Per 1000
4 to 5 feet.....	2.90	25.00
5 to 6 feet.....	3.80	35.00	300.00
6 to 8 feet.....	5.50	50.00	450.00
8 to 10 feet.....	8.00	75.00	650.00
1¼ to 1½ inches.....	10.00	90.00
1½ to 1¾ inches.....	14.00	125.00
1¾ to 2 inches.....	18.50	175.00
2 to 2½ inches.....	22.00	200.00

Chinese, Root Pruned Trees.

Have been grown in rows and thinned out to develop branched tops. All have been root pruned to secure a branched root system, and they will be graded by caliper and height. Are good value.

4 to 5 feet, 7-16 to 9-16 inches.....	1.90	16.00	150.00
5 to 6 feet, 9-16 to 11-16 inches.....	2.90	25.00	220.00
6 to 8 feet, 11-16 to 7-8 inches.....	3.80	33.00	300.00
8 to 10 feet, 7-8 to 1 inch.....	5.50	50.00	450.00

DECIDUOUS and ORNAMENTAL SEEDLINGS—Continued

Moline Elm. 80-100 ft.

A new pyramidal, vigorous growing variety with large handsome green foliage. Fine tree for street and drive planting.

	Per 10	Per 100
2 to 3 feet.....	3.50	25.00
3 to 4 feet.....	4.50	35.00
4 to 5 feet.....	6.00	50.00
5 to 6 feet.....	8.50	75.00
6 to 8 feet.....	10.00	90.00
8 to 10 feet.....	12.50	110.00
1¼ to 1½ inches.....	15.00	135.00
1½ to 1¾ inches.....	19.00	175.00
1¾ to 2 inches.....	25.00	225.00
2 to 2½ inches.....	30.00	275.00

Vase Elm. 80-100 ft.

An American Elm with vase formation of limbs. Uniform type, rapid grower. Distinct improvement.

5 to 6 feet.....	8.50	75.00
6 to 8 feet.....	10.00	90.00
8 to 10 feet.....	12.50	110.00
1¼ to 1½ inches.....	15.00	135.00
1½ to 1¾ inches.....	19.00	175.00
1¾ to 2 inches.....	25.00	225.00
2 inch.....	30.00	275.00

HACKBERRY, *Celtis occidentalis*, 50 ft.

A valuable shade tree of rapid spreading growth. Limbs seldom broken by wind. Will stand adverse conditions.

5 to 6 feet.....	4.50	40.00
6 to 8 feet.....	6.50	60.00
8 to 10 feet.....	10.00	90.00
1¼ to 1½ inches.....	12.00	110.00
1½ to 1¾ inches.....	14.00	125.00
1¾ to 2 inches.....	19.00	175.00
2 inch.....	22.00	200.00

LINDEN. American. *Tilia americana*. 60-90 ft.

Rapid growing tree. Large glossy leaves, fragrant yellow flowers. June.

6 to 8 feet.....	9.00	85.00
8 to 10 feet.....	13.50	125.00
1½ to 1¾ inches.....	17.50	160.00
2 to 2½ inches.....	25.00	225.00

Redmond, *Tilia Crimean*, "Budded"

A hybrid Linden growing more rapidly than American, developing a straight heavy stem and closely set branches forming a perfect pyramid.

8 to 10 feet.....	13.50	125.00
1¼ to 1½ inches.....	15.00	140.00
2 inch.....	26.00	240.00
2½ to 3 inches.....	30.00	275.00
3 to 3½ inches.....	35.00	325.00

Honeylocust, *Gleditsia triacanthos*. 50-60 ft.

A thorny tree with attractive pinnate leaves. Fragrant white flowers in May. Long lived, hardy tree. Succeeds on most any kind of soil. Not affected by borers or drouth.

6 to 8 feet.....	8.00	75.00
8 to 10 feet.....	11.00	100.00
1¼ to 1½ inches.....	14.00	125.00

Thornless, *Gleditsia triacanthos inermis*. 50-60 ft.

A variety of *Triacanthos* without thorns.

5 to 6 feet.....	6.50	60.00
6 to 8 feet.....	9.00	85.00
8 to 10 feet.....	12.00	110.00
1¼ to 1½ inches.....	15.00	135.00
1½ to 2 inches.....	18.00	165.00

DECIDUOUS TREES—Continued

MAPLE, Norway, platanoides. 50-60 ft.

Hardy, popular tree. Fine for park and street planting. Spreading habit.

	Per 10	Per 100
6 to 8 ft., branched.....	12.00	110.00
8 to 10 ft., branched.....	16.50	150.00
1½ to 1¾ inches.....	25.00	225.00

Schwedler, Purple Leaf Maple. 40-50 ft.

6 to 8 ft., branched.....	22.00	200.00
8 to 10 ft., branched.....	27.50	250.00
1¼ to 1½ inches.....	32.50	300.00
1½ to 1¾ inches.....	37.50	350.00

Silver, dasycarpum. 60-80 ft.

Well known, rapid growing tree. Leaves silver underneath.

6 to 8 feet.....	6.50	60.00
8 to 10 feet.....	10.00	90.00
1¼ to 1½ inches.....	12.00	110.00
1½ to 1¾ inches.....	15.50	140.00

Sugar, saccharum. 50-75 ft.

Splendid hardy ornamental tree. Foliage turning bright orange, sometimes scarlet in autumn.

5 to 6 feet.....	9.00	85.00
6 to 8 feet.....	14.00	125.00
8 to 10 feet.....	16.50	150.00

MOUNTAIN ASH, European, Sorbus aucuparia. 20-40 ft.

A valuable ornamental tree with scarlet berries. August-September.

1¼ to 1½ inches.....	12.50	115.00
1½ to 1¾ inches.....	15.00	135.00

OAK, BUR, quercus Macrocarpa.

Well known in Nebraska and Iowa. A very hardy rugged tree.

4 to 5 feet.....	8.00	75.00
5 to 6 feet.....	11.00	100.00
6 to 8 feet.....	15.00	135.00
8 to 10 feet.....	20.00	175.00
1¼ to 1½ inches.....	24.00	225.00

Chestnut, Yellow Oak. 40-50 ft.

Medium size tree. Thrives in most soils. Foliage resembles that of American Chestnut bronze-green turning deep yellow and scarlet in autumn.

5 to 6 feet.....	13.00
6 to 8 feet.....	16.50
8 to 10 feet.....	18.50

English, Quercus Robur. 60-80 ft.

A long-lived Oak with stout branches, forming a broad round-topped head.

5 to 6 feet.....	13.00	120.00
6 to 8 feet.....	15.00	140.00
8 to 10 feet.....	22.00	200.00

Pin, quercus palustris. 70-80 ft.

Of rapid growth. Leaves deeply cut and colors beautiful in autumn.

5 to 6 feet.....	11.00	100.00
6 to 8 feet.....	14.00	125.00
8 to 10 feet.....	19.00	175.00
1¼ to 1½ inches.....	25.00	225.00

Red (rubra) 60-80 ft.

A monarch in the tree world. Heavy, shiny, deep green leaves turning crimson in Fall.

5 to 6 feet.....	13.00	120.00
6 to 8 feet.....	15.00	140.00
8 to 10 feet.....	22.00	200.00

DECIDUOUS TREES—Continued

Scarlet, Quercus Coccinea 75-90 ft.

Most striking autumn colors; tall stately grower, deeply cut leaves.

	Per 10	Per 100
6 to 8 feet.....	16.50

White, Quercus Alba. 60-80 ft.

A rugged oak of slow growth making a large, magnificent tree.

5 to 6 feet.....	11.00	100.00
6 to 8 feet.....	14.00	125.00
8 to 10 feet.....	19.00	175.00
1¼ to 1½ inches.....	25.00	225.00
1½ to 2 inches.....	28.00	250.00

POPLAR, Bolleana, Silver Leaved. 50-60 ft.

A rapid growing, columnar tree with silvery foliage. Pale green bark. Grows similar to Lombardy.

1¼ to 1½ inches.....	8.50	80.00
1½ to 2 inches.....	11.00	100.00
1¼ to 1½ inches.....	12.50	100.00
1½ to 1¾ inches.....	15.00	135.00
1¾ to 2 inches.....	17.50	160.00

Lombardy. 60-80 ft.

Tall grower, pyramidal. Valuable for landscaping and used freely for screens. Low branches.

4 to 5 feet.....	1.40	12.00
5 to 6 feet.....	2.40	20.00
6 to 8 feet.....	3.20	28.00
8 to 10 feet.....	4.50	40.00

Yellow Cottonwood

Grown for its lumber qualities. Is a strain used by early settlers, for lumber. Does not warp and resembles the Tulip Poplar wood used in wagon boxes and cabinet building.

6 to 8 feet.....	4.50	40.00
8 to 10 feet.....	6.50	60.00
1¼ to 1½ inches.....	8.50	80.00

PRUNUS, Ornamental Plum

Cistena, Hansen's Purple Leaved Plum. 5-6 ft.

A dwarf hardy variety with rich purple red foliage. Bush form.

18 to 24 inches.....	4.00	35.00
2 to 3 feet.....	5.50	50.00
4 to 5 feet.....	7.50	70.00

serotina, Wild Black Cherry. 40-50 ft.

A native of the Middle West. White flowers in May followed by small black cherries borne in clusters.

1¼ to 1½ inches.....	8.50	75.00
1½ to 1¾ inches.....	12.50	110.00
2 inch.....	17.50	150.00

triloba, Flowering Plum. 8-10 ft.

A handsome, hardy, vigorous, large shrub or small tree with double pink flowers in April-May. Will succeed over a wide territory. Bush form. (On Native Plum).

2 to 3 feet.....	5.50	50.00
3 to 4 feet.....	6.50	60.00

Virginiana, Common Chokecherry, Red or Black. 20-30 ft.

Bush or small tree with rough, speckled bark with strong odor when bruised. Red or black fruit.

2 to 3 feet.....	2.00
3 to 4 feet.....	2.50
4 to 5 feet.....	3.00

SOLD OUT

DECIDUOUS TREES—Continued

RED BUD, American, *Cercis canadensis*. 20-30 ft.

Produces an abundance of reddish-pink flowers in early spring; forms a broad head of glossy, heart-shaped leaves that turn pale yellow in Fall.

	Per 10	Per 100
2 to 3 feet.....	4.00	35.00
3 to 4 feet.....	5.00	45.00
4 to 5 feet.....	6.50	60.00

RUSSIAN OLIVE, *Eleagnus angustifolia*. 20-25 ft.

Attractive silver gray leaves, grayish white berries. Desirable for mass planting. Used frequently for hedges and windbreaks. Very hardy.

For smaller sizes see *Eleagnus* under Seedlings.

6 to 8 feet.....	7.00	65.00
8 to 10 feet.....	9.00	85.00
1¼ to 1½ inches.....	11.00	100.00
1½ to 2 inches.....	13.50	125.00

SOPHORA JAPONICA, Chinese Scholartree. 40-60 ft.

Foliage dark green and glossy above. Forms a dense round head. Yellowish white flowers. Pods form July-Sept. and are 2 to 3 inches long, waxy green.

6 to 8 feet.....	15.00
5 to 6 feet.....	12.50
4 to 5 feet.....	10.00
3 to 4 feet.....	7.50

SYCAMORE or American Planetree, *Platanus occidentalis*. 100-130 ft.

Large, handsome leaves. Smooth, light colored, almost creamy-white bark with age, gives tree a striking appearance.

5 to 6 feet.....	5.50	50.00
6 to 8 feet.....	8.00	75.00
8 to 10 feet.....	11.00	100.00

WALNUT, Black, *Juglans nigra*. 80-100 ft.

Valuable tree for the wood and nuts.

6 to 8 feet.....	9.00	85.00
8 to 10 feet.....	12.50	115.00
1½ to 1¾ inches.....	17.50	160.00

WILLOW (*Salix*)**Niobe Weeping. 30-35 ft.**

An exceptionally strong, hardy, graceful tree. Splendid pendulous habit. Very attractive golden bark. Light green flowers in April.

6 to 8 feet.....	7.50	70.00
8 to 10 feet.....	11.00	100.00
1¼ to 1½ inches.....	12.50	115.00

ORNAMENTAL SHRUBS

Our shrubs are well grown, bushy stock, many of them twice transplanted, grown on rich land, with plenty of room to develop well furnished plants. Are confident they will please your trade. Can quote lower prices on quantities.

Tied 9-12 and 12-18, 25; 18-24 and 2-3, 10; 3-4 and 4-5, 5 per bundle.

ALMOND PINK or WHITE Flowering, *Prunus glandulosa*. 5-6 ft.

Double pink and white. Very ornamental, limbs being covered with masses of flowers. April-May.

	Per 10	Per 100	Per 1000
18 to 24 inches.....	3.20	28.00
2 to 3 feet.....	4.00	35.00
3 to 3½ feet.....	4.50	40.00

AMELANCHIER, *canadensis*, Juneberry (Downy Shadblow). 10-15 ft.

Attractive white flowers early spring followed by dark red fruit. Edible. Attractive to birds.

12 to 18 inches.....	2.50	22.00
18 to 24 inches.....	3.20	28.00
2 to 3 feet.....	4.00	35.00

ORNAMENTAL SHRUBS—Continued

BARBERRY

Thunbergi, Common Barberry, 4-5 ft.

Pale yellow flowers. April-May. A splendid hardy hedge plant. Also fine for mass planting. Brilliant red fruit and foliage in autumn.

	Per 10	Per 100	Per 1000
9 to 12 inches.....	.85	7.50	65.00
12 to 15 inches.....	1.25	10.00	90.00
2 to 2½ feet.....	2.60	22.00	200.00
2½ to 3 feet.....	3.20	28.00

See Hedging for Seedlings and smaller grades.

Red Leaved, atropurpurea. 3-6 ft.

9 to 12 inches.....	1.80	15.00
12 to 15 inches.....	2.10	18.00

Please send your list for quotations, on varieties not listed.

BUDDLEIA, Butterfly Bush, Perennial Shrub. 4-5 ft.**Farquhar. 5-6 ft.**

Lavender pink flowers with orange center; fragrant.

Medium	2.25	20.00
--------------	------	-------	-------

Ile de France. 4-6 ft.

Large flowers of rich, reddish-purple, borne in long panicles.

Medium	2.25	20.00
--------------	------	-------	-------

CORNUS, Dogwood**alba siberica, Coral Dogwood. 10-12 ft.**

Hardy, vigorous, upright shrub producing small white flowers, April-May. Porcelain blue fruit. Bright red bark in winter.

18 to 24 inches.....	1.90	16.00
2 to 3 feet.....	2.50	22.00

Goldentwig, stolonifera lutea. 8-10 ft.

Distinct yellow bark, has fine winter effect.

18 to 24 inches.....	2.40	20.00
2 to 3 feet.....	2.90	25.00
3 to 4 feet.....	3.50	30.00

COTONEASTER acutifolia, Peking Cotoneaster. 10-12 ft.

An attractive hardy shrub or hedge. Dark green leaves. Black fruit.

12 to 18 inches.....	1.40	12.00
18 to 24 inches.....	2.00	16.00
2 to 3 feet.....	2.40	20.00
3 to 4 feet.....	2.80	25.00

CYDONIA japonica, Flowering Quince. 5-6 ft.

Our Cydonia are grown from cuttings secured from blooming wood, producing uniform scarlet colored flowers.

12 to 18 inches.....	2.10	18.00
18 to 24 inches.....	2.50	22.00
2 to 3 feet.....	3.20	28.00

ORNAMENTAL SHRUBS—Continued

EUONYMUS, atropurpureus, Wahoo. 12-15 ft.

Native, hardy, vigorous shrub or small tree producing an abundance of scarlet berries. Attractive colored foliage in autumn.

	Per 10	Per 100	Per 1000
18 to 24 inches.....	2.40	20.00
2 to 3 feet.....	2.90	25.00
3 to 4 feet.....	4.00	35.00

FORSYTHIA intermedia, Border Forsythia. 8-10 ft.

Vigorous, spreading, bright yellow flowers early in April.

18 to 24 inches.....	1.90	16.00
2 to 3 feet.....	2.50	22.00
3 to 4 feet.....	3.50	30.00

intermedia spectabilis, Showy Border Forsythia. 8-10 ft.

18 to 24 inches.....	1.90	16.00
2 to 3 feet.....	2.50	22.00
3 to 4 feet.....	3.50	30.00

HONEYSUCKLE, Lonicera**bella albida, White Belle Honeysuckle. 10-12 ft.**

Very hardy, upright, strong grower. White bloom, red fruit. Makes a splendid tall hedge.

18 to 24 inches.....	1.90	16.00
2 to 3 feet.....	2.50	22.00

bella rosea, Pink Belle Honeysuckle. 7-8 ft.

Hardy, spreading, medium grower. Attractive pink flowers, red fruit.

18 to 24 inches.....	1.90	16.00
2 to 3 feet.....	2.50	22.00

Morrow Honeysuckle, morrowi. 7-8 ft.

Spreading habit, attractive foliage. White flowers, May-June. Red berries.

18 to 24 inches.....	2.10	18.00
2 to 3 feet.....	2.90	25.00

tatarica rosea, Pink Tatarian Honeysuckle. 10-12 ft.

Hardy, vigorous grower. Pink flowers, April-May, red fruit.

18 to 24 inches.....	1.90	16.00
2 to 3 feet.....	2.50	22.00

tatarica rubra, Red Tatarian Honeysuckle. 8-10 ft.

Very hardy, upright. Flowers April-May, rosy pink. Bright red fruit.

18 to 24 inches.....	1.90	16.00
2 to 3 feet.....	2.50	22.00

HYDRANGEA arborescens grandiflora, Snowhill. 3-6 ft.

Large, double white flowers June-July. Thrives in shady places.

18 to 24 inches.....	3.70	32.00
----------------------	------	-------	-------

Paniculata grandiflora, Peegee Hydrangea. 8-10 ft.

A very hardy shrub with large trusses of showy double white flowers, blending into pink and bronze shades of autumn. July-October.

12 to 18 inches.....	2.50	22.00
18 to 24 inches.....	3.20	28.00
2 to 3 feet.....	4.00	35.00
3 to 3½ feet, Heavy.....	4.50	40.00

KOLKWITZIA amabilis, Beauty Bush. 4-6 ft.

A graceful shrub, covered with small pink flowers in May.

18 to 24 inches.....	3.50	30.00
2 to 3 feet.....	4.50	40.00

ORNAMENTAL SHRUBS—Continued



RUSSIAN OLIVE SEEDLINGS and HYDRANGEA PEEGEE

LILAC. 12-15 ft.

Chinese, rothomagensis, 8-10 ft.

Generally grown and sold for Persian Lilac. Upright, vigorous grower. Reddish purple flowers, April-May. One of the best for general planting on account of its free blooming qualities and hardiness.

	Per 10	Per 100	Per 1000
18 to 24 inches.....	2.50	22.00
2 to 3 feet.....	3.20	28.00
3 to 4 feet.....	4.00	35.00

A Red Variety at same prices.

Common Purple, vulgaris. 12-18 ft.

Hardy, popular shrub. Blooms freely. Purplish, single lilac flowers in large panicles. April-May.

12 to 18 inches.....	1.70	14.00
18 to 24 inches.....	2.40	20.00
2 to 3 feet.....	2.80	25.00
3 to 4 feet.....	4.50	40.00

French, Syringa, Budded. 12-15 ft.

Valuable, hardy hybrids. Popular on account of attractive flowers of various colors and foliage. Height to fifteen feet according to variety and soil.

18 to 24 inches.....	4.50	40.00
2 to 3 feet.....	5.50	50.00
3 to 4 feet.....	7.00	65.00

s—single

d—double

Belle de Nancy, d rose, white center

Marie LeGraye, s white

Chas. Joly, d purple

Mme. Lemoine, d white

*Chas. X., s reddish purple

Pres. Grevy, d light blue

Souv. Ludwig Spaeth, s purple

Korean (Korean Islands)

A shrub growing 8 to 10 ft. Broad glabrous leaves turning vinous-red in autumn. Blooms earlier than most Lilacs. Flowers of pale pink to lilac borne in large loose panicles.

18 to 24 inches.....	1.70	14.00
2 to 3 feet.....	2.40	20.00
3 to 4 feet.....	2.80	25.00

ORNAMENTAL SHRUBS—Continued

PHILADELPHUS, Mockorange (*Syringa*)**coronarius, Sweet Mockorange (Garland *Syringa*). 8-10 ft.**

A popular well known, hardy shrub. White, fragrant flowers in May-June.

	Per 10	Per 100	Per 1000
18 to 24 inches.....	1.90	16.00
2 to 3 feet.....	2.40	20.00
3 to 4 feet.....	3.20	28.00

Glacier Flora Plena, double flowering Mockorange.

Large white flowers, very double, sweet scented. Shrub hardy, symmetrical and compact. Leaves bluish-green. Does not grow as fast as standard varieties of Philadelphia, therefore more desirable for average garden or lawn.

18 to 24 inches.....	2.70	25.00
2 to 3 feet.....	3.50	30.00

PHILADELPHUS (Continued)

lemoinei, Lemoine Mockorange. 4-5 ft.

Semi-dwarf with attractive foliage, producing dense racemes of small fragrant white flowers.

12 to 18 inches.....	1.80	15.00
18 to 24 inches.....	2.40	20.00
2 to 3 feet.....	2.80	25.00

Virginal. 7-8 ft.

Medium grower. Loads down with beautiful fragrant semi-double flowers over a long season, beginning in May.

12 to 18 inches.....	2.50	22.00
18 to 24 inches.....	3.50	30.00

PHYSOCARPUS *opulifolius*.**Goldleaf Ninebark (*Spirea aureus*). 8-10 ft.**

Golden leaved variety producing white flowers in May-June.

2 to 3 feet.....	2.50	22.00
3 to 4 feet.....	3.50	30.00

PRIVET—*Ligustrum***Amoor North, *amurense*. 12-15 ft.**

Used extensively. Valuable,, hardy, hedge plant with rich attractive foliage.

12-18 in., 3 canes up.....	8.00
18-24 in., 3 canes up.....	10.00
2-3 ft., 4 canes & up.....	15.00

PRIVET SHRUBS, Golden

9 to 12 inches.....	1.80	15.00
---------------------	------	-------	-------

SPIREA, Anthony Waterer. 3-4 ft.

A valuable dwarf shrub, bright red flowers, June-September.

	Per 10	Per 100	Per 1000
12 to 15 inches.....	1.90	16.00

Billiard Spirea, *billardi*. 5-6 ft.

Bright pink flowers in spikes, July-September.

18 to 24 inches.....	1.90	16.00
2 to 3 feet.....	2.40	20.00

Froebel Spirea. 4 ft.

Vigorous, spreading grower. Bright pink flowers, May-June. Purplish tips in spring. Beautiful autumn colors. Very hardy. Used extensively.

18 to 24 inches.....	2.10	18.00	160.00
2 to 2½ feet.....	2.50	22.00	200.00
2½ to 3 feet.....	3.20	28.00

opulifolius, Ninebark. (See *Physocarpus*.)

ORNAMENTAL SHRUBS—Continued

Thunberg Spirea, thunbergi. 3-4 ft.

Low growing shrub with slender spreading branches. Feathery, bright green foliage. Snow white flowers, April.	Per 10	Per 100	Per 1000
12 to 18 inches.....	1.40	12.00
18 to 24 inches.....	2.10	18.00
2 to 2½ feet.....	2.40	20.00

Vanhoutte Spirea. 5-6 ft.

Well known, popular shrub. Graceful habit of growth. Sometimes called Bridalwreath. Pure white flowers, April-May. Blooms profusely.			
12 to 18 inches.....	1.40	11.00	90.00
18 to 24 inches.....	1.70	14.00	120.00
2 to 3 feet.....	2.40	20.00	180.00

SYMPHORICARPOS Snowberry**racemosus, Common Snowberry. 3-5 ft.**

Attractive green foliage, pink flowers, June-July. Large white fruit in clusters in autumn.			
18 to 24 inches.....	1.70	14.00	120.00
2 to 3 feet.....	2.10	18.00	160.00

vulgaris, Coralberry (Red Snowberry). 4-6 ft.

Hardy native shrub. Succeeds everywhere. Coral red berries in autumn and winter.			
12 to 18 inches.....	1.20	10.00
18 to 24 inches.....	1.70	14.00	120.00
2 to 3 feet.....	2.10	18.00	160.00

TAMARIX

18 to 24 inches.....	1.90	16.00
2 to 3 feet.....	2.40	20.00
3 to 4 feet.....	2.90	25.00

amurensis, Amur Tamarix, Hort. Variety Pentandra. 8-10 ft.

Strong growing, hardy shrub with purple branches, silvery foliage with pink flowers in large panicles.

hispidula, Kashgar Tamarix. 15-20 ft.

Feathery silver foliage. Bright pink flowers. June-July. Remains in bloom longer than other varieties. One of the best. Hardy.

VIBURNUM, americanum, American Cranberrybush. 8-12 ft.

Handsome shrub, single white flowers in April-May. Bright scarlet berries hanging until spring. Edible.

18 to 24 inches.....	2.90	25.00
2 to 3 feet.....	3.50	30.00

dentatum, Arrowwood. 10-12 ft.

Attractive foliage, white flowers, April-May, followed by bluish-black fruit.

18 to 24 inches.....	2.10	18.00	160.00
2 to 3 feet.....	2.50	22.00	200.00

opulus, European Cranberrybush (Highbush Cranberry). 10-12 ft.

Well known hardy shrub, single white flowers in April-May, followed by scarlet fruit hanging on until spring.

18 to 24 inches.....	2.50	22.00	200.00
2 to 3 feet.....	3.20	28.00	250.00

opulus sterilis, Common Snowball. 10-12 ft.

Popular shrub. Blooms profusely. Large double white flowers, April-May.

18 to 24 inches.....	2.90	25.00
2 to 3 feet.....	3.50	30.00
2½ to 3 feet.....	3.80	33.00	300.00

HEDGING

Lighter stock than regular grade of shrubs; good hedging grades.

BARBERRY, Thunbergi Hedging

6 to 9 inches, 2 year seedlings, branched.....	3.00	25.00
9 to 12 inches, 2 year seedlings, branched.....	4.50	40.00
12 to 18 inches, 2 year seedlings, branched.....	5.60	50.00

HEDGING (Continued)

CARAGANA arborescens, Siberian Peatree (See Deciduous Seedlings)

MULBERRY, RUSSIAN. (See Deciduous Tree Seedlings.)

PRIVET. (See Shrubs.)

VINES

Tied, 2-year Medium, 25; 2-year No. 1, 10; 3-year, 5 per bundle.

AMPELOPSIS, Boston Ivy, tricuspidata (Veitchi). 40-50 ft.

Beautiful foliage in spring and summer changing to crimson-scarlet in autumn. Clings tight to brick, stone or concrete walls. Succeeds best in this latitude on north or east side.

	Per 10	Per 100	Per 1000
2 year Medium.....	2.90	25.00
2 year No. 1.....	3.50	30.00

Engleman Creeper, englemanni. 30-40 ft.

A good hardy, clinging vine with smaller leaves than Virginia Creeper. More brilliant coloring in autumn.

2 year Medium.....	1.70	14.00	120.00
2 year No. 1.....	2.10	18.00	150.00

Virginia Creeper, quinquefolia. 30-40 ft.

A rapid growing, hardy vine suitable for covering trellises, stone walls and verandas.

2 year Medium.....	1.70	14.00	120.00
2 year No. 1.....	2.10	18.00	150.00

CELASTRUS, scandens, American Bittersweet. 20-25 ft.

Hardy vine producing bunches of red berries retaining their color a long time and popular for cutting and hanging in the home.

2 year Medium.....	1.40	12.00
2 year No. 1.....	1.90	16.00
3 year No. 1.....	2.40	20.00

CLEMATIS, Large Flowering. 10-15 ft.

Popular hybrids on account of the beautiful purple, red and white flowers.

3 inch pots, staked with 24 inch tops.....	3.50	30.00
2 year Medium, dormant.....	3.50	30.00

Henryi, white	Mme. Edouard Andre, red
Jackmani, rich purple	Ramona, light blue

paniculata, Sweet Autumn Clematis. 20-30 ft.

A valuable climber, covered with white fragrant flowers in September.

2 year Medium.....	2.90	25.00
2 year No. 1.....	3.50	30.00

HONEYSUCKLE, Lonicera.**Gold Flame**

Everblooming honeysuckle, blooming from early summer until killing frost. Showy, tubular flowers, with recurving petals, flame red outside, bright yellow inside. Very fragrant and hardy.

2 year No. 1.....	3.50	30.00	250.00
-------------------	------	-------	--------

Hall's Japan, Japonica halleana. 20-25 ft.

Rapid growing vine with beautiful foliage. Delightfully fragrant, creamy white flowers. Makes a fine hedge or covering for caves or unsightly places.

2 year No. 1.....	1.90	16.00
3 year No. 1.....	2.40	20.00

Heckrotti

Everblooming trumpet-shaped flowers. Fragrant, bright red outside, yellow inside. Hardy.

2 year Medium.....	2.40	20.00
2 year No. 1.....	2.90	25.00

VINES—Continued

sempervirens, Scarlet Trumpet Honeysuckle. 20-30 ft.

Upright grower. Dark green foliage. Long tubular scarlet flowers.

	Per 10	Per 100	Per 1000
2 year Medium.....	1.70	14.00
2 year No. 1.....	2.10	18.00

POLYGONUM auberti, China Fleecevine. 25-30 ft.

Rapid growing climber producing throughout summer and fall large foamy sprays of creamy white flowers.

2 year Medium.....	2.50	22.00
2 year No. 1.....	3.20	28.00

WISTERIA, American frutescens. 20-25 ft.

Tall, vigorous climber. Lilac purple flowers, June-July.

2 year Medium, grown from blooming wood....	1.70	14.00
2 year No. 1, grown from blooming wood.....	2.10	18.00

LIST OF BOXING CHARGES FOR SPRING 1945

TREE BOXES

30x30x10.....	\$6.00	24x24x6.....	4.00
30x30x8.....	5.25	20x20x10.....	4.25
30x30x6.....	4.50	20x20x8.....	4.00
24x24x10.....	5.25	20x20x6.....	3.00
24x24x8.....	4.75	20x20x5.....	2.50

PLYWOOD BOXES

26x26x7'4".....	\$4.00	23x30x7.....	3.50
-----------------	--------	--------------	------

EVERGREEN BOXES

Evergreens will be packed, using moisture proof paper and Sphagnum Moss and charged for at cost according to amount of material and size and kind of boxes used.

SPHAGNUM MOSS—46x16x12

	#1 Burlapped	Not Burlapped
1 to 5 bales.....	\$2.50 each	\$2.25 each
6 to 10 bales.....	2.35 each	2.10 each

INDEX

	Page
Balled Evergreens.....	1 to 10
Line Out Evergreens.....	10 to 16
Fruit Trees and Fruit Plants.....	16 to 18
Forest Tree Seedlings.....	18 to 19
Deciduous Trees	19 to 24
Ornamental Shrubs	24 to 29
Hedging Plants.....	29 to 30
Vines.....	30 to 31

FROM

PLUMFIELD NURSERIES

FREMONT,

NEBRASKA



ORDER SHEET

Plumfield Nurseries

FREMONT, NEBRASKA

Date.....194.....

Your Name.....
Write Very Plainly

Postoffice.....

State.....

Street, P. O. Box
or Rural Delivery.....

AMOUNT ENCLOSED	
\$	_____
<input type="checkbox"/> Check	<input type="checkbox"/> Money Order
<input type="checkbox"/> Draft	<input type="checkbox"/> Cash
Mark X in Proper ()	

How Goods are to be sent? Mail..... Express..... Freight.....

Express: what town..... Freight: what town.....

BE SURE TO GIVE KIND, SIZE AND COLOR

QUANTITY	NAME OF VARIETY	SIZE	PRICE	TOTAL
TOTAL AMOUNT			- - - - -	

USE BACK OF SHEET IF NECESSARY

If mail shipment is desired, add 10% to order, unless order is under \$2.00, then add 20c to cover special packing and postage.

PLUMFIELD NURSERIES

TREES THAT PLEASE

FREMONT, NEBRASKA

MEMBER

American Association of Nurserymen
BUILDERS OF BEAUTY



It's Not a Farm Home
Without Fruit.

