

Historic, Archive Document

Do not assume content reflects current scientific knowledge, policies, or practices.

62.85

ILLUSTRATED BELOW

Wolfe's **TEXABERTA**
World's Most Perfect Peach

SEE PAGE 4 FOR COMPLETE DESCRIPTION AND PRICES

Wolfe's

NURSERY

STEPHENVILLE, TEXAS



WOLFE'S *Selected and Inspected—*

BUY WITH CONFIDENCE



Dear Friends and Customers:

It is a pleasure to hand you my new catalogue of the finest and most select varieties of Fruit and Nut trees in the world. My time as a Texas Nurseryman has been spent in quest of NEW and more PROFITABLE varieties. This enables you to get the best Trees and Plants in the WORLD from Wolfe Nursery without paying any more than you would pay for just ordinary stock of uncertain origin.

We offer the experience and creations of the three greatest Plant breeders in this country: The late E. E. Risien (breeder of finer paper shell Pecans), the late T. V. Munson (world famous for his Grape culture), and the late J. W. Stubenrauch (originator of heavy-bearing, FROST-RESISTANT Peaches). We are growing "Risien Pecans," and "Stubenrauch Peaches" by their request and have bought the Munson vineyard and nursery.

Our stock is grown in fertile soils, ideal conditions and propagated with the most modern methods. Our expert growers produce Trees with big root systems, insuring stronger, quicker growth and early, heavy production.

It has always been one of our iron-clad rules to GROW STOCK UP TO A STANDARD, NOT DOWN TO A PRICE, and for that reason the sun never sets on trees and plants shipped from WOLFE Nursery, as we have supplied Experimental Stations and individuals in nearly every nation of the world.

Trees and Plants that do not measure up to our standard are discarded and if you are an old customer, you will know this to be true.

As your Nurseryman I will always do my utmost to help you with any problems that may arise and serve you to the very best of my ability.

Sincerely yours,

ROSS R. WOLFE, President.

A recent view of our office and sales yard. All during our sales season hundreds of customers come to the Nursery for their large specimen Evergreen Plants. As a rule these plants are too large for shipping. Note plants on car bumpers.



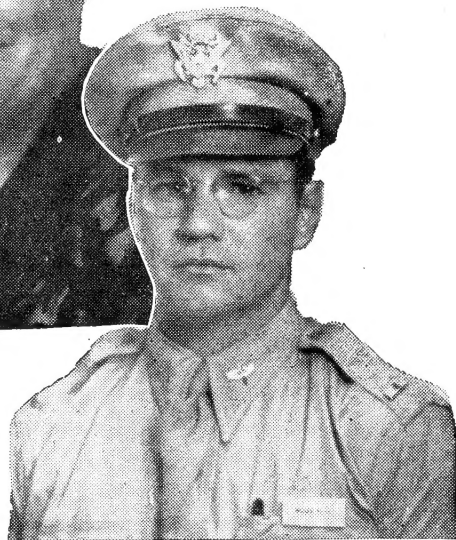
**ROSS R. WOLFE, President
Wolfe's Nursery**

Past President and Member Texas Association of Nurserymen; Member American Association of Nurserymen, and President Stephenville Chamber of Commerce

**MRS. ROSS R. WOLFE, Vice-President and Assistant
Manager Wolfe Nursery**

**LT. HUGH WOLFE, U. S. Air Corps, Manager
of Production and Advertising**

An airplane view of our general office and sales yard, located on beautiful U. S. Highway 67, just two miles west of Stephenville, Texas



Heavy Bearing Trees and Plants

PLANT WITH PRIDE

Please Read This Important Information—It Will Help You to Order

SHIPPING INFORMATION

Send in your order just as soon as you receive this catalog. We will ship at the proper planting time for your locality, or you may notify us when you are ready to plant. It has always been our policy to ship all orders the same day as they are received, but due to the acute labor shortage you may suffer a short delay—ORDER EARLY. Last year we had to return many orders because we could not fill them. To save disappointment and a year's growth, we strongly advise you to order early.

GENERAL TERMS

On all orders we ask that you please remit in full. Send all cash by registered mail. We will gladly accept your personal check or you may remit by Money Order or Express Money Order. Please do not send stamps.

OUR GUARANTEE

We exercise every care to be sure that when the plants leave here they are in a good, live, growing condition, and they should reach you the same way for we use only the best packing material available. The only guarantee we make on nursery stock now is that it reaches you in good condition. WE DO NOT GUARANTEE OUR PLANTS TO LIVE. Due to present war-time conditions we discontinued our guarantee-to-live on all plants June 1, 1942.

HOW TO PLANT

16-Page Illustrated Booklet—3½" x 5¾"

Complete instructions on how to care for trees on arrival, heeling in trees, pruning before planting, preparation of ground and distance to plant. How to plant shrubs, evergreens, bulbs, perennials, berries, grapes, asparagus, rhubarb and strawberries.

How to care for trees after planting, and control of diseases and insects.

Price, 10c each, or free with each order of \$5.00 or more when cash accompanies order.

REFERENCES

Dublin National Bank, Dublin, Texas.

Farmers First National Bank, Stephenville, Texas.

Dun & Bradstreet; Postmaster, Stephenville, Texas.

Railway Express Agent, Stephenville, Texas.

SPECIAL NOTICE

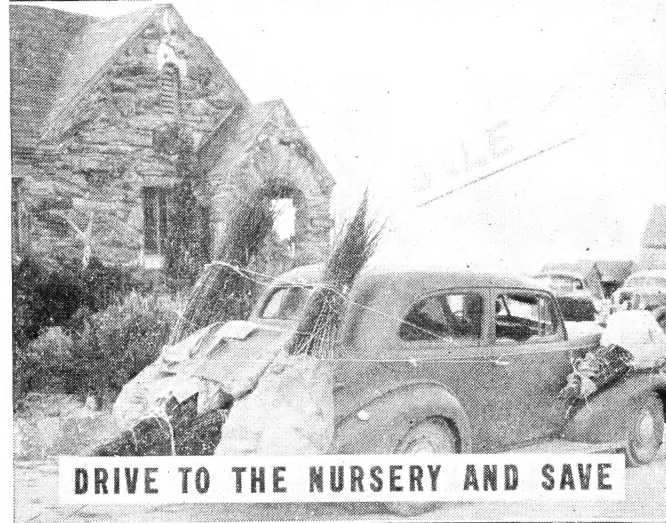
In keeping with our GOVERNMENTS request to conserve paper whenever and wherever possible we have greatly reduced the quantity of our catalogs this season. In order to make these catalogs go as far as possible we would consider it a great favor if, after you have thoroughly read this catalog, you would pass it on to your neighbor—THANK YOU.



WOLFE'S FAMOUS HOME ORCHARD



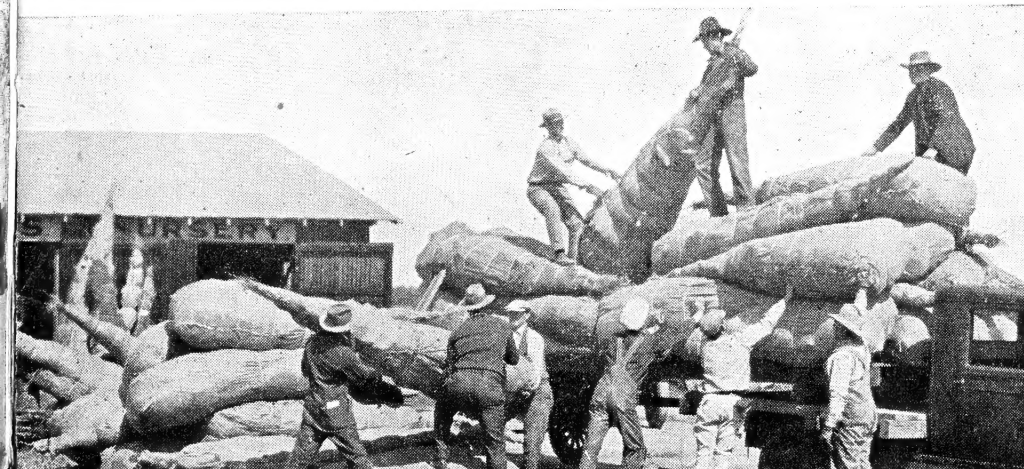
PERSONAL ATTENTION TO DAILY MAIL

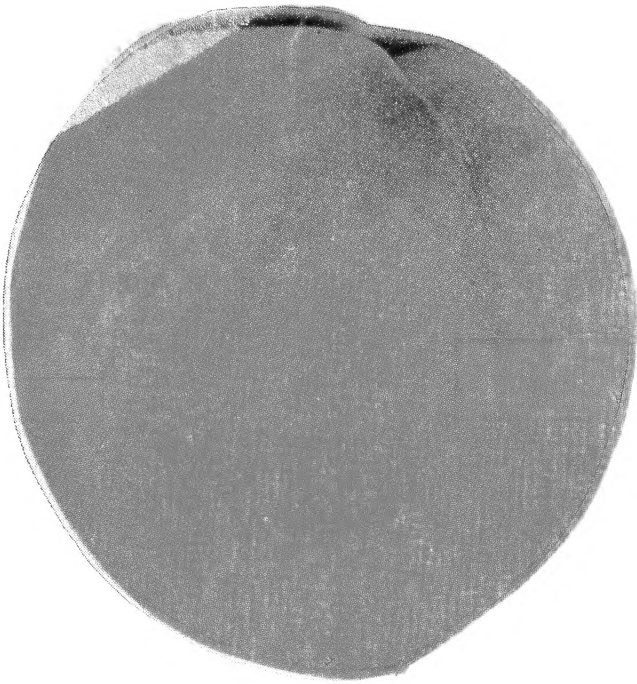


DRIVE TO THE NURSERY AND SAVE



SOUTH AMERICAN BUYERS
PICK WOLFE'S NURSERY





WOLFE'S NEW ELBERTA

Wolfe's Guaranteed Quality

PEACH

WOLFE'S NEW ELBERTA

Freestone. Ripens June 20. Just as the name implies, this is a new Elberta that beats all other peaches of its class to the market. Commercial growers have welcomed this variety as a precious gift to early marketing. Take our word for it and plant a peach that will make money. This variety is a winner because it frequently bears at two years old, produces heavy crops. Scarlet red covering, so brilliant that fruit on trees can be seen at a distance; the meat is very fine, with small seed, perfect freestone and very delicious. It usually bears when other peaches fail.

ILLUSTRATED IN NATURAL COLOR ON OUR FRONT COVER

WOLFE'S TEXABERTA — WORLD'S MOST PERFECT PEACH

Freestone peach that ripens July 10. Combine the best qualities of all peach varieties . . . add a few and you have Texaberta. A peach that is a peach of a peach. FROST-RESISTANT EIGHTEEN CONSECUTIVE CROPS—No Failures. Tiny seed; dark red flesh around the seed, fading in streaks into the deep yellow body. Tough skin with little fuzz. The sweet, juicy flesh has a smooth

texture that is tender and firm. It ripens evenly and hangs fast to the tree. DISEASE-RESISTANT! Remarkably free from Brown Rot that ruins some varieties. It grows well with mild winters where the Elberta is a failure. TEXABERTA bears young and is an excellent shipper and canner, one of the most delicious peaches grown and is sold exclusively by WOLFE. **Prices on opposite page (5).**

WOLFE'S FAMOUS FRANK

FRANK, one of the best cling peaches grown, holds the **WORLD'S PRODUCTION RECORD**. Forty-two years at Mexia, Texas, without missing a crop. A new production record of 10 bushels from a 3-year-old tree was set in the orchard of Reeve Odiorne, Stephenville, Texas. Ripens August 10 when good peaches are in demand. Several growers are making from \$300.00 to \$500.00 per acre from heavy-bearing Frank trees. It is a beauty, with sweet, acid-free, juicy flesh . . . so yellow and, OH! so good. It has small, sound seed and its firm flesh makes it an excellent shipper. W. H. Smith of DeLeon, (Texas' peach wizard) says: "MY FRANK trees prove that Mr. Wolfe was right when he said **MONEY DOES GROW ON TREES.**" Farm & Ranch said, "The most outstanding peach produced in the Southwest." For the genuine **FRANK**, get it at Wolfe's.

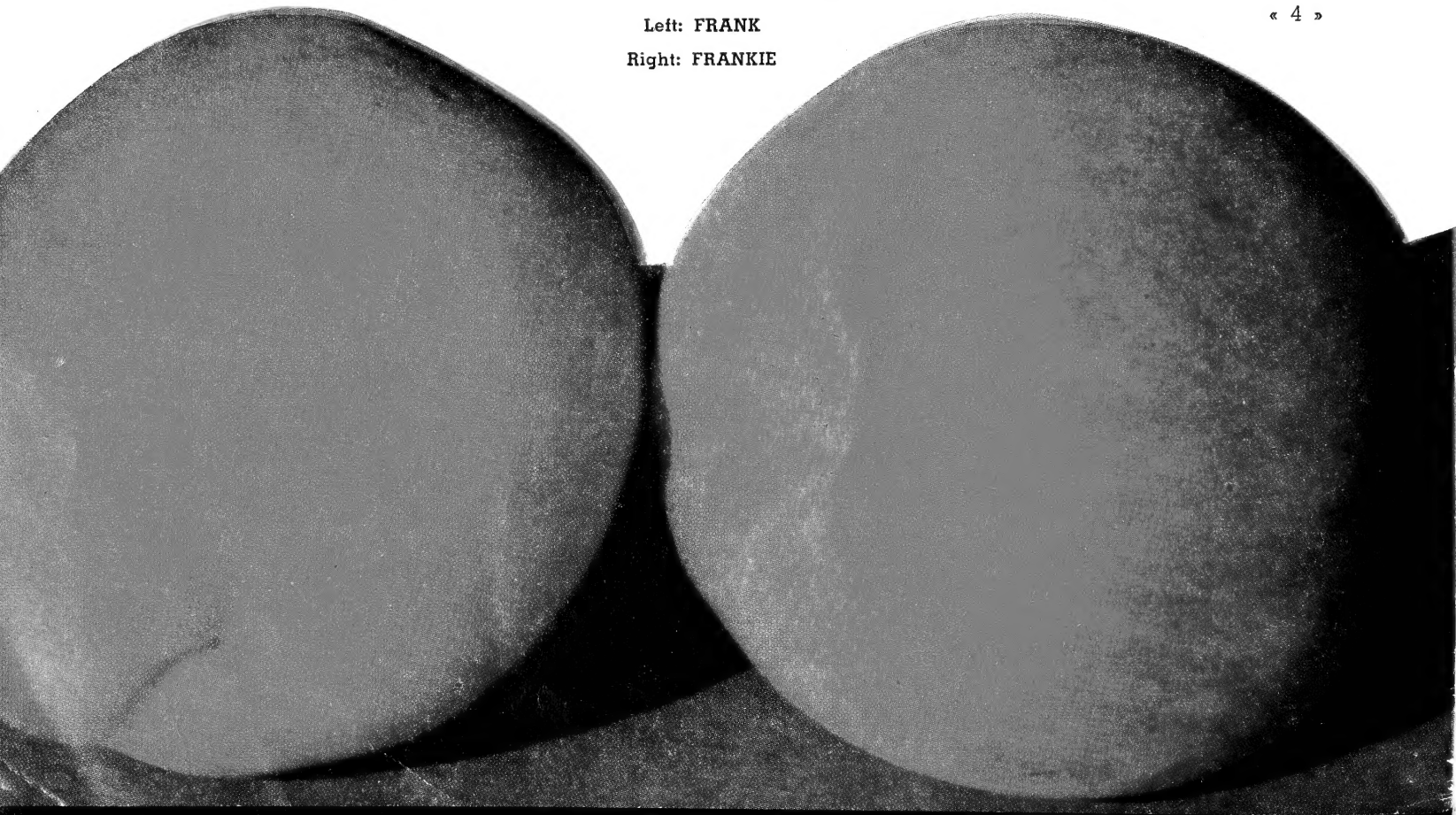
WOLFE'S FAMOUS FRANKIE

A freestone **FRANK**. Ripens August 15. A large beautiful peach with all the qualities of the Frank. Sold only by Wolfe. Frankie is a heavy producer . . . even during years of late frost . . . disease-resistant, two of the many qualities that put it in the Money Class. It has a color that sells; rich yellow with bright red sun-kissed cheeks. R. B. Alexander, oldest and most successful orchardist in the South, told the Number One Peach Association of Texas, in a meeting at Wolfe's Nursery, "If I were a young man, I would plant 1,000 acres of Frankie." Truckers say, "Frankie is one of our best shippers. Watch it make peach history."

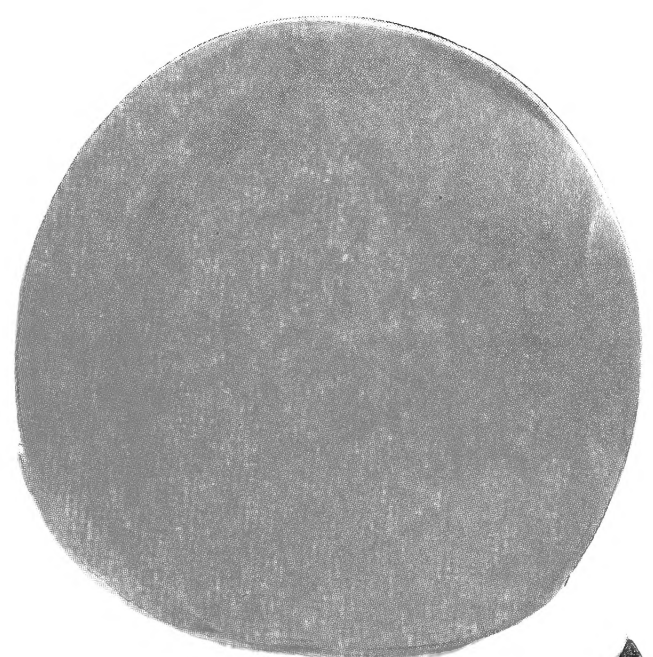
Left: **FRANK**

Right: **FRANKIE**

« 4 »



Profitable, Quick Bearing
TREES



WOLFE'S NEW VETERAN

Wolfe's low prices on all varieties listed on these two pages (4 and 5). VARIETIES: Wolfe's New Elberta, Texaberta, Frank, Frankie, Veteran and Red Haven.

Size	Each	10-49
1 to 2 ft.	\$.50	\$.45 Prepaid
2 to 4 ft.90	.85 Prepaid
4 to 6 ft.	1.35	1.25 Not Prepaid

WOLFE'S NEW VETERAN PEACH

VETERAN. This new variety is rapidly becoming the leading real early yellow peach. The fruit is very large, a handsome solid red like a Jonathan apple. The yellow flesh is firm, sweetly delicious, high quality. Freestone. A hardy, vigorous grower and very productive. Ripens 3 weeks ahead of Elberta.

Below:
 REDHAVEN

WOLFE'S SUPERIOR REDHAVEN

A grand peach—the most promising new, early variety for either home use or commercial markets. REDHAVEN is extra early, ripens a month before Elberta; has a brilliant color, reddens before it ripens; excellent flavor, sweet and juicy; fine texture. Its firm fresh and tough skin make it an excellent shipper. A profitable commercial variety and excellent for table or canning. Every orchard should have several of WOLFE'S REDHAVEN.



3 TEXABERTA TREES, nice 1-year trees, 18 to 24 inches high. **\$1⁰⁰**
 PREPAID for only.....

ORDER OFFER No. 1

Wolfe's Special Frank Peach Offer

3

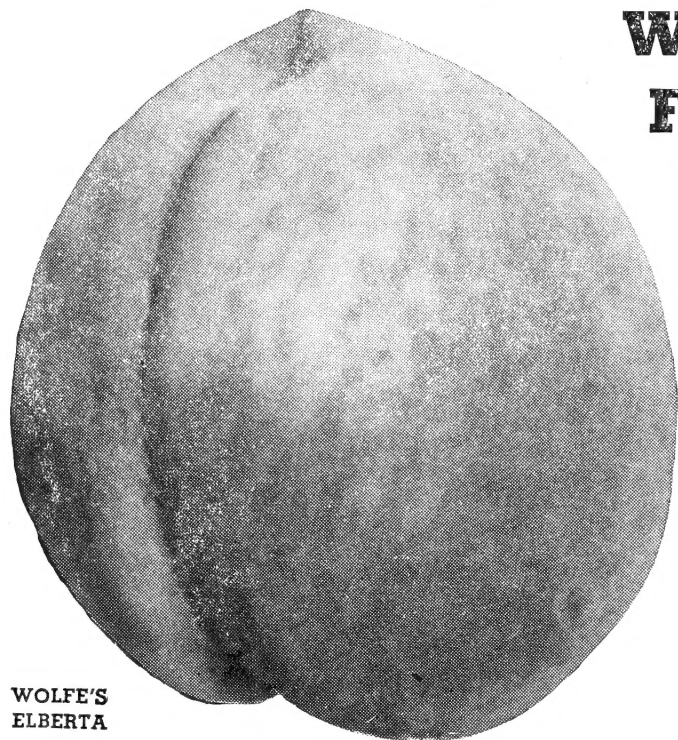
Frank Peach trees. This is a real bargain in 1-year-old trees. Postpaid to your door.....

\$1⁰⁰
 Post-paid

ORDER OFFER No. 3

WOLFE'S STANDARD PEACHES

That Pay — **HEAVILY ROOTED,
WELL BRANCHED-STRONG
FIELD SPECIMEN, READY
FOR YOUR ORCHARD**



**WOLFE'S
ELBERTA**

WOLFE'S GIANT HALE. Freestone, ripe July 15. Our Hale is a Grand Champion at all the shows. Thinned properly, the big ones often weigh ONE POUND and measure ONE FOOT around. Our huge, dark red Hale commands instant attention at all markets and sells like hot-cakes at two and three dollars per bushel.

ELBERTA. Freestone, ripe July 10. This yellow peach needs no description. I have an improved strain of the original variety that bears heavier and more regular than the old variety. It is third to TEXABERTA and FRANK on the market.

BELLE OF GEORGIA. The best white peach for home and commercial planting. Ripens a week before Elberta. This is the famous Belle of Georgia; freestone; of splendid quality; very large; showy.

MAYFLOWER. Semi-cling, ripens May 25. Earliest peach on market and valuable for home or commercial purposes. It is medium size, creamy-white skin, mottled with dark red; juicy and very delicious.

EARLY WHEELER. Cling, ripe June 5. Peach we sell for Early Wheeler is sold by Stark for Red Bird Cling. It is better colored and has the same size and shipping qualities.

HALEHAVEN. Freestone, ripens June 25. Cross between South Haven and J. H. Hale; large, beautifully colored, yellow-fleshed peach. Splendid shipper. Heavy producer and brings top prices. Second only to Elberta in popularity! Halehaven is one of the finest shipping and canning peaches grown. Every peach is a big hand full of delicious, tempting goodness. Juicy, bright colored, and with a flavor you will never forget. Halehaven has deep blushes of red nearly covering the surface. Brilliantly colored long before ripe; ripens fifteen days ahead of Elberta at a time when market pays highest prices for peaches. Freestone, perfectly self-fertile. Extremely hardy, prolific and pollinizes other varieties.

GOLDEN JUBILEE. A high quality, early, freestone peach, a typical Elberta type fruit, highly colored, ripening about four weeks before the regular Elberta, the buds will resist winter freezes well, and open after Elberta, which will insure a regular crop.

PEACHES, next to WAR BONDS, are one of the best investments you can make—they will not only provide your table with delicious fresh fruit, but they will enhance the value of your property. Order several trees today and get you an orchard started.

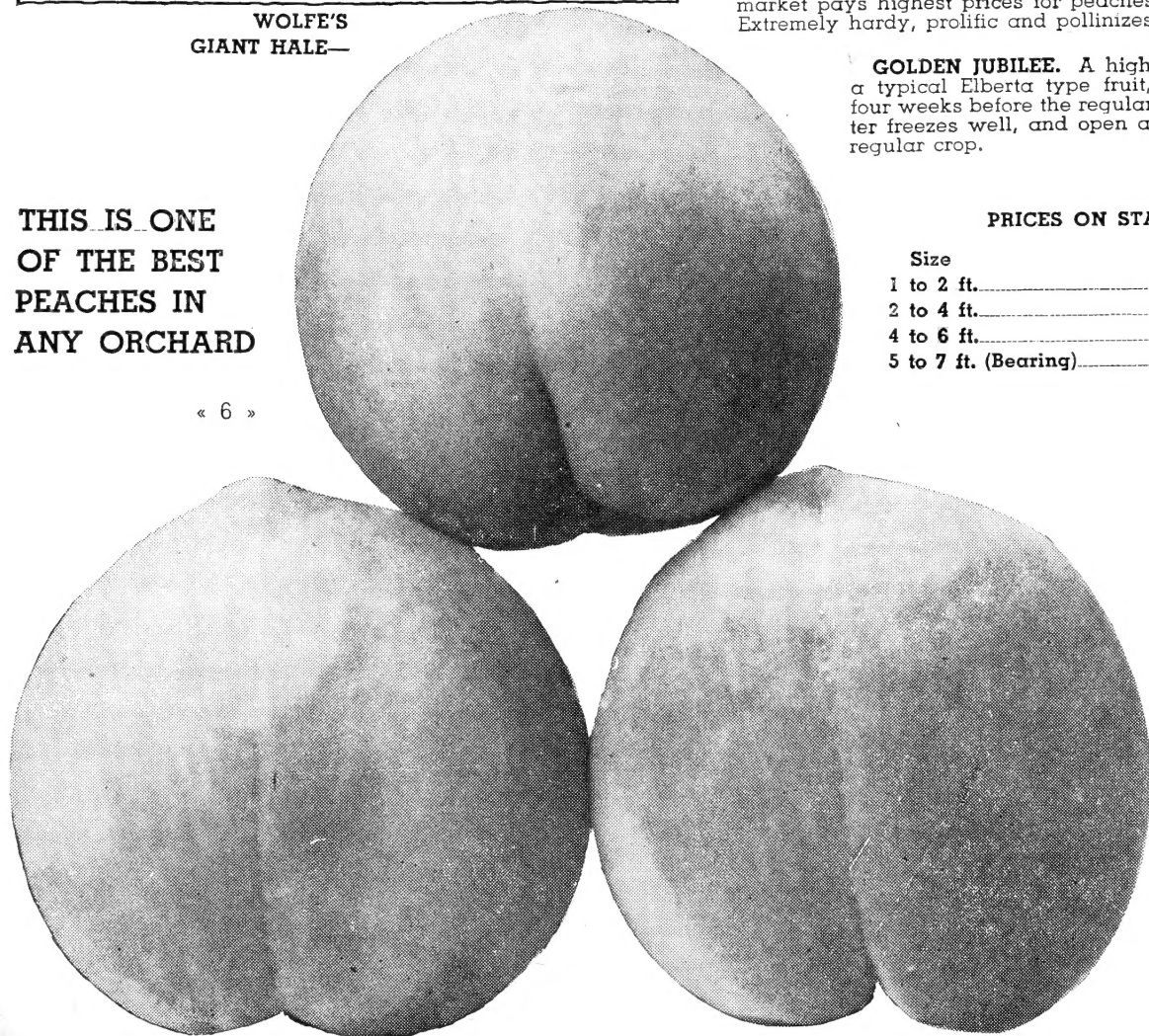
**WOLFE'S
GIANT HALE—**

**THIS IS ONE
OF THE BEST
PEACHES IN
ANY ORCHARD**

« 6 »

PRICES ON STANDARD PEACH TREES

Size	Each	10-49
1 to 2 ft.	\$.40	\$.35 Prepaid
2 to 4 ft.65	.60 Prepaid
4 to 6 ft.	1.25	1.15 Not Prepaid
5 to 7 ft. (Bearing)	1.50	1.40 Not Prepaid



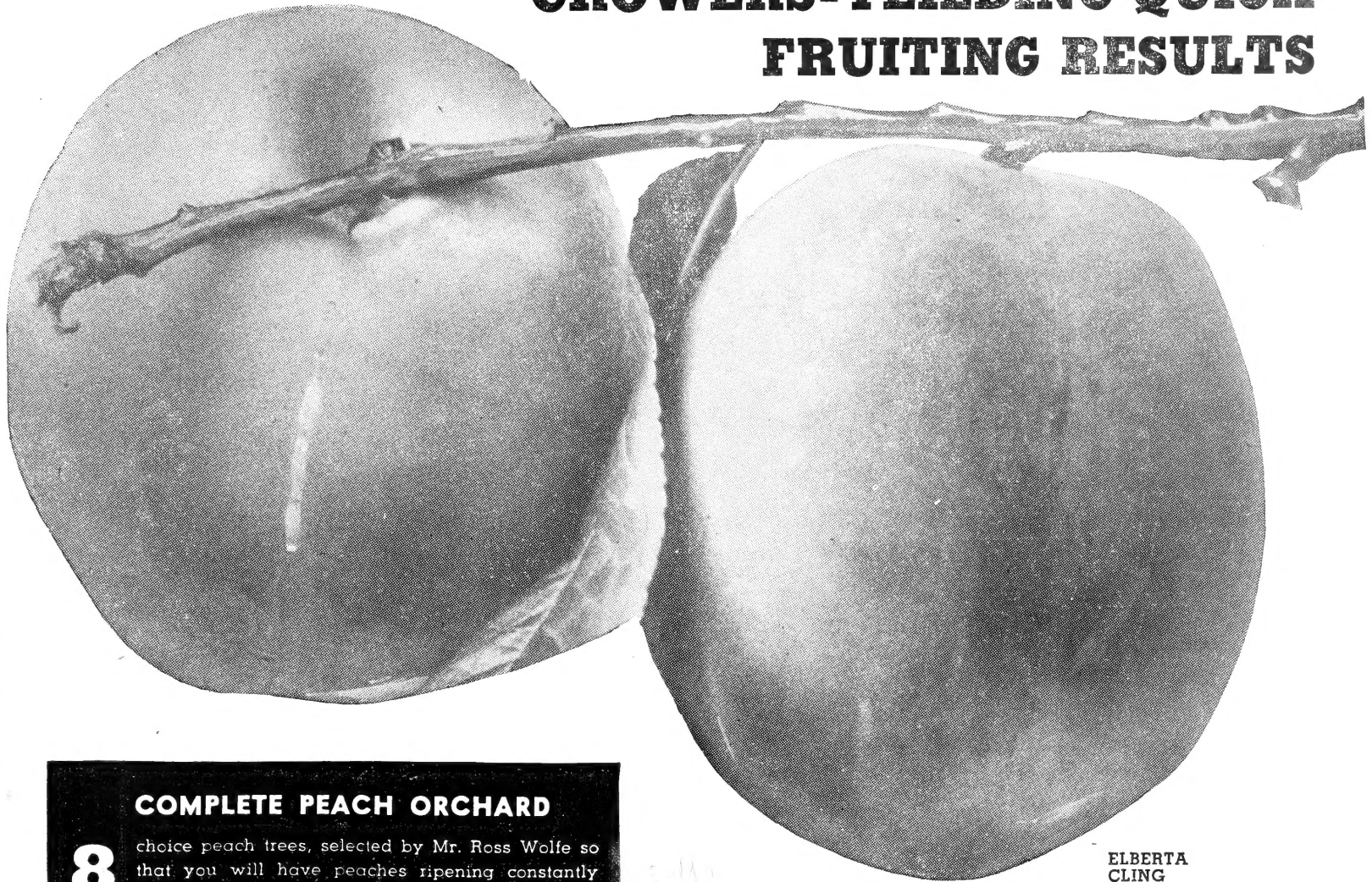
6

ELBERTA
PEACH TREES
1 YEAR OLD
POSTPAID—

\$1.00

SPECIAL
OFFER No. 5

WOLFE'S STANDARD PEACHES ARE STEADY-DEPENDABLE GROWERS-YEILDING QUICK FRUITING RESULTS



ELBERTA CLING

COMPLETE PEACH ORCHARD

8 choice peach trees, selected by Mr. Ross Wolfe so that you will have peaches ripening constantly from May through August. Here is what you get: One tree each, Mayflower, Early Elberta, Halehaven, Belle of Georgia, Giant Hale, Elberta, Indian Chief, and Famous Frank.

\$2.49

POSTPAID

ORDER OFFER No. 4-B

LEUTICHAU. Freestone, ripens June 25. Originated in Florida. Medium size, very sweet with no acid. It seems to be related to the Honey Peach and is a fast-growing, heavy-producing peach.

EARLY ROSE. Cling. Ripens June 10. Extremely heavy producer, good canner and sells easily. It is highly colored with bright rose red and has deep, sweet flesh.

MAMIE ROSS. Semi-cling. Ripens June 20. Originated in Dallas County, Texas. Successful and sure-bearing variety. White flesh and one of our best eating peaches.

FAIR BEAUTY. Semi-cling. Ripens June 25. Remarkably free of diseases. Ripens over a long period of time and profitable for early market. Can be hauled several hundred miles to market and brings fancy prices. I consider it an outstanding variety. It is a beautiful deep yellow peach with lots of red on the cheeks.

HILEY. Freestone. Ripens June 25. White dotted with pink and red, making it a beautiful and different market peach.

SURPRISE. Cling. Ripens October 20. Good for eating, canning, pickle, preserve and commercial purposes. Due to its fine qualities, color and time of ripening, it has a great future as a valuable market variety.

TENA. Freestone. Ripens July 10. Crossed with Mamie Ross and Elberta, Tena gives you the quality of both fruits in one. Tena is another of Wolfe's FROST-RESISTANT varieties and will pay big dividends regularly.

BARBARA. Freestone. Ripens August 10. A SISTER to FRANK, so you know it must be good. Same vigor of tree and bearing habit of Frank. It is larger with beautiful shape and color and pointed at the end. Has not missed a crop in SIXTEEN YEARS and is a heavy producer. The original tree in the Stubenrauch orchard has a spread of 37 feet and has produced 15 bushels of big number one peaches.

ELBERTA CLING. Clingstone. Ripens July 5. A beautiful yellow Elberta that is becoming popular with growers. Larger than the old Elberta and much better in flavor.

ROCHESTER. Extra early. A round, orange-yellow Peach with blazing red cheeks. Yellow flesh stained with red near pit. Firm skin and texture; juicy, sweet and delicious. Excellent for either market or canning. One of the most widely planted early varieties. Ripens 10 days to two weeks ahead of Elberta. Freestone and self-fertile. Ripens June 5.

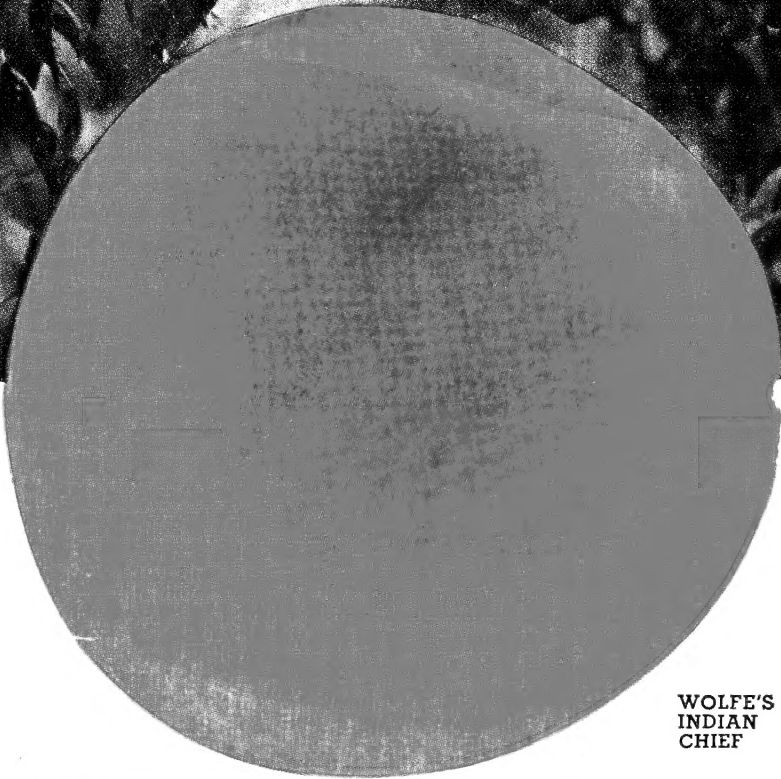
CHAMPION. White with red cheek, very large, early and productive, sweet, rich, juicy, very hardy; one of the best white sorts. Ripens July 25.

PRICES ON STANDARD PEACH TREES

Size	Each	10-49	
1 to 2 ft.	\$.40	\$.35	Prepaid
2 to 4 ft.	.65	.60	Prepaid
4 to 6 ft.	1.25	1.15	Not Prepaid
5 to 7 ft. (Bearing)	1.50	1.40	Not Prepaid

PEACH VARIETIES FOR BLACK LAND

Mayflower, Early Rose, Mamie Ross, Belle of Georgia, Leona; also the following special varieties especially priced: Texaberta and Indian.



**WOLFE'S
INDIAN
CHIEF**

WOLFE'S 3 SPECIAL PEACHES

WOLFE INDIAN CHIEF. Cling. Ripens July 20. \$100.00 reward for better Indian peach than ours. I have three of these peaches in my office that completely fill a HALF-GALLON jar—the finest pickling peach in the land; 25-year-old trees here in Stephenville are still healthy and bearing the finest large, red-fleshed, red-skinned peaches I have ever seen. A grand peach for home or market.

PRESIDENT ROOSEVELT. \$25.00 in cash was paid for the name of this Grand New peach last season. Freestone. Ripens June 20. It is similar to Texaberta in size, color, size of seed, flavor and shipping quality. This big yellow freestone ripens just after Early Wheeler and seems to be extra FROST-RESISTANT. The big delicious peaches hang on the tree remarkably well after they are ripe. We recommend it highly.

ROSS WOLFE'S INDIAN CHIEF SPECIAL—3 trees for \$1.00 Prepaid. This is the old-time Indian Peach we knew when we were boys. Three strong, heavily rooted trees.
ROSS WOLFE'S SPECIAL OFFER No. 4-A

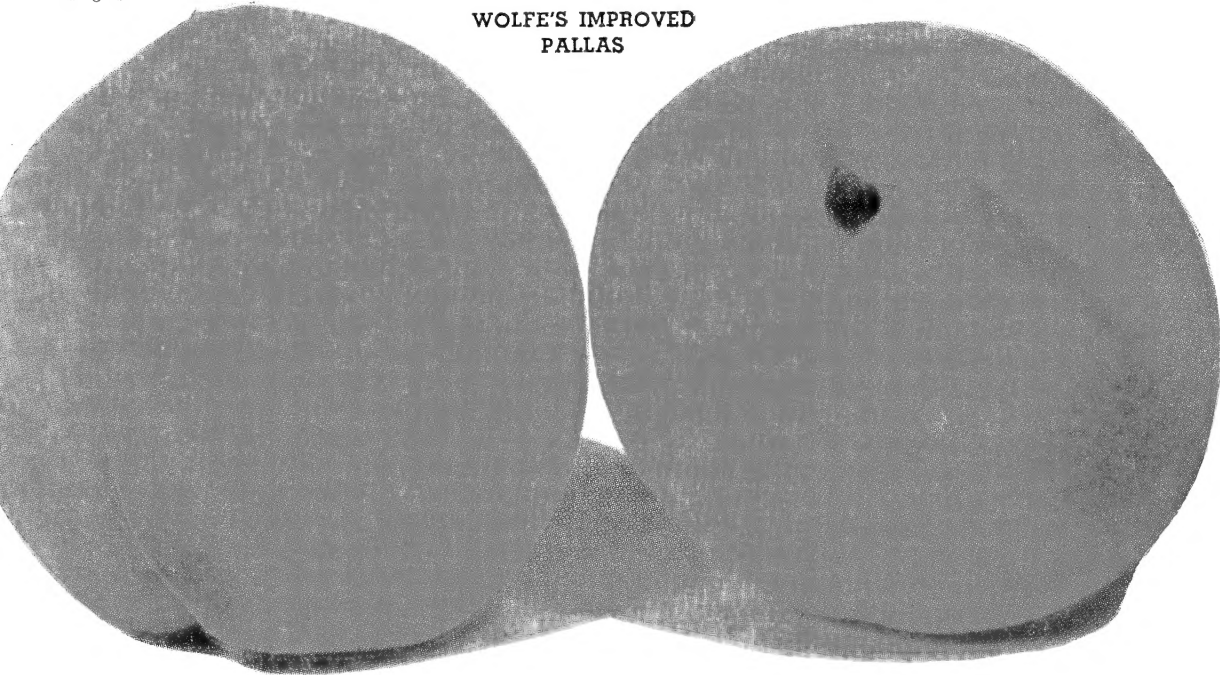
PRICES ON THREE SPECIAL PEACHES

Size	Each	10-49	
1 to 2 ft.	\$.50	\$.45	Prepaid
2 to 4 ft.90	.85	Prepaid
4 to 6 ft.	1.35	1.25	Not Prepaid

IMPROVED PALLAS. If I just raised one peach it would be Improved Pallas, because of the healthiness of the tree, sure and heavy production, the large, white, freestone fruit, the small seed, and the honey flavor. This is a cross between the Honey Peach and some of our large white peaches that has produced a fruit the size of Elberta with the flavor of the Honey Peach. Regardless of where you live, if you just plant one tree, plant an Improved Pallas.

« 8 »

**WOLFE'S IMPROVED
PALLAS**



**MAIL
ALL ORDERS
DIRECT
TO THE
WOLFE
NURSERY
STEPHENVILLE,
TEXAS**

GET

THIS BIG LIVE MAGAZINE

NOW!

60 MONTHS \$1.00 or 12 MONTHS 25¢

YOU will be delighted and wonder how these two great up-to-the-minute illustrated magazines, now printed together, can cost so little. It's for all — men, women, boys and girls, — clean and wholesome, no liquor advertisements

Farm Journal and Farmer's Wife, Dept. C, Phila., Pa.

I'm enclosing \$1.00 for
60 months subscription

OR

I'm enclosing 25c for
12 months subscription

Mark the Offer You Want. Send Money Our Risk.

Name _____

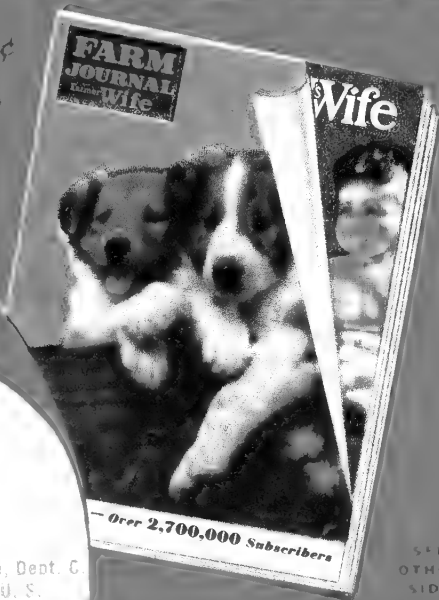
R.F.D. Box or Street _____

If you live on a R. F. D. put route number above for prompt service.

P. O. _____

State _____

IMPORTANT: Send coupon direct to Farm Journal and Farmer's Wife, Dept. C, Philadelphia 5, Pa., with remittance (at our risk). Offer good only in U. S.



SEE
OTHER
SIDE

TAKE YOUR CHOICE

60

MONTHS

\$1

More For Your Money

—Send \$1.00 for 60

months and protect
against price in-
crease and additional
paper rationing. Or 25¢

gives you 12 big issues,
biggest value ever for a Quarter.

12

MONTHS

25¢

Something for the Whole Family

Farm Journal and Farmer's Wife is published monthly; big issues; new timely features; fine pictures; beautiful colored covers. Brief, easy to read; 67 years old. Largest subscription list in the world,—over 2,700,000 from Maine to California; Money back if not satisfied.

UNLIKE ANY OTHER MAGAZINE

For folks who live in the Country and love the Country. Printed on fast-running presses, this Month Ahead-Magazine gets the important news to you first when it is valuable and useful.

Farm Journal section: Latest ideas in farm practice, equipment and machinery repairs, livestock, dairying, poultry, crops, orchard, garden, and everything about the farm. Latest Washington news important to farmers.

Farmer's Wife section carries new practical ideas on home decorations, fashions, fancywork, health and beauty. Canning, foods recipes tested in our own Farm Kitchen. Features on country life. Farm Women's letters, etc. Fiction by nationally known authors.

Youth section: Latest 4-H Club and FFA news, answers to youths' problems, grooming, etiquette, parties, games, movies, sports, aviation, hobbies, success stories, money-making ideas, jokes, cartoons, etc.

WILL HELP YOU GROW A BETTER GARDEN

Mail this Coupon today with remittance (at our risk), direct to **Farm Journal and Farmer's Wife, Dept. C., Philadelphia 5, Pa.**

Recommended by

WOLFE'S NURSERY

Home of "Frost Resistant Fruit Trees"

TAKE YOUR CHOICE

60

MONTHS

\$1

More For Your Money

-- Send \$1.00 for 60 months and protect against price increase and additional paper rationing. Or 25c gives you 12 big issues, biggest value ever for a Quarter.

12

MONTHS

25c

Something for the Whole Family

Farm Journal and Farmer's Wife is published monthly; big issues; new timely features; fine pictures; beautiful colored covers. Brief, easy to read; 67 years old. Largest subscription list in the world, — over 2,700,000 from Maine to California; Money back if not satisfied.

UNLIKE ANY OTHER MAGAZINE

For folks who live in the Country and love the Country. Printed on fast-running presses, this Month Ahead-Magazine gets the important news to you first when it is valuable and useful.

Farm Journal section: Latest ideas in farm practice, equipment and machinery repairs, livestock, dairying, poultry, crops, orchard, garden, and everything about the farm. Latest Washington news important to farmers.

Farmer's Wife section carries new practical ideas on home decorations, fashions, fancywork, health and beauty. Canning, foods recipes tested in our own Farm Kitchen. Features on country life. Farm Women's letters, etc. Fiction by nationally known authors.

Youth section: Latest 4-H Club and FFA news, answers to youths' problems, grooming, etiquette, parties, games, movies, sports, aviation, hobbies, success stories, money-making ideas, jokes, cartoons, etc.

WILL HELP YOU GROW A BETTER GARDEN

Mail this Coupon today with remittance (at our risk), direct to Farm Journal and Farmer's Wife, Dept. C., Philadelphia 5, Pa.

GIFT SUGGESTION

Send a subscription to a friend at above low prices. The Publishers will mail Gift Card with your name as Donor if you request it. Wolfe's Nursery

If you are not a subscriber, you may mail us this valuable coupon to a friend who is not.

GET

THIS BIG LIVE MAGAZINE

NOW!

60 MONTHS \$1.00 or 12 MONTHS 25¢

YOU will be delighted and wonder how these two great up-to-the-minute illustrated magazines, now printed together, can cost so little. It's for all — men, women, boys and girls, — clean and wholesome, no liquor advertisements.

Farm Journal and Farmer's Wife, Dept. C, Phila., Pa.

I'm enclosing \$1.00 for
60 months subscription

OR

I'm enclosing 25c for
12 months subscription

Mark the Offer You Want. Send Money Our Risk.

Name

R.F.D. Box or Street

If you live on a R.F.D. put route number above for prompt service.

P. O.

State

IMPORTANT: Send coupon direct to Farm Journal and Farmer's Wife, Dept. C, Philadelphia 5, Pa., with remittance (at our risk). Offer good only in U. S.



Dark n
and abu
first year
in your y
have sil
flowers
where o
75c each

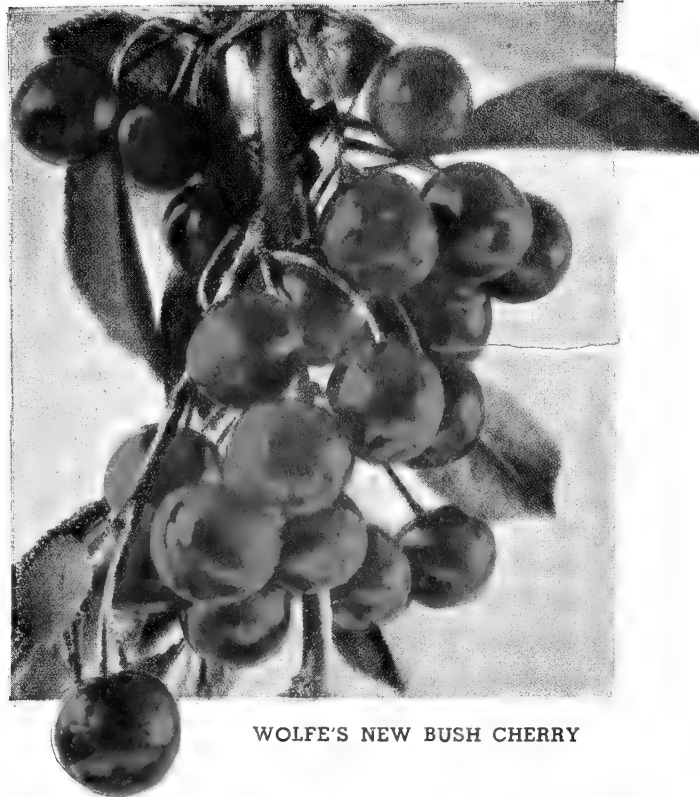
SEE
OTHER
SIDE

WOLFE'S HARDY CHERRY TREES

The cherry is America's favorite fruit for all-around, year-around delicious eating. Pies and sauce when they're fresh. Preserves put away for a long winter. And, best of all, canned cherries so you can have those luscious pies throughout the year.

WOLFE'S NEW BUSH CHERRY

Beautiful, dark red fruit that is excellent for jellies, jams and pies; it is FROST-RESISTANT, a sure and abundant bearer. This is a NEW variety sold EXCLUSIVELY by WOLFE. Ripens about August 1, will bear the second year after planting and will continue to bear very abundantly every year. A new variety for the Southern States that will make money for you. Order early as the supply is very limited. Price: 1-year plants, each, 75c.



WOLFE'S NEW BUSH CHERRY

3 Wolfe's Bush Cherry, 1-year plants, prepaid **\$2⁰⁰**
for only

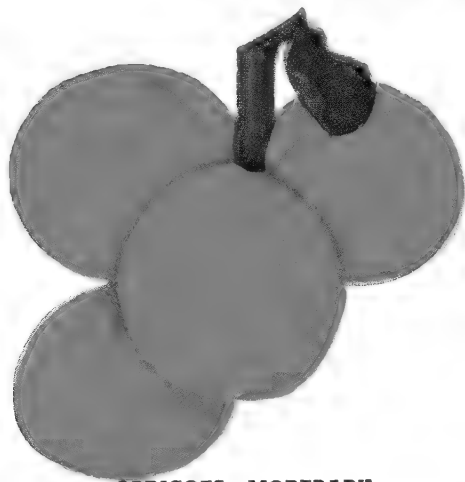
SPECIAL OFFER No. 10

HANSEN BUSH CHERRY

Dark red fruit that is excellent for jelly, jams and pies. Frost-Resistant, sure and abundant bearer. This is a new variety. Ripens around June 1. Bear the first year planted and will bear every year. Plant a row of these bush cherries in your yard or mix them with shrub plantings. Shapely, low-growing bushes, have silver green leaves which turn red in autumn. A glow of dainty white flowers in the spring; both practical and ornamental, will bear in sections where other cherries fail. Order early—supply limited. Prices: 2-year plants, 75c each, prepaid; 3-year plants, 95c each, prepaid.

3 HANSEN BUSH CHERRIES **\$1⁰⁰**
1-Year Plants, PREPAID
OFFER No. 10-A

WOLFE'S DELICIOUS APRICOTS



APRICOTS—MOREPARK

Ripening right after the cherries and before the early peaches, apricots are one of the most delicious fruits, especially when picked fully ripe from your own trees. They are so easy to grow and also make a handsome shade tree, beautiful enough for lawn planting. For delectable sauce and preserves, few fruits equal apricots. Plant 20 feet apart.

IMPROVED CLUSTER. Medium to small, light orange, yellow, flecked with red; flesh tender, juicy, sweet, and of good quality; productive.

MOORPARK. Large, yellowish green with brownish red on sunny side, marked with dark specks; flesh bright orange; separates readily from seed. Grown largely for commercial purposes, especially for canning and drying. Tree vigorous and prolific.

EARLY GOLDEN. There are four reasons for planting the Early Golden Apricot—it blooms late and ripens early, the fruit is the largest apricot grown in the South and the flavor is outstanding. If you want to grow the finest apricot, plant Early Golden.

PRICES OF APRICOT TREES

Size	Each	
1 to 2 ft.	\$.50	Prepaid
2 to 4 ft.90	Prepaid
4 to 6 ft.	1.35	Not Prepaid

3 Well-rooted, 1-year **\$1⁰⁰**
Apricot Trees, Prepaid
SPECIAL OFFER No. 8

WOLFE'S CHERRIES FAVORITE PIE and CANNING VARIETIES

MONTMORENCY. Bright red, delicious flavored cherries with firm flesh. Acclaimed America's greatest canning cherry. The tree is hardy and disease-resistant, less affected by wet weather. Young, sure bearer.

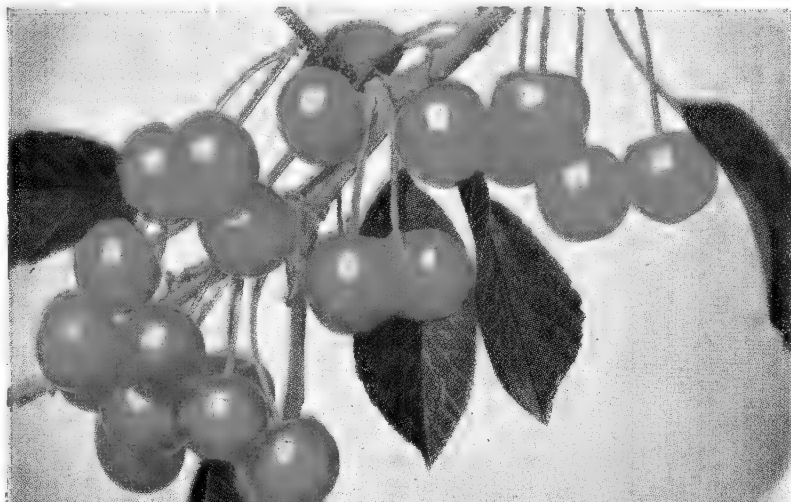
EARLY RICHMOND. Leading early sour cherry. Ripens June 15. Fine for pies. Be sure to include some of this variety in your order.

PRICES ON CHERRY TREES

Size	Each	
2 to 4 ft.	\$1.50	Prepaid
4 to 6 ft.	1.85	Not Prepaid

No Larger Cherries Offered

Below: CHERRIES—MONTMORENCY



Plant WOLFE'S

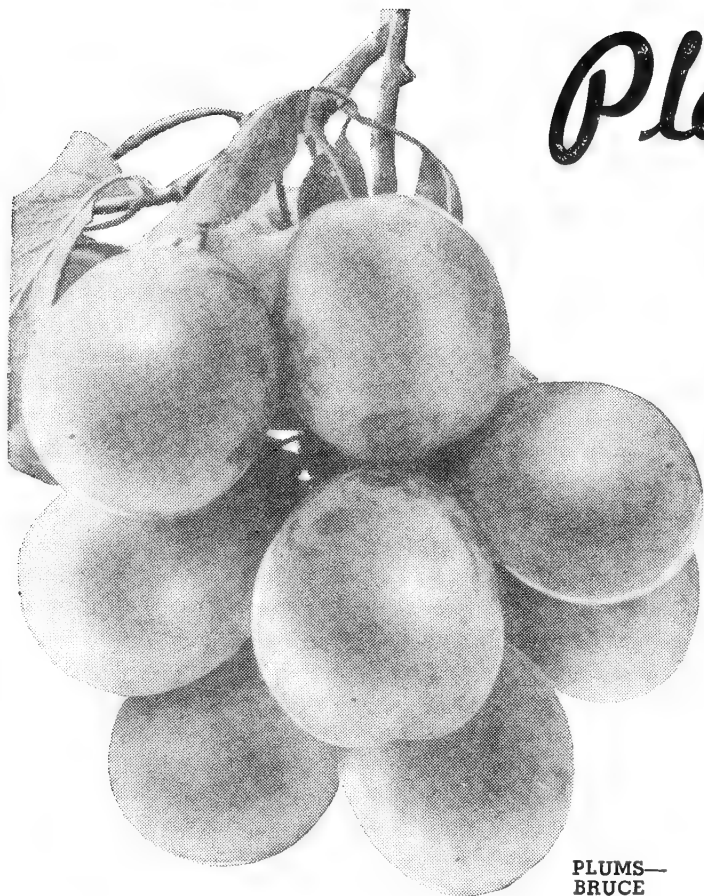
EARLY BEARING

PLUM TREES

THEY BEAR YOUNG

THEY BEAR HEAVILY

THEY ARE DELICIOUS



PLUMS—
BRUCE

BRUCE. This is one of the best plums that grow in the South. The tree is very healthy, early to bear and produces loads of red plums nearly as large as hen eggs. It ripens in early June, and growers who shipped it in carloads from Texas to New York report it retailed for \$8.00 per bushel.

AMERICA. Ripens June 20. Thrifty, symmetrical, spreading tree with medium to large fruit that is a bright golden color with pink cheeks. Firm flesh, clingstone.

BURBANK. Ripens June 25. Large, clear, purplish-red, flesh deep yellow, sweet flavor. Very prolific. A great plum produced and named for a great man.

SHIRO. Ripens in July. One of the most desirable plums over a wide area. Large to very large fruit, oblong, clear yellow with small seed; firm, fine texture, unsurpassed quality for eating and cooking purposes.

METHLEY. Ripens May 25. Red fleshed, red skin and is more than three inches in circumference. Methley was introduced from South Africa and is growing in popularity as a good market variety.

Every home with planting space should grow their own plums for fresh eating, jellies, jams, plum butter and canning.

Scarcely has any fruit been improved as much in the past few years as the plum. Bears younger and more heavily. The fruit is larger, with a more delicious flavor. WOLFE'S plums are the very cream of the selected varieties.

Plant plums 15 or 20 feet apart, in a group, so they can cross pollinize, thus greatly increasing the crop.

GOLD. Ripens July 1. Similar to America, but larger and sweeter.

SIX WEEKS. Ripens May 20. The earliest good plum on the market. Large, rich red and excellent flavor.

DAMSON. Fruit small, oval; bluish-purple covered with bloom; flesh juicy and rather tart; the kind that makes the old-time "Damson preserves." Tree is an abundant bearer. Ripe August and September.

WICKSON. Largest of all Oriental plums. Tree upright in growth, bearing good crops under proper conditions. Fruit large, dark red over a yellow ground, splashed and mottled with darker red. Flesh amber yellow, juicy, firm, pleasant and sweet in flavor.

ABUNDANCE (Botan). Early. A large, bright, cherry-red plum. Firm, sweet, excellent quality. Ships well. The tree is hardy, healthy and productive. Should be planted in every orchard—home yard and commercial. Good to eat fresh and for cooking, canning, plum butter and preserves.

RED JUNE. Popular all over the South, a strong grower and good bearer. Fruit is large, red and delicious. Ripens the last of June.

PRICES ON PLUM TREES

Size	Each	10-49	
1 to 2 ft.	\$.50	\$.45	Prepaid
2 to 4 ft.90	.85	Prepaid
4 to 6 ft.	1.35	1.25	Not Prepaid

WOLFE'S PLUM CHERRIES FOR HEAVY CROPS

HANSKA. Ripens in July. Fruit is red with an apricot flavor and almost freestone. Frequently double and will hang on the tree long after ripe.

COMPASS. Vigorous grower, hardy, prolific and bears extremely young. Fruit rather small, dark red and ripens in June.

SAPA. Ripens last of June and a tremendous producer. Dwarfish, thrifty and often sets fruit at one year of age. Fruit medium in size, dark, with greenish splotches, flesh rich dark purple-red, rich flavor with small seed. The best jelly plum on the market.

OPATA. Ripens the last of June. Also an extra heavy producer. Tree is very beautiful when in bloom and very fragrant. Medium size fruit, purplish-red, splashed with green, flesh light green and fine flavored . . . completely covers the long limbs. Clingstone.

PRICES ON PLUM CHERRY TREES

Size	Each	10-49	
1 to 2 ft.	\$.50	\$.45	Prepaid
2 to 4 ft.90	.85	Prepaid
4 to 6 ft.	1.35	1.25	Not Prepaid



PLUM
CHERRIES—
OPATA

3 This assortment includes three of our very best One-Year-Old, heavy-rooted PLUM trees. Postpaid for only **\$1.00**

SPECIAL OFFER No. 7

WOLFE'S STANDARD VITAMIN APPLES

-Contain vitamins A, B₁, C, & G

This is the year you really should plant that new orchard you've been thinking about. Don't wait any longer! In the face of rising prices, fruit trees are certain to cost more next year, with available supplies of good stock even more limited than at present. The increased demand for food products of all kinds makes orchard profits certain. Get yours planted, and into bearing without further delay.

DELICIOUS (1). Again this year I raised Big Red Delicious Apples that weighed a pound. Wonderful flavor and beautiful shape makes them market specials. Every home should plant a few apples trees. Ripe in September and October.

GOLDEN DELICIOUS (2). This apple is just like Delicious, except it is a golden yellow; good keeper and a real money maker. Ripens the same time as Delicious.

YELLOW TRANSPARENT. This mellow, yellow apple really gets ripe about June 10. The trees are very prolific and the apple is good for cooking and for early market.

DOUBLE RED DELICIOUS. The Double Red Delicious is just like Delicious, except it has more red; \$5,000.00 was paid for the original limb. I have the genuine stock. Several of our customers report they are making \$15.00 to \$25.00 per tree . . . proving that "MONEY DOES GROW ON TREES."

KING DAVID (3). Mr. J. Frank Browning of Baird, Texas, the largest apple grower in this section, places King David and Holland at the top of his list for money makers. King David gets ripe in August and sells like hot cakes. King David and Golden Delicious are good pollinators for Delicious. An orchard of Holland and King David properly cared for will net \$100.00 to \$300.00 per acre.

LODI (Early Golden) New, Improved Yellow Transparent. Fruit large. Clear yellow. Oblong conic shape. Ripens few days after Transparent. Tree hardy. Often bears at 2 or 3 years. Has great promise. Good for eating and cooking—home yard and market.

ANOKA (The Speediest Bearer in the Apple Family!). Often starts fruiting the year after planted. Red and green striped, sub-acid, eating and cooking type. Crisp, white flesh. Ripens in late summer, bearing an enormous crop every year. Anoka will stand the coldest climates and most adverse weather conditions. Adapted to most any soil. Pollenizes other varieties.

RED JUNE (Extra Young-Bearing Tree). Brilliant, glorious deep red summer apple of enormous size. No other summer apple can compare with it in size and beauty. A favorite in home, local and commercial orchards. Ships well. Commands high prices on the market.

WINESAP. Winesap is one of the most widely distributed and best known American apples. It can be thriving on both the Atlantic and Pacific seaboards. The trees are thrifty, hardy, young and regular bearers where given proper cross pollenization. The apple is of medium size, dark red color, firm and juicy.

PRICES ON STANDARD APPLE TREES

Size	Each	10-49	
1 to 2 ft.	\$.40	\$.35	Prepaid
2 to 4 ft.	.65	.60	Prepaid
4 to 6 ft.	1.25	1.15	Not Prepaid
5 to 7 ft. (Bearing)	1.50	1.40	Not Prepaid

3

MARY'S APPLE ORCHARD

SELECTED VARIETIES

Fine 2-4-foot Apple Trees

Regular \$1.60 Value for Only

SPECIAL OFFER No. 9

\$100

POST-PAID

PLANT WOLFE'S PEARS for bigger YIELD

Good Pears in Demand—High Prices Paid

KIEFFER (4)—Large yellow with red cheeks. Wonderful flavor. Ripens from September to December. Our trees bear very young.

BARTLETT (5)—Large, buttery, melting, rich flavor. Ripens last of July and August. Adapted to dry sections.

GARBER—Like Kieffer but ripens in August. Thrifty, heavy bearer, good eating and canning pear.

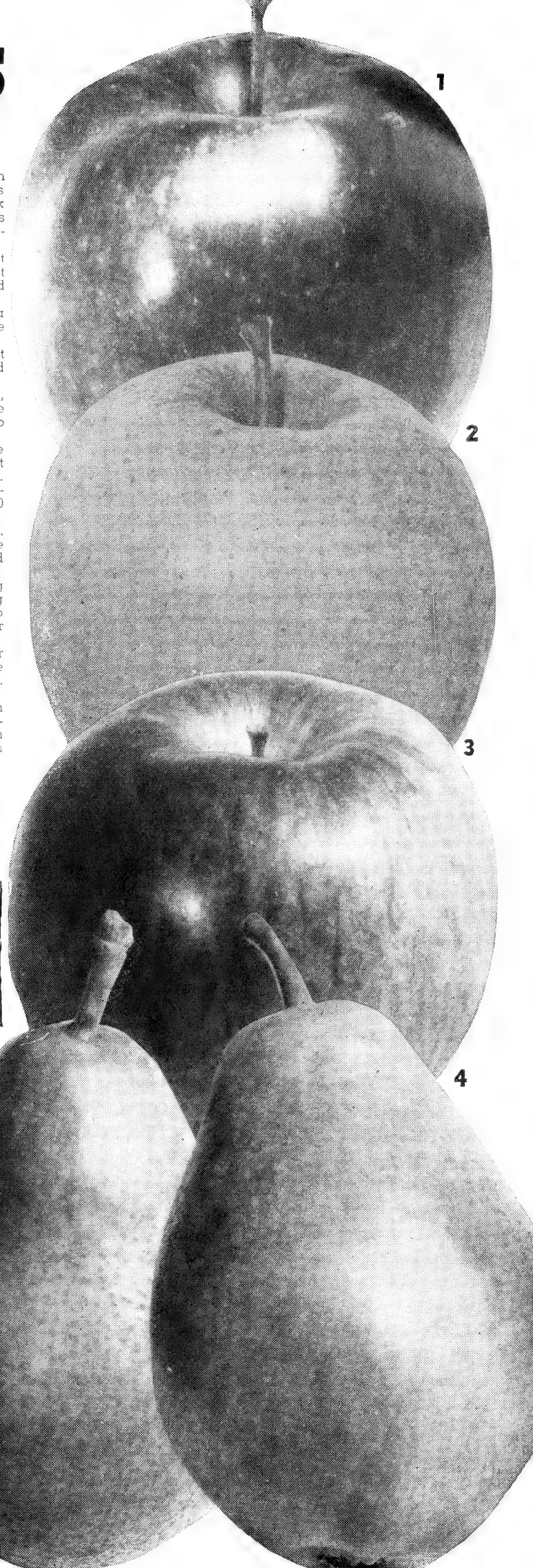
LeCONTE—Medium bell-shaped creamy yellow, with red cheeks. Eating and cooking pear. Ripe July 25th.

DOUGLAS—Douglas will put that RINGING noise back in your pocketbook. It is an early, heavy-bearing pear that sells for fancy prices on all the markets. Young two- and three-year-old trees are often loaded with the big, soft, juicy, delicious fruit. Best eating near on the market. It is Blight Resisting which insures healthy trees. Ripens the latter part of August.

PRICES ON PEAR TREES

Size	Each
1 to 2 feet, prepaid	\$.50
2 to 4 feet, prepaid	.90
4 to 6 feet, not prepaid	1.35

(Note—Not over ten pear trees to a customer)





FIGS—MAGNOLIA

PRICES ON FIG PLANTS

Small Plants	\$.60	Prepaid
Medium Plants80	Prepaid
Large Plants	1.00	Prepaid

YOU CAN HAVE DELICIOUS FIGS THIS YEAR FROM WOLFE'S FIG TREES

I recently visited the Museum in Chicago and I learned to my surprise that the fig is a member of the mulberry family.

The fig is the only plant that we sell that will bear the first year and will ripen its fruit from August to frost. It is the healthiest fruit that is grown and is unequalled for preserves.

You can grow figs in your garden, against your home, against your garage, in the orchard, or on terraces. If the frost kills them another crop will come on as they are sure to bear.

WOLFE'S EVERBEARING FIG (RAMSEY). Ripens its fruit from July until frost and each tree will produce fruit first year. Bears on its new growth. Light straw to brown in color, medium size and very sweet. Does not crack easily. La Reunion Orchard of Grand Prairie made \$1,600.00 from four acres of this fig in one year. Wolfe's Everbearing Fig (Ramsey) is extra good for preserves or eating fresh.

MAGNOLIA. It is not necessary to plant two varieties of figs for good results. The Magnolia produces large brownish straw-colored fruit and will bear the first year after planting. We offer only the best varieties in all fruits.

4	WOLFE'S FIG COLLECTION Fig Plants, Strong 1-Year OFFER No. 12	\$2 ⁰⁰
---	--	-------------------

Wolfe's HOLLAND APPLE A New Money Maker

THIS NEW HOLLAND WONDER APPLE SOLD ONLY BY WOLFE

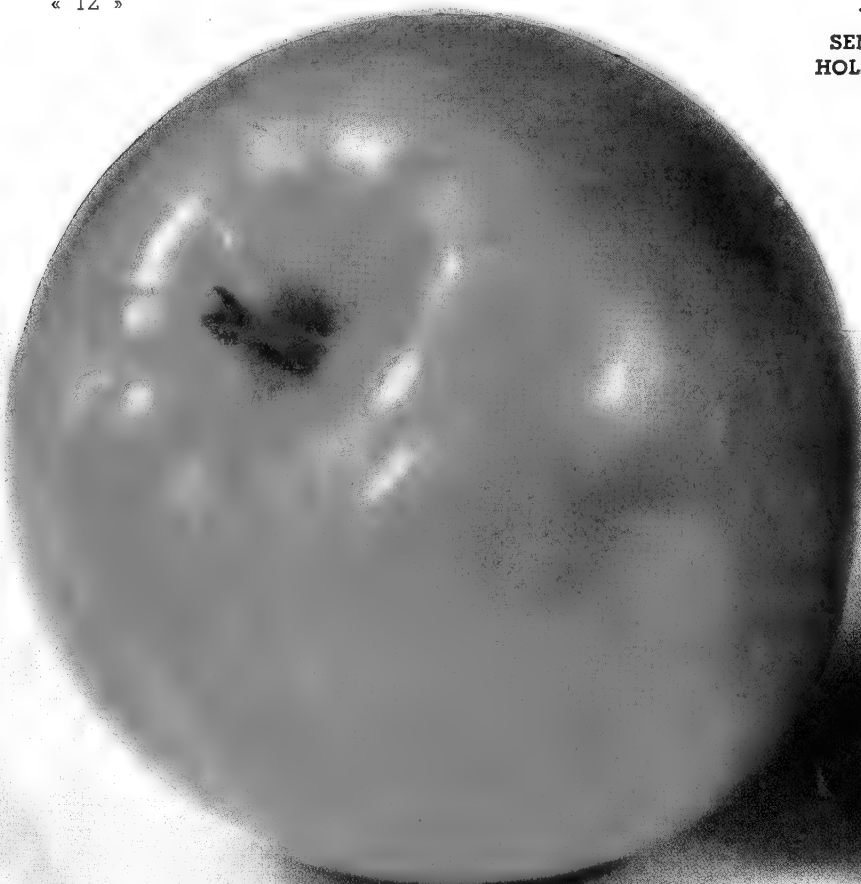
The Horticultural Wonder that originated at Weatherford, Texas, was called to my attention by Mr. R. B. Alexander, the largest and most successful fruit grower in Texas. Holland has been a consistent and heavy producer for 30 years. Its outstanding commercial advantages are: (1) The fruit is firm, good packer, shipper and one of the most delicious apples grown; (2) it ripens as early as our Frank peach and is on the market before outside apples are shipped in; (3) it hangs on the tree exceedingly well, giving the grower a longer selling season.

TRANSCENDENT CRAB APPLE (Siberian). Ripens in July. An attractive yellow color, splashed and striped with red; bears very young. Buds and blossoms exquisitely beautiful. Price same as Holland.

PRICES ON HOLLAND APPLE AND CRAB APPLE TREES

Size	Each	10-49	
1 to 2 ft	\$.50	\$.45	Prepaid
2 to 4 ft.90	.85	Prepaid
4 to 6 ft.	1.35	1.25	Not Prepaid

**WOLFE'S
SENSATIONAL
HOLLAND APPLE**



STRAWBERRIES WILL MAKE YOU MONEY -- JOIN WOLFE'S MONEY MAKERS NOW!



STRAWBERRIES—BLAKEMORE

I hope it makes your mouth water to think of Fresh Strawberries with cream and Strawberry Shortcake. Think of the preserves, too, and the jelly. Doesn't it make you wish you had your own strawberry patch? That's the way to have all you want and have them fresh, picked at the peak of their wonderful flavor. There's no such thing as too many, because your surplus will always be in big demand at attractive prices. Grow berries for your own use or for market. Set out 16 to 18 inches apart in 3½-foot rows. It will require about 7,500 plants per acre.

BIG THRIFTY PLANTS

I insist that my strawberry plants be young and healthy. They are fresh dug and shipped to you the ideal way—in an open-end package. I guarantee them to reach you in first class growing condition

Barrel of Strawberries and a Barrel of Fun

25 Klondike 25 Blakemore

Have strawberries for breakfast twice a week. Bore 40 2-inch holes in the side of the barrel and set 10 plants on top. Keep well watered. Bore small holes in bottom for drainage. Keep runners pinched off. EAT.

\$1.50
Post-paid

OFFER No. 13

THE NEW BLAKEMORE STRAWBERRY. This is a new berry that has been recommended highly by the Department of Agriculture. The Blakemore is firm, well colored, deliciously flavored—very productive and marketable fruit.

MASTODON EVERBEARING. This is the finest everbearing strawberry. New, large, fall-bearing berry. Mammoth berries. Eighteen of the larger ones fill a quart.

IMPROVED KLONDIKE. This variety is planted more in the Southwest than any one variety grown today. The Improved Klondike is bred up and is more productive than the old original Klondike.

Read what Dr. S. H. Yarnell, Head of the Horticultural Division, Texas Experiment Stations, says about TEXAS RANGER Strawberry: "The NEW TEXAS RANGER Strawberry, originated by Mr. E. Mortensen and released by the Winter Garden Substation of the Texas Agricultural Experiment Station, has been found by experimental tests and by commercial growers to excel both Klondike and Missionary."

TEXAS RANGER STRAWBERRY. This BRAND NEW berry is the better berry to plant, because: (1) It produces 25 per cent greater than either the Klondike or the Missionary; (2) it is a better shipper; (3) it produces twice as many plants; (4) it is more VIGOROUS; (5) it is thought to be more DROUGHT-RESISTANT; (6) it has a much deeper and more inviting color.

PRICES ON WOLFE'S MONEY-MAKING STRAWBERRY PLANTS

BLAKEMORE and KLONDIKE

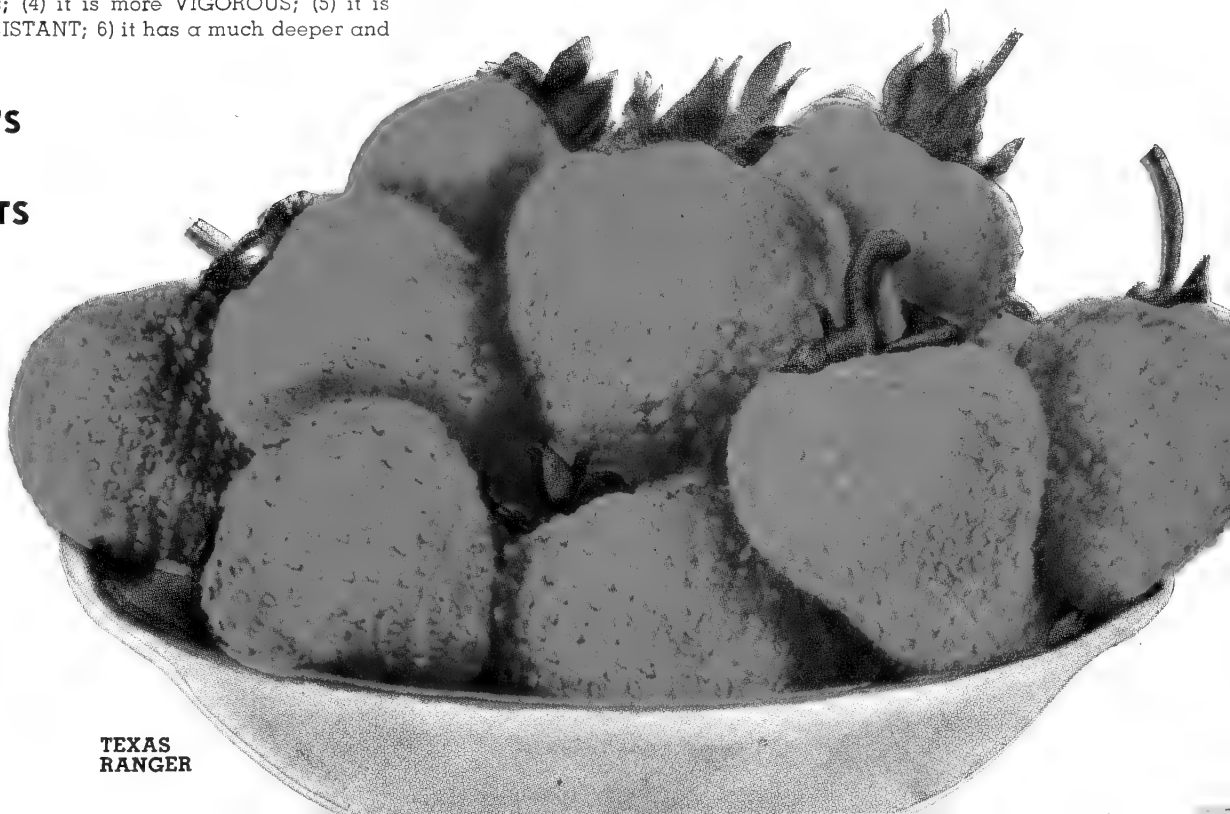
25 Plants	\$1.00
50 Plants	1.50
100 Plants	2.50

TEXAS RANGER and MASTADON

25 Plants	\$1.25
50 Plants	1.75
100 Plants	2.95

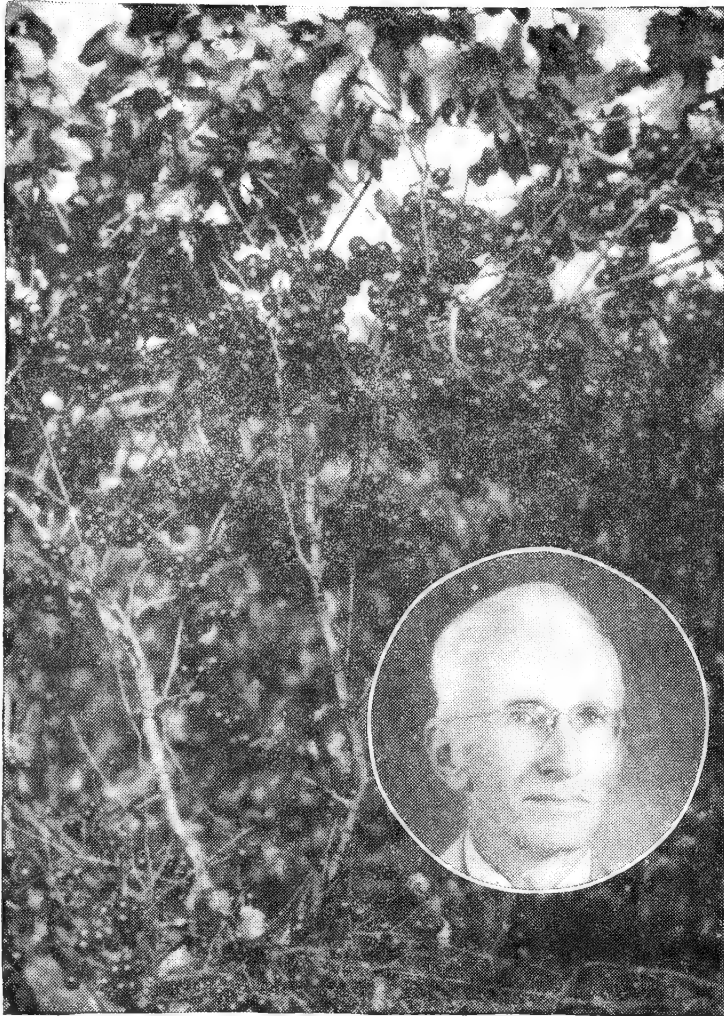
All Prices Are Prepaid on Strawberry Plants

NOTE: Strawberry Plants will usually be shipped separately from the rest of the order.



TEXAS RANGER

WOLFE'S MUSCADINES and PERSIMMONS



MR. Z. L. SCOTT, Concord, Georgia, Noted Grower of Muscadine Grapes

You may remember with pleasure the flavor of the Muscadines you used to eat, or your parents may have told you of their outstanding quality. From plant breeders like the late T. V. Munson of Texas, and H. P. Stuckey and Z. L. Scott of Georgia we have selected the finest varieties of these grapes.

CREEK. The fruit of this variety has the thinnest skin of all varieties. It is very juicy with a fruity flavor, has large clusters of medium size, reddish-purple berries, quality good to excellent, high in sugar and acid content, fairly persistent, prolific and regular in bearing. Ripens uniformly about October 1. One of the latest introductions of Georgia Experiment Stations and a promising commercial variety, one of the best for wine-making.

JAMES. Extra large berries, often measuring 3½ inches in circumference, black, from three to ten berries on a bunch, extremely prolific. Good commercial variety.

HUNT. Vines vigorous, foliage healthy and medium to heavy; prolific, regular bearer, fruit large, black, bunches well, hangs on well, cluster stems long, skin medium to thick, excellent flavor, ripens in August. Fine for all purposes.

MALE. Should be planted with other varieties of Muscadine grapes; it will cause them to bear much heavier crops, as this is pollinating variety. These bear no fruit.

PRICES ON HUNT, CREEK, JAMES, MALE MUSCADINE VINES
2 year\$.75 Prepaid

WOLFE'S DELICIOUS PERSIMMONS MAKES A "Dish Fit for a King"

The leading fruit of the lower South. Demand increasing far in excess of their supply. Plant persimmons, the trees live 50 to 100 years. They bear very young, bear every year; the fruit is ornamental, delicious and easily sold.

TANE NASHI. Seedless. Finest quality to be had. Looks like a picture. It bears young and is FROST-RESISTANT. We have picked Tane Nashi when snow was on the ground. Best seller. Plant trees 20 feet apart.

EUREKA. Hardy variety, fruit looks like a huge red tomato. Very soft and makes a dish fit for a King when served with lemon juice, sugar and cream. Almost seedless. Ripe November and December.

PRICES ON PERSIMMON TREES

Size	Each	
2 to 4 ft.....	\$.95	Prepaid
4 to 6 ft.....	1.50	Not Prepaid

TEXAS ALMOND. One of the best almonds for the South.

PRICES ON TEXAS ALMOND TREES

Size	Each	
3 to 4 ft.....	\$1.00	Prepaid



PERSIMMON—EUREKA

WOLFE'S GRAPES FOR VINEYARDS— ARBORS and PERGOLAS

GRAPES WILL BEAR EVERY YEAR AND WILL LAST A LIFETIME

A dollar's worth of grape vines will produce many dollars' worth of fruit, year after year, for a lifetime. Wholesome, healthful grapes, eat them fresh, make your own fine jelly, jam, sauce and juice. Grapes are easy to grow—you don't even need an arbor—just plant them along the fence. Plant them 3 feet apart; they generally start bearing next year after planting.

From the famous Munson vineyards of Denison, Texas, which is owned by the Wolfe Nursery, we are able to offer you America's finest grapes. Grapes are low in cost, so start with the best—plant WOLFE'S GRAPES.

CONCORD. Most popular large, purplish black grape. Large shouldered, compact bunch. Flesh is juicy, sweet and tender, excellent flavor. Vine a strong grower, very healthy, hardy and productive. Ripens in August.

DELAWARE. There has probably been a greater acreage planted to Delaware than to any other red grape. Flesh is juicy, very sweet, and of finest quality for both table use and wine making. Ripens early

CHAMPANEL. Black berries with tough skin, tender pulp. Adapted to any soil, including black land.

NIAGARA (the Best White Grape). Niagara is as much of a standard among white varieties as is Concord among the blacks. Both bunch and berries are large, greenish white changing to pale yellow when fully ripe. Fresh is juicy and delicious. Skin is thin but tough, making this variety ideal for market. A dependable cropper and yielder.

CARMAN. Growth vigorous; foliage never attacked by leaf folder or mildew; prolific, cluster, conical, compact. Berries persistent, medium, globular, black with thin skin. Tough, never cracking; pulp meaty, firm and tender when ripe. Rich quality, superior to Concord; seeds easily leaving pulp. Ripe August 10. Makes good juice or wine.

THOMPSON SEEDLESS. Heavy producer, greenish white, large compact bunches. Adapted to Southwest Texas and New Mexico.

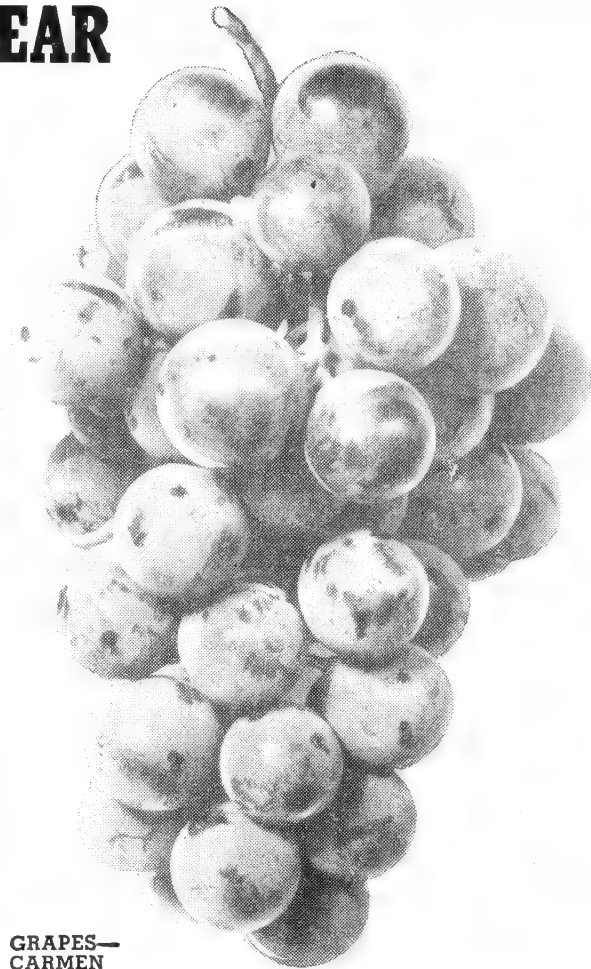
PRICES ON GRAPE VINES

Size	Each	Prepaid
Small\$.30	Prepaid
Large50	Prepaid

"THE FOUNDATION OF AMERICAN GRAPE CULTURE"

Written by the late T. V. Munson, 252 pages with 87 full-page illustrations. Information for growing grapes, preparation of soil, planting, cultivation and pruning.

Reduced Price is \$1.50 Per Copy. Postpaid



GRAPES—
CARMEN

CARMAN GRAPE VINEYARD

4 Heavy-bearing, 1-year-old, field-grown CARMAN grape vines shipped to you, postpaid for only **\$1.00**

ORDER OFFER No. 11

WOLFE'S 5 SPECIAL NEW FRUITS

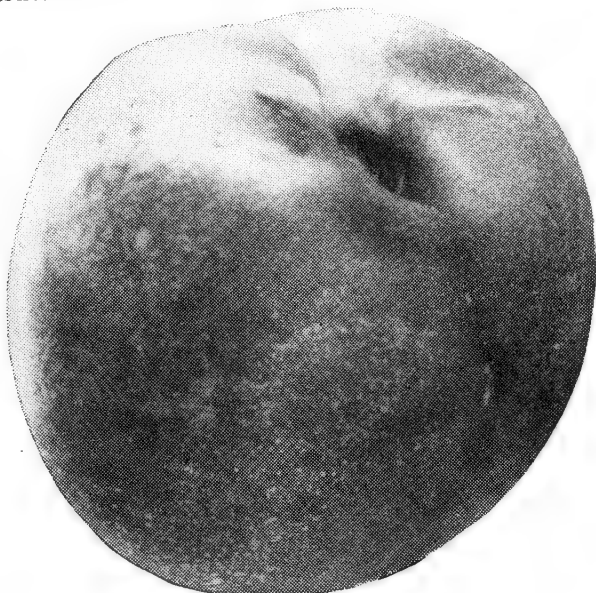
SANTA ROSA PLUM. Largest and most beautiful plum. Leading commercial plum in California and well adapted to the South. Purplish red in and outside and most delicious.

WOLFE'S ALLRED PLUM. Beautiful to see, delicious to EAT and easy to admire. Allred is another of Wolfe's new varieties resulting from a never-ending search for new and finer fruits. Allred attracts the eye like a passing parade. It is medium in size, highly ornamental and produces regular crops of high-quality fruit. The leaf is red. The stem and branches are red. The fruit is red outside and inside and the seed is red. It is ALLRED. Many of the trees are used in landscapes for its beauty.

RED NECTARINE. The Nectarine is a bud sport of the peach, and is not a cross. The Nectarine tree is identical with the peach tree in its climatic and cultural requirements. Its smooth, fuzzless skin, however, and distinctive and delicious flavor make it popular wherever it is known. The fruit is medium sized, red in color, semi-cling, of extra good flavor. Tree a medium grower and good bearer, earliest of the shipping nectarines. Carries well to market. Ripe in late June.

WOLFE'S MUNSON PLUM. When I tasted the Munson Plum, I said it is as sweet as honey and as yellow as gold. It gets ripe June 1 when the berries are at their best and should be in every planting. This is our greatest plum.

PRUNE. Cross between plum and prune. Blue-black color with reddish meat. Small seed. Fruit delicious and good for jellies and jams or preserves. Ripens July 10 to 20.



RED NECTARINE

PRICES ON ALLRED PLUM, RED NECTARINE, SANTA ROSA WOLFE'S MUNSON PLUM, PRUNE TREES

Size	Each	10-49	Prepaid
1 to 2 ft.\$.50	\$.45	Prepaid
2 to 4 ft.90	.85	Prepaid
4 to 6 ft.1.35	1.25	Not Prepaid

WOLFE'S BERRIES WILL PRODUCE FIRST AND SECOND YEAR AFTER PLANTING NO FRUIT IS SO SURE TO BEAR OR MORE VALUABLE TO EAT AND COOK. PLANT MORE BERRIES FOR PIES-JAM-JELLIES



WOLFE'S WONDERFUL DEW-BLACKBERRY

This wonderful berry is a cross between Dewberry and Blackberry. There is no more delicious fruit grown than WOLFE'S delicious DEW-BLACKBERRY. Pick these big, tempting berries from your own garden and eat them fresh with cream and sugar . . . in pies . . . in shortcakes . . . for sauces and jams.

Wolfe's Dew-Blackberries are easy to grow and are hardy most anywhere—just tip the roots the first year and then stand and handle like blackberry.

DEW-BLACKBERRIES are DROUTH-RESISTANT and FROST-RESISTANT and will produce a crop every year . . . 1,000 to 2,000 gallons per acre. We shipped DEW-BLACKBERRY to 44 States last year.

Plant them 3 to 4 feet apart in the row and the rows 6 to 7 feet apart. DEW-BLACKBERRY ripens through May and June.

PRICES:

10 Plants	\$.95
50 Plants	3.75
100 Plants	5.95
1000 Plants	40.00

All Prices Postpaid

25

Of These Wonderful
DEW-BLACKBERRY
PLANTS

Shipped Postpaid to Your Door

FOR ONLY—

\$1.50

ORDER OFFER No. 16

WOLFE'S ROSSBERRY



WOLFE'S NEW
SENSATION—ROSSBERRY

**THE HORTICULTURAL
SENSATION OF THE
PAST DECADE—A
NEW MONEY MAKER!**

In quest for new and better varieties, I consider this berry one of my greatest finds. Let me tell you how it originated, where it got its name, and about its good features.

Many years ago when Luther Burbank was growing Raspberries, Loganberries, Blackberries and Dewberries, he sent one of his friends a few plants of this berry to try out. It has now been tried more than thirty years along side of Youngberries, Boysenberries, Thornless Boysenberries and Nectarberries and, in my opinion, it is far superior to any of these berries.

**IN OUR OPINION ROSSBERRY HAS A
GREATER FUTURE THAN ANY BERRY
INTRODUCED IN THE PAST 10 YEARS**

This new berry had to have a name so I selected two outstanding authorities for a name. Neither was acquainted with the other and knew what the other suggested. Each selected twenty names to choose from and both selected No. 1 as Rossberry. It combined my

name Ross with Raspberry so this new berry is Rossberry—a new variety that has a great future. Check ROSSBERRY'S seven outstanding features:

1. The plants are much more vigorous than Youngberries.
2. Remarkably free from diseases.
3. The berries are large like Youngberries and Boysenberries and the flavor is Raspberry.
4. It is a combination of the good points of the Dewberry and Boysenberry families.
5. It comes into bearing the next year after planting and one planting lasts for years.
6. It stands the cold much better than Boysenberries.
7. It ripens two weeks earlier than Boysenberries.

**SEND ALL ORDERS
DIRECT TO
WOLFE NURSERY
Stephenville,
Texas**

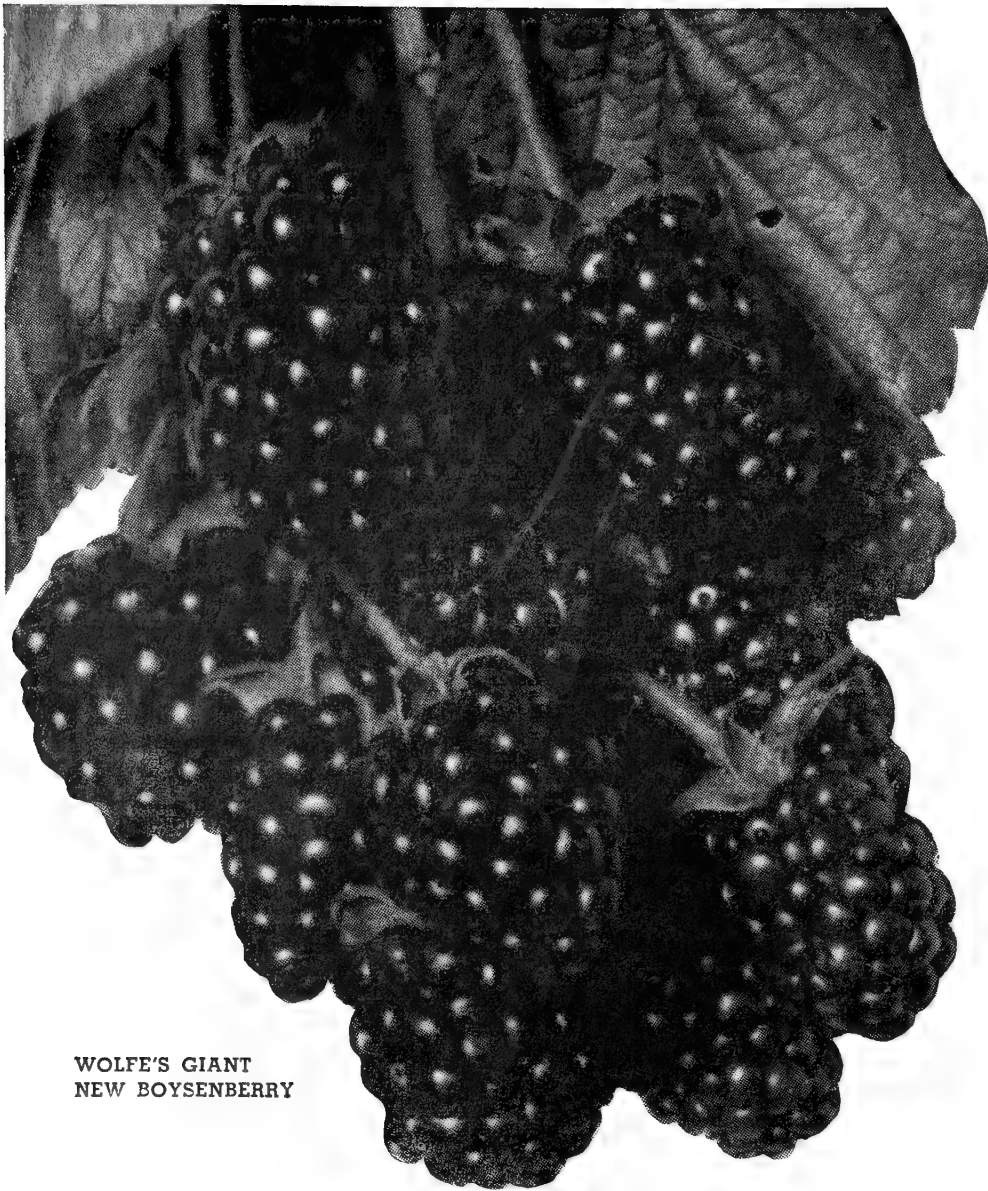
Shipping Season From January 15 to April 1
PRICES ON ROSSBERRY PLANTS
1-YEAR HEAVY ROOTED, STRONG PLANTS

2	5	10	25	50	100
\$1.20	\$2.40	\$3.60	\$6.60	\$11.00	\$19.00

All Orders Filled in the Same Order They Are Received—Money Refunded When Supply Is Exhausted

ORDER EARLY

We cannot stress to much the importance of ordering early. Many Nursery items all over the country are short—send in your order now and we will reserve your stock and ship it upon your request.



**WOLFE'S GIANT
NEW BOYSENBERRY**

The Sensational Giant Boysenberry

THE NEW FRUIT WITH A DIFFERENT FLAVOR . .

Boysenberry is a sensational new fruit introduced in California. It is a cross between the Loganberry, Raspberry and Blackberry. Imagine, if you can, a berry combining the best of these fruits in one giant, gorgeous wine-colored berry, with a distinct and delicious flavor you will never forget. That's Boysenberry!

This amazing new berry is huge . . . about one by two inches in size and has an amazingly rich flavor that makes everyone want more. Boysenberry is FROST-RESISTANT and DISEASE-RESISTANT.

It is sweet and juicy, yet amply firm to withstand shipping to market. It is ideal for freezing, and so far the supply of berries is not nearly equal to the demand for this choice, frozen delicacy.

Boysenberry is perfectly hardy, and may be safely grown in the Northern States, as well as in the South.

In tests made by the U. S. Department of Agriculture, 50 berries have been known to fill a quart box; but a conservative number for the average crop would be from 75 to 85 berries.

Boysenberry is a highly profitable crop, and the cost of planting stock is now low enough that you can't afford to wait longer to get started. Plant this year and cash in on a big-money crop. Planted 8 ft. by 8 ft., six hundred plants will set an acre.

PRICES ON BOYSENBERRY

10 Plants \$1.50 Prepaid 25 Plants \$3.50 Prepaid 100 Plants \$12.50 Prepaid

PARKER THORNLESS YOUNGBERRIES. These mammoth maroon-red purple berries often measures 1½ to 2 inches long and nearly as wide. Borne in huge, loose clusters. Flavor a combination of Loganberry, raspberry, blackberry—better than any. Juicy, tangy, sweet and sub-acid. Delicious fresh, canned, in pies, jam, juice, etc. Absolutely thornless and practically seedless. Adapted to wide range of soils and thrives anywhere. Plant six to eight feet apart.

PRICES ON PARKER THORNLESS YOUNGBERRIES

10.....\$1.50 Prepaid 25.....\$3.50 Prepaid 100.....\$12.50 Prepaid

AUSTIN DEWBERRY. Probably the best commercial variety for Central and North Texas. Very large, fine flavor, and especially good for jams and jellies. A vigorous grower and very prolific. Ripens in May and June.

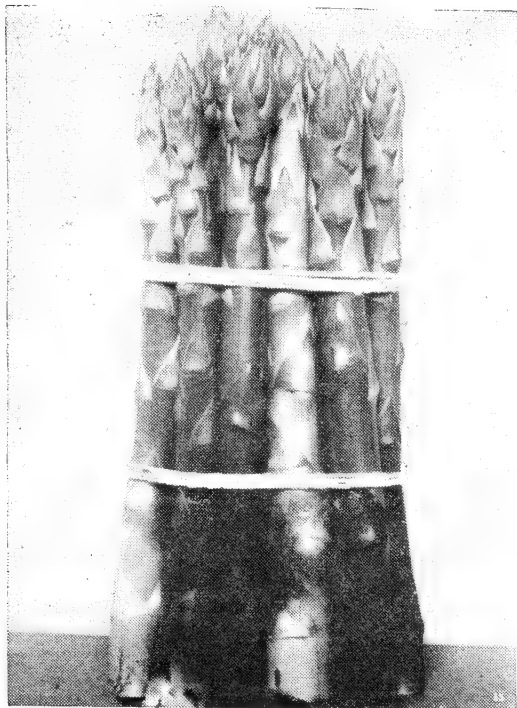
YOUNGBERRY. A wonderful berry produced by crossing the Loganberry and the dewberry. An exceptionally heavy producer; berries dark wine-red, of extraordinary flavor, tender, juicy and rich, and with no hard core. Unsurpassed for jams and jellies. The demand for this berry has been far in excess of the supply and everyone wants it. Ripens in May and is particularly well suited to this section.

PRICES ON YOUNGBERRIES AND AUSTIN DEWBERRIES

10.....\$1.25 Prepaid 25.....\$3.00 Prepaid 100.....\$6.95 Prepaid

NOTE: Boysenberry, Youngberry and Thornless Youngberry will be shipped after February 1st because they do not have sufficient roots to be transplanted in December and January.

Plant **WOLFE'S RHUBARB** FOR YOUR BEST PIES



ASPARAGUS—WASHINGTON

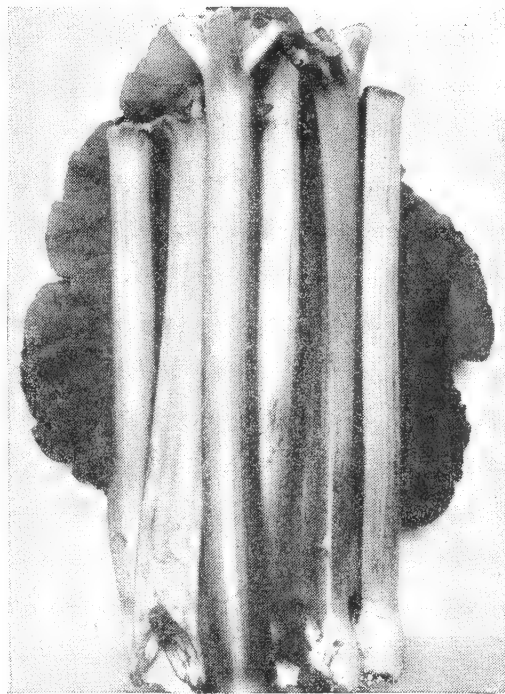
MARTHA WASHINGTON ASPARAGUS PLANTS

Introduced by the U. S. Department of Agriculture a few years ago. Has been the main-crop Asparagus variety for home, market, and canning. Produces large, tender, green tips. Famous for its mild, rich, full flavor.

A few roots produce many tips. Plant them 12 inches apart in the garden. In the field, the rows can be 4 feet apart. 5,000 roots will plant an acre. Price: Per plant, 10c; per dozen plants, \$1.00, postpaid.

VICTORIA RHUBARB

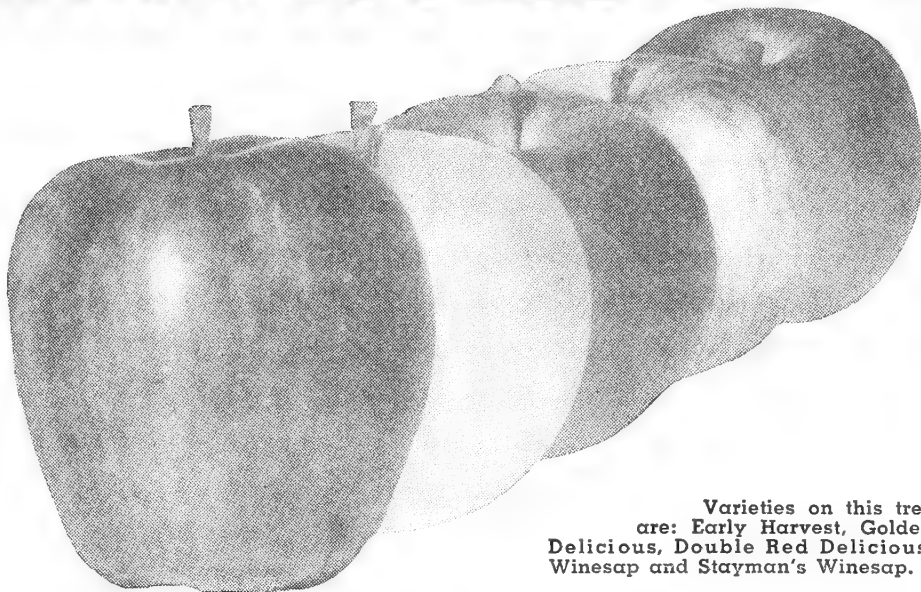
The first plant to furnish fresh sauce and pies in springtime. Will last a lifetime. Will provide lots of juicy stalks after the first year. Plant 2 feet apart. Set the roots straight up and down, with the crown about 2 inches below the surface of the soil. Prices: 1 year plants, 15c each; 8 plants, \$1.00, postpaid.



VICTORIA RHUBARB

WOLFE'S 5 in 1 APPLE TREE AN ORCHARD IN YOUR BACK YARD

"The City-Man's Orchard." The quintuplet apple is a tree that has been produced so that the small home owner who has a restricted planting space can have a variety of apples over a long picking season. We have budded on a single apple five different varieties, which will bear fruit over a long period of time. The trees are highly ornamental and present a beautiful appearance when the blossoms are bursting in the spring followed by more blossoms as the later varieties come on. Prices: 3-year-old trees, each \$2.95; two trees, \$5.00, prices prepaid.



Varieties on this tree are: Early Harvest, Golden Delicious, Double Red Delicious, Winesap and Stayman's Winesap.

PECAN BUDS AND GRAFTS

From Cold Storage Until July 1—After That Date We Will Ship Fresh Buds

WESTERN SCHLEY, SQUIRREL'S DELIGHT, BURKETT, SAN SABA IMPROVED, SUCCESS SCHLEY
STUART & MOORE and ORIENTAL PERSIMMON BUDS AND GRAFTS

PRICES, Prepaid: 10—85c; 25—\$1.25; 100—\$2.50

JOHN GARNER and MEYHAN PECANS BUDS AND GRAFTS
PRICES, Prepaid: 10—\$1.00; 25—\$1.50; 50—\$2.75; 100—\$4.00

WALNUT BUDS AND GRAFTS

GRANDE ENGLISH WALNUT, THOMAS BLACK WALNUT and WILSON WONDER ENGLISH WALNUT BUDS AND GRAFTS

PRICES, Prepaid: 10—\$1.00; 25—\$1.50; 50—\$2.75; 100—\$4.00

QUINTUPLET PEACH

Five Leading Varieties on ONE TREE

Here is a complete peach orchard in your own back yard—and all you need is space for one or two trees. The neighbors will be amazed—and so will you. It seems incredible but you will get five of the best varieties grown on one tree. Plan to supply plenty of delicious fruit all season. These trees have been proven successful, and are not a mere flash in the pan. We know you will be very well pleased with them. These trees will bear delicious peaches May through August and include the following varieties: Early Rose, Halehaven, Elberta, Augberta, and Golden Jubilee. Shipped postpaid for only.....

2⁷⁵

WOLFE'S PAPERSHELL PECANS

WHAT ARE YOUR PLANS FOR THE FUTURE?

What are you doing to provide for a future income? You are growing older, your health will not always be good, some younger person may get your job. When you are older, will you be mowing lawns, on relief and living with your children?

You can be independent, happy and contented by owning your own home and having an income from a pecan orchard that will grow more valuable as the years go by. Let me tell you HOW — with pecans.

WOLFE'S PECANS ARE GOOD INSURANCE

Plant a pecan orchard now and be prepared for the future. A tree that costs a dollar or more will quickly grow into a tree worth ONE HUNDRED DOLLARS. Our pecan trees begin to bear two and

three years after they are planted so your dividends begin to come in. The older the trees the bigger the income.

WOLFE'S PECANS WILL EDUCATE YOUR CHILDREN

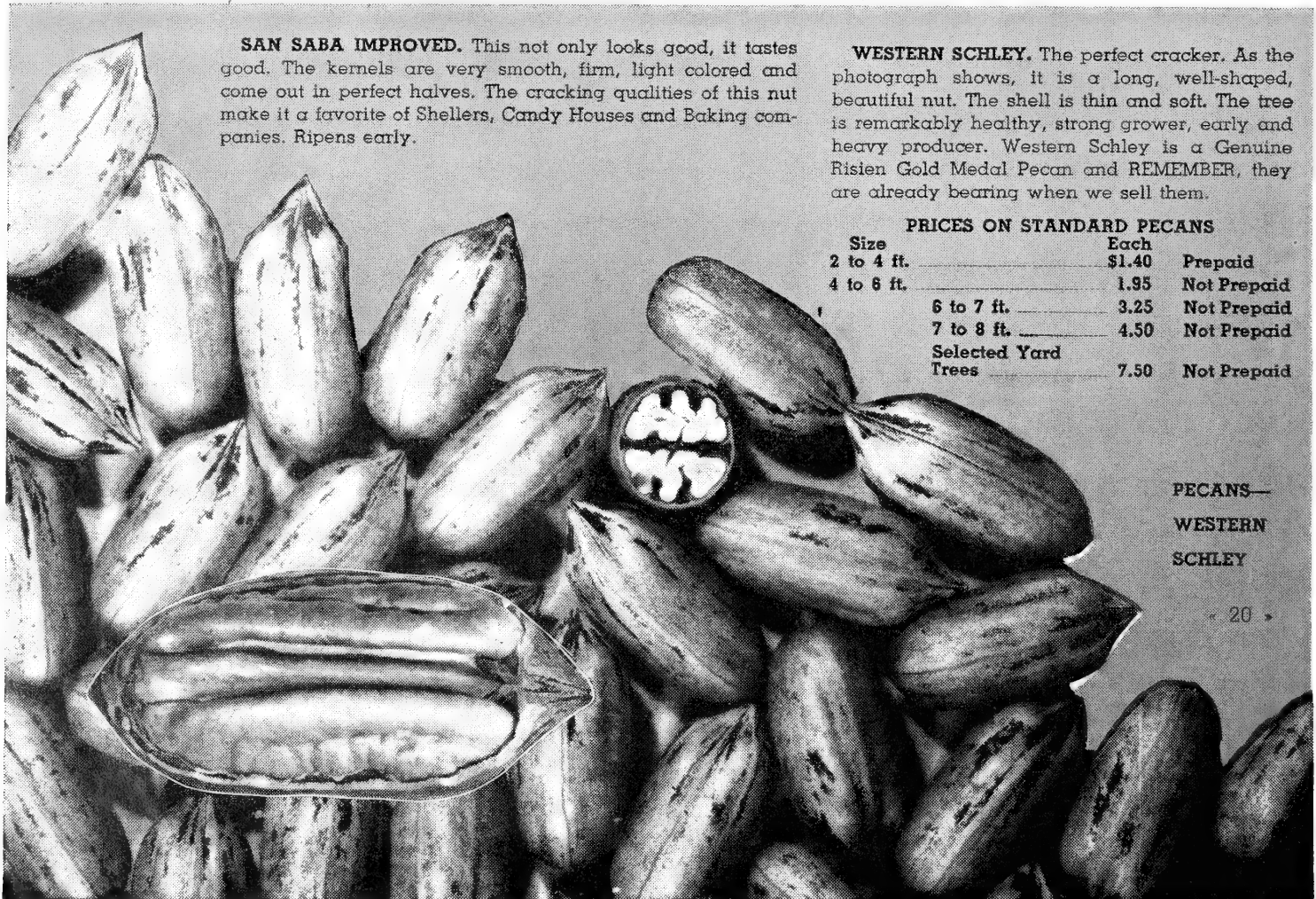
The owner of this business has built a modern home and sent his children to college with the money from his pecans. Why not plant 50 to 100

pecan trees for each one of your children now so that he or she may be assured of funds for their education?

ARE YOU A CITY MAN

If you are on a salary, would it not be a wise thing to lay aside a part of your earnings and buy a farm? Life in the fresh, open air and a home among trees with a few chickens, cows, and a gar-

den and pecan trees to grow while you sleep will contribute to the happiness and uplift to yourself and your family.



SAN SABA IMPROVED. This not only looks good, it tastes good. The kernels are very smooth, firm, light colored and come out in perfect halves. The cracking qualities of this nut make it a favorite of Shellers, Candy Houses and Baking companies. Ripens early.

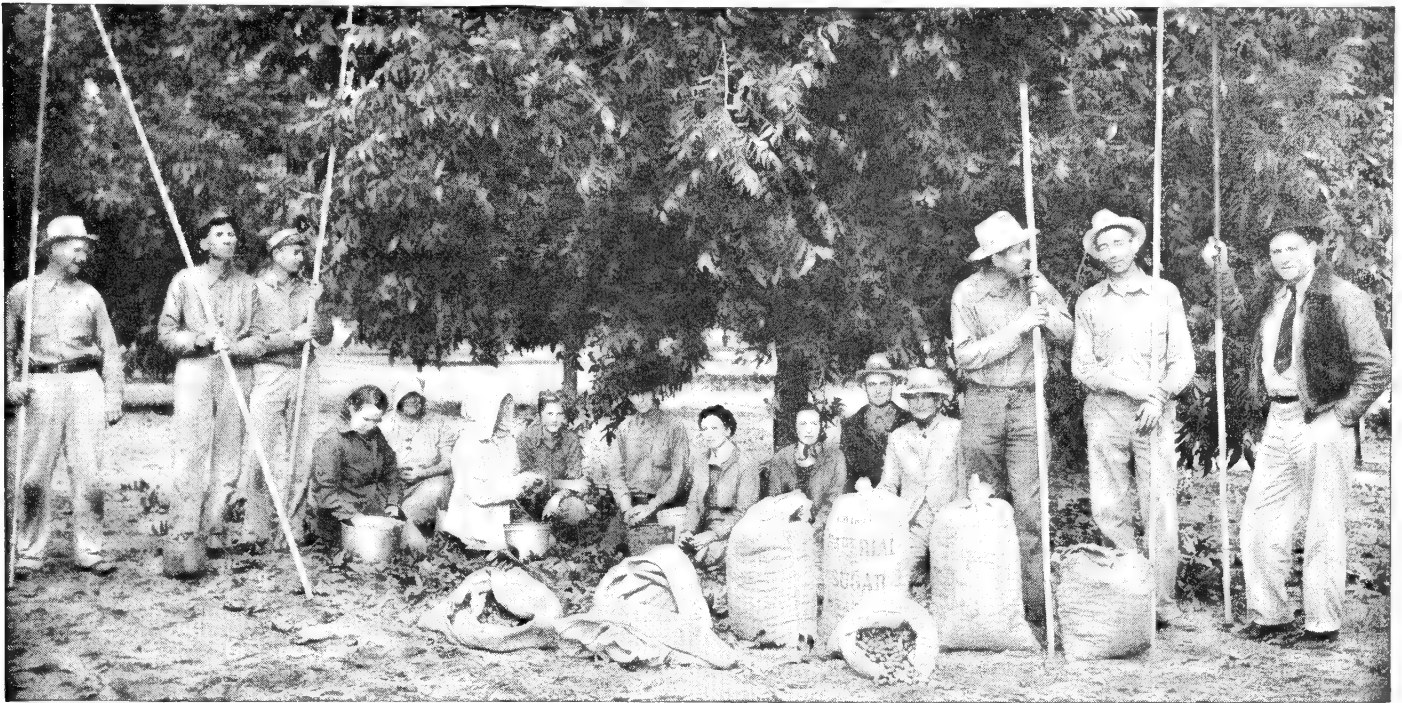
WESTERN SCHLEY. The perfect cracker. As the photograph shows, it is a long, well-shaped, beautiful nut. The shell is thin and soft. The tree is remarkably healthy, strong grower, early and heavy producer. Western Schley is a Genuine Risien Gold Medal Pecan and REMEMBER, they are already bearing when we sell them.

PRICES ON STANDARD PECANS

Size	Each	Prepaid
2 to 4 ft.	\$1.40	Prepaid
4 to 6 ft.	1.95	Not Prepaid
6 to 7 ft.	3.25	Not Prepaid
7 to 8 ft.	4.50	Not Prepaid
Selected Yard Trees	7.50	Not Prepaid

PECANS—
WESTERN
SCHLEY

\$5,000 FROM THIS 21 ACRES OF PECANS--THIS ORCHARD AT WOLFE'S NURSERY PRODUCED 25,000 LBS. OF PECANS



SEE THIS RECORD PRODUCING ORCHARD AT OUR NURSERY—VISITORS ALWAYS WELCOME

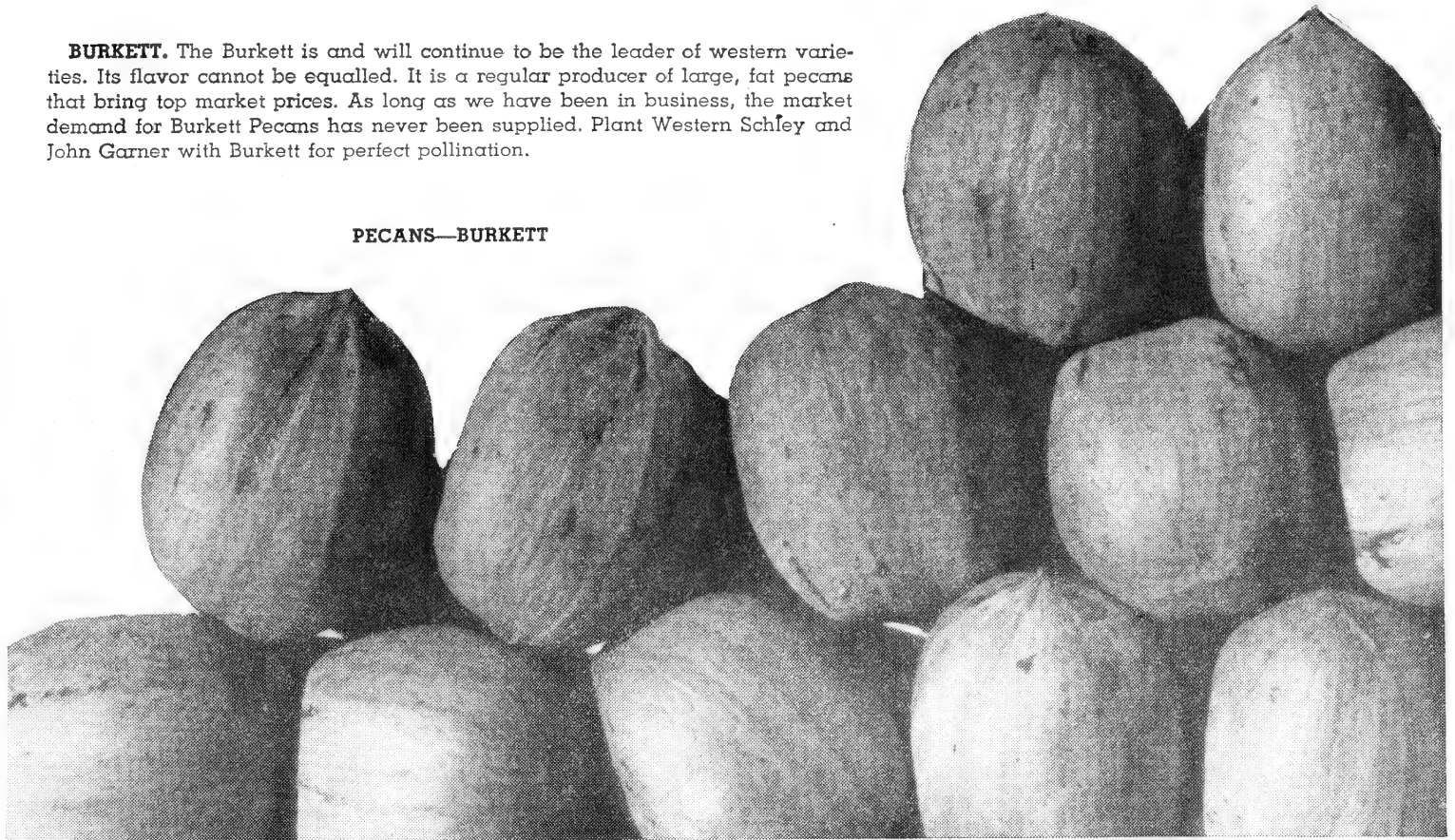
SQUIRREL'S DELIGHT. An ideal pecan for sections having a short growing season. Oklahoma, New Mexico and Kansas are ideal states for this hardy pecan. The nut is long like Schley with a delicious flavor and fine quality.

PRICES ON STANDARD PECAN TREES

Size	Each	Prepaid
2 to 4 ft.	\$1.40	Not Prepaid
4 to 6 ft.	1.95	Not Prepaid
6 to 7 ft.	3.25	Not Prepaid
7 to 8 ft.	4.50	Not Prepaid
Selected Yard Trees	7.50	Not Prepaid

BURKETT. The Burkett is and will continue to be the leader of western varieties. Its flavor cannot be equalled. It is a regular producer of large, fat pecans that bring top market prices. As long as we have been in business, the market demand for Burkett Pecans has never been supplied. Plant Western Schley and John Garner with Burkett for perfect pollination.

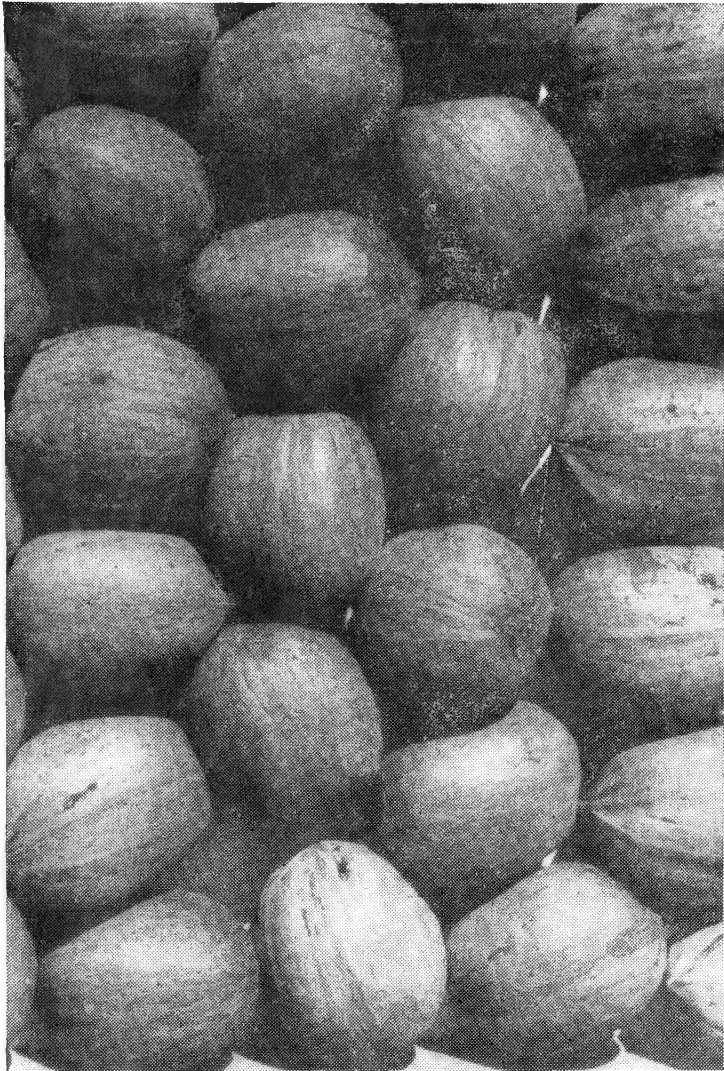
PECANS—BURKETT



WOLFE'S PECANS WILL PAY THE TAXES ON YOUR HOME

OUR SYSTEM OF GROWING AND BUDDING MAKES

THEM BEAR IN THE NURSERY ROW



PECANS—SUCCESS

Many people fail to realize that it only requires a very small amount of money to purchase enough good pecan trees to plant a splendid orchard. From 12 to 17 trees are sufficient and Wolfe can supply good, first-class, WELL-ROOTED trees, with an established reputation and record for LIVING, GROWING AND PRODUCING, for as little as \$1.40 each and up, depending, of course, on the size you wish to start with. A few dollars spent for good Pecan trees, and a reasonable amount of care after they have been planted, will be good OLD AGE INSURANCE. Put NATURE to work for you—participate in the pleasurable PROFIT that the owners of Pecan orchards enjoy.

STUART. The Stuart comes nearer to being well suited to all sections of the country and all soils than any other variety. It is a good producer and a hardy, fast growing tree. The meat is sweet and brittle. It is one of the earliest ripening of all the large standard pecans.

EASTERN SCHLEY. This is the standard of excellence among pecans. The tree is healthy and it has made an excellent production record in the native pecan belts of Texas, Arkansas and Oklahoma in altitudes from 350 to 1,000 feet. Ripens early.

SUCCESS. This most popular Eastern variety is in demand. The nut is very large and oblong, with plump, smooth, creamy kernels that release perfectly from the thin soft shell. The tree is a vigorous grower and resistant to scab. It ripens after Stuart.

DELMAS. Delmas is a beauty and makes good our saying that "MONEY DOES GROW ON TREES." It is a heavy producing tree and the large nuts are first class eating. Adapted to Central Texas. We grow only varieties that will pay you.

PRICES ON STANDARD PECAN TREES

Size	Each	
2 to 4 ft.	\$1.40	Prepaid
4 to 6 ft.	1.95	Not Prepaid
6 to 7 ft.	3.25	Not Prepaid
7 to 8 ft.	4.50	Not Prepaid
Selected Yard Trees	7.50	Not Prepaid

A Few Simple Suggestions to Help You Plan Your Orchard—How to Plant It and Distance for Planting . . .

POLLINATION OF PECANS

Where you do not have native pecans it is better to plant some early pollen-shedding varieties with late pollen-shedding varieties to insure perfect pollination. Western Schley, Success, San Saba Improved and Squirrels Delight shed their pollen early. Burkett, Delmas, Schley, Stuart and Mahan shed their pollen late.

SIZE OF HOLE FOR PECANS

In ideal pecan soils, use a post-hole digger, making the hole 10 inches wide and from 3 to 3½ feet deep. In hard soils dig a hole 3 feet square and 3 feet deep so that the roots can get started before reaching the hard soil.

DISTANCE FOR PLANTING PECAN TREES

- 35 ft. by 35 ft. gives 35 trees per acre.
- 40 ft. by 40 ft. gives 27 trees per acre.
- 35 ft. by 70 ft. gives 17 trees per acre.
- 50 ft. by 50 ft. gives 16 trees per acre.
- 60 ft. by 60 ft. gives 12 trees per acre.

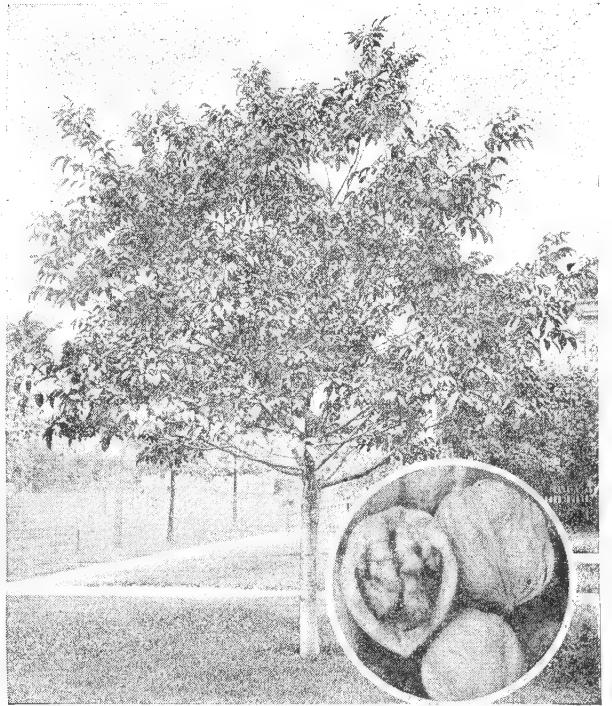


BUDDED PECAN TREES BEAR YOUNG

WOLFE'S THOMAS BLACK WALNUT

THOMAS BLACK IS THE WORLD'S HEAVIEST PRODUCING WALNUT

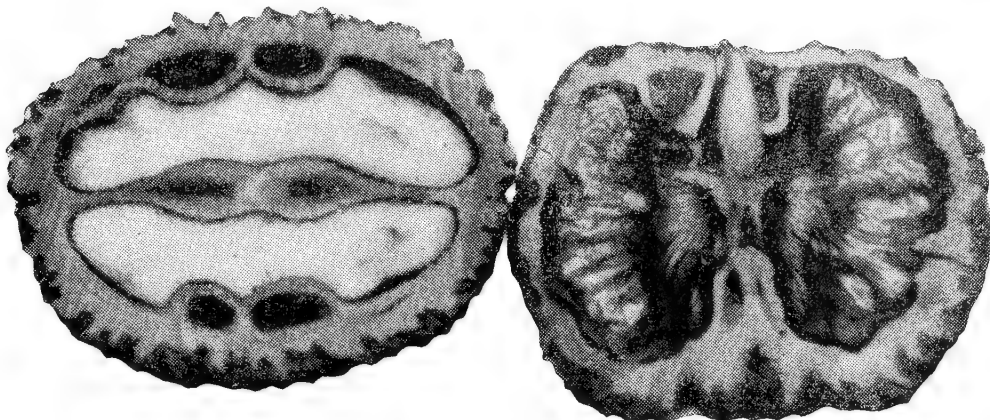
THOMAS BLACK is the walnut that you simply cannot afford to pass up. Everybody likes these delicious nuts at Christmas time, so here is your chance to grow your own and at the same time have a beautiful tree. **THOMAS BLACK**, in flavor and quality of kernel, is the choicest of all the walnuts. The shell is thinner and the kernel is much larger. **THOMAS BLACK** is a thrifty grower, symmetrical in shape and of luxuriant foliage. **REMEMBER**, our trees are already bearing.



THOMAS BLACK MAKES AN IDEAL TREE FOR SPECIMEN PLANTING

PRICES ON THOMAS BLACK WALNUT TREES

Size	Each	
2 to 4 ft.	\$1.75	Prepaid
4 to 6 ft.	2.75	Not Prepaid



WOLFE'S THOMAS BLACK WALNUT

WILSON WONDER ENGLISH WALNUT. Called the "Jumbo Walnut" because of its enormous size. Nuts often 2 inches in diameter. Makes a beautiful, fast-growing shade tree that will furnish your table with good eating nuts.

GRANDE ENGLISH WALNUT. A new English walnut for the Southwest that is a sensation. Our trees are loaded this year with the high quality nuts. The tree makes a beautiful shade for the home grounds.

PRICES ON WILSON WONDER and GRANDE ENGLISH WALNUTS

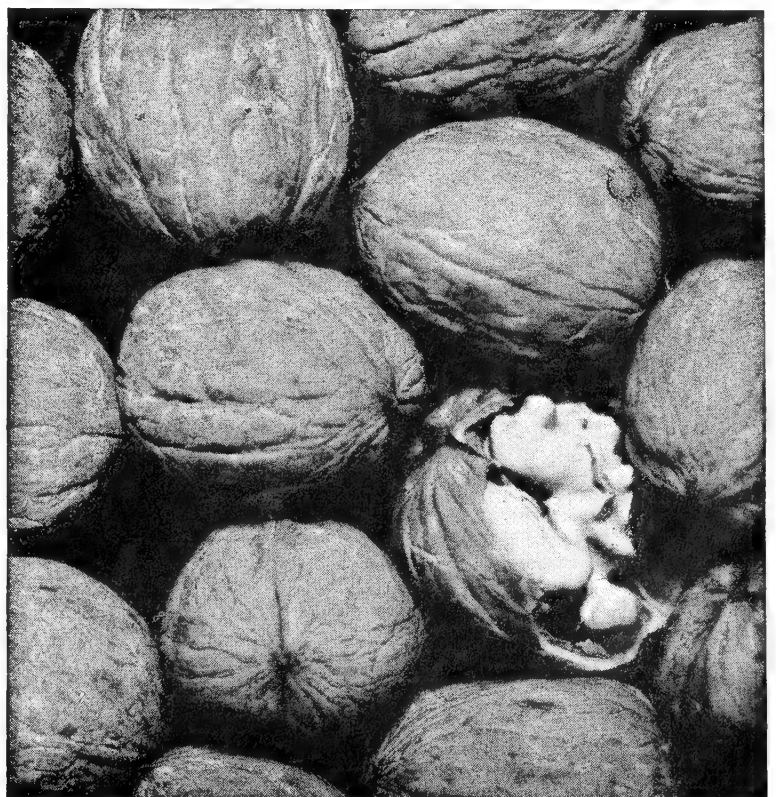
Size	Each	
2 to 4 ft.	\$1.75	Prepaid
4 to 6 ft.	2.75	Not Prepaid

PRICES ON HAZEL NUT, BUTTERNUT, SHAGBARK HICKORY and BLACK WALNUT TREES

Size	Each	
2 to 3 ft.	\$.79	Prepaid

THOMAS BLACK will produce heavy crops anywhere. As the picture shows, it is a perfect nut with the same old flavor of native walnuts. Note the thin shell and big kernels that come out in halves.

"MONEY DOES GROW ON TREES"



GRANDE ENGLISH WALNUT

WOLFE'S NUT ORCHARD

4 1 Black Walnut (Native) Tree
 1 Shagbark Hickory Tree
 1 Butternut Tree
 1 Shellbark Hickory Tree
 (All 2 to 3-ft. trees)

2⁹⁵

ORDER COLLECTION No. 14

WOLFE'S JOHN GARNER PECAN

WILL OUT BEAR ALL OTHER PECAN TREES!

ROSS R. WOLFE SAYS: "John Garner offered a cash prize for the finest pecan in Texas. This pecan won his prize and with his permission was named John Garner. I have fruited it alongside of one hundred other varieties during a period of 13 years and it has consistently made more money than any other pecan I grow. I have never been able to produce enough trees."

PLANT YOUR PENNIES AND WATCH YOUR DOLLARS GROW

Pecans are an investment that will pay big dividends for the rest of your life. A small investment in a JOHN GARNER pecan grove will make easy

money for you and for several generations to come. JOHN GARNER pecans set in the proper soil will immediately double the value of your land.

JOHN GARNER PECAN

JOHN GARNER PECAN. The very finest pecan grown and will bear one-third more per tree than any other pecan. Garner produces nuts the first or second year after you plant them because our "YOUNG-BEARING" system makes them bear in the nursery rows. Garner is FROST-RESISTANT and one of the first pecans on the market. Everyone says it is the most beautiful pecan grown. It is the only true paper-shell—so thin it can be cracked with the fingers. The creamy, delicious kernels are extremely rich in oil, proteins, carbohydrates, vitamins and distinctive flavor. Plant in uplands of sections only at

altitudes of 600 feet and up, on account of pecan scab, which attacks it in lower altitudes.

PRICES ON JOHN GARNER PECAN TREES

Size	Each	Prepaid
2 to 4 ft.	\$1.50	Not Prepaid
4 to 6 ft.	2.25	Not Prepaid
6 to 7 ft.	3.75	Not Prepaid

Can Be Furnished in Above Sizes Only

**SEND ALL ORDERS FOR JOHN GARNER PECANS DIRECT TO WOLFE'S NURSERY
STEPHENVILLE, TEXAS**



The above photograph was made from John Garner Pecans grown here at Wolfe Nursery and shows them to be about two-thirds actual size—actually some of the nuts are twice as large as those in the illustration.

WOLFE'S GIANT MEYHAN

THE LARGEST PAPER SHELL PECAN GROWN

Can you imagine a pecan so large that the nuts in the green clusters look like bananas on a tree? The nuts look like Schley but they are more than twice as large. It is a true paper shell and brings more money per pound than any other pecan.

I recently visited the United States Pecan Experiment Station at Shreveport, Louisiana, and asked Dr. Alvion what was their most profitable pecan and he said the Meyhan. He showed me their production records over a period of several years and this variety had averaged approximately three times as many pounds as Stuart, Success, or Schley.

This variety has become increasingly popular due to the healthy, vigorous growing tree which makes one of the best shade trees grown due to its symmetrical-shaped top and the large, dark green leaves. Added to this feature, its high production of the largest nut grown makes it the most popular

pecan on the market. While the nuts sometimes fail to fill, yet the kernels are always good, as far as they always develop. Adapted to all sections.

PRICES ON MEYHAN PECAN TREES

Size	Each
2 to 4 ft.	\$1.50 Prepaid
4 to 6 ft.	2.25 Not Prepaid

Meyhan Can Be Furnished in Above Sizes Only

WOLFE'S PAPER SHELL PECAN

SPECIAL

2

1 Mahan Pecan Tree, 2-3 ft.

1 Success Pecan Tree, 2-3 ft.

ORDER COLLECTION No. 15

\$2⁷⁵

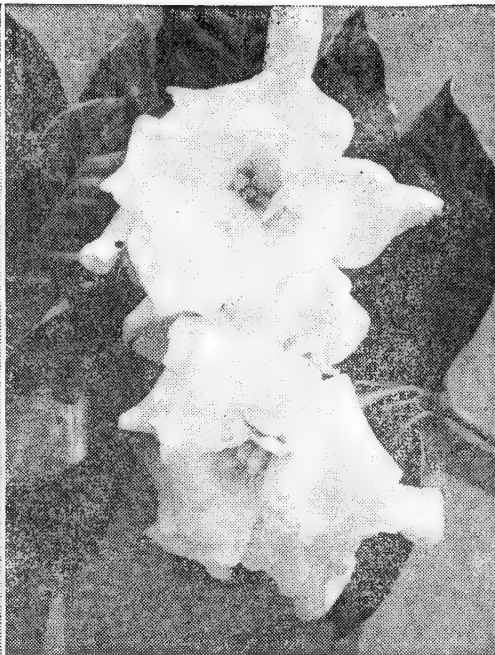
SEND ALL ORDERS FOR GIANT MEYHAN PECANS DIRECT TO WOLFE'S NURSERY STEPHENVILLE, TEXAS



GIANT MEYHAN PECANS—ILLUSTRATED ABOUT ONE-HALF ACTUAL SIZE



ABELIA



GARDENIA



MAGNOLIA GRANDIFLORA

WOLFE'S CHOICE Specimen EVERGREENS FOR LAWN PLANTING

ROOT PUDDLED EVERGREENS. When dug the roots are immediately puddled and dipped in a rich, thick mud. This protects the finest roots. It is then wrapped in material and shipped to you. You remove the material and plant as you would any other plant or shrub.

ABELIA. A beautiful evergreen with glossy foliage that blooms from May until frost with a mass of fragrant white and pink flowers. Silver foliage in the winter. **2-year plants, 69c.**

AZALEAS. Beautiful little shrubs. Perfectly hardy in the open in the South. They supply bushels of blooms from January to May. **2-year plants, 95c.**

EUONYMOUS JAPONICA. A waxy, glossy, hardy evergreen that may be pruned or will cling to walls. **2-year plants, 35c; 3 for \$1.00.**

EUONYMUS RADICAN. With red berries. **9-12 in., 39c.**

GARDENIA. Needs no description. Everyone knows it. Snowy-white flowers, very highly scented. **Small plants out of pots, 29c each, pre-paid.**

JASMINE HUMILE. Graceful growth, stays green all winter, blooms yellow flowers all summer. **2-year plants, 75c.**

LIGUSTRUM JAPONICA (Japan Privet). A large, handsome, upright shrub with broad, dark green foliage and white flowers. **2-year plants, 85c.**

MAGNOLIA GRANDIFLORA. Stately tree, large white blooms. **9-12 in., 65c.**

NANDINA. This beautiful and popular evergreen with bright red berries, with red leaves through cold weather, should be in every planting. Use under windows and mix in with other plants for autumn beauty. **6-12 in., 35c; 3 for \$1.00; 2-year plants, 65c.**

PHOTENIA (Holly Leaf Type). One of our most beautiful broad-leaved evergreens. The leaves are dark, broad, long, with serrate edges. Beautiful white, fragrant flowers in the spring. **2-yr. plants, 65c.**

PYRACANTHA-BARLOW. The grandest of all Pyracanthas, semi-upright in growth with profuse and enormous quantities of red berries which are produced the second year. Use for smart, colorful contrast. **9-12 in., 59c.**

PYRACANTHA LELANDI. Commonly called Firethorn. Tall, upright growing evergreen covered with orange berries during the winter months. Leaves of dark shiny green. Very popular. **9-12 in., 59c.**

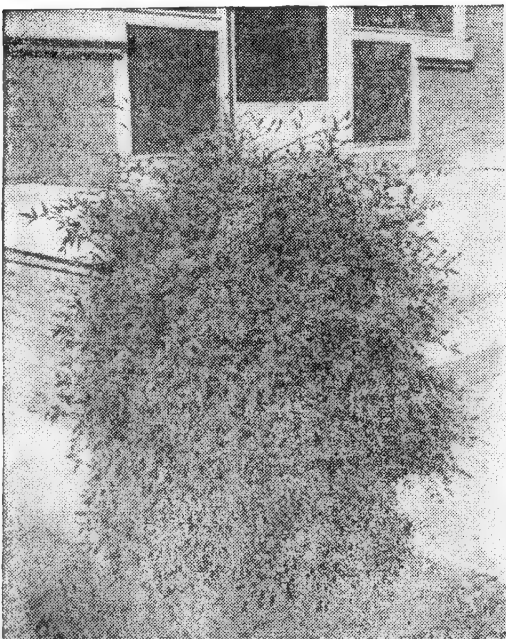
RHODODENDRON. Are among the oldest plants in Southern gardens. Gorgeous blossoms and magnificent foliage with every possible shade of color to be found in the genus. Can be grown almost everywhere. **15-18 in., 79c.**

YELLOW JASMINE. Its branches are beautifully arched, overhanging the ground from the inner edges. Foliage dark green, covered with gorgeous little yellow flowers all summer. **2-year plants, 75c.**

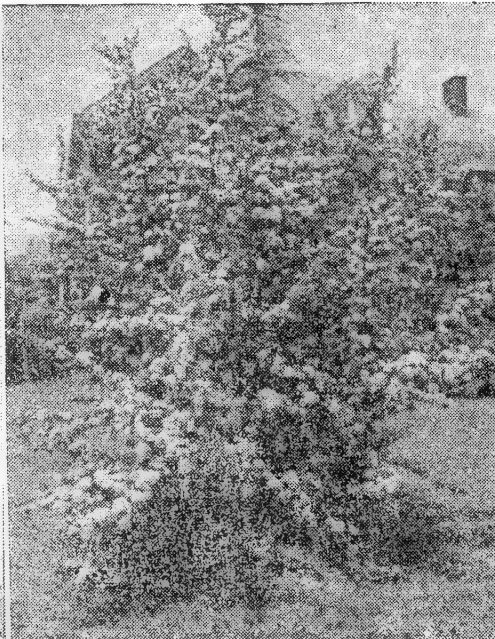
EUONYMUS BARGAIN OFFER

8 Sturdy, strong-rooted Euonymus Japonica Evergreen Shrubs. Enough to start a fine hedge or to spot throughout your landscape. All eight plants for only **\$1⁰⁰**

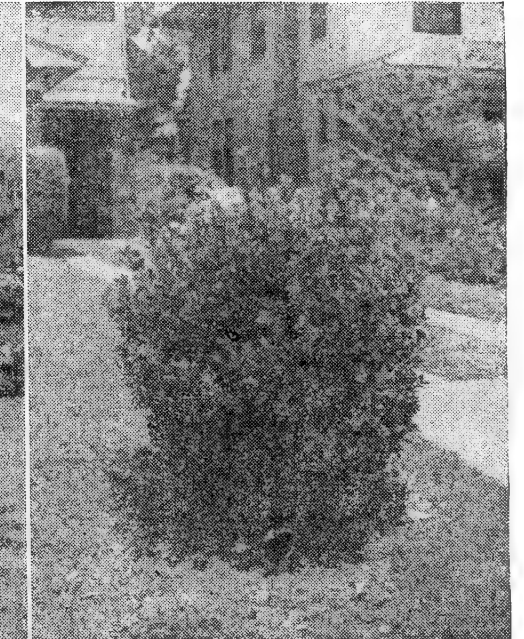
SPECIAL OFFER No. 21-A



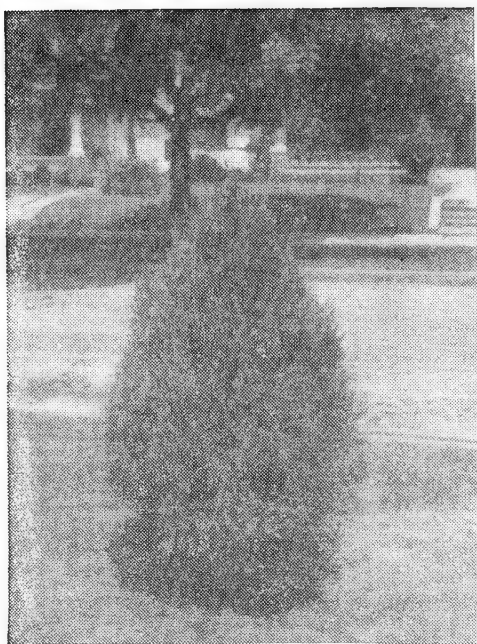
NANDINA



PYRACANTHA LELANDI



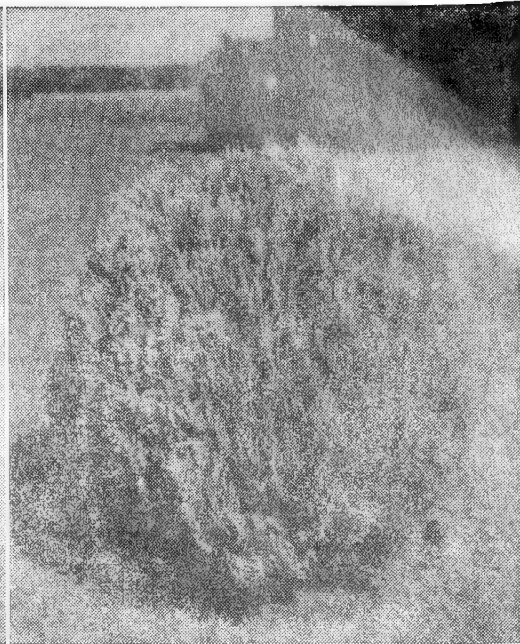
EUONYMUS JAPONICA



BAKER ARBORVITAE



BERKMAN'S GOLDEN ARBOVITAE



BONITA ARBORVITAE

WOLFE'S EVERGREENS for Year Around Beauty

EVERGREENS GROWN IN WOLFE'S NURSERY PROPAGATED BY EXPERTS

BABY EVERGREENS. These baby evergreens are adapted to a large portion of the United States. They transplant safely and are easily shipped by mail or express. They will soon grow into valuable specimen in landscaping your home. Notice the low price and the small amount invested. You will enjoy watching them grow.

BAKER'S PYRAMIDAL ARBORVITAE. Compact and pyramidal, with dark green foliage. 12-18 in., 45c each, prepaid.

BERKMAN'S GOLDEN. A new dwarf, compact, almost globular arborvitae with yellow-greenish foliage tipped with gold in spring. Grows to height of 6 feet. A background for the different "color scheme." 10-12 in., 55c each, postpaid.

BONITA ARBORVITAE. A globe-shaped, dwarf-growing plant with dark green foliage, grows 4 feet high. Lends a graceful touch to an entrance. 8-10 in., 45c each, prepaid.

CHINESE A. V. Will grow in any drained soil. Good for hedges. 6-10 in., 20c each; 6 plants for \$1.00, prepaid.

ITALIAN CYPRESS. A tall columnar growing tree with soft, dark green foliage. Will attain 25 feet in height. Use with Pfizter Junipers on corners and to build up tall lines. 15-18 in., 59c each, prepaid.

PFITZER JUNIPERS. One of the handsomest and most popular low-spreading junipers with beautiful silvery-green foliage. Ideal for corner planting and border filling. 6-8 in., 55c each, prepaid.

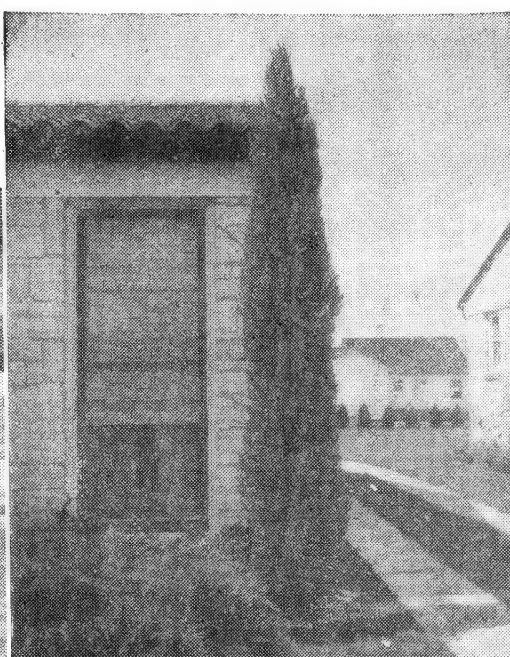
REDCEDAR (Juniperus Virginiana). Our well-known, native cedar. Often attains majestic height and is of spreading, compact, symmetrical growth. May be kept sheared into formal shapes. Foliage dark green and with pungent odor. 12-18 in., 25c each, prepaid.

ARBORVITAE BLUE GLOBE (Biota Caesius). Plants rather slender when young, but develop into globe shape, often being as broad as they are tall. Foliage feathery, steely-blue, and the plant does not brown in center as do some other sorts. Very attractive. 12-15 in., 59c each, prepaid.

ARBORVITAE EXCELSA (Biota Excelsa). Broad, compact grower with tapering top. Foliage a good green. One of the hardiest of the Oriental type and one of the most beautiful. 12-18 in., 59c each, prepaid.

**MAIL ALL ORDERS DIRECT TO
WOLFE'S NURSERY, Stephenville, Texas**

Modern landscape demands these beautiful evergreen — their elaborate foliage pattern, and rich color blends.

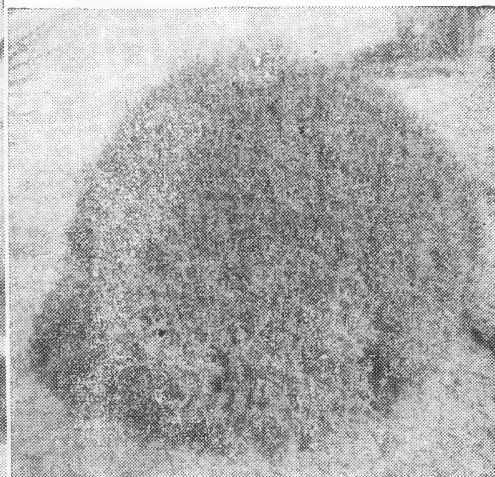


ITALIAN CYPRESS

COME TO THE NURSERY AND SAVE
We have hundreds of specimen size evergreens that are too large to ship. Drive to the Nursery for large plants.



PFITZER JUNIPER



BLUE GLOBE ARBORVITAE

WOLFE'S FLOWERING SHRUBS

Nothing adds to the beauty of your home like a planting of beautiful, colorful shrubs and flowers. With Wolfe's fine plants and low costs you can have an attractive place, with a succession of blooms, through the season, at a very small cost.

BUTTERFLY BUSH. A new, improved form of the old favorite. Long, graceful spikes of dark violet-purple give color from May until frost. It is very fine as a cut flower. It is well named as it attracts butterflies and humming birds throughout the blooming season. **2-ft. plants, each 49c, Postpaid.**

CREPE MYRTLE (*Lagerstroemia Indica*). Beautifully fringed flowers borne in large panicles from July to November. For best results cut the tops back to a height of one to three inches above the ground after transplanting. Purple, pink and watermelon red. **2 to 3-ft. plants, each 30c; 4 for \$1.00, Postpaid.**

CYDONIA JAPONICA. An aristocratic shrub that attains from 4 to 6 feet in height and has spinous and extended branches. Its beautiful scarlet blooms appear before the leaves and are followed by elongated fruits of a yellowish-green color that gives it a claim to space about the garden entrance for the rare beauty it imparts. **2-ft. plants, each 69c, Postpaid.**

CORALBERRY (*Symphoricarpos Vulgaris*). A native shrub which is dwarfish in growth, very hardy, and drouth resistant. Has small, insignificant flowers in the spring and a wealth of coral berries in late fall and winter, remaining until spring. **2-ft. plants, each 19c, Postpaid.**

DOGWOOD, BLOOD-TWIG (*Cornus Sanguinea*). A tall shrub with beautiful, glossy, purplish-red branches; flowers greenish-white. Desirable for planting in shrub groups as the branches lend color in winter. **2 to 3-ft. plants, each 35c, Postpaid.**

DOGWOOD (Red Ozier). Beautiful four-petal white flowers of 3 to 3½ inches in diameter literally cover the plant in the spring before the leaves appear. Dark green, luxuriant foliage makes this a beautiful plant all summer and into the fall when the leaves turn a lovely crimson. **2 to 3-ft. plants, each 98c, Postpaid.**

DEUTZIA, SNOWFLAKE (*Deutzia Scabra Candidissima*). Tall grower with double, white miniature. Chrysanthemum-like flowers borne profusely in racemes. **2-ft. plants, each 19c, Postpaid.**

DEUTZIA, DOUBLE ROSE (*Deutzia Scabra Plena*). Flowers very double and bright rose-pink. erect, strong grower. **2-ft. plants, each 19c, Postpaid.**

FLOWERING PEACH (Red). One of the most beautiful ornamental trees. In early spring it is completely covered with carnation-like blossoms, followed by green, glossy foliage. A fast grower and sure to be the talk of your neighborhood. Trees bloom in the spring and develop into a mass of beauty. **2 to 3-ft. plants, each 55c, Postpaid.**



CREPE MYRTLE

ALTHEA (Rose of Sharon). Beautiful, double flowers in color varieties of rosy-red, white, pink or purple. Produced in profusion from about the middle of July to September. One of the finest and showiest of the mid-summer flowering shrubs. **2 to 3-ft. plants, each 55c, Postpaid.**

BARBERRY, RED LEAF (*Berberis thunbergii atropurpurea*). There is nothing so strikingly brilliant in hardy shrubbery as our genuine true-red strain of Red-Leaf Barberry. Its abundance of thick, purplish-maroon leaves glisten in the sun, contrasting with the green and yellow of other plants. Valuable for single specimens, corner groups, and solid border hedges. **12 to 15-inch plants, each 45c, Postpaid.**

BRIDAL WREATH (*Spirea Van Houttei*). Without doubt one of the most useful and most widely used shrubs in cultivation. Blooming in April and May, the plant throws out long branches that curve and droop to the ground, weighted with a mass of pure white flowers that suggest a fountain of snow. May be used for specimens, massed, or for hedges. **2 to 3-ft. plants, each 25c; 5 for \$1.00, Postpaid.**



BRIDAL WREATH (*Spirea V. H.*)



CYDONIA JAPONICA



ALTHEA



LILACS (See Page 29)

For Colorful BLOOMS All Season

FORSYTHIA (Golden Ball). Few, if any of the spring-flowering hardy shrubs can surpass the splendor and brilliancy of the Forsythias. Of upright, vigorous growth, foliage rich, dark green and lustrous. Flowers brilliant golden yellow, borne in great profusion early in April before leaves appear. **2 to 3-ft. plants, each 29c, Postpaid.**

HONEYSUCKLE (Red Bush). This is one of the choicest plants in the garden. From June to October it is covered with hundreds of Flame-Scarlet flowers. Excellent for borders or specimen plantings. It is perfectly hardy everywhere.

LILACS. Wolfe's beautiful lilacs come either in **WHITE** or **PURPLE**. Blooms more freely than the old common variety with a much more improved blossom. The bush makes a fine hedge where height is wanted. **Price, 18-in. plants, each 39c, Postpaid. (Illustrated on Page 28.)**

MOCK ORANGE. Blooms profusely in May and June and most any day all summer you will find some flowers. They are so fragrant that just a small spray will perfume a room. Grows 5 to 6 feet tall. Perfectly hardy, planted all over America, in sun or a little shade. **2 to 3-ft. plants, each 25c, Postpaid.**

PINK ALMOND. The picture does not do justice to this lovely shrub. It is one of the very earliest to bloom in the spring, bursting into flowers even before its leaves appear. The charming pink blooms are perfect, resembling small roses and completely cover every branch, every twig, from top to bottom. It makes a shapely bush 3 to 4 feet tall and just as wide. It will grow in every State in the entire United States. Our plants are on their own root, the finest we ever saw. **2-ft. plants, each 59c, Postpaid.**

PLUM, PURPLE-LEAVED (Prunus Cerasifera Pissardi). A handsome small tree covered with pale pink plum-like blossoms in early spring. The foliage is purplish-red and does not turn green in summer as do many other varieties. Lends color to large group plantings. **2 to 3-ft. plants, each 59c, Postpaid.**

REDBUD. Spring's early harbinger, blooming in April, and literally covered with red or pink blooms before the leaves appear. It is a small, shapely tree, with large, deep green leaves. May be used in heavy mass planting of shrubs, with white-flowering dogwood, or against evergreens or white birch, to furnish contrast. **2 to 3-ft. plants, each 25c; 5 for \$1.00, Postpaid.**

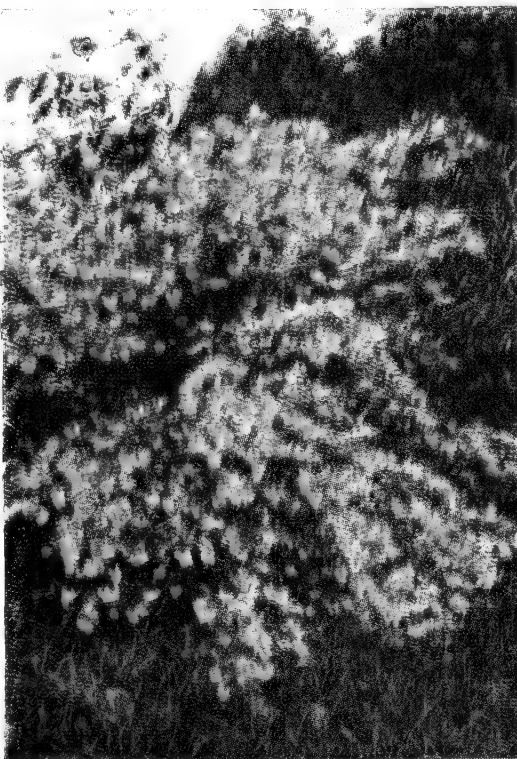
WEIGELA (Rosea). This Weigela grows to a height of 5 feet, its branches gracefully arching spread out to a round bush form. The rose-pink blossoms and foliage on each branch are arranged by nature to have the appearance of a finished bouquet. Blooming season in June, and under normal conditions repeated later in the summer. A shady place or part shade is best. There the blooming periods will be considerably longer. **2 to 3-ft. plants, each 35c; 3 for \$1.00, Postpaid.**



RED BUD

RED WING (Heteroptis). From South America, the land of color, comes one of the most colorful shrubs of recent years! Yellow blossoms in sprays with red seed-pods that cling to the stem give a profusion of color the entire summer, regardless of the heat and dry weather. Can be trimmed often without affecting its beauty. Fine for cut flowers, keeping several days after cut. Limited quantities this year. Please order early to avoid disappointment. **2 to 3-ft. plants, each 98c, Postpaid.**

SPIREA (Billardi). Popular because its feathery pink plumes are produced almost all summer. Thrives everywhere, even in dry places. Grows 4 to 5 feet tall. Well adapted for shrubby borders and foundation planting because of its upright, dense growth. **2 to 3-ft. plants, each 35c, Postpaid.**



WEIGELA

SPIREA VAN HOUTTE
(BRIDAL WREATH) **\$1.00**
5 18-inch **Post-paid**
SPECIAL OFFER No. 23-A



RED WING

3
Flame Honeysuckle
This beautiful new creation, a bush, blooms every month in the year and it is an evergreen. The fragrant blossoms are RED with ORANGE shadings. In this offer you get 3 hardy 2-year plants for only—
\$2.00
Postpaid
ORDER OFFER No. 20



FLAME HONEYSUCKLE

WOLFE'S EVERBLOOMING ROSES

HYBRID TEA

I have tested and observed hundreds of rose varieties in my gardens and trial grounds. I am offering the varieties which are outstanding for abundance and excellence of bloom and for vigorous growth and hardiness. My roses are the superior southern grown plants. All of them bloomed last year. They are well rooted, and will bloom for you this year.

2-year-old Roses: Each, 75¢; 10 for \$6.95, Postpaid

BETTY UPRICHARD. A two-toned rose, salmon suffused orange on the inside of the petals, while the reverse is coppery carmine.

CALEDONIA. Exquisite long buds of ivory-white, changing to purest white as flowers open into double blooms.

E. G. HILL. Beautiful long bud of perfect form and full, double high-centered flower of dazzling scarlet, shading to a deeper red.

EDITH NELLIE PERKINS. Long, pointed buds, double flowers of large size. Outside of petals red, shaded with orange, inside salmon-pink.

ETOILE DE HOLLANDE (5). Large, velvety crimson flowers produced in great profusion throughout summer. An excellent red rose.

KAISERIN AUGUSTE VIKTORIA (3). Its snowy petals are symmetrically arranged about a lemon-white center. It has a delicious magnolia-like fragrance.

LADY HILLINGDON. Cupped blooms of deep saffron-yellow, growing lighter toward the edges of the petals; fragrant. Erect-growing, free-flowering plants.

LUXEMBOURG. Rich golden yellow, shading to copper at the center of the flower. Desirable for cutting.

MARGARET MCGREY (6). Large, ovoid buds and double cupped flowers of solid orange-vermilion. Very prolific.

PRESIDENT HERBERT HOOVER (2). Multicolored. The large, beautifully fragrant blooms of scarlet, yellow, cerise and flame colors. Its tall-growing plant blooms freely and the lovely flowers last for days when cut.

RED RADIANCE (1). Big flowers on strong individual stems are produced during the whole season. The buds are rose-pink but open into blooms of a slightly deeper shade, which in turn have a lighter tint on the reverse of the petals.

PINK RADIANCE (4). Brilliant rose-pink buds opening to well-formed, shining flowers with lighter tints on the reverse of the petals; ovoid in shape and very fragrant. Splendid, vigorous growth with wonderful blooming qualities.

TALISMAN. Brilliant red and gold buds, opening to well-shaped blooms of scarlet-orange and rich yellow. Tall, vigorous growth. Constantly in bloom.

POLYANTHA ROSES

GOLDEN SALMON. A distinct, bright and pleasing orange color; really the best Polyantha of this particular shade. Makes a splendid display when planted in large groups.

IDEAL. In a mass planting makes a splendid showing of rich dark scarlet blooms shaded very much darker. The plants are vigorous and bear a great amount of bloom in compact bunches.

CLIMBING ROSES

PAUL'S SCARLET CLIMBER. An early-blooming variety producing intense scarlet blooms in small trusses, but the profusion makes up for the size of the bloom. Extremely popular and has been planted throughout the nation.

CL. TALISMAN. Multi-colored. A climbing sport of the famous Talisman Rose with multi-colored blooms.

4 **3** PAUL SCARLET CLIMBING ROSES **\$2.00**
2-YEAR-OLD
SCARLET OFFER No. 19-C

WOLFE'S ROSE GARDEN
2-YEAR-OLD FIELD-GROWN ROSES
10 9 Monthly Blooming Bush Roses **\$5.95**
1 Climbing Rose

Colors our selection.
COLLECTION No. 18

Form 6001

POST OFFICE DEPARTMENT
THIRD ASSISTANT POSTMASTER GENERAL
DIVISION OF MONEY ORDERS

No. _____
Stamp of Issuing Office

FEE _____

The Postmaster
will insert

here _____
the office drawn on, when the office
named by the remitter does not trans-
act money-order business.

Spaces above this line are for Postmaster's record, to be filled in by him

Application for Domestic Money Order

Spaces below to be filled in by purchaser, or, if necessary,
by another person for him

Amount—

USE FIGURES,
DO NOT SPELL _____ Dollars _____ Cents

To be } _____
paid to } **Wolfe Nursery**
(Name of person or firm for whom order is intended)

Whose } _____
address } is } **Drawer 811** _____ Street

City } _____
and } **Stephenville, Texas**
State } _____

Sent by _____
(Name of sender)

_____ Street
City } _____
and } _____
State } _____

PURCHASER MUST SEND ORDER AND COUPON TO PAYEE
(FOR FEES SEE OTHER SIDE)

616-8391

DO NOT RISK MONEY OR STAMPS IN ORDINARY MAIL—BUY A MONEY ORDER

FOR SPEED—Send your money order AIR MAIL special delivery

Fees for Money Orders Drawn on Domestic Form

Payable in the United States, including Hawaii, Puerto Rico, and the United States Virgin Islands, or in Guam and Tutuila (Samoa); also for orders payable in Antigua, Bahamas, Barbados, Bermuda, British Guiana, British Honduras, British Virgin Islands, Canada, Canal Zone, Cuba, Dominica, Grenada, Jamaica, Montserrat, Nevis, Newfoundland, Philippine Islands, St. Kitts, St. Lucia, St. Vincent, and Trinidad and Tobago.

For Orders	From \$0.01 to \$2.50_____	6 cents.
	From \$2.51 to \$5.00_____	8 cents.
	From \$5.01 to \$10.00_____	11 cents.
	From \$10.01 to \$20.00_____	13 cents.
	From \$20.01 to \$40.00_____	15 cents.
	From \$40.01 to \$60.00_____	18 cents.
	From \$60.01 to \$80.00_____	20 cents.
	From \$80.01 to \$100.00_____	22 cents.

Memoranda of Issuing Postmaster:

If order is purchased through Rural Carrier, he will fill spaces below:

Carrier's receipt No. _____

_____, Carrier.

NOTE.—The maximum amount for which a single Money Order may be issued is \$100. When a larger sum is to be sent additional Orders must be obtained. Any number of Orders may be drawn on any Money Order office on any one day.

Applications must be preserved at the office of issue for three years from date of issue.

State and
Federal Approved
Stock

WOLFE'S
GET ACQUAINTED OFFERS
Greater Values Than Ever Before

By Parcel Post
PREPAID to
Your Door

<input type="checkbox"/>	4 Texaberta Peach Trees, 1 Yr., Offer No. 1	\$ 1.00
<input type="checkbox"/>	4 Red Haven Peach Trees, 1 Yr., Offer No. 2	1.00
<input type="checkbox"/>	4 Frank Peach Trees, 1 Yr., Offer No. 3.....	1.00
<input type="checkbox"/>	35 Trees and Plants (Complete Radio Home Orchard), Offer No. 4.....	2.30
<input type="checkbox"/>	4 Indian Chief Peach Trees, 1 Yr., Offer No. 4-A	1.00
<input type="checkbox"/>	8 1 Yr. Peach Trees (Complete Home Orchard) Offer No. 4-B.....	1.49
<input type="checkbox"/>	10 Elberta Peach Trees, 1 Yr., Offer No. 5.....	1.00
<input type="checkbox"/>	*4 Prune and Nectarine 4-6 ft., Express prepaid, Offer No. 6.....	3.95
<input type="checkbox"/>	5 Plum Trees, 1 Yr., Offer No. 7.....	1.00
<input type="checkbox"/>	4 Apricot Trees, 1 Yr., Offer No. 8.....	1.00
<input type="checkbox"/>	4 Apple Trees, Mary's Apple Orchard 2-4 ft., Offer No. 9	1.00
<input type="checkbox"/>	4 Wolfe's Bush Berries, 1 Yr., Offer No. 10	2.00
<input type="checkbox"/>	6 Carmen Grapes, 2 Yr., Offer No. 11.....	1.00
<input type="checkbox"/>	100 Berries. Wolfe's Berry Patch, Offer No. 12	3.95
<input type="checkbox"/>	50 Strawberry Plants. Barrel of Strawberries, Offer No. 13.....	1.00
<input type="checkbox"/>	200 Strawberry Plants. Strawberry Patch, Offer No. 13-A	3.00
<input type="checkbox"/>	4 Nut Trees. Wolfe's Nut Orchard 2-3 ft., Offer No. 14.....	1.95
<input type="checkbox"/>	2 Paper Shell Pecan Trees 2-3 ft., Offer No. 15	2.50
<input type="checkbox"/>	5 Figs, Wolfe's Fig Collection, 1 Yr., Offer No. 16	2.00
<input type="checkbox"/>	12 Pecans, One Acre Pecan Orchard, 2-3 ft., Offer No. 17.....	11.95
<input type="checkbox"/>	10 Roses, Wolfe's Rose Garden, 2 Yr., Offer No. 18	2.95
<input type="checkbox"/>	5 Roses, Wolfe's Red Rose Collection, 2 Yr., Offer No. 19.....	1.75
<input type="checkbox"/>	40 Gladiolas. Rainbow Gladiola Collection, Offer No. 19-A	1.00
<input type="checkbox"/>	6 Radiance Roses, 2 Yr., Offer No. 19-B.....	2.00
<input type="checkbox"/>	3 Paul Scarlet Climbing Roses, 2 Yr., Offer No. 19-C	1.00
<input type="checkbox"/>	3 Flame Honeysuckle, 2 Yr., Offer No. 20.....	2.00
<input type="checkbox"/>	6 Evergreens, Wolfe's Evergreen Offer No. 21	1.95
<input type="checkbox"/>	10 Euonymus, Euonymus Bargain Offer No. 21-A	1.00
<input type="checkbox"/>	50 Amoor River Privet, 6-12 in., Offer No. 22	1.49
<input type="checkbox"/>	10 Sycamore Shade Trees, 2-3 ft., Offer No. 22-A	1.00
<input type="checkbox"/>	12 Chinese Elm Shade Trees, 2-3 ft., Offer No. 22-B	1.00
<input type="checkbox"/>	*2 Delmas Pecans, 6-8 ft. Offer No. 22-C Express Prepaid	5.95
<input type="checkbox"/>	10 Crape Myrtle, 2-3 ft., Offer No. 23.....	2.00
<input type="checkbox"/>	10 Bridal Wreath, Spirea Offer No. 23-A.....	1.00
<input type="checkbox"/>	4 Choice Dahlias, Mrs. Wolfe's Dahlia Offer No. 24.....	1.00
<input type="checkbox"/>	25 Gladiola Bulbs, Selected Varieties, Offer No. 24-A	1.00
<input type="checkbox"/>	8 Large Cannas, Canna Bed Collection, Offer No. 24-B.....	1.00

*Offers Number 6 and 22-C Express Prepaid to Your Door Instead of Parcel Post.

WOLFE'S TREES FOR SPECIMEN and STREET PLANTING

A home without shade trees is like a room without furniture. Plant TREES to beautify your home. They will increase the value of your property and bring you pleasure for years to come.

ELM, CHINESE. I have one of these lovely trees in my yard that is 35 feet high and has a spread of 40 feet. The trunk is 16 inches in diameter at the age of 13 years. **Prices: 2 to 3 ft., 25c, prepaid; 4 to 6 ft., 69c, not prepaid; 8 to 10 ft., \$1.59, not prepaid.**

SYCAMORE AMERICAN. This is one of America's most popular and satisfactory shade trees. It is hardy and resistant to root-rot. Grows 50 to 60 feet high. **Prices: 2 to 3 ft., 25c, prepaid; 4 to 6 ft., 69c, not prepaid; 8 to 10 ft., \$1.59, not prepaid.**

MIMOSA (Silk Tree). Has an umbrella-like top, feathery foliage and beautiful, fragrant, pink blossoms in the summer. The leaves fold up at night like a sensitive vine. This is one of our most beautiful trees and is hardy. **Prices: 2 to 3 ft., 39c, prepaid; 4 to 6 ft., 95c not prepaid; 7 to 10 ft., \$1.45, not prepaid.**

WEeping WILLOW. I have the true Babylonian with branches that hang straight down. Adds an airy touch to a low spot around your home. Plant where it will get plenty of water. **Prices: 2 to 3 ft., 29c, prepaid; 6 to 8 ft., \$1.49, not prepaid.**

ELM, AMERICAN. Tall, stately, beautiful branches, spreading to lend grace to a shade. It often grows 60 feet tall. **Prices: 2 to 3 ft., 29c, prepaid; 4 to 6 ft., 75c, not prepaid; 6 to 8 ft., \$1.49, not prepaid.**

REDBUD or JUDAS TREE (Cecis Canadensis). Medium, irregular growing tree with heart-shaped leaves. An abundance of reddish pink blooms appear in April. **Prices: 2 to 3 ft., 25 each, prepaid.**

MAPLE, SILVER. A quick-growing beautiful tree which succeeds in most soils. Leaves light green, showing silvery white beneath, giving a beautiful effect. The tree transplants easily and grows quickly into well-shaped trees desirable for street or lawn. **Prices: 2 to 3 ft., 25c, prepaid; 4 to 6 ft., \$1.15, not prepaid; 8 to 10 ft., \$1.79, not prepaid.**

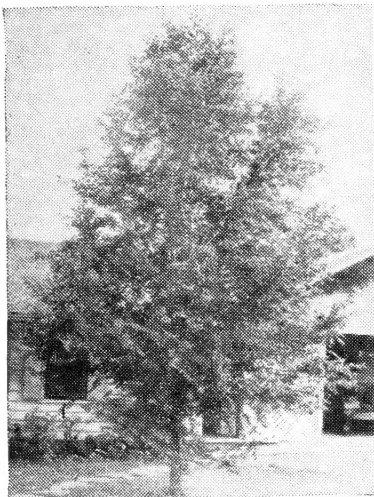
MAGNOLIA ACUMINATA (Cucumber Tree). This stately tree has spreading branches and a bold, broad, pyramidal crown. It is well suited to street or park planting. Rather inconspicuous, but fragrant green flowers occur in spring while long fruit, vaguely resembling small cucumbers, and handsome seven-inch-long leaves follow. It likes cool, rich soil and resents drought. **Price: 2 to 3 ft., 35c each, prepaid.**

RED MAPLE. This magnificent native tree lends great beauty to the landscape in all seasons. The upright branches form a narrow crown and are clothed with green, red-stemmed leaves. In fall the leaves assume a red-orange color, equal in brilliancy to the Japanese maple. Its outline is quite picturesque in winter and in spring the tree is unusually attractive when the branches are lined with reddish or orange flowers. It grows well in many environments. **Price: 2 to 3 ft., 25c each, prepaid.**

MOSS LOCUST (Robinia Hispida), Tree Form Rose-Acacia. The same as shrub Rose-Acacia with the exception that this variety is grown in tree form. Loaded with clusters of pea-shaped, rose-pink flowers during June and July. **Strong 2 to 3 ft. trees, 35c each, prepaid.**

TULIP TREE (Liriodendron Tulipifera). One of the finest of our native trees. Tall growing, stately tree with smooth bark and large, irregularly shaped leaves of glossy green that make it ideal for quick shade. Blooms in late May and early June, bearing numerous tulip-like flowers, 2 to 3 inches long. **Strong 2 to 3 ft. trees, 35c, prepaid.**

CHINESE RED BUD. Much like the American Red Bud, but with leaves more deeply heart-shaped at the base. Larger and more numerous rosy-purple flowers. **Price: 2 to 3 ft. trees, 25c, postpaid.**



CHINESE ELM



SYCAMORE



MIMOSA (SILK TREE)



WEeping WILLOW

Plant WOLFE'S HEDGE FOR A LIVING FENCE

AMoor RIVER PRIVET. The most widely planted hedge in the South. Does well in all kinds of soil. Quick grower, easily sheared. A wonderful plant for screening, for background or for long hedges.

CALIFORNIA PRIVET. Tall, upright growers. Its leaves of golden green in spring make a very showy hedge. Grows fast and is hardy. Very popular hedge.

AMoor RIVER AND CALIFORNIA PRIVET HEDGE PLANTS

Size	Each	10	50	100	
24 to 30 inch	\$.12	\$1.00	\$3.95	\$7.50	Prepaid

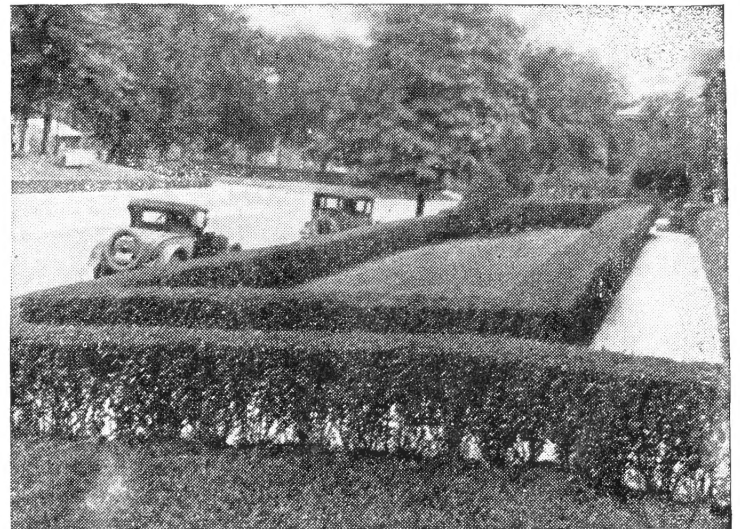
JAPANESE LIGUSTRUM. Best evergreen hedge, big leaves, shears perfectly.

JAPANESE LIGUSTRUM

Size	Each	10	50	100	
2 ft.	\$.20	\$1.50	\$6.50	\$9.95	Prepaid

SPECIAL OFFER No. 22

50 Amoor Privet, 12-18 inch				\$1.98	Postpaid
-----------------------------	--	--	--	--------	----------



AMoor RIVER PRIVET

WOLFE'S VINES NATURES DRAPERIES THAT CLING and CLIMB



DAHLIA—JANE COWL

QUEEN'S WREATH. A long, slender vine that produces racemes of pink flowers on grape-like clusters. Blooms from mid-summer until late frost. 2-yr. vines, each 25c; 2 for 45c, Postpaid.

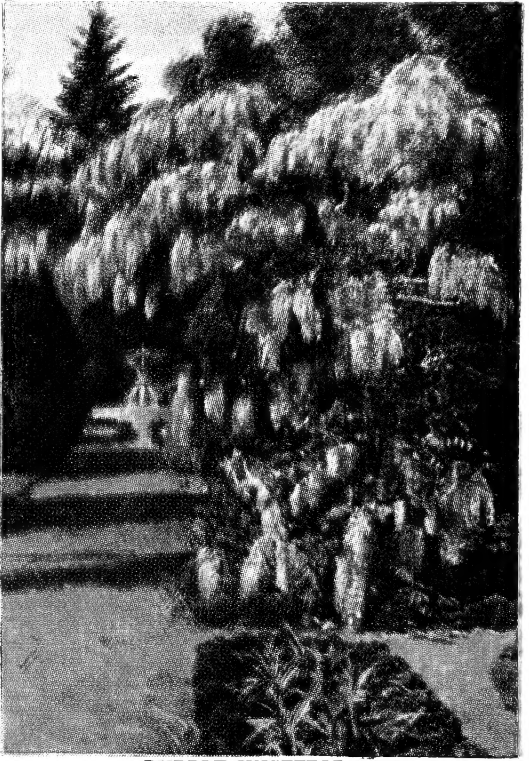
HONEYSUCKLE. Evergreen Honeysuckle with yellow and white fragrant flowers. 2-yr. vines, each 80c, Postpaid.

PURPLE WISTERIA. A magnificent vine, becoming more beautiful each year and lasting for generations. Our stock is graded and grown in a special manner to induce its blooming early. Sometimes they even bloom the same year planted and always the next year. The flowers are fragrant and come in clusters in May-June. The color is lilac-purple, far superior to the lavender color of the common Wisteria. 2-yr. vines, each 59c, Postpaid.

WHITE WISTERIA. A new rare Wisteria with exquisite white flowers that are more lovely than our picture shows. A profuse bloomer and our grafted plants generally bloom next year after planting. Perfectly hardy, easy to grow. 2-yr. vines, each 59c, Postpaid.

MRS. WOLFE'S CHOICE DAHLIAS
 Beautiful Dahlias, such as a Rose Glory (better than Jersey Beauty), Pride of California (dark red), Jean Kerr (white), and Jane Cowl (brnize). Postpaid..... **\$1.00**
4
 OFFER No. 24

Dahlias
 Are Easy
 to Grow



PURPLE WISTERIA

GLADIOLI BULBS
 "Glads" varieties such as Picardy (pink), Vagabond (red), Queen of Bremen (lavender), Maid of Orleans (white), and Rapture (pink). All blooming size, for..... **\$1.00** Post-paid
12
 OFFER No. 24-A

WOLFE'S LARGE FLOWERING CANNA BED
 Beauties—
 STATUE OF LIBERTY (bright red), 7 ft. for center of bed;
 KING HUMBERT (red), for inside of bed; HUNGARIA (pink), for outside of bed..... **\$1.00** Post-paid
8
 CANNA BED No. 24-B

