

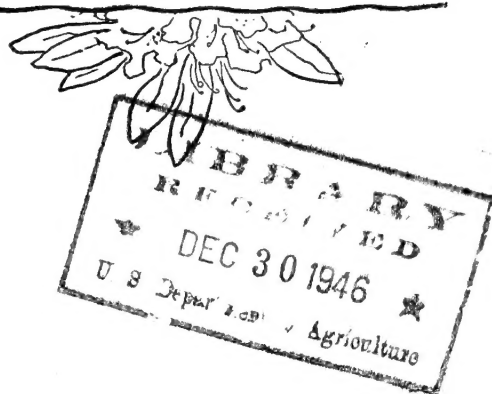
Historic, Archive Document

Do not assume content reflects current scientific knowledge, policies, or practices.

The PLANT-OF-THE-MONTH CLUB *December Offerings*

(Your All America Garden Club)

JOSEPH VANCE BUILDING
SEATTLE 1, WASHINGTON



*Tantarrara! the joyous Book of Spring
Lies open, writ in blossoms.*

WILLIAM ALLINGHAM



For YOUR "Book of Spring"...

ESPECIALLY CHOICE RHODODENDRONS

THESE FIVE rhododendrons are highly desirable and exceedingly beautiful. Three of them have been given four-star ratings of merit by the Rhododendron Association of England, and the others, two stars. You will find them hardy along the seaboard and in warm gardens inland. If there is any doubt in your mind as to whether you can grow rhododendrons in your locality, please check carefully before you order. Each contains so much of potential exquisite beauty and pleasure for mankind, it would be a pity to doom it to a situation where it could not do its best.

While these rhododendrons have been introduced long enough to have been grown, tested and rated, they are so little known by the general public, and, in fact, to everyone save the rhododendron expert that they can be said to be new. It is certain that you won't find them in every garden.

These rhododendrons have been grown for The Plant-of-the-Month Club by Endre Ostbo, a member of The American Rhododendron Society and a grower of outstanding quality rhododendrons. All are two years old, of which one year was field grown. They are exceptionally strong and vigorous, well rooted plants. Each will be as guaranteed and named. Full cultural directions, of course, come with each order. Both the rhododendrons and the camellias described on the following page will be shipped in March unless you request otherwise.

Rhododendrons for the Rockery

***R. Blue Tit

This hybrid of *R. impeditum* and *R. Augustinii* might be taken for a blue azalea. The inch-wide flowers of deep sky blue come so profusely in late spring they practically cover the bush. The leaves are small and slender. It grows as easily as heather and will thrive wherever camellias, azaleas or most rhododendrons grow. It requires a position where it can have ample room for spreading, overhead sun and shaded ground. Since *blue tit* can be held to 2½ feet it is ideal for the rockery or for bordering the rhododendron bed. It is more attractive when allowed to develop its natural irregular branching habit rather than be pruned into a round shape. Beautiful with small narcissi or primulas and delightful when planted sparingly among vine maple, mahonias, huckleberries or salal in a natural woodland.

2 year old shrub, 5 to 6 inches in size.....\$4.00

**R. pemakoense

Coming from the Province of Pemako in Tibet and so new that very little is known about it, this dwarf rhododendron is described as "One of the best of the low forms," in "THE HANDBOOK OF RHODODENDRONS" published by The Arboretum Foundation of Seattle. In the report by the Arboretum Rhododendron Committee it is described as pink and a March bloomer. Endre Ostbo tells us that the upright blooms are bell-like, good sized, that there is mauve in the pink and that the shrub is a mass of delicate color when it flowers. He broke off a leaf for us to smell. It has a delightful spicy fragrance and is small and attractive. The mature shrub grows to only 8 or 10 inches, making it very useful in the rockery with alpinas and heather.

2 year old shrub, 4 to 6 inches in size.....\$3.50

Large-Leaved Rhododendrons

***R. unique (Slocock)

The creamy yellow flowers grow on good sized trusses of a 5 or 6 inch spread. The mature bush grows from 4 to 6 feet high in rounded form and has exceptionally fine foliage. This is an excellent rhododendron to use with *azalea mollis* as the *R. unique* blooms before the *azalea mollis* and furnishes decorative, and also much needed protective winter foliage for the *mollis* bed. It is a good choice for use close to steps and walks and under windows as it doesn't get long-legged as many other rhododendrons do.

2 year old shrub, 8 to 10 inches in size.....\$6.00

***R. Mrs. G. W. Leak

This is one of the finest of the big flowering hybrids. The free blooming flowers are borne on tall erect trusses and are a lovely clear pink with a chocolate blotch. This is the only pink to get four stars from the Rhododendron Association of England and is to be found up to now only in the hands of the hobbyist and rhododendron fancier. It is a hardy shrub and a fast grower. Do not be disappointed if it does not bloom well as a young plant. This is its characteristic and it certainly makes up for this quality in maturity. With its beautifully shaped, large leaves, this rhododendron is every effective and handsome when used in groups in uneven sizes.

2 year old shrub, about 12 inches high.....\$8.00

**R. emasculum

The rosy lilac flowers of this pleasing, bold hardy hybrid are about 1½ inches across and have pretty wavy petals. They come in good sized trusses early, usually in March. The mature shrub grows to 3 or 4 feet in height. It is a beautiful thing to see with yellow primulas, or crocus and heather.

2 year old shrub, 12 inches high.....\$5.00

Expert Selected Rhododendron Collections

**FIVE DIFFERENT RHODODENDRONS
OF THE FINEST NEW TYPE NOT COMMONLY OFFERED
THAT WILL MAKE A HANDSOME
GROUP TOGETHER**

ENDRE OSTBO, expert rhododendron grower and hybridizer, will select from his very choicest and newest varieties, five different rhododendrons of top quality, and make up a collection for you. These will include the newest of the rhododendron hybrids, all of them rated with three or four stars. There are not enough of any of them to list separately in this brochure but each rhododendron in the collections will be named and as named. Each shrub will be at least two years old, one year of which was field grown. Each shrub will be from 12 to 15 inches in height and be strong and healthy and with strong vigorous roots.

These will be wonderful collections..... Each, \$42.50

TWO EXQUISITE CAMELLIAS YOU WILL LIKE

C. magnoliaeflora

The delicate, tender pink semi-double bloom is shaped like a water lily. The serrated foliage is light green, very glossy and sharply pointed. This camellia has an exceptionally long flowering period, beginning in January and continuing all through the spring. The mature bush is compact and grows to 10 feet. It is easily grown and is a hardy shrub in all but severe climates.

Endre Ostbo described the color as "delicate." We said, "Blush pink?" If you have met Endre Ostbo you know he is a huge man with gentle, knowing hands. "No," he answered. "Shell pink?" we persisted. "No-o-o," he said again. "Baby pink?" "No-o-o, delicate pink," he repeated, and somehow his emphasis gave you the soft, delicate, tender, exquisite hue. But just before we left, he added, "Not bluish as in many camellia pinks."

2 year old, 12 to 18 inch shrub.....\$5.00

C. Victor Emanuele

Known also as Blood of China, the color in the blood red blooms is visible for weeks before these open. The 5 inch wide rather full flowers are of loose peony to semi-double form with a mass of long golden stamens in striking contrast to the vivid color of the ruffled petals. The foliage is rounded, and glossy green. Growing to 8 feet in height, the shrub is spreading in habit. It has a long, brilliant season of late bloom, beginning about March and continuing through May, and is especially good in the Puget Sound and coastal country, although it is a hardy camellia and will grow wherever other camellias grow.

2 year old, 12 to 18 inch shrub.....\$5.00

PLANT-OF-THE-MONTH CLUB

1026 JOSEPH VANCE BUILDING
SEATTLE 1 ★ WASHINGTON

Your All America Garden Club

It's Not Too Late

It's not too late to start bulbs for spring window blooming, or to plant them outside in the southern states. Delayed delivery from Holland enables us to still supply you with some very desirable bulbs. These, together with other bulbs and items listed below, and of which we have more or less limited stock, also will make much appreciated Christmas or winter birthday presents for your gardening friends.

*(Please turn to our Fall Bulb List
for more complete descriptions)*

MUSCARI (GRAPE HYACINTH)

M. plumosus, flowers of clear bright blue, very feathery. This "bit of blue sky" is one of the easiest of all bulbs to force.

10 bulbs	\$0.85
100 bulbs	7.00

ESPERANZA (which means hope) STRAIN, LILIAM AURATUM SEEDLINGS

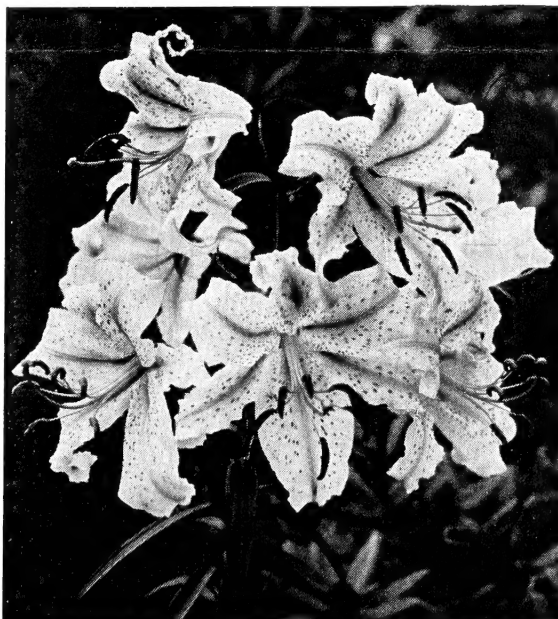
Unquestionably the greatest development in Lilies in many decades. Extraordinarily beautiful and healthy. They will throw as many as 30 or more huge, gorgeous blooms. The following are especially choice bulbs.

Select bulbs, each 9-10 inch	\$ 4.00
Choice bulbs, each 6-7 inch	7.00
Choice bulbs, each 7-8 inch	8.25
Choice bulbs, each 8-9 inch	10.00
Choice bulbs, each 9-10 inch	13.00

PRINCEPS CREELMAN HYBRID SEEDLINGS

A new selected strain of the wonderful Lily grown in Oregon. These are vigorous and extraordinarily beautiful. You will see them only in the gardens of the most discriminating growers.

6-8 inch bulbs, each \$1.25; 6 for \$5.50; 12 for \$10.00
8-10 inch bulbs, each \$1.75; 6 for \$8.50; 12 for \$16.00



Try forcing these for late Spring Bloom

*(Please turn to our October Offerings
for more complete descriptions)*

CALLA LILIES

- C. zantedestia melanoleuca*—the rare South African calla.
Each bulb 90c; 6 for \$4.50
- C. Elliottiana*—the yellow calla.
Each bulb 75c; 6 for \$4.25
- C. rhemanii superba*—the pink calla.
Each bulb \$1.00; 6 for \$5.50
- Plant-of-the-Month Club Collection.
2 bulbs each of the above, 6 bulbs in all \$5.00

ORNTHOGALUM ARABICUM—The Arabian Lily

- Fragrant, long keeping, excellent for window blooming.
3 bulbs for 50c; 12 for \$1.40

IMPORTED HOLLAND HYACINTHS

- Try forcing these fragrant, old-time favorites for late spring bloom.
6 for \$2.70; 12 for \$5.25

For Southern Areas:

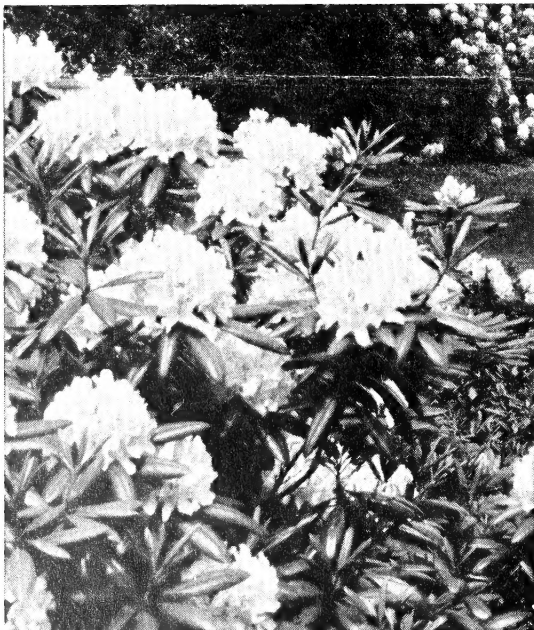
IRIS-TINGITANA HYBRIDS

- I. Wedgewood*, the earliest of bulb Iris to bloom; azure blue with golden yellow spots.
Small size, 12 for \$1.10
Large size, 12 for 2.50
- I. The First*, clear, sky blue with large flowers.
12 for \$1.50; 24 for \$2.75

For Pacific Coast Area:

ENGLISH IRIS

- Mixed, well-blended colors, top-size bulbs.
12 for \$2.25; 25 for \$4.10

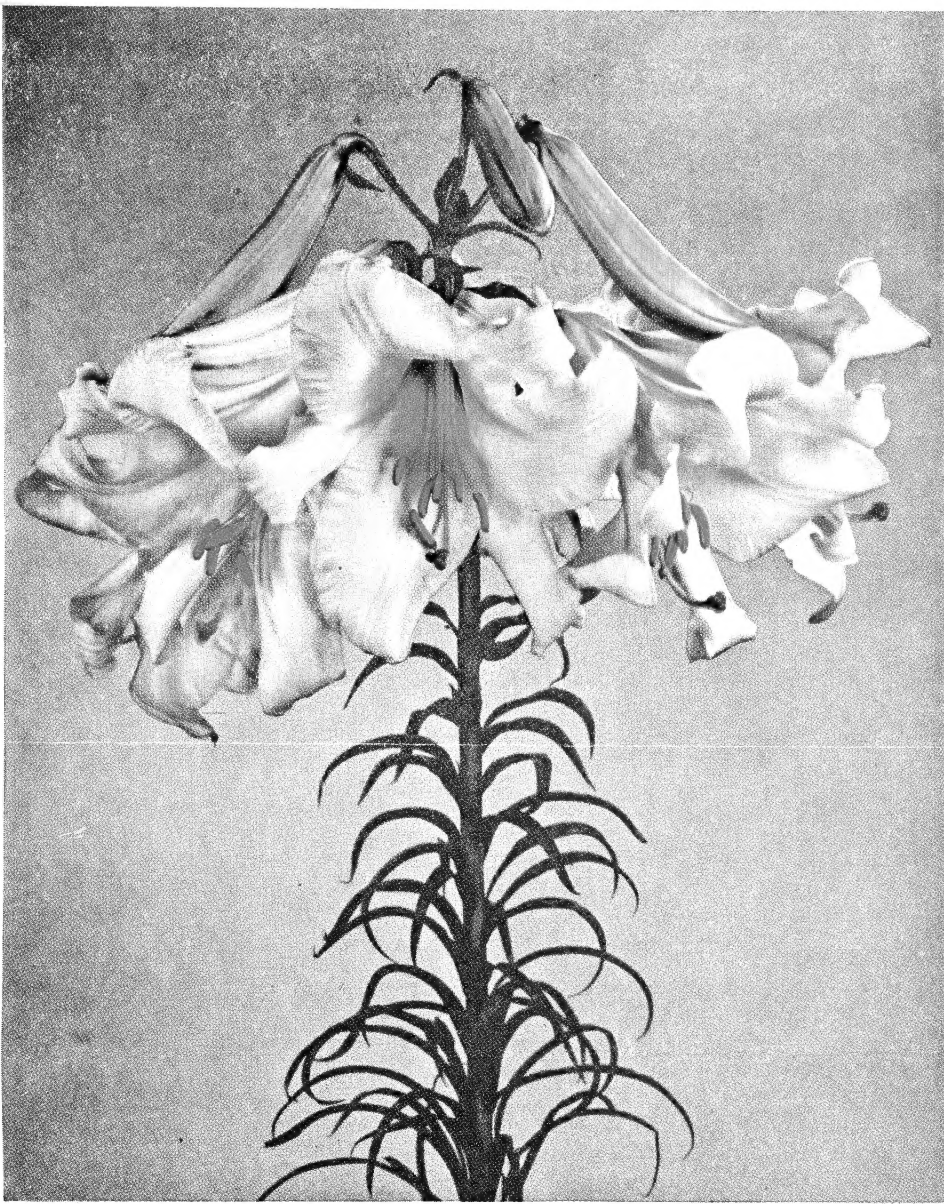


THE HAND BOOK OF RHODODENDRONS

Compiled and published by the Arboretum Foundation of Seattle, Washington. Complete guidance and growing help for gardeners who own rhododendrons and azaleas.

a copy—\$5.00

*The Original.
Plant-of-the Month
Club, your
All America Garden Club*

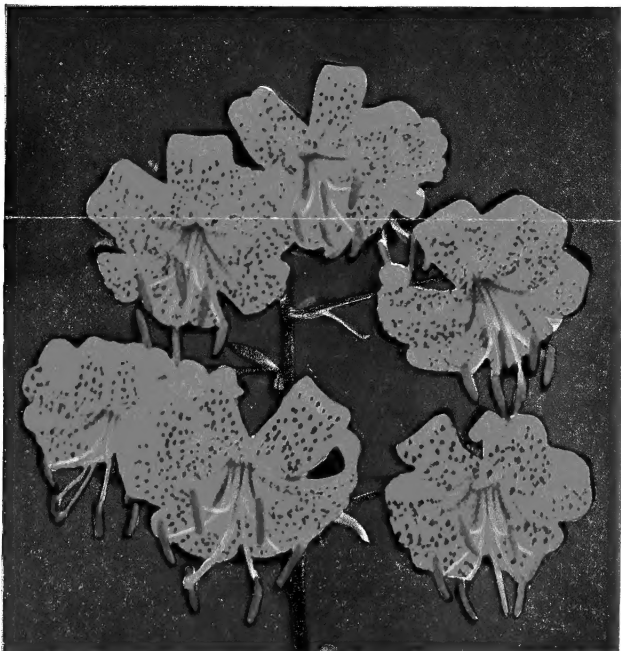


*Lilies
Will
Give Your
Garden
Grace*

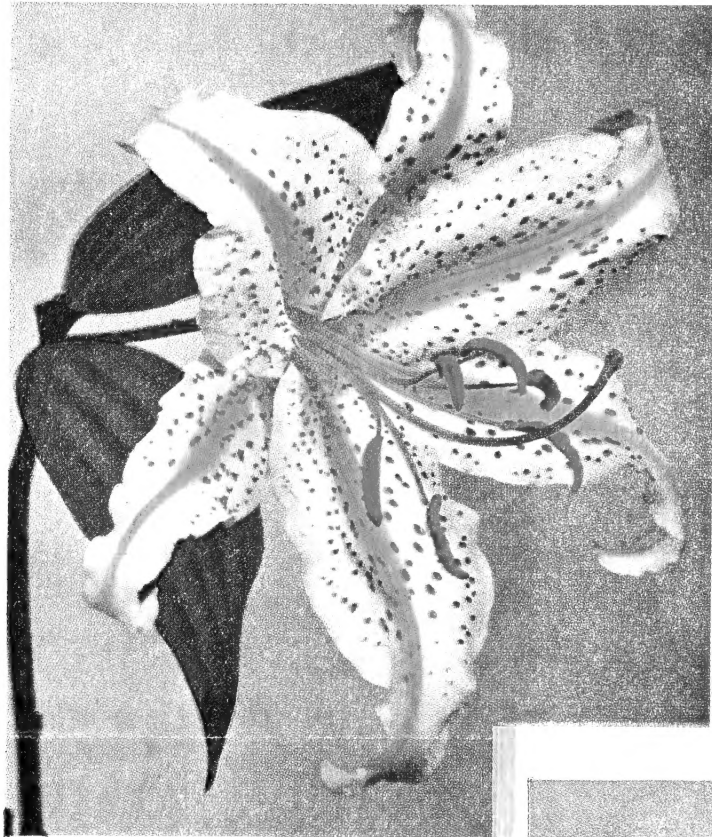
L. CENTIFOLIUM
HYBRIDS



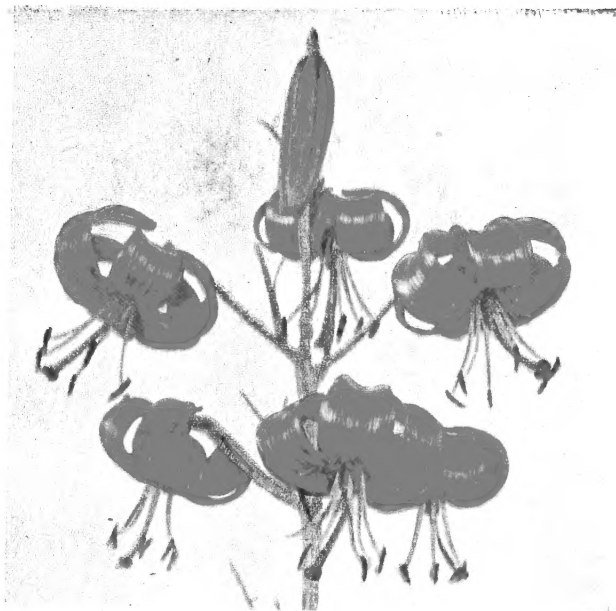
L. PARDALINUM
GIGANTEUM



L. WILLMOTTIAEA

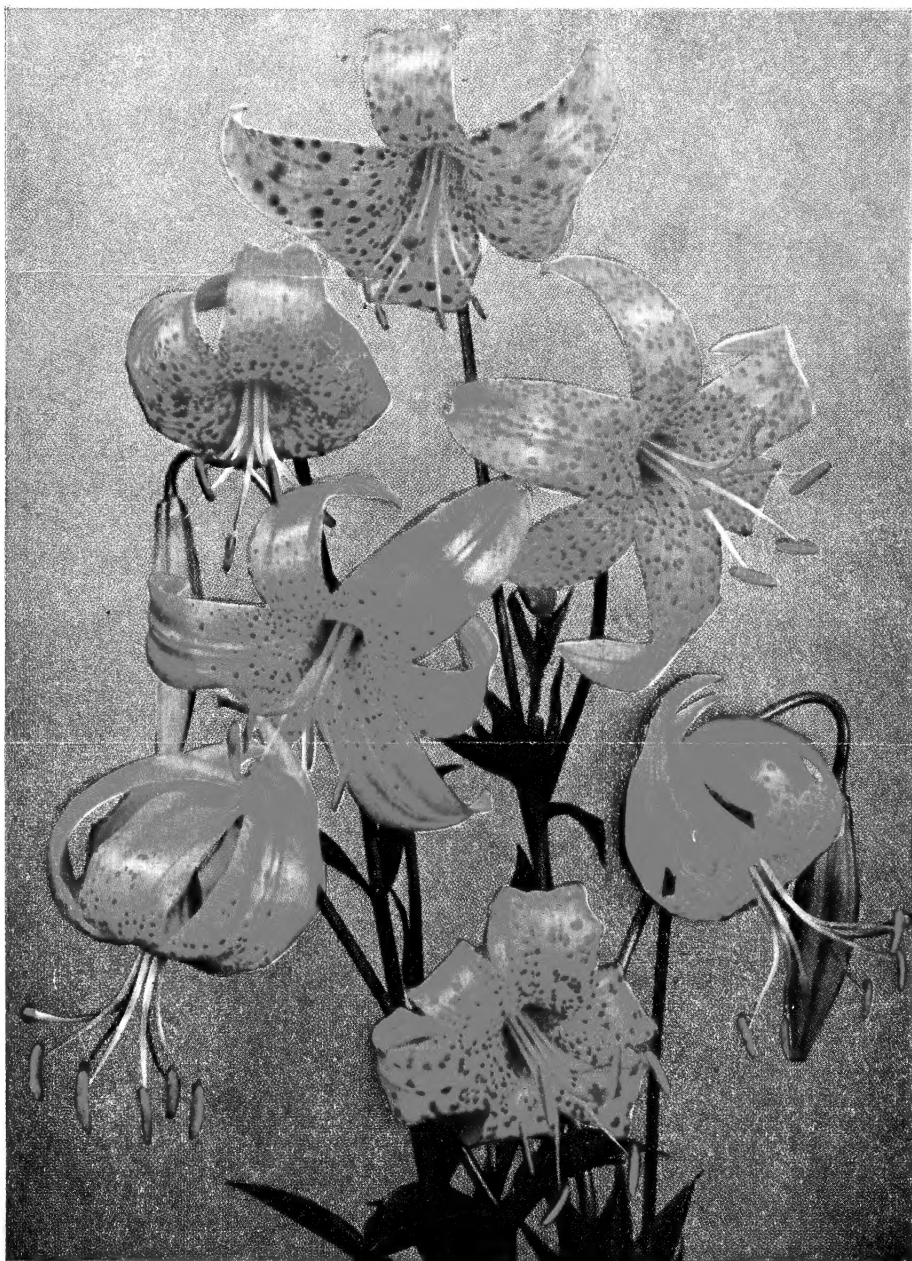


LILIUM AURATUM



L. TENUIFOLIUM

*Hardy
Stately
Beautiful
Lilies
You
Can
Grow*



L. BELLINGHAM
HYBRIDS

EDGAR L. KLINE, *Lily Grower and Hybridizer of Oregon,*

tells you about

GROWING LILIES FROM SEED . . .



GROWING LILIES from seed brings a beautifully rich and satisfying reward, although it is an easy and not at all complicated thing to do. The fact that the process takes time and must be paid for in patience perhaps makes the lovely, fragrant result all the more precious. Certainly the long growing period required to bring lilies to bloom from seed is an antidote to the poison of our modern, pell-mell rush of living. Since we are prone to expect all results of any of our activities in the shortest possible time, the growing of lilies that *won't* be hurried is not only a long term adventure, but is quite possibly a salutary experience for us. But, unless you are willing to wait two or three years for your bloom, buy lily bulbs instead of lily seed.

If you have a spot in the back of your garden for a small lily nursery and a place for a cold frame, however, and if you have patience, and if immediate results are not your objective, you will have for very little money and effort, an imposing number of valuable lilies that will make your garden a fragrant and lovely place. Used as drifts at the edge of a planting of shrubbery or trees, in a border or in a bed, lilies are magnificent and mass gorgeously.

In addition, there is always the chance that from your seed you might produce an especially choice hybrid, and if you have followed the story of the Croft and of other famous lilies, you know that this could mean a considerable financial success. At least it puts on your floral hobby horse a figurative saddle bag with an exciting, unknown factor as its freight.

Seedling lilies are free of disease and unless infected from other lilies, remain so. This is another important advantage in growing lilies from seed.

Reference Chart of Lilies for Gardens and Greenhouse



THE SEED offered to you in the accompanying list was grown by Edgar L. Kline, one of Oregon's foremost lily growers, whose REFERENCE CHART is considered an authoritative contribution to lily data. We offered it to you in our fall bulb brochure. We are suggesting it again for your further consideration because of its helpfulness to the lily grower, whether the commercial grower or the home owner interested in including a planting of lilies in his garden. Mr. Kline's CHART is a valuable addition to the horticultural library; every garden club interested in lily culture will find it a serviceable reference for study. . . . A copy, \$1.00

SEED OF TWELVE BEAUTIFUL VARIETIES OF LILIES

FULL INSTRUCTIONS by Edgar L. Kline for growing lilies from seed will come with each order. These will be in the notebook format. While we will be glad to quote you prices on larger amounts of this seed if you wish, the following packets will each contain enough seed, if properly grown, to fill a good sized plot of ground with a magnificent display of lovely lilies. The price of each packet of seed is . . . \$1.25

L. auratum

This variety is commonly known as the Gold Band Lily because of the rich gold band down the center of each segment of the crimson-spotted, large white bowl. Needless to say, with such coloring, it is a showy, gorgeous lily. It does not need additional charms but it has the one of delightful fragrance. *L. auratum* likes partial shade, and since it grows from 4 to 6 feet in height and blooms from July to September according to location, it is very useful in a border, and quite striking grown with blue delphinium.

L. Bellingham hybrids

These handsome, brilliantly colored lilies are varied in color, ranging from lemon yellow through all the varying shades of orange yellow, orange, red orange and red. In type they are semi-recurved to recurved. There is also a variation in their height. They are a great improvement on the older varieties, bear pyramidal clusters of bloom on stiff stems that require no staking. Mid-July flowering. For mass display few strains equal them.

L. centifolium hybrids

These large white trumpet lilies have a green blotch at the base of each segment and are shaded brownish purple or green externally. In fact, this is also called the Green Stripe lily. Since it reaches 5 to 8 feet in height, it is ideal to use as background material in a border. It wants full sun, and blooms in July when its fragrance fills the garden. This is an especially easy lily to grow as seed germination only takes from 3 to 6 weeks.

L. Davidi Macranthum

The recurved, medium sized blooms of this exceedingly showy lily are a brilliant orange-red, spotted black. These also are July bloomers, easy to grow, and like full sun. They are not fragrant. Since they grow from 4 to 6 feet and require the same growing conditions, they may be used in front of *L. centifolium* for an unforgettable rich color effect.

L. formosanum (late variety)

The large trumpets of this lily are white with emerald green throat shaded violet externally. It is another sun lover, and because it blooms in September to October, extends your season of lily blooming late into the year. It is delightfully fragrant. Growing from 4 to 6 feet in height, it is beautiful planted with low growing pink or lavender chrysanthemums or dahlias.

(Continued on next page)

L. longiflorum Croft x Snowdrift

The flowers are trumpet shaped, varying somewhat in size, but all are of the typical Easter lily type. The color is pure white, with golden anthers, and the height will vary from 1½ to 3 feet, although some individual plants might be taller than this under certain conditions.

L. maximowiczii wadai (early)

This early Tiger lily has large recurved blooms of deep orange-red with rich mahogany spots. They grow from 4 to 6 feet and like either full sun or partial shade. Their July bloom is delightful in the border when brilliant marigolds carry out the golden theme, or when, for instance, *Echinops ritro* (Steel Globe thistle) makes a blue and orange-red contrast.

L. maximowiczii (late)

The description of this late variety is similar to that of the early, both as to color and form, and habit, with these exceptions. The late variety blooms in September and early October and is one of the latest of all lilies to bloom; it wants full sun and the blooms are a little lighter in color and smaller in size.

L. pardalinum giganteum

The Sunset lily. Since the true Sunset lily does not set seed when self-pollinated it is necessary to use other lilies of a similar type in order to get seed. The pollen parent of this seed is *L. Cyrus Gates*, one of the most vigorous and beautiful of the *Bellingham hybrids*. Naturally there will be some variance in the result from seed and all of the seedlings will not be the true Sunset lily. All of the variations in this seedling, however, are very interesting and some very fine plants will result from this combination. The Sunset lily is a large brilliant bloom, recurved in type, in color a rich crimson shading to deep gold at the throat and with deep purple spots. It is a June flowering variety, liking both sun and partial shade and growing from 5 to 7 feet in height.

L. Preston's hybrids

There is a variation in color, height and form in this hybrid lily. The seed is collected from such named hybrids as *Grace Marshall*, *Edna Kean*, *Coronation*, *Brenda Watts*, *Lillian Cummings*, and others of this strain. The height varies from 2 to 4 feet; some blooms are orange-vermillion and spotted, others are plain, but the huge pyramidal flame of blooms is always vivid and beautiful. They may be grown in full sun or partial shade, but preferably the former. The blooming period is July.

L. princeps G. C. Creelman

Here again we have a lily which does not set seed when self-pollinated, but must require the pollen of one of the other late blooming trumpet lilies. As in the case of *pardalinum giganteum*, and the *Preston's hybrids*, there will be considerable variance in height, form and blooming time and only a certain portion of the seedlings will approach the true *Creelman*. Nevertheless, all of the forms are interesting and many fine plants will result. The *L. princeps G. C. Creelman* has large white trumpets with a yellow throat shaded brownish lavender externally. It is fragrant, grows from 4 to 6 feet, likes sun or partial shade and blooms in July to August.

L. Washingtonianum purpureum

The beloved Mt. Hood lily, Oregon's own native, blooms in our gardens from June to July. The medium funnel shaped trumpets are white with small purple spots. The bloom turns to lilac purple with age. The matured lily carries up to 30 fragrant blooms. It grows

from 3 to 6 feet in height and likes partial shade. It is charming in a border with *Heuchera sanguina* (Coralbells), *veronica incana* (Woolly speedwell) and other low growing late summer annuals and perennials.

L. willmottiae

This Szechwan lily from China has recurved medium sized blooms in orange-red which are dotted black in a spectacular fashion. It grows from 3 to 6 feet and likes full sun or partial shade and is one of the easier lilies to grow. A July bloomer it makes a beautiful picture when planted with *hemerocallis thunbergi* (Japanese Daylily), *heliopsis pitcheriana* (Pitcher heliopsis) and *lychnis haageana* (Haage campion) in the foreground.



DEAR MEMBER:

We hope yours is a happy, joyous Christmas and that the coming year brings you wonderful experiences, including that of many pleasant hours in your garden.

Did you notice the new use to which we've put the descriptive phrase we've used under our All America Garden Club name? That's right! It's become the new name of your Club. We have felt for some time that it was more truly expressive of the type of services offered to you through your membership in the Club, and we hope you agree with us and like it well enough to not mind the change.

We hasten to assure you, however, that it's the same Club, with the same personnel serving you, with the same high standards and ideals, and with the only changes being improved facilities for bringing you the best plant material that it is possible for us to find.

The color insert which comes to you this month is, as you see, punched to go into your Plant-of-the-Month Club Garden Notebook. Next month's color sheet will illustrate some of the very fine roses we will have for you in January. These will not be new roses, but especially vigorous and well grown specimens of very choice roses that have proved to be particularly satisfactory. We will have also several interesting new perennial and annual seed varieties and an offering of William Steinhilber's superior primrose which we are certain will interest you greatly.

Yours very sincerely,

THE PLANT-OF-THE-MONTH CLUB.

by EARL F. HUBBARD, *President*