

Historic, Archive Document

Do not assume content reflects current scientific knowledge, policies, or practices.



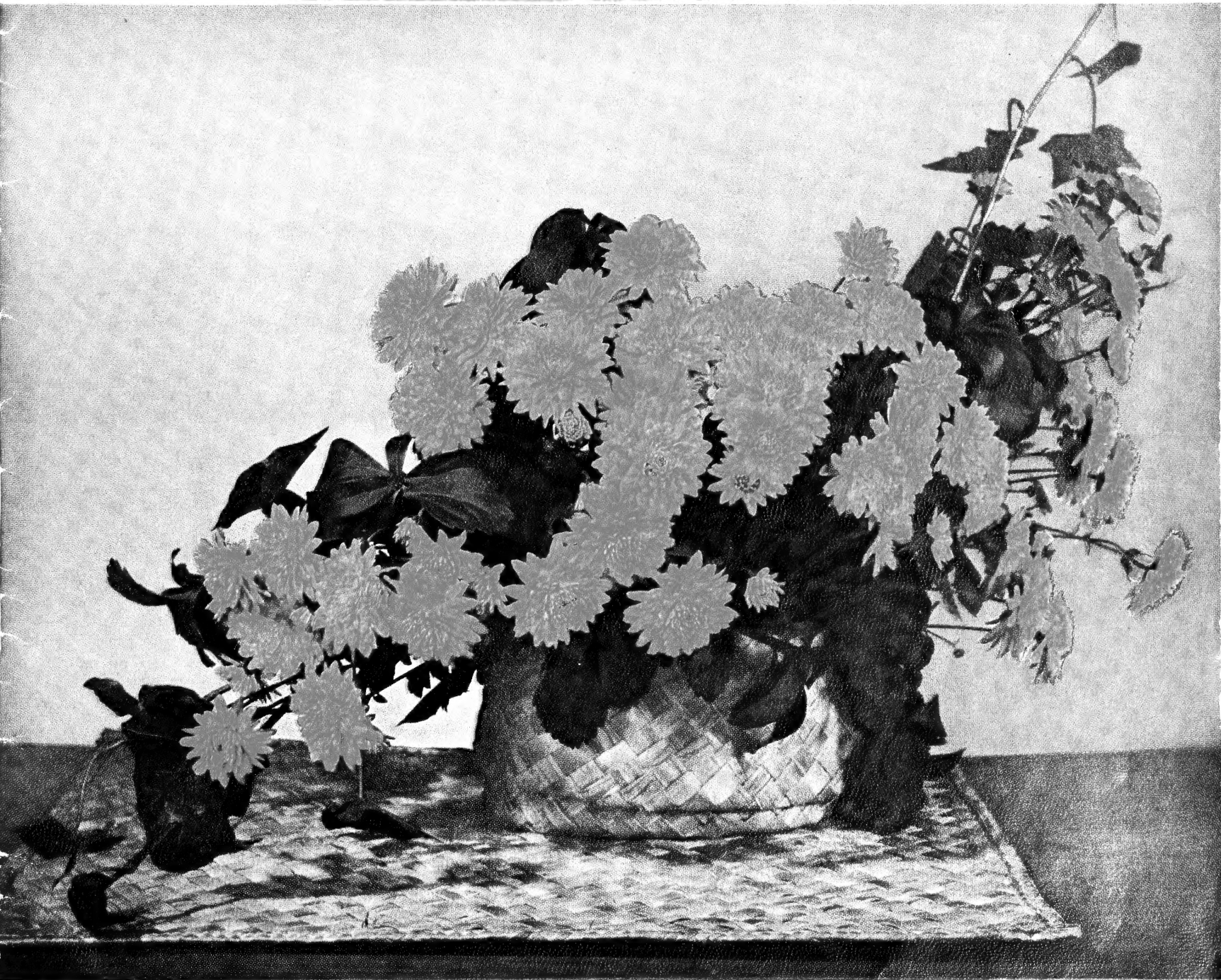


LIBRARY
RECORDED
★ MAR 1 1946 ★
INC.

Bristol Nurseries

PRESENTS FOR 1946

THE "MUM OF THE YEAR" ★ THE "MUM OF TOMORROW"



THE FAMOUS

"Storm Proof Pompon" "FRED F. ROCKWELL"

A BRILLIANT NEW COLOR FOR YOUR AUTUMN GARDEN

*Fully Described
on Back Cover*



RED VELVET

(B. N., 1944.) *Bristol's New Crimson Beauty*. Finest of all Crimson Garden Mums. Shapely, long lasting blooms. Lustrous, healthy foliage. Hardiness plus. Full bloom early October. Height, 2 ft.

3 for \$1.60; \$6.00 per doz.; 60 cts. each

SHIPMENT OF CHRYSANTHEMUMS

EXPRESS SHIPMENT

Recommended for six or more plants. Safe arrival is guaranteed and the special rate which applies to plants means reasonable transportation. Express shipments not prepaid unless requested.

PARCEL POST SHIPMENT

recommended for less than 6 Chrysanthemums
 West of the Mississippi: **Add 15 cts. for 1 plant**
25 cts. for 3 plants; 50 cts. for 6 plants
 East of the Mississippi: **Add 10 cts. for 1 plant**
15 cts. for 3 plants; 30 cts. for 6 plants



PINK RADIANCE

(B. N., 1945.) Most prolific of all pink kinds. Hardiness exceptional. A lusty 2½-ft. plant. Full flower late September.

3 for \$2.00; \$7.50 per doz.; 75 cts. each

FOR ECONOMY

FOR BEST GARDEN EFFECT

Order 3 of a kind
 Plant 3 of a kind

Note the special reduction in the "three" offers throughout this catalog. More than three of a kind can be ordered **at the dozen rate. Refer to price scale on Page 15.**

KING MIDAS. (B. N., 1937.) The best all-around yellow. Full flower late September. Beautiful as it is rugged. Height, 2 ft. Illustration does not do it justice.

3 for \$1.15; \$4.50 per doz.; 45 cts. each



KING MIDAS

Index of
 Chrysanthemums
 Page 15

Shipping
 Instructions Page 14

**7 SUPERB DOUBLE 7
KOREAN HYBRIDS**

Created by Bristol—Grown by the Nation
ALL IN BLOOM BY OCT. 5
Grand Colors!
Magnificent Flower Types



LAVENDER LADY

(B. N., 1939.) Queen of all Mums is this aristocrat of the garden. No other kind approaches it for all around excellence. Full flower early October. Height, 2½ ft.

3 for \$1.40; \$5.00 per doz.; 50 cts. each



AVALANCHE

Queen of all whites is this big, fluffy, handsome Mum. Flowers over 5 inches across—perfectly formed. Full flower late September. Height, 18-20 inches.

3 for \$1.60; \$6.00 per doz.; 60 cts. each

B U R G U N D Y

(B. N., 1939.) It's distinct! Wine Red is the color. Big handsome blooms with strong stems. A grand cut flower. Early October. Height, 2½ ft.

**3 for \$1.40; \$5.00 per doz.
50 cts. each**



SPECIAL OFFER

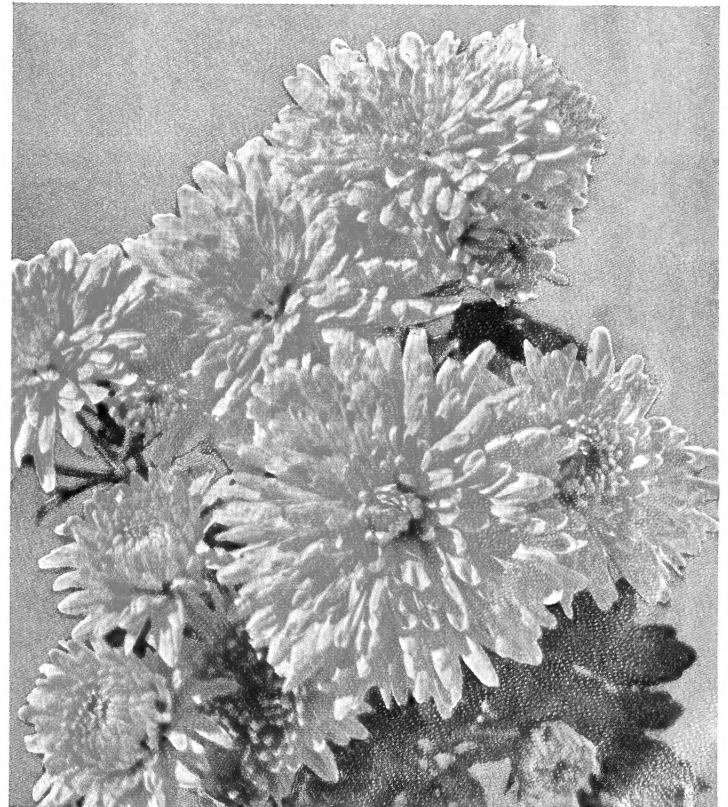
A. 1 Each of these 7 Gorgeous Double Korean Hybrids Shown on Pages 2 and 3 \$3.75

A-1. 3 Each (21 plants in all) \$10.50

MRS. PIERRE S. DuPONT, III. (B. N., 1941.) It's a classic. Magnificent, full double blooms in a lovely blending of rosy salmon-bronze and peach-pink tints. A grand growing plant. Early October. Height, 2½ ft.

3 for \$1.40; \$5.00 per doz.; 50 cts. each

MRS. PIERRE S. DuPONT, III



1945

INTRODUCTIONS

BY

Bristol

HAVE PASSED THE ACID TEST
NOW DESTINED FOR STARDOM

Complete Planting Instructions

will be mailed promptly on receipt of your order with order acknowledgment. Read it carefully, please, and have the ground ready before your plants arrive.

PINK RADIANCE. For Glowing Profusion It Has No Equal. Winter Hardy.

PINK RADIANCE. (B. N., 1945.) Huge sprays of soft luminous pink simply smother the lusty 2½-3 ft., winter hardy plants from late September on. Easily first choice for your cut flower supply.
3 for \$2.00; \$7.50 per doz.; 75 cts. each

FIREGLOW. (B. N., 1945.) Oriental red changing slowly to a nice bronze-red. A stunning bit of color from mid-September on and a tidy, compact 18-inch plant. Very hardy, it is at its best in the second year.
3 for \$2.00; \$7.50 per doz.; 75 cts. each

MAGNOLIA. (B. N., 1945.) Chaste and charming in its blending of soft pink and cream yellow tints. The stocky 1½-2 ft. plants are covered with bloom from mid-September on through the season. It's one of the hardiest. No other approaches it for quaint loveliness.
3 for \$2.00; \$7.50 per doz.; 75 cts. each

APRICOT GLOW. (B. N., 1945.) A glowing, apricot-bronze Azalea-like cushion Mum. In full flower by late summer, the profusion of bloom persists. Handsome, mound-like plants 2½ ft. or more across the first season. It's a prize winner.
**3 for \$2.00
\$7.50 per doz.
75 cts. each**

Index of
Chrysanthemums

Page 15

•

Shipping
Instructions

Page 14



FIREGLOW

Most Colorful of the September Mums — Extremely Hardy

**Glorious
Additions**

FOR YOUR

Garden

**PRICE 75c
EACH**

**SPECIAL
OFFER B**

1 Each of 4 Kinds

\$2.85

OFFER B-1

3 Each

12 Plants In All

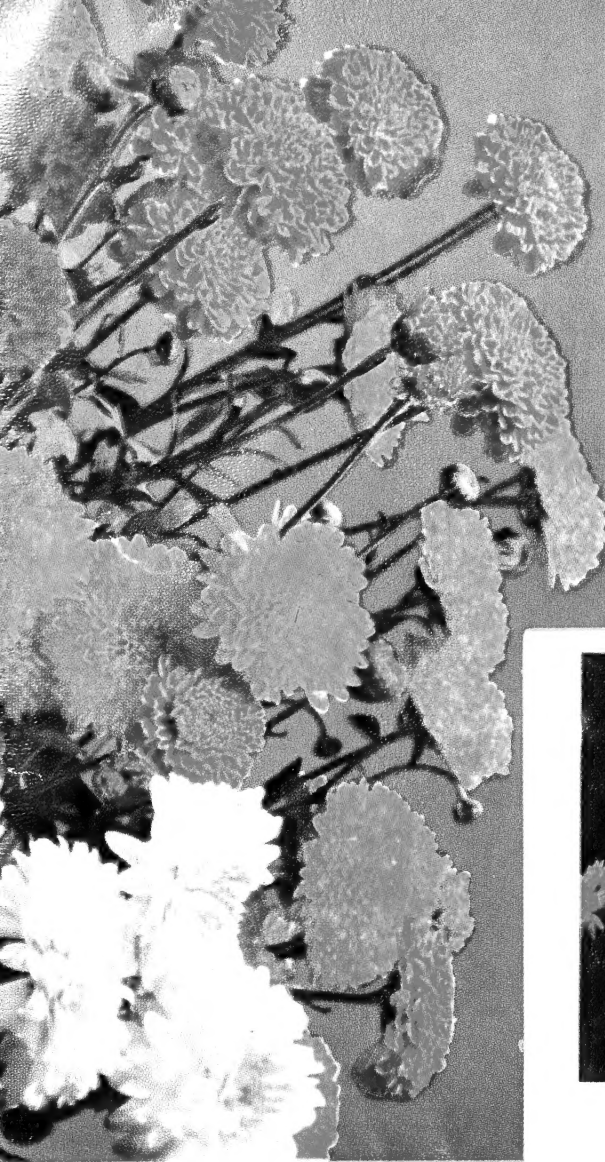
\$7.50



The Dainty **MAGNOLIA**—Truly a thing of beauty. So hardy too.

APRICOT GLOW—Aristocrat of the early Azalea-like Mums.





THE DISTINCTIVE SEPTEMBER-BLOOMING

BRISTOL CUSHION POMPONS

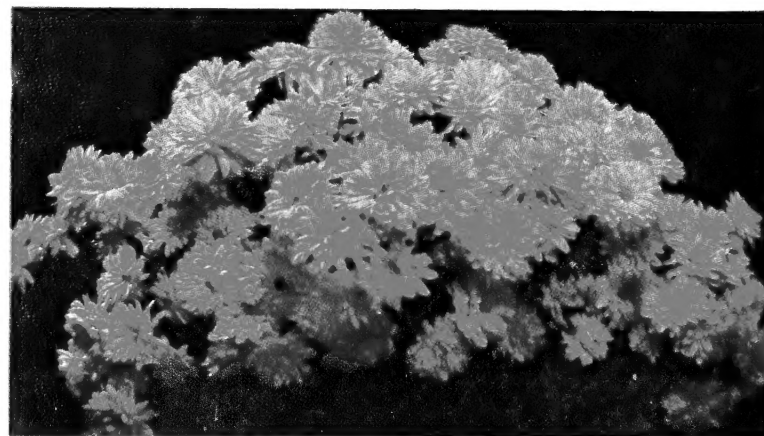
Notable among Bristol originations is this September-blooming Cushion Pompon group. Like the Azalea-flowering or cushion Mums in their low, mound-like growing habit and freedom, but the blossoms are brilliant in color with the crisp, clean cut form of the shapely little pompon, and altogether desirable for cut flower arrangements. Height averaging 18 inches. Much greater spread.

SEPTEMBER BRONZE. (B. N., 1942.) Showiest of the early Mums. The color—golden-bronze changing to vivid bronze. Amazingly free. Splendid-keeping cut flowers.

SEPTEMBER GOLD. (B. N., 1942.) Brilliant golden yellow. Remarkably free—often 25 or more perfect blossoms to a spray.

SEPTEMBER CLOUD. (B. N., 1942.) Purest white when open—primrose tinted in the bud. Briefly, **the best white early Mum.**

3 of a kind \$1.40; \$5.00 per doz.; 50 cts. each, above three



BRONZE GOLD

(B. N., 1943.) Entirely distinct from other cushion kinds in its somewhat loose, but altogether desirable informal habit. It is a fluffy, gorgeous mass of gold tinted with bronze from late September until the season ends. Height, 2 ft., much wider. Really a grand bit of color!

**3 for \$1.40; 12 for \$5.00
50 cts. each**

OTHER POPULAR CUSHION MUMS

3 of a kind, \$1.15; 12 for \$4.50; 45 cts. each

AMELIA. Original Pink Cushion. Variable shades of pink. Hardy and very early.

DEAN KAY. Deep pink, somewhat larger than Amelia or Azaleamum. Quite hardy. Very popular in some sections.

KING CUSHION. Coppery bronze to dull red. Also variable but one of the best.

QUEEN CUSHION. White occasionally shaded lavender.

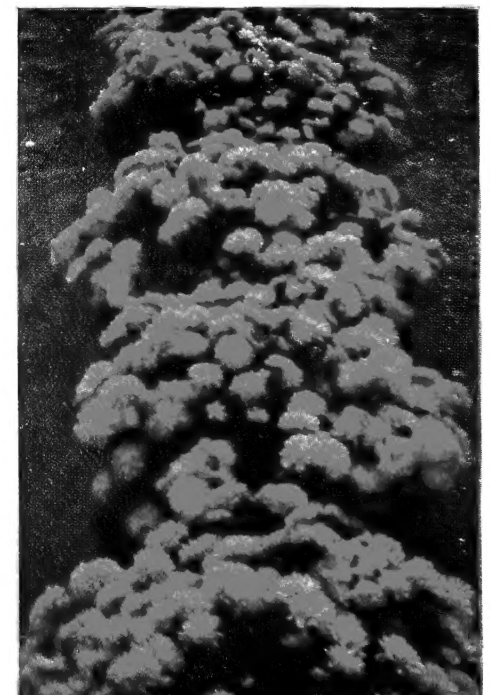


MAJOR CUSHION. Easily the best pink cushion—full petalled flowers—symmetrical free flowering plant.

**3 for \$1.40, \$5.00 per doz.
50 cts. each**

SUPREME YELLOW. (Hurley.) The most effective in its color. It is a soft but most effective shade of yellow without the slightest shading. Shapely 18 in. plant. Early and profuse.

**3 for \$1.60; \$6.00 per doz.
60 cts. each**



MARJORIE MILLS

(B. N., 1943.) The ideal Mum for an informal edging—the rich green plants effective long before flowering. Height, 15 in. Late Sept.

Plant clusters of 3 in the border foreground. Fine for the Rock Garden too.

3 for \$1.40; \$5.00 per doz.; 50 cts. each

LAVENDER LASSIE

(B. N., 1943.) Lavender Lady, perhaps the most popular of all Bristol introductions, may well be proud of its miniature offspring. It's a 2-2½ ft. mound of lavender from September until killing frost.

Price: 3 for \$1.40; \$5.00 per doz.; 50 cts. each
Index of Chrysanthemums Page 15
Shipping Instructions Page 14

A PAGE OF FINE . . .

GARDEN POMPONS

MANDALAY

(B. N., 1944.) Brilliant orange bronze in color—carrying its neatly formed blossoms in profusely branched sprays—ideal for cutting or for garden color. It is a shapely plant of medium height with handsome dark green foliage. In full flower Oct. 1.



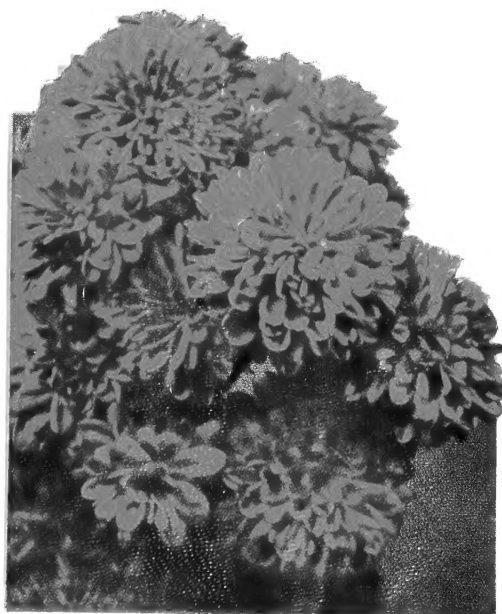
Mandalay

Index of
Chrysanthemums
Page 15

Shipping Instructions
Page 14

RUBY POMPON

(B. N., 1943.) Ruby crimson is the color, but more rich and glowing than any other pompon. Equally exciting is the remarkable profusion in which the branchy 2½ ft. plant carries its blossoms. In full flower early October. Height, 2½-3 ft.



Ruby Pompon

REMBRANDT

For the Connoisseur. (B. N., 1943.) A color blend entirely new and not easy to describe—rose mauve with faint copper tinting, and a suffusion of ripe strawberry—truly an art blend. The trim, upright plant grows to a height of 18-24 inches and is remarkably free and colorful from October 1st on.



Rembrandt

OTHER FINE POMPONS

3 of a kind, \$1.15; \$4.50 per doz.; 45 cts. each

Early Bronze. Fine, free-flowering bronze. 1½ ft. Early Sept.

Ermalinda. Lovely old rose. Neat cut flowers. 1½ ft. Oct. 15.

Gleam O' Gold. (B. N., 1940.) A glistening golden-yellow beauty. 2 ft. Early Oct.

Goblin. (B. N., 1940.) Fine Halloween bronze. 2 ft. Mid-Oct.

Irene. Very neat, pure white blossoms. An established favorite. 1½ ft. Oct. 10.

Jewel. Soft pink, perfectly formed blossoms. 1½ ft. Oct. 10.

Judith Anderson. (B. N., 1936.) Pure yellow button-like blossoms. Remarkably free. 1½ ft. Oct. 10.

Pomponette. (B. N., 1940.) Perfectly formed, large yellow blossoms. Dwarf. Early.

Pygmy Gold. (B. N., 1938.) First to flower. Small golden-yellow blossoms. Dwarf plant.

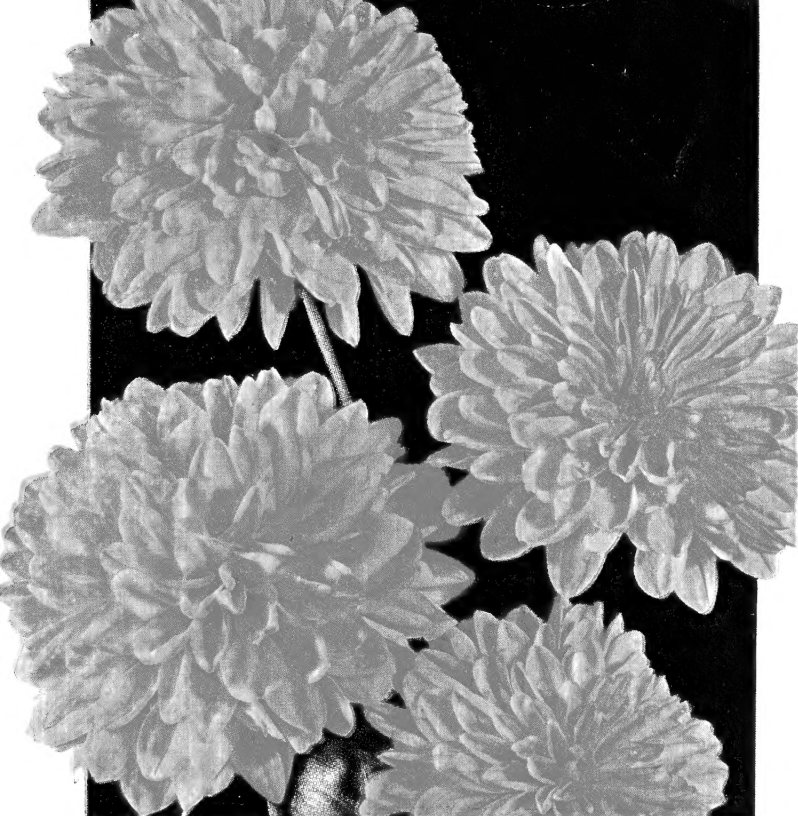
Silver Tips. Bright carmine; tips silver. 2 ft. Early Oct.

Treasure Trove. Crisp yellow blossoms. Very free. 2½ ft. Oct. 5.

MME. CHIANG KAI-SHEK

(Plant Patent 634.) Introduced by Wayside Gardens and offered here by special arrangement. It is a pompon of a beautiful and distinct shade of bronze, attaining full flower early September.

Each, \$1.00; 3 for \$2.75; 12 for \$10.00



HARBOR LIGHTS. (B. N., 1944.) The pale yellow and creamy white tints in this new Pompon blend to create a luminous effect—soft, yet sparkling among its garden companions. Indoors, it brings that delightful touch so effective in the arrangement of cut chrysanthemums. It is a tidy, compact, 2-foot plant with rich green contrasting foliage, liberal in blossoming and very early. In full flower September 20.

Price of above 4 kinds: 3 of a kind, \$1.60; \$6.00 per doz.; 60 cts. each



GOOD GARDEN MUMS

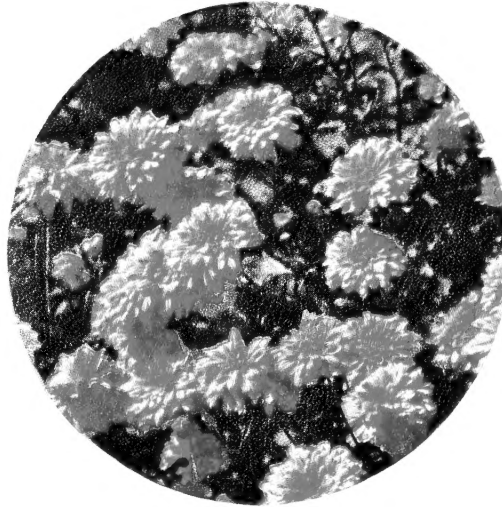
Something New

Something Old



SYMPHONY

(B. N., 1938.) Mauve and coppery pink—beautiful blend. 2½ ft. Oct. 10.



ROSE GLOW

(B. N., 1939.) Raspberry pink. Very profuse. Oct. 1-2 ft.



CALIPH

(B. N., 1939.) Deepest velvet red. Husky, 2½ ft. plant. Oct. 5.



JEAN TREADWAY

(B. N., 1933.) Softest pink, lovely rose center. Late Sept. 1½-2 ft.



PALE MOON

(B. N., 1939.) Huge sprays of soft yellow. 2½ ft. Oct. 5.

PRICE EXCEPT WHERE NOTED

3 of a kind \$1.15

\$4.50 per doz.

45 cts. each

*

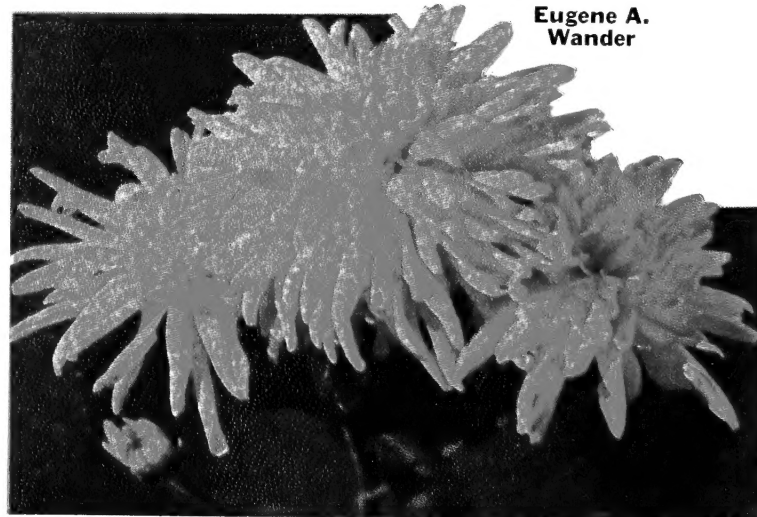
EUGENE A. WANDER

(B. N., 1941.) The biggest, finest, earliest yellow. Height, 18 inches. Mid-September.

3 for \$1.40

\$5.00 per doz.

50 cts. each



Eugene A. Wander



THE MOOR. (B. N., 1937.) Amaranth-crimson. Richest of all. Oct. 5. 2 ft.

HERE'S SOMETHING EXCITING!

CHIPPEWA. (University of Minnesota Origination.) Absolutely distinct is the new rich Aster purple color and its an early blooming, free flowering, bushy 2-ft. plant. Semi-double, mid-size bloom. Very striking.

JOAN HELEN. Rhododendron purple is the color of this outstandingly useful early kind. In full flower late September, it is definitely eye catching. A fine free flowering 18-inch plant.

Price of the above two: 3 for \$1.60; \$6.00 per doz.; 60 cts. each
Index of Chrysanthemums Page 15. Shipping Instructions Page 14.



The Glistening Copper AUTUMN LIGHTS

(B. N., 1940.) Autumn at its best is immediately suggested in the gleaming coppery bronze tints. Fine, compact, free flowering plant. Requires no dividing or fussing and perfectly hardy. The illustration does not begin to do it justice.

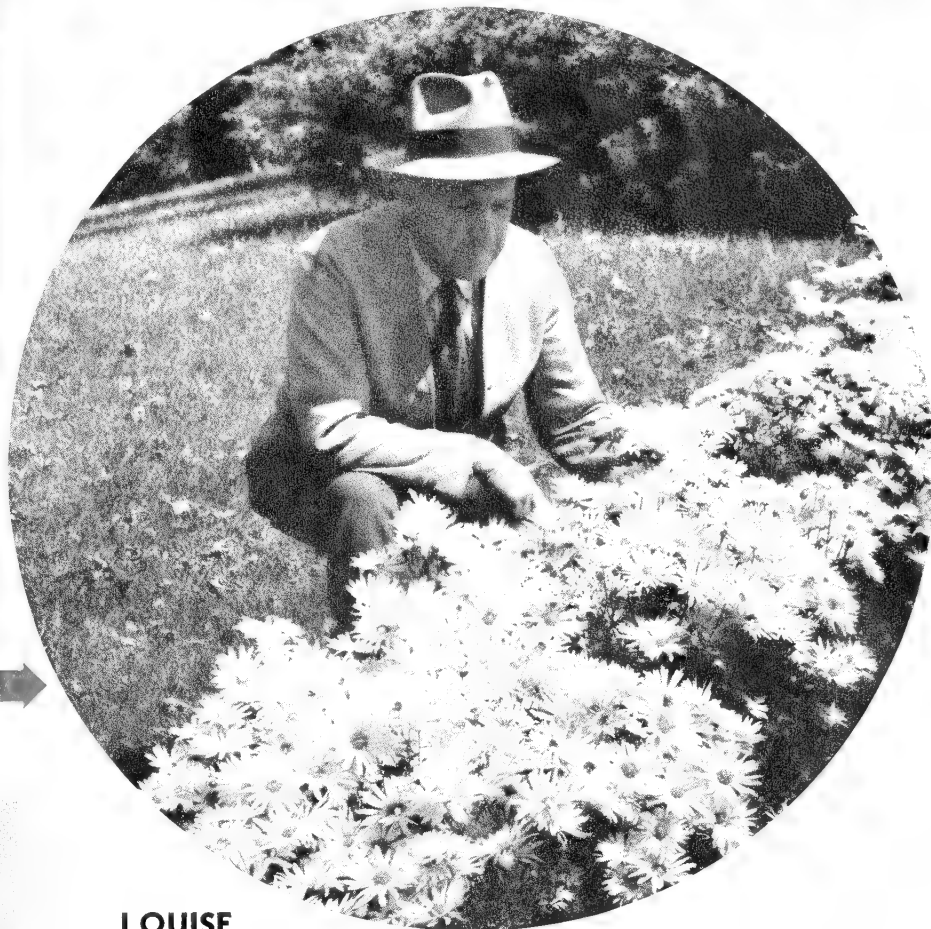
The Glistening White NORTH STAR

(B. N., 1944.) Extremely hardy. Early. The best pure white single Chrysanthemum for New England. Profuse beyond belief—a 4 to 5 foot spread is not unusual in a 2-year plant. Height, 2½ ft. Full flower September 20.

3 for \$1.60; \$6.00 per doz.; 60 cts. each



THE DAINTY . . . BRISTOL SINGLE KOREANS



LOUISE SCHLING

Graceful, Hardy, Luminous. (B. N., 1935.) Unquestionably the finest red single Korean. Maturing salmon-red. Extremely free, never fails. Height, 2½ ft. Early Oct.

CERES

(B. N., 1934.) Gold and copper tints like ripening grain in Autumn sunshine. 2½ ft. October 10th.

APOLLO

(B. N., 1934.) Sparkling orange-bronze, remarkably free. 2½ ft. October 10th.

DAPHNE

(B. N., 1934.) Beautiful old rose. 2½ ft. October 10th.

OTHER GOOD SINGLES

ACACIA. (B. N., 1940.) Miniature yellow; cascade-like. 2½ ft. Late Sept.

AGNES SELKIRK CLARK. (B. N., 1937.) Glowing apricot pink. 2½ ft. Late Sept.

ASTRID. Ironclad Arcticum Hybrid. Soft rose. 1½ ft. Oct. 5.

CLARA CURTIS (C. rubellum.) Fragrant, pink daisy-like blossoms. Hardy. Early.

CRIMSON SPLENDOR. (B. N., 1933.) Rich crimson. 2½ ft. Oct. 5.

GOOD MORNING. Creamy yellow form of Astrid.

PINK LUSTRE. (B. N., 1937.) Soft orchid pink. 2½ ft. Late Sept.

SALADIN. (B. N., 1938.) Oriental red and coral bronze. 2½ ft. Oct. 10.

Price of all kinds on this page except North Star
3 of a kind, \$1.15; \$4.50 per doz.; 45 cts. each

VENUS

Best Pink Single for Your Early Garden! (B. N., 1936.) This lovely orchid pink is in full flower by mid-September. Every blossom perfect, too. Height, 2½ to 3 feet.

SILVER MOON

(B. N., 1942.) This gleaming white Chrysanthemum has a warmth and intensity that is entirely new. Mild, sweet fragrance, attractive, contrasting dark green foliage. A fine lusty 2½ ft. plant producing flowers from September on equal to the finest greenhouse product, yet unusually frost resistant.



← Venus



Something New

MISCELLANEOUS GOOD GARDEN MUMS

Something Old

THE PERFECT BRONZE

BURMA. (B. N., 1944.) In your garden only—as it grows—can you get the true picture of Burma; no illustration can capture its luminous quality or show its perfection of form.

Beautifully modelled blossoms, glistening bronze, with under tones of copper and soft pink, simply cover the shapely, heavily branched, 2 ft. plant by late September. The distinctive rich green foliage acquires its fine texture from the little known species *C. Nipponicum* which we have successfully bred into the Korean Hybrid strain. **Another Bristol First**, incidentally.

3 for \$1.60; \$6.00 per doz.
60 cts. each



OTHER GOOD MUMS

The New De Petris Varieties

This new group of Arcticum Hybrids, originated by Vincent De Petris, famous chrysanthemum hybridist of Detroit, brings new and desirable traits to the Garden Chrysanthemum. They are extremely free and beautiful as cut flowers. These hybrids carry the hardiness of the Arcticum parent. All flower in early October unless otherwise noted.

ARCTIC QUEEN. Very large single blossoms with several rays of distinctive broad petals not unlike the Gerbera in effect. Color, bronze-yellow with salmon shading.

CORAL SEA. Delightfully different in its tumbling masses of coppery tinted salmon-rose blossoms. It is a low, spready, perfectly hardy plant. A gem for bordering or foreground planting. In full flower October 1st.

DUBONNET. Very large single, amaranth pink blossoms. Strong, sturdy plant.

POLLYANNA. Large single blossoms with graceful, recurving, broad petals. Luminous pink with rosy salmon sheen. Quite distinct.

WHITE CLOUD. A profusion of double blossoms. Pure white when fully open. Fine early variety, Sept. 20.

WINSOME. Single. Soft peach-pink. Extremely free.

Three of a kind, \$1.40; 12 for \$5.00
50 cts. each

Spoon Chrysanthemums

JASPER SPOON. Soft yellow, Jasper red.

ORCHID SPOON. Orchid-lilac.

PINK SPOON. Large semi-double, lavender pink.

WHITE SPOON. White, creamy center.

YELLOW SPOON. Brilliant, clear yellow.

3 of a kind, \$1.40; \$5.00 per dozen
50 cts. each

Index of Chrysanthemums Page 15

Shipping Instructions Page 14

A Different Red from Dr. Kraus of the University of Chicago

COURAGEOUS. Well-named is this new frost resisting Mum for it boldly carries its vivid crimson red color right through inclement weather until the season's end. Good sized double flowers. Habit, strong and upright. Early October. 3 ft.

3 for \$1.60; \$6.00 per doz.; 60 cts. each

EUREKA GIANT. (Hurley, 1943.) Here is a new shade of bronze—vivid tawny orange best describes it. Blossoms, medium size, semi-double, are produced abundantly on a remarkably healthy, lusty, hardy 2 ft. plant. Oct. 15.

3 for \$1.40; \$5.00 per doz.; 50 cts. each

MILKY WAY. (B. N., 1940.) Valuable for hardiness, and early blooming. The informal semi-double blossoms more frost resistant than any other white variety! Large branching sprays. Opening flowers soft yellow. Late September. 2½ ft.

3 for \$1.40; \$5.00 per doz.; 50 cts. each

THREE VERY EARLY MUMS

ALGONQUIN. This brilliant yellow is in full flower by mid-September. Remarkably hardy. Fine for New England. Height, 1½-2 ft.

3 for \$1.15; \$4.50 per doz.; 45 cts. each

EARLY WONDER. A new, large pompon in full flower Sept. 20. Soft pink shades blending nicely. Excellent cut-flower. 2½ ft.

3 for \$1.40; 12 for \$5.00; 50 cts. each

ZANTHA. From Dr. Kraus, University of Chicago. The perfect early yellow pompon for cutting. In flower September 5, its brilliant canary yellow blossoms fairly glisten in the Autumn sunshine. A clean, upright growing 2 ft. plant.

3 for \$1.60; \$6.00 per doz.; 60 cts. each

The Hattons

RUTH HATTON. (B. N., 1929.) Free-flowering, medium size. Pure white pompon-like blossoms cover the plant. Height, 2 ft. October 5.

R. MARION HATTON. (B. N., 1931.) Like Ruth Hatton but bright canary yellow. A grand favorite, as is Ruth. Height, 2 ft. October 1.

3 for \$1.15; 12 for \$4.50; 45 cts. each

The Cumming Girls

Introductions of earlier years—still popular and very much worth-while.

BARBARA CUMMING. (B. N., 1928.) Large bronze-yellow, 3 inches across. In full flower early September. Favorite early Mum. Height, 13 in.

JEAN CUMMING. (B. N., 1931.) Not vigorous in habit, but when well grown easily the most perfect pure white. Large, very double. Height, 1½ ft. Mid-September.

RUTH CUMMING. Although introduced in 1920, its popularity persists. It is a reddish bronze with fire. Full double flower; sturdy plant, 2 ft. in height. Early October.

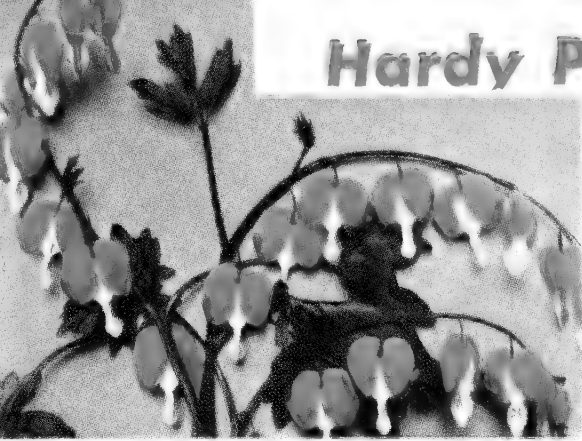
3 for \$1.15; 12 for \$4.50; 45 cts. each



GRANNY SCOVILL. (B. N., 1934.) Largest of all is this big, warm coral bronze; many think too—none so beautiful. The immense flowers, very double, compare favorably with the finest the greenhouse produces. Requires careful winter covering; so good it deserves it. Height, 2 ft. October 10.

3 for \$1.40; \$5.00 per doz.; 50 cts. each

Hardy Perennials . . . Selected Favorites



BLEEDING HEART

Is this grand old favorite in your garden? It should be.

75 cts. each; Extra Heavy, \$1.00 each

The Indispensable BRISTOL FAIRY GYPSOPHILA

This Bristol introduction—conceded the best White Baby's Breath—is just about the most useful Hardy Perennial for cut flower arrangements. There should be at least one in every garden.

2 yr. Roots, 75 cts. each; Extra Heavy, \$1.00 each

All Summer Flowering ANTHEMIS

ANTHEMIS MOONLIGHT. A splendid, easily grown cut flower. Single, 2½-inch daisy-like blossoms on good stems. This is a true soft-yellow form.

3 for \$1.40; \$5.00 per doz.; 50 cts. each

SUMMER FLOWERING SPURGE

EUPHORBIA CORALLATA. Grow this for a follow up for Bristol Fairy. Its 2-ft. branching sprays of dainty white blossoms are excellent for cutting.

3 for \$1.40; \$5.00 per doz.; 50 cts. each

TWO NEAT GEUMS

Fine foreground plants with good foliage. Flowering through summer.

DOLLY NORTH. Glowing orange.

WILTON RUBY. Ruby, scarlet-red.

3 for \$1.40; \$5.00 per doz.; 50 cts. each

DAINTY CORAL BELLS

QUEEN OF HEARTS. In our opinion the best of all the Heucheras. Attractive as a plant, beautiful when the dainty flower covered sprays appear through summer. Coral red. Fine cut flower.

3 for \$1.60; \$6.00 per doz.; 60 cts. each

DICTAMNUS (Gas Plant)

This old favorite in white or pink.

3 for \$1.60; \$6.00 per doz.; 60 cts. each

FINE "SUMMER FLOWERING DAYLILIES"

ANNA BETSCHER. Large luscious golden yellow flowers—3 ft. July. 3 for \$1.40; 50 cts. each.

FLAVA. The early fragrant old fashioned Lemon Lily. 3 for \$1.40; 50 cts. each.

ENCHANTRESS. (B. N., 1939.) Medium-sized blossoms, perfectly formed. Color, soft yellow, deepening to a faint copper-gold, with just a slight flush of tender pink in the throat. Mid-July, August. 4 ft. \$1.00 each; 3 for \$2.75.

We are building up for the coming years a complete line of the good perennials temporarily discontinued due to the lack of skilled labor and the fact that our fields were largely devoted to food crops. Sorry space does not permit a better presentation of the good things offered here.

GEORGE YELD. Rich orange flushed rose; a distinctive and perfectly formed large flower. 3½ ft. July, August. 3 for \$2.00; 75 cts. each.

HYPERION. Most popular of all. Very large, fragrant, soft yellow blossoms. Remarkably free. July, August. 3 feet. 75 cts. each; 3 for \$2.00.

MIKADO. Very large, rich orange blossoms, conspicuously marked with a dark purple-red band in each petal. Vigorous plant. 2½ feet. July, August. 75 cts. each; 3 for \$2.00.

ORANGE FLARE. (B. N., 1941.) A very large, graceful, golden-yellow blossom with a glorious soft, but sparkling, orange sheen. Tremendously strong 4½-foot plant. 3 for \$3.75; \$1.50 each.

SUMMER GOLD. (B. N., 1941.) Brilliant golden yellow, fragrant blossoms of medium size are borne profusely on much branched 5 ft. slender stalks. An improved Ochroleuca. 3 for \$2.75; \$1.00 each.

THE HARDY SUMMER SUNFLOWERS

SUMMER GOLD. Semi-double, daisy-like golden flowers on 2½-3 ft. stems. Thrives under hot summer conditions.

EMINENS. Double yellow. Very fine. 3 for \$1.40; \$5.00 per doz.; 50 cts. each

THE GORGEOUS BUTTERFLY WEED

Big umbels of orange colored flowers. Fine for summer cutting.

3 for \$1.40; \$5.00 per doz.; 50 cts. each

HARDY DOUBLE PYRETHRUMS

From a large group of these fine old favorites, we have selected two of the hardiest.

FLORENCE SHADLEY. Large, double flowers. Beautiful clear pink.

MIAMI QUEEN. Fine rose-pink with crested center.

3 for \$1.60; \$6.00 per doz.; 60 cts. each

DOUBLE SHASTA DAISY

MT. SHASTA. Pure white, very double flowers on good stems. The most dependable kind.

3 for \$1.60; \$6.00 per doz.; 60 cts. each

IRIS CAESAR'S BROTHER

Find space for this Superb Iris. It's a stately, attractive, 2½-ft. plant. Exquisite, deep pansy-violet flowers with the good substance of the less hardy English Iris. Once planted it stays in a solid clump. It's permanent. June flowering. Easily the best of the sturdy Siberian Iris.

Strong Plants, 75 cts. each; 3 for \$2.00

TARRAGON. The True French Strain. Most attractive and useful of the Herbs. Fine for flavoring salads, vinegar, etc.

Strong Clumps, 60 cts. each; 3 for \$1.60

PHLOX—"Five of the Finest"

LILIAN. Soft, cameo pink—delicate but most effective. 2 ft.

LEO SCHLAGETER. Rich carmine crimson. Blends well. 2½ ft.

SALMON GLOW. (B. N., 1932.) Flame pink and salmon. Huge trusses. 2½ ft.

SAN ANTONIO. Striking blood red color which does not fade. 2½ ft.

MARY LOUISE. Purest white. Finest of them all. 2½ ft.

3 of a kind, \$1.40; \$5.00 per doz.; 50 cts. each

SUPERBLY FINE PEONIES

ALBATRE. Huge, perfectly formed pure white flowers, tinted delicate lilac while opening.

FESTIVA MAXIMA. Pure white with delicate crimson markings.

KARL ROSENFELD. The finest deep red Peony. Large, globular flowers.

MONS. JULES ELIE. Beautiful silvery pink. Immense size. Perfect form.

SOLANGE. Waxy white shading to golden brown. Very choice.

Price: \$1.00 each

SUMMER FLOWERING PENTSTEMON

Flowering from June until frost, they produce a succession of Snapdragon-like blossoms very useful for cutting. Semi-hardy, they require careful winter protection but worth the trouble.

GARNET. Rich garnet. 18-inch flowering spikes.

CHERRY GLOW. (Firebird.) Bright cherry red on wiry stems.

3 for \$1.60; \$6.00 per doz.; 60 cts. each

ALL SUMMER FLOWERING LOOSESTRIFE

MORDEN'S PINK. Wonderfully fine for summer color in the garden. Part shade or full sun. Masses of gay rose-pink spikes from June till October. Height, 2-2½ ft.

3 for \$1.60; \$6.00 per doz.; 60 cts. each

THE RUSSELL LUPINES

If your conditions are favorable for Lupines—some are not—then here is the finest strain in existence. Superb colors in mixture only.

3 for \$1.60; \$6.00 per doz.; 60 cts. each

HARDY PRIMROSES

Mrs. Carder's Strain

About the finest strain of this spring flowering favorite available. Nice range of colors.

3 for \$1.40; \$5.00 per doz.; 50 cts. each

PERENNIAL PIN CUSHION FLOWER

SCABIOSA CAUCASICA. The famous Isaac House Strain in lovely shades of light blue and lilac.

3 for \$1.40; \$5.00 per doz.; 50 cts. each

Index of Chrysanthemums Page 15

Shipping Instructions Page 14

Bristol

EVERBLOOMING ROSES

Good Roses are scarce. Since it requires two years to develop a good rose plant, the absence of skilled workers and other production difficulties during the war period are still apparent.

Some of the old favorites are missing but we are fortunate in being able to offer more of the newer roses than ever.

All plants offered are 2-year Eastern-grown; well-furnished with the **fibrous roots** so essential to a good plant.

PEACE

PEACE. (Plant Patent No. 591.) The All-American Selection for 1945 and the most distinctive Rose introduction in many years. The bud, soft golden yellow etched with pink, opens to a magnificently large canary-yellow bloom daintily marked with cream and pink. Strong, upright growing plant with rigid stems and heavy luxurious foliage. A superb exhibition Rose. **\$2.50 each.**



PEACE All-American Selection for 1945



Mirandy

MIRANDY. (Plant Patent No. 632.) Another All-American Selection. Rich, dark, vivid red with black shading. Long-lasting, beautifully formed flowers with a penetrating damask perfume. A fine, vigorous-growing, new Rose. **\$2.00 each.**



Douglas Mac Arthur

DOUGLAS MACARTHUR

(Plant Patent No. 581.) Remarkable freedom features this new Rose; as easily grown as the favorite **Radiance**. Color, pink with gold and salmon tints. Long buds; large blooms. **\$1.50 each.**

CALIFORNIA. (Plant Patent No. 449.) Long pointed buds, enormous flowers 5 to 6 inches across. Color, orange, saffron yellow and pink in a lovely blend. An exceptionally vigorous, free branching plant. **\$1.50 each.**

GRAND DUCHESSE CHARLOTTE. (Patent Pending.) A fine, easy growing, new Rose. Chestnut red in the bud, opening Begonia-rose. Foliage and growth perfect. Long, pointed bud. Large, double, long-lasting, carnation-scented flower. **\$1.50 each.**

MME. MARIE CURIE. (Patent Applied For.) Beautifully formed, clear yellow, deliciously scented blooms carried on good stems. This is a choice rose, particularly valuable for cutting. **\$1.50 each.**

DICKSON'S RED. (Plant Patent No. 376.) Large, perfectly formed, high-centered flower on long stems. Scarlet red in summer, velvety red in cool weather. An exhibition Rose. **\$1.25 each.**

PEARL HARBOR. (Plant Patent No. 637.) A vigorous, free-flowering Rose with almost thornless wood. Color, delicate shell-pink with golden bronze shading. Reverse of petals, tyrian rose. **\$1.50 each.**

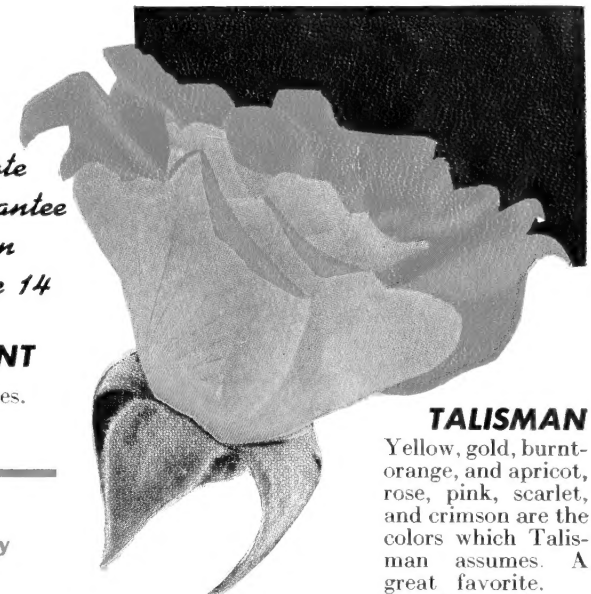


CRIMSON GLORY

CRIMSON GLORY. (Plant Patent No. 105.) Big, beautifully formed velvety crimson flowers, with all the rich fragrance one associates with a red Rose. Equally important, it is a husky, vigorous plant, flowering almost without let-up from June until late October. The Best Crimson Rose. **\$1.50 each.**



ECLIPSE. (Plant Patent No. 172.) A really good yellow Rose. It produces quantities of exquisite, long, shapely, neat buds, just right for a button-hole Rose. Hardier than the average, this fine, golden yellow Rose is also the most prolific. At its best in autumn. **\$1.25 each.**



*Note
Guarantee
on
Page 14*

MRS. PIERRE S. du PONT

Most popular of all yellow roses.
\$1.00 each

TRIOGEN

The Complete Rose Spray
offered on page 14

TALISMAN

Yellow, gold, burnt-orange, and apricot, rose, pink, scarlet, and crimson are the colors which Talisman assumes. A great favorite.
\$1.00 each

FLORIBUNDA ROSES

\$1.25 Each

A. GRILLE. (Plant Patent No. 475.) Lively scarlet crimson, semi-double blooms in clusters all through Summer. It's a vigorous, healthy looking plant.

BETTY PRIOR. (Plant Patent No. 340.) Heavy, branching sprays of single, fragrant blossoms, not unlike the pink dogwood. Outside of petals carmine—inside several shades lighter. Lusty, purple-tinted foliage.

DONALD PRIOR. (Plant Patent No. 377.) Semi-double, bright scarlet, cup-shaped flowers with crimson flush; fragrant. Dark green foliage. Very free.

PINOCCHIO. (Plant Patent No. 484.) This extremely prolific little cluster Rose is a gem. The delightfully fragrant, miniature blossoms coming in a succession of dainty sprays are perfect for cutting. Color, salmon pink flushed with gold. Fruity fragrance.

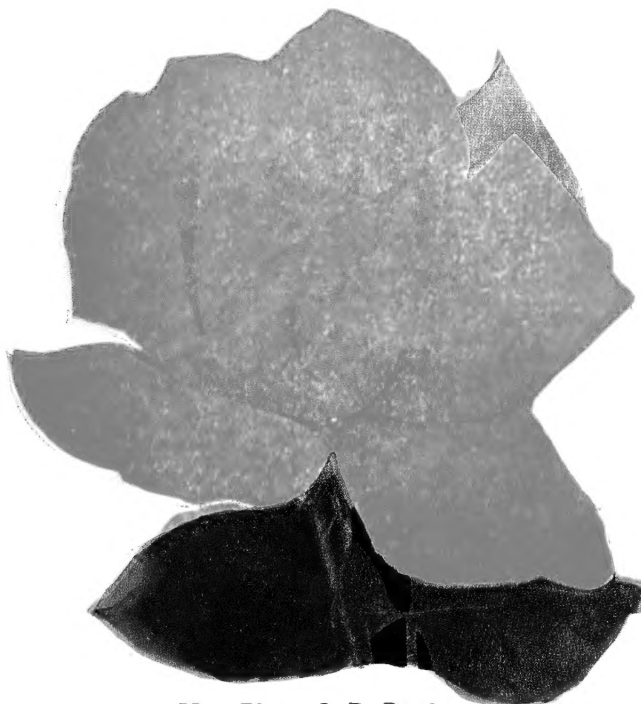
CHOICE CLIMBING ROSES

BLAZE. (Plant Patent No. 10.) The ever-blooming Paul's Scarlet Climber. This new climber has all the fine points of Paul's Scarlet, with the added trait of flowering more or less throughout the season. **\$1.50 each.**

DOUBLOONS. (Plant Patent No. 152.) The hardiest of the new yellow climbing Roses, it will be particularly valuable in New England. Saffron-yellow flowers—cup-formed and of good texture—are carried in sprays, opening one after another. **\$1.50 each.**

NEW DAWN. (Plant Patent No. 1.) A sport from Dr. W. Van Fleet. Identical with it in size and formation of its flowers and color, but it blooms intermittently throughout the summer and fall months. Since it has the hardiness of Dr. W. Van Fleet, we regard it as the first worth-while everblooming climber ever introduced. **\$1.50 each.**

PAUL'S SCARLET CLIMBER. A climber of merit. Vivid scarlet, semi-double flowers. **\$1.00 each**



Mrs. Pierre S. DuPont

GOOD OLD FAVORITES, \$1.00 Each

FRAU KARL DRUSCHKI. Hardest and most satisfactory white Rose. Large, very double.

McGREY'S SCARLET. An outstanding Rose. It is rich, brilliant, velvety scarlet and growth is perfect.

POINSETTIA. A big, beautiful rose with the vivid color of a Scarlet Poinsettia. Splendid for cutting. Good garden rose.



REGALE LILY

This easiest of all lilies to grow is available in fine, American-grown bulbs, which simply indicates that it is still the best lily for American gardens—it's sure to thrive in your garden. Good flowering size bulbs. **3 for \$1.60; 60 cts. each; \$6.00 per doz.**

**ROSE
GUARANTEE**



Production costs on Roses have so far advanced that we must for this season ask purchasers **to share with us** the reasonable risk that is necessarily involved where growing plants are concerned.

We agree to replace all roses which fail to start satisfactorily by mid-July **at one-half the purchase price**, but fully guarantee safe arrival.

If your plants reach you in poor condition due to delay in transit or for any reason, please return promptly at our expense. Your money will be refunded at once.

**SHIPMENT OF
CHRYSANTHEMUMS**

EXPRESS SHIPMENT

Recommended for six or more plants. Safe arrival is guaranteed and the special rate which applies to plants means reasonable transportation. Express shipments not prepaid unless requested.

PARCEL POST SHIPMENT

Recommended for less than 6 Chrysanthemums.
West of the Mississippi: **Add 15 cts. for 1 plant
25 cts. for 3 plants; 50 cts. for 6 plants**
East of the Mississippi: **Add 10 cts. for 1 plant
15 cts. for 3 plants; 30 cts. for 6 plants**

BUSINESS HOURS

NURSERY OPEN FROM 7 A.M. to 5 P.M. DAILY

OFFICE OPEN 8 A.M. to 5 P.M.

**Closed Saturday afternoons and Sunday from
June 15 to September 15; December 1st to April 1st**

Phone: Bristol 3151

**Nursery is located on Route 6 between Bristol
and Terryville**

**Please keep this catalog for reference until the 1947
issue reaches you**

TRI-OGEN

**Combined Spray Treatment
Spray with TRI-OGEN for Healthy Roses
Fungicide - Insecticide - Plant Stimulant
Complete Protection against Plant
Insects and Diseases**

- A. Small Kit (makes 16 quarts) \$ 1.50
- B. Medium Kit (makes 64 quarts) 4.00
- C. Large Kit (makes 32 gallons) 6.00
- D. Estate Kit (makes 128 gallons) 20.00

**Fruit Trees Small Fruits
Shade and Flowering Trees
Flowering Shrubs Evergreens**

***In Good Assortment
Available for Local Use***



PLEASE CALL FOR AND SELECT

WEIGELA

Bristol

RUBY

Plant Patent No. 492

Economical Planting Size

Not as good as our regular grade but they will be **Two-year** plants averaging about 15-18 inches in height, most of which will flower this year.

Plant 2½ feet apart.

12 for \$7.50; 25 or more, 50 cts. each



The Nation's Newest Shrub!

This new Weigela originated and introduced by us has lived up to every claim we have made for it. It is the hardest—the best Weigela for New England. Covered with ruby-red blossoms in June, it continues on flowering at intervals all through the summer. A shapely, lovely shrub, **Bristol Ruby** grows to a height of 7 to 8 feet but can be pruned lower if desired.

PRICE

Flowering size, 1½ to 2 ft.
\$1.00 each; 3 for \$2.90; 12 for \$10.00

Flowering size, 2- 3ft.
\$1.50 each; 3 for \$4.00; 12 for \$14.00

Flowering size, 3-4 ft.
\$2.00 each; 3 for \$5.75; 12 for \$20.00

OUR GUARANTEE . . .

We guarantee safe arrival of all shipments within the United States. Plants that reach you in poor condition or that are not exactly as represented in our catalog may be returned immediately at our expense. We will replace at once or refund your money, whichever you prefer. Complaints must be made within five days of receipt of shipment.

Beyond this, plants are subject to conditions outside of our control. Good culture and care are of first importance. This is the purchaser's responsibility. Nevertheless, we are interested in your complete success and if for any reason any plants received from us do not grow satisfactorily, tell us so, will you?

SCALE OF PRICES FOR EASY FIGURING WHERE QUANTITIES BETWEEN 1 AND 12 ARE ORDERED.

NOTE: THESE REDUCTIONS APPLY TO ANY ONE VARIETY AND DO NOT PERMIT GROUPING OF MORE THAN ONE KIND.

Cost of .	1	2	3	4	5	6	7	8	9	10	11	12	100
\$0.25	\$0.50	\$0.70	\$0.90	\$1.10	\$1.25	\$1.45	\$1.65	\$1.90	\$2.10	\$2.30	\$2.50	\$15.00	
.30	.60	.85	1.05	1.30	1.50	1.75	2.00	2.25	2.50	2.75	3.00	18.00	
.35	.70	1.00	1.25	1.50	1.75	2.05	2.35	2.65	2.95	3.25	3.50	25.00	
.40	.80	1.10	1.45	1.80	2.00	2.35	2.65	2.95	3.25	3.65	4.00	30.00	
.50	1.00	1.40	1.80	2.15	2.50	2.90	3.35	3.75	4.20	4.60	5.00	35.00	
.60	1.20	1.60	2.10	2.60	3.00	3.50	4.00	4.50	5.00	5.50	6.00	42.00	
.75	1.40	2.00	2.60	3.20	3.75	4.35	5.00	5.65	6.25	6.90	7.50	52.50	
1.00	1.90	2.75	3.50	4.25	5.00	5.85	6.65	7.50	8.35	9.15	10.00	70.00	
1.25	2.35	3.00	4.00	5.00	6.00	7.00	8.00	9.00	10.00	11.00	12.00	84.00	
1.50	2.75	3.75	5.00	6.25	7.50	8.75	10.00	11.25	12.50	13.75	15.00	100.00	

Please Note: 25 or more of same variety may be ordered at the 100 rate

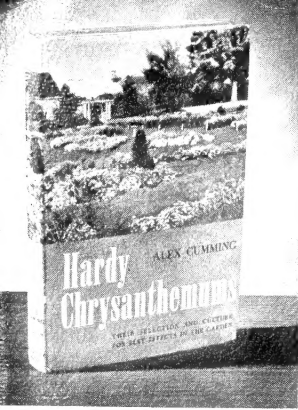
Don't fail to use this convenient scale of prices! It will save you money and time in figuring. It applies not only to chrysanthemums, but to every item offered in our catalog.

COMPLETE PLANTING INSTRUCTIONS FOR CHRYSANTHEMUMS

will be mailed promptly on receipt of your order with order acknowledgment. Read it carefully, please, and have the ground ready before your plants arrive.

INDEX OF CHRYSANTHEMUMS

	Page		Page		Page
Acacia	9	Gleam o' Gold	7	Pink Radiance	2, 4
Agnes Selkirk Clark	9	Goblin	7	Pink Spoon	10
Algonquin	10	Good Morning	9	Pollyanna	10
Amelia	6	Granny Scovill	10	Pomponette	7
Apollo	9	Harbor Lights	7	Pygmy Gold	7
Apricot Glow	4, 5	Irene	7	Queen Cushion	6
Arctic Queen	10	Jasper Spoon	10	R. Marion Hatton	10
Astrid	9	Jean Cumming	10	Red Velvet	2
Autumn Lights	9	Jean Treadway	8	Rembrandt	7
Avalanche	3	Jewel	7	Rockwell	16
Barbara Cumming	10	Joan Helen	8	Rose Glow	8
Bronze Gold	6	Judith Anderson	7	Ruby Pompon	7
Burgundy	3	King Cushion	6	Ruth Cumming	10
Burma	10	King Midas	2	Ruth Hatton	10
Caliph	8	Lavender Lady	3	Saladin	9
Ceres	9	Lavender Lassie	6	September Bronze	6
Chippewa	8	Louise Schling	9	September Cloud	6
Clara Curtis	9	Magnolia	4, 5	September Gold	6
Coral Sea	10	Major Cushion	6	Silver Moon	9
Courageous	10	Mandalay	7	Silver Tips	7
Crimson Splendor	9	Marjorie Mills	6	Supreme Yellow	6
Daphne	9	Milky Way	10	Symphony	8
Dean Kay	6	Mme. Chiang Kai-shek	7	The Moor	8
Dubonnet	10	Mrs. Pierre S. du Pont, III	3	Treasure Trove	7
Early Bronze	7	North Star	9	Venus	9
Early Wonder	10	Orchid Spoon	10	White Cloud	10
Ermalinda	7	Pale Moon	8	White Spoon	10
Eugene A. Wander	8	Pink Lustre	9	Winsome	10
Eureka Giant	10			Yellow Spoon	10
Fireglow	4			Zantha	10
Fred Rockwell	16				



Hardy Chrysanthemums

How to Grow Them
REVISED EDITION

"Hardy Chrysanthemums" by Alex Cumming of the Bristol Nurseries, is the only up-to-date book that offers complete information about Hardy Chrysanthemums.

PRICE: \$2.50 per Copy



CHRYSANTHEMUMS AT BRISTOL NURSERIES From the Front Cover of the Book "HARDY CHRYSANTHEMUMS"

Kodachrome by F. F. Rockwell

Bristol's Brilliant New "Storm King" Pompon

FRED F. ROCKWELL (Patent Applied For)

Briefly, it is the most gorgeous blending of bronze and orange-scarlet tones ever seen in a pompon. Amazingly prolific, the strong, branching, 2-foot plants often carry 75 or more symmetrically perfect flowers to a single spray, several sprays to a plant.

Without a growing fault, the plant is a thing of beauty in its lusty, vigorous appearance. In full flower early October, it is re-

markably frost proof, resisting November storms and retaining its full brilliance long after many others are destroyed.

This dazzling pompon, we believe, is destined to be an all-time favorite—a credit to one of the great names in horticulture and another distinctly worth-while addition to the many notable introductions from Bristol.

PRICE: Three for \$2.75; Twelve for \$10.00; \$1.00 each



Fred F. Rockwell

Editor-in-Chief "The Home Garden." Writer and eminent authority on horticultural subjects and a dyed-in-the-wool dirt gardener.

Concerning the New "FRED ROCKWELL" MUM

For many years now it has been my pleasure to pay an annual visit to the Bristol Nurseries' trial grounds, and to watch the progress of their work in developing better and hardier chrysanthemums. I have enjoyed also the privilege of testing in my own garden many of their most promising seedlings.

Two years ago Mr. Cumming asked me what I considered the best of his many new varieties not yet introduced. There was one which, it seemed to me, "had everything"—vigor, exceptional winter hardiness, nice branching habit, good foliage, good form, profusion of bloom, long flowering season, and my favorite chrysanthemum color, a rich, glowing coppery bronze, enlivened by a touch of gold on the reverse of the incurved center petals.

I am glad to say that many of my friends who know 'mums agree with me as to the merits of this new variety; it stood up particularly well in test gardens last fall. I am very pleased to have it bear my name.

F. F. ROCKWELL