

## **Historic, Archive Document**

Do not assume content reflects current scientific knowledge, policies, or practices.



62.67

19463

# CLARKE'S

(FORMERLY)

## BUSKIRK'S AQUARIUM

INDEPENDENCE,

OHIO



**LIBRARY**  
**RECEIVED**  
 ★ APR 1 1946 ★  
 U S Department of Agriculture

Water Lilies

Aquatic Plants

Gold & Tropical fish

Rare Cacti & Potted Plants

## TO MY HOST OF FRIENDS AND CUSTOMERS

In July of last year, I sold my Waterlily and Fish business, known as Buskirk's Aquarium, to Mr. R. S. Clarke, who has been very helpful to me the past few years. I will stay on and help Mr. Clarke and I am sure that you will have the best of service and merchandise.

Fish and Waterlilies have been my hobby for many years and I still love to work with them, but the time came when I wished to be relieved of the business problems and worries.

I shall still be here to meet and greet you and have more time for growing Lilies and raising Fish.

Sincerely,

A. S. BUSKIRK

## HELLO - TO ALL OUR FRIENDS, OLD AND NEW

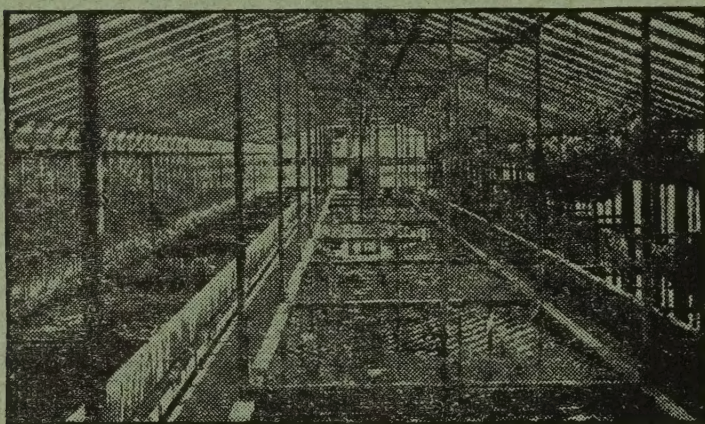
It is my hope that all Mr. Buskirk's friends will also be my friends, and that in the years to come we will have many, many, more.

Every effort will be made to give you the most efficient service and the finest Lilies and Fish that can be produced.

You are cordially invited to visit our greenhouses and see our display tanks.

Yours for Service,

R. S. CLARKE



One of our Greenhouses

## TERMS OF BUSINESS

We guarantee all stock furnished by us to be first class, true to name, all of a size, so as to give immediate results. However, there are causes for failure over which we have no control, and we can assume no responsibility after stock is delivered.

**Cash with Order.** To avoid unnecessary record keeping in our office, we request you to send cash with order.

**Shipping.** Plants should be sent by express rather than parcel post. Fish must be sent by express.

All Lilies and supplies sent P. P. Postage must be paid by the customer.

### FREE

All orders for Waterlilies either Hardy or Tropical, and Shallow Water Plants, selected from this catalogue amounting to \$5.00 or more, and received by us before June 1st, we will give you FREE one Pink Hardy Lily, if you will mention same in your order.

This offer does not apply to any of the Special Collections or on anything else only that mentioned above.



## HARDY WATER LILIES

Blooms of Hardy Waterlilies float on the water, or are carried an inch or two above the surface. These Lilies may be grown in a tub, in a half-barrel, in a pool, or in a pond, as best suits your convenience. They really need only water, sunshine, and a little rich soil for the roots to live in. If in an open pond, which does not freeze clear to the bottom, the roots will live without further care; in pools or tubs, care must be taken to avoid freezing. Boxes containing the roots may be kept slightly moist, in a cellar, or buried in a trench. A pool may be drained and the boxes well covered with leaves, manure, or straw. If water remains in the pool, cover with boards, then use leaves or straw.

The varieties here described have proved satisfactory under all conditions. You can depend on the high quality of the tubers, and on the blooming habits of the plants.

## WHITE WATERLILIES

**Gonnere.** A new variety from the noted French growers, Latour-Marliac. Blooms full double, and plants flower freely. \$2.00 each.

**Marliacea albida.** Pure white with prominent yellow stamens; sepals tinted pink. Blooms all season. \$1 each.

**Tuberosa maxima.** Medium-sized pure white flowers, globe-shaped and very fragrant. Desirable for naturalizing in ponds or large pools. Strong growing. 75 cts. each.

**Tuberosa Richardsoni.** A beautiful white Waterlily which opens up like a snowball and is often called "Snowball Lily." Set the tuber in a box or pot and allow it to become pot-bound, when it will bloom freely. \$2 each.

**Vera Louise.** The largest of the white Waterlilies and is recommended as a show variety. Given plenty of room and good soil it blooms freely. \$2.00 each.

## PINK WATERLILIES

**Lustrous.** A large cup-shaped bloom with a host of rose-pink petals and a great group of yellow stamens at the center; sepals deep pink on the inside and brown beneath. There is a peculiar silvery sheen to the petals, and many people describe the color as "deep peach." \$2.00.

**Morning Glory.** A beautiful *Nymphaea* of our own introduction. The color is a delicate shell-pink, almost white at the petal tips, shading deeper toward the center of the flower; fragrant. \$2.00.

**Pink Opal.** A new deep pink variety which has proven its value. The buds are almost round, opening into a flower with comparatively short petals, and having a distinct value for cutting. \$1.25.

**Rose Arey.** This variety seems to be in bloom all the time, and the dark pink color of the blooms is very effective. The plants make a strong, heavy growth. \$1.50.

**Gloire du Temple-Sur-Lot.** Remarkable and very large, double *Nymphaea* resembling an immense decorative dahlia in form. Opens a beautiful pink that changes gradually to a pure white; stamens yellow; very fragrant. Frequently has over a hundred long, narrow, curled petals. \$2.00.

**Odorata rosea.** The Cape Cod Pond-Lily. Flowers 4 to 5 inches across, beautiful rose-pink, very fragrant, \$1.00.

### RED WATERLILIES

**Attraction.** Well named as it draws the attention of all visitors to our water garden. The blooms are the largest and brightest of all red varieties, and no other red Waterlily blooms more freely. As the blooms mature the color turns to a rich deep red, with garnet-streaked sepals. Stamens rich mahogany, tipped with yellow. Plant is strong growing and needs plenty of room to develop. A superb variety. \$2.50 each.

**Gloriosa.** Highly recommended because of its early and free-flowering habit. The color is a deep carmine-rose, deepening as the season advances. Because of size the variety is adapted to pool culture. \$2.00 each.

**James Brydon.** Rose-crimson. Early blooming and will grow well in either tub or pool. \$3.00 each.

**William Falconer.** The darkest of all red Waterlilies—a rich color that is always attractive. The flowers are a good size, 6 to 7 inches across, and are produced in great numbers after the plants are well established. \$5.00 each.

### YELLOW AND COPPER WATERLILIES

**Comanche.** On opening, the blooms are apricot color, changing to copper-bronze streaked with red as they mature. Possibly the finest of the changeable Waterlilies. \$2.00 each.

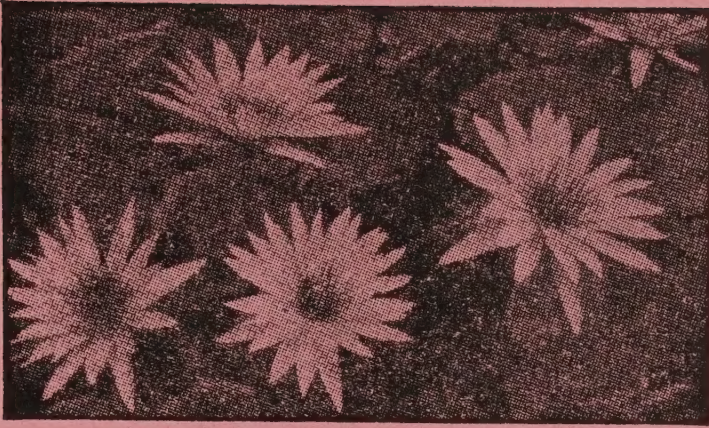
**Marliacea chromatella.** Bright yellow blooms which are from 4 to 6 inches across; the stamens are deep yellow. It is a most satisfactory variety and an extremely popular Waterlily. \$1.50 each.

**Paul Hariot.** May be numbered among the best and most beautiful of the hardy Waterlilies. Petals are clear yellow with a shading of red at the center and at the base. The plants are free and continuous bloomers and give entire satisfaction in a medium-sized pool. \$2.00 each.

**Sunrise.** The name suggests the early opening of the flowers which are clear yellow, 8 to 10 inches across; the curved and crinkled petals surround a group of lemon-yellow stamens. \$2 each; pot-grown plants in bud, \$3 each.

#### NOTICE:

We will have large specimen plants of many varieties of Waterlilies growing in pails or large containers, priced according to size and variety. They can be planted successfully all summer, and will give immediate effect.



## TROPICAL WATERLILIES

Blue, Lavender, Purple, Red, White and Pink

Tropical Waterlilies or Nymphas, have many desirable qualities. Although they are set out late in the season, usually June, they make such remarkable growth that within several weeks, blossoms appear, and continue increasing in size and numbers until heavy frosts destroy the foliage.

**Tropical Waterlilies—Day Blooming 5" Pots.**

### WHITE WATERLILIES

**Janice.** Pure white with a great cluster of stamens. Extra fine. \$2.00 each.

**Mrs. George H. Pring.** Pure white blooms 8 to 10 inches across and extremely fragrant. So good a variety that it was awarded a silver medal when first exhibited at a National Flower Show. \$1.50 each.

### PINK WATERLILIES

**Chicago.** Originated by Mr. August Koch. Vivid pink blooms, very large and produced freely. Foliage dark green marbled with brown. \$2.00 each.

**General Pershing.** Bright pink—one of the best of its color. The blooms open very early in the morning, are from 8 to 10 inches across, and will remain open four or five days. Very fragrant. \$2.00 each.

**Mrs. A. S. Buskirk.** The finest of all pink Waterlilies. Distinct in color and beauty, and noted for the number of blooms. Flowers have 25 or more petals surrounding a mass of yellow stamens. Blooms remain open all day and often into the late evening. Awarded gold medal at Cleveland Flower Show in 1932. \$2.50 each.

**Pink Pearl.** Color rich pink. The large blooms, 9 to 12 inches across, are very beautiful. Free blooming for a plant producing such large flowers. \$2.00 each.

**Zanzibariensis rosea.** Flowers from 6 to 8 inches across and in varying shades of light rose. Blooms very early in the morning. \$2.00 each.

**Golden West.** A new Lily of outstanding beauty. Color peach or apricot. A good strong grower. \$2.50 each.

**Day Blooming Tropicals—Continued**

## BLUE WATERLILIES

**Bluebird.** Blooms a pronounced blue, with yellow stamens, and from 5 to 7 inches across. The flowers are carried well above the water, and in large numbers, points that make it very popular. \$2.50 each.

**Colonel Lindbergh.** Extra-large blooms which in both size and color surpass all other blue varieties. They are carried on long stems well above the water. We consider it an extra-choice Waterlily. \$2.00 each.

**Mrs. Edwards Whitaker.** Flowers possibly the largest of all Day-bloomers; color a lavender-blue when first open, changing to a lighter blue at maturity. Blooms often reach 10 inches in diameter, and open almost with the sunrise and do not close until early evening. \$2.00 each.

**Pennsylvania. (Blue Beauty).** An extremely popular blue day-blooming Waterlily. The flowers are large and carried on long stems, and you may expect blooms from early summer until frost. \$2.00 each.

**Dauben.** The best known viviparous Lily. Produces small blue flowers in great profusion. The small leaf-plants frequently bloom while still attached to parent plant. Fine for tub or aquarium culture. A continuous bloomer. \$1.00 each.

## PURPLE WATERLILIES

**August Koch.** Blue shaded with lilac-purple. A viviparous variety. \$2.00 each.

**Panama-Pacific.** A deep royal purple with yellow stamens. The buds are green-bronze flecked with brown. Blooms freely. Viviparous. \$1.50 each.

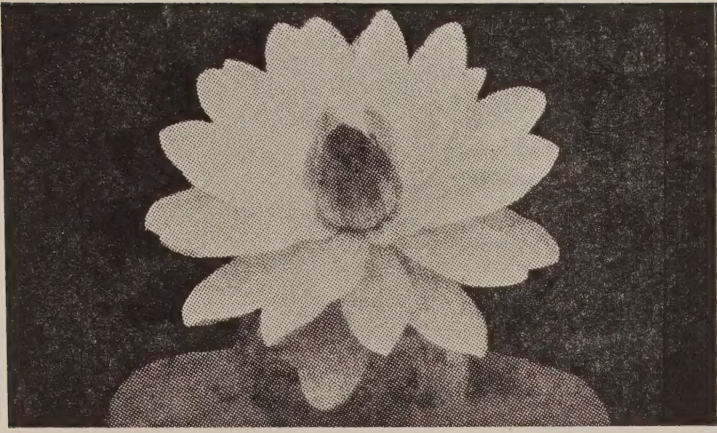
**Royal Purple.** One of our own introductions and the darkest of all purple waterlilies. It is very free flowering, with blooms 6 to 8 inches across, and is sure to attract the attention of all who see it. Viviparous. \$2.00 each.

**MIXED VARIETIES.** There are always some of the Tropical Lilies becoming mixed, which we are not sure of, and we will sell these unnamed. 75 cts. each, \$6.50 for 10.

## SEEDS

We have a limited amount of seed of the Tender Water Lilies, mixed varieties, at 50c per pkt. Also, the Sacred Lotus seed in mixed colors, Pink, White and Yellow, at 50c per pkt.





Missouri

## NIGHT-BLOOMING TROPICALS

The Night-blooming or, more accurately, night-opening Nymphaeas, are derived from very ancient parentage. To the Egyptians, they were known as the Lotus, and from the records remaining to us we may trace the important part they played in the life and religion of this mystic race. Opening at dusk, these flowers are the guardians of the night, not closing again until the sun is high in the heavens; and if the sky be overcast, the vigil continues through the whole day, perhaps, and the following night until the wayward sun returns, or the bloom's allotted span of life (five days) has passed.

### WHITE WATERLILIES

**Lotus dentata.** Blooms pure white, 8 to 10 inches across, and produced freely. The petals open horizontally, giving the bloom a flat appearance. \$1.50 each.

**Missouri.** A superb new Waterlily introduced in 1933 by Mr. George H. Pring. The blooms are snowy white, unsurpassed by any other variety. Its young leaves are a light coppery brown when they first appear but soon develop to a dark green with deeply serrated edges. A supreme beauty, and a variety we highly recommend. \$2.00 each.

### PINK WATERLILIES

**Mrs. George C. Hitchcock.** Originated in the Missouri Botanical Gardens about 6 years ago. Blooms are deep rose-pink, a most attractive color, and are carried well above the water. \$2.00 each.

**Emily Grant Hutchings.** Cup-shaped blooms, amaranth-pink in color. We consider it a desirable night-blooming variety. \$2.00 each.

### RED WATERLILIES

**Frank Trelease.** Dark crimson; stamens are reddish brown. Blooms from 8 to 10 inches across. \$1.50 each.

**Rubra rosea.** Brilliant rosy carmine. \$1.50 each.

**H. C. Haarstick.** A new brilliant red Waterlily. The flowers are large, well formed, and rise from a group of copper-colored leaves. A very satisfactory red variety. \$2 ea.

Buskirk's prepared Gold Fish food for out of door pools. Contains meat and cereals. A balanced food giving the fish a variety in diet. Quart container, 50 cts.



## NELUMBIUMS—THE WATER LOTUSES OF ANCIENT WORSHIP AND LORE

This is the Lily that was revered by the Egyptians. Designs patterned after its flowers are found upon many burial crypts and ceremonial instruments. These picture manuscripts show plainly that the Lily was held to be possessed of mysterious power, or perhaps that it was a symbol of the peace and beauty of human happiness in the life to come.

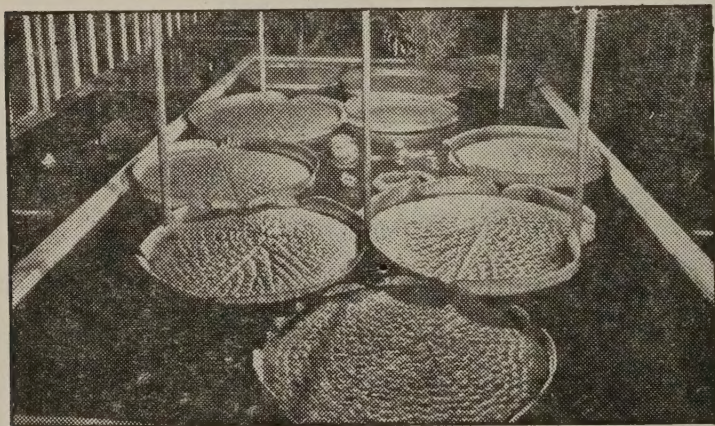
**Album grandiflorum.** The fragrance of the flowers makes this particularly attractive. Its blooms are large and pure white in color. \$1.50 each; potted plants \$2 each.

**Luteum.** Native to some of the states in the South and West, and known as Water Chinquapin or American Lotus. The flowers are rich yellow. Plant seems entirely at home in the East. \$1.50 each; potted plants \$2.00 each.

**Roseum plenum.** The blooms are deep pink, large, and double. \$2.50 each; potted plants \$3 each.

**Shiroman.** The largest of the Nelumbiums. Its flowers are snow-white and decidedly double. The plants require no particular attention and are vigorous growers. \$3.00 each; potted plants \$3.50 each.

**Speciosum.** The Sacred Lotus of the Nile. The rosy pink blooms are large and fragrant. It grows well under almost all conditions. Both flowers and leaves stand well above the water. The plant is hardy in the latitude of Cleveland and northern Ohio. \$1.50 each; potted plants \$2.00 each.



## VICTORIA, THE ROYAL WATERLILY

Absolutely unlike other aquatic plants, these Lilies may be recognized by their large leaves, often more than 6 feet in diameter. The margins are turned up at the edges to a height of 3 to 8 inches giving the leaves the appearance of huge pie-pans. Practically indispensable for water gardens on large estates or in parks. Strong plants, \$7.50 each.



### MARSH OR BOG PLANTS

Butterfly Lily, masses of fragrant white flowers.....	\$	.50
Giant Arrowhead .....	2 for	.50
Common Cat-tail .....	2 for	.25
Graceful Cat-tail, Narrow Leaf.....	2 for	.50
Floating Heart, lily-like leaves, yellow blossom	3 for	.25
Flowering Rush, three sided leaves, Pink flowers	2 for	.50
Forget-me-not, for growing edge of pools.....	3 for	.50
Iris, Yellow Flag .....	.25 ea.; 3 for	.50
Iris, Blue Flag .....		.25
Lizards Tail, hardy bog plant.....	2 for	.50
Lobelia cardinalis, Cardinal flower.....	ea.	.50
Lythrum roseum .....	ea.	.50
Pickereel Rush, Blue flowers .....	.25 ea.; 3 for	.50
Variegated Sweet Flag .....		.25
Water-Canna .....	ea.	.50
Water Plantain .....	2 for	.25
Japanese Taro, Colocasia Violacea, beautiful....	.50 and	1.00
Imperial Taro, Variegated leaves .....	.50 and	1.00
Papyrus, Egyptian Paper .....	.25 each; large	1.00
Parrot Feather .....	2 for	.25
Primrose Creeper, Waxy, green leaves .....	ea.	.25
Primrose Willow, Bright yellow blossoms.....	ea.	.50
Spiral Palm, Large .....	ea.	.25
Umbrella Palm, grows in water or soil, Large .....	ea.	.25
Variegated Umbrella Palm, Green and White.....	ea.	1.00
Four-leaf Water Clover .....	2 for	.25
Purple Water-Hyacinth, creeper .....	35 ea.; 3 for	.75
Water-Poppy, have yellow flowers .....	3 for	.25
Azolla, crinkly, green leaves, Portion .....		.25
Duck-Weed, Portion .....		.25
Salvinia, small, hairy leaves, Portion .....		.25
Water-Fern .....	3 for	.25
Water-Lettuce .....	3 for	.25
Water-Hyacinth .....	3 for	.25
Water-Snowflake .....	ea.	.25

#### Special Collection No. 1

- 1 Red Night — bloomer
- 1 White Hardy (yellow if you prefer)
- 1 Blue Tropical

These Three Waterlilies, our selection of varieties,  
\$3.00

#### Special Collection No. 2

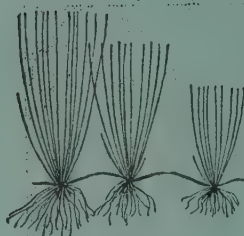
for Tub Garden

- 1 Waterlily (your selection of color)
- 2 Tall Plants for growing out of water
- 3 Floating Plants
- 2 Oxygenating Plants

These Eight Plants for \$2.50.

#### Special Collection No. 3

3 Night-blooming Lilies, 1 Pink, 1 Red, 1 White, our  
selection of varieties, \$2.50.



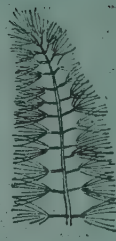
Hair Grass



Anacharis



Cabomba



Myriophyllum

### SUBMERGED OR OXYGENATING PLANTS

The chief value of these plants is to prevent the water in pools and aquariums from becoming green and stagnant, and to provide food and protection for fish.

8 Varieties of oxygenating plants in collection for only \$1.00

- COLLECTION 28A, for either aquarium or small pool; state when ordering what you want it for ..... 1.25
- COLLECTION 29A, enough for medium sizes pool when 5 lilies are used ..... 2.50
- COLLECTION 30A, oxygenating plants for large pool, assorted in many varieties, our selection..... 6.00

### FLOATING PLANTS

- COLLECTION 25A, collection of floating plants made up to 5 varieties, enough for small pool ..... 1.00
- COLLECTION 26A, enough for medium sized pool for ..... 2.00
- COLLECTION 27A, large pool collection, 35 plants ..... 3.00

### SCAVENGERS—To Keep the Pool in Order

#### COLLECTION No. 10

Scavengers for Small Pools

- 6 Tadpoles, with shipping can
- 1 Geographic Turtle
- 12 Snails, 3 varieties
- Total ..... 1.00

#### COLLECTION No. 11

Scavengers for Medium Pool

- 12 Jap Snails
- 1 Dozen Tadpoles
- 6 clams
- 12 Black Ramshorn Snails
- 1 Pair Green Frogs
- 2 Geographic Turtles, with shipping can
- Total ..... 2.50

### JUMBO FROGS

These big fellows, with their melodious voices, are needed to give the real touch of nature to a pool. They take care of themselves, but never harm the fish. A pair will give a lot of pleasure to visitors. A pair of breeding size for only ..... 3.00

Common Green Frogs ..... pair ..... .50

All fish and scavengers must be sent by express

Fancy Fish add to the attractiveness of the water garden. They destroy insect life; soon become tame, even feeding from the fingers.



Telescope Goldfish

## GOLDFISH FOR OUTDOOR POOLS AND PONDS

A pool without fish loses one of its attractive features. Also, fish are needed to destroy larvae of mosquitoes and other insects. Fish require little care, and in a pool will look out for themselves. It is well to feed them Buskirk's Goldfish Food two or three times a week. Over-feeding should be avoided. If fed regularly the fish become quite tame and will come to the hand for food.

### Giant Goldfish

#### BREEDERS, ASSORTED COLORS,

	Each	Dozen
6 to 8 in. ....	\$ .50	\$ 4.00
8 to 10 in. ....	.75	6.00
10 to 12 in. ....	1.50	12.00

### Comet-Tail Goldfish

The body is long and slender and all the fins are elongated. Sometimes its tail grows as long as its body. To the American breeders falls the honor of producing the Comet Goldfish.

	Each	Dozen
ASSORTED or RED, 4 to 6 in. ....	\$ .35	\$ 3.00
BREEDERS, ASSORTED COLORS, or		
RED, 6 to 9 in. ....	1.00	8.00
9 to 12 in. ....	2.00	18.00

### Shubunkin

MOTTLED BLUE, RED or BLACK. 2 to 3 in., 25 cts. each.  
3 to 5 in., 40 cts. each; \$3 per doz.

### Fantail Goldfish

The best known of the fancy fish. They are indeed beautiful. The distinguishing feature is the double tail which is joined at the top.

	Each	Dozen
2 to 3 in. ....	\$ .50	\$ 3.00
BREEDERS, 3 to 5 in. ....	.75	5.00
Small .....		1.50

#### Special Collection No. 4

3 Hardy Lilies, 1 Pink, 1 White, 1 Yellow, our selection of varieties, \$2.25.

#### Special Collection No. 5

3 Beautiful Day-blooming Tropical Lilies, Pink, White, Blue, one tuber of each color, our selection of varieties, \$3.00.

### Calico Fantails

\$1, \$2, and \$5 per pair, according to size.

### Fringetail Goldfish

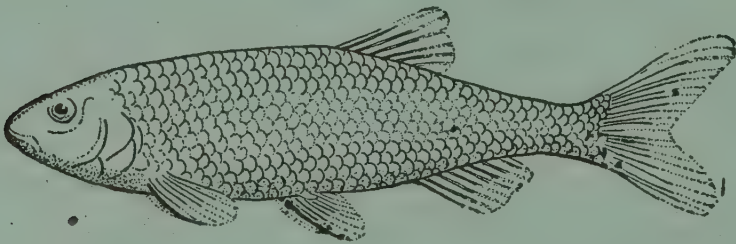
	Each	Dozen
BREEDERS, 2 to 3 in. -----	\$ .75	\$ 6.00
3 to 4 in. -----	1.00	8.00
Extra large (over 6 in.) -----	5.00	

### Telescope Goldfish

RED or BLACK, \$1, \$2, and \$5 per pair, according to size.

### Common Goldfish

	Each	Dozen
BREEDERS, ASSORTED COLORS,		
3 to 4 in. -----	\$ .20	\$ 1.60
4 to 6 in. -----	.25	2.00
6 to 7 in. -----	.40	3.00



### GOLDEN ORF OR GOLDEN TROUT

The outstanding fish for pools. Resembles our Trout only in color which is a rich gold. Grows to length of 18 to 20 inches, swims near surface and makes a beautiful sight, does not roil water like gold fish. Don't fail to stock a few, they are of our own growings and healthy. Should be shipped during April or before real warm weather. Will do well in ordinary pool. We have a nice lot of one year old 2 and 3 inch at \$1.00 per pair, \$5.00 per dozen and \$25 per 100. Two years old, \$3.00 per pair. Breeders, three years old, \$10.00 per pair.

### SUPPLIES

**BUSKIRK'S PREPARED GOLDFISH FOOD.** For Outdoor Pools, contains meat and cereals. A balanced food giving the fish variety in diet. Qt., 50 cts.

**GERMAN FUNGUS CURE.** Removes scum or fungus growth in a few hours. Should be used as an antiseptic before introducing new fish in the aquarium, or on fish after a trip in a shipping can. Pkg., 35 cts.

**AQUARIUM CEMENT.** For constructing or mending aquariums. Full directions on can. Can, 25 cts.

**DIP-NETS.** Goldfish Nets, 6 in., with 2-ft. wood handles, \$1.00 each. Small Cloth Nets, 3 in., 25 cts. each.

**GLASS THERMOMETERS,** 50 cts. each.

**GLASS FEEDING-RING,** 20 cts. each.

**GLASS DIP-TUBES.** To remove sediment from aquarium. 50 cts. each.

**BUSKIRK'S VITAMIN FISH-FOOD.** Scientifically prepared and balanced. Contains elements needed for health and growth of fish—80 per cent meats, 20 per cent cereals and salts. Bottles, 25 and 50 cts. each.

**BUSKIRK'S CHEMICAL AQUARIUM NEUTRALIZERS.**

Retards development of ichthyophthira in tropical aquariums; prevents decaying of snail-shells; neutralizes the ammonia produced by decaying plants. 2 for 25 cts.; \$1 per doz.



**BLOOD MEAL AND BONE**

A good fertilizer for all water plants. Use 1 quart per bushel of good garden soil. 1-qt. carton 50 cts.



You can have and enjoy the rock garden and pool at a very low cost.



**RARE PLANTS FOR TERRARIUM**

Fern Dwarf, (5 varieties) 25c each .....5 for \$1.00

Selaginella, beautiful moss fern, one of best terrarium plants (3 varieties) 50c each .....3 for 1.00

Fittonia Argyroneura, vivid green leaves attractively with pure white in veins. Makes a showy display.

Fittonia Verschaffeti, bronze green leaves attractively variegated with pink veins. Also makes a showy display.

Either variety 50c each .....doz. 5.00

Ivy Dwarf (5 varieties) 25c each .....5 for 1.00

Aglaonema Modestium (Chinese evergreen) .....each .50

EACH

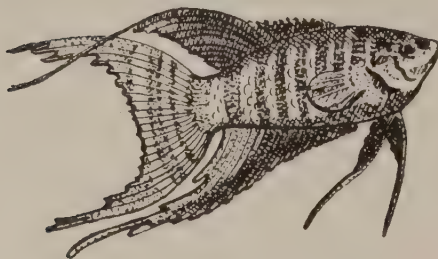
**AFRICAN VIOLETS**, large 4 inch in bloom. Your selection of Blue Boy, Blue Girl, Pink Lady, and White Lady. .... \$1.50  
 Small Plants ..... .50

**BEGONIAS**, large 4 inch in bloom, Red, White, and Pink, your selection. .... .75  
 Small Plants in bloom..... .25

**GREEN PHILODENDRON** ..... .25  
**VARIEGATED PHILODENDRON** ..... .25  
**GREEN PEPEROMIA** ..... .25  
**VARIEGATED PEPEROMIA**..... .25  
**WATERMELON BEGONIA** ..... .25  
**STRAWBERRY BEGONIA**..... .25  
**JADE PLANT (Little Rubber Plant)** ..... .25  
**TRUE RUBBER PLANT (Ficus Elastica)** ..... .75

Cacti, assorted for desert gardens. 15c each .....doz. 1.50

## TROPICAL FISH



### INSTRUCTIONS CONCERNING YOUR ORDERS FOR FISH:

All prices are F. O. B., Independence, Ohio and are shipped via EXPRESS.

All orders for fish must be accompanied by \$1.00 to cover the cost of special cans and packing charges. Large cans must be returned prepaid.

No C. O. D. orders are accepted.

It will be to your advantage to PRINT your name and your COMPLETE address on your order. It insures delivery and avoids many costly mistakes.

### CARE OF YOUR ORDER UPON ARRIVAL:

If fish, it is well to have one or more aquariums ready for the new fish. These should be partly filled with seasoned water (aged water). Taking the fish from the shipping can they should be FLOATED, in jars containing the same water in which they were shipped, in the prepared aquarium. The remaining water in the can should be strained and dumped into the aquarium. When the temperature is the same in both the aquarium and floating jars, the fish may be released into the aquarium. They should be kept in this aquarium several days, away from your other fishes.

A teaspoon of sea salt to each 5 gallons of water makes an effective tonic for the fish if they appear sluggish.

### A WORD OF ADVICE:

We are always ready and willing to draw upon our store of experience, gained through a quarter of a century of serving the aquatic public, to answer your problems. Feel free to call on us at any time and we shall do all in our power to make our advice aid you.

•

### ❖ SPECIAL GUPPYI COLLECTION ❖

25 ASSORTED GUPPYI, PLANTS, SAND, AND  
3 GALLON AQUARIUM. \$5.00



## LIVEBEARERS

	Per Pair
RED PLATYI—The favorite moon. Fine red stock .....	\$ .75
BLACK PLATYI—Of the finest strain, an old favorite .....	.50
BLUE PLATYI—A blue-green variety. Very pleasing .....	.50
GOLD PLATYI—A delicate and pleasing hue of sungold .....	.50
SALT & PEPPER PLATYI—A real old timer in a newer, finer strain, that's the best.....	.75
PLATYI VARIATUS—Red tailed full colored fancier's fish of highest color and breeding	1.00
GOLD HELMET PLATYI—The most striking of all Moons with a perfect helmet of gold .....	.50
GREEN SWORDTAIL—Coming back into favor again, stronger than ever. Good tails	1.00
ORANGE SWORD—Nice sized stock, very pretty .....	1.00
SWORDTAIL—Green and orange, med. pair .....	.50
RED SWORD WITH BLACK DORSAL—One of the newer types that is fast gaining in favor. Very pretty .....	1.50
BLOOD RED SWORD—The highest development in Swordtail species. Unlike the old red, the BLOOD RED appears to be almost a living flame.....	1.50
SWORDTAILS—Blood red and red with black dorsal, med. ....	1.00
BLACK SWORDTAIL—Another very fine development that has a place in every tank. A REAL black Swordtail.....	1.50
FULL GROWN PAIR OF THE ABOVE.....	2.00
LEBISTES RETICULATUS—Often referred to as the "Common" Guppyi. Care and selection however gives you the "Cream of the crop" .....	.40
GOLDEN GUPPYI—Rare beauty and a golden tint gives you one of the finest Guppyi	.50
LACE TAIL GUPPYI—The body colors, of outstanding quality and the tail of a delicate lace pattern. Beautiful .....	.50
BLOND LYRE TAIL GUPPYI — A newer development with a dominate color of golden cream. Exceedingly pretty .....	.50
BLACK TAILED GUPPYI—When courting the female, the large full tail of the male becomes suffused with black .....	.50

	Per Pair
SWORDTAIL GUPPYI—Male with a beautiful long swordtail .....	1.00
SHOW SPEC. OF ABOVE .....	1.00
PARAGON GUPPYI—A perfect lacetail ...	1.00
RAINBOW GUPPYI .....	.20
Small, 6 for .....	.50
MOLLIENISIA SPHENOPS—Black spotted, very nice .....	.50
SHOW PAIR OF ABOVE .....	1.00
LIBERTY MOLLY—One of the most colorful Mollies with the dorsal carrying the patriotic colors .....	.50
SHOW SPEC. OF ABOVE .....	1.00
BLACK SAILFIN MOLLIES—Large sailfin dorsal setting off a beautiful black body....	1.00
SHOW SPEC. OF ABOVE .....	2.00
MIDNIGHT MOLLIES — Born black and stays black, developed to the highest degree	1.00
SHOW SPEC. OF ABOVE .....	1.50
H. FORMOSA—"The Mosquito Fish" and actually the smallest living live-bearer known to aquarists .....	.50
BABY FISH—Assorted varieties, our selection, doz. ....	1.00

## LABYRINTH

	Per Pair
BLUE GOURAMI—An old favorite among the Labyrinths .....	\$ .50
LARGE SPEC. OF ABOVE .....	1.00
DWARF GOURAMI—Very pretty.....	1.00
LEERI — "The Pearl." Its Mosaic pattern makes it the most beautiful Gourami of all	1.00
Large Breeders .....	2.00
PINK KISSING GOURAMI .....	2.00
PARADISE—Still a fish of rare beauty and interest .....	.50
SHOW SPEC. OF ABOVE .....	1.00
WHITE PARADISE—A striking development in the Paradise family, often rare.....	1.00
LARGE BREEDERS .....	2.00
BETTAS — The Siamese Fighting Fish of both red and blue strains. One of the finest strains developed in the U. S. The color and quality of the fish is the finest obtainable. FEMALES .....	.75
MALES .....	1.00
SHOW SPEC. MALES.....	1.50 to 3.00
SMALL, 3 for.....	1.00

## EGG-LAYERS

	Per Pair
AUSTRALIAN RAINBOW .....	\$1.00
ACARA PORTALEGRENSIS — One of the better known Chosen Cichlids that is much more peaceful than most .....	1.00
LARGE BREEDERS .....	2.00
HEMICHROMIS BIMACULATUS — It is commonly called the jewel and at breeding time, its appearance is just that.....	2.00
MEDIUM .....	1.00
CICHLASOM CONGO—Another very beautiful Cichlid .....	2.00
MEDIUM .....	1.00
CICHLASOMA MEEKI—Fire mouth Cichlid	2.00
SCALARE—The Angel Fish, the most popular of all egg layers. Truly one of the most beautiful .....	1.50
MEDIUM SIZE .....	2.00
LARGE SIZE .....	3.50
ROSY BARB — A delightful fish for any aquarium, medium 50c, large.....	1.00
BARBUS SUMATRANUS — A rarer and more colorful Barb that is indeed a beauty	1.00
STRIPED BARB—(Semifasc.) An excellent community fish .....	.50
BARBUS OLIGOLEPIS—The checker-board Barb and a real beauty.....	1.00
BARBUS TITEYA—The “Cherry” Barb, an old favorite .....	1.50
BLACK RUBY BARB — (Nigro.) A real show fish with a wealth of beautiful colors. Med. \$1.00, large.....	2.00
ZEBRA DANIO—The life of any aquarium. Appear best in schools of four or more .....	.50
Medium .....	.25
PEARL DANIO—Med. 50c pr., large.....	.75
GOLDEN DANIO—Med. 50c pr., large.....	.75
TETRA VON RIO—One of the prettiest of the smaller Tetras.....	50c and 1.00
TETRA BUENOS AIRES—A larger Tetra, colorful and flashy .....	.75
SILVER TETRA—A metallic silver covers the entire sides of this active fish.....	.50
BLACK TETRA—With a black and silver marked body and fins and a practically invisible tail, this fish has taken the Hobby. Med. 75c; large .....	1.00
NEON TETRA—Easily the most colorful fish on the face of the earth. It actually glitters like a neon tube.....	4.00
ROSEACUS — Known as the Black Flag Tetra, this outstanding fish is one of the best .....	3.00

	<b>Pair</b>
BLOODFINS—Med. \$1.00 pr., large.....	1.50
HEAD & TAILIGHT—An outstanding marking identifies this community tank fish .....	1.00
PRISTELLA RIDDLEI — One of the few aquarium fish marked in WHITE.....	1.00
WHITE CLOUD-MOUNTAIN FISH—one of the newer importations from far off China. A rival of the Neon. Med. \$1.00 pr., large	1.50

## SCAVENGERS

One of the most important factors in successful aquarium keeping is having scavengers of the right type and of the right quantity. Too often this fact is neglected and more and more fish are added to an aquarium with no thought given to the extra requirements in keeping the aquarium balanced.

The types of scavengers listed below are the finest obtainable and all are good healthy stock.

When you order fish, give thought also to the house cleaning needs of your aquariums.

	<b>Per Pair</b>
CORYDORAS—A small armoured Catfish which is a perfect scavenger and will not bother the tiniest fish or rile the aquarium water (EACH) .....	\$1.50
C. LEOPARDUS—Of the same Catfish family but very prettily marked with leopard spots (EACH) .....	
BLACK RAMSHORN SNAILS .....	.05
6 for .....	.25
	<b>Each</b>
RED RAMSHORN SNAILS .....	.10
4 for .....	.25
TRUMPET SNAILS .....	.10
4 for .....	.25
JAPANESE SNAILS .....	.10
3 for .....	.25
NURSEMAID SNAILS .....	.20
RED TRUMPET SNAILS .....	.10
3 for .....	.25
FRESH WATER CLAMS.....	.15
2 for .....	.25
TADPOLES .....	.05
6 for .....	.25
AMERICAN NEWTS .....	.25
TURTLES .....	.25

## AQUARIUMS

Width	Length	Height	Gallons	Price
6½	x 12	x 6½	2	\$1.75
6½	x 16	x 8½	3	2.50
7½	x 18	x 10½	6	4.00
8½	x 20	x 12½	8	5.00
10½	x 22	x 12½	10	6.00

Packing charge 50c on first 3 sizes.  
\$1.00 on 8 and 10 gal.





## ACCESSORIES

Heater, not submergible.....	1.50
HEATER, submergible, 25 to 100 watts.....	2.50
THERMOSTAT .....	4.00
THERMOSTAT & HEATER.....	8.00
THERMOMETER—Floating, tested .....	.50
THERMOMETER—Not tested .....	.35
AIR PUMP—Jenson .....	
AIR PUMP TUBING, per foot.....	.10
NET—3 inches .....	.15
NET—4 inches .....	.25
DIP TUBE—12 inches.....	.40
DIP TUBE—16 inches.....	.60
WORM FEEDERS—With cork .....	.15
FEEDING RINGS—Small 15c, large.....	.25
AQUARIUM CEMENT .....	.25
AQUARIUM SAND—(White) 10 lb. ....	.25
(Brown) 10 lb. ....	.50
FUNGUS CURE .....	.35
WATER NEUTRALIZER .....	.10
RELEASE STONES .....	.35

## PLANTS

Aquatic plants form one of the important stages of the complete cycle of a balanced aquarium. They are needed to help supply oxygen to the fish and take up some of the waste matter that is given off by the fishes. Buskirk's aquatic plants are all carefully propagated by skilled aquarists and give you the highest in quality, growth and satisfaction.

	Per Bunch
CABOMBA .....	\$ .15
ANACHARIS .....	.15
LUDWIGIA .....	.15
LYSIMACHIA .....	.10
PARROTS FEATHER .....	.15
ELODEA (Floating) Portion .....	.50
DWARF SAGITTARIA—Per Doz. ....	.50
SINENSIS SAGITTARIA—Each .....	.10
NATANS SAGITTARIA—Per Doz.....	.50
VALLISNERIA—Per Doz. ....	.25
CORKSCREW VALLISNERIA—Per Doz. ....	.35

## FOOD

A quarter of a century of research and study by our firm with dozens of different kinds of foods and tonics has led to the development of a BALANCED food, containing all the necessary elements necessary for the health and growth of your fish. Cereals, salts and meats, blended together in just the right quantities to assure you the finest for your fish. Prepared and shipped in clean glass bottles in two sizes.

REGULAR SIZE .....	\$ .25
“SAVINGS” SIZE .....	.50
SALMON EGGS FOR BABY FISH.....	.50
TURTLE FOOD .....	.15
GOLD FISH FOOD, quart .....	.50

*We do not guarantee live delivery on fish.*

# Special Collections

VICTORY TRIO - RED, WHITE, AND BLUE LILIES. ONE OF EACH.....\$3.00

MOONLIGHT DUET - WHITE AND CERISE BEAUTIFUL NIGHT BLOOMING LILIES...\$3.00

OUR HARDY SPECIAL  
ONE OF EACH, WHITE, PINK AND  
YELLOW.....\$2.50



TROPICAL TRIO  
PANAMA PACIFIC, BLUE  
BEAUTY, MRS. PRING  
\$4.50

MARLIAC TRIO - THE WELL KNOWN  
MARLIAC WHITE, YELLOW, AND PINK  
\$3.50

THE MOONLIGHT AND SUNLIGHT COLLECTION  
WHITE, PINK, RED, BLUE, YELLOW, PURPLE, AND LAVENDER  
A SUPERB ASSORTMENT OF THE BEST DAY AND NIGHT  
BLOOMING LILIES.....SPECIAL \$15.00