

## **Historic, Archive Document**

Do not assume content reflects current scientific knowledge, policies, or practices.





62.19

LIBRARY  
RECEIVED  
★ JAN 17 1947 ★  
Department of Agriculture

FALL 1946 LIST

of  
CHOICE DEPENDABLE  
*Iris*

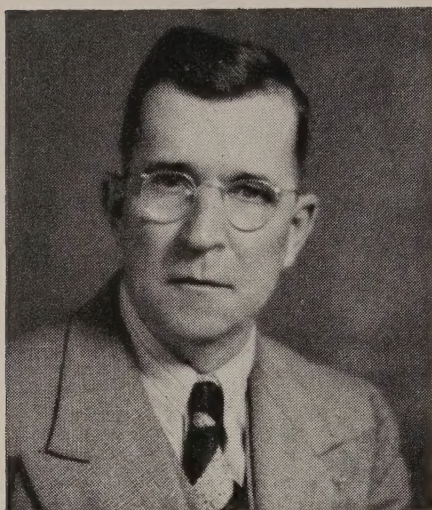


Grown By  
J. A. FORD  
FORD'S GARDENS  
ELLENWOOD, GEORGIA  
ELLENWOOD ROAD  
Formerly "BOULDER CREST ROAD"  
at DeKalb and Henry Co. Line

MEMBER  
*American Iris Society*



# GREETINGS 1946



*THAT'S ME*

## FOREWORD

Here is Iris time again. To our old customers, we thank you for your orders in the past. Many of you who order rhizomes every year, and make it possible for us to issue this list and go forward. Growing and hybridizing fine Iris and Gladiolus is my hobby and is self supporting. My vocation is mechanical engineering. But all of my spare time is spent in the Iris and Glad fields, trying out new varieties and methods of growing them better. Doing a little hybridizing and playing with our new creations.

Occasionally we find a seedling that is outstanding. Only the best of these are given a rigid test for several years before giving them a name and introducing them to the public. Many of our visitors admire some of our seedlings more than the older named varieties. They must be good before we give them a name, as there are too many poor named varieties on the market already.

Each year we try out several of the new named varieties introduced by others and only a few of them come up to our expectations. If they are not good we do not offer them to you.

We have over 300 named varieties in our gardens. Every plant offered in this list is grown here on our 73-acre farm on the Ellenwood Road, 14 miles southeast of the center of Atlanta, and we guarantee every one to be strong, healthy rhizomes and true to name. In our list we have tried to describe each one in a very few words as truthfully as we know how, leaving out a lot of big words that are meaningless, and we don't have a big catalog full of beautiful colored pictures which are very often misleading.

From the many reports of our customers we believe our Iris rhizomes are equal to those of any grower anywhere. A trial will convince you. Good Iris is still scarce. Many growers have increased their prices.

As stocks of our newer ones have increased we have reduced the prices to where every Iris lover can afford them. Best time to plant Iris is in the fall. We plant Iris from September 1st to December 1st with very good results.



In the North it might be better to plant before October 15th.

Wishing you much pleasure and satisfaction with your Iris the coming season we are

Sincerely yours,  
J. A. FORD  
Gladiolus and Iris  
grower and hybridizer

OUR OWN ORIGINATIONS

1946 ELLENWOOD. Parentage Trails End crossed with Black Wings. Early mid season 30" high. Medium purple with white veining and solid deep purple in center of falls. Prolific bloomer, admired by everyone who saw it. Many visitors who saw it suggested that we name it "Purple Heart," but owing to a conflict in names we called it Ellenwood. Pretty difficult to find a name for a new Iris when there are already ten thousand named varieties in circulation. We have a fine stock of this unusual Iris and are introducing it at the unusual low price .....\$1.50

1945 Georgia Gold, introduced last year as Dixie Gold but owing to another Iris having that name we were forced to change the name of ours. Parentage, Southland crossed with Golden Hind. Georgia Gold habits much like its pollen parent but a more profuse and more dependable bloomer. Intermediate size. Early deep yellow. Admired by all our visitors ..... 1.50

In 1947 we will introduce 3 new ones. "Etta Bell," a seedling from Wabash. "Queen Ett," a seedling from Shiningwaters, and "Thanksgiving," a new giant Fall bloomer. I know you will like all of them.

LILIES

"Harrisi," known to some as the Bermuda Easter Lily, but it is an improved long trumpet pure white lily. Will bloom for Easter when grown under glass but perfectly hardy out doors, 6 to 15 blooms 6" long on one stalk. Large bulbs sure to bloom in spring after planted in fall, each .....\$.50

Jumbo bulbs will produce 2 or more stalks, each ..... .75

Regal Lilies, queen of the garden, large white trumpet flowers having pink ribs on outside and golden yellow throat, 12 to 25 blooms on one stalk 48" high, very fragrant and very hardy. Large bulbs, each ..... .50



## LIST OF STANDARD AND NEWER VARIETIES

Alta California, light yellow 48".....	\$ .25
Ambassador, S. bronze F. maroon.....	.25
Ambera, pale yellow, self, very early.....	.25
Anitra, a new silvery sky blue, from "Sass."	
Very large .....	.40
Anne Marie Cayeux, dark opal, odd.....	.35
Balmung, new yellow plicata, very large, with heavy brown hemstitching .....	2.50
Beotie, elephant gray, 48" .....	.40
Black Wings, deep blue black, extra fine...	.25
Blue and Gold, medium blue, heavy golden beard, 44", profuse bloomer .....	.25
Blue Banner, light blue, outstanding.....	.25
Blue Gown, large, tall, deep blue .....	.35
Blue Triumph, soft blue, large flowers, heavy substance .....	.25
Buechley's Giant, med. blue bi-color, extra large .....	.25
California Gold, tall deep golden yellow, a beauty .....	.35
Cheerio, S. tan, F. velvety red, extra fine..	.25
China Maid, color almost indescribable. Pink, golden copper and lilac. Award of Merit, A.I.S., 1939. Every year a sell- out. Very tall and large .....	1.00
Christabel, new brilliant red, given A.M....	.75
Claribel, S. white frilled blue, F. white, best plicata .....	.40
Conquisitor, S. lavender, F. violet, 44"....	.25
Copper Lustre, copper and gold, Dykes Medal, '39 .....	.50
Crown Jewel, color of talisman rose, gor- geous .....	.25
Crystal Beauty, crystal white, tall .....	.25
Cyrus The Great, best early dark blue, 42"	.25
Dark Knight, mahogany red almost black, large, 48" .....	.35
Depute Nomblot, claret red flushed golden	.25
Desert Dawn, rich yellow and lavender blend .....	.25
Desert Gold, soft yellow, fragrant early ..	.25
Destiny, S. deep purple, F. velvety black purple .....	.50
Don Juan, large garnet-toned red blend ...	.25
Dorothy Dietz, white standards, violet falls, seed parent of Wabash .....	.25
Doxa, olive tints, very early .....	.25
Dubrovnik, a new brilliant rose and golden copper blend. Honorable Mention, A.I.S., 1940 .....	1.00
Dymia Large, self purple, almost black....	.25
E. B. Williamson, new chestnut red .....	.75
Eclador, large frilled, yellow .....	.25
El Capitan, violet lavender, large .....	.25
Eros, salmon pink, tall and fine .....	.35
Ethelwin Dubar, very large, deep pink ....	.25
Far West, new salmon, coral and henna blend, H.M., A.I.S. ....	.50
Frieda Mohr, large lavender pink blend...	.25



Garden Magic, very large and late velvety red, slow propagator. Every year a sell-out .....	1.50
Gilead, golden toned bronze, self, 42" .....	.40
Golden Flare, orange, apricot and sunlight .....	.25
Golden Hind, yellow tinted orange .....	.75
Grace Mohr, lilac, silver overcast, veined violet, a Wm. Mohr seedling .....	.75
Grace Sturdevant, rich red brown, fragrant, 36" .....	.25
Grace Wayman, S. lavender violet, F. pansy violet, white throat .....	.25
Grand Canyon, new blend of plum, copper and gold ruffled. Award of Merit, A.I.S., 1944. Scarce .....	2.50
Great Lakes, new clear light blue, large. Dykes Medal, 1942. Another sell-out. . .	2.00
Gudrun, very large, pure white .....	.25
Guyasuta, deep violet blue, almost black. .	.25
Happy Days, large, fine yellow, Dykes Medal .....	.30
Hypatia, intense pure blue, self .....	.25
Indian Chief, brilliant red toned, outstanding, 40" .....	.25
Ivory Coast, tall cream with green gold veinings. A rare beauty .....	.50
Jean Cayeux, coffee brown, Dykes Medal. .	.35
King Juba, variegata, old gold and dahlia carmine .....	.25
King Tut, reddish brown .....	.25
K. V. Ayres, soft lavender gray, huge flower .....	.50
Lady Paramount, soft yellow, large, early .....	.25
Lord of June, large, lavender blue .....	.25
Los Angeles, a plicata white hemstitched blue, A.M. 1945 .....	.25
Louvois, new chocolate brown falls, lighter border and standards, A French introduction .....	1.00
Lucrezia Bori, very tall yellow, beautiful form and much ruffled .....	.50
Mabel Taft, rich blue bi-color .....	.25
M. A. Porter, deep violet, self, large and vigorous .....	.25
Marquita, ivory yellow with mahogany veinings, French introduction. Very fine	1.00
Mary Geddes, yellow salmon .....	.25
May Day, new apricot salmon blend overlaid golden copper .....	.75
Meldoric, colossal blue black, 40" .....	.50
Midgard, yellow and pink blend .....	.25
Mohrson, a Wm. Mohr seedling similar to its parent, but larger, and darker. . . .	.75
Monadnock, huge flowers of bright rosy red .....	1.00
Mrs. Valerie West, bronze red, fragrant, 36" .....	.25
Nanook, cream color, amber edges, orange veining .....	.25
Naranja, pure orange yellow and bronze. .	.50
Nordic, S. golden tan, F. red violet, white throat, striking .....	.35
Noweta, frilled soft pink and yellow blend	.25



Numa Roumestan, dark strawberry red, late	.30
Omaha, coppery pink and orange blend..	.25
Orloff, new yellow plicata with brown hemstitch. We dropped Siegfried for this one. A beauty .....	.75
Ormohr, a Wm. Mohr seedling, very large, pale lilac, veined violet .....	1.00
Paulette, light blue bi-color, very large....	.40
Peaches, peach apricot blend .....	.25
Persia, blue and buff, very unusual .....	.35
Picador, fragrant variegata, S. honey gold, F. dahlia carmine. A must have .....	.35
Pieute, new popular red .....	.50
Pink Satin, true pink, self, tall and fine...	.25
Pres Pilkington, buff, blue and lavender...	.25
Ramesus, symphony of rose, pink and buff.	.25
Roseland, rose pink and buff .....	1.00
Rosey Wings, pink and copper, '38 Dykes Medal .....	.50
Royal Coach, bright yellow plicata .....	.75
Rubeo, best large red, new .....	.25
Sable, tall black violet, new, Award of Merit, A.I.S. Very brilliant .....	2.00
Sacramento, unusual white hemstitched red purple .....	.25
Santa Barbara, large lavender blue, self, 40" .....	.25
San Francisco, white plicata edged blue, a beauty .....	.25
Seduction, ivory white, stitched and polka dotted lavender, dainty plicata, large flowers .....	1.00
Selene (Moon Goddess), large silvery white frilled .....	.25
Shining Waters, most beautiful light blue, fragrant .....	.50
Sierra Blue, beautiful clear enamel blue, with lacquer-like finish. Dykes Medal	.35
Sir Launcelot, chestnut red and golden yellow marked throat .....	.50
Sir Michael, dark blue toned heliotrope and purple .....	.25
Sitka, very early, huge white, fragrant, 48"	.50
Snow King, new large white by sass. Awarded A.M. ....*	.50
Souv. Gaudichau, deep violet .....	.25
Souv. Michaud, lovely light blue .....	.25
Spokan, bright red brown blend, 36" .....	.50
Suntan, S. rich gold, F. deep brown .....	.30
Thuratus, new dark purple, self, a beauty	.50
Tiffany, soft yellow with hemstitching, rosy brown .....	.60
Trails End, beautiful blend yellow, orange and red .....	.25
Treasure Island, olive yellow, golden beard, new .....	.75
Ukiah, tall deep velvety brown, extra fine	.40
Valor, deep blue bi-color, outstanding, 50"	.35
Venus de Milo, fine new white, 42" .....	.25
Vishnu, light pinkish cinnamon, maroon veining .....	.25



Wabash, S. white, F. blue, white border, Dykes Medal, '40. See picture on front of this list .....	.75
War Eagle, S. red purple, F. dark red purple, nearly black .....	.35
Wedgewood, light blue, profuse bloomer...	.25
Winneshiek, new best blue black Iris, very large .....	.30
W. R. Dykes, early, large yellow, parent of the new yellows .....	.50
Zaharoon, fawn and rose .....	.25
Zua, early, creamy white, flower crinkled	.25

### TERMS OF SALE

All stock is guaranteed to be true to name and of the highest quality, free from disease and insect pests. That is about all we can do at this end of the line. Therefore we cannot be held responsible for your failure to make them grow. That depends on your ability as a gardener.

Cash with order, either check or P. O. money order. No C.O.D. shipments. Orders for \$2.00 or more will be shipped postpaid. Orders for less please add 25 cents to help pay postage and packing.

We will not substitute unless you give us permission. Our stock is very limited, therefore please mention possible substitutes.

Shipments will begin about August 15 and will continue as long as we have orders to fill. Orders are filled in rotation. First come, first served. Early orders get the pick of rhizomes.

We are always very liberal with our free extras. Mention your favorite color so we can send you something you will enjoy.

You are invited to visit our garden and see for yourself the many fine Iris we have collected. Blooming season is the first week of March to first part of June. That is the time to make your selections. Garden Clubs are especially welcome.

If you are pleased with your order and treatment, tell others. If you are not pleased tell us so that we may have a chance to make it right. Our customers must be pleased.

Don't judge an Iris by its price. Many of the older ones are perfect jewels for the garden, for instance Frieda Mohr, Depute Nomblot, Dorothy Dietz, Cheerio, and others.

### EXTRA SPECIAL

With every order in the amount of \$5.00 or more we will include one rhizome of either Ellenwood or Georgia Gold, your choice. With every order in the amount of \$10.00 or more we will include one rhizome of each of these two fine Iris gratis.

There is no express office at Ellenwood. All orders shipped from Atlanta.



## STANDARD FALL BLOOMERS

These Iris bloom in the spring and in the fall they bloom again. Some of them bloom till the frost catches them. Many fall bloomers are on the market, but this list includes only the best, and most of the reliable ones.

**AUTUMN DAWN.** 28 in. Very fragrant. Ruffled soft pink and soft yellow blend. Each 25c.

**AUTUMN ELF.** 18 in. Cream and soft lilac. Deeper veins in throat. Each 25c.

**AUTUMN HAZE.** 30 in. Fragrant. One of the largest of this class. S. light lavender. F. violet shading to manganese. Each 25c.

**BLACK MAGIC.** 28 in. The most profuse of the fall bloomers. Color intense blue violet with a velvety luster and black sheen. Fragrant. Each 35c.

**ELEANOR ROOSEVELT.** 26 in. A profuse bloomer, twice a year. Color similar to Black Magic, but a few shades lighter. Each 25c.

**GOLDEN HARVEST.** 18 in. A fine free flowering deep yellow with red and gold veins in the throat. Reliable. Each 30c.

**JEAN SIRET.** 15 in. A new yellow ever bloomer. Sold once at \$10.00 a plant. Each 25c.

**LIEUT. CHAVAGNAC.** 15 in. Brilliant violet colored variety. Very free bloomer. Goes well with Jean Siret. Each 25c.

**OCTOBER BLAZE.** New near red. A valuable addition to the fall blooming class. Each 35c.

**SANGREAL.** 28 in. An extra fine new deep yellow with orange beard. Each 25c.

**SOUTHLAND.** 24 in. A sensational new intense yellow, fine form and heavy substance. One of the best yellows. Profuse bloomer. Each 25c.

**ULTRA.** 18 in. A new break in blues. Ultra marine blue, profuse bloomer. Each 50c.

**WHITE AUTUMN KING.** New silvery white, profuse bloomer in spring and fall. Each 35c.

**SPECIAL OFFER:** One each any 12 of above varieties separately labeled for only \$2.00. A \$3.00 value.

**SIBERIAN IRIS.** "Perry's Blue." The most popular of this class of Iris. Very profuse bloomer. We are selling this variety in clumps. Each clump will give you 6 to 8 strong plants. Should be planted in groups or borders for best effect. Price per clump, only \$1.25.

