

Historic, Archive Document

Do not assume content reflects current scientific knowledge, policies, or practices.



1946
FALL - - 1946



Imported and Domestic
Tulips
Daffodils
Hyacinths
Crocus
Dutch Iris
Grass Seed
Fertilizers

From
The Garden Store
107-109 East Third Street
Dayton 2, Ohio

*Prices subject to unsold stocks
and market changes.*

FOREWORD

It is with great pleasure that we present to you herewith our 1946 offerings of the finest imported and domestic grown bulbs. Never before have we offered so complete a list as presented to you herewith.

All the Tulips, Hyacinths, Crocus and other small bulbs are imported by us direct from the best Holland growers. All our Daffodils and other Narcissi are Oregon grown. Those of you who had the pleasure of viewing our Spring Daffodil Show in April can attest to the quality of blooms these fine bulbs can be expected to produce.

All varieties offered have been selected with utmost care, and descriptions are carefully checked for accuracy. A number of new and unusual varieties are offered herewith, and we hope you will try some of these.

*TERMS OF SALE

All bulb and grass seed orders amounting to \$2.00 or more will be delivered at prices quoted to any point within the 3rd postal zone from Dayton. Please bear this in mind when comparing prices. Bulbs will not be shipped C. O. D. Please send your check or money order with all mail orders. We sell 6 or more bulbs *of a variety* at the dozen rate: 50 or more *of a variety* at the 100 rate.

GUARANTEE

We guarantee all bulbs we sell to be true to variety name, and in healthy condition when delivered to the customer. All complaints concerning quality or condition of bulbs, to be considered, must be filed within 5 days after receipt of merchandise. In no case will The Garden Store be responsible for more than the original purchase price of the bulbs.

*MAIL ORDERS will have our prompt and careful attention. If out of the variety ordered, we will substitute a similar variety if available, unless you indicate on your order not to do so.

The Garden Store is run on the idea that gardeners want reliability, above all else, in their seedsmen.

Our merchandise and our selling methods are governed by that one big idea.

The good gardeners of the Dayton area know this, and they may be sure that we'll never let them down!

If you're not already acquainted with our complete "one-stop" service, we invite you to try it out.

THE GARDEN STORE

107-109 East Third Street

Dayton, Ohio

TULIPS—Holland Grown

Note: Letters in () following variety indicate type as follows: (S.E.) Single Early; (D.E.) Double Early; (Br.) Breeder; (M.F.) May Flowering or Cottage; (P.) Parrot; (T.) Triumph; (D.) Darwin; (L.F.) Lily-flowering. Figures following variety indicate approximate average height in inches. 6 or more of a kind take the dozen rate; 50 or more of a kind take the 100 rate.

- AFTERGLOW** (D.), 28"—Violet-rose, edged apricot-orange. Ea. 11c; doz. \$1.10; 100 \$8.50.
- ALL BRIGHT** (D.), 22"—Fine bright red, sport of Bartigon. Ea. 11c; doz. \$1.10; 100 \$8.50.
- AVIATEUR** (T.), 18"—Carmine red, edged white. Ea. 11c; doz. \$1.10; 100 \$8.50.
- BACCHUS** (Br.), 26"—Very large flower, deep purple. Ea. 11c; doz. \$1.10; 100 \$8.50.
- BARTIGON** (D.), 24"—Crimson red with white base. Ea. 11c; doz. \$1.10; 100 \$8.50.
- BLUE PARROT** (P.), 24"—Bluish heliotrope, very large. Ea. 25c; doz. \$2.50.
- CHERBOURG** (Br.), 30"—Golden yellow, tinged bronze. Ea. 11c; doz. \$1.10; 100 \$8.50.
- CITY OF HAARLEM** (D.), 28"—Large vermillion-red, blue base. Ea. 11c; doz. \$1.10; 100 \$8.50.
- CLARA BUTT** (D.), 24"—Lovely clear salmon pink. Ea. 11c; doz. \$1.10; 100 \$8.50.
- COULEUR CARDINAL** (S.E.), 13"—Deep glowing scarlet, shaded plum. Ea. 14c; doz. \$1.40; 100 \$10.75.
- DENBOLA** (T.), 16"—Deep red, creamy white edging. Ea. 11c; doz. \$1.10; 100 \$8.50.
- DILLENBURG** (Br.), 26"—Bright orange, edged apricot. Ea. 11c; doz. \$1.10; 100 \$8.50.
- DREAM** (D.), 28"—Clear, soft lilac. Ea. 11c; doz. \$1.10; 100 \$8.50.
- ECLIPSE** (D.), 26"—Large crimson-maroon. Ea. 11c; doz. \$1.10; 100 \$8.50.
- FANTASY** (P.), 22"—Large salmon pink, apple-green markings. Ea. 12c; doz. \$1.20; 100 \$9.50.
- FARNCOMBE SANDERS** (D.), 28"—Vivid rose-red, white base. Ea. 11c; doz. \$1.10; 100 \$8.50.
- GENERAL DE WET** (S.E.), 13"—Large deep orange; good forcer. Ea. 14c; doz. \$1.40; 100 \$10.75.
- INDIAN CHIEF** (Br.), 32"—Large mahogany red, flushed violet. Ea. 11c; doz. \$1.10; 100 \$8.50.
- INGLESCOMBE YELLOW** (D.), 22"—Medium size, canary yellow. Ea. 11c; doz. \$1.10; 100 \$8.50.
- KEIZERSKROON** (S.E.), 14"—Deep red, edged in yellow. Ea. 14c; doz. \$1.40; 100 \$10.75.
- LA TULIPE NOIRE** (D.), 26"—The "Black Tulip"; deepest purple. Ea. 11c; doz. \$1.10; 100 \$8.50.
- LOUIS XIV** (Br.), 30"—Striking dark purple, flushed orange. Ea. 11c; doz. \$1.10; 100 \$8.50.
- MR. VAN DER HOFF** (D.E.), 10"—Very double; pure yellow. Ea. 14c; doz. \$1.40; 100 \$10.75.
- MRS. MOON** (L.F.), 24"—Golden yellow, gracefully pointed petals. Ea. 11c; doz. \$1.10; 100 \$8.50.
- ORANGE NASSAU** (D.E.), 10"—Fully double, deep orange red. Ea. doz. \$1.40; 100 \$10.75.
- PEACH BLOSSOM** (D.E.), 10"—Fully double, bright rose pink. Ea. 14c; doz. \$1.40; 100 \$10.75.
- PICOTEE** (L.F.), 24"—Graceful white flower; pink picotee edging. Ea. 11c; doz. \$1.10; 100 \$8.50.
- PINK BEAUTY** (S.E.), 12"—Deep rose-red with white striping. Ea. 14c; doz. \$1.40; 100 \$10.75.

- PRIDE OF HAARLEM** (D.), 28"—Bright rosy-carmine; blue base. Ea. 11c; doz. \$1.10; 100 \$8.50.
- PRINCESS ELIZABETH** (D.), 26"—Bright pink, edged silvery-rose. Ea. 11c; doz. \$1.10; 100 \$8.50.
- ROSABELLA** (M.F.), 24"—Soft rose, with lighter edging. Ea. 11c; doz. \$1.10; 100 \$8.50.
- ROSE COPELAND** (D.), 24"—Lilac-rose; beautiful large flower. Ea. 11c; doz. \$1.10; 100 \$8.50.
- SIRENE** (L.F.), 20"—Cerise-pink, gracefully pointed petals. Ea. 11c; doz. \$1.10; 100 \$8.50.
- SNOWBALL** (D.E.), 10"—Snow white, double blooms. Ea. 14c; doz. \$1.40; 100 \$10.75.
- SUNBURST** (S.E.), 12"—Large yellow, flushed red. Ea. 14c; doz. \$1.40; 100 \$10.75.
- TANTALUS** (Br.), 28"—Large yellow, flushed lilac. Ea. 11c; doz. \$1.10; 100 \$8.50.
- TELESCOPIUM** (T.), 22"—Large beautiful violet-red. Ea. 11c doz. \$1.10; 100 \$8.50.
- THE BISHOP** (D.), 28"—Large clear violet-purple. Ea. 11c; doz. \$1.10; 100 \$8.50.
- THERESE** (P.), 24"—Flaming carmine-red; giant size. Ea. 25c; doz. \$2.50.
- VUURBAAK** (D.E.), 10"—Brilliant scarlet; fully double. Ea. 14c; doz. \$1.40; 100 \$10.75.
- WHITE HAWK** (S.E.), 12"—Globular shaped, pure white. Ea. 14c; doz. \$1.40; 100 \$10.75.
- WILLIAM COPELAND** (D.), 24"—Deep lavender; lovely flower. Ea. 11c; doz. \$1.10; 100 \$8.50.
- YELLOW GIANT** (D.), 30"—A rich, deep golden yellow. Ea. 11c; doz. \$1.10; 100 \$8.50.
- ZIMMERMAN** (T.), 20"—Delicate pink; lighter base. Ea. 11c; doz. \$1.10; 100 \$8.50.
- ZWANENBURG** (D.), 26"—Large pure white. Ea. 11c; doz. \$1.10; 100 \$8.50.

MIXTURE of DARWINS

A superb mixture of nice large bulbs, selected for variety and harmonious blending of colors. Contains many varieties not listed above. Excellent for either mass bedding or for cutting. Doz. 85c; 100 \$6.75.

MIXTURE of PARROT TULIPS

A splendid mixture of these richly-colored and fantastically shaped flowers. They are a great attraction in the garden and make fine cut flower subjects. Doz. \$1.10; 100 \$8.50.

BOTANICALS & REMBRANDTS

- CLUSIANA** (Botanical) 9"—Cherry red and creamy white. Ea. 18c; doz. \$1.80.
- EICHLERI** (Botanical) 9"—Scarlet, shaded orange; black center. Ea. 12c; doz. \$1.20.
- KAUFMANNIANA** (Botanical) 10"—Creamy white, tinged red. Ea. 12c; doz. \$1.20.
- RED EMPEROR** (Botanical) 18"—New early brilliant red; largest of all. Ea. 25c; doz. \$2.50.
- REMBRANDTS, MIXED** 16"—Colorfully striped and feathered. Ea. 14c; doz. \$1.40; 100 \$10.75.

The proper depth of planting various bulbs depends to a considerable extent on the nature of the planting soil. In soils inclined to be heavy, shallower planting is usually advisable compared with planting in loose, porous soils. Also slightly deeper planting in the more rigorous climates is advisable. Keep these points in mind when consulting any bulb planting chart.

NARCISSUS (Daffodils)

They make a permanent addition to the garden, and thrive in most any ordinary garden soil. They do not object to partial shade. We offer an unusually complete assortment of types this year. All are large No. 1 round bulbs and Oregon grown. 6 or more of a kind take the dozen rate; 50 or more of a kind take the 100 rate.



Fine
Bulbs

- ACTAEA** (Poeticus)—Largest of its type. White perianth, large eye, margined red. Ea. 14c; doz. \$1.40; 100 \$10.50.
- BEERSHEBA** (Wh. Trumpet)—Large perianth, long trumpet, flanged at mouth. A magnificent flower. Ea. \$1.00; doz. \$10.00.
- CHEERFULNESS** (Double Poetaz)—Creamy perianth, double center of white and yellow; very fragrant. Ea. 14c; doz. \$1.40; 100 \$10.50.
- CROESUS** (Incomparabilis)—Light canary perianth; broad fluted cup, rich orange. Ea. 14c; doz. \$1.40; 100 \$10.50.
- DIANA KASNER** (Barri)—Perianth creamy yellow; fluted yellow cup with red frill. Ea. 12c; doz. \$1.20; 100 \$9.00.
- DICK WELLBAND** (Incomparabilis)—Strong grower, free-flowering. White perianth with flame-orange cup. Ea. 60c; doz. \$6.00.
- DUBLOON** (Double)—Long primrose petals interspersed with shorter ones of canary yellow. Ea. 14c; doz. \$1.40; 100 \$10.50.
- EMPEROR** (Yel. Trumpet)—Primrose perianth, deeper yellow trumpet. A proven variety. Ea. 14c; doz. \$1.40; 100 \$10.50.
- FIRETAIL** (Barri)—Creamy perianth, large orange cup, edged red. Ea. 20c; doz. \$2.00; 100 \$15.00.
- HER GRACE** (Leedsii)—Silvery white perianth, long sulphur-yellow cup, frilled. Ea. 85c; doz. \$8.50.
- INGLESCOMBE** (Double)—Exquisite flower; clear lemon yellow over all. Ea. 14c; doz. \$1.40; 100 \$10.50.
- IRENE COPELAND** (Double)—Large snow-white flowers with primrose markings. Ea. 50c; doz. \$5.50.
- JOHN EVELYN** (Incomparabilis)—Large white perianth, wide lemon-yellow cup. D deservedly popular. Ea. 20c; doz. \$2.00; 100 \$15.00.
- JONQUILLA FLORE PLENO** (Jonquil Hybrid)—The old fashioned rich, double sweet jonquil. Ea. 14c; doz. \$1.40; 100 \$10.50.
- KING ALFRED** (Yel. Trumpet)—The most popular of all large yellow trumpets. Ea. 14c; doz. \$1.40; 100 \$10.50.
Jumbo Size Bulbs—Ea. 25c; doz. \$2.50; 100 \$18.75.
- KLONDYKE** (Poetaz)—One of the finest yellow cluster-flowered type narcissus. Very fragrant and hardy. Ea. 12c; doz. \$1.20; 100 \$9.00.
- LAURENS KOSTER** (Poetaz)—Free-flowering; creamy white perianth with lemon-yellow cup. Ea. 12c; doz. \$1.20; 100 \$9.00.
- MRS. E. H. KRELAGE** (Wh. Trumpet)—Large waxy white flower of good form. Ea. 30c; doz. \$3.00; 100 \$22.00.
- MRS. NETTE O'MELVENY** (Leedsii)—Pure white perianth; cup clear lemon-yellow with orange picotee. Splendid foliage; a delightful flower in every way. Ea. 14c; doz. \$1.40; 100 \$10.50.
- MRS. R. O. BACKHOUSE** (Leedsii)—The famous "pink daffodil". Perianth waxy white; slim long trumpet of apricot and shell-pink, deeply fringed. Each 60c; doz. \$6.00.
- OLYMPIA** (Yel. Trumpet)—One of the largest of the all-yellow trumpets. Free-flowering and hardy. Ea. 20c; doz. \$2.00; 100 \$15.00.
- ORANGE QUEEN** (Jonquil Hybrid)—Striking variety, 2 and 3 flowers on a stem. Color, intense golden orange; delightfully fragrant. Ea. 12c; doz. \$1.20; 100 \$9.00.

RECURVUS (Poeticus)—White perianth with orange-red eye. Very fragrant. Ea. 10c; doz. 95c; 100 \$7.00.

SIR WATKIN (Incomparabilis)—Sulphur-yellow perianth; yellow cup, tinged orange. Ea. 14c; doz. \$1.40; 100 \$10.50.

SPRING GLORY (Bi-color trumpet)—An old favorite with white perianth and pure yellow trumpet. Ea. 20c; doz. \$2.00; 100 \$15.00.

TWINK (Double)—A promising variety, the petals alternating a soft primrose and clear orange. Splendid show flower. Ea. 20c; doz. \$2.00; 100 \$15.00.

VAN SION (Double)—Medium-sized double pure yellow trumpet. Ea. 14c; doz. \$1.40; 100 \$10.50.

YELLOW POPPY (Incomparabilis)—Primrose-yellow perianth, with bright yellow cup, edged orange. Fine for naturalizing. Ea. 14c; doz. \$1.40; 100 \$10.50.

CHOICE MIXED DAFFODILS

Made up of many varieties and types. Fine for naturalizing and large scale plantings. All are blooming-size bulbs. Doz. 95c; 100 \$7.00.

PAPER WHITE NARCISSUS

The easiest and quickest of bulbous flowers to bloom indoors. Start a new bowl full every couple weeks and enjoy their fragrance and beauty all winter. Blooms appear in from 6 to 8 weeks. Large bulbs. Pkg. of 3 for 20c; Doz. 70c.

COLORED PEBBLES—For use in bulb bowls, fish bowls and for decoration. 2 lb. Pkg. 19c; 10 lbs. 75c.

HYACINTHS (Holland Grown)

All our Hyacinth Bulbs are the large 18-19 ctm. size. Bulbs of this size will produce blooms of maximum size. Hyacinths are delightfully fragrant, and suitable for either outdoor growing or pot culture.

CITY OF HAARLEM—Pure yellow

GRAND MAITRE—Lavender-blue

KING OF THE BLUES—Dark blue

LADY DERBY—Rose-pink

LA VICTOIRE—Carmine-rose

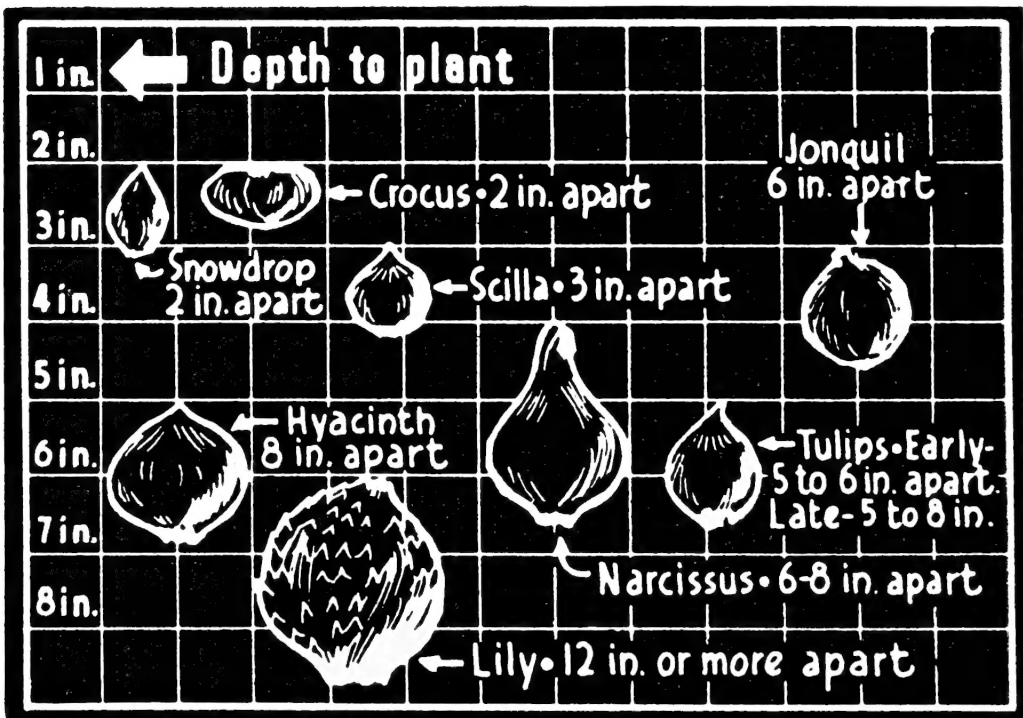
L'INNOCENCE—Pure white

QUEEN OF THE BLUES—Azure-blue

Each 25c
Doz. \$2.50
100 \$19.00

HYACINTH GLASSES

Available again! We have been successful in obtaining a limited number of these special glasses for growing hyacinths in the home. An excellent gift item for flower lovers, especially if accompanied by the hyacinth bulbs. Colors: Amber, light blue, and crystal. Each 39c.



HERALDS OF SPRING

CHIONODOXA (Glory-of-the-Snow)—Charming little star-shaped flowers, borne in clusters. Sky-blue in color, with lighter centers. Doz. 65c 100 \$5.00.

CROCUS—This is one of the better known of the early blooming "Heralds of Spring". Fine for either 'drift' or group plantings in the lawn, or for clumps in the border or rock garden. Cheery, bright colors. (Order by color.) Light blue, dark blue, yellow, white, striped or mixed colors. Doz. 50c; 100 \$3.75.

ERANTHIS (Winter Aconite)—Bright little yellow flowers; the first to open in the Spring. Doz. 30c; 100 \$2.25.

FRITILLARIA MELEAGRIS—Pretty little bell-shaped flowers in a variety of contrasting colors. Most of the blooms are striped or checkered. Doz. 40c; 100 \$3.00.

GALANTHUS (Snowdrops)—Little snowy-white bells, announcing the arrival of Spring. Doz. 70c; 100 \$5.25.

GRAPE HYACINTHS (Muscari)—Charming little spring-blooming flowers, appearing like a cluster of tiny grapes. Perfectly hardy. Order by color. Dark blue, light blue and white. Doz. 50c; 100 \$3.75.

SCILLA CAMPANULATA—Lovely bell-shaped flowers, borne on 12 inch spikes, appearing in early May. Do not object to partial shade. White, blue or pink. Doz. 65c; 100 \$5.00.

SCILLA SIBIRICA—A perfect little gem, with flowers of deepest blue. Doz. 65c; 100 \$5.00.

MADONNA LILY (*Lilium Candidum*)

Loveliest of all white lilies. Large flowers, delightfully fragrant, opening in June. Each 50c; doz. \$5.00.

DUTCH IRIS (Oregon-grown)

These lovely bulbous iris bloom in early June and are among the prettiest of spring flowers for either cutting or garden decoration. Being orchid-like in form, they make attractive corsages. Varieties, Imperator (Dark Blue), Blue Horizon (Light Blue), Yellow Queen and White Excelsior. Each 10c; doz. \$1.00.

WEDGEWOOD IRIS

A large hybrid Dutch Iris blooming much earlier than the above varieties, having huge flowers of lovely azure-blue with a golden spot in center. Blooms with the lilacs and tulips. Each 10c; doz. \$1.00.

PEONIES

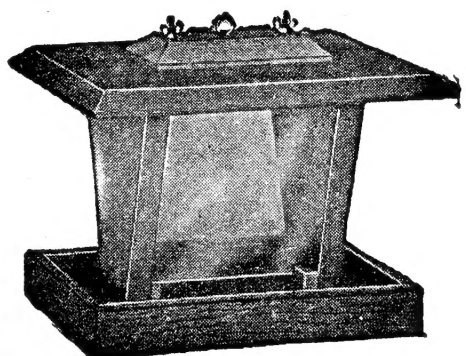
(Available Only On Order)

All roots furnished in good quality 3 to 5-eye divisions, freshly dug on receipt of your order. Minimum order, \$2.00. Best planting time—the month of September. Eyes should be covered two inches deep.

| | |
|---|--------|
| | Each |
| BARONESS SCHROEDER —Flesh white..... | \$1.00 |
| CHERRY HILL —Deep garnet; early..... | 1.00 |
| DAVID HARUM —Bright Red..... | 1.50 |
| KARL ROSENFELD —Dark crimson..... | 1.00 |
| MARIE CROUSSE —Fine shell-pink..... | 1.00 |
| PRIMVERE —Sulphur-yellow..... | 1.50 |
| RICHARD CARVEL —Brilliant crimson..... | 1.00 |
| UMBELLATA ROSEA —Early pink..... | 1.00 |
| WALTER FAXON —Salmon-rose..... | 1.50 |

BIRD FEEDERS

A couple of our bird feeders will add beauty and interest to any garden. They provide an excellent opportunity to study your bird companions. Ideal for the enjoyment of shut-ins, and a real form of companionship to any person fond of our feathered friends. The model illustrated (No. 755) sells for \$2.25. Other styles available from 65c up.



YOUR LAWN

**For a drought-resisting lawn next summer
FEED and SEED it NOW**

This is best done early in the Fall. September 1st is not too early, and all seeding should be finished if at all possible, by October 1st. If this is done, and the soil is not allowed to dry out until the grass plants are well started, you are assured of a good green lawn before cold weather. For best results, use either our SUNNY GLEN or SUN-SHADE DIAMOND listed below.



Sunny Glen Lawn Mixture

A properly proportioned blend of the finest lawn grasses, with Kentucky Blue grass predominating. Years of satisfactory performance proves its adaptability to local soil and climatic conditions. Available either with or without White Dutch Clover. Lb. 95c; 10 lbs. \$9.00; 25 lbs. \$22.00; 100 lbs. \$86.00.

Sun-Shade Diamond Mixture

A companion mixture to the above, compounded for use on those more shaded areas. Blends well with other grass mixtures. Contains Kentucky Blue Grass, Bent Grass, Chewings Fescue and Red Top Grass. Lb. \$1.20; 10 lbs. \$11.50; 25 lbs. \$28.00; 100 lbs. \$110.00.

Terrace Turf Mixture

For those unsightly bare-backed hillsides and terraces where the usual lawn grasses refuse to grow. Lb. 90c; 10 lbs. \$8.50; 25 lbs. \$20.75; 100 lbs. \$81.00.

Dayton Special Mixture

For use where lower cost of materials is more important than extreme fineness of turf. A serviceable mixture of good quality, re-cleaned and tested seeds. Lb. 65c; 10 lbs. \$6.00; 25 lbs. \$14.50; 100 lbs. \$56.00.

SPECIAL PURPOSE GRASSES

| | Lb. | 10-lbs. | 25-lbs. | 100-lbs. |
|----------------------------|--------|---------|---------|----------|
| Kentucky Blue Grass..... | \$1.25 | \$12.00 | \$29.00 | \$114.00 |
| Canada Blue Grass..... | 1.25 | 12.00 | 29.00 | 114.00 |
| Astoria Bent Grass..... | 1.60 | 15.00 | 36.50 | 140.00 |
| White Dutch Clover..... | 1.50 | 14.00 | 34.00 | 130.00 |
| N. Z. Chewings Fescue..... | 1.20 | 11.00 | 26.00 | 100.00 |
| Poa Trivialis | 1.20 | 11.00 | 26.00 | 100.00 |
| Red Top Grass..... | .40 | 3.50 | 8.00 | 29.00 |
| Rye Grass, Domestic..... | .30 | 2.50 | 5.50 | 19.00 |
| Rye Grass, Perennial..... | .40 | 3.50 | 8.00 | 30.00 |



Have Every Feature You Want
in a Garden Glove

**All-Leather—DIRT PROOF—Durable
SOFT — Comfortable — WASHABLE**

Easy on the hands and easy to wear!

Economical, too—outwear 6 pairs of ordinary fabric gloves, are washable and can be used the year round for garden, housework, yard, painting, furnace, garage, etc. You'll like them.

Sizes 7, 8, 9 and 10. Per Pair 95c.



FALL-FED LAWNS THRIVE

AGRICO FOR LAWNS, TREES and SHRUBS

The complete balanced plant food for vigorous lawn growth. Now back to the proven pre-war formula, 6-10-4. Figure 3 lbs. for each 100 sq. ft. of lawn area. 5 lbs. 45c; 10 lbs. 85c; 25 lbs. \$1.50; 50 lbs. \$2.50; 100 lbs. \$4.00.

AGRICO FOR GARDENS

Best for use on flowers and vegetables. Price: same as the lawn grade.

VIGORO

The square meal for all plants. Contains all the known elements and minerals that plants require for normal growth. The best known name in plant foods is VIGORO. 5 lbs. 45c; 10 lbs. 85c; 25 lbs. \$1.50; 50 lbs. \$2.50; 100 lbs. \$4.00.

MILORGANITE

A fortified organic fertilizer containing 6% available Nitrogen. Use Milorganite on your lawn without any danger of burning. You can fertilize and seed safely—the same day. 25 lbs. \$1.10; 50 lbs. \$1.90; 100 lbs. \$3.30.

HYPONEX PLANT FOOD



Hyponex is a clean, odorless, soluble powder which, with water, is a complete plant food. It grows bigger and better plants in poorest soil, even in sand, cinders or water—indoors or outdoors. Assures larger and more flowers, increased quantities of vegetables, and more prolific growth for grass, plants, bushes and trees. 1 lb. makes 100 gallons; 1 oz. makes 6 gallons; 1 teaspoon makes 1 gallon.

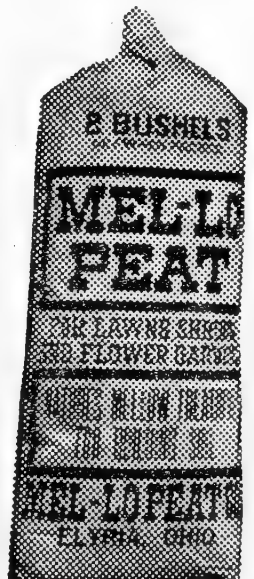
1 oz. 10c; 3 oz. can 25c; 7 oz. can 50c; lb. \$1.00; 10 lbs. \$8.00

PEAT MOSS

The same high quality imported peat we have handled for years. Vacuum cleaned to remove excessive dust and dirt. New convenient size carton \$1.95 each. Special bale \$2.75.

Mel-lo Peat

A pure weedless, odorless sedge peat, milled and fluffed by a special process ready for use. Unexcelled for preparing seed beds, conditioning soils, mulching and as a covering for grass seed. It contains 96% organic humus and about 2% nitrogen. Try a bag—you'll like its fine feathery texture. Per 2-bu. bag \$1.35.



TREE SAVER BANDS

A DDT PREPARATION ON A STEEL WOOL BAND



The Tree Saver Band is a simplified method of protecting your valuable trees against the ravages of insect pests such as the deadly Canker Worm, Gypsy Brown-tail Moth, Tussock Moth, Caterpillars and other tree pests. It is prepared of a sticky substance impregnated with DDT. Just wrap the band around the tree, tuck in the edges and Tree Saver does the rest. Application should be made in early September through November, and again in early March through June.

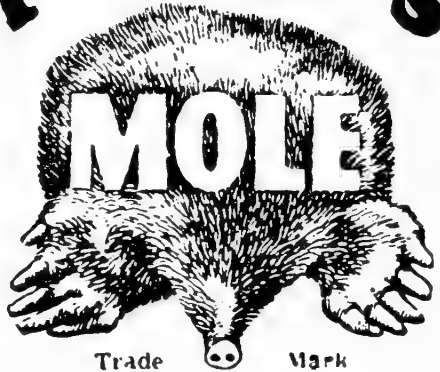
Four Convenient Sizes

- | | |
|--|------------|
| 2 ft. (for trees up to 7 1/2" diameter) | Ea. \$.50 |
| 3 1/2 ft. (for trees up to 13" diameter) | Ea. .75 |
| 5 ft. (for trees up to 19" diameter) | Ea. 1.00 |
| 8 ft. (for trees up to 31" diameter) | Ea. 1.25 |

MOLITE

A definite improvement in "gas" type rodent destroyers. Produces a greater volume of gas of higher killing power. Non-inflammable, non-explosive. 2 for 25c; Doz. \$1.35.

FORCE'S

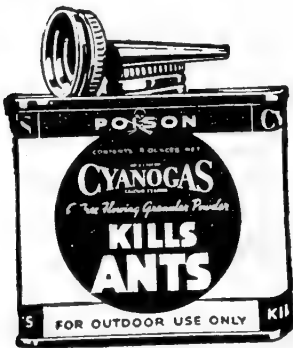


KILLER

IN PELLET FORM

Positively Kills Moles. Money back guarantee. Compounded from the moles natural food Used successfully for 30 years

Small Can 50c; Large Size \$1.00



CYANO GAS "A"—For destruction of ants, and ground moles, rats and other rodents. 4 oz. size 30c; lb. 75c; 5 lbs. \$3.00.

RATS COMMIT SUICIDE

Now rid your premises of rats and mice quickly, safely and without fuss or muss. Saf-Kil Rat Bait made with Red Squill is safest poison known. Large 6-oz. pkg. only

SAF-KIL **59c**
READY MIXED RAT BAIT



AEROSOL Insect-O-Blitz

(Contains 3% DDT—2% Pyrethrum)

Exactly as formulated and used by the U. S. armed forces. Government approved ingredients and potency are guaranteed in INSECT-O-BLITZ. Manufactured under government licenses and patents of the U. S. Dept. of Agriculture, you are certain of getting the original and genuine Aerosol DDT formula when you buy Aerosol Insect-O-Blitz. Kills Flies, Moths, Ants, Mosquitoes, Silverfish, Lice, Bedbugs, Fleas, Roaches, Spiders and other similar insects. Each dispenser contains sufficient insecticide to spray an average 5-room house 40 times. Four seconds of spraying treats 1000 cu. ft. Each \$2.95.



**Here's more order space—
for any items you didn't have room for on the other side**

| Quantity | Name of Article Wanted | Amount |
|----------|------------------------|--------|
| | | |
| | | |
| | | |
| | | |
| | | |
| | | |
| | | |
| | | |
| | | |
| | | |

When you order by mail—

All packet seeds, both vegetable and flowers, are shipped **POSTPAID**. On all other items, don't forget to add Parcel Post. See rates below:

PARCEL POST RATES

On Seeds, Plants, Bulbs, Roots, etc., within the U. S. and Possessions. Effective Nov. 1, 1944.

| | | | |
|-------------------|-----------------------|----------------|------------|
| 1 & 2. | 150 miles..... | 9c.... | 1c |
| 3..... | 150 to 300.. | 10c.... | 2c |
| 4..... | 300 to 600.. | 11c.... | 3½c |
| 5..... | 600 to 1000.. | 12c.... | 5½c |
| 6..... | 1000 to 1400.. | 13c.... | 7c |
| 7..... | 1400 to 1800.. | 15c.... | 9c |
| 8..... | over 1800..... | 16c.... | 11c |

FOLD ON THIS LINE

THE GARDEN STORE
107-109 East Third Street
DAYTON 2, OHIO

FROM _____
STREET _____
TOWN _____
STATE _____

USE
LETTER
POSTAGE
HERE

ENV.-O-BLANK
TRADE MARK REG. IN U. S. PAT. OFFICE
STANLEY WESSEL & COMPANY, CHICAGO

If you plan to shop at our store—

Customers who plan to do their garden shopping at our store will find that this order blank is very useful as a shopping list, too. So, even if you aren't going to order by mail, we suggest you use this blank to note down your needs.

You can make your Spring garden shopping easier and more pleasant if you jot down your needs here—and then give us the list. We'll fill your order while you wait . . . or have it ready whenever you say. So—*get it down on paper, NOW! We'll do the rest.*

ORDER BLANK

THE GARDEN STORE 107-109 East Third Street, DAYTON 2, OHIO

Date _____, 194____

Enclosed, find \$_____ for which ship merchandise named below

By express By freight By mail Best way
(Check which you prefer)

YOUR NAME _____
(All members of one family please order under one name)

Address _____ R.F.D. _____

Post Office _____ State _____

| Amount Enclosed | |
|---|-------|
| Money Order | _____ |
| Check | _____ |
| Cash | _____ |
| Stamps | _____ |
| TOTAL | _____ |
| <small>NOTICE—Remittance by Postal Money Order is a guarantee against loss. We prefer them for our mutual protection. Use them if convenient.</small> | |

| Quantity | Name of Article Wanted | Price |
|-----------------------------------|------------------------|-------|
| | | |
| | | |
| | | |
| | | |
| | | |
| | | |
| | | |
| | | |
| | | |
| | | |
| | | |
| | | |
| | | |
| | | |
| | | |
| | | |
| | | |
| | | |
| | | |
| | | |
| | | |
| | | |
| | | |
| | | |
| | | |
| | | |
| | | |
| | | |
| TOTAL AMOUNT | | |
| Amount of Sales Tax, if any | | |
| TOTAL AMOUNT OF REMITTANCE | | |

All gardeners of experience know that success with bulbs, etc., depends largely on weather conditions and proper cultivation, so in accordance with the universal custom of the seed trade we give no warranty, express or implied, as to the

productiveness of any seeds, bulbs or plants we sell and will not be in any way responsible for the crop. Our liability, in all instances, is limited to the purchase price of the seed, bulbs or plants.

**THIS FLAP IS GUMMED, READY TO SEAL
NO ENVELOPE NECESSARY**
STANLEY WESSEL & COMPANY, CHICAGO 3380

BOOKS FOR GARDENERS

Following are a few of the many Horticultural books we stock. Ask for descriptive folders.

STANDARD CYCLOPEDIA OF HORTICULTURE (Bailey)

These three volumes contain detailed discussions of more than 40,000 plants grown in North America. This great work is the most important ever published for those who wish scientific authority and gardening information. Illustrated\$20.00

SOME AMERICAN TREES (Werthner)

Here is described in detail the distinctive features of some favorite native Ohio trees such as the black walnut, shagbark, hickory, sugar maple, sassafras and others. Excellent for identification purposes. Illustrated\$3.50

GARDEN FLOWERS IN COLOR (Foley)

This book contains 350 important garden flowers shown in beautiful color photographs. This authoritative book, arranged alphabetically, identifies each plant and gives brief but adequate cultural directions for each. A truly beautiful book at an amazingly low price. . . . \$2.49

VEGETABLE GARDENING IN COLOR (Foley)

Here are 150 important varieties of vegetables, including fruits and berries, shown in full color. This picture-encyclopedia gives expert and practical directions for growing them. Arranged in alphabetical order\$2.50

THE FOOD GARDEN (Blair)

This practical book on vegetables has twenty double-page spreads of how-to-do-it line drawings with instructions to show the various steps in cultivation. It is a book that both shows and tells you how. \$2.00

ANNUALS FOR YOUR GARDEN (Foley)

Here's an ideal handbook which contains full cultural directions for 90 annual flowers, gives the latest information about varieties. Illustrated. Only.....\$1.00

THE GARDEN CLINIC (Blair)

This is a how-to-do-it book covering about 100 garden favorites, including annuals, perennials, bulbs, evergreens, shrubs, vines, and flowering trees. 20 double page spreads of line drawings show various cultural steps.....\$2.00

LAWNS (Rockwell)

Make your lawn the envy of your neighbors by following the simple directions outlined in this practical manual. Illustrated.....\$1.25

HERBS: THEIR CULTURE AND USES (Clarkson)

This book gives concise, cultural information on all useful herbs used in cooking, in medicine, and in industry. An unusual feature is the long section of delicious recipes using culinary herbs which will add variety to many dishes.....\$2.75

HORTUS SECOND (Edited by Bailey)

Now this famous book has been drastically reduced from its former price of \$12.00. This concise gardening dictionary, arranged in alphabetical sequence, contains brief descriptions of 31,905 plants in North America. Now only.....\$5.00

LANDSCAPING THE HOME GROUNDS (Ramsey)

Step by step, with photographs and plans, this book shows just how to develop your home grounds for greatest beauty.....\$2.00

MANUAL OF CULTIVATED TREES AND SHRUBS HARDY IN NORTH AMERICA (Rehder)

This book is intended for all those who are interested in trees and shrubs from a botanical or horticultural point of view. Concise, complete and authoritative.....\$10.50

FREE REFERENCE LIBRARY

You are always welcome to come in and consult our Gardener's Reference Library maintained for your help and information. Books covering nearly every garden subject are included in this service library.

**From Your
"Home of
Friendly
Garden
Service"**

**Return Postage
Guaranteed**

Sec. 562, P. L. & R.

U. S. POSTAGE

Paid

Dayton, Ohio

Permit No. 91

Journal of

Home of Friendly Garden Service

11th Ave. West 25, N.E.C.
