

Historic, Archive Document

Do not assume content reflects current scientific knowledge, policies, or practices.

62.79
1946
NEWEST - HARDIEST

FRUITS ~ ORNAMENTALS

SPECIALTIES



SUPER BUSH CHERRY

Over 40 years of selection work has gone into the improvement of the Hansen Bush Cherry by Prof. N. E. Hansen and Carl A. Hansen. We offer here the latest improved selections for largest size of fruit, heaviest bearers and most beautiful in bloom. Only a few to offer while they last.

3-Year, Ready to Bear
This Year

\$1.00 Each

3 For \$2.50

6 For \$4.50

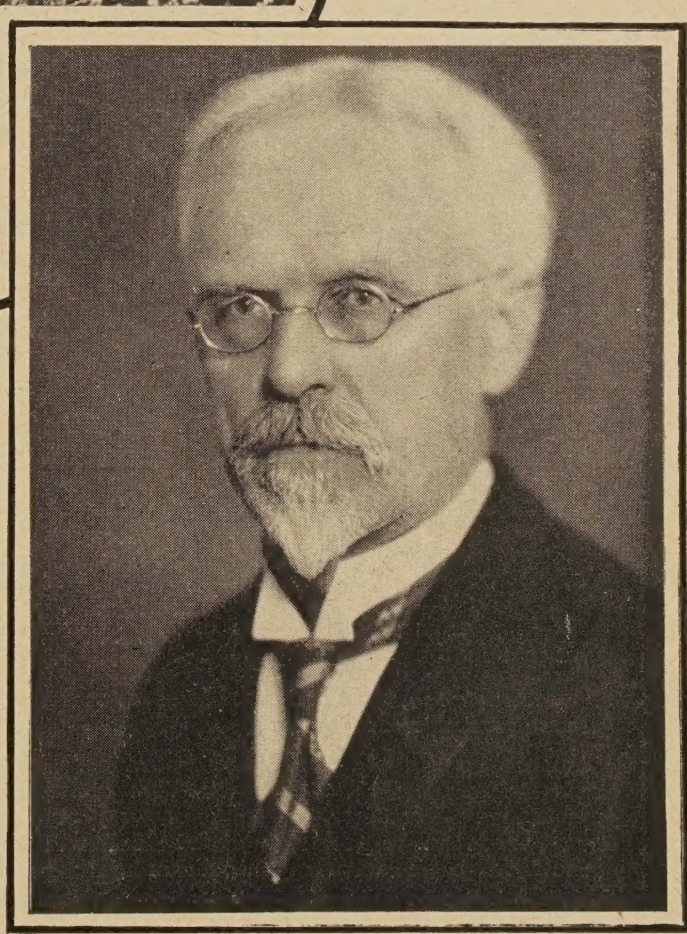
(See also Hansen Bush
Cherry Offers, Pages 16-17)

Hardest
NEW PLANT
Introductions



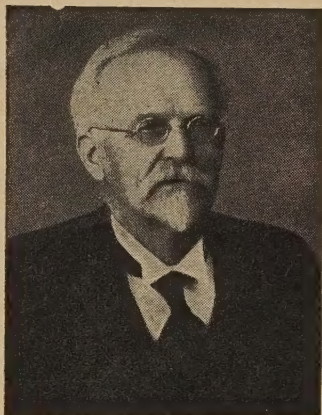
Dr. N. E. Hansen
GREATEST PLANT BREEDER
OF OUR TIME

ESTABLISHED 1922



CARL A. HANSEN NURSERY
BROOKINGS, SOUTH DAKOTA

3 Generations of HANSENS



Niels Ebbesen Hansen

FOREWORD 1946

THANK YOU for your fine orders of the past season. We trust you will be with us again this year.

We have added quite a few new introductions to our list this year and we hope you will try some of them.

Dr. N. E. Hansen, my father, whose picture appears here with my son, Paul, and I, is in no business way connected with my nursery, but is with the Horticulture Department of South Dakota State College, here in Brookings. Nat-



Carl Andreas Hansen

urally, he is a great inspiration to me in my work, and it is with a great deal of pride that I read the many letters we receive from folks all over the country telling of their successes with the many plants that dad has originated and introduced during the past fifty years and more of work.

If you can't send us an order, write us anyway, as your letters are always very welcome and very helpful in determining the course of our plans and our work.

Dr. N. E. Hansen has many more new plants coming on that have required many years of painstaking research and effort to bring along toward successful introduction. His many great introductions thus far, such as Cossack Alfalfa, the Waneta, Sapa, Opata and Hanska Plums, the Anoka Apple, the Dolgo Crab, and on down the list, have been in the aggregate worth millions of dollars in profits and pleasure to the people of the Northwest.

Every possible aid in the way of land, money and workers should now be given to Dr. N. E. Hansen, as never before, so that he can go on and complete the many experiments he has under way, for when he is gone no one will be able to rightfully complete the work and experiments he has started. The cost to the nation and the cost to our state is very small compared to the great benefits the people have received and will continue to receive from Dr. N. E. Hansen's untiring efforts.



Paul Robert Hansen

CARL A. HANSEN.

TERMS

Send remittance with your order, by cash, money order, or check. If by check, please add 5 cents extra for bank float charges. No C. O. D. orders accepted.

Packing free on all orders of \$2.00 or more, and on orders for less than that amount please add 25c for packing.

All shipments of Plants and Seeds will be sent collect for the delivery charges unless otherwise stated, by what we consider the best and cheapest way. If you want a small package to be sent by parcel post prepaid, be sure to add enough more for postage (usually about 10% will cover it), with a minimum of 25c per parcel. If seed or plant shipments must be sent to a prepaid station, be sure to include the shipping charges in your remittance.

South Dakota Customers please add the 2% Sales Tax.

ALMATA APPLE

!! LARGE RED FLESHED APPLE !!

Most Startling Fruit Discovery of the Century

A Dr. N. E. Hansen Introduction

The new apple the world has been waiting for! A large good quality apple with red flesh. Fruit is a solid brilliant red with bright, clear red flesh from skin to core. Firm texture and juicy with a sweet pleasant flavor. Fruit 3 inches across. The fruit of Almata makes excellent red sauce and red jelly. The tree is vigorous growing and produces fruit on very young trees.

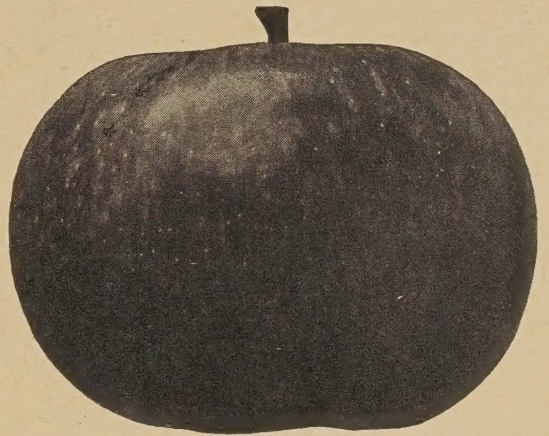
VERY ORNAMENTAL

Because Almata blossoms with an abundance of large fragrant red flowers, it makes a most outstanding ornamental for the lawn and garden.

BIG DEMAND COMING

The demand for trees of Almata is going to be tremendous and once there are sufficient planted for the fruit to be sold on the market, its hard to say how enormous the demand will be. You can be sure that for many years to come the fruit will demand a premium price. Those that get started with this new fruit now will reap rewards for years to come.

Like all new good things, the quantity is limited. Please order early.



PRICES FOR ALMATA APPLE

Small, 2-3 Ft.....Each, \$1.25; 3 for \$3.50
Medium, 3-4 Ft.....Each, \$1.75; 3 for \$5.00
Large, 4-5 Ft.....Each, \$2.50; 3 for \$7.00
3 Yr. Super Grade, Ready to Bear,
\$3.50 Each; 3 for \$10.00.

Yellow Sweet Apple

An Excellent Early Summer Eating Apple.

This variety is of Russian origin and is becoming a favorite throughout the Northwest. It ripens just at harvest time. You won't get too many of them and will want to fill your pockets with these yellow, juicy, sweet apples.

Yellow Sweet is the name given to this apple because it describes the delicious fruit so well. The apples measure over two inches in diameter, and have a light yellow, tender skin, blushed with pink. The flesh is white in color and is very juicy and sweet. The tree has proved sturdy and absolutely hardy, bearing heavy crops of fruit.

This variety should find a place in every family orchard, for early eating apples—children love them!

PRICE: Per Tree, \$1.75; 3 Trees, \$5.00.

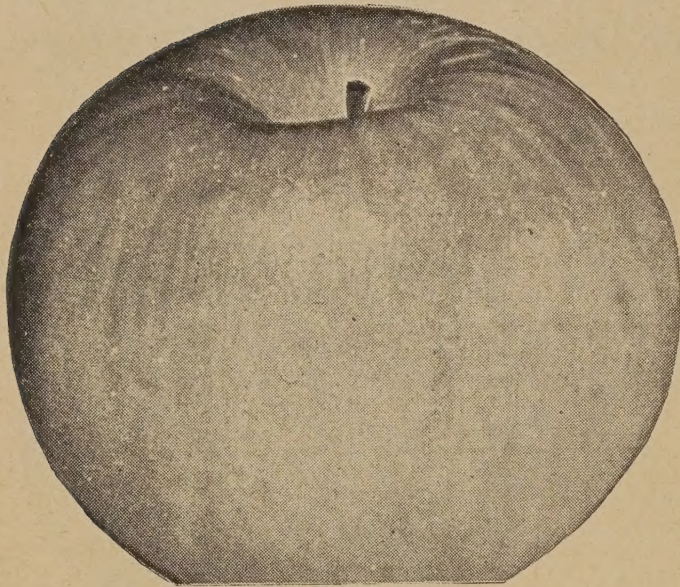
Russian White Apple

A Worthy New White Fleshed Summer Apple

A Russian apple with a snow-white flesh and light yellow skin. The apple is of large size and cooks well. Is juicy and slightly sub-acid in flavor. Russian White is really a better cooking apple than eating from the tree, although it is about as good eating as the Duchess. A fine combination sauce or jam would be one made of Russian White apples and some of the Hansen Crab introductions. Russian White is distinctly a summer apple as after ripening it gets mellow. The tree makes a good upright growth and is very hardy. A few trees of Russian White would insure a bountiful supply of early fall cooking apples which make the kind of apple sauce that makes them all call for more.

PRICE: Per Tree, \$1.25; 3 Trees, \$3.50.

ANOKA—The



ANOKA—The Best of 10,000 Seedlings

One of Prof. N. E. Hansen's
BEARS EARLIEST

The Anoka is truly the wonder apple of this generation. Anoka has the most remarkable ability in that it will bear on one-year wood and annually, thereafter, the second year after planting. Four-year trees have been known to have borne three crops of fruit.

Anoka upsets ordinary ideas about apple trees and introduces a new era in apple culture, for the whole nature of the tree is changed, so that early bearing of fruit is secured and the tree remains of moderate size to permit easy spraying.

FINE EATING—VERY PRODUCTIVE

Anoka is a round, red-striped apple of attractive appearance and of good quality. The fruit ripens early, a very good early summer eating apple, with very juicy, pleasant, sub-acid flesh of peculiar characteristic flavor that pleases everybody.

Anoka is surprisingly productive, often loading its branches till they bend nearly to the ground, yet due to its sturdy habit, seldom breaks under the great weight.

ANOKA APPLE TREE PRICES

Size	Each	Per 3	Per 6	Per 12
Large	\$1.25	\$3.50	\$6.50	\$12.50
Medium75	2.00	3.50	6.50

ANOKA SPECIAL!

Large 3-Yr. Anoka Trees, Ready to Bear This Year: Each, \$1.75.

3 Extra Large 3-Yr. Trees . . . \$5.00



Three-Year Anoka Tree Bearing a Good Crop of Fruit.

A Masterpiece of the Fruit World!

Wonder Apple

Greatest Introductions

VERY STURDY—HARDY EVERYWHERE

It is hardy and disease resistant throughout the Northwest.

In thousands of small gardens in country and town the Anoka will be planted where no apples were planted before because of their sure fruiting and small size trees. It will no doubt become the leading apple in many states.

A one-year-old tree of Anoka apple sent to the Agricultural Experiment Station at Fargo, North Dakota, bore 26 good sized apples the second year and bore again the next year and the next. In other words, five years planted and three crops of fruit. Can you beat this on Dakota prairies? Other very favorable reports have been made from widely separated localities so it is now definitely known that Anoka is the outstanding apple of merit for the Northwest.



Prof. N. E. Hansen, the Plant Wizard, and a Mature Anoka Apple Tree.

PLANT THE ANOKA APPLE

The Wonder of the Age—Because:

- 1—Anoka bears the second year after planting.
- 2—Anoka bears large crops of apples every year.

- 3—Anoka is an excellent early summer eating apple.
- 4—Anoka may be planted closer than other apples.
- 5—Anoka is hardy and disease resistant.

JOY CRAB APPLE

A CARL A. HANSEN INTRODUCTION

A JOY to eat, a JOY to see and a JOY to have in bearing. For it is one of those crab apples that you can just eat and eat and eat. They are just so good that you can keep on eating and never seem to get your fill.

The JOY CRAB comes on early in the season, just when you want a lot of fresh fruit at harvest time. The size of this crab is upwards to about 1½ inches in diameter. It is mostly round in shape, though slightly irregular and a little truncated. Its color is an orange yellow with blushes and stripes of red and pink. It has a very crisp, fine textured flesh which is sweet and juicy, with a very delicious flavor. Because of its size, flavor and texture Joy Crabs make excellent pickled crabs.

We'll wager that the first time your JOY CRAB trees begin to bear, and they do bear very early, usually within a year or two after planting, that you will want to fill your pockets right then and there and eat them all until the crop is gone.

PRICE: Per Tree, \$1.25; 3 Trees, \$3.50.

Red Flesh Crab

SOMETHING REAL NEW! DELICIOUS

Bright Red Apple Sauce

Red Flesh, Red Skin, Red Flowers. This new crab apple introduced by Prof. N. E. Hansen has created a sensation. The fruit is good size, varying from about 2 to 2½ inches long and about 1¼ to 1½ inches in diameter. The color of the skin is somewhat of a greenish dark red, the flesh when fully ripe is a good dark red.

Beautiful in Jellies and Sauce. When cooked alone or with other apples, the sauce or jelly changes into the most beautiful red you could ask for.

Hardy—Vigorous—Bear Young. The tree is very sturdy, and completely hardy for the North. It bears at a very young age.

Good to Eat Fresh. Red Flesh is so good to eat fresh, having sort of sprightly tart sweet flavor.

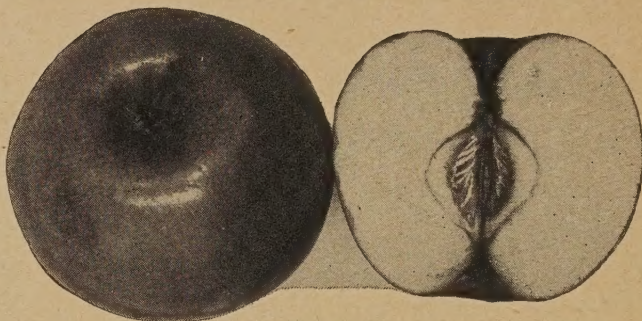
Very Ornamental. Because its flowers are also a beautiful red color, Red Flesh makes a very fine ornamental.

PRICE: Per Tree, \$1.75; 3 Trees, \$5.00.

HARDY APPLES

WEALTHY APPLE

An old time favorite. Vigorous growing tree, especially hardy. Bears extremely young, every year. Wealthy has a red skin and a very sweet flesh. A good eating and cooking early fall apple.



Wealthy Apple

WHITNEY CRAB

Perhaps the most popular eating crab grown. It has a delicious flavor. Whitney bears young and very heavily and because it is also such a hardy apple it should have a place in every good fruit orchard.

JONATHAN APPLE

One of the most desirable varieties for the winter holiday season. Trees bear when young. Firm, crisp, tender and juicy, with that rich flavor that has made it a national favorite. A good keeper. Very popular on the market and one of the most profitable. Largely grown, extremely long lived.

DELICIOUS APPLE

The king of all apples, and rightly named "Delicious." The tree is semi-hardy here, but all right for farther east and south. Large, brilliant red fruit with flesh that is tender, crisp and juicy and mild in flavor. A splendid keeper. Ideal for market and one of the best for every purpose.



Delicious

PRICES OF STANDARD APPLES AND CRABS

Small, 2-4 ft.....	Each, \$.50; 3 for \$1.35; 6 for \$2.50; 12 for \$ 4.50
Medium, 3-5 ft.....	Each, \$.75; 3 for \$2.00; 6 for \$3.50; 12 for \$ 6.50
Large, 4-6 ft.....	Each, \$1.25; 3 for \$3.50; 6 for \$6.50; 12 for \$12.50



GOLDO APPLE

Best Hardy Winter Apple

Goldo Apple is Prof. N. E. Hansen's best winter apple introduction. It is a hybrid of Grimes Golden and Duchess Apple.

Fruit is of most excellent flavor and an improvement on Grimes Golden. It has the hardiness of the Duchess. It has somewhat the Grimes shape, being truncated, though a little more irregular in general appearance.

Its color is rich golden with pure white flesh. The fruit is large in size, being up to three to four inches across and three to four inches long.

Goldo is a splendid keeper and will keep in an excellent condition in an ordinary vegetable cellar until late in March.

It usually bears a year or two after planting and heavy and annually thereafter. The tree is perfectly hardy throughout the Northwest. Our stock of Goldo is very scarce this year so be sure to order early if you want some of this excellent new fruit.

PRICES: Each, \$1.75; 3 for \$5.00.

DOLGO CRAB APPLE

The World's Best Jelly Crab



Dolgo Crabs Make Beautiful Jelly

very best of Prof. N. E. Hansen's crab apple introductions and is worthy of the highest praise. It is both a distinctive and splendid ornamental and a fruit tree of great value. Everyone should have at least a few trees of Dolgo.

GOOD TO EAT. The fruit is full of juice and has a sprightly sweet flavor. For making a very fine, bright, clear red jelly of excellent flavor. Many think that crab apple pickles made from Dolgo fruit are the best that can be made.

FREE FROM BLIGHT—VERY STRONG. The tree of Dolgo has so far proved free from blight. It makes a very strong growth and forms strong, wide-spreading forks and strong shouldered limbs, which can bear such heavy crops without injury.

BLOSSOMS FROST HARDY. Another remarkable characteristic of Dolgo, expressed by Prof. A. E. Yager: "Dolgo Crab, even when in full blossom, survived freezes which killed all other varieties."

HARDY FAR NORTH. Dolgo is perfectly hardy far north into Canada, and is almost a sure annual producer of a fine crop of fruit.

BEARS VERY EARLY. It is the nature of Dolgo to bear early and it usually bears the second or third year after planting—almost as soon as Anoka.

WORTHY OF HIGHEST PRAISE. Dolgo is one of the

PRICES ON DOLGO CRAB

	Each	3 for	6 for
Large	\$1.25	\$3.50	\$6.50
Medium75	2.00	3.50
Extra Large, 3 Yr.,	\$1.75 Each.		

3-in-1 APPLE

Anoka-Dolgo-Goldo . . . All-In-One-Tree

Now you can have Anoka Apple, Dolgo Crab, and Goldo Apple, three of the most famous of Professor N. E. Hansen's apple and crab apple introductions, all on one tree. This new type of apple tree has been sweeping the country with a tremendous surge of popularity the last few years, and now you can have your choicest varieties of apples and crabs on one single tree.

All the fruit you want to eat, of the best kinds, in only one-third the space, because all the varieties are growing on one tree. This accomplishment is brought about by special methods of grafting so that all varieties are grown on one single hardy tree.

Our supply of these new trees is not very great this year so please place your orders as early as possible.

Special Prices

3-in-1 APPLE TREE
\$1.75 each; 3 for \$5.00

RED RASPBERRIES



Latham Raspberry

FLAMING GIANT. This is Prof. Hansen's best and most popular red raspberry. Originally called Ohta, which in the Sioux Indian language means "much" or "many." In later years it has been called Flaming Giant, because of the large size and flaming red color of the fruit. Berries are purplish red, large, excellent flavor and good keepers. Is called everbearing by some because it bears very heavily and annually and over a long period of time. Hardy and drouth resistant. Makes a splendid berry for market and for home use. Early. Hardest of red raspberries. Does not winter kill. Will stand 30 below without damage. 5 Plants, \$1.00; 10 Plants, \$1.75; 25 Plants, \$3.25.

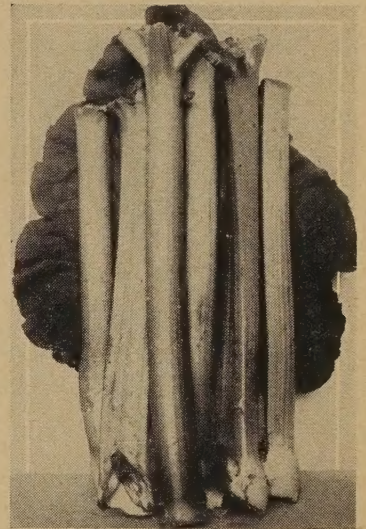
SUNBEAM. One of Prof. N. E. Hansen's first red raspberry introductions and now famous throughout the Northwest. Plant vigorous, productive, purple-caned, and freely sprouting. Has survived a temperature of 41 degrees below zero, without protection. Fruit of large size and bright red color. 5 Plants, \$1.00; 10 Plants, \$1.75; 25 Plants, \$3.25.

LATHAM. Generally considered the best market berry because of its enormous size and good color, its fine flavor and extra heavy bearing. Bushes are just loaded to the ground with their great crop of fruit. A great favorite everywhere. Very productive, long bearer. Deep blood red fruit. 5 Plants, \$1.00; 10 Plants, \$1.75; 25 Plants, \$3.25.

RHUBARB

Rhubarb is one of the best and most healthful foods. The stalks, tender and juicy, are so easy to make into pies or sauce, and very popular with the whole family. Be sure to plant plenty of rhubarb this year as it is so easy to grow and one item that should be in anyone's garden.

Plant about three feet apart, and you will not have to plant it again as it will last many, many years.



VICTORIA RHUBARB. Victoria is a popular standard variety, and is no doubt more extensively grown than any other kind. A very heavy yielder of excellent quality.

1 Yr. Roots
15c Each, 6 for 75c,
12 for \$1.25.
2 Yr. Roots
25c each, 6 for \$1.25,
12 for \$2.25.

VICTORIA RHUBARB
Extra Heavy 3 and 4 Year
CLUMPS
50 Each, 4 for \$1.75

Special!

A few NEW all red-stemmed, red-fleshed rhubarb to offer this year. Very sweet.

**RED-FLESHED
RHUBARB**

Special Prices While They Last:
Large Roots, Each 75c; 3 for \$2.

THORNLESS BOYSENBERRY



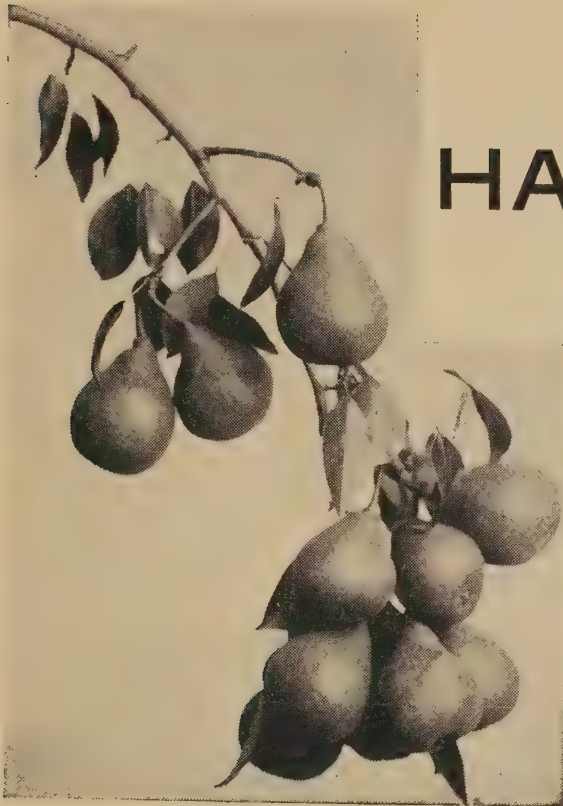
One of the most famous of recent new berry introductions.

Fruit is a dark bluish black, large, somewhat resembling a dew-berry and blackberry, but much longer and larger. In fact, fruits often grow in size to 2½ inches long and 1 inch in diameter. Very sweet to eat fresh, especially when served with cream. They also make delicious pies and preserves.

The plants produce long branches close to the ground, making the fruit easy to pick, and this new variety, being thornless, makes picking much easier.

PRICES While They Last

Each.....35c 3 for.....\$1.00 6 for.....\$1.75



Hansen HARDY PEARS

HARDY—PRODUCTIVE—GOOD

These pears were introduced from Siberia and Northern China by Prof. N. E. Hansen and improved by him. They are perfectly hardy anywhere in the Northwest, free from disease and resistant to fire blight, the dreaded disease of the standard varieties.

NORTH CHINA PEAR. Grown from seed of some of the hardiest pears of North China. Of the sand pear type. Strong growth. Fruit good size, juicy and of a pleasant good quality. Good keepers. **Each, 50c; 3 for \$1.25.**

HANSEN SIBERIAN PEAR. Hardest pear introduced from Siberia by Prof. N. E. Hansen. Of the Russian sand pear type of fruit and the hardest of pears for the North. **Each, 50c; 3 for \$1.25.**

HARBIN PEAR. Large, vigorous growing tree. Fruit of fair size and quality. Good for eating fresh and cooks into fine sauce and preserves well. **Each, 50c; 3 for \$1.25.**

The New Hansen GRAPES



Recently Prof. N. E. Hansen of the South Dakota State College at Brookings, again startled the world by introducing a remarkable collection of 32 new grapes which have the hardiness of the wild grape, and in flavor comparable to the best cultivated grapes of America and Europe.

These new Hansen Grapes will do much toward changing the grape culture of America, especially because of their great hardiness and resistance to disease and their splendid flavor and quality. There is no doubt at all but that many of these excellent grapes will attain world fame and will be propagated by the millions, as so many of Prof. N. E. Hansen's other introductions have been.

If you like fresh grapes for table use, and especially if they can be grown on your own vines, and if you like delicious grape jelly and preserves, and grape nectar, be sure to get some of these new hardy Hansen Grapes.

Because they are new and the propagating wood is still very scarce, we cannot offer you a complete assortment of all the named sorts as yet. But to the lucky ones who get their orders in early, while they last, we offer a nice assortment of new Hansen Grape cuttings at the following prices:

PRICES ON HANSEN GRAPE CUTTINGS

Each.....25c 3 for.....65c 6 for.....\$1.15 12 for.....\$2.00

BETA GRAPE. The best known and hardest of the popular grapes. Producing amazingly large crops of fine, good sized fruit which are good eating and make excellent preserves, splendid jelly and tasty grape juice. Essentially the grape for the middle northwest.

PRICES: Each, 40c; 5 Vines, \$1.75; 10 Vines, \$3.25.

CONCORD GRAPE. Fruits abundantly on two-year vines. Concord is a very vigorous grower; and very productive. Somewhat larger than Beta but not as hardy, yet harder than most other varieties. One of the best commercial varieties. Of best dessert quality for the table.

PRICES: Each, 35c; 5 Vines, \$1.50; 10 Vines, \$2.75.



Manchurian Apricots

FRUIT IN ABUNDANCE FOR EVERYONE

**Hardy—Vigorous
Quick to Bear**



Dr. N. E. Hansen and a Group of Manchurian Apricots

No fruit has jumped into popularity and had such sudden fame as have Prof. N. E. Hansen's new Hardy Manchurian Apricots. We offer here some plants from the original strain from which he introduced his famous six varieties, listed and described on the opposite page.

If you like good fresh fruit, picked from your own trees, you should have at least a few of these new hardy Apricot trees. They will afford you the greatest satisfaction and pleasure with their abundance of good, tree-ripened fruit. It is hard to beat their dependable fruit production year after year.

The Manchurian Apricots are hardy in the coldest places. Like the other Hansen Apricots, they apparently have an almost frost-proof blossom, as they can set fruit even if the blossoms are caught in a late spring frost. They came from a country where temperatures get as low as 50 and 60 degrees below zero in winter with late spring frosts as a rule, and where hot dry weather prevails in summer, up to 115 degrees during long periods without rain. Yet even these adversities do not seem to bother these hardy apricots from thriving and bearing heavy annual crops of fine large fruit.

If you want really good fruit at the right time, early in July before the plums come on, get some of these new Manchurian Apricot trees now! We have only a comparatively small supply available this year, so be sure to order early.



Plenty of Fruit—Always

PRICES ON HANSEN NEW HARDY MANCHURIAN APRICOTS

Large	Each.....	\$1.50	3 for.....	\$4.00	6 for.....	\$7.50	12 for.....	\$14.50
Medium	Each.....	\$1.00	3 for.....	\$2.75	6 for.....	\$5.00	12 for.....	\$ 9.50
Small	Each.....	\$.75	3 for.....	\$2.00	6 for.....	\$3.50	12 for.....	\$ 6.50

Big Special Combination Offer

2—Hansen Apricots, Your Selection of Those
Described on Page 11

1—Hansen Manchurian Apricot

only \$4.50

4—Hansen Apricots, Your Selection of Those
Described on Page 11

2—Hansen Manchurian Apricots

only \$9.00



The New HANSEN APRICOTS

Extremely Hardy

... Very Drouth Resitant

Beautiful

Fragrant

Pink

Flowers

CHOW. Very heavy producer. Yellow fruit that is good to eat fresh and when cooked makes a delightful sauce of quality.

MANCHU. Large fruit in heavy crop. Yellow. Tops in size and quality. Cooks up into excellent, pale yellow sauce.

ANDA. Heavy crops in late season. Freestone. Fruit of good size. Stays firm even when cooked. One of the best in quality.

TOLA. Large, freestone fruit. Very good flavor. Makes excellent quality sauce. This one ripens early in the season.

NINGUTA. One of the mildest and best in flavor. Very heavy crop, ripening late in season. Large, yellow, with red blush.

MANDARIN. Rich yellow, large fruit. One of the best in quality for eating fresh or for making into delicious sauce.

Fruits On Very Young Trees

We offer for a short time, Hansen's new sensational Northwest hardy apricots. Just recently introduced by Prof. N. E. Hansen, of South Dakota State College, who has been working for many years to produce hardy apricots that would be good eating and large size and still would withstand the rigors of Dakota's cold and drouth.

Those offered herewith are his best introductions to date. We give a brief description of each, though they are all good and it is rather hard to say just which one is best. Only time, experience, and tests can best prove that.

Two very important points of interest stand out in regard to these new apricots. One is that they are perhaps one of the most drouth resistant of all trees, coming through the terrible drouths of 1933, 1934 and 1935 with flying colors—full foliage and no apparent effect whatever from the dry, hot weather, and with a great crop of fruit. The second point is that they are hardy almost anywhere in America, standing and bearing well in climates getting as low as 50 to 60 below zero.



Large



Fine



Fruit



PLANT AN ORCHARD OF
HANSEN APRICOTS
AND REAP YOUR REWARD
FOR YEARS TO COME!

Hansen Hardy
Apricot Prices
1.75 EACH

Sapa CHERRY PLUM

Dark Purple-Red Flesh and Skin

SAPA



HARDY .. GOOD .. PRODUCTIVE

FRUIT TO PLEASE EVERYONE

WORTHY OF HIGHEST PRAISE

Early Bearing

Semi-Dwarf

One of the Most Popular Hansen Plums.

Sapa is the Sioux Indian word for "black," and alludes to the skin, flesh and the juice of this remarkable hybrid. The fruit has rich, dark purple-red skin, flesh and juice. The tree is bush cherry-like in habit, forming fruit buds freely on one-year trees. The rich purple color of the skin is dulled at first by being overspread with a thin gray, which will disappear as soon as the fruit has ripened thoroughly. Sapa bears freely on one-year shoots and has attained much popularity. Sapa is early, large, productive, and very hardy; very good to eat fresh, and makes delightful preserves and jams.

PRICES FOR SAPA CHERRY PLUM

Size	Each	Per 3	Per 6	Per 12
Large	\$1.25	\$3.50	\$6.50	\$12.50
Medium	.75	2.00	3.50	6.50

Extra Large, Ready to Bear,
\$1.75 Each; 3 For \$5.00.

Hansen's Special HYBRID PLUM SELECTIONS

Very Hardy . . . Heavy Bearers



These are some selected Plum Hybrids we are offering for the first time. They are selected seedlings grown from mixed plantings of the best of Prof. N. E. Hansen's famous hybrid plums. By experimentation and selection we have found that they seem to have all maintained the high standard of hardiness and many have the high quality flavor and size of Prof. N. E. Hansen's other plums.

They are all good eating, good size, prolific bearers, and make the most delicious plum preserves. They are excellent pollenizers and will make your other plums bear better. We only have a limited quantity to offer this year, so order early.

HANSEN'S SPECIAL PLUM

Size	Each	Per 3	Per 6	Per 12
Large, 4-5 Ft.	\$1.00	\$2.50	\$4.50	\$8.50
Medium, 3-4 Ft.	.75	2.00	3.50	6.50
Small, 2-3 Ft.	.40	1.00	1.75	3.25

Dakota Producer Plums

HANSEN IMPROVED

These are plums which we have been selecting and improving for a number of plant generations. They are all hardy and good to eat. They will stand temperatures of downwards to 40 degrees below zero in winter and upwards to 115 degrees in summer.

The fruit of these plums varies in size, from about 3/4-inch to 1 1/2 inches and over. They have been developed from the native wild plums of the Dakotas, Minnesota and Canada. Their yield is abundant—plenty for eating, plenty for preserves.

It is hard to beat good old fashioned plum jam as a spread for bread. Our aim with Dakota Producer Plums has been to improve this; to improve one of nature's best, rich foods.

Because of the natural vigor of growth and fruiting power, they are especially good to pollinate the various hybrid plums in your yard and orchard. They will help all of your plums to set their full crop capacity of fruit, which they may not now produce because of weak pollen.



Beautiful in Flower



Plentiful in Fruit

PRICES FOR DAKOTA PRODUCER PLUMS

Size	Each	Per 3	Per 6	Per 12	Per 25
Large, 4 to 6 feet.....	\$.65	\$1.75	\$3.35	\$6.50	\$11.50
Medium, 3 to 5 feet.....	.50	1.35	2.60	5.00	9.50
Small, 2 to 4 feet.....	.35	1.00	1.85	3.50	6.50

Extra Large, Ready to Bear, \$1.25 Each.



Tom Thumb Cherry

Tom Thumb Cherry

Hardiness - Flavor - Productiveness

This new fruit has had a surprisingly quick leap to fame. Nothing like it anywhere. Though growing but knee high can bear a bushel of fruit. Exceedingly sweet flesh. Delicious in sauce and jams.

For canning, they are perhaps the best of any of the Hansen Hybrid Cherries in preserving the shape of the whole fruit, much the same as the canned cherries you buy. Fruit good sized. Flesh dark reddish purple. Hardy far north into Canada.

Tom Thumb is a low bush just right for protection by snow drifts, bearing an abundant crop of fruit the year after planting and annually thereafter. Everyone should plant more Tom Thumb Cherries for sure results and good quality.

LARGE BEARING SIZE TREES
\$1.50 EACH

World Famous Hansen PLUMS



WANETA

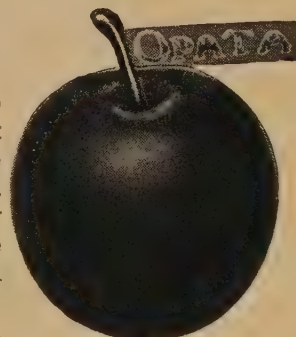


HANSKA

HANSKA APRICOT PLUM. A hybrid of the wild northwestern plum and the large, firm fleshed, fragrant apricot plum of China. In fruit the Hanska closely resembles its Chinese parent in form, color, fragrance, quality and firmness of flesh. The pit is very small.

The plums described below are three of the most famous Hansen Plums and have been propagated by the millions and have gone to all parts of the world. There is a good reason for this. Because they are some of the best all around plums, bearing when very young, very hardy, and more sure to produce year after year than most any other plums grown.

WANETA PLUM. The Giant of the Hardy Plums. These large plums measure up to two inches in diameter. Waneta plums are highly flavored, of delicious desert quality. They have a richly colored red skin, free from acidity, a comparatively small pit, and fine firm yellow flesh.



OPATA CHERRY-PLUM

Excellent quality. The fruit is dark purplish red with firm, green flesh. Fruits freely on one-year old shoots. Season very early.

PRICES FOR				
WANETA, HANSKA, OPATA				
Size	Each	Per 3	Per 6	Per 12
Large\$1.25	\$3.50	\$6.50	\$12.50
Medium75	2.00	3.50	6.50
Extra Large, Ready to Bear, \$1.75 Each; 3 for \$5.00.				

Ural Mountain CHERRY

NEW BRIGHT RED BUSH CHERRY

A DR. N. E. HANSEN INTRODUCTION

First Time Offered

This new dwarf cherry is really something to rave about. The fruit is good sized, a clear bright red in color from skin to pit, and excellent eating. Comparable in quality to the best California tree cherry fruits on the market. The flesh and skin are firm and stand up well when picked.

Good to eat fresh and when preserved will make nice candied cherries for cakes and ice cream.

These are a new introduction this year and we have but a very limited number to offer so please order early. For we do know these are going to be in great demand in the coming years. Be the first in your community to have them.

PRICES While They Last:

Each.....\$2.50 3 for.....\$6.50 6 for.....\$12.00

Hansen's OKA CHERRY

VERY HARDY

DWARF HABIT

EARLY BEARING

WINE-RED FLESH

LARGE FRUIT

DELICIOUS FLAVOR!

NEWEST AND BEST

One of Prof. N. E. Hansen's latest cherry-plum introductions and considered his best so far.

DARK, LUSCIOUS, WINE-RED FLESH

The flesh color is a rich, intense purplish black red. It is in all a very remarkable fruit to look at and surely a delight to eat. Jelly and jam made from Oka Cherries are as deliciously sweet as they are beautiful to look at.

The tree of Oka has a dwarf bushy habit and bears from the ground up. This remarkable feature is of unique value when harvesting the fruit. No need for a stepladder for all the fruit is within easy reach. But the dwarf size in no way indicates the size of the crop of cherries, for the strength of the plant goes into fruit production and not into surplus tree growth.

EARLY BEARING—VERY HARDY

Oka Cherry, like the other of Prof. N. E. Hansen's Bush Cherry hybrids, bears extremely early—always, if the season is at all favorable, the year after planting.



Large and Fine Wine Red Flesh



Most Beautiful in Flower

PRICES for OKA CHERRY

Size	Each	3	6
Large	\$1.25	\$3.50	\$6.50
Medium75	2.00	3.50

Extra Large, Ready to Bear, \$1.75 Each.

HANSEN IMPROVED

Easy to Grow . . .

Good Flavor, Highly Productive, Hardy



Beautiful in Spring Flower.

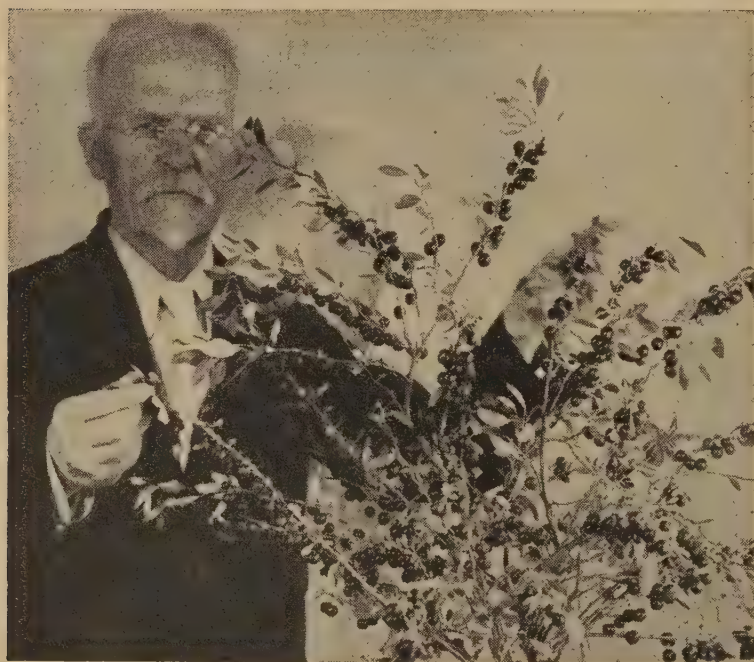
The Development of Years. Hansen Improved Bush Cherries are the result of over forty years of untiring selection work by the great plant wizard, Prof. N. E. Hansen at South Dakota State College, Brookings. He has developed what was formerly the rather small, little known, western South Dakota Dwarf Bush Cherry, into a fruit of large size, desirable taste, good habits, wonderful bearing, and beautiful in flower, fruit and foliage.

Fruit of Good Quality. The fruit is good to eat from the bush, is fine in sauce and makes a wonderful jam of the most superb flavor and rich color imaginable.

Grows Bush-Like. Though the fruit of this cherry resembles a cherry in size and shape, the plant itself grows in a bush form, branching and bearing from the ground up. Usually bears the year after planting. It always retains its dwarf stature which is of fine value for planting in the garden, as it doesn't take up near the room of an ordinary plum tree and yet often bears more.

Beautiful in Plantings. In landscape planting a few of the bush cherries are very desirable as they are dwarf and bushy, and a great aid in foundation covering.

The foliage, a beautiful silvery green, turns to a rich red and gold in fall, adding a very desirable color touch to landscape plantings.



N. E. Hansen With Branches of the Hansen Bush Cherry.

The profuse masses of white flowers in early spring, completely covering the bushes, are a glorious sight. The fruit later is ornamental as well as useful.

FRUITS IN ONE YEAR!

EXTRA SPECIAL ! ! !

Large Three-Year Old
BUSH CHERRIES

Ready to Bear This Year

65c Each; 3 for \$1.50;
6 for \$2.75

A Desirable Good Fruit and Ornamental for Extensive Planting

BUSH CHERRIES

Sure to Produce

Everywhere, Disease Resistant..

Makes a Good Low Hedge. Because of their dwarf bushy habit these Hansen Improved Bush Cherries make a most beautiful silvery green ornamental low hedge for the front lawn, as well as in the garden.

Hardy Everywhere—Disease Resistant. The hardiness of these Bush Cherries is unquestioned. They have been used as the sires in a number of Prof. N. E. Hansen's introductions, because he knew it would give the new variety the hardiness they need to withstand the cold and adverse weather conditions we often get. Their sturdiness and resistance to disease is another outstanding characteristic.



N. E. Hansen Selecting Bush Cherries.

Plant These Hansen Bush Cherries Because

- 1—They are easy to grow and perfectly hardy everywhere.
- 2—Good to eat fresh and make the most delicious preserves.
- 3—Quick to bear. Bear heavy, and annually.
- 4—Are dwarf growing, bushy, need little room.
- 5—Are excellent for hedges or ornamental shrubs.

RECOMMENDATION FOR PLANTING

For best results for fruiting these new Improved Hansen Bush Cherries should be planted 2 to 4 feet apart, in rows 4 to 6 feet apart. Plant two or more for better pollination.

Around the home for beauty and use, plant them anywhere in groups.

As a hedge they may be planted close, 1 to 1½ feet apart, and may be kept trimmed, though they won't bear as much that way.

Plant them in abundance and have fine fruit for years to come.

NEW LOW PRICES ON HANSEN BUSH CHERRIES

All Heavy, Well Branched, Strong Rooted, Bushy Trees.

Size	Each	Per 3	Per 6	Per 12	Per 25
Large, Two-Year.....	\$.50	\$1.25	\$2.25	\$4.00	\$7.50
Medium, Two-Year..	.35	1.00	1.75	2.75	5.00
Small, Two-Year.....	.25	.65	1.25	2.00	3.50



Masses of Fruit Completely Cover the Branches.

Everywhere—Will Be Planted by the Millions Thruout the World!

NIobe WEEPING WILLOW



3-4 Ft. Trees, Each 50c; 2 For 90c;
 4-5 Ft. Trees, Each 75c; 2 For \$1.35
 5-6 Ft. Trees, Each \$1.25; 2 For \$2.25
 6-8 Ft. Trees, Each \$1.75; 2 For \$3.25

Graceful Beauty

Every Lawn Should Have Some

INTRODUCED BY PROFESSOR N. E. HANSEN

The superb, graceful beauty of the Niobe Weeping Willow is near to the utmost in distinctive specimen ornamental planting. There is no doubt that their beauty will be a continual joy to those who are fortunate enough to have these lovely trees on their home grounds. In winter and summer their graceful branches sway in the gentlest breeze and wave their beauty to all.

Prof. N. E. Hansen introduced Niobe Weeping Willow from the colder parts of Europe and so it is perfectly hardy far north into Canada. Beautify your grounds with this fine, hardy Weeping Willow.



Glorious Springtime Blossoms

FOR THE LAWN OR BOULEVARD

The blossoming is followed by a mass of dense, bright green foliage, covering heavily shouldered and wide spreading branches, thus making it a fine shade tree for the street or lawn.

A FINE FRUIT TREE—BEARS EARLY

Then comes the bright red and yellow fruits which can be used for jelly, or pickling, or are best pressed out and the juice added as the desired flavor in other fruit jams and jellies. The juice also makes remarkable cider. The tree usually bears when about three years old.

Siberian FLOWERING CRAB

GLORIOUSLY BEAUTIFUL

Its glorious, gorgeous, early spring magnificence adorned in an avalanche of large pink and white flowers of superb fragrance begins its alluring loveliness. This unquestionably makes it both a fine specimen ornamental for the lawn and wonderful as a street tree. Used in a windbreak, it gives the whole place a living frame of beauty.



Fruit Fair Size. Good Flavor. Makes Fine Jams, Jelly, Cider.

A commendable tree for ornament and utility. It must be seen and used to be fully appreciated.

STURDY—DISEASE RESISTANT

The tree itself grows to a good height and lives long. Its growth is rapid, sturdy, and vigorous. It is very drought and disease resistant and because of its origin is absolutely hardy everywhere.

A BEAUTIFUL WINDBREAK BACKGROUND

Being of such a well built nature with staunchly branched limbs and with such a fine heavy network of branches, it makes a splendid tall windbreak. Note our real low prices on windbreak stock, that we are able to offer you this year for groves and shelterbelts.

PRICES FOR STRONG, BRANCHED TRANSPLANTED, WELL ROOTED TREES

Size	Each	3	6	12
Large, 4-5 Ft.....	\$1.00	\$2.50	\$4.50	\$8.50
Medium, 3-4 Ft.....	.75	2.00	3.50	6.50
Small, 2-3 Ft.....	.50	1.25	2.25	4.00

WINDBREAK STOCK

Size	Per 10	Per 25	Per 100
6-9 inch.....	\$.65	\$1.50	\$ 5.00
9-12 inch.....	1.00	2.25	7.50
12-15 inch.....	1.35	3.00	10.00

DAKOTA BEAUTY

Flowering Crab

A Carl A. Hansen Introduction

It is with a great deal of pride that we now offer a **double** red flowering crab, and the hardiest one of its type in the world. There have been double flowering crabs before. There have been red flowering crabs before. But never has there been a double red flowering crab with the supreme, ultra hardiness of this one. In addition, it has a fair sized fruit with red flesh that is fair eating fresh, and just the thing to put red coloring into your apple sauce and preserves.

It is hard to say when a new plant is introduced to the public just how far it will go, but from our study and knowledge of the background of these things, it is our firmest belief that DAKOTA BEAUTY will go a long, long way, and will become one of the top few in America. To buy one now is like getting in as a charter member of a great new order that will change the beauty of the world.

We have named this new flowering crab in honor of our State, where it was originated and born. This year it goes out to greet the world and commence to spread its beauty everywhere. If you enjoy flowers, the beauty of spring, lovely flowering trees, your joy will know no bounds if you add DAKOTA BEAUTY to your lawn and can enjoy its breath-taking loveliness that will make your place a fairyland of beauty.



Large Dark Red Double Flowers.

Plant Patent
No. 648

Price **\$5.00** Each

Plant Patent
No. 648

As this plant is patented, it may not be reproduced from without permission.
If interested, write us for particulars.

SNOW WHITE

Flowering Crab

A Carl A. Hansen Introduction

A **Double White** flowering crab. Although red is the favorite of many people, nevertheless a contrast of pure white only enhances the other colors more. Most white flowers have slightly pink blushes or blotches of red in their throats, but not SNOW WHITE. For it is pure white, as white as the Easter Lily, and with a rich, sweet fragrance. SNOW WHITE blossoms very early and it is literally a massive white bouquet when in full bloom in early spring.

We have only a very few trees available.



Pure White Double Flowers.

Snow White
Each, **\$2.00**



Lovely Large Open Flowers.

PINK GIANT

Flowering Crab

A Carl A. Hansen Introduction

We have seen many flowering crabs, but this is the first one at which we are completely awed. The flowers are huge, brilliantly pink and the showiest things imaginable. Among our many groups of flowering crabs, Pink Giant, with its gaudy blossoms, outshines all the rest. In addition to their large size, they open wide, which tends to make them look even bigger. After its gorgeous flowers, come small, brilliantly red fruits which hang on well into the winter and make fine feed for the birds.

The tree is of strong, upright growth with heavy branches and main trunk. The leaves on the tips of the branches are tinted with red, giving the whole tree an unusually decorative effect, even when not in bloom.

Pink Giant is of a very hardy strain, and tests so far have proved it should thrive to the Canadian line and beyond. In the nursery it is a very vigorous and an unusually fast growing tree, and as far as we know immune to fire blight.

We believe this new Pink Giant Flowering Crab to be one of the most outstanding Flowering Crabs ever offered.

Size	Price
Large, 4-5 Ft.....	\$2.00 Each
Medium, 3-4 Ft.....	1.50 Each
Small, 2-3 Ft.....	1.00 Each

HOPA • • • Rose Flowering Crab

Attractive Cherry Desirable

A Niels E. Hansen Introduction

A remarkable tree which is entirely covered with beautiful ROSE colored blossoms in May. It is a cross of Niedzwetzkyana, a red fleshed, red-flowering apple from Turkestan, and the Siberian Crab. Hopa is very hardy, blooms when but five feet in height, and is of such striking beauty that it deserves a place on every lawn. The fruit is red inside and out, and is very ornamental.

The tree makes a very strong, well balanced growth. The color of the leaves and bark livens up the landscape and gives it a cheerful aspect throughout the year. The foliage for summer color and the reddish colored bark for winter scenery.

For the best effect and to bring out its beauty Hopa may be planted in a group with other tall growing shrubbery or trees, or it may be planted as a specimen tree with excellent results, for as such it shows up splendidly.



Beautiful Rose-Red Flowers in Early Spring

Size	Each
Large, 4-5 Ft.....	\$2.00
Medium, 3-4 Ft.....	1.50
Small, 2-3 Ft.....	1.00

RED SILVER

Flowering Crab

A CARL A. HANSEN INTRODUCTION

A REAL WORTHWHILE ORNAMENTAL



Lovely, Dark Red Flowers—Beauty You Dream About.

The glorious flowering crab that is completely **red** in flower, leaf, bark and fruit. Makes a fine lawn tree. Rich maroon red from top to bottom. This is a very remarkable new ornamental recently introduced by Carl A. Hansen. Most flowering crabs are desirable because of the mass of blooms which they have in such profusion for a short time, but Red Silver is beautiful from spring until late fall because of its all-over red color.



Maroon-Red Cut-Leaf Foliage
Tinsel with Silver

The under side of the leaves are tinsel with silver, a touch that makes it all the more beautiful as the blend of maroon and silver is a unique combination throughout the season. The leaves are somewhat cut-leaf, adding to the striking beauty of this new ornamental.

This small tree, graceful in its lines, with such strikingly beautiful foliage, has a color so intense that it is little affected by the summer heat. The wonderfully fragrant red flowers are large, partially double and altogether lovely. One of the greatest hardy flowering crabs ever introduced. Showy and different.

The Marvel of All Flowering Crabs

Size	Each	Per 3	Per 6
Large, 4-5 Ft.	\$2.00	\$5.00	\$9.50
Medium, 3-4 Ft.	1.50	4.00	7.50
Small, 2-3 Ft.	1.00	2.50	4.50

MAY DAY TREE

THE BEAUTIFUL FLOWERING LAWN TREE

Lovely
Fragrant
Hardy
Vigorous

For superb flowering beauty on the lawn or boulevard, none excels May Day Tree. Its fragrant, fine white flowers early in spring create a massive bouquet of loveliness. The individual flowers are fully a half inch across. A few days later the leaves unfold in all their glossy beauty, far ahead of all the other trees.

FIRST TO BLOOM

As this tree is always in bloom by the first of May here it was well named the May Day Tree, and the long racemes of fragrant white flowers, so thickly set on fine branches, may well be used for garlands and to crown the Queen of May. The mass-like clusters are a beautiful sight and are well adapted to cutting for the house or for early spring lawn festivals.

BIRDS ENJOY FRUIT

The shiny black cherry fruit which follow the lovely blossoms are small and though edible and good for jelly, are soon claimed by the birds in preference to what we consider better fruit. Thus our good fruit is spared, yet the birds are fed.



Close-Up View of the Flowers of the May Day Tree.



Prof. N. E. Hansen and a May Day Tree.

May Day may be trimmed up for a street or lawn shade tree, or left in bush form as shown. It grows rapidly, reaching a height of fifteen to twenty feet at maturity. When used as a specimen plant on the open lawn it reaches its full majesty, but it may be used in the background of shrub groups as well.

EXTREMELY HARDY

Having come from eastern Siberia and Manchuria, there is no doubt as to its hardiness. The scientific name of this remarkable tree is *Prunus Padus Commutata*, but better call it May Day Tree for everyday. It is highly recommended by the Arnold Arboretum at Boston where records show that it is in bloom about three weeks in advance of any other bird cherry.

For the lawn the superb beauty of the May Day Tree will please and impress everyone.

PRICES on MAY DAY TREES

Well Branched, 3 and 4 Year	
Ready to Bloom First Year	
5-6 Ft.....Each,	\$1.75; 3 for \$5.00
4-5 Ft.....Each,	1.25; 3 for 3.50
3-4 Ft.....Each,	.75; 3 for 2.00
2-3 Ft.....Each,	.50; 3 for 1.25

Manchurian Beauty

Flowering Crab

ORNAMENTAL

As prolific in blossom as the Hopa or Bechtal but has a lighter pink blossom.



FRUIT TREE

This tree has fruit which is exceptionally good for jams and jellies.



Easy to Grow

The Manchurian Beauty is one of the easiest flowering crabs to start in that it is derived from one of the hardiest strains from Manchuria.



Blossoms Early

It is one of the first to bloom, thus giving it that enhancing beauty which comes only with the first spring blossoms.



In All Its Springtime Glory

SHADE TREE . . . FRUIT TREE . . . ORNAMENTAL

Beautiful Flowers . . . Wonderful Shade . . . Hardy Everywhere

This lovely flowering lawn tree, introduced from the mountains of interior Manchuria, is one of the first to blossom in the early spring, with an avalanche of beautiful pink and white flowers, followed by a mass of fine dense foliage and bright red fruits. One of the hardiest Flowering Crabs known, it is fast growing, sturdy and vigorous, with a natural resistance to disease, cold and drouth. Long lived and absolutely hardy anywhere.

Plant them on lawns as specimen trees, along walks and drives, in fact everywhere that you want abundant beauty.

PRICES FOR STURDY, WELL BRANCHED, HEAVY ROOTED TREES	{	4 to 5 Feet.....	Each, \$1.50; 3 for \$4.00; 6 for \$7.50
		3 to 4 Feet.....	Each, \$1.00; 3 for \$2.50; 6 for \$4.50
		2 to 3 Feet.....	Each, \$.65; 3 for \$1.75; 6 for \$3.00

DWARF FLOWERING ALMOND

A Glorified Shrub of Alluring Loveliness



Gorgeous Blooms Cover the Plant

HARDEST DWARF ORNAMENTAL

The Dwarf Flowering Almond is a beautiful lawn shrub which is destined to great popularity. It is perhaps the hardest of dwarf ornamentals as it is native of Siberia.

EARLIEST TO BLOOM

Before other shrubs are out and its own leaves appear, it is covered with bright rose-pink, fragrant flowers. It remains a beautiful mass of blooms for nearly three weeks. The flowers being fragrant and of such brilliant hue, are valuable for bouquets in the house.

In the fall the leaves turn to a pretty gold and red color to brighten the landscape.

PRICES FOR DWARF FLOWERING ALMOND

Size	Each	3	6
Large	\$.75	\$2.00	\$3.50
Medium	.50	1.25	2.25
Extra Large Specimen Plants: \$1.25 Each.			

SPECIAL!

Dwarf Flowering Almond will form a beautifully symmetrical, natural hedge about 3 feet high if not trimmed. Plant 12-18 in. apart.

HEDGING STOCK PRICES		
Per 10	Per 25	Per 100
\$3.00	\$6.50	\$25.00



Fine as a Low Flowering Hedge.



Plant in Front of Taller Shrubs.

Hansen's Dwarf FLOWERING CHERRY

A New Hardy Dwarf Cherry which, though it has large dark red fruits of good quality, its main charm lies in its beautiful fragrant flowers early in spring. Blooms profusely for a long time.

The branches are slender and are completely covered with flowers before the leaves appear. They make excellent bouquets for the house and keep on blooming for many days in a vase of water.

The flowers vary from a light shell pink to white, and sometimes come double.

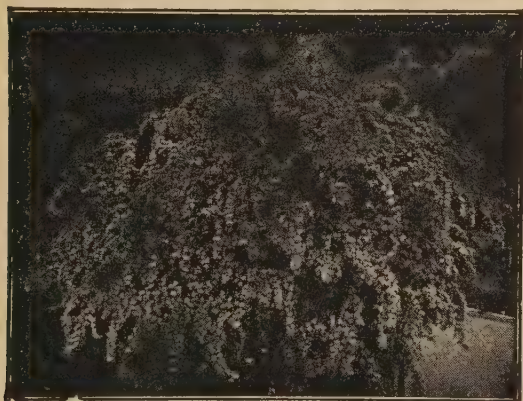
PRICES: Each, 75c; 3 for \$2.00; 6 for \$3.50.



Best Ornamental Shrubs



HYDRANGEA, P. G. A very beautiful shrub with heavy foliage. Blossoms in late summer and fall, having many huge clusters of creamy white flowers that turn to pink and rose. Especially fine for cutting—last so long.



Spirea Van Houtte

SPIREA VAN HOUTTE. The most popular of all shrubs. Known also as Bridal Wreath. Extremely hardy and easy to grow. The foliage is fine and dense making it an ideal ornamental for foundation plantings, for hedges, for a specimen shrub, or in groups with other ornamentals. It blooms profusely and the small white flowers are borne in tiny clusters all along the slender, pendulant branches. These long sprays of flowers are ideal for mixed bouquets.

SPIREA VAN HOUTTE PRICES

Size	Each	3	6	12
Large 2-yr., 3-4 ft.....	\$.50	\$1.25	\$2.25	\$4.00
Medium 2-yr., 2-3 ft.....	.35	1.00	1.75	3.00
Small 2-yr., 18-24 in....	.25	.65	1.25	2.00

SNOWBALL. A well known, tall, growing, hardy shrub with strong upright branches and dense foliage. So named because of the masses of white flowers in April and May that resemble snowballs clinging to the branches. May be included in group plantings and makes an ideal specimen plant in a conspicuous place on the lawn.

GOLDEN ELDER. A large shrub with heavy, large, yellow leaves. Bears flat clusters of white blossoms and later produces heavy bunches of shiny dark fruit that attracts birds. Especially hardy and strong growing.

MOCK ORANGE. An upright growing shrub, producing an abundance of large white, fragrant flowers in May and June. One of the taller shrubs.

JAPANESE BARBERRY. A low growing shrub with drooping sprays of bright green foliage. Turns to brilliant hues in autumn. Red berries hang on in winter. Excellent for borders.

PERSIAN LILAC. A fine leaved lilac with large panicles of reddish purple flowers in spring. Does not sprout from the roots, making it better for group plantings.

SPIREA, A. W. A very dwarf ornamental shrub that makes a lovely low hedge, or may be planted in front of other shrubs. Has small bunches of bright red flowers from June until September.

TAMARIX. Myriads of tiny, individual, almost invisible pink flowers on the tips of the branches, from a distance make a radiant rosy glow like a fluffy cloud at sunset. Very unique, cypress-like, feathery silver foliage. The long, graceful branches dancing in the breeze lend a gay and fantastic effect.

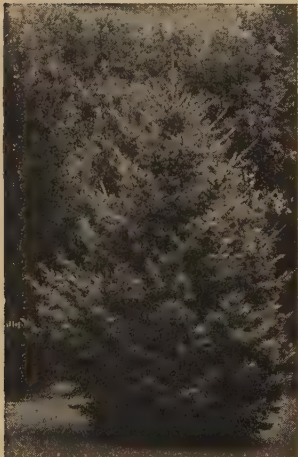
SIBERIAN DOGWOOD. A large growing shrub with bright red bark and green leaves. Has flat bunches of white flowers followed by white berries.

PRICES FOR ABOVE SHRUBS and HYDRANGEA, P. G.

Size	Each	Per 3	Per 6
Large	\$.85	\$2.35	\$4.50
Medium60	1.60	3.00
Small40	1.10	2.00

BLACK HILLS SPRUCE

The Compact, Perfect Shaped Spruce



Black Hills Spruce

Perfect for All-Year Beauty
Perfect for Group Planting
Perfect for Specimen Planting

Black Hills Spruce is the most popular of the evergreens in the Northwest. This tree is one of the hardiest we have, standing our most severe winters and droughts. Its dense dark green foliage makes everlasting beauty the year around. The perfect lawn tree. Plant them freely on the lawn singly or in groups or a long line of them along your lot line or driveway or to outline your windbreak on the farm.

This year we have a very nice lot of well branched transplanted trees which we will dig upon receipt of your order and immediately pack in a special peat moss which will keep them in perfect shape until you plant them.

PRICES ON BLACK HILLS SPRUCE

Size	Each	Per 3	Per 6	Per 12	Per 25
8-12 Inch Transplanted Trees	\$.35	\$1.00	\$1.85	\$3.50	\$6.50
12-18 Inch Transplanted Trees	.50	1.35	2.60	5.00	9.50
15-18 Inch Transplanted Trees	.65	1.75	3.35	6.50	11.50

SPECIAL NOTICE! Park Boards, Cemetary Associations, and others. If you are within 200 miles of our nursery, and want larger sizes, we will give you special **delivered** prices in lots of 25 or more trees. We have all sizes of Black Hills Spruce to offer besides those listed above. Please write for further information.



CLIMBING VINES

ENGELMANNI IVY. The hardiest vine. Will climb without a trellis as it has small sudopads that cling tightly. The large shiny green leaves turn to brilliant hues of red with the first light frost.

Large 3-year plants. Each, 35c; 3 for 75c; 6 for \$1.25.

HALL'S HONEYSUCKLE. Rapid growing vine with beautiful foliage and fragrant creamy white flowers. For terraces and trellises.

Each, 50c; 3 for \$1.25; 6 for \$2.25.

JACKMANI CLEMATIS. Beautiful masses of purple flowers all summer.

Each, 85c; 3 for \$2.25.



Hall's Honeysuckle

LOMBARDY POPLAR

This is the Poplar that is so much used for avenue or background planting. They form tall, stately columns of dark, shiny green leaves. It succeeds on soil too poor for other trees and grows rapidly. Widely used for screening and windbreak purposes because the foliage grows close to the ground and the limbs grow in an upright position, giving a dense screen when planted close together.

Size	Each	Per 3	Per 5	Per 10	Per 25
3-4 Ft. Trees.....	\$.35	\$1.00	\$1.50	\$2.50	\$6.00
4-5 Ft. Trees.....	.50	1.35	2.00	3.50	8.00
5-6 Ft. Trees.....	.75	2.00	3.00	5.50	12.75

"To Plant the Prairies and the Plains"

A Biographical Story of Horticultural Adventure of

Dr. N. E. Hansen

By MRS. H. J. TAYLOR



N. E. Hansen greeting Ivan Mitchurin, the world-famous Plant Breeder of the Soviet Union. Taken on one of N. E. Hansen's many trips to Russia, in search of new hardy plant material.

If you are interested in Dr. N. E. Hansen's work in fruit breeding and other plant hybridizing and his plant explorations, get this book.

It tells of his many tours to Russia, Siberia and far-off places in search of new plant material. Of his many strange, interesting and exciting adventures in wild country and with native people.

It tells of his many plant experiments, his processes of plant breeding, selecting and improving.

It is a scientific book of great interest and importance to the scientist and amateur, written in the style of a thrilling novel.

Buy your book today—only a few copies still available of the first, leather-bound, edition.

ONLY \$1.75 PREPAID

HARDY ROSES

Make Your Dreams Come True

To many there is no flower in the garden lovelier than a rose, yet, contrary to the opinion of many, they are easy to grow if the proper simple care and attention is given them. We sell only the hardiest sorts that have proven themselves in home gardens throughout the Northwest.

HANSA. Best Hardy Red Rose. Large, double flowers over an unusually long blooming season. Sturdy growth and absolute hardiness.

SIR THOMAS LIPTON. Best Hardy White Rose. Large, double, pure white. Profuse bloomer.

BELLE POITEVINE. Good Hardy Pink Rose. Very large, double, fragrant flowers of a bright silvery rose-pink.

CRIMSON RAMBLER. Famous everywhere. Vigorous grower, glossy foliage, panicles of blooms, large and perfect for weeks.



Hansa Rose

HANSEN SIBERIAN ROSE

NEW HARDY ROSE INTRODUCTION BY N. E. HANSEN

Beautiful pink blossoms all summer long. Sturdy, large growing, for background in group plantings, or as single shrubs. The hardiest rose grown.

PRICES FOR THESE HARDY ROSES
Each, 75c; 3 for \$2.00;
6 for \$3.50.

A Sensational New Rose . . . HANSEN'S THORNLESS A Rose Without Thorns!

Prof. N. E. Hansen is working with thousands of rose seedlings and is attracting nation wide attention for his efforts toward producing lovely, hardy roses without thorns.

His Thornless Rose we offer here is really thornless. Not only on the main stems, but on the branches as well. The plant is of sturdy upright growth with attractive foliage, which makes it desirable as a shrub, and it is perfectly hardy as it will stand fifty degrees below zero without protection.

The flowers are of a delicate pink color and very fragrant. The branches likewise are very attractive, being a bright glowing red throughout the year. The red seed pods clinging to the red stems in winter time makes them very ornamental.



THORNLESS ROSE PRICES
LARGE SIZE PLANTS
Each, \$1.00; 3 for \$2.75
6 Roses, \$5.00.

N. E. Hansen and
His Thornless Rose

The New Hansen Hedge Rose

THE STATELY, BEAUTIFUL HEDGE

The most beautiful of all hedges. These roses were introduced from Siberia some years ago by Prof. Hansen and have been developed by him for years to improve their

size and beauty. The flowers are quite large, fragrant and beautiful. With a hedge of these roses around your lawn you will have a flowering border of beauty to frame your home which will be a continual joy and everlasting pleasure throughout the years to come. Buy them now and beautify your place beyond your fondest dreams.



HEDGE ROSE PRICES
Strong 2 and 3 Yr. Plants
100 Plants, \$17.50
25 Plants, \$5.00.

N. E. Hansen's Newest Hardy Roses

Double . . . Hardy . . . Gorgeous

ZITKALA ROSE

RED THORNLESS BEAUTY

Dr. N. E. Hansen's most recent and best double red rose introduction. The flowers are large and fragrant and are borne on long smooth red stems. No thorns at all except on the extreme lower base of the plant. Extremely hardy. Blooms over a very long time in mid-summer.

TETONKAHA ROSE

INDIAN PRINCESS OF THE PRAIRIES

The blooms are rose pink, fully three inches across, and are double, having upwards to 25 petals or more. Their brilliant color makes them very showy, and they are borne conspicuously amid the dense foliage in great profusion. It is a strong grower, absolutely hardy, and a very free bloomer.

ALIKA ROSE

Very vivid cerise, double blossoms over a long blooming season. Sturdy, dwarf plant. Very hardy.



Special New Rose Prices

Tetonkaha - Zitkala - Alika

Each, \$1.50; 3 for \$4.00.

6 Roses, \$7.50

Hansen's **HARDIEST** *Hybrid* **TEA ROSES**

No Garden Is Complete Without a Few Hybrid Tea Roses.

These roses bloom all summer long and give us that delicate and exquisite touch that only a really good rose can give.

These Tea Roses we are offering are the hardiest and best of the hundreds of different varieties on the market today.

You may order by color and we will use our best judgment in giving you the best and hardiest for your territory.

Each \$1.25

3 for \$3.50

6 for \$6.50

GLADIOLUS

THE QUEEN OF SUMMER FLOWERS

The Glory of the Garden. A flower supreme. Desirable and easy to grow everywhere. A wide range of many attractive colors. We have hundreds of varieties and our assortments are sure to please you for they contain a wonderful array of many colors and choice kinds which will produce many glorious blooms from early in the season till late in the summer.



Gladiolus

LARGE BULBS

6 Bulbs, 40c; 12 Bulbs, 75c; 25 Bulbs, \$1.40

SUPER JUMBO BULBS

6 Bulbs, 55c; 12 Bulbs, \$1.00; 25 Bulbs, \$1.85



Peonies FOR EVERLASTING BEAUTY

The superb flower of the garden that holds sway with the most gorgeous array of gloriously colored flowers, giving to the garden the effect of fairyland. Hardest of perennials and will grow for years almost anywhere with scarcely any care or attention. Peonies are a priceless pleasure that all should have.

Prices for Strong 3 to 5 Eye Divisions

By Colors—Pink, Red, Dark Red, White.

65c Each; 3 for \$1.75; 6 for \$3.25.

Choice Assorted Peonies

50c Each; 3 for \$1.25; 6 for \$2.25.

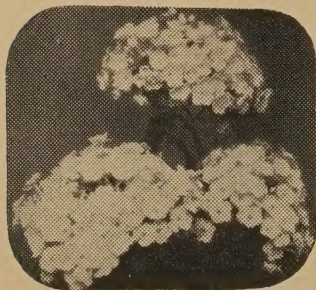


HOLLY HOCKS

pretty lavender shell pink. Blooms profusely all summer. Each, 35c; 3 for \$1.00; 12 for \$3.50.

DOUBLE HOLLYHOCK. The beautiful garden flower whose stately beauty is admired by all.

Has large handsomely colored double flowers which make it a favorite. Each, 25c; 3, 65c; 12, \$2.00.



Phlox

Hardy PERENNIALS

DAKOTA PENSTEMON. One of the most perfect and beautiful native perennials. Reigns serenely in queenly beauty on the very driest of hills. Its large cup-shaped flowers are a pretty lilac-blue. Each, 25c; 3, 65c; 12, \$2.00.

SIBERIAN LAVATERA. A pretty Flowering Perennial introduced by Dr. Hansen. Flowers large, up to 2 to 3 inches across, single and usually a

WESTERN YUCCA. Has beautiful long stalks of cream colored, bell shaped flowers. They are especially nice for rock gardens, with their sword shaped leaves. Very hardy and drought resistant. Each, 20c; 3, 50c; 12, \$1.75.

PHLOX. A hardy and very desirable perennial with large clusters of brilliant flowers. Gives a vivid alluring touch of color that is so much in demand by all lovers of beautiful flowers. Each, 35c; 3, \$1.00; 12, \$3.00.

BLEEDING HEART. The old fashioned variety with branches of deep pink, heart shaped flowers.

Bloom in May and June. Plant them in the shade. Price: Each, 50c; 3, \$1.25; 12, \$4.00.



Yucca

FERN LEAVED
CORAL LILY
 One of the most beautiful of all lilies. Fern leaved foliage. Large, gorgeous, red, fragrant flowers, June and July. Very hardy and drought resistant. Each, 25c; 3 for 65c.



Bleeding Heart

Every Man's Orchid

HANSEN'S NEW SHILKA IRIS Everblooming ORCHID IRIS

From the wilds of Siberia, near the town of Shilka, comes this new, hardy, Everblooming Orchid Iris, which was brought to this country by Carl A. Hansen from one of his world-wide plant exploration expeditions.

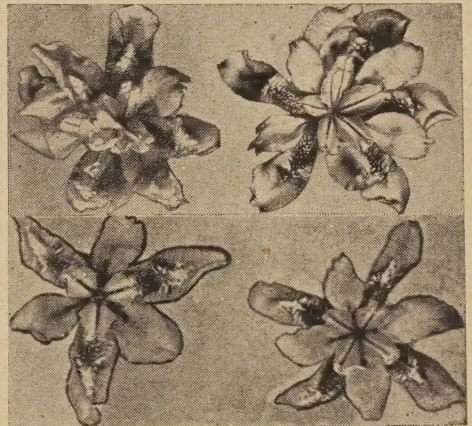
A real hardy outdoor perennial for the Northwest. It blooms continuously for six to eight weeks after all other Irises are gone. Its wide, spreading blooms possess lovely, delicate tones of superb orchid and blue, mingled with creamy white as found in the finest orchids.

With this latest addition to the Iris family, it is now possible for everyone to have flowers growing in their own gardens, so like the expensive orchids. Long slender stems bear as many as twelve to fifteen superbly beautiful flowers on each plant, all at one time, hundreds before the season is over.

The flowers of the new Shilka are delicately fragrant, a remarkable attribute to an already beautiful flower. Many of the blossoms come double.

The foliage, like other Irises, is attractive all through the season, in beds or in border plantings.

Everyone who likes Irises should plant this newest and finest, Shilka Iris.



Shilka Iris Flowers

PRICES ON SHILKA IRIS

SMALL SIZE ROOTS
Each, 20c; 3, 50c; 12, \$1.75

LARGE SIZE ROOTS
Ea., 35c; 3, \$1.00; 12, \$2.75

LARGE 3 YR. CLUMPS
Ea., 75c; 3, \$2.00; 6, \$3.50

The Hansen FERN LEAF PEONY

EARLIEST OF ALL!

Another very fine ornamental introduction by Prof. N. E. Hansen. This new Peony has beautiful, very showy, red flowers with orange-yellow centers. They make a most attractive showing and are so welcome at the time of year they bloom.

Siberian Fern-Leaf Peonies are the very first of the Peonies to bloom, from ten days to two weeks ahead of all others, and are about the only flowers at that time of year.



Attractive Cut-Leaf Foliage and Dark Red Flowers

The plant itself is very attractive all through the season, with its fine, cut-leaf, fern-like foliage in contrast to other varieties. This Peony is very hardy, resistant to drought and leaf spot. Our supply of these plants is not large, so send your orders as early as you can.

Special . . .

3 Shilka Iris
1 Fern-Leaf Peony

LARGEST SIZES
Both Only

\$4

Hansen Fern-Leaf Peonies

Large 3-Year Roots.....\$2.50 Each

HANSEN PROSO

THE DRY LAND WONDER GRAIN !



One Bundle of Proso
Grown in Western S. Dak.

The Best Catch Crop for the Northwest—Matures in 60 Days. Can Be Planted Later and Will Stand More Dry Weather Than Any Other Grain.

Here is an all-purpose grain that farmers have been looking for. It matures quickly, is an abundant producer, very drouth resistant, makes good forage, can be planted late, has white kernels, is good food for live stock and poultry, makes a fine breakfast food, is a heavy grain, and grows in any soil.

Best Catch Crop. Proso matures in 60 to 70 days, and should not be sown until after the middle of May. It may even be planted as late as July.

Stands More Dry Weather Than Any Other Grain. During the drouth, many farmers seeded Proso after the other crops had failed, and when the late rains came they had plenty of feed.

Pasture and Forage. Proso may be pastured until it heads out. It is equally good pasture after harvest until frost. If planted real early, Proso furnishes pasture for those who are short on feed. Proso straw makes a wonderful forage because it retains its green color and does not chaff.

Ideal for Cattle and Hogs. Proso grain is considered one of the best feeds for live stock, equal to or better than wheat. Farmers tell us that ground Proso is equal to corn in finishing off live stock for market.

Ideal for Poultry. In a very interesting poultry feeding test with White Proso mixed with corn, oats, barley and wheat, none of the others were touched until the Proso was gone. It is very valuable because of its high protein content. Proso does not have to be threshed for poultry feeding, but may be fed in shock.

Makes Fine Breakfast Food. Carl A. Hansen, while studying seeds and plant life in Russia, noticed that Proso was used extensively as a food. He experimented with it and by puffing it obtained a very tasty breakfast food, which he named Proso Puffs.

White Kernel. Improved Strain. Prof. N. E. Hansen, the famous plant wizard, introduced the Hansen Proso from Siberia, and selected it for its white color, large kernels, and greater productivity. The seed is round, pure white, several times the size of millet, growing in a sprangly head. It should not be confused with the colored prosos, as Hansen's Proso is superior in every way: size, color, and production.



HOW TO PLANT. Proso may be planted on any kind of land, either broadcast or drilled. Weeds may be plowed under two or three times and killed before it is time to plant Hansen Proso. Many farmers report that by planting Hansen Proso in late May or June, the plants will produce 15 to 25 stems each. Proso may be harvested with a combine or it may be shocked and threshed. For combining it should be ripe, but for shocking it should be cut when the stalks are still quite green. Average yield of Hansen Proso is from 40 to 60 bushels per acre with a seeding of 20 to 30 lbs. per acre. The grain averages 60 to 64 lbs. per bushel.

PRICES ON HANSEN PROSO

BY MAIL POSTPAID

Large Pkt., 10c; 4 oz., 35c;
5 lbs., \$1.35.

BY EXPRESS OR FREIGHT COLLECT

10 lbs., \$1.50; 25 lbs., \$2.50; 50 lbs., \$4.00;
100 lbs., \$6.50; 500 lbs., \$30.00;
1,000 lbs., \$55.00.