

Historic, Archive Document

Do not assume content reflects current scientific knowledge, policies, or practices.

62.61



HUNT'S *perfection* SEEDS

1946

Your home-garden is now a major source of our food supply. Keep up your gardening efforts for health and economy.

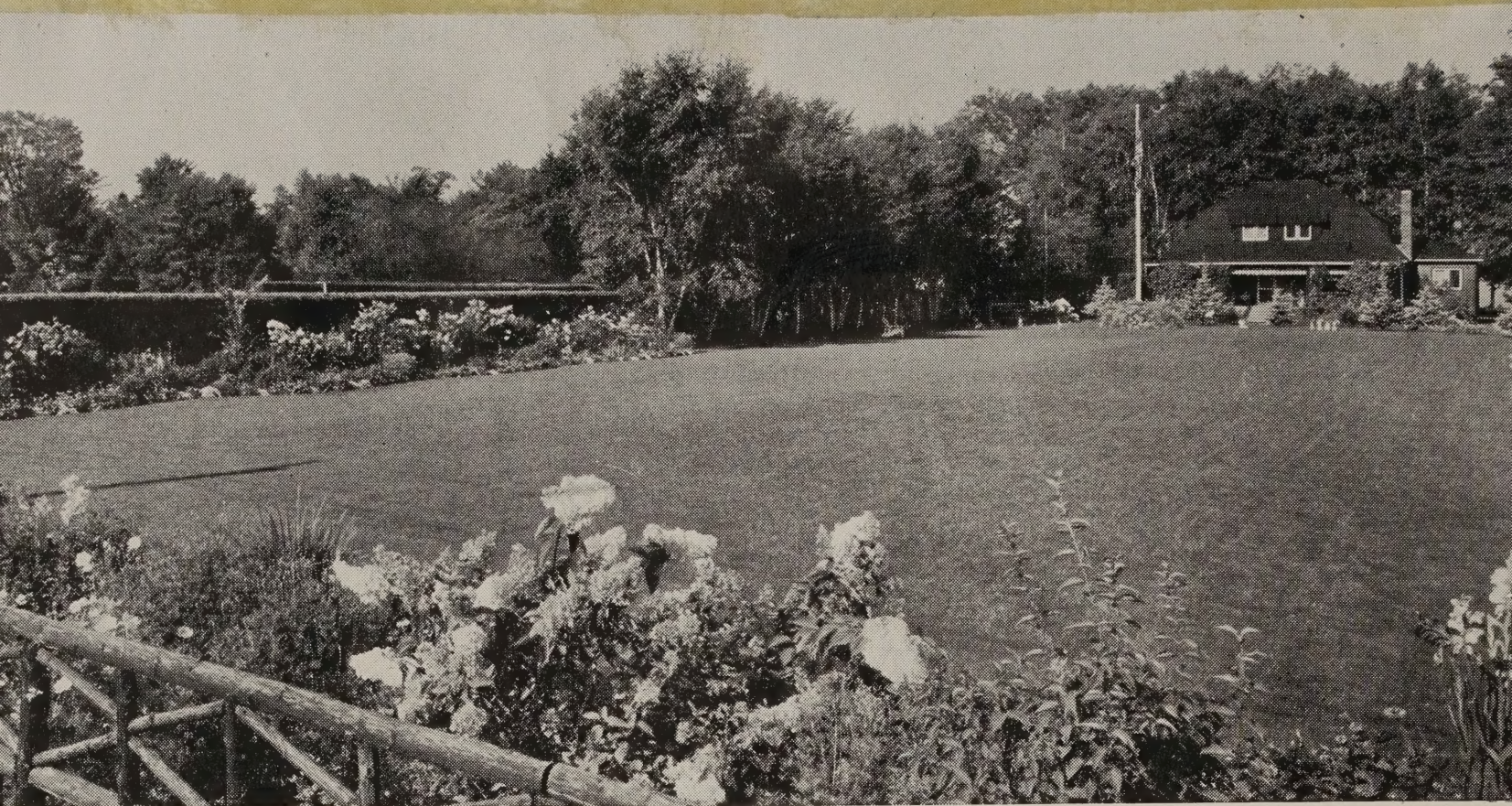
N.B.—FLOWER SEEDS are exceedingly short in supply this season. We strongly advise early placing of orders. We shall be pleased to hold them in reserve and ship at any time required.

WILLIAM M. HUNT & COMPANY, Inc.

*Consolidated with J. M. THORBURN and COMPANY
Supplying Gardens for Over a Century*

115 West 45th St., NEW YORK 19, N. Y.

Telephone: BRyant 9-3547



HUNT'S *Perfection* LAWN SEED MIXTURE

*Contains Fancy Red Top, Kentucky Blue, Astoria Bent,
Perennial Rye Grasses*

*An acre requires 200 pounds of seed, or 1 pound to each 160 square feet.
For renovating use half this quantity*

Harrow or rake the ground lightly, and roll with a heavy roller

An ideal selection of many kinds of grass is offered in this seed mixture. In fact, representative types have been selected to provide a rich green lawn of even texture throughout the year. The early-maturing type insures a solid mass of green for the spring and early summer months. As the season progresses the late kinds maintain the vigor of the turf, giving a permanent foundation to the lawn. To overcome the dry conditions of mid-summer only varieties with deep moisture-holding roots have been included. They need only a minimum of water to maintain their even green richness throughout the growing season.

Lb. \$1; 5 lbs. \$4.50; 20 lbs. \$17.50; 100 lbs. \$80

TERMS. Prices quoted are net. For cash with order we prepay transportation on seeds to any point in the United States.

Upon delivery of goods by us to the carrier, ownership passes to the purchaser; when the carrier issues a receipt, our responsibility ceases. Claims for loss or damage should be made to the agent at point of delivery.

EARLY ORDERING. Your cooperation is invited by placing orders early; this will aid us in preparing for the spring trade and facilitate delivery at proper time.

Ask for our special printed order form for large orders

PRICES on Bulbs, Seeds, Plants, and Supplies are subject to market, tariff, and currency changes.

SUBSTITUTES. Should the stock of any variety ordered be exhausted, we shall, to save delay, send in its place the most suitable substitute, unless instructed to the contrary.

RECOMMENDATIONS. We are indeed grateful to our customers who recommend us to their friends and we will at once forward our catalogue to these friends whose names and addresses are given to us.

NON-WARRANTY. William M. Hunt & Company, Inc., give no warranty, express or implied, as to description, quality, productiveness, or any other matter of any seeds, bulbs, or plants they send out, and they will not be in any way responsible for the crop. If the purchaser does not accept the goods on these terms, they are at once to be returned.

Hunt's Lawn Grass Mixtures

Prospect Park Mixture

Contains Fancy Red Top, Kentucky Blue, New Zealand Fescue, Domestic Rye

This mixture is made of the finest grasses specially adapted for lawns. With proper care of the soil beforehand, it will produce a rich, velvety lawn in four to six weeks, which will remain green throughout the year.

Lb. 90 cts.; 5 lbs. \$4; 20 lbs. (bus.) \$13.50;
100 lbs. \$65

Hunt's Popular Mixture

Contains Fancy Red Top, Domestic Rye, Kentucky Blue, New Zealand Fescue

This mixture has been prepared to meet the demand for lawn seed lower in price than the Perfection or Prospect Park Mixtures, but which will produce a satisfactory lawn the first season after planting. Popular Lawn Grass Mixture is especially prepared for sunny locations and is not recommended for shady situations.

Lb. 75 cts.; 5 lbs. \$3.50; 20 lbs. (bus.) \$12.50
100 lbs. \$55

WHITE CLOVER FOR LAWNS

Specially selected seed of high purity, valuable for lawns. Sow in the spring at the rate of 4 pounds per acre when used with other grasses.

Lb. \$2; 5 lbs. \$9

Shady Lawn Mixture

Contains Fancy Red Top, Kentucky Blue, English Rye Grass, Chewing's New Zealand Fescue

This mixture is a combination of dwarf-growing grasses which thrive in shaded places. It quickly produces an abundant and even growth of lovely green grass where ordinary lawn seed mixtures are failures. Situations under trees are a challenge to the lawn-maker, and this mixture has been compounded to meet that challenge.

Lb. \$1; 5 lbs. \$4.50; 20 lbs. (bus.) \$17.50;
100 lbs. \$80

TERRACE LAWN SEED

Will produce a rich and lasting turf. This mixture is a combination of fine stoloniferous grasses that will make a quick, strong growth, taking a firm hold of the soil and preventing washing away by heavy rains.

Lb. 95 cts.; 5 lbs. \$4.50; 20 lbs. \$16.50;
100 lbs. \$75

LAWN RESTORING MIXTURE

A mixture of fine grasses high in both purity and germination, specially suited for renovating old lawns. Will produce a rich and lasting turf. Sow at the rate of 3 pounds per 100 square feet.

Lb. 70 cts.; 5 lbs. \$3.25; 20 lbs. \$12.50;
100 lbs. \$60

Grass Seeds sent prepaid to any address
for Cash with order

Meadow and Pasture Mixtures

Our mixtures are compounded with the object of securing a good stand from early spring until winter sets in.

We are prepared to make special formulas to meet certain specified conditions.

BOTH HAY AND PASTURE

No. 1. For light soils.	100	20 lbs.	100 lbs.
lbs. to the acre.	\$12 00		\$55 00
No. 2. For heavy soils.	90		
lbs. to the acre.	13 00		57 00
No. 3. For woodland.	100		
lbs. to the acre.	14 00		60 00

PERMANENT PASTURE MIXTURES

No. 4. For light soils.	80	20 lbs.	100 lbs.
lbs. to the acre.	\$14 00		\$60 00
No. 5. For heavy, wet soils.			
80 lbs to the acre.	14 00		60 00
FOR HAY ONLY			
No. 7. Mixture.	40	lbs. to	
the acre.	\$11 00		\$50 00

Grass and Clover Seeds

Chewing's Fescue. Excellent for fairways and putting-greens. **5 lbs. \$7.50; 100 lbs. \$140**

Coos County Bent (Seaside Bent; *Agrostis maritima*). **5 lbs. \$8; 100 lbs. \$150**

Colonial Bent (*Agrostis vulgaris*). Grown in New Zealand. Desirable for putting-greens. **5 lbs. \$7.50; 100 lbs. \$140**

English Rye Grass. Very nutritious, valuable for meadows and pastures. Sow 60 pounds to the acre. **5 lbs. \$2.50; 100 lbs. \$40**

Domestic Rye Grass. Thrives in any soil and yields early and abundant crops. Valuable for pasture mixtures. Sow 50 pounds per acre. **5 lbs. \$1.50; 100 lbs. \$24**

Kentucky Blue Grass. Especially useful for lawns, meadows, and rich lands. Sow 70 pounds per acre for lawns, 40 pounds for pasture. **5 lbs. \$6; 100 lbs. \$100**

Red Top Fancy or Recleaned. Splendid for lawns. **5 lbs. \$2.50; 100 lbs. \$40**

Timothy. If used alone, sow 30 pounds to the acre. **5 lbs. \$2; 45 lbs. (bus.) \$7.50**

White Clover For Lawns

Specially selected seed of high purity
Lb. \$2; 5 lbs. \$9

Wild White Clover

1/2 lb. \$1.25; lb. \$2.25

Clovers

ASK FOR PRICES

Alfalfa (Lucerne). Requires a deep, rich soil. Sow 20 to 25 pounds per acre.

Alfalfa, Grimm's. Certified. Very hardy and productive. In 60-lb. (bus.) sealed bags.

Alsike Clover. Thrives well in cold, wet, and stiff soils. Sow 10 pounds per acre if used alone.

Crimson or Scarlet. An annual variety for feeding green and for hay. Sow 15 to 20 pounds per acre.

Large Red or Pea Vine Clover. The English Cow Grass for plowing under. Sow 15 pounds per acre.

Medium Red Clover. Considered most nutritious of all species; best in moist locations. Sow in spring or fall, 20 pounds per acre.

Sweet Clover, Bokhara. Especially suitable for bees; also used as a fertilizer.

White Clover. Valuable for lawns. Sow in spring at the rate of 8 pounds per acre; or when used with other grasses, half that amount.

Lb. \$2; 5 lbs. \$9

GRASS AND CLOVER SEED PRICES ARE SUBJECT TO MARKET CHANGES

Farm and Field Seeds

Oats

Sow 3 bushels of seed to the acre; 32 pounds to the bushel

Regenerated Swedish Select. Popular for its heavy yield. **Bus. \$5.50**

Storm King. A very early variety that makes a strong growth of straw, producing 70 bushels per acre. **Bus. \$5**

Millet

Sow 50 pounds of seed to the acre

Golden Millet. Grows 4 to 5 feet high and yields a heavy crop. **100 lbs. \$14**

Hungarian. Yields a heavy growth of excellent hay. **100 lbs. \$13.50**

Wheat

Sow 1 1/2 bushels of seed to the acre

Honor. The best variety for fall sowing. Very hardy and prolific. **Bus. \$5**

Marquis. Spring Wheat. **Bus. \$5.50**

Buckwheat

Sow 1 bushel (48 lbs.) of seed to the acre

Japanese. Early and productive. **100 lbs. \$10**

Silverhull. Light gray grain. **100 lbs. \$10**

Rye

For grain, sow 1 bushel (56 lbs.) of seed to the acre; for forage or soiling 1 1/2 bushels

Winter. Very heavy cropper, producing 25 to 45 bushels to the acre. **Bus. \$5; 5 bus. \$22**

Spring. **Bus. \$5**

Miscellaneous Farm Seeds

PEAS, Canada Field. Fine ensilage. If sown with oats, sow about 1 1/2 bushels to the acre; in drills, 2 to 3 bushels. **Bus. \$7**

SOJA BEAN, Black Wilson. Splendid as ensilage or green fodder. **Bus. \$6.50**

RAPE, Dwarf Essex. (English.) For sheep pasture and also for soiling. **100 lbs. \$30**

SUNFLOWER. An excellent and cheap food for fowls. Sow 5 pounds to the acre. **100 lbs. \$27**

VETCHES

Spring Vetches or Tares (*Vicia sativa*). 2 to 3 bushels to acre, broadcast, or 1 to 2 bushels in drills. **100 lbs. \$17**

Winter Vetches or Tares (*Vicia villosa*). For fall sowing, use 1 bushel of the seed per acre with 1 bushel of rye. **100 lbs. \$27**

All Farm Seeds subject to market changes



Hunt's Perfection Vegetable Seeds

All seeds sent prepaid to any address for cash with order

In spite of the fact that the commercial gardener can usually supply most vegetables during the summer at less than what it costs the consumer in time and labor to raise them himself, market vegetables, no matter how expeditiously and scientifically marketed, are never as good as those grown in the home-garden.

Besides, there is always the added spice of triumphant achievement in producing the vegetables for family use from the home plot.

If there is space, such crops as mature underground—potatoes, turnips, parsnips, carrots, and so on—can be grown cheaply in quantity, and may be stored in the cellar in autumn and kept until wanted for use. Garden space and garden enthusiasm are all that are needed to produce greater quantities of those staple things of better quality.

Please order your seeds early. The use of our special order form will assist us, and expedite delivery.

ASPARAGUS ROOTS

Set out in April, in rows 2 feet apart, plant 1½ feet apart in the row, and 6 inches below surface. In small gardens, two and three-year plants are preferred to seed, as they are easier to handle and bring quicker results.

Washington. A practically rustproof variety that produces large, luscious, dark green stalks of finest quality.

Choice 1-year roots, \$4 per 100; \$30 per 1000
Strong 2-year roots, \$6 per 100; \$50 per 1000
Extra-strong 3-yr. roots, \$10 per 100

BORECOLE or KALE

Chou Vert Frise

Col Grun Kobl

One ounce of seed will sow 100 feet of drill

Sow seed ½ to 1 inch deep, in rows 1½ to 2 feet apart, and thin plants to stand 2 feet apart. Borecole is always improved in quality by mild early autumn frosts. Sowings should therefore be made in May and the plants transplanted in July.

Dwarf Green Curled Scotch. Very dwarf and spreading. Pkt. 15 cts.; ½oz. 60 cts.; oz. \$1.

Tall Green Curled Scotch. Heavy cropping sort. Pkt. 15 cts.; ½oz. 60 cts.; oz. \$1.

HUNT'S GARDEN BEANS

Haricots Nains *Frijoles* *Bobne*

Beans, particularly the bush varieties, are one of the most satisfactory vegetables to grow. They adapt themselves to practically any condition of soil, succeeding particularly well in the virgin soil of newly made gardens. Successive sowings should be made throughout the season. Those not wanted for immediate use may be canned or allowed to ripen and dry for winter use. Black Valentine Stringless, Masterpiece, and Golden Wax carry our highest recommendations.

Sow about May 1, in drills 2 inches deep; and 1½ to 2 feet apart. Drop the Beans 3 inches apart, and cover not more than 2 inches. Sow every two weeks, up to the end of July, for a succession.

Dwarf or Bush Beans

One pound (or pint) of seed will sow 50 feet of drill

Green-Podded

**Standard prices, all varieties, ½lb. 30 cts.;
lb. 50 cts.; 5 lbs. \$2.40**

Black Valentine Stringless. Long, round, solid pods. Heavy cropper. For forcing or garden.

Bountiful. One of the best green-podded sorts. Early and prolific; long green, flat pods.

Earliest Red Valentine. Tender and of fine flavor.

Keystonian. 52 days. Dark green pods 6 inches long. Round, solid, fine-grained flesh of superior quality. Its combined productiveness, hardiness, high quality, and adaptability to various locations has made it a general favorite.

Long Yellow Six Weeks. Very early, productive, and of splendid flavor.

Mammoth Stringless Green-Pod. Large, handsome pods. One of the best early varieties.

Masterpiece. Plants robust in constitution and the long pods are straight, handsome, and tender; unusually productive.

Plentiful. 51 days. The pods are long, thick and flat, slightly curved; 8 inches long, fairly smooth, stringless and of good quality. Very early.

Tendergreen. Plants are vigorous in habit, erect, and very prolific, producing Beans 6 to 7 inches long, round, straight, and stringless.

The Prince. One of the finest Beans ever introduced. Matures very early and bears enormous crops. Pods are stringless, of fine flavor, 10 to 11 inches in length.

Wax-Podded Dwarf Beans

**Standard prices, all varieties, ½lb. 30 cts.;
lb. 55 cts.; 5 lbs. \$2.50**

Golden Wax, Improved. Very early. Flat pods, stringless and tender.

Surecrop Stringless Wax. 52 days. Bears handsome rich yellow pods slightly curved; 7 inches in length; ½ inch wide. Meaty and sweet.

Wardwell's Dwarf Kidney Wax. Early and crisp. Produces a heavy crop.

Bush Lima Beans

Lima Beans should not be planted until all danger from frost is past. Sow bush varieties in drills 2 feet apart, the Beans about 6 inches apart, and cover about 2 inches. For Pole Limas, allow 5 Beans to a hill; plant seed eyes down, 2 inches deep.

Two pounds (or quart) of seed will sow 100 feet of drill

**Standard prices, all varieties, ½lb. 30 cts.;
lb. 50 cts.; 5 lbs. \$2.40**

Burpee's Improved Bush. Pods are enormous, often measuring 5 to 6 inches. Very productive.

Bush Lima Beans, continued

Baby Fordhook. 70 days. Small-seeded Lima Bean of splendid quality. Height 14 inches, pods 3 inches long. Suitable for all purposes.

Fordhook Bush. Immense pods and Beans of delicious flavor.

Henderson's Bush. Early and heavy cropper. Small Beans of fine quality.

Early Giant. Quick-growing and an immense cropper.

Pole Lima Beans

Two pounds (or quart) of seed will sow 100 hills

**Standard prices, all varieties, ½lb. 30 cts.;
lb. 50 cts.; 5 lbs. \$2.40**

Burpee's Giant-podded. The Beans are large and thick. Productive.

Dreer's Improved. Early and heavy cropper of excellent quality.

Early Leviathan. Pods contain 5 Beans. Early; excellent.

Sunnybrook. The Beans are thick and meaty.

Pole Beans, Green-Podded

Pole Beans make ideal ornamental vines on trellises or arches adjacent to the vegetable garden. Try the Scarlet Runner in this way, if opportunity comes. The flowers are exquisite and the matured pods are deliciously tender to eat.

**Standard prices, all varieties, ½lb. 30 cts.;
lb. 55 cts.; 5 lbs. \$2.50**

Kentucky Wonder (Old Homestead). Long, green, and round. Excellent flavor.

Scarlet Runner. Produces a heavy crop of tender, stringless, delicious Beans.

Veitch's Climbing. Prolific and of exquisite flavor.

Shell Beans

May be used either green or dried

One pound of seed will sow about 40 feet of row

Grown mostly as dried Beans for winter use. The culture is similar to that recommended for green-pod Bush Beans, but Shell Beans should be left on the vine until the pods are matured.

**Standard prices, all varieties, ½lb. 30 cts.;
lb. 40 cts.; 5 lbs. \$1.75**

Dwarf Horticultural. 65 days to green Shell Beans. Pods 5 to 5½ inches long, thick, flat, light green, splashed with carmine at maturity.

Michilite Pea Bean. 90 days. Similar to Improved White Navy but more uniform and productive.

Red Kidney. 95 days. Pods are 6 inches long, flat, light green; Beans are large, kidney-shaped.

White Marrowfat. 100 days. Pods grow 4½ to 5 inches long, flat, nearly straight, and well filled with 5 white Beans. Valued for baking.

BEANS, EDIBLE SOY, Bansei. This variety is very easy to grow, enormously productive, resists drought, and is not attacked by the bean beetle.

BRUSSELS SPROUTS

Chou de Bruxelles Berza de Bruselas Rosenkohl

One ounce of seed will produce 1500 plants

Sow seed in April in seed-beds, transplanting afterward into rows 2 feet apart, and cultivate like cabbage.

HUNT'S EXHIBITION. Produces an abundant crop of delicious solid Sprouts which mature very early. **Pkt. 25 cts.; ½oz. \$1; oz. \$1.75**

Prolific Exhibition. Very fine, even-shaped Sprouts of good size and flavor.

Pkt. 15 cts.; ½oz. 60 cts.; oz. \$1

BEET

Betterave

Remolacha

Salatrube

One ounce of seed will sow 50 feet of drill;
5 to 6 pounds, an acre

Sow as early in the spring as the ground can be worked, and every two weeks after, for a succession up to the first week of July. Soil should be light, sandy loam, well enriched with manure. Sow in drills, 15 inches apart, and thin out to 4 inches.

Standard prices, all varieties, pkt. 15 cts.;
oz. 40 cts.; 1/4lb. \$1.25; lb. \$3.75

HUNT'S DARK-LEAVED GLOBE. Has a dark leaf like decorative strains. It is a main-crop Beet of excellent keeping qualities. 58 days.

Crimson Globe. Fine, globular shape; flesh rich, very tender and sweet. One of the best for an early crop. 58 days.

Crosby's Egyptian. Rapid grower; sow outside as late as July. Dark blood-red. 56 days.

Egyptian. Extra early. Flat; deep red; tender and sweet. 60 days.

Early Wonder. Semi-globe-shaped, about 3 inches in diameter. Small top and thin tapered root. Dark red skin and flesh. Very early. Popular Beet for canning or cooking whole. 55 days.

Giant Winter Keeper. Remains solid and tender all summer as well as when stored. 80 days.

Detroit Dark Red. Very early. Sweet and tender. 60 days.

Model Red Globe. Flesh is exceedingly rich and of the choicest flavor. Perfect in shape, with very small tap-root. 56 days.

Perfect Model Globe. A fine selection of Globe Beet with a very small top. 60 days.

SWISS CHARD, Lucullus. Large, dark green leaves; white ribs. May be used as spinach.

Pkt. 15 cts.; oz. 40 cts.; 1/4lb. \$1

RHUBARB CHARD. 60 days. A Swiss Chard that looks like Rhubarb. Bright, delicate, translucent crimson. Easily grown, thrives everywhere.

Pkt. 15 cts.; oz. 60 cts.

SUGAR BEETS (MANGELS)

Six to 8 pounds of seed will sow an acre

Giant Intermediate. 1/2lb. \$1.50; lb. \$2.75

Mammoth Long Red. 1/2lb. \$1.50; lb. \$2.75

BROCCOLI

This vegetable is similar to cauliflower but of less delicate flavor. It is hardier.

Green Calabrese. Delicious flavor.

Pkt. 15 cts.; 1/2oz. 75 cts.; oz. \$1.25

Italian Green Sprouting, Propagano.

Pkt. 15 cts.; 1/2oz. 60 cts.; oz. \$1

CARROTS

Carotte

Zanahoria

Mobre

One ounce of seed will sow 100 feet of drill;
4 pounds, an acre

Sow seed in light sandy soil, from April to July, in drills 1 1/2 feet apart, covering the seed 1/2 inch deep. Thin out to 3 to 5 inches apart. Cultivate freely and do not allow the soil to get too dry during hot weather.

Standard prices, all varieties, pkt. 15 cts.;
oz. 50 cts.; 1/4lb. \$1.75; lb. \$5

HUNT'S SCARLET INTERMEDIATE. In color, quality, and shape cannot be excelled. Splendid cropper and good keeper.

California Bunching. A well-shaped Carrot, 1 1/2 inches thick by 8 inches in length.

CARROTS, continued

Chantenay Half-Long Scarlet. Orange-red, stump-rooted variety, with broad shoulder.

Danvers Half-Long. Handsome, large, smooth, rich orange-red Carrot with little core.

Early French Forcing. Its small, mild-flavored, globe-shaped roots make an elegant and delicious side dish.

Early Scarlet Horn. Very thick roots. Fine for frames.

Guerande (Oxheart). An immense cropper. Especially suited to hard soils.

Half-Long Nantes. A popular French sort adapted to shallow soils.

Long Red Surrey. Heavy cropper of first-rate quality.

Long Orange. A heavy cropper and a perfect winter keeper. Tender and tasty.

CABBAGE

Chou

Col repollo

Kopfkobl

One ounce of seed will produce about 1500 heads;
8 ounces will sow an acre

For plants of early kinds, sow seed in January under glass, and prick out into flats about 2 inches apart. Transplant to open ground as early in the spring as the soil can be prepared, setting 1 1/2 feet to 2 feet apart, in rows, which should be 3 feet apart. Cultivate frequently, and during dry weather water copiously. Late Cabbage seed should be sown in drills in open ground during April and May, and transplanted in June or July. Fertilize heavily, using 400 pounds Nitrate of Soda per acre in three dressings, one-third when plants are set out, and two-thirds a month apart later.

Standard prices, all varieties, pkt. 15 cts.;
1/2oz. 50 cts.; oz. 85 cts.; 1/4lb. \$2.75

HUNT'S EARLIEST. A conical-shaped Cabbage of very dwarf habit. Delicate in flavor, very tender, and quick to mature. 59 days.

Autumn King. Large, flat heads with closely set leaves of fine quality; good keeper.

Copenhagen Market. The earliest round variety and the largest.

Danish Ballhead. Medium size; few outer leaves; good keeper. 61 days.

Early Jersey Wakefield. Heads conical, solid, with few outer leaves. 61 days.

Charleston Wakefield. Head heart-shaped, 8 inches long, 7 inches broad at base. A popular first-early variety. 72 days.

Premium Flat Dutch. The heads are flat and grow remarkably large.

Succession. 88 days. Globe-shaped heads that are 9 inches across, 6 inches deep, and weigh approximately 7 pounds each.

Chinese, Chihili. 73 days. Leaves are broad, smooth, and fringed at the edges; very crisp and tender. Height 18 to 20 inches.

Pe-Tsai. Outside leaves are pale green, inside creamy white; very mild flavor.

Wong-Bok. Big, compact, and crisp.

Mammoth Rock Red. Round, solid heads.

SAVOY, American Drumhead. Unsurpassed for winter use. Large, late, and finely curled.

Savoy, Perfection. Largely grown for New York market. 90 days.

CHERVIL

Cerfeuil

Perifello

Kertel

Curled. For flavoring. Very scarce.

Pkt. 35 cts.; 3 pkts. \$1; 1/4oz. \$2.50

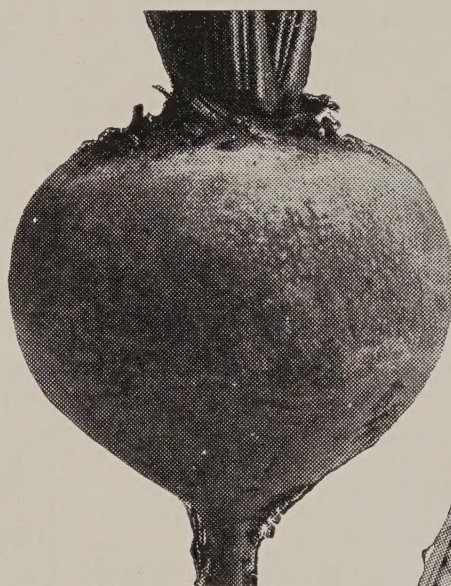
Vegetable Seeds sent postpaid to any address for cash with order



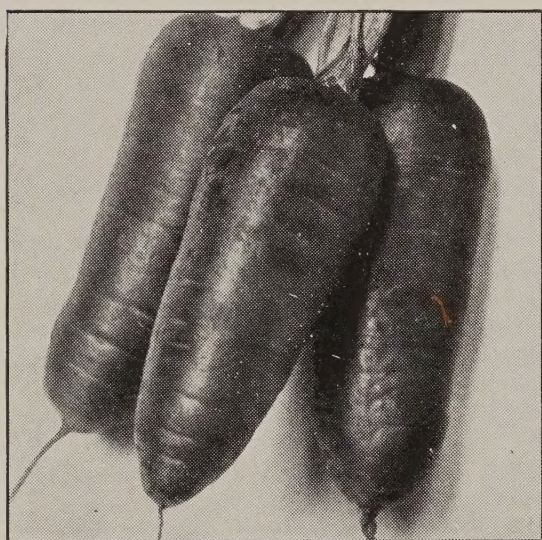
BEANS, Bountiful. 1/2lb. 30 cts.; lb. 50 cts.; 5 lbs. \$2.40



CABBAGE, Copenhagen Market
Pkt. 15 cts.; 1/2oz. 50 cts.; oz. 85 cts.



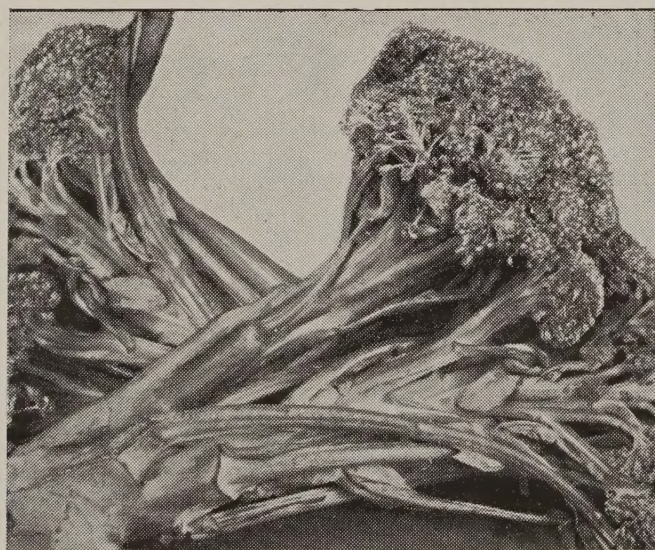
BET, Detroit Dark Red. Pkt. 15 cts.; oz. 40 cts.; 1/4lb. \$1.25



CARROT, Hunt's Scarlet Intermediate
Pkt. 15 cts.; oz. 50 cts.; 1/4lb. \$1.75



CORN, Golden Cross Bantam
Pkt. 15 cts.; 1/2lb. 45 cts.; lb. 70 cts.



BROCCOLI, Italian Green Sprouting
Pkt. 15 cts.; 1/2oz. 60 cts.; oz. \$1

CAULIFLOWER

Chou Fleur *Coliflor* *Blumenkohl*

One ounce of seed will produce 2000 plants

For early varieties, sow seed in hotbeds during January or February, transplant 2 to 3 inches apart, to flats or coldframes and set out in open ground 2½ feet apart as soon as weather is suitable. Thrives best in loamy soil. Water freely during dry spells. For late Cauliflower give same treatment as late cabbage.

Standard prices, all varieties, pkt. 25 cts.;
¼oz. \$1.50; oz. \$5

Dry Weather. Heads grow to a very large size, are solid, pure white, and of delicious flavor.

Extra-Early Snowball. The best for forcing under glass or for open ground. Extremely dwarf, early, producing wonderful white heads. 82 days.

Improved Erfurt. One of the earliest and most desirable small-leaved, dwarf varieties.

Veitch's Autumn Giant. Very large white heads of good quality.

New Early Purple Head. The most delicious Cauliflower, of more delicious flavor than Brussels Sprouts or Broccoli. Head same shape as ordinary Cauliflower, but dark purple on the top. Very easy of cultivation, plants being large and robust; makes a fine tight head which does not require any tying. Ready for use late August and September.

CELERY

Celeri *Apios* *Sellerie*

One ounce of seed will produce 3000 plants

For earliest crop, sow in February under glass or in heated frames. Prick out on bottom heat when ready, and transplant to trenches in May or June. For main crop sow in March and continue up to July. When plants are large enough, transplant to trenches, preparing same with good rich loam. Water freely during July and August. To grow good Celery it is essential to place at least 3 to 4 inches of rotted manure in the bottom of the trenches before setting out plants. Without it, dwarf, stunted plants invariably result.

Standard prices, all varieties, pkt. 15 cts.;
½oz. 60 cts.; oz. \$1

Easy Blanching. Second-early Celery. Solid, pure white, crisp, of extra-fine flavor.

Giant Pascal. Solid and crisp; golden yellow heart; rich nutty flavor. Easily blanched.

Golden Self-blanching. Crisp; tender; fine flavor.

Utah (Golden Crisp). An excellent green Celery for fall use or winter storing. Plants are compact, stalks broad and thick, exceptionally solid, and when blanched are pure white, crisp, and of the most delicious flavor.

White Plume. A valuable early variety unsurpassed for fall and winter use. 112 days.

Winter Queen. Very large and solid. Excellent for keeping.

CELERIAC, Large Erfurt (Turnip-rooted Celery). For soups. **Pkt. 15 cts.; oz. \$1.50**

Mixed Celery Seed for Soup. **¼lb. \$1**

CHICORY

Chicoree *Achicoria*

Witloof (French Endive). The stalks when blanched are used for salad. 110 days.

Pkt. 25 cts.; ½oz. 75 cts.; oz. \$1.25

All seeds sent postpaid to any address for cash with order

SWEET CORN

Mais *Maiz* *Korn*

*One pound of seed will sow 200 feet of drill,
or 200 to 300 hills*

Like Peas, Sweet Corn is at its best when served within a few minutes after picking. Plant in rich, warm soil, in hills 2 to 3 feet apart, in rows 3 feet apart for early kinds and 4 feet apart for late sorts. Sow about mid-May and continue fortnightly until the middle of July.

Golden Midget (Mason's). Plants grow no higher than 3½ feet, and produce golden yellow ears 4 to 5 inches long. Kernels are of delicious flavor. Matures in 55 days.

Packets only, 35 cts.; 3 pkts. \$1

Hybrid Varieties

Golden Cross Bantam. Outstanding sort, showing remarkable resistance to wilt. Stalks are sturdy, ears 7 inches long, maturing in 88 days.

Lincoln. Large ears 9 inches long, with 16 rows of bright golden kernels of superb quality. 6 feet tall. Recommended for freezing, home and market use. 85 days.

Marcross. A fine development from the Connecticut Experimental Station. Very early, producing pale yellow ears 7 to 8 inches long. Height 6 feet, resistant to wilt. 75 days.

Stowell's Evergreen Hybrid. Ears 8 inches long, with white tender sweet kernels. 90 days.

Spancross. Ears are 7 inches long, well filled with golden yellow kernels. Earliest of all hybrids. 71 days.

Top Flight Bantam. Deep creamy yellow ears, 9 inches, of finest quality. 84 days.

**Standard prices, above hybrid varieties,
pkt. 15 cts.; ½lb. 45 cts.; lb. 70 cts.**

Standard Sorts

All varieties, pkt. 15 cts.; ½lb. 30 cts.; lb. 50 cts.

Bantam Evergreen. Early. An excellent, medium-sized Corn of delicious flavor.

Country Gentleman. Best for midseason. Sweet, tender and milky.

Golden Bantam. Extra early. Very sweet and tender; yellow. 80 days.

Golden Colonel. Midseason. Grains irregular, on ears 8 inches long.

Golden Giant. Early. Excels all other early varieties in size and quality.

Golden Sunshine. A very early Corn. Ears are about the same size as Golden Bantam.

Stowell's Evergreen. Late. Ears large and very sweet.

Whipple's Early Yellow. Prolific and vigorous; matures in about 80 days.

COLLARDS

Georgia. Produces a loose rosette of large, succulent, cabbage-like leaves which make delicious boiling "greens." Height 2 to 3 feet. 80 days.

Pkt. 15 cts.; oz. 30 cts.; ¼lb. \$1

CRESS or PEPPER GRASS

One ounce of seed will sow 150 feet of drill

Extra Curled. Splendid for salads and garnishing. **Pkt. 25 cts.; oz. 60 cts.; ¼lb. \$2**

Water Cress. Seed very scarce. **Pkt. 50 cts.; ¼oz. \$2**

CUCUMBER

Concombre *Pepino* *Gurke*

One ounce of seed will sow 50 hills; 2 pounds, an acre

Sow outdoor varieties early in spring, in hotbeds, and transplant to open ground when weather is suitable. For later crop, sow seed when weather becomes settled, in hills 3 to 4 feet apart. They require a warm, rich soil, and should be watered liberally.

Standard prices, all varieties, pkt. 15 cts.; oz. 35 cts.; ¼lb. \$1.25

Black Diamond (Stays-green). "It Stays Green." Fruits grow 7½ to 8½ inches long, straight, blunt-ended; deep green skin. The flesh is pure white, refreshing and tasty. Matures in 54 days.

Boston Pickling. Suitable for pickling or slicing. Cool and Crisp. Flesh crisp and tender.

Davis' Perfect. Fruits are long and slim, very tender, and of fine flavor.

Fordhook Famous. Dark green fruits. Vigorous and productive.

Long Green. Dark green; long and crisp.

Selected White Spine Improved. Fine for cutting or pickles.

West India Gherkin. Very small. Used for pickles.

English Cucumbers (Greenhouse-grown Seed)

English or Frame varieties must be started about the end of February. Sow in pots or pans, protecting from strong light until seedlings appear. When strong enough to handle, transplant to permanent position in hotbed or greenhouse.

Sutton's Delicacy. The best Cucumber for greenhouse culture. Fruits are dark green, well shaped and 16 to 18 inches long. Splendid flavor. Pkt. \$1.

Telegraph. A Cucumber of fine shape. Very prolific. Quick in growth. Pkt. 75 cts.

EGGPLANT

Aubergine *Berengena* *Eierpflanze*

One ounce of seed will produce about 1000 plants

Sow in mild heat, about mid-March, and transplant June 1, setting the plants 2½ feet apart.

Standard prices, all varieties, pkt. 15 cts.; ½oz. 75 cts.; oz. \$1.25

Black Beauty. Large, round, deep purple fruits. Very early. 73 days.

Early Long Purple. Hardy and productive.

New York Spineless. Early and productive. 76 days.

New Hampshire. Hybrid low bush type. Much earlier than any other sort.

ENDIVE

Chicoree *Escarola o Endivia* *Endidien*

One ounce of seed will sow 100 feet of drill

Sow about the middle of April, in rows 1½ feet apart, and thin out to about 9 inches apart.

Broad-leaved (Escarolle). Leaves long, broad, and succulent. A fine variety for winter salads. 70 days. Pkt. 15 cts.; ½oz. 65 cts.; oz. \$1

Green Curled. Standard variety for fall and winter crop. Pkt. 15 cts.; ½oz. 65 cts.; oz. \$1

KOHLRABI

Chou-Rave *Colinabo* *Kohlrabi*

One ounce of seed will sow 100 feet of drill

Drill seeds in rows about 15 inches apart in May, and thin out to about 9 inches apart.

Short-leaved White Vienna. Mild and delicate. 55 days.

Early Purple Vienna. Good all-round sort.

Each variety, pkt. 15 cts.; ½oz. 65 cts.; oz. \$1

LEEK

Poireau *Puerr* *Lauch*

One ounce of seed will sow 100 feet of drill

Sow in April and transplant in July into trenches of well-manured soil, about 20 inches between the plants. In warm weather, apply liquid manure.

Any variety, pkt. 25 cts.; ½oz. 75 cts.; oz. \$1.25

HUNT'S EXHIBITION. This is undoubtedly the largest of all Leeks. Flavor mild. 125 days.

American Flag, or Broad London. Mildly flavored thick stems of excellent quality. The white portion extends well up the stalks. 125 days.

Musselburgh (Scotch). Large and extra-fine.

Prizetaker. Very large and long pure white stems.

LETTUCE

Laitue *Lechuga* *Lattich*

One ounce of seed will produce 2000 plants

Sow the seed in hotbeds during February until the middle of March, afterward pricking off into flats or coldframes, leaving about 6 to 8 inches between the plants. As soon as weather becomes suitable, transfer to open ground and set out in rows 1 foot apart, leaving 9 inches between plants.

Standard prices, all varieties, except where noted, pkt. 15 cts.; ½oz. 30 cts.; oz. 50 cts.; ¼lb. \$1.50

HUNT'S FAVORITE. The leaves are curled and the heart is crisp and tender. Pkt. 25 cts.; oz. \$1
Big Boston. Very large heads of excellent flavor. Fine for forcing in coldframes or open ground. 81 days.

Black-seeded Simpson. Produces large masses of curly, crisp leaves. Tender; of good flavor.

Great Lakes. Especially valuable for summer, as it stands heat and sun. Heads are small and somewhat flat. The leaves fold completely over the heads, which are solid before they attain full size. 90 days. Pkt. 25 cts.; oz. \$1.25

Grand Rapids Forcing. Large, crisp, tender, early bunching variety.

Iceberg. Splendid crisp sort. Few Lettuces resist the heat as well as Iceberg.

May King. Extra-large, round, solid, very tender heads. 75 days.

Mignonette. Small, russet-colored heads that are exceedingly tender.

New York Giant. Bleaches naturally. Large; crisp, tender. 83 days.

Summer Triumph. Produces loose, crisp heads of deliciously flavored Lettuce.

Pkt. 25 cts.; oz. \$1.25

White Big Boston. Bright green outer leaves enclosing solid light green head.

Romaine or Cos Lettuce

Paris White Cos. Upright in growth; color pale green. Pkt. 15 cts.; oz. 50 cts.

Self-folding Cos. The largest Cos Lettuce.

Pkt. 15 cts.; oz. 75 cts.

MUSTARD

Moutarde *Mostaza* *Senfkraut*

White London. Leaves used for salad. 40 days.

Oz. 40 cts.; ¼lb. \$1.25; lb. \$4

Giant Southern Curled. Very large leaves.

Oz. 30 cts.; ¼lb. \$1; lb. \$3.50

SPINACH MUSTARD. Rapid-growing with thick dark green leaves. Matures in 28 days.

Oz. 30 cts.; ¼lb. 75 cts.

All seeds sent postpaid to any address for cash with order

MUSKMELON

Melon Muscade *Melon Muscatel* *Melone*

One ounce of seed will sow 50 hills;
2 to 3 pounds, an acre in hills

Seed should be planted in rich, sandy soil about the first week in May. Place ten seeds in hills about 5 feet apart each way; thin out to three or four.

Standard prices, all varieties, pkt. 15 cts.;
1/2oz. 30 cts.; oz. 50 cts.

Baby Persian. Fruits globular, weighing 4 pounds. Rind dark green; thick orange flesh of distinctive flavor. 100 days.

Emerald Gem. Dark green skin; flesh orange, very sweet. 90 days.

Hackensack. Large, round, early variety; flesh green and sweet.

Hale's Best. Oval-shaped, orange-fleshed melon. Delicious, sweet, and firm.

Hearts of Gold. Delicate luscious salmon flesh. Medium size.

Honeydew. White skin; flesh green, thick, sweet.

Pride of Wisconsin. Large size; firm, thick orange flesh. Heavily netted fruits, nearly round, weighing approximately 5 pounds. Flesh of excellent flavor. 90 days.

Rocky Ford. Oval; flesh thick, green, very sweet.

English Muskmelon Greenhouse Varieties

For first crop, sow seed in January in good, rich loam and well-rotted manure, adding a dressing of fine soil to the surface, and bring plants as near light and glass as possible. A regular temperature should be maintained. When fruit is ripened, give air freely and check supply of water in order to develop the flavor.

Any variety, pkt. 75 cts.

Cotting's Hybrid. Very large, of handsome shape, with deep golden flesh rich in flavor.

King George. Very distinct scarlet-fleshed melon.

Sutton's Perfection. A valuable green-fleshed melon.

Sutton's Superlative. Medium size, handsome shape; scarlet flesh.

WATERMELON

Melon d'Eau *Zandia* *Wasser Melone*

One ounce of seed will sow 25 hills;

Treat similar to muskmelon, except that they should be planted out in hills 8 to 10 feet apart.

Cole's Early. Medium size; green skin; red flesh. 84 days.

Kleckley's Sweet. Sweet and fine flavored.

White Mountain (Early Midget). Small, early, delicious. 70 days.

Each variety, pkt. 15 cts.; oz. 40 cts.; 1/4lb. \$1.25

ONION

Oignon *Cebolla* *Zwiebel*

One ounce of seed will sow 100 feet of drill;
4 to 5 pounds, an acre

As early as soil can be worked in spring, sow the seeds thinly in drills 1 foot apart, and cover lightly, later thinning out to about 6 inches apart in the row. The soil must be well fertilized. In hot weather, water frequently. Plant Onion sets as early as your ground will permit.

Standard prices, all varieties, pkt. 25 cts.;
1/2oz. 60 cts.; oz. \$1; 1/4lb. \$3.50

HUNT'S VICTORY. Small neck, mild flavor, globular shape, and yellow skin.

Ailsa Craig. Extra-selected strain. Flesh white.

Gigantic Gibraltar. Very large; handsome, globular shape; light straw-color.

Large Red Wethersfield. A large, rather strongly flavored Onion; an excellent keeper.

ONION, continued

Prizetaker. Immense, globular, yellow; flesh white.

Southport Red Globe. A globe-shaped, medium-sized Onion that keeps well; excellent quality.

Southport White Globe. Globe-shaped; flesh firm, fine-grained, mild, pure white. 112 days.

White Portugal or Silver Skin. Early; mild flavor.

White Sweet Spanish. Pure white; large size; mild flavor; solid and crisp. 100 days.

Yellow Danvers. Standard sort; early and a good keeper.

Yellow Globe Danvers. Globular shape; keeps well. 102 days.

White Bunching. Seed sown in spring will produce mild scallions in early fall. Remains mild and sweet for a long time.

Onion Sets

	Quart	Peck
Red Onion Sets	\$0 60	\$3 50
White Onion Sets	60	3 50
Yellow Onion Sets	60	3 50
Yellow Ebenezer	60	3 50
Shallots	1 25	6 00
Garlic	Lb. \$1..	
Chives	Strong clumps, \$4.50 per doz.	

Chives (Seeds)

Perennial. The tops are used for giving a mild onion-like flavor to soups, stews, salads, meats, omelets, etc. Grows 6 inches high and matures in 80 days.

Pkt. 25 cts.; 1/4oz. \$1

OKRA or GUMBO

Combaud *Quimbombo* *Essbarer Hibiscus*

One ounce of seed will plant 40 feet of drill

Sow seed early in May, in rows 3 feet apart and 2 inches deep. Thin out to about 1 foot apart.

Standard prices, all varieties, oz. 25 cts.;
1/4lb. 75 cts.

Dwarf Green. Early. Short, thick pods.

Long Green. Very productive. 55 days.

White Velvet. Tender, long white pods.

PARSLEY

Persil *Perijil* *Petersilie*

One ounce of seed will sow 100 feet of drill

Sow seed thinly in beds any time from February until the end of May. Soak seed thoroughly in water before sowing.

Standard prices, all varieties, pkt. 15 cts.;
1/2oz. 30 cts.; oz. 50 cts.; 1/4lb. \$1.50

HUNT'S PERFECTA. Dwarf, compact Parsley. Beautifully curled.

Exhibition Green Gem. Rich deep green and closely curled. 70 days.

Fern-leaved. Superior; useful for garnishing.

Triple Moss-Curled. Immensely double, compact leaves.

PEPPER

Piment *Pimiento* *Pfeffer*

One ounce of seed will produce about 2000 plants

Standard prices, all varieties, pkt. 15 cts.;
1/2oz. 75 cts.; oz. \$1.25

California Wonder. 75 days. Thick walls; sweet, tender and good flavor. Glossy green; bright crimson when ripe. Unsurpassed for baking.

Chinese Giant. Large; bright scarlet; mild and sweet. 80 days.

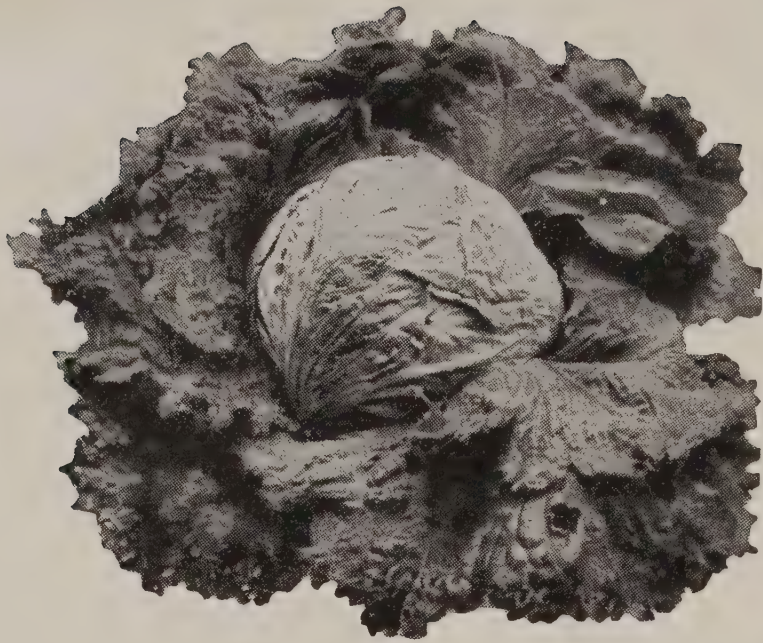
Large Bell (Bull-Nose). Large, early, bright red, mild variety.

Red Apple. Mild and sweet.

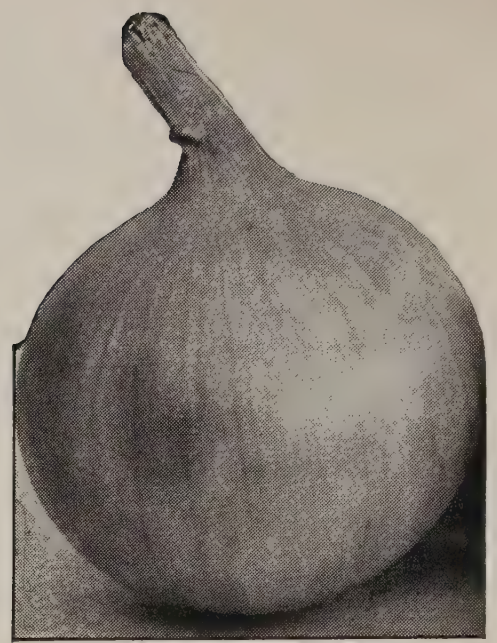
Ruby King. Bright red; flesh thick and mild.

Sweet Mountain. Very large, mild and sweet.

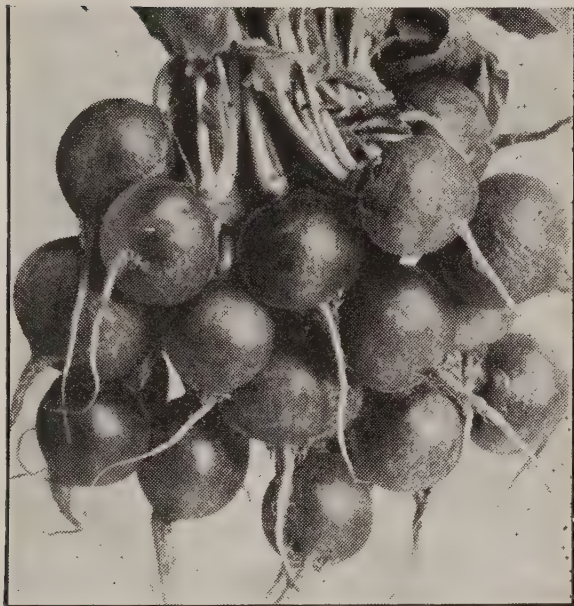
World Beater. One of the largest and best. Deep green, turning to scarlet-red.



LETTUCE, Big Boston
Pkt. 15 cts.; 1/2oz. 30 cts.; oz. 50 cts.;
1/4lb. \$1.50



ONION, Yellow Globe Danvers
Pkt. 25 cts.; 1/2oz. 60 cts.; oz. \$1;
1/4lb. \$3.50



RADISH, Crimson Giant
Pkt. 15 cts.; oz. 30 cts.; 1/4lb. \$1



PEA, Little Marvel. 1/2lb. 30 cts.;
lb. 50 cts.; 5 lbs. \$2.40



TURNIP, Purple-Top White Globe
Pkt. 15 cts.; oz. 30 cts.;
1/4lb. 60 cts.



PARSLEY, Triple Moss-Curled
Pkt. 15 cts.; 1/2oz. 30 cts.; oz. 50 cts.;
1/4lb. \$1.50



TOMATO, Rutgers
Pkt. 15 cts.; 1/2oz. 60 cts.; oz. \$1

HUNT'S GARDEN PEAS

Pois Chicharos o Guisantes Erbsen

For first crop, round-seeded Peas should be sown in the open ground as soon as it is fit to be worked; wrinkled varieties should be planted two to three weeks later. Frequent planting for succession, and a careful selection of varieties, will give an almost continuous crop of Peas from June until frost. Sow Peas in rows 3 feet apart and 3 inches deep. Rotted horse-manure and wood-ashes should be freely used in the preparation of soil for Pea-growing.

Three pounds of seed will sow 100 feet of drill

Round Peas

Standard prices, all Round varieties, 1/2 lb. 30 cts.; lb. 45 cts.; 5 lbs. \$2.10

Alaska. 2 1/2 ft. Round Pea. An extremely early variety and most widely used for canning. Pods contain light green Peas. Fully resistant to wilt. 60 days.

First of All. 3 to 4 ft. Round. This splendid variety is ready for use in a short time. Produces a heavy crop of well-filled pointed pods containing Peas of delicious flavor.

Mammoth Sugar (Melting Sugar). 4 1/2 ft. Seeds medium round, smooth, creamy white. Peas and pods both edible.

The Pilot. 3 1/2 ft. Round-seeded. Robust in habit, producing an abundance of well-filled pods.

Wrinkled Peas

Standard prices, all Wrinkled varieties, 1/2 lb. 30 cts.; lb. 50 cts.; 5 lbs. \$2.40

Alderman. 5 ft. Main crop. Wrinkled. Few varieties yield such an abundant crop. Pods are immense, with large Peas of rich flavor.

Early Bird. 3 ft. First early. Robust in habit and produces extra-large, round Peas in abundance. 62 days.

Gradus (Prosperity). 3 to 3 1/2 ft. Second early. A large-podded variety for home- and market-garden. Pods borne singly; medium green, plump, and well filled. 68 days.

Laxtonian (Blue Bantam). 2 ft. Main crop. The dark green pods contain large, wrinkled, green and cream Peas.

Little Marvel. 2 ft. Seeds medium size, distinctly wrinkled, green, unsurpassed in quality and productiveness.

Nott's Excelsior. 15 in. Very early, and also useful for late sowing. Matures in 62 days.

Quite Content. 5 ft. Main crop. Pods contain 9 or 10 large Peas of delicious flavor. A very heavy cropper.

Telephone. 5 ft. Main crop. One of the best home- and market-garden sorts. Pods borne singly contain large green wrinkled Peas. 74 days.

Thomas Laxton. 3 ft. Wrinkled second-early. Produces a heavy crop of large dark green Peas.

World's Record. 3 ft. Second early. Produces large, wrinkled, green and cream seeds. Very productive. 63 days.

PARSNIP

Panais Chirivia Pastinake

*One ounce of seed will sow 100 feet of drill;
5 pounds, an acre*

Sow the seed as soon as season will permit, in drills about 2 feet apart, and thin plants out to 1 foot apart in the row. The ground should be deeply trenched and well manured.

American Hollow Crown. Long, smooth, and milky white. 100 days.

Pkt. 15 cts.; oz. 50 cts.; 1/4 lb. \$1.25

POTATOES

Pomme de terre Patatas Kartoffel

Ten bushels of cut tubers will plant an acre

CERTIFIED SEED ONLY

Chippewa. Early; heavy yielding. Matures a week or 10 days later than Cobbler, but yields much more and succeeds under almost all conditions. Uniform in size; flesh is white and splendid for boiling or steaming or for salads.

Green Mountain. Unsurpassed for main crop.

Irish Cobbler. One of the first to be ready for use. Flesh white, of fine flavor.

Katahdin. Intermediate. White skin and white flesh. Handsome oval shape.

Sebago. Extremely productive; late. Handsome white tubers; quality is excellent. Vines large and vigorous, resistant to heat and drought. One of the best for all purposes and excellent for winter storing.

Sold at prevailing market prices

PUMPKIN

Potiron Tucca Grosse Kurbis

One ounce of seed will sow 25 hills; 3 pounds, an acre

Sow about the end of April, in hills 8 feet apart, using 3 or 4 seeds to a hill.

Standard prices, all varieties, pkt. 15 cts.; oz. 40 cts.; 1/4 lb. \$1.25

Connecticut Field. Large, oval.

Large Cheese. Flat. One of the best for family use.

Sugar. Small, yellow, and sweet.

Winter Luxury. Round, of medium size; yellow.

RADISH

Radis et Rave Rabanos y Rabanitos Radieschen

One ounce of seed will sow 75 feet of drill

For an early crop, sow in hotbed in January, February, and March. As soon as ground is fit to be worked, sow seed in the open, in rows 1 foot apart.

Standard prices, all Radishes, pkt. 15 cts.; oz. 30 cts.; 1/4 lb. \$1

Crimson Giant. Crisp and solid.

Deep Scarlet Turnip Forcing. Handsome; delicious; crisp.

French Breakfast. Very early. Succeeds in hot weather. Scarlet with white tip. 23 days.

Long Icicle. Pure white, crisp, and tender.

Long Scarlet. Very early. Long, crisp, and sweet.

Scarlet Globe. Good for forcing or open ground.

Scarlet Olive-shaped. Valuable and distinct sort.

White Spanish.

White-tipped Scarlet Turnip (Sparkler).

White Strasburg. Skin and flesh are white. Crisp, tender and of an icy texture.

Winter Scarlet Chinese.

SPINACH

Epinard Espinaca Spinach

*One ounce of seed will sow 100 feet of drill;
12 pounds, an acre in drills*

Summer Spinach should be sown every ten days, from April to the middle of July, for succession; winter varieties during August and September.

All varieties, pkt. 15 cts.; oz. 30 cts.; 1/4 lb. 75 cts.; lb. \$2.50

Curled-leaved Savoy. Large and tender.

Blight-resistant Virginia Savoy. For late sowing.

King of Denmark. Leaves large and tender.

Long-standing (Round, Thick-leaved).

NEW ZEALAND SUMMER. Does well in hot summer weather. 70 days.

Perpetual. Maintains a supply long after other sorts are exhausted.

Prickly (Winter). Recommended for fall sowing.

Victoria. Extra dark green color. 49 days.

SALSIFY

Salsifis *Ostion Vegeta* *Haferwurze*
 One ounce of seed will sow 75 feet of drill

Mammoth Sandwich Island. A large-growing variety. Matures in 120 days.
 Pkt. 25 cts.; 1/2oz. 75 cts.; oz. \$1.25

SORREL

Large-leaved French. Used for soups and salads.
 Pkt. 25 cts.; 1/2oz. 75 cts.; oz. \$1.25

SQUASH

Courge *Calabaza* *Speisse Kurbis*
 One ounce of seed will sow 50 hills of the early sorts
 and 25 hills of the later varieties

Seeds should be planted about the middle of May, in hills 4 feet apart for bush varieties and 10 feet apart for the running sorts. Put twelve to fifteen seeds in each hill; afterward thin out, leaving three or four of the best plants.

Standard prices, all varieties, pkt. 15 cts.;
 1/2oz. 25 cts.; oz. 40 cts.; 1/4lb. \$1.25

Acorn or Table Queen. Deeply ribbed, dark yellow flesh, very sweet. 85 days.

Blue Hubbard. Bright orange flesh of choice flavor.

Bush Summer Crookneck. Yellow fruit of delicious flavor.

Butternut. The fruits are yellowish brown and bottle-shaped. The flesh is yellow, fine textured, dry, sweet, and of excellent flavor. 85 days.

Cocozelle. Dark green when young, afterwards light yellow.

English Marrow, Bush White. Cream-colored.

English Marrow, Long White. Skin greenish yellow; flesh white, soft.

Extra-Early Jersey White Bush. Enormously productive. 54 days.

Giant Summer Crookneck. Large; rich flavor.

Golden Hubbard. Flesh deep golden yellow.

Improved Hubbard. Well known and liked for late use. 115 days.

Summer Straightneck. Golden orange fruits. Finest quality salmon-yellow flesh. 55 days.

White Bush Scallop. A good early variety of fine quality.

Zucchini. Tender, of delicious mild flavor.

TURNIP

Navet *Nabo* *Meisse Rube*
 One ounce of seed will sow 150 feet of drill;
 2 pounds, an acre

For main crop, sow in open ground from May to July; for winter use, during July and August. Set out in rows 1 1/2 feet apart, allowing a space of 6 inches between the plants.

Standard prices, all varieties, pkt. 15 cts.;
 oz. 30 cts.; 1/4lb. 60 cts.; lb. \$1.50

Early Snowball. Crisp, tender, and sweet.

Golden Ball. One of the best table sorts.

Milan, Early Purple-Top. Flesh pure white.

Milan, Early White-Top. Quick grower.

Purple-Top White Globe.

Yellow Globe. For early or late sowing.

GARDEN SWEDE. Specially selected for garden purposes.

Swede Turnip or Rutabaga

Three pounds of seed will sow an acre

Oz. 40 cts.; 1/4lb. 75 cts.; lb. \$1.60

American Purple-Top.

Champion. Purple-top.

Long Island Improved.

TOMATO

Tomato *Tomate* *Liebesapfel*
 One ounce of seed will produce 2000 plants

In February or March sow seeds lightly in rows in greenhouse, hotbed, or window-box, and when plants have reached a height of 3 inches, transplant to hotbeds. About June 1, set out in open ground, 4 feet apart, giving plenty of well-rotted manure to each plant. Water freely during hot weather. To obtain the best results, use trellises or stakes.

Standard prices, all varieties, pkt. 15 cts.;
 1/2oz. 60 cts.; oz. \$1

Bonny Best. Certified Seed. Very early. Medium size.

Chalk's Early Jewel. Large, bright red fruits.

Earliana. Extra early. Bright red, smooth.

Golden Queen. Bright golden yellow fruits of large size and excellent flavor.

John Baer. Certified Seed. Very early. An exceedingly heavy cropper. 66 days.

Marglobe (Wilt-resistant). Certified Seed. Red, globe-shaped fruits with few seeds. 73 days.

Penn State. Certified Seed. Fruit scarlet-red, of medium size, borne in clusters.

Ponderosa Giant (Beefsteaf). Certified Seed. Fruits very large, solid, bright crimson. 81 days.

Pritchard (Scarlet Topper). Certified Seed. Extra-early, large, smooth Tomato of intense scarlet color.

Rutgers. Certified Seed. Large globular, deep red fruits are borne in great quantity.

Stone, Dwarf. Large scarlet fruits.

Stone, Tall. Large, solid fruits of very fine flavor.

Tangerine. Decided tangerine-orange color.

Forcing Tomatoes

Sold in pkts. only, 35 cts. each, 3 for \$1

HUNT'S VICTORY. Early. A very heavy cropper. Produces round, medium-sized fruit of splendid flavor, in large trusses.

Early Sunrise. Splendid cropper. Medium size.

Golden Sunrise. Produces medium-sized, pure golden yellow fruits.

Market King. Early. A very heavy cropper.

Stirling Castle. Small solid fruits of good shape, color and fine flavor. Very prolific.

Fancy-Shaped Tomatoes

Red Pear **Red Cherry** **Yellow Pear**
Red Plum **Strawberry (Husk)** **Yellow Plum**
 Each: Pkt. 25 cts.

TAMPALA (Burpee's)

A delicious new green vegetable, the leaves of which are cooked, prepared, and served like spinach. Claimed to have more flavor, body, and food value than either spinach or chard. Does well in hot weather and will keep on producing all summer.
 Pkt. 25 cts.; 1/8oz. 60 cts.

HERBS

Basil, Sweet

Caraway

Chives

Coriander

Cress, Curled

Cress, Upland

Dill. Pkt. 15 cts.

Fennel, Florence

Fennel, Sweet

Marjoram, Sweet

Marigold, Pot

Mustard, Pkt. 15 cts.

Parsley, Pkt. 15 cts.

Purslane, Green

Sage, Broad-leaved

Savory, Summer

Sorrel, Narrow-leaved

Thyme, English

Price, pkt. 25 cts., except where noted

Alphabetical List of Flower Seeds

Valuable Cultural Hints

Due to continuous heavy rains at time of harvesting, several varieties of Flower Seeds are short in supply and unless instructions to the contrary are given, the nearest substitute will be sent.

When sowing seeds in pots, pans, or trays, use a compost of sweet top soil, sand, and humus, or clean leaf-mold. Some growers substitute peat-moss for the humus, but I prefer the latter. No manure of any kind is required, and the mechanical condition should be such that if a handful is squeezed together, when just pleasantly moist, it falls apart readily upon the hand being opened. If the particles cling tenaciously together, it requires the addition of more humus and sand. The soil should be passed through a sieve having a half-inch mesh. Fill the pots or flats to within half an inch of the top with this compost and press it moderately and uniformly firm, making the surface perfectly level. For very fine seeds, a surfacing layer of the same soil passed through a quarter-inch sieve will be required. Now water with a fine spray so that the whole body of soil is saturated. It will be found an excellent preventative of damping-off and other fungoid troubles if Semesan is used (normal strength) for this purpose. Allow to drain for an hour or so and then sow the seed. Sow thinly and barely cover with soil shaken through a piece of wire screening. Large seeds, as Lupins and Sweet Peas, should be covered to a depth of 1 inch, and minute seeds, as Lobelia, Begonias, etc., will not require covering. Place a piece of glass and a sheet of brown paper over each pot or flat and keep in a temperature of 60 degrees. Examine each morning, and as soon as germination is evident, remove the coverings and gradually expose the plants to full light. Water with care, never allowing the plants to suffer either for want of water or by being waterlogged. When water is required, stand the seed-pot in a pail and allow the moisture to rise from below.

When preparing a seed-bed in a frame, the soil should possess the qualities already described. Sand and humus may be freely used. The surface must be raked fine and level and the seed sown either broadcast or in shallow drills, 3 to 4 inches apart. Cover

the seed to its own depth, or slightly more, for summer sowings. Press lightly with a flat piece of board and water well with a very fine spray. Keep the sash and shading material on until the shoots can be just discerned breaking through the surface, then remove the shading and admit ventilation on all favorable occasions. The ground where seed is to be sown in the open should be brought to a state of pulverization and the surface raked fine. So far as possible, sow either immediately before or after rains, so that the seed is insured sufficient moisture for germination and early growth. Annuals may be sown where they are to flower, the young plants afterward being vigorously thinned out. Perennials are best sown in rows and later transplanted.

Seedlings sown in pots and frames will require transplanting when the second pair of leaves develop. For many things, flats 3 to 4 inches deep are suitable, using a compost similar to that advised for seed-sowing but in a little coarser state, or they may be transplanted to beds in frames. Allow 2 inches each way for this first move. Perennials and biennial seedlings will be transplanted into frames or in rows in the open ground allowing ample space for development.

Hardy annuals may be sown when the trees are bursting into leaf, and in some cases in the fall.

Half-hardy annuals may be sown so that sizable plants are available for planting out when danger of frost has passed, and later for succession. Hardy biennials are best sown in June or July and hardy perennials from June to September. Greenhouse plants are sown at various times according to requirements, and in this connection it may be mentioned that many hardy annuals make excellent greenhouse plants if sown in September or in early spring. When seeds fail to germinate, my experience is that the fault is invariably with the person responsible for the sowing and after-care. No reputable seed-house disseminates untested seed. The most frequent causes of failure are too deep sowing and permitting the soil to become excessively dry or the reverse while germination is taking place. Either of these conditions is fatal to success.

T. H. Everett, F.R.H.S., N.D.H.

Late of the Royal Botanical Gardens, Kew, England

The following abbreviations are used throughout the Flower Seed Department

HA., Hardy Annuals	HHP., Half-Hardy Perennials	GP., Greenhouse Plants
HHA., Half-Hardy Annuals	HB., Hardy Biennials	GS., Greenhouse Shrubs
TA., Tender Annuals	HHB., Half-Hardy Biennials	GB., Greenhouse Bulbs
HP., Hardy Perennials	HC., Hardy Climbers	

All seeds sent prepaid to any address for cash with order

Ageratum HA

A beautiful plant with tassel-like clustered flowers. Fine for bedding and useful for bouquets. Excellent for low borders and edging, and is often used for porch boxes. Easily raised from seed, which is usually started in a hotbed or window and transferred to open ground in May. Can also be sown outdoors in May.

Little Blue Star. Beautiful mauve. Miniature. Pkt. 50 cts.

Mexicanum, Blue Perfection. Very fine, semi-dwarf. Pkt. 25 cts.; 1/8oz. \$1.50

Aquilegia (Columbine) HP

Aquilegias are easily grown from seed and are greatly admired in the spring and early summer.

Cœrulea. 3 ft. Pale blue. Summer. Pkt. 25 cts.

Chrysantha. 3 ft. Canary. Summer. Pkt. 25 cts.

Chrysantha grandiflora alba. 3 ft. White. Pkt. 25 cts.

Long-spurred Hybrids. All the best and brightest shades. Pkt. 50 cts.; 1/16oz. \$2.50

Mrs. Scott Elliott's Celebrated Strain. A renowned English strain. Choice flowers, in the greatest possible array of colors.

Pkt. 50 cts.; 1/16oz. \$3

Alyssum

Unsurpassed for edging in long borders, blooming continuously all summer.

Benthami (Sweet Alyssum). HA. Fragrant, white flowers. Pkt. 15 cts.; oz. \$1.50

Carpet of Snow. HA. Invaluable for edges. Pkt. 25 cts.; oz. \$3

Lilac Queen. HA. Unique shade. Pkt. 25 cts.; 1/2oz. \$2.50

Little Gem. HA. Very small white flowers. Pkt. 25 cts.; oz. \$2

Violet Queen. HA. Especially dwarf compact form with honey-like odor. Very bright violet tint. Pkt. 25 cts.; 1/2oz. \$2

Saxatile compactum. HP. 1 ft. Yellow. June. Splendid for rockery. Pkt. 25 cts.

Anchusa

Italica, Dropmore Variety. HP. Strong, branching habit, producing large, brilliant blue flowers in abundance. July. Pkt. 25 cts.; 1/4oz. \$1.25

HUNT'S ANTIRRHINUMS (SNAPDRAGON) HP

Effective for bedding and forcing under glass. Produces enormous spikes of many shades of color; highly decorative and lasting when cut. Easy of cultivation. Seed sown outdoors the first week in May will bloom in August and remain in flower until November.

Varieties marked with an asterisk (*) are recommended for greenhouse culture

RUST-PROOF TALL VARIETIES

- ***Alaska.** Pure white.
- ***Daffodil.** Deep primrose.
- ***Indian Summer.** Coppery orange-scarlet.
- ***Salmon-Pink Shades.**
- ***Finest Mixed.**

Each: Pkt. 25 cts.; 1/8oz. \$1.50

OTHER TALL VARIETIES

- ***Afterglow.** Early-flowering bronze. Pkt. 50 cts.
- Bezdek's White Wonder.** Early-flowering giant white, producing long spikes throughout the winter months. Pkt. \$1.50
- ***Ceylon Court.** The giant yellow sensation. Pkt. 50 cts.
- ***Cheviot Maid Supreme.** Deep rose. A remarkably fine variety for greenhouse culture. Pkt. 50 cts.
- Giant Yellow.** The popular yellow for outdoors. Pkt. 50 cts.; 1/8oz. \$1.50
- ***Judd's Early Light Pink.** Very fine variety for greenhouse culture. Pkt. 50 cts.
- ***Lucky Strike.** Produces large spikes of well-spaced big white flowers. Pkt. 50 cts.
- ***Nicholson's Yellow.** Choice, giant, pale yellow variety. Pkt. 50 cts.
- ***White Rock.** Extra early. Pure white. Strong and free grower. Pkt. 50 cts.
- Tall Mixed.** All the best outdoor varieties. Pkt. 25 cts.; 1/4oz. \$1

FLOWER SEEDS ARE VERY SCARCE—
ORDER EARLY

All seeds sent postpaid to any address
for cash with order

Hunt's Extraordinary Antirrhinum

Bronze. Bronze with pink and gold shadings; very large.

Moonlight. Pale yellow, shading to white.

Pink Pearl. Exquisite shade of pale pink shaded gold.

Picardy Pink. The Picardy gladiolus shade in a Snapdragon.

Sunset. Nature's sunset shades of golden pink and old-gold.

World's Fair. Old-gold with shades of flesh, pink, and orange.

Mixed. A wonderful range of colors.

Any of above, pkt. \$1; 3 pkts. \$2.50

Special Amateur's Pkt. 50 cts.

ASTERS

(WILT-RESISTANT)

For early flowering, the seed should be started in the house, hotbed, or coldframe in March, transferring the seedlings to their permanent flowering position as soon as all danger from frost is past. Asters prefer a sunny position and thrive best in a heavy loamy soil enriched with bone meal.

GIANT COMET

Flowers often measure 6 inches in diameter, borne on long, strong stems. Splendid for cutting and effective when placed in large vases. Height 1 1/2 feet.

Mixed. Pkt. 25 cts.; 1/8oz. \$1.50

Giant California Sunshine, Mixed. Flowers may be described as varying shades of Enchantress pink, apple-blossom pink, deep rose, blue and lavender. Pkt. 25 cts.; 1/8oz. \$2

GIANT CREGO

Resembles the large chrysanthemum in size and shape. Height 2 1/2 feet.

Lavender	Rose	Violet
Pink		White

Each: Pkt. 25 cts.; 1/8oz. \$2



Aster, Giant Crego

ASTERS, continued

LATE BRANCHING ASTERS

Recommended for late flowering. Vigorous; profuse bloomers. Height 2 feet.

Carlson's Lavender	Vick's Rose
Semple's Shell-Pink	Vick's White
Vick's Crimson	Vick's Mixed
Vick's Purple	

Each: Pkt. 25 cts.; 1/8oz. \$1.50

LATE OSTRICH-PLUME ASTERS

The large, wavy flowers are produced on exceedingly long stems. Height 1 1/2 feet.

Crimson	Lavender	Salmon-Rose
Deep Blue	Light Blue	White
		Mixed

Each: Pkt. 25 cts.; 1/8oz. \$1.50

Single Large-flowered Asters

The colors listed below are beautiful shades and will be found excellent for cutting and general decorative purposes.

Carmine-Rose	Mauve	Violet
	Scarlet King	

Each: Pkt. 15 cts.; 1/8oz. \$1.50

Begonia HHP

Specially suited for summer bedding; makes a brilliant display. Very easy to grow.

Erfordi. Carmine-pink.
Gracilis luminosa. Fiery dark scarlet flowers. Reddish brown foliage.
Prima Donna. Rose and carmine.
Vernon. A fine bedding sort with rich red flowers.
 Each: Pkt. 50 cts.

Balsam (Lady's Slipper)

Suitable for borders or bedding. Excellent for conservatory and pot-plants.

Mixed. HHP. Pkt. 25 cts.; 1/4oz. \$1.50

Bellis (English Daisy) HP

Very effective for bedding alone, or interspersed with pansies or forget-me-nots, etc.

Perennis Mixed.	Pkt. 50 cts.
Giant Crimson. Fine color.	Pkt. 50 cts.
Giant Rose. Magnificent strain.	Pkt. 50 cts.
Giant White. Perfect double blooms. (Very scarce)	Pkt. \$1.

Browallia

Elata Blue. HHA. Elegant. About 18 inches high. Pkt. 25 cts.

Calendula (English Marigold) HA

Ball's Orange King. Strongly recommended for flowering under glass. Produces enormous yellow flowers. Pkt. 25 cts.; oz. \$1.50

Campfire (Sensation). The color of the petals is brilliant orange with a scarlet sheen and full yellow center. Pkt. 25 cts.; oz. \$1.50

Lemon Queen. Bears deep sulphur flowers. Very attractive. Pkt. 25 cts.; oz. \$1.50

All seeds sent postpaid to any address for cash with order

Calliopsis (Coreopsis) HP

Grandiflora. Bright golden yellow.

Pkt. 25 cts.; 1/2oz. 75 cts.

Lanceolata fl.-pl. A splendid mixture of semi-double flowers. Tall, strong, and vigorous.

Pkt. 25 cts.

Calceolaria

Hunt's Choicest Blends. HHA. Flowers of the largest size, of rich and varied colors, including self-colors, blotched, spotted and laced. Pkt. \$1

Campanula (Bellflower)

Graceful subjects for borders and beds, and may be grown with the greatest ease in all gardens.

Medium (Canterbury Bells). HB. 1 1/2 ft. Extremely showy in mixed borders, also used to advantage as pot-plants.

Double Blue.	Pkt. 35 cts.
Double Rose.	Pkt. 35 cts.
Double White.	Pkt. 35 cts.
Double Mixed.	Pkt. 25 cts.
Single Blue.	Pkt. 25 cts.
Single Light Blue.	Pkt. 25 cts.
Single Rose.	Pkt. 25 cts.
Single White.	Pkt. 25 cts.
Single Mixed.	Pkt. 25 cts.; 1/8oz. \$1.50

Medium calycanthema (Cup-and-Saucer). 2 ft. Blue Rose White

Each: Pkt. 25 cts.

Persicifolia grandiflora. HP. 4 ft. Produces large, blue, bell-shaped flowers on long stems in June. Pkt. 35 cts.

Persicifolia grandiflora alba. HP. 4 ft. White. Pkt. 35 cts.

Pyramidalis (Chimney Bellflower). HP. 3 1/2 ft. Blue. Summer. Pkt. 25 cts.

Pyramidalis alba. HP. 3 1/2 ft. White. Pkt. 25 cts.

Candytuft (Iberis)

A very useful annual for bedding; quite hardy. Seed may be sown in place where it is intended to bloom.

Empress. HA. 1 ft. Pure white. Pkt. 25 cts.; oz. \$1.50

Giant Hyacinth-flowered, White. HA. Large, pure white, spiral spikes. Pkt. 25 cts.; oz. \$2

Large-flowered Hybrids. HA. Dwarf. Pkt. 25 cts.; oz. \$2

Sempervirens. HP. 1 ft. White flowers. Pkt. 30 cts.

Carnation HHP

Allwoodi. Extremely free flowering; varied colors. Can be sown at all seasons.

Pkt. 25 cts.; 1/8oz. \$1.50

Choice Mixed. From the finest collections. Excellent for cutting. Pkt. 25 cts.; 1/8oz. \$1.50

Marguerite Mixture. Greatly prized for border or table decoration. Sown early in spring, they will flower profusely throughout the summer.

Pkt. 25 cts.; 1/8oz. \$1

Celosia HHA

Cristata (Cockscomb).

Empress. Monstrous combs of a rich crimson. Pkt. 50 cts.

Plumosa, Pride of Castle Gould. Original strain. Many shades from yellow to intense crimson.

Pkt. 50 cts.

Centaurea

- Cyanus** (Bachelor's Button; Cornflower). HA.
Double Blue. Pkt. 15 cts.; oz. \$1.50
Jubilee Gem. Dwarf. Double; rich blue, very dark.
Pkt. 25 cts.; oz. \$2
Imperialis (Sweet Sultan). HA.
Favorite. Brilliant rose.
Graziosa. Intense lilac.
Lilacina. Lilac; very distinct.
Rosea. Deep rose.
Splendens. Dark purple.
White. Extremely large and fragrant.
Any above *Centaurea imperialis*, each,
pkt. 25 cts.; 1/4oz. \$1

Chrysanthemum

- Morning Star.** HA. Large, primrose annual
Marguerite. Pkt. 25 cts.; oz. \$2.50
Evening Star. HA. Rich bright golden yellow.
Pkt. 25 cts.; oz. \$1.50
Maximum (Shasta Daisy). HP. 1 1/2 ft. Mixed.
Summer. Pkt. 25 cts.

Cheiranthus

- Allioni** (Alpine or Siberian Wallflower). HHP. 9 in.
Excellent for rockery or borders; brilliant orange.
Very fragrant. Pkt. 25 cts.; 1/4oz. \$1.50
Kewensis (Chinese Wallflower). HA. 1 ft. Yel-
lowish red, sweet-scented flowers over a long
season. Pkt. 25 cts.; 1/8oz. \$1.50

Clarkia elegans HA

Very suitable for borders, and makes wonderful
pot-plants which attain a height of 4 to 5 feet and
bloom in the late fall.

- Salmon Queen.** Salmon; double.
Scarlet Queen. Orange-scarlet; double.
Each: Pkt. 50 cts.; 1/4oz. \$2.50

Coleus

- Rainbow Hybrids.** HHA. Suitable for bedding
and ornamental as pot-plants. Pkt. 75 cts.

Cosmos HA

- Sensation.** Giant flowers almost 6 inches across.
Flowers are borne on strong stems. Plants 4 to
6 feet high.
Dazzler. A dazzling crimson.
Pinkie. Good clear rose-pink.
Purity. Pure white.
Sensation, Finest Mixed.
Each; Pkt. 25 cts.; 1/4oz. 75 cts.
Double Early-flowering Hybrid.
Pkt. 25 cts.; 1/4oz. \$1
Extra-Early Double Crested.
Pink Beauty **White Queen**
Crimson King **Finest Mixed**
Pkt. 25 cts.; 1/8oz. \$1
Lady Lenox, Pink. Color a delightful shell-pink.
Lady Lenox, White. Exceedingly popular.
Early-flowering Mixed.
Orange Flare. Vivid orange flowers.
Each: Pkt. 15 cts.; 1/4oz. 50 cts.

Hunt's Cinerarias HHP

- Hunt's Perfection Mixed.** A strain of giant flow-
ers of the finest form and substance; includes the
brightest and richest colors. Pkt. \$1
Hunt's Perfection, Dwarf Mixed. Compact
habit, carrying large flowers in an endless variety
of colors. Pkt. \$1
Cremer's Prize Mixed. A dwarf-growing variety,
producing medium-sized blooms of marvelous
shades and markings. Pkt. \$2
Hybrida multiflora nana, Mixed. Produces
dwarf plants with masses of small, self-colored
flowers. Pkt. 75 cts.
Cactus-flowered, Mixed. Large flowers with nar-
row, rolled petals radiating from a small center.
Pkt. \$1
Stellata, Tall Choicest Mixed. Unexcelled for
house and conservatory decoration during winter.
Pkt. \$1

Cynoglossum

- Amabile, Blue.** HHA. Flowers are a beautiful
shade of blue. It grows on tall, graceful branches,
from 18 to 20 inches in height.
Pkt. 25 cts.; 1/4oz. 50 cts.

Cyclamen

These beautiful winter-blooming plants may be
flowered from seed in about a year if the seedlings
are pricked off and grown on rapidly without in-
terruption.

- Finest Mixed Colors.** HHP.
Pkt. 75 cts.; 100 seeds, \$5

Dahlias

Dahlias may be had in flower the first season from
seed if sown in February or March.

- Cactus, Mixed.** Pkt. 25 cts.
Large Double Show. Mixed. Pkt. 25 cts.
Single Giants. Mixed. Pkt. 25 cts.
Coltness Hybrids, Mixed, Reselected. An amaz-
ing variety of color. Very even and dwarf habit.
Pkt. 50 cts.; 1/8oz. \$3
Unwin's Dwarf Hybrids. The hybrids are early
and embrace a wide and most charming color-
range. Pkt. 50 cts.; 1/8oz. \$3
Orchid-flowered, Mixed. Produces flowers with
attractively twisted and curled petals.
Pkt. 50 cts.; 1/8oz. \$2.50

Didiscus

- Cerulea** (Blue Lace Flower). HHA. Very attrac-
tive lavender flower. Blooms all summer. Splen-
did for indoor culture. Pkt. 25 cts.; 1/4oz. \$1.50

Digitalis (Foxglove)

HP. 3 ft.

No perennial border is complete without Fox-
gloves.

- The Shirley Hybrids.** Very large-flowered strain
with fine range of color. Pkt. 25 cts.; 1/4oz. \$1.50
Finest Mixed Colors. Pkt. 25 cts.; 1/4oz. \$1.25
Purpurea monstrosa, Mixed. Large, bell-shaped
terminal flower. Pkt. 25 cts.; 1/4oz. \$1.75

SPECIAL OFFERING OF DAHLIA BULBS.

SEE PAGES 29 and 31

All seeds sent postpaid to any address for cash with order



Delphiniums, Giant Pacific Hybrids

Hunt's Delphiniums HP

The Delphinium or Hardy Larkspur is probably the most valuable of all herbaceous plants and provides many of the light and dark shades of blue colors always desirable but far too scarce in flowers.

Belladonna, Improved. Lovely azure-blue shade.
Pkt. 50 cts.; 1/8oz. \$2

Hunt's Perfection Hybrids. Showy hybrids saved from the best varieties.
Pkt. 50 cts.; 1/8oz. \$1

GIANT PACIFIC HYBRIDS

Produces under favorable conditions plants which grow to an enormous height with magnificent flower spikes closely set in exquisite blooms.

Black Knight. Rich impressive color with a glistening sheen. The darkest violet yet produced.

Blue Jay. Medium to dark blue with stronger contrasting dark bee. Very long spikes.

Galahad. Clear white blooms of enormous size. Giant pyramidal spikes with well-spaced glistening white blooms.

Guinevere. Showy light pink-lavender with white bee.

King Arthur. Brilliant royal variety set off by a white bee.

Lancelot. A lovely new color—pure lilac self with white bee.

Pure White. Clear white of heavy texture.

Summer Skies. Light blue with white bee.

Each: Pkt. \$1; 1/16oz. \$1.50; 1/8oz. \$2.75

Dianthus (Pinks)

HA and HP

A delightful subject for beds or borders and very useful for cutting.

Chinensis, Double Mixed. Pkt. 25 cts.; oz. \$1.50
Chinensis, Single, Finest Mixed.

Pkt. 25 cts.; oz. \$1.50

Sweet Wivelsfield. Contains a great variety of colors and flowers almost continuously throughout the season.
Pkt. 35 cts.; 1/8oz. \$1

Dimorphotheca HA

South African Daisy

Flowers very early and keeps on blooming throughout the summer.

Aurantiaca. Rich glossy orange-gold. Pkt. 30 cts.

Aurantiaca hybrida. These hybrids are similar in habit to the above.
Pkt. 30 cts.

Eschscholtzia (California Poppy)

HA. 1 ft.

For bedding they make a brilliant effect.

California Giant. Yellow. Pkt. 15 cts.; oz. \$1

Fringed Golden Yellow. Deeply lacinated.
Pkt. 25 cts.

Golden West. Golden yellow.

Pkt. 15 cts.; oz. \$1.50

Monarch Art Shades. Colors range through light rose to deep rose and carmine, and from deep golden yellow to orange and scarlet.

Pkt. 25 cts.; 1/8oz. \$1.75

Gaillardia (Blanket Flower)

The Perennial Gaillardias are wonderful for cut-flowers, blooming right through till frost, and adapt themselves to almost any kind of soil.

Dazzler. HP. Rich maroon-red with outer zone bright golden yellow. Pkt. 30 cts.

Annual Varieties, Choice Mixed. Pkt. 30 cts.

Large-flowered Perennial Varieties, Mixed.
Pkt. 30 cts.

Gloxinia HHA

Makes an elegant plant and can be had in flower from seed the first season. Our strain is one of the best obtainable.

Perfection Mixed. Wonderful self-colored and spotted varieties. Pkt. \$2

Gypsophila (Baby's Breath)

The light, graceful sprays of both annual and perennial varieties are most desirable for mixing in bouquets or vases.

Elegans. HA. White and pink.

Pkt. 20 cts.; oz. 75 cts.

Elegans carminea. HA. Carmine-rose.

Pkt. 20 cts.; oz. \$1

Elegans grandiflora alba. HA. White.

Pkt. 20 cts.; oz. \$1.50

Elegans grandiflora rosea. HA. Rose.

Pkt. 20 cts.; oz. \$1

Elegans, Pure White, Compact. HA. A greatly improved strain. Pkt. 20 cts.; oz. \$3

Paniculata. HP. White flowers.

Pkt. 20 cts.; oz. \$2

Paniculata fl.-pl., Snow-White. HP. Double white flowers. Pkt. 25 cts.

Helianthus (Sunflower) HA

Californicus. 6 ft. Double; orange.

Pkt. 15 cts.; oz. \$1.50

Helichrysum

Monstrosum, Mixed (Everlasting). HA. Double flowers in shades of yellow, orange, red, and white. Finest mixture.

Pkt. 30 cts.; 1/4oz. \$1

Hollyhocks, Perfection Double HP

Very choice. Everybody's favorite. Their stately appearance and exquisite colors make them indispensable in the hardy garden.

Apple Blossom
Canary-Yellow
Crimson
Newport Pink

Salmon
Snow-White
Mixed (Double)
Single, Finest Mixed

Each: Pkt. 25 cts.; 1/8oz. \$1

Exquisite. Very large flowers in Rose, Light Rose, Carmine, Violet, and Dark Purple.

Pkt. 25 cts.; 1/8oz. \$1

Hunnemannia

Fumariæfolia. HA. Large, yellow, poppy-like blossoms.

Pkt. 25 cts.; oz. \$2

Ipomoea

Cardinalis (Cardinal Creeper). HA. Red.

Pkt. 25 cts.

Heavenly Blue (Clarke's). Sky-blue, extremely early.

Pkt. 25 cts.; 1/2oz. \$1

Mexicana grandiflora alba. 15 ft. White.

Pkt. 25 cts.; oz. \$1

Rubro-cærulea. 15 ft. Sky-blue.

Pkt. 25 cts.; 1/4oz. 50 cts.

Scarlett O'Hara. Large, rich dark wine-red flowers produced all summer.

Pkt. 25 cts.; 1/4oz. 75 cts.

Ornamental Gourds

Large Varieties, Mixed. Pkt. 25 cts.; oz. \$1

Small Varieties, Mixed. Pkt. 25 cts.; oz. \$1

Larkspur HA

Sometimes called the Annual Delphinium. They are hardy, producing large spikes of bloom which are both graceful and attractive.

Emperor, Azure-blue.

Emperor, Black-blue.

Emperor, Rose.

Emperor, White.

Giant Azure. Intense blue.

Each; Pkt. 20 cts.; 1/4oz. \$1

Giant Coral King. Blush-pink, suffused with coral.

Pkt. 25 cts.; 1/4oz. \$1.25

Giant Newport Pink. Pkt. 25 cts.; 1/4oz. \$1.25

Giant White. Pkt. 25 cts.; 1/4oz. \$1.25

Giant Hyacinth-flowered, Mixed.

Pkt. 25 cts.; oz. \$3

La France. The color is a pleasing salmon-pink.

Pkt. 25 cts.; 1/4oz. \$1.25

Los Angeles. Rich color—something between shell-pink and rosy scarlet.

Pkt. 25 cts.; 1/4oz. \$1.25

Super-Majestic White. The flowers are large, fully double, and closely packed on long 4 to 5-foot spikes.

Pkt. 25 cts.; 1/4oz. \$1.50

Leptosyne

Stillmanni. HA. 1 1/2 ft. Golden yellow. Excellent for cutting.

Pkt. 25 cts.



Marigold, Sunset Giants

Lobelia HA

Excellent for bedding, window-boxes, and perennial borders.

Erinus compacta, Crystal Palace. 9 in. Dark blue. Pkt. 50 cts.

Erinus compacta, Emperor William. 6 in. Dwarf; light blue. Pkt. 50 cts.

Lupinus (Lupins) HA and HP

Very free-flowering plants that make a fine show for little cost. Useful for borders and greenhouse culture.

ANNUAL LUPINS

Giant Pink

Salmon-Pink

Mid-Blue

Scarlet and White

Pure White

Each: Pkt. 15 cts.; oz. \$3.

PERENNIAL LUPINS

Blue. 3 ft. Flowers similar to the annual variety.

Pkt. 25 cts.; oz. \$2.50

Harkness' Hybrids. A mixture containing many beautiful art shades.

Pkt. 25 cts.; 1/4oz. \$1.50

Roseus. 3 ft. Immense spikes of lovely soft pink flowers.

Pkt. 25 cts.; 1/4oz. \$1

Russell Hybrids. HP. 3 1/2 to 4 ft. Giant spikes of flowers in magnificent range of color.

Pkt. 25 cts.; 1/4oz. \$2.50

Mignonette (Reseda) HA

Exceedingly fragrant and ornamental either as a growing plant or as cut-flowers.

Goliath. Extra-heavy spikes.

Pkt. 15 cts.; 1/4oz. 75 cts.

Large-flowering. Sweet-scented.

Pkt. 15 cts.; oz. \$1

Machet, Dwarf. Pyramidal growth. Long, broad spikes of deliciously scented red flowers.

Pkt. 25 cts.; oz. \$2

New York Giant. Specially recommended for pot-culture. The spikes measure 15 to 20 inches long; very fragrant. Excellent for shipping.

Pkt. 50 cts.; 1/8oz. \$1.50

Universal. Intensely fragrant flowers on spikes often measuring 2 feet in length.

Pkt. 50 cts.; 1/8oz. \$1.50

MARIGOLD HA

Marigolds provide a plentiful supply of bloom when other plants have ceased to flower. Exceedingly attractive and useful for cutting.

Collarette, Crown of Gold

An entirely new type of Marigold. The crown and collarette of big broad petals which surround it are of a bright, pleasing shade, a clear golden orange.

Pkt. 25 cts.; 1/4oz. 75 cts.

AFRICAN

Guinea Gold. 2 1/2 ft. Brilliant orange flowers.

Pkt. 25 cts.; 1/4oz. \$1.25

Lemon Queen. Lemon. Pkt. 25 cts.; 1/4oz. \$1.50

Lieb's Winter-flowering. Flowers measure 3 inches in diameter; single and semi-double, of a mahogany-brown with golden crested centers.

Pkt. 25 cts.; 1/4oz. \$1

Orange King. Golden. Pkt. 25 cts.; 1/4oz. \$1.50

Sunset Giants. Mixture from deep orange to primrose. Height. 4 ft. Pkt. 25 cts.; 1/4oz. \$1

FRENCH

Little Brownie. Single; golden yellow, marked velvety red. Pkt. 25 cts.

Dwarf Double, Mixed. Pkt. 15 cts.; 1/4oz. 75 cts.

Tall Double, Mixed. Pkt. 15 cts.; 1/4oz. 75 cts.

Double Lilliput, Fine Mixed.

Pkt. 15 cts.; 1/4oz. \$1

Myosotis (Forget-me-not)

HP

Those who make a feature of late-flowering tulips for an effective May garden should use Myosotis either as a border or carpeting for the beds. The contrast of the blue Forget-me-not with lilac, violet, or mauve tulips is extremely handsome. Plants for this purpose should be wintered in a coldframe and planted out early.

Alpestris. A pretty blue trailer.

Pkt. 50 cts.; 1/8oz. \$5

Alpestris, Eliza Fonrobert. Sky-blue, with yellow eye. Fine for cutting. Pkt. 50 cts.; 1/8oz. \$4

Alpestris, Royal Blue. Upright variety with large, very deep blue flowers. Pkt. 50 cts.; 1/8oz. \$4

Alpestris, Victoria. Sky-blue.

Pkt. 50 cts.; 1/8oz. \$4

Ruth Fischer. Beautiful, heavenly blue flowers.

Pkt. 75 cts.



Hunt's Giant-flowered Pansies

Nasturtiums HA

DWARF or TOM THUMB

Very striking and brilliant flowers. Splendid for beds and borders.

Empress of India. Dark crimson.

Yellow.

Mixed.

Queen of Tom Thumbs, Mixed. Variegated-leaved.

Any of above, pkt. 15 cts.; oz. 50 cts.

Golden Gleam (Double Sweet-scented Nasturtium). Large, double, sweet-scented golden yellow.

Scarlet Gleam, Double. Large, double, scarlet flowers, fragrant and uniformly well formed.

Double Glorious Gleam Hybrids.

Any of above 3 varieties, pkt. 15 cts.; oz. 75 cts.

TALL or CLIMBING NASTURTIIUMS

Fine Mixed. Pkt. 15 cts.; oz. 40 cts.

Lobb's Finest Mixture. Pkt. 15 cts.; oz. 50 cts.

Nicotiana (Tobacco Plant)

Affinis. HA. 3 ft. White flowers.

Pkt. 25 cts.; 1/4oz. \$1.50

Affinis, Crimson Bedder. 2 ft. Dwarf crimson variety.

Pkt. 25 cts.

Choice Hybrids. Bright colors. Pkt. 25 cts.

Hunt's Giant-flowered Pansies

HP

When the bright hues of the tulips and daffodils have faded, the rich, deep and varied shades of the Pansies provide a welcome change in the flower-beds. The varieties listed below comprise a selection from the best and most recent introductions. They produce large blooms of good substance, regular markings, and full rich coloring.

New Greenhouse Giants. Produces blooms measuring 4 inches across and plants grow from 2 to 4 feet, according to culture. This mixture contains beautifully marked flowers of every color in Pansies. Pkt. \$1

Hunt's Superb Mixture. Without doubt one of the finest mixtures ever offered. The flowers are of the largest and most beautiful form.

Pkt. 50 cts.; 1/8oz. \$3.50; 1/4oz. \$6.50

Masterpiece. Petals beautifully waved. Exquisite colors. Pkt. 50 cts.; 1/8oz. \$3; 1/4oz. \$5

Swiss Giants. Giant flowers in splendid variety. Pkt. 75 cts.; 1/8oz. \$5

Trimardeau, Mixed. Mammoth flowers in many colors. Pkt. 35 cts.; 1/8oz. \$2; 1/4oz. \$3.50

Giant Dark Blue (Lord Beaconsfield). Very large, dark blue flowers shading to white.

Pkt. 50 cts.

Giant Golden Queen. Brilliant yellow with dark center. Pkt. 50 cts.; 1/8oz. \$4

Giant Light Blue. Delicate lilac-blue. Pkt. 50 cts.; 1/8oz. \$4

Giant Mauve Queen. Pinkish mauve. Very attractive. Pkt. 50 cts.; 1/8oz. \$4

Giant Purple. Rich purple. Pkt. 50 cts.; 1/8oz. \$4

Giant White (Snowflake). Immense, pure white flowers with purple eyes. Pkt. 50 cts.; 1/8oz. \$4

Giant Victoria. Claret-red. Pkt. 50 cts.; 1/8oz. \$4

All seeds sent postpaid to any address for cash with order

Papaver (Poppy) HP

ORIENTAL POPPIES (*Papaver orientale*)

Mixed. Pkt. 25 cts.; 1/4oz. \$2

ICELAND POPPIES (*Papaver nudicaule*)

Album. White. Pkt. 25 cts.
 Coccineum. Scarlet. Pkt. 25 cts.
 Croceum. Yellow. Pkt. 25 cts.
 Mixed. Pkt. 25 cts.; 1/4oz. \$2.50

SINGLE SHIRLEY POPPIES HA

Very showy and useful for picking; seed should be sown where intended to flower.

Finest Mixed. Pkt. 25 cts.; oz. \$2.50

DOUBLE POPPIES HA

Double Mixed. Pkt. 15 cts.; oz. \$1.50

PETUNIAS HHA

Very effective either as pot-plants or for bedding.

- Balcony, Blue.** Rich indigo-blue. Pkt. 50 cts.; 1/8oz. \$5
- Balcony, Pink.** Brilliant rose-pink. Pkt. 50 cts.; 1/8oz. \$5
- Balcony, White.** Pure white. Very graceful. Pkt. 50 cts.; 1/8oz. \$5
- Balcony, Steel-Blue.** A striking color. Pkt. 50 cts.; 1/8oz. \$5
- Bar Harbor Beauty.** Beautiful rose. Splendid for bedding. Pkt. 35 cts.; 1/8oz. \$4
- Cheerful.** Flowers 3 inches across, clear salmon-pink, a brand-new color. Produces a mass of blooms spreading close to the ground and continuing to flower throughout the summer and fall. Splendid for cutting. Pkt. 50 cts.; 1/16oz. \$2.50
- Flaming Velvet.** Large velvety, rich blood-red flowers. Pkt. 35 cts.; 1/8oz. \$3
- New Rosy Morn.** An improvement on the old variety, being larger and much brighter in color. Pkt. 35 cts.; 1/8oz. \$3
- Purple Queen.** Intense violet. Erect habit. Pretty and effective for bedding. Pkt. 75 cts.
- Rose of Heaven.** Brilliant light pink. Erect and compact. Pkt. 35 cts.; 1/8oz. \$3
- Rosy Morn.** Soft carmine-pink. Pkt. 25 cts.; 1/8oz. \$1.75
- Salmon Supreme.** A dwarf, erect type bearing soft pastel salmon flowers. Pkt. 75 cts.
- Scarlet Beauty.** Giant; single, fringed, scarlet-rose with dark throats. Pkt. 75 cts.
- Snowstorm.** Pure white; single; fringed. Exceptionally choice strain. Pkt. 75 cts.
- Velvety Dark Scarlet.** The brightest color in this class. Pkt. 75 cts.
- Giant Single Fringed, Mixed.** Colors vary from pure white, through all shades of red to dark purple-violet. Pkt. 75 cts.
- Dwarf California Giants Mixed.** Large, colorful flowers with open throats well marked and veined. Pkt. 75 cts.
- Hybrida, Single Mixed.** Pkt. 25 cts.; 1/4oz. \$1
- Double Fringed, Mixed.** Double flowers of exquisite beauty and great size. One of the finest strains in existence. Pkt. \$1.50

Phlox Drummondii HA

Very desirable for bedding and cutting. Height 2 1/2 feet. Large beds of Phlox make a wonderful display of brilliant colors. May be used to advantage as a greenhouse plant.

Grandiflora Mixed. Pkt. 35 cts.; 1/8oz. \$1.75

All seeds sent postpaid to any address for cash with order



Petunia, Cheerful

Primrose HHP

- Giant Munstead.** White and yellow—very fine combination. Pkt. 75 cts.
- Japonica, Choice Mixed.** HP. 2 ft. Bright showy flowers. Pkt. 75 cts.
- Yellow (*Primula vulgaris*).** The common English Primrose. Pkt. 50 cts.

Portulaca (Sun-Plant) HA

- Double Mixed. Pkt. 35 cts.; 1/4oz. \$3.50
- Single Mixed. Pkt. 25 cts.; 1/2oz. \$2.25

Primula (Primrose) HHP

PRIMULA MALACOIDES

Handsome and dainty, very effective for conservatory during the winter.

- Lilac.** Light lilac.
- Rosea.** Light rose and carmine.
- Snow Queen.** The purest white. Each: Pkt. 75 cts.

PRIMULA OBCONICA GIGANTEA

- One of the most useful plants for pot-culture. Mixed. Pkt. 75 cts.

Pyrethrum HP

- Hybridum, Robinson's Giant Hybrids.** Very choice. Pkt. 75 cts.

Salpiglossis (Painted Tongue) HHA

The strains we offer are all of the large-flowering type and contain some wonderful colors and markings.

GRANDIFLORA SUPERBISSIMA

- Crimson and Gold
 Scarlet and Gold
 Violet and Gold
 Rose and Gold
 Dark Red
 Yellow
 Each: Pkt. 35 cts.; 1/8oz. \$2
- Mixed. Pkt. 35 cts.; 1/4oz. \$1.50
- Emperor, Mixed. Pkt. 35 cts.; 1/4oz. \$2

Salvia (Sage) HHP

Handsome and attractive. Comes into flower in late summer and continues to bloom until cut down by frost.

- Ball of Fire.** Dwarf and early. Dark scarlet.
Pkt. 35 cts.; 1/4oz. \$4
- Clara Bedman.** The popular scarlet variety.
Pkt. 35 cts.; 1/4oz. \$3
- Farinacea.** 2 ft. A perennial that should be grown as an annual. Long spikes of lavender-blue flowers.
Pkt. 50 cts.
- Farinacea, Blue Bedder.** A more compact form of this graceful plant, with deeper blue flowers.
Pkt. 50 cts.
- Patens.** GP. Rich deep blue. Pkt. 50 cts.; 1/8oz. \$4
- Splendens.** Bright scarlet spikes.
Pkt. 25 cts.; 1/4oz. \$2.50
- Zurich.** Compact, scarlet, very early and free flowering.
Pkt. 35 cts.; 1/8oz. \$3.50

Scabiosa, Tall Double HA

One of the most beautiful annuals. Valuable for vases and for table decoration.

- | | | |
|---------------------|----------------------|--------------|
| Azure Fairy | Fiery Scarlet | Rose |
| Black-Purple | Flesh Color | White |
| Cherry-Red | Lilac | |

Each: Pkt. 20 cts.; 1/4oz. \$1

- Giant Loveliness.** Delicate salmon-rose.
Pkt. 25 cts.; 1/4oz. \$1.50
- Mixed.** Pkt. 15 cts.; 1/4oz. 75 cts.

Schizanthus (Butterfly Flower) HHP

The Schizanthus is unrivaled for conservatory and table decoration and as pot-plants.

- Dawkin's Giant Strain.** The remarkable size and wonderful self colors make it extremely attractive.
Pkt. 75 cts.
- Grandiflorus maximus, Mixed.** Splendid brilliantly colored flowers.
Pkt. 75 cts.
- Pansy-flowered Mixture.** Large blooms in great variety of coloring. Compact habit. Pkt. \$1
- Dr. Badger's Reselected Hybrids, Mixed.** The size, variety, and remarkable color make it invaluable for winter flowering.
Pkt. 75 cts.
- Wisetonensis, Mixed.** Consisting of the lighter shades, this variety produces profusely flowers that are effective and lasting when cut.
Pkt. 50 cts.

Sweet William HB

Easy to grow, producing large, fragrant flowers of great lasting quality.

- Giant Double, Mixed.** Pkt. 25 cts.; 1/4oz. \$2
- Giant White.** Pkt. 25 cts.; 1/4oz. \$2.50
- Newport Pink.** Watermelon-pink or salmon-rose.
Pkt. 25 cts.; 1/4oz. \$2.50
- Pink Beauty.** Delicate pink.
Pkt. 25 cts.; 1/4oz. \$1.50
- Scarlet Beauty.** Intense scarlet.
Pkt. 25 cts.; 1/4oz. \$1.50

Stevia

- Serrata.** GP. 2 ft. Graceful sprays of tiny pure white flowers.
Pkt. 35 cts.

Special Amateur's Collection

12 pkts. Hardy Annuals, \$1 post-paid
our selection, for . . .

Stocks HHA

LARGE-FLOWERING TEN-WEEKS

One of the most popular of the hardy annuals, and suitable for bedding or pot-culture.

- | | |
|-------------------------|--------------------|
| Bright Rose | Flesh-Color |
| Canary-Yellow | Light Blue |
| Crimson | Snow-White |
| Dark Violet-Blue | |

Each: Pkt. 25 cts.; 1/8oz. \$2

- Fine Mixed.** Pkt. 20 cts.; 1/8oz. \$1.50

WINTER-FLOWERING STOCKS

All the following varieties are splendid for late flowering outdoors and are unsurpassed for greenhouse culture.

- Abundance.** Lovely shade of carmine-rose.
- Almond Blossom.** White shaded carmine.
- Beauty of Nice.** Delicate flesh-pink.
- Crimson King.** Fiery crimson.
- Giant Perfection, White.** Large, double flowers.
- Monte Carlo.** Pure yellow.
- Old Rose.** Lovely shade.
- Queen Alexandra.** Delicate rosy lilac.
- Summer Night.** Rich royal purple.

All above varieties, pkt. 50 cts.

MAMMOTH SINGLE-COLUMN

The flowers, which are produced in four lovely shades as offered below, have been grown to a height of almost 3 feet. The length of the single column of flowers produced on each plant often exceeds 18 inches. Strongly recommended for pots or benches.

- | | |
|---------------------|-----------------------|
| Chamois-Pink | Lilac-Lavender |
| Ruby | Pure White |

Each: Pkt. 75 cts.

- COLLECTION: One pkt. each of above 4 colors for \$2.50.**

PERPETUAL-FLOWERING STOCKS

Will flower continuously through the summer if sown early.

- | | |
|-------------------------------|---------------------------|
| Apple Blossom. Pink. | Rose. |
| Princess Alice. White. | Violet. Dark blue. |

Any of the above, pkt. 50 cts.

GIANTS OF CALIFORNIA

A very early-flowering class with the branching habit of the Bismarcks, but producing large flowers on longer stems. A definite improvement.

- | | |
|--------------------------------|-------------------------------|
| Golden Gate. Yellow. | Santa Maria. White. |
| Mojave. Velvety purple. | Sequoia. Rose-carmine. |
| Monterey. Pink. | Tahoe. Lavender. |
| Pacific. Blue. | Yosemite. Rose. |
| Redwoods. Blood-red. | Mixed. |
| Santa Barbara. Chamois. | |

Any of above, pkt. 35 cts.; 1/8oz. \$1

Sunflowers, Miniature HA

- Excelsior Hybrids.** Yellow with zones of blood-red, purple, and brown. Pkt. 25 cts.
- Golden Fleece.** Cactus-shaped, clear golden yellow, with dark center. Pkt. 25 cts.

Wallflower HA and HB

Wallflowers are ideally suited for bedding in masses or as a cut-flower.

- Annual Varieties, Mixed.** Pkt. 25 cts.; 1/4oz. \$1
- Perennial, Double, Finest Mixed.** Pkt. 50 cts.; 1/8oz. \$3

SWEET PEAS

The Twentieth-Century Method of Growing Sweet Peas

For Early Blooms. Place three seeds in a small pot of soil in the house about March 1. If all three seeds germinate, pull out the two weakest plants and retain the strongest. As soon as the second set of leaves has formed, plunge the young plants, with the pots, in a coldframe protected by sash, where they can be hardened off. Lift the sash during the sunny hours of the day and water carefully. Set the plants out in the open about April 15, and space them 6 inches apart in the row.

General Culture

Four ounces of seed will sow a single row of 100 feet

The ground where Sweet Peas are to be grown should be well prepared—if possible, the fall previous. Deep spading or plowing is very essential, for

the roots love to penetrate into the cooler part of the soil. Manure placed at a considerable depth will help to draw the roots downward. Sweet Peas love sun, therefore they should always be planted where they are exposed to the sun all day.

Sow Seeds Early. Sweet Peas produce their strongest roots during the cool, moist months of spring, so planting should take place as soon as the land can be worked. A little frost will do no harm to Sweet Peas. After the soil has been carefully smoothed and raked, draw a line for a straight row and sow three seeds every 6 inches in the row. Do not cover the seed with more than $\frac{1}{2}$ inch of soil, and if more than one plant should appear in each spot, carefully destroy all but one specimen so that one plant shows every 6 inches in the row.

The Cream of the Spencer Varieties

Named Spencer Sweet Peas, Each, pkt. (approx. 50 Seeds) 25 cts.; oz. \$1.25

WHITE

Burpee's Best White. White waved.

Gigantic. Of wonderful purity.

Ruffled White. Very large. Often bears five blooms to a stem.

CREAM

Ruffled Primrose. Cream or primrose.

DEEP PINK ON CREAM

Ruffled Pink. Large ruffled flowers of deep rose-pink on cream.

PICOTEE AND BLUSH-PINK

Youth. Beautiful white blooms with rose-pink edge.

SALMON-PINK ON CREAM

Bonnie Lassie. Cream-pink suffused salmon.

Elstree. Bright pink on cream ground.

LIGHT PINK

Ascot. Clear shell-pink.

Lady Ruffled Improved. Soft pink self on white ground.

DEEP PINK

Pinkie. Clear deep rose-pink.

Prolific. Warm shade of rose-pink.

FAWN-PINK

The Burpee Improved. Soft luminous fawn-salmon-pink.

SALMON-PINK

Aristocrat. Clear pink on white.

Salmon Fantasy. Flaked salmon-pink.

SCARLET

Welcome. Dazzling deep scarlet-vermilion.

FANCY (Flushed)

Heyday. Pink enlivened by tones of amber.

Robustum. Apricot-pink.

SALMON-CERISE

His Majesty. Brilliant salmon-cerise.

Ruffled Exquisite. Salmon-cerise with glow of deeper salmon in the standards.

SCARLET-CERISE

Royal Ruffles. Brilliant scarlet-cerise.

ROSE

Brilliant Rose. Rose, suffused bronze.

Ruffled Rose. Rich rose.

ORANGE

Orange Flame. Deep orange.

LAVENDER

Powerscourt. Very fine pure lavender.

BLUE

Amethyst. Bright amethyst-blue very clear.

Bountiful (Multiflora). Five to seven large blue flowers on a stem.

Burpee Blue. Large ruffled, deep blue.

Capri. Beautiful light blue; long stems.

DARK BLUE

The Admiral. Dark navy blue; long stems.

MAROON

The Sultan. Rich velvety black-maroon.

PURPLE AND MAUVE

Abundance (Multiflora). Bright clear mauve.

Floradale Purple. Lovely true purple shade.

HUNT'S RUFFLED NOVELTY MIXTURE

This novelty mixture includes all the finest new named giant Sweet Peas.

Pkt. 15 cts.; oz. 75 cts.; $\frac{1}{4}$ lb. \$2

HUNT'S PERFECTION SPENCER MIXED

Pkt. 15 cts.; oz. 50 cts.; $\frac{1}{4}$ lb. \$1.50

Sweet Peas for Greenhouse

Coquette. Deep salmon-pink; very large.

Fiesta. Orange-cerise color; sunproof.

Gardenia. Large ruffled paper-white.

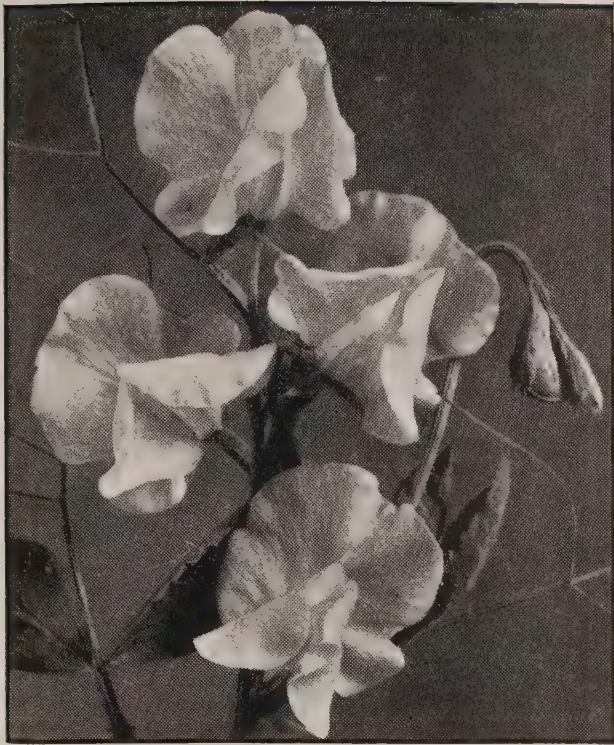
Miss Liberty. Pure white keel with rose-carmine background.

Rhapsody. Giant rosy lavender.

Tops. Vigorous. Rose-pink with salmon.

Any of above varieties, pkt. 25 cts.; $\frac{1}{2}$ oz. \$1.25

All seeds sent postpaid to any address for cash with order



Spencer Sweet Peas

GREENHOUSE SWEET PEAS, continued

- Early Daphne.** Salmon-pink on cream.
Early Mars. Very large, clear crimson.
Early Star. Rose-pink on white; salmon shading.
 Any of above varieties, pkt. 25 cts.; oz. \$1.50
- Early Apollo.** Salmon-cerise.
Early Attraction. Deep pink.
Early Fortyniner. True orange shade.
Early Monterey. Clear pink, flushed salmon.
Early Pride. Pure cerise.
Early White Harmony. Best early white.
 Any of above varieties, pkt. 25 cts.; oz. \$1

Verbenas HHP

- Effective for bedding and as cut-flowers in vases.
- | | | |
|----------------------|------|---------|
| Blue | Pink | Scarlet |
| White (candidissima) | | |
- Any of above, pkt. 25 cts.; 1/8oz. \$2
- Mammoth Hybrids, Mixed.**
 Pkt. 25 cts.; 1/8oz. \$1
- Ellen Willmott.** Salmon-rose flowers, white eye.
 Pkt. 25 cts.; 1/8oz. \$2

Violas HHP

- Requires same treatment as pansies. Very attractive for bedding and rockeries.
- Apricot.** (Sutton's) Rich apricot, tipped orange toward the center.
Blue Butterfly. 8 in. Vivid mid-blue, shading white on upper petals.
Blue Perfection. 1/2 ft. Blue.
Jersey Gem. Deep violet-blue.
Scotch Strains, Mixed. Choicest and newest bedding hybrids.
Normandie. Rich burgundy-red-purple.
White Perfection. 1/2 ft. White.
Mixed. All colors.
 All above varieties, pkt. 30 cts.; 1/16oz. \$1.50

Vinca (Periwinkle) HHP

- For bedding; seed should be sown early.
- | | |
|-----------------------------|--------------|
| Alba pura. White. | Rosea. Rose. |
| Rosea alba. Rose and white. | Mixed |
- Each: Pkt. 25 cts.; 1/8oz. \$1.50

ZINNIAS HA

Brightest, showiest, and most dependable of annuals; Zinnias are everybody's flower. They can be grown with the greatest of ease in almost any soil and location, except dense shade. No diseases afflict their foliage and no bugs eat their flowers. From the time the seed is sown in late spring until the frost blasts their bloom, they grow blithely along.

Special Giant Strains have been developed which rival the dahlias in their huge size and multitudinous colors.

DAHLIA-FLOWERED

2 to 2 1/2 ft.

- Crimson Monarch.** The largest and best.
Dream. Fine deep lavender.
Golden Dawn. Golden yellow flowers.
Golden State. Rich orange-yellow.
Old Rose. Adequately described by its name.
Oriole. Immense orange and gold bicolor.
Polar Bear. Large, pure white.
Royal Purple. Deep rich reddish purple.
Youth. Rose self.

Each: Pkt. 25 cts.; 1/4oz. \$1.50

COLLECTION: One pkt. each of above 9 varieties for \$2.

Gold Medal Mixture. Pkt. 20 cts.; 1/4oz. \$1

DOUBLE GIANTS

The following are truly Giant Zinnias, with beautiful, large, double flowers, 4 1/2 to 6 inches in diameter, of gorgeous coloring, with loosely arranged petals. 3 ft.

- | | | |
|--------------------|-----------------------|----------------|
| Cream | Golden Yellow | Purple |
| Crimson | Pink | Scarlet |
| Flesh-Color | Sulphur-Yellow | White |

Each: Pkt. 25 cts.; 1/4oz. \$1.25

Mixed. Pkt. 20 cts.; 1/4oz. \$1

ELEGANS (Dwarf)

Double, large, well-formed flowers of superb colors. 2 ft.

- | | | |
|--------------------|-------------------|----------------------|
| Bright Rose | Flesh-Pink | Old-Rose |
| Cream | Lemon | Orange-Yellow |
| Crimson | Lilac | White |

Each: Pkt. 20 cts.; 1/4oz. \$1

Dwarf Double, Mixed. Pkt. 15 cts.; 1/4oz. 75 cts.

LILLIPUT or BABY ZINNIAS

- | | | |
|----------------------|--------------------|--------------------|
| Canary-Yellow | Salmon-Rose | Scarlet Gem |
| Golden Gem | Purple | White Gem |
| Flesh | | Mixed |

Each: Pkt. 20 cts.; 1/4oz. \$1.50

CHRYSANTHEMUM-FLOWERED

Fantasy. Unusually shaped flowers in brilliant colors. Pkt. 25 cts.; 1/4oz. \$1.25

Fantasy, Star Dust. The shaggy-petaled, graceful blooms are rich golden yellow. Pkt. 25 cts.; 1/4oz. \$1.50

SCABIOUS-FLOWERED MIXTURE

Particularly rich in shades of crimson, scarlet, orange, yellow, and pink. Pkt. 25 cts.; 1/8oz. \$1.50

ZINNIA HAAGEANA

Dwarf, compact variety, growing 9 inches high, bearing masses of double flowers 1 1/2 inches through in an unusual range of colors.

Pkt. 25 cts.; 1/8oz. \$1.25

All seeds sent postpaid to any address for cash with order

GLADIOLUS,
Picardy
\$1.50 per doz.,
\$10 per 100.



DECORATIVE DAHLIA, Jersey's Beauty
50 cts. each



MINIATURE DAHLIA, Bishop of Llandaff
60 cts. each

BULBS AND ROOTS

We make a specialty of securing the firmest, ripest bulbs obtainable, so that there is no surer way of having a conservatory full of beautiful flowers, or a garden of brilliant color, than by planting Hunt's Bulbs. And remember, we pay transportation when cash accompanies order.

GLADIOLUS

Culture. Gladiolus will succeed in all kinds of soil, provided the location is a sunny one. Before spading or plowing, manure the ground thoroughly, as Gladiolus like rich ground.

Time of Planting. The bulbs can be planted just as soon as the frost is out of the ground and the beds are properly prepared. In the vicinity of New York this may be early in April. If the flowers are wanted in successive crops, it is best to make weekly plantings, and, if planted as late as June 30, the flowers will appear before frost-time.

Feeding. Gladiolus are gross feeders, and we find pulverized sheep-manure is the most result-producing food. Apply it between the rows after the foliage has made a good start, and repeat the application

every two weeks until the buds show. From that time on, liquid sheep-manure, applied every other day, produces splendid results.

Watering. Continued moisture is just as essential for the successful growing of these flowers as food, and we wish to impress our readers with the fact that drought is most detrimental to their health.

Cultivation. It is a well-established fact that every plant benefits by constant cultivation, and if we were asked what part of the culture is the most important we should always say cultivation. The soil around the plants should always be open.

Depth and Distance to Plant. Our recommendation is to plant 4 inches deep and 4 inches apart.

Gladiolus Classified by Color to Help You Make Your Selections

All our bulbs are treated against thrip

RED, SCARLET, AND ORANGE SHADES

Bagdad. Huge red florets with mauve lines radiating from the center.	Doz.	100	
		\$1 50	\$10 00
Commander Koehl. Deep blood-red with scarlet reflexes; very large.	1 75		12 00
Dr. F. E. Bennett. Peach-red; throat creamy white, speckled ruby-red.	1 50		10 00
Flaming Sword. (Prim.) Brilliant red with orange overtone.	1 50		10 00
Johann S. Bach. Orange with a lighter throat; white midrib on each petal.	1 75		12 00
Red Phipps. Brilliant light scarlet; very tall.	1 50		10 00
Rewi Fallu. Deep blood-red; tall and straight.	1 50		10 00
Smiling Maestro. Extremely large; salmon-orange-red.	1 75		12 00
Vagabond Prince. Garnet-brown with scarlet blotch.	1 75		12 00

PINK, ROSE, AND SALMON SHADES

Aladdin. Coral-red blending to a creamy throat.	\$1 75		\$12 00
Corona. Creamy pink with a rose picotee edge.	2 25		15 00
Debonair. La-France-pink; throat shrimp-pink and cream.	1 50		10 00
Margaret Fulton. Rich salmon with an apricot throat.	1 75		12 00
Miss New Zealand. Apricot-salmon suffused with rose.	1 75		12 00
Mrs. Leon Douglas. Begonia-rose with flecks of flame-scarlet.	1 50		10 00
Picardy. Wonderful light pink; very popular.	1 50		10 00

YELLOW SHADES

Barcarolle. Salmon-orange with cream-yellow midrib in throat.	\$1 75		\$12 00
Golden Dream. Clear deep golden yellow.	1 50		10 00
Orange Imperator. Orange-red; very large.	1 50		10 00
Orange Queen. (Prim.) Yellow suffused with copper-orange.	1 50		10 00
Souvenir. (Prim.) Pure yellow. Excellent for forcing.	1 50		10 00

BLUE, LAVENDER, AND PURPLE SHADES

Ave Maria. Light blue with small purple blotches.	Doz.	100	
		\$1 50	\$10 00
Blue Beauty. Solid blue, lighter toward the edge.	2 25		15 00
Charles Dickens. Purple-violet of good size.	1 50		10 00
Marmora. Smoky gray and lavender, blotched red and purple.	1 50		10 00
Minuet. Very attractive light lavender; huge size.	1 75		12 00
Mother Machree. Soft lavender, with orange and gray.	1 75		12 00
Pelegrina. Deep violet-blue with a darker throat.	1 50		10 00

WHITE, CREAM, AND BLUSH SHADES

Albatross. Pure white; tall spikes.	\$1 75		\$12 00
Camellia. Blush-white tinted pink with small scarlet blotch.	1 75		12 00
Greta Garbo. Blush-pink and apricot.	2 25		15 00
Maid of Orleans. Large milk-white flowers.	1 50		10 00
Margaret Beaton. Large, pure white with scarlet blotch.	2 25		15 00
Polar Ice. Dead white; good size and shape.	1 75		12 00
Shirley Temple. Creamy white with darker cream throat.	1 50		10 00
Snow Princess. Clear white with milky throat.	2 25		15 00
Star of Bethlehem. Pure white, faintly tinged crimson.	1 75		12 00

GLADIOLUS MIXTURES

TOP-SIZED BULBS

GROFF'S PRIMULINUS HYBRIDS

Graceful; colors range from sulphur-yellow to chrome-yellow, orange to cream and pink.

\$1.25 per doz.; \$8 per 100

HUNT'S PERFECTION DE LUXE PRIZE MIXTURE

Composed of fine sorts in all colors
\$1.50 per doz.; \$9 per 100



AMARYLLIS HYBRIDS
\$1.50 each



GLOXINIA, Mixed. \$1 each



MONTBRETIA MIXTURE
75 cts. per doz.



SPIREA, Gladstone. \$15 per doz.



TUBEROUS-ROOTED BEGONIA
50 cts. each; \$5 per doz.

BULBS AND ROOTS, continued

Achimenes

Lavender-pink. An excellent house plant or greenhouse subject. Culture similar to Gloxinias. Put six bulbs in a 6-inch pot.
\$2.50 per doz.; \$4.50 per 25; \$12 per 100

AMARYLLIS

Giant Hippeastrum Hybrids. A magnificent strain of giant-flowering Amaryllis throwing vigorous flower-stems set with 4 to 6 gigantic perfect blooms of the flat, new type, in a wide range of beautiful colors.

\$1.50 each; \$15 per doz.
Extra Choice, \$2.50 each; \$25 per doz.

Tuberous-Rooted Begonias

GIANT SINGLE. The flowers are of waxy texture, often measure 7 inches across, and have a glowing sheen not found in any other bloom. Plants grow 18 inches high.

Apricot	Rose	Yellow
Dark Red	Salmon	White
Orange	Pink	Mixed

Any of above, 50 cts. each; \$5 per doz.

DOUBLE, CAMELLIA-FLOWERED.

Pink	Yellow	Dark Red
Rose	Orange	Apricot
White	Salmon	Mixed
	Scarlet	

Any of above, 50 cts. each; \$5 per doz.

CARNATION-FLOWERED DOUBLE

Apricot	Dark Red	Orange
Pink	Rose	Salmon
Scarlet	White	Yellow
Mixed		

Any of the above, 50 cts. each; \$5 per doz.

CRESTED, MIXED. These have crested centers, ruffled edges. **60 cts. each; \$6 per doz.**

HANGING-BASKET, MIXED.
60 cts. each; \$6 per doz.

Caladiums, Fancy-leaved

Mixed Varieties. **\$8 per doz.; \$50 per 100**

Calanthe (Terrestrial Orchid)

Harrisi. Large; pure white. **\$5 each; \$45 per doz.**
Sybil. Delicate pink. **\$4 each; \$35 per doz.**

Large, healthy bulbs; delivery up to April 1

Calla

Elliottiana. Large, deep golden yellow. Leaves spotted white.
 Top-size bulbs. **\$12 per doz.; \$80 per 100**
 Large bulbs. **\$8 per doz.; \$60 per 100**

Dielytra

Spectabilis (Bleeding-Heart). Fine for spring planting in the perennial border and as pot-plants.
\$1 each; \$9.50 per doz.

Gloxinias

Elegant and handsome pot-plants for window or conservatory.

Red. Rich shade. **Deep Blue.** **Purple.**
Emperor Frederick. Scarlet, white banded.
Emperor William. Violet banded by a white margin.
Mixed. Mixture of above sorts.

All above varieties, \$1 each; \$10 per doz.

Ismene Calathina (Peruvian Daffodils)

Large, white, fragrant amaryllis-shaped blooms. Easy to grow in a sunny position. Plant outdoors in Spring. **Doz. \$4**

Lily-of-the-Valley

Extra-strong clumps. Ideal for the shady border.
\$6 per doz.

Tuberoses

Excelsior Pearl XXX. Large; double; white.
\$4 per doz.; \$20 per 100

Montbretias

Etoile de Feu. 2 ft. Red flowers, with orange throat.
Fire King. Large bright scarlet flowers.
George Davison. Free flowering; yellow.
His Majesty. Brilliant scarlet flowers.
King Edmund. Fine orange-yellow flowers.
Lady Hamilton. Yellow, shading to apricot.
Lord Nelson. Dazzling crimson with yellow.

All above varieties, \$1.50 per doz.; \$9 per 100
Mixed Standard Varieties.
75 cts. per doz.; \$6 per 100

Spirea

America. Charming lilac-rose flowers.
Gladstone. Fine spikes of pure white.
Gloria Superba. Brilliant dark pink.
Philadelphia. Clear lavender-rose.
Queen Alexandra. Large; fluffy pink.
Rubens. Deep carmine-rose.

All the above can be supplied from cold storage at any time desired at \$15 per doz.

DAHLIAS

Popular Standard Varieties

SEMI-CACTUS DAHLIAS

Greater Glory. Tall, vigorous, and healthy. A deep rose-pink, shading to salmon at center.
Roots \$1.50 each. Plants 75 cts. each
Gretel. Soft fiery red. Splendid for cutting.
Roots 75 cts. each
Satan. Scarlet with yellow. **Roots \$1 each**

INCURVED AND STRAIGHT CACTUS DAHLIAS

Mrs. Herbert O'Connor. Bright rose-pink, shading to deep rose-pink. **Roots \$1 each**

FORMAL DECORATIVE DAHLIAS

Demolay. Large; rich blood-red.
Roots \$2 each. Plants \$1.50 each
Jersey's Beauty. The ideal pink for exhibition or florists' use. **Roots 50 cts. each**
Jersey's White Beauty. Beautiful flowers of purest white. Early and free-blooming.
Roots 75 cts. each



LILIUM SPECIOSUM MELPOMENE



LILIUM TENUIFOLIUM (Coral Lily)



LILIUM TIGRINUM



LILIUM REGALE

DAHLIAS, continued

INFORMAL DECORATIVE DAHLIAS

Forest Fire. A very spectacular variety. Lemon-yellow shaded to rich scarlet toward the tips.

Roots 75 cts. each

Hunt's Velvet Wonder. Deep rosy magenta, blending into a deep purple. **Roots \$1 each**

Jane Cowl. Warm buff on old-gold blending to apricot and rose at center. **Roots 75 cts. each**

Mrs. George Le Boutillier. Carmine-red. A giant exhibition variety. **Roots \$1 each**

MINIATURE DAHLIAS

Bishop of Llandaff. Bright scarlet with a deep garnet center. **Roots 60 cts. each**

McKay's Purity. A very good white. **Roots 60 cts. each**

Pink Lassie. A beautiful soft shade of rose-pink with cream and lighter shadings.

Roots \$1 each. Plants 75 cts. each

Red Eye. Orange-scarlet. **Roots 75 cts. each**

SINGLE DAHLIAS

Garnet Poinsettia. Rich glowing garnet.

Pequot Yellow. Very large; clear yellow.

Either variety, roots 60 cts. each

COLLARETTE DAHLIAS

Erica. Deep maroon-red, almost black.

Mitzi. Carmine shading to primrose-yellow and edged white.

Tribune. Deep rich crimson-carmine with white collar.

Roots of any of the above, 80 cts. each

POMPON DAHLIAS

Betty Anne. Soft rose-pink inclined to violet-rose.

Goldilocks. Gold deepening at center.

Sunny Daybreak. Lemon-yellow, tipped cardinal.

Roots of any of the above, 50 cts. each

GARDEN LILIES

Since the beginning of gardens, Lilies have been prized among the choicest plants. The family is so large, so diversified in shape and color of the flowers, so varied in their habit of growth, that truly Lilies may be chosen for any situation, and to accommodate any mood of the gardener.

Auratum (The Golden-banded Lily). One of the stateliest of all the hardy Lilies; grows 3 to 6 feet high and bears twenty or more large and fragrant flowers 8 to 10 inches in diameter. Flowers white, spotted deep red, with bright yellow band running through the center of each petal, in August.

Mammoth Bulbs. XXX } Market prices
Extra-large Bulbs. XX }

Henryi (Yellow *Speciosum*). 4 to 5 ft. In form and habit resembles *L. speciosum*. Flowers shaded yellow, slightly varying in color, with a distinct and waxy green center. Blooms during August and September. **\$1 each; \$8.50 per doz.; \$60 per 100**

REGALE (Royal Lily). Plant the bulbs 6 to 8 inches deep in rich well-drained soil and they will increase in strength and production year after year. The trumpets are waxy white with golden yellow throats and the reverse stained with dull purple. They are deliciously fragrant. New bulbs usually carry at least half a dozen flowers while an old established plant will bear two dozen or more. Heights vary from 4 to 7 feet.

Top size XXX, \$1.50 each; \$12 per doz.

2nd size XX, \$1 each; \$9.50 per doz.; \$70 per 100

3rd size X, 75 cts. each; \$6 per doz.; \$40 per 100

GARDEN LILIES, continued

Philippinense formosanum. A fine hardy Lily.

A gorgeous large pure white trumpet, tinted rose on the outside. Of large size, splendid form and richly fragrant. Blooms from September to frost. Height 4 to 6 feet. **95 cts. each; \$9.50 per doz.**

Speciosum album. 3 to 4 ft. Very dainty white Lily. It flowers in the border or amongst the shrubbery at the same time as *L. auratum*.

Extra-large Bulbs, \$1.50 each; \$15 per doz.; \$95 per 100.

Speciosum Melpomene. Large, dark crimson-spotted flower of striking appearance.

Mammoth Bulbs, \$1.50 each; \$15 per doz.; \$95 per 100.

Speciosum rubrum. 3 to 4 ft. Bears an abundance of spotted rose flowers.

Mammoth Bulbs, \$1.50 each; \$15 per doz.; \$95 per 100.

Tenuifolium (Coral Lily). An attractive and colorful hardy Lily for rock-gardens and borders. Drooping rich scarlet flowers.

\$6 per doz.; \$40 per 100

Tigrinum, Single (Tiger Lily). Extremely showy and very easily grown, producing immense quantities of brilliant orange-red flowers, elegantly spotted with brownish black. Grows to 3 to 4 feet or more; blooms in August.

75 cts. each; \$7.50 per doz.

Carnations

Rooted Cuttings

We offer the following rooted cuttings for delivery January, February, and later.

Chief Kokomo. Variegated yellow with red stripes. **\$7 per 25; \$25 per 100**

Gardenia. Pure snow-white; very fragrant. **\$5 per 25; \$18 per 100**

Giant Laddie. Deep, glowing rose-pink. **\$7 per 25; \$24 per 100**

Joan Marie. White. **\$5 per 25; \$18 per 100**

King Cardinal. Deep scarlet. **\$8 per 25; \$27 per 100**

Maine Sunshine. Yellow. **\$6 per 25; \$23 per 100**

Miller's Yellow. Best yellow to date. **\$8 per 25; \$30 per 100**

Olivette. White. Very large and productive. **\$5 per 25; \$18 per 100**

Patrician. Large, pure white. **\$5 per 25; \$18 per 100**

Scarlet King. A sport of *Pelargonium* with rich rose markings. **\$6 per 25**

Spectrum Supreme. Deep red. **\$5 per 25; \$18 per 100**

Tom Knight. Deep scarlet. **\$10 per 25**

Victory Red. A very deep red. **\$8 per 25; \$30 per 100**

Greenhouse Plants

BEGONIA, Lady Mack. 2¼-in. pots. **\$14 per 25.**

B., Marjorie Gibbs. 2¼-in. pots. **\$14 per 25.**

B., Melior. 2¼-in. pots. **\$14 per 25.**

CYCLAMEN. Mixed or in colors. 2¼-in. pots. **\$7 per 25.** 3-in. pots. **\$12 per 25.**

GARDENIA, Belmont. 2¼-in. pots. **\$13 per 25.** 3-in. pots. **\$16 per 25.**

G., Hadley. 2¼-in. pots. **\$12 per 25.** 3-in. pots. **\$15 per 25.**

POINSETTIA, Oak Leaf. 2¼-in. pots. **\$8 per 25.**



AQUILEGIA (Columbine)



DELPHINIUM, Pacific Giants, White



CHRYSANTHEMUM



GYPSOPHILA



DIANTHUS



GAILLARDIA

HARDY PERENNIALS

The material we offer is strong field-grown stock with the exception of some varieties which transplant and ship better by being grown in pots. Our perennials are carefully packed and labeled and will arrive at destination in first-class condition. All true to name.

Althaea rosea (Hollyhock)

Double Varieties. Apple-Blossom, Blood-Red, Crimson, Dark Rose, Pink, Salmon, White, and Yellow. **Separate Colors, or Mixed.**
50 cts. each; \$4 per doz.

Anchusa

Italica, Dropmore. Gentian-blue flowers. 4 feet. May.
50 cts. each; \$4 per doz.

Anemone

Japonica, Queen Charlotte. The best semi-double, pink variety. 4 feet. Autumn.

Japonica, Whirlwind. The finest white, double variety. 4 feet.

Either of above, 75 cts. each; \$6 per doz.

Aster

Michaelmas Daisies

Blue Gem. Large, double, dark blue flowers. 4 feet. October.

Mount Everest. Large, pure white flowers. 2 feet. August.

Either of above, 60 cts. each; \$6 per doz.

Dwarf Hybrid Asters

Countess of Dudley. Charming clear pink. 9 inches.

Lady Henry Maddocks. Light pink. 1 ft.

Snowsprite. Semi-double; white. 10 inches.

Any of above, 60 cts. each; \$6 per doz.

Aquilegia

Chrysantha (Columbine). A lovely, long-spurred, golden yellow variety. 3 feet. June, July.

Mrs. Scott Elliott's Hybrids. A choice selection of finest shades of pink and rose; long-spurred. June, July.

Either of above, 50 cts. each; \$5 per doz.

Campanula

Medium (Canterbury Bells). Blue, White, Pink or Mixed, as desired. 3 feet. June, July.

Medium calycanthema (Cup-and-Saucer). Pink, White, Blue or Mixed, as desired.

Pyramidalis (Chimney Bellflower). Small, starry blue flowers on enormous spikes. 4 to 6 feet. September October.

Pyramidalis alba. White variety.

Any of above, 50 cts. each; \$4 per doz.

Dianthus

Barbatus (Sweet William). 1½ feet. Mixed colors.

Newport Pink. Gorgeous variety in shades of salmon and pink.

Scarlet Beauty. Rich, brilliant red.

Any of the above, 50 cts. each; \$4 per doz.

GARDEN CHRYSANTHEMUMS

"CUSHION POMPONS"

September Bronze. Shades from golden bronze to an intense warm bronze.

60 cts. each; \$5 per doz.

September Cloud. Beautiful rounded blossoms of purest white.

60 cts. each; \$5 per doz.

September Gold. Golden yellow flowers cover the 18-inch plants from mid-September on.

60 cts. each; \$5 per doz.

Golden Cushion. Golden yellow.

King Cushion. Coppery bronze and red.

Pink Cushion. Pink, turning white.

Queen Cushion. White tinted lavender.

The set of 4 for \$1.50 or 3 plants of each for \$5
Any of the 4 varieties \$5 per doz.

KOREAN HYBRIDS

Acacia. Small, glittering, fragrant yellow blossoms in late September. Flowers semi-double; sulphur-yellow. 2 feet.

Autumn Lights. Semi-double; coppery bronze with gleaming orange tone. 1½ feet. Late September.

Goblin. Flowers perfectly formed, 2 inches across, and nicely placed. Bronze, shading to gold. 2 feet. October 10.

Lavender Lady. Pure lavender, later takes on a silvery tint; 3½-inch blooms. 2½ feet. October 8.

Any of the 4 varieties, 55 cts. each; \$5 per doz.

Ceres. Single flowers of old-gold, chamois-yellow, and soft coppery bronze. 2 to 2½ feet. October 10.

Daphne. Daphne-pink with an underlying sheen of lilac-rose. Single flowers, 3½ inches in diameter. 2 to 2½ feet. October 10.

Indian Summer. Vivid, glowing orange, with luminous reflexes. The plants are 2½ to 3 feet tall. October 15.

King Midas. Glorious 4-inch double flowers, of a charming shade of soft yellow. 2½ feet. Late September.

Pale Moon. Densely branched sprays of fluffy, sulphur-yellow blooms completely cover the compact plant. 2 feet. October 5.

Saladin. 3-inch bloom, with 4 rows of petals. The color is Chinese red, shading to coral-red, with coppery tones on the reverse. 3 feet. October 10.

Saturn. Single flower of orange and bronze, enhanced by a soft orange ring surrounding the yellow center. 2½ feet. October 5.

Any of the above varieties, 60 cts. each;
\$5 per doz.

Delphinium

Belladonna. Pale blue. 50 cts. each; \$4.50 per doz.

Gold Medal Hollyhock Hybrids. Flowers ranging from light azure to dark blue, and from delicate lavender to purple. 3 to 5 feet.

75 cts. each; \$7.50 per doz.

Pacific Hybrids, Mixed.

90 cts. each; \$2.50 for 3; \$8.50 per doz.

SET OUT SOME POT-GROWN STRAWBERRY PLANTS THIS SPRING

See listing on page 36

Digitalis

Purpurea alba. Beautiful white flowers. 3 feet. June.

Purpurea gloxiniaeflora. Rich purple flowers. 4 to 5 feet. June, July.

Purpurea gloxiniaeflora rosea. Charming pink flowers. June, July.

Shirley Hybrids. Magnificent new strain. 5 to 7 feet.

Any of the above, 50 cts. each; \$4 per doz.

Gaillardia

Aristata, Portola. Large crimson flowers, edged gold. 50 cts. each; \$4 per doz.

Gypsophila

Paniculata fl.-pl., Bristol Fairy. The flowers are large, pure white, double, and come in enormous sprays in great profusion. 2 to 3 feet. June-October.

Rosy Veil. 2 ft. Pink.

Either variety, 60 cts. each; \$5 per doz.

Lupinus

Russell Hybrids. Plants are very vigorous, producing spikes 2 to 3 feet long of bewildering and beautiful shades. 3-in. pots.

80 cts. each; \$6 per doz.

Mertensia

Virginica (Virginia Bluebells). For shady places, with nodding clusters of delicate blue bell-shaped flowers. 1 to 2 feet.

60 cts. each; \$5 per doz.

Myosotis

Semperflorens. An everblooming variety with light blue flowers in clusters. 8 inches.

50 cts. each; \$4 per doz.

Papaver orientale (Oriental Poppy)

Peggy Joyce. Light salmon-pink. 3 feet.

Perry's White. White flower, crimson base.

Beauty of Livermore. Blazing red.

Any of above varieties, 70 cts. each; \$6 per doz.

Phlox, Hardy

Beacon. Brilliant cherry-red. 3 feet.

E. I. Farrington. Salmon-pink, white eye.

Miss Lingard. Large white flowers.

Mrs. Jenkins. Large trusses of pure white flowers.

Any above varieties, 60 cts. each; \$5 per doz.

Viola

Jersey Gem. Tufted plants with showy violet flowers. 8 inches. June-August.

75 cts. each; \$6 per doz.

Ground-Cover Plants

English Ivy. Best results are obtained by using small plants, and lots of them, which readily cover the bare soil. 3½-in. pots. \$8 per doz.

Pachysandra terminalis. For bare areas in dense shade and for use amongst rhododendrons and azaleas, it has no equal. 3-in. pot-plants. \$4 per doz.; \$25 per 100.

Vinca minor (Periwinkle Myrtle). The singular deep green color of the leaves presents a fine contrast when planted on banks, terraces, etc. 2-yr. field-grown plants, or 2¼-in. pot-plants. \$4 per doz.; \$25 per 100.

THE HERB GARDEN

An Herb Garden is a necessary part of every Peace Garden. Many home-canned foods demand the use of Herbs. A corner of the garden planted to Herbs will add interest and variety to your table.

Standard prices, all varieties, except where noted, 60 cts. each; \$1.50 for 3; \$4.50 per doz.

Angelica. Stems are candied.

Anise. Seeds used in pastry, candy; leaves in salads.

***Basil, Sweet.** Leaves used in soup, fish, sauce, tomatoes.

Beebalm. Dried leaves used as an aromatic tea.

***Borage.** Leaves used for cucumber flavor in salads.

Burnet. Leaves used for cucumber flavor in salads.

Caraway. Seeds used in bread, pastry, cheese.

Catnip. Leaves used in medicinal tea.

Chive. Leaves used in salads, soups, cheese.

***Coriander.** Leaves used for soup, salads; seeds for pastry, stuffing.

Costmary. Leaves used for veal stuffing and pot-pourris.

***Dill.** Seeds for pickles, vinegar; leaves for fish sauce.

***Fennel, Florence.** Leaves for puddings; stems as celery.

Horehound. Leaves used for candy and a healthful tea.

Hyssop. Leaves used for soups, salads, vegetable dishes.

Lavender. Dried flowers in potpourris, sachets, perfumes.

Lovage. Stems and roots candied; stalks as celery.

Marjoram, Pot. Leaves used as a seasoning.

***Marjoram, Sweet.** Leaves used as a seasoning; oil for fragrance.

Mints. Leaves used for jelly, sauces, drinks, mint-sauce, juleps, cheese.

Apple **Peppermint, Gray-leaved**

Bergamot **Peppermint, White**

Curly **Pineapple**

Peppermint **Spearmint**

Pennyroyal. For use, see Mints.

Rosemary. Leaves used in stews; to make "Rosemary Biscuits."

85 cts. each; \$2 for 3; \$7 per doz.

Rue. Leaves used sparingly in salads and with vegetables.

Sage. Leaves used for stuffing, sausage, cheese, soup.

***Savory, Summer.** Leaves used in soup, gravies, stuffing.

Savory, Winter. Leaves used in stuffing. Substitute for pepper.

Sorrel, French. Leaves used as a green.

Sorrel, Garden. Leaves used as a green.

Southernwood. Burn dried leaves, to dispel cooking odor.

Sweet Woodruff. Leaves used in white wine and "May Drink."

Tansy. Leaves used in omelets and "Tansy pudding."

Tarragon. Leaves used in vinegar, salads, fish, chicken. 70 cts. each; \$1.75 for 3; \$6 per doz.

Thyme, Common. Leaves used in soup, meat, fish, vegetables.

Verbena, Lemon. Leaves used in cooling drinks, tea and jelly.

Water Cress. Leaves used for salads and garnishing.

Wormwood, Common. Leaves used in "Absinthe" cordials.

*Annuals; not hardy.

GROWING GOOD ROSES

The beds ought not be more than 4 feet wide, and the soil should be rich. Avoid making the ground loose or spongy. The stiffer and harder the soil in the lower layers of the bed, the better Roses grow. Old sods, decayed cow-manure, bone meal, and commercial dried sheep manure are good fertilizers. Keep the surface of the Rose-beds well cultivated.

Plant Hybrid Tea Roses 1½ feet apart. More vigorous types need more space. Set the "bud" or "graft" at least 1 inch beneath the surface. Spread

out the fine roots carefully and tamp the soil firmly about them. It is well to tread the soil hard about the roots. Loose planting is fatal.

Dormant Roses should be pruned in the spring. Remove weak and dead wood, and shorten the good canes to 6 inches. Ramblers of the Dorothy Perkins type should have the old canes cut out at the base as soon as they are through blooming. Other Climbers require little pruning; simply remove dead wood and an occasional old cane as new ones appear.

Recent Introductions of Hybrid Tea Roses

Extra-strong, field-grown, dormant plants. April delivery.

Better Times. Pat. 23. Long crimson buds opening into large, double, brilliant cerise-red flowers of delicate fragrance. **\$1.75 each**

Condesa de Sastago. Fiery copper inside and golden yellow on the reverse. **\$1.75 each**

McGredy's Sunset. Pat. 317. Outside of petals clear buttercup-yellow, tipped orange, while the inside is chrome-yellow, flushed with scarlet as it opens. **\$2.50 each**

Mme. Joseph Perraud. Long, slender, pointed, nasturtium-orange buds which open to sweetly fragrant, shell-pink blooms. **\$1.75 each**

Poinsettia. Semi-double bright scarlet flowers during the whole season. **\$1.75 each**

President Macia. Great billowy blooms, 5 to 6 inches across, of pale flesh with the reverse deep pink. **\$2.50 each**

R. M. S. Queen Mary. Pat. 249. Rich, glowing blending of salmon and pink with an orange base. **\$2.50 each**

Hybrid Perpetual or June Roses

Extra-strong, field-grown, dormant plants, \$1.75 each; \$17.50 per doz. April delivery.

Frau Karl Druschki. Pure snow-white.

General Jacqueminot. Bud scarlet-crimson; flower clear red.

Mme. Albert Barbier. Produces creamy yellow, and coppery buds.

Mrs. John Laing. Immense blooms of soft, clear pink; fragrant.

Hardy Rambler Roses

Extra-strong, field-grown, dormant plants, \$1.50 each; \$15 per doz.

American Pillar. Bears heavy trusses of pink flowers.

Dorothy Perkins. Bears beautiful clusters of pink blooms.

Mary Wallace. Lovely large, light pink flower.

Paul's Scarlet Climber. Bears double scarlet flowers in great profusion.

Chevy Chase. Pat. 443. Attractive, healthy foliage and masses of deep crimson pompons over several weeks. **\$2 each**

New Dawn. Pat. 1. A counterpart of the beautiful flesh-pink Rose, Dr. W. Van Fleet. **\$2 each**

Polyantha Roses

Belvedere. Large, full, velvety red flowers.

Dagmar Spath. A pure white sport of Lafayette.

Mrs. R. M. Finch. Pink and white flowers.

Orange Triumph. Great clusters of small double flowers of brick-red.

Price of above varieties, \$1.75 each



Hybrid Tea or Everblooming Roses

Extra-strong, field-grown, dormant plants, \$1.75 each; \$17.50 per doz. April delivery.

Betty Uprichard. Coppery pink opening to flowers of brilliant salmon, shaded rose-pink.

E. G. Hill. Long buds and highly scented, dazzling scarlet bloom, shading to red-pink.

Etoile de Hollande. Broad petals of velvety crimson-red make up a beautiful flower.

Hinrich Gaede. A magnificent Rose with shapely buds of brilliant nasturtium-red.

Joanna Hill. A splendid clear yellow with golden heart.

Margaret McGredy. Fragrant Oriental red flowers.

Mme. Butterfly. Brilliant pink, suffused apricot and gold.

Mme. Edouard Herriot. Coral-red buds shaded yellow to scarlet.

Mrs. E. P. Thom. Golden yellow Rose.

Mrs. Sam McGredy. Long coppery buds open to shapely fragrant blooms of coppery scarlet-orange with the reverse a deeper copper.

Radiance. Lovely, light silvery pink flowers, with beautiful suffusions of deeper color.

Red Radiance. Lovely deep red color.

Talisman. Bright rose flamed with orange, varying to scarlet and yellow.

Standard or Tree Roses

These ornamental Tree Roses are useful to relieve the flat appearance of a Rose-garden. The height of these Standards runs from 3 to 3½ feet, 4 years old.

Margaret McGredy. Orange-scarlet.

Mme. Jules Bouche. White.

Mrs. E. P. Thom. Canary-yellow.

President Macia. Pink and rose.

Radiance. Pink.

Red Radiance. Red.

All Standard Roses, \$5 each

Hardy Fruits for the Home-Garden

Apples

Strong, 2-yr.-old, selected trees, 5 to 6 ft.,
3/4-in. and up cal., \$2 each

- Baldwin.** Large; deep red.
McIntosh. A delicious, juicy aromatic red Apple.
Delicious. Dark red eating Apple.
Winesap. Crisp and juicy. Keeps well.

Peaches

Strong, selected trees 5 to 6 ft., 3/4-in. and up
cal., \$2 each

- Belle of Georgia.** Large; rich, creamy white flesh,
bright red blush. Freestone.
Elberta. Early September. Yellow skin, with deep
red cheek; flesh golden yellow.
J. H. Hale. Mid-September. Large, yellow fruit of
excellent quality, wonderful color.

Grapes

Extra- strong, 2-year No. 1 plants
75 cts. each; \$7.50 per doz.

- Fredonia.** An early-ripening black Grape.
Catawba. Standard red Grape. Vigorous, hardy,
and productive.
Niagara. Popular white variety. Cluster large and
compact.

Blackberries

Strong, transplanted plants
\$2 per doz.; \$17 per 100

- Eldorado.** Early to midseason. Berries are medium
size, jet-black, and very sweet.
Blowers. The canes are of strong growth, quite
hardy, and yield a heavy crop.

Currants

Strong, 2-year selected plants, \$11 per doz.

- Cherry.** Deep crimson.
Fay's Prolific. Large; deep red.
President Wilder. Very prolific; red.

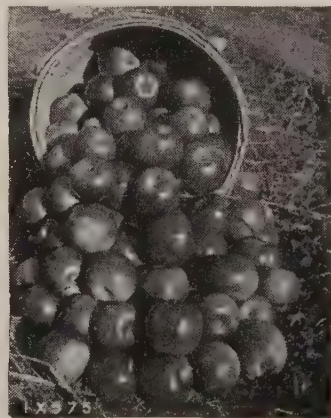
Raspberries

Extra-strong, transplanted plants
\$2 per doz.; \$17 per 100

- Chief.** Early. Immense dark red berries of splendid
flavor.
Indian Summer. Everbearing. Big, attractive,
delicious berries. Bears spring, summer, and fall.
Newburg. Midseason variety. Extra-large berries.
Largest cropper.
St. Regis. Well-known everbearing variety.
Taylor. Late red sort.



Niagara Grapes



Baldwin Apples



STRAWBERRY PLANTS

Any variety: \$2 per doz.; \$6 for 50; \$10 per 100
prepaid for cash with order.

Pot-grown, delivery April 1 to May 15

- Aberdeen.** Midseason. Produces immense crops of
large, bright red berries. Perfect for home-gardens.
Chesapeake. Midseason to late. The berries are
uniform in size and shape, bright crimson. Flesh
firm and of excellent quality.
Dorsett. Early. Largest in size, most attractive in
appearance, heaviest in yield. Berries are bright
red, shapely and of excellent flavor.
Fairfax. Ripening just after Dorsett, this remark-
able berry rules the second-early market.
Marshall. Midseason. Vigorous in growth, with
clean, healthy foliage. One of the tastiest.
Premier. Excelled by no early variety. Produces
vast quantities of berries of good size; attractive,
and excellent quality.
Redstar. Very late. The berries are large, glossy,
bright red and do not turn dark. Considered more
productive and of better quality than other late
varieties.

EVERBEARING STRAWBERRIES

- New Perfection.** Claimed to be the best Ever-
bearing Strawberry ever introduced.
Mastodon. It outyields some of the finest June-
bearing varieties during their season and continues
to produce, throughout the summer and fall,
berries of amazing size and surpassingly fine
quality.

Vegetable Plants and Roots

ASPARAGUS, Washington.

- | | |
|---------------------------------|----------------------------|
| 1-year-old roots. | \$4 per 100; \$30 per 1000 |
| 2-year-old roots. | \$6 per 100; \$50 per 1000 |
| 3-year-old roots, extra-strong. | \$10 per 100 |

HORSERADISH. Sets. \$6 per 100

RHUBARB ROOTS, McDonald. \$7.50 per doz.

FERTILIZERS, MANURES, ETC.

ALL PRICES SUBJECT TO CHANGE WITHOUT NOTICE

Acid Phosphate. (Superphosphate.) Unexcelled for all crops and as a top dressing. 100 lbs. \$3.50; ton \$50.
Adco. An artificial stable manure. 25 lbs. \$5; 150-lb. bag \$10.50.
Agrico. Complete fertilizer. 3-8-7. 100 lbs. \$4.50.
Agricultural Lime. For sour soils. 80-lb. bag \$2.
Blood, Dried. 100 lbs. \$12.50.
Bone Meal. 100 lbs. \$7.50.
Cattle Manure, Shredded. 100 lbs. \$5; ton \$85.
Chrysanthemum Manure. 50 lbs. \$6; 100 lbs. \$10.50.
Complete Fertilizer. 5-10-5. 100 lbs. \$5.
Imp Fertilizer. The improved domestic fertilizer. 28 lbs. \$3.50; 56 lbs. \$6; 112 lbs. \$11.
Lawn Top-Dressing. 100 lbs. \$4.50; ton \$75.
Natural Hyper Humus. 100 lbs. \$4; 500 lbs. \$18; ton (in bags) \$50.
Potato Fertilizer. 5-10-5. Complete highest grade. 100 lbs. \$5; ton \$75.
Rhodono. The aluminum sulphate compound. 50 lbs. \$4.50; 100 lbs. \$8.
Hyponex. Highly concentrated, economical and efficient. Lb. \$1; 10 lbs. \$8; 25 lbs. \$15.
Nitrate of Soda. 100 lbs. \$7.

Rootone. Roots cuttings; germinates seeds. Just dust and plant. 2 ozs. \$1.50; lb. \$7.50.
Rose-Food. Special formula. 100 lbs. \$9.
Sheep Manure, Pulverized. 100 lbs. \$6; ton \$80.
Tankage, Ground. 100 lbs. \$7.50.
Vigoro. (Swift's.) A specially prepared plant-food for lawns, shrubbery, flowers, and trees. 50 lbs. \$2.50; 100 lbs. \$4.50.
Wilson's Eureka Plant Food. 100 lbs. \$10.
Wood Ashes. 100 lbs. \$4.50; ton \$85.

Potting Materials

Charcoal, Dust. 100 lbs. \$11.
Lump. For orchids, etc. 100 lbs. \$11.
Leaf-Mould. 100 lbs. \$4; ton in bags \$35.
Moss, Dry Sphagnum. Bale \$7.
Live Green Sphagnum. Bag \$7.
Sheet. For florists' work. Bag \$8.
Peat, Fibrous. For ferns, begonias, etc. Bag \$6.50.
For Orchids. Bag \$6.50.
Peat Moss, Granulated. Bale \$6.50; 5 bales \$31.
Salt Hay. Large bale (approx. 200 lbs.) \$7; 5 bales \$28.

INSECTICIDES AND FUNGICIDES

Ant Tubes, Buckeye. For complete extermination of ants. \$1.25 per tube.
Aphine. Destroys aphids, thrips, mealy bug, etc. Qt. \$1; gal. \$3.50; 5 gals. \$14.50.
Arsenate of Lead, Powder. For spraying and dusting. 4 lbs. \$1.25; 100 lbs. \$24.
Awinc (Wilson's). Effective against Mexican bean beetles, etc. Qt. \$4.
Black-Leaf 40. Kills black aphides and sucking insects. Lb. \$3; 2 lbs. \$4.50; 5 lbs. \$8.50; 10 lbs. \$16.50.
Bordeaux Mixture, Powder. 4 lbs. \$1.25; 100 lbs. \$24.
Copper Solution. Prevents mildew. Qt. \$2; gal. \$6.
Cyanogas G. (Calcium Cyanide.) For fumigating, etc. 5 lbs. \$4.
Flowers of Sulphur. 10 lbs. \$2.40; 100 lbs. \$15.
Formacide. 1/2 lb. 75 cts.; lb. \$1.30; 5 lbs. \$4.
Fungine. Qt. \$1; gal. \$3.50; 5 gals. \$14.50.
Grafting Wax. Lb. \$1; 5 lbs. \$4.
Grape and Rose Dust. Prevents mildew and black-spot. 10 lbs. \$3.
Imp Soap Spray. Kills aphids, etc. Gal. \$3.50; 5-gal. keg \$15.
Japanese Beetle Traps and Bait (Ellison's).
No. 4 Trap only, \$1.10.
4 ozs. Bait, 40 cts.; lb. \$1.20.
Lemon Oil. Kills green and black fly. Qt. \$1.25; gal. \$4.
Nico-Fume Liquid. For spraying and fumigating. Lb. \$3; 4 lbs. \$9.
Nicofume Powder, Two-way Pressure-fumigator. 6 lbs., that is 12-1/2-lb. cans, \$5.50; 12 lbs., that is 12-1-lb. cans, \$10.
Para-di-Chloro-benzine. Exterminates peach borers. Lb. 70 cts.; 10 lbs. \$6.50.

Pyrox. Combined insecticide and fungicide. 5 lbs. \$2.50; 25 lbs. \$8.
Rat Paste. (Poison.) Zelio. 2 ozs. \$1; 4 ozs. \$1.75.
Red-Arrow Insecticide. One of the most reliable all-round insecticides on the market today. 4 ozs. \$1.25; pt. \$2.75; qt. \$5; gal. \$16.
Rotenone Dust. Lb. 50 cts.; 5 lbs. \$2; 50 lbs. \$17.50.
Rotecide. Effective in the control of mealy bug, red spider, and thrip. Pt. \$2.75; qt. \$5.
Rotoxine. Non-poisonous dust specific for control of Mexican bean beetle and gladiolus thrip. 5 lbs. \$5; 25-lb. drum \$15.
Scalecide. Destroys San Jose scale. Gal. \$2; 5 gals. \$7; 30 gals. \$28.50; 50 gals. \$45.
Semesan. For the prevention of brown patch, etc. Lb. \$3.50; 5 lbs. \$14.50.
Slug Shot Dust. Effective against potato bugs. 5 lbs. \$1.75; 10 lbs. \$3.
Snarol. Eliminates soil pests in greenhouses. 5 lbs. \$2.50; 100 lbs. \$17.50.
Stanley's Crow Repellent. Pt. \$1; qt. \$1.75.
Tobacco Dust. For burning or dusting. 10 lbs. \$1.50; 100 lbs. \$6.
Tobacco Stems. 100 lbs. \$3.
To-Na-Cide. An effective insecticide for the positive control of thrip, centipedes, lice, bugs, and various other pests. 25 lbs. \$6.
Tri-Ogen. A triple-acting spray controlling black-spot, blight and mildew, sucking and chewing insects. **Medium kit** (makes 64 qts.) \$4.50; **large kit** (makes 32 gals.) \$6.50; **estate kit** (makes 128 gals.) \$20.
Tri-Tox-Cide (Wilson's). For the specific control of gladiolus thrip and Japanese beetles. Lb. \$1.25; 5 lbs. \$4.50.
Volck. (Greenhouse.) For the control of red spider, mite, aphids, thrip, mealy bug, scale, white and green fly. Gal. \$3.50; 5 gals. \$13.

INSECTICIDES AND FUNGICIDES, continued

Weed Killer. Kills poison ivy; 1 gallon makes 35 gallons. Gal. \$2.50; 5 gals. \$10; 30 gals. \$40.
Wikeham Weed Eradicator. (Imported.) All-brass tube 36 inches long that enables you to pierce and inject Weed Killer into the roots of dandelions and other weeds on lawns. \$3 each.
Wilson's O. K. Plant Spray. Very effective against all plant aphids. Gal. \$3; 5 gals. \$12; 25 gals. \$50; 50 gals. \$90.
Weedone. A new idea in weed killing. Very effective. 6 ozs. \$1; qt. \$5; gal. \$14.

Wilson's Scale-O. For the control of scaly insects; effective against all kinds of fungus. Gal. \$2.50; 5 gals. \$9.
X-L-ALL Insecticide. Kills mealy bug, etc. 1/2 gal. \$5.50; gal. \$10; 5 gals. \$47. *Sold out.* Booking orders for later delivery.
X-L-ALL Vaporizing Compound. The most effectual method of fumigating greenhouses. No. 1, bottle sufficient for 40,000 cu. ft. \$14; No. 2, bottle sufficient for 20,000 cu. ft. \$7.50.
X-L-ALL Fumigators for above. \$3 each.

SPRAYING AND WATERING SUPPLIES

The Boston Nozzle. Throws coarse or fine spray. 3/4-in. \$1.75.
Water-cans, Haws' Pattern, Imported.
Haws' Own Make. Painted.
French.
Philadelphia.
 At Market Prices
Garden Hose. 3/4-in., \$33 per 100 ft.; 1/2-in. \$30 per 100 ft.
Sprayer Hose. 1/2-in., \$35 per 100 ft.

Paragon No. 3 Sprayer. Capacity 12 gals.; galvanized tank. Complete with truck, \$32.
Soil Soaker. To use attach to end of watering hose, place in position, turn on water. Very effective. No. 2, 30 ft., \$3.75; No. 3, 50 ft., \$5.75.
Hose Clamps. 1/2-in. \$2 per doz.; 3/4-in. \$2.50 per doz.
Hose Menders, Bull-Dog. Perfect clinching. 1/2-in. \$4 per doz.; 3/4-in. \$4.50 per doz.
Hose Washers. 1/2-in. and 3/4-in. Lb. \$2.

GARDEN REQUISITES

Canes and Plant Supports

Bamboo Canes. Genuine Chinese, natural, strong, heavy.	100	1000
4 ft. x 3/8-in. diam.	\$5 00	\$42 00
5 ft. x 1/2-in. diam.	5 50	50 00
Bamboo Canes. Painted green.		
3 1/2 feet	3 00	28 00
4 feet	3 50	32 00
Dahlia Poles, Square. Extra heavy.	100	
5 feet	\$21 00	
6 feet	24 00	
6 feet, extra heavy, 1 1/4 x 1 1/4 in.	28 00	
Dahlia Poles, Round. Painted green. Very strong.		
5 feet	19 00	
6 feet	24 00	
Plant Stakes. Round painted green.		
2 feet	5 00	
3 feet	7 00	
4 feet	11 00	
5 feet	15 00	

Garden Tools

Asparagus Buncher. No. 2. Makes bunch 4 to 4 1/2 in. diam. length adjustable 7 to 9 in.	Each	\$6 50
Forks, Digging or Spading.	3 50	
Hoes, Draw or Corn. 6-in.	2 00	
7-in.	3 00	
Rakes, Wooden. For lawns.	2 00	
American Garden. Steel (handled).		
14 teeth	3 00	
16 teeth	3 50	
Gravel Rake. 16 teeth	2 50	
Cast Steel. 12 teeth	2 50	
Hay. 28 teeth	2 00	
Pruning Saws. (Double-bladed.)		
18-in.	3 00	
22-in.	4 00	

Garden Tools, continued

Leaf-Rakes. 18-in. spread	Each	\$1 50
24-in. spread		2 00
Scythe, English		4 75
Scythe Snath or Handle		3 00
Scythe Stones	\$6 per doz.	1 00
Shears, Hedge. English, 9-in.		10 50
Grass Border. 8-in.		9 00
10-in.		11 00
Grass or Sheep.	Per pair	\$2.50
Shovels, Ames', D-Handle, Round Point.		3 50
Long Handle, Round Point		3 50
D-Handle, Square Point		3 50
Long Handle, Square Point		3 50
Spades, Square. D- or Long Handle.		4 00

Knives

Asparagus Granite State	Each	\$1 50
Handy Garden Knives. 2-bladed brass bolstered		2 00
Pruning Knives. No. 938		5 00
No. 187		4 50
Pruning Knives, Kunde Pattern.		
One-blade		2 50
Two-blade		3 00

Shears

Scissors, Grape-thinning.	Pair	
6-in.		\$3 00
7-in.		3 50
Pruning Shears, Ladies'. Nickel plated.		
6-in.		4 00
Pruning Shears, California. 9-in.		3 50
Rolcut. The new idea in Pruning Shears. Very strong, effective and low in price.		3 00

GARDEN REQUISITES, continued

Tying Materials, Etc.

Raffia. Long and broad. Lb. 80 cts.; 5 lbs. \$3.50.
Green. Lb. \$1.50; 5 lbs. \$7.

Silkalene. For stringing smilax, etc.
FFF Coarse, eight 2-oz. spools\$3 50
FF Medium, eight 2-oz. spools 3 50
F Fine, eight 2-oz. spools 3 50

Twine, Hemp. Heavy and light parceling. Lb. ball, \$1.25.

Binding. In 5-lb. balls. 70 cts. per lb.

Hemp. On reels (about 10 lbs. to the reel). Reel
No. 12. Fine\$15 50
No. 18. Fine 14 50
No. 24. Medium 13 50
No. 36. Medium 12 50
No. 48. Heavy 12 50
No. 60. Heavy 12 50

Royal Cotton, White. 16-ply. Lb. \$2.

Soft Jute. For vines, 3 and 5-ply. In balls at 80 cts. per lb.

Sea Island Twine. Green. 2-lb. cones, \$3.50 each.

Parcelling Twine. Thin, Thick, Medium.
1-lb. balls \$1.50.

Miscellaneous Sundries

Aprons, General Utility Each \$3 00

Baskets, English Garden.
No. 4. 15 x 8 in. 3 50
No. 5. 16 x 9 in. 4 00
No. 6. 18 x 10 in. 4 50
No. 7. 21 x 11 in. 5 00

Baskets, Strawberry. 100 1000
1-qt. \$2 50 \$21 00

Baskets, Vegetable. Each
No. 2. 21 x 12 x 6½ in.\$2 75
No. 3. 23 x 13 x 7 in. 3 25
No. 4. 28 x 15 x 8 in. 3 75
No. 5. 25 x 16 x 8½ in. 4 50

Bellows, Woodason's. For dusting hellebore, sulphur, etc. Large Single Cone, \$7; Small Single Cone, \$6; Double Cone, \$9.50.

Boxes, Flower, Cardboard. 25 100
18 x 5 x 3 in.\$2 25 \$7 50
21 x 7 x 3½ in. 2 50 8 50
24 x 8 x 5 in. 4 00 14 00
25 x 15 x 5 in. 4 50 16 50
25 x 15 x 8 in. 9 50 36 00
26 x 16 x 6 in. 7 50 28 00
28 x 8 x 5 in. 5 50 20 00
28 x 8 x 6 in. 6 00 22 00
30 x 8 x 5 in. 6 00 22 00
30 x 10 x 6 in. 8 50 32 00
36 x 8 x 5 in. 6 00 22 50
36 x 12 x 6 in. 9 50 34 00
10 x 7 x 6 in. Corsage 3 00 9 00
9 x 6 x 5 in. Corsage 2 00 6 00

Boxes, Flower, Corrugated Cardboard. Very strong. 20 100
30 x 12 x 6 in.\$9 00 \$40 00
36 x 14 x 8 in. 11 00 50 00
42 x 16 x 8 in. 13 00 60 00
48 x 18 x 9 in. 15 00 70 00
60 x 20 x 10 in. 16 00 75 00

Celery Bleachers, Ball's. 7 x 14 in. \$6 per 100.

Cotton Wadding. Sheets 40 x 40 in. Doz. \$2.50.

Galvanized Vases. For cut-flowers. Painted green, very durable.

	Depth	Diam.	Doz.
No. 1.	9 in.	5 in.	\$14 00
No. 2.	10 in.	6½ in.	16 00
No. 33.	12½ in.	6½ in.	20 00
No. 22.	15 in.	7 in.	24 00
No. 0.	13 in.	8 in.	23 00
No. 11.	17 in.	8 in.	25 00
No. 01.	20 in.	9 in.	27 00

Garden Line. 90-ft. Each \$2 00

Garden Reel. Wrought iron 2 50

Gloves, Ladies' Gardening and Utility. \$1 per pair.

Horsehide (domestic). \$3 per pair.

Labels, Wooden, Pot and Garden. 100 1000
4-in. painted \$3 00
4½-in. painted 3 50
5-in. painted 4 00
6-in. painted 4 25
8-in. painted \$3 for 250 .. 9 00
10-in. painted \$1 25 11 00
12-in. painted 1 60 13 00
3½-in. (wire tree), painted 4 00

Copper Labels, complete with stylus. 3 00

Simplex Weatherproof Garden Labels. 100
No. 1. 3 x ½ in.\$4 00
No. 2. 4 x ¾ in. 6 00
No. 3. 5 x 1 in. 8 50

Lever Clips (Blake's). \$5 per 1000.

Mats, Frost-Proof, Burlap. No. 2D. Waterproof duck, one side. Each Doz.
40 x 76 in.\$4 00 \$40 00
76 x 76 in. 7 50 75 00

Melon Nets. Imported. \$7.50 for 25; \$27 per 100.

Paper, Manila Wrapping. 24 x 36 in. 50 lbs. (ream) \$15.

White Tissue. 24 x 36 in. 10 lbs. (ream) \$4.

Manila Tissue, Brown. 24 x 36 in. 10 lbs. (ream) \$5.

Parceling. 20 x 30 in., 24 x 30 in., 30 x 40 in., ream (50, 60, and 100 lbs. respectively), lb. 21 cts.

Parceling on Rolls, Kraft. 18 in. wide, weight 25 lbs. \$6.

Parceling on Rolls, Kraft. 24 in. wide, weight 39 lbs. \$8.50.

Parceling on Rolls, Kraft. 36 in. wide, weight 60 lbs. \$13.50.

Waxed, White. 24 x 36 in. 10 lbs. \$4.50.

Waxed, Green. 24 x 36 in. 10 lbs. \$4.50.

Waxed, Purple. 24 x 36 in. 10 lbs. \$4.

Thermometers, Japanned. Heavy tin case; brass scale, white figures. 12-in., \$4 each.

Hotbed. Galvanized frame. \$3 each.

Wall Nails, Chandler's English Patent. 1¼-in., \$1 per box; 1½-in., \$1.25 per box; 2-in., \$1.50.

ALL PRICES SUBJECT TO CHANGE WITHOUT NOTICE



If perchance you are not planning a garden this spring, you might hand this Catalog to a neighboring friend.

It may be the list he is anxious to get.

Thank you.

WILLIAM M. HUNT & COMPANY, Inc.

SEEDS, BULBS, and PLANTS 115 West 45th Street, New York 19, N. Y.

Phone: BRyant 9-3547
