

Historic, Archive Document

Do not assume content reflects current scientific knowledge, policies, or practices.

62.91

61st CATALOG

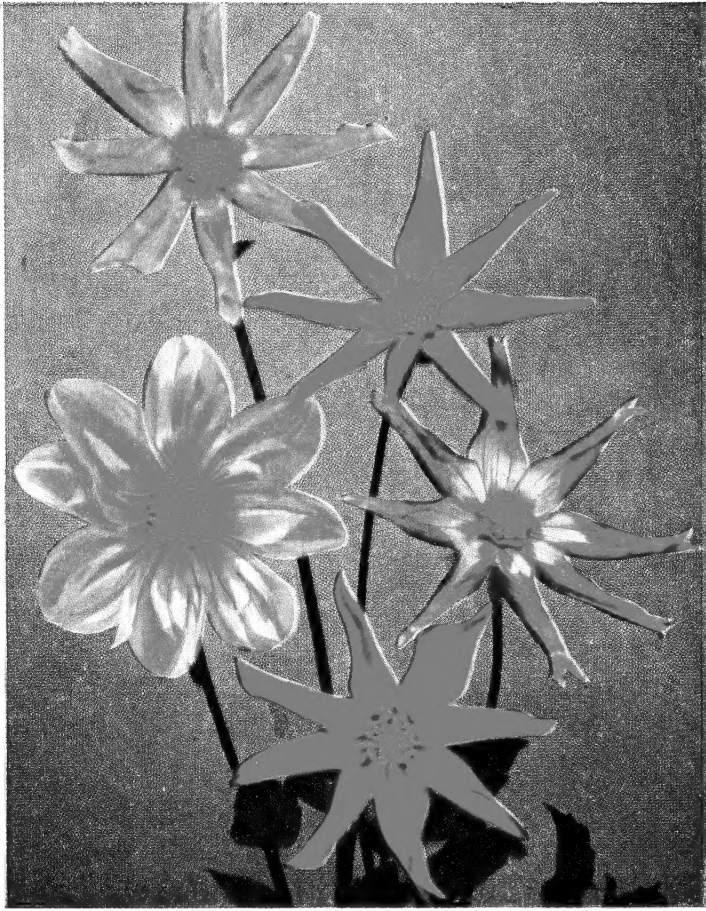
LIBRARY
RECORDED
★ FEB 12 1946 ★
U. S. Department of Agriculture



1946

THE *Tillinghast Seed Co.*
LA CONNER, WASHINGTON





DOT
SKIPPER

DREANA DARLENE
PAT DELSMAN

VIVIAN

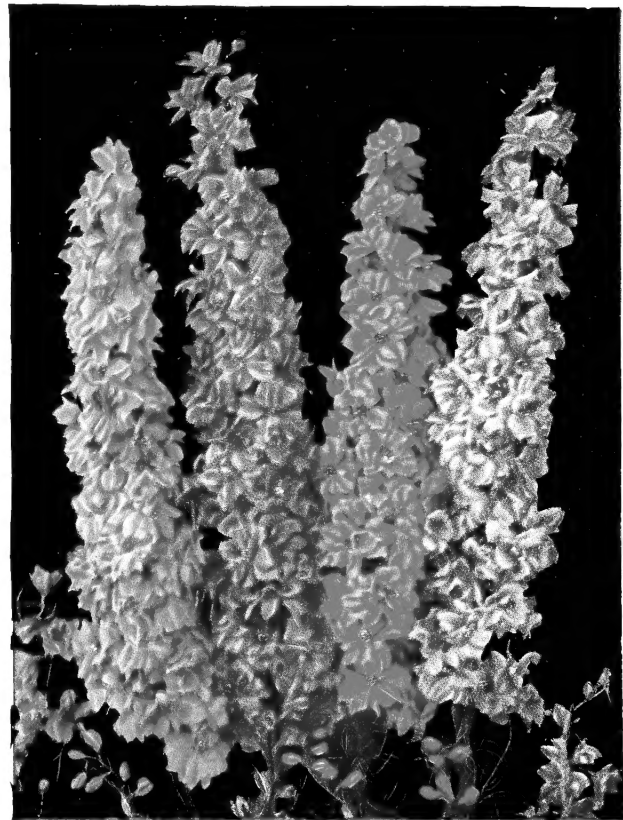
See our Dahlia List for prices.



MARIGOLD
New Mammoth Mum. Pkt. 15c.



PANSY—Mastodon "Jumbo"
Pkt. 50c.



LARKSPUR—Giant Imperial
Pkt. 10c.

GET THIS BIG LIVE MAGAZINE

NOW!

60 MONTHS \$1.00 or 12 MONTHS 25¢

YOU will be delighted and wonder how these two great up-to-the-minute illustrated magazines, now printed together, can cost so little. It's for all — men, women, boys and girls, — clean and wholesome, no liquor advertisements.

Farm Journal and Farmer's Wife, Dept. C, Phila., Pa.

I'm enclosing \$1.00 for 60 months subscription **OR** I'm enclosing 25c for 12 months subscription

Mark the Offer You Want. Send Money Our Risk.

Name

R.F.D. Box or Street

If you live on a R. F. D. put route number above for prompt service.

P. O. State

IMPORTANT: Send coupon direct to Farm Journal and Farmer's Wife, Dept. C, Philadelphia 5, Pa., with remittance (at our risk). Price outside U. S. \$1 for 2 yrs.



SEE
OTHER

TAKE YOUR CHOICE

60

MONTHS

\$1

More For Your Money

—Send \$1.00 for 60

months and protect

against price in-

crease and save

money. Or 25c gives

you 12 big issues, big-

gest value ever for a Quarter.

12

MONTHS

25c

WORLD'S LARGEST FARM MAGAZINE

FARM JOURNAL AND FARMER'S WIFE is published monthly; big issues; new timely features; fine pictures, beautiful colored covers. Brief, easy to read, 69 years old. Largest mail subscription list in the world,—over 2,500,000 copies monthly from Maine to California.

Something for the Whole Family

For folks who live in the Country and love the Country. This fastest printed Month Ahead-Magazine gets the important news to you first when valuable and useful.

FARM JOURNAL section: Latest ideas in farm practice, equipment and machinery repairs, "How to Do Things," livestock, dairying, poultry, crops, orchard, garden and everything about the farm. Will keep you up-to-date on changing conditions affecting your farming operations. Latest Washington news important to farmets.

FARMER'S WIFE section, with its beautiful cover in colors, is a complete magazine for feminine readers. Homemaking, decorating, renovating, fashions, needlework patterns. Health and beauty, child care. Foods, canning, recipes. Farm Women's letters. Grand fiction.

DEPARTMENTS FOR GIRLS AND BOYS: Latest 4-H Club and FFA news, answers to young folks' problems, grooming, etiquette, parties, games, movies, sports, aviation, hobbies, money-making ideas, jokes, cartoons.

DON'T FAIL TO READ "LATE AND IMPORTANT LETTER" EVERY ISSUE: PREDICTS FUTURE TRENDS IN BUSINESS OF FARMING

Mail this Coupon today with remittance (at our risk), direct to Farm Journal and Farmer's Wife, Dept. C., Philadelphia 5, Pa.

Recommended by

TILLINGHAST SEED CO.

USE THIS COUPON AND YOUR SUBSCRIPTION WILL START AT ONCE IF YOU ARE NOW A SUBSCRIBER. YOU MAY MAIL OR GIVE THIS VALUABLE COUPON TO A FRIEND WHO \$ NOT

To Our Customers:

We are pleased to send you this, our 61st Annual Catalog. We want to thank all of our many customers, both old and new, for their splendid patronage. We hope that we may be able to serve all of you for years to come. We will continue to supply you with the very best quality products obtainable and the kind that we know will be the best for the Northwest. Our motto has always been and will be THE BEST SEEDS OF THE BEST KINDS.

We again wish to call to your attention that our seeds are not ever sold in Commission Boxes. We sell only direct to our customers: either by Mail Order, or at our store in La Conner. Always be sure to look for the name TILLINGHAST on every package.

SPECIAL VALUE VEGETABLE SEED COLLECTIONS

SPECIAL \$1.00 GARDEN COLLECTION

Enough Seed to Plant 20 by 30 ft.

12 full size packets; Regular \$1.20 value for \$1.00

- 1 Pkt. Beans, Stringless Green Pod.
- 1 Pkt. Beets, Detroit Dark Red.
- 1 Pkt. Carrots, Red Cored Chantenay.
- 1 Pkt. Cucumber, Straight 8.
- 1 Pkt. Corn, Golden Bantam.
- 1 Pkt. Lettuce, New York.
- 1 Pkt. Onion, Yellow Globe Danvers.
- 1 Pkt. Peas, Laxton's Progress.
- 1 Pkt. Radish, Early Scarlet Globe.
- 1 Pkt. Spinach, King of Denmark.
- 1 Pkt. Squash, Table Queen.
- 1 Pkt. Turnip, Purple Top White Globe.

SPECIAL \$2.00 GARDEN COLLECTION

Enough Seed to Plant 40 by 60 ft.

25 full size packets; Regular \$2.50 value for \$2.00

- 1/4 Lb. Beans, Stringless Green Pod.
- 1/4 Lb. Beans, Pencil Pod Wax.
- 1/4 Lb. Beans, Kentucky Wonder Pole.
- 1 Pkt. Beets, Detroit Dark Red.
- 1 Pkt. Cabbage, Early Wakefield.
- 1 Pkt. Cabbage, Danish Ball Head.
- 1 Pkt. Carrot, Red Cored Chantenay.
- 1 Pkt. Carrot, Nantes.
- 1/4 Lb. Corn, Golden Early Market.
- 1/4 Lb. Corn, Golden Bantam.
- 1 Pkt. Cucumber, Straight 8.
- 1 Pkt. Cucumber, Boston Pickling.
- 1 Pkt. Dill.
- 1 Pkt. Lettuce, New York.
- 1 Pkt. Onion, Yellow Globe Danvers.
- 1 Pkt. Parsnip, Long White.

- 1/4 Lb. Peas, Laxton's Progress.
- 1/4 Lb. Peas, Tall Telephone.
- 1 Pkt. Pumpkin, Sweet or Sugar.
- 1 Pkt. Radish, Early Scarlet Globe.
- 1 Pkt. Radish, White Icicle.
- 1 Pkt. Squash, Hubbard.
- 1 Pkt. Squash, Table Queen.
- 1 Pkt. Spinach, King of Denmark.
- 1 Pkt. Turnip, Purple Top White Globe.

SPECIAL \$3.00 GARDEN COLLECTION

Enough Seed to Plant 50 by 100 ft.

Regular \$3.65 value for \$3.00

- 1/2 Lb. Beans, Stringless Green Pod.
- 1/2 Lb. Beans, Pencil Pod Wax.
- 1/2 Lb. Beans, Kentucky Wonder Pole.
- 1 Oz. Beets, Detroit Dark Red.
- 1 Pkt. Cabbage, Early Wakefield.
- 1 Pkt. Cabbage, Danish Ball Head.
- 1 Oz. Carrots, Red Cored Chantenay.
- 1/2 Lb. Corn, Golden Early Market.
- 1/2 Lb. Corn, Golden Bantam.
- 1 Pkt. Cucumber, Straight 8.
- 1 Pkt. Cucumber, Boston Pickling.
- 1 Pkt. Dill.
- 1 Oz. Lettuce, New York.
- 2 Pkts. Onion, Yellow Globe Danvers.
- 1 Pkt. Parsnip, Long White.
- 1/2 Lb. Peas, Laxton's Progress.
- 1/2 Lb. Peas, Tall Telephone.
- 1 Pkt. Pumpkin, Sweet or Sugar.
- 1 Oz. Radish, Early Scarlet Globe.
- 1 Pkt. Squash, Hubbard.
- 1 Pkt. Squash, Table Queen.
- 1 Oz. Spinach, King of Denmark.
- 1 Pkt. Turnip, Purple Top White Globe.

SALES UNDER \$1.00

Amt. of Sale	Tax
0 — 4c	No Tax
5c—14c	1 Token
15c—29c	2 Tokens
30c—49c	1 Cent
50c—84c	2 Cents
85c—1.14	3 Cents

Add 3c for each full \$1.00 of your order to the odd cents tax as per schedule above.

Example: Order\$1.65
 Odd cents tax...2c
 Tax on \$1.00...3c Total tax... .05
 Amount to send\$1.70

The following items are exempt from State Sales Tax: Flower seed or bulbs for raising flowers to sell. Vegetable seed used to produce vegetables to sell. Plant purchased to produce vegetables, fruit, or flowers for sale. Field seed used to produce pasture, hay, grain, or other crops to sell or feed to animals to produce eggs, butter, milk, or meat for sale. Fertilizers entering into the growing of any of the crops listed above or for any crop of hay, grain, fruit, or seed which is produced for sale to others.

HOW TO GET OUR SEEDS

HOW TO SEND MONEY: If the amount is 50 cents or more, send by POSTOFFICE MONEY ORDER, drawn on La Conner, Wash., P. O. (in applying for which you can fill out at home, for the postmaster, the government blank application which we send you with the order sheet). If you prefer you may send Express Money Order, Bank Check or by Registered Letter. If the amount is less than FIFTY CENTS, you may send Coin, securely sealed and plainly addressed. Be sure that all orders and checks are drawn to the order of the Tillinghast Seed Co., La Conner, Wash., and that all coin should be wrapped with a small piece of cloth or strong paper, or otherwise secured from shaking loose in the letter.

POSTAGE in 6th, 7th and 8th ZONES: Owing to the fact that the postage on seed in the 6th, 7th and 8th zones is so much greater than the nearby territory, all customers in Alaska, Canada, and all the states lying south and east of the following states: Washington, Oregon, Idaho, California and Montana, must add 8 cents extra to your order for each pound that your order will weigh. Otherwise we will be forced to send your money's worth or to hold your order until the necessary postage is received.

PARCEL POST ORDERS: We wish to call the attention of our customers to present parcel post rules which permit us to send up to 70 pounds in a single parcel anywhere in the United States or Alaska. Thus, grass, clover, vetch or other seed ordered in quantities can be delivered to you by parcel post at about 1c per pound postage anywhere in the 1st or 2nd zones. This will be found to be of special value wherever freight service is slow or uncertain in delivery.

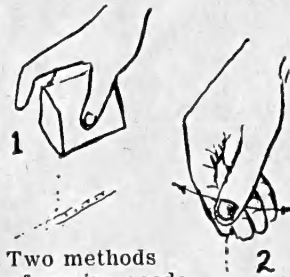
WE PAY THE POSTAGE

All seeds, bulbs, trees, small fruits, roots, plants, fertilizers and other articles in this catalog are sent postpaid anywhere in Washington, Oregon, Idaho and California at the prices listed unless otherwise noted. Customers in Alaska and the states not listed above must allow extra postage.



Walk on a board when sowing seed. Make a V-shaped groove for seed.

Pointed Stick



Two methods of sowing seed:

- (1) tapping packet
- (2) rubbing a pinch of seed between fingers.

Plants are safer and easier to use for tomato (sketch) pepper, cauliflower, egg plant, celery and cabbage. Select vigorous plants properly hardened to resist cool weather. Protect with "Hotkaps" when weather is unsettled.



HOW TO SET PLANTS



HOW TO PLANT A VEGETABLE GARDEN

LOCATION—PREPARING THE SOIL

Exposure for the vegetable garden should be sunny. No common vegetable will grow under trees, or in the shade of buildings—only a few herbs will thrive under such conditions.

The garden should be as open and as sunny as possible. Sometimes buildings on adjacent lots may shade the garden a little, but if the sun reaches the soil at least half of the day, you will be able to grow most any vegetable you desire.

Plan the vegetable rows to run from north to south. This direction gives the most benefit from the sun. Another way is to plant the taller kinds behind so that they never shade the small ones.

Good soil is as essential as sunlight to growing plants. Most soils will grow vegetables, or can be made suitable by thorough, deep spading and liberal applications of manure, peat or other humus material at that time. Dig as deep as the spading fork or spade will go, forcing it straight down before lifting and turning the soil over, breaking up all clods. Grass may be turned under to rot and make humus, but the roots of perennial weeds, like dandelions and thistles, should be removed. Throw out all large stones, building refuse and other material detrimental to growing plants.

WHAT AND HOW TO PLANT

In selecting vegetables to plant include the ones your family should eat as well as the kinds they like. A well balanced diet is most important and should include green vegetables, yellow vegetables, leafy vegetables, root vegetables, and tomatoes.

Flowers to compliment the vegetables. Morale does not stop with the stomach. Flowers for the house, fresh from the garden, are essential. Plant them, as shown, on the plan to make the view from the house attractive and colorful.

SOW SEEDS AT RIGHT TIME

Sow seeds at the proper season and avoid waste. We have the highest quality seeds available.

Work down the top soil with a rake until it is level, fine and in perfect physical condition, before attempting to plant seed.

Seed should be sown thinly in shallow rills, made with a stick as shown in the sketch. To make the rows straight follow a line of string stretched between stakes placed at either end of the row. The depth of this rill depends on the variety sown. Check with the depth of planting chart on page 3 before sowing seed.

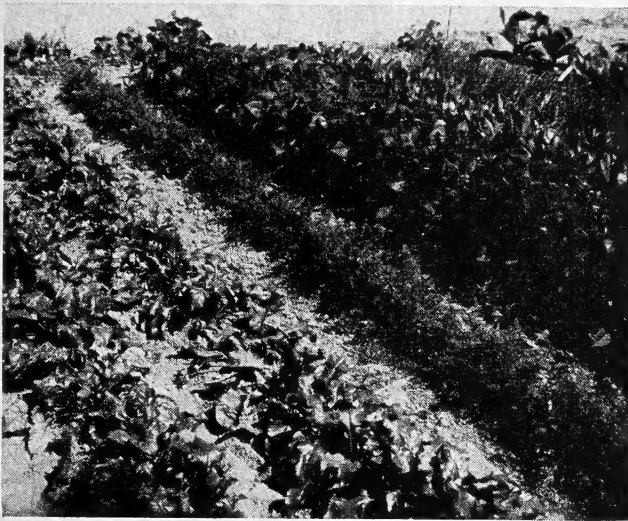
WATERING IS IMPORTANT

Watering will be necessary during the growing season. It should be done early enough in the day to evaporate drops of water from the leaves before nightfall. Water generously, soaking the soil deeply each time, rather than by quick "sprinkles" with the hose. In this way, the roots will grow deep, feed better and be protected from drouth, in case watering is missed during a hot dry spell. Once every week or ten days should be ample for moist soils. No rules can be formulated to determine the necessity of watering. Observation of the soil, and testing with a shovel, will best determine when to water.

TRY SOME "SPACE SAVERS" IN YOUR GARDEN

<p>Plant carrots, turnips, beets, onions, lettuce spinach and celery in double rows one foot apart instead of single rows.</p>	<p>Sow radishes, leaf lettuce and bunching onions in beds which are later planted to other crops requiring more space</p>	<p>Supports for Tomatoes</p> <p>Tomatoes are best on a stout trellis. Tie with strips of soft cloth. Pinch or prune some of side branches but not the flower clusters which grow at the opposite side of stem.</p>	<p>Pole</p> <p>String</p> <p>Wire</p> <p>Train pole beans, tall peas, limas, or cucumbers on heavy twine stretched between poles and wires or train on the fence.</p>	<p>Slow</p> <p>Quickcrop</p> <p>Slow Crop</p> <p>Get an extra crop of quick maturing crops by planting with slow kinds.</p>	<p>Radishes, onions, or lettuce between peppers or eggplant rows.</p>
--	---	--	---	---	---

Helpful Hints on Growing Vegetables



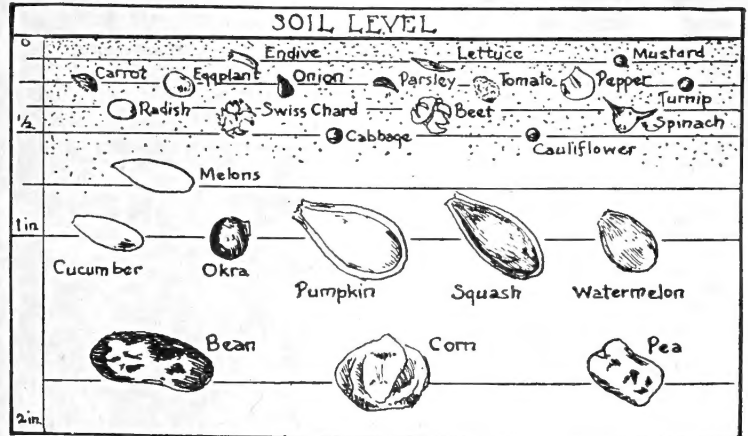
SPRAY AND DUST FOR PESTS

Insects and diseases may infest the vegetable garden but may never become a serious problem if one watches for evidence of damage and takes prompt action. Sprays and dusts are available in convenient packages to combat every garden pest. When spraying cover all parts of the plant and both sides of the leaves. Do a thorough job promptly and avoid a serious infestation.

Success in gardening starts by following certain rules. Whether these be noted from the pages of books or gathered from practical experience makes little difference. The process is the same. Good seed, soil, water, fertilizer, and work makes for success.

If we understand that almost every seed we sow has stored within its shell the ability to sprout and grow into a useful plant we can easily think of seeds as plants ready to set out which will make the picture of the finished garden clearer in our mind's eye thus avoiding many of the early mistakes of planting.

Seeds are started by sowing in the soil of the garden. There germination takes place readily when conditions required for growth are met. Fortunately good garden soil, well prepared meets these requirements: soil moisture, usually present after winter rains or supplied by irrigation; soil temperature, heat from the sun and the main reason why certain tender seeds should be delayed in sowing (until the ground is warm), and air and moisture drainage supplied by the hard work of soil



preparation which we have been recommending. As far as fertilizer is concerned young seedlings don't need extra feeding until they have used up the stored food of the cotyledons. It is better to delay feeding until growth is well started and then apply gradually. This is in addition to the humus (manure, peat, compost, etc.) and phosphate and other fertilizers put into the soil at the time of preparation. They are deeper down and can be reached by the plants as they grow.

By thinking of the seeds as plants we will sow them far enough apart to reduce drastic thinning. We wouldn't set plants out very close because before long we would not have much of a garden, competition between the plants would reduce the flowers, fruit and shape of the individual plants to an undesired minimum. In both vegetable and flower gardens we strive for perfection in either flowers, fruits or foliage—poor quality is seldom tolerated.

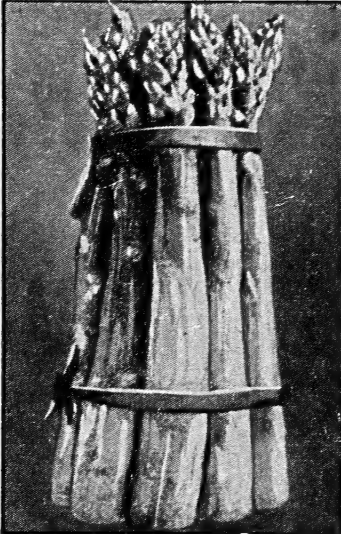
Actually every seed we sow will not germinate. Not from poor quality, but more often because other factors more difficult to control affect the seed. Among these are water, in excess, which may either wash the seeds out altogether or cover them more than they should be to sprout. (See planting chart). Crows and rodents may eat some. Soil fungi and very wet soils before germination may cause many to rot. So we usually sow seeds thicker than needed and thin the row later on to a spacing that allows the desired growth.

The planting chart below contains suggestions to enable proper planning of the garden. However, most varieties used in the small home garden are best sown in smaller rows for which a packet each will usually suffice. Replanting to prolong the season of short maturing crops is a splendid idea and makes maximum use of the prepared soil.

QUANTITY OF SEED AND SPACING FOR HOME AND MARKET GARDENS

VEGETABLE	Seed Required for 50 ft. of row	Seed Required to sow an acre	Distance between rows inches	Distance apart in row inches	Depth of planting inches	VEGETABLE	Seed Required for 50 ft. of row	Seed Required to sow an acre	Distance between rows inches	Distance apart in row inches	Depth of planting inches
Artichoke, Globe	1/4 oz.	6 to 8 oz.	40 to 48	18 to 24	1	Kohl Rabi	1/4 oz.	4 to 5 lbs.	14 to 24	4 to 6	1/2
Asparagus	1/2 oz.	4 lbs.	14 to 24	3 to 6	1	Leek	1/4 oz.	4 lbs.	14 to 36	2 to 3	3/4
Beans, Bush	1/2 lb.	50 to 60 lbs.	24 to 30	2 to 3	1 1/2 to 2	Lettuce	1/4 oz.	3 lbs.	12 to 18	4 to 12	1/4
Beans, Lima	1/2 lb.	30 to 50 lbs.	24 to 36	3 to 6	1 1/2 to 2	Melon, Musk	1/2 oz.	3 to 4 lbs.	70 to 80	36 to 60	3/4
Beans, Pole	1/2 lb.	30 to 35 lbs.	36 to 48	6 to 8	1 1/2 to 2	Melon, Water	1/2 oz.	3 to 4 lbs.	72 to 96	72 to 96	3/4
Beet	1/2 oz.	8 to 14 lbs.	14 to 24	3 to 4	1/2 to 1	Mustard	1/4 oz.	4 lbs.	14 to 24	6 to 9	1/2
Beet, Mangel & Sugar	1/2 oz.	6 to 10 lbs.	18 to 24	6 to 9	1/2 to 1	Okra	1 oz.	8 to 10 lbs.	24 to 40	18 to 24	1
Swiss Chard	1/2 oz.	6 to 10 lbs.	18 to 24	10 to 12	1	Onion	1/4 oz.	3 to 4 lbs.	18 to 24	3 to 4	3/4
Broccoli	1/4 oz.	4 oz.	20 to 36	16 to 22	1/2 to 1	Onion (for sets)	1/2 oz.	60 to 85 lbs.	12 to 14	Not thin'd	3/4
Brussels Sprouts	1/4 oz.	4 oz.	20 to 36	16 to 22	1/2 to 3/4	Parsnip	1/2 oz.	3 to 4 lbs.	18 to 24	3 to 4	1/2
Cabbage	1/4 oz.	4 oz.	18 to 36	14 to 24	1/2	Parsley	1/4 oz.	3 to 4 lbs.	12 to 20	6 to 8	1/2
Cardoon	1/2 oz.	5 oz.	20 to 32	20 to 30	1/2 to 1	Peas	3/4 lb.	90 to 180 lbs.	24 to 36	1 to 2	1 to 2
Carrot	1/4 oz.	3 to 4 lbs.	16 to 24	1 to 3	1/2	Pepper	1/4 oz.	1 to 2 lbs.	20 to 30	18 to 29	1/2
Cauliflower	1/4 oz.	4 oz.	24 to 30	20 to 24	1/2	Potatoes	8 lbs.	800-1000	24 to 36	18 to 24	6
Celery	1/8 oz.	4 oz.	24 to 30	4 to 6	1/4	Pumpkin	2 oz.	3 to 4 lbs.	96 to 110	60 to 84	3/4
Chicory	1/2 oz.	4 to 5 lbs.	20 to 36	2 to 3	1/2 to 1	Radish	1/2 oz.	10 to 12 lbs.	12 to 18	1 to 2	1/2
Collard	1/4 oz.	5 oz.	24 to 30	14 to 18	1/2	Rhubarb	1/2 oz.	3 lbs.	24 to 42	20 to 24	3/4
Corn, Pop	3 oz.	6 to 8 lbs.	34 to 40	6 to 8	1	Rutabaga	1/2 oz.	2 to 4 lbs.	18 to 24	4 to 7	1/2
Corn, Sweet	4 oz.	10 to 12 lbs.	30 to 42	9 to 12	1	Sage	1/2 oz.	4 to 5 lbs.	20 to 24	6 to 10	1/2
Corn Salad	2 oz.	10 to 12 lbs.	14 to 18	3 to 4	3/4	Salsify	3/4 oz.	7 to 8 lbs.	18 to 24	2 to 3	3/4
Cress	1 oz.	10 lbs.	12 to 18	2 to 4	1/2	Sorrel	1/2 oz.	4 to 5 lbs.	18 to 22	2 to 3	1/2
Cucumber	1/2 oz.	3 to 4 lbs.	48 to 60	12 to 36	1/2 to 3/4	Spinach	3/4 oz.	10 to 20 lbs.	14 to 18	3 to 5	3/4
Dandelion	1/4 oz.	5 to 6 lbs.	18 to 22	6 to 10	1/2	Squash, Bush	1 oz.	4 to 6 lbs.	42 to 48	42 to 48	1
Dill	1/2 oz.	5 lbs.	20 to 36	4 to 6	1/2	Squash, Vining	1 oz.	4 lbs.	72 to 90	60 to 90	1
Egg Plant	1/8 oz.	5 to 6 oz.	24 to 36	18 to 24	1/2	Sunflower	1 oz.	7 to 8 lbs.	48 to 70	10 to 12	1
Endive	1/2 oz.	4 to 5 lbs.	18 to 24	8 to 12	1/2	Tomato	2 oz.	2 oz.	40 to 60	36 to 40	1 1/2
Fennel	1/2 oz.	3 to 4 lbs.	24 to 32	5 to 8	3/4	Tobacco	2 oz.	2 oz.	36 to 48	24 to 36	1/2
Kale	1/2 oz.	4 to 5 lbs.	24 to 32	14 to 22	1/2	Turnip	1/2 oz.	2 to 3 lbs.	12 to 20	2 to 4	1/2

VEGETABLE LIST FOR 1946



Asparagus

1 oz. to 100 ft., 4 lbs. per acre.

CULTURE—When starting an Asparagus bed from seed, it is advisable to soak the seed for 24 hours before planting. This makes germination more rapid and certain. Sow in Spring in rows about 18 inches apart, allowing 15 to 20 seeds to the foot. Cover 2 inches deep. When plants are well established, thin to about an inch apart. Hoe frequently during the Summer. The plants will be ready to set in a permanent bed the following Spring.

GIANT WASHINGTON. A rust-resisting asparagus. This splendid new asparagus which has been bred up under U. S. Government supervision, has proven to be of unquestioned merit both for the home garden or for production on a large scale. The color is good and quality excellent. Pkg. 10c; oz. 20c; ¼ lb. 60c; 1 lb. \$1.75. (See page 25)

Beans

DWARF BEANS

1 lb. to 100 ft., 50 to 60 lbs. per acre.

POLE BEANS

1 lb. to 100 ft., 30 to 35 lbs. per acre.

LIMA BEANS

1 lb. to 100 ft., 30 to 50 lbs. per acre.

CULTURE—Plant Beans after all danger of frost is past, in warm, dry, well prepared soil. The rows should be 2 to 3 feet apart and the seeds covered 1½ to 2 inches deep. Thin the young plants to 3 to 6 ins. apart in the rows. Shallow cultivation should be frequent until blossoming; then stop to avoid injury to roots. Root injury causes the blossoms to fall off. For succession, plant every 2 weeks until mid-summer. Frequent picking of the crop insures long bearing.

Wax-Pod Bush Beans

PRICE — All Bush Beans, POSTPAID: ¼ lb. 10c; ½ lb. 20c; 1 lb. 35c; 5 lbs. \$1.65. **BRITTLE WAX.** This is without a doubt the earliest of all wax beans and also a great cropper. The bushes are remarkably hardy and extremely prolific, while the pods are fleshy and entirely stringless, often measuring 4½ to 6 inches. Fine flavor, round and solid, tender, brittle and entirely stringless at all stages of growth. The beans are white except for small black dot near the eye. Also fine as a shell bean.



Stringless Green Pod

★**PENCIL POD BLACK WAX.** One of the finest strains of wax beans known. It is very early, enormously productive and of the very best quality. It has long, slender handsome pods, that cook so tender that they melt in the mouth, and are the most delicious bean we have ever found.

IMPROVED GOLDEN WAX. A splendid early wax bean. The plants are erect, compact and very productive. The pods are medium size, broad and fleshy. The quality is very fine.

Green-Pod Bush Beans

PRICE—All bush beans, POSTPAID: ¼ lb. 10c; ½ lb. 20c; 1 lb. 35c; 5 lbs. \$1.65.

STRINGLESS GREEN POD. The first pods of this splendid bean are ready for use about 65 days after planting. They remain tender and crisp a long time after they reach full size and are tender, brittle and entirely stringless. Very productive.

★**HENDERSON'S BOUNTIFUL.** One of the earliest of green pod beans. Vines are vigorous and prolific. Pods large, flat, free from strings or tough lining and are tender and delicious. Although not a new bean it still is one of the favorite sorts.

TENDERGREEN. A very desirable sort for home garden or market. The plants are large, erect and productive. Pods round, fleshy, dark green, strictly stringless, and of fine quality. Seeds are brown, mottled and blotched with light fawn.

BEANS, Pole or Running

PRICE, Postpaid: All kinds, except Oregon Pole Lima, Oregon Giant; ¼ lb. 10c; ½ lb. 20c; 1 lb. 35c; 5 lbs. \$1.65.

★**KENTUCKY WONDER.** Also called Old Homestead. This grand pole bean continues to be a great favorite both for home garden and for canning. It is medium early and enormously productive. The pods are large, green, and very long. A wonderful string bean that is also satisfactory as a dry shelled bean. The seed is brown.

KENTUCKY WONDER WAX. An excellent variety and of the very best pole beans. The pods are long, very thick, meaty, deeply saddle-backed, entirely stringless and bright yellow in color. The vine is thrifty and very prolific. Seed deep brown.

BLUE LAKE. An early, long round pod, stringless bean. Good flavor and a heavy yielder. The best canning bean on the market.

LAZY WIFE. Pods are from 4 to 5 inches in length, produced in large clusters in great abundance. Dark green, thick, fleshy and stringless; of unusually rich flavor. Dry beans, pure white; excellent for winter use.

OREGON GIANT BEAN. This is one of the best of the recent introductions, either for home or for market. The pods are about one foot in length and light green striped with carmine. Hardy and productive. Pkg. 10c; ¼ lb. 15c; ½ lb. 30c; 1 lb. 50c.

OREGON POLE LIMA. An excellent pole Lima Bean that does very well in the Northwest, being early enough to mature in this climate. The pods are large and broad. The beans are white, and of delicious quality, either green, shelled or dry. Pkg. 10c; ¼ lb. 15c; ½ lb. 25c; 1 lb. 45c; 5 lbs. \$2.15.

Shell Beans

PRICES—See Wax-Pod Beans

DAVIS WHITE WAX. A popular white seeded, wax podded bean of superior merit. The pod is large and when young is crisp and tender. One of the main uses of this variety, however, is as a dried bean for winter use, for which purpose it is unsurpassed.

★**DWARF HORTICULTURAL, or "Cranberry Bean."** This well-known bean is very sturdy and prolific. The beans, which are speckled, bright red on a yellowish ground, are quite large and uniform and are very fine either for eating as green shell beans or as dried beans for winter use.

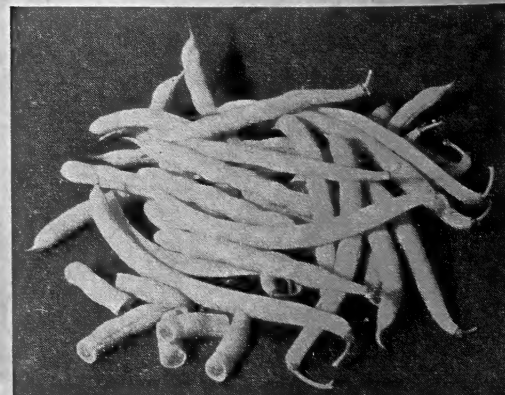
BOSTON PEA BEAN. Also called White Navy. This is the best of the small white beans known as navy beans for the Northwest. The bean is small, oval, white and of excellent flavor for baking. The plant does not run to vine and the leaves are few and drop early.

BROAD WINDSOR: Improved Long Pod. Stalk tall, slender, erect; pods green and hairy; 5 to 6 inches long. Green shell beans large flat, light green. Should be planted in November or very early in the spring.

Lima Beans

PRICES—Same as Green Pod

EARLY BUSH LIMA. Earliest and most productive of the lima beans. Quality good either for eating fresh or for canning. Requires a warm location in this area.



Pencil Pod Black Wax



Detroit Dark Red

Table Beets

1 oz. to 100 ft., 8 to 14 lbs. per acre.

CULTURE—Seed should be sown at the rate of one ounce to 100 feet of row. The rows should be spaced 14 to 24 ins. apart. Work the soil well and cover the seeds about an inch deep. A rich sandy loam is most favorable, but nearly all types of soil will provide Beets if sufficiently fertilized and properly tilled.

EARLY WONDER. A new variety that is an improvement over the old Crosby's Egyptian, from which it originated. It is very nearly globular in shape and the flesh is dark red, sweet and tender. The skin is smooth and the tops small. It matures slightly later than the Early Egyptian. Pkg. 10c; oz. 20c; ¼ lb. 50c; ½ lb. 80c; 1 lb. \$1.50.

★**DETROIT DARK RED.** This is considered the best general purpose beet on the market today. The root is rounded smooth and very dark red. The flesh is dark crimson with almost purple zones and of the finest quality. It has replaced almost entirely the sorts formerly used for canning either for home or commercial use or for home garden. Pkg. 10c; oz. 20c; ¼ lb. 50c; ½ lb. 80c; 1 lb. \$1.50.

EARLY EGYPTIAN. This is the best variety for forcing or for the earliest market trade. It is rounded somewhat on top but flattened underneath and has a small tap root. The tops are small, the flesh very dark, slightly zoned. Pkg. 10c; oz. 20c; ¼ lb. 50c; ½ lb. 80c; 1 lb. \$1.50.

CROSBY'S EGYPTIAN. This beet is smooth, dark red, and about midway in shape between Flat Egyptian and Detroit Dark Red, and of excellent flavor. Pkg. 10c; oz. 20c; ¼ lb. 50c; ½ lb. 80c; 1 lb. \$1.50.

EDMOND'S BLOOD TURNIP. A handsome, clean shaped blood beet, not too large or coarse but of good size. The flesh is crisp, tender and sweet and an excellent keeper. The tops are small and the root matures rather early. Pkg. 10c; oz. 20c; ¼ lb. 50c; ½ lb. 80c; 1 lb. \$1.50.

Sugar Beets

For Sugar or Stock

KLEIN WANZLEBEN. This variety of sugar beet is very hardy and easy to grow. It produces very heavily and is used for both sugar production and for stock. Pkg. 10c; oz. 15c; ¼ lb. 40c; ½ lb. 70c; 1 lb. \$1.30.

Mangel-Wurzel or Stock Beets

PRICES ON ALL MANGEL SEED: Oz. 15c; ¼ lb. 40c; ½ lb. 70c; 1 lb. \$1.30. Five lbs. @ \$1.25 per lb. Postpaid in 1st to 4th zones.

★**DANISH SLUDSTRUP.** This is without doubt the largest selling mangel in the Northwest. The root is oval, long, easy to pull, and reddish yellow in color. High in yield and high in food value.

MAMMOTH LONG RED. Largest red. Easiest to pull. Grows mostly above ground. Produces more weight to the acre, but is coarser grain than the other mangels.

GOLDEN YELLOW TANKARD. A smooth yellowish-fleshed mangel. The roots are of large diameter, tapering quickly at the bottom, which is quite broad, with only a small tap root. It grows largely above the soil. It yields large crops on good land and is easily harvested.

GIANT HALF SUGAR MANGEL. A strain of mangels, larger than the regular sugar beet, and sweeter than the other mangels, which has been specially selected for its size and also nutritive feeding value. Stands well out of the ground and is easier to pull than the smaller sugar beets.

Broccoli

½ oz. to 100 ft., 4 oz. per acre.

Broccoli is a variety of cauliflower, but is more hardy and requires a longer period for development. It is often called "winter cauliflower" and should be treated the same as late cauliflower.

ITALIAN GREEN SPROUTING. This new type of Broccoli is a recent introduction from Europe. The heads are green instead of white and are considered by many to be superior in flavor to the standard sort. If the first head is cut when ready others will sprout up so that several cuttings may be had. It is cooked like cauliflower. Pkg. 10c; ¼ oz. 30c; 1 oz. \$1.00.

ST. VALENTINE. This is the finest variety of Broccoli for use in the west where it is used largely by market gardeners as well as in the home garden. The heads

are large, solid, very white and of finest quality. With average weather conditions the crop will mature for use about February. Pkg. 10c; ¼ oz. 35c; oz. \$1.25.

Brussels Sprouts

½ oz. to 100 ft., 4 oz. per acre.

CULTURE—They are successfully grown wherever conditions are favorable for late cabbage and require the same method of culture. They mature best in the Autumn after the weather becomes cool.

TALL FRENCH. This variety grows two or three feet high. It produces numerous sprouts which resemble little cabbage heads, one to two inches in diameter. The flavor is like mild cabbage. Pkg. 10c; oz. 60c.

Swiss Chard

1 oz. to 100 ft., 6 to 10 lbs. per acre.

LUCULLUS. A variety of beet grown exclusively for its large, juicy, tender, light colored leaves and leaf stalks, which are much superior to those of other beets for use as greens. Swiss Chard is also greatly relished by chickens. Poultrymen will find this a valuable food for young chicks as well as laying hens that are kept constantly penned up. Pkg. 10c; oz. 20c; ¼ lb. 50c; ½ lb. 80c; 1 lb. \$1.50.

RHUBARB CHARD. A new Swiss Chard that looks like Rhubarb. The leaf stalks are bright but delicate, translucent crimson; the rich color extends out through the veins into the dark green, heavily crumpled leaves. Different, tasty, delicious flavor. Easily grown, thrives everywhere. Pkt. 15c; oz. 40c.

Pure-Bred CABBAGE



Early Jersey Wakefield

½ oz. to 100 ft., 4 oz. per acre.

CULTURE—For plants of early kinds, sow seed in January under glass, and put out into flats about 2 inches apart. Transplant to open ground as early in the Spring as the soil can be prepared, setting 1½ to 2 feet apart, in rows, which should be 3 feet apart. Cultivate frequently, and during dry weather water copiously. Late Cabbage seed should be sown in drills in open ground during April and May, and transplanted in June or July. Fertilize heavily, using 400 pounds nitrate of soda per acre in three dressings, one-third when plants are set out, and two-thirds a month apart later.

Early Cabbage

GOLDEN ACRE. An extra early Copenhagen Type with small, round, quite solid heads, maturing with Jersey Wakefield. Plant dwarf, with few outer leaves; used by truckers for the early markets. Pkt. 10c; oz. 40c.

CHARLESTON WAKEFIELD. This is a strain of Wakefield which is just a little later and larger than the Early Jersey Wakefield. The leaves are large, smooth

and rather thick. The plant is very hardy and vigorous. The heads are blunt pointed, broad at the base, and in general very uniform. Pkt. 10c; oz. 40c.

EARLY WINNIGSTADT. A very solid, pointed head, medium in size and earliness. If planted late, makes a good winter cabbage. Heads well on land too poor to head other kinds. Pkt. 10c; oz. 40c.

★**EARLY JERSEY WAKEFIELD.** This is the earliest and best cabbage not only for market gardeners but for the family garden. Its great resistance both to frost and other unfavorable conditions makes it the surest header of all the early cabbages. The heads are very solid, uniform, medium sized and of excellent quality. Pkt. 10c; oz. 40c.

EARLY DWARF FLAT DUTCH. The plants of this valuable second early sort are short stemmed, compact and upright with comparatively few and short leaves. Outer leaves slightly waved and serrated at edges. Heads large for size of plant, nearly round or somewhat flattened, close, firm and very solid. Matures a little earlier than Early Summer. First quality seed. Pkt. 10c; oz. 40c.

CABBAGE—Continued

ALL SEASONS OR SUCCESSION. A fine new cabbage a few days later but much larger than the Early Summer; sure heading and finest quality. Good to plant early or late. Pkt. 10c; oz. 40c.

★**COPENHAGEN MARKET.** This is the earliest of the round headed type of cabbage yet introduced. Heads are quite large, very fine quality. Although this is not quite so hardy as early Jersey Wakefield, it will be found excellent both for home garden and the market. Pkt. 10c; oz. 40c.

Late Cabbage

★**DANISH BALL HEAD.** A medium-sized, very solid head. It is a longer keeper and a good one to ship. The small heads weigh more than large heads of other kinds. Should be planted on good soil, with good cultivation to secure good-sized heads. On poor soil it makes too long a stem. Pkt. 10c; oz. 40c.

PREMIUM LATE DUTCH. Best for winter use; round or slightly flattened heads; stands freezing well. A good keeper and of excellent quality. Pkt. 10c; oz. 40c.

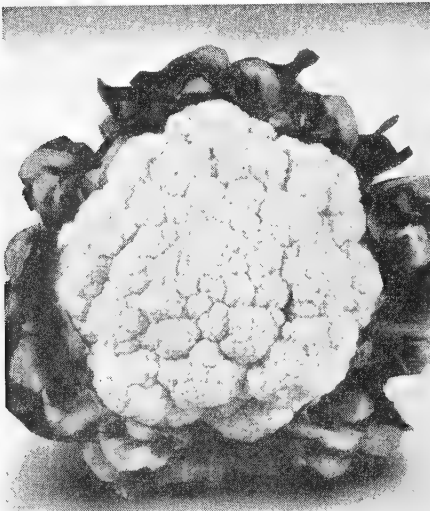
★**GLORY OF ENKHUIZEN.** Second early variety, sure heading and excellent quality. Plants of vigorous growth. Heads globular or nearly round, very solid and of large size. Pkt. 10c; oz. 40c.

NETTED SAVOY. This is the finest of the Savoy cabbages, and a general favorite; of excellent flavor, surpassing that of any other late cabbage, stands freezing well. Pkt. 10c; oz. 40c.

RED DRUMHEAD. 90 days. An excellent red cabbage; splendid winter keeper. Heads round to slightly flattened globe-shape; commonly 7 inches in diameter and weigh about 7 lbs.; very hard; deep purplish-red. Pkt. 10c; oz. 40c.

Chinese Cabbage

CHIHLI. A quaint distinct early variety of great merit which we think superior to all other types. Heads are long, almost cylindrical, bleached pure white, very solid and of superior quality. The upright growth and the shape of the heads permits closer planting than of other kinds. Although of recent introduction, it is already very popular on most markets. It is important to sow at the right time in July and August as spring sowings will bolt to seed. Pkg. 10c; oz. 40c.



Cauliflower, Snowball

Carrots

½ oz. to 100 ft., 3 to 4 lbs. per acre.

CULTURE—Sow seed in light sandy soil, from April to July, in drills 1½ feet apart, covering the seed ½ inch deep. Thin out the young plants from 3 to 5 inches apart, according to size of variety. Cultivate freely and do not allow the soil to get too dry during hot weather.

PRICES ON ALL TABLE CARROTS:
Pkg. 10c; oz. 30c; ¼ lb. 90c; ½ lb. \$1.70;
1 lb. \$3.25.

★**NANTES or CORELESS.** This is one of the finest of all table carrots, about six inches long and slightly over one inch in diameter when fully matured. It is stump rooted and very uniform in size the full length. The flesh is exceptionally tender and sweet and the flavor is fine, either cooked or raw as in salads. Our strain is almost entirely coreless, which makes it unsurpassed for canning purposes.

DANVERS HALF-LONG. The best known of all yellow carrots. It is shorter and easier to pull than the Long Orange and one of the best yielders. The quality is excellent. Very fine either for table or stock.

LONG ORANGE. This is an old and well known variety in use for many years as a stock carrot. However, owing to its bright color and shape many market gardeners are finding a ready sale for it in the stores and markets.

★**RED CORED CHANTENAY.** A new variety of carrot with tops shorter and finer cut than Chantenay. The roots are about six inches long and two inches in diameter. The core is quite red and in cooking retains its color in a remarkable extent. It has all the good qualities of both the Chantenay and the Nantes, and about 10% greater sugar content than either variety. A fine market sort.

OXHEART or GUERANDE. Short and thick intermediate, between the half-long and the Early Horn varieties; three or four inches in diameter at the neck. Of most beautiful color and shape.

EMPERATOR. A long, smooth, handsome carrot. Roots have rounded shoulders, smooth, deep rich orange; uniformly tapered to a semi-blunt end. Flesh rich orange color, extending to center of root; fine grained, tender and of excellent quality. An ideal bunching carrot.

Stock Carrots

WHITE BELGIAN. In ground. This is the largest and best of the white stock carrots. The roots are 8 to 10 inches long and 3 to 4 inches thick at the top. They have almost entirely displaced the Short White or Mastodon owing to their superior quality and yield. Pkg. 10c; oz. 30c; ¼ lb. 90c; ½ lb. \$1.70; 1 lb. \$3.25.

YELLOW BELGIAN. A new carrot similar to the White Belgian in every way except the color which is pale yellow. Pkg. 10c; oz. 30c; ¼ lb. 90c; ½ lb. \$1.70; 1 lb. \$3.25.

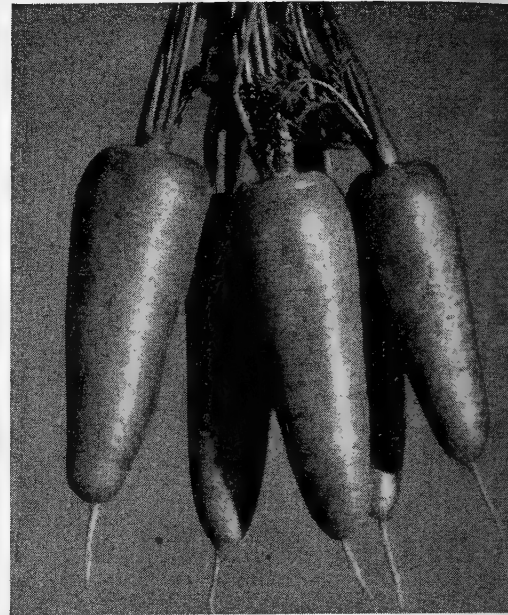
Cauliflower

½ oz. to 100 ft., 4 oz. per acre.

CULTURE—The same methods that produce good Cabbage will grow good Cauliflower. The only great difference is that Cauliflower heads must be protected from sunlight so as to make sure of the desirable white curd. Gather the tops of the leaves together loosely as soon as the heads begin to form. In shutting off the light, it is important not to cramp the heads.

★**HENDERSON'S EARLY SNOWBALL.** The best known and most used of all the early cauliflowers. A great favorite with the market gardeners; for both early and late planting. Produces beautiful snow-white heads of the most delicious flavor. Pkg. 15c; ¼ oz. 75c; oz. \$2.50.

VEITCH'S AUTUMN GIANT. The finest of the late cauliflowers. It produces immense compact white heads, 8 to 10 inches in diameter. Plants are large and vigorous. Pkt. 15c; ¼ oz. 60c; ½ oz. \$1.10; oz. \$2.00.



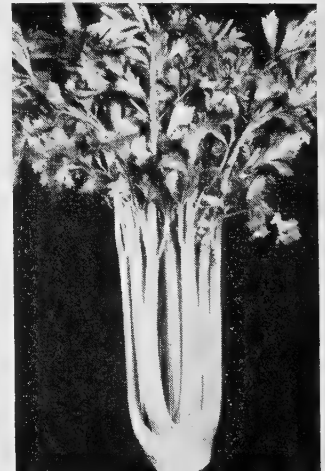
Carrots, New Red Cored Chantenay

Celeriac

¼ oz. to 100 ft., 4 oz. per acre.

CULTURE—Sow seed at the same season and give same treatment as common celery. Transplant to moist, rich soil, in rows 2 feet apart and 6 inches apart in row. Give thorough culture. It is not necessary to earth up or handle the plants. After the roots have attained a diameter of 2 ins., they are fit for use.

CELERIAC (Turnip-rooted Celery). This is distinct in growth from all the tall celeries. The edible portion is the large, swollen root, which somewhat resembles a turnip, and is highly esteemed for boiling or for flavoring soups, stews and other dishes. The plants should be started in the same manner as other celeries, and when of sufficient size, transplant to stand eight or ten inches apart each way in rich soil, hoeing frequently to promote a strong growth. As roots are produced entirely below the surface, plants do not need earthing up. Pkg. 10c; oz. 30c.



Celery, Utah

Celery

¼ oz. to 100 ft., 4 oz. per acre.

CULTURE—Sow from February to May in drills 1 foot apart. Later, usually in June, transplant to rows 3 feet apart and 6 inches apart in row. Rows should be furrowed out so plants may be set 6 inches deep. Later, soil may be banked against rows for blanching, even so-called self-blanching varieties needing the cool, moist soil to render the stalks crisp and tender, but this should not be done until a few weeks before harvesting. One ounce of seed will produce five thousand plants.

★**GOLDEN PLUME.** A yellow celery resembling the Golden Self-Blanching in several respects. Its height is about the same, but it is about two weeks earlier. It also makes a larger bunch which blanches easier and whiter. It is especially recommended for the home garden on account of its hardiness, easiness to blanch and its fine quality. Pkg. 10c; ½ oz. 30c; 1 oz. 50c.

WHITE PLUME. Most popular with white stalks and leaves. Very ornamental. Does not require so much banking up for blanching as the other kinds. Pkg. 10c; ½ oz. 30c; 1 oz. 50c.

GOLDEN SELF-BLANCHING CELERY. A good variety especially for later crop. The plant is naturally golden-yellow, both leaves and stems. Forms a small bunch. Pkg. 10c; ½ oz. 30c; 1 oz. 50c.

★**UTAH OR GOLDEN CRISP.** A late celery that has come into favor during recent years. The plants are sturdy, compact and solid. Stems broad, thick and well rounded, flavor rich and nutty. Pkg. 10c; ½ oz. 30c; 1 oz. 50c.

Celtuce

A new vegetable. The plant begins its growth like lettuce, when the green leaves may be used in salads. Later the seed stalk elongates, becoming 18 inches and 1½ inches in diameter. This stalk is tender, pale translucent green in color, very succulent, with a flavor like that of celery and lettuce deliciously blended. Celtuce grows best under the same conditions of soil, temperature and moisture as lettuce. Sow the seed as early as possible in the spring, covering only lightly in rows 18 inches or more apart. Thin or transplant to stand at least 10 inches apart in the row. Per pkg. 10c; 1 oz. 60c.

Chicory

1 oz. to 100 ft., 4 to 5 lbs. per acre.

LARGE ROOTED. The dried roots of chicory are used as a substitute for coffee. Experiments have proven that the leaves are rich in VITAMINS and are very valuable as a poultry food. Also used in salads. Pkg. 10c.

Chives

A perennial onion-like plant that is used as a flavoring for salads and soups. It can be easily started from seed and a bed when once started is good for several years before it is necessary to replant. Pkg. 10c.

CRESS or

Pepper Grass

UPLAND. Leaves and flavor resemble water cress, but grows in a dry soil on uplands. Pkg. 10c.

The worms in carrots are caused by the eggs from the Carrot Rust Fly. The best repellent for this pest that we know about is NAPHTHALENE FLAKES. See page 35 for prices and information on use.

SWEET CORN



Golden Cross Bantam

8 oz. to 100 ft., 10 to 14 lbs. per acre.

POPCORN

6 oz. to 100 ft., 6 to 8 lbs. per acre.

CULTURE—Plant in rich, warm soil, in hills 2 to 3 feet apart, in rows 3 feet apart for early kinds and 4 feet apart for late sorts. Make first sowing about the middle of May and continue fortnightly up to about the middle of July.

PRICE—On all Sweet Corn except Golden Cross Bantam: ¼ lb. 10c; ½ lb. 20c; 1 lb. 35c; 5 lbs. @ 34c per lb.; 10 lbs. @ 33c per lb.; 25 lbs. @ 32c per lb.; 50 lbs. @ 31c per lb.; 100 lbs. @ 30c per lb. Prices postpaid anywhere in 1st, 2nd and 3rd zones.

★**GOLDEN BANTAM.** This is the finest and best sweet corn grown. While it is several days later than Early Market and Golden Early Market its delicious flavor and sweetness more than make up for the few days' difference in maturity. As a market corn it has no superior. The cobs are medium sized, the kernels yellow, plump and of a flavor that has no equal.

We have yet to find a corn that will quite match it for flavor or uniformity of ears. Eight row.

IMPROVED GOLDEN BANTAM. The kernels are deep rich golden yellow, set close on the cob, nearly all of which are twelve rowed and somewhat larger than regular Golden Bantam. The quality and flavor are unsurpassed. Fine for either home or market. Four days earlier than Golden Bantam.

★**GOLDEN EARLY MARKET.** This is a new sweet corn introduced in 1925 which has increased steadily in popularity owing to its extreme earliness. It is a cross between Early Market and Golden Bantam and combines the good qualities of both parents. The ears are 14 to 16 rowed and the color a creamy yellow of fine flavor. It is very sweet and tender. A very fine corn either for the home garden or for market.

In the Puget Sound region Golden Early Market will mature for table use about 10 days earlier than Golden Bantam.

EARLY MARKET. This is undoubtedly the finest extra early white corn on the market. It was originated in the Northwest several years ago. The ear is large, the kernels plump and sweet, and of purest white.

★**GOLDEN CROSS BANTAM.** A new variety which on account of its large ear, being 10 to 14 rowed, is well adapted to home, market or canners' use. The kernels are of medium width and depth and slightly lighter in color than Golden Bantam. The flavor is similar but the yield somewhat heavier and later, as well as maturing more nearly even than other sorts. Four days later than Golden Bantam. Pkg. 10c; ¼ lb. 15c; ½ lb. 25c; 1 lb. 50c; 5 lbs. or over @ 45c per lb.

MARCCROSS. (76 days.) Stalks short but sturdy, highly resistant to bacterial wilt. Ears long, plump, abruptly tapered at tips; 10-14 rowed, with light cream-yellow medium-broad kernels of good quality. Pkt. 10c; ¼ lb. 15c; ½ lb. 25c; 1 lb. 50c.

Pop Corn

TOM THUMB. Also called Japanese Hulless. This variety is somewhat earlier than the White Rice. The kernels are also longer and narrower. Tom Thumb when properly cured will pop the largest percent of kernels of any pop corn. ¼ lb. 10c; ½ lb. 20c; 1 lb. 35c; 5 lbs. \$1.70.

Egg Plant

1 oz. to 100 ft., 3 to 4 lbs. per acre.

CULTURE—Sow in mild heat, about the middle of March, and transplant on June 1, setting the plants 2½ feet apart.

BLACK BEAUTY. An early variety with glossy black-purple fruits that keep well. Pkg. 10c; oz. 60c.

Endive

1 oz. to 100 ft., 4 to 5 lbs. per acre.

FULL HEART BATAVIAN. Crispness and tenderness make this endive unexcelled for salads. The broad leaves, twisted and waved, are of bright green with midribs nearly white; the inner leaves form a fairly solid cluster which blanches to deep creamy white. Pkg. 10c; oz. 20c.

Kohl Rabi

½ oz. to 100 ft., 4 to 5 lbs. per acre.

CULTURE—The delicious flavor of this turnip shaped bulb combines both Cabbage and Turnip. As early in Spring as possible, sow the seed in light rich soil in rows 1½ feet apart. When plants are well established, thin to 6 inches apart in the row.

In growth this is half way between cabbage and turnip; the edible portion is the large bulb which forms on the stem above the soil. By making successive sowings, tender bulbs may be had throughout the summer and fall, and are highly esteemed for their mild, delicate cabbage-like flavor. Pkg. 10c; oz. 50c.

WHITE VIENNA or LARGE WHITE. Bulb large, white and skin smooth. Very fine flavor and an excellent keeper.



Cucumber, Straight Eight

Plant Tillinghast's Cucumber

1 oz. to 100 ft., 3 to 4 lbs. per acre.

CULTURE—Sow in warm loamy soil, enriched with well rotted manure if possible, when weather becomes settled and warm, usually after May 1st. Thin to 4 or 5 plants to a hill. For pickles sow from the middle of June to middle of July. Water freely.

LONG GREEN IMPROVED. This is undoubtedly the best variety of cucumber for all uses grown. It produces an abundance of fruit and is unsurpassed either for market gardening or for the home garden. Pkg. 10c; oz. 20c; ¼ lb. 60c.

★**STRAIGHT 8.** (All-America Gold Medal Award for 1935.) This outstanding new variety produces smooth cylindrical fruits about eight inches in length and about 1½ inches in diameter. Fruits well rounded at the end and free from objectionable striping or tipping. Equally fine for shipping or for home use. Pkg. 10c; oz. 20c; ¼ lb. 60c.

IMPROVED WHITE SPINE. This is one of the best sorts for early table use, as it will mature fruits a little earlier than the Long Green. Fruits usually straight and light green in color. Pkg. 10c; oz. 20c; ¼ lb. 60c.

★**LEMON CUCUMBER.** A dainty little cucumber resembling a lemon in size and shape. Its flavor, which differs somewhat from other varieties, makes of fine either for slicing or for salads. Pkg. 10c; oz. 20c; ¼ lb. 60c.

SMALL GHERKIN (for Pickles). While this is not a true cucumber, it is grown and used in a similar manner. It is very prolific, with pale green spines over the entire surface of the fruits. Pkg. 15c; oz. 35c.

BOSTON PICKLING. This is a very productive variety and one of the most popular kinds used for pickling. The fruits are of medium size, very smooth and bright green in color. The flesh is crisp and tender. Pkg. 10c; oz. 20c; ¼ lb. 60c.

Kale or Borecole

1 oz. to 100 ft., 4 to 5 lbs. per acre.

CULTURE—The culture is practically the same as that of late Cabbage, but as the plants will withstand several degrees of frost they can grow late into the Fall. Many think Kale best after the first heavy frost.

GREEN CURLED. The plants of this variety are two to four feet in height and bear an abundance of long plume-like leaves. The leaf edges are deeply cut and very curly. Very seldom injured by freezing in Western Washington or Oregon. Pkg. 10c; oz. 35c.

DWARF CURLED SCOTCH. A finely curled low growing and hardy variety, well adapted for making greens. This variety is used largely for garnishing, as the leaves are of a beautiful shade of green. This variety is also very hardy. Pkg. 10c; oz. 35c.

THOUSAND HEADED or COW KALE. Thousand Headed Kale is one of the most valuable of all winter crops for the dairymen and poultrymen. It is a very hardy plant belonging to the cabbage family, which grows, in many cases, well over four feet in height, while the central stalk produces an abundance of long, broad leaves which are of great value as a green winter feed. Many poultrymen use it almost exclusively as a source of green feed during the winter. Pkg. 10c; oz. 20c; ¼ lb. 60c; 1 lb. \$1.50.

Leek

½ oz. to 100 ft., 4 lbs. per acre.

LARGE AMERICAN FLAG. This vegetable belongs to the onion family and is a good fall and winter substitute for green onions. It is very fine for flavoring soup and other cooking. The leaves are flat and the stems large and bulbous. Pkg. 10c; oz. 60c.



Lettuce, New York or Los Angeles

LETTUCE

CULTURE—Sow the seed in hotbeds during February until the middle of March, afterward pricking off into flats or cold-frames, leaving about 6 to 8 inches between the plants. As soon as weather becomes suitable, transfer to open ground and set out in rows 1 foot apart, leaving 9 inches between the plants in the rows.

½ oz. to 100 ft., 3 lbs. per acre.

★**NEW YORK or LOS ANGELES.** This wonderful variety of lettuce is undoubtedly one of the finest, both for the market and for the home garden. It forms a large, tight, crisp head that is very popular with the market gardeners and is much used as a fall and winter lettuce on the markets. The outer leaves are dark green and frilled at the edges, while the inner leaves are very tender and beautifully blanched. Pkg. 10c; oz. 25c; ¼ lb. 75c.

HANSON. One of the very best. Large heads, sweet and crisp. If you want your lettuce to head, plant this kind and thin out, or transplant to several inches apart. Pkg. 10c; oz. 25c; ¼ lb. 75c.

BIG BOSTON. Very large, smooth leaved, solid-heading variety, grown more extensively throughout the east and south than any other. It is congenial to all climates, a good shipper. In flavor it probably excels other smooth-leaved varieties. Pkg. 10c; oz. 25c; ¼ lb. 75c.

BLACK SEED SIMPSON. Large early; very nice and desirable; slow to run to seed; tender a long time. Pkg. 10c; oz. 25c; ¼ lb. 75c.

EARLY PRIZE HEAD BROWN. Large leaves tinged with brownish red; very tender, crisp and sweet, forming a large, loose head. Pkg. 10c; oz. 25c; ¼ lb. 75c.

GRAND RAPIDS. This is the kind of lettuce that is generally used for growing under glass in winter. Pkg. 10c; oz. 25c; ¼ lb. 75c.

Chicken Lettuce

CHICKEN LETTUCE. This is a rough, rank growing variety of lettuce that has no head but produces a large bunch of leaves. For this reason it is an ideal source of green feed for chickens, and should find great favor with poultrymen everywhere. Pkg. 10c; oz. 20c; ¼ lb. 60c; 1 lb. \$1.80.

Cos or Romaine Lettuce

WHITE PARIS. This kind of lettuce is distinguished by its long, narrow, spoon-shaped leaves, folding into loose, sugar-loaf shaped heads which blanch better by having the outer leaves drawn about them and tied. The quality is distinct from that of the Cabbage Lettuces and by many is considered very superior. Pkg. 10c; oz. 25c; ¼ lb. 75c.

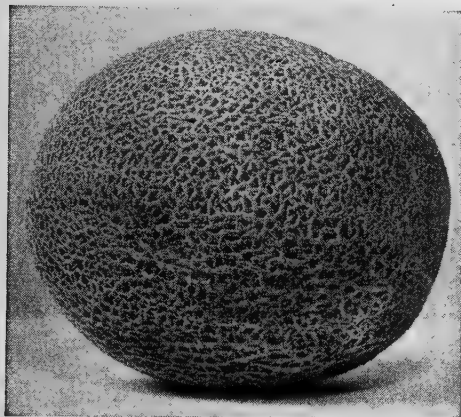


MELONS

Muskmelons

1 oz. to 100 ft., 3 to 4 lbs. per acre.

CULTURE—In sections where the Summers are short, seed can be planted indoors or in hot beds in small boxes. The young plants can be transferred to the garden when danger of frost is past. If practicable spade in a liberal forkful of well rotted manure at the bottom of each hill. The rows should be at least 6 feet apart and the hills 3 feet apart in the rows. In general, the culture is the same as that for Cucumber.



★**SKAGIT GOLDEN.** This is the earliest muskmelon that we have ever seen and while muskmelons are not always satisfactory in Western Washington we believe that Skagit Golden will give good results here even in spite of the short growing season. If you have a warm early soil you will be delighted with this fine melon. The flesh is medium thick, sweet and juicy and of a rich salmon orange color. Pkg. 10c; oz. 35c.

EMERALD GEM. One of the earliest of all muskmelons and therefore more nearly adaptable to the short growing seasons of this locality. The skin is smooth and of deep emerald green color. The flesh is thick and of a delicate salmon color. Pkg. 10c; oz. 25c.

Watermelons

1 oz. to 100 ft., 3 to 4 lbs. per acre.

CULTURE—Rich rather sandy soils produce the finest crops of Watermelons, but a well-drained loam, especially with a southern exposure, is also suitable. Place 6 to 8 seeds in a circle in each hill, and cover ½ inch deep with a fine soil. One ounce will plant 20 to 25 hills; 3 to 4 pounds per acre.

★**SKAGIT GEM.** A brand new watermelon just introduced into this country from Asia that is reported to be about 20 days earlier than any other melon now used. Medium small, oval, flesh pink and of excellent flavor. Our own trials have proven this to be the earliest watermelon for the Puget Sound area we have seen. Pkg. 10c; oz. 35c.

COLE'S EARLY. A fine early variety for the Northwest. Fruits medium-sized, and green striped. Flesh pink and of good flavor. Pkg. 10c; oz. 25c.

CITRON. A type of watermelon used for preserving. While a little late for the Puget Sound area, it will mature some fruits with special care on warm soil. Pkg. 10c; oz. 25c.

Mustard

½ oz. to 100 ft., 4 lbs. per acre.

CULTURE—Seed may be sown from early Spring to midsummer in rows 18 inches apart. Thin to 5 or 6 inches apart in the rows. The plants are in condition for use as soon as the leaves are the size of one's hand. Mustard runs to seed quickly, so that successive plantings are necessary for a continuous supply.

GIANT SOUTHERN CURLED. This variety grows about three feet tall. The broad leaves are cut and frilled. They are boiled and used as greens. Sometimes when the plants are about two inches tall they are cut, washed and used as a sandwich spread. Pkg. 10c; oz. 15c; ¼ lb. 30c.

Okra or Gumbo

1 oz. to 100 ft., 8 to 10 lbs. per acre.

EARLY DWARF GREEN. An early sort which remains in condition for use a long time. Pods long, fluted and dark green. Pkg. 10c; oz. 20c.

Parsley

½ oz. to 100 ft., 3 to 4 lbs. per acre.

CULTURE—Parsley seed is even slower than parsnip in germinating. It grows best in rich mellow soil and should be sown as early as possible in spring in rows 1 to 2 feet apart with a covering of not more than ½ inch of soil firmly pressed down. When the plants are well up, thin them 8 to 12 inches apart.

CHAMPION MOSS CURLED. The most beautiful kind for garnishing or flavoring. Can be cut fresh from the garden all winter. Pkg. 10c; oz. 20c; ¼ lb. 60c.

HAMBURG or TURNIP ROOTED. The root of this variety is the edible portion and resembles a small turnip. It is extensively used for flavoring soup, stews, etc. Pkg. 10c; oz. 20c; ¼ lb. 60c.

ONION SEEDS and SETS

ONION SEEDS

½ oz. to 100 ft., 3 to 4 lbs. per acre.

CULTURE—As early as soil can be worked in Spring, sow the seeds thinly in drills 1 foot apart, and cover lightly, later thinning out to about 6 inches apart in the row. The soil must be well fertilized and be made very friable. In hot weather, water frequently.

YELLOW GLOBE DANVERS. A great favorite. Round, large; yields heavy; early to ripen and a good keeper; best kind for Puget Sound. All onion growers like it. Pkg. 10c; oz. 60c; ¼ lb. \$2.00; 1 lb. \$7.00.

★**SWEET SPANISH.** This fine new onion is a very large, globe shaped, yellow onion. In flavor it is very mild and sweet and it has good, firm meat of tender texture. It is one of the best for the home garden, and also for the early market. Planted at the proper time, and well cured it is a good keeper, and will ship as well as any other onion. Pkg. 10c; oz. 60c; ¼ lb. \$2.00; 1 lb. \$7.00.

★**CRYSTAL WAX BERMUDA.** An early pure white onion. Much in demand on account of its mild sweet flavor. Fine as green table onion or for cooking in the fall. Not a very good keeper for winter use. Pkg. 10c; oz. 60c; ¼ lb. \$2.00; 1 lb. \$7.00.

SOUTHPORT RED GLOBE. This variety of red onion has proven so superior to all other red onions in recent years that we have omitted Red Wethersfield and Early Red from our list. Globe shape, flesh mild, fine grained, tender and of excellent flavor. Pkg. 10c; oz. 60c; ¼ lb. \$2.00; 1 lb. \$7.00.

WHITE BUNCHING. A variety of onion that is grown exclusively as a pulling onion or "Scallion." Generally pulled when not much larger than a lead pencil when they will be found extremely mild and sweet. Pkg. 10c; oz. 60c; ¼ lb. \$2.00.



Yellow Globe Danvers

WHITE QUEEN. This is the best onion for small pickles. It is one of the earliest onions grown. The bulbs average 1½ inches in diameter and are pure white and very mild in flavor. They are also unsurpassed for very early table use. Pkg. 10c; oz. 60c; ¼ lb. \$2.00.

SETS

YELLOW BOTTOM SETS. These are small onions about ½ inch in diameter that are produced by thick planting. They will produce green onions for table or market use in a very short time. In the Northwest, sets may be planted as early as weather and soil conditions will permit. We have an exceptionally fine lot of sets this year and hope to fill all orders as long as they come in.

PRICE POSTPAID — 1 lb. 35c; 5 lbs. or over 34c per lb.; 10 lbs. or over 33c per lb.

SHALLOTS. This variety is also known as Multiplier and is a splendid keeper. They are very hardy and make fine early green onions. Each bulb will produce a cluster of three to five green onions. Price, ½ lb. 20c; 1 lb. 40c.

GARLIC BULBS. This is the most pungent member of the onion family. It is much prized for flavoring soups, etc. We offer local grown bulbs, or "cloves," as they are called. Each little "clove" should be planted separate about 6 inches apart in the row. Price, postpaid, ½ lb. 25c; 1 lb. 45c.

PEAS Love Cool, Moist Weather

Peas (Early)

1/2 lbs. to 100 ft., 90 to 180 lbs. per acre.

CULTURE—For first crop, round-seeded Peas should be sown in the open ground as soon as it is fit to be worked; wrinkled varieties should be planted 2 to 3 weeks later. Frequent planting for succession, and a careful selection of varieties will give an almost continuous crop of Peas from June until frost. Sow Peas in rows 3 feet apart and 1 to 2 inches deep. Rotted horse manure and wood ashes should be freely used in the preparation of soil for Pea growing.

PRICES — On all Peas, except Skagit Giant: 1/4 lb. 10c; 1/2 lb. 20c; 1 lb. 35c; 5 lbs. @ 34c per lb.; 10 lbs. @ 33c per lb.; 25 lbs. @ 32c per lb. 50 lbs. @ 31c per lb.; 100 lbs. @ 30c per lb.

ALASKA or FIRST OF ALL. Earliest of all, and best of the hard, smooth, round peas, which can be planted very early, as they are not so liable to rot in the ground as the wrinkled peas. Three feet tall.

LAXTON'S PROGRESS. A market, shipping and home garden variety of great merit. Maturing in about 62 days, it grows a vine 18 to 20 inches high. The pods are dark green and about 4 1/2 inches long. Very sweet and fine flavor.

LAXTONIAN. This new pea is one of the earliest dwarf varieties. It is very hardy and produces abundantly. The pods are dark green and generally about 4 inches long. The peas are usually 7 to 10 inches in number and of large size and very delicious flavor. 20 inches.

★**SKAGIT GIANT.** This splendid new early pea is among the finest of the giant podded sorts developed in recent years. The vines are dark green and heavy, growing from 24 to 30 inches in height. The pods are 4 1/2 to 5 inches long, dark green and borne in abundance. About 2 days later than Laxtonian. Pkg. 10c; 1/4 lb. 15c; 1/2 lb. 25c; 1 lb. 45c.

GRADUS. This variety combines the finest quality with extreme earliness and is also well known for its productiveness. It is very hardy and may be planted fully as early as any other sort. The vines, which are very vigorous and healthy, produce an abundance of pods that rival the pods of the Telephone in size. The peas are large, tender and very delicious in taste. Height, 36 to 40 inches.

AMERICAN WONDER. Earliest of the dwarfed wrinkled peas. Does not need bushing. Large peas and pods and prolific; quality extra good. Do not plant it while the ground is cold and wet. 12 to 14 inches.

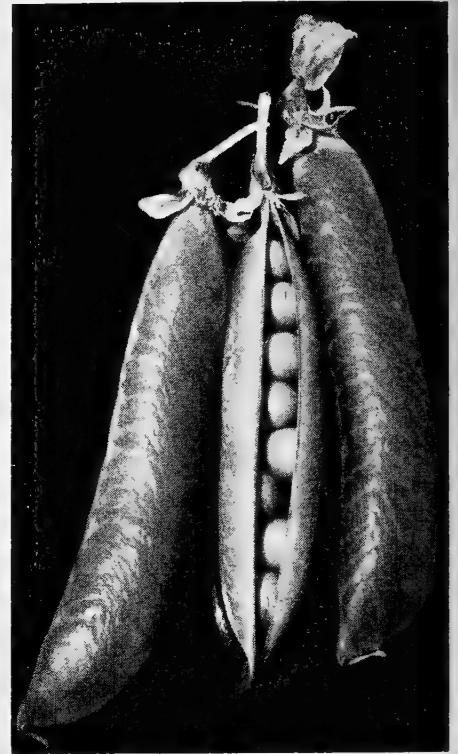
Peas (Late)

Prices at Top of Page.

★**TALL TELEPHONE (Alderman Strain).** The finest main crop pea for the home or market gardener. The vines which are four or five feet tall, bear an abundance of extra long pods filled with large sugary peas of fine flavor.

IMPROVED STRATEGEM. A sweet wrinkled variety from England; vines of vigorous growth, healthy and stocky; about two feet high, producing a heavy crop of beautiful, large long pods, well filled with large peas of good quality; very valuable and reliable. Height, 28 to 30 inches.

★**DWARF TELEPHONE.** Half dwarf with vigorous vines, producing an abundance of very large pods, filled with immense peas, which are tender and sweet and of excellent flavor.



Peas, Early Varieties—Dwarf

MELTING SUGAR or EDIBLE POD. This variety is grown chiefly for its large, flat brittle pods rather than the peas. These are sweet and are cut or broken and cooked similar to string beans. It is a delicious vegetable.

Parsnips

1 oz. to 100 ft., 3 to 4 lbs. per acre.

CULTURE—Sow the seed as soon as season will permit, in drills about 2 feet apart, and thin plants out to 1 foot apart in the row. The ground should be deeply trenched and well manured.

LONG WHITE. Large, smooth, sweet, the standard kind; grown from especially selected smooth roots. Pkg. 10c; oz. 20c; 1/4 lb. 60c; 1 lb. \$1.75.

Peppers

1/4 oz. to 100 ft., 1 to 2 lbs. per acre.

CULTURE—Soil and temperature requirements are about the same as for Eggplant. A moderate dressing of Guano, poultry manure, or complete commercial fertilizer, hoed into the soil after the plants are 6 to 8 inches tall, will be very beneficial.

★**HARRIS' EARLY GIANT.** This is the largest and best of the early sorts. It is the best adapted for use in the Northwest that we know about. Seven to ten fine large fruits are usually produced on each plant. Best for home use. Pkg. 10c; oz. 60c.

LARGE BELL or BULL NOSE. This is the earliest pepper of the "bell" type. The fruits are larger and a little later than the Harris' Early. The fruits are also more pungent and produced in greater abundance. Pkg. 10c; oz. 60c.

PIMENTO. This is a very mild, sweet variety of Pepper that is in great demand for salad making. It is easily canned for home use. The seed should be planted in a hotbed and the plants set out after the ground is warm. Pkg. 10c; oz. 60c.



Pumpkin, Sweet or Sugar

Pumpkins

4 oz. to 100 ft., 3 to 4 lbs. per acre.

CULTURE—Pumpkins are typically American, and Pumpkin pie is one of our truly American dishes. They are less sensitive to unfavorable conditions of soil and weather than Melons or Cucumbers, but they are cultivated in about the same way.

★**SWEET or SUGAR.** A small, fine grained pumpkin that is unexcelled for cooking or pies. It is very early and prolific. A good market sort. Pkg. 10c; oz. 20c; 1/4 lb. 60c; 1 lb. \$1.80.

WINTER LUXURY. A good keeper and a very good pie pumpkin. It is round, the skin is netted and russet yellow. Flesh is deep yellow and thick. Somewhat larger than the Sweet or Sugar Pumpkin. Pkg. 10c; oz. 20c; 1/4 lb. 60c; 1 lb. \$1.80.

KING OF MAMMOTHS. This is the largest pumpkin grown. The skin is rich dark yellow, the flesh lighter shade and of excellent quality, good flavor and suitable for pies. Pkg. 10c; oz. 20c; 1/4 lb. 60c; 1 lb. \$1.80.

Rutabagas

1 oz. to 100 ft., 2 to 4 lbs. per acre.

CULTURE—The culture is the same as for common Turnip, but if anything, less exacting in care.

★**AMERICAN YELLOW.** This is the best rutabaga for table use. The flesh is very firm. As a yielder the American Yellow is surpassed only by the Skirving's. Pkg. 10c; oz. 20c; 1/4 lb. 45c.

WHITE FRENCH. A large, white market variety; sweet, smooth and solid. Good winter keeper. Pkg. 10c; oz. 20c; 1/4 lb. 45c.

Plant an HERB GARDEN

All Packets 10c.

ANISE. Hardy annual.

CARAWAY. Hardy perennial.

CATNIP. Hardy annual.

DILL. Annual Aromatic. Oz. 25c.

LAVENDER. Fragrant perennial.

SAGE. Large leaved, for flavoring.

THYME. Medicinal perennial.

Plant your RADISHES Early

1 oz. to 100 ft., 10 to 12 lbs. per acre.

CULTURE—For an early crop, sow in hotbed in January, February and March. As soon as ground is fit to be worked, sow seed in the open, in rows 1 foot apart.

PRICES ON ALL RADISHES:

Pkg. 10c; oz. 20c; ¼ lb. 50c; 1 lb. \$1.50.

★**EARLY SCARLET GLOBE.** This is one of the best radishes on the market both for the home garden and for the market. It is oval in shape and a bright rich scarlet in color, the flesh is crisp, tender, juicy and mild. The foliage is very small compared with the size of the radish.

ROSY GEM. One of the most popular and attractive short varieties. Globe shaped, bright red carmine, with bottom and tip clear white. Valuable for forcing as well as for the home garden and market.

FRENCH BREAKFAST. Small, oval form, quick growing, mild and tender. Color scarlet, tipped with white; best kind for hotbeds or for earlier use in open ground in the garden. Get a good supply of radish seeds and sow every two weeks through the season.

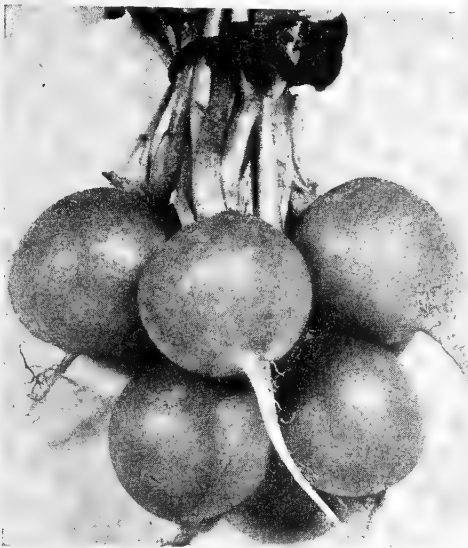
CRIMSON GIANT. An exceptionally fine radish either for the family garden or for forcing. It grows nearly twice as large as any of the other round radishes before becoming pithy. The flesh is mild and of excellent flavor.

★**WHITE ICICLE.** This radish is also called the Long White. This is the finest of the long white radishes. It is very juicy, crisp and tender.

LONG BRIGHT SCARLET. A beautiful new radish. It grows very quickly and is as good as it is pretty.

CHINESE WHITE WINTER or CELESTIAL. Popular and well known winter variety. The half stump-roots are clear white and the flesh is the most crystalline of all winter varieties. The flavor is much more delicate than the ordinary summer varieties. The roots may be used all winter as they keep in fine condition. Makes a palatable dish when cooked and served like turnips.

CHINA ROSE WINTER. Best for winter use. Long, solid and tender.



Spinach

1½ oz. to 100 ft., 10 to 20 lbs. per acre.

CULTURE—Sow in rows 16 to 20 inches apart and thin to 6 inches apart in the row when leaves are an inch wide. In the North, seed can be planted as soon as the ground can be prepared. In the South, Spinach will Winter over with little or no protection.

PRICES on all varieties except New Zealand: Pkg. 10c; oz. 20c; ¼ lb. 45c; 1 lb. \$1.25.

★**KING OF DENMARK.** This new spinach is undoubtedly the finest variety introduced in recent years. The leaves resemble Long Standing, but are more crumpled and dark green. This variety generally stays in good condition a week or two longer than any other kind.

IMPROVED THICK LEAVED. This variety grows very rapidly and forms a cluster of large slightly crumpled leaves of deep green color. Quality very excellent.

BLOOMSDALE SAVOY. Leaves thick, heavy and much savoyed or crumpled. Quality fine and yield is very good, surpassed.

PRICKLY WINTER. This is one of the best of the market varieties owing to its extreme hardiness. It bears many large, smooth, arrow-pointed leaves. As a winter or very early spring variety it is un-

NEW ZEALAND. A very productive variety that will stand repeated cuttings during the hot, dry weather of summer. It grows well on land that is too poor to grow common spinach. The seed of this variety is large and very hard and should be soaked in water for several hours before planting. Pkg. 10c; oz. 25c.

Tampala

Tampala is so different in flavor to other vegetables used as "greens" that it is difficult to compare it to any of them. The leaves are cooked, prepared and served like spinach, but it is better than spinach in many respects. Its flavor is less irony and less puckery than spinach.

Tampala is easy to grow and does well in hot weather and keeps on producing all summer. One sowing usually produces enough greens for the season.

Sow seed outdoors any time after the ground becomes warm. Space rows 2 ft. apart and thin out or transplant 2 ft. apart in the rows. Use the 4 or 5 inch tips of each branch and repeated cuttings may be made as new leaves and stems grow. Pkt. 15c; 2 pkts. 25c.

Protect Radishes

Use NAPHTHALENE or MAGOTITE

About Once a Week.

Squash

Vining, 1 oz. to 100 ft., 4 lbs. per acre.

Bush, 1 oz. to 100 ft., 4 to 6 lbs. per acre.

CULTURE—Seeds should be planted about the middle of May, in hills 4 feet apart for bush varieties, and 10 feet apart for the running sorts. Put 12 to 15 seeds in each hill; afterward thin out, leaving 3 or 4 of the best plants.

PRICES on all Squash—Pkg. 10c; oz. 20c; ¼ lb. 60c; 1 lb. \$1.80.

★**GOLDEN DELICIOUS.** A golden skinned form of the regular Delicious that is equally fine in flavor, being fine either for baking or pies. Flesh and skin are rich golden orange with no trace of green. Flesh is very thick, fine grained and sweet. Skin is thin and the keeping qualities are excellent. An ideal canning sort as well as a heavy cropper.

★**DELICIOUS.** A fine green winter squash somewhat smaller than the Hubbard. Heart-shaped with thin rind and thick flesh of delicious flavor.

★**GREEN HUBBARD.** This is the best known of all Hubbards. The skin is dark green and rough. The flesh is thick orange colored and very excellent in quality. For many years it has been one of the standard market sorts and probably will remain one of the biggest sellers of any squash.

MARBLEHEAD. This is one of the best of the commercial sorts. It resembles the Green Hubbard somewhat in size and shape. The color is a bluish-gray and the flesh bright creamy yellow; fine grained, dry, sweet, and of a delightful flavor. An excellent keeper for winter use.

BANANA. A smooth grayish - green squash about 2 feet in length. The quality and flavor are good. As a keeper it has few superiors.

★**GOLDEN TABLE QUEEN.** A golden strain developed from Table Queen, but with a little thicker meat, and excellent quality for the table when baked. May also be used as a summer squash when the fruits are 2½ to 3 inches long.

★**TABLE QUEEN.** Also called Acorn. A small squash about 7 inches in length. It matures early and keeps well. The quality is fine. Excellent for baking.

EARLY WHITE BUSH. The earliest summer squash. Very pretty, scalloped and very productive.

LARGE SUMMER CROOKNECK. An excellent kind for family use or for market. Fine buttery flavor, prolific and large.

ITALIAN VEGETABLE MARROW. This is one of the earliest of all summer squashes. It may be eaten when only 6 to 8 inches long, but is good much larger. The young fruits are delicious fried as well as cooked in other ways.



Spinach, Bloomsdale Savoy



Acorn

TOMATOES



Early Varieties for the Northwest

CULTURE—Sow tomato seed in a hot bed or in a shallow box in the house, allowing 6 to 8 weeks to produce plants large enough for setting outdoors when the weather becomes warm. Sow in rows 3 in. apart and cover with $\frac{1}{4}$ in. of soil. When plants are about 2 in. tall, transplant to stand 4 in. apart each way, or pot singly in 3 in. pots. Plant outdoors when all danger of frost is past. Plant in rows 4 ft. apart and 3 or 4 ft. apart in the row. A pkt. of seed will produce about 200 plants and 1 oz. 2000 plants.

JUBILEE is a new orange yellow tomato that compares favorably with the best of the standard red varieties in shape, smoothness, quality and solidity. Fruits are large, bright golden orange, globular, heavy, full flavored and are really delicious. Pkt. 15c; $\frac{1}{2}$ oz. 60c; 1 oz. \$1.00.

EARLY CHATHAM. A very early small vine variety bred especially for our Northwest climate. The vine is small and open. The fruit is of medium size, red, smooth and prolific. This is the earliest tomato we have ever grown. Sold in packets only. Price, 15c each.

STOKESDALE. This is an outstanding variety. It matures along with Bonny Best, and is well adapted to our Northwest climate. The fruit is medium large, smooth, almost globe-shaped, with solid flesh of fine flavor. Color is bright scarlet throughout. Vines are spreading and open, but with sufficient coverage to protect the fruit. They are very productive. Pkg. 10c; $\frac{1}{2}$ oz. 35c; oz. 65c.

Salsify

$\frac{1}{2}$ oz. to 100 ft., 7 to 8 lbs. per acre.

CULTURE—Salsify succeeds best in a light, well enriched soil which should be stirred to a good depth. Coarse and fresh manure should be avoided, as it will cause the roots to become irregular and branched. Sow early and quite deep, giving the general culture recommended for Parsnip.

WHITE FRENCH. A white carrot-shaped root that makes delicious soup, resembling oysters in flavor; easy to grow; good all winter and late in spring; can be left in the ground all winter. Try it. Pkg. 10c; oz. 35c; $\frac{1}{4}$ lb. \$1.00.

★**BREAK O' DAY.** This is the finest tomato we have ever raised and among the earliest. The fruits are large, smooth and firm. The quality is excellent, flesh thick and meaty. Vines are open which permits ripening of the fruits. Pkg. 10c; $\frac{1}{2}$ oz. 35c; oz. 65c; $\frac{1}{4}$ lb. \$1.75.

EARLIANA. An early and very prolific medium-sized bright scarlet tomato of great solidity and fine flavor. Vines vigorous and hardy, yielding and ripening well for use. Pkg. 10c; $\frac{1}{2}$ oz. 35c; oz. 65c; $\frac{1}{4}$ lb. \$1.75.

★**SCARLET DAWN** (All America Gold Medal Winner). This new tomato promises to be one of the finest sorts for use in the Northwest. In our trials it was not only early, but seemed to be exceptionally robust in growth. The fruits medium large, thick walled, globular, smooth and bright scarlet ripening clear to the stem. Equally desirable for the home garden, shipping, or canning. Pkg. 10c; $\frac{1}{2}$ oz. 35c; oz. 65c.

JOHN BAER. An extra early variety of great merit. Fruits nearly round, firm, smooth and fine quality. It is unsurpassed either for home garden or for market. Pkg. 10c; $\frac{1}{2}$ oz. 35c; oz. 65c; $\frac{1}{4}$ lb. \$1.75.

RED PEAR. Used for preserves and to make "tomato figs". Fruits bright red, distinctly pear-shaped and of excellent flavor. Our stock is the true small pear-shaped. Pkg. 10c; $\frac{1}{2}$ oz. 35c; oz. 65c.

YELLOW PLUM. Small, plum-shaped, early, very prolific. Most excellent for sweet preserves. Pkg. 10c; oz. 70c.

YELLOW HUSK or GROUND CHERRY. A small-fruited variety used almost exclusively for preserves. Pkg. 10c.

Sunflower

MAMMOTH RUSSIAN. Sunflower was at one time raised extensively for poultry food and while still used to some extent it finds its main use as a stock food. Many dairymen find it excellent for silos either alone or mixed with field corn. Oz. 5c; $\frac{1}{4}$ lb. 10c; 1 lb. 35c; 5 lbs. \$1.50; 10 lbs. \$2.50.

Tobacco

CONNECTICUT SEED LEAF. This variety is hardy and best suited for this latitude. Excellent for smoking, also for making liquid spray for killing insects. Pkg. 10c; $\frac{1}{4}$ oz. 20c; oz. 60c.

Turnips

1 oz. to 100 ft., 2 to 3 lbs. per acre.

CULTURE—For main crop, sow in open ground from May to July; for Winter use, during July and August. Set out in rows $1\frac{1}{2}$ feet apart, allowing a space of 6 inches between the plants.

PRICE—Pkg. 10c; oz. 20c; $\frac{1}{4}$ lb. 45c.

★**EXTRA EARLY MILAN.** Earliest of turnips. Quite flat, small leaves and small tap-root, with bulb 3 or 4 inches in diameter; bright red and purple above ground and clean white below, making it very attractive in the market.

PURPLE TOP STRAP LEAF. The old standard flat fall turnip.

★**PURPLE TOP WHITE GLOBE.** A valuable sort for either table use or stock feeding. Roots globe-shaped, white and purple top; flesh white; firm and tender.

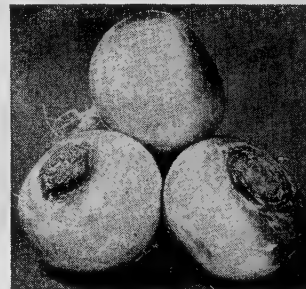
YELLOW ABERDEEN. Very hardy and productive; a good keeper; globe-shaped and a very fine quality turnip.

WHITE EGG. Large, early sweet, good, smooth, egg-shaped.

COW HORN. Also called Long White. The root of this variety grows 12 to 16 inches long and about 3 inches thick at the shoulder. The flesh is mild and sweet and is suitable either for table or stock.

LONG YELLOW BORTFELD. A large heavy yielding stock turnip with a thick maggot resisting skin. A good keeper that is as hardy as rutabaga. Needs no trimming.

GOLDEN BALL. The best yellow sort for market or family use. Medium sized round and smooth. Skin and flesh yellow. Good winter keeper.



Turnips, Purple Top Strap Leaf

Rhubarb

1 oz. to 100 ft., 3 lbs. per acre.

VICTORIA. Is very large, standard kind; seeds sown this year will yield stalks next year. Pkg. 10c; oz. 35c; $\frac{1}{4}$ lb. 35c; 1 lb. \$1.00. See page 25 for plants.

Fodder Corn

EARLY NORTHWESTERN, Smoky Dent.

The earliest dent crown grown. The kernel is red, being a cross between a red flint and a yellow dent. While this corn does not produce as great a quantity of stalk as the Minnesota No. 13, it will mature a much greater number of ears, and so is especially adapted for feeding hogs.

Prices, postpaid: Lb. 20c; 10 lbs. at 14c per lb.; 50 lbs. at 13c per lb.; 100 lbs. at 12c per lb.

MINNESOTA No. 13, Dent

This corn is the earliest and most productive of all yellow dent corn. Besides being adapted to a wider range of climate and soils than any other crop, it will produce the greatest amount of ensilage of any of the kinds now grown with success west of the Cascade Mountains. Our stock is grown from finest selected stock and carefully tested for germination.

Prices, postpaid: Lb. 20c; 10 lbs. at 14c per lb.; 50 lbs. at 13c per lb.; 100 lbs. at 12c per lb.

ANNUAL and PERENNIAL FLOWER SEEDS

ACROCLINIUM. This hardy annual, the most hardy of the so-called everlasting flowers, produces an abundance of white and rose-colored flowers during the months of August and September. Pkt. 10c.

AGERATUM. One of the best bedding annuals owing to its prolific flowering which extends over a long period. The blooms are deep blue and are not injured by rain. The color does not fade. Fine either for the garden or for cutting. Pkt. 10c.

Ageratum Midget Blue

(All America Selection). The first really dependable extra dwarf (height 2-3 ins.) ageratum that will come uniformly dwarf and true to color, which is a true ageratum blue. The foliage is fine and the plants externally smothered with flowers. Fine for rockeries or edgings. Price per pkt. 15c.

Alyssum Violet Queen

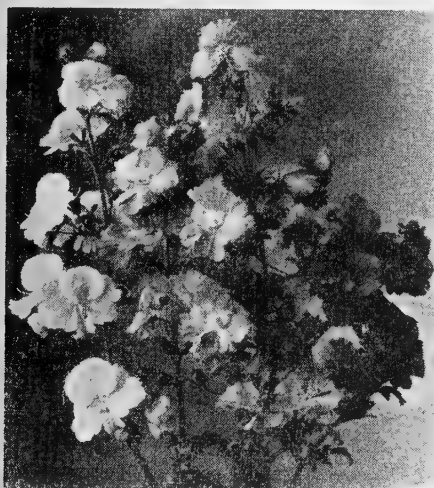
This new dwarf compact alyssum is a bright violet color which is a charming companion for the white LITTLE GEM. Height about 5 or 6 inches, making it an excellent bedding or border flower. Pkt. 15c.

★**SWEET ALYSSUM.** This is one of the sweetest of the annuals. It is very hardy and produces a succession of white flowers till it is killed by frost. Alyssum is a great favorite as a border plant. Pkt. 10c.

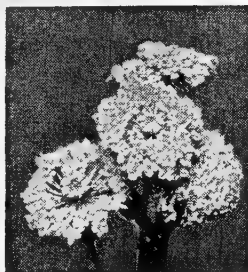
★**ALYSSUM SAXATILE.** A hardy growing perennial which will bloom the first season if the seed is planted indoors early and set outside when conditions permit. The flowers are bright yellow and borne in great profusion, making a "carpet of gold". Pkt. 10c.

AMARANTHUS (Caudatus) Love Lies Bleeding. Brilliant foliaged plants with brilliant contrasts in color, being a blend of red and green. A very rapid growing annual with long drooping crimson flower spikes. Pkt. 10c.

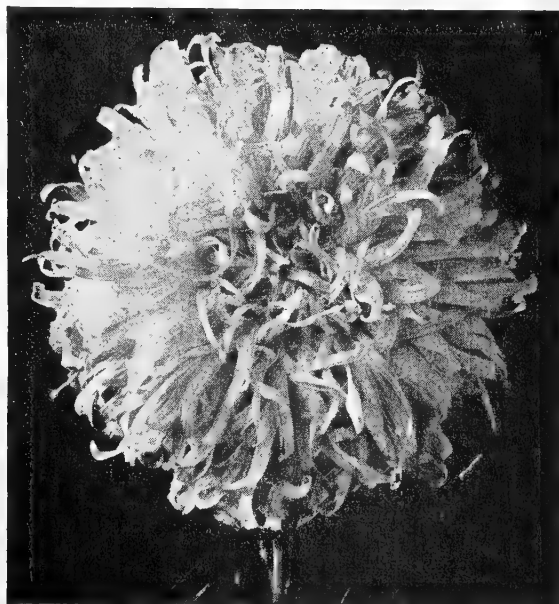
★**ARABIS or ROCK CRESS.** A dwarf perennial which produces a mass of white flowers very early in the spring. It is one of the earliest of all flowers, which makes it especially desirable. Fine for borders, massing or rock gardens. Pkt. 10c.



BUTTERFLY FLOWERS or SCHIZANTHUS. A dainty annual with finely cut foliage and many colored flowers borne in profusion. It is very hardy and of easy culture. The wide range of colors and dwarf habit makes it very fine for window boxes and border plantings. Each 10c.



Blue Lace Flower



Aster, Super Giant, Los Angeles

Asters

PRICES ON ALL
GIANTS OF CALIFORNIA AND
AMERICAN BRANCHING ASTERS

Each 10c; 6 for 55c; 12 for \$1.00.

GIANTS OF CALIFORNIA in following colors—Peach Blossom, Light Blue, Deep Rose, Dark Purple, White and Mixed.

IMPROVED CREGO—Crimson, Lavender, and Mixed.

CREGO ENCHANTRESS—Salmon Rose.

EL MONTE—Super Giant Crimson.

LOS ANGELES—Super Giant Shell Pink.

American Branching Asters

The blossoms of these asters have incurved petals and are large, double, and borne on long stiff stems. The flowers are peony-like and are sometimes known as the Beauty type. Excellent as a cut flower. A profuse bloomer. Colors: Azure Blue, Crimson, Peach Blossom, Purple, White and Mixed.

Heart of France Asters

This is undoubtedly the finest ruby red aster on the market and we have added it to our list for the benefit of those who wish a truly fine aster of that shade. The flower is large and the stem is sufficiently strong for any purpose. Per pkt. 15c.

Imbricated Pompon Asters

A most charming, rather early blooming type. The plants are of upright, somewhat compact growth, about 15 in. tall and lend themselves admirably to bedding, cutting and pot culture. The small, round, pompon flowers have a few rows of short, broad outer petals, while the center petals are quilled. Mixed colors. Price per pkt. 15c.

California Sunshine Asters

This aster is of an entirely new type. The flowers, which range through flesh, pink, carmine, lavender and violet, are inclined to be rather flat and dainty. Single or Anemone Flowered Asters have been on the market for several years, but the California Sunshine Asters are the first on strong stems of a suitable length for bouquets or florist work. Mixed colors. Per pkt. 15c.

New Aurora Aster "Golden Sheaf"

Golden Sheaf is the finest Aster introduction of 1935. A new wilt-resistant variety of the famous Aurora type. The flowers, which are of the deepest yellow of any aster yet offered, are fully double with an attractive crest-like center, of good substance, and fine depth of petal. A new type and color which must be seen to be fully appreciated. Per pkt. 15c.

"Aurora Blue"

Similar to Golden Sheaf in form but light blue with yellow center. Very attractive. Per pkt. 15c.

Giant Single Asters

A wonderful new kind of asters often measuring 3 to 4 inches across with stems 18 to 20 inches long. The flowers resemble the Shasta Daisy somewhat but come in a wide range of colors. Sold in mixture only. Per pkt. 15c.

ASTERS. All varieties and colors mixed. This mixture contains many fine sorts and colors. Pkt. 10c.

★**AUBRETIA (False Wall Cress).** Pretty dwarf-growing rock plants forming broad masses of silvery green foliage, covered with many showy flowers. Mixed colors but with shades of lavender predominating. Grows well on any soil. Perennial. (See page 24.) Per pkt. 15c.

Bachelor Buttons—Jubilee Gem

A dwarf variety, making a compact plant covered with double dark blue flowers. The foliage forms a tufted mass of bright green. Height about 12 inches. (All America Selection, 1937). Price per pkt. 10c.

BACHELOR BUTTON. This old-time favorite is still a very popular flower for cutting purposes. Mixed colors in shades of blue, pink, white and lavender. Also called cornflower. Pkt. 10c.

BABY BREATH. A feathery perennial bearing a profusion of small starlike flowers. It is much used in bouquets with larger flowers. Pkt. 10c.

BLUE LACE FLOWER. A pretty annual that blooms nearly all summer and fall. The plants are about 18 inches to 3 feet tall and bear an abundance of beautiful flowers. The flowers are lacy. Pkt. 10c.

Cactus

Good results in growing new varieties of cactus may be obtained with our seed as follows: Sow the seed in flats or pans in soil made with even parts of sand and leaf mold. Cover seed lightly and keep moist but not wet. Cover with a pane of glass. Germination period 14 to 40 days.

Seed contains many varieties including rare kinds. Pkt. each 20c.

CALENDULA. Orange Fantasy. Winner of All-America Award. A new sort with long outer petals, the inner petals short, curled and interlaced to form a heavy crest which surrounds a large mahogany bronze center. Flowers grow over 3 inches across, of deep but pleasing coppery orange, with petals edged deep mahogany-red; 15 inches tall. Pkt. 10c.

CALENDULA. All colors mixed. One of the best and showiest of the hardy annuals. It does well in almost any soil, producing an abundance of bright flowers until the hardest frost in late fall. Mixed colors and shades. Pkt. 10c.

CALLIOPSIS. One of the easiest and showiest of annuals. The flowers are of the daisy type and are produced in a pleasing variety of color markings. Fine either for flower or for cutting. Pkt. 10c.

CANDYTUFT. A hardy annual growing about 8 to 10 inches high. Flowers very fragrant. It is very easy to grow and is much used for borders and massing. Mixed colors. Pkt. 10c.

CANTERBURY BELLS. There are few flowers in the garden as hardy or as easily grown as the Campanulas. They will grow in almost any garden soil and when once started they will usually reseed themselves. Our seed contains many colors, of two varieties.

Canterbury Bells. Single mixed. Pkt. 10c.
Cup & Saucer. Calycanthema. Pkt. 10c.

Cardinal Climber

This annual is very attractive, strong and rapid climber that sometimes attains a growth of 25 feet in a single season. The foliage is fern-like and dainty. During the flowering season the vine is literally a blaze of fiery cardinal blossoms, each about 1 inch across. Per pkt. 15c.

CARNATIONS. Carnations do not produce flowers the first year unless started very early indoors or in a hotbed. Our mixture contains both the double and single varieties, and has all shades and colors. (See page 26.) Per pkt. 15c.

CELOSIA. This annual is also known as Cockscomb, and is a mixture of the plume and the cockscomb type of blooms. A wonderful mixture of shades and colors. Will transplant easily, and is suitable for pot culture or for bedding. Pkt. 10c.

CHRYSANTHEMUMS. Annual. This flower is also called Painted Daisy because of the bright colors of its daisy-like flowers. The plants are about 3 feet tall and covered with a mass of bloom in nearly every shade and color. It is very fine for cutting. Pkt. 10c.

CLARKIA. A showy annual about 2 ft. tall that blooms from July until frost. They resemble sprays of double flowering almond in various shades and colors. The seed germinates quickly and does well even on light sandy soil. Choice mixed: Pkt. 10c.

COLUMBINE or AQUILEGIA. One of the most beautiful and satisfactory of the perennials. The plant grows about 3 feet tall and produces many long spurred flowers in a wide range of shades and colors. Exceptionally beautiful in mixed bouquets. Pkt. 10c.

COREOPSIS. One of the hardiest and easiest grown of all summer blooming perennials. Plants 2 feet tall. Adapted to bedding or massing effects. Pkt. 10c.

COSMOS. Early Flowering Mammoth Mixed. A hardy annual growing from 4 to 6 feet tall. The flowers, which resemble single dahlias in shape, are borne profusely on long stems. Pkt. 10c.



Cosmos, Dazzler

COSMOS. Sensation Dazzler. This is one of the beautiful new giant early Sensation strain. The flowers are very large, from 4 to 5 inches across, with heavy fluted petals. The color is dazzling crimson. Pkt. 15c.

COSMOS. Sensation Mixed. A fine mixture of the Sensation type, which contains red, pink and white colors. Pkt. 15c.

New Cosmos Klondyke "Orange Flare"
This new Cosmos of the Klondyke type is among the best of the All-America introductions. The flower which is of fine substance and borne on long stiff stems is of a color new in Cosmos. This is a vivid orange of striking hue. Unsurpassed for cutting. Per pkt. 10c.

Double Crested Cosmos

(EARLY)

This new and improved Cosmos is one of the most beautiful of recent introduction. The center of the flower has a crest or crown which is very attractive. The outer or guard petals are similar to the single Cosmos. They bloom as early as the Early Single Cosmos. Per. Pkt. 15c.

Dahlias From Seed

Growing dahlias from seed is not only a fascinating pastime but you many originate a beautiful new variety of your own. We offer two early blooming sorts:

Finest Single and Double Mixed. All colors and varieties. Pkt. 15c.

Unwin's Ideal Bedding. A mixture of early dwarf single free-blooming dahlias in a finer array of colors. Pkt. 15c.

For Dahlia Tubers—See p. 25.

Delphinium

(Perennial Larkspur)

WREXHAM HYBRIDS. One of the finest strains of Delphinium on the market. The flowers are large and showy, the plants tall and vigorous. The color ranges from light to dark blue. Very fine. Pkt. 15c.

GOLD MEDAL HYBRIDS. A fine strain of these well-known flowers that will give satisfaction wherever grown. Pkt. 10c.

Pacific Strain Delphinium

These magnificent Delphiniums are the result of years of painstaking research and hybridizing by Mr. Frank Reinelt. The florets are often over 2 inches in diameter and borne on tall, mildew resisting stalks of great height. Expensive but easily worth the price. Price per pkt., each 25c.

EVENING SCENTED STOCKS. An old-fashioned annual that is grown for its fragrance rather than its beauty. The flower is purplish lilac and gives off an entrancing odor during the early evening. Pkt. 10c.

FORGET-ME-NOT. Very popular, beautiful biennial. Hardy enough to remain in open ground over winter. Blue. Pkt. 10c.

FOXGLOVE. This is one of the hardiest of all perennials. The flowers are tubular in shape and are borne on long spikes 4 to 6 feet in height. Foxgloves will do well either in partial shade or bright sun, and on most any kind of soil.

PRICES, mixed colors. Pkt. 10c; ¼ oz. 20c.

GAILLARDIA. Also called Blanket Flower. A hardy perennial which will bloom the first year from seed if planted early. The plants are about 18 inches tall and will bloom over a long season. Flowers are scarlet and yellow blended. Fine for cutting. Pkt. 10c.

GODETIA (Satinflower). This attractive and showy annual thrives in rather poor soil and will stand some shade. Flowers are borne profusely and are of rich satiny texture. Mixed colors. Pkt. 10c.

GOURDS. Ornamental gourds. Large and small mixed. Interesting fruits produced on vines in same manner as cucumbers. Pkt. 10c.

HELICHRYSUM (Straw Flower). This is one of the best of the everlasting. The effective double flowers in rich glistening colors make a wonderful display either in the garden or for winter bouquets. Pkt. 10c.



Carnations, Enfant de Nice

HELIOTROPE. A half hardy perennial that should be treated as an annual in this climate. It will bloom in the open garden the first year but does best if sown indoors or in hotbeds and transplanted to the open when the weather is warmer. The flowers are very fragrant. Each 15c.

HOLLYHOCKS. This is the old favorite found in nearly all flower gardens. It is a very hardy perennial and as it grows very tall is finely adapted for rows along high fences or beside buildings. For plants in separate colors see page 9.) Pkt. 10c.



Hollyhock—Annual "Indian Spring"

A new annual hollyhock with semi-double crinkly edged flowers of lovely rose-pink shades predominating. Cutting back after first blooms are past often produces a second crop of flowers. Price per pkt. 10c.

KOCHIA or SUMMER CYPRESS. This beautiful annual, sometimes called Burning Bush, forms a globe-shaped bush about 2 feet to 2½ feet in height, which resembles a cypress tree. In summer, the color is light green, but in the fall it turns carmine to blood-red, when the frosts come. Flowers are inconspicuous. Pkt. 10c.

Giant Imperial Larkspurs

This new type of Larkspur is much finer than the well known stock-flowered type and will supersede it for both florist and home garden use. The delphinium-like flowers are carried on 4 to 5 foot stems. The plant is upright and compact. A wonderful hardy annual. We offer the following colors: Blue Spire, Rose King, Pink King, White, King, Lilac Spire, and Mixed. Per pkt. 10c; collection of six, 50c.

★**LINARIA.** A dainty easily grown annual bearing small spikes, like a miniature snapdragon, of brilliant colors, including yellow, crimson, pink, purple, etc. Plants about 12 inches tall. Fine for borders or rockery. Pkt. 10c.

LINUM (Scarlet Flax). A very effective and showy hardy annual bedding plant. Long blooming period. Brilliant scarlet flowers on delicate stems about 1 foot high. Pkt. 10c.

★**LOBELIA, DWARF.** Plants small and compact and very hardy, bearing a profusion of brilliant blue flowers. A great favorite not only for borders but for window and porch boxes as well. Each 10c.

★**LOBELIA, TRAILING.** A beautiful plant for window boxes and hanging baskets. The flowers are similar to the compact Lobelia but the plants are loose and trailing. Each 10c.

LUPIN. Annual Mixed. This is a hardy free blooming annual that has been coming into popularity recently. It makes a very rapid growth and bears a profusion of long, graceful spikes covered with many pea-like flowers in many colors. Very satisfactory for massing or in shrubberies. Pkt. 10c.

Russell's Lupins

This is without doubt the finest strain of Perennial Lupins yet introduced. It was originated in England and first offered in 1938 at very high prices. The flower spikes are longer, and the flowers closer placed than any of the earlier kinds. The colors are brighter and come in a wide range of solid colors and striking bi-colors. Our seed is saved from reselected plants. Large pkt. 25c; ½ oz. 50c.

MIGNONETTE. Another old-fashioned favorite flower. No garden complete without it. Large spikes, very fragrant. Pkt. 10c.

Beautiful New Marigolds

Marigold Mission Giants

A new personality in marigolds of exceptional merit. The plants grow about 18 inches high and show much more than the ordinary amount of vigor. The plants, which are base branching, produce from 8 to 12 stems of excellent length. The blooms, which measure from 4 to 5 inches in diameter, are almost a perfect ball.

MISSION GIANT GOLDSMITH. New rich golden orange. Price per pkt. 15c.

MISSION GIANT YELLOWSTONE. New clear golden yellow. Price per pkt. 15c.

Marigold Gigantea "Sunset Giants"

A striking new sweet scented marigold that is attracting much attention on account of its size, keeping qualities and range of color, which varies from deep orange, golden orange, deep golden yellow, lemon and primrose. The blossoms, which are borne on robust plants 3 to 4 feet tall, average 5 inches in diameter on good soil. Early, large and fully 60 per cent double. Per pkt. 15c.

New Double Marigold "Guinea Gold"

A new and distinct type of Marigold, excellent for both cut flower and garden use. The flowers are a brilliant orange, double, ruffled, with loose petals. A fine addition to the Marigold family. Per pkt. 10c.

New Mammoth Mum Marigold

Great, fluffy, light sulphur, yellow blooms 3½ inches and more across. 2 inches deep, flowering in 2½ months from seed so gardeners have "Mums" for garden and cut flowers months before frost even threatens. Profusely borne on upright plants 30 inches tall. Extremely long, sturdy stems. Per pkt. 15c.

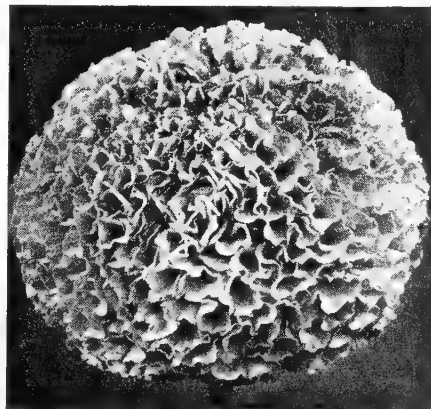
Harmony Hybrids

French Dwarf Double. All the fine features of "Harmony" but coming in a wide and varied color range, from yellow to maroon with many striped and contrasting combinations. Price per pkt. 10c.

Flash Marigold

New All-America Silver Medal Winner. Earliest of all Marigolds! The dwarf plants are completely covered with flowers all summer. Flowers are a bright combination of colors: ranging from vivid red through bronze, with a few yellow flowers to give harmonious contrast to the massed, alive brilliance of the fiery plants. Plants average 18 in. in height. Price per packet 25c.

MARIGOLD, AFRICAN DOUBLE. A fine hardy annual of vigorous growth about 3 feet tall. It is covered during its blooming season with many globe-shaped orange and lemon-colored blossoms. Pkt. 10c.



★**PUMILA or BORDER MARIGOLD.** This is a miniature Marigold, with finely cut foliage, growing about 1 foot high and being completely covered with a profusion of bright orange flowers. It blooms over a long period. Each 10c.

MORNING GLORY. Tall Mixed. A good mixture of this well-known climbing annual of rapid growth. Pkt. 10c.

Heavenly Blue Morning Glory

This is a new shade of the well known climber and will find great favor with those who wish a rapid growing vine for covering trellises and garage walls. The color is such a brilliant blue that a mass of these Morning Glories makes a wonderful display when in full bloom. Pkt. 10c.

Imperial Morning Glory

The flowers are gigantic in size and their colorings beyond description, ranging from snow-white to black purple with all possible intermediate shades and markings. Per pkt. 10c.

Nasturtium

NASTURTITIUM, DWARF. Half hardy annual. Blossoms very profusely all the season. Many brilliant colors; mixed. Needs no trellis. Pkt. 5c; oz. 20c; ¼ lb. 60c.

NASTURTITIUM, TALL. Beautiful annual climber for trellises and arbors; of easy culture; gorgeous colored flowers until killed by hard frosts. Pkt. 5c; oz. 20c; ¼ lb. 60c.

Semi-Double Gleam Nasturtiums

This new race of semi-double nasturtium needs no description as it has almost replaced the old style sorts. We offer them in the following shades and colors:

GOLDEN GLEAM. Golden yellow. Pkt. 10c.

SCARLET GLEAM. Brilliant scarlet. Pkt. 10c.

MAHOGANY. Dark mahogany red. Pkt. 10c.

MOON GLEAM. Light golden cream. Pkt. 10c.

ORANGE GLEAM. Deep glowing orange. Pkt. 10c.

SALMON GLEAM. Golden salmon. Pkt. 10c.

DOUBLE GLEAM HYBRIDS. Many shades. Pkt. 10c; oz. 25c.

"Dwarf Double Gem Mixture"

This new type of Double Gem is entirely free from runners and forms dwarf, compact, gem-like plants suitable for edging or window boxes. The range of color includes shades of yellow, orange, scarlet, crimson, cerise, maroon, etc. The flowers are sweet scented and the foliage varies from light to dark green. Per pkt. 10c; oz. 25c.

Nemesia

This is one of the best of the dwarf annuals which make pleasing masses of low growth for edging and borders for beds of tall annuals or perennials. The orchid-like flowers are often $\frac{3}{4}$ inch across and the color is various shades of scarlet, orange, rose and blue. Large flowered hybrids. Per pkt. 10c.

Dwarf Cup Flower

Nierembergia Hippomanica

One of the best of recent introductions for the border, edgings, rockery or window box. Grows 6 to 8 inches tall and covered all summer with light lavender cup-shaped flowers. It has lived through the last two winters without special care. Price per pkt. 15c.

NIGELLA (Love-in-a-Mist). Pretty garden annuals with feathery foliage in which large double charming blue and white flowers are set. Pkt. 10c.

GIANT PANSIES

MASTODON "JUMBO"

Earliest of all. These gigantic flowers are often $4\frac{1}{2}$ inches across. This mixture contains shades of orchids, blues, pinks, copper, salmon and many other colors. Per pkt. 50c.

"MASTODON MIRACLE" MIXED

A wonderful mixture of the famous Mastodon Pansies containing many of the finest novelties produced by a well-known Pansy grower. Per pkt. 35c.

TILLINGHAST "REGAL" PANSY SEED

A good mixture of large flowering sorts in a good range of colors. Per pkt. 25c.

Pentstemon

This beautiful perennial ranks with the petunia and phlox as a bedding plant. However, it is usually treated as an annual as it blooms readily from seed the first year. The flower spikes are about 30 inches tall and very brilliant. All colors mixed. Per pkt. 15c.

Petunia

Petunia — Cream Star

Light cream at the outer edges, the throat deepens to a bright golden yellow. The small, five-pointed star-like blooms are produced in amazing quantities on the dwarf plants which have a remarkable dwarf uniform habit of growth. Ideal for the dwarf border. Per pkt. 15c.

Cheerful Petunia, Dwarf Bedding

Entirely new color and growing habit. Crisp, satiny sheen on salmon-pink petals, deeper rose veining toward throat; flowers $2\frac{1}{2}$ inches and more across. Plants first grow low, spreading close to the ground, later forming a mound 10 to 12 inches high with spread of 2 feet, densely compact with no tendency to thin out, fall over or open up at center. Per Pkt. 25c.

Petunia — Theodosia

One of the finest garden petunias yet. A frilled bloom of rich rose with deep open throat of molten gold. Blooms about 3 inches in diameter. Long and continuous bloomer. One of the finest of all petunias. Price per pkt. 25c.

Petunia "Rosy Morn"

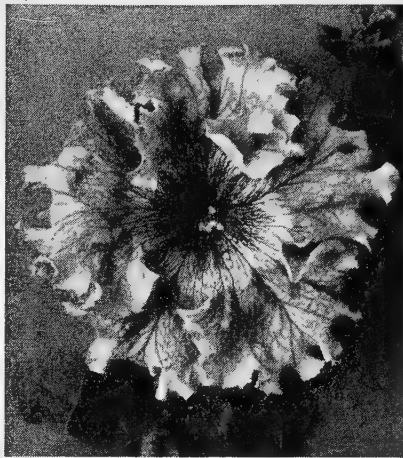
This is a single bedding Petunia that in recent years has become very popular for bedding and window boxes. The color is a soft rose pink with the throat shading to white. It is a very profuse bloomer and well liked by all who have grown it. Per pkt. 10c.

Petunia "Elks' Pride"

This is the finest of all purple Petunias and is in great demand both for bedding and for window boxes. The plant is somewhat trailing and very free flowering. The color is a vivid royal purple and very striking. Per pkt. 25c.

Petunia, Flaming Velvet

Velvety, rich, blood-red flower. The plants are semi-compact in habit, about 15 inches high and absolutely uniform. The flowers are large and borne in great profusion. Pkt. 20c.



Giants of California Petunia

Our strain of these well known ruffled petunias contains a wide range of colors and markings. Some of the blooms are so ruffled that they appear almost double. Pkt. each 25c.

Giant Double Petunia

One of the prettiest and finest strains of petunias in existence. They come in a wide range of colors and run a high percent of doubles. Price per pkt. 50c.

PETUNIA. Single Mixed. Profusely blooming; hardy. In bloom till frost comes. Easy to grow anywhere. Pkt. 10c.

★**PHACELIA.** This is sometimes called California Blue Bells. The flower is somewhat like the single Canterbury Bell, of beautiful cup-shaped formation, and a lovely gentian blue. Plants about 1 foot high and literally covered with lovely flowers throughout the summer. Very easily grown but does not transplant easily. Pkt. 10c.

PHLOX DRUMMONDI. A beautiful showy annual. All colors; mixed, very brilliant. Each 10c.

★**PINKS, DOUBLE CHINESE.** No flower garden is complete without a few clumps of this delightful annual. The flowers have a pleasing range of colors and a spicy fragrance that always makes them a favorite. Pkt. 10c.



Salpiglossis

★**PORTULACA.** Sometimes called Moss Rose. It is one of the most beautiful of the dwarf bedding plants. The cup-shaped flowers are about an inch in diameter and various shades of pink, red, yellow and white. The fleshy stems grow almost flat on the ground. Single Portulaca, pkt. 10c; Double Portulaca, pkt. 10c.

California Poppy

"Ramona Strain"

This is similar to the common form in shape and color but the petals are crinkled and fluted like crepe paper. Very fine. Per pkt. 15c.

CALIFORNIA POPPY. Mixed. A very hardy perennial bearing a profusion of cup-shaped flowers in many new and vivid shades. Will grow in almost any soil and re-seeds itself. Pkt. 10c.

Iceland Poppy

While these hardy poppies are perennials they bloom as well from seed the first year as the annual sorts. They are very graceful with neat, fern-like foliage. The flower stalks are about 15 inches tall, bearing an endless profusion of brilliant flowers that are suitable for cutting. Various shades of yellow, white and orange scarlet. Per pkt. 10c.

Red Cardinal, Iceland Poppy

This is the first real red poppy of this class to be offered. The color is a brilliant cardinal red and is a fine addition to the usual orange and yellow shades. Price per pkt. 15c.

Tulip Poppy

The Tulip Poppy is one of the most brilliant of all poppies and unsurpassed for massed planting. The flowers are 3 inches across and closely resemble a brilliant scarlet. *Gesneriana Tulip.* Very fine. Per pkt. 10c.

SHIRLEY POPPIES. The Shirley Poppy is the most beautiful type of poppy grown. The foliage has a soft hairy covering and the petals are immense and have a beautiful satin-like texture. The flowers are of many colors, there being white, pink, lavender, purple and various shades of red and scarlet. Mixed colors. Pkt. 10c; $\frac{1}{4}$ oz. 25c.

SHIRLEY POPPY — Double Sweet Briar. This double begonia-flowered poppy of brilliant cerise rose is one of the best of the new colors. Price: Per pkt. 10c; $\frac{1}{4}$ oz. 25c; $\frac{1}{2}$ oz. 45c.

ORIENTAL POPPIES. One of the finest and hardiest of all perennials. The flowers are large and showy, the petals satiny. The plants require but little care and will grow in very poor soil, but respond to good soils and fertilizers. Pkt. 10c.

RICINUS. Also called Castor Oil Plant. A tall growing plant planted for its large colored leaves which give it a tropical appearance. Fine as a hedge or to cover unsightly places. Pkt. 10c.

SALPIGLOSSIS. Also called Painted Tongue. Few flowers contribute such a wealth of bloom from summer until cut down by frost. $2\frac{1}{2}$ feet. The flowers are funnel-shaped, facing upward, and reveal exquisite and infinitely wrought veinings of either gold or silver, running throughout the groundwork of the flowers, the whole shapely flower having an orchid-like appearance. Mixed. All colors from rose and scarlet to purple. Pkt. 10c.

Salvia

16 inch. Freest and most continuous bloomer also the most uniform in habit, which makes it particularly valuable for bedding or ribbon planting. Pkt. 25c.
SCABIOSA. Large Flowering Double Mixed. These beautiful hardy annuals are in great demand. They grow about 2½ feet tall and bloom from early summer until frost. As a flower for cutting they are very popular. The flowers compare favorably with the finest hothouse carnations both in size and shape. Scabiosas display many bright and charming colors. (See page 4.) Pkt. 10c.

New Scabiosa Grandiflora Rosette

As the result of many years' selection and painstaking care, we have created a glorious new color in Annual Scabiosa. Rosette is a beautiful shade of deep rose heavily suffused with salmon. The flowers are extra large and the stems are long and stiff. This glorious, glowing new color will undoubtedly make Rosette a most popular flower for the garden and also with the florist for cutting. Per pkt. 10c.

Giant Scabiosa "Blue Moon"

Considered by many as the outstanding flower introduction of 1939. This new type of scabiosa is fully double and larger than any previous type. Color is a lavender blue, stems long and strong. An ideal cut flower. Pkt. each 15c.

Giant Scabiosa "Peach Blossom"

A fine new shade of Giant Scabiosa that makes a wonderful cut flower for the home as well as the florist. It is a great improvement over the common Scabiosa as the flowers are of enormous size and the color is exquisite. The blooms stand rain well and the season extends into the late fall. Per pkt. 10c.

SCARLET RUNNER BEAN. A pole or running bean that because of its showy scarlet flowers is much used for ornamental purposes. It is a rapid grower and makes a handsome covering for trellises. The beans are of excellent quality and are fine as shell beans. Pkt. 10c; large pkt. 15c.

Rustproof Giant Flowered Snapdragon

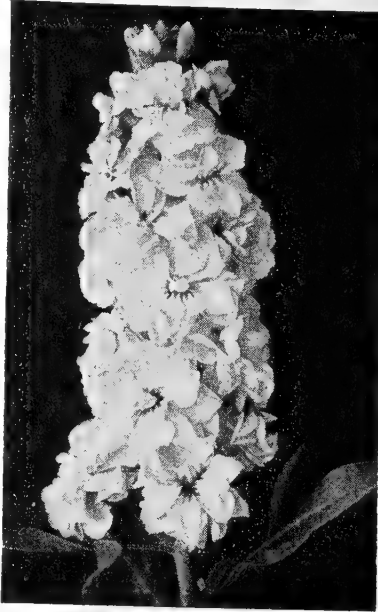
The plants of this variety are much larger than the common snapdragons, growing 2 or 3 feet tall. The flower stems are long and thickly set with large flowers. This is the largest and finest of all snapdragons. Wonderful either for massing or for cut flowers. It is a fine steady bloomer when properly cared for and fertilized. The seed we offer is almost entirely rustproof and comes in the following colors: Alaska (white), Campfire (scarlet), Canary Bird (canary yellow), Copper shades (copper and orange), Loveliness (rose pink), and Mixed. Per pkt. 10c; collection of six, 50c.

Rustproof Snapdragon—Rosalie

This lovely new color in "Snaps" was offered first in 1940. The color is a rich rose with an underlying tone of topaz or amber. Many huge flowers open at the same time. Price per pkt. 15c.

Statice

A fine annual that can be used either as a cut flower or dried as an everlasting and used for bouquets in the winter. The dried blossoms retain their color exceptionally well. Our mixture contains shades of rose, pink, blue and white. Pkt. 10c.



Giant Imperial Stock



Scabiosa, Imperial Giants

Stocks

DOUBLE TEN WEEKS Mixed. Large flowered ten weeks stock are among the finest hardy annuals we have, either for garden or pot culture. The flowers are borne in dense spikes in a great range of colors and are very fragrant. Each 10c.

Double Early Giant Imperial Stocks

We offer this year the finest double stocks that we have yet seen. They will produce plants about 2 feet tall with many spikes of immense florets. Very fragrant. This strain will produce a very high percentage of doubles when grown under favorable conditions. We offer the following colors: Fiery Blood Red, Elks' Pride (purple), Lavender, Blush Pink, Buttercup (yellow), white, and mixed. Per pkt. 15c, 3 for 40c; complete set of six, 75c.

Brompton or Winter Stocks

A hardy strain of stocks that does well during mild winters but should be in a protected location. It is of branching habit, disease resistant, robust and easy to grow. Height, 24 inches. Many colors in our mixture. Pkt. each 15c.

★**VIRGINIA STOCKS.** A charming little bedding or border annual in bright shades of red rose and white. Blooms early and for a long period. Pkt. 10c.

SUNFLOWER (Helianthus). This variety of sunflower resembles a large Gaillardia. The flowers are in various shades of yellow and orange. Free bloomer. Fine for bouquets or growing among shrubbery. Pkt. 10c.

SWEET WILLIAM. A very fine perennial for either cut flowers or for borders. It grows about 18 inches tall in good soil and will produce a wonderful display of fragrant blossoms. One of the finest and showiest of the hardy perennials. Pkt. 10c.

SWEET SULTANS. This flower is a wonderful improvement over the old well-known Bachelor Button which belongs to the same family. It is a hardy annual that produces many fine flowers in a pleasing array of colors. Pkt. 10c.

SWAN RIVER DAISY (Brachycome). A lovely free flowering annual of compact habit growing about 12 inches high. The plants are covered with a profusion of blue or white daisy-like blossoms. Splendid for edging small beds, rock gardens or for pot plants. Pkt. 10c.

Venidium

(Fastuosum Hybrids)

These new hybrids of the African Daisy form strong bushy plants about 2 feet tall with flowers about 3 inches across. The new hybrids come in a remarkable range of colors, from pure white through ivory, yellow and buff, set off by gleaming black centers with maroon markings at the base of the petals. Start in flats and transplant when danger of frost is over. Per pkt. 15c.

VERBENA. A hardy annual of easy culture. Soaking the seed in water before planting will hasten the germination. Can be used either for bedding or border plants. Pkt. 10c.

Tillinghast's Formula Mixture of Violas

This blend of bright gay colors far surpasses any mixture of violas we have ever seen. The bright shades of self colors of red, yellow, blue, and apricot combined with many shades which are blotched undoubtedly make these violas a supreme mixture. Price per pkt. 25c.

WALLFLOWER. Single mixed colors. Hardy perennial, fragrant. Blooms profusely early in the spring next year after planting and continue to bloom for several years. Pkt. 10c.

Flower Seed Mixtures

FLOWER GARDEN MIXTURE. This mixture contains a fine collection of many varieties of annual and perennial flowers, many of which are not even in our list. Very fine for waste space. Will supply many bouquets of mixed flowers. Pkt. 10c.

ROCK GARDEN MIXTURE. This mixture contains a wide assortment of annual and perennial plants, especially adapted for planting in rock gardens. Should be planted before the weather becomes too dry. Pkt. 10c.



Zinnias

Giant Dahlia-Flowered Zinnias

These Zinnias are so superior to the varieties usually offered that they beggar description. The flowers are unusually large, being from 4 to 7 inches in diameter when grown under proper conditions with good fertilizer and sufficient moisture. Many of the flowers resemble immense dahlias with their long, stout stems that make them unsurpassed as cut flowers. We offer this strain in six distinct colors and a mixture: **Crimson Monarch**, **Dream** (deep lavender), **Exquisite** (pink), **Canary Bird** (primrose yellow), **Oriole** (golden yellow), **Polar Bear** (white), and **Mixed**. Per pkt. 10c, 3 for 25c, 7 for 55c.

Zinnia—Crown O' Gold Pastel Tints

The finest large flowered Zinnia introduction since the original Dahlia Flowered. The flowers are large and showy, five to five and one-half inches in diameter. Strictly a pastel mixture, it contains a wide range of pastel shades. All of the flowers carry the characteristics Crown O' Gold markings, that is each petal of the flower is overlaid at the base with deep golden yellow, while carrying out the individual flower color at the tip. Plants grow about 3 feet tall, and flowers are borne profusely throughout the season. Per pkt. each 15c.

Giants of California Zinnias

A mutation from the Giant Dahlia Flowered Zinnia that is truly enormous in size. The blossom is flatter than the Dahlia Flowered type and the stem is not so stiff, which gives it a much more graceful appearance. Our mixture contains a wide range of colors. Per pkt. 10c.

Fantasy Finest Mixed

This new Fantasy Mixture with rounded flowers of shaggy ray-like petals is an outstanding Zinnia novelty. The plants are 2 to 3 feet high and bearing many blooms throughout the summer. The color range includes the brightest shades of red and orange as well as the popular pastel shades, pink and cream. Per pkt. 10c.

New Giant Crested Zinnia Howard's Giant

A cross between the Giant Dahlia Flowered and Scabiosa Flowered which combines the size of first with the form of the second. The crested centers are surrounded by several rows of guard petals presenting a pleasing variation from the usual Zinnia. All the usual Zinnia colors—orange, scarlet, yellow, rose, and crimson are included. A bouquet of these giant flowers is breath taking in its beauty. Howard's Crested Zinnias are a real novelty. Price per pkt. 25c.

Zinnia—Haageana Double (Mexican Hybrids)

The small flowered Mexican Zinnias have a charm all their own. The smaller flowers lend themselves to bedding and make a brilliant display and yet have stems long enough to make fine bouquets for small vases and bowls. The mixture contains many attractive colors and color combinations. Finest Mixed. Per Pkt. 10c.

Lilliput Zinnias

A new type of Zinnias that is rapidly coming into favor as a bedding plant. Owing to the fact that it is only about 12 inches tall, it is suitable either for bedding or window boxes. The flowers which are small and button-like and very double are borne in great profusion. Our mixture contains a beautiful variety of shades and is very fine for small bouquets and basket work. Per pkt. 10c.



Spencer Sweet Peas

We believe that **SIZE**, **COLOR** and **VIGOR OF GROWTH** considered this is the finest list of Standard Spencers to date. Varieties that sunburn have been eliminated as far as possible. All giant frilled. All high germination.

PRICES—Pkt. 10c; any six for 50c; 12 for 75c; collection of 24 kinds for \$1.50. Oz. 35c, any variety in this list.

ORDER BY NAME, NOT COLOR

AMBITION. Rosy lavender or orchid.
AMETHYST. Clear medium blue.
CHARMING. Deep cerise.
CHIEFTAIN. Pure satiny mauve.
DISCOVERY. Soft chamois pink.
ECSTASY. Largest blush pink.
FAIRYLAND. Light rose pink on heavy salmon ground.
FLAGSHIP. Deep navy blue.
GIGANTIC. Lovely pure white, very large.
GLENEAGLES. Light blue.
MARY PICKFORD. Cream pink, tinged salmon.
MASTERCREAM. Deep rich cream.
OLYMPIA. Immense rich purple.
PEER. Bright orange pink.
PINKIE. Deep rose pink.
PIRATE GOLD. Best salmon orange.
PERSONALITY. Coral salmon pink.
POWERSCOURT. Best true lavender.
RED BOY. Fine crimson.
SHIRLEY TEMPLE. Soft rich rose pink. Large daintly frilled flowers.
SMILES. Clear glistening salmon.



Zinnia Haageana

STYLIST. Pink cerise on white ground.
WARRIOR. Best maroon red.
WELCOME. Brilliant scarlet cerise.
 Above packets are full 10c size.
 You will be pleased with the amount of seed in each packet.

Giant Ruffled and Duplexed Sweet Peas

We offer this year the finest of the Ruffled Sweet Peas now grown and in as wide a range of colors as possible.

BONNIE RUFFLES. Salmon-pink on rich cream, creating a golden pink effect.

FLUFFY RUFFLES. Light cream pink. Pkt. 15c.

RUFFLED EXQUISITE. A new scintillating salmon cerise shading to deeper salmon. Pkt. 15c.

RUFFLED BLUE. Beautiful duplexed flowers of mid-blue, shades to deeper blue. Pkt. 15c.

RUFFLED CRIMSON. Rich satiny crimson. Very fine. Pkt. 15c.

RUFFLED ORCHID. Lavender pink with pastel mauve sheen. Pkt. 15c.

RUFFLED PRIMROSE. Rich deep cream. Pkt. 15c.

RUFFLED ROSE. Soft rich rose. Pkt. 15c.

RUFFLED SPARKLE. Brilliant glowing cerise. Per pkt. 15c.

RUFFLED WHITE. The largest and finest duplexed white yet. Pkt. 15c.

RUFFLED SPENCER MIXED. Pkt. 15c; oz. 40c.

ONE each of the above eleven packets, \$1.25.

Note—Most Ruffled Sweet Peas are light seeded and require a little warmer ground for best results.

Mixed Sweet Peas

SUPERB SPENCER. This fine mixture contains a wonderful array of colors made up of named varieties. Pkt. 10c; oz. 30c; ¼ lb. 75c.

EARLY FLOWERED SPENCER. This variety is suitable for spring planting and has the advantage of coming into bloom earlier after planting than the Superb Spencers. Good mixture of colors. Pkt. 10c; oz. 30c; ¼ lb. 75c.

SPRING FLOWERING SPENCER. This new class was All-America Selections in 1940; will bloom better under hot summer conditions than other sorts. Shades of blue, lavender, and rose-pink in mixture only. Price per pkt. 10c.

Perennial Plants—New and Old

Regular Perennial List

ACHILLEA (A-kil-lee-a). Milfoil or Yarrow The Pearl. Beautiful fern-like foliage suitable for dry exposed places. Masses of small white flowers on 2-foot stems. Spreading root habit.

ACONITUM (Ak-oh-ny-tum). Monkshood. Napellus—Stately stems, about 3½ feet tall with many dark blue hooded blossoms. Will grow in sun or moist shade. Excellent cut flowers.

★**ALYSSUM (Al-is-um).** Madwort. Saxatile—Called Carpet of Gold. A fine rock plant about 1 foot tall forming masses of grayish green foliage and covered in early Spring with masses of golden yellow flowers. Likes full sun.

ANCHUSA (An-shu-za) Alkanet. A very hardy family of perennials noted for their brilliance of color. Blooms over a long period.

Dropmore—Four foot stems with many large blue flowers.

Myosotidiflora—A dwarf sort with large rounding leaves and large heads of bright blue forget-me-not like flowers.

ANTHEMIS (Marguerite). This Marguerite is one of the most satisfactory summer blooming perennials. It does well even in rather poor soil. Produces large yellow daisy-like flowers during most of the summer. Height about 18 inches.

ARMERIA (Ar-mer-ia). Sea thrift — A low growing border or rock plant that does well even in a rather poor soil. The foliage is bright green and grows in compact clumps, from which stiff, wiry stems arise bearing dense heads of light pink bloom. They flower more or less continuously from early spring till fall.

★**ARABIS (Rock Cross).** One of the earliest of all spring flowers in this section. The foliage is gray green and resists drought well. It is very hardy. Forms dense masses of fragrant white blossoms. Suitable for rockeries or edging.

ARABIS ALPINA FL. PL. Double White Rock Cross—The flowers resemble small dainty white rosebuds. Flowers April to June. Height about 8 inches; very fine rock plant.

ASTERS, Perennial (Michaelmas Daisy). Hardy tall growing clumps of daisy-like flowers borne in great profusion.

FINEST OF THE NEWER SORTS

BEECHWOOD CHALLENGER. Early first flowering aster about 3½ feet tall. Nearest to red. Brilliant crimson red. Each 45c; 2 for 80c.

BLUE GEM. Finest blue yet. Large semi-double with yellow center. Blooms from September to frost. Each 30c; 2 for 55c.

HARRINGTON'S PINK. Finest pink yet. 4 feet tall. A very profuse bloomer. Each 45c; 2 for 80c.

ASTERS (Hardy). Species and Hybrids. Hardy upright plants with small leaves and many daisy-like flowers.

★**AUBRETIA (Oh-bre-she-a).** Rainbow Rock Cross. Neat clumps of foliage covered during early spring and summer with masses of beautiful blooms ranging from pink to purple. Fine for rockeries and crevices. 4 to 6 inches.

BABY BREATH. An airy mass of delicate misty bloom much used with bouquets of sweet peas and other bright flowers. Also used for dried bouquets for winter. Single white perennial.

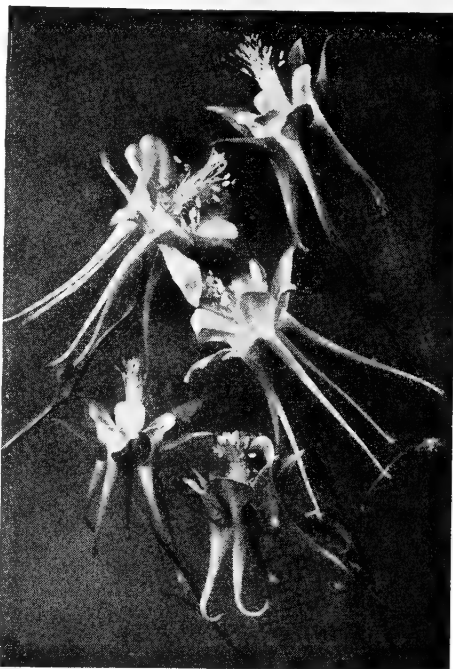
BABY BREATH, Bistol Fairy. A new variety of Baby Breath which has a much larger and much more double blossom than any other sort. Each 60c.

BLEEDING HEART (Spectabilis). This old-fashioned favorite bears long drooping racemes of graceful heart-shaped rosy red blowers. Two year plants. Each 60c.

BOLTONIA (False Chammomile). Pink flowers, slightly tinged with lavender; excellent for cutting. 4 ft. Sept.

CENTAUREA (Montana), Giant Cornflower. This hardy perennial has a large blue flower that resembles the common Bachelor's Button, except in size. Very hard.

★**CERASTIUM (Snow in Summer).** A pretty low-growing plant with silvery foliage and covered with pretty starry flowers during the summer. A fine rock or border plant.



Aquilegia (Columbine)

COLUMBINE or AQUILEGIA. One of the daintiest and prettiest of all the hardy perennials. The flowers come in late spring and early summer in a gorgeous array of shades and colors. Our plants are grown from the famous Mrs. Scott Elliott strain which is unsurpassed either in the length of spurs or for color.

CORAL BELLS (Heuchera). Many bright coral-red bell-haped flowers in graceful panicles, which give a delicate and airy effect. Suitable for rock work or bedding. Very fine.

COREOPSIS. A free-blooming plant valuable alike for the flower bed or for cutting. Flowers rich golden yellow, semi-double.

DELPHINIUM. No flower in recent years has shown a greater improvement as a class than the Delphinium. Nor has there been any plant that has outranked it in popularity. Their immense spikes and beautiful colors have made them indispensable for the perennial garden as well as for cut flowers.

PACIFIC HYBRIDS MIXED. A mixture of Pacific Strain colors. Very fine. Price: 35c each or 3 for \$1.00.

DORONICUM. A fine hardy perennial with many large daisy-like flowers of bright yellow. Blooms in May and June.

FOXGLOVE (Digitalis). We offer a fine strain of this flower that is much improved in type of bloom. The flowers are like Gloxinias in shape and color.

GAILLARDIA (Blanket Flower). A hardy and valuable perennial which produces many bright flowers on long stems, fine for cutting. Flowers are scarlet shaded to yellow. They bloom over a long period.

GEUM. Pretty and valuable plants producing many cup-like flowers on long stems. Excellent for cutting. We offer several varieties as follows:

Lady Stratheden. Double yellow. Each, 30c; seed, 10c, per pkt.

Mrs. Bradshaw. Double scarlet. Each, 30c; seed, 10c, per pkt.

HELENIUM (Helen's Flower). Hardy perennials flowering from August to October. Valuable both as a garden and a cut flower. Glowing bronzy red petals with tip of golden yellow. Three-foot stems.

HELLEBORUS (Niger). Christmas Rose. A rare and beautiful species of winter blooming plants with palmately divided leaves and large open flowers on 12-inch stems. These plants prefer the shade of deciduous trees and should not be disturbed. Blooms from November through the winter. Flowers are white, sometimes suffused pink. Each \$1.00.

HEMEROCALLIS (Hee-mur-o-kal-lis) — Day Lily. One of the oldest of all cultivated flowers, having been cultivated in Asia in ancient times. There are many new varieties and colors. We offer several of the best known.

FLAVA 36". May-June. Fragrant clear lemon yellow. Each 35c.

FULVA 36". July. A colorful reddish-orange. Each 35c.

HOLLYHOCK (Chater's Double). This fine old favorite needs no description. Our plants are grown from the finest strain of seed and will please the most discriminating. We offer the following colors: Salmon, Scarlet, Newport Pink, Sulphur, Yellow, White, and Mixed. Plants, 30c. Seed, per pkt. 15c; any color listed.

LIATRIS (September Glory). This type was selected from a large number of seedlings because of its outstanding beauty. It has proved very popular as a cut flower. The purple flowers are produced on extra long spikes during late August and September. A first class acquisition for the border and for cutting. Each 30c.

RUSSELL'S LUPINS. These new Lupins introduced last year in England are without doubt the finest ever produced anywhere. The flower spikes are exceptionally long and the colors startling in their brilliance. Many are two-toned or bright self colors seldom found heretofore in Lupins. Seeding plants. Each 35c; 3 for \$1.00.

LYCHNIS (Viscaria Splendens) — Flore Pleno or double, or Ragged Robin. An old-fashioned flower about 1 foot tall bearing large heads of brilliantly colored flowers. This variety is suitable for rockeries and bears panicles of large rose-colored blossoms. Each 30c.

LYCHNIS CHALCEDONICA (Maltese Cross). Three feet. This old favorite bears large heads of brilliant scarlet flowers. Fine for cutting or for growing among shrubbery.

PRICES of all perennials in this list, except where otherwise noted: Each, 30c; 3 for 85c; 6 for \$1.65; dozen \$3.00, postpaid.

Perennial Flower Plants

*Primroses

PRIMULA (Veris). One of the best of the hardy border plants for ordinary culture. A low growing plant with heads of cheery flowers in various shades of red and yellow. Seed, per pkt. 35c; plants, 35c each.

★**PRIMULA AURICULA.** Evergreen primrose. The hardiest of all primroses with broad fleshy leaves that usually are attractive throughout the year. The flowers appear generally in both spring and fall. They are sweet scented and come in a wide range of colors. Mixed colors only. Seed, pkt. 35c; plants, each 35c.

PYRETHRUM (Painted or Persian Daisy). A double form. These plants are grown from the finest double Pyrethrum seed obtainable and while we cannot guarantee them to come double the percentage of doubles is very high. Each, 30c; 3 for 85c; Seed, per pkt. 25c.

SCABIOSA CAUCASICA (Isaac House strain). This is a greatly improved strain of the well-known Scabiosa Caucasica. Colors range from white to darkest blue. A wonderful bloomer; 18 to 24 inches. Each, 30c; 3 for 85c. Seed, per pkt. 10c.

SHASTA DAISY. This well known daisy grows about 3 feet tall and produces many large white flowers on long stems throughout the summer. An excellent cut flower.

SHASTA DAISY. Double White. Pure white double flowers on strong, wiry stems 24 to 30 inches long. In bloom for Memorial Day. Price: Each 40c.

STATICE LATIFOLIA (Great Sea Lavender). An attractive and showy plant for borders and beds. The leaves are large and leathery. Stiff branched stems bearing large candelabra-like heads sometimes 2 feet across arise from the centers. The flowers small purple-blue and attractive are fine in bouquets and for winter use.

STOKESIA (Blue Moon). The color is a very attractive shade of silvery blue with a lilac-blue suffusion at the center. The flowers are very large, open 5 inches across. An excellent cut flower, having stems 18 to 20 inches in length. Flowers freely and is a beautiful border plant. Price: Each 35c.

SWEET WILLIAM. We can supply this old favorite in mixed colors.

THALICTRUM (Dipterocarpum) (Meadow Rue). A new form of this graceful and dainty plant that grows about 4 feet tall. The foliage is fern-like and the flower a delicate violet mauve shade. Each 35c.

TRADESCANTIA (Spiderwort). James Stratton. Deep Delphinium mauve flowers slightly shaded with rose. 16 inches. Spring and summer. Each, 40c.

TRITOMA (Red Hot Poker or Flame Flower). The early free-blooming qualities of this variety make it one of the best of the hardy bedding plants either single or in masses. On well established plants the spikes are about 3 feet tall, and the heads are a rich orange-scarlet.

TROLLIUS (Globe Flower) Ledebouri. Large buttercup-like orange colored flowers borne on 3-foot stems. A fine cut flower for wet or moist locations. It will do well on any soil that does not get too dry during the summer months. 40c each.

VALERIANA (Officinalis). Hardy garden Heliotrope. A variety with cut leaves and large heads of rose pink flowers with an exquisite heliotrope odor. Height, 3 to 4 feet.

VERONICA (Blue Spire). A delightful 2-foot border plant with long spikes of deep blue flowers borne abundantly during July and August. A good cut flower. Price, each 30c.

PAPAVER (Pa-pay'-ver) ORIENTALE

(ORIENTAL POPPY)

ENCHANTRESS—34". Huge flowers of soft lilac rose. A unique color among poppies, forming a welcome contrast. Each \$1.00.

GOLD OF OPHIR—35". This new sort opens a rich golden orange and develops into the nearest true yellow of any poppy yet introduced. A unique achievement. Each 75c.

JEANNE MAWSON—24". A grand flower shading from peach pink to deep coral rose. A very satisfactory bloomer. Each 50c.

PERRY'S WHITE—26". Petals of satiny white each with a blotch of maroon at the base. Each 90c.

WURTEMBERGIA—38". One of the very best varieties grown and certainly among the largest. Petals like bits of China silk, a bright spectrum red with small blotch. Always admired instantly. Each 50c.

PENSTEMON. Garnet. The first hardy, large flowering penstemon. It has become a perennial plant sensation. Garnet is neatly spreading in habit, and produces a succession of bloom from June until cut down by frost. Stems are 12-18" long, neatly populated by large, rich garnet colored flowers. They are fine for cutting as well as for border plantings. Each 40c.

PHYSOSTEGIA (False Dragon Head). Rosy Spire. Deep rosy-crimson color, very vivid. 3 to 3½ ft. Blooms in Sept. Very colorful.



Viola

Jersey Gem (Blue Gem). Vigorous, compact sturdy plants covered with violet-blue blooms from May till fall.

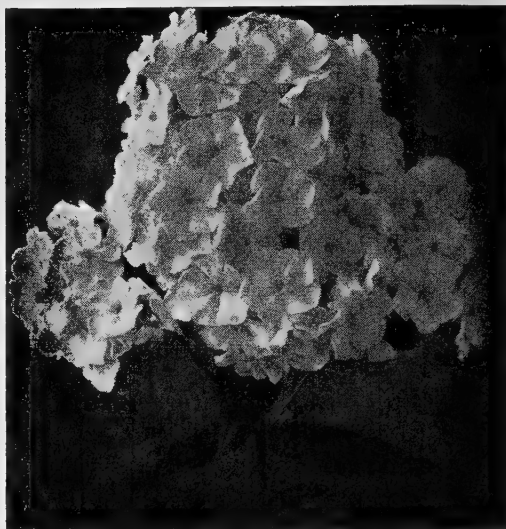
VIOLETS (Odorata). Sweet Violets. One of the most satisfactory and popular of all bedding plants. We offer three sorts:

Princess of Wales. Single violet blue. Fragrant. Each 30c.

Double Russian. Double deep violet. Fragrant. Each 35c.

Rosina. Pink and old rose. Fragrant. Each 30c.

YUCCA (Adam's Needle). A plant with creamy yellow flowers on spikes up to 6 ft. tall, with broad, swordlike evergreen foliage. It can be used either for lawn or rockery work and it stands out among all other plants.



Perennial Phlox

Phlox (Subulata) Rock Garden Varieties

An early spring-flowering type with the beautiful moss-like evergreen foliage, which during the months of April and May is hidden under the masses of bloom. Fine plant for the rockery, border, and invaluable for covering graves or where a carpet of flowers is wanted. Because of its earliness to flower, it needs to be in every rock garden.

We supply these charming rock plants in three colors, Pink, Lavender and White.

Price, each 40c; three, \$1.15.

Hardy Named Phlox

Perennial Phlox succeeds in almost any soil, but of course extra care in preparing and enriching the soil and watering plants in dry weather will result in better plants and flowers. If the first spikes of bloom, which usually appear in July and August, are removed as soon as over, the plants will produce a second supply of flowers, continuing the display until late in the autumn. Perfectly hardy.

Price—Named Phlox, all varieties, 35c each; three for \$1.00; dozen, \$3.50. Either all alike or assorted colors. All postpaid.

AFRICA. Brilliant carmine-red with blood-red eye. Large compact florets with good strong stems.

APPLE BLOSSOM. Soft apple-blossom pink. 2-2½ inch florets. Disease resistant foliage.

BRILLIANT. Fiery scarlet with darker eye.

CAROLINE VANDENBERG. A fascinating shade of lilac blue. Enormous flowers.

CHEERFULNESS. Very vigorous grower with much branched panicles of sparkling salmon-orange florets. The color does not fade in bright sunlight.

DAILY SKETCH. Large trusses of lustrous pink with crimson-rose eye. Florets measure 1½ in. across. No other Hardy Phlox produces florets so large: 3½ feet high.

F. Von LASSBURG. Very large white waxy flowers.

MRS. ETHEL PRITCHARD. Self shade of rose mauve, large flowers.

PRICES of all perennials in this list, except where otherwise noted: Each, 30c; 3 for 85c; 6 for \$1.65; dozen \$3.00, postpaid.

MISCELLANEOUS BULBS

BEGONIAS

Tuberous-Rooted

CULTURE—A popular method of culture is to provide a pan or box, and cover the bottom to the depth of one inch with sphagnum moss, placing the bulb immediately on top and then covering with still another layer of sphagnum moss. They should be kept moist and moderately warm. As soon as roots appear plant in pots in a light soil, one inch below the surface, and water cautiously until plant has shown growth, then increase the amount. Good drainage is essential.

While professional gardeners start tubers in pots indoors during early spring, the dormant bulbs may be planted 10 inches apart in the open ground during May with excellent results. They will thrive in partial shade. Planted on the north side of a house they will make a beautiful display and in those places where hardly any other flower will bloom satisfactorily.

We offer the following colors: Orange, Pink, Rose, White, Yellow, Scarlet and Mixed. Price, ea. 30c; six, \$1.60; doz. \$3.00. All large bulbs.

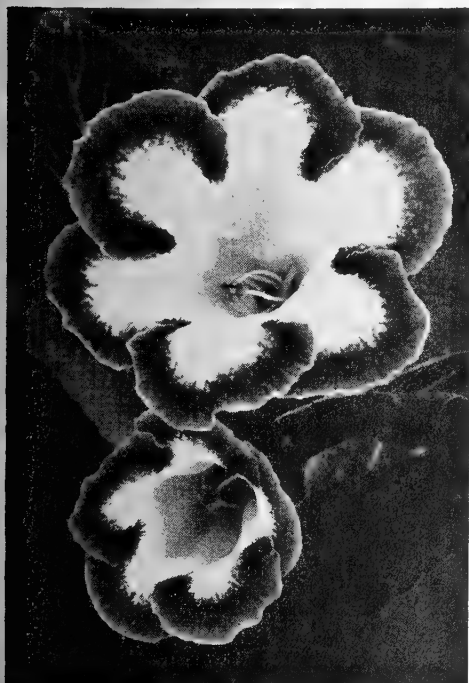


Tuberous Rooted Begonia

TUBEROSE (The Pearl. The beautiful double sweet scented flowers of pure white should be in every garden. Plant about 2 inches deep in rich soil and water frequently during growing season. Lift or protect in winter. Each 20c; 3 for 50c; dozen \$2.00.

GLOXINIAS

The Gloxinia has handsome large, round, hairy leaves and quantities of big flowers. Give rich, light soil and partial shade, until well started into growth; in watering, do not wet the leaves. When through blooming, store in any dry, warm place for re-potting next season. In this climate Gloxinias are generally used as house plants. Our bulbs are large size and when properly potted and watered will give excellent results. Mixed colors. Large size bulbs, each 45c; 3 for \$1.30; 6 for \$2.55.



Gloxinia

ANEMONE and RANUNCULUS

ANEMONE (Monarch de Caen). A magnificent robust growing strain of Poppy Anemone with immense saucer-shaped flowers of the most brilliant colors from pink to beautiful shades of blue and scarlet, borne on long stiff stems. 3 for 18c; dozen 70c.

ANEMONE (Blue Poppy). A most attractive strain of beautiful blue poppy type Anemone with large flowers. 3 for 20c; dozen 75c.

ANEMONE (His Excellency). A grand variety with Poppy type flowers of the most vivid scarlet with silver-white base and black central boss measuring 3 inches across. 3 for 20c; dozen 75c.

ANEMONE (St. Brigid). Mixed. Large semi-double flowers of the most brilliant hues and delicate shades of colors, including a good proportion of rose, pink, lavender and blues. 3 for 18c; dozen 70c.

RANUNCULUS (Tecolote Giants). By far the largest and most magnificent strain of Ranunculus. Flowers are very double, blended with semi-double; centers are usually light green. Mixture contains a beautiful range of colors. Mixed colors, 3 for 17c; dozen 65c. Separate colors, red, pink and orange, 3 for 20c; dozen 75c.

MONTBRETIAS

This delightful bulbous plant blooms from July until frost and is excellent for cutting. Bulbs should be planted outdoors during Feb.-March. They require a protection of leaves or litter if planted in a permanent location. Depth 2 inches.

EARLHAM LARGE FLOWERED HYBRIDS. They are a completely new race, being generally much taller and more robust in growth, and having flowers of great size and beauty; some measuring 3 to 4 inches. Special Mixed. 3 for 55c; 6 for \$1.00; doz. \$1.80.

CANNAS

These showy Cannas need warm locations for best results. We offer this year dormant root divisions of three of the best known varieties. These divisions should be sprouted in flats or pots during March or April and set out in beds when the soil has warmed up.

PRICES: Each 20c; 6 for \$1.15; doz. \$2.00.

KING HUMBERT. Red—4 feet. Scarlet flowers, bronze leaves; a favorite for 15 years.

HUNGARIA. Pink — 3½ feet. The best pink, with bluish green leaves. Flowers very large.

YELLOW KING HUMBERT. 4 feet. Foliage very dark green; flowers deep rich yellow, softly spotted with bright red.

Tigridia or Mexican Shell Flower

Bright, fantastically colored summer blooms lasting until frost. A most satisfactory summer bedder for full sun.

Give the same treatment as gladiolus, planting 4 inches deep and 6 inches apart from late February until May. Ordinary garden soil in full sun. Enjoys plenty of moisture.

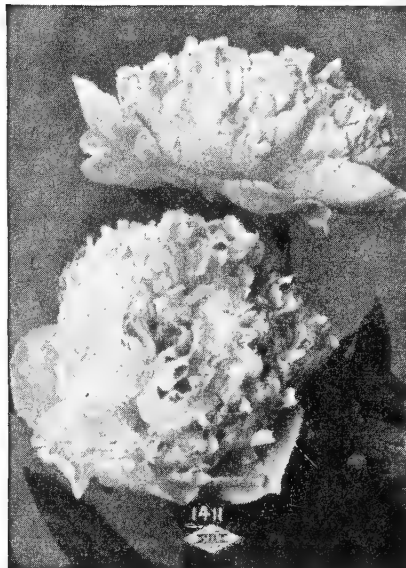
Mixed colors: 10c each; \$1.00 per dozen.

AMARYLLIS (Giant Hybrids). Easily grown, showy plants with beautifully formed lily-like flowers of immense size and the most perfect form. Colors range from the richest self-colors as scarlet, crimson and bright red, to rose, red and crimson markings on pure white grounds. Several flowers are usually produced on each spike. Plant one bulb to a pot. Mixed colors. Large bulbs. Each 50c.

FLORALIFE

No more need to worry about your cut flowers keeping! Amazing Floralife adds 3 to 5 days more life to cut flowers. No wilting, no fading. No need to change water or recut stems. Used by leading florists and at major flower shows. Order several packages of Floralife and get added pleasure from cut flowers in your own home. 10c per pkg.

FINE PEONIES



Peonies do not bloom well the first year but improve rapidly when established. Planting should be done as early as possible. Strong three to five eye divisions.

The following twelve double peonies are considered among the best in their class. All are fully double and of exceptionally high rating. Many of them are very fragrant.

Peonies are easily grown almost anywhere in ordinary garden soil, the principal thing to remember in planting to see that the eyes are not more than an inch or two below the surface. Too deep planting is the most common cause of failure to flower. The varieties here listed will all flower profusely, increasing in beauty from year to year and may be left undisturbed for 20 years.

While Peonies give best results when fall planted, in this climate they may be planted at any time during the winter up until about April 1st, with average weather.

ALBERT CROUSSE. 8.6. Fragrant, large, soft rose pink. An exceptionally fine late flowering variety. Superb either as a landscape or cut flower variety. Each 80c.

BARONESS SCHROEDER (9.0). Rose type; late. White with shadings of flesh. This is one of the finest Peonies. Its immense flowers of great substance with high chalice-shaped center are freely produced, lasting a long time. Very fragrant. Each, postpaid, \$1.00.

COURONNE d'OR. (Calot, 1873). Semi-rose type; late mid-season. This is the famous Crown of Gold. Immense, very full, imbricated ball-shaped bloom. Solid and compactly built from edge to center. Color snow-white, reflecting golden-yellow stamens that show through the petals when looking at the flower from the side. Delicate carmine penciling on edges of a few central petals. Each, postpaid, 80c.

DUCHESS DE NEMOURS. White guards with a moderately full center of light canary-yellow, deepening to pale green at base of petals. Blooms double, large and fragrant. Each, 80c.

EDULIS SUPERBA. A very early, bright, clear rose pink peony with silvery reflex that blooms about Decoration Day. One of the most valuable of the fragrant sorts. Each, postpaid, 80c.

FELIX CROUSSE (Crousse, 1881). Rose type; late mid-season. Its large, globular flowers, solid and compactly built from edge to center, are a rich, brilliant dazzling ruby-red. Exceptionally fiery. Bright and effective. Each, postpaid, 80c.

FESTIVA MAXIMA. This is without doubt the finest medium-sized white peony in existence. The enormous flowers are snowy-white, with flecks of purple on some of the center petals. Very fragrant. Each, postpaid, 80c.

THERESE. (9.8). The second highest rated Peony and considered the world's

best pink. Very large, rose-type with a delightful fragrance. Equally fine for landscape or show purposes. Mid-season. \$1.50.

MONSIEUR JULES ELIE. Mid-season, bomb type. This is the king of all peonies. The immense flowers are glossy lilac pink shading to deeper rose at the base. The entire flower is overlaid with shimmering silver sheen that makes it truly a wonderful peony. Each, \$1.00, postpaid.

SOLANGE (9.7). Flower very large, compact; rose type; outer petals delicate waxy white, deepening toward the center with shades of orange and golden brown. One of the most beautiful Peonies in existence; a strong grower and a late, free bloomer. Each, postpaid, \$1.25.

GLADIOLUS . . . THE CREAM OF THE WORLD'S BEST VARIETIES

General Gladiolus List

BAGDAD. Smoky old rose, deeper at edge of petals and lighter in the throat. Lip petals have a faint creamy blotch marked with pencilings of begonia-rose. Five to seven immense blossoms, strong spike. Each 8c; doz. 80c.

★**BARCAROLLE.** Clear large ruffled grenadine orange of an absolutely clean clear shade. No markings. Best of its color and an outstanding new glad. Each 10c; dozen \$1.00.

★**BEACON.** Clear bright rose scarlet with large cream blotch. 8-10 partially ruffled blooms borne on a straight stem. Fine cut flower. A real 100% commercial. Each 10c; dozen \$1.00.

BETTY NUTHALL. The coloring is new, a warm light coral with pale orange throat and a light feathering of carmine. The flowers are often 6 inches across, of splendid substance and placement. Each 8c; dozen 80c.

★**BLUE BEAUTY.** Large light blue, shading darker towards the edge. Flowers wide open and more vigorous than most blues. Each 10c; dozen \$1.00.

COMMANDER KOEHL. A beautiful large clear light blood red. Probably the best variety in its color. Tall, straight, massive spikes with many open at a time. Each 8c; dozen 80c.

★**CHIEF MULTNOMAH.** Reddish smoky with a cherry blotch. Very large and fine. Each 10c; dozen \$1.00.

DANNY DANTON. A fine large flower of deep ruby color with a black velvet patch in the throat. Each 50c.

DR. F. E. BENNETT. Peach red overlaid with flame scarlet. The throat is striped with ruby and white. Very large and striking. Each 8c; dozen 80c.

EARLY ROSE. Early. A splendid cut flower of blended rose shades. A prizewinner. Each 8c; dozen 80c.

GAYLY CLAD. Deep pink with a trace of orange pink overlay that adds brilliance. A very fine new sort. Each \$1.50.

GATE OF HEAVEN. Straight spike. A strong growing pure rich deep yellow. Florets large, ruffled, well placed and of good substance. Each 8c; dozen 80c.

★**J. S. BACH.** 5 ft. Early. An immense salmon orange. Highly recommended. Each 8c; dozen 80c.

KULSHAN. Tall, strong stem with up to eight open, cup-shaped florets in medium purple with small cream spots in the throat. Each 10c; dozen \$1.00.

MAID OF ORLEANS. Beautiful pure white with cream throat. Straight spike with many florets open at one time. An excellent cut variety. Each 8c; dozen 80c.

★**MAMMOTH WHITE.** A very large alabaster white with many flowers beautifully placed on a tall and graceful spike. A consistent prize winner. Each 8c; dozen 80c.

MT. INDEX. This magnificent new glad grows 5 feet tall with 2 foot flowerheads of creamy white, with a golden feathered blotch in the throat. The florets are large and about 5 or 6 open at a time. Each 25c.

★**NEW ERA.** This new Glad which sold for \$8.00 per bulb in 1937 is one of the loveliest Glads yet introduced. Winner of many blue ribbons all over the United States. Color, eosine pink blended with LaFrance pink; throat soft cream pink, white midribs. Extremely ruffled and frilled. As high as 10 florets open at one time. Each 12c; dozen for \$1.25.

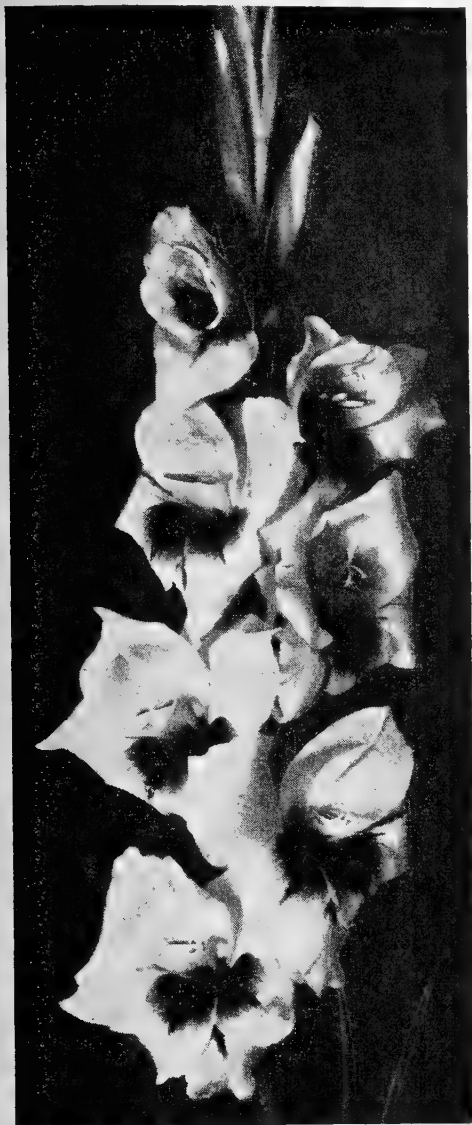
★**PEGGY LOU.** Beautiful new light rose. Mid-season. Grows about 4½ feet tall. Each 10c; dozen \$1.00.

PELEGRINA. This is considered the very best dark blue, being of a rich and intense deep violet-blue shades. Each 8c; doz. 80c.

★**PICARDY.** A truly sensational flower of delicate apricot pink. One of the finest gladioli in our entire list. Ea. 8c; doz. 80c.

RECADO. Rosy ash, flecked orange. Each 10c; dozen \$1.00.





★**MARGARET BEATON.** Pure snow white with small orange scarlet blotch in the throat. Six or more large well placed blooms open on a long flower head. A strong grower. This variety is very beautiful and has created a sensation everywhere it has been shown. It was voted the most beautiful bloom in the show. Each 10c; dozen \$1.00.

MARGUERITE. Watermelon pink with cream throat. Each 20c; dozen \$2.00.

★**MAX REGAR.** Light lavender blue. Darker throat markings with white points. Each 10c; dozen \$1.00.

MINUET. Clear, light lavender with just a hint of opalescent shading. Among the best of its colors. Each 8c; dozen 80c.

MOORISH KING. Deep velvety maroon. Very fine. Each 10c; dozen \$1.00.

MRS. LEON DOUGLAS. Giant graceful flowers 5 to 6 inches across on tall spikes. Ground color, rich salmon pink overlaid and beautifully penciled brilliant flame scarlet; pale lemon throat, slightly speckled ruby. Each 8c; dozen 80c.

RED PHIPPS. A glowing scarlet. Has the good points of W. H. Phipps, such as size, length of spike and lasting qualities. Each 8c; dozen 80c.

ROSA VAN LIMA. A very fine, large light pink. Early. Each 8c; dozen 80c.

★**SHIRLEY TEMPLE.** One of the recent high priced novelties. The flower is an immense ruffled cream of good substance, borne on tall spikes. An outstanding gladiola. Each 10c; dozen \$1.00.

TAHLAHNEKA. Something rare in yellow Glads. A clear medium gold color. Tall well placed florets, many open at a time. The best yellow we have seen. Each 50c.

TWILIGHT. A delicate pale lavender with a pale blue arrow on the lower petals. Wavy edges. Tall flower spike with many flowers open at once. Each \$1.00.

YELLOW EMPEROR. Extra fine yellow. Each 8c; dozen 80c.

SPECIAL VALUE GLADIOLUS COLLECTION

Seven fine named glads as follows: Bagdad, Dr. F. E. Bennett, Maid of Orleans, Minuet, Pelegrina, Picardy and Yellow Emperor. 5 of each one or 35 in all for \$2.40 or 10 of each one, 70 in all, for \$4.70.

FANCY MIXTURE. Doz. 50c; 25 for 95c; 50 for \$1.85; 100 for \$3.60.

PREMIER Mixed. Doz. 75c; 25 for \$1.45; 50 for \$2.85; 100 for \$5.60.

Postpaid in 1st, 2nd, 3rd and 4th zones.

IRIS—Tall Bearded

No shipment of Bearded Iris until after July 1st. Iris do best when planted during July, August and September.

ALTA CALIFORNIA (Mitchell) 45". Deep golden yellow with a bronze flush on the F. which intensifies the glowing color. All Iris judges place this variety among the very finest yellows in existence. Flowers are large and firm-textured. Each 30c.

AVONDALE. Subdued shades of violet and copper, with a very vivid orange beard and inner glow. Each 40c.

BLUE VELVET (Loomis) 42". Petals similar in shade and texture to deepest blue velvet. Each 30c.

BURNING BRONZE (Ayres) 40". A rich and brilliant blazing metallic red bronze that glows, like a burning torch. A new novelty red. A.M. Each 40c.

CALIFORNIA GOLD. Deep glittering yellow, of very large size, and surpasses everything in its color. Each 30c.

CHINA MAID. Shades of pink, golden copper, and lilac smoothly blended together. Very large size and fine form. Each \$1.00.

COPPER LUSTRE. (See back cover). 1938 Dykes Medal Winner. A new shade in Iris. It positively glows in its bright copper, gold, and pinkish tan blendings. Each 50c.

DAUNTLESS (Connell) 41". The finest low-priced red variety. For those who desire two good reds, we recommend this variety and Indian Chief. Dykes Medal winner. Each 30c.

DESERT GOLD (Kirkland) 35". A very early bloomer. An extremely large, finely formed, smooth clear yellow with brilliant beard. Fragrant. A.M. Each 30c.

DOGROSE. Deep rose-pink self on very tall wiry stems. A very free bloomer of medium size. A colorful pink and a beautiful cut flower in the house. Each 50c.

FAR WEST. One of the loveliest of all blends, a rare medley of salmon and golden sand, of coral and henna, with a soft glow at the heart. It is of bold and sturdy growing habit, the big blooms well spaced on fine stalks reaching 40 inches in height. Each 50c.

GUDRUN. Heavily textured enormous white, with petals like those of a magnolia. A warm or creamy white, with brilliant orange berad and a slight gold dust sprinkling over the entire bloom. A constant winner at the shows. Each 40c.

TREATMENT OF GLADIOLUS BULBS FOR THRIPS

To treat your Gladiolus Bulbs for thrips use Naphthalene Flakes at the rate of 1 oz. to each 100 large or 250 medium size bulbs. Cover the containers, preferably a shallow box or tray with newspaper. Perforate the paper with small holes to allow excessive gas to escape. After three weeks sift out the flakes. This treatment will kill both thrips and eggs. Do not treat the bulbs with naphthalene after the roots begin to show, as it will burn them.

Another good treatment to give the bulbs just before planting is the use of Lysol solution. Mix 4 teaspoonfuls of Lysol to 1 gallon of water. Soak the bulbs in this solution for 16 hours or more. The bulbs may be dipped and left for as long as three weeks before planting.

GRAND CANYON. An odd blend of deep tones of plum and copper and gold. About 41 inches tall, perfectly branched, with blooms of very large size, which hold up well in any weather. Each \$2.00.

INDIAN CHIEF (Ayres) 36". S. pinkish red; F. velvety red. One of the finest reds in the garden, regardless of price; a most popular sort. Each 30c.

JUNALASKA. A unique blend of red, copper, rose and gold. The effect is copper red. An early bloomer. Each 40c.

KALINGA. Huge cream self, outstanding not only as an exhibition flower but as a garden specimen as well. The broad, spreading, ivory-textured blooms generally come out in groups of three or four at the same time. Under proper conditions it grows about four feet tall. Each 40c.

LOS ANGELES (Mohr) 46". Great satiny white flowers, faintly edged with blue. Popular sort. Each 30c.

MARY GEDDES (Wash.) 33". A Dykes Medal Winner. A rich golden salmon blend, the F. stained deeper and overlaid Pompeian red. Each 30c.

MISS CALIFORNIA. 48" gigantic lilac pink, with the growing habits of Dauntless, one of its parents. While not the "pinkest" iris the shade is quite novel which is usually classed as orchid pink. A vigorous grower, a rapid increaser and perfectly hardy. Early. Each 50c.

MOHRSON. A deep violet colored seedling of Wm. Mohr, with darker veins and a rich bronzy gold beard. Each 60c.

MRS. VALERIE WEST (Bliss) 40". Most popular variety ever imported from England—a mixture of lavender, bronze and crimson. Each 25c.

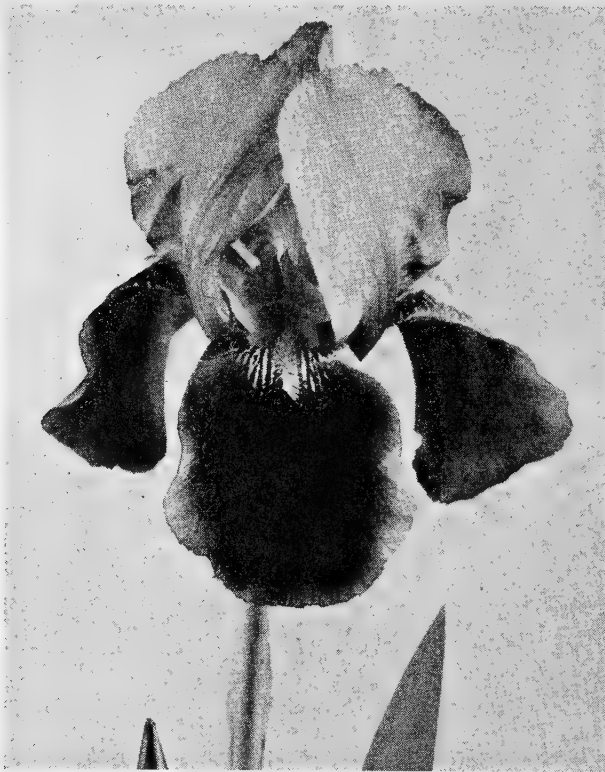
NARANJA. The first iris of huge size with a definite orange tone. Falls are ochraceous orange, with a yellow heart and the standards are bright empire yellow, the beard orange yellow. It gives a pronounced orange effect in the garden. Each 35c.

ORMOHR. One of the largest irises in existence. A seedling of Wm. Mohr. The color is pale lilac with a silvery cast, veined violet. Each \$1.50.

PRESIDENT PILKINGTON (Cayeux) 46". Very huge flower, being a lovely pastel blend of lavender, blue, buff, yellow, and rose, with striking gold beard. French award winner. Each 25c.

PURISSIMA (Mohr) 40". Pure cold white. One of the finest whites yet. Each 35c.

RAMESES (Sass) 38". A symphony in rose, pink, and buff, shading to yellow near edges. Apricot beard. American Dykes Medal winner. Each 30c.



Red Dominion

RED DOMINION (Ayres) 40". Luxurious red velvet, the shade of a glass of fine wine with the light shining through it. S. clear lustrous red, slightly frilled; F. horizontal and velvety. H.M. Each 40c.

ROSY WINGS. Winner of the Dykes medal 1939. A blend of rose and copper with excellent form, flaring falls, large size, 40-inch stem. A profuse bloomer and easy grower. To grow this iris at maximum quality, remove some of the excess bloom stalks. Do it early and the result will surprise you. Each 40c.

SENSATION (Cayeux) 34". Cornflower blue. One of the finest of all blue iris of the stalk. Each 30c.

SIERRA BLUE (Essig) 50". A soft, clear, enamel-like blue. This Iris was recently awarded the Dykes medal of the American Iris Society for 1935. It is of tall and stately habit and carries many buds to the stalk. Each 35c.

THE BLACK DOUGLAS. Large blackish purple of even tone, different in its "black" effect in that it is on the red-purple side instead of being blue-purple. Medium height, fine form, and very velvety surface. Each 35c.

WABASH. 40". Large flowers with clean white standards and bright purple falls beautifully margined. A gorgeous Iris. Each \$1.00.

WILLIAM MOHR (Mohr) 30". World's best *Oncocyclus-pogon-iris* hybrid. Large blossoms of pale lilac, netted and veined violet. Unique. Each 30c.

THE GARDEN ORCHID

IRIS, KAEMPFERI. The last of the Iris species to bloom and the most beautiful, their remarkable flowers, generally rather flat and wide, appearing in June and July. Plant in a sunny moist location.

Price—With exception noted: by mail postpaid: Each 35c; 3 for \$1.00; doz. \$3.50.

1—**BLUE WAVES.** Large semi-double grayish background overlaid with Wisteria blue and striking gold center. Second flowers are sometimes lighter shade. Very striking in mass planting. Each 45c.

2—**KUMA FUNJAN** (Excited Bear). Double intense claret red, with tufted center, the color being uniform throughout, with the exception of the deep yellow throat markings. Very handsome. Each 45c.

3—**GEKKA - NO - NAMI.** (Waves under Moonlight). Earliest to bloom, and very free. Glistening white with creamy white stigmas. Each 35c.

4—**KOKI - NO - IRO.** (Purple and Gold). Enormous double flowers often ten inches across, early and free-blooming; one of the very best varieties. Color, rich violet-purple with white petaloids tipped violet. The conspicuous golden throat extends outwards in sharp bluish-white rays. Each 35c.

5—**UCHIU.** (Universe). Beautiful, six-petaled flowers of largest size, on the longest stems. Color, coerulean blue with golden center and white halo from which radiate many clear white lines. Standards white, tipped blue. This variety covers the longest blooming season and is altogether one of the most attractive. Each 35c.

6—**ZAMA - NO - MORI.** Larger than a majority of varieties, although only three-petaled; one of the daintiest and most delightful of the delicate toned kinds. White, with a heavy azure blue zone; short white standards margined blue. Each 35c.

7—**MAHOGANY.** Large, double flowers, among the latest to bloom. Velvet-toned, deep mahogany-red; the erect petaloids prettily crested. Each 45c.

8—**ISO - NO - NAMI** (Shallow Waves). A magnificent broad-petaled variety; one of the largest flowered, and the latest to bloom. Color a nebulated suffusion of rose and coerulean blue over gray, deepening toward the gold flushed center of rosy lilac. Each 35c.

DAHLIAS

Form of Flower—(FD) Formal Decorative, (ID) Informal Decorative, (C) Cactus, (SC) Semi Cactus, (B) Ball or Show, (P) Peony.

Dimensions—After each listing, numbers such as 6-8 5 appear. The 6-8 means that the flower will grow from 6 to 8 inches in diameter, and the last number such as 5 means the height the plant will grow in feet.

Culture—Plant 2 or 3 feet apart in holes about 4 to 6 inches deep, laying the bulbs flat with the eye uppermost. Never stand bulb on end. Soil must be well worked and kept cultivated until bloom buds appear, after which keep the surface from crusting. After the young plant appears above the ground, keep the soil moist, but never water before the plant is above the ground as this may cause them to rot or damp off. Never allow fertilizer to come in contact with the bulb or plant. Allow only one shoot to grow and disbud for large blossom and long stems.

Orders for Dahlias are booked as received, and will be shipped from April 15 to May 15. Dahlias can be planted at any time from about April 20 to June 1. We would appreciate it if you will say we may substitute with an equal or better variety if the one ordered is sold out.

AGNES YOUNG (ID) 6-8 5. Pleasing color of red with gold tips, best of stems, a very striking flower. Each 50c.

AUDREY (FD) 8-4. Blend of old rose, mauve, pink and gold. Each 50c.

BETTY ANN (ID) 6-12 4. Fuchsia purple with suffusion of yellow at base of petals. Each 50c.

BETTY COLTER (ID) 8-12 4. Salmon red shading to old rose at the base of the petals, the stems are fine, and the plant covered with blooms at all times. 50c.

BLUE RIVER. Large French violet. Each 50c.

BOBBE DEANE (FD). This dahlia produces the finest of flowers; it has never been defeated in competition; color is maize yellow overlaid gernaum pink. 5 to 6 feet. Each \$2.00.

BRIDESMAID (FD) 5-7 6. Lavender pink lighter at base, long stiff stems and is one of the best for cutting. Each 50c.

CAVALCADE (FD) 6-10 7. Old rose, like Jersey Beauty, in form. Each 50c.

CHARLES MASTIC (FD) 8"-4". A one-tone bloom of a rich golden orange that in some seasons shows a pinkish cast. An especially fine cut flower. Each 75c.

CLASSMAN (ID) 8-10-5. Large flowers of cream yellow, lavender and purple. Each 50c.

COLLEEN MOORE (FD) 6-6. Bronze yellow bloom lifts high from stem. Each 50c.

CORNELIA BRYCE PINCHOT (ID) 10-5. Shaggy burgundy blooms. Very wide curling petals. Each 50c.

DAD SMITH (FD) 5-7 5. This one has been a winner all over the world and always gets the blue ribbon. We feel that it is the best in its type and so will you. Soft red heavily edged with golden yellow. In the late fall the red will be almost out of the flowers. Each 50c.

DAISY TURNQUIST (ID) 5-5. Rose pink, salmon and orange blend. Each 50c.

DORA MILLER (FD) 8-12-5. Old gold with suggestion of orange. Each \$1.50.

ELLEN WORTHEN (SC) 8-14-5. Salmon pink. Each 50c.



ELINOR FISH (FD) 8-12 6. A wonderful flower of a deep red, finest of stems to hold gigantic flower high above the foliage. Each 75c.

ELITE GEM (C) 6-6. Pink petals with old gold at the base. Keeps well. Each 75c.

FRANCOTT (C) 6-8-4. Magenta tipped white. Each \$1.00.

JANICE WALKER (FD) 4-6 7. A fine cut flower of light purple. Each 50c.

JOSEPHINE G (ID) 6-8 5. Bright rose pink tipped gold at base of petals. 50c.

KATHLEEN NORRIS (ID) 8-10 5. Still a favorite in the large pinks. Each 50c.

KENTUCKY COLONEL. Lavender pink, white at base. Each 50c.

LILLIAN NOSER (FD) 8-12-5. Lavender pink, very large. Each \$1.00.

MABEL ARUNDEL (FD) 7-5½. Lilac, apricot and gold blend. Strong stem. Each \$1.00.

MARGARET IVY (SC). Apricot and orange. Blooms 6 to 8 inches. Each \$1.00.

MAY WARNER (FD) 6-8 4. Silver and pink. You will be proud when you grow this one. The flower that everyone loved that came to our gardens. Each 50c.

MISS PUGET. Warm buff with suggestion of pink. Blooms 8 to 10 inches across. Each 50c.

MRS. F. F. POWELL (FD). Spanish. Scarlet. Each 50c.

MUNCHAUSEN (FD) 5-4. Bright stick candy red, tipped with white. Each 50c.

PRINCE OF PERSIA (ID) 8-10 6. Bright cardinal red, deep flowers held facing on long stiff stems. Each 50c.

PURPLE MANITOU (FD) 4-6 3. A very good purple flower for cutting. Each 50c.

ROCKLEY MOON (FD) 7-5. A clear sunshine yellow with rounded tight center and large round florets. Each 50c.

ROUGE BOUQUET (C) 6-8 6. Rouge red with orange at base of petals. Each 50c.

RUTH HELEN (SC) 7-9 5. A beautiful golden yellow. An improved Golden Emblem. Each 50c.

ROYAL PENNANT (ID) 6-8-4. A large royal purple. Each 50c.

SALBACH'S WHITE (FD) 6-8 5. A very good white. Each 50c.

THOMAS A. EDISON (FD) 6-9 4. Royal purple, finest of stems. A wonder. Ea. 50c.

SINGLES, MINIATURE, COLLARETTES and ORCHID. Each 50c, except where noted.

BETTY BERNEY (Min. FD). Brilliant scarlet with pointed petals.

BOB HARRIS (Charm). Claret red with a white center stripe. This is gay!

BO-PEEP (Min. FD). Rich, violet purple bloom balls back.

CORINE (Duplex). Spanish scarlet.

DAWN (Single). Amber buff.

DOT. Orchid. 3½-4. The surface of the long petal is a silvery white shot with the rose fuchsia of the reverse and deepening to fuchsia on the roll. Stems are exceptionally long and strong.

DREANA DARLENE. Orchid. 3½-4. About a third of the surface of the tightly involute petal shows and is old gold with the tomato red of the reverse blushing through in the petal folds. Each 75c.

FAIRY (FD). Lavender pink.

FUGA (Col). Tomato red with red collar.

GAY FEATHER (Single). Dazzling red.

HELEN HERRICK MALSED (Min. Col). Almost black Spanish scarlet.

MRS. STEPHEN CONWAY. Small maize yellow dahlia shaped like a cosmos. New type. Foliage resembles holly.

ORA FRIEND (P) (Min.). Old gold and apricot. Blooms 2 to 2½ inches.

PATRICIA MALONEY (FD). Apricot and warm buff suffusion.

PAT DELSMAN. Orchid. 3½-4. The silvery surface of the tightly involute petals shows only in a halo around the disc ray. The reverse of the staghorn petals is a beautiful shade of purple with a rosy cast. Each 75c.

RENEE (ID). Straw yellow to a warm buff with a suggestion of pink.

SHIRLEY GORGEN (Min. Double). Delicate peach-yellow.

SKIPPER. Col. 3-6. This very unusual dahlia is a silvery white splashed with rose pink and lavender. It has a double row of white petaloids as long as the florets, giving the bloom an exquisitely graceful and feathery appearance. Both petals and petaloids show green gold at the base. The stems frequently grow three feet long. Each \$1.50.

SPARKS. Single. 3-5. So named because the round wide petals are the flame and yellow orange of sparks from a spitting wood fire.

TWINKLE. Min. Single. 2-2. A dainty wee creamy petaled flower whose florets have a delicate pink blush. Holds up well in arrangements.

VELMA SALA. Min. 3-5. A charming old rose and citron yellow suffusion. The well formed flower is very formal with petals that are evenly placed.

VIVIAN. Orchid. 3½-4. A dark poinsetta red of one shade throughout and with petals loosely involute. A pretty and graceful little flower with very long stems. Each 75c.

WINE DROP (FD). Wine red with a purple cast.

All of the miniatures have the best of stems and the flowers of each face up or out. All are the finest of cut flowers.

POMPON DAHLIAS

30c Each.

BABY. White, flushed lavender.

BANTAM. Bright red.

DAINTY MISS. White, flushed pink.

ELISABETH ANN. Yellow edged red.

HAZEL DELL. Clear pink edged cerise.

HELEN ANITA. Lavender pink with white eye.

JOE FETTE. White.

LITTLE DAVID. Orange red.

LITTLE DORRIT. Deep purple.

LITTLE JENNIE. Yellow flush.

LITTLE SNOW WHITE. White.

MARY MUNNS. Fuchsia with orchid sheen.

MINNIE MELLIS. Orchid rose.

ROSALIE. Cream.

Vegetable Plants

(Postpaid)

CELERY—Per 12, 25c; per 25, 45c; per 100, \$1.50.

White Plume. Early plants from hotbed.
Golden Plume. Early plants from hotbed.
Utah. Early plants from hotbed.

ASPARAGUS ROOTS (by mail postpaid).
Giant Washington. 1st to 4th Zones.

Size	Dozen	50	100
3 year	\$0.75	\$2.00	\$3.50

CAULIFLOWER—Per 12, 25c; per 25, 45c; per 100, \$1.50.

Early Snowball. Hardened plants.
Late Plants (after June 15).

CABBAGE—Per 12, 25c; per 25, 45c; per 100, \$1.50.

Jersey Wakefield (wintered over plants in season).

Copenhagen Market.

Late Flat Dutch.

Danish Ball Head.

HORSERADISH ROOTS. Three for 25c; dozen, \$1.00; 100 for \$7.00.

RHUBARB CUTTINGS. Strawberry. Ea. 15c; dozen, \$1.50.

Notice. All plant orders will be booked when received and mailed at the proper time for planting. We cannot guarantee delivery on plants booked owing to the uncertainty of growing conditions.

Four Fine Carnations

These carnations are larger and finer than the seedling carnations offered on page 14 and are grown only from cuttings. Fine for either greenhouse or garden use.

MY LOVE. Free blooming bright rose pink.

PINK SPECTRUM. Large clear pink, very fine.

RED SPECTRUM. Massive bright scarlet. One of the best.

PATRICIAN. Fine large fringed blooms of pure white. Price—Each 30c; Collection of Four, \$1.00; dozen, \$3.00.

CARNATION PLANTS. Seedlings grown from the finest strain of carnation seed obtainable. Mixed colors. Will bloom this year. Per doz. 50c.

Bedding and Porch Box Plants

FUCHSIA. Graceful plants with many dainty drooping brilliantly colored blooms. Single. Pink. Pink with purple bell. White with pink bell.

FUCHSIA, Trailing. Red with purple bell.

ICE PLANT (Mesembryanthemum). Thick leaves, plant drooping. Flowers pink.

HELIOTROPE. Flowers violet purple and very fragrant.

GERANIUM. Finest of all bedding plants in brilliance of bloom and hardiness.

Double Sorts:

Edmund Blanc. American Beauty shade.

Fiat. Intense dark salmon pink.

Light Pink Cheer. Fine light pink.

Michell's Sensation. Brick red.

Radio Red. Intense deep scarlet.

Single Sorts:

Fire. Brilliant red.

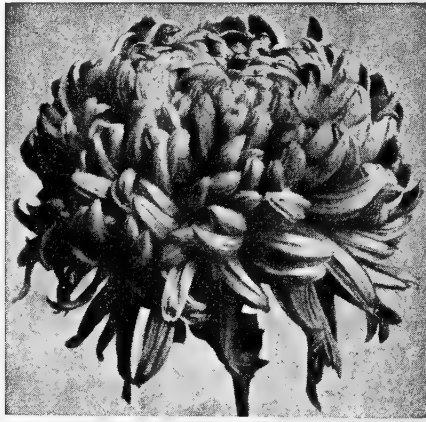
Gertrude. Clear pink.

KAVOLESKI. Brick salmon-red.

Mrs. E. G. Hill. Soft salmon-pink.

LANTANA. Dainty plants 12 to 18 inches tall, bearing a profusion of bright two-toned flowers. We have them in two colors: Salmon and Orange.

Prices, Postpaid—Any plants listed above: Each, 35c; 3 for \$1.00; 6 for \$1.90; 12 for \$3.50.



Chrysanthemum

Hardy Garden Chrysanthemums

NOTICE! Chrysanthemum Plants will be sent from May 15 to June 15.

ANGELO. Medium large clear pink, a free bloomer.

BRONZE EARLY BUTTERCUP. Bronze with gold reverse. One of the best. Aug.

CRANFORD CREAM. Cream shading to primrose in center. Sept.

CRIMSON BUTTERCUP. Crimson with buff shadings. Very free flowering. Aug.

EARLY ACE. Golden chestnut, 5 in. incurving bloom, strong stems. Sept.

FREDA. A beautiful bright silvery mauve-pink, with large flower and long stem. Sept.

GOLDEN DOME. Golden yellow, slight overlay of orange bronze. Sept.

GOLD STANDARD. Bright golden yellow, immense blooms. Early

GRANNY SCOVIL. Large fluffy flowers of warm coral bronze. Early.

JEAN HARLOW. A bright golden yellow with semi-incurved form. Aug., Sept.

JOHN BAXTER. Fine bright bronze flower 5 in., splendid form. Sept.

MRS. JOHN FINLAY. Bright yellow, 6 in. reflexing blooms; strong stems. Sept.

NELLIE KLERIS. Lovely rose pink. Very fine.

REVELLER. Large flower of Indian red color, very fine. Sept.

ROMANY. Rich glowing red with carmine and bronze tones. Full double. October.

ROSE PRINCESS. Salmon rose with a basal flush of gold. A fine large flower. Sept.

ROSE GLOW. A raspberry-rose color which shades to an opalescent rose, semi-double flowers, 2 in. across.

WHITE FROST. Large incurved white. A magnificent flower. Oct. Prices: 35c each; 6 for \$1.85; doz. \$3.50.

Cultural Suggestions for Chrysanthemums

Plant in a sunny location, in any good garden soil with good drainage. If soil is too heavy, mix coarse sand, leaf mold, peat moss or well-rotted manure to a depth of 12 to 18 inches. Plant firmly at same level as growing before. Do not plant too deeply. It is a good idea to sprinkle a little coarse sand or peat moss on surface after planting.

May and early June are the best months for planting. Space the plants about 18 inches apart and water well. Do not let plants suffer for lack of water. When the foliage shows any sign of drooping or getting hard, it is a sure sign that the plant is thirsty. Water at the root and do not wet the foliage if it can be avoided. The best time to water is in the early morning or evening. Water thoroughly so that the water will penetrate to the root where it is needed. If the soil dried up too fast, it may indicate a lack of humus; in which case a top dressing of peat moss or well-rotted manure should be given.

Pansy Plants

GIANT PANSY PLANTS. Fine, large plants grown from our "Regal" strain. Mixed colors. Per doz. 90c; 2 doz. \$1.75; 50 for \$3.40.

LAWN GRASS

Skagit Brand Lawn Grass

We believe that this is the finest mixed lawn grass that is on the market today. Only the best grasses, both as to purity and germination enter into it. A wonderful lawn grass for those who demand the best.

Price per lb. 90c; 5 lbs. for \$4.35; 10 lbs. for \$8.00, postpaid.

Premier Lawn Grass

This mixture contains nothing but the best of the fine leaves, non-bunching grasses, such as Creeping Bent, Fescues, etc., and has few superiors for the home lawn or golf course. Contains no white clover.

Price per lb. 80c; 5 lbs. for \$3.75; 10 lbs. for \$7.00, postpaid.

Fancy Lawn Grass

This mixture is the same fine lawn grass that we have sold for years and contains White Clover in addition to the regular grasses.

Price per lb. 70c; 5 lbs. for \$3.25; 10 lbs. for \$6.00, postpaid.

Economy Lawn Grass

A low priced lawn grass mixture that will give excellent results. It does not contain as many fine leaved grasses as the Premier or Skagit Brands, but it will stand abuse equally as well. ECONOMY lawn grass does not contain any Creeping Bent grass and for that reason does not require as much moisture or care.

Price per lb. 45c; 5 lbs. for \$2.00; 10 lbs. for \$3.60, postpaid.

How to Have a Good Lawn

Spade the ground deeply and see that it is thoroughly pulverized. Work in a good commercial fertilizer. Sheep guano or peat moss will add humus and improve the seed bed. Rake level and water thoroughly so the ground will settle. The seed bed should be allowed to stand for about two weeks, watering from time to time so the weed seeds will sprout.

Roll the ground before seeding, to prevent it from settling unevenly, and then rake the surface lightly. Sow the seed so as to cover the ground thoroughly, and then cover it lightly with soil. Roll again so as to press the seed in firmly. If you have no roller, use boards and tramp on them so as to pack the ground firmly, but a roller is preferred.

Grass seed will germinate in from 8 to 15 days, according to the weather. If a

lawn is made during the summer, the ground should be covered lightly with peat after the seed has been rolled, so as to retain the moisture. New lawns should not be allowed to dry out, not even for a half day. For the first 15 days the lawn should be watered twice a day if necessary. A lawn should be fertilized after the first cutting, and at least twice a year. Water well after applying.

WARNING: Do not use the so called rotted manure which is being sold to inexperienced gardeners. It may be full of wild clover and other weed seeds and pests. It is expensive when you take into consideration that a few pounds of good fertilizer is equal to a sack of manure. If you want a moisture-holding material for top-dressing use peat. We recommend the use of peat.

CLOVERS AND GRASSES

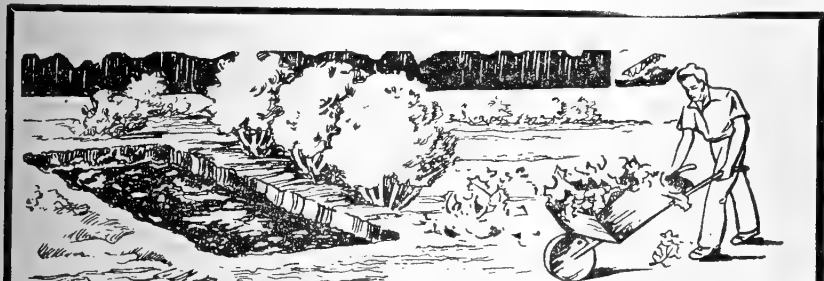
Variety	Uses	Kind of Soil	Lbs. Per Acre	Postpaid 1st to 3rd Zones		
				PRICE PER POUND		
				1 lb.	5 lbs.	50 lbs.
Alfalfa, Common	Green feed, hay	Well drained	} 12-15 Drilled } } 18-20 Broadcast }	62c	53c	51c
Alfalfa, Grimm Blue Tag	Green feed, hay	Well drained		Crop Failure		
Alsike Clover	Hay and pasture	Average soil	20-30 Broadcast	55c	44c	43c
Chewings Fescue	Lawn and pasture	Average to dry	1 lb.—300 sq. ft. lawn	96c	87c	85c
Creeping Bent Grass	Lawns	Average to wet	1 lb.—300 sq. ft. lawn	\$1.08	\$1.01	99c
Kentucky Blue Grass	Lawns, permanent pasture	Average	20-30—Pasture	70c	63c	61c
Ladino	Pasture and hay	Average	6-10—Pasture	\$2.50		
Meadow Fescue	Pasture grass	Average	20-30—Pasture	55c	44c	42c
Orchard Grass	Pasture	Average	20-30—Pasture	60c	53c	51c
Red Clover, Medium	Pasture and hay	Average	12-15—Pasture	56c	48c	46c
Red Clover, Mammoth	Pasture and hay	Average	12-15—Pasture	60c	53c	51c
Red Top	Pasture and hay	Average to wet	14-18—Pasture	42c	35c	33c
Reed's Canary Grass	Pasture and hay	Only very wet	6- 8—Pasture	75c	68c	66c
Rye Grass, Domestic	Pasture and hay	Average	25-30—Pasture	27c	19c	17c
Rye Grass, Italian	Pasture and hay	Average	25-30—Pasture	27c	19c	17c
Rye Grass, English	Pasture and hay	Average	25-30—Pasture	37c	29c	27c
Sweet Clover (White)	Wasteland cover	Average to dry	15-20—Pasture	33c	26c	24c
Tall Oat Grass	In mixture only	Average	30-35—Pasture	60c	53c	51c
Timothy	Hay and pasture	Average	10-15—Pasture	24c	16c	14c
White Dutch Clover	Lawns and pasture	Average	{ 5-10—Pasture } { 1 lb to 200 sq. ft. lawn }	\$1.35	\$1.28	\$1.26

PRICES SUBJECT TO CHANGE WITHOUT NOTICE

GRAINS, FORAGE CROPS, SOILING CROPS

Variety	Uses	Kind of Soil	Lbs. Per Acre	Postpaid 1st to 3rd Zones		
				PRICE PER POUND		
				1 lb.	5 lbs.	50 lbs.
Barley, Common	Grain	Average	100	...	08c	07c
Rape, Dwarf Essex	Green feed	Average	4-5 Drilled; 6-8 Broadcast	35c	\$1.25	...
Rye, Winter	Grain, green feed	Average	80-100	...	07c	05c
Vetch, Spring	Green or soiling	Average	40- 60	...	14c	13c
Wheat, Spring	Grain	Average	40- 60	...	07c	05c
Wheat, Winter	Grain	Average	75-120	...	07c	05c
Oats, White Seeded	Grain and hay	Average	100-150	...	07c	05c

PRICES SUBJECT TO CHANGE WITHOUT NOTICE



Miller's GARDEN
COMPOST MAKER

5 lbs. 25 lbs.
79c \$2.50

- ★ CONVERTS RUBBISH INTO FERTILIZER
- ★ USES GRASS CLIPPINGS, LEAVES, WEEDS, ETC.

A 5-lb. package of Miller's Garden Compost Maker will make several hundred pounds of high-grade, organic humus fertilizer by converting your garden refuse into a rich organic humus compost.

BOOSTER POWDER Stimulates Plant Growth, Root Formation, Fruit Setting, Flower Production. Produces vegetables rich in flavor and minerals. Contains Nitrogen, Phosphorus, Potash, Calcium, Sulphur, Iron, Magnesium, Manganese, Zinc, Boron, Copper and Iodine. Add 1 tablespoon Miller's Garden BOOSTER Powder to 1 gallon water. Mix thoroughly.

1 lb., 49c — 5 lbs., \$1.50

Write for FREE GARDEN BOOKLET
Describing and Illustrating Insects and Fungous Diseases

HOTKAPS

Do as successful market growers do—Place patented Germaco HOTKAPS—strong little hot-houses—over seeds (or over plants when transplanting). Completely protect from destructive frosts, storms, insects—maintain perfect mulch. Increase yield from 18% to 51%, ripen plants three weeks earlier.

Quick, easy to set, instructions on package. 25 Hotkaps, 50c. 250 for \$3.50. Setter free. Beat everyone with first vegetables, flowers. Buy Germaco HOTKAPS from us today. MARKET GROWERS: GERMACO HOTKAPS help you have sure crops, highest out-of-season prices, bigger profits. 1000 for \$11.00.

Grafting Wax

This is one of the best grades of grafting wax on the market and is suitable for use in grafting fruit trees or budding roses or other shrubs such as holly, etc. ¼ lb. 20c; ½ lb. 35c; 1 lb. 60c.

Wood Labels

	Doz.	100
3½-inch Painted Tree Labels, copper wire	\$.10	\$.60
4-inch Painted Pot or Garden Labels	.10	.60
6-inch Painted Pot or Garden Labels	.15	.75
10-inch Painted Pot or Garden Labels	.20	1:30

Prevent Pest Damage with ORTHO Garden and Home Products

MULTI-PURPOSE SPRAY SET



For Use Against More Prevalent GARDEN INSECTS

Set contains 4-ounce bottle of **EXTRAX** Insect Spray, **GREENOL** Liquid Fungicide and **VOLCK** Oil Spray. Mix all 3 sprays in the same water and in one application treat against many insects and diseases in the garden. Set makes 25 gallons combination spray at normal dilution.....\$1.85

MULTI-PURPOSE BAIT

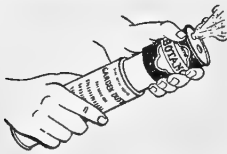
For Use Against PRINCIPAL FORAGING PESTS

Slugs, cutworms, snails, earwigs, grasshoppers, strawberry root weevil. Baiting against these pests is easy with the new **BUG-GETA** PELLETS Compressed BAIT. (A Metaldehyde-Arsenical Bait.) 5000 baits in a 2 pound carton.

12-oz. Carton.....25c 5-lb. Carton.....\$1.00
2-lb. Carton.....50c 25-lb. Bag.....\$3.60



MULTI-PURPOSE DUSTS



BOTANO Garden Dust. For use against many insects and diseases. Preferred by many, particularly for vegetables. One of the safest multi-purpose dusts that

can be used. 10-oz. size is Dual Purpose package which also serves as handy garden duster. (Contains **ROTENONE**)

10-oz. Duster.....49c 1-lb. Pkg.....\$.50
4-lb. Pkg.....\$1.10

CALTOX Garden Dust "525". Used throughout the garden, but especially useful on Tomatoes, Potatoes, Cucumbers, Squash, and Melons, against Flea Beetle, Diabrotica or Cucumber Beetle, Potato Beetle, Tomato Worm, Late Blight. Contains Cryolite, Copper and Zinc.

10-oz. Dual Purpose package.....49c
4-lb. Pkg.....\$1.10

OIL SPRAYS

VOLCK Oil Spray. Envelops, wets and smothers many sucking insects such as certain Scale Insects, White Fly, Mealybug, and Red Spider. Also a spray carrier for other sprays.

4-oz. Bottle.....25c 1-pint Bottle.....50c
1/2-gallon Can.....\$1.25 1-gallon Can.....\$2.25

KLEENUP Winter Spray. An emulsive Oil Spray for use against certain Scale Insects during dormant season. Use with Bordeaux Mixture.

1-pint Bottle.....39c 1-gallon Can.....\$1.00
5 Gallons.....\$4.95

SOWBUG CONTROL

ORTHO Sowbug Killer. A specially prepared bait for use against Sowbugs and Pillbugs.

1-lb. Can.....50c

ANT CONTROLS

ORTHO Ant and Roach Powder. A Fluorine-Pyrethrum Insecticide for use against Ants, Roaches, Silverfish. Easy to use.

4 1/2-oz. Shaker.....25c



ANT-B-GON Ant Poison. Four to 8 Dispensers are enough for average home. Easy to refill. Ants feed from "WICK"... Can't get inside. For Argentine and Sweets-eating ants.

Set of four 1-oz. Dispensers.....60c
Ant Poison to refill dispensers:

4-oz. Bottle.....20c 1 pint.....50c
1/2 gallon.....\$1.50

INSECTICIDES

EXTRAX Insect Spray. Kills by contact. Used against many sucking and chewing insects such as Aphis, Beetles, Caterpillars, Thrips, on Vegetables and Ornamentals. Economical... General dosage is one teaspoonful to gallon of water.

1-oz. Bottle.....\$.35 1 Pint.....\$2.75
4-oz. Bottle.....\$1.00 1/2 Gallon.....\$7.95

NEW DDT SPRAY

PEST-B-GON DDT Spray. Contains 20% DDT, the new insecticide that played such an important role in World War II. Use in the garden and also around barns, poultry houses, dog kennels, outbuildings, basements, against many Beetles, Worms, Thrips, Leafhoppers, Weevils... Ants, Fleas, Mosquitoes and certain other insect pests.

4-oz. Bottle.....\$1.00

ORTHO Lead Arsenate. A stomach poison for use as a spray or dust to control chewing insects such as certain Beetles, Caterpillars (as Oak Moth), Worms on Apples, Pears and other plants, and Sod Webworm in lawns.

1 lb.....35c

EARWORMICIDE. To keep worms out of sweet corn, make one treatment when silk begins to wilt. 2 ozs. treats 60 ears.

2-oz. Bottle with applicator.....35c

FUNGICIDES

GREENOL Liquid Fungicide. A copper fungicide used to prevent Powdery Mildew. Contains spreading and wetting agents and mixes with EXTRAX Insect Spray for making a combination treatment against insects and diseases.

1-oz. Bottle.....35c 1 pint.....\$1.50
4-oz. Bottle.....60c 1/2 gallon.....\$3.95

"ORTHO" BORDO Mixture. Prepared Bordeaux Mixture used to control fungus diseases such as Peach Leaf Curl, Peach Blight, Pear Scab.

1 lb.....35c

FLOTEX Garden Sulfur. Finely powdered... Used either as a dust or spray to control Powdery Mildew, Scab and certain other diseases.

26 ozs.....25c 4 lbs.....50c

PRUNING PAINT

CONTAX Pruning Paint. Protect cuts and tree wounds with this modern plastic pruning and grafting composition. Also has many other uses.

1 pint.....35c

ORTHO ROSE SPRAY KIT

Special Combination Offer. Contains 2-oz. bottle "EXTRAX" for Aphis and other insects and 2-oz. bottle "GREENOL" to prevent certain Powdery Mildews. Makes 12 gallons spray. Used for vegetables too.

Each Kit.....\$1.00



SOIL INSECTS

ORTHO Soil Fumigant. A new "ORTHO" development designed to control certain soil inhabiting insects which attack roots. Used primarily against garden Centipedes, Cabbage Maggots, Onion Maggots.

4-oz. Bottle.....35c 1 pint.....\$1.00

WEED KILLERS

TRIOX Weed Killer. Poisons soil and prevents weeds from growing. Use on driveways, walks, and other places where no vegetation is wanted.

1/2-gal. Can.....\$1.50 1-gal. Can.....\$2.25

WEED-B-GON Weed Killer. Contains "2,4-D." A hormone spray for killing Wild Morning-Glory (Bindweed), Poison Oak, Poison Ivy, Plantain, Dandelion and certain other susceptible weeds. Can be used on certain grass lawns (not on Bent, Dichondra, Lippia or Clover).

4-oz. Bottle.....65c 1 pint.....\$2.00
1/2 gallon.....\$6.00

RODENT CONTROL

ORTHO Rat Bait Pellets. Ready-to-use Red Squill Bait which are relatively harmless to humans and domestic animals. Poisoned Rats seek underground burrows before dying.

2-oz. Carton.....25c 6-oz. Carton.....50c

ORTHO Rodent Destroyer. Kills Gophers, Squirrels, Prairie Dogs, Rats, Mice. This bait is poisoned with strychnine by a special solvent process to assure lasting potency.

6-oz. Carton.....30c 1-lb. Carton.....60c
5-lb. Carton.....\$2.25

DOG REPELLENT

SCRAM Dog Repellent. A special powder used to keep dogs away from shrubs, flowers, lawns, store fronts, porches, etc. Easy to use. Does not harm animals.

8-oz. Shaker.....49c



Develop the rich beauty of your Garden . . .

Through Proper Plant Feeding!

Do you admire deep green lawns, velvety smooth and weed-free? Glorious flowers on fine foliage? You must start with good seed and follow right cultural practice. But to be certain of the fine results you desire, you must see that your plants are properly fed. That's easy today . . . *Feed everything you grow with VIGORO.* It is complete plant food that supplies the vital food elements plants require from the soil for finest growth.

Price, Postpaid, 1st, 2nd and 3rd Zones:
 1 lb. Carton . . . 10c 25 lb. Bag . . . \$1.40
 5 lb. Carton . . . 45c 50 lb. Bag . . . \$2.30
 10 lb. Carton . . . 70c 100 lb. Bag . . . \$3.50
 F.O.B. LA CONNER



Feed Your Garden Regularly!

VIGORO will bring you the largest measure of gardening satisfaction if you use it regularly. Plan to feed lawn areas in early spring and again in fall. Feed flowers when you plant them and at regular intervals throughout the growing season. Trees and shrubs should be fed annually. Suggestions on how and when to feed all plants are included in the direction sheet included.

A Product of Swift & Company

Spergon

Reg. U. S. Pat. Off.

SEED PROTECTANT

When Spergon is applied to seed, it helps prevent seed decay and damping-off, thus increasing the stand and improving the crop. Safe to use. Inexpensive.

UNITED STATES RUBBER COMPANY

Naugatuck Chemical Division
 1230 Sixth Avenue • New York 20, N.Y.



2 oz. Package, Each 35c

FARM JOURNAL

We are local representatives for the FARM JOURNAL on which we offer a special price of TWELVE months for 25c. This magazine is published in the interests of the farmer, gardener, and home owner, and contains timely articles on many subjects. Farming, gardening, new crops, cooking, fashions, movies of the month, and many other subjects are discussed in simple every-day language. Merely enclose the coupon which we supply for your use and send it with 25c in an envelope and mail it direct to

FARM JOURNAL, Philadelphia, Pa.

Be sure that the correct address is filled in on the coupon so that you will receive your magazine promptly and correctly addressed to you.

CARCO

BRAND
VEGETABLE SPRAY
 ROOT MAGGOT CONTROL



Keep Your
VEGETABLES
 Free of Root Maggots

If you will use this simple remedy as directed, you will keep your vegetables free of root maggots. Complete directions on every container. Ask your dealer for the pamphlet with testimonials.

Begin using as early as possible and use until fall.

CARCO: 1/2 Pts. 50c; Pts. 75c; Qts. \$1.25

● The GETZUM GUN is designed for the easiest and surest way to control lawn weeds. Just one drop of Getzum Liquid applied to the heart of each weed is all it takes to eradicate the average weed, and the root dries up completely.

GETZUM GUN: \$1.75; Pints 30c. Gallons (when available) \$1.75.

Get yours today and learn this simple remedy



Ask for
 Free
 Literature

SUMMER INSECTS**DIAMOND "L" BRAND****APHIS-ITE**
TRADE MARK

is recognized as a superior insecticide for control of aphids, tent caterpillars, saw flies, thrip, flea beetles, earwigs, ants, holly leaf miner and slugs. Alph-is-ite is penetrating and highly toxic. Being non-discoloring makes it extremely satisfactory for use on flowers in bloom. Increasingly used by rose growers. Safe for use in vegetable gardens.

8 oz. 50c; qt. \$1.50; gal. \$4.00

ROOT MAGGOTS**DIAMOND "L" BRAND****MAGOTITE**
TRADE MARK

has proven a satisfactory control for root maggots as demonstrated by many years successful use in northwestern gardens.

Definite protection for carrots, cabbage, cauliflower, kale, radish, turnips, horseradish and other Victory Garden vegetables. Other uses (1) mole repellent, (2) control of thrips on Gladioli Korms.

1½-lb. pkg.....25c	25-lb. bag.....\$2.00
5 -lb. pkg.....60c	100-lb. bag.....\$5.00

PEACH TREES**DIAMOND "L" BRAND
PEACH LEAF CURL
SPRAY**

For control of peach leaf curl fungi when applied both late fall and late winter. An oil emulsion and copper compound.

8 oz. 60c; qt. \$1.50; gal. \$4.00

WINTER SPRAY**DIAMOND "L" BRAND
DORMITE****DORMANT OIL EMULSION**

A thorough application of this dormant oil spray will devitalize many insect eggs when applied as a general fall or winter clean-up application. Especially effective on many kinds of scale, particularly lecanium scale, oyster shell scale, San Jose scale.

Qt. 50c; gal. \$1.00; 5 gal. \$3.00

CUT WORMS**DIAMOND "L" BRAND
CUT WORM BAIT**

Minimum burn hazard for foliage, and freedom from discoloration. A recommended product.

1 lb. 25c; 10 lbs. \$1.00; 25 lbs. \$3.00

Wm. T.
Thompson's
DEE-CEE-PEE
Weedicide
LIQUID

**COMPLETELY
DESTROYS**

Bindweed (Wild Morning Glory), Poison Ivy, Poison Oak, Canada Thistle, Jap Honey-suckle, and many other noxious pests.

A selective herbicide—non-inflammable—non-corrosive—non-staining—Relative low toxicity. Easy to use in hand or tank spray. \$1.00 treats 2720 sq. ft. \$2.75 treats one quarter acre. \$10 treats 1 acre. Also available in larger sizes and in tablet, powder and special concentrate liquid form.

**TOMATO BLOOM-SET
AT RATIONAL PRICES**

FIX "sets" blossoms as they appear, even the fragile early blooms. This means your tomato crop will be:

- 20% to 30% greater
- Earlier, larger, firmer
- More flavorful
- Seedless, more edible

Spray FIX early and late, as plants continue to flower. May also be used for cucumbers, melons, and squash. FIX sets holly and other berries.



\$1 for 100 tablets—
makes 100 QUARTS
25c for 20 tablets—
makes 20 QUARTS
Also larger sizes.

Seeding • Transplanting • Growing

The safe, odorless, balanced plant food with complete nutrients plus plant hormone in convenient concentrated form.

PLANT-CHEM **SALTS**

A scant spoonful makes a gallon of rich FERTILIZER

**FLOWER AND VEGETABLE GARDENS
SLIPS • SHRUBS • TREES**

10¢ size makes	5 gals.	2.00 size makes	400 gals.
25¢ size makes	16 gals.	5.00 size makes	1200 gals.
50¢ size makes	37½ gals.	10.00 size makes	3000 gals.
1.00 size makes	100 gals.	15.00 size makes	5000 gals.

PLANT-CHEM (Acid Food) FOR AZALEAS, CAMELIAS, ETC.

25¢ size makes	16 gals.	1.00 size makes	100 gals.
----------------	----------	-----------------	-----------

LAWN-CHEM (Again available)

50¢ size makes	100 gals.
1.50 size makes	400 gals.
4.00 size makes	1200 gals.

POUR IT ON...WATCH 'EM GROW!

SPRAYS and DUSTS—INSECTICIDES

BLACK LEAF 40

A concentrated nicotine solution for aphids, thrip and red spider or any other sucking insect. Also much used as a poultry house spray.

Prices: 1 oz. 36c; 5 oz. \$1.05; 1 lb. \$2.47; 2 lbs. \$3.57; 5 lbs. \$6.70.

MOSQUITOZOFF



It is no longer necessary to suffer from the bites of mosquitoes, gnats, and other flying insects. Our own experience with this repellent has been very satisfactory. It is pleasant to use and will not harm the most delicate skin. Be able to enjoy picnics, camping, fishing and other outdoor sports as never before.

Prices, postpaid: 1 oz. 35c; 2 oz. 50c.

Seed Treatment With SEMESAN

IMPROVES STANDS
REDUCES DAMPING-OFF
INCREASES YIELDS

Vegetable losses caused by damping-off (rotting of the seedling stem near the soil level) can be prevented or greatly reduced by treating seed with SEMESAN in either dust or liquid form, and by occasionally spraying liquid SEMESAN on the seed beds.

SEMESAN generally increases germination; usually improves and increases vegetable yields. Costs little to use.

Price, 1/3 oz. 10c; 2 oz. 40c; 12 oz. \$1.88; 5 lbs. \$11.40.

Ask for free Vegetable Pamphlet.

"SEMESAN BEL"

Potatoes

Reduces seed piece decay—check losses from Rhizoctonia and scab—and you will cut potato costs and get more profit. Convincing tests and use on many farms shows that quick dip seed treatment with Improved "SEMESAN BEL" is the best way to these results!

No soaking. No time wasted. And very low cost—one pound treats 60 to 80 bushels. Yields increased an average of 13.6% in tests.

Price: 2 oz. 30c; 1 lb. \$1.65; 5 lbs. \$7.15.

Ask for free Potato Pamphlet.

"CERESAN"

Wheat, Oats, Barley

New Improved "CERESAN" is unusually effective for controlling but or stinking smut of wheat, loose and covered smut of oats, covered smut and stripe of barley, and seedling blight caused by seed-borne scab. It costs but 1% to 2 1/3 cents a bushel of seed. Is easily and quickly applied.

Price: 4 oz. 30c; 1 lb. 80c; 4 lbs. \$2.70.



"DOGZOFF"

If you are bothered with dogs, cats or rabbits, "Dogzoff" is the spray you need. It is a most efficient animal repellent and one spraying will last from three to four weeks. Not poisonous to plants and will not injure animals. Not offensive to humans. Its use is guaranteed to keep these animals from any place where they are not wanted. "Dogzoff" is applied with any small insect sprayer and one application usually does the work. "Dogzoff" will save its cost many times over around the garden and home.

Price, 60c, prepaid.

OLD TRAPPER MOLE BAIT

A prepared bait composed of ingredients attractive to moles with an effective poison that causes instant death to these pests. Sold with a money back guarantee.

Thousands of satisfied users.

Price per can, 2 oz., (50 baittings), 50c.
Lb. can (400 baittings), \$3.00.



Books on Gardening

We are agents for the finest line of books on gardening, rock gardening, pools, bulbs, iris, lilies, fruit culture, rose landscaping and all kindred subjects. If you are interested write for a booklet describing these truly valuable and instructive books. Ask for our list of books that tell you how.

Old Trapper "Mouse Nox"

A new mouse bait that mice really love and that will actually rid the premises of these troublesome pests. Economical and effective if properly used.

Price: Bottle (about 1/2 oz.), 25c.

Old Trapper Rat Krunches

A new Red Squill rat and mice poison bait that really kills. Put up in packages of about 100 baits each of a kind and size attractive to rats. Harmless to pets and humans. Our trials have proved them very efficient and safe.

Price per packet (100 baits), postpaid, 25c.



Old Trapper Poisoned Grain

For those who prefer a grain, we have this prepared poisoned bait, more efficient than traps or other methods of killing. It is unattractive to cats, dogs and other pets, but sure death to rats, mice, ground squirrels and prairie dogs. Old Trapper is made with approximately one-third greater killing power than the average baits on the market. Price per pkt. 35c.

USE OF NAPHTHALENE in badly infested areas

Tons of Naphthalene are now being used in Skagit County for the protection of cabbage plant beds as well as carrots, cauliflower, turnips and radishes. We recommend application to the soil before planting of a mixture of Naphthalene, Gypsum, and Sulphur (10-10-1 proportions) at the rate of 1 pound of mixture to each 125 square feet of plant bed, or 350 pounds per acre. A top dressing of Naphthalene applied several times during the growing season also helps.

Carrots need a top dressing each 7 to 10 days from May 10th until they are big enough to use. Commercial plantings here are treated from May 10th to June 31st for early plantings; late plantings from about July 15th to September 1st.

NAPHTHALENE

A powerful non-poisonous soil disinfectant used for the control of wire worms, cut worms, and many other garden pests. Also as an aid in protecting plant beds from roots maggots that attack cabbage, cauliflower and similar plants.

Prices, postpaid: 5 lbs. 65c; 10 lbs. \$1.20; 25 lbs. \$2.50.

Soil Conditioners

AGRICULTURAL SULPHUR

This is 100% pure sulphur but not ground so fine as dusting sulphur, and is used for applying directly in the soil at planting time, sometimes directly in the rows with the seed, both as a soil conditioner and as a fungicide for protection against certain seed and plant diseases.

Prices: 1 lb. 20c; 5 lbs. 50c; 10 lbs. 85c; 50 lbs. \$3.75.

AGRICULTURAL HYDRATED LIME

A good grade of Hydrated Lime for use as a soil conditioner for acid soils. It may also be used for many other purposes around the farm, such as in poultry houses, whitewashing, as well as for dusting for insects when mixed with such things as Arsenate of Lead or Calcium.

Price, postpaid (1st and 2nd zones): 10 lbs. 50c; 50 lbs. \$1.50.

By freight collect; \$1.50 for 100 lbs.; \$25.00 per ton. F.O.B. our shipping point.

BUMPER CROP GYPSUM

A powerful form of Agricultural Gypsum for dusting as well as many other uses around the farm or poultry house. Increases crops on acid soil and makes plant food available.

Prices, postpaid in 1st and 2nd zones: 5 lbs. or over at 5c per lb; 25 lbs. or over at 4c per lb.; 50 lbs. or over at 3c per lb.

Again You Can Have Rich, Pre-War Formula

We are now supplying Fulton's Plantabbs in the rich, white, completely dissolving TABLETS, the same formula as before they went to war. Plantabbs provide a high analysis of Nitrogen, Phosphoric Acid, and Potash PLUS all the Vitamin B1 needed by deficient plants, with many secondary ingredients thereby making a complete, balanced FOOD in quickly available form which improves every type of flower and vegetable fed upon it.

GROW BEAUTIFUL PLANTS AND FLOWERS

HOUSE PLANTS flourish with strong, green, bushy foliage, the blooming kind covered with perfect blossoms. Ferns, Geraniums, Ivy, Cacti, African Violets, etc., thrive the year round.

GARDEN FLOWERS like Roses, Delphinium, Dahlias, Mums, etc., will make your garden a true joy.

VEGETABLES. Begin feeding when plants are well up out of the ground. Repeat regularly to maturity and raise a crop of tomatoes, beans, peas, etc., like you never dreamed of.

Push a tablets into the soil near the stem or, if liquid form is preferred, simply drop 4 tablets in a gallon of water. Quick, easy, economical and so safe will not burn tenderest plants.

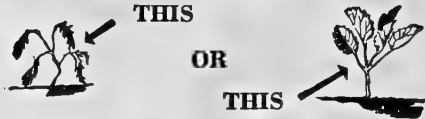
For prize results, we recommend Fulton's Plantabbs in boxes

of

- 10 Tablets.. \$.10
- 30 Tablets.. .25
- 75 Tablets.. .50
- 200 Tablets.. 1.00
- 1000 Tablets.. 3.50



WHICH DO YOU WANT ?



The hormones and vitamins (B, and others) found together only in



THE HORMONE-VITAMIN POWDER

Stop the shock and wilt usually inevitable after transplanting all kinds of plants. . . . Simple, Safe, Economical to use. 1/2 oz. packet 25c, 1 oz. can 50c, 3 oz. can \$1.00, 1 lb. can \$4.00.

YOU CAN INCREASE THE NUMBER AND QUALITY OF BERRIES ON ORNAMENTAL SHRUBS . . . by spraying with



REG. U. S. PAT. OFF.

This plant hormone spray will help to develop big berries on holly, snow berry, euonymus, pyracantha and other berry bearing shrubs—even when they are bi-sexual and no male plants are near. Simple and easy to use. Stops drop of leaves and fruit.

- 2/5 oz. pkt. (5 gallons of spray) 25c.
- 2 ozs. (25 gallons of spray) \$1.00.

APPROX. 70,000,000 LBS. OF AIR-NITROGEN ABOVE EVERY ACRE. THIS IS AVAILABLE FREE FOR SOIL AND CROP IMPROVEMENT IF YOU CONVERT LEGUME SEEDS INTO FERTILIZER PLANTS

Inoculating by with **NITRAGIN** SINCE 1898

ALFALFA, RED CLOVER, SWEET CLOVER, COWPEAS, PEAS, VETCH, A.W. PEAS, SOYBEANS, LESPEDEZA, PEANUTS, BEANS, ALL LEGUMES

1946 NITRAGIN INOCULATION PRICES

When Ordering, ALWAYS State Name of Seed

ALFALFA
Sweet, Bur, Hubam Clovers
Size Retail
1 bu. ea. \$.50
2 1/2 bu. ea. 1.00

CLOVERS
Medium & Mammoth
Red, Alsike, Crimson & White Clovers
1 bu. ea. \$.50
2 1/2 bu. ea. 1.00

PEAS (All Varieties)
VETCHES (All Varieties)
100 lb. size (Inoculates up to 100 lbs.) ea. \$.50
1200 lb. size ea. 3.70 (12-100 lb. size cans)

BEANS—Navy, Pinto, Wax, String, Kidney, Gr. Northern
1 bu. ea. \$.35

LESPEDEZA Hulled or Unhulled
100 lb. size (Inoculates up to 100 lbs. seed) . . . \$.50

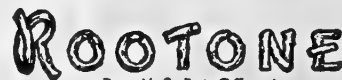
PEANUTS, LIMA BEANS, COW PEAS
Size Retail
Small (Inoculates up to 120 lbs. seed) \$.30
5 bu. ea.55
25 bu. (one can) ea. . 2.50
30 bu. (one ctn.) ea. 3.25 (Contains 6-5 bu. cans)

SOYBEANS (All Varieties)
Small (Inoculates up to 120 lbs. seed) \$.30
5 bu. ea.55
25 bu. (one can) ea. . 2.50
30 bu. (one ctn.) ea. 3.25 (Contains 6-5 bu. cans)

LUPINES (All Varieties)
100 lb. size (Inoculates up to 100 lbs. seed) ea. \$.50

GARDEN SIZE
Garden Peas and Beans
Sweet Peas, Lupines and Edible Soybeans
Enough for 8 lbs. seed
Retail Price 10c each.

NITRAGIN—Oldest and Most Widely Used Inoculator in America



Reg. U. S. Pat. Off.

ROOTONE, the plant hormone powder. Dip cuttings in Rootone before planting to give faster, better, more successful rooting. Mix flower, vegetable or grass seed with Rootone before planting to give faster growth and stronger roots. Easy to use. 1/4 oz. packet 25c. 2 oz. jar \$1.00. 1 lb. can \$5.00.



Geranium Cuttings. Treated and Untreated

Keepway Tared Plant Protector



For the control of cabbage maggot the use of these protectors will give 90% to 100% protection against the root maggot on cabbage, cauliflower and other members of the cabbage family. Place one protector about the stem of the plant on top of the ground when transplanting. The tar odor repels the maggot fly, thus no eggs are deposited.

The pad retains its efficiency until plant maturity. It also acts as a mulch in retaining moisture in the soil around the roots of the plant.

The size of these protectors is 3 inches by 3 inches, put up in packages as follows: 24, 10c; 72, 25c; 144, 45c; 500, \$1.50; 1000, \$2.50. Postpaid to 4th zone only.

Pathfinder

The Weekly News Magazine for the Whole Family. Now in its 53rd Year of Continuous Publication from Washington, the Nation's Capital. It's the One Weekly Magazine for Small Town America.

HONEST • IMPARTIAL • ACCURATE

You get every week the news of the Family, the Nation, the World and communities like yours, written briefly in simple, everyday English. It's for the whole family. **PATH-FINDER**, by focusing on the pertinent, meaningful events of today, projects the clearest picture of America's and the World's tomorrow. Our editors report the news while it is happening, and give the background story and significance. Folks have liked it for over 50 years. You will, too.

ONE YEAR \$1.00
(52 Weekly Issues)

or
THREE YEARS \$2.00
(156 Weekly Issues)

OTHER WEEKLY FEATURES YOU'LL LIKE



Under the Dome, Weekly Washington Letter—Forecasts of the future with a full page of important late items. The how, why and probable effect of what is happening in Washington. Keeps you up-to-the-minute on things you and your family want to know about.

Americana—Lots of one- and two-paragraph human interest items with photographs to give a picture of modern America. News about people—some big people, some movie stars—but in the main, about average people, the ones who make America tick as a democracy.

The Family—News of general family interest—cooking, new home gadgets, fashions—news items in Religion, Education and Health that affect the home. Also interesting letters from readers on various subjects. Radio, Movies, New Records and Book Reviews. The young folks, too, will get a lot of fun from brain teasers, puzzles, cartoons and jokes.

YOU NEVER GOT SO MUCH FOR SO LITTLE.

Mail Coupon with check, currency or money order (at our risk) to **PATHFINDER, Dept. C., Pathfinder Building, Washington 5, D. C.**

Recommended by TILLINGHAST SEED CO.

MAIL TODAY!

USE THIS COUPON AND YOUR SUBSCRIPTION WILL START AT ONCE.
If you are now a subscriber, give this Valuable Coupon to a Friend who is not.

EVERY WEEK — NEWS OF THE FAMILY THE TOWN — THE NATION — THE WORLD

NOW, more than ever before, you will want to know what is going on while it is going on. The coming years probably will be the most important in the world's history. You will get the accurate and complete up-to-the-minute facts behind the important news every week in **PATHFINDER**, America's Oldest News Weekly. Bigger issues, better paper and greatly improved. The important latest news pictures also. At the new lower price of \$1.00 for one year or three years for only \$2.00, you can't afford to be without it. No liquor or objectionable advertising.

See
Over
Side

ONE YEAR \$1.00
(52 Weekly Issues)
THREE YEARS \$2.00
(156 Weekly Issues)



PATHFINDER, Dept. C.

Pathfinder Bldg., Washington 5, D. C.

Please enter my subscription as checked.

Name _____

R. F. D. _____ Box _____ or Street _____

P. O. _____ State _____

CHECK OFFER

Enclosed \$2.00
for 3 Years

or

Enclosed \$1.00
for 1 Year

IMPORTANT: Mail direct to **PATHFINDER** with remittance (at our risk). Offer good only in U. S.

The Tillinghast Seed Co.

LA CONNER

Skagit Co.

Washington

From _____
Street _____
and No. _____

R. F. D. No. _____ Box No. _____

Post Office _____

County _____ State _____

PLEASE WRITE NAME AND ADDRESS PLAINLY



Form 6001

POST OFFICE DEPARTMENT

THIRD ASSISTANT POSTMASTER GENERAL

DIVISION OF MONEY ORDERS

No. _____

Stamp of Issuing Office

FEE _____

The Postmaster
will insert

here _____
the office drawn on, when the office
named by the remitter does not trans-
act money-order business

Spaces above this line are for the Postmaster's record, to be filled in by him

Application for Domestic Money Order

Spaces below to be filled in by purchaser, or, if necessary,
by another person for him

Amount—

USE FIGURES.

DO NOT SPELL

Dollars _____ Cents _____

To be
paid to }

Tillinghast Seed Co.

(Name of person or firm for whom order is intended)

Whose
address }
is }
City }
and }
State }

La Conner,

Street

Washington

Sent by _____

(Name of sender)

City }
and }
State }

Street

PURCHASER MUST SEND ORDER AND COUPON TO PAYEE

(FOR FEES SEE OTHER SIDE)

c18-8391-2

Fees for Money Orders Drawn on Domestic Form

Payable in the United States, including Hawaii, Puerto Rico, and the United States Virgin Islands, or in Guam and Tutuila (Samoa); also for orders payable in Antigua, Bahamas, Barbados, Bermuda, British Guiana, British Honduras, British Virgin Islands, Canada, Canal Zone, Cuba, Dominica, Grenada, Jamaica, Montserrat, Nevis, Newfoundland, Philippine Islands, St. Kitts, St. Lucia, St. Vincent, and Trinidad and Tobago.

For Orders	From \$0.01 to	\$2.50	_____	6 cents.
	From \$2.51 to	\$5.00	_____	8 cents.
	From \$5.01 to	\$10.00	_____	11 cents.
	From \$10.01 to	\$20.00	_____	13 cents.
	From \$20.01 to	\$40.00	_____	15 cents.
	From \$40.01 to	\$60.00	_____	18 cents.
	From \$60.01 to	\$80.00	_____	20 cents.
	From \$80.01 to	\$100.00	_____	22 cents.

Memoranda of Issuing Postmaster:

If order is purchased through Rural Carrier, he will fill spaces below:

Carrier's receipt No. _____

_____, Carrier.

NOTE—The maximum amount for which a single Money Order may be issued is \$100. When a larger sum is to be sent, additional Orders must be obtained. Any number of Orders may be drawn on any Money Order office on any one day.

Applications must be preserved at the office of issue for three years from date of issue.



GLADIOLUS—Rosa Van Lima
Each 10c — Dozen \$1.00.



BEGONIA—Tuberous Rooted
Six colors: Each, 30c; six for \$1.60; dozen, \$3.00.



RANUNCULUS—Giant Mixed
Three for 17c; dozen, 65c.



Grow your own Vegetables

**See Our Special Vegetable
Garden Collections on Page 1**

THE *Tillinghast Seed Co.*
LA CONNER, WASHINGTON