

## **Historic, Archive Document**

Do not assume content reflects current scientific knowledge, policies, or practices.



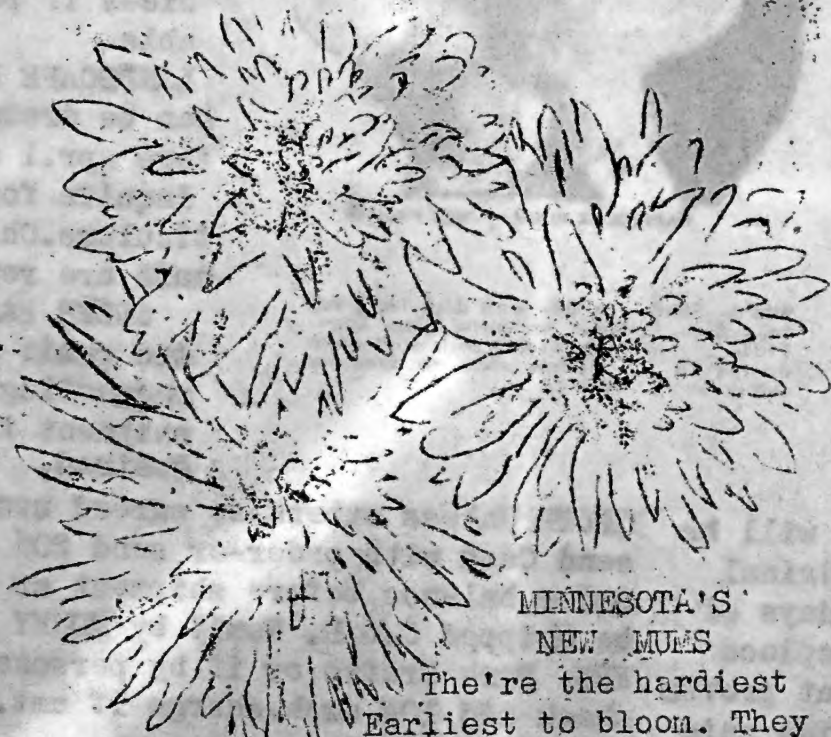
Swedberg's

1946

# PLANT GUIDE

We Feature the  
New Minnesota Fruits

Minnesota Newer and Better Varieties in  
Apples, Plums, Pears and Apricots.  
Grapes, Strawberries and Raspberries.



MINNESOTA'S  
NEW MUMS

The're the hardiest  
Earliest to bloom. They  
start blooming in mid-August.

6 MUMS \$2.16

See page 14

10 ASSORTED DELPHINIUM \$2.00 postpaid

- 3 Pacific Hybrids Asst.
- 5 Gold Medal Hybrids "
- 2 Chinese pure Blue

2

Values in Fruit, Windbreak  
and Evergreen Trees; Shrubs;  
Flowers, Berries and Plants

# 5-IN-1 APPLE TREE

ACCLIMATED TO NORTHERN CONDITIONS

5 HARDY APPLES  
ON ONE GOOD TREE.  
Heavy 5-7ft. Trees

\$2.30 Each.

Limit 2 to  
Customer

SUBSTITUTIONS

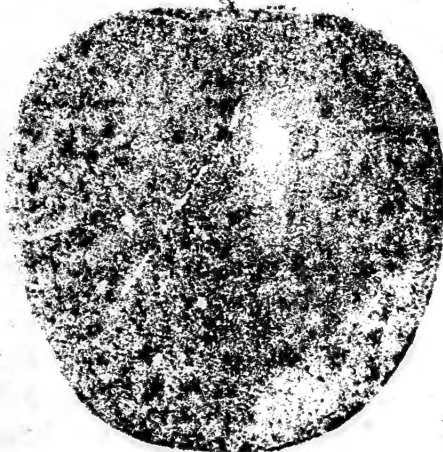
In ordering New  
varieties esp-  
ecially, always  
give second ch-  
oices if poss-  
ible

LANDSCAPE PLANS  
can be drawn be-  
fore Apr. 1 only.

Inquire for par-  
ticulars. Charges  
made are returne

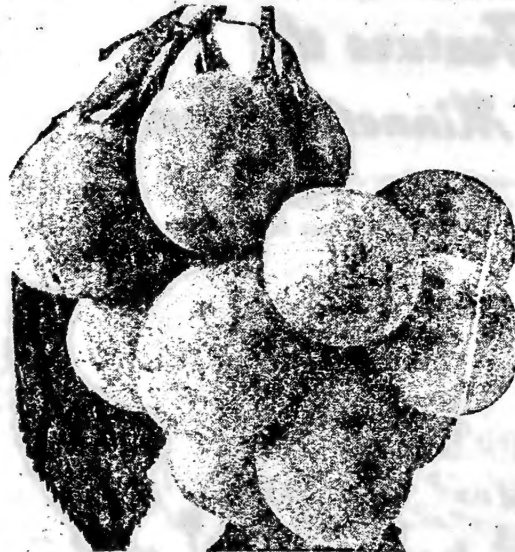
ORDER EARLY

And remit when  
requesting the  
shipment if  
desired.



WINTER APPLE

**WARALSON** A great big red apple orig-  
inated by Minn. Fruit Breeding Farm that  
cracks tops in every way. Quality excellent.  
They keep in ordinary cool cellar all winter.  
The trees are rugged and hardy and free  
from drought. Does not form bad crotches.  
Early into Canada. Bears on young trees  
2 years after planting.



SAPA BLUE PLUM — SEE PAGE 4

**SAPA**—Similar to Oka with dark blood red  
juicy flesh. Makes a wonderful plum sauce.  
Limbs are annually loaded with fruit from  
ground to top. Plant close to Compass  
berry for best results.

## GUARANTEE

Any stock failing to grow will be  
replaced at one-half the original  
cost if reported within 60 days of  
receipt of order. We will replace  
any portion of the stock that proves  
untrue to name or refund price paid  
for such portion. Under no circum-  
stances are we liable for more than  
price paid for plants.

PLANTING INSTRUCTIONS accompany  
each order sent out in the shipping  
and inspection tag.

**TERMS:** Unless otherwise agreed upon  
send Cash with order-or send 20% with  
order, balance before shipment or will  
be shipped C.O.D. Remit by MONEY ORD  
ERS, Bank Drafts, or if by personal  
check add 10¢ exch. charge if amt. is  
less than \$3.00.

**WE SHIP** most orders by Exp. Collect  
Small orders parcel post, add postage  
or have us ship C.O.D. for postage.  
Prices f.o.b. Battle Lake unless not-  
ed. Stock Prepaid is so marked.



# REGULAR APPLES NEW MINNESOTA VARIETIES

## SUMMER APPLES

**ANOKA**- Early bearing, often fruiting the second year after planting. Good quality and very hardy.

**RED DUCHESS**- Fruit bright red, ripens early august. Perfectly hardy early sauce apple for the north.

**YELLOW TRANSPARENT**- One of earliest Large crops of mild eating apples.

## FALL APPLES

**CORTLAND**- Vigorous grower, & yielder. Flesh purest white not darkening in salads. Medium size, shiny red, crisp.

**PATTENS GREENING**- Large, round, yellow-green with bronze blush. Hardy pie or baking apple. A keeper.

**WEALTHY**- Hardy Minn. apple of vigorous habit. Good quality, good appearance and fine keeper.

## WINTER APPLES

**HARALSON**- Best large red apple originated by Minn. Exp. Farm. Excellent quality, keeps until spring. Tree is rugged, forms no bad crotches, hardy into Canada. Bears in 2 or 3 years.

**HIBERNAL**- Extremely hardy rugged tree ideal for top working, grafting. Large green apple for cooking.

## PRICES FOR APPLES ABOVE

SIZE	EACH	(5 or more)
3 to 4 ft.	\$1.15	\$1.10 Ea.
4 to 5 ft.	1.25	1.15 Ea.
5 to 7 ft.	1.45	1.35 Ea.

**ERICKSON APPLE**- Large early red, for early market. Excellent. --- Order now for 1947 (None on hand)

## SUMMER APPLES

**BEACON**- Ripens with Duchess. Completely red, uniform fair size. Excellent for eating or canning. Very hardy and annual cropper. The only early apple keeping 2-3 months. NO. 714. Available spr. 1947 LARGE.

## FALL AND WINTER APPLES.

**NO. 396 VICTORY** Apple-Good red cooking apple, improved McIntosh type. Hangs to tree well & good keeper.

**NO. 638 Winter Wealthy**- Hangs to tree until red. Good eating, keeps.

**NO. 700 MINJON**- Minnesota Jonathan. Medium size, round, dark rich red. Regular fall crop-hangs to tree.

**NO. 790 Tip Top Baking Apple** of Rome Beauty type. Right size, texture, sugar content, for baking.

**NO 995-FIRESIDE**- Minnesota Delicious. Not delicious shape and looks but the best flavor of any hardy apple. Large keeping apple; red blush over green-yellow base. Vigorous grower.

**NO. 1007 PRAIRIE SPY**- Medium size late winter apple. Bright red over yellow base. Excellent quality. Keeps

**NO. 240 CRAB**- Light red skin, yellow flesh. Keeps til Nov. A large crab of high quality dessert type.

## -PRICES FOR NEW APPLES ABOVE-

SIZE	EACH	EACH (5 or more)
3-4 ft.	\$1.45	\$1.35
4-5 ft.	1.75	1.65
5-7 ft.	1.95	1.85

# CRAB APPLES

**DOLGO Crab-** Ornamental, upright vigorous tree. Large pink fls. followed by dark shiny red crabs against dark green leaves. Perfect jelly crab because of size, texture, color.

**EARLY STRAWBERRY-** Early medium size crab for eating or canning.

**HYSLOP-** Deep red crab for eating or pickling. Ripens late. Vigorous.

**TRANSCENDANT-** Good pickling crab. Very productive. Bright red. 5-7ft. only

**SWEET RUSSETT-** Russett cast over yellow base. Sweet, good canner, yielder.

**WHITNEY-** Best large crab for eating & especially for sauce. Good healthy tree, dependable yielder.

**VIRGINIA-** Hardest crab of vigorous growth. Pickles, jelly, or canning.

PRICES FOR CRAB APPLES ABOVE		
SIZE	EACH	EACH (5 or more)
3 to 4ft.	\$1.15	\$1.10
4 to 5ft.	1.25	1.15
5 to 7ft.	1.45	1.35

## HOPA CRAB

Very showy rosy-red flowers followed by small red crabs in clusters. The most beautiful hardy tree grown. 5-6ft. trees \$1.75; 7-8ft. trees \$2.50

## PEARS

**PATTEN-** 3-4ft. only **PATTEN** 3-4' & 5-7ft.

**PARKER PEAR-** Medium to large, light bluish over yellow. Fine grain, juicy. 5-7ft. only

**NEW BANTAM (No. 3)** Hardy small pear. Real quality dessert pear. Resistant to blight and cold. 3-4' & 5-7ft.

**PEARS;** 3-4ft. \$1.35 5-7ft. \$1.90 Each

# PLUMS

Prices at bottom of page  
**NO. 17 RED COAT-** Rather long Italian prune shape. Dark red, freestone. Early

**NO. 218 PIPESTONE-** Very large early red plum, high quality. Excellent for canning- very productive. Good tree.

**EMBER (NO. 83)-** Late bearing, good keeper. Yellow with red blush. Round.

**FEIBING PRIZE-** Dark red firm fruit of good canning quality. Semi-freestone and extra large 2-2½ inches through.

**KAHINTA-** Large firm dark red plum with yellow flesh, freestone; quality good.

**KAGA-** Apricot flavor. Delicious for eating, canning, or plum jam. Pollenizer for hybrids like Sapa & Oka.

**SUPERIOR-** Large beautiful red, firm flesh, high quality. Early freestone.

**SUPRISE-** Another red plum pollenizer.

**TONKA-** Large, round, red fruit. High quality very productive, freestone.

**UNDERWOOD-** Early, large, bright red, & semi-freestone. Annual bearer, hardy north, Most widely planted plum.

**WANETA-** Immense size, delicious quality. Good red, small pits. Early.

## CHERRY PLUMS

**SAPA-** The Red Flesh Cherry. Wine red juicy meat making beautiful sauce. Low branching enabling loaded branches to overcome heavy weight.

**OPATA-** Sister to Sapa with green meat.

**OKA-** Like Sapa but sweet for eating off tree. Bears quickly

**COMPASS CHERRY & MORDENA CH.** Improved on Compass.

PRICES ON ABOVE: Each		
	Each	(5 or more)
3 to 4ft.	\$1.45	\$1.35
4 to 6ft.	1.75	1.65
5 to 7ft.	1.95	1.85



# HARDY CHERRIES

HANSON'S BUSH CHERRY Improved. Bear early, annually making good preserves  
2ft. transplants .55¢; 5 for \$1.95  
2-3ft. " 75¢; 3 for 2.00

NANKING CHERRIES-Fruit round, 1/2 in. or more across. Bright red, flesh firm, tender, sweet, small pitted. For jam, jelly, canning, or dessert. Masses of bloom, good foliage, showy fruit for landscape planting. 2-3ft. \$1.25  
3-4ft. heavy \$1.75 Each.

HARDY APRICOT (limited)

MANDARIN-Strong grafted tree; heavy 5-7ft. tree \$2.50. One to customer.

# GRAPES

NEW MINNESOTA VARIETIES

--2 Year Old Plants 75¢ Each--

RED EMBER No. 45-Medium size, best quality, flavor sweet but spicy.

MOONBEAM No. 66- Light greenish-white of Concord size. Very tender skin.

BLUE JAY No. 69- Dull black with blue cast. Concord size. First spicy, but when fully ripe, they are mild.

No. 158- New blue grape .

STANDARD GRAPES

3 yr. vines 50¢ ea.; 6 for \$2.55

BETA-Hardy blue-black grape. Cross between wild and Concord. Dependable.

CONCORD-One of largest blue grapes fruiting this far north.

WILD GRAPES.

Fine for grape juice. A good pollenizer for other grapes.

3 yr. vines 2 for 60¢; 6 for \$1.65

NEW Robinson Strawberry-Heavy yielder, drought resistant; Large

# RASPBERRIES

Intensive patch plant 1 1/2 ft. between plants; large acreage 3-4ft. Between rows; small patch 3ft. When cultivated, rows 5ft. apart.

LATHAM-Best red Minnesota variety.

SUNRISE-Like Latham, but earlier for market purposes. Very hardy.

Above 2;	Per 12	25	100	300
2 Year	\$2.50	\$3.95	\$12.00	\$33.00

Bearing Size.

NEW INDIAN SUMMER Everbearing Rasp.

Best of everbearing types. lg. red.

2 yr. Per 6	12	25	per 50
Plants	\$2.00	\$3.00	\$5.00
			\$8.00

Prepaid (Not Prepaid, 100 for \$14.75)

12 LATHAM  
12 SUNRISE  
12 INDIAN SUMMER . . . . . Prepaid.

36 plants \$5.50

25 of Each 75 PLANTS \$9.95 P.Pd.

CUMBERLAND BLACK CAP RASPBERRY

1 yr. 25 for \$3.50; 12 for \$2.25  
6 for \$1.50 Prepaid.

BOYSENBERRY THORNLESS

1Yr. 25¢ ea.; 5 for \$1.10 Prepaid.

BLUE BERRIES

ROOTED IN PEAT-2yr. \$1.35 Each.

2 for \$2.40; 4 for \$4.70 Prepaid.

# STRAWBERRIES

Everbearing- Prepaid Prices

SCARLET GEM-A	per 12	25	100
good yielder.	\$1.00	\$1.40	\$4.80

MINNESOTA #1166			
New Evermore	1.25	2.00	6.50

WAYZATA (Potted) 2.00 (Field gr. 9¢ each)

SENATOR DUNLAP (June dr) 1.00 2.75

Robinson NEW . . . . . 90 1.25 3.30

Catskill . . . . . 90 1.15 3.00

More Strawberries page 6

# CURRENTS

**RED LAKE**- Large red berry; 2 yr.

old strong plants 60¢ each.

6 or more plants @ 50¢ each.

3 yr. plants (heavy) 75¢ each

6 or more plants @ 65¢ each

**PERFECTION**-Red, Heavy yielder.

2 yr. plants 50¢ each;

6 or more @ 40¢ each.

**CASCADE NO. 70**-New large red.

1 yr. plants 60¢

6 or more plants @ 50¢ each

**NEW NO. 9 STEPHENS**-Canadian Red.

Sweet large berry. 2 Yr. \$1.25 Ea.

DRINK CURRANT JUICE FOR HEALTH

# ASPARAGUS

**PARADISE**-2 yr. plants, 25 for \$2.00

**MARY WASHINGTON**-2 yr. plants, 25

for \$1.50. 50 for \$2.00

**CHIVES** (Gröss Lök) } Prepaid  
**HORSERADISH** roots. } 25¢ each  
**PEPPERMINT** plants. } 6 for \$1.00

# RHUBARB

**RUBY RED**- Makes rich deep red sauce  
 or pie. Tender skins which need not  
 be peeled. 60¢ ea.; 5 or more @ 50¢

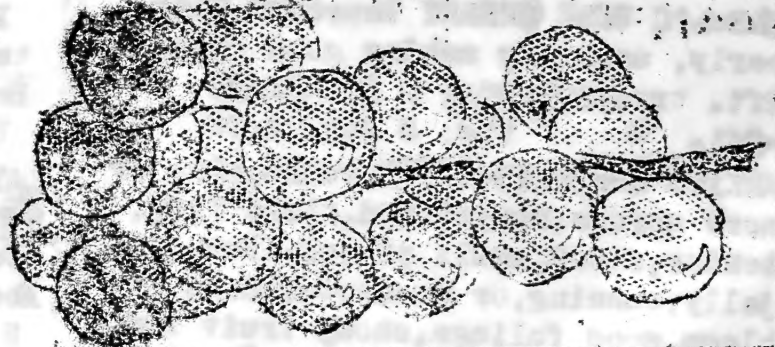
**MCDONALD**-Large red stalks. Prolific.  
 60¢ each; 5 or more @ 50¢ each

**CHIPMAN**- New Canadian Red which is  
 blood red into the tops. 95¢ ea.  
 2 for \$1.75; 5 for \$3.75

**COMMON VARIETIES**- 30¢; 5 for \$1.25

SAVE your rhubarb seed-we paid 25¢  
 a lb. last fall. Write for Price!!

Actual size of Red Lake



# GOOSEBERRIES

**PIXWELL**- Fargo, N. Dak. variety. Has  
 long stems and scarcity of thorns  
 for easy picking. 2 yr. 85¢ each.

**CHAMPION**-Good size fruit 60¢ each.

**NEW JUMBO EUROPEAN** Type Gooseberry  
 Sweetest and largest of all known  
 types. 2 yr. plants \$1.50 Each  
 Extra heavy plants 2.50 Each

BRAND NEW STRAWBERRY

**BRUNES MARVEL**-Early everbearing. Large,  
 sweet, Lucious, prolific, long rooted,  
 drought resistant, very hardy.

A Minn. origination by Chas. Bruner.

10 plants or more 10¢ each

50 plants or more 8¢ each.

SWEDBERG'S STRAWBERRY SPECIAL

25 Junebearing Sen. Dunlap

25 " Catskill ONLY

25 Everbearing Scarlet Gem \$3.95

12 " NEW MINN # 1166

1 Hardy Phlox FREE Postpaid

LETTER Page, N.D.

1/6/46 Dear Sir-The fruit trees I  
 bought from you last spring grew  
 fine and I'm in the market for more.  
 Signed, John Alm Rt. 2.



# HARDY SHRUBS

\* Hedging shrubs are planted 1 foot apart. For screens plant 2-3ft. apart

PLANT	FLOWERING SHRUBS	3-5ft. APART.	(Per)	QUA.	1-1½'	1½-2'	2-3ft	3-4ft
*BUCKTHORN	Common-Makes solid stiff hedge	"	Each	\$...	\$...	\$..40	\$..50	
		"	50	...	...	25.00	35.00	
*CARAGANA	Arborescens, Siberian Pea Tree -	"	Each	...	...	.20	.30	
	Yellow fls., small pods, light green bark	"	25	1.25	3.00	4.00	6.00	
	bright green lvs. in June. Very hardy.	"	100	3.00	9.00	12.00	18.00	
*CARAGANA	Pigmea Dwarf-Fine low hedge. Needs	"	Each	.50	.60	.75	1.00	
	very little pruning. Yellow fls. Hardy.	"	25	7.00	9.00	12.00	...	
*COTONEASTER	Peking-Glossy spring leaves,	"	Each	...	...	.50	.65	
	turning bright colors in fall. Squares up.	"	25	6.00	...	12.00	15.00	
**CURRANT	Alpine-Good low showy hedge. It	"	Each	.35	.50	1.75	2.50	
	squared up beautifully. Bright green.	"	25	6.50	(6-12"	\$5.00)	Encured	
*BARBERRY	Green Leaved-Lvs. turn colors in	"	Each	.50	.65	...	...	
	fall. Red berries hang into winter.	"	25	4.00	6.00	...	...	
BARBERRY	Red Leaf-Foliage is dark red all	"	Each	.65	.85	1.00	...	
	summer and bright red in fall. Grows 2½ft.	"	5	3.00	3.75	...	...	
BRIDALWREATH	See Spirea Van Houttei-Next page							
**DWARF NINEBARK	Bright green leaves making	"	Each	.35	.50	.75	1.00	
	very attractive smooth soft hedge. Easily	"	5	1.50	2.00	3.00	4.50	
	pruned, fills square to ground. Grows 5ft.	"	25	7.00	9.00	13.50	...	
GOLDEN NINEBARK	Golden lvs, white spirea-like	"	Each	...	.50	.65	.75	
	fls. followed by red showy seed pods.	"	5	...	2.20	3.00	4.50	
*HONEYSUCKLE	Zabel- Real red fls. and red	"	Each	...	.50	.75	1.00	
	berries. Showy against dark green lvs. A	"	5	1.50	2.00	2.75	4.00	
	good shrub, make room for it. Upright.	"	25	6.50	9.00	12.50	...	
HONEY	SUCKLE Tartarian Pink Fls. Orange fruit	"	50	12.00	...	Ea..45	.60	
*CHINESE HEDGEWOOD	Makes a nice bright	"	25	2.95	...	...	...	
	green hedge in just few years. Trim thus	"	100	9.35	...	...	...	
**CHINESE LILAC	Rothemogensis-This beautiful	"	Each	.40	.50	.65	.85	
	dark red lilac also makes ideal dark green	"	5	1.75	2.25	3.00	3.50	
	hedge thick to the ground. No suckers.	"	25	9.00	11.00	...	...	
FRENCH LILACS	Hybrids as named below: ....	"	Each	.65	.85	1.25	1.75	
	Chas. Joly-Double Purple. Pres. Grevy-D. lilac							
	Chas. X-Showy large red. Alphonse Lavelle-Double violet							
	MADAME LeMoine-Double White Belle de Nancy-Double rose-pink							
VILLOSA LATE LILAC	Large pink-lavender fls.	"	Each	...	.50	.75	...	

# 8 HARDY FLOWERING SHRUBS

(D) Dwarf Shrubs 1-3ft. high - (L) Low Shrubs 3-5ft. - (M) 5-7ft. (T) Tall 8ft. over

	Above	Type	Qua.	1-1ft	1½-2	2-3ft.	3-4ft.
DOGWOOD Variagated Leaved. Good red bark	M	Each	\$...	\$...	\$ .75	\$....	
DOGWOOD Red Barked or Golden barked	M	Each	...	.50	.60	.75	
ELDER Golden leaved, white fls., black bry	L	Each	...	.50	.75	...	
ELDER Fern leaf-Showy black berries, large	L	Each	...	.50	.75	...	
HIGH BUSH CRANBERRY-White fls. flater than snowball but showy red jamberries.	M	Each	.40	.50	.65	.75	
		Per 5	1.75	2.25	2.95	3.50	
HYDRANGEA Arborescens-Large showball-type flower July-August. Very hardy. For shade	L	" 5	2.25	3.00	3.50	4.00	
HYDRANGEA P.G. White pyr. fl., turns pink	L	Each	.65	.85	1.00	...	
MAY DAY TREE- Long fragrant wh. fls. May	T	Each	.45	.65	.75	1.00	
MAPLE GINNALI-Tall shrub or small tree. Bright colored fall lvs. Red seed pods	T	Each	.35	.50	.65	...	
		" 5	1.50	2.00	3.00	...	
		" 10 seedlings	1.50	...	...	...	
MOCKORANGE Virginal Double White-Mass of flowers in June; also summer and fall	M	Each	.50	.75	.90	...	
MOCKORANGE LEMOINE Fragrant white. Tall	M	" 5	2.25	3.50	...	1.00	
<b>SPIREAS</b>							
SPIREA ARGUTA Snow Garland-Early pure white	M	Each	...	.85	1.00	...	
" ANTHONY WATERER-Dwarf, deep pink wide fls	D	Each	.40	.50	...	...	
" FROEBEL-Light pink, semi-dwarf, same price	D	Per 5	1.85	2.25	...	...	
" ASH LEAVED (Sorbariea) White fl. spikes in June late. Good for shade. Bright green	L	Each	.40	.45	.65	.85	
		" 5	1.75	2.00	3.00	4.00	
" BILLARDI-Pink fl. spikes mid-June.	L	Each	...	.40	.60	.75	
" VAN HOUTTE Bridalwreath Common White. A ideal shrub for sun or shade. As screen or hedge plant 2 to 3ft. apart.	M	Each	.25	.35	.50	.75	
		5	1.15	1.50	2.25	3.50	
		25	5.00	6.50	...	...	
" KOREAN-Creamy white fls. later than V.H.	L	Each	...	.50	.75	.85	
" THUNBERG- Fern Leaf graceful shrub. The early pure white flowering, like arguta.	L	Each	...	.50	.65	.85	
		5	...	2.25	3.00	....	
SIBERIAN ALMOND-Semi-dwarf, covered single pink fls. early May. A root runner. Good.	D	Each	.40	.65	.75	...	
		5	1.85	3.00	3.50	...	
SNOWBALL-Common June flowering tall shrub	M	Each	.45	.60	.75	...	
PURPLE PLUM-Red leaves all summer, no plums	M	Each	...	.75	.90	1.25	
*RUSSIAN OLIVE-Showy silver leaves. White berries. Fast growing windbreak or hedge	T	Per 10	1.00	1.35	1.75	...	
		100	5.00	6.60	...	...	

# FLOWERING PLUM

DOUBLE PINK FLOWERING PLUM OR ALMOND  
 Prunus Triloba-A hardy flw. Almond.  
 1½-2ft. 75¢ Ea. 2-3ft. 90¢ each.  
 1-1½ft. 60¢ Ea. 3-4ft. \$1.25 Each

TAMARIX Hespida-Silver sprays; fls. pink.  
 1½-2ft. 50¢, 3' for \$1.35- 2-3ft. 75¢ Ea.

WAYFARING TREE-Viburnum lantana. White  
 snowball-like bush. Fls. larger, flater.  
 Showy red berries, dark green leaves.

1½-2ft. 45¢; 3 for \$1.20  
 2-3 ft. 65¢; 3 for 1.80

# VINES

AMERICAN IVY-Virginia Creeper. Twines  
 for support. 35¢; 3 for 85¢

ENGLISH IVY- Clings to brick or  
 stucco. Fine fall coloring. 40¢  
 3 for \$1.10; 5 for \$1.75.

BOSTON IVY- Small dainty leaves. Good  
 fall coloring. Clings to wall. 85¢ ea.

BITTERSWEET- Native twining vine  
 with orange-red berries. 40¢ Each.

CLEMATIS Jackmanni Purple-Large pur-  
 ple-blue flowers mid-summer. Plant  
 on trellis east side, in open.  
 2½ in. potted 75¢; 2 for \$1.25  
 Large potted \$1.00 Each.

NEW SCARLET TRUMPET HONEYSUCKLE  
 Trumpets golden inside; red outside.  
 Large size fls. all summer long.  
 75¢ Each; Heavy Plants \$1.00 Each.



# ROSES

HANSA RUGOSA -Double violet-red  
 fls. in June; periodically during  
 the summer and again Sept. Good  
 shrub for front foundation.

1½-2ft. 85¢ Each  
 2-3ft. \$1.25 Ea. (No. 1)

F. J. GROOTENDORST RUGOSA-Bright  
 red roses in clusters all summer  
 long. 2yr. No. 1 \$1.25 each.

GROOTENDORST SUPREME \$1.50 Each.

HARRISON YELLOW-Good hardy rose.  
 Grows 5 ft. high. No. 1 \$1.25

F. K. DRUSCHKI-Large white \$1.25

GRUSS EN TEPLITZ-Good red \$1.25

PAUL NEYRON-Large dbl. pink \$1.25

DUPONT- Clear yellow. \$1.25

## CLIMBING ROSES

DOROTHY PERKINS Dark Pink 90¢ Ea.

EXCELSA Dark red dbl. fls. 90¢ ea.

Anchorage, Alaska.

Gentlemen:

Some of my neighbors in this  
 town have roses blooming in their  
 gardens which have lived outdoors  
 several winters and which they  
 bought from your nursery. I  
 would like them myself; please  
 send your catalog. Signed J.A.B.

## SPECIAL ON HARDY BACKYARD SHRUBS

1. Caragana Pigmaea
  2. Cotoneaster Peking LARGE
  3. Green Ninkark 2 & 3 ft.
  4. Zabel Red Honeysuckle Shrubs
  5. High Bush Cranberry Value
  6. Ash Leaved Spirea \$3.55
- 1 of Each 6 SHRUBS FOR \$2.95  
 2 of Each 2 SHRUBS FOR \$5.70  
 2 DELPHINIUM Blue FREE 2 with 3 shrubs



# 10 WINDBREAK & SHADE TREES

PRICES ON;-

AMERICAN FIRM - GREEN ASH  
CHINESE ELM and BOX ELDER

Seedlings Per	50	100	500
12-18 inch	\$1.35	\$2.35	\$10.00
18-24 "	1.75	3.20	15.00
2-3 feet	2.25	4.20	19.50

Transplanted	Each	Per 10	25
3-4 feet	\$ .20	\$1.50	\$3.50
4-5 "	.45	4.00	9.25
5-6 "	.75	7.00	16.00
6-7 "	1.25	11.50	....
7-8 "	1.50	13.00	....
8-10 "	2.00	17.50	....
1½ in. caliper	2.50	23.00	....
2 in. "	4.00	37.00	....

COTTONWOOD

2-3 ft. trees \$3.00 per 100

BLACK WALNUT

Seedlings Per	25	50	100
1-1½ feet	\$2.50	\$3.90	\$7.25
1½-2 "	3.00	5.00	9.25
3-4 ft. Trees	40¢	10 for	\$3.50
6-8 ft. Trees	\$3.50	Each	

BUTTERNUT

3-4ft. Trees 40¢; 10 for \$3.50

SOFT MAPLE (Silver Maple)

Fastest growing of the Long Lived Trees. A good buy.

Seedlings Per	10	50	100	500
1½-2ft.	\$.75	\$1.75	\$3.25	\$14.00
2-3 ft.	1.00	2.35	4.25	20.00
Trees	Each	Per 10	25	50
3-4 feet	\$.35	\$2.95	\$6.25	\$12.00
4-5 "	.50	4.75	9.75	17.50
5-6 "	.75	6.00	14.00	27.00
6-8 "	1.50	14.00	30.00	....

CARAGANA

SIBERIAN PEA TREE-Best snowcatch plant.

Seedlings Per	25	50	100	500
8-12 inch	\$.75	\$1.50	\$2.50	\$22.00
12-18 "	1.00	1.75	3.00	29.00
18-24 "	1.50	2.50	5.00	39.00

RUSSIAN OLIVE

1-1½ft. 25 for \$1.50; 100 for \$5.00  
1½-2ft. 25 for 1.95; 100 for 6.50

NORWAY POPLAR

CUTTINGS 50¢ per 100

Trees	Each	Per 10	Per 25	Per 100
2-3 feet	\$.15	\$1.25	\$2.50	\$7.75
6-8 feet	1.00	9.00	....	....

RUSSIAN GOLDEN BARK WILLOW and  
LAUREL LEAF Green bark WILLOW

Cuttings 50¢ per 100

Trees 1½-2 feet \$5.00 per 100

HACKBERRY

Like American Elm only limbs do not break in wind or sleet as easily.

1½-2ft. 25 for \$2.00; 100 for \$5.50  
2-3 ft. Each 35¢; 10 for \$2.50  
3-4 ft. Each 50¢; 10 for 3.50  
5-6 ft. Each \$1.00;

LAKE CITY ELM

A vase elm. Grafted form of American Elm growing uniform thick top.

5-6 ft. trees \$1.50 Each  
6-8 ft. trees 2.00 Each  
8-10ft. trees 3.50 Each

HARD SUGAR MAPLE

17 yr. old 10ft. trees \$6.00  
2-2½ in. cal. trunks Ea. \$ 8.00

WIER'S CUT LEAF MAPLE

5-6 ft. trees \$1.95 Each.

# ORNAMENTAL & SHADE TREES 11

## AMERICAN WHITE BIRCH

Pure white bark, dark green lvs.  
Plant 3-5 in clusters or alone.

SIZE	Each	Per 3	Per 10
2 feet	\$.25	\$.60	\$1.75
2-3 feet	.35	.75	2.50
6-8 feet	1.75	4.75	15.00
8-10 "	2.50	6.75	.....
2" Cal.	5.00	...	.....

## CUT LEAF WEEPING WHITE BIRCH

Branches hang like Wp. willows.

4-5 ft.	\$3.50 Ea.	2 for \$6.50
5-6 ft.	4.50 Ea.	2 for 8.50

## Big Leaf AMERICAN LINDEN Wood

SIZE	EACH	Per 4	Per 10
2ft.	\$.30	\$.95	\$2.00
2-3 ft.	.40	1.25	3.00
3-4 ft.	.50	1.75	4.00
5-6 ft.	1.40	5.25	13.00

## EUROPEAN LARCH

Grows in the shape of a spruce but drops its needles. Graceful bright green tree. 1½-2ft. \$1.50  
\$3.50 Each.

RED OAK- Bright red in fall.  
2-3 ft. trees 50¢; 4 for \$1.85

AMERISINO HYBRID CROSS ELM. A  
fast growing clean tree.  
8-10ft. trees \$3.50 Each

## HONEYLOCUST Thornless

6-8 ft. trees \$1.75 each.  
8-10ft. trees 2.50 each.

## SCHWEDLERI Blood Red MAPLE

Leaves red in spring turning a dark green. 6-8ft. \$3.00 Each.

GINNALI MAPLE-See shrubs page 8.

## HORSECHESTNUT-Ohio Buckeye

The hardiest leaf tree for the north  
Showy white fls., brown nuts.

2-3 ft.	\$.60	2 for \$1.00	4 for \$1.85
3-4 ft.	.95	2 for 1.75	4 for 3.35
4-5 ft.	1.25	2 for \$2.25	
5-6 ft.	1.75	2 for 2.95	
6-8 ft.	2.50	2 for 4.60	

## MOUNTAIN ASH- European

Orange-red berried type. White fls.

5-7 ft.	\$1.50 Ea.	2 for \$2.50
7-8 ft.	2.00 Ea.	2 for 3.80
8-10 ft.	3.50 Ea.	2 for 6.25

## POPLAR LOMBARLY

Pyramidal type tree; green leaf.

4-5 ft.	\$.55 Ea.	3 for \$1.50
5-6 ft.	.75 Ea.	3 for 2.00
6-8 ft.	1.25 Ea.	3 for 3.25

## POPLAR BOLLEANA

Pyramidal type tree. Leaves silver underneath; light grey-green bark.

4-5 ft.	\$.90; Ea.	3 for \$2.50
5-6 ft.	1.25 Ea.	3 for 3.25
6-8 ft.	1.75 Ea.	3 for 4.50

GOLDEN WEEPING WILLOW Niobe  
Beautiful drooping branches. Yel. bark.

4-5 ft. trees	75¢; 2 for \$1.35
5-6 ft. trees	90¢; 2 for 1.75
6-8 ft. trees	\$1.50 2 for 2.75

## HOPA FLOWERING TREE

The hardiest most beautiful ornamental tree for the north. Loaded with rose-red fls. in spring. Large showy red berries (small crabs) in fall.

6 ft. trees	\$1.75; 7-8ft. \$2.50 Each.
-------------	-----------------------------

# SPECIMEN EVERGREENS

## ARBORVITAE B&B

B&B Specimen Evergreens are all dug with dirt Ball, held securely with Burlap

A. AMERICAN-Bright green foliage all winter. Shear into thick pyramids. 1-1½ft. 1½-2' 2-2½' 2½-3ft. 3-3½' 3½-4'

A. PYRAMIDAL-Grows compact for doorway planting. Always bright green. 2.00 3.00 4.25 5.50 6.50 7.50

A. SIBERIAN-Prune globe, or blunt pyr. 3.00 3.75 .... .... ....

## UPRIGHT JUNIPERS B&B

J. VIRGINIANA-Red Cedar-Best seller. 2.00 2.50 3.50 5.00 5.50 6.00

J. " NEVINS BLUE-Grafted, blue-green color all winter. Very hardy..... .... 6.50 7.50 8.50 10.50

J. SCOPULCRUM-Chandler, Pathfinder, & Hilli Silver Junipers. Very hardy.. .... 3.75 6.50 7.50 ....

## SPREADING BUSH TYPE JUNIPERS B&B

JUN. SAVINS-Hardy bright green bush juniper .Use under front windows. 10-12" 12-15" 15-18" 1½-2' 2-2½' 2½-3'

JUN. PHFITZER-Silvery-green cast. An artistic low growing bush juniper.. .... 2.50 3.00 3.50 3.95 4.95

JUN. PROSTRATE-Covers ground lft. high..... 1.75 2.50 3.00 3.50 ....

## MUGHO DWARF PINE B&B

Bright green dwarf pine that should be pruned pillow shape or round. 1.75 2.75 3.75 5.00 ....

## SPRUCE AND PINE B&B

ALSO SEE SMALLER, CHEAPER, WINDBREAK EVERGREENS ON NEXT PAGE

COLORADO BLUE SPRUCE-Showy silvery cast with new growth a fresh silver sheen, Ornamental lawn tree. Can be trimmed 1-1½' 1½-2' 2-2½' 2½-3' 3-3½' 3½-4'

COLORADO SPRUCE-Blue-green tree. 2.00 3.25 4.50 6.00 7.00 9.00

BLACK HILL SPRUCE-A dark green thick symmetrical tree. A good buy.. 2.50 3.00 3.75 4.75 6.00 7.50

NATIVE WHITE SPRUCE-Very hardy.. 1.75 2.50 .... ...

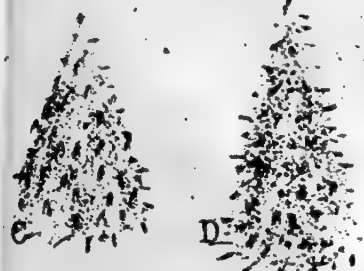
WESTERN YELLOW BULL PINE. A hardy fast growing long needled Pine. These are wide full trees... 6.00 7.50

SCOTCH PINE-Shorter needles than Bull Pine. See next page ----->

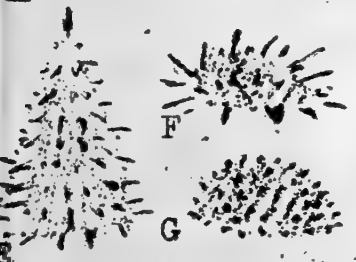


## USE EVERGREENS EVERYWHERE

- A ARBORVITAE Pyramid
- B " Siberian
- C " American
- D Cedars-Red, Blue, Silver
- E Spruces

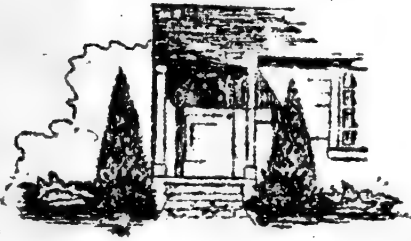


- F Bush Junipers
- G Mugho Dw. Pine.



### A FRONT SIDEWALK PLANTING

A Mugho Pine at each side of top of steps with two Savin Junipers below for a very pleasing effect. On narrow lots 4 Mugho Pines may be used alone.

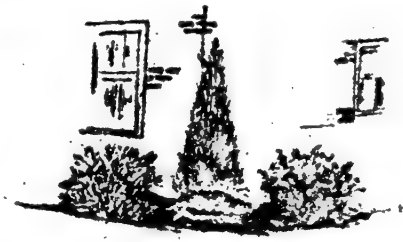


### A FRONT ENTRANCE PLANTING

At the front entrance the tall Silver Cedars or the Red Cedars are most appropriate. The low Mugho Pines next to the steps contrast nicely in color and form, add also the Juniper Savin which completes the groups.

### FOR CORNER OF HOUSE

Here either the Silver Cedar or the Red Cedar provides the needed height. With a Mugho Pine at each side, and either a Pfitzer or a Savin Juniper between these two, the effect is harmonious.



### A REFINED MONUMENT PLANTING

A Silver Cedar, Red Cedar or Pyramidal Arbor Vitae at each end of the monument with a Juniper Savin in front and in back presents a dignified and refined appearance.



## ROOTS ARE PACKED IN WET MOSS WHEN SHIPPED WINDBREAK EVERGREENS

S Seedlings & (T) Once Transplanted should be planted in garden plot for a few years before transplanted into rows or in sod.  
 (TT) TWICE Transplanted Evergreens may be planted right out in field or sod if watered and cultivated generously.

PRICES ON: Black Hill, White, and Colorado Spruce.

SIZE	Each	Per 10	Per 50
S 6-10 in.	\$.20	\$1.50	\$7.00
T 6-10 in.	.30	2.00	9.00
TT 9-12 in.	.50	4.00	18.00
TT 12-15 in.	.75	7.00	30.00
<b>AMERICAN ARBORVITAE</b>			
T 9-12 in.	.25	2.00	8.00
TT 9-12 in.	.35	3.00	10.00
TT 12-15 in.	.50	4.50	18.00

PRICES ON: Scotch, Austrian, Norway, & White PINES and Western Yellow Bull (Ponderosa) PINE.

SIZE	EACH	Per 10	Per 50
S 6-9 in.	\$ ..	\$1.00	\$4.50
TT 9-12 in.	.30	2.50	12.00
TT 12-18 in.	.35	3.00	14.00

When planting Evergreens place them in container with water at least partially covering the roots. Keep Moist.



**HARDY FLOWERS CONT.**

Postpaid Each

<b>COLUMBINE</b> <i>Acquilegia</i> (M) Mx. blue-red.	20
" Long Spurred pink or mixed.	25
" " " Crimson Star red.	35
<b>FLOWERING FLAX</b> (M) Blue	25
<b>GAILLARDIA</b> Blanket Flower (M) Red	25
<b>GAS PLANT</b> ( <i>Dictamnus</i> ) (M) Pink & blue	25
<b>DIGITALIS</b> (T) Mx. whites, blues, pink	25
<b>GOLDEN GLOW</b> (T) Double fls. 3 for 60¢	25
10 for \$1.00	
<b>HEUCHERA</b> Carolbell (M) Pink bells	25
" FIRELIGHT- Red carolbells	35
<b>HOLLEYHOCKS</b> (T) Single mixed	20
" Double Red, Yellow, or Pink	25
<b>IRIS</b> INDIAN CHIEF- Large velvety bronze red. Over 30" tall.	35
(We may have to sub.)	
<b>GERTRUDE</b> Blue- Good large pure bl.	25
<b>QUEEN OF MAY</b> - Soft rose-lilac; 32in.	30
<b>LORD OF JUNE</b> - Fragrant gigantic blue bicolor fls. 5-7in. 40in. high.	30
<b>AUTUMN KING</b> - Clear blue uprights with rich purple blue falls. Will bloom in fall also farther south.	35
<b>PERFECTION</b> - Blue uprights, velvety purple falls.	30
<b>BLUE FLAG</b> - Early Decoration Day fl.	25
<b>SIBERIAN</b> - Blue, orchid-shaped fl.	25
<b>LARGE YELLOW</b> - A good ahrdy yellow.	25
<b>1 EACH OF THOSE UNDERLINED</b>	7 For
And get free 1 NEW IRIS <i>Delicious</i>	\$1.69
<b>MOTHER OF PEARL</b> - Bluish-lavender 44"	30

**NEW LYTHRUM** (T)

A New Canadian flower. Showy clear pink fls. ALL summer long. Ideal cut flower. Sure to get it. .... 35

**LUPINE** Russels' Improved (M) Large spikes pea shaped fls. Light colors. 35

**LYCHNIS** Champion (MT) Orange-red fls. in round heads 3-4" across. .... 25



**PHLOX**

5 PLANTS (5 colors) \$1.19  
Our Selection POSTPAID

<b>FIELD GROWN PHLOX PLANTS</b> Each	\$ .30
See preceeding page for discount	
<b>BEACON</b> - Large bright cherry red.	30
<b>BARON VON HEECHEREN</b> - Nice pink.	30
<b>B COMPTE</b> - Wine red, very good.	30
<b>COLONIAL</b> - Large; clear lavender blue	30
<b>DR. CHAS. MAYO</b> - White-carmen eye.	30
<b>MRS. JENKINS</b> - Good pure lg. white.	30
<b>ECLAIREUR</b> - Brilliant rosy carmen.	30
<b>RHEINLANDER</b> - Salmon-pink, rosy eye	30
<b>RYNSTROM</b> - Best large deep pink.	30
<b>WIDAR</b> - Outstanding lav., white eye	30
<b>THOR</b> - Very tall pink variety.	25

**NEWER VARIETIES**

<b>BLUE COMMANDER</b> - Most attractive shade of blue.	45
<b>DAILY SKETCH</b> - One of largest fls. Delicate salmon-pink, darker eye	45
<b>NEW STARLIGHT</b> - Purplish-violet with white star. Unusuall.	35
<b>SPECIAL FRENCH</b> - Large rich pink.	45

**CREEPING PHLOX**

Bloom in May and again Sept.	Red. 35
White, lavender, pink, .....	30

<b>PHYSOSTEGIA</b> False Dragon Head (M) Clear lavender fl. in Oct. Good.	25
<b>PLATYCODON</b> Balloon Flower (M) Blue	25
<b>PRIMROSE</b> Yellow (L) In May-June.	25
<b>PENTSTEMON</b> Grandiflora (M) Hardy native lavender foxglove-like.	25
<b>POPPY</b> Oriental- Bright scarlet.	25
<b>SEDUMS</b> - Yellow, or red creeper.	25
<b>SEMPERVIVUM</b> - Hen and Chicks.	20
<b>STATICE</b> Sea Lavender Sprays.	35
<b>VERONICA</b> New Blue Spire (M) Good	35
<b>THYME</b> - Purple fls. OR Silver type.	25
<b>VIOLAS</b> - Yellow or blues.	20



# LILIES

See page 14 for flower discounts.

POSTPAID EACH

ELEGAN(M)The Red Russian Lily with orange-red up- turned flowers. Blooms late June...\$..25	TIGER Single- The common orange-red speckled lily.... .25
TIGER Double(T)A swell fl. outside or inside bouquets. .30	REGAL-Fragrant white fl.... .35
" smaller size bulbs.... .25	CAROL LILY(M)*Deep orange, waxon, miniature lily..... .25
DAY LILIES(T)Orange trumpet shaped fls.& iris foliage.. .20	LILY OF THE VALLEY(L) White. .25
TIGRIDIA(M) Shell flower of Mexico.Red specked fl. Dig in the fall like glad bulbs..20	



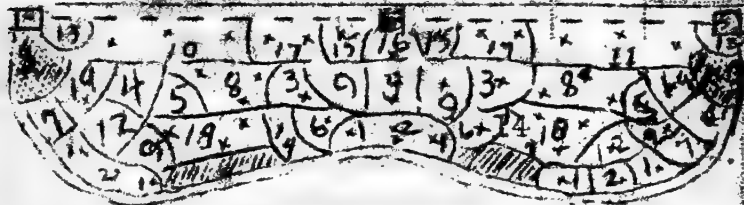
1 Red  
1 Pink  
1 White

# PEONIES

3 FOR  
\$1.50  
Prepaid

NO FLOWER DISCOUNT ON PEONIES unless  
5 OR MORE PEONIES ARE ORDERED

Nice roots-2 best sizes-STANDARD	HEAVY
FESTIVA MAXIMA-Largest pure white with red splash in the center.Can't be beat.....\$.60	\$... .75
FESTIVA ROSEA-Larg clear pink.55	.75
GIANT PINK-Deep rose,very dbl.65	.85
KARL ROSENFIELD-Good early double red......75	1.00
EARLY RED-First to bloom,with yellow stamens in center... .60	.85
LONGFELLOW-Bright cherry red. Fl. very double,medium size..85	1.10
MARY BRAND-Best double large red. Midseason bloom..... .75	.95
MIDNIGHT-Large,deep marroon .75	.95
RUBRA SUPERBA-Best late red .75	.95
SARAH BERNHARDT-Apple blossom pink. Large and beautiful..1.00	...



## FLOWER BORDER

This Flower Border contains the varieties well suited for this territory. It can be altered to suit yourself. Flowers will bloom from May until Oct. or November. Tulips and creeping Phlox can be added to front of border later.

Bright large Dahlias can be planted in upper corners around Peonies and cut down Peonies after bloom. Annuals may be used in shaded areas for mid-summer bloom.

FLOWER BORDER as shown with x for each plant for 20ft. border:

KEY	NAME	KEY	NAME
1	DW. ASTER Blue	11	PACIFIC DELPH.
2	Dw. ASTER White	12	SHASTA DAISY
3	ASTER Red	13	FALL DAISY
4	BLEEDING HEART	14	ELEGANS LILY
5	BUTTERCUP Yel.	15	DBL. TIGER LILY
6	BEE BALM Red	16	LYTHRUM Pink.
7	COLUMBINE Mx	17	PHYSOSTEGIA
8	COREOPSIS Yel.	18	HARDY PHLOX
9	MINN. MUMS Mx	19	PEONIES
10	G.M. DELPHINIUM	20	DAHLIAS

One plant for each No. Shaded, ANNUALS

42 FLOWERING PLANTS only \$10.95  
Cat. Value \$12.65 Prepaid

56 FLOWERING PLANTS \$13.75  
Cat. Value \$16.65 Prepaid

# ANY 6 DAHLIAS \$1.29

(YOUR CHOICE) Postpaid

- 1. AVALON-Lg. dbl. good yellow.....<sup>Each</sup>\$.35
- 2. AMERICAN BEAUTY-Double red.....30
- 3. BONNIE BLUE-Medium size.....30
- 4. COUNTESS OF PEMBROKE-Lavender dbl.30
- 5. JANE COWL-Large bronze & buff....30
- 6. JERSEY'S BEACON-Scarlet & buff...30
- 7. JERSEY'S BEAUTY-Good large pink...35
- 8. KEMPS WHITE WONDER-Plate size....35
- 9. MRS. I. DE. VER WARNER-Most beautiful deep clear lavender, double.....35
- 10. PRIDE OF CALIFORNIA-Largest red...30
- 11. PURITY-Good size pure white.....25
- 12. DR. TEVIS- Large salmon rose....35
- 13. THE COMMODORE-Cannary yellow, a large plate size flower.....30

### CACTUS DAHLIAS

RENE AJEUX- Waxy red. BRIDES. BOUQUET. White, MELODY Yellow, PIERROTT Orange Tipped White, CELIA Lavender pink...25

POMPON, MINIATURE, AND CACTUS DAHLIAS IN ASSORTED COLORS OF: Brilliant Red Lavender, White, Yellow, Purple, Bronze

6 NICE TUBERS (One Each) \$1.19

FRED SPRINGER-The great Killy-Lieu or beaoning dahlia. Decorative brilliant red, bright green foliage. Bloom from August until frost. Plant 1 1/2 ft. apart. 7 tubers (for 3 ft. bed) only \$1.49 19 " (for 6 ft. bed) only 3.75 Postpaid.

## CHOICE GLADS

A FEW EACH OF THE BEST KINDS

25 (Our Selection mixed) \$1.29 POSTPAID

SPECIAL COLLECTION-100 Bulbs for \$4.75 10 bulbs each of 10 good varieties.

## CHOICE GLADS

2 Bulbs FREE with each order of 10 bulbs ordered @ Each Rate.

- |  | Postpaid..... | Each |
|--|---------------|------|
| 1. ALICE TIPLADY- Orange.....                                  | \$.08         |      |
| 2. APRICOT GLOW-Apricot yellow,                                |               | .08  |
| 3. BAGDAD- Large rusty rose...                                 |               | .10  |
| 4. BETTY NUTHALL-Good pink....                                 |               | .09  |
| 5. BEACON-Salmon scarlet with creamy throat.....               |               | .09  |
| 6. BLACK OPAL-Dark rich red....                                |               | .11  |
| 7. BLUE ADMIRAL-Dark blue.....                                 |               | .12  |
| 8. DR. BENNETT-Fiery scarlet....                               |               | .09  |
| 9. COMMANDER KOEHL-Large, deep vivid scarlet, clear color..    |               | .10  |
| 10. CRIMSON GLOW- Dark red. ...                                |               | .08  |
| 11. CHARLES DICKENS-Blood red..                                |               | .09  |
| 12. DUNA- Exquisite peach.....                                 |               | .10  |
| 13. DEBONAIR- LaFrance pink....                                |               | .10  |
| 14. GOLD EAGLE- Golden orange..                                |               | .08  |
| 15. GIANT GOLDEN RUFFLED-Yellow                                |               | .08  |
| 16. GIANT NYMPH-Good large pink.                               |               | .08  |
| 17. GOLDEN FRILLS-Creamy orange                                |               | .08  |
| 18. LILAC WONDER- Lavender... ..                               |               | .08  |
| 19. LOS ANGELES-Pink, red throat                               |               | .08  |
| 20. KING ARTHUR-Popular lavend.                                |               | .09  |
| 21. KING LEAR-Ruffled, glistening wine purple... ..            |               | .10  |
| 22. MAID OF ORLEANS-Best white.                                |               | .09  |
| 23. MARNIA- Orange... ..                                       |               | .08  |
| 24. MINUET-Clear lavender .....                                |               | .09  |
| 25. MORROCCO-Reddish-black....                                 |               | .10  |
| 26. ORCHID-Miniature orchid....                                |               | .08  |
| 27. OPALECENT-Lavender.....                                    |               | .08  |
| 28. PICARDY-Pure salmon pink, one of the best in every way.... |               | .08  |
| 29. PELEGRINA- Best true blue..                                |               | .09  |
| 30. PHITZER'S TRIUMPH- Large orange-red. Very good .....       |               | .09  |
| 31. PRIDE OF WANAKA-Deep rose..                                |               | .09  |
| 32. SHIRLEY TEMPLE-Ruffled cream..One of the best              |               | .10  |

# VEGETABLE PLANTS

# GARDEN SEED

These plants can be shipped parcel post to neighboring states. Add 10% of Order for Postage.

- TOMATOES: Bounty, Marglobe, <sup>Doz.</sup> 15¢
- " Transplanted " " 25¢
- CABBAGE: Flat Dutch; sdls. 15¢
- " Early or Late" trnsp. 25¢
- PEPPERS: Big sweet... trnsp. 35¢
- GROUND CHERRIES..... trnsp. 35¢
- CELERY & EGG PLANTS trnsp. 35¢

## BERMUDA ONIONS

30¢ PER 100 Plants

## WATER LILIES POSTPAID

- CHROMATELLA Yellow..... EACH \$2.00
- GONNERE White..... 2.50
- GLORIOSA Red ..... 2.50
- PAUL HARIOT Peach to red... 2.00

### POOL PLANTS

- Arrow Heads, Cattails, Water Hyacinth, & Oxygenating plts. 25
  - Water Poppy -when available. 35
- PRICE EACH POSTPAID.....

## CANNAS

- KING HUMBERT BRONZE-Red flowers
- KING HUMBERT GREEN-Yellow fls.
- 30¢ ea.; 3 for 75¢ Postpaid.

### WINDBREAK TREE SEEDS

In 25¢ Pkts. Postpaid

- 1. Caragana Snow Catch
- 2. American Elm.
- 3. Soft Maple.
- 4. Black Hill Spruce.
- 5. Colorado Spruce.
- 6. Scotch Pine.
- 7. Bull Pine.

FLOWER SEEDS-Gold Medal Delphinium, Balloon Flower, Hollyhocks, and Columbine in 10¢ pkts. postpaid

We stock best early POSTPAID PRICES Northern Varieties.

	Pkt.	1 oz.	1/4 lb.
BEANS-Navy and Northern	\$.08	\$....	\$.11
" Swedish Brown Bean	....08	...	.10
" Golden or Black Wax..	.10	...	.15
BEETS-Detroit Dark Red..	.10	.23	.85
" Mangel Stock. Feed..	.10	.20	.60
CABBAGE-Flat Dutch.....	.10	.50	1.25
CARROTS-Half Long; Red Core	10	.40	1.40
CORN-Golden Bantam. 1#40¢	.10	...	.14
CORN-Golden CROSS" 1#70¢	.10	...	.25
POPCORN-Jap. Hulless & Rice	.10	...	.15
CUCUMBER-Early or Pickle	.08	.20	.65
LETTUCE-Curled or Head	.08	.15	.20
MUSKMELON- Green Ford,			
" Golden Chap., Honey Rock.	08	.20	.60
ONIONS-Red or Yel. Globe	.10	.60	...
PARSNIPS-Guernsey or Crown.	08	.13	.45
PEAS-Prem. Gem, Alaska, and			
" Moore's Progress. 1#40¢	.10	...	.15
PUMPKIN-Winter Pie.....	10	.20	.50
RADISHES-Red-White Tip or			
" Icicle white.....	05	.12	.38
RUTABAGA-Purple Top Turnip	08	.15	.45
SPINACH-King of Denmark...	10	.12	.40
SWISS CHARD.....	10	.12	.40
TOMATOES-Earlina, Bounty,			
" Marglobe, Yellow Pear...	10	.80	...
WATERMELON-Monte or Queen	10	.20	...
GROUND CHERRY-....	10	...	..

## GRASS SEED

LANDSCAPE MIXTURE- Used on our lawn jobs. Kentucky Blue Grass, Red Top, and White Clover. 75¢ lb. 10 lbs. or more @ 65¢ per lb.

August is the ideal seeding month if the lawn can be sprinkled. If you cannot water it, plant seed in April early.

**FROM**

---

---

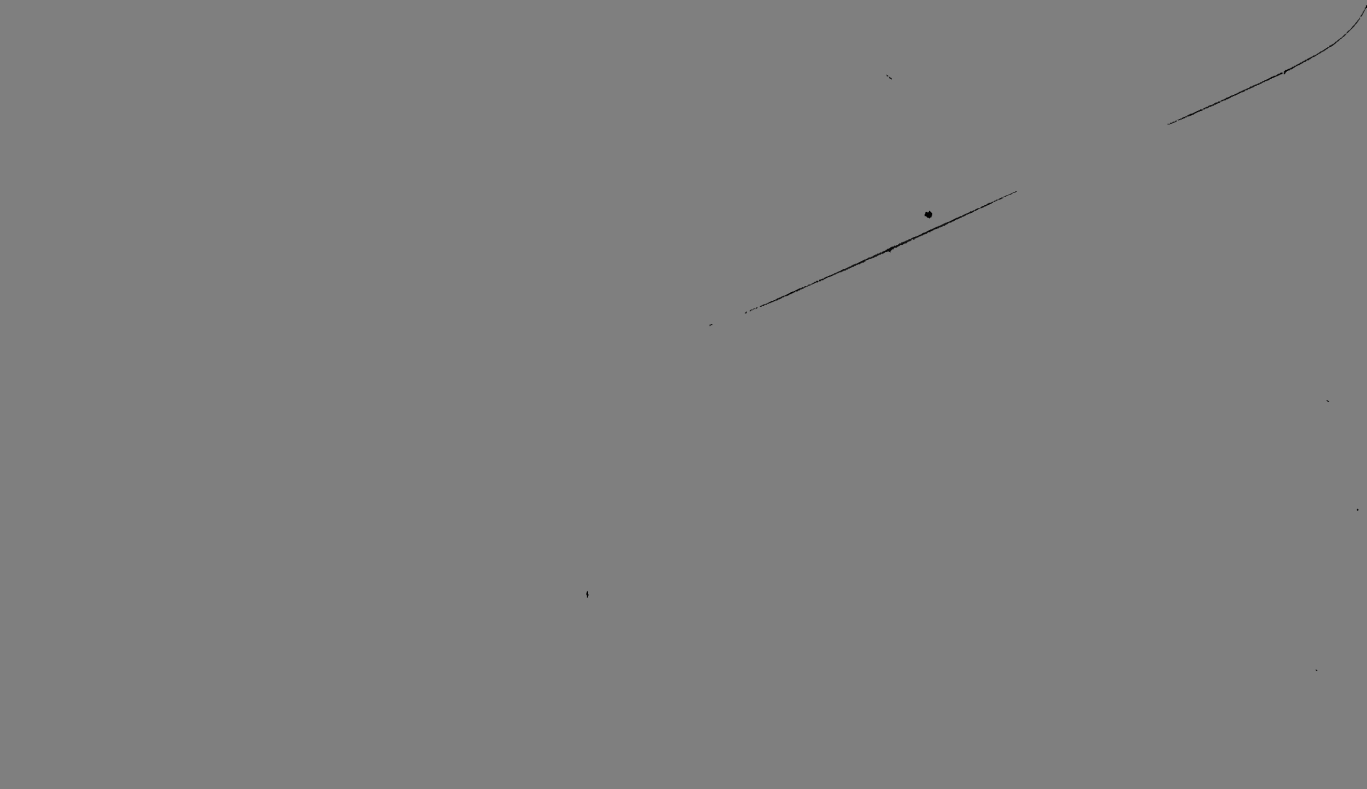
**PIONEER SEED HOUSE, NURSERY AND GREEN HOUSES**  
**OF THE NORTHWEST**

**OSCAR H. WILL & CO.**

**322-324 Fourth St.**

**BISMARCK, N. DAK.**







**SPECIAL INTRODUCTORY OFFER:** To get our mailing list more complete—we are offering the following **FOR A SHORT TIME ONLY.** Send names and addresses of 5 home owners interested in **FRUITS, WINDBREAK, FLOWERS, TREES** and **PLANTS** and we will send you for **ONLY 50c** (in coin or dollar bill) to pay for postage and packing

- 3—Lovely Hybrid Delphinium plants assorted color.
- 2—Hardy Phlox, 2 colors all five for ..... 50c
- or
- 3—Lovely large flowering Dahlias 4 colors ..... 50c
- or both for dollar bill—with five names.

WRITE NAMES AND ADDRESSES ON SEPARATE SHEET PLEASE

**NORTHERN - GROWN - STOCK - BEST - BY - TEST**  
**A FLOWER GARDEN in Red, White and Blue**  
*Flowers all Summer*

PERENNIALS, that will with-stand our winters.

- 5 Delphiniums, Gold Medal Hybrid, assorted colors
  - 3 Delphiniums, Chinese-Blue and White, Dwarf-with cut-leaf-foilage
  - 3 Physotegia-Snapdragon shaped-redish lavender flowers
  - 2 Platycodon, Blue, Ballon Flower
  - 2 Baby's Breath-Pure white-a mass of flowers
  - 2 Hardy Phlox, Red and beautiful
  - 3 1 Hardy Chrysanthemum, 2 Shasta Daisy ..... \$4.00 value
  - 20 Field Grown, Blooming size plants for only ..... **\$2.00**
- if you send along names and addresses of five home owners that love Flowers and Trees.

LINE THIS NO OLD FOLD

**MINNESOTA**

**BATTLE LAKE**

**THE SWEDBERG NURSERY**

*Northern Growers Since 1915—State Inspected*

USE  
LETTER  
POSTAGE  
HERE

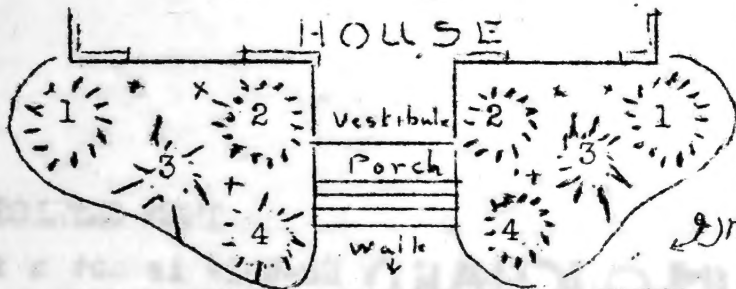
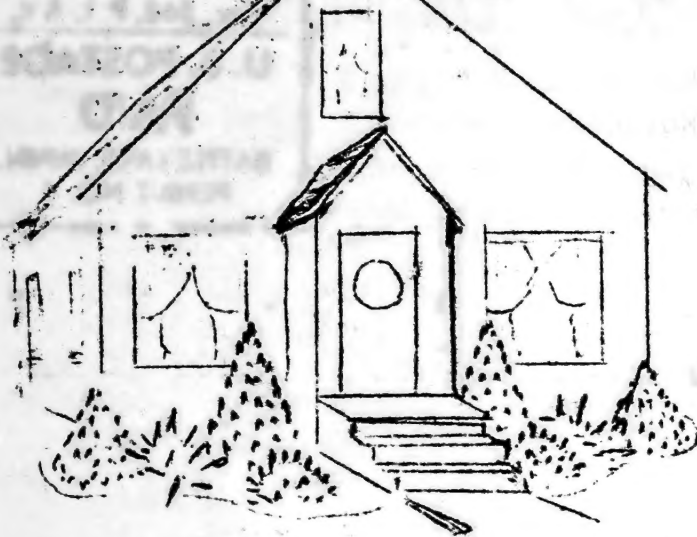
FROM


Be sure to include the beautiful Horsechestnut tree in your order, a most beautiful lawn tree, with very fragrant large white flowers and bearing nuts in the fall—very hardy and drought resistant.

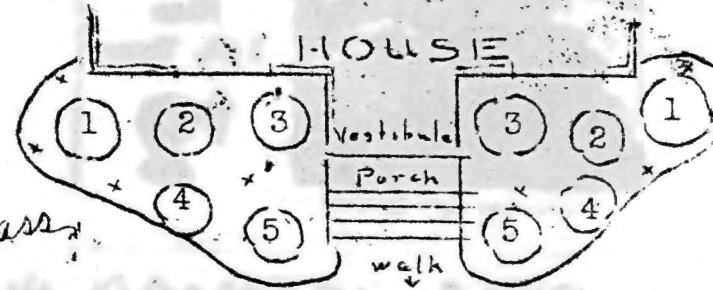
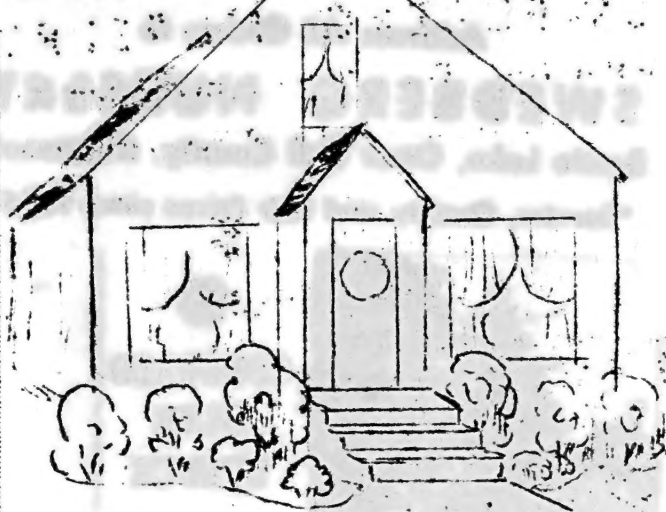
ENV.-O-BLANK  
 TRADE MARK REG. IN U. S. PAT. OFFICE  
 STANLEY WESSEL & COMPANY, CHICAGO



# LANDSCAPE YOUR HOME 19



B&B EVERGREEN PLANTING ABOVE AS SHOWN



SHRUB PLANTING ABOVE AS SHOWN.

Key Qua.	Name	B&B Size	Price
1...2...	Arborvitae Pyr.	2-2½ft	\$ 8.50
2...2...	Juniper Virginian	3½-4ft.	12.00
3...2...	Juniper Savins	15-18in.	6.00
4...2...	Mugho Dw. Pine.	15-18in.	7.50
x	Salvia or Mums		
Total Value			\$34.00

**8 LANDSCAPE EVERGREENS B&B \$31.95**

Here is a smaller cheaper Planting

Key Qua.	Name	B&B Size	Price
1..2...	Juniper Silver	1-1½'	\$4.00
3 ..2...	Juniper Savins	12-15"	5.00
2 ..2...	Arborvitae Pyr.	1-1½'	4.00
4..2...	Mugho Dw. Pine.	10-12"	3.50
Total Value			\$16.50

**8 LANDSCAPE EVERGREENS B&B \$14.00**

Key No.1 Can also be planted using a Rose Bush, Virg. Mockorange, or Purple Plum. etc.

Key Qua.	Name	Size	Price
1..2..	Hansa Shrub Rose	2-3'	\$2.50
2..2..	Hydrangea Arboresl	1½-2'	1.30
3..2..	Purple Plum	2-3'	1.80
4..2..	Grootendorst Rose	No.1	2.50
5..2..	Red Dw. Spirea	1-1½'	1.00
x	Chrysanthemum or Salvia		
Total Value			\$9.10

**10 LANDSCAPE SHRUBS only \$7.95**

Here's a Cheaper Shrub Group

1..2..	Ash Leaved Spirea	3-4'	\$1.70
2..2..	Golden Elder	2'	1.00
3..2..	Fragrant Mockorange	4'	1.50
4..2..	Pigmea Caragana	2-3'	1.50
5..2..	Green Lv. Barberry	1½'	1.00
Total Value			\$6.70

**10 LANDSCAPE SHRUBS only \$5.45**

Address All Orders to

# SWEDBERG NURSERY

Battle Lake, Otter Tail County, Minnesota

"Service, Quality and Fair Prices since 1915"

Sec. 562, P. L. & R.

U. S. POSTAGE  
PAID

BATTLE LAKE, MINN.  
PERMIT NO. 1



COLORADO BLUE SPRUCE

5

COLORADO  
BLUE  
SPRUCE

Nice  
1 ft. Trees

\$ 2

TO U.S. Dept of Agri  
Station

Mandan

N. Dap

THIS CATALOG

## APPLE ORCHARD

- 1 ANOKA NICE 2yr.
- 1 CORTLAND old trees
- 1 HARALSON 3-4feet
- 1 PRAIRIE SPY A REAL BUY
- 1 VIRGINIA CRAB 6 For
- 1 YELLOW TRANSP. \$5.50

or

- 1 DOLGO CRAB 3 & 4yr.
- 1 No. 700 MINJON 4-6ft.
- 1 NO. 790 Baking Trees.
- 1 NO. 638 Winter Wealthy 6
- 1 PRAIRIE SPY For only
- 1 YELLOW TRANSP. \$6.20

DDT

Send for circular now.

DDT-3% Garden Dust 35¢ lb.

DDT-25% Garden wettable spray 75¢lb. Postage 15¢

DDT-5% Household fly spray \$1. qt. (Not Mailable)

SCALECIDE Dormant fruit tree spray (inquire) SULPHACIDE

## PLUM ORCHARD

- 1 Underwood 3-4 ft.
- 1 Sapa Ch. plum Trees
- 1 Superior 6 For \$7.25
- 1 Kahinta 4-6ft.
- 1 Tonka Trees 6
- 1 Red Coat #17 For \$8.50

## FALL TULIPS

Did you forget to order your tulips last fall? Be sure to send for our fall colored bulb circular now and order your Tulips, Daf-fodils, and Hyacinths now to be shipped at right time for planting in fall.

No-this is not a fancy & colored picture catalog, but we do plan to send out fancy quality fruit trees, flowers, bulbs, and trees.

We are grateful for our many customers that have been sending orders in year after year even since years 1915 & 1920. We certainly like to hear from you and would appreciate you writing us about your success with our stock especially New Minn. Fruits & flowers. We also appreciate suggestions.

The Swedbergs

Fl. & leaf spray.