

## **Historic, Archive Document**

Do not assume content reflects current scientific knowledge, policies, or practices.



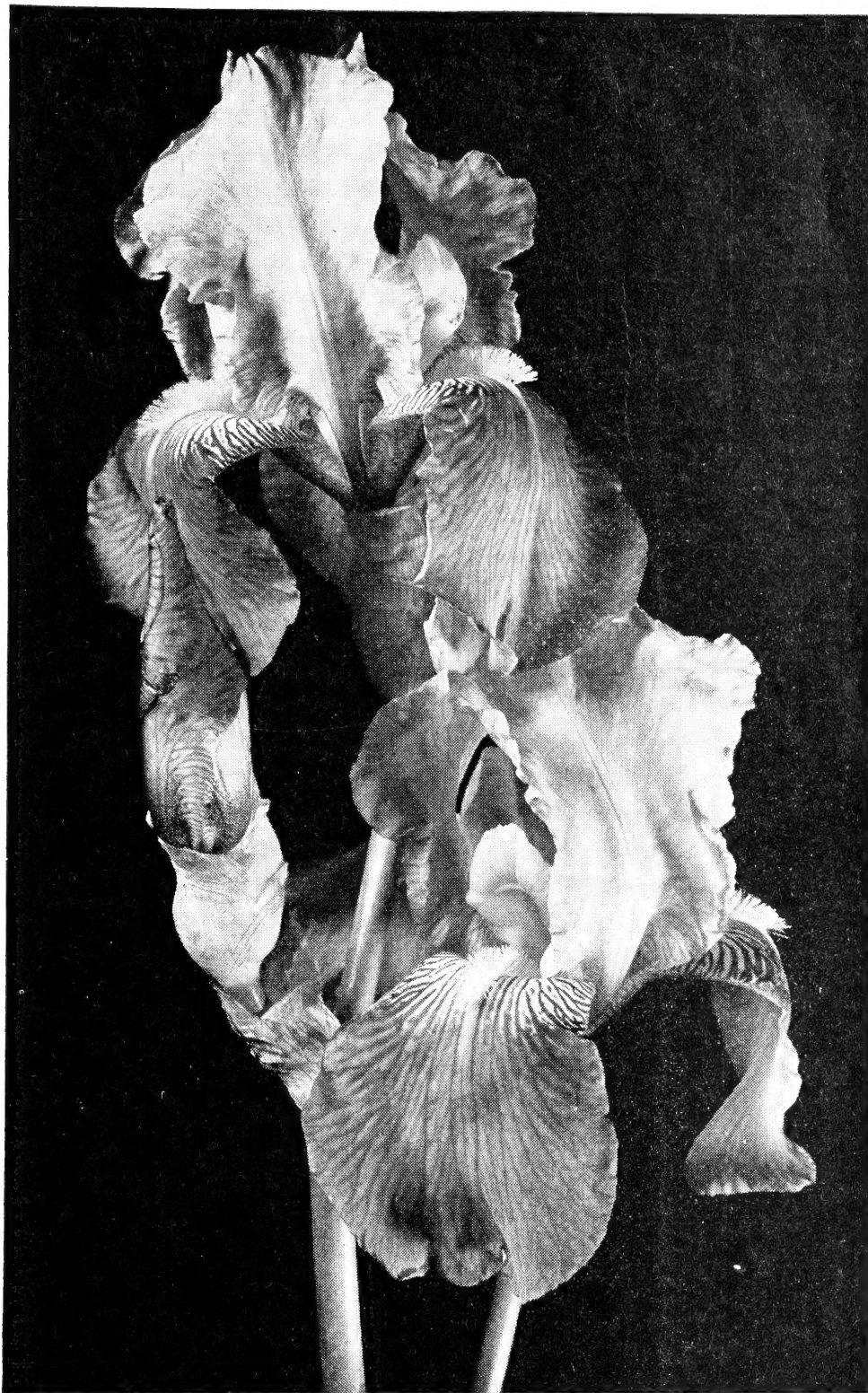
0 21 61

LIBRARY

RECEIVED

★ MAY 19 1945 ★

U S Department of Agriculture



fall 1945

Spring 1946

Peonies - Iris - Hemerocallis - Poppies

---

*C. F. Wassenberg*  
VAN WERT, OHIO

# "Beauties for Your Garden"

## Our Guarantee

All varieties true-to-name. Replacement if not.  
Young stock full of strength and vigor. Will grow if planted and cultivated properly.

We advise you to make second choices.

All Peonies are 3- to 5-eye standard divisions.

All Irises are strong healthy one-year-old rhizomes.

All Poppies are fine healthy plants. We suggest that you follow closely the directions for planting which accompany every order.

All Hemerocallis plants are fine divisions. These plants are very fine for the garden and are very easy to grow.

## Printed Planting Instructions Accompany Every Order

All plants shipped Parcel Post or Express Prepaid.

Orders amounting to less than \$2.00, include 25c extra for Parcel Post.

### THE AMERICAN PEONY SOCIETY

A \$3.00 membership keeps you posted on the doings in the Peony world.

Peony Manual, Parcel Post prepaid, \$1.65. You should own a copy.

Send checks for either of the above to: The American Peony Society, W. F. Christman, Sec.; Northbrook, Ill.

### AMERICAN IRIS SOCIETY

All Iris lovers should belong to this society. The Bulletins are full of interesting articles on the new varieties and other subjects of interest. Membership \$3.00. Send check to

H. R. WATKINS, Sec.,  
821 Washington Loan and Trust Bldg.,  
Washington, D. C.

## 10 GORGEOUS PEONIES

All high grade varieties you will be proud to own and show your friends.

2 White—Kelway's Glorious and  
Minnie Shaylor

2 Red—Longfellow and W. F. Turner

2 Pink—Tourangelle and Rosa Bonheur

2 Yellow—Laura Dessert and Primevere

2 Rose—Souv. de Louis Bigot and  
Auguste Dessert

All labeled  
Only **\$10.75**

Parcel Post Prepaid

## SPECIAL GARDEN COLLECTION

This collection will give color to your garden from April to October. Catalog value \$12.00.

4 Gorgeous Peonies

15 Lovely Irises

5 Colorful Hemerocallis

5 Beautiful Poppies

All labeled and assorted to color and blooming period. Shipped in August, September or October. Parcel Post prepaid.

**\$8.75**

**C. F. WASSENBERG**

**VAN WERT, OHIO**

# Wassenberg's PEONIES

## Double Varieties



Sarah  
Bernhardt

	Each
A. B. Franklin. (Fran.) White, opening blush .....	\$ 5.00
Addielanthea. (Bra.) Creamy white .....	1.00
Adolphe Rousseau. (Des.) Very early garnet-red. Tall strong stems. Foliage dark, tinged red .....	1.00
Aksarben. (Ros.) Brilliant dark crimson .....	1.00
Albert Crousse. (Cr.) Large, late, light rose-pink with a creamy tone. Tall, has strong stems, good foliage and blooms profusely .....	1.00
Alex. D. Vories (Vor.) American-Beauty-red. Large and very tall .....	1.50
Alice Balfour. (Kel.) Delicate rose-pink .....	1.00
Alice Harding. (Lem.) Cream-white with soft pink guard petals. Stems and foliage good. A very fine flower ..	2.50
Allure. (Neeley.) White. Loosely built .....	3.50
Alpheus Hyatt. (Rich.) Rose-pink. Late .....	1.00
Alsace-Lorraine. (Lem.) Late cream-white with a light touch of brownish yellow at the base of the petals .....	1.00
A. P. Saunders. (Thur.) Flesh-white. Late .....	1.00
Archie Brand. (Brand.) Shell-pink .....	1.00
Argentine. (Lem.) Cream to white. Fragrant .....	2.50
Arlequin. (Des.) Large; pale rose-pink .....	1.00
Armance Dessert. (Dor.) Soft silvery salmon-pink .....	1.50
Armide. (Lem.) White tinged cream in center .....	2.50
Asa Gray. (Cr.) Pale lilac dotted .....	1.00
Auguste Dessert. (Des.) Rose-red with a slight silver border on each petal. A plant of medium height and a profuse bloomer .....	1.00
Auguste Villaume. (Cr.) Rose. Late. Tall .....	1.00
Augustin d'Hour. Solferino-red .....	1.00
Avalanche. (Cr.) A blush-white of waxy texture tinted pink, giving a creamy effect. Large, late bloomer and fragrant .....	1.00
Aviateur Lindbergh. (Dor.) Extra fine red .....	2.50
Ball o' Cotton. (Fra.) Pure white, fragrant, of medium height with good foliage. Petals incurved to form a large white ball similar to name ...	1.00
Baroness Schroeder. (Kel.) Pale flesh-white. One of the best. A late bloomer, fragrant, has strong stems and excellent foliage .....	1.00
Bayadere. (Lem.) Cream-white; dwarf .....	1.00
B. B. Wright. (Wri.) Beautiful pink. Tall .....	5.00
Beaumarchais. (Lem.) Flesh-pink. Tall .....	3.00
Ben Franklin. (Bra.) Dark crimson; tall .....	1.00
Benoit. Dark red .....	1.00
Bertrade. (Lem.) Tall white. Late .....	1.00
Betty Blossom. (Thur.) Soft yellow effect .....	1.50
Bishop Burke. (Vor.) Rosy crimson, strong stems .....	1.50
Blanche King. (Bra.) Considered by many the best deep pink. Holds its form and color in the field and makes a fine show flower as well ..	5.00
Blushing Beauty. (Fran.) Pale pink .....	2.50
Candeur. (Des.) Silvery pink. Bright green foliage .....	1.00
Cardinal. (Gumm.) Rich glowing red .....	1.50
Catherine. (Rich.) Pink. Rose type .....	1.00
Charlot. (Dor.) Silvery lilac. Strong stems .....	1.00
Cherry Hill. (Thur.) One of the earliest reds. This maroon-red is brightened by yellow stamens. Tall, strong stems hold the clusters of blooms erect .....	1.00
Chestine Gowdy. Variegated cone-shaped pink .....	1.00
Chief. (Fra.) Light pink. Fragrant .....	6.00



Therese

	Each
Claire Dubois. (Cr.) Satiny pink. Large, late ..	\$ 1.00
Clara Anderson. (And.-Hol.) White, gold stamens .....	1.00
Clemenceau. (Des.) Carmine with silver edge ..	1.00
Col. Chas. A. Lindbergh. (Kund.) Early red ..	1.00
Cornelia Shaylor. (Shay.) Guards pale rose, collar of flesh-white, darker in center. Tall, large, and late .....	1.50
Coronation. (Kel.) Light pink, white center ..	1.00
Couronne d'Or. (Cal.) Milk-white, with center petals edged crimson. Late .....	1.00
Crystola. (And.) Pure crystal-white. New ....	2.00
Currant Red .....	2.00
C. W. Shock. (Fra.) Red. Midseason .....	1.00
David. (Kel.) Coral-pink .....	1.00
David Harum. (Bra.) Clear bright crimson; fine texture. Strong stems. Broad light green foliage ..	1.00
Denise. (Lem.) White flecked crimson .....	2.50
Denis Debatene. (Dor.) Salmon-pink .....	2.00
Desire. (Lem.) Delicate mauve. Rich rose fragrance .....	1.00
Dixie. (Fra.) Dark red. Large .....	3.00
Dorchester. Flesh-pink. Late .....	1.00
Doris Shaylor. (Shay.) Fine pink. Free bloomer ..	1.00
Dorothy J. (Jones.) Tall, rich cream. Home Achievement Medal and Silver Medal in Seedling Class at National Peony Show, 1940. A fine flower with a future .....	15.00
Dr. Edgar Pleas. (Pleas.) Lilac-pink .....	1.00
Dr. J. H. Neeley. (G. & R.) Large, tall white ..	2.50
Duchess of Albany. Rose-pink. Large .....	1.00
Duchesse de Nemours. (Cal.) Cupped white guards with a moderately full center of canary-yellow. Large, medium tall .....	1.00
Dulcinee. (Lem.) Pale pink. Fragrant .....	2.50
Duluth. (Fra.) A late pure white .....	3.00
E. C. Shaw. (Thur.) Light old rose with pink tones. Medium height, fragrant, tall, stems strong with glossy foliage .....	1.25
Edith M. Snook. (Snook.) Flesh-pink. Late ..	10.00
Edulis Superba. (Lem.) Guards and center petals bright old-rose-pink. Collar is lighter pink, narrow petals. Very early .....	\$ 1.00
E. G. Hill. (Lem.) Deep rose. Unusual color ..	1.00
E. J. Shaylor. (Shay.) Rose-pink. Good .....	1.00
Elisa. (Des.) Hydrangea-pink. Semi-double ..	1.00
Elise Renault. (Dor.) Lilac-pink .....	2.50
Elizabeth B. Browning. (Bra.) Pure white, late bloomer. Fragrant, tall .....	1.00
Ella Christiansen. (Bra.) Deep pink. Fine .....	3.00
Elsa Sass. (Sass.) Full rose type white. Tall ....	5.00
Elwood Pleas. (Pleas.) Pale rose-pink changing to light flesh-pink in center. Flowers flat, large, and late .....	1.00
Enchantress. (Lem.) Very late white with lemon tints in collar and crimson wire edges to a few center petals. Tall with strong stems .....	1.00
Estafette. (Des.) Crimson with a silver margin bordering the petals. Very fine and very early ..	1.00
Etta. (Ter.) Deep shell-pink. Large, late .....	1.00
Eucharis. (Lem.) White. Late .....	1.00
Eugene Verdier. (Cal.) Pale hydrangea-pink ...	1.00
Eugenie Verdier. (Cal.) A hydrangea-pink. Darker in center than on edges. Flecked crimson. Fragrant .....	1.00
Evangeline. (Lem.) Compact pale pink. Late ..	1.00
Evening Glow. (Hol.) Tall lilac. Very late ..	1.00
Exquisite. (Kel.) Fragrant rose-pink. Early ...	1.00
Fannie Lee. (Vor.) American-Beauty-red .....	1.50
Fanny Crosby. (Bra.) Yellow center .....	1.00
Faustine. (Lem.) Pale pink .....	1.00
Felix Crousse. (Cr.) Brilliant crimson, silky luster. Good keeper .....	1.00
Festiva Maxima. (Miel.) Large white, with a few crimson flakes on the central petals. Tall, early. One of the best whites .....	1.00
Flamingo. (And.) Light pink, early .....	1.50
Florence MacBeth. (Sass.) Large light pink ...	1.50
Floweret of Eden. (Nee.) Mauve-pink. Large ..	1.00
Fragrans. Very late rose .....	1.00
Frances Shaylor. (Shay.) White and gold effect ..	1.00
Frances Willard. (Bra.) Blush-white. Strong stems, heavy dark foliage. Very popular and good .....	1.00
Francois Rousseau. (Des.) Dark red. Early ...	1.00
Frankie Curtis. (Vor.) A large delicate white. Very free flowering. Stiff stems and known as "the White Mons. Jules Elie" .....	3.00
Franklin's Pride. (Fran.) Pink. Fragrant .....	3.00
Galathee. (Lem.) Flesh-white. Very late. Tall ..	1.00
Garden Princess. (Nee.) Midseason light pink..	2.00
Gene Stratton Porter. (Ros.) White. Bird-nest form .....	1.00
Genevieve. (Lem.) Enormous white. Very late..	2.50
General Gorgas. (Van Leeu.) Pure white, mid-season .....	1.50
Georgiana Shaylor. (Shay.) Large light rose-pink. Center petals flecked crimson. Medium height and strong stems .....	1.00
Germaine Bigot. (Des.) Pale lilac-rose .....	1.00
Gigantea. (Cal.) Clear rose-pink. Silver-tipped petals. Fragrant, tall, good foliage. Very early..	1.00
Gilbert Barthelot. (Dor.) Silvery pink .....	1.50
Gilberte. (Lem.) Late pink. New French variety..	1.50
Ginette. (Des.) Flesh-pink. Dwarf .....	1.00
Gismonda. (Cr.) Flesh colored. Late; tall .....	1.00
Gloriana. (Nee.) Pink. Extra fine .....	1.50
Glorious. (Kel.) Light pink shading to white ..	1.00
Golden Dawn. (Gumm.) White with yellow center .....	1.00
Golden Wedding. (Pleas.) Canary-yellow ....	1.00
Golden West. (And.) Rose-pink guards .....	1.50
Good's Dream. (G. & W.) White. Midseason..	3.50
Grace Batson. (Sass.) Deep pink bomb .....	1.50

**C. F. WASSENBERG** — *Peony and Iris Specialist* — **VAN WERT, OHIO**

	Each		Each
Grace Loomis. (Saun.) White. Late, tall . . . . .	\$ 2.00	La Fayette. (Des.) Pink with silvery effects . . .	\$ 1.00
Grace Ott. (Gumm.) Brilliant dark crimson, tall	1.00	La Fee. (Lem.) Light old-rose-pink with a nar-	
Grandiflora. (Rich.) Bright pink. Tall, very		row collar of creamy pink. Strong rose-like	
large. One of the best to bloom . . . . .	1.00	fragrance. Tall, free flowering . . . . .	1.00
Gretchen. Light pink . . . . .	1.00	La France. (Lem.) Clear light pink with splashes	
Grover Cleveland. (Ter.) Large, late, bright		of crimson on the outer petals. Tall, strong	
crimson of medium height. Stiff stems with		stems . . . . .	1.00
excellent foliage . . . . .	1.00	Lake o' Silver. (Fra.) Silver-tipped pink. Mid-	
H. A. Hagen. (Rich.) Deep rose-pink. Late . .	1.00	season . . . . .	1.00
Hansina Brand. (Bra.) Pink. Prize winner . .	5.00	La Lorraine. (Lem.) Large cream-white, tinted	
Hans Peter Sass. (Sass.) A very fine flower of		pink. Yellow glow produced by a few yellow	
blush-white. Out of all of Mr. H. P. Sass'		stamens. Tall, free flowering. Stout stems with	
seedlings, he picks this Peony to bear his name	5.00	good foliage . . . . .	2.00
Harry L. Burden. (Nee.) Delicate pink. Large.	2.50	Lamartine. (Lem.) Old-rose-pink. Dark . . . . .	1.00
Harriet Farnsley. (Bra.) Dark crimson . . . . .	1.00	La Perle. (Cr.) Soft pink, cup-shaped . . . . .	1.00
Harry F. Little. (Nich.) Tinted white, large . .	7.50	La Rosiere. (Cr.) Cream-white. Gold stamens . .	1.00
Harry L. Richardson. (Ros.) Red . . . . .	1.50	Last Rose. (Sass.) Deep pink; very late . . . . .	2.50
Hazel Kinney. (Bra.) Clear hydrangea-pink . .	1.50	La Tendresse. (Cro.) White . . . . .	1.00
Helen Wolaver. (Bra.) Seashell-pink . . . . .	1.00	La Tulipe. (Cal.) Lilac-white . . . . .	1.00
Henri Core. (Dor.) Flesh-pink . . . . .	1.00	Laura Dessert. (Des.) Guard petals creamy	
Henry Avery. (Bra.) White with yellow collar . .	1.00	white enclosing a center of pure canary-yellow.	
Henry M. Vories. (Vor.) Light pink. Late . . .	2.00	Should be cut to preserve the color . . . . .	1.50
Henry Webster. (Fra.) Large red, late . . . . .	2.00	Laura Vories. (Vor.) Flesh-white. Pink center.	2.00
Hermione. (Sass.) Light tall pink. Late . . . . .	1.50	Le Cygne. (Lem.) The best white Peony. Pure	
Hespanola. (And.) Shell-pink . . . . .	1.50	ivory-white without any markings whatsoever.	
H. F. Reddick. (Bra.) Bright dark crimson . . . .	1.00	Large. Fragrant. Foliage large and dark	
Hiawatha. (Fra.) Dark red. Late . . . . .	3.00	green. A rating of 9.9 by the American Peony	
Ingenieur Doriat. (Dor.) Carmine-red . . . . .	2.50	Society. (The highest rating ever given to	
Inspecteur Lavergne. (Dor.) Fine new red. Early	1.50	any Peony) . . . . .	3.00
Irma. (Cal.) Rose with cream center . . . . .	1.00	Leviathan. (Kel.) Deep rose . . . . .	1.00
Isoline. (Lem.) Pale yellow effect. Large . . . .	1.50	Libellule. (Des.) Flesh marked crimson . . . . .	1.00
Jacques Dessert. (Dor.) Dark crimson. Enor-		Lillian Gumm. (Gumm.) Outer petals very	
mous size . . . . .	2.50	large and ruffled. Deep rose-pink. Fragrant,	
James Boyd. (Thur.) Flesh, changing to white.	1.00	stems and foliage good . . . . .	1.00
James Kelway. (Kel.) Rose-white. Early, fra-		Livingstone. (Cr.) Lilac-rose. Large; late . . . . .	1.00
grant . . . . .	1.00	Longfellow. (Bra.) Bright crimson intensified	
James R. Mann. (Thur.) Rosy pink . . . . .	1.00	by golden yellow stamens near center. Very	
Jean Harlow. (Wri.) Double white. 1939 in-		good cut flower . . . . .	1.50
roduction. Early midseason, large, compact		Lora Dexheimer. (Bra.) A bright crimson with	
pure white of unusual form with golden reflec-		a few stamens which are not very noticeable.	
tions in the depth of the well-rounded petals.		Large, midseason . . . . .	1.00
No stamens or carpels, tall strong stems hold		Lorch. (G. & K.) Cream-white, rose-scented . .	1.00
the flowers above the rich green foliage. Flow-		Lord Kitchener. (Ren.) Very early red . . . . .	1.00
ers of unexcelled substance. Ideal for cutting,		Loren Franklin. (Fra.) Dark pink. Late . . . . .	3.00
storing, and garden effect. A grand white		Loveliness. (Hol.) Hydrangea-pink. Late . . . .	1.00
Peony in every way and universally admired		Lucile Hartman. (Fra.) Light pink. Vigorous . .	2.50
and liked by all who have seen it, like the lady		Lucky Strike. (Wri.) Bright rose-pink, fragrant	2.50
whose name it bears. Pleasing fragrance.		Lucy E. Hollis. (Hol.) Pink . . . . .	1.00
Strong 3-5 eye roots . . . . .	7.50	Luetta Pfeiffer. (Bra.) Very pale pink, nearly	
Jeannot. (Des.) Fine flesh-pink. Wiry stems		white. Center petals flecked red, and numer-	
and good foliage. Late . . . . .	1.50	ous yellow stamens. Tall, with strong stems	
Jenny Lind. (Barr.) Pink . . . . .	1.00	and very early . . . . .	1.00
Jessie Shaylor. (Thur.) Deep cream . . . . .	1.00	Lucy Shaylor. (Shay.) Creamy yellow center . .	2.00
John M. Good. (G. & W.) White. Rose type.		Luxor. (Sass.) A white Mons. Jules Elie . . . . .	5.00
Early . . . . .	1.50	L. W. Pollock. (Bra.) Tyrian-rose. Late . . . . .	5.00
John Richardson. (Rich.) Rose-pink. Fragrant . .	1.00	Mabel L. Franklin. (Fra.) Light pink . . . . .	1.00
Jubilee. (Pleas.) Large ivory-white. Very flat		Madelon. (Des.) Silvery pink, large. Late . . . .	1.00
blooms, tall, free flowering . . . . .	1.00	Madonna. (Nee.) Cream-white. Loosely built . .	5.00
Judge Berry. (Bra.) A delicate light rose-pink.		Magnificent. (Bra.) Dark red. Tall. Early . . . .	1.00
Very large, early, with good foliage . . . . .	1.00	Manitou. (And.) Blush with rose fragrance . . .	1.50
Judge Snook. (G. & R.) Cream-white. Large.	7.50	Mar. Ell. Waggamann. (Dor.) Salmon. Tall . . .	1.50
June Day. (Fra.) Light flesh edged lavender . .	1.50	Margaret Vierheller. (Wett.) White. Large . .	1.50
Karl Rosenfield. (Ros.) Very bright crimson.		Marie Crousse. (Cr.) A delicate shell-pink.	
Good cut flower. Tall, strong stems . . . . .	1.00	Guards very large. Fragrant, tall, strong stems	
Katherine Havemeyer. (Thur.) Flesh-pink . . . .	1.50	and excellent foliage . . . . .	1.00
Kaub. (G. & K.) Silvery pink . . . . .	3.00	Marguerite Gerard. (Cr.) Immense heart-shaped	
Kelway's Glorious. (Kel.) Fine white with a		guard petals, broad serrated crown of pale	
creamy suffusion in the depths. Strong rose		flesh-pink. Darker in the center. Small petals	
fragrance. Free flowering. Strong stems . . . .	2.00	in center mixed with many yellow stamens . . .	1.00
Kelway's Queen. (Kel.) Late bright pink with		Marie Jacquin. (Vor.) A semi-double Peony	
flecked crimson center. Fine quality of color.	2.00	of pure white with a large cluster of yellow	
Koenigen Wilhelmina. (Kre.) Rose-pink. Tall . .	1.00	stamens in the center. Strong stems and light	
Kunderd's Jubilee. (Kund.) White . . . . .	1.50	green foliage. Known as the Water Lily Peony.	1.00
Lady Alex. Duff. (Kel.) Very fine pale pink . .	1.00		

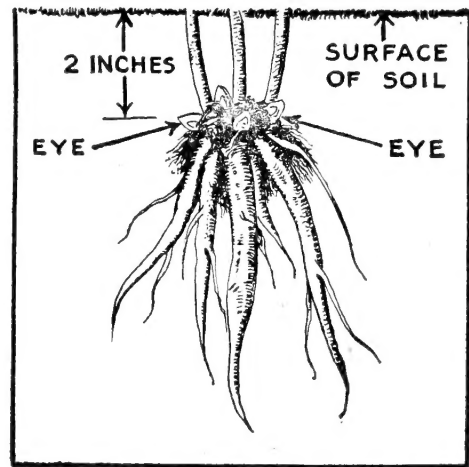
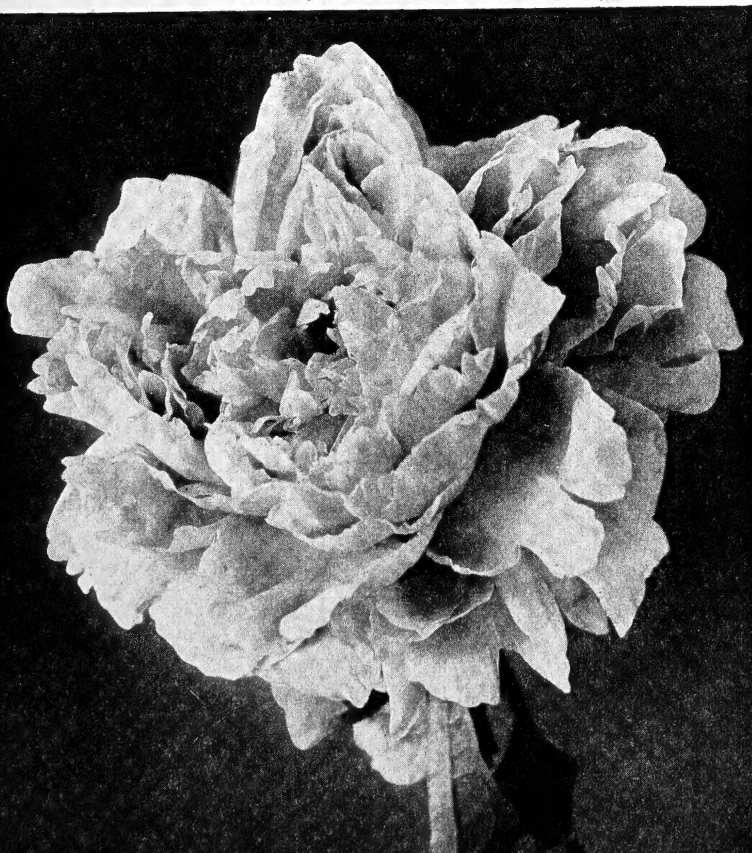
**C. F. WASSENBERG** — *Peony and Iris Specialist* — **VAN WERT, OHIO**

	Each		Each
<b>Martha Bulloch.</b> (Bra.) One of the best rose-pink Peonies. This variety is admired by everyone. Very large flower .....	\$ 1.50	<b>Mrs. A. M. Brand.</b> (Bra.) Pure glistening white. Very large flower of perfect rose form; uniform petals. Late. Medium height, erect stems.	\$ 2.50
<b>Marvel.</b> (Secor.) Fine large pink. Fragrant ..	1.50	<b>Mrs. C. S. Minot.</b> (Min.) Shell-pink and white.	1.50
<b>Mary Brand.</b> (Bra.) Dark clear crimson, with a few yellow stamens buried in the collar. Notably fragrant for a red variety. Very free flowering .....	1.00	<b>Mrs. Deane Funk.</b> (Bra.) A fine pink .....	2.00
<b>Mary A. Livermore.</b> (Hol.) Lilac-pink .....	1.00	<b>Mrs. Edward Harding.</b> (Shay.) Large white illumined by bright golden stamens under the petals. Medium size, stiff stems; very early ...	1.50
<b>Mary B. Vories.</b> (Vor.) Late white .....	2.00	<b>Mrs. Geo. Bunyard.</b> (Kel.) Lilac-rose. Tall ...	1.00
<b>Mary P. King.</b> (Fra.) Coral-pink. Good .....	1.00	<b>Mrs. Geo. Rawson.</b> (S. & A.) Light pink. Late	2.00
<b>Mary Woodbury Shaylor.</b> (Shay.) Clear pink .	1.00	<b>Mrs. Harriet Gentry.</b> (Bra.) Pure white. Late .	2.00
<b>Matchless Beauty.</b> (Nee.) Cream-white. Good.	5.00	<b>Mrs. John M. Good.</b> (G. & W.) White .....	1.50
<b>Matilda Lewis.</b> (Saun.) A fine red .....	5.00	<b>Mrs. John M. Kleitsch.</b> (Bra.) Light violet-rose.	2.00
<b>Maud L. Richardson.</b> (Hol.) Lilac-rose. Tall ..	1.00	<b>Mrs. James Kelway.</b> (Kel.) White. Late .....	5.00
<b>Midnight.</b> (Bra.) Deep maroon .....	1.00	<b>Mrs. John M. Lewis.</b> (Lew.) Rich medium red..	1.00
<b>Mignon.</b> (Lem.) Amber-white. Dwarf foliage .	1.00	<b>Mrs. J. V. Edlund.</b> (Edl.) Largest white. Tall. ..	7.50
<b>Milton Hill.</b> (Rich.) Very light shell-pink with a few red blotches on central petals. Strong stems with excellent foliage .....	1.00	<b>Mrs. Lawrence.</b> (Bre.) Fine new pink .....	10.00
<b>Minerva.</b> (Sass.) Blush-pink. Strong stems ...	1.50	<b>Mrs. Livingston Ferrand.</b> (Nich.) True salmon-pink. Won the Silver Medal of A. P. S., 1936.	15.00
<b>Minnie Shaylor.</b> (Shay.) Several rows of fluffy crepe-like petals of clear light pink fading to white. Center of golden yellow. Stamens very attractive. Most popular Peony at blooming time on our farm .....	1.50	<b>Mrs. M. P. Clough.</b> (Shay.) Salmon and white.	1.00
<b>Miriam.</b> (Chase.) Rich pink. Semi-double .....	1.00	<b>Mrs. R. M. Bachellor.</b> (Vor.) White. New ...	5.00
<b>Miss Emery.</b> (Shay.) Salmon-pink .....	2.50	<b>Mrs. Romaine B. Ware.</b> (Bra.) Light pink. Tall.	2.00
<b>Miss Henninger.</b> (Ter.) White. Very popular .	1.00	<b>Mrs. Shaylor Force.</b> (Shay.) White. Very large	1.00
<b>Miss Minneapolis.</b> (Fra.) Pale pink. Late .....	5.00	<b>Mrs. Springer Brooks.</b> (Edl.) White. Midseason	10.00
<b>Mlle. Jeanne Riviere.</b> (Riv.) Pink, yellow center.	1.00	<b>Mrs. W. A. Rafferty.</b> Tall rose-pink; never offered before. Origin: Mrs. Rafferty, Greencastle, Indiana, a famous Peony connoisseur ..	5.00
<b>Mme. Auguste Dessert.</b> (Des.) Rose .....	1.00	<b>Mrs. W. D. Bennett.</b> (Wett.) Late pink .....	1.50
<b>Mme. Calot.</b> (Miel.) Flesh, crimson flaked ....	1.00	<b>Myrtle Gentry.</b> (Bra.) Beautiful light pink fading to blush-white. Fragrant, tall, with strong stems and good habit .....	3.00
<b>Mme. Claude Tain.</b> (Dor.) Fine white .....	1.50	<b>Nancy Dolman.</b> (Vor.) Pale rose-pink of conical form. Tall with stiff stems and very late .....	2.00
<b>Mme. de Treyeran.</b> (Des.) Flesh-white .....	1.00	<b>Nanette.</b> (Dor.) Cream-white. Early .....	1.00
<b>Mme. de Verneville.</b> (Cr.) Blush-white. Early ..	1.00	<b>Nell Shaylor.</b> (Shay.) White and gold .....	1.50
<b>Mme. Ducl.</b> (Mech.) Soft pink bomb. Early ..	1.00	<b>Nick Shaylor.</b> (S. & A.) White, rose type .....	4.00
<b>Mme. Edouard Doriat.</b> (Dor.) White. Fine ...	1.50	<b>Nimbus.</b> (And.) Tall white, rose type .....	1.50
<b>Mme. Emile Debatene.</b> (Dor.) New pink .....	2.00	<b>Nina Secor.</b> (Sec.) Pure white .....	1.50
<b>Mme. Emile Dupraz.</b> (Riv.) Old-rose-pink, fragrant .....	1.00	<b>Ninon.</b> (Dor.) Soft flesh .....	1.00
<b>Mme. Emile Galle.</b> (Cr.) Lilac-white .....	1.00	<b>Nobility.</b> (Van Leeu.) Bright pink .....	2.50
<b>Mme. Emile Lemoine.</b> (Lem.) A beautiful white with crimson streaks on the outer petals. Tall and free-flowering. Very erect .....	1.00	<b>Norfolk.</b> (Rich.) Pale lilac-rose .....	1.00
<b>Mme. Escary.</b> (Lem.) Creamy white. Very large	2.50	<b>Nymphaea.</b> (Thur.) Creamy white. Yellow stamens .....	1.00
<b>Mme. Gaudichau.</b> (Mil.) Dark crimson. Tall .	1.00	<b>Octavie Demay.</b> (Cal.) Pink. Fragrant. Early ..	1.00
<b>Mme. Geissler.</b> (Cr.) Light old-rose-pink. Bright in center and tipped on the reverse with silver .....	1.00	<b>Odile.</b> (Dor.) Flesh-pink. Fine .....	3.00
<b>Mme. Guyot.</b> (Pail.) Cream. Yellow center ..	1.00	<b>Old Silver Tip.</b> (Bra.) Deep rose-red .....	1.00
<b>Mme. Jules Dessert.</b> (Des.) Very fine light pink, fading to white. Well formed, tall, mildly fragrant. Fine Peony for garden or the show room .....	1.00	<b>Onondaga.</b> (Lit.) New tall red .....	7.50
<b>Modele de Perfection.</b> (Cr.) Late; old rose .....	1.00	<b>Opal.</b> (Pleas.) Opalescent tints. Large .....	1.00
<b>Modella.</b> (Bet.) Light pink. Dwarf .....	1.50	<b>Opal Iris.</b> (Pleas.) Large; light pink .....	1.00
<b>Modeste Guerin.</b> (Gue.) Rose-pink. Early ....	1.00	<b>Pallas.</b> (Ter.) Rose-pink. Early and dwarf .....	1.00
<b>Mons. Dupont.</b> (Cal.) Milk-white .....	1.00	<b>Paradise.</b> (Hol.) Hydrangea-pink. Dwarf .....	1.00
<b>Mons. Jules Elie.</b> (Cr.) Very large light rose-pink. Very popular. Mildly fragrant. One of the best .....	1.00	<b>Pasteur.</b> (Cr.) Pink, nearly white. Tall .....	1.00
<b>Mons. Martin Cahuzac.</b> (Des.) This Peony is the darkest red of all. Deep maroon-red, very near black. Early .....	1.50	<b>Peach Blow.</b> (Shay.) Peach-pink. Early .....	10.00
<b>Mont Blanc.</b> (Lem.) Opens white with creamy center. Develops into a large flat flower. Rose-centered .....	1.00	<b>Perrette.</b> (Des.) White, tinged flesh .....	1.00
<b>Montrose.</b> (And.) Large deep rose bomb ....	1.50	<b>Peter Pan.</b> (Hol.) Lilac-rose. Large, erect .....	1.00
<b>Mount Everest.</b> (Sass.) Late white .....	5.00	<b>Philippe Rivoire.</b> (Riv.) Very dark rich crimson. Greatly admired by all Peony lovers. Richly rose-scented. Considered the finest red.	2.00
<b>Mr. L. Van Leeuwen.</b> (Nie.) Dark pink. Large	1.50	<b>Philomele.</b> (Cal.) Guards dark old rose with collar of narrow buff petals. Fragrant; good foliage..	1.00
<b>Mrs. A. B. Franklin.</b> (Fra.) Pure white. New .	4.00	<b>Phoebe Cary.</b> (Bra.) Lavender-pink. Late. Tall..	1.00
<b>Mrs. A. G. Ruggles</b> (Bra.) Light pink. Late ..	1.00	<b>Phyllis Kelway.</b> (Kel.) Very large loosely built rose-pink. The center petals are intermingled with bright golden stamens. Stiff stems with abundant foliage. Fine .....	1.00
		<b>Pierre Duchartre.</b> (Cr.) Lilac-pink .....	1.00
		<b>Pink Opal.</b> (Sass.) Late light pink .....	2.00
		<b>Pitti Sinn.</b> (Vor.) Pink. Strong plant .....	1.00
		<b>Pleiades.</b> (And.) New .....	2.00
		<b>Pomponette.</b> (Des.) Pink and silver .....	1.00
		<b>Pres. F. D. Roosevelt.</b> (Fra.) Dark pink .....	6.00
		<b>Pres. Taft.</b> (Cal.) Rose-pink with fluffy petals, notched, and silvered at the tips and occasionally flecked with crimson in the center. Tall, free flowering .....	1.00



	Each
<b>Pres. Wilson.</b> (Thur.) Bright rose-pink fading to a lighter shade with age. The flower possesses a rich spicy fragrance, is of medium height, with strong stems . . . . .	\$ 1.50
<b>Pride of Essex.</b> (Thur.) Light rose-pink, fading to blush-white with a golden suffusion from its many gold stamens. The center petals are flecked crimson. Fragrant . . . . .	1.00
<b>Pride of Paulding.</b> (Nee.) Rich flesh-pink . . . . .	1.00
<b>Primevere.</b> (Lem.) White guard petals enclosing a large ball of sulphur-yellow small petals. Like all yellow Peonies it must be cut to retain its natural color . . . . .	1.50
<b>Priscilla Alden.</b> (Rob.) Warm white. Early . . . . .	2.50
<b>Prof. C. Potrat.</b> (Dor.) Cherry-pink. Tall. Late . . . . .	1.50
<b>Queen of Pleasance.</b> (Pleas.) Pink . . . . .	1.00
<b>Ralph.</b> (Pleas.) Bright pink. Very late . . . . .	1.00
<b>Raoul Dessert.</b> (Des.) Mauve, shaded pink . . . . .	1.00
<b>Red Bird.</b> (Fra.) Light rose-red; midseason . . . . .	1.00
<b>Reine Hortense.</b> (Cal.) Delicate pink. Fine . . . . .	1.00
<b>Reine Baronet.</b> (Mil.) Tyrian pink . . . . .	1.00
<b>Renee Marie.</b> (Des.) Soft pink to white. Large . . . . .	1.00
<b>Rev. H. N. Tragitt.</b> (Bra.) White, rose type . . . . .	2.00
<b>Richard Carvel.</b> (Bra.) Large, very early, bright crimson. Tall, slightly fragrant, with good stems . . . . .	1.00
<b>Rita.</b> (Des.) Flesh-salmon-pink, cupped flower . . . . .	1.00
<b>Robt. Lee Davis.</b> (Vor.) Light pink. Large . . . . .	1.50
<b>Rosa Bonheur.</b> (Des.) Soft flesh-pink. Late . . . . .	1.00
<b>Rose Shaylor.</b> (Shay.) Flushed white. Fine . . . . .	1.50
<b>Rosette.</b> (Des.) Silvery flesh. Erect grower . . . . .	1.00
<b>Rosine.</b> (Lem.) Pale lilac. Late. Fragrant . . . . .	2.00
<b>Ruth Brand.</b> (Bra.) Lavender-pink . . . . .	1.00
<b>Samuel Hughes.</b> (Kel.) Deep amaranth . . . . .	1.00
<b>Sarah Bernhard.</b> (Lem.) Dark rose-pink. Agreeably fragrant, of medium height, strong stems. A fine flower . . . . .	1.00
<b>Sarah Carstenson.</b> (Ter.) Hydrangea-pink . . . . .	1.00
<b>Sarah K. Thurlow.</b> (Thur.) Large white. Late . . . . .	1.50
<b>Sarah M. Wettengel.</b> (Wett.) Blush-white . . . . .	1.00
<b>Secretary Fewkes.</b> (Shay.) Creamy white. Large . . . . .	1.00
<b>Sensation.</b> (Sass.) Late light pink . . . . .	5.00
<b>Shaylor's Dream.</b> (Shay.) Flesh. Very large . . . . .	1.00

*Victory Chateau Thierry*

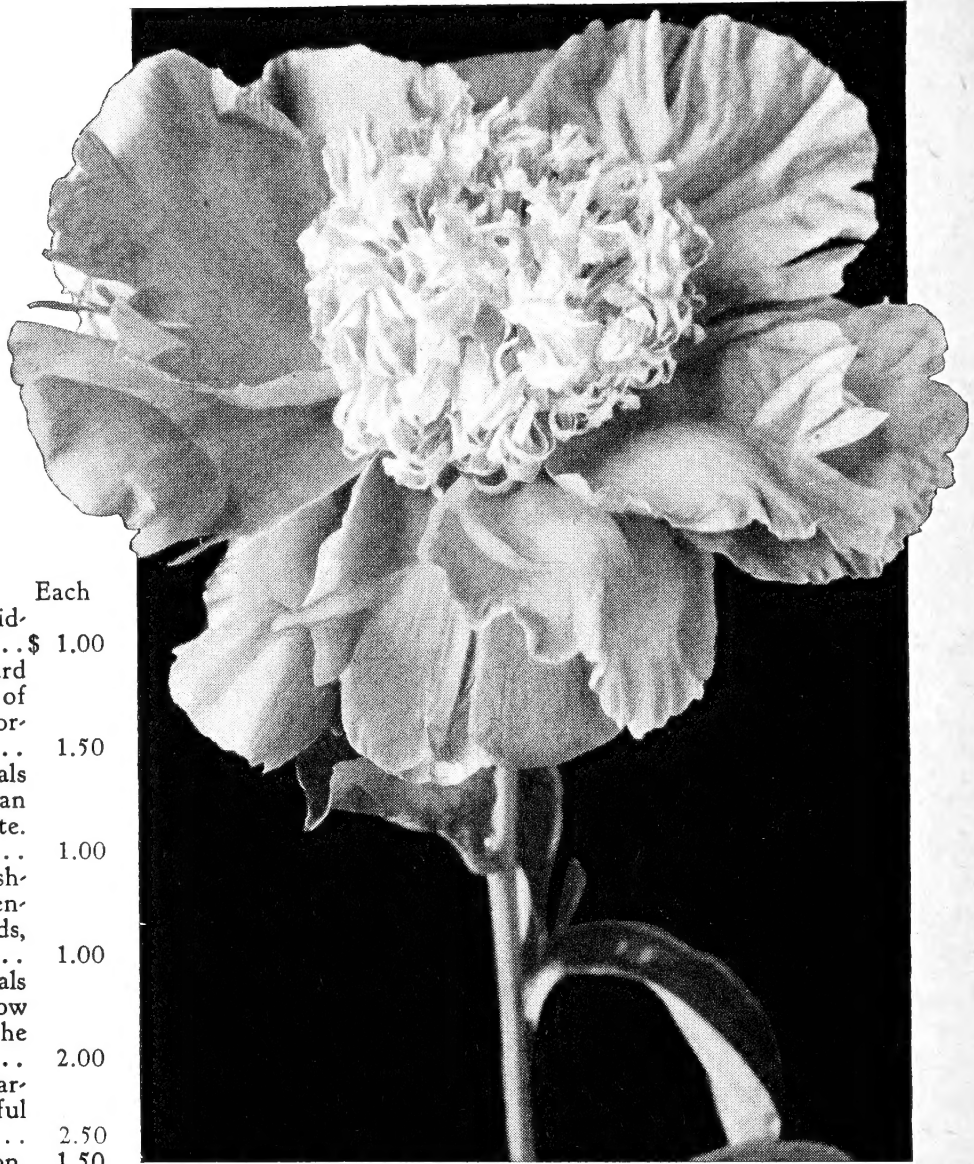


*Proper Depth is Important in Planting Peonies*

	Each
<b>Solange.</b> (Lem.) A very distinct Peony. The color could be described best as coffee-with-cream color. Dark green foliage . . . . .	\$ 1.00
<b>Sops of Wine.</b> (Secor.) Dark red, purplish; late . . . . .	1.00
<b>Souv. de A. Millet.</b> (Mil.) Amaranth-red. Tall . . . . .	1.50
<b>Souv. de Francois Ruitton.</b> Pink . . . . .	1.00
<b>Souv. de Gen. Gallieni.</b> (Riv.) Pink . . . . .	1.50
<b>Souv. de Louis Bigot.</b> (Des.) A vivid salmon-pink. Erect bloomer and should be in every garden . . . . .	1.00
<b>Star of Beauty.</b> (Nee.) Flesh-pink. Late . . . . .	2.50
<b>Stephanie.</b> (Ter.) Delicate pink. Free bloomer . . . . .	1.00
<b>Strassburg.</b> (G. & K.) Silvery lilac-rose . . . . .	1.00
<b>Supreme.</b> (Hol.) Pink. Late and good . . . . .	1.00
<b>Suzette.</b> (Des.) Bengal rose . . . . .	1.00
<b>Sylvia Louise.</b> (Saun.) Tyrian purple. Fine . . . . .	1.00
<b>Tanager.</b> (Sass.) Red. Midseason . . . . .	1.50
<b>The Disc.</b> (Sass.) Late red . . . . .	1.50
<b>The Gem.</b> (Pleas.) Crimson. Small. Midseason . . . . .	1.00
<b>Therese.</b> (Des.) Old-rose-pink. Considered the best pink Peony. Of medium height with strong stems and heavy foliage . . . . .	1.50
<b>Thos. C. Thurlow.</b> (Thur.) Salmon-flesh . . . . .	1.50
<b>Tourangelle.</b> (Des.) Pale cream-white with a tan suffusion in the depths of the flower. Very high rated, lovely . . . . .	1.00
<b>Trail's End.</b> (Nee.) Soft pink . . . . .	2.50
<b>Umbellata Rosea.</b> (Des.) Pink. Early . . . . .	1.00
<b>Venus.</b> (Kel.) Delicate shell-pink . . . . .	1.00
<b>Victor's Crown.</b> (Nee.) Pink. Midseason . . . . .	5.00
<b>Victory Chateau Thierry.</b> (Bra.) Bright pink . . . . .	2.50
<b>Victoire de la Marne.</b> (Des.) One of the largest purplish red Peonies. Has lighter edges, giving a silvery effect . . . . .	1.00
<b>Walter Faxon.</b> (Rich.) Vivid salmon-pink, often called salmon-rose. A good show flower. It is medium size, mildly fragrant, has good stems and foliage . . . . .	1.50
<b>Ward Welsh.</b> (Nee.) Flesh. Late . . . . .	10.00
<b>W. E. Blanchette.</b> (Bra.) One of the largest reds; tall . . . . .	7.50
<b>Wiesbaden.</b> (G. & K.) Deep pink . . . . .	1.00
<b>Welcome Guest.</b> (Hol.) Pink . . . . .	1.00
<b>W. F. Christman.</b> (Fra.) Flesh-white. Large . . . . .	1.00
<b>W. F. Turner.</b> (Shay.) Very dark crimson petals with a blackish sheen, mingled with yellow stamens. Tall, free flowering. Early . . . . .	1.50
<b>Wilton Lockwood.</b> (Shay.) Rose-pink. Very large . . . . .	1.00
<b>W. L. Gumm.</b> (Gumm.) White. Late . . . . .	5.00
<b>Zest.</b> (Hol.) Pink . . . . .	1.00

# Japanese PEONIES

This type of Peony is very graceful in growth and quite different in type of flower. The flowers are single or semi-double with wide flaring petals of exquisite coloring and texture. The centers are usually a more or less compact mass of tiny petals or petaloids surrounding the stamens and usually of a color contrasting with the main petal color. Very charming color effects are found among them.



*Akashigata*

	Each
<b>Akalu.</b> (Des.) Large carmine-red mid-season .....	\$ 1.00
<b>Akashigata.</b> (Des.) Bright rose guard petals surrounding a heavy center of filamental petals of bright pink bordered with gold .....	1.50
<b>Alma.</b> (Shay.) Light pink. The petals darker on the edges and center than at the base which is near white. Strong stems and good foliage ....	1.00
<b>Altar Candles.</b> (Pleas.) Cupped, flesh-pink guard petals surrounding a center of narrow, wax-white petaloids, tipped with red .....	1.00
<b>Ama-No-Sode No. 1.</b> Guard petals bright rose-pink surrounding yellow staminodes, tipped rose. One of the best .....	2.00
<b>Antwerpen.</b> Very large flowers of carmine-pink surrounding a beautiful center .....	2.50
<b>Apple Blossom.</b> Flesh-pink, midseason.	1.50
<b>Attraction.</b> (Hol.) Tyrian rose, fragrant, large .....	1.00
<b>Aureolin.</b> (Shay.) A light rose-pink which is paler at the edges. Center composed of narrow bright canary-yellow petaloids, with yellow carpels, giving a fine yellow effect .....	1.00
<b>Calypso.</b> (And.) Amaranth-pink, midseason ..	1.50
<b>Capt. Alcock.</b> (Kel.) Dark pink, midseason ..	1.00
<b>Caroline.</b> (Pleas.) Snow-white .....	1.00
<b>Cascade.</b> White, midseason .....	1.00
<b>Cathedral.</b> Vivid dark rose-pink guard petals with narrow lighter edges. Center of long pale pink petaloids. Very popular .....	1.00
<b>Charm.</b> (Fran.) Dark red. Tall. Strong. Late.	2.00
<b>Constance.</b> (Bern.) Pink, yellow center, mid-season .....	1.50
<b>Crown Hill.</b> Unusual rose and yellow .....	1.50
<b>Crown On Crown.</b> Medium pink .....	1.00
<b>Dawn.</b> (Cal.) Light pink. Free flowering .....	1.00
<b>Departing Sun.</b> A very large dark rose-pink or light crimson. Compact center of crowded petaloids dark rose on one side and lighter on the other. Foliage good dark green .....	1.50
<b>Diadem.</b> (Fran.) Dark red. Late midseason ..	5.00
<b>Dog Rose.</b> (Kel.) Delicate light pink .....	1.50
<b>Emperor of India.</b> Dark red. Medium tall ....	1.00
<b>Eva.</b> Light lilac-crimson. Fine .....	2.00
<b>Exquisite First.</b> White, good, midseason .....	1.00
<b>Fairv.</b> Light pink. New .....	2.00
<b>Flashlight.</b> (Hol.) Tyrian rose, free blooming ..	1.50
<b>Fugi-No-Mine.</b> Pure milk-white .....	1.50

	Each
<b>Fugi-Zoma-Gorona.</b> Wisteria-pink. Extra fine ..	\$ 2.50
<b>Fuyajo.</b> Dark purplish crimson guard petals of smooth texture and heart-shaped outline. The center is a cluster of dark old-rose petaloids, heavily tipped with pale cream. Tall, strong stems, foliage tinged red .....	1.00
<b>Geisha.</b> Clear bright red. Late .....	2.50
<b>Ginko-Nishiki.</b> White streaked crimson .....	1.50
<b>Glory.</b> (Hol.) Light Tyrian rose .....	1.00
<b>Goddess.</b> (Kel.) Rose-pink self .....	1.50
<b>Golden Nugget.</b> (Pleas.) Rosy lilac .....	1.00
<b>Gold Mine.</b> (Hol.) Tyrian rose .....	1.00
<b>Gypsy.</b> (Hol.) Wine-red, medium size .....	1.50
<b>Hakodate.</b> (Mil.) Large pure white. Rare ...	5.00
<b>Hana-No-Sota.</b> (Des.) Deep pink. Popular ...	1.00
<b>Hari-Ai-Nin.</b> (Bab.) Maroon, outstanding variety .....	2.50
<b>Hatsugi.</b> Dark red. Midseason .....	1.00
<b>Henri Potin.</b> (Dor.) China-pink. Late .....	1.00
<b>Hinoke Sahkie.</b> Violet .....	1.00
<b>Ho-Gioku.</b> White .....	1.00
<b>Innocence.</b> (Hol.) Light old rose guards .....	1.00
<b>Isani-Gidui.</b> The best white Japanese. Pure white guard petals with yellow staminodes, carpels green, tipped pale yellow, moderately tall, vigorous, with crinkled foliage .....	3.00
<b>Joseph Plagne.</b> (Dor.) Carmine-red .....	1.50
<b>Kameno-Kerogama.</b> Clear red .....	1.00
<b>Kino-Kimo.</b> Crimson-carmine. Free blooming .	1.00

# C. F. WASSENBERG, VAN WERT, O.

	Each
<b>King of England.</b> (Kel.) Dark maroon-red guards with buff staminodes streaked with dark rose-pink. Carpels green. Tall .....	\$ 1.00
<b>Knight of the Thistle.</b> (Kel.) Crimson. Dwarf	1.00
<b>Kukeni-Jishi.</b> (Des.) Silvery pink, midseason..	5.00
<b>Kumagoe.</b> Crimson-pink .....	1.00
<b>Lotus.</b> Beautiful pale pink .....	1.50
<b>Lou Shenk.</b> (Rose.) An attractive pink .....	1.00
<b>Margaret Atwood.</b> Pure white, cuplike flowers with an occasional pink flush on the outside. The center is a ball of yellow staminodes ...	2.00
<b>Melody.</b> (Auten.) Pink, yellow center. Fragrant	1.00
<b>Mikado.</b> Waxed, cupped petals of rich dark crimson. Center broad and flat, red and yellow staminodes. The most popular Japanese variety .....	1.00
<b>Minamota.</b> A fine purple-red .....	1.00
<b>Miyo-No-Hana.</b> White, lovely, rare .....	3.50
<b>Monterey.</b> (Auten.) Light salmon, Hon. Mention .....	2.00
<b>Moon-Yen-Claire.</b> (Pleas.) Rose-pink .....	1.00
<b>Mr. G. F. Hemerick.</b> (Van Leeu.) Fine rose-pink .....	2.50
<b>Mrs. Mac.</b> (Fran.) Pink, flecked .....	1.50
<b>Nippon Beauty.</b> (Auten.) Dark red with center of staminodes flushed and edged yellow. One of the best Japanese. Late .....	3.00
<b>Nippon Brilliant.</b> (Auten.) Red, very attractive.	8.00
<b>Nippon Gold.</b> (Auten.) Deep pink .....	2.50
<b>Noon Day.</b> Rose, very fine .....	1.50
<b>Nymphe.</b> (Des.) Pink .....	1.00
<b>O Fugi.</b> Flesh guard petals .....	1.00
<b>Oki-No-Nami.</b> Hydrangea-pink .....	1.00
<b>Ohanagassa.</b> Red tinted rose .....	1.50
<b>Ohrama.</b> Carmine tinged purple .....	1.00
<b>Onahama.</b> (Gumm.) Dark rich red .....	2.00
<b>Oriental Pearl.</b> (Wri.) Large light rose-pink...	5.00
<b>Ostrich Plume.</b> (Pleas.) White guards .....	1.00
<b>Petite Renee.</b> (Des.) Carmine-pink .....	1.00
<b>Ping Wing.</b> Pink of medium height .....	1.00
<b>Prairie Afire.</b> (Bra.) Dark pink. Fine .....	5.00
<b>Princess Duleep Singh.</b> (Kel.) Rose-pink .....	3.00
<b>Rabelais.</b> (Des.) Pink .....	1.00
<b>Rashooman.</b> Glowing rose-red guard petals. Center of slender staminodes, incurved tips of rose-red .....	1.00



*Toro-No-Maki*

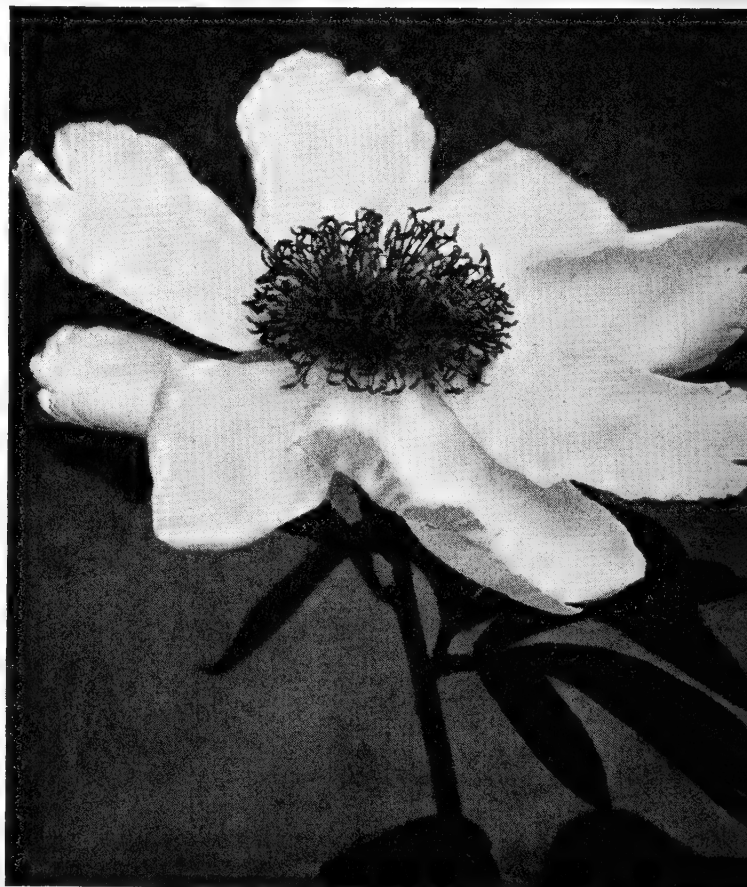
	Each
<b>Rigolette.</b> (Dor.) Broad purple-crimson petals..	\$ 2.50
<b>Rose of Nippon.</b> Deep rose, different .....	1.50
<b>Rose Valley.</b> (Scott.) Pink. Honorable Mention of American Peony Society, 1937 .....	3.50
<b>Ruigegno.</b> Rich dark maroon .....	1.00
<b>Sagoroma.</b> (Mil.) Salmon guards .....	1.00
<b>Seiriu Somae.</b> White and sulphur .....	1.00
<b>Shavano.</b> (And.) Clear rose-pink .....	1.50
<b>Shiro Sangai.</b> Heavy smooth guard petals of pure cream-white. Long, narrow petaloids of yellow tipped darker. Free flowering .....	1.50
<b>Shy Maid.</b> (Auten.) Lavender-pink .....	1.00
<b>Silver Plume.</b> (And.) Silvery pink .....	1.50
<b>Snow Wheel.</b> White, very popular .....	1.50
<b>Soshi.</b> (Mil.) Deep rose .....	2.00
<b>Soma Ganoka.</b> Clear dark crimson cupped shape guard petals. Flat center of yellow staminodes. Foliage dark green, ruffled .....	1.50
<b>Sunburst.</b> (Shay.) White. Beautiful. Fragrant.	3.00
<b>Sunrise.</b> (Hol.) Pink with yellow center .....	1.50
<b>Surugu.</b> (Mil.) New pure red .....	1.50
<b>Tago-No-Tsuki.</b> Pink .....	1.00
<b>Taiho.</b> Pink .....	1.00
<b>Tamate Boku.</b> The highest rated Peony of the Japanese type. Guards are dark old-rose-pink with a center of threadlike yellow staminodes. Very beautiful flower .....	10.00
<b>Tarantella.</b> (Auten.) Extra fine light red .....	1.50
<b>Tokio.</b> A large rose-pink with loose narrow staminodes with wide tips tinted pale yellow, buff and pink. Very erect grower .....	1.50
<b>Toro-No-Maki.</b> Guards of pale blush-white fading to pure white. Center composed of whitish staminodes edged and suffused yellow at the tips. Carpels pale green .....	3.50
<b>Torpilleur.</b> (Des.) Carmine-purple .....	1.00
<b>Weigetsuka.</b> Large pink .....	1.50
<b>White Japan.</b> White. Yellow petaloids .....	1.00
<b>Yamato Tsukasa.</b> Bright rose. Midseason .....	1.00
<b>Yeso.</b> White tinted yellow .....	1.00
<b>Yokohama.</b> (Mil.) Blush-white. Late .....	5.00
<b>Yellow King.</b> (Hard.) New Peony. The beautiful center is of filamental petaloids of yellow surrounded by very lovely soft pink guard petals. Best yellow among the Japanese .....	3.50



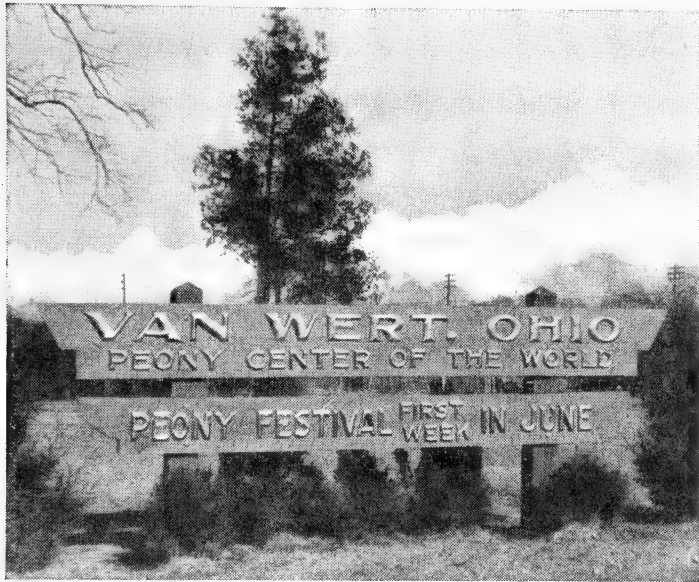
# Single PEONIES

Somewhat like the Japanese Peony but having no central petaloids, the stamens being exposed to form the contrast with the guard or main petals. As a class they are very graceful plants, holding their blooms well off the ground without support and offering very handsome subjects for bouquets as well as the garden.

	Each
<b>Albiflora.</b> Pure white with bright yellow stamens. Very popular .....	\$ 1.00
<b>Black Prince.</b> (Thur.) Large deep red with a satiny sheen. Stamens reddish at base tipped yellow. Carpels green. Stiff stems and excellent foliage .....	1.00
<b>Charlotte Core.</b> (Dor.) Large pure white .....	2.50
<b>Clairette.</b> (Des.) White tinged pink .....	1.00
<b>Clio.</b> (Pet.) Good pink .....	1.00
<b>Cottage Maid.</b> (Pleas.) Light pink .....	1.00
<b>Decoration Day.</b> (Wri.) Bright rose-red. Early ..	2.50
<b>Edith West.</b> (Bra.) Large white .....	1.50
<b>Eglantine.</b> (Des.) Pink fancy white .....	1.00
<b>E. St. Hill.</b> (Kel.) Dark red .....	1.00
<b>Flanders Fields.</b> (Bra.) Brilliant red .....	2.00
<b>Harriet Olney.</b> (Bra.) A soft rose with center of yellow stamens. Erect grower .....	1.00
<b>Helen.</b> (Thur.) A double row of broad, round, dark shell-pink petals with a mass of golden yellow stamens in center. Considered by many as the best single Peony .....	3.00
<b>Imperial Red.</b> (Sass.) Red. Erect grower .....	1.50
<b>Jeanne Ernould.</b> (Dor.) Rich apple-blossom-pink guards. Tall stems. Very fine flower ...	2.00
<b>Jimmie Franklin.</b> (Fra.) Fine dark red .....	2.50
<b>Kelway's Wild Rose.</b> (Kel.) Speckled pink ..	1.50
<b>King Albert.</b> (Kel.) Rose-violet .....	1.00
<b>Krinkled White.</b> (Bra.) Large flower with pure white petals which are crinkled. Tall, stems slender but very strong with light green foliage ..	2.50
<b>La Fiancee.</b> White. Yellow stamens .....	1.00
<b>Le Jour.</b> (Shay.) White, with two rows of very long, wide overlapping petals. The center has a broad ring of golden yellow stamens surrounding a group of reddish carpels. Considered the best white Single Peony .....	1.50
<b>L'Etincelante.</b> (Des.) Cup-shaped flowers of very bright pink. Stamens in center are bright yellow. Tall, stiff stems with excellent foliage ..	1.00
<b>Letitia.</b> (Kel.) Clear pink .....	1.00
<b>Louise Delettre.</b> (Dor.) Light pink .....	1.00
<b>Madeleine Gauthier.</b> (Des.) Light flesh-pink petals of waxy texture surrounding a center of yellow stamens and yellow-green carpels with red base and tips .....	1.50
<b>Mafeking.</b> (Kel.) Dark rose-pink .....	1.00
<b>Marguerite Dessert.</b> (Des.) White, splashed pink. 1.00	1.00
<b>Maurice Maeterlinck.</b> (Kel.) Crimson-pink ...	1.00
<b>May Oleson.</b> (Ole.) Apple-blossom-pink .....	1.00
<b>Mellin Knight.</b> (Bra.) Rich deep red guards surrounding a center of yellow stamens and reddish green carpels .....	1.00
<b>Minnehaha.</b> (Pleas.) Very early, bright cherry-red with center tufts of clear golden stamens ..	1.00
<b>Mischief.</b> (Auten.) Lovely soft pink, yellow center .....	1.50
<b>Moonbeam.</b> Opal tints. Unusual .....	1.50
<b>Nellie.</b> (Kel.) Rose-pink, with a small tuft of yellow stamens in center. Carpels ruddy green. Blooms in clusters. Dwarf .....	1.00
<b>Perle Blanche.</b> (Des.) Broad rounded white petals enclosing a large mass of golden yellow stamens. Tall, free flowering, erect stems ....	\$ 1.00
<b>Pie Plate.</b> (Wri.) White. Very large .....	2.50
<b>Pocahontas.</b> (Pleas.) Rosy red. Late. Tall ...	1.00
<b>Pres. Lincoln.</b> (Bra.) Red. Midseason .....	5.00
<b>Pride of Langport.</b> (Kel.) Pale rose-pink petals surrounding a large cluster of very bright golden stamens and pale green carpels. Tall, thin, wiry stems with abundant foliage .....	1.50
<b>Princess Matilda.</b> (Des.) China-pink .....	1.00
<b>Pure Love.</b> (Kel.) Shell-pink. Yellow stamens. 1.00	1.00
<b>Queen.</b> (Pleas.) White. Yellow center .....	1.00
<b>Rebecca.</b> (Wri.) White .....	3.50
<b>Spring Maid.</b> Light pink. Yellow stamens ....	1.00
<b>Silvia Saunders.</b> (Saun.) Cup-shaped bright clear rose-pink fading lighter toward the center which is filled with yellow stamens. Good grower and an abundant bloomer. Extra fine ..	2.50
<b>The Moor.</b> (Barr.) Dark red. Early .....	1.00
<b>Toreador.</b> (Wett.) Red. Very late. Tall .....	1.00
<b>Veloutine.</b> (Des.) Tyrian rose .....	1.00
<b>Venise.</b> (Des.) Brilliant pink. Very good ....	1.00
<b>Vera.</b> (Gumm.) Very dark crimson-maroon with a silky sheen. Compact center of clear golden stamens .....	1.50
<b>Verdun.</b> (Dor.) Very large flowers with rich crimson guards .....	1.50
<b>Vesuve.</b> (Des.) Dark red. Dwarf .....	1.00
<b>Whitley Major.</b> White. Yellow stamens .....	1.00
<b>White Swan.</b> (Pleas.) Good late white .....	1.00
<b>Wilbur Wright.</b> (Kel.) Dark crimson-maroon with attractive center of yellow stamens .....	1.00



*Albiflora*



## Peony Species

Species and Hybrids will give you a month more of Peony bloom, as they will all bloom from 10 days to 30 days before the Chinensis varieties. All have unusual foliage, color of bloom and growing habit. You'll enjoy having some or all of them in your plantings.

	Each
<b>Anomala.</b> Cut leaves, rose-lilac. Early .....	\$ 1.00
<b>Ligulata Rosea.</b> Soft pink .....	1.50
<b>Lobata.</b> Brilliant cerise, unusual .....	10.00
<b>Macrophylla.</b> White; very early .....	5.00
<b>Mlokosewitschi.</b> Yellow, holds color well ...	20.00
<b>Officinalis Rubra Plena.</b> Rich red; very early	1.00
<b>Pubens.</b> Bright carmine; dwarf. Early .....	2.00
<b>Tenuifolia Laciniata.</b> Crimson .....	2.00
<b>Tenuifolia Latifolia.</b> Crimson. Single .....	1.00

# IRISES

Iris in some form are native to practically all parts of the world. They vary greatly in size, height and coloring in the various countries. As a class they are of extremely easy culture and not particular as to soil. No flowering plant gives so much in beauty for so little cost and attention.

The following list of Tall Bearded Iris offers the newer kinds which, because scarce as yet, are relatively more expensive than the older varieties. Because our list is so extensive we can give only brief descriptions.

Get some of these newer kinds for your garden. You will revel in their beauty and your friends will enjoy kinds they have never seen.

## Tall Bearded Varieties

	Each		Each
<b>Alastor.</b> (Splen.) A very fine Cyclamen-pink. A. M. ....	\$ 2.50	<b>Apricot Glow.</b> (Weis-Schr.) Rosy apricot. 36 in. ....	\$ 0.50
<b>Alice Harding.</b> (Cay.) A large soft satin yellow with deep orange beard. Flowers of perfect form and substance. Profuse bloomer and vigorous grower .....	.35	<b>Arabian Prince.</b> (Sim.) Garnet-red with rich velvety falls. Many blooms on each stalk ....	.35
<b>Aline.</b> (Stern.) Pure blue. It possesses an enamel-like luster which makes it distinct from all other blues .....	.30	<b>At Dawning.</b> (Kirk.) Standards pinkish white with gold at the base. The falls are a soft rose. Beautiful gold-veined throat and deep orange beard .....	.40
<b>Almaviva.</b> 42 in. S. old rose; F. amaranth-red ..	2.00	<b>Aubanel.</b> (Cay.) A fine flower of shrimp-pink. A. M. ....	1.00
<b>Always.</b> (White.) Rosy bronze and ivory. 38 in. ....	.75	<b>Autumn Frost.</b> (Schr.) Moonlight color. 36 in. ....	.35
<b>Amber Beads.</b> 40 in. Golden amber. Different ..	.75	<b>Autumn Haze.</b> (Sass.) S. wine; F. velvet-violet. ....	.30
<b>Amber Wave</b> .....	.50	<b>Ballet Girl.</b> (Sass.) Pure blush-pink .....	.35
<b>Amenti.</b> (H. Sass.) Grayish standards; light mauve falls .....	.30	<b>Bayside.</b> 44 in. Deep rich velvety bicolor .....	1.50
<b>Amethyst Dome.</b> 36 in. S. pure amethyst; F. carmine .....	2.50	<b>Beau Brummel.</b> 32 in. Huge, dark rich blue-purple .....	1.50
<b>Amigo.</b> (Wmsn.) Light lavender standards and very deep hyacinth-violet falls, edged the color of the standards, and margined white. 34 in. ....	1.00	<b>Beige Princess.</b> 42 in. Lovely soft rose-beige ...	1.50
<b>Amitola.</b> (Sass.) S. russet; F. pink. 38 inches ..	.35	<b>Belmont.</b> (Wil.) 36 in. A very early blue self ..	1.50
<b>Angelus.</b> (Egelberg.) Lilac-pink blend; fine ...	.60	<b>Beotie.</b> (Cay.) Metallic bluish lavender. 48 in. ..	.30
<b>Anitra.</b> (Sass.) Verbena-violet self; large. 36 in. ....	.40	<b>Beowulf.</b> (Schr.) True maroon-red; early .....	.30
<b>Anna Gage.</b> (Gage.) S. tawny olive; F. garnet-brown .....	4.00	<b>Berkeley Fire.</b> (Salb.) 36 in. A fine red bicolor. ....	.75
<b>Anne-Marie Cayeux.</b> (Cay.) Blend of soft pastel colors. S. pinkish lilac, flushed gray; F. metallic blue over gray .....	.30	<b>Black Magic.</b> Rich velvety black sheen .....	.30
<b>Anne Newhard.</b> (Weis.) New Pansy-blue self. 38 inches .....	2.50	<b>Black Watch.</b> 30 in. Almost pure black; like velvet .....	.75
<b>Antigone.</b> 36 in. Dykes Medal. Deep pure yellow .....	2.00	<b>Blazing Star.</b> A very fine light yellow .....	.35
<b>Apricot.</b> Golden apricot self .....	.60	<b>Blenheim.</b> (Stern.) Rich bronze and Pansy-violet. ....	.50
		<b>Blue Chintz.</b> Purple-lavender Plicata; handsome. ....	.35
		<b>Blue Diamond.</b> Glistening bright sky blue ....	1.25
		<b>Blue Heaven.</b> Very dark blue .....	.50
		<b>Blue June.</b> (Don.) Pale blue-lavender .....	.50
		<b>Blue Melody</b> .....	2.00



	Each
<b>Blue Peter.</b> (White.) One of the best very dark blue-purple. 37 inches .....	\$ 0.50
<b>Blue Spire.</b> (Mill.) Sparkling light blue. Tall with fine foliage. 40 inches .....	1.00
<b>Blue Triumph.</b> (Grinter.) A very fine soft light blue, flaring falls. Honorable Mention A. I. S.	.30
<b>Bonsor.</b> (Connell '38.) Rich aniline-blue ....	1.75
<b>Brahmin.</b> (Meyers.) 36 in. A new intense blue..	.50
<b>Buechley Giant.</b> (Buech.) Very large flower of soft medium blue with perfect form .....	.35
<b>Bronze Beacon</b> .....	.35
<b>Bronze Glory.</b> (Sim.) Rich velvety bronze-red..	.35
<b>Bronzino.</b> (Salb.) S. frosty golden bronze; F. bright coppery bronze. 36 inches .....	.60
<b>Brunhilde.</b> (Sal.) Vivid indigo-blue, with a blue beard. Large flowers. Fragrant .....	.50
<b>Buffawn.</b> S. light fawn; F. light pinkish buff ...	1.50
<b>Burning Bronze.</b> (Ay.) Standards light red. Falls deep coppery red. Large and brilliant. Honorable Mention A. I. S. ....	.40
<b>Byzantium.</b> (Ay.) Tan, gold-blue blend. 40 in.	.35
<b>Caballero.</b> 45 in. S. soft rose; F. mahogany ....	.50
<b>Cadetou.</b> (Cay.) S. yellow; F. garnet edged gold	.35
<b>Cafe Au Lait.</b> (Gra.) Creamy tan self .....	1.00
<b>Calcutta.</b> (Klein.) Cocoa-brown tones overlaid with a blush veil. 42 inches .....	.75
<b>California Gold.</b> (M. & M.) One of the best deep yellows. It is tall, large and a free bloomer ..	.30
<b>California Peach.</b> (Salb.) Delicate pink and apricot .....	6.50
<b>Carnelian.</b> Red toned bicolor. Large blooms and perfectly formed. Early blooming .....	.35
<b>Casque d'Or.</b> Gold. Falls blackish .....	1.50
<b>Celestielle.</b> New English Plicata. Medal winner..	2.50
<b>Champaign Glow.</b> 38 in. Huge flowers of soft yellow .....	1.00
<b>Charlotte Millet.</b> (Cay.) A beautiful bright reddish lilac self. Late. 36 inches .....	1.50
<b>Charm.</b> (Mit.) 30 in. Glowing Strawberry-red ..	.75
<b>Cheerio.</b> (Ay.) Falls rich, satiny ruby-red, with orange beard. Standards are soft rose, flushed yellow. 40 inches .....	.35
<b>Chenoc</b> .....	1.00
<b>Chief Sidar.</b> (Gage.) Rosy red .....	.50
<b>Chestnut Hill.</b> (Gage.) Deep yellow self; fragrant. 45 inches tall .....	1.00
<b>China Boy.</b> (Mill.) Rich red-bronze. 40 inches. Huge .....	1.00
<b>China Lantern.</b> (Mill.) .....	.50
<b>China Maid.</b> (Mill.) Pink blend, bronze and lilac.	1.00
<b>China Rose.</b> (Mill.) Rose .....	.35
<b>Chloris.</b> (Knorr.) Medium light pink self .....	.50
<b>Chosen.</b> Large new yellow .....	1.50
<b>City of Lincoln.</b> (Sass.) Queen of Variegatas! Clear golden yellow standards, fiery red falls, producing a very startling contrast .....	1.50
<b>Claret Velvet.</b> Dark maroon-red, burnt gold beard .....	2.00
<b>Claribel.</b> (J. Sass.) S. white frilled blue; F. white.	.35
<b>Conestoga.</b> (Kirk.) S. golden brown; F. red. 38 inches .....	.75
<b>Copper Lustre.</b> (Kirk.) Copper and gold blend. Large flowers. Dykes Memorial Medal winner in 1938 .....	.50
<b>Copper Piece.</b> (Kell.) Bright reddish toned with copper shadings. 34 inches .....	.50
<b>Copper Rose.</b> A fine blend of old rose, tan and copper .....	7.50
<b>Coronet.</b> (D. Hall.) A blended self of golden tan with a delicate underlay of rosy biege. H. M. A. I. S., 1939. 34 inches .....	.40
<b>Creole Belle.</b> (Nich.) Bishop's pure self. 36 in.	.35
<b>Crimson Petal.</b> (Norton.) 36 in. A very clear red.	1.50

**C. F. WASSENBERG — Peony and Iris Specialist — VAN WERT, OHIO**

	Each
<b>Crimson Tide.</b> Very large brilliant red flowers..	\$ 1.50
<b>Crown Hill.</b> Blue bicolor; ruffled .....	.50
<b>Crown of Gold.</b> 36 in. One of the best new yellows .....	2.50
<b>Crown Prince.</b> S. gold; F. velvet-red .....	.35
<b>Cyrus the Great.</b> (Kirk.) Early dark blue .....	.35
<b>Damerine.</b> (Gage.) A large, dark red flower of splendid substance and velvety texture, deep yellow beard. 36 inches .....	2.00
<b>Dark Horse.</b> Violet-carmine. Velvety black sheen .....	.50
<b>Dark Knight.</b> (Sal.) Deep rich mahogany-red, with bronze beard. Flowers nicely placed on tall stems .....	.40
<b>Dawning Day</b> .....	.50
<b>Days Farewell.</b> (Mil.) 42 in. A fine rose-lavender .....	2.50
<b>Delicious</b> .....	1.00
<b>Derck Meyer.</b> Rich velvety violet. Medal winner.	2.50
<b>Derrill Hart.</b> S. rose shot with bronze; F. wine.	1.50
<b>Deseret.</b> (Thor.) Striking Variegata. 40 inches..	.35
<b>Destiny.</b> (Burgess.) Giant blue-purple; fine .....	.50
<b>Directeur Pinelle.</b> (Cay.) S. coppery wine-red; F. wide, deep velvety blackish garnet-red. Tall, large .....	.40
<b>Don Juan.</b> Garnet-red blend, large. 40 inches ...	.35
<b>Drap d'Or.</b> (Cay.) New French Iris. A soft yellow without any variation of color. Beard same shade. Perfect form .....	.40
<b>Dubrovnik.</b> (Wmsn.) A colorful blend of deep rose and gold with a beard of deep orange. Good branching. 38 inches .....	1.50
<b>Dymia.</b> (Shub.) Deep purple self. 38 inches ...	.30
<b>Easter Morn.</b> (Ess.) Very fragrant, pure sparkling white, with a satiny sheen and glowing yellow center .....	.35
<b>E. B. Williamson.</b> (Cook.) New Iris in a coppery red tone, sprinkled with gold dust over entire flower. Perfect form; heavy substance .....	.75
<b>Eclador.</b> (Cay.) Large yellow; frilled .....	.50
<b>Eclat.</b> (Gage.) Blend of pink and copper .....	.35
<b>Eleanor Blue.</b> (Sal.) Soft blue with brown markings at haft, yellow beard. 30 inches .....	.40
<b>El Capitan.</b> Tall, light blue .....	.30
<b>Electra.</b> (J. Sass.) New Plicata; very fine .....	.30
<b>Elkhart.</b> (Lap.) Deep chestnut-red; large .....	.50
<b>Ella Winchester.</b> (Grin.) Brilliant velvety garnet self. Brownish gold beard .....	.40
<b>Elmohr.</b> (Loomis '42.) This is a very distinctive new hybrid of Wm. Mohr which won't be soon forgotten. Beautiful shade of rich reddish mulberry .....	6.00
<b>Elsa Sass.</b> (Sass.) Exquisite new Iris in a bewitching shade of yellow, like a sparkling glass of ice-cool lemonade .....	2.00
<b>El Tovar.</b> (Sass.) Gorgeous Variegata blend in rich brown-yellow and blackish maroon; with a yellow glow at the heart. 36 inches .....	.30
<b>Empire State</b> .....	.50
<b>Ethel Peckham.</b> (Wmsn.) Largest red-toned Iris. The huge flowers are perfect in form and the rich deep red color makes it one of the best.	.35
<b>Ethiop Queen.</b> (Schr.) Standards of deep blackish violet and falls practically coal-black. 34 inches .....	1.00
<b>Evelyn Pullar.</b> A two-toned pale blue .....	.50
<b>Ever Gay.</b> (Kirk.) S. orange; F. burnt orange. 34 inches .....	2.50
<b>Evolved.</b> 48 in. Bronze-violet blend .....	1.00
<b>Exclusive.</b> (Gr.) Clear light blue. Falls deeper than standards. Very distinct and exclusive ..	.60
<b>Fairylea.</b> (Hall.) White plicata; yellow beard ..	1.00
<b>Falklands.</b> 36 in. Hardy new snow-white .....	1.50
<b>Fall Beauty.</b> 34 in. Violet-bronze-brown blend ..	2.00
<b>Far West.</b> (Klein.) Gold, salmon, coral blend ..	.50



*California Gold*

	Each
<b>Ferric.</b> (Mill.) S. light purple; F. red-purple. 36 inches .....	\$ 2.50
<b>Fiesta.</b> (White.) S. copper; F. apricot. 34 inches	2.00
<b>Firebrand.</b> Gold-red bicolor. Extremely late ....	2.00
<b>Flaming Torch.</b> 32 in. S. hellebore; F. neutral red .....	2.50
<b>Florentina.</b> Plicata. White ground, dotted blue ..	2.00
<b>Forest Aflame.</b> S. bronze-brown, strongly suffused red; F. velvety chestnut-red-brown ...	1.50
<b>Francesca.</b> 40 in. New deep pink self .....	1.50
<b>Frank Adams.</b> (Laph.) Rosy tan standards and rosy red falls. Rich orange beard. Very large flowers and foliage. H. M. A. I. S., 1938. 36 inches .....	.60
<b>French Maid.</b> (Grant.) A very fine pink blend ..	1.00
<b>Frost Queen.</b> Frosty white .....	.30
<b>Gallant Leader.</b> (Weis.) S. rose-red .....	1.50
<b>Garden Magic.</b> (Grint.) A magnificent deep, glowing, velvety red. Quite late; tall with a large bloom. H. M. A. I. S., 1937 .....	1.50
<b>Gay Day.</b> (McDade.) New tan blend .....	1.00
<b>Glow Port.</b> An exceptional Iris in wine-red ....	.75
<b>Gold Champion.</b> 36 in. Huge, bright canary-yellow .....	2.50
<b>Gold Coast.</b> (Pilk.) .....	1.50
<b>Gold Queen</b> .....	1.00
<b>Goldsmith.</b> 42 in. Pure deep yellow flushed bronze .....	2.50
<b>Golden Age.</b> A large yellow self, frilled edges ..	.50
<b>Golden Arrow.</b> 42 in. Large, pure lemon-yellow.	2.50
<b>Golden Bow.</b> (H. Sass.) Chrome-yellow. Large..	.30
<b>Golden Harvest.</b> Fall bloomer. Yellow .....	.35
<b>Golden Helmet.</b> (Sass.) New brilliant Variegata. S. bronzy yellow; F. morocco-red, orange beard .....	.30

	Each
<b>Golden Hind.</b> (Chad.) Yellow tinted with orange .....	\$ 0.40
<b>Golden Image.</b> 36 in. Clear deep pure yellow ..	2.50
<b>Golden Majesty.</b> (Salb.) A deep rich yellow of heavy substance. One of the best. Late. 42 inches. H. M. A. I. S., 1939 .....	1.00
<b>Golden Melody.</b> 36 in. Huge clear deep yellow.	2.50
<b>Golden Slippers.</b> (DeForest.) Daffodil-yellow. 36 inches .....	.75
<b>Golden Star.</b> Pure deep gold, terra cotta flush..	.50
<b>Golden Treasure.</b> (Schr.) Solid deep cream with central portion of golden orange. Very vigorous. 40 inches .....	.50
<b>Good Cheer.</b> S. yellow; F. bright yellow veined red .....	1.00
<b>Grace Lapham.</b> (Lap.) Pink flushed lavender ..	.30
<b>Grace Mohr.</b> (Jory.) Large flower of soft lilac, veined manganese-violet .....	1.00
<b>Grand Canyon.</b> An odd blend of plum, copper and gold. It is an Iris to be admired and one entirely different. 40 inches tall, perfectly branched, and flowers over a very long season	3.00
<b>Great Lakes.</b> One of the finest pure blues; beard almost white. Dykes Medal 1942 .....	1.75
<b>Gudrun.</b> (K. Dykes.) Large white, considered by some to be the finest. The largest and best for massing in whites .....	.35
<b>Halloween Night.</b> A very distinct lemon-yellow..	10.00
<b>Happy Days.</b> (Nich.) A large fine yellow, glistening with a deep orange beard. The largest of the yellows. Seven-inch blooms with seven or eight on each stalk. Fine form .....	.30
<b>Helen M. Riedel.</b> (Riedel.) A fine orange blend.	1.50
<b>Heliane.</b> (Mil.) Plicata. White petals are bordered with a solid mass of deep blue-violet lines. A bright orange beard helps produce a distinctiveness from all other Iris .....	.35
<b>High Hat.</b> 45 in. Very lovely. Large ageratum-blue .....	1.50
<b>Homerun.</b> 36 in. S. bronze; F. red. Extra fine ..	1.75
<b>Icy Blue.</b> Distinct and beautiful. Lightest of blue.	2.50
<b>Imperial Blush.</b> (H. Sass.) Very large soft pink. Considered the largest and finest in its class. Fragrant. 44 inches .....	.35
<b>India.</b> Deep blue-purple .....	.30
<b>Indian Hills.</b> (Gra. & Schr.) Rich true purple ..	.40
<b>Itasca.</b> (Kle.) Rich amethyst-purple. 30 inches..	.50
<b>Ivory Tint</b> .....	1.00
<b>Jake.</b> (Sass.) Very fine new white .....	2.00
<b>Jasmania.</b> (Ay.) Large perfect formed flower of a new shade of yellow. The falls have a slight touch of lavender at the center. 42 inches ..	.35
<b>Jean Cayeux.</b> Gray and brown blend. Dykes Medal winner .....	.35
<b>Jean Lafitte.</b> (Wash.) S. coppery rose, broad and arched; F. semi-flaring of intense deep rose with coppery undertone. Bright yellow beard, 40 inches .....	.30
<b>July Beauty.</b> 36 in. S. powder-blue; F. light violet .....	5.00
<b>Junaluska.</b> (Kirk.) F. vivid velvety carmine; S. lovely rose and soft yellow blend. Very large.	.50
<b>Kalinga.</b> (Klein.) Creamy white. Fine form ....	.35
<b>Katisha.</b> (Hall.) Dainty tourmaline-pink .....	.50
<b>Khiva.</b> 40 in. Rich deep burgundy, red-toned self .....	.50
<b>King's Ransom.</b> (Mil.) 48 in. A fine white ....	2.00
<b>K. V. Ayres.</b> (Ay.) Huge flower of soft lavender-gray .....	.35
<b>Lady Paramount.</b> (White.) Soft primrose-yellow.	.35
<b>La Lorraine.</b> Pastel blend of smooth coppery pink .....	1.50



Jelloway

	Each
<b>Lancaster.</b> (Cook.) Handsome lustrous old rose of heavy substance. Fine for garden and show flowers. Very floriferous. An outstanding production .....	\$ 5.00
<b>Laura Hutcheson.</b> Red-pink cast. F. blue. 26 in.	.30
<b>Lavender and Old Lace.</b> 36 in. Lavender-violet..	1.00
<b>Lecoq.</b> 30 in. Blue-violet with flaring falls .....	2.50
<b>Lighthouse.</b> (Salb.) S. strawberry; F. dark violet.	.60
<b>Lilimani.</b> (J. Sass.) Velvety blackish self .....	.40
<b>Louvois.</b> (Cay.) S. Havana tinted brown and the flaring falls are velvety maroon, edged with bronze. 36 inches .....	1.00
<b>Lucrezia Bori.</b> (Schr.) Large bronze-yellow. Ruffled and flushed standards .....	.35
<b>Mab Chadburn.</b> (Chad.) A fine yellow hailing from England .....	2.00
<b>Maid of Astolat.</b> (J. Sass.) White with brilliant blue styles and crest .....	.40
<b>Majestic Rose.</b> Brilliant. S. rose; F. rosy violet ..	1.00
<b>Marco Polo.</b> (Schr.) Rich glowing pink .....	.40



**C. F. WASSENBERG — Peony and Iris Specialist — VAN WERT, OHIO**

	Each		Each
Marie-Azur. (Mur.)	\$ 1.00	Oregon Beauty. Velvety copper-rose. 40 inches	\$ 0.50
Marietta	1.00	Oregon Giant. Dark plum-purple; tall. 42 inches	.35
Marisha. (J. Sass.) Soft cream-yellow standards with heavily flushed light pink falls overlaid the same tone of creamy yellow. 38 inches. One of the finest pink blends	1.50	Oregon Sunshine. (Weed.) One of the finest pale yellows now available. Slightly fragrant	1.00
Marquita. (Cay.) Huge flowers of brilliant smooth ivory. Center of falls turns red with age, leaving a cream colored border	.60	Orloff. (H. Sass.) Yellow, red-brown Plicata. 30 inches	.60
Mary Geddes. Orange-salmon. Dykes Medal winner	.30	Ormohr. (Klein.) A very outstanding Iris in pale lilac, with a silvery cast, veined violet. Beautiful blooms of immense size	1.50
Mary Lee Donahue	1.00	Ossar. (H. Sass.) Blackish red self. 32 inches	.35
Massenet. (Cay.) A fine yellow from France	.50	Ozark Blue. (Jay.) Light blue self	.35
Mata Hari. (Nic.) 40 inches. A deep blue-violet.	.75	Ozone. (J. Sass.) A very unusual and beautiful blend of deep pearly mauve. Very fine	.40
Matterhorn. (J. Sass.) The finest pure white in existence today. Very delicate despite large size. Creamy beard. Flaring falls. 40 inches. Midseason	1.50	Pageant. 54 in. Fine pinkish lilac tone	1.00
Matula. (Sass.) A very beautiful and unusual blend of warm rosy tan and apricot-rose that is almost breathtaking	1.25	Pale Moonlight. (Ess.) Fine soft sky-blue. Very large. Free flowering, uniform color	.35
Maud Deming. (Lap.) S. lilac; F. red-purple	.50	Palerme. (Cay.) S. sulphur; F. mauve-lavender. 36 inches	1.00
Maya. (Wash-Sta.) Strawberry-red; F. velvety red. 40 inches	1.00	Paltec. (Den.)	.50
May Day. (Hall.) Fine glowing apricot-salmon self	2.00	Parthenon. (Conn.) White and gold tint. 38 in.	.35
Meldoric. Colossal blue-black. 40 inches	.35	Patricia. (H. Sass.) A very clean and sparkling white. Both standards and falls frilled and fluted at the edges. Very pale yellow beard. Early. 38 inches	1.00
Michelangelo. (Weed.) Very unusual tan	.35	Percalle	.75
Midwest Gem. (H. Sass.) Light yellow blend	.75	Persia. Blue toned, unique coloring	.30
Ming Yellow. (Glutz.) A very large, smooth yellow. Faultless. Midseason. 36 inches	1.50	Picador. Yellow Variegata. 44 inches	.35
Miss Bonnie. 38 in. Fine, large flowers of garnet-red	.50	Pink Perfection. (Cook.) A fine hydrangea-pink.	9.00
Miss California. (Sal.) Beautiful rose-lilac	.60	Pink Satin. (Sass.) Outstanding pink	.35
Missouri. (Grint.) Very fine deep blue. Perfect form. Dykes Memorial Medal winner in 1937.	.60	Piute. (Thom.) Pure rich red; fine; tall	.50
Mme. L. Aureau. (Cay.) An unusually fine white, sprinkled heliotrope. Dykes Medal winner	.50	Platinum Beauty. (Sch.) Light lilac-pink blend	.75
Modiste. (D. Hall.) A smooth silky lavender-mauve of large size, splendid branching, fine blooming habit. 38 inches	1.00	Platon. 48 in. Huge deep rich violet flowers	1.00
Monadnock. (Sal.) Gigantic vivid rose-red	1.50	Poinsettia. 38 in. Huge Dahlia-carmine bicolor	1.50
Moonglo. (Wmsn.) Soft yellow blend. 32 in.	.35	Prairie Sunset. Sunset effect	4.50
Morocco Rose. (Loomis.) Soft pink standards flushed deeper; falls of deep pink. Honorable Mention A. I. S.	1.50	Pres. LeBrun. (Cay.) A popular red bicolor	.50
Mount Cloud. White self, fragrant	.35	Primat. (Cay.) Light pink toned	.35
Mountain Snow. (Kellogg.) A glistening white with a faint blue touch	.40	Purissima. Most perfect white; tender	.35
Mountain Sunset. (Klein.) Fawn and old gold	.50	Purple Encore	5.00
Mozo. Self or red-maroon washing and veining.	.75	Purple Giant. (Gage.) Red-purple, bronze guard	.35
Mrs. Gamelia	1.00	Purple Spire. 38 in. Rich lustrous velvety purple.	1.00
Mrs. J. L. Gibson. (Gibson.) Very rich velvety dark blue self. Large flowers of fine form. 38 inches	.30	Rabahere. (Cay.) Golden yellow lighted with sky-blue center. 48 inches	1.00
Mrs. Silas Waters. (Ayers.) A fine pale yellow	1.00	Radiant. (Sal.) Coppery orange; gigantic	1.00
Mrs. Willard Jaques. (Sass.) New pink and cream blend	.40	Rebellion. (Klein.) Glowing deep blood-red	.50
Narada. A clear light blue. Free bloomer	2.50	Red Bonnet. (Gage.) A dark red self with large flowers of fine form and texture. Excellent. H. M., A. I. S., 1939	.35
Naranja. (Mitch.) Rich yellow self	.35	Red Gleam. A rich red, velvety and brilliant, with a chestnut cast. One of the finer Iris of its color in this price class	2.00
Narain. (Shuber.) Medium blue self. 36 inches	.40	Red Glory. S. soft rose; F. blackish coppery red.	3.50
National Giant. 42 in. Rose-violet	5.00	Red Meadow. S. Hydrangea-red; F. violet-carmine	2.50
National Prosperity. (Weed.) Deep blue, large.	.35	Red Queen	1.00
Natoma. (Sal.) S. cinnamon; F. bronzy gold	.30	Red Radiance. Rich glowing red. 38 inches	.40
Nassak. (H. Sass.) White Plicata, blue stitch	.40	Red Robe. Brilliant red-violet; fragrant. 36 in.	.35
Nene. Largest Iris in a fine red bicolor	.30	Red Robin. 36 in. A real true dark red	2.50
Noel. A perfect white Iris faintly flushed cream.	3.50	Red Ruby. 38 in. S. pink; F. velvety Dahlia-carmine	2.50
Noonday Sky. Lavender-blue, slightly fragrant.	1.50	Red Sails. (Lap.) 38 in. S. chestnut flushed red; F. velvety	1.00
Ojibway. (Kirk.) Coppery Indian color	.50	Red Sox	1.00
Old Parchment. (Klein, 1939.) A. M., A. I. S., 1941. A light creamy tan, with golden buff overlay, a most distinctly beautiful new Iris. 38 inches.	2.00	Red Sunset. S. brownish rose; F. Dahlia-carmine.	2.50
Orange Boy. (Riedel.) A new orange of great beauty	5.00	Regal Beauty. S. light violet; F. blackish	1.75
		Rhapsody. (Wmsn.) A symphony in violet-purple and brown. Wonderful form and heavy substance. Very late blooming period	1.00
		Rheintochter. S. white flushed lilac; F. velvety violet-blue with lilac border	.30
		Rose Allure. S. seashell-pink; F. Dahlia-carmine.	1.00
		Rose Bronze Blend. Bronze-brown, flushed rose.	3.00
		Rose Dominion. Brilliant American Beauty Rose color	.30

**C. F. WASSENBERG** — *Peony and Iris Specialist* — **VAN WERT, OHIO**

	Each		Each
<b>Rosy Wings.</b> (Gage.) Blend of brown, red and pink with an orange beard. Fragrant. Dykes Memorial Medal winner in 1939 .....	\$ 0.35	<b>Springfield.</b> (Simon.) Deep violet and garnet-red .....	1.00
<b>Royal Coach.</b> Bright yellow Plicata, dotted brown .....	.60	<b>Spring Idyll.</b> (Lap.) Deep violet and garnet-red.	1.00
<b>Royal Command.</b> (Hall.) A very rich velvety purple .....	.75	<b>Spring Prom.</b> (Hall.) 38 in. A lemon-yellow given H. M. ....	.50
<b>Royal Salute.</b> Royal purple; fragrant .....	.35	<b>Spun Gold.</b> (Glutz.) 38 in. A large rich deep golden yellow .....	7.50
<b>Royal Sceptre.</b> Very lovely soft primrose-yellow.	.75	<b>Stained Glass.</b> Copper-red self .....	1.25
<b>Rubeo.</b> (M. & M.) A huge red; good .....	.40	<b>Stateliners</b> .....	.35
<b>Ruffled Beauty</b> .....	.30	<b>Summer Tan.</b> (Kirk.) Blend of yellow, brown and tan. Early and very distinct .....	.35
<b>Sable.</b> (Cook.) Almost perfectly black, with a harmonizing blue beard. Large; tall. H. M. A. I. S., 1937 .....	2.00	<b>Sundust.</b> (Wash.) Chrome-yellow standards and deeper falls .....	.75
<b>Sails Aloft.</b> 36 in. A very lovely bluish pearly gray .....	.75	<b>Sunny South.</b> (Wash.) Deep yellow self. 40 in.	.35
<b>Salutation.</b> (D. Hall.) A charming ruffled yellow self, the earliest of the large yellows. 38 inches .....	.75	<b>Sunset Gold.</b> 32 in. A rich deep yellow .....	2.50
<b>Sandalwood.</b> (H. Sass.) Army-brown; large; fine.	.50	<b>Sun Tan.</b> (Mit.) S. orange-tan; F. overlaid purple .....	.35
<b>Sandia.</b> (Wmsn.) Bright deep pink blend. Unusual with a smoky veil. Blooms are large. 40 inches .....	.40	<b>Tan Delight.</b> 40 in. Buff-tan-violet blend .....	2.00
<b>San Diego.</b> (M. & M.) Fine dark blue bicolor.	.30	<b>Tarantella.</b> (Sass.) Ruffled delicate pink .....	.35
<b>Sargon.</b> 39 in. A magnificent dark purple bicolor.	1.00	<b>Television Blue.</b> (Shub.) Medium blue .....	.35
<b>Schooner.</b> (McDade.) White .....	1.00	<b>Tenaya.</b> Black reddish purple. 3½ feet .....	.35
<b>Setting Sun.</b> (Kirk.) A brilliant fiery red copper as of the afterglow of a red sunset. 36 in.	1.00	<b>The Bishop.</b> Rich purple self .....	1.00
<b>Shah Jehan.</b> (Neel.) Soft blended Variegata. Standards straw color, glistening rose sheen and lavender edges. Falls reddish brown, changing to purple. Late; extra fine. 40 in...	.35	<b>The Guardsman.</b> (Grant.) Dusky pink S. with darker F. ....	7.50
<b>Shantung</b> .....	1.00	<b>Thelma Jean.</b> (Peck.) A stunning new variety in a very novel coloring. Rich clear Petunia-violet, early flowering, and the heavy substance resists all weather .....	2.50
<b>Shawano.</b> (Wmsn.) A tall brilliant yellow with Vandyke-red veining on falls. Heavy cadmium-yellow beard. H. M. A. I. S. in 1940 .....	1.50	<b>Theolinda.</b> Pure white Plicata. Good. 44 inches..	.35
<b>Shining Waters.</b> (Ess.) Sky-blue self .....	.40	<b>The Black Douglas.</b> (J. Sass.) This is one of our darkest and richest Iris. Standards erect. S. madder-violet; F. semi-flaring violet with a bronze beard. Very velvety .....	.30
<b>Siegfried.</b> (H. Sass.) New plicata; yellow .....	.50	<b>The Red Brick.</b> (Weed.) Color of red brick. 31 inches .....	.40
<b>Sierra Blue.</b> (Ess.) Blue of immense size. Perfect form and very tall. Dykes Memorial Medal winner in 1935 .....	.35	<b>The Red Douglas.</b> (J. Sass.) Fine new red .....	1.25
<b>Signal Light.</b> (Kirk.) Large red self. 36 inches.	.75	<b>ThurLOW Weed.</b> Cream-white, heavily veined gold .....	10.00
<b>Silvanus</b> .....	.50	<b>Tiffany.</b> (H. Sass.) Yellow Plicata; unusual ...	.60
<b>Silver Glaze.</b> 36 in. Sparkling silvery blue .....	1.50	<b>Tiger-Tiger.</b> (Ware.) Bright red; late. 24 in. .	.35
<b>Silver Top</b> .....	.50	<b>Tint o' Tan.</b> (Ay.) Bronzy tan and yellow .....	.50
<b>Sir Launcelot.</b> (Sass.) S. hazel; F. claret-brown..	.40	<b>Token.</b> Old gold S. flushed rose; F. rosy brown-red .....	1.00
<b>Sitka.</b> (Ess.) Beautiful white. Very early and fragrant. 48 inches. One of the best .....	.40	<b>Top Hilly.</b> (White.) 36 in. A beautiful pearl-white .....	.75
<b>Smolder.</b> (Nich.) A deep purple self with a red undertone. Standards are well domed. The velvety falls are carried out and down. Late and tall .....	1.00	<b>Torchlight.</b> Brilliant Variegata! Yellow and red.	1.00
<b>Snow Flurry.</b> (Rees.) Perfectly formed blooms of pure ice-white. The unopened buds are lightly tinted blue, but open like an enveloping spray of soft snow .....	3.50	<b>Tower of Jewels.</b> Fine bright yellow and mauve.	1.00
<b>Snowking.</b> (H. Sass.) Large white of fine form. Standards broad and arching. Falls broad and flaring. Beard yellow. Honorable Mention A. I. S. 38 inches .....	.50	<b>Treasure Island.</b> (Klein.) Olive-yellow .....	.50
<b>Snoqualmie.</b> (Brehm.) A large rich smooth cream .....	1.00	<b>Twilight Blue.</b> (Kirk.) Sparkling powder-blue. 40 inches .....	1.00
<b>Snow Belle.</b> (McKee.) 38 in. A fine pearly white.	.75	<b>Varese.</b> (Wmsn.) A very brilliant red-purple. Good substance; erect stems .....	.35
<b>Solitude.</b> (Klein.) Velvety black-mulberry .....	.35	<b>Veined Beauty.</b> 34 in. Plicata; white .....	3.00
<b>Sonny Boy.</b> (Kirk.) Glorious buff and brown blend .....	1.25	<b>Velvet Wonder.</b> Dark rich blackish red-purple..	2.50
<b>Sparkling Frost.</b> (Mill.) Sparkling ice-blue; early. 48 inches .....	.50	<b>Venus de Milo.</b> Fine new white. 42 inches .....	.30
<b>Spokan.</b> (J. Sass.) A brilliant red-brown blend. Rich and unusual coloring. Orange beard. 38 inches .....	.30	<b>Violet Crown.</b> Very tall; pure violet. 40 inches.	.35
<b>Sporty</b> .....	1.00	<b>Vision.</b> (Cay.) Variegata of clear yellow and brown .....	.35
<b>Spring Cloud.</b> (Jory.) .....	.40	<b>W. Carey Jones.</b> 30 inches. Smooth, soft clear ivory .....	.35
		<b>Wabash.</b> (Wmsn.) A white bicolor. S. pure white; F. rich hyacinth-violet with a small margin of snow-white. A perfect flower. 39 in.	1.00
		<b>Wantage.</b> Velvety, rich purple with black sheen.	.50
		<b>War Eagle.</b> (J. Sass.) Light rose-red, large. 42 inches .....	.35
		<b>Wasatch.</b> (Thorup.) Pure glistening white with a border of blue feather stitching .....	.30
		<b>Waverly.</b> (Williams.) Highly commendable and captivating, in a clear, pure blue. Very early. with widely flaring falls and nice branching .	1.00
		<b>Wm. A. Setchell.</b> (Frehm.) 36 in. A fine violet tone .....	1.50



*The Bride*

## Dwarf Bearded Iris

Short-stemmed, sturdy, brave little fellows which bloom in early spring. Make wonderful edges for perennial or shrub plantings and give you color in early May when you are still hungry for flowers after the long winter.

	Each
<b>Atroviolacea.</b> Red-purple, very early. 5 inches	\$.15
<b>Citrea.</b> Lemon-yellow	.15
<b>Coerulea.</b> Early; fine sky-blue. 6 inches	.25
<b>Cyanea.</b> Red-purple, fragrant	.15
<b>Dixmude.</b> S. blue; F. red-violet	.15
<b>Florida.</b> Soft primrose-yellow	.15
<b>Graminea.</b> Red toned; fragrant	.15
<b>Laddie Boy.</b> (Sass.) Blue bicolor; velvety	.15
<b>Lurida.</b> Col. Candelot color	.15
<b>Marocain.</b> S. violet; F. pansy-violet; good	.15
<b>Negus.</b> S. bright violet with deeper falls	.15
<b>Royal.</b> S. rich blue; F. reddish purple	.15
<b>Schneekuppe.</b> White with cream throat. 6 in.	.15
<b>The Bride.</b> White, free flowering	.15
<b>Tony.</b> Red-purple with an orange beard	.15
<b>Zua.</b> White frosted crepe, crinkled. 16 inches.	.25
<b>Zwanenburg.</b> Cream and maroon. 12 inches	.15

	Each
<b>Wm. Mohr.</b> A huge, pale lilac of medium height, veined deep violet, giving an odd, yet strangely lovely effect	\$.035
<b>Wine Glory.</b> (Weed.) A combination of colors, red, purple, and violet. A very profuse bloomer. Tall. 38 inches	.30
<b>Winneshiek.</b> (Egel.) Excellent dark blue	.30
<b>Wonderchild.</b> (Weed.) Very large, deep, dark pansy-purple flowers of perfect form. Very distinct. 38 inches	.50
<b>Wotan.</b> (Grint.) Velvety purple-brown blend.	.35
<b>Yakima</b>	1.50
<b>Yellow Champion</b>	.50
<b>Yellow Fragrance</b>	.75
<b>Zaharoon.</b> Beautiful blend of soft pastel tints	.35
<b>Zuni.</b> Red-brown-copper	.35

## IRIS *Kaempferi*

### The Modern Orchid of the Garden

We are now offering you the finest of all Iris types, the Kaempferi. Mass plantings will make your garden a spot of sheer breath-taking beauty. Fine form and graceful foliage make it a thing of real beauty even after the blooms are gone.

	Each
<b>Albatrose.</b> White	\$.050
<b>Astarte.</b> Beautiful double dark violet	.50
<b>Betty F. Holmes.</b> Large, double pure white flowers with lemon-yellow midrib	.50
<b>Catherine Parry.</b> Blue overlaid rosy red	.50
<b>Fascination.</b> Flesh-pink	.50
<b>Flamingo</b>	.50
<b>Gold Bound.</b> Pure white with gold banded center	.50
<b>Koko-No-Iro.</b> Enormous double flowers. Rich violet-purple with white petaloides tipped violet.	.50
<b>Kumuchi-Gumi.</b> Dark blue	.50
<b>Lucia Marshall.</b> A fine large double, pansy-violet, with white veins	.50
<b>Mahogany.</b> Velvet-mahogany-red	.50
<b>Purple and Gold.</b> Rich violet-purple	.50
<b>Reine des Bulgares.</b> Lavender	.50
<b>Repsime.</b> Giant double flowers, light blue with wide white margins, stigmas ivory. Unusual and attractive	.50
<b>Rose Anna.</b> Double ivory-white, heavy ruby-red veins, conspicuous yellow blotch. Stigmas dark plum	.50
<b>Rose H. Scheepers.</b> Mauve-gray, overlaid blue.	.50
<b>Secret.</b> White and blue	.50



# 25<sup>c</sup> Ea.

Greatest Collection In  
America at this Price

20 for \$ 4<sup>55</sup>  
Parcel Post Prepaid

All Labeled, Guaranteed True to  
Name With Planting Instructions

## 400 of the Finest Irises

Many of which sold as high as \$25.00 and \$50.00 each only a few years ago. Order as many as your garden and purse will permit. Think of the beauty and pleasure a few dollars invested in these will give you and your friends the rest of your life. Include 25c extra for parcel post on orders amounting to less than \$2.00.

Abelard. Purple.  
Abenda. White.  
Abora. Violet.  
Adobe. Red.  
Afterglow. Lavender-gray.  
Airy Dream. Pink.  
Alabaster. White.  
Alcazar. Purple-violet.  
Alan Hoyt. Brown.  
Albright. Orchid.  
Alcyon. White.  
Aliquippa. Yellow.  
Al-Lu-We. Variegata.  
Allure. Pink blend.  
Alta California. Yellow.  
Ambassador. Bronze.  
Amber. Yellow.  
Amber Wave.  
Ambera. Pale yellow.  
Ambrosia. Pink.  
Andrew Jackson. Violet.  
Andromede. Smoky.  
Annodelia. Lavender.  
Anna Farr. White.  
Antares. Yellow.  
Aphrodite. Pink.  
Ariel. Blue.  
Archevique. Purple.  
Arzani. Red.  
Asia. Lavender.  
Asphodel. Blue.  
Attye Eugenia.  
Aurex. Purple.  
Autumn Elf. Lavender.  
Autumn King. Blue.  
Autumn Surprise. Violet.  
Azure. Blue.

Baldwin. Violet.  
Beau Ideal. White.  
Beau Sabreur. Red.  
Blackmoor. Black-purple.  
Blue Banner. Blue.  
Blue Boy. Purple.  
Blue Hill. Blue.  
Blue Torch. Blue.  
Boadicea. Apricot.  
Bonita. Yellow.  
Bourem. Red.  
Brandywine. Violet.  
Brilliant. Red.  
Brising.  
Britoness. Yellow.  
Bruno. Bronze.  
Buto. Blue.

Cameliard. Yellow.  
Camilla Dubuar. Pink.  
Canopus. Violet.  
Cantabile. White.  
Cantata. Violet.  
Capri. Light yellow with  
bronze.

Caprice. Rosy red.  
Capt. Courageous. Pink.  
Cardinal.  
Carfax. Red.  
Casenka. Violet.  
Cassandra. Rose.  
Castalia. Blue.  
Cecil Minturn. Pink.  
Celeste. Azure.  
Chalice. Yellow.  
Challenger. Purple.  
Chasseur. Yellow.  
Cherry Rust. Red.  
Chromylla. Yellow.  
Churchmouse. Brown.  
Cimarron. Purple.  
Cinnabar. Maroon.  
Citronella. Gold.  
Clara Noyes. Rich blend.  
Classic. Lavender.  
Claude Aureau. Yellow.  
Cockatoo. Yellow.  
Col. Candelot. Brown.  
Columbine. White.  
Coppersmith. Copper.  
Coral. Lavender.  
Coronation. Yellow.  
Coronation Imperial. Yellow.  
Cottage White. White.  
Crown Jewel. Orange.  
Crusader. Bluish.  
Cryosoro. Yellow.  
Cudbear. Purple.  
Cydnus. Blue.

Daffodil. Canary.  
Dalila. White and red.  
Damozel. Ruffled.  
Danube. Dark blue self.  
Day Dream. Pink.  
Dazzler. Red.  
Decennial. Carmine.  
Delight. White.  
Desert Gold. Yellow.  
Distinction. Rose.  
Dolly Madison. Blend.  
Dorcas Hutcheson. Violet.  
Dore. Daffodil.  
Dorothea. Grey.  
Dorothy Dietz. White.  
Douglas. Purple.  
Doxa. Olive.  
Dr. Chas. Mayo. Pink.  
Dream. Pink.  
Duke of York. Mauve.  
Dune Sprite. Yellow.

Eclairer. White.  
Edgewood. Pink.  
Ed. Michel. Red.  
Egypt. Violet.  
Elaine. Yellow.  
Eliz. Egelberg. Rose.

Elsa. Blue tones.  
Elsinore. Yellow.  
Eleanor Roosevelt.  
Ember. Violet-red.  
Enchantment. Violet.  
Endymion. Buff.  
Erebian. Red.  
Esplendido. Purple.  
Esterel. Pink.  
Euphony. Copper.  
Evadne. Rose-violet.  
Evelyn Benson. Carmine.  
Evolution. Bronze.

Farandole. Gray.  
Flamingo. Rose-red.  
Flammenschwert. Red.  
Florentina Alba. White.  
Folkwang. Pink.  
Fragonard. Pink.  
Francheville. Fawn.  
Frieda Mohr. Pink.  
Frivolite. Pink.

Garden White. White.  
Gay Hussar. Red.  
Genevieve Serouge. Blend.  
Geo. J. Tribolet. Red.  
Geo. P. Baker. Yellow.  
Geo. Yeld. Apricot.  
Germaine Perthuis. Purple.  
Germanica. Blue.  
Giant Baldwin. Blue.  
Giant King. Variegata.  
Gilead. Bronze.  
Gleam. Blue.  
Glowing Embers. Smoky.  
Gobelin Red. Oxblood.  
Golden Cataract. Yellow.  
Golden Flare. Apricot.  
Golden Glory. Yellow.  
Golden Light. Blend.  
Goldenrod. Yellow.  
Gold Imperial. Yellow.  
Gold Spangle. Yellow.  
Gold Standard. Yellow.  
Grace Sturtevant. Red.  
Grandiosa. Violet.  
Grand Monarch. Red.  
Graziella. Red.  
Guyasuta. Deep violet-blue  
self. 30 inches.

Havamal. Blue.  
Hearth Fire. Rosy red.  
Hearthstone Copper.  
Helios. Yellow.  
Henri Riviere. Blend.  
Hermitage. Purple.  
Hermene. Rose-pink.  
Hernani. Red.  
Hussard. Blue.

Hyperion. Lavender.  
Hypnos. Blend.

Iduna. Purple.  
Imperator. Red.  
Indian Chief. Red.  
Indigo Bunting. Blue.  
Inner Glow. Yellow.  
Iris King. Maroon.  
Irma Pollock. Carmine.  
Isoline. Lilac.

Jane Williamson. Pink.  
Jolly Roger. Indigo.  
Joyance. Cream.  
Jubilee. Dotted.  
Jubilesta. Lemon-yellow.  
June Night. Blue.  
Juniata. Clear blue.

Kansas. Pink.  
Kath. McFarland. Purple.  
Kensington.  
King Juba. Variegata.  
Kinglet. Yellow.  
King Midas. Buff.  
King Tut. Red-brown.  
Klamath. Mulberry.  
Kochii. Claret.  
Kublai Khan. Rosy red  
bicolor.

Labor. Blue sheen.  
Lady Byng. Pale lavender.  
Lady Gage. White.  
La Neige. White.  
Le Correge. Bronze.  
Le Grand Ferre. Grey edged.  
Lent A. Williamson. Purple.  
Liberty Bell. White.  
Lillian Toedt. Vivacious rose.  
Lindbergh. Blue-violet.  
Lohengrin. Rose.  
Lona. Soft buff.  
Lord Lambourne. Red.  
Lord of June. Blue.  
Loreley. Yellow and blue.  
Louis Willert. Raspberry.  
Louise Lapham.  
Lux. Strawberry.

Magenta. Red-purple.  
Maisie Lowe. Bicolor.  
Majestic. Red-purple.  
Mandarin. Yellow.  
Maori Princess. Yellow.  
M. A. Porter. Violet.  
Mareschal Ney. Red-brown.  
Mary Barnet. Lavender.  
Mary Elizabeth. Rosy.  
Mary Garden. Dotted.  
Mary Gibson. Rose blend.  
Mary Senni. Mauve.

Mary Williamson. Lavender.  
 Maygold. Yellow.  
 Medrano. Claret.  
 Melchior. Purple.  
 Micheline Charraire. White.  
 Midgard. Pink blend.  
 Midwest. Dotted purple.  
 Mid-West Pride. Purple.  
 Mildred Presby. Bicolor.  
 Miss Avarilla. Variegata.  
 Mme. Chobaut. Dotted.  
 Montezuma. Dotted yellow.  
 Moon Magic. Yellow.  
 Morning Splendor. Red.  
 Mother of Pearl. Pearl.  
 Motif. Dark purple.  
 Mourning Dove. Grey.  
 Mozambique. Red-purple.  
 Mrs. G. G. Whitelegg. Yellow.  
 Mrs. H. F. Bowles. Gold.  
 Mrs. Herbert Hoover.  
 Mrs. Marion Cran. Pink.  
 Mrs. Neubronner. Yellow.  
 Mrs. Valerie West. Bronze.  
 Mt. Royal. Purple.  
 Mussolini. Vivid blue.  
 My Maryland. Violet-purple.  
 Naronda. Deep blue self.  
 Nebraska. Deep yellow.  
 Nehawka. Dark purple.  
 Nepenthe. Lavender-buff.  
 Newtonia. Amber.  
 Nungal. Buff.  
 Nightshade. Purple.  
 Norrona. Bright blue.  
 No-We-Ta. Pink.  
 Numa Roumestan. Red.  
 Nusku. Yellow.  
 Nymph. Yellow.

October Blaze. Large red-purple.  
 October Opera. Rich velvety purple.  
 Odaroloc. Mauve.

Old Ivory. Ivory.  
 Olive White. Cream.  
 Omaha. Pink.  
 Opaline. Pink.  
 Opera. Red-purple.  
 Ophelia. Orange blend.

Packard Blue. Late, rich blue.  
 Pallida Dalmatica. Lavender.  
 Papio. Pansy-purple; early.  
 Parisiana. White.  
 Paulette. Light blue.  
 Peaches. Apricot blend.  
 Pink Opal. Pink.  
 Pink Pearl. Pink.  
 Pioneer. Red-purple.  
 Pluie d'Or. Yellow.  
 Pocahontas. White.  
 Pongee. Soft buff.  
 Powesheik. Red.  
 Prairie King. Blue.  
 Prairie Rose. Soft pink.  
 Pres. Pilkington. Blend.  
 Primevere. Primrose.  
 Primrose. Yellow.  
 Princess Beatrice. Light lavender.  
 Prosper Laugier. Bronze.  
 Prospero. Lavender-purple.  
 Purple Silk.

Quaker Princess.  
 Queen Caterina. Orchid.  
 Queen of May. Pink.  
 Quivera. Blend.

Rameses. Blend.  
 Red Elf. Ruby-red.  
 Red Ember. Crimson.  
 Red Giant. Purple.  
 Red Orchid. Red.  
 Red Prince.  
 Redwing. Bronze-red.  
 Refulgence. Purple.  
 Rene Cayeux. White, red.  
 Reverie. Pink.

Rhages. Large violet Plicata.  
 Rhein Nixe. Blue.  
 Rheingauferle. Pink.  
 Rheintochter. Bicolor.  
 Robert.  
 Robt. W. Wallace. Purple.  
 Rose-Marie. Red-violet.  
 Rosalind. Pink.  
 Roseway. Rose-pink.  
 Royal Beauty. Blue-violet.  
 Ruy Blas. Soft mauve.

Sachem. Red-brown.  
 Salonique. White and purple.  
 Sandakan. Pale drab.  
 Sandalphon. Violet.  
 San Francisco. White.  
 Sangreal. Yellow.  
 San Luis Rey. Red.  
 Santa Barbara. Blue.  
 Sapphire Night. Indigo.  
 Sea Dawn. Old rose.  
 Sea Foam. Early white.  
 Selene. Large white.  
 Seminole. Red tones.  
 Senlac. Claret-red.  
 Serenade. Pink.  
 Serenite. Blend.  
 Shekinah. Pale yellow.  
 Sherwin-Wright. Yellow.  
 Shirvan. Brownish.  
 Shogun. Red.  
 Sikh. Copper.  
 Sir Michael. Dark blue-violet.  
 Skitchewaug. Pink.  
 Snowbound. White.  
 Snow White. White.  
 Southland. Lemon.  
 Souv. de Mme. Gaudichau. Pur.  
 Spark. Brick-red.  
 Stanwix.  
 Steepway. Mauve.  
 St. Louis. Purple.  
 Sunburst. Yellow, apricot glow.

Sun Mist. Creamy.  
 Sunol. Yellow blend.  
 Sunset. Yellow.  
 Surefire. Light yellow.  
 Susa. Purple.  
 Susan Bliss. Lilac-pink.  
 Swazi. Pansy-violet.  
 Sweet Sixteen. Pink.

Taj Mahal. White.  
 Talisman. Yellow blend.  
 Tapestry. Mulberry.  
 Tarantella. Ruffled. Delicate pink.  
 Theodore. Violet.  
 Thuratus. Purple.  
 Tokay. Salmon-pink.  
 Trail's End. Yellow.  
 Trostringer. Rose-pink.  
 True Charm. White.  
 True Delight. Plicata.  
 Tuscany Gold. Gold blend.  
 Tuscarora. Pink.  
 Tyrian. Deep claret.

Ute Chief. Purple-violet.

Valor. Bicolor.  
 Vesper Gold. Yellow.  
 Vestal Flame. Cream.

Waconda. Red.  
 Wambliska. White.  
 Wedgewood. Blue self.  
 White Autumn King. White.  
 White Marble. Tall, white, gold beard.  
 Wild Rose. Rose-pink.  
 Wyomissing. Creamy.

Yataghan. Red.  
 Yolande. Dark purple.  
 Zada. White.  
 Zouave. Violet.  
 Zulu. Purple.



## Beardless Iris

Here are listed some unusual types, some of which are native varieties from various parts of the world—all interesting and probably some you have never seen.

	Each
Bob White. (Sib.) Waxy snow-white. 28 in. . . . .	\$ 0.35
Caesar. (Sib.) Brilliant dark red-purple. 30 in. . . . .	.50
Caesar's Brother. (S. B.) New light blue . . . . .	.50
Distinction. (Sib.) Speckled blue and white . . . . .	.35
Dor. K. Williamson. (Hybrid.) Dark violet . . . . .	.25
Emperor. (Sib.) Dark blue; tall . . . . .	.35
Heavenly Blue. (Sib.) New clear blue . . . . .	.50
Kingfisher's Blue. (Sib.) Bright blue . . . . .	.35
Mrs. Gray Hill. (Sib.) Intense blue . . . . .	.35
Ochroleuca. (Spuria.) White and yellow . . . . .	.25
Perry's Blue. (Sib.) One of the best blues . . . . .	.35
Pseudacorus. (England.) Bright yellow; tall; late . . . . .	.25
Queen Victoria. Very tall, white and yellow . . . . .	.50
Shelford Giant. (Spuria.) Large and tall . . . . .	.65
Skylark. (Sib.) Exquisite light blue . . . . .	.35
Snow Queen. (Sib.) Waxy white . . . . .	.35
Star Dust. (Sib.) . . . . .	.35
White Dove. (Sib.) Beautiful large white . . . . .	.35



*Distinction*

## Fall Bloomers

All of these bloom in the fall as well as the spring. Until a few years ago Iris was only a spring flower. Now the season is greatly extended. These are not common in gardens. You should have some.

	Each
Autumn Elf. (Brown.) S. cream; F. lavender; fragrant . . . . .	\$ 0.25
Autumn Frost. (Schr.) Exquisite frosty white. 36 inches . . . . .	.35
Autumn Haze. (H. Sass.) Large violet-purple. 34 inches . . . . .	.30
Autumn King. (H. Sass.) Blue-purple; popular. 36 inches . . . . .	.25
Autumn King Junior. Blue-lavender bicolor. 28 inches . . . . .	.25
Autumn Surprise. Fine new medium blue . . . . .	.25
Eleanor Roosevelt. (Sass.) Deep red-violet. 20 inches . . . . .	.25
Frost Queen. (Sass.) Good dependable white . . . . .	.30
Golden Cataract. (Dysart.) Rich golden yellow. . . . .	.25
Golden Harvest. (J. Sass.) Large olive-yellow . . . . .	.35
Laura Hutcheson. (H. Sass.) Red-pink cast. 26 inches . . . . .	.30
October Opera. (H. Sass.) Rich velvety purple. 24 inches . . . . .	.25
Olive White. (H. Sass.) Deep cream; very fine . . . . .	.25
Sangreal. (J. Sass.) Clear pure yellow. 28 in. . . . .	.25
September Skies. (Sass.) Clear red-purple. 16 inches . . . . .	.25
Southland. (H. Sass.) Deep lemon-chrome . . . . .	.25
Souv. de L. Chavagnac. Dwarf violet; fragrant . . . . .	.25
Surefire. (Nich.) Light yellow . . . . .	.25
White Autumn King. (Sass.) Pure white . . . . .	.25



*Golden Cataract*

# *Hemerocallis* ~ DAY LILIES



The old-fashioned Day Lily has undergone a transformation in the hands of hybridists in the past few years. Now we have great variety in color, time of bloom, May to September, and new shapes from which to choose. All are hardy and do well in sun or partial shade. If you do not have these newer Day Lilies you are missing a rare beauty in your garden. Beautiful for cut flowers as well as garden.

	Each
<b>Acres of Gold</b> . . . \$	1.00
<b>Aladdin</b> (Stout.)	
3½ ft. June.	
Garnet-brown spot on petals; outer half golden yellow.	2.50
<b>Alamo</b> . . . . .	3.00
<b>Amaryllis</b> . (Bet.) Large golden orange, slightly deeper in throat. July and August. 36 inches . . . .	.50
<b>Anna Betscher</b> . (Bet.) Deep orange, shaded with bronze. Large flowers. July and August. 36 in.	.50
<b>Apricot</b> . (Yeld.) Early free blooming light apricot-orange flowers. Fragrant. May and June . . . . .	.35
<b>Apricot Glow</b> . . . . .	.75
<b>Aureole</b> . (Japan Hybrid.) Deep cadmium-yellow. Extra fine. May and June. 36 inches . . . . .	.35
<b>August Pioneer</b> . (Stout.) Chrome-yellow with outer half of petals flushed red. August and September. 34 inches . . . . .	2.00
<b>Autumn Prince</b> . (Stout.) 3½ feet. August to frost. Best late clear yellow . . . . .	2.50
<b>Bagdad</b> . (Stout.) Throat of orange, with outer part of petals copper-red overlaid with orange. 42 in. June and July . . . . .	1.00
<b>Bay State</b> . (Bet.) A large glistening yellow. Fast growing. 46 inches. June to August . . . . .	.50
<b>Bernice</b> . . . . .	.75
<b>Bijou</b> . (Stout.) A ground color orange overcast with rich fulvous red. 24 inches. June and July . . .	1.00
<b>Boutonniere</b> . (Stout.) Light rosy peach petals with grassy foliage. 36 inches. July and August . . . .	1.00
<b>Buckeye</b> . (Stout.) 3 ft. June. Full, clear orange with large mahogany-red eye . . . . .	1.50
<b>Calypso</b> . (Burbank.) A clear canary-yellow night bloomer. 40 inches. July and August . . . . .	.35
<b>Campus Queen</b> . . . . .	1.00

**C. F. WASSENBERG — Peony and Iris Specialist — VAN WERT, OHIO**

	Each		Each
<b>Canari.</b> (Nesm.) Large open flowers of palest canary-yellow. 38 inches. July and August. . . . .	\$ 5.00	<b>J. A. Crawford.</b> (Bet.) Beautiful apricot-yellow. 48 inches tall. Very good for landscaping. July and August . . . . .	\$ 0.35
<b>Chalice</b> . . . . .	1.00	<b>J. R. Mann.</b> (Bet.) A buff and yellow frosted flower. 42 inches tall. June to August . . . . .	.35
<b>Cheerio.</b> (Wayman.) 40 in. Mars-orange with a slightly darker star . . . . .	1.00	<b>Keepsake</b> . . . . .	1.50
<b>Chengtu.</b> 3 feet. July to August. Recurved petals. Flowers 4½ inches. Bright copper-red . . . . .	1.00	<b>Kwanso Flora Plena.</b> Orange, flushed with red, similar to Fulva only double. 42 inches. July and August . . . . .	.35
<b>Cinnabar.</b> (Stout.) Rosy red-brown with yellow throat. Long blooming. July and August . . . . .	.75	<b>Kwanso Flora Variegata.</b> Almost identical with Kwanso Flora Plena except for the white striped leaves. 42 inches . . . . .	.50
<b>Circe.</b> (Stout.) A clear yellow with medium size flowers. 48 in. July . . . . .	1.25	<b>Lemona.</b> (Bet.) Pale lemon-yellow flowers. 42 inches tall. July and August . . . . .	.35
<b>Cissy Giuseppe.</b> (Perry.) Deep rosy bronze. July. 36 inches . . . . .	.50	<b>Lemon Lily.</b> Same as Flava. Old but still good. . . . .	.35
<b>Cressida.</b> (Bet.) A bright orange star-shaped flower of 36-inch height. June to August . . . . .	.35	<b>Linda.</b> (Stout.) Golden yellow, flecked red, sepals clear yellow. 30 inches. June and July. . . . .	1.50
<b>Crystal Fairy.</b> (Russell.) Beautiful crystal-pink; light salmon-pink. 3 ft. April-May . . . . .	1.00	<b>Lucky Star.</b> (Wayman.) 39 in. Brilliant, effective lemon-chrome. June-July . . . . .	10.00
<b>Citrina.</b> A dainty sulphur-yellow color. 36 inches tall. June and July . . . . .	.35	<b>Luteoia Major.</b> Orange-yellow. Wide open flowers. July and August. 36 inches . . . . .	.35
<b>Crown of Gold.</b> (Nesmith.) Large blooms of clear orange which open wide. 36 inches. June and July . . . . .	1.50	<b>Majestic.</b> (Stout.) . . . . .	3.00
<b>Dauntless.</b> 3 feet. July, August. Pale yellowish orange. Large wide overlapping petals. Fine. . . . .	1.00	<b>Mandarin.</b> (Farr.) Lemon-yellow. 48 inches. July and August . . . . .	.50
<b>D. D. Wyman.</b> (Bet.) A superb large golden yellow. 36 inches. July and August . . . . .	.35	<b>Mary Florence.</b> (Bet.) Large flowers of waxy apricot-buff. 36 inches. June-July . . . . .	.75
<b>Doris Dae.</b> (McDade.) . . . . .	1.00	<b>Margaret Perry.</b> (Perry.) Brilliant orange-scarlet lined yellow. 48 inches. July and August. . . . .	.50
<b>Dr. Regel.</b> An orange-yellow. Fragrant. May and early June. 30 inches . . . . .	.35	<b>Marvel</b> . . . . .	1.00
<b>Dumortieri.</b> Rich cadmium-yellow of 24-inch height. May and June flowering . . . . .	.25	<b>Midas.</b> (Stout.) Clear rich golden orange, narrow petals, very tall and erect. 42 inches. June and July . . . . .	.50
<b>Earliana.</b> (Bet.) Very early . . . . .	3.00	<b>Middendorffi.</b> Rich orange-yellow. May and June. Very fragrant. 18 inches . . . . .	.25
<b>Emily Hume.</b> Deep yellow, twisted and fluted. 42 inches. July-August . . . . .	2.00	<b>Mikado.</b> (Stout.) Striking orange with red spots on petals. Very good. 36 inches. June-July . . . . .	.35
<b>Estmere.</b> (Yeld.) An apricot-yellow with grassy foliage. Very good. 30 inches. May and June. . . . .	.35	<b>Modesty.</b> (Bet.) A very large pale yellow. 36 inches. June-July . . . . .	.75
<b>Fairy Queen</b> . . . . .	1.00	<b>Monarch.</b> (Stout.) 3 ft. July. Light yellow with delicate halo of orange . . . . .	3.00
<b>Festival.</b> (Stout.) Petals orange, with reddish brown tinges, veined. July. 48 inches . . . . .	3.00	<b>Mrs. A. H. Austin.</b> (Bet.) Deep golden yellow flowers with a 6-inch spread. Long bloomer. July-August . . . . .	.50
<b>Flava.</b> Clear lemon-yellow. The old Lemon Lily. 36 inches. May and June . . . . .	.35	<b>Mrs. Chas. Urshul</b> . . . . .	1.00
<b>Fulva.</b> The old roadside Lily. 40 inches. July. . . . .	.25	<b>Mrs. W. H. Wyman.</b> (Bet.) A late lemon-yellow. 48 inches. July and August . . . . .	.35
<b>Fulvolo.</b> (Betscher.) 30 in. Very late bloomer. Dark fulvous . . . . .	2.50	<b>No Siesta</b> . . . . .	2.00
<b>Gaiety.</b> (Betscher.) June-July. Luminous color of pale yellow with unusual form. Very attractive. . . . .	1.50	<b>On Tour.</b> (Russell.) This Day Lily in a pale yellow is a "must have." 3½ feet. May-June. . . . .	5.00
<b>George Yeld.</b> (Perry.) Golden yellow petals. 36 inches. July and August . . . . .	.50	<b>Ophir.</b> (Farr.) A large bloom of 5-inch width and 6-inch length, of yellow overlaid with gold. One of the best. Early July to August . . . . .	.50
<b>Gladness</b> . . . . .	2.00	<b>Orange Man.</b> Medium yellow with red buds. Dwarf in height. May and June . . . . .	.35
<b>Gloriana.</b> (Bet.) A golden yellow with fluted edges. June and July . . . . .	1.50	<b>Orange Vase.</b> (Yeld.) Cup-shaped orange-yellow petals . . . . .	.35
<b>Gold Dust.</b> Empire yellow, rather dwarf. 24 in. May and June . . . . .	.35	<b>Pale Moon.</b> (Cleve.) Pale yellow. June and July. 30 inches . . . . .	2.00
<b>Gold Standard.</b> Rich canary-yellow. 36 inches high. July and August . . . . .	.35	<b>Patricia.</b> (Stout.) A fine pale yellow, with a green throat. Fragrant. 5-in. flowers. Blooms good in evenings and is sun-resisting. 36 in. June and July . . . . .	1.50
<b>Goldeni.</b> (Bet.) Fine yellow flowers of deep orange. 36 inches. June and July . . . . .	.35	<b>Pink Lustre.</b> 45 in. Huge trumpet-shaped flowers of a lustrous soft pink with a bright canary-yellow throat . . . . .	3.00
<b>Gypsy.</b> (Bet.) Brilliant deep orange flowers with slender stems. 36 inches. June and July . . . . .	.35	<b>Princess.</b> (Stout.) A very pale canary-yellow. 39 inches. July . . . . .	3.00
<b>Hankow.</b> (Stout.) Rich yellowish orange. Blooms 5½ inches wide. 42 in. July-August. . . . .	2.00	<b>Queen Bess</b> . . . . .	3.00
<b>Harvest Moon.</b> (Bet.) Clear orange sherbet. 3 feet tall. July and August . . . . .	.50	<b>Queen of Gonzales.</b> Solid self orange. Earliest of large flowering kinds. 3 ft. April-May . . . . .	3.00
<b>High Boy.</b> (Gray.) Very pale yellow of enormous height. 5 feet tall. July and August. . . . .	.50	<b>Queen of May.</b> 2½ feet. June. Taller than most early varieties. Pale apricot-orange . . . . .	.50
<b>Hiroeache</b> . . . . .	2.00	<b>Radiant.</b> (Yeld.) Clear fine orange of good quality and texture. 36 in. July and August . . . . .	.35
<b>Hyperion.</b> (Mead.) This Day Lily is considered the finest of all Day Lilies. It has large waxy flowers of soft canary-yellow. 48 inches tall. July and August . . . . .	.50	<b>Rembrandt</b> . . . . .	2.00
<b>Imperator.</b> (Perry.) Star shaped. Rich orange-red, lined with sulphur. Large. July-August . . . . .	.75		
<b>Indian Summer</b> . . . . .	1.50		
<b>Iris Perry.</b> (Perry.) Orange-bronze flowers. 36 inches. July to September . . . . .	.75		











**C. F. WASSENBERG** — *Peony and Iris Specialist* — **VAN WERT, OHIO**

	Each		Each
Rosalind. (Fulva-Rosea.) The pink Hemerocallis.	\$ 5.00	Summer Multiflora Hybrids. 2½ ft. Late June to late August. Clear orange	\$ 0.65
Royal. (Japan Hybrid.) Primrose-yellow of fine texture. 36 inches. June and July flowering.	.50	Sunny West. (Sass.) Pale canary-yellow. 48 in.	1.00
Saffron. (Bet.) Saffron-yellow	2.00	Symphony. 3½ ft. June-July. A delicate blend of pastel tones. Sepals toned yellow; petals rose, with midband of darker red	3.00
Semiramis	1.00	The Gem. (Bet.) Rich shade of yellow. 36 in. July and August	.50
Semperflorens. May-June. 2-3 ft. Rich yellow; best midseason	.60	Thunbergi. Pale yellow evening bloomer. 36 in. height. July and August	.25
Serenade. (Stout.) Very light pastel shades of yellow and pink. Medium large flowers on tall stiff stems. 36 inches	1.25	Tuscany Gold	1.00
Shirley. (Ruys.) Large open flowers of pale apricot-yellow. 36 inches. July	1.00	Vesta. (Stout.) Deep glistening gold-orange. Holds up well in hot weather. 30 in. June and July	1.00
Sirius. (Yeld.) Rich orange with a faint red tinge. Petals crinkled and margins wavy. Long bloomer. 30 inches	1.00	War Path. (Russell.) Petals and sepals even dark mahogany-red. 3 ft. Defies hottest sun. April-May and midsummer	5.00
Sir Michael Foster. Apricot. July and August blooming. 48 inches	.50	Wau-Bun. (Stout.) Soft cadmium-yellow, with fulvous red traces. Petals large with unusual twisted ends. 30 inches. July	1.25
Sir William. (Perry.) Orange-red. July-August. 36 inches	1.00	Winsome. (Yeld.) A pleasing yellow tone. Very fine. 36 inches. Fragrant. June and July	.50
Soudan. (Stout.) Pure yellow petals which are broad and crinkled. Four-inch width of flowers. June and July	1.00	Woodlot Gold. 36 in. Large crinkled flowers of soft gold. July-August	1.00
Sovereign. (Yeld.) Fine orange-yellow. 30 in. May and June	.25		

## Oriental Poppies

Huge flaming scarlet, crimson and rich maroon flowers, some with black blotches, also some new colors: pink, salmon and old rose, have revived interest in the old Oriental Poppy. These newer kinds are really marvelous; you must have some of these newer Oriental beauties which bloom between the Iris and Peony seasons. Shipments after August 1st.

	Each
Barr's White	\$ 1.00
Beauty of Livermere. Bright crimson; large	.75
Bracteatum. Fiery scarlet	.50
Cavalier. Scarlet-red. Crinkly flowers	.75
Cerise Beauty. Large, cerise-pink	.50
Enchantress. Soft lilac-rose	1.00
Fairy. Pale pink. Prolific bloomer	.50
Gold of Ophir. Golden orange. 24 to 28 inches in height	1.00
Golden Surprise. Golden yellow. Large, free bloomer	1.00
Helen Elizabeth. Pink. Straight 34-inch stems. No dark spots	1.00
Henri Cayeux. Old rose, unusual color	1.00
Jeanne Mawson. Geranium-pink. Erect grower	.50
Joyce. Cerise and old rose	.50
Lord Lambourne. Lacinated, scarlet	.75
Lulu A. Neeley. Dark red, extra fine, very tall	.75
May Sadler. Salmon-pink, free flowering	.75
Mrs. Perry. Salmon-pink; free flowering	.50
Olympia. Double flame-scarlet with glistening golden salmon	.50
Orange Perfection. Strong grower; orange-tinted flame-red flowers. Free flowering	.50
Oriente. Crimson-scarlet. Large purplish black blotches	.50
Perry's White. Good size, blue-black blot	1.00
Pink Radiance	.75
Proserpine. Chinese-red; immense flowers	.50
Purity. Soft pink. No spots or markings. Free flowering	1.00
Salmon Glow. Double salmon-orange. Strong, erect grower	1.00
Sass Pink. Pink. Large, crepy texture petals	1.00
Snow Flame. Lower half pure white, upper half flame-orange. A very strong plant. (Plant Patent No. 365)	1.50
Trilby. Dark rich red; one of the best; late	1.50
Wunderkind. Brilliant carmine-rose; large	1.00
Wurtembergia. Very large red; good	.75



# Beauties for Your Garden in

## COLLECTIONS Parcel Post Prepaid

If the 1500 varieties in this catalog are confusing, select one or more of these Money-Saving Collections.

### 4 Double Peonies

Gorgeous double varieties, in Red, Pink, and White—all labeled, standard divisions.

Catalog value at least \$4.00. **\$3<sup>25</sup>**

**2 Collections \$6.25**  
Parcel Post Prepaid

### 4 Japanese Peonies

All the rage, in Red, Pink, Rose, and White—all labeled, standard divisions.

Catalog value at least \$4.00. **\$3<sup>25</sup>**

**2 Collections \$6.25**  
Parcel Post Prepaid

### 4 Single Peonies

Now so popular, in Red, White, Rose, and Pink—all labeled, standard divisions.

Catalog value at least \$4.00. **\$3<sup>25</sup>**

**2 Collections \$6.25**  
Parcel Post Prepaid

### 7 Hemerocallis or Day Lilies

Everyone wild about them. Bloom from May to August—all labeled, no two alike.

**\$2<sup>45</sup>**

**2 Collections \$4.35**  
Parcel Post Prepaid

### 20 Irises

All different. Some sold as high as \$25.00 each—all labeled.

Catalog value at least \$5.00.

**\$3<sup>45</sup>**

**2 Collections \$6.65**  
Parcel Post Prepaid

### 6 Oriental Poppies

The most colorful plant in the garden, in White, Red, and Pink—all labeled. No two alike.

Catalog value at least \$3.00. **\$2<sup>45</sup>**

**2 Collections \$4.65**  
Parcel Post Prepaid

### 10 IRIS

*Kaempferi*

You won't be sorry when you try these. Exotic, glamorous, in assorted colors.

**\$3<sup>75</sup>**

**2 Collections \$7.15**  
Parcel Post Prepaid

