

## **Historic, Archive Document**

Do not assume content reflects current scientific knowledge, policies, or practices.



62.39

LIBRARY  
RECORDS  
JAN 18 1946  
U. S. Department of Agriculture

# *Flying Cloud Farms Inc.*

## GLADIOLUS

19



46

## ARISTOCRATS

*Mrs. Bancroft Winsor*

Acushnet Station

*Mrs. Sylvia W. Moseley*

New Bedford, Mass., U.S.A.



## THANK YOU!

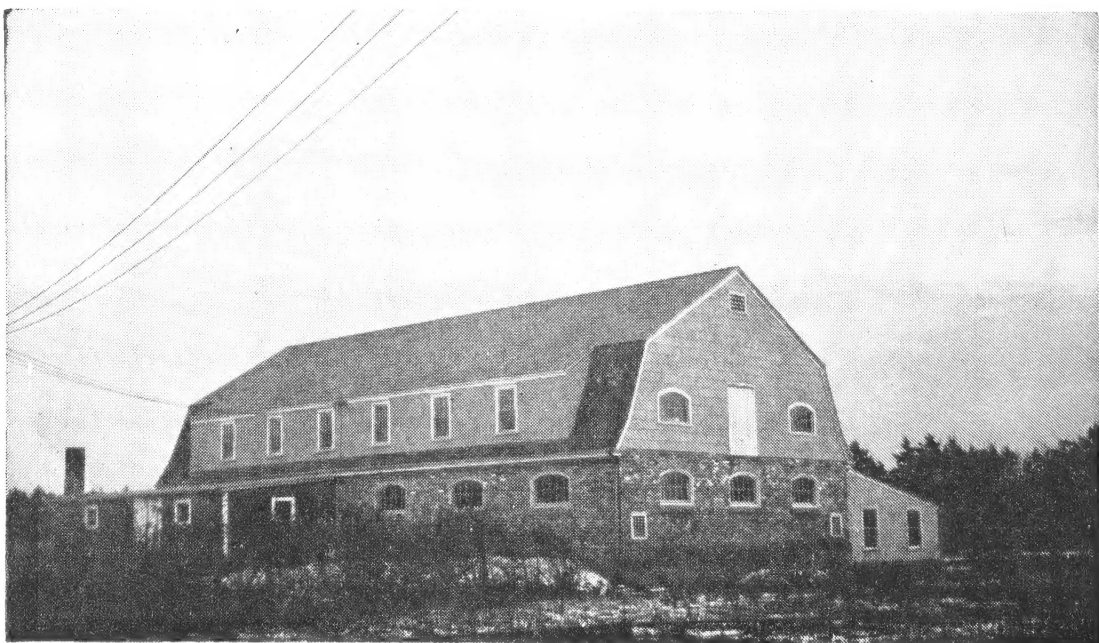
Indeed we do, and we want all our customers and glad friends to know how much we appreciate their confidence in Flying Cloud Farms. You have been liberal with your orders and kind with your suggestions and compliments.

We want to help you with any of your "glad" problems so do not hesitate to write us and perhaps we can work together to raise better glads.

After VJ-Day we welcomed many interested visitors and we hope that next summer there will be many more. The picture above shows you the sign to watch for in front of the farm. From mid-July until early October you will usually find something of interest to see in the new varieties or among the seedlings.

Thank you again and success to your 1946 garden!

**Mrs. Winsor and Sylvia**



## GLAD "TIPS"

It is always a pleasure to chat about the new glads and the ground to cover in this respect grows amazingly each year. We have found that the growers in this country have given us some beautiful varieties. Also, there are some outstanding glads of a few years back that we can now afford to grow in larger quantities.

Then there is a commercial group and each year this group becomes more popular. The early planting must be of the earliest varieties,—often very low priced—such as: GOLD DUST, MISS HARRIET, MAID OF ORLEANS, SYLVIA TWING, CAPEHEART, BLUE BEAUTY, LAVENDER QUEEN, and RED BEAUTY and, of course, SURFSIDE which we must have in every planting. You see, this gives you a good variety of color. As the season advances, many newer varieties step up: HOPEDALE, WHITE GOLD, MOTHER KADEL, CORONA, PINK RADIANCE, A. L. STEPHEN and EVENING LIGHT, along with MASTER MYRON, RED BANK, and RED GIANT. This last group, together with PRESTIGE, GUNPOWDER, and KING WILLIAM, feature themselves with the florists as well as the exhibitors.

LEADING LADY is such a fine cream and her habits are so pleasing. Mr. Van Voorhis' VANGOLD was an outstanding yellow at our Boston Show and we do need more good yellows. CRINKLE CREAM is another in the cream shade which looks worthwhile.

LADY HELEN stepped to the front this past summer,—a beautiful light salmon pastel shade of fine texture.

LIPSTICK is not too widely known but will be we feel sure for it is a ruffled true pink with brighter rosy throat.

The pink group is made up of so many fine varieties, shading from shell pink HOPEDALE, to apricot-tinted SUSQUEHANNA, and deeper and very beautiful EGLANTINE. ROSEA and DAUNTLESS should be in your garden too. Your favorite shade can be found among this interesting group and we will be glad to help and suggest.

BANCROFT WINSOR is a warm true orange, very pleasing to all who see it and grow it. SUNBURST and SUNGLO strengthen this group. AURORA, more on the salmon shade, is very large and continues its fine performance for us and made many friends at the Boston Show last summer. CORALEEN and SUNLIGHT are striking and worthwhile additions to the warm salmon and orange group and you will find, on another page, a very complete description of them both.

Among the vivid reds are: ERREY'S SCARLET, RED RIVAL, and MASTER MYRON. BURMA and RED GIANT still seem to top the rosier reds and RED ENSIGN and FLAGSHIP are very striking.

The blue group doesn't change noticeably. BLUE BEAUTY and BLUE WONDER are still tried and true. AZURINE and WINTERMOON are very fine too but cannot be thought of commercially for some time due to the limited quantities.

ELIZABETH THE QUEEN, BADGER BEAUTY, and MAUVETTE, fine light lavenders, are becoming more widely grown. Watch for LAVENDER PRINCE,—you will like this one!

HIGH FINANCE is a pleasing novelty, and MIDNIGHT SUN, BRONZEWING, and NORWOTTUCK are very popular too.

There are so many fine glads and we have mentioned very few. Gladiolus cover almost every color and shade and we hope you will find your favorites among them.

## SUCCESSFUL GLADIOLUS CULTURE

The present day varieties of gladiolus can be very EASILY GROWN to perfection in every section of United States or Canada as well as in most all the foreign countries. We hope these notes may be of help to our customers in having their gardens filled with better glads this year.

OPEN YOUR PACKAGE of bulbs as soon as received and allow the air to get at them. If there are only a few in each bag, open the top and stand the bag up in a box. If there are many bulbs in a bag it is advisable to pour them out, each variety in a separate shallow box. Now they can be stored in a cool dry cellar, preferably where the temperature is about 40° fahrenheit and it is well to let some fresh air in occasionally.

You can make YOUR FIRST PLANTING about the time farmers put in their first potatoes and this will vary according to location. Your last planting should be at least 120 days before your usual first frost but that is hardly long enough if you expect to dig good mature bulbs of the midseason varieties. In our locality it would seem best to make about three plantings, three or four weeks apart, to insure a long season of bloom; we suggest in southeastern New England—April 10-15, May 10 or thereabouts, and June 1-10.

Glads love the sun so SELECT A SUNNY LOCATION away from trees or shrubs where roots might take up the food and moisture you intend the glads to get and also away from the sides of houses, walls or fences that might shade them even if only for a part of each day.

The soil will have considerable bearing on your culture. If a heavy clay soil, you will not need to plant more than two thirds as deep as in a light sandy soil. Plant large bulbs about six inches deep in light sandy soil; medium bulbs four inches and small bulbs three inches. If you are mainly interested in bulblet increase, plant as close to the surface as possible, if blooming size bulbs you will probably have to stake them. Light soils will usually give more bulblets than heavy soils.

Either spade or plough (depending on the size of the garden) the soil deeply, preferably in the fall, leaving it rough during the winter. If stable manure is available put it on before spading and it will be well rotted by spring.

If the glads are grown for landscape effect they should be in beds about six to ten inches apart depending upon the variety. If grown for the blooms, as more often is the case, they should be in rows and the bulbs can be placed either in single or double rows. We prefer double rows in the trench as then they tend to hold each other up on windy days. The rows should be from eighteen inches apart to thirty-six inches depending on whether you intend to cultivate by hand or machine. The wider rows are much easier to handle if cultivating machinery is used. Allow about five inches between large bulbs and less as the size of the bulbs planted decreases.

FERTILIZER: This item plays a very important part in successful growing, yet the cost in relation to the whole is not a large factor. Well rotted barnyard manure will give the very finest results but is usually only available and practical for the smaller gardens. For the larger plantings, it pays to use a plant food that supplies not only the so-called major elements, but the just-as-important minor elements as well. Research has shown that deficiencies in minor elements will cause a very definite retardation if not a complete failure of a crop.

Here, at Flying Cloud, we have found that either Vigoro or Agrico supply the needed elements and have given us excellent satisfaction. A check on bulb growth has revealed superior development to former years, and color has been outstanding.

General recommendations for the use of either Vigoro or Agrico are as follows: After the soil is put in good tillable condition, the planting rows should be made an inch or so deeper than you want to plant. Said fertilizer should then be put in the bottom of the row at the rate of about four pounds per 100 feet of row. Cover the plant food with one and one-half inches of soil and then plant the corms. Or, if preferred, it may be worked thoroughly into the soil in the bottom of the row instead of just being covered with soil. Wait one or two days before planting. After the bulbs are set, cover in the trench and hill it up a bit. When the first weeds appear, rake it down level again and that first crop of weeds is easily killed. After the glads are eight to ten inches high, a surface feeding should be made at the rate of four pounds to 100 feet of row and should be spread on both sides of the row and worked lightly into the soil. Another similar feeding should be made just as the buds appear.

Watering will depend entirely upon the rainfall, heat, and type of soil you are using but when you do water, use enough to do a good job. Three-quarters of an inch of water at least for big bulbs (just set a low straight-sided tin can among them before you start watering and then you can tell how much you are getting on.) Three-quarters of an inch, you will find, is a lot but it pays, especially from the time the spikes come out of the sheath until they bloom.

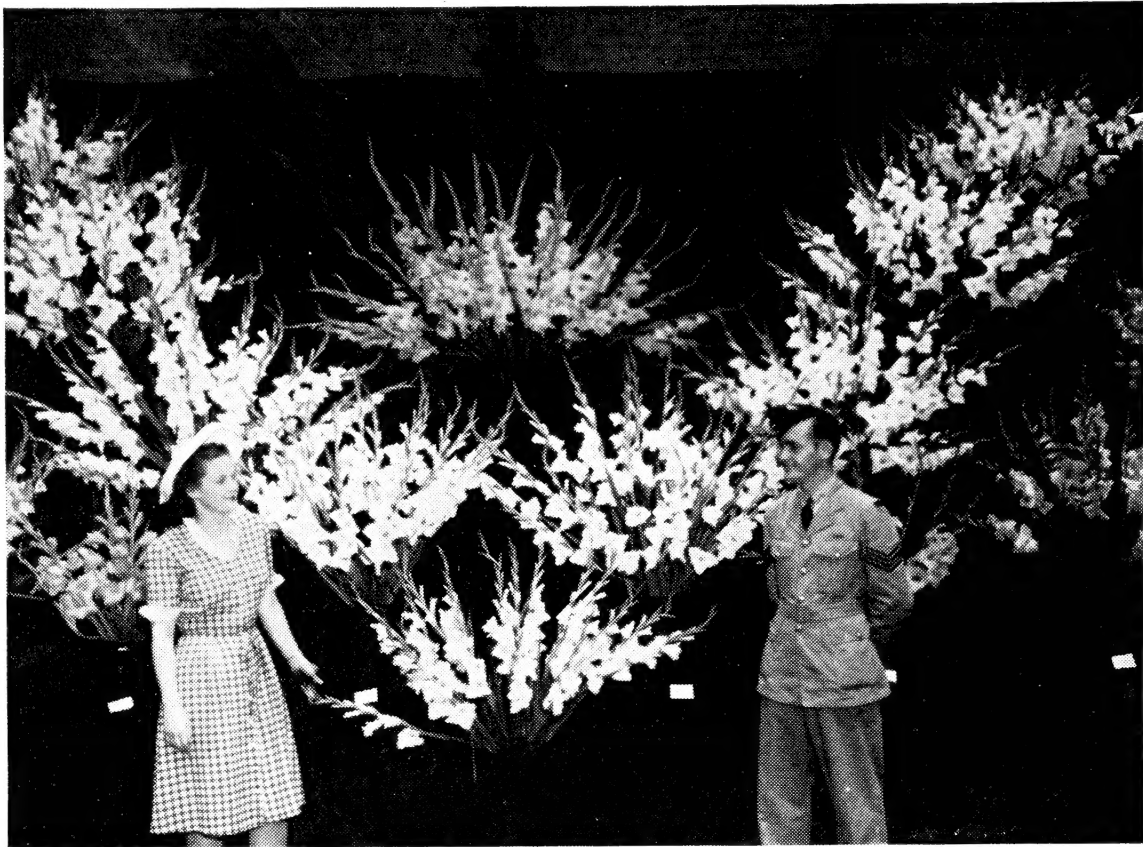
Stirring of the soil is a great factor. Hoeing, scratching, cultivating, brooming, or whatever you want to call it, should be done often. We use lawn brooms in the planted rows on our light soil and cultivators between the rows. We plan to get over the piece every fourth or fifth day but if it has been dry once a week is enough. If it rains, or we irrigate, we try to cultivate the following day as soon as it dries out.

Bulbs we ship to you we will guarantee to be absolutely free of thrips. Nevertheless, we always dip our bulbs before planting and suggest it to our customers because this really should be absolute protection. The two most popular dips are the Bichloride of Mercury (Corrosive Sublimate) and the Lysol dip. Using the **Bichloride of Mercury** dip we **soak** them from **8 to 10 hours** in a solution of **one ounce to seven gallons of warm water**, (preferable to keep the solution in a fairly warm place early in the season.) This recommendation is for bulbs with their husks on,—six to eight hours is sufficient for bulbs which have been peeled. **Use only wooden, glass or crockery containers** as a chemical action, weakening the solution, will take place in a metal vessel. You can do no harm to the bulbs with this treatment except to delay blooming about ten days. The **Lysol dip** is widely used also: **1 tablespoon of Lysol to 1 gallon of water, soaking** the bulbs **four to eight hours**. This is supposed to be a highly recommended control for any diseases on bulbs. With both treatments we always feel it advisable to dip just preceding planting.

You are now giving your bulbs a good start and when they are about six inches high, we consider it a wise move to play safe and spray them. Thrips are so hard to distinguish that a very few at this stage in your growth would multiply enough to make serious damage later. The old formula still seems to be popular: **two tablespoons Arsenate of Lead, two pounds sugar** (the cheapest kind you can buy) and **three gallons of water**. In the sections where the weather is often hot and the humidity high during the growing season, growers have some trouble with burning of the foliage with the Arsenate of Lead spray although it does not burn nearly as easily as Paris Green. The **Tartar Emetic** spray has been used very successfully and we use it in place of the Arsenate spray. The formula is: **4 pounds Tartar Emetic, 16 pounds brown sugar, to 100 gallons of water**. **For home gardens use: 3 gallons of water, 4½ teaspoonsful of Tartar Emetic, and 1 2/3 cups of brown sugar**. Tartar Emetic is a standard drug also known as Antimony and Potassium Tartrate U.S.P. Brown sugar is usually cheaper but any sugar is equally effective or you can use corn syrup and molasses (three and three-quarters pints per 100 gallons.) If Tartar Emetic is not obtainable a suggested substitute is Salp (sodium antimony lacto phenolate) used in combination with the corn syrup or molasses solution at the rate of six pints per 100 gallons of spray. We think if one keeps all open spikes cut close there will be little damage. The thrips go to blooming spikes so if these are cut and removed from the field, any thrips present on the spikes, where most of them will be, would go out on these spikes. Any tops broken off, or worthless spikes, should also be kept cleaned up and removed from the field and destroyed as you then remove any thrips that may be present on these spikes.

For decorative or show purposes, cut your spikes as soon as the first blossom or two opens—preferably in the morning before it gets too warm,—and be sure that you leave at least five leaves on the plant to mature the bulb. By cutting a bit off the stem each day, and freshening the water of course, they will last many days. If desired for showing, and the show is nearby, cut the spikes as above and hold in as cool a place as available until the day of the show. If you must ship or carry the blooms some distance, we suggest you pack them flat in boxes.

Do not neglect your gladiolus after they have bloomed. An occasional cultivation will be beneficial and if weeds are kept down the digging will be easier. We think about four to six weeks after blooming is a good time to start digging a variety. Be sure and cut the tops off close to the bulb and spread the bulbs out in low boxes to dry, preferably where air can move around them. It will depend on the size of the bulbs and the drying conditions on how soon they will be ready to clean (the old bulb should come off easily) and be sure to destroy all the old bottoms, etc. Now store in a cool dry place. If you use naphthalene flakes we suggest that you put in half a handful on pieces of paper, or small pie plates, in the boxes; cover the boxes with paper or, if you can put them in one big pile, cover it all with a tight cover of some kind such as canvas or several thicknesses of newspaper and leave for a couple of weeks. Uncover, take out the naphthalene flakes and store for the winter. Putting the naphthalene on paper will save taking all the bulbs out to get the naphthalene flakes away from the bulbs for we do not like to leave them among the bulbs all winter. Now the bulbs should be in good shape until planting time.



**Mr. and Mrs. Horace Allison, of Toronto, Canada, in front of our Gold Medal N. E. G. S. Exhibit, August 16, 1945.**

## **SHIPMENT**

Orders can usually be shipped all winter except to the most northern and western states. We like to ship as soon after the order is received as weather permits. This season, with the continued shortage of labor, it may be two weeks after we receive your order before we can fill and ship it. There will be no "immediate" or "at once" shipments of orders this season. However, we will gladly store and ship when you wish. We ship by either parcel post or express, whichever we think best and cheapest or safest at the time shipment is desired, so if your express office is different from your mail address be sure to state it on the order. Fairly heavy orders are usually cheaper by express. We guarantee safe delivery of every shipment.

## **BULBLETS**

While we guarantee to satisfy our customers, it is not possible for us to guarantee the germination of bulblets. The bulblets of some varieties are hard to germinate and they need good care to get the best results. Bulblets are cheaper than bulbs because they are not so sure to grow. It is a cheap way to get a start, especially in the new introductions, but we want our customers to be sure they understand clearly that they must not expect us to replace them if they do not germinate. Of course a big per cent usually will grow anyway but if they are valuable ones, and are cracked before planting, and then kept well watered, the per cent that will grow will be much increased. We will always select the largest bulblets available of the ordered variety.



## TERMS

Customers often lose cash sent in the mails unregistered so be sure to register any orders containing cash. Anyone sending cash, not registered, does so at their own risk of loss. The day an order is received we mail you a card or letter of acknowledgment. If this does not arrive promptly please let us know. We may be able to trace it then but if we do not know about it for a couple of months it is hopeless.

It is our custom to add extras to each order,—the amount and varieties vary with the size of the order. As some customers already have a wide selection of varieties, they prefer the extras in overcount of the ordered varieties, or have some varieties in mind that they might like to try and, while of course we cannot always send all the varieties that are mentioned, it will help us to have a list to select from so we may send something you really want. Just put on the order what you would prefer to have us do,—increase the count, take them from your list, or select them ourselves.

If one is willing to pay the transportation charges on an order, we will see that there are bulbs of a value much larger than the shipping cost added to the order to offset these charges. Here again, just give us an idea of what you would like and we will do our best.

Please do not ask us to accept an order for less than \$2.00, which must be accompanied by cash in full, and no single item for less than ten cents. On orders of \$5.00 and up, we will accept 25% with the order, balance before shipment. We will prepay all orders to any point in the United States or Canada, except orders from the wholesale list, and guarantee safe delivery on all shipments. Orders from foreign customers, except Canada and Mexico, must be accompanied by money order or draft and shipping charges.

## BULB DISCOUNTS

**Orders for \$3.00 to \$5.00 select 10% additional stock.**

**Orders for \$5.00 to \$25.00 select 15% additional stock.**

**Orders for \$25.00 or over select 20% additional stock.**

These discounts do not apply to wholesale orders, the collection, or varieties marked "No Discount." These extras to be selected from the retail list. **Where bulbs, not bulblets, are priced each, ten bulbs of a variety will be sold at eight times the single price; five bulbs or more at the ten rate, except on varieties marked "No Discount."** Large bulbs will be 1¼" up, medium will be ¾" up, and small will be ⅜" up. As long as available, the larger bulbs of each grade will be used.

We shall personally see that full value is given to every customer. If you are not pleased with the stock when received, or if, after you have grown it, you are not satisfied with the results, please let us know and we will make every effort possible to please you. All stock is guaranteed true to name and free from disease.

## SUBSTITUTION

In no case will any other variety be substituted for the variety ordered except with your permission on orders received prior to April 1. However, if you order later than this, please give us some varieties for second choice or, if we are out of some varieties, permit us to send more of those available to make up the value. All orders are put up and put aside in the order received regardless of the shipping date.

---

**NEW INTRODUCTIONS****SUNLIGHT (Spiller)**

Rose pink shading to pure golden center, giving the effect of brilliant light orange. The florets are large and ruffled and perfectly placed. Sunlight is a tall, vigorous grower and produces plenty of bulblets that germinate easily. Will make an outstanding commercial variety. Midseason. It won the American Home Achievement Medal in the Maine Show—the first variety deemed worthy in the four years the medal has been offered. Large bulbs only—\$5.00 each. No Discount.

**CORALEEN (Jackson) 1945-46**

The name Coraleen exactly fits this beautiful gladiolus as it is a clear coral tone. The fine long spikes of nicely placed, ruffled, florets holds its color perfectly. Coraleen blooms profusely from small stock and the bulblets germinate well. At the New England Gladiolus Show in Boston, this past summer, it was centered with our V of Surfside and won many pleasing comments. We have also found that our florist trade is most enthusiastic about this variety. Coraleen will be an added attraction in your garden and we feel sure that you will be well pleased with it. L \$1.00, M 75c, S 50c, Blts. 10—\$1.00. No Discount.

**DESCRIPTIONS**

AND

**PREPAID PRICE LIST OF VARIETIES**

- AJAX (Errey)**—Tall massive white with contrasting petunia throat. Large, ruffled, and heavy textured. L 75c, M 50c, S 25c, Blts. 2--15c.
- ALADDIN (Palmer)**—Bright reddish salmon with large cream blotch. The beautifully ruffled blooms open 8 to 10 on long flower heads. L 3--25c, M 5--25c, S 10--25c, Blts. 25--10c.
- ALGONQUIN (Palmer)**—Brilliant scarlet. 8 to 10 florets open wide on tall straight spikes. A fine exhibition variety. L 2--20c, M 2--15c, S 2--10c, Blts. 25--15c.
- ALLEGRO (Pfitzer)**—Light lavender blue with two dark blue blotches in throat, tipped white. The color is clear and makes a fine cut flower as well as an exhibition glad. L 3--25c, M 3--15c, S 3--10c, Blts. 25--10c.
- ALSACE (Benedict)**—Beautiful buff apricot. Florets are large, ruffled, needlepoint type, and of heavy texture. Tall strong grower. L 20c, M 15c, S 10c, Blts. 10--20c.
- A. L. STEPHEN (Winsor-Moseley)**—Rose doree with an attractive spectrum red spot in the throat. Slightly ruffled, large decorative. L 75c, M 50c, S 25c, Blts. 2--15c.
- ALTA (E. H. Young)**—Light rose salmon with plum markings. Tall and nice. L 20c, M 15c, S 2--15c, Blts. 20--25c.
- ANNAMAE (Pommert)**—Pure snow white with tiny wine-red spot at base of petals. A seedling of Maid of Orleans but without the creaminess of that variety. A fine early pure white. M 2--15c, S 2--10c, Blts. 15--15c.
- ARUNDEL (Downs)**—Bright crimson with deeper self blotch on lower petal and faint white midrib. Slightly ruffled florets of good texture on tall spikes. L 50c, M 30c, S 20c, Blts. 10--25c.
- ATLAS (Pfitzer)**—Dark blue, somewhat lighter in throat, with two tiny black reddish purple blotches on lower petals. L 75c, M 50c, S 25c, Blts. 2--15c. No Discount.
- AURORA (Fanning)**—Enormous ruffled salmon rose, lighter in throat with self veining. Tall, strong, straight spikes and a fine glad. L 50c, M 30c, S 20c, Blts. 10--25c.
- AZALEA (Pfitzer)**—Large rosy red with bluish feather in throat tipped yellow. L 2--15c, M 2--10c, S 4--10c, Blts. 15--15c.
- AZURINE (Buchanan)**—Light violet blue. Grand champion at World's Fair in 1940. L 75c, M 50c, S 25c, Blts. 2--15c. No Discount.
- BADGER BEAUTY (Krueger)**—Lovely light lavender with creamy throat. A tall midseason variety. L 25c, M 15c, S 2--15c, Blts. 10--15c.
- BANCROFT WINSOR (Winsor-Moseley)**—Lovely large, slightly ruffled, orange with a deeper and more reddish plume in the throat. Perfectly placed florets on long spikes. L 75c, M 50c.
- BARCAROLE (Palmer)**—Clear grenadine orange self. The florets are large, heavily ruffled, and of good substance. L 3--25c, M 3--15c, S 3--10c, Blts. 25--10c.

- BEACON (Palmer)**—Bright rose scarlet with a very large clear cream blotch,—a striking glad and very popular. **L 2--15c, M 3--15c, S 6--15c, Blts. 30--15c.**
- BINGO (Canine)**—Large flesh pink with rose and cream throat. Attracts much attention in our field. **L 10c, M 2--15c, S 2--10c, Blts. 25--15c.**
- BLACK OPAL (Errey)**—An exceptional rich dark red self. You will find the faults of dark reds overcome in this glad with its long flower head and well placed florets. **L 2--15c, M 2--10c, S 4--10c, Blts. 30--15c.**
- BLUE BEAUTY (Pfitzer)**—This glad is well named for it surely is a blue beauty. It is probably the best blue on the market. The strong blue shade becomes a bit lighter at the edges of the petals. It is a tall, strong, grower and produces long spikes that will open eight florets at once. **L 2--20c, M 2--15c, S 2--10c, Blts. 25--15c.**
- BLUE WONDER (Both)**—A medium light blue which is made attractive by lines of deeper self at edges of petals and in the throat. Tall spikes with large five inch flowers perfectly placed. **L 10c, M 2--15c, S 2--10c, Blts. 25--15c.**
- BLUTENTRAUM (Barth)**—An early glad of a soft shade of pink with a lighter throat and carmine pencillings. About six blooms open at once and stands up well in all weather. **L 25c, M 15c, S 2--15c, Blts. 10--15c.**
- BRONZEWING (Errey)**—This is the brightest and most attractive of all autumn tints, being a brilliant mixture of orange, salmon and slate, with a powdered crimson and yellow throat. Opens up to ten on a strong stem and is suitable for both exhibition and decorative purposes. **L 50c, M 30c, S 20c, Blts. 5--25c. No Discount.**
- BUCKEYE BRONZE (Wilson)**—Rich bronze. A novelty. **L 30c, M 20c, S 10c, Blts. 10--30c.**
- BUFFETTE (Winsor)**—Clear buff with fine red pencil lines in throat. Good texture with 10-12 perfectly placed florets open at once. Fine early commercial. **L 3--25c, M 3--15c, S 3--10c, Blts. 25--10c.**
- BUNGANA (Errey)**—Large ruffled white faintly overlaid with a touch of pink and the cream throat is lightly shaded and powdered magenta. Up to ten flowers open at a time in perfect formation on tall spikes and a most attractive glad. **L 75c, M 50c, S 25c, Blts. 2--15c.**
- BURMA (Palmer)**—Deep rose, lighter in throat. Heavily ruffled, well placed florets on tall spikes. Fine for exhibition. **L \$1.00, M 60c, S 30c, Blts. 3--25c. No Discount.**
- CABARITA (Errey)**—Medium blue with dark purple throat which is based garnet and tipped with cream darts. **L 75c, M 50c, S 25c, Blts. 2--15c. No Discount.**
- CALoola (Errey)**—Rose salmon overlaid and flecked slate. The center of the flower is carmine, powdered cream. The florets are large, slightly ruffled and well placed. **L \$1.00, M 60c, S 30c, Blts. 3--25c.**
- CAMELLIA (Palmer)**—Bluish white tinted pink with small scarlet marking in throat. Tall and husky. **L 3--25c, M 3--15c, S 3--10c, Blts. 25--10c.**
- CAPE COD (Winsor-Moseley)**—An exhibition variety with perfectly placed blooms of glistening lilac pink and a creamy throat overlaid with a slight feather of deeper self. **L \$1.00, M 75c, S 50c, Blts. 10--\$1.00.**
- CAPEHEART (Winsor)**—Light salmon rose, deeper at the edges of the petals, with a slight rose feather in the throat. A fine early commercial. **L 3--25c, M 3--15c, S 3--10c, Blts. 25--10c.**
- CAPSICUM (RED PEPPER) (LaSalle)**—Deep pink decorative with striking throat of self peppering on cream blotch. Midseason. **Large, Medium, or Small \$2.00 each. No Bulblets. No Discount.**
- CENTENNIAL (Ball)**—A lovely deep pink, tinted gray at the edges, with a raspberry plume in the throat. The color is very striking and lends accent to the flowers in the garden. **L 15c, M 10c, S 2--10c, Blts. 25--10c.**

---

*“This is to acknowledge receipt of my glad order and to thank you for the more than generous extras and overcount. The bulbs were splendidly packed and arrived in first class condition. Your stock is clean and healthy looking.”—Mrs. L. T., Bremerton, Washington.*

*“Had splendid luck with your Surfside,—it’s superb!”—J. W., Great Barrington, Mass.*

*“Two of the nicest glads I grow in my garden are your Surfside and Capeheart.”—H. D., No. Baltimore, Ohio.*

- COLONEL TYNG (Woodward)**—Clear, sparkling, rich coral pink with snow white throat and midrib. Tall and straight with large wide open florets and many buds showing color. **L \$1.00, M 75c, S 50c, Bulblets 10--\$1.50. No Discount.**
- COLONIAL MAID (C. G. Young)**—Light lavender with deeper self flecks and lines in throat. **L 3--25c, M 3--15c, Blts. 25--10c.**
- CONNECTICUT YANKEE (LaSalle)**—Clear light pink with a most attractive red throat blotch. Large, plain petaled, wide open florets on tall strong spikes. **Large or Medium \$5.00 each. No Discount.**
- CONVOY (Palmer)**—Clear rose purple slightly deeper in throat. Florets are large, of good texture, and well placed on tall spikes. A fine addition to this color class. **L 35c, M 25c, S 15c, Blts. 10--25c.**
- CORAL GLOW (Ellis)**—Bright orange with cream midribs. Blooms are large, of heavy substance, and well placed. **L 2--25c, M 2--15c, S 2--10c, Blts. 15--15c.**
- CORONA (Palmer)**—Creamy white ground to cream throat with rosy lavender edge around petals. Florets are of the round type and very pretty. **L 2--30c, M 2--20c, S 4--25c, Blts. 15--15c.**
- COVER GIRL (LaSalle)**—Beautiful medium pink. Tall growing with large blooms and very fine. **Large, Medium or Small \$2.00 each. No Discount.**
- CRINKLE CREAM (Ellis)**—Large, wide open, ruffled florets of a good clear light yellow. A fine addition to this color class. **L 75c, M 50c, S 35c, Blts. 5--25c.**
- DAUNTLESS (Errey)**—Attractive pale pink shading to petunia in the throat. 6 large blooms open in field with 9 of the 20-22 buds showing color. Very fine. **L \$1.00, M 60c, S 30c, Blts. 3--25c.**
- DIANE (Krueger)**—Orange salmon with cream throat. Late. **L 15c, M 10c, S 2--10c, Blts. 10--10c.**
- DR. VERHAGE (Buggenum)**—Scarlet with red velvet spot offset cream in the throat. The ruffled blooms are large and of good texture. **L 15c, M 10c, S 2--10c, Blts. 25--10c.**
- EARLY ROSE (Jack)**—Rich rose shading to lighter in throat. A popular early cut flower. **L 2--15c, M 3--15c, S 6--15c, Blts. 15--15c.**
- EGLANTINE (Scheer)**—Clear, sparkling medium pink. The florets are heavily ruffled and perfectly placed on typical exhibition spikes. **L \$10.00, M \$7.50, S \$5.00. No Discount.**
- ELANORA (Errey)**—Rich rose-red-violet with all the buds showing color. A fine glad. **L 35c, M 25c, S 15c, Blts. 10--25c.**
- ELIZABETH THE QUEEN (D. W. White)**—An exhibition and commercial lavender—really a clean mauve—a bit darker than Minuet with a reddish stippled feather in the throat and some flecking of the same. Nicely ruffled petals (a bit needlepoint) with many large blooms open on long flower heads. **L 35c, M 25c, S 15c, Blts. 10--25c.**
- ERREY'S SCARLET (Errey)**—Magnificent scarlet with two deeper self darts on the lower petals. Florets are ruffled and of good substance. **L 50c, M 30c, S 20c, Blts. 5--25c. No Discount.**
- ETHEL CAVE-COLE (Cave)**—Large, flat, wide open florets of light pink with slightly deeper and more rosy self throat. **L 2--25c, M 2--15c, S 2--10c, Blts. 15--15c.**
- EVENING LIGHT (Winsor-Moseley)**—A fine commercial and show bench variety which has proven most popular. The large, plain petaled, florets are peach pink with a cream and rose throat,—a lovely and striking color combination. **L \$1.00, M 60c, S 30c, Blts. 3--25c.**
- FLAGSHIP (Butt)**—Medium light red with attractive white throat pencilled blue. Florets are large and round and perfectly placed on tall straight spikes. A fine exhibition glad. **L 25c, M 15c, S 2--15c, Blts. 10--15c.**
- FLORA FARMER (Quackenbush)**—Pure pink, shading to darker self at edges of petals and creamy white throat. Large, ruffled florets on tall spikes. A popular variety. **L 2--20c, M 3--25c, S 5--20c, Blts. 25--15c.**
- FRANK WARNER (Buchanan)**—Tall growing medium yellow with warm red spot in the throat. **L 50c, M 30c, S 20c, Blts. 10--25c.**
- GARDEN OF THE NATIONS (Winsor-Moseley)**—Clear cerise rose with each petal edged silver,—a rich combination of color much admired by everyone. **L 35c, M 30c. No Discount.**

---

*"Thanks a million for the bulbs. As always, they are fine looking, healthy, and the extras and overcount surprised me, especially since bulbs are not as plentiful now."*—R. S., Hagerstown, Maryland.

- GENGHIS KHAN (Scheer)**—Huge salmon pink blending to soft cream throat. Large florets are of very heavy substance with petals fluted and ruffled and slightly lacinated. Early midseason. **L \$2.50, M \$1.75, S \$1.00, Blts. 25c each. No Discount.**
- GERTRUDE SWENSON (Swenson)**—Beautiful shade of mauve with a white blotch on the lower petals and a light mauve feather. **L 3--25c, M 3--15c.**
- GINGER ROGERS (Davis)**—A most attractive and bright light orange with reddish lines in the throat. Tall, strong, and nice. **L 2--25c, M 2--15c, S 2--10c, Blts. 15--15c.**
- GLENBURN (Errey)**—A bright and attractive glad with its apricot ground color and brilliant orange and crimson blotch on the lower petals. **L 75c M 50c, S 25c, Blts. 2--15c.**
- GLENORA (Errey)**—Dark smoky old rose with garnet velvet lower petals that are bordered with a powdering of gold. A very striking novelty. **L 50c, M 30c, S 20c, Blts. 5--25c.**
- GLOAMING (Zimmer)**—Slightly ruffled bright purple with attractive white throat. The spikes are tall and graceful and are especially pretty in mixed bouquets. **L 3--25c, M 3--15c, S 3--10c, Blts. 25--10c.**
- GOLD DUST (Pfitzer)**—Deep rich yellow self. A fine commercial as it is very early. **L 6--25c, M 6--15c, S 10--15c, Blts. 50--15c.**
- GREEN LIGHT (Pfitzer)**—A light cream with a green gloss, from which the name is derived. The large florets are ruffled and of fine substance. **L 2-25c, M 2--15c.**
- GRETA GARBO (Pfitzer)**—A fine exhibition glad. The florets are large and of a lovely soft rose color with a creamy throat. **L 15c, M 10c, S 2--10c, Blts. 25--10c.**
- GUERDON (Balentine)**—Deep American Beauty color with a silky sheen. The slightly ruffled florets are well placed on tall spikes. **L 15c, M 10c, S 2--10c, Blts. 15--10c.**
- GUNPOWDER (Sewell)**—A color sport of Picardy, identical to its parent variety in all respects except color which is a clear buff with slight throat markings. **L 50c, M 30c, S 20c, Blts. 10--25c.**
- HIGH FINANCE (G. W. Wilson)**—Light orange gray with cream throat. A beautiful ruffled smoky that has been a winner at many shows. **L 25c.**
- HIS MAJESTY (Heemskerck)**—Nice midseason salmon orange. **L 3--30c, M 5--30c, S 8--30c, Blts. 30--30c.**
- HONEYMOON (Winsor)**—Peach pink, suffused deeper at the edges of the petals, going to a lighter shade in the throat where there is a creamy blotch and garnet feather. Florets are of good substance on tall spikes. **L 20c, M 15c, S 2--15c, Blts. 10--15c.**
- HOPEDALE (Winsor-Moseley)**—Delicate flesh pink with slightly lighter throat. The florets are large and of excellent texture and shows good resistance to heat. A fine commercial. **L 25c, M 15c, S 2--15c, Blts. 10--15c.**
- HURRICANE (Evans)**—Bright salmon orange with clear cream throat which is marked with several small cherry lines. **L 35c, M 25c, S 15c, Blts. 10--25c.**
- IMPERIAL PURPLE (Arenius)**—Late midseason purple, slightly deeper and more reddish in throat. **L 40c, M 25c, S 15c, Blts. 10--25c.**
- INDIGO (Errey)**—Rich royal purple with faint garnet feather. Velvety texture and a most attractive glad. **L 50c, M 30c, S 20c, Blts. 5--25c. No Discount.**
- INTERMEZZO (Quackenbush)**—Clear cream self except for a faint dusting of violet rose deep in throat. Tall, straight grower. **L 20c, M 2--25c, S 3--20c, Blts. 10--15c.**
- ISOLA BELLA (Pfitzer)**—Ruffled, light lavender with all the buds showing color. A most attractive midseason variety. **L 3--30c, M 5--30c, S 8--30c, Blts. 30--30c.**
- IVORY KEYS (Ellis)**—Large white with light yellow lining to throat. **L 10c, M 2--15c, S 2--10c, Blts. 25--15c.**
- JASMINE (Palmer)**—Slightly ruffled, large florets of clear pale lemon yellow without markings. A nice early yellow. **L 10c, M 2--15c, S 2--10c, Blts. 25--15c.**
- JEANEL (Hornberger)**—Peach colored sport of Picardy which has performed very well with us. **L 20c, M 15c, S 2--15c, Blts. 20--25c.**

---

*"Received bulbs in fine condition . Many thanks for generous overcount and extras; also generous grading."*—J. H., E. Berlin, Conn.

*"Surfside is tops!"*—G. F. E., New York.



KILLARA

ELANORA

**KILLARA (Errey)**—Deep salmon pink, more creamy in throat, with deeper self pencillings. L 25c, M 15c, S 2--15c, Blts. 10--15c.

**KING LEAR (Palmer)**—Clear deep reddish purple with silver line at edges of petals. The blooms are large and heavily ruffled on tall spikes. Early. L 3--25c, M 3--15c, S 3--10c, Blts. 25--10c.

**KING WILLIAM (Schenetsky)**—A soft salmon and apricot blending beautifully into a clear unmarked cream throat. A tall, healthy, vigorous grower and a great commercial as well as a super exhibition variety. L 2--25c, M 2--15c, S 2--10c, Blts. 25--10c.

## OUR GOLD MEDAL EXHIBIT AT THE 1945



"Flying Cloud Farms, New Bedford, Mass., staged a 150 square foot display which easily won the N. E. G. S. Gold Medal with the highest score in years. At various shows we have seen many V-for-Victory designs but none was more appropriate than the one these ladies were arranging at the time of President Truman's release of Victory news. Using their own white Surfside, a "V" 15 feet wide was made, while at the upper ends were vases containing red, white and blue glads. The effect was impressive and beautiful. As intro-



## NEW ENGLAND GLADIOLUS SOCIETY SHOW



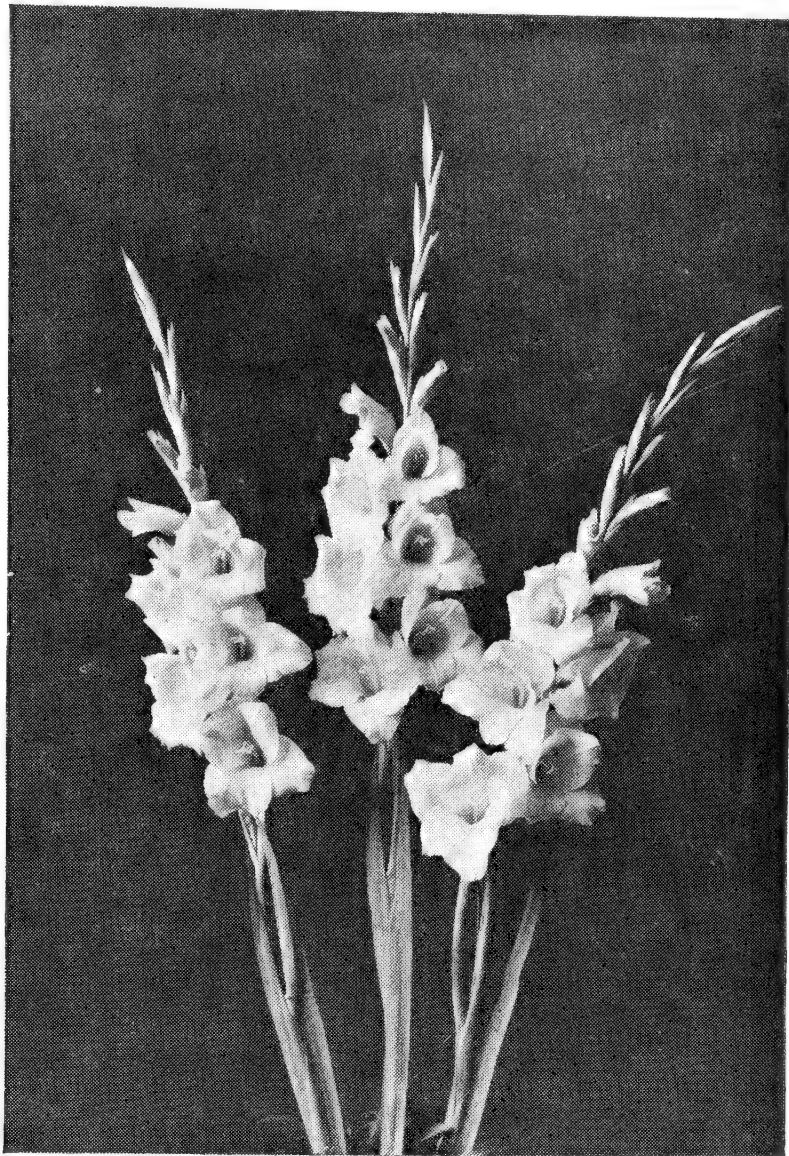
ducers for other hybridizers, the firm showed in the center a great vase of Coraleen, a deep salmon seedling of Mrs. Louise Jackson; also the large rose pink Aurora and the smoky Norwottuck. In grand condition were the salmon A. L. Stephen, the orange red blotched Bancroft Winsor; the pastel pink Hopedale; the lavender pink Cape Cod; the red blotched cream Evening Light, and some unnamed seedlings."

James H. Odell

- KOALA (Errey)**—Creamy pink florets that seem to glisten in the sunlight. The throat is still more creamy with reddish pepperings,—most attractive. **L 25c, M 15c, S 2--15c, Blts. 10--15c.**
- LADDIE (H. E. Wilson)**—Very large light salmon pink with faint rose blotch in the throat. Fine tall grower. **L 2--15c, M 3--15c, S 6--15c, Blts. 30--15c.**
- LADY BOUNTIFUL (Woodward)**—Tall growing rich wine red. Nice placement of 4" blooms on well formed spikes. Five or six open. **Large, Medium, or Small \$1.00 each. No Bulblets. No Discount.**
- LADY HELEN (Woodward)**—Light pastel salmon of very nice texture. Slightly ruffled and extra nice. **Large, Medium, or Small \$1.00 each. No Bulblets. No Discount.**
- LAUSANNE (Van Duersen)**—Large florets of medium yellow shading to darker self in throat. **L 10c, M 2--15c, S 2--10c, Blts. 25--15c.**
- LAVENDER PRINCE (LaSalle)**—Beautiful ruffled lavender mauve with darker lines in throat. The florets open wide and are well placed on tall strong spikes. **L 75c, M 50c, S 35c. No Discount.**
- LAVENDER QUEEN (Arenius)**—Deep violet lavender, usually clear but sometimes flecked. Very fine midseason commercial. **L 3--25c, M 3--15c, S 3--10c, Blts. 25--10c.**
- LEADING LADY (Johnston)**—Creamy white sport of Picardy. An outstanding glad which has attracted much attention. **L 60c, M 40c, S 25c, Blts. 5--40c.**
- LEGEND (C. Fisher)**—Pure light pink blending to a creamy white throat. Large florets of good texture on tall straight spikes. **L 25c, M 15c, S 2--20c, Blts. 15--15c.**
- LIPSTICK (Balentine)**—Nicely ruffled pure shell pink with bright rose plumes in throat. Florets are large and of very good texture; well placed on tall spikes. **L 40c, M 25c, S 15c, Blts. 10--25c.**
- LUSTRE (Winsor-Moseley)**—A lovely light rosy pink that gets much lighter in the throat where it is overlaid by a most attractive lustrous cyclamen feather. The ruffled edges of the petals are a bit darker than the pink ground color of the individual florets. A fine decorative glad. **L 25c, M 15c, S 2--15c, Blts. 10--15c.**
- MADONNA (Bork)**—We are glad to be able to list Madonna again as it has given increasing satisfaction in our gardens. The snowy white waxy florets are very large and perfectly placed on tall spikes of 18-20 buds. **L 75c, M 50c, S 25c, Blts. 2--15c. No Discount.**
- MAID OF ORLEANS (Pfitzer)**—Heavy textured white with cream throat. A popular commercial. **L 3--25c, M 3--15c, Blts. 25--10c.**
- MARGARET BEATON (Twomey)**—Nice large florets of a good clear white with an orange red blotch in the throat. **L 3--25c, M 3--15c, S 3--10c, Blts. 25--10c.**
- MARGARET JOAN (Errey)**—Beautiful shade of deep shell pink, deepening to a more orange pink in the throat. The florets are large and well formed on tall straight spikes. **L 35c, M 25c, S 15c, Blts. 10--25c.**
- MARGUERITE (Pommert)**—Bright salmon with broad yellow throat on which there is a dusty feather of lighter self. Very strong grower. **L 20c, M 15c, S 2--15c, Blts. 20--25c.**
- MARION PEARL (Benedict)**—Salmon with clear lighter self throat and no markings. Opens many large florets on tall straight spikes. **L \$1.00, M 75c, Blts. 10c each. No Discount.**
- MARSEILLAISE (Scheer)**—Large plain petalled variety of a rich glowing velvety scarlet with cream lines on lower petals. **L 40c, M 30c, S 20c, Blts. 2--10c. No Discount.**
- MARY DAMARIS (Clark)**—Very fine clear medium yellow. **L 2--25c, M 2--15c, S 2--10c, Blts. 15--15c.**
- MASTER MYRON (Krueger)**—Enormous glistening rich red self. The florets are of very good substance and well placed on tall straight spikes. It stands up exceptionally well in the heat and is much admired by everyone who sees it. **L 20c, M 15c, S 2--15c, Blts. 20--25c.**
- MASKERADE (Pfitzer)**—Amber-yellow with distinct scarlet-carmine blotch. The medium sized flowers are of a fine roundish form. A nice bright novelty. **L 75c, M 50c, S 25c, Blts. 2--15c.**
- MAUVETTE (Burns)**—Attractive mauve lavender with two velvety rose-purple lines in the throat. **L 50c, M 30c, S 20c, Blts. 5--25c.**

---

*"Received my bulb order in very good condition and wish to express my gratitude for your generosity in filling it. I am more than pleased and I bet you could almost hear my "Heavens to Betsey" out at Flying Cloud Farms when I saw all the bulbs I had received."*—Mrs. E. P., Arlington, Mass.



MOTHER KADEL

**MERRIMACK (Woodward)**—Rich rose salmon with white throat and midrib through center of each petal. Many open on tall exhibition spikes. **L 50c, M 35c, S 25c, Blts. 25--\$1.00. No Discount.**

**MERRIWA** — Light rose pink with deeper self throat. **L 15c, M 10c, S 2--10c, Blts. 20--15c.**

**MIDNIGHT SUN (Moore)**—Pale peach with a smoky overcast—a beautiful combination—with brighter throat of salmon and cream. Produces fine exhibition spikes and is a dandy novelty. **L 25c, M 15c, S 2--15c, Blts. 10--15c.**

**MISS HARRIET (Carpenter)**—Bright chrome orange with a yellow throat. Blooms are not too large but it is a good early commercial. **L 2--15c, M 2--10c.**

**MISS LOMBARD (C. A. Brown)**—Miss Lombard is distinctly a novelty. Cream with somewhat tulip shaped petals of needlepoint type, the point being edged and dotted with rose. **L 2--15c, M 2--10c S 4--10c, Blts. 30--15c.**

**MOHAWK (Stevens)**—A deep maroon opening up to ten 5" well placed blooms on tall straight spikes. Midseason. **L 25c, M 15c, S 2--15c, Blts. 10--15c.**

**MOTHER KADEL (Kadel)**—Clear medium yellow slightly deeper in the throat, without any markings. **L 15c, M 2--25c, S 2--15c, Blts. 10--15c.**

---

*"Surfside, Bancroft Winsor, Thistle Dew, and Hopedale were front row glads in my garden."*  
—H. D. Y., Mass.

*"Received corms in good condition. Many thanks for the extras and I am looking forward to the time for them to bloom. As usual I find the corms in the pink of perfection."*—H. F. M., New York.



**Gladiolus Arrangement**

**MRS. G. G. ERREY (Errey)**—The creamy white ground color of the large, heavy textured florets, becomes darker in the throat, making a really beautiful flower. **L 25c, M 15c, S 2--15c, Blts. 10--15c.**

**MRS. LULU HUNT** — Very early light salmon with light lipstick throat. Fine tall spikes and very popular with our florists. **L 2-25c, M 2--15c, S 2--10c, Blts. 25--15c.**

**MRS. MARK'S MEMORY (Pfitzer)**—Enormous florets of reddish violet with a small dark carmine blotch on the lower petal which adds to its beauty. A fine exhibition variety. **L 50c, M 30c, S 20c, Blts. 5--25c.**

**MURRALLA (Errey)**—Silvery pink, going brighter at the edges of the petals, and shading lighter toward the throat where there is a heavy garnet blotch tipped with a slight speck of yellow. **L 35c, M 25c, S 15c, Blts. 10--25c.**

**NANETTE (Scheer)**—Beautiful shade of soft baby pink, slightly lighter in the throat. The florets are of excellent texture, large, ruffled, and well placed on tall straight spikes. A lovely new one from this originator. **L \$8.00, M \$6.50, S \$5.00, Blts. \$1.00 each. No Discount.**

**NAROOMA (Errey)**—Attractive bright magenta purple self. A fine midseason exhibition variety. **L 40c, M 25c, S 15c, Blts. 10--25c. No Discount.**

---

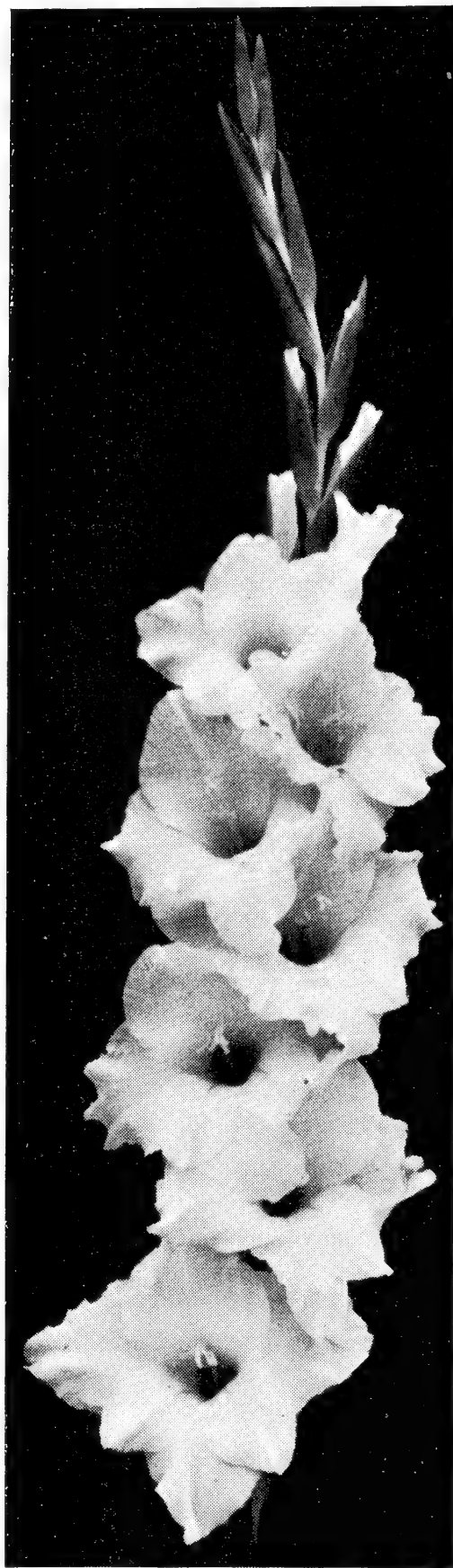
*"Received bulbs in very fine shape and can truthfully say that in all my years of gladiolus growing, this is the first time I've received such a shipment of large, clean, marvelous bulbs. They are really super fine and I mean it. Your medium size bulbs are by far much larger than most growers put out for large size bulbs and I am certainly glad I sent for your catalog."*—  
E. J. W., Franklin Grove, Illinois.

- NORWOTTUCK (LaSalle)**—A beautiful smoky lavender with a more salmon throat. Tall strong grower and one of the prettiest and most popular smokies in our field. **L 25c.**
- ODELLIA (Winsor-Moseley)**—Showy red-orange prim with a large yellow blotch in the throat. The willowy spikes, characteristic of a small decorative, with 5-6 florets open, are nice in a bouquet by themselves or when mixed with other flowers. **L 3--15c, M 6--15c, S 10--15c, Blts. 50--15c.**
- OKARINA (Pfitzer)**—Another fine smoky lavender which is very popular. **L 15c, M 10c, S 2--10c, Blts. 20--15c.**
- OLD GOLD (Both)**—Rich buff orange florets that are bright and attractive on tall, well formed, spikes. **L 2--25c, M 2--15c, S 2--10c, Blts. 15--15c.**
- ORANGE DREAM (Roozen)**—Enormous round florets of brilliant orange with velvety red feather in throat and lighter midribs. **L 3--25c, M 3--15c, S 3--10c, Blts. 25--10c.**
- ORCHID BEAUTY (Winsor-Moseley)**—Rose lavender with striking deeper self lines becoming magenta farther in the throat. An orchid novelty which has aroused much interest in our garden and is most popular with the florists as well as hobbyists. One of the tallest growing glads in our field. **L \$1.00, M 60c, S 30c, Blts. 3--25c.**
- ORNAT** — Rich rose red with darker self lip and shading lighter at back of throat. **L 2--25c, M 2--15c, S 2--10c, Blts. 15--15c.**
- PARNASSUS (Ristow)**—Very fine rich pansy purple with a few cream specks in the throat which add to its attractiveness. **L 2--25c.**
- PEGGY LOU (Wilson)**—Lovely rose pink. Florets are large on very long flower heads. **L 10c, M 2--15c, S 2--10c, Blts. 25--15c.**
- PELEGRINA (Pfitzer)**—Very dark blue self with all the buds showing color. One of the older varieties which still is very popular. **L 10c.**
- PHE德拉 (Benedict)**—Clear light rose pink with white throat. 18-20 buds, 6 open, 56" spike, 5½" florets. **L 50c, M 30c, S 20c, Blts. 5--25c.**
- PHOEBE (Scheer)**—Clear medium pink with lighter throat and no markings. Florets are large, of good substance, and slightly ruffled. **L \$1.50, M \$1.00, S 75c, Blts. 15c each. No Discount.**
- PICARDY (Palmer)**—Large florets of a pleasing apricot color on tall strong spikes but too well known to need further description. **L 3--25c, M 3--15c, S 3--10c, Blts. 25--10c.**
- PINK JEWEL (Errey)**—A beautiful shade of soft shell pink. The large florets are of good texture and well formed on tall strong spikes. A lovely glad. **L \$1.00, M 60c, S 30c, Blts. 3--25c. No Discount.**
- PINK RADIANCE (Quackenbush)**—Light silvery pure pink of exhibition type. Fine tall spikes with 6-8 large florets open at once. A fine cut flower as well as an exhibition variety. **L 15c, M 2--25c, S 2--15c, Blts. 10--15c.**
- PIONEER (LaSalle)**—Very large deep salmon pink blending to a cream throat. Tall, straight, husky grower. Midseason. **Large, Medium or Small \$2.00 each. No Discount.**
- POLAR ICE (Pfitzer)**—Pure white. Good early commercial. **L 3--15c, M 6--15c.**
- PRESTIGE (Winsor-Moseley)**—Soft pink, slightly on the salmon tone, shading to cream as it goes into the throat. The florets are large and ruffled and well placed, with all of the buds showing color. A very popular cut flower. **L 2--35c, M 2--20c, S 4--20c, Blts. 20--25c.**
- PREUSSEN'S GLORIA (Pfitzer)**—Very rich velvety dark black red with a fine white line running down the middle of the lower petals. Heavy textured, well-formed florets on long straight spikes. **L \$2.00. No Discount.**
- PURPLE BEAUTY (Roozen)**—Rich dark red violet of good substance with 6-8 open on 19 bud spikes. **L 2--25c, M 2--15c, S 2--10c, Blts. 15--15c.**

---

*"I wish to tell you that the gladiolus bulbs arrived in fine condition. They were as clean and free from disease as any I have ever received."*—B. H., Alden, Minnesota.

*"When I opened the package of bulbs I received from you I was certainly delightfully surprised at the number and quality of the corms that I had received in exchange for so small a sum of money. Your generosity did indeed surpass my expectations. The medium sizes were nearer the large grade and all were as clean as a hound's tooth."*—A. M., Detroit, Mich.

**BRONZEWING****SURFSIDE**

*"I consider Capeheart and Surfside two outstanding glads and I would not want to be without them. Had some very good blooms from Surfside bulblets last summer which I think is pretty good for our short growing season."—G. W., N. Springfield, Vermont.*

- RECADO (Palmer)**—Rosy ash with rose salmon veinings and darker blotch in throat. A pleasing smoky novelty. **L 10c, M 2--15c, S 2--10c, Blts. 15--15c.**
- RECORDER (Whiteley)**—Bright purplish violet with deeper throat. **L 3--25c, M 3--15c, S 3--10c, Blts. 25--10c.**
- RED BANK (Winsor-Moseley)**—Bright red with darker red feather edged white in the throat. 8 large blooms open on 18 bud spikes. **L 2--35c, M 2--20c, Blts. 20--25c.**
- RED BEAUTY (Alkemade)**—A scarlet red self. Flowers are of medium size, blooms very early and makes a good commercial. **L 2--15c, M 2--10c, S 4--10c, Blts. 30--15c.**
- RED ENSIGN (Errey)**—Bright scarlet with conspicuous white throat edged scarlet. **L 20c, M 15c, S 2--15c, Blts. 20--25c.**
- RED GIANT (Phillips)**—Bright rose red, deepening in the throat, with a white line through center of lower petals. 8 perfectly placed large blooms open at once on tall strong spikes. **L 2--25c, M 2--15c, S 2--10c, Blts. 15--15c.**
- RED LIGHTNING (Pruitt)**—Pleasing bright red with cream blotch in the throat. **L 10c, M 2--15c, S 2--10c, Blts. 25--15c.**
- RED RIVAL (LaSalle)**—Large, showy, ruffled florets of clear scarlet self. Tall, strong grower. **L \$1.00, M 75c, S 50c, Blts. 10--\$1.00. No Discount.**
- ROBERT SHIPPEE (Winsor-Moseley)**—Despite the beauty of many of the new glads, this variety still is one of the most beautiful we have seen. The china white florets are ruffled and enhanced by a dainty spot of rose in the throat. Popular commercial. **L 3--25c, M 3--15c, S 3--10c, Blts. 25--10c.**
- ROSA VAN LIMA**—Lovely pure pink with a white midrib and throat and just a touch of a dusty lavender feather deep in the throat. A fine early commercial. **L 3--25c, M 3--15c, S 3--10c, Blts. 25--10c.**
- ROSEA (Errey)**—Clear light rose pink with deeper self lines in throat. Florets are very large, of good texture, with 8 open at once. **L \$1.00, M 75c, S 45c, Blts. 3--25c. No Discount.**
- ROSY MORN (Riley)**—Clear light rose pink with rich white throat. An outstanding early commercial and exhibition variety. **L 15c, M 10c, S 2--15c, Blts. 20--15c.**
- ROYAL** — Light reddish purple darkening toward the throat which is lightened by a white dart. Medium decorative. **L 10c, M 2--15c, S 2--10c, Blts. 25--15c.**
- RUFFLED BEAUTY (Prestgard)**—A very nice, heavily ruffled, light yellow. A large decorative and very pretty. **L 3--25c, M 3--15c, S 3--10c, Blts. 25--10c.**
- SENSATION (Marshall)**—Large, heavily ruffled florets of medium bright rose. Good texture and fine for exhibition as well as commercial purposes. **L 3--25c, M 3--15c, S 3--10c, Blts. 25--10c.**
- SOUTHERN DRAMA (Wilson)**—Lovely large vivid scarlet with a few cream lines in the throat. Tall strong grower. **L \$1.00, M 75c, S 50c, Blts. 10--\$1.00. No Discount.**
- SPITFIRE (Evans)**—Slightly ruffled florets of clear rosy salmon with white throat on which there are a few cherry lines. **L 75c, M 50c, S 25c, Blts. 2--15c.**
- STOPLIGHT (Lins)**—Bright ruffled red of good texture, opening up to eight large florets on tall spikes. **L 25c, M 20c, S 2--20c, Blts. 10--25c.**
- SUNBURST (Errey)**—Beautiful clear orange apricot with deep orange blotch, edged lighter self, in throat and self colored dart through center of blotch. Different and very lovely. **L \$1.00, M 60c, S 30c, Blts. 3--25c.**
- SUNGLO (Errey)**—Glistening light orange with slightly lighter throat and deeper self pencillings. Bright and attractive. **L \$1.00, M 60c, S 30c, Blts. 3--25c.**
- SURFSIDE (Winsor)**—Beautiful ruffled white with fine lavender line in throat. Bulblets are plentiful and germinate easily and it has become a most popular commercial as well as a winner at many shows. **L 3--25c, M 3--15c, S 3--10c, Blts. 25--10c.**

---

*"Have never received a finer, cleaner, order of bulbs. Every one was young, high crowned, and free of disease. Many thanks for the generous overcount and fine extras. Am very well pleased in every way and want to extend my sincerest thanks and appreciation for the fine way you handled my small order."*—K. L., Ottawa, Illinois.

- SUSQUEHANNA (Herridge)**—Lovely apricot pink flesh with creamy throat. Large florets on long straight spikes. Very nice. **L 35c, M 25c, S 15c, Blts. 10--25c.**
- SYLVIA TWING (Winsor-Moseley)**—A lovely platinum pink flower, a bit more creamy in the throat where there are pencillings of a deeper self color. A typical large decorative variety which has been most popular as a cut flower. **L 25c, M 15c, S 2--15c, Blts. 10-15c.**
- SYLVIA WINSOR (Symons)**—Clear light cream, becoming darker in the throat, with a few magenta markings. Large, well-formed florets on exhibition spikes. **L 2--25c, M 2--15c, S 2--10c, Blts. 15--15c.**
- TAKINA (Burns)**—Enormous blooms of clear rosaline purple (almost a pure violet red.) Placement is good, it is a strong grower, and propagates easily. **L 3--25c, M 3--15c, S 3--10c, Blts. 25--10c.**
- TARA (Hogan)**—Large flowered deep salmon with a few attractive smoky flecks and broad light yellow throat. Tall and nice. **L 35c, M 25c, S 15c, Blts. 10--25c.**
- THISTLE DEW (Winsor)**—A dandy light peach pink with a creamy peach throat and self pepperings. The florets are large and ruffled and lay flat against the stem. **L 3--25c, M 3--15c, S 3--10c, Blts. 25--10c.**
- TOWN TALK (Balentine)**—Light salmon with lighter midribs and delicate light red pencilled throat. Tall and nice and attracted much attention in our field this summer. **L \$2.00, M \$1.50, S \$1.00, Blts. 20c each. No Discount.**
- VALERIA (Pruitt)**—Clear red with a silky sheen. It shades a bit darker towards the center and has a faint white line on the lower petals. **L 3--25c, M 3--15c, S 3--10c, Blts. 25--10c.**
- VALOR (Baerman)**—Deep salmon with rich yellow throat. A good midseason cut flower. **L 2--20c, M 2--15c, S 2--10c, Blts. 25--15c.**
- VICTORY (Heemskerck)**—Rcsey orange with white throat on which there are slight garnet lines. **L 3--25c, M 3--15c, S 3--10c, Blts. 25--10c.**
- VANGOLD (Van Voorhis)**—Rich deep yellow. A fine addition to this color class which attracted much attention at the Boston Show this past summer. **L \$1.00, M 75c, S 50c, Blts. 10--\$1.00.**
- VULCAN (Stevens)**—Very nice purple on the red-violet shade. Florets are slightly ruffled and of good size. **L 35c, M 25c, S 15c, Blts. 10--25c.**
- WALLAROY (Errey)**—White with distinct pale magenta throat marking which is edged and lined with cream. **L \$1.00, M 60c, S 30c, Blts. 3--25c.**
- WAMPUM (Winsor)**—Large, slightly ruffled florets of a dark smoky rose with an attractive white feather dusted a bit at the edges. **L 2--25c, M 2--15c, S 2--10c, Blts. 15--15c.**
- WHITE GOLD (Scheer)**—Cream blending to gold in the throat. The enormous blooms are slightly ruffled, heavy textured, and well placed. Much admired by everyone who sees it. **L 35c, M 25c, S 15c, Blts. 10--25c.**
- WILDWOOD (Riley)**—Large ruffled florets of pale rose pink with creamy throat and midribs. Tall, early mid-season, exhibition variety and a fine commercial. **L 50c, M 40c, S 30c, Blts. 10--50c. No Discount.**
- WINTERMOON (Buchanan)**—Medium blue with white blotched throat and midrib. **L 65c, M 50c, S 35c, Blts. 2--15c. No Discount.**

---

*"The bulbs you sent were excellent and you were more than generous with your extras. All of this was very much appreciated. Thank you for the extra Honeymoon. To my mind it is much lovelier than your catalog description indicates."—J. W. C., Maumee, Ohio.*

*"May I express my appreciation for the very fine bulbs you sent me. I had no more beautiful blooms than those from Flying Cloud. I was especially keen about Bancroft Winsor and Lustre. The latter was exquisitely beautiful and I love it. Bancroft Winsor stood straight and true when others around it were lopping and I like the color. I was also pleased with Thistle Dew and Red Lightning and of course I never can get enough of Surfside, Red Bank, and Sylvia Twing. I think you have propagated some outstanding glads."—A. M. B., Atlantic, Iowa.*

*"The shipment of bulbs recently received were so fine I want to say that I never from any one received bulbs so clean, well kept and healthy as these. They were splendid."—W. B. R., Peoria, Illinois,*





Gladiolus Arrangement

### ARISTOCRATIC COLLECTION

If you do not care to know the name of each variety as it blooms, a collection is the value supreme. Special care will be used to see that all colors, from white to the dark reds and purples, are included. The cost of the bulbs if purchased separately, and each variety named, would be at least three times the price of this **unlabeled collection**.

**100 assorted large (1" up) bulbs for \$5.00; 50 for \$2.75.** With each collection of one hundred bulbs we will add—free—2 large bulbs (labeled) of Cape Cod.

**Same Collection but of Medium Size Bulbs: 100 for \$3.50; 50 for \$2.00.** With each collection of one hundred bulbs we will add—free—2 medium bulbs (labeled) of Cape Cod.

---

*"I have all your originations and they surely have what it takes! They are favorites of mine, and I have won many prizes at the shows with them. In my estimation Prestige is the most beautiful glad I have ever grown and I have grown over 2000 named varieties in my gardens since 1922. It has beauty in the garden, in the vase, under any kind of light; it is always straight; I have never had a misplaced bloom; it produces well. What more could be desired? I am all for the Winsor varieties."*—W. J. D., Michigan.



RED BANK

**WHOLESALE PRICES — F. O. B. New Bedford, Mass.**

**Discounts Do Not Apply to This Wholesale List**

If you desire thousand lots of any of the varieties in this wholesale list, the price will be eight times the price per hundred. 25 or more at the 100 rate; 250 or more at the 1000 rate where available.

If out of size ordered we will send the next smaller size and add enough extra to offset the difference in price unless otherwise requested.

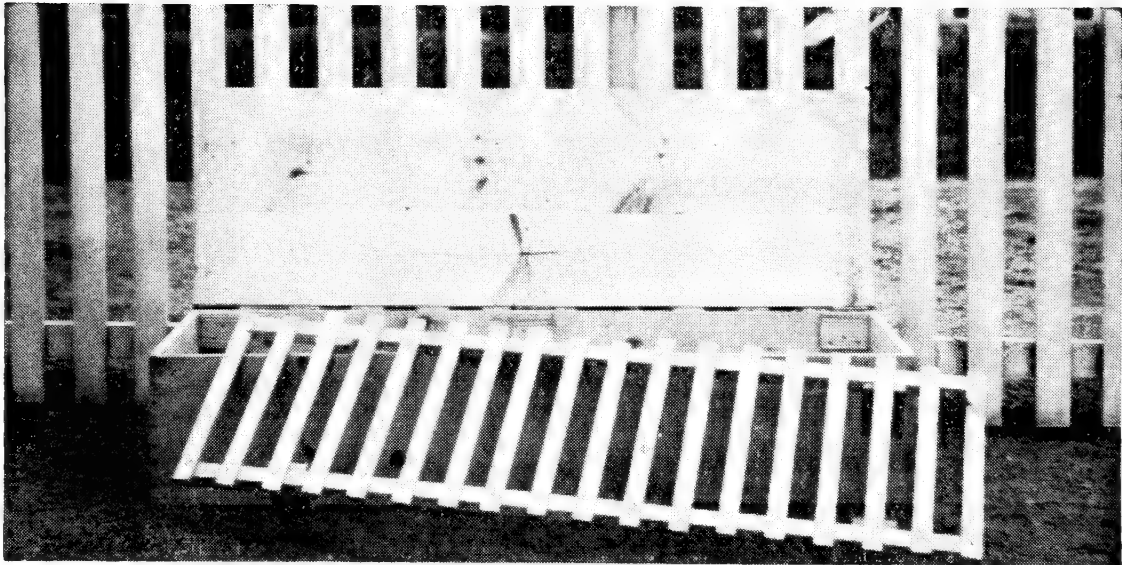
All Stock Subject to Price Sale. Obvious Errors in Prices are Cancelled.

	Per	No. 1 1 1/2" up	No. 2 1 1/4"-1 1/2"	No. 3 1"-1 1/4"	No. 4 3/4"-1"	No. 5 1/2"-3/4"	No. 6 3/8"-1/2"	Bulblets	
								1/2 Pt.	Quart
Alsace .....	100	\$15.00	\$13.00	\$11.00	\$9.00	\$7.00	\$4.00	\$7.00	.....
Bingo .....	100	7.00	6.00	5.00	.....	.....	.....	4.00	.....
Black Opal .....	100	7.00	6.00	5.00	4.00	3.00	2.50	4.00	.....
Blue Beauty .....	100	8.00	6.50	5.00	4.00	3.00	2.50	4.00	.....
Cape Cod .....	100	50.00	40.00	30.00	20.00	16.00	12.00	30.00	.....
Capeheart .....	100	7.00	6.00	5.00	4.00	3.00	2.50	3.00	10.00
Flora Farmer .....	100	7.00	6.00	5.00	4.00	3.00	2.50	4.00	15.00
Gold Dust .....	100	3.50	2.50	2.00	1.50	1.25	1.00	1.25	4.00
Gunpowder .....	100	35.00	30.00	25.00	20.00	15.00	12.00	6.00	.....
Hopedale .....	100	15.00	12.00	8.00	6.50	5.00	4.00	7.00	.....
King William .....	100	10.00	8.00	7.00	6.00	4.00	3.00	5.00	.....
Lavender Queen .....	100	7.00	6.00	5.00	4.00	3.00	2.50	4.00	.....
Lustre .....	100	20.00	18.00	15.00	12.00	8.00	6.00	8.00	.....
Maid of Orleans .....	100	7.00	6.00	5.00	.....	.....	.....	.....	.....
Midnight Sun .....	100	.....	13.00	11.00	9.00	7.00	4.00	7.00	25.00
Mother Kadel .....	100	10.00	9.00	8.00	6.50	5.00	4.00	7.00	25.00
Mohawk .....	100	.....	12.00	8.00	6.00	4.00	3.00	5.00	15.00
Mrs. Lulu Hunt .....	100	10.00	8.00	7.00	.....	.....	.....	3.00	10.00
Pink Radiance .....	100	10.00	9.00	8.00	6.50	5.00	4.00	7.00	25.00
Prestige .....	100	12.00	10.00	8.00	6.50	5.00	4.00	7.00	.....
Red Beauty .....	100	6.00	5.00	4.00	3.00	2.50	2.00	3.00	10.00
Robert Shippee .....	100	6.00	5.00	4.00	3.00	2.50	2.00	3.00	10.00
Rosa Van Lima .....	100	7.00	6.00	5.00	4.00	3.00	2.50	3.00	.....
Surfside .....	100	7.00	6.00	5.00	4.00	3.00	2.50	3.00	10.00
Sylvia Twing .....	100	15.00	12.00	8.00	6.50	5.00	4.00	7.00	.....
Thistle Dew .....	100	7.00	6.00	5.00	4.00	3.00	2.50	3.00	.....

### MAY WE SUGGEST ?

If you have been growing gladiolus for some years, and are familiar with color descriptions and exhibiting, you can broaden your gladiolus interest and enjoyment by owning the Color Chart, published by the New England Gladiolus Society. This has gone through four revisions and the latest edition, with lacquered finish, has brighter colors than ever. This is not only the standard for gladiolus color classification but is now included also in the National Council of State Garden Clubs—"Handbook of Flower Show Judging"—more than 6000 copies have been distributed in the past few years.

If you wish to add \$2.00 (the actual cost) to your bulb order we shall be glad to forward it to N.E.G.S. for you. You may order from the Society direct,—if so, please mention reading about it here.



### Box for Shipping Blooms to the Shows

This is the type of box we have used to ship blooms to the shows for several years. It is made of white pine or any light wood. Inside measurements, 48" long, 15" wide, 9" high. Stock is  $\frac{1}{2}$ " thick except ends which are  $\frac{5}{8}$ "; the cover has three cleats on the top and three  $2\frac{1}{2}$ " butt hinges. The front of the cover is held down in front by a couple of wire nails and then a wire or rope put around the box to be sure the cover is not pushed up in transit. The table to hold the second layer is made of laths nailed on a 1" x 1" frame; let them be long enough so the table can not move sideways or endways and use short pieces of lath for the legs. Let the legs be long enough so the table comes up half way ( $4\frac{1}{2}$ ") of the box thus dividing the inside space equally. When you put the table in be sure no blooms are under the legs.

*From* \_\_\_\_\_

\_\_\_\_\_

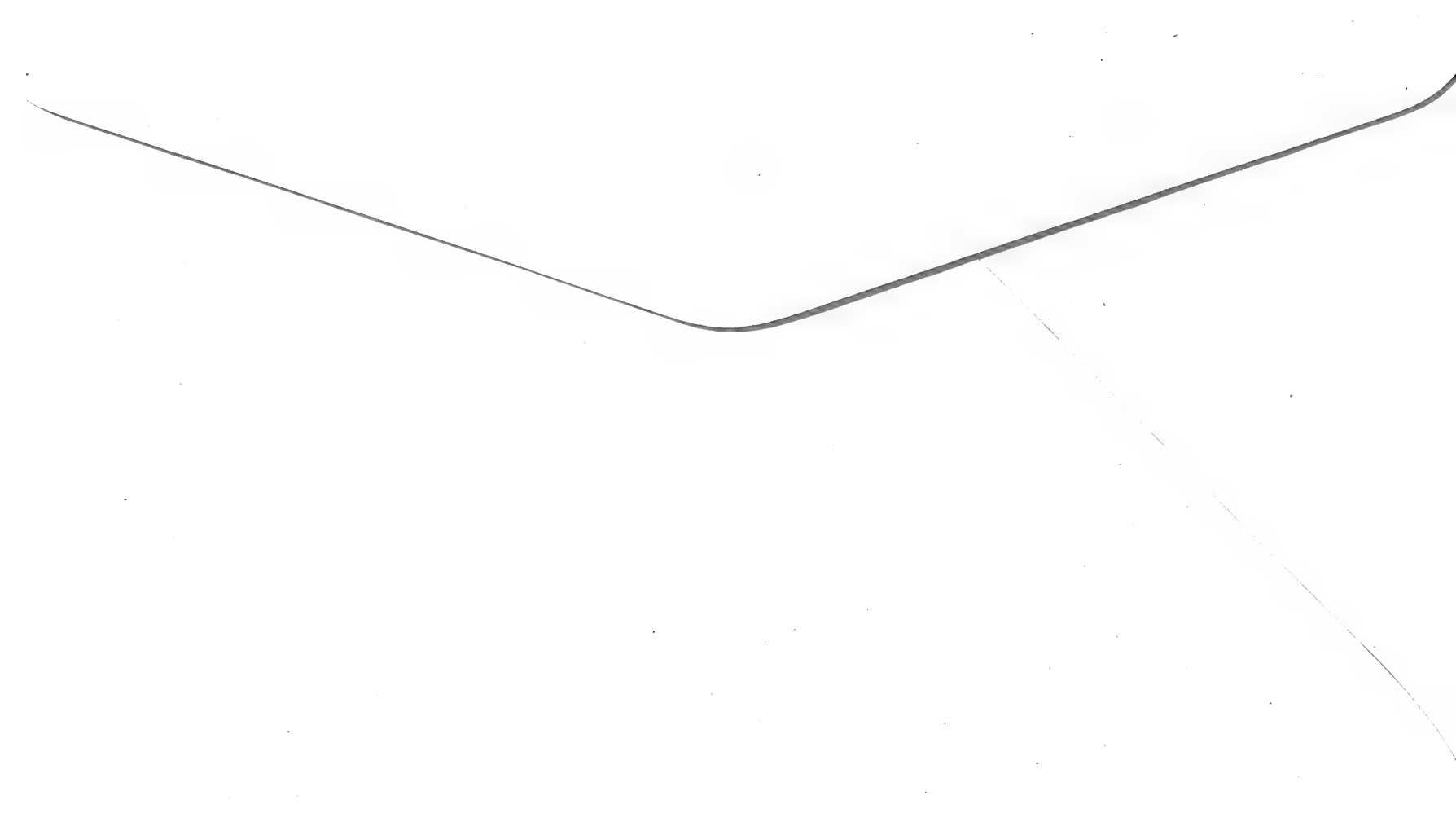
\_\_\_\_\_

FLYING CLOUD FARMS, INC.

MRS. BANCROFT WINSOR,

Acushnet Station,

New Bedford, Mass., U.S.A.



● ORDER BLANK ●  
**FLYING CLOUD FARMS, INC.**  
**MRS. BANCROFT WINSOR**  
 ACUSHNET STATION, NEW BEDFORD, MASS., U. S. A.

DATE OF ORDER \_\_\_\_\_ 194\_\_\_\_

NAME \_\_\_\_\_ STREET \_\_\_\_\_

POST OFFICE \_\_\_\_\_ STATE \_\_\_\_\_

DATE DELIVERY WANTED \_\_\_\_\_

We usually give extras with each order, varying with the size of the order; we want to send what you prefer so please check which you desire.

.....Extra count of varieties ordered.

.....Varieties of our choice.

.....Varieties you may like to try; mention several from which we may select.

11-29-45 8M AMER. 13655

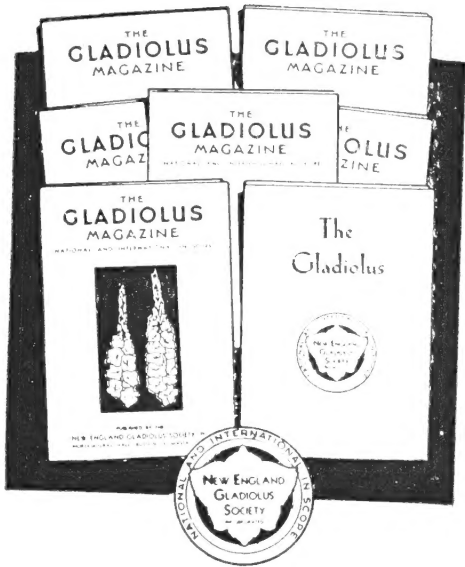
Quantity	Size	Name	Amount

(Over)





## GLADIOLUS SOCIETIES



Anyone growing gladiolus should join some society and keep up to date with the best cultural practices and receive the valuable and entertaining information constantly being released,—one article could save you as much as three to ten years' dues.

The New England Gladiolus Society is both national and international in scope with about 5000 members by whom it is kept abreast of latest developments which it releases for you.

There are a number of state societies, many of them issuing quarterly bulletins to keep their own members well acquainted with each other. Most of them have affiliated with N.E.G.S. It will be worth your while to join the organization in your own state.

::-----::

### Application Blank for New Member

#### THE NEW ENGLAND GLADIOLUS SOCIETY, INC.

Horticultural Hall, Boston 15, Mass.

Date .....

Send To: NEW ENGLAND GLADIOLUS SOCIETY, INC.,  
A. K. Parker, Secretary, Box 2, Norwood, Mass., U.S.A.

#### Supplement Membership (non-assessable)

**\$2.00**

Entitles you to a 240 page deluxe, flexible, imitation leather bound copy of The Gladiolus 1946 (21st edition) issued in January.

You will also receive in 1946—February, April, July, September, October, and December—The Gladiolus Magazine (24 or more pages each) with seasonal culture information (planting, fertilizing, harvesting, storing) latest research material, show dates and reports, and news from other societies and abroad.

The Gladiolus (book) of 240 pages, profusely illustrated, has for years been the acknowledged world authority on gladiolus. It enjoys a prestige based upon intense and hard work, and exclusive contributions. The Show Winner Symposium, Parentages of Varieties, Reports, Experiences of Members, are worth many times the cost to you of membership in this non-profit educational society.

**NAME** .....  
(Please Print)

**ADDRESS — STREET** ..... **CITY**..... **STATE** .....

Recommended by: FLYING CLOUD FARMS, Acushnet Station, New Bedford, Mass.

Make check, money order, etc., payable in Norwood, Mass.; U. S. funds to New England Gladiolus Society, Inc.

