

## **Historic, Archive Document**

Do not assume content reflects current scientific knowledge, policies, or practices.



62.01

LIBRARY  
RECEIVED  
JAN 10 1947  
Agriculture

---

---

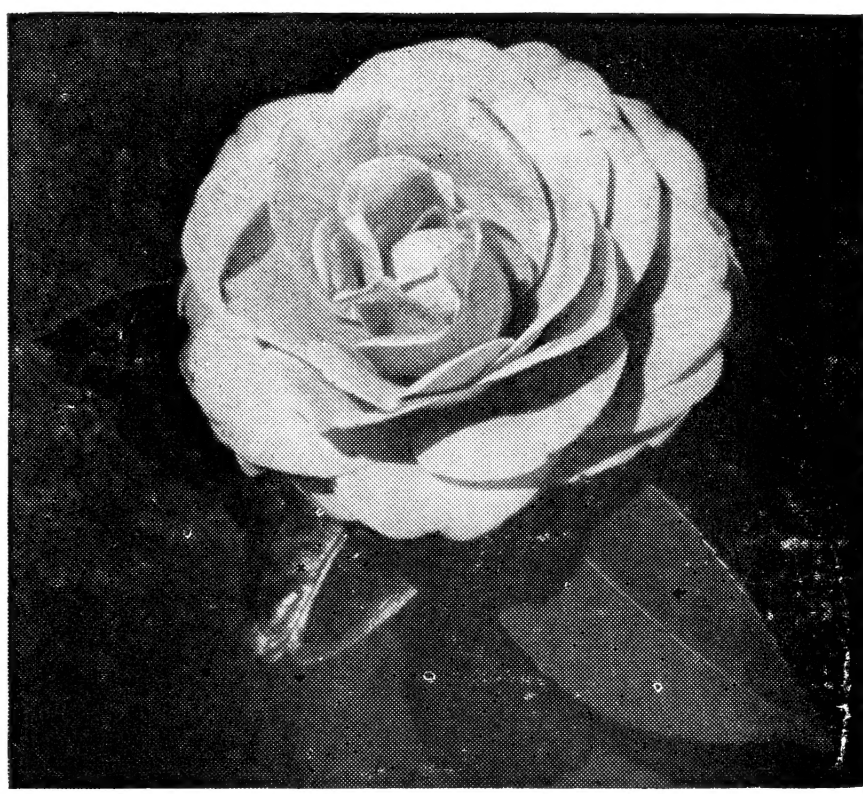
**Retail Price List**

---

---

# AZALEA GLEN NURSERIES

**Loxley, Ala.**



Located at Intersection of  
U. S. 90 and Ala. 3

17 Miles East of Mobile

**SEASON**

**1946 - 1947**

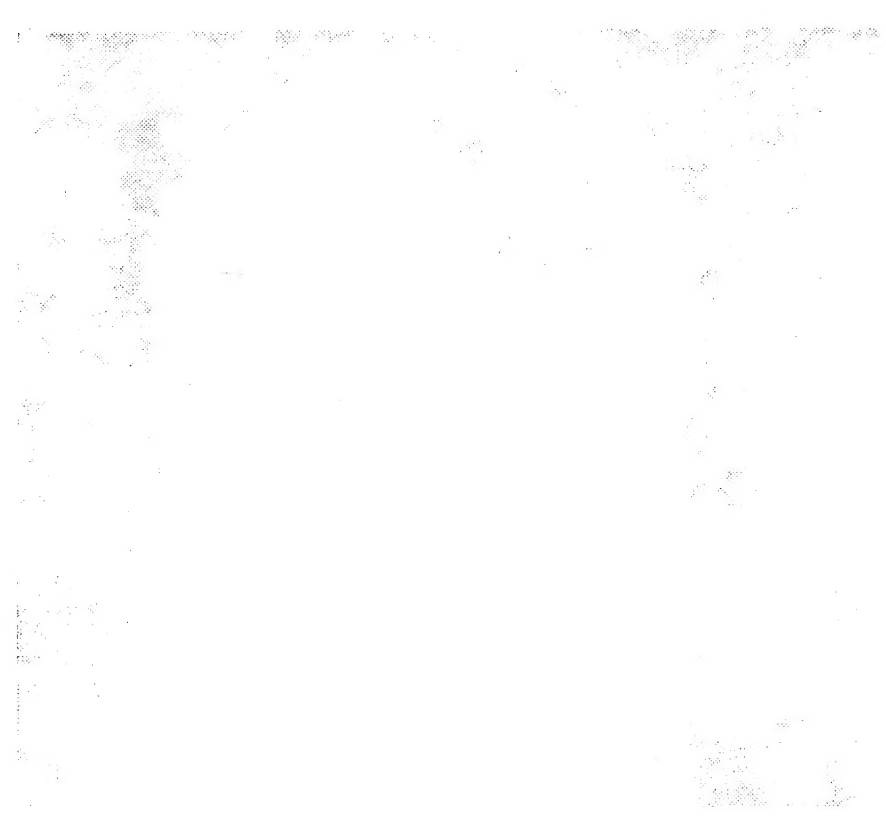
---

---

THE UNIVERSITY OF CHICAGO

PHYSICS DEPARTMENT

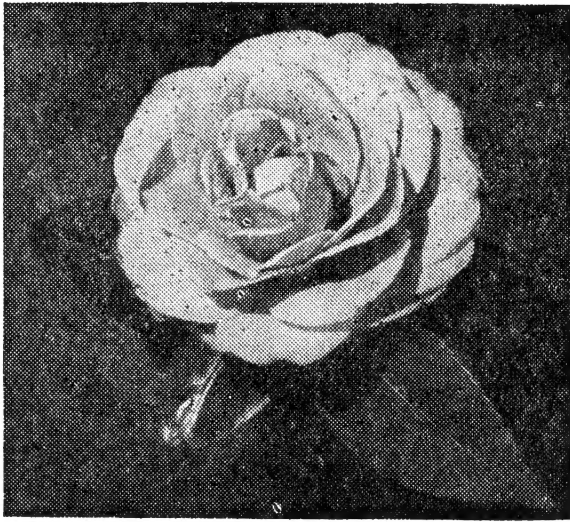
PHYSICS 435



Buy Your Fancy Camellias From

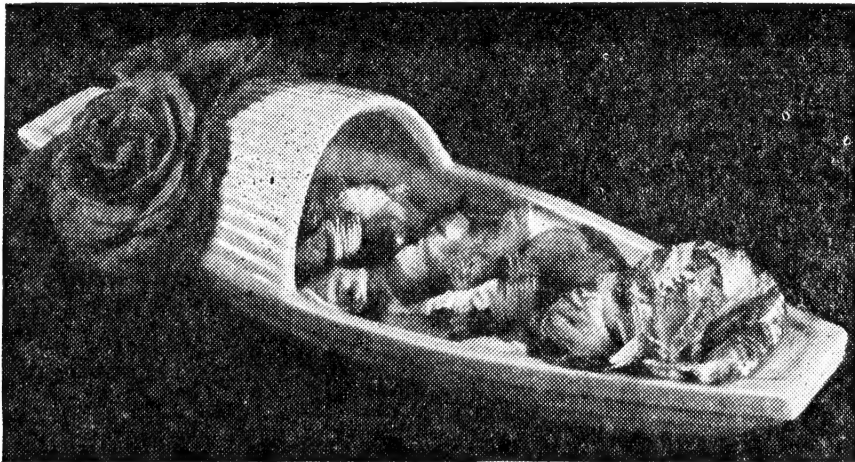
A Z A L E A G L E N

Home of the Glen No. 40 Camellia



GLEN NO. 40 IN BUD

Use Camellias for Table  
Decoration



## We Thank You

Friends and Patrons:

For bearing with us during the war and through labor and material shortages.

From the many letters of praise for our stock from our patrons this season, we feel satisfied that you will like the stock we have to offer this season, the best we have ever had.

### **CAMELLIAS ARE EASY TO GROW — DON'T PLANT TOO DEEP**

**WE GUARANTEE:** Our stock to be true to name and properly packed. It takes us from three to eight years to grow a good camellia, according to sizes to offer for sale. If you kill them in a few days we cannot be responsible, because we cannot control conditions after plants leave the nursery.

**TERMS:** Our responsibility for delivery ceases when we have delivered the stock in good condition and accepted as same by the transportation company or carrier, any claims should be made to them, on receipt of stock.

**ALL ORDERS CASH:** Add sales tax if your state demands sales tax.

**TRANSPORTATION:** How do you want order shipped: Parcel-post, motor-express, express or freight.

**WE CLOSE SUNDAYS:**

Visitors always welcome.

PHONE: LOXLEY 1705

H. L. WINDBIGLER  
M. M. WINDBIGLER  
Owners

**CAMELLIA SASSANQUA**

Plant these fast growing evergreen flowering plants for backgrounds and hedges!

**BRILLIANCY** — Single pink flowers, compact grower: 15 to 18 inch, \$2.00 — 18 to 24 inch \$3.00

**MINE-NO-YUKI** — (Snow On The Mountain — Flowers double-peony form, pure white — 6 - 8 inch only — 50c each.

**BROAD LEAF EVERGREENS**

**ARDISIA CRENULA** — Compact evergreen shrub with bright red berries: Med. \$1.00-Large \$1.50

**ABELIA GRANDIFLORA** — Small \$1.00, Medium \$1.50, Large \$3.00.

**BOTTLE BRUSH** (*Callistemon Rigidus*) — In pots — \$1.00 and \$2.00 each.

**BOXUS - SUFFUTICOSA** — Old English Box — Small \$1.00; Medium \$1.50; Large \$5.00.

**GARDENIA** (Cape Jasmine) — Bright Glossy foliage with large waxy flowers: Medium \$1.00; Large \$2.50.

**OLEANDER** — The oleander is a most desirable plant for sea-side planting: Colors, red, white, yellow. In pots, \$1.00 each. Large specimen white \$7.50 each.

**PITTOSPORUM TOBIRA** — A plant that can be used about anywhere in your planting — Medium \$1.25; Large \$4.00 each.

**PYRACANTHA FORMOSANA** — This variety has mass of red berries. Medium \$1.50; Large \$2.50.

**LUCIDUM-COMPACTUM** — Small 75c; Medium \$1.50; Large \$2.00 each.

**ILEX CRENATA ROTUNDIFOLIA** — Can be used as a sheared specimen any place in a planting. Heavy \$3.00 each.

**NANDINA** — Well known red berry bearing plants: Small 75c; Medium \$1.25; Large \$2.50; Heavy \$5.00 each.

**TEA OLIVE** — Having fragrant white flowers: \$3.00 and \$4.00 each.

**PODOCARPUS** (Japanese Yew) — 2-3 ft., \$2.50; 3-4 ft. \$3.50; 4-5 ft. \$5.00 each.

**PHONTINA GLABRA** — Photinia is a mass of burning scarlet when covered with new growth — 12-18 in., \$1.00 each; 3-4 ft, \$2.50; Heavy sheared plants \$7.50.

**AZALEA INDICA**

**CHINA SEAS** — Brilliant madarin pink: \$2.50 and \$3.50 each.

**DAPHNE RED** — Compact low grower: \$3.50, \$5.00 and \$7.50 each.

**ELEGANS** — Pink — Small plants \$1.00; Medium \$1.50; Heavy field grown \$5.00 - \$15.00 ea.

**FORMOSA** — Lavender: fast grower, small plants \$1.00; medium \$1.50; Heavy \$5.00 each.

GULF PRIDE — Orchid: small plants: \$1.25 medium, \$2.00 each.

PRIDE OF MOBILE — Watermelon red: small plants \$1.50; Field grown \$4.00 to \$7.50 each.

PHOENICIA — Lavender: compact good grower: Field grown \$1.00 to \$7.50 each.

### NO HARDY KURUME AZALEAS

### CONIFERS

CEDRUS DEODARA — We have field grown plants priced from \$3.00 to \$10.00.

JUNIPERUS (Pfitzeriana) — Small plants, \$1.25; Medium \$2.50; Large \$4.00 each.

JUNIPERUS SYLVESTRIS — 5 to 6 feet, \$5.00 ea.

RETINOSPORA SQUARROSA — Small \$1.25. ea.

RETINOSPORA PLUMOSA AUREA — 18 to 24 inch, \$3.00; two for \$5.00.

RETINOSPORA ERICOIDES — 3 to 4 ft., \$3.00; 4 to 5 ft, \$5.00 each.

THUJA AUREA NANA (Berchman's Golden) — 18 to 24 inches, \$3.00; two for 5.00.

### SHADE AND ORNAMENTAL TREES

MAGNOLIA ACUMINATA — 5-6 ft, \$3.00.

MAGNOLIA GRANDIFLORA — 2 to 3 ft, \$2.00; 3-4 ft, \$5.00; 4 to 5 ft \$7.50 each.

MIMOSA — 4-5 ft \$2.00; 5-6 ft \$3.00 each.

LIVE OAKS — Best shade for the South: 2 to 3 ft. \$3.00; 3 to 4 ft, \$5.00; 4-5 ft, \$7.50 each.

DOGWOOD — 3 to 4 ft, \$1.50; 4 to 5 ft., \$2.50; 5 to 6 ft., \$4.00 each.

WILLOW (Weeping) — Small \$1.00; Medium \$2.50 each.

### PALMS

COCAS AUSTRALIAS — Medium \$3.50; Large \$5.00; Heavy \$7.50 each.

### BULBS

AMARYLLIS HYBRIDA — Plant these in your borders. Priced according to the colors — \$1.00 to \$3.50 each.

ANTIGONON LEPTOUS — With beautiful coral pink flowers: \$1.00 each.

CALADIUM (fancy leaved) - 35c each; 12 for \$4.00.

CRINUM PINK — Pink radiance rose color — Medium \$1.50; Large \$2.50.

CRINUM — White with pink stripe: \$1.00 each.

CANNAS — The President Red: 10c each; \$4.50 for 50.



CREOLE (Easter Lily) — White. Each 50c; 6 for \$2.50.

DAY LILY (Hermerocallis) — These flowers should be used more in the borders and for mass plantings. Easy to grow, wonderful cut flowers. We have 30 varieties: Single divisions 50c each; Clump \$3.00.

FORMOSA LILY — \$1.50.

GLADIOLUS — Mixture \$1.00 per 12; \$6.00 per 100.

TIGER LILY — Orange with darker spots — 50c each; \$5.00 per 12.

ROSES — Pink and red Radiance — 75c each; \$8.00 per 12.

GERBERAS (Transvall Daisy) — Single divisions, 50c each; clump, \$3.00.

### FLOWERING SHRUBS

HYDRANGEAS — Blooms may be pink or blue, depending on soil and culture: Small 50c; Medium \$1.00; Large \$4.00.

CREPE MYRTLE — Watermelon Red: Small 75c; Medium \$1.50 each; Standards \$4.00 each.

SPIREA (Reevisinia) — Heavy, \$2.00 each.

CHINESE MAGNOLIA (Stellata) — White, Small \$1.50 each.

### CAMELLIA JAPONICA

- |  |                                |
|--|--------------------------------|
| *Admiral Nimitz, \$15.                   | *Arajishi, \$10 to \$15.       |
| Alba Plena, \$5 to \$10.                 | *Aspacia \$7.50 to \$25.       |
| Alba Supreme, \$10.                      | Apple Blossom.                 |
| Alba Frimbriata, \$10.                   | *Agnes M. Stowe, \$15.         |
| *Alba Superba,                           | American Beauty, sold.         |
| Augusta Wilson, \$4.00.                  | Anna Lee, sold.                |
| Amazing.                                 | Akebono, variegated.           |
| *Adolphe Audusson, variegated.           | *Anita.                        |
| Admiration, sold.                        | Aitonia.                       |
| Bonamina, sold.                          |                                |
| Brilliant, \$7.50.                       | *Blush Hibiscus, \$10 to \$20. |
| Concordia, Angelo Cochet, \$7.50.        | Baron Von Bleichroeder, sold.  |
| *Bessie McArthur.                        |                                |
| Chandlerii Elegance, \$3.00 to \$25.00.  | California Tri - color, sold.  |
| Col Firey, \$10.                         | Clara B. Myrick, sold.         |
| Christine Lee.                           | Chin's Bright Red, \$10.       |
| Cameo Pink, \$15.                        | *California, \$10 to \$15.     |
| Chandlerii Pink, Sophia, Francine, sold. | Chas. Duell, \$25.00.          |
| Monjishu, variegated.                    | Cavalcade, sold.               |
| Cheerful, sold.                          | Crown Jewels, sold.            |
| *Colette Maculata.                       | Casablanca, sold.              |
|  |                                |
| *David Gerbing, \$12.50 to \$15.00       | Dorothy B., sold.              |
| *Daikagura.                              | Dorothy Cladwell, \$7.50       |
| *Daikagura, Variegated                   | Mathotiana Rubra, variegated.  |

- Downing, Wm., \$10 to \$15.
- \*Debutante, Sarah C. Hastie.
- \*Donkalarii, \$10 to \$15.
- \*Davis Rose-Dawn. Dr. Scott, sold. to \$10.00.
- Duchess of Windsor, sold.
- Dixie, \$25.00.
- \*Emperor Wilhelm, \$10 to \$15.
- \*Emperor. Elizabeth, sold.
- \*Elinor Fairoaks.
- \*Elizabeth Boardman, \$10 to \$25.
- Fairhope, \$5 to \$7.50.
- \*Frizzle White.
- Flame, sold.
- Firebrand, \$20.00.
- Frankie Bray, sold.
- Gloire de Nantes, \$4.00
- Gov. Mouton, \$4.00 to \$7.50.
- \*Glen No. 40.
- Gruenwald's Pink, sold
- Goshoguruma, sold.
- Greegs Seedling, sold.
- \*Gigantea.
- \*Herme.
- \*H. A. Downing. Horkan, sold.
- \*Haku Tsusu.
- \*Hiyro, \$10.00.
- Henry Barnett, sold.
- \*Imura, \$10 to \$20.
- \*Iwani Shibori, \$10 - \$15
- Jarvis Red, \$5 to \$7.50.
- \*John D. Drayton. Jessica, sold.
- \*Jean Norton. Jean Kerr, sold.
- \*John Illges.
- \*Josephine Duell, \$10 to \$15.
- \*Kumasaka.
- \*Kiyosu.
- Lady Hume Blush, \$10 to \$15.
- Laurel Leaf, \$15 to \$20.
- Lady Alice, \$10.
- Lotus, sold.
- \*Lady Van Sittart, variegated, \$7.50 to \$10.00.
- \*Lady Jane Grey. Lelia, Catherine Cathcart, 2 to 3 ft.
- \*Leona Bolen.
- Caprice, sold.
- \*Dante.
- \*Duchess of Sutherland. Dr. Lee, sold.
- \*Downing Wm., variegated.
- \*Daikaruga Shiro-white Dorothy M., sold.
- \*Duchess of Exeter.
- \*Dr. Campbell.
- \*Duncan Bell.
- Enrico Bettoni, \$4.00.
- Elmore Lee, \$7.50.
- Edith Churchill, \$10.00.
- Elinor Haygood, \$15 to \$20.
- Elena Noble, sold.
- \*Eugene Bolen, \$10 - \$15
- \*Favorita, \$10.
- Flossie, sold.
- Fancy, sold.
- Frimbriata Rubra, sold
- \*Gruenwald's Red. Grandma, sold.
- Gardenia Flora, sold.
- Gardenia, sold.
- \*Glen No. 40, Variegated, \$15 to \$25.
- Goddess of Fire, sold.
- Haku How, sold.
- Hunt Henderson, sold.
- \*Herme Sport.
- \*Haku Rakentan, \$10 to \$25.
- Imperator, \$18 to \$25.
- \*James Hyde Porter.
- \*Joe Holland. Jenny Lind, \$10.
- Joan of Arc, sold.
- Julia Safe, sold.
- Julia Dial, sold.
- Julia Drayton, sold.
- James Allan, sold.
- King Lear, sold.
- Lady Mulberry, sold.
- \*La Reine, Variegated. Luries Favorite, sold.
- \*Lee's Variegated.
- \*Lindsey Neil, \$10 - \$50.
- Lady Mary Cromartie, \$12 to \$25.
- \*Lady Charlotte. Laura Dasher, sold.
- Louise McClay, \$7.50 to \$12.50.

- Marghrita Caleonie.  
 \*Magnolia-Flora, \$10 to \$40.  
 Mrs. Wm. Thompson, sold.  
 \*Mary Hare.  
 Monjusii Variegated, sold.  
 \*Madame Chang Kai Shek, \$12.50 to \$18.  
 \*Mrs. Chas. Cobb.  
 \*Magnolia King.  
 Mrs. Chas Simmons, sold.  
 \*Marion Mitchell, \$10 to \$15.  
 Madame Maintenon, sold.  
 Mihata, sold.  
 \*Magaret Sandusky.  
 Mary Jean, sold.  
 Magnolia Garden No. 90, sold.  
 Magnolia Garden No. 180, sold.  
 Mrs. Baldwin Wood, \$15 to \$20.  
 Martha Brice, \$10 - \$15  
 Marguerita.  
 Marquisa.  
  
 Noblissima, \$8 to \$20.  
 Nagasaki, \$18 to \$25.  
  
 Otome, sold.  
 Onigi, \$15 to \$25.  
  
 \*Pink Glory.  
 Prof. C. S. Sargent, \$4 to \$60.  
 Pink Perfection, \$3 to \$75.  
 Pope Pius, \$5 to \$40.  
 Panache, sold.  
 \*Powell's Pink.  
 \*Peony-flora.  
  
 \*Queen Bessie, \$10 - \$40  
  
 Rainy Sun, \$15.00.  
 \*Rosea Superba.  
 \*Red Chandlerii.  
 Ross, \$15 to \$25.  
 \*Rev. John Bennett.  
 Reticulata, sold.  
 Ray's Best No. 1, sold.  
 Refugee, sold.  
 Robert E. Lee, \$10-\$15.  
 \*Rose Dawn, \$10 to \$15.  
 Rose Royale, sold.  
 Red Hibiscus, sold.  
  
 \*Sarasa.  
 Semi-double-blush, \$10  
 Sarah Frost, \$10.  
 Scarlet O'Hara, \$10.  
 \*Snowdrift.  
  
 Meredith Lake, sold.  
 Mrs. Norman Mansfield, sold.  
 \*Marquis of Exeter.  
 Mrs. J. Arthur Daspit, sold.  
 Mrs. Chas. Blard, sold.  
 Margaret Higdon, sold.  
 Mrs. Walter Allan, sold.  
 \*Mrs. H. L. Windbigler, \$10 to \$15.  
 Madame Adele.  
 Monarch.  
 Madame Nihart.  
 Marie Lustrat McHatten.  
 Marchioness of Salisbury, \$10 to \$25.  
 \*Mrs. Stevens Pink.  
 \*Mary E. M.  
 Marchioness of Exeter.  
 Mathotiana Alba.  
 Myrick Monarch.  
 Mrs. Freeman Weiss  
 \*Mathotiana Rubra,  
 Purple Dawn, Purple Emperor, \$10 to \$45.  
  
 \*New Nagasaki.  
 \*Northern Light.  
  
 Ochreleuca, sold.  
  
 Princess Nagaskie, \$10 to \$15.  
 Prima Donna Variegated, sold.  
 Pax, sold.  
 Prince of Wales, sold.  
 Pink Peony, \$10 to \$15  
 Pink Star, \$10.  
  
 Rainsford Cantelou, sold.  
 Robert Norton, \$12.50 to \$20.  
 Royal White, \$20 to \$40  
 \*Rose Mallows.  
 Rosaplana, sold.  
 Rose Queen, sold.  
 \*Razen-Zome.  
 Rose Queen Variegated, sold.  
  
 Showa-No-Sakae, sasanqua, sold.  
 Surprise, sold.  
 \*Sen. Duncan Fletcher.  
 Swan, sold.

- Sophia, \$8 to \$15.  
 \*Stark Deb.  
 \*St. Andre, \$10 to \$15.  
 \*Sweeta Vera.  
 \*Sept. Morn, \$10 to \$15.  
 \*Te Deum, Firegold, Dr. Shepperd.  
 \*Tea Garden No. 113.  
 The Belle, sold.  
 Variegata, \$20.  
 Victor Emanuel, Blood of China, \$4 to \$100.  
 \*Variegated Downing.  
 Wm. Penn, \$10.  
 Wards form of Daikagura, \$10 to \$15.  
 White Empress, \$10 to \$15.  
 White Giant, \$10 - \$25.
- \*Smiling Beauty.  
 San Antonio, sold.  
 Sanko Nashiki, \$10 to \$15.  
 \*Susan Carter.  
 Tea Garden No. 330, sold.  
 Thunderhead, \$15 to \$35.  
 \*Variegated Jorvis Red.  
 Variegated Imperator, sold.  
 Ville De Nantes, sold.  
 Waterloo, \$8 to \$12.50.  
 White Queen, \$25.00.  
 White Daikagura, sold.  
 \*Woodville Red, Gruenwald Red.  
 White King, sold.

\* Camellias marked with asterisk, we have grafted plants only.

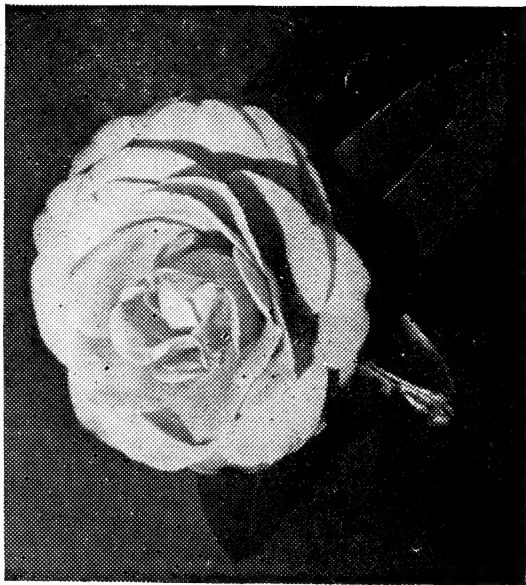


We will graft camellias for next season delivery, at \$10.00 to \$25.00 each, according to variety. Select your varieties — 50% deposit when you place your order. Our grafted Camellias, due to some influence in the understock beyond our control, some solid color varieties will bloom variegated. We guarantee the scion as to variety only.



# Azalea Glen Nurseries

Loxley, Alabama



LOXLEY  
AL



Library U.S. Department of Agriculture

---

Washington 25, D.C.

---