

## **Historic, Archive Document**

Do not assume content reflects current scientific knowledge, policies, or practices.



62. 11  
LIBRARY  
RECEIVED

☆ JUN 26 1947 ☆

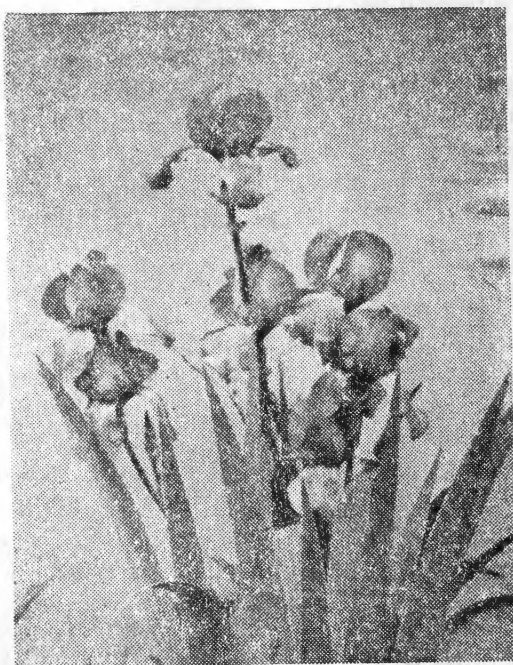
U. S. Department of Agriculture

1947

---

# IRIS

---



**LOVELY  
IRIS**

All Shades and Colors

---

New and Sensational  
**IRIS**

---

**W. E. TAYLOR  
Amity Gardens**

**Amity, - Oregon**

**Box 43**

## TALL BEARDED IRIS

Well here we are again friends with nice iris for your gardens.

We wish to thank our many friends and iris lovers for their liberal patronage and for the many fine letters of commendation. One of the thrills of the iris season is to receive praise for our efforts and friendly greetings from our friends.

It would be difficult to find an organization where there is so much friendship and good fellowship expressed between the members as in the iris society, and we wish to extend our best wishes to all members for their health, happiness and for a prosperous year.

More people are becoming interested in flower gardening each year. It brings them closer to nature, and many more are also interested in iris and this results in many more good varieties of iris being created and introduced.

With these introductions come newer and better iris and there seems to be no limit to what may be accomplished in iris propagation.

We have been fortunate enough to produce several very fine creations to add to the constantly growing list of new iris. Our Southern Pacific, a large lavender blue, is now several years old and is more reasonable in price this year, and our So Big Texas, another large lavender blue is listed higher. Both of these are very large and soft toned and strong growers. This season we are introducing four nice ones, B.P.O.E. an unusual vivid purple with a million dollar fragrance, and has a splendid shaped strong plant, and Crystal Palace, a very fine icy bluish tinted white which attracts more attention than any other white in our garden, and McMinnville, a very fine lavender blue, very tall and stately, and Spirit of Amity, a clear icy white which is a real beauty.

We have a nice lot of El Mohr this year and it is one of the real sensations of the present iris age, and the price is more reasonable this season.

### OUR NEW INTRODUCTIONS

**CRYSTAL PALACE.** This beautiful clear white is icy in appearance and has just enough blue tint to take away the bleached effect, the parent iris, Purissima, the pollen iris, El Capitan, petals artistically waved, well jeweled, and of splendid form and is exceptionally thrilling, especially when viewed IN A SETTING SUNLIGHT.

**B.P.O.E.** This is a deep rich silky purple self with well shaped petals, and splendid strong plants of excellent form, the standards have a silky appearance and the falls a velvety, and it has a most pleasing fragrance. It has a prominent yellow beard and the whole plant and flowers are of the best form and color.

**McMINNVILLE.** This lovely iris is a soft lavender blue, well shaped plants and tall strong stems, very tall and stately, falls and standards are silky and well shaped, the falls have slight light markings and the blooms are very large and the markings are much less noticeable than in other large blooming iris, splendid yellow beard shading to lighter at outer end, very faint fragrance if any, petals jeweled, and the parent plant is Sierra Blue, pollen plant unknown, blooming period around 30 days.

**SPIRIT OF AMITY.** This is a clear white with faint bluish tint, icy in appearance, well jeweled, falls have slight light markings, through haft, beard yellow shading to lighter at outer end, large flowers on strong medium stems, no fragrance, blooming period around 20 days, attracts more attention than the purer whites, parent plant Purissima, pollen plant unknown, blooms are of good substance and are lovely.

Every garden should have an abundance of iris, they are easy to grow and most any kind of ground that will nourish other plants will grow them but they should have plenty of sunlight to be most satisfactory, for they do better when they are not crowded by other plants or trees. It is important that the plants are well set, in the open, and in well drained soil, and have plenty of moisture and are well cultivated, then you should have splendid iris.

In our collection you will find colors ranging from the vivid rich purple of B.P.O.E, to the softest lavenders and blues. and from the rich bronzy tone of Aztec Copper to the light soft tans and from golden deep yellow of Klondyke Gold to the creamy whites of delicate tint.

There are colors and shades to suit the taste of the most discriminating and prices to suit the pocket book, and remember, prices do not regulate the beauty of the flower, all are pretty.

We try to arrange our prices and stock to compare favorably with other catalogs and will meet all reasonable competition.

We have arranged some very attractive collection bargains which may be found next to the order blank and by taking advantage of them a great saving may be made.

In making up your orders please confine your selection as outlined in our bargain offers.

### **SHIPPING TIME**

Iris may be reset almost any time that the ground may be in condition to receive them but the most favorable time for commercial shipping and planting is from June 10th to Sept. 15th and while the plants are much larger by the 1st of Sept. it is advisable to plant early so that the plants will get well set for winter and that will also give the plants a better chance to bloom the following season.

Do not be too much disappointed if your plants do not bloom for you the first season, for some times they skip the 1st year.

### **TERMS**

Cash to accompany all orders; checks, money orders, or currency will be acceptable, but we recommend that all letters containing currency be registered. All orders must be for one dollar or over, and all orders are received subject to prior sale or to conditions and circumstances existing when orders are received. We ship by parcel post unless requested to ship by Express. Be sure and give your express office if different from your post office. We pay postal charges to all points within the United States.

We have made very few mistakes in reading handwriting but we regret making any so please write or print your name and address plainly..

- ANAKIM**..... Ea. 35c  
 Large lavender blue, strong grower and a good propagator, lovely blooms, excellent form.
- ANCHORAGE**..... Ea. 50c  
 A brownish red bronze of good color and form and is a splendid iris of the bronze type.
- ARCTIC**..... Ea. \$1.00 3 for \$2.50  
 Large fine white, ruffled with broad falls and closed standards, wonderful snow white of delightful effect. One of the finest.
- AZTEC COPPER**..... Ea. \$1.50 3 for \$4.00  
 A copper violet blend of rare beauty and charm, nothing just like it, large blooms, fine texture, splendid effect, one of the very best of the copper bronze yet developed.
- AZTEC GLORY**..... Ea. \$2.50  
 A rose red and coppery blend of very fine form and a good bloomer. This is a very classy iris of the bronze type.
- BALDWIN**..... Ea. 35c 3 for 90c  
 Manganese violet and heliotrope, purplish effect. Strong grower and an unusual flower.
- BARRIMOHR**..... Ea. \$10.00  
 A very large ruffled purple flower of good substance and form. A direct descendant of the famous Wm. Mohr.
- BIRCHBARK**..... Ea. 75c 3 for \$2.00  
 Lovely creamy white, large blooms, good texture and splendid form.
- BLACK WINGS**..... Ea. 30c 3 for 75c  
 A very dark purple, almost black, fine texture, black velvety finish.
- BLUE VELVET**..... Ea. 35c 3 for 90c  
 Wonderful deep velvety purple. Excellent fascinating sheen, large blooms on strong stems. One of the loveliest deep blues.
- B. P. O. E.**..... Ea. \$40.00  
 This is an unusually vivid purple with large well shaped artistic blooms of excellent quality and good substance. It is truly an elks purple, stands up well in all kinds of weather, and has a million dollar fragrance. The plants are well shaped, the leaves stand up straight and do not grow out to the side. It is an outstanding iris.
- BUECHLEYS GIANT**..... Ea 35c 3 for \$1.00  
 Huge clear lavender, of fine quality. Tall, strong, and majestic. One of the really splendid giants in iris.
- BUFFAWN**..... Each \$1.00  
 A combination of golden tan and pink, with deep orange beard. A very attractive kind.
- CALIFORNIA GOLD**..... Each 35c  
 Golden yellow. Large fine flowers of excellent quality. One of the best yellows.

- CHINA MAID** ----- Each \$1.00  
 Glorious pink blend, of the very finest quality, Fine texture, good blooms, pleasing tone.
- COPPER LUSTRE** ----- Each 50c 3 for \$1.20  
 Pinkish tan, blending into copper and gold. One of the finest coppery kinds. Fine texture, good blooms on medium tall, strong stems. An unusual flower.
- CRYSTAL PALACE** ----- Each \$15.00  
 A beautiful clear crystal white with slight tint of blue, Flowers are large and on strong tall stems. Very firm substance, stands up well under unfavorable conditions.
- DAUNTLESS** ----- Ea. 35c 3 for 90c  
 Reddish purple. Large blooms well placed on tall strong stems.
- DIRECTEUR PINELLE** ----- Ea. 40c  
 Maroon purple with undertone of bronze; large blooms on well branched stems and strong grower.
- EASTER MORN** ----- Ea. 35c 3 for 90c  
 Almost pure white, slight creamy tint, beautifully domed standards, large flaring falls, vivid orange beard.
- EL CAPITAN** ----- Ea. 35c 3 for 90c  
 Large lavender blue, tall strong stems, blooms of beautiful tone, well placed.
- ELEANOR ROOSEVELT** ----- Ea. 35c 3 for 90c  
 Dark violet purple, very silky and exquisite and one of the exceptional fine fall bloomers.
- EL MOHR** ----- Ea. \$2.00  
 Rich red velvet. Huge blooms on tall strong stems. We believe this is the best seedling that has been introduced from the iris Wm. Mohr. It is outstanding in color, shape, size and loveliness and is one of the most attractive flowers in the garden.
- ETHELWYN DUBUAR** ----- Ea. 35c 3 for 90c  
 Lovely soft pink. Has the tone of lovely orchid. One of the finest and most beautiful pinks.
- FRIEDA MOHR** ----- Ea. 35c  
 Fine tall pink. Large blooms well placed. A strong grower.
- GLORIOLE** ----- Ea. 50c 3 for \$1.20  
 Fine blue, large blooms well placed on strong stems, good bloomer.
- GLOWPORT** ----- Ea. 50c 3 for \$1.20  
 Wine red, attractive glow through the heart, bronze yellow beard. A rich red of charm and merit.
- GOLDEN HARVEST** ----- Ea. 35c 3 for 90c  
 Very rich pleasing yellow, bluish tint at base of falls and standards, large blooms on short stems, and is one of the few reasonable priced fall bloomers.
- GOLDEN HIND** ----- Ea. 50c  
 Rich golden buttercup yellow, good form, vivid orange beard. A great golden.
- GRAND CANYON** ----- Ea. \$2.00  
 Deep blend of gold and copper, striking, beautiful tone, blooms very large. It is different from all other iris.
- GREAT LAKES** ----- Ea. \$1.50 3 for \$3.90  
 Clear blue self of exceptional merit, tall, graceful-grand Considered one of the most perfect iris yet produced. Has a high rating.

**GUDRUN**----- Ea. 35c 3 for 90c  
Soft creamy white, lovely blooms, good form, fine texture. One of the really fine whites.

**HAPPY DAYS**----- Ea. 35c 3 for 90c  
Light yellow, strong grower, soft, smooth tone, very fine.

**ICY BLUE**----- Ea. \$1.00 3 for \$2.50  
Lovely light blue, almost white, closed standards and flaring falls. Immense blooms on tall sturdy stems. Its name is very appropriate for it has a clear icy appearance that makes it one of the most attractive flowers in our collection and attracts an unusual amount of attention. It is one of the best iris yet introduced.

**ITASCA**----- Ea. 35c 3 for 90c  
Deep purple, fine silky texture. A rich purple of great merit. This one is an exceptional beauty.

**JEAN CAYEUX**----- Ea. 35c  
Soft light buff self, splendid form and texture and a most unusual color of rare beauty.

**JERRY**----- Ea. 35c  
Standards soft pinkish tan, falls deep purplish red, deep in color, splendid in form and one of the best reds.

**KALINGA**----- Ea. 35c 3 for 90c  
Warm cream, large soft tone blooms, lots of fine flowers. Very pleasing.

**KHORASAN**----- Ea. 50c  
A large blend variegeta. Very beautiful tone of good substance and form. Falls are very light underneath, an unusual feature in iris.

**KLONDYKE GOLD**----- Ea. \$2.50  
This is an unusual flower, a large, rich, deep golden yellow. Blooms are well shaped and are of good substance and are very attractive.

**LADY PARAMOUNT**----- Ea. 35c 3 for 90c  
Primrose yellow. Fine soft texture, large well placed blooms on good stems.

**LEGEND**----- Ea. 35c  
Lavender blue and rich claret. Large blooms,

**LOS ANGELES**----- Ea. 40c  
White placata, with edging of lavender blue. Splendidly penciled. Flowers large, on tall graceful stems. Very popular.

**MARCO POLO**----- Ea. 40c 3 for \$1.10  
Bright rose and crimson. Flowers vivid and strikingly beautiful.

**MARTIE EVEREST**----- Ea. 35c 3 for 90c  
Soft clear lavender blue. Lovely tone. Fine blooms. Good grower. Fall bloomer. Very desirable.

**MARY GEDDIS**----- Ea. 35c  
Salmon orange, deeper toned falls, good blooms, well placed.

**MARY SENNI**----- Ea. 35c  
A mauve blended with ashes of roses, a delightful combination; very large blooms on medium stems.

**McMINNVILLE**----- Each \$15.00  
This is an unusually tall iris with strong straight stems. A large lavender blue of good substance and fine form.

**MISS CALIFORNIA**----- Each 60c  
Tall lilac pink. Large blooms, very graceful. One of the most satisfying lovely pinks.



- MOHRSON** ----- Each 75c  
 Huge deep violet seedling from the famous iris William Mohr. Blooms are of exceptional beauty and size. One of the outstanding late introductions.
- MONADNOCK** ----- Each \$1.50 3 for \$4.20  
 Rose red. Large attractive blooms, of good form and texture. One of the best in new iris.
- MOUNTAIN SUNSET** ----- Each 35c 3 for 90c  
 Old gold and fawn suffused with varying shades of violet. Large blooms, of fine tone and splendid form.
- NARANJA** ----- Each 40c  
 Deep orange. Unusual in color scheme. Lovely in effect, and very attractive.
- NATIONAL GIANT** ----- Each \$4.00 3 for \$9.00  
 Very large blooms of purple or bronze violet, with orange beard. Blooms on tall strong stems well branched and is a very fine iris.
- ORMOHR** ----- Each 75c  
 Pale lilac. A huge seedling from the iris, William Mohr, and one of the unusual colors of that strain of iris. Lovely blooms on strong stems. Strong grower of merit.
- PERSIA** ----- Each 35c 3 for 90c  
 Grayish lavender and rich purple. One of outstanding merit, of good form, fine texture, and soft tone.
- PRAIRIE SUNSET** ----- Each \$2.50  
 A blend of peach, copper, apricot and gold, one of the loveliest of the latest creations. It is one of the unusual and outstanding colors of recent introduction. It won the Dykes Medal in 1943.
- PRESIDENT PILKINGTON** ----- Each 35c  
 Fine mauve, lovely tone, strong grower.
- PURISSIMA** ----- Each 35c 3 for 90c  
 This is a very pure white. The petals are clear and almost transparent, and the blooms are large and are on strong stems, tall and handsome. It is one of the outstanding whites of all whites.
- RAMBSES** ----- Each 35c  
 Standards very light buff shading to delicate rose pink at the top: falls rose pink changing to yellow through the haft. Beard deep yellow.
- RANGER** ----- Each \$6.00  
 A dark brilliant red which thrills on sight. A fine red which is outstanding among reds and is praised highly by all who see it. Large blooms, fine branching and good strong stems. H.M.A.I.S. 1944.
- ROBINWOOD** ----- Ea. \$1.50  
 A very fine brown bronze of excellent form and fine substance. A good bloomer and a very attractive iris.
- SACRAMENTO** ----- Ea. 35c 3 for 90c  
 Creamy white ground with a very dainty edge of lavender. This edging gives it a very artistic appearance and makes an unusual bloom liked by everyone.
- SANDALWOOD** ----- Ea. 35c  
 Soft fawn brown and salmon blended with mauve and tan. A lovely tone, fine blooms, and very satisfactory. One of the best soft tans.
- SAN DIEGO** ----- Ea. 35c 3 for 90c  
 Deep lavender blue, rich in color, and a profuse bloomer. One of the loveliest of the deep purplish lavenders.
- SAN FRANCISCO** ----- Ea. 35c 3 for 90c  
 Tall lovely white placata, edged lavender blue.

- SEADEEP**..... Ea. 35c 3 for 90c  
 Deep blue bicolor. Standards sea blue, falls darker blue. A profuse bloomer, and one of the best blues of the late introductions.
- SHAH JEHAN**..... Ea. 35c 3 for 90c  
 Buff and purple. Standards buff slightly edged lavender, falls chestnut brown merging into lavender, beard rich orange.
- SHINING WATERS**..... Ea. 40c 3 for \$1.00  
 Clear crystal waters blue. A soft light delicate shade of blue which is really pleasing. Beautiful orange beard.
- SIEGFRIED**..... Ea. 50c 3 for \$1.35  
 Pale sulphur yellow, penciled and dotted with purple, a placata of unusual merit.
- SIERRA BLUE**..... Ea. 35c 3 for 90c  
 Soft clear blue of immense size, very showy and rivals all others in size and color, tall, graceful and attractive.
- SNOW FLURRY**..... Ea. \$2.00  
 A very fine white with large ruffled blooms with bluish tint. Blooms are of good substance and splendid form and it is an outstanding pure white.
- SNOW KING**..... Ea. 35c 3 for 90c  
 Pure white, large waxen blooms of good form and texture. One of the loveliest whites.
- SO BIG TEXAS**..... Ea. \$10.00  
 Lovely large lavender blue. Huge blooms of softer tone than the ordinary large iris of this color. Well placed on strong stems. Standards almost closed. Falls have artistic curves and are semi flaring. A fine addition to the iris family. Only one to a customer.
- SOUTHERN PACIFIC**..... Ea. \$4.00 3 for \$9.00  
 Huge lavender blue, soft tone, splendid texture and form, a rare beauty.
- SOUTHLAND**..... Ea. 35c 3 for 90c  
 Golden yellow, lovely rich tone and a good fall bloomer.
- SPIRIT OF AMITY**..... Ea. \$15.00  
 A very fine clear icy white with a faint bluish tint. Blooms are large and well shaped and on strong straight stems.
- SPOKAN**..... Ea. 35c 3 for 90c  
 Deep chestnut red suffused throughout with copper, golden glow through center, of good form and texture and pleasing tone.
- TAPESTRY**..... Ea. 35c 3 for 90c  
 Lovely soft violet red standards, falls deeply colored, shading to lighter at the edges, rich yellow beard, immense blooms of good form and splendid texture.
- THE BLACK DOUGLAS**..... Each 35c 3 for 90c  
 Big black blooms, one of the distinctive blacks, or darkest purples, a masterpiece in the dark kinds.

**TIFFANY** ----- Each 60c 3 for \$1.70  
Soft yellow placata with brownish violet markings, one of the most attractive of the placata type.

**TREASURE ISLAND** ----- Each 50c 3 for \$1.35  
Rich clear yellow, large bloom on tall strong stems, one of the best new yellows, tall, stately in appearance.

**VENUS DE MILO** ----- Each 35c 3 for 90c  
Warm creamy toned white, bright orange beard, one of the best new whites.

**VESPER IRIS** ----- Ea. 30c  
We have a nice lot of Vesper Iris which are said to be fine for cutting and are very desirable flowers and will send four of these for \$1.00 when included with an order for Tall bearded iris.

**WABASH** ----- Each \$1.00 3 for \$2.70  
This is an unusual flower, with white standards and purple falls, and is one of the attractive blooms of the garden.

It won the Dykes Medal in 1940. Blooms are on trim stocks of fair height, and are very attractive, and are a value to any garden.

**WHITE ALONE** ----- Each \$1.00  
A splendid white with good substance and fine form, One of the excellent whites.

**WM. MOHR** ----- Each 35c  
A large lavender purple bloom suffused with grey and splendidly ruffled. The blooms are unusual form and texture and while the plants are low growing it is one of the most popular iris ever introduced.

**WINNESHIEK** ----- Each 35c 3 for 90c  
Deep bluish purple. One of the very best, splendid form, rich color, high class and very showy.

**ZUNI** ----- Each 35c 3 for 90c  
Reddish brown and tan, suffused with copper all through, large attractive blooms, has a wonderful fiery glow in the sunlight.

The blooms from iris that we have sent to patrons have taken many blue ribbons in various parts of the country when exhibited at flower shows.

#### **BIG BARGAINS ON THE FOLLOWING PAGE**

By taking advantage of these bargain offers you get the benefit of a substantial reduction in price and have a reasonable range of varieties from which to select your order.

Please use the order blank herein provided and write out your order in full, listing each item plainly.

#### **THE AMERICAN IRIS SOCIETY**

This splendid society is of the greatest interest to its many members and we heartily recommend it to any who have not yet joined.

The object of the organization is to encourage the growing and propagation of iris, and it publishes each year four bulletins which gives much valuable information along these lines.

It has an established scale by which new introductions are rated, and appoints judges to rate each new iris according to its merits.

Information regarding the society and the requirements for obtaining membership may be obtained from Mr. Howard R. Watkins, 821 Washington Loan and Trust Building, Washington, D. C.

**\$50.00 BARGAIN**

- 1 B. P. O. E.
- 1 CRYSTAL PALACE
- 1 McMINNVILLE
- 1 SPIRIT OF AMITY
- 1 BARRIMOHR
- 1 SOUTHERN PACIFIC
- 1 NATIONAL GIANT
- 1 EL MOHR

**\$25.00 BARGAIN**

- 1 BARRIMOHR
- 1 McMINNVILLE
- 1 SPIRIT OF AMITY
- 1 SOUTHERN PACIFIC
- 1 NATIONAL GIANT
- 1 EL MOHR
- 1 Ea. of any two of Group A.

**\$15.00 BARGAIN**

- 1 SOUTHERN PACIFIC
- 1 NATIONAL GIANT
- 1 McMINNVILLE
- 1 Ea. of any 1 of Group A.
- 1 Ea. of any 1 of Group B.
- 1 Ea. of any 10 of 35c Iris.

**\$10.00 BARGAIN**

- 1 SOUTHERN PACIFIC
- 1 Ea. of any 2 of Group A.
- 1 Ea. of any 2 of Group B.
- 1 Ea. of any 8 of Group C.
- 1 Ea. of any 10 of 35c Iris.

**\$5.00 BARGAIN**

- 1 Ea. of any 1 of Group A.
- 1 Ea. of any 1 of Group B.
- 1 Ea. of any 3 of Group C.
- 1 Ea. of any 11 of 35c Iris.

**\$3.00 BARGAIN**

- 1 Ea. of any 1 of Group B.
- 1 Ea. of any 1 of Group C.
- 1 Ea. of any 11 of 35c Iris.

**Group A**

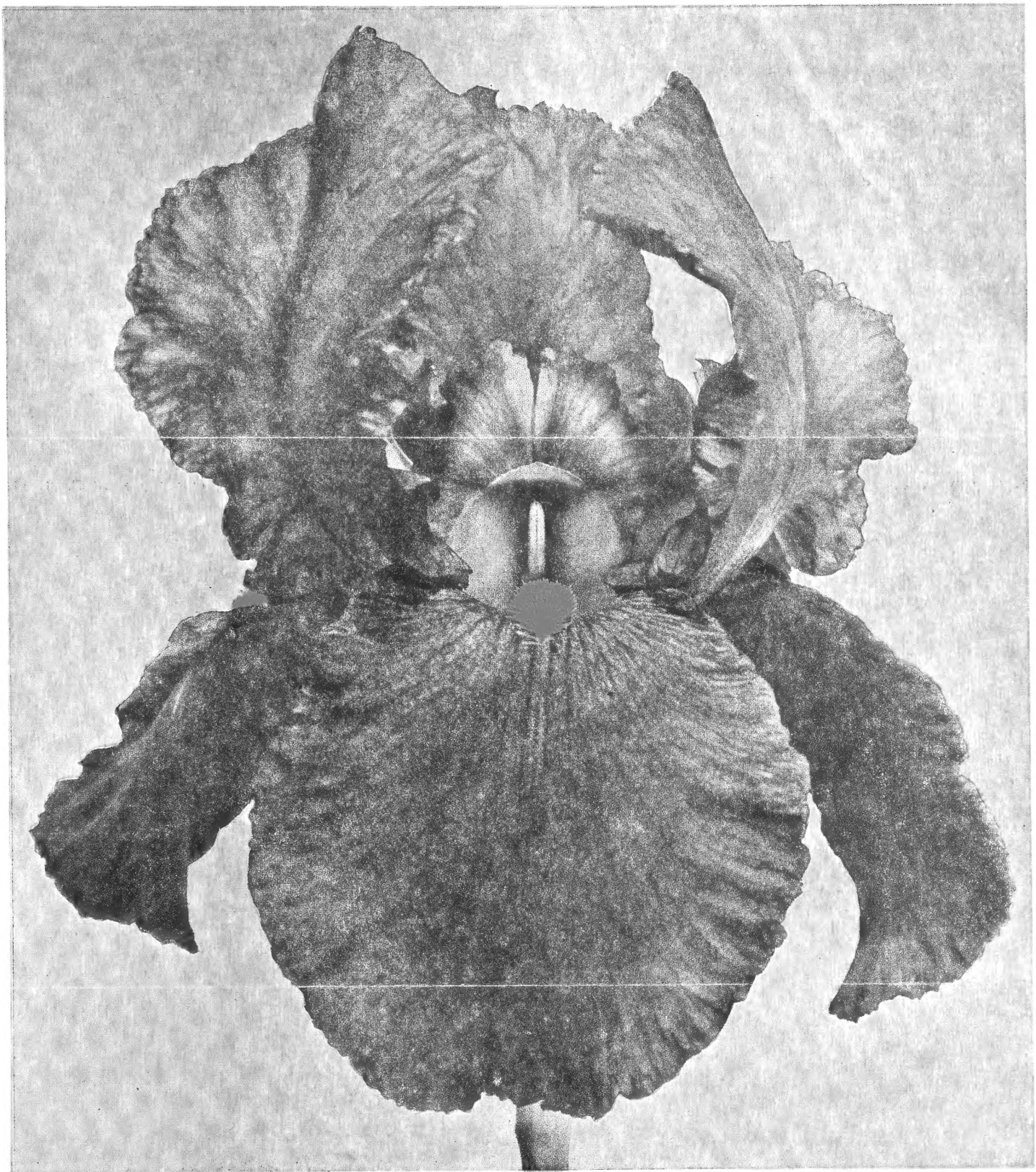
- |              |                |
|--------------|----------------|
| Aztec Glory  | El Mohr        |
| Grand Canyon | Klondyke Gold  |
| Snow Flurry  | Prairie Sunset |

**Group B**

- |              |             |
|--------------|-------------|
| Arctic       | Buffawn     |
| Aztec Copper | China Maid  |
| Great Lakes  | Icy Blue    |
| Monadnock    | Robinwood   |
| Wabash       | White Alone |

**Group C**

- |                 |                   |
|-----------------|-------------------|
| Anchorage       | Birchbark         |
| Copper Lustre   | Directeur Pinelle |
| Gloriole        | Glowport          |
| Golden Hind     | Khorasan          |
| Los Angeles     | Marco Polo        |
| Miss California | Mohrson           |
| Naranja         | Ormohr            |
| Shining Waters  | Siegfried         |
| Tiffany         | Treasure Island   |



“ELMOHR”

## IRIS LETTER TO IRIS LOVERS

As I write this I look out of my office window on a very beautiful array of lovely iris blooms and among them are five of our introductions, all lovely and beautiful due to a very favorable season, which so far has been mild and delightful.

My Crystal Palace makes a fine showing, stands 36 inches, is crystal white with a slight bluish tint and holds its tone for the full life of the bloom which is five days, and holds up well under rain, wind and sun, better than the average iris.

My McMinnville which is listed for the first time this year is tall, 50 inches, and graceful, and resembles its parent Sierra Blue, and seems more attractive than the parent plant, stalks are straight and it is a fine iris for a back row where it can stand stately and magnificent.

My B.P.O.E. stands 36 inches, is a lovely deep rich purple with strong straight stems and a wonderful even growing foliage, a little darker than El Mohr but not as dark as the real dark purples, is silky in its standards and velvety in its falls, and has a very fine fragrance, every one notices that, like the old man from the old country of whom the story is told, when he was taken to a flower garden to see the beauty and fragrance of the flowers, he finally remarked in a very praising way "Dot is fine, the whole place stinks."

My So Big Texas stands 30 inches is a strong grower and is a lovely lavender blue, very large and similar to my Southern Pacific which is around 36 inches, but some plants are at least four feet tall this season and both of these are making a wonderful display of color.

My Spirit of Amity is a very light blue almost white and is crystal clear, the standards are like thin ice and falls are of firm substance and the blooms last well before folding up.

These six are my only introductions so far, and I have hundreds of fine seedlings with good color but few of them are outstanding enough to be considered as worthy of introduction.

I have three however that seem to be very fine, one a tall large lavender of the Frieda Mohr type, one very much like San Francisco, but larger and more pronounced stitching, and one very dark similar to Black Wings, this dark one came from Purissima polenized by Black Wings, can you imagine that? an almost black from a pure white, ancestors don't seem to count when it comes to color, for there is no telling what will come from a chance crossing. The mention of ancestors reminds us of the story of the two Negro boys who were having a heated argument over Ancestors, one says 'Course you got ancestors, everybody's gotum, I'se gotum, You's gotum', the other replied heatedly, 'I ain't gotum, if I IS gotum I'se gotum from you.'

The most outstanding iris in our garden according to our judgement is El Mohr, it seems to be the very top iris in irisdom.

The picture of this magnificent flower on the back of this letter is not a good likeness of the real bloom, but it gives one an idea of its form and size but the bloom is much more clear and has more red in it than the picture shows and is really much more beautiful.

We have a very fine collection in our garden and you may be assured that your order will be filled with desirable kinds, all are good.

With best wishes we remain, Very truly yours

AMITY GARDENS



W. E. TAYLOR  
AMITY GARDENS  
Box 43, Amity, Oregon  
Return Postage Guaranteed



Sec. 562  
P. L. & R.

U. S. DEPARTMENT OF AGRICULTURE

OFFICIAL BUSINESS

PENALTY FOR PRIVATE USE TO AVOID  
PAYMENT OF POSTAGE, \$300

GPO

**LIBRARY**

U. S. Department of Agriculture

Washington 25, D. C.