

Historic, Archive Document

Do not assume content reflects current scientific knowledge, policies, or practices.

62.23

1947 Seed bargains

LIBRARY
RECEIVED
MAR 17 1947
U. S. Department of Agriculture

AMERICAN FIELD SEED Sale!

GRIMM
ALFALFA
\$24.50 BU.
NORTHERN
SEE PAGE 13

TIMOTHY
\$3.50 BU.
UTILITY
BRAND
SEE PAGE 34

RED CLOVER
25% TIMOTHY
\$21.25 BU.
PAGE 5

EXTRA
HARDY
ALFALFA
\$22.30 BU.
U.S. GROWN
SEE PAGE 13

SCARIFIED
SWEET CLOVER
\$8.30 BU.
LOT GOOD LUCK
SEE PAGE 9

TIMOTHY
AND
CLOVER
\$6.75 BU.
SEE PAGE 19

HYBRID
SEED CORN
AS LOW AS \$4.25 BU.

Save
Money!

AMERICAN FIELD SEED CO. Chicago, Ill.

**OUR
1947 SEED
BARGAINS**



**PLACE YOUR
ORDER EARLY
THIS YEAR**

**BUY DIRECT
AND SAVE MORE MONEY**

Dear Friends: I am very happy to greet you on our 25th Anniversary in the seed business. I like to recall the pleasant memories of the fine business and co-operation we have had with the tens of thousands of satisfied customers during that time.

This year we are again prepared to serve you. We confine our efforts entirely to farm and field seeds and specialize in that line. I believe we are well qualified to look after your interests and at the same time save you money on seeds of high quality.

Regarding crops the past season, the Alfalfa seed crop was larger in some states and less in others, from previous year. Red Clover and Alsike were about normal, but there was a very small carry over. Sweet Clover and Timothy yields were not large. Forage crops like Sudan, Millets, Cane, etc., were decidedly short. Some of the grasses were extremely short, especially Ky. Blue Grass, which was the shortest crop in 25 years. Regardless of any shortage, we acted quickly in accumulating stocks to supply our customers. However, we will have to disappoint some customers this year on our New Strain Brome Grass. The crop in Kansas and Nebraska where most of it is produced was practically a failure. We do have large stocks of fancy northern grown Brome.

While seed prices are high generally, we are selling our seeds at rock bottom prices. We buy many carloads direct from the producing districts. We sell direct to you, which cuts out the middleman's profits. Our prices are lower on some seeds than your local dealer paid for them.

Friends, I want your business this year and ask you to cooperate by sending in your order early while our stocks are complete. On some seeds there may be higher prices later. Our Money Back Guarantee on page 4 protects you. Buy now at a real saving.

Sincerely,
E. E. Elder, President.



Lot
DIAMOND RED CLOVER
With Alsike & Timothy

**U.S.
GROWN**

A combination that is hard to beat. Most farmers add some Alsike and Timothy to Red Clover for a well balanced seeding. Lot "Diamond" is composed of 50% to 55% of Red Clover and Alsike Clover and the balance fancy Timothy seed. Much more Red Clover than Alsike. A very rich combination. When sown 8 pounds per acre, you have an average of about 40 Red Clover and Alsike Clover seeds per square foot in addition to the Timothy. A fine seeding at a very low cost.

\$13²⁰
BU.
45 LBS.

98 to 99%
**PURE
CROP
SEED**

You'll Like the Quality and Savings

Lot "Diamond" is new crop domestic northern grown seed. Has a good bright color. It has been re-cleaned and tested. Shows good purity and germination. This is not cheap seed. I guarantee it to be good dependable quality. If you are doubtful about the quality, write for a free sample. Sow about 8 or 9 pounds per acre. Easy to get a catch with Lot "Diamond."

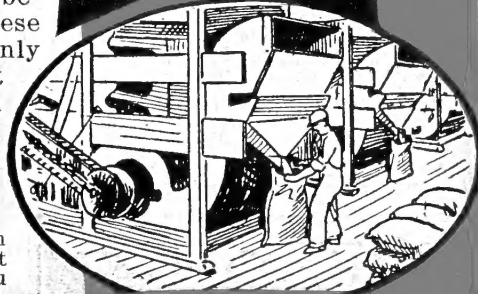
The cost of seeding is low. I am glad to recommend Lot "Diamond" to our customers and friends. Order this lot and if you are not pleased with it, kindly return the seed and I will see that your money is refunded promptly, including transportation charges. Order early while prices are low.

BETTER SEEDS LOWER PRICES

Greater Star Bargains for 1947

On October 24, 1946, the O.P.A. lifted the ceilings on farm seeds under control. Since that time some seeds have advanced, while others have held steady. Some seedsmen are taking advantage of this situation by marking up prices that are abnormally high. We bought a good many carloads before the prices advanced. We are not going to follow these high retail prices. We are thinking of your business not only for this year, but for years to come. We have found that short profits make long friends. We urge you to get in your order early for best selections and lowest prices.

**BUY
DIRECT
SAVE
UP TO 30%**



**EXPERT CLEANING
IMPROVES QUALITY**

Why Our Prices Are Low

There are many reasons why we quote lower prices than many other dealers. Common horse sense tells you our direct buying from the producing districts and selling direct to you will save you money. We cut out some of the middlemen's profits. We have no salaried salesmen with big expense accounts. Don't have a lot of bad book accounts. We handle millions of pounds of seeds. Our buying power enables us to buy low and sell low. Low prices increase our sales. A 10% profit on \$30.00 worth of orders looks better to us than 20% on \$10.00 worth of orders.



Our Seed Analyzed

The test tags attached to shipments of seed show the results of the purity and germination tests of a composite sample of the lot of seed from which shipment is taken. This sample is obtained by taking small quantities of seed from different portions of the lot. These are mixed thoroughly so as to make the composite sample as representative

as possible of the entire lot of seed. A portion of this sample is taken to make the purity and germination test. This is the general method of testing seed and is followed by us. In most cases the analysis is our own, or from a commercial or state laboratory, but occasionally we use the analysis of the party selling us the seed if a reliable shipper. It is our aim to attach such test tags to all shipments made. Sometimes a tag will be missed or lost from the shipment, but in such case a test tag may be had upon request.

Part of our service is to take good country seed, reclean it, grade it. However, we often buy seed which has been previously cleaned and in such instances, we do not reclean it. Removing weed seeds, light stock and chaff makes smoother, more uniform and more valuable stock. The percentage of clean out is often astonishing. You may be able to buy country seed for a few cents less per acre, but it is more to your interest to sow recleaned, tested seed.

NEW FEDERAL SEED LAW

Recently a new Federal Seed Law was passed by Congress, regulating the sale of seeds in interstate commerce. It requires all seed shipments to be tagged according to the restrictions of noxious weeds as provided by the law of your State. Also purity and germination tests are given. This gives you practically the same information as you would get from a retail seed dealer.

OUR GRADES OF SEED

Pinnacle Brand

Our top grade and an extra fancy quality. Beautiful color. Plump seed, smooth, uniform. This is the brand that satisfies the most critical customers. It is always a great value at our low price. Buy it if you demand the very best. Price List Page 34.

Economy Brand

Good serviceable seed. Not as nice in color. Contains some smaller berries. Gives good performance and therefore pleases buyers. A real value for the price. See Page 34.

Universal Brand

A very fancy quality running a shade under the Pinnacle in appearance. Will compare favorably with many of the "Best" grades. A sound, reliable type of stock priced at a nice saving in price. Price List Page 34.

Specials

You will find other lots listed by different names. These are "specials" described in full particulars instead of being classified under a certain grade. All are extra values.

Gentlemen: Am interested in 2 bushels of northern grown Alfalfa and 2 bushels of Sweet Clover; prices to be good for 2 weeks. Might say that last year I purchased 2 bushels of medium Red Clover from you and it is the best I ever saw. Not a single plant of buckhorn in it. Thanking you, I am

(Signed) W. J. Kelley, R.F.D. 2.



FINANCIAL STRENGTH

The American Field Seed Company has a strong financial backing. Many years of fair dealings have established them as leading seedsmen who sell direct to farmers. Quality seeds, low prices and honest methods have brought their just reward. Their business has grown and they are reputable and reliable.

The American Field Seed Company has business affiliation with the following banks and they will gladly answer any questions as to the ability of said Company to serve seed buyers in a manner that will give complete satisfaction to the purchaser.

Drovers National Bank
Chicago, Ill.

First National Bank
Chicago, Ill.

Continental Ill. Nat'l. Bank and Trust
Company
Chicago, Ill.

ESTABLISHED RELIABILITY

"Old Reliable Firm"

We have been in business here in the same location for twenty-five years. We use government mails and our methods are subject to State and U. S. Government investigation. All seed is sold on our Money Back Guarantee explained on this page. See our bank reference in left column. We have served over 130,000 farmers. We specialize in field and farm seeds. Years of experience, thousands of satisfied customers, strong financially and liberal guarantee, all help to protect your interest.

We sell on a volume basis, save you money. Why buy at high retail prices. Buy direct and save more money. The savings are large in our great Star Bargain Sale.

Market Conditions

This report for our Catalog is made about the middle of December, just before the copy goes to the press. The Alfalfa crop was a little larger in the west central states. At this time they report Montana crop shorter than last year. Red Clover about the same and is in great demand. Alsike crop is small in many sections and no surplus. Sweet Clover crop was short in the U. S. and some seed will have to come in from Canada, which will be top quality, as import laws are strict. Timothy crop was not large and moved from growers hands at higher prices. Kentucky Blue Grass was shortest crop in over 30 years and prices extremely high. Other grass crops small. Millets and forage crops only fair. This is a good year to send in your order early.

"Buy Now—Prices Low"

The fact that seed supplies are not large indicates a firm position in the seed market. Prices will advance on most seeds rather than decline. We were fortunate in accumulating a large stock of fine seeds in 1946. We bought these seeds to very good advantage. This permits us to undersell competitors. Present conditions point to higher prices. Our quality and prices talk for themselves. Don't wait until time to sow and pay some country dealer two profits. Protect yourself by buying now when prices are low. Transportation conditions have slowed up, so it is wise to order early this year.

HOW TO ORDER

It is easy to buy from us. Write your name and address clearly. Put down the kind and grade of seed that you want. Specify the amount you desire and enclose remittance to cover the price of same. Send your remittance in the form of Bank Draft, Cashier Check, Postal or Express Money Order or Personal Check, whichever is most convenient.

Give name of town where your freight station is located if different than your postoffice. If there is no Agent at freight station, or it is a prepaid station, add money to remittance for freight. Or, we will bill you for freight. Freight rate per 100 lbs. is much less than half of express or parcel post rates. If you desire parcel post shipment, add money to cover postage. If you do not know amount of postage, ask your Postmaster or advise us you guarantee to pay later.

GUARANTEE

Your Money Back if Our
Seeds Fail to Please

We hereby guarantee every shipment to you will be absolutely satisfactory. If our seeds, for any reason whatsoever, are not satisfactory and you do not feel that they are worth more than you paid for them, you can return them at our expense and we will refund your money and any freight charges you have paid.

We cannot guarantee crops as that is past our control owing to climate conditions, accidents and unusual things that occasionally occur, but we give you 30 days' time, after you receive the seeds to test them in any way you wish and give you full protection on your seed purchases.

American Field Seed Co.
E. E. Elder, Pres. Chicago
Our Motto

"We are not satisfied
unless you are."

RECEIPTED INVOICE

If you wish a receipted invoice, ask for it on your order. If you need a Certificate of Origin for A.A.A. Soil Program Committee, ask for it.

"We Guarantee Quick, Safe Arrival"

There are over twenty trunk line railroads running out of Chicago. Shipments delivered before two P.M. to Junction Railway terminal freight house, which connects with all railroads, under normal conditions leave Chicago same day. We guarantee safe arrival and file claim for you if shipment is lost or damaged. We co-operate. Send paid freight bill showing amount of damage, or shortage.

LOWER RATES ON FREIGHT

Grass and Clover seeds take third class rate. Rates may be lowered in some states. Grains and Corn are carried at 5th class rate except west of Illinois and northwestern states where the rate is 4th class. Your freight agent can give you rate from Chicago. Or write us for rates. Chicago rates are low. Add the freight to our prices and there is a big savings over your local dealer's prices. All our quotations include bags free.

EXPRESS for RUSH SHIPMENTS

Express is the best for quick arrival and if you are delayed and want seed at once you may desire express service. All seeds take the second class express rate. Express is about double the freight charges. It is advisable of course to order early so your seed can come by freight as that saves you considerable. On account of our superior freight service we can get freight shipments through much more quickly than most other houses.

TWO GREAT BARGAINS

In

RED CLOVER LOT WORTHMORE



All Hardy U. S. Grown

Around 98% Pure
Including Crop Seed

While going through the reconversion period, it is wise to practice economy in your buying program. That is why I am offering Lot "Worthmore" to our customers. You can save around \$1.25 per acre by sowing this fine lot of seed. During the buying season we pick up many lots of Red Clover of very fine quality which contain a very small percent of other clovers, around 3 or 4 percent. These other clovers are usually alfalfa, sweet clover and alsike. After we clean up these lots of

Red Clover, we like to save our customers more money. I know most farmers like a little Timothy in their Red Clover. It increases the yields and improves the quality of both the Clover and Timothy crop. There is plenty of Clover to build up the soil. We have added about twenty-five percent, the proportion used by most good farmers. Sow about 7 or 8 pounds per acre and you put about 70 to 75 Clover and Timothy seeds on every square foot. Lot "Worthmore" makes a low cost seeding and produces a bumper crop. It is sold on our Money Back Guarantee. Order early this year.

LOT "REAL WORTH"

This seed has been highly re-cleaned. You will not find any Canada Thistle, Quack Grass or Bind Weed in this lot. Why are we selling it under the market? Because it contains around 3 to 5% of other crop seeds, such as Alfalfa and other Clovers, which are agricultural seeds. Has high germination. There isn't one farmer in fifty that objects to this small percentage of these crop seeds. It has the appearance of extra quality. Notice the large bright plump berries. It is U.S. northern grown seed. We bought Lot "Real Worth" at a discount and are giving you the advantage of this purchase. Don't buy country run clover that has not been tested, when you can buy this fine quality at a rock-bottom price. We guarantee shipment as represented, or money refunded. Send us your order.



U.S. GROWN RED CLOVER PINNACLE BRAND

EXTRA FANCY New Crop U. S. Grown. Guaranteed

This is hardy domestic northern grown seed and our Pinnacle Brand is our best grade. We have always tried to maintain a high standard of purity and germination on all our Pinnacle Brand seeds. This grade of seed satisfies the farmer who is particular about wanting the best. It is really a beautiful quality. We offer this brand to buyers who want the highest quality.

Northern Grown—Guaranteed

We do not handle any southern grown Red Clover. It is not good for our customers. We want your further business. Our Pinnacle Brand has been thoroughly re-cleaned, tested and guaranteed to be just as recommended. Thousands and thousands of our customers have been using our Pinnacle Brand seeds for years with the utmost satisfaction. Our other grades of Red Clover, Economy and Universal, quoted on page 34, are

all home grown seeds. They are all priced to save you money

Underpriced—Lower Now

We have priced our Red Clover to sell. We challenge competitors to undersell us. Compare our prices with other seedsmen. We bought several carloads last fall in the producing districts. We bought lots of seed before the market advanced. The crop was about the same as previous year, due to weather conditions. The crop is short of the demand.

Buy our Pinnacle Brand. It runs around 99% or better pure. If you do not find our seed as represented, or if you do not save \$2.00 to \$3.00 per bushel after you receive the seed, return it and we will refund your money plus freight. There is a good demand for Red Clover. Buy now while the price is low.



Gentlemen:

I have bought and sowed all my seeding from the American Field Seed Company for more than five years, and have always been well pleased. Will perhaps need more seed soon again.

(Signed) John O'Meara.

Monroe, Wisconsin.

Dear Sirs:

Received my clover seed, and am well satisfied with the quality and purity. I have had it analyzed and find it just as you advertise. Always had the seed tested, and found yours free from noxious weeds. This is more than I can say for some of the other firms I have dealt with. Truly yours, (Signed) Otto J. Klein.

Streator, Ill.





MAMMOTH CLOVER RED

Those who understand the Mammoth Clover seed situation will quickly appreciate the wonderful value in Lot Pride. This seed was produced in the northern part of the United States. Mammoth is sown all over our country, but is generally cut for hay or plowed under for a soil builder. Our Mammoth Clover was grown in north central States. Seed production was a total failure in some of those sections and good in others. This Star Bargain will save you \$2.00 to \$3.00 per bushel. Why are we selling Lot Pride under the market? Because it contains around three to five percent of other Clovers. Adding this small percentage of other crop seeds or clovers to the purity of the Mammoth

Fancy Quality

Clover, Lot Pride has total crop purity of about 99% or better. We guarantee it of high purity and germination. You can buy it subject to your obtaining any State or U. S. Government test. Investigate and compare. You will discover that our Star Bargain sale is saving the farmers of this country thousands of dollars on their seed bill. This seed is high quality seed. It is only the price that is low. Complies with Agricultural Conservation Program.

Where to Sow Mammoth

This clover grows larger than Medium Red and also somewhat coarser. It is often called Sapling Clover. The yields of a crop of Mammoth are quite a bit heavier than of the Medium Red. The Mammoth, however, does not make as much second growth as the Medium. It is also later in maturity. If your seasons are too short for two crops of Medium Red,

it pays to sow Mammoth. If you are sowing clover mainly for the purpose of plowing under, use Mammoth and you may prefer it for sowing in mixtures.

You want clean, pure, bright, plump, high colored, strong germinating seed and you get all of those in Lot Pride.

INOCULATION PAYS BIG DIVIDENDS

"INOCULATE Legume Seed"

We Offer a New Inoculation
TUBERCLE GERM UNI-CULTURE

One Can Inoculates All Clovers and Alfalfa

This new Inoculation is prepared for us by a well known laboratory. Their bacteriologist developed this new Uni-Culture. This new Culture revolutionizes the sale of inoculation. No longer necessary for you to buy different kinds of inoculation for different seeds. The bacteria for the Clovers and Alfalfa are all packed in the same can. There are three times as many bacteria as needed in each can for each of six different kinds of Alfalfa, Clovers, including Red Clovers, Alsike, Sweet Clovers and Crimson. There are billions of live bacteria for different legumes in each can.

Cost of Inoculation Is Small

Any Agricultural expert or successful farmer will tell you it pays to inoculate. The extra crop yield makes the cost per acre very small. Our Tubercle Germ has plenty of strong virile bacteria. If our Tubercle Germ fails to produce nodules on the roots, write us within 6 months after using the seed and we will refund your money.

POSTPAID PRICES ON TUBERCLE GERM

Alfalfa and Clovers	Soy Beans and Cow Peas
1 Bu. Size 50c	2 Bu. Size..... 30c
2½ Bu. Size..... 90c	5 Bu. Size..... 50c
Lespedeza	25 Bu. Size..... \$1.95
4 Bu. (100 lbs.) Size... 60c	Vetches
	2 Bu. (100 lbs.) Size... 40c

State kind of seed you wish to inoculate. No more ½ bushel sizes on account Gov. Conservation Program.

MIDLAND RED CLOVER

A New Strain
CERTIFIED-BLUE TAG
Idaho Grown



This new variety of Red Clover has been in production the past six years. There has not been enough seed produced to take care of the demand. Midland Red Clover is the result of 12 years of breeding and testing by Experiment Stations of Illinois, Indiana, Ohio and Iowa, co-operating with three northwestern states and the U. S. Dept. of Agriculture. In their research experiments they selected five of the best strains in the central corn belt states. They cleaned and mixed them in one lot and shipped the seed west, where it was grown under certification to become Midland Clover.

Dr. E. A. Hollowell, of the U. S. Dept. of Agriculture, says—"Midland Clover is adapted to the middle section of the red clover belt. Certified or registered seed should be recommended to insure the farmer of getting the right product." Midland and Common Red Clover look alike.

Prof. J. C. Hackleman, of Illinois Agricultural Experiment Station, says—"Our experience with Midland Clover here at the University, and also in demonstrations over the northern half of the state, is that it is one of the better strains of red clover that we have available at the present time." Midland is extra hardy and will give you an increased production. Our stocks are limited.

Creston, W. Va.

Gentlemen:

Please inoculate my clover seed, as I enclosed 50c extra in my order. Ship as soon as possible. Have been ordering my seeds from you for 7 or 8 years. Like your seeds fine.

Sincerely yours,
(Signed) WIRT D. LEE, R.F.D.1

Rockdale, Ky.

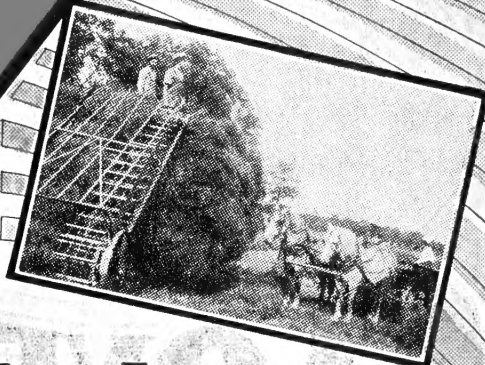
Gentlemen: This has been the driest year that was ever known in Kentucky. A seed merchant told me he sowed 2 bushels of Alfalfa and did not have a dozen stalks in the whole field. I sowed your seed, inoculated, and have a good stand of both Alfalfa and Sweet Clover. Yours very truly,
(Signed) S. T. GLASS.



ALSIKE CLOVER

HOME GROWN
\$28.90
60 LBS. BU.

60 lbs.
Per Bu.



PINNACLE BRAND—Extra Fancy

Any judge of high grade seeds will agree with us when we say this is a beautiful lot of Alsike Clover. We will gladly send you a sample of it. The Alsike crop in Illinois, Wisconsin, Michigan and other central states was very poor this past year. When there is a short crop the quality is usually not so good. We were fortunate in buying two carloads of this fine Alsike to take care of our customers who are cranky about high grade seed. In buying our Pinnacle Brand you obtain our finest quality. We don't believe you can find any better seed for the money.

Economical to Sow

On account of the high purity of our Pinnacle Brand and Alsike being a smaller sized clover, sow 5 or 6 pounds per acre for a good stand. Many farmers sow a couple of pounds of Alsike with Red Clover. Makes better stand and thicker growth. Alsike is grown from Canada to Tennessee and from Maine to Oregon. It's about the only clover that thrives on low wet ground.

Alsike has higher feeding value than Red Clover. Is greener in color and less dusty. Is fine for pasture and makes wonderful hay crop.

Easy to Get Started

Alsike Clover is one of the easiest to get to grow. This crop does not care much what kind of land you sow it on. It may be too sour for Red Clover or too wet, and yet it will grow Alsike. It works well in pastures and meadows. If you have any trouble getting Red Clover started, use Alsike. It's a good plan to mix it with Red Clover if you are doubtful of success. Alsike is a perennial.

A Big Saving

This great Star Bargain deserves the attention of every buyer who wants to get all he possibly can for his money. You will not be disappointed. Since we secured this seed we haven't been able to find another like it at a similar price. The seed is all higher. The producers have all sold. We can offer this Alsike so long as this lot lasts. Buy it now.

LOT
WISCONSIN
\$25.30
60 LBS. BU.

WHITE DUTCH CLOVER

The famous pasture clover. Makes wonderful bottom growth sown with other taller clovers and grasses. Also known as a lawn clover. It is used in lawn grass mixtures. Is drought resistant and very nutritious. The seed is small. Four pounds sows an acre. In mixtures use 1 to 2 pounds per acre. On lawns use 1 pound on 600 square feet. It's a perennial. Lasts several years.

Small lots, postpaid: 1 lb., \$1.20; 5 lbs., \$5.40; 10 lbs., \$10.30.

See page 34 for quantity prices.

LOT
THRIFT
\$12.00
45 LBS. BU.

ALSIKE CLOVER

We offer Lot "Wisconsin" at large discount under our Pinnacle Brand, because it contains a small percentage of White Dutch Clover, Red Clover and other farm Clovers or farm crop seeds. White Dutch Clover is selling for over 95c per lb. It will run around 90% Alsike and with other farm crop seeds, will have a total crop purity of 97% to 98%. Many farmers like a small percentage of other clovers in their Alsike. It makes a good undergrowth and produces a better pasture or meadow. Will be glad to send free sample on request to prove it's a good value.

Cuts Cost of Seeding

We buy this class of seed a way under the market price of straight seed, because it is mixed. It has a high germination and has been double re-cleaned. Fine for pasture or hay crop. Sow 6 or 7 pounds per acre for a good seeding. It's a good lot to sow on bare spots in old pastures or meadows. It will grow on most any kind of soil. Lot "Wisconsin" is a bargain any way you figure it. It is sold on a Money Back Guarantee. Grab this bargain and save money.

Alsike with Timothy

You stretch your seeding dollars to the limit when you buy lot "Thrift." We buy many lots of Alsike in the country that contain some Timothy. We usually buy this seed 10% to 20% cheaper than the straight seeds. Lot "Thrift" runs from 50% to 54% Alsike. If you sowed 7 to 8 lbs. per acre it would only cost about \$1.70 per acre. Most farmers want Timothy in Alsike. It prevents soil erosion. The Timothy holds up the Alsike. The Alsike stores nitrogen in the soil. This lot has high feeding value.

Lot "Thrift" has been well re-cleaned. It will germinate quickly and grow a heavy crop of fine hay or pasture. Sown at the rate of 8 lbs. per acre there would be about 50 to 60 Alsike seeds on each square foot besides the Timothy. Tell your friends about this low priced seeding. It is shipped subject to your satisfaction or money refunded.



Nashville, Ind.
Gentlemen: Enclosed herewith another order for Clover Alsike and Timothy mixed. The seed I bought from you before produced such a nice piece of grass that it is the talk of the neighborhood. They say it is the best piece that they have seen anywhere this year.

(Signed) E. B. Nisbet.



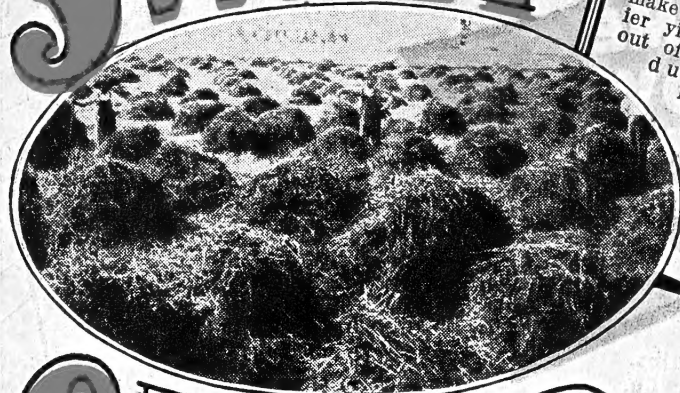
Newald, Wis.
Gentlemen: The Alsike that I bought from you in the spring was certainly fine and I have the best new seeding in the country. The Champion Beardless Barley that I bought from you were No. 1 and I have harvested it already.

Yours very truly,

(Signed) R. B. Rose.

SWEET

THE WONDER CROP



Don't Forget to Inoculate

All Clovers and Alfalfa should be inoculated. You make more profit in heavier yields than we make out of the sale. It produces stronger and healthier plants. The price is low
—50c for 1 bu. size;
90c for 2½ bu. size.

For **FERTILIZERS**
PASTURE and
MONEY
MAKING

CLOVER

Domestic Northern Grown

More land is going to be sown to clovers and grass this year. Sweet Clover is a great favorite because it excels in soil building and is the cheapest of all to buy. Seed supplies are not large. Already market advances show the tremendous demand for this crop. We bought large supplies early. As long as they last you can buy at our money saving prices.

VARIETIES AND TYPES

SWEET CLOVER—This is the White type. Is generally known as the tall Sweet Clover. In the large producing sections of Minnesota and the Dakotas some yellow has gotten into the fields. Because of these conditions it may contain some yellow or mottled seeds, around 2 to 4%. It is a wonderful crop for pasture, soil building and produces heavy crops of hay. Lives two years.

Grundy County Type—we call it Dwarf Type. Does not grow as tall as the common Sweet Clover. Matures about 3 weeks earlier. See page 8.

Yellow Type Sweet Clover—Lives two years. Matures between Common and Grundy County. Finer stemmed and leafy. Mostly all yellow blossom. See page 10.

Hubam Type—An annual Sweet Clover. Makes complete growth in the same year it is sown. Blooms, bears seeds same year sown. See page 10.

UNHULLED SWEET CLOVER



Nature's Way of Seeding

This is a beautiful bargain in seed in the same form as it falls from the plant in the fall. It is one of the surest and best ways of getting a stand. This should be sown during the early winter. The seed then becomes imbedded in the soil. The freezing and thawing prepare the seed for quick germination in the spring. Unhulled is not recommended for late spring seeding as it is slower in germinating. A good time to sow is December, January, February or first part of March, on the snow or frozen ground. Some farmers tell us that they get heavier stands of clover from sowing the Unhulled Seed.

Extra Nice Seed

Much Unhulled Seed that is offered, is poorly cleaned. We obtain our Unhulled Seed from a shipper in Minnesota, who picks out the best lots of Unhulled purchased from growers. Our Unhulled Seed is fine clean quality. Our seed is quoted low. Stocks of this fine quality are limited, so order early and sow early.

\$4.25
30 BU.
LBS.

DWARF TYPE SWEET CLOVER LOT HIGH TEST

\$10.80
BU.
60 LBS.

Also Called Grundy County Type Sweet Clover

Is the finest quality, like Lot "Cream" on next page. This smaller type of Sweet Clover originated over 25 years ago in Grundy Co., Ill., which is about 60 miles southwest of Chicago. Now grown in several states. Has same characteristics as the yellow blossom. Seldom grows over 3½ feet high. Many farmers in Grundy Co. still call it Grundy Co. Dwarf Sweet Clover. Many call it Dwarf Sweet Clover to distinguish it from the big, tall White Sweet Clover. This lot contains around 4 to 6 yellow or mottled seeds in 100 seeds.

Lot "High-Test" has a big hidden value. It is about 10 or 12 days earlier than the tall White Sweet Clover. Makes finer stemmed hay. Costs less to sow, because it only takes 11 to 12 lbs. per acre. Has high purity and germination. Lot "High-Test" is one of our fine Star Bargains.



Gentlemen: I bought Sweet Clover from you last spring, and sowed it on a stock field, on very steep ground sloping to the west. I have a fine stand, pastured it through the dry months and it is now over knee high. I am well pleased with the Red Tag Grimm Alfalfa seed bought from you last spring. (Signed) J. Ralph Meyer.



Circleville, Ohio.
Gentlemen: Enclosed find another order for clover seed. This is my third year ordering clover from you. Am more than pleased with the last two clover seedings, both in price and quality. I had the only good piece of Sweet Clover seed in this neighborhood last summer.
Yours truly, (Signed) Harvey M. Bode.

LOT **CREAM**
FINEST SWEET CLOVER

\$10.75
60LBS
BU.

This lot of Sweet Clover will please the most critical buyer. It's the cream of the crop. Big berries and fine color. The highest purity and very strong germination. Lot "Cream" is better than the average best. Runs over 99% pure. This is the tall White Blossom. Contains 2 or 3% mottled colored Sweet Clover Seeds.

Priced to Save You Money

Lot Cream is Pinnacle Brand quality. Pinnacle is our highest grade. High grade seed is always satisfactory and economical. Your local dealer could not give you better seed value if he charged you \$2.00 more. Why pay long prices. Buy lot Cream and save money. Hardy northern grown.

Our Seed Carefully Prepared

All of our seed is bought with care and cleaned with modern machinery. Our Sweet Clover is scarified by latest improved methods. You can depend on our seed as being good reliable stock. It must be good or we cannot expect your future business. See page 6 about "Varieties."

Grow Sweet Clover This Year

Build up your land. Grow better pastures and get larger yields of hay and grain. Sweet Clover will help you make more money. You cannot make a better purchase than lot Cream. Very few dealers handle seed of this quality. Order lot Cream. It will make us friends.



LOT
NOBLE
\$9.50
60LBS 30

A Sweet Clover Leader

This is an outstanding offer. This is the quality a lot of our customers ask for. Seed that is a little off in color; not quite so uniform in size, but clean and good germination and low priced. Lot "Noble" meets with these qualifications. It is not real fancy quality but a mighty serviceable lot of Sweet Clover. It is similar to our Universal Brand. Some dealers might sell this quality as their best grade. A good percentage of this lot is first grade in color

and size of the berries. It's a dandy value any way you look at it.

Lot "Noble" Is Sharply Underpriced

We consider it one of the big Star bargains of our Sweet Clover special offers. There will be a big rush for Lot Noble. We know it will deliver the goods and make us a lot of friends. This seed is scarified. It has been carefully blended. See page 6 about "Varieties" and White Sweet Clover.

Save Up to \$2.00 Per Bushel

Check our price on Lot "Noble" with prices others are asking for a similar quality, you will find a big saving on this lot. Don't let some competitor discourage you. Use your own judgment. It's northern grown. We have carefully tested Lot "Noble" and are offering you one of the finest values of the season. It is a real bargain. We offer this lot on our Money Back Guarantee. Remember, "We are not satisfied unless you are."

LOT
GOOD LUCK
\$8.30
60LBS. BU.
BAGS FREE

An Outstanding BARGAIN

Lot "GOOD LUCK" Priced Extremely Low

This is our lowest priced Sweet Clover and a Star Bargain that excels all others. It is by no means cheap quality. The seed has been cleaned, scarified and germination is good. It will produce a good crop and should bring Good Luck to you who order it. It is domestic northern grown.

Good Luck Is Big Sweet Type

Just the kind you most generally see throughout the country. It ranks foremost in land building and is used very extensively for pasture. Usually makes a good hay crop in the fall of first year and is used either for hay or pasture and for plowing under the second year. Grows fast, produces heavily and it is one of the best money making crops.

A Big Dollar Value

The quality of our lot "Good Luck" this year is far better than in previous years. It runs 10% to 20% better in quality. Not quite as fancy looking as our best grade, but a mighty serviceable lot of seed. The seed runs a little smaller, the color is not so uniform and it contains some Yellow Clover. On account of some of the seeds being small, there are about 20% to 30% more seeds in a pound than in the higher priced seed. This makes a good stand. Many of our customers are not so particular about the color and size of the berry. You want seed that has satisfactory purity and germination at a real bargain price. Lot "Good Luck" has those qualifications. We ship this seed to you on approval. Our Money Back Guarantee on Page 4 protects you.

Buy This Bargain NOW

We want every customer to get full value for his money. It would be difficult for us to get more seed like Lot "Good Luck" that we could sell at this low price. We recommend this lot as an outstanding value and urge you to buy now at this low price.

Mooresville, Ind.

Gentlemen: I wish to say to my brother farmers of the United States that after 4 years dealing with the American Field Seed Company, that I have saved on an average of \$2.00 per bushel on most seeds bought of them and also got a square deal in every respect.

(Signed) J. T. Brown, Ex-Co. Commissioner.



Milan, Mich.

Gentlemen: I have bought seeds from your company for my fertilizer customers for the past two years, and have ordered over 100 bushels of grass seed each year. I have never had a complaint from my customers.

Very truly yours,
(Signed) W. P. Craig.



STAR BARGAINS

SWEET CLOVER

GREATEST VALUES

LOT VICTORY

LOT JEWEL \$10.60

60 LBS. BU.

Dollars Saved in Biennial Yellow Blossom Type

This Star Bargain glitters like a jewel. Very few dealers can match it. The Yellow Type Biennial Sweet Clover is not so plentiful as the White. It is becoming better known every year. It has finer stems and makes more leafy growth. We know where the best Yellow Blossom Type Sweet Clover is produced. It is a profitable seed crop.

Yields lots of seed per acre. Matures about 10 days earlier than the tall White. Many say it is easier to grow. Makes a finer quality of hay. It is great for pasture and building up the soil. Lot "Jewel" is quality seed for quality folks. Runs over 99% pure.

Lot "Jewel" is Pinnacle grade quality. That means our very best. It is fine, bright, clean, high colored seed. Has high germination. If anyone talks to you about quality, get a sample of their seed. Compare it with sample of Lot "Jewel." You will usually find our seed superior. It is strictly high quality.

Save More Money

Retail dealers who sell Yellow Biennial Type Sweet Clover will no doubt ask you about \$2.00 more for seed like lot "Jewel." Why pay more money? We sell you the seed on a guaranteed basis. Our Sweet Clover seed is carefully prepared. If you pay \$2.00 per bushel more, we don't think you would get any better seed than lot "Jewel." Take advantage of this Star Bargain offer. Don't pay two profits, when you can get high quality seed like lot "Jewel" at this price.

\$9.00
BU.
60 LBS.

A Nice Quality of Yellow Sweet Clover Type

Here again as in our other lots of Sweet Clover you discover what amazing values we are giving our customers this year. We know this low price will put Biennial Yellow Sweet Clover on thousands of farms that have never had it before.

A Good Quality of Seed

Lot "Victory" is seed that will produce very satisfactory results. It is good seed. It has been well scarified. The germination is good. You will like it because it will do as much for you as higher priced seed. It's not so extra fancy in appearance, having somewhat smaller berries a little off colored. That is why you can buy it cheaper. If you are strong for looks buy Lot "Jewel" described above. If you don't care much for looks, you can make an extra saving by ordering Lot "Victory." It is guaranteed to satisfy.

A Great Value

Biennial Yellow Type Sweet Clover at this price is cheap. This fine stemmed leafy variety is becoming more popular. This lot offered to save you money. You can sow Lot "Victory" on old pastures. As a soil builder this clover ranks high. Remember it's a bargain.

HUBAM

THE ANNUAL WHITE BLOSSOM SWEET CLOVER

Hubam Type—A One Year Variety

Here is a peerless Star Bargain in a highly profitable crop. Sowing Hubam enables you to work your land harder and still keep it in a high state of fertility. It does two years work in one. It makes a full and complete growth the same year you sow the seed. It's a one year rotation crop. Produces seed crop same year seed is sown. Read at the bottom of the testimony of Mr. T. E. Beals, Cicero, Indiana. This is more evidence regarding the value of Hubam.

Other Advantages of Hubam Type

This type of Sweet Clover is a real money maker. You can get two cash crops a year with Hubam. Sow it with grain in the spring. Cut your grain first. Then in early fall you get a crop of seed. You can pasture it after the grain is off. Produces up to 600 pounds of seed per acre. Makes a good hay crop if cut about the time it starts to bloom. Some farmers plow it under about the time it starts to bloom. Makes a great fertilizer. Adds large quantity of humus and nitrogen to the soil. Will increase next year's corn or grain crop around twenty to forty percent. Hubam is a quick action crop. Sow about 12 to 15 lbs. per acre.

Lot Pinnacle Priced Low

This is new crop seed. We obtain the bulk of our seed in the producing territory. It is adapted for any northern territory. Lot Pinnacle is our extra fancy seed. It is good bright seed. Thoroughly re-cleaned and scarified. Has good purity and germination. It is guaranteed to satisfy. It is the same quality as our Pinnacle Brand quoted on page 32. We offer extra fancy Hubam at this special price to induce more farmers to use Hubam Clover. Order Lot Pinnacle and cash in on this crop this fall. Our price is lower than many other dealers are asking.



Cicero, Indiana.
Gentlemen: In spite of the drought and heat, the Hubam Sweet Clover bought of you did exceptionally good. Hubam makes a fine crop to plow down for a corn crop. It also makes a fine fall pasture.

Yours very truly,
(Signed) T. E. Beals.



Centerville, Mich.

Gentlemen: Am interested in 2 bushels of northern grown Alfalfa and 2 bushels of Sweet Clover; prices to be good for 2 weeks. Might say that last year I purchased 2 bushels of medium Red Clover from you and it is the best I ever saw. Not a single plant of buckhorn in it. Thanking you, I am
(Signed) W. J. Kelley, R.F.D. 2.



KOREAN CLOVER LESPEDeza

\$2.60
BU.
25 LBS.

10 BU.
\$25.50

A Great Clover for Poor Thin Land. Requires No Lime or Fertilizer—A Valuable Crop

Its popularity increases year after year. Very easy to get started. A phenomenal drought resister. High in food value. Extra fine summer pasture. Grows on the poorest land. Enriches soils and keeps them from washing. Millions of poor acres are being reclaimed by Korean Lespedeza.

Description

Korean is an annual. It grows only one year. However, it reseeds itself very easily unless the season is too short to mature seed. The stands from reseeding are generally much thicker than the original stand.

The stems are fine. The growth is very leafy. The feeding value is very similar to Alfalfa. It makes up to 3 tons per acre. In the north it is best for pasture. Korean is especially good in pasture mixtures because this clover does not make much growth in the spring. In the hot dry summer months it grows best. Pastures containing Korean do not dry up but continue to flourish until killing frosts.

Seeding Suggestions

Your seed bed **Must** be firm and the seed **must Not** be covered deeply. Broadcasting on winter grains is a good practice. Sow like Red Clover. About $\frac{1}{2}$ inch

deep. Running a roller over the ground later helps both grain and the clover. When sown with spring grain, roll the ground thoroughly then sow Korean and roll again. Seed may be broadcast in early spring on thin pasture without any seed bed preparation.

You can also broadcast seeding during winter months and early spring. Avoid covering it too much. Sow 12 to 15 lbs. per acre. Ask for our Free Circular on Lespedeza. Extra Fancy Grade—\$2.75 bu., 25 lbs. per bu.

EARLY STRAIN LESPEDeza CLOVER

New Tall Early Type

This new strain of Lespedeza can be grown further north with good success. Grows taller. Matures seed earlier. Known as early strain No. 19604. One of our Illinois customers has been reproducing a seed crop for five years. An Illinois grower reported it made a growth of two feet during a dry summer and claims a yield of 900 to 1000 lbs. of good seed per acre. Stands heat and drought and is a great crop.

More farmers are finding out every year it is a "life saver." It will mature seed over a 100 miles north of the ordinary Korean described above. It grows well on poor soil without lime or fertilizer. On better land it will grow taller and heavier. It is a vigorous grower and protein content is high.

A Money Crop

Sow in spring, medium early and harvest a seed crop the same year. Will mature seed further north. Farmers in sections of Iowa, Illinois, Indiana, Ohio, Pennsylvania and other states, need this type where regular Korean does not do so well. Heavy stands of this Early Strain can yield as much as two tons of fine stemmed leafy hay that is equal to alfalfa. Its greatest value is for pasture. It is easy to get started. Sow with Oats or other small grain. Requires little seed bed preparation. It builds up the soil. Firm seed bed is best. Do not cover seed over $\frac{1}{2}$ inch. Often sown on top of the ground in early spring. It's a real money maker. For seed crop, sow 5 lbs. in rows and cultivate it. For hay or pasture, sow or drill 12 to 14 lbs. per acre. We have fancy re-cleaned seed. Get started this year.

Small lots, postpaid: 5 lbs., \$1.60; 10 lbs., \$2.85.

See page 34 for quantity prices.

SERICEA LESPEDeza SCARIFIED KOREAN

A Tall Grower—A Perennial

This Lespedeza differs a great deal from Korean. Instead of living through reseeding it comes up in the spring from buds that form on the roots in the fall. Grows taller than Korean. Therefore, it is much better for hay. It also has a larger, stronger root system and is a superior soil builder. Has lived over winters in the latitude of the southern part of Wisconsin. Grows on poor soil.

Nature of Growth

Sericea grows slowly the first year sending up a single stem. It throws out more stems from the crown each year. Thus, it becomes finer and heavier producing year to year. Grows very leafy. Should be cut before blooming for best hay. May be used for pasture.

The strong tap root of Sericea penetrates the stiffest soils. This tap root branches very freely and this extensive root system loosens up the heaviest land. Gives remarkable results on flat, poorly drained land.

Seeding

Sow only scarified seed. Does not stand as much frost as Korean; therefore, do not sow too early. Use about 6 to 8 pounds per acre. It is vitally important to have a solid seed bed and not to cover deep. Use a roller after seeding if you can. That is good practice on all grass and clover seedings.

We save you money on Sericea Lespedeza based on the quality of seed we sell. See page 34 for quotation.

Small lots, postpaid: 1 lb., 50c; 5 lbs., \$2.00; 10 lbs., \$3.75.

This is the same seed as the Korean Lespedeza described at the top of this page which has the hulls on it. This Scarified Korean has the hulls off. They come off when seed goes thru our scarifying machine. After seed is scarified, it is easier to clean out bad weeds. Scarified Korean germinates quicker. For early spring seeding use the regular Korean. For late spring seeding use the Scarified seed. Sow about 10 to 12 lbs. per acre.

The hulled scarified seeds are about the same size as Red Clover, just a trifle larger. Sow with small grain like other clovers. Hulled Korean is getting more popular every year. Grows everywhere, on any kind of soil. Cost of seeding around \$1.25 per acre. Sow 9 or 10 pounds per acre. Sold 60 lbs. to the bushel.

Price: \$7.75 bu., (60 lbs.); $\frac{1}{2}$ bu. \$3.95; $\frac{1}{4}$ bu. \$2.05.

Aurora, Ill.
Gentlemen: I have been more than pleased with every order of seeds bought of you for several years, especially as to quality and price. Have bought hundreds of dollars worth of seed, and always got good seed. I like your system of doing business.
(Signed) Levi Carr.

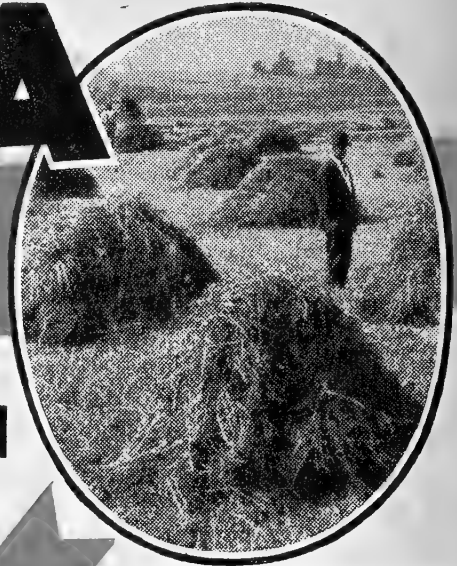


ALFALFA

FOR THE

CORN-BELT

LOW COST HEAVY PRODUCTION



Corn-Belt Alfalfa has come into existence as a registered trade-name for Alfalfa seed, adapted to the corn belt as shown on the map below. Corn-Belt Alfalfa is a "registered" trade-mark and is not a variety of Alfalfa. Corn-Belt Alfalfa seed is produced in the northern and western part of the corn belt and even farther west and north. We have for example established that Alfalfa for the corn belt states does just as well in Wisconsin as Montana or Dakota Common. Hundreds of farmers in Wisconsin have grown Kansas Alfalfa for several years with success.

Thoroughly Adapted

We have not made wild guesses but the fact of adaptation of such seed has been amply sustained by experiments made by state stations. It is further established by the experiences of our customers who have used seed from these sections for many years.

We have four different grades of Corn Belt—PINNACLE, UNIVERSAL, ECONOMY and UTILITY Brands. They are adapted for sowing in Corn Belt States. Our Corn-Belt Alfalfa is domestic U. S. origin. No southern seed in Corn-Belt.

Always Dependable

Now we can help you solve your seed problems more easily. You can select adapted Corn Belt Alfalfa with the assurance that you will always get seed of dependable character. It will have the hardiness and yielding quality you want at lower prices. Our Corn-Belt Alfalfa is adapted to territory as shown by map below. Always insist on genuine Corn-Belt stock.



Reg. U. S. Pat. Off.

ALFALFA CORN-BELT

PINNACLE BRAND

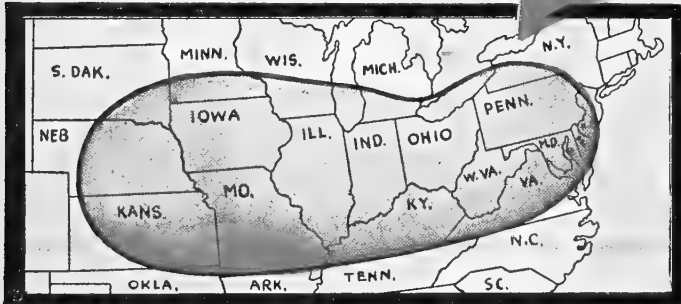
\$28.90 BU.
60 LBS.

See Sample Enclosed

This is our extra fancy quality. The sample represents the actual seed we will ship you.

Notice the high color and plump berries. It usually runs 99.25% to 99.50% pure. Is 1946 crop. It's high grade Alfalfa Seed in any seed store. We do not receive one complaint in a thousand orders from customers who buy our Pinnacle Brand. We have received many testimonials from customers who buy this Alfalfa year after year.

This is hardy Alfalfa and we recommend it for any section of the corn belt, described on the map in adjoining column. Contains no southern seed. Many dealers will ask you \$3.50 to \$4.00 a bushel more money for alfalfa of similar character. This is winter hardy alfalfa and will produce a yield equal to most any northern alfalfa. One of our northern Illinois customers reports it is just as hardy as higher priced Certified Grimm Alfalfa. Order this seed and be a satisfied customer.



LOT GRO-WELL

Low Price in Hardy Alfalfa

This is a fancy quality of hardy Corn-Belt Alfalfa. It does not have quite as high a purity as our Pinnacle Brand, but it is a close second. Many dealers might offer this quality as their best fancy Alfalfa. It has a high purity and germination and will produce good stands. Just as hardy as the Pinnacle Brand on this page. Not quite as good color, but only a slight difference.

There is quite a saving in buying Lot "Gro-Well." This offer packs a real bargain. Buy this lot and if you do not think it worth the money after you take it home, return it and we will refund your money.

\$26.80 BU.
60 LBS.

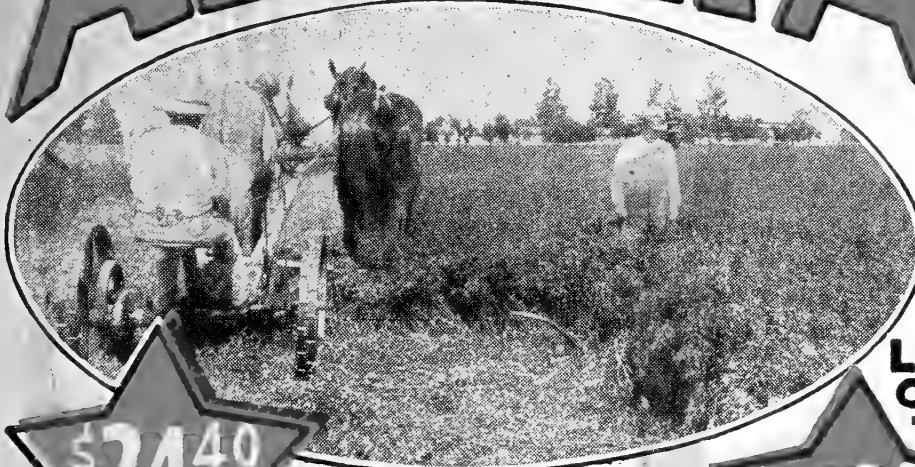
VARIEGATED ALFALFA

Lot "NORTHERN" 99 1/4 % Pure Including About 2% Crop Seeds

This is the variegated type of alfalfa. It is similar to Grimm Alfalfa. Was grown in Canada, north of North Dakota. Just as hardy as any alfalfa grown in the U. S. Lot "Northern" is good clean seed. Purity is 99 1/4 % including about 2% of other clovers, such as Red Clover, Sweet Clover and Alsike. Germination 77 to 80%. Canadian No. 1 Alfalfa is sold by some dealers for \$35.00 a bushel and only has a germination of 83 to 85%. You can sow one or two pounds more of Lot "Northern" per acre and get just as good a stand and save \$1.50 per acre. This lot guaranteed to pass your state pure seed law. It is sold on our Money Back Guarantee on page 4.

\$27.80 BU.
60 LBS.

ALFALFA



**MAKES
MORE
PROFIT
THAN
OTHER
CROPS**

LOT GRAND

**A Big Value
Grown in the U. S.**

Our trade uses a large quantity of this grade. It gives good satisfaction. Our customers like it. They come back for more and tell their friends of this big value.

You get a lot for your money in this seed. It produces good stands. Those stands yield fine crops. It is as hardy and productive as any common alfalfa. The crops are clean and vigorous. It is adapted for Soil Program.

Why so Low in Cost?

It is merely a matter of appearance. It is not as smooth or highly colored as our more expensive grades. It's a good bit like judging horses. One horse may not look as nice as another but he'll do just as much work and have just as good wind as a nicer looking one that sells for twice as much.

An Economy Seeding

This lot will hold down your cost of seeding. Sown at the rate of 15 lbs. per acre, it has produced good stands. It contains some smaller seeds which make a whole lot more seeds per pound and more seeds per square foot when sown. Start this money crop this year by sowing Lot "Grand." Sold subject to your approval. See guarantee, Page 4. Many farmers sow it every year. Stocks of this quality are limited. Order now.

\$24.40
BU.
60 LBS.

LOT ROCK BOTTOM HARDY NORTHERN GRIMM ALFALFA

We are offering Lot "Rock Bottom" Grimm Alfalfa to our customers who prefer the Grimm type, but hesitate on account of the price. Here is a super bargain in Grimm and discolor seeds. The price is low because it contains some alfalfa seeds will produce large plants the same as larger seeds. On account of the seeds being smaller in size, there are approximately 20% to 30% more seeds in a pound of this seed than in a pound of larger seeds that sell for \$3.00 to \$4.00 per bushel more.

Buy Now—Cost Low

A lot of our old customers buy this quality every year. They don't care for looks if they can get seed that germinates, produces a good stand and can buy it at the right price. This seed has been re-cleaned. Lot "Rock Bottom" will save you around 20% to 25% on your alfalfa bill. Sow 15 pounds per acre for a good stand. Lot "Rock Bottom" is northern grown and complies with the Agricultural Conservation Program. We sell this lot of seed on our Money Back Guarantee explained on page 4. Alfalfa is not so plentiful this year and we urge you to send in your order real soon.

\$22.30
BU.
60 LBS.

KANSAS Hardy Alfalfa

\$28.00
BU.
60 LBS.

Pinnacle Brand

This Alfalfa is equal in quality to the sample of our Pinnacle Corn Belt mailed with this book. Kansas Alfalfa is now recognized by many Agricultural Experts to be very hardy Alfalfa. Some farmers claim it is more resistant to bacterial wilt than some of the so called northwestern grown Alfalfa. The Illinois Exp. Station conducted a test for four years in northern Illinois. At the end of four years the Kansas Alfalfa had a better stand than Alfalfa from three northwestern states. For many years the Wis. Agr. Authorities have recommended Kansas Alfalfa in that state. It's a great Alfalfa at this low price.

OKLAHOMA APPROVED ALFALFA

\$28.60
BU.
60 LBS.

Pinnacle Brand—Premium Quality

This beautiful lot of hardy Alfalfa is over 99 1/4 % pure, new crop seed. The Okla. Crop Improvement Assn. requires this seed to be grown in certain hardy districts of Okla. It is produced from established fields that have grown Alfalfa for over 2 or 3 years before it can be Approved. Grown where they have zero weather in the winter and thawing and freezing in the spring. Oklahoma Approved is adapted for Illinois, Indiana, Ohio and any territory in this latitude. Used extensively in southern Wisconsin and Michigan with excellent results. Indiana Soil and Crop advisors report it gave fine results in that state. Hundreds of our customers in the Corn Belt prefer Oklahoma Approved. Guaranteed satisfactory. Order this beautiful lot of Alfalfa now.



Ravenswood, W. Va.
Gentlemen: I am much pleased with the Alfalfa and Red Clover got of you in March. The Alfalfa, sown in April, has withstood the worst drought ever known here. It is better than any grass, native or otherwise, and is still looking well. Send me your price list of seeds as usual.
Yours Sincerely, Chas. L. Brown (Ex-Senator).



Lawton, Mich.
Gentlemen: I am enclosing part of my order amounting to \$112.70. The balance will follow as needed. One man that was going to order with me has not the money right now, but will have it later. Your seeds always grow. Many thanks,
Yours respectfully,
(Signed) D. H. Kuhns.

DAKOTA No. 12

\$31.70
60 LBS. BU.

Very Hardy
PINNACLE BRAND
99 1/4% Pure



GRIMM ALFALFA

Super-Hardy
Grimm Type
Super Bargain
Adapted—
Northern Seed
In Sealed Bags

LOT LIBERTY
\$26.90
60 LBS. BU.

We offer this lot to our customers who demand extra hardy Alfalfa. It is Dakota 12 type, Nebraska grown. Most everyone knows of the superior value of Dakota 12 Alfalfa. Any Alfalfa that withstands the ranges of Nebraska and Dakota Winters will do well most anywhere. Most dealers demand a big premium for where. Most dealers cannot match this quality Dakota 12 over other Alfalfa. The crop was real short. Most dealers cannot match this quality and price. Our Low Price on this Northern Origin Seed will save you money. Fits in Soil Program.

A Fine Bargain

You are buying this seed at a very substantial reduction. You can return it and get your money back if you don't consider it a matchless bargain. The seed is of very fine quality. The purity and germination are high. It would pass as the best with any dealers.

Lot Dakota will give you a start with Alfalfa of real winter hardiness and at a price that eases the strain on the pocketbook. Investigate. Check up on us. Make comparisons. You'll find a big saving and a great value. One manager of several farms has bought our Dak. 12 for several years.

Every practical and economical farmer will appreciate this bargain. Grimm Alfalfa at less than the price of some grades of common. Why so low in price? Because it isn't as high in color or as uniform in appearance. The purity is good. So is the germination. The seed is cleaned and graded by modern methods. The berries are a bit smaller in size. Requires no more seed per acre than the most expensive grades. The farmer who buys his seeds on the basis of results rather than for looks will find in this seed just what he wants.

Lot Liberty Is Reliable

Judge seed values by performance rather than by the price of the seed. This lot of seed will produce a fine crop and practically the same yield as the higher priced seed. Contains a small percent of other clovers, around 2%, which are called crop seeds, cleaned for noxious weeds. Higher colored seeds usually bring more money, but often not better results. Lot "Liberty" has a hidden value that makes it a real bargain. It is hardy northern grown. It gives you most practical and serviceable seed for every dollar you spend. We do not have too much of this lot of seed, so you better send in your order early.

PINNACLE BRAND GRIMM Alfalfa

This Is Grimm Type

U. S. Northern Grown Seed
Premium Grade

\$32.25
60 LBS. BU.

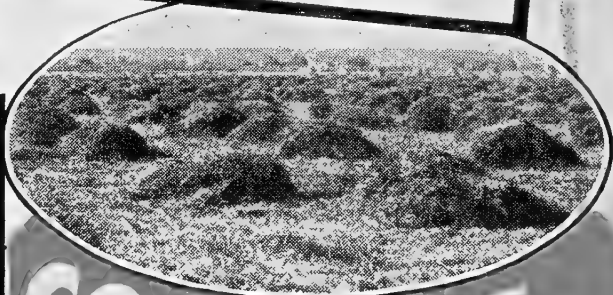
I want every one of our critical customers to give particular attention to this wonderful value. If you want a strictly high quality lot of Grimm Alfalfa you will find just what you desire in our Pinnacle Grimm. It has beautiful color, high purity and strong germination. Plump golden berries. A fine, smooth, uniform lot.

Every bag is sealed for your protection. I wish you could visit with me so I could explain the superior merit of this Pinnacle seed. Perhaps if we charged more money for such seed some people would think it was better. Our volume buying permits us to sell lower. This seed is sharply under priced. It runs over 99 1/4% pure.

Shipped in Sealed Bags

We probably can't visit together, but I will gladly send you a sample of this seed. You can see for yourself what a beautiful grade this is. It is hardy stock Grimm. I am sure that compared with other seed of equal quality our price will save you money. I bought this seed to advantage and I want you to benefit by sharing in the savings so obtained. This quality scarce.

May I urge you to act as promptly as possible for such extra fine Grimm at so close a price will certainly sell fast.



COSSACK TYPE

ALFALFA \$32.75 Bu. (60 lbs.)
A SUPER-HARDY COSSACK TYPE

WITHSTANDS SEVERE WINTERS AND THE MOST DAMAGING CONDITIONS

Our Cossack Type ranks as the full equal of Grimm as regards winter killing. Some consider it even superior. It is unquestionably in front rank. Does your soil or your climate cause a lot of winter killing? If so, use Cossack or Grimm. You won't find anything that will do better. In the end it is the cheapest to sow. Makes heavier production and produces greater profits.

Our Cossack Type Extra Fine

This is our Pinnacle brand. It's the finest grade we sell and that is finer than most. It is top-notch in every way. You are guaranteed the best and you get the big, bright, clean, high germinating seed.

This is also U. S. Grown, Northern seed. Our careful buying brings you this unequalled value. This is a very low price for seed of this character. If you need a super-hardy Alfalfa you will make no mistake in ordering our New Cossack. We know your dealer will ask you more money and talk about better quality. You won't get any better quality no matter what you pay. Buy direct during our Star Bargain Sale, and keep the extra dollars for other things. Larger amounts, see price list on page 34.



Sheboygan Falls, Wis.
Gentlemen: Your Alfalfa No. 12 is the best Alfalfa I saw yet. It is even better than some Grimm here and did not freeze out. We had 28 below zero in winter, so it sure is tough and produces a nice amount of hay each year.

(Signed)

Yours truly,
Edgar H. Klemm.



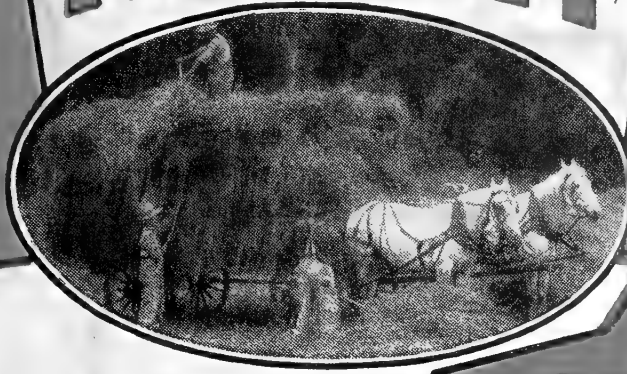
Burgettstown, Pa.
Gentlemen: Your seeds have always been very satisfactory and of good quality and have saved me money. I have a pretty good stand of Alfalfa on my wheat stubble from your seed, sowed last spring, and we did not have any rain for four months.

(Signed)

Yours truly,
C. R. Fullerton.

BUY EARLY
for
LOWEST PRICES

TIMOTHY



FINE CLEAN
HIGH GERMINATING
SEED

Priced Exceedingly Low

You can cut your cost of seeding to the bone by sowing Lot "Silver." The Timothy crop the past season was about two-thirds of the previous year's crop. While the prices are higher this year, Timothy is the cheapest seed on the list. We have several cars and can take good care of your business.

99% Pure—Strong Germination

Lot "Silver" is strictly first class quality. It is Pinnacle Brand quality. If you are an old customer you know that means Extra Fancy or the best.

Send for samples. Compare quality and prices with your retail dealers. Considering quality, you will find our prices lower.

Compare Quality and Value

It pays to sow seed that will grow. Our test shows this lot has high purity and germination. This lot is priced right. A higher price cannot make it any better. You will find other grades described on page 1 and prices on page 34. Send your order for Lot "Silver." It is a dandy value.

LOT
SILVER
TIMOTHY
\$ **4 15**
45 LBS. BU.

GOLD MINE ALL-CLOVER MIXTURE

A Rich Mixture of Legumes at a Low Price

This is a well balanced mixture of Red Clover, Alsike Clover, Sweet Clover, Alfalfa and Korean Clover. Contains a small sprinkle of Timothy, around three or four percent. Some of these Clovers are grown mixed and others get mixed in our mill and shipping room when bags are torn. We mix these lots together and add other clovers in right proportion to make this mixture. This accounts for the low price. Our customers like it. Many repeat orders for this mixture.

\$13 80
BU.
50 LBS.

You Need This Mixture

We recommend our Gold Mine Clover Mixture for a hay or pasture crop. Also for building up the soil. Composed of all legumes it stores nitrogen in the soil. Produces a heavy crop at a small cost. It will grow on most any kind of soil. Sow about 10 to 14 lbs. per acre. Sow on field of all grain or with spring nurse crop. Will produce 3 years. It is re-cleaned seed. Has good germination. This is not old junk screenings like some mixtures offered by some dealers at a low price. We sell this mixture like all our seeds, subject to our Money Back Guarantee. If you do not find it as represented or not well worth the money you paid, just ship it back at our expense and we will refund your money plus freight. Order now. Stock limited.

CRIMSON CLOVER

This clover is also known as Giant Incarnate Clover. It resembles Red Clover. Does better on thinner and poorer soils than Red Clover. Usually grows 2 to 2½ feet. Stores lots of nitrogen in the soil. Plowing under a good crop of Crimson Clover is about equal to 15 to 20 loads of manure per acre. Increase your next corn crop 15 to 25 bu. per acre. Usually sown in spring in northern states, where it is considered an annual. Fall sowing is best in the south. Sow with light seeding of oats or on fall sown grain. Sow 12 to 15 lbs. per acre. Our seed guaranteed to please. Sold 60 lbs. per bu. PRICE:—½ bu. \$8.25; 1 bu. \$16.40.

Red Top

Easiest of All to Grow

Red Top thrives most anywhere on medium to heavy soils. It grows on a wider range of soil types and over a large variation of climates than any grass we know of. Poor soils grow Red Top even after other grasses fail. Medium soils produce it profitably. On rich land it makes a luxurious production. It grows under dry conditions and is the best grass for wet land or poorly drained soil. Red Top stops gully-washing as it makes a thick sod.

Use This Valuable Crop

The above characteristics will suggest uses for this crop on your farm. It makes a fine grass to have in permanent pasture and meadows. It is also fine for lawns. Red Top will catch where other grasses may fail. Using Red Top assures a fuller stand of grass and therefore greater returns from the land. We strongly advise its use.

Our Prices Save You Money

Compared with other grasses the acre cost of seeding is very low. Very economical to use. It only takes 10 to 12 lbs. per acre for a full seeding. In a mixture a little goes a long ways. Our seed is thoroughly re-cleaned and is high testing new seed. Our wholesale quotations are on page 34. Smaller lots postpaid. 1 lb. 60c; 5 lbs., \$1.80; 10 lbs., \$3.40. See page 34 for latest price list.

Knights town, Ind.

Gentlemen:
Please quote price on Red Clover, Alsike Clover and Timothy. I have used your Pinnacle Brand for several years and always found them O. K.

(Signed) Eldon Hagy.



Sow with **ALFALFA**—Increase Farm Profits **20% to 25%**

GREATEST GRASS OF THE CENTURY

BROME GRASS

A Heavy Producer—Resists Drought
Our No. 1 Extra Fancy Northern
Grown Brome

Grows Anywhere—Very Winter Hardy—High Feeding Value

Brome is one of the most valuable grasses for the livestock farmer. It is a perennial and lasts several years. During a severe drought, pastures of Blue Grass and other native grasses usually fade out, but Brome Grass keeps green and right on growing. Starts very early in spring. Brome is more palatable than other grasses. Relished by all livestock. Brome roots go down 4 or 5 feet, yet not difficult to eradicate. The plants grow up 3 feet or more, depending on soil fertility. Stands severe winters. Does well on most any kind of soil. Shows good results on clay and sandy loams, if not too low in fertility. Is used for the prevention of soil erosion.

Brome Is a Superior Grass and Money Maker

It has about the same percentage of nutritive elements as Alfalfa. The carrying capacity of Brome is almost double that of Blue Grass or other native grasses. Has an extra long growing season. When Brome is sown with Alfalfa or Clover, it is more palatable than other grasses and is readily eaten by livestock, the same as the Alfalfa and Clover. If your land will not grow Alfalfa, sow 3 or 4 lbs. Red Clover or Alsike with the Brome. Some add one pound Ladino per acre with the Brome. No danger of livestock bloating when Brome is used.

For a Good Stand

Prepare a good solid seed bed as you would for Alfalfa. Brome is light seed and does not feed readily through a drill. Mixing some cracked corn, oats, or sand with the Brome and keeping it stirred act as an agitator in working it through the drill or seeder. Some use an end gate seeder. Some sow by hand on a still day. Cover seed lightly, about $\frac{1}{2}$ to $\frac{3}{4}$ inch deep. If possible, roll after seeding. It is slow in starting and does not make a big showing the first year. Best results are obtained by sowing with some Alfalfa or Clover. This Brome free from quack grass.

PRICES—No. 1 Extra Fancy Grade Northern Grown, **\$25.25** per 100 lbs. Our No. 2 Choice Grade Northern Grown, **\$23.50** per 100 lbs.

BROME and ALFALFA MIXTURE

Rich Mixture for Big Profits

70% No. 1 Brome Grass—30% Hardy Alfalfa

This is a valuable combination. Brome and Alfalfa work mighty well in putting growth, fat and finish on livestock. Alfalfa feeds nitrogen to the Brome and prevents it from becoming sod-bound. The deep fibrous Brome roots aid Alfalfa in holding the soil. Brome and Alfalfa seem to last longer when sown together. They produce 25 to 50% more hay than Brome sown alone.

One Iowa farmer reports that after three years of Brome-Alfalfa pasture, his yield of corn was 15 to 20 bu. higher. Another farmer in the Corn Belt, who followed a five year rotation program with Brome and Alfalfa, produced 119 bu. of corn per acre on first year sod. Also a yield of 100 bu. oats per acre.

The mixture offered above is about the right proportion. It is 70% No. 1 Brome, 30% hardy Alfalfa with a purity of 97% or better. Both have high germination. Brome seed is light, so we have to ship in separate bags. They should be sown separately.

PRICE—50 lbs. of Mixture:—35 lbs. Brome—15 lbs. Alfalfa, **\$15.80**; 100 lbs.—70 lbs. Brome—30 lbs. Alfalfa, **\$31.50**.

1 lb. 14¢ 3/4
25 lbs. \$6.40
50 lbs. \$12.70
100 lbs. \$25.40

More Facts About Brome Grass

Experiment stations of Illinois, Michigan and other states in the Corn Belt, have been recommending Brome Grass as a valuable grass. They advise sowing Alfalfa or other legumes with Brome. They have found by sowing 3 or 4 pounds of Alfalfa with about 16 or 17 pounds of Brome per acre, it increases the hay tonnage around 25 percent over straight Brome Grass. When sown alone use 20 to 22 lbs. per acre. If you have the least doubt about this valuable crop, write your own State Experiment Station for a free bulletin or information. States from Nebraska to New York State, all recommend Brome, and Brome and legumes mixed.

Alfalfa and Brome silage is a life saver for the dairyman. Records show an Illinois dairy farmer who feeds Alfalfa-Brome silage to his herd makes 40% more profit than an average dairy herd in his area. He feeds less commercial protein concentrates and grain. When putting this mixture in silo, it is wise to mix in some ear corn to keep the silage in good condition.

For a pasture some farmers add Sweet Clover to their mixture of Brome, Alfalfa and other Clovers. A Brome legume combination will care for more livestock per acre than any straight grass or mixture. Never any trouble with livestock bloating when a good percentage of Brome is in the pasture.



Rodden, Ill.
Gentlemen: I have bought seed of you since 1919 and am well pleased so far, and as long as I get the quality I have been I will continue.
Yours respectfully,
(Signed) Albert M. Taylor.



Milmine, Ill.
Gentlemen: I got 3 bushels of your Clover, Alsike and Timothy Mixed last year, and believe every seed grew, and I have a fine hay crop. I have ordered 3 bushels more of the same seed.
(Signed) Howard Virtue.



We are large dealers in grasses and in a position to quote lower prices than small operators. We handle the better grades which are more desirable for a permanent seeding. If you have a low piece of ground that is wet and cannot be cultivated, try Reed Canary Grass this year.

REED CANARY GRASS

THE MIRACLE GRASS Also Known As Phalaris

This grass is a perennial and lasts several years. It will establish a heavy sod on land too wet for other crops. It is easy to eradicate. This grass is best adapted for low wet land, although it has been found to produce paying crops on drained land and up land. It roots fairly deep. It is a wonderful drought resister. During a dry season when other grasses and forage crops were practically a failure, Reed's Canary Grass produced 3 tons of hay per acre.

Seeding and Soil Requirements

It can be successfully grown most anywhere in the northern half of the U. S. Thrives on sour soil. Grows standing in water. Reed's Canary Grass can be sown in spring or fall. Spring seeding is most common. Can be sown real early in the spring. Sow it alone or with a very light seeding of grain. For a seed crop sow about 3 lb. per acre in rows about 18 inches apart. Should be cultivated once or twice. For hay or pasture sow 6 to 8 lb. per acre. Only cover the seed lightly. About 1/2 inch is plenty. You can sow broadcast and go over with a roller if soil is loose. Practically all our seed comes from Minnesota and Wisconsin. Our seed is clean and has good germination.

Profitable Crop

Grows 4 to 6 feet high. Yields 3 to 5 tons per acre. The hay has high feeding value. All livestock will eat it. Under average conditions two or three cuttings per acre are obtained. You can cut off the heads for seed and still get a full crop of fine quality of hay from the stand. Produces 100 to 175 lb. of seed per acre. This is a fine grass for pasture. It can be pastured from early spring until late in the fall. Has pastured four mature cows per acre for a period of seven months.

Postpaid Price: 1 lb., **85c**; 5 lbs., **\$4.00**; 10 lbs., **\$7.60**.

See page 34 for quantity prices.

Write for free Circular on Reed's Canary Grass for further information.



ORCHARD GRASS

Is a perennial. Grows on good and poor soil. Excellent in permanent meadow and pasture mixture. Keeps soil from washing. Good for shady places. Makes fine hay crop sown with Red Clover. A good drought resister. Starts growing early in spring. Our Orchard Grass seed is very fine this year. Purity and germination tests are high. Sow 20 to 22 pounds per acre for full seeding. Can be sown with other grasses and clovers.

See page 34 for reduced Star Bargain prices.
Small lots postpaid: 5 lbs., **\$2.20**; 10 lbs., **\$4.15**.

DOMESTIC RYE GRASS

A quick growing crop. Can be sown early. Starts quick and keeps on job all summer. Makes early pasture or hay crop. Produces lots of feed. Is something like Blue Grass, but leaves are broader and grows much taller. Requires no nurse crop. Often used as a nurse crop sown with slower growing grasses. Experiment Stations in several states recommend it. Eaten by all livestock. Sow 20 to 25 pounds per acre. Can be sown with other grasses. Our seed fancy quality. Prepare a good seed bed, cover seed lightly and roll if possible. Low prices quoted on page 34.

Small lots postpaid: 5 lbs., **\$1.20**; 10 lbs., **\$2.00**.

KENTUCKY BLUE GRASS

Surpassing Quality—Star Bargain Prices

You know what Kentucky Blue Grass is, how valuable for pastures and lawns. It comes volunteer in many places, but it's a mistake to wait for volunteer growth. You lose too much. It's wasteful to let acres be cut in production. If you need Blue Grass sow the seed, you'll be money ahead in the end.

Our prices on Kentucky Blue Grass are very low. No item has been spared. Every price has been slashed terrifically. We did not carry over old seed as so many dealers did. Our prices are on heavy weight re-cleaned high germinating seed. This is 21 lb. to 23 lb. seed.

See price list on page 34 for bargain quotations on this seed. It's the cheapest to sow this extra fancy quality. Helps keep out weeds like dandelions. Small lots, postpaid, 1 lb., **\$1.35**; 5 lbs., **\$6.00**; 10 lbs., **\$11.30**.

LAWN GRASS MIXTURES

Mixtures That Produce Beautiful Lawns

Our lawn grass mixtures are a blend of grasses made up for producing a beautiful, healthy sodded lawn. These mixtures adapted to different soil and climate conditions. They are made up of fancy high grade grasses. The principal perennial grasses are: Kentucky Blue Grass, Red Top, Chewings Fescue, Creeping Red Fescue and small percentage of White Dutch Clover. Similar mixtures (no better) sell in many retail stores at 15c to 20c per lb. higher. Don't buy bargain mixtures. There are several different grades of grasses.

"American Parks Mixture." Makes a heavy sod. Composed of fancy grasses for a velvet, permanent lawn. Helps to knock out Crab Grass.
Price—Postpaid: 2 lbs. for **\$1.80**; 5 lbs., **\$4.25**; 10 lbs., **\$8.30**.
Not Prepaid: 25 lbs., **\$18.75**.

"Economy Lawn Mixture." A mixture made up of choice grade of grasses. A similar mixture is sold by dealers at their best grade.
Price—Postpaid: 2 lbs., **\$1.40**; 5 lbs., **\$3.35**; 10 lbs., **\$6.50**.

"American Shady Lawn Mixture." A fine mixture of fancy grasses that will produce an excellent lawn under shade trees and other shady spots.
Price—Postpaid: 1 lb., **\$1.10**; 2 lbs., **\$1.90**; 5 lbs., **\$4.45**; 10 lbs., **\$8.70**. Not prepaid: 25 lbs., **\$20.00**.

CRESTED WHEAT GRASS

Stands more drought than most other grasses. During dry weather periods it came through with better stands than most other grasses. Good plan to sow with clovers and other grasses. Has high feed value. All livestock eat it. Stands lots of cold weather. Is suited to most any soil in the west or middlewest. Grows from early spring to late fall. Stands lots of abuse. Lasts several years. Easy to eradicate. Sow on a firm seed bed, drilling 10 to 12 pounds per acre. Cover lightly. Not over 1/2 inch.

Postpaid: 1 lb., **50c**; 5 lbs., **\$1.70**; 10 lbs., **\$3.90**. Not Prepaid: 25 lbs., **\$6.20**; 50 lbs., **\$12.30**; 100 lbs., **\$24.50**.



Gentlemen: Spencer, Ind.
With many thanks for being prompt in sending out my shipment. I find the American Field Seed Company to be on the square, and the best of all that sells pure seed.
Yours very truly, Bruce H. Been.



Gentlemen: Selma, Ind.
All the seeds that I have purchased from you have been entirely satisfactory. Your prompt shipment and fair dealings have been above par.
(Signed) Cecil Freestone.



MAJOR ALL DOMESTIC GROWN SEED

TIMOTHY ALSIKE & RED CLOVER Mixed



\$7.50
BU.
45 LBS.

CONTAINS 20% TO 25% CLOVERS

See Sample Enclosed

This makes a very fine and a very heavy producing combination for meadows. Also good for pastures. Contains just the right amount of clovers. It is a dandy rich mixture. It is carefully prepared to give the most satisfactory results. There is real quality seed in this mixture. Good purity and germination. It has the growing power you want. It is all domestic northern grown seed.

pared to give the most satisfactory results. There is real quality seed in this mixture. Good purity and germination. It has the growing power you want. It is all domestic northern grown seed.

Gives About 30 Clover Seeds Per Square Foot

That's just what Lot "Major" will average when you sow about 11 to 12 pounds per acre. In addition to the 30 clovers per square foot there are about five times as many Timothy seeds. Such a seeding can produce a stand as "thick as hair on a dog's back." We wish you could talk to thousands of our customers who have used our Alsike, Red Clover and Timothy mixtures.

The yields are surprisingly heavy, because the clovers help the Timothy and the Timothy helps the clovers. We consider this one of our best seedings for more permanent results. We urge you to place your order early.

Great Mixtures

Lot "Major" has just the right percentage of Clovers that a lot of customers desire. They like it because it is economical to sow.

If you want a 50 to 60% Mixture like this, buy lot "Diamond" offered on the inside front cover of this Catalog. It's another big money saver.

Valuable Mixture at Low Price

Lot "Major" has sufficient Clovers to enrich the soil. Will produce a marvelous hay crop. It gives you a real crop at a low seed cost. Contains hardy northern grown seeds. It has been re-cleaned. We sell this triple mixture with the understanding you must be satisfied. If not, ship it back and we will cheerfully refund your money including the freight charges. Lot "Major" is a good buy.

RED CLOVER AND TIMOTHY MIXED

Lot "SUPERIOR"

Contains Over 50% Clovers

Many farmers write us, asking if we have a mixture of this kind. This rich combination has been used for the past 60 years. Is a good soil builder. Makes an ideal hay crop and a good pasture. Timothy is easy to grow. It binds the soil and stops erosion. A Red Clover and Timothy mixture sown together makes a much larger growth than when sown separately. The clover puts nitrogen in the soil which aids the timothy. The timothy makes a quick growth which protects the clover and keeps it erect. Lot "Superior" is straight Red Clover and Timothy with the exception of three or four percent of other clovers, like Alsike, Mammoth and Sweet Clover. Has been thoroughly re-cleaned. Has a crop purity of 97 1/2 to 99%. High germination. Sow 9 or 10 lbs. per acre. In sowing 10 lbs. per acre you put about 33 clover seeds on each square foot besides the timothy. It is economical. This seed sold subject to your approval.

\$13.40
BU.
45 LBS.

PERMANENT PASTURE

Economy Mixture

\$8.20
BU.
50 LBS.

Here is a fine mixture composed of grasses with the exception of a small amount of Korean and Sweet Clover. An all around mixture than can be sown in spring or fall. It is suitable for most any soil and climatic conditions, and a wide range of territory. Our Economy Mixture is an ideal combination for a permanent pasture at a very low cost. Produces a pasture that will last several years.

Our Economy Mixture is a combination of Red Top, Kentucky Blue Grass, Korean Clover, Timothy, and Rye Grass and Sweet Clover. Sow 15 to 20 pounds per acre. If you want more Clovers, add them to suit your requirements. These grasses all reseed well and your pasture gets better each year. This seed has been re-cleaned and the mixture carefully blended. The price is low and we guarantee shipment to satisfy you according to our guarantee on page 4.

BEAT-EM-ALL

QUICKEST GROWING PASTURE MIXTURE

\$3.60
BU.
25 LBS.

Approximately 50% Clovers

This is a quick action mixture at a low cost. Is especially recommended to farmers needing early pasturage. You begin pasturing lightly in a few weeks after sowing. Contains rye Grass, Sweet Clover, Korean Clover and Timothy. The Rye Grass is a fast grower. Not necessary to use a nurse crop. We have sold thousands of bushels of Beat-Em-All Mixture the past few years. Sow 14 to 18 lbs. per acre. A firm seed bed and a light covering is the best. Sow fairly early. Can be used to thicken thin pastures. Other Prices Page 34.

PERFECTION MIXTURE

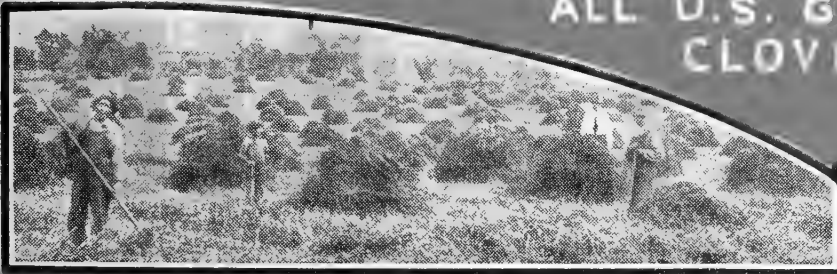
\$10.80
BU.
50 LBS.

Our Perfection Mixture is made up of the higher priced grasses, which are all Perennial grasses. This variety of grasses makes an excellent Pasture or Meadow. This Mixture is principally Ky. Blue Grass, Crested Wheat Grass, Bromus (Brome Grass), Reed's Canary Grass, Timothy and Red Top. This combination of seeds meets various conditions of soil, climate, etc. Some of these seeds make a vigorous growth during dry periods and others yield well in wet seasons. These grasses produce well-balanced results from year to year. This is a mixture that should last for years. Sow 15 to 20 pounds per acre. The seeds in this mixture have been re-cleaned. We guarantee shipment to please you. This is a good value at this low price.

MONEY MAKING MIXTURES *at* LOW COST

ALL U.S. GROWN CLOVERS

MIXTURES AT BED ROCK PRICES



LOT
ROYAL
\$6.60
45 LBS. BU.

\$8.90
BU.
45 LBS.

TIMOTHY, RED CLOVER, ALSIKE AND ALFALFA

TIMOTHY and ALSIKE MIXED

Big 4 Mixture 28% to 32% Clover and Alfalfa

This is a rich four-way mixture. This Big 4 Mixture is one of our best sellers. It is all hardy U.S. grown seed. Produces big yield of fine hay and pasture. Sow this mixture and find out if your land is in condition to grow Alfalfa. Many customers have established fields of straight Alfalfa after seeing the wonderful growth of Alfalfa in this mixture. This mixture has high feeding value. It builds up your soil for better corn and grain crops.

A Fine Value

It is cleaned and carefully blended seed. Examine the enclosed sample. Observe the fine quality. The richness of Clovers and Alfalfa. Has a good germination. If you do not get a full stand of Alfalfa, you are pretty sure of getting a good stand of the Clover and Timothy. A seeding of 10 lbs. to 12 lbs. per acre gives an average of 35 to 40 Clover and Alfalfa seeds per square foot in addition to the Timothy. It has a double value; good seed at a low cost of seeding. Comes ready to sow. Shipment guaranteed to satisfy and save you money. See our Money Back Guarantee, page 4.

This Mixture Contains 15% to 20% Alsike

Another superior value. Lot "Royal" will save you money and give most gratifying results. A bushel sows 4 to 4½ acres. Produces heavy yields of rich nutritious hay. Grows on poor land. We have sold millions of pounds of Alsike and Timothy mixtures in the past few years to satisfied customers. Most Alsike Clover seeds are less than half the size of Red Clover seeds. Sown at the rate of 10 to 12 lbs. per acre, there will be about 35 to 45 Clover seeds on every square foot besides about four times as many Timothy seeds. That makes a heavy seeding.

Very Desirable Hay Crop

Alsike Clover is less dusty than Red Clover. Has a little higher feeding value. When sown with Timothy, the Alsike grows erect and more leafy. The Alsike stimulates the growth of the Timothy. They seem to aid one another in growth. This increases production and improves the quality. Can be used for pasture and stops soil from washing.

Lot "Royal" is northern grown. It was mostly grown mixed. We buy this mixed seed at a substantial discount. We re-cleaned and properly blended this seed. You are getting the last penny in seed value when you buy this mixture. If you want a mixture of over 50% Alsike, buy our Lot "Thrift" offered on page 5. If you want the greatest economy in seeding, we know Lot "Royal" will suit you. It is sold on our Money Back Guarantee. See page 4. Buy now while the price is low.

TIMOTHY AND RED CLOVER MIXED

\$9.00
BU.
45 LBS.

Richer Grade Has 28% to 32% Clover

A rich seeding at a low cost. Has been a popular mixture for over 60 years. Red Clover and Timothy Mixed is an old stand-by with practically every farmer in the agricultural district. This Richer Grade produces a heavy stand for pasture or meadow. It is rich in feeding value. When sown at the rate of 11 to 12 lbs. per acre, there are about 30 Clover seeds on each square foot besides about three times as many Timothy seeds. This mixture is a great soil builder. Stores plenty of nitrogen in the soil.

Fine Quality Seed—Price Low

We pick up many lots of this seed already mixed when harvested. We mix it to obtain a proper Clover percentage. We buy it mixed at a discount. This permits us to offer this mixture at such a low price. This mixture has been well cleaned. The purity and germination tests are good. It is northern U.S. grown. You have a right to ship the seed back and get all your money back if not satisfied. Economize by buying this mixture. We have priced it low to get your business. Order now. Market strong.

TIMOTHY & RED CLOVER \$6.75 BU.

Standard Grade—45 lbs. per Bu. Contains 15% to 20% Clover

We quote this mixture at practically Timothy prices. This mixture makes a highly satisfactory seeding at a very low cost. There is enough clover to store lots of nitrogen in the soil. Is good for pasture or meadow. It is northern grown hardy seed. Many farmers like a mixture of this kind. One bushel sows about 4 acres. We buy many lots of Timothy containing some Clover. We buy this seed at practically the market price on Timothy. That permits us to sell at this low price. This Standard Grade has been carefully re-cleaned and blended. It is all ready to sow. Buy this mixture and get your money's worth.



Gentlemen:

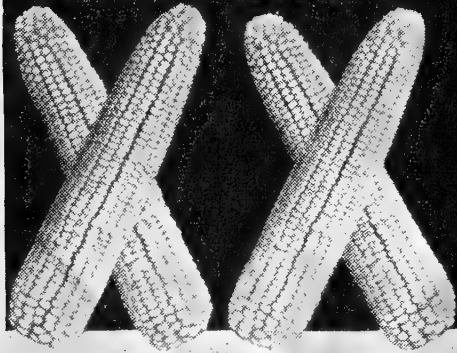
I have used your seed for a number of years and am well pleased. I can save from one-fourth to one-third by buying from the American Field Seed Company. I can recommend your seed to my friends as I know they will save money.

Bark River, Mich.

(Signed) Joseph E. Guilbault.



DOUBLE CROSS STATE ORIGINATED HYBRID SEED CORN



Don't Gamble on Your Hybrid Seed

Higher prices do not make one Hybrid superior to another. Some dealers and agents may try to sell you on that idea. The basic seed stock used in producing our Hybrid Corn was secured from experts. Their ability and honesty is unquestioned. This is the foundation for Hybrids that produce larger and better crops. Our Hybrids are built from the leading Inbred lines that have been developed by U. S. Gov't. and State Departments of Agriculture. This gives us the benefit of research work carried on by men who make it a life study and have no selfish interests at stake.

"Hybrid Corn Treated"

We treat our corn with a chemical compound. It controls seedling blight and root and stalk rots. This treatment increases germination and permits earlier planting. Buy Hybrid that has been treated.

Improved Hybrids For Bumper Yields

There is a big difference in Hybrids. They must prove by tests and yields that they are superior. Our Improved Hybrids are past the experimental stage. It requires expert knowledge and intense personal supervision to produce the best foundation stocks. Better single crosses, purer inbreds, better detasseling, better drying and processing mean better Improved Hybrid Corn. Our Hybrids are developed under these regulations.

NEW LOW PRICES
ON STATE RECORD HYBRIDS

LOW AS
\$4²⁵
BU.

American's Superior Hybrids

The heavy yielding qualities of a good Hybrid Corn variety depends on the inbreds that are used to produce it. You can plant the same variety of Hybrid Corn obtained from different growers and still get a difference in yield. When you order our Superior Hybrids, you get the factors of quality, explained above. Our Hybrids are produced from approved foundation stock. Most of the large hybrid concerns that get \$8.50 to \$9.50 bushel, sell corn that have inbred lines developed by State Agriculture Departments. We could charge \$9.00 bushel, but that would not make our seed any better. Use our time tested Hybrids for biggest crops.

AMERICAN'S 615

An Outstanding Hybrid for Large Yields About 105 to 110 Day Corn

This is one of our new Hybrids. It's similar to Iowa 939, but has some improved features. In fact, it is made up of three of the same inbreds that go into Iowa 939. However, one is different, making it a longer and better shaped ear. Has practically the same maturity as the Iowa 939. It really is a smooth looking ear. It's the type of Corn that the big corn raisers admire, the appearance of ear. Has nice yellow golden color, but sides of grains have a slight reddish cast. Not hard and flinty like some Hybrids. Is a fine feeding corn. Has strong stalk. Ears hold good position and are easy to husk. On account of high yielding ability of American's 615 you will come back and buy it every year. Suitable central part of Illinois, Indiana, Ohio and pretty well towards the northern part of these states and in same latitude of other states. It's a fairly early maturing corn and is adapted for a wide range of territory. Grow American's 615 this year and show your neighbors some real Hybrid Corn.

Prices—Medium Flat, **\$8.00** bu.; Large and Extra Large Flats, **\$8.50** bu.; Round Grains, **\$6.25**.



IOWA 939

A State Originated Hybrid of Medium Maturity

It was originated by the Iowa Experiment Station. Is widely grown in that state. Also in Illinois, Indiana and Ohio, except in far northern part of these states. Is adapted for part of Pennsylvania, West Virginia and parts on east. Best Hybrid for a wide range territory. In Illinois, Iowa 939 established yields in the north central part of the state of 107 bushels per acre at one station. It showed higher resistance against lodging in all tests. Has shown as high as 45% increase in yield over average open pollinated in central Iowa.

Has nice shaped ears. Kernels have slight reddish cast on the side. Are broad and of good depth. A softer corn than most Hybrids. Has strong stalks. More universally grown in Ohio than any other Hybrid. That shows the wide range of adaptability. We have many testimonials on Iowa 939. Try it this year and you will be a booster.

Prices—Medium Flat, **\$7.50** bu.; Large and Extra Large Flats, **\$8.00** bu.; Round Grains, **\$5.75**.

LEADING HYBRIDS

TIME TESTED
HYBRIDS RECOGNIZED
BY LEADING FARMERS AS
EXCEPTIONAL HEAVY YIELDERS

AMERICAN'S 813

About 118 to 120 Day Maturity—A Great Drought and Heat Resister

Here is a Hybrid Corn that is different. Like U. S. 13 it has big strong stalks. Large single ears. Deep starchy kernels. Other great features are its drought resistance, a longer pollination period and less ear droppage. We think it is a little superior, because it has the four inbreds of U. S. 13 and a fifth inbred added. Every practical farmer will appreciate the advantage of this fifth inbred that contributes added drought, resistance and deeper color. The longer pollination period is of great importance. How often we all have seen fields of excellent 'promise,' fail to fill properly, because hot dry wind hit just at the pollinating time. In some years excessive drought and heat may kill much of the pollen. This added inbred with a later pollinating line has pollen available for fertilizing, even though the early pollen burned. This makes American's 813 a safer Corn to plant. Witnessed yield reports in Iowa and Illinois show yields up to 130 bu. at 15% moisture. We consider it a top yielder. Here are some of the outstanding features:

1. One large ear per stalk. Easy to husk by hand or machine.
2. Adapted to wide range of fertility. Extra good on nearly all soils.
3. Dark green healthy foliage. A heavy vigorous growth.
4. Strong stalks. Stands well and resists drought and chinch bugs.
5. Large deep kernels. High shelling percentage. A fine feeding corn.
6. No commission to pay to Hybrid Corn agents.

Large Flat, \$8.50 Bu.
Medium Flat, \$8.00 Bu.
Round Grains, \$6.25 Bu.

TWO LEADING EARLY VARIETIES

WISCONSIN 606

This is an early variety. Grown in Wisconsin about 10 to 15 miles north of the Illinois line. Is very popular in northern Illinois. This corn was developed by Wisconsin Experiment Station several years ago. Is past the experimental stage. Yields are reported up to 118 bu. per acre. A good yield for an early corn. Has large smooth uniform ears for an early variety. Is a good feeding corn. Stands up well. Suitable for a wide range of soils. Is a favorite wherever it is grown. Don't take a chance on the weather, plant Wis. 606.

This Hybrid is adapted for the three northern counties of Illinois, Indiana, Ohio, Pennsylvania and southern part of Wisconsin, Michigan, New York and other sections in the same latitude.

Price: Certified Blue Tag, Flat Grains \$8.50 Bu., Round Grains \$5.75 Bu.

AMERICAN'S No 405

About 103 to 110 Day Maturity

Here is an outstanding early Hybrid. It was produced about 45 miles north and west of Chicago. Was developed for planting in northern Illinois, Indiana and any territory having similar conditions. Under normal conditions will mature in southern Wisconsin and southern Michigan. It's an early Corn with a large ear. Makes fast early growth. Has stiff stalks. Tests made with other well known, high priced Hybrids, show our 405 has equal standing ability with the best of them. Stalks are good height and very leafy. Medium long, good sized ear. Has deep grain. A leader for husking. Excellent for feeding and cribbing. Does well on most any type of soil. Rich land, average, clay and timber. In official tests in 1941 this 405 was top in commercial Hybrid yields in northeastern Illinois.

Large Flat
\$8.50 Bu.
Medium Flat
\$8.00 Bu.
Rounds
\$6.25 Bu.

ILLINOIS 201—A Better HYBRID

About 113 to 116 Day Type—A New Hybrid—A Great Record

An Illinois State Originated Hybrid. The pedigree is (WF9 x 38-11) (187-2 x L 317). Is a strong stalked, single large ear Hybrid. Recommended by most experts as the outstanding Hybrid for feeding. Deep grain and beautiful golden color. Has shown great resistance against drought and chinch bugs. Is a strong healthy grower. State tests with other highly advertised Hybrids sold with a brand name, show that Illinois 201 is right up with the top performers. Is adapted for soils of medium

and high fertility. Picks well by machine or hand. Its heavy yields, fine quality grain, erect growth and fine root system give it a combination of characters so desirable in a good Hybrid. An Illinois dealer who sells over 5000 bushels of Hybrid a year, says Illinois 201 was one of the best yielders in the State. Buy Illinois 201. It will put more money in your pocket.

Large Flat
\$8.00 Bu.
Medium Flat
\$7.50 Bu.
Round Grains
\$5.75 Bu.

HYBRIDS that LEAD

A Leader in Yields and Quality. Is One of Our Best Big Profit Hybrids. Thousands of Illinois and Iowa Farmers Will Testify U. S. 13 Is One of the Best.



SUPERIOR and U. S. ORIGINATED

U. S. 13 A PRIZE WINNER

In 1939 and 1941 U. S. 13 was in the blue ribbon class. In 1939 and 1941 it took practically all of the prizes at the International Livestock Exposition. It has an exceptionally fine pedigree of high producing inbred lines. It was developed by the U. S. D. A.

U. S. 13 is a leader in the heart of the corn belt. Record yields prove beyond a shadow of doubt that it is a front ranking Hybrid in any section where it is adapted.

Illinois and Iowa tests show it high in production on different types of soils. It made front ranking position on soils of high, medium and low productivity. We know of no finer Hybrid on rich land. It is a large, deep grained, single eared variety. Has a deep golden color. Well dented kernels, moderately rough. Has strong stalks and roots. Ears hang on well although it is not difficult to shuck. This is really a show type corn. It is one of the softer Hybrids. Popular with cattle feeders.

U. S. 13 is adapted over a wide area. In Ohio, U. S. 13 was the highest yielding Hybrid in official state tests in sections 9, 10, 11 and 12, which are located in the southern half of that state. It also was top ranking in west central Illinois state test. It yielded 24 bushel per acre more than the average open pollinated in the same test.

Has a wonderful record from Nebraska to Connecticut and south into Kentucky and other states. Here are some recorded yields of official state tests:

Iowa 108.4 bu. per acre; Ohio 123 bu.; Illinois 112.6 bu.; Indiana 103.2 bu.; Pennsylvania 97.7 bu.; Missouri 121 bu.

This shows the wide area to which this Corn is adapted. A customer from west central Indiana wrote us he planted our U. S. 13 on 62 acres and obtained a yield of 6,072 bushels of fine corn. It is a vigorous grower and is resistant to drought, chinch bugs and disease.

Price—Medium Flat \$7.50 bu.; Large and Medium Large Flats \$8.00 bu. Round Grains \$5.75 bu.

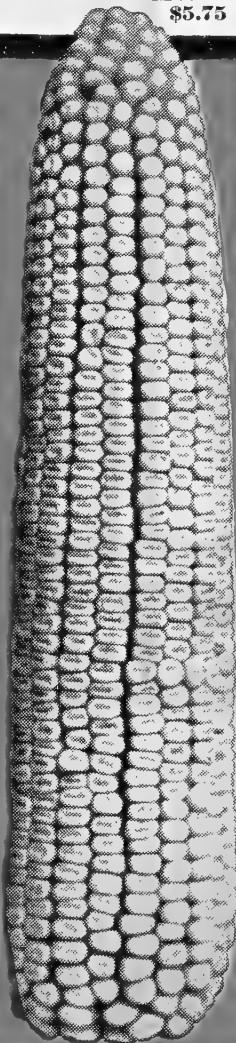
WISCONSIN 641

Certified—Blue Tag

New Heavy Yielding Variety

Flats \$8.50 — Rounds \$5.75

This is early maturing corn. Growers in southern Wisconsin tell us Wis. 641 is going to be a leader with big corn growers. In 1944 the yields exceeded some of the highly advertised varieties selling for \$2.00 to \$3.00 bu. more money. One grower told us Wis. 641 matures under normal conditions as early in southern Wisconsin, as other Hybrids maturing in 107 to 110 days. The husks tend to open and the ears dry out quickly. Is distinguished for long sound ears, easy husking and high yield. Is an excellent feeding and cribbing corn. Is grown just over the line from Illinois. Wis. 641 is adapted for planting in southern one-fourth part of Wis., northern part of Illinois. Also southern Michigan, northern Indiana, northern part Ohio, northern half Pennsylvania and on-east in some latitude. Try some of this champion yielder.



INDIANA 608

Matures About 108 to 114 Days

Here is a Hybrid with a real pedigree. It is quite evident other Hybrid Corn companies have been marketing this fine Hybrid under different names or numbers. Its true pedigree is (WF9 x Hy) (A x Tr). It has stiff stalks, medium height, disease resistance to common organisms. Among Hybrids of similar maturity, Indiana 608 is among the top of all Hybrids grown in some locations in that state. It yields 100.9 bu. per acre in northern Indiana state test.

The last few years Indiana 608 has been very popular in Iowa, especially in central Iowa and north central part of that state. For Illinois, plant in the northern half anywhere within 40 miles of the Wisconsin line. Indiana anywhere in central and northern part of the state, except in northern tier of counties. Anywhere in Ohio south of line 40 miles from northern part of state. Good for most of Pennsylvania, West Virginia and on East. Does well on medium poor soil.

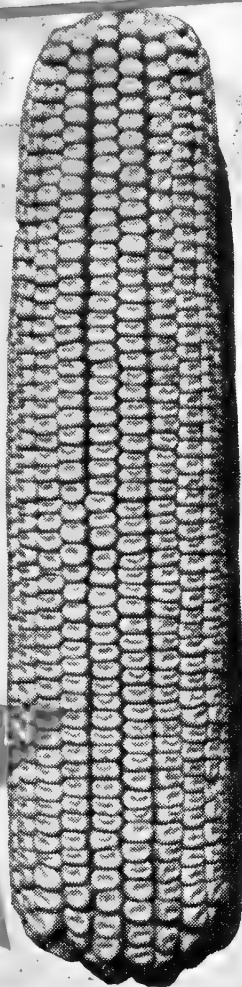
Price—Medium Flat Grains \$7.50 bu.; Large and Extra Large Flats \$8.00. Round Grains \$5.75 bu.

Big Yields—Big Saving

HI-YIELD BLEND HYBRID CORN

Our Hi-Yield Blends are a combination or blends of different varieties of Hybrids of similar maturity. Hundreds of our customers who have been planting our Hi-Yield Blends the past few years realize the importance of these blends. We have received many genuine testimonials from farmers telling us about the enormous yields from our Hybrid Blends. Have received reports from customers that our Hi-Yield Blends produced a larger yield than other well known Hybrids that cost \$4.50 to \$5.00 more. Some stated yields almost doubled straight Hybrids in their locality. Originally farmers bought different Hybrids of about same maturity and mixed or blended them together. We now make up these special blends and sell them at a very low price.

Our Hi-Yield Blends are made up mostly of the varieties listed in this catalog. The fine reports of large yields from our customers convince us our Hi-Yield Blends are giving the farmers Hybrid Corn that is making them money.



Larger Yields for Less Money

The advantage of these blends is pronounced. Most Hybrids have a short pollinating period. If there is an extreme hot, dry period at that time, the pollen will be damaged, resulting in poorly filled ears and lower yields. By using two or three varieties mixed, which mature about the same time and having slightly different pollinating dates, this danger is reduced. These blends give you more assurance of well filled ears and bigger yields.

THICK FLAT GRAINS
\$4.75 BU.
ROUND GRAINS
\$4.25 BU.

Medium and Late Maturity

We offer two different maturing blends. Medium Blend will average around 106 to 110 days. The Later Blend around 115 to 120 days. Be sure to mention which you want when ordering Hi-Yield Blend. These Blends are adapted for most any section of the Corn Belt, where Corn of this maturity is adapted.

HI-YIELD Blend Hybrid comes in two grades. The Round Grains at only \$4.25 per bu., which usually produces larger yields. The Thick Flat Grains at \$4.75 which is also a heavy yielder. Our Hi-Yield Blends germinate 90% or better. The seed is also treated. If you do not find the seed satisfactory after 30 days, write us for shipping instructions. All your money will be refunded, plus freight charges.

HYBRIDS for ENSILAGE

LESS ACRES FILL YOUR SILO

In Wisconsin, Michigan, northern Illinois and other northern states, the farmers are using Hybrid Corn for ensilage. They want stronger stalks, better quality, larger yields, which mean more silage and more profits. Official tests show that late maturing Hybrids grown in northern part of corn belt, have made an increase of 22% in ensilage tonnage over open pollinated ensilage varieties.

5 More Tons Ensilage Per Acre


At an additional cost of 30c per acre it is reasonable to expect an increase in silage tonnage of 5 to 7 tons per acre. Wisconsin official tests show that medium early Hybrid Corn outyielded open pollinated check varieties as much as 4.9 tons per acre. Michigan tests show as much as 7.3 tons per acre increase. We have slightly later Hybrids and the increase in green tonnage should be much greater. A corn to be good for ensilage should have both good stalk and grain production. We have Hybrids for ensilage that have large strong tall stalks.

They are very leafy. They really put a lot of ensilage in your silo. In a nutshell, Hybrid will produce a lot more tonnage from fewer acres.

Planting Cost Low

We have the right Hybrids for producing a large tonnage of silage per acre. Last year we sold a lot of Hybrid Corn for ensilage to our Wisconsin and Michigan customers. Also to customers in other states. We have some good reports from these customers. This leads us to believe we can supply you with Hybrid Ensilage Corn that will prove very profitable. It only costs around 30c per acre more to plant Hybrid than open pollinated. This cost is very small considering the extra tonnage that can be obtained. Don't be penny wise and pound foolish. Plant less acres in Hybrid and get your silo filled up quicker. Round Grains make just as good corn for silage as the Flat Grains. There is also a savings.

ROUND GRAINS
\$4.30 BU.
THICK FLAT GRAINS
\$4.80 BU.



Hamilton, Mich.
Gentlemen: Wish to tell you how pleased I am with all the seed bought from you. I have tried your Alfalfa, Clover and Timothy and some of your seed oats. I think that you have the finest seed on the market.
(Signed) John Yonker,



Warsaw, Ind.
Gentlemen: Please send a sample of Grundy County Sweet Clover, and Special Superior Sweet Clover, as I want some good Sweet Clover for spring sowing. You can tell the world that all seed I have purchased from you has been satisfactory.
Yours very truly,
(Signed) Roy Stoneburner.

NEW CROP SWEET SUDAN

A Marvelous New Forage Grass

This new variety is a development resulting from several years breeding work by the Texas Agricultural Experiment Station in cooperation with Bureau of Plant Industry, U. S. Dept. of Agriculture. In 1944 was the first time enough seed was available to plant acreage of Sweet Sudan to produce seed in commercial quantities. The supply for planting 1947 crop is still limited.

It's Sweet, Juicy and More Palatable

When Sweet Sudan is planted side by side with Common Sudan and other forage crops, cattle will always eat the Sweet Sudan first. A farmer in the southwest has the following to say about Sweet Sudan: "About cattle or sheep preferring the Sweet Sudan Grass to Common Sudan, has certainly been borne out by our experience. You just can't keep them away from it where the option is given them." Another farmer said from his experience, he would rather pay fifteen cents per pound for Sweet Sudan Seed than have Common Sudan Seed as a gift.

Livestock Prefer It to Alfalfa

This may sound like sales talk, but anyone who has grown this wonderful crop will verify this statement. Here is what another large farmer and livestock raiser in the southwest says: "The results from the eighty acres of Sweet Sudan I planted this May and June, are very surprising to me. My dairy cattle have invariably eaten Sweet Sudan into the dirt before touching the Alfalfa or any of the grasses and clovers in the permanent pastures. My herdsman reports an immediate increase in milk flow when he moved cows from Alfalfa to Sweet Sudan." This information convinces us it will make our customers money.

More Livestock on Less Acres

Sweet Sudan has more and broader leaves; heavier and taller stalks and stools much heavier than Common Sudan. Is just a little later and coarser than Common Sudan; thereby, producing more growth and remaining green and growing longer than the Common. This means more grazing. Sweet Sudan produces a better quality of hay and the value is two to three times greater than Common. As it is more juicy, sweet and palatable it does not need to produce more feed. Because of its sweetness, which livestock relish, they eat it faster and consume more of it in a shorter period. This increases both milk and meat production.

A Great Hay and Pasture Crop

One farmer reports he has to put a larger number of cows on smaller acreage in order to hold it down. Sweet Sudan stands lots of dry weather. When other grasses are fading out, it keeps coming right along. Here is what a farmer says, who is running some 1500 acres in the southwest: "Sweet Sudan is excellent hay, bundled, loose or baled. I have 80 or 90 tons which were bundled for seed production just before frost. It has much Sucrose (Sugar) and it apparently isn't going to dry out." This will afford lots of good palatable hay. Sow Sweet Sudan 15 to 25 lbs. per acre.



\$18.90 Per 100 lbs.

**Our price low,
market higher.**

**Buy now and
save money.**

**Write for
Quantity Prices**

SUDAN GRASS

THE GREATEST OF ALL FORAGE CROPS

Every Farmer Should Grow It This Year

Our Price Very Low

There will probably be a wide variation in qualities of Sudan Grass seed this year. Insist on the highest quality new crop seed. Our stocks are bright and high germinating and considering the quality our prices are very low. At this very low figure you can afford to sow it liberally. No similar investment in any other crop can bring you the enormous production of Sudan Grass. All dairy farmers should have it and every stock grower who wants maximum production from reduced acreage.

Characteristics

Sudan belongs to the Cane family. It came originally from Africa. It was imported because of its drought resistance. In yield it excels cane, millet, kaffir and similar crops. Sudan is a free stooler and makes a fine quality of hay. Being a warm weather crop it should not be sown till corn planting time and any time from then on to early July. Yields average three cuttings in the central corn belt. Grows only one year. Sow 20 to 25 lbs. to the acre. Drill in or broadcast and harrow. May be used as a smother crop for weeds. Makes good ensilage and fine pasture and hay.

Consider Its Value

Why risk the danger of short pastures or hay when Sudan Grass gives so much. In spite of heat and drought it grows right along. Your milk cows will give more milk. Your horses and mules will be kept in good flesh. Your cattle will fatten on it. It will take no more fertility from the land than a crop of oats. The crop can be used for seed but its big value on the average farm is for hay and pasture. Cut for hay when in full bloom and handle like millet. May be cut before or after full bloom if desired. Some cut with a binder and cure in shocks claiming that is the easiest and best way to handle. It's a great crop, friends. You should be growing it.

Highest Quality New Crop Seed

We believe our seed is the finest grade, new crop, re-cleaned seed. It has strong germination. You cannot buy better seed. Our Sudan Grass is a wonderful bargain. Be sure to sow some at this low price. Provide yourself with pasture that will flourish in the hot dry summer months. Use it for hay or green feed. It is one of the best money-making crops you can grow. The use of Sudan has been increasing rapidly in recent years and at our present astonishingly low bargain prices it will certainly sell fast. So easy to grow, so enormously productive, so highly palatable to live stock and such a phenomenal drought resister. Put some acres to work on Sudan and make fine extra profits.

500 LBS. 60.50

100 LB. BAG \$12.25

BAGS FREE

50 LBS. \$6.20

25 LBS. \$3.15



CUTTING BILLION DOLLAR GRASS

BILLION DOLLAR GRASS

25 lbs., \$2.35; 50 lbs., \$4.55; 100 lbs., \$9.00

These are bargain prices on this money making forage crop. It is used for hay, pasture, silage and as a seed crop. An enormous producer yielding as high as 50,000 pounds of green feed per acre and 12,000 pounds of hay. Makes growth which ranges from 5 to 2 feet. Will grow further north than Sudan and is a very popular crop in the northern and New England States as well as in the Corn Belt.

Billion Dollar Grass belongs to the Millet family, and is also known as Japanese Millet. Sown about first of May it should be ready to cut for hay in 7 to 9 weeks. May be sown in May, June and July. It is a one-year crop. It yields heavily and is relished by cattle, young stock and sheep.

Makes good silage alone or mixed two parts Billion Dollar Grass and one part Soy Beans. Hay is higher in feed value than Timothy. Not poisonous due to drouth or frost.

Our seed is fine and our price is low. Sow about 20 lbs. per acre. Now is a good time to start with this great crop.

ANNUAL HOG PASTURE MIXTURE

100 LBS. \$7.80


50 LBS. \$4.00

25 LBS. \$2.10

This quick growing combination produces a large amount of nutritious pasture in a short time. May be sown from first part of May till the middle of the summer after small grain crops are removed. Sow 40 to 50 lbs. per acre. One acre will pasture 40 pigs.

This mixture is made up of annual crops. Will provide both early and late pasture. This combination is designed to give you the heaviest yield and highest feed value. Contains peas, rape, vetch, oats and other grains, millets, sudan and forage crops. Plow up your feed lots and sow to this mixture.


We are pricing our Annual Hog Pasture Mixture very cheaply. Anyone ordering this seed will receive a mixture that will produce a wealth of feed in a short time. We urge you to try it. Will be billed as grain, account lower freight rate.



Wonewoc, Wis.

Gentlemen: I have got seed from the American Field Seed Company many years, and always got good seed and a dandy stand. Will have an order for you again next year.

(Signed) Chas. Demasker



Smicksburg, Pa.

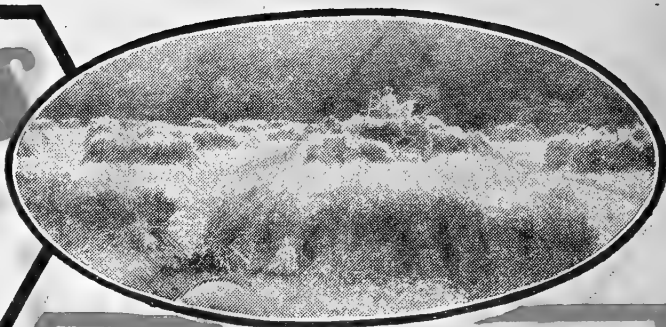
Gentlemen: I am favorable to your seed for two reasons, first on account of the big savings and price on the high grade field seeds, and second the purity seems to be unexcelled by any other that I have ever bought. Other farmers here have used your seed with excellent results.

(Signed) Mr. J. E. Dickey.

LOWER PRICES
High Quality
SEED OATS

EXTRA PROFITS

MARION OATS



CLINTON OATS

CERTIFIED

1 1/2 Bu. Sown Per Acre

Yielded 100 Bu. Per Acre

Greatest Oats Ever Produced

Many farm papers, agricultural experts and thousands of farmers have been talking about these wonderful oats for the past year. There has been so much publicity about Clinton Oats, there is not much we can add, only that we will not have enough of them to take care of the demand this season. These Oats were developed by the Iowa Agr. Experiment Station in cooperation with the U. S. Dept. of Agriculture. They were bred especially for resistance to leaf and stem rusts, smuts and leaf blights. Clinton Oats were developed from the cross, Iowa D69x Bond. Clinton Oats have been closely held in control by Iowa, Illinois and Indiana Experiment Stations for the past 4 or 5 years, while they conducted experiments to prove their superiority. In 1946 was the first year these Oats were released to certified growers in Iowa, Ill. and Ind., for commercial production. Each grower obtained from 10 to 20 bushels. They were not allowed to sow over 1 1/2 bu. per acre. Yields of 90 to 100 bu. per acre were reported.

Description

We saw several fields of Clinton Oats last summer and they were an amazing sight. They grow about 5 or 6 inches taller than the Tama and Vicland. Are free from rust and diseases that attack other oats. It is a yellow early oat. Grains are plump and the hulls are thin. Outstanding is the strength of the straw; in many cases is almost thick as a cigaret and rarely lodges under most adverse conditions. The main features of the Clinton Oat, are its high yielding ability, the stiffness of the straw and the high test weight which runs 36 to 38 lbs. Not over 15 bushels sold to a customer. PRICE—In 2 1/2 and 3 bushel bags, \$6.50 per bushel.

1946 Record Outstanding

Next to the famous Clinton Oats, the Marion was about the only oat that resisted the blight disease (Helminthosporium) in 1946 that attacked other well known varieties. This variety is a hybridized oat. It was developed by Iowa Experiment Station in cooperation with the U. S. Dept. of Agriculture. It is a selection from the Markton and Rainbow cross. In 1941 the Marion outyielded all other varieties in Illinois according to a state bulletin. In 1946 these Oats yielded so well in Iowa, the State Authorities urged farmers to save them for seed.

Marion Oats have retained all the fine characteristics of its parents. It is resistant to stem rust and smut and some forms of leaf rust. It is a fine quality of white oats. The straw is 3 to 5 inches taller than the Boone, Tama and Vicland, and matures about 3 or 4 days later. Yields well on thin soil.

Recommended by State Authorities

They advise sowing Marion Oats this year. Some of the late popular varieties like the Boone, Tama and Vicland, have been yielding more than the Marion, but not in 1946. Last year the blight was very bad in some areas. It attacks the oats at the roots and cuts off the flow of sap. Yields are materially reduced. However, the Marion is highly resistant to this disease. State Authorities think the damage from blight may increase in 1947 and advise sowing resistant varieties. High testing Marion Seed Oats are not plentiful.

PRICE—1 bu., \$1.90; 5 bu., \$1.80 per bu.; 15 bu., \$1.75 per bu.

BOONE OATS

This variety has been producing good yields since 1940. They have been very popular in Iowa, where they were developed by the Iowa Experiment Station. In a six-year test in Iowa, it outyielded other well-known varieties 15 to 20 bushels per acre. Illinois tests in 1940 were reported of over 90 bushel per acre.

They are an early yellow oat. Usually weigh around 35 to 37 lbs. Have a fairly short straw. Are resistant to rust and smut. Stand up well on rich ground. Have made good yields on fair soil. Our seed grown from certified seed. Price—1 bu. \$1.60; 5 bu. \$1.55; 15 bu. \$1.50. bu.

VICLAND OATS

This variety has received a lot of publicity the past 5 years. The plant breeders at the Wisconsin Experiment Station in cooperation with the U. S. Dept. of Agr., developed the Vicland. They have the same parentage as the Boone and Tama. Some claim better yields from the Vicland Oat. It has practically the same characteristics, early maturity, strong straw, color and disease resistance. Are also resistant to lodging. The grain is fine quality and they usually weigh 36 to 38 lbs., depending on the season. They are adapted over a wide range of soil conditions. The Vicland has been grown in many states from Iowa to the Atlantic Coast. Many farmers have found them very profitable as a grain and seed crop. It pays to sow certified seed.

Price:—CERTIFIED—1 bu. \$1.85; 5 bu. \$1.75 per bu.; 15 bu. \$1.70 per bu.

Price:—NON-CERTIFIED—1 bu. \$1.60; 5 bu. \$1.55 per bu.; 15 bu. \$1.50 per bu.



Gentlemen: I have used the following seeds from your house: Red Clover, Mammoth Red Clover, Sweet Clover, Alsike and Barley. I have been well pleased with them all. I consider Pinnacle seeds as good as money can buy, and at a lower price.

(Signed)

Yours very truly,
 C. B. Hunt.

Sheridan, Indiana.

**IMPROVED
SEED OATS
MAKE
MONEY**

**VICTORY
HEAVY OATS
Northern Grown**

1 BU. \$1.80
5 BU. \$8.50
15 \$ 24.75
BU.

Are Victory Type Oats
from Swedish Origin
Fine Large Oats

An extra large heavy white oat. Beautiful seed stock. Weighs out around 43 pounds per bushel. Northwestern grown new crop seed. A sensational producer. An eye opener to thousands of farmers. Ask for free sample.

These oats have cost us a fancy premium. It has been expensive to bring them into Chicago, but we certainly are proud of them. You too, will be proud of your purchase. Return shipment and get your money back if you do not find them the finest seed oats you ever owned.

The greatest profits from oats are secured by introducing new and superior varieties into a neighborhood. Farmers will often drive for miles and pay a good premium to secure some for seed.

The first seeding cost is higher, but the returns make the investment highly profitable. Order some of this phenomenal stock and sow oats the like of which your neighbors may never have seen before. Sow 1½ to 2 bu. per acre.

Description

The kernels are extra large and plump. They are almost 1¼ times as large as the average size machine run early oats. The straw is of good length, yet has strength to fairly resist lodging. The heads are spangled.

The Victory Type Oats took first prize at the International Livestock Show in 1938. See those great oversize meaty kernels. The Victory Type is a fairly late oat. Often agents go through the country selling these oats to the farmers for fabulous prices. Order these oats and if you do not find the quality up to your expectations, you can ship them back to us and we will cheerfully refund your money including transportation charges.

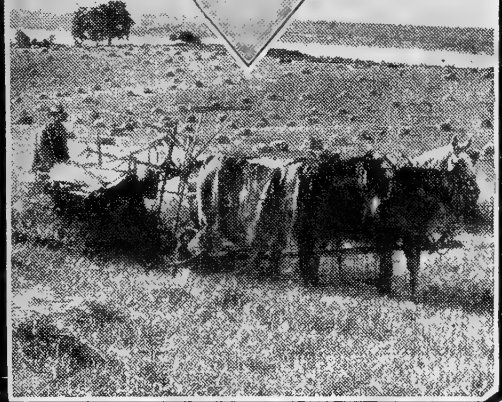
TAMA OATS

A Champion Yielder In Iowa

Thousands of farmers in Iowa, Illinois and other corn belt states have been getting record yields from these oats, during the past 3 or 4 years. They were developed by the Iowa State Experiment Station. The superior yields and fine qualities of Tama Oats pronounce it one of the greatest early oats grown today. It is a hybrid selection of a cross between the Victoria and Richland Oats.

The Tama are early maturing; have strong straw that seldom lodges. They are highly resistant to rust and smut. They have great disease resistance. When weather conditions are unfavorable they stand up and deliver fine yields. They do well most anywhere in the U. S. These Hybridized Oats are different from Hybrid Corn. They do not run out. They last for years if you reclean and grade your seed each year. Yields of 90 to 100 bu. have been reported. Are heavy for an early oat. They ordinarily weigh around 36 to 38 lbs. It pays to sow good oats.

PRICE, Certified: 2 bu., \$1.85 bu.; 5 bu., \$1.75 bu.; 15 bu., \$1.70 bu. Non-Certified, PRICE: 2 bu., \$1.60 bu.; 5 bu., \$1.55 bu.; 15 bu., \$1.50 bu.



**GOLDEN
RUST PROOF
OATS**

WITH RECORD YIELDS

Disease Resistance

Progressive farmers are always looking for a better oat. Our Golden Rust Proof Oats have made some sensational yields and believe they are the oats you have been looking for. They are a superior type and we urge you to start growing them this year. They are a selection of Hybridized Oats that have made yields of over 100 bushels per acre. Have a test weight of 36 to 38 lbs. per bushel.

**Less Risk Growing
Golden Rust Proof Oats**

These oats mature early. Medium height with strong straw. They make a fine nurse crop. Do not lodge like many oats. They are highly resistant to crown rust and stem rust. Also resist loose and covered smut. You have greater assurance of larger yields of better quality under unfavorable conditions when you grow these oats. The large yields are evidence of their superiority. Buy our Golden Rust Proof Oats and increase your yields this year. Your neighbors will be interested. Price—2 bu. \$1.85 bu.; 5 to 10 bu. \$1.75 bu.; 15 to 25 bu. \$1.70 bu.

Gentlemen: Lynnville, Tenn.
I have been ordering seeds from you several years and am always well pleased. I do not find as good quality elsewhere and your prices are always reasonable. Your shipments are prompt and I have recommended your seed to my neighbors who are ordering from you.
(Signed) R. S. Carpenter



BARLEY

VELVET

This is Velvet Type of Barbless Beards

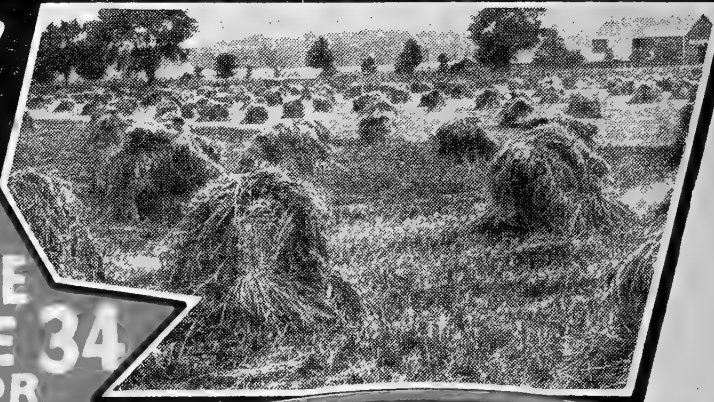
This type of barley was introduced a few years ago as one of the first types of barbless barley. Since that time the Wisconsin 38 type of barbless barley was developed and is considered by many to be an improved type. This Velvet type took the place of the old Beardless Barley that was grown about twenty-two years ago. The Velvet type with barbless beards was a great improvement, as the beards protected the grain during early summer hot weather. Is a six row kind.

Increasing Barley Acreage

Thousands of farmers are again turning to Barley growing since this variety has come on the market. Barley is the heaviest producing small grain crop in the northern part of the United States. It yields more pounds of grain per acre and it is valuable feed.

Our Velvet Barley is being grown successfully over a large territory and is being used in sections where barley has not been generally grown. You'll be enthusiastic about it too after growing it. page 34 for Sale Prices.

SEE
PAGE 34
FOR
PRICES



WISCONSIN 38 TYPE

Improved Barbless Barley

This is an improved type of the Velvet Barley. On a four year test it made an average yield of over 50 bushels per acre; outyielded all well known varieties. It is a smooth awned, white six row barley. Has been introduced extensively the past four years in Illinois. In a few years it will be one of the most popular varieties grown. The barbs have been removed from the beards by a breeding process. No discomfort in harvesting and threshing this variety.

The Best for Malting and Brewing

A large brewing concern has made several tests and found the Wis. 38 Type exceedingly fine for both malting and brewing purposes. Other Maltsters have made tests and predict this variety will become the great malting and brewing barley of the country. It is to your advantage to buy this type of barley. It is practically free from disease. Yields more than other popular varieties.

Every farmer should grow barley. During the past two years it has been the best paying grain crop on the farm. We have talked to a good many farmers in our office about barley. Most of them claim they could not farm without barley. This is a nice big plump barley. Buy this variety and obtain an extra yield that will more than repay you for the cost of the seed.

ODERBRUCKER

Oderbrucker Type Barley is a Six Row Bearded Kind

This is an old type of six row bearded barley. Is a heavy yielder. In tests with other barleys of same type it often excels in yield and quality of grain. Usually weighs heavier per bushel. Kernels are large. An excellent barley for malting purposes. Has heavy protein content. The quality of our seed is good. It is well re-cleaned. Good seed barley produces good crops. This barley also known as Wis. 55 Type. During a dry season it usually outyields the beardless types of barley.

Cyclone Seed Sower

Saves on seed and labor. You can sow acres in one hour. Sows Clovers, Alfalfa, Timothy, Wheat, Sudan, etc. Can be regulated for different amounts per acre. Double feed and distributing wheel scatters seed evenly at equal distance from operator. Directions on seeder. Supply limited. Postpaid price—\$3.50.



Horn Seed Sower

Simple way to seed. Sows all smooth seeds like Clovers, Alfalfa, Timothy, Lespedeza, etc. Seed gauge regulates amount per acre. Easily operated. No wasted seed. Postpaid—\$1.25.



SPARTAN BARLEY

A Two Row Kind

Smooth Awned Spring Barley

This is one of the strongest strawed barleys grown. Smooth soft beards, but no barbs. A fine variety for pearling. Not considered a good malting barley. Has large, uniform, plump kernels. The strength of straw makes it desirable to sow on rich land, although it yields well on soil where other varieties thrive. Is superior to common varieties as a feeding barley. Try this heavy yielding barley. Prices on page 34.



Gentlemen: Wish to say that the hundred pounds of America's Best Mixture I got of you last spring made one of the finest stands of grass. Any farmer that wants to build up his soil would do well to use it.

(Signed) Edw. E. Miller.

Sheldon, Ill.



Gentlemen: I have sown your seed for a few years and have splendid results. I am always glad to recommend your company as I have always found your seed as represented.

Yours truly,

(Signed) John F. Mills.

Bridgeport, Ind.

3 Spring GRAINS

SPELTZ or EMMER

at See page 34 for prices

LOW PRICES
SEE PAGE 34

A Grain of Unusual Qualities

Speltz, also called Emmer, is quite different from the ordinary grain crop. It resembles Barley but is really a species of wheat. The grain is broader than Barley, and the kernels are not so tightly enclosed in the hull. The grain is softer. The shuck and grain both have good feeding value. It makes a rich feed that is palatable and relished by all kinds of live stock.

Characteristics

It is very hardy, being grown in the northern states, and in semi-arid regions. You will find it a remarkable drought resister. Neither is it easily affected by rust or blight. The straw is pithy and strong. Maturity is very early. A fine nurse crop. Produces a grain crop under dry conditions that would cause a failure of other small grains. You will find it growing over a wide territory.

Fine Stock Feed

You can use it for poultry feed. Cows show a marked liking for it and it is often fed with bran and shorts to milk cows. Hogs thrive on it. It is a fattening grain and will put weight on hogs and cattle in a hurry. Speltz helps to cut down feed bills. It is good for pasture, fattens in the green state, and is a heavy stooler. We are sure you will like Speltz, and that it will prove a very profitable crop for you. We have it this year.

Easy to Grow

Prepare ground same as you would for any small grain crop. Sow 2 to 2½ bushels per acre. Drill or broadcast. Harvest when in hard dough stage. Thresh with ordinary grain thresher like wheat, but use fewer concaves.

Consider its resistance; its early maturity; its heavy yields; its high feeding value and palatability. You will find it worthy of a trial and once tried we are sure you will always want some Speltz on the farm.



SPRING WHEAT

MIDA

Mida Wheat is the new sensation of North Dakota and Minnesota. Average yields of Mida Stations, over 4 year period show Mida beat them all. Average yield 33.2 bu. Yielded high as 36.4 bu. per acre. We are always looking for a better variety of Wheat for our customers. MIDA, a new variety released in 1944, was bred at North Dakota Experiment Station. This variety is bearded. Superior to many others in strength of straw. The kernel is large, dark red in color. In 41 experiments in 3 years in North Dakota, Mida Wheat had a test of 60.8 pounds, which was higher than other old leading varieties. It is an early type, easy to thresh and does not shatter like many varieties. Mida shows high resistance to both leaf and stem rust and to stinking smut. Was more resistant than 10 other varieties in experiments. The large, plump grains of high test weight make it very desirable for a milling wheat. Mida will produce a larger yield for you. Make more money by growing this variety. See prices page 34.

SPRING WHEAT

THATCHER

This Type Rust Resistant

Is a type of beardless spring wheat developed at the Minnesota Experiment Station. Is a hard red wheat. Reports show the Thatcher type has made phenomenal yields the past few years when stem rust damaged other varieties. During bad rust years of 1935 and 1937, reports show Thatcher yields 2½ times greater than Marquis Beardless Wheat. Thatcher has strong straw and matures earlier than Marquis. Straw not as tall as some varieties. Excellent for rich land. Makes a fine nurse crop. This is the most profitable spring wheat for sections susceptible to stem rust and loose smut damage. This is the year to sow spring wheat for a money crop. It's a fine milling wheat. As it matures early, is best for corn-belt. Our seed stock is northern grown. Has been well re-cleaned and very fine quality. Best to order early so you are sure of getting it. Prices page 34.

Treatment for SMALL GRAIN

CERESAN

Only costs about 3c per bushel. Controls certain smuts and other diseases that attack Wheat, Barley and Oats. Makes larger stands and yields. Is a dust treatment. Easy to apply.

Directions on each can. Half an ounce treats one bu.

Oats. Prepaid Prices:
1 lb., 80c; 4 lbs., \$2.70.



Almond, Wis.
Gentlemen: I never received your March price list, but am enclosing another order for seed. I always get my seed from you and am always satisfied and have good luck with them. My Alfalfa field that I planted with your seed was surely a picture last fall. Yours truly,
(Signed) Ira H. Lamb.



Brant, Mich.
Gentlemen: Enclosed another order for 200 lbs. of America's Best Mixture. I sowed this seed last year, and it was very satisfactory.
Yours very truly,
(Signed) M. Carstensen.



**BEST VARIETIES
LOW PRICED**

SEE PAGE 34
for PRICES
WRITE FOR
PRICES ON
LARGE LOTS

SOY BEANS

**TWO NEW VARIETIES
LINCOLN and EARLYANA**

EARLYANA

CERTIFIED

A New Very Early Soy Bean

Earlyana is one of the earliest yellow soy beans grown. Matures 7 days earlier than the early Richland. Official reports show it received the same systematic selection and testing that is accorded all plant selections of known hybrid origin. Earlyana was developed by the Purdue University Agr. Exp. Station. This strain officially tested for adaptation to different conditions of soil and climate.

Valuable Characteristics

Earlyana grows as tall as the Richland. Matures about 10 to 12 days earlier than the Illini and Dunfield. Is earlier than Wis. Manchu 3 and Wis. Manchu 606. The oil content compares favorably with Illini and Richland, but has a higher percentage of protein than these two varieties. Average yield is larger than most of the other early varieties. Is adapted to a wide range of soil conditions. It grows faster in early stages of growth than other standard varieties. This helps weed control. The seed is about the same size as Illini. The seed has a brown speck at one end of the hilum.

Make Money Now

Start growing these sensational soy beans while they are new. Very few farmers are growing them. There will be a big demand for the next few years. They can be sown in north central Illinois, Iowa, Indiana and Ohio. As far north as central Wisconsin, Michigan and southern part of New York. Can be sown late in the season. Harvest Earlyana early and put a fall wheat crop on this land.

Is more lodge resistant than Dunfield and Illini. Averages about 3 beans per pod compared to around 2 for Richlands.

Price—1 bu. \$4.90; 6 bu. \$4.80 per bu.; 12 bu. \$4.75 per bu.

INOCULATION

For Soy Beans

2 bu. size 30c; 5 bu. size 50c; 25 bu. size \$1.95.



LINCOLN

**A New
Soy Bean**

Certified and Tagged


Here is that new wonderful soy bean you have been reading about in the farm papers. Lincoln Soy Beans are taking the country by storm. Here is the story in a nutshell. The Lincoln variety is a selection from a natural cross, made at Ill. Agr. Experiment Station. The seed is yellow with a prominent black hilum, similar to Manchu. Seed is slightly larger than the Illini, but smaller than the Richland. Usually three seeds in a pod on fertile soil. Has white flowers instead of purple. Yields larger than other yellow varieties. In six year official tests in Iowa, Ill., Wis., Mich., Ohio, Va., Mo., and Nebr. in each individual year the Lincoln outyielded the Illini and Dunfield 5.2 bushels or 18.6 percent. Lincoln has a higher oil content (21.3) than most all well known varieties. It lodges less than most varieties. Is taller than Richland. Is earlier than Illini and Dunfield. One of my friends who lives in Indiana about 110 miles southeast of Chicago, sold us several hundred bushels of these Certified Lincoln Soy Beans. He told me he planted 26 pounds per acre and obtained a yield of 36 bushels per acre. I know him to be honest and reliable. Another farmer reported planting 3 pecks and a yield of 40 bushels per acre. It will be three or four years before there will be enough Lincolns to supply the demand. There was a limited acreage, not enough to take care of the demand. We have a large stock this year. We want to take care of more customers.

**1BU. \$4.70
6BU. \$4.60
12BU. \$4.55
PER BU.**

NON-CERTIFIED LINCOLN

We bought these Lincoln Soy Beans from a grower. They were eligible for certification, but he had a mortgage to pay Nov. 1st, and wanted to sell them the last of October. They are genuine Lincoln.

Price—\$4.55 bu.; 6 bu. \$4.45 bu.; 12 bu. \$4.40 bu.



La Porte, Ind.
Gentlemen: I would like to know the price you would make on Soy Beans, in 25, 50 and 100 bushel lots, and also 300 lbs. of Sudan Grass. As I sent you an order of \$160 last year on Soy Beans and seeds and I was well pleased.
(Signed) Harry Reinthur.



Arthur, W. Va.
Gentlemen: Please send me samples of Alfalfa, Timothy and Alsike Clover. I need right smart seed this spring. I did get an awful good crop from your seed and it holds better than other grasses we get here.
(Signed) Carl Vanfleet.

Valuable Crops for Your Farm

HAIRY OR WINTER VETCH

These are bargain prices on a valuable crop. It is a legume, a nitrogen gathering soil building crop. It is one of the best fertilizing crops. Vetch grows on poor land where clover will fail. For sandy soil it does better than other legumes. A two year crop. Can be sown in spring or fall with good success.

Hairy Vetch makes a fine growth through spring, summer and fall and remains green the greater part of the winter. The following spring it grows rapidly, maturing in the early summer. It is equal or superior to Alfalfa in food value. Sow it in spring or fall and it will produce the first bite of green feed next spring. The crop stands cold and drought.

Sow 18 to 22 lbs. per acre with small grain. Use 1½ to 2 bu. of Oats or Barley per acre. Sow with Rye or Wheat if you sow it in the fall and cut them together for hay the next spring. We urge you to grow it.

25 LBS. \$5.55
50 LBS. \$10.90
100 LBS. \$21.75

SPRING VETCH

\$2.85 25 lbs. \$5.55 50 lbs. \$11.00 100 lbs.

Similar to Winter Vetch. Is an annual crop. Can be sown early. Grows anywhere. Is a soil builder. If you want quick summer pasture or hay crop, use Spring Vetch. It's an emergency crop. When sown alone use 50 to 60 lbs. per acre. Most farmers sow with Oats or Canada Field Peas or both. Sow about 30 to 40 lbs. Vetch and 1½ to 2 bushels oats per acre. Or sow about 25 lbs. Vetch, 20 lbs. Canada Field Peas with 1½ to 2 bushels of Oats. High germination and low price-guaranteed.



DWARF ESSEX RAPE



\$4.00 25 lbs. \$7.85 50 lbs. \$15.65 100 lbs.

Genuine U. S. Grown

This is real fancy Dwarf Essex Rape. A great forage crop for hogs or sheep. Exceedingly rich in protein. Lowers your feed cost.

Rape is economical to sow. Use about 6 lbs. per acre. Can be sown from early spring till in August. Many sow in corn at last cultivation. May be seeded alone or in small grain. Does its best in cool weather. Produces pasture weeks after other forage plants are killed by frost. Sometimes used for plowing under to add humus to the soil.

Rape will help you reduce the cost of growing live stock. Puts on a fine finish. Stock is ready for market in shorter time. It is fine for all animals, especially young ones and you can't beat it for hogs and sheep. Grow some rape pasture this year. It will pay you. We have cut our prices to bed rock. It will only cost you around \$1.00 an acre for seed. Ours is the genuine Dwarf Essex variety and is clean, high germinating and guaranteed to satisfy. Price high due to none imported.

FIELD PEAS

½ bu., \$3.10; 1 bu., \$6.00; 5 bu., \$5.90 60 lb., to bu.

They are usually called CANADA FIELD PEAS. A crop that will give quick results. Sow them as early as you can work the ground. Disc in a bushel of peas with a couple of bushels of oats. Produces a big yield of excellent hay early. Can be pastured or fed green very early. Makes a fine feed. You can harvest oats and peas together for seed and separate them after threshing. Field Peas plowed under in full bloom make a wonderful fertilizer.

This is just the crop that farmers will need this spring. Be sure to order early and get them in the ground early. They want cool weather and will stand considerable frost. Our seed quality will please particular buyers. It's thoroughly cleaned. Germination is high and our price is a real bargain.

SOY BEANS For HAY

"BLACK KINGWA"

The Kingwa is one of the best varieties of soy beans for hay. During the past few years they have taken the place of the old Black Ebony and Black Wilson in the southern part of Indiana and Illinois where most of the seed is produced. They grow tall and leafy. They make a large growth and fine quality of hay. A great soy bean for planting with corn. They grow well on medium to poor soil. Will make 25% more hay than most of the yellow beans. Is a medium late type. Sow 1¼ to 1½ bushels per acre. See price list page 34.

"VIRGINIA"

These are known as the Virginia Type of Brown Soy Beans. Used principally for a hay crop in northern part of the corn-belt. Stems are slender, making it easier to cure; also giving a finer quality of hay. The bean for seed is smaller than most of the yellow beans and takes less seed per acre. About 1¼ bushel makes a heavy seeding for a hay crop. Our stock is limited. See page 34 for prices.



Rodden, Ill.
Gentlemen: I have bought seed of you since 1919 and am well pleased so far, and as long as I get the quality I have been I will continue.
Yours respectfully,
(Signed) Albert M. Taylor.



Milmine, Ill.
Gentlemen: I got 3 bushels of your Clover, Alsike and Timothy Mixed last year, and believe every seed grew, and I have a fine hay crop. I have ordered 3 bushels more of the same seed.
(Signed) Howard Virtue.

Drought Resisting Grains at **LOW PRICES**

GENUINE ATLAS SORGO

Atlas is considered by Agricultural Authorities to be one of the greatest forage crops developed in the last century. It is a cross between Sweet Sorgo and Blackhull Kaffir. Has made some sensational yields. One farmer reported nearly 23 tons green feed per acre. Yields 2 and 3 times as much as corn in dry seasons. Grows 10 to 12 feet tall. Is late in maturing seed. A great drought resister.

A Very Valuable Crop

Nothing better for ensilage. It has sweet juicy stalks. More palatable than corn. Live stock, especially cattle, will eat it stalks and all. They will leave most any kind of hay or feed for Atlas Sorgo. Requires warm soil. Plant about 10 to 20 days after you plant corn. Drill 8 to 12 pounds per acre for single row planting. Sow 30 pounds solid drilled or 40 pounds broadcast. Cut in fall before first heavy frost. Shock like corn.

Makes fine ensilage for a dairy herd. It's good insurance to be prepared for a dry season.

Price, Postpaid: 10 lbs., \$1.60. Not Prepaid: 25 lbs., \$2.75; 50 lbs., \$5.35; 100 lbs., \$10.50.

NORKAN

New Early Atlas

Here is a new wonderful fodder crop. Norkan is a cross between Atlas Sorgo and Early Sumac Cane. It looks very much like Atlas Sorgo. The plants are medium tall, sweet and juicy. Norkan matures about two weeks earlier than Atlas. Is better for the northern part of the Corn Belt. Does not grow quite as tall as Atlas Sorgo, but average height 8 to 10 feet, depending upon location and soil. Heavily leaved from top to ground. The grain yield is very heavy. Tests at Lincoln, Nebraska, show Norkan yield of grain, 55.8 bushels per acre.

It makes wonderful silage. Live stock is very fond of this juicy, sweet stemmed feed. In regular corn rows, plant 10 to 15 lbs. per acre. In double rows, about 22 to 25 lbs. per acre. Weighs 50 lbs. per bu.

Price— $\frac{1}{2}$ bu., \$2.35; 1 bu., \$4.60; 5 bu., \$4.50 bu.



MILO COMBINE

Fine Poultry Feed

This is also a member of the grain Sorghum family. The stalks are more slender than the Kaffir, but have no juice in them. Milo is much earlier than Kaffir. The seed heads are much more compact and egg shaped. Grain is widely used in chicken feeds. Where seasons are short or a quick maturing kind is desired, the Milo should be your selection. Milo will also grow with less moisture. Grain has good feeding value.

Milo, Kaffir, Feterita and all similar grains should not be planted until after the ground is thoroughly warm. Two or three weeks after corn planting is best. Spring plowing warms the land better. Sow 8 lbs. for grain, 75 lbs for hay.

The feeding value of these various sorghum grains is about equal. Milo and Feterita are more generally grown throughout the northern part of the Corn Belt, because of earlier maturity. Our seed is very choice. See page 34 for prices.

HEGARI

This is the Hegari type of Sweet Stalked Sorgo or Sweet Sorghum. Is somewhat similar to Atlas Sorgo, but does not grow as tall. Livestock, especially cattle, are very fond of it, due to its sweet taste. Is very nutritious. Valuable for grain, dry fodder, ensilage and pasture. Is very productive.

Has been known to yield up to 5000 lbs. of grain per acre and up to 18 tons of ensilage. It combines the grain production of Kaffir and Milo with the high forage value of Cane. Is a great drought resister. Try a few acres this year and you will be enthusiastic about this wonderful forage crop. For a grain crop, drill about 30 to 40 inches apart, using about 8 lbs. of seed per acre. For hay, about 75 to 80 pounds per acre.

Postpaid: 5 lbs., 75c; 10 lbs., \$1.40. See page 34 for quantity prices.

KAFFIR CORN

This is Kaffir Corn type. Is called a sorghum grain crop. The stalks are stout and fairly short. Stalks not quite as juicy as Cane. The seed heads are 10 to 15 inches long. For hay, sow 60 to 75 pounds per acre. For grain, drill 8 pounds per acre in rows like Corn. Stands lots of hot dry weather. Makes excellent poultry feed and good for all kinds of livestock, when it is ground alone or with other grains. When it is harvested for grain, it will produce up to 40 bushels per acre. See page 34 for prices.

BUCKWHEAT

A quick maturing grain (10 to 12 weeks). Yields well, 20 to 40 bushels per acre. The best grain crop for poor soils. Does even better than Rye on poor land. Makes hard land mellow and friable. Can be used as a catch crop if small grain kills out. Good crop for new land. Excellent cover crop in orchards. Also used for bee pasture.

Many farmers sow Buckwheat after other grains are harvested and they obtain a good crop. Can be sown up to August 1st. Sow about 1 bushel or 48 pounds per acre. Our seed is re-cleaned. Our stock is the Japanese type. This type is most in demand. See price page 34.



Algonquin, Ill.

Gentlemen: I have used your clovers and grass seeds for a number of years and have been satisfied with the results. I have also saved considerable money in buying direct from you.

Yours truly,

(Signed) Henry Gehl.



Frederic, Wis.

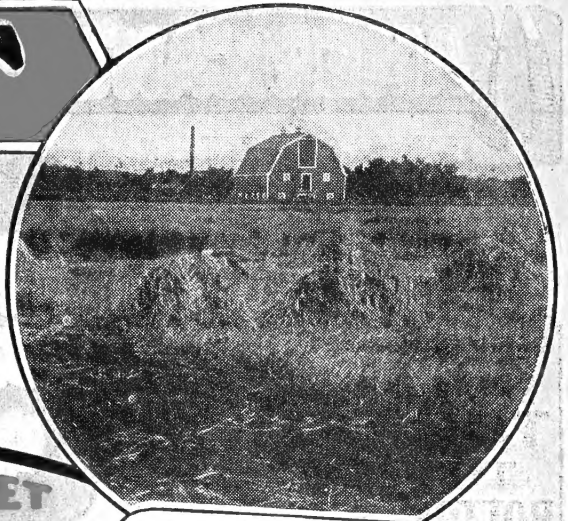
Gentlemen: Regarding the Green Mountain Favorite Oats I bought from you I told you I got 87 bushels to the acre but found out later that they weighed out almost 100 bushels to the acre. You see, the thresher gave me a big bushel.

(Signed) Chas. Hedlund.

MILLET

WHITE WONDER TYPE

A long headed, heavy producing, early maturing variety. This is a very fine type of Millet preferred by some over all others. The foliage is very heavy which accounts for its big yields. The long heads make prolific seed yields. It is a top-notch in yield of hay and seed. Leaves fairly broad. Cures readily. Seed light colored. A trial of this variety will prove its superior worth. Our seed quality is very fine. See page 34 for bargain prices.



GOLDEN or GERMAN MILLET

This Is the German Type Millet

The German Type or Golden Millet is a truly remarkable crop. This Millet is an enormous yielder both of hay and seed. Its tall dense growth affords a lot of fine feed in a short time. The crop is quick growing and a great drought resister. Seed yields run 40 to 50 bushels per acre. Can be sown as late as in July and makes a fine crop. This fine leafy crop is certainly a great help to any farmer caught short on feed.

Heavy producing stock is generally sold at premium prices. You will find our quotations on page 34 unusually attractive. This seed is cleaned and graded. For feed or seed production our German Millet is a winner. Order your seed early and get the choicest stock.

PROSO

or Hog Millet

This variety is a big seed producing Millet. It is not as good a hay variety as the others. The seed is considerably larger and is grown chiefly for seed. This is used in feeds of different kinds. Equal to small grains in fattening value for hogs. Poultry men have been praising its value highly, and they are largely responsible for the great interest in this crop, in the past few years.

CHARACTERISTICS

Proso Millet is one of the earliest maturing varieties, requiring about 65 to 75 days. Don't sow too early. It is partial to warm seed bed. Production 55 to 70 bushels of seed per acre is not uncommon. If small grain fails or you want a good cash catch crop, sow Proso. Price page 34.

Siberian Millet Type

Very early. Grows somewhat smaller than the white or golden but has finer leaves. Very valuable for Northern states on account of earlier maturity. Grows two to four feet high. Seed has a reddish color. Sow 35 to 40 lbs. per acre. Makes an ideal catch crop. Fine feeding value. Anyone wishing a fine, quick growing, early maturing crop will like our Siberian Millet. Seed quality A 1. See page 34.

Hungarian Millet Type

Earlier than the German. Very leafy and makes a good production of fine quality hay. Stools freely. Heavy seed producer. Make money growing seed crop. Usually sells at a premium. On account of its earliness it is especially good for northern states but its use is not confined to that section. In some places it is called Hungarian Grass. Seed runs mixed colors purple and golden. The use of this variety is increasing. Our seed is clean, bright stock and we are pricing it very low. See page 34.

JAPAN MILLET SEE BILLION DOLLAR GRASS

CANE SEED

A Forage Crop You Should Know Better

You have probably heard about Cane most of your life, but do you know what it can do for you? It is one of the heaviest producing crops you can grow. Will produce 30,000 lbs. to 40,000 lbs. of green feed per acre. Seed production may vary from 30 bushels to 50 bushels to the acre with some reporting 60 bushels. Study these figures. Consider what an enormous production that is.

How to Use Cane For hay use 1 bushel to 1½ bushels per acre. The heavier seeding will not yield more but makes finer hay. For pasture an even heavier seeding is recommended. When used for fodder a lighter seeding rate is used depending upon the distance between the rows. Plow deeply for cane. Pulverize the seed bed well. Do not plant until after corn planting. Seed bed and weather must be warm.

Waconia Cane For making molasses or filling the silo. Contains four or five times as much sap for syrup as ordinary sorghum fodder cane. It's twice as sweet. Makes enormous growth. Will produce 20 to 30% more. We have customers that will pay \$3.00 to \$4.00 cwt. premium to get it. Earlier than Atlas Sorgho and better. Price—25 lbs., \$2.85; 50 lbs., \$5.55; 100 lbs., \$11.00.

Amber Cane Type The earliest variety. Grown from Maine to California. Has slender stalks and narrow leaves. Suitable anywhere. We recommend it highly and should be selected by all northern customers. See prices page 34.

Orange Cane Type Somewhat later. More abundant leaves which are broader and stalks and seed heads heavier. On account of somewhat heavier yields is a favorite in the corn belt where a later cane is used. See prices page 34.



MOLASSES CANE

Kept pure for making sorghum. Seed carefully handled but quality of sorghum is not guaranteed.

Sorghum Molasses Seed. The kind that produces big yields and lots of gallons per acre. Has fine flavor and color. Makes delicious mild tasting sorghum. Used by big sorghum producers.

Price postpaid, 2 lbs., 50c; 5 lbs., \$1.15. Not prepaid 10 lbs., \$1.40; 50 lbs., or more, 13c per lb.



Little Genesee, N. Y.
Gentlemen: I just harvested 6 acres of new seedling that I seeded with your Alsike, Red Clover and Timothy seed. I got 20 tons of nice hay out of the 6 acres, and I have 6 acres more to cut of it and it is as good. It is the best seed I ever bought.
C. C. Giddings.



Winslow, Ill.
Gentlemen: I have been getting seed of your Company for the past several years, and think it is fine. Have been telling my neighbors and friends about your seeds. Below are some of their names.
Yours very truly,
(Signed) Geo. S. Robb.

AMERICAN'S LOWEST PRICE LIST

EVERY PRICE A BARGAIN

BUY NOW AND SAVE MOST

WE GUARANTEE SAVING AND QUALITY

REDUCING FROM TOP TO BOTTOM

All prices are F. O. B. Chicago. Bags are Free. Safe arrival and satisfactory quality are guaranteed. See page 4. All prices will be protected as long as our present stocks of seed last. Write promptly for free samples. We are glad to show quality.

When judging prices remember that the quality back of it determines whether or not that price is a bargain. You can order our seed with this understanding. If you do not believe you have saved money you can return the seed and get your money plus freight refunded.

PRICES HIGHER LATER \$

Prices Good Until Lots Are Exhausted or Advancing Markets Compel Advance.

EARLY 1947 PRICES

ALFALFA—60 lb. bu.

All U. S. Grown (Except Argentine)

	1 Bu.	1/2 Bu.	1/4 Bu.
Utility Brand (Prime) Corn-Belt.....	\$22.60	\$11.35	\$ 5.70
Economy Brand (Choice) Corn-Belt.....	24.50	12.30	6.20
Universal Brand (Fancy) Corn-Belt.....	26.60	13.35	6.75
Pinnacle Brand (Extra Fancy) Corn-Belt....	28.90	14.50	7.30
Pinnacle Br., Kansas grown (Ex. Fancy)....	28.80	14.45	7.30
Pinnacle, Oklahoma Approved Origin.....	28.60	14.35	7.25
Dakota No. 12 (Pinn. Brand) Nor. Grown....	31.70	15.90	8.00
Grimm, Lot "Rock Bottom" (Page 13).....	24.40	12.25	6.20
Grimm, Lot "Sealed" (Page 35).....	27.90	14.00	7.10
Grimm (Pinnacle Brand) Northern grown....	32.25	16.20	8.15
Grimm (Pinnacle Brand) Montana grown....	32.90	16.50	8.30
Cossack (Pinnacle Br.) Northern grown....	32.75	16.45	8.25
Pinnacle Brand, Argentine, 99% pure.....	20.50	10.30	5.25
Ranger Alfalfa, Blue Tag Certified.....	75.00	37.60	18.90

MEDIUM RED AND MAMMOTH RED CLOVER—U. S. Grown

	1 Bu.	1/2 Bu.	1/4 Bu.
Lot "Worthmore" 25% Tim., 50 lb.....	\$21.25	\$10.65	\$ 5.40
Economy Brand, Medium Red, 60 lb. bu....	29.80	15.00	7.60
Universal Br., Medium Red, 60 lb. bu....	31.60	15.90	8.05
Pinnacle Br., Medium Red, 60 lb. bu....	33.50	16.80	8.50
MIDLAND Clov., Cert. Blue Tag, 60 lb....	39.90	20.00	10.15
Economy Br., Mammoth Red, 60 lb. bu....	30.60	15.35	7.75
Pinnacle Br., Mammoth Red, 60 lb. bu....	33.90	17.00	8.55

ALSIKE CLOVER—60 lb. bu.—U. S. Grown

	1 Bu.	1/2 Bu.	1/4 Bu.
Economy Brand (Choice).....	\$25.50	\$12.80	\$ 6.50
Universal Brand (Fancy).....	27.10	13.60	6.90
Pinnacle Brand (Extra Fancy).....	28.90	14.50	7.30
Premium Grade (Extra Fancy).....	29.50	14.80	7.45

SWEET CLOVER—Scarified

	1 Bu.	1/2 Bu.	1/4 Bu.
Unhulled, 30 lb. bu. (Page 8—Not Scar.)....	\$ 4.25	\$ 2.20	\$ 1.20
Utility Br. Sweet Clover, Hulled, 60 lb....	8.30	4.20	2.15
Economy Br. Sweet Clo., Hulled, 60 lb....	9.15	4.65	2.40
Universal Br. (Fcy) Sw. Clo., Hld., 60 lb....	10.00	5.05	2.60
Pinnacle Brand (Ex. Fcy) Sweet Clo., Hulled, Tall Type, 60 lb.....	10.90	5.50	2.80
Grundy Co. Type Sw. Clo. (Pinn. Br.).....	11.00	5.55	2.85
Yellow (Economy Brand) Hulled, 60 lb....	9.10	4.60	2.40
Yellow (Universal Brand) Hulled, 60 lb....	9.75	4.95	2.55
Yellow (Pinnacle Brand) Hulled, 60 lb....	10.75	5.45	2.80
Hubam Annual Type (Fancy) 60 lb.....	14.90	7.50	3.80

OTHER CLOVERS

	1 Bu.	1/2 Bu.	1/4 Bu.
Korean Lespedeza (Choice) 25 lb. bu.....	\$ 2.60	\$ 1.40	\$.80
Korean Lespedeza (Fancy) 25 lb. bu.....	2.75	1.45	.80
Korean Lespedeza, Scarified, 60 lb. bu....	7.75	3.95	2.05
Korean, Tall Early Strain 19604, 25 lb....	4.55	2.35	1.25
Sericea Lespedeza (Perennial) 60 lb. bu....	18.15	9.10	4.60
White Dutch Clover (Fancy) 60 lb. bu....	53.40	26.80	13.45
Crimson or Giant Incarnate Clo., 60 lb....	16.40	8.25	4.20
Ladino Clover, Fancy, 60 lb. bu.....	114.40	57.30	28.75

TIMOTHY—TIMOTHY AND CLOVER MIXTURES, 45 lb. bu.—U. S. Grown

	1 Bu.	1/2 Bu.	1/4 Bu.
Timothy, Utility Brand (Prime).....	\$ 3.50	\$ 1.85	\$ 1.00
Timothy, Economy Brand (Choice).....	3.75	1.95	1.05
Timothy, Universal Brand (Fancy).....	4.05	2.10	1.10
Timothy, Pinnacle Brand (Extra Fancy)....	4.25	2.20	1.15
Tim. and Alsike Mix., Royal, 16-20% Alsike Tim., Alsike and Red Clover Mixed, Lot "Major," 20-25% Clovers.....	6.60	3.40	1.80
Tim. and Red Clo. Mix., 16-20% Clo., Std. Clo.....	7.50	3.80	1.95
Tim. and Red Clo. Mix., "Richer," 28-32% Clo.....	6.75	3.45	1.80
Alfalfa, Red Clover, Alsike and Tim., Big 4 Mixt., 28-32% Clovers and Alfalfa....	9.00	4.60	2.35
Red Clover and Timothy, over 50% Clover...	8.90	4.50	2.30
America's Best Mixture, 50% Clovers.....	13.40	6.75	3.45
	8.60	4.35	2.25

GRASSES FOR HAY AND PASTURE

	100 lb.	50 lb.	25 lb.
Kentucky Blue Grass, Pinn. (Ex. Fcy).....	\$99.50	\$49.80	\$24.95
English Blue Grass (Meadow Fescue).....	31.25	15.70	7.90
Brome Grass, Extra Fancy, Northern.....	25.25	12.70	6.40
Brome Grass, New Strain.....	35.40	17.75	8.95
Orchard Grass (Fancy).....	25.50	12.80	6.45
Red Top, Lot "Top," Contains some Tim....	14.80	7.45	3.80
Red Top, Pinnacle Brand (Extra Fancy)....	22.60	11.35	5.75
Domestic Rye Grass (Fancy).....	12.90	6.50	3.35
Reed Canary Grass (Phalaris).....	64.50	32.30	16.20
Crested Wheat Grass (Fancy).....	24.50	12.30	6.20

GRASS MIXTURES

	100 lb.	50 lb.	25 lb.
Beat-Em-All Mixt. (See Page 18).....	\$14.00	\$ 7.10	\$ 3.60
Gold Mine Clover Mixt. (See Page 15).....	27.50	13.80	6.95
Economy Pasture Mixt. (See Page 18).....	16.30	8.20	4.15
Perfection Pasture Mixt. (See Page 18)....	21.50	10.80	5.50
Brome-Alfalfa Mixed, 70% Brome, 30% Alfalfa.....	31.50	15.80	8.00

SPECIAL FORAGE CROPS

	100 lb.	50 lb.	25 lb.
Annual Hog Pasture Mixt. (See Page 25)...	\$ 7.80	\$ 4.00	\$ 2.10
Dwarf Essex Rape, U. S. Grown (Page 31)...	15.65	7.85	4.00
Billion Dollar Grass (Page 25).....	9.00	4.55	2.35
Sudan Grass (Page 25).....	12.25	6.20	3.15
New Sweet Sudan Grass (Page 24).....	18.90	9.50	4.80

SEED OATS—32 lb. bu.

	15 bu.	5 bu.	1 bu.
Marion, blight resistant (Page 26).....	\$ 1.75	\$ 1.80	\$ 1.90
Vieland and Tama, Certified.....	1.70	1.75	1.85
Vieland and Tama, Non-Certified.....	1.50	1.55	1.60
Boone, Non-Certified (Page 26).....	1.50	1.55	1.60
Our Golden Rust Proof (Page 27).....	1.70	1.75	1.85
Victory Type, Extra Heavy, 40-42 lbs....	1.65	1.70	1.80
CLINTON—Certified (Page 26) in 2 1/2 and 3 bu. bags.....			6.50

OTHER SEED GRAINS and BUCKWHEAT

	10 bu.	5 bu.	1 bu.
Speltz, 40 lb. bu.....	\$ 2.60	\$ 2.65	\$ 2.75
Thatcher Type Spring Wheat, Beardless....	3.80	3.85	3.90
Mida Spring Wheat, Bearded.....	3.70	3.75	3.85
Oderbrucker Type Barley, 48 lb. bu.....	3.20	3.25	3.30
Wis. 38 or Velvet Type Barley (Page 28) 48 lb. bu.....	3.00	3.05	3.15
Spartan Type Barley (Smooth Awn) 48 lb....	3.00	3.05	3.10
Buckwheat, 48 lb. bu.....	3.15	3.20	3.25

SOY BEANS and FIELD PEAS

	12 bu.	6 bu.	1 bu.
Lincoln—Genuine Certified.....	\$ 4.55	\$ 4.60	\$ 4.70
Lincoln—Non-Certified.....	4.40	4.45	4.55
Earlyana—Genuine Certified, Extra Early...	4.75	4.80	4.90
Black Kingwa, Hay Bean.....	4.45	4.50	4.60
Virginia Brown, Hay Bean.....	4.55	4.60	4.70
Field Peas, Canadian Type.....	5.85	5.90	6.00

FORAGE CROPS and VETCHES

	5 bu.	1 bu.	1/2 bu.
Cane, Orange Type, 50 lb. bu.....	\$ 5.25	\$ 5.35	\$ 2.75
Cane, Amber Type, 50 lb. bu.....	5.15	5.25	2.70
Atlas Sorgo, 50 lb. bu.....	5.25	5.35	2.70
Norkan, Sweet Stalk, Early, 50 lb. bu....	4.50	4.60	2.35
Hegari Type, Sweet Sorgo, 50 lb. bu....	3.60	3.70	1.90
Milo Maize, 56 lb. bu.....	3.50	3.60	1.85
Kaffir Corn, Grain Sorgo, 56 lb. bu....	3.65	3.75	1.90
Winter, Hairy or Sand VETCH, 50 lb. bu....	10.85	10.90	5.55
Spring VETCH, 50 lb. bu.....	5.50	5.55	2.85

MILLETS

	5 bu.	1 bu.	1/2 bu.
Japanese, 35 lb. bu. (Grown in U. S.)....	\$ 3.20	\$ 3.30	\$ 1.70
Golden or German Type, 50 lb. bu.....	4.20	4.30	2.20
Siberian Type, 50 lb. bu.....	2.95	3.05	1.60
Proso or Hog Type, 50 lb. bu.....	2.60	2.70	1.40
Hungarian Type, Fine Hay, 50 lb. bu....	4.35	4.45	2.30
White Wonder Type, 50 lb. bu.....	3.95	4.05	2.10

HYBRID SEED CORN—56 lb. bu.

	1 Bu.	1/2 Bu.	1/4 Bu.
American's 813 or 615 or 405, Large Flat Grains.....	\$ 8.50	\$ 4.30	\$ 2.25
American's 813 or 615 or 405, Medium Flat Grains.....	8.00	4.10	2.15
Any of above in Round Grains.....	6.25	3.20	1.70
U. S. 13 or Ind. 608 or Ind. 620, Large Flat Grains.....	8.00	4.10	2.15
U. S. 13 or Ind. 608 or Ind. 620, Medium Flat Grains.....	7.50	3.80	2.00
U. S. 13, Ind. 608, Ind. 620, Round Grains...	5.75	2.95	1.55
Iowa 939 and Ill. 201, Large Flat Grains...	8.00	4.10	2.15
Iowa 939 and Ill. 201, Medium Flat Grains...	7.50	3.80	2.00
Iowa 939 and Ill. 201, Round Grains.....	5.75	2.95	1.55
Wisconsin 606, Wis. 641, Certified, Flat.....	8.50	4.30	2.25
Wisconsin 606, Wis. 641, Certified, Round...	5.75	2.95	1.55
Hi-Yield Blend Hybrid, Round Grains.....	4.25	2.20	1.15
Hi-Yield Blend Hybrid, Thick Flat Grains...	4.75	2.45	1.30
Hybrids for Ensilage, Round Grains.....	4.30	2.25	1.20
Hybrids for Ensilage, Thick Flat Grains...	4.80	2.50	1.35

GRIMM

SUPER VALUE

ALFALFA

LOT
SEALED
\$ **27**⁹⁰
BU. 60 LBS.

"Hardy Northern Alfalfa" Shipped in Sealed Bags

I am always on the lookout for good values in hardy northern alfalfa that will save our customers money. Lot "Sealed" fills the bill. This is the variegated type of Alfalfa. It was grown in the far north and adapted for any section of the U.S., where hardy alfalfa is required. Has lots of resistance to severe winters.

Approximately 99 $\frac{1}{4}$ -99 $\frac{1}{2}$ % Crop Purity

I am always glad to offer customers a fine value like Lot "Sealed." Has good color. Nice smooth uniform berries. Good germination. Including about 2% of other crop seed, such as Red Clover, Sweet Clover and Alsike. Lot "Sealed" has a total crop purity of about 99 $\frac{1}{4}$ %. On account of this seed containing some crop seed, we bought this lot at quite a discount. This accounts for the extraordinary low price we have placed on this lot. With small stocks of alfalfa in the dealers' hands, Lot "Sealed" is a bargain.

Save \$2.00 to \$3.00 Per Bushel

You'll like this northern grown Alfalfa. The way it grows, the crops it produces and the staying power. Such quality at this low price is a bargain in anybody's town. If you were in my office and saw a sample and analysis of Lot "Sealed" you would buy it in a minute. This is nice, bright, plump seed. Write for a free sample. This seed is not old seed. You would be proud to show this quality of Alfalfa to your neighbor. We could not replace this seed to sell at this low price. As President of this company I want you to order Lot "Sealed" on my recommendation. If you do not think it is worth more than you paid, ship it back and I guarantee you will not be out a red cent.

Early Buyers Get Good Values

On account of the heavy demand for alfalfa and other legumes, I urge our customers to buy early this year. Lot "Sealed" is an excellent value, so don't miss out on getting some of this hardy Alfalfa.

BE SURE TO INOCULATE YOUR ALFALFA
PAYS BIG DIVIDENDS
COST IS LOW. See Page 6.



LADINO CLOVER

A Profitable New Clover

It's similar to White Clover and known as the giant type. Grows 2 to 4 times as large as the common White Clover. It's a perennial. Had lots of publicity in farm and poultry magazines. Is now being grown in corn belt states, through to the New England states. One farmer in Indiana, in 1946, harvested 600 pounds of fancy re-cleaned Ladino Clover from eight acres. Ladino is used extensively on chicken farms. Thrives on fertile soil. Does well on wet ground. Also on heavier clay or loam soil. Best results, by sowing in mixture with other clovers and grasses. Has creeping fleshy stems that root at the nodes and joints, sending out leafy shoots. Produces a heavy growth of high protein feed. A good mixture is, 3 lbs. Red Clover, 5 lbs. Rye Grass, 1 $\frac{1}{2}$ lbs. Ladino and 5 lbs. Timothy or Orchard Grass per acre. Other mixtures can be used.

PRICES, Postpaid: — 1 lb. \$2.30; 2 lbs. \$4.40; 5 lbs. \$10.60; 10 lbs. \$20.40.

PRICES, Not Prepaid: — 10 lbs. \$19.30; 15 lbs. \$28.75; 30 lbs. \$57.30.

MAMMOTH CLOVER

\$ **33**⁹⁰
BU.
60 LBS.

PINNACLE BRAND

99 $\frac{1}{2}$ % Pure or Better—New Crop
Northern Grown

It is sometimes called Sapling Clover. This is our Pinnacle Brand quality, which is always high grade seed. Has been triple cleaned to remove impurities, weeds, etc. The quality is extra fine. Will please any farmer who only wants top quality. The crop was fair this past year and seed of this quality is not plentiful.

Mammoth Red Clover Different

It grows two years from a seeding and generally makes two hay crops or a hay and seed crop in the second year of its growth. It grows taller and makes a somewhat coarser and heavier growth than the Medium Red Clover. One cutting of Mammoth will produce more tonnage than one of Medium. It is a little later in maturity than the Medium. In the north where the seasons are too short for two cuttings, more Mammoth is used. It is also used to plow under earlier in the fall in preparation for some other fall crop.

Priced to Save You Money

Try and buy this quality elsewhere at our price. This is a wholesale price. After you pay the freight you save about \$1.50 to \$3.00 per bushel. Lower grade Mammoth quoted on opposite page 34.

**A RICH
ECONOMICAL
SEEDING**

**PRICED
EXTREMELY
LOW**

AMERICA'S BEST MIXTURE

**50%
CLOVERS**

Balance
Timothy

**\$ 8 60
BU.
45 LBS.**

6 bu.
\$51.30

OUR MOST SENSATIONAL

BARGAIN



An Enormous Producer

America's Best Mixture outranks any of our mixtures in yields. We believe it to be the biggest producer of any seeding on the markets. Others try to imitate, but when it comes down to the biggest yields of the best hay our mixture takes the lead. The high protein content of the hay makes it worth more per ton than the average similar seeding.

America's Best Mixture is a permanent seeding. It lasts several years. Makes good meadows or pastures. It is composed of over one-half Clovers, such as Red Clover, Alfalfa, Alsike and Sweet Clover. The balance is Timothy. It's all quality seed. We receive hundreds of repeat orders for this wonderful mixture.

You will find it practically equal to a pure clover seeding in its fertilizing value. It yields more than any single clover or grass hay will produce. It helps put your land in shape for alfalfa. It will prove one of your biggest and best money crops. Many farmers send us testimonials and many send us pictures showing what a wonderful stand and big yield they obtained from sowing our America's Best Mixture.

ALL NORTHERN HOME GROWN SEEDS

We are holding prices down to bedrock on this mixture. Extra rich in clovers, yet so low in cost that no one need neglect a clover seeding. You are practicing the highest type of economy when you buy this mixture.

The quality of this seed is fine. Has been re-cleaned. Is bright color. Has good purity and germination. It will make a fine stand if it has half a chance. Our customers consider it the greatest seeding they ever made. We consider that it is the biggest money making mixture. Makes wonderful seeding at this remarkably low price.

Low Cost Per Acre

This is a sensational value at a low cost. This mixture will appeal to you if you are a thrifty buyer. Sow this mixture on winter wheat or with spring grain. Practically sure to make a stand. Sow about 12 lbs. per acre. That figures around \$1.50 per acre. Sown at rate of 12 lbs. per acre should give you about 45 to 50 clover seeds per square foot besides the Timothy. Sold per our Guarantee on page 4. It's a real profit maker. We advise ordering quickly as possible.



NORTHERN GROWN ALSIKE CLOVER

PINNACLE BRAND — EXTRA FANCY

THIS IS PREMIUM QUALITY

This real high grade Alsike is northern grown. It is super fancy, in the blue ribbon class. Thousands of seed dealers are looking for this quality. Some would pay a high market price for it. They should have bought last October. Too late now. We are selling this beautiful lot of Alsike under the ceiling price. Alsike crop was far below normal the past two years. The crop in Illinois, Michigan, Wisconsin and Minnesota was small and the quality only fair.

98 3/4% to 99% Purity—High Germination

This is new crop and has to germinate high to qualify for premium grade. Our customers who are critical and demand only high quality will be pleased with this beautiful seed. Only takes about 5 or 6 pounds per acre of this quality for a good seeding. Grows on land that is too sour to grow Red Clover and Alfalfa. Alsike is scarce and the market will not be lower this year. We urge you to get in your order early and be protected. They are lining up for seed this year. Buy this seed and if you do not think it the finest Alsike you ever saw, return it and all money paid out will be refunded.

**\$ 29 50
BU.
60 LBS.**