

Historic, Archive Document

Do not assume content reflects current scientific knowledge, policies, or practices.

62.73

LIBRARY
RECORDED
MAR 17 1947
U.S. DEPARTMENT OF AGRICULTURE

1893

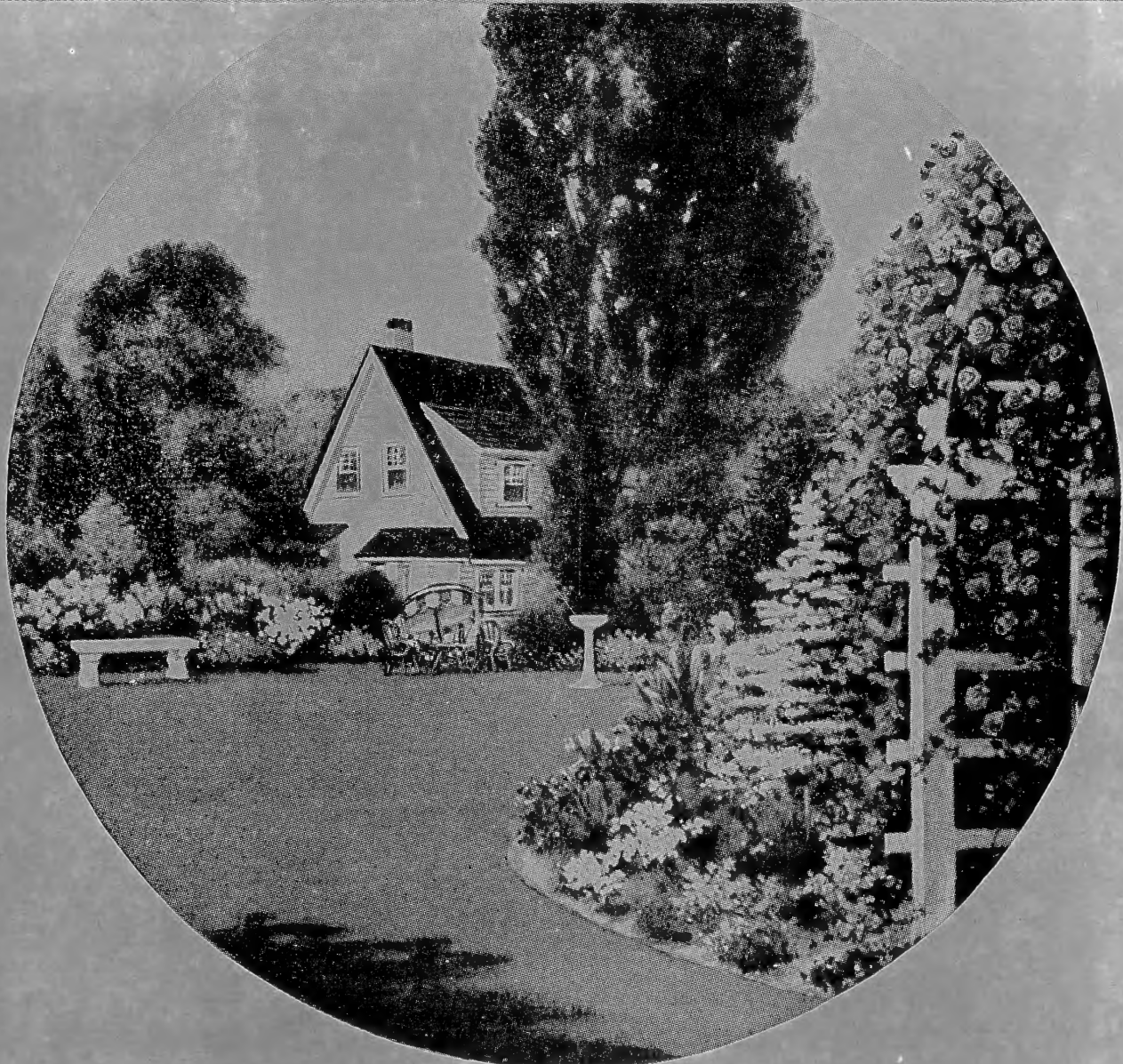
Barr's

1947

NURSERY

CATALOG

How, When, Where and What to Plant



ROSES, ORNAMENTAL TREES, SHRUBS,
HARDY PERENNIALS, GRASS SEED, ETC.

B. F. Barr & Son

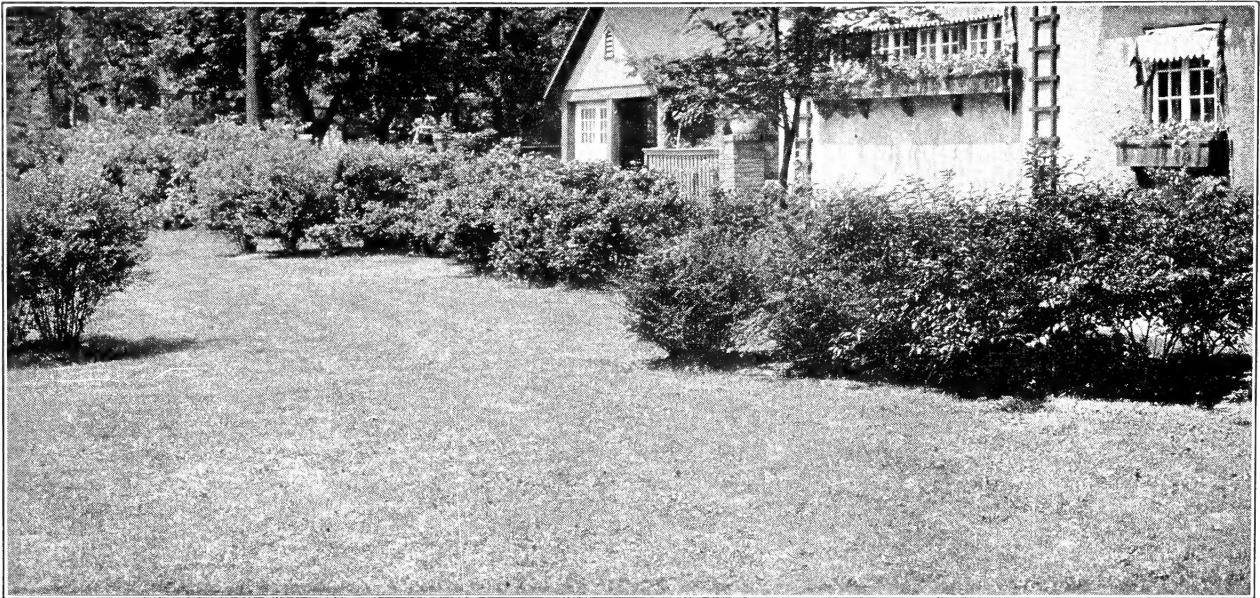
Nurseries: R. D. 2 Marietta Road, Route 340

B. F. BARR Flower Shop, 116 N. Queen St., Lancaster, Pa.

For The Finest Quality Lawn Sow Barr's Grass Seed

Barr's Lawn Grass Seed Mixtures have been designed primarily to produce a lawn that is at once permanent, quick starting, and a good green color. They are guaranteed to be entirely free of Fall or Crab Grass seed. Recleaned by modern machinery, Barr's Lawn Grass Seed Mixtures are free from chaff, which makes these mixtures go twice as far. They test especially high in germination, providing a thick stand from the beginning which is essential in holding weeds in check.

One pound of seed will sow to 200 square feet of lawn. Keep ground constantly moist until grass is well started then water heavily at intervals during dry periods.



BARR'S Sunnyside Lawn Seed Mixture

This is a combination of the most desirable permanent grasses—dwarf, close-growing, fine-leaved—producing a good green lawn even in dry weather. As the chief ingredient of a good lawn is superfine Kentucky Blue Grass there is a larger proportion of this ideal grass in this mixture. No Timothy nor Rye nor coarse-bladed annual grasses are used to cheapen this mixture. It will germinate quickly and provide a neat, permanent lawn. Besides the Kentucky Blue Grass other varieties included are fine-leaved perennial grasses and some Cheving's Fescue, a higher-priced grass that holds weeds in check much better than other varieties.

1 lb. \$1.10; 5 lbs. \$5.40; 10 lbs. \$10.60; 25 lbs. \$26.00; 100 lbs. \$102.00.

BARR'S Fancy White Dutch Clover

Fancy recleaned seed. Excellent for lawns. Mix 2 to 4 ounces with each pound of above named mixtures if you want Clover on the lawn.

¼ lb. 60c; ½ lb. \$1.00; 1 lb. \$1.90.

BARR'S Green Mantle Lawn Seed Mixture

This is a splendid mixture of good grasses for average conditions of soil and sunshine. It has a large proportion of Kentucky Blue Grass; also other desirable grasses for a good, quick effect which helps to hold weeds in check. Will give the lawn an enduring velvety, deep green mantle. Very free from weed seeds.

1 lb. 75c; 5 lbs. \$3.65; 10 lbs. \$7.10; 25 lbs. \$17.25; 100 lbs. \$67.00.

BARR'S Shady Side Lawn Seed Mixture

Composed of shade-loving permanent varieties of fine-leaved grasses—no Timothy nor Ryegrass. Included are fine-leaved perennial grasses, including *Poa trivialis*, which have proved best adapted for situations of a difficult nature due to shade.

Feed lawns under trees heavily three times a year—spring, early summer, and fall. Failure under trees is due more to competition of tree roots than shade. Plenty of feed gives both grass and trees a chance to exist. As a fertilizer we recommend Barr's Special Lawn Fertilizer.

1 lb. \$1.00; 5 lbs. \$4.90; 10 lbs. \$9.60; 25 lbs. \$23.50; 100 lbs. \$92.00.

We Prepay Delivery Charges on All Orders for Barr's Grass Seed.

Practical Landscape Service For Prospective Clients

Pleasing and satisfactory results are only attained through a careful study of your home and surroundings, and the selection and planting of the proper material. Many local and distant homes have been successfully landscaped from plans and planting services rendered by us. Because of our knowledge and experience, we are in a position to serve you well and you are assured of satisfactory results.

Where tentative plans are required locally or in cities close by, we make no charge for making plans.

Sincerely, B. F. BARR, LEWIS E. BARR

Everblooming Hybrid Tea Roses

FIRST SIZE 2 YEAR FIELD GROWN PLANTS

Guaranteed to Bloom or Money Refunded

These are the cream of the several hundred varieties known to the flower industry. They include the most indispensable of the time-tested standard varieties and the best of the new and patented offerings.

You will have the fullest degree of pleasure in planting any of the varieties listed, for Barr's "Will Grow" Roses are guaranteed to grow and to bloom the first season, or will be replaced free.

Full planting and cultural directions furnished with each order.

QUALITY ROSE PLANTS A LEADING SPECIALTY

ORDER EARLY to receive your plants in time to plant at the earliest date your soil is in condition to set them out.

SHIPPING CONDITIONS. We begin shipping dormant plants about March 10, weather permitting. If a preferred date of delivery is marked on your order you will be assured of receiving your plants when you want them; otherwise orders are filled in the same sequence as received. All dormant plants are sent Parcel Post prepaid.

FOR LATE PLANTING. After May 10 dormant plants are not recommended, we can then supply potted Rose plants ready to put out in your garden in bud and full leaf. For these potted plants add 30c each. All potted plants are sent Express Collect.

LANCASTER "RED ROSE CITY" COLLECTION

Ranging from vivid reds to pink and pastel shades. They are the most popular of the older Universal Favorites, highly recommended by leading rosarians. All high grade 2 year field grown dormant plants.

| | |
|--|------------|
| Betty Uprichard. Carmine and salmon | ... \$1.25 |
| Christopher Stone. Scarlet-crimson | 1.25 |
| Etoile de Hollande. Brilliant scarlet | 1.25 |
| Golden Rapture. Yellow | 1.25 |
| Margaret McGredy. Red-gold | 1.25 |
| Poinsettia. Brilliant scarlet-red | 1.25 |
| Pres. Herbert Hoover. Multi-color | 1.25 |
| Picture. Rose pink & Salmon | 1.25 |

8 dormant plants valued at\$10.00

8 plants above, 1 of each\$ 8.50 Post Paid

24 plants above, 3 of each 24.00 Post Paid

American Flagship. Pat. 676. High centered, well formed, double flowers of velvet-textured crimson red. Vigorous grower and free bloomer, with black-spot resistant foliage. Hold color in sun. \$1.50 ea., 3 for \$4.00.

Ami Quinard. Blackish maroon, opening into semi-double flowers of rich velvety red, with blackish luster—brilliant and unfading; has old-time fragrance. Strong, upright grower and fine producer. \$1.25 each; 3 for \$3.25

Betty Uprichard. Carmine and salmon. In color, this rose is in a class by itself with its beautiful, harmonizing shades, rising from an orange base. Long pointed buds open to large semi-double blooms with a spicy fragrance. \$1.25 ea., 3 for \$3.25.

Caledonia. Large, very double, high-centered flower of pure white, born singly on long, strong stems, average growth, with dark green foliage. One of the best white Roses. \$1.50 each; 3 for \$3.75.

Condesa de Sastago. Bicolor. Delightfully fragrant flowers of yellow and raspberry-red are produced profusely on vigorous, healthy plants. \$1.25 ea., 3 for \$3.25.



BETTY UPRICHARD

Countess Vandal. Patent 38. Copper and salmon. A charming rose from the first tints of color on the large, long, tapering buds of orange-copper that open to perfumed, exquisitely formed blooms of copper, salmon and gold. \$1.50 ea., 3 for \$3.75.

California. Pat. 449. Ruddy orange toned with saffron-yellow. Very large flowers, 5 to 6 inches across. Healthy foliage. \$1.50 each; 3 for \$3.75.



MCGREDY'S SCARLET

Charlotte Armstrong. Pat. 455. Blood-red pointed buds; magnificent long-stemmed, open flower, cerise in summer heat; richly fragrant. Very prolific and a continuous bloomer. Disease-resistant foliage. An All-American Rose. \$1.50 each; 3 for \$3.75.

Christopher Stone. Scarlet-crimson, well sustained; vividly colored new Rose with old-Rose perfume. \$1.25 each; 3 for \$3.25.

Crimson Glory. Pat. 105. Large urn-shaped buds opening into well-formed flowers of intense deep vivid crimson, shaded oxblood-red; soft, velvet nap. \$1.50 each; 3 for \$3.75.

Dicksons Red. Pat. 376. Glowing scarlet-red, rich in fragrance. Very rugged, defying hottest sun's rays. Awarded Gold Medal by National Rose Society of England 1939. \$1.50 each; 3 for \$3.75.

Eclipse. Pat. 172. International sensation; awarded prizes in Rome, Paris, etc. Long streamlined buds are rich gold without shading. Strong upright plant with healthy dark green foliage. Gold Medal winner. \$1.50 each; 3 for \$3.75.

Edith Nellie Perkins. Long-pointed, rich orange-pink buds, opening salmon-pink with golden underglow; very fragrant. \$1.25 each; 3 for \$3.25.

Editor McFarland. Deep pink. Flowers large, on long stems. Vigorous grower. \$1.25 each; 3 for \$3.25.

Etoile de Hollande. Brilliant scarlet, fragrant flowers of large size, a constant joy as it is a continuous bloomer. One of the best reds. \$1.25 each; 3 for \$3.25.

Girona. Multicolored. Lovely buds of turkey-red and golden yellow, on 12 to 18 inch stems, open to alluringly fragrant blooms. \$1.25 ea., 3 for \$3.25.

Golden Dawn. Sunflower-yellow with bud tinged carmine; deliciously fragrant. Robust grower with superabundance of foliage; a prolific bloomer. Bush and habit perfect. \$1.25 each; 3 for \$3.25.

Golden Rapture. Yellow. Large, high-centered flower of golden yellow, with an old-rose fragrance. Upright plants with large, glossy foliage. \$1.25 ea., 3 for \$3.25.

Good News. Pat 426. Splendid, strong-growing, healthy plants with a profusion of nicely formed blooms of lovely peach-color with silvery pink outer petals. Fragrant. 60 petals. \$1.50 ea., 3 for \$3.75.

Grande Duchesse Charlotte. Pat. Pending. The lovely burnt-carmine color of this new Rose is unmatched by any other. The enchanting, streamlined buds come freely on long, wiry stems, making them excellent for cutting. Carnation fragrance. \$1.50 each; 3 for \$3.75.

Hector Deane. Pat. 361. Crimson buds stained with orange, open to deep satiny pink flowers with an orange base to each petal. Very fragrant. Strong, healthy plants. \$1.50 each; 3 for \$3.75.

Heinrich Wendland. Bicolor. Fragrant flowers of an unfading nasturtium-red, reverse deep golden yellow. Very double and highly recommended. \$1.25 ea., 3 for \$3.25.

Kaiserine Auguste Viktoria. Creamy white, large blooms on long stems; fragrant; constant, majestic bloomer. \$1.25 each; 3 for \$3.25.

Lowell Thomas. Pat. 595. Vibrant lemon-chrome color, vigorous growth. The 25-petaled blooms open from beautiful buds and have a high cupped center, with the petals rolling outward, making magnificent, glowing flowers, over 4 inches across when fully open. \$1.50 each; 3 for \$3.75.

Margaret McGredy. Brilliant red petals on hinges of deep gold; buds upright; constant bloomer. Resistant to black-spot and mildew. Gold Medal winner. \$1.25 each; 3 for \$3.25.

McGredy's Ivory. Pure white, perfectly formed, long-pointed buds and high-centered double flowers with sweet fragrance. \$1.25 ea., 3 for \$3.25.

McGredy's Scarlet. Rich, velvety, scarlet with orange base. Fragrant, full, double flowers of good size. Free blooming. \$1.25 each; 3 for \$3.25.

McGredy's Yellow. Bright buttercup-yellow flowers, perfectly formed; undamaged by rains. Glossy, dark bronze foliage. \$1.25 each; 3 for \$3.25.

Mirandy. Pat. 632. A glorious new Rose from California. Received the highest in the tests for the year 1945 in the All-American Rose Selection. Big, ovoid buds, deep, rich, dark red with black shadings; beautifully formed blossoms with a delightful fragrance. \$2.00 each; 3 for \$5.00.

Mme. Cochet-Cochet. Pat. 129. Soft salmon-pink with satiny sheen; buds long-pointed, coppery pink, flushed orange; fragrant. \$1.50 each; 3 for \$3.75.

Mrs. E. P. Thom. Yellow. Buds are long-pointed and open to well-formed blooms of clear yellow without any carmine markings such as most yellow roses have. \$1.25 ea., 3 for \$3.25.

Mrs. Pierre S. du Pont. Most continuous-blooming yellow. Buds long pointed, rich reddish-gold, almost orange in depths of petals. \$1.25 each; 3 for \$3.25.

Mrs. Sam McGredy. Glistening scarlet-copper-orange; deep red shadings. Fine form, double; fragrant. Graceful long-pointed buds. Disease resistant. \$1.25 each; 3 for \$3.25.

Narzisse. Pat. pending. This is the most superb maize-yellow variety that has appeared in many years. It is a marvel for size. Blooms are borne erect on extra-stout stems on plants of exceptional vigor, with very large, glossy foliage. \$1.50 ea., 3 for \$3.75.

Peace. Pat. 591. Sensational new rose; buds open yellow edged cerise; glorious 5-inch blooms of firm, alabaster-white, each petal edged with pink that deepens as the flower opens. Very double, strong and vigorous grower with superb foliage. This new Rose appropriately heralds the dawn of Peace. \$2.50 each; 3 for \$6.25.

Picture. Beautiful, clear pink with just a trace of salmon to give it a warm glow. Delightfully fragrant, very vigorous and continuous bloomer. \$1.25 ea., 3 for \$3.25.

Pink Dawn. Glistening deep rose, opening to lovely pink, tinted orange at base of petals; well-formed; double; fragrant. Vigorous and prolific. \$1.25 each; 3 for \$3.25.

President Macia. The loveliest, longest of all pink buds open to great billowy blooms nearly 6 inches across. The color is silvery pink inside and sparkling pink outside marked with heavy veins. Fragrant. 25 petals. \$1.25 ea., 3 for \$3.25.

Poinsettia. Upright, Radiance-like plants with beautiful blooms of brilliant scarlet-red. They are fragrant and are close to perfection in form. One of the best of the new Roses. Fragrant. 28 petals. \$1.25 each; 3 for \$3.25.

President Herbert Hoover. Contrasting shades of maroon, orange and gold; continuous bloomer; exquisitely formed buds; strong stems. Three-time medal winner. \$1.25 each; 3 for \$3.25.

Radiance. Beautiful light silvery pink on salmon-pink. A dependable pink; large and fragrant. \$1.25 each; 3 for \$3.25.

Red Radiance. Beautiful deep red form of Radiance. \$1.25 each; 3 for \$3.25.

Sister Therese. Golden yellow, exquisite, long-pointed buds touched with orange-carmine. vigorous fine bloomer. \$1.25 each; 3 for \$3.25.

Sterling. Pat. 21. Bright pink, splendidly formed; delightfully fragrant. Fine for cutting. \$1.50 each; 3 for \$3.75.

Talisman. Brilliant orange-red buds, opening a glowing golden yellow, tinted copper-red and orange-rose; large and fragrant. \$1.25 each; 3 for \$3.25.



CALEDONIA

HARDY CLIMBING ROSES

Useful for covering porches, trellises, arbors, fences, walls and banks, making a superb display of bloom. Prune after flowering.

Blaze. Pat. 10. Scarlet-red flowers in great profusion and under favorable conditions it often repeats. \$1.50 each; 3 for \$3.75.

Climbing American Beauty. Rich carmine flowers, 3 to 4 inches across in abundance. \$1.25 each; 3 for \$3.25.

Doubloons. Pat. 152. Clusters of large, cup-formed, saffron-yellow blooms, opening one after the other, thus prolonging the season. \$1.50 each; 3 for \$3.75.

Dr. W. Van Fleet. Long-pointed, deep pink buds opening a lighter shade of pink; large and fragrant. \$1.25 each; 3 for \$3.25.

King Midas. Pat. applied for. Longest-blooming hardy yellow climbing Rose. Tight buds and lovely 4-inch Hybrid-Tea-like flowers in clusters 4 to 6 inches across on strong stems. Disease-resistant. \$1.50 each; 3 for \$3.75.

New Dawn. Pat. 1. The everblooming Dr. W. Van Fleet with which it is identical except that it blooms throughout the Summer and Fall. \$1.50 each; 3 for \$3.75.

Paul's Scarlet Climber. Vivid scarlet, shaded crimson; semi-double flowers in clusters borne in profusion. \$1.25 each; 3 for \$3.25.

EVERBLOOMING CLIMBING ROSES

These roses require winter protection in our climate.

Before cold weather untie the plant from its support, loosen the roots on one side, lay the branches on surface of soil and cover with 8 inches of earth. This procedure is carried out very successfully.

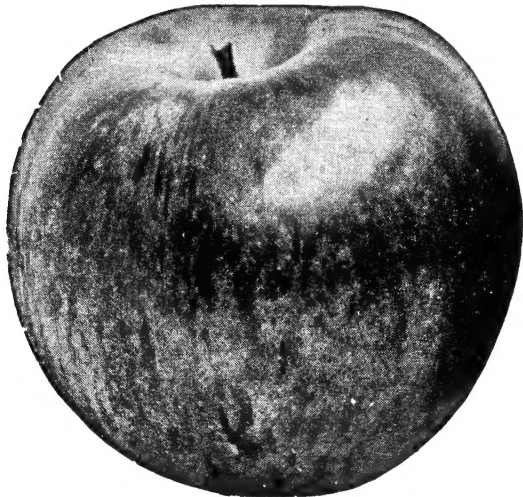
Climbing Etoile de Hollande. Brilliant red. \$1.25 each.

Climbing Talisman. Multi-color. \$1.25 each.

Barr's Fruit Trees Are Sturdy, Heavy-Yielding

The trees listed here are the best in their respective varieties. They are the largest sizes that can be planted to best advantage, are straight trunked, true to name. By reason of their being northern grown they have unusual vigor, will transplant successfully, make good growth, and give an early and abundant yield. Plant cherry tree tap-root straight down.

Heavy, No. 1 grade selected trees; note large caliper (trunk diameter) of trees supplied.



STAYMAN'S WINESAP APPLE

STANDARD APPLE

(D) Dessert variety; (C) Cooking variety.

- Baldwin.** Large; bright red; rich juicy. Winter (DC)
- Grimes' Golden Pippin.** Medium. Sub-acid. Winter. (DC).
- Jonathan.** Brilliant red; highly flavored. Winter. (DC).
- McIntosh.** Medium to large; deep red. Winter. (DC).
- Northern Spy.** Medium to large; red striped. Sub-acid. Winter. (DC).
- Rambo.** Large; yellow; rich and of good flavor. Autumn. (DC).
- Red Delicious.** Large; red striped. Winter. (D).
- Rome Beauty.** Large; juicy; mottled and striped different shades of red. Good baking apple. Winter. (C).
- Smokehouse.** Medium; red striped. Sub-acid. Winter. (DC).
- Stayman's Winesap.** Medium; bright red. Winter. (DC).
- Wealthy.** Red of good quality; good keeper. Acid. Autumn. (DC).
- Yellow Delicious.** Large; clear, bright yellow. Winter. (DC.)
- Yellow Transparent.** Pale yellow. Sub-acid. Summer. (DC).
- York Imperial.** Medium yellow, shaded red. Acid. Winter. (C).

Extra large, 2 yr., 5 to 6 ft., 3/4-1 in. cal., \$1.75 ea. Any 3 for \$4.50.

CRAB-APPLE

- Martha.** Medium, golden yellow, crimson cheek, September. Strong, stocky trees.
2 yr., 3/4-1 in. cal., \$1.75 ea., 3 for \$4.50

APRICOT

- Moorpark.** Large, deep orange. Rich. August.
2 yr., 4-5 ft., 3/4-1 in. cal., \$2.25 ea., 3 for \$5.50.

SOUR CHERRY

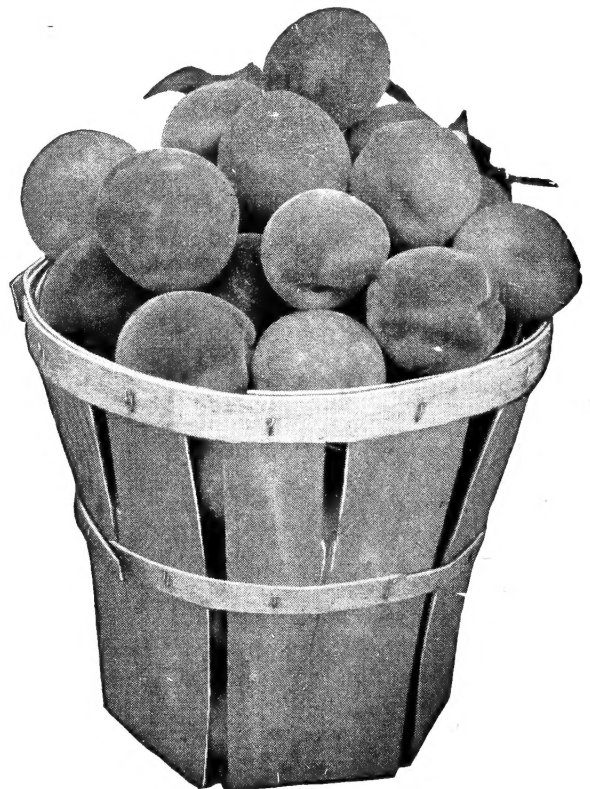
- Early Richmond.** Medium, deep red, rich, acid. Mid-June.
- English Morello.** Large. deep red, pleasant, acid. Late July.
- Montmorency.** Large; bright red; pleasing acid flavor. June.
2 yr., 3 to 5 ft.; 3/4-1 in. cal., \$2.25 ea. Any 3 for \$5.50.

SWEET CHERRY

- Black Tartarian.** Very large, purplish-black, rich. June.
- Governor Wood.** Large; yellow. shaded red. June.
- Napoleon Bigarreau.** Large, yellow-red, excellent. July.
- Schmidt's Bigarreau.** Large, red, rich and pleasant. July.
- Windsor.** (Oxheart). Large, liver-color, rich, July.
- Yellow Spanish.** Very large, yellow, red cheek, sweet. Last of June.
2 yr., 5 to 6 ft., 3/4-1 in. cal., \$2.50 ea. Any 3 for \$6.50.

PEACH

- Belle of Georgia.** White with red cheek; excellent flavor. Early September.
- Champion.** Very large; white; red cheek, delicious. Late September.



Basket of CHAMPION PEACHES

Barr "Will Grow" Fruit Trees Are Too Large to Mail.

PEACH (Continued)

- Crawford's Late.** Very large; yellow; red cheek. Late September.
- Elberta.** Very large, yellow; red cheek, juicy, rich. Middle of August.
- Golden Jubilee.** Large; yellow; freestone, Middle of August.
- J. H. Hale.** Very large; yellow. Late August.
- Champion.** Very large; creamy white; red cheek, delicious. September.
- Yellow St. John.** Large; yellow; sweet. July. 1 yr., 4 to 5 ft., $\frac{3}{8}$ - $\frac{7}{8}$ in. cal., \$1.60 ea. Any 3 for \$4.50.

PEAR

- Bartlett.** Large, clear yellow, highly aromatic. Autumn.
- Duchess d'Agnouleme.** Large, greenish yellow, juicy. Autumn.
- Kieffer.** Large, golden yellow, sweet. Winter.
- Seckel.** Small, yellowish russet, spicy flavor. Autumn. 2 yr., 5 to 6 ft., $\frac{3}{4}$ -1 in. cal., \$2.25 ea. Any 3 for \$5.75.

PLUM

(European Varieties)

- German Prune.** Large; purple, sweet. September.

ASPARAGUS

- Mary Washington.** 2 yr. Select No. 1 roots. \$5.00 per 100; \$40.00 per 1000.

BLACKBERRY

- Blowers.** A hardy and productive variety. Fruit large, black and sweet. Good strong canes. 25c ea.; 6 for \$1.25.

GRAPE VINES**Black**

- Campbell's Early.** One of the largest fruiting Grapes and extremely satisfactory.
- Concord.** The well-known black Grape. Can always be depended on to fruit heavily.
- Worden.** Bunch large and compact. Good large berries and an early fruiting variety.

Red and Purple

- Catawba.** A very nice berry, having an unusually sweet and aromatic flesh.
- Salem.** Berries larger than Catawba, flesh tender, juicy and sweet.

White

- Niagara.** Sweet and juicy, large, round berries; long, compact, heavy bunches; best white. Selected, strong 2 yr. Grape Vines. Any 3 for \$1.80; \$5.00 per 10.

RASPBERRY

- Cumberland.** A well-known black-cap. Fruit large.
- Cuthbert.** Hardy, sweet and productive. Deep crimson.
- Latham.** Large, round, brilliant red; heavy yielding. Mosaic free and hardy. Strong plants, any 3 for \$1.00; \$2.60 per 10.
- Boysenberry.** The largest berry ever produced. 3 for \$1.00; \$3.00 per 10.

RHUBARB

- Strong 2 yr. roots, 3 for \$1.00; \$3.00 per 10.

Reine Claude. Large, green gage; excellent. Late September.

Yellow Egg. Large oval, yellow; juicy. September.

(Japanese Varieties)

Burbank. Large; cherry-red; sweet. Last of August.

Satsuma. (Blood Plum). Large; purplish-red; juicy. Mid-July.

2 yr., 5 to 6 ft., $\frac{3}{4}$ -1 in. cal., \$2.25 ea. Any 3 for \$5.75.

QUINCE

Orange. Large and prolific; orange-yellow; delightfully fragrant. Early.

1 yr., 4 to 5 ft., $\frac{5}{8}$ - $\frac{7}{8}$ in. cal., \$2.25 ea., 3 for \$5.75.

"HANSEN BUSH CHERRY"

Ornamental and fruit producing plant. Good to eat; beautiful ornamental; easy to grow; quick to bear; dwarf habit; need little room; delicious preserves; fine for cordial; bears heavy and annually; very hardy. Fruit is large of a good flavor. Grows bush-like, rarely getting over four or five feet tall, branching and bearing from the ground up. Often bear the first year planted. Foliage is a beautiful silvery green turning to rich red and gold in the Fall. Plant 2 to 4 feet apart in rows 4 to 6 feet apart.

2-3 ft., 60c ea.; 3 for \$1.60.

STRAWBERRIES

The Strawberry will grow in any good garden soil. Plant 1 foot apart in the row, the rows 3 to 4 feet apart.

Big Joe (Perfect). Vigorous grower and very productive. Berries large, conical shape, rich red, excellent flavor. Best mid-season variety.

Catskill (Perfect). Vigorous grower, very productive, large. Excellent flavor. Mid-season.

Chesapeake. (Perfect). Large, firm berries of delicious flavor. Glossy, rich color. Best late variety.

Dorset (Perfect) New introduction, heavy yielding qualities, delicious flavor. Early.

Premier (Perfect). Glossy, rich red color extending clear through. Deliciously flavored. Immensely productive. Best very early.

Fairfax (Perfect). Fruit bright red, glossy and attractive. Standard, medium early.

William Belt (Perfect). Firm, deep crimson, large, irregularly shaped berries of good taste. Late.

Strong, layer plants, 25 for \$1.00; \$3.50 per 100. Your selection.

EVERBEARING STRAWBERRIES

Mastodon. Large fruiting and most prolific, bearing continuously June to frost; good flavor. 25 for \$2.00; \$5.00 per 100.

**DISH OF WILLIAM BELT STRAWBERRIES**

Eat and Enjoy Some Fruit Grown by Yourself in Your Own Garden

Barr's "Will Grow" Evergreens

No other plants offer so much in value as Evergreens giving as they do enjoyment twelve months the year 'round. Then, too, they can be used in so many interesting ways and make a lasting improvement to any property.

White Fir

ABIES concolor, 60-75 ft. White Fir

Leaves flat, long and of soft, silvery hue, usually curved; lemon scented. Very hardy.

4-5 ft. -----\$10.00 5-6 ft. -----\$12.00

Douglas Fir

Medium-conical form and rapid growing. Foliage dark bluish-green, flat, long persisting. One of the best tall-growing evergreens. Use as specimen plant or in screens. Valued for its symmetrical, compact outline and persistence of lower branches.

PSEUDOTSUGA douglasi, 70-80 ft. Douglas Fir

| | |
|-----------------------|-----------------------|
| 1½-2 ft. -----\$ 2.00 | 4- 5 ft. -----\$ 7.50 |
| 2-2½ ft. ----- 4.00 | 5- 6 ft. ----- 10.00 |
| 2½-3 ft. ----- 4.50 | 6- 8 ft. ----- 15.00 |
| 3- 4 ft. ----- 5.50 | 12-14 ft. ----- 50.00 |

The Retinospora

The graceful habit and the soft, fine foliage of the Retinosporas make them favorite Evergreens. These refined Evergreens attain unusual beauty. Recommended for foundation planting and as lawn specimens in sunny locations. Prefer moist soil.

C. obtusa nana, 4-5 ft. Dwarf Hinoki Cypress

Exquisite, low Evergreen with short, curiously twisted, graceful, dark green branchlets; wide, irregular pyramid. Useful in rock gardens and low foundation plantings.

2-2½ ft. -----\$5.00 2½-3 ft. -----\$6.00

C. plumosa, 20-30 ft. Plume Retinospora

Wide, pyramidal; dense foliage, soft and plume-like; rich green; handsome and distinctive.

| | |
|-----------------------|----------------------|
| 18-24 in. -----\$2.25 | 2-2½ ft. -----\$3.25 |
| 2½-3 ft. -----\$4.00 | 3-4 ft. -----\$5.00 |

C. pl. aurea, 10-15 ft. Golden Plume Retinospora

Wide, pyramidal; bright golden foliage, soft and plummy. Valuable for contrast.

| | |
|-----------------------|-----------------------|
| 18-24 in. -----\$2.50 | 2-2½ ft. -----\$ 3.25 |
| 2½-3 ft. -----\$4.00 | 3-3½ ft. -----\$6.00 |

How To Use Evergreens

When considering Evergreens for a planting visualize first what shape the plant should have for that particular location, keeping in mind, too, the ultimate height. Following the botanical name of each variety listed on the following pages we show its ultimate height at maturity for your guidance in selection. By judicious pruning, many varieties may be kept dwarf.

PACKING RATES ON EVERGREENS

Evergreens are dug with a ball of earth and require crating, the cost of which is estimated according to the size of the trees. In ordering please add 10% to list prices of evergreens, to help defray the packing costs.

Balled evergreens may be shipped safely by freight, door to door delivery, while plants not balled, express is recommended. Full truck loads may be sent by truck at cost.



PLUME RETINOSPORA

C. pl. flavescens, 4-6 ft. Dwarf Silver-tipped Retinospora

Proad, dense bush with bright green, plummy foliage, tipped silver.

15-18 in. -----\$ 2.50

C. p. filifera, 10-12 ft. Thread Retinospora

Deep green, thread-like, graceful, drooping foliage; bushy, egg-shaped form.

2½-3 ft. -----\$ 3.50 3-4 ft. -----\$ 5.00

Discount on quantity rate 10% on 5 or more of one variety and size.

Junipers Worthily Fill Almost Every Planting Need



SILVER REDCEDAR

JUNIPERS

Junipers are valuable ornamental plants that thrive best in moist soils and sunny, open positions. The tall, columnar forms are used as accent plants; the low, bushy forms for foundations and massing; the prostrate forms for covering slopes, or in the rock garden, or in the foreground of foundation plantings. A very hardy class.

JUNIPERUS ch. pfitzeriana, 5-6 ft.

Pfitzer Juniper

Wide growing; plumose, graceful horizontally spreading branches; foliage blue-green.

15-18 in. spr. --\$ 3.00 2-2½ ft. spr. --\$ 5.00
1½-2 ft. spr. -- 4.00 2½-3 ft. spr. -- 6.00

J. ch. sargentii, 1-2 ft. Sargent Juniper

Prostrate habit; grass green winter and summer. Good in rock gardens.

12-15 in. spr. -----\$ 3.00

J. ch. smithi, 6-8 ft. Smith Chinese Juniper

Graceful, bushy form; foliage light green, remaining fresh and bright Summer and Winter.

3-4 ft. -----\$ 6.00 4-5 ft. -----\$ 7.00

J. communis depressa plumosa, 1 ft.

Purple Spreading Juniper

Spreading habit; foliage tinged with rich purple during fall and winter.

15-18 in. spr. --\$ 3.00 1½-2 ft. spr. --\$ 4.00

J. excelsa stricta, 6-8 ft. Spiny Greek Juniper

Slow, compact grower; glaucous, blue color; narrow, pyramidal form.

9-12 in. -----\$ 1.50 3-4 ft. -----\$ 6.00

J. virginiana burkii, 8-10 ft. Burks Juniper

Dense, columnar form; distinctive blue color in summer, plum-colored winter.

3-4 ft. -----\$ 5.50 4-5 ft. -----\$ 7.00
6-8 ft. -----\$11.00

J. v. cannarti, 12-15 ft. Cannart Redcedar

Compact columnar habit; rich dark green foliage. Its blue berries in autumn give it a distinct ornamental advantage.

3-4 ft. -----\$ 5.50 5-6 ft. -----\$ 9.00
4-5 ft. ----- 7.50 6-8 ft. ----- 11.00

J. v. glauca, 12-15 ft. Silver Redcedar

Columnar, vigorous grower; silvery blue, changing to bluish-grey. Good as a color accent among other Evergreens.

3-4 ft. -----\$ 5.50 5-6 ft. ----- 9.00
4-5 ft. ----- 7.50 6-8 ft. ----- 11.00

J. v. keteleeri, 12-15 ft. Keteleer Redcedar

Refined, symmetrical, compact pyramidal growth; intense green. In autumn bears large, showy slate-blue berries of considerable decorative value. Not susceptible to cedar apple rust.

2-2½ ft. -----\$ 4.00 2½-3 ft. -----\$ 5.00
3-4 ft. ----- 6.00 4-5 ft. ----- 7.50
5-6 ft. -----\$ 9.00

Only One Grade "THE FINEST"

Each plant a field grown specimen, not to be compared with cheap bed-grown plants.

A large ball of Lancaster County's famous fertile soil goes with each "Will Grow" Evergreen which helps it in getting off to a good start and making continued satisfactory growth.

Because we ball and burlap and prepare "Will Grow" Evergreens for shipment by freight our customers have the advantage of this more economical method of delivery.

Ephrata, Pa.

I just wish you could see the setting of Evergreens you planted. It looks wonderful. I don't think you could buy same for \$1,000. I am a good booster for Barr's Nurseries.

Spruces are Most Effective on the Open Lawn

SPRUCES

Spruces are valued especially for specimen planting either singly, or in groups on large lawns; too large growing for foundation planting. These magnificent trees do best in suburban sections. The stately, regular, pyramidal outline of these hardy trees is strikingly effective.

***P. c. albertiana*, 40-50 ft. Black Hills Spruce**

Conical, symmetrical outline; bluish-green; compact and hardy; drought resisting.

| | | | |
|---------------|---------|---------------|---------|
| 2-3 ft. ----- | \$ 3.50 | 3-4 ft. ----- | \$ 4.50 |
| 4-5 ft. ----- | \$ 5.50 | | |

***P. excelsa*, 60-80 ft. Norway Spruce**

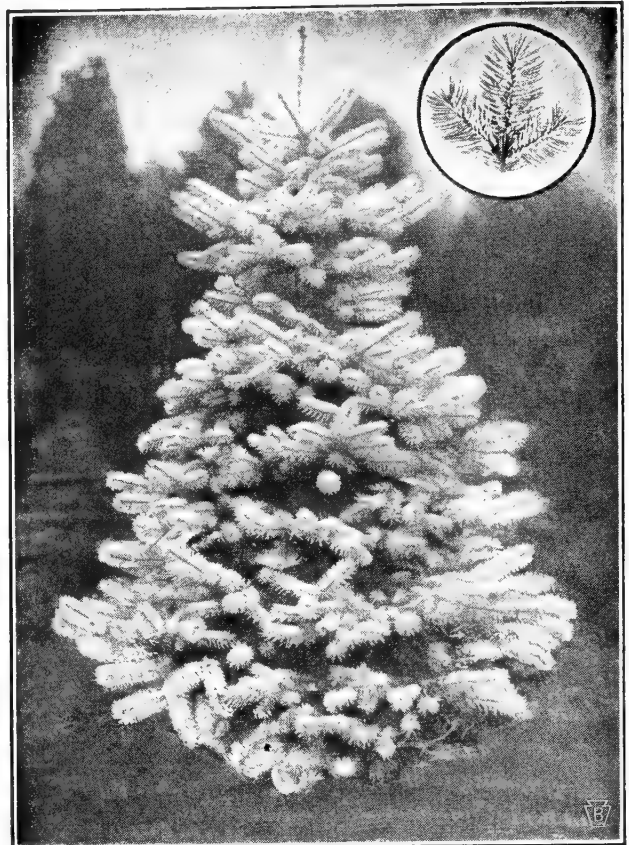
Fast growing; dark green; valuable for screens and hedges. When older makes a fine silhouette against the sky.

| | | | |
|---------------|---------|----------------|---------|
| 2-3 ft. ----- | \$ 3.50 | 5- 6 ft. ----- | \$ 8.00 |
| 3-4 ft. ----- | 4.50 | 6- 7 ft. ----- | 11.00 |
| 4-5 ft. ----- | 5.50 | 8-10 ft. ----- | 20.00 |

***P. orientalis*, 50-70 ft. Oriental Spruce**

Its classic outline and small, neat, glossy green needles closely clothing the branches make this a plant of uncommon beauty. One of the most beautiful of all spruces.

| | | | |
|----------------|---------|----------------|---------|
| 1½-2 ft. ----- | \$ 2.50 | 5- 6 ft. ----- | \$11.00 |
| 2- 3 ft. ----- | 4.00 | 6- 7 ft. ----- | 15.00 |
| 3- 4 ft. ----- | 6.00 | 8-10 ft. ----- | 30.00 |



MOORHEIM BLUE SPRUCE

***P. pungens*, 60-80 ft. Colorado Spruce**

Foliage light-green. Withstands heat and drought. Striking in appearance due to its perfect pyramidal outline and horizontally spreading branches.

| | | | |
|----------------|---------|----------------|---------|
| 1½-2 ft. ----- | \$ 2.50 | 2½-3 ft. ----- | \$ 5.00 |
| 2-2½ ft. ----- | 4.50 | 3 -4 ft. ----- | 6.00 |
| 4-5 ft. ----- | \$ 8.00 | | |

***P. p. glauca*, 60-80 ft. Blue Colorado Spruce**

Like above, except for a slight bluish tinge.

| | | | |
|----------------|---------|---------------|---------|
| 2-2½ ft. ----- | \$ 5.00 | 3-4 ft. ----- | \$ 7.50 |
| 2½-3 ft. ----- | 6.00 | 4-5 ft. ----- | 10.00 |
| 5-6 ft. ----- | \$15.00 | | |

***P. p. kosteri*, 60-80 ft. Koster Blue Spruce**

Beautiful silvery-blue, broad, symmetrical tree making a striking appearance as a specimen on the lawn, or planted in groups. Very hardy.

| | | | |
|---------------|---------|-----------------|---------|
| 6-7 ft. ----- | \$30.00 | 8-10 ft. ----- | \$50.00 |
| 7-8 ft. ----- | 40.00 | 10-12 ft. ----- | 60.00 |

Most Intensely Blue Spruce

***P. p. moorheimi*, 60-80 ft. Moorheim Blue Spruce**

More intensely blue than Koster Blue Spruce, and with larger needles making a glorious effect in color and form.

| | | | |
|-----------------|---------|----------------|---------|
| 18-24 in. ----- | \$ 7.50 | 2-2½ ft. ----- | \$10.00 |
|-----------------|---------|----------------|---------|



DOUGLAS FIR See Page 8 for description.



AUSTRIAN PINE

PINES

The Pines with their spreading branches bearing clusters of long, needle-shaped leaves, make valuable, majestic evergreens for permanent planting. They endure a wide range of soil and climate, and as they grow older gain in picturesqueness.

***Pinus montana mughus*, 4-5 ft. Mugho Pine**

Dwarf; many stems spreading outward and upward; erect new growth resembling candles. A low, compact plant, almost globular in outline. Suitable for foundation plantings, or in groups.
 12-15 in. wide -- \$ 3.00 1½-2 ft. wide -- \$ 4.00
 15-18 in. wide -- 3.50 2-2½ ft. wide -- 5.00
 2½-3 ft. wide ----- \$ 6.60

***P. nigra*, 60-80 ft. Austrian Pine**

Heavily plumed, with long, rich, glossy, dark green, rigid needles. Will thrive in poor soil, or damp situations. Good for specimen, or mass planting; also for windbreaks.
 3-4 ft. ----- \$ 6.00 5-6 ft. ----- \$12.00
 4-5 ft. ----- 9.00 6-8 ft. ----- 15.00

***P. resinosa*, 50-60 ft. Red Pine**

Spreading, somewhat pendulous branches; dark green leaves. Good in massed background planting or as a specimen.
 2-3 ft. ----- \$ 3.00 5- 6 ft. ----- \$11.00
 3-4 ft. ----- 6.00 6- 8 ft. ----- 14.00
 4-5 ft. ----- 8.00 8-10 ft. ----- 25.00

***P. strobus*, 60-80 ft. White Pine**

A tall, straight, fast-growing, hardy tree with long, flexible, light green needles. Very graceful. Good as specimen or in groups.
 2-3 ft. ----- \$ 4.00 4-5 ft. ----- \$ 8.00
 3-4 ft. ----- 6.00 5-6 ft. ----- 11.00

***P. sylvestris*, 25-35 ft. Scotch Pine**

Fast growing, open, round-headed, picturesque tree; twisted needles with bluish-green hue. Resists smoky, city conditions.
 3-4 ft. ----- \$ 6.00 5-6 ft. ----- \$11.00
 4-5 ft. ----- 8.00 6-8 ft. ----- 14.00

**YOU GET BEAUTY AND VIGOR
IN "WILL GROW" EVERGREENS**

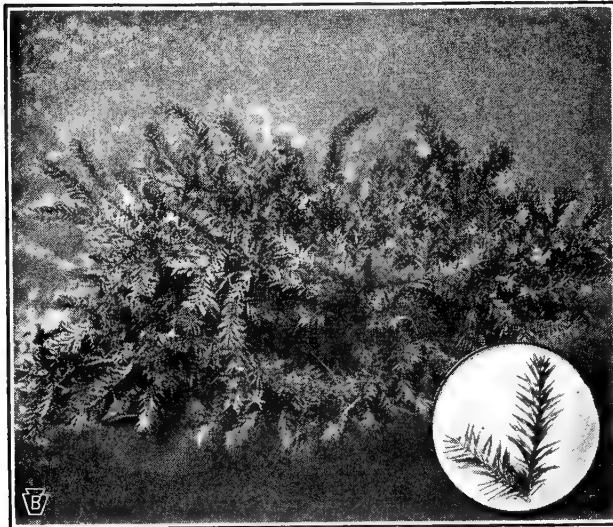
Barr's "Will Grow" Evergreens have a character all their own, due to our system of shaping, root-pruning and frequent transplanting, which results not only in a close, beautiful, compact growth so desirable in Evergreens, but aids in quick recovery after transplanting.

Being hand-dug when your order is received all roots are carefully secured. Taken fresh from the ground is assurance that your Evergreens will have their full vitality and that you can count on them giving you the most satisfactory results.



WHITE PINE

Yews Unexcelled In Either Sunny or Shady Places



SPREADING ENGLISH YEW

YEWS

Adaptability to part shade, semi-dwarf habit, handsome, dark green foliage winter and summer, give the Yews their high value as Evergreens for foundation and other ornamental planting. Best evergreen family for difficult city conditions and foundation planting. Any planting can be greatly enriched by a liberal use of Yews. Many of the Yews produce a profusion of red berries during the Fall.

TAXUS baccata repandens, 4-5 ft.

Spreading English Yew

Low gracefully spreading habit; long, glossy, blue-green foliage. Ideal as a low plant to face off groups. Thrives in shade.

| | |
|----------------------|---------|
| 10-12 in. spr. ----- | \$ 2.50 |
| 12-15 in. spr. ----- | 3.50 |
| 15-18 in. spr. ----- | 5.00 |
| 18-24 in. spr. ----- | 7.00 |

T. cuspidata, 8-12 ft.

Common Spreading Yew

Most vigorous of the Yews; very hardy; dark, green foliage; excellent for foundation planting or hedges. Has a pleasing informal spreading habit. Lends itself well for group planting.

| | |
|--------------------------|-------------------------|
| 10-12 in. wide --\$ 1.50 | 2½-3 ft. wide --\$ 9.00 |
| 12-15 in. wide -- 2.75 | 3-3½ ft. wide -- 10.50 |
| 15-18 in. wide -- 3.50 | 3½-4 ft. wide -- 13.00 |
| 1½-2 ft. wide -- 5.00 | 4 -5 ft. wide -- 15.00 |
| 2-2½ ft. wide -- 7.00 | 5 -6 ft. wide -- 20.00 |

T. c. capitata, 15-20 ft.

Upright Yew

Symmetrical, upright and compact grower; foliage dark green; fruit, bright scarlet. Very hardy; invaluable for foundation planting: excellent in masses. Makes a rich hedge.

| | |
|------------------------|---------------------------|
| 10-12 in. -----\$ 2.00 | 2½-3 ft. -----\$ 8.00 |
| 15-18 in. ----- 3.25 | 3-3½ ft. ----- 10.00 |
| 1½-2 ft. ----- 4.50 | 3½-4 ft. ----- 12.00 |
| 2-2½ ft. ----- 6.00 | 5- 6 ft. -----20.00-25.00 |

Yews Are the Most Satisfactory of All Evergreens. A Complete Planting Can Be Made of Them Alone.

T. c. nana (brevifolia), 3-4 ft. Dwarf Yew

Very handsome, slow growing, low, compact Evergreen, with short, rich, dark green needles. Splendid for foundation plantings. Unexcelled for permanence.

| | |
|-------------------------|--------------------------|
| 9-12 in. wide --\$ 3.00 | 15-18 in. wide --\$ 6.00 |
| 12-15 in. wide -- 4.25 | 18-21 in. wide -- 7.50 |
| 21-24 in. wide ----- | \$ 9.50 |

T. media hatfieldi, 6-8 ft. Hatfield Yew

Compact, conical form, with upright branches, center full; very beautiful, hardy variety; rich black-green, darkest of all Yews.

| | |
|-----------------------|-----------------------|
| 15-18 in. -----\$3.50 | 2-2½ ft. -----\$ 7.50 |
| 1½-2 ft. ----- 5.00 | 2½-3 ft. ----- 10.00 |

T. m. hicksi, 8-12 ft. Hicks Yew

Upright, narrow, conical form; dense, dark green foliage. Effective accent plant. Very attractive in Fall for its profusion of red berries.

| | |
|------------------------|-----------------------|
| 15-18 in. -----\$ 3.00 | 2½-3 ft. -----\$ 8.00 |
| 1½-2 ft. ----- 5.00 | 3 -4 ft. ----- 10.00 |
| 2-2½ ft. ----- 7.00 | 4 -5 ft. ----- 12.00 |
| 5-6 ft. ----- | \$25.00-\$30.00 |



UPRIGHT YEW

Arborvitae---Popular Evergreens At A Low Cost

ARBORVITAE

The clean, neat, compact appearance and soft foliage of the Arborvitae make them appropriate for foundation planting where they are almost indispensable for hedges, and for planting on small lawns as well as large areas. The Arborvitae are hardy and easy to transplant, but prefer moist soils. They offer a wide range of possibilities.

THUJA occidentalis, 15-25 ft.

American Arborvitae

Broad, conical tree; foliage bright green. Good for screens and hedges and accent purposes in evergreen plantings.

| | | | |
|---------------|---------|---------------|---------|
| 3-4 ft. ----- | \$ 4.00 | 5-6 ft. ----- | \$ 6.00 |
| 4-5 ft. ----- | 5.00 | 6-7 ft. ----- | 7.50 |

T. oc. elegantissima, 15-20 ft.

Lee Golden Arborvitae

Compact, pyramidal plant; golden green foliage; hardy and vigorous in growth. Its bright color will enliven any evergreen planting.

| | |
|----------------|---------|
| 2-2½ ft. ----- | \$ 2.75 |
| 2½-3 ft. ----- | 3.00 |
| 3 -4 ft. ----- | 4.00 |
| 4 -5 ft. ----- | 5.00 |

Arborvitae Are Widely Used for Economical Foundation Plantings, Open Lawn Specimens, or Evergreen Hedges.



PYRAMIDAL ARBORVITAE

T. oc. globosa, 3-4 ft.

American Globe Arborvitae

Grows naturally in ball-like form; light green foliage. Very hardy. Use as a low type for variety in foundation plantings, or as accent plant for colonial type house on each side of entrance step.

| | | | |
|-----------------|---------|-----------------|---------|
| 12-15 in. ----- | \$ 1.75 | 15-18 in. ----- | \$ 2.50 |
| 18-24 in. ----- | \$ 3.50 | | |

T. oc. spiralis, 10-15 ft.

Moss Arborvitae

Dense, attractive, blue-green, pyramidal variety. Very beautiful crested, obtuse foliage.

| | | | |
|----------------|---------|---------------|---------|
| 2½-3 ft. ----- | \$ 3.00 | 4-5 ft. ----- | \$ 5.00 |
| 3 -4ft. ----- | 4.00 | 5-6 ft. ----- | 6.00 |

T. oc. pyramidalis, 15-25 ft.

Pyramidal Arborvitae

Narrow columnar growth; denser and darker green than American Arborvitae. Most widely used tall, narrow type. Holds color well throughout year.

| | | | |
|-----------------|---------|----------------|--------|
| 15-18 in. ----- | \$ 1.25 | 3 -4 ft. ----- | \$4.00 |
| 1½-2 ft. ----- | 1.75 | 4 -5 ft. ----- | 5.00 |
| 2-2½ ft. ----- | 2.25 | 5 -6 ft. ----- | 6.00 |
| 2½-3 ft. ----- | 2.75 | 6 -7 ft. ----- | 7.50 |
| 7-8 ft. ----- | \$10.00 | | |

T. oc. wareana, 10-15 ft.

Ware (Siberian) Arborvitae

Broad conical type; dense, slow growing, of rugged appearance. Pleasant bluish-green foliage unchanged by Winter. Very hardy.

| | | | |
|-----------------|---------|----------------|---------|
| 15-18 in. ----- | \$ 1.50 | 2-2½ ft. ----- | \$ 3.25 |
| 1½-2 ft. ----- | 2.50 | 2½-3 ft. ----- | 4.00 |
| 3-4 ft. ----- | \$ 5.00 | | |

BIOTAS

Branchlets in vertical planes on slender, ascending branches from near the base.

T. or.—Biota aurea nana, 2-3 ft.

Dwarf Golden Oriental Arborvitae

Popular, low, conical plant; bright golden hue becoming bronze-tipped in winter. A spectacular living globe of gold and green.

| | | | |
|-----------------|---------|----------------|---------|
| 15-18 in. ----- | \$ 2.50 | 1½-2 ft. ----- | \$ 3.00 |
| 2-2½ ft. ----- | \$ 4.00 | | |

T. orientalis, 5-6 ft.

Oriental Arborvitae

Conical plant of rapid growth, bronzy color in winter.

| | |
|---------------|---------|
| 3-4 ft. ----- | \$ 4.00 |
| 4-5 ft. ----- | 5.00 |

T. or.—Biota compacta, 4-5 ft.

Siebold Arborvitae

Compact, formal type like Biota aurea nana but with constant, fresh green foliage. Desirable for formal effects or hedges.

| | |
|---------------|---------|
| 3-4 ft. ----- | \$ 4.00 |
|---------------|---------|

Use Hemlocks For Their Graceful, Handsome Foliage

HEMLOCKS — A Leading Specialty at Barr's

The Hemlock with its graceful branches, and beautiful, neat, needle foliage can well be made the basis of many fine plantings. Its informality of outline is particularly pleasing. On the open lawn it makes a handsome specimen, but wherever planted it is never out of place. Will remain small many years if sheared regularly.

TSUGA canadensis, 60-80 ft.

Canada Hemlock

The soft, feathery, dark green, fernlike foliage of the Canada Hemlock will give a softening touch to any planting, and combined with its gracefully spreading branches makes of it a magnificent tree. It is the State Tree of Pennsylvania. For specimen planting or in groups on the open lawn, or for hedges.

| | | | |
|-----------------|-----------------|----------------|---------|
| 2-2½ ft. ----- | \$ 4.00 | 4½-5 ft. ----- | \$10.00 |
| 2½-3 ft. ----- | 5.00 | 5 -6 ft. ----- | 12.00 |
| 3-3½ ft. ----- | 6.00 | 6 -7 ft. ----- | 15.00 |
| 3½-4 ft. ----- | 7.00 | 7 -8 ft. ----- | 20.00 |
| 4-4½ ft. ----- | 8.00 | 8-10 ft. ----- | 30.00 |
| 25-30 ft. ----- | \$50.00-\$60.00 | | |

T. caroliniana, 50-60 ft. Carolina Hemlock

More compact, darker green and smaller growing than preceding. Yew-like foliage. Its conspicuous, yellowish-brown cones in contrast with the dark foliage makes a most interesting effect.

| | | | |
|----------------|---------|----------------------|---------|
| 10-12 ft. ---- | \$40.00 | 14-16 ft. specimen-- | \$50.00 |
|----------------|---------|----------------------|---------|

T. canadensis sargentii (*pendula*)

Sargent Weeping Hemlock

A compact, bushy form with weeping habit: breadth greater than height, a very rare specimen tree.

| | |
|--------------------------------|--------------------|
| 3-4 ft. wide, 3 ft. high ----- | \$12.00 to \$15.00 |
|--------------------------------|--------------------|



CANADA HEMLOCK

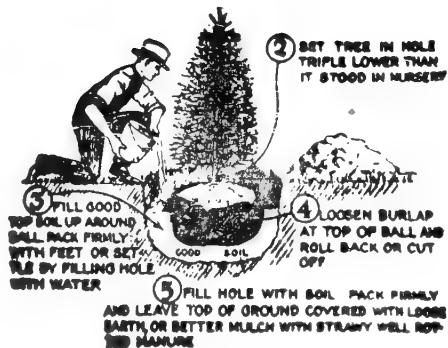
When Building A New Home

It is advisable to budget 6-10 percent for landscaping. Real estate men agree an investment of 6-10 percent of the cost of the house in Evergreens, Trees, and Shrubs increases the value at least 10 per cent and your enjoyment of your home to an immeasurable extent.

At the very beginning of operations put aside the amount you purpose spending for landscaping. Without good landscaping a house gives the appearance of "something wanting," or not being finished.

We shall be pleased to furnish estimates and sketches on contemplated plantings without cost. Our 54 years experience is yours for the asking.

When and How to Plant Evergreens



(1) Dig hole 6 inches larger and deeper than ball of earth.

Evergreens transplant best during the Spring months, before and just as new growth is beginning, or for several months following August 15 when the new growth is completed and has become sufficiently hardened.

The excavation for planting should be considerably larger and deeper than the encased roots so as to allow liberal space around the ball for filling in with good soil. Do not remove burlap, only loosen it at top and roll back as indicated in illustration. Carefully pack soil under earth ball. Mix 10% Peat Moss or rotted manure in the soil used for back fill, and ¼ lb. Vigoro, or BARR'S special fertilizer to a wheelbarrow load of soil. When hole is two-thirds refilled, FLOOD WITH WATER.

In restoring the remainder of the excavated soil allow a shallow basin to remain around the tree to collect the rain and enable it to soak into the ground. Mulch with well-rotted manure or Peat Moss to conserve the moisture in the ground and keep it from becoming hard. In the Fall mound the soil against the plants.

Nightly spray the foliage, water soil weekly and direct a STRONG force of water against the under side of the foliage, when the sun is not shining. This treatment preserves the vigor and beauty of the plant.

Shade and Flowering Trees

Figures following names indicate approximate height at maturity "CAL." means thickness of trunk 10 inches from ground.

Does your home stand out in the bare sun, without background and unframed. Shade trees will make a wonderful transformation and give comforting shade as well.



NORWAY MAPLE

Acer—MAPLES

Maples are widely used for street and lawn planting, being one of the best shade trees known. Their great popularity is evidence of their reliability.

| | |
|---|---------|
| Acer platanoides, 50-75 ft. Norway Maple | |
| 6-8 ft. high | \$ 3.25 |
| 8-10 ft. high, 1 1/4-1 1/2 in. cal. | 4.50 |
| 10-12 ft. high, 1 1/2-2 in. cal. | 6.00 |
| 12-14 ft. high, 2-2 1/2 in. cal. | 8.00 |
| 12-14 ft. high, 2 1/2-3 in. cal. | 10.00 |
| 14-16 ft. high, 3-4 in. cal. | 12.00 |
| 14-16 ft. high, 4-5 in. cal. | 18.00 |
| 18-22 ft. high, 5-6 in. cal. B&B | 55.00 |
| 20-24 ft. high, 6-7 in. cal. B&B | 70.00 |
| A. P. schwedleri, 30-40 ft. Schwedler Purple Maple | |
| 6-8 ft. high | \$ 4.00 |
| 8-10 ft. high, 1 1/4-2 in. cal. | 7.50 |
| 20-24 ft. high, 7-8 in. cal. | 90.00 |
| A. rubrum, 40-60 ft. Red Maple | |
| 6-8 ft. high, 3/4-1 in. cal. | \$ 3.00 |
| 8-10 ft. high, 1 1/4-1 1/2 in. cal. | 5.00 |
| 10-12 ft. high, 1 1/2-2 in. cal. | 7.00 |
| 14-16 ft. high, 2-2 1/2 in. cal. | 10.00 |
| 14-16 ft. high, 2 1/2-3 in. cal. | 12.00 |
| A. saccharinum wieri, 50 ft. Wier Maple | |
| 14-16 ft. high, 4-5 in. cal. | \$20.00 |
| A. saccharum, 40-60 ft. Sugar Maple | |
| 8-10 ft. high | \$ 4.00 |
| 8-10 ft. high, 1 1/4-1 1/2 in. cal. | 5.50 |
| 10-12 ft. high, 1 1/2-2 in. cal. | 7.00 |
| 12-14 ft. high, 3-4 in. cal. | 15.00 |
| 16-18 ft. high, 4-5 in. cal. B&B | 42.00 |
| 18-22 ft. high, 5-6 in. cal. B&B | 60.00 |
| 20-22 ft. high, 6-7 in. cal. B&B | 70.00 |

JAPANESE RED MAPLE

Beautiful low growing trees. Attractive as single specimens on the lawn or in masses. Will grow and retain color best in full sun.

| | |
|--|----------------------------|
| A. atropurpureum, 10-15 ft. Bloodleaf Maple | |
| 12-15 in. ... \$ 4.00 | 2-2 1/2 ft. B&B .. \$ 8.00 |
| 1 1/2-2 ft. .. 6.00 | 2 1/2-3 ft. B&B .. 11.00 |

Betula—BIRCH

Highly colored, silvery-white bark; small, triangular leaves; pyramidal in form.

| | |
|--|-------------------------|
| Betula alba, 30-40 ft. White Birch | |
| 6-8 ft. high | \$ 4.00 |
| B. a. laciniata, 30-40 ft. Cut Leaf Weeping Birch | |
| 5-6 ft. B&B ... \$ 3.50 | 6-8 ft. B&B ... \$ 4.50 |

Cercis—REDBUD

| | |
|---|-------------------------|
| Cercis canadensis, 12-15 ft. Redbud (Judas Tree) | |
| 6-8 ft. B&B ... \$ 8.00 | 8-10 ft. B&B .. \$10.00 |

Cornus—DOGWOODS

One of the best small ornamental trees for lawn decoration; pretty in border with Evergreens, or in masses. Showy spring flowers, followed by bright-red berries and beautiful autumn foliage display.

| | |
|--|---------|
| Cornus florida, 12-20 ft. White Dogwood | |
| 4-5 ft. | \$ 4.00 |
| 5-6 ft. B&B | 6.00 |
| 6-8 ft. B&B | 8.00 |
| 8-10 ft. 1 1/2-2 in. cal. B&B | 14.00 |
| 10-12 ft. 2-2 1/2 in. cal. B&B | 18.00 |
| C. f. rubra, 12-18 ft. Red Dogwood | |
| 3 1/2-4 ft. B&B | \$ 7.00 |
| 4-5 ft. B&B | 9.00 |
| 5-6 ft. B&B | 11.00 |
| 6-8 ft. B&B | 14.00 |
| 8-10 ft. B&B | 18.00 |

| | |
|---|----------------------|
| C. mas, 12-18 ft. Cornelian Cherry | |
| 3-4 ft. \$ 1.40 | 4-5 ft. \$ 2.50 |

Crataegus—HAWTHORNS

| | |
|--|--------------------------|
| Crataegus cordata, 12-16 ft. Washington Thorn | |
| 4-5 ft. \$ 4.00 | 8-10 ft. B&B ... \$12.00 |
| Crataegus Paul Scarlet | |
| 5-6 ft. | \$ 4.50 |

Fagus—BEECH

| | |
|---|---------------|
| Fagus americana, 40-50 ft. American Beech | |
| 14-16 ft. 5-6 in. cal. B&B | \$65.00 |
| F. sylvatica 40-50 ft. European Beech | |
| 8-10 ft., 3-4 in. cal. B&B | \$15.00 |
| F. s. heterophylla, 30-40 ft. Fernleaf Beech | |
| 6-8 ft., 3-4 in. cal. B&B | \$18.00 |
| F. s. pendula, 25-35 ft. Weeping Beech | |
| 8-10 ft., B&B | \$15.00 |
| F. s. riversi, 35-40 ft. Rivers Purple Beech | |
| 5-6 ft. B&B | \$16.00 |
| 6-8 ft. B&B | 20.00 |
| 8-10 ft., 2-2 1/2 in. cal. B&B | \$30.00-40.00 |

Fraxinus—WHITE ASH

| | |
|--|---------|
| Fraxinus americana, 60-70 ft. White Ash | |
| 6-8 ft. | \$ 2.00 |
| 10-12 ft., 1 1/4-1 1/2 in. cal. | 3.50 |
| 12-14 ft., 1 1/2-2 in. cal. | 5.00 |
| 12-14 ft. 4-5 in. cal. | 18.00 |

All prices of trees and shrubs dug without a ball of earth, under 4 feet includes free expert packing. Trees over 4 feet and those dug with a ball of earth require extra packing material and crates, the cost of which is estimated according to the size of the tree. In ordering these larger sizes, please add 10% to list prices of trees over 4 feet to help defray the packing cost.

All trees, other than those dug with a ball, express shipment is recommended, or by truck.



LIQUIDAMBER, SWEET GUM

Ginkgo—GINKGO

Pyramidal tree with clean, straight trunk, and fan-shaped, Maidenhair Fern-like leaves; immune from insects. A most interesting and unusual tree where dense shade is not desired.

| | |
|----------------------------------|-------------------------------|
| Ginkgo biloba , 50-70 ft. | Maidenhair Tree |
| 8-10 ft., 1 -1¼ in. cal. |\$ 4.00 |
| 10-12 ft., 1¼-1½ in. cal. | 5.00 |
| 10-12 ft., 1½-2 in. cal. | 6.25 |
| 12-14 ft., 2 -2½ in. cal. | 8.00 |
| 12-14 ft., 2½-3 in. cal. | 10.00 |
| 14-17 ft., 3 -3½ in. cal. | 14.00 |
| 16-18 ft., 4 -5 in. cal. | 20.00 |
| Gledetsia intermis | Thornless Honey Locust |
| 10-12 ft., 1½-2 in. cal. |\$ 5.00 |
| 10-12 ft., 2 -2½ in. cal. | 8.00 |

Laburnum—GOLDENCHAIN

| | |
|------------------------------------|--------------------|
| Laburnum vossii , 20-30 ft. | Goldenchain |
| 4-5 ft. high |\$ 6.00 |

Larix—LARCH

| | |
|----------------------------------|-----------------------|
| Larix europae , 50-60 ft. | European Larch |
| 8-10 ft. B&B |\$10.00 |

Liquidamber—SWEET GUM

Leaves star-shaped and glossy, changing to brilliant crimson in Fall making it an outstanding tree. Tall, pyramidal type, with interesting, corky bark.

| | |
|--|------------------|
| Liquidamber styraciflua , 50-70 ft. | Sweet Gum |
| 12-14 ft. high, 2 -2½ in. cal. B&B |\$15.00 |
| 12-14 ft. high, 2½-3 in. cal. B&B | 20.00 |
| 12-14 ft. high, 3 -4 in. cal. B&B | 29.00 |

Liriodendron—TULIP TREE

| | |
|--|-------------------|
| Liriodendron tulipifera , 50-70 ft. | Tulip Tree |
| 8-10 ft. high, 1¼-1½ in. cal. |\$ 4.25 |
| 10-12 ft. high, 1½-2 in. cal. | 6.50 |
| 12-14 ft. high, 2 -2½ in. cal. B&B | 13.00 |

Magnolia—MAGNOLIAS

The Magnolias are small trees that give distinction to any lawn, being especially beautiful in foliage and in the large flowers.

| | |
|------------------------------------|------------------------|
| Magnolia glauca , 15-20 ft. | Sweet Bay |
| 4-5 ft. B&B ..\$ 8.00 | 6- 8 ft. B&B ..\$12.00 |
| M. soulangeana , 12-18 ft. | Saucer Magnolia |
| 3-4 ft. B&B ..\$ 8.00 | 6- 8 ft. B&B ..\$15.00 |

| | |
|---------------------------------|------------------------|
| M. s. lennei , 12-18 ft. | Lenne Magnolia |
| 3-4 ft. B&B ..\$ 9.00 | 8-10 ft. B&B ..\$20.00 |
| M. s. nigra , 10-12 ft. | Purple Magnolia |
| 2½-3 ft. |\$ 7.50 |
| M. stellata , 6-8 ft. | Star Magnolia |
| 2-2½ ft. B&B .. |\$ 7.00 |
| 4-5 ft. B&B .. | 16.00 |

Malus—FLOWERING CRABS

The Flowering Crab is a most charming spring flowering tree and worthy of a place on every lawn.

| | |
|--|----------------------------------|
| Malus floribunda , 10-15 ft. | Pink Flowering Crab |
| 5-6 ft. high |\$ 4.00 |
| M. f. atrosanguinea , 10-15 ft. | Carmine Crab |
| 5-6 ft. high |\$ 4.50 |
| M. hoppi , 12-15 ft. | Red Flowering Crab |
| 5-6 ft. high |\$ 4.50 |
| M. ioensis plena , 10-15 ft. | Bechtel Crab, Double Pink |
| 4-5 ft. high |\$ 4.50 |

Platanus—PLANETREE

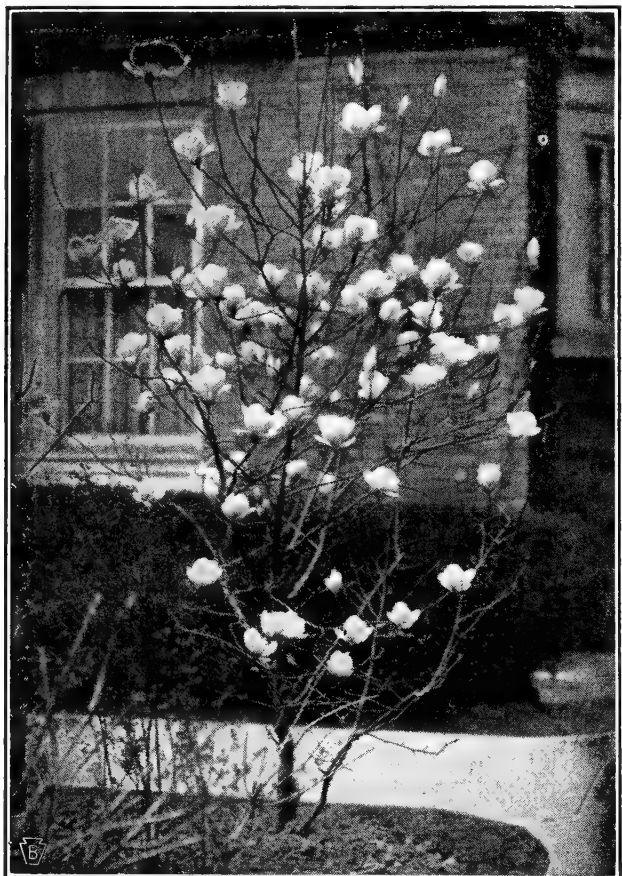
One of best shade trees for city conditions.

| | |
|--|-----------------------|
| Platanus orientalis , 50-60 ft. | Oriental Plane |
| 8-10 ft. high, 1¼-1½ in. cal. |\$ 4.00 |
| 10-12 ft. high, 1½-2 in. cal. | 5.50 |
| 12-14 ft. high, 2 -2½ in. cal. | 7.50 |

Prunus—FLOWERING CHERRIES

Picturesque trees of exquisite color and fragrance are the Flowering Cherries and Plums.

| | |
|---|-----------------------------------|
| Prunus serrulata (Kwansan) , 20-25 ft. | Double Rose Cherry |
| 5-6 ft. B&B ..\$ 6.00 | 6-8 ft. B&B ..\$ 9.00 |
| P. s. (Paul Wohlert) , 20-25 ft. | Paul Wohlert Cherry |
| 6- 7 ft. B&B |\$ 9.00 |
| 8-10 ft. Specimen 2-2½ in. cal. B&B | 12.00 |
| P. shirofugen , 20-25 ft. | Double Blush Pink Cherry |
| 6-7 ft. B&B |\$ 9.00 |
| P. subhirtella pendula , 15-20 ft. | Single Pink Weeping Cherry |
| 5-6 ft. stems, year head |\$ 6.50 |



MAGNOLIA

Prunus—FLOWERING PLUMS

Prunus bilariana, 8-10 ft. **Purpleleaf Plum**
 5-6 ft. high\$ 4.00

Quercus—OAKS

Majestic trees, strongly formed and with beautiful foliage, particularly handsome in the autumn. Rank as outstanding trees for lawn and street planting.

Quercus coccinae, 70-90 ft. **Scarlet Oak**
 8-10 ft., 1¼-1½ in. cal.\$ 6.00
 10-12 ft., 1½-1¾ in. cal. 8.00

Q. palustris, 40-66 ft. **Pin Oak**
 10-12 ft. high, 1¼-1½ in. cal.\$ 5.00
 10-12 ft. high, 1½-1¾ in. cal. 7.00
 12-14 ft. high, 1¾-2 in. cal. 8.50
 12-14 ft. high, 2 -2½ in. cal. 11.00
 14-16 ft. high, 2½-3 in. cal. 14.00
 14-16 ft. high, 3 -3½ in. cal. B&B 26.00
 14-16 ft. high, 3½-4 in. cal. B&B 32.00
 16-20 ft. high, 4 -4½ in. cal. B&B 40.00
 16-8 ft. high, 5 in. cal. B&B 56.00

Q. rubra, 50-75 ft. **Red Oak**
 8-10 ft. high, 1 -1¼ in. cal.\$ 4.50
 10-12 ft. high, 1¼-1½ in. cal. 5.50
 10-12 ft. high, 1½-1¾ in. cal. 7.00
 12-14 ft. high, 1¾-2 in. cal. 9.00
 12-14 ft. high, 2 -2½ in. cal. 11.00
 14-16 ft. high, 3 -3½ in. cal. B&B 26.00
 14-16 ft. high, 3½-4 in. cal. B&B 32.00
 16-20 ft. high, 4 -4½ in. cal. B&B 40.00
 16-18 ft. high, 5 in. cal. B&B 56.00

Salix—WILLOW

Particularly attractive near water; branches olive-green, slender and drooping.

Salix babylonica, 30-40 ft. **Weeping Willow**
 6- 8 ft.\$ 3.00
 8-10 ft. 4.00

Tilia—LINDEN

Fast growing shade trees for lawn, park or avenue planting; straight growth and symmetrical outline.

Tilia americana, 60-80 ft. **(Basswood) American Linden**
 12-14 ft. high, 2-2½ in. cal.\$ 6.00
 14-16 ft. high, 3-4 in. cal. 14.00

T. cordata, 50-60 ft. **Littleleaf European Linden**
 10-12 ft. high, 1½-2 in. cal.\$ 6.00
 12-14 ft. high, 2 -2½ in. cal. 8.00
 12-14 ft. high, 2½-3 in. cal. 12.00
 12-14 ft. high, 3 -4 in. cal. 15.00

Ulmus—ELM

Graceful, majestic trees. Fine for avenues, parks and near homes. Good for use as a background or frame for the house over which its protection and beauty tower.

Ulmus americana, 60-80 ft. **American Elm**
 8-10 ft. high, 1-1¼ in. cal.\$ 3.00
 10-12 ft. high, 1½-2 in. cal. 4.00
 12-14 ft. high, 2-2½ in. cal. 6.50
 14-16 ft. high, 3-4 in. cal. 12.00



PIN OAK

U. a. vaseii, 60-80 ft. **Vase Elm**
 12-14 ft. high, 1½-2 in. cal.\$ 5.00
 12-14 ft. high, 2-2½ in. cal. 7.00
 12-14 ft. high, 2½-3 in. cal. 9.00

U. molineii, 60-75 ft. **Moline Elm**
 12-14 ft. high, 2½-3 in. cal.\$ 9.00
 12-14 ft. high, 3 -4 in. cal. 12.00
 14-18 ft. high, 4- 5 in. cal. 16.00

BALL and BURLAP CHARGES

When it is desired to have Trees or Shrubs balled and burlapped (B. & B.) there will be an extra charge for this additional treatment unless quoted as B. & B. This charge will be in conformity with the following schedule:

| Size of Tree | Size of Ball | Extra for B&B |
|---------------------------|--------------|---------------|
| 12-14 ft., 2 -2½ in. cal. | 20-24 in. | \$ 5.00 |
| 12-14 ft., 2½-3 in. cal. | 24-30 in. | 7.00 |
| 14-16 ft., 3 -3½ in. cal. | 30-35 in. | 10.00 |
| 16-18 ft., 3½-4 in. cal. | 36-40 in. | 14.00 |
| 18-20 ft., 4 -5 in. cal. | 45-50 in. | 20.00 |

Blight-Resistant Chinese Chestnuts

Memories of childhood days, luscious brown, chestnuts can again be yours from the trees you plant this Spring. Wiped out by the blight that stripped our woods of native trees, with the advent of this blight-resistant variety, you can have chestnuts in two years after planting.

Best crops insured by planting two or more trees for pollination.

3½-4 ft., 4 years old \$2.25 each; 3 for \$6.00
Shipped Express Collect

Beautiful Broad-Leaved Evergreen Shrubs

These splendid plants hold their bright green foliage all the year round and many varieties make a magnificent showing of bloom. Shaded situations are preferred by most of the varieties, giving them an added value in making them available for planting about the foundation of houses or shady corners.

ABELIA

ABELIA grandiflora, 3-4 ft.

Glossy Abelia or Bush Arbutus

Graceful, arching branches; shining, dark green leaves; dainty, waxy, pinkish-white, fragrant flowers from June to November. Very attractive in foreground of foundation plantings; or for hedges.

| | |
|--------------------------|---------|
| 12-15 in., B. & B. ----- | \$ 1.25 |
| 1½-2 ft., B. & B. ----- | 2.50 |

AZALEAS

Few flowering plants can excel the Azaleas for all around usefulness. They make a most brilliant color display, either singly or in groups, and can be used to good advantage in brightening the foundation planting, doing well among other evergreens.

A. hinodegiri, 3-4 ft.

Crimson Evergreen Azalea

Bright red, double flowers; very showy.

| | | | |
|--------------------------|--------|--------------------------|--------|
| 8-10 in., B. & B. ----- | \$2.25 | 12-15 in., B. & B. ----- | \$3.75 |
| 10-12 in., B. & B. ----- | 3.00 | 15-18 in., B. & B. ----- | 5.00 |

A. Kaempferi

Hybrid pink. Early Spring.

| | |
|-----------------|---------|
| 15-18 in. ----- | \$ 4.00 |
|-----------------|---------|

A. yodogawa, 2-3 ft.

Yodogawa Azalea

Brilliant pinkish-lavendar, double flowers in early Spring. Very hardy.

| | | | |
|--------------------------|--------|-------------------------|--------|
| 15-18 in., B. & B. ----- | \$4.00 | 2-2½ ft., B. & B. ----- | \$6.00 |
|--------------------------|--------|-------------------------|--------|

BOXWOODS

Will thrive in full sunlight, or in shady locations where no other Evergreen will grow.

BUXUS sempervirens, 12-15 ft. Boxbush

Bushy; deep rich color; slow growing. Frequently used for hedges.

| | |
|--------------------------|---------|
| 15-18 in., B. & B. ----- | \$ 3.00 |
| 18-24 in., B. & B. ----- | 5.00 |

B. suffruticosa, 3-4 ft. Dwarf English Box

Especially adapted to edging walks or as a low hedge. This is the attractive variety growing in the formal gardens at Washington's home, Mt. Vernon.

| | | | |
|--------------------------|--------|---------|---------|
| | Ea. | Per 10 | Per 100 |
| 3- 4 in., B. & B. ----- | \$0.25 | \$ 2.00 | \$18.00 |
| 6- 8 in., B. & B. ----- | 1.25 | 10.00 | |
| 10-12 in., B. & B. ----- | 2.50 | | |
| 15-18 in., B. & B. ----- | 3.50 | | |

COTONEASTERS

COTONEASTER horizontalis, 1-1½ ft.

Rock Cotoneaster

Small, pink flowers; ornamental bright red fruit; shiny, green leaves; semi-evergreen.

| | |
|--------------------------------|---------|
| 12-15 in., potted plants ----- | \$ 2.25 |
|--------------------------------|---------|

C. francheti, 5-6 ft. Franchet Cotoneaster

Semi-evergreen with gradually arching branches; fruit orange-red persisting greater part of Winter.

| | |
|---------------------------|---------|
| 4-yr. potted plants ----- | \$ 2.25 |
|---------------------------|---------|

DAPHNE

DAPHNE, cneorum, 1 ft. Rose Daphne

Covered in May with beautiful pink, tubular flowers; fragrant. A splendid rock garden plant.

| | | | |
|------------------------|--------|-------------------------|--------|
| 6-9 in., B. & B. ----- | \$1.50 | 9-12 in., B. & B. ----- | \$2.50 |
|------------------------|--------|-------------------------|--------|

How To Treat The Soil For Azaleas Holly and Rhododendrons

Rhododendrons and Azaleas require an acid soil. For best results, plant in a mixture of three parts leaf mould or Holland Peat to one part soil. In limestone localities ½ pound aluminum sulphate to each square yard of surface broadcast Spring and Fall, will prove beneficial in acidifying the soil.

The Rhododendrons we list are nursery-grown, and acclimated, and have had the benefit of careful transplanting by which they have gained root systems which will cause them to make better growth than collected plants.

EUONYMUS

EUONYMUS patens (sieboldianus,) 6-7 ft.

Spreading Euonymus

Handsome, large, dark green foliage; white flowers July; red berries in Fall.

| | |
|-------------------------|--------|
| 2-2½ ft., B. & B. ----- | \$3.00 |
| 3- 4 ft., B. & B. ----- | 4.00 |

E. r. vegetus, 3-4 ft. Bigleaf Wintercreeper

(Evergreen Bittersweet). Bushy growth, bright scarlet fruits. Will climb, or grow as bush.

| | |
|------------------------------|--------|
| 9-12 in., 3 yr. plant ----- | \$1.00 |
| 12-15 in., 5 yr. plant ----- | 2.50 |

E. r. colorato Purpleleaved Wintercreeper

| | | | |
|--------------------|--------|--------------------|--------|
| 1 yr. plants ----- | \$0.50 | 2 yr. plants ----- | \$0.75 |
|--------------------|--------|--------------------|--------|



AMERICAN HOLLY See description next page

HOLLIES

***ILEX opaca*, 10-12 ft. American Holly**

For berries in abundance one must plant both male and the female type, as it's only the female that produce berries. Hollies love a slightly acid soil.

FEMALE BERRY-BEARING, B. & B.

| | | | |
|---------------|---------|----------------|---------|
| 2-3 ft. ----- | \$ 4.00 | 5- 6 ft. ----- | \$13.00 |
| 3-4 ft. ----- | 7.00 | 6- 8 ft. ----- | 18.00 |
| 4-5 ft. ----- | 9.00 | 8-10 ft. ----- | 24.00 |

NON-BEARING, (Male Trees), B. & B.

| | | | |
|---------------|---------|---------------|---------|
| 4-5 ft. ----- | \$ 8.00 | 6-8 ft. ----- | \$15.00 |
|---------------|---------|---------------|---------|

SEX UNDETERMINED, B. & B.

(50 to 60% of these plants will berry)

| | | | |
|---------------|---------|---------------|---------|
| 2-3 ft. ----- | \$ 3.50 | 4-5 ft. ----- | \$ 8.00 |
| 3-4 ft. ----- | 5.50 | 5-6 ft. ----- | 12.00 |

***ILEX crenata microphylla*, 5-6 ft.**

Small-leaved Holly

Deep green, boxlike leaves. Black berries. Unusually attractive in foundation plantings or as specimens. Compact and slow growing.

| | |
|---------------------------|---------------------------|
| 2-2½ ft. B & B. \$6.00 | 2½-3 ft., B. & B. \$ 7.00 |
| 3-3½ ft., B. & B. \$ 8.50 | |

***I. c. convexa (bullatum)*, 3-4 ft. Boxleaf Holly**

Exquisite, dwarf, spreading Evergreen Shrub with small, box-like, convex, glossy, persistent leaves. Small, black berries, remaining over Winter. Especially suitable for foundation planting in sun or shade.

| | |
|----------------------------|----------------------------|
| 12-15 in., B. & B. \$ 3.00 | 15-18 in., B. & B. \$ 3.50 |
| 18-24 in., B. & B. \$ 4.50 | |

***I. glabra*, 4-6 ft.**

Inkberry

Deep green leaves turning metallic deep purple in Winter; black berries, attractive to birds.

| | |
|--------------------------|---------------------------|
| 15-18 in., B. B. \$ 2.00 | 1½-2 ft., B. & B. \$ 3.00 |
| 2-3 ft., B. & B. \$ 4.00 | |

LAUREL

***KALMIA latifolia*, 4-8 ft. Mountain Laurel**

(The Pennsylvania State Flower)

Bright, dark-green leaves; large showy clusters of rose-colored flowers. One of the most beautiful, most popular and most useful of native, woody plants.

| | |
|----------------------------|---------------------------|
| 18-24 in., B. & B. \$ 4.00 | 2-2½ ft., B. & B. \$ 5.00 |
|----------------------------|---------------------------|

LEUCOTHOE

***LEUCOTHOE catesbaei*, 3-4 ft.**

Drooping Leucothoe

Attractive, fragrant, white flowers in May, borne in long, pendulous racemes.

| | |
|---------------------------------|---------|
| 15-18 in. clumps, B. & B. ----- | \$ 2.50 |
| 18-24 in. clumps, B. & B. ----- | 3.50 |

PACHYSANDRA

***PACHYSANDRA terminalis*, 6-8 in.**

Spurge Ground Cover

Evergreen ground cover with dense, glossy foliage forming thick carpet. One of the most valuable plants for difficult situations under trees and in dense shade.

| | | |
|-----------------------------|---------------------|---------|
| 1 yr., 4-6 in., per 10, -- | \$1.20; per 100, -- | \$10.00 |
| Potted plants, per 10, ---- | 1.50; per 100, -- | 12.00 |

ANDROMEDA

***PIERIS japonica*, 3-5 ft. Andromeda**

Bears graceful pendants of white flowers in early Spring. Glossy bright green foliage, especially attractive in Winter when bronze.

| | |
|----------------------------|----------------------------|
| 12-15 in., B. & B. \$ 2.00 | 15-18 in., B. & B. \$ 4.00 |
| 18-24 in., B. & B. \$ 5.50 | |

FIRETHORN

***PYRACANTHA coccinea lalandi*, 6-8 ft.**

Laland Scarlet Firethorn

Glossy foliage; white flowers, followed by large clusters of orange berries; very ornamental.

| | |
|----------------------------|---------|
| 2 yr. from pots ----- | \$ 2.50 |
| 4 yr. from 7 in pots ----- | 4.00 |

RHODODENDRONS

The Rhododendron is a very effective plant used in masses or groups or near dark foliage evergreens. It is excellent for the difficult shaded corner or on the north side of the house.

Hybrid Rhododendron

Handsome of the Rhododendrons, the flowers being larger and of a bright, clearer color.

NAMED HYBRIDS

Supply very limited. Varieties and sizes available on request.

***RHODODENDRON carolinianum*, 4-5 ft.**

Carolina Rhododendron

Light rose flowers in early May. Foliage is relatively small and plant is broad and compact. Tolerates sunshine.

| | |
|--------------------------------|---------|
| 15-18 in., B. & B. ----- | \$ 3.75 |
| 1½-2 ft. clumps, B. & B. ----- | 6.00 |

***R. c. album*, 3-4 ft.**

White Carolina Rhododendron

Pure white form of the preceding.

| | |
|--------------------------------|---------|
| 2-2½ ft. clumps, B. & B. ----- | \$ 5.00 |
| 3-4 ft. clumps, B. & B. ----- | 7.50 |

***R. maximum*, 6-10 ft. Rosebay Rhododendron**

Native of Penna.

Flowers pale rose to nearly white. July. Good for mass planting.

| | |
|---------------------------------|------------------|
| 18-24 in. plants ----- | \$ 3.00 |
| 2 -2½ ft. clumps, B. & B. ----- | 4.00 |
| 2½-3 ft. clumps, B. & B. ----- | 5.00 |
| 3 -4 ft. clumps, B. & B. ----- | \$7.00 to \$8.00 |

Both the Trees received in Pittsburgh and at Claysville arrived in excellent condition and all of them have started growth, they are all straight and well formed. In fact, I was quite pleasantly surprised, as some catalogs lead one to believe things that are not so, while your trees exemplify all that you say of them.

WALTER HOWARD KELLEY.

Barr's Hardy Ornamental Shrubs

The hardy shrubs offer a constant change of scene that is always pleasing.

They may be used in many ways to beautify the lawn and garden where permanent plants are desired.

With very little attention they will grow and flower in their new location for years. By planting assorted varieties a succession of flowers may be had all summer.

* Denotes Varieties Thriving in Part Shade.

AMELANCHIER canadensis, 3-4 ft.

Downy Shadblow*

Its numerous white flowers make this a conspicuous plant among the leafless trees of early spring. Maroon-purple berries, relished by birds.

2-3 ft. ----- \$ 0.75

ARALIA pentaphyllum (acanthopanax)

6-8 ft. Five-Leaved Angelica*

Arching, spiny branches leaved to base; tolerates dust, smoke and shade.

4-5 ft. ----- \$ 2.00

AZALEAS

AZALEA calendulacea, 4-5 ft.

Flame Azalea*

Brilliant flowers about two inches across in flaming colors ranging from salmon to golden orange, appearing early Spring. Most beautiful.

1½-2 ft. clumps, B.&B. ----- \$ 3.50

3 -4 ft. clumps, well-branched, B.&B. ----- 6.00

BUTTERFLY BUSHES

BUDDLEIA "Charming", 5-6 ft.

Lovely long sprays of lavender-pink blooms, which compared with other Buddleias are distinctly pink.

2 yr. plants from 4 in. pots ----- \$ 0.65

B. hartwegi, 5-6 ft.

A Buddleia of superior hardiness. Large, bright, lavender flowers, opening complete from the tip downwards.

2 yr. plants from 4 in. pots ----- \$ 0.65

B. Ile de France, 5-6 ft.

New variety with greater brilliance of color; fragrant; rose-purple.

2 yr. plants from 4 in. pots ----- \$ 0.65

B. Royal Red.

New variety, dazzling red; shaded purple.

2 yr. field plants ----- \$ 1.00

2 yr. plants from 4 in. pots ----- \$ 0.65

B. White Bouquet

A beautiful addition to the Butterfly family.

2 yr. plants from 4 in. pots ----- \$ 0.65

CALLICARPA purpurea, 3-4 ft.

Chinese Beauty Fruit

Valued for lilac-violet berries which crowd branches after leaves have fallen when this is a very unusual and attractive shrub.

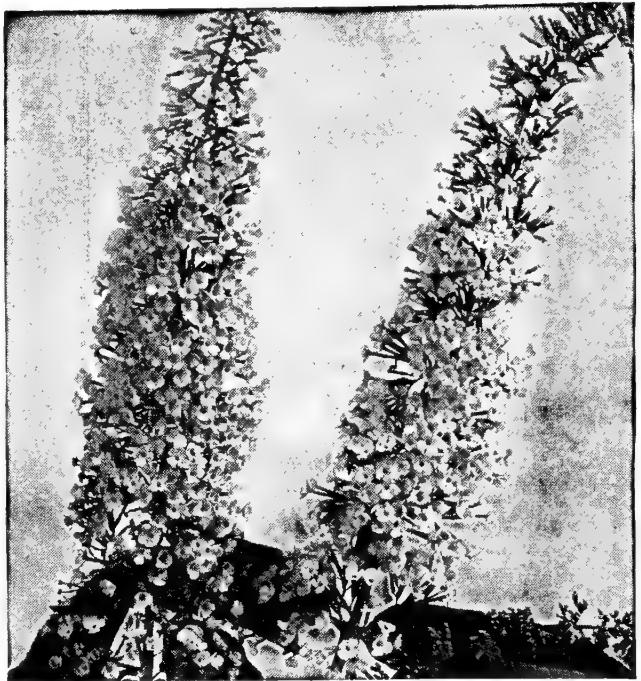
2-3 ft. ----- \$ 1.00

CALYCANTHUS floridus, 4-5 ft.

Sweetshrub or Strawberry Shrub*

Reddish-brown, heavily scented flowers, spring and summer. Also known as Carolina alspice.

2-3 ft. ----- \$ 1.00



ILE DE FRANCE—BUDDLEIA BUTTERFLY BUSH

CARYOPTERIS incana, 2-3 ft. Blue Beard

Violet-blue flower clusters in September.

1 yr. pot plants ----- \$ 0.50

CLETHRA alnifolia, 4-5 ft. Summersweet*

fragrant, white flower spikes terminating upright branches, July. (Sweet Pepperbush).

2-3 ft. ----- \$ 1.00

BUSH DOGWOODS

CORNUS alternifolia, 12-15 ft.

Pagoda Dogwood*

Branches are in flat spreading tiers. Pale yellow flowers in flat umbels, May; berries bluish-black.

3-4 ft. ----- \$ 1.50

C. stolonifera, 6-8 ft. Red-Osier Dogwood

Planted chiefly for the Winter effect of its blood-red branches. Very effective in planting banks. White flowers in May followed by white fruits in Autumn.

3-4 ft. ----- \$ 1.10

C. stolonifera lutea, 6-8 ft.

Goldentwig Dogwood*

Bright yellow bark, flowers creamy.

2-3 ft. ----- \$ 1.10

CORNUS mas 8-10 ft. Conelian Cherry

Small yellow April flowers. Red berries in fall.

3-4 ft. ----- \$ 1.50 4-5 ft. ----- \$ 2.25

COTONEASTER divaricata, 5-6 ft.
Spreading Cotoneaster*
 Arching branches loaded with bright red fruit; leaves brilliant in Autumn.
 1½-2 ft., B & B. ----- \$ 2.00

C. francheti, 5-6 ft. Franchet Cotoneaster
 Its gracefully arching branches, bearing large clusters of brilliant, orange fruits, persisting the greater part of the Winter, makes this a highly decorative plant.
 12-15 in Potted plants ----- \$ 2.00
 1½-2 ft. Potted plants ----- 3.00

CYDONIA japonica, 4-5 ft. Flowering Quince
 Masses of scarlet flowers hug leafless branches in April. Sometimes called "Fire Bush."
 1½-2 ft. ----- \$ 0.75 2-3 ft. ----- \$ 1.25

DEUTZIAS

DEUTZIA gracilis, 2-3 ft. Slender Deutzia*
 White flowers in graceful, upright clusters in May. Graceful bushy form.
 15-18 in. ----- \$ 0.85

D. lemoinei, 4-5 ft. Lemoine Deutzia*
 Large, dazzling white flowers in great abundance; June.
 2-3 ft. ----- \$ 1.25

D. s. crenata, 6-8 ft. Double Pink Deutzia
 Double, light pink flowers, June.
 3-4 ft. ----- \$ 1.25

ENKIANTHUS campanulatus, 8-10 ft. Redvein Enkianthus
 Yellowish or pale orange, veined darker red, gracefully drooping flowers in racemes; brilliant red autumn foliage.
 2-3 ft., B.&B. -- \$ 3.50 3-4 ft., B.&B. -- \$ 5.00

Gettysburg, Pa.

The Shrubbery arrived in fine shape. I am delighted with them. Everything is growing. The Deutzia, etc. didn't even wither.

V. A. S.

ONE OF OUR MOST SHOWY PLANTS
EUONYMUS alatus, 6-8 ft.

Winged Euonymus*
 In the Fall its foliage is a brilliant rose. Corky-winged branches; small, red fruits. A very striking plant.
 2-3 ft. ----- \$1.75 4-5 ft. ----- \$ 3.00

E. compacta, 3-4 ft. Dwarf Winged Euonymus
 More compact in habit than alatus.
 2-3 ft. ----- \$ 2.00

EXOCHORDA grandiflora, 6-8 ft. Pearlbush
 Pearl-like, dazzling white, globular flowers in six to ten flowered racemes. April-May
 3-4 ft. ----- \$ 2.00

Barberry and Privet can be used to advantage planted in groups or as specimens as well as for Hedges.

BARBERRY

BERBERIS thunbergi, 4-5 ft. Japanese Barberry
 The best "all purpose" plant. In Fall has brilliantly colored foliage and many scarlet berries. Plant 18 inches apart for a nice hedge, or 3 to 4 ft. apart in shrubbery plantings.

| | | | |
|-----------------------------|--------|--------|---------|
| | Ea. | 10 | 100 |
| 12-15 in., 2-yr. ----- | \$0.40 | \$3.00 | \$25.00 |
| 15-18 in., 3-yr. ----- | .45 | 3.50 | 30.00 |
| 2-2½ ft., 4-yr. heavy ----- | .90 | 8.00 | |

B. t. atropurpurea, 4-5 ft. Red-Leaved Japanese Barberry
 Foliage rich bronze-red Spring to Autumn; should have sunny situation.

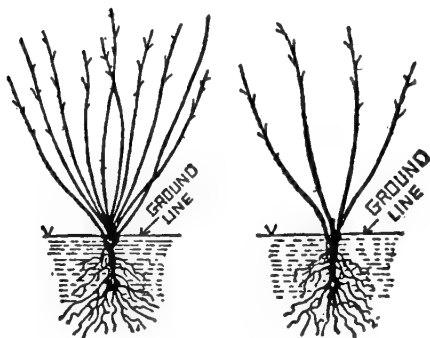
| | | |
|-------------------------------|--------|--------|
| | Ea. | 10 |
| 12-15 in., bushy plants ----- | \$0.60 | \$5.00 |
| 1½-2 ft., bushy plants ----- | 1.00 | 8.00 |

LIGUSTRUM PRIVET

LIGUSTRUM amurense, 12-15 ft. Amur Privet*
 Hardy northern-grown type; dark foliage.

| | | | |
|-----------------|--------|--------|---------|
| | Ea. | 10 | 100 |
| 12-18 in. ----- | \$0.25 | \$2.00 | \$18.00 |
| 18-24 in. ----- | .35 | 3.00 | |

How To Plant and Prune Ornamental Shrubs



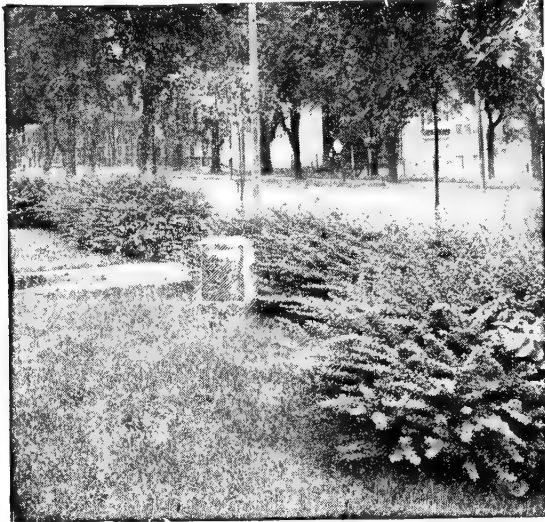
Before Pruning

After Pruning

Remove about one-third of top growth of shrub at planting time if Spring planted, or following Spring, if Fall planted, to facilitate establishment of plant. Thereafter, pruning should be done to remove old wood and keep plant to size desired. Cut off damaged or frayed roots just above the point affected. Be careful to have roots exposed to air or sun as little as possible at any time.

The important point in planting is to have the hole large enough to accommodate the roots without crowding, and to get the soil well worked in among the roots. Space the larger growing Shrubs 4-5 ft. apart, medium growers 3-4 ft., low growers, 2-3 ft.

Always water abundantly and apply a mulch. A basin-shaped depression should remain around each plant to hold the water, at least the first summer.



BARBERRY HEDGE

L. i. regelianum*, 5-6 ft. Regal Privet
 Dense shrub with low, horizontal branches; fragrant white flowers in June; attractive black berries. Splendid in foundation plants.

| | | | |
|----------------|--------|--------|---------|
| | Ea. | 10 | 100 |
| 1½-2 ft. ----- | \$0.65 | \$6.00 | \$55.00 |
| 3-4 ft. ----- | 1.00 | 8.00 | |
| 4-5 ft. ----- | 1.50 | 12.00 | |

***L. ovalifolium*, 12-15 ft. California Privet**
 The most generally used hedge plant. Space six inches apart for a dense, full-to-the-ground hedge.

| | | |
|-----------------------|--------|---------|
| | 10 | 100 |
| 1½-2 ft. ----- | \$1.50 | \$14.00 |
| 3-4 ft., 3-year ----- | 2.50 | |

FORSYTHIAS (Golden Bell)

FORSYTHIA intermedia spectabilis*, 5-7 ft. (Golden Bell) Showy Border Forsythia
 Showiest of Golden Bells: open late enough to escape injury by frost. Most profuse blooming, large flower.

| | | | |
|---------------|---------|---------------|---------|
| 2-3 ft. ----- | \$ 0.75 | 3-4 ft. ----- | \$ 1.00 |
|---------------|---------|---------------|---------|

F. ovata*, 5-6 ft. Korean Forsythia
 From Northern Korea, hardier than other Golden Bells. Clothed with primrose-yellow flowers, produced ten days earlier than other sorts.

| | |
|---------------|---------|
| 2-3 ft. ----- | \$ 0.90 |
|---------------|---------|

***F. suspensa*, 4-6 ft. Weeping Forsythia**
 Long, drooping branches; bright yellow flowers, very early. Suitable for covering banks.

| | | | |
|---------------|---------|---------------|---------|
| 2-3 ft. ----- | \$ 0.75 | 3-4 ft. ----- | \$ 1.00 |
|---------------|---------|---------------|---------|

F. s. fortunei*, 6-8 ft. Fortune Forsythia
 Finely arching branches, covered with rich yellow flowers.

| | | | |
|---------------|---------|---------------|---------|
| 2-3 ft. ----- | \$ 0.75 | 3-4 ft. ----- | \$ 1.00 |
|---------------|---------|---------------|---------|

HAMAMEL'S vernalis*, 10-12 ft. Witch Hazel
 Yellow flowers as late as October and November. Excellent as a background shrub.

| | |
|---------------|---------|
| 4-5 ft. ----- | \$ 2.50 |
|---------------|---------|

***HIBISCUS syriacus*, 10-12 ft. Shrub Althea or Rose of Sharon**
 Hollyhock-like flowers in August-September. White or pink. State color desired.

| | | | |
|---------------|---------|---------------|---------|
| 2-3 ft. ----- | \$ 0.75 | 4-5 ft. ----- | \$ 1.25 |
|---------------|---------|---------------|---------|

HYDRANGEAS

HYDRANGEA arborescens grand.*, 4-5 ft. Snowhill
 Upright branched shrub with pure white flowers like big snow-balls, June-September.

| | | | |
|----------------|---------|---------------|---------|
| 1½-2 ft. ----- | \$ 1.00 | 2-3 ft. ----- | \$ 1.25 |
|----------------|---------|---------------|---------|

***H. opuloides acuminata*, 2-3 ft. French Hydrangea**
 Blue or pink flowers in immense clusters. For blue flowers plant in acid soil or treat with Aluminum Sulphate or rusty iron.

| | |
|---------------------------|---------|
| 4-yr. potted plants ----- | \$ 2.00 |
|---------------------------|---------|

***H. paniculata grand.*, 8-10 ft. Peegee Hydrangea**
 Immense cone-shaped heads of white flowers turning pink and bronze, September-October.

| | | | |
|----------------|---------|---------------|---------|
| 1½-2 ft. ----- | \$ 1.00 | 3-4 ft. ----- | \$ 1.25 |
|----------------|---------|---------------|---------|

H. quercifolia*, 3-4 ft. Oakleaf Hydrangea
 Leaves oak-like, beautifully colored in the Fall. Flowers pinkish-white, turning purplish, borne in narrow, upright clusters in June.

| | |
|----------------|---------|
| 1½-2 ft. ----- | \$ 2.00 |
|----------------|---------|

***ILEX verticillata*, 6-8 ft. Winterberry or Black Alder**
 Bright red fruits conspicuous until mid-winter. Plant in groups for berries—it's a Holly. Much used in early Winter decoration.

| | | | |
|---------------|---------|---------------|---------|
| 3-4 ft. ----- | \$ 1.00 | 4-5 ft. ----- | \$ 3.00 |
|---------------|---------|---------------|---------|

***JASMINUM nudiflorum*, 2-3 ft. Winter Jasmine**
 Golden yellow flowers before the leaves. Very first Shrub to bloom in the Spring. Very graceful and free flowering.

| | |
|----------------|---------|
| 1½-2 ft. ----- | \$ 0.75 |
|----------------|---------|



PEEGEE HYDRANGEA

KERRIA japonica (Corchorus), 4-5 ft.

Kerria*

June to September profusion of rich-yellow flowers with numerous stamens. Green branches make Winter show.

18-24 in. ----- \$ 1.00

A REAL BEAUTY BUSH

KOLKWITZIA amabilis, 5-7 ft. Beauty Bush

Fountain-like mass of pink bloom in May. Thrives best in full sunlight.

2-3 ft. ----- \$ 0.75 4-5 ft. ----- \$ 1.50

HONEYSUCKLE BUSHES

LONICERA fragrantissima, 6-8 ft.

Winter Honeysuckle*

Small creamy-white, very fragrant flowers in March; red fruits. Semi-evergreen.

2-3 ft. ----- \$ 0.90

L. morrowi, 6-8 ft. Morrow Honeysuckle*

White flowers May and June; translucent, blood-red berries, July-August.

2-3 ft. ----- \$ 0.75 4-5 ft. ----- \$ 1.25

L. syringantha, 4-5 ft. Lilac Honeysuckle

Fragrant, lilac-rose flowers in May; scarlet fruits in August. Upright; irregular branches, with smooth, bluish-green leaves.

1½-2 ft. ----- \$ 0.75

L. tatarica rosea, 8-10 ft.

Pink Tatarian Honeysuckle*

Pink flowers, May-June; attractive red fruit.

2-3 ft. ----- \$ 0.90

MYRICA carolinensis (cerifera), 3-4 ft.

Northern Bayberry

Winter-decorative, wax-coated, gray berries attractive amidst dark green, glossy, fragrant leaves, which turn purplish-bronze.

15-18 in., B. & B. ----- \$ 1.00

PHILADELPHUS coronarius, 8-10 ft.

Sweet Mock Orange*

Pure white, delightfully fragrant flowers in abundance. May-June.

3-4 ft. ----- \$1.00

P. lemoinei, 6-8 ft. Lemoine Mock Orange*

Flowers smaller, fragrant, in great profusion. Dwarf, graceful habit. Beautifully symmetrical plant.

3-4 ft. ----- \$1.00

BEST OF THE MOCK ORANGES

P. virginalis, 6-8 ft. Virginal Mock Orange

Large, sweet, double, pure white flowers in May and June and intervals throughout Summer. Very striking and best of the Mock Oranges.

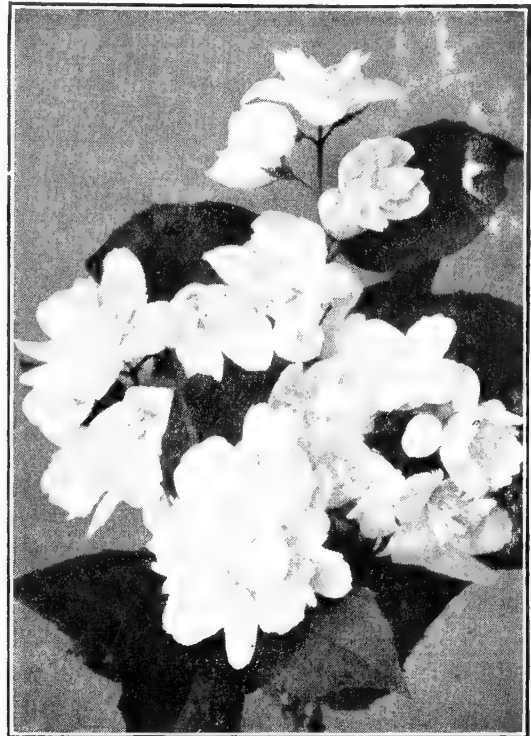
2-3 ft. ----- \$1.00 3-4 ft. ----- \$1.25

4-5 ft. ----- \$1.50

PRUNUS (amygdalis) glandulosa alba, fl. pl., 5-7 ft. Double White Flowering Almond

White, fully double flowers crowd the bare branches in early Spring; very picturesque.

1½-2 ft. ----- \$1.25



**PHILADELPHUS VIRGINALES
VIRGINAL MOCK ORANGE**

P. rosea, fl. pl., 5-7 ft.

Double Pink Flowering Almond

Very attractive pink form of preceding.

1½-2 ft. ----- \$1.25

RHODOTYPOS kerrioides, 4-5 ft. Jetbead*

White flowers in May followed by conspicuous, black bead-like fruits. Will grow satisfactorily in shade or sunny situations, or in poor soil.

2-3 ft. ----- \$.75 3-4 ft. ----- \$1.00

ROSA hugonis, 5-6 ft.

Hugonis Rose (Golden Rose of China)

Long garlands of dainty, yellow flowers in May, followed by translucent red fruits.

12-18 in. ----- \$.75 18-24 in. ----- \$1.25

R. rugosa, 4-5 ft.

Japanese Rose

Large, red flowers, followed by handsome, scarlet-crimson fruits.

2-3 ft. ----- \$1.00

SPIREA arguta, 4-5 ft.

Garland Spirea

Profusion of white flowers on slender, drooping branches; feathery foliage.

1½-2 ft. ----- \$.75 3-4 ft. ----- \$1.25

Spirea billardi, 5-6 ft.

Billiard Spirea*

Brilliant rose flowers in dense, plummy spikes. July-August.

3-4 ft. ----- \$.75

B. & B. FOR LATE PLANTING

After Shrubs have started growth in the Spring (about May 15th), planting can still be continued if plants are dug with ball of earth and burlapped. For this extra service there is an additional charge of 25 to 50 cents per plant, unless quoted B. & B.



PRUNUS AMYGDALIS
FLOWERING ALMOND

SPIREAS

S. bumalda anthony waterer, 2-3 ft. **Anthony Waterer Spirea**
Rosy-crimson flowers in flat-topped, terminal clusters, June to frost. Good plant for flowering hedge. Very dwarf.
15-18 in. -----\$1.00

S. froebeli, 3-4 ft. **Froebel Spirea**
Like Anthony Waterer except earlier and taller. Excellent foreground shrub for Summer flowering effects on the home grounds.
½-2 ft. -----\$.75 2-3 ft. -----\$1.00

S. prunifolia, fl. pl., 6-8 ft. **Bridal Wreath**
White, fully double, small button-like flowers, on slender, upright branches, April-May.
2-3 ft. -----\$.75 3-4 ft. -----\$1.25

S. trichocarpa, 5-6 ft. **Korean Spirea***
Graceful arching form like Van Houtte Spirea, but the profusely borne flowers are larger and two weeks later.
3-4 ft. -----\$1.25

S. van houttei, 6-8 ft. **Van Houtte Spirea***
Graceful, arching branches wreathed in May-June with a profusion of pure white flowers.
18-24 in. -----\$.75 2-3 ft. -----\$1.00

STEPHANANDRA flexuosa, 5-6 ft. **Cutleaf Stephanandra***
Graceful, spreading shrub; small, white flowers in clusters, June-July; dainty leaves, brilliant red in Autumn.
2-3 ft. -----\$.75

SYMPHORICARPOS chenaulti, 5-6 ft. **Chenault Coralberry***
Bunches of coral-red fruits remaining until mid-winter. An improved type of Coralberry.
2-3 ft. -----\$.60 3-4 ft. -----\$.75

S. racemosus, 5-6 ft. **Snowberry***
Showy, waxy, white berries weigh down the willow branches in Autumn.
2-3 ft. -----\$.60

S. vulgaris, 4-5 ft. **Coralberry***
Purplish-red berries in clusters lining long slender branches Autumn and Winter. Good on steep banks. ("Indian Currant").
2-3 ft. -----\$.60

**LILACS—Always Cherished,
Fragrant Shrubs**

SYRINGA chinensis (rothomagensis), 8-9 ft. **Chinese Lilac**
Fragrant, reddish-purple flowers in large, open heads in May. Superior to the Common Lilac in gracefulness of branches, in the color, texture and density of its foliage, and just as free flowering.
2-3 ft. -----\$1.00 4-5 ft. -----\$2.00

S. persica, 5-8 ft. **Persian Lilac**
Slender, arching branches, bearing fragrant pale-lilac flowers in loose, broad panicles, appearing after the Common Lilac. Use where a lower growing, finer textured Lilac is most suitable.
2-3 ft. -----\$1.25 3-4 ft. -----\$2.00

S. vulgaris, 10-12 ft. **Common Lilac**
Fragrant, purplish flowers in May in large, double clusters.
3-4 ft. -----\$1.50 4-5 ft. -----\$2.00

S. v. alba, 10-12 ft. **White Lilac**
White form of preceding.
4-5 ft. -----\$2.00

FRENCH LILACS

The French Lilacs are recognized as the finest of the Lilac family. Perfection in size of bloom, color and form. Dug B-B at prices quoted.

Alphonse Lavallee, double, violet-blue.
3-4 ft. -----\$2.25 4-5 ft. -----\$3.25

Charles Joly, semi-double, red mauve.
3-4 ft. -----\$2.25

Marie Legrage, single, white.
3-4 ft. -----\$2.25 4-5 ft. -----\$3.25

Mme. Lemoine, double white.
3-4 ft. -----\$2.25

William Robinson, double, pinkish violet.
3-4 ft. -----\$2.25 4-5 ft. -----\$3.25

VIBURNUM carlesi, 3-4 ft. **Fragrant Viburnum**
Lovely pink, fragrant flowers in dense clusters 2-3 in. in diameter, early April; blue-black berries.
1½-2 ft., B. & B. -----\$2.50
2-3 ft., B. & B. -----3.75

V. dilatatum, 8-10 ft. **Linden Viburnum**
Attractive, spreading shrub, creamy-white flowers; abundant, small red fruits in September, long persisting.
3-4 ft. -----\$2.00 5-6 ft. -----\$3.00

Barr's "Will Grow" Shrubs Have the Dense Root Systems Necessary for Successful Growth



THE WEIGELA

- V. lentago, 16-20 ft. Nannyberry***
Fragrant, white flowers, May-June in clusters 4-5 in. across; fruit blue-black, edible. Bronze foliage in Fall.
3-4 ft. -----\$1.25 5-6 ft. -----\$2.50
- V. opulus, 8-10 ft. European Cranberry Bush**
Showy white flower heads May-June; scarlet berries in the Fall. (High Bush Cranberry).
3-4 ft. -----\$1.25 4-5 ft. -----\$2.00
- V. tomentosum, 6-8 ft. Doublefile Viburnum**
Profuse, pure white flowers in large flat clusters, June. Red fruits changing to black.
3-4 ft. -----\$1.25 4-5 ft. -----\$2.00
- V. t. plicatum, 6-8 ft. Japanese Snowball**
Large, round heads, snowy white flowers, in abundance in June; dark green, crimped foliage.
3-4 ft. -----\$1.25 4-5 ft. -----\$2.00
- VITEX macrophyllus, 4-5 ft. Chaste-tree**
Very graceful, attractive plant; pretty lavender blue flower spikes 6 to 10 in. long, July to frost.
2-3 ft. -----\$1.25
- WEIGELA floribunda, 6-8 ft. Crimson Weigela**
Tubular dark crimson, fragrant flowers, June.
2-3 ft. -----\$1.00
- W. rosea, 6-8 ft. Pink Weigela**
Flowers deep rose outside, paler within; May and June.
2-3 ft. -----\$1.00 3-4 ft. -----\$1.10

Selection of Vines For Any Place Made Easy

VARIETIES, SIZES AND PRICES

10% Discount when three or more of one kind are ordered.

| Each | Walls and Surfaces | Porches and Pergolas | Banks and Slopes | Flowering | Autumn Color | Evergreen |
|---|--------------------|----------------------|------------------|-----------|--------------|-----------|
| <i>Impatiopsis tricuspidata (veitchii)</i> —Boston Ivy, 2 yr. potted plants ----- | * | * | * | * | * | * |
| <i>Bignonia radicans</i> —Trumpet Creeper, strong 2 yr. potted plants ----- | * | * | * | * | * | * |
| <i>Celastrus scandens</i> —American Bittersweet, field grown, 2 yr. ----- | * | * | * | * | * | * |
| <i>Clematis paniculata</i> —Sweet Autumn Clematis, potted plants, 2 yr. old ----- | * | * | * | * | * | * |
| <i>Clematis henryi</i> —Henry Clematis (white), 2 yr. potted plants ----- | * | * | * | * | * | * |
| <i>Clematis hybrid andre</i> —Madame Andre Clematis (red) 2 yr. potted plants ----- | * | * | * | * | * | * |
| <i>Clematis jackmani</i> —Jackman Clematis (purple), 2 yr. potted plants ----- | * | * | * | * | * | * |
| <i>Clematis ramona</i> —Ramona Clematis (lavender), 2 yr. potted plants ----- | * | * | * | * | * | * |
| <i>Euonymus radicans</i> —Wintercreeper, heavy, 2 yr. plants ----- | * | * | * | * | * | * |
| <i>Euonymus radicans var. vegetus</i> —Big Leaf Wintercreeper, 2 yr. plants ----- | * | * | * | * | * | * |
| <i>Hedera helix</i> —English Ivy, 2½ in. pots ----- | * | * | * | * | * | * |
| <i>Hedera helix cuspidata minor</i> —Small-Leaf English Ivy, 2½ in. pots ----- | * | * | * | * | * | * |
| <i>Lonicera japonica halliana</i> —Hall Japanese Climbing Honeysuckle, out of 4 in. pots ----- | * | * | * | * | * | * |
| <i>Lycium chinensis</i> —Chinese Matrimony Vine, 2 yr. plants ----- | * | * | * | * | * | * |
| <i>Wisteria sinensis</i> —Chinese Wisteria (blue), 3 yr. field grown (grafted plants) ----- | * | * | * | * | * | * |
| <i>Wisteria sinensis alba</i> —White Chinese Wisteria, 3 yr. field grown (grafted plants) ----- | * | * | * | * | * | * |

Evergreen Ground Cover Plants For Difficult, Shady Places

For difficult places under trees and on banks where it is impossible for grass to thrive a class of plants designated as "Ground Cover Plants" can be used with good results. These plants are also valuable in Evergreen and Shrub plantings, filling up the intervening spaces. Other advantages are that they always look well, yet require practically no attention; and being evergreen, are as effective in Winter as in Summer. Among the best plants for this purpose are English Ivy, Pachysandra and Periwinkle.

PACHYSANDRA

Under trees Pachysandra is the real answer to the problem of covering the bare ground with greenery. Another advantage is the protection to the roots of trees afforded by the Pachysandra. The glossy foliage is very attractive. Use 3 or 4 to 1 sq. ft. of the area to be covered.

Per 100

1 yr. plants\$10.00
Potted plants 14.00

ENGLISH IVY

The English Ivy is particularly effective used on banks, to edge walks and under trees. An advantage in using Barr's English Ivy is that it goes further in coverage, each pot containing two plants—a twofold advantage. Plant 10 to 12 inches apart and you will soon have a carpet of green.

Per 10 Per 100

2½ in. pot size \$ 1.75 \$14.00
(Large or Small-leaved)

PERIWINKLE

Not only is the Hardy Periwinkle a good ground cover under trees and on hillsides, but its pretty blue flowers also make an appeal. The glossy, evergreen foliage remains beautiful the year round. When planting do not place the crown of the plant below the surface of the soil. Use 3 or 4 to 1 sq. ft. of area.

Per 100

Strong, field-grown plants\$ 9.00
Potted plants 14.00

25 Plants at the quoted 100 rate; 250 or more Plants at the 1000 rate.

"Hardy Mums"

This is a new day for garden mum lovers, the easiest of all perennials to grow. The recent introductions bloom through August, September and early October before frost. Better range of colors, blooming qualities, winter hardiness, disease resistance and better foliage account for their increasing popularity. We are offering only the best of the older varieties and, as far as we can learn, the cream of the late introductions. Every plant we send out is guaranteed true to name and free of insects and disease.



AVALANCHE

Strong plants from pots for easy, successful transplanting, ready for delivery May 1 through June.

On orders for \$3.00 or more postage prepaid.

Large Early Flowering

Each year we have more requests for the large greenhouse type chrysanthemums. These are not as hardy as the garden type mums but can be carried over winter very successfully in a cold frame under glass. To produce those big 5-6 inch blooms they require disbudding, leaving one to three flowers to each plant.

We offer only the best early varieties:

| | Blooming Date to frost |
|---|---------------------------|
| Ambassador. Fine cream-white, incurved | Oct. 23 |
| Mrs. H. E. Kidder. Deep lemon-yellow, incurved. | Oct. 20 |
| Hilda H. Bergen. Large bronze-red. | Oct. 25 |
| Major Bowes. Deep lavender-pink. | Oct. 20 |
| Any of the above varieties, potted plants 50c each, 3 for \$1.25. | |

Azalea or Cushion Flowering Mums

Named azalea because of their habit of growth and masses of flowers covering the entire plant, growing as wide as high, perfectly hardy.

| | Blooming Date |
|-----------------------|------------------|
| Bronze Cushion | Aug. to frost |
| Queen Cushion | Aug. to frost |
| Red Cushion | Aug. to frost |
| Yellow Cushion | Aug. to frost |
| Apricot Cushion | Aug. to frost |

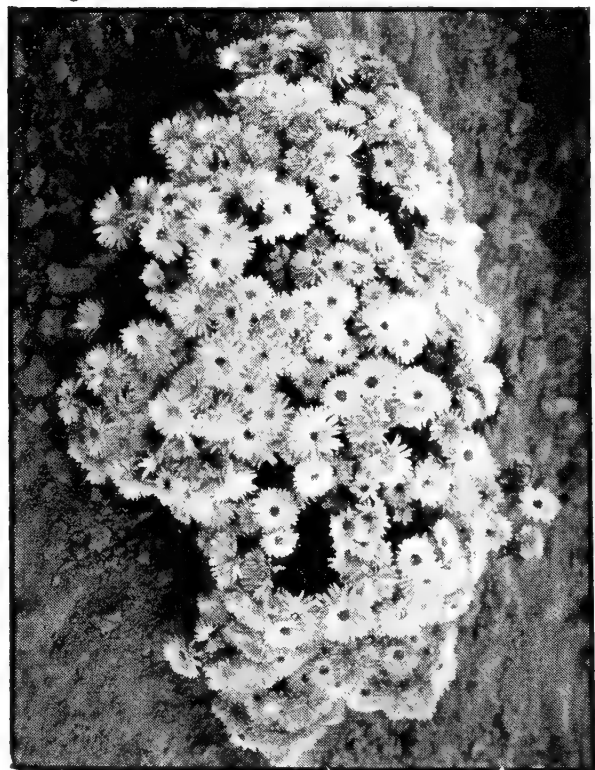
Any of the above azalea mums: Potted plants 40c each; 3 for \$1.10.

Choicest Late Introductions

You can be assured the following list comprises one of the most modern and up to date collections, including some of the new creations by Dr. Kraus of the University of Chicago.

D., Double. SD., Semi-double. S., Single. Name and description.

| | Blooming Date to frost |
|--|---------------------------|
| Autumn Sunlight D. (Rosebud). A grand new, early, pure golden-yellow. 60c ea., 3 for \$1.50. | Aug. 27 |
| Avalanche D. The world's best large, creamy white. Perfect blooms cover the plant from mid-September until frost. 60c ea., 3 for \$1.50. | Sept. 10 |
| Barbara Small D. (Kraus). Clear lilac-pink, slightly brighter at the margins with a carmine center. 50c ea., 3 for \$1.25. | Sept. 6 |
| Calendula. Bright gold, metallic sheen, very double, medium size, September flowering; upright habit; a favorite variety in its color. 50c ea., 3 for \$1.25. | Sept. 10 |
| Challenger D. (English). Large bright, bronze red. 6 inch blooms if disbudded. 50c ea., 3 for \$1.25. | Oct. 2 |
| Charles Nye D. (Kraus 1946). The 'Mum of the Year! Large 3 inch fully double, rounded flowers of rich buttercup yellow and firm substance. One of the "Master Six". \$1.00 ea., 3 for \$2.50. | Sept. 24 |
| Chippewa D. (Longley). Giant, bright aster-purple, slightly incurved. Does especially well in the North. 75c ea., 3 for \$2.00. | Sept. 4 |
| Courageous D. (Kraus). Bright, dark ruby-red, large, double flowers 3 1/2 in. in diameter. Strong, upright, healthy green foliage. The most promising new early, dark red. One of the "Master Six". 75c ea., 3 for \$2.00. | Sept. 19 |
| Cydonia D. Brilliant orange-chestnut overlaid with mahogany. We like it. 40c ea., 3 for \$1.10. | Oct. 15 |
| Dahlia 'Mum D. Quilled petals like a cactus dahlia of a bright wine-red. 40c ea., 3 for \$1.10. | Sept. 10 |
| Dubonnet. Large single orchid pink. Good cut flower. 70c ea., 3 for \$1.50. | Oct. 1 |
| Early Wonder D. New, large, soft pink pompon. Excellent for cutting. 60c ea., 3 for \$1.50. | Sept. 30 |



CUSHION MUMS

- Eugene Wander D.** (Cumming). Without a doubt the largest and finest bright early yellow. Blooms 4 inches across. **40c ea., 3 for \$1.10.** Aug. 25
- Harbor Lights D.** (Cumming). A different pompon. Pale yellow with cream white tints. **60c ea., 3 for \$1.50.** Sept. 24
- Heatherbloom D.** (Kraus). Very double heather-pink center shaded rose-red with gold tipping. Outstandingly good. **75c ea., 3 for \$2.00.** Sept. 4
- Lavender Lady D.** (Cumming). Immense silvery-lavendar. One of the "Master Six". **40c ea., 3 for \$1.10.** Oct. 6
- Maroon N' Gold D.** (Longley). New 1945. Prof. Longley's best since Chip-pewa. Immense 4 inch flowers of bright mahogany, shaded maroon with golden reverse. Outstandingly good. One of the "Master Six". **75c ea., 3 for \$2.00.** Aug. 26
- Marjorie Mills Dwarf 18".** Deep crimson when opening, shading to chestnut-crimson, later becoming suffused with rose and bronze tints. **60c ea., 3 for \$1.50.** Sept. 20
- My Lady D.** (Mosnat). A lovely combination of gold with bronze-red shadings. In bloom practically all summer. **40c ea., 3 for \$1.10.** Aug. 27
- Olive Longland D.** (Kraus). The 'Mum of the Year 1945. 3 inch apricot-toned salmon-pink flowers. The best of the so called pastel colors. One of the "Master Six". **75c ea., 3 for \$2.00** Sept. 26
- Primula S.** (Kraus). Graceful, free-flowering yellow single. We consider this the best of the yellow daisy type. **50c ea., 3 for \$1.25.** Oct. 10
- Rembrandt D.** (Cumming). A new art color in pompons. Rose mauve with copper blending. **60c ea., 3 for \$1.50.** Sept. 28
- Sequoia D.** Exquisite rich mallow-ember. Very large flowers. One of the best. **40c ea., 3 for \$1.10.** Sept. 6
- Silver Moon S.** (Cumming). White, like a glorified Shasta Daisy with yellow center. **40c ea., 3 for \$1.10.** Sept. 28
- Tussore SD.** (Kraus). Exceptionally fine orchid-pink. We like this best of all singles. **50c ea., 3 for \$1.25.** Sept. 30



CALENDULA

Choice Standard Mums

The best of the old favorites. These are the time-tested, most indispensable varieties of the earlier introductions—vigorous, dependable and good colors.

- Algonquin.** D. A very hardy variety with healthy foliage and large, full golden yellow flowers. Aug. 30
- Burgundy.** D. Rich cerise-crimson; double; 2 inches across. Oct. 15
- Crimson Glory.** Very bright crimson, surpassing all early crimson varieties. Oct. 15
- Early Bronze.** D. Lively bronze-yellow. Dwarf. Aug. 30
- Ember.** Brilliant glowing bronze — a combination of coral and orange shades. Oct. 1
- Indian Summer.** Glowing orange flowers 3 inches across; double. Erect and free flowering. Sept. 20
- Judith Anderson.** Clear buttercup-yellow flowers nicely rounded, Button type, completely covering the plant. Oct. 10
- Louise Schling.** S. Bright, glowing salmon-red in color. Strong grower. Oct. 10
- Minnau.** D. Large, very double, white flowers. Button type. Compact plant. Oct. 10
- Mrs. Pierre S. du Pont III.** Soft delicate pink; double; 3 inches across. Sept. 20
- Rose Glow. SD.** Lovely old rose becoming opalescent rose; semi-double Oct. 1
- Roberta Copeland.** S.D. Raspberry-rose. Strong, erect grower. Large flower. Oct. 1
- Ruth Cumming.** D. Rich bronze terracotta Oct. 10
- Saladin.** SD. Oriental red, shading to coral-red with coppery tones. Oct. 1
- Snappy.** D. Red with golden reverse; semi-double. Oct. 10
- Sunny Boy.** D. Clear yellow pompon. Oct. 10
- Any of the above varieties, 3 for \$1.10.

NOTE: Orders from this page valued at \$3.00 or more will be sent postpaid.

Great progress is being made toward more beautiful hardy chrysanthemums and in order to keep step with this development our trial grounds will contain many new varieties this fall for inspection.

Everyone is cordially invited to visit our trial ground display. Between September 15th and 30th is usually when the display is at its best.



CYDONIA (Garden Mum)

Perennial Peonies

Among the Best Known and Easiest to Grow Hardy Plants

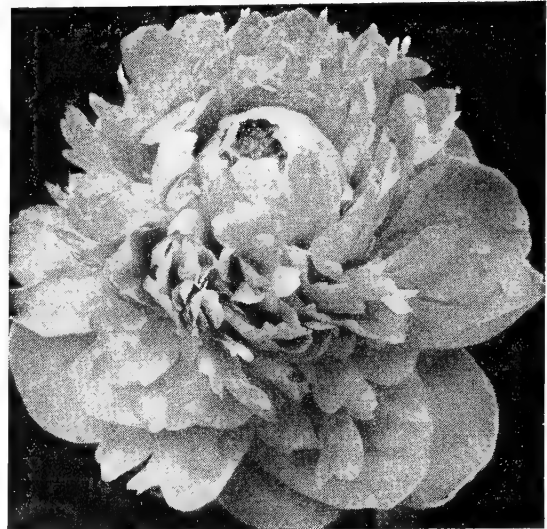
Friendship Offer Peonies

Choicest Standard and Late Introductions (Strong 3 to 5 eye Blooming-Size Roots)

(E) Early; (M) Midseason; (L) Late Blooming

- Albatre. White, carmine lined (M)\$.75
 - Cherry Hill. Glistening garnet (E) 1.00
 - Edulis Superba. Old-rose-pink (E)75
 - Eugene Verdier. Hydrangea-pink (M)75
 - Felix Crousse. Brilliant red (L)75
 - Festiva Maxima. Snowy-white (E)75
 - Karl Rosenfield. Dark, velvety-crimson (M) .75
 - Lora Dexheimer. Bright crimson (M)75
 - M. Jules Elie. Glossy shell-pink (M)75
 - Sarah Bernhardt. Dark rose-pink (L) 1.25
 - Walter Faxon. Vivid shell-pink (M) 1.25
- 3 of any one variety less 10%. Orders for \$3.00 or more, postpaid.

Peonies are best planted in the fall.



PEONY, Sarah Bernhardt. \$1.25 each

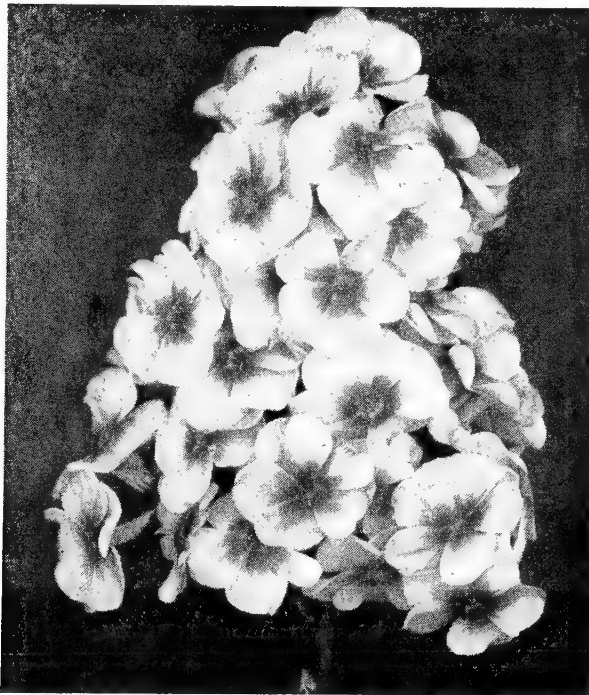
Friendship Offer Hardy Phlox

Phlox embody all the qualities desirable in a plant—hardiness, upright carriage, pretty foliage, fragrance, beauty and variety of color. Besides, Phlox have the added merit of being in bloom during the summer when other plants are out of bloom. July-Sept.

We supply extra strong, field-grown plants that will bloom the first season.

- D. P. Williams.** Trusses of soft pink flowers with light blue eyes. Compact grower. 3 for \$1.25
- E. I Farrington.** Large heads of beautiful salmon-pink flowers. Grows to a height of 18 to 24 inches and carries its foliage clear to the ground. A much admired variety wherever grown. 3 for \$1.00.
- Enchantress.** Bright salmon-pink with darker eye. Strong growth, and rich green, glossy foliage. 3 for \$1.00.
- Fuerbrand.** Brilliant orange-scarlet; medium; blooms very freely. 3 for \$1.00.
- Innocence.** Tall grower, producing large pure white flowers. One of the finest varieties. 3 for \$1.00.
- Lillian.** Very attractive, large, soft salmon-pink blooms. One of the best of its color. 3 for \$1.25.

12 plants, your selection, \$3.75, postpaid.



PHLOX, Enchantress, 3 for \$1.00

FRIENDSHIP OFFER

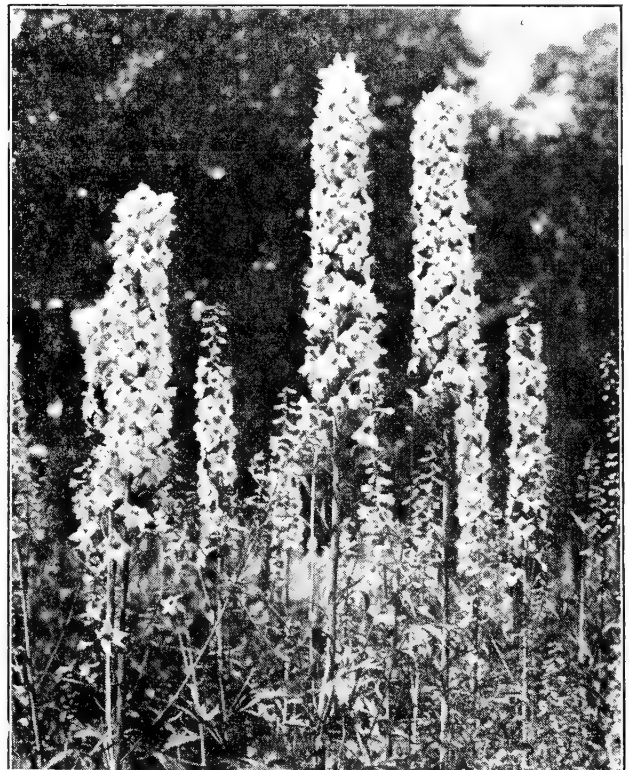
3 each—9 Finest Delphiniums, \$3.25 Postpaid

The Delphinium, or Perennial Larkspur, is one of the finest blue flowers cultivated, and among the most useful and effective of hardy plants. Especially fine for the hardy border, although very effective almost anywhere—in beds, in clumps, in the shrubbery. Ideal for cut flowers.

Plant in well-enriched soil and cut off the old flowering stems as they mature.

The Best Varieties are Included in this Offer as Follows:

- 3 Delphinium belladonna, large flowers of a rich deep blue shade. 3 for \$1.00.
- 3 Delphinium bellamosa, beautiful sky-blue; flowers all summer until cut down by frost. 3 for \$1.00.
- 3 Delphinium Giant Pacific Hybrids, large flowers on long spikes, in mixed shades of blue. 3 for \$1.50.



GIANT PACIFIC DELPHINIUM

HARDY PERENNIALS

The Most Dependable Varieties

From early Spring to late Autumn there are always flowers to enjoy where Perennials are planted, and the blooms are equally enjoyable growing in beds or borders on the lawn or cut for table and home decoration. Once planted they continue to bloom and increase in beauty each succeeding year.

Perennials require little attention (weeding and watering during the growing season and mulching with fertilizer in the Fall) and, as each variety has a fixed period to flower, a succession of bloom can be enjoyed throughout the season. The following table makes easy the selection of proper varieties.

| Botanical Name | Common Name | Time of Bloom | | | | | | | | | | Color | | | | | Good for | | | | Ultimate Height | Price for 3 Plants | | |
|--|----------------------|---------------|-----|------|------|--------|-----------|---------|-------|--------|------|-------|------|--------|---------|---------|------------|-------------|---|---|-----------------|--------------------|---------|--------|
| | | April | May | June | July | August | September | October | White | Yellow | Pink | Red | Blue | Purple | Borders | Cutting | Part Shade | Rock Garden | | | | | | |
| Always plant 3 or more of a kind in a group for the best effect. | | | | | | | | | | | | | | | | | | | | | | | | |
| <i>Alyssum saxatile com-</i> | Goldentuft | | * | | | | | | | | | | * | | | | | * | | | | | 1 ft. | \$1.00 |
| <i>Aquilegia caerulea hy-</i> | Hybrid Colorado | | | | | | | | | | | | | | | | | | | | | | 2-3 ft. | 1.20 |
| | Columbine | | * | * | | | | | | | | | | | | | | | | | | | 4 ft. | 1.25 |
| <i>Aster</i> | Beechwood Challenger | | | | | | | * | | | | | | | | | | * | | | | | 4 ft. | 1.25 |
| <i>Aster</i> | Harrington's Pink | | | | | | | * | | | | | * | | | | | * | | | | | 3 ft. | 1.25 |
| <i>Aster</i> | Blue Eyes | | | | | | | * | | | | | * | | | | | * | | | | | | |
| <i>Chrysanthemum maxi-</i> | Shasta Daisy | | | * | * | * | * | * | | | | * | | | | | | * | | | | | 2 ft. | 1.00 |
| <i>Coreopsis grandiflora</i> | Big Coreopsis | | * | * | * | * | * | * | | | | * | | | | | | * | | | | | 2 ft. | 1.00 |
| <i>Dianthus plumarius</i> | Grass Pink | | | * | | | | | | | | | | | | | | * | | | | | 9 in. | 1.00 |
| <i>Eupatorium coelestinum</i> | Mistflower | | | | | * | * | * | | | | | | | | | | * | | | | | 2 ft. | 1.00 |
| <i>Gypsophila paniculata</i> | (Bristol Fairy) | | | | * | * | * | * | | | | * | | | | | | * | * | | | | 2 ft. | 1.50 |
| <i>Heliopsis scabra zinniae-</i> | Zinnia Heliopsis | | | | * | * | * | * | | | | * | | | | | | * | * | | | | 3 ft. | 1.00 |
| <i>Hemerocallis dumortieri</i> | Early Daylily | | | * | * | * | * | * | | | | * | | | | | | * | * | | | | 18 in. | 1.00 |
| <i>Hemerocallis flava</i> | Lemon Daylily | | | * | * | * | * | * | | | | * | | | | | | * | * | | | | 3 ft. | 1.00 |
| <i>Hemerocallis julva</i> | Kwanso Daylily | | | | * | * | * | * | | | | * | | | | | | * | * | | | | 4 ft. | 1.00 |
| <i>Hemerocallis thunbergi</i> | Japanese Daylily | | | | * | * | * | * | | | | * | | | | | | * | * | | | | 3 ft. | 1.00 |
| <i>Hemerocallis</i> | Mikado | | | | * | * | * | * | | | | * | | | | | | * | * | | | | 2 ft. | 1.25 |
| <i>Hibiscus (Marvels) rosea</i> | Pink Rosemallow | | | | * | * | * | * | | | | * | | | | | | * | * | | | | 3-5 ft. | 1.60 |
| <i>Hibiscus (Marvels) coc-</i> | Scarlet Rosemallow | | | | * | * | * | * | | | | * | | | | | | * | * | | | | 3-5 ft. | 1.60 |
| <i>Hibiscus (Marvels) alba</i> | White Rosemallow | | | | * | * | * | * | | | | * | | | | | | * | * | | | | 3-5 ft. | 1.60 |
| <i>Hosta caerulea (funkia)</i> | Blue Plantainlily | | | | * | * | * | * | | | | * | | | | | | * | * | * | | | 1½ ft. | 1.20 |
| <i>Hosta grandiflora</i> | Big Plantainlily | | | | * | * | * | * | | | | * | | | | | | * | * | * | | | 2 ft. | 1.50 |
| <i>Lobelia cardinalis</i> | Cardinal Flower | | | | * | * | * | * | | | | * | | | | | | * | * | * | | | 2 ft. | 1.00 |
| <i>Lychnis chalcedonica</i> | Maltese Cross | | | * | * | * | * | * | | | | * | | | | | | * | * | * | | | 3 ft. | 1.00 |
| <i>Lythrum salicaria roseum</i> | Rose Loosestrife | | | * | * | * | * | * | | | | * | | | | | | * | * | * | | | 2 ft. | 1.00 |
| <i>Papaver orientale</i> | Oriental Poppy | | | * | * | * | * | * | | | | * | | | | | | * | * | * | | | 2 ft. | 1.10 |
| <i>Papaver orientale (Lev-</i> | Levermere O. Poppy | | | * | * | * | * | * | | | | * | | | | | | * | * | * | | | 2½ ft. | 1.10 |
| <i>Papaver orientale (Mrs.</i> | Mrs. Perry O. Poppy | | | * | * | * | * | * | | | | * | | | | | | * | * | * | | | 2½ ft. | 1.10 |
| <i>Plumbago</i> | Larpetine | | | * | * | * | * | * | | | | * | | | | | | * | * | * | | | 6-9 in. | 1.00 |
| <i>Pyrethrum coccineum</i> | Coccineum | | | * | * | * | * | * | | | | * | | | | | | * | * | * | | | 1 ft. | 1.16 |
| <i>Veronica</i> | Blue Spire | | | * | * | * | * | * | | | | * | | | | | | * | * | * | | | 2 ft. | 1.00 |

Perennial orders valued at \$3.00 or more will be sent postpaid.

Orders under \$3.00 please add 30 cents if postpaid is desired to help defray expenses in handling and postage.

GERMAN BEARDED IRIS

NEW AND RARE VARIETIES

- California Gold.** Best deep yellow. Superb.
 - Cheerio.** Super red tone.
 - Dolly Madison.** Soft, pastel shades.
 - Easter Morn.** Large sparkling, satiny white.
 - Indian Chief.** Tall, red and brown. Very large.
 - Missouri.** True blue, large and fragrant.
 - Pale Moonlight.** Soft sky blue. Gigantic.
 - Red Dominion.** Popular red tone.
 - Rubeo.** Velvety red of colossal size.
- 60c each. 6 Plants, your selection, \$3.00 postpaid
 9 Plants, your selection, \$4.25 postpaid.

TESTIMONIALS

Peach Bottom, Pa.
 I am very pleased with the Mahonia, it is a real beauty. However I have always found Barr's Trees satisfactory and in 20 years have never lost a single tree or shrub from you.

E. K.

Ephrata, Pa.
 I just wish you could see the setting of Evergreens you planted. It looks wonderful. I don't think you could buy same for \$1,000. I am a good booster for Barr's Nurseries.

G. R. S.

INSECTICIDES AND FUNGICIDES

Arsenate of Lead. (Powdered) To combat leaf-eating insects. Use 1½ to 2 lbs. to 50 gals. of water. 1 lb., 50c.

Black Leaf 40. For aphids and all sucking insects. 1 oz., 35c; 5 ozs., \$1.00; 1 lb., \$2.50.

Bordeaux Mixture. For mildew, blight, black rot and other fungus diseases of fruits and plants. 1 lb., 40c; 4 lbs., \$1.00; 10 lbs., \$2.25.

Borerkil is a scientifically prepared paste that kills boring insects when injected into their burrows. Safe, convenient and simple to use. Indispensable as a dog repellent and poultry fumigant. Packed in handy tubes with injectors included. Garden Size, 60c.

C. P. O. Liquid insecticidal soap spreader that increases the efficiency of contact spray solutions. Odorless; non-poisonous; does not discolor foliage. 3 ozs., 25c; 1 qt., \$1.00; 1 gal., \$2.50.

Dogzoff. Will keep dogs, cats or rabbits from any place where they are not wanted. Not poisonous to plants. Will not injure animals. 4 oz. bottle, 60c postpaid.

Jap-Ro-Cide. Improved repellent for protecting foliage plants against Japanese Beetles. Safe to humans, birds and animals, leaves no deposit, easy to use, odorless, yet strongly repellent to Japanese Beetles. 1 lb. canister (sufficient for 20 gal.), \$1.25; 5 lb. canister, \$5.50.

Killogen. Plant spray and ant killer. A contact spray to control insects in the garden, window boxes and on evergreens. Splendid for house plants. Non-poisonous to humans, harmless to foliage or blooms. Another "ogen" product. 2½ oz. bottle, 50c (makes 250 times its volume).

Marvel Spray. Sure remedy for mealy bugs. Kills by penetrating the waxy coat of the insect. Stimulates plant growth; does not burn or stain. 2 oz. bottle, 50c.

Molgen. An "ogen" product in semi-powder form. Eliminates moles from lawns, flower and bulb beds, etc. Will not harm soil or grass. ½ lb. can, 50c.

Red Arrow. Fatal to both chewing and sucking insects, yet harmless to human beings and pets, such as dogs, cats and birds. 1 oz. makes 4 to 8 gal. of spray. 1 oz., 35c; ¼ pt., \$1.00; 1 pint, \$2.85; 1 qt., \$5.40.

Sunoco. Most effective spray for scale insects. 1 gal. makes 30 to 75 gal. of spray. 1 gal., \$1.40; 5 gal., \$5.50.

T A T Ant Trap. Recommended for the home due to exclusive safety feature. Destroys both sweet and grease eating ants. Worker ants enter traps and carry poison back to colony and soon the queen and every member is destroyed in their nests which usually are outside the house or in the foundations. 25c each.

Tree Tanglefoot. Easily applied, effective, economical and non-injurious protection for fruit, shade and ornamental trees against ants, caterpillars and all crawling insects. One pound is sufficient for 12 to 15 ft. of tree band. Also useful for waterproofing wounds in trees. 1 lb. can, 75c. Postage extra.



Complete all-purpose Rose Spray. Offers the first definite mildew and black spot control. Combining an insecticide it kills all insects, including sucking and leaf-eating types. Remains on foliage, repelling subsequent attacks. Stimulates plant growth, resulting in fine foliage and luxuriant blooms.

Kit "A" (Protects 12 to 20 roses a season) \$1.50
Kit "B" (Protects 50 to 75 roses a season) 4.00
Kit "C" (Protects 100 to 150 roses a season) 6.00
Kit "D" (Estate Kit, makes 128 gals.) 20.00

"One of the inexpensive possessions that we can continue to enjoy, come war and taxes, is our Shade and Decorative Trees."—Pathfinder.

Your Plants And Lawns Respond Best If Fertilized

When small quantities of fertilizers or insecticides are wanted by parcel post, please add postage as follows: 20c for 10 lbs., or less. Larger quantities will be sent by express or freight, collect.

Adco. Garden rubbish such as leaves, cuttings, straw, etc., is turned into a true manure (best of all fertilizers) when mixed with Adco. 25 lbs., Adco makes ¾ ton valuable manure. 25 lbs., \$2.25; 150 lbs., \$10.50.

Aluminum Sulphate. Useful in creating acid soil conditions. Broadcast 1 to 3 lb. to each square yard of surface. 5 lbs., 75c; 10 lbs., \$1.25.

Bovung. Natural cow manure, thoroughly dehydrated and pulverized. Free of weed seeds. One pound is sufficient for 25 sq. ft. of area. 10 lbs., 60c; 50 lbs., \$2.75; 100 lbs., \$5.00.

Lawn Fertilizer (Barr's) Special formula that makes grass develop stronger and deeper roots to better compete with Crab Grass and other weeds, which are surface rooting. Gives good color and vigor to the lawn. Apply 1 lb. to 40 sq. ft., and water heavily. 50 lbs., \$2.50; 100 lbs., \$4.00.

Leaf Mold. Nature's plant food. Mix with soil in which Rhododendrons and Azaleas are to be planted. 3 parts Leaf Mold to 1 part soil. 50 lbs., \$2.00; 100 lbs., \$2.50; 1 ton (2000 lbs.), \$35.00.

Lime Pulverized. For lawn and field use where the ground has become sour. Two pound is sufficient for 25 sq. ft. of surface. 50 lbs., \$1.50; 100 lbs., \$2.00; 500 lbs., \$8.00.

Peat Moss. (Ground) Applied as mulch, conserves moisture, keeps down weeds, mellows and acidifies the soil and beautifies at same time. Water well before and immediately after applying as a mulch. 1 bale covers 125 sq. ft. to depth of 2 inches Large Bales, \$5.00; Senior Bales, \$3.00; Junior Bales, \$2.00.

Rhododendron Food. (Barr's). Both acidifies the soil and provides plant food especially needed by Rhododendrons, Azaleas and other broad-leaved evergreens. Broadcast 1 lb. to each square yard two or three times a year. 5 lbs., \$1.00; 10 lbs., \$1.75; 25 lbs., \$3.00.

Soil, Potting. Mixture of soil, sand and fertilizer. Ideal for potting purposes, or any place where especially good soil is needed. 1 bu., 75c; 2 bu., \$1.25; 3 bu., \$1.60; 5 bu., \$2.00; 1 ton, \$4.50.

Tobacco Stems, Cut. A combined fertilizer, mulch and insecticide for lawns and shrubbery, trees and evergreens. Unlike stable manure dose not introduce weed seeds. 100 lbs. will cover 500 sq. ft. thickly. \$1.75 per 100 lbs.; 500 lbs., \$6.75; \$22.50 per ton.

Tree Food (Barr's). Trees will make quick response to this special food and its action will also be long lasting. Especially valuable for Oak trees where leaves show tendency to turn yellow. Use 4 lbs. to each 1 in. caliper early spring, and again in July. Do not use as top dressing but insert in holes in ground as far as branches extend above. 5 lbs., \$1.00; 10 lbs., \$1.75; 50 lbs., \$4.00; 100 lbs., \$7.50.

Vigoro. Special prepared plant food. Vigoro supplies all 11 of the vital food elements all growing plants need from the soil. It is clean, odorless, sanitary and easy to apply. Use 1 lb. to 20-25 sq. ft. area. 10 lbs., \$1.00; 25 lbs., \$1.50; 50 lbs., \$2.50; 100 lbs., \$4.00.

Garden Accessories

Bird Baths

Concrete, beautifully and substantially molded. Diameter of bowl 23 inches; pedestal 29½ inches; height over all 34 in., weight 220 lbs., \$12.00 ea.



B. F. BARR & SON Phone 2-5415
 Main Office and Nurseries
 Marietta Road, R. D. 1, State Highway 340
 Lancaster, Pa.

Offices, salesroom, greenhouses and shipping department practically under one roof.
 Business hours, open every week day from 8:00 a. m. to 6:00 p. m. Sunday, by appointment only.
 Visitors welcome daily.



B. F. Barr Flower Shop Phone 3-3300
 116 North Queen Street
 Lancaster, Penna.

Specializing in Cut Flowers, located in the heart of Lancaster, serving Lancaster and vicinity with fresh cut flowers and accessories daily, except Sunday. Open from 8:00 a. m. to 5:30 p. m.
 Pioneer members of the Florist Telegraph Association. Flowers and plant orders are filled and relayed to all parts of the world through 7,500 bonded members, bringing cheer and a spiritual uplift in thousands of homes.

It's Easy to Order by Mail

Customers are invited to read this page before ordering.

A Check, Post Office or Express Money Order may accompany your order. We are glad to open charge accounts on receipt of the usual trade references.

All Dormant Roses, Grass Seed and special offers prepaid. Perennials without a ball of earth on orders for \$3.00 or more are sent post paid.

Potted Roses, Shrubbery and Small Trees under 5 feet, dug without a ball of earth, catalog prices include free, expert, packing—shipping charges collect.

Evergreens and plants dug with a ball of earth, including trees, over 5 feet, packing additional, according to the size of the material. When ordering, please add 10% to list price of trees over 5 feet, Evergreens and other balled material, to help defray the cost of crates and packing material. Unless plants and other materials are marked postpaid, they are sent by Railway Freight or Express, delivery charges collect, or, by truck in full truck load lots at cost.

Balled plants (B&B) may be shipped safely by freight while plants not balled, express is recommended.

If we are unable to make full shipment of your prepaid order, and you do not allow substitution, we will make prompt refund of your over-payment.

The right is reserved to advance prices without notice depending on market or other conditions beyond our control.

Safe Arrival Guaranteed. Please report any dissatisfaction immediately. During the peak of our shipping seasons, when we work day and night to fill thousands of orders, slight errors may occur which we are pleased to correct at once when called upon.

Responsibility. While we exercise the greatest care in filling orders, we cannot give any warranty, expressed or implied. We will replace such material as proved not true to name, but it is agreed at no time will we be responsible for more than the original purchase price.

Replacement. All stock accepted as satisfactory, properly planted and cared for, if failing to grow, dies from reasons beyond our or the customer's control. Such losses (except the delivery and planting) occurring the first growing season are shared fairly on a 50-50 basis. Hence, we agree to replace once at one-half the original purchase price, when purchased at regular catalogue prices and providing the customer has also shown good faith by having paid for the original plants in full. Customers should not expect plants to be replaced on the half price basis that have been winter killed or otherwise injured by dogs, or suffered any accident or neglect.

Local Truck Deliveries. Customers residing within 10 miles of our Nurseries may request truck delivery without charge on such days as we have full truck load deliveries in that particular section. Special deliveries, 20c a mile.

Truck Deliveries Outside of 10-mile area on full truck load lots based on the round trip mileage at 20 cents a mile for a 2½ ton truck.



B.F. Barr & Son

Established 1893

Leading Nursery & Florist in the Garden Spot of America
For the Best Garden you ever had Plant Barr's "Will Grow" Plants

CONTENTS

| | | | |
|------------------------------------|--------------------------|---------------------------------|----------------|
| Lawn Grass Seed ----- | Cover 2 | Hedge Plants ----- | 21 |
| Landscape Service ----- | Cover 2 | Vines ----- | 25 |
| Rose Plants ----- | 3, 4, 5 | Ground Covers ----- | 25 |
| Fruit Trees and Small Fruits ----- | 6, 7 | Chrysanthemums, Hardy Garden -- | 26, 27 |
| Evergreens ----- | 8, 9, 10, 11, 12, 13, 14 | Perennials, Hardy ----- | 26, 27, 28, 29 |
| Shade & Flowering Trees ----- | 15, 16, 17 | Insecticides & Fungicides ----- | 30 |
| Broadleaf Evergreens ----- | 18, 19 | Fertilizers ----- | 30 |
| Flowering Shrubs --- | 20, 21, 22, 23, 24, 25 | Terms and Delivery ----- | 31 |