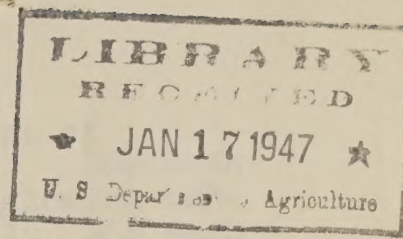


Historic, Archive Document

Do not assume content reflects current scientific knowledge, policies, or practices.

62,51

FLEMMING'S FLOWER FIELDS
Growers of Fine Perennials
3100 LLIGHTON AVE. LINCOLN, NEBR.



1947 CHRYSANTHEMUM LIST

Our Chrysanthemum list is a selection of varieties adapted to garden culture, both as to growth of plant and quality of flower. We feel that these plants will please any person who desires a Mum garden. They may be used in masses or as individual specimens. Cushion mums make a bright edging in borders. Where a show of flowers is desired, there is nothing quite like Chrysanthemums.

A WORD OF CAUTION - Orders should be placed as soon as selections can be made to be sure of receiving varieties you desire. Orders will be filled in rotation as received and shipped at the proper planting time.

Orders for \$2.00 or more prepaid. To prepay smaller orders add 15%. Cash with orders please.

WHITE DOUBLE DECORATIVE

- AVANGLAHL - Large well formed white flowers in great quantities make this a great favorite and a fine cut flower. Early 35¢ each
- BORLEAS - An early strong grower of medium height with large numbers of pure white flowers. Early. 40¢ each
- DRIFTED SNOW - A mound of large double white flowers shaded yellow in the center. Early. 40¢ each
- GLACIER - Long stemmed loose clusters of pure white flowers 3" in diameter. Tall upright habit. One of the finest. Early. 35¢ each
- POLAR ICE - The most beautiful clear glistening white. We like this one very much. A good cut flower. Early. 35¢ each
- SNOWBALL - The plant is medium in height with double blooms which are ivory in the center, later becoming pure white. Early 40¢ each
- WHITE KNIGHT - Three inch pure white flowers with a light cream tinge in the center. Upright habit. Early. 35¢ each

YELLOW SHADES - DOUBLE DECORATIVE

- ALGONQUIN - Showy clear yellow. Good cut flower. Early. 25¢ each
- AUTUMN SUNLIGHT - An intense golden yellow shading to bright yellow at the tips of the petals. Extra early. 40¢ each
- BUTTERBALL - An outstanding variety with ball-shaped incurved flowers 2½" in diameter. Low compact habit. Extra early. 35¢ each
- BURMA - Flowers are a brilliant glistening orange with coppery undertones. Medium tall, fine for cutting. Midseason 40¢ each
- CALENDULA - Deep chrome yellow flowers with a metallic sheen. Blossoms are 3" in diameter. Midseason. 40¢ each
- EUGENE WANDER - A beautiful extra large flowering variety. Blooms are 4" in diameter and a glistening pure yellow. Early 35¢ each
- HARBINGER - Incurved flowers borne in clusters of a fine primrose yellow the coloring of fall maples. Extra early. 35¢ each
- KING MIDAS - A fine yellow variety. Midseason. 25¢ each
- M.J. COSTELLO - Fine golden yellow with bronze shadings. An excellent pot plant. Early. 40¢ each
- MOONGLOW - Low bushy plant with dark glossy foliage. Deep chrome yellow flowers cover plant for several weeks. Early. 40¢ each
- ZANTHA - A beautiful yellow variety with ball shaped 2½" flowers. A vigorous grower and outstanding cut flower. Early. 50¢ each

PINK DOUBLE DECORATIVE

- AUTUMN SONG - An entirely new color in mums. Large wine-rose shading to carmine. Truly outstanding. Early. 40¢ each
- BARBARA SMALL - Large 3" blooms of lovely lavender pink with deeper centers. Sturdy grower with stiff upright stems. Early. 35¢ each
- HEATHER BLOOM - Heather pink, center shaded rose-red, incurved petals tipped gold. A very fine cut flower. Midseason. 40¢ each
- JEAN THURDAY - Perfectly formed, very double pink with deep rose centers. Excellent for cutting. Midseason to late. 35¢ each
- PINK RADIANCE - Tall cut flower variety, clear delicate pink. 40¢ each
- POHATONG - Beautiful fully double large flowers of a lovely orchid pink. Beautiful when cut. Early. 35¢ each
- SEPTEMBER DAWN - New, large bright pink fully double flowers. One of the very finest pink mums. Midseason. 40¢ each
- TIFFANY ROSE - Three inch deep rose pink flowers with faint cream undertones. Reminds one of iridescent Tiffany glass. 50¢ each

1907 CHRYSANTHEMUM LIST

Our Chrysanthemum list is a selection of varieties adapted to garden culture, both as to growth of plant and quality of flower. We feel that these plants will please any person who desires a fine garden. They may be used in masses or as individual specimens. Garden mums make a bright edging in borders. There is a show of flowers in desired, there is nothing quite like Chrysanthemums. A word of caution - Orders should be placed as soon as selections can be made to be sure of receiving varieties you desire. Orders will be filled in rotation as received and shipped at the proper planting time. Orders for \$2.00 or more prepaid. In prepaid orders the 15% Cash with orders please.

WHITE DOUBLE ANEMONE

ANEMONE - Large well formed white flowers in great quantities make this a great favorite and a fine cut flower. Early. 35¢ each
ANEMONE - An early strong grower of medium height with large numbers of pure white flowers. Early. 40¢ each
DARLING GLOW - A mound of large double white flowers shaded yellow in the center. Early. 40¢ each
GARDEN - Long stemmed loose clusters of pure white flowers 3" in diameter. Fall upright habit. One of the finest. Early. 35¢ each
POLAR ICE - The most beautiful clear glistening white. We like this one very much. A good cut flower. Early. 35¢ each
SUNSHINE - The plant is medium in height with double blooms which are ivory in the center, later becoming pure white. Early. 40¢ each
WILD LIGHT - Three inch pure white flowers with a light cream tinge in the center. Upright habit. Early. 35¢ each

YELLOW DOUBLE ANEMONE

ANEMONE - Snowy pure yellow, good cut flower. Early. 35¢ each
ANEMONE - An intense golden yellow shading to bright yellow at the tip of the petals. Extra early. 40¢ each
ANEMONE - An outstanding variety with bell-shaped incurved flowers 2 1/2" in diameter, low compact habit. Extra early. 35¢ each
ANEMONE - Flowers are a brilliant glistening orange with copper undertones. Medium tall, fine for cutting. Midseason. 40¢ each
GARDEN - Deep chrome yellow flowers with a metallic sheen. Blooms are 2" in diameter. Midseason. 40¢ each
LUCAS - A beautiful extra large flowering variety. Blooms are 4" in diameter and a glistening pure yellow. Early. 35¢ each
MILKMAID - Incurved flowers borne in clusters of a fine primrose yellow the coloring of fall peas. Extra early. 35¢ each
MILKMAID - A fine yellow variety. Midseason. 35¢ each
M.J. COLLINS - Fine golden yellow with bronze shading. An excellent pot plant. Early. 40¢ each
MILKMAID - Low bushy plant with dark glossy foliage. Deep chrome yellow flowers cover plant for several weeks. Early. 40¢ each
SUNSHINE - A beautiful yellow variety with bell shaped 2 1/2" flowers. A vigorous grower and outstanding cut flower. Early. 50¢ each

PINK DOUBLE ANEMONE

ANEMONE - An entirely new color in mums. Large wine-rose shading to carmine. Truly outstanding. Early. 40¢ each
ANEMONE - Large 3" blooms of lovely lavender pink with deeper centers. Strong grower with stiff upright stems. Early. 35¢ each
ANEMONE - Healer pink, center shaded rose-red, incurved petals tipped gold. A very fine cut flower. Midseason. 40¢ each
ANEMONE - Perfectly formed, very double pink with deep rose centers. Excellent for cutting. Midseason to late. 35¢ each
ANEMONE - Fall cut flower variety, clear delicate pink. 40¢ each
ANEMONE - Beautiful fully double large flowers of a lovely orchid pink. Beautiful when cut. Early. 35¢ each
ANEMONE - New, large bright pink fully double flowers. One of the very finest pink mums. Midseason. 40¢ each
ANEMONE - Three inch deep rose pink flowers with light cream undertones. Remains one of the finest. Early. 40¢ each

GOLD AND BRONZE SHADES - DOUBLE DECORATIVE

- AUTUMN GREETINGS - Splendid double flowers forming a mass of bright copper and gold. Early. 35¢ each
EARLY HARVEST - Low growing plants covered with 2 3/4" glowing mahogany orange flowers with occasional rose shades. Early 35¢ each
MAROON 'N GOLD - Rather low growing plants bearing extra large flowers in which the rays are brazil red to maroon in color and golden on the underside. Extra early. 50¢ each
SEQUOIA - Large double of beautiful form and ember color. 40¢ each
STALWART - Medium sized double blooms of a brilliant deep gold shaded bronze. Compact habit, very free flowering. Midseason 60¢
WILLIAM LONGLAND - A beautiful medley of yellow and reddish bronze shades. Strong sturdy grower. Midseason. 50¢ each

LAVENDER AND PURPLE DOUBLE DECORATIVE

- CHIPPEWA - Bushy, many stemmed plants bearing large clusters of incurved aster-like purple flowers. Early. 40¢ each
LAVENDER LADY - One of the loveliest of all Chrysanthemums. True light lavender double flowers in graceful sprays. Late 40¢ each
PURPLE STAR - Tall, upright very floriferous variety. Blossoms are a bright dahlia-purple with rays arranged in star shape. 40¢ each
VIOLET - Flowers Dahlia-like, deep amaranth-purple to pansy-purple, 3" in diameter. Midseason. 60¢ each

RED DOUBLE DECORATIVE

- AURORA - Compact plant covered with masses of dragon-blood red flowers which lighten as they age. Extra early. 40¢ each
COURAGEOUS - One of the most promising new reds. Bright dark ruby red flowers 3 1/2" in diameter. Early to midseason. 60¢ each
HEARTHIE - Bright red flowers, small yellow centers when fully open. Fine for cutting. Midseason. 50¢ each
RED HAWK - Flowers 2" in diameter of dragon blood red to Brazil red in clusters on long upright stems. Extra early. 40¢ each
RED VELVET - Shapely medium sized blooms opening velvety crimson, darkening on age. Borne in long stemmed clusters. Late 40¢ each
ROBERT BRYDON - Very free flowering bushy plants covered with garnet red flowers. Early. 35¢ each
SEPTEMBER CHILLER - Very attractive flowers of rich cherry-red on low growing plants. Late. 50¢ each

BLENDED COLORS - DOUBLE DECORATIVE

- AMBER GLOW - Brilliant rosy bronze, brighter toned than the famous Mrs. P.S. Du Pont. Late 40¢ each
BAMBI - Perfectly formed flowers of faun-yellow with amber shadings at the center. Named for the faun so dear to children. 40¢ each
EVELYN - Large double cactus-Dahlia like flowers of an orange bronze with pink shadings. Midseason to late. 40¢ each
MRS P.S. DU PONT - A beautiful blend of peach pink, rosy salmon and faun. An unforgettable cut flower. Late. 40¢ each
OLIVE LONGLAND - A grand double with slightly incurved petals of apricot toned salmon pink. An extra choice variety. Mid. 40¢ each
SYMPHONY - Mauve rose overcast soft coppery rose with the sheen of damask silk, which later takes on silvery lilac and coppery tones. One of the most outstanding garden mums. Midseason. 35¢ each

ENGLISH VARIETIES

These new English mums have been sweeping the country by storm. The blooms are comparable in size to many greenhouse grown flowers when disbudded. All are midseason to late bloomers here.

- ALABASTER - Slightly incurved white flowers which will reach five inches in diameter if disbudded. 60¢ each
ALPINE - Deep rosy pink on long stiff stems. 60¢ each
BUTTERCUP - A large incurved bright golden yellow. 60¢ each
CRIMSON BUTTERCUP - Large incurved golden yellow with crimson on reverse side of petals. Should be disbudded. 60¢ each
ELITE - Dark cerise pink with touch of yellow in the center and on reverse side. Excellent for cutting. 60¢ each
EARLY ACE - Large incurved blooms of golden chestnut. Really a beauty and a giant when disbudded. 40¢ each
INDIANA - Rich velvety crimson. 40¢ each
LEDA - Large heliotrope pink, beautifully rolled petals 60¢ each
MRS. E. PATIE - Terra-cotta red, bronze reverse. 60¢ each
ROSE PRINCESS - Nice long stemmed flowers of salmon rose with a basal blush of gold. 60¢ each
STELLA - Very free bloomer of lovely clear pink 60¢ each
VOLCAN - Large brilliant crimson. 40¢ each

OLD AND NEW ROSES - ROSEALIA SECTION

ALBION GARDENS - Splendid double flowers forming a mass of
 bright copper and gold. Early. 35¢ each
 LADY HAWLEY - low growing plants covered with 3/4" glowing main-
 crany orange flowers with occasional rose shades. Early. 35¢ each
 WILSON'S GOLD - Rather low growing plants bearing very large
 flowers in which the rays are brilliant red and crimson in color and
 golden on the underside. Late early. 50¢ each
 SHELBY - Large double or beautiful form and amber color. 40¢ each
 STAMPA - Medium sized double light rose brilliant deep color
 single spray. Compact habit, very free flowering. Midseason 60¢
 WILSON'S GARDENS - A beautiful variety of yellow and reddish bronze
 shades, strong sturdy grower. Midseason. 50¢ each

NEW AND OLD ROSES - ROSEALIA SECTION

GLORIA - Bushy stems, rather spreading large clusters of
 fragrant white-lilac purple flowers. Early. 40¢ each
 LADY HAWLEY - One of the loveliest of all roses. Fine
 light lavender double flowers in graceful spray. Late 40¢ each
 POLAR STAR - Tall upright very floriferous variety. Blossoms are
 a bright double form with rays arranged in star shape. 40¢ each
 VIOLET - Flowers double, deep amaranth-purple to pansy-purple
 1 1/2" in diameter. Midseason. 50¢ each

NEW AND OLD ROSES - ROSEALIA SECTION

ALBION - Compact plant with numerous clusters of dragon-blood red
 flowers which brighten as they age. Late early. 40¢ each
 GARDENS - One of the best roses in new reds, bright dark ruby
 red flowers 2 1/2" in diameter. Early to midseason. 50¢ each
 HAWLEY - A light red rose, small yellow centers when fully
 open. Late 50¢ each
 LADY HAWLEY - Flowers 2 1/2" in diameter of dragon blood red to brilliant red
 in clusters on long upright stems. Late early. 40¢ each
 LADY HAWLEY - Specially medium sized blossoms, velvety crimson
 background of eye. Borne in low branched clusters. Late 40¢ each
 WILSON'S GOLD - Very free flowering bushy plants covered with large
 red flowers. Early. 35¢ each
 WILSON'S GOLD - Very attractive flowers of rich chestnut red or
 glowing planes. Late. 50¢ each

NEW AND OLD ROSES - ROSEALIA SECTION

ALBION - Brilliant rose shades, brighter than the famous
 late. 1 1/2" in four. Late 40¢ each
 BABY - Perfectly formed flowers of lemon-yellow with amber shading
 at the center. Named for the town so dear to children. 40¢ each
 LADY HAWLEY - Large double carmine-like like flowers as an orange
 shades with pink shading. Midseason to late. 40¢ each
 LADY HAWLEY - A beautiful plant of peach pink, rosy salmon
 and lavender. An unforgettable cut flower. Late 40¢ each
 OLIVE - A grand double with slightly incurved petals of
 apricot toned salmon pink an extra choice variety. Mid. 40¢ each
 SYDNEY - Have rose over the soft coppery rose with the sheen of
 damask skin, which later takes on silvery lilac and coppery tones.
 One of the most outstanding garden roses. Midseason. 50¢ each

ENGLISH VALLEY

These new English roses have been made in the country by storm. The
 blooms are comparable in size to many greenhouse grown flowers when
 distributed. All are midseason to late bloomers here.

ALBION - Slightly incurved white flowers which will reach five
 inches in diameter if disbudded. 60¢ each
 ALBION - Deep rosy, pink on long, soft stems. 60¢ each
 ALBION - A large incurved bright golden yellow. 60¢ each
 ALBION - Large incurved golden yellow with crimson on
 the reverse side of petals. Should be disbudded. 60¢ each
 ALBION - Dark carmine pink with touch of yellow in the center and
 excellent for cutting. 60¢ each
 ALBION - Large incurved bloom of golden chestnut. Really a
 beauty and a giant when disbudded. 40¢ each
 ALBION - Rich velvety crimson. 40¢ each
 ALBION - Large bell-shaped, beautifully rolled petals
 of a deep red, bronze reverse. 60¢ each
 ALBION - Rich low stemmed flowers of salmon rose with
 heavy blush of gold. 60¢ each
 ALBION - Very free bloomer of lovely clear pink
 large brilliant crimson. 40¢ each

POMPONS

EARLY WONDER - Flowers are first a delicate pink blending to a lovely peachblossom pink when fully open. Early	35¢ each
HARBOR LIGHTS - Soft yellow and creamy white tints mingle to create a luminous sparkling effect. Midseason.	50¢ each
HARVEST MOON - low growing plants covered with pompon blooms of a rich burnt orange.	35¢ each
LAVENDER LASSIE - Abundance of graceful sprays of dainty lavender pink like Lavender Lady in color. Early	35¢ each
LITTLE BOB - Bright brick red flowers of the button type.	25¢ each
MANDALAY - A very fine cut flower variety with nice sized blooms of brilliant orange-bronze. Midseason	35¢ each
POM-PONETTE - Tall plant covered with hundreds of pompon blooms of gold overcast bronze. Late.	25¢ each
PYGMY GOLD - A dwarf pompon type producing large quantities of golden flowers. Fine for cutting. Early	25¢ each
RUBY POM-PON - A new and exciting ruby-crimson pompon. Upright habit and very profuse bloomer.	35¢ each
REMBRANDT - A new color combination, rosy mauve tinted copper suffused ripe strawberry. Midseason.	35¢ each
RED GOLD - Medium tall upright plants with two inch scarlet to Brazil red flowers like pompon Dahlias in form. Early	35¢ each
SUN DANCE - Hundreds of fully double golden-bronze pompons cover attractive plants. Midseason to late.	35¢ each

SINGLES AND SEMI-DOUBLES

AUTUMN LIGHTS - Semi-double, bright coppery bronze. Mid.	40¢ each
AUTUMN LIGHTS - Another color with same name. Flowers are a blend of pink and yellow. Midseason	40¢ each
DEBUTANTE - Large semi-double. A gorgeous blending of light rose pink, soft peach and lemon yellow. Midseason	40¢ each
DUBONNET - One of the really good singles with blooms of rich Amaranth pink. Extra long stems for cutting. Midseason	40¢ each
DULUTH - Semi-double flowers of lemon yellow. Extra early	40¢ each
EUREKA GIANT - Large semi-double flowers of a brilliant golden bronze. Excellent for cutting. Midseason.	50¢ each
EARLY JOAN HELEN - Semi-double flowers of sparkling garnet-lake shading to purple with bright yellow centers. Early	35¢ each
POLLYANNA - Large graceful single blooms of luminous Mayflower pink with rosy salmon sheen. Vigorous grower. Midseason	25¢ each
PIRESTONE - A low robust grower with large semi-double flowers of Brazil red to pinkish scarlet. Very freeblooming. Extra early	40¢ each
PROF. SAM WILLISTON - Large semi-double flowers of a glowing dark red. A truly outstanding variety. Extra early.	50¢ each
RED WINGS - Low compact plant with semi-double flowers of Pompeian red. Very valuable as an extra early red.	40¢ each
REDWOOD - Low plants covered with semi-double blossoms whose color varies from carmine to oxblood, Midseason	40¢ each
SERENNE - Lovely white semi-double flowers tinted peach.	40¢ each
SUN RED - Medium tall plants with 3" semi-double flowers of a bright Brazil red. Early	40¢ each
WATER LILY - Semi-double white with four rows of petals arranged to suggest Water Lilies in form. Midseason.	35¢ each
WELCOME - One of the earliest to bloom. Low grower with multitudes of bright mallow purple flowers. Extra early.	40¢ each

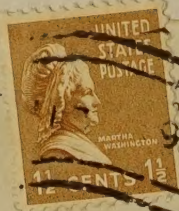
CUSHION CHRYSANTHEMUMS

APRICOT GLOW - Beautiful double blooms of rich apricot bronze. The latest in the cushion family. Early.	50¢ each
CHAMPION CUSHION - Semi-double bronze-red flowers. Early.	35¢ each
CLARA CURTIS - Hundreds of single pink daisy-like blooms cover dwarf plants. Extra early.	25¢ each
DEANNA - A very early bright pink of the Dean Kay type	25¢ each
DAHLIA MUM - The richest of colors, deep purple red. Flowers resemble Cactus Dahlia in form. Early	35¢ each
HARMONY - A beautiful blended type, the flowers being yellowish at first, later strawberry pink and then red. Early	35¢ each
GOLDEN CUSHION - A fine bright golden yellow cushion.	35¢ each
SANTA CLAUS - Dark red blooms, gold in reverse. Taller than most of this type.	25¢ each
SEPTEMBER BRONZE - Hundreds of ball-shaped bronze pompon flowers on cushion type plants. Midseason	25¢ each
SEPTEMBER CLOUD - White pompon of this new type. Mid.	25¢ each
SEPTEMBER GOLD - The third in this group. Fine golden yellow flowers. All fine for cutting. Midseason	35¢ each
SNOWCLAD - a new pure white cushion mum. Early	35¢ each

1947 List of Modern Mums
Fleming's
3100 Leighton, Lincoln 3 Nebr.

U. S. DEPARTMENT OF AGRICULTURE
OFFICIAL BUSINESS

PENALTY FOR
PAYMENT



LIBRARY

U. S. Department of Agriculture

Washington 25, D. C.