

Historic, Archive Document

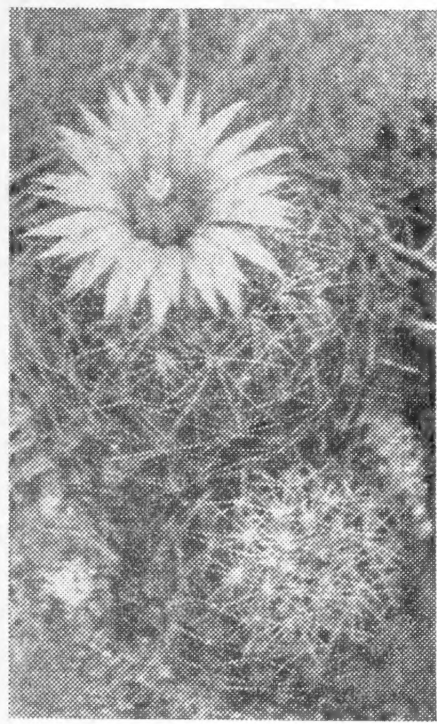
Do not assume content reflects current scientific knowledge, policies, or practices.

62,53

**LIBRARY
RECEIVED**
★ MAR 25 1948 ★
U. S. Department of Agriculture

Franklin Gardens

Elevation 3369



MAMMILLARIA VIVIPARA

Hardy Cacti
Rock Garden Plants
Perennials

1947-48

BIG SPRINGS, NEBRASKA

Terms of Business

Prices in this catalogue cancel any previous listings and are subject to change at any time.

Our terms are cash with order, and including packing and delivery by prepaid parcel post on orders of \$3.00 and over. Orders of less than \$3.00 must include 25c for postage and packing. Otherwise we will think you want your order by express collect.

All orders will be filled and packed in rotation in which they are received. We would suggest that you order early, especially if you wish new or rare plants, as in a good many cases our stock is limited. We have many plants not listed. If you will write us we may be able to supply your needs. Plants are field grown and dug and packed the same day. Every precaution is made at all times to keep all plants true to name.

We give no warranty, expressed or implied, as to quality, description, productiveness or any other matter of any nursery stock we sell.

On account of the great number of conditions over which we have no control, we can assume no responsibility after stock is delivered. If stock reaches you in poor condition, please let us know at once.

Retail sales only, we do not have adequate stock for wholesale orders.

Every variety listed in this price list, is now being grown in our gardens, where stock is insufficient no price is given for this season.

Most descriptions of Hemerocallis, Iris and Poppies are originators descriptions.

Franklin Gardens
Big Springs, Nebraska

HARDY CACTI

All cacti listed have withstood our winters cold up to 30 below zero without protection. The thing for us to do is to avoid too much moisture during the winter when they are dormant. For gardeners that have excessive moisture a raised rockery or sloping hillside is advised. Ordinary garden soil is best for cacti, with crushed rock or gravel on top if desired. Prices quoted are for rooted plants of the ball types and the opuntia types will be sent rooted when possible, otherwise cuttings will be sent.

If you would rather have them rooted and care to wait, will be glad to root them for you before sending.

Echinocereus Aggregatus (Cereus Coccineus)—Cylindrical with prominent ribs, tufted with soft straw colored spines, forms masses of many heads, often measuring 30 inches across. Flowers large and very brilliant scarlet. \$1.00.

Echinocereus Goiacanthus (Kings Crown)—Cylindrical, dark green, broadly ribbed, spines very stout and comparatively few, each head 5 inches high and 2 inches in diameter, forms clusters or mounds 12 to 20 inches across. The blossoms are thick petaled bright red.

Echinocereus Viridiflorus—Pale green striped chocolate blossoms, give name to this species of smaller size, 3 inches high by 2 inches in diameter. They are very pretty with red spines or white, sometimes variegated, usually banded, sometimes forms clusters but usually singular. 50c.

Mammillaria Missouriensis—Dull grey-green ball shaped, 1 to 2 inches in diameter. Has very pretty lacy white spines. Forms compact mounds, the edges coming firmly together so that the sides of the mounds are always snug against the ground, with center raised, often a foot or more across. ~~Flowers are lovely silvery-buff with center raised, often a foot or more across.~~ Flowers are a lovely silvery-buff with pointed narrow petals having a delicate rose streak down center of each petal, filaments green and pink, anthers orange, stigma medium green opening up reminding one of a palm tree. Scarlet fruit that remains on until blossoms push it out or bird or animal eats it. 50c.

Mammillaria Vivipara—Dark green ball shaped, the individual balls are separate and distinct, though they increase around the original forming clusters. Blossoms exquisite glowing rose purple, followed by green spineless fruit. 35c.

Pediacactus Simpsonii (Echinocereus Simsonii)—Pin cushion, ball shaped, densely netted with brown or purplish spines. In very early spring bright pink blossoms arise from a white woolly crown. 50c.

Opuntia Apache—Thick grey-green oblong joints connected in an erect clump formation, 10 to 12 inches high. Distinct for its growth and numerous long brown-red spines, outstanding. 60c.

Opuntia Arborens—Tree or candelbrun cactus—Cylindrical joints, freely branching into tree-like form four to eight feet high. Moderately spiney joints mostly 3 to 6 inches long and 1 inch thick; areoles with dirty-white wool and small yellow to light bristles. Spines 1 inch or less. Flowers lovely cerise purple. Fruit which follows is bright yellow and one inch in diameter. It remains attached and in full color a year or more. 50c.

Opuntia Clavata—A low spreading cacti with ascending joints 4 to 6 inch high forming dense mats 4 to 5 foot in diameter. Joints grey green thick armed with numerous short flat white spines, one of the central spines usually very broad. Flowers thick petaled greenish yellow, Fruit long clavate yellowish, dry, very spiney. \$1.00.

- Opuntia Cimarron**—A high altitude form of extra hardiness, small cemi-cylindrical joints strongly tinged red or purple. Flowers apricot yellow. 60c.
- Opuntia Davisii**—(Lady finger cactus)—Cylindrical stems branching from the center attaining several feet across and seldom over 18 inches high, spines are stiff and straw colored. Flowers greenish yellow, fruit clavate 1 inch or more long. 50c.
- Opuntia Fragilis (Brittle Cactus)**—A small prostrate cactus rarely more than 4 inches high. Joints 1 inch or less in length, oblong or nearly round and very easily detached, very spiny, spines grey to red-brown. Flowers yellow. 35c.
- Opuntia Fragilis var. Arenaria (Sand cactus)**—Dark green joints a little larger and flatter than *Opuntia Fragilis*, but with a lesser number of stout yellow spines. Flowers yellow. 50c.
- Opuntia Messacantha (O. rafinesquii) (O. Humifusa)**—Large flat joints of light green, with reddish brown bristles, spines white with darker tips, few to medium mostly marginal.
- Beauty**—Chrome yellow blossoms, tomato at heart, tomato stamens, slender pads. Very large pottery red fruits. 50c.
- Desert Gold**—Medium yellow blossoms, red-orange at heart, medium red-orange fruits. —
- Gloriosa**—Blossoms 4 to 5 inches in diameter, golden yellow, tomato at heart, tomato stamens, large Ivory stigma. Fruits reddish purple and large. 50c.
- Gold Dust**—Bright yellow blossoms, orange at heart, medium red-orange fruits. —
- Lemon King**—Blossoms lemon yellow, deeper lemon at heart, large pottery red fruits. 75c.
- Orange Heart**—Blossoms cup shaped plain yellow, tiny tinge of reddish orange at heart. Very few spines, green fruits. —
- Peaches**—Blossoms very deep lemon yellow, peach at center with peach stamens. The second day the blossoms turn a lovely peach color, the different age blossoms making a lovely appearance. Small Indian-red fruits. 50c.
- Opuntia Opuntia (O. Vulgaris)**—Prostrate, small round smooth dark green pads rooting wherever they touch the ground, bristles greenish brown and numerous, rarely spines, when present usually one erect and stout. Satiny yellow blossoms. 50c.
- Opuntia Phaeacantha var. Major**—Immense glaucous joints turning purplish during autumn and winter, long dark purple spines. Flowers yellow followed by large purple fruit. 75c.
- Opuntia Polycantha (O. Missouriensis)**—Prostrate wide spreading, rarely more than one foot high, joints variable, from long, oval to round, usually bright grayish green, wrinkled and tuberculate joints 4x6 inch. Areoles about ½ inch apart, grayish wool and reddish-brown bristles. Spines variable in length, number and color, some reaching a length of three inches. Fruit broadly ovate, armed with numerous short spines. Blossoms yellow, darker within, 2 - 2½ inches wide. 35c.
- Antique Gold**—Bronzy antique gold blossoms, darker center, rust filaments, yellow anthers, green stigma, very beautiful. 50c.
- Bronze Gem**—Satiny yellow blossoms, dark rust center, very dark rust filaments, anthers yellow, stigma green. 50c.
- Citrina**—Pale yellow blossoms, yellow and rust filaments, stamens yellow, stigma green. 50c.
- Crystal Beauty**—Blossoms pale yellow, filaments very deep rose-red, anthers yellow. 50c.

- Crystal Tide**—Blossoms are very pale yellow, near white, rosy heart, abundance of pink filaments, anthers yellow, stigma green. Most beautiful. \$2.00.
- Double Cerise**—Very large buds bursting into lovely double cerise blossoms, cerise stamens, stigma green. 75c.
- Dusty Rose**—Small star shaped blossoms of dusty rose, small pads with many light colored pine. 50c.
- Gypsy Queen**—Very brilliant dark cerise-purple blossoms, deep cerise filaments, anthers yellow, stigma green, very distinct. \$1.00.
- Lewellen**—Cup shaped buff-cream blossoms, light orange stamens, stigma green.
- Lovely Lady**—Satiny deep pink blossoms, cerise stamens, brown stigma. 50c.
- North Star**—Very pointed star-shaped blossoms of glistening yellow, filaments red, anthers yellow, green stigma. \$1.00.
- Old Gold**—Satiny gold blossoms, dark gold at heart, crimson filaments, anthers yellow, green stigma, very heavily spined. 50c.
- Orange Sherbert**—Rose orange, darker at heart, filaments orange with pale yellow anthers, stigma green reminding one of a palm tree. 50c.
- Papoose**—Lovely, satin eggshell salmon pink, dusted silvery, spines whitish, very beautiful. \$1.00.
- Peppermint Stick**—Blossoms very beautiful, petals narrow and pointed, old gold striped with burnt orange, cerise filaments, anthers yellow, green stigma. The pads are long with many straw colored spines 2 and 3 inches long. \$1.00.
- Pink Satin**—Blossoms have three rows of lovely deep satiny pink petals, lighter at edge, petals turn back reminding one of a rose. \$1.00.
- Rattler**—Huge buds opening to big cup shaped very double yellow blossoms with rust-red stamens. Pads are very large and upright growing to 1½ ft. \$1.00.
- Rose Beauty**—Medium rose blossoms, with cerise filaments, buff anthers, stigma green. 50c.
- Ruffled Queen**—Lovely deep pink blossoms, very frilly and ruffled, cerise filaments, anthers yellow. 75c.
- Satin Glory**—Very satiny eggshell yellow, stamens yellow, green stigma. 50c.
- Silver Glow**—Silvery white spines against lovely grayish green pads, set off by beautiful satiny pink blossoms. 50c.
- Silver Spine**—Silvery white spines against lovely grayish green pads, set off by beautiful satiny pink blossoms. 50c.
- Silvery Moonlight**—Blossoms silvery light yellow, pinkish at heart, pale yellow stamens, green stigma. \$1.00.
- Spook**—Blossoms glistening creamy white, filaments same. Whitest Opuntia known. \$3.00.
- Star Dust**—Blossoms glowing scarlet, very brilliant and showy, reddest opuntia known. \$2.00.
- Strawberries and Cream**—Blossoms rose-pink, cream around the edge of each petal, very beautiful. \$2.00.
- Sunrise**—Blossoms are double having two to three rows of lovely satiny yellow petals, reminds one of a rose, even more beautiful. \$1.00.
- Twister**—Blossoms are deep yellow, the petals are slim and twisted, green at heart, greenish yellow stamens, medium green stigma. \$1.00.
- Waterlily**—Plain light yellow, opening wide like a waterlily. 50c.
- Warrior**—Blossoms gleaming yellow, with many beautiful rust-red stamens, stigma green. 50c.
- Wild Rose**—Blossoms deep rose with rose stamens, stigma green, many grayish spines, lovely. 50c.
- Cerise Pigmy**—Small round pads, small blossoms of glowing cerise, with cerise stamens, stigma brown. 75c.

- Yellow Pigmy**—Small round pads, blossoms small yellow changing to salmon the second day making a lovely color combination, yellow stamens, stigma green \$1.00.
- Opuntia Rhodantha**—Very striking, spines white and numerous. Lovely cerise blossoms. 60c.
- Opuntia Schweriniana**—Nearly alpine forming neat clumps of oval joints nearly 2 inches in length, numerous soft white spines. Blossoms yellow. 60c.
- Opuntia Whipplei**—Rarely more than 2 feet high, with numerous small branches having short crowded light colored spines about 1½ inches long. Flowers greenish, borne at the ends of the joints. \$1.00.
- Opuntia Xanthostemma**—Red flowered opuntia from Western Colorado. Very much like opuntia Rhodantha but makes more compact clumps. \$1.00.
- Yucca Glauca (Soap Weed)**—clusters of medium slender stiff-sword-like evergreen leaves a foot or more long, with long thread-like marginal fibers, from the center rise in June, long flower stalks bearing clusters of fragrant greenish-yellow bell-shaped flowers, which are followed by wood pods with many thin black seeds. No desert garden is complete without several yuccas. 50c.
- Yucca Angustissima (Swaying Yucca)**—Extremely narrow evergreen foliage, sharp pointed, edged with long thread-like fibers, making colonies, from center arise tall branched stalks bearing clusters of greenish-white bell shaped blossoms, followed by seed pods. \$1.00.

HARDY BORDER PERENNIALS AND ROCK GARDEN PLANTS

- Abronia Fragrans**—1 to 1½ ft. Glauous foliage, semi-prostrate, with verbena-like balls of white blossoms opening in the evening, intensively fragrant. 50c.
- Achilla—Milfoil or Yarrow.**
- Argenta**—4 in. Mounds of silvery white, large white flowers. 35c.
- Filipendulina**—3 ft. Flat heads of brilliant yellow above the cut foliage. Excellent for cutting and winter boquets. 35c.
- Millefolium**—1 to 1½ ft. Ferny foliage, with flat clusters of small white flowers in May and June. 35c.
- Millefolium Roseum**—20 in. Pink flowers in dense flat heads, fine ferny foliage. 35c.
- Millefolium Cerise**—Like the above except the flower heads are cerise red. 35c.
- Ptarmica Boule de Neige**—2 ft. Clusters of little pure white double flowers like snowballs. Excellent for cutting. 35c.
- Rupestris**—6 in. Green packed cushion, drifts of white above. 35c.
- Serbica (Ageratifolia)**—6 in. Downy silvery foliage cushions, with fairly large daisy-like white flowers. 35c.
- Tomentosa**—8 in. Woolly foliage mass of super ferniness, bright golden flower clusters. 35c.
- Tometosa Sulphurea**—8 in. A new form with light yellow blossoms. 50c.
- Ajuga—Bugle.**
- Genevensis (Alpina)**—6 in. Mats of green foliage with blue flowers. 35c.

- Genevensis Variegata**—Similar to above but foliage somewhat splashed with yellow. 35c.
Repatans—6 in. Carpeting plant with blue flowers. 35c.
Repatans Alba—6 in. pure white flowers. 50c.
Repatans Brockbanki—6 in. Bronzy-green foliage, blue flowers. 35c.
Repatans Rosea—6 in. A new pink flowered form. 35c.
Repatans Variegated—Foliage green, variegated with cream, silver and pink. 50c.

Allium.

- Ammophilum**—20 in. Fluffy balls of orchid, with blue anthers. 35c.
Azureum—20 in. Delightfully pure bright blue, are the closely clustered lacy heads. True form. 50c.
Cernum—The **nodding onion**—6 to 10 in. flowering stems, and nodding clusters of little bell-like very soft pink flowers. Likes light shade and moisture. 35c.
Controversum—12 in. A rare lovely flower jewel, clustered blooms of deep pink. 35c.
Cyaneum—6 in. Many slender stems carrying miniature heads of light blue star-bells. 35c.
Farreri—10 in. Pretty bells of rich rosy purple in nodding one-sided clusters. 50c.
Flavum—16 in. Bells of light yellow, in many informal clusters. 35c.
Flavum Minor—8 in. Flower bells of yellow, buff tawney in reverse, are carried in loosely spraying clusters, exceedingly floriferous. Good in rock garden. 35c.
Mt. Cenís Species—8 in. Dainty heads of rosy lavender. 35c.
Odorum—20 in. Nearly flat umbel of closely set starry white flowers, marked with green, which turn upward. Flowers throughout late summer and early autumn, flowers exhale a Heliotrope fragrance and last long in good condition. nice cut flower variety. 50c.
Pulchellum—18 in. Loose heads of raspberry, very attractive, like a spraying skyrocket. 40c.
Pyrenaicum—9 in. Florets of smoky lavender in close packed clusters. Evenly crowded glossy leaf ribbons. —
Recurvatum Album—12 in. This pure white form is very lovely and the individual bells are like tiny white lilies. 60c.
Recurvatum Superbum—15 in. Tall robust clear rose. 50c.
Senescens Glaucum—8 in. Very attractive in late summer with balls of pink flowers above a tuft of curly grey-green leaves. 50c.
Stellatum—15 in. Stars of glorious rose pink and golden anthers in the fall. 35c.
Thibeticum—Softest rose-lavender blossom stars in compact clusters. 35c.
Tuberosum—36 in. Sweetly fragrant flower clusters, upfacing snowy stars top each spiraling stem. 35c.

Alyssum Argentum—12 in. Silvery mounds, mantled with flake-flowers of citron yellow. 35c.

Anchusa.

panicles of blue-star flowers. 35c.

- Amsonia Tabernaemontana**—25 in. Long willowy stalks with big
Barrelieri—18 in. Small deep blue flowers on long stems in June. Bushy habit. 35c.
Italica Dropmore—4-5 ft. Tall spikes of lovely deep blue flowers intermittently all summer. 35c.
Myostidiflora—12 in. Large heart shaped foliage, clusters of blue forget-me-not flowers above the foliage in May. Will grow in shade. 35c.

Anemone.

Patens Nuttaliana—American Pasque Flower. Tulip-like blossoms of satiny lavender, each centered with a ball of golden stamens, appear in very early spring. Followed by fluffy seed plumes. The downy fern-like leaves appear after the flowers have passed and remained all season. 35c.

Patens Nuttaliana Sea Gull—A grey-white flowered form of the above. \$1.00.

Anthericum.

Liliago—St. Bernard's Lily. 10 to 15 in. Grass-like foliage with lovely fragrant white flowers in a spike during July. 35c.

Liliastrum (Paradisea Liliastrum)—St. Bruno's Lily. 18 in. White lily-like blooms above grassy foliage tufts. 35c.

Aquilegia Blue Heaven (Coerulea Daileyae)—A beautiful mutation of the Colorado Columbine. Instead of having a white cup, the flower is all blue saucer and spurless, so large that the effect is that of an intense blue clematis, the boquet of yellow stamens making an attractive contrast. Mrs. Marriage's description. \$1.00.

Artemisia.

Frigida—12 in. Silky, silvery ferny aromatic foliage, one of the best. 35c.

Silver King—3 ft. Frosted silver foliage, a beautiful mist for setting off bouquets and sprays, may be used for winter bouquets. 35c.

Asclepias.

Incarnata Pulchra—3 ft. Delightful old rose flower umbels. 35c.

Incarnata Alba—Like the last but blossoms of silvery white. —

Asters—Michaelmas Daisies.**Novae-angliae New England Aster. 4 ft.**

Barr's Pink—Large sem-double flowers of rose pink. 35c.

Burbank's Charming—A late variety with lovely arching one-sided fan-like sprays of soft pink flowers. Very frost resistant. This and White Plume make wonderful fillers for bouquets. 40c.

Mount Rainier—Large flowers of pure white narrow petals, with a golden eye. Easily the best of its color in the novae-angliae section. 50c.

White Plume—3½ ft. A hybrid, showing its ericoides blood by feathery foliage and small white flowers. 45c.

Novi-belgi—New York Aster.

Beechwood Challenger—3 ft. Brilliant crimson flowers, the nearest red michaelmas daisy. 35c.

Blue Gown—4 ft. Very large flowers of a lovely clear medium blue. 35c.

Blue Plume—2-3 ft. Semi-double flowers of deep blue. 40c.

Climax—The old favorite, large lavender flowers. 35c.

Hilda Ballard—A lovely new double form having large blooms of silvery mauve. 50c.

Hon. Vic. Gibbs—2 ft. Tiny blue flowers smother the plant calling to mind heather. 35c.

King of the Belgians—Very large semi-double lavender-blue flowers. 40c.

Lavender Giant—Large lavender-blue flowers completely cover the 3 ft. plants in graceful sprays. Ideal for cut flowers. 50c.

Maggie Perry—Narrow petaled large silvery mauve. Distinct. 50c.

Mammoth—Very large flowers of pearl grey. 50c.

Mount Everest—A grand white aster that flowers right down to the ground. 35c.

Ogla Kieth—Double rich rose pink. 35c.

Palmyra—3 ft. The semi-double pink flowers smother the bushes which are perfect pyramids. 45c.

Queen Mary—Large flowers of blue, tinted lavender in graceful panicles. 35c.

Silver Sheen—3 ft. Beautiful fall aster, with bright lavender-blue flowers. 50c.

Spring Side—3 ft. Of erect habit, luxuriant foliage and large flowers of clear soft blue with lilac tint. 45c.

Strawberries and Cream—Flowers when first opening are a very deep pink turning to a softer pink with age which makes a lovely combination. 40c.

Violetta—3 ft. New. Lovely flowers of violet purple. 50c.

Dwarf Asters.

Countess of Dudley—Clear pink flowers with yellow eye. 35c.

Lady Henry Maddocks—Clear pink flowers in early September.

Lilac Time—Lovely soft lilac flowers. Of bushy habit. 35c.

Marjorie—Late blooming bright rose pink. 35c.

Nancy—Dwarf bushy habit, great masses of lavender pink blooms.

Niobe—Very dwarf with pure white flowers. —

Victor—Clear lavender blue flowers, very dwarf. —

Aster Species and Hybrids.

Alpinus Alba—8 in. Pure white daisy-like flowers. May and June. 50c.

Campbell's Pink—Resembles Aster acaris in foliage, habit and flowers. Rosy pink flowers from August to October. 35c.

Ericoides—1½ ft. Very branched and bushy, small linear leaves, tiny white blossoms very crowded on the stems. 35c.

Mauve Cushion—A hardy species forming round cushion-like plants 6 to 8 in. high. Covered with pale mauve colored flowers during October and November. —

Oblongifolus—Leaves grayish lanconate, forms broad mounds up to 1 ft. high. In September is covered with a sheet of fine petaled lavender asters with gold centers. Very showy. 35c.

Oblongifolus-rosea—A choice variety with rose pink asters. 45c.

Snowflurry—New. A dwarf with small foliage. Countless glistening snow white blossoms less than an inch in diameter, very different and fine. Nice for filler in bouquets. 50c.

Tartaricus—The latest blooming aster. Erect stems to five feet tall, with large lanceolate leaves. The terminal heads are filled with small blue-violet flowers. 35c.

Callirhoe Involucrata (Poppy Mallow)—Trailing plants with large wine-crimson mallow shaped flowers. A brilliant blaze. 35c.

Campanula.

Cochlearifolia (Pusilla)—4 in. Large mats of fine foliage with nodding lavender—blue bells in midsummer. 35c.

Glomerata—12 to 18 in. Upfacing clusetrs of rich purple flowers in July. 35c.

Glomerata White Queen—12 in. A white form of the above. 75c.

Persicifolia (Peach Bells)—2 ft. Large single lavender-blue flowers. 35c.

Persicifolia Blue Gardenia—2½ ft. Semi-double flowers of a beautiful shade of blue, above neat tufts of leathery dark green foliage. June to August. 50c.

Persicifolia Misty Morn—2½ ft. New and outstanding. Double lavender-blue bells cover the spiral stems. 60c.

Persifolia Moerheimi—2½ ft. Large double Camellia-like flowers of exquisite creamy white. 50c.

- Persicifolia Mount Hood**—2½ ft. A fine double white peachbell. 50c.
- Poscharskyana**—Trailing plant with far reaching prostrate sprays of blue starry flowers. 35c.
- Raddeana**—Round, glossy leaves, sharply toothed at the edge. Branching sprays of large dark purple bells on 9 to 12 in. stems. Rare and distinct. 50c.
- Rotundifolia (Bluebells of Scotland)**—12 in. Slender branching stems with nodding bells of blue. 35c.
- Rapunculoides**—2 ft. Large lavender purple hanging bells, invasive. 35c.
- Centaurea Dealbata**—2 ft. Well rounded branching plants with pinnate foliage, silvery tomentose below. Deep rose and white flowers. 35c
- Cephalaria Radiata**—4 to 5 ft. Fluffy scabiosa-like blossoms of sunlight yellow. 35c.
- Chrysanthemum Maximum—Shasta Daisy.**
Supreme—Extra large single white flowers all summer. 35c.
- Hardy Chrysanthemums.**
- Acacia**—A profusion of small glittering, semi-double yellow blossoms completely cover the plant in September and remain fresh and attractive long after other kinds have been destroyed by frost. 35c.
- Alabaster**—A very large English variety with large white incurved flowers about 5 inches across. 50c.
- American Beauty**—The color of the American Beauty rose. 35c.
- Appolo**—A most profuse bloomer, two inch single blossoms are a sparkling combination of orange, bronze and gold. 35c.
- Aurora**—Tall lavender button. 35c.
- Autumn Lights**—Masses of semi-double blossoms of glistening coppery bronze with a gleaming orange tone, very hardy and conspicuously different, early. 30c.
- Avalanche**—The world's best large creamy white, fully double. 40c.
- Boreas**—Rather low bushy mum, but stems are long making it an ideal cut flower. Blossoms are very early double pure white. 50c.
- Bronze Beauty**—Warm coppery bronze blossoms borne four in a square cluster to a stem. Different. 35c.
- Bronze Button**—Tiny deep mahogany bronze button, tips of petals highlighted with yellow gold, a gem for bouquets. 25c.
- Bronze Cushion**—Masses of light bronze blossoms, completely hide the plant, very early bloomer. 25c.
- Burgundy**—Large dahlia-like flowers, rarest of colors glowing rich wine-red. 35c.
- Caliph**—Very double deepest and richest oxblood red with a rich velvet sheen, so prominent it stands out conspicuously among others. 35c.
- Captain John Smith**—Rosy-pink, has short petaled full flowers 2 in. across. Very bushy, height 18 in. 35c.
- Ceres**—Old gold blended with chamos yellow, dusted with gold dust. 35c.
- Champion Cushion**—A reddish deep bronze, a distinct color. The flowers and growing habit are the perfect cushion type, blooms early to late. 25c.
- Chippewa**—The true variety. Giant 4 inch incurved aster-like flowers of mallow purple, freely produced on strong 2 foot stems, very showy, choice for cutting. 50c.
- Clara Curtis**—A fine European novelty. Above a mass of distinct finely foliage arise the many pyrethrum like blossoms of lovely shell pink warmed with old rose tints. Blooms very early. 30c.

- Colorado Lavender Lady**—Gleaming bright deep lavender flowers up to 5 inches across, an outstanding variety that is a "Must" on sight. 50c.
- Courageous**—Large double blossoms of bright dark ruby-red, a very promising new early dark red. 75c.
- Dahlia Mum**—The flowers resemble a cactus dahlia which combined with its wine-red color makes it a beautiful and very distinct variety. Fine cushion type. 35c.
- Dean Kay**—The deep pink blossoms have an unusual lustre and hold their color even in the hot August sun, very early cushion type. 30c.
- Dean Ladd**—Summer flowering, large double reddish bronze blossoms. Good. 30c.
- Duluth**—The earliest of all double yellow cushion mums. 35c.
- Early Bronze**—(Edmund F. Black)—Early deep bronze pompom, fine for cutting. 30c.
- Early Wonder**—New large soft pink pompom, beautiful for cutting. 35c.
- Edgar A. Guest**—A very profuse bloomer of striking brilliant red blossoms from September on. Height is dwarf and blossoms average 2 inch. 25c.
- Eggshell**—Large double distinct eggshell-white, slightly deeper at center blossoms, which are 3-4 inch across. Excellent for cutting as it has lasting qualities. 50c.
- Ember**—Very double luminous coral bronze that just glows. Unusually frost resistant. One of the best. 35c.
- Eugene Wander**—Without a doubt the finest and largest double yellow, in full bloom by early Sept. Blooms 4 inches across. 40c.
- Eureka Giant**—Fine semi-double 2½ inch blooms of very brilliant orange. 50c.
- Garden Queen**—An outstanding and unusual beauty, Most striking combination of creamy yellow suffused with crimson-salmon and bronzy-rose. Its large flowers are excellent for cutting. 40c.
- Glacier**—Dwarf, very early, double absolutely pure white. 50c.
- Glittering Hills**—Double lemon yellow 3 inch blooms without budding, quantities of beautiful blooms on stiff stems. 50c.
- Goblin**—The pompom blossoms, perfectly formed, two inches across, are so nicely placed that each blossom stands out distinctly. The color is a reddish bronze, shading to a sparkling gold in the open flower. A real gem. 40c.
- Granny Scovill**—Well formed shaggy flowers fully 4½ inches across of a glowing clear warm coral bronze, one of the finest. 35c.
- Harbor Lights**—Beautiful pompom, early bloomer of soft yellow and creamy white tints mingle to create a luminous sparkling effect. 40c.
- Harmony**—In a general way this would be classed as a bronze flowered variety, altho the color of the flowers on the same plant varies from yellow to brazil red. During the early season it is yellowish, later strawberry pink and with the cool weather it becomes brazil red. At times all the colors are present at once. The plant is similar to the cushion type. Flowers 2¼ inch in diameter. 40c.
- Heatherbloom**—Very double heather-pink flowers, center shaded rose-red with gold tipping, very good. 60c.
- Ida Brewster**—Large brilliant crimson flowers, with a very attractive yellow center. Flowers are 3-4 inches across and have several rows of petals. 75c.
- Indian Summer**—Blossoms double glowing orange bronze, nearly frost proof. Fine for cutting. 35c.
- Irene**—Dainty pure white buttons, without a doubt the finest white button, Larger than White Button. 25c.
- Joan Helen**—Very profuse bloomer. Semi-double blossoms with

sparkling garnet-lake shading to purple, bright yellow center, completely hide the plant. 50c.

Judith Anderson—Well rounded 1½ inch blooms of clear buttercup yellow. 25c.

L' Argentuillas—Fine large double two toned bronze. 35c.

Lavender Lady—The blooms are fully double 3 inches or more across and of that lovely silvery-lavender tint. One of the finest. 35c.

Lavender Lassie—A grand new double pompom, with cushion-like growth, color even better than Lavender Lady. 40c.

Lav White Cushion—True cushion type with blossoms white, tinted lavender. 35c.

Leda—English type with huge blossoms of heliotrope-pink with rolled petals. 35c.

Little Bob—A charming chrysanthemum of the cushion type forming a mound, in early autumn, it is loaded with hundreds of small bronze-crimson button blossoms. A real gem. 50c.

Little Jim—Same habit of growth and bloom as little Bob, but the color is a light tan with pink overtones. A plant to be proud of. 50c.

Little Joe—Hundreds of silvery pink, tight, double, button-like flowers burst open early in the season, lasting to the end. The perfectly formed blooms do not fade to a dirty objectional color, but hold their pleasing pink shade. Grows 15 inches tall and 30 inches across. 75c.

Louis Schilling—The blossoms are good size: fully 3 inches across, with 3 or 4 rows of petals, fluffy and distinct in appearance and are lovely glowing salmon-red changing to a soft bronze-salmon as the flowers mature. 35c.

Magnolia—Large double blooms of dainty soft pink with cream yellow tints. 60c.

Mantantico—Semi-double unusual bright red blossoms on compact 18 inch plants. 35c.

Mandalay—Brilliant orange bronze pompom of recent introduction. Ideal for cutting. 40c.

Mars—Large single deep amaranth red overlaid with a velvety sheen. 40c.

Milky Way—A magnificent milky-white, very popular, valuable because the semi-double blossoms are more frost resistant than any other white variety. 35c.

Minog—Neat snow white perfectly formed button blossoms. Free flowering. 40c.

Mitzie—A buttercup-yellow button with a red center, height 15 inches, very early bloomer. 35c.

Moonglow—An early bloomer having double deep lemon-chrome blossoms 1¾ inch in diameter, covering the plant for several weeks. 40c.

Mrs. C. R. Hastings—A striking crushed strawberry red semi-double type, with 2 inch blossoms. Nothing like it, beautiful for bouquets. 50c.

Mrs. Pierre S. Dupont III—A perfect cut flower, the large full perfectly formed flowers are a glorious blend of rosy-peach, tinted salmon and buff shades. 40c.

Muskogee—Flowers in red in bud, open to a lovely purplish pink giving an attractive red and pink combination. A good U.S.D.A. origination. Most unusual. 40c.

My Lady—Another summer flowering with delicate apricot buds that open into beautiful double warm yellow blossoms. 35c.

No. 60—Lovely double bronze. In great demand. 25c.

North Star—Earliness and hardiness are the characteristics of this mum, by mid Sept. it is a cascade of pure glistening white single daisies, staying clean white for a long period. Very husky. 40c.

- Nysa**—Compact dwarf plant producing lovely single rosy-lilac daisies 3 inches across in great profusion. 35c.
- Oriental**—An oriental shiek of the garden and just as gorgeously and colorfully dressed in two color combination of pink and cream. Flowers very double and decorative.
- Osage**—Large double lavender, cream center, very distinct and lovely. 40c.
- Ouray**—Masses of rich bronze button blossoms with a coppery glow. 30c.
- Peach Blow**—Semi-double glorious blend of salmon-pink, fawn and bronze, strong and sturdy. 40c.
- Pink Bouquet**—Very large single pink, rightly named for each branch is a bouquet in itself, tall. 35c.
- Pink Cushion**—Masses of light pink blossoms completely cover the plant. Very early bloomer. 25c.
- Pipestone**—A low robust and spreading plant with semi-double brazil-red blossoms that reach $2\frac{3}{4}$ inches in diameter, largest and brightest of any of the cushion mums. 40c.
- Polar Ice**—Clear glistening blue-white without a trace of cream color. Flowers double $2\frac{1}{2}$ -3 inch in diameter. Very free flowering and the most beautiful white. 35c.
- Psyche**—Clear single shell pink flowers 4-5 inches in diameter. Very fine. 35c.
- Purple Jewel**—A sport of the regular Jewel. Perfect compact flowers of deep mauve purple. 40c.
- Purple Star**—New! Distinct star shaped 2 inch semi-double blossoms of bright dahlia purple. 50c.
- Pygmy Gold**—A distinct dwarf pompom, producing an abundance of blossoms slightly over one inch across, of remarkable intense yellow. A korean hybrid beginning to bloom early and continuing throughout the season. 35c.
- Red Gold**—Very attractive, one of the university of Minn. introductions, blossoms a lovely combination of red and orange-gold, brightest of the pompoms. 50c.
- Red Wing**—Semi-double small bronzy-red blossoms with a yellow center, 40c.
- Rembrant**—An art blend entirely new, rose mauve with faint copper and strawberry tinting. 50c.
- Red Velvet**—Full double rich velvety crimson. Finest of all. 35c.
- Robert Brydon**—Double dark garnet-red flowers $2\frac{1}{2}$ inches across. Plant has a dense habit 18-20 inches tall and very free flowering. 50c.
- Rose Glow**—Entirely different double raspberry-rose blossoms on excellent cutting stems. 25c.
- Rose Travana**—Strong grower having huge sprays of large button type blossoms of rich rose-purple. 35c.
- Saladin**—Gorgeous semi-double oriental red shading to a cool coral red with coppery tones, three inch with four rows of petals. Delightfully fragrant and very lovely. 40c.
- Santa Claus**—Masses of brilliant red semi-double blossoms with a golden reverse, smother the dwarf plant early in autumn. Very fine. 35c.
- Saturn**—Brilliant sparkling orange and bronze enhanced by a soft orange ring surrounding the golden yellow center, flowers single and 3 inches across. 35c.
- September Bronze**—Pompom blooms with the warm bronze tints of autumn, petals have a golden edge. 35c.
- Silver Tips**—Double blossoms of bright carmine with the tips and reverse of the petals silvery white. Unique and lovely. 40c.
- Teton**—A good U.S.D.A. variety, large glistening white single pyrethmum-like blossoms. 35c.

- The Chief**—One of the most admired sorts, being a loosely semi-double of bright scarlet with a gold reverse, freely produced on well branched sprays. Lovely. 40c.
- Tiffany Rose**—Double deep rose flowers with faint cream undertones, remind one of the iridescence of tiffany glass. An excellent cut flower. 60c.
- Water Lily**—Semi-double white. 40c.
- White Gull**—Low white button. 40c.
- Welcome**—An early bloomer with semi-double bright pinkish purple blossoms, $1\frac{3}{4}$ inches in diameter. Low and bushy plant. 40c.
- White Button**—As the name describes. Lovely for bouquets. 25c.
- White Cushion**—At opening showing a delicate pink changing to pure white as the flowers develop. 25c.
- Yellow Anemone**—Many small bright lemon anemone-like blossoms, very frost resistant. Foliage attains lovely autumn coloring, very lovely. 35c.
- Yellow Cactus**—Blossoms large sulphur yellow measuring over 3 inches in diameter. A flowery mass that blooms very early. 40c.
- Yellow Emperor**—Here we have an outdoor chrysanthemum with flowers like the green-house varieties, measuring 4 to 5 inches across of purest empire yellow. Medium height, unsurpassed for cutting. \$1.00.
- Yellow Sport Cushion**—A true yellow cushion. In all respects this charming mum is like pink cushion except for color. Low and bushy completely hidden with myriads of soft sulphur yellow blossoms, with no bronze tints. 40c.
- Youdash's White**—An early large white, full flowered with creamy center, turning pure white when in full bloom, blossoms measure $2\frac{1}{2}$ inches and starts to bloom early and lasts until frost. 40c.
- Zantha**—Clear canary yellow with ball shaped blossoms, early bloomer and blooms all season. 75c.

Northland Daisies

- Astrid**—Extremely hardy, with single soft rose daisy-like blossoms 3 inches across, foliage very distinct. 35c.
- Kritina**—The most beautiful deep pink blossoms 3 inches across. Buds red, foliage broad and dark. 30c.
- Siegfried**—Delightful single blossoms 3 inches across made up of long petals of rich, bright golden-yellow from central disk. 35c.
- Viking**—Beautiful single blossoms of burnt orange or reddish bronze, $3\frac{1}{2}$ inches across. 30c.

Spoon Mums

- Buff Spoon**—Three inch cinnamon-buff blooms on 18 inch plants, a beauty. 50c.
- Bronze Spoon**—Long golden petals with reddish bronze tips. 40c.
- Golden Spoon**—Masses of semi-double blooms of glistening bright golden apricot yellow. 40c.
- Jasper Spoon**—A very unusual shade of jasper-red spoons at the tips, with old straw yellow color tubes, very distinct. 40c.
- Pink Spoon**—Large showy semi-double blossoms of pure pink. 40c.
- Red Spoon**—Striking deep rich velvety maroon blossoms. 40c.
- Rose Spoon**—Luminous old rose. 40c.
- Rose Quilled**—Large full flowers $3\frac{1}{2}$ inches across, quilled petal silver pink outside, deep rose inside, very lovely and unusual spoon type. 40c.
- Orchid Spoon**—Large lovely orchid pink. 40c.
- White Spoon**—A real novelty, double white fuzzy flowers with creamy center, excellent for cutting. 40c.
- Yellow Spoon**—Double brilliant yellow spoons and tubes. 40c.

Colchium. Showy autumn flowering bulbs with large crocus-like blossoms, in profusion.

Agrippinum—Checkered rosy purple. 50c.

Autumnale—Soft pinkish lavender. 35c.

Autumnale Alba—Pure white, increases quickly. 35c.

Autumnale Alba Plena—A rare double white, very pretty. \$1.00.

Autumnale Rosea Plena—A choice double pinkish lavender form. 75c.

Autumn Queen—Dark lilac, prolific and early. Large flowered. 60c.

Lilac Wonder—Extra large flowers of clear mauve. Free flowering. 55c.

Premier—Large dark pink, early free bloomer. 60c.

Speciosum—Large, deep rosy purple. 50c.

The Giant—Immense flowers of pure lilac. 60c.

Violet Queen—Deep violet-purple, very beautiful. 50c.

Coreopsis Grandiflora—A popular plant bearing bright yellow daisy-like flowers throughout the summer, good for cutting. 35c.

Dianthus.

Arenaris—6 in., deeply fringed, fragrant white flowers. 35c.

Deltodies—Masses of bright green foliage and an abundance of small rose-crimson flowers. 35c.

Deltodies Alba—6 in., small white flowers with red markings at the center. 35c.

Deltodies Major Stern—A variety of Deltodies having deep crimson flowers and dark foliage tinted bronze. 40c.

Little Joe—6 in. Novelty, beautiful gray-green foliage, almost blue in effect, has large single rich carmine blossoms. 50c.

Plumaris—10 to 12 in. Pretty gray-green foliage and fragrant flowers of pink. 35c.

Sammy—5 in. It forms a nice blue-gray cushion covered with perfectly formed double pink flowers in June. Delightfully fragrant. 50c.

Sundermanii—12 in. Snow white fringed flowers in June, Jasmine fragrance. 35c.

Tiny Rubies—2 to 3 in. A close tuft of gray foliage and small, brilliant, very double ruby red sweet scented flowers. 50c.

Digitalis Ambigua—2 to 2½ ft. Spikes in June and July with yellow flowers marked with brown. 35c.

Dodecatheon Radicatum (Shooting Star)—8 to 12 in. Leaves oblong, making a low tuft from which shoot several stems, each topped with many brilliant rose and gold cyclamen like flowers. Lovely. 35c.

Echinops Ritro (Globe Thistle)—4 ft. An interesting thistle-like plant with globular heads and deep metallic-blue flowers in late summer. 35c.

Erigeron Speciosus—20 in. Large fine petaled lilac daisies in August, fine for cutting. 35c.

Eryngium—Sea Holly.

Amethystinum—2 ft. The blue thistle, with amethyst stems and bracts, beautiful in July and August. Grand for winter bouquets. 50c.

Planum—2 ft. This is a prickly plant in every respect, the leaves are prickly, the light blue flower head is surrounded with prickly bracts. 35c.

Euphorbia—Spurge.

Corollata (Flowering Spurge)—2 ft. Showy and useful plant, large umbels of small white flowers with green eye in summer, excellent cut flower as a substitute for Baby's Breath. Foliage turns a beautiful golden yellow in the fall. 35c.

Cyperissus—8 to 10 in. Like little cyprus trees, with greenish yellow bracts. 35c.

Myrsinites—Trailing, with fat spraying stems set with blue-green leaves in spirals. In spring each stem ends in a crown of gold. 35c.

Grasses Hardy Ornamental.

Arrhetherum Bulbosum—Bulb grass. 8 to 10 in. Variegated leaves of green and white. 35c.

Elymus Glaucus—Blue Lime Grass. Large blades of blue-gray, grows 2 to 3 feet. Nice in combination with pink flowers and fine bouquet grass for daffodils. 35c.

Festuca Glauca—A pretty dwarf grass, with tufts of fine bluish green foliage. Very good for edging. 50c.

Variegated Ribbon Grass (Phalaris Arundinacea Picta)—1 to 1½ ft. Very hardy, with broad leaves striped green and ivory. 35c.

Hedera Helix Gracilis (Hardy Baltic Ivy)—A lovely vine as well as a splendid ground cover, foliage not as large and more cut than the English Ivy. Perfectly hardy and a graceful evergreen vine. 50c.

Helenum.

Chipperfield Orange—4 to 5 ft. Well formed flowers of brilliant orange yellow, prettily flamed brick red. 35c.

Moreheim Beauty—3 ft. An improved Crimson Beauty, the glowing brown red flowers clearing the foliage by several inches. 50c.

Helianthus—Perennial Sunflower.

Coronation—4 to 5 ft. Golden yellow flowers with an anemone center, about 4 in. across, blooms profusely in late summer and early fall. 50c.

Multiflorus Flore Pleno—4 ft. Double clear yellow flowers, closely resembling a dahlia. 50c.

Orgyalis (Salicifolius)—Tall stems clothed with narrow willow-like foliage reaching about four feet by mid-August, then of a sudden they shoot up another four feet, but this all, a long yellow panicle of pretty yellow daisies. 35c.

Heliopsis—Orange Sunflower.

Scabra Vitellina—3 ft. Rare, full double golden variety, very showy and a fine cut flower. June to September. 50c.

Hemerocallis—Daylily.

Admiration—2½ ft. A mahogany red with deeper mahogany eye zone, 4 in. bloom is slightly ruffled, throat yellow. —

Aflame—Cup shaped blooms of medium size, almost crimson in color with a deeper red halo, enriched by a glowing yellow throat. —

Afterglow—3 ft. Pale buff and pastel peach, with a rosy tint in the throat and mid-vein of petals, July and August. —

Ajax—Deep orange apricot, with faint fulvous tint. June. —

Aladdin—3½ ft. Strongly Banded, garnet-brown spot on petals, outer half golden yellow, remains open evenings. June. —

Alba Striata—3 ft. Large open flowers of light yellow, changing to almost white. 50c.

Amaryllis—36 in. Beautiful golden orange. —

Anna Betscher—3 ft. Deep orange yellow, shaded with bronze, large flowers. July and August. —

Apricot—2 ft. Early free blooming light apricot-orange. May and June. 50c.

Araby—3 ft. Medium sized flower of rosy tan yellow, with a distinct band of morocco red. Broadly overlapping petals. July. —

- August Pioneer**—3 ft. Chrome yellow with outer half of petals flushed. August and September. \$1.00.
- Aurantica**—2 ft. Bright cadmium orange with deep shades at the center. 35c.
- Autumn Prince**—3 ft. Clear, light yellow flowers on many strong branches. August to frost. —
- Autumn Red**—An open semi-flaring flower with petals of vandyke red flushed nopal red. The sepals the same colors with a lighter line at the midrib. August-September. —
- Aurole**—3 ft. Orange yellow, good size. June. 35c.
- Bagdad**—3½ ft. Rich brown and reddish tones, with yellow throat. June-July. 75c.
- Baystate**—3 ft. Heavy textured lily-like flowers of deep yellow. —
- Baronet**—2 ft. Flowers full and sprightly crimson-orange, and remain open evenings. July-August. —
- Beacon**—4 ft. Long open segments of rich golden yellow, June-July. —
- Bells of Sanantone**—A chrome self, reverse of sepals green. A perfect bell shape. —
- B. H. Farr**—3 ft. Glowing rosy peach, heavily veined, no eye. Extra large, full flower, with curved petals. —
- Bicolor**—3½ ft. Sepals, throat and stripe along midrib of each petal are yellowish orange, petals except throat are pale red, tinged rose. Remains open evenings. July-August. —
- Bijou**—2 ft. Flowers small, orange overcast with rich fluvous red. June-July. 50c.
- Black Falcon**—3 ft. The black-purple flowers are large, open and wavy at the edges, with a shallow pale canary yellow throat. July-August. —
- Boutonniere**—3 ft. Sepals clear yellow, with recurving petals of rosy peach. July-August. 50c.
- Burbank**—3 ft. Soft lemon yellow flowers, with long tube, the petals spreading flat and broadly. June-July. 40c.
- Cabaleero**—4 ft. A distinct bicolor, petals vermillion-red, throat and sepals golden yellow. July-August. \$3.00.
- Calapso**—3½ ft. Clear canary yellow, evening bloomer. July-August. 35c.
- Chengtu**—3 ft. Brilliant coppery, orange-red with deep velvety carmine mid-zone, flowers 4½ in., pleasingly recurved. \$1.25.
- Chisca**—3 ft. Frosty maze yellow sepals and petals are bright Indian red, giving an unusual bicolor of red and yellow. July. —
- Cinderella**—Petals red copper, sepals lemon yellow. Blooms open late afternoon. July. 50c.
- Cinnabar**—2½ ft. Orange base, sprinkled cinnamon and strongly gold-glistening. July-August. 75c.
- Citrina**—Tall pale sulphur yellow, evening bloomer. July-August. 35c.
- Cissy Guiseppi**—3 ft. Dark coppery rose-red, almost ox-blood red with yellow bar down the center of each petal. 35c.
- Cressida**—3 ft. Clear pale apricot, edges of petals ruffled. June. 40c.
- Crown of Gold**—3 ft. Wide open flowers of light golden yellow. June. —
- Curly Pate**—3½ ft. Clear soft yellow, flowers small, petals curved. August. \$1.00.
- Dauntless**—2½ ft. Cadmium yellow, having a green throat with fulvous touch in center of petal. July-August. 80c.
- Dawn**—3 ft. Fulvous rose, sulphur yellow base. July-August. 50c.
- Dawn Play**—4 ft. An open flower of deep velvety rose, illumined by a golden heart. July-Aug. —

- D. D. Wyman**—3 ft. Large golden yellow, with twany splash on petals. July-August. —
- Dolly Verdon**—3½ ft. Open, broad flowers of coral pink, with a touch or rose on petals and sepals. June-July. —
- Dominion**—3½ ft. Extra large, full flowers of rich red colorings. Remains open evenings. —
- Dorothy McDade**—3½ ft. A splendid late blooming pure yellow, with deep tubular shaped blossoms. \$3.00.
- Dover**—3 ft. Early, broad petaled orange cadmium. June-July. 35c.
- Dragon**—3 ft. The under color is capucine yellow deepening to cadmium orange in the cup. The petals and sepals are flushed with dragon's blood red, giving the impression of light rosy vermillion flower, July-August. \$3.00.
- Dr. Regal**—2 ft. Fragrant pure orange yellow, reverse brown. May-June. 35c.
- Dumerteri**—1½ ft. Rich cadmium yellow, shaded brown on outside. May-June. 35c.
- Emily Hume**—3½ ft. Similar to Wau-bun but deeper color and grows taller. Large yellow flowers with twisted petals. June. 75c.
- Earliana**—2 ft. Fine yellow of heavy texture. May-June. \$1.50.
- Evangeline**—2½ ft. Petals rosy-red, almost a wine color, with a deep purple eye. Sepals are just a bit lighter in color and decidedly twisted the throat is green. Looks quite a bit like an Orchid in color and shape. —
- Festival**—3½ ft. Sepals orange with brown tinge, petals English red with darker veins and orange mid-stripe. A gay bicolor. July-August. —
- Firefly**—A brilliant red effect, flowers somewhat small, but many of them. —
- Flava**—3 ft. The Lemon Lily. Fragrant clear lemon yellow, early. May-June. 35c.
- Flavina**—1½ ft. Dainty flower of bright lemon yellow. May-June. —
- Florham**—3 ft. A large trumpet-shaped flower of rich golden yellow. June-July. 35c.
- Fulva**—4 ft. The Twany Lily. Reddish orange flowers. July 35c.
- Fulva Maculata**—3½ ft. Brighter and larger flowers than Fulva, copery orange blended with yellow. July to late Aug. 40c.
- Gaity**—3 ft. Palest lemon, wide open blooms, very fine. June-July. \$1.50.
- Gay Day**—3½ ft. Soft yellow flowers with great substance. August. —
- George Yeld**—3½ ft. Large open flowers, 6 in. across, bronzy apricot flushed with brownish red. 50c.
- Gloaming**—3½ ft. Large open blossoms with yellow background, heavily overcast with reddish rose-purple. A sparkling beauty. July-August. —
- Gloriana**—3½ ft. Rich, clear pure deep yellow. June-July. —
- Gold Dust**—2 ft. Empire yellow with back of petals bronze-gold. 35c.
- Goldeni**—2½ ft. Rich deep orange. July-August. 35c.
- Golden Bell**—3½ ft. Large, fragrant flowers of golden yellow, recurving petals. 40c.
- Golden Dream**—3½ ft. Deep golden orange, with heavy recurving petals. July-August. —
- Golden Trumpet**—3 ft. Pure yellow fragrant blossoms, with green tinting in the veins. —
- Golden Empress**—Stately golden stars. \$1.60.
- Golden West**—4 ft. Heavy texture, waxy, large funnel-shaped flowers of bright golden yellow. July-August. —
- Gypsy**—3 ft. Deep copery orange with brownish mid-zone. July-August. 40c.

- Hankow**—3½ ft. Flowers are large 5½ inch, rich yellowish orange with bold scarlet eye-zone in petals. July-August. \$2.00.
- Harvest Moon**—3 ft. Slender, graceful flowers of clear orange sherbert. July. 40c.
- Hesperus**—4 ft. 7 inch flowers, deep yellow. July-August. \$2.00.
- Hiawatha**—3½ ft. Numerous medium-small, golden orange blossoms on branching, upstanding scapes. June-July. —
- Highboy**—Pale yellow, open star-like flowers on tall stems. —
- Honey Red Head**—Open and flaring velvety bright rose-red with border of pale creamy yellow. July-August. —
- Hyperion**—Large waxy flowers of soft canary yellow. July-August. 50c.
- Imperator**—3½ ft. Pointed segments, rich orange-red, with a bright clear yellow star-shaped throat. July-August. 50c.
- Iris Perry**—3 ft. Large open flowers, orange-bronze, overcast with a sparkling sheen. July. —
- J. A. Crawford**—3 ft. Fine apricot yellow, very large. July-August. 40c.
- J. R. Mann**—3 ft. Early, fine cadmium yellow with frosted sheen. June-July. —
- Judge Orr**—2½ ft. Large fine soft orange, blooming at iris time. —
- Kwanso flora pleno**—3½ ft. Large Double, orange flushed with red. July-August. 35c.
- Kwanso flora plena Variegated Fol.**—Double flowers same as above. The foliage is striped green and white. Good strain of the variegated form. \$1.00.
- Kwanso flore pleno Virginia**—A double flowering variety that is quite different from ordinary double hem and blooming earlier. The flowers are more peach and rose in color. July. —
- Lemona**—3½ ft. Lemon yellow flowers. July-Aug. 35c.
- Linda**—2½ ft. Ruffled golden yellow petals, flushed with cinniamon being a contrast to the bright yellow sepals, pastel shaded eye-zone. 75c.
- Luteola**—3 ft. Well expanded blooms of golden yellow. June. 35c.
- Mandarin**—4 ft. Tall plant with bell-shaped bright yellow flowers. August. 50c.
- Marcus**—2½ ft. Large flowers of apricot, dusted with soft bronze. —
- Margaret Perry**—4 ft. Brilliant orange-scarlet lined with yellow. July-August. 35c.
- Mary Florence**—3½ ft. A fine apricot buff, with pinkish undertone. June-July. 50c.
- Mary Stoker**—3½ ft. The three larger segments are brownish red, with a prominent canary yellow stripe down the center. The other three segments are canary yellow, softly flushed brownish red. There is a clear canary yellow triangular throat area. July-August. —
- Matador**—3 ft. Wide open, broad petaled flowers of dark mahogany red. July-August. —
- Midas**—3½ ft. Medium large, clear glowing orange. July. 50c.
- Middendorffi**—1½ ft. Widely open flowers of rich orange-yellow, heavy texture. May-June. 35c.
- Mikado**—Flowers of Mellow orange, dark red-purple eye-zone in each petal. 40c.
- Modesty**—3 ft. Very lovely large uniform, pure, clear, soft yellow flowers. June-July. —
- Moonbeam**—4 ft. Pale creamy yellow, medium large, opens in late afternoon. July-August. \$2.00.
- Moonstone**—3½ ft. Reddish-buff, deeper toward the throat, triangle of pure yellow at throat. Each petal has a narrow pure yellow stripe down the center. June-August. 50c.

- Mrs. A. H. Austin**—Deep golden orange flowers with 6 inch spread. July-August. 50c.
- Mrs. W. H. Wymann**—3 ft. A late lemon yellow, broad, overlapping segments. August. 35c.
- Multiflora Hybrid**—3 ft. Numerous small clear orange flowers on slender stems. 60c.
- Nebraska**—3½ ft. Cadmium yellow, large ruffled petals. July-August. \$1.00.
- Nocerensis**—3 ft. Large clear open flowers of canary yellow, petals ruffled. 50c.
- Ochreleuca**—Clear citron yellow flowers. July-August. 35c.
- Ophir**—4 ft. A large 5 inch trumpet of golden yellow, evening bloomer. July-August. 50c.
- Orange Beauty**—3½ ft. Flowers large, with broad segments, opening flat about 5½ inches. Color orange self very fragrant. July-August. —
- Orange Flare**—3½ ft. A very large, golden yellow bloom with a soft sparkling orange sheen. August-September. —
- Orpheus**—2½ ft. A slight buff yellow of unusual shade. June. —
- Patricia**—3 ft. A clear tone of pale yellow with green throat. Fragrant 5 inch flowers, evening bloomer. \$1.00.
- Peach Blow**—2½ ft. Large open flowers of yellow, brushed deep coral pink. July-August. 75c.
- Pink Lustre**—3½ ft. Huge trumpet-shaped flowers of a lustrous soft pink, with a bright canary yellow throat. July-August. —
- Polly anna**—3 ft. Wide open flowers of deep yellow. June-July. 35c.
- Port**—2½ ft. Many beautiful small port red flowers on well branched stems. Remains open evenings. July. —
- Queen Mary**—3 ft. Large flowers of rich glistening yellow and full overlapping petals. June-July. —
- Queen of May**—2½ ft. A taller and larger early variety. Flowers full, broadly spread to four inches. Pale apricot orange. June. 50c.
- Radiant**—3 ft. Clear, fine orange of good quality and texture. July-August. 35c.
- Rajah**—3½ ft. Large and gay English-red, with conspicuous eye-zone of garnet-brown, throat pale orange, with greenish tinge. July-August. —
- Red Bird**—3 ft. Petals even toned vermillion red, with ox-blood eye-zone and yellow green throat. Petals recurved and semi-full. July. —
- Revelute**—4 ft. Large blooms of pure lemon yellow, each segment rolls back, wide open trumpet shaped flower. July-August. \$3.00.
- Rocket**—The reds, the flame orange and yellow stripe petals to create a pyrotechnic cup of great size. Blooms 5½ inches across on 3 ft. stems that spring from abundant deep-green foliage. —
- Rosalind**—3½ ft. Very lovely pink flowers with a deeper rose eye-zone in each petal. July-August. —
- Rosita**—3 ft. A bright carmine-crimson with a coppery red tone. July. —
- Royal**—3½ ft. Deep golden yellow. July. 35c.
- Sachem**—3½ ft. A broad, medium large flower of dark red with orange throat. July. —
- Saturn**—3 ft. A multiflora type. Beautiful small flowers of dark reddish orange blending into a yellow marginal band. June-July. —
- Serenade**—3 ft. Crinkled petals in pastel shades, giving an effect of pale coral-pink. June. 50c.
- Sirius**—3 ft. Rich orange with a faint eye-zone, petals crimped and margin wavy. July. 75c.
- Sir Micheal Foster**—4 ft. Large apricot yellow with wavy petals. July-August. 50c.

- Soudan**—3 ft. Medium large empire yellow flowers, very full and of recurved lily type, with broad, creped and crinkled petals and sepals. —
- Sovereign**—1½ ft. Fine orange yellow. May-June. 35c.
- Stalwart**—3½ ft. Large, tawny, reddish bronze and orange. July-August. —
- Starlight**—4 ft. Lovely large, fluted and ruffled flowers, of very pale cream yellow. July-August. —
- Star of Gold**—4 ft. 7 inch flower, long star-like petals of light yellow. July-August. \$1.50.
- Su-lin**—Bicolor of pale mauve and yellow. —
- Sunkist**—Deep soft rose, lightly flushed bronze. July-August 50c.
- Sunny West**—Large, soft creamy yellow flowers. July-Sept. 75c.
- Symphony**—3½ ft. A delicate blend of pastel tones, sepals toned yellow, petals rose, with mid-band of darker red, flowers remain open evenings. —
- Taruga**—3 ft. Clear lemon-yellow with a faint cinnamon dust effect in the mid-zone Large flowers with curled petals July —
- The Gem**—3 ft Deep yellow apricot June-July 35c
- Theron**—2½ ft. Large, full, dark mahogany red. Throat dark red outside, orange inside, producing a striking purple and gold effect. July-September. —
- The Sultan**—3½ ft. A very dark red with a deep gold throat. July-August. —
- Thunbergia**—3 ft. Pale yellow, evening bloomer. 35c.
- Vesta**—2½ ft. Deep orange-yellow, with an unusual glistening gold sheen, slight fulvous markings in mid-zone. June-July. 75c.
- Viscountess Byng**—3½ ft. Soft yellow overlaid soft rose, with a clear lemon-yellow throat and lemon-yellow narrow line down the center of each petal. July-August. 60c.
- Vulcan**—3 ft. Deep red with orange throat. May-June. —
- Wa-bun**—3 ft. Large flowers of light cadmium-yellow, slightly sprinkled with traces of fulvous red. The twisted petals give it unique and attractive appearance. July-August. \$1.00.
- Winnie Nightingale**—4 ft. A rich glowing orange self, star-shaped flowers, the three alternating petals having beautiful crimped edges. July. 50c.
- Winsome**—3 ft. A dainty, fragrant soft creamy yellow. 50c.
- Wolof**—3 ft. A beautiful dark velvety maroon-red with a clear orange throat. July. —
- Woodlot Gold**—3 ft. Nice crinkled flowers of bright yellow. June-July. 50c.
- White Lady**—Large very light yellow flowers. \$2.00.
- Zoave**—3½ ft. Petals rich fulvous-red with darker mid-zone, sepals lighter. Near to a red bicolor. June. —
- Hesperis—Sweet Rocket**—3 ft. Clusters of lilac flowers, in May. 35c.
- Heuchera Freedom**—Large, light-rose colored flowers, new variety. 35c.
- Iberis Sempervivens**—8 in. A sheet of white flowers, in the spring, cover the rich dark foliage. 35c.
- Lamium Maculatum**—6 in. Deep green foliage heavily marbled with silver, above which, the old rose salvia-like flowers bloom all season. 35c.
- Lathyrus Ornatus (Wild Sweet Pea)**—4 to 10 in. Lovely racemes of dark rose purple, pink to white wings, in May, leaves pinnate silvery green. 35c.
- Lepachys Columnaris (Long Headed Cone Flower)**—2 ft. Leaves thick pinnately divided into narrow flowers golden yellow with brown elongated center, 3 to 4 times as long as wide. 35c.

Lepachys Columnaris Pulcherrima (Indian Lass)—Same as above only flowers are red with yellow edge or sometimes all maroon. 50c.

Leucocrinum—Sand Lily.

Montanum—Ordinary soil, full sun, fragrant waxy white stars in early spring, from low tuft of glaucous grass like leaves. The Crocus-like blossoms continue for several weeks. 35c.

Liatris Punctata—Blazing Star—A good liatris for the dry sunny rock garden. Each plant produces several foot high stems of pretty brilliant magenta feathery spikes. 35c.

Lilium Tigrinum Splendens—Hardest of all and very striking. Large brilliant salmon-orange flowers with purplish black dots. 35c.

Lilium Tigrinum flore pleno—Double Tiger Lily, lighter shades and more delicate blossoms than the single. One to three weeks later. 40c.

Linaria Macedonica Speciosa—Hardy Snapdragon—The hardy perennial snapdragon, grows to a height of two feet, flowers are of good size, yellow marked with orange. 35c.

Linum—Flax.

Perenne—12 to 18 in. One of our loveliest perennials, feathery leaved gray-green foliage, with delicate airy sky blue blossoms. 35c.

Lychnis Viscaria Splendens—Evergreen tuft of foliage, stems 15 in. with masses of bright deep pink flowers in large heads. Early bloomer. 35c.

Lychnis Viscaria Splendens flore pleno—A double form of the above 35c.

Lysimachia—Loosestrife.

Nummularia—Money Wort, 4 in. A rapid growing creeping plant, with round shining leaves arranged in pairs and small yellow bell shaped flowers. 35c.

Malvastrum Coccineum (Flame Mallow)—6 in. Startling little holy-hocks of salmon scarlet in short spires, leaves silver-grey, very lovely. 35c.

Monarda—Bergamot.

Didyma Chambridge Scarlet—3 ft. stalks topped with large heads of brilliant red-scarlet, delightfully fragrant foliage. 35c.

Muscari—Grape Hyacinth. Fine Spring blooming bulb.

Armenaicum—Early Giant. Many stalks of cobalt-blue flowers with a white rim. 6 for 40c.

Botryoides Coeruleum—Bright blue, flowering at the time of crocus. 6 for 40c.

Neglectum—8 in. Blackish-blue, flowers early in the spring and remain in bloom for a long time. 6 for 50c.

Racemosum—The earliest grape hyacinth to appear in the spring, very dark blue flowers. 6 for 40c.

Myrrhis—Myrrh.

Odorata—The Sweet Cicely of English gardens. A very attractive plant having finely cut velvet foliage resembling a large fern and having panicles of lace like white blossoms in early spring. 50c.

Nepta—

Mussini—8 in. Silvery grey armatic foliage tufts with clouds of small lavender all summer. 35c.

- Souvenir d'Andre Chaudron**—20 in. A distinct upright growing plant with grey foliage and dark blue flowers all summer, nice for cutting. 35c.
- Oxalis Violacea—Violet Wood Sorrel**—A small specie with lilac-pink flowers above three parted leaves. 35c.
- Papaver Orientale**—Oriental Poppy. Fall planting only.
- Aksarben**—Large, light pink on strong stems. \$1.00.
- Allumeuse**—Deep flaming pink. —
- Apricot Queen**—Apricot colored, large silky petals. 35c.
- Atrosanguinea Maxima**—Large dark red, stiff stems. —
- Beauty of Livermere**—Early, deep ox-blood red, not large but permanent. 50c.
- Betty Ann**—Beautiful crinkled flower of La France pink. No base spots. 50c.
- Big Jim**—Mammoth flowers of deep maroon-red. —
- Blazonry**—A rich, glowing Persian-red overflushed with rose. \$2.00.
- Cavalier**—Bright dark red, very large. 60c.
- Cerise Beauty**—Large glowing cerise-pink, strong growing. 35c.
- Cheero**—Shell pink with pure red blotch that shows clear through. —
- Clara Finan**—New. Eggshell pink or blush, tall heavy stems, a good grower and a beauty. \$5.00.
- Colonel Bowles**—Extremely large flowers of scarlet red, heavy stiff stems. —
- Coral Cup**—A beautiful six petaled poppy of real pink coral tone, velvety rose purple stamens, late bloomer. —
- Crimson Pompom**—Fully double deep crimson of medium height and flowers freely. —
- Curtis Giant Flame**—The huge blazing red flowers are immense. 75c.
- Curtis Giant Flesh Pink**—A mammoth flesh-pink, slightly tinted lavender. 75c.
- Dainty Lady**—Very delicate La France pink, rose blotch. \$1.00.
- Delight**—Heavy texture flowers of purest shell pink with no base spots, late. \$1.00.
- E. A. Bowles**—Pale apricot and shell-pink, crinkled petals. 75c.
- Echo**—Delightful silvery pink, with frosted sheen, maroon spot. —
- Enchantress**—Large flowers of soft lilac-rose, partial shade for best coloring of flowers, black base. \$1.00.
- Enfield Beauty**—A large cherry-pink flower on tall, erect stem. 35c.
- Ethel Swete**—A medium sized, brilliant cerise pink with black blotch. Shining green foliage, fewer hairs than average. —
- Fairy**—A pale pink of medium size, good bloomer. 35c.
- Field Marshall General von de Glotz**—Fine large white, when first opens is very pale pinkish-lavender, rapidly changing to pure white. —
- Flaming Giant**—Giant scarlet, hairy foliage. —
- Glowing Embers**—Large heavily crinkled flowers of a deep brick red with a touch of orange, showy and beautiful. 35c.
- Gold of Ophir**—Distant golden orange, improves with age. 35c.
- Goliath**—Giant orange-red short stocky stems. 50c.
- Gorgeous**—Large late pink. 50c.
- Helen Elizabeth**—Deeply crinkled petals of pale La France pink with no markings. 75c.
- Henry Cayeux**—Old rose, shading into burgundy. An early bloomer and comes to perfection in light shade. 50c.
- Jeanne Mawson**—Lovely peach-pink of vigorous growth, easy culture. 35c.
- John III**—Nice blooms of coral pink with no base spots. The petals remain crinkled until they drop, good for cut flowers. —
- Joyce**—Bright rose-cerise, distinct. 35c.

- Julia Buck**—Large deep coral-pink flowers, on strong rigid stems. 35c.
- King George**—Large, fringed flowers of brilliant scarlet. 75c.
- Lach's Konigen**—Salmon, rosy peach-red, distinct and fine for cutting. 50c.
- Little Shrimp**—Great quantities of very small shrimp-pink flowers on slender erect stems. No spots. —
- Lord Lambourne**—Orange-scarlet with lanced petals. \$1.00.
- Luly Neeley**—Medium sized flowers glowing dark red. 60c.
- Mahony**—Large flowers of deep mahogany red, true strain. \$1.00.
- Manchu's Fan**—Glowing scarlet flowers with heavy green bracts, which support the petals on two opposite sides. 35c.
- Mandarin**—Chinese red flowers of large size, established plants fail to show any spots. 50c.
- Mary Ellen**—Flowers of pale shrimp pink, open flat, lovely and unusual. \$1.00.
- Mary Finan**—Very large orange-red, with dark brown blotch, petals regularly lanced. A beauty. \$5.00.
- Mary Jane Miller**—Gorgeous flowers of glowing geranium pink, tall and early. —
- Mayflower**—Huge flowers with deeply crinkled petals of pure pink. —
- May Sadler**—Large salmon pink, with very large black base spots. —
- Mrs. J. Hawkins**—Good shade of pink, good bloomer. —
- Mrs. Ballego**—Light carmine, very late. —
- Mrs. Perry**—Soft salmon pink. —
- Mrs. Stobort**—Brilliant cerise-pink flowers of large size, dull green foliage, more hairs than Ethel Swete. —
- Negrillon**—Bordeaux and lavender, early blooming. Needs shade to develop best. 75c.
- New Perfection**—Delicate sea shell pink, with feathery black stamens, petals heavily fluted. \$1.00.
- Olympia**—Double orange scarlet, the first to bloom and showy. 35c.
- Orange Perfection**—Flame-red tinted orange, strong growing. —
- Perfection**—Large flowers of Hermosa pink, large black spots. 75c.
- Perry's Blush**—Blush-white flowers on tall sturdy stems. A beauty. —
- Phenomenal**—Large, brilliant cerise-pink with large black blotch. \$1.00.
- Pink Cloud**—A lovely pale pink of great beauty, delicate blue blotch at base of petals. —
- Pink Radiance**—Gorgeous deep pink, unusual beauty and form. —
- Prince of Wales**—Large bright salmon pink, midseason. —
- Princess Victoria Louise**—Soft salmon rose, lovely. —
- Prosenpine**—Chinese-red flowers with very dark centers, tall and late. 35c.
- Purity**—A pure coral pink without spots or markings. —
- Ridgewood Beauty**—Between strawberry and Geranium pink with rose blotch, one of the most distinctive. —
- Rose Beauty**—Clear gleaming rose pink, petals are crinkled and edged with silver. 60c.
- Royal Rose**—Large flowers of deep rose red, perfectly gorgeous. —
- Salmon Glow**—Large, double salmon orange, first blooms very double, but later ones only slightly. 65c.
- Sass Pink**—Flesh pink with maroon spots, smaller than Aksarben. 50c.
- Sea Shell**—A delicate colored poppy with the creamy iridescence of pink sea shells. The cup-shaped blossoms are of heavy wax-like substance. —
- Snow Queen**—A snow white poppy with purple spot at the base of petals. —

Spotted Giant—Huge flowers of orange scarlet with black base markings. \$1.00.

Tanager—A radiant deep red, with no orange tone tall and a beauty.

Tangee—Pure orange-red, of splendid form. 35c.

Tangerine—Tangerine color with red spots. —

Thora Perry—Lovely delicate white of medium size, erect in growth. \$1.00.

Trilby—Very dark lustrous red flowers, with plaited petals, tall stiff stems. —

Troeador—Large crimson flowers, with black base markings, very tall. —

Waateau—Pure coral-pink, no blotch, low growing and flowering profusely. 50c.

Welcome—Large deep scarlet, shaggy black center. —

Whirlwind—Large chrome yellow, nothing else like it. —

Wunderkind—Large flowers of brilliant carmine rose. —

Wurtembergia—Enormous blooms of dark scarlet. 40c.

Papaver Rupifragum—A lovely airy variety, with small blooms of silky apricot on 15 inch stems, above the lovely grey-green foliage. 35c.

Penstemon—Beard Tongue.

Albidus—14 in. Beautiful spires of lovely white trumpets in May and June. 35c.

Angustifolus—1 ft. Azure-blue spikes, with bell-shaped flowers crowded on them above silvery foliage. An excellent rock plant. 35c.

Crandelli—A dainty trailer with fine feathery grey-green foliage, making broad mats covered with upturned bells of soft blue in June. Sun or light shade. 50c.

Crandelli Alba—White flowered form, beautiful and rare. \$1.00.

Crandelli Rosea—Flowers clear rose. Rare. \$1.00.

Glaber—18 in. Heavy glaucous foliage, large light blue flowers. 50c.

Glaber Rose—18 in. stems of big pink and rose colored blossoms. Blue glaucous foliage. 50c.

Grandiflorus—2 ft. Big trumpets of cool lavender, in spires above the beautiful grey leaf clusters. 35c.

Phlox.

Divaricata Alba—A pure white flowering variety of the Timber Phlox. 50c.

Divaricata Violet Queen—A rare form with medium violet flowers. 50c.

Pink Timber Phlox—Form and habit of the above, with dark rose pink blossoms. 75c.

Divaricata Laphami—Large fragrant lilac-blue flowers. The foliage is broader and heavier than the above. 50c.

Divaricata Laphami Alba—A white flowered form. 50c.

Phlox Subulata.

We are very proud of our four introductions, Eva Roselma Glacier, Poeticus and The Purple Heart. Each is outstanding and different from the others listed.

Alba—Pure white with yellow eye. 35c.

Alice Wilson—Orchid colored blossoms, blooms again in the fall. 50c.

Arbutus—Choice clump forming variety, of beautiful light pink with white eye. 50c.

Autumn Rose—Bright deep rose flowers with red center, blooms in spring and again in fall. 35c.

Apple Blossom—Dwarf compact grower, finer shorter leaves than the type, small pale pink flowers. Very lovely. 35c.

- Atrolilacina**—A fine blue phlox subulata. Its growth is neat and compact, flowers rich pale blue. 50c.
- Brightness**—New, attractive bright pink with a scarlet center. 35c.
- Brilliant (Atropurpurea)**—Dark foliage and vivid dark red flowers.
-
- Brittoni**—Small white star-like flowers with darker centers formed by rings of blue dots. Distinct. 35c.
- Brittoni Pink**—Very prickly, fine evergreen mat, small pink flowers.
-
- Blue Hill**—Lavender-blue, one of the finest. —
- Emerald Cushion**—Distinct emerald green foliage, large blossoms of deep rose. 35c.
- Eva Roselma**—Dazzling rosy red flowers with darker center, very distinct. No other phlox subulata approaches this for brightness. Fine short needled dark green foliage. \$1.00.
- Fairy**—Pale mauve with darker purple eye, compact foliage, very dainty. 35c.
- Fonderosa**—Lavender cast, the petals each deeply incised. 35c.
- G. F. Wilson**—Fine lavender flowers. 35c.
- Glacier**—A very pale lavender overlays the white of the long, narrow, deeply notched petals. The large blooms are an inch in diameter, with rings of purple dots at center. Long needled foliage. 75c.
- Jersey Blush**—A new variety, large blush pink blooms. 35c.
- June Jane**—Sheets of light pink blossoms. —
- Katherine Freeman**—Glossy large deep pink flowers over a long period. Much more vigorous than camla. 75c.
- Leuchtstern**—Mossy compact mounds with big deep salmon-pink flowers. 50c.
- Lilacina**—Lavender with darker eye, strong growing. 35c.
- Miaschnee (May Snow)**—A free flowering pure white. 50c.
- Moerheimi**—Carmine-rose with a darker center. 35c.
- Nelsoni**—Large white with purple shadings at center. 35c.
- Newery Seedling**—A strong growing lavender. 35c.
- Perdue's Purity**—Makes a very compact clump, covered with pure white flowers. with small yellow eye, the petals overlapping. 40c.
- Poeticus**—Large rose pink flowers with white halo, distinctive white eye thickly encircled with continuous feather lines of wine. 75c.
- Ronsdorf Beauty**—A fine compact variety, with large brilliant salmon-pink flowers. 50c.
- Rosea**—The well known moss pink, rose color with a circle of minute carmine dots in center. 35c.
- Sampson**—The large rose flowers are pure rose pink, free from magneta. 50c.
- Sneewitchen (Snowwhite)**—Many small, scalloped white blossoms, small fine foliage. Slow growing. 35c.
- Sprite**—Unusually large pink flowers with red eyes. Good. 35c.
- Starlight**—A new salmon-pink variety, very good. 35c.
- The Bride**—White with a pink eye. 35c.
- The Purple Heart**—Lovely hesperis purple blossoms with purple eye Extra long needled, curly dark green foliage. Very distinct. \$1.00.
- Vivid**—A compact slow grower with firey rose flowers. 35c.
- Phlox Nivalis Camala**—Originated in England. Very large flowers of a glistening salmon-pink, has very long blooming period. —
- Phlox Nivalis Camala Alba**—A lovely new white form, that blooms again during the fall months. Blooms have a very pale lilac cast. —
- Phlox Navilis Dixie Brilliant**—Big showy flowers of rich very brilliant rosy red. Long in bloom. —

Physotegia—False Dragonhead.

Virginica—3 ft. Spikes of pink flowers. August to September. 35c.

Virginica Alba—3 ft. Erect plants with slender spikes and beautiful white flowers. 35c.

Vivid—20 in. A new dwarf variety with unusually large flowers of deep pink. September and October. 35c.

Rosy Spire—3 ft. Long showy spikes of deep rosy crimson. Sept. 35c

Pulmonaria.

Rubra—Large heads of coral flowers above lush green foliage, blooms early and long. 50c.

Saccarata Mrs. Moon—Handsome green foliage splashed silver, pink or salmon flowers. Lovely and distinct. 50c.

Pyrethrum—Painted Daisy.

Eileen May Robinson—Large, single light rose pink blossoms. 50c.

Huntington's Scarlet—Fine single deep scarlet, there is no trace of magenta even under artificial light, very brilliant. 40c.

Mrs. C. D. Bliss—Unusual bright shade of orange pink. 35c.

Ranunculus—Buttercup.

Acris—1½ to 2 ft. A double flowered, upright growing buttercup with attractive yellow flowers. 35c.

Repens fl. pl.—4 in. A creeping buttercup covered in mid-summer with tiny double button blossoms, so filled with petals as to leave no center showing. —

Rosa.

Excelsa—Climber, with great clusters of double bright pink-red. 65c.

Rubrifolia—6 ft. The attractive red-purple leaves and stems are overlaid with a glaucous bloom. In this setting the bright pink starry blooms shine out. The dark twiggy stems and abundant red fruits are very attractive against the winter's snow. \$1.00.

Rudbeckia.

Laciniata Golden Glow—5 ft. July to September. A very popular hardy perennial with a mass of double golden yellow flowers. 35c.

Lacinta Golden Globe—A new improved form of the old popular golden glow with larger more perfectly formed ball type flowers. 40c.

Salvia.

Azurea—4 ft. Summer blooming with large open panicles of sky-blue. 35c.

Azurea Alba—Same habit and season, flowers snow white. 40c.

Pitcheri—This form is a month later and is a mass of rich gentian-blue flowers. 35c.

Sapanaria—Soapwort.

Officinalis—Bouncing Bet. 2 ft. Masses of light pink double blossoms. 35c.

Ocymoides Splendens—6 in. A trailing plant making a thick mat, literally covered with small rosy-pink blossoms in May and early June. Grand for the rock garden. 35c.

Sedum—Stonecrop.

Album—Dwarf, spreading, thick waxy bronze evergreen foliage, flowers white. 35c.

Altissimum—8 in. Upright stems of large closely set, fleshy glaucous spruce-like leaves, yellow flowers. Much larger than *Rupestre*. 50c.

Anglicum minus—1 in. One of the smallest of the sedums. Dark green bead-like foliage and white flowers in midsummer. —

- Anacampseros**—Stems with rosetts of round glaucous leaves, distinct and nearly evergreen. 35c.
- Anopetalatum**—Bronzy dark green needle-like foliage pale yellow flowers. 35c.
- Arboreum**—Glaucous green spruce-like foliage, yellow flowers. —
- Asiaticum (Crassipes)**—Green foliage and light yellow flowers, in autumn foliage takes beautiful red tints. 35c.
- Balticum**—A very dwarf form, with small bead-like emerald green foliage, flowers white. 50c.
- Browni**—A shorter leaved album. 35c.
- Dasyphyllum**—1 in. One of the smallest and most choice. Cushions of blue-gray bead-like foliage and light pink flowers. —
- Dasyphyllum Glanduliferum**—1 in. Tight masses of hairy gray bead-like leaves and pink flowers in July. —
- Ewersii**—Grey-green almost evergreen leaves, wine colored flowers in late summer. 35c.
- Gracilis**—Very dwarf, dark green mossy foliage, white flowers. —
- Griffithi**—Dark green evergreen foliage, yellow flowers. 35c.
- Gypsocolon**—4 in. Creeping evergreen mat of thick green leaves, white flowers in July. 75c.
- Hayseii**—A tiny little glaucous-blue leaved plant with purple flowers. Rare. —
- Hispanicum bithynicum**—Mats of glaucous mealy foliage with a pinkish tint, little white flowers. —
- Hybridum**—Flat green leaves and yellow flowers. 35c.
- Ibericum**—Like spurrum only with white flowers. 35c.
- Kamschaticum**—6 in. Handsome sedum with orange flowers. 35c.
- Kamschaticum Variegated**—6 in. Lovely cream and green variegated foliage, orange-yellow flowers in midsummer. 35c.
- Lydium**—Dainty and dwarf. Makes dense cushions of light green, which in winter take a most attractive, bright red tint, making it even prettier than in summer. —
- Lydium Glaucum**—Tiny blue-grey bead-like leaves making mossy mounds, flowers pale pink or white. —
- Middendorffianum**—6 in. Mats of dented leaves of bronzy green, yellow flowers. 35c.
- Middendorffianum diffusum**—Little bushes of dented very narrow leaves of bronzy green, turning red-orange in the fall, brownish yellow flowers. Choice. 35c.
- Murale—Pink Sea Foam.** Purplish leaves, white flowers with pink center. 35c.
- Nevi**—Flat pinkish gray leaves forming tiny rosettes, flowers white. —
- Nevi beyrichianum**—Smaller than the above with narrower blue-green leaves. —
- Nicaeense**—Stems of closely set fleshy leaves of grey-green, yellow flowers. 35c.
- Oreganum**—Dark green, round bead-like leaves along red stems, flowers yellow. 35c.
- Pruniatum Fosterianum**—Like a dwarf creeping evergreen, soft foliage and yellow flowers. 35c.
- Pulchellum**—Low and mossy, fine emerald spruce-like foliage, tips of leaves turning red in the fall, flowers light pink in three cornered umbles. —
- Reflexum Criststum**—Fir-like foliage, some of the stems have coxcomb like cresta. 35c.
- Rupestre**—Spiny gray foliage, yellow flowers. 35c.
- Sarmentosum**—Creeping stems of flat leaves, yellow flowers. 35c.
- Sexangular**—Hexagon Stonecrop. Dark green bead-like leaves, forms low mats, yellow flowers. 35c.
- Siboldi**—Pink edged round gray leaves in whorls of three, bright pink blooms in August. 35c.

- Sieboldi Variegated**—Like Sieboldi except leaves are cream with green border. —
Stoloniferum—Flat green leaves and light pink flowers. 35c.
Spurium Coccineum—Rosy crimson flowers in summer, flat green leaves. 35c.
Spurium Dragon's Blood—A new sedum, stems and buds bronzy red, deep bright carmine-red in flower. 50c.
Stenopetalum—Deep green foliage, yellow flowers. 35c.
Stribrni—Foliage evergreen, flowers yellow. 35c.

Taller Growing Sedums.

- Aizoon**—1 ft. Narrow flat leaves and yellow flowers. 35c.
Borderii—16 in. A large leaved form. 35c.
Fabaria—12 in. Blue-green foliage, lilac-purple flowers. 35c.
Maxium Haematiodes (Atropurpureum)—18 in. Red Tip Stonecrop. Metallic brown foliage and red flowers. Sept. to Oct. Very attractive. —
Spathulatum Purpureum (Confusum)—18 in. Large reddish gray leaves and dark yellow flowers. 40c.
Spectabile—12 to 18 in. Large grey leaves and flat heads of light pink flowers. 40c.
Spectabile Brilliant—12 to 18 in. Carmine flowered form. 35c.
Spectabile Variegated—Foliage cream edged green light pink or white flowers. 45c.

Sempervivum—Hardy Hen and Chickens.

- Admontensis**—Green leaves tipped red. 35c.
Alberti—Medium green rosettes. 35c.
Arachnoideum—Cobweb Houseleek. Medium sized rosette of green leaves, with tips connected with fine silvery thread in cobweb appearance, flowers rose. 35c.
Arachnoideum Cottetti—Very tiny form with $\frac{1}{4}$ inch rosettes, looks like moss clinging to a rock. Very rare. —
Arachnoideum Minus—A bantam. Much smaller than the type, rosettes seldom over $\frac{1}{2}$ inch in diameter, becoming tightly surrounded with numerous tiny webbed chicks, red-pink flowers, beautiful. 35c.
Arachnoideum Rubrum—Similar to type, taking on red tints, more pronounced in fall. 40c.
Arenaria—A bantam. One of the smallest, the tiny $\frac{1}{4}$ to $\frac{3}{4}$ inch rosettes form dense crowded cushions, leaves bright green tipped brown, the chicks roll off the old plants when very small. A Gem. 35c.
Assimile—Green medium sized rosettes. —
Atlanticum—Large pale green downy rosettes, rare. 35c.
Atropurpureum—Large rosettes, glaucous shaded purple. 35c.
Atraviolaceum—Large purple-red rosettes. 50c.
Atraviolaceum Tectoreum—Long tapering leaves of deep sea green flushed purple, purple tip. 35c.
Beta—Rosettes of brownish colored leaves, tufted with white hair. 35c.
Blandum—Narrow reddish leaves, attractive. 35c.
Brauni—Greenish brown rosettes, tipped brownish red. 35c.
Calcareum—Very distinct, large glaucous cup-shaped rosettes of sharply pointed leaves with conspicuous red-purple tip. 50c.
Cantalicum—Large rosettes of grey-green velvety leaves, broader at the tips. 35c.
Ciliatum Rubrum—A medium sized hybrid, each leaf has hair outlining turning red in the spring. 50c.
Clusianum—Rosettes of pale green with distinct brown-red tip. 35c.
Comolli—Grey-green purple tipped, turning purplish throughout in winter. 35c.
Compt de Congal—A hybrid variety. 35c.

- Doellianum**—Neat grower, grey rosettes of hairy leaves, turning red and closing in the fall. 35c.
- Emberley's pink**—A flat rosette of pinkish coloring. 35c.
- Emerald Giant**—Very large emerald green rosettes. 50c.
- Engle Seedling**—Medium sized green rosettes, bronze in winter. 35c.
- Erytheraeum**—Soft grayish-purple rosettes, whole plant covered with soft down. 35c.
- Fauconette**—A bantam. Small webbed rosettes of very narrow needle-like green leaves stained red. 35c.
- Fimbriatum**—Fringed Houseleek. Medium rosettes. 35c.
- Funcki**—Medium sized brownish rosettes. 35c.
- Glaucum**—Glaucous medium rosettes. 35c.
- Globiferum**—Globe Bearing Houseleek. Medium rosettes of short scale-like light green leaves tipped brown, offsets are round balls carried on side of mother, falling off at a touch and growing wherever they roll. Yellow flowers. 35c.
- Haussmanni**—Rare hybrid. Globular pale gray-blue velvety rosettes. Yellow flowers. 75c.
- Havana**—Dense rosettes of dark green, purple edged leaves. 35c.
- Hirtum Purpureum**—The center of the rosette is green while the small surrounding chicks are purple. 35c.
- Histoni**—Lovely high colored red and green rosettes. 35c.
- Huteri**—Large densely placed green leaves. 35c.
- Juratense**—Medium sized compact rosettes, green tipped red. 35c.
- Kindingeri**—Medium sized rosettes of light green. 35c.
- Kochi**—Rosettes medium sized with deep red tips. 35c.
- Laggeri (Arachnoideum Tomentosum or Arach. Major)**—The largest cobweb variety. 40c.
- La Harpei**—Large rosettes of satiny leaves tinged red. 50c.
- La Mottei**—Large green rosettes tipped red. 35c.
- Lesurianum**—Green rosettes tipped purplish. 35c.
- Longifolia**—Large rosettes with long light green leaves. 35c.
- Longobordum**—Broad pointed leaves tipped with red. 35c.
- Lown's No. 60**—Globular green rosettes suffused red, with silky hairs on margins and tips of leaves. 40c.
- Magnificum**—Large rosettes of deep rosy red throughout, overlaid grey. 50c.
- Malbyi**—Large flat red rosettes. 50c.
- Mauvine**—Attractive purplish green leaves, light pink blossoms. —
- Mayfair Hybrid No. 14**—Cross of Arachnoideum and Pittoni. Small gray rosettes, hairy tufts at tips, pink flowers. 50c.
- Minto's Seedling**—Green tinted red rosettes with hairy tips. 35c.
- Mitchell's Giant**—A seedling of Giganteum. Full grown rosettes may reach a foot across, flat, very crowded short leaves which have the outer half clear green and inner half misty pink. \$1.50.
- Mitchell's Seedling**—Lower half green, upper half deep red. 50c.
- Mettentianum**—Rosettes of bronze red. 35c.
- Moggridgeri**—Small rosettes, light bristles give silvery tone. —
- Montanum**—Distinct, with inch greyish-green loose rosettes, narrow pointed leaves. The offsets are on long slender leafy and quite hairy stems. 35c.
- Moreliannum**—Green rosettes tipped brown. 35c.
- Neilrich**—Narrow glabrous leaves. 35c.
- Ornatum**—Brownish rosettes, red in winter. 35c.
- Pallidum**—Bright green leaves edges and tips bronzy. 35c.
- Penniculatum**—Green rosettes hairy at the margins. 35c.
- Pittoni**—Medium one-sided rosettes of plush-like narrow, rather erect leaves, distinct yellow flowers. 40c.
- Purdy's 60-1**—Medium red rosettes, leaves narrow and long, tapering to a long point. 35c.
- Purdy's 80-1**—Green with red base and tips. 35c.
- Purdy's 90-1**—Grey-green medium sized downy rosettes overlaid rose. 50c.

- Pyrenaicum**—Medium rosettes of light green tipped red. 35c.
Rangeri—Medium sized rosettes light green tipped bronze. 35c.
Regina-Amaliae—Large soft green rosettes which grow tightly together, small yellow flowers. —
Rhidanthicum—Large medium green, brown tipped rosettes. 35c.
Royanum—Large to 6 inches, light green rosettes with reddish purple tips. —
Rubicundum—Medium old rose brownish rosettes. 35c.
Rubicundum Hybridum—A very distinct variety, base of leaf to outer one third deep red, while the tip and margin are bright green. 50c.
Ruthenicum—Greyish rosettes. 35c.
Schnittsphni—Hybrid between Arachnoideum and Tectorum. —
Segueri—Bronze rosettes. 35c.
Silverine—Very light silvery green. 40c.
Spinulifolium—Large rosettes, the leaves are long and rather slender, bristly and margined with fine hairs. An unusual pale green sort. 75c.
Standfeldi—Extra large Arachnoideum. 50c.
Tectorum—Large rosettes, broad pale green red tipped leaves. 35c.
Theobaldi—Small brownish rosettes. 35c.
Tisseri—Small rosettes ciliated around the edges, a neat grower. 40c.
Triste—Brown tipped dark green rosettes, tinted brown. 35c.
Verlotti—Pale green rosettes tinged red brown. 35c.
Violaceum—Purple leaved sort. 35c.
Wulfeni—Large sea green rosettes, reddish at tips. 50c.
Zelbouri—Velvety purplish green rosettes. 35c.
- Umbulicus Chrysantha**—Quite distinct velvety light green rosettes and yellow flowers. Not a Sempervivum but on the same order. 35c.
- Shasta Daisy**—See Chrysanthemum Maximum.
- Solidago**—5 ft. A tall handsome variety with golden yellow plumes. 35c.
- Stachys Lanata**—Rabbit Ears. 14 in. Furry, silvery leaves, resembling rabbit ears, forming tufts, spikes of rosy lavender flowers. 35c.
- Tanacetum Vulgare**—Tansy. Scalloped leaves and heads of tarnished gold buttons in late summer. 35c.
- Tanacetum vulgare crispa**—Fern leaved Tansy. The leaves are dark green, beautifully cut and fringed. 35c.
- Thalictrum**—Meadow Rue.
Adiantifolium—Foliage like a Maiden Hair Fern, and heads of yellow flowers in June. 35c.
- Thermopsis Rhombifolia**—Dwarf Golden Pea. 8 to 12 in. Broad packed racemes of glowing fragrant yellow pea-like flowers in May, leaves light green. 35c.
- Thymus**-Thyme.
Citriodorus Argento-marginata—4-6 in. A dwarf shrubby plant of upright growth having attractive green leaves variegated with silver. —
Nitidus—12 in. Like a miniature silvery Irish yew, covering itself with rosy lilac in June. —
Serpyllum Albus—1 in. White flowered form with pale green leaves. 35c.
Serpyllum Annie Hall—1 in. Light pink flowers. 35c.
Serpyllum Coccineum—Dark green bronzy foliage and crimson flowers. 35c.

Townsendia Excapa—Easter Daisy. Early pale pink stemless daisies nestling in a tuffet of narrow silvery evergreen leaves 2 inches long. Blooms in March and April. Good drainage and full sun. 50c.

Tradescantia.

Brevicaulis—12 in. Deep pink flowers over spreading grass-like foliage. 35c.

James Crawford Weguelin—18 in. Everblooming sky blue. 40c.

Tunica Saxifraga—Airy foliage and clouds of light pink flowers all summer. 35c.

Valeriana Officinalis—Garden Helitrope. Showy heads of rose tinted creamy flowers on 3 foot stalks, with delicious fragrance of helitrope. 35c.

Verbena.

Candensis—A mass of lavender flowers on trailing stems from May to fall. 35c.

Candensis Roseum—A beautiful deep variety of the above. 35c.

Veronica.

Allionii—4 in. Prostrate with violet-colored blossoms in spike-like racemes. 50c.

Armena—Matted prostrate dark green foliage, like small fir boughs, and glorious royal blue flowers in early spring. Distinct and rare. 35c.

Blue Shimmer—4 in. A new hybrid, with trailing stems and showy blue flowers over a long period. 50c.

Hav-a-Look—4 in. Blue and white blooms in spring, also fall. 35c.

Incana—10 in. A compact low growing plant with silvery-grey foliage and spikes of deep blue. 35c.

Inaca Rosea—10 in. Foliage and habit like above, flowers a deep rose pink. 50c.

Pectinata Rosea—1 in. A strong grower quickly forming wide mats of handsome silvery wooly foliage, enlivened by countless rich rose colored flowers with a penciling of white about each petal. 35c.

Pinnatifida—6 in. With fine cut foliage and bright blue flower spikes. 35c.

Rupestris—2 to 3 in. Clouds of bright blue flowers in midsummer. 35c.

Rupestris Alba—A choice variety of the above with pure white flowers. —

Rupestris Flexuosa—A lovely sky blue form, very compact growing. April and May. 40c.

Rupestris Rosea—A pink flowering form. 40c.

Spicata Nana—6 in. A pretty very dwarf form of Spicata. 50c.

Spicata Nana Alba—Similar to Spicata Nana but having clear white flowers. 50c.

Spicata Nana Rosea—6 in. Flowers light pink. 50c.

Spicata Nana Rubra—9 in. Flowers reddish-purple. 50c.

Teucrium Trehandi—6 in. Distinct golden foliage and blue flower spikes, rare. 50c.

Vinca—Perwinkle—Myrtle.

Alpina—Small foliage, double flowers of attractive rosy-violet. 35c.

Major—Big Leaf Perwinkle. Large broader foliage and heavier gloss, the flowers are larger and deeper blue. 35c.

Major Variegated—A lovely white and green variegated form of Major with same colored flowers. 50c.

Minor—A handsome evergreen ground cover, with showy blue flowers borne freely in early spring. 35c.

Minor Alba—A pure white flowered form, that is extremely scarce. A lovely sort. 35c.

- Minor Alba Variegated**—Foliage variegated with yellow and green. 50c.
Minor Aurea Variegated—Leaves edged yellow, blue flowers. 35c.
Minor Rosea—Small foliage and pink flowers. 50c.
Minor Variegated—Leaves edged cream and white, blue flowers. 50c.

Violets.

- Cucullata Alba**—Large white flowers on long stems in May and June. 35c.
Cucullata Rubra—Deep rose-red flowers on long stems in May and June. 35c.
Cucullata Rubra—Deep rose-red flowers. 35c.
English—Large leaves and red-purple blossoms. 50c.
The Kentucky Violet—Large white flowers with a dark blue eye. 35c.
King Edward—Lovely large foliage and violet-blue flowers. 40c.
Nuttali—Ovate leaves and bright yellow flowers, very dwarf. 35c.
Odorata Blue—Sweet purple violet. 35c.
Odorata Double Russian—Very fragrant, double blooms of violet purple. 50c.
Odorata Rosina—Single old rose flowers, intensely fragrant, hardy and good. 40c.
Odorata White—Sweet white violet. 35c.
Patrinii—Chinese violet. Mounds of wedge-shaped leaves lilac flowers. 35c.
Royal Robe—Large deep violet blue, blossoms open flat on long stems, fragrant. 40c.
Rugulosa—8 in. Large foliage, flowers white with violet lines, showy, spreads by runners. 35c.
Striata—A beautiful deep cream color, trailing habit. 35c.
Sylvestris Rosea—A trailing woodland violet from Europe, delicate and flowering well in spring, the blooms rosy pink. 40c.

Violas.

- Gracalis**—A beautiful ruffled royal purple viola, blooming very profusely, a must have. 35c.
Tricolor—Tiny flowered viola of three colors, purple, white and yellow. 35c.
Johny-Jump-Up—Small flowered violas. Two colors, all purple, and purple and yellow. Either color. 35c.

HARDY WATERLILIES

Very small growing varieties for tubs or small pools, and gems in the shallow parts of large pools.

- Aurora**—A very changeable variety, opening a creamy yellow deepening through orange-red to dark red as the flowers age. Its stamens are orange-red. The leaves mottled with brownish red, very beautiful. One of the best for tub gardens, also a pleasing addition to larger pools. \$1.25.
- Pink Laydeker (Laydeleri Liacea)**—This is the queen of miniature lilies. The miniature blossoms are two inches in diameter, perfect jewels. Replicas of their larger neighbors in every minute detail. And best of all it blooms from early spring to late fall. No pool should be without this tiny plant. \$1.25.
- Yellow Pigmy (Pygmaea Helvola)**—Bright yellow miniature flowers with yellow stamens, from 1 to 2 inches across. Leaves are pleasing-

ly mottled with chocolate. A gem for the small water garden and no pool is complete without it. \$1.25.

We also have several larger varieties of Hardy Waterlilies.
If interested write for list.

OTHER POOL PLANTS

Floating Heart—Small leaves resembling waterlilies, brilliant yellow flowers. 2 for 25c.

Vallisneria—Green strapped foliage one fourth inch wide, grows under the water. 10c per bunch.

Sagittaria—Wide strapped foliage. 10c each.

FOR THE VEGETABLE GARDEN

Perennial Garlic—Grows new bulbs at the top of the stalks like onion sets, winters without dying out. Large root bulbs. 25c.

Grandmother's Lima Beans—Mature beans are white with reddish purple blotches. Fine canned green. Can be planted in rows or along fence. We never stake them here. Will bear when other limas fail. 1 lb. 45c, ½ lb. 25c.

Everbearing Strawberry.

Gem—The berries are large, bright red, firm, roundish in shape, rather tart but of good flavor and quality, this variety is an excellent plant maker. True stock. \$3.00 per 100.

Mastodon—Plants hardy and productive. Berries large to very large, round, conic in shape, dark scarlet, flesh firm and excellent flavor. True stock. \$3.00 per 100.

Ruby Rubarb—This new variety is solid red inside and out, all the way up and down the stem. Cooks up into beautiful, highly flavored sauce, also excellent for pies. 60c.

HOUSE PLANTS

***Waiting List Item.** These varieties are in great demand, and available only to waiting list customers. Orders filled as soon as possible in order received.

Begonia.

Baby Pink—Charming low bushy grower, with very double light pink blossoms. Smaller grower than Geneva Rose Beauty or Westport Beauty. ~~75c.~~ / . 00

Bijou De Jardin—The smallest of all, blossoms double red like tiny roses. 75c.

Black and White—Low and compact grower, extremely dark maroon-black foliage, making a perfect contrast for the glistening snow white blossoms. A gem. \$1.00.

Carmen—Low and compact grower, dark blackish-green foliage which forms a lovely setting for the profusion of bright pink blossoms. 50c.

Christmas Cheer—Low grower, with dark green hairy foliage, and a profusion of bright crimson-scarlet blossoms. Exceedingly free bloomer and very pretty. 50c.

Cincinnati—Very dwarf and compact plant, with small fresh green leaves and myriads of bright deep pink blossoms. An everbloomer and always in bloom. 50c.

- Duchartrei**—Pointed light green leaves, underside red. White blossoms up to 2½ inches long are in clusters on long stems, the back sides of the large petals have a patch of dark pink bristles making it very attractive. \$1.00.
- Fire Sea**—One of the best flowering begonias, low grower with medium dark green leaves, in full sun turning reddish. The flowers are crimson-scarlet borne in profusion for months at a time. 50c.
- Foliosa**—Smallest leaved fibrous begonia, the very small leaves grow flat from the stem giving the appearance of a fern. Flowers miniature white. ~~50c.~~ 75¢
- Geneva Rose Beauty**—Resembles the semperflorens type in foliage. Compact low growth, good pot plant. The blossoms are very double large pink balls. Flowers and foliage larger than Westport Beauty. 75c.
- Geneva Scarlet Beauty**—Same type foliage as Geneva Rose Beauty, but the blossoms are very large double red balls. Larger than Bijou De Jardin. 75c.
- Giant Rose 101**—New giant rose like the Geneva Rose Beauty, but with much larger and darker rose blossoms carried on longer stems. 75c.
- ***Glorie De Lorraine**—Grand for the hanging basket, roundish notched light green leaves, prominent veins. Flowers in long hanging clusters, single deep pink with yellow stamens. Lovely, and a good bloomer. \$2.00.
- Indian Maid**—A handsome variety, coral-red blossoms carried over rich dark mahogany-red foliage. 50c.
- ***It**—Medium size bright green leaf with silver spots, well branched, carries a cluster of delicate pink flowers from every joint making it a shower of flowers. Flowers the year around but best from December to May. 75c.
- ***Lady Mack**—Similar to Glorie De Lorraine but an upright grower instead of trailing. 75c.
- Lepidota (New Hampshire)**—Medium growing. Foliage green blotched with cream like Grandmother's favorite marble cake, blossoms white and free blooming. 50c.
- Luminosa**—Large foliage rich glossy green, shaded bronze. Flowers flaming red. 50c.
- Manda's Woolly Bear**—A small grower and year around bloomer, blossoms white. Leaf thick and round, very dark green, underside and stems covered with brown fuzz. Very odd. 50c.
- ***Marguerite**—Noted for its richly colored hairy foliage. Leaves bronzy green, red beneath, large trusses of rose colored blossoms. 50c.
- Mazie (Mazee)**—A giant in this class. Leaves angel wing shaped green with bronzy tints. Blossoms soft pink and two inches long. 50c.
- Mrs. Margaret Ham**—Excellent winter flowering, blooms spectom red, leaf dark green turning darker in strong light, edge fringed and waved splendid habit of growth. 50c.
- Medora**—A restrained branching type, leaves small heavily spotted with silver, pink blossoms. 50c.
- Mcbethi**—Semi-tuberous, with finely pointed serrated small leaves, of light green touched with crimson, very bushy in habit. Flowers white. 50c.
- Nellie Bly**—Bushy in habit, foliage short and broad fluted and of a distinct gray-green, blooms tinted pink. 50c.
- Oadi**—A seedling of Odorata Alba. Flowers much larger and lighter shade of pink than Tea Rose. But no fragrance. One of the finest ever bloomers. ~~50c.~~ 75¢
- Odorata Alba**—Round glossy leaves and large clusters of delicately scented white blossoms, continuously produced. One of the very best and makes a large spreading plant. 50c.

- Pink Spray**—A seedling of *Odorata Alba*, but blossoms are a lovely shade of medium pink in large clusters. Very fragrant. Graceful drooping habit, lovely in a basket. 75c.
- Primma Donna**—Low growing, foliage shaded bronze, blossoms bright pink, a very free bloomer and very pretty. 50c.
- Ruddy**—Same type foliage as *Geneva Rose Beauty*, but the blossoms are large and more of an anemone type, of lovely red, the two back petals tinted brick. \$1.00.
- ***Salmon Fairy**—Tuberous X Fibrous Cross. The leaf is somewhat between the tuberous and *imperialis*. It is medium green and sparkles like crystals when the sun shines on it. Flowers loosely double and of that lovely salmon shade. They will flower year around with proper temperature. \$2.50.
- Snow Blush**—Outstanding double white. White outer petals shading to rose-pink in the center, on strong well branched plant. Good contrast for other doubles. 75c.
- Snow Queen**—The finest white variety, clear light green foliage smothered with glistening pure white blossoms. 50c.
- Tausendschoen**—Compact medium foliage, flowers are a unique very bright rose, an everbloomer and always in bloom. 50c.
- Tea Rose**—Most fragrant fibrous begonia in existence. Medium grower with glossy leaves turning slightly reddish in sunlight. Fragrant pink flowers in large clusters. 50c.
- Wallow**—A very vigorous grower branching well, foliage very dark green with maroon underside leaves long, narrow and wavy, carried almost perpendicularly giving great elegance, erect clusters of bloom tinted white. \$1.00.
- Warrior**—Hybrid, low and compact foliage, miniature angel wing shaped, dark green leaves, rather hairy, underside Indian red edged light green making a very beautiful plant, continuous bloomer, flowers white daintily marked rose at heart, stems are also an attractive rose. Stamens yellow. One has to see it to really appreciate it. 75c.
- Weltoniensis Alba**—Semi-tuberous with pointed serrated small leaves, red stems. The blossoms are white. 50c.
- Weltoniensis Rosea**—Semi-tuberous ivy shaped serrated leaves. Red veining in the leaves and red stems holding lovely clusters of pink blossoms with yellow stamens. 50c.
- Westport Beauty**—A charming low bushy grower with clusters of very double rosy-pink blossoms. 75c.

Cactus.

- Echinopsis Multiplex**—The original hedge hog cactus. Immense pink blossoms like Easter lilies borne on small globular green plants the size of an orange, a very easily grown window plant. 35c.
- Echinopsis Turbinata**—Another hedge hog cactus with frothy white trumpet shaped blossoms. 35c.
- Euphorbia Splendens (Crown of Thorns)**—The stems are thick twining and covered with sharp spines, the leaves are bright green and it has an abundance of beautiful coral blossoms. A beauty. 50c.
- Mamillaria Elgonta (Lace Cactus)**—Thimble like dwarf cactus, forming many branches not over 5 inches long, very charming type with star-like clusters of spines, and tiny cream blossoms. 35c.
- ***Rhpsilas Swarzana (Rice or Deer Antler Cactus)**—Light green slender branches about the size of a match branching at the ends like deer antlers. Is of the hanging type and branches get to be about 2 feet long. 50c.
- Gasteria Hybrida**—This lovely succulent has leaves two ranked and beautifully covered with raised dots as though covered with seed pearls, the arching flower spikes are hung with pink and green bells. 35c.

Ceropegia Woodi (Rosary Vine)—Waxy, gray heart shaped leaves in pairs along pendant thread like stems, decanter shaped blossoms followed by fruits at intervals like rosary beads among the leaves. 50c.

Geraniums.

Alliance—Double lilac-white tiny blotches of bright crimson-rose, french hybrid, cross between Ivy and Geranium. Good bloomer. 35c.

Alpha—Dwarf, yellowish green dentate leaves with reddish brown ring. Blooms single scarlet in profusion, year around bloomer. One of the best. 50c.

Belle Poiteveine—Double salmon pink, old and reliable window box variety. 50c.

***Canadian Pink and White**—White with penciled edge of pink. Double, odd. 40c.

Cerise Rosebud—Very large fully double florets, bright rich cerise, with silvery reverse, larger than red rosebud. 50c.

Duke of Montmort—Rich soft rose-purple, often called the "blue geranium". A splendid variety. 40c.

Fiat Queen—Fringed bright salmon-red: Semi-double very large flowers. No other like it. A real Beauty. \$2.00.

Happy Thought—A tri-colored with very dark green foliage, light creamy almost white center and dark zone. Bright dark scarlet blossoms, with an airy grace. 50c.

Jeanne or Carnation—Unique cluster of bright salmon-rose florets with distinct cut edges, resembling carnations and blooms well. 50c.

Kleiner Liebling (Little Darling)—Very attractive dwarf growing variety with light green foliage and tiny bright pink blossoms. 40c.

***Mrs. J. J. Knight**—Soft shell-pink with deep pink freckles, a greenish eye, and orange stigma. Really a beauty. \$2.50.

Mrs. Parker—Foliage deep green with a broad margin of silver white. Double clear pink blossoms. 50c.

Picardy—One of the finest geraniums, dwarf branching habit and is almost everblooming semi-double blossoms of deep salmon pink, just a little darker than the ever popular Picardy Gladioulas. 40c.

Pink and White Rosebud—Very double rose like florets, white tinged green and edged pink. Old fashioned. 50c.

Ponsettia—This is a great novelty. The flowers are bright red and petals are narrow resembling miniature ponsettias. The clusters are good size and are borne in profusion the year around. Distinctly different and very pretty. 50c.

Red Rosebud—An odd and very beautiful variety, low growing. The flower head is a cluster of small double red florets, like a bunch of tiny red roses. 50c.

Salmon Rosebud—Very large fully double florets of salmon-red with silvery reverse. Larger grower and larger blossoms than Red Rosebud. 50c.

S. A. Nutt—Foliage distinctly edged silvery white. Very double red blossoms continual bloomer. 50c.

Stars and Stripes—Rather small semi-double star-like flowers with pointed petals. The color is brilliant scarlet striped white. An outstanding and rare novelty and very attractive. 50c.

Variegated Ivy—Green and white leaves with tiny rose-pink flowers. Splendid for window box arrangement. 75c.

Hoya Carnosa—The true wax plant, climbing, shining succulent dark green foliage makes it very attractive even when not in bloom. Umbels of fragrant waxy white flowers with pink centers, grows freely without direct light. 40c.

Vitis Rhombifolia (Grape Ivy)—Particularly fine for wall jars on terraces or porches. Dignified for any conspicuous spot around the house. Bronze green foliage in three parted graceful segments. 35c.

Wandering Jew—Multicolor, leaves variegated with stripes of green, silver and crimson-maroon. Blossoms tiny, plum color. 25c.

IRIS SECTION

Species and Siberian Iris shipped in spring or fall. The others shipped only after July 4 to November 1.

Bulbous Iris. Fall planting only.

Reticulata—A lovely little iris with brilliant deep purple blooms with golden streak in center of falls, very early. 35c.

Reticulata Krelagei—Red-purple flowering form of the above. 35c.

Dwarf Iris Species.

Arenaria—3 in. Exceedingly dwarf little brilliant yellow iris, but fairly large flowers. A rare choice variety. \$1.00.

Cristata—4 in. A lovely little species, wide open light lavender flowers with a golden crest. 35c.

Cristata Alba—A rare white form of cristata, orange-yellow crest. 50c.

Cristata Amethyst—Dark lavender blossoms with yellow crests. 50c.

Cristata Coerulea—Flower deep rich royal-blue, very handsome.

Cristata Crested Fairy—4 in. An attractive little iris of cristata form. Standards first opening pale lavender, soon paling out to white. The falls deep lavender, a lovely little bicolor. \$2.50.

Flavissima—Same coloring as Arenaria, only a little larger. 50c.

Graminea—12 in. Grassy tufts and fragrant reddish-violet flowers of unique form, part shade. 35c.

Lacustris—2 in. Similar to Cristata, but about half as large. Flowers lavender with an orange-yellow crest. 50c.

Mellita Mulberry—Sickle shaped leaves, the flowers are brownish-purple on 4 in. stems. 50c.

Mellita Yellow—Same habit as above with flowers greenish-yellow tinged with brown. 50c.

Rubra-Marginata—4 in. Lurid red flowers, attractive curved foliage edged pink-red, very rare. 75c.

Ruthenica—A rare specie. Deep blue-purple flowers, a tiny siberian on 8 in. stems during April and May. Foliage soft and grass-like. 50c.

Setosa Canadensis—10 in. A fine large flowered light blue form. —

Setosa Labrador—Very lovely clear blue blossoms, lightly veined. Very dwarf. —

Unifolia—Similar to Ruthenica with paler blue flowers appearing late in the season. New and rare. \$1.00.

Dwarf Bearded.

Alba—6 in. A very lovely creamy-white fragrant. 25c.

Albatre—8 in. S. soft creamy white, F. soft olive. 25c.

Alpin—5 in. Lobelia blue and reddish purple. 25c.

Aphylla—6 in. Exquisite soft grey-blue, sometimes flowers in autumn. 35c.

Aramis—5 in. Light yellow. 25c.

Argynnis—10 in. Gold and purple. 25c.

Atroviolacea—4 in. The earliest red-purple. 25c.

Aurea Maculata—6 in. Yellow with purple shadings. 25c.

Azurea—4 in. An early sky blue, makes a beautiful light blue mass. 25c.

- Balceng Curiosity**—8 in. Lovely greenish yellow falls overlaid with violet, beautiful, curious, fragrant. 25c.
- Balkana**—6 in. Reddish purple, pleasing form. 25c.
- Barbara**—8 in. Smoky white. 35c.
- Betsy Presby**—5 in. A fine bright yellow, darker falls. 35c.
- Biflora**—3 in. Purple violet. 35c.
- Black Bird**—8 in. Midnight violet. 35c.
- Black Midget**—6 in. Buds soot black, opening deep purple. \$1.00.
- Blue Beard**—6 in. Blend of white, yellow, brown and green. 25c.
- Blue Stone**—6 in. S. violet. F. purple. 25c.
- Bouquet**—6 in. White and heliotrope. 35c.
- Brautjungfer**—6 in. S. lilac white, F. deep purple tipped yellow, a gem. 35c.
- Bride**—6 in. White veined greenish. 25c.
- Bronya**—A wee tony in color, stems slender. \$2.00.
- Burchfield**—
- Butterfly**—6 in. Yellow with tan at haft, beautiful. 25c.
- Buzzer**—5 in. Light lavender blue with pink overtones. 35c.
- Carpathia**—Diminutive 3 in. yellow, beard and all the same color, tiny. \$3.00.
- Coerulea (Spring Skies)**—5 in. Early light blue dwarf that makes a beautiful carpet of light sky-blue. Fine combined with yellows. 25c.
- Comtesse D'Hautville**—6 in. Smoky heliotrope suffused red. 25c.
- Cream Tart**—Glistening cream and olive yellow with wide extended falls and a dash or tart of red in center of lower falls, very free and showy. 35c.
- Cyanea**—6 in. Rich crimson-purple, throat white. 25c.
- Dainty Miss**—Light pink. —
- Delicata**—12 in. Palest blue self flushed lavender. 25c.
- Delpha Deane**—8 in. Fine deep yellow. 35c.
- Die Fee**—8 in. Sky-blue with purple markings. —
- Dixmude**—6 in. S. anilene blue, F. reddish purple. 25c.
- Dr. Mann**—6 in. Smoky lavender and claret, bright yellow beard. 25c.
- Dr. Potter**—8 in. S. mulberry-purple, F. flourite-violet. 35c.
- Elegance**—6 in. Tinted white. 35c.
- Elf Queen**—Best pure white, short stem, more dwarf than Snow Maiden. 35c.
- Endymion**—8 in. Beautiful dark mahogany-red. 35c.
- Fallen Leaf**—15 in. Dark maroon on graceful stems. The petals are narrow and twisted, justifying the name. \$2.00.
- Fairy**—6 in. Lovely soft sky blue with purple markings. 25c.
- Fauntleroy**—6 in. S. greyish white edged soft yellow, F. flaring raisin purple with narrow yellow border. 50c.
- Fior Del Mondo**—Dwarf variegata. S. clear yellow, falls that come nicely blended on first year plants and then with wide marks of red down the center on older plants. \$2.00.
- Flordia**—6 in. A large flowered strong growing pale yellow. 25c.
- Fragrance**—7 in. Medium blue, fine long season bloomer. 35c.
- Glee**—10 in. A fine soft yellow with frilled segments. 25c.
- Golden**—Light yellow tinted self. 25c.
- Golden Dream**—Fine clear yellow of good form with velvety falls. 25c.
- Gorgeous**—Pure white self. 35c.
- Graminea**—6 in. A rich violet-red of fine form. 25c.
- THE Great Smokies**—S. smoky lavender, F. purple with smoky over-cast. 50c.
- Harbor Lights**—6 in. Delightful sulphur yellow, good form. 25c.
- Huron Imp**—Large dark blue flowers, very dwarf. 35c.
- Icy Glow**—White with a faint greenish cast. 35c.
- J. A. Slete**—Light yellow. 25c.
- Judy**—7 in. A dark ruby red self. 35c.

- Keepsake**—8 in. Bright yellow on slender stalks, orange beard. 35c.
La France—8 in. white. 25c.
La Tulip—Medium yellow with pointed segments. 25c.
Laddie Boy—6 in. Velvety deep blue-purple. 25c.
Ladies of Peeling—9 in. Exquisite pale blue. Distinct. 25c.
Leopold—6 in. A fine deep purple. 25c.
Little Jewel—10 in. Brown tan blend. 50c.
Louise H. Starker—Good clear white, late. 35c.
Lurida—6 in. Deep rich mahogany red, very late. 25c.
Lurida Redoutiana—A dwarf with the coloring of Doxa, olive-green, lavender yellow blend. \$2.00.
Macrocarpa—4 in. Rich violet tone, very early. 25c.
Margaret—6 in. Light sky blue. 25c.
Marocain—6 in. Deep velvety purple, one of the finest. 25c.
Mauve Mist—Standards a misty mauve lavender and falls misty blue. Spicy fragrance. \$1.00.
Mignonette—6 in. White flushed pinkish mauve. 25c.
Mist O' Pink—Very showy red pink with wide extended falls. \$2.00.
Mogador—15 in. An unusually beautiful variety, with milk white standards and soft yellow falls. 35c.
Mongol—15 in. Very handsome with dauphins blue standards and bright red-purple falls bordered the color of the standards. 35c.
Mrs. H. M. White—6 in. A pleasing blend of tan and lavender. 50c.
Mistral—5 in. Light blue bicolor. 25c.
Negus—10 in. A bright rich dark violet, brilliant yellow beard. 25c.
Neola—10 in. Violet washed brown, unique. 35c.
Niobe—5 in. Dark purple self, white beard. 25c.
Orange Queen—6 in. Clear deep yellow, one of the best. 25c.
Owaissa—6 in. Medium blue. 35c.
Papoose—6 in. S. soft buff, lightly flecked wine, F. flaring dark mahogany with narrow buff border. \$1.00.
Petie Aimee—An unusually pretty creamy white. 25c.
Pixie—A dwarf plicata with the attractive coloring of old Jubilee. \$1.00.
Play Boy—12 in. S. white, purple falls. 35c.
Prairie Beauty—Yellow, veined. 25c.
Prairie Gem—6 in. Fine dark yellow. 25c.
Princess Louise—6 in. Cambridge and china blue. 25c.
Puck—Dark garnet with velvety falls. 35c.
Pumilla Nana—Very narrow grass-like foliage, flower claret, tiniest bearded iris. \$3.00.
Purple Beauty—Rich red purple. 25c.
Reflection—6 in. A large medium blue, distinct. 25c.
Reichenbachii Orange—A clear beautiful deep yellow. 25c.
Rose Mist—Soft mauve pink, unusual color. 25c.
Sambo—6 in. Very dark purple. —
Sapphire—6 in. Very large blossoms of dark purple, late and choice. 50c.
Sapphire Night—15 in. A deep, lustrous indigo-purple throughout, dark beard. 35c.
Sass Dark Ruby—Red purple. 25c.
Schneekuppe (Snow Cap)—White with a cream throat. 25c.
Sea Gull—6 in. Pale sulphur, falls flecked violet. 35c.
Serpolette—6 in. Creamy white washed rose. 35c.
Silver Elf—10 in. White and gray, unusual silvery effect. 25c.
Snow Maiden—10 in. Striking pure white. 25c.
Socrates—6 in. Uniform clear garnet red. 50c.
Sonny—Fine intense yellow. 35c.
Sound Money—10 in. Deep yellow. long beard. Sometimes autumn blooming. 35c.
Statellae—10 in. Cream white veined olive. 25c.
Sturet's Yellow—8 in. Medium yellow. 25c.

- Stewart's Alpine**—Fine yellow. 25c.
Sulina—3 in. Lovely royal blue with beard the same color. Tiny. \$3.00.
Sweet Spring—Bronze purple, Lily of the Valley fragrance. 40c.
Tampa—8 in. Tiny flowers of red tone carried on slender stems. 50c.
Tan Toy—12 in. A new true tan brown beauty. 50c.
Tiny Tony—A smaller Tony with unusual stem and plant. \$1.00.
Tiny Treasure—Bright canary yellow with wide extended falls. A lovely midget making a showy mass. \$2.00.
Titania—8 in. Pure beautiful yellow with large blooms. 35c.
Tony—A brilliant ruby red, almost black unless in sunshine. In early morning or at sundown it glows like fire. 35c.
Troutleib—8 in. Delightful pink toned variety. 50c.
Tu Tone—Two shades of blue. 25c.
Villereal—8 in. Variegation in old rose. —
Wigan—6 in. A very pretty brownish red. 35c.
Xeno—6 in. Deep yellow self, deep golden beard, very fragrant. 25c.
Yellow Bird—6 in. A fine yellow overlaid olive. 25c.
Yellow Frills—8 in. Lovely ruffled golden yellow. 25c.
Ylo—6 in. A bright yellow self with flaring falls. 25c.
Zobedia—6 in. Smoky lavender with heavy bloom on the petals. 35c.

Dwarf Pogo-Cyclus Iris.

- Aruna**—S. boryta yellow, F. pinard yellow. Blackish purple blotch at end of beard. 24 inch branching stalk. \$1.00.
Balroudour—S. pallid soft bluish violet, F. deep olive buff with olive blotch at end of beard. 12-18 inches tall. 35c.
Blue Topaz—Striking combination of blue, brown and green. Brown beard tipped darker brown. 12-15 inches. 50c.
Gray Cloud—A blend of blue, gray, red, green and brown. S. Campanula blue, F. dawn gray with brown stripes on haft emerging into brown purple blotch at end of beard. 12 inches. 35c.
Mons. Stichen—S. iridescent milky-white, flushed very soft lavender, F. creamy white flushed soft yellow, with a deep wine-red velvety spot, radiating out into veins of the same color. 50c.
Spotless—A pure white seedling from Hoogiana. Hardy and floriferous. 50c.
Stormy Dawn—S. pallid soft blue violet, darker at base, F. pale neropaline blue with brown stripes on haft forming a blotch at the end of the beard. 10 in. stems. 35c.

Table Iris.

- Ariel**—Lovely soft blue. 35c.
Bunting—A pale violet self of fine form. \$1.00.
Chewink—18 in. A dainty light blue with golden beard. 50c.
Daystar—Dainty little creamy white iris with a brilliant cadmium orange beard. \$2.00.
Hobo—S. yellow F. maroon. 50c.
Kinglet—24 in. Deep golden yellow self with small well formed flowers. 35c.
Le Bohemiene—Beautifully blended and penciled dark pink blend. 50c.
Lodestar—S. bright yellow, F. sharply contrasting dark scarlet. —
Montour—26 in. A lovely pink and brown effect with pinkish cinnamon. S. flushed magenta, F. velvety burnt lake. \$1.00.
Nambe—S. arched, slightly ruffled, golden Empire yellow, F. straight hanging Hortense violet blended to the margin of Empire yellow. \$2.00.
Pee Wee—17 in. A tiny pure white flower on graceful stems. 35c.
Sea Foam—White tinted with sea foam yellow. 35c.
Siskin—24 in. A lovely pinard yellow self, with slightly open standards and flaring falls. 35c.

- Tid Bit**—24 in. Lovely lavender. 35c.
Tit Mouse—24 in. Amber yellow, speckled and edged Hortense violet. 50c.
Tom Tit—18 in. Very dark mulberry purple with horizontal falls. 35c.
Treasure Trove—A charming table iris in Naranjo coloring. —
Yellow Tom Tit—A clear golden yellow. —
Warbler—25 in. Very small clean yellow. 35c.
Westways—18 in. Light wisteria violet with bright wisteria blue patch in the center of the falls, beard bright orange gold. 75c.
Widget—A baby white plicata, S. speckled heavily with lavender violet. F. edged and very lightly dotted lavender violet. \$1.00.

Taller Iris Species.

- Bulleyena**—Like a glorified Siberian iris. The flowers are much larger, borne well above the foliage and of rich purple. Excellent for pool planting. 50c.
Dorothea K. Williamson—Large rich velvety, rich royal purple flowers. Good cut flower. 35c.
Ensata—18 in. Small light lavender-blue flowers, grassy foliage. 50c.
Guldenstaedtiana (Halophila)—Pale yellow spuria type flowers, tall growing. 50c.
Longipetala—18 in. Standards clear lavender, Falls gray-white, veined with deep lavender, blooming in May. 75c.
Missouriensis—15 in. Light lavender blue flowers in May. 50c.
Missouriensis—Blue Bird—A selected, vigorous type, the flowers deeper blue, Bradley's violet, and freely produced. —
Missouriensis—Snowbird—Equally hardy but not as tall flowers pure white, no veining. —
Pseudacorus—36 in. Rich yellow, very hardy. 35c.
Pseudacorus Alba—A lovely white form of the above. \$1.00.
Pseudacorus Gigantea—A giant flowered form. 50c.
Pseudacorus Sulphurea—A light sulphur-yellow form. \$1.00.
Pseudacorus Variegated—Foliage variegated yellow-white in the spring. Yellow flowers. \$1.00.

Spurias.

- A. J. Balfour**—An intense blue of fine form. 75c.
Aurea—Tall dark yellow, has long narrow falls. —
Golden State—Large deep yellow with ruffled petals. \$1.00.
Monneri—Handsome rich yellow, cut-flower variety. 75c.
Monspur—Large deep blue with yellow throat, resembles dutch iris. 75c.
Mrs. A. W. Tait—Soft porcelain blue with a yellow spot at throat, early flowering spuria. 50c.
Ochroleuca—Large ivory-white flowers with deep yellow blotch at throat, very decorative, fine for waters edge. 50c.
Shelford Giant—Large pale creamy yellow flowers, very tall. \$1.00.
Sunny Day—Tall very beautiful gleaming yellow. \$1.00.
Lord Wolseley—A deep blue purple. \$1.00.

Siberian Iris.

- Acuta**—Dwarf, blue and white ruffled, good edger, neat blue-green foliage tuft. 50c.
Amelia Earhart—Deep blue violet, falls flaring. 50c.
Baxteri—Standards violet, Falls white veined and tipped blue. 35c.
Blue Charm—A large light blue with round horizontal falls. 50c.
Blue Flame—Brilliant sky blue. \$1.00.
Blue Owl—Medium height, earliest blue, darker area at haft. 35c.
Blue Ridge—Silvery light blue with turquoise midrib, late. 35c.
Blue Star—Star-shaped flowers of deep blue. 35c.
Blue Wings—Intense china blue, light styles, low to medium growing. —

- Bob White**—Waxy snow-white, soft lemon yellow throat. For front of border. 35c.
- Butterfly**—Soft blue gracefully posed like a butterfly. 35c.
- Caesar**—Beautiful dark purple with flaring falls. 35c.
- Caesar's Brother**—Large dark velvety blue with a black lustre. 50c.
- Chaudiere**—New, fairly light blue. 50c.
- Cool Spring**—The standards are pearly blue. The very horizontal falls are much deeper on the upper part, very lovely. \$1.50.
- Distinction**—Medium tall variety, flowers light blue penciled white. 35c.
- Dragonfly**—Very tall medium blue. 35c.
- Emporer Improved**—Tall deep violet blue. 35c.
- Florrie Riddler**—Tall, large flowered, attractive shade of medium blue. 35c.
- Gatineau**—Extremely large flowers of fine clear blue, tall sturdy stems. 50c.
- Gayheart**—Large late dark blue, white throat, medium height. —
- George Wallace**—Tall, light blue with deep veining. 35c.
- Gray Dove**—Grey blue. —
- Gray Prince**—Large flaring soft gray-blue. 35c.
- Heavenly Blue**—An exquisite rich heavenly blue. 50c.
- Helen Astor**—Standards wide and slightly fluted on the edge. Falls are broad and round of rosy red with a white halo near the throat, which is flushed with blue. \$1.50.
- Kenogian**—Striking dark blue, late. 35c.
- Kingfisher**—Rich violet, falls marked with white. 35c.
- Kingfisher Blue**—Fine bright uniform sky blue. —
- Laceta**—Dainty butterfly like flowers of purest white. Many flowers in bloom at the same time. 50c.
- Lady Godiva**—Lavender, spotted darker. 50c.
- Lady Northcliffe**—A rich deep bright violet flower with a white throat that is beautifully veined violet. The falls hang straight down, the center half of the back of the lower petals, white. 35c.
- Llewellen**—Large flaring flowers of rich blue purple. Tall and upstanding. 50c.
- Madawska**—Rich brilliant sapphire blue. 35c.
- Matane**—Low growing milky white, the round falls are crinkled at the edges, and the standards are slightly fluted. 50c.
- Mattawin**—Large blue purple. 50c.
- Mildred Stahlman**—New, light blue flowers of large size with horizontal falls. 50c.
- Miss Dodo**—Very tall medium blue, falls laced by veins. 35c.
- Miss Duluth**—Velvety blackish violet. 50c.
- Miss Muffet**—10 to 15 inches tall true dwarf white. \$2.00.
- Morning Magic**—Soft lavender suffused rose. Early and tall. 50c.
- Mountain Lake**—A clear medium blue self with semi-erect standards and flaring falls which are slightly ruffled at the edge. The center of the flower and styles are lighter blue. \$3.00.
- Mountain Pool**—Deep sky blue. 35c.
- Mrs. Gray Hill**—A very early deep rich blue, with flaring falls and a beautifully veined white throat. 35c.
- Mrs. Perry**—Fairly tall soft mauve tone. 35c.
- Mrs. Rowe**—Lavender-pink blossoms. 35c.
- Natick**—Tall late violet. 50c.
- Nipigon**—Beautiful blue, flushed with purple. \$1.00.
- Night Sprite**—Standards light blue violet flushed deeper in the center. The sem-flaring falls are bluish violet shaded very bright around the small white halo. The flowers give a bicolor effect. \$3.00.
- Nors Destin**—Beautiful dark blue with lighter edge. 35c.
- Nurse Cavell**—Medium blue, early. —
- Oriental Sanguinea**—Reddish purple flowers. 35c.
- Oriental Suberba**—Purple flowers, tall and early. 35c.

- Ottawa**—Large flowers of brilliant violet-blue with white center. \$1.50.
- Papillon**—Tall late light blue. —
- Peggy Perry**—A fine deep violet blue, large flowers with broad ruffled petals. 35c.
- Perry's Blue**—A bright sky blue that is very lovely. 35c.
- Periwinkle**—Large flaring medium blue. 35c.
- Pickanook**—Dark vivid blue, distinct veins. 75c.
- Pigmy**—A dainty dark violet miniature type. 35c.
- Red Emporer**—Wine red, veined blue. —
- Silvertip**—Deep sky blue with very light blue styles. Bicolor effect, one of the loveliest. —
- Skeena**—A dwarf of dark blue coloring, late blooming. 35c.
- ~~Skyblue Water~~—A charming pale blue iris with erect chicory blue standards and horizontal falls of chicory blue shading to light lavender violet on the edge. \$3.00.
- Skylark**—An exquisite soft blue, with large flowers of fine form. 35c.
- Skyrocket**—Early tall violet blue, long blooming. 35c.
- Snow Bunting**—Earlier than the other white siberians. 75c.
- Snow Crest**—Tall, large white flowers with frilled edges. 50c.
- Snowy Egeret**—New ruffled white. \$2.50.
- Snow Queen**—Late, very beautiful snow white with yellow at throat. Low to medium. —
- Summer Sky**—White falls and pale blue standards, new and different. 50c.
- Sunnybrook**—A nice soft Alice blue with brighter styles, very much admired. Late. 35c.
- Star Dust**—35c.
- Thelma Perry**—Late, light blue, long flower, large cream center to falls. 35c.
- Thisbe**—An adorable uniform soft china blue. —
- Tropic Night**—A new siberian which surpasses Caesar and Caesar's Brother in beauty, form and color. —
- True Blue**—Magnificent true blue flowers. 35c.
- Tunkhannock**—40 in. tall. Large flowers 5½ to 6 inch spread, flaring, twirled. \$3.00.
- Turquoise Cup**—Large turquoise-blue flowers, one of loveliest. 50c.
- Tycoon**—Large violet blue, very outstanding. \$3.00.
- Velvet Gown**—Velvety blue-purple, the falls are overlaid with black and dotted with gold at the throat. \$2.00.
- Wisteria**—Falls very large, wisteria blue suffused deeper blue, standards large. Distinct and very attractive. —
- White Dove**—A beautiful pure white, tall and late. —
- White Empress**—Not quite so tall as Snow Queen and more rounded flower. 50c.
- White Way**—Lovely snow white flowers, late. 35c.
- Yale Blue**—Low growing dark blue. —
- Zest**—Brilliant dark blue with deep lavender-pink style branches. 35c.

TALL BEARDED INTERMEDIATE AND FALL BLOOMING IRIS

- Abelard**—Very early intermediate of unusual coloring. S. reddish-tan, F. velvety maroon. 25c.
- Afterglow**—Lovely flowers of misty lavender, softly blended yellow. 20c.
- Allen Hoyt**—Brown and buff bi-color. 25c.
- Aksarben**—Rich cream, with velvety brown markings in the falls. Good plicata 25c.

- Alcazar**—One of the first to bloom, tall large blue-purple with bronze throat. S. soft violet, F. rich velvety crimson-purple. 20c.
- Alice Horsefall**—Dark velvety red-purple. 20c.
- Al-Lu-We**—Large variegata S. yellow F. red-magphony. 30c.
- Atla California**—One of the best yellows. S. clear medium yellow and the F. a shade deeper with brown markings. Much used in landscaping. 30c.
- Always**—The huge flowers are, if carved from old ivory with delicate veining and splatterings of bronzy red-purple. —
- Ambassadeur**—Rich blend S. smoky bronzy-violet F. rich velvety carmine. 25c.
- Amenti**—Delightfully ruffled. S. grayish vinaceous F. light mauve. 25c.
- Amigo**—One of the richest colored iris. S. clear light lavender and semi-flaring falls of deep velvety hyacinth violet edged the color of the standards and margined white. \$1.00.
- Amitola**—Ruffled S. and stigmas light russet vinaceous F. tourmaline pink, Beard bright yellow. 25c.
- Anna Farr**—S. white frilled and bordered pale blue. F. pure white flushed violet blue. —
- Antares**—S. yellow shaded lighter, dotted blue. F. lighter yellow dotted and splashed agertum blue. 25c.
- Anndelia**—White and violet plicata. Fine fragrance. 35c.
- Anne Leslie**—Lovely bi-color. S. white, F. rich dahlia carmine. 25c.
- Apache**—S. bright coppery-red and F. dark crimson brown. Very distinctive. 25c.
- Apricot Glow**—A rosy apricot self that glows in the garden picture. 35c.
- Asia**—A huge bloom of pale silvery lavender S. and reddish-purple F. 25c.
- At Dawning**—A rare pink, white and rose blend of great charm, like the tones in a summer sky at dawning. —
- Aubanel**—Striking true shrimp pink. 75c.
- Aurea**—A clear chrome yellow. 25c.
- Autumn Dawn**—A charming variety of clear bright blend of old gold and pink. 20c.
- Autumn Glow**—Pale yellow self. 25c.
- Autumn King**—Blooms spring and fall. Fine blue-purple. 25c.
- Autumn Queen**—The most persistent everbloomer pure white of exceptional form. 25c.
- Autumn Surprise**—A fine medium blue. —
- Bachelor Girl**—A winsome plicata with golden beard. The S. are nicely closed and the F. rounded in form penciled and picot in old rose. Fragrance of sweet peas. \$2.50.
- Baldwin**—A huge maganese violet self with an electric sheen in the falls. Belongs in every garden. 30c.
- Ballerine**—Tall and fragrant, with immense flowers of light blue-violet. Unusual grace and beauty. 20c.
- Balmung**—One of the finest yellow plicatas, S. and F. yellow bordered brown, blossoms large on tall and good branching stems. —
- Beau Ideal**—Very striking plicata, large white with violet penciling on both S. and F. 25c.
- Beau Sabreur**—Variegata rich and velvety, S. amber, F. velvety red. 25c.
- Bellodona**—S. white spotted and veined blue-purple, F. white edged violet. 35c.
- Beote**—Elephant gray flushed taupe. 25c.
- Beowolf**—Rich velvety true maroon-red with brownish undertone and more coppery brown S. 35c.
- Blended Beauty**—New different and distinctive. S. golden bronze, F. golden ground with red veining. 50c.
- Bluet**—Early pale blue self. Beautiful garden effect. 20c.
- Blue Banner**—The general tone of this iris is a beautiful light blue with markings of purple violet on the falls. —
- Blue Crepe**—Blue crepey and crinkly effect. 50c.

- Blue Monarch**—Gigantic soft blue self; with a tefeta sheen, exceptionally fine. 30c.
- Bonanza**—A medium sized yellow ground plicata with distinct brown edge on falls. —
- Brown Feathers**—Yellow, marked with feather stitches of brownish red. —
- Browngray Blend**—Large blossoms of gray and brown blend. S. are closed. F. semi-flaring slightly washed violet-blue, and displaying a deep orange beard. 50c.
- Brownie**—A hays-brown self. Lovely. 25c.
- Bruno**—S. fawn tinted lavender, F. deep velvety red-purple. 25c
- Buchley Giant**—Very large and tall brilliant lavender-blue blossoms of great form. —
- Buffawn**—An unusual coloring, slightly frilled S. of light buff veined with old gold, the burning brilliant tangerine beard seems to cast a luminous pink glow over the entire flower. —
- Byzantium**—Tan, gold and blue blend, best of the tan-brown color range. 25c.
- Calcutta**—Delicate coco brown tones, entirely overlaid with a bluish veil, very unusual. 60c.
- California Gold**—A beautiful bright yellow of large size and good substance. 35c.
- Camelot**—S. and F. creamy white edged pale violet. 25c.
- Capri**—Fawn yellow of perfect form, very unusual and handsome. 35c.
- Caprice**—Frilled claret wine with a distinctive fragrance of bruised grapes. 25c.
- Caroline Stringer**—Delicate apple blossom pink. 20c.
- Castor**—The white ground is almost completely covered with pin dots of deep violet. In the S. the stippling is uniform throughout. In the F. the stippling is heavier toward the border. 35c.
- Chamita**—A distinctly "different" brown toned iris. A beauty. —
- Charles Arthur**—A large blossom with closed S. of buff-bronze and F. are semi-flaring garnet-brown with bright orange beard, very fragrant. 50c.
- Cheerio**—A super red toned very striking in its brilliance. S. soft rose flushed yellow, F. rich satiny ruby-red. 35c.
- Cherry Rust**—S. rosy copper, F. brownish red-maghyony. 25c.
- Chestnut**—A plicata very ruffled, S. cinnamon drab, F. petunia violet striped. 35c.
- China Maid**—One of the finest new pinks, being soft lilac pink blended golden bronze. \$1.00.
- Church Mouse**—Odd dark hay's brown self. 25c.
- Christabell**—A splendid true red with a lusterous sheen. It is one of the most effective iris in the garden, a clump is a perfect mass of glowing copper red. 20c.
- Citronella**—S. pure lemon yellow, F. morocco-red with a yellow line through the center and a yellow margin. 20c.
- City of Lincoln**—Largest, brightest and best of the variegatas. S. intense golden yellow and F. bright velvety red-brown with golden margin, making a very striking contrast. \$1.50.
- Clara Noyes**—A gorgeous blend of red, orange and yellow. 20c.
- Claribell**—A large flowered plicata. S. white frilled blue, F. white. —
- Clinton Silvester**—A lovely tall deep white plicata, apple blossom fragrance. The blossoms are beautifully marked peach tones. \$1.00.
- Cockatoo**—A clear empire yellow self, very ruffled. Much admired. 25c.
- Columbine**—Very lovely pure dazzling crystal white. 35c.
- Copper Lustre**—Unusual blending of gold, copper and pinkish tan that produces the effect of glistening copper. 40c.
- Congress**—A marvelously rich dark ruby-red the velvet falls being darker and of rich maghyony tone with a beautiful veined throat. 35c.
- Coppersmith**—Large coppery-red-bronze with a sheen. 35c.

- Coronet**—A blended self of golden tan with a delicate underlay of rosy beige. 40c.
- Cottage White**—Low growing white. 20c.
- Crandelbra**—S. violet lighter inside sanded violet at throat, F. violet. Beautiful. 35c.
- Crimped Beauty**—An attractive flower of silvered lilac rose coloring with beautifully crimped petals. 35c.
- Crown Jewel**—Gorgeous ruffled yellow, striped flame red. A fine burnt orange or red orange in mass. 35c.
- Crysora**—Very early rich luminous yellow, with no trace of gold. At sight it is a mass of deep glowing yellow, very large and ruffled. 25c.
- Curlew Top**—This little ruffled low growing iris has light yellow S. and deep pink F. 35c.
- Cydalise**—Luminous yellow with border etched chocolate brown. Grand. 35c.
- Dalila**—A lovely bi-color S. flushed white F. reddish-purple. 20c.
- Damosel**—White with S. and outer edge of F. flushed and sanded rich lavender. 25c.
- Darius**—S. rich yellow, F. white reticuled purple. 20c.
- Dauntless**—A striking red, tall luminous rosy-red with bright orange beard and F. like richest velvet. 30c.
- Dawn**—S. and F. pale yellow deeping toward the center. 20c.
- Dazzler**—A rosy-red that has great carrying power. 20c.
- Decennial**—S. bright yellow F. dahlia carmine. Very fragrant. —
- Demi-Deuil**—Feathered pink and red. 20c.
- Depute Nomblot**—Large impressive and one of the most famous iris. S. rosy-purple slightly fused bronze, F. rich claret crimson. 25c.
- Dogrose**—Exceedingly fine large delightful true pink, glorified by a deep golden beard, popular and highly recommended. —
- Dolly Madison**—Mauve-lavender blend. 20c.
- Dore**—Huge blossoms of a lovely combination. S. daffodil yellow, F. ivory white. 25c.
- Dorothea**—Blue-white flushed lilac, flat blooms similar to a Japanese iris. —
- Dorothy Diech**—Distinct Bi-color. S. pale blue almost white, F. rich violet. 25c.
- Doxa**—Very unusual and beautiful early bloomer, S. cream, F. irridescent buff and olive. Entirely unlike any other iris and a favorite. 30c.
- Dream**—Delightful soft crinkled orchid pink. Very popular. 25c.
- Duke of York**—An exquisite soft mauve-blue with white beard, brushed orange. 25c.
- Dusky Boy**—Dusky smoky wine. 35c.
- E. B. Williamson**—Gigantic blooms of bright red, with a coppery lustre showing throughout, F. are lighter at the edge, bright orange beard. —
- Eclaireur**—S. white shaded lilac, F. rosy violet suffused clear lilac. 25c.
- Electra**—Striking large flowered plicata. White peppered and veined blue. Good. 35c.
- Elsinore**—A lovely blend of soft primrose yellow edged violet-crimson. red-violet. 25c.
- Elizabeth Huntington**—An early crisp frosty blue. Blue sport of Zua. A beauty. 50c.
- Elsa Sass**—Exquisite new iris in a bewitching shade of yellow with a white flush in the center of the falls like a sparkling glass of ice cold lemonade. —
- Elsinore**—A lovely blend of soft primrose yellow edged violet-crimson. 20c.
- Eros**—A silky irridescent bloom of clear pure salmon pink on a cream ground. 30c.
- Ethel Peckham**—Large blossoms of exceedingly rich deep brilliant red. Largest of the red toned iris. —

- Eugene Field**—S. orchid, F. Wistoria self. Med sized blossoms. 35c.
- Euphony**—Exquisite blend S. ruffled mustard yellow, F. copper flushed violet, a real beauty. 25c.
- Eventide**—Misty slaty lavender. 25c.
- Evolution**—Fine coppery bronze, rose and blue blend. Exquisite. 20c.
- Exclusive**—Large clear light blue, falls deeper than standards, all overlaid with a silvery mist. 25c.
- Fairy**—White delicately suffused soft blue very fragrant. 20c.
- Far West**—A warm mellow blend. S. soft tan, F. rose with a bluish copper cast. 50c.
- Fawn**—Lovely fawn color self. Distinct. 35c.
- Firmament**—Early blue-lavender. 20c.
- Flavescens**—Early creamy yellow. 20c.
- Folkwang**—S. rosy-pink, F. claret. 20c.
- Frank Adams**—A very large bi-color of distinction. S. are fawn with a blending of pink. The big semi-flaring falls are of crushed strawberry. 60c.
- Franklin B. Mead**—Fine white plicata with blue stitching around each S. and F. There is no brown on the clean haft. 75c.
- Fredia Mohr**—Massive blooms of rosy lilac-pink. 25c.
- Frost Queen**—Good, dependable white fall bloomer. 25c.
- Garden Magic**—A very smooth deep velvety red almost maroon, lit by an orange beard and possessing a laquer like finish. It holds its place with the best of the new reds. \$1.50.
- Gaviota**—Creamy white with S. and F. distinctly edged yellow. 25c.
- Gaynelle**—Intermediate S. clear yellow, F. slightly darker with brown reticulations at haft. 25c.
- Gay Hussar**—S. lemon chrome F. deep velvety ox-blood red. 25c.
- Geneive Serouge**—Very beautiful blending of soft olive-buff, lilac and flax blue. Liked by many. 30c.
- Giant King**—Largest variegata. S. fawn suffused rose, F. wine-red. 25c.
- Gloriole**—We rank this the best of the very pale pastel blues, very large like an immense blue-white ice crystal sparkling in the sun. 50c.
- Gobelin Red**—S. mineral red, F. ox-blood red. 20c.
- Golden Bow**—Long large blossoms of chrome yellow, very early blooming. 20c.
- Golden Flare**—Orange, apricot and sunlight. 20c.
- Golden Harvest**—S. olive-yellow blue at the base. F. yellow citron. Also a fall bloomer. 35c.
- Golden Hind**—A real nugget of dazzling golden buttercup yellow. Best deepest and purest yellow. 40c.
- Golden Light**—S. apricot yellow, toning to yellow ochre on edges. F. yellow ochre lightly striped buckthorn brown. 25c.
- Golden Treasure**—Exquisite silky cream with infusion of golden light. 60c.
- Grace Mohr**—Seedling of William Mohr. Large blossom pale lilac veined and netted maganese violet. Flaring falls. \$1.00.
- Grace Sturtevant**—S. dark brown-red, F. velvety carmine. Orange beard. Very rich brilliant and velvety. 25c.
- Grand Canyon**—The grandeur of the coloring and size of this iris must be seen closely to be fully admired. A mutual blending of deep canyon colors, plum, copper and gold. A must have. ~~\$2.50~~ \$1.00
- Grapta**—S. rich toast brown. F. deeper color. Distinctly brown garden Effect. 20c.
- Gudrun**—Massive blossoms of pure white dusted gold, long hanging falls. 30c.
- Happy Days**—The very largest yellow, bright clear tones of medium yellow with glistening orange beard. The first glimpse of this leaves visitors breathless. 25c.
- Harliquin**—Rather odd variety as name indicates blue and white striped. 35c.
- Helen Field Fischer**—Favorite pink. —
- Henri—Riviere**—S. pure lemon yellow, F. mauve with lemon. 25c.

- Her Majesty**—S. lovely rose pink, F. bright crimson. 20c.
- Hills Giant**—25c.
- Ibapall**—A fine large free flowering variety with ruffled reddish-lilac S. and dark violet falls over a white ground, Bronzy yellow beard with a dark spot on the falls at the tip of the beard. 35c.
- Icy Blue**—Distinct and beautiful gigantic palest blue self dusted and frosted with silver that sparkles in the sunshine. —
- Indian**—Most remarkable iris tan slightly fused rose; ruffled. 25c.
- Indian Chief**—Gorgeous red tone. S. beautiful violet-rose F. deep rich velvety red. 20c.
- Indian Hills**—A rich true purple self of large size, with striking oval form. One of the best for massing. It makes a gorgeous clump of color with unusual carrying power. 40c.
- Ingeborg**—Nice floriferous early white. 20c.
- Iowa Glory**—Blackish red, very showy. \$2.00.
- Iris King**—S. old gold, F. garnet-brown edged yellow. 20c.
- Irquois**—S. smoky lavender, dotted brown, F. black maroon. 20c.
- Isolene**—Created a sensation when introduced, beautiful blend of silvery lilac S. and rich mauve F. 20c.
- Jacquesiana**—S. smoky crimson shaded copper F. flaring deep velvety rich maroon. 20c.
- Jasmania**—The color is about that of a ripe banana, with a brilliant orange beard. The color is enhanced by a shadow of pale buff near the heart of the flower. 35c.
- Jean Cayeux**—Pale lustrous havana brown, shot with gold, with a touch of pale blue on the falls. Very fine. 30c.
- Jeanette May Kennedy**—S. ruffled pink, F. blackish purple. 25c.
- Jean Siret**—Another good everbloomer. S. clear petite yellow, F. a little deeper flushed and flecked violet. 30c.
- Jeb Stuart**—S. orange bronze, F. deep velvety crimson-brown almost black, very rich and striking. 35c.
- Jerry**—Very bright rich glowing red. S. light rich red, F. velvety deep rich ruby-red. 35c.
- Joseph's Coat**—Lovely pale blue blotched with white and yellow. 50c.
- Joycette**—S. raisin purple, F. blackish purple, very large. The effect with the sun shining through it is a rich blazing red. Extra fine. 40c.
- Jubilee**—Large ruffled creamy buff S. sanded with dark copper. F. cream dotted and veined with bright brown. 25c.
- Junaluska**—Best described as a "blended red". S. yellow suffused bronze, with deep velvety maroon F. Very effective in the garden and good for cutting. 40c.
- Juanita**—Clear lavender-blue self. Sweetly scented. 20c.
- June Bride**—Large clear very good white. —
- Kaleidscope**—It has a habit of breaking up the maroon color of the falls into stripes, stipples, blotches and other formations of maroon and yellow. By shaking the colored glass in a Kaleidscope you can change the design. Hence the new bud sport is appropriately given the name Kaleidscope. It is a bud sport of Honorabile. 40c.
- Kaloz**—White heavily peppered rose. Lovely. 35c.
- Kansas Ingleside**—This warm brown-red self named on its merit as a spring bloomer has also proved a fall bloomer. 50c.
- Katherine Lees**—White and delicate lavender. S. ruffled. 20c.
- King Juba**—A clear colored large flowered variegata much admired. S. yellow and wide solid deep velvety red F. 25c.
- King Carl**—Cream peppered cinnamon. Lovely. 25c.
- King Midas**—S. golden buff suffused garnet brown. F. velvety rich garnet brown, an exceptionally beautiful blend. 25c.
- King Tut**—One of the brightest in the garden. S. are brown flushed red and F. are rich velvety red-brown. 30c.
- Kochii**—Early claret purple. 25c.
- K. V. Ayres**—Soft coffee and lavender blend. 30c.
- Labor**—S. brilliant red-violet F. darker shade than standards. A brilliantly metallic color that instantly catches the eye. 20c.

- Lady Lilford**—Unusual dark violet, veined and netted deeper violet. Black beard beautiful and striking. 35c.
- Lady Lillian**—Soft smooth pink. 20c.
- Lady Paramont**—Soft primrose yellow of huge size. 35c.
- Lake Huron**—A medium toned true blue self emphasized with a golden beard. \$1.50.
- Largo**—S. canary yellow, F. mauve; deep bordered yellow. 25c.
- Le Corege**—S. smoky bronze suffused violet, F. dark reddish-plum. 30c.
- Lenchree**—Large pure snow white with flush of blue in the falls. 25c.
- Lent A. Williamson**—S. campanula violet, F. violet purple. 20c.
- Liberty Bell**—White, with a red toned feather stitched edge. 25c.
- Lieut. de Chavagnac**—Another everbloomer in violet. 25c.
- Lilimani**—A velvety blackish violet self, large flowers and well branched. 40c.
- Little Corporal**—Unique blending of pink, yellow and lavender. 25c.
- Lohengrin**—Ruffled rosy mauve-violet. 20c.
- Lona**—S. pale purplish-buff, F. cream dotted and striped violet. Unique and unusual. 25c.
- Lord Lomborne**—S. rosy fawn, F. madder crimson-violet. 25c.
- Lord of June**—Huge chickory-blue and lavender bi-color. 25c.
- Lorely**—S. canary yellow splashed purple, F. raisin purple bordered yellow. 25c.
- Los Angeles**—An immense cool white lightly brushed with clear blue about the haft. 35c.
- Loudoun**—S. yellow lightly veined with chestnut, F. creamy white edged with a sanded border of chestnut, underside of falls are yellow which shows as edges are waved. 25c.
- Louis Willert**—S. gold, F. raspberry. Gold blend overall. 25c.
- Louvois**—S. light chocolate brown, F. velvety maroon brown edged to match the standards. \$1.00.
- Lurida**—Very attractive tawny bronze-red. 20c.
- Lucrezia Bori**—S. domed soft canary yellow, F. deeper tone yellow. 35c.
- Madam Chereau**—White deeply buttonholed blue. A beauty for bouquets. 25c.
- Madam Choboet**—S. creamy pink dotted bronze red, F. white edged russet. 25c.
- Madam Louis Aureau**—A striking plicata of translucent silvery white, heavily dotted and sanded heliotrope. A very free bloomer with large flaring blossoms. 50c.
- Magnifica**—Huge flowers light violet-blue S. and red-violet F. 25c.
- Maid of the Mist**—Odd shade of gray with F. washed violet edged buff. Orange beard. Very odd. 35c.
- Maid of Astolot**—A real masterpiece of perfect form. Huge size, white with brilliant blue styles and crests. 50c.
- Marechal Ney**—Red with chestnut brown tone. 20c.
- Margaret Ann**—Unusual brick red. 35c.
- Marisha**—Cream yellow flushed clear light pink. The large flowers are frilly and one of the last to bloom. \$1.00.
- Mary Garden**—S. tan suffused delicate lavender, F. long drooping creamy-white, minutely dotted and veined rich maroon. 25c.
- Mary Jane Sisney**—S. old lilac F. deep rich red. Heavy orange beard, very fragrant and fine for mass plantings. 40c.
- Ma Mie**—S. white frilled, violet; F. white penciled and margined violet. 25c.
- Medrano**—Beautiful dark smokey claret. Rich and distinct color. Delicious wild grape scent. 25c.
- Minchelangelo**—A new color, uniform dove gray throughout, an exquisite beautiful blend. Very different. 50c.
- Midgard**—Both S. and F. yellow with flush of clear pink and silvery iridescent tints. Fine. 20c.
- Midwest**—Ruffled white, entire flower fused and peppered bright rose. 25c.

- Midwest Gem**—Large luminous apricot yellow, slightly flushed pink, both S. and F. slightly crinkled and ruffled at the edges. 75c.
- Midwest Pride**—Rich reddish purple of heavy substance. Very fine. 30c.
- Mildred Presby**—S. white flushed pale rose lavender, F. rich dark velvety pansy-purple. A beauty. 25c.
- Missouri**—A giant clear blue, the broad flaring blossoms are of an enamel like texture. 50c.
- Missouri Gold**—The large flowers are a dazzling buttercup yellow with an orange tinge. Orange beard. Well branched, five and six blooms well placed on stems. —
- Missouri Night**—A large rich dark velvety blue with a brilliant orange beard, entirely different from other dark blues, really indigo with a sheen, grape hyacinth fragrance. \$1.00.
- Mourning Dove**—A most unusual and attractive plicata of large size, white heavily stippled grayish-lavender with a buff tan flush at the throat and buff styles, with silver-blue midrib. 50c.
- Morning Splendor**—S. petunia violet, F. velvety raisin purple. 25c.
- Monsingor**—Deep velvety brownish purple. 20c.
- Montezuma**—Plicata in yellow dotted brown. 25c.
- Mother of Pearl**—Iridescent pearly lavender. 25c.
- Mountain Sunset**—An indescribable medley of fawn, old gold and lavender equally suffused in the S., and F. entirely overlaid with varying shades of violet. Novel in shape as well as color. 75c.
- Mrs. A. S. Hoyt**—S. light amparo purple, ruffled F. white striped petunia violet on edge and haft. 25c.
- Mrs. Cuthbertson**—Rosy purple, apricot and grayish combination. 20c.
- Mrs. H. Darwin**—An outstanding snow white slightly reticulated violet. Should be in every garden. Fragrant as Lily of the Valley. 20c.
- Mrs. Herbert Hoover**—S. are old rose lightly tinged with bronze, and are broad and ruffled. F. a deeper rose with midrib of turquoise blue. 35c.
- Mrs. Valerie West**—A masterpiece. S. large lavender shot with bronze, F. deep crimson brown. 20c.
- Mrs. Willard Jacques**—A pinkish toned blend of No-we-ta and Clara Noyes type. Very beautiful. 40c.
- Mussolini**—A very large, long, egg shaped deep blue purple, with heavy reticulation on the haft. Of great size and imposing appearance in the garden. —
- Naranja**—A striking large sized iris with a distinctly orange hue. An orchraceous yellow with pronounced orange tone in the F. and with decidedly orange looking buds. Known as the orange iris. 35c.
- Nassak**—A large and tall Plicata, white with bright blue stitchings. Gorgeous. 35c.
- Natoma**—A super iris. S. soft bronze flushed violet. F. brilliant old rose with a chocolate border. You'll like it. 30c.
- Navajo**—Honey yellow veined coppery-red. A good red tone. 25c.
- Nebraska**—S. apricot yellow, ruffled. F. apricot yellow with faint reddish brown stripes. Very different. —
- Nehawka**—Darkest blue-purple plicata on a white back-ground. A must have. —
- Nene**—Gigantic bloom of soft lilac. S. and red lavender F. A french giant. 30c.
- Nibelungen**—S. soft rich fawn, F. red-purple bronze. 20c.
- No-We-Ta**—The most beautiful true bright pink in effect. A pinker Midgard with the same ruffling. 30c.
- Numa Roumestan**—Dark strawberry red. Late. 25c.
- Nymph**—Very floriferous, Empire yellow self. 25c.
- Odenvogel**—S. deep yellow, F. plum. 20c.
- Odoratissima**—Light lavender mauve with an unexcelled fragrance. 30c.
- Old Gold**—S. ruffled primuline yellow, F. old gold overlaid buff. A favorite. 25c.

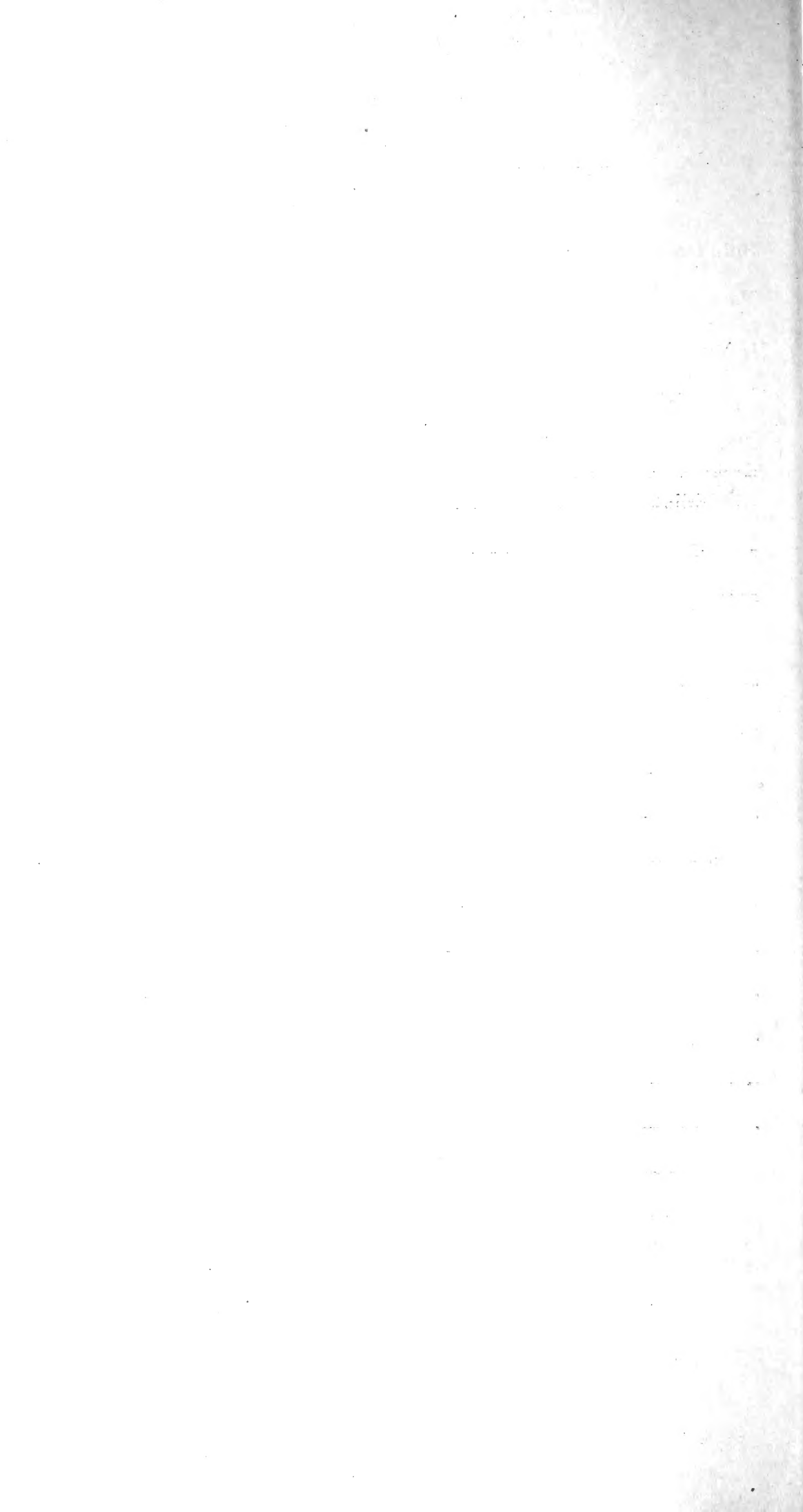
- Omaha**—S. dark vinaceous, F. vinaceous purple. A real rich red effect. 25c.
- Opaline**—S. pale rose purple, F. rosaline purple. 25c.
- Opera**—S. red-purple, F. velvety purple violet. Rich ruby effect. 25c.
- Ophelia**—Golden copper and lavender blend. 25c.
- Oregon Giant**—Gigantic blooms. S. reddish-purple, F. blackish-purple. 35c.
- Oregon Sunshine**—One of the finest pale yellows, standards are closed and ruffled and the semi-flaring F. are also ruffled and the haft is veined deeper green-gold. —
- Orloff**—Medium sized blooms of deep cream heavily dotted and etched as if sprinkled with cinnamon. 60c.
- Ormohr**—One of the largest, deep silvery lavender veined violet. \$1.00.
- Osceola**—Crinkley sky blue self. Beautiful. 50c.
- Otoe**—Early deep velvety red. Fine variety for low mass of color. 20c.
- Ozark Blue**—Light blue self. 25c.
- Pallida Dalmatica**—S. and F. clear lavender blue. 20c.
- Pallida Dalmatica Folis Variegatus**—White and green striped foliage, blossoms clear lavender blue. Beautiful. 35c.
- Parisiana**—Cream-white heavily frilled and dotted purple. 25c.
- Parvar**—Vivid black-violet F. horizontal, narrow soot black very velvety. With broad mossy brown beard. 35c.
- Patricia**—A very clean and sparkling white, both S. and F. are frilled and ruffled at the edges. Very pale yellow beard. 75c.
- Peaches**—Warm bright blend of peach, apricot and orange. 25c.
- Peau Rouge**—Most popular red-brown. 25c.
- Peggy Babbington**—A rich canary yellow. Very fine. 20c.
- Peacock Eye**—Yellow blend with bright eye. 35c.
- Persia**—S. smoky blue gray. F. rich purple-blue overlaid smoky-blue. A new shade. 30c.
- Picador**—S. tarnished gold. F. brilliant carmine red. 35c.
- Pink Jadu**—A very lovely pink plicata, beautiful color and beautifully frilled. 35c.
- Pink Opal**—Large clear orchid pink self. 30c.
- Pink Satin**—A very fine outstanding true pink self, without the usual rose or purplish cast. 35c.
- Pluie D'Or**—A most beautiful iris, on slender, perfectly branched stems. Fine rounded flowers of solid golden yellow, with deep yellow beard, buds are golden yellow. 25c.
- Plumed Knight**—Pale veined pink of crepe paper texture. 25c.
- Pocahontas**—White edged and feathered blue. 25c.
- Prairie Gold**—Clear rich dark golden yellow self. 20c.
- President Pilkington**—S. buff brown suffused lavender, F. lavender blue suffused and edged buff brown. 25c.
- Princess Beatrice**—S. silvery lavender, F. slightly darker. 20c.
- Princess Osra**—A novelty in plicatas white with fresh blue stippling. 35c.
- Princess Victoria Louise**—Early blooming, S. yellow, F. rich plum. 20c.
- Prosper Laugier**—S. light bronze red. F. velvety ruby-purple. 20c.
- Prospero**—Large lavender and purple-brown bi-color. 20c.
- Purple Haze**—Delightful large french gray self. 20c.
- Quaker Lady**—S. smoky lavender, F. lavender washed old gold. 20c.
- Queen Chereau**—Plicata. 35c.
- Queen of May**—S. and F. fine rose-lilac, very early. 20c.
- Queen of the Gypsies**—S. smokey lavender, F. purple. Lovely and fine for bouquets. 25c.
- Quivera**—A beautiful blend of buff, pink, orange and brown. 20c.
- Radiant**—Burnished-orange S. with very bright intense glowing coppery-red F. Brilliant and carrying. \$1.00.
- Rameses**—S. light russet vinaceous with yellow glow at center. F. flaring to drooping tourmaline pink. Heavy apricot beard. 25c.
- Red Dominion**—S. deep red, F. deeper velvety-red, very rich. 35c.
- Red Elf**—Deep ruby-red self. Very fragrant. 25c.

- Red Glow**—Nothing makes a richer garden mass. S. silky lustrous bronze flushed lilac, F. deep velvety-red. 35c.
- Red Orchid**—Very early intermediate. Rich deep glowing violet carmine, very distinctive. 25c.
- Red Radiance**—A very rich beautiful shade of purple red. 30c.
- Red Wing**—One of the reddest irises in garden effect and makes a brilliant group of striking beauty. S. light brownish vinaceous F. Dahlia carmine. 25c.
- Retta**—Soft creamy pink. —
- Rheingauperle**—Gorgeous free flowering apple blossom pink. Exquisite fragrance. 20c.
- Rhein Nixe**—S. pure snow white F. deep pansy violet with white edge. A beauty. 25c.
- Robert**—An exceedingly fine pale golden amber yellow, with a pale azure flush at center of falls. 35c.
- Rob Roy**—One of the bright spots of the garden. A rich, bright, red bi-color heavily suffused with coppery gold and illuminated by a glowing orange beard. 35c.
- Rose Petal**—Very lovely flowers of clear, uniform rose petal pink. —
- Rose Unique**—Early deep pink. Good for massing. S. and F. bright rose. 20c.
- Rosy Glow**—White and rose bi-color to plicata. 20c.
- Rosy Wings**—Blend of brown, red and pink with conspicuous orange beard, giving an effect of light brown. Lovely. 30c.
- Royal Coach**—An attractive plicata, with S. of chamois yellow, edged brownish heliotrope. F. clear yellow, speckled with reddish-brown. A real gem. 50c.
- Rubyd**—Rich deep reddish violet-purple with the falls deeper in tone. Very effective in mass. 25c.
- Ruffles**—35c.
- Ruth Pfeiffer**—Lovely large white, edge stitched pale blue. 25c.
- Ruth Pollock**—Yellow plicata. S. yellow, dotted and edged brown, F. light yellow with a heavy border of red-brown. A beauty. \$2.50.
- Sable**—A large velvety bloom of deepest blue-black. Violet-blue beard. Gorgeous. —
- Sachem**—Richest red-brown tone. 25c.
- Sacramento**—White strongly flushed, dusted and edged purple. Best of the heavily marked plicatis. 30c.
- Sandia**—A lovely clear pink blend unusual with a smoky veil. There is considerable yellow in the central portion of the broad falls. 50c.
- Sandlewood**—Large flowers with S. of buff-bronze. F. are of a bronze-brown washed with blue. Brown veining on light haft. 35c.
- San Francisco**—Huge pure white blooms distinctly edged in both S. and F. with blue. Beautiful. 25c.
- Sans Souci**—S. gold. F. reddish-brown, fine for mass planting and unexcelled for bouquets. 20c.
- Seabiscuit**—A deep dark brown-red: self tall, slender and graceful. Fragrance of cinnamon. A deep orange beard. S. and F. are narrow. Late bloomer. \$1.00.
- Seduction**—A plicata from France that compares with the best. Large blooms of perfect form on tall well branched stems. Creamy white with veining and stitching lilac rather than blue. 75c.
- Selene**—Extra large warm luminous glistening white. 25c.
- Seminole**—Beautiful rich dark rose-red with velvety falls. 20c.
- Sensation**—Clear crisp cornflower, blue self, grand. 25c.

- Shah Jehan**—The S. are creamy buff, suffused gray, the F. lustrous purple edged with buff. Fawn and copper tones on the haft. 25c.
- Shekinah**—A pale lemon yellow. 25c.
- Shining Waters**—A clear clean sky blue one of the loveliest of blue iris. —
- Shirvan**—Exceptionally brilliant combination of yellow-brown S. and velvety rich brown F. 35c.
- Shot Silk**—Rich satiny blend of pink and gold. 25c.
- Shawano**—A glorified Nebraska. —
- Shushan**—Erect silky S. of bright violet-purple, the flaring F. are of rich dark mahogany with burnt orange styles and bronze beard. In the sunlight the F. take on a fiery red color. 35c.
- Siegfried**—A beautiful plicata of yellow S. and creamy F. both stippled and dotted brown, the whole flower is ruffled. Very different. 50c.
- Sierra Blue**—A true blue self, the falls are broad and of unusual length. Flowers have smooth lacquer-like finish. 25c.
- Sir Launcelot**—S. Hazel, F. claret-brown with golden haft and orange beard. —
- Sitka**—A huge clear white. It is a prolific bloomer and is later than other large flowered whites. —
- Snoqualmie**—Very heavy substance, large rich smooth cream, one of the best. —
- Snow Bound**—Distinct brown branches on sparkling white. 25c.
- Snow King**—A giant number one white, with golden throat, much admired. 35c.
- Southland**—An intermediate and fall bloomer of chrome yellow which appears to be sprinkled with diamond dust. —
- Souveni De Madam Gaudicheau**—S. violet, F. blackish-purple. 20c.
- Spring Cloud**—A blue and white plicata in which the S. are heavily marked with blue, while the F. are white except for a few blue markings. —
- Spring Maid**—An enchanting shade of pink, that has a honey yellow flush through the center. 25c.
- Spark**—Wonderful color in intermediates and redder than any iris except Red Elf. A bright glowing brick red. 35c.
- Spokane**—Huge blooms. S. pure fawn-brown, F. bright red edged brown. The most brilliant of the red brown iris. 30c.
- Speckles**—50c.
- Steepway**—A fine purple tinted flower, slightly fused peacock blue, apricot and Nile green with an orange beard, a combination hard to describe. —
- Stipples**—White stippled with blue, the falls more heavily than the standards. A most unusual plicata. 35c.
- Storm Cloud**—Late gray, very odd. 35c.
- Summer Tan**—Neither yellow or brown but a delightful "summer tan" color. Handsome and unusual. 35c.
- Sun Mist**—Glittering pure white with the beard and central area on the falls of yellow. 25c.
- Sunol**—A beautiful blend of iridescent golden bronze over flushed lavender in the center of the falls. —
- Sun Tan**—Best of the real tan effects. The color is a deep sunflower yellow, overlaid with russet giving a rich tan effect. 35c.
- Sunset**—Exquisite, lovely old gold to yellow touched lavender on falls. 25c.

- Susa**—Outstanding intermediate, very earliest blooming, red-purple self. Long overlooked and neglected. 25c.
- Susan Bliss**—Uniform deep orchid pink. 20c.
- Syphax**—S. pure violet, F. deep crimson-violet. 20c.
- Talisman**—Iridescent blending red, yellow, pink and soft blue, reminding one of the colors in the world famous Talisman rose. 35c.
- Tapestry**—Huge mulberry blend of smoky tones. Very good. 35c.
- Tarantella**—"A pink plicata" with long hanging falls and wavy standards. A very profuse bloomer and the flowers are larger than other varieties of this type and are carried on well branched stems. 35c.
- The Black Douglas**—Outstanding velvety deep violet with a black sheen, moderate in size, rich in texture. 30c.
- The First Lady**—Nothing gay or flashy. S. snow white and F. same penciled with rose-red markings. \$2.00.
- Theodolinda**—Large satiny white, with pure blue pencilings, probably the largest plicata. Extra fine. 50c.
- The Red Brick**—Brick red self. —
- The Red Douglas**—Gigantic flowers that seem to glow with inner lights of red. S. raisin purple, F. dahlia purple with brown haft. A favorite of all. —
- Thuratus**—One of the darkest of all iris and makes a striking color group, a rather long flower of drooping F. A blackish purple self, showing rich crimson tones when the sun shines through it. A beauty. 25c.
- Tiffany**—The most popular plicata ever produced. Enormous frilled blossoms of soft yellow generously marked and bordered brown. 60c.
- Tiger-Tiger**—The bronzy S. and brownish-red F. produce a color combination that is both rich and satisfying. 35c.
- Tint-O-Tan**—Striking new blend of bronzy tan and gold flushed blue. 25c.
- Trails End**—S. dull yellow overlaid soft orange-red, and the falls remind one of the bittersweet after it has been touched by frost. 30c.
- Tristram**—S. white, F. black-purple. 30c.
- True Charm**—Delightful plicata with lavender edged margin. 20c.
- Trostinger**—Pale light rose self. 20c.
- True Delight**—Plicata in white with edges of both S. and F. stitched deep rose. Unusual. 20c.
- Tuscany Gold**—Distinctive red-gold blend, very popular. 20c.
- Ultra**—Bi-color general color effect is ultramarine blue. Another fall bloomer. 25c.
- Ukiah**—A fine large dark bronzy red-purple, of lustrous texture, shot with gold dust. S. Indian red, F. richest velvety blackish maroon. 60c.
- Valencia**—An orange-buff self with brilliant deep orange beard. 20c.

- Veined Beauty**—Plicata of white and violet. S. veined and washed violet and F. white with the outer half inch edged with dotted and veined violet. Truly beautiful and a must have. 75c.
- Venus De Milo**—Beautiful soft creamy white. 30c.
- Vert Gallant**—Very large blooms of coppery fawn, and garnet red shaded brown. 35c.
- Vesper Gold**—Distinct yellow with soft violet flush. 20c.
- Vishnu**—Cinnamon brown undertone, veiled with dull pink and red-lavender. 25c.
- Vision**—S. deep yellow F. velvety garnet brown, orange beard. 35c.
- Wabash**—White S. are slightly ruffled, the deep purple F. are trimmed with a margin of white. \$1.00.
- Waconda**—Fine rich velvety fuchsia red, distinct color. 25c.
- Wambliska**—Huge white self. A faint blue flush at the base of the S. give it a cool appearance, rather than the warm effect of creamy whites like Purrissima, Venus de Milo, etc. Very fragrant. 30c.
- War Eagle**—S. vinaceous purple, F. blackish red-purple fading to pansy purple. —
- Wasatach**—Pure glistening white etched around the border with blue. The largest plicata "Magnificent". 35c.
- Wedgewood**—Almost true wedgewood blue with white beard. 20c.
- White Knight**—Vigorous early waxy snow white self. Without markings. 25c.
- White Marble**—Daintily frilled white with orange beard. —
- Winneshiek**—One of the very best in the dark class, with deep blue S. and blackish midnight-blue F. Outstanding. 35c.
- Wm. Mohr**—Ground color lilac, heavily veined maganse violet. Gorgeous large flowers that cannot be described. One of the most famous of all iris. —
- W. R. Dykes**—Famous deep golden yellow, delightful crepy texture with F. streaked or flecked violet. —
- Wonderchild**—The large flowers of deepest midnight blue are placed close together and make each stalk a gigantic bouquet. Edge of falls slightly lighter, conspicuous veining on light ground at haft. 40c.
- Wyomissing**—S. creamy white, F. deep rose. 30c.
- Zua**—Crinkled and creped frosty white flushed light blue, very distinct and a honey. 35c.
- Zuni**—An unusual glowing rich red-brown overlaid copper. 30c.
- Zwanburg**—An oddly colored hybrid from the French breeder Louis Denis. S. cream-buff heavily splashed maroon, F. dark olive brown. Very early bloomer. Beautiful. 25c.





Franklin Gardens

BIG SPRINGS, NEBRASKA

Sec. 562, P.L.&R.

Library
U. S. Department of Agri.
Washington 25, D. C.



RETURN POSTAGE GUARANTEED