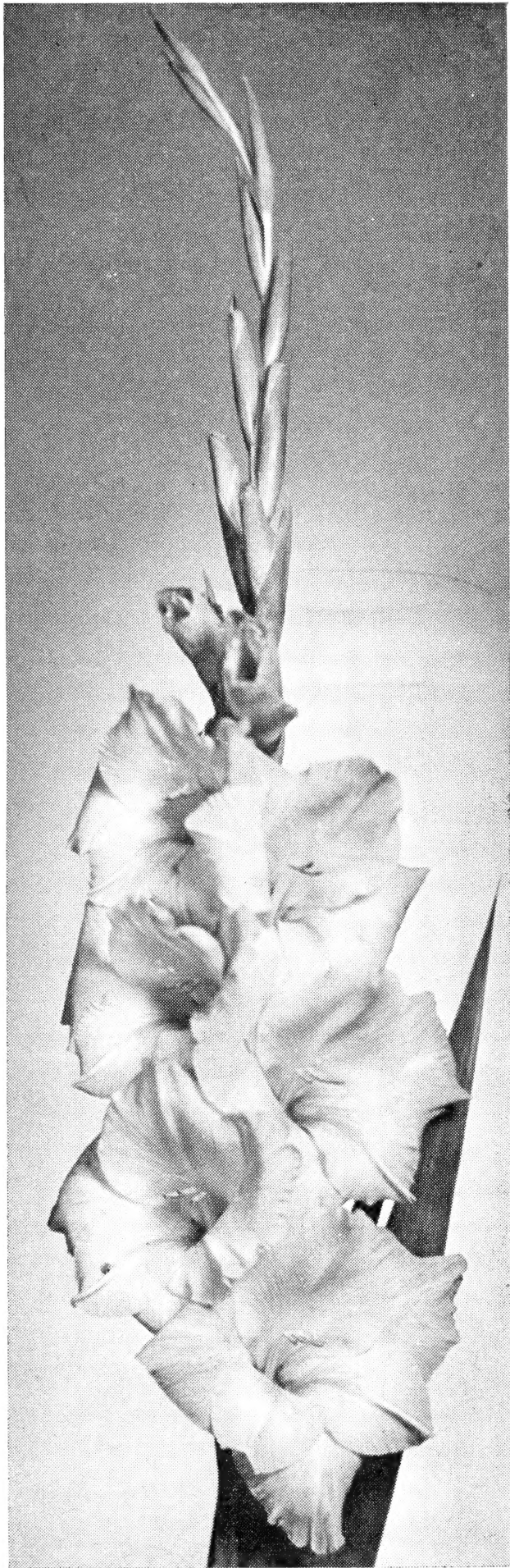


Historic, Archive Document

Do not assume content reflects current scientific knowledge, policies, or practices.

62,43

LIBRARY
RECORDED
★ JAN 17 1947 ★
U S Department of Agriculture
1947



Miss Wisconsin

Gladview
GLADIOLUS

Featuring

Martha Deane

Oriental Pearl

Spic and Span

Leading Lady

Elizabeth the Queen

Miss Wisconsin

Spotlight

White Gold

and

Other Exhibition and

Commercial Varieties

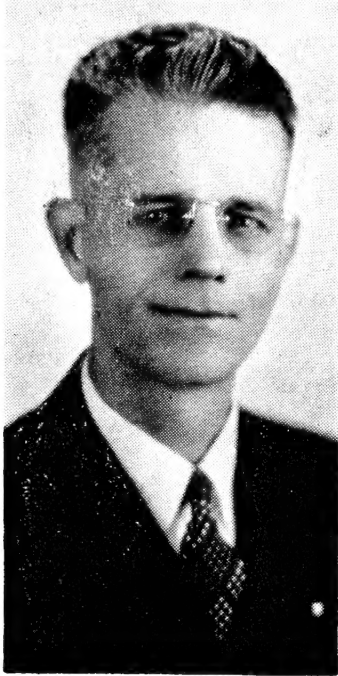
GLADVIEW GARDENS

Maple Plain

Minnesota

FOREWORD

In introducing to you our new Spring Catalog we have completed our twenty-fifth year growing gladioli. The wonderful success we have enjoyed these past years in growing these flowers and also in the satisfaction from the letters of commendation we have received have been a constant inspiration to us.



Jesse T. Osborne

Inasmuch as this year marks our 25th year growing Glads, we will take this opportunity to give our customers and friends throughout the United States a brief history of our business. In 1921 the grower, Jesse T. Osborne, purchased 100 bulbs, 10 each of 10 varieties. Included in the collection was Mrs. E. J. Shaylor, Peace, Virginia, Prince of Wales and other varieties. From this very meager beginning, gladioli bloomed in profusion, destined to thrive and be a great success. During much of this time this has been a hobby, expanding into a business that resulted in growing of three acres in 1946. We have gained a world of experience during this time. Hundreds of varieties have been grown. Many have been discarded each year, that do not come up to our critical judgment.

It has been our policy to send out only the highest quality stock, a policy which has established for us satisfied customers throughout the United States. We are pleased to offer our customers a list of outstanding glads that we highly recommend. This year we are especially happy to recommend three new introductions: Martha Deane, Oriental Pearl, and Spic and Span, described in detail on page 4 and 5.

In the past few years the development of sensational new varieties has caused the public to realize the demand for those that have excellent propagating qualities, healthy growth, immunity from disease, good shape of floret, and all around beauty.

Although the past season, owing to drought conditions, was not conducive to a really successful flower season, yet our harvest of bulbs has been the best we have ever had.

Our descriptions of varieties are not over-emphasized, but as they really are from actual observation. We therefore will give you a preview of how different varieties performed for us during the past season.

VARIETY COMMENTS

This review is based on our own personal opinions and may differ from your ideas. We will indicate the varieties that dominated in their color class for us.

PINK—In this class we consider **ETHEL CAVE COLE** one of the best. It is an early light pink. It's the color the florists like. A healthy robust grower and consistently produces large well-placed blooms. Lovely salable spikes can be cut from No. 4 and 5 bulbs. Two later mid-season varieties which were outstanding for us were **PINK RADIANCE** and **KING WILLIAM**.

WHITE—We grew 13 varieties of white the past season, all of which seemed to outdo themselves. **LEADING LADY**,

really a creamy white, bloomed for us as near to perfection as any glad we have yet seen. It caused a sensation in our gardens. **CASABLANCA** was another really wonderful pure white. It was a one-hundred percent cutter. Other varieties that were very good were **SILENTUM** a **NEW WHITE**, really an improved **MARGARET BEATON**. Not so tall, but more refined. It was always in demand as a cut flower. **MARGARET BEATON** and **SNOW PRINCESS** were both hard to beat for cut flowers.

CREAM—Probably the finest cream we have ever seen was the new **ORIENTAL PEARL**. It has no competition in its class. In the moderate price varieties **WANDA** and **AMULET** were outstanding for the lovers of pastel shades.

RED—BLACK OPAL and **MOHAWK** were two outstanding varieties in this color class. Along with **REWI FALLU**, they form a trio that combines beauty of form and richness of color.

SCARLET—STOPLIGHT, a new Scarlet-red was a stellar performer for us. **ALGONQUIN**, **VALERIA**, and **BEACON** were all good cut flower varieties the past season.

LAVENDER—ELIZABETH the **QUEEN** proved a sensation to all who saw this exquisitely beautiful lavender. **BADGER BEAUTY** was another consistent performer as a cut flower.

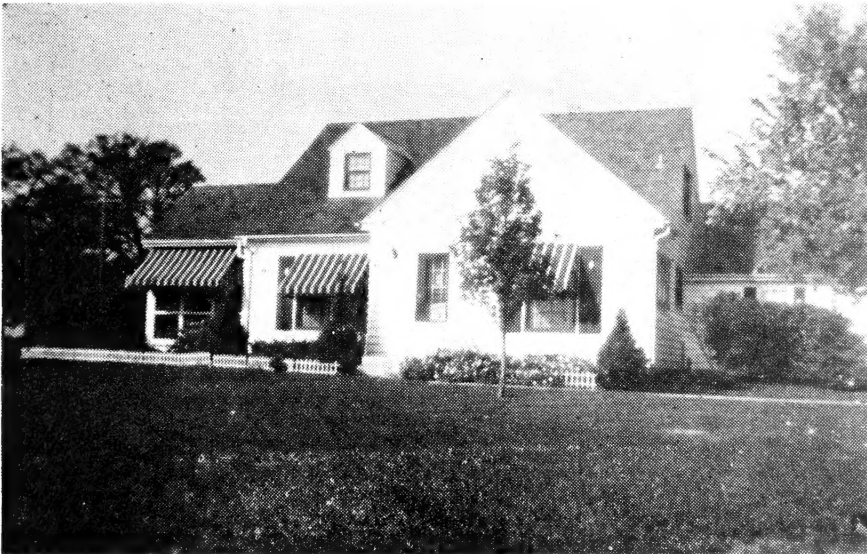
ROSE PINK—MISS WISCONSIN has

little competition in this class. Truly it was a wonderful glad. In the deep rose class **BURMA** was admired by those who desired a real large glad.

YELLOW—This class has been greatly strengthened by the addition of several sensational new varieties. **MARTHA DEANE** was really tops this season. In the medium priced class **CRINKLE CREAM** performed near perfection. Among the late yellows the beautiful spikes of **OREFON GOLD** was admired by everyone.

PURPLE—PURPLE SUPREME, a clear purple, is gaining popularity every year. This, with **KING LEAR**, we can highly recommend.

CREAMY WHITE — WHITE GOLD in this class needs no introduction. It was really tops the past season. **CORONA**, another huge glad with a pink picot edge, is very popular. It is a consistent performer.



Home of Gladview Gardens.

Curing and Storage sheds in rear.

Terms and Prices

Please read carefully before ordering.

SHIPMENTS—All prices quoted here include delivery by parcel post or express prepaid on all orders of \$2.00 or more. On small orders of less than \$2.00, please include 25 cents extra to cover cost of packing. Orders are shipped at proper planting time or on the date you specify in order. **CULTURAL DIRECTIONS** are included with every order. If planted as directed, you will have wonderful success.

TERMS—Cash with order, or 25% will hold your order until time of your order, balance C.O.D.

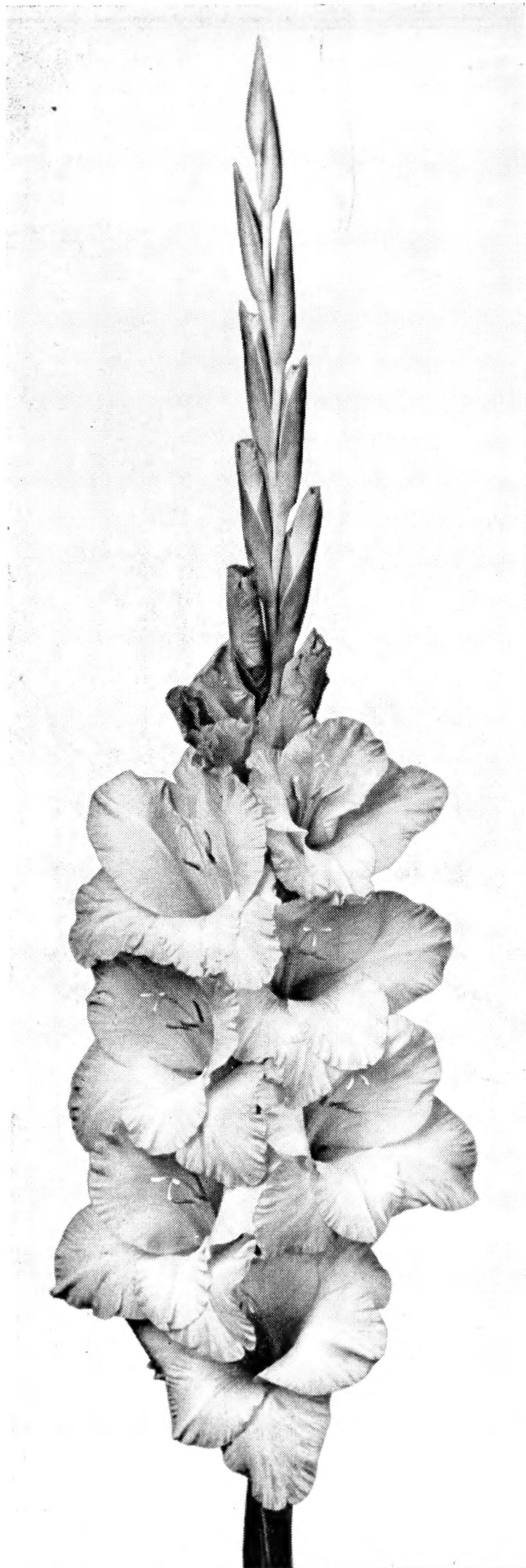
GUARANTEE—We aim to send our only healthy, true to name, and disease free stock. All State Inspected. If not completely satisfied when bulbs arrive, no matter what the reason, return at once, and purchase price will be refunded together with the cost of transportation.

NO WARRANTY—In common with all responsible growers, we give no warranty, express or implied, and will not be in any way responsible for the results of planting of any bulbs we send out. Growing conditions and careless use of new chemical dips of which we have no control, make this mandatory.

DISCOUNTS—Where cash remittance accompanies order you may take the following cash discount, or same value in extra bulbs, your selection.

| | |
|----------------------------------|-----|
| On orders \$5.00 to \$15.00..... | 5% |
| 15.00 to \$40.00..... | 10% |
| 40.00 and over..... | 15% |

Discounts do not apply on collections or the following varieties: Martha Deane, Oriental Pearl and Spic and Span.



We have built up an enviable reputation for the generous count in filling orders with overcount, oversize and new varieties for trial. Time does not permit us to give a detailed account of the various winnings of the different varieties exhibited at shows throughout the country. There are many Gladiolus Societies that make a specialty of this. The following three we especially endorse:

New England Gladiolus Society,
Alvin K. Parker, Secretary
Norwood, Massachusetts

A year book is published in February, and four quarterly supplements, which are packed with information.

North American Gladiolus Council,
Thomas R. Manley, Secretary
525 Coleman Ave.,
Fairmont, West Virginia

The Council issues bulletins, quarterly. Membership \$1.00 per year.

Minnesota Gladiolus Society,
Harold A. Christianson, Secretary
Christine Lake, Como Sta. 3,
St. Paul, Minnesota

Membership rate, \$1.50 per year. Two issues of the "Minnesota Glad Fan" will be sent to you. For \$3.00 per year you receive the above plus membership in the New England Gladiolus Society, which includes a copy of the year book and 6 issues of their Gladiolus magazine.

We are members of all three of the above named Societies, and suggest that you join one or all. The information you receive will be beyond your expectations.

Outstanding New and Recent Introductions

SPIC AND SPAN. (Carlson-Puerner)

This tall deep pink—really it is a shade between pink and salmon, has created a sensation at shows whenever exhibited. Its tall spike will open 8 to 10—4½ to 5 inch florets on a flowerhead, carrying 20 to 22 buds. Spikes never crook. Its placement is near perfect. Medium sized bulbs only, **\$4.00**. Bulblets 10 for **\$5.00**.

«—SPIC and SPAN

Cut by courtesy of Harold E. Janes

ORIENTAL PEARL (Carlson) Originator's Description

The Wonder Glad of 1946. Oriental Pearl is a very large wide open plain petalled cream. It is the finest glad I have ever seen in its color. Florets are easily 7 inches in diameter and even spikes from medium sizes carry 18 buds. Its best feature lies in the fact that florets are strongly and closely attached to the stem; it can be bunched and shipped, in spite of its great size. I have never known one to crook. Winnings, champion seedling and grand champion spike, Madison '44; 3 spike champion seedling, Minnesota '44; 3 spike champion seedling, Wisconsin seedling show '45; 3 spike champion seedling, Ottawa, Ill. '45; champion seedling, Wis. State Show, '45; 3 spike champion seedling, Marinette, Wis., '45. Prices for 1946 and 1947: Large \$5.00; Medium \$4.00; Small \$3.00. Bulblets sold only with purchase of a large bulb. 1 large and 10 Bulblets for \$10.00.

MARTHA DEANE (Walter Guille). Mid-season.

A beautiful tall growing yellow, with faint red throat spears, not conspicuous. It will make a 30 inch flowerhead, 6 to 8 florets opening, on a tall, graceful spike. One of the most beautiful yellows yet introduced.

Large \$5.00; Medium \$4.00; Small \$3.00; bulblets 10 for \$5.00

Outstanding Exhibition Varieties

BADGER BEAUTY (Krueger). Mid-season. A very popular clear lavender with a creamy throat. Has a fine record as a show winner. A dependable cut flower variety.

BURMA (Palmer). Mid-season. Deep rose red, heavily ruffled with heavy texture. When first florets begins to open practically all the buds on the spike will show color. An exceptionally fine glad.

BUENA VISTA (Pruitt). Mid-season. One of the most beautiful glads grown. Has not received the publicity it deserves. An immense rose-red. Grows up to 6 ft. tall with 6 to 8 seven inch florets open all at once. Color similar to Leona.

CASABLANCA. The most outstanding new white in existence. No markings. Tall straight spikes (never crooked), carrying 6-8 beautiful ruffled, average size florets, open at once. Absolutely a 100% cutter. Produces oodles of bulblets that germinate freely.

CORONA (Palmer). Originator's description: Creamy white shading somewhat deeper in the throat with rose picotee edge on the petals. Very distinctive and beautiful. Outstanding prize winning exhibition flower.

CRINKLE CREAM (Ellis). Mid-season. If you are looking for a good, medium-priced yellow, here it is. A beautiful ruffled pale yellow, wide open florets,

good placement, and average height.

DIANE (Krueger). Late. Orange to orange-salmon. A late bloomer, florets of immense size, clear to tips.

DREAM CASTLE (Lins). For those who like to have many florets open at once don't forget Dream Castle. It will open up to fourteen very nicely displaying a warm light coral pink ribbon of color, ruffled and firmly attached. It is a 100% cutter and has good commercial possibilities when stock becomes ample.

ELIZABETH THE QUEEN (White). Mid-season. This variety deserves the great popularity it has received to date. Large, beautiful, ruffled, deep lavender, with darker lines in the throat. Opens 7 to 8 large open blooms. Small bulbs make good spikes.

ETHEL CAVE COLE. (Cave). Early Mid-season. Here is a pink that the florists like. Large light pink, opens 8 large florets on a very tall stem. Excellent for commercial as well as exhibition. Small bulbs make salable spikes.

GENGHIS KAHN (Sheer). Midseason. A very reliable striking ruffled pure pink, no markings. Florets very large, up to 6 inches wide.

GOLDEN STATE (Wheeler). Late. A prize-winning desirable yellow, having won many grand championships. Very good.



LEADING LADY

PURPLE SUPREME (Wilson). Early mid-season. A very attractive purple. Medium-sized florets perfectly placed on a long spike. A very beautiful clear purple.

RIO RITA (Lins). Mid-season. A beautiful ruffled orange, opening up to 8 on a 23 inch flowerhead. This will produce sensational thrilling show spikes.

SPOTLIGHT (Palmer). A beautiful outstanding clear bright yellow with small scarlet blotching in throat. It produces tall straight spikes, opening 5 or 6

LEADING LADY (Johnston). Mid-season. It is hard for words to describe the beauty of this wonderful glad. Probably one of the most popular creamy white with lemon throat varieties yet introduced. Prices reduced. Don't fail to try this one.

MARGUERITE. A strong, sturdy variety. Deep watermelon pink with cream throat. 5 to 6 open florets on a well-placed stem.

MISS WISCONSIN (Krueger). Mid-season. This no doubt is the most popular rose yet introduced today. The demand for this is so great that the stock is always exhausted early. It is a mid-season bloomer, open 6 to 8 five-inch florets at one time.

MOTHER KADEL (Kadel). Mid-season. A very graceful medium yellow, 5 to 6 plain florets opening on tall spikes. Very dependable and reliable.

OREGON GOLD (Majeski). Late. The perfect yellow. Color medium yellow on outer edges, and blending smoothly to a deep yellow in the throat. This glad will produce 5 foot spikes, carrying 18 to 24 buds, 9 to 10 huge ruffled florets open at once. Nicely arranged on a tall graceful spike. This glad was sensational with us this past season.

PINK RADIANCE. (Quackenbush). Mid-season. Here is another reliable and dependable pink. Can be classed as a pure light pink with a silvery sheen and a touch of carmine in the throat. Open 6 to 8 medium sized florets, well placed on a long spike.

large blooms at once. Will carry from 16 to 20 buds. Demand is great. Order this one early.

STOPLIGHT (Lins). Mid-season to late. A brilliant rich red with silvery lustle. 6 to 8 medium sized florets open at once on a 22 inch long flower-head. Dark green healthy foliage. Graceful and dependable. Don't fail to get this one.

WHITE GOLD (Sheer). Mid-season. This tall beautiful cream really needs no introduction. 4 to 6 large blooms open all at once on a tall straight stem. Small bulbs bloom freely. Healthy, popular, and dependable.

General List

ALLADIN — Large beautifully ruffled grenadine pink with salmon blotch. 6-8 huge blooms born on stout straight stem. Sometimes grows short.

AMULET—An attractive ruffled creamy buff. A very dainty color to use in arrangement and basket work.

- ANNA MAE.** This is one, if not the best early chalk whites. Blooms a week ahead of Snow Princess. Excellent placement; straight stems.
- ALGONQUIN** — Tall brilliant, bright scarlet. Opens 6-8 blooms on a straight stem. An all around fine variety.
- AMBER GLOW**—Tall decorative amber yellow. Wiry stems—crooks some in hot weather.
- ARETHUSA**—An early apricot-tan. Tall vigorous grower. Heavily ruffled, almost frilled. Florets are perfectly placed. This is one of our favorites.
- BEACON** — Bright rose-scarlet with a creamy throat. 8 well placed florets on a tall willowy stem. Unsurpassed for either exhibition or commercial.
- BETSY BOB UP**—A late variety that blooms when all others are about gone. Light creamy yellow with distinct reddish pencil lines down the middle of each floret.
- BIT O' HEAVEN**—An unusual shade of orange. The color is vivid, lighter in throat. Florets are medium size, 8-10 open at once on tall stout spikes. In demand as a cut flower.
- BLAZE**—Tall light scarlet self. No markings. Blends well with other reds. Very fine.
- BLACK OPAL**—This can be classed as a dark red, or velvety maroon. 8-10 beautiful florets opens on a tall flower head, well placed.
- BLUE ADMIRAL**—One of the finest real dark blues. Not too tall, but has perfect placement.
- BLUE BEAUTY**—This tall growing glad produces 4-5 wide open florets on a strong straight spike. An early medium blue.
- BLUE WONDER**—Tall medium china blue. Darker strip in throat. This is really a beautiful glad when well grown.
- CAMROSE**—A most beautiful soft, shell pink with good placement. Will please those who favor pastel shades.
- CORAL GLOW**—Bright orange red, edge pink with creamy throat. Tall spikes, of petals lighter.
- CHAMOUNY** — A very unusual color. Rose or cerise-rose, with silver line around the edge of each petal. Its unusual color combination is very appealing.
- DEL RAY**—Light scarlet red with a large cream blotch in throat. It blooms late.
- DR. F. E. BENNETT**—Best described as "house afire red." An old variety that is still in demand as a cut flower. Perfect placement of florets, 4-6 open on medium tall spike. Fine.
- DR. HOAG**—Deep, maroon red, florets well placed; medium tall.
- EARLY ROSE** — Extra early rose-red. Medium tall spikes. In demand as an early cut flower. Much admired by garden visitors.
- GARDENIA** — Excellent creamy white; 4-6 florets open at once on tall wiry spikes. Opens well in water. An exceptionally fine cut flower.
- GOLDEN CHIMES**—A large ruffled light yellow. Very fine.
- GREENLIGHT** — The originator's own description: The especial charm of this variety arises from the peculiar greenish gloss, which overlays the milky-white of the large, well-formed, slightly ruffled florets. This is particularly pronounced in the bud stage. A mid-season variety possessing the points necessary to make it first-class for exhibition work.
- HARVEST MOON**—Good medium yellow. Smooth, flat-opening florets. Placement variable. A good exhibition and cut-flower variety.
- HINDENBURG'S MEMORY**—One of the best reds. Large vivid red. Tall spikes, 4-6 extra large florets open at once. Extra fine cut flower.
- KING LEAR**—Deep reddish-purple, silver lines on edge of petals. Extra tall. Spikes born on willowy stems. Becoming more popular every year.
- KING WILLIAM**—Light apricot blending with soft salmon, similar to Picardy. Extra fine cut flower.
- LADY JANE**—A clear cream with yellow tips, slightly ruffled, and will open 6-8 lovely florets, well placed. An excellent variety for cut flowers.
- LAVENDER RUFFLES**—Heavily ruffled delicate lavender. Florets are of medium size. Makes lovely corsages and dainty arrangement work.
- LEONA**—One of the finest deep rose reds. Tall straight wiry stems. Florets well placed. Blooms mid-season to late.
- LIBERATOR**—A brilliant orange brick red. Tall spike, well placed florets. This variety blooms late, and is always in demand. Try some.
- MARGARET BEATON**—Pure white with large cherry blotch in throat. Tall straight spike with 4-6 well placed blooms. Really a wonder glad.
- MISTY DAWN**—A beautiful smoky rose grey, orange red blotch in throat. Tall spikes, with medium sized florets. Considered the best smoky.
- MARGARET FULTON**—A medium tall, warm peach salmon. Florets are well placed, 4-6 open at once. Ideal cut flower variety.

- MARY ELIZABETH** — Heavily ruffled white. Very tall, straight spikes.
- MINUET**—One of the best lavenders ever introduced. As a cut flower it is as popular as ever. Florets are perfectly placed on medium tall spikes. 4-6 open at once. Fine.
- MYRNA**—An outstanding heavily ruffled ivory white. Florets well spaced on a straight stout spike.
- MOHAWK**—Another mid-season variety. Velvety deep maroon. Tall straight spikes.
- PELEGRINA**—A medium sized spike of a beautiful deep-violet. Extra fine for arrangement with other colors.
- PICARDY**—Probably the most loved and popular glad on the market today. Light salmon pink, near perfect placement of florets, tall straight spikes. Has won more prizes than any other glad.
- PURPLE BEAUTY** — Very large self color, clear deep purple. Round florets.
- RED LORY**—Extra fine large rose red.
- RECADO**—Rose ash, flecked orange. A giant smoky which always attracts attention in our gardens.
- REWI FALLU**—Deep blood red. Extra large florets born on tall wiry stems. An extra fine red, although sometimes flower head becomes "floppy."
- ROCKET**—An extra fine clear glowing scarlet. Medium tall spikes, blooms well placed. Popular cut flower.
- SENSATION**—Soft rose. A giant robust plant. Very tall.
- SNOW PRINCESS**—The most popular cut flower white today. A lovely white with creamy throat. Large flowers on a medium tall spike. Don't be without this one.
- SHIRLEY TEMPLE**—Light cream with creamy-yellow lower petal. Heavily ruffled. While somewhat inclined to crook in hot weather and placement is not always good, this is a beautiful thing when well grown.
- SILENTUM**—Another new white, almost identical with Margaret Beaton, except that it is not as large, therefore it really makes a better cut flower variety. White with ermine feather in throat.
- SURFSIDE** — A large white on tall straight stems, well placed. This is a late bloomer and flowers are always sold as soon as they are ready.
- VALERIA**—Tall early scarlet. Exceptionally fine cut flower variety.
- VAGABOND PRINCE**—Mahogany brown shading lighter in throat, with a distinct, vivid scarlet blotch. 6-8 well placed medium sized florets open at once on tall spikes. Odd, distinctive, beautiful.
- WANDA**—A rich deep cream. A sport of Picardy. Grows identically the same as Picardy, except of a different color. Exceptionally fine for cut flowers.
- WINGS OF SONG** — Soft rose-salmon with white in throat. Frequently this variety has touches of blue around the edge of petals. Florets very large, makes a very striking bouquet.

COLLECTIONS

We have many inquiries for collections each year, many folks are desirous of planting a hundred or more but are not certain just what varieties to select. For that reason we are again offering the following collections. The varieties we use to make up these collections are all dependable and will give you excellent results in your garden. The bulblet-collection affords one to get an economical start in new and late introductions.

BUBLET COLLECTION OF NEW AND LATE INTRODUCTIONS

| | |
|--------------------------------|-----------------|
| 100 Bublets CORONA | 100 GREEN LIGHT |
| 50 Bublets CASABLANCA | 50 MOTHER KADEL |
| 100 Bublets DIANE | 50 MYRNA |
| 100 Bublets ETHEL CAVE COLE | 50 SILENTUM |
| 50 Bublets ELIZABETH the QUEEN | 100 WHITE GOLD |

25 Bublets LEADING LADY
1 large bulb LEADING LADY included in each Collection.

47E—\$5.00

RAINBOW COLLECTION

We have offered this collection for several years, and it has always been satisfactory. This collection contains 10 varieties, all selected for their consistent performance. All are leaders in their color class as top notch cut flowers.

AMULET
BEACON
BIT O' HEAVEN
GARDENIA
KING WILLIAM

MARGARET FULTON
ROCKET
SNOW PRINCESS
VAGABOND PRINCE
WANDA

47A—10 each, large bulbs of the above, 100 bulbs, \$6.00
47B—10 each, medium bulbs of the above, 100 bulbs, \$4.00
2 Large White Gold extra with Collection 47A
1 Large White Gold extra with Collection 47B

DELUXE COLLECTION

This collection contains 10 varieties of outstanding Gladioli. Each variety has been selected for its color appeal, strong, healthy growing habits, consistent performance as a leader in its particular color class. Try one of these—you will surely be pleased.

10 ARETHUSA
10 BLACK OPAL
10 BLAZE
10 BLUE BEAUTY
10 DIANE

10 ETHEL CAVE COLE
10 GREEN LIGHT
10 KING LEAR
10 LIBERATOR
10 MARGARET BEATON

47C—100 Large Bulbs, \$7.50; 47D—100 Medium Bulbs, \$5.00
3 Large White Gold extra with Collection 47C
3 Medium White Gold extra with Collection 47D

Retail Price List Season 1947

Please Read Carefully

Large bulbs are 1¼ inches and over in diameter, size 1 and 2. Medium size are ¾ inch to 1¼ inches in diameter, size 3 and 4.

10 bulbs at 8 times the 10 rate where priced singly. 5 bulbs at 10 rate. No item for less than 15c. Please order in units as 3 for 25c.

If interested in small, planting size bulbs by the 100, or bulbs of the larger sizes, 50 or more of one variety and size, please ask for our wholesale list.

Our Fall sales have been heavy, even before issuing and sending out this catalog. Many of the new varieties will be sold out before spring. WE SUGGEST THAT YOU ORDER EARLY!

| Variety | Per | Large | | Medium | | Bulblets | | | |
|---------------------|-----|-------|--------|--------|-----|----------|--------|-----|--------|
| | | 1 | 3 | 10 | 1 | 3 | 10 | 10 | 100 |
| Alladin | | | \$0.20 | \$0.70 | | \$0.15 | \$0.50 | | \$0.35 |
| Amulet | | | .20 | .60 | | .15 | .45 | | .25 |
| Anna Mae | | | .25 | .85 | | .20 | .60 | | .50 |
| Algonquin | | | .35 | .85 | | .20 | .60 | | .50 |
| Amber Glow..... | | | .20 | .70 | | .15 | .50 | | .35 |
| Arethusa | | | .25 | .85 | | .20 | .60 | | .50 |
| Badger Beauty | .20 | | | | .15 | | | .25 | 1.75 |
| Beacon | | | .20 | .70 | | .15 | .45 | | .25 |
| Buena Vista | .50 | | | | | .35 | | | |
| Burma | .50 | | | | | .35 | | .50 | 4.00 |

| | | | | | | | |
|---------------------------|-------|-------|-------|-------|-------|-------|-------|
| Betsy Bob Up..... | .25 | .85 | | .20 | .60 | | .50 |
| Bit O' Heaven..... | .20 | .70 | | .15 | .50 | | .25 |
| Blaze | .20 | .70 | | .15 | .45 | | .25 |
| Black Opal | .25 | .75 | | .20 | .60 | | .35 |
| Blue Admiral | .25 | .75 | | .20 | .55 | | .35 |
| Blue Beauty | .25 | .75 | | .20 | .55 | | .35 |
| Blue Wonder..... | .20 | .65 | | .15 | .45 | | .35 |
| Camrose | .25 | .85 | | .20 | .60 | | .50 |
| Chamouny | .25 | .85 | | .20 | .60 | | .50 |
| Casablanca..... | .20 | 1.60 | | .30 | .80 | | .75 |
| Corona | .30 | .80 | | .20 | .60 | | .75 |
| Coral Glow | .20 | .65 | | .15 | .45 | | .35 |
| Crinkle Cream | .50 | 4.00 | | .30 | 2.40 | .50 | 4.00 |
| Diane | .35 | .85 | | .25 | .60 | | .50 |
| Dr. F. E. Bennett..... | .20 | .65 | | .15 | .45 | | .25 |
| Dr. Hoag | .25 | .75 | | .20 | .60 | | .35 |
| Dream Castle | .60 | | | .40 | | .60 | 4.80 |
| Early Rose | .25 | .65 | | .20 | .50 | | .35 |
| Elizabeth the Queen..... | .25 | 2.00 | | .15 | 1.20 | | 1.50 |
| Ethel Cave Cole..... | .40 | 1.00 | | .25 | .60 | | .25 |
| Gardenia | .20 | .65 | | .15 | .45 | | .25 |
| Genghis Kahn | 1.50 | | 1.00 | | | 1.40 | 11.00 |
| Golden Chimes | .20 | .65 | | .15 | .50 | | .25 |
| Golden State | .75 | | | .50 | | .40 | 3.00 |
| Green Light | .35 | .85 | | .25 | .60 | | .75 |
| Harvest Moon | .30 | .80 | | .20 | .55 | | .50 |
| Hindenburg's Memory | .25 | .75 | | .20 | .55 | | .35 |
| King Lear | .25 | .75 | | .20 | .55 | | .35 |
| King William | .30 | .80 | | .20 | .60 | | .50 |
| Lady Jane | .15 | .35 | .90 | | .30 | .65 | .25 |
| Leading Lady | .40 | 3.20 | .25 | | 2.00 | .40 | 3.00 |
| Lavender Ruffles | .20 | .65 | | .15 | .45 | | .25 |
| Leona | .25 | .75 | | .20 | .55 | | .35 |
| Liberator | .25 | .75 | | .20 | .55 | | .35 |
| Marguerite | .30 | .90 | | .20 | .65 | | .50 |
| Margaret Beaton | .25 | .75 | | .20 | .50 | | .50 |
| Margaret Fulton | .20 | .65 | | .15 | .45 | | .25 |
| Mary Elizabeth | .20 | .65 | | .15 | .45 | | .25 |
| Miss Wisconsin | .80 | | .60 | | | .80 | 6.40 |
| Minuet | .25 | .75 | | .20 | .65 | | .25 |
| Mother Kadel | .30 | .90 | | .20 | .65 | | .75 |
| Myrna | .25 | .75 | | .20 | .65 | | .50 |
| Mohawk | .15 | 1.20 | | .30 | .80 | | 1.00 |
| Oregon Gold | .20 | 1.50 | | .35 | 1.00 | | .75 |
| Pelegrina | .25 | .75 | | .20 | .60 | | .35 |
| Picardy | .25 | .75 | | .20 | .55 | | .35 |
| Pink Radiance | .15 | .35 | 1.00 | | .25 | .75 | .35 |
| Purple Beauty | .25 | .75 | | .20 | .55 | | .50 |
| Purple Supreme | .25 | 2.00 | | .40 | 1.25 | .25 | 1.00 |
| Red Lory | .25 | .70 | | .20 | .55 | | .25 |
| Recado | .25 | .75 | | .20 | .55 | | .35 |
| Rio Rita | .25 | 2.00 | .15 | | 1.10 | | |
| Rewi Fallu | .25 | .75 | | .20 | .55 | | .25 |
| Rocket | .20 | .65 | | .15 | .45 | | |
| Sensation | .15 | .35 | 1.00 | | .25 | .65 | .50 |
| Shirley Temple | .25 | .75 | | .20 | .55 | | .35 |
| Silentum | .25 | .75 | | .20 | .60 | | .50 |
| Snow Princess | .20 | .60 | | .15 | .45 | | .25 |
| Surfside | .25 | .75 | | .20 | .60 | | .35 |
| Spotlight | | | 1.00 | | 8.00 | 1.20 | 9.60 |
| Stoplight | .30 | 1.00 | | .25 | .70 | | .75 |
| Vagabond Prince | .20 | .65 | | .15 | .45 | | .25 |
| Valeria | .25 | .75 | | .20 | .55 | | .50 |
| Wanda | .25 | .75 | | .20 | .55 | | .50 |
| Wings of Song..... | .30 | .90 | | .25 | .65 | | .50 |
| White Gold | .20 | .45 | 1.60 | .15 | .35 | 1.00 | 1.00 |

Misty Dawn
SAME AS CAMROSE



Cut by courtesy of Harold E. Janes

ORIENTAL PEARL, the wonder GLAD of 1946,
described in detail on page 5.

Our Special Advertising 25th Anniversary Collection

For the advanced Amateur and Fancier

Here is a collection that will give you maximum results and thrills at a minimum cost. All are prize-winning varieties of outstanding merit. We will mail, postpaid, 5 each large bulbs and 5 each medium size bulbs, a total of 100 bulbs (catalog value \$13.50) for \$10.00. Until March 1, 1947 or as long as our supply lasts we will include gratis 1 No. 5 Martha Deane, the sensation new yellow. (Catalog value \$3.00.)

LEADING LADY

ELIZABETH the QUEEN

WHITE GOLD

ETHEL CAVE COLE

GREEN LIGHT

MOTHER KADEL

CORONA

STOPLIGHT

KING LEAR

MARGARET BEATON

25th Anniversary collection (catalog value \$13.50) \$10.00.

Order Collection 25th-A

Order Sheet
GLADVIEW GARDENS
 Maple Plain, Minnesota

Order No.

Date.....

Mr.
 Mrs.
 Miss (Please print or write your name very plainly)

Street address or R.F.D.....

Post Office State.....

Express Office..... (If different from Post Office)
 Amount enclosed.....
 Check

Money Order

Ship when

Substitutions. If we are out of any item you order shall we: Refund.
 Substitute nearest size. Substitute another variety of equal value?

Note: All stock offered subject to crop and prior sale. Orders are filled in numerical sequence.

| Quantity | Size | VARIETY | Rate | Price |
|----------|------|---------|------|-------|
| 1 | | | | |
| 2 | | | | |
| 3 | | | | |
| 4 | | | | |
| 5 | | | | |
| 6 | | | | |
| 7 | | | | |
| 8 | | | | |
| 9 | | | | |
| 10 | | | | |
| 11 | | | | |
| 12 | | | | |
| 13 | | | | |
| 14 | | | | |
| 15 | | | | |
| 16 | | | | |

Note: Gladview Gardens will refund the purchase price on any order found unsatisfactory, and returned. We will replace any untrue to name stock free of charge, but all responsibility for results of growth and crop is denied.